

Data Path : Z:\svoasrv\HPCHEM1\BNA\_F\Data\BF020521\  
 Data File : BF123139.D  
 Acq On : 5 Feb 2021 17:12  
 Operator : JU/CG  
 Sample : M1315-04  
 Misc :  
 ALS Vial : 13 Sample Multiplier: 1

Instrument :  
 BNA\_F  
 ClientSampleId :  
 TS-1

Quant Time: Feb 05 18:12:49 2021  
 Quant Method : Z:\SVOASRV\HPCHEM1\BNA\_F\METHODS\8270-BF012721.M  
 Quant Title : ASP BNA STANDARDS FOR 5 POINT CALIBRATION  
 QLast Update : Fri Jan 29 12:29:00 2021  
 Response via : Initial Calibration

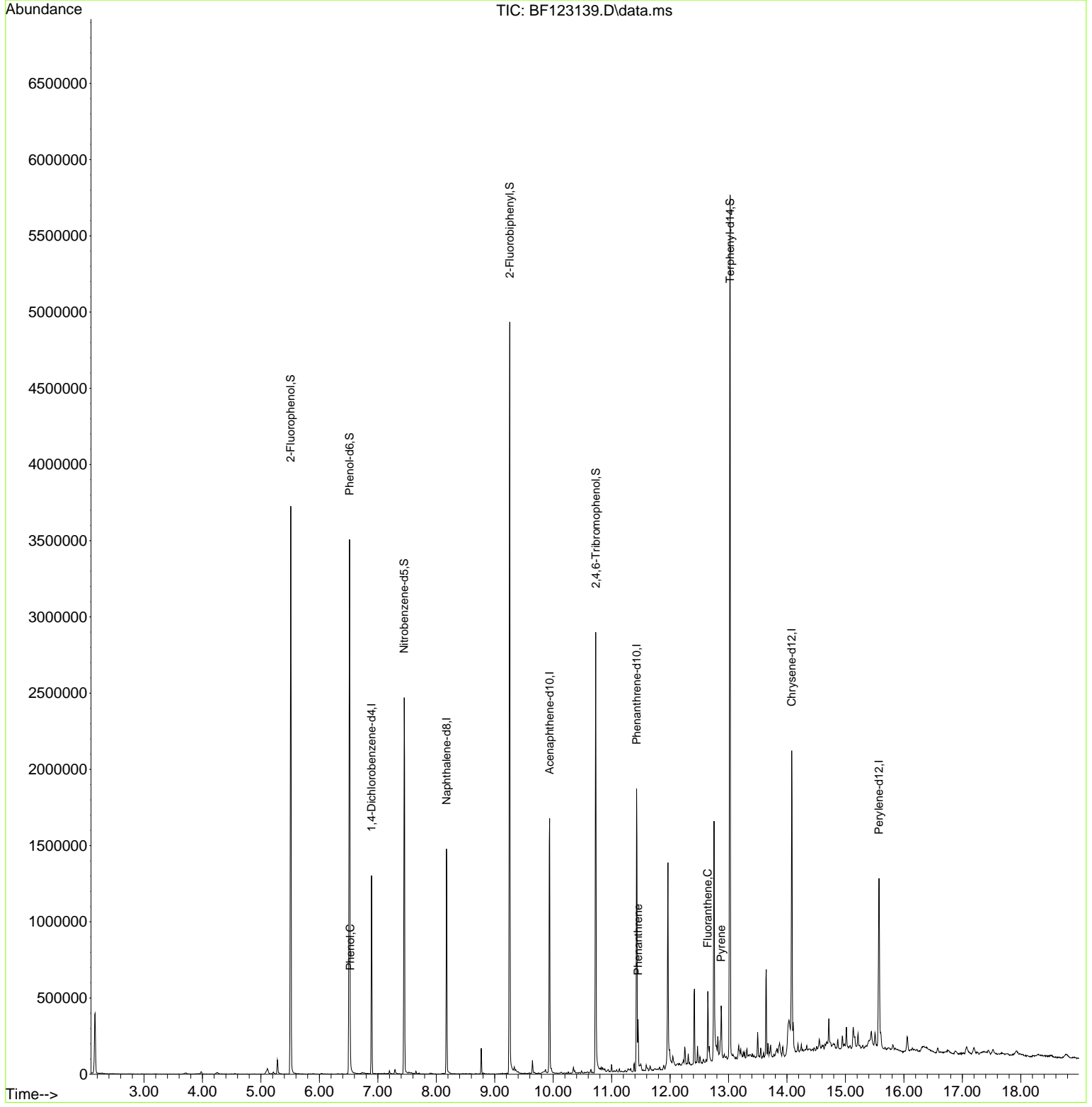
Compound	R.T.	QIon	Response	Conc	Units	Dev(Min)	
Internal Standards							
1) 1,4-Dichlorobenzene-d4	6.893	152	167727	20.00	ng	0.00	
21) Naphthalene-d8	8.175	136	650944	20.00	ng	0.00	
39) Acenaphthene-d10	9.939	164	359610	20.00	ng	0.00	
64) Phenanthrene-d10	11.428	188	686993	20.00	ng	0.00	
76) Chrysene-d12	14.080	240	655465	20.00	ng	0.00	
86) Perylene-d12	15.574	264	553786	20.00	ng	0.00	
System Monitoring Compounds							
5) 2-Fluorophenol	5.510	112	1077335	99.08	ng	0.00	
7) Phenol-d6	6.516	99	1328553	90.14	ng	0.00	
23) Nitrobenzene-d5	7.451	82	825273	63.80	ng	-0.01	
42) 2,4,6-Tribromophenol	10.728	330	377031	96.58	ng	0.00	
45) 2-Fluorobiphenyl	9.257	172	1510469	62.44	ng	0.00	
79) Terphenyl-d14	13.027	244	1859382	55.73	ng	0.00	
Target Compounds							Qvalue
10) Phenol	6.528	94	40633	2.78	ng		93
71) Phenanthrene	11.451	178	107789	2.53	ng		97
75) Fluoranthene	12.645	202	173014	4.06	ng		99
78) Pyrene	12.874	202	131607	2.66	ng		98

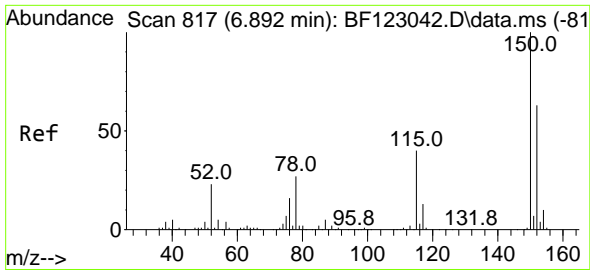
(#) = qualifier out of range (m) = manual integration (+) = signals summed

Data Path : Z:\svoasrv\HPCHEM1\BNA\_F\Data\BF020521\  
 Data File : BF123139.D  
 Acq On : 5 Feb 2021 17:12  
 Operator : JU/CG  
 Sample : M1315-04  
 Misc :  
 ALS Vial : 13 Sample Multiplier: 1

Instrument :  
 BNA\_F  
 ClientSampled :  
 TS-1

Quant Time: Feb 05 18:12:49 2021  
 Quant Method : Z:\SVOASRV\HPCHEM1\BNA\_F\METHODS\8270-BF012721.M  
 Quant Title : ASP BNA STANDARDS FOR 5 POINT CALIBRATION  
 QLast Update : Fri Jan 29 12:29:00 2021  
 Response via : Initial Calibration

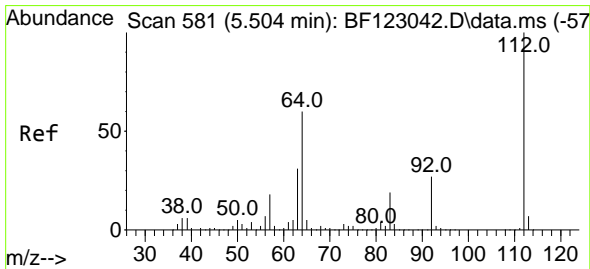
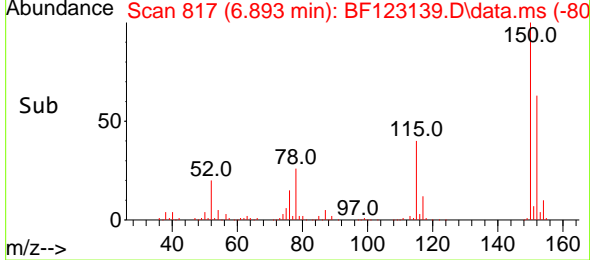
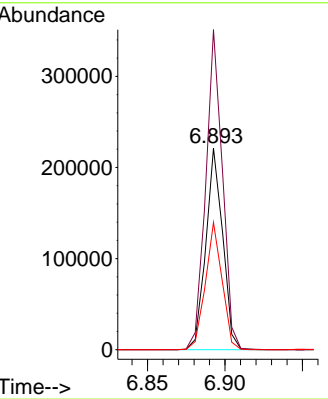
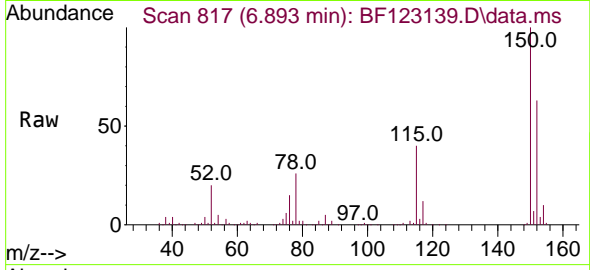




#1  
 1,4-Dichlorobenzene-d4  
 Concen: 20.00 ng  
 RT: 6.893 min Scan# 817  
 Delta R.T. 0.001 min  
 Lab File: BF123139.D  
 Acq: 5 Feb 2021 17:12

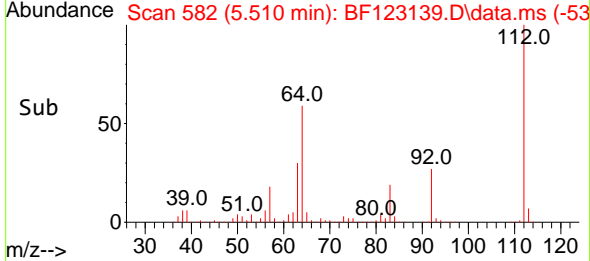
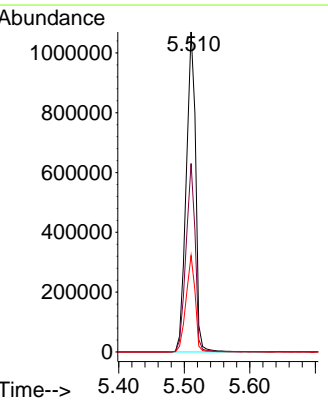
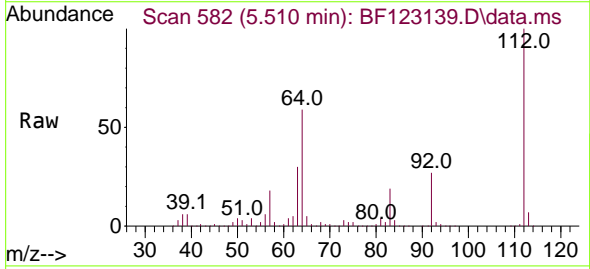
Instrument :  
 BNA\_F  
 ClientSampled :  
 TS-1

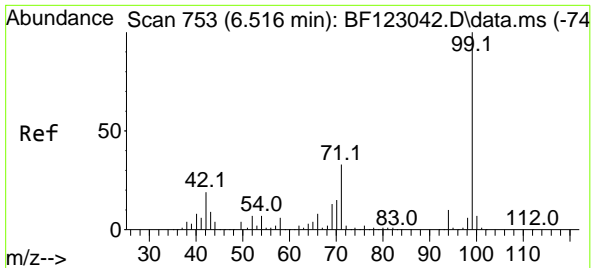
Tgt Ion:152 Resp: 167727  
 Ion Ratio Lower Upper  
 152 100  
 150 158.7 125.8 188.6  
 115 63.1 49.3 73.9



#5  
 2-Fluorophenol  
 Concen: 99.08 ng  
 RT: 5.510 min Scan# 582  
 Delta R.T. 0.006 min  
 Lab File: BF123139.D  
 Acq: 5 Feb 2021 17:12

Tgt Ion:112 Resp: 1077335  
 Ion Ratio Lower Upper  
 112 100  
 64 58.9 46.9 70.3  
 63 30.1 24.5 36.7

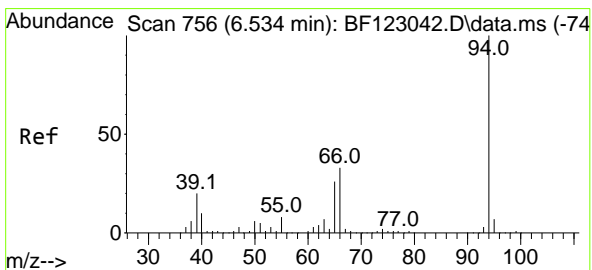
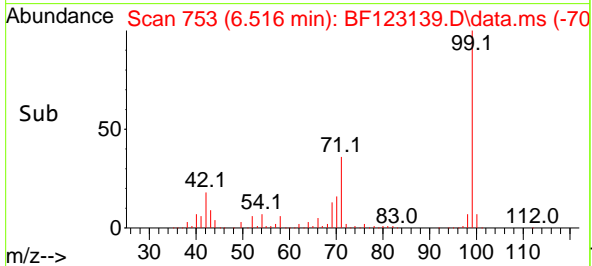
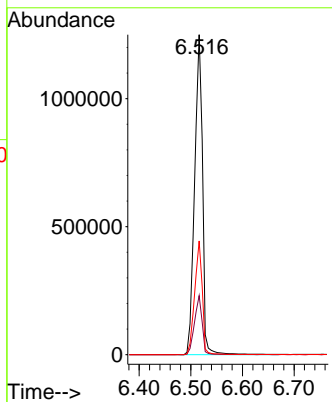
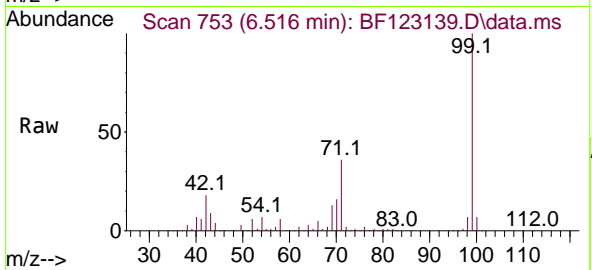




#7  
Phenol-d6  
Concen: 90.14 ng  
RT: 6.516 min Scan# 753  
Delta R.T. 0.000 min  
Lab File: BF123139.D  
Acq: 5 Feb 2021 17:12

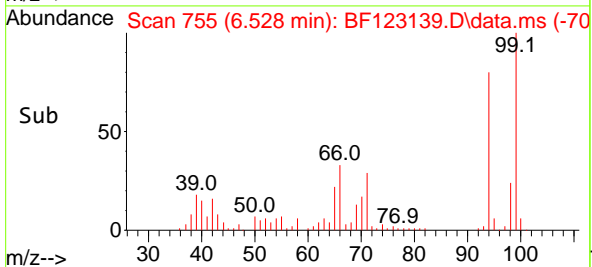
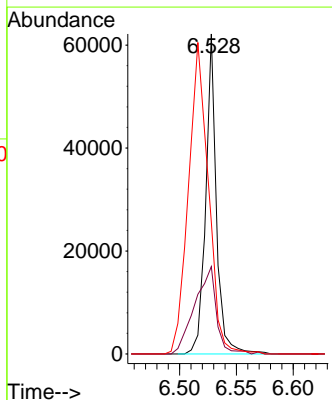
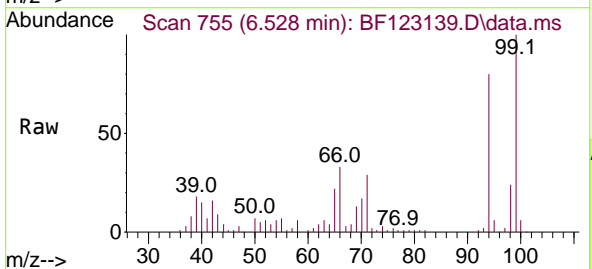
Instrument :  
BNA\_F  
ClientSampled :  
TS-1

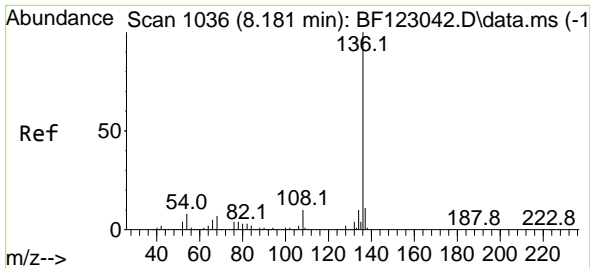
Tgt Ion: 99 Resp: 1328553  
Ion Ratio Lower Upper  
99 100  
42 18.4 13.8 20.6  
71 35.5 26.9 40.3



#10  
Phenol  
Concen: 2.78 ng  
RT: 6.528 min Scan# 755  
Delta R.T. -0.006 min  
Lab File: BF123139.D  
Acq: 5 Feb 2021 17:12

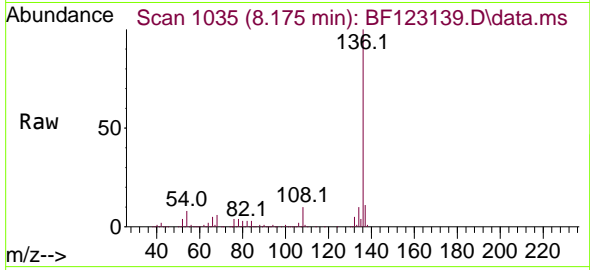
Tgt Ion: 94 Resp: 40633  
Ion Ratio Lower Upper  
94 100  
65 27.3 11.2 51.2  
66 41.2 25.8 65.8





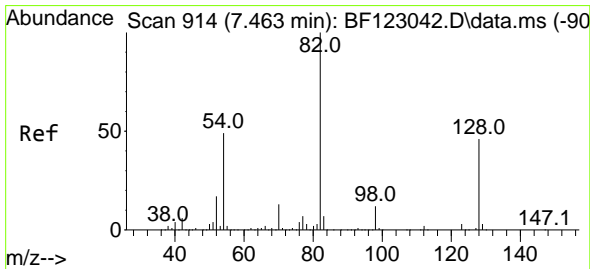
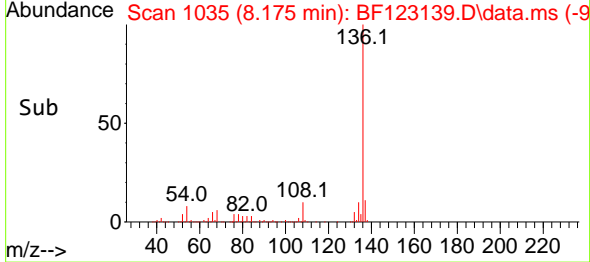
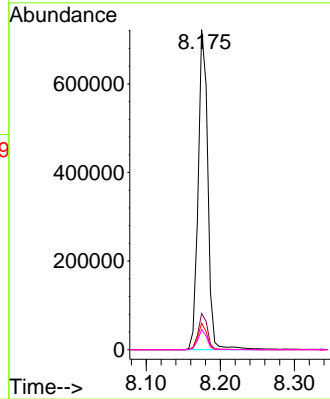
#21  
 Naphthalene-d8  
 Concen: 20.00 ng  
 RT: 8.175 min Scan# 1035  
 Delta R.T. -0.006 min  
 Lab File: BF123139.D  
 Acq: 5 Feb 2021 17:12

Instrument :  
 BNA\_F  
 ClientSampled :  
 TS-1

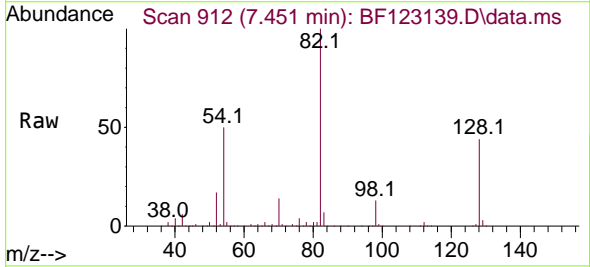


Tgt Ion:136 Resp: 650944

Ion	Ratio	Lower	Upper
136	100		
137	11.3	8.8	13.2
54	8.3	5.5	8.3
68	6.3	4.6	6.8

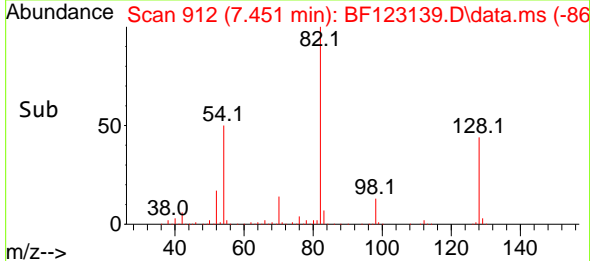
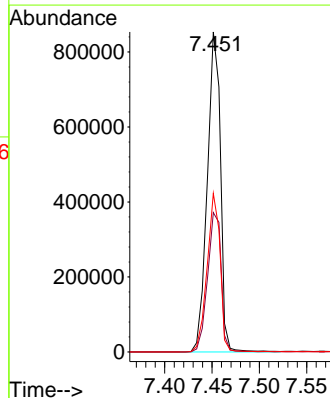


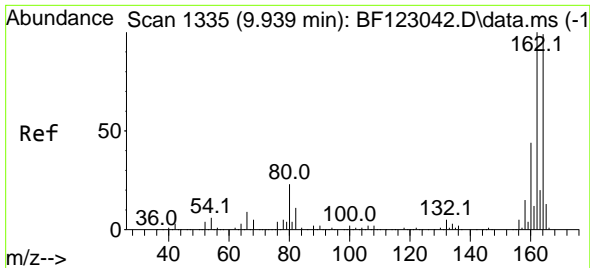
#23  
 Nitrobenzene-d5  
 Concen: 63.80 ng  
 RT: 7.451 min Scan# 912  
 Delta R.T. -0.012 min  
 Lab File: BF123139.D  
 Acq: 5 Feb 2021 17:12



Tgt Ion: 82 Resp: 825273

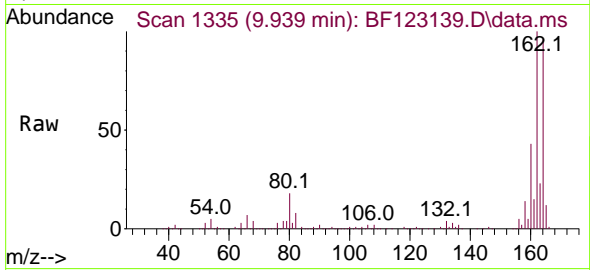
Ion	Ratio	Lower	Upper
82	100		
128	43.5	37.0	55.4
54	49.5	38.4	57.6



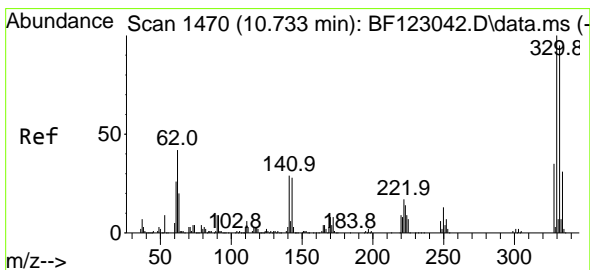
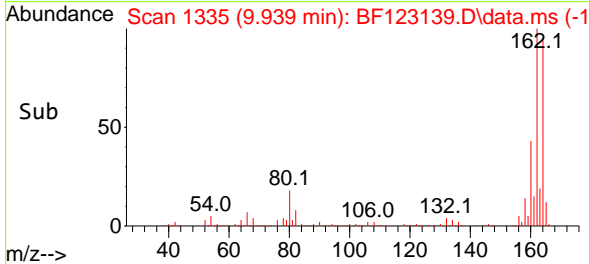
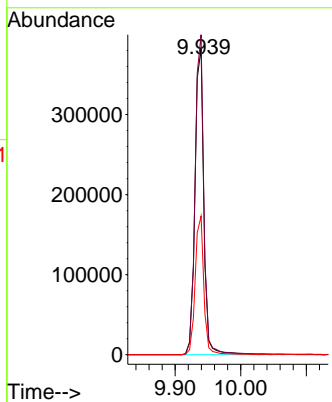


#39  
 Acenaphthene-d10  
 Concen: 20.00 ng  
 RT: 9.939 min Scan# 1335  
 Delta R.T. 0.000 min  
 Lab File: BF123139.D  
 Acq: 5 Feb 2021 17:12

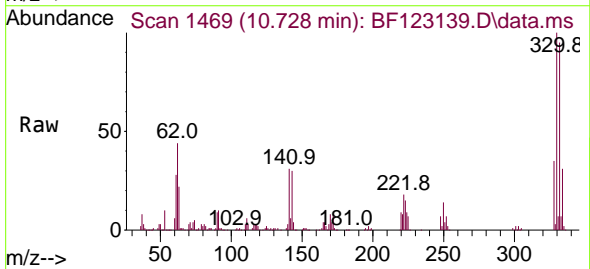
Instrument :  
 BNA\_F  
 ClientSampled :  
 TS-1



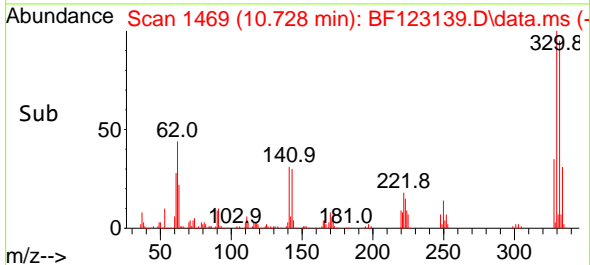
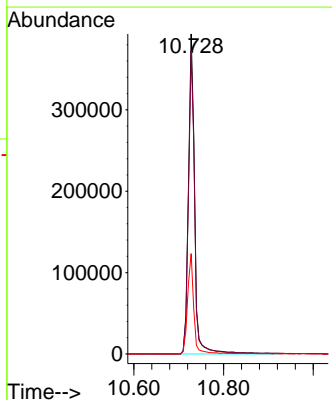
Tgt Ion:164 Resp: 359610  
 Ion Ratio Lower Upper  
 164 100  
 162 104.5 80.8 121.2  
 160 45.2 35.4 53.0

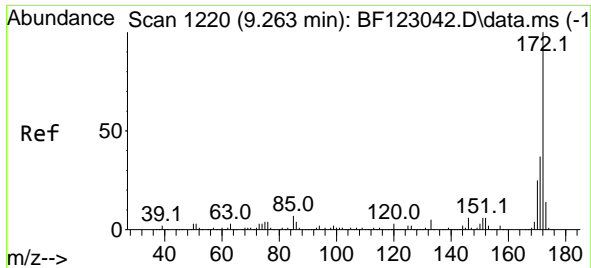


#42  
 2,4,6-Tribromophenol  
 Concen: 96.58 ng  
 RT: 10.728 min Scan# 1469  
 Delta R.T. -0.006 min  
 Lab File: BF123139.D  
 Acq: 5 Feb 2021 17:12



Tgt Ion:330 Resp: 377031  
 Ion Ratio Lower Upper  
 330 100  
 332 95.0 77.5 116.3  
 141 31.2 23.8 35.8

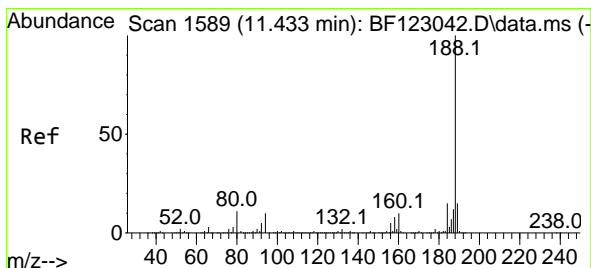
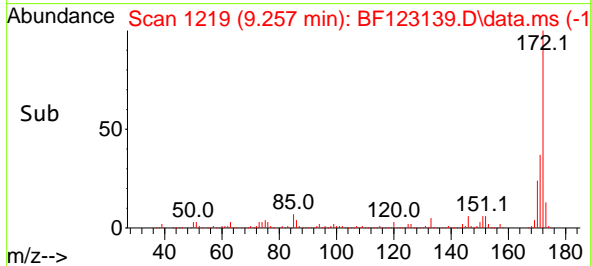
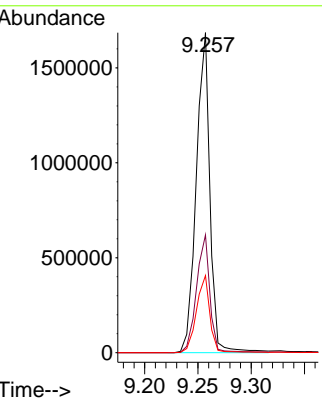
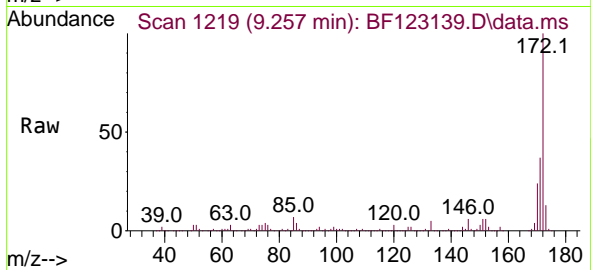




#45  
 2-Fluorobiphenyl  
 Concen: 62.44 ng  
 RT: 9.257 min Scan# 1219  
 Delta R.T. -0.006 min  
 Lab File: BF123139.D  
 Acq: 5 Feb 2021 17:12

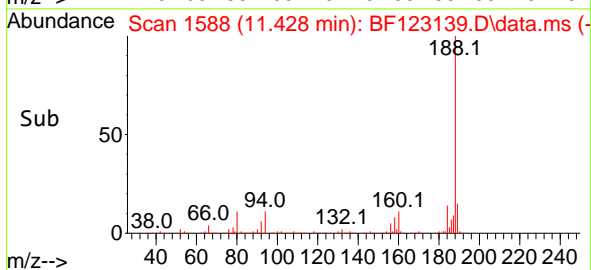
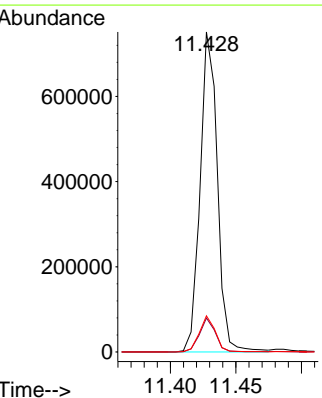
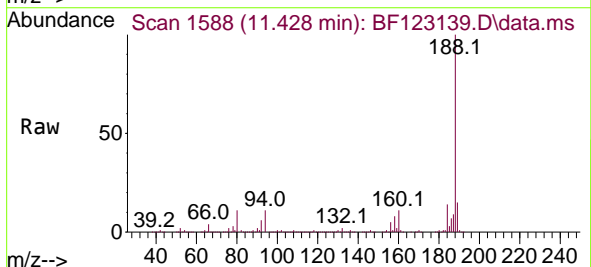
Instrument :  
 BNA\_F  
 ClientSampled :  
 TS-1

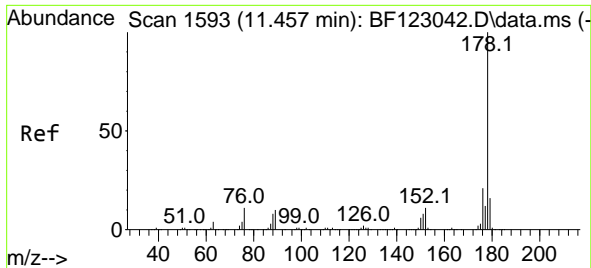
Tgt Ion:172 Resp: 1510469  
 Ion Ratio Lower Upper  
 172 100  
 171 36.8 29.6 44.4  
 170 24.1 19.5 29.3



#64  
 Phenanthrene-d10  
 Concen: 20.00 ng  
 RT: 11.428 min Scan# 1588  
 Delta R.T. -0.005 min  
 Lab File: BF123139.D  
 Acq: 5 Feb 2021 17:12

Tgt Ion:188 Resp: 686993  
 Ion Ratio Lower Upper  
 188 100  
 94 10.6 7.4 11.2  
 80 11.3 8.2 12.4



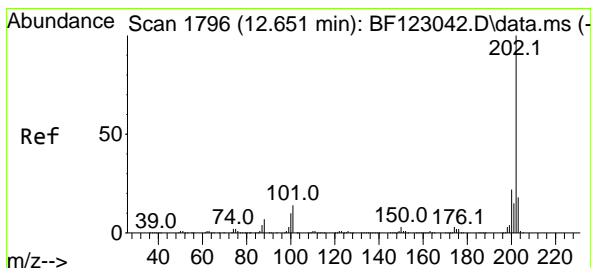
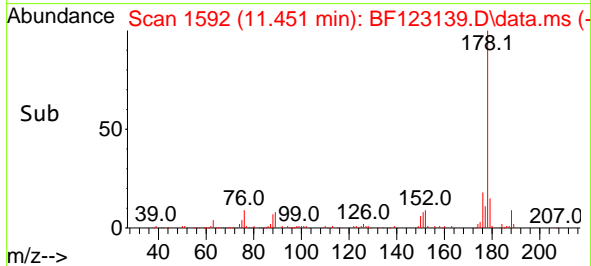
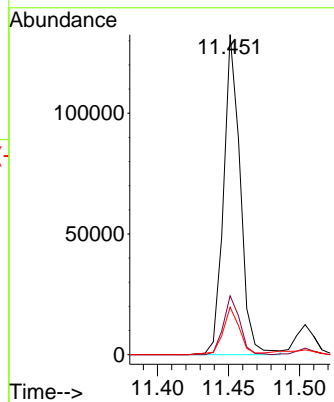
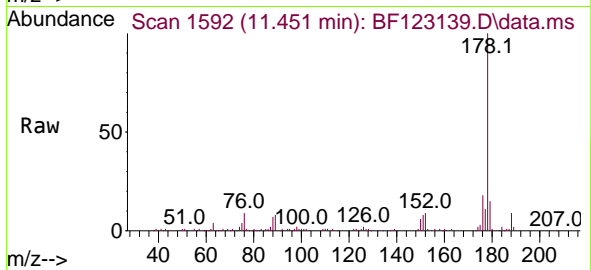


#71  
 Phenanthrene  
 Concen: 2.53 ng  
 RT: 11.451 min Scan# 1592  
 Delta R.T. -0.006 min  
 Lab File: BF123139.D  
 Acq: 5 Feb 2021 17:12

Instrument :  
 BNA\_F  
 ClientSampled :  
 TS-1

Tgt Ion:178 Resp: 107789

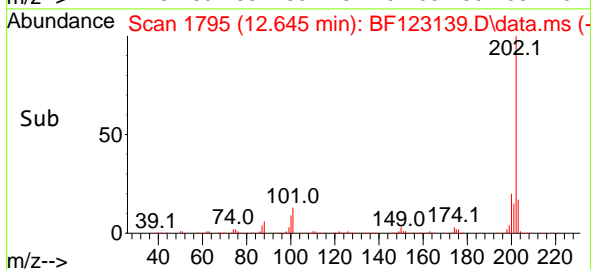
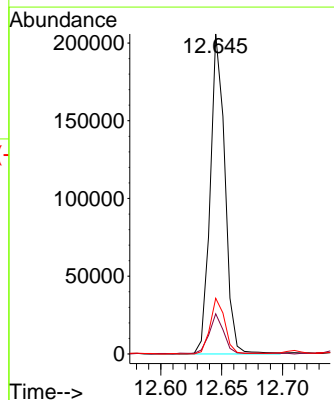
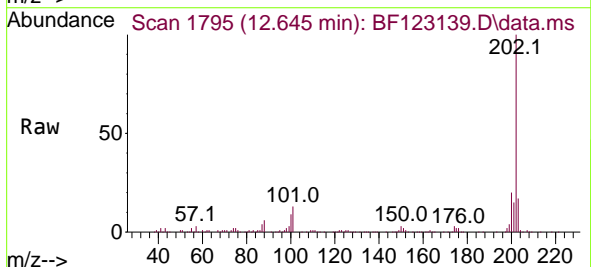
Ion	Ratio	Lower	Upper
178	100		
176	18.4	16.2	24.2
179	14.9	12.7	19.1



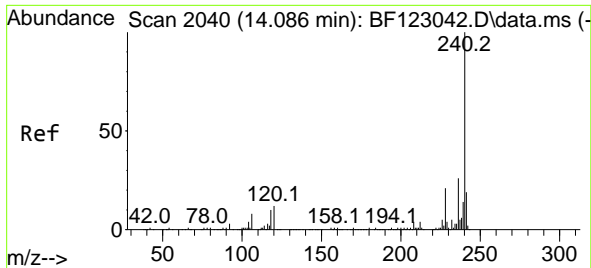
#75  
 Fluoranthene  
 Concen: 4.06 ng  
 RT: 12.645 min Scan# 1795  
 Delta R.T. -0.006 min  
 Lab File: BF123139.D  
 Acq: 5 Feb 2021 17:12

Tgt Ion:202 Resp: 173014

Ion	Ratio	Lower	Upper
202	100		
101	12.6	0.0	32.2
203	17.4	0.0	38.1



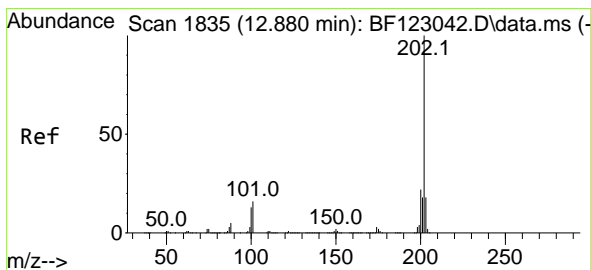
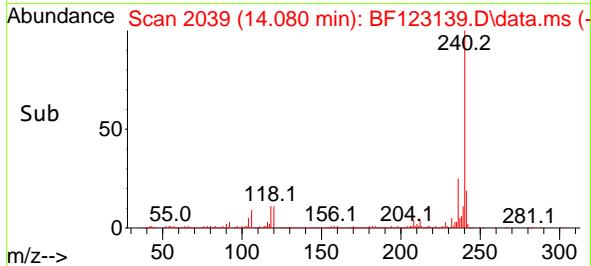
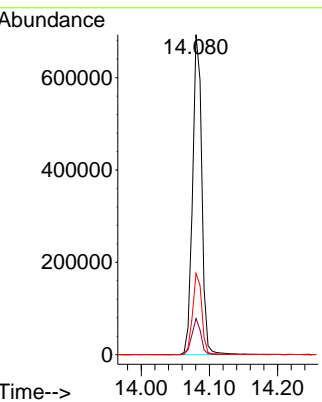
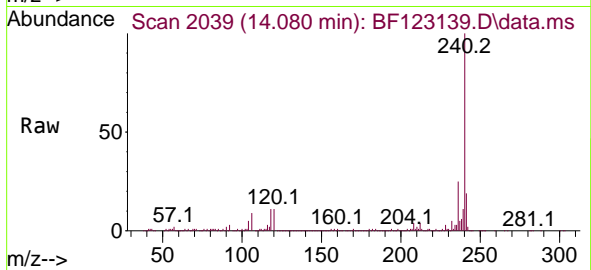




#76  
 Chrysene-d12  
 Concen: 20.00 ng  
 RT: 14.080 min Scan# 2039  
 Delta R.T. -0.006 min  
 Lab File: BF123139.D  
 Acq: 5 Feb 2021 17:12

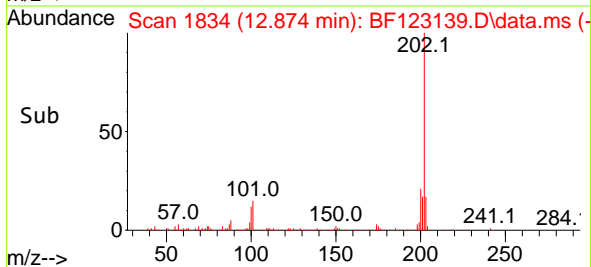
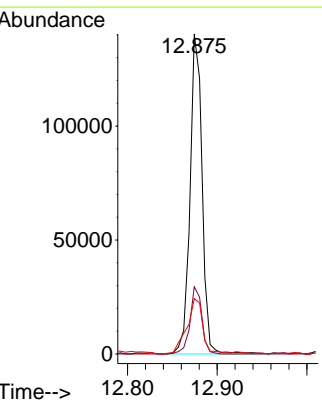
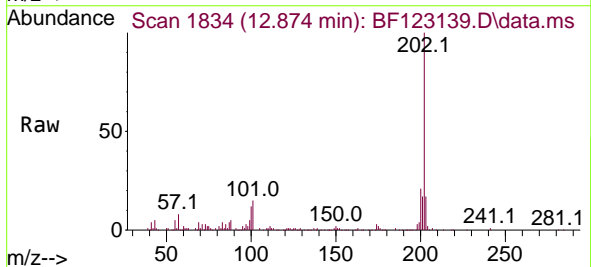
Instrument :  
 BNA\_F  
 ClientSampled :  
 TS-1

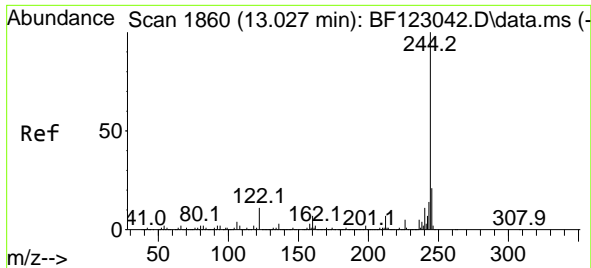
Tgt Ion	Resp	Lower	Upper
240	100		
120	11.3	8.6	12.8
236	25.4	20.3	30.5



#78  
 Pyrene  
 Concen: 2.66 ng  
 RT: 12.874 min Scan# 1834  
 Delta R.T. -0.006 min  
 Lab File: BF123139.D  
 Acq: 5 Feb 2021 17:12

Tgt Ion	Resp	Lower	Upper
202	100		
200	21.0	17.6	26.4
203	17.3	14.6	21.8

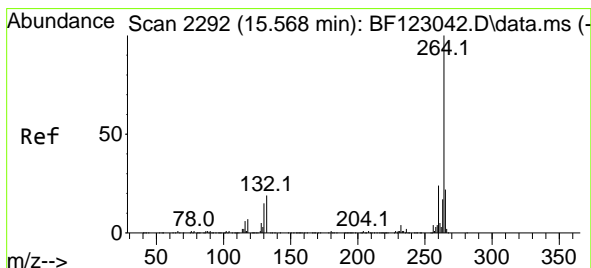
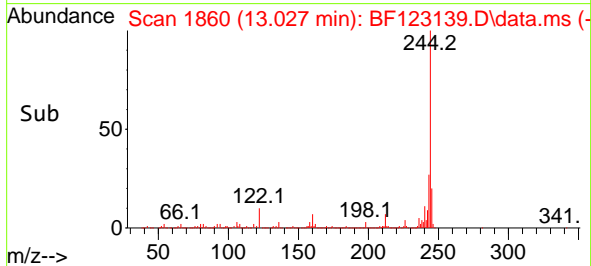
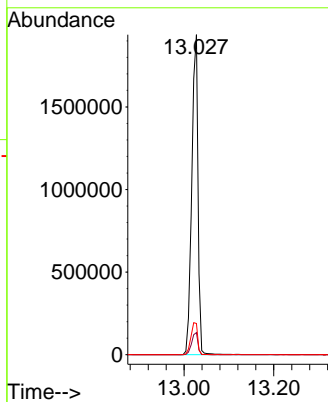
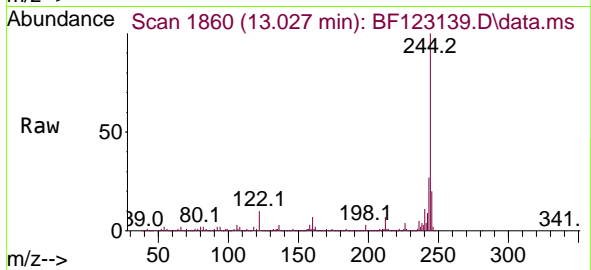




#79  
 Terphenyl-d14  
 Concen: 55.73 ng  
 RT: 13.027 min Scan# 1860  
 Delta R.T. 0.000 min  
 Lab File: BF123139.D  
 Acq: 5 Feb 2021 17:12

Instrument :  
 BNA\_F  
 ClientSampled :  
 TS-1

Tgt Ion:244 Resp: 1859382  
 Ion Ratio Lower Upper  
 244 100  
 212 6.9 5.7 8.5  
 122 9.7 8.3 12.5



#86  
 Perylene-d12  
 Concen: 20.00 ng  
 RT: 15.574 min Scan# 2293  
 Delta R.T. 0.006 min  
 Lab File: BF123139.D  
 Acq: 5 Feb 2021 17:12

Tgt Ion:264 Resp: 553786  
 Ion Ratio Lower Upper  
 264 100  
 260 23.8 18.6 28.0  
 265 21.7 17.0 25.6

