

Data Path : Z:\svoasrv\HPCHEM1\BNA_F\Data\BF020623\
 Data File : BF132336.D
 Acq On : 06 Feb 2023 14:02
 Operator : CG\JU
 Sample : PB150684BL
 Misc :
 ALS Vial : 3 Sample Multiplier: 1

Instrument :
 BNA_F
 ClientSampleId :
 PB150684BL

Integration Parameters: rteint.p
 Integrator: RTE
 Smoothing : ON Filtering: 5
 Sampling : 1 Min Area: 3 % of largest Peak
 Start Thrs: 0.2 Max Peaks: 100
 Stop Thrs : 0 Peak Location: TOP

If leading or trailing edge < 100 prefer < Baseline drop else tangent >
 Peak separation: 5

Method : Z:\svoasrv\HPCHEM1\BNA_F\Methods\8270-BF013123.M
 Title : ASP BNA STANDARDS FOR 5 POINT CALIBRATION

Signal : TIC: BF132336.D\data.ms

peak #	R.T. min	first scan	max scan	last scan	PK TY	peak height	corr. area	corr. % max.	% of total
1	5.301	413	419	431	rBV	1173325	1675110	25.40%	4.368%
2	5.684	478	484	487	rBV	3870438	4195355	63.62%	10.939%
3	6.672	646	652	655	rBV	3519049	4107769	62.29%	10.711%
4	7.054	713	717	720	rBV	1212372	1072747	16.27%	2.797%
5	7.619	807	813	816	rBV	2824147	2790983	42.32%	7.277%
6	8.337	932	935	939	rBV	1884381	1470989	22.31%	3.835%
7	9.419	1114	1119	1122	rBV	6199256	5565728	84.39%	14.512%
8	10.101	1231	1235	1239	rBV	2105117	1738200	26.36%	4.532%
9	10.895	1366	1370	1374	rBV	4030433	3953266	59.94%	10.308%
10	11.601	1486	1490	1493	rBV	2305976	1876786	28.46%	4.893%
11	13.195	1756	1761	1765	rBV	6041062	6594882	100.00%	17.195%
12	14.260	1938	1942	1946	rBV	1802791	1575771	23.89%	4.109%
13	15.836	2204	2210	2221	rBV2	997832	1376767	20.88%	3.590%
14	18.318	2617	2632	2651	rBV5	63269	358315	5.43%	0.934%

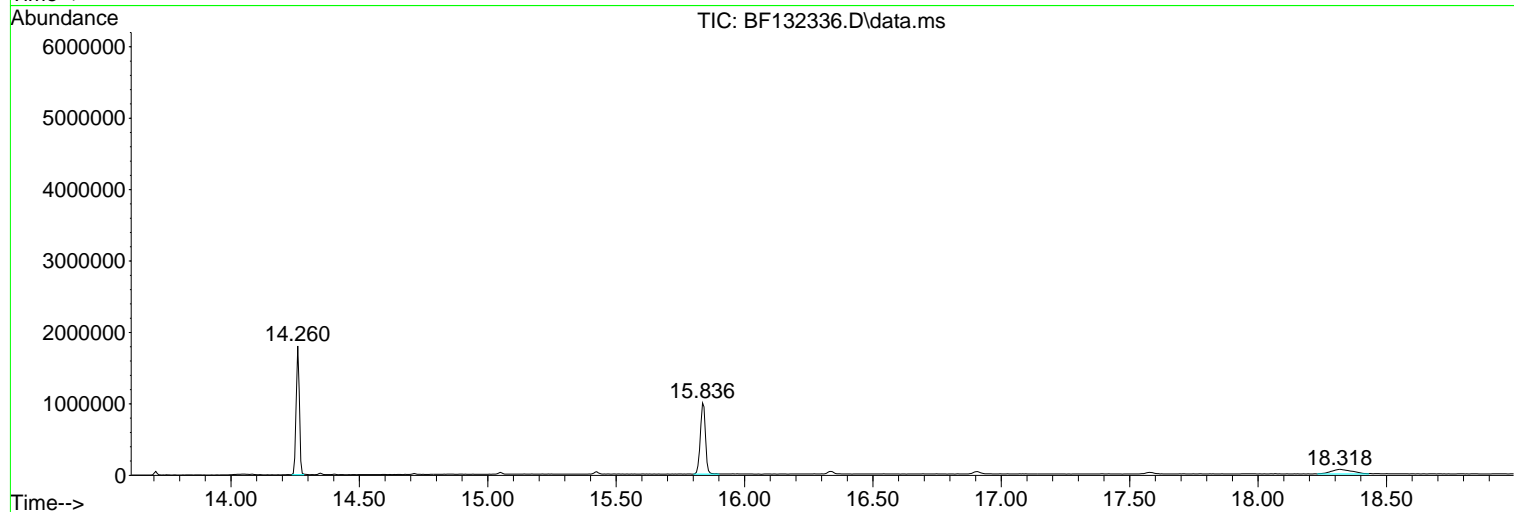
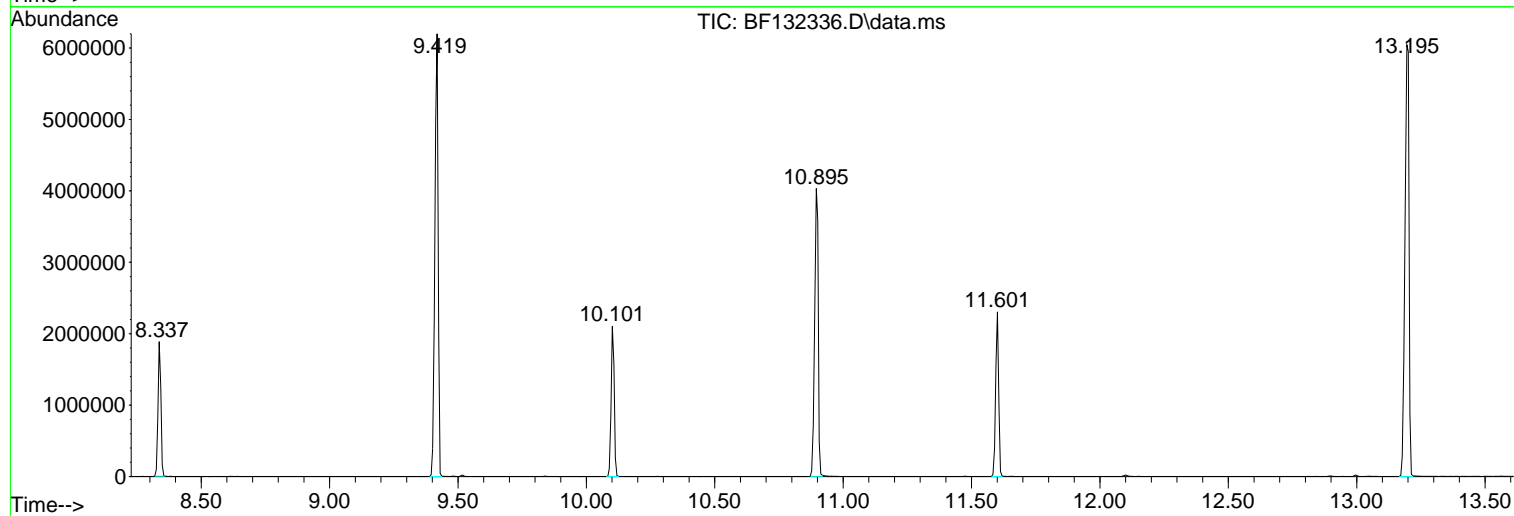
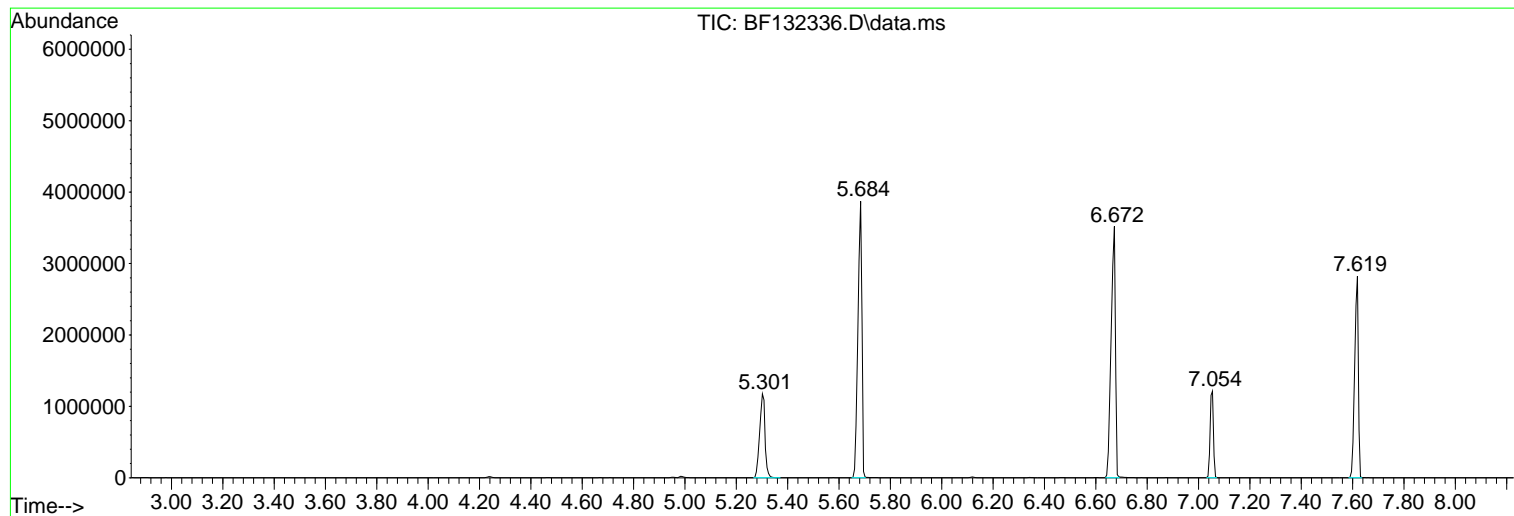
Sum of corrected areas: 38352668

Data Path : Z:\svoasrv\HPCHEM1\BNA_F\Data\BF020623\
Data File : BF132336.D
Acq On : 06 Feb 2023 14:02
Operator : CG\JU
Sample : PB150684BL
Misc :
ALS Vial : 3 Sample Multiplier: 1

Instrument :
BNA_F
ClientSampleId :
PB150684BL

Quant Method : Z:\svoasrv\HPCHEM1\BNA_F\Methods\8270-BF013123.M
Quant Title : ASP BNA STANDARDS FOR 5 POINT CALIBRATION

TIC Library : C:\Database\NIST20.L
TIC Integration Parameters: LSCINT.P



Data Path : Z:\svoasrv\HPCHEM1\BNA_F\Data\BF020623\
 Data File : BF132336.D
 Acq On : 06 Feb 2023 14:02
 Operator : CG\JU
 Sample : PB150684BL
 Misc :
 ALS Vial : 3 Sample Multiplier: 1

Instrument :
 BNA_F
 ClientSampleId :
 PB150684BL

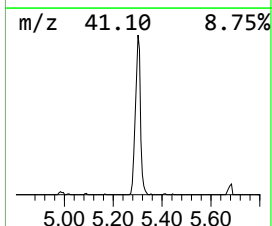
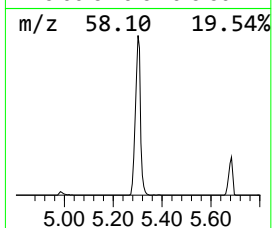
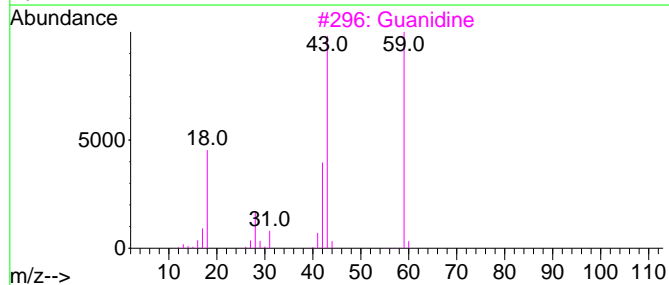
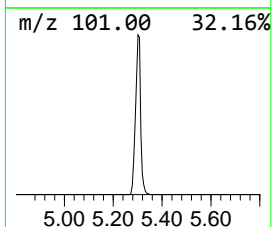
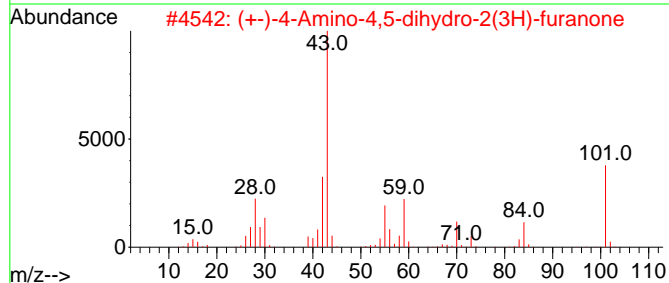
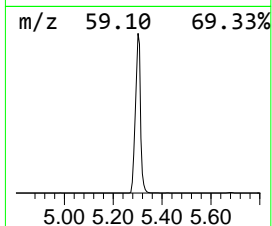
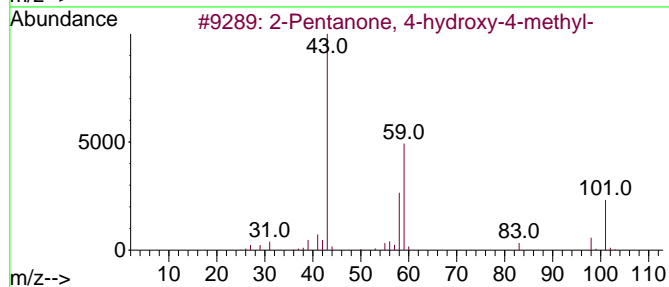
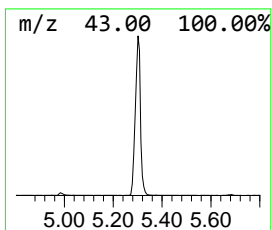
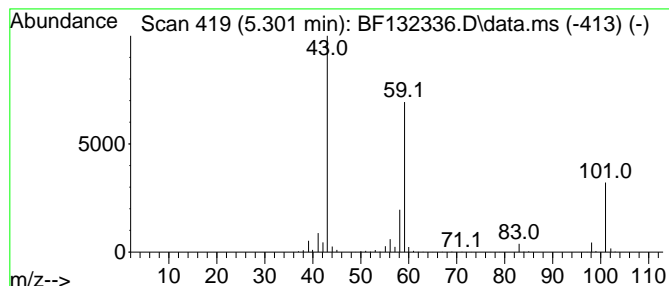
Quant Method : Z:\svoasrv\HPCHEM1\BNA_F\Methods\8270-BF013123.M
 Quant Title : ASP BNA STANDARDS FOR 5 POINT CALIBRATION

TIC Library : C:\Database\NIST20.L
 TIC Integration Parameters: LSCINT.P

 Peak Number 1 2-Pentanone, 4-hydroxy-4-me... Concentration Rank 1

R.T.	EstConc	Area	Relative to ISTD	R.T.
5.301	31.23 ng	1675110	1,4-Dichlorobenzene-d4	7.054

Hit#	of 5	Tentative ID	MW	MolForm	CAS#	Qual
1		2-Pentanone, 4-hydroxy-4-methyl-	116	C6H12O2	000123-42-2	59
2		(+)-4-Amino-4,5-dihydro-2(3H)-f...	101	C4H7NO2	016504-58-8	43
3		Guanidine	59	CH5N3	000113-00-8	38
4		1-Propen-2-ol, acetate	100	C5H8O2	000108-22-5	12
5		Acetic acid, cyano-, 1,1-dimethy...	141	C7H11NO2	001116-98-9	12



Data Path : Z:\svoasrv\HPCHEM1\BNA_F\Data\BF020623\
 Data File : BF132336.D
 Acq On : 06 Feb 2023 14:02
 Operator : CG\JU
 Sample : PB150684BL
 Misc :
 ALS Vial : 3 Sample Multiplier: 1

Instrument :
 BNA_F
 ClientSampleId :
 PB150684BL

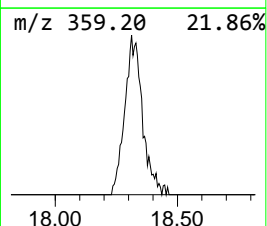
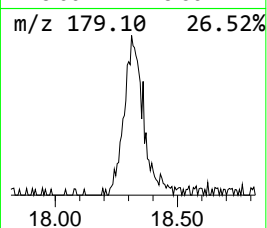
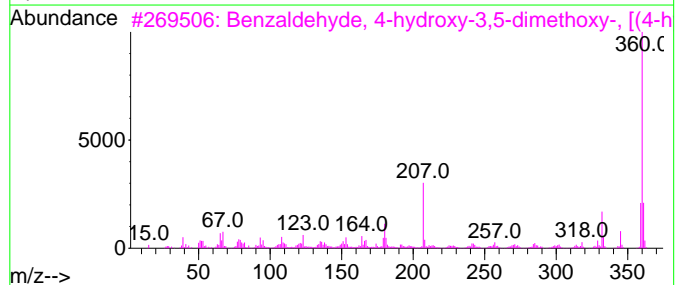
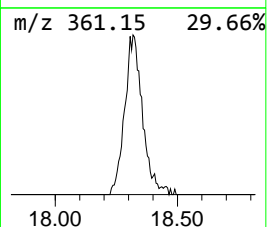
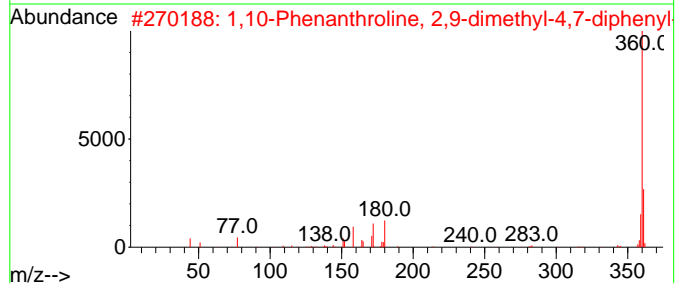
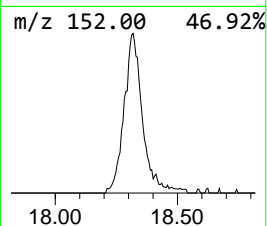
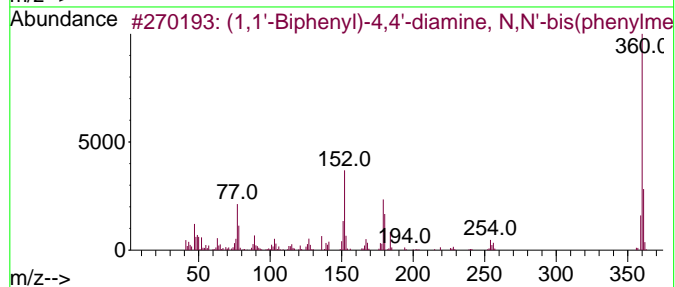
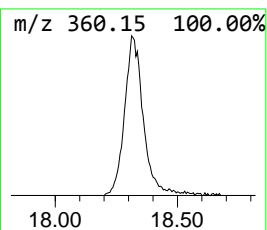
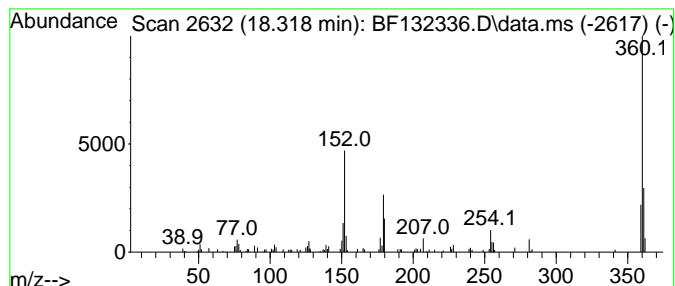
Quant Method : Z:\svoasrv\HPCHEM1\BNA_F\Methods\8270-BF013123.M
 Quant Title : ASP BNA STANDARDS FOR 5 POINT CALIBRATION

TIC Library : C:\Database\NIST20.L
 TIC Integration Parameters: LSCINT.P

 Peak Number 2 (1,1'-Biphenyl)-4,4'-diamin... Concentration Rank 2

R.T.	EstConc	Area	Relative to ISTD	R.T.
18.318	5.21 ng	358315	Perylene-d12	15.836

Hit#	of 5	Tentative ID	MW	MolForm	CAS#	Qual
1		(1,1'-Biphenyl)-4,4'-diamine, N,...	360	C26H20N2	006311-48-4	94
2		1,10-Phenanthroline, 2,9-dimethy...	360	C26H20N2	004733-39-5	52
3		Benzaldehyde, 4-hydroxy-3,5-dime...	360	C18H20N2O6	014414-32-5	47
4		N,N'-di-2-Naphthyl-p-phenylenedi...	360	C26H20N2	000093-46-9	46
5		Ethene, 1-(anthracen-9-yl)-2-(4-...	360	C27H200	1000163-55-1	43



Data Path : Z:\svoasrv\HPCHEM1\BNA_F\Data\BF020623\
Data File : BF132336.D
Acq On : 06 Feb 2023 14:02
Operator : CG\JU
Sample : PB150684BL
Misc :
ALS Vial : 3 Sample Multiplier: 1

Instrument :
BNA_F
ClientSampleId :
PB150684BL

Quant Method : Z:\svoasrv\HPCHEM1\BNA_F\Methods\8270-BF013123.M
Quant Title : ASP BNA STANDARDS FOR 5 POINT CALIBRATION

TIC Library : C:\Database\NIST20.L
TIC Integration Parameters: LSCINT.P

TIC Top Hit name	RT	EstConc	Units	Response	--Internal Standard--			
					#	RT	Resp	Conc
2-Pentanone, 4-...	5.301	31.2	ng	1675110	1	7.054	1072750	20.0
(1,1'-Biphenyl)...	18.318	5.2	ng	358315	6	15.836	1376770	20.0