

Data Path : Z:\svoasrv\HPCHEM1\BNA_F\Data\BF020921\
 Data File : BF123167.D
 Acq On : 9 Feb 2021 16:28
 Operator : JU/CG
 Sample : M1341-02
 Misc :
 ALS Vial : 11 Sample Multiplier: 1

Instrument :
 BNA_F
 ClientSampleId :
 26572

Quant Time: Feb 09 17:47:51 2021
 Quant Method : Z:\SVOASRV\HPCHEM1\BNA_F\METHODS\8270-BF012721.M
 Quant Title : ASP BNA STANDARDS FOR 5 POINT CALIBRATION
 QLast Update : Fri Jan 29 12:29:00 2021
 Response via : Initial Calibration

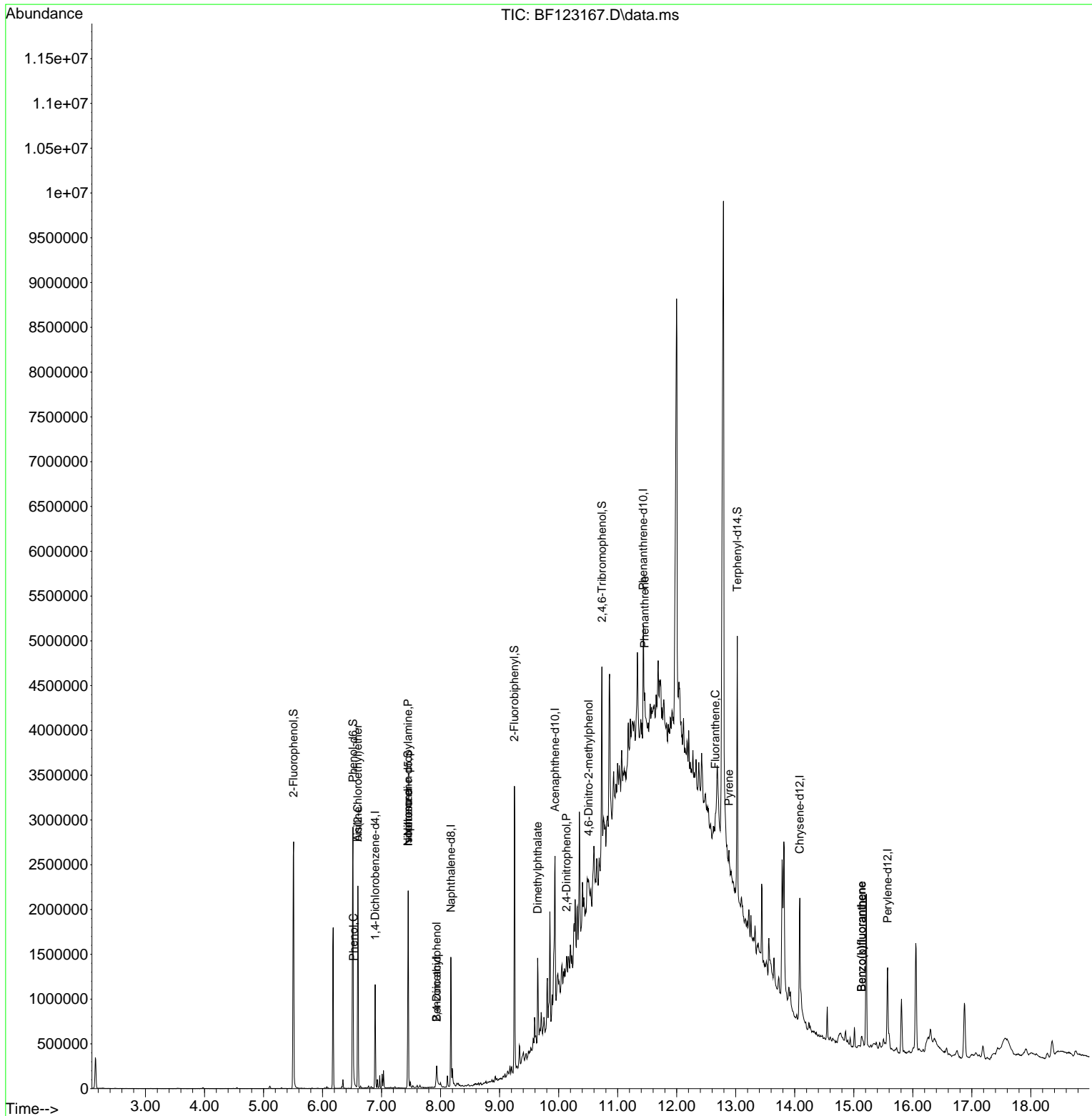
Compound	R.T.	QIon	Response	Conc	Units	Dev(Min)	
Internal Standards							
1) 1,4-Dichlorobenzene-d4	6.892	152	156947	20.00	ng	0.00	
21) Naphthalene-d8	8.175	136	617612	20.00	ng	0.00	
39) Acenaphthene-d10	9.939	164	315066	20.00	ng	0.00	
64) Phenanthrene-d10	11.433	188	497690	20.00	ng	0.00	#
76) Chrysene-d12	14.086	240	427239	20.00	ng	0.00	
86) Perylene-d12	15.574	264	430257	20.00	ng	0.00	
System Monitoring Compounds							
5) 2-Fluorophenol	5.510	112	877057	86.20	ng	0.00	
7) Phenol-d6	6.516	99	1081710	78.44	ng	0.00	
23) Nitrobenzene-d5	7.451	82	673253	54.86	ng	-0.01	
42) 2,4,6-Tribromophenol	10.733	330	330398	96.60	ng	0.00	
45) 2-Fluorobiphenyl	9.251	172	1017239	48.00	ng	-0.01	
79) Terphenyl-d14	13.027	244	934119	42.96	ng	0.00	
Target Compounds							Qvalue
6) Aniline	6.598	93	451215	26.58	ng	#	50
10) Phenol	6.522	94	42627	3.12	ng	#	82
11) bis(2-Chloroethyl)ether	6.598	93	451215	39.64	ng	#	25
19) n-Nitroso-di-n-propyla...	7.451	70	91351	11.02	ng	#	80
25) Isophorone	7.451	82	673246	29.95	ng	#	65
27) 2,4-Dimethylphenol	7.933	122	47595	5.04	ng	#	1
32) Benzoic acid	7.933	122	47595	10.54	ng	#	27
50) Dimethylphthalate	9.645	163	61062	2.47	ng	#	76
54) 2,4-Dinitrophenol	10.133	184	949	7.21	ng	#	1
65) 4,6-Dinitro-2-methylph...	10.510	198	2452	5.78	ng	#	1
71) Phenanthrene	11.457	178	97343	3.15	ng	#	74
75) Fluoranthene	12.657	202	93665	3.03	ng	#	93
78) Pyrene	12.886	202	83101	2.58	ng	#	95
88) Benzo(b)fluoranthene	15.133	252	77248	2.49	ng	#	91
89) Benzo(k)fluoranthene	15.133	252	77248	2.68	ng	#	91

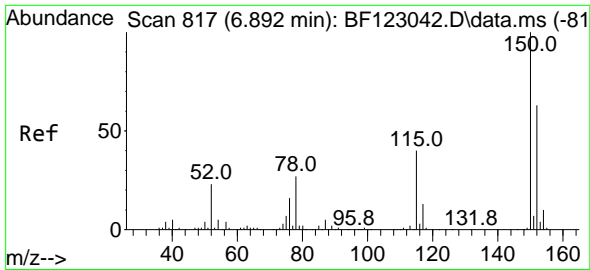
(#) = qualifier out of range (m) = manual integration (+) = signals summed

Data Path : Z:\svoasrv\HPCHEM1\BNA_F\Data\BF020921\
 Data File : BF123167.D
 Acq On : 9 Feb 2021 16:28
 Operator : JU/CG
 Sample : M1341-02
 Misc :
 ALS Vial : 11 Sample Multiplier: 1

Instrument :
 BNA_F
 Client Sampled :
 26572

Quant Time: Feb 09 17:47:51 2021
 Quant Method : Z:\SVOASRV\HPCHEM1\BNA_F\METHODS\8270-BF012721.M
 Quant Title : ASP BNA STANDARDS FOR 5 POINT CALIBRATION
 QLast Update : Fri Jan 29 12:29:00 2021
 Response via : Initial Calibration

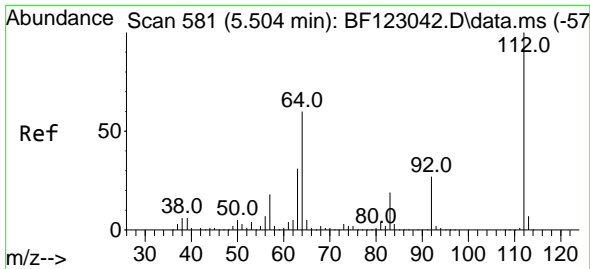
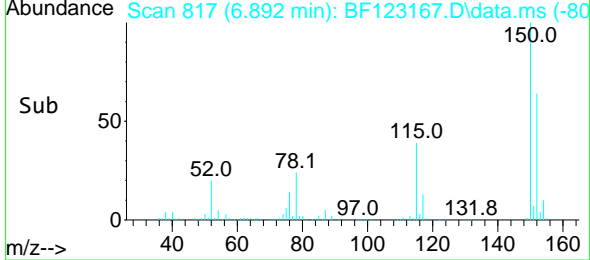
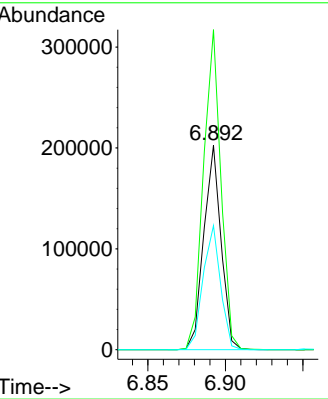
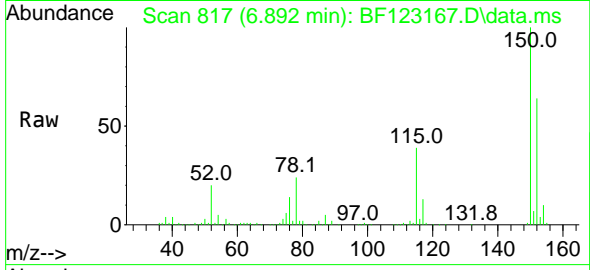




#1
 1,4-Dichlorobenzene-d4
 Concen: 20.00 ng
 RT: 6.892 min Scan# 817
 Delta R.T. 0.000 min
 Lab File: BF123167.D
 Acq: 9 Feb 2021 16:28

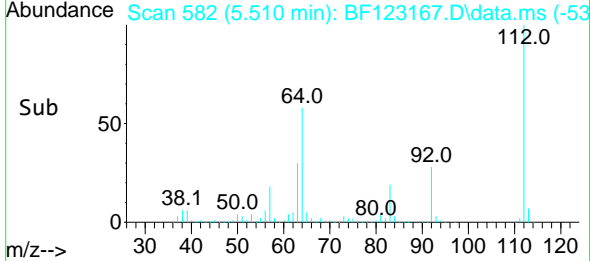
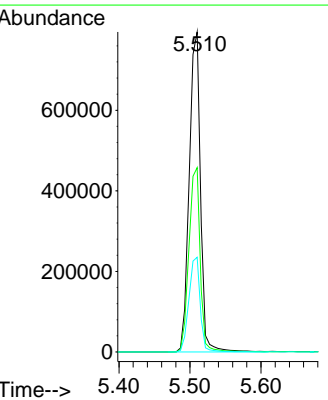
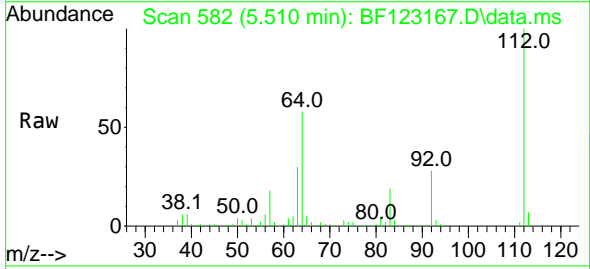
Instrument :
 BNA_F
 ClientSampled :
 26572

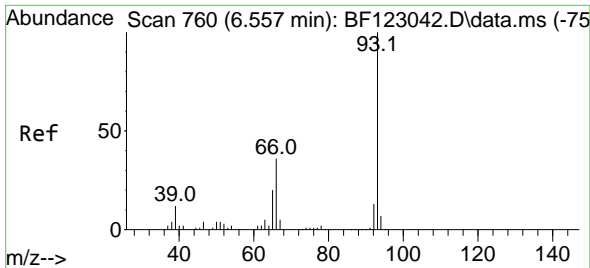
Tgt Ion:152 Resp: 156947
 Ion Ratio Lower Upper
 152 100
 150 156.6 125.8 188.6
 115 60.7 49.3 73.9



#5
 2-Fluorophenol
 Concen: 86.20 ng
 RT: 5.510 min Scan# 582
 Delta R.T. 0.006 min
 Lab File: BF123167.D
 Acq: 9 Feb 2021 16:28

Tgt Ion:112 Resp: 877057
 Ion Ratio Lower Upper
 112 100
 64 57.6 46.9 70.3
 63 29.6 24.5 36.7

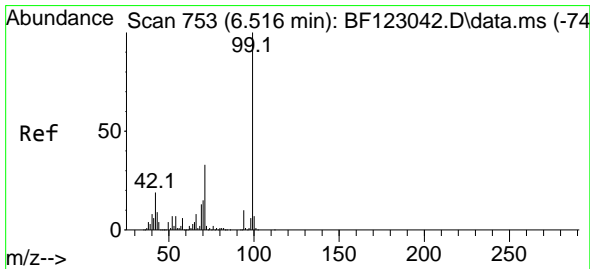
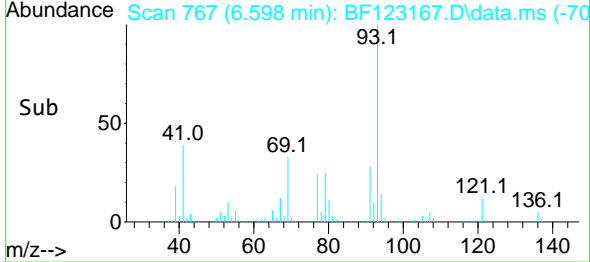
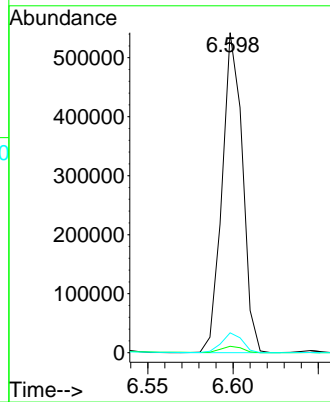
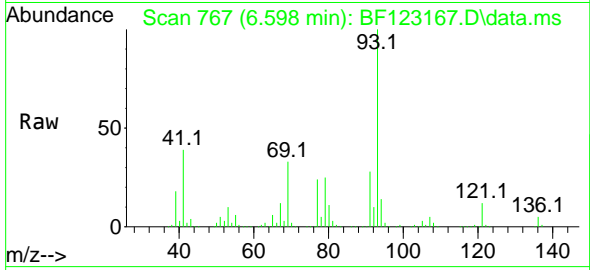




#6
 Aniline
 Concen: 26.58 ng
 RT: 6.598 min Scan# 767
 Delta R.T. 0.041 min
 Lab File: BF123167.D
 Acq: 9 Feb 2021 16:28

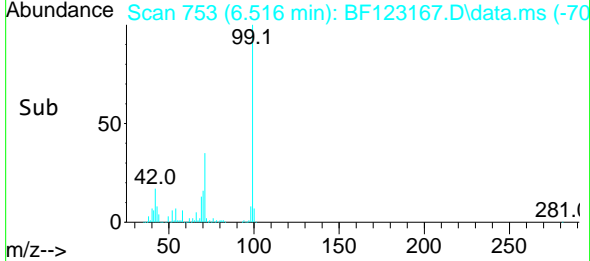
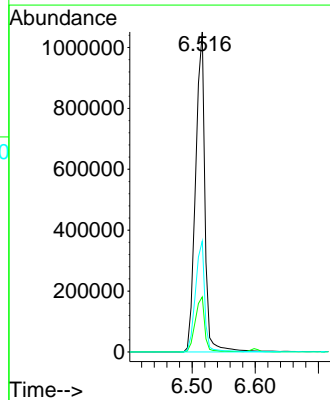
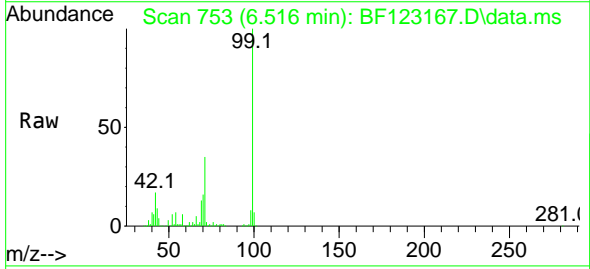
Instrument :
 BNA_F
 ClientSampled :
 26572

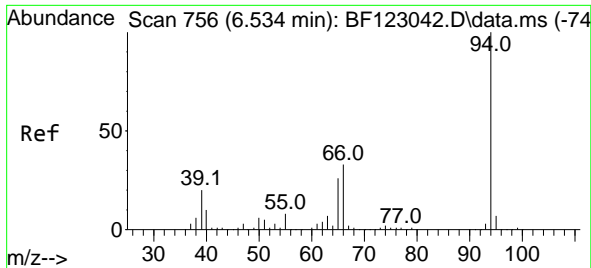
Tgt Ion: 93 Resp: 451215
 Ion Ratio Lower Upper
 93 100
 66 2.0 31.3 46.9#
 65 6.2 15.6 23.4#



#7
 Phenol-d6
 Concen: 78.44 ng
 RT: 6.516 min Scan# 753
 Delta R.T. -0.000 min
 Lab File: BF123167.D
 Acq: 9 Feb 2021 16:28

Tgt Ion: 99 Resp: 1081710
 Ion Ratio Lower Upper
 99 100
 42 17.2 13.8 20.6
 71 34.7 26.9 40.3

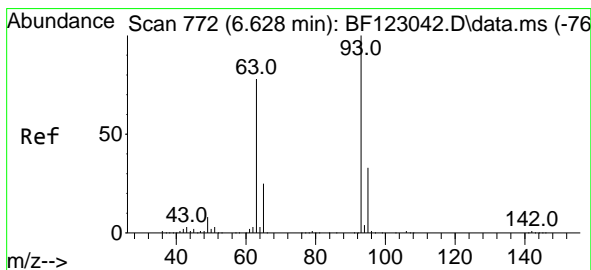
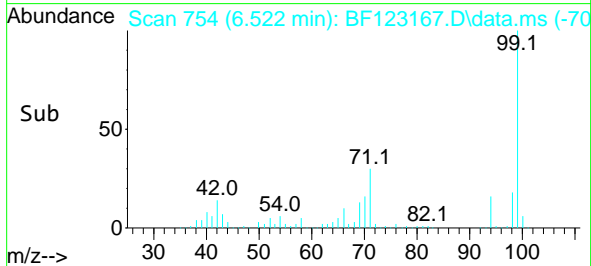
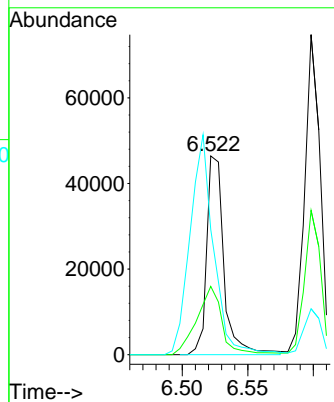
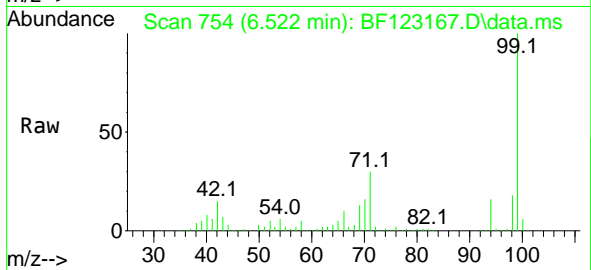




#10
Pheno1
Concen: 3.12 ng
RT: 6.522 min Scan# 754
Delta R.T. -0.012 min
Lab File: BF123167.D
Acq: 9 Feb 2021 16:28

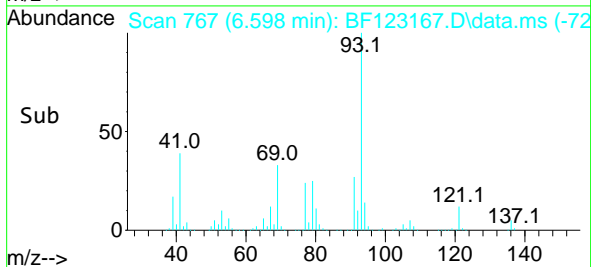
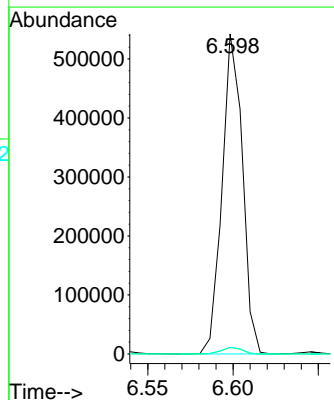
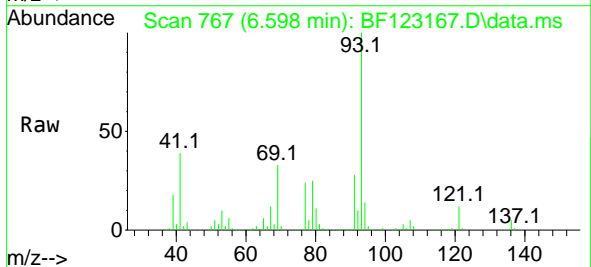
Instrument :
BNA_F
ClientSampled :
26572

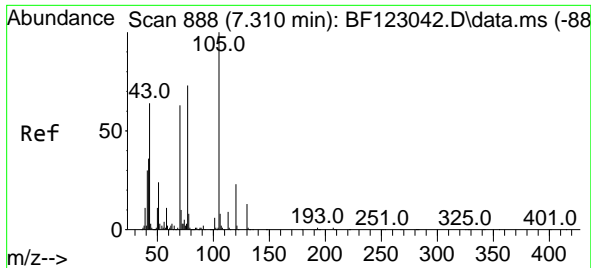
Tgt Ion	Resp	Ion Ratio	Lower	Upper
94	42627	100		
65		34.3	11.2	51.2
66		62.9	25.8	65.8



#11
bis(2-Chloroethyl)ether
Concen: 39.64 ng
RT: 6.598 min Scan# 767
Delta R.T. -0.030 min
Lab File: BF123167.D
Acq: 9 Feb 2021 16:28

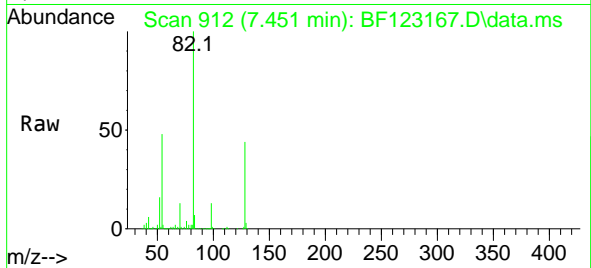
Tgt Ion	Resp	Ion Ratio	Lower	Upper
93	451215	100		
63		2.0	52.6	92.6#
95		2.1	12.6	52.6#





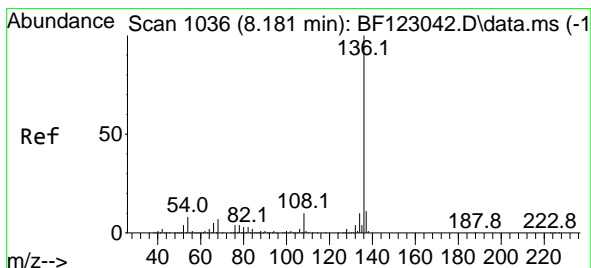
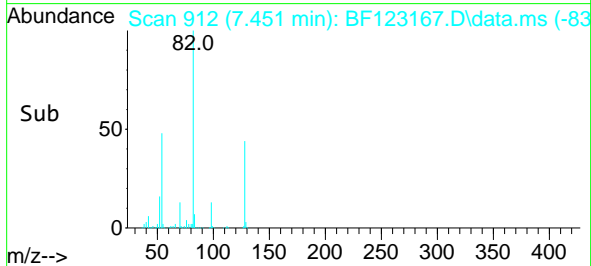
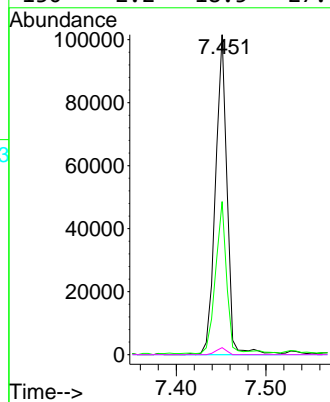
#19
 n-Nitroso-di-n-propylamine
 Concen: 11.02 ng
 RT: 7.451 min Scan# 912
 Delta R.T. 0.141 min
 Lab File: BF123167.D
 Acq: 9 Feb 2021 16:28

Instrument :
 BNA_F
 ClientSampled :
 26572

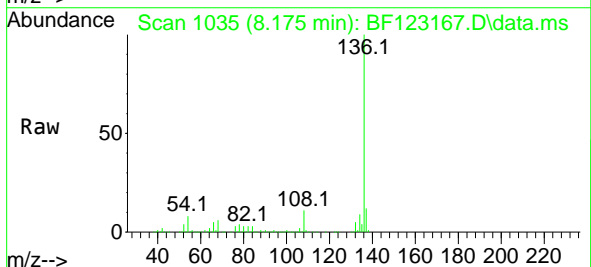


Tgt Ion: 70 Resp: 91351

Ion	Ratio	Lower	Upper
70	100		
42	47.9	43.0	64.4
101	0.0	7.9	11.9#
130	2.2	18.5	27.7#

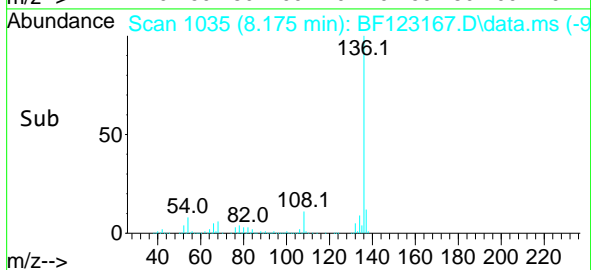
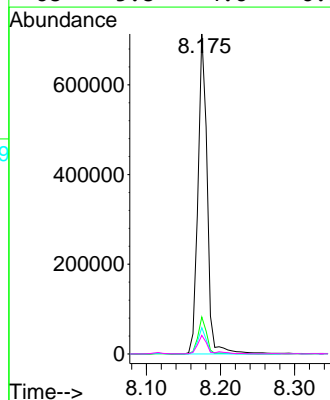


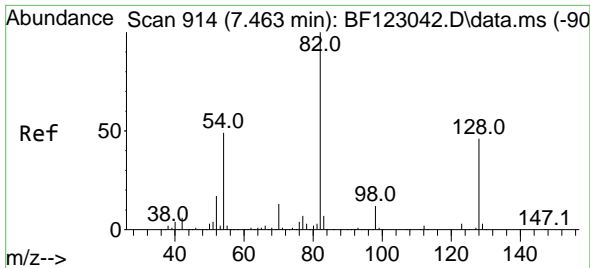
#21
 Naphthalene-d8
 Concen: 20.00 ng
 RT: 8.175 min Scan# 1035
 Delta R.T. -0.006 min
 Lab File: BF123167.D
 Acq: 9 Feb 2021 16:28



Tgt Ion: 136 Resp: 617612

Ion	Ratio	Lower	Upper
136	100		
137	11.5	8.8	13.2
54	8.2	5.5	8.3
68	5.8	4.6	6.8

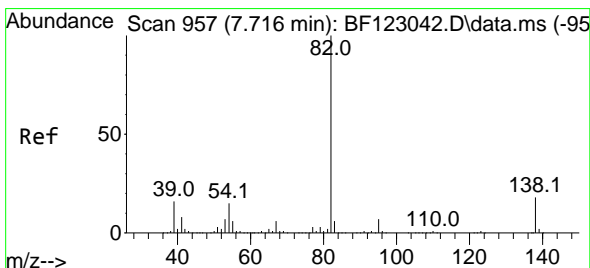
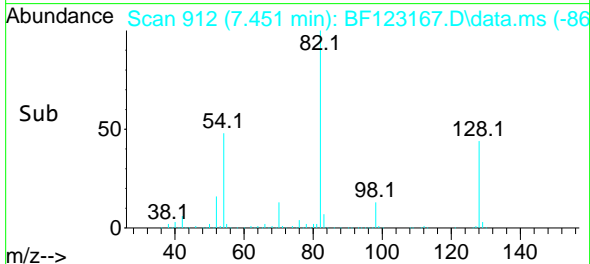
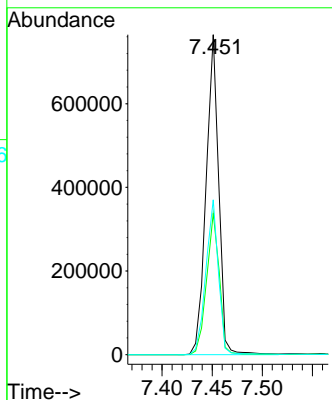
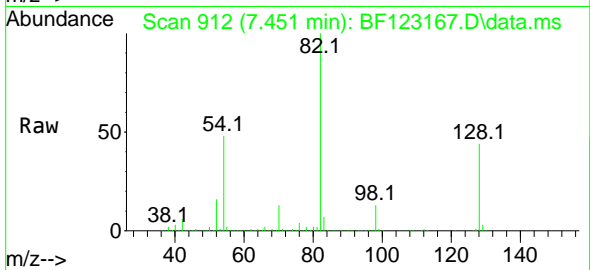




#23
 Nitrobenzene-d5
 Concen: 54.86 ng
 RT: 7.451 min Scan# 912
 Delta R.T. -0.012 min
 Lab File: BF123167.D
 Acq: 9 Feb 2021 16:28

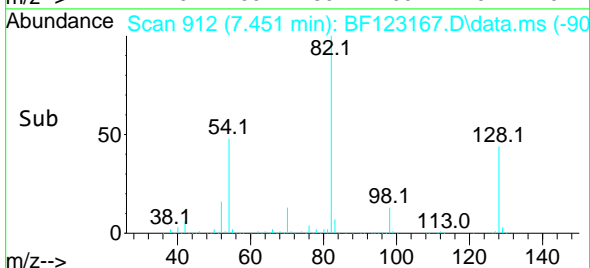
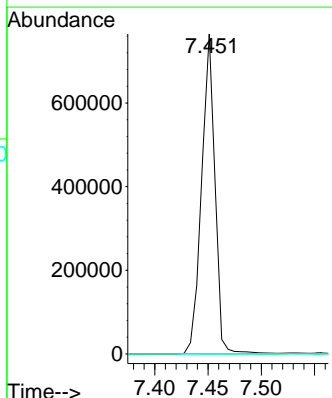
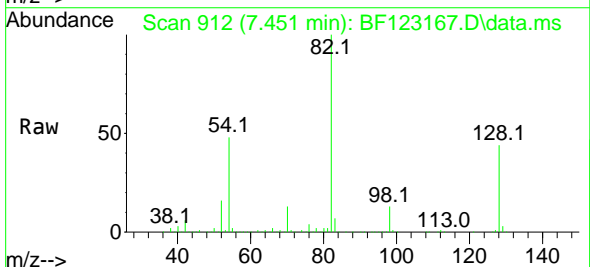
Instrument :
 BNA_F
 ClientSampled :
 26572

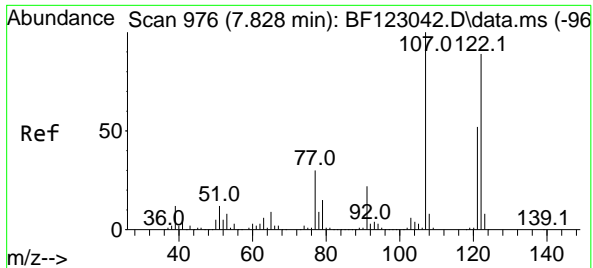
Tgt Ion:	82	Resp:	673253
Ion Ratio	Lower	Upper	
82	100		
128	44.2	37.0	55.4
54	48.4	38.4	57.6



#25
 Isophorone
 Concen: 29.95 ng
 RT: 7.451 min Scan# 912
 Delta R.T. -0.265 min
 Lab File: BF123167.D
 Acq: 9 Feb 2021 16:28

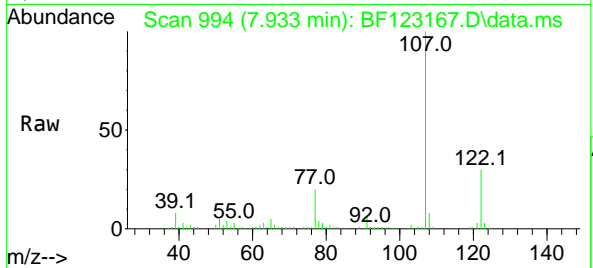
Tgt Ion:	82	Resp:	673246
Ion Ratio	Lower	Upper	
82	100		
95	0.1	5.8	8.6#
138	0.0	14.6	21.8#



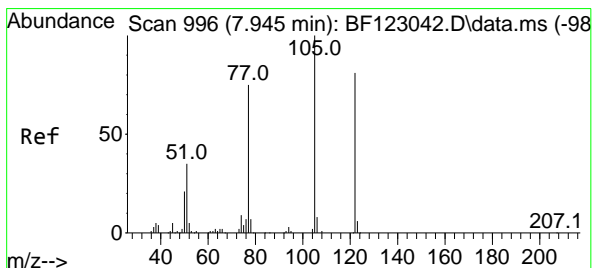
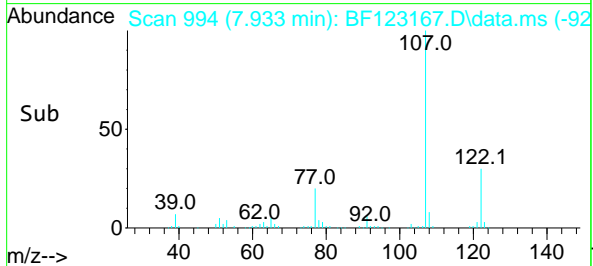
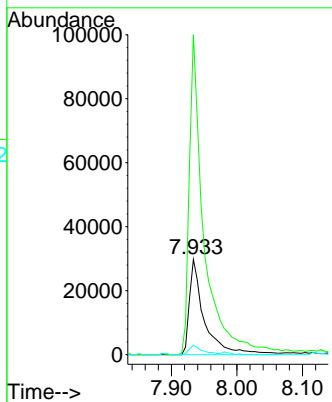


#27
 2,4-Dimethylphenol
 Concen: 5.04 ng
 RT: 7.933 min Scan# 994
 Delta R.T. 0.106 min
 Lab File: BF123167.D
 Acq: 9 Feb 2021 16:28

Instrument :
 BNA_F
 ClientSampled :
 26572

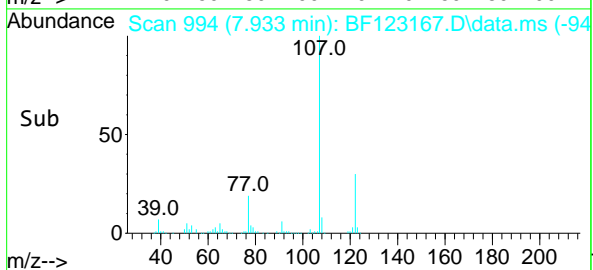
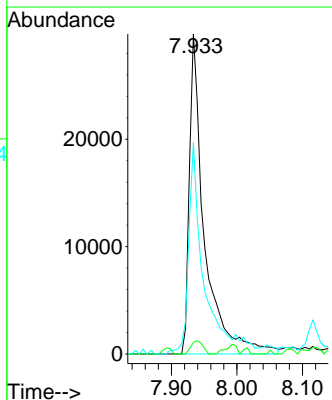
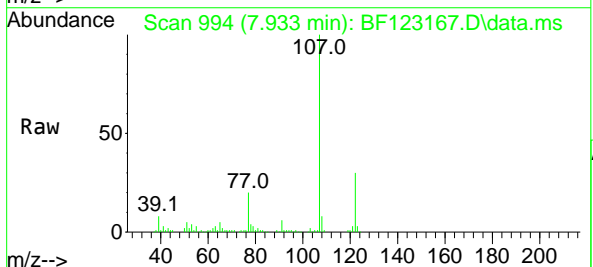


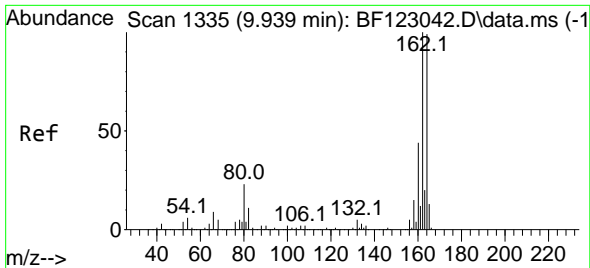
Tgt Ion:122 Resp: 47595
 Ion Ratio Lower Upper
 122 100
 107 335.6 91.8 137.8#
 121 9.9 47.3 70.9#



#32
 Benzoic acid
 Concen: 10.54 ng
 RT: 7.933 min Scan# 994
 Delta R.T. -0.012 min
 Lab File: BF123167.D
 Acq: 9 Feb 2021 16:28

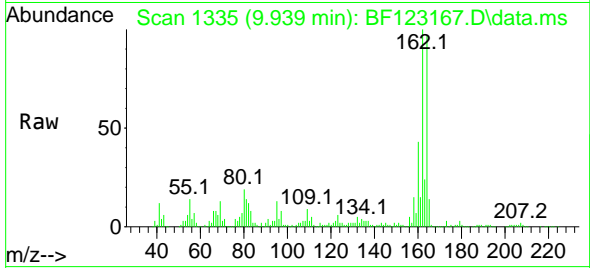
Tgt Ion:122 Resp: 47595
 Ion Ratio Lower Upper
 122 100
 105 3.6 104.8 144.8#
 77 66.1 71.0 111.0#



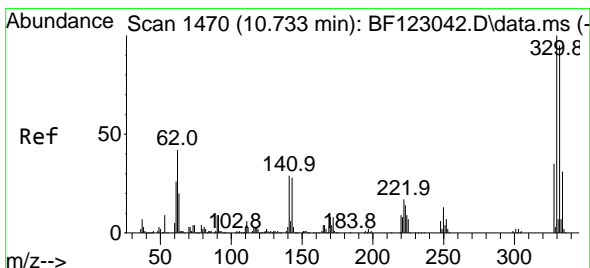
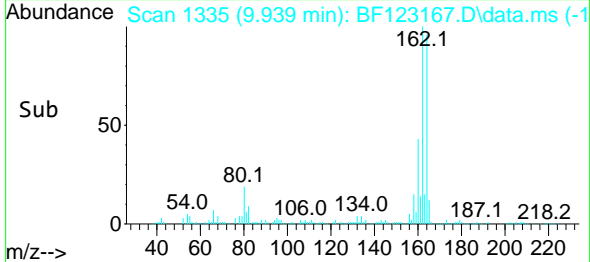
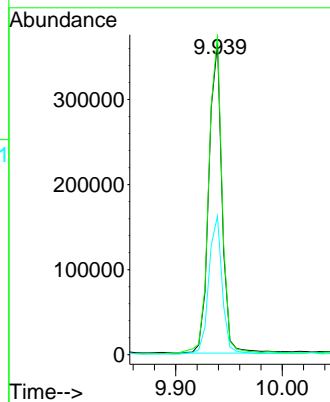


#39
 Acenaphthene-d10
 Concen: 20.00 ng
 RT: 9.939 min Scan# 1335
 Delta R.T. 0.000 min
 Lab File: BF123167.D
 Acq: 9 Feb 2021 16:28

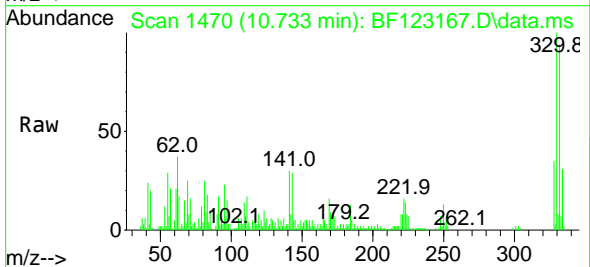
Instrument :
 BNA_F
 ClientSampled :
 26572



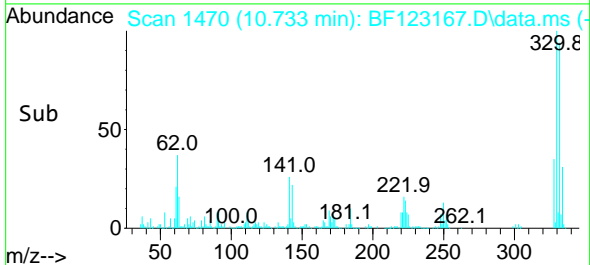
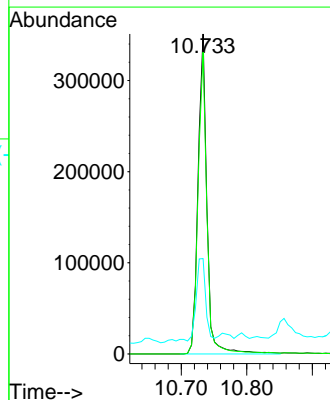
Tgt Ion:164 Resp: 315066
 Ion Ratio Lower Upper
 164 100
 162 102.6 80.8 121.2
 160 44.5 35.4 53.0

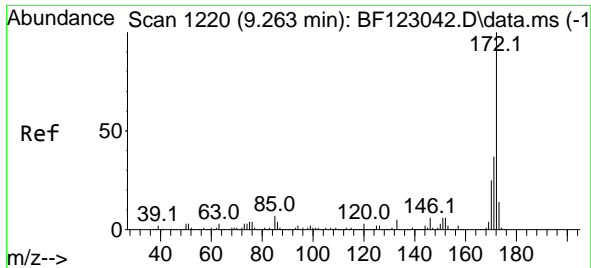


#42
 2,4,6-Tribromophenol
 Concen: 96.60 ng
 RT: 10.733 min Scan# 1470
 Delta R.T. -0.000 min
 Lab File: BF123167.D
 Acq: 9 Feb 2021 16:28



Tgt Ion:330 Resp: 330398
 Ion Ratio Lower Upper
 330 100
 332 94.3 77.5 116.3
 141 26.8 23.8 35.8

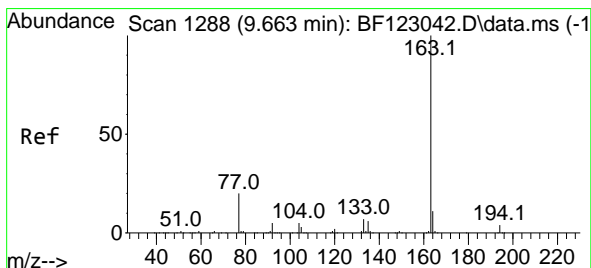
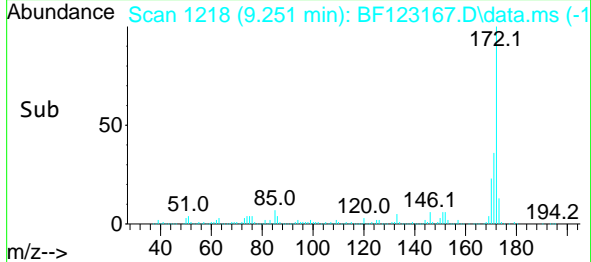
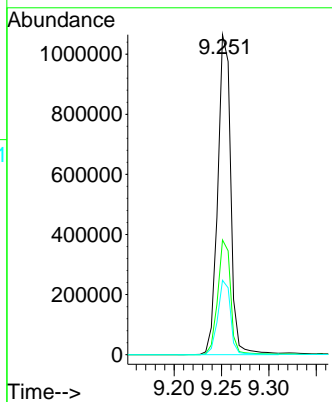
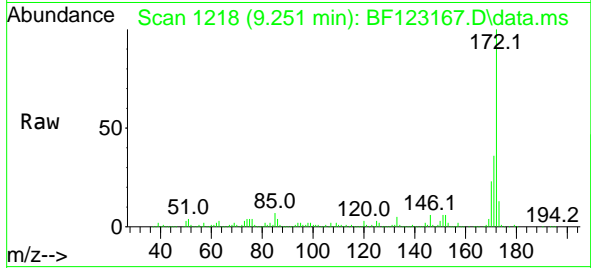




#45
 2-Fluorobiphenyl
 Concen: 48.00 ng
 RT: 9.251 min Scan# 1218
 Delta R.T. -0.012 min
 Lab File: BF123167.D
 Acq: 9 Feb 2021 16:28

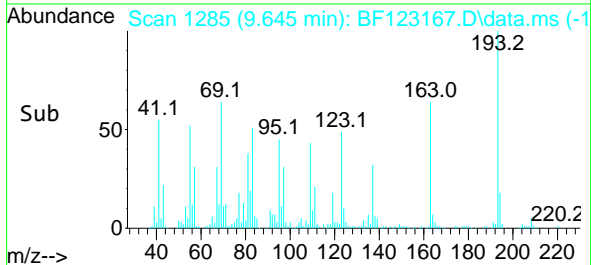
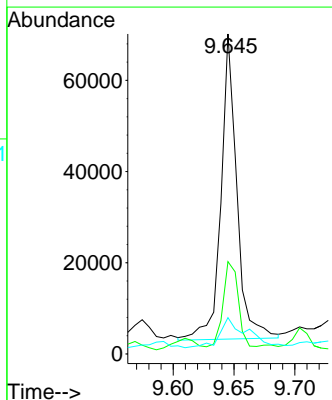
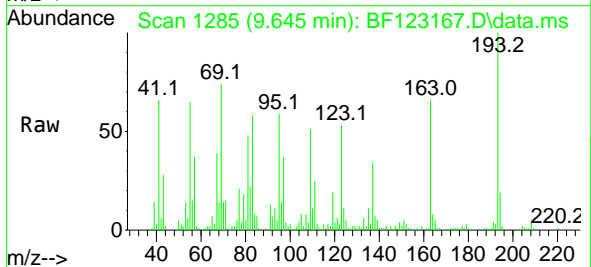
Instrument :
 BNA_F
 ClientSampled :
 26572

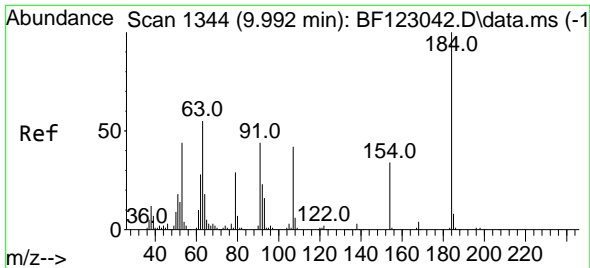
Tgt Ion:172 Resp: 1017239
 Ion Ratio Lower Upper
 172 100
 171 35.8 29.6 44.4
 170 23.2 19.5 29.3



#50
 Dimethylphthalate
 Concen: 2.47 ng
 RT: 9.645 min Scan# 1285
 Delta R.T. -0.018 min
 Lab File: BF123167.D
 Acq: 9 Feb 2021 16:28

Tgt Ion:163 Resp: 61062
 Ion Ratio Lower Upper
 163 100
 194 28.8 3.4 5.0#
 164 11.3 8.1 12.1

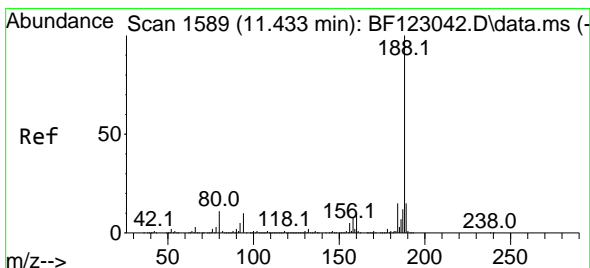
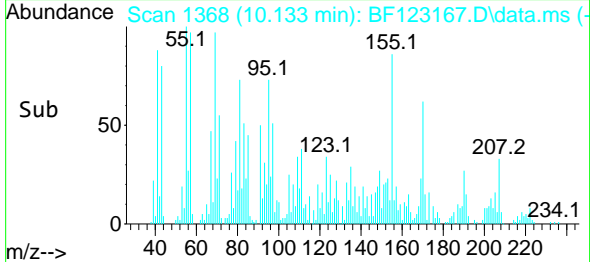
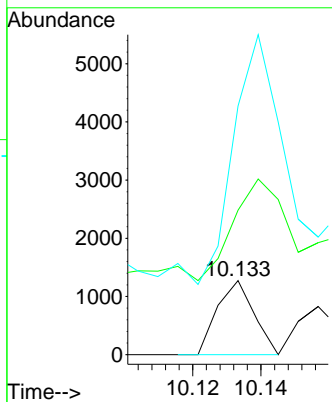
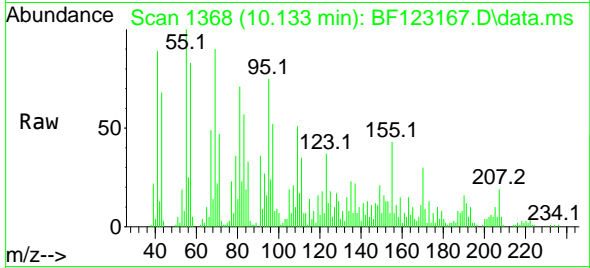




#54
 2,4-Dinitrophenol
 Concen: 7.21 ng
 RT: 10.133 min Scan# 1368
 Delta R.T. 0.141 min
 Lab File: BF123167.D
 Acq: 9 Feb 2021 16:28

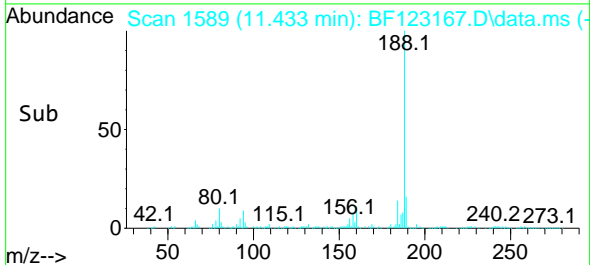
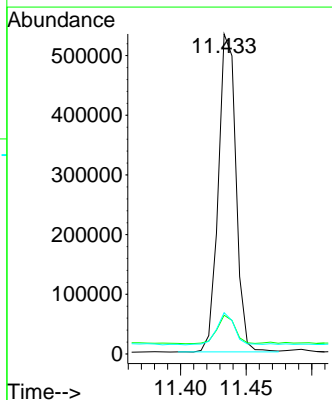
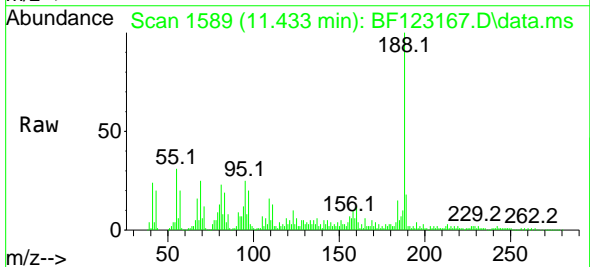
Instrument :
 BNA_F
 ClientSampled :
 26572

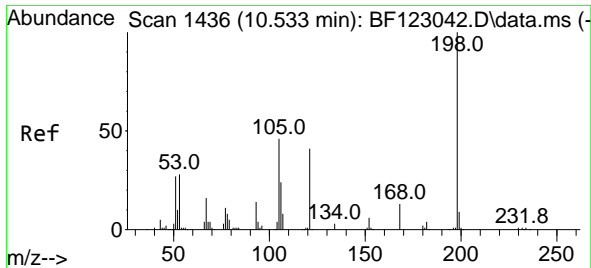
Tgt Ion	Resp	Lower	Upper
184	100		
63	195.3	51.4	77.2#
154	335.8	49.7	74.5#



#64
 Phenanthrene-d10
 Concen: 20.00 ng
 RT: 11.433 min Scan# 1589
 Delta R.T. 0.000 min
 Lab File: BF123167.D
 Acq: 9 Feb 2021 16:28

Tgt Ion	Resp	Lower	Upper
188	100		
94	12.1	7.4	11.2#
80	12.9	8.2	12.4#

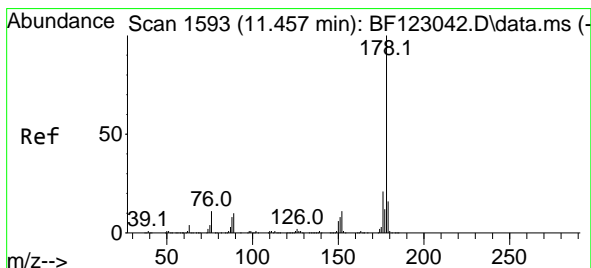
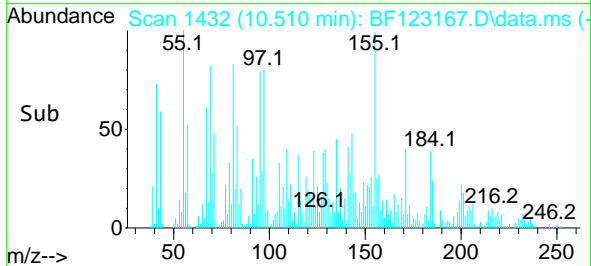
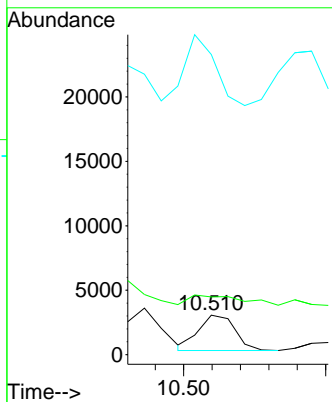
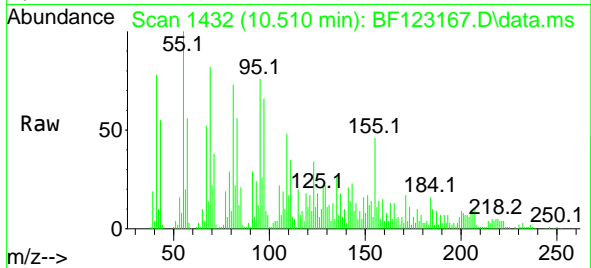




#65
 4,6-Dinitro-2-methylphenol
 Concen: 5.78 ng
 RT: 10.510 min Scan# 1432
 Delta R.T. -0.023 min
 Lab File: BF123167.D
 Acq: 9 Feb 2021 16:28

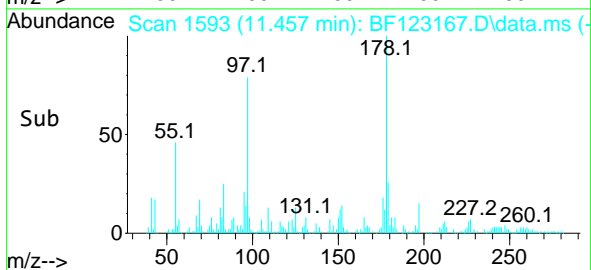
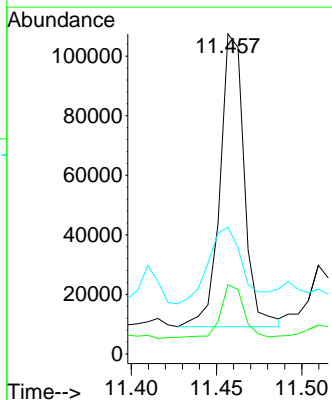
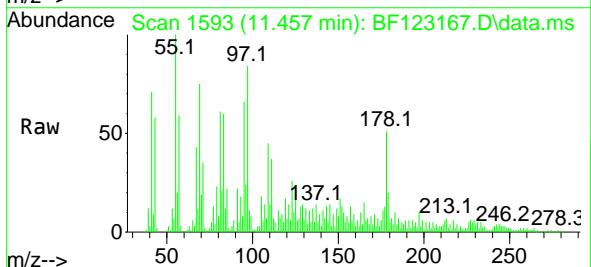
Instrument :
 BNA_F
 ClientSampled :
 26572

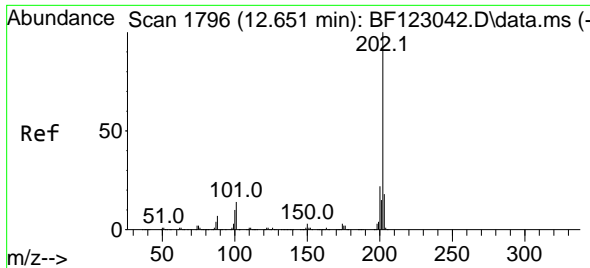
Tgt Ion:198 Resp: 2452
 Ion Ratio Lower Upper
 198 100
 51 146.1 20.3 60.3#
 105 758.1 23.0 63.0#



#71
 Phenanthrene
 Concen: 3.15 ng
 RT: 11.457 min Scan# 1593
 Delta R.T. -0.000 min
 Lab File: BF123167.D
 Acq: 9 Feb 2021 16:28

Tgt Ion:178 Resp: 97343
 Ion Ratio Lower Upper
 178 100
 176 21.6 16.2 24.2
 179 39.6 12.7 19.1#

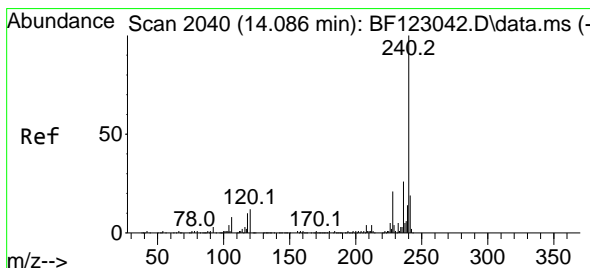
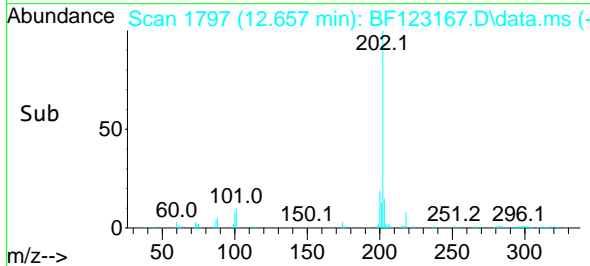
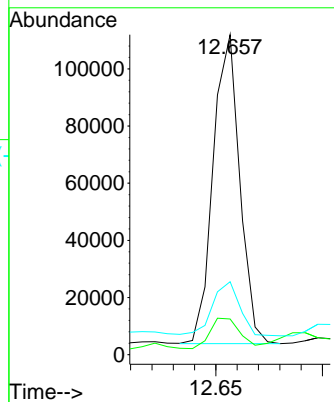
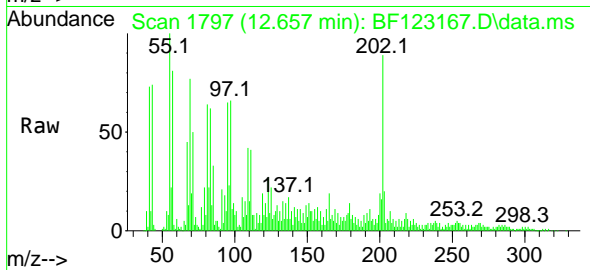




#75
 Fluoranthene
 Concen: 3.03 ng
 RT: 12.657 min Scan# 1797
 Delta R.T. 0.006 min
 Lab File: BF123167.D
 Acq: 9 Feb 2021 16:28

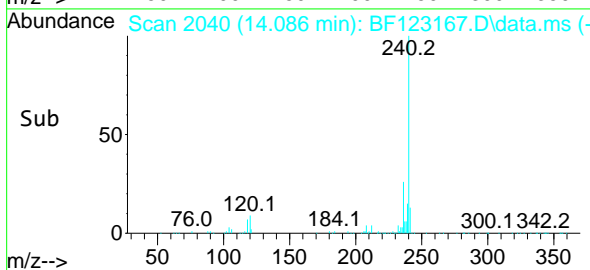
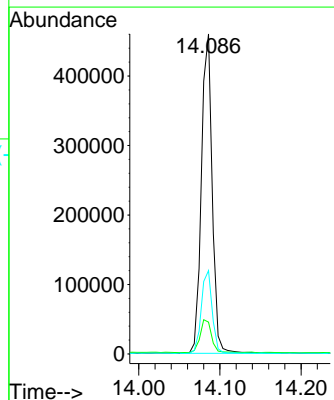
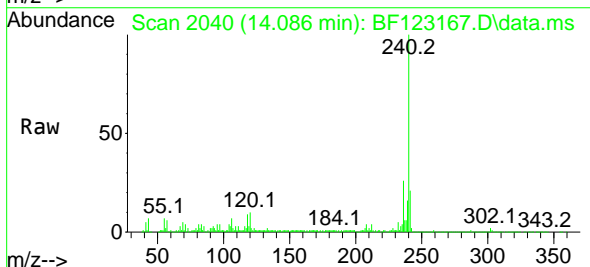
Instrument :
 BNA_F
 ClientSampled :
 26572

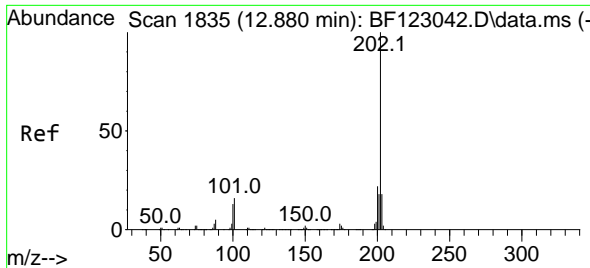
Tgt Ion	Resp	Lower	Upper
202	93665	100	
101	11.1	0.0	32.2
203	22.8	0.0	38.1



#76
 Chrysene-d12
 Concen: 20.00 ng
 RT: 14.086 min Scan# 2040
 Delta R.T. -0.000 min
 Lab File: BF123167.D
 Acq: 9 Feb 2021 16:28

Tgt Ion	Resp	Lower	Upper
240	427239	100	
120	10.0	8.6	12.8
236	26.1	20.3	30.5

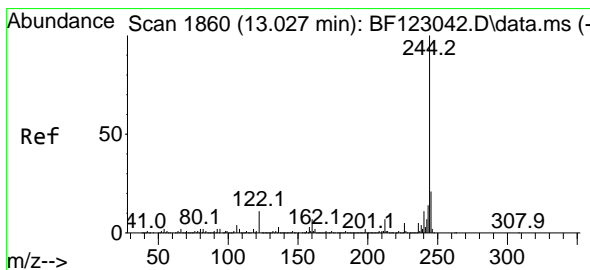
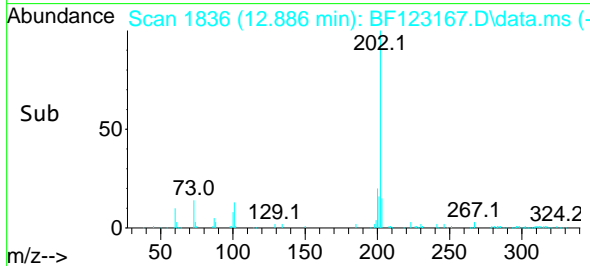
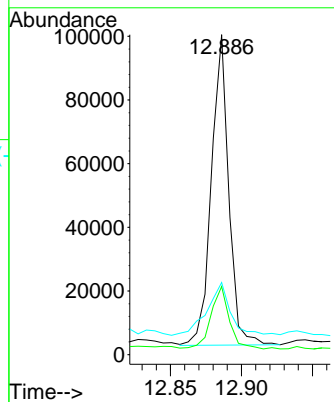
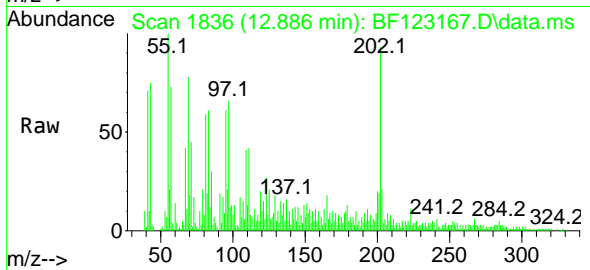




#78
 Pyrene
 Concen: 2.58 ng
 RT: 12.886 min Scan# 1836
 Delta R.T. 0.006 min
 Lab File: BF123167.D
 Acq: 9 Feb 2021 16:28

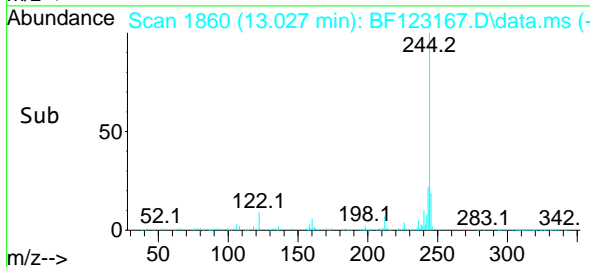
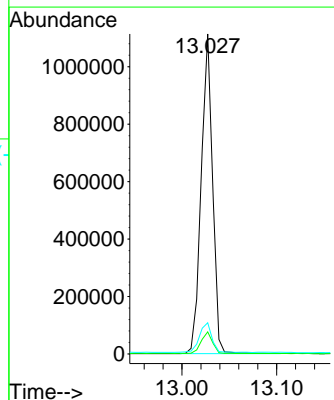
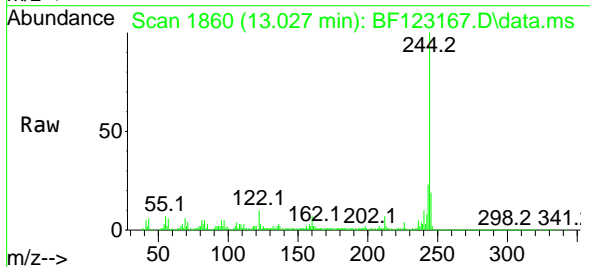
Instrument :
 BNA_F
 ClientSampled :
 26572

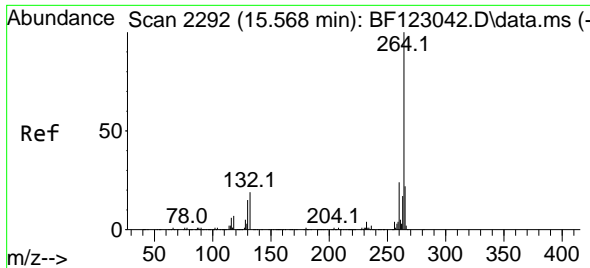
Tgt Ion:202 Resp: 83101
 Ion Ratio Lower Upper
 202 100
 200 21.3 17.6 26.4
 203 22.5 14.6 21.8#



#79
 Terphenyl-d14
 Concen: 42.96 ng
 RT: 13.027 min Scan# 1860
 Delta R.T. -0.000 min
 Lab File: BF123167.D
 Acq: 9 Feb 2021 16:28

Tgt Ion:244 Resp: 934119
 Ion Ratio Lower Upper
 244 100
 212 6.9 5.7 8.5
 122 9.8 8.3 12.5

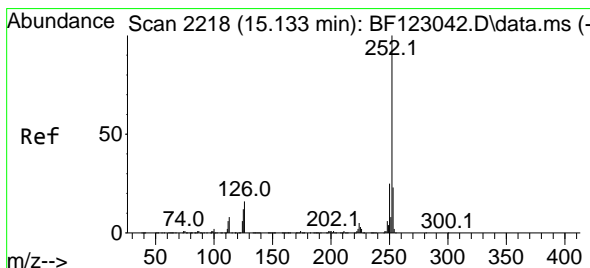
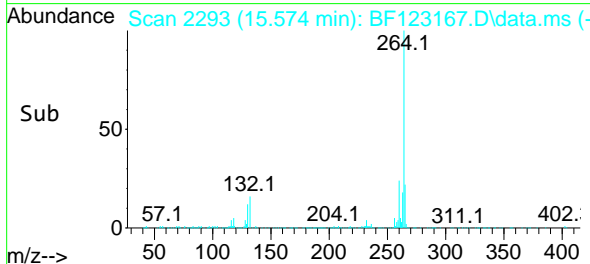
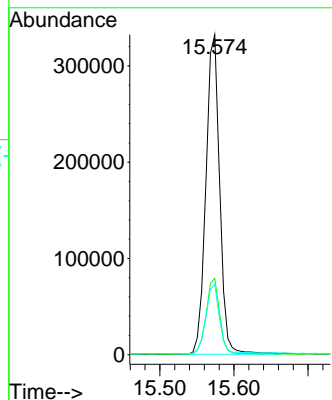
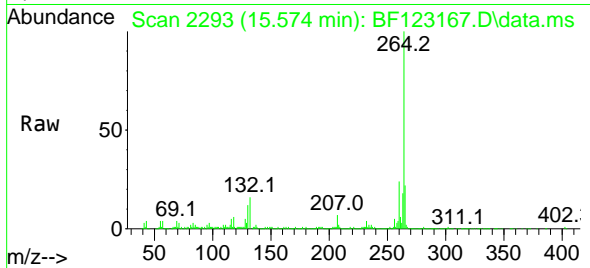




#86
 Perylene-d12
 Concen: 20.00 ng
 RT: 15.574 min Scan# 2293
 Delta R.T. 0.006 min
 Lab File: BF123167.D
 Acq: 9 Feb 2021 16:28

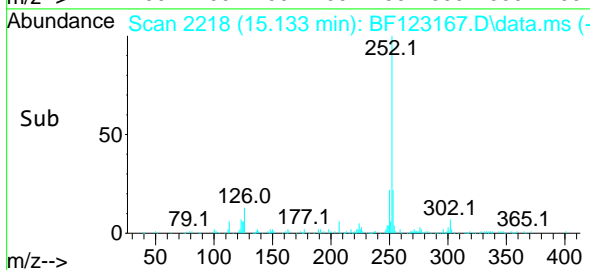
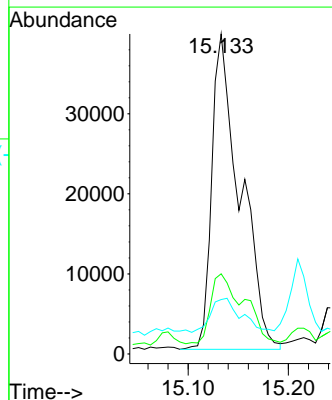
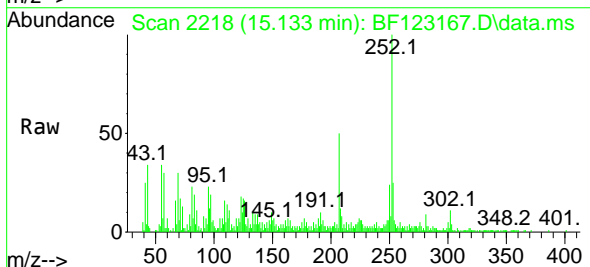
Instrument :
 BNA_F
 ClientSampled :
 26572

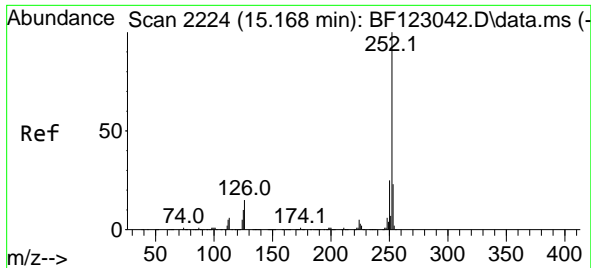
Tgt Ion	Resp	Lower	Upper
264	430257	100	100
260	23.8	18.6	28.0
265	21.9	17.0	25.6



#88
 Benzo(b)fluoranthene
 Concen: 2.49 ng
 RT: 15.133 min Scan# 2218
 Delta R.T. -0.000 min
 Lab File: BF123167.D
 Acq: 9 Feb 2021 16:28

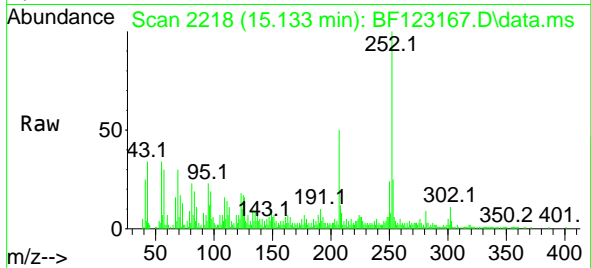
Tgt Ion	Resp	Lower	Upper
252	77248	100	100
253	25.0	18.3	27.5
125	17.0	8.1	12.1





#89
 Benzo(k)fluoranthene
 Concen: 2.68 ng
 RT: 15.133 min Scan# 2218
 Delta R.T. -0.035 min
 Lab File: BF123167.D
 Acq: 9 Feb 2021 16:28

Instrument :
 BNA_F
 ClientSampled :
 26572



Tgt Ion:252 Resp: 77248

Ion	Ratio	Lower	Upper
252	100		
253	25.0	17.8	26.8
125	17.0	8.4	12.6#

