

Data Path : Z:\svoasrv\HPCHEM1\BNA\_F\Data\BF021723\  
 Data File : BF132470.D  
 Acq On : 18 Feb 2023 02:01  
 Operator : CG\JU  
 Sample : 01552-14  
 Misc :  
 ALS Vial : 18 Sample Multiplier: 1

Instrument :  
 BNA\_F  
 ClientSampleId :  
 SB-04-0-2.0

Integration Parameters: rteint.p

Integrator: RTE  
 Smoothing : ON Filtering: 5  
 Sampling : 1 Min Area: 3 % of largest Peak  
 Start Thrs: 0.2 Max Peaks: 100  
 Stop Thrs : 0 Peak Location: TOP

If leading or trailing edge < 100 prefer < Baseline drop else tangent >  
 Peak separation: 5

Method : Z:\svoasrv\HPCHEM1\BNA\_F\Methods\8270-BF021623.M  
 Title : ASP BNA STANDARDS FOR 5 POINT CALIBRATION

Signal : TIC: BF132470.D\data.ms

peak #	R.T. min	first scan	max scan	last scan	PK TY	peak height	corr. area	corr. % max.	% of total
1	5.260	407	412	424	rVB	1756847	2213410	47.71%	5.590%
2	5.649	473	478	481	rBV	4547302	4524913	97.54%	11.428%
3	6.643	642	647	650	rBV	4138751	4481170	96.60%	11.317%
4	7.025	708	712	715	rBV	1522140	1262847	27.22%	3.189%
5	7.584	803	807	810	rBV	3031044	2903885	62.60%	7.334%
6	8.307	926	930	933	rBV	1888850	1539519	33.19%	3.888%
7	9.384	1109	1113	1116	rBV	5427993	4639069	100.00%	11.716%
8	10.072	1226	1230	1233	rBV	1908862	1500238	32.34%	3.789%
9	10.725	1339	1341	1345	rVB	70858	56544	1.22%	0.143%
10	10.784	1347	1351	1354	rVB	162701	132907	2.86%	0.336%
11	10.860	1360	1364	1368	rBV	2661207	2413922	52.03%	6.096%
12	10.972	1378	1383	1389	rVB5	33039	63995	1.38%	0.162%
13	11.566	1480	1484	1486	rBV	1691887	1388177	29.92%	3.506%
14	11.589	1486	1488	1492	rVB	449077	341634	7.36%	0.863%
15	11.642	1492	1497	1499	rBV	107561	116429	2.51%	0.294%
16	11.795	1520	1523	1528	rBV	46277	52569	1.13%	0.133%
17	12.078	1567	1571	1580	rBV3	415087	643902	13.88%	1.626%
18	12.183	1586	1589	1591	rBV2	125231	121703	2.62%	0.307%
19	12.619	1660	1663	1665	rBV	73437	75304	1.62%	0.190%
20	12.707	1676	1678	1682	rBV2	45673	54044	1.16%	0.136%
21	12.783	1688	1691	1695	rBV	1110336	1069427	23.05%	2.701%
22	12.866	1703	1705	1707	rBV2	52875	55537	1.20%	0.140%
23	13.019	1725	1731	1737	rBV	1110465	1249824	26.94%	3.156%
24	13.066	1737	1739	1742	rVB2	56845	57935	1.25%	0.146%
25	13.160	1750	1755	1758	rBV	3871055	3797226	81.85%	9.590%
26	13.342	1784	1786	1789	rVB	170443	151785	3.27%	0.383%
27	13.413	1795	1798	1800	rVB	134443	109985	2.37%	0.278%
28	14.224	1931	1936	1938	rBV2	1251989	1584936	34.16%	4.003%
29	14.248	1938	1940	1946	rVB	509739	455572	9.82%	1.151%
30	14.313	1948	1951	1956	rVB	836423	890109	19.19%	2.248%
31	15.319	2119	2122	2126	rBV	384478	590551	12.73%	1.491%
32	15.719	2187	2190	2195	rBV	286177	343621	7.41%	0.868%
33	15.789	2199	2202	2206	rVB2	574693	713160	15.37%	1.801%

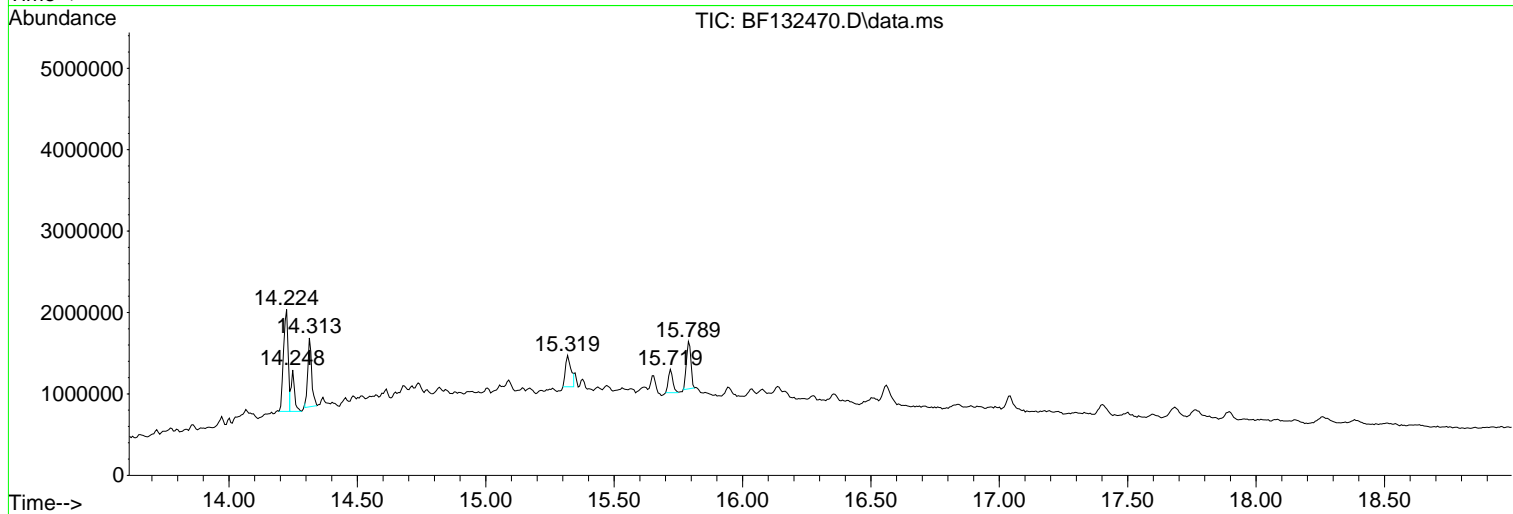
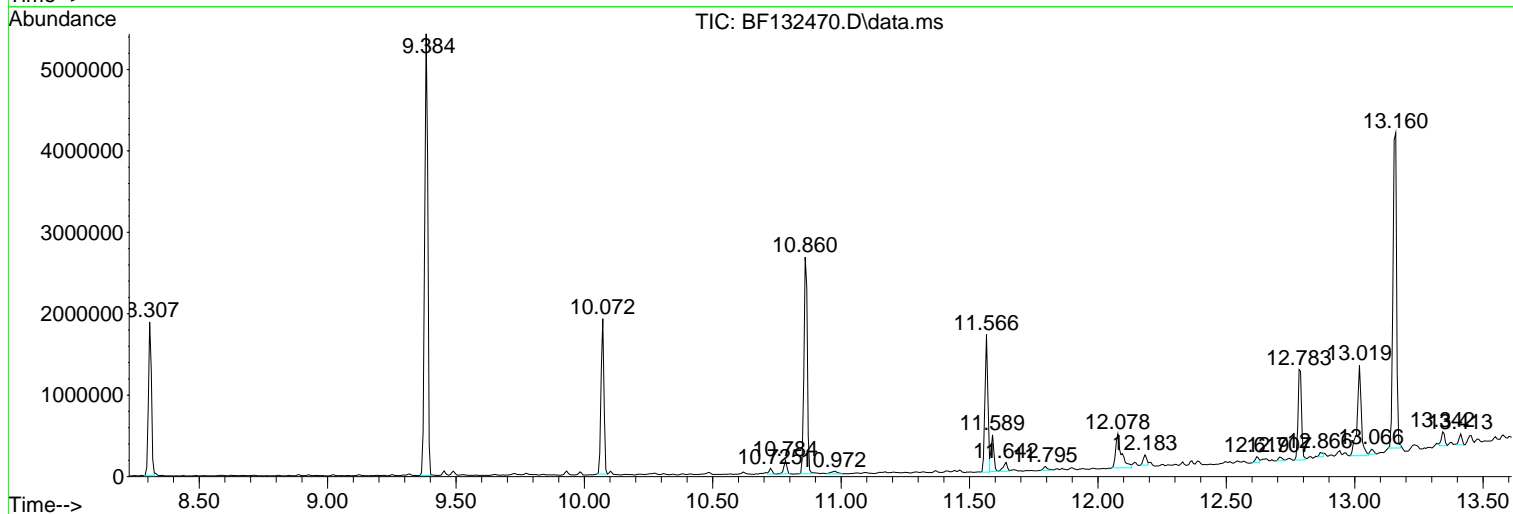
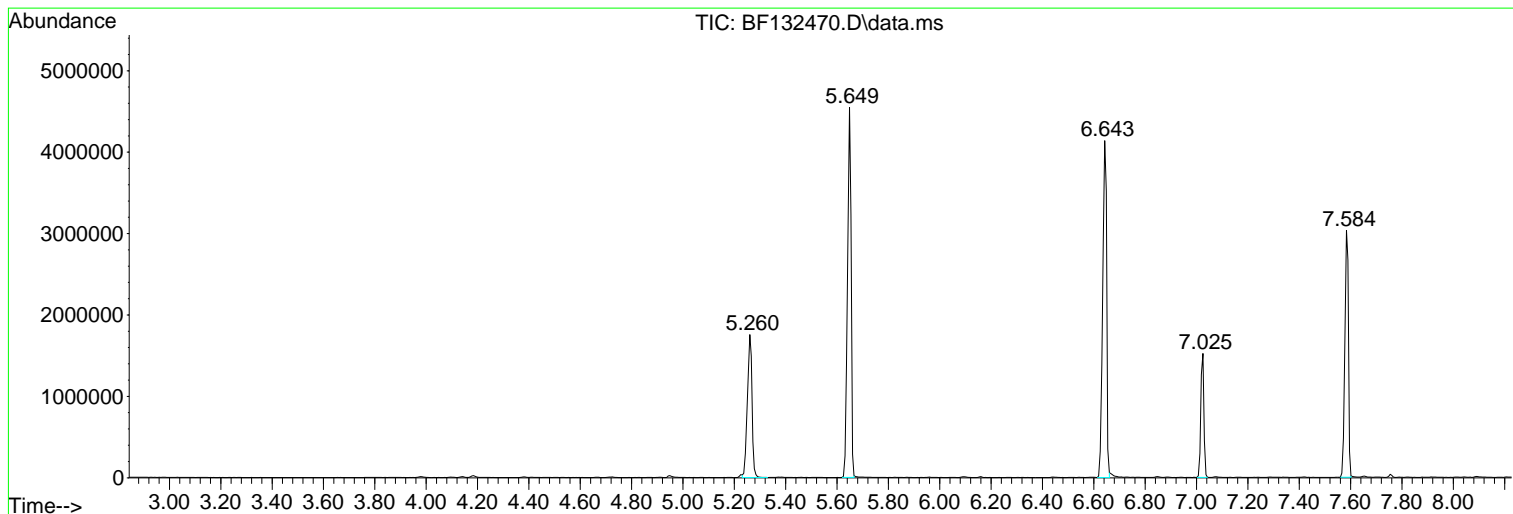
Sum of corrected areas: 39595849

Data Path : Z:\svoasrv\HPCHEM1\BNA\_F\Data\BF021723\  
 Data File : BF132470.D  
 Acq On : 18 Feb 2023 02:01  
 Operator : CG\JU  
 Sample : 01552-14  
 Misc :  
 ALS Vial : 18 Sample Multiplier: 1

Instrument :  
 BNA\_F  
 ClientSampleId :  
 SB-04-0-2.0

Quant Method : Z:\svoasrv\HPCHEM1\BNA\_F\Methods\8270-BF021623.M  
 Quant Title : ASP BNA STANDARDS FOR 5 POINT CALIBRATION

TIC Library : C:\Database\NIST20.L  
 TIC Integration Parameters: LSCINT.P



Data Path : Z:\svoasrv\HPCHEM1\BNA\_F\Data\BF021723\  
 Data File : BF132470.D  
 Acq On : 18 Feb 2023 02:01  
 Operator : CG\JU  
 Sample : 01552-14  
 Misc :  
 ALS Vial : 18 Sample Multiplier: 1

Instrument :  
 BNA\_F  
 ClientSampleId :  
 SB-04-0-2.0

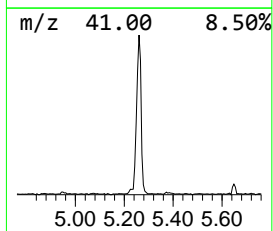
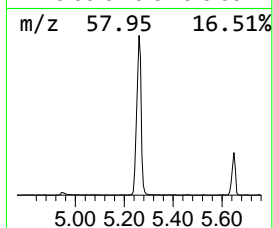
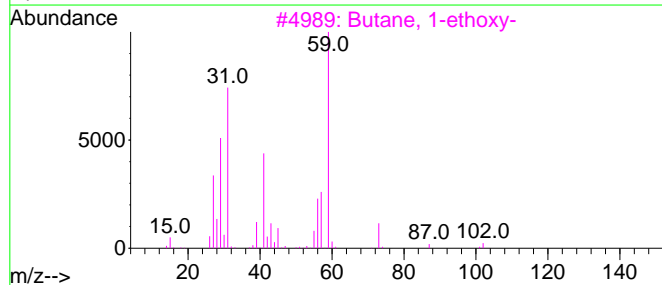
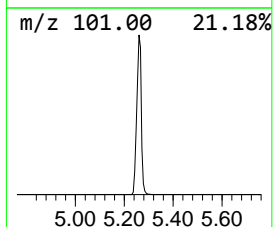
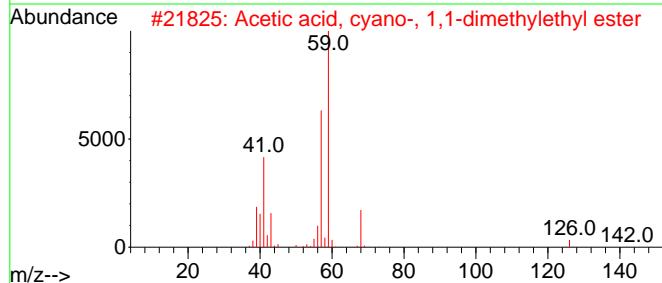
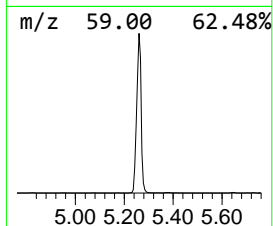
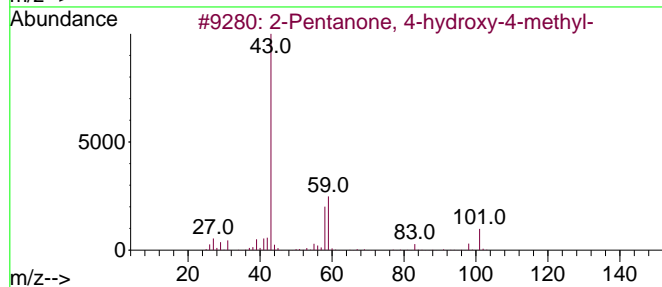
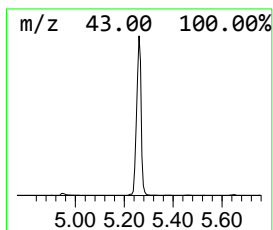
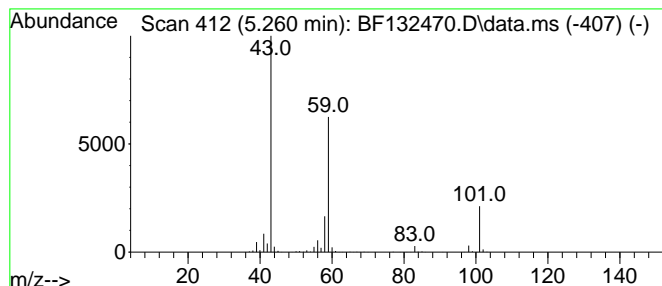
Quant Method : Z:\svoasrv\HPCHEM1\BNA\_F\Methods\8270-BF021623.M  
 Quant Title : ASP BNA STANDARDS FOR 5 POINT CALIBRATION

TIC Library : C:\Database\NIST20.L  
 TIC Integration Parameters: LSCINT.P

\*\*\*\*\*  
 Peak Number 1 2-Pentanone, 4-hydroxy-4-me... Concentration Rank 1

R.T.	EstConc	Area	Relative to ISTD	R.T.
5.260	35.05 ng	2213410	1,4-Dichlorobenzene-d4	7.025

Hit#	of 5	Tentative ID	MW	MolForm	CAS#	Qual
1		2-Pentanone, 4-hydroxy-4-methyl-	116	C6H12O2	000123-42-2	64
2		Acetic acid, cyano-, 1,1-dimethy...	141	C7H11NO2	001116-98-9	17
3		Butane, 1-ethoxy-	102	C6H14O	000628-81-9	9
4		Guanidine	59	CH5N3	000113-00-8	9
5		Morpholine, 4-methyl-	101	C5H11NO	000109-02-4	9



Data Path : Z:\svoasrv\HPCHEM1\BNA\_F\Data\BF021723\  
 Data File : BF132470.D  
 Acq On : 18 Feb 2023 02:01  
 Operator : CG\JU  
 Sample : 01552-14  
 Misc :  
 ALS Vial : 18 Sample Multiplier: 1

Instrument :  
 BNA\_F  
 ClientSampleId :  
 SB-04-0-2.0

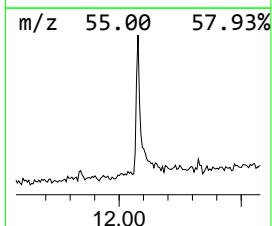
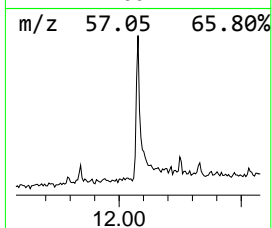
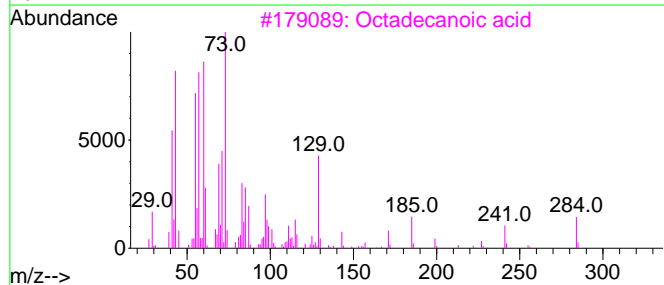
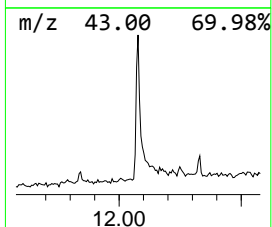
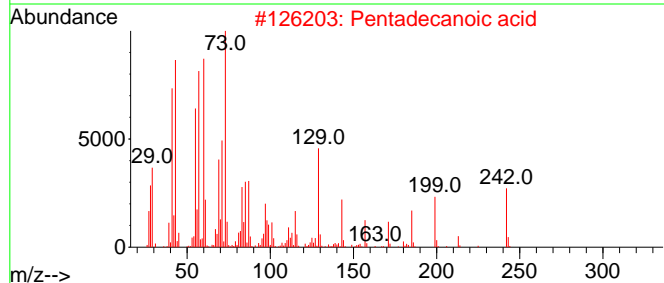
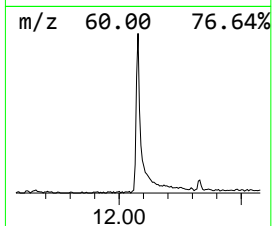
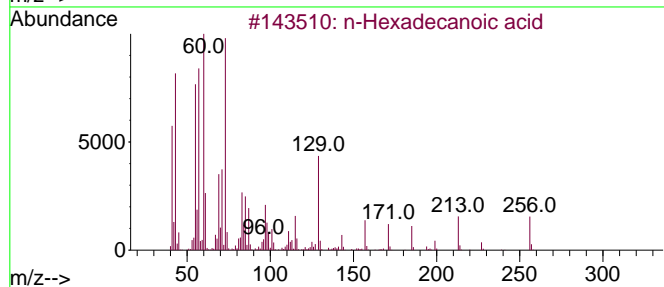
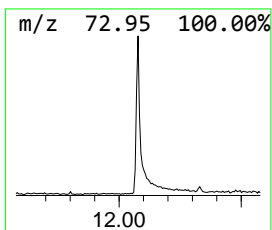
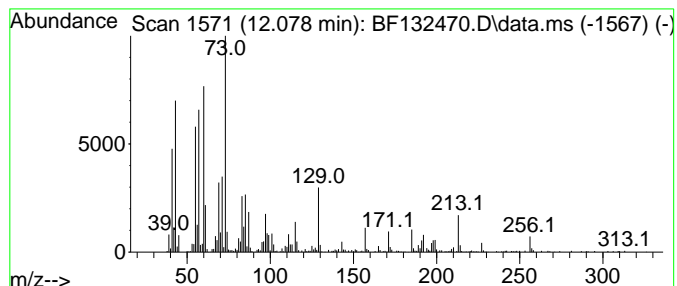
Quant Method : Z:\svoasrv\HPCHEM1\BNA\_F\Methods\8270-BF021623.M  
 Quant Title : ASP BNA STANDARDS FOR 5 POINT CALIBRATION

TIC Library : C:\Database\NIST20.L  
 TIC Integration Parameters: LSCINT.P

\*\*\*\*\*  
 Peak Number 2 n-Hexadecanoic acid Concentration Rank 3

R.T.	EstConc	Area	Relative to ISTD	R.T.
12.078	9.28 ng	643902	Phenanthrene-d10	11.566

Hit#	of 5	Tentative ID	MW	MolForm	CAS#	Qual
1		n-Hexadecanoic acid	256	C16H32O2	000057-10-3	97
2		Pentadecanoic acid	242	C15H30O2	001002-84-2	90
3		Octadecanoic acid	284	C18H36O2	000057-11-4	81
4		Tetradecanoic acid	228	C14H28O2	000544-63-8	81
5		Tridecanoic acid	214	C13H26O2	000638-53-9	72



Data Path : Z:\svoasrv\HPCHEM1\BNA\_F\Data\BF021723\  
 Data File : BF132470.D  
 Acq On : 18 Feb 2023 02:01  
 Operator : CG\JU  
 Sample : 01552-14  
 Misc :  
 ALS Vial : 18 Sample Multiplier: 1

Instrument :  
 BNA\_F  
 ClientSampleId :  
 SB-04-0-2.0

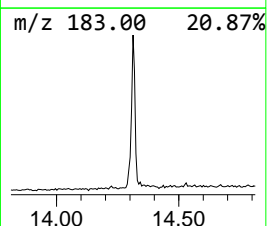
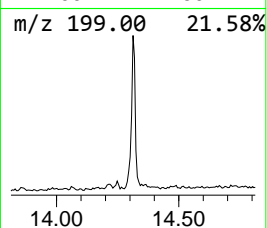
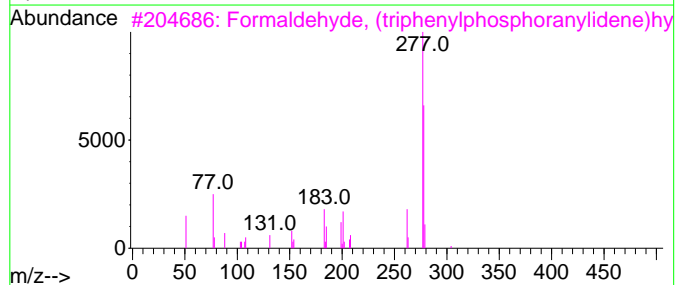
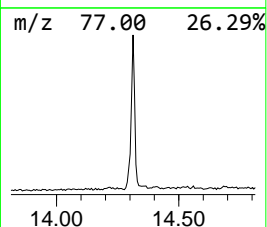
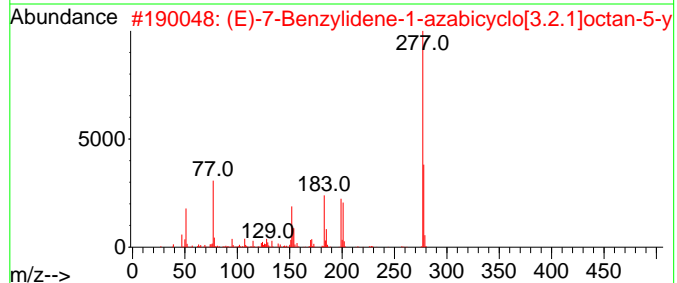
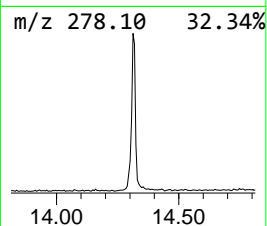
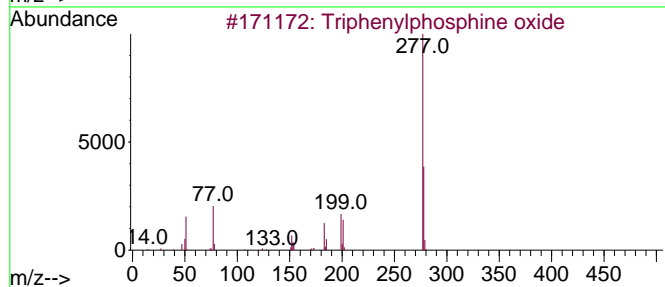
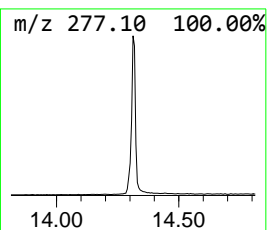
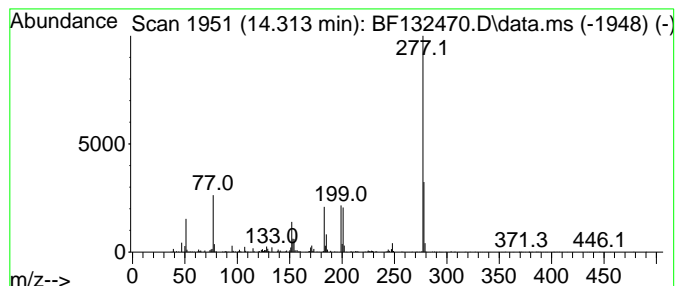
Quant Method : Z:\svoasrv\HPCHEM1\BNA\_F\Methods\8270-BF021623.M  
 Quant Title : ASP BNA STANDARDS FOR 5 POINT CALIBRATION

TIC Library : C:\Database\NIST20.L  
 TIC Integration Parameters: LSCINT.P

\*\*\*\*\*  
 Peak Number 3 Triphenylphosphine oxide Concentration Rank 2

R.T.	EstConc	Area	Relative to ISTD	R.T.
14.313	11.23 ng	890109	Chrysene-d12	14.225

Hit#	of	5	Tentative ID	MW	MolForm	CAS#	Qual
1			Triphenylphosphine oxide	278	C18H15OP	000791-28-6	95
2			(E)-7-Benzylidene-1-azabicyclo[3...]	293	C15H19N03S	1000483-83-4	90
3			Formaldehyde, (triphenylphosphor...)	304	C19H17N2P	015990-54-2	50
4			(Carbethoxymethyl)-triphenylphos...	428	C22H22BrO2P	001530-45-6	45
5			4-Nitro-4'-methylidiphenylsulfone	277	C13H11N04S	004094-37-5	43



Data Path : Z:\svoasrv\HPCHEM1\BNA\_F\Data\BF021723\  
Data File : BF132470.D  
Acq On : 18 Feb 2023 02:01  
Operator : CG\JU  
Sample : 01552-14  
Misc :  
ALS Vial : 18 Sample Multiplier: 1

Instrument :  
BNA\_F  
ClientSampleId :  
SB-04-0-2.0

Quant Method : Z:\svoasrv\HPCHEM1\BNA\_F\Methods\8270-BF021623.M  
Quant Title : ASP BNA STANDARDS FOR 5 POINT CALIBRATION

TIC Library : C:\Database\NIST20.L  
TIC Integration Parameters: LSCINT.P

TIC Top Hit name	RT	EstConc	Units	Response	--Internal Standard--			
					#	RT	Resp	Conc
2-Pentanone, 4-...	5.260	35.0	ng	2213410	1	7.025	1262850	20.0
n-Hexadecanoic ...	12.078	9.3	ng	643902	4	11.566	1388180	20.0
Triphenylphosph...	14.313	11.2	ng	890109	5	14.225	1584940	20.0