

Data Path : Z:\svoasrv\HPCHEM1\BNA\_F\Data\BF060322\  
 Data File : BF128689.D  
 Acq On : 03 Jun 2022 20:09  
 Operator : CG\JU  
 Sample : N3068-01RE 5X  
 Misc :  
 ALS Vial : 21 Sample Multiplier: 1

Instrument :  
 BNA\_F  
 ClientSampleId :  
 WATER-DRUMRE

Integration Parameters: rteint.p  
 Integrator: RTE  
 Smoothing : ON  
 Sampling : 1  
 Start Thrs : 0.2  
 Stop Thrs : 0  
 Filtering: 5  
 Min Area: 3 % of largest Peak  
 Max Peaks: 100  
 Peak Location: TOP

If leading or trailing edge < 100 prefer < Baseline drop else tangent >  
 Peak separation: 5

Method : Z:\svoasrv\HPCHEM1\BNA\_F\Methods\8270-BF060222.M  
 Title : ASP BNA STANDARDS FOR 5 POINT CALIBRATION

Signal : TIC: BF128689.D\data.ms

peak #	R.T. min	first scan	max scan	last scan	PK TY	peak height	corr. area	corr. % max.	% of total
1	5.128	470	483	498	rBV2	207441	1136194	2.98%	0.326%
2	5.687	550	578	580	rBV2	9822280	37230879	97.54%	10.680%
3	5.763	580	591	592	rBV2	3199557	10752500	28.17%	3.085%
4	6.169	656	660	670	rVB	1714399	1785838	4.68%	0.512%
5	6.257	670	675	680	rVB2	554880	608682	1.59%	0.175%
6	6.575	724	729	735	rBV3	224266	436484	1.14%	0.125%
7	6.716	740	753	757	rVB2	426045	1247628	3.27%	0.358%
8	6.845	769	775	779	rBV2	722797	794555	2.08%	0.228%
9	6.945	788	792	800	rBV	893148	1301435	3.41%	0.373%
10	7.057	801	811	814	rBV	5689081	11799659	30.91%	3.385%
11	7.281	837	849	853	rBV	7119245	9937378	26.03%	2.851%
12	7.445	873	877	878	rVV	2281295	2328827	6.10%	0.668%
13	7.457	878	879	888	rVB	1039067	835893	2.19%	0.240%
14	7.622	894	907	910	rBV	5478200	9119991	23.89%	2.616%
15	7.922	948	958	960	rBV4	454611	1088021	2.85%	0.312%
16	8.045	960	979	982	rBV2	2882012	8433089	22.09%	2.419%
17	8.122	989	992	993	rBV	957571	1043117	2.73%	0.299%
18	8.139	993	995	996	rVB	2354401	1530695	4.01%	0.439%
19	8.169	996	1000	1002	rVB2	6227127	6891629	18.06%	1.977%
20	8.192	1002	1004	1006	rVB	558410	411748	1.08%	0.118%
21	8.298	1017	1022	1032	rVB3	222229	438275	1.15%	0.126%
22	8.439	1042	1046	1057	rVB	3650951	4500966	11.79%	1.291%
23	8.533	1057	1062	1064	rBV3	358626	445965	1.17%	0.128%
24	9.186	1146	1173	1174	rBV3	3814135	15348181	40.21%	4.403%
25	9.298	1188	1192	1193	rVV	431225	517377	1.36%	0.148%
26	9.339	1193	1199	1202	rVV3	1195089	2076668	5.44%	0.596%
27	9.392	1205	1208	1211	rVV3	1137600	1490158	3.90%	0.427%
28	9.445	1214	1217	1221	rVV3	1215577	2400772	6.29%	0.689%
29	9.486	1221	1224	1226	rVV	1114868	1395090	3.65%	0.400%
30	9.510	1226	1228	1231	rVV	540368	572671	1.50%	0.164%
31	9.575	1234	1239	1244	rVV2	721946	1229368	3.22%	0.353%
32	9.622	1244	1247	1248	rVV	544272	484975	1.27%	0.139%
33	9.633	1248	1249	1253	rVV	500599	497844	1.30%	0.143%
34	9.722	1259	1264	1267	rVV	891923	919140	2.41%	0.264%
35	9.775	1270	1273	1275	rBV	893057	699082	1.83%	0.201%
36	9.845	1281	1285	1286	rBV	835794	645968	1.69%	0.185%

Data Path : Z:\svoasrv\HPCHEM1\BNA\_F\Data\BF060322\  
 Data File : BF128689.D  
 Acq On : 03 Jun 2022 20:09  
 Operator : CG\JU  
 Sample : N3068-01RE 5X  
 Misc :  
 ALS Vial : 21 Sample Multiplier: 1

Instrument :  
 BNA\_F  
 ClientSampleId :  
 WATER-DRUMRE

Integration Parameters: rteint.p

Integrator: RTE  
 Smoothing : ON Filtering: 5  
 Sampling : 1 Min Area: 3 % of largest Peak  
 Start Thrs: 0.2 Max Peaks: 100  
 Stop Thrs : 0 Peak Location: TOP

If leading or trailing edge < 100 prefer < Baseline drop else tangent >  
 Peak separation: 5

Method : Z:\svoasrv\HPCHEM1\BNA\_F\Methods\8270-BF060222.M  
 Title : ASP BNA STANDARDS FOR 5 POINT CALIBRATION

37	9.880	1286	1291	1295	rVB3	2760914	3635228	9.52%	1.043%
38	10.127	1322	1333	1335	rBV	5435032	7757420	20.32%	2.225%
39	10.298	1335	1362	1363	rBV	7386345	38169686	100.00%	10.950%
40	10.557	1404	1406	1410	rVV3	444791	434210	1.14%	0.125%
41	10.674	1421	1426	1428	rVV3	1089269	1786309	4.68%	0.512%
42	10.733	1431	1436	1440	rVB4	1432820	1902323	4.98%	0.546%
43	10.804	1440	1448	1457	rBV4	3561607	8016077	21.00%	2.300%
44	10.869	1457	1459	1461	rVV2	693953	738578	1.93%	0.212%
45	10.922	1465	1468	1472	rVB	665126	873214	2.29%	0.250%
46	11.004	1479	1482	1484	rVV	350661	430753	1.13%	0.124%
47	11.104	1488	1499	1501	rVV	5689184	14309037	37.49%	4.105%
48	11.139	1503	1505	1508	rVB	6774377	5341703	13.99%	1.532%
49	11.357	1539	1542	1545	rBV	718134	595648	1.56%	0.171%
50	11.733	1599	1606	1608	rBV	2184086	2746620	7.20%	0.788%
51	11.763	1608	1611	1614	rVB	665358	620686	1.63%	0.178%
52	11.804	1614	1618	1621	rVB	345020	514473	1.35%	0.148%
53	11.874	1621	1630	1633	rBV	1627886	2758030	7.23%	0.791%
54	11.927	1633	1639	1640	rVV2	4597238	7348444	19.25%	2.108%
55	11.963	1641	1645	1647	rVV	7068496	9993605	26.18%	2.867%
56	11.992	1647	1650	1657	rVB2	2560919	4312231	11.30%	1.237%
57	12.045	1657	1659	1662	rBV	856457	720257	1.89%	0.207%
58	12.098	1662	1668	1673	rVB	986987	1707722	4.47%	0.490%
59	12.139	1673	1675	1678	rBV	498081	436103	1.14%	0.125%
60	12.168	1678	1680	1682	rBV	674960	704544	1.85%	0.202%
61	12.398	1716	1719	1721	rVB	590635	451270	1.18%	0.129%
62	12.533	1737	1742	1745	rVB	4630104	4065905	10.65%	1.166%
63	12.610	1745	1755	1758	rBV	7386687	14694123	38.50%	4.215%
64	12.721	1762	1774	1775	rBV2	7844566	15715251	41.17%	4.508%
65	12.839	1791	1794	1799	rVB2	432379	486265	1.27%	0.139%
66	12.945	1806	1812	1815	rBV2	1793828	2756334	7.22%	0.791%
67	13.004	1819	1822	1824	rVV3	870698	1421842	3.73%	0.408%
68	13.045	1824	1829	1835	rVV	2685662	5923792	15.52%	1.699%
69	13.098	1835	1838	1841	rVV	937904	1117392	2.93%	0.321%
70	13.145	1841	1846	1850	rVV3	1018864	2297911	6.02%	0.659%
71	13.210	1854	1857	1864	rVB	1092627	1707208	4.47%	0.490%
72	13.351	1878	1881	1884	rBV2	342486	402334	1.05%	0.115%
73	13.415	1884	1892	1903	rVV3	996292	2565795	6.72%	0.736%
74	13.545	1912	1914	1920	rVB	991996	987220	2.59%	0.283%
75	13.604	1920	1924	1926	rBV	1997520	2251005	5.90%	0.646%
76	13.627	1926	1928	1930	rVV	2041238	1613434	4.23%	0.463%

Data Path : Z:\svoasrv\HPCHEM1\BNA\_F\Data\BF060322\  
 Data File : BF128689.D  
 Acq On : 03 Jun 2022 20:09  
 Operator : CG\JU  
 Sample : N3068-01RE 5X  
 Misc :  
 ALS Vial : 21 Sample Multiplier: 1

Instrument :  
 BNA\_F  
 ClientSampleId :  
 WATER-DRUMRE

Integration Parameters: rteint.p  
 Integrator: RTE  
 Smoothing : ON Filtering: 5  
 Sampling : 1 Min Area: 3 % of largest Peak  
 Start Thrs: 0.2 Max Peaks: 100  
 Stop Thrs : 0 Peak Location: TOP

If leading or trailing edge < 100 prefer < Baseline drop else tangent >  
 Peak separation: 5

Method : Z:\svoasrv\HPCHEM1\BNA\_F\Methods\8270-BF060222.M  
 Title : ASP BNA STANDARDS FOR 5 POINT CALIBRATION

77	13.733	1943	1946	1950	rVB	393627	423205	1.11%	0.121%
78	13.780	1950	1954	1959	rBV2	700711	1284391	3.36%	0.368%
79	13.880	1964	1971	1973	rBV	1363686	2240267	5.87%	0.643%
80	13.904	1973	1975	1978	rVB	568597	563032	1.48%	0.162%
81	13.933	1978	1980	1982	rBV	648127	685539	1.80%	0.197%
82	13.974	1982	1987	1993	rVV2	2124484	4310311	11.29%	1.236%
83	14.021	1993	1995	1998	rVB	953894	839732	2.20%	0.241%
84	14.062	1998	2002	2004	rBV	1115469	1625261	4.26%	0.466%
85	14.133	2010	2014	2018	rVB2	952013	1392380	3.65%	0.399%
86	14.198	2022	2025	2028	rVB	568294	484080	1.27%	0.139%
87	14.245	2030	2033	2039	rVB	610409	619629	1.62%	0.178%
88	14.304	2039	2043	2046	rBV	2244614	2076018	5.44%	0.596%
89	14.633	2095	2099	2104	rBV	432809	697400	1.83%	0.200%
90	14.733	2110	2116	2118	rBV	1032411	1872025	4.90%	0.537%
91	14.786	2122	2125	2126	rVV	525008	604681	1.58%	0.173%
92	14.827	2129	2132	2138	rVB	1327637	2168288	5.68%	0.622%
93	14.915	2144	2147	2154	rBV2	1163533	1973672	5.17%	0.566%
94	14.980	2154	2158	2165	rVB2	1539523	2492154	6.53%	0.715%
95	15.598	2258	2263	2272	rBV2	297526	731151	1.92%	0.210%
96	15.727	2281	2285	2290	rBV3	563471	1363638	3.57%	0.391%
97	15.804	2294	2298	2301	rVV	682638	984292	2.58%	0.282%
98	15.939	2319	2321	2327	rVB2	356890	544342	1.43%	0.156%
99	15.998	2327	2331	2341	rBV	484403	1211135	3.17%	0.347%
100	16.109	2347	2350	2357	rVB	408067	722991	1.89%	0.207%

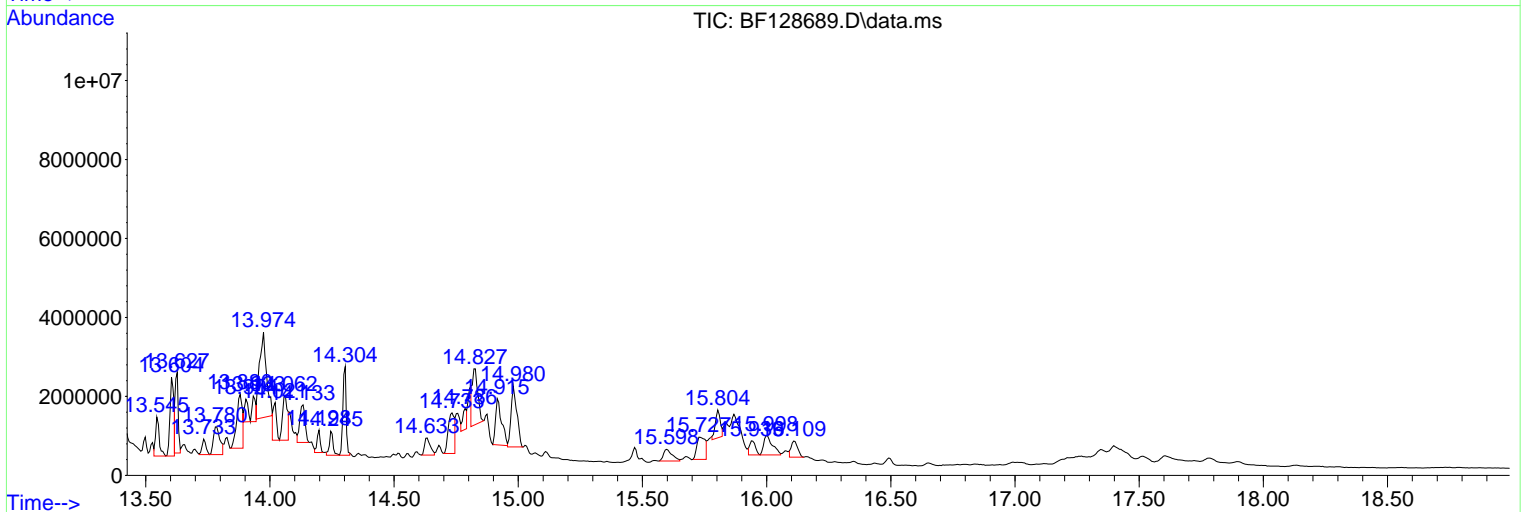
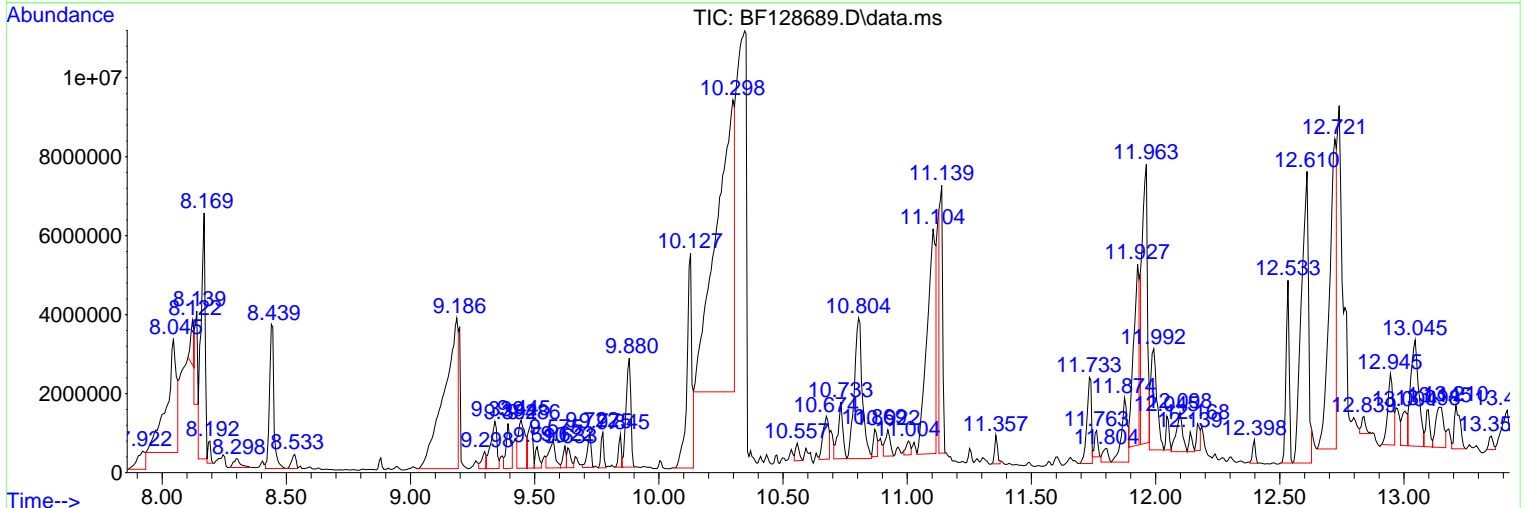
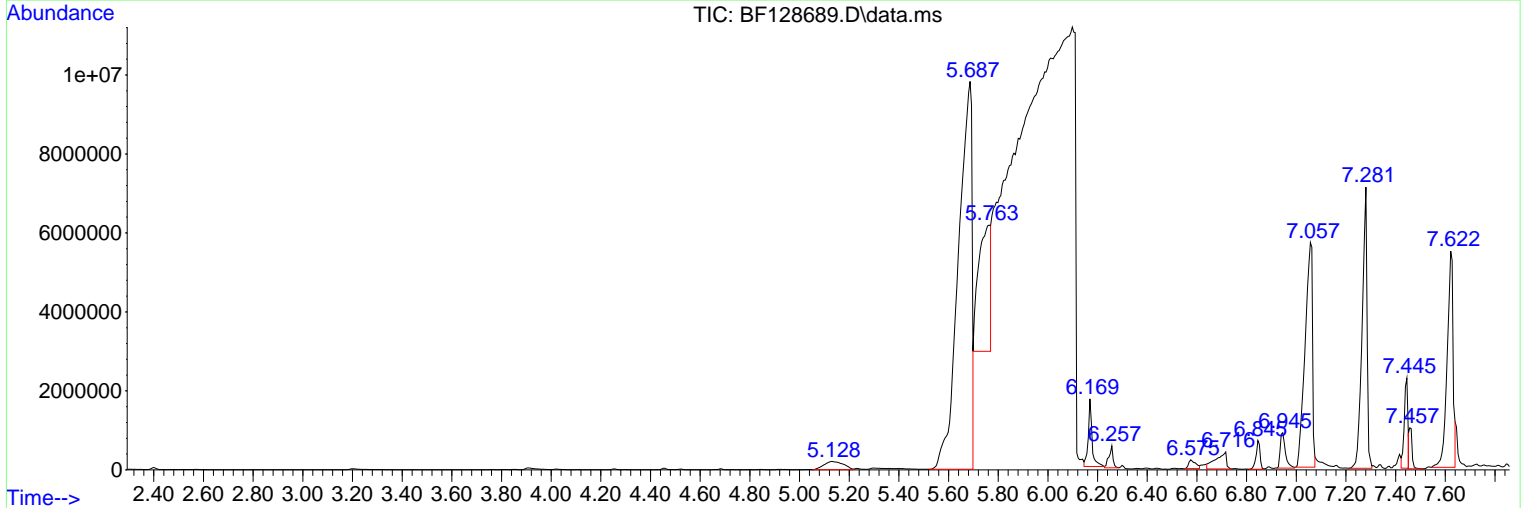
Sum of corrected areas: 348596338

Data Path : Z:\svoasrv\HPCHEM1\BNA\_F\Data\BF060322\  
 Data File : BF128689.D  
 Acq On : 03 Jun 2022 20:09  
 Operator : CG\JU  
 Sample : N3068-01RE 5X  
 Misc :  
 ALS Vial : 21 Sample Multiplier: 1

**Instrument :**  
 BNA\_F  
**ClientSampleId :**  
 WATER-DRUMRE

Quant Method : Z:\svoasrv\HPCHEM1\BNA\_F\Methods\8270-BF060222.M  
 Quant Title : ASP BNA STANDARDS FOR 5 POINT CALIBRATION

TIC Library : C:\Database\NIST20.L  
 TIC Integration Parameters: LSCINT.P



Library Search Compound Report

Data Path : Z:\svoasrv\HPCHEM1\BNA\_F\Data\BF060322\  
Data File : BF128689.D  
Acq On : 03 Jun 2022 20:09  
Operator : CG\JU  
Sample : N3068-01RE 5X  
Misc :  
ALS Vial : 21 Sample Multiplier: 1

Instrument :  
BNA\_F  
ClientSampleId :  
WATER-DRUMRE

Quant Method : Z:\svoasrv\HPCHEM1\BNA\_F\Methods\8270-BF060222.M  
Quant Title : ASP BNA STANDARDS FOR 5 POINT CALIBRATION

TIC Library : C:\Database\NIST20.L  
TIC Integration Parameters: LSCINT.P

No Library Search Compounds Detected

\*\*\*\*\*

Data Path : Z:\svoasrv\HPCHEM1\BNA\_F\Data\BF060322\  
Data File : BF128689.D  
Acq On : 03 Jun 2022 20:09  
Operator : CG\JU  
Sample : N3068-01RE 5X  
Misc :  
ALS Vial : 21 Sample Multiplier: 1

Instrument :  
BNA\_F  
ClientSampleId :  
WATER-DRUMRE

Quant Method : Z:\svoasrv\HPCHEM1\BNA\_F\Methods\8270-BF060222.M  
Quant Title : ASP BNA STANDARDS FOR 5 POINT CALIBRATION

TIC Library : C:\Database\NIST20.L  
TIC Integration Parameters: LSCINT.P

TIC Top Hit name	RT	EstConc	Units	Response	#	RT	Resp	Conc
------------------	----	---------	-------	----------	---	----	------	------

---