

Data Path : Z:\SVOASRV\HPCHEM1\BNA F\DATA\BF062920\
 Data File : BF120730.D
 Acq On : 29 Jun 2020 16:27
 Operator : JU/CG
 Sample : L3129-07
 Misc :
 ALS Vial : 7 Sample Multiplier: 1

Instrument :
 BNA_F
 ClientSampleId :
 1399-1400

Quant Time: Jun 29 17:12:40 2020
 Quant Method : Z:\SVOASRV\HPCHEM1\BNA F\METHODS\8270-BF061020.M
 Quant Title : ASP BNA STANDARDS FOR 5 POINT CALIBRATION
 QLast Update : Mon Jun 29 15:30:14 2020
 Response via : Initial Calibration

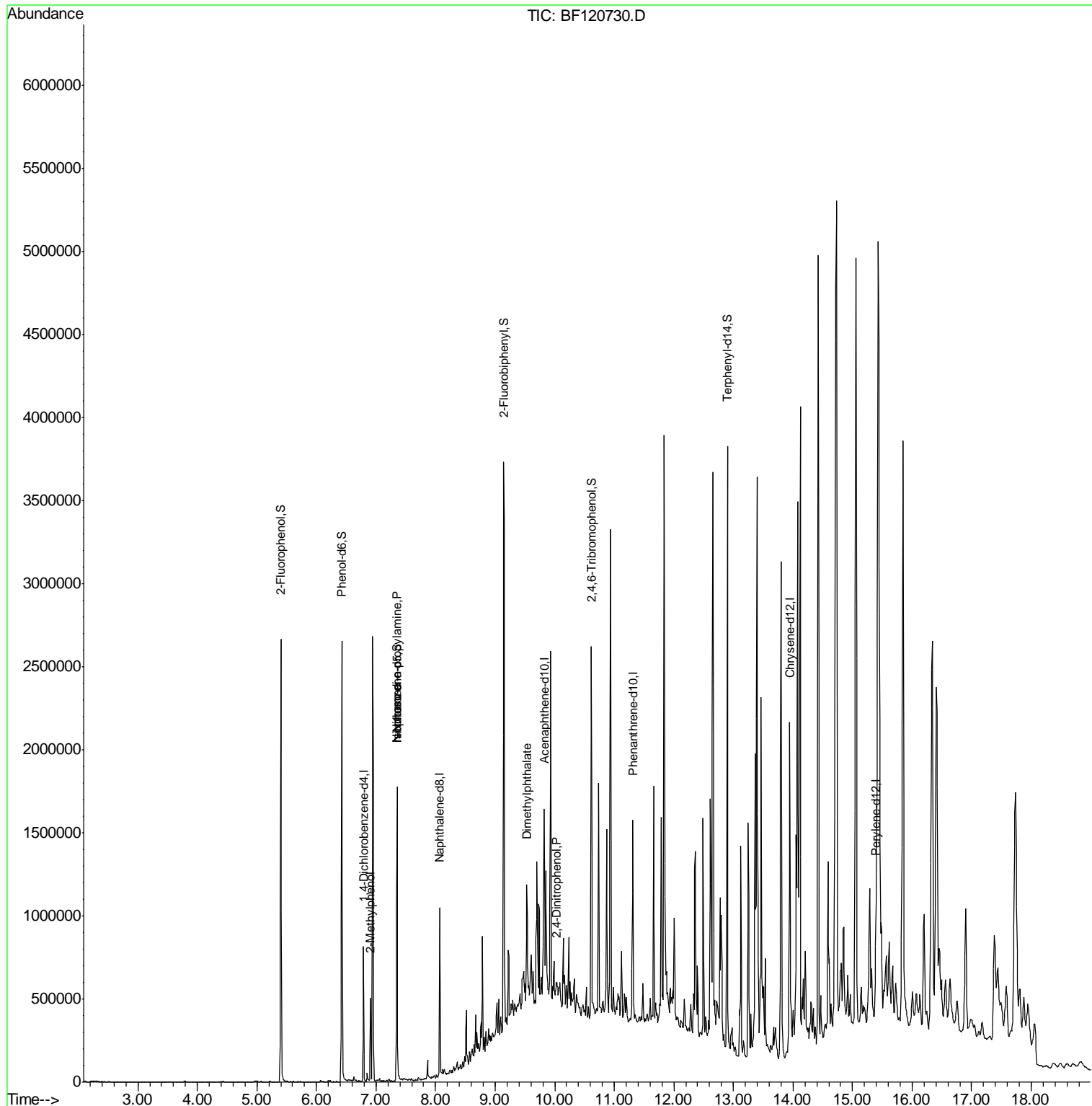
Internal Standards	R.T.	QIon	Response	Conc	Units	Dev(Min)
1) 1,4-Dichlorobenzene-d4	6.79	152	125855	20.00	ng	0.00
21) Naphthalene-d8	8.07	136	442734	20.00	ng	0.00
39) Acenaphthene-d10	9.83	164	222610	20.00	ng	0.00
64) Phenanthrene-d10	11.31	188	441478	20.00	ng	0.00
76) Chrysene-d12	13.95	240	329478	20.00	ng	0.00
86) Perylene-d12	15.39	264	311049	20.00	ng	0.00
System Monitoring Compounds						
5) 2-Fluorophenol	5.40	112	796642	108.52	ng	0.00
7) Phenol-d6	6.43	99	957702	104.75	ng	0.00
23) Nitrobenzene-d5	7.35	82	617571	77.97	ng	0.00
42) 2,4,6-Tribromophenol	10.62	330	297539	114.96	ng	0.00
45) 2-Fluorobiphenyl	9.15	172	1171262	80.50	ng	0.00
79) Terphenyl-d14	12.90	244	1373462	92.08	ng	0.00
Target Compounds						
17) 2-Methylphenol	6.91	107	14584	2.061	ng	# 1
19) n-Nitroso-di-n-propylamine	7.35	70	82280	15.514	ng	# 77
25) Isophorone	7.35	82	617562	40.026	ng	# 62
50) Dimethylphthalate	9.54	163	103721	6.469	ng	# 94
54) 2,4-Dinitrophenol	10.02	184	247	3.174	ng	# 1

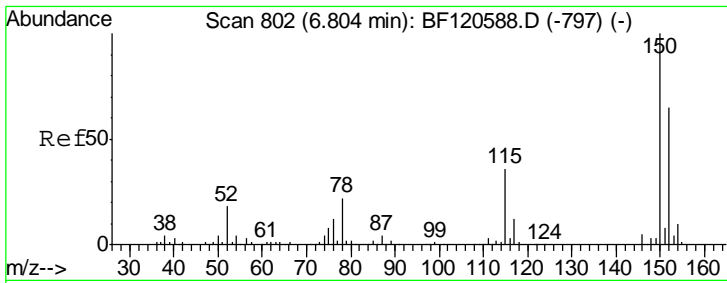
(#) = qualifier out of range (m) = manual integration (+) = signals summed

Data Path : Z:\SVOASRV\HPCHEM1\BNA F\DATA\BF062920\
 Data File : BF120730.D
 Acq On : 29 Jun 2020 16:27
 Operator : JU/CG
 Sample : L3129-07
 Misc :
 ALS Vial : 7 Sample Multiplier: 1

Instrument :
 BNA_F
 ClientSampleId :
 1399-1400

Quant Time: Jun 29 17:12:40 2020
 Quant Method : Z:\SVOASRV\HPCHEM1\BNA F\METHODS\8270-BF061020.M
 Quant Title : ASP BNA STANDARDS FOR 5 POINT CALIBRATION
 QLast Update : Mon Jun 29 15:30:14 2020
 Response via : Initial Calibration

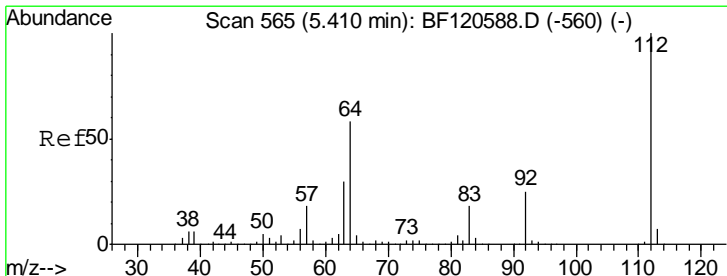
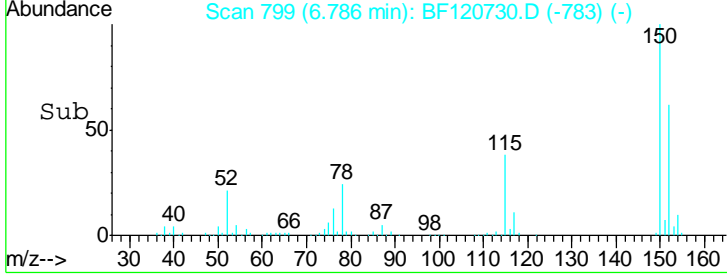
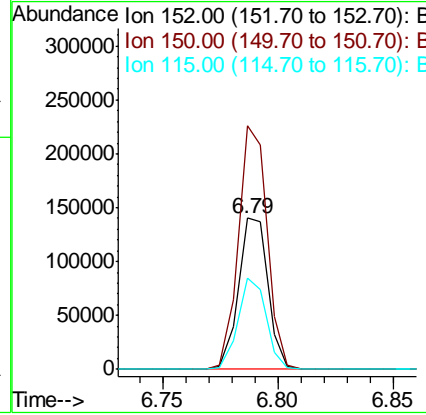
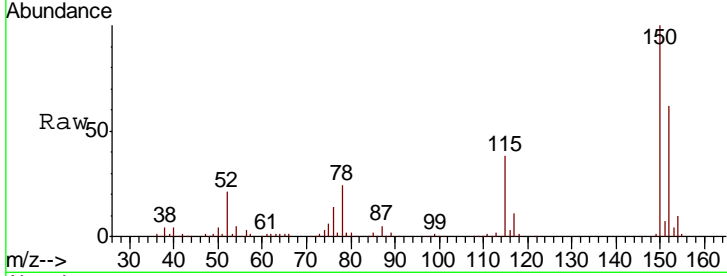




#1
 1,4-Dichlorobenzene-d4
 Concen: 20.000 ng
 RT: 6.79 min Scan# 799
 Delta R.T. -0.01 min
 Lab File: BF120730.D
 Acq: 29 Jun 2020 16:27

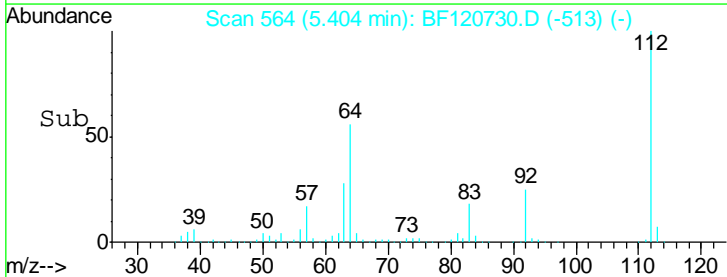
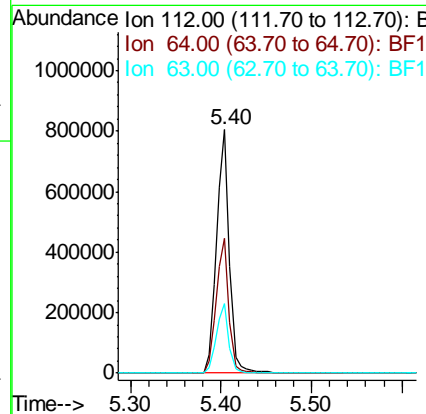
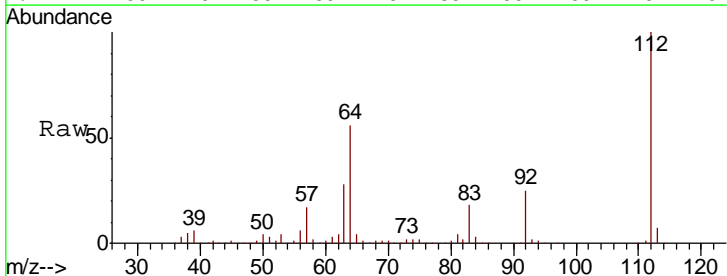
Instrument :
 BNA_F
 ClientSampleId :
 1399-1400

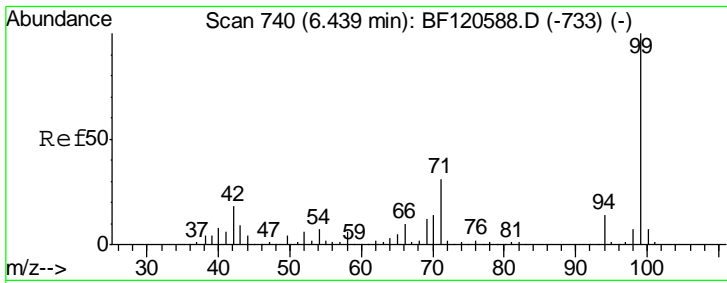
Tgt Ion	Resp	Lower	Upper
152	125855		
150	161.0	124.6	187.0
115	60.7	44.2	66.4



#5
 2-Fluorophenol
 Concen: 108.522 ng
 RT: 5.40 min Scan# 564
 Delta R.T. -0.00 min
 Lab File: BF120730.D
 Acq: 29 Jun 2020 16:27

Tgt Ion	Resp	Lower	Upper
112	796642		
64	55.5	42.2	63.2
63	28.4	21.7	32.5

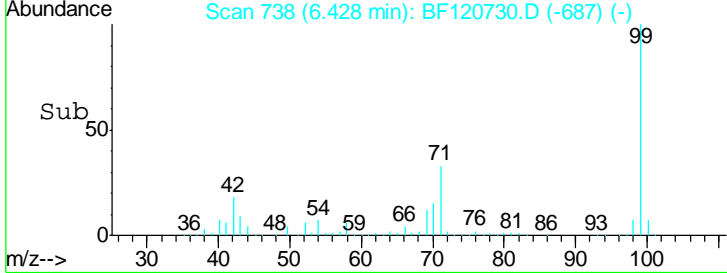
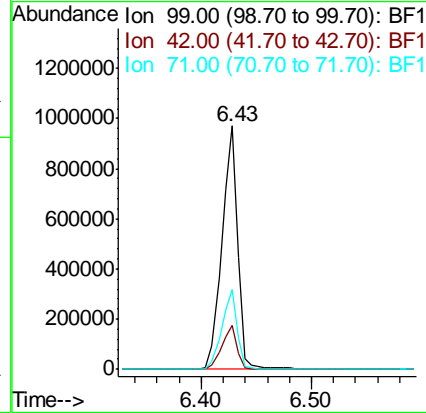
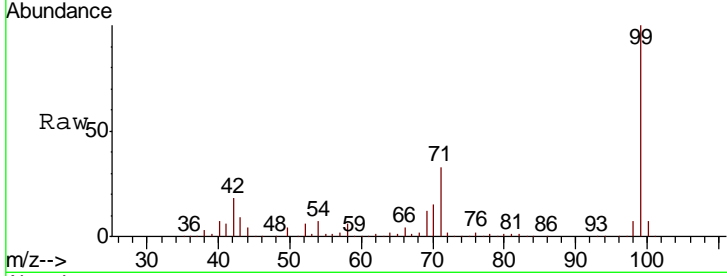




#7
 Phenol-d6
 Concen: 104.747 ng
 RT: 6.43 min Scan# 738
 Delta R.T. -0.00 min
 Lab File: BF120730.D
 Acq: 29 Jun 2020 16:27

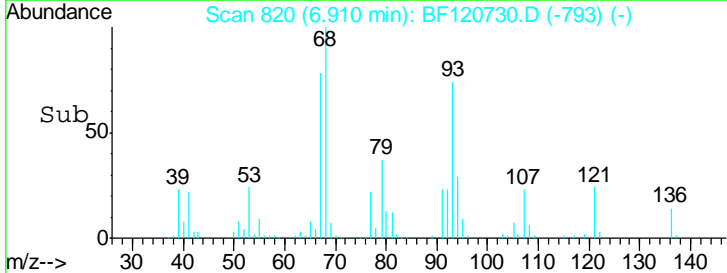
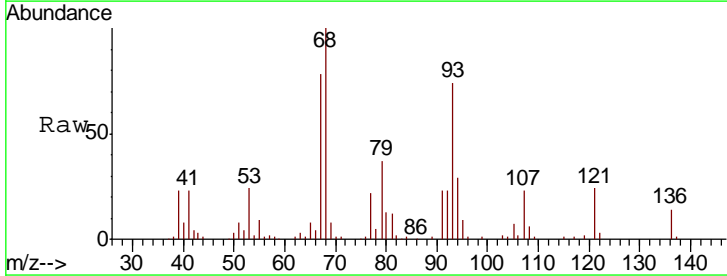
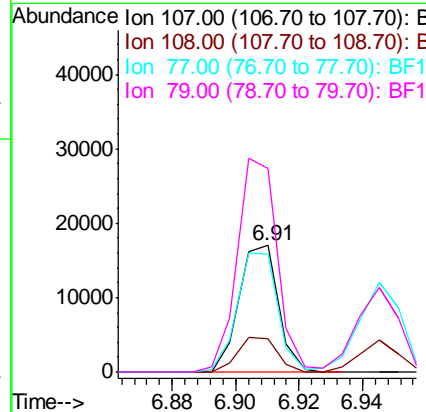
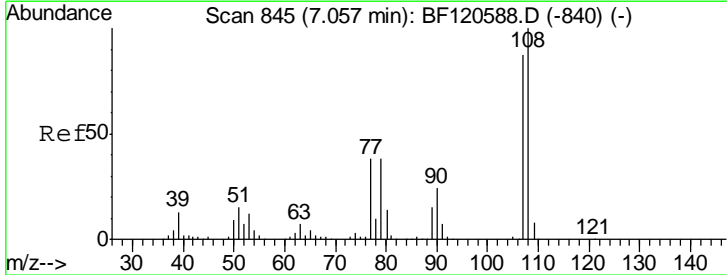
Instrument :
 BNA_F
ClientSampled :
 1399-1400

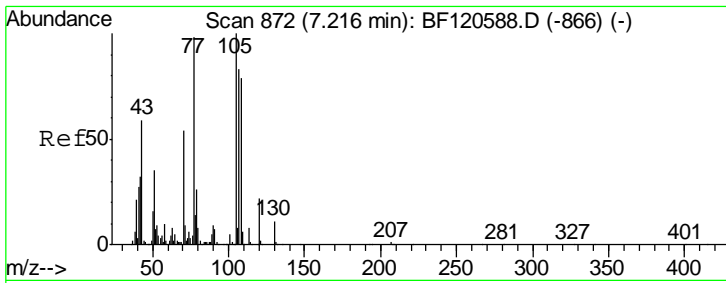
Tgt Ion	Resp	Lower	Upper
99	100		
42	18.0	14.2	21.4
71	32.8	25.4	38.2



#17
 2-Methylphenol
 Concen: 2.061 ng
 RT: 6.91 min Scan# 820
 Delta R.T. -0.14 min
 Lab File: BF120730.D
 Acq: 29 Jun 2020 16:27

Tgt Ion	Resp	Lower	Upper
107	100		
108	26.7	90.7	136.1#
77	93.7	35.0	52.4#
79	161.3	33.6	50.4#

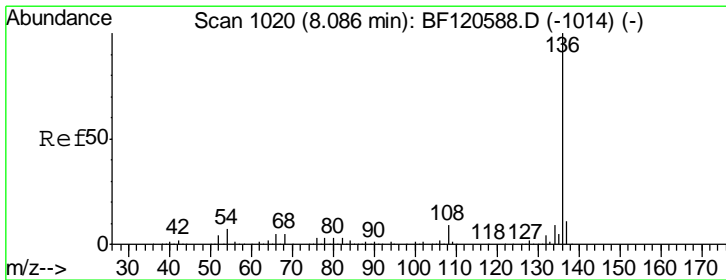
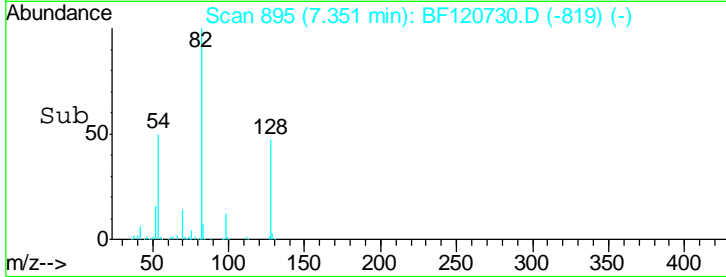
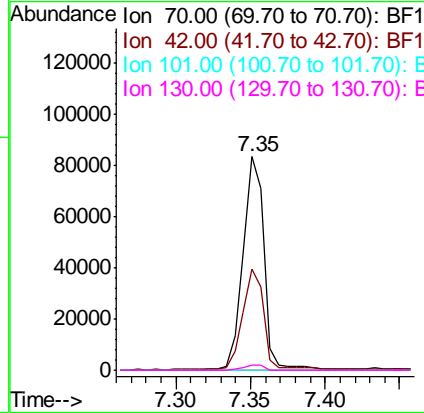
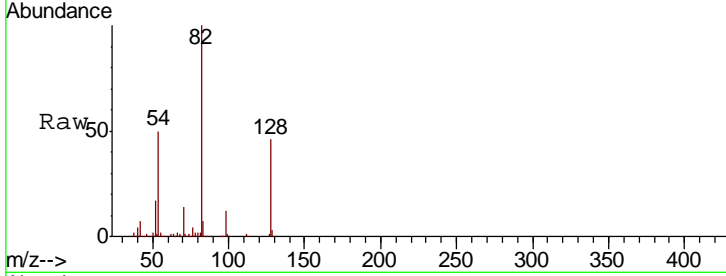




#19
 n-Nitroso-di-n-propylamine
 Concen: 15.514 ng
 RT: 7.35 min Scan# 895
 Delta R.T. 0.15 min
 Lab File: BF120730.D
 Acq: 29 Jun 2020 16:27

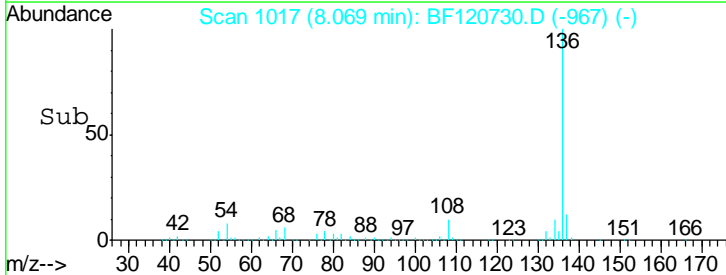
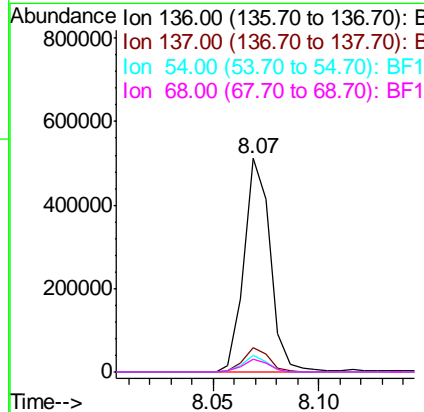
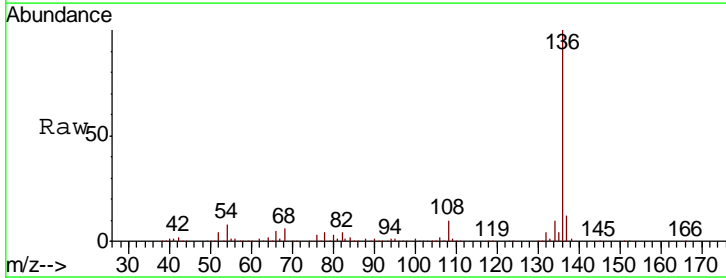
Instrument :
 BNA_F
ClientSampled :
 1399-1400

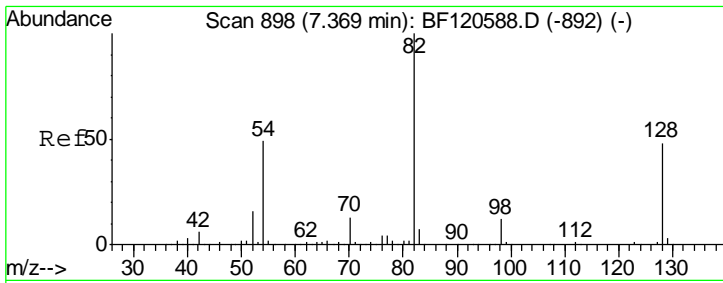
Tgt Ion	Resp	Lower	Upper
70	82280		
70	100		
42	47.5	47.6	71.4#
101	0.0	7.6	11.4#
130	2.2	17.4	26.2#



#21
 Naphthalene-d8
 Concen: 20.000 ng
 RT: 8.07 min Scan# 1017
 Delta R.T. -0.01 min
 Lab File: BF120730.D
 Acq: 29 Jun 2020 16:27

Tgt Ion	Resp	Lower	Upper
136	442734		
136	100		
137	11.5	8.6	12.8
54	7.7	5.3	7.9
68	6.0	4.3	6.5

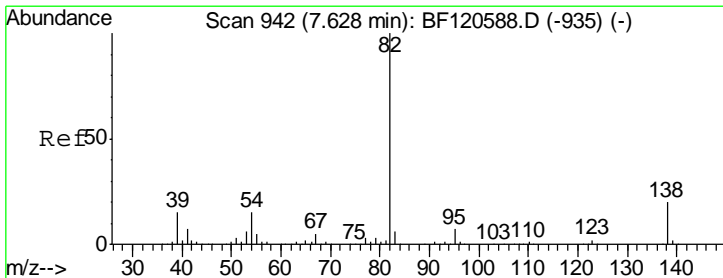
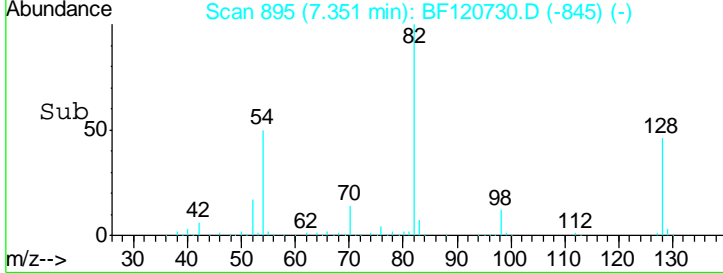
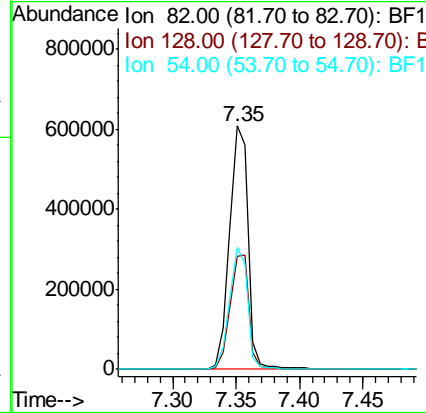
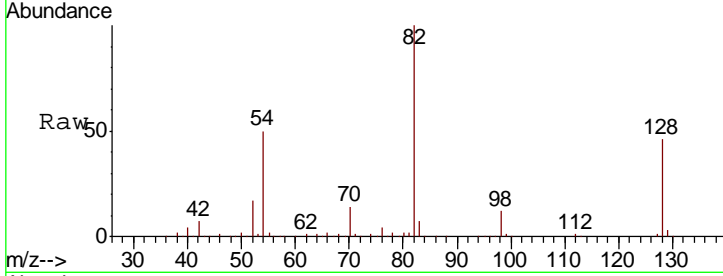




#23
 Nitrobenzene-d5
 Concen: 77.970 ng
 RT: 7.35 min Scan# 895
 Delta R.T. -0.01 min
 Lab File: BF120730.D
 Acq: 29 Jun 2020 16:27

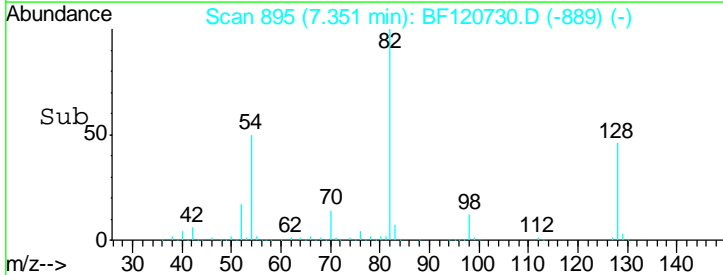
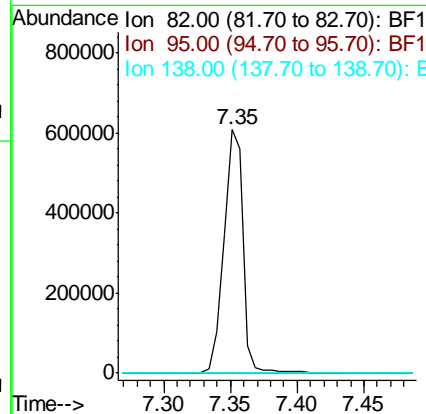
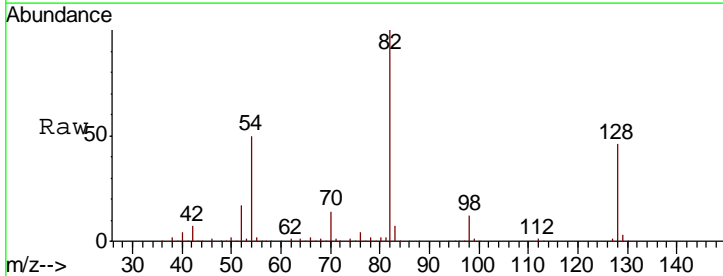
Instrument :
 BNA_F
 ClientSampleID :
 1399-1400

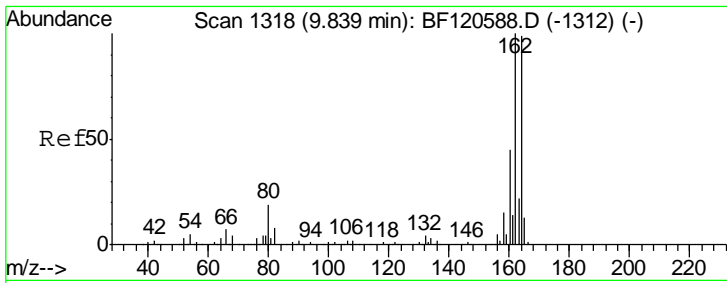
Tgt Ion	Resp	Lower	Upper
82	100		
128	46.5	38.1	57.1
54	50.3	38.8	58.2



#25
 Isophorone
 Concen: 40.026 ng
 RT: 7.35 min Scan# 895
 Delta R.T. -0.26 min
 Lab File: BF120730.D
 Acq: 29 Jun 2020 16:27

Tgt Ion	Resp	Lower	Upper
82	100		
95	0.1	5.6	8.4#
138	0.0	16.1	24.1#

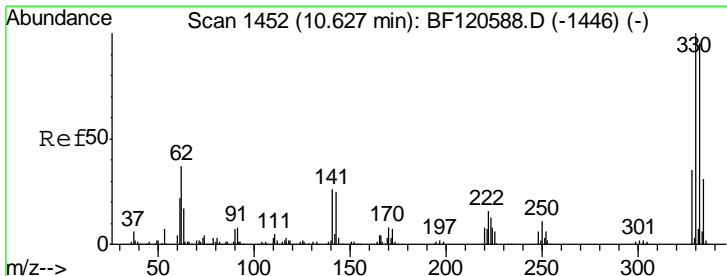
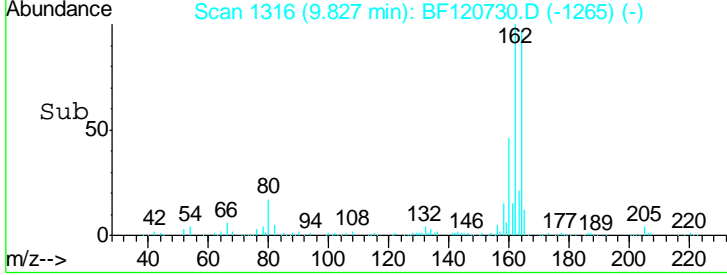
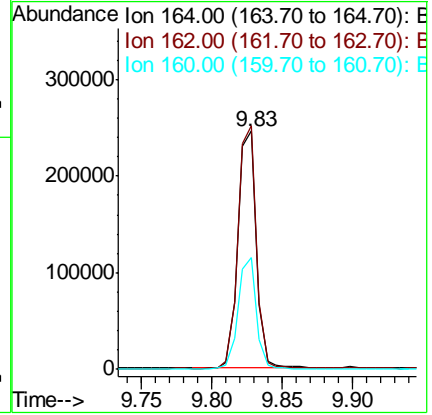
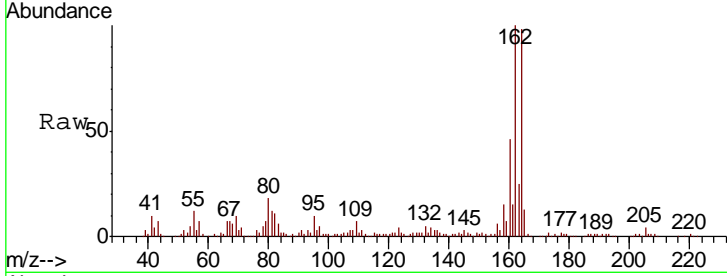




#39
 Acenaphthene-d10
 Concen: 20.000 ng
 RT: 9.83 min Scan# 1316
 Delta R.T. -0.00 min
 Lab File: BF120730.D
 Acq: 29 Jun 2020 16:27

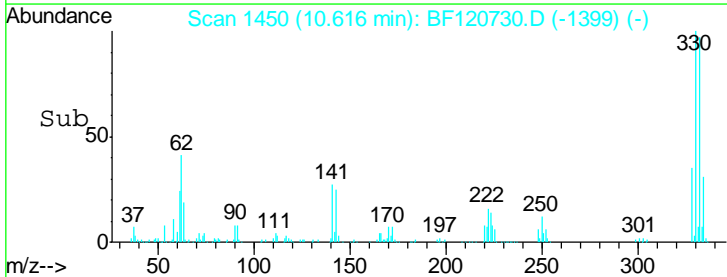
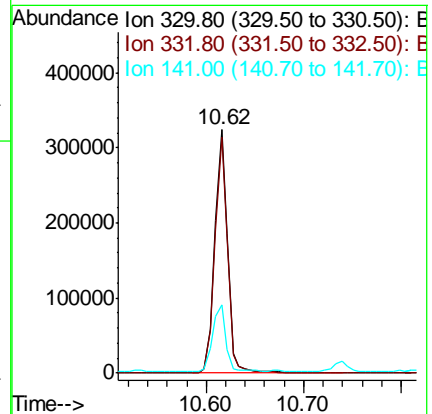
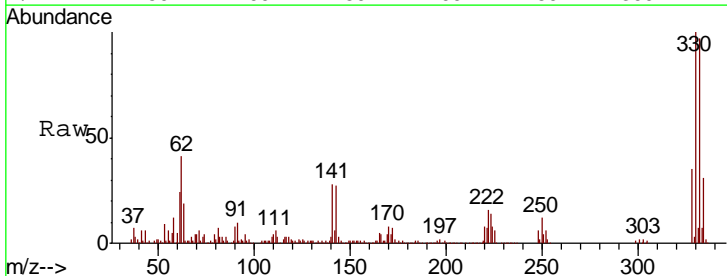
Instrument :
 BNA_F
 ClientSampled :
 1399-1400

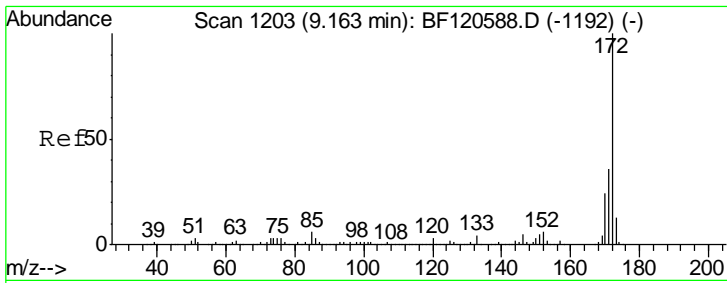
Tgt Ion	Resp	Lower	Upper
164	100		
162	102.2	81.4	122.0
160	46.7	36.6	55.0



#42
 2,4,6-Tribromophenol
 Concen: 114.962 ng
 RT: 10.62 min Scan# 1450
 Delta R.T. -0.00 min
 Lab File: BF120730.D
 Acq: 29 Jun 2020 16:27

Tgt Ion	Resp	Lower	Upper
330	100		
332	96.4	76.4	114.6
141	27.8	23.0	34.6



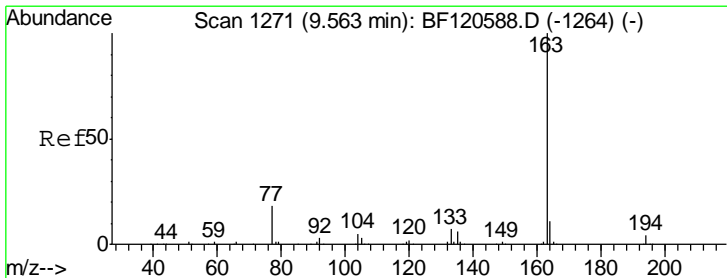
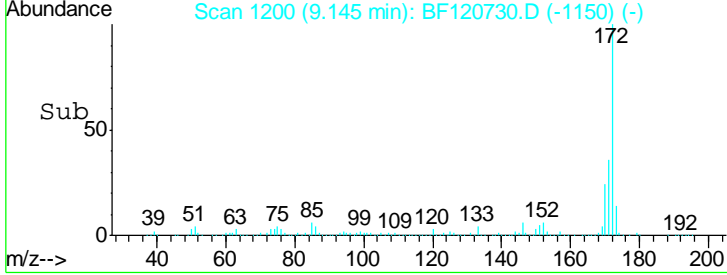
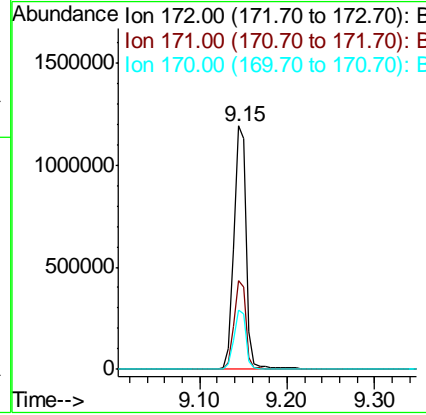
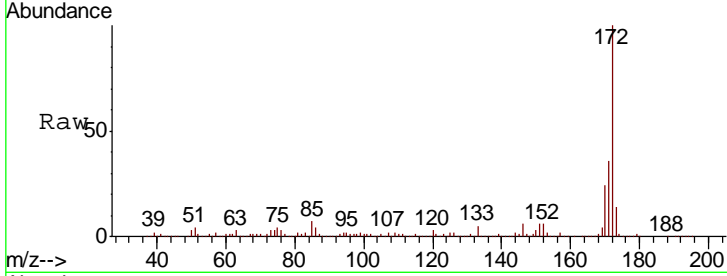


#45
 2-Fluorobiphenyl
 Concen: 80.500 ng
 RT: 9.15 min Scan# 1200
 Delta R.T. -0.01 min
 Lab File: BF120730.D
 Acq: 29 Jun 2020 16:27

Instrument :
 BNA_F
 ClientSampled :
 1399-1400

Tgt Ion:172 Resp: 1171262

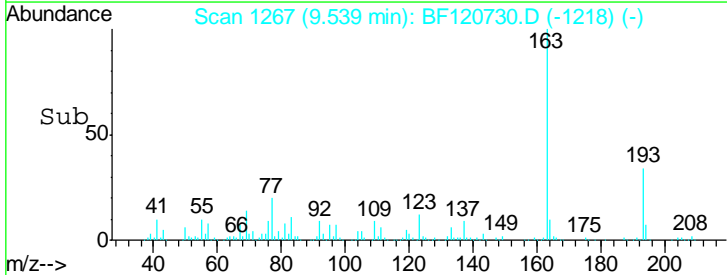
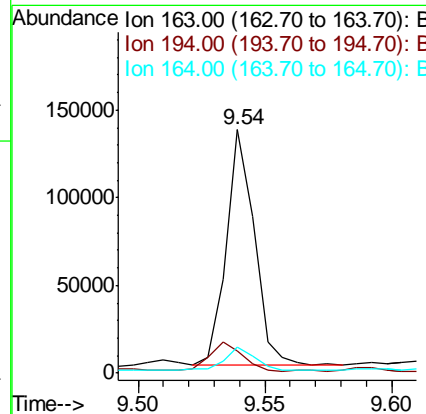
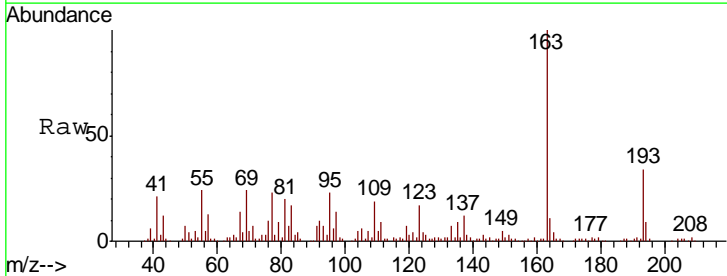
Ion	Ratio	Lower	Upper
172	100		
171	36.3	28.6	43.0
170	24.1	19.1	28.7

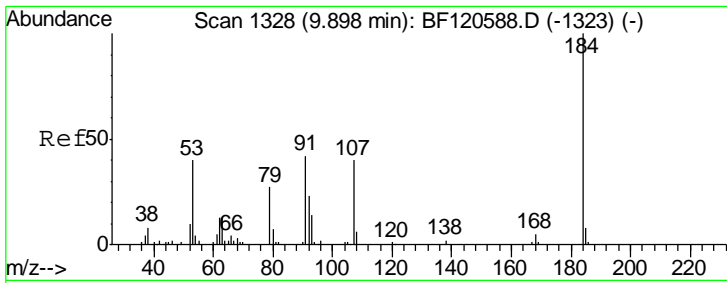


#50
 Dimethylphthalate
 Concen: 6.469 ng
 RT: 9.54 min Scan# 1267
 Delta R.T. -0.01 min
 Lab File: BF120730.D
 Acq: 29 Jun 2020 16:27

Tgt Ion:163 Resp: 103721

Ion	Ratio	Lower	Upper
163	100		
194	8.9	3.0	4.6#
164	10.9	8.2	12.2

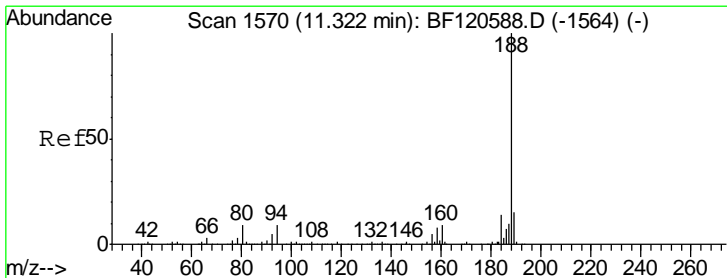
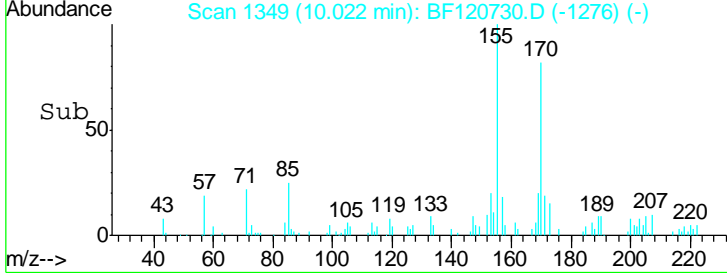
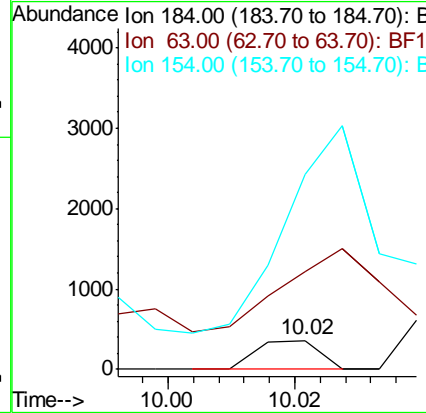
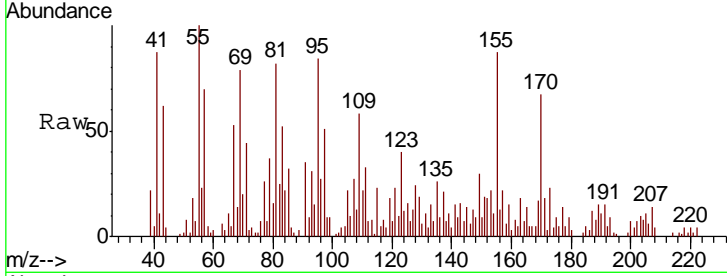




#54
 2,4-Dinitrophenol
 Concen: 3.174 ng
 RT: 10.02 min Scan# 1349
 Delta R.T. 0.13 min
 Lab File: BF120730.D
 Acq: 29 Jun 2020 16:27

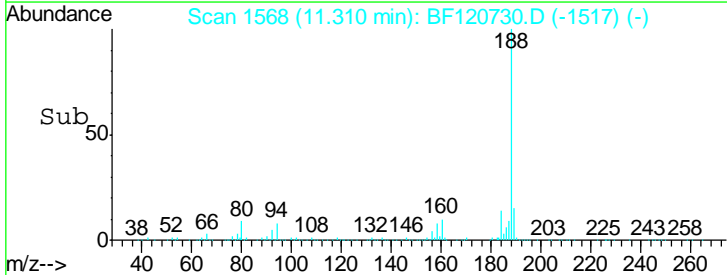
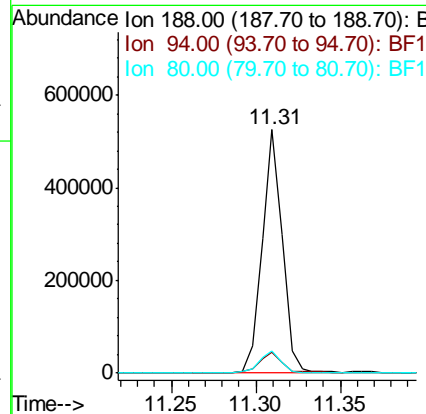
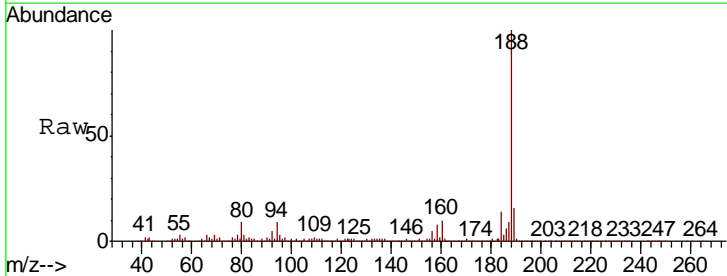
Instrument :
 BNA_F
 ClientSampled :
 1399-1400

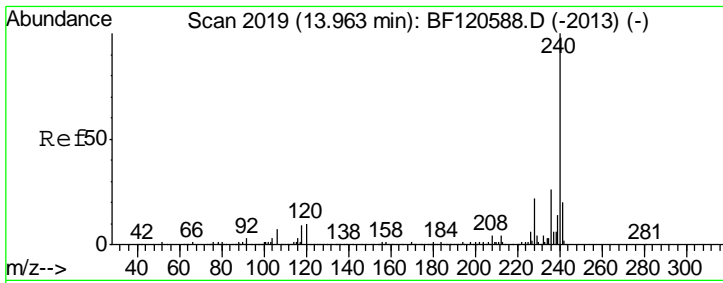
Tgt Ion	Resp	Lower	Upper
184	100		
63	338.8	47.4	71.0#
154	675.7	45.3	67.9#



#64
 Phenanthrene-d10
 Concen: 20.000 ng
 RT: 11.31 min Scan# 1568
 Delta R.T. -0.00 min
 Lab File: BF120730.D
 Acq: 29 Jun 2020 16:27

Tgt Ion	Resp	Lower	Upper
188	100		
94	8.7	7.5	11.3
80	9.3	7.7	11.5

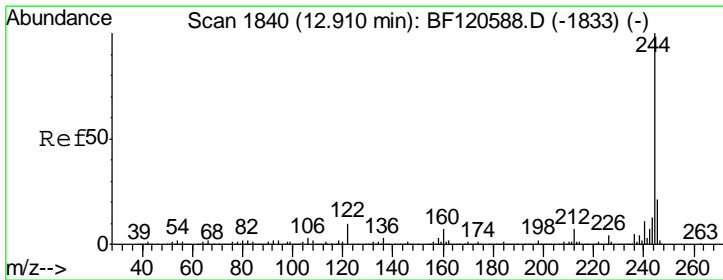
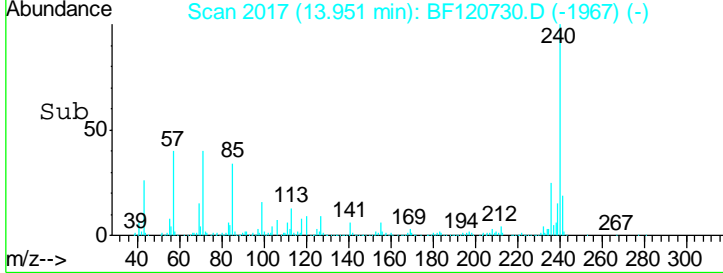
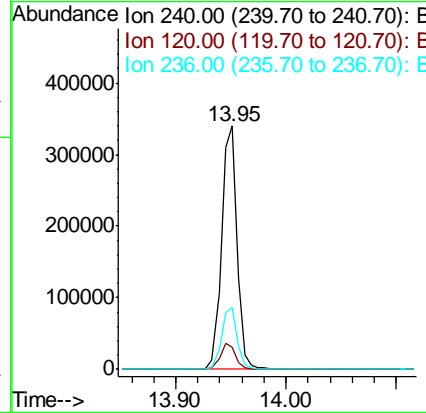
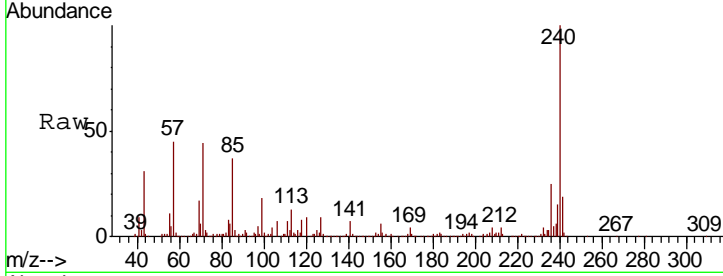




#76
 Chrysene-d12
 Concen: 20.000 ng
 RT: 13.95 min Scan# 2017
 Delta R.T. -0.01 min
 Lab File: BF120730.D
 Acq: 29 Jun 2020 16:27

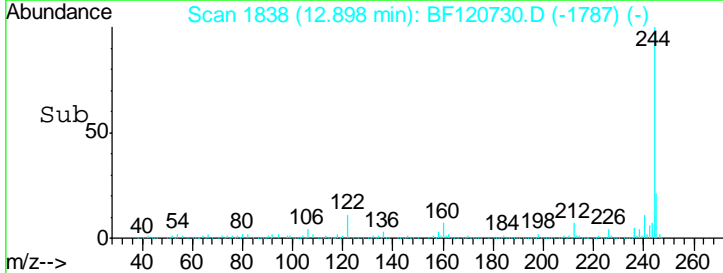
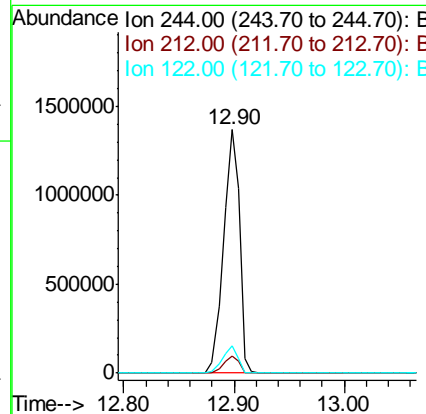
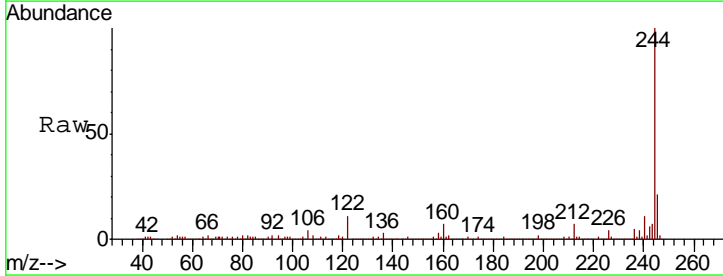
Instrument :
 BNA_F
 ClientSampleId :
 1399-1400

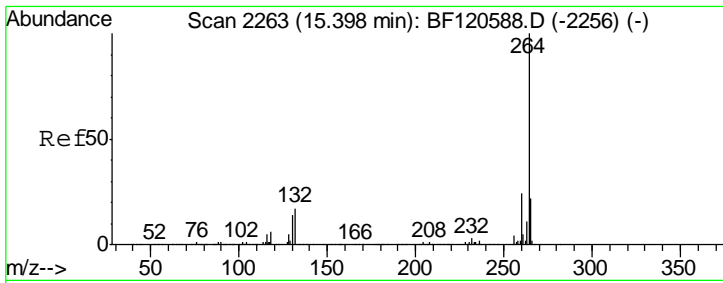
Tgt Ion	Resp	Lower	Upper
240	329478		
120	9.1	7.6	11.4
236	25.3	21.0	31.4



#79
 Terphenyl-d14
 Concen: 92.079 ng
 RT: 12.90 min Scan# 1838
 Delta R.T. -0.00 min
 Lab File: BF120730.D
 Acq: 29 Jun 2020 16:27

Tgt Ion	Resp	Lower	Upper
244	1373462		
212	6.8	5.6	8.4
122	11.1	8.8	13.2





#86
 Perylene-d12
 Concen: 20.000 ng
 RT: 15.39 min Scan# 2262
 Delta R.T. -0.00 min
 Lab File: BF120730.D
 Acq: 29 Jun 2020 16:27

Instrument :
 BNA_F
ClientSampleId :
 1399-1400

Tot Ion: 264 Resp: 311049

Ion	Ratio	Lower	Upper
264	100		
260	24.5	19.4	29.2
265	21.9	17.4	26.0

