

Data Path : Z:\SVOASRV\HPCHEM1\BNA F\DATA\BF100920\  
 Data File : BF121902.D  
 Acq On : 9 Oct 2020 12:47  
 Operator : JU/CG  
 Sample : PB132237BL  
 Misc :  
 ALS Vial : 3 Sample Multiplier: 1

Instrument :  
 BNA\_F  
 ClientSampleId :  
 PB132237BL

Quant Time: Oct 09 14:06:00 2020  
 Quant Method : Z:\SVOASRV\HPCHEM1\BNA F\METHODS\8270-BF091020.M  
 Quant Title : ASP BNA STANDARDS FOR 5 POINT CALIBRATION  
 QLast Update : Thu Oct 01 14:29:14 2020  
 Response via : Initial Calibration

Internal Standards	R.T.	QIon	Response	Conc	Units	Dev(Min)
1) 1,4-Dichlorobenzene-d4	6.76	152	141615	20.00	ng	-0.01
21) Naphthalene-d8	8.04	136	554901	20.00	ng	-0.02
39) Acenaphthene-d10	9.79	164	289741	20.00	ng	-0.02
64) Phenanthrene-d10	11.28	188	550577	20.00	ng	-0.01
76) Chrysene-d12	13.92	240	468346	20.00	ng	-0.01
86) Perylene-d12	15.36	264	404333	20.00	ng	0.00
System Monitoring Compounds						
5) 2-Fluorophenol	5.39	112	1059302	111.16	ng	0.00
7) Phenol-d6	6.40	99	1364606	109.15	ng	-0.01
23) Nitrobenzene-d5	7.33	82	974524	94.29	ng	-0.01
42) 2,4,6-Tribromophenol	10.59	330	437344	121.45	ng	-0.02
45) 2-Fluorobiphenyl	9.12	172	1647394	86.11	ng	-0.02
79) Terphenyl-d14	12.87	244	1864881	80.67	ng	-0.01

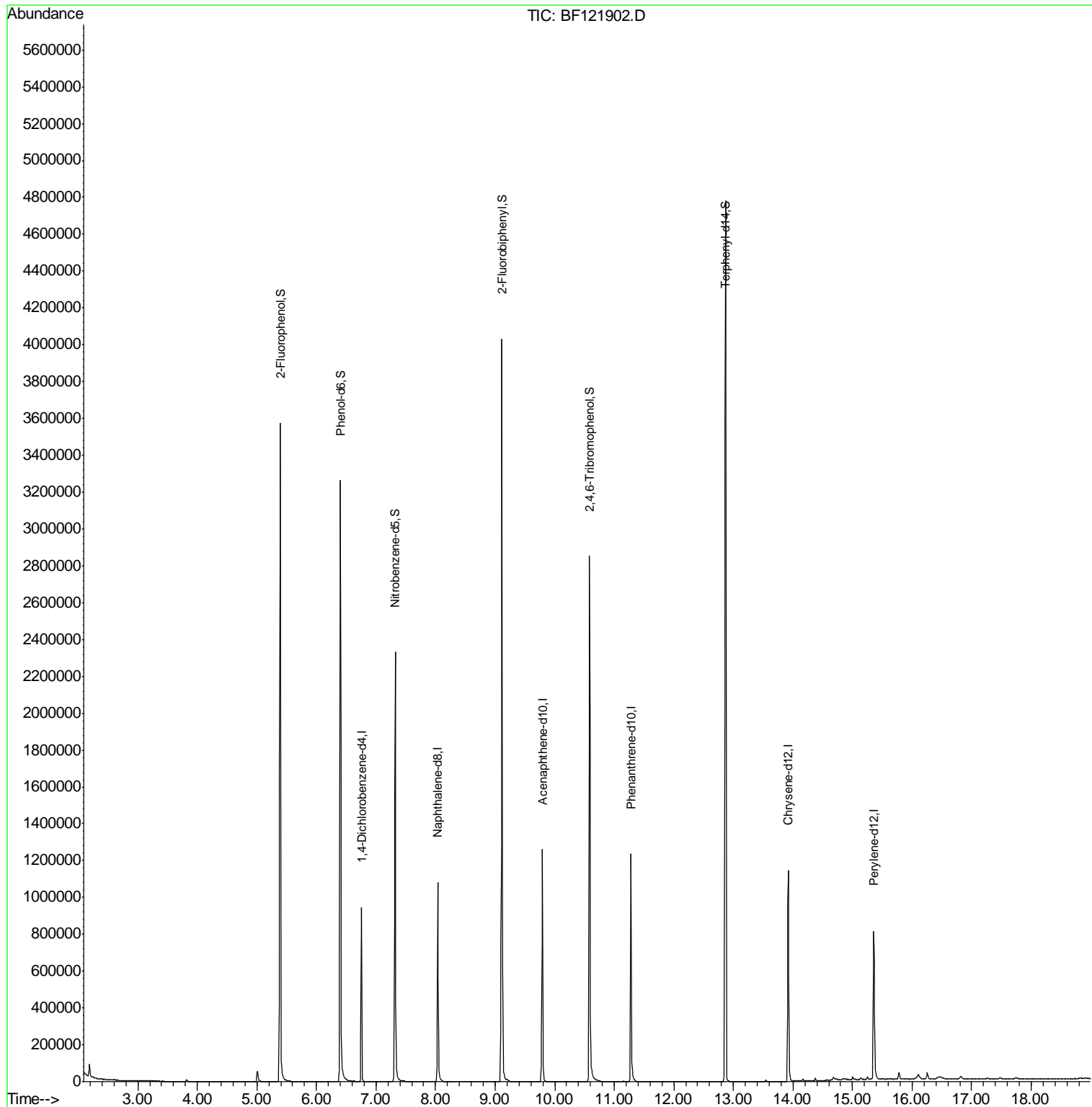
Target Compounds Qvalue

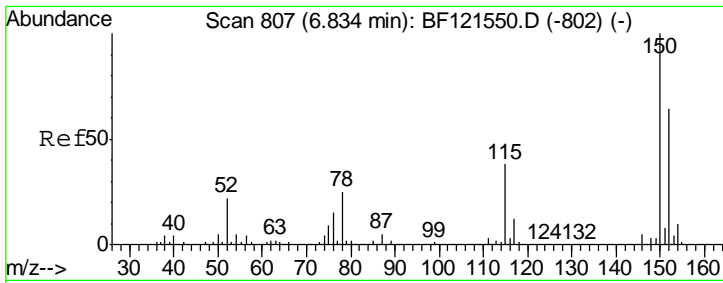
(#) = qualifier out of range (m) = manual integration (+) = signals summed

Data Path : Z:\SVOASRV\HPCHEM1\BNA F\DATA\BF100920\  
 Data File : BF121902.D  
 Acq On : 9 Oct 2020 12:47  
 Operator : JU/CG  
 Sample : PB132237BL  
 Misc :  
 ALS Vial : 3 Sample Multiplier: 1

Instrument :  
 BNA\_F  
 ClientSampled :  
 PB132237BL

Quant Time: Oct 09 14:06:00 2020  
 Quant Method : Z:\SVOASRV\HPCHEM1\BNA F\METHODS\8270-BF091020.M  
 Quant Title : ASP BNA STANDARDS FOR 5 POINT CALIBRATION  
 QLast Update : Thu Oct 01 14:29:14 2020  
 Response via : Initial Calibration

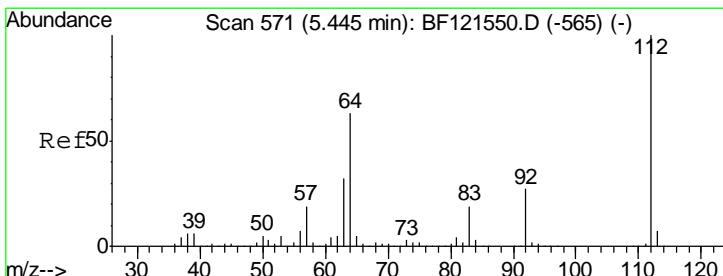
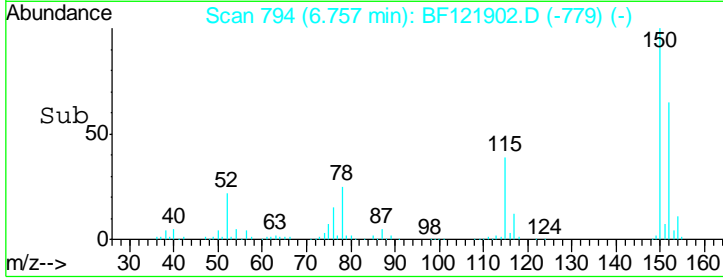
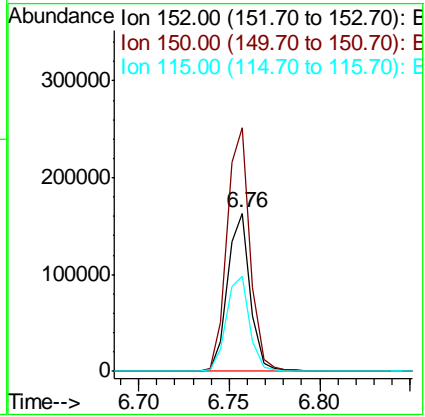
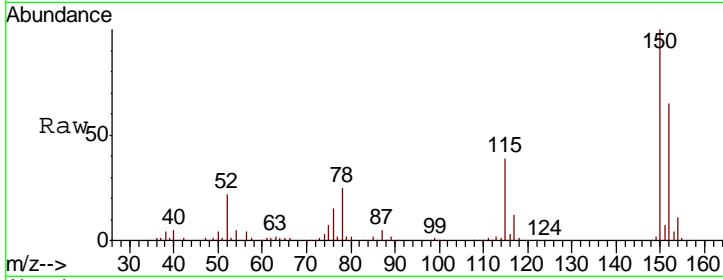




#1  
 1,4-Dichlorobenzene-d4  
 Concen: 20.000 ng  
 RT: 6.76 min Scan# 794  
 Delta R.T. -0.01 min  
 Lab File: BF121902.D  
 Acq: 9 Oct 2020 12:47

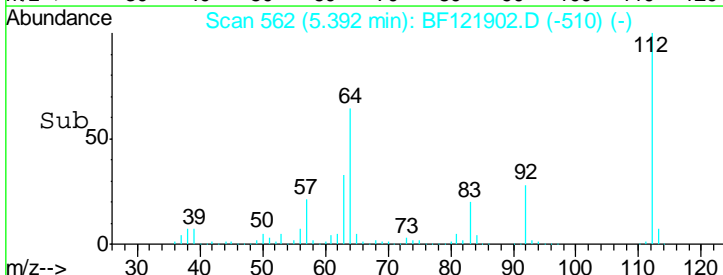
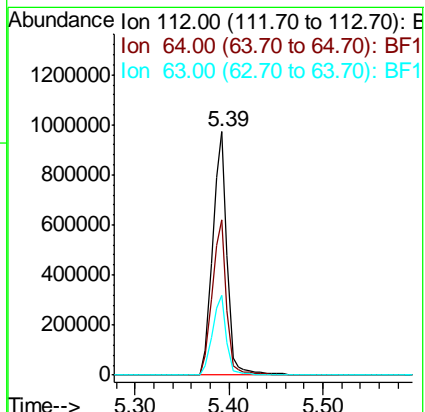
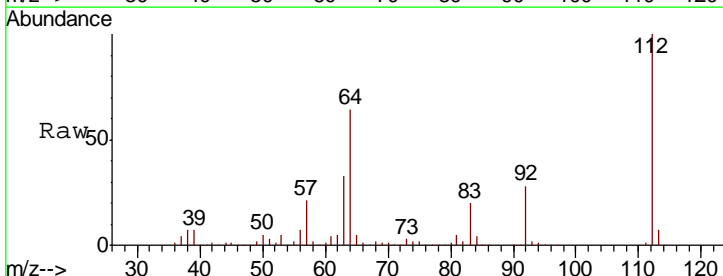
**Instrument :**  
 BNA\_F  
**ClientSampled :**  
 PB132237BL

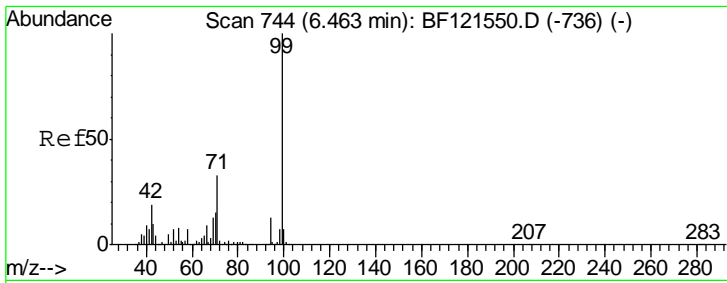
Tgt Ion	Resp	Lower	Upper
152	141615		
150	154.1	125.3	187.9
115	60.6	51.9	77.9



#5  
 2-Fluorophenol  
 Concen: 111.164 ng  
 RT: 5.39 min Scan# 562  
 Delta R.T. 0.01 min  
 Lab File: BF121902.D  
 Acq: 9 Oct 2020 12:47

Tgt Ion	Resp	Lower	Upper
112	1059302		
64	64.0	50.4	75.6
63	32.8	25.8	38.6

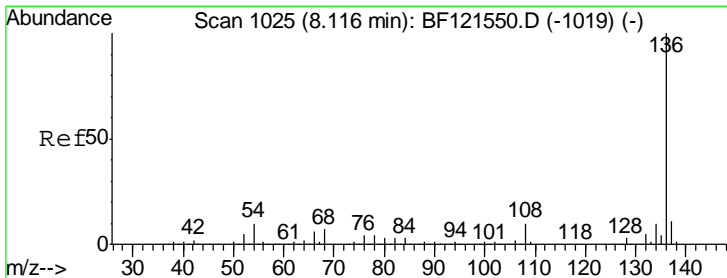
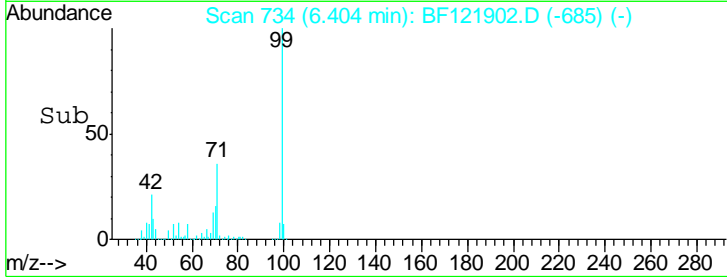
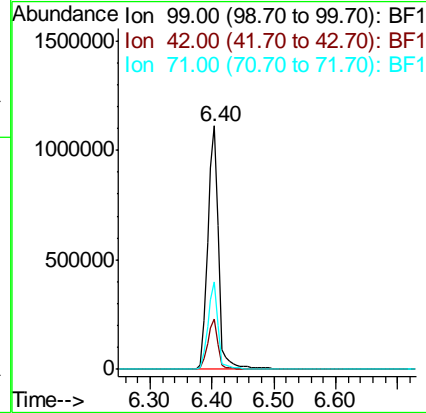
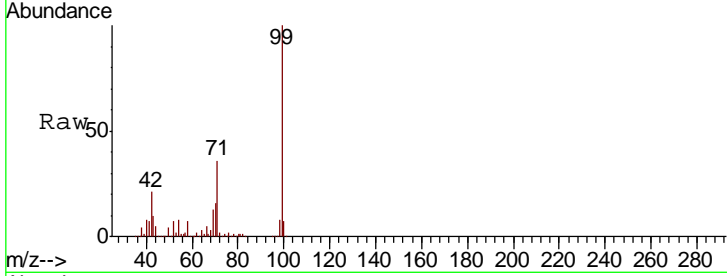




#7  
 Phenol-d6  
 Concen: 109.154 ng  
 RT: 6.40 min Scan# 734  
 Delta R.T. -0.01 min  
 Lab File: BF121902.D  
 Acq: 9 Oct 2020 12:47

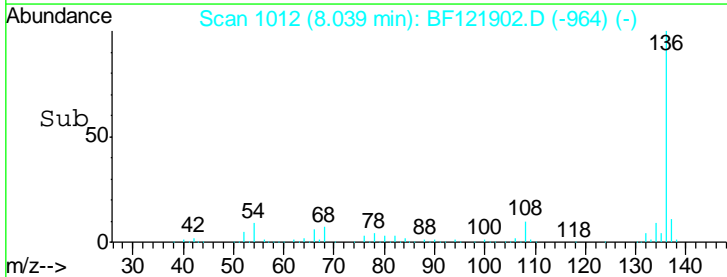
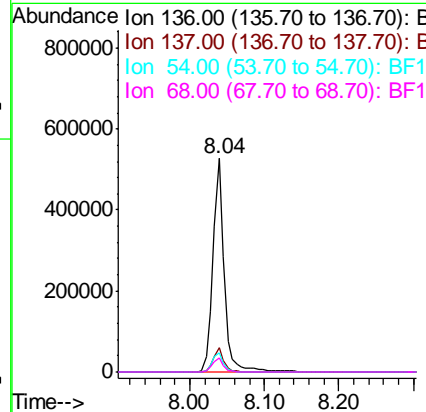
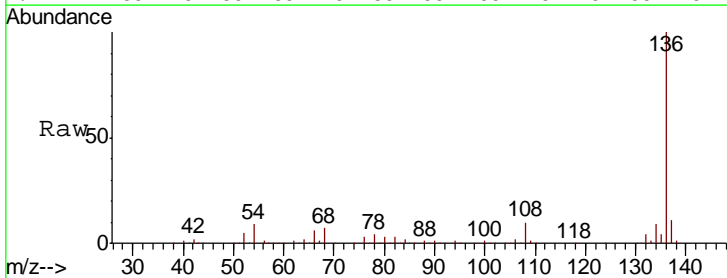
Instrument :  
 BNA\_F  
 ClientSampled :  
 PB132237BL

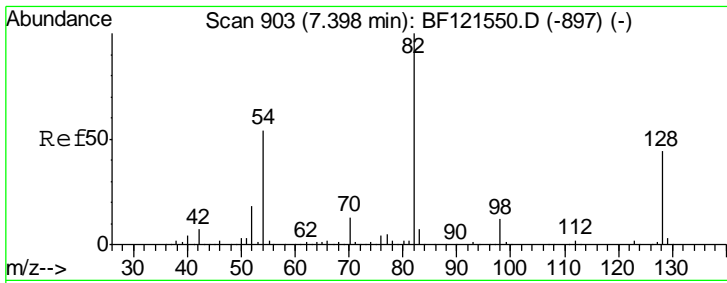
Tgt Ion	Resp	Lower	Upper
99	1364606		
42	20.8	15.9	23.9
71	36.1	27.1	40.7



#21  
 Naphthalene-d8  
 Concen: 20.000 ng  
 RT: 8.04 min Scan# 1012  
 Delta R.T. -0.02 min  
 Lab File: BF121902.D  
 Acq: 9 Oct 2020 12:47

Tgt Ion	Resp	Lower	Upper
136	554901		
137	11.1	8.6	13.0
54	9.1	7.1	10.7
68	6.8	5.0	7.4

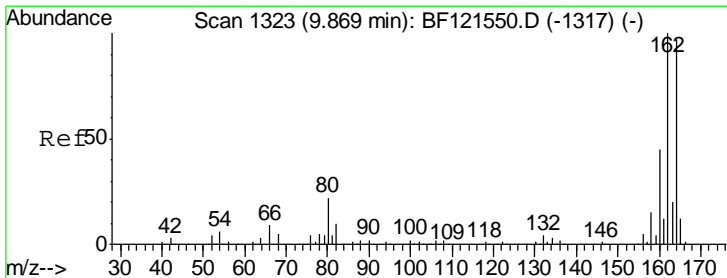
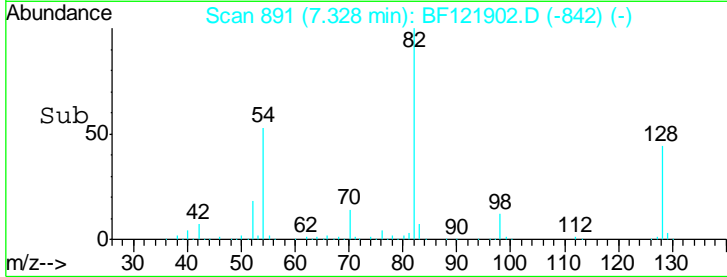
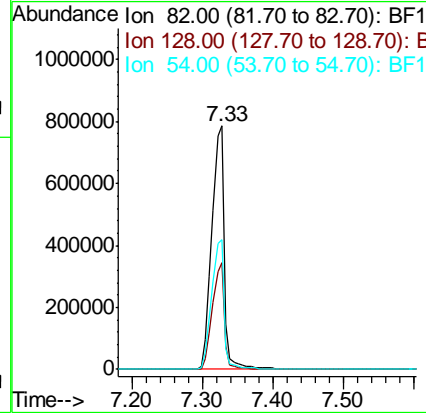
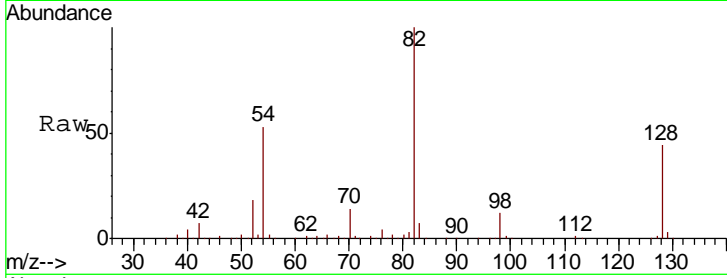




#23  
 Nitrobenzene-d5  
 Concen: 94.294 ng  
 RT: 7.33 min Scan# 891  
 Delta R.T. -0.01 min  
 Lab File: BF121902.D  
 Acq: 9 Oct 2020 12:47

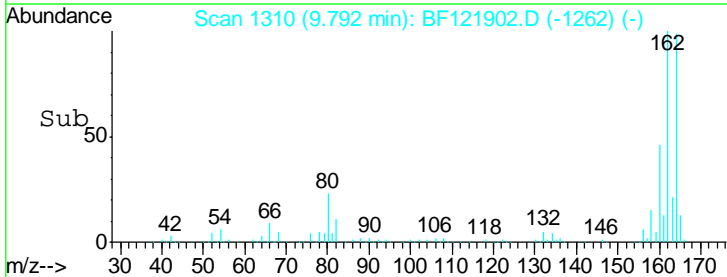
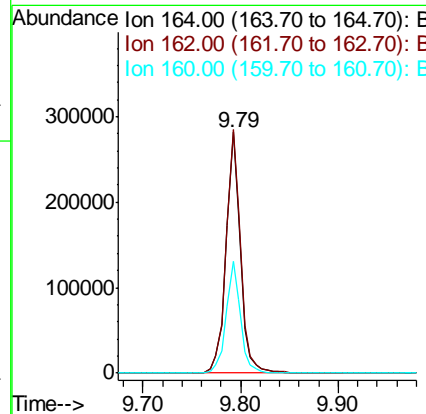
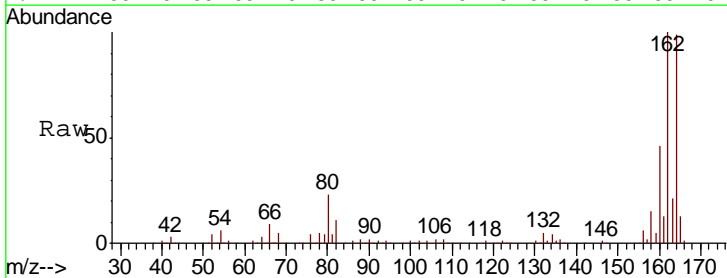
Instrument :  
 BNA\_F  
 ClientSampled :  
 PB132237BL

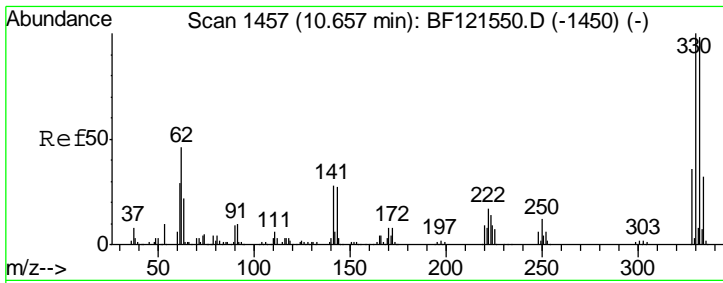
Tgt Ion	Resp	Lower	Upper
82	974524		
128	43.9	35.0	52.4
54	53.4	43.9	65.9



#39  
 Acenaphthene-d10  
 Concen: 20.000 ng  
 RT: 9.79 min Scan# 1310  
 Delta R.T. -0.02 min  
 Lab File: BF121902.D  
 Acq: 9 Oct 2020 12:47

Tgt Ion	Resp	Lower	Upper
164	289741		
162	101.1	83.2	124.8
160	46.2	37.5	56.3

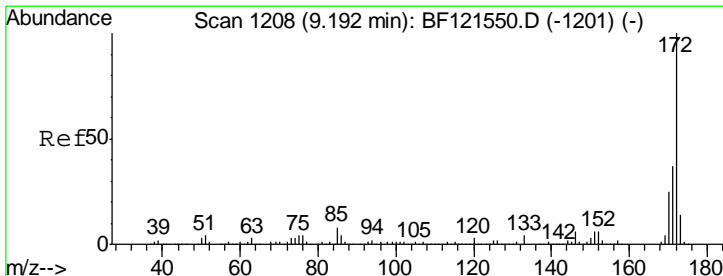
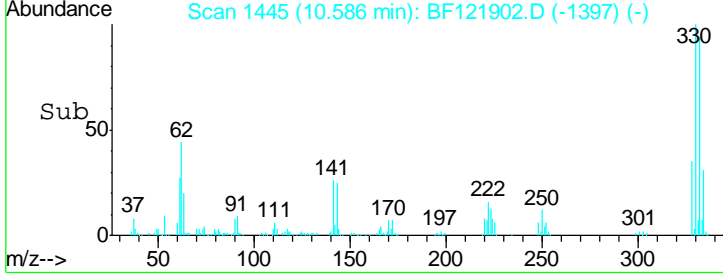
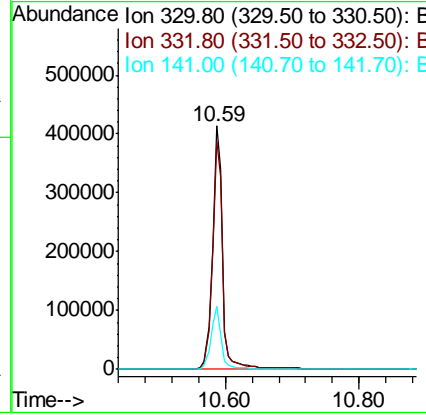
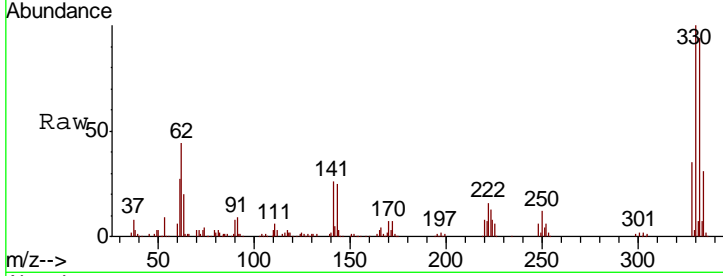




#42  
 2,4,6-Tribromophenol  
 Concen: 121.448 ng  
 RT: 10.59 min Scan# 1445  
 Delta R.T. -0.02 min  
 Lab File: BF121902.D  
 Acq: 9 Oct 2020 12:47

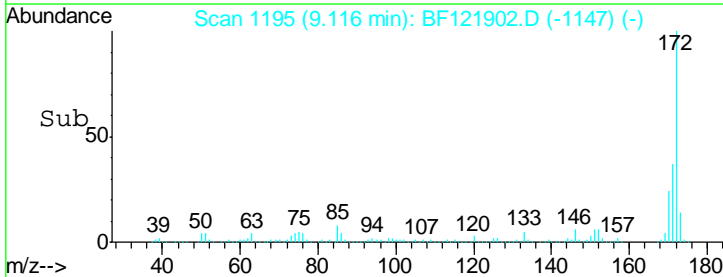
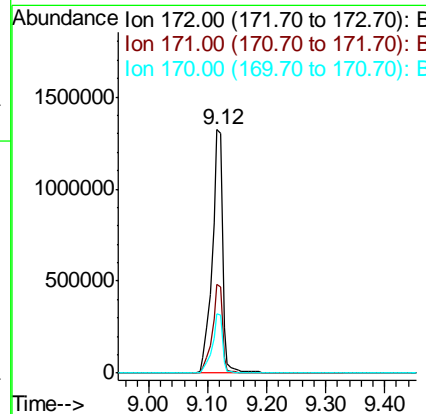
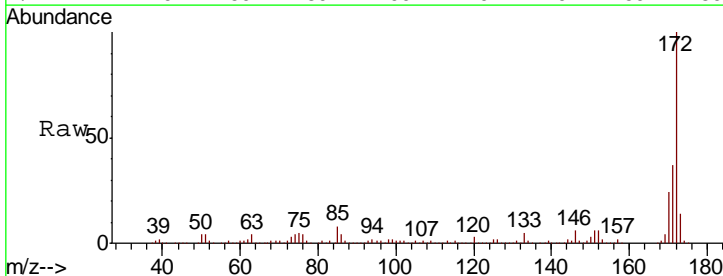
**Instrument :**  
 BNA\_F  
**ClientSampled :**  
 PB132237BL

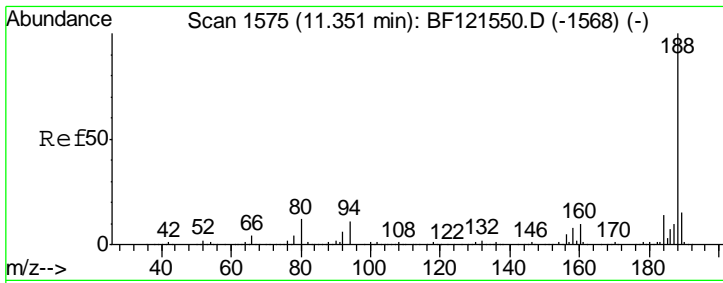
Tgt Ion	Resp	Lower	Upper
330	437344		
332	95.5	77.3	115.9
141	26.5	22.3	33.5



#45  
 2-Fluorobiphenyl  
 Concen: 86.112 ng  
 RT: 9.12 min Scan# 1195  
 Delta R.T. -0.02 min  
 Lab File: BF121902.D  
 Acq: 9 Oct 2020 12:47

Tgt Ion	Resp	Lower	Upper
172	1647394		
171	36.6	29.1	43.7
170	24.4	19.8	29.6

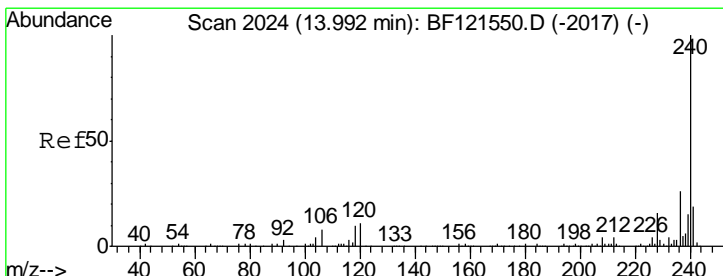
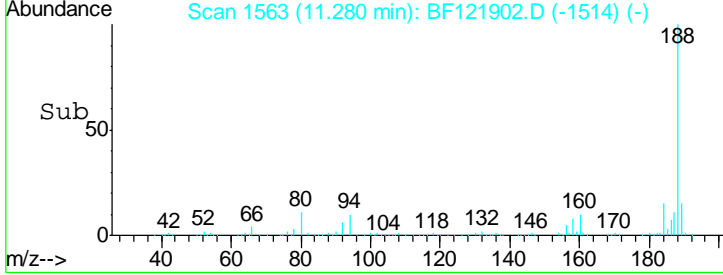
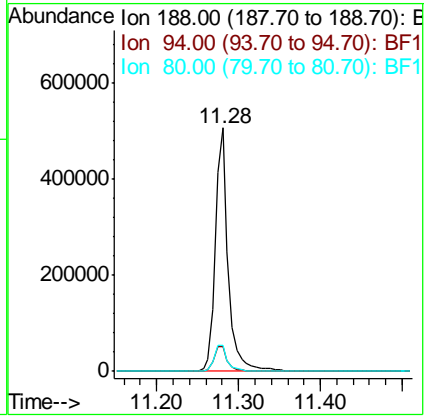
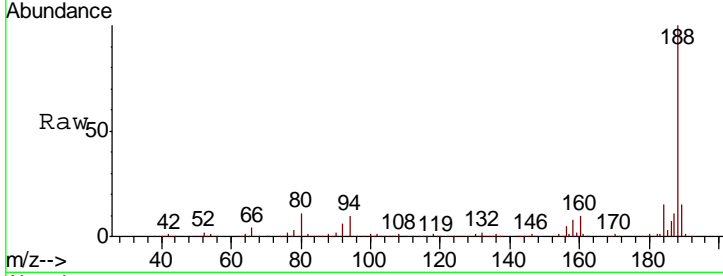




#64  
 Phenanthrene-d10  
 Concen: 20.000 ng  
 RT: 11.28 min Scan# 1563  
 Delta R.T. -0.01 min  
 Lab File: BF121902.D  
 Acq: 9 Oct 2020 12:47

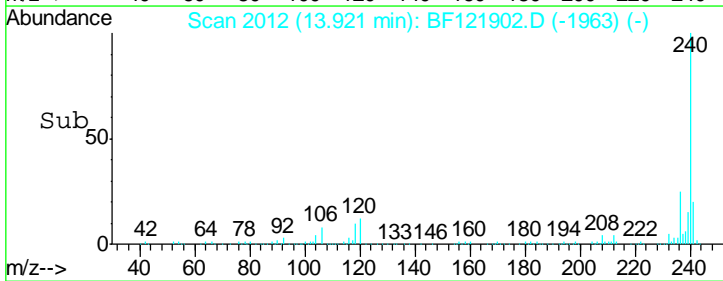
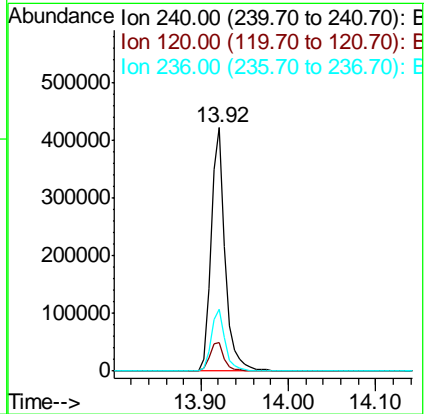
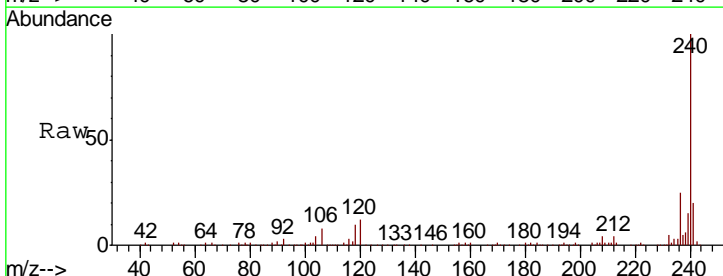
Instrument :  
 BNA\_F  
 ClientSampled :  
 PB132237BL

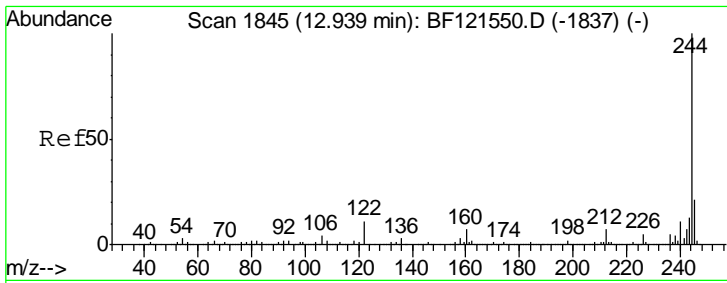
Tgt Ion	Resp	Lower	Upper
188	100		
94	10.4	8.3	12.5
80	10.9	9.1	13.7



#76  
 Chrysene-d12  
 Concen: 20.000 ng  
 RT: 13.92 min Scan# 2012  
 Delta R.T. -0.01 min  
 Lab File: BF121902.D  
 Acq: 9 Oct 2020 12:47

Tgt Ion	Resp	Lower	Upper
240	100		
120	11.6	9.2	13.8
236	25.4	20.9	31.3



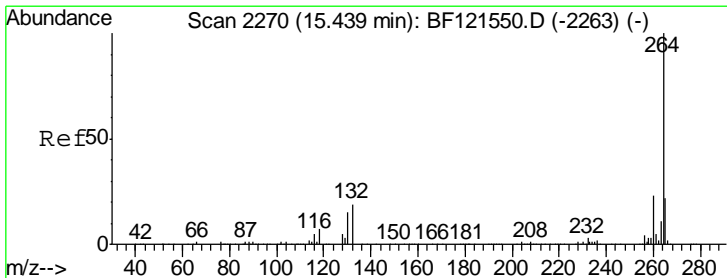
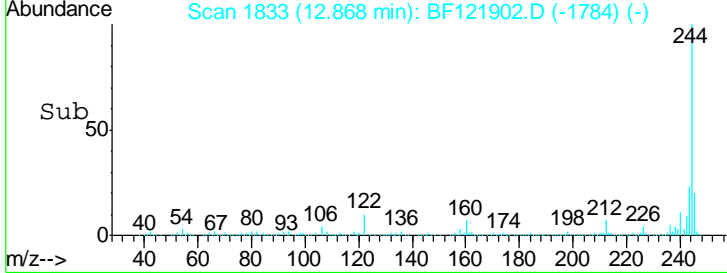
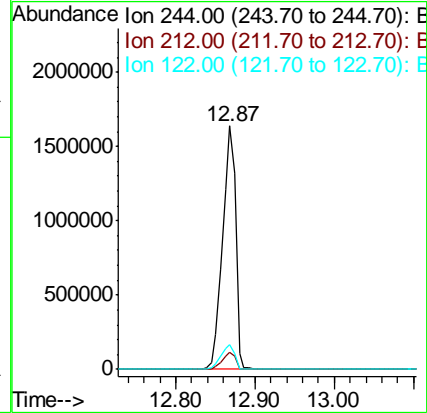
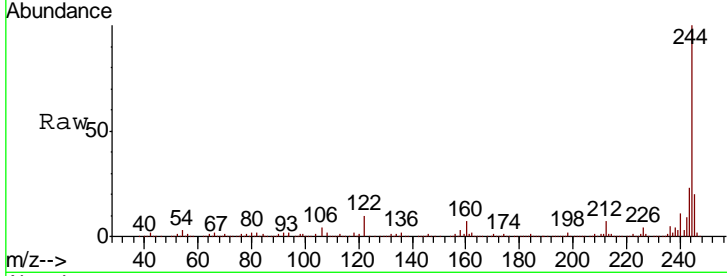


#79  
 Terphenyl-d14  
 Concen: 80.668 ng  
 RT: 12.87 min Scan# 1833  
 Delta R.T. -0.01 min  
 Lab File: BF121902.D  
 Acq: 9 Oct 2020 12:47

Instrument :  
 BNA\_F  
 ClientSampled :  
 PB132237BL

Tgt Ion: 244 Resp: 1864881

Ion	Ratio	Lower	Upper
244	100		
212	6.9	5.4	8.2
122	10.1	8.1	12.1



#86  
 Perylene-d12  
 Concen: 20.000 ng  
 RT: 15.36 min Scan# 2256  
 Delta R.T. -0.01 min  
 Lab File: BF121902.D  
 Acq: 9 Oct 2020 12:47

Tgt Ion: 264 Resp: 404333

Ion	Ratio	Lower	Upper
264	100		
260	24.1	18.7	28.1
265	21.6	17.3	25.9

