

Data Path : Z:\svoasrv\HPCHEM1\BNA_F\Data\BF102225\
 Data File : BF144036.D
 Acq On : 22 Oct 2025 12:26
 Operator : RC/JU
 Sample : Q3393-01
 Misc :
 ALS Vial : 6 Sample Multiplier: 1

Instrument :
 BNA_F
 ClientSampleId :
 PR132-S10-000022-20251017

Quant Time: Oct 22 13:09:02 2025
 Quant Method : Z:\svoasrv\HPCHEM1\BNA_F\Methods\8270-BF100625.M
 Quant Title : ASP BNA STANDARDS FOR 5 POINT CALIBRATION
 QLast Update : Mon Oct 06 15:29:47 2025
 Response via : Initial Calibration

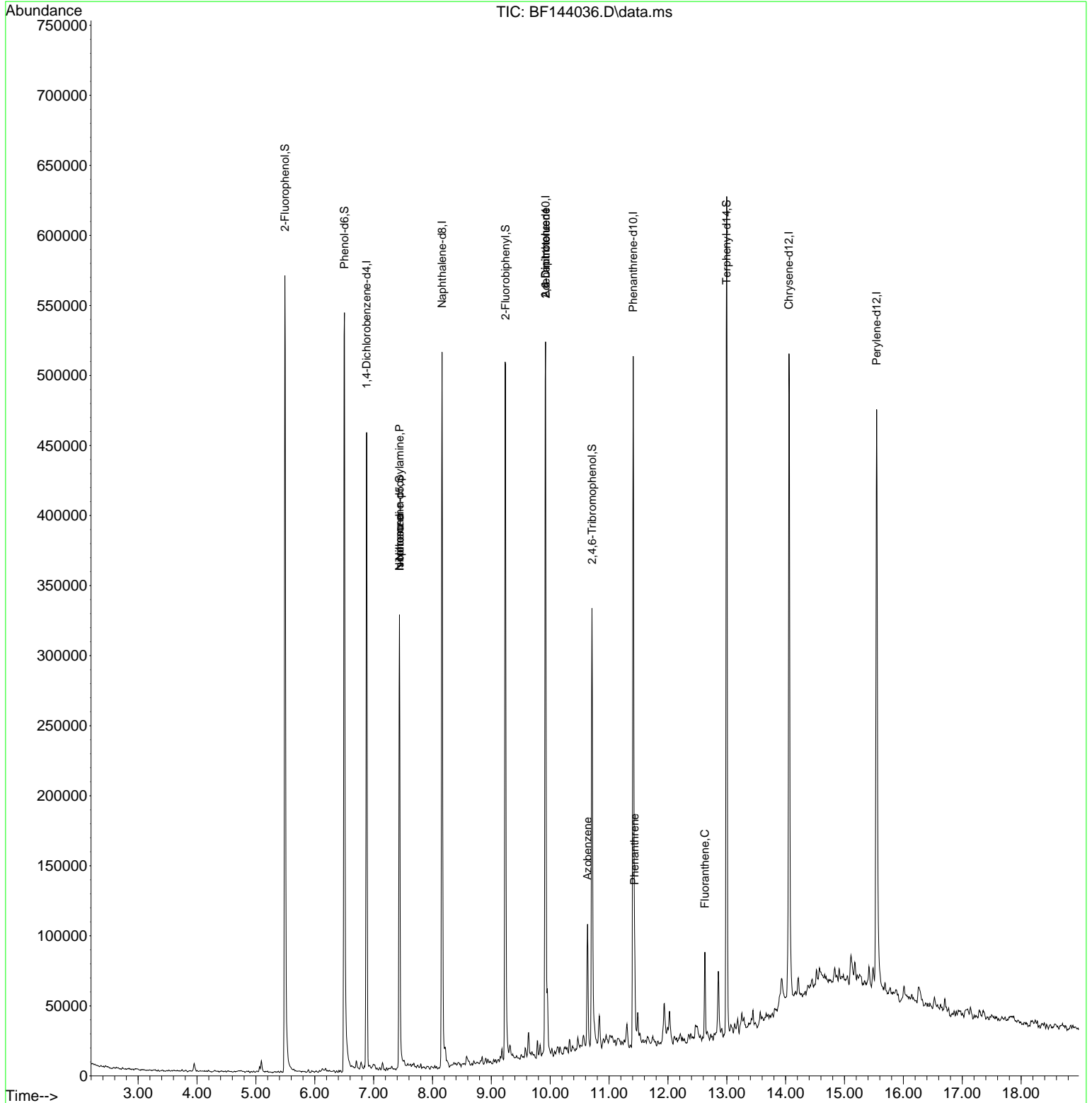
Compound	R.T.	QIon	Response	Conc	Units	Dev(Min)
Internal Standards						
1) 1,4-Dichlorobenzene-d4	6.881	152	90843	20.000	ng	0.00
21) Naphthalene-d8	8.163	136	335392	20.000	ng	0.00
39) Acenaphthene-d10	9.922	164	160805	20.000	ng	0.00
64) Phenanthrene-d10	11.410	188	269571	20.000	ng	0.00
76) Chrysene-d12	14.057	240	234635	20.000	ng	-0.01
86) Perylene-d12	15.545	264	281457	20.000	ng	0.00
System Monitoring Compounds						
5) 2-Fluorophenol	5.492	112	247526	43.269	ng	0.00
7) Phenol-d6	6.504	99	278346	40.821	ng	-0.01
23) Nitrobenzene-d5	7.439	82	144668	26.206	ng	-0.02
42) 2,4,6-Tribromophenol	10.710	330	58721	36.663	ng	-0.01
45) 2-Fluorobiphenyl	9.239	172	263423	25.993	ng	-0.01
79) Terphenyl-d14	12.998	244	306488	22.325	ng	-0.01
Target Compounds						
19) n-Nitroso-di-n-propyla...	7.439	70	20523	4.397	ng	# 74
25) Isophorone	7.439	82	118680	10.196	ng	# 68
51) 2,6-Dinitrotoluene	9.922	165	22116	11.679	ng	# 27
57) 2,4-Dinitrotoluene	9.922	165	22116	8.584	ng	# 27
63) Azobenzene	10.633	77	22984	2.318	ng	# 1
71) Phenanthrene	11.433	178	33352	2.552	ng	99
75) Fluoranthene	12.627	202	37179	2.754	ng	97

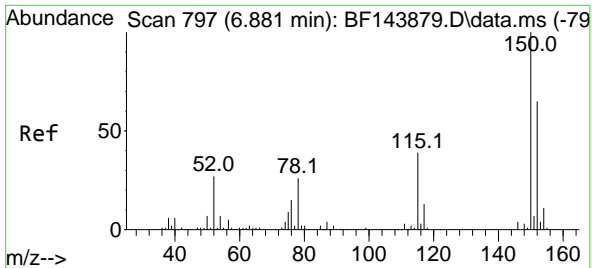
(#) = qualifier out of range (m) = manual integration (+) = signals summed

Data Path : Z:\svoasrv\HPCHEM1\BNA_F\Data\BF102225\
 Data File : BF144036.D
 Acq On : 22 Oct 2025 12:26
 Operator : RC/JU
 Sample : Q3393-01
 Misc :
 ALS Vial : 6 Sample Multiplier: 1

Instrument :
 BNA_F
 ClientSampleId :
 PR132-S10-000022-20251017

Quant Time: Oct 22 13:09:02 2025
 Quant Method : Z:\svoasrv\HPCHEM1\BNA_F\Methods\8270-BF100625.M
 Quant Title : ASP BNA STANDARDS FOR 5 POINT CALIBRATION
 QLast Update : Mon Oct 06 15:29:47 2025
 Response via : Initial Calibration

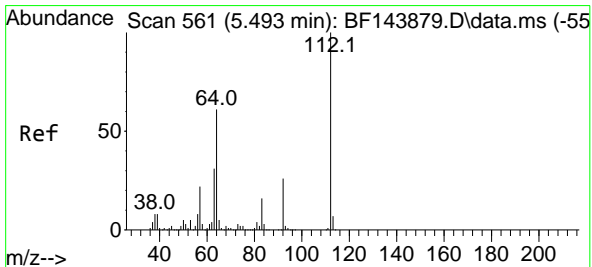
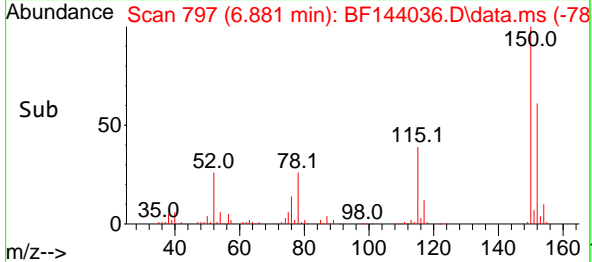
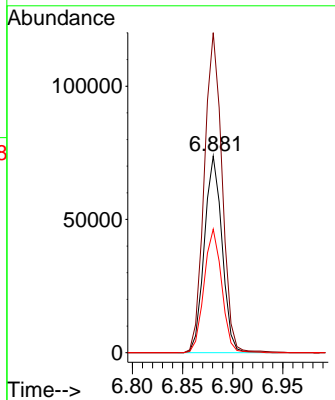
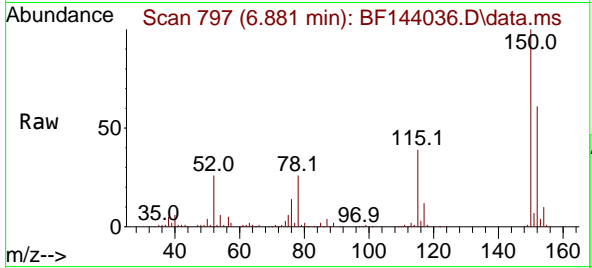




#1
 1,4-Dichlorobenzene-d4
 Concen: 20.000 ng
 RT: 6.881 min Scan# 797
 Delta R.T. -0.005 min
 Lab File: BF144036.D
 Acq: 22 Oct 2025 12:26

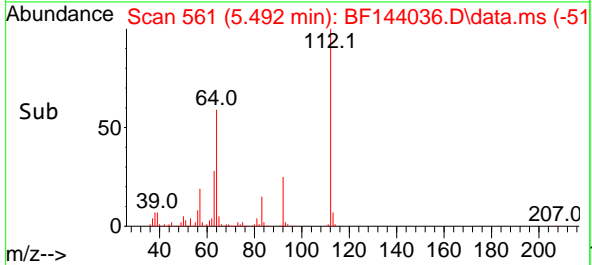
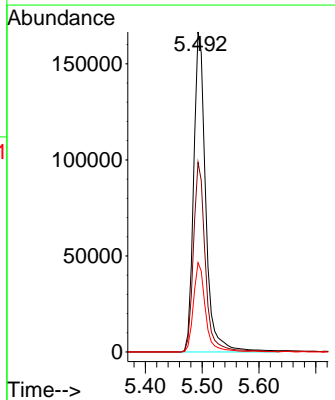
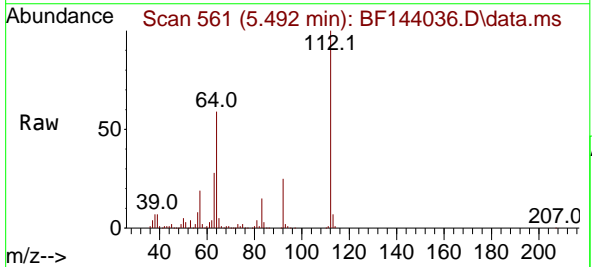
Instrument :
 BNA_F
 ClientSampleId :
 PR132-S10-000022-20251017

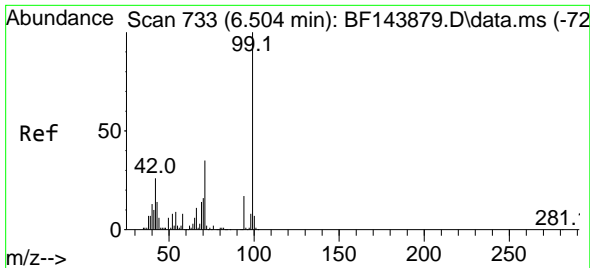
Tgt Ion:152 Resp: 90843
 Ion Ratio Lower Upper
 152 100
 150 162.8 124.4 186.6
 115 62.8 48.1 72.1



#5
 2-Fluorophenol
 Concen: 43.269 ng
 RT: 5.492 min Scan# 561
 Delta R.T. -0.006 min
 Lab File: BF144036.D
 Acq: 22 Oct 2025 12:26

Tgt Ion:112 Resp: 247526
 Ion Ratio Lower Upper
 112 100
 64 59.2 49.1 73.7
 63 27.9 24.5 36.7

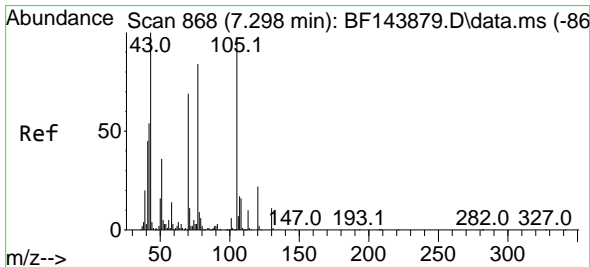
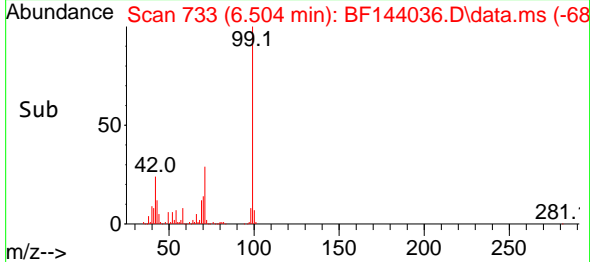
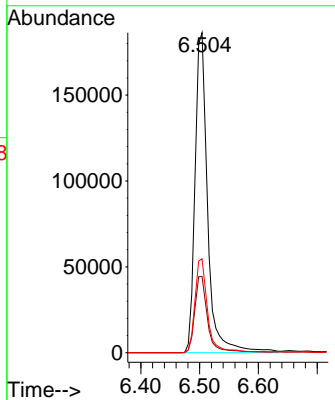
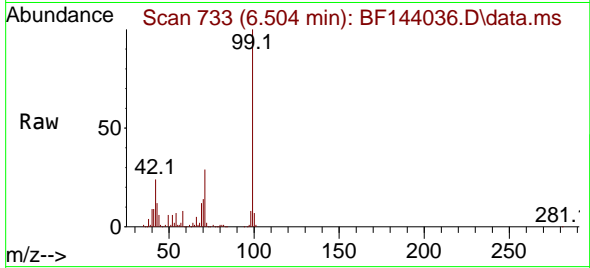




#7
 Phenol-d6
 Concen: 40.821 ng
 RT: 6.504 min Scan# 713
 Delta R.T. -0.012 min
 Lab File: BF144036.D
 Acq: 22 Oct 2025 12:26

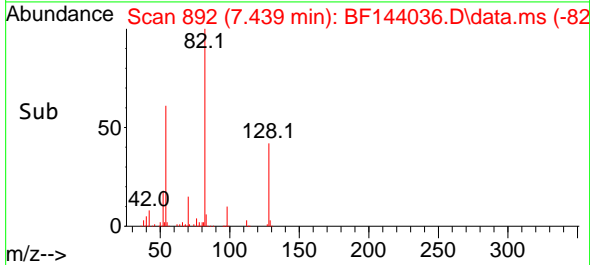
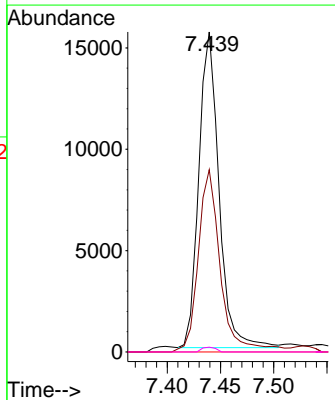
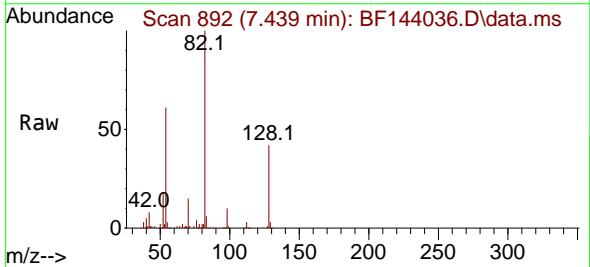
Instrument : BNA_F
 ClientSampleId : PR132-S10-000022-20251017

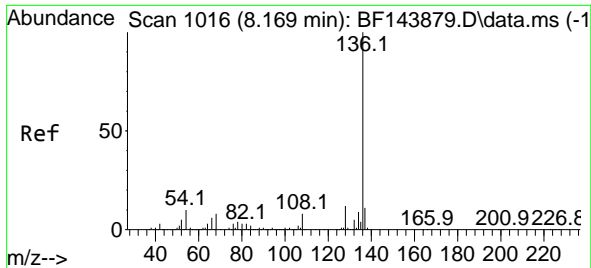
Tgt Ion	Resp	Lower	Upper
99	100		
42	23.8	21.0	31.4
71	29.4	27.8	41.8



#19
 n-Nitroso-di-n-propylamine
 Concen: 4.397 ng
 RT: 7.439 min Scan# 892
 Delta R.T. 0.124 min
 Lab File: BF144036.D
 Acq: 22 Oct 2025 12:26

Tgt Ion	Resp	Lower	Upper
70	100		
42	57.0	62.8	94.2#
101	0.0	6.7	10.1#
130	1.5	13.0	19.4#



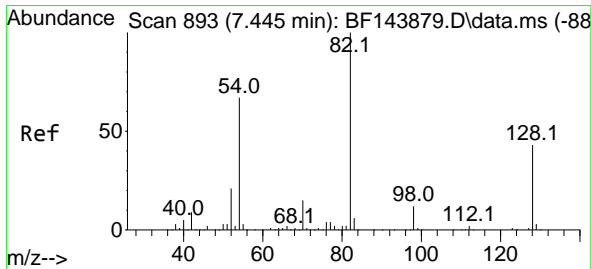
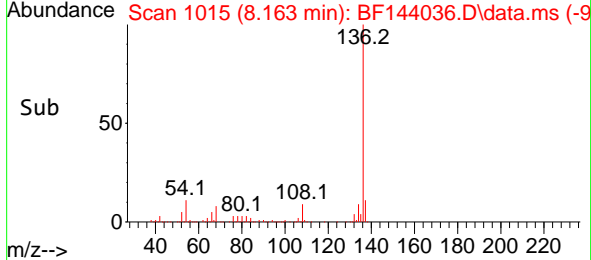
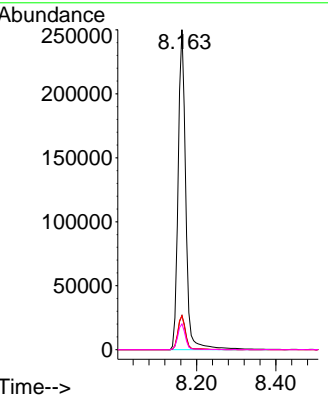
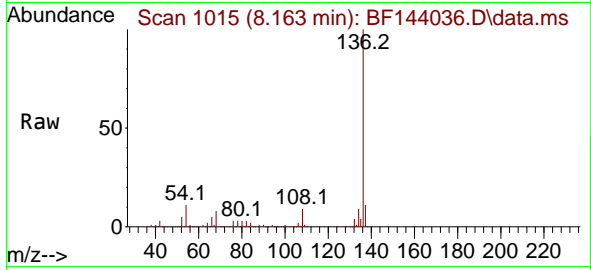


#21
 Naphthalene-d8
 Concen: 20.000 ng
 RT: 8.163 min Scan# 1015
 Delta R.T. -0.006 min
 Lab File: BF144036.D
 Acq: 22 Oct 2025 12:26

Instrument : BNA_F
 ClientSampleId : PR132-S10-000022-20251017

Tgt Ion: 136 Resp: 335392

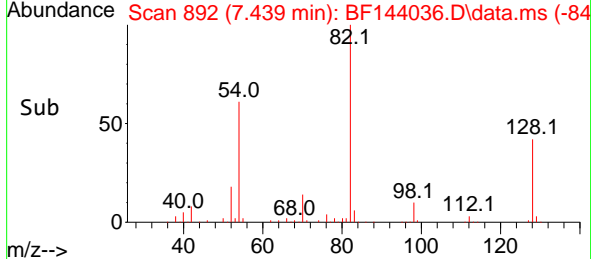
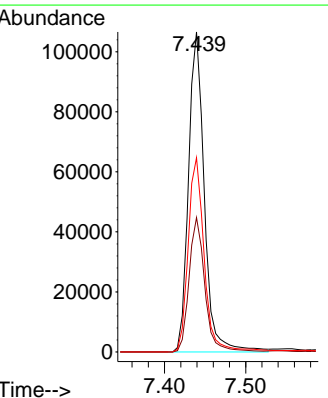
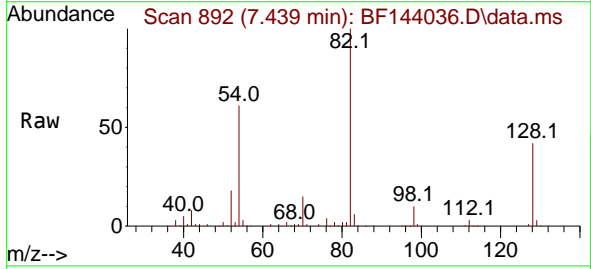
Ion	Ratio	Lower	Upper
136	100		
137	10.7	8.5	12.7
54	10.6	8.2	12.4
68	8.0	6.2	9.4

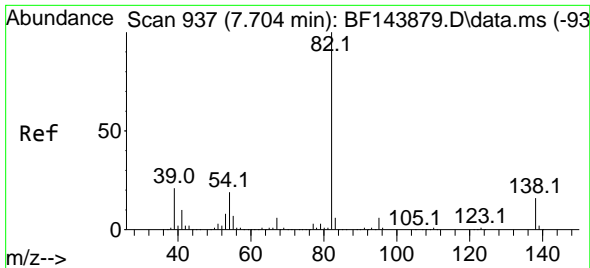


#23
 Nitrobenzene-d5
 Concen: 26.206 ng
 RT: 7.439 min Scan# 892
 Delta R.T. -0.018 min
 Lab File: BF144036.D
 Acq: 22 Oct 2025 12:26

Tgt Ion: 82 Resp: 144668

Ion	Ratio	Lower	Upper
82	100		
128	42.0	34.0	51.0
54	60.7	53.2	79.8

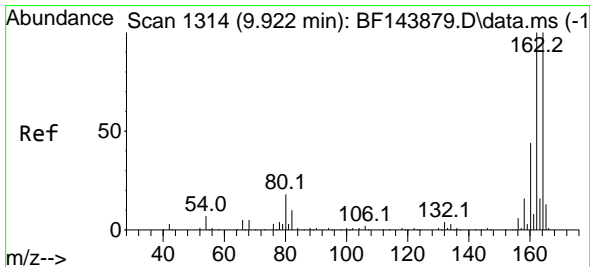
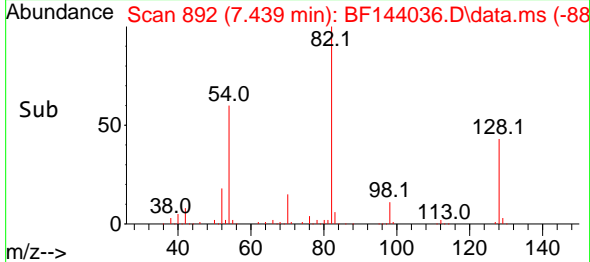
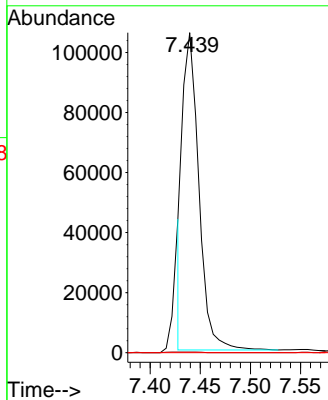
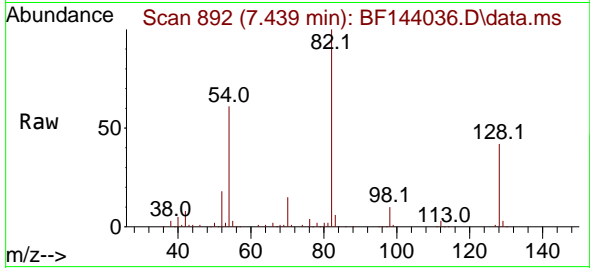




#25
 Isophorone
 Concen: 10.196 ng
 RT: 7.439 min Scan# 892
 Delta R.T. -0.282 min
 Lab File: BF144036.D
 Acq: 22 Oct 2025 12:26

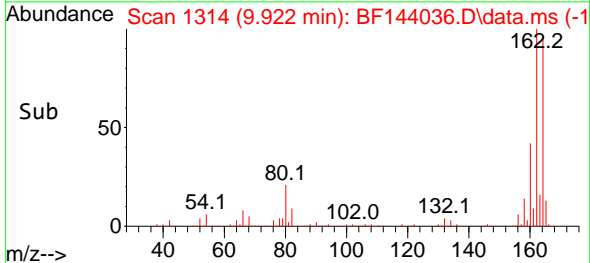
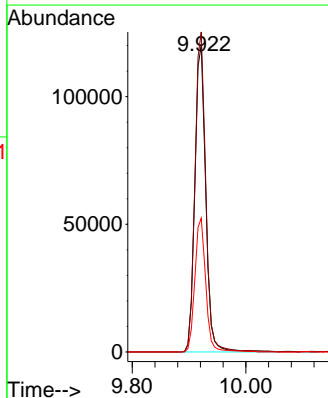
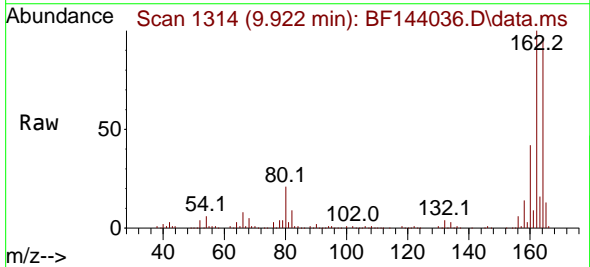
Instrument : BNA_F
 ClientSampleId : PR132-S10-000022-20251017

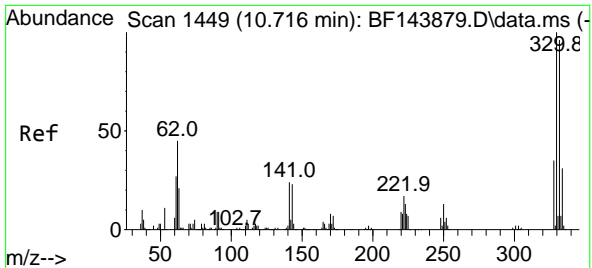
Tgt Ion: 82 Resp: 118680
 Ion Ratio Lower Upper
 82 100
 95 0.2 5.1 7.7#
 138 0.0 12.9 19.3#



#39
 Acenaphthene-d10
 Concen: 20.000 ng
 RT: 9.922 min Scan# 1314
 Delta R.T. -0.005 min
 Lab File: BF144036.D
 Acq: 22 Oct 2025 12:26

Tgt Ion:164 Resp: 160805
 Ion Ratio Lower Upper
 164 100
 162 104.3 80.2 120.2
 160 43.6 35.4 53.0



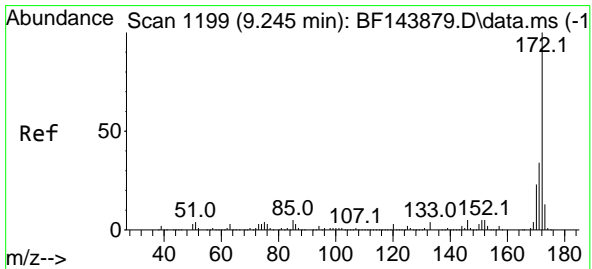
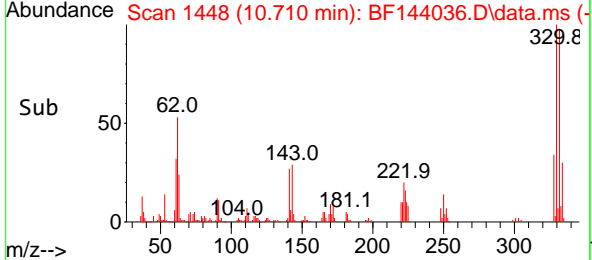
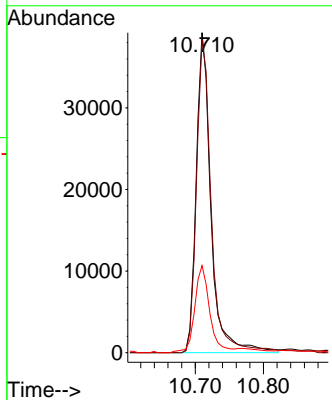
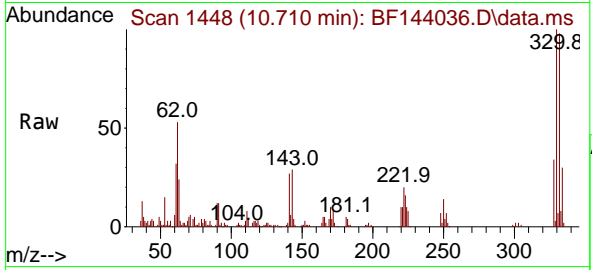


#42
 2,4,6-Tribromophenol
 Concen: 36.663 ng
 RT: 10.710 min Scan# 1448
 Delta R.T. -0.012 min
 Lab File: BF144036.D
 Acq: 22 Oct 2025 12:26

Instrument : BNA_F
 ClientSampleId : PR132-S10-000022-20251017

Tgt Ion:330 Resp: 58721

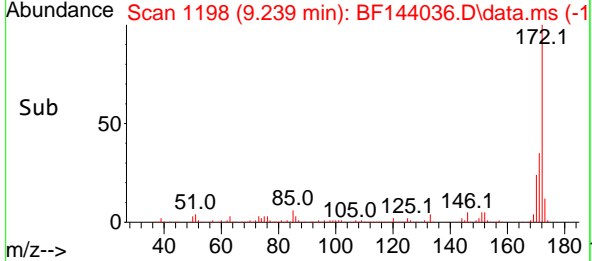
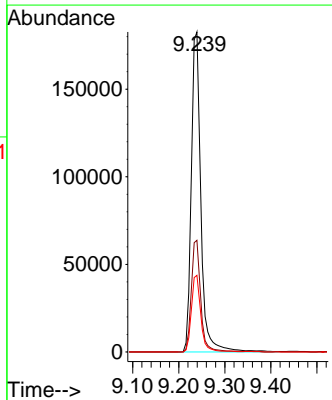
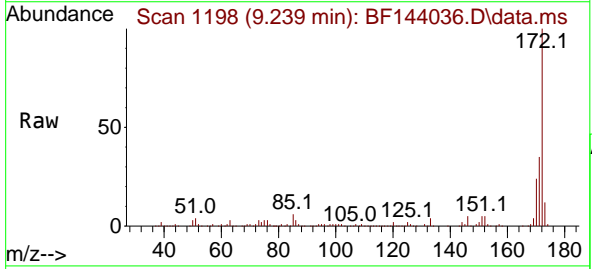
Ion	Ratio	Lower	Upper
330	100		
332	100.1	76.9	115.3
141	27.7	20.2	30.4

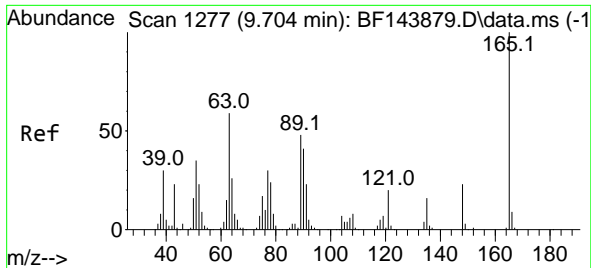


#45
 2-Fluorobiphenyl
 Concen: 25.993 ng
 RT: 9.239 min Scan# 1198
 Delta R.T. -0.012 min
 Lab File: BF144036.D
 Acq: 22 Oct 2025 12:26

Tgt Ion:172 Resp: 263423

Ion	Ratio	Lower	Upper
172	100		
171	34.9	27.4	41.0
170	24.0	18.6	28.0

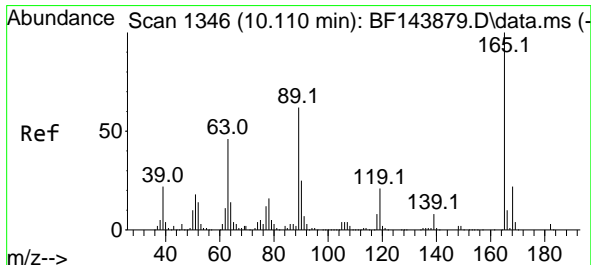
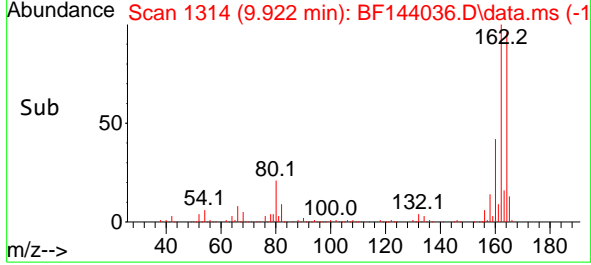
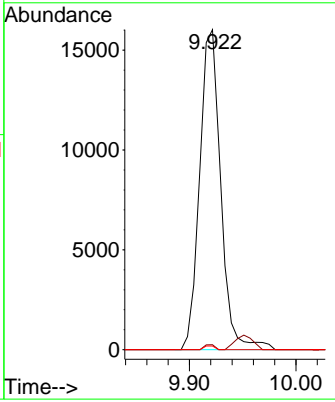
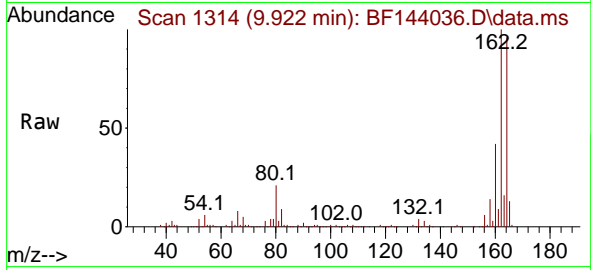




#51
 2,6-Dinitrotoluene
 Concen: 11.679 ng
 RT: 9.922 min Scan# 1314
 Delta R.T. 0.206 min
 Lab File: BF144036.D
 Acq: 22 Oct 2025 12:26

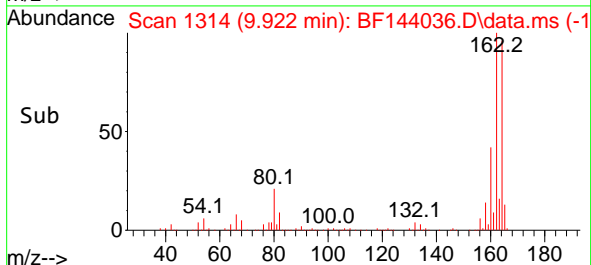
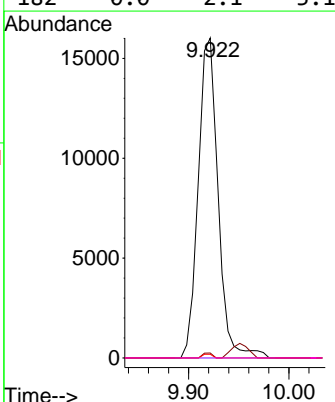
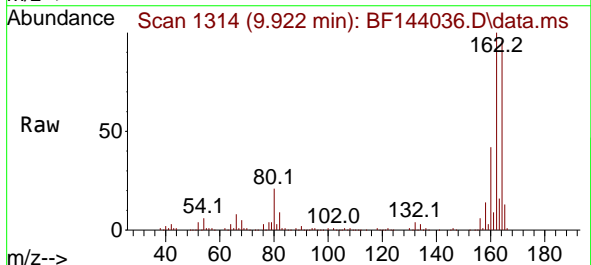
Instrument : BNA_F
 ClientSampleId : PR132-S10-000022-20251017

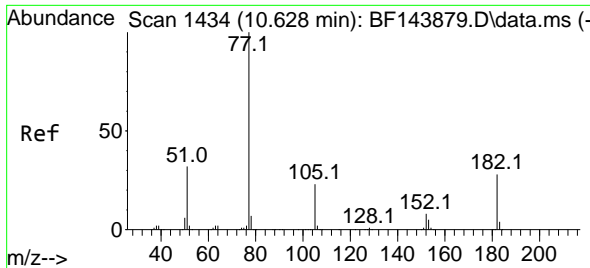
Tgt Ion	Resp	Lower	Upper
165	100		
63	1.5	47.3	70.9#
89	1.2	38.2	57.4#



#57
 2,4-Dinitrotoluene
 Concen: 8.584 ng
 RT: 9.922 min Scan# 1314
 Delta R.T. -0.194 min
 Lab File: BF144036.D
 Acq: 22 Oct 2025 12:26

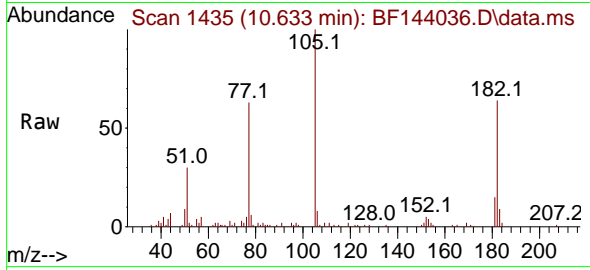
Tgt Ion	Resp	Lower	Upper
165	100		
63	1.5	37.2	55.8#
89	1.2	49.4	74.2#
182	0.0	2.1	3.1#



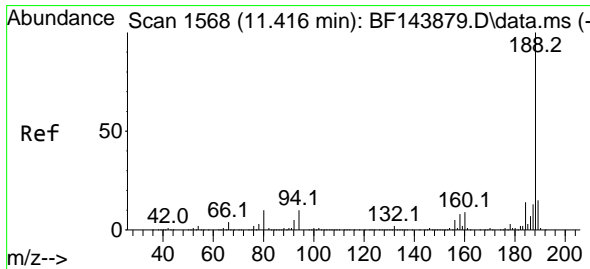
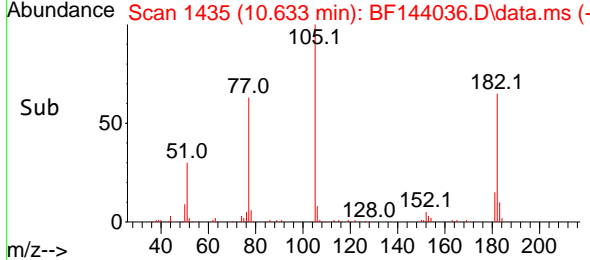
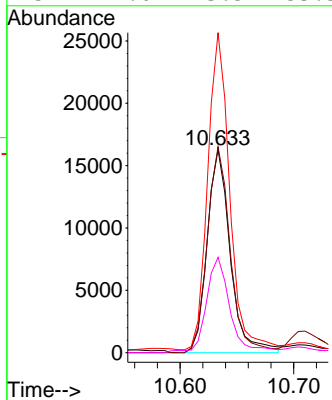


#63
 Azobenzene
 Concen: 2.318 ng
 RT: 10.633 min Scan# 14
 Delta R.T. 0.000 min
 Lab File: BF144036.D
 Acq: 22 Oct 2025 12:26

Instrument :
 BNA_F
 ClientSampleId :
 PR132-S10-000022-20251017

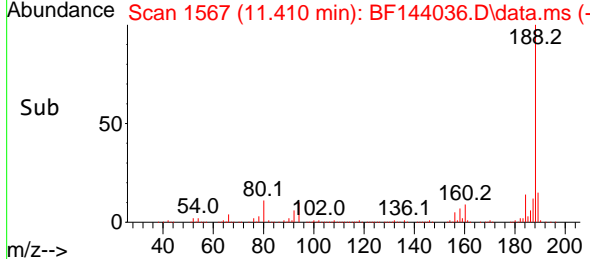
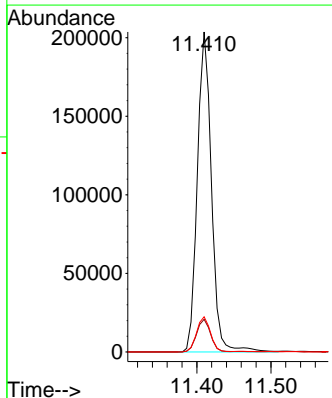
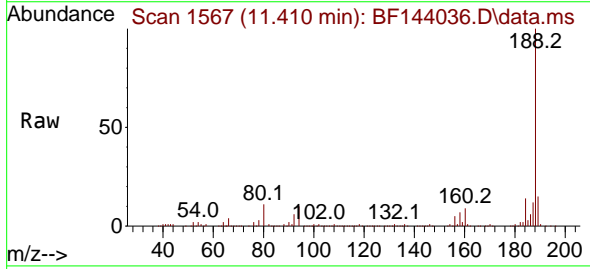


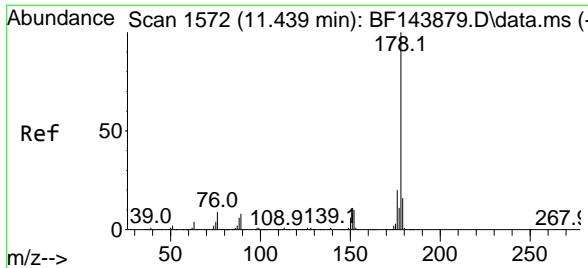
Tgt Ion	Resp	Lower	Upper
77	100		
182	101.4	7.3	47.3#
105	157.7	3.0	43.0#
51	47.0	13.5	53.5



#64
 Phenanthrene-d10
 Concen: 20.000 ng
 RT: 11.410 min Scan# 1567
 Delta R.T. -0.006 min
 Lab File: BF144036.D
 Acq: 22 Oct 2025 12:26

Tgt Ion	Resp	Lower	Upper
188	100		
94	10.2	7.8	11.6
80	11.0	7.9	11.9



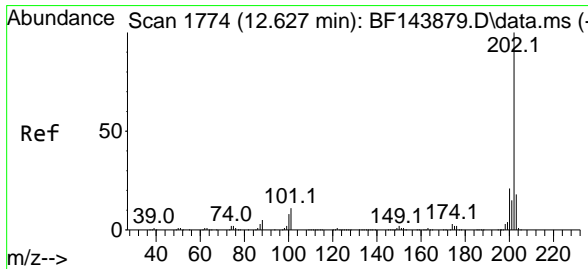
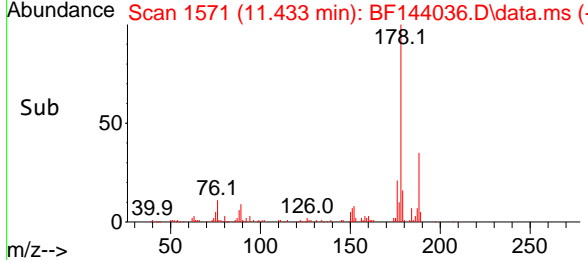
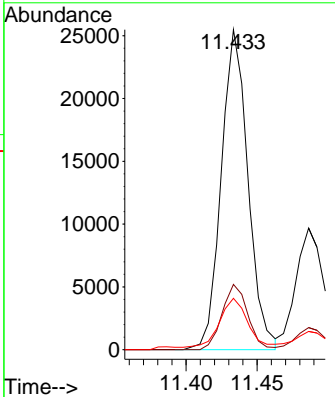
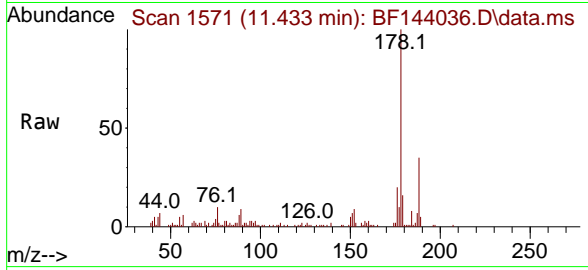


#71
 Phenanthrene
 Concen: 2.552 ng
 RT: 11.433 min Scan# 11
 Delta R.T. -0.012 min
 Lab File: BF144036.D
 Acq: 22 Oct 2025 12:26

Instrument : BNA_F
 ClientSampleId : PR132-S10-000022-20251017

Tgt Ion:178 Resp: 33352

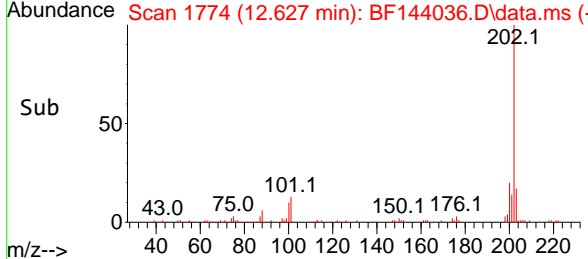
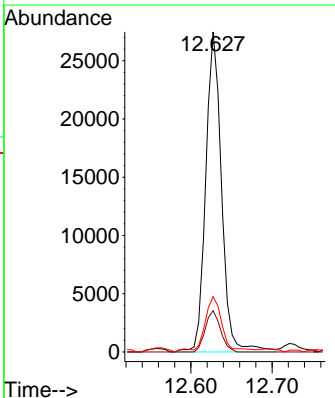
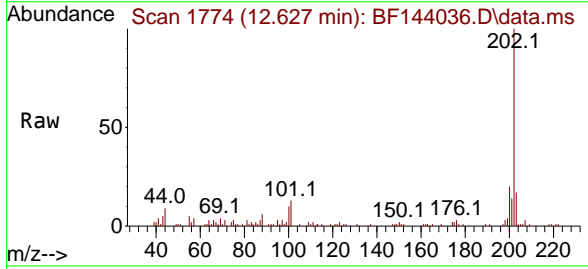
Ion	Ratio	Lower	Upper
178	100		
176	20.4	15.9	23.9
179	16.1	12.4	18.6

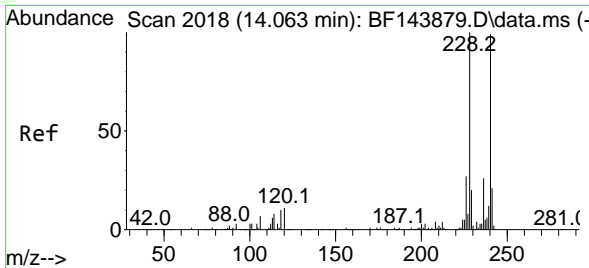


#75
 Fluoranthene
 Concen: 2.754 ng
 RT: 12.627 min Scan# 1774
 Delta R.T. -0.006 min
 Lab File: BF144036.D
 Acq: 22 Oct 2025 12:26

Tgt Ion:202 Resp: 37179

Ion	Ratio	Lower	Upper
202	100		
101	12.9	0.0	30.7
203	17.3	0.0	37.8



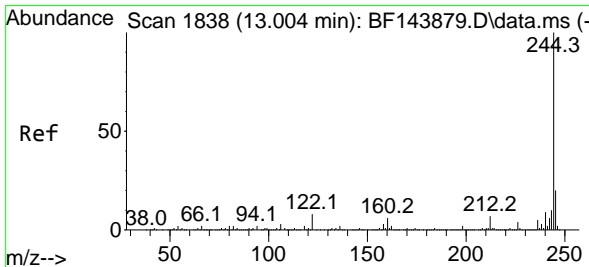
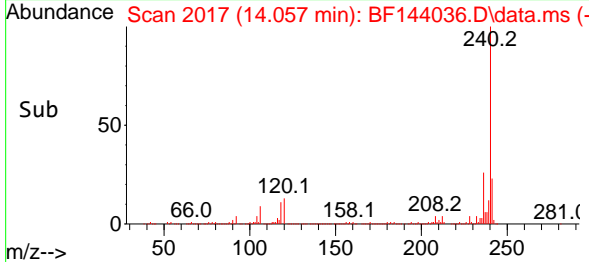
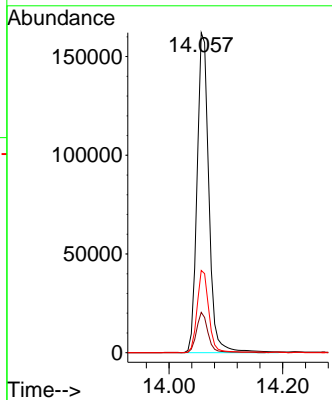
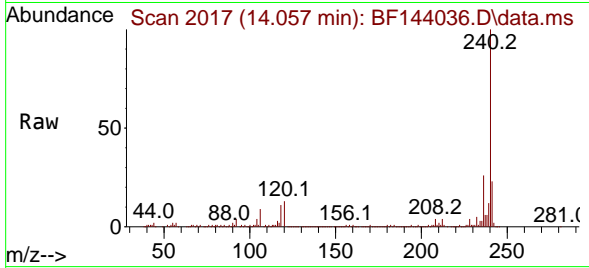


#76
 Chrysene-d12
 Concen: 20.000 ng
 RT: 14.057 min Scan# 2018
 Delta R.T. -0.011 min
 Lab File: BF144036.D
 Acq: 22 Oct 2025 12:26

Instrument : BNA_F
 ClientSampleId : PR132-S10-000022-20251017

Tgt Ion:240 Resp: 234635

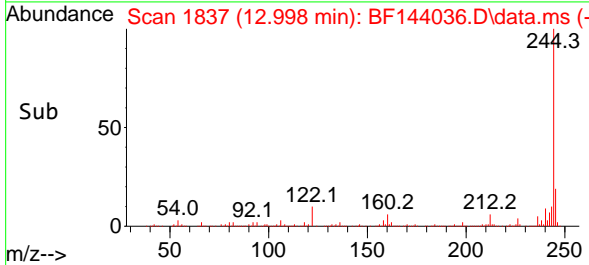
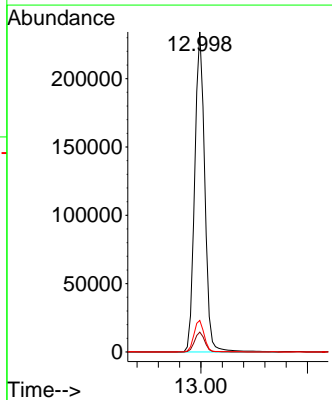
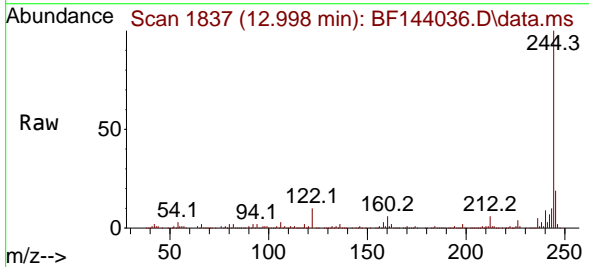
Ion	Ratio	Lower	Upper
240	100		
120	12.6	8.6	13.0
236	25.7	21.1	31.7

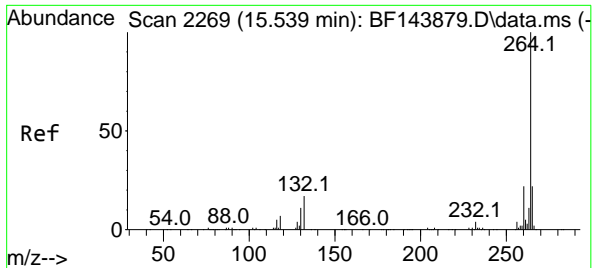


#79
 Terphenyl-d14
 Concen: 22.325 ng
 RT: 12.998 min Scan# 1837
 Delta R.T. -0.012 min
 Lab File: BF144036.D
 Acq: 22 Oct 2025 12:26

Tgt Ion:244 Resp: 306488

Ion	Ratio	Lower	Upper
244	100		
212	6.2	5.4	8.0
122	9.9	6.4	9.6#





#86
 Perylene-d12
 Concen: 20.000 ng
 RT: 15.545 min Scan# 21
 Delta R.T. 0.000 min
 Lab File: BF144036.D
 Acq: 22 Oct 2025 12:26

Instrument :
 BNA_F
 ClientSampleId :
 PR132-S10-000022-20251017

Tgt Ion:264 Resp: 281457

Ion	Ratio	Lower	Upper
264	100		
260	20.6	17.8	26.8
265	21.4	17.5	26.3

