

Data Path : Z:\svoasrv\HPCHEM1\BNA_F\Data\BF121621\
 Data File : BF126224.D
 Acq On : 16 Dec 2021 21:55
 Operator : JU/CG
 Sample : M4927-10RE
 Misc :
 ALS Vial : 20 Sample Multiplier: 1

Instrument :
 BNA_F
ClientSampleId :

Quant Time: Dec 17 01:48:50 2021
 Quant Method : Z:\svoasrv\HPCHEM1\BNA_F\Methods\8270-BF121521.M
 Quant Title : ASP BNA STANDARDS FOR 5 POINT CALIBRATION
 QLast Update : Thu Dec 16 12:22:48 2021
 Response via : Initial Calibration

Compound	R. T.	QI on	Response	Conc	Units	Dev(Min)	

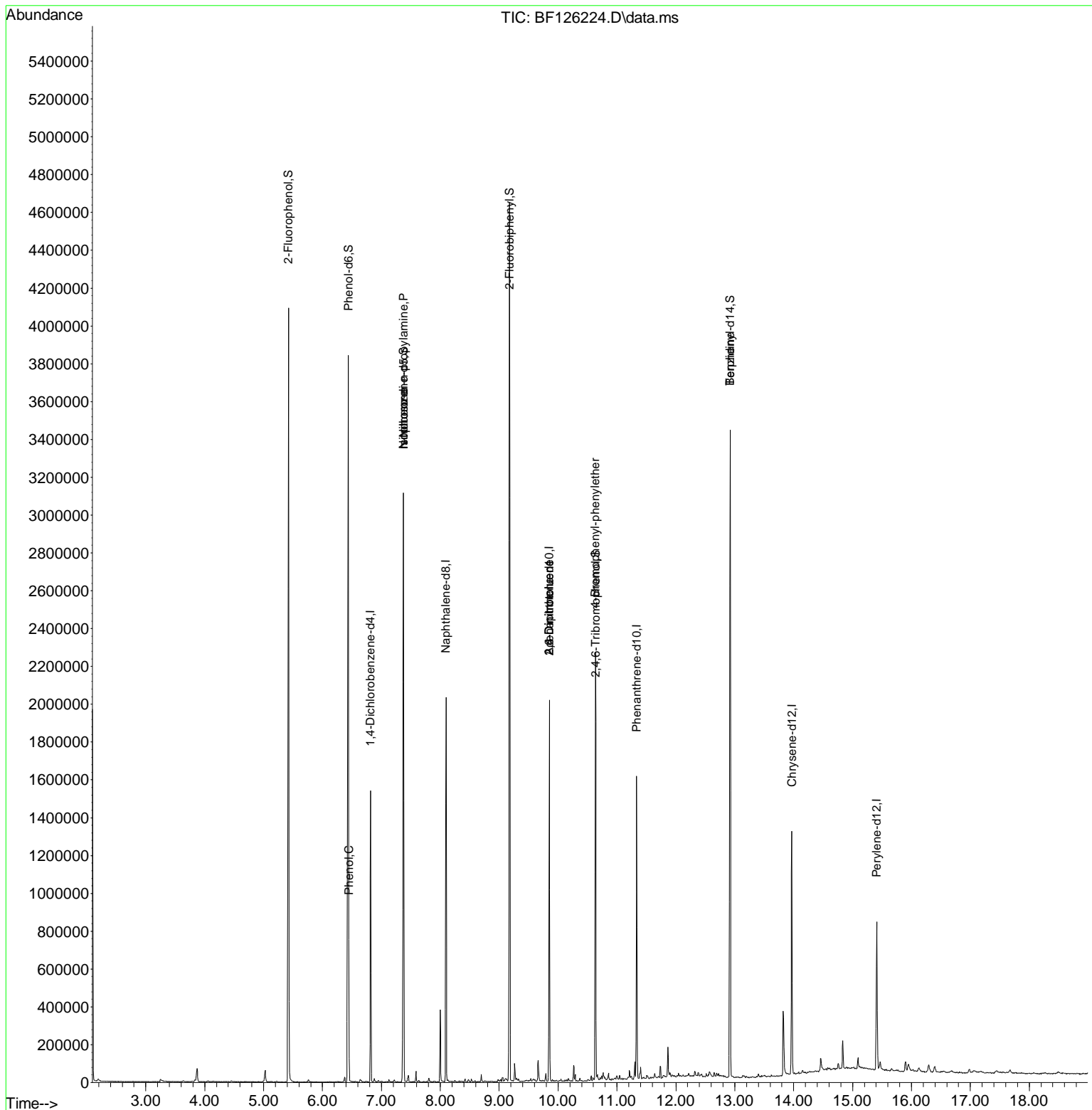
Internal Standards							
1) 1,4-Dichlorobenzene-d4	6.816	152	199815	20.000	ng	0.00	
21) Naphthalene-d8	8.098	136	827890	20.000	ng	# 0.00	
39) Acenaphthene-d10	9.851	164	361548	20.000	ng	0.00	
64) Phenanthrene-d10	11.333	188	506486	20.000	ng	# 0.00	
76) Chrysene-d12	13.969	240	391620	20.000	ng	0.00	
86) Perylene-d12	15.410	264	314680	20.000	ng	0.00	
System Monitoring Compounds							
5) 2-Fluorophenol	5.422	112	1268857	93.516	ng	0.00	
7) Phenol-d6	6.440	99	1604020	93.103	ng	0.00	
23) Nitrobenzene-d5	7.375	82	996593	65.195	ng	0.00	
42) 2,4,6-Tribromophenol	10.639	330	254373	87.547	ng	0.00	
45) 2-Fluorobiphenyl	9.175	172	1400538	67.941	ng	0.00	
79) Terphenyl-d14	12.922	244	1078172	47.852	ng	0.00	
Target Compounds							
10) Phenol	6.446	94	51927	2.685	ng		Qvalue 97
19) n-Nitrosodipropylamine	7.375	70	125430	11.859	ng	#	55
25) Isophorone	7.375	82	965406	33.444	ng	#	59
51) 2,6-Dinitrotoluene	9.851	165	45506	9.180	ng	#	28
57) 2,4-Dinitrotoluene	9.851	165	45506	7.196	ng	#	20
67) 4-Bromophenyl-phenyl ether	10.633	248	13754	2.893	ng	#	1
77) Benzidine	12.922	184	13043	2.113	ng		94

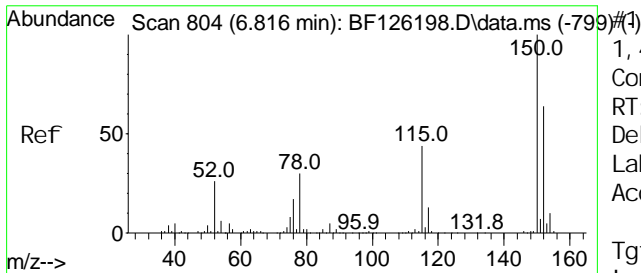
(#) = qualifier out of range (m) = manual integration (+) = signals summed

Data Path : Z:\svoasrv\HPCHEM1\BNA_F\Data\BF121621\
 Data File : BF126224.D
 Acq On : 16 Dec 2021 21:55
 Operator : JU/CG
 Sample : M4927-10RE
 Misc :
 ALS Vial : 20 Sample Multiplier: 1

Instrument :
 BNA_F
 ClientSampleId :

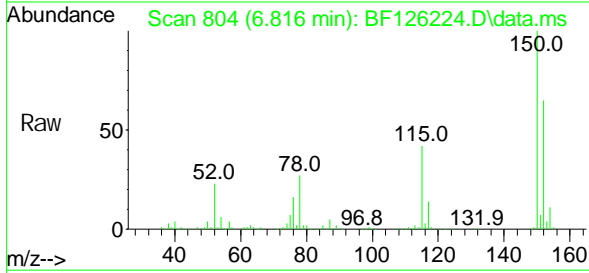
Quant Time: Dec 17 01:48:50 2021
 Quant Method : Z:\svoasrv\HPCHEM1\BNA_F\Methods\8270-BF121521.M
 Quant Title : ASP BNA STANDARDS FOR 5 POINT CALIBRATION
 QLast Update : Thu Dec 16 12:22:48 2021
 Response via : Initial Calibration



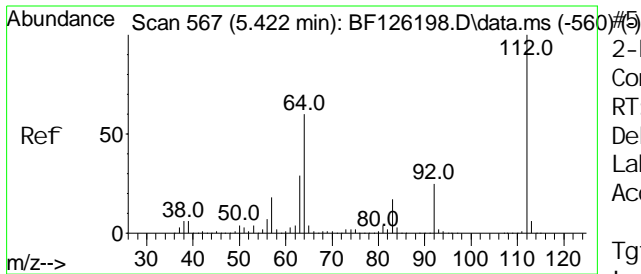
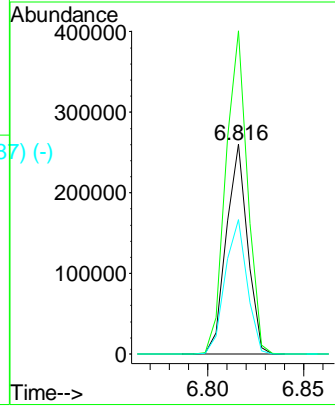
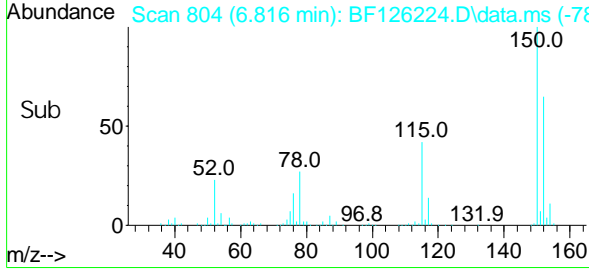


1, 4-Di chl oro benzene-d4
 Concen: 20.000 ng
 RT: 6.816 mi n Scan# 814
 Del ta R. T. 0.000 mi n
 Lab Fi le: BF126224. D
 Acq: 16 Dec 2021 21:55

Instrument :
 BNA_F
 Client Sample Id :

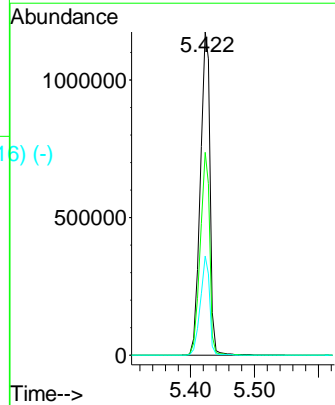
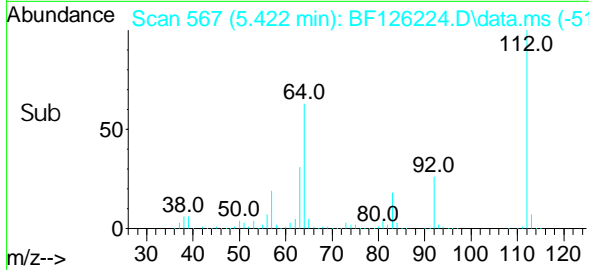
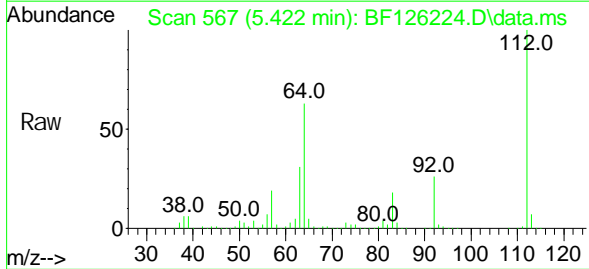


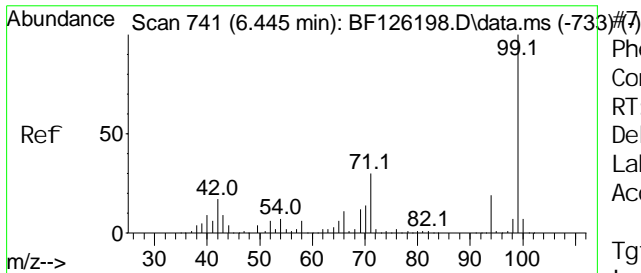
Tgt Ion: 152 Resp: 199815
 Ion Ratio Lower Upper
 152 100
 150 154.2 117.6 176.4
 115 64.2 47.1 70.7



2-Fl uorophenol
 Concen: 93.516 ng
 RT: 5.422 mi n Scan# 567
 Del ta R. T. 0.000 mi n
 Lab Fi le: BF126224. D
 Acq: 16 Dec 2021 21:55

Tgt Ion: 112 Resp: 1268857
 Ion Ratio Lower Upper
 112 100
 64 62.9 44.2 66.2
 63 30.7 26.2 39.2



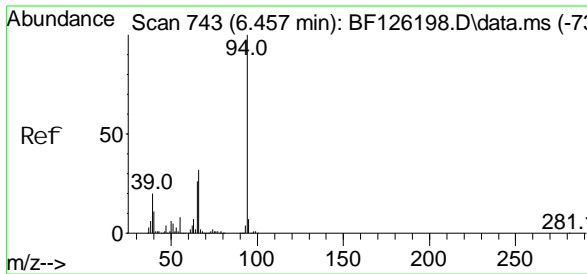
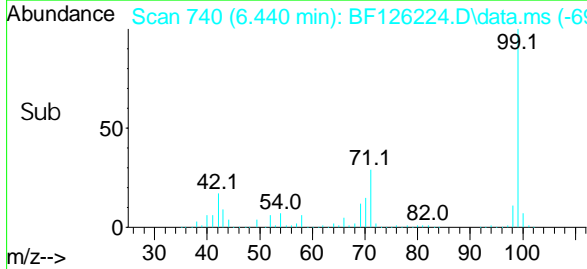
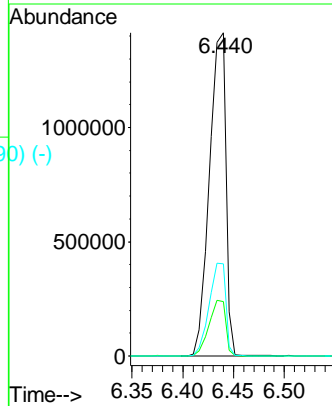
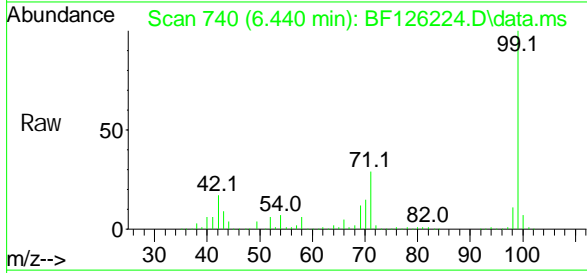


Phenol -d6
 Concen: 93.103 ng
 RT: 6.440 min Scan#
 Delta R.T. -0.006 min
 Lab File: BF126224.D
 Acq: 16 Dec 2021 21:55

Instrument :
 BNA_F
 ClientSampleId :

Tgt Ion: 99 Resp: 1604020

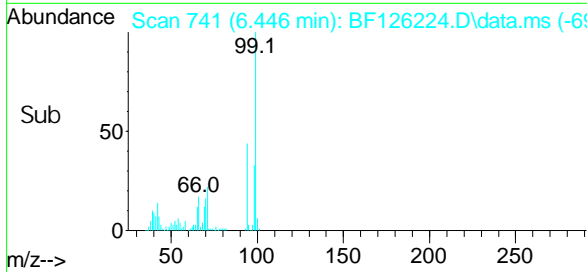
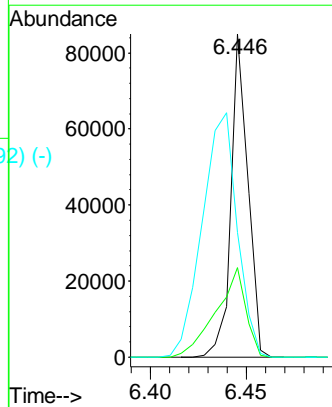
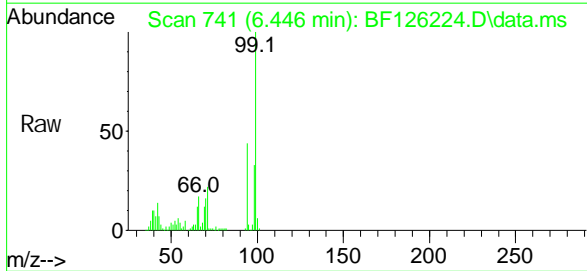
Ion	Ratio	Lower	Upper
99	100		
42	16.8	23.5	35.3#
71	28.6	25.6	38.4

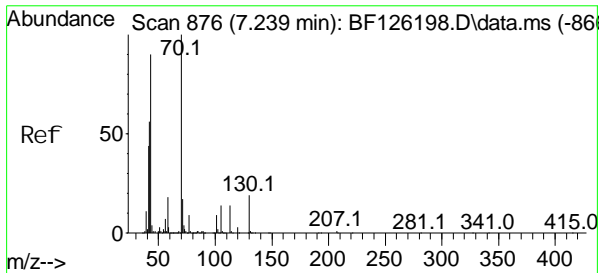


Phenol
 Concen: 2.685 ng
 RT: 6.446 min Scan# 741
 Delta R.T. -0.011 min
 Lab File: BF126224.D
 Acq: 16 Dec 2021 21:55

Tgt Ion: 94 Resp: 51927

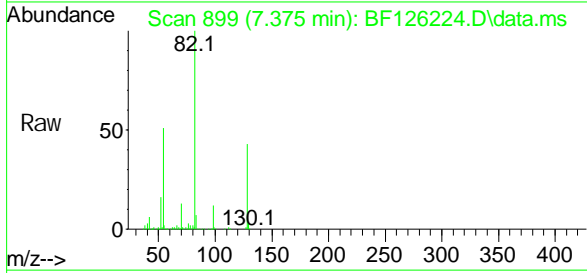
Ion	Ratio	Lower	Upper
94	100		
65	27.7	9.3	49.3
66	38.6	20.3	60.3



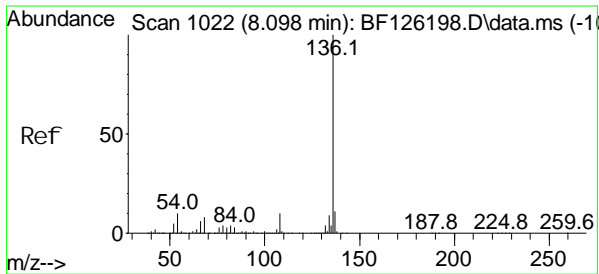
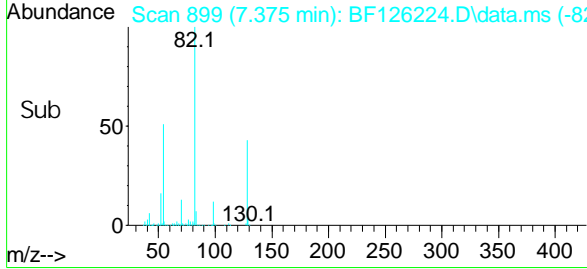
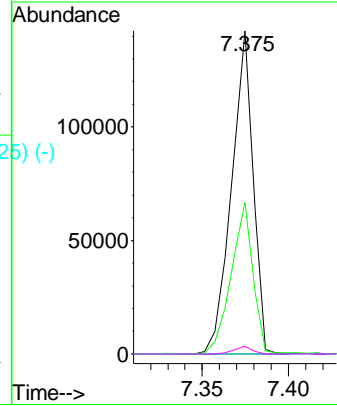


Scan 876 (7.239 min): BF126198.D\data.ms (-866) (-)
 n-Ni troso-di -n-propyl ami ne
 Concen: 11.859 ng
 RT: 7.375 mi n Scan# 876
 Del ta R. T. 0.136 mi n
 Lab Fi le: BF126224. D
 Acq: 16 Dec 2021 21:55

Instrument :
 BNA_F
ClientSampleId :

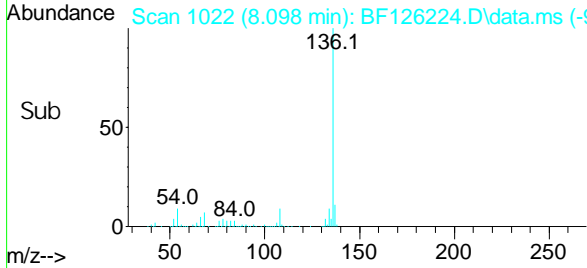
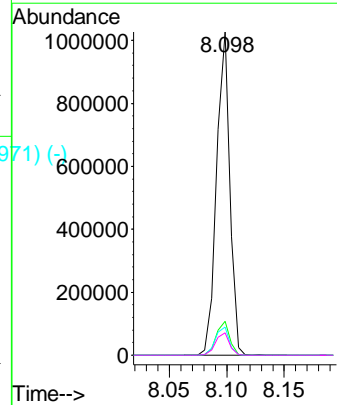
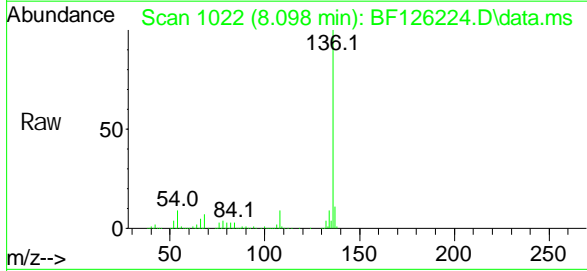


Tgt Ion: 70 Resp: 125430
 Ion Ratio Lower Upper
 70 100
 42 46.9 72.2 108.2#
 101 0.0 7.8 11.8#
 130 2.4 21.8 32.6#

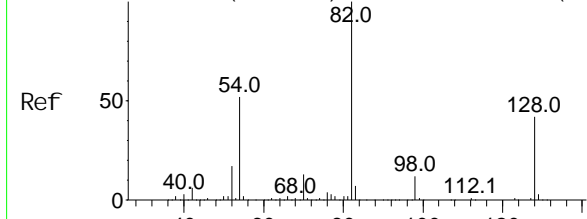


Scan 1022 (8.098 min): BF126198.D\data.ms (-1022) (-)
 Naphthal ene-d8
 Concen: 20.000 ng
 RT: 8.098 mi n Scan# 1022
 Del ta R. T. 0.000 mi n
 Lab Fi le: BF126224. D
 Acq: 16 Dec 2021 21:55

Tgt Ion: 136 Resp: 827890
 Ion Ratio Lower Upper
 136 100
 137 10.5 9.8 14.6
 54 8.7 6.4 9.6
 68 7.0 3.3 4.9#

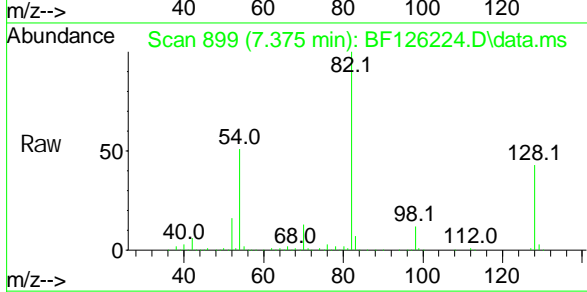


Abundance Scan 900 (7.380 min): BF126198.D\data.ms (-895) #23



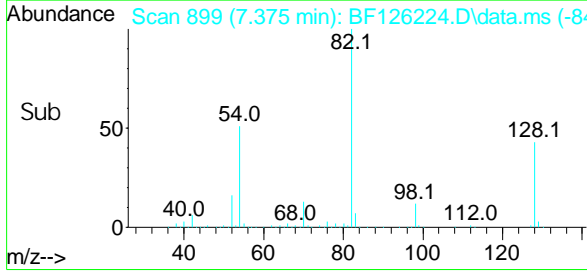
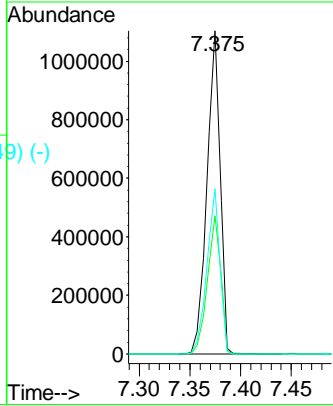
Nitrobenzene-d5
Concen: 65.195 ng
RT: 7.375 min Scan# 899
Delta R.T. -0.006 min
Lab File: BF126224.D
Acq: 16 Dec 2021 21:55

Instrument : BNA_F
ClientSampleId :

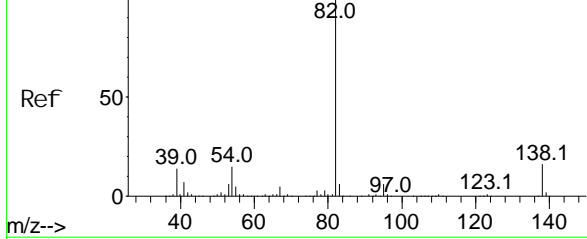


Tgt Ion: 82 Resp: 996593

Ion	Ratio	Lower	Upper
82	100		
128	42.7	40.6	60.8
54	51.1	49.6	74.4



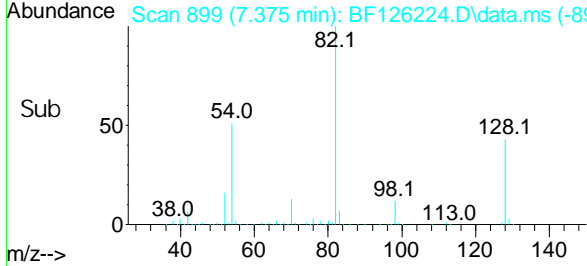
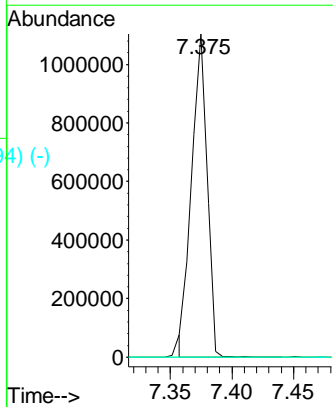
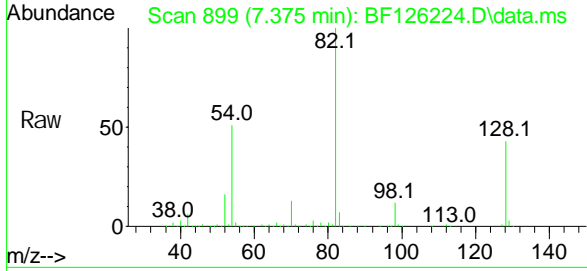
Abundance Scan 945 (7.645 min): BF126198.D\data.ms (-935) #25



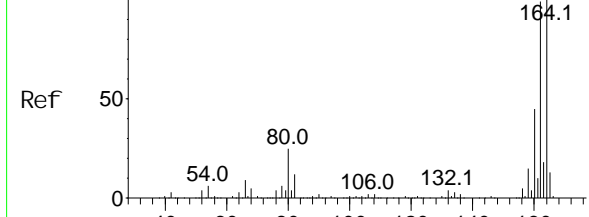
Isophorone
Concen: 33.444 ng
RT: 7.375 min Scan# 899
Delta R.T. -0.270 min
Lab File: BF126224.D
Acq: 16 Dec 2021 21:55

Tgt Ion: 82 Resp: 965406

Ion	Ratio	Lower	Upper
82	100		
95	0.0	6.5	9.7#
138	0.0	18.4	27.6#

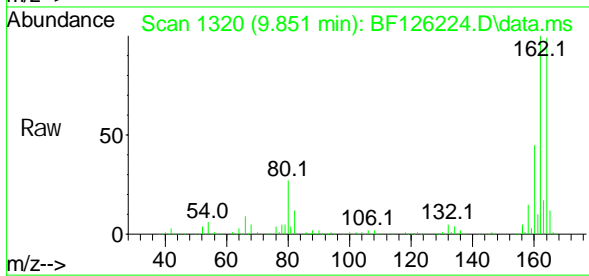


Abundance Scan 1321 (9.857 min): BF126198.D\data.ms (-1315)



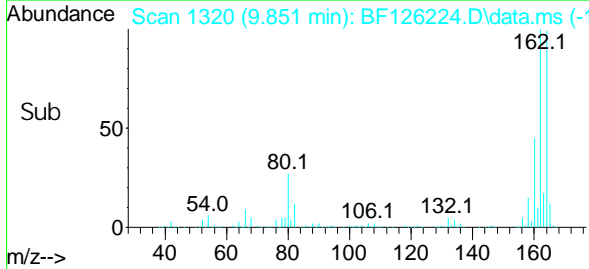
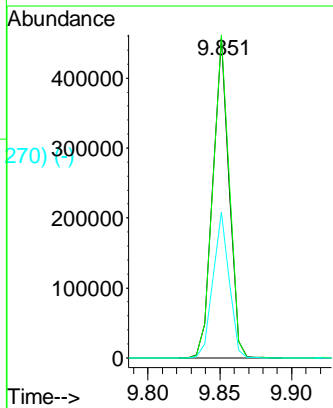
Acenaphthene-d10
Concen: 20.000 ng
RT: 9.851 min Scan#
Delta R.T. -0.006 min
Lab File: BF126224.D
Acq: 16 Dec 2021 21:55

Instrument :
BNA_F
ClientSampleId :

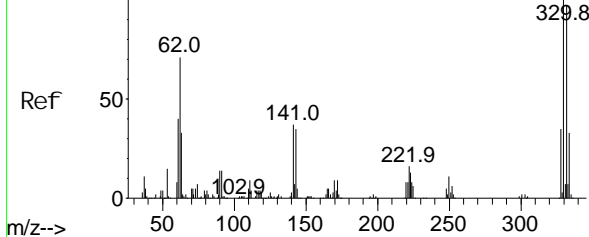


Tgt Ion: 164 Resp: 361548

Ion	Ratio	Lower	Upper
164	100		
162	101.1	81.3	121.9
160	45.6	38.0	57.0



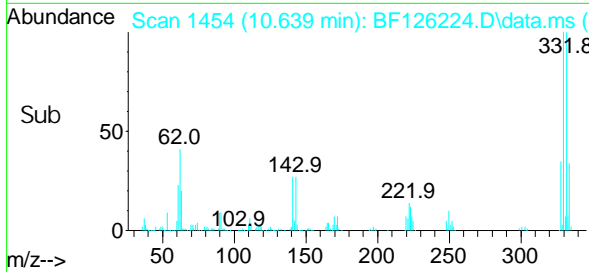
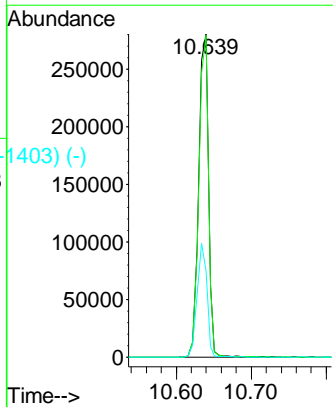
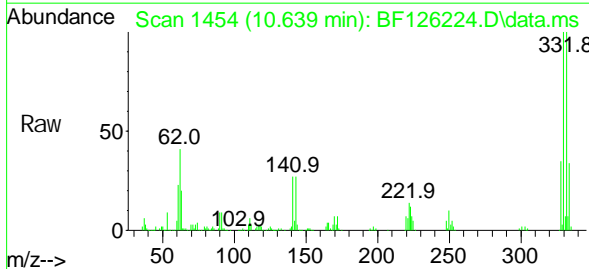
Abundance Scan 1454 (10.639 min): BF126198.D\data.ms (-1448)

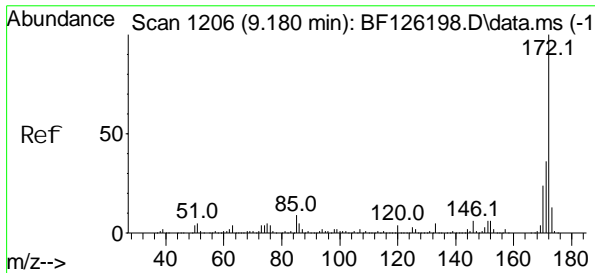


2,4,6-Tri bromophenol
Concen: 87.547 ng
RT: 10.639 min Scan# 1454
Delta R.T. 0.000 min
Lab File: BF126224.D
Acq: 16 Dec 2021 21:55

Tgt Ion: 330 Resp: 254373

Ion	Ratio	Lower	Upper
330	100		
332	97.5	76.2	114.4
141	35.0	44.6	66.8#



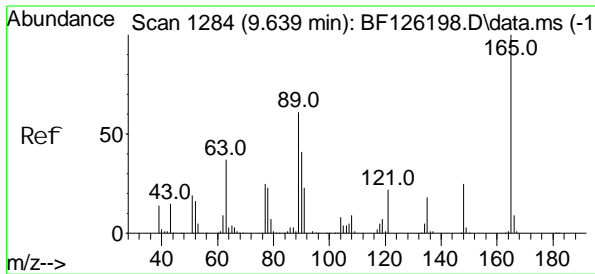
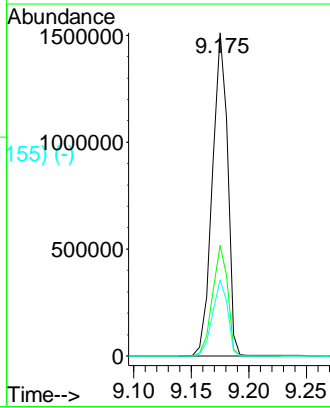
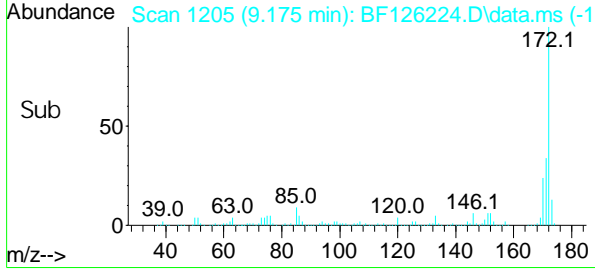
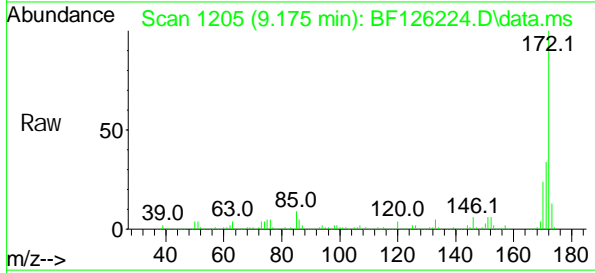


Scan 1206 (9.180 min): BF126198.D\data.ms (-11945)
 2-Fluorophenyl
 Concn: 67.941 ng
 RT: 9.175 min Scan#
 Delta R.T. -0.006 min
 Lab File: BF126224.D
 Acq: 16 Dec 2021 21:55

Instrument :
 BNA_F
Client SampleID :

Tgt Ion: 172 Resp: 1400538

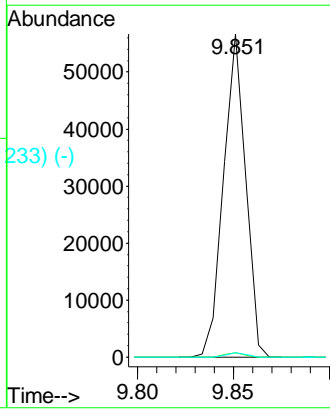
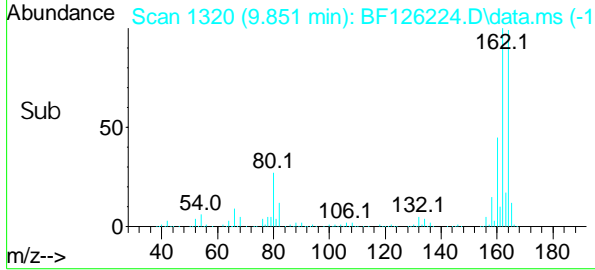
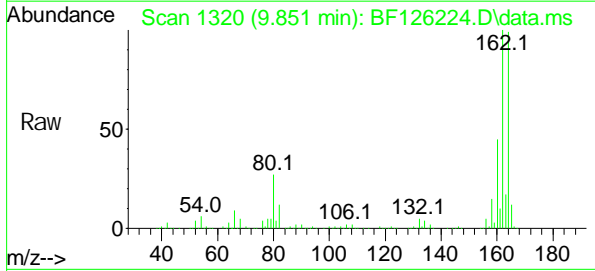
Ion	Ratio	Lower	Upper
172	100		
171	34.3	26.5	39.7
170	23.6	18.8	28.2

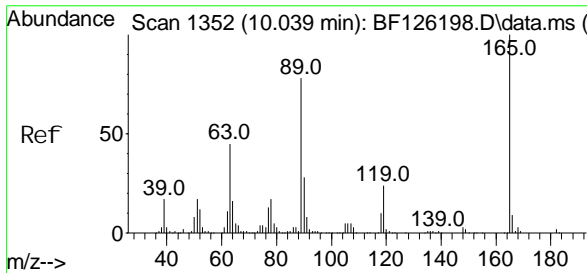


Scan 1284 (9.639 min): BF126198.D\data.ms (-1276)
 2,6-Dinitrotoluene
 Concn: 9.180 ng
 RT: 9.851 min Scan# 1320
 Delta R.T. 0.212 min
 Lab File: BF126224.D
 Acq: 16 Dec 2021 21:55

Tgt Ion: 165 Resp: 45506

Ion	Ratio	Lower	Upper
165	100		
63	1.3	42.6	63.8#
89	1.4	40.6	60.8#



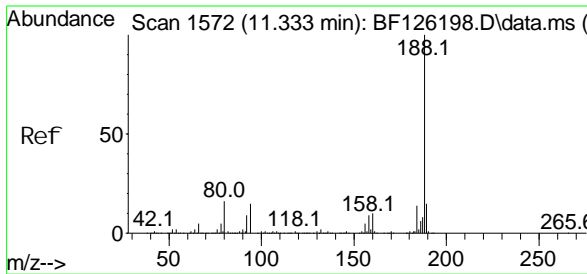
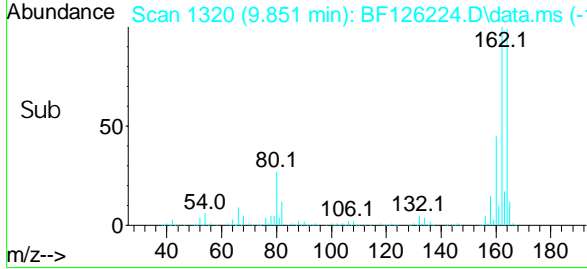
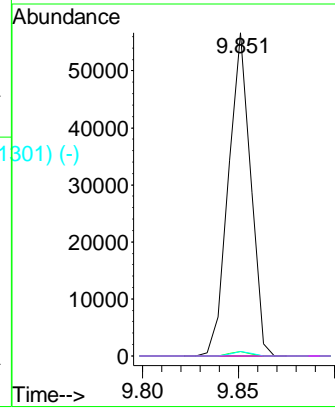
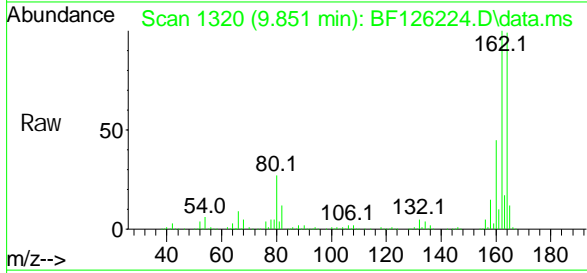


#57 (-)
 2,4-Dinitrotoluene
 Concn: 7.196 ng
 RT: 9.851 min Scan#
 Delta R.T. -0.188 min
 Lab File: BF126224.D
 Acq: 16 Dec 2021 21:55

Instrument :
 BNA_F
 ClientSampleId :

Tgt Ion: 165 Resp: 45506

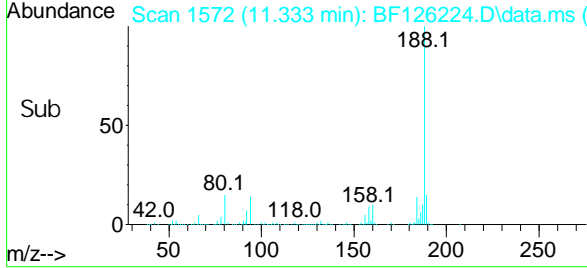
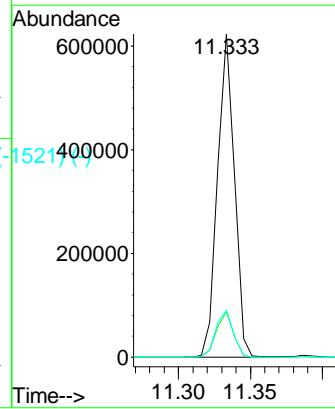
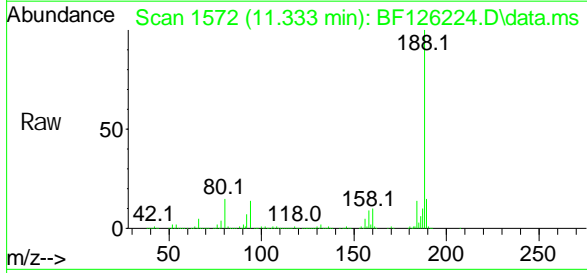
Ion	Ratio	Lower	Upper
165	100		
63	1.3	40.9	61.3#
89	1.4	59.7	89.5#
182	0.0	0.0	0.0

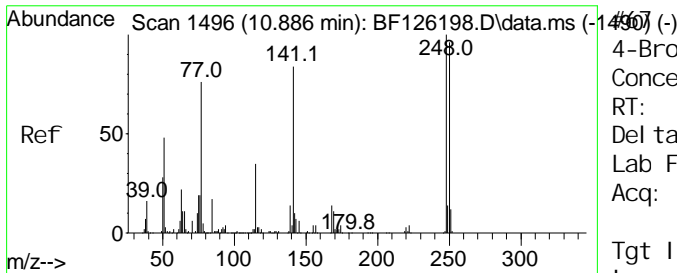


#67 (-)
 Phenanthrene-d10
 Concn: 20.000 ng
 RT: 11.333 min Scan# 1572
 Delta R.T. 0.000 min
 Lab File: BF126224.D
 Acq: 16 Dec 2021 21:55

Tgt Ion: 188 Resp: 506486

Ion	Ratio	Lower	Upper
188	100		
94	14.0	6.7	10.1#
80	14.6	7.5	11.3#

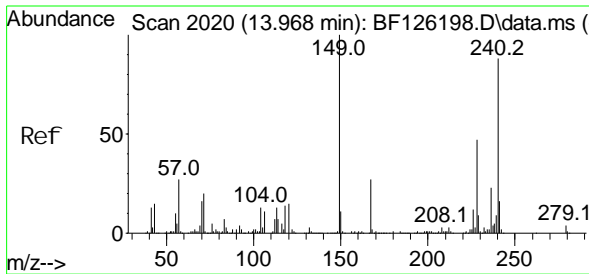
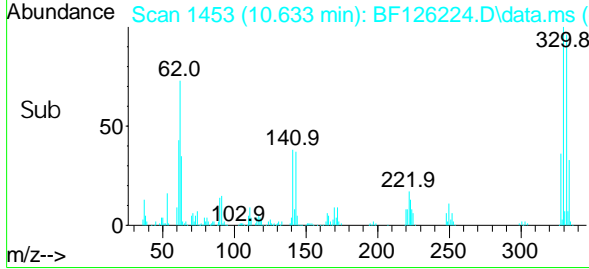
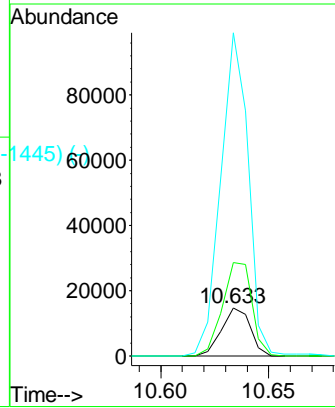
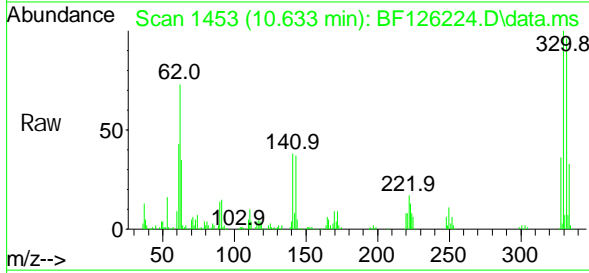




4-Bromophenyl -phenyl ether
 Concen: 2.893 ng
 RT: 10.633 min Scan#
 Delta R.T. -0.253 min
 Lab File: BF126224.D
 Acq: 16 Dec 2021 21:55

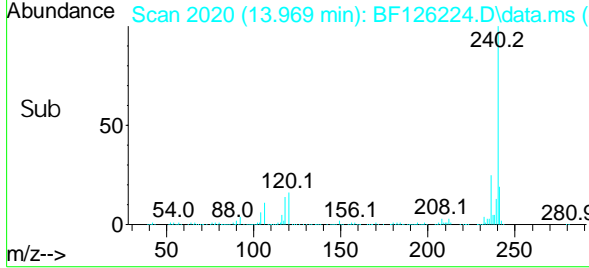
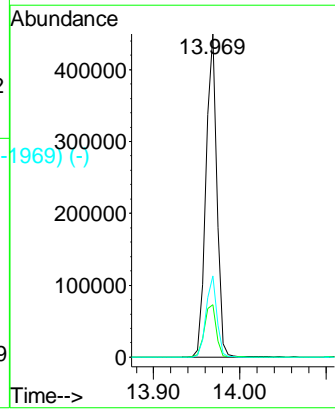
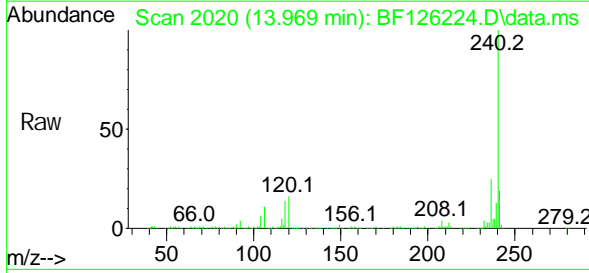
Instrument :
 BNA_F
 ClientSampleId :

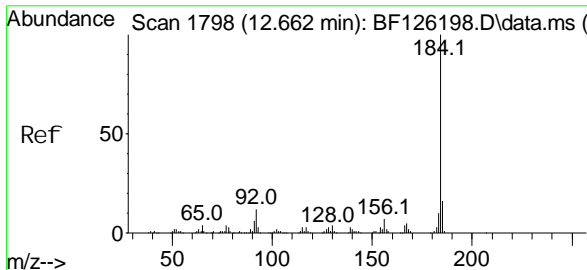
Tgt Ion: 248 Resp: 13754
 Ion Ratio Lower Upper
 248 100
 250 193.9 74.2 111.4#
 141 670.8 60.4 90.6#



Chrysene-d12
 Concen: 20.000 ng
 RT: 13.969 min Scan# 2020
 Delta R.T. 0.000 min
 Lab File: BF126224.D
 Acq: 16 Dec 2021 21:55

Tgt Ion: 240 Resp: 391620
 Ion Ratio Lower Upper
 240 100
 120 16.1 10.8 16.2
 236 25.1 21.6 32.4



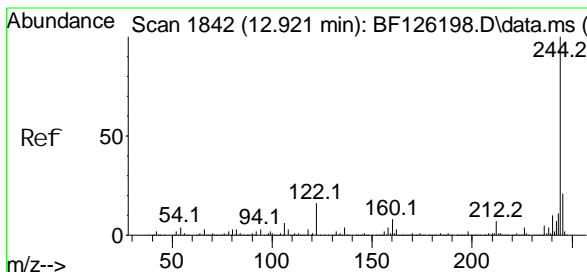
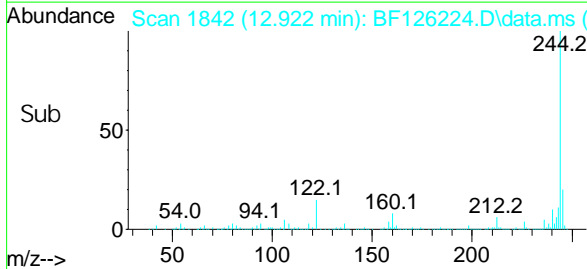
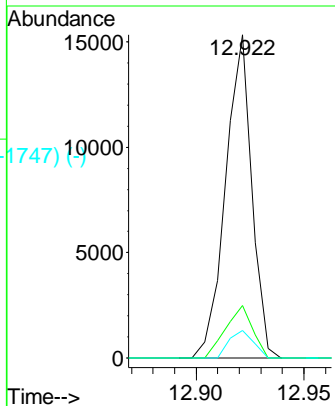
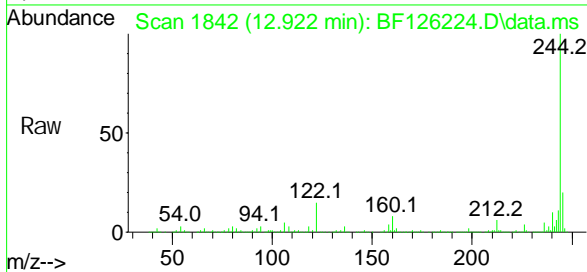


Benzi di ne
 Concen: 2.113 ng
 RT: 12.922 mi n Scan#
 Del ta R. T. 0.259 mi n
 Lab Fi le: BF126224. D
 Acq: 16 Dec 2021 21:55

Instrument :
 BNA_F
 ClientSampleId :

Tgt Ion: 184 Resp: 13043

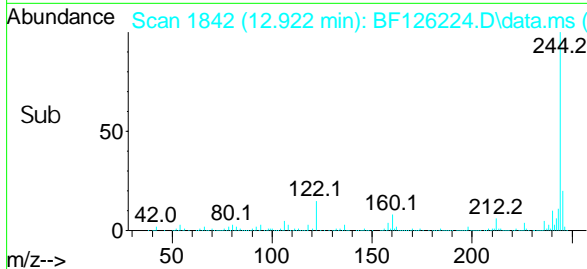
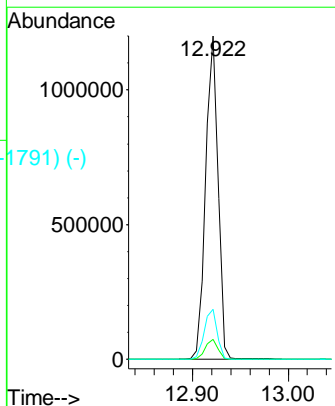
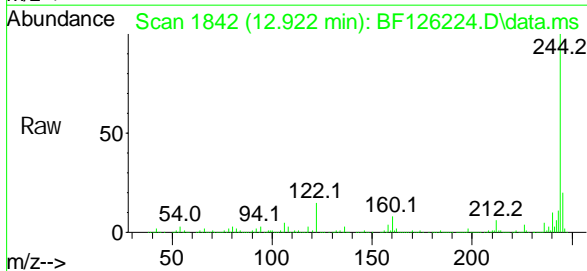
Ion	Ratio	Lower	Upper
184	100		
185	16.2	10.8	16.2
183	8.4	8.1	12.1

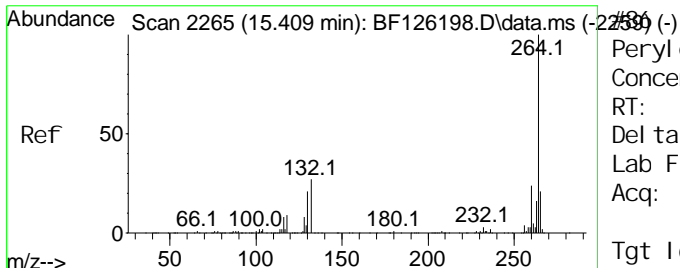


Terphenyl -d14
 Concen: 47.852 ng
 RT: 12.922 mi n Scan# 1842
 Del ta R. T. 0.000 mi n
 Lab Fi le: BF126224. D
 Acq: 16 Dec 2021 21:55

Tgt Ion: 244 Resp: 1078172

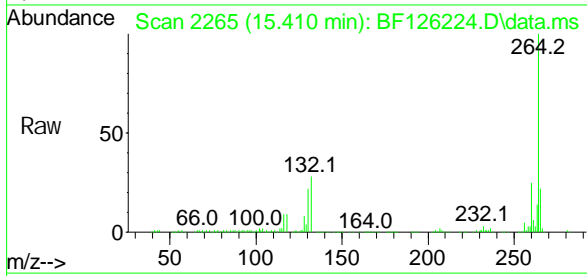
Ion	Ratio	Lower	Upper
244	100		
212	6.2	5.9	8.9
122	15.4	9.0	13.4#





Perylene-d12
 Concen: 20.000 ng
 RT: 15.410 min Scan# 1
 Delta R.T. 0.000 min
 Lab File: BF126224.D
 Acq: 16 Dec 2021 21:55

Instrument :
 BNA_F
 ClientSampleId :



Tgt Ion: 264 Resp: 314680

Ion	Ratio	Lower	Upper
264	100		
260	24.6	19.6	29.4
265	22.1	17.2	25.8

