

Data Path : Z:\svoasrv\HPCHEM1\BNA_F\Data\BF110920\
 Data File : BF122279.D
 Acq On : 9 Nov 2020 11:22
 Operator : JU/CG
 Sample : SSTDIC005
 Misc :
 ALS Vial : 2 Sample Multiplier: 1

Instrument :
 BNA_F
 ClientSampleId :
 SSTDIC005

Quant Time: Nov 09 13:42:24 2020
 Quant Method : Z:\SVOASRV\HPCHEM1\BNA_F\METHODS\8270-BF110920.M
 Quant Title : ASP BNA STANDARDS FOR 5 POINT CALIBRATION
 QLast Update : Mon Nov 09 13:34:45 2020
 Response via : Initial Calibration

Compound	R.T.	QIon	Response	Conc	Units	Dev(Min)	
Internal Standards							
1) 1,4-Dichlorobenzene-d4	6.863	152	281556	20.00	ng	0.00	
21) Naphthalene-d8	8.151	136	1081634	20.00	ng	0.00	
39) Acenaphthene-d10	9.904	164	596469	20.00	ng	0.00	
64) Phenanthrene-d10	11.392	188	1088616	20.00	ng	0.00	
76) Chrysene-d12	14.027	240	988308	20.00	ng	0.00	
86) Perylene-d12	15.498	264	991687	20.00	ng	0.00	
System Monitoring Compounds							
5) 2-Fluorophenol	5.463	112	189562	9.94	ng	-0.01	
7) Phenol-d6	6.469	99	248792	10.13	ng	-0.02	
23) Nitrobenzene-d5	7.422	82	127577	6.05	ng	-0.01	
42) 2,4,6-Tribromophenol	10.686	330	53044	7.19	ng	-0.01	
45) 2-Fluorobiphenyl	9.222	172	435304	10.74	ng	-0.01	
79) Terphenyl-d14	12.974	244	531003	10.24	ng	0.00	
Target Compounds							Qvalue
2) 1,4-Dioxane	2.657	88	42911	5.11	ng		89
3) Pyridine	3.398	79	111903	5.07	ng		94
4) n-Nitrosodimethylamine	3.322	42	53058	4.98	ng	#	89
6) Aniline	6.522	93	157450	5.21	ng		96
8) 2-Chlorophenol	6.639	128	97135	5.04	ng		96
9) Benzaldehyde	6.410	77	86907	6.14	ng		99
10) Phenol	6.486	94	120188	4.74	ng		78
11) bis(2-Chloroethyl)ether	6.592	93	98312	5.02	ng		94
12) 1,3-Dichlorobenzene	6.804	146	115076	5.31	ng		99
13) 1,4-Dichlorobenzene	6.880	146	115745	5.32	ng		99
14) 1,2-Dichlorobenzene	7.033	146	109585	5.51	ng		98
15) Benzyl Alcohol	6.992	79	84952	5.35	ng		96
16) 2,2'-oxybis(1-Chloropr...	7.139	45	144874	4.81	ng		100
17) 2-Methylphenol	7.104	107	79529	4.82	ng		98
18) Hexachloroethane	7.380	117	37738	4.80	ng		95
19) n-Nitroso-di-n-propyla...	7.269	70	74459	5.33	ng		96
20) 3+4-Methylphenols	7.257	107	100676	5.06	ng	#	72
22) Acetophenone	7.269	105	150780	5.42	ng	#	85
24) Nitrobenzene	7.439	77	80501	3.57	ng		97
25) Isophorone	7.680	82	199866	5.01	ng		100
27) 2,4-Dimethylphenol	7.792	122	90130	5.09	ng		98
28) bis(2-Chloroethoxy)met...	7.892	93	125072	5.01	ng		99
29) 2,4-Dichlorophenol	7.998	162	74154	4.47	ng		96
30) 1,2,4-Trichlorobenzene	8.092	180	93615	5.31	ng		97
31) Naphthalene	8.169	128	309318	5.34	ng		99
33) 4-Chloroaniline	8.216	127	129308	5.24	ng		95
34) Hexachlorobutadiene	8.292	225	53441	5.11	ng		99
35) Caprolactam	8.533	113	22652	4.30	ng		96
36) 4-Chloro-3-methylphenol	8.686	107	80711	4.53	ng		89
37) 2-Methylnaphthalene	8.863	142	203539	5.42	ng		98
38) 1-Methylnaphthalene	8.963	142	190283	5.48	ng		98
40) 1,2,4,5-Tetrachloroben...	9.027	216	93827	4.87	ng		99
41) Hexachlorocyclopentadiene	9.022	237	43195	11.37	ng		97
43) 2,4,6-Trichlorophenol	9.133	196	50349	4.24	ng		98
44) 2,4,5-Trichlorophenol	9.169	196	53233	4.15	ng		98
46) 1,1'-Biphenyl	9.327	154	253197	5.22	ng		96

Data Path : Z:\svoasrv\HPCHEM1\BNA_F\Data\BF110920\
 Data File : BF122279.D
 Acq On : 9 Nov 2020 11:22
 Operator : JU/CG
 Sample : SSTDICC005
 Misc :
 ALS Vial : 2 Sample Multiplier: 1

Instrument :
 BNA_F
 ClientSampleId :
 SSTDICC005

Quant Time: Nov 09 13:42:24 2020
 Quant Method : Z:\SVOASRV\HPCHEM1\BNA_F\METHODS\8270-BF110920.M
 Quant Title : ASP BNA STANDARDS FOR 5 POINT CALIBRATION
 QLast Update : Mon Nov 09 13:34:45 2020
 Response via : Initial Calibration

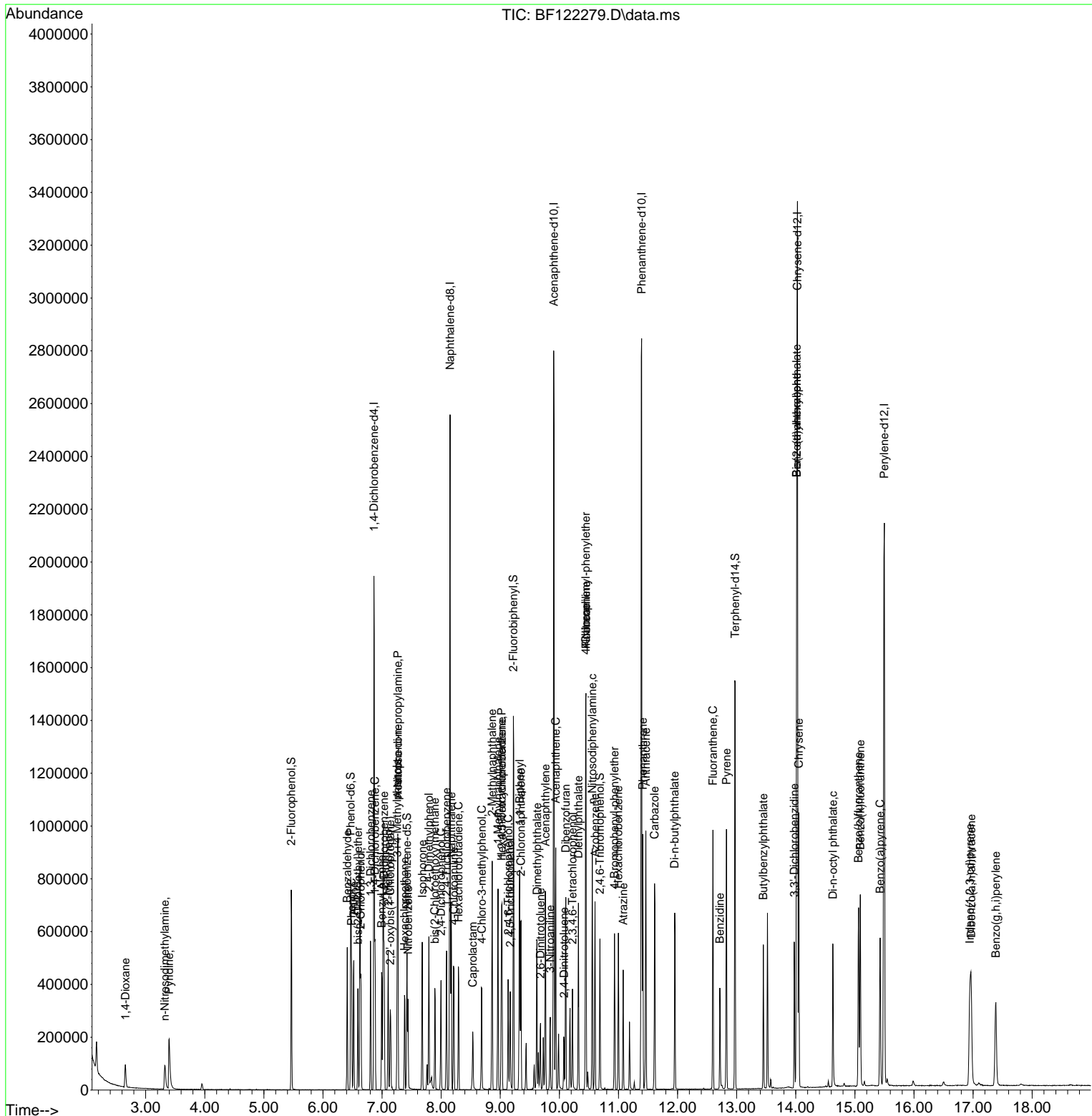
Compound	R.T.	QIon	Response	Conc	Units	Dev(Min)
47) 2-Chloronaphthalene	9.351	162	195001	5.17	ng	94
49) Acenaphthylene	9.763	152	298228	5.15	ng	99
50) Dimethylphthalate	9.621	163	221914	5.09	ng	98
51) 2,6-Dinitrotoluene	9.680	165	24417	2.55	ng	96
52) Acenaphthene	9.939	154	183126	5.31	ng	99
53) 3-Nitroaniline	9.845	138	30396	2.79	ng	# 96
55) Dibenzofuran	10.110	168	276949	5.50	ng	98
57) 2,4-Dinitrotoluene	10.080	165	24933	2.12	ng	# 93
58) Fluorene	10.451	166	222889	5.49	ng	100
59) 2,3,4,6-Tetrachlorophenol	10.221	232	43373	4.37	ng	98
60) Diethylphthalate	10.321	149	215862	5.13	ng	98
61) 4-Chlorophenyl-phenyle...	10.445	204	104588	5.37	ng	98
62) 4-Nitroaniline	10.451	138	31413	2.89	ng	88
63) Azobenzene	10.604	77	231412	5.20	ng	98
66) n-Nitrosodiphenylamine	10.557	169	189779	5.06	ng	95
67) 4-Bromophenyl-phenylether	10.933	248	63724	5.07	ng	93
68) Hexachlorobenzene	10.998	284	70666	4.96	ng	98
69) Atrazine	11.080	200	43258	4.72	ng	98
71) Phenanthrene	11.410	178	335454	5.62	ng	99
72) Anthracene	11.463	178	342989	5.54	ng	98
73) Carbazole	11.610	167	304180	5.53	ng	97
74) Di-n-butylphthalate	11.951	149	326816	5.16	ng	98
75) Fluoranthene	12.598	202	340720	5.32	ng	97
77) Benzidine	12.715	184	141469	4.64	ng	99
78) Pyrene	12.827	202	358154	4.76	ng	99
80) Butylbenzylphthalate	13.451	149	92227	3.09	ng	98
81) Benzo(a)anthracene	14.015	228	329377	5.09	ng	100
82) 3,3'-Dichlorobenzidine	13.974	252	105231	4.38	ng	99
83) Chrysene	14.051	228	322936	5.08	ng	100
84) Bis(2-ethylhexyl)phtha...	14.015	149	168742	4.16	ng	99
85) Di-n-octyl phthalate	14.627	149	240065	3.66	ng	99
87) Indeno(1,2,3-cd)pyrene	16.945	276	306576	4.76	ng	99
88) Benzo(b)fluoranthene	15.062	252	300681	4.49	ng	98
89) Benzo(k)fluoranthene	15.092	252	317778	4.99	ng	99
90) Benzo(a)pyrene	15.427	252	269265	4.65	ng	99
91) Dibenzo(a,h)anthracene	16.968	278	261772	4.94	ng	99
92) Benzo(g,h,i)perylene	17.386	276	255913	4.82	ng	97

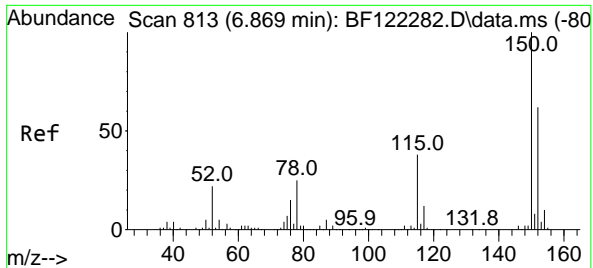
(#) = qualifier out of range (m) = manual integration (+) = signals summed

Data Path : Z:\svoasrv\HPCHEM1\BNA_F\Data\BF110920\
 Data File : BF122279.D
 Acq On : 9 Nov 2020 11:22
 Operator : JU/CG
 Sample : SSTDIC005
 Misc :
 ALS Vial : 2 Sample Multiplier: 1

Instrument :
 BNA_F
 Client Sampled :
 SSTDIC005

Quant Time: Nov 09 13:42:24 2020
 Quant Method : Z:\SVOASRV\HPCHEM1\BNA_F\METHODS\8270-BF110920.M
 Quant Title : ASP BNA STANDARDS FOR 5 POINT CALIBRATION
 QLast Update : Mon Nov 09 13:34:45 2020
 Response via : Initial Calibration

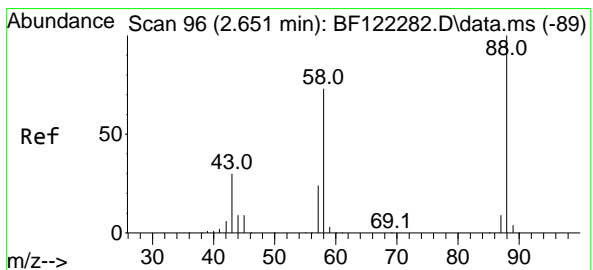
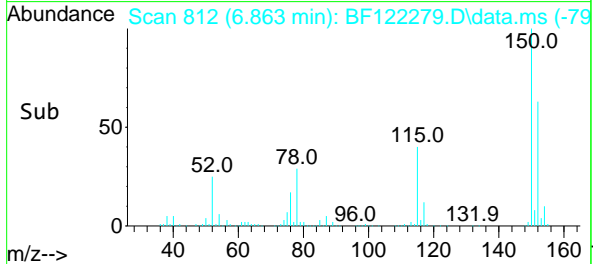
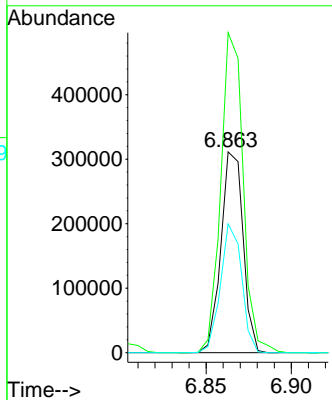
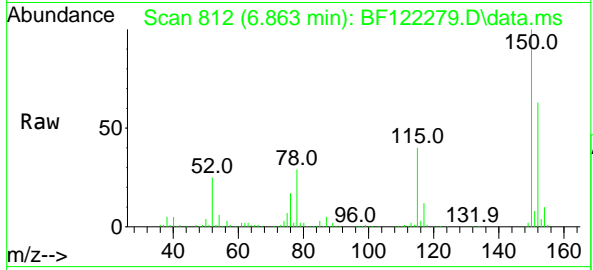




#1
 1,4-Dichlorobenzene-d4
 Concen: 20.00 ng
 RT: 6.863 min Scan# 812
 Delta R.T. -0.006 min
 Lab File: BF122279.D
 Acq: 9 Nov 2020 11:22

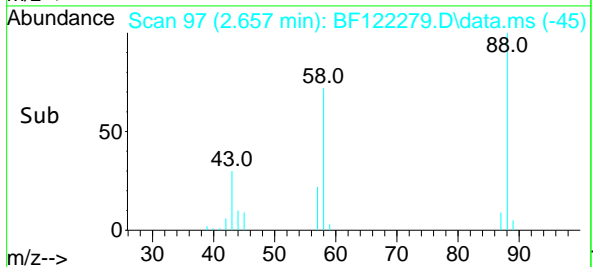
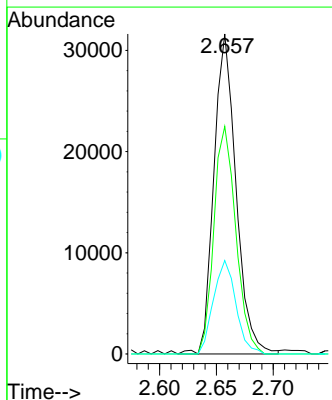
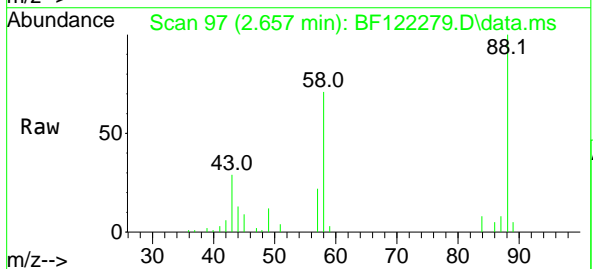
Instrument :
 BNA_F
 ClientSampled :
 SSTDICC005

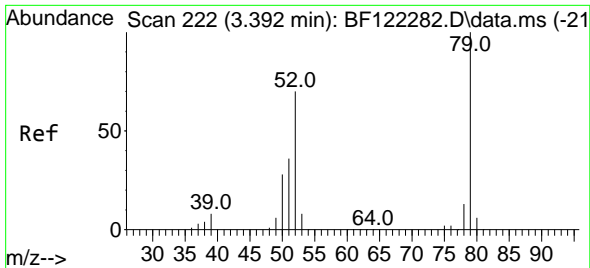
Tgt Ion:152 Resp: 281556
 Ion Ratio Lower Upper
 152 100
 150 159.4 125.3 187.9
 115 64.1 51.9 77.9



#2
 1,4-Dioxane
 Concen: 5.11 ng
 RT: 2.657 min Scan# 97
 Delta R.T. 0.006 min
 Lab File: BF122279.D
 Acq: 9 Nov 2020 11:22

Tgt Ion: 88 Resp: 42911
 Ion Ratio Lower Upper
 88 100
 58 70.4 65.8 98.8
 43 29.6 25.8 38.8

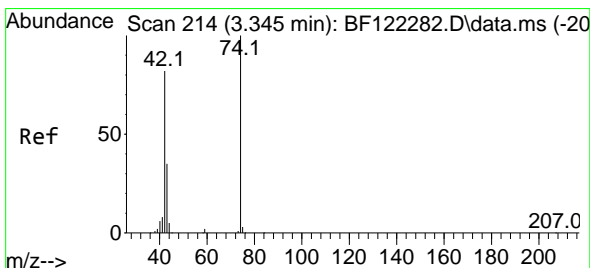
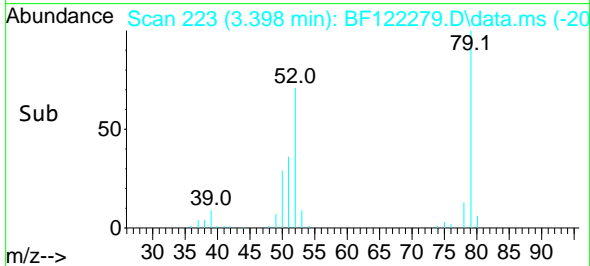
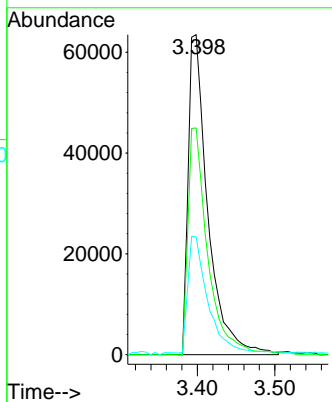
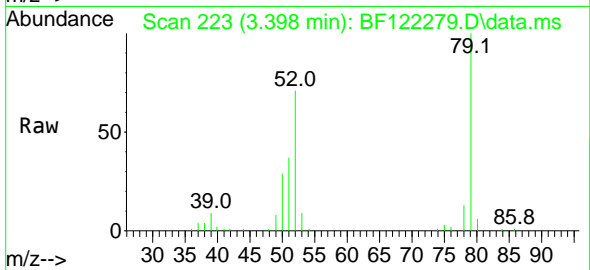




#3
 Pyridine
 Concen: 5.07 ng
 RT: 3.398 min Scan# 223
 Delta R.T. 0.006 min
 Lab File: BF122279.D
 Acq: 9 Nov 2020 11:22

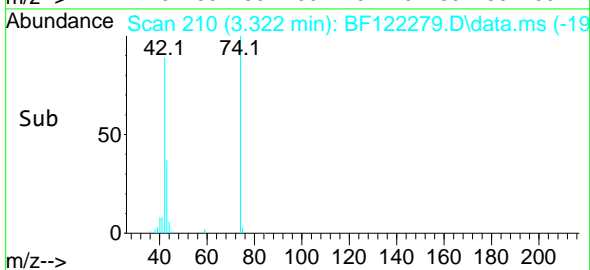
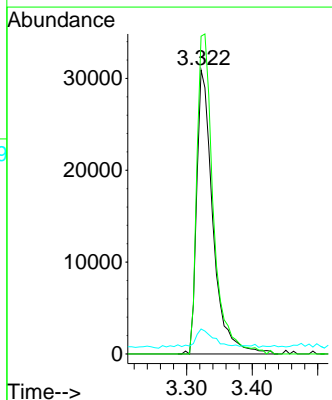
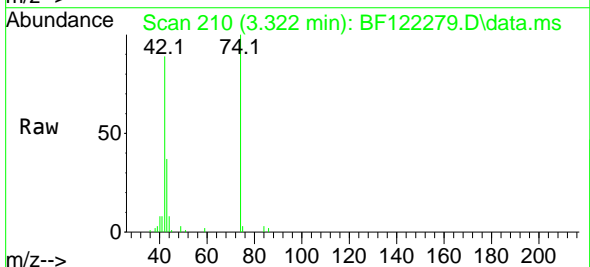
Instrument :
 BNA_F
 ClientSampled :
 SSTDICC005

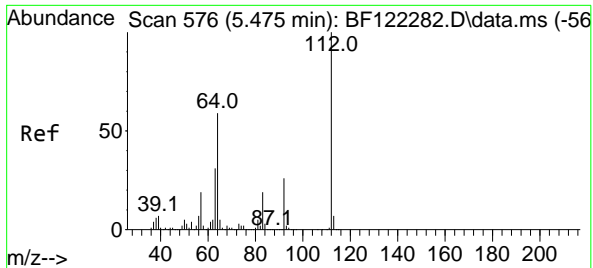
Tgt Ion: 79 Resp: 111903
 Ion Ratio Lower Upper
 79 100
 52 70.9 62.2 93.4
 51 36.8 31.1 46.7



#4
 n-Nitrosodimethylamine
 Concen: 4.98 ng
 RT: 3.322 min Scan# 210
 Delta R.T. -0.023 min
 Lab File: BF122279.D
 Acq: 9 Nov 2020 11:22

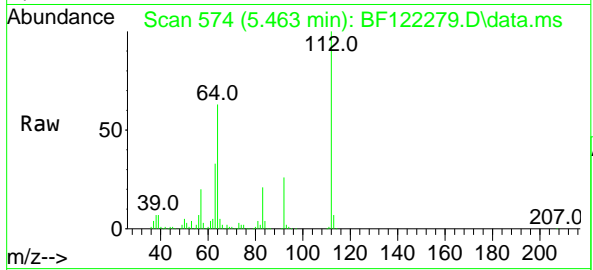
Tgt Ion: 42 Resp: 53058
 Ion Ratio Lower Upper
 42 100
 74 111.9 100.2 150.2
 44 8.8 5.8 8.6#





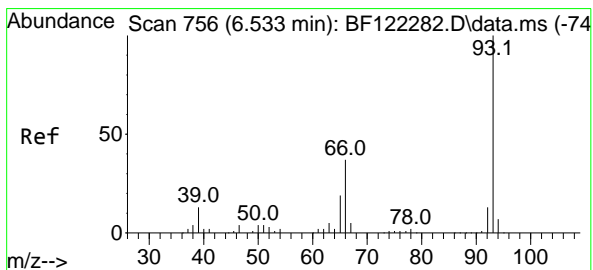
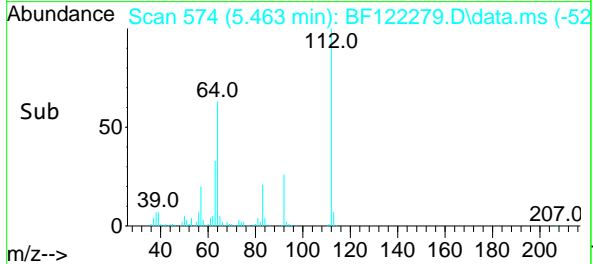
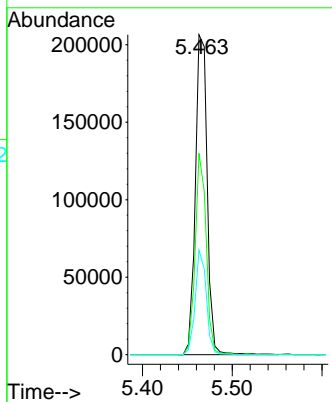
#5
 2-Fluorophenol
 Concen: 9.94 ng
 RT: 5.463 min Scan# 574
 Delta R.T. -0.012 min
 Lab File: BF122279.D
 Acq: 9 Nov 2020 11:22

Instrument :
 BNA_F
 ClientSampled :
 SSTDICC005



Tgt Ion: 112 Resp: 189562

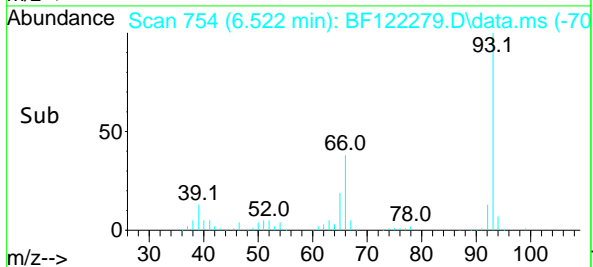
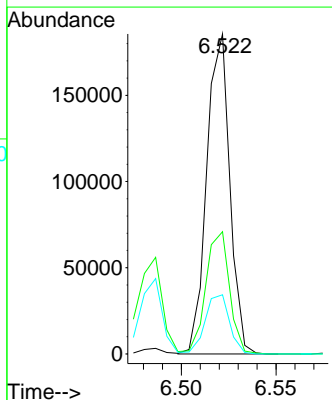
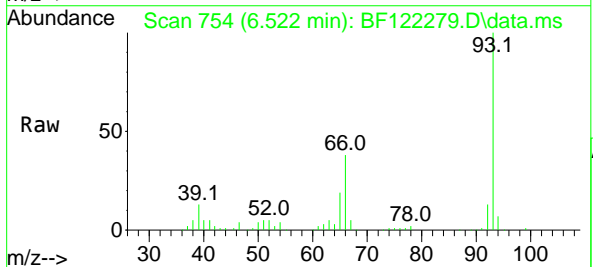
Ion	Ratio	Lower	Upper
112	100		
64	62.9	50.4	75.6
63	32.6	25.8	38.6

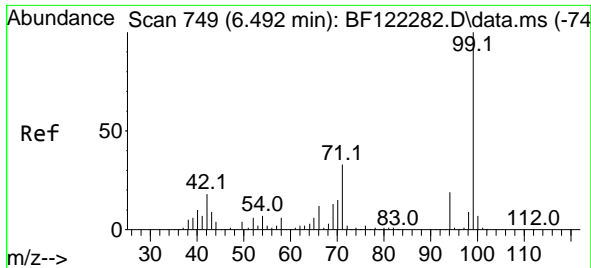


#6
 Aniline
 Concen: 5.21 ng
 RT: 6.522 min Scan# 754
 Delta R.T. -0.012 min
 Lab File: BF122279.D
 Acq: 9 Nov 2020 11:22

Tgt Ion: 93 Resp: 157450

Ion	Ratio	Lower	Upper
93	100		
66	38.2	32.7	49.1
65	18.5	16.6	24.8

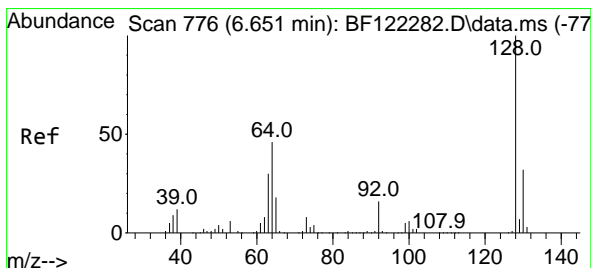
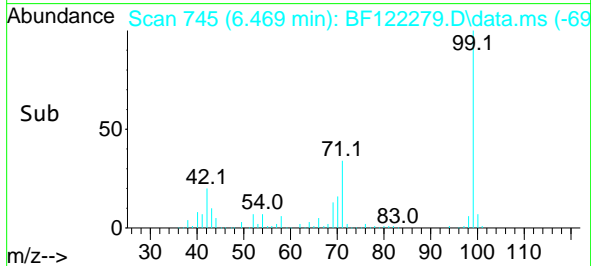
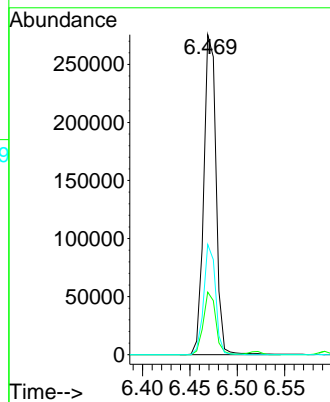
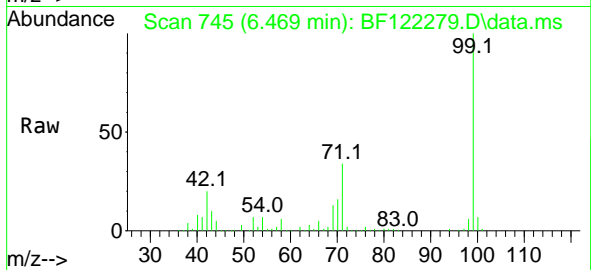




#7
 Phenol-d6
 Concen: 10.13 ng
 RT: 6.469 min Scan# 745
 Delta R.T. -0.023 min
 Lab File: BF122279.D
 Acq: 9 Nov 2020 11:22

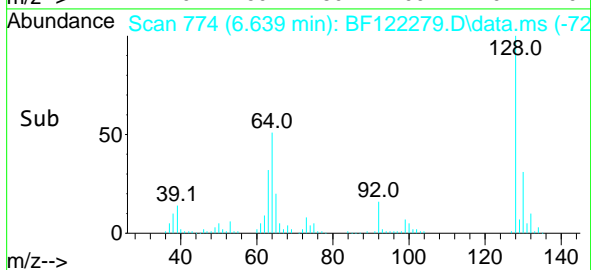
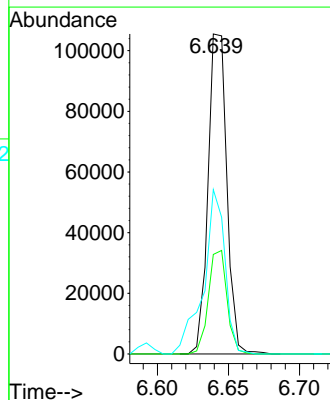
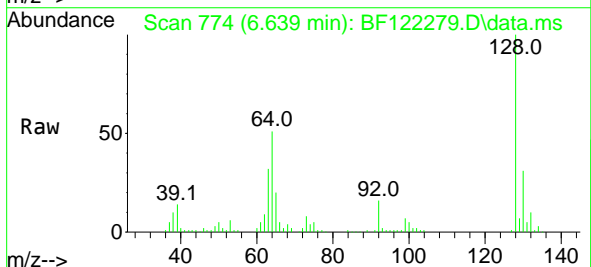
Instrument :
 BNA_F
 ClientSampleId :
 SSTDICC005

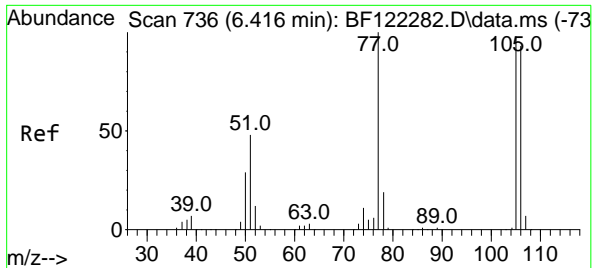
Tgt Ion: 99 Resp: 248792
 Ion Ratio Lower Upper
 99 100
 42 19.5 15.9 23.9
 71 34.5 27.1 40.7



#8
 2-Chlorophenol
 Concen: 5.04 ng
 RT: 6.639 min Scan# 774
 Delta R.T. -0.012 min
 Lab File: BF122279.D
 Acq: 9 Nov 2020 11:22

Tgt Ion:128 Resp: 97135
 Ion Ratio Lower Upper
 128 100
 130 31.1 12.4 52.4
 64 51.3 34.8 74.8

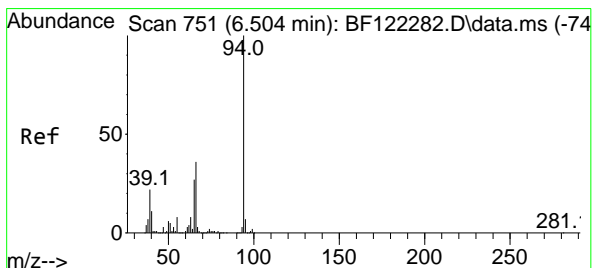
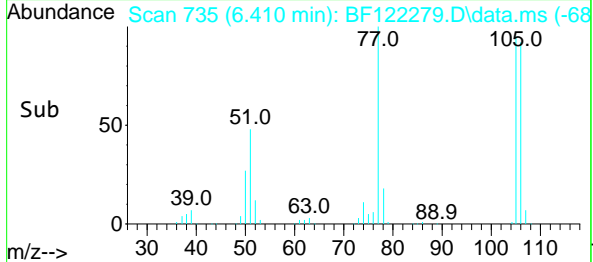
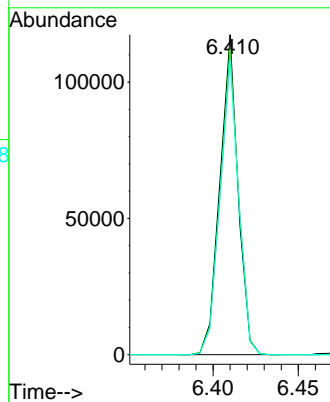
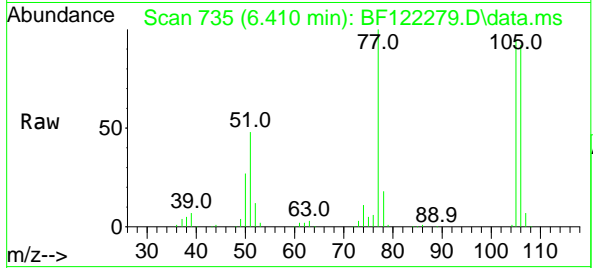




#9
Benzaldehyde
Concen: 6.14 ng
RT: 6.410 min Scan# 735
Delta R.T. -0.006 min
Lab File: BF122279.D
Acq: 9 Nov 2020 11:22

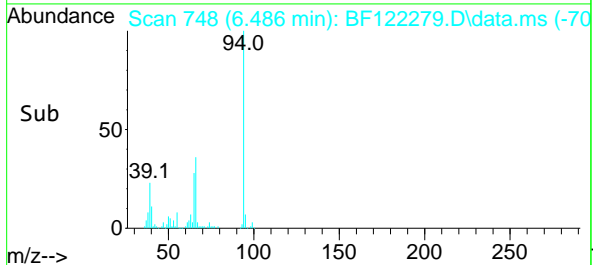
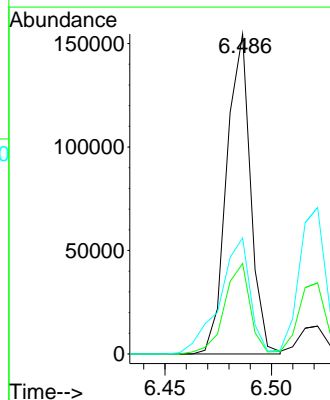
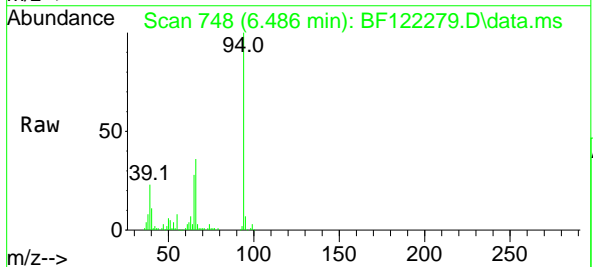
Instrument :
BNA_F
ClientSampleId :
SSTDIC005

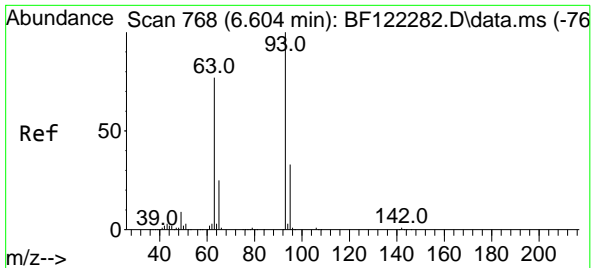
Tgt Ion: 77 Resp: 86907
Ion Ratio Lower Upper
77 100
105 95.4 76.7 116.7
106 92.3 71.3 111.3



#10
Phenol
Concen: 4.74 ng
RT: 6.486 min Scan# 748
Delta R.T. -0.018 min
Lab File: BF122279.D
Acq: 9 Nov 2020 11:22

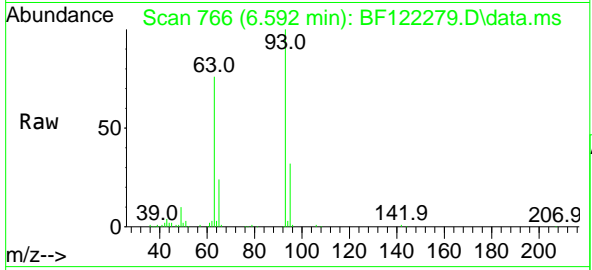
Tgt Ion: 94 Resp: 120188
Ion Ratio Lower Upper
94 100
65 28.3 17.1 57.1
66 36.3 36.0 76.0





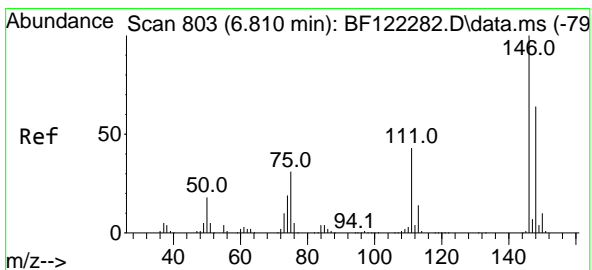
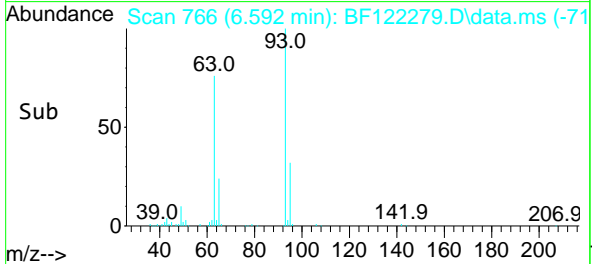
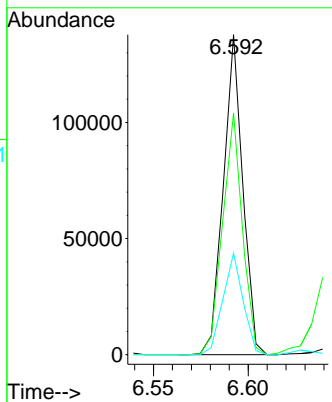
#11
 bis(2-Chloroethyl)ether
 Concen: 5.02 ng
 RT: 6.592 min Scan# 766
 Delta R.T. -0.012 min
 Lab File: BF122279.D
 Acq: 9 Nov 2020 11:22

Instrument :
 BNA_F
ClientSampled :
 SSTDICC005



Tgt Ion: 93 Resp: 98312

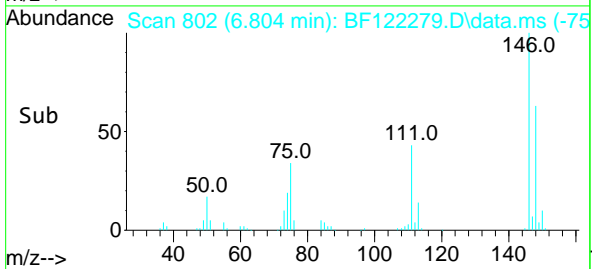
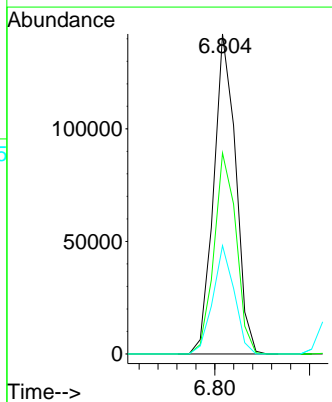
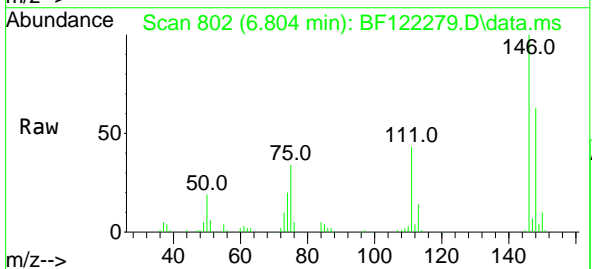
Ion	Ratio	Lower	Upper
93	100		
63	75.5	62.4	102.4
95	31.8	12.6	52.6

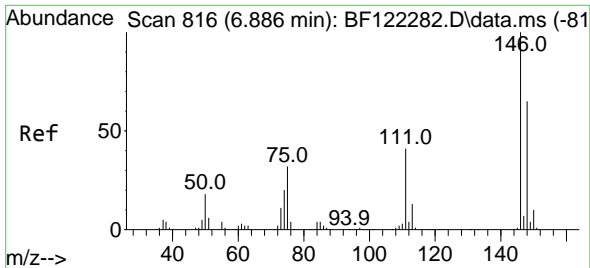


#12
 1,3-Dichlorobenzene
 Concen: 5.31 ng
 RT: 6.804 min Scan# 802
 Delta R.T. -0.006 min
 Lab File: BF122279.D
 Acq: 9 Nov 2020 11:22

Tgt Ion: 146 Resp: 115076

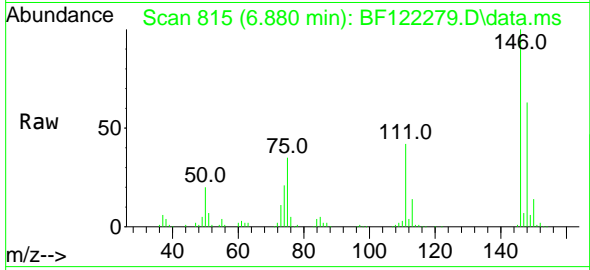
Ion	Ratio	Lower	Upper
146	100		
148	62.8	51.0	76.4
75	33.8	27.6	41.4



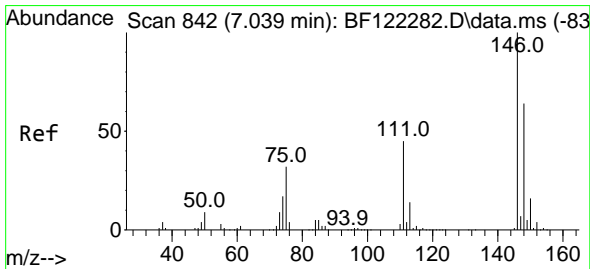
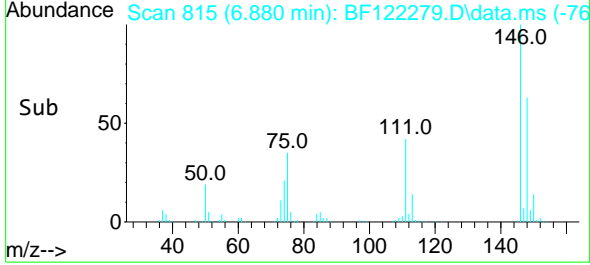
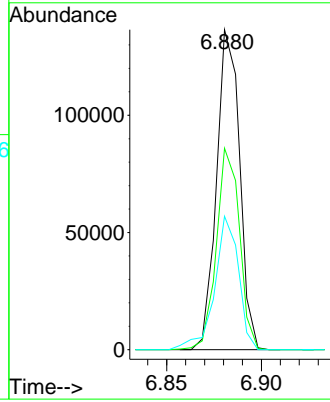


#13
 1,4-Dichlorobenzene
 Concen: 5.32 ng
 RT: 6.880 min Scan# 815
 Delta R.T. -0.006 min
 Lab File: BF122279.D
 Acq: 9 Nov 2020 11:22

Instrument :
 BNA_F
 ClientSampled :
 SSTDICC005

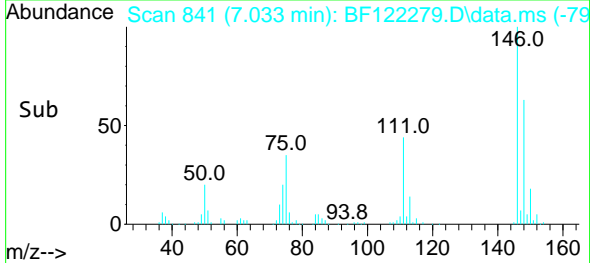
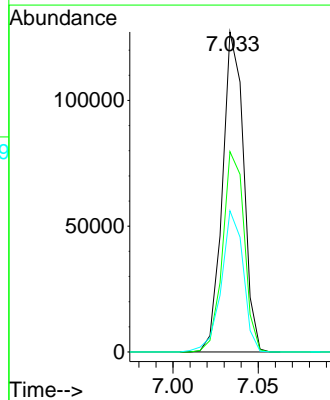
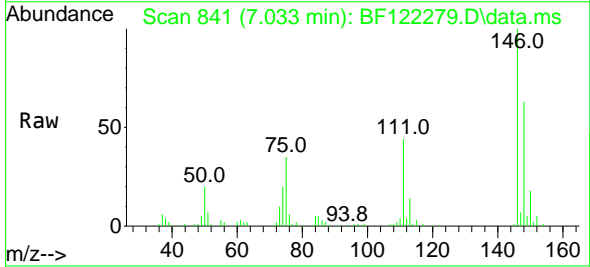


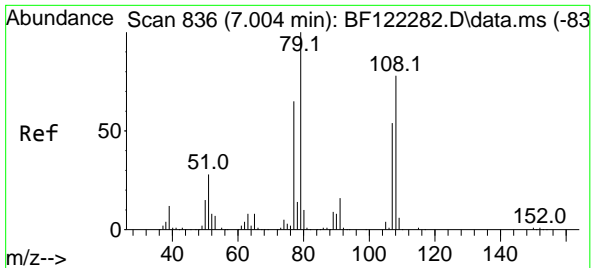
Tgt Ion:146 Resp: 115745
 Ion Ratio Lower Upper
 146 100
 148 62.9 50.1 75.1
 111 41.7 34.6 52.0



#14
 1,2-Dichlorobenzene
 Concen: 5.51 ng
 RT: 7.033 min Scan# 841
 Delta R.T. -0.006 min
 Lab File: BF122279.D
 Acq: 9 Nov 2020 11:22

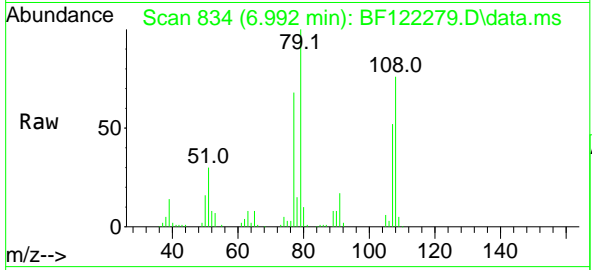
Tgt Ion:146 Resp: 109585
 Ion Ratio Lower Upper
 146 100
 148 62.6 51.1 76.7
 111 44.1 34.2 51.4





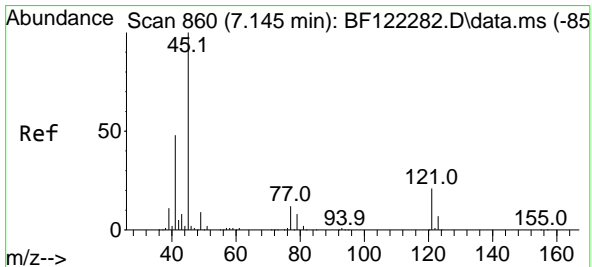
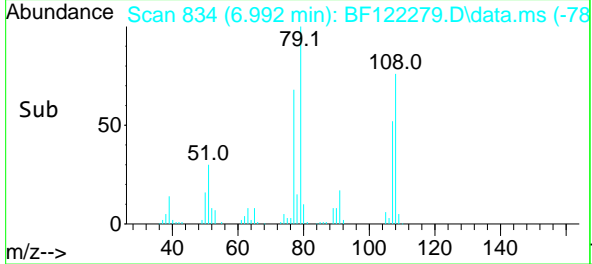
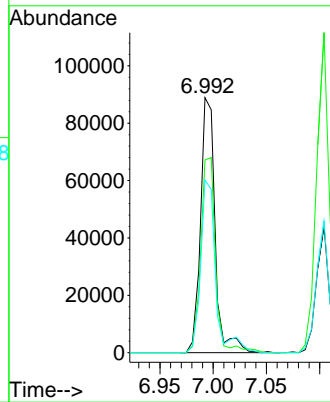
#15
 Benzyl Alcohol
 Concen: 5.35 ng
 RT: 6.992 min Scan# 834
 Delta R.T. -0.012 min
 Lab File: BF122279.D
 Acq: 9 Nov 2020 11:22

Instrument :
 BNA_F
 ClientSampled :
 SSTDICC005

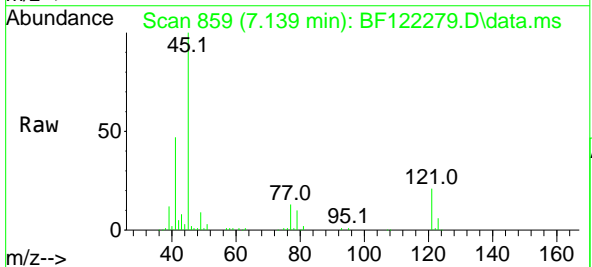


Tgt Ion: 79 Resp: 84952

Ion	Ratio	Lower	Upper
79	100		
108	75.6	62.3	93.5
77	67.7	50.6	75.8

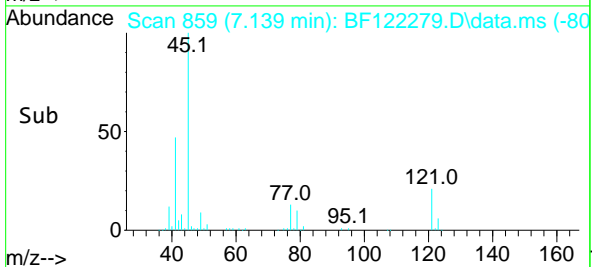
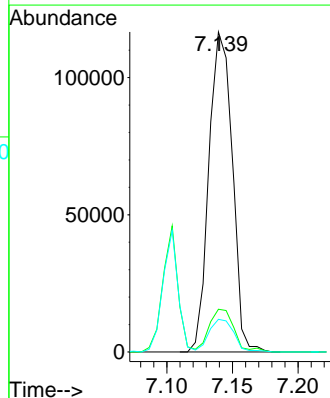


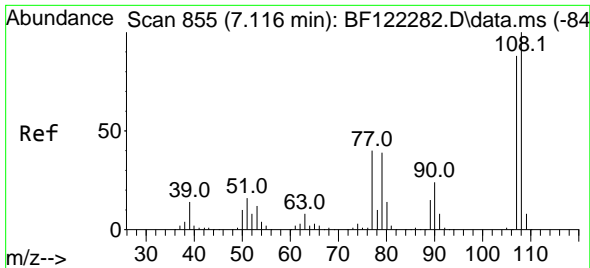
#16
 2,2'-oxybis(1-Chloropropane)
 Concen: 4.81 ng
 RT: 7.139 min Scan# 859
 Delta R.T. -0.006 min
 Lab File: BF122279.D
 Acq: 9 Nov 2020 11:22



Tgt Ion: 45 Resp: 144874

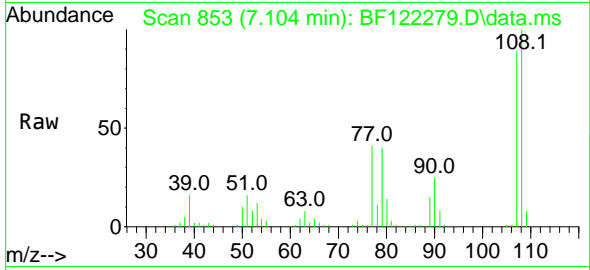
Ion	Ratio	Lower	Upper
45	100		
77	13.3	0.0	33.3
79	10.2	0.0	30.4





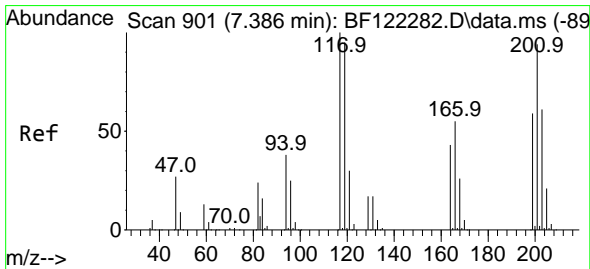
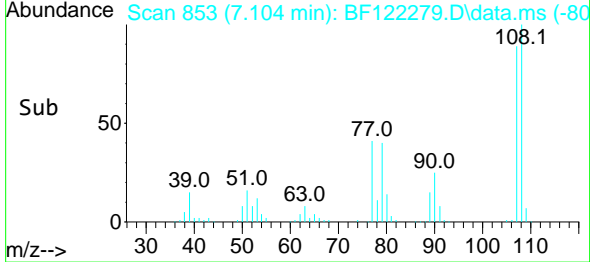
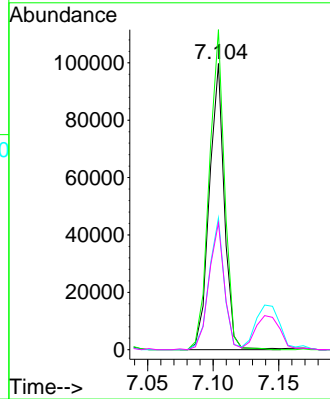
#17
 2-Methylphenol
 Concen: 4.82 ng
 RT: 7.104 min Scan# 853
 Delta R.T. -0.012 min
 Lab File: BF122279.D
 Acq: 9 Nov 2020 11:22

Instrument :
 BNA_F
 ClientSampled :
 SSTDICC005

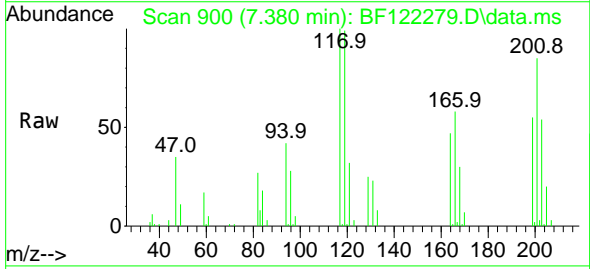


Tgt Ion:107 Resp: 79529

Ion	Ratio	Lower	Upper
107	100		
108	111.8	90.9	136.3
77	46.0	37.5	56.3
79	44.4	37.4	56.0

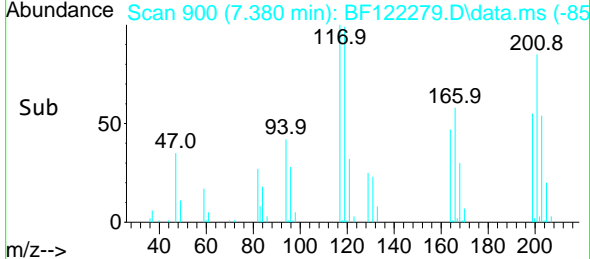
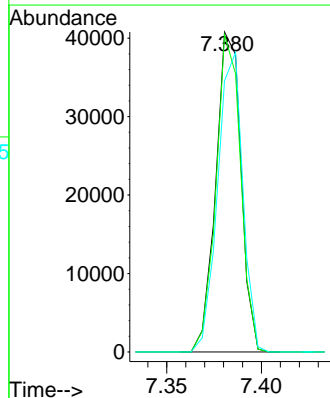


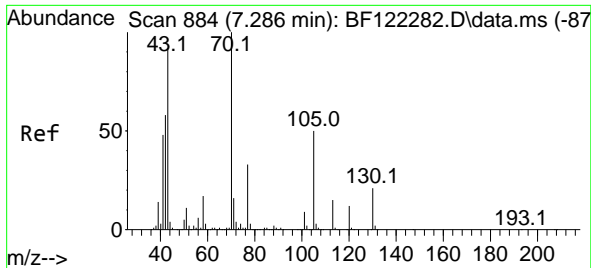
#18
 Hexachloroethane
 Concen: 4.80 ng
 RT: 7.380 min Scan# 900
 Delta R.T. -0.006 min
 Lab File: BF122279.D
 Acq: 9 Nov 2020 11:22



Tgt Ion:117 Resp: 37738

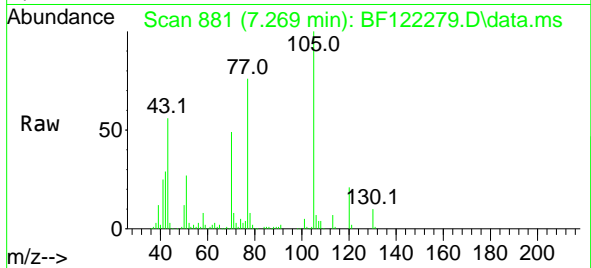
Ion	Ratio	Lower	Upper
117	100		
119	99.1	76.3	114.5
201	84.7	71.8	107.6



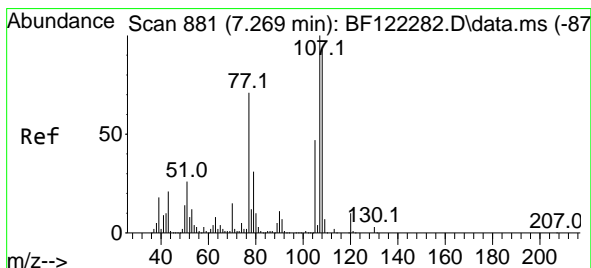
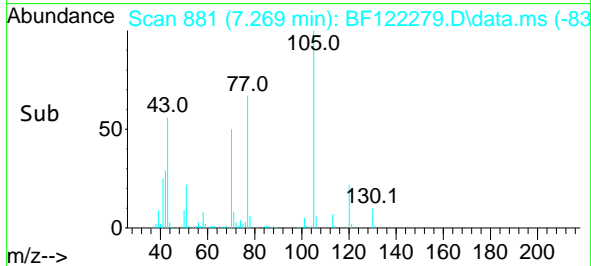
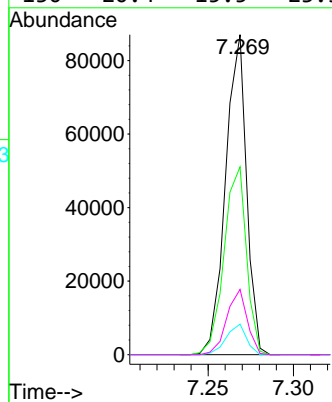


#19
 n-Nitroso-di-n-propylamine
 Concen: 5.33 ng
 RT: 7.269 min Scan# 881
 Delta R.T. -0.018 min
 Lab File: BF122279.D
 Acq: 9 Nov 2020 11:22

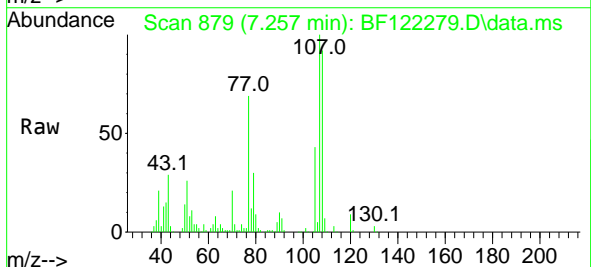
Instrument :
 BNA_F
 ClientSampleId :
 SSTDICC005



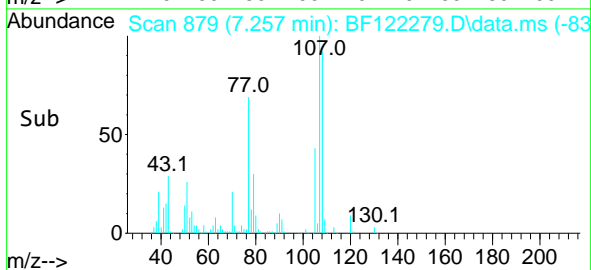
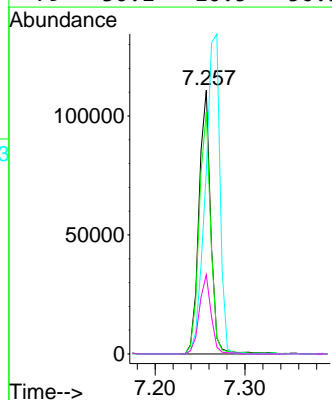
Tgt Ion: 70 Resp: 74459
 Ion Ratio Lower Upper
 70 100
 42 58.7 50.2 75.4
 101 9.6 7.5 11.3
 130 20.4 15.5 23.3

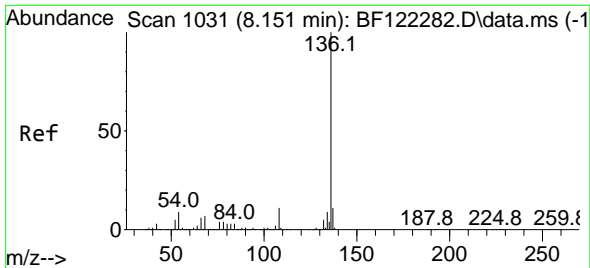


#20
 3+4-Methylphenols
 Concen: 5.06 ng
 RT: 7.257 min Scan# 879
 Delta R.T. -0.012 min
 Lab File: BF122279.D
 Acq: 9 Nov 2020 11:22



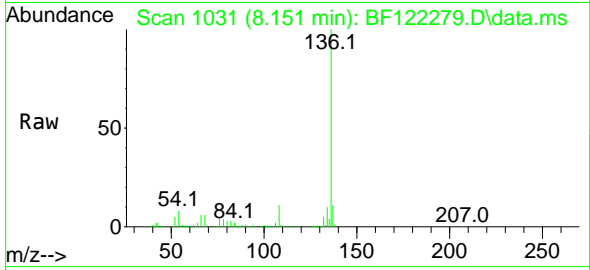
Tgt Ion: 107 Resp: 100676
 Ion Ratio Lower Upper
 107 100
 108 91.7 68.9 108.9
 77 69.0 108.0 148.0#
 79 30.1 10.5 50.5





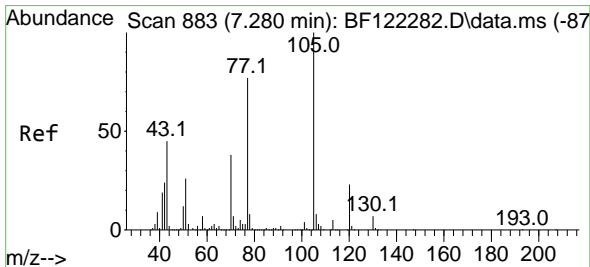
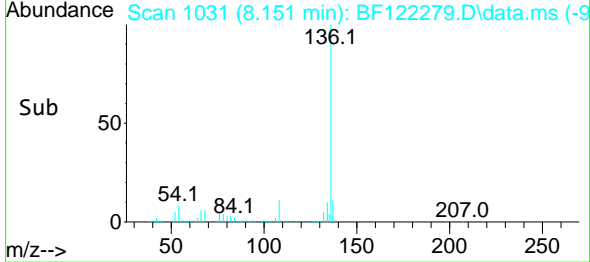
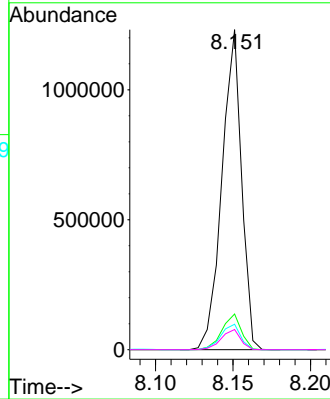
#21
 Naphthalene-d8
 Concen: 20.00 ng
 RT: 8.151 min Scan# 1031
 Delta R.T. 0.000 min
 Lab File: BF122279.D
 Acq: 9 Nov 2020 11:22

Instrument :
 BNA_F
 ClientSampleId :
 SSTDICC005

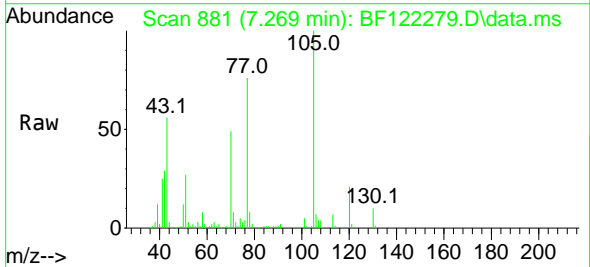


Tgt Ion:136 Resp: 1081634

Ion	Ratio	Lower	Upper
136	100		
137	11.2	8.6	13.0
54	8.0	7.1	10.7
68	6.3	5.0	7.4

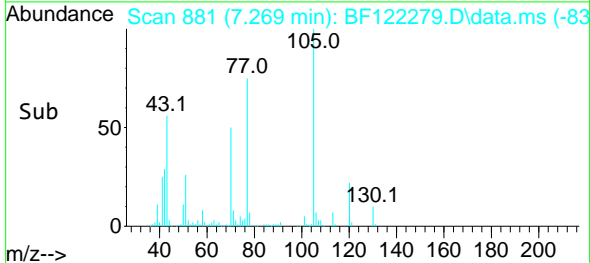
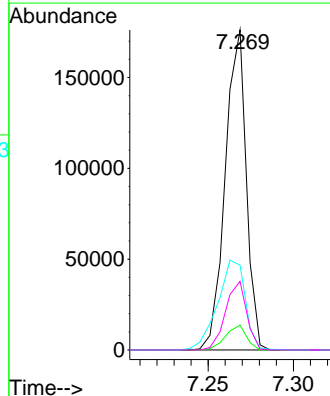


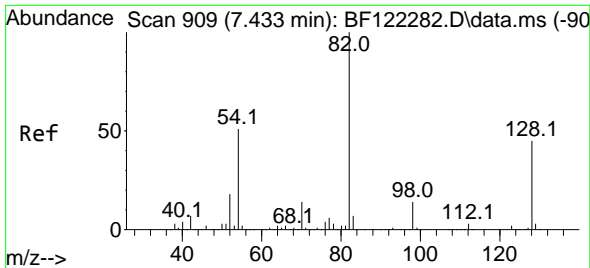
#22
 Acetophenone
 Concen: 5.42 ng
 RT: 7.269 min Scan# 881
 Delta R.T. -0.012 min
 Lab File: BF122279.D
 Acq: 9 Nov 2020 11:22



Tgt Ion:105 Resp: 150780

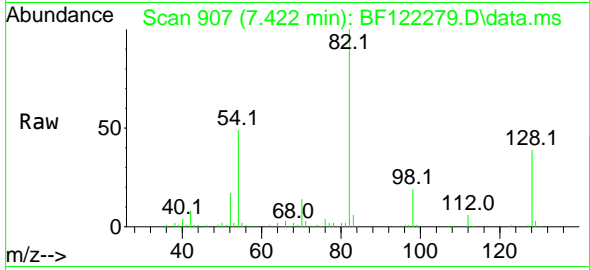
Ion	Ratio	Lower	Upper
105	100		
71	7.8	5.3	7.9
51	26.5	33.2	49.8
120	21.5	17.4	26.0





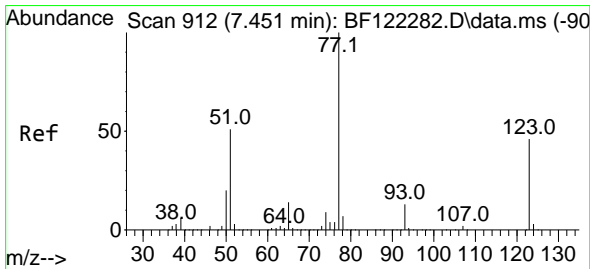
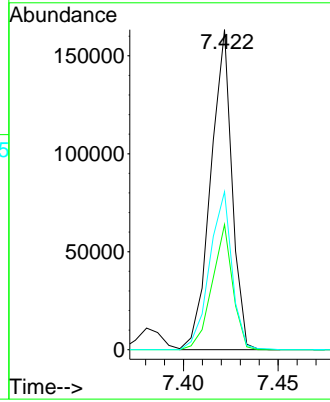
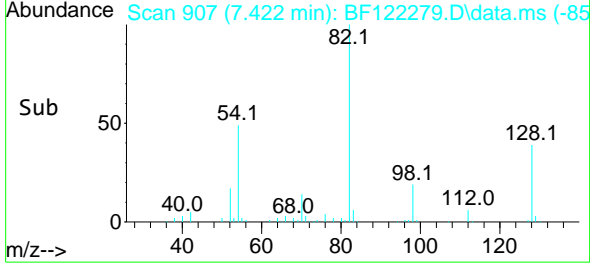
#23
 Nitrobenzene-d5
 Concen: 6.05 ng
 RT: 7.422 min Scan# 907
 Delta R.T. -0.012 min
 Lab File: BF122279.D
 Acq: 9 Nov 2020 11:22

Instrument :
 BNA_F
 ClientSampleId :
 SSTDICC005

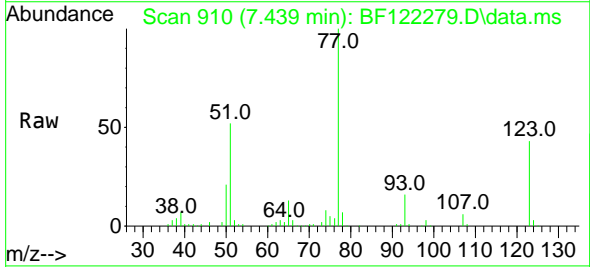


Tgt Ion: 82 Resp: 127577

Ion	Ratio	Lower	Upper
82	100		
128	39.1	35.0	52.4
54	49.3	43.9	65.9

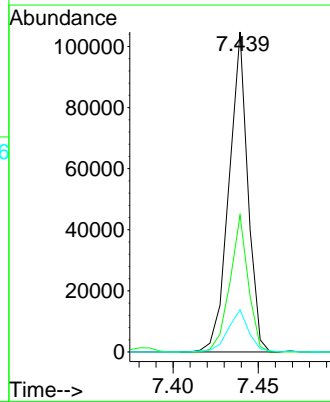
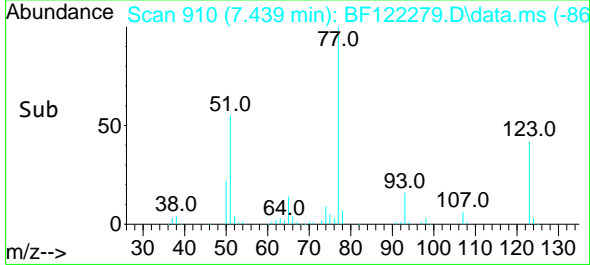


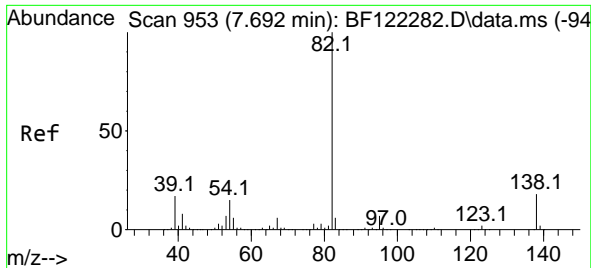
#24
 Nitrobenzene
 Concen: 3.57 ng
 RT: 7.439 min Scan# 910
 Delta R.T. -0.012 min
 Lab File: BF122279.D
 Acq: 9 Nov 2020 11:22



Tgt Ion: 77 Resp: 80501

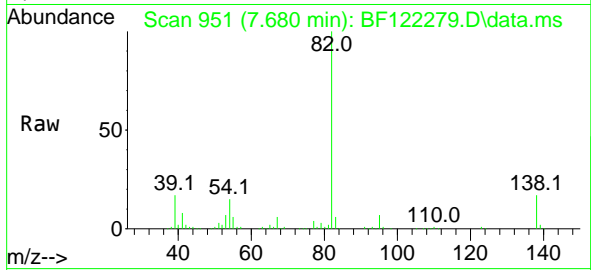
Ion	Ratio	Lower	Upper
77	100		
123	42.7	35.6	53.4
65	13.2	11.2	16.8



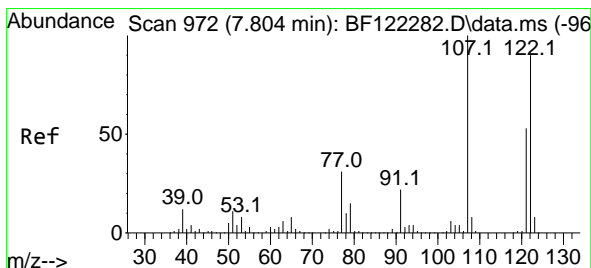
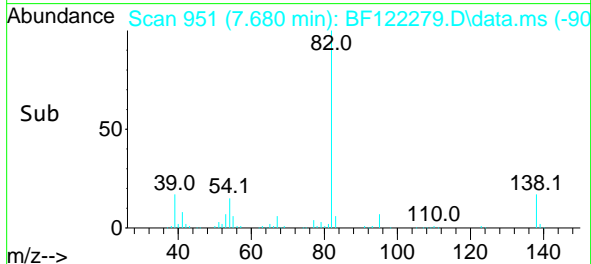
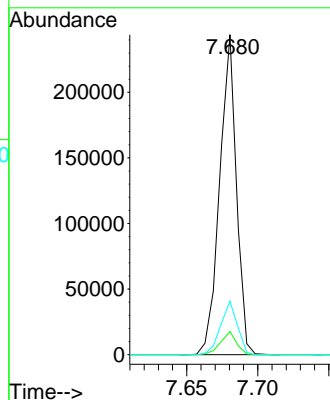


#25
 Isophorone
 Concen: 5.01 ng
 RT: 7.680 min Scan# 951
 Delta R.T. -0.012 min
 Lab File: BF122279.D
 Acq: 9 Nov 2020 11:22

Instrument :
 BNA_F
 ClientSampleId :
 SSTDIC005

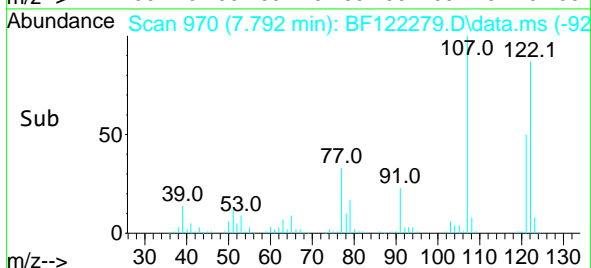
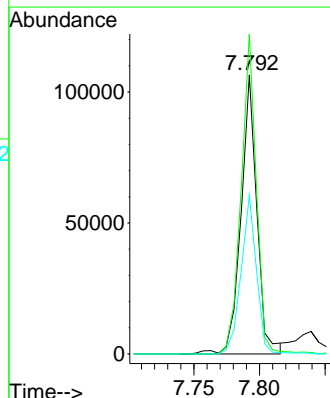
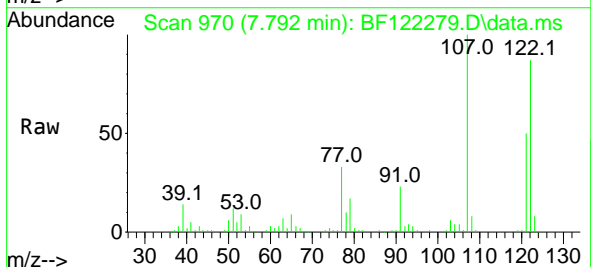


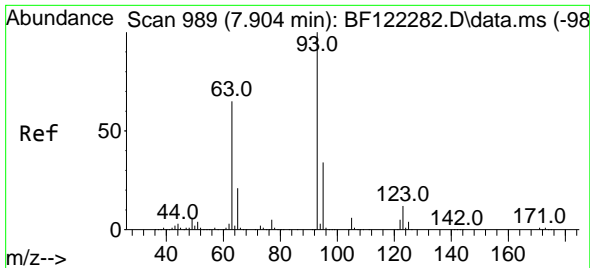
Tgt Ion: 82 Resp: 199866
 Ion Ratio Lower Upper
 82 100
 95 7.3 5.4 8.0
 138 16.7 13.4 20.0



#27
 2,4-Dimethylphenol
 Concen: 5.09 ng
 RT: 7.792 min Scan# 970
 Delta R.T. -0.012 min
 Lab File: BF122279.D
 Acq: 9 Nov 2020 11:22

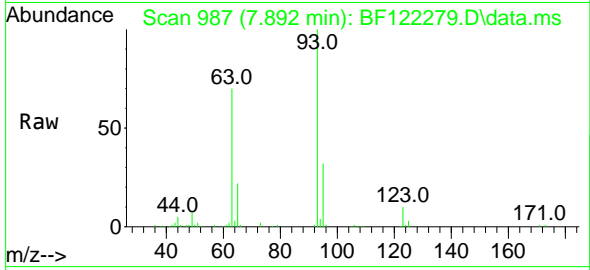
Tgt Ion: 122 Resp: 90130
 Ion Ratio Lower Upper
 122 100
 107 114.7 90.8 136.2
 121 56.9 47.5 71.3





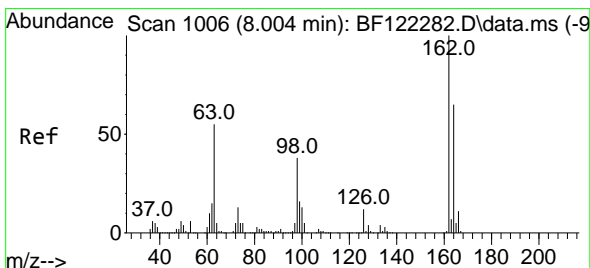
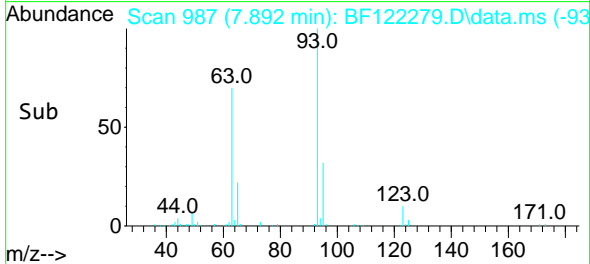
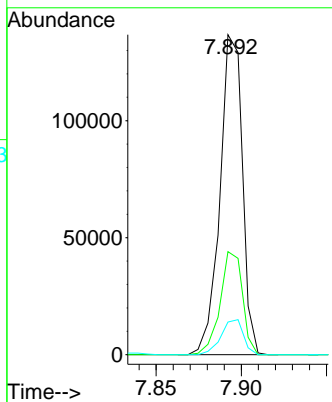
#28
 bis(2-Chloroethoxy)methane
 Concen: 5.01 ng
 RT: 7.892 min Scan# 987
 Delta R.T. -0.012 min
 Lab File: BF122279.D
 Acq: 9 Nov 2020 11:22

Instrument :
 BNA_F
ClientSampled :
 SSTDICC005

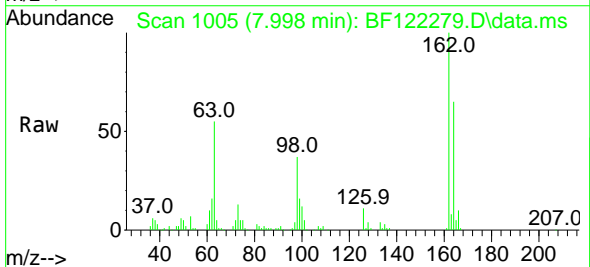


Tgt Ion: 93 Resp: 125072

Ion	Ratio	Lower	Upper
93	100		
95	32.2	26.2	39.4
123	10.2	8.8	13.2

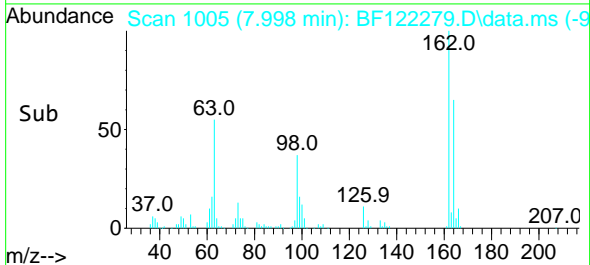
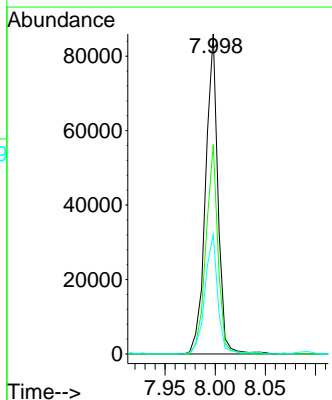


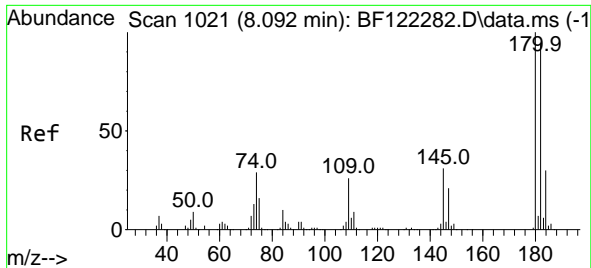
#29
 2,4-Dichlorophenol
 Concen: 4.47 ng
 RT: 7.998 min Scan# 1005
 Delta R.T. -0.006 min
 Lab File: BF122279.D
 Acq: 9 Nov 2020 11:22



Tgt Ion: 162 Resp: 74154

Ion	Ratio	Lower	Upper
162	100		
164	65.5	42.5	82.5
98	37.4	20.1	60.1

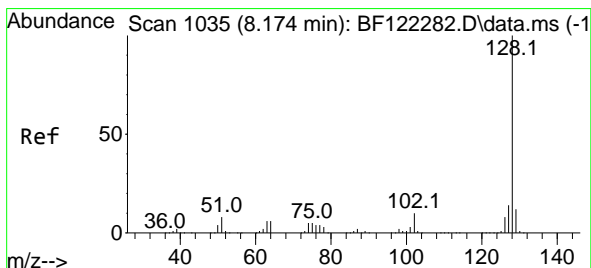
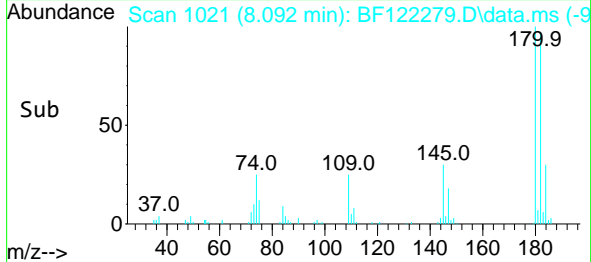
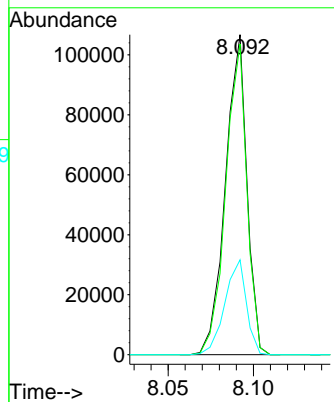
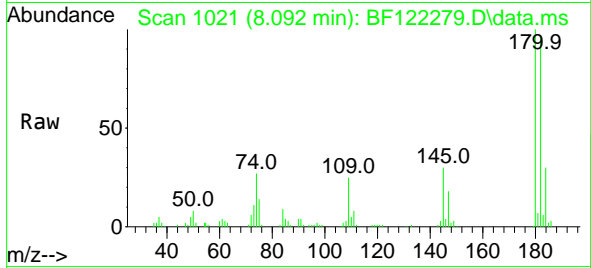




#30
 1,2,4-Trichlorobenzene
 Concen: 5.31 ng
 RT: 8.092 min Scan# 1021
 Delta R.T. 0.000 min
 Lab File: BF122279.D
 Acq: 9 Nov 2020 11:22

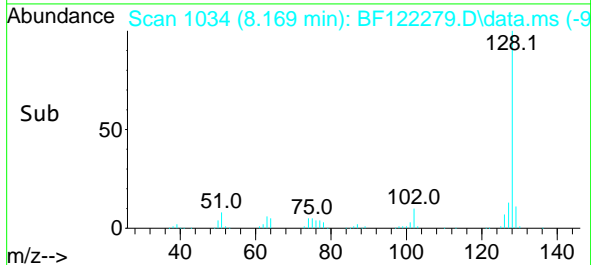
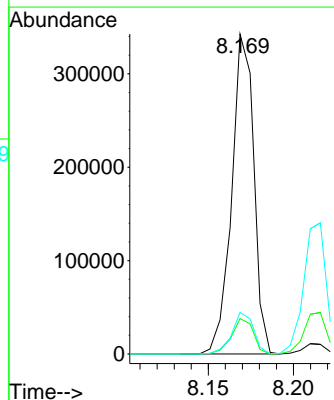
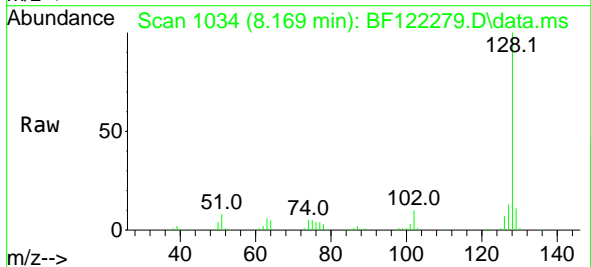
Instrument :
 BNA_F
 ClientSampleId :
 SSTDICC005

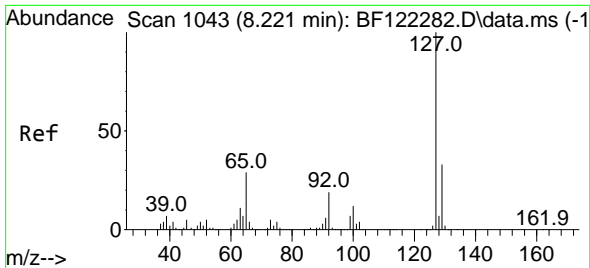
Tgt Ion:180 Resp: 93615
 Ion Ratio Lower Upper
 180 100
 182 97.1 79.4 119.2
 145 29.6 25.5 38.3



#31
 Naphthalene
 Concen: 5.34 ng
 RT: 8.169 min Scan# 1034
 Delta R.T. -0.006 min
 Lab File: BF122279.D
 Acq: 9 Nov 2020 11:22

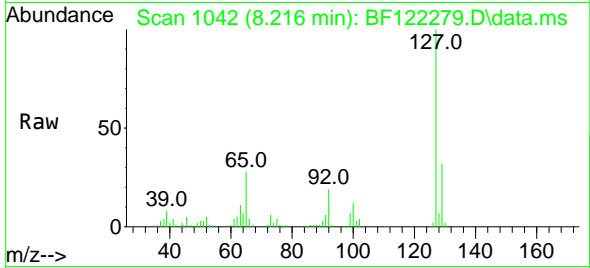
Tgt Ion:128 Resp: 309318
 Ion Ratio Lower Upper
 128 100
 129 11.0 8.7 13.1
 127 13.0 10.8 16.2





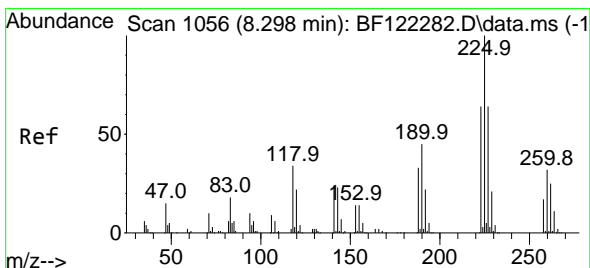
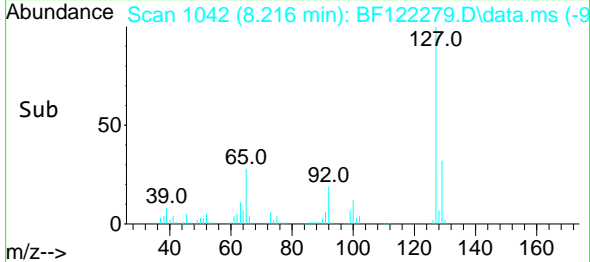
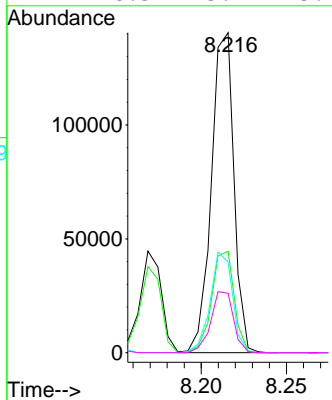
#33
 4-Chloroaniline
 Concen: 5.24 ng
 RT: 8.216 min Scan# 1042
 Delta R.T. -0.006 min
 Lab File: BF122279.D
 Acq: 9 Nov 2020 11:22

Instrument :
 BNA_F
 ClientSampled :
 SSTDICC005



Tgt Ion:127 Resp: 129308

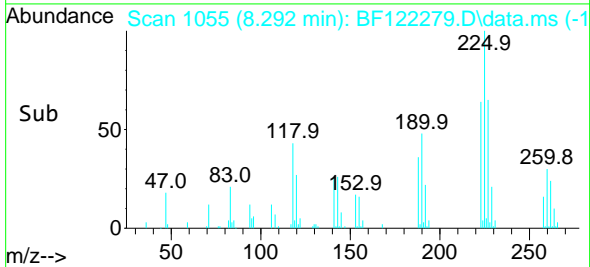
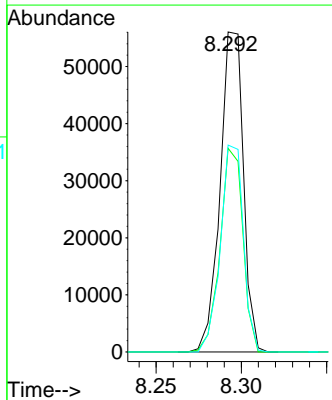
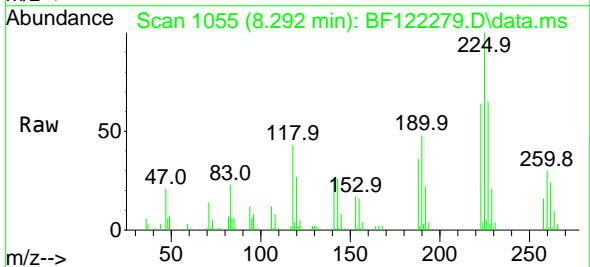
Ion	Ratio	Lower	Upper
127	100		
129	31.6	26.3	39.5
65	28.3	26.2	39.2
92	18.5	15.9	23.9

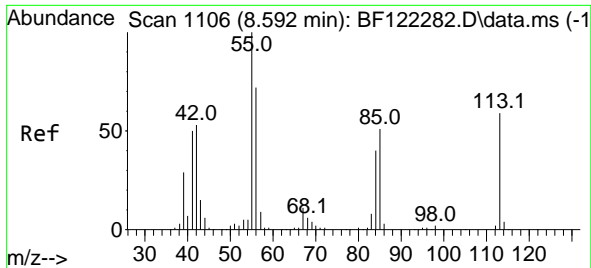


#34
 Hexachlorobutadiene
 Concen: 5.11 ng
 RT: 8.292 min Scan# 1055
 Delta R.T. -0.006 min
 Lab File: BF122279.D
 Acq: 9 Nov 2020 11:22

Tgt Ion:225 Resp: 53441

Ion	Ratio	Lower	Upper
225	100		
223	63.7	51.1	76.7
227	64.6	51.0	76.6

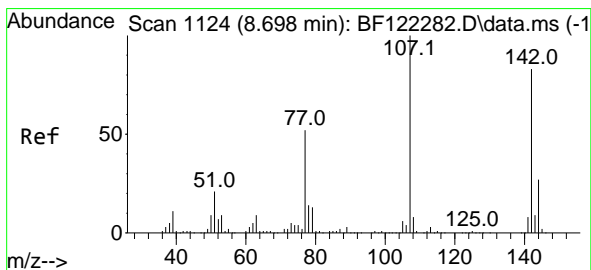
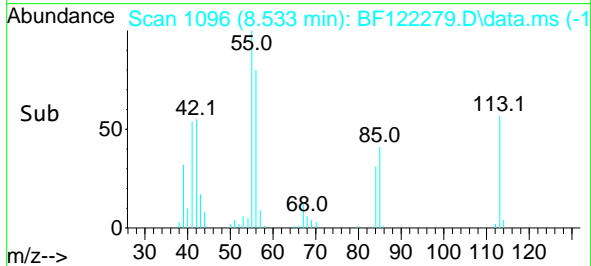
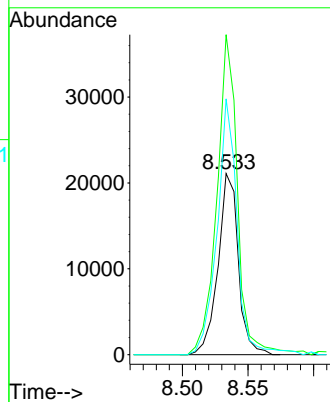
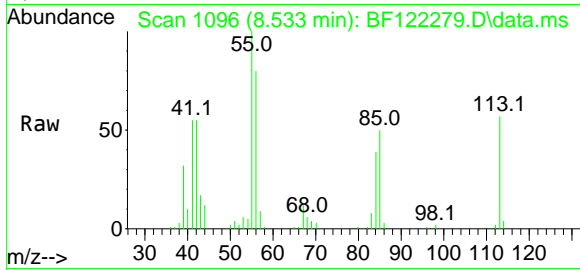




#35
 Caprolactam
 Concen: 4.30 ng
 RT: 8.533 min Scan# 1096
 Delta R.T. -0.059 min
 Lab File: BF122279.D
 Acq: 9 Nov 2020 11:22

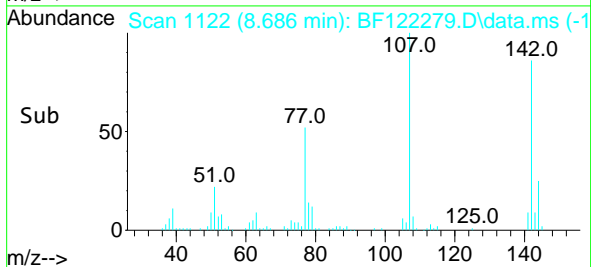
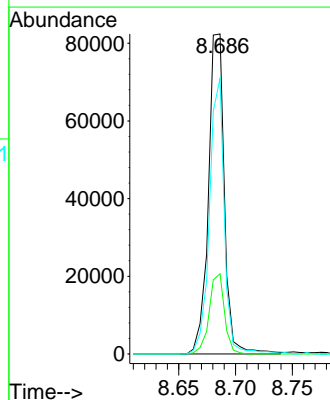
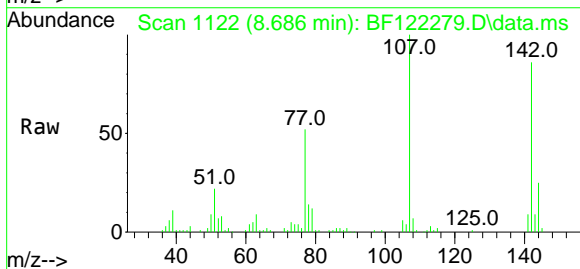
Instrument :
 BNA_F
 ClientSampled :
 SSTDICC005

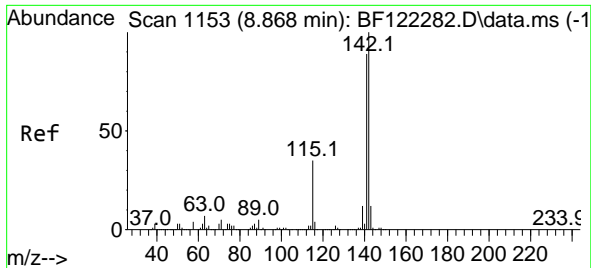
Tgt Ion:113 Resp: 22652
 Ion Ratio Lower Upper
 113 100
 55 176.7 167.5 207.5
 56 141.2 121.2 161.2



#36
 4-Chloro-3-methylphenol
 Concen: 4.53 ng
 RT: 8.686 min Scan# 1122
 Delta R.T. -0.012 min
 Lab File: BF122279.D
 Acq: 9 Nov 2020 11:22

Tgt Ion:107 Resp: 80711
 Ion Ratio Lower Upper
 107 100
 144 25.0 20.1 30.1
 142 86.1 59.3 88.9

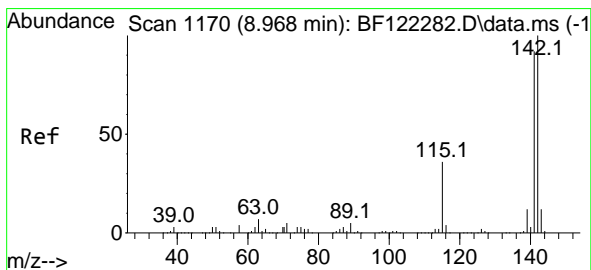
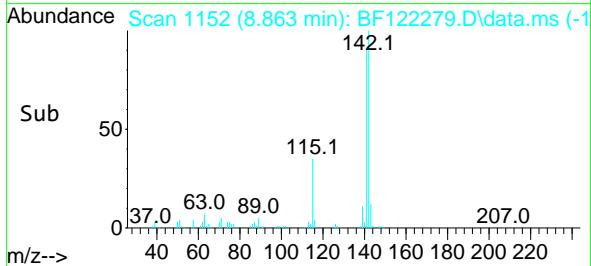
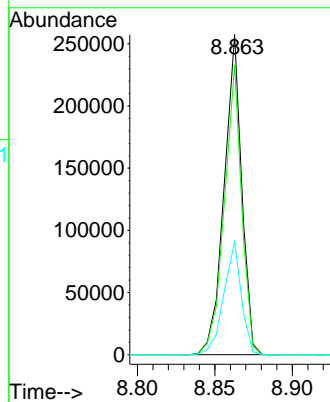
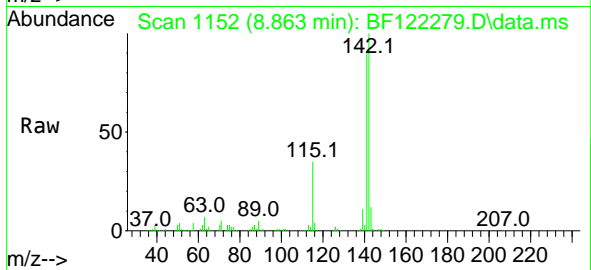




#37
 2-Methylnaphthalene
 Concen: 5.42 ng
 RT: 8.863 min Scan# 1152
 Delta R.T. -0.006 min
 Lab File: BF122279.D
 Acq: 9 Nov 2020 11:22

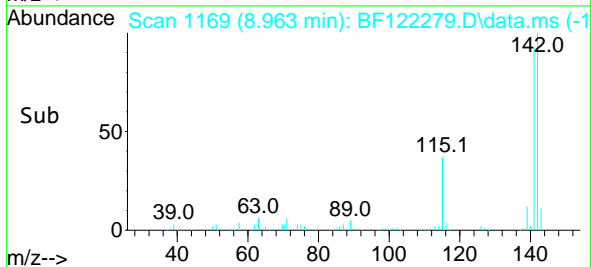
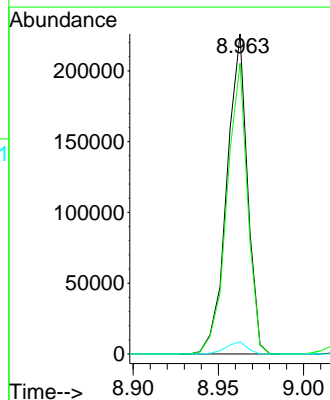
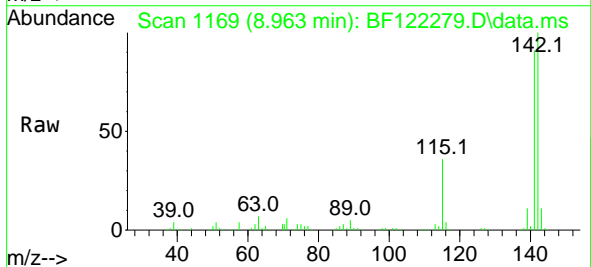
Instrument :
 BNA_F
 ClientSampled :
 SSTDICC005

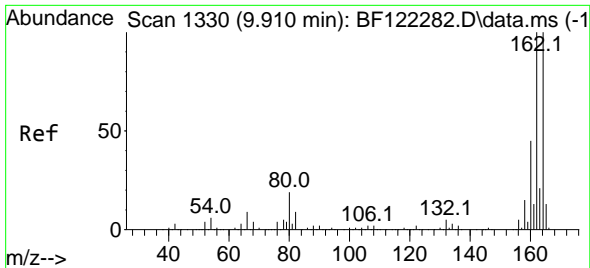
Tgt Ion	Resp	Lower	Upper
142	203539		
141	90.6	70.2	105.4
115	35.2	28.6	43.0



#38
 1-Methylnaphthalene
 Concen: 5.48 ng
 RT: 8.963 min Scan# 1169
 Delta R.T. -0.006 min
 Lab File: BF122279.D
 Acq: 9 Nov 2020 11:22

Tgt Ion	Resp	Lower	Upper
142	190283		
141	90.9	74.5	111.7
116	3.8	3.2	4.8

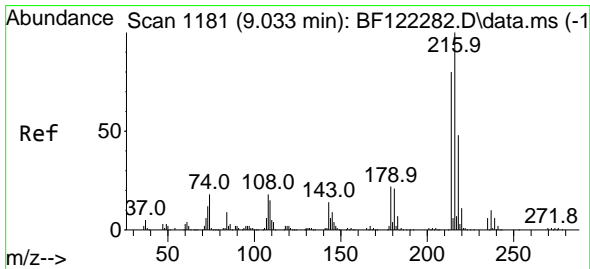
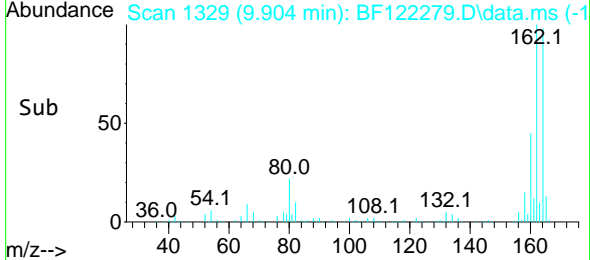
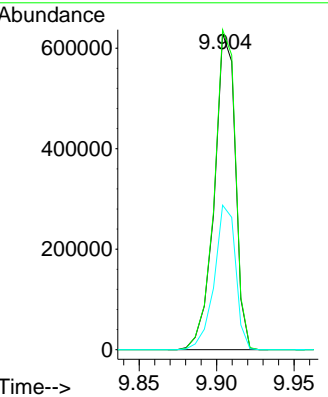
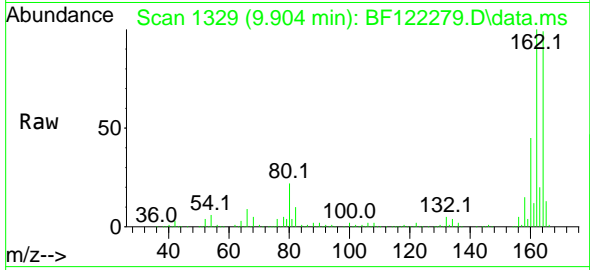




#39
 Acenaphthene-d10
 Concen: 20.00 ng
 RT: 9.904 min Scan# 1329
 Delta R.T. -0.006 min
 Lab File: BF122279.D
 Acq: 9 Nov 2020 11:22

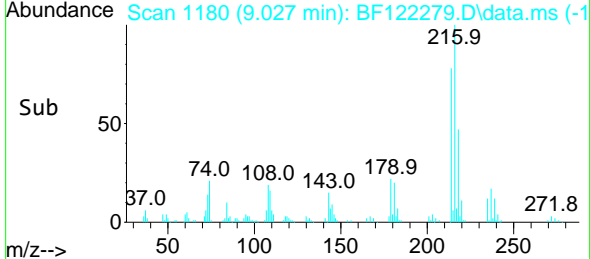
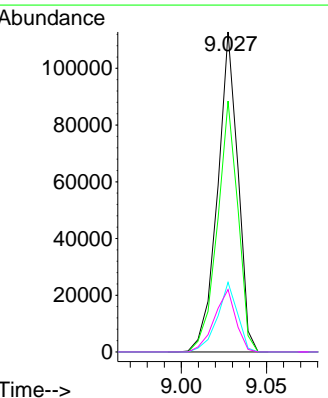
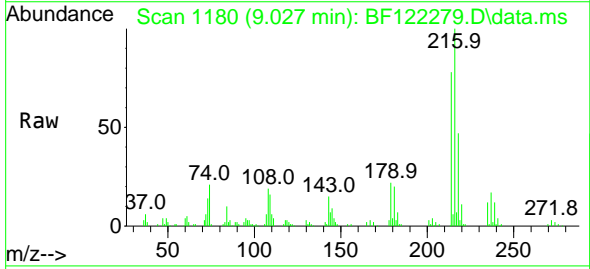
Instrument :
 BNA_F
 ClientSampleId :
 SSTDICC005

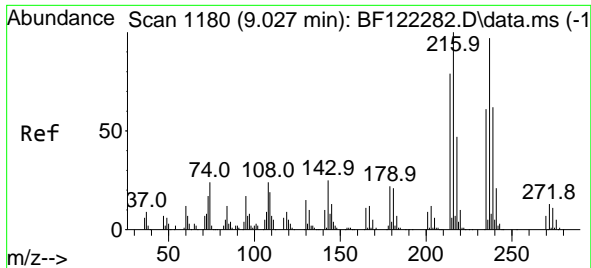
Tgt Ion:164 Resp: 596469
 Ion Ratio Lower Upper
 164 100
 162 101.2 83.2 124.8
 160 45.7 37.5 56.3



#40
 1,2,4,5-Tetrachlorobenzene
 Concen: 4.87 ng
 RT: 9.027 min Scan# 1180
 Delta R.T. -0.006 min
 Lab File: BF122279.D
 Acq: 9 Nov 2020 11:22

Tgt Ion:216 Resp: 93827
 Ion Ratio Lower Upper
 216 100
 214 78.9 63.4 95.2
 179 21.6 17.0 25.6
 108 20.6 15.5 23.3

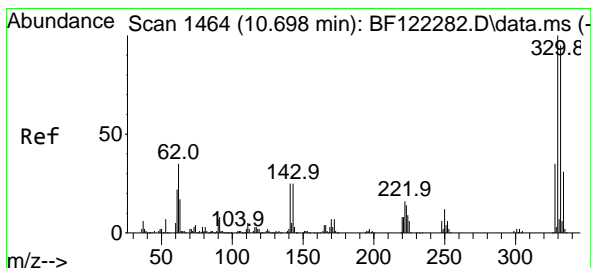
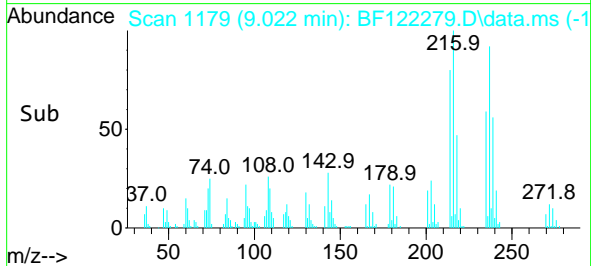
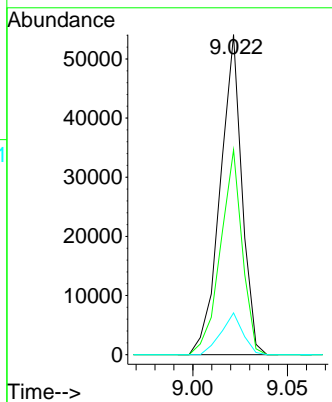
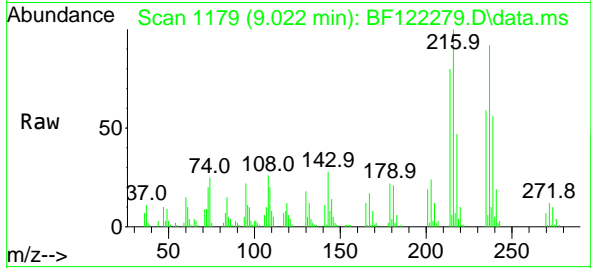




#41
 Hexachlorocyclopentadiene
 Concen: 11.37 ng
 RT: 9.022 min Scan# 1179
 Delta R.T. -0.006 min
 Lab File: BF122279.D
 Acq: 9 Nov 2020 11:22

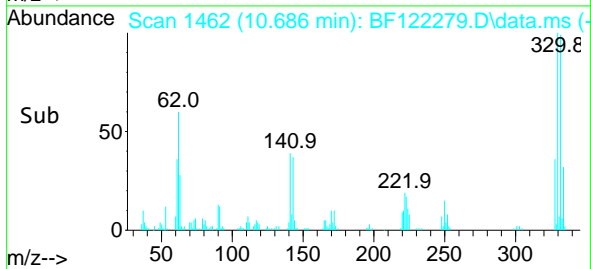
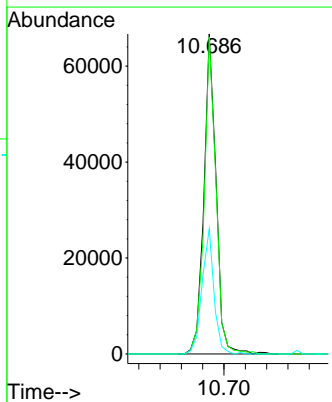
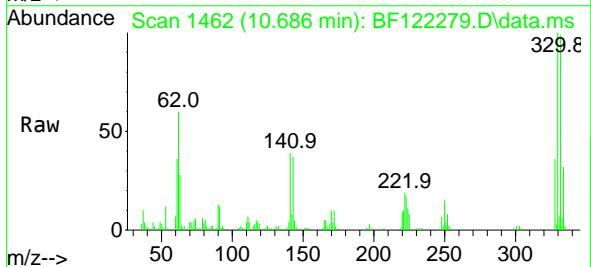
Instrument :
 BNA_F
ClientSampled :
 SSTDICC005

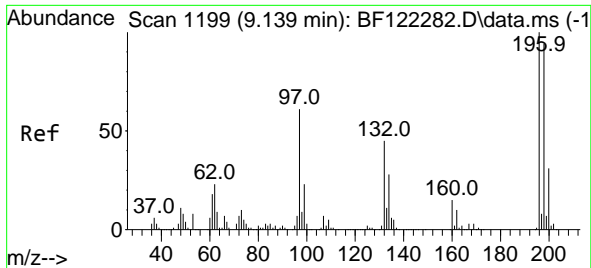
Tgt Ion	Resp	Lower	Upper
237	100		
235	64.0	41.8	81.8
272	13.1	0.0	33.5



#42
 2,4,6-Tribromophenol
 Concen: 7.19 ng
 RT: 10.686 min Scan# 1462
 Delta R.T. -0.012 min
 Lab File: BF122279.D
 Acq: 9 Nov 2020 11:22

Tgt Ion	Resp	Lower	Upper
330	100		
332	95.9	77.3	115.9
141	38.5	22.3	33.5#

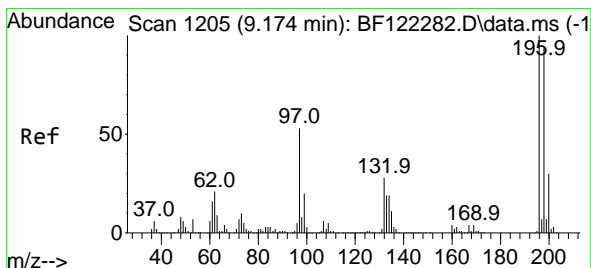
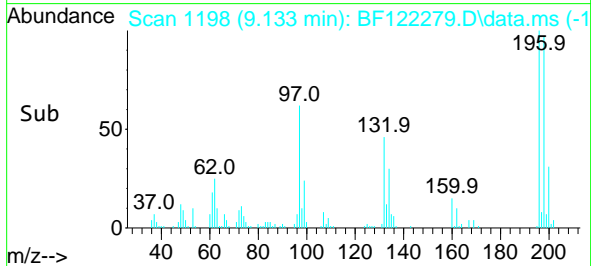
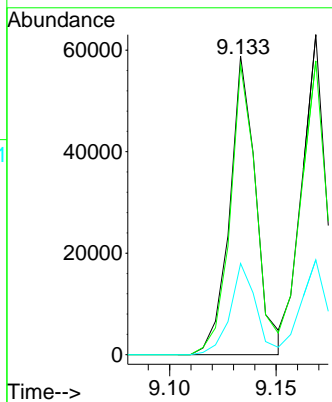
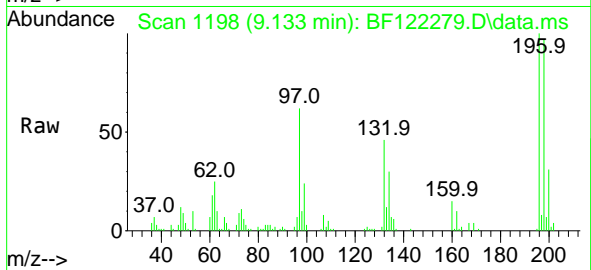




#43
 2,4,6-Trichlorophenol
 Concen: 4.24 ng
 RT: 9.133 min Scan# 1198
 Delta R.T. -0.006 min
 Lab File: BF122279.D
 Acq: 9 Nov 2020 11:22

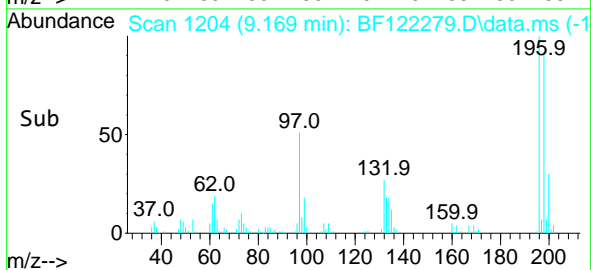
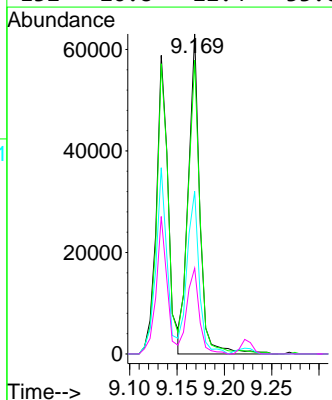
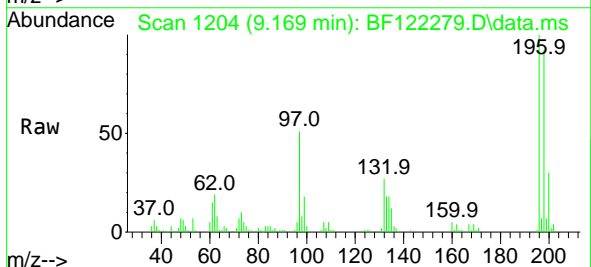
Instrument :
 BNA_F
 ClientSampled :
 SSTDICC005

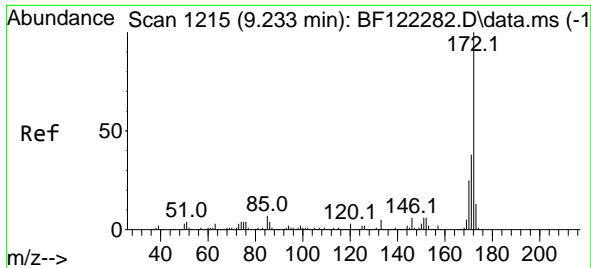
Tgt Ion:196 Resp: 50349
 Ion Ratio Lower Upper
 196 100
 198 97.2 75.8 113.6
 200 30.5 24.6 36.8



#44
 2,4,5-Trichlorophenol
 Concen: 4.15 ng
 RT: 9.169 min Scan# 1204
 Delta R.T. -0.006 min
 Lab File: BF122279.D
 Acq: 9 Nov 2020 11:22

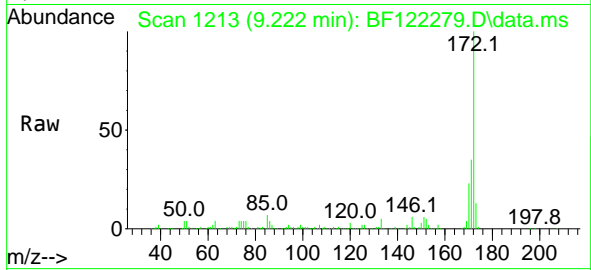
Tgt Ion:196 Resp: 53233
 Ion Ratio Lower Upper
 196 100
 198 91.8 76.1 114.1
 97 50.8 41.0 61.6
 132 26.8 22.4 33.6



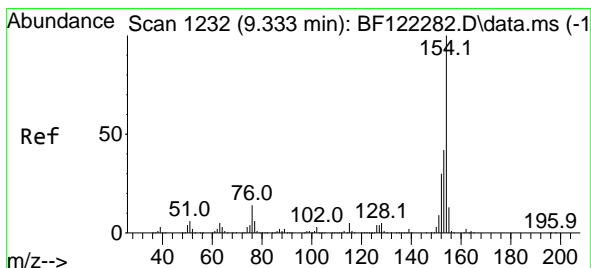
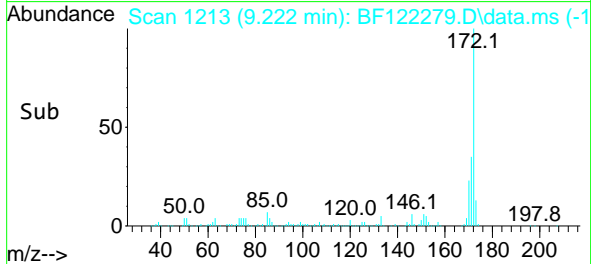
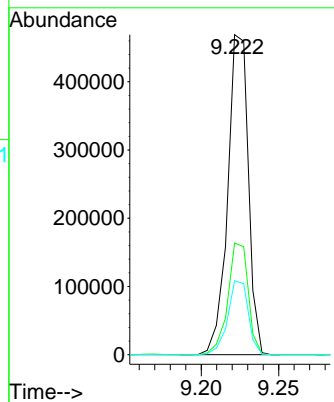


#45
 2-Fluorobiphenyl
 Concen: 10.74 ng
 RT: 9.222 min Scan# 1213
 Delta R.T. -0.012 min
 Lab File: BF122279.D
 Acq: 9 Nov 2020 11:22

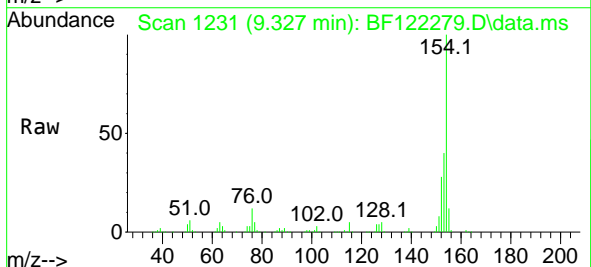
Instrument :
 BNA_F
 ClientSampled :
 SSTDICC005



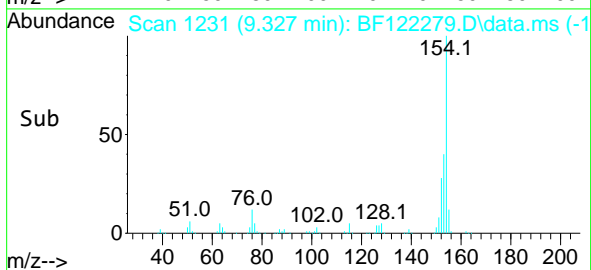
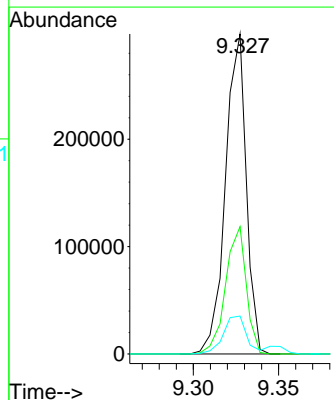
Tgt Ion:172 Resp: 435304
 Ion Ratio Lower Upper
 172 100
 171 34.9 29.1 43.7
 170 23.1 19.8 29.6

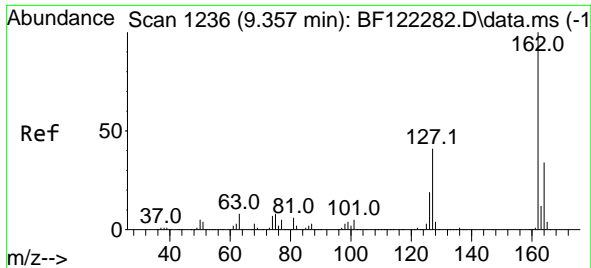


#46
 1,1'-Biphenyl
 Concen: 5.22 ng
 RT: 9.327 min Scan# 1231
 Delta R.T. -0.006 min
 Lab File: BF122279.D
 Acq: 9 Nov 2020 11:22



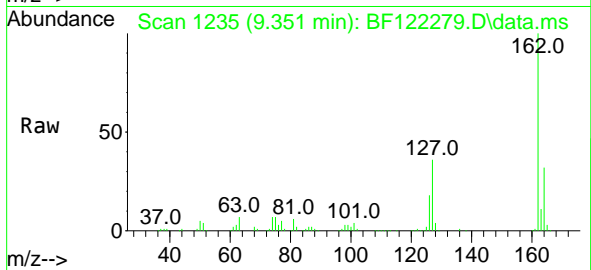
Tgt Ion:154 Resp: 253197
 Ion Ratio Lower Upper
 154 100
 153 39.8 21.3 61.3
 76 11.8 0.0 34.7





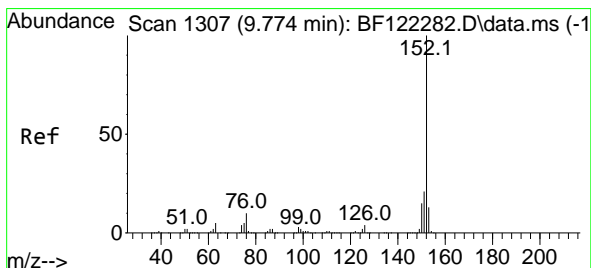
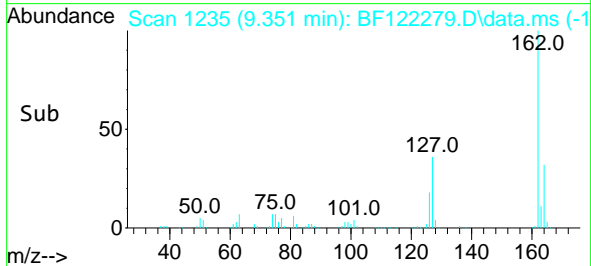
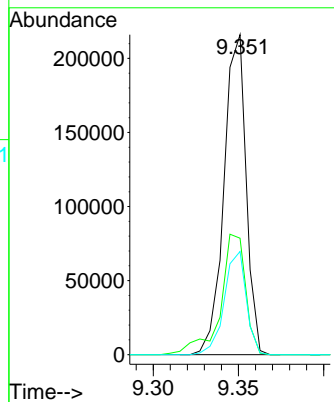
#47
 2-Chloronaphthalene
 Concen: 5.17 ng
 RT: 9.351 min Scan# 1235
 Delta R.T. -0.006 min
 Lab File: BF122279.D
 Acq: 9 Nov 2020 11:22

Instrument :
 BNA_F
 ClientSampled :
 SSTDICC005



Tgt Ion:162 Resp: 195001

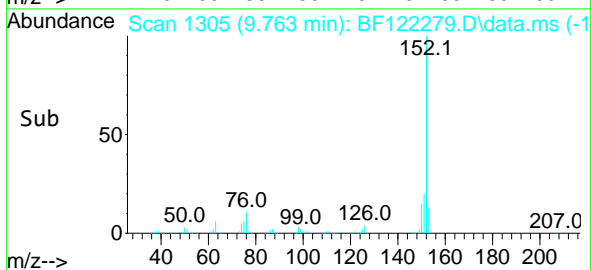
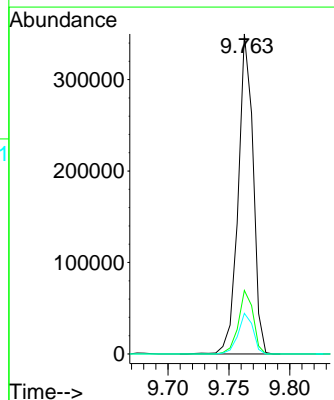
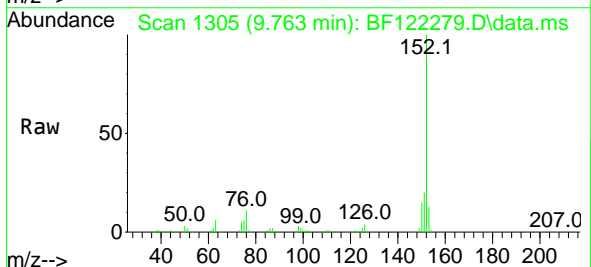
Ion	Ratio	Lower	Upper
162	100		
127	36.4	34.4	51.6
164	32.2	26.3	39.5

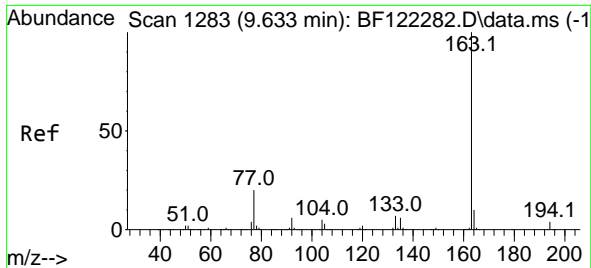


#49
 Acenaphthylene
 Concen: 5.15 ng
 RT: 9.763 min Scan# 1305
 Delta R.T. -0.012 min
 Lab File: BF122279.D
 Acq: 9 Nov 2020 11:22

Tgt Ion:152 Resp: 298228

Ion	Ratio	Lower	Upper
152	100		
151	19.8	16.4	24.6
153	12.7	10.6	15.8

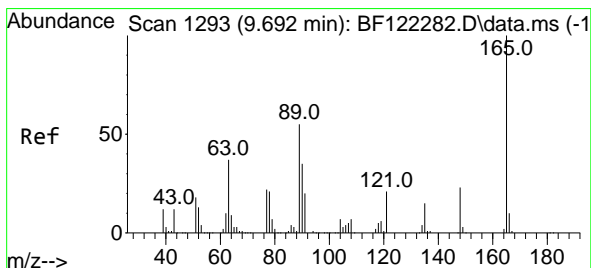
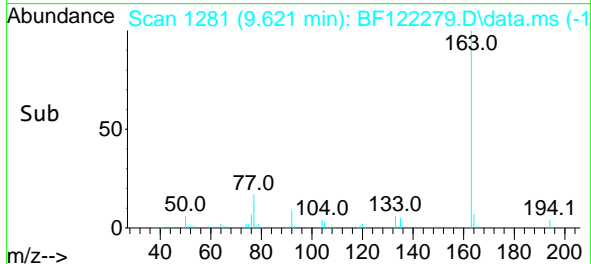
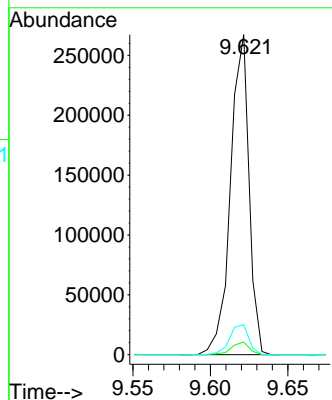
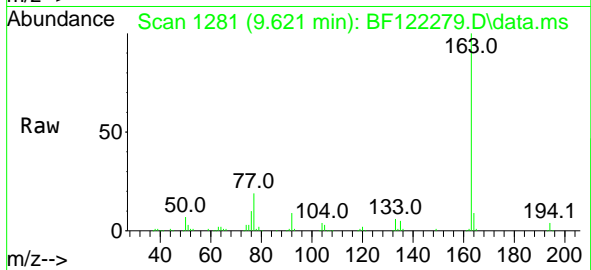




#50
 Dimethylphthalate
 Concen: 5.09 ng
 RT: 9.621 min Scan# 1281
 Delta R.T. -0.012 min
 Lab File: BF122279.D
 Acq: 9 Nov 2020 11:22

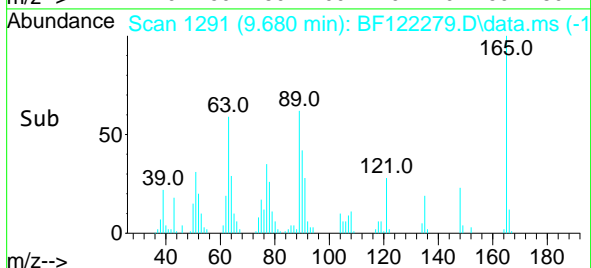
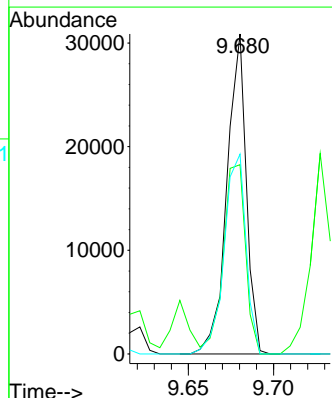
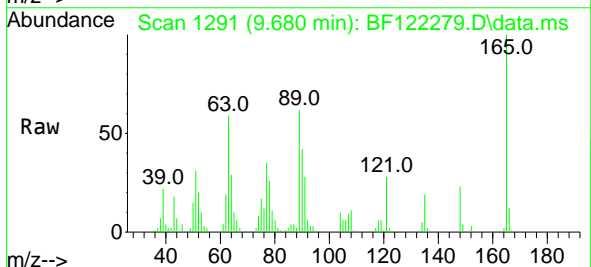
Instrument :
 BNA_F
 ClientSampled :
 SSTDICC005

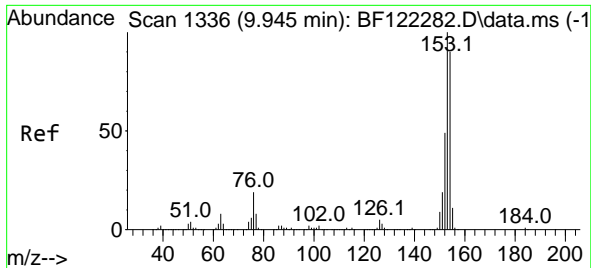
Tgt Ion:163 Resp: 221914
 Ion Ratio Lower Upper
 163 100
 194 4.0 3.3 4.9
 164 9.4 8.2 12.4



#51
 2,6-Dinitrotoluene
 Concen: 2.55 ng
 RT: 9.680 min Scan# 1291
 Delta R.T. -0.012 min
 Lab File: BF122279.D
 Acq: 9 Nov 2020 11:22

Tgt Ion:165 Resp: 24417
 Ion Ratio Lower Upper
 165 100
 63 59.2 51.8 77.6
 89 62.5 49.0 73.6

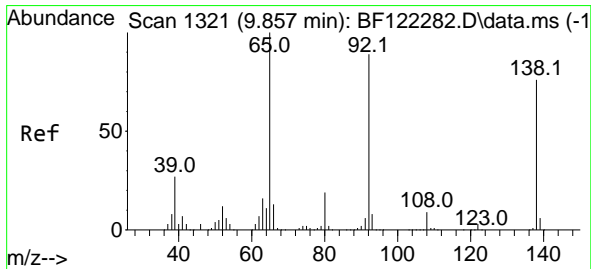
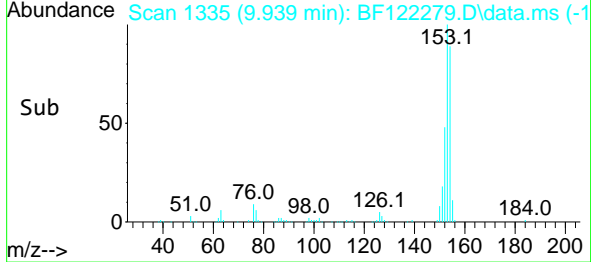
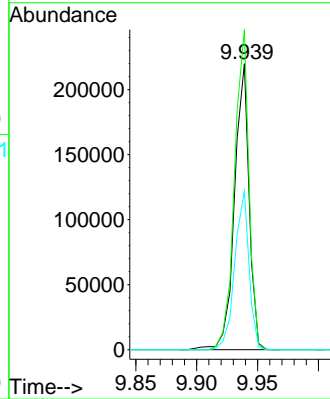
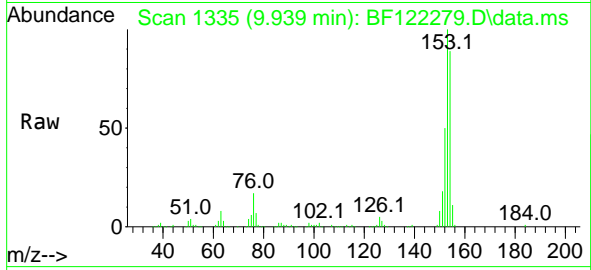




#52
 Acenaphthene
 Concen: 5.31 ng
 RT: 9.939 min Scan# 1335
 Delta R.T. -0.006 min
 Lab File: BF122279.D
 Acq: 9 Nov 2020 11:22

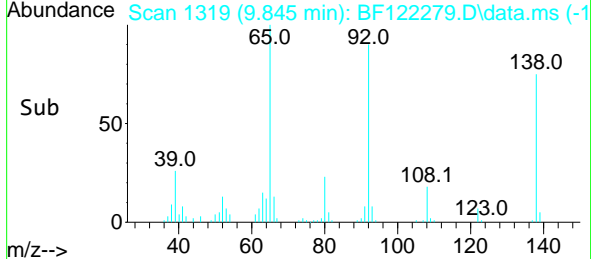
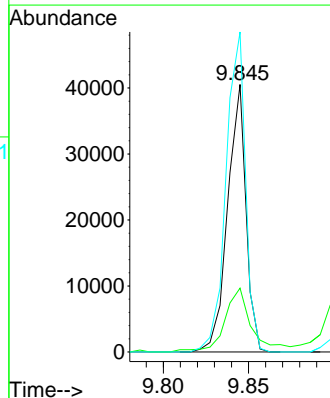
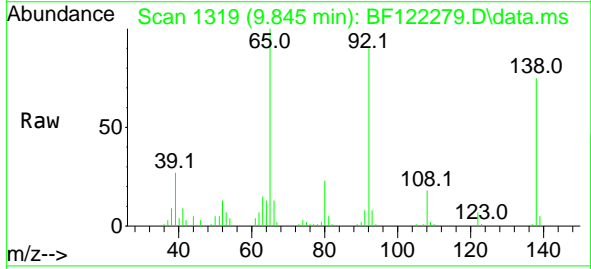
Instrument :
 BNA_F
 ClientSampled :
 SSTDICC005

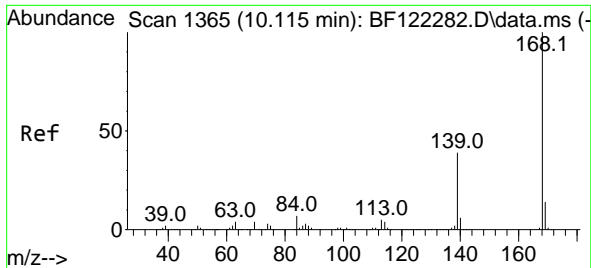
Tgt Ion:154 Resp: 183126
 Ion Ratio Lower Upper
 154 100
 153 111.9 89.8 134.8
 152 55.4 43.2 64.8



#53
 3-Nitroaniline
 Concen: 2.79 ng
 RT: 9.845 min Scan# 1319
 Delta R.T. -0.012 min
 Lab File: BF122279.D
 Acq: 9 Nov 2020 11:22

Tgt Ion:138 Resp: 30396
 Ion Ratio Lower Upper
 138 100
 108 23.9 8.6 13.0#
 92 119.6 96.6 144.8



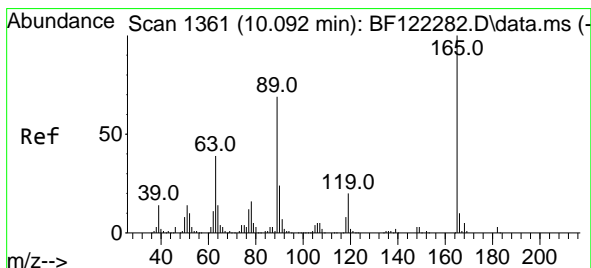
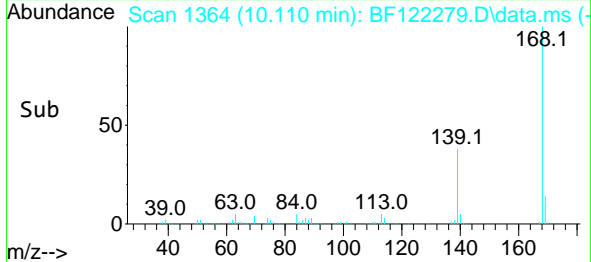
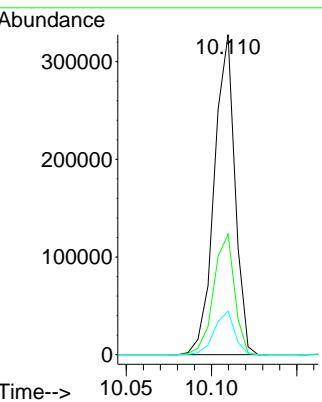
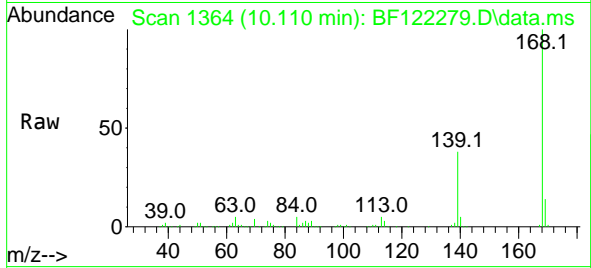


#55
 Dibenzenofuran
 Concen: 5.50 ng
 RT: 10.110 min Scan# 1364
 Delta R.T. -0.006 min
 Lab File: BF122279.D
 Acq: 9 Nov 2020 11:22

Instrument :
 BNA_F
ClientSampled :
 SSTDICC005

Tgt Ion:168 Resp: 276949

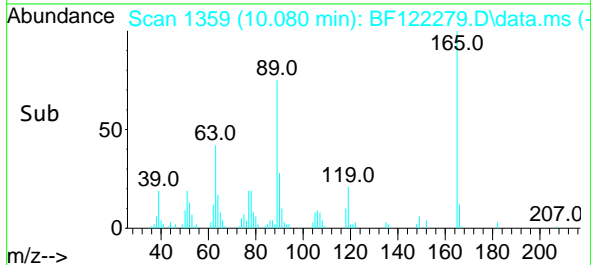
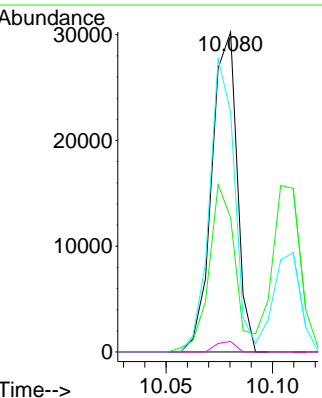
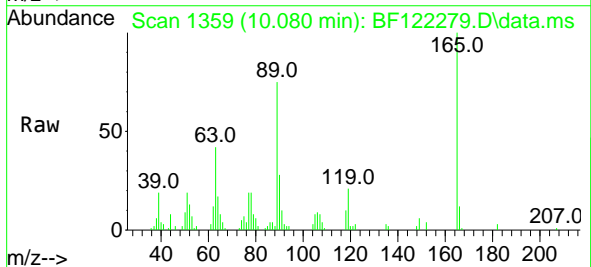
Ion	Ratio	Lower	Upper
168	100		
139	37.7	31.0	46.6
169	13.6	11.3	16.9

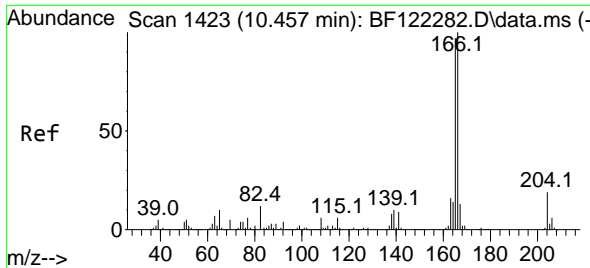


#57
 2,4-Dinitrotoluene
 Concen: 2.12 ng
 RT: 10.080 min Scan# 1359
 Delta R.T. -0.012 min
 Lab File: BF122279.D
 Acq: 9 Nov 2020 11:22

Tgt Ion:165 Resp: 24933

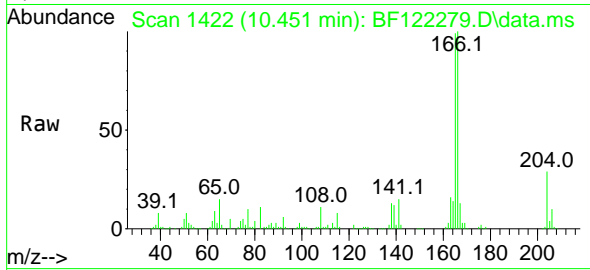
Ion	Ratio	Lower	Upper
165	100		
63	42.0	41.3	61.9
89	75.0	61.8	92.8
182	3.3	2.1	3.1#



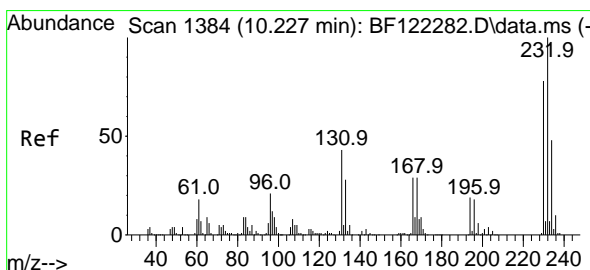
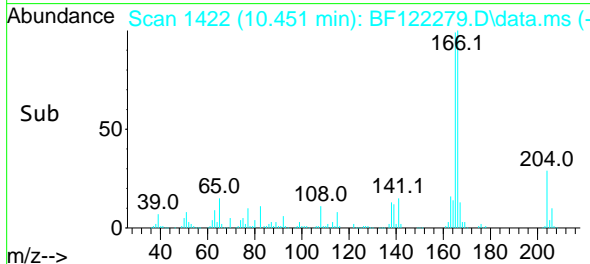
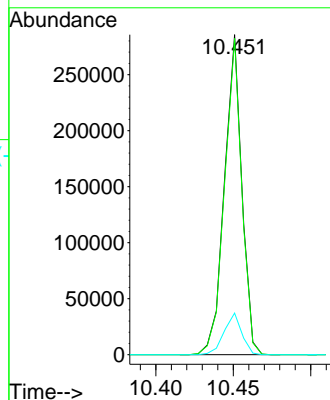


#58
 Fluorene
 Concen: 5.49 ng
 RT: 10.451 min Scan# 1422
 Delta R.T. -0.006 min
 Lab File: BF122279.D
 Acq: 9 Nov 2020 11:22

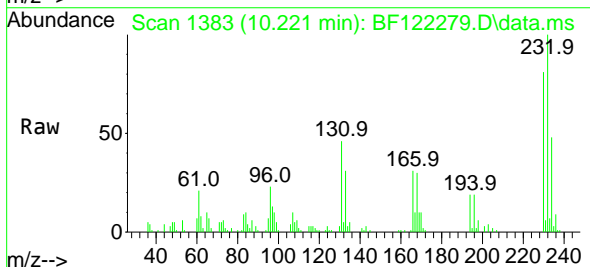
Instrument :
 BNA_F
 ClientSampled :
 SSTDICC005



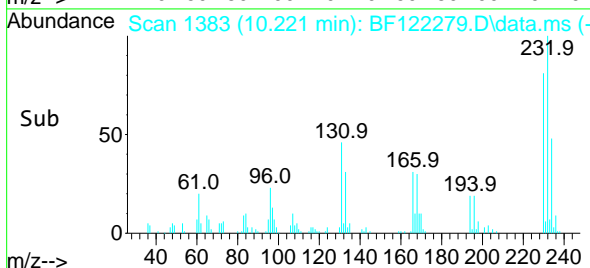
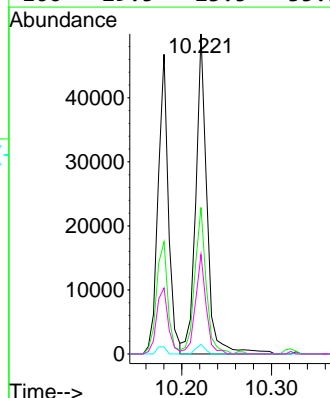
Tgt Ion:166 Resp: 222889
 Ion Ratio Lower Upper
 166 100
 165 98.8 79.1 118.7
 167 13.0 11.0 16.6

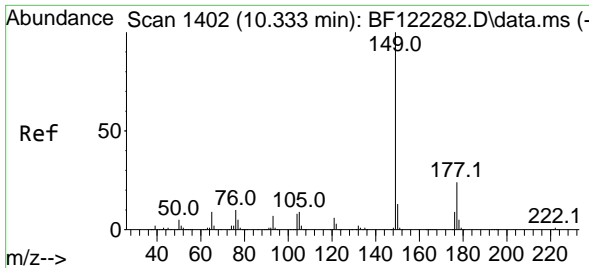


#59
 2,3,4,6-Tetrachlorophenol
 Concen: 4.37 ng
 RT: 10.221 min Scan# 1383
 Delta R.T. -0.006 min
 Lab File: BF122279.D
 Acq: 9 Nov 2020 11:22



Tgt Ion:232 Resp: 43373
 Ion Ratio Lower Upper
 232 100
 131 46.5 35.9 53.9
 130 2.4 1.8 2.6
 166 29.5 23.5 35.3

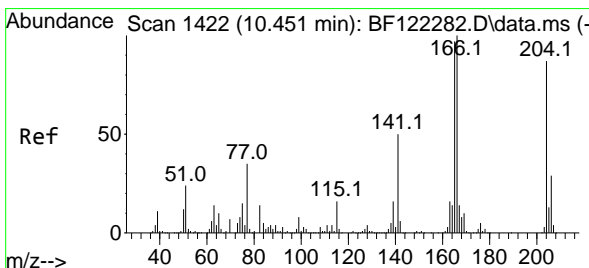
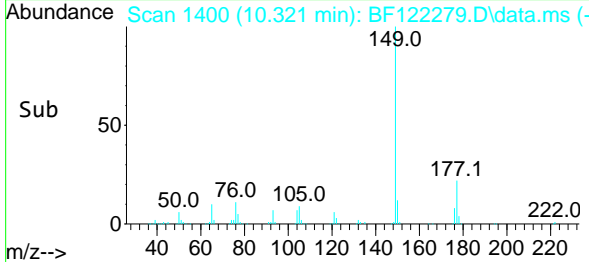
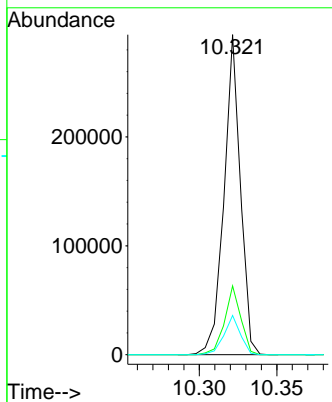
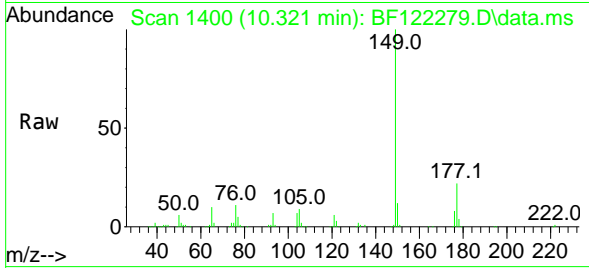




#60
 Diethylphthalate
 Concen: 5.13 ng
 RT: 10.321 min Scan# 1400
 Delta R.T. -0.012 min
 Lab File: BF122279.D
 Acq: 9 Nov 2020 11:22

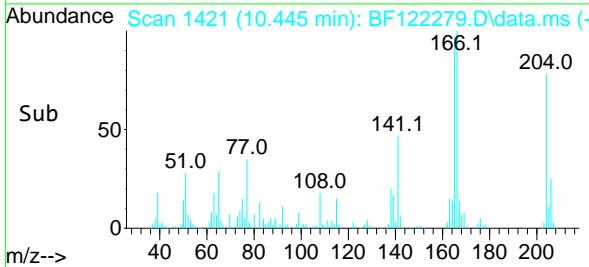
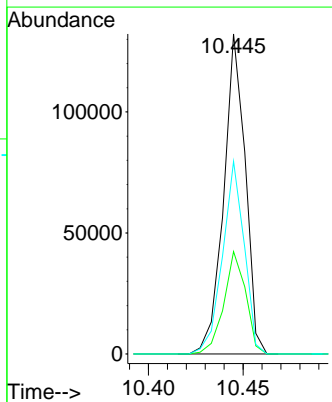
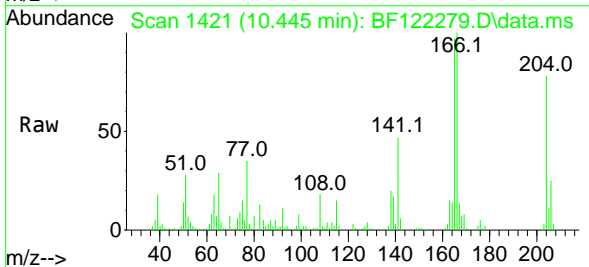
Instrument :
 BNA_F
ClientSampled :
 SSTDICC005

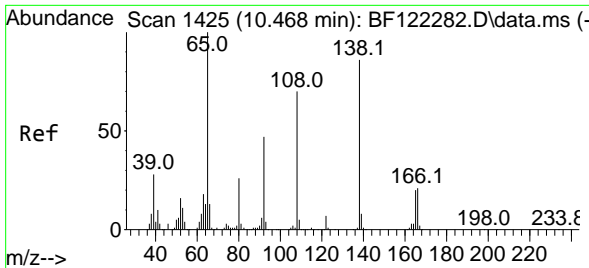
Tgt Ion	Resp	Lower	Upper
149	215862		
177	21.5	18.1	27.1
150	12.2	10.3	15.5



#61
 4-Chlorophenyl-phenylether
 Concen: 5.37 ng
 RT: 10.445 min Scan# 1421
 Delta R.T. -0.006 min
 Lab File: BF122279.D
 Acq: 9 Nov 2020 11:22

Tgt Ion	Resp	Lower	Upper
204	104588		
206	32.0	26.0	39.0
141	60.2	46.2	69.4



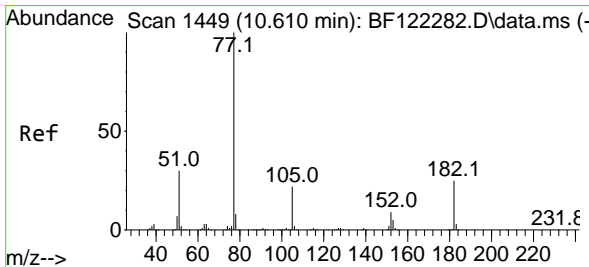
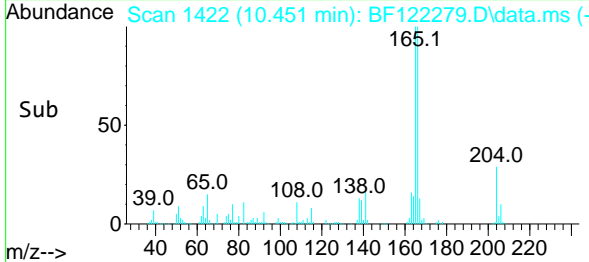
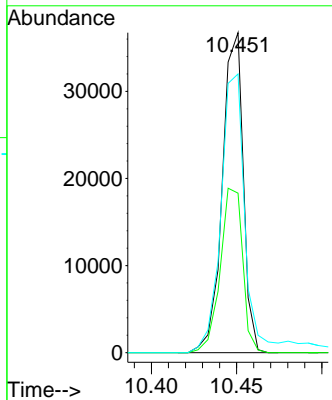
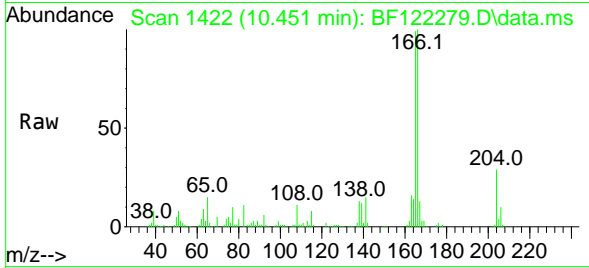


#62
 4-Nitroaniline
 Concen: 2.89 ng
 RT: 10.451 min Scan# 1422
 Delta R.T. -0.018 min
 Lab File: BF122279.D
 Acq: 9 Nov 2020 11:22

Instrument :
 BNA_F
ClientSampled :
 SSTDICC005

Tgt Ion:138 Resp: 31413

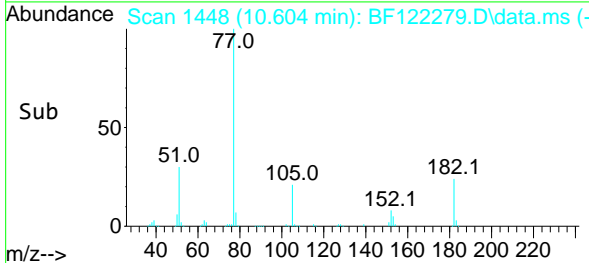
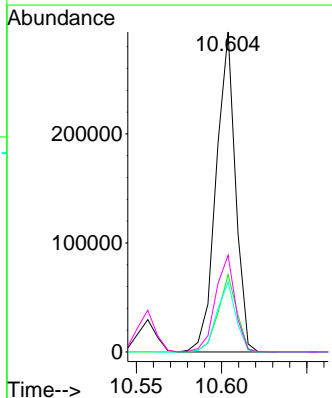
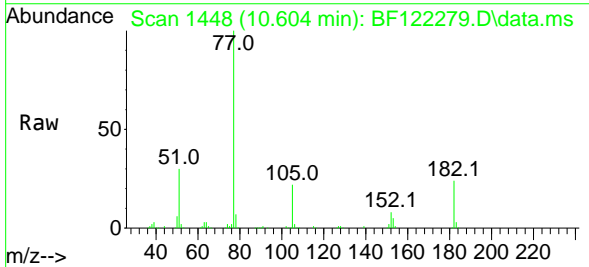
Ion	Ratio	Lower	Upper
138	100		
92	49.9	31.0	71.0
108	87.1	51.5	91.5

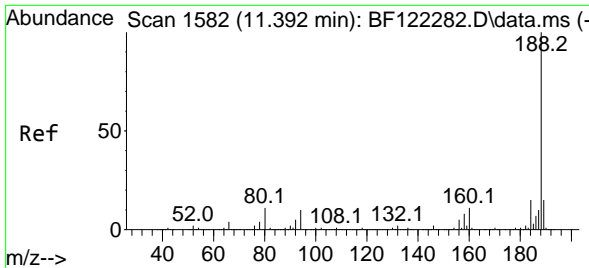


#63
 Azobenzene
 Concen: 5.20 ng
 RT: 10.604 min Scan# 1448
 Delta R.T. -0.006 min
 Lab File: BF122279.D
 Acq: 9 Nov 2020 11:22

Tgt Ion: 77 Resp: 231412

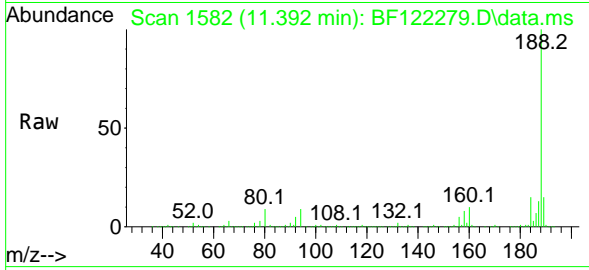
Ion	Ratio	Lower	Upper
77	100		
182	24.2	3.4	43.4
105	21.8	1.7	41.7
51	30.2	11.6	51.6



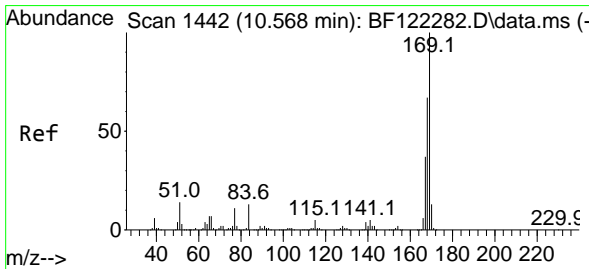
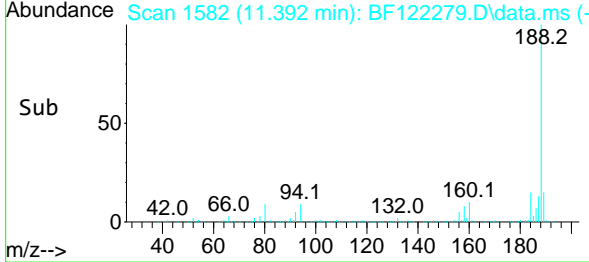
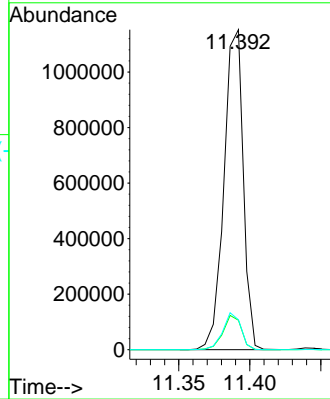


#64
 Phenanthrene-d10
 Concen: 20.00 ng
 RT: 11.392 min Scan# 1582
 Delta R.T. 0.000 min
 Lab File: BF122279.D
 Acq: 9 Nov 2020 11:22

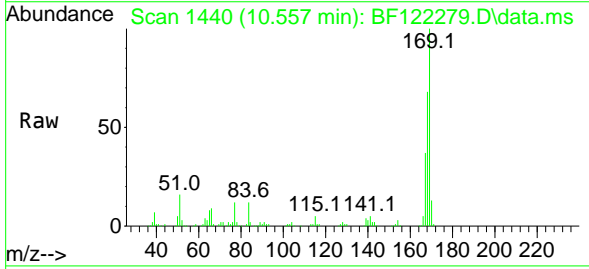
Instrument :
 BNA_F
 ClientSampleId :
 SSTDICC005



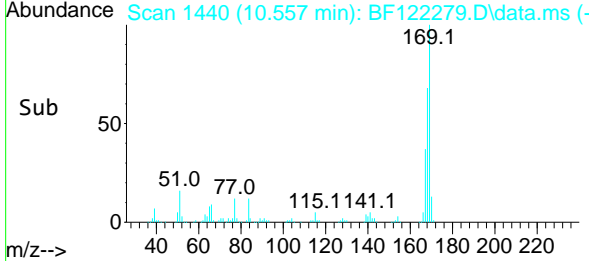
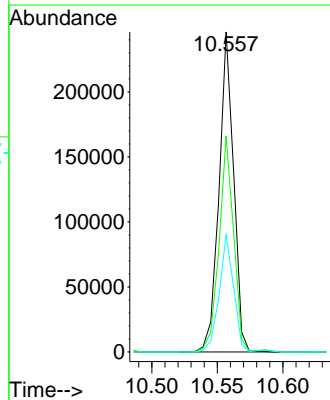
Tgt Ion:188 Resp: 1088616
 Ion Ratio Lower Upper
 188 100
 94 9.2 8.3 12.5
 80 9.4 9.1 13.7

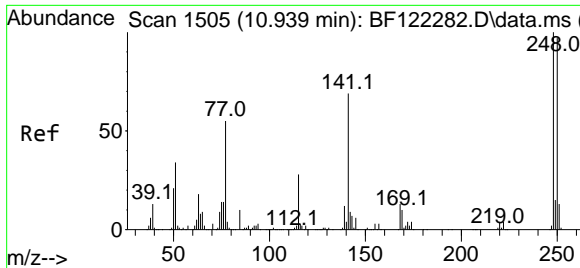


#66
 n-Nitrosodiphenylamine
 Concen: 5.06 ng
 RT: 10.557 min Scan# 1440
 Delta R.T. -0.012 min
 Lab File: BF122279.D
 Acq: 9 Nov 2020 11:22



Tgt Ion:169 Resp: 189779
 Ion Ratio Lower Upper
 169 100
 168 67.5 50.0 75.0
 167 36.6 27.8 41.6

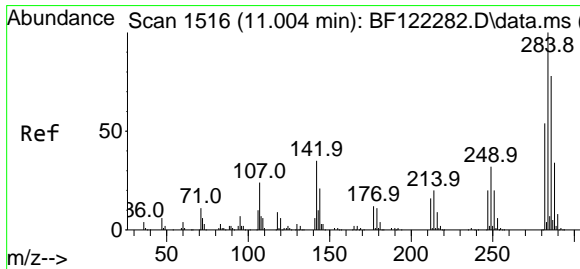
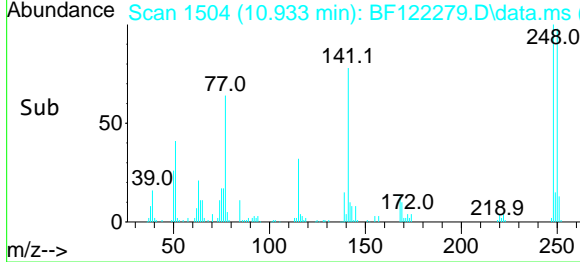
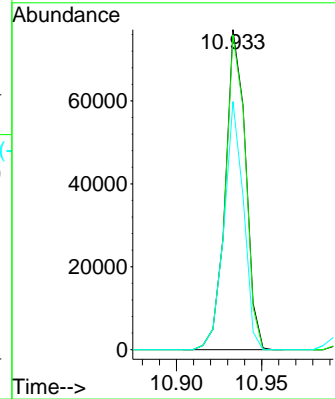
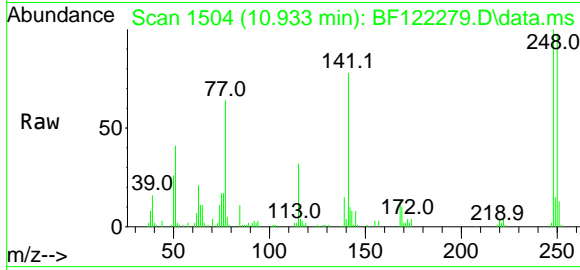




#67
 4-Bromophenyl-phenylether
 Concen: 5.07 ng
 RT: 10.933 min Scan# 1504
 Delta R.T. -0.006 min
 Lab File: BF122279.D
 Acq: 9 Nov 2020 11:22

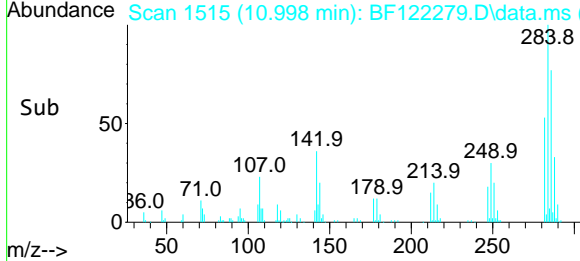
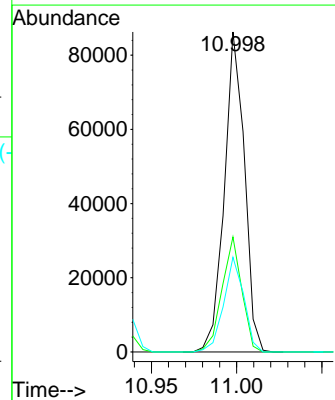
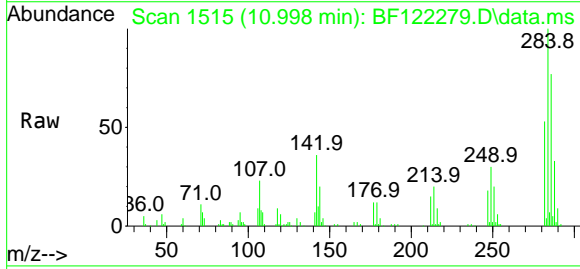
Instrument :
 BNA_F
ClientSampled :
 SSTDICC005

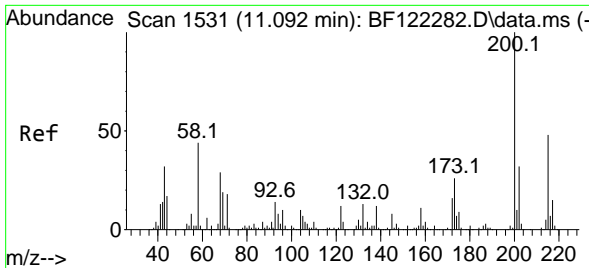
Tgt Ion	Resp	Lower	Upper
248	100		
250	98.4	77.0	115.6
141	77.5	53.7	80.5



#68
 Hexachlorobenzene
 Concen: 4.96 ng
 RT: 10.998 min Scan# 1515
 Delta R.T. -0.006 min
 Lab File: BF122279.D
 Acq: 9 Nov 2020 11:22

Tgt Ion	Resp	Lower	Upper
284	100		
142	36.0	27.4	41.2
249	29.6	24.2	36.4

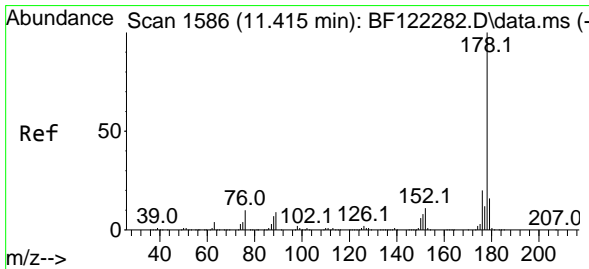
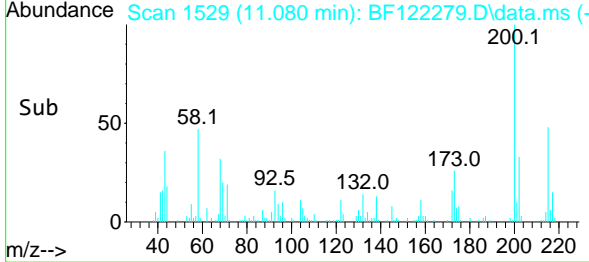
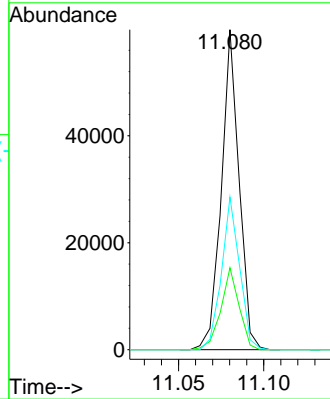
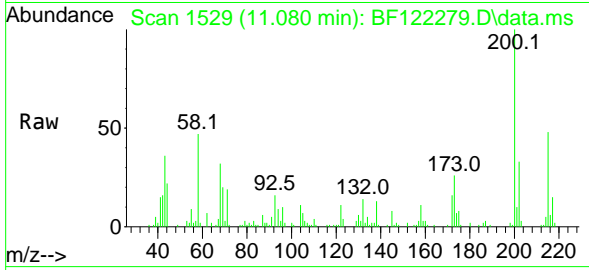




#69
 Atrazine
 Concen: 4.72 ng
 RT: 11.080 min Scan# 1529
 Delta R.T. -0.012 min
 Lab File: BF122279.D
 Acq: 9 Nov 2020 11:22

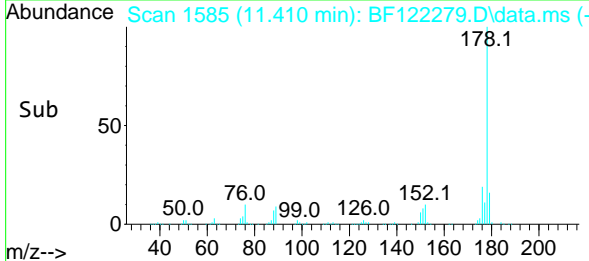
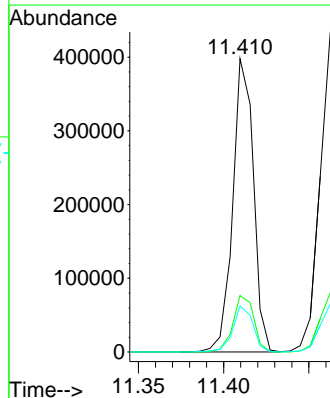
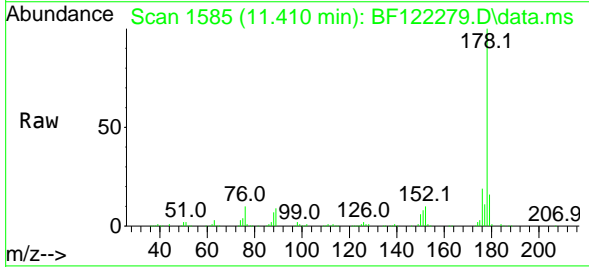
Instrument :
 BNA_F
 ClientSampleId :
 SSTDICC005

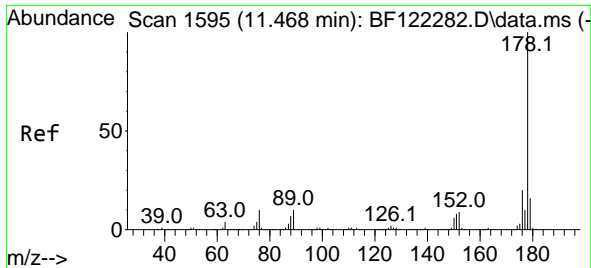
Tgt Ion:200 Resp: 43258
 Ion Ratio Lower Upper
 200 100
 173 25.6 7.5 47.5
 215 47.7 27.1 67.1



#71
 Phenanthrene
 Concen: 5.62 ng
 RT: 11.410 min Scan# 1585
 Delta R.T. -0.006 min
 Lab File: BF122279.D
 Acq: 9 Nov 2020 11:22

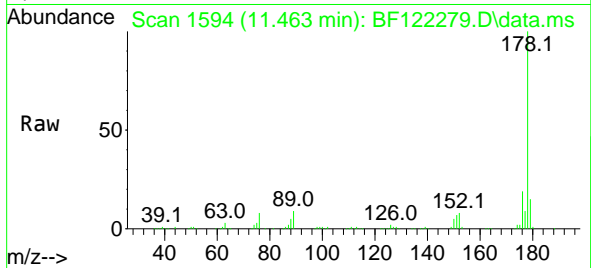
Tgt Ion:178 Resp: 335454
 Ion Ratio Lower Upper
 178 100
 176 19.3 15.9 23.9
 179 15.6 12.2 18.4



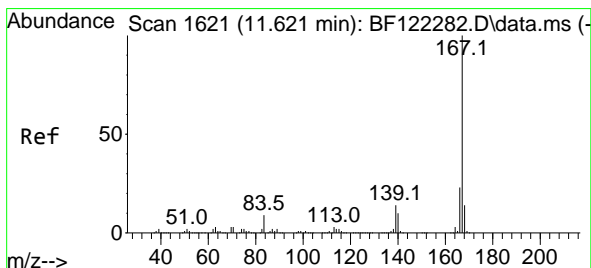
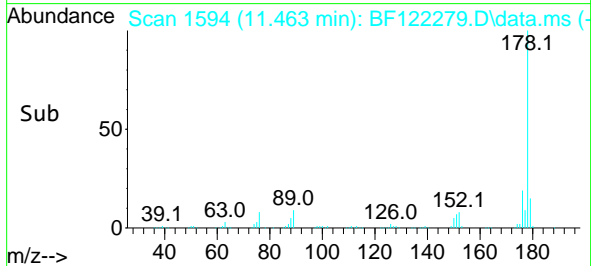
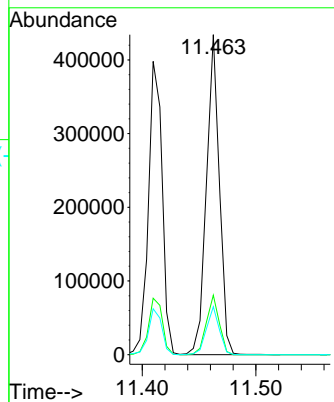


#72
 Anthracene
 Concen: 5.54 ng
 RT: 11.463 min Scan# 1594
 Delta R.T. -0.006 min
 Lab File: BF122279.D
 Acq: 9 Nov 2020 11:22

Instrument :
 BNA_F
 ClientSampled :
 SSTDICC005

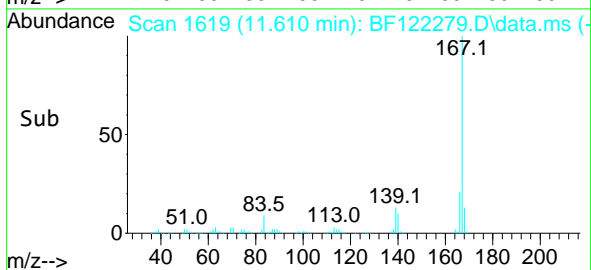
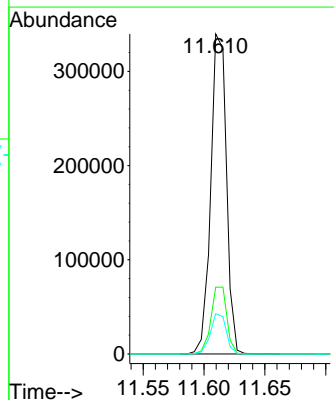
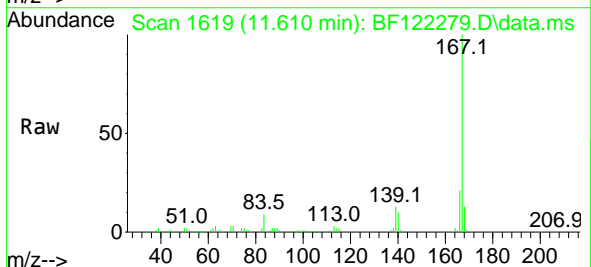


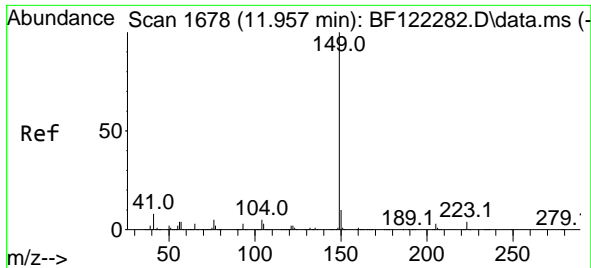
Tgt Ion:178 Resp: 342989
 Ion Ratio Lower Upper
 178 100
 176 18.6 15.7 23.5
 179 15.0 12.7 19.1



#73
 Carbazole
 Concen: 5.53 ng
 RT: 11.610 min Scan# 1619
 Delta R.T. -0.012 min
 Lab File: BF122279.D
 Acq: 9 Nov 2020 11:22

Tgt Ion:167 Resp: 304180
 Ion Ratio Lower Upper
 167 100
 166 20.9 17.8 26.6
 139 12.6 10.8 16.2

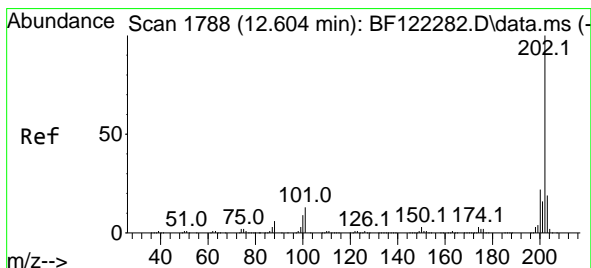
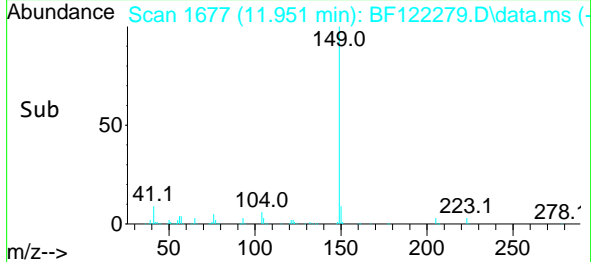
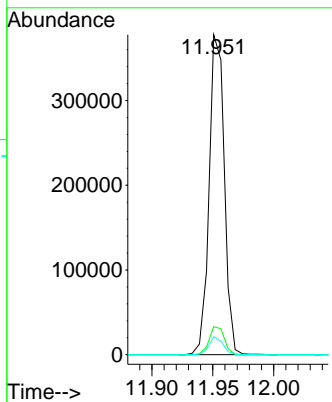
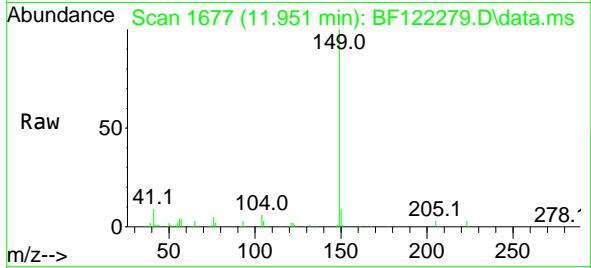




#74
 Di-n-butylphthalate
 Concen: 5.16 ng
 RT: 11.951 min Scan# 1677
 Delta R.T. -0.006 min
 Lab File: BF122279.D
 Acq: 9 Nov 2020 11:22

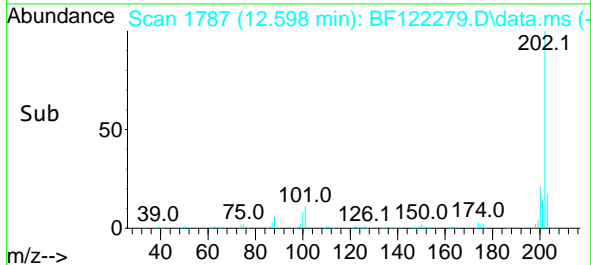
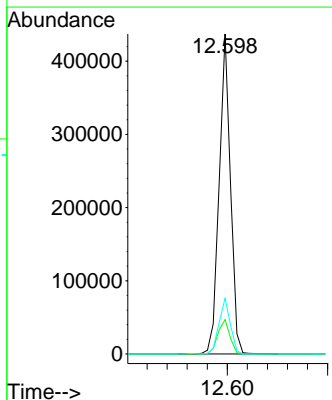
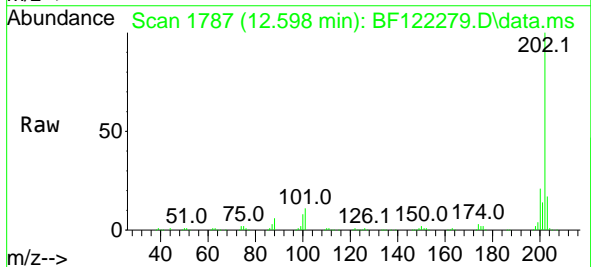
Instrument :
 BNA_F
 ClientSampleId :
 SSTDICC005

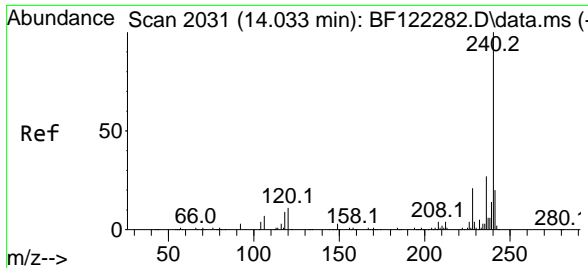
Tgt Ion:149 Resp: 326816
 Ion Ratio Lower Upper
 149 100
 150 8.8 7.7 11.5
 104 5.6 4.2 6.2



#75
 Fluoranthene
 Concen: 5.32 ng
 RT: 12.598 min Scan# 1787
 Delta R.T. -0.006 min
 Lab File: BF122279.D
 Acq: 9 Nov 2020 11:22

Tgt Ion:202 Resp: 340720
 Ion Ratio Lower Upper
 202 100
 101 10.8 0.0 33.4
 203 17.4 0.0 37.9



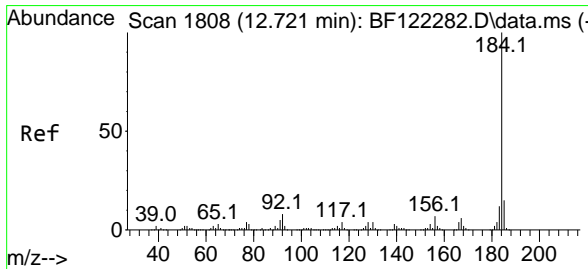
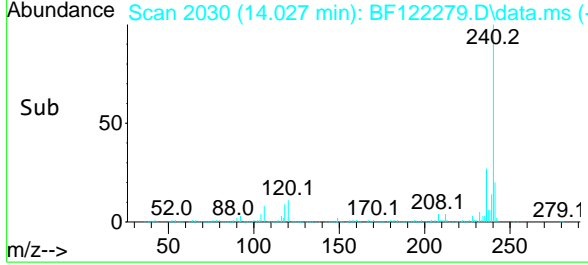
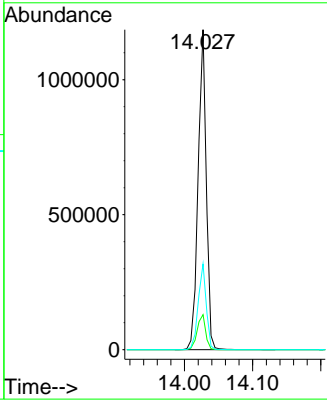
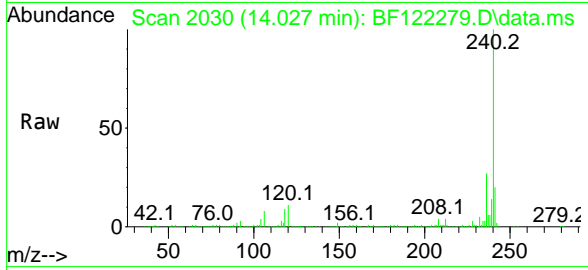


#76
 Chrysene-d12
 Concen: 20.00 ng
 RT: 14.027 min Scan# 2030
 Delta R.T. -0.006 min
 Lab File: BF122279.D
 Acq: 9 Nov 2020 11:22

Instrument :
 BNA_F
ClientSampleId :
 SSTDICC005

Tgt Ion:240 Resp: 988308

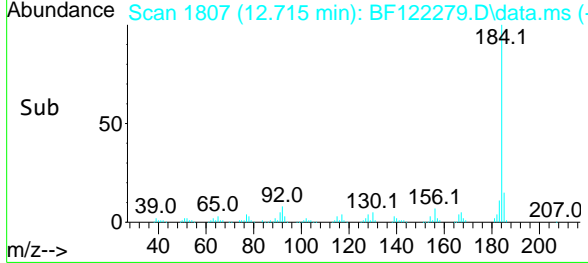
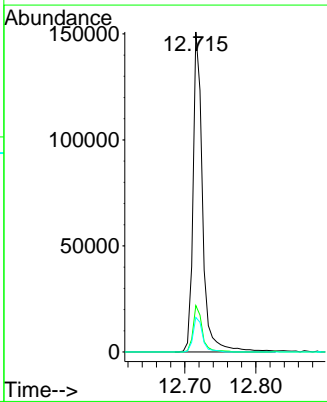
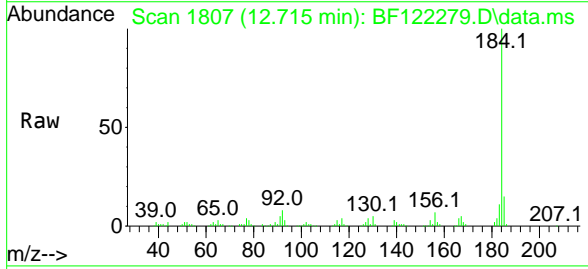
Ion	Ratio	Lower	Upper
240	100		
120	10.9	9.2	13.8
236	26.8	20.9	31.3

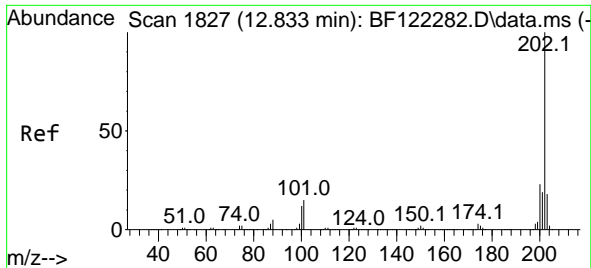


#77
 Benzidine
 Concen: 4.64 ng
 RT: 12.715 min Scan# 1807
 Delta R.T. -0.006 min
 Lab File: BF122279.D
 Acq: 9 Nov 2020 11:22

Tgt Ion:184 Resp: 141469

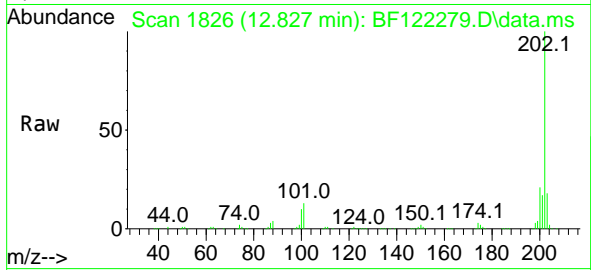
Ion	Ratio	Lower	Upper
184	100		
185	14.5	11.6	17.4
183	10.8	9.4	14.0



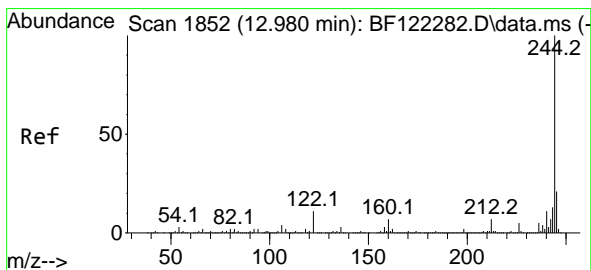
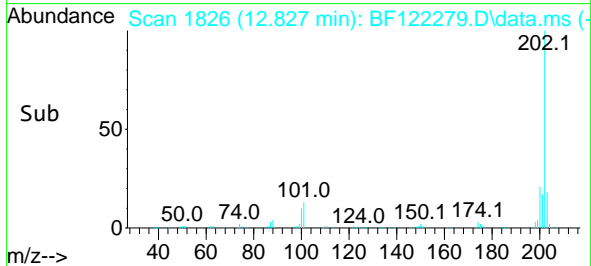
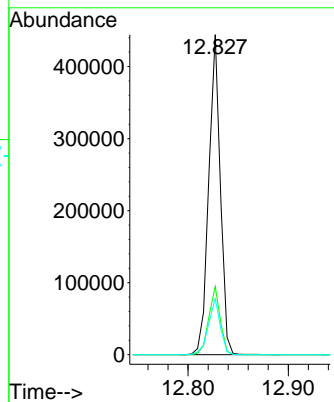


#78
 Pyrene
 Concen: 4.76 ng
 RT: 12.827 min Scan# 1826
 Delta R.T. -0.006 min
 Lab File: BF122279.D
 Acq: 9 Nov 2020 11:22

Instrument :
 BNA_F
 ClientSampled :
 SSTDICC005

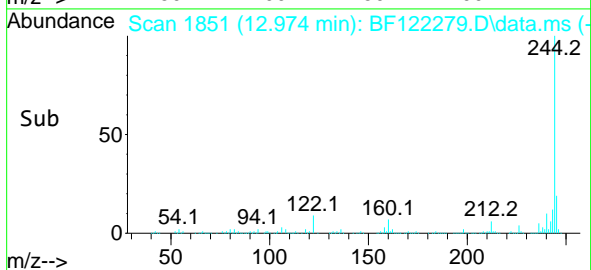
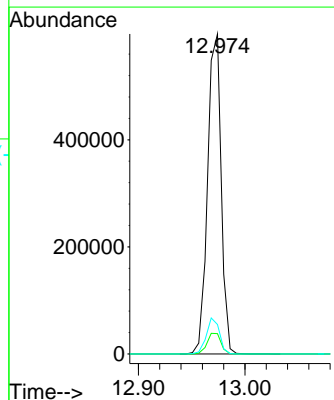
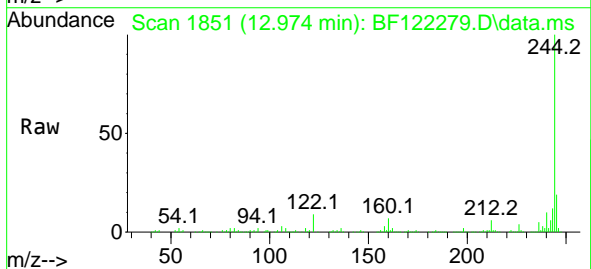


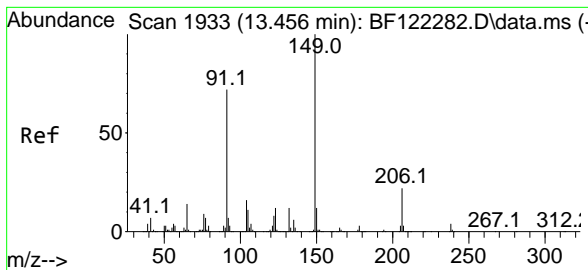
Tgt Ion:202 Resp: 358154
 Ion Ratio Lower Upper
 202 100
 200 21.3 17.4 26.2
 203 17.5 14.6 21.8



#79
 Terphenyl-d14
 Concen: 10.24 ng
 RT: 12.974 min Scan# 1851
 Delta R.T. -0.006 min
 Lab File: BF122279.D
 Acq: 9 Nov 2020 11:22

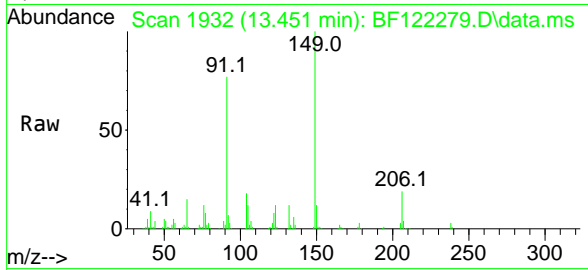
Tgt Ion:244 Resp: 531003
 Ion Ratio Lower Upper
 244 100
 212 6.3 5.4 8.2
 122 9.2 8.1 12.1





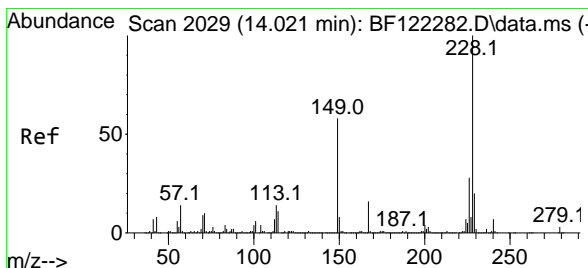
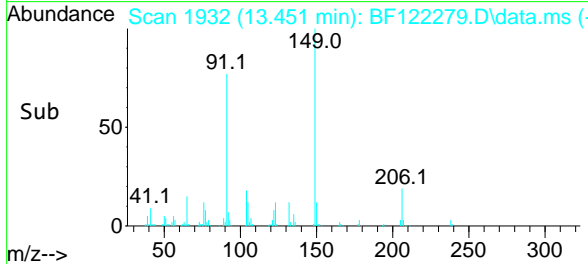
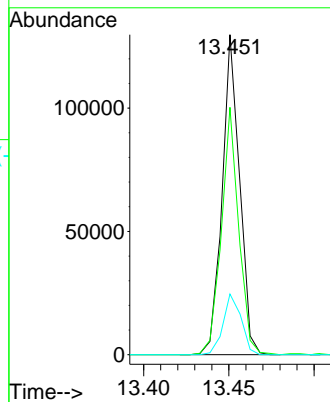
#80
 Butylbenzylphthalate
 Concen: 3.09 ng
 RT: 13.451 min Scan# 1932
 Delta R.T. -0.006 min
 Lab File: BF122279.D
 Acq: 9 Nov 2020 11:22

Instrument :
 BNA_F
 ClientSampled :
 SSTDICC005

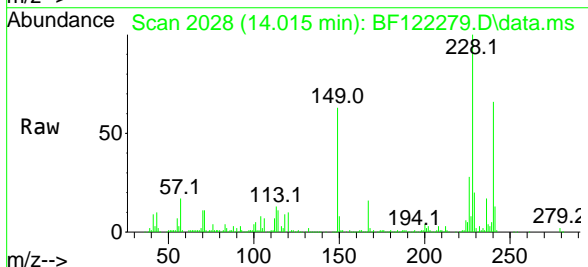


Tgt Ion:149 Resp: 92227

Ion	Ratio	Lower	Upper
149	100		
91	77.3	61.0	91.4
206	18.9	16.7	25.1

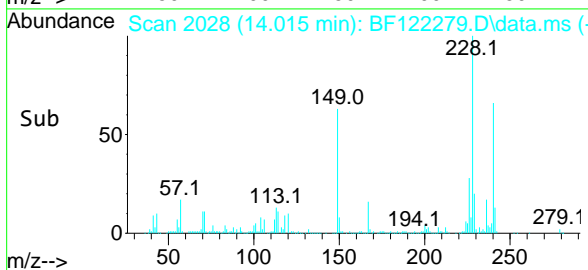
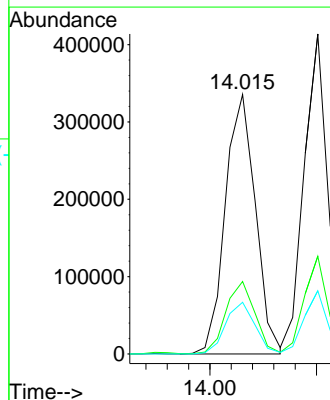


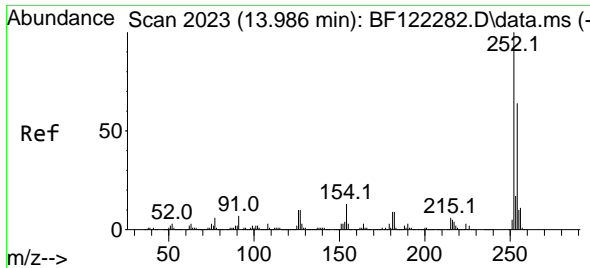
#81
 Benzo(a)anthracene
 Concen: 5.09 ng
 RT: 14.015 min Scan# 2028
 Delta R.T. -0.006 min
 Lab File: BF122279.D
 Acq: 9 Nov 2020 11:22



Tgt Ion:228 Resp: 329377

Ion	Ratio	Lower	Upper
228	100		
226	27.9	22.3	33.5
229	19.9	16.2	24.4

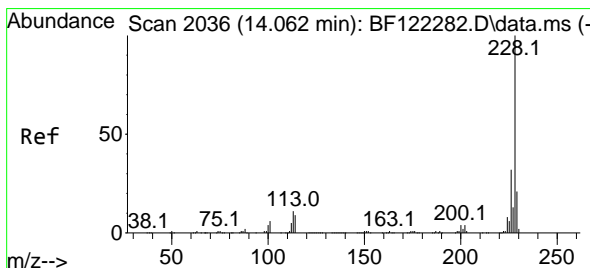
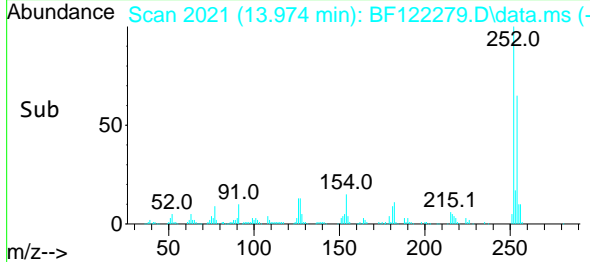
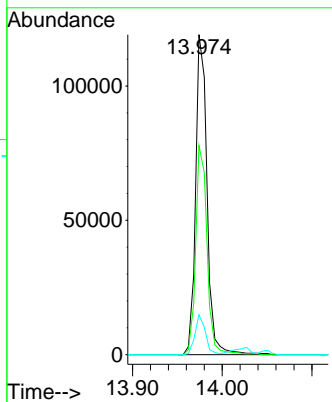
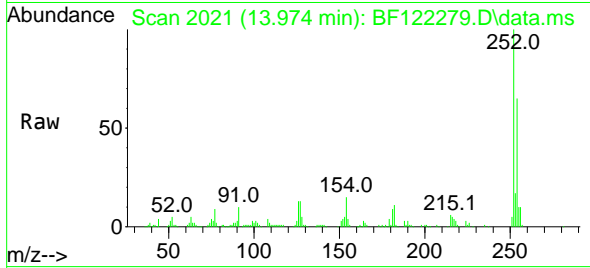




#82
 3,3'-Dichlorobenzidine
 Concen: 4.38 ng
 RT: 13.974 min Scan# 2021
 Delta R.T. -0.012 min
 Lab File: BF122279.D
 Acq: 9 Nov 2020 11:22

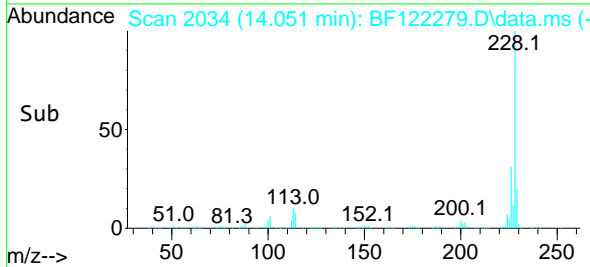
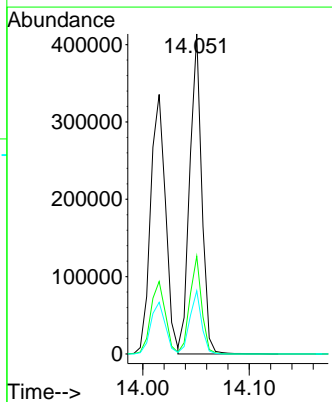
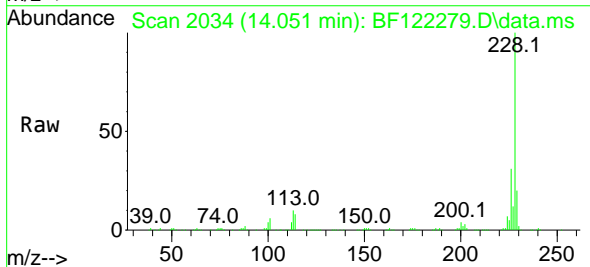
Instrument :
 BNA_F
ClientSampled :
 SSTDICC005

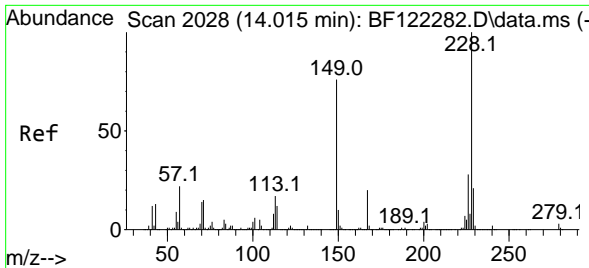
Tgt Ion	Resp	Lower	Upper
252	105231		
254	65.4	51.8	77.6
126	12.5	8.8	13.2



#83
 Chrysene
 Concen: 5.08 ng
 RT: 14.051 min Scan# 2034
 Delta R.T. -0.012 min
 Lab File: BF122279.D
 Acq: 9 Nov 2020 11:22

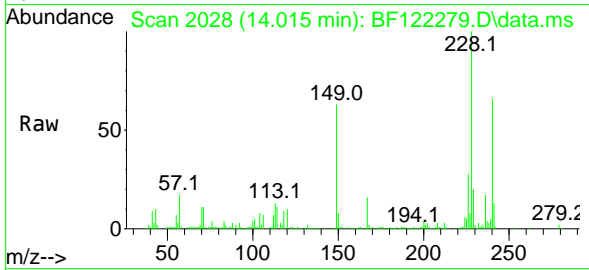
Tgt Ion	Resp	Lower	Upper
228	322936		
226	30.6	24.6	37.0
229	19.7	15.9	23.9



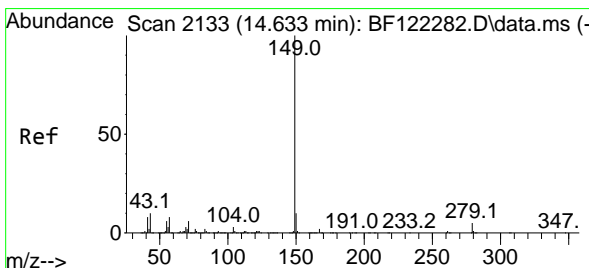
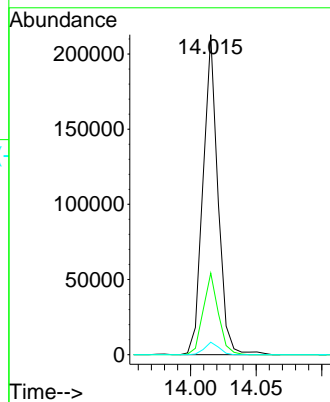
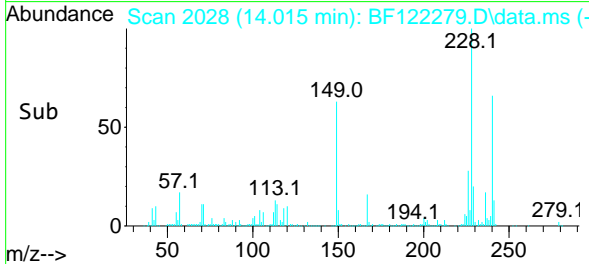


#84
 Bis(2-ethylhexyl)phthalate
 Concen: 4.16 ng
 RT: 14.015 min Scan# 2028
 Delta R.T. 0.000 min
 Lab File: BF122279.D
 Acq: 9 Nov 2020 11:22

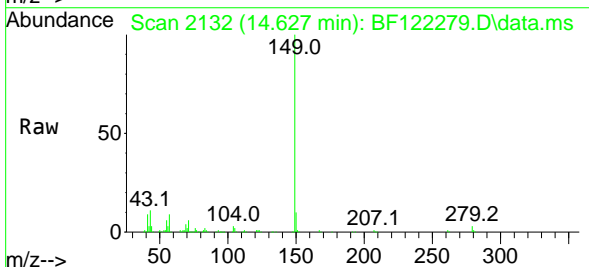
Instrument :
 BNA_F
 ClientSampleId :
 SSTDICC005



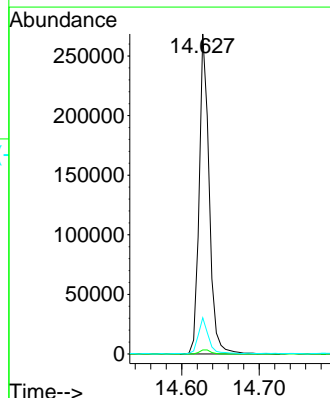
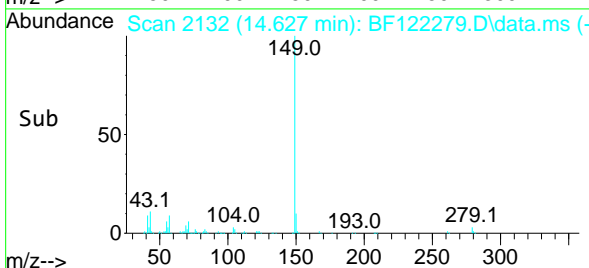
Tgt Ion:149 Resp: 168742
 Ion Ratio Lower Upper
 149 100
 167 25.5 20.9 31.3
 279 3.9 3.2 4.8

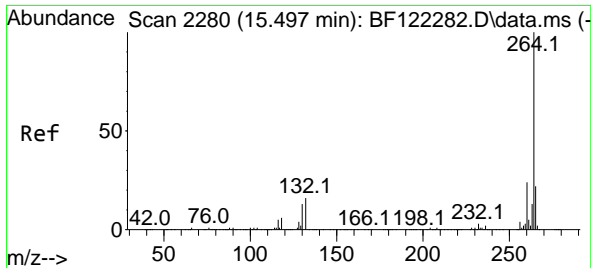


#85
 Di-n-octyl phthalate
 Concen: 3.66 ng
 RT: 14.627 min Scan# 2132
 Delta R.T. -0.006 min
 Lab File: BF122279.D
 Acq: 9 Nov 2020 11:22



Tgt Ion:149 Resp: 240065
 Ion Ratio Lower Upper
 149 100
 167 1.4 1.2 1.8
 43 11.8 9.0 13.6

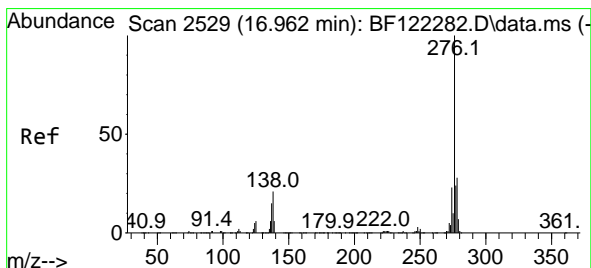
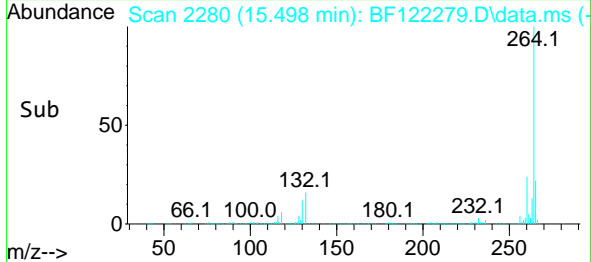
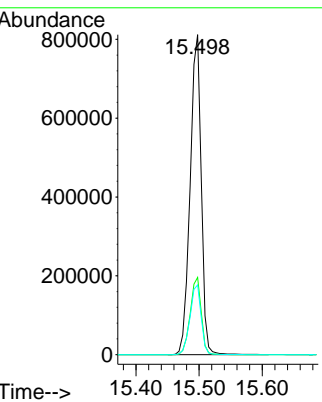
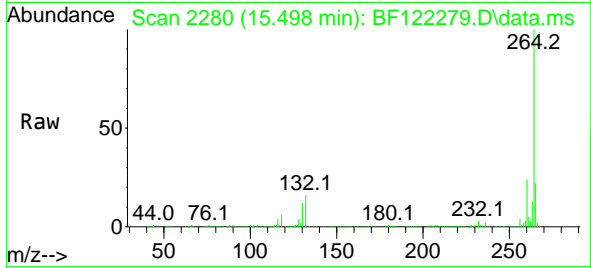




#86
 Perylene-d12
 Concen: 20.00 ng
 RT: 15.498 min Scan# 2280
 Delta R.T. 0.000 min
 Lab File: BF122279.D
 Acq: 9 Nov 2020 11:22

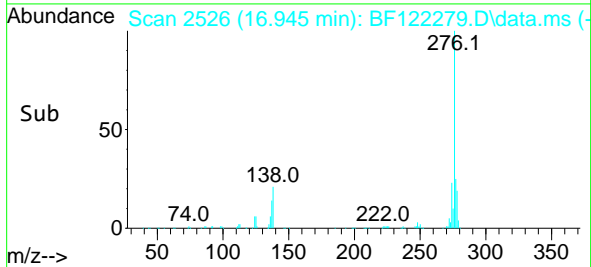
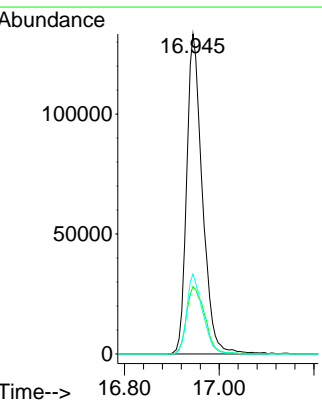
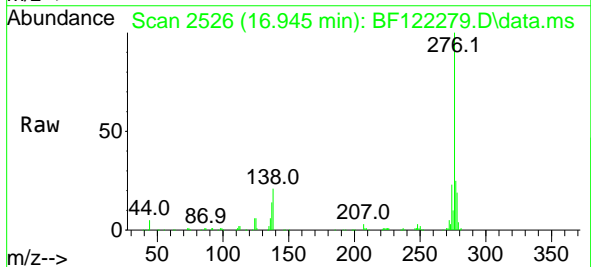
Instrument :
 BNA_F
 ClientSampled :
 SSTDICC005

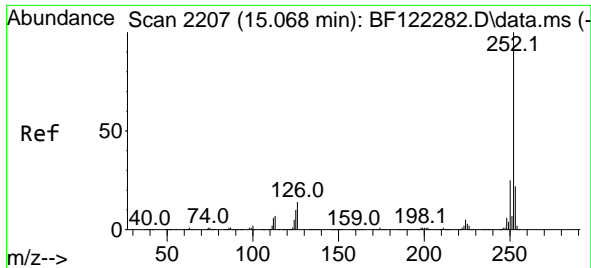
Tgt Ion	Resp	Lower	Upper
264	100		
260	24.1	18.7	28.1
265	21.8	17.3	25.9



#87
 Indeno(1,2,3-cd)pyrene
 Concen: 4.76 ng
 RT: 16.945 min Scan# 2526
 Delta R.T. -0.018 min
 Lab File: BF122279.D
 Acq: 9 Nov 2020 11:22

Tgt Ion	Resp	Lower	Upper
276	100		
138	24.6	19.9	29.9
277	25.1	20.4	30.6

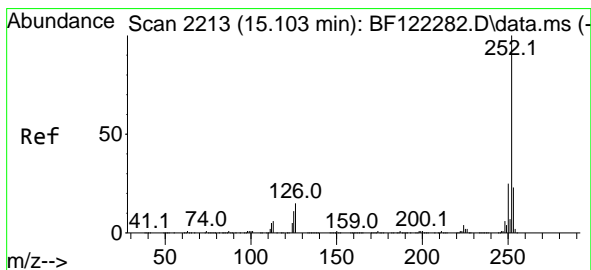
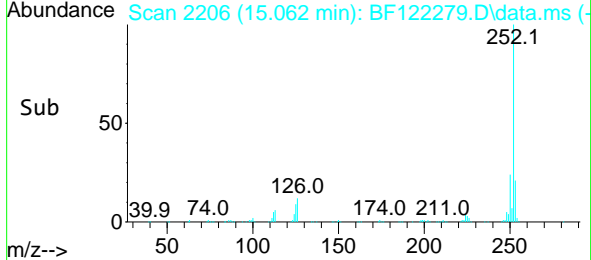
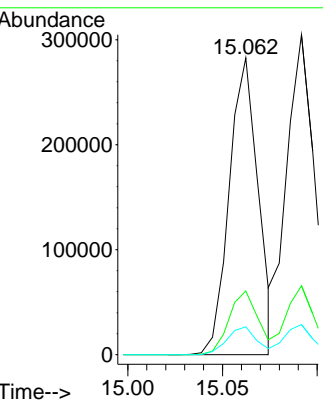
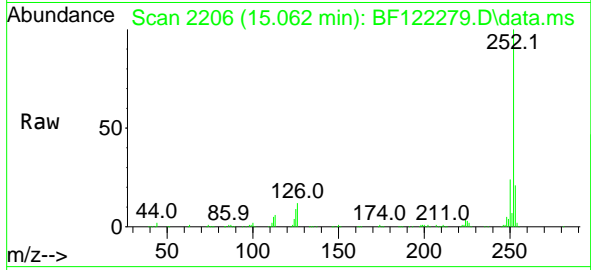




#88
 Benzo(b)fluoranthene
 Concen: 4.49 ng
 RT: 15.062 min Scan# 2206
 Delta R.T. -0.006 min
 Lab File: BF122279.D
 Acq: 9 Nov 2020 11:22

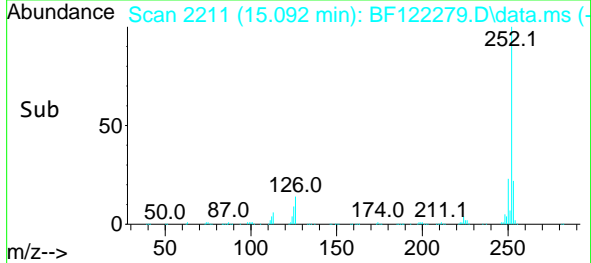
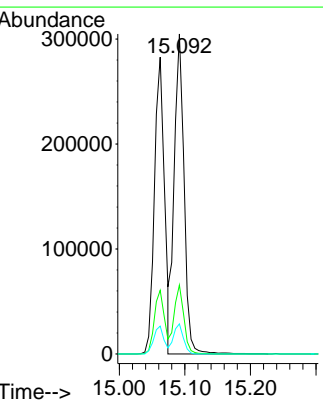
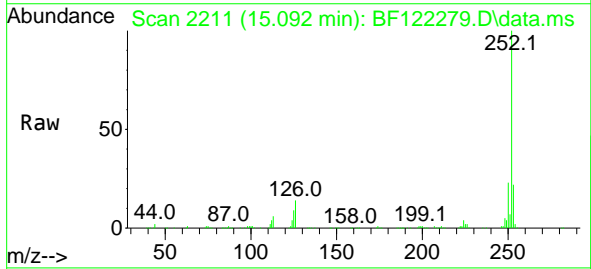
Instrument :
 BNA_F
ClientSampled :
 SSTDICC005

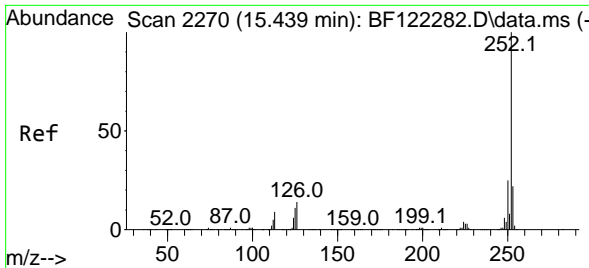
Tgt Ion	Resp	Lower	Upper
252	100		
253	21.5	18.2	27.2
125	9.4	8.0	12.0



#89
 Benzo(k)fluoranthene
 Concen: 4.99 ng
 RT: 15.092 min Scan# 2211
 Delta R.T. -0.012 min
 Lab File: BF122279.D
 Acq: 9 Nov 2020 11:22

Tgt Ion	Resp	Lower	Upper
252	100		
253	21.6	17.8	26.6
125	9.4	7.7	11.5



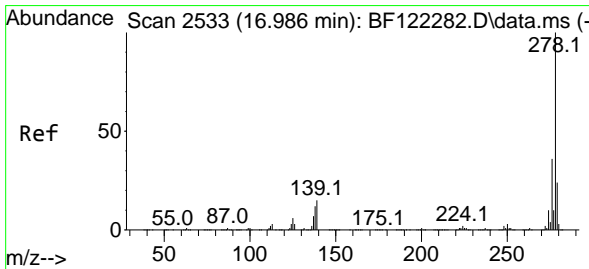
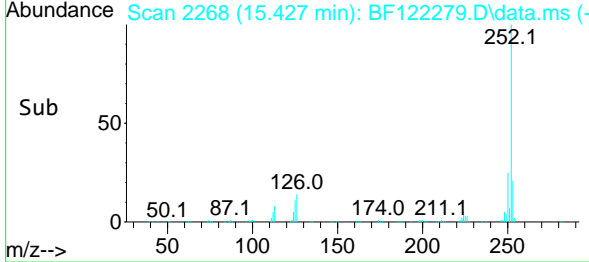
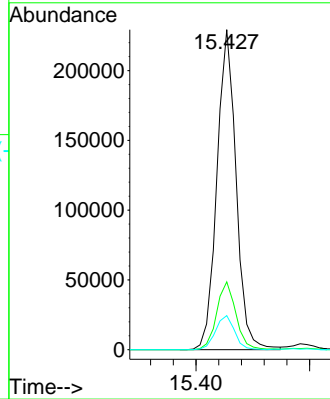
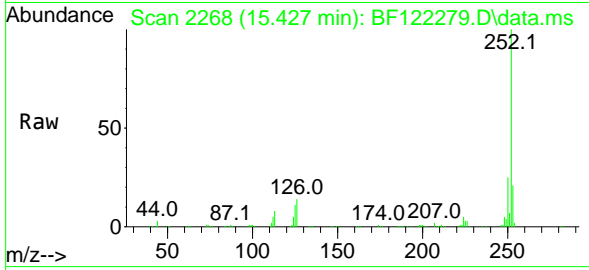


#90
 Benzo(a)pyrene
 Concen: 4.65 ng
 RT: 15.427 min Scan# 2268
 Delta R.T. -0.012 min
 Lab File: BF122279.D
 Acq: 9 Nov 2020 11:22

Instrument :
 BNA_F
 ClientSampled :
 SSTDICC005

Tgt Ion:252 Resp: 269265

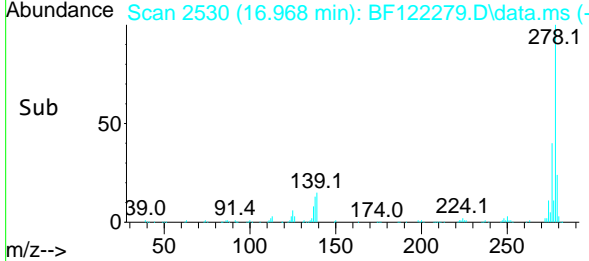
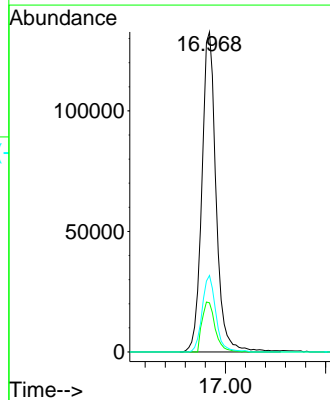
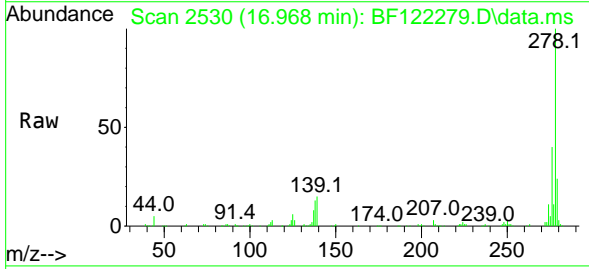
Ion	Ratio	Lower	Upper
252	100		
253	21.2	17.3	25.9
125	10.7	8.6	13.0

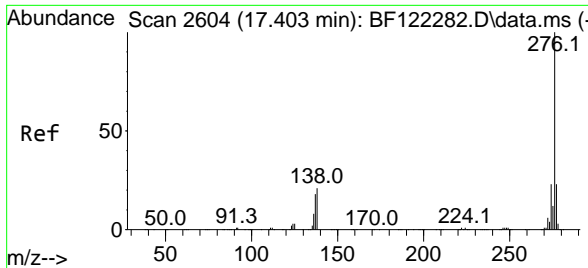


#91
 Dibenzo(a,h)anthracene
 Concen: 4.94 ng
 RT: 16.968 min Scan# 2530
 Delta R.T. -0.018 min
 Lab File: BF122279.D
 Acq: 9 Nov 2020 11:22

Tgt Ion:278 Resp: 261772

Ion	Ratio	Lower	Upper
278	100		
139	15.4	13.0	19.4
279	23.9	19.0	28.4





#92
 Benzo(g,h,i)perylene
 Concen: 4.82 ng
 RT: 17.386 min Scan# 2601
 Delta R.T. -0.018 min
 Lab File: BF122279.D
 Acq: 9 Nov 2020 11:22

Instrument :
 BNA_F
ClientSampled :
 SSTDICC005

Tgt Ion:276 Resp: 255913

Ion	Ratio	Lower	Upper
276	100		
277	22.8	19.4	29.2
138	20.3	17.8	26.6

