

Data Path : Z:\HPCHEM1\BNA_F\DATA\BF010416\
 Data File : BF084243.D
 Acq On : 4 Jan 2016 17:12
 Operator : UM/SJ
 Sample : G4981-07
 Misc :
 ALS Vial : 13 Sample Multiplier: 1

Instrument :
 BNA_F
 ClientSampleId :
 S8-0534

Quant Time: Jan 05 05:49:12 2016
 Quant Method : Z:\HPCHEM1\BNA_F\METHODS\8270-BF123115.M
 Quant Title : ASP BNA STANDARDS FOR 5 POINT CALIBRATION
 QLast Update : Mon Jan 04 12:22:40 2016
 Response via : Initial Calibration

Internal Standards	R.T.	QIon	Response	Conc	Units	Dev(Min)
1) 1,4-Dichlorobenzene-d4	6.90	152	307589	20.00	ng	0.00
21) Naphthalene-d8	8.19	136	1146918	20.00	ng	0.00
38) Acenaphthene-d10	9.94	164	516432	20.00	ng	-0.01
63) Phenanthrene-d10	11.42	188	798247	20.00	ng	0.00
75) Chrysene-d12	14.07	240	602725	20.00	ng	0.00
86) Perylene-d12	15.51	264	517306	20.00	ng	0.00

System Monitoring Compounds

5) 2-Fluorophenol	5.50	112	789371	41.51	ng	0.01
7) Phenol-d6	6.56	99	675495	28.28	ng	0.02
23) Nitrobenzene-d5	7.46	82	1461899	70.94	ng	-0.01
41) 2,4,6-Tribromophenol	10.74	330	429841	82.44	ng	0.00
44) 2-Fluorobiphenyl	9.26	172	2064811	69.16	ng	0.00
78) Terphenyl-d14	13.01	244	1296027	48.00	ng	0.00

Target Compounds

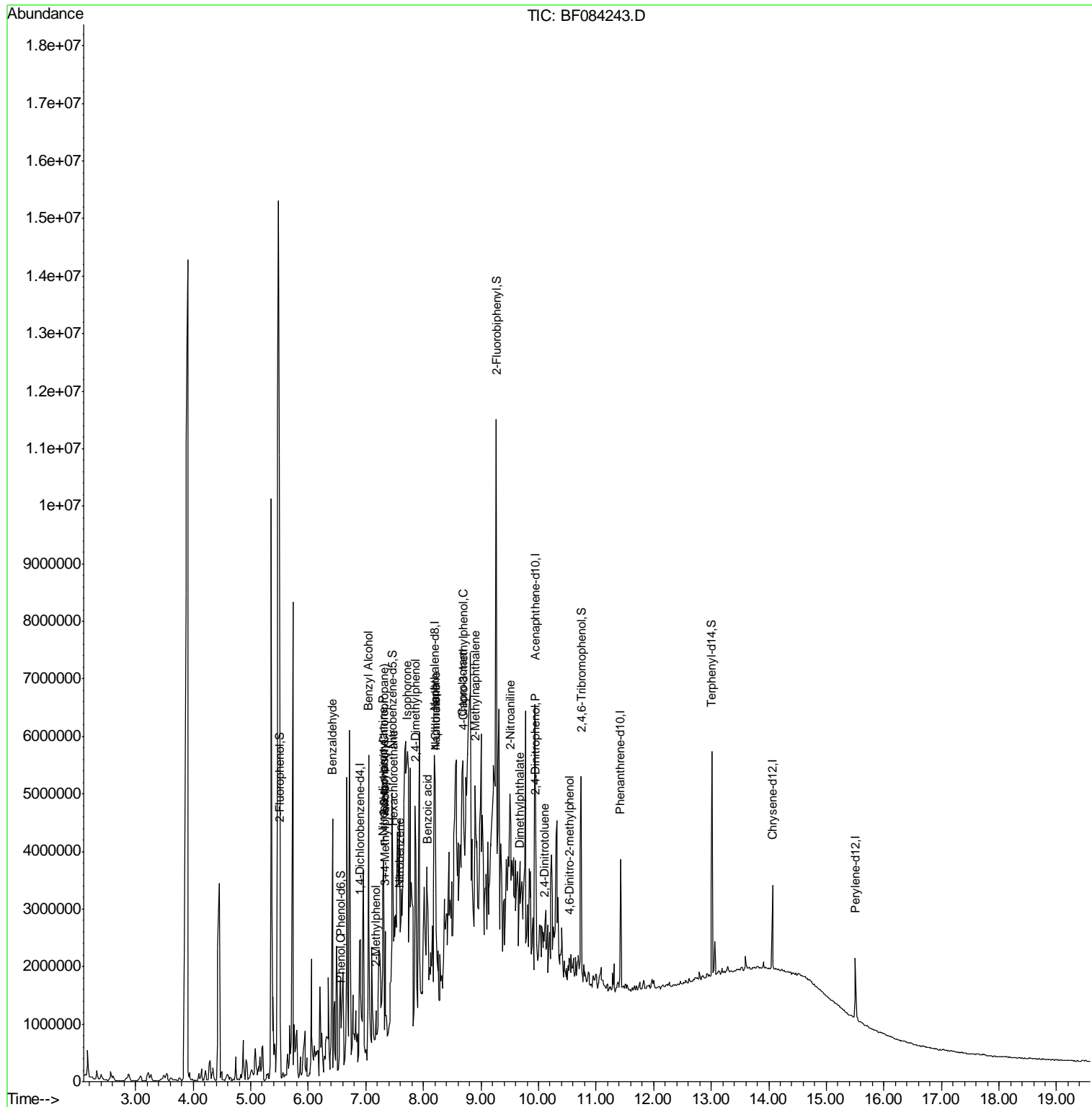
						Qvalue
9) Benzaldehyde	6.42	77	228327	14.68	ng	# 1
10) Phenol	6.57	94	64201	2.36	ng	80
15) Benzyl Alcohol	7.05	79	90147	4.49	ng	# 76
16) 2,2'-oxybis(1-Chloropropan	7.31	45	177179	4.63	ng	# 1
17) 2-Methylphenol	7.17	107	84918	4.70	ng	# 81
18) Hexachloroethane	7.47	117	143625	16.09	ng	# 30
19) n-Nitroso-di-n-propylamine	7.30	70	72009	4.45	ng	# 24
20) 3+4-Methylphenols	7.33	107	563667	26.52	ng	86
22) Acetophenone	7.31	105	667916	24.22	ng	# 97
24) Nitrobenzene	7.60	77	48699	2.33	ng	# 56
25) Isophorone	7.71	82	88961	2.26	ng	# 41
27) 2,4-Dimethylphenol	7.86	122	231841	12.04	ng	95
31) Naphthalene	8.21	128	1767267	33.96	ng	99
32) Benzoic acid	8.06	122	173589	18.44	ng	86
33) 4-Chloroaniline	8.21	127	249177	10.45	ng	# 42
35) Caprolactam	8.68	113	116620	21.57	ng	# 1
36) 4-Chloro-3-methylphenol	8.69	107	49365	2.75	ng	# 32
37) 2-Methylnaphthalene	8.90	142	261229	6.99	ng	# 96
47) 2-Nitroaniline	9.50	65	44948	4.22	ng	# 46
49) Dimethylphthalate	9.66	163	131735	3.57	ng	# 66
53) 2,4-Dinitrophenol	9.95	184	3822	4.62	ng	# 1
54) Dibenzofuran	10.14	168	4878	Below	Cal	# 1
56) 2,4-Dinitrotoluene	10.10	165	32487	3.17	ng	# 64
57) Fluorene	10.49	166	5003	Below	Cal	# 23
60) 4-Chlorophenyl-phenylether	10.46	204	3289	Below	Cal	# 1
64) 4,6-Dinitro-2-methylphenol	10.54	198	3700	6.98	ng	# 1
73) Di-n-butylphthalate	12.00	149	21402	Below	Cal	# 42

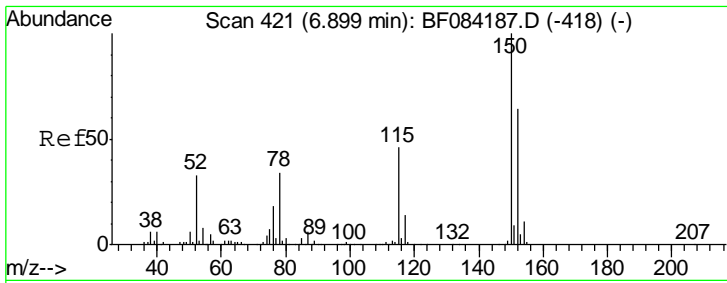
(#) = qualifier out of range (m) = manual integration (+) = signals summed

Data Path : Z:\HPCHEM1\BNA_F\DATA\BF010416\
Data File : BF084243.D
Acq On : 4 Jan 2016 17:12
Operator : UM/SJ
Sample : G4981-07
Misc :
ALS Vial : 13 Sample Multiplier: 1

Instrument :
BNA_F
Client Sampled :
S8-0534

Quant Time: Jan 05 05:49:12 2016
Quant Method : Z:\HPCHEM1\BNA_F\METHODS\8270-BF123115.M
Quant Title : ASP BNA STANDARDS FOR 5 POINT CALIBRATION
QLast Update : Mon Jan 04 12:22:40 2016
Response via : Initial Calibration

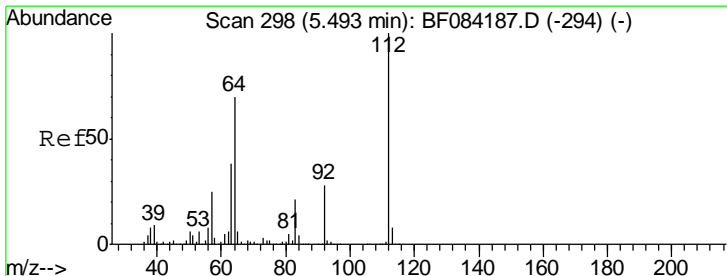
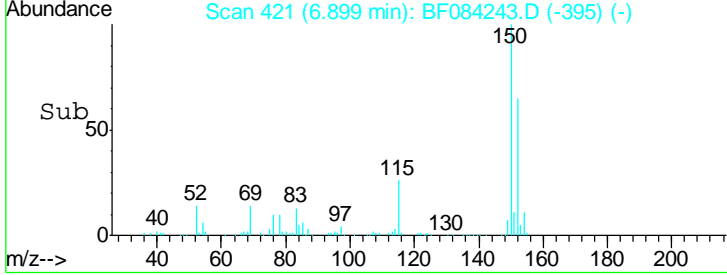
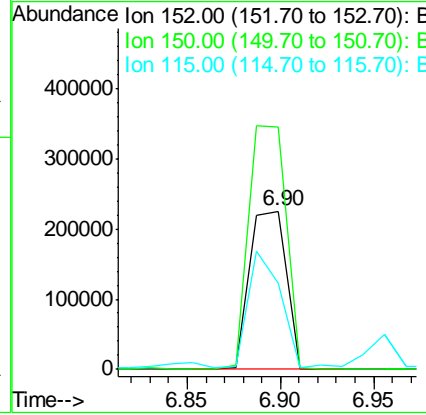
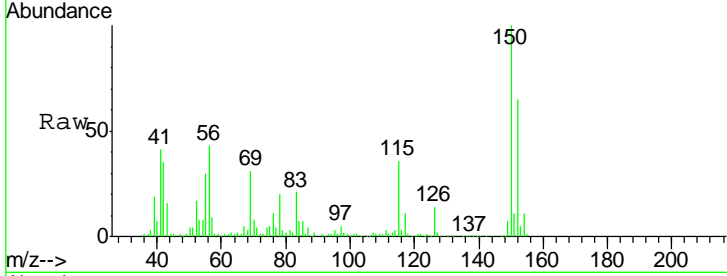




#1
 1,4-Dichlorobenzene-d4
 Concen: 20.00 ng
 RT: 6.90 min Scan# 421
 Delta R.T. 0.00 min
 Lab File: BF084243.D
 Acq: 4 Jan 2016 17:12

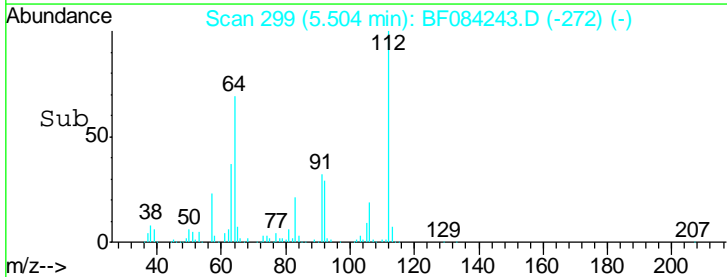
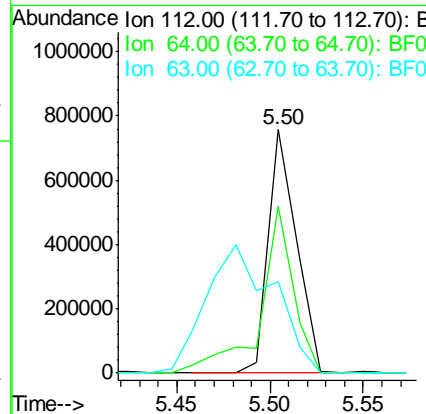
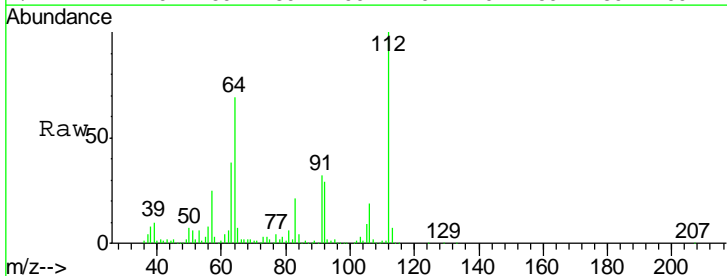
Instrument :
 BNA_F
ClientSampled :
 S8-0534

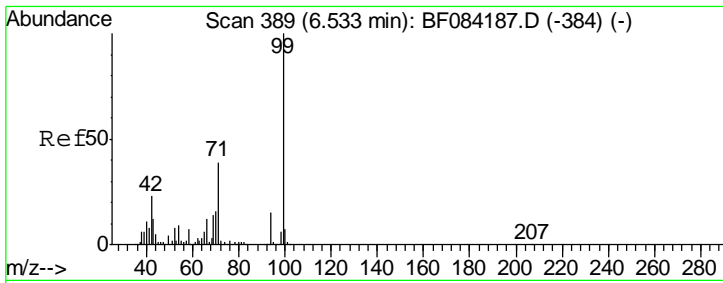
Tgt Ion	Resp	Lower	Upper
152	100		
150	153.2	123.0	184.4
115	54.9	51.4	77.2



#5
 2-Fluorophenol
 Concen: 41.51 ng
 RT: 5.50 min Scan# 299
 Delta R.T. 0.01 min
 Lab File: BF084243.D
 Acq: 4 Jan 2016 17:12

Tgt Ion	Resp	Lower	Upper
112	100		
64	68.8	36.6	55.0#
63	37.6	19.4	29.0#

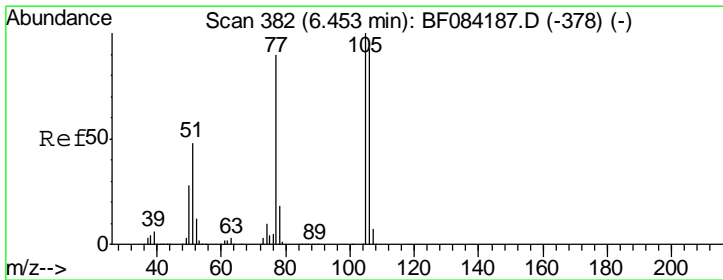
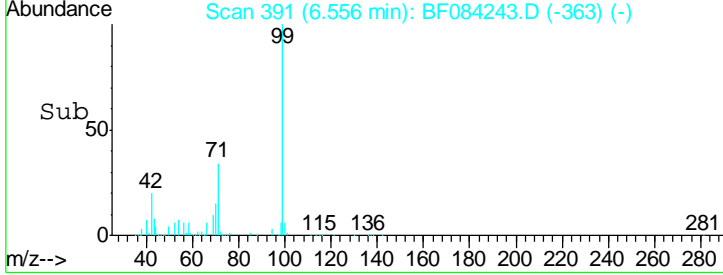
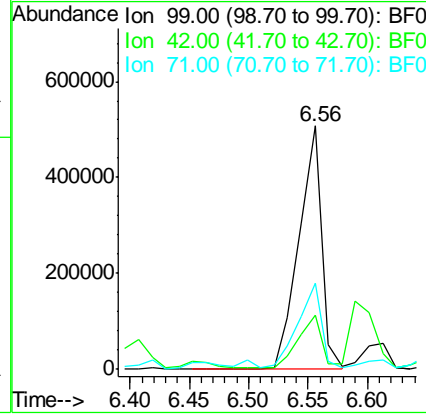
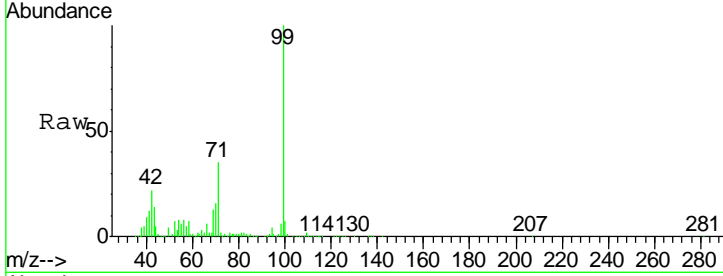




#7
 Phenol-d6
 Concen: 28.28 ng
 RT: 6.56 min Scan# 391
 Delta R.T. 0.02 min
 Lab File: BF084243.D
 Acq: 4 Jan 2016 17:12

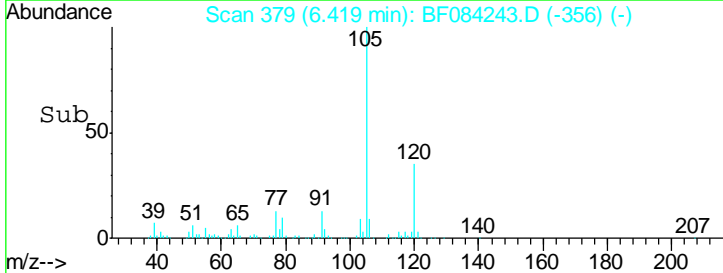
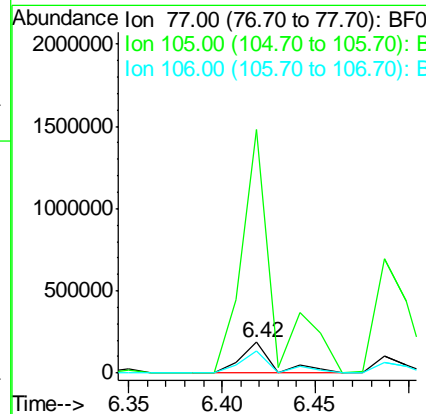
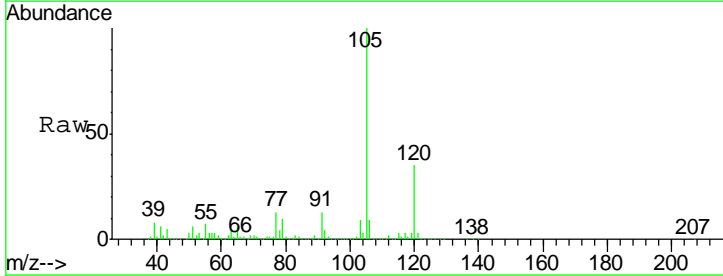
Instrument :
 BNA_F
 ClientSampled :
 S8-0534

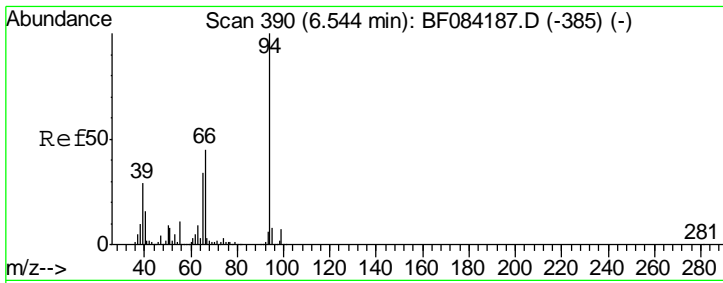
Tgt Ion	Resp	Lower	Upper
99	100		
42	22.0	12.8	19.2#
71	35.2	30.9	46.3



#9
 Benzaldehyde
 Concen: 14.68 ng
 RT: 6.42 min Scan# 379
 Delta R.T. -0.03 min
 Lab File: BF084243.D
 Acq: 4 Jan 2016 17:12

Tgt Ion	Resp	Lower	Upper
77	100		
105	784.5	83.0	123.0#
106	71.4	74.6	114.6#

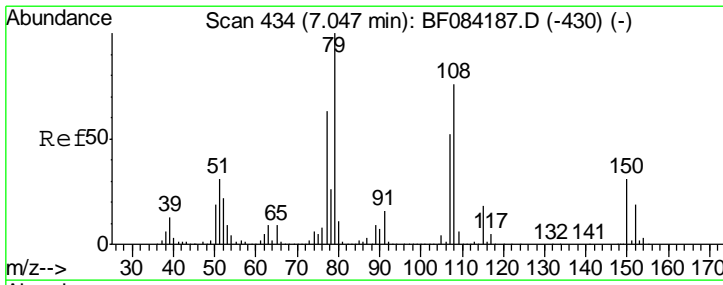
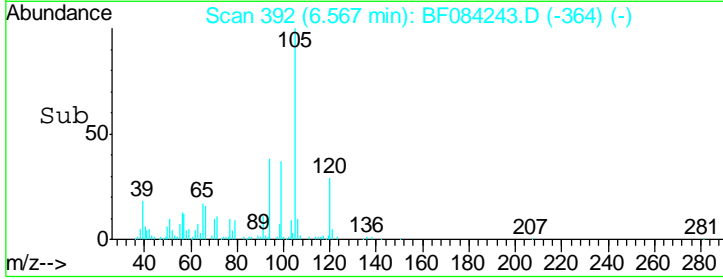
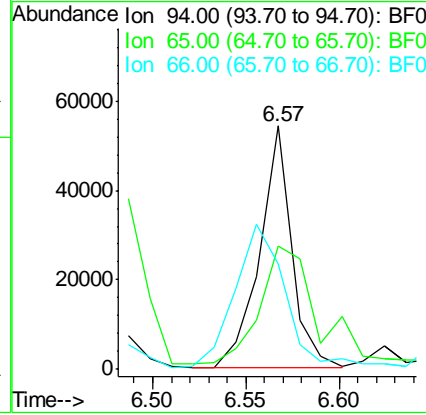
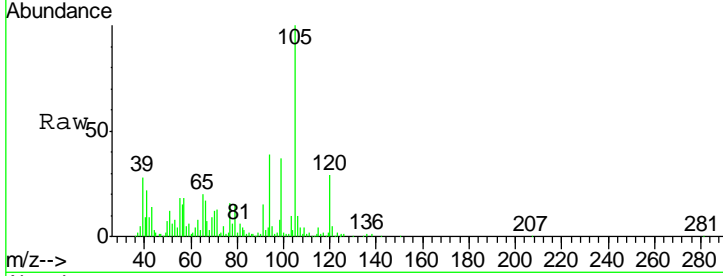




#10
 Phenol
 Concen: 2.36 ng
 RT: 6.57 min Scan# 392
 Delta R.T. 0.02 min
 Lab File: BF084243.D
 Acq: 4 Jan 2016 17:12

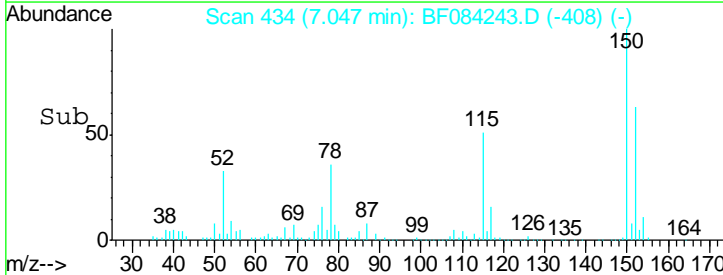
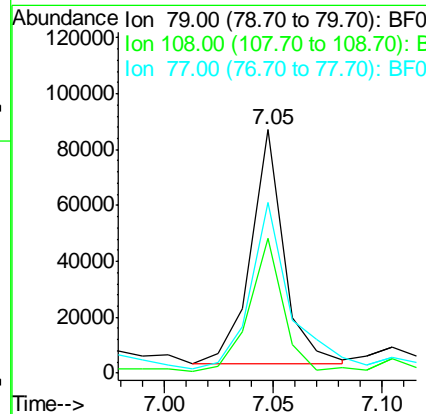
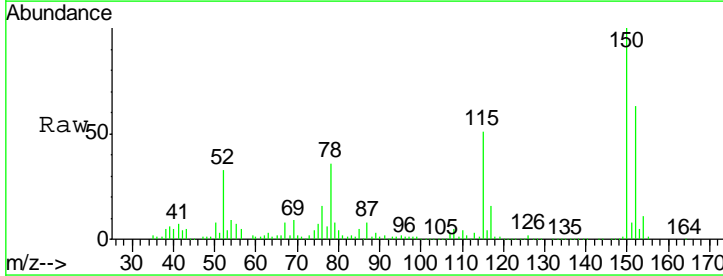
Instrument :
 BNA_F
 ClientSampled :
 S8-0534

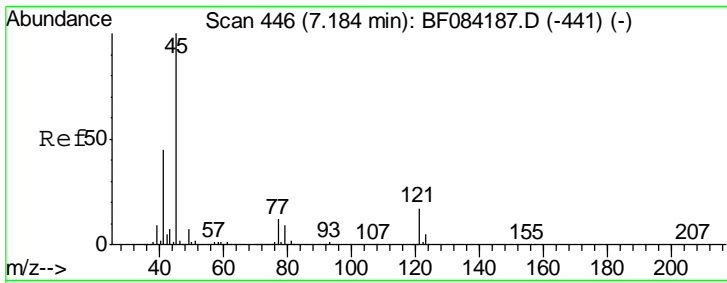
Tgt Ion	Resp	Lower	Upper
94	100		
65	50.7	12.9	52.9
66	43.4	32.7	72.7



#15
 Benzyl Alcohol
 Concen: 4.49 ng
 RT: 7.05 min Scan# 434
 Delta R.T. 0.00 min
 Lab File: BF084243.D
 Acq: 4 Jan 2016 17:12

Tgt Ion	Resp	Lower	Upper
79	100		
108	55.5	69.0	103.4#
77	70.1	50.0	75.0

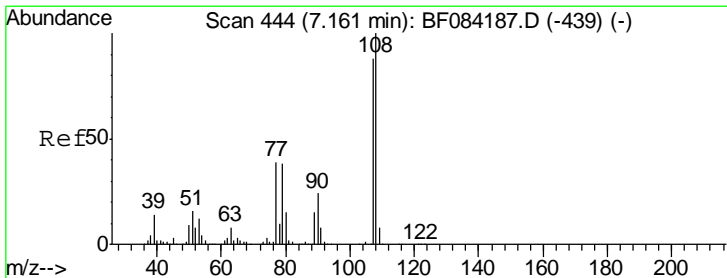
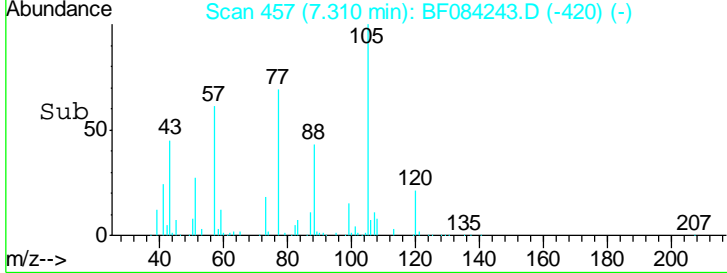
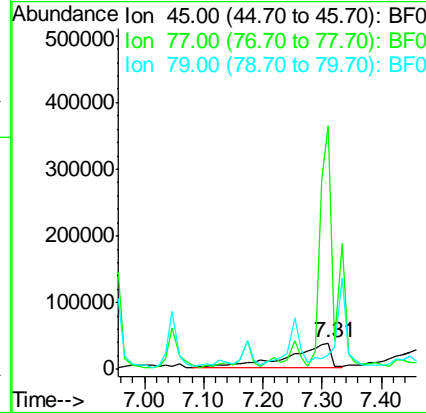
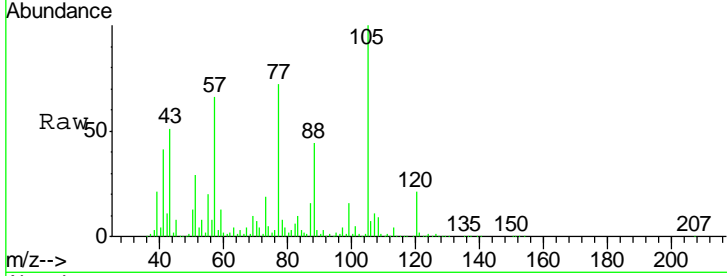




#16
 2,2'-oxybis(1-Chloropropane)
 Concen: 4.63 ng
 RT: 7.31 min Scan# 457
 Delta R.T. 0.13 min
 Lab File: BF084243.D
 Acq: 4 Jan 2016 17:12

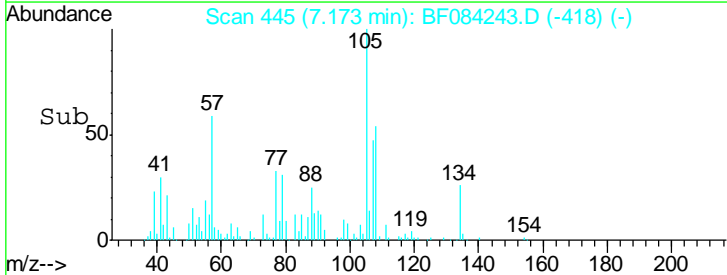
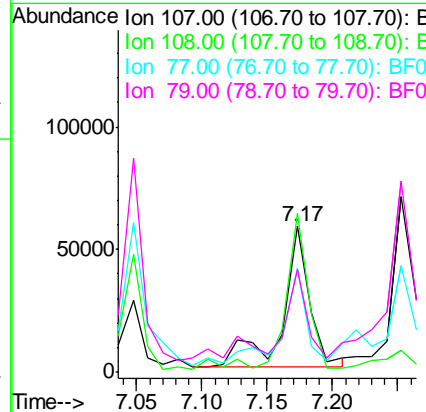
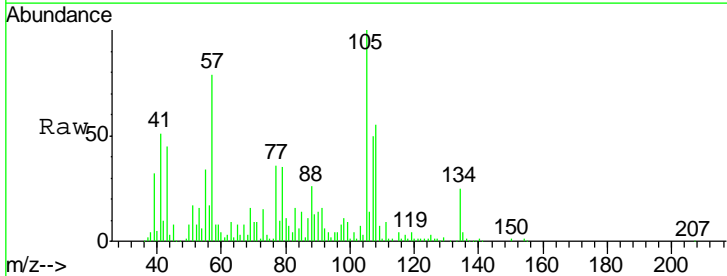
Instrument :
 BNA_F
 ClientSampled :
 S8-0534

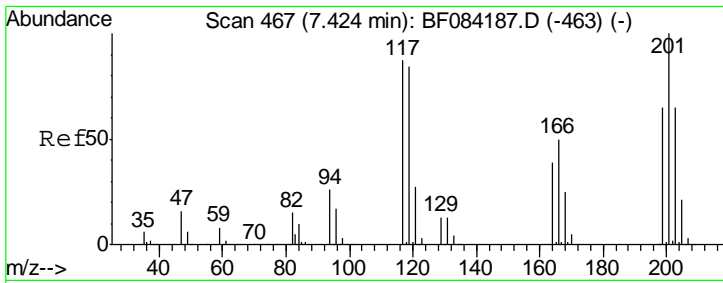
Tgt Ion	Resp	Lower	Upper
45	177179		
77	920.6	0.0	39.6#
79	55.4	0.0	35.0#



#17
 2-Methylphenol
 Concen: 4.70 ng
 RT: 7.17 min Scan# 445
 Delta R.T. 0.01 min
 Lab File: BF084243.D
 Acq: 4 Jan 2016 17:12

Tgt Ion	Resp	Lower	Upper
107	84918		
108	109.6	89.8	134.6
77	71.5	35.7	53.5#
79	70.9	35.7	53.5#

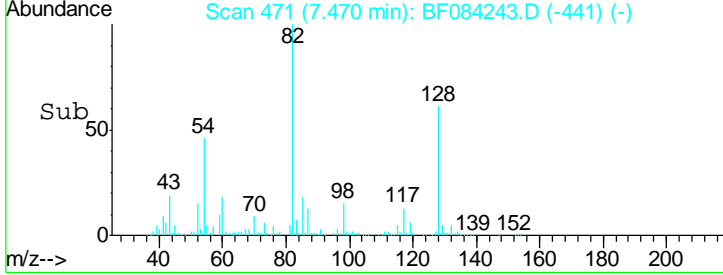
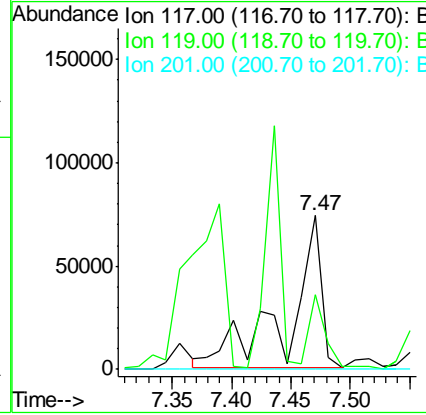
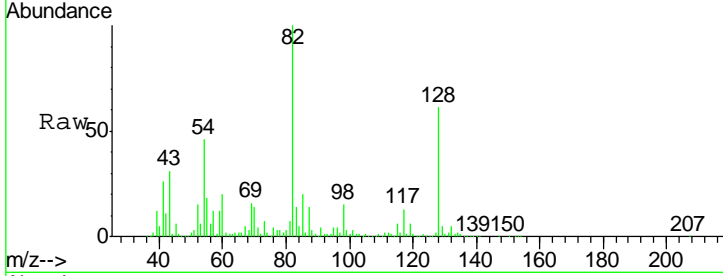




#18
 Hexachloroethane
 Concen: 16.09 ng
 RT: 7.47 min Scan# 471
 Delta R.T. 0.05 min
 Lab File: BF084243.D
 Acq: 4 Jan 2016 17:12

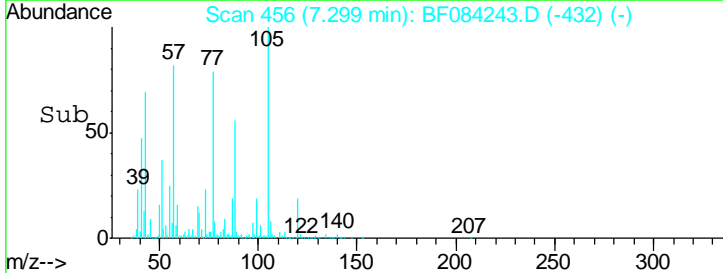
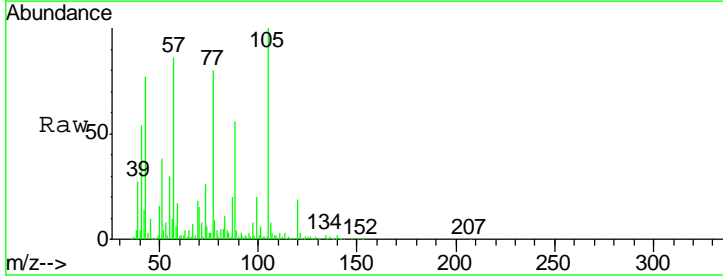
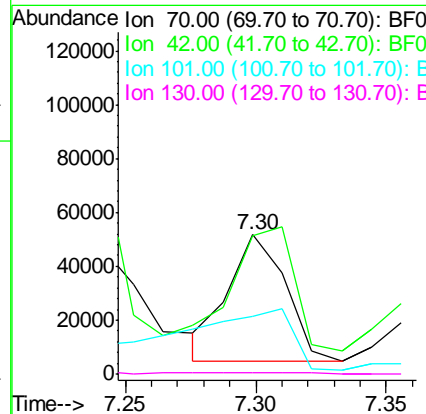
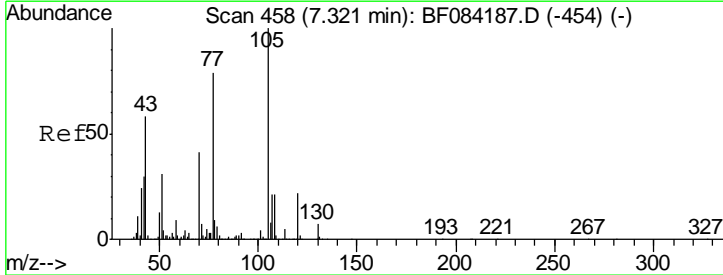
Instrument :
 BNA_F
ClientSampled :
 S8-0534

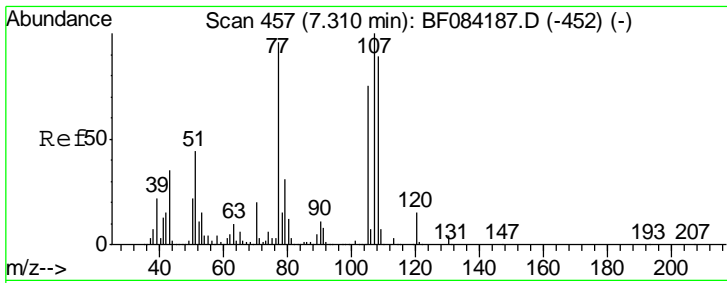
Tgt Ion	Resp	Lower	Upper
117	143625		
119	49.0	77.4	116.0#
201	0.0	68.6	103.0#



#19
 n-Nitroso-di-n-propylamine
 Concen: 4.45 ng
 RT: 7.30 min Scan# 456
 Delta R.T. -0.02 min
 Lab File: BF084243.D
 Acq: 4 Jan 2016 17:12

Tgt Ion	Resp	Lower	Upper
70	72009		
42	99.5	33.3	49.9#
101	41.2	9.3	13.9#
130	0.6	23.4	35.0#

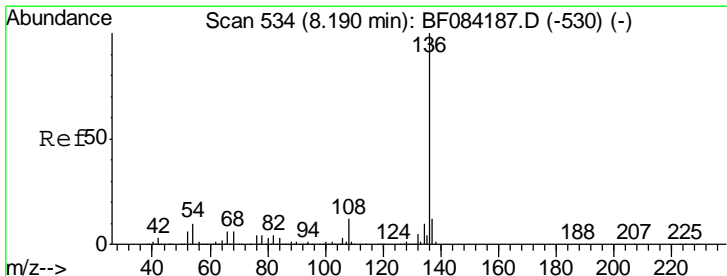
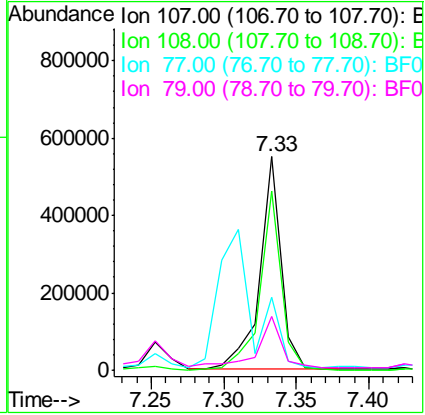
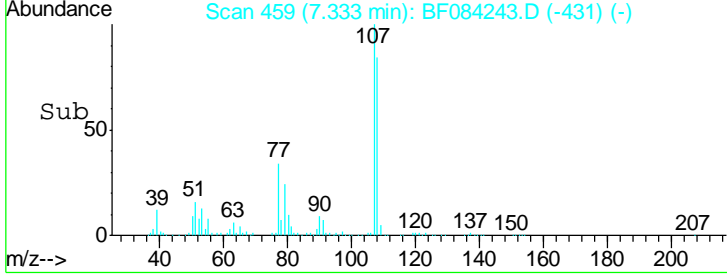
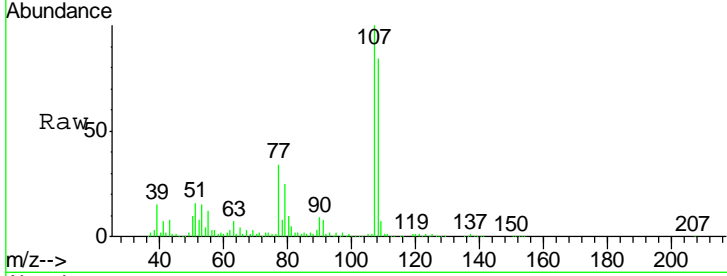




#20
 3+4-Methylphenols
 Concen: 26.52 ng
 RT: 7.33 min Scan# 459
 Delta R.T. 0.02 min
 Lab File: BF084243.D
 Acq: 4 Jan 2016 17:12

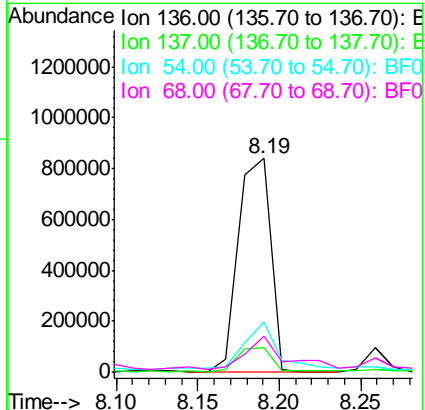
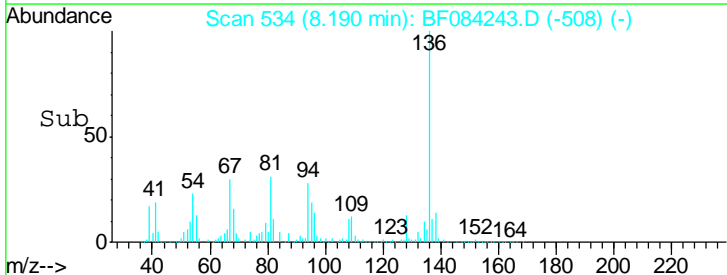
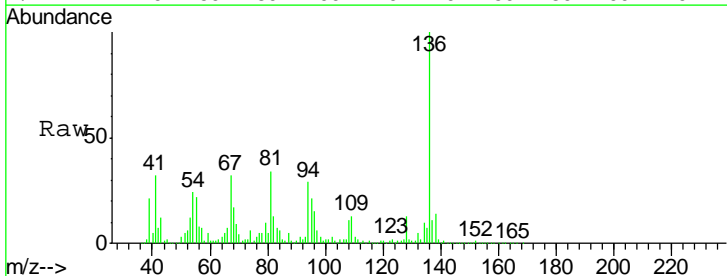
Instrument :
 BNA_F
 ClientSampled :
 S8-0534

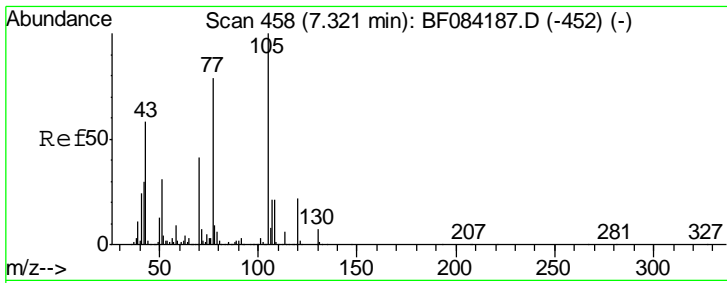
Tgt Ion	Resp	Lower	Upper
107	100		
108	84.1	74.6	114.6
77	34.1	0.7	40.7
79	24.9	0.0	39.0



#21
 Naphthalene-d8
 Concen: 20.00 ng
 RT: 8.19 min Scan# 534
 Delta R.T. 0.00 min
 Lab File: BF084243.D
 Acq: 4 Jan 2016 17:12

Tgt Ion	Resp	Lower	Upper
136	100		
137	11.1	8.7	13.1
54	23.6	5.8	8.8#
68	17.1	4.2	6.2#

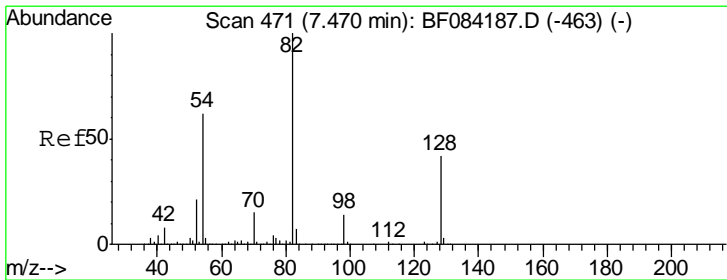
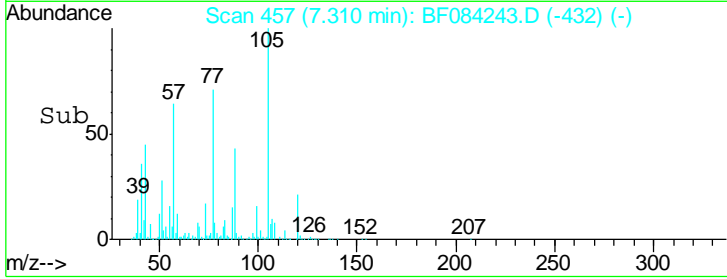
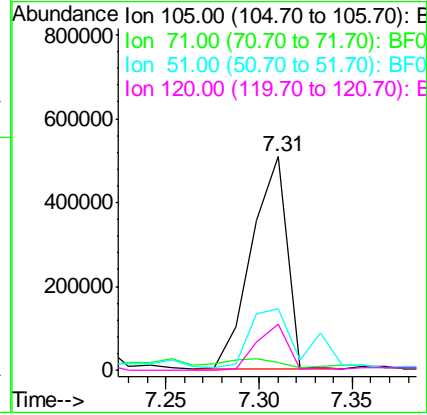
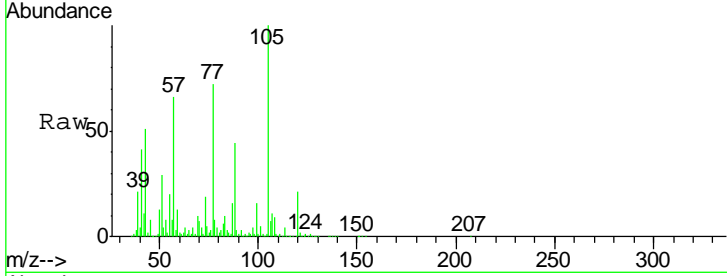




#22
 Acetophenone
 Concen: 24.22 ng
 RT: 7.31 min Scan# 457
 Delta R.T. -0.01 min
 Lab File: BF084243.D
 Acq: 4 Jan 2016 17:12

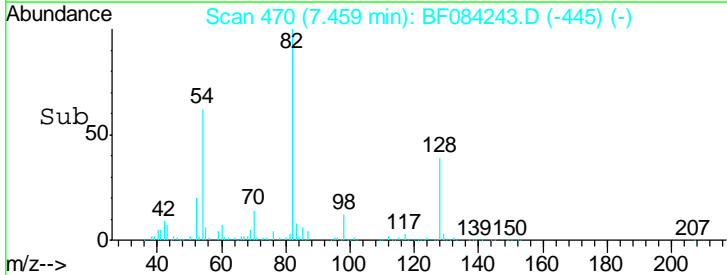
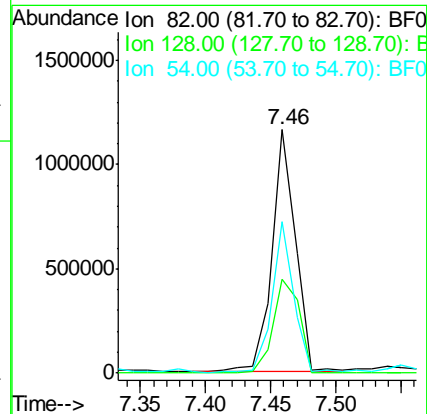
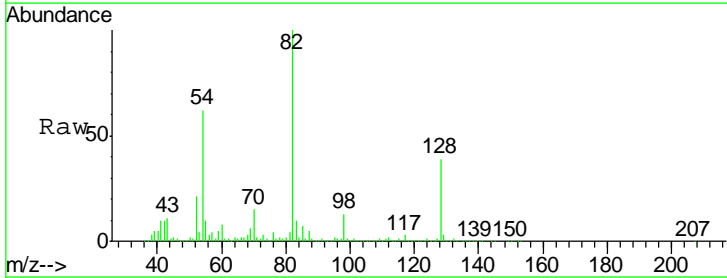
Instrument :
 BNA_F
 ClientSampled :
 S8-0534

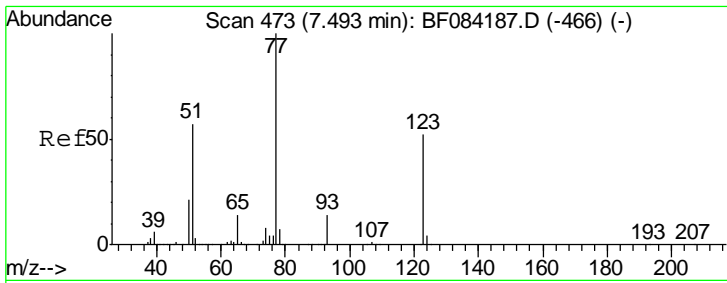
Tgt Ion	Resp	Lower	Upper
105	100		
71	3.5	3.7	5.5#
51	28.9	25.1	37.7
120	21.4	16.6	25.0



#23
 Nitrobenzene-d5
 Concen: 70.94 ng
 RT: 7.46 min Scan# 470
 Delta R.T. -0.01 min
 Lab File: BF084243.D
 Acq: 4 Jan 2016 17:12

Tgt Ion	Resp	Lower	Upper
82	100		
128	38.8	34.6	51.8
54	62.2	38.4	57.6#

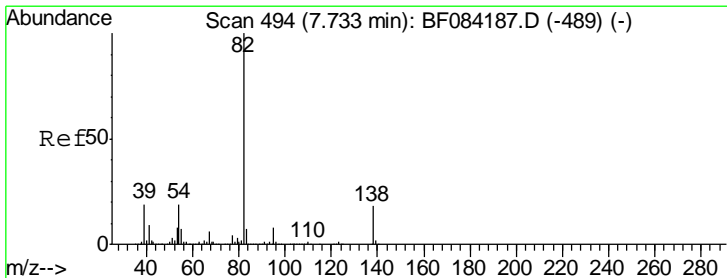
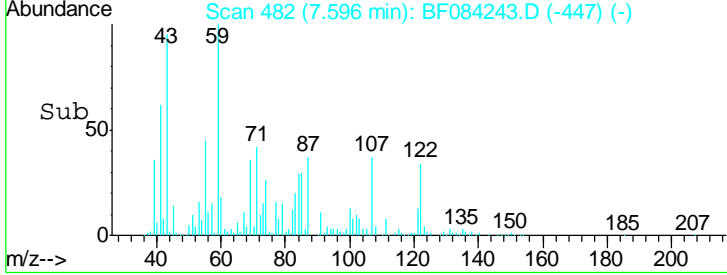
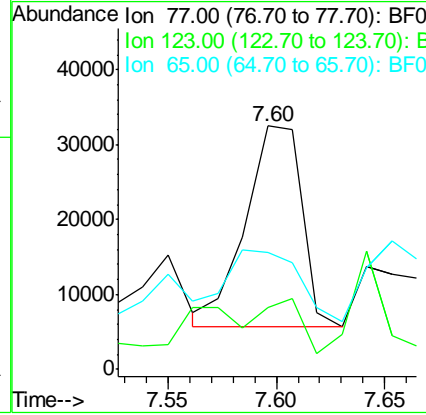
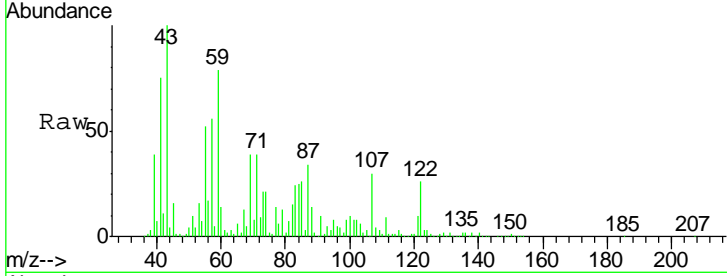




#24
 Nitrobenzene
 Concen: 2.33 ng
 RT: 7.60 min Scan# 482
 Delta R.T. 0.10 min
 Lab File: BF084243.D
 Acq: 4 Jan 2016 17:12

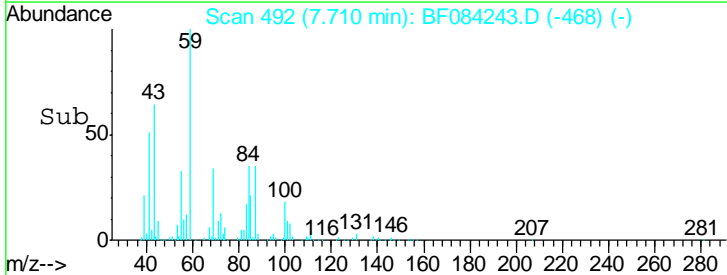
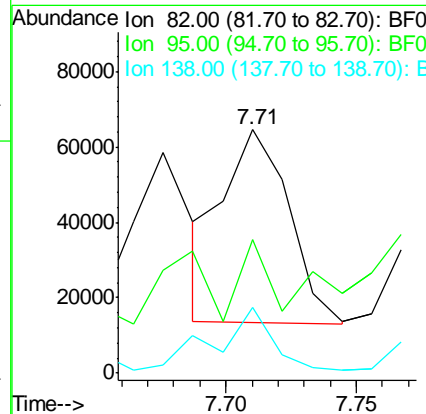
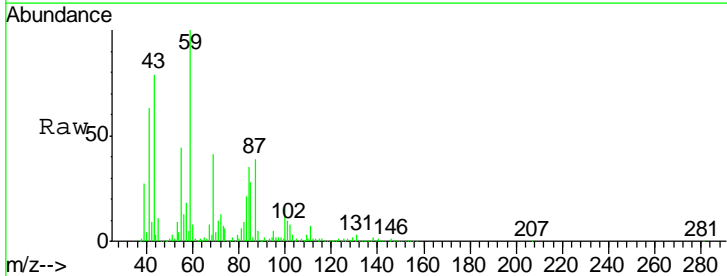
Instrument :
 BNA_F
 ClientSampled :
 S8-0534

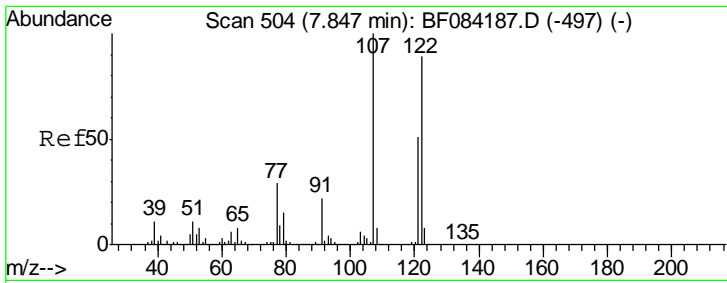
Tgt Ion	Resp	Lower	Upper
77	100		
123	25.5	37.4	56.2#
65	47.8	10.9	16.3#



#25
 Isophorone
 Concen: 2.26 ng
 RT: 7.71 min Scan# 492
 Delta R.T. -0.02 min
 Lab File: BF084243.D
 Acq: 4 Jan 2016 17:12

Tgt Ion	Resp	Lower	Upper
82	100		
95	55.1	6.6	10.0#
138	27.1	13.6	20.4#

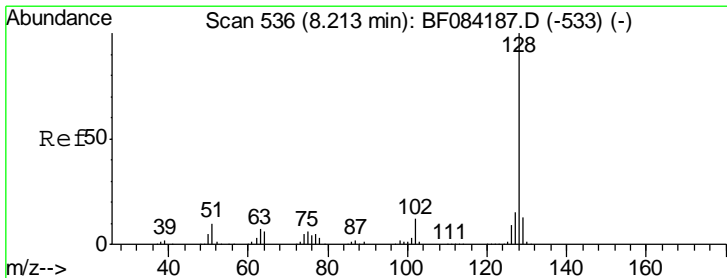
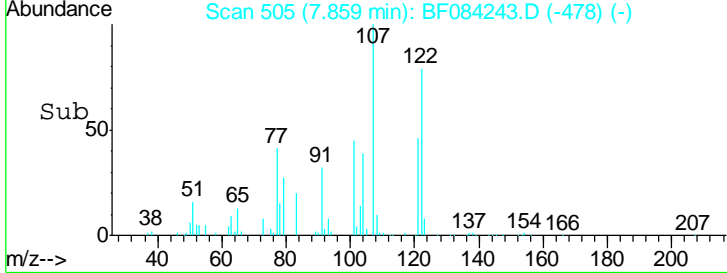
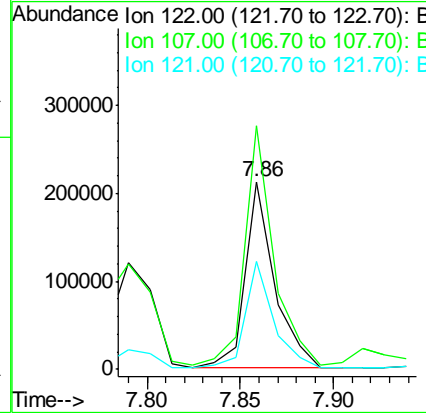
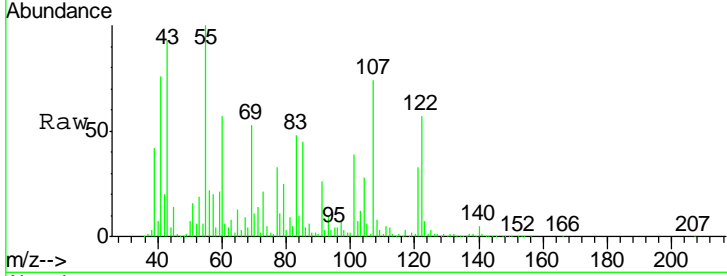




#27
 2,4-Dimethylphenol
 Concen: 12.04 ng
 RT: 7.86 min Scan# 505
 Delta R.T. 0.01 min
 Lab File: BF084243.D
 Acq: 4 Jan 2016 17:12

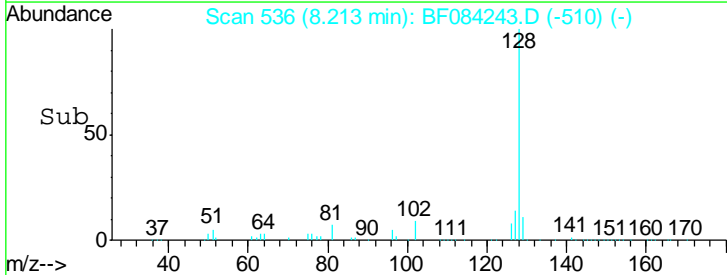
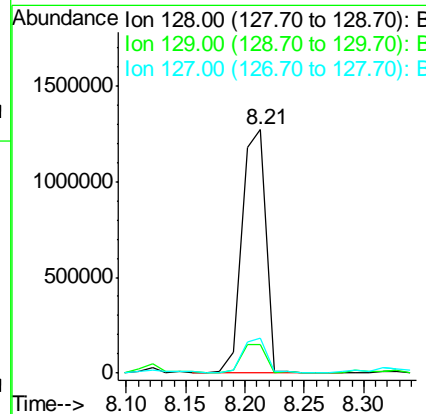
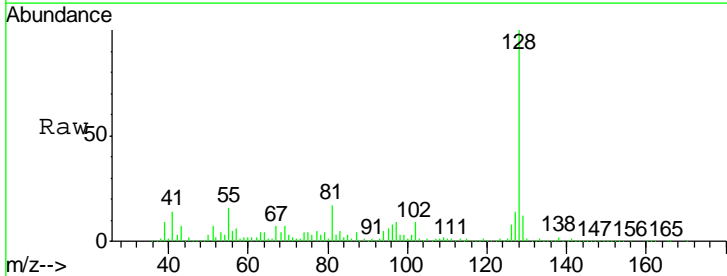
Instrument :
 BNA_F
 ClientSampled :
 S8-0534

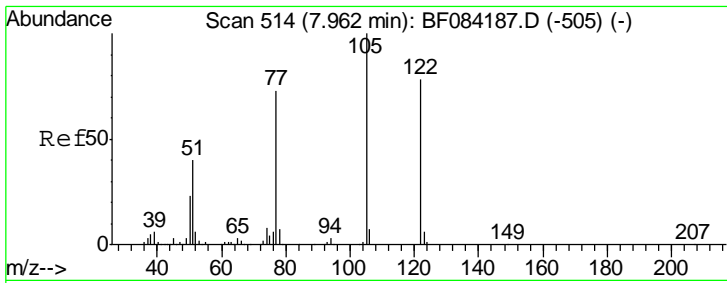
Tgt Ion	Resp	Lower	Upper
122	231841		
107	129.7	99.1	148.7
121	57.3	47.9	71.9



#31
 Naphthalene
 Concen: 33.96 ng
 RT: 8.21 min Scan# 536
 Delta R.T. 0.00 min
 Lab File: BF084243.D
 Acq: 4 Jan 2016 17:12

Tgt Ion	Resp	Lower	Upper
128	1767267		
129	11.7	9.1	13.7
127	14.2	11.1	16.7

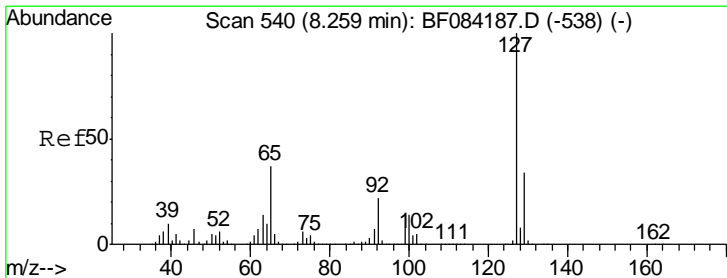
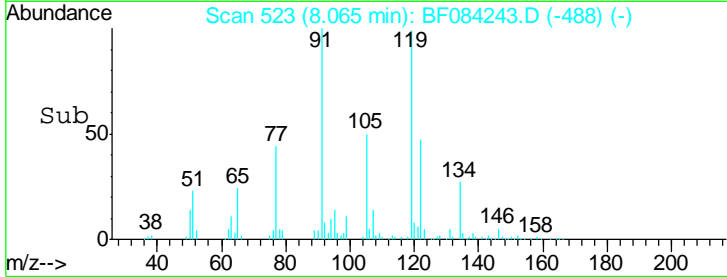
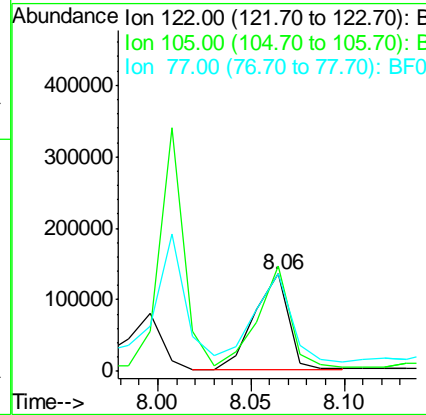
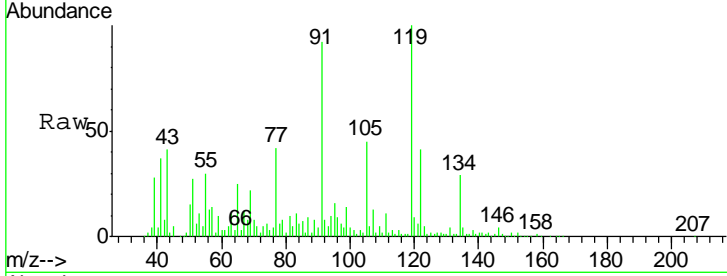




#32
 Benzoic acid
 Concen: 18.44 ng
 RT: 8.06 min Scan# 523
 Delta R.T. 0.10 min
 Lab File: BF084243.D
 Acq: 4 Jan 2016 17:12

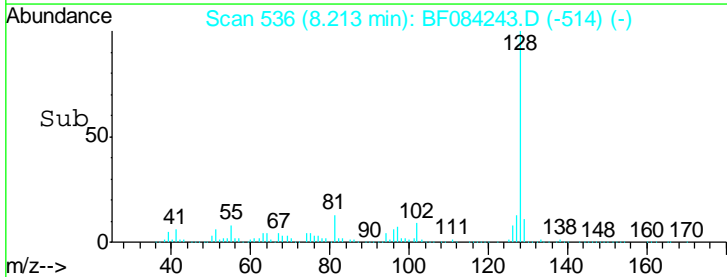
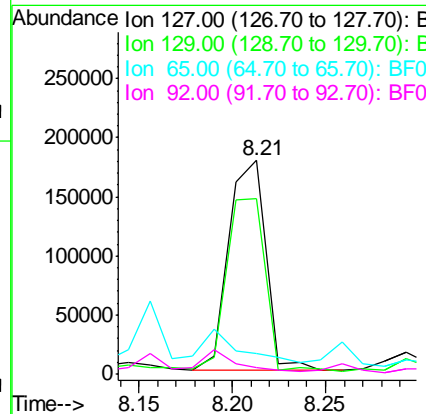
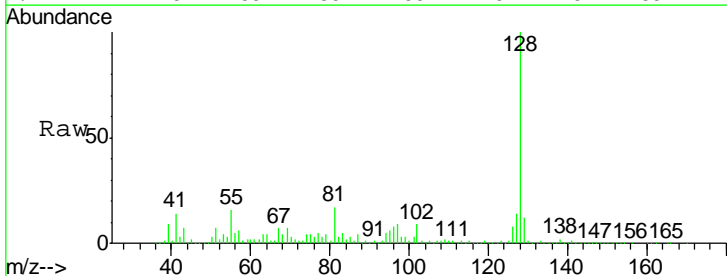
Instrument :
 BNA_F
 ClientSampled :
 S8-0534

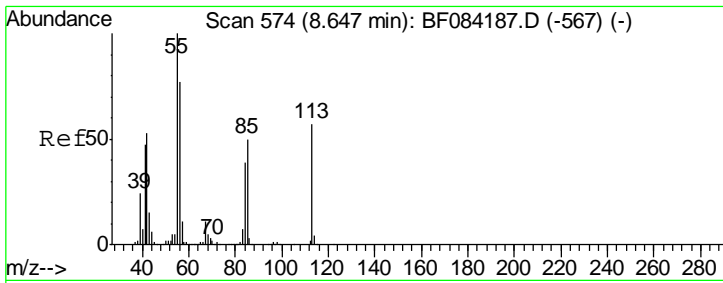
Tgt Ion	Resp	Lower	Upper
122	173589		
105	108.4	100.3	140.3
77	100.6	63.5	103.5



#33
 4-Chloroaniline
 Concen: 10.45 ng
 RT: 8.21 min Scan# 536
 Delta R.T. -0.05 min
 Lab File: BF084243.D
 Acq: 4 Jan 2016 17:12

Tgt Ion	Resp	Lower	Upper
127	249177		
129	82.0	26.5	39.7#
65	9.5	27.2	40.8#
92	2.7	17.7	26.5#

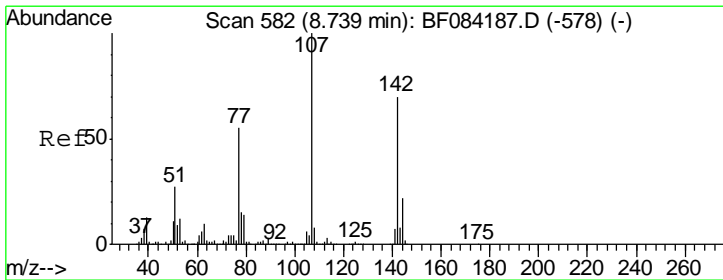
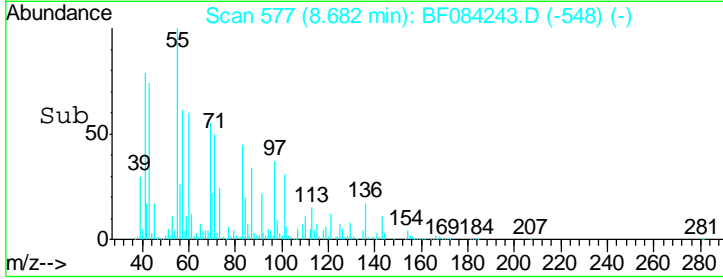
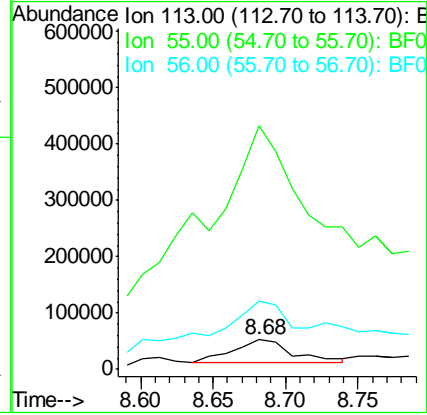
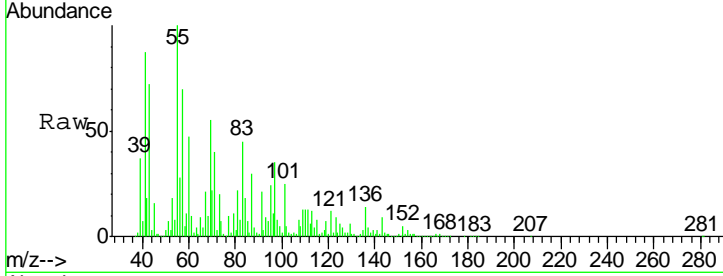




#35
 Caprolactam
 Concen: 21.57 ng
 RT: 8.68 min Scan# 577
 Delta R.T. 0.03 min
 Lab File: BF084243.D
 Acq: 4 Jan 2016 17:12

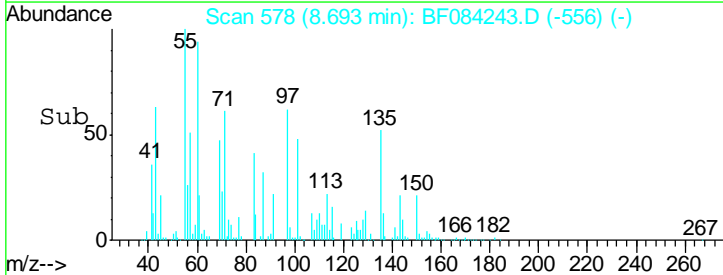
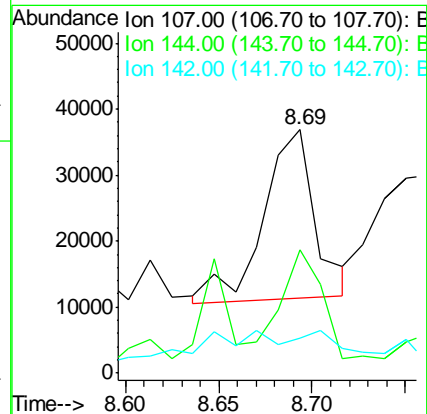
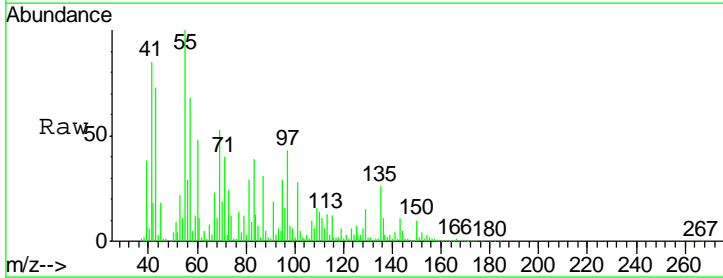
Instrument :
 BNA_F
 ClientSampleID :
 S8-0534

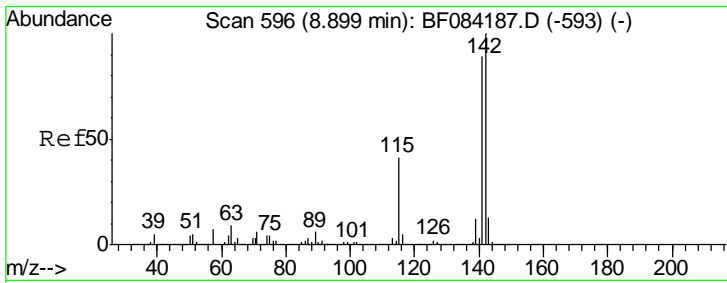
Tgt Ion	Resp	Lower	Upper
113	100		
55	830.9	116.9	156.9#
56	232.1	93.8	133.8#



#36
 4-Chloro-3-methylphenol
 Concen: 2.75 ng
 RT: 8.69 min Scan# 578
 Delta R.T. -0.05 min
 Lab File: BF084243.D
 Acq: 4 Jan 2016 17:12

Tgt Ion	Resp	Lower	Upper
107	100		
144	50.7	19.7	29.5#
142	14.1	61.8	92.6#

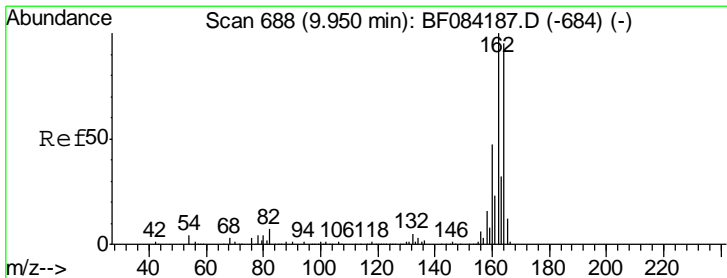
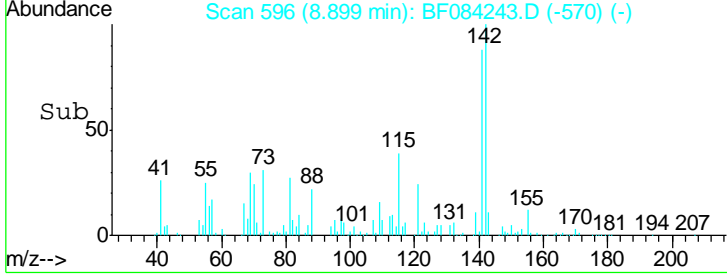
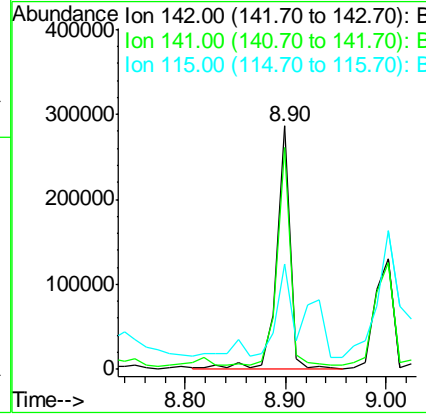
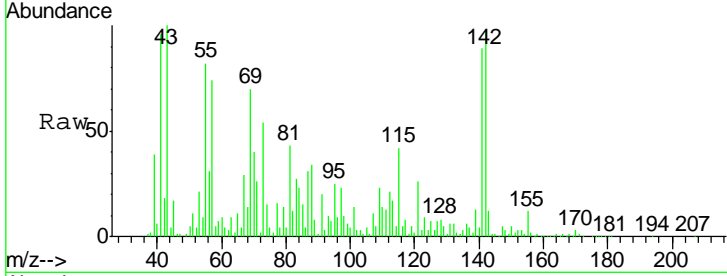




#37
 2-Methylnaphthalene
 Concen: 6.99 ng
 RT: 8.90 min Scan# 596
 Delta R.T. 0.00 min
 Lab File: BF084243.D
 Acq: 4 Jan 2016 17:12

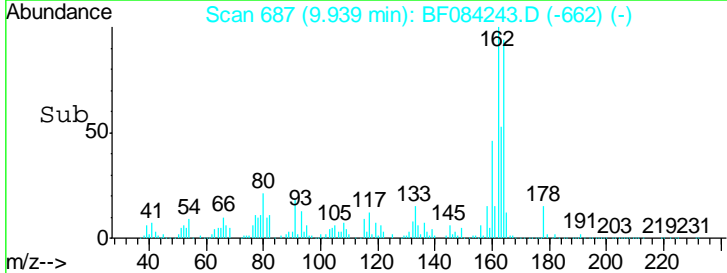
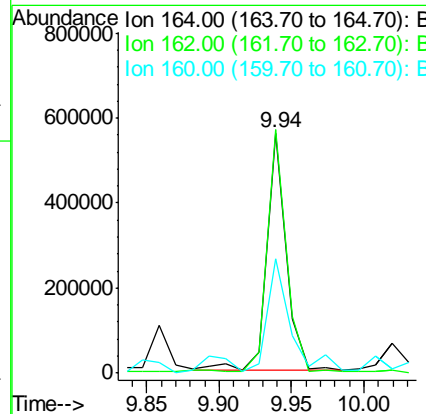
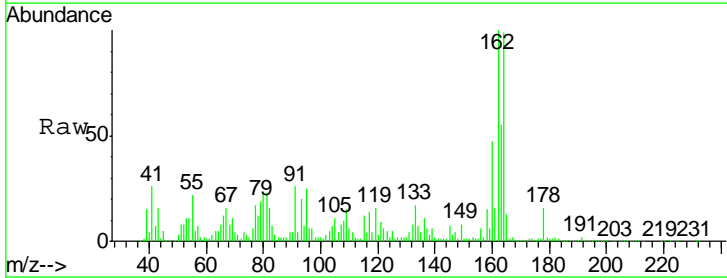
Instrument :
 BNA_F
ClientSampled :
 S8-0534

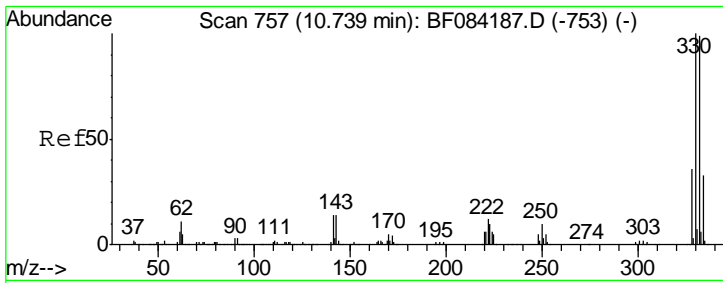
Tgt Ion	Resp	Lower	Upper
142	100		
141	90.9	72.4	108.6
115	43.2	27.9	41.9#



#38
 Acenaphthene-d10
 Concen: 20.00 ng
 RT: 9.94 min Scan# 687
 Delta R.T. -0.01 min
 Lab File: BF084243.D
 Acq: 4 Jan 2016 17:12

Tgt Ion	Resp	Lower	Upper
164	100		
162	101.5	85.1	127.7
160	47.5	37.5	56.3

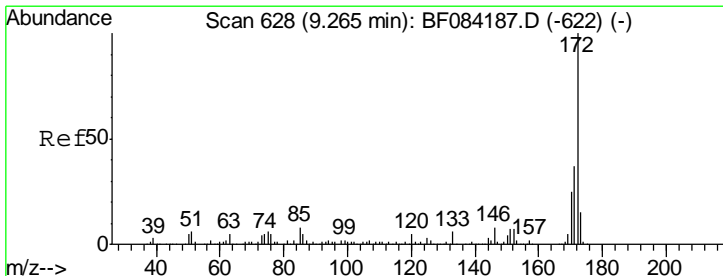
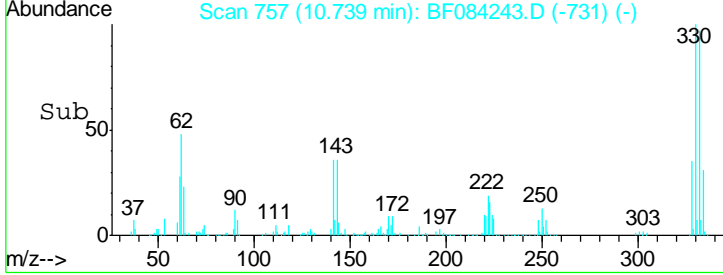
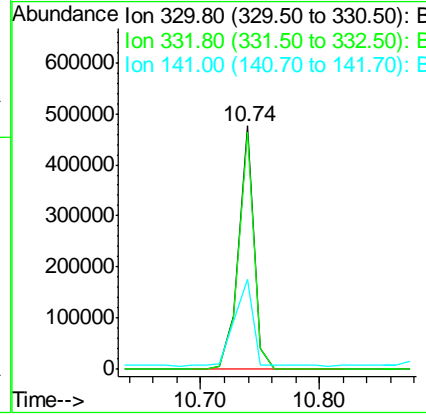
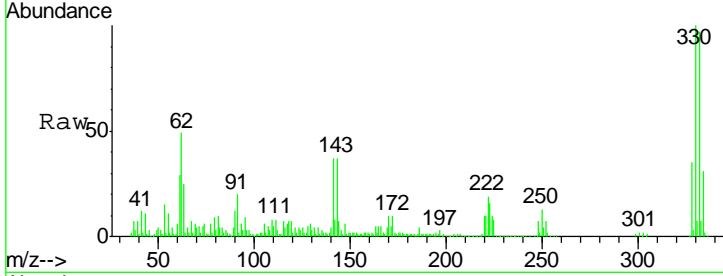




#41
 2,4,6-Tribromophenol
 Concen: 82.44 ng
 RT: 10.74 min Scan# 757
 Delta R.T. 0.00 min
 Lab File: BF084243.D
 Acq: 4 Jan 2016 17:12

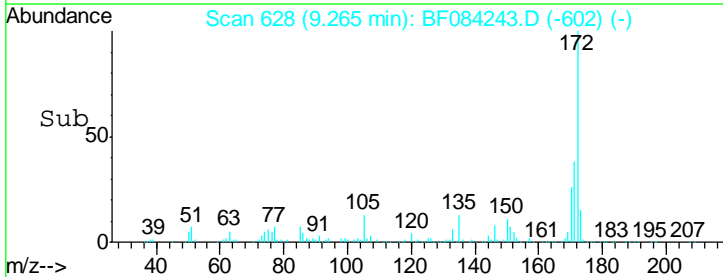
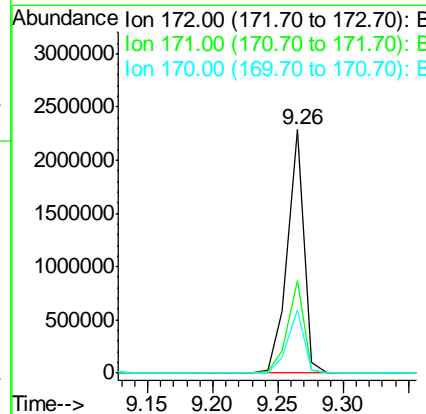
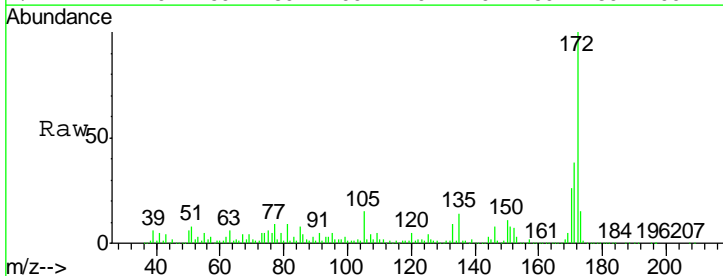
Instrument :
 BNA_F
 ClientSampled :
 S8-0534

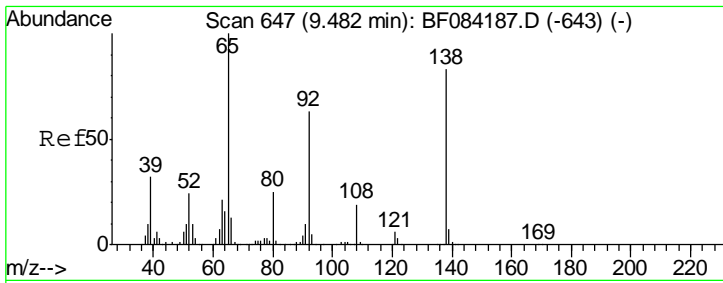
Tgt Ion	Resp	Lower	Upper
330	100		
332	98.0	76.6	114.8
141	42.9	27.8	41.6#



#44
 2-Fluorobiphenyl
 Concen: 69.16 ng
 RT: 9.26 min Scan# 628
 Delta R.T. 0.00 min
 Lab File: BF084243.D
 Acq: 4 Jan 2016 17:12

Tgt Ion	Resp	Lower	Upper
172	100		
171	37.8	28.9	43.3
170	26.0	18.6	27.8

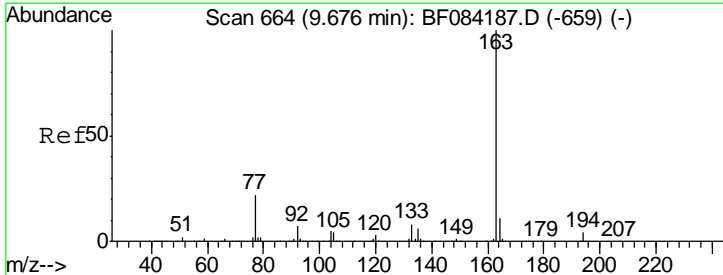
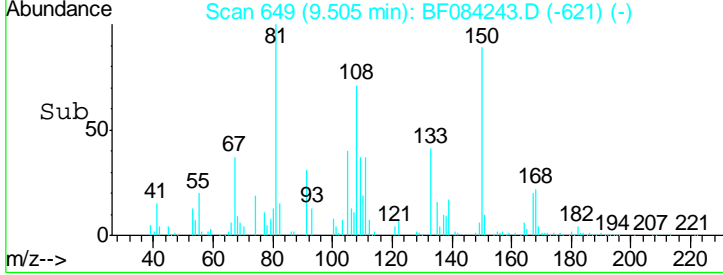
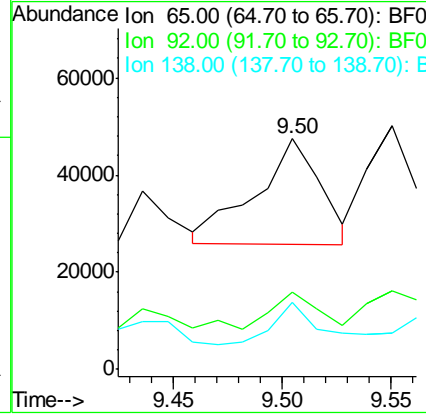
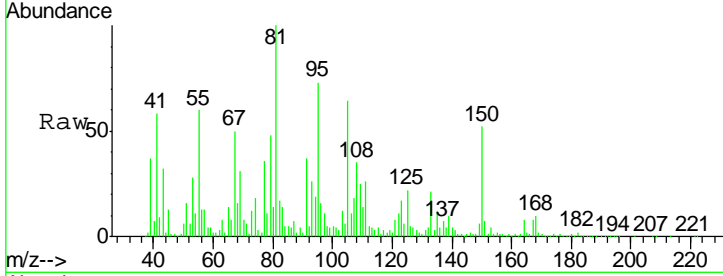




#47
 2-Nitroaniline
 Concen: 4.22 ng
 RT: 9.50 min Scan# 649
 Delta R.T. 0.02 min
 Lab File: BF084243.D
 Acq: 4 Jan 2016 17:12

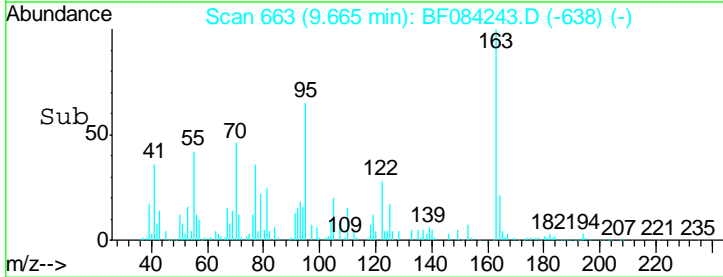
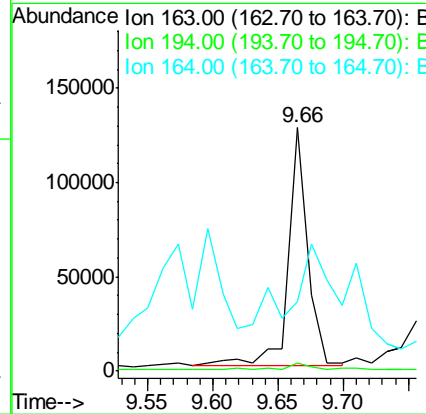
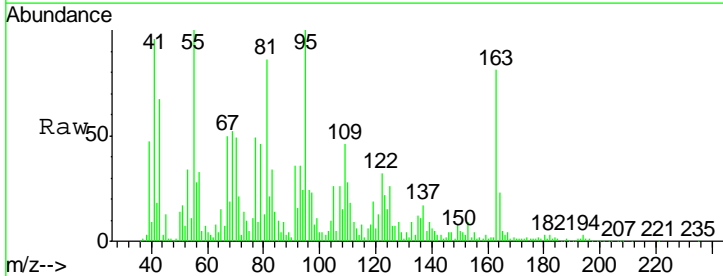
Instrument :
 BNA_F
 ClientSampled :
 S8-0534

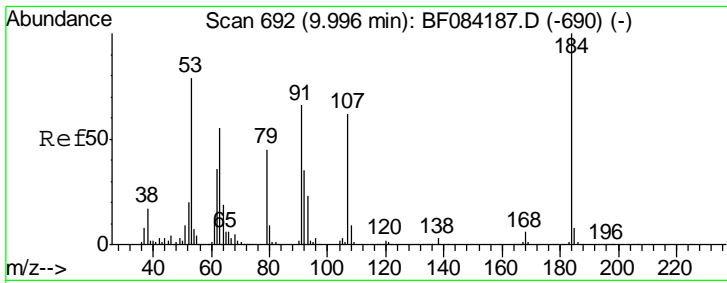
Tgt Ion	Resp	Lower	Upper
65	100		
92	33.6	53.4	80.2#
138	29.2	71.1	106.7#



#49
 Dimethylphthalate
 Concen: 3.57 ng
 RT: 9.66 min Scan# 663
 Delta R.T. -0.01 min
 Lab File: BF084243.D
 Acq: 4 Jan 2016 17:12

Tgt Ion	Resp	Lower	Upper
163	100		
194	3.5	8.0	12.0#
164	28.4	8.0	12.0#

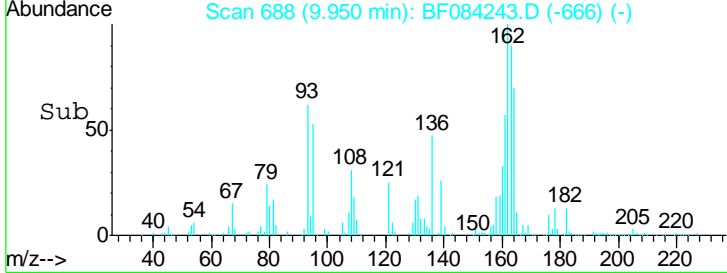
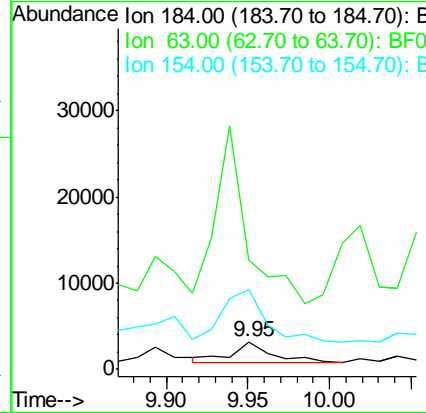
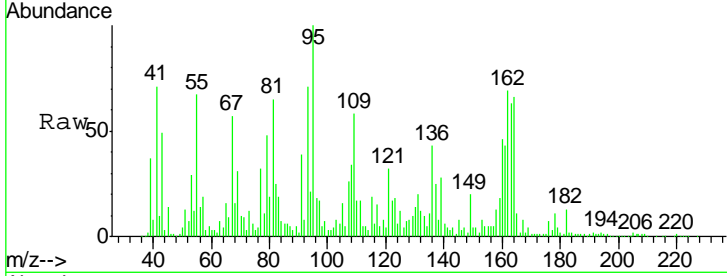




#53
 2,4-Dinitrophenol
 Concen: 4.62 ng
 RT: 9.95 min Scan# 688
 Delta R.T. -0.05 min
 Lab File: BF084243.D
 Acq: 4 Jan 2016 17:12

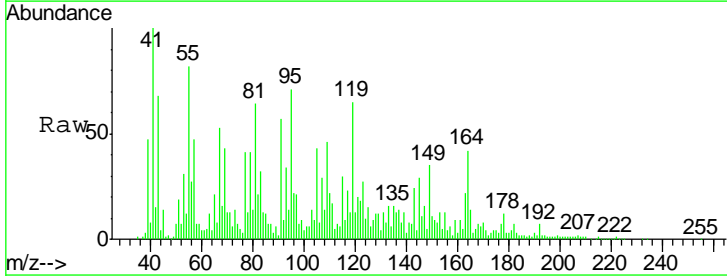
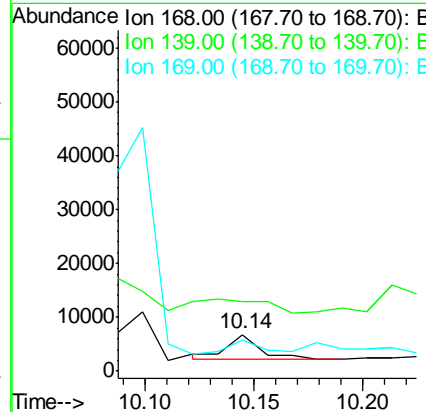
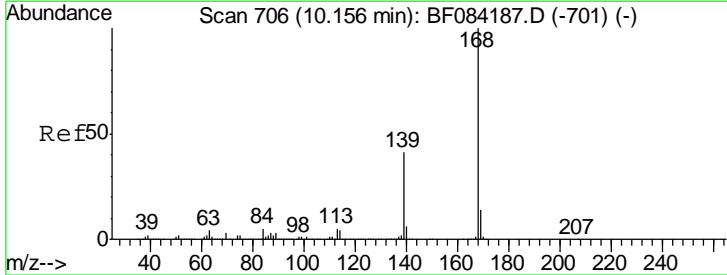
Instrument :
 BNA_F
 ClientSampleId :
 S8-0534

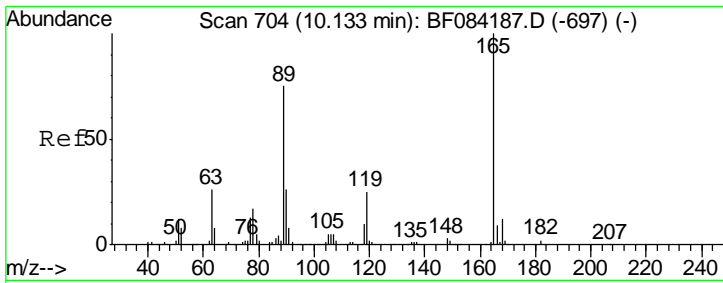
Tgt Ion	Resp	Lower	Upper
184	100		
63	392.1	43.1	64.7#
154	287.0	60.5	90.7#



#54
 Dibenzofuran
 Concen: Below Cal
 RT: 10.14 min Scan# 705
 Delta R.T. -0.01 min
 Lab File: BF084243.D
 Acq: 4 Jan 2016 17:12

Tgt Ion	Resp	Lower	Upper
168	100		
139	188.7	30.5	45.7#
169	83.3	10.4	15.6#

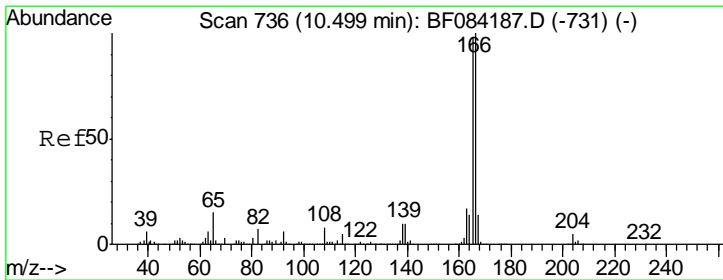
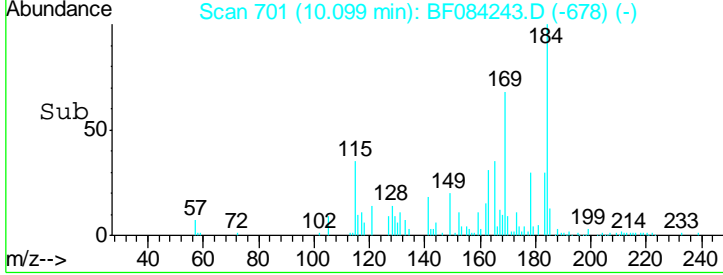
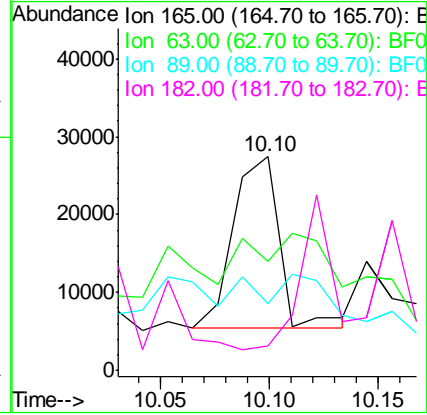
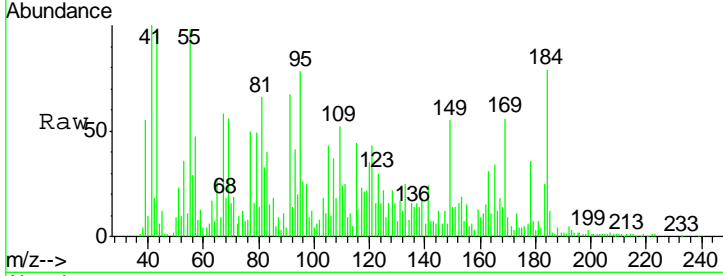




#56
 2,4-Dinitrotoluene
 Concen: 3.17 ng
 RT: 10.10 min Scan# 701
 Delta R.T. -0.03 min
 Lab File: BF084243.D
 Acq: 4 Jan 2016 17:12

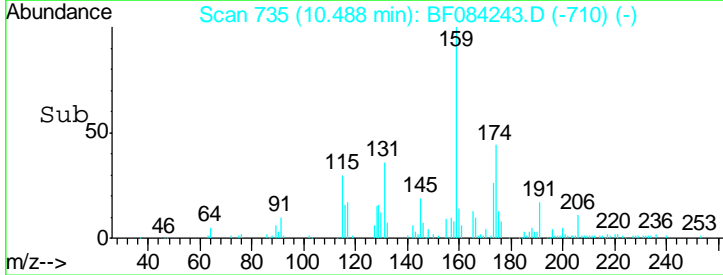
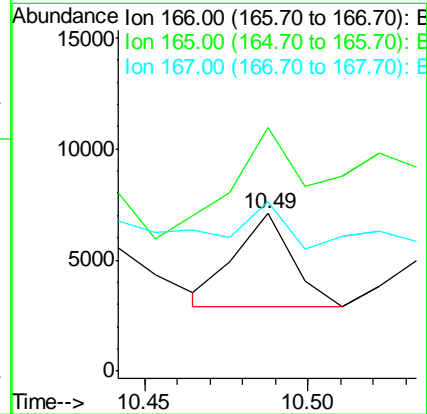
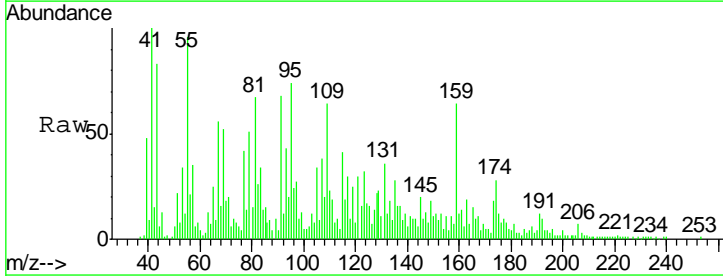
Instrument :
 BNA_F
 ClientSampleID :
 S8-0534

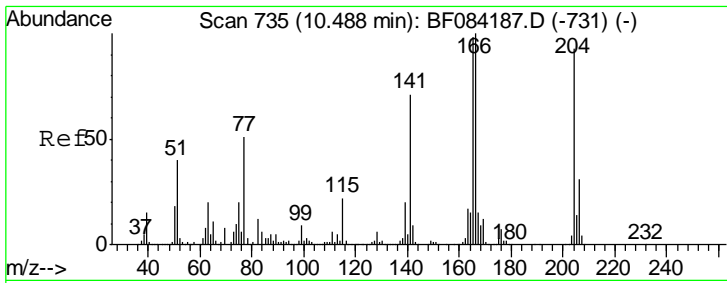
Tgt Ion	Resp	Lower	Upper
165	100		
63	51.1	36.7	55.1
89	31.2	61.9	92.9#
182	11.2	2.0	3.0#



#57
 Fluorene
 Concen: Below Cal
 RT: 10.49 min Scan# 735
 Delta R.T. -0.01 min
 Lab File: BF084243.D
 Acq: 4 Jan 2016 17:12

Tgt Ion	Resp	Lower	Upper
166	100		
165	154.6	79.1	118.7#
167	107.7	10.4	15.6#

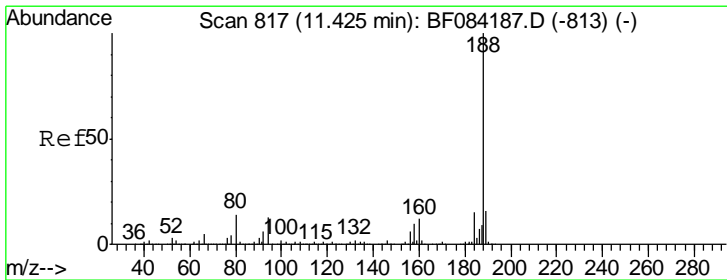
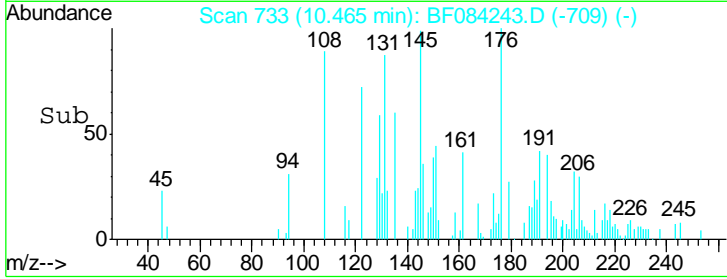
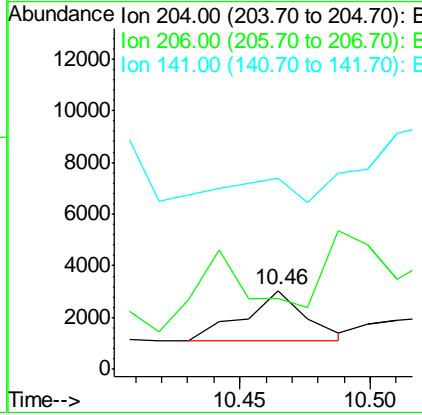
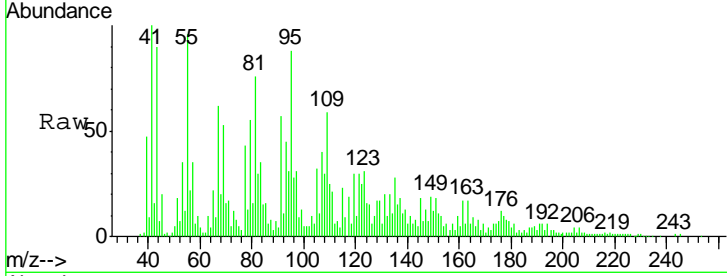




#60
 4-Chlorophenyl-phenylether
 Concen: Below Cal
 RT: 10.46 min Scan# 733
 Delta R.T. -0.02 min
 Lab File: BF084243.D
 Acq: 4 Jan 2016 17:12

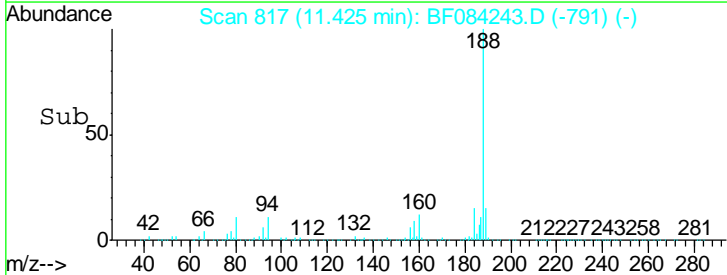
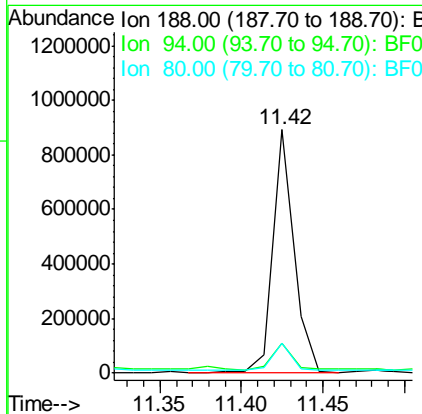
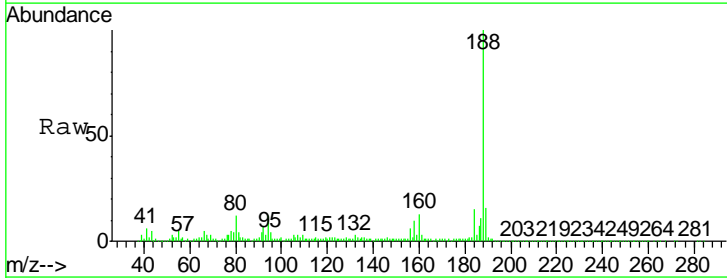
Instrument :
 BNA_F
 ClientSampleID :
 S8-0534

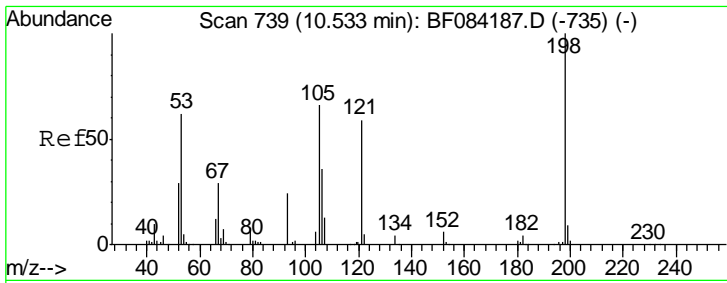
Tgt Ion	Resp	Lower	Upper
204	100		
206	89.5	25.7	38.5#
141	242.1	55.1	82.7#



#63
 Phenanthrene-d10
 Concen: 20.00 ng
 RT: 11.42 min Scan# 817
 Delta R.T. 0.00 min
 Lab File: BF084243.D
 Acq: 4 Jan 2016 17:12

Tgt Ion	Resp	Lower	Upper
188	100		
94	12.3	9.0	13.4
80	12.5	9.6	14.4

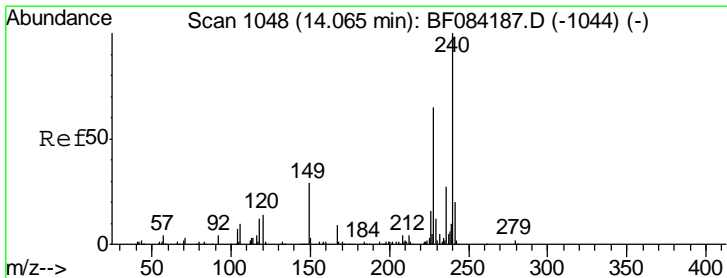
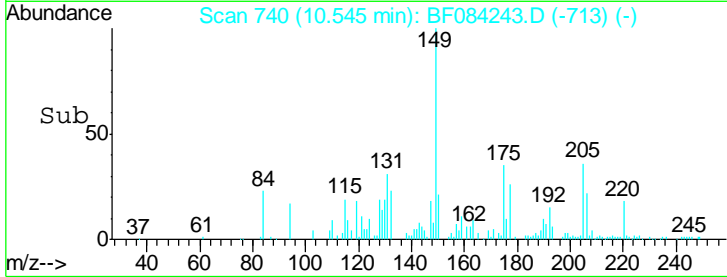
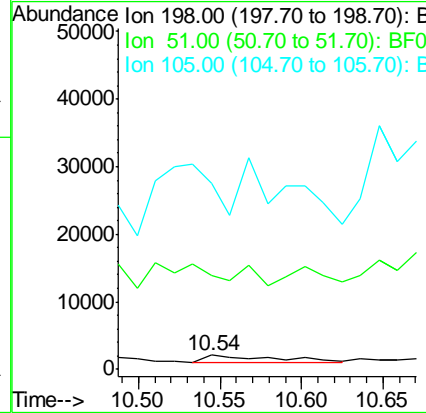
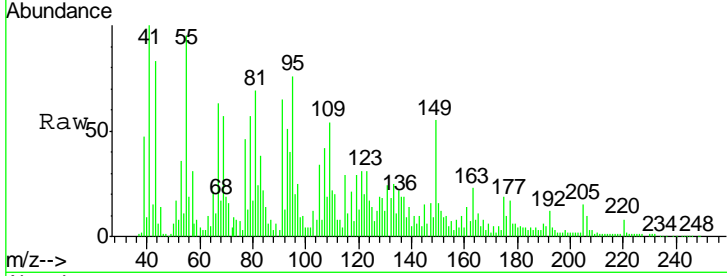




#64
 4,6-Dinitro-2-methylphenol
 Concen: 6.98 ng
 RT: 10.54 min Scan# 740
 Delta R.T. 0.01 min
 Lab File: BF084243.D
 Acq: 4 Jan 2016 17:12

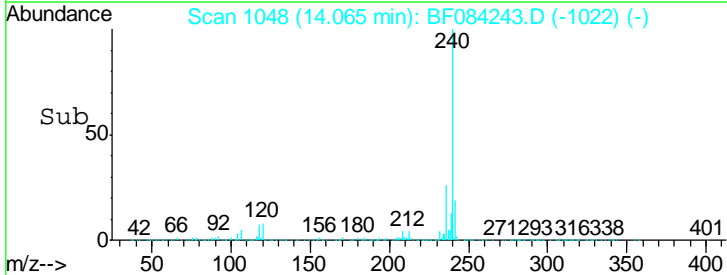
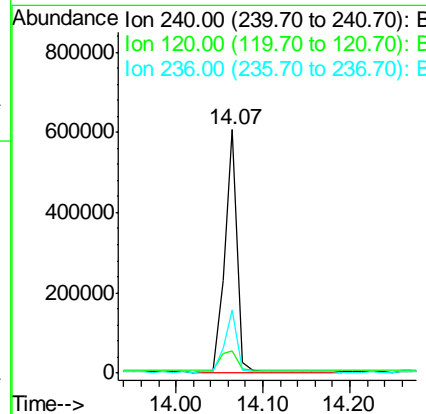
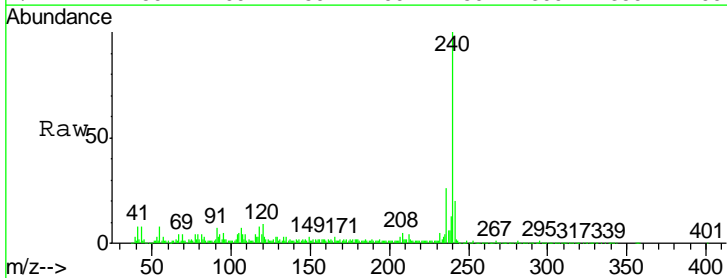
Instrument :
 BNA_F
 ClientSampled :
 S8-0534

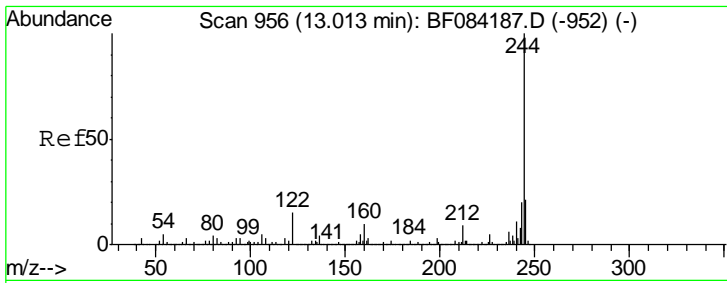
Tgt Ion	Resp	Lower	Upper
198	3700		
51	654.0	18.9	58.9#
105	1307.8	26.4	66.4#



#75
 Chrysene-d12
 Concen: 20.00 ng
 RT: 14.07 min Scan# 1048
 Delta R.T. 0.00 min
 Lab File: BF084243.D
 Acq: 4 Jan 2016 17:12

Tgt Ion	Resp	Lower	Upper
240	602725		
120	9.0	9.5	14.3#
236	26.0	20.6	31.0



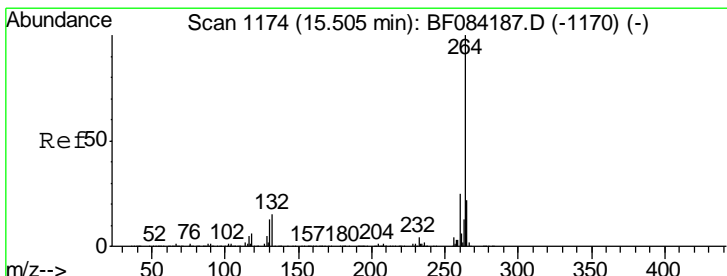
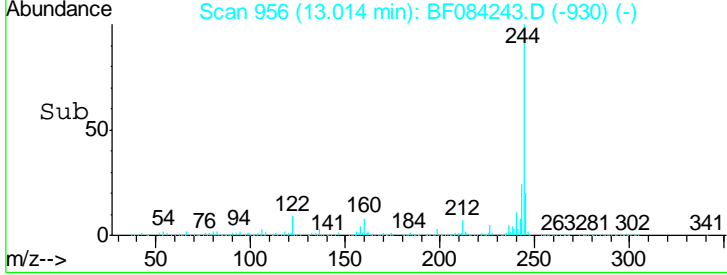
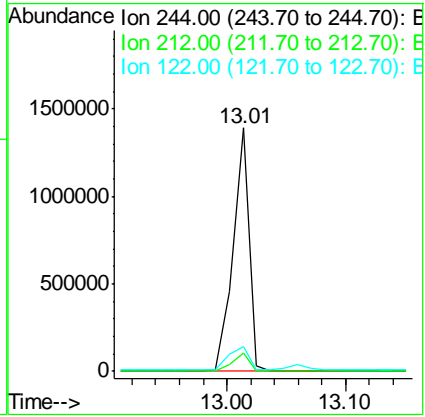
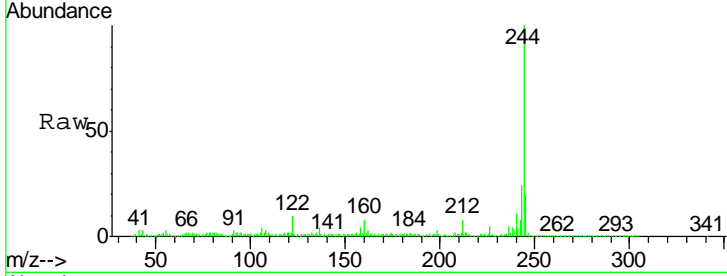


#78
 Terphenyl-d14
 Concen: 48.00 ng
 RT: 13.01 min Scan# 956
 Delta R.T. 0.00 min
 Lab File: BF084243.D
 Acq: 4 Jan 2016 17:12

Instrument :
 BNA_F
ClientSampled :
 S8-0534

Tgt Ion: 244 Resp: 1296027

Ion	Ratio	Lower	Upper
244	100		
212	7.6	5.7	8.5
122	10.1	7.4	11.0



#86
 Perylene-d12
 Concen: 20.00 ng
 RT: 15.51 min Scan# 1174
 Delta R.T. 0.00 min
 Lab File: BF084243.D
 Acq: 4 Jan 2016 17:12

Tgt Ion: 264 Resp: 517306

Ion	Ratio	Lower	Upper
264	100		
260	23.7	19.4	29.2
265	22.3	17.8	26.6

