

Data Path : Z:\HPCHEM1\BNA F\DATA\BF010416\
 Data File : BF084248.D
 Acq On : 4 Jan 2016 19:30
 Operator : UM/SJ
 Sample : G4986-02
 Misc :
 ALS Vial : 18 Sample Multiplier: 1

Instrument :
 BNA_F
 ClientSampleId :
 PJ-SB-10-21.0-21.5

Quant Time: Jan 05 02:52:27 2016
 Quant Method : Z:\HPCHEM1\BNA F\METHODS\8270-BF123115.M
 Quant Title : ASP BNA STANDARDS FOR 5 POINT CALIBRATION
 QLast Update : Mon Jan 04 12:22:40 2016
 Response via : Initial Calibration

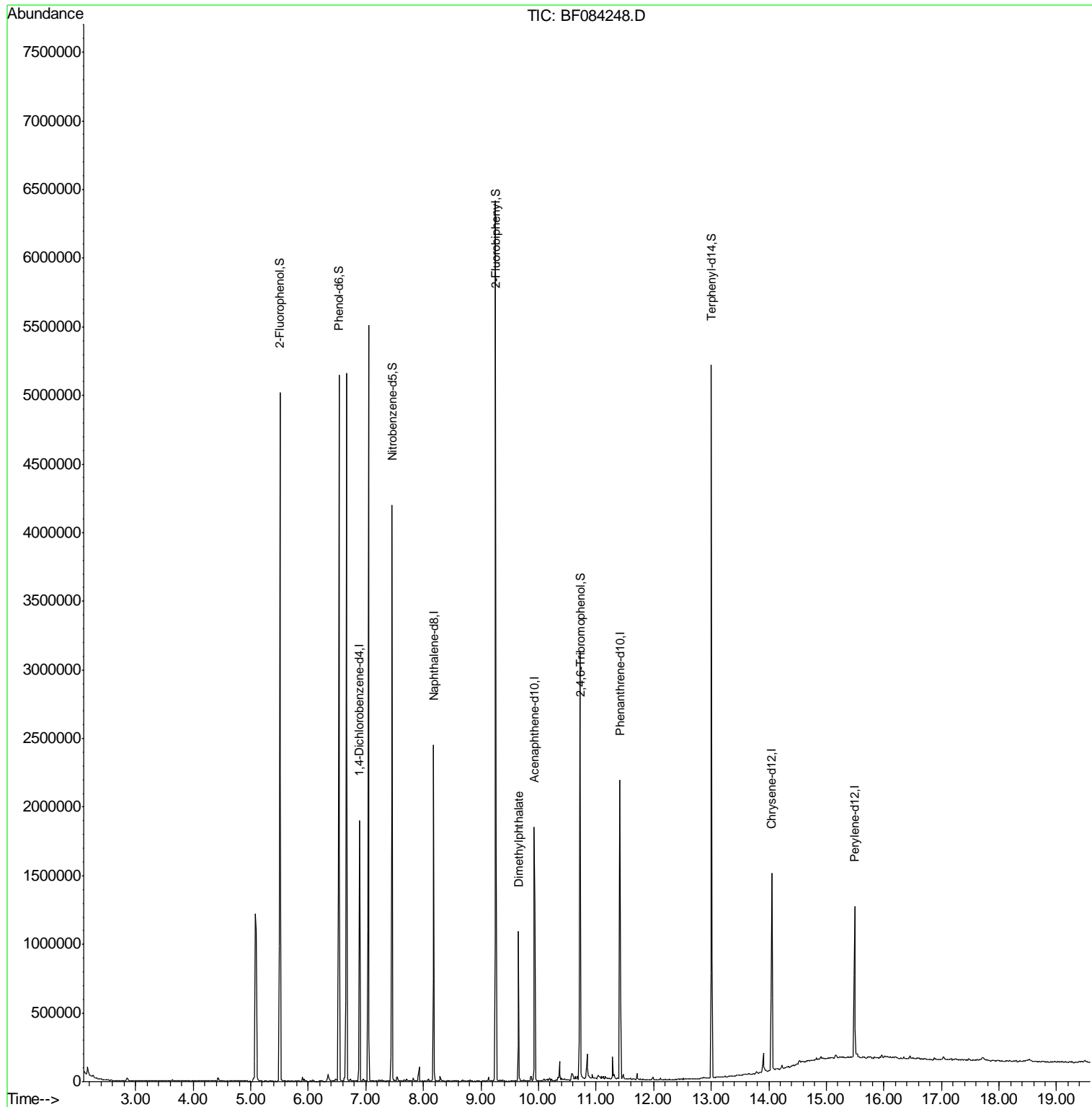
Internal Standards	R.T.	QIon	Response	Conc	Units	Dev(Min)
1) 1,4-Dichlorobenzene-d4	6.89	152	256517	20.00	ng	-0.01
21) Naphthalene-d8	8.18	136	1091048	20.00	ng	-0.01
38) Acenaphthene-d10	9.93	164	461336	20.00	ng	-0.02
63) Phenanthrene-d10	11.41	188	756418	20.00	ng	-0.01
75) Chrysene-d12	14.05	240	525903	20.00	ng	-0.01
86) Perylene-d12	15.49	264	517125	20.00	ng	-0.01
System Monitoring Compounds						
5) 2-Fluorophenol	5.50	112	1595753	100.62	ng	0.01
7) Phenol-d6	6.53	99	1921526	96.47	ng	0.00
23) Nitrobenzene-d5	7.46	82	1480103	75.50	ng	-0.01
41) 2,4,6-Tribromophenol	10.73	330	519260	111.49	ng	-0.01
44) 2-Fluorobiphenyl	9.25	172	2013269	76.11	ng	-0.01
78) Terphenyl-d14	13.00	244	1488033	63.16	ng	-0.01
Target Compounds						Qvalue
49) Dimethylphthalate	9.65	163	428667	13.00	ng	# 90

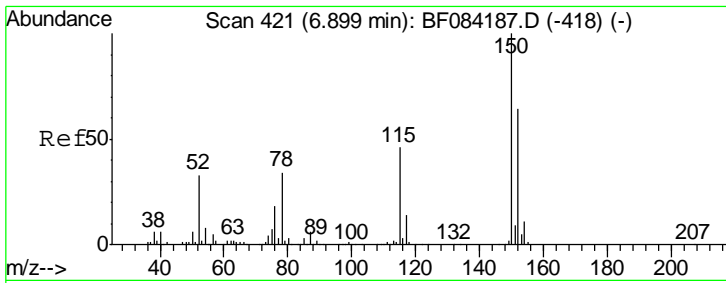
(#) = qualifier out of range (m) = manual integration (+) = signals summed

Data Path : Z:\HPCHEM1\BNA F\DATA\BF010416\
 Data File : BF084248.D
 Acq On : 4 Jan 2016 19:30
 Operator : UM/SJ
 Sample : G4986-02
 Misc :
 ALS Vial : 18 Sample Multiplier: 1

Instrument :
 BNA_F
 ClientSampleId :
 PJ-SB-10-21.0-21.5

Quant Time: Jan 05 02:52:27 2016
 Quant Method : Z:\HPCHEM1\BNA F\METHODS\8270-BF123115.M
 Quant Title : ASP BNA STANDARDS FOR 5 POINT CALIBRATION
 QLast Update : Mon Jan 04 12:22:40 2016
 Response via : Initial Calibration

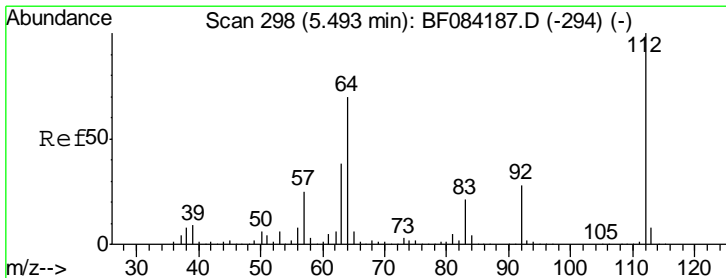
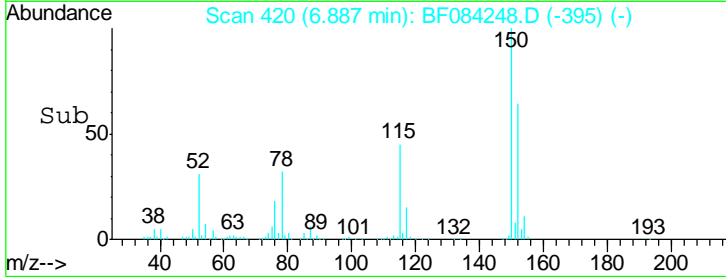
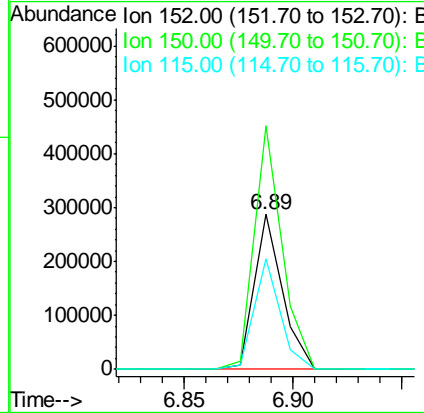
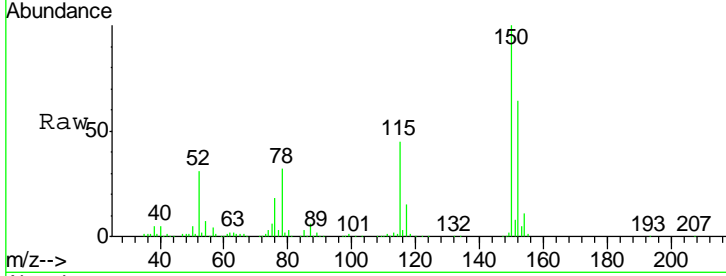




#1
 1,4-Dichlorobenzene-d4
 Concen: 20.00 ng
 RT: 6.89 min Scan# 420
 Delta R.T. -0.01 min
 Lab File: BF084248.D
 Acq: 4 Jan 2016 19:30

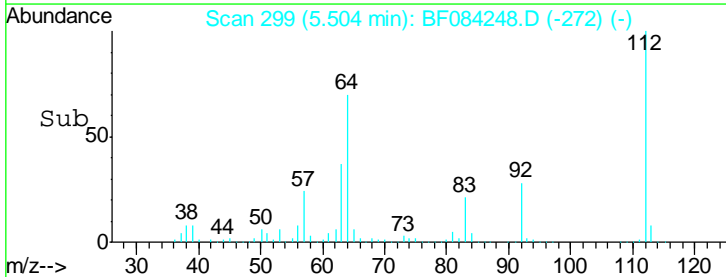
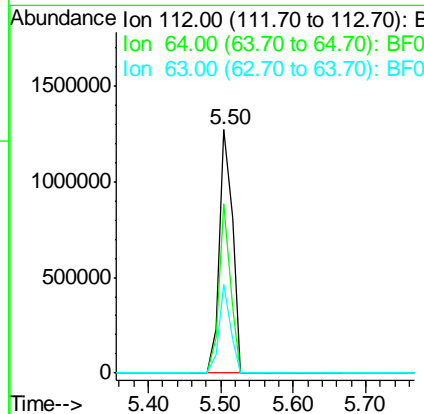
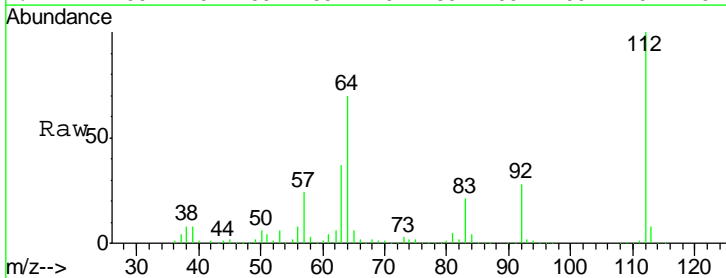
Instrument :
 BNA_F
 ClientSampleId :
 PJ-SB-10-21.0-21.5

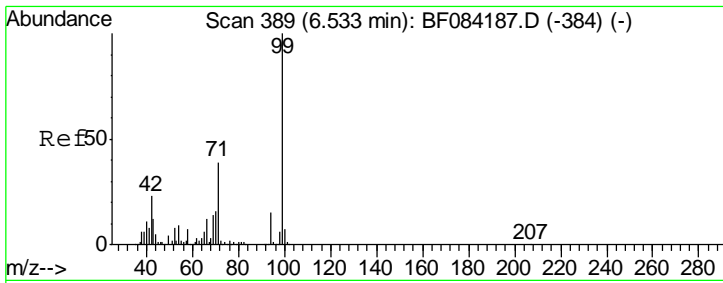
Tgt Ion	Resp	Lower	Upper
152	100		
150	157.3	123.0	184.4
115	71.5	51.4	77.2



#5
 2-Fluorophenol
 Concen: 100.62 ng
 RT: 5.50 min Scan# 299
 Delta R.T. 0.01 min
 Lab File: BF084248.D
 Acq: 4 Jan 2016 19:30

Tgt Ion	Resp	Lower	Upper
112	100		
64	69.6	36.6	55.0#
63	36.7	19.4	29.0#

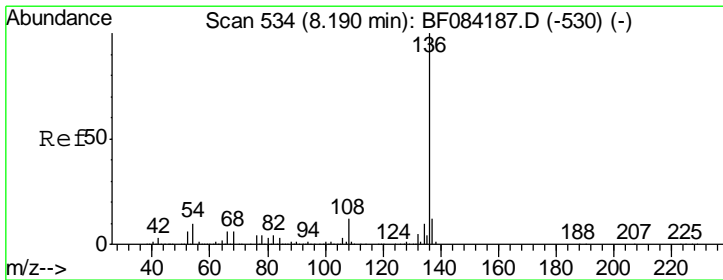
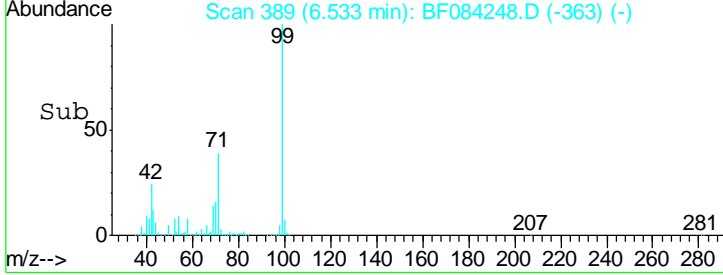
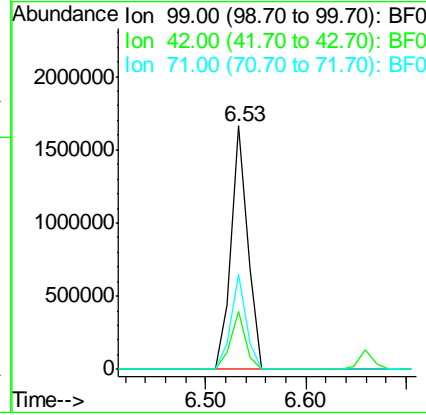
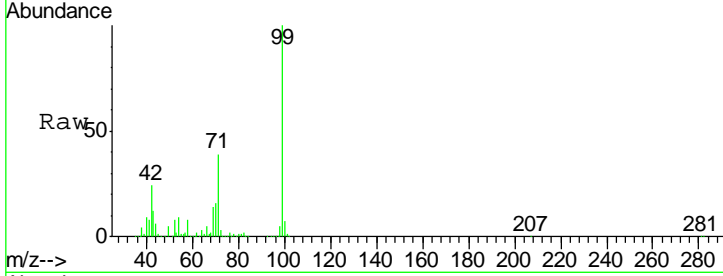




#7
 Phenol-d6
 Concen: 96.47 ng
 RT: 6.53 min Scan# 389
 Delta R.T. 0.00 min
 Lab File: BF084248.D
 Acq: 4 Jan 2016 19:30

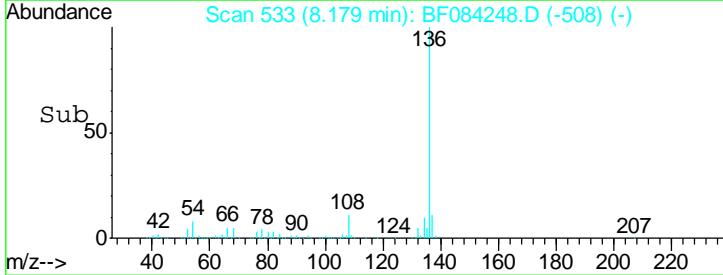
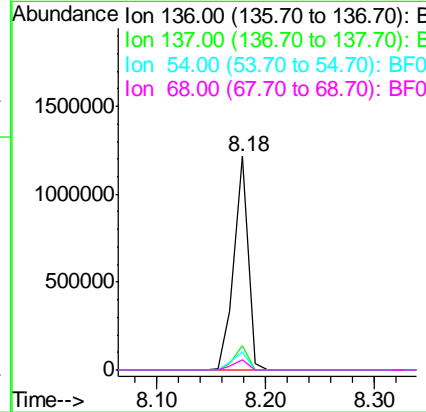
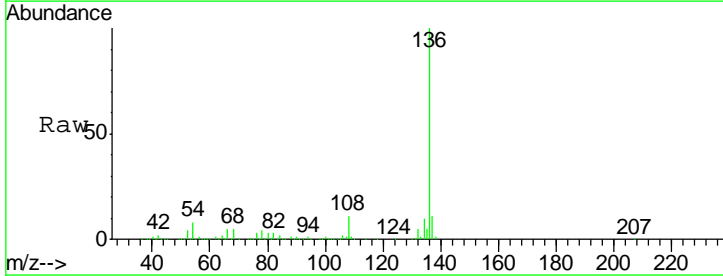
Instrument :
 BNA_F
 ClientSampled :
 PJ-SB-10-21.0-21.5

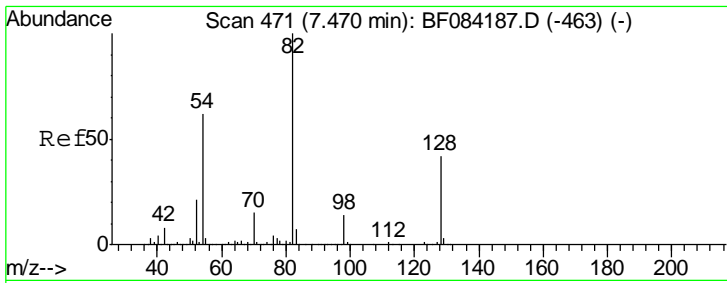
Tgt Ion	Resp	Lower	Upper
99	1921526		
42	23.8	12.8	19.2#
71	39.2	30.9	46.3



#21
 Naphthalene-d8
 Concen: 20.00 ng
 RT: 8.18 min Scan# 533
 Delta R.T. -0.01 min
 Lab File: BF084248.D
 Acq: 4 Jan 2016 19:30

Tgt Ion	Resp	Lower	Upper
136	1091048		
137	11.5	8.7	13.1
54	8.2	5.8	8.8
68	4.9	4.2	6.2

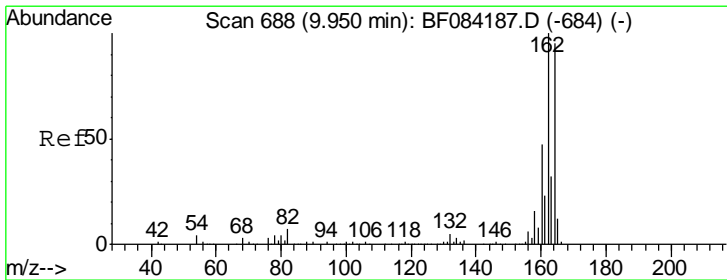
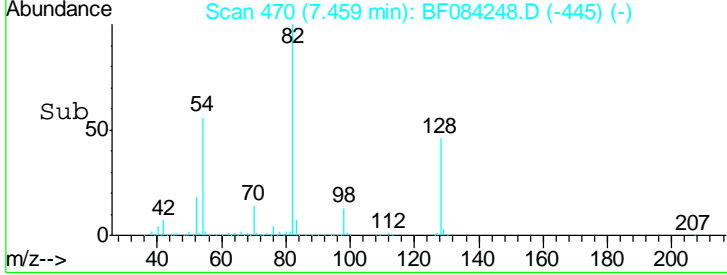
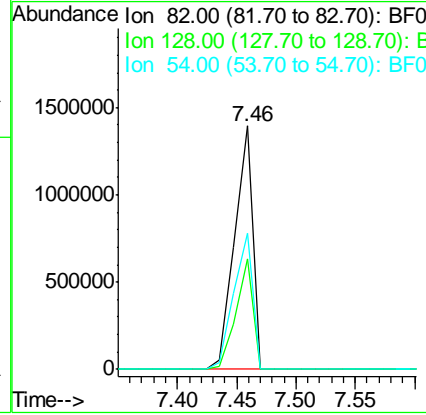




#23
 Nitrobenzene-d5
 Concen: 75.50 ng
 RT: 7.46 min Scan# 470
 Delta R.T. -0.01 min
 Lab File: BF084248.D
 Acq: 4 Jan 2016 19:30

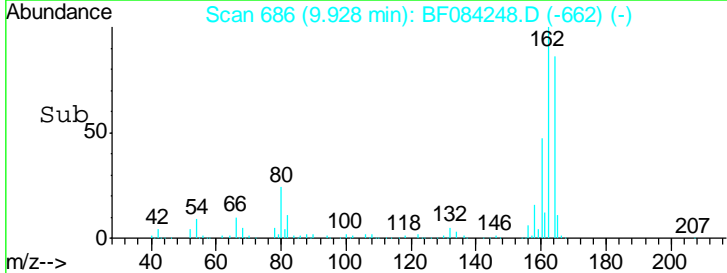
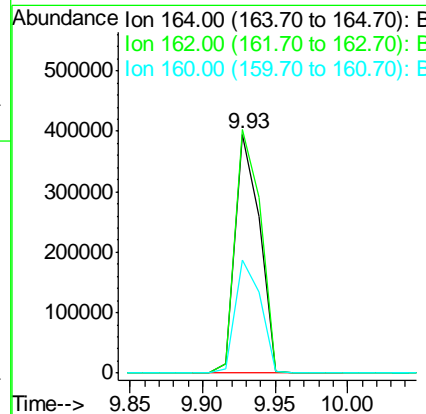
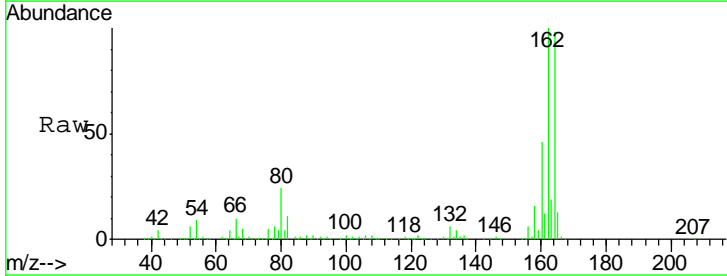
Instrument :
 BNA_F
ClientSampleId :
 PJ-SB-10-21.0-21.5

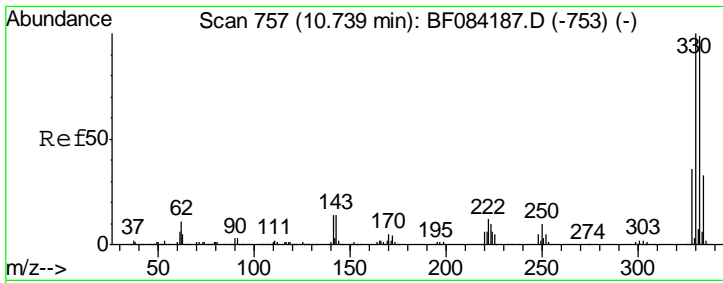
Tgt Ion	Resp	Lower	Upper
82	1480103		
128	45.6	34.6	51.8
54	56.0	38.4	57.6



#38
 Acenaphthene-d10
 Concen: 20.00 ng
 RT: 9.93 min Scan# 686
 Delta R.T. -0.02 min
 Lab File: BF084248.D
 Acq: 4 Jan 2016 19:30

Tgt Ion	Resp	Lower	Upper
164	461336		
162	102.0	85.1	127.7
160	47.4	37.5	56.3

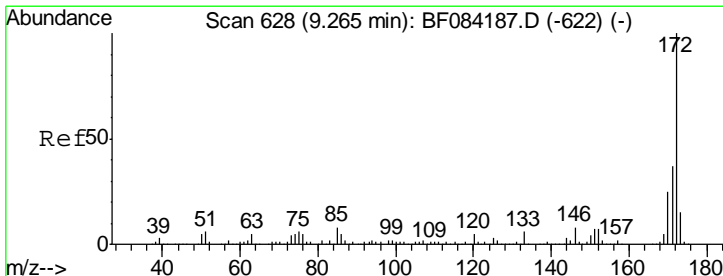
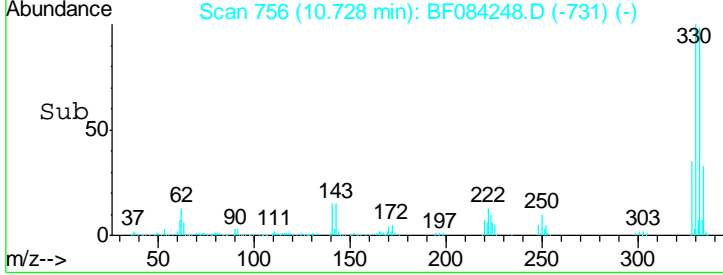
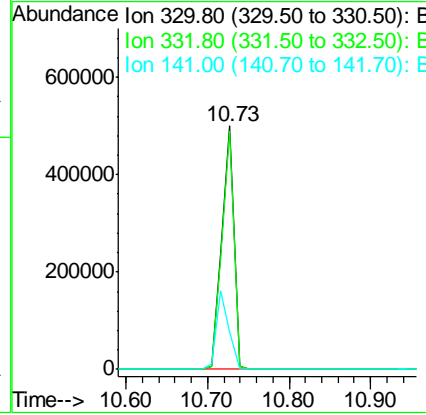
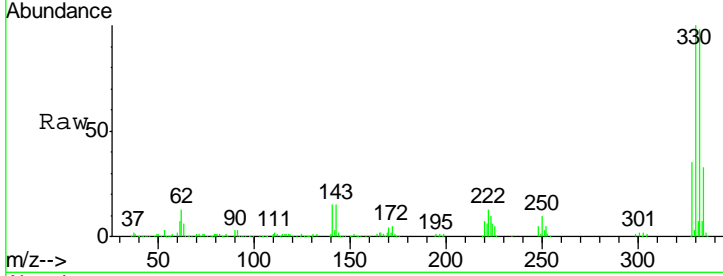




#41
 2,4,6-Tribromophenol
 Concen: 111.49 ng
 RT: 10.73 min Scan# 756
 Delta R.T. -0.01 min
 Lab File: BF084248.D
 Acq: 4 Jan 2016 19:30

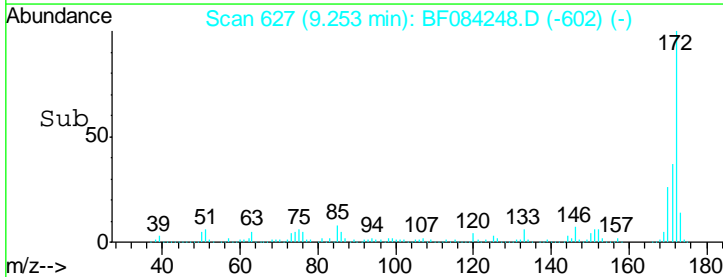
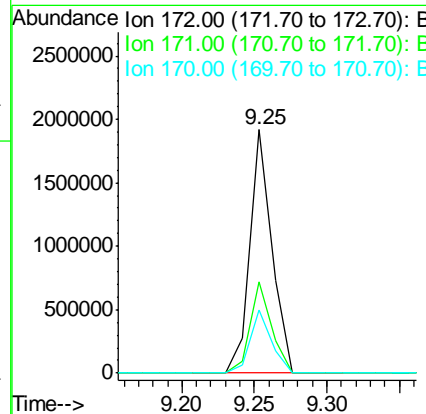
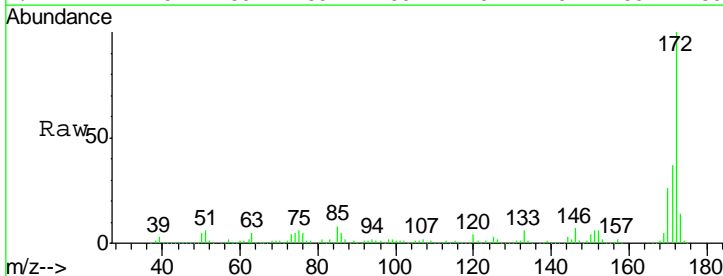
Instrument :
 BNA_F
ClientSampled :
 PJ-SB-10-21.0-21.5

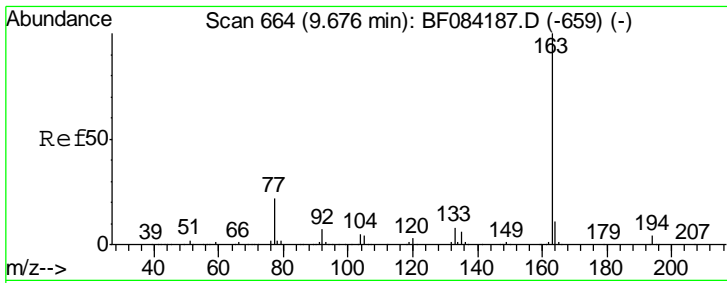
Tgt Ion	Resp	Lower	Upper
330	519260		
332	97.1	76.6	114.8
141	33.6	27.8	41.6



#44
 2-Fluorobiphenyl
 Concen: 76.11 ng
 RT: 9.25 min Scan# 627
 Delta R.T. -0.01 min
 Lab File: BF084248.D
 Acq: 4 Jan 2016 19:30

Tgt Ion	Resp	Lower	Upper
172	2013269		
171	37.4	28.9	43.3
170	25.9	18.6	27.8

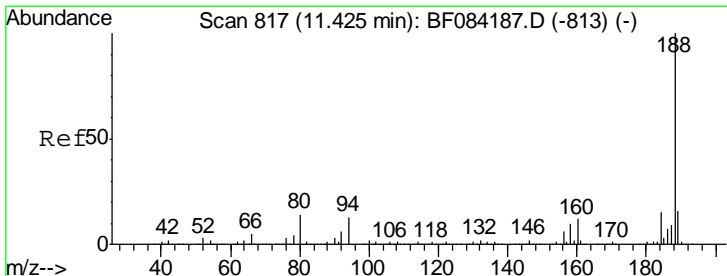
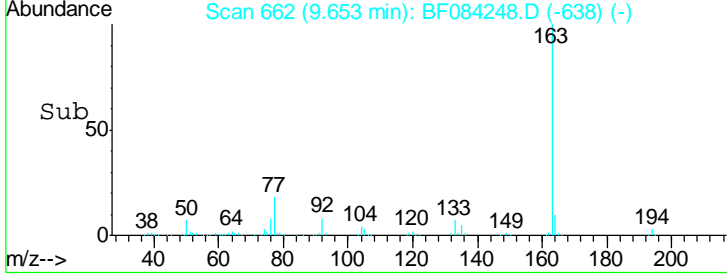
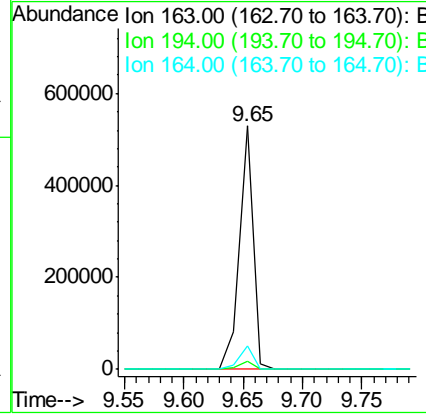
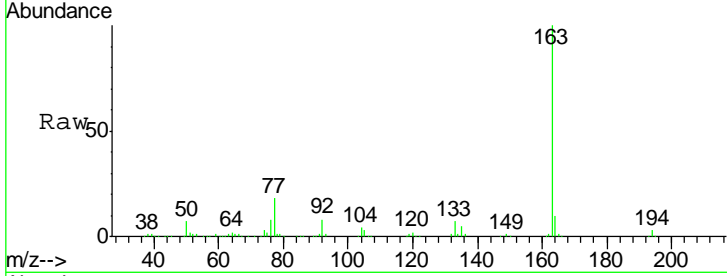




#49
 Dimethylphthalate
 Concen: 13.00 ng
 RT: 9.65 min Scan# 662
 Delta R.T. -0.02 min
 Lab File: BF084248.D
 Acq: 4 Jan 2016 19:30

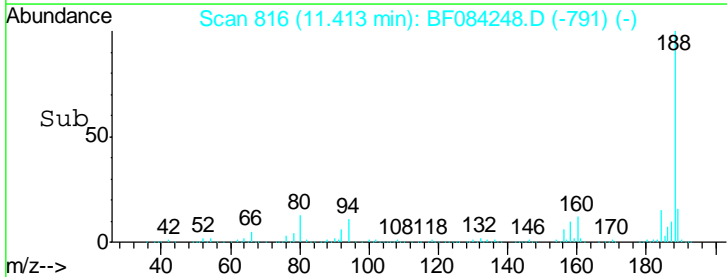
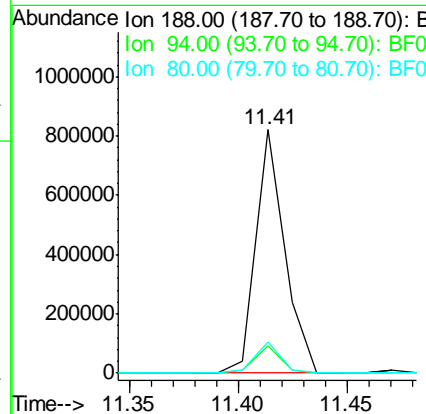
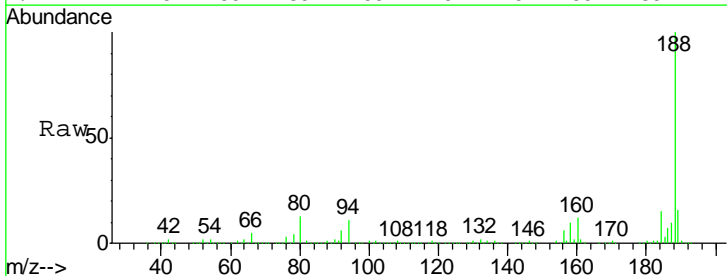
Instrument :
 BNA_F
 ClientSampled :
 PJ-SB-10-21.0-21.5

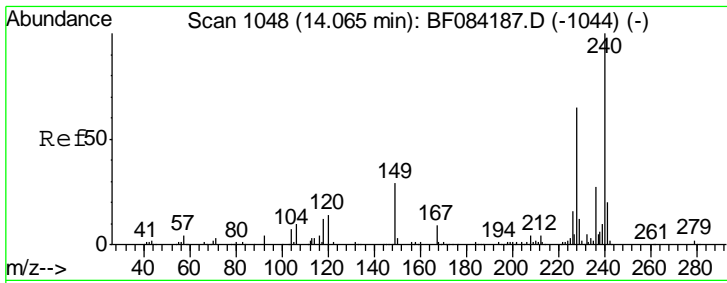
Tgt Ion	Resp	Lower	Upper
163	100		
194	3.2	8.0	12.0#
164	9.7	8.0	12.0



#63
 Phenanthrene-d10
 Concen: 20.00 ng
 RT: 11.41 min Scan# 816
 Delta R.T. -0.01 min
 Lab File: BF084248.D
 Acq: 4 Jan 2016 19:30

Tgt Ion	Resp	Lower	Upper
188	100		
94	11.2	9.0	13.4
80	12.6	9.6	14.4

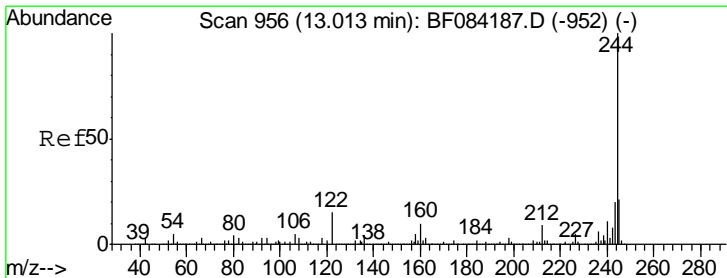
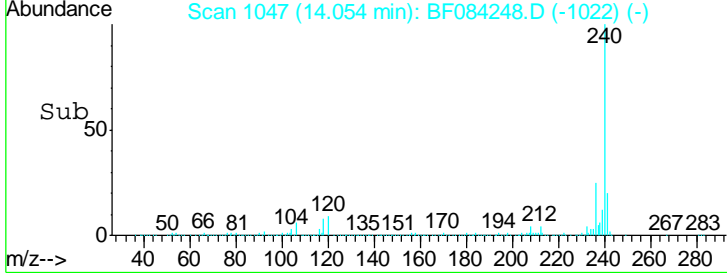
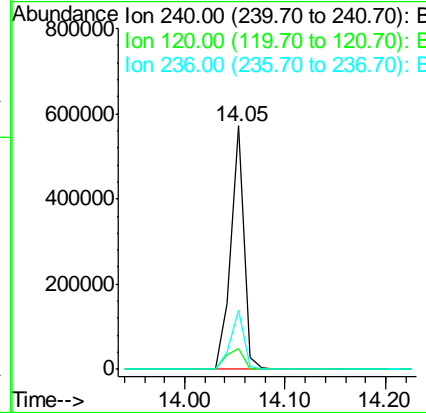
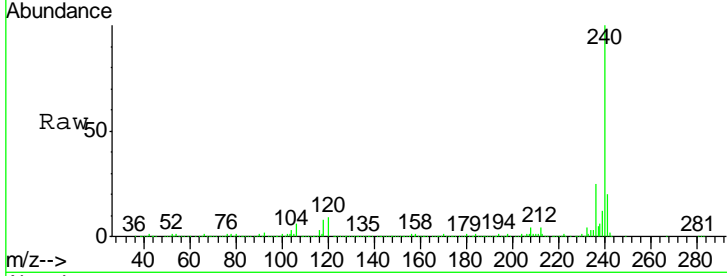




#75
 Chrysene-d12
 Concen: 20.00 ng
 RT: 14.05 min Scan# 1047
 Delta R.T. -0.01 min
 Lab File: BF084248.D
 Acq: 4 Jan 2016 19:30

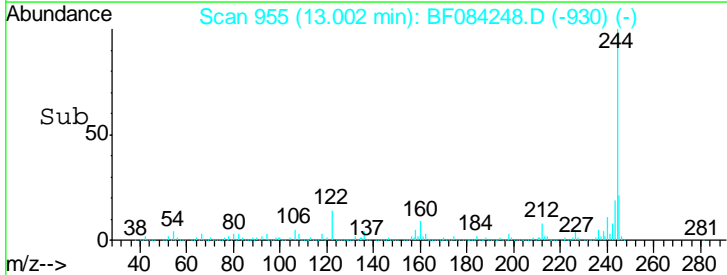
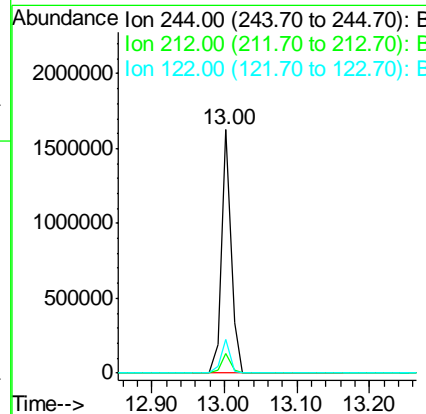
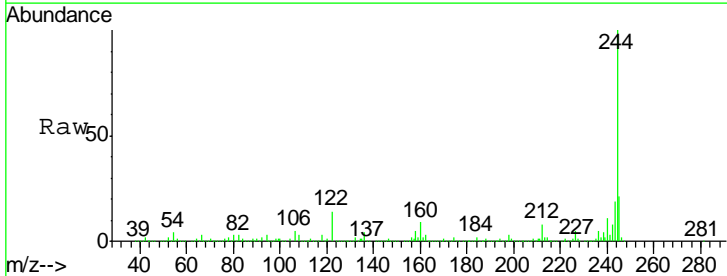
Instrument :
 BNA_F
 ClientSampled :
 PJ-SB-10-21.0-21.5

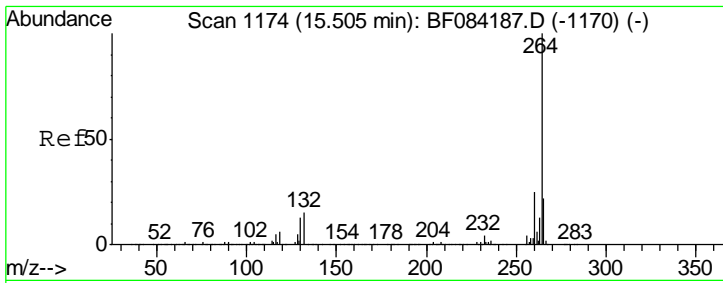
Tgt Ion	Resp	Lower	Upper
240	525903		
120	8.6	9.5	14.3#
236	24.6	20.6	31.0



#78
 Terphenyl-d14
 Concen: 63.16 ng
 RT: 13.00 min Scan# 955
 Delta R.T. -0.01 min
 Lab File: BF084248.D
 Acq: 4 Jan 2016 19:30

Tgt Ion	Resp	Lower	Upper
244	1488033		
212	7.9	5.7	8.5
122	13.6	7.4	11.0#





#86
 Perylene-d12
 Concen: 20.00 ng
 RT: 15.49 min Scan# 1173
 Delta R.T. -0.01 min
 Lab File: BF084248.D
 Acq: 4 Jan 2016 19:30

Instrument :
 BNA_F
 ClientSampleId :
 PJ-SB-10-21.0-21.5

Tot Ion: 264 Resp: 517125

Ion	Ratio	Lower	Upper
264	100		
260	23.6	19.4	29.2
265	21.9	17.8	26.6

