

Data Path : Z:\HPCHEM1\BNA F\DATA\BF010417\
 Data File : BF092081.D
 Acq On : 4 Jan 2017 21:22
 Operator : UM/SJ
 Sample : I1004-04
 Misc :
 ALS Vial : 10 Sample Multiplier: 1

Instrument :
 BNA_F
 ClientSampleId :
 MW-30

Quant Time: Jan 05 00:47:03 2017
 Quant Method : Z:\HPCHEM1\BNA F\METHODS\8270-BF122116.M
 Quant Title : ASP BNA STANDARDS FOR 5 POINT CALIBRATION
 QLast Update : Thu Jan 05 00:16:49 2017
 Response via : Initial Calibration

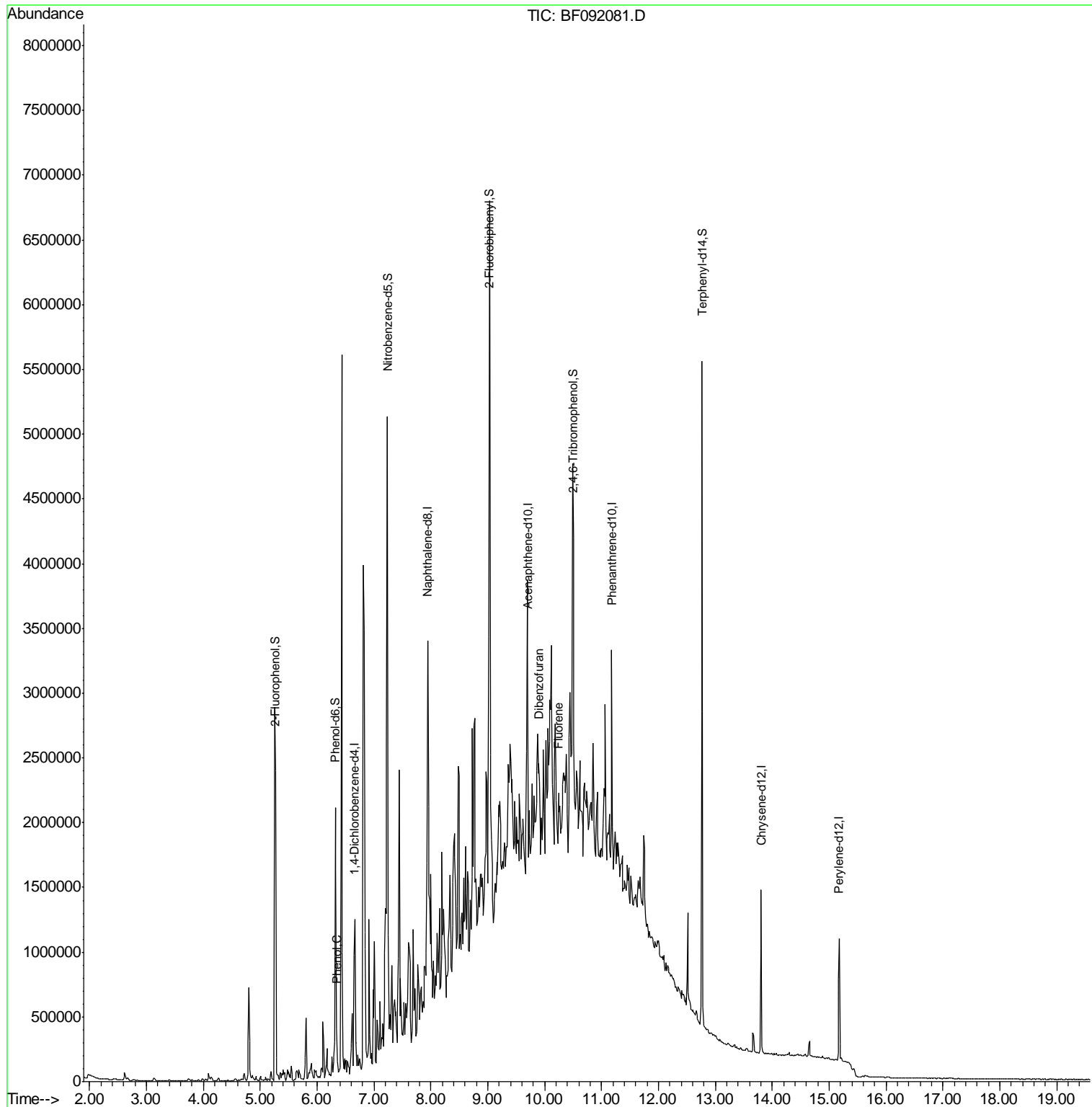
Internal Standards	R.T.	QIon	Response	Conc	Units	Dev(Min)
1) 1,4-Dichlorobenzene-d4	6.66	152	219851	20.00	ng	0.00
21) Naphthalene-d8	7.94	136	789422	20.00	ng	-0.01
38) Acenaphthene-d10	9.70	164	441417	20.00	ng	0.00
63) Phenanthrene-d10	11.18	188	623616	20.00	ng	0.00
75) Chrysene-d12	13.81	240	550887	20.00	ng	0.00
86) Perylene-d12	15.18	264	452590	20.00	ng	0.00
System Monitoring Compounds						
5) 2-Fluorophenol	5.27	112	1147240	87.13	ng	0.01
7) Phenol-d6	6.32	99	968473	60.25	ng	-0.01
23) Nitrobenzene-d5	7.24	82	1526581	107.53	ng	0.00
41) 2,4,6-Tribromophenol	10.50	330	511826	140.11	ng	0.01
44) 2-Fluorobiphenyl	9.03	172	2101406	99.78	ng	0.00
78) Terphenyl-d14	12.77	244	1799836	79.24	ng	0.00
Target Compounds						Qvalue
10) Phenol	6.34	94	111328	6.08	ng	# 65
54) Dibenzofuran	9.90	168	71959	2.14	ng	# 69
57) Fluorene	10.24	166	52468	2.14	ng	# 88

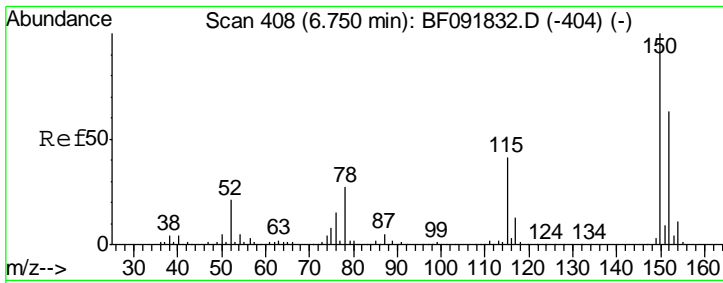
(#) = qualifier out of range (m) = manual integration (+) = signals summed

Data Path : Z:\HPCHEM1\BNA F\DATA\BF010417\
 Data File : BF092081.D
 Acq On : 4 Jan 2017 21:22
 Operator : UM/SJ
 Sample : I1004-04
 Misc :
 ALS Vial : 10 Sample Multiplier: 1

Instrument :
 BNA_F
 ClientSampled :
 MW-30

Quant Time: Jan 05 00:47:03 2017
 Quant Method : Z:\HPCHEM1\BNA F\METHODS\8270-BF122116.M
 Quant Title : ASP BNA STANDARDS FOR 5 POINT CALIBRATION
 QLast Update : Thu Jan 05 00:16:49 2017
 Response via : Initial Calibration



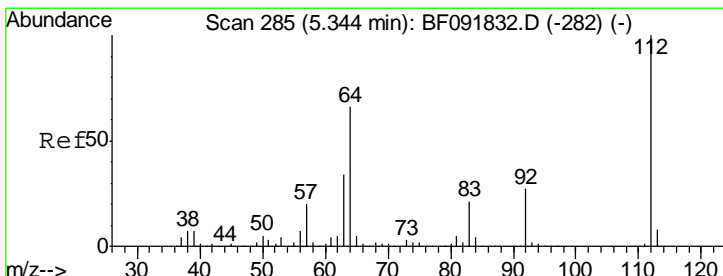
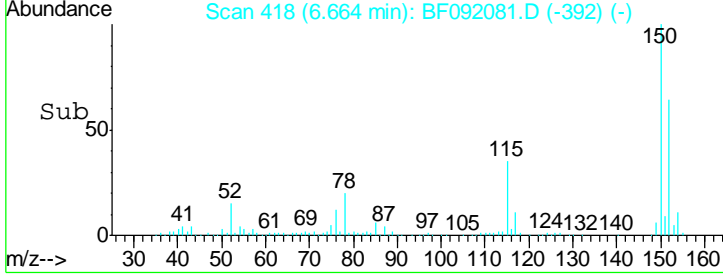
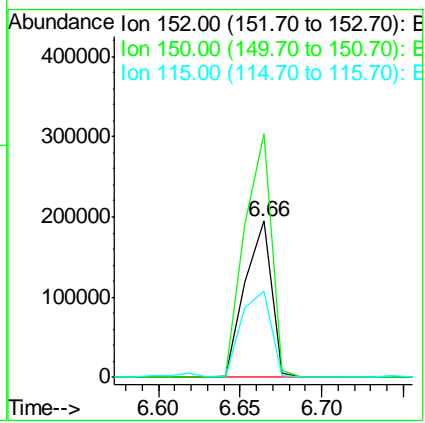
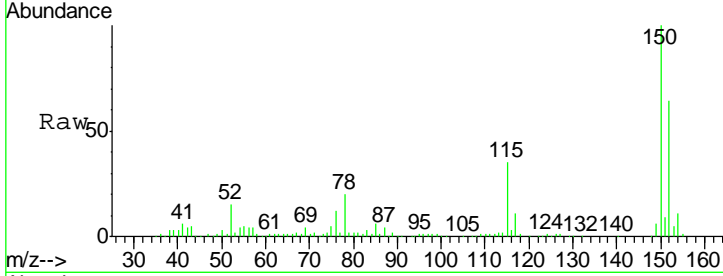


#1
 1,4-Dichlorobenzene-d4
 Concen: 20.00 ng
 RT: 6.66 min Scan# 418
 Delta R.T. -0.00 min
 Lab File: BF092081.D
 Acq: 4 Jan 2017 21:22

Instrument :
 BNA_F
ClientSampled :
 MW-30

Tgt Ion:152 Resp: 219851

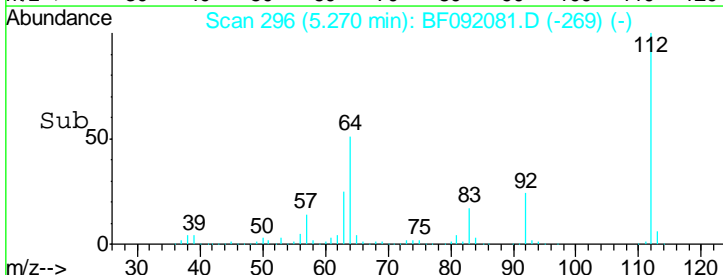
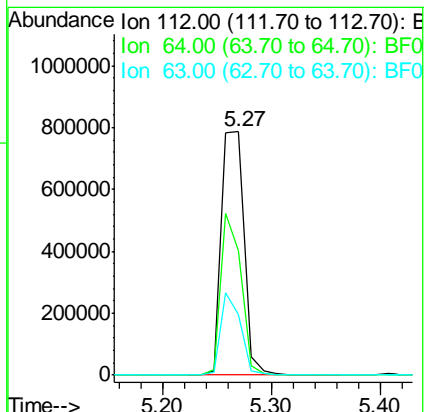
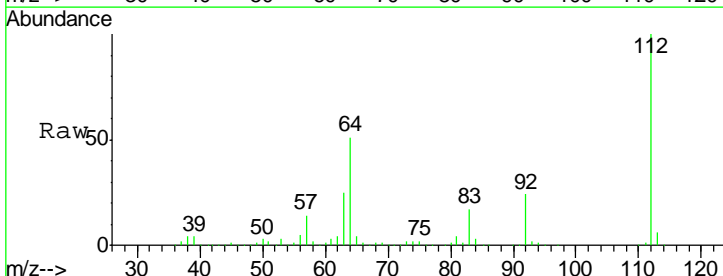
Ion	Ratio	Lower	Upper
152	100		
150	155.7	124.9	187.3
115	55.0	46.0	69.0

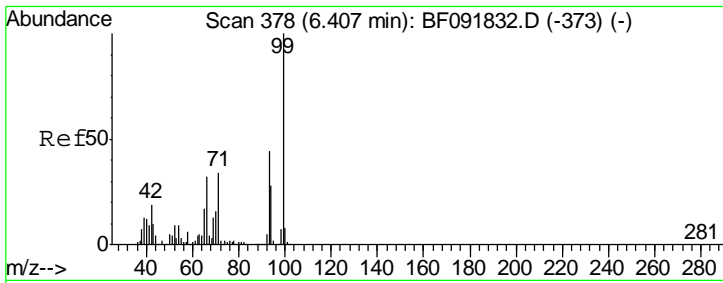


#5
 2-Fluorophenol
 Concen: 87.13 ng
 RT: 5.27 min Scan# 296
 Delta R.T. 0.01 min
 Lab File: BF092081.D
 Acq: 4 Jan 2017 21:22

Tgt Ion:112 Resp: 1147240

Ion	Ratio	Lower	Upper
112	100		
64	50.9	46.1	69.1
63	24.9	23.8	35.6

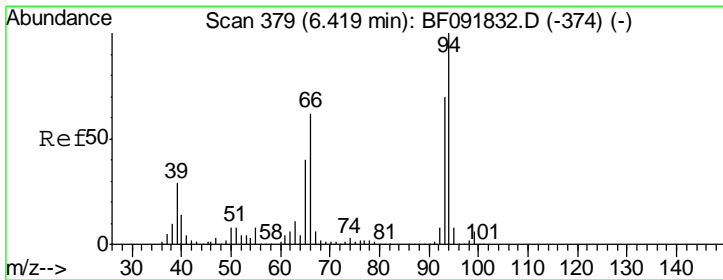
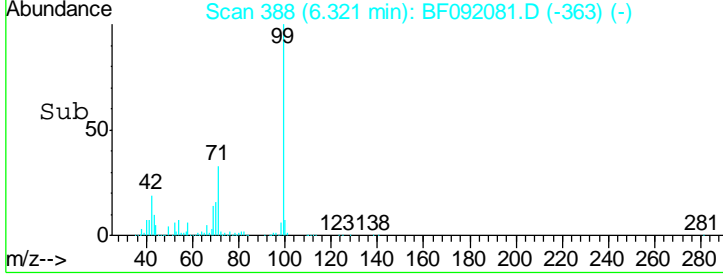
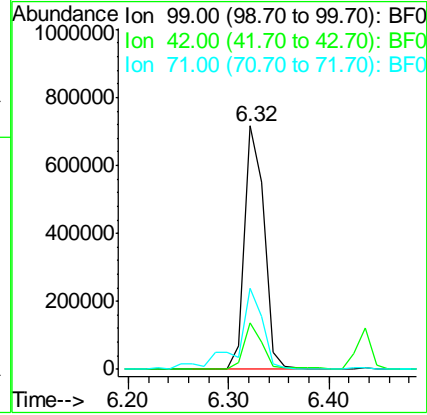
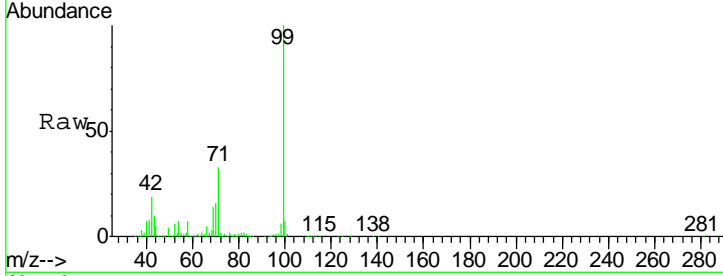




#7
 Phenol-d6
 Concen: 60.25 ng
 RT: 6.32 min Scan# 388
 Delta R.T. -0.01 min
 Lab File: BF092081.D
 Acq: 4 Jan 2017 21:22

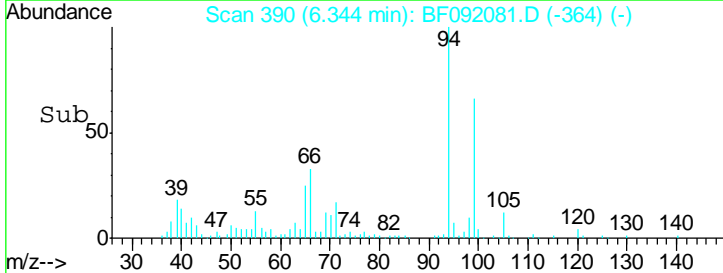
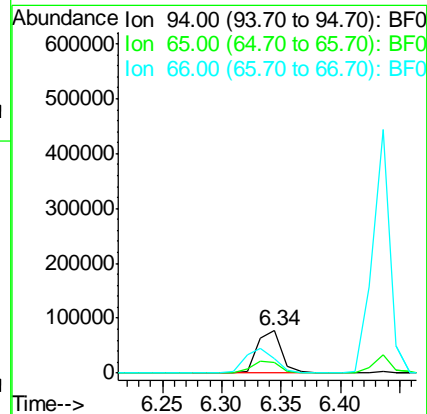
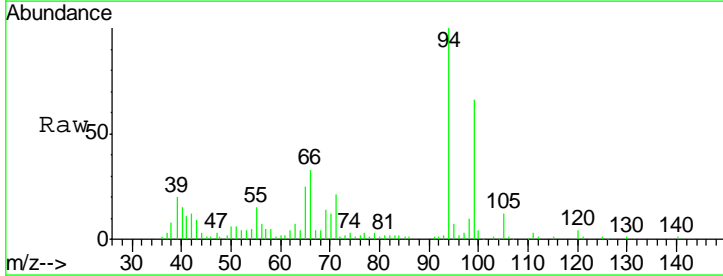
Instrument :
 BNA_F
ClientSampled :
 MW-30

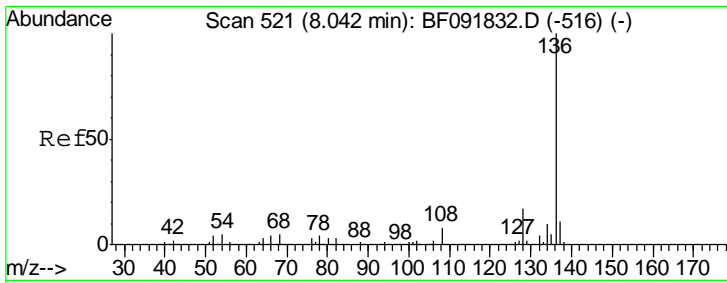
Tgt Ion	Resp	Lower	Upper
99	100		
42	19.3	15.6	23.4
71	33.1	27.5	41.3



#10
 Phenol
 Concen: 6.08 ng
 RT: 6.34 min Scan# 390
 Delta R.T. -0.00 min
 Lab File: BF092081.D
 Acq: 4 Jan 2017 21:22

Tgt Ion	Resp	Lower	Upper
94	100		
65	24.8	21.4	61.4
66	32.7	44.0	84.0#



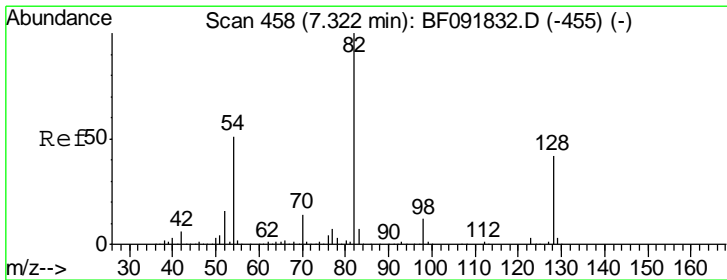
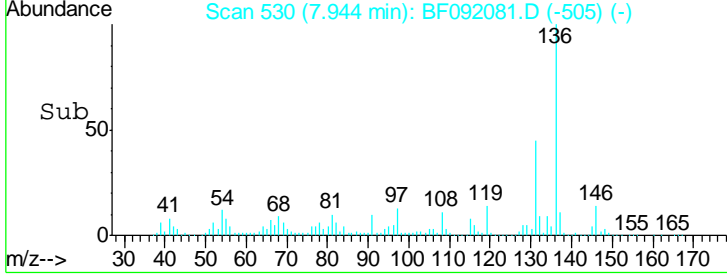
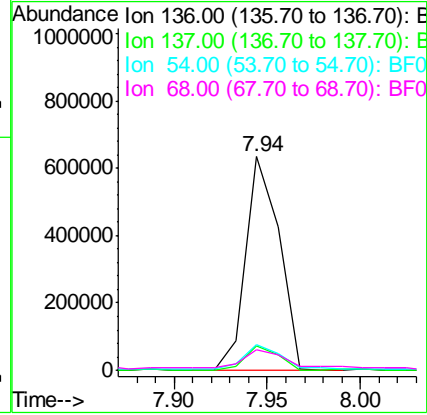
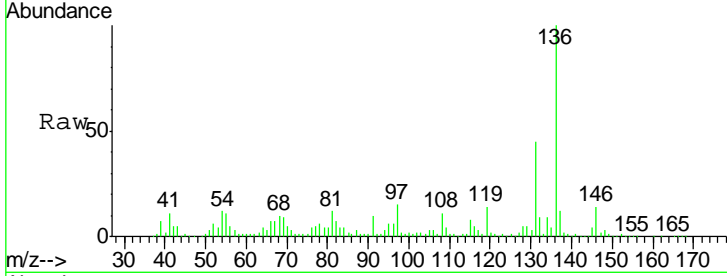


#21
 Naphthalene-d8
 Concen: 20.00 ng
 RT: 7.94 min Scan# 530
 Delta R.T. -0.01 min
 Lab File: BF092081.D
 Acq: 4 Jan 2017 21:22

Instrument :
 BNA_F
ClientSampled :
 MW-30

Tgt Ion: 136 Resp: 789422

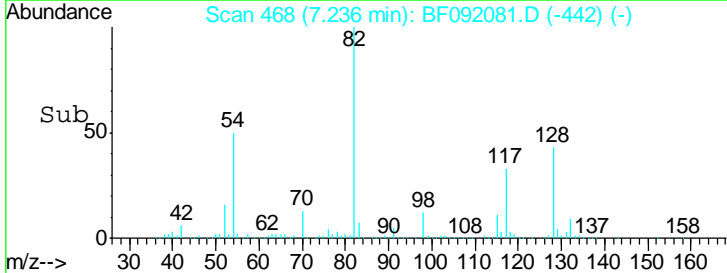
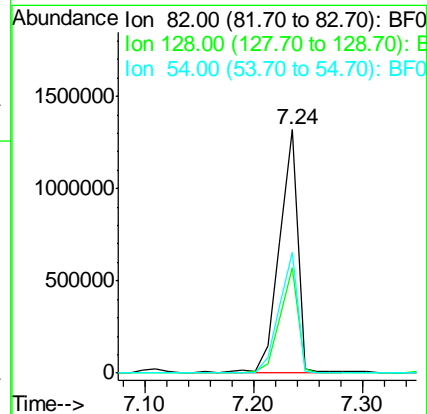
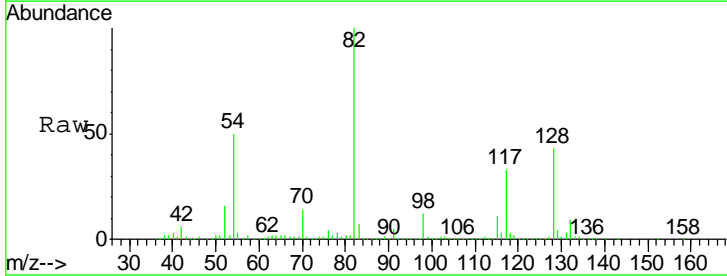
Ion	Ratio	Lower	Upper
136	100		
137	11.6	8.4	12.6
54	11.9	4.5	6.7#
68	9.8	3.6	5.4#

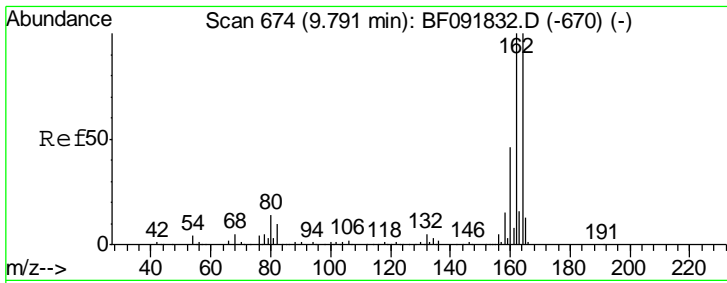


#23
 Nitrobenzene-d5
 Concen: 107.53 ng
 RT: 7.24 min Scan# 468
 Delta R.T. -0.00 min
 Lab File: BF092081.D
 Acq: 4 Jan 2017 21:22

Tgt Ion: 82 Resp: 1526581

Ion	Ratio	Lower	Upper
82	100		
128	43.3	34.6	52.0
54	49.5	39.5	59.3

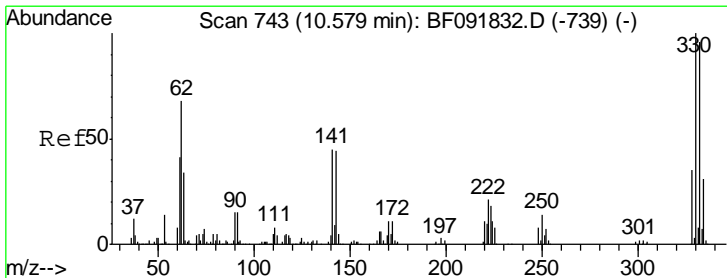
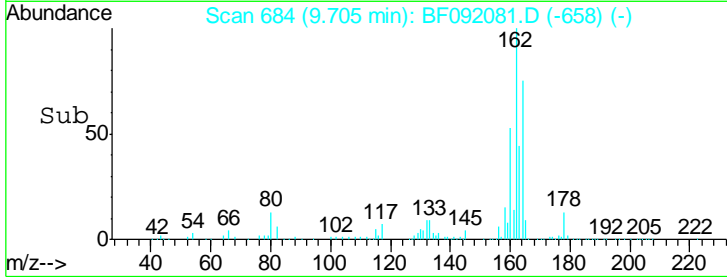
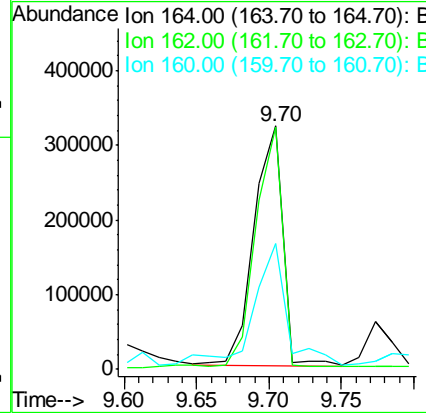
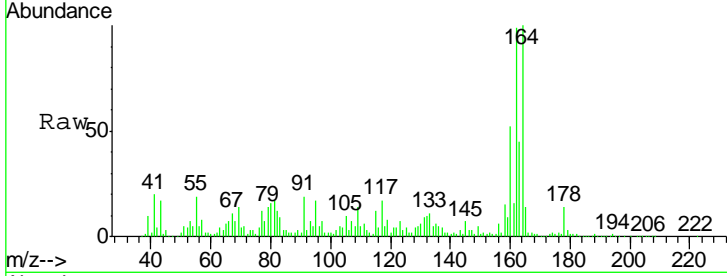




#38
 Acenaphthene-d10
 Concen: 20.00 ng
 RT: 9.70 min Scan# 684
 Delta R.T. -0.00 min
 Lab File: BF092081.D
 Acq: 4 Jan 2017 21:22

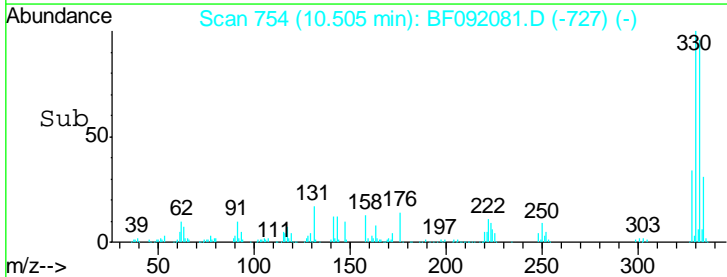
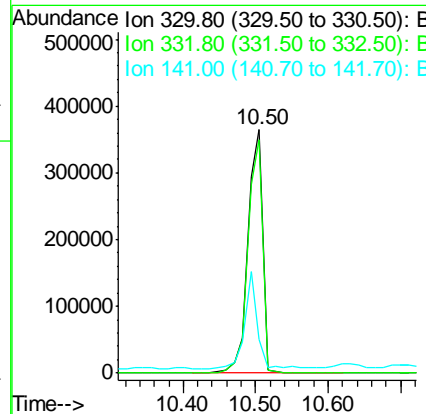
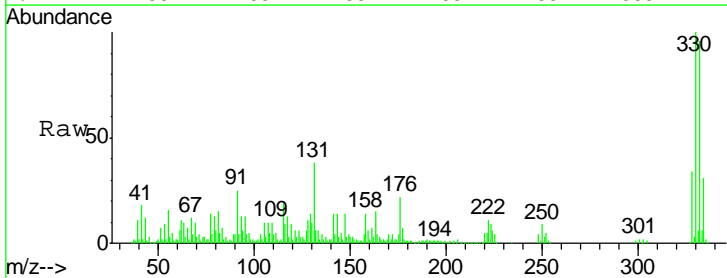
Instrument :
 BNA_F
 ClientSampled :
 MW-30

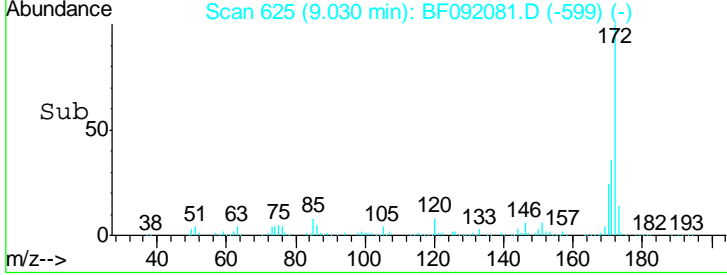
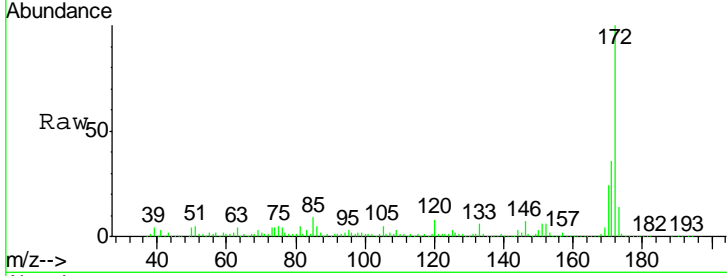
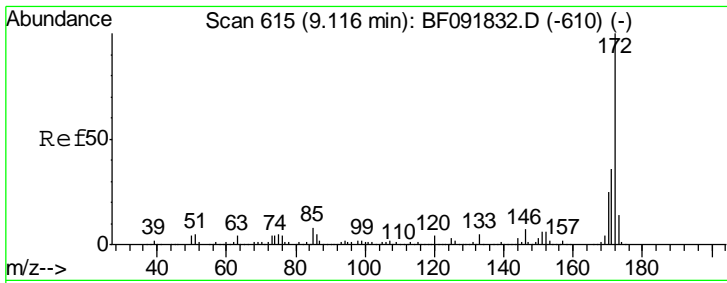
Tgt Ion	Resp	Lower	Upper
164	100		
162	99.3	80.2	120.2
160	52.0	36.9	55.3



#41
 2,4,6-Tribromophenol
 Concen: 140.11 ng
 RT: 10.50 min Scan# 754
 Delta R.T. 0.01 min
 Lab File: BF092081.D
 Acq: 4 Jan 2017 21:22

Tgt Ion	Resp	Lower	Upper
330	100		
332	95.8	77.4	116.2
141	33.6	34.1	51.1#



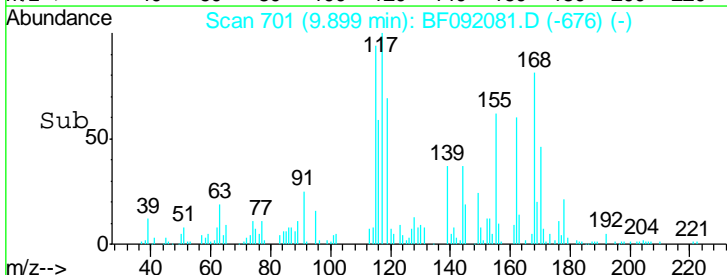
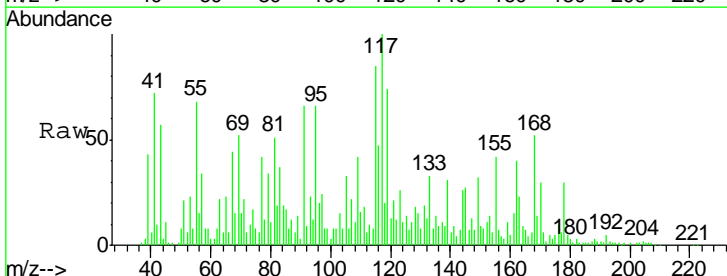
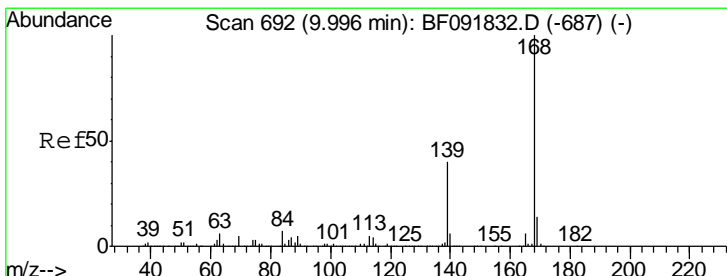
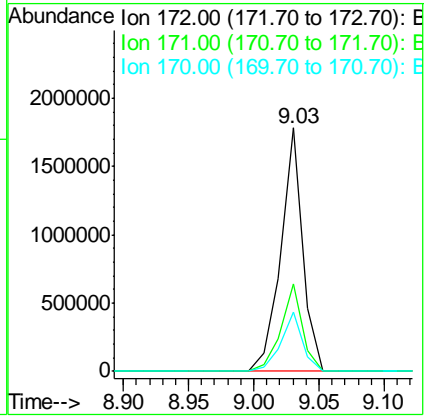


#44
 2-Fluorobiphenyl
 Concen: 99.78 ng
 RT: 9.03 min Scan# 625
 Delta R.T. -0.00 min
 Lab File: BF092081.D
 Acq: 4 Jan 2017 21:22

Instrument :
 BNA_F
 ClientSampled :
 MW-30

Tgt Ion:172 Resp: 2101406

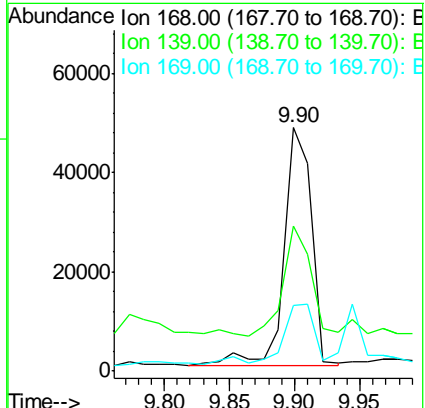
Ion	Ratio	Lower	Upper
172	100		
171	36.1	29.4	44.0
170	24.5	20.2	30.4

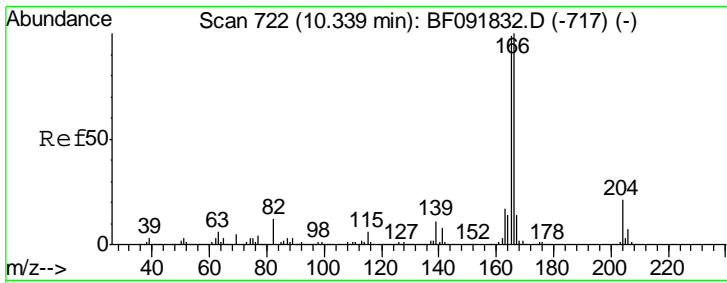


#54
 Dibenzofuran
 Concen: 2.14 ng
 RT: 9.90 min Scan# 701
 Delta R.T. -0.01 min
 Lab File: BF092081.D
 Acq: 4 Jan 2017 21:22

Tgt Ion:168 Resp: 71959

Ion	Ratio	Lower	Upper
168	100		
139	59.7	32.6	49.0#
169	26.8	11.3	16.9#

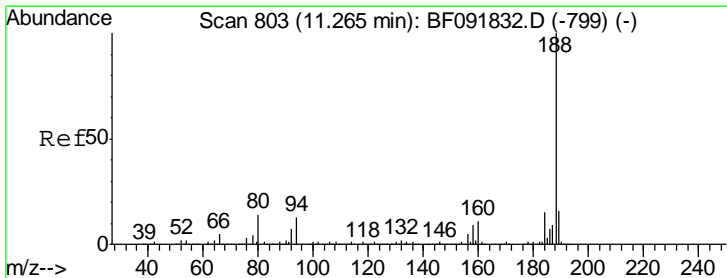
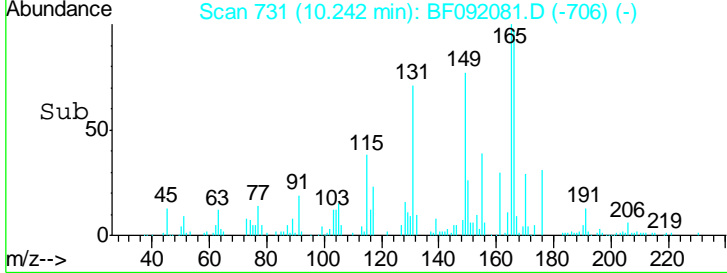
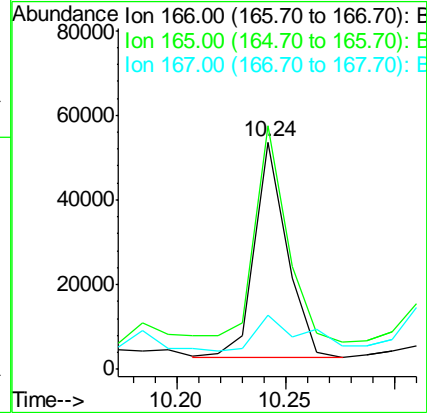
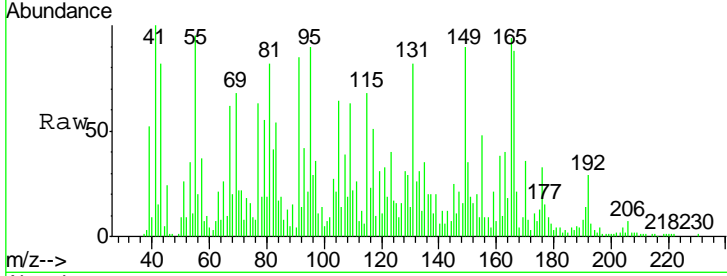




#57
 Fluorene
 Concen: 2.14 ng
 RT: 10.24 min Scan# 731
 Delta R.T. -0.01 min
 Lab File: BF092081.D
 Acq: 4 Jan 2017 21:22

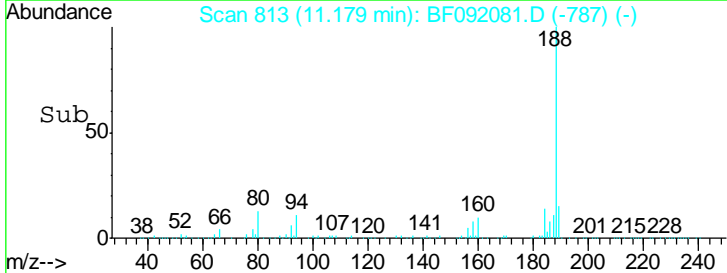
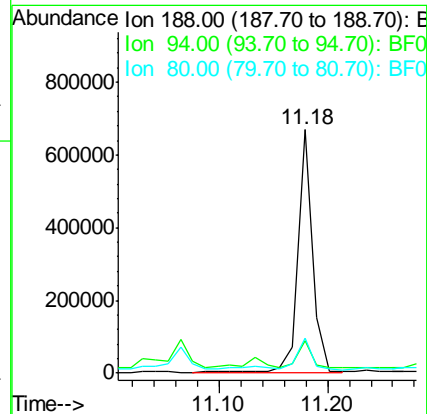
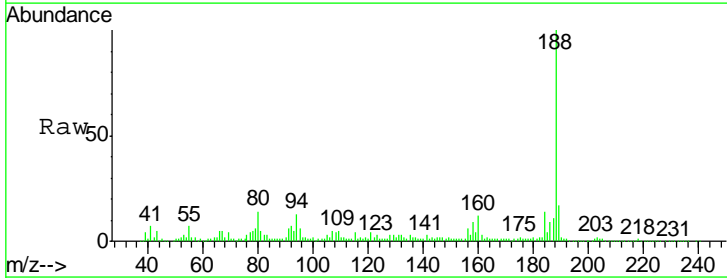
Instrument :
 BNA_F
 ClientSampled :
 MW-30

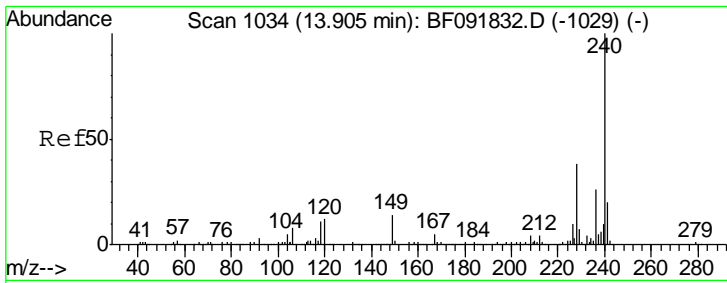
Tgt Ion	Resp	Lower	Upper
166	52468		
165	107.2	77.8	116.8
167	23.7	10.8	16.2#



#63
 Phenanthrene-d10
 Concen: 20.00 ng
 RT: 11.18 min Scan# 813
 Delta R.T. -0.00 min
 Lab File: BF092081.D
 Acq: 4 Jan 2017 21:22

Tgt Ion	Resp	Lower	Upper
188	623616		
94	13.3	10.0	15.0
80	14.4	11.2	16.8

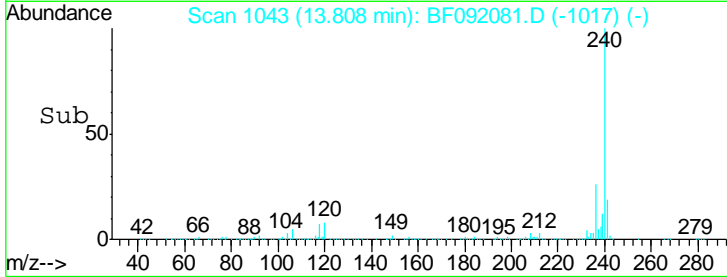
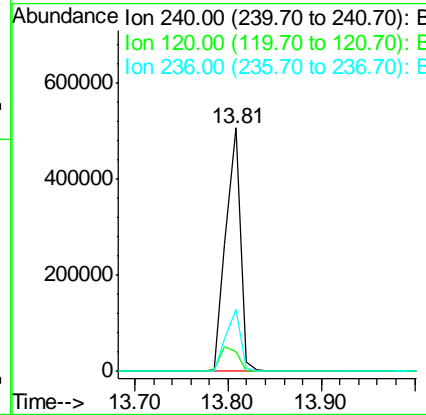
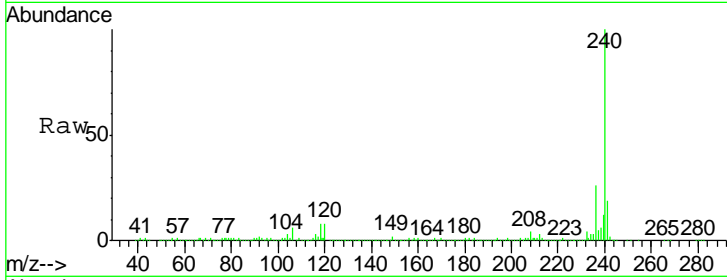




#75
 Chrysene-d12
 Concen: 20.00 ng
 RT: 13.81 min Scan# 1043
 Delta R.T. -0.00 min
 Lab File: BF092081.D
 Acq: 4 Jan 2017 21:22

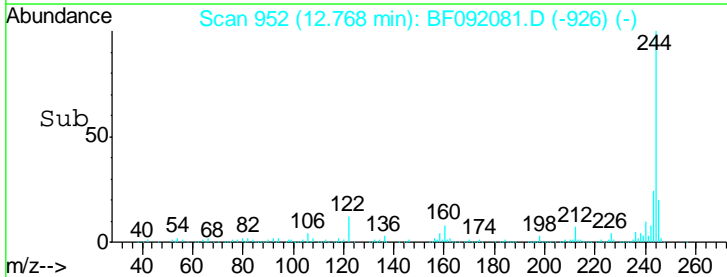
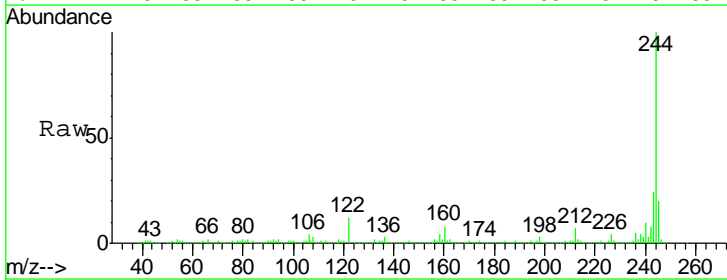
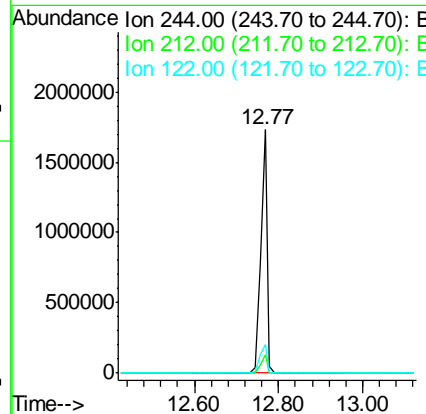
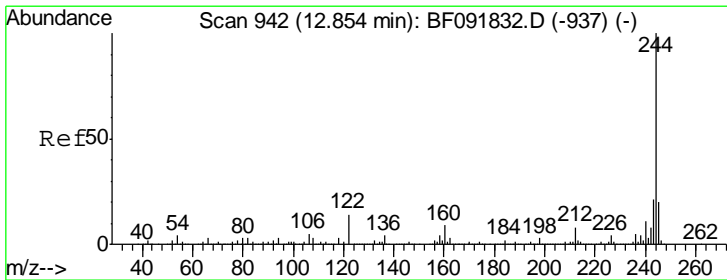
Instrument :
 BNA_F
 ClientSampled :
 MW-30

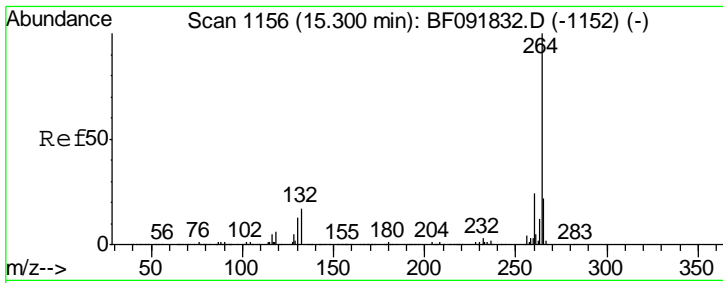
Tgt Ion	Resp	Lower	Upper
240	100		
120	8.1	12.9	19.3#
236	25.6	20.9	31.3



#78
 Terphenyl-d14
 Concen: 79.24 ng
 RT: 12.77 min Scan# 952
 Delta R.T. -0.00 min
 Lab File: BF092081.D
 Acq: 4 Jan 2017 21:22

Tgt Ion	Resp	Lower	Upper
244	100		
212	7.3	6.2	9.2
122	11.9	11.4	17.2





#86
 Perylene-d12
 Concen: 20.00 ng
 RT: 15.18 min Scan# 1163
 Delta R.T. -0.00 min
 Lab File: BF092081.D
 Acq: 4 Jan 2017 21:22

Instrument :
 BNA_F
ClientSampled :
 MW-30

Tot Ion: 264 Resp: 452590

Ion	Ratio	Lower	Upper
264	100		
260	23.9	19.2	28.8
265	21.9	17.4	26.0

