

Data File : BF118509.D
 Acq On : 8 Jan 2020 20:17
 Operator : JU
 Sample : L1049-10
 Misc :
 ALS Vial : 16 Sample Multiplier: 1

Instrument :
 BNA_F
 ClientSampleId :
 TP-4

Quant Time: Jan 09 03:16:31 2020
 Quant Method : Z:\SVOASRV\HPCHEM1\BNA_F\METHODS\8270-BF010820.M
 Quant Title : ASP BNA STANDARDS FOR 5 POINT CALIBRATION
 QLast Update : Wed Jan 08 16:06:11 2020
 Response via : Initial Calibration

Internal Standards	R.T.	QIon	Response	Conc	Units	Dev(Min)
1) 1,4-Dichlorobenzene-d4	6.83	152	67479	20.00	ng	0.00
21) Naphthalene-d8	8.12	136	273195	20.00	ng	0.00
39) Acenaphthene-d10	9.87	164	142458	20.00	ng	-0.01
64) Phenanthrene-d10	11.37	188	254893	20.00	ng	-0.01
76) Chrysene-d12	14.03	240	186103	20.00	ng	-0.01
87) Perylene-d12	15.51	264	199951	20.00	ng	0.00

System Monitoring Compounds

5) 2-Fluorophenol	5.45	112	472136	115.50	ng	0.00
7) Phenol-d6	6.47	99	605717	123.94	ng	0.00
23) Nitrobenzene-d5	7.39	82	358182	68.87	ng	-0.01
42) 2,4,6-Tribromophenol	10.67	330	204700	121.77	ng	0.00
45) 2-Fluorobiphenyl	9.19	172	780062	78.53	ng	-0.01
79) Terphenyl-d14	12.96	244	681327	58.02	ng	0.00

Target Compounds

	R.T.	QIon	Response	Conc	Units	Qvalue
2) 1,4-Dioxane	2.36	88	114	0.084	ng	# 1
6) Aniline	6.48	93	114	0.019	ng	# 1
9) Benzaldehyde	6.40	77	1220	0.448	ng	# 62
10) Phenol	6.48	94	12192	2.251	ng	# 89
11) bis(2-Chloroethyl)ether	6.60	93	675	0.175	ng	# 1
12) 1,3-Dichlorobenzene	6.85	146	450	0.086	ng	# 61
13) 1,4-Dichlorobenzene	6.85	146	450	0.084	ng	# 89
14) 1,2-Dichlorobenzene	6.85	146	450	0.087	ng	# 89
15) Benzyl Alcohol	6.98	79	7100	1.791	ng	# 51
17) 2-Methylphenol	7.29	107	365	0.099	ng	# 14
18) Hexachloroethane	7.36	117	126	0.062	ng	# 7
19) n-Nitroso-di-n-propylamine	7.39	70	51709	16.427	ng	# 76
20) 3+4-Methylphenols	7.29	107	365	0.073	ng	# 40
22) Acetophenone	7.25	105	664	0.096	ng	# 51
24) Nitrobenzene	7.39	77	1211	0.234	ng	# 32
25) Isophorone	7.39	82	358228	42.997	ng	# 63
27) 2,4-Dimethylphenol	7.93	122	311	0.091	ng	# 45
28) bis(2-Chloroethoxy)methane	8.12	93	135	0.025	ng	# 1
31) Naphthalene	8.13	128	48968	3.427	ng	# 98
32) Benzoic acid	7.93	122	311	6.596	ng	# 88
33) 4-Chloroaniline	8.13	127	6184	1.051	ng	# 32
35) Caprolactam	8.53	113	993	0.822	ng	# 79
36) 4-Chloro-3-methylphenol	8.57	107	180	0.042	ng	# 18
37) 2-Methylnaphthalene	8.83	142	18696	1.906	ng	# 99
38) 1-Methylnaphthalene	8.83	142	18696	2.030	ng	# 99
46) 1,1'-Biphenyl	9.29	154	8489	0.729	ng	# 97
47) 2-Chloronaphthalene	9.46	162	141	0.015	ng	# 24
48) 2-Nitroaniline	9.47	65	118	0.044	ng	# 1
49) Acenaphthylene	9.74	152	4300	0.314	ng	# 87
50) Dimethylphthalate	9.59	163	47283	4.324	ng	# 99
51) 2,6-Dinitrotoluene	9.87	165	18879	8.018	ng	# 24
52) Acenaphthene	9.91	154	30870	3.686	ng	# 97
53) 3-Nitroaniline	10.08	138	476	0.173	ng	# 6
54) 2,4-Dinitrophenol	10.16	184	226	5.070	ng	# 15

Data File : BF118509.D
 Acq On : 8 Jan 2020 20:17
 Operator : JU
 Sample : L1049-10
 Misc :
 ALS Vial : 16 Sample Multiplier: 1

Instrument :
 BNA_F
 ClientSampleId :
 TP-4

Quant Time: Jan 09 03:16:31 2020
 Quant Method : Z:\SVOASRV\HPCHEM1\BNA_F\METHODS\8270-BF010820.M
 Quant Title : ASP BNA STANDARDS FOR 5 POINT CALIBRATION
 QLast Update : Wed Jan 08 16:06:11 2020
 Response via : Initial Calibration

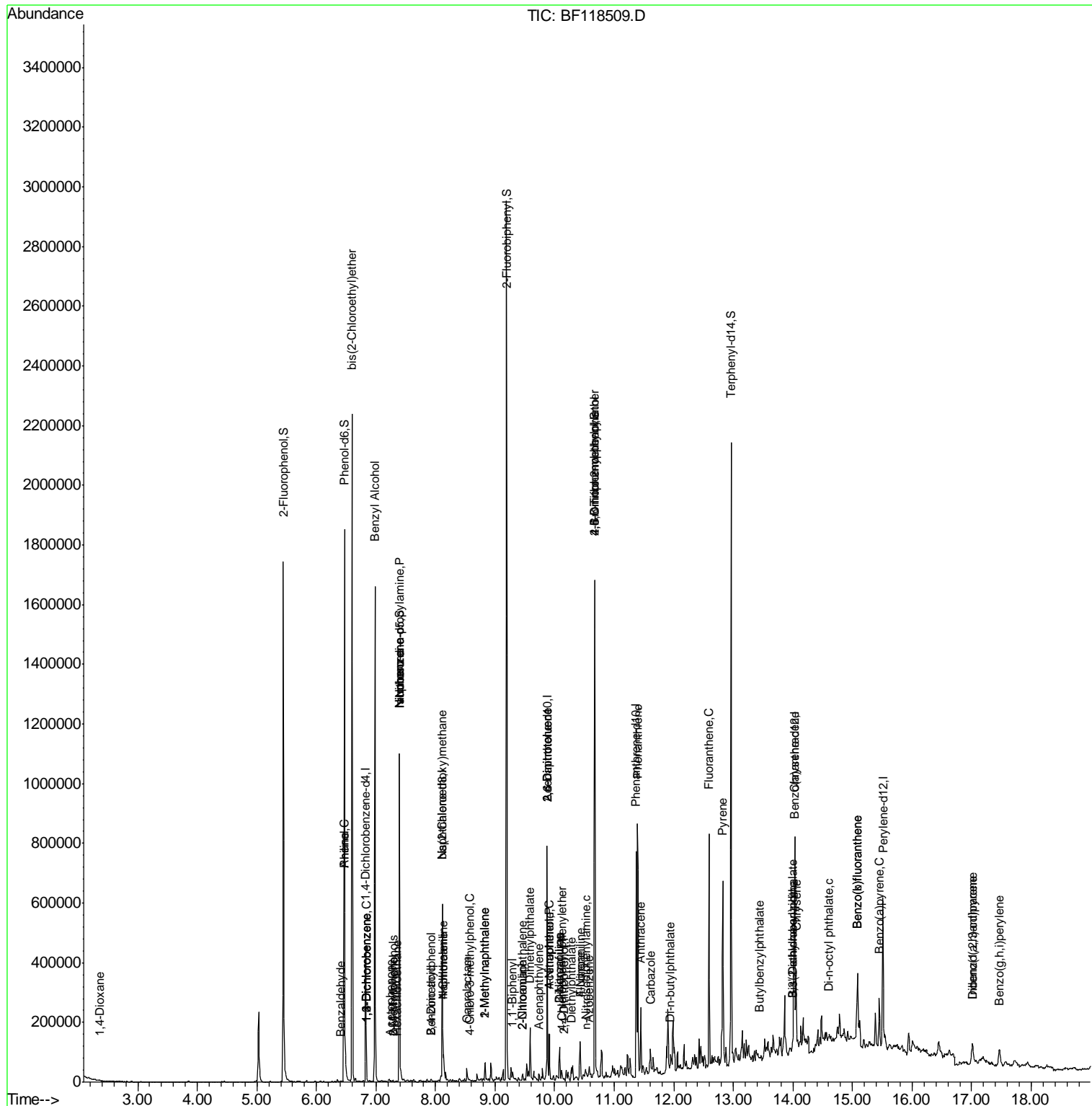
Internal Standards	R.T.	QIon	Response	Conc	Units	Dev(Min)
55) Dibenzofuran	10.08	168	30265	2.406	ng	96
56) 4-Nitrophenol	9.90	139	540	0.403	ng	89
57) 2,4-Dinitrotoluene	9.87	165	18879	5.988	ng #	21
58) Fluorene	10.43	166	32272	3.192	ng	99
60) Diethylphthalate	10.29	149	508	0.046	ng #	44
61) 4-Chlorophenyl-phenylether	10.13	204	110	0.022	ng #	28
62) 4-Nitroaniline	10.43	138	368	0.136	ng #	15
63) Azobenzene	10.58	77	1908	0.202	ng #	1
65) 4,6-Dinitro-2-methylphenol	10.67	198	487	0.361	ng #	1
66) n-Nitrosodiphenylamine	10.53	169	2232	0.269	ng #	72
67) 4-Bromophenyl-phenylether	10.67	248	12411	4.157	ng #	1
71) Phenanthrene	11.39	178	303479	21.254	ng	99
72) Anthracene	11.45	178	81060	5.706	ng	99
73) Carbazole	11.60	167	27611	2.244	ng #	96
74) Di-n-butylphthalate	11.93	149	2661	0.162	ng #	82
75) Fluoranthene	12.59	202	270317	18.626	ng	98
77) Benzidine	12.96	184	9807	Below Cal	#	92
78) Pyrene	12.82	202	218575	14.275	ng	99
80) Butylbenzylphthalate	13.43	149	1141	0.163	ng #	68
81) Benzo(a)anthracene	14.02	228	107243	8.233	ng	97
82) 3,3'-Dichlorobenzidine	13.99	252	108	0.025	ng #	1
83) Chrysene	14.05	228	90418	7.143	ng	94
84) Bis(2-ethylhexyl)phthalate	13.99	149	1695	0.178	ng #	94
85) Di-n-octyl phthalate	14.60	149	741	0.054	ng #	31
86) Indeno(1,2,3-cd)pyrene	17.01	276	39936	3.919	ng	96
88) Benzo(b)fluoranthene	15.07	252	154798	10.708	ng	99
89) Benzo(k)fluoranthene	15.07	252	154798	11.218	ng	98
90) Benzo(a)pyrene	15.45	252	77773	6.565	ng	96
91) Dibenzo(a,h)anthracene	17.02	278	10469	0.942	ng #	93
92) Benzo(g,h,i)perylene	17.47	276	41429	3.936	ng #	90

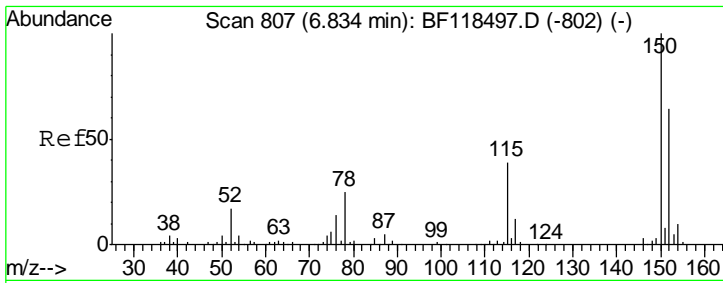
(#) = qualifier out of range (m) = manual integration (+) = signals summed

Data File : BF118509.D
 Acq On : 8 Jan 2020 20:17
 Operator : JU
 Sample : L1049-10
 Misc :
 ALS Vial : 16 Sample Multiplier: 1

Instrument :
 BNA_F
 Client Sampled :
 TP-4

Quant Time: Jan 09 03:16:31 2020
 Quant Method : Z:\SVOASRV\HPCHEM1\BNA_F\METHODS\8270-BF010820.M
 Quant Title : ASP BNA STANDARDS FOR 5 POINT CALIBRATION
 QLast Update : Wed Jan 08 16:06:11 2020
 Response via : Initial Calibration

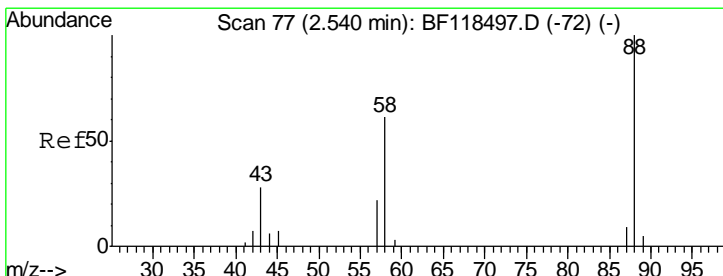
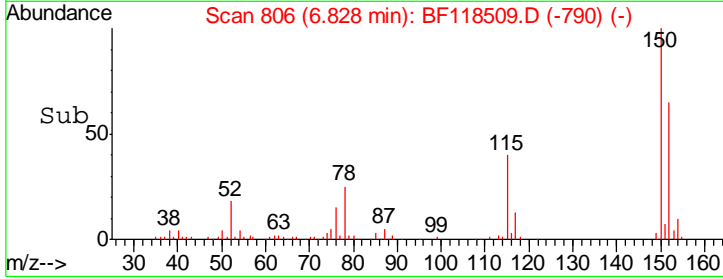
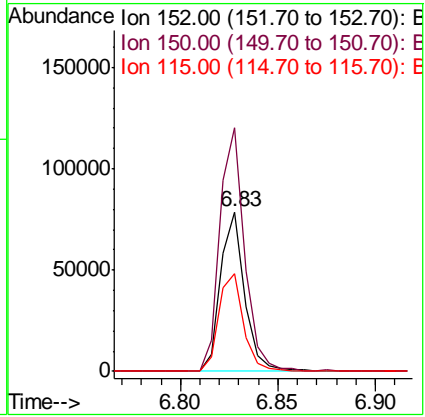
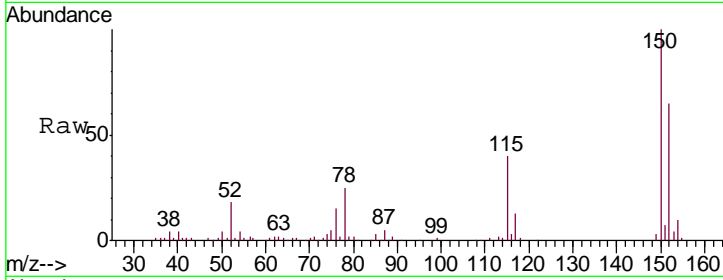




#1
 1,4-Dichlorobenzene-d4
 Concen: 20.000 ng
 RT: 6.83 min Scan# 806
 Delta R.T. -0.01 min
 Lab File: BF118509.D
 Acq: 8 Jan 2020 20:17

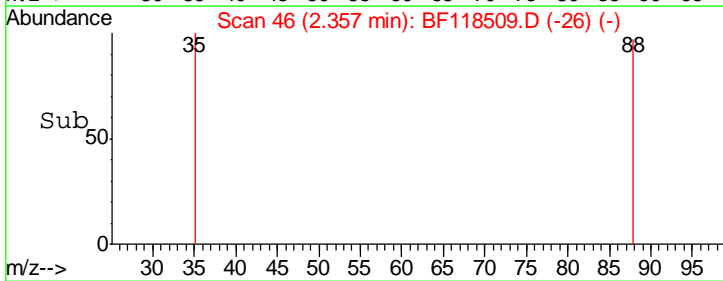
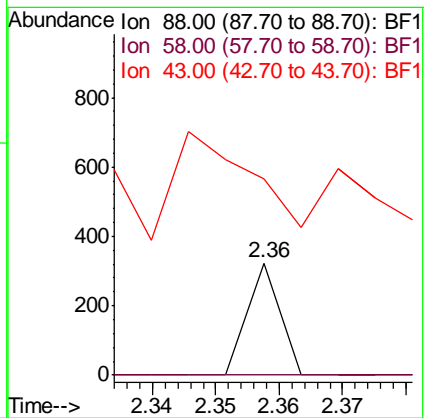
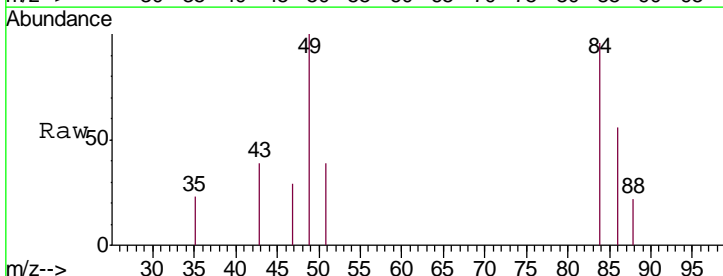
Instrument :
 BNA_F
 ClientSampled :
 TP-4

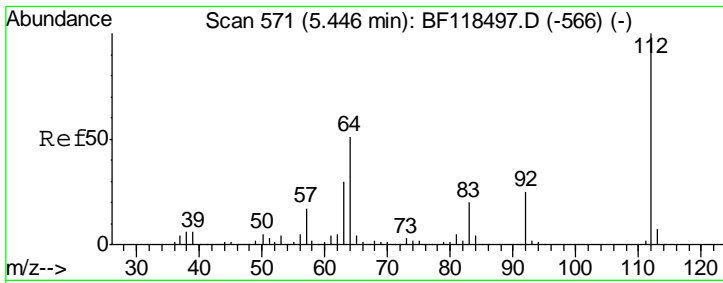
Tgt Ion	Resp	Lower	Upper
152	100		
150	152.7	124.7	187.1
115	61.1	49.0	73.6



#2
 1,4-Dioxane
 Concen: 0.084 ng
 RT: 2.36 min Scan# 46
 Delta R.T. -0.18 min
 Lab File: BF118509.D
 Acq: 8 Jan 2020 20:17

Tgt Ion	Resp	Lower	Upper
88	100		
58	0.0	48.3	72.5#
43	235.1	23.4	35.0#

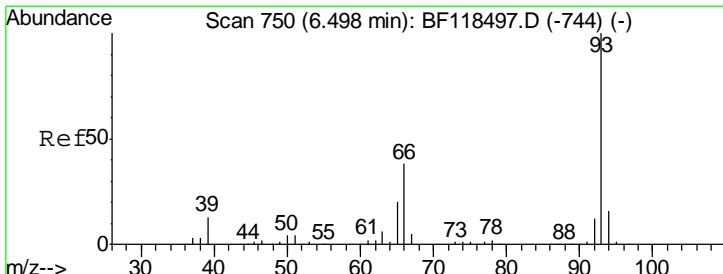
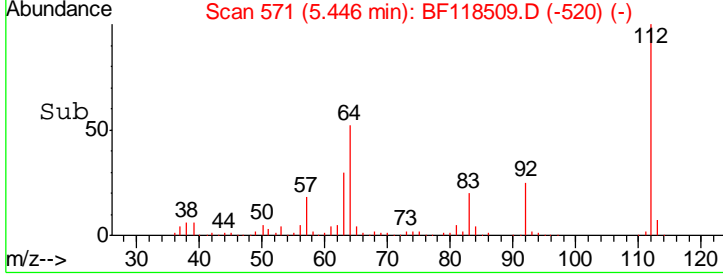
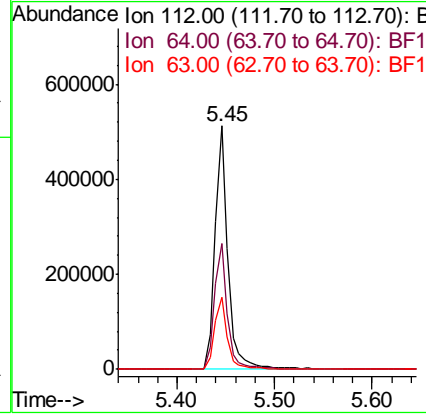
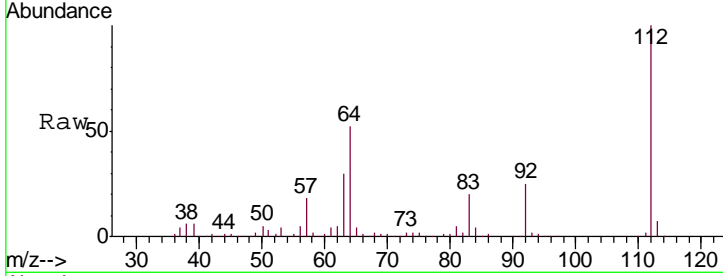




#5
 2-Fluorophenol
 Concen: 115.499 ng
 RT: 5.45 min Scan# 571
 Delta R.T. -0.00 min
 Lab File: BF118509.D
 Acq: 8 Jan 2020 20:17

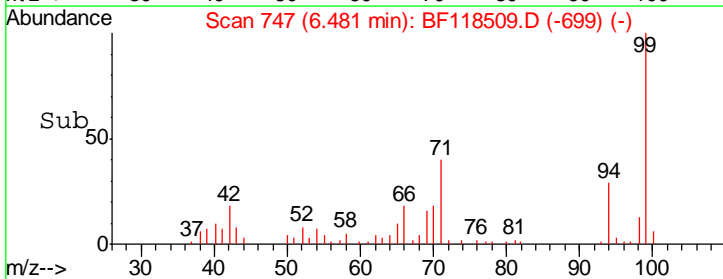
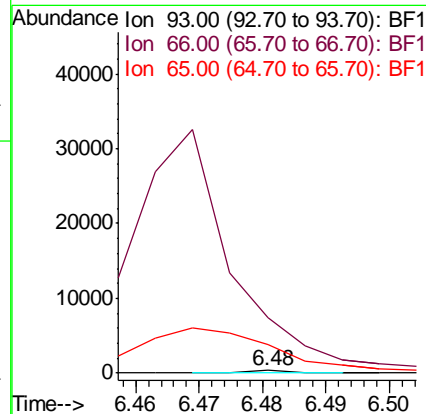
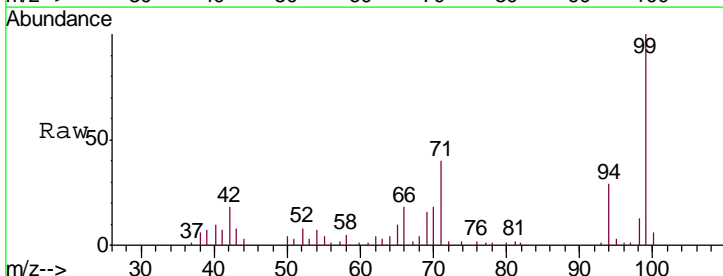
Instrument :
 BNA_F
 ClientSampled :
 TP-4

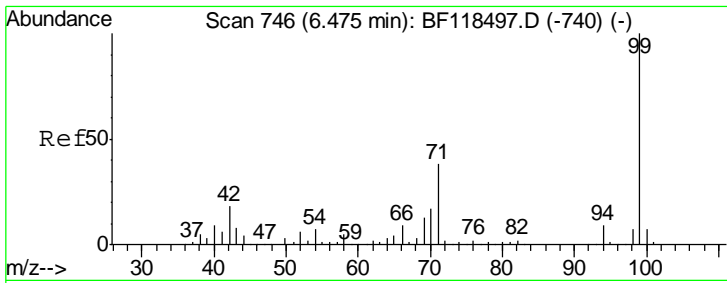
Tgt Ion	Resp	Lower	Upper
112	100		
64	51.5	41.1	61.7
63	29.6	24.1	36.1



#6
 Aniline
 Concen: 0.019 ng
 RT: 6.48 min Scan# 747
 Delta R.T. -0.02 min
 Lab File: BF118509.D
 Acq: 8 Jan 2020 20:17

Tgt Ion	Resp	Lower	Upper
93	100		
66	2292.9	33.4	50.0#
65	1199.7	16.7	25.1#

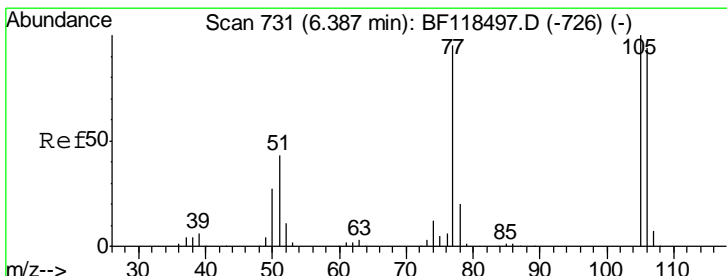
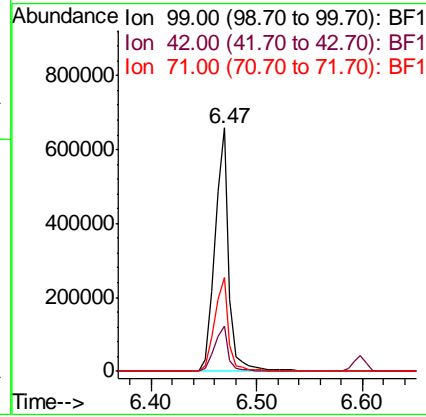
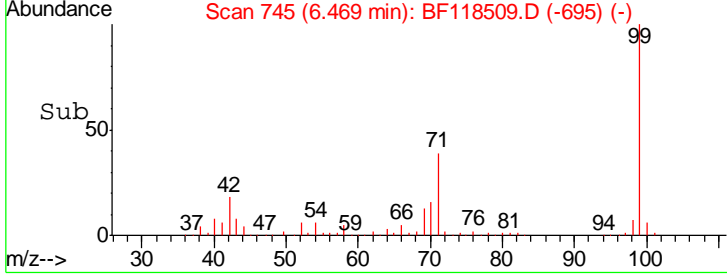
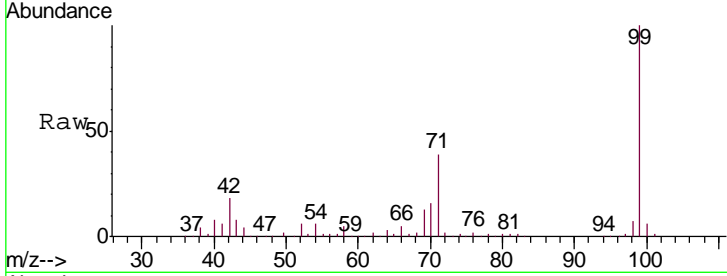




#7
 Phenol-d6
 Concen: 123.940 ng
 RT: 6.47 min Scan# 745
 Delta R.T. -0.01 min
 Lab File: BF118509.D
 Acq: 8 Jan 2020 20:17

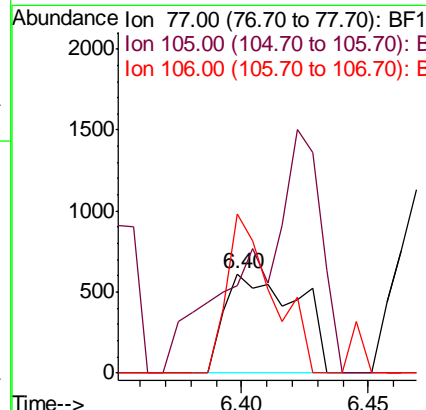
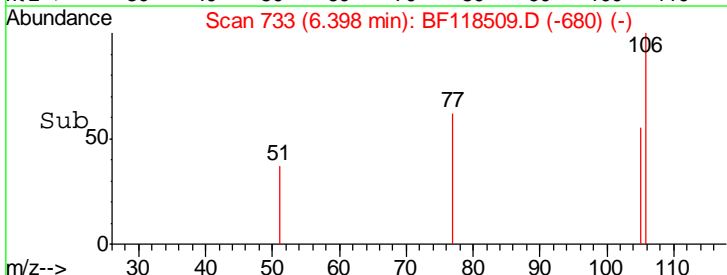
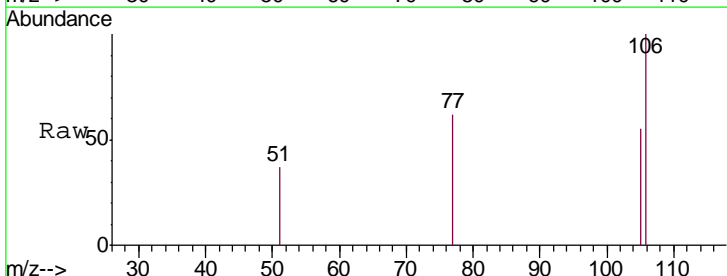
Instrument :
 BNA_F
 ClientSampled :
 TP-4

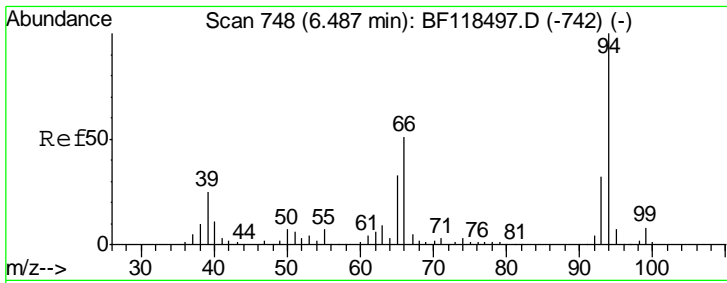
Tgt Ion	Resp	Lower	Upper
99	605717		
Ion Ratio			
99	100		
42	18.4	14.5	21.7
71	38.5	30.6	45.8



#9
 Benzaldehyde
 Concen: 0.448 ng
 RT: 6.40 min Scan# 733
 Delta R.T. 0.01 min
 Lab File: BF118509.D
 Acq: 8 Jan 2020 20:17

Tgt Ion	Resp	Lower	Upper
77	1220		
Ion Ratio			
77	100		
105	88.5	85.4	125.4
106	160.2	79.5	119.5#

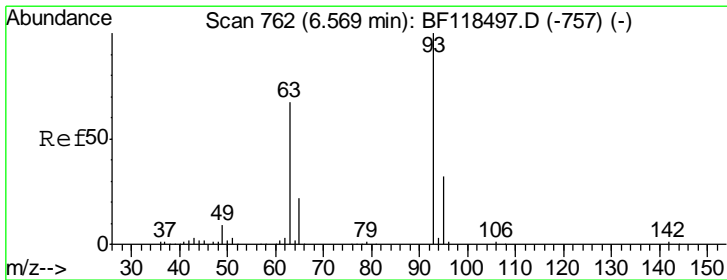
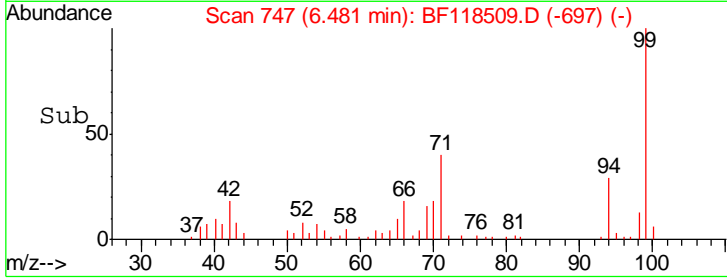
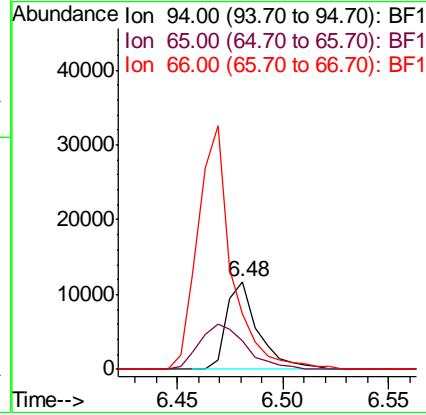
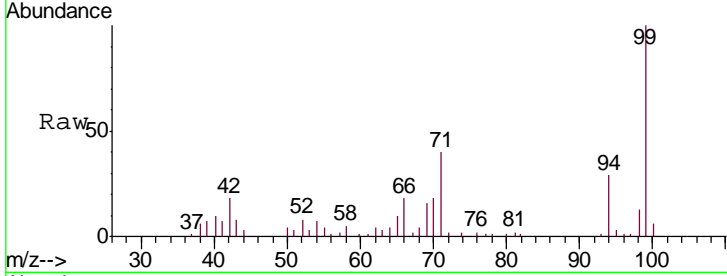




#10
 Phenol
 Concen: 2.251 ng
 RT: 6.48 min Scan# 747
 Delta R.T. -0.01 min
 Lab File: BF118509.D
 Acq: 8 Jan 2020 20:17

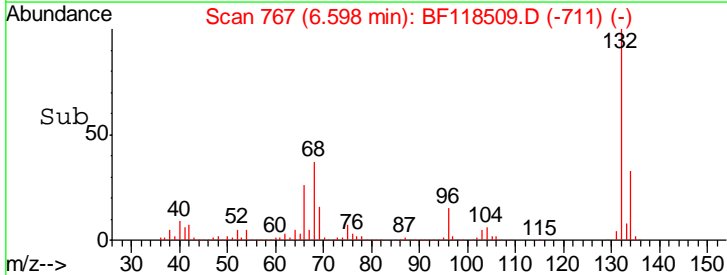
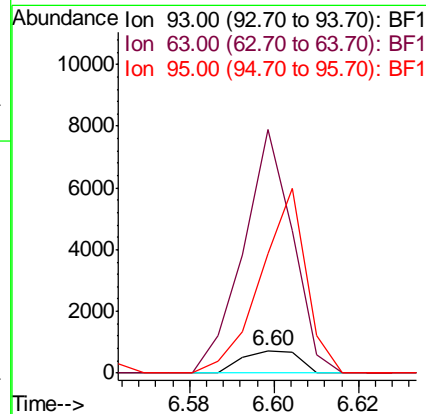
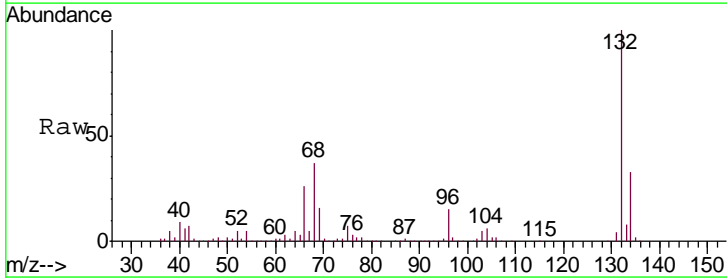
Instrument :
 BNA_F
 ClientSampled :
 TP-4

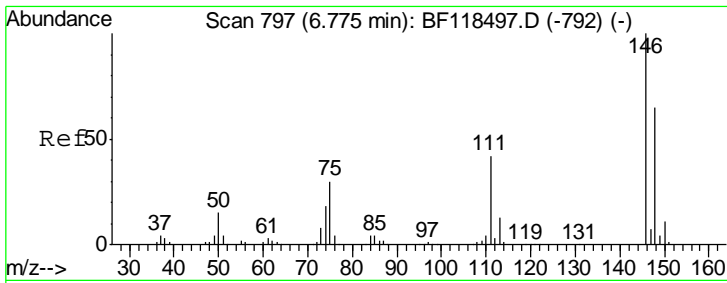
Tgt Ion	Resp	Lower	Upper
94	12192		
65	33.0	13.3	53.3
66	63.1	30.9	70.9



#11
 bis(2-Chloroethyl)ether
 Concen: 0.175 ng
 RT: 6.60 min Scan# 767
 Delta R.T. 0.03 min
 Lab File: BF118509.D
 Acq: 8 Jan 2020 20:17

Tgt Ion	Resp	Lower	Upper
93	675		
63	1086.8	46.6	86.6#
95	534.0	11.5	51.5#

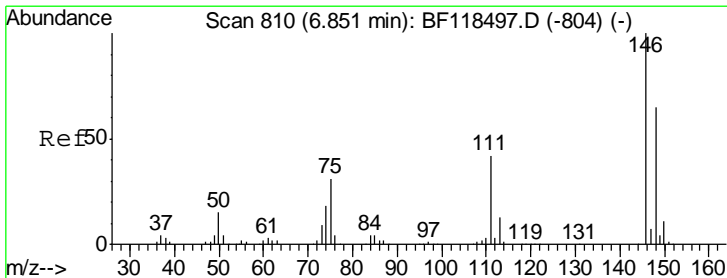
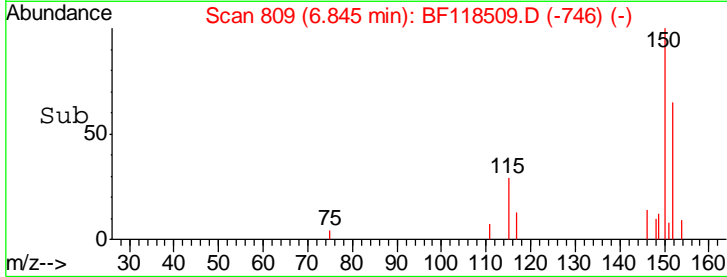
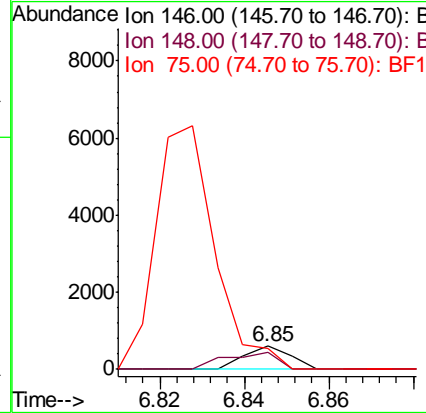
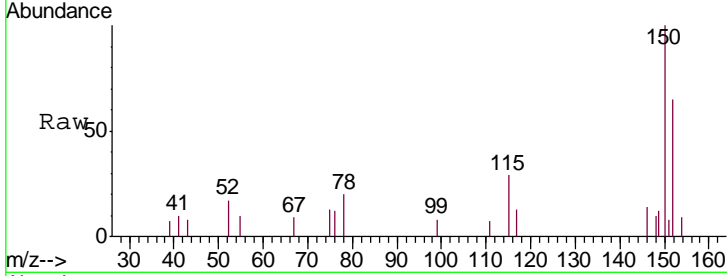




#12
 1,3-Dichlorobenzene
 Concen: 0.086 ng
 RT: 6.85 min Scan# 809
 Delta R.T. 0.07 min
 Lab File: BF118509.D
 Acq: 8 Jan 2020 20:17

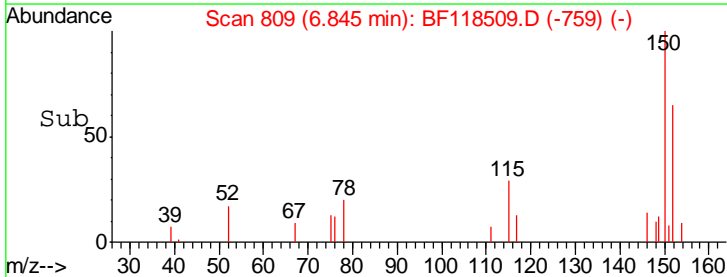
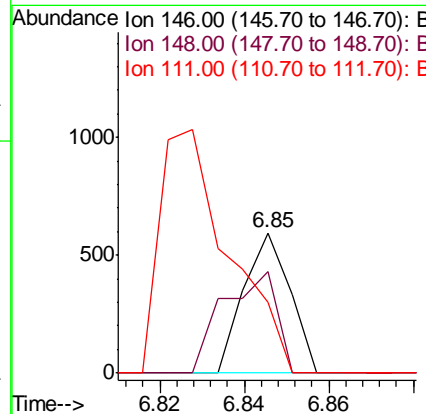
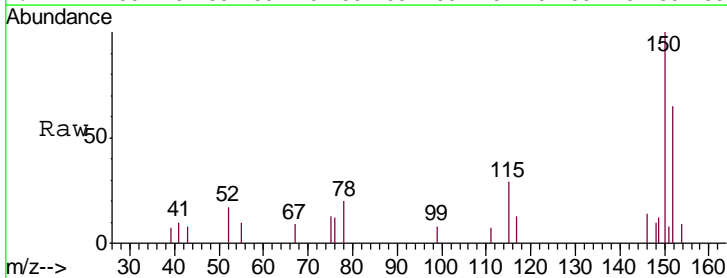
Instrument :
 BNA_F
 ClientSampled :
 TP-4

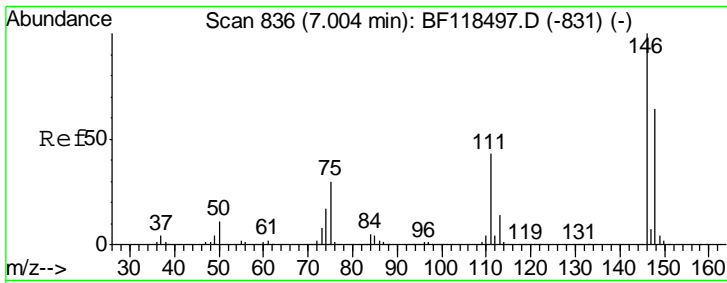
Tgt Ion	Resp	Lower	Upper
146	100		
148	72.1	52.4	78.6
75	88.3	24.1	36.1#



#13
 1,4-Dichlorobenzene
 Concen: 0.084 ng
 RT: 6.85 min Scan# 809
 Delta R.T. -0.01 min
 Lab File: BF118509.D
 Acq: 8 Jan 2020 20:17

Tgt Ion	Resp	Lower	Upper
146	100		
148	72.1	52.2	78.2
111	50.7	33.2	49.8#

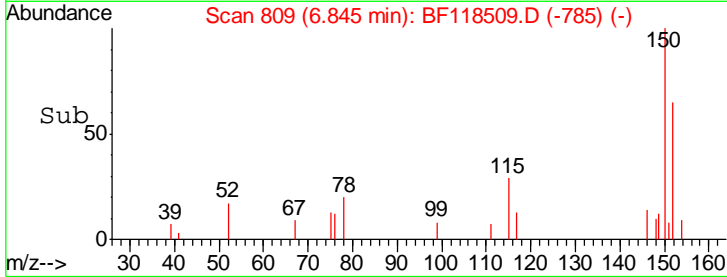
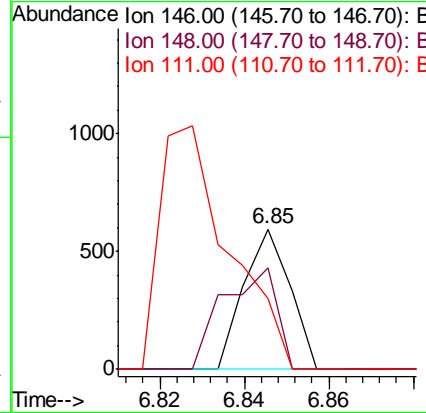
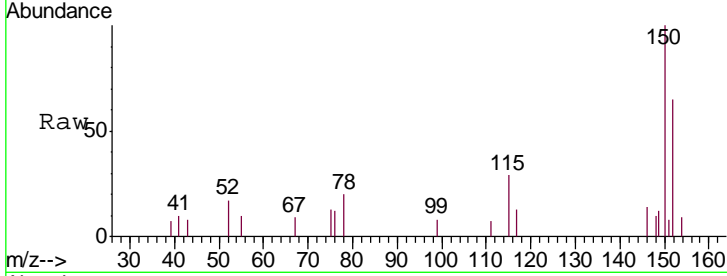




#14
 1,2-Dichlorobenzene
 Concen: 0.087 ng
 RT: 6.85 min Scan# 809
 Delta R.T. -0.16 min
 Lab File: BF118509.D
 Acq: 8 Jan 2020 20:17

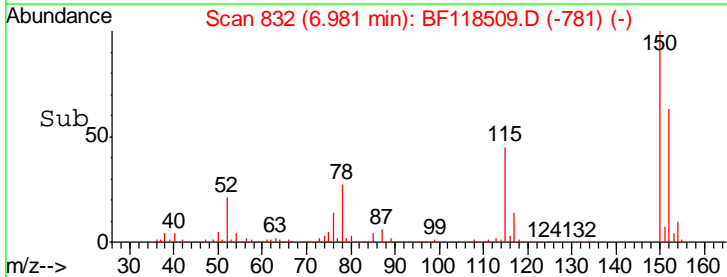
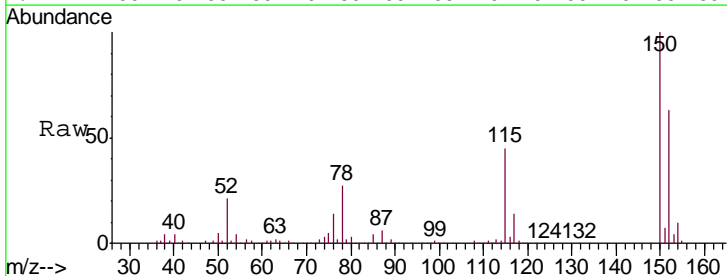
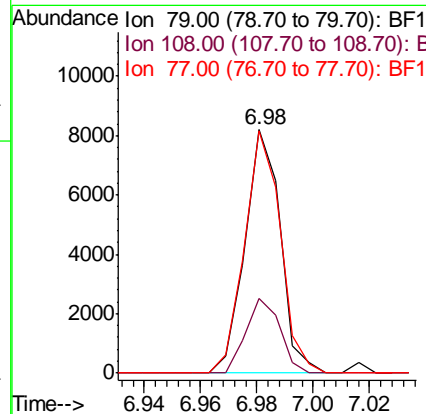
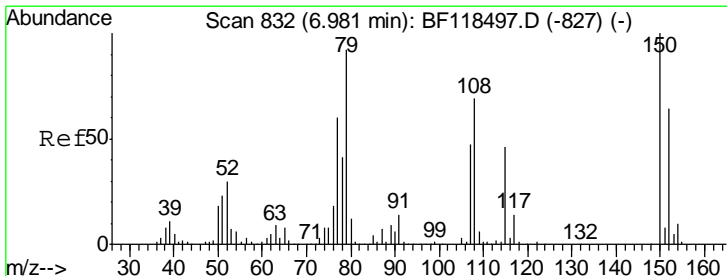
Instrument :
 BNA_F
 ClientSampled :
 TP-4

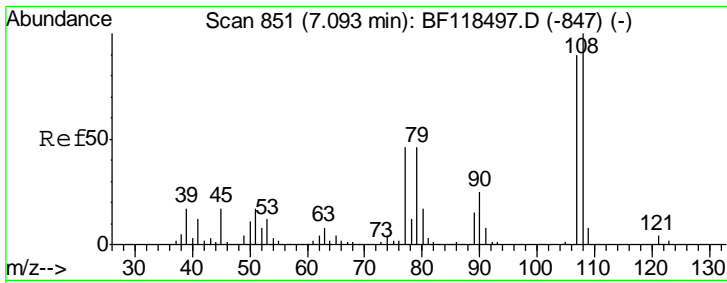
Tgt Ion	Resp	Lower	Upper
146	100		
148	72.1	51.3	76.9
111	50.7	34.7	52.1



#15
 Benzyl Alcohol
 Concen: 1.791 ng
 RT: 6.98 min Scan# 832
 Delta R.T. -0.00 min
 Lab File: BF118509.D
 Acq: 8 Jan 2020 20:17

Tgt Ion	Resp	Lower	Upper
79	100		
108	30.5	60.2	90.2#
77	99.6	51.8	77.8#

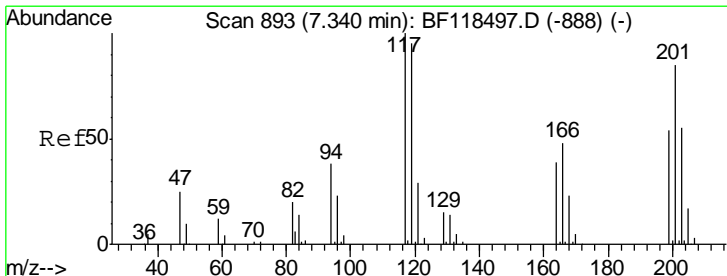
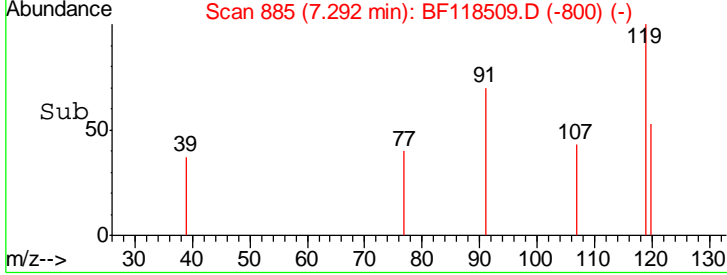
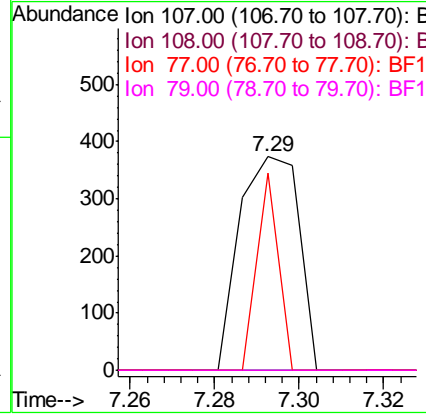
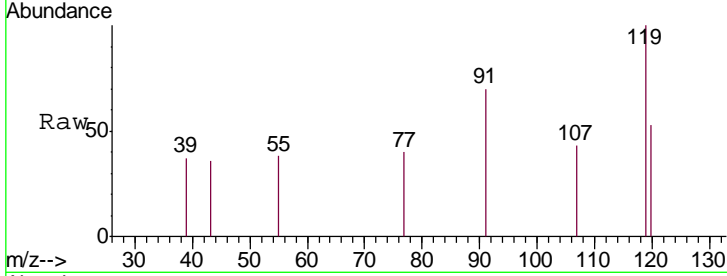




#17
 2-Methylphenol
 Concen: 0.099 ng
 RT: 7.29 min Scan# 885
 Delta R.T. 0.20 min
 Lab File: BF118509.D
 Acq: 8 Jan 2020 20:17

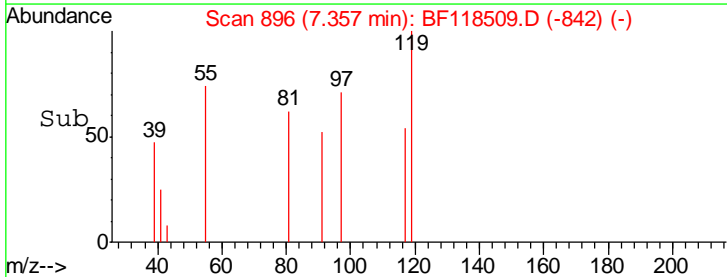
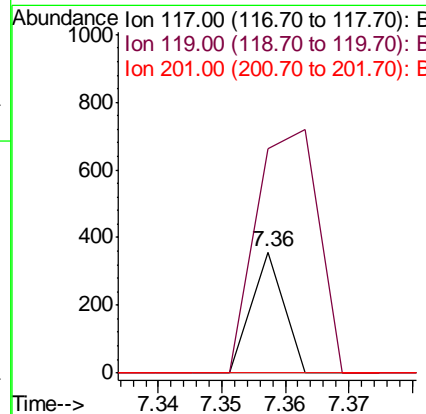
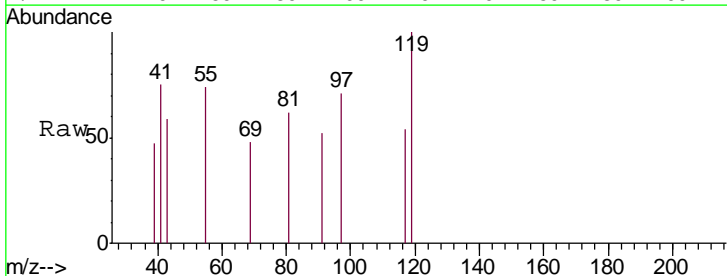
Instrument :
 BNA_F
 ClientSampled :
 TP-4

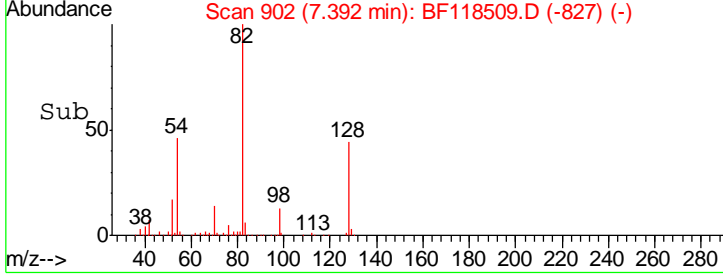
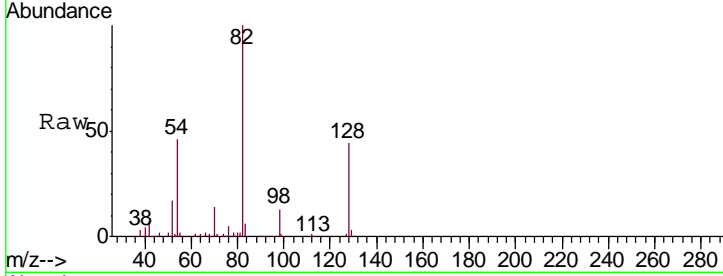
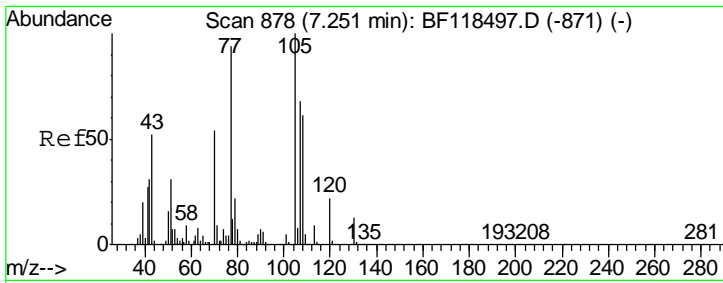
Tgt Ion	Resp	Lower	Upper
107	100		
108	0.0	88.9	133.3#
77	92.2	41.2	61.8#
79	0.0	41.6	62.4#



#18
 Hexachloroethane
 Concen: 0.062 ng
 RT: 7.36 min Scan# 896
 Delta R.T. 0.02 min
 Lab File: BF118509.D
 Acq: 8 Jan 2020 20:17

Tgt Ion	Resp	Lower	Upper
117	100		
119	185.5	76.2	114.4#
201	0.0	67.7	101.5#

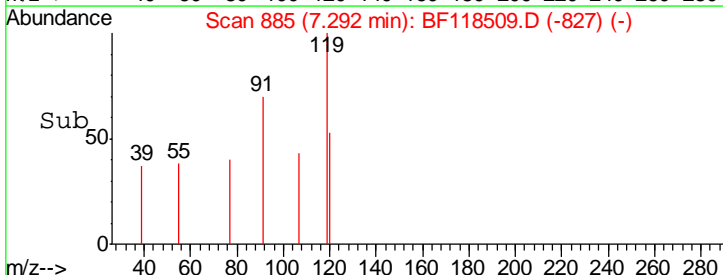
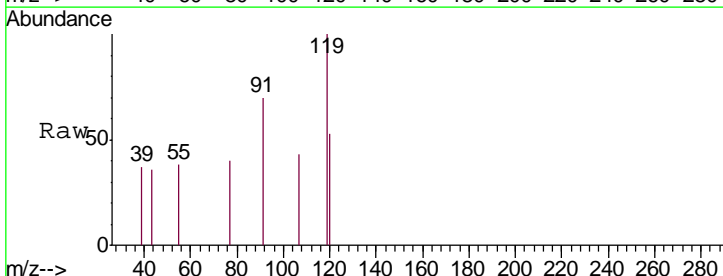
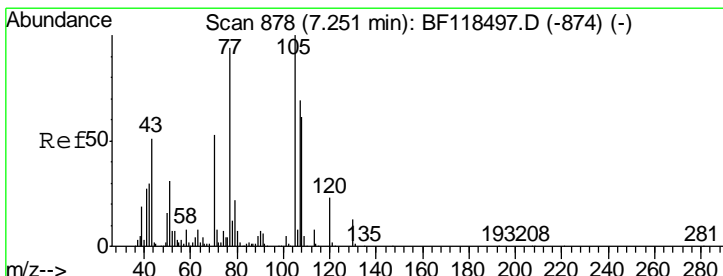
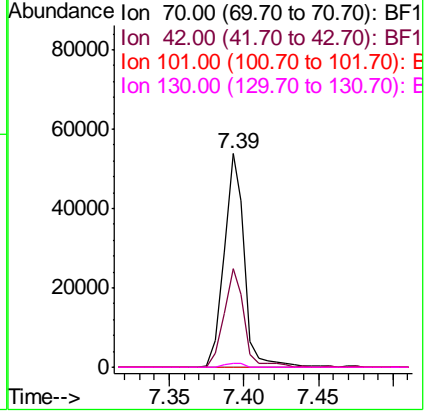




#19
 n-Nitroso-di-n-propylamine
 Concen: 16.427 ng
 RT: 7.39 min Scan# 902
 Delta R.T. 0.14 min
 Lab File: BF118509.D
 Acq: 8 Jan 2020 20:17

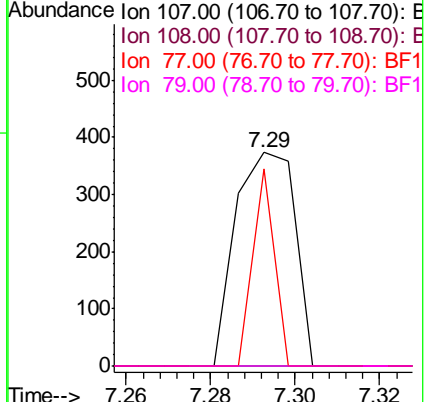
Instrument :
 BNA_F
 ClientSampleId :
 TP-4

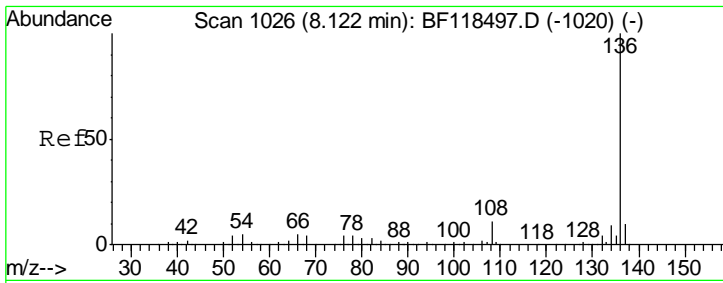
Tgt Ion	Resp	Lower	Upper
70	51709		
70	100		
42	46.3	45.6	68.4
101	0.0	8.2	12.2#
130	1.9	19.2	28.8#



#20
 3+4-Methylphenols
 Concen: 0.073 ng
 RT: 7.29 min Scan# 885
 Delta R.T. 0.04 min
 Lab File: BF118509.D
 Acq: 8 Jan 2020 20:17

Tgt Ion	Resp	Lower	Upper
107	365		
107	100		
108	0.0	68.9	108.9#
77	92.2	116.8	156.8#
79	0.0	11.7	51.7#



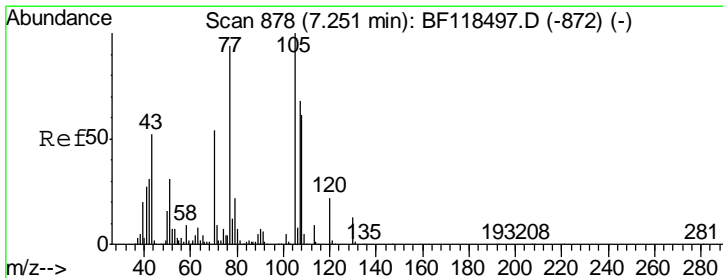
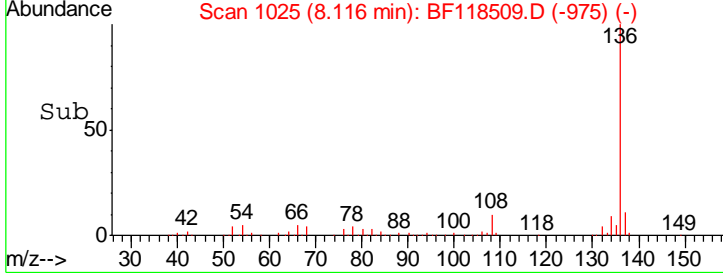
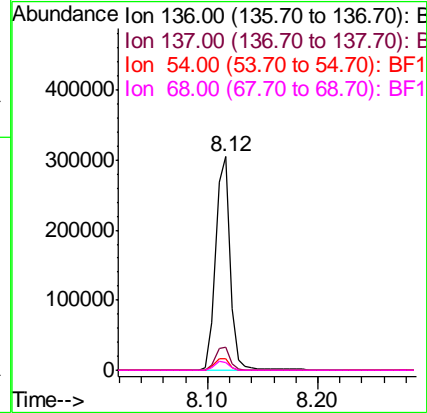
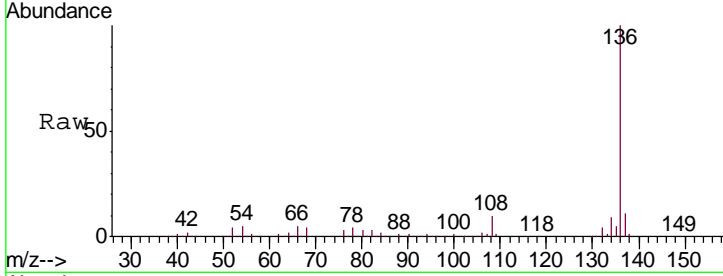


#21
 Naphthalene-d8
 Concen: 20.000 ng
 RT: 8.12 min Scan# 1025
 Delta R.T. -0.01 min
 Lab File: BF118509.D
 Acq: 8 Jan 2020 20:17

Instrument :
 BNA_F
 ClientSampled :
 TP-4

Tgt Ion:136 Resp: 273195

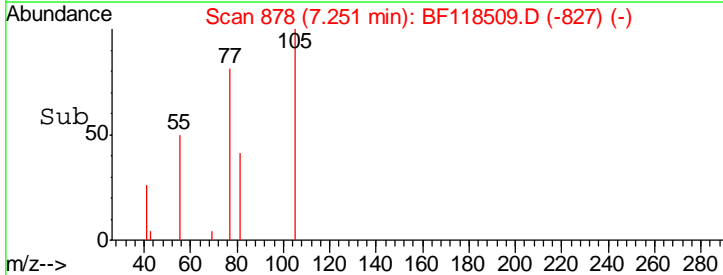
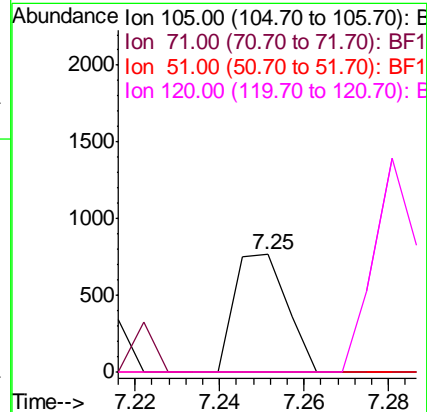
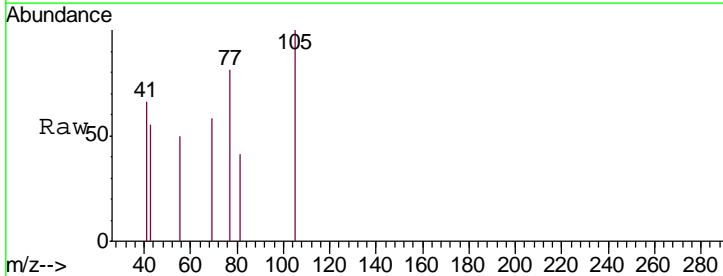
Ion	Ratio	Lower	Upper
136	100		
137	10.7	8.3	12.5
54	5.2	4.2	6.2
68	3.8	3.3	4.9

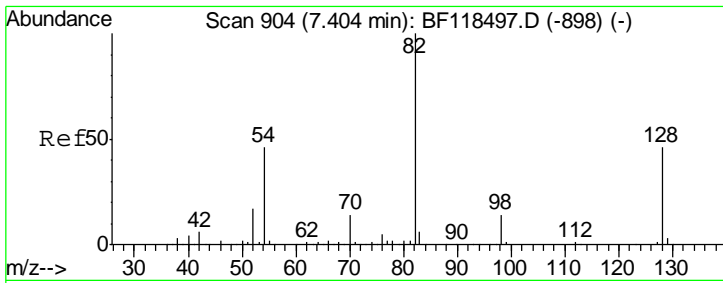


#22
 Acetophenone
 Concen: 0.096 ng
 RT: 7.25 min Scan# 878
 Delta R.T. -0.00 min
 Lab File: BF118509.D
 Acq: 8 Jan 2020 20:17

Tgt Ion:105 Resp: 664

Ion	Ratio	Lower	Upper
105	100		
71	0.0	6.9	10.3#
51	0.0	25.0	37.4#
120	0.0	18.0	27.0#

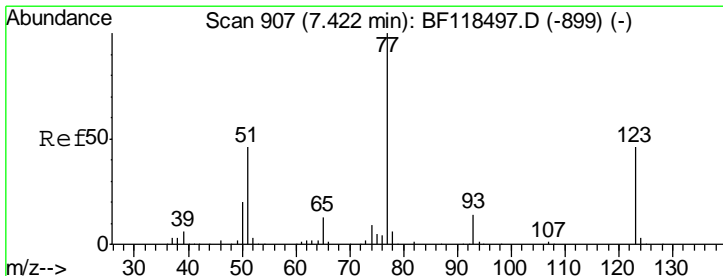
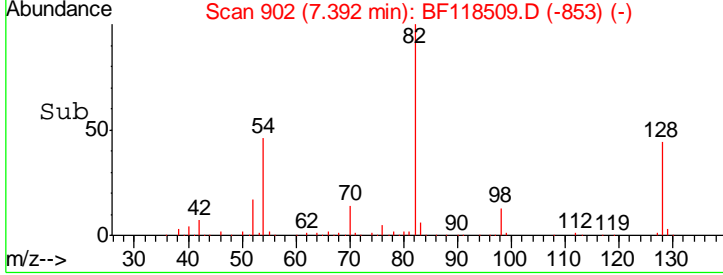
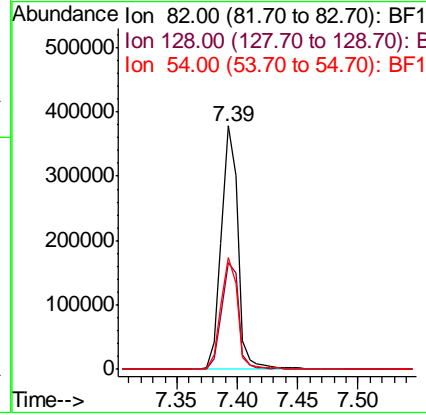
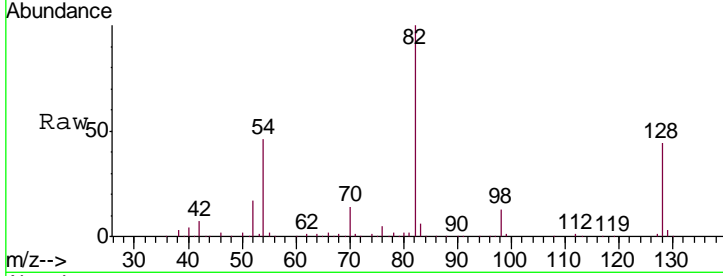




#23
 Nitrobenzene-d5
 Concen: 68.873 ng
 RT: 7.39 min Scan# 902
 Delta R.T. -0.01 min
 Lab File: BF118509.D
 Acq: 8 Jan 2020 20:17

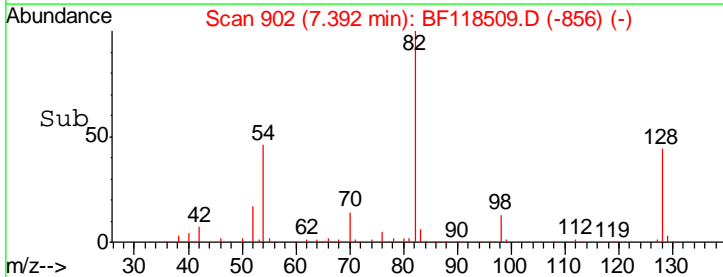
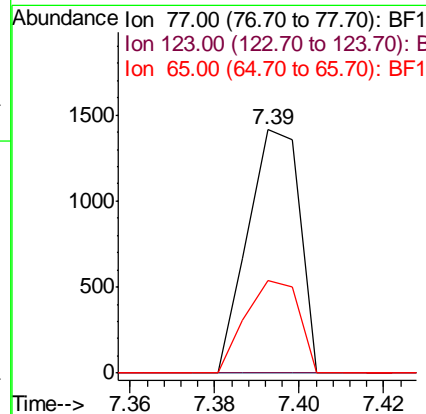
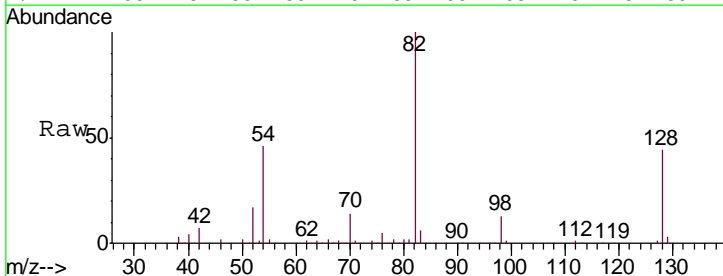
Instrument :
 BNA_F
 ClientSampled :
 TP-4

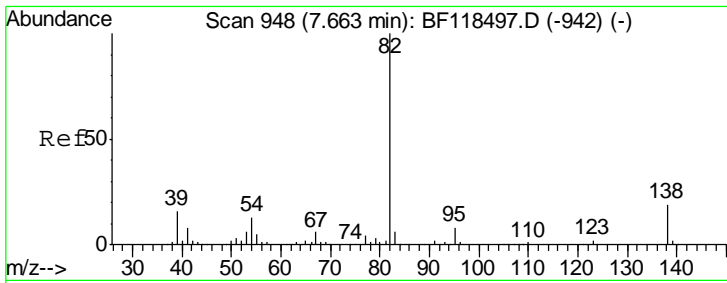
Tgt Ion	Resp	Lower	Upper
82	100		
128	43.8	36.6	54.8
54	45.9	37.0	55.6



#24
 Nitrobenzene
 Concen: 0.234 ng
 RT: 7.39 min Scan# 902
 Delta R.T. -0.03 min
 Lab File: BF118509.D
 Acq: 8 Jan 2020 20:17

Tgt Ion	Resp	Lower	Upper
77	100		
123	0.0	37.0	55.4#
65	38.0	10.7	16.1#

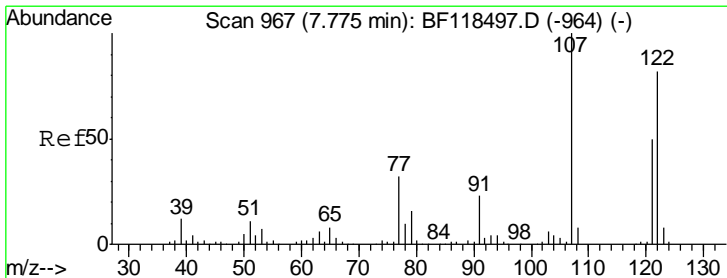
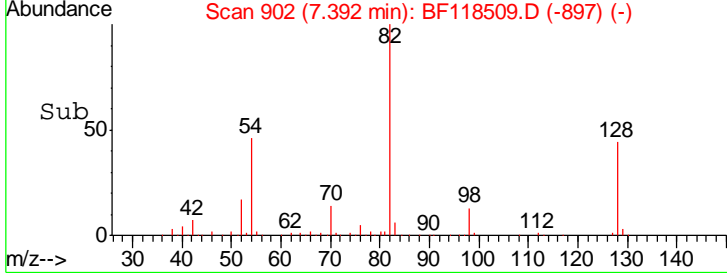
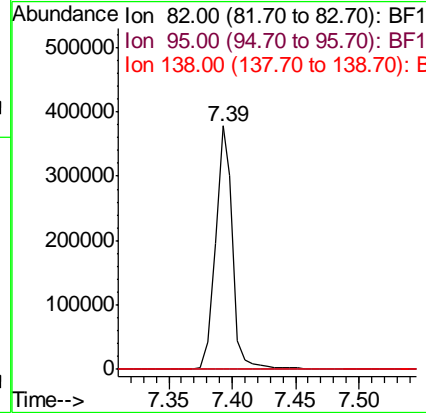
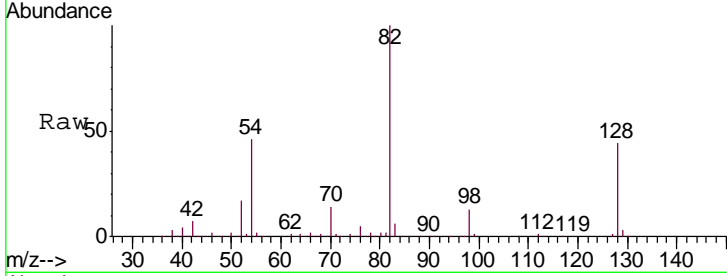




#25
 Isophorone
 Concen: 42.997 ng
 RT: 7.39 min Scan# 902
 Delta R.T. -0.27 min
 Lab File: BF118509.D
 Acq: 8 Jan 2020 20:17

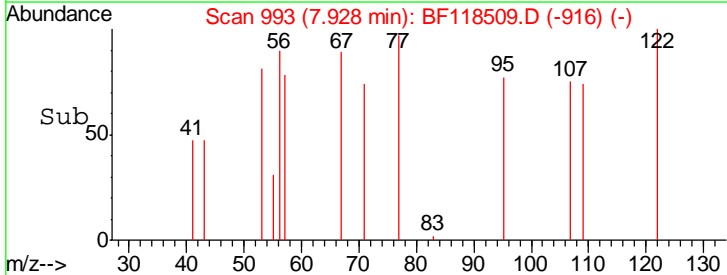
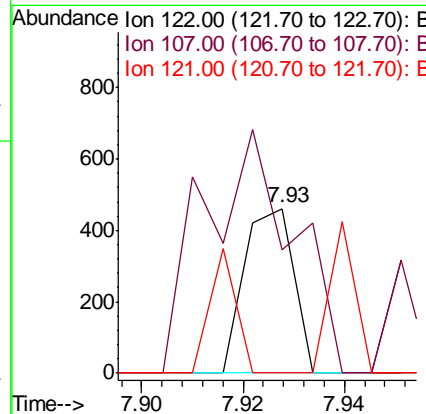
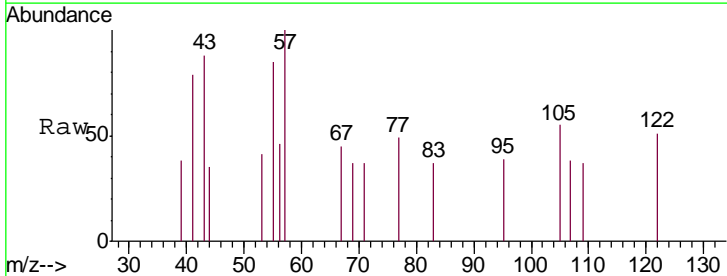
Instrument :
 BNA_F
 ClientSampleID :
 TP-4

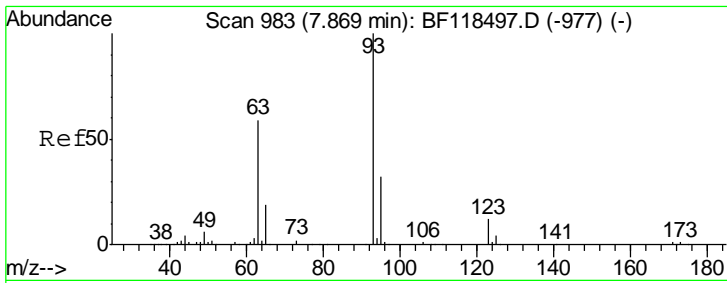
Tgt Ion	Resp	Lower	Upper
82	100		
95	0.0	6.6	9.8#
138	0.0	15.4	23.2#



#27
 2,4-Dimethylphenol
 Concen: 0.091 ng
 RT: 7.93 min Scan# 993
 Delta R.T. 0.15 min
 Lab File: BF118509.D
 Acq: 8 Jan 2020 20:17

Tgt Ion	Resp	Lower	Upper
122	100		
107	74.9	97.9	146.9#
121	0.0	49.0	73.4#

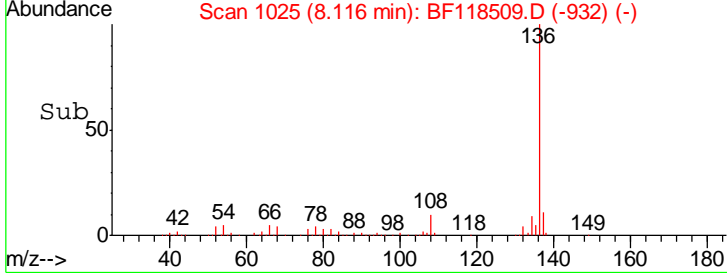
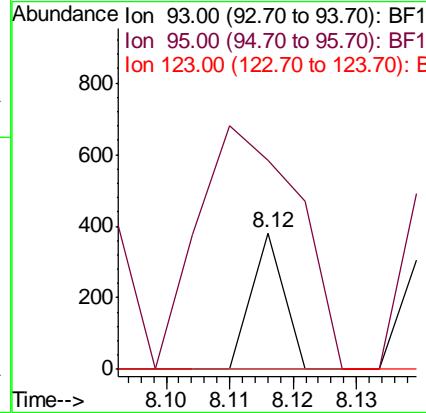
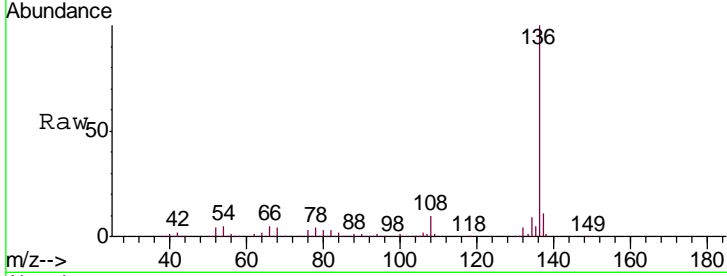




#28
 bis(2-Chloroethoxy)methane
 Concen: 0.025 ng
 RT: 8.12 min Scan# 1025
 Delta R.T. 0.25 min
 Lab File: BF118509.D
 Acq: 8 Jan 2020 20:17

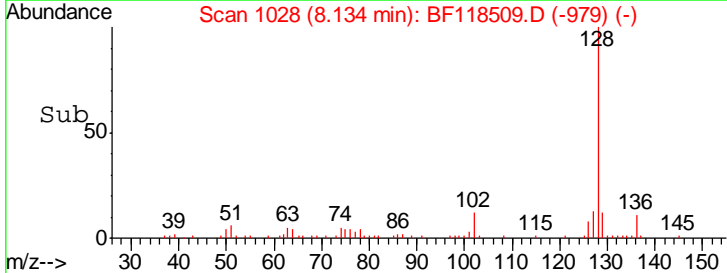
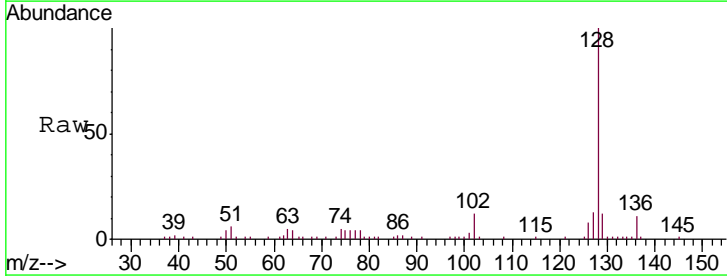
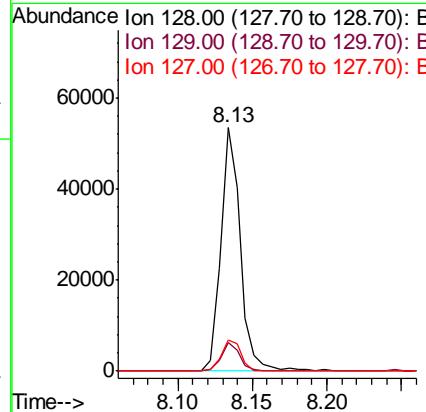
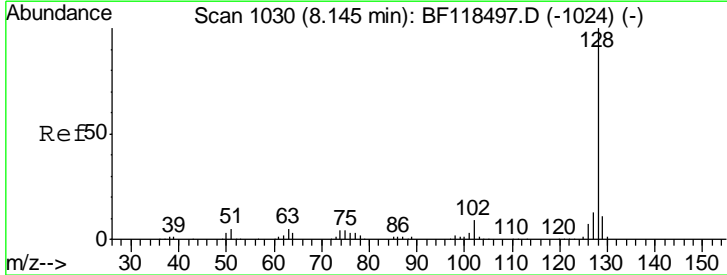
Instrument :
 BNA_F
 ClientSampled :
 TP-4

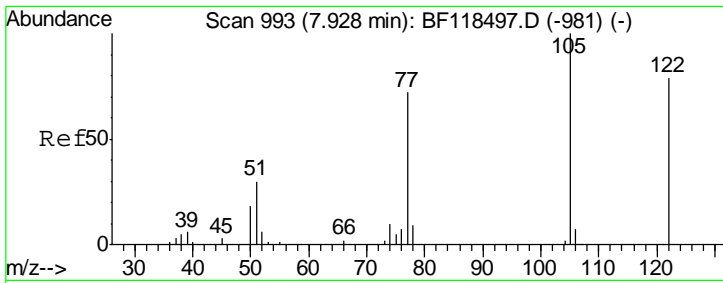
Tgt Ion	Resp	Lower	Upper
93	100		
95	153.1	25.9	38.9#
123	0.0	9.7	14.5#



#31
 Naphthalene
 Concen: 3.427 ng
 RT: 8.13 min Scan# 1028
 Delta R.T. -0.01 min
 Lab File: BF118509.D
 Acq: 8 Jan 2020 20:17

Tgt Ion	Resp	Lower	Upper
128	100		
129	11.6	8.6	12.8
127	12.8	10.7	16.1

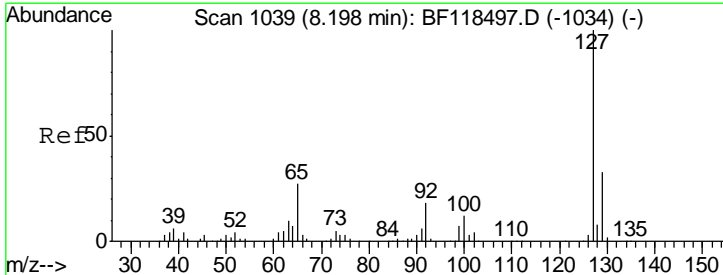
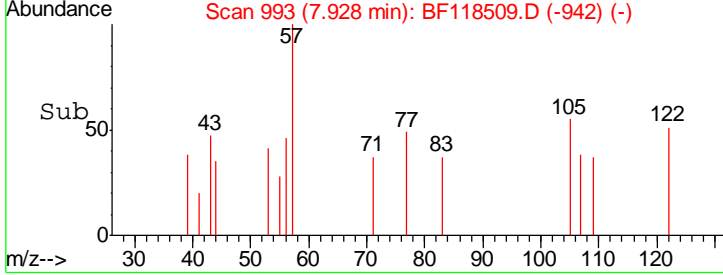
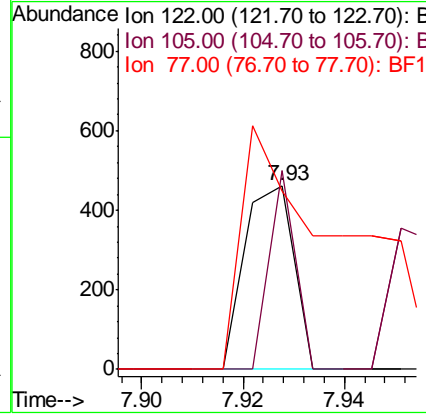
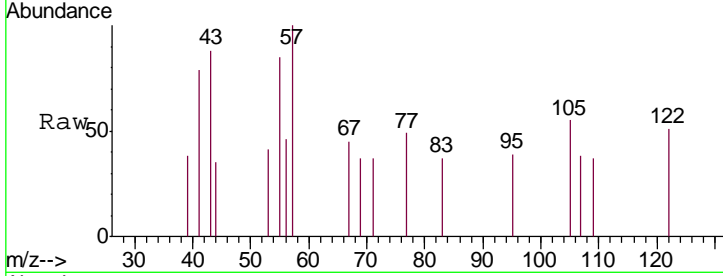




#32
 Benzoic acid
 Concen: 6.596 ng
 RT: 7.93 min Scan# 993
 Delta R.T. 0.00 min
 Lab File: BF118509.D
 Acq: 8 Jan 2020 20:17

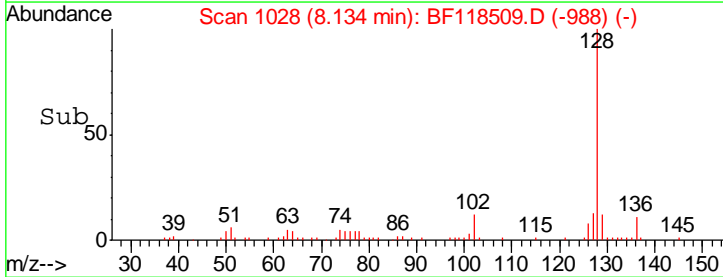
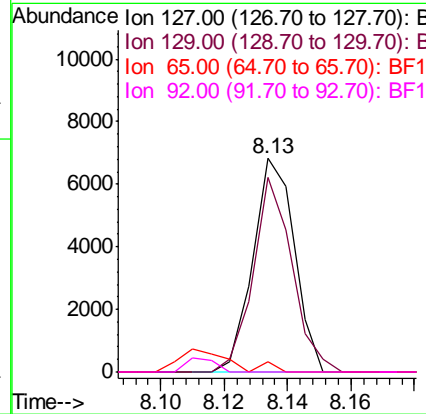
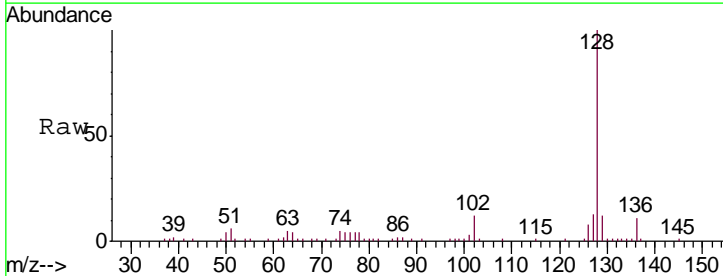
Instrument :
 BNA_F
 ClientSampled :
 TP-4

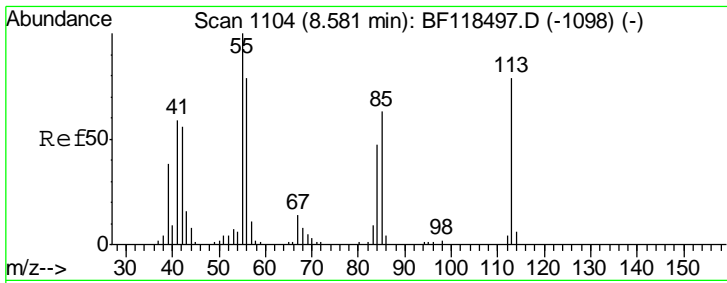
Tgt Ion	Resp	Lower	Upper
122	100		
105	108.2	105.7	145.7
77	97.2	71.0	111.0



#33
 4-Chloroaniline
 Concen: 1.051 ng
 RT: 8.13 min Scan# 1028
 Delta R.T. -0.06 min
 Lab File: BF118509.D
 Acq: 8 Jan 2020 20:17

Tgt Ion	Resp	Lower	Upper
127	100		
129	91.2	26.2	39.4#
65	4.5	21.6	32.4#
92	0.0	14.3	21.5#

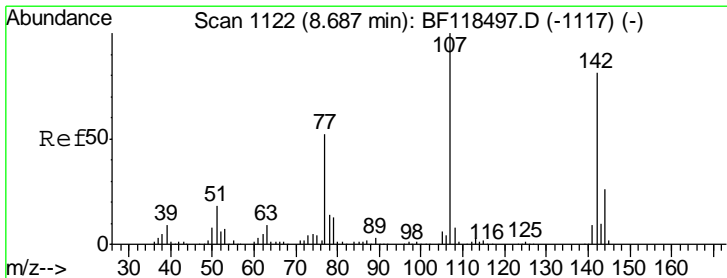
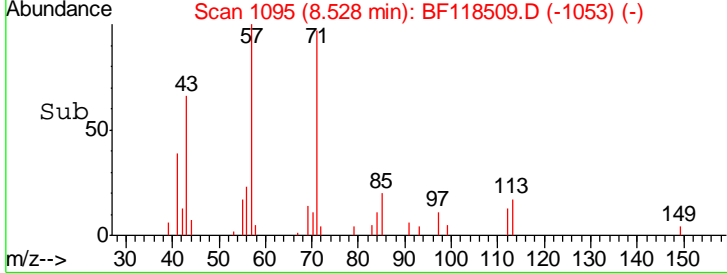
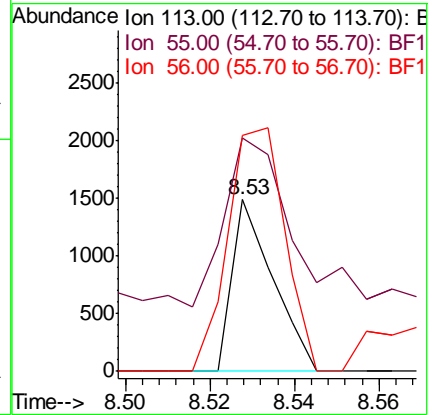
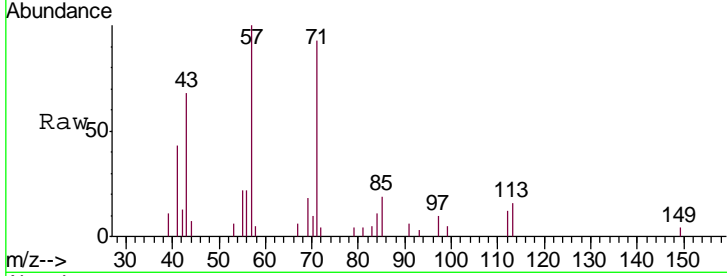




#35
 Caprolactam
 Concen: 0.822 ng
 RT: 8.53 min Scan# 1095
 Delta R.T. -0.05 min
 Lab File: BF118509.D
 Acq: 8 Jan 2020 20:17

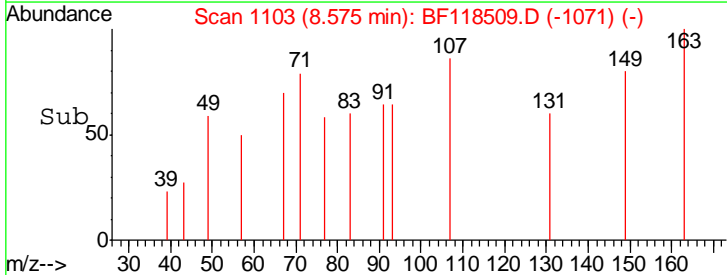
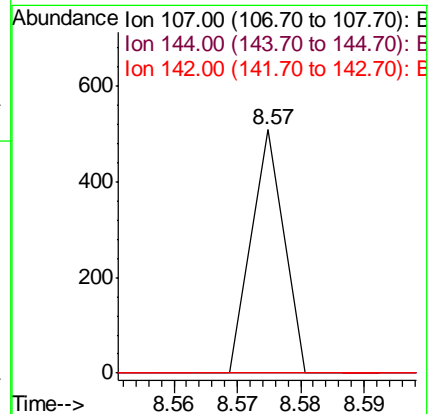
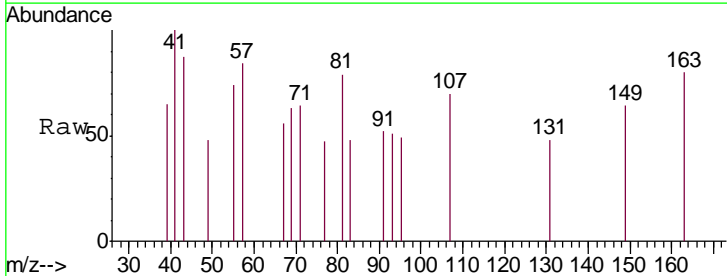
Instrument :
 BNA_F
 ClientSampled :
 TP-4

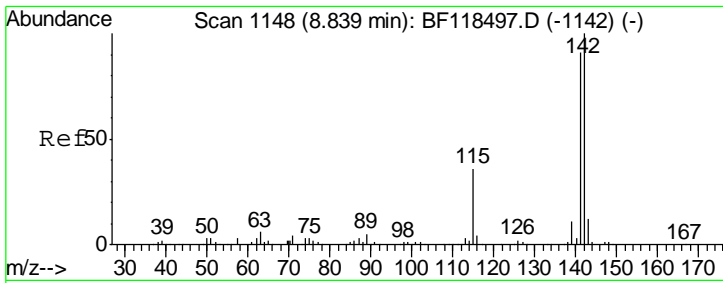
Tgt Ion	Resp	Lower	Upper
113	100		
55	136.3	106.5	146.5
56	137.3	80.1	120.1#



#36
 4-Chloro-3-methylphenol
 Concen: 0.042 ng
 RT: 8.57 min Scan# 1103
 Delta R.T. -0.11 min
 Lab File: BF118509.D
 Acq: 8 Jan 2020 20:17

Tgt Ion	Resp	Lower	Upper
107	100		
144	0.0	20.6	31.0#
142	0.0	65.0	97.4#

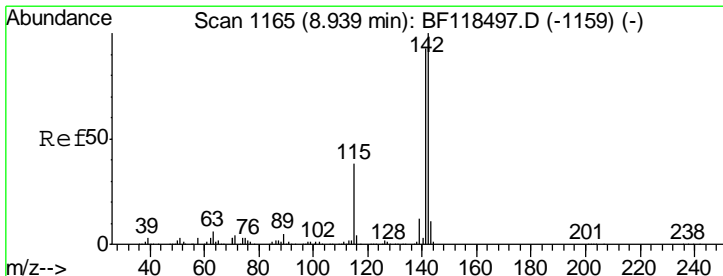
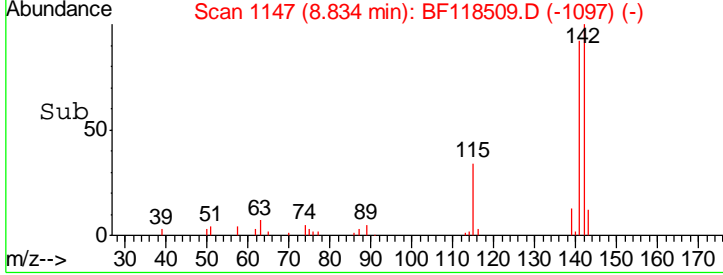
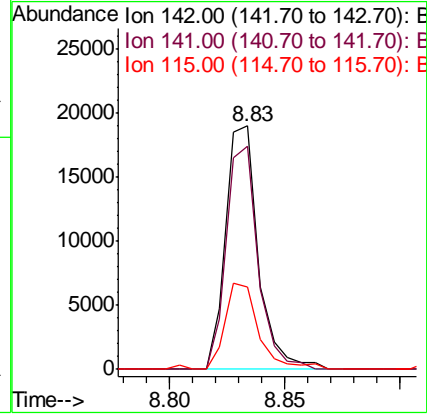
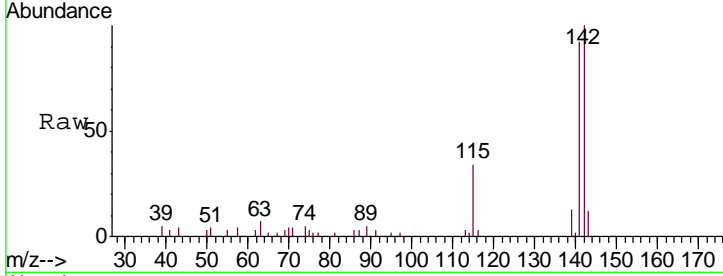




#37
 2-Methylnaphthalene
 Concen: 1.906 ng
 RT: 8.83 min Scan# 1147
 Delta R.T. -0.01 min
 Lab File: BF118509.D
 Acq: 8 Jan 2020 20:17

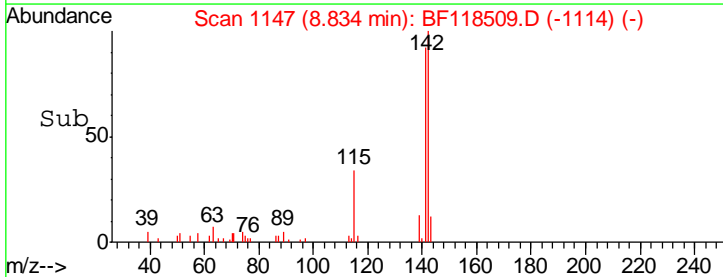
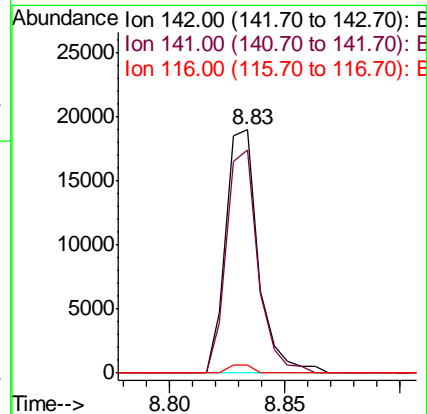
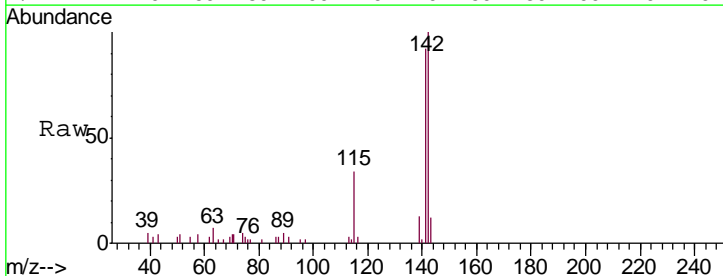
Instrument :
 BNA_F
 ClientSampled :
 TP-4

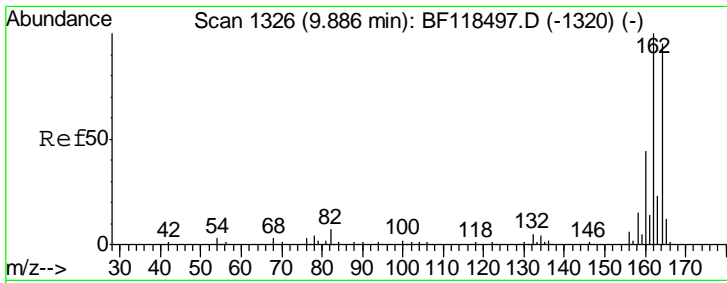
Tgt Ion	Resp	Lower	Upper
142	18696		
141	91.5	73.0	109.6
115	34.0	28.4	42.6



#38
 1-Methylnaphthalene
 Concen: 2.030 ng
 RT: 8.83 min Scan# 1147
 Delta R.T. -0.11 min
 Lab File: BF118509.D
 Acq: 8 Jan 2020 20:17

Tgt Ion	Resp	Lower	Upper
142	18696		
141	91.5	74.3	111.5
116	3.3	3.2	4.8

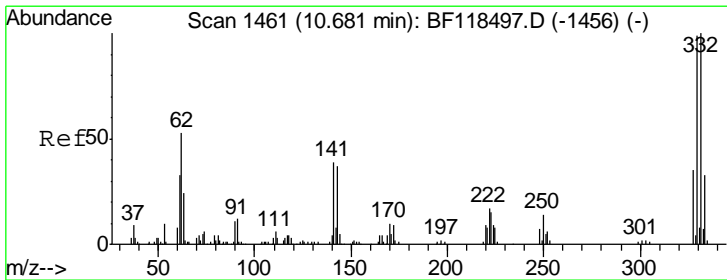
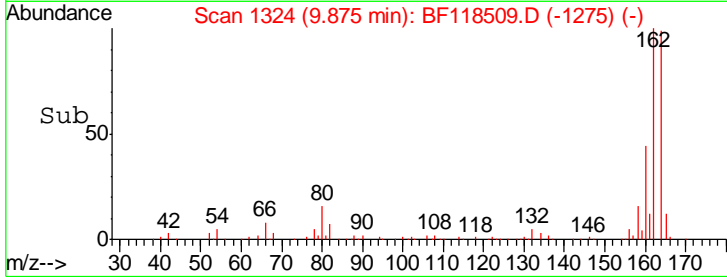
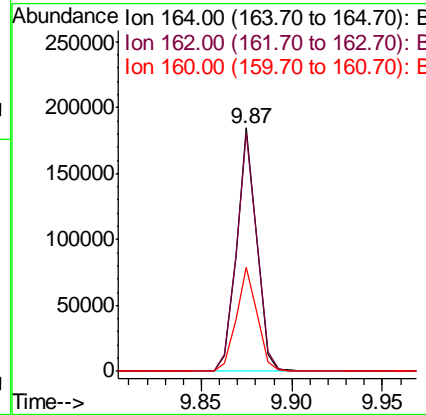
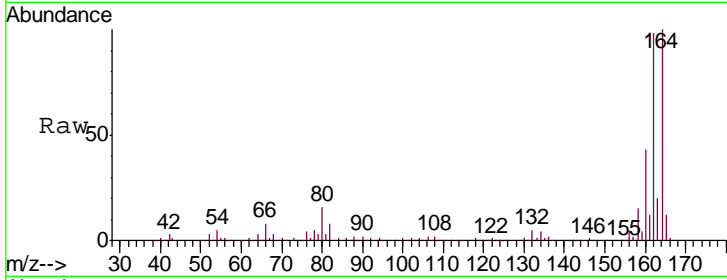




#39
 Acenaphthene-d10
 Concen: 20.000 ng
 RT: 9.87 min Scan# 1324
 Delta R.T. -0.01 min
 Lab File: BF118509.D
 Acq: 8 Jan 2020 20:17

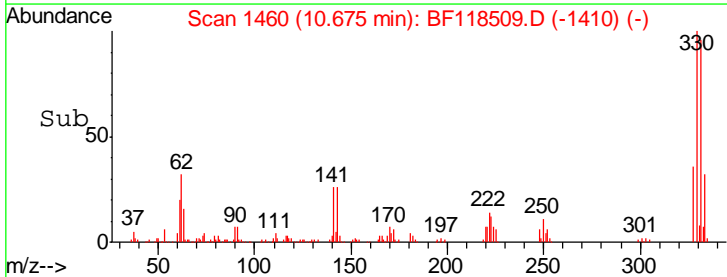
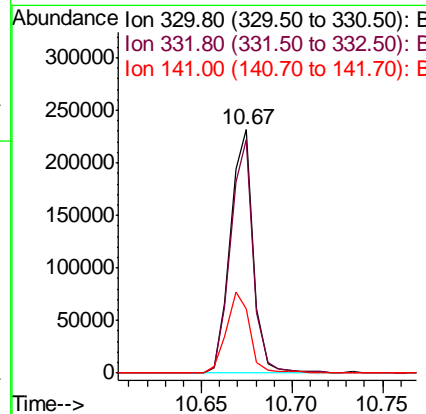
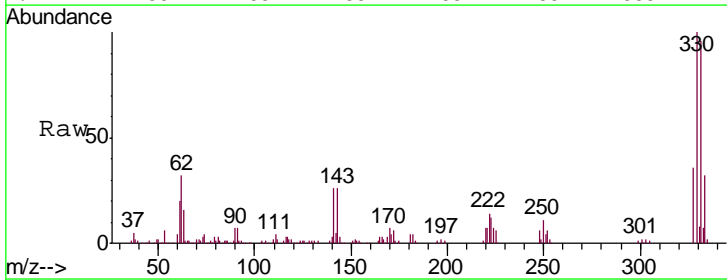
Instrument :
 BNA_F
 ClientSampled :
 TP-4

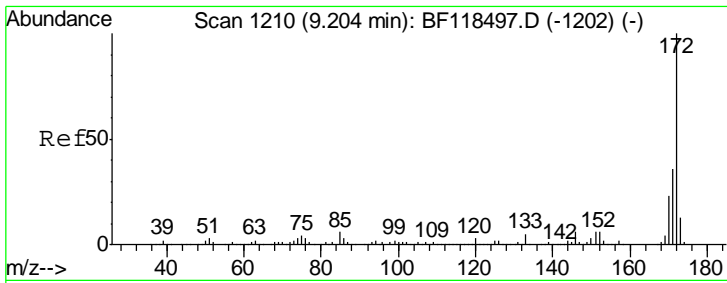
Tgt Ion	Resp	Lower	Upper
164	100		
162	98.0	84.2	126.4
160	42.8	36.8	55.2



#42
 2,4,6-Tribromophenol
 Concen: 121.774 ng
 RT: 10.67 min Scan# 1460
 Delta R.T. -0.01 min
 Lab File: BF118509.D
 Acq: 8 Jan 2020 20:17

Tgt Ion	Resp	Lower	Upper
330	100		
332	95.9	77.9	116.9
141	35.8	28.6	43.0

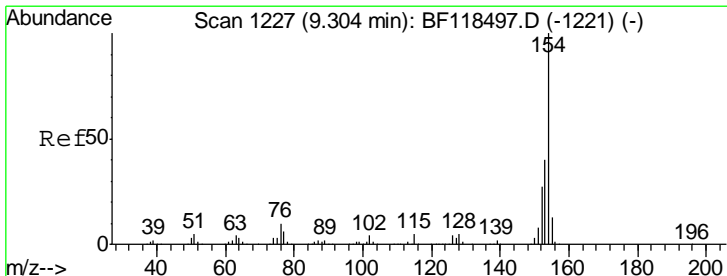
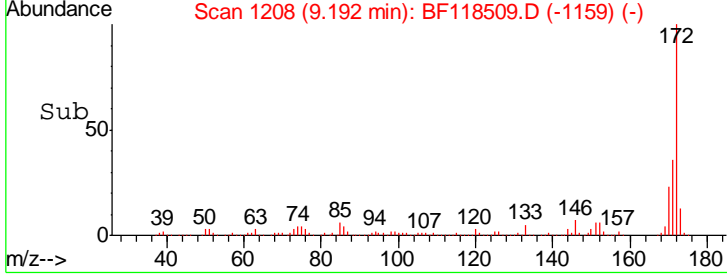
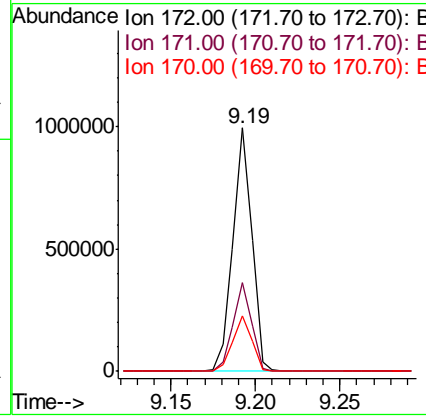
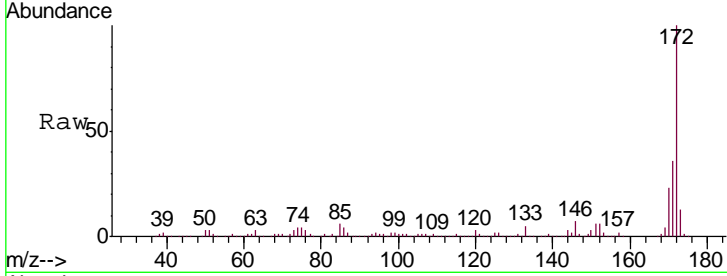




#45
 2-Fluorobiphenyl
 Concen: 78.533 ng
 RT: 9.19 min Scan# 1208
 Delta R.T. -0.01 min
 Lab File: BF118509.D
 Acq: 8 Jan 2020 20:17

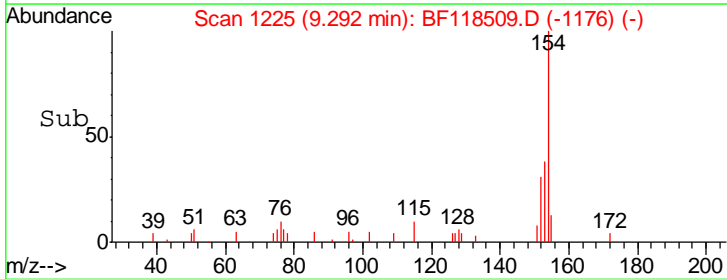
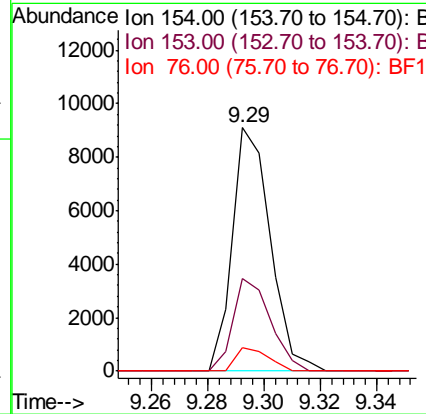
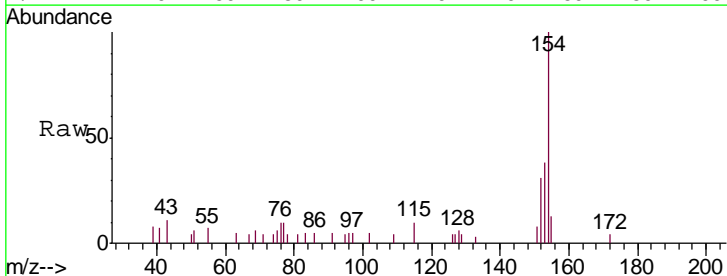
Instrument :
 BNA_F
 ClientSampled :
 TP-4

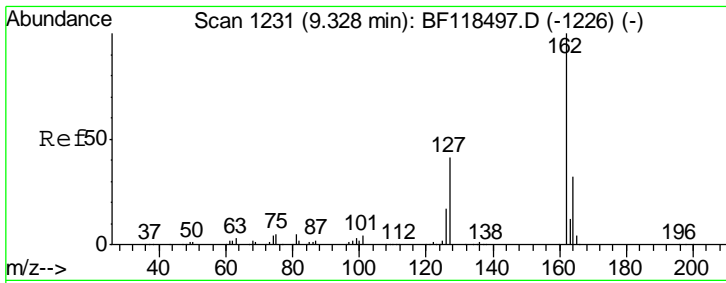
Tgt Ion	Resp	Lower	Upper
172	100		
171	36.3	28.6	42.8
170	23.0	18.6	27.8



#46
 1,1'-Biphenyl
 Concen: 0.729 ng
 RT: 9.29 min Scan# 1225
 Delta R.T. -0.01 min
 Lab File: BF118509.D
 Acq: 8 Jan 2020 20:17

Tgt Ion	Resp	Lower	Upper
154	100		
153	37.9	20.2	60.2
76	9.7	0.0	30.4

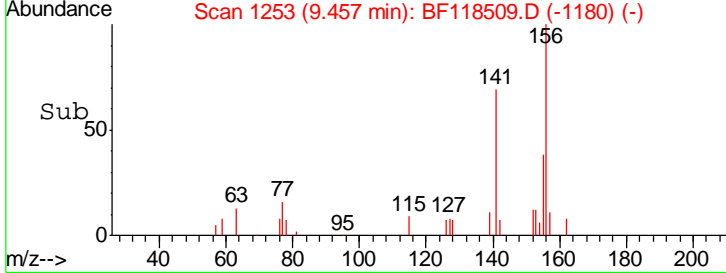
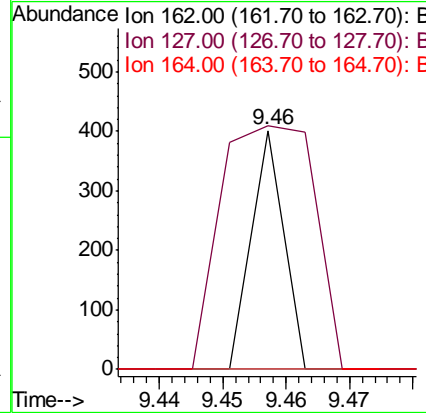
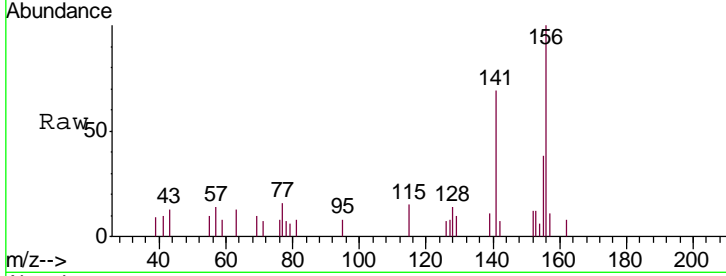




#47
 2-Chloronaphthalene
 Concen: 0.015 ng
 RT: 9.46 min Scan# 1253
 Delta R.T. 0.13 min
 Lab File: BF118509.D
 Acq: 8 Jan 2020 20:17

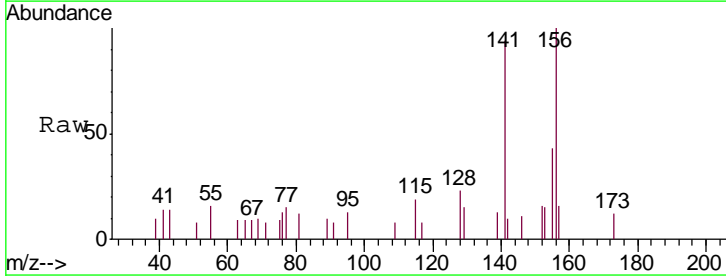
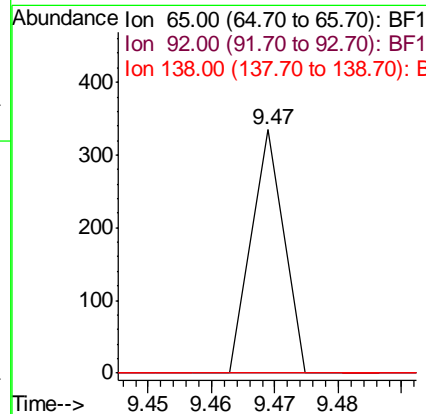
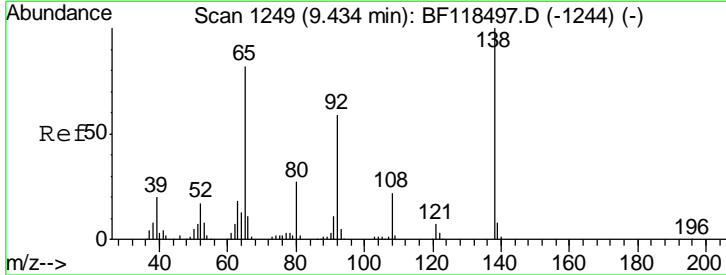
Instrument :
 BNA_F
 ClientSampled :
 TP-4

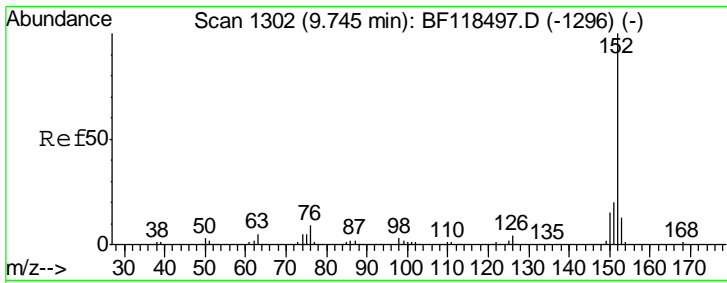
Tgt Ion	Resp	Lower	Upper
162	100		
127	102.0	35.5	53.3#
164	0.0	25.8	38.8#



#48
 2-Nitroaniline
 Concen: 0.044 ng
 RT: 9.47 min Scan# 1255
 Delta R.T. 0.04 min
 Lab File: BF118509.D
 Acq: 8 Jan 2020 20:17

Tgt Ion	Resp	Lower	Upper
65	100		
92	0.0	57.7	86.5#
138	0.0	97.2	145.8#

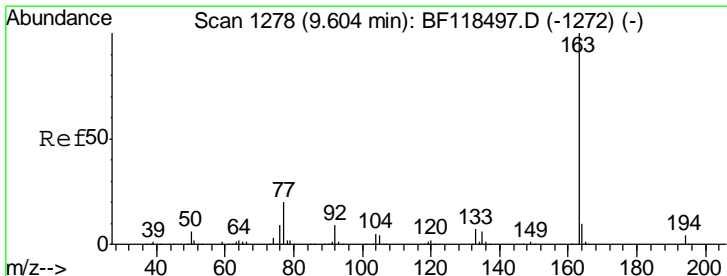
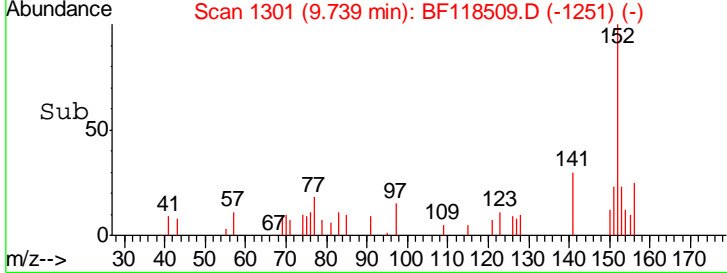
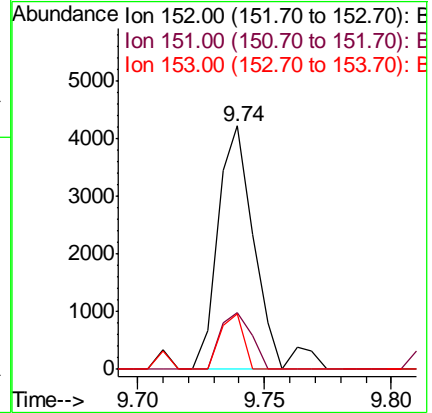
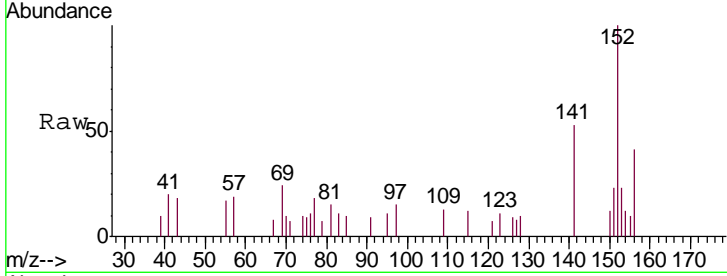




#49
 Acenaphthylene
 Concen: 0.314 ng
 RT: 9.74 min Scan# 1301
 Delta R.T. -0.01 min
 Lab File: BF118509.D
 Acq: 8 Jan 2020 20:17

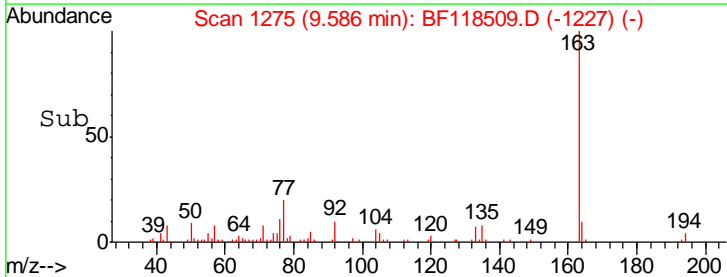
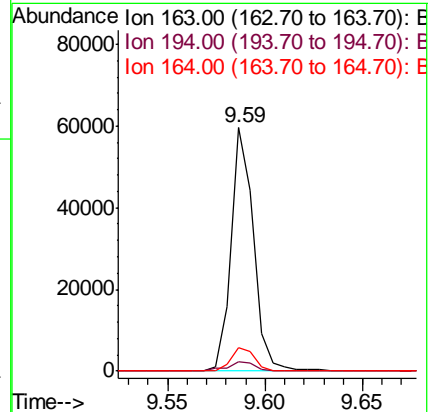
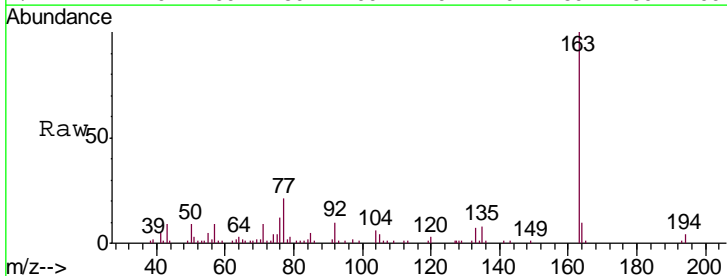
Instrument :
 BNA_F
 ClientSampleID :
 TP-4

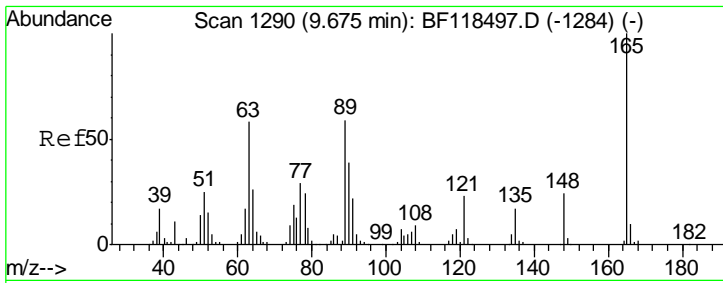
Tgt Ion	Resp	Lower	Upper
152	4300		
151	23.1	16.3	24.5
153	22.8	10.6	16.0



#50
 Dimethylphthalate
 Concen: 4.324 ng
 RT: 9.59 min Scan# 1275
 Delta R.T. -0.02 min
 Lab File: BF118509.D
 Acq: 8 Jan 2020 20:17

Tgt Ion	Resp	Lower	Upper
163	47283		
194	3.6	3.0	4.6
164	9.9	8.1	12.1

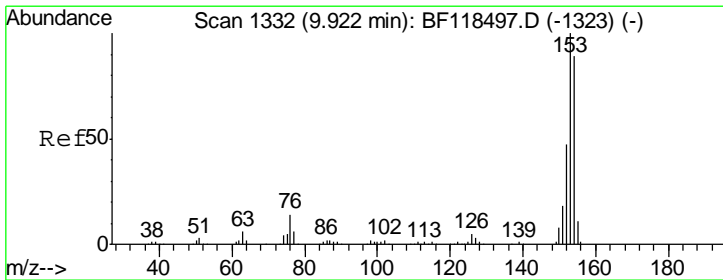
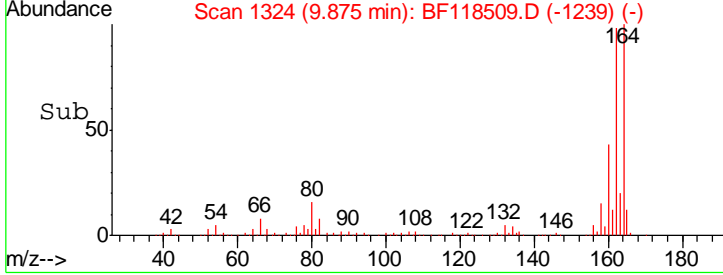
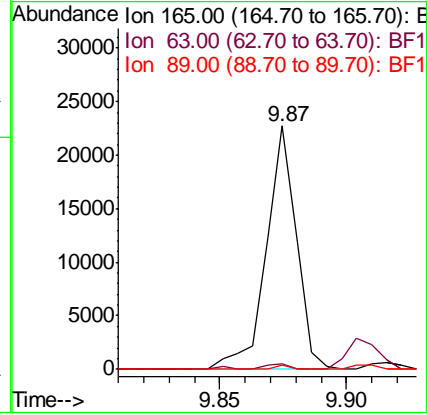
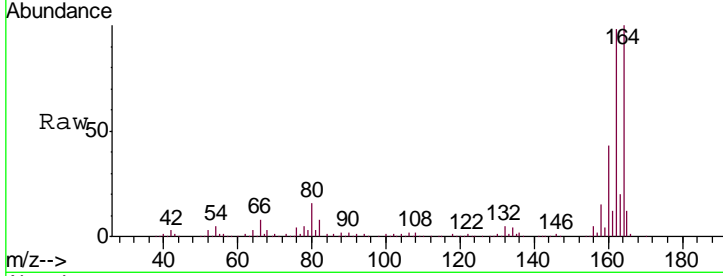




#51
 2,6-Dinitrotoluene
 Concen: 8.018 ng
 RT: 9.87 min Scan# 1324
 Delta R.T. 0.20 min
 Lab File: BF118509.D
 Acq: 8 Jan 2020 20:17

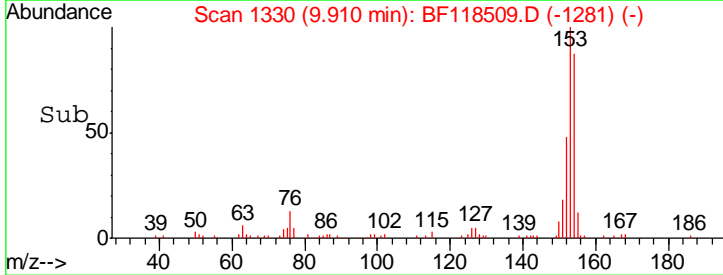
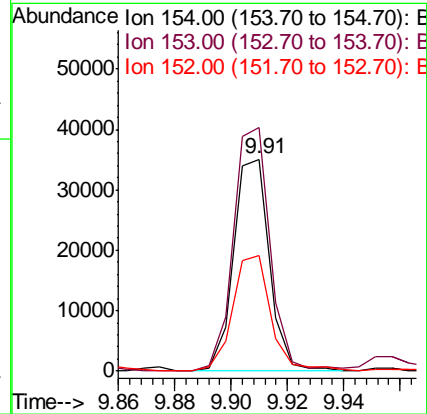
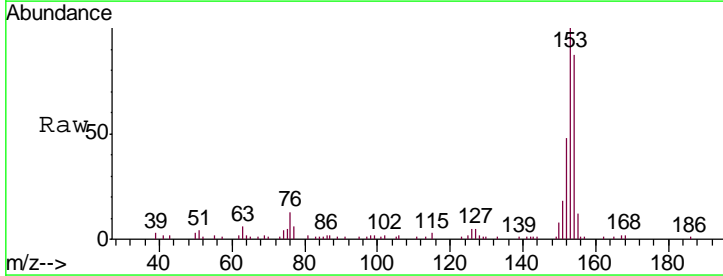
Instrument :
 BNA_F
 ClientSampleId :
 TP-4

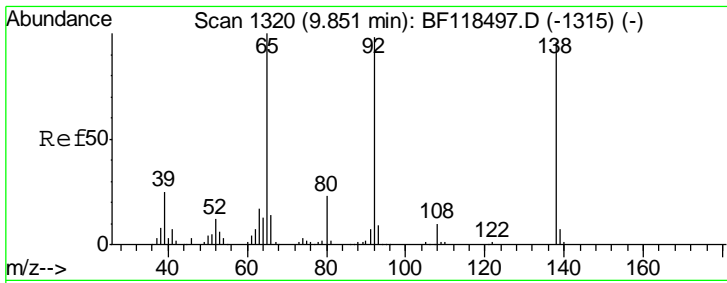
Tgt Ion	Resp	Lower	Upper
165	18879		
63	2.0	46.6	70.0#
89	1.7	47.5	71.3#



#52
 Acenaphthene
 Concen: 3.686 ng
 RT: 9.91 min Scan# 1330
 Delta R.T. -0.01 min
 Lab File: BF118509.D
 Acq: 8 Jan 2020 20:17

Tgt Ion	Resp	Lower	Upper
154	30870		
153	114.8	89.7	134.5
152	54.6	41.9	62.9

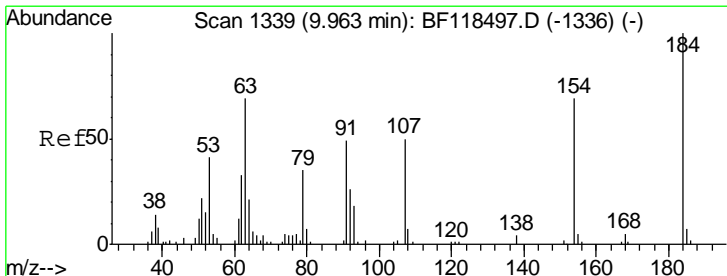
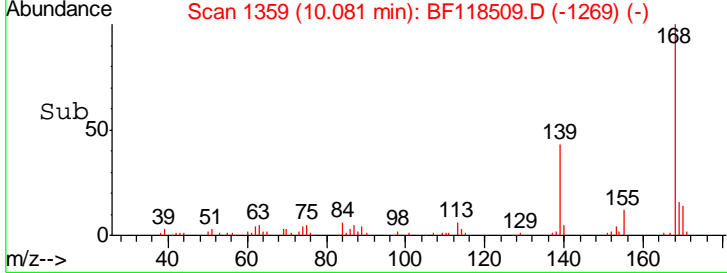
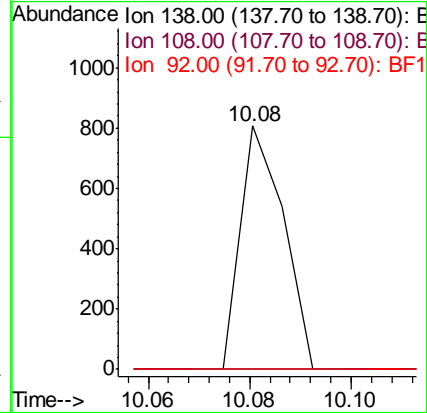
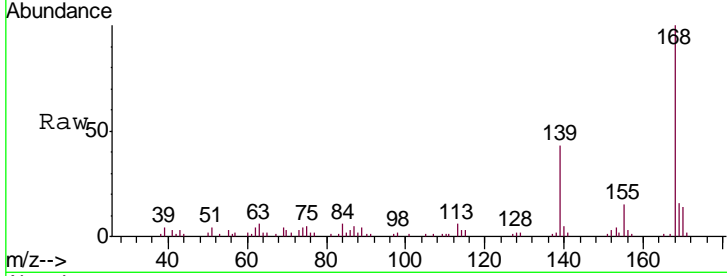




#53
 3-Nitroaniline
 Concen: 0.173 ng
 RT: 10.08 min Scan# 1359
 Delta R.T. 0.23 min
 Lab File: BF118509.D
 Acq: 8 Jan 2020 20:17

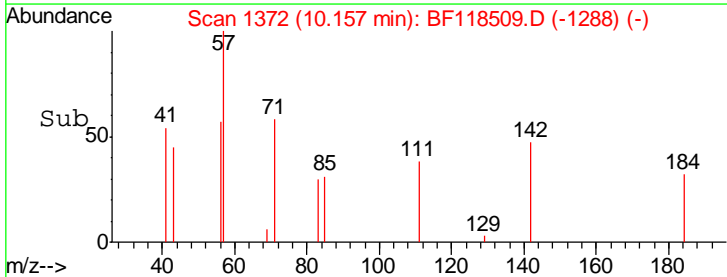
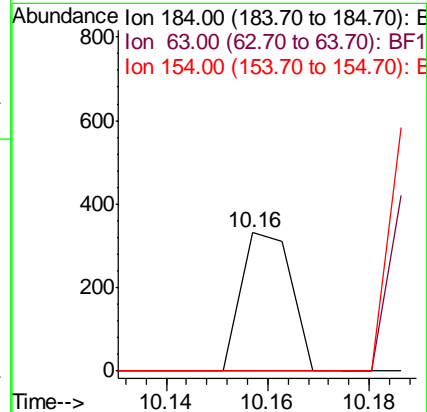
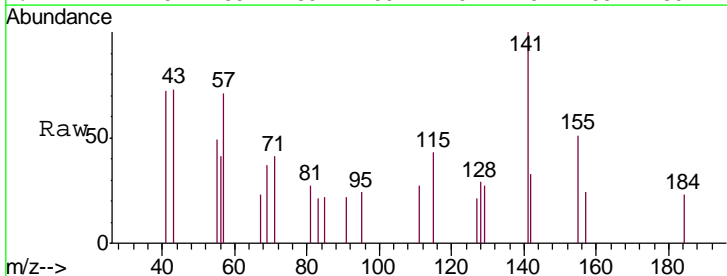
Instrument :
 BNA_F
 ClientSampled :
 TP-4

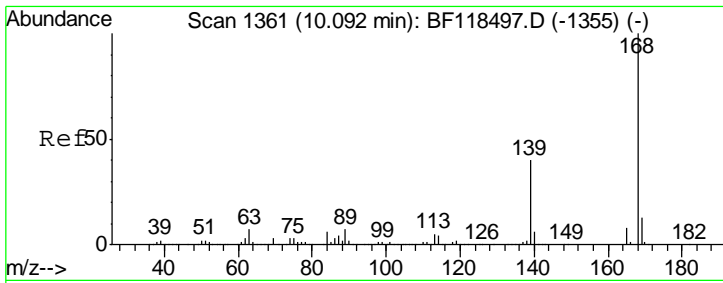
Tgt Ion	Resp	Lower	Upper
138	100		
108	0.0	8.1	12.1#
92	0.0	81.6	122.4#



#54
 2,4-Dinitrophenol
 Concen: 5.070 ng
 RT: 10.16 min Scan# 1372
 Delta R.T. 0.20 min
 Lab File: BF118509.D
 Acq: 8 Jan 2020 20:17

Tgt Ion	Resp	Lower	Upper
184	100		
63	0.0	55.3	82.9#
154	0.0	55.0	82.4#

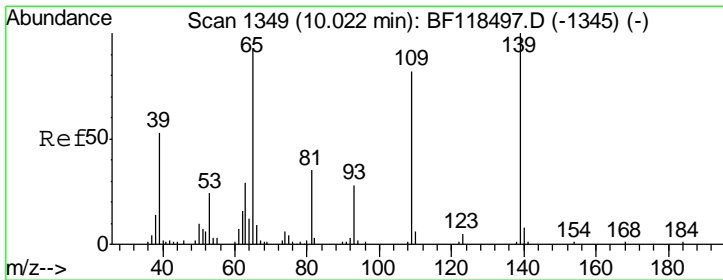
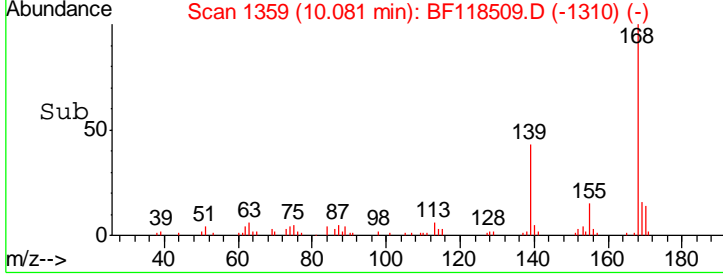
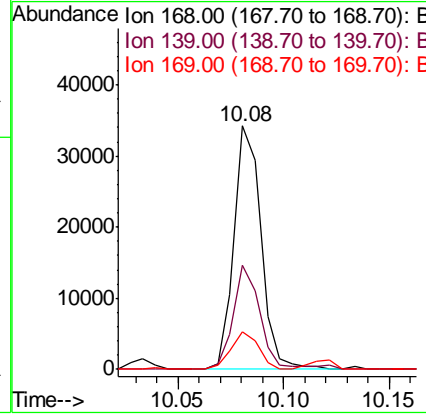
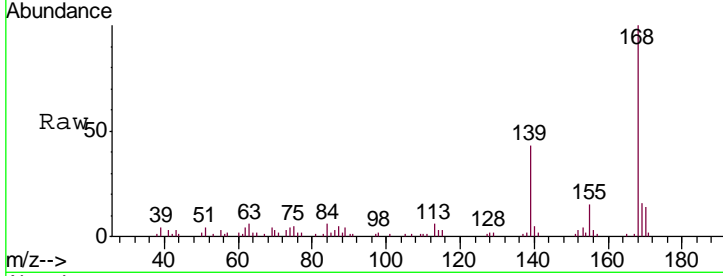




#55
 Dibenzofuran
 Concen: 2.406 ng
 RT: 10.08 min Scan# 1359
 Delta R.T. -0.01 min
 Lab File: BF118509.D
 Acq: 8 Jan 2020 20:17

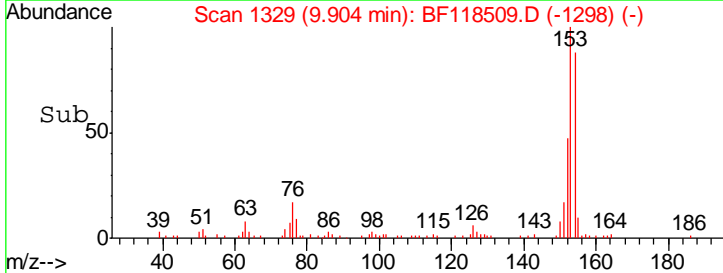
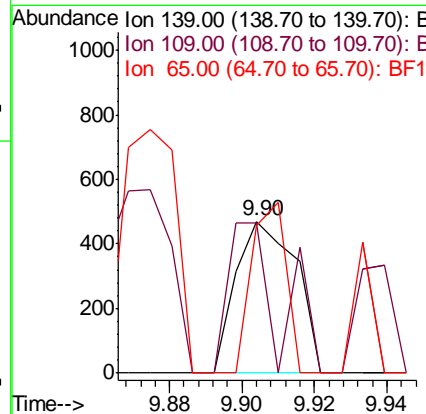
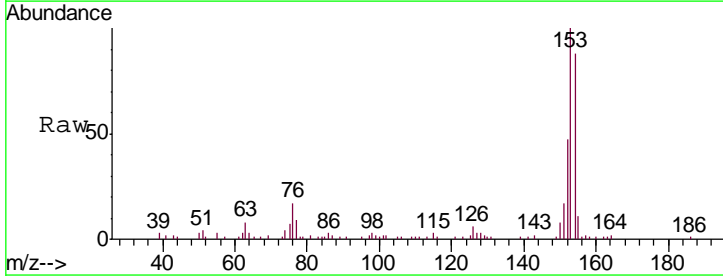
Instrument :
 BNA_F
 ClientSampled :
 TP-4

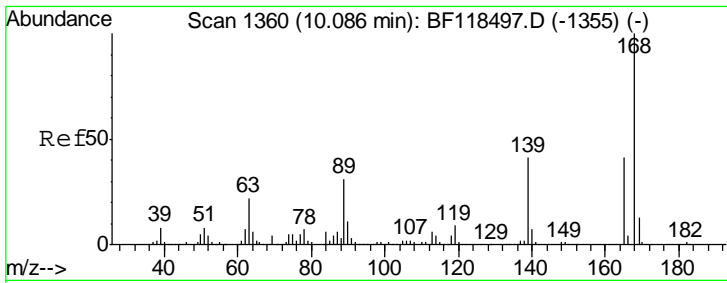
Tgt Ion	Resp	Lower	Upper
168	30265		
139	42.6	32.5	48.7
169	15.6	10.6	16.0



#56
 4-Nitrophenol
 Concen: 0.403 ng
 RT: 9.90 min Scan# 1329
 Delta R.T. -0.12 min
 Lab File: BF118509.D
 Acq: 8 Jan 2020 20:17

Tgt Ion	Resp	Lower	Upper
139	540		
109	99.1	62.2	102.2
65	97.4	72.8	112.8

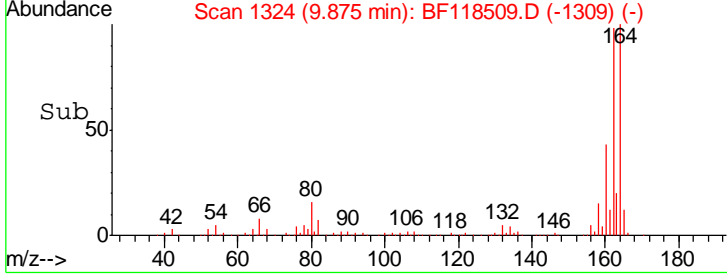
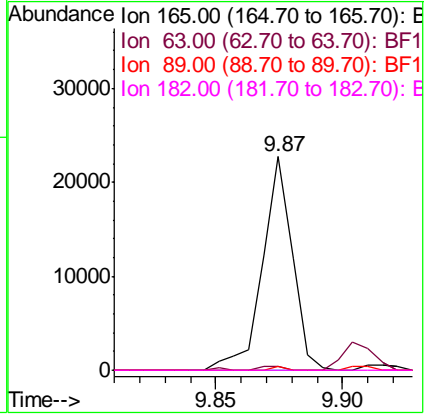
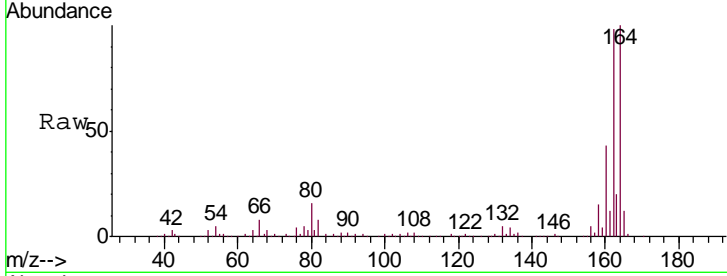




#57
 2,4-Dinitrotoluene
 Concen: 5.988 ng
 RT: 9.87 min Scan# 1324
 Delta R.T. -0.21 min
 Lab File: BF118509.D
 Acq: 8 Jan 2020 20:17

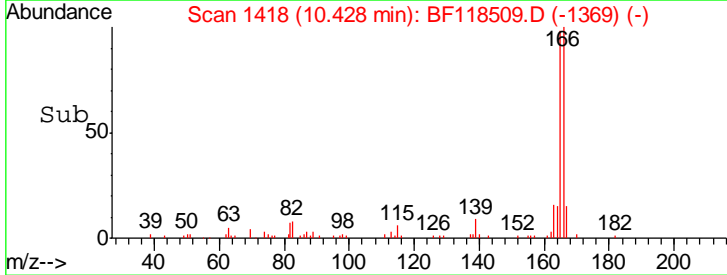
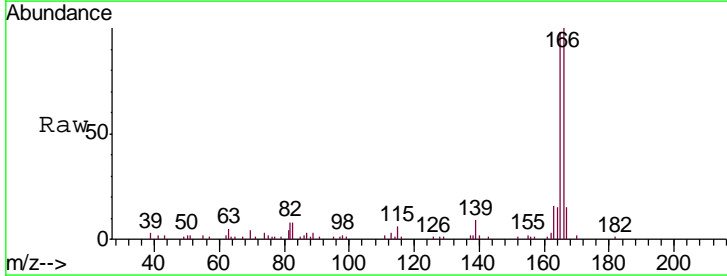
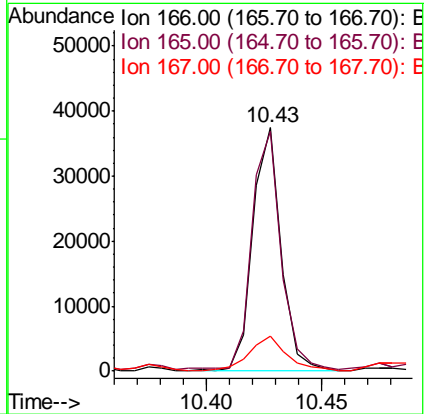
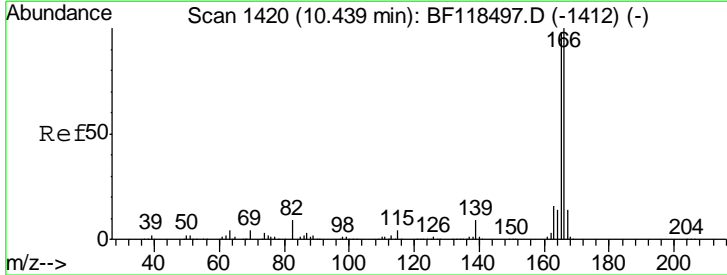
Instrument :
 BNA_F
 ClientSampled :
 TP-4

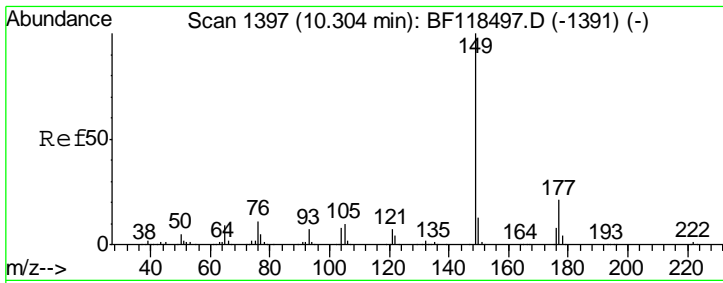
Tgt Ion	Resp	Lower	Upper
165	18879		
63	2.0	44.1	66.1#
89	1.7	60.4	90.6#
182	0.0	2.0	3.0#



#58
 Fluorene
 Concen: 3.192 ng
 RT: 10.43 min Scan# 1418
 Delta R.T. -0.01 min
 Lab File: BF118509.D
 Acq: 8 Jan 2020 20:17

Tgt Ion	Resp	Lower	Upper
166	32272		
165	98.5	78.6	117.8
167	14.6	10.8	16.2

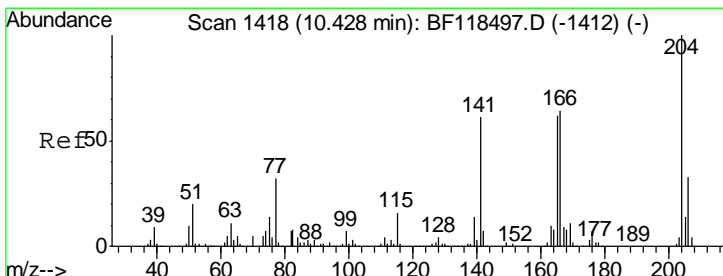
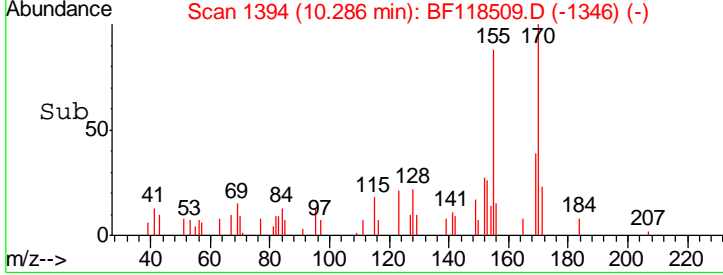
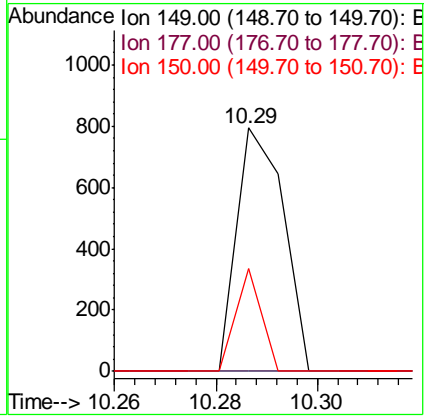
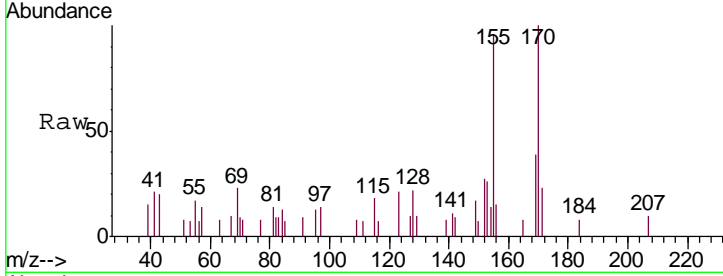




#60
 Diethylphthalate
 Concen: 0.046 ng
 RT: 10.29 min Scan# 1394
 Delta R.T. -0.02 min
 Lab File: BF118509.D
 Acq: 8 Jan 2020 20:17

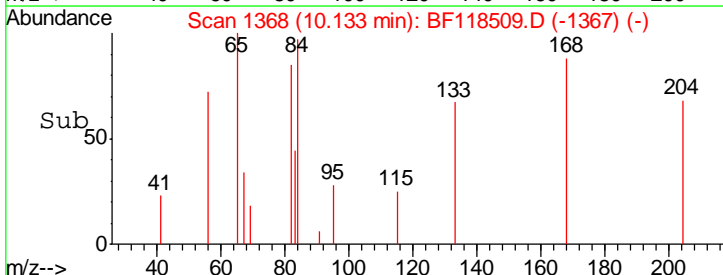
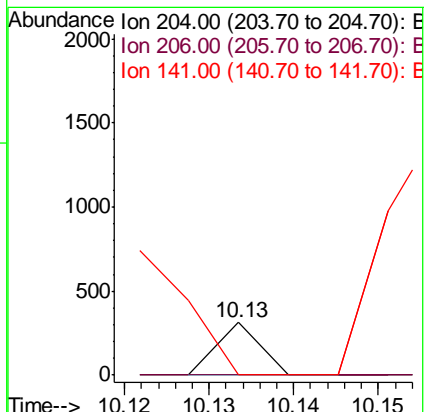
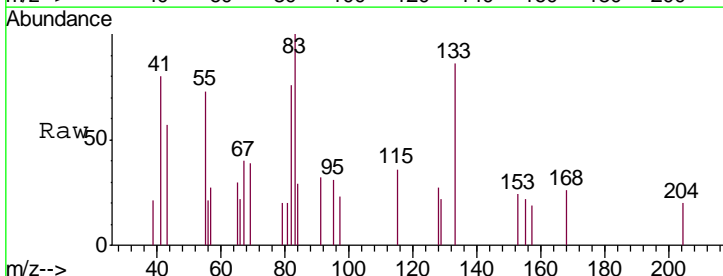
Instrument :
 BNA_F
 ClientSampled :
 TP-4

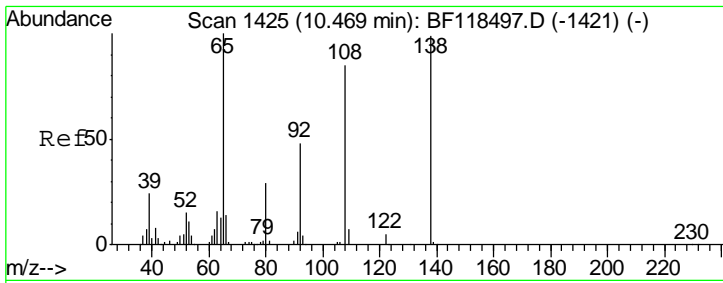
Tgt Ion	Resp	Lower	Upper
149	100		
177	0.0	16.5	24.7#
150	42.3	10.2	15.2#



#61
 4-Chlorophenyl-phenylether
 Concen: 0.022 ng
 RT: 10.13 min Scan# 1368
 Delta R.T. -0.29 min
 Lab File: BF118509.D
 Acq: 8 Jan 2020 20:17

Tgt Ion	Resp	Lower	Upper
204	100		
206	0.0	26.0	39.0#
141	0.0	49.0	73.6#

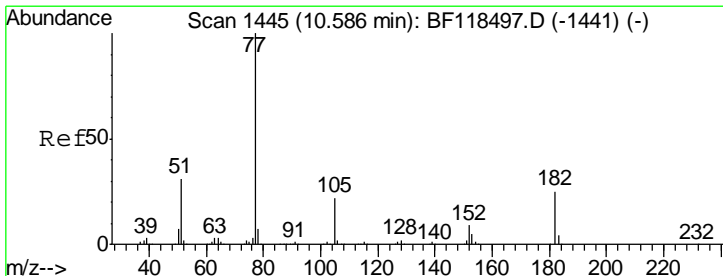
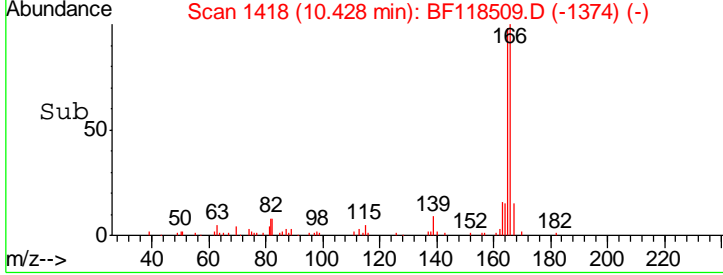
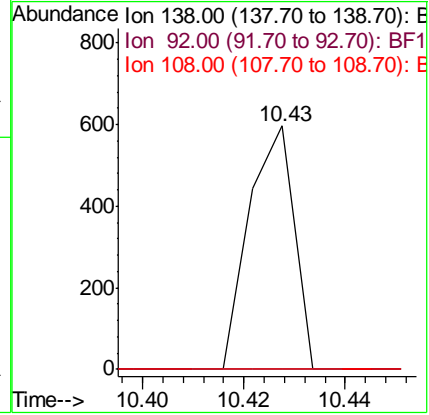
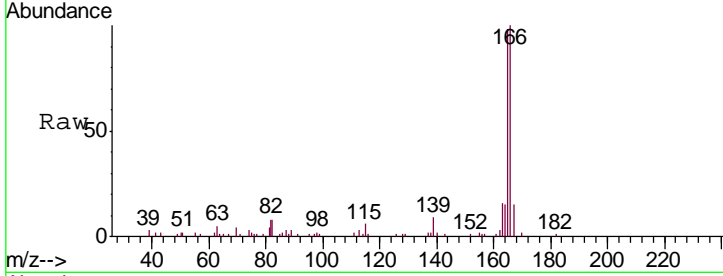




#62
 4-Nitroaniline
 Concen: 0.136 ng
 RT: 10.43 min Scan# 1418
 Delta R.T. -0.04 min
 Lab File: BF118509.D
 Acq: 8 Jan 2020 20:17

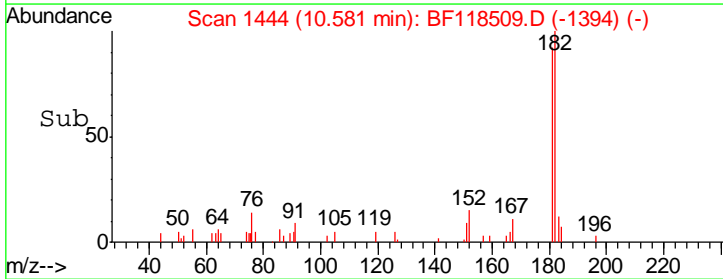
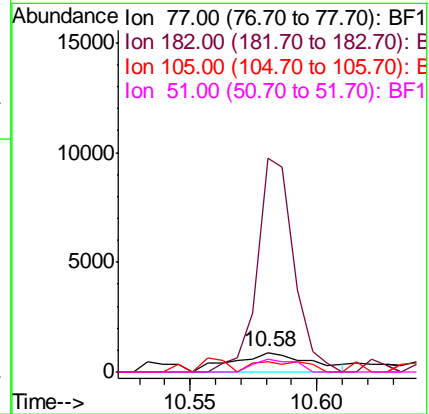
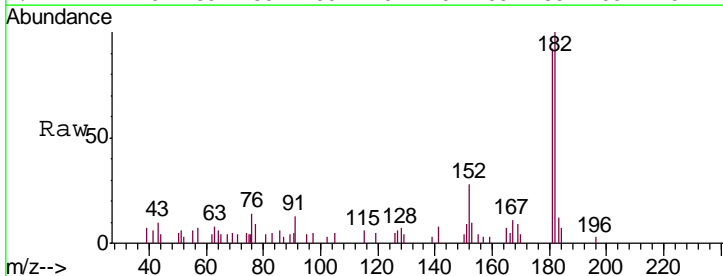
Instrument :
 BNA_F
 ClientSampled :
 TP-4

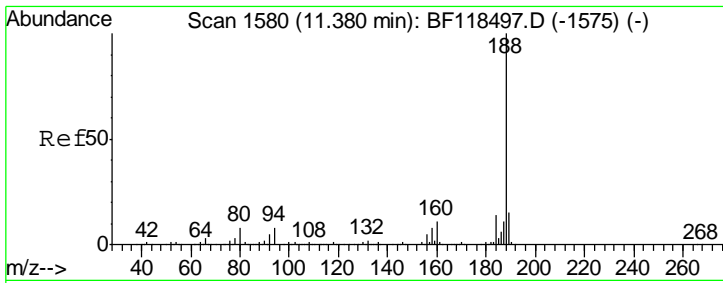
Tgt Ion	Resp	Lower	Upper
138	100		
92	0.0	27.9	67.9#
108	0.0	64.7	104.7#



#63
 Azobenzene
 Concen: 0.202 ng
 RT: 10.58 min Scan# 1444
 Delta R.T. -0.01 min
 Lab File: BF118509.D
 Acq: 8 Jan 2020 20:17

Tgt Ion	Resp	Lower	Upper
77	100		
182	1093.5	5.2	45.2#
105	49.8	1.7	41.7#
51	66.2	11.2	51.2#

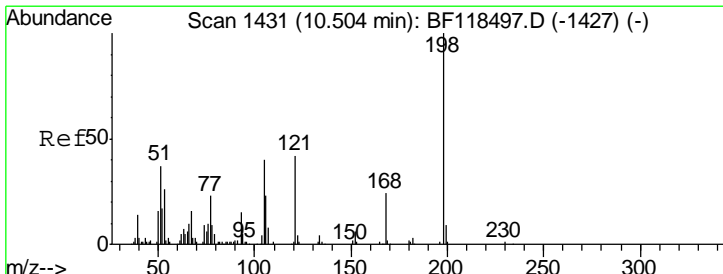
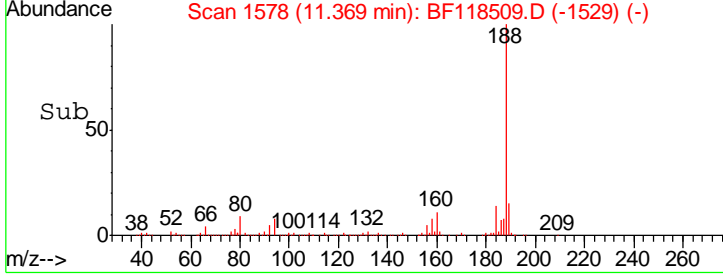
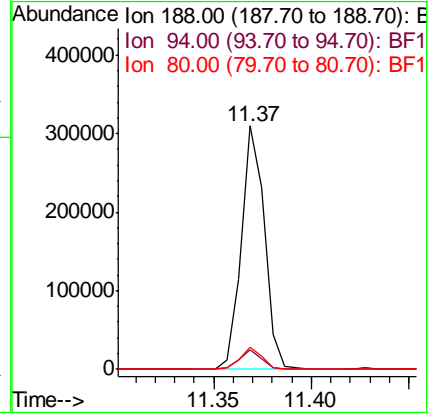
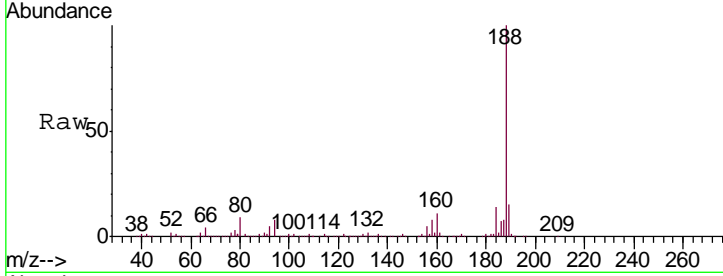




#64
 Phenanthrene-d10
 Concen: 20.000 ng
 RT: 11.37 min Scan# 1578
 Delta R.T. -0.01 min
 Lab File: BF118509.D
 Acq: 8 Jan 2020 20:17

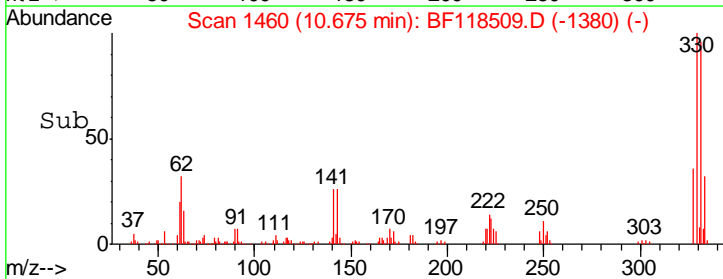
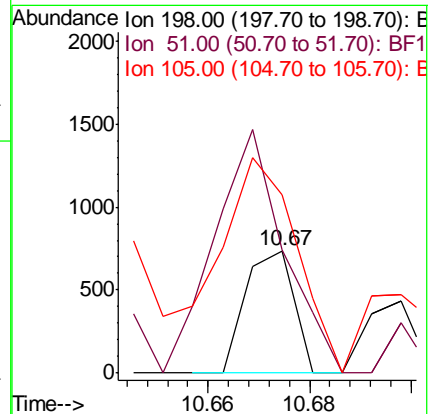
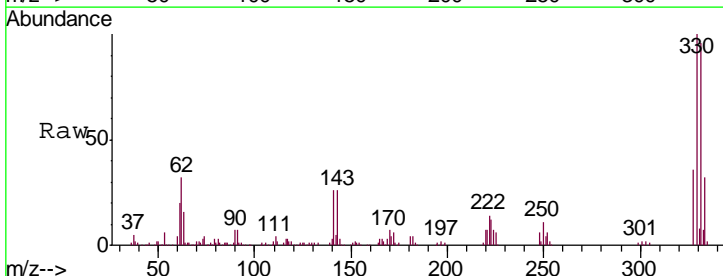
Instrument :
 BNA_F
 ClientSampled :
 TP-4

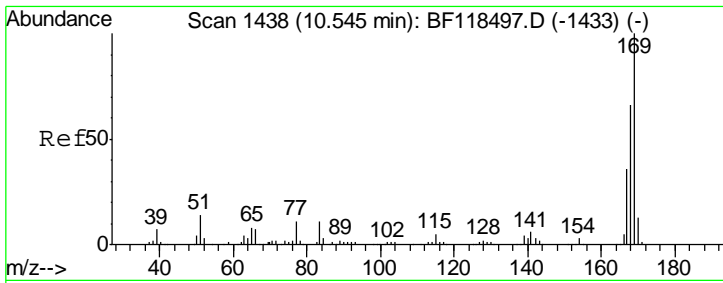
Tgt Ion	Resp	Lower	Upper
188	100		
94	8.2	6.2	9.4
80	9.0	6.6	10.0



#65
 4,6-Dinitro-2-methylphenol
 Concen: 0.361 ng
 RT: 10.67 min Scan# 1460
 Delta R.T. 0.17 min
 Lab File: BF118509.D
 Acq: 8 Jan 2020 20:17

Tgt Ion	Resp	Lower	Upper
198	100		
51	100.3	17.8	57.8#
105	145.5	20.1	60.1#

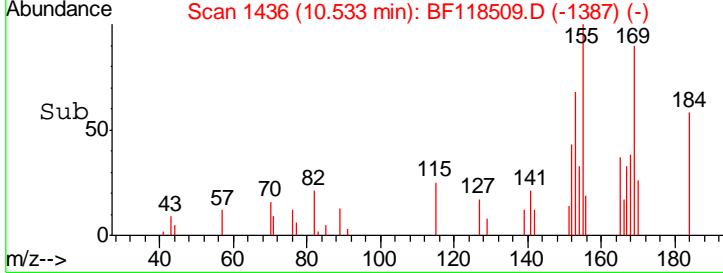
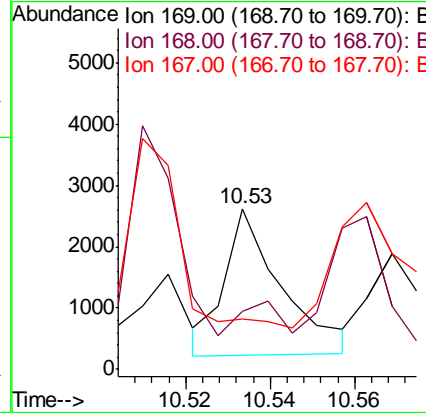
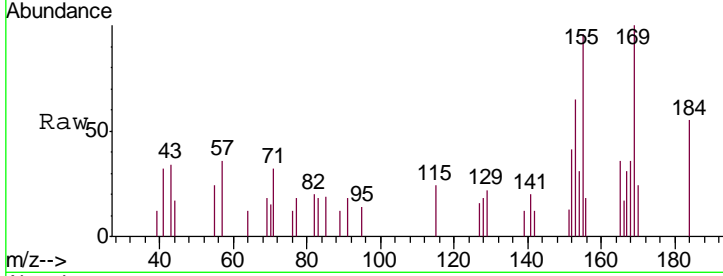




#66
 n-Nitrosodiphenylamine
 Concen: 0.269 ng
 RT: 10.53 min Scan# 1436
 Delta R.T. -0.01 min
 Lab File: BF118509.D
 Acq: 8 Jan 2020 20:17

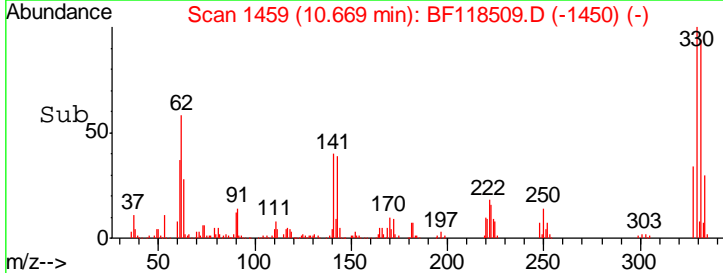
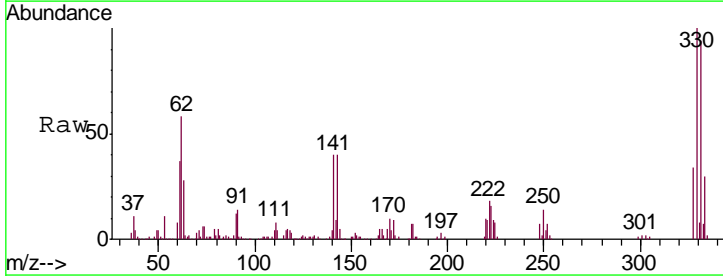
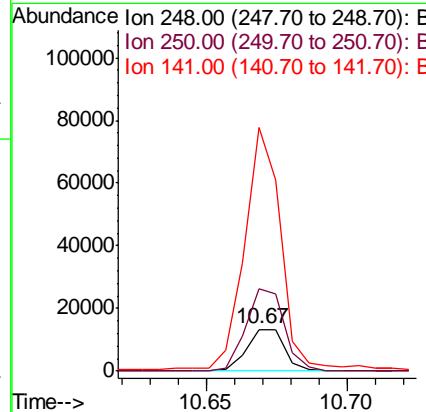
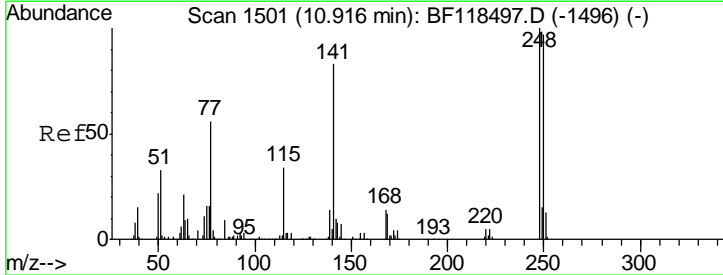
Instrument :
 BNA_F
 ClientSampled :
 TP-4

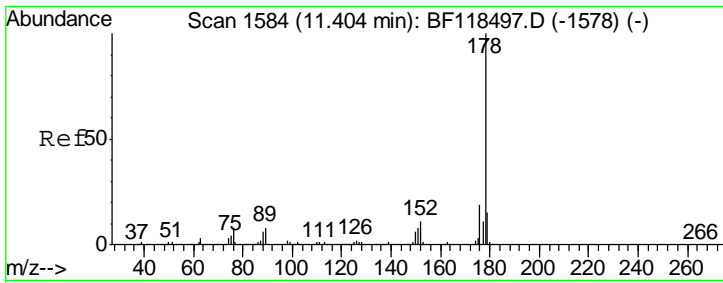
Tgt Ion	Resp	Lower	Upper
169	100		
168	36.2	53.4	80.2#
167	31.2	28.9	43.3



#67
 4-Bromophenyl-phenylether
 Concen: 4.157 ng
 RT: 10.67 min Scan# 1459
 Delta R.T. -0.25 min
 Lab File: BF118509.D
 Acq: 8 Jan 2020 20:17

Tgt Ion	Resp	Lower	Upper
248	100		
250	196.9	77.4	116.0#
141	580.5	66.2	99.4#

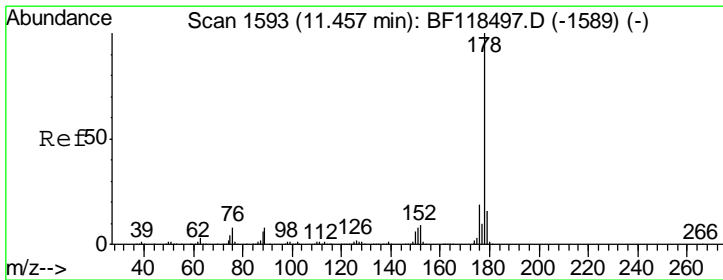
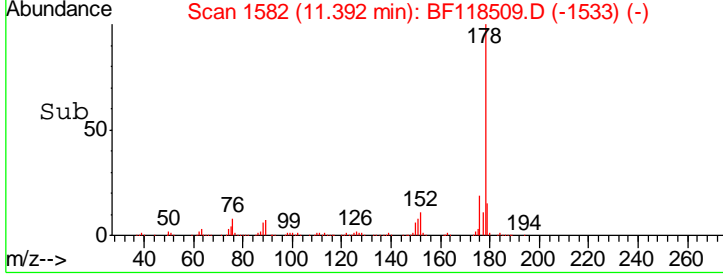
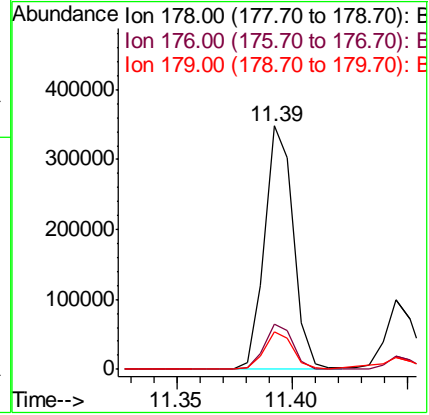
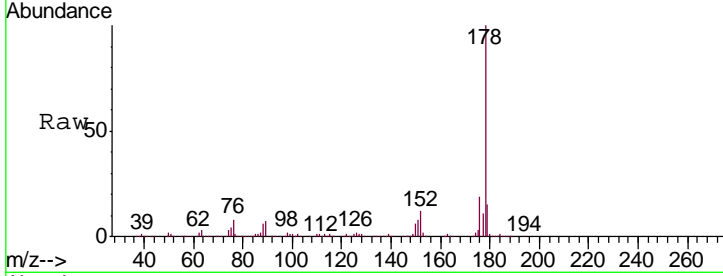




#71
 Phenanthrene
 Concen: 21.254 ng
 RT: 11.39 min Scan# 1582
 Delta R.T. -0.01 min
 Lab File: BF118509.D
 Acq: 8 Jan 2020 20:17

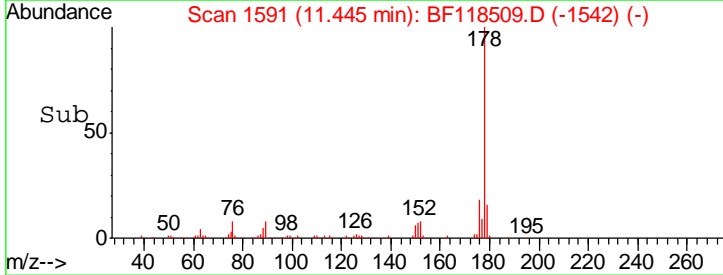
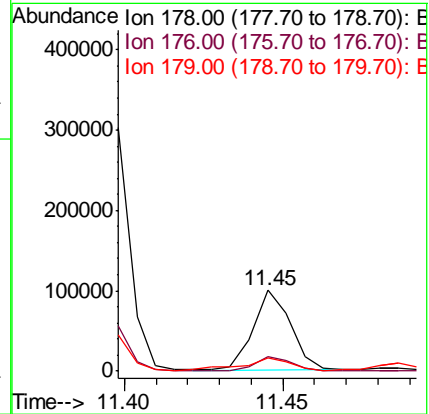
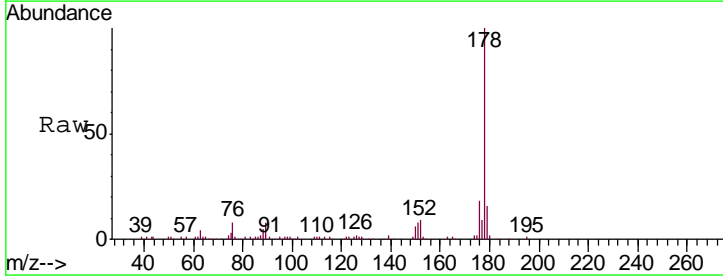
Instrument :
 BNA_F
 ClientSampled :
 TP-4

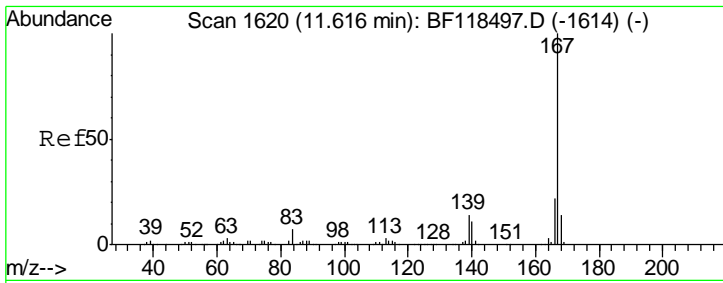
Tgt Ion	Resp	Lower	Upper
178	303479		
176	18.7	15.2	22.8
179	15.2	12.3	18.5



#72
 Anthracene
 Concen: 5.706 ng
 RT: 11.45 min Scan# 1591
 Delta R.T. -0.01 min
 Lab File: BF118509.D
 Acq: 8 Jan 2020 20:17

Tgt Ion	Resp	Lower	Upper
178	81060		
176	18.3	15.0	22.4
179	16.3	12.6	19.0

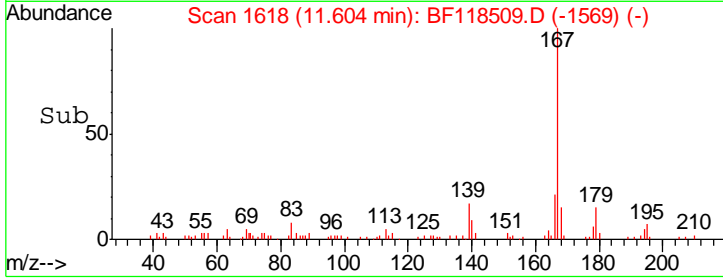
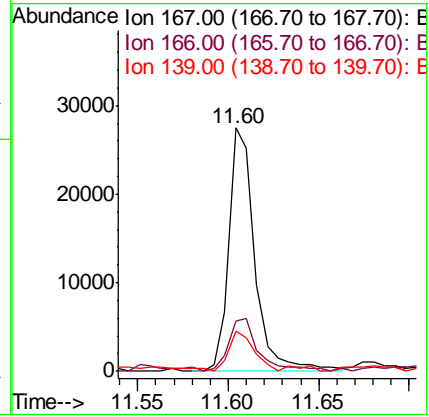
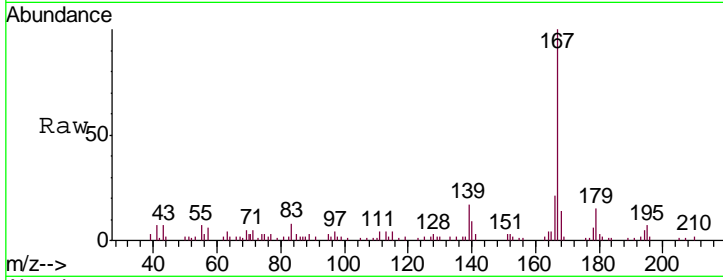




#73
 Carbazole
 Concen: 2.244 ng
 RT: 11.60 min Scan# 1618
 Delta R.T. -0.01 min
 Lab File: BF118509.D
 Acq: 8 Jan 2020 20:17

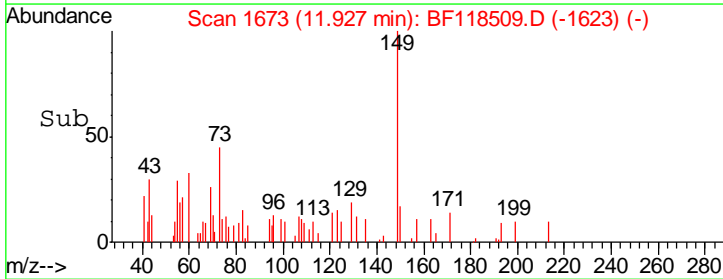
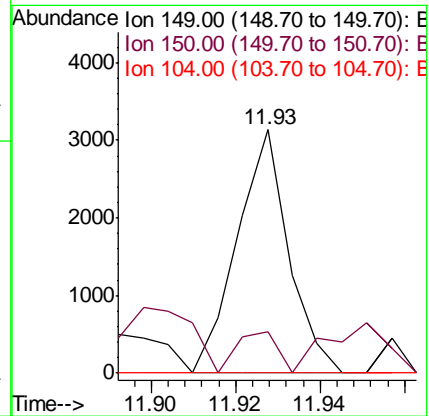
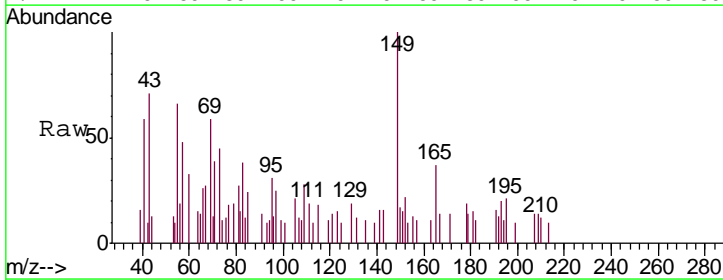
Instrument :
 BNA_F
 ClientSampled :
 TP-4

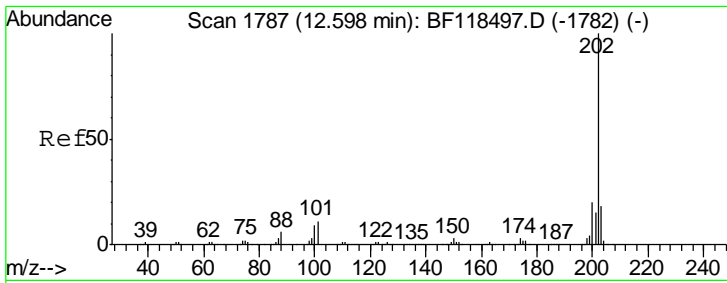
Tgt Ion	Resp	Lower	Upper
167	100		
166	20.8	17.4	26.2
139	16.7	10.9	16.3#



#74
 Di-n-butylphthalate
 Concen: 0.162 ng
 RT: 11.93 min Scan# 1673
 Delta R.T. -0.01 min
 Lab File: BF118509.D
 Acq: 8 Jan 2020 20:17

Tgt Ion	Resp	Lower	Upper
149	100		
150	17.0	7.8	11.8#
104	0.0	4.2	6.4#

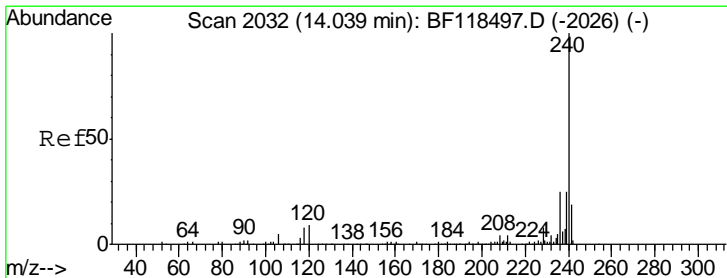
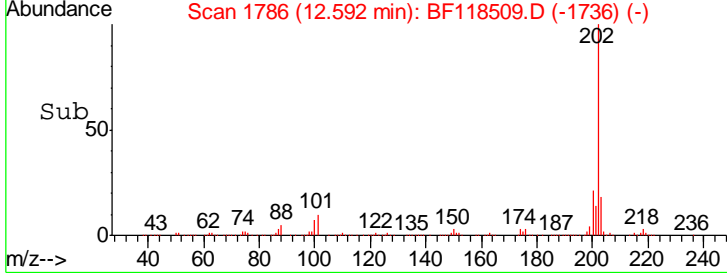
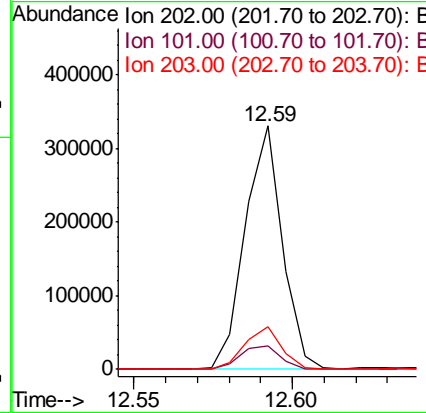
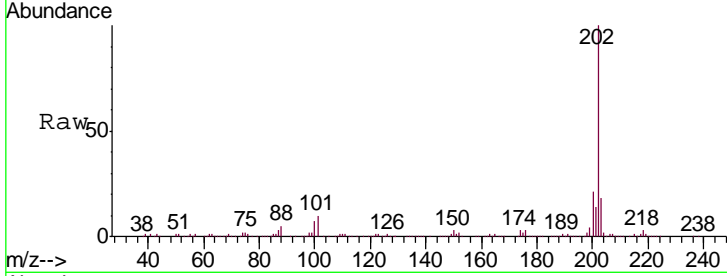




#75
 Fluoranthene
 Concen: 18.626 ng
 RT: 12.59 min Scan# 1786
 Delta R.T. -0.01 min
 Lab File: BF118509.D
 Acq: 8 Jan 2020 20:17

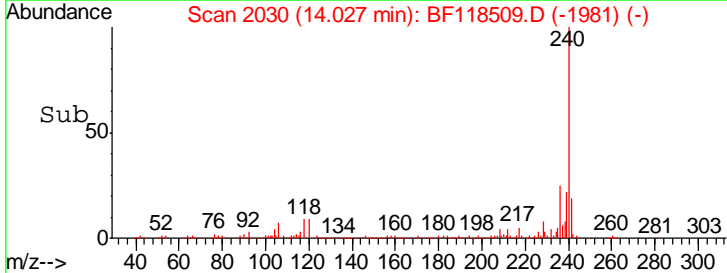
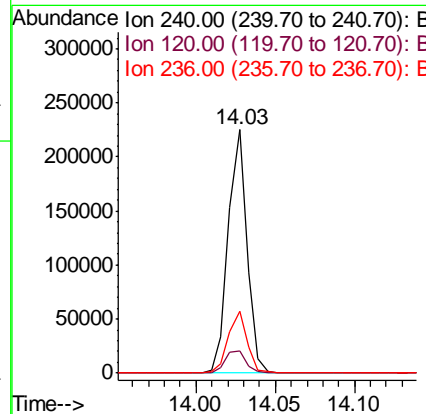
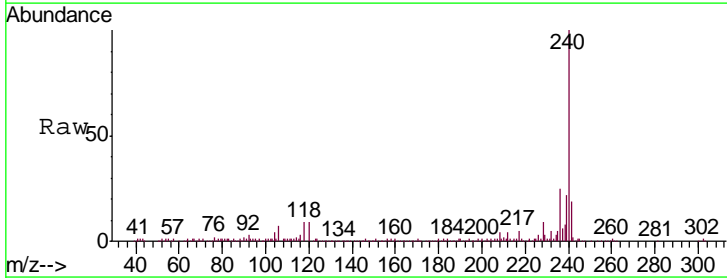
Instrument :
 BNA_F
 ClientSampled :
 TP-4

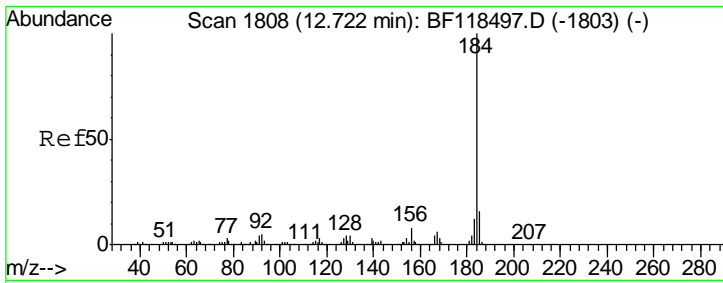
Tgt Ion	Resp	Lower	Upper
202	270317		
101	9.7	0.0	31.4
203	17.7	0.0	38.1



#76
 Chrysene-d12
 Concen: 20.000 ng
 RT: 14.03 min Scan# 2030
 Delta R.T. -0.01 min
 Lab File: BF118509.D
 Acq: 8 Jan 2020 20:17

Tgt Ion	Resp	Lower	Upper
240	186103		
120	9.3	7.0	10.6
236	25.4	20.1	30.1



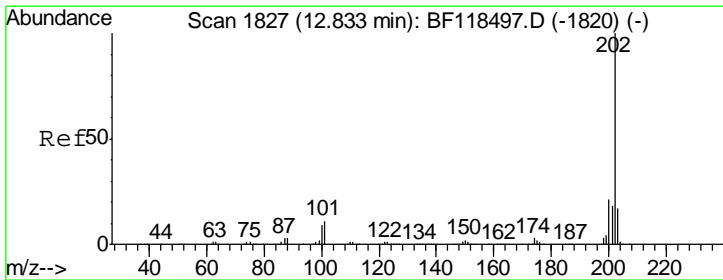
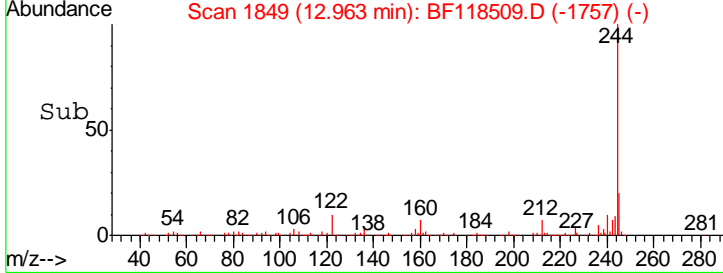
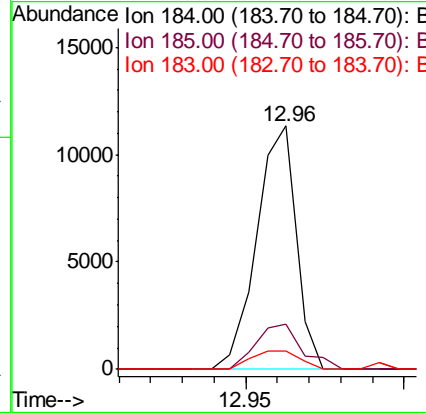
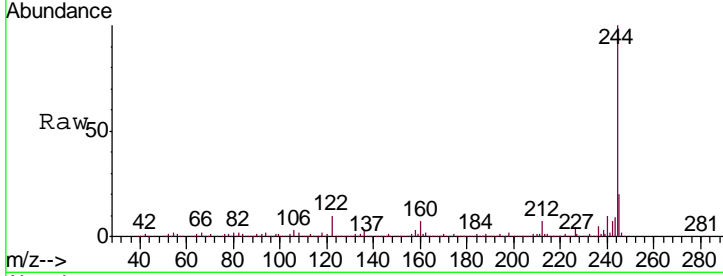


#77
Benzidine
Concen: Below Cal
RT: 12.96 min Scan# 1849
Delta R.T. 0.24 min
Lab File: BF118509.D
Acq: 8 Jan 2020 20:17

Instrument :
BNA_F
ClientSampled :
TP-4

Tgt Ion:184 Resp: 9807

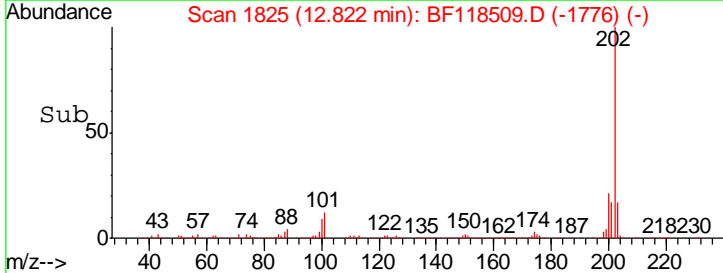
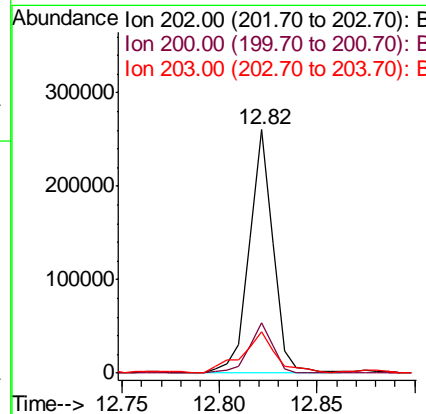
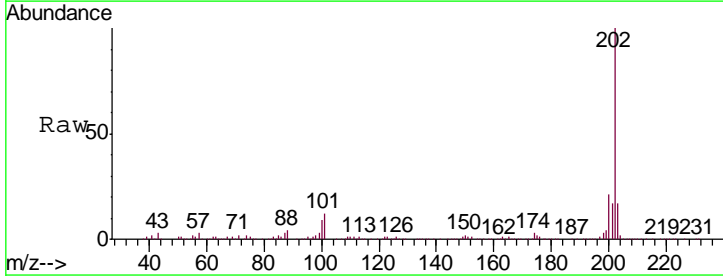
Ion	Ratio	Lower	Upper
184	100		
185	18.5	12.6	18.8
183	7.4	9.3	13.9#

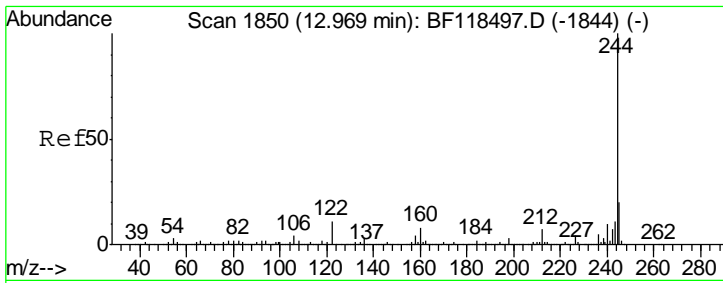


#78
Pyrene
Concen: 14.275 ng
RT: 12.82 min Scan# 1825
Delta R.T. -0.01 min
Lab File: BF118509.D
Acq: 8 Jan 2020 20:17

Tgt Ion:202 Resp: 218575

Ion	Ratio	Lower	Upper
202	100		
200	20.5	16.9	25.3
203	17.1	13.9	20.9

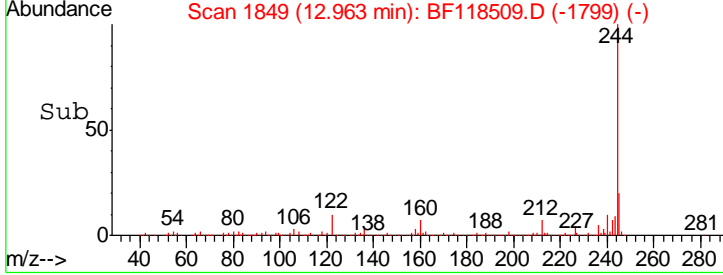
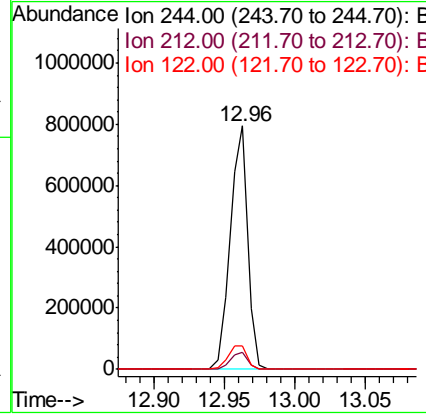
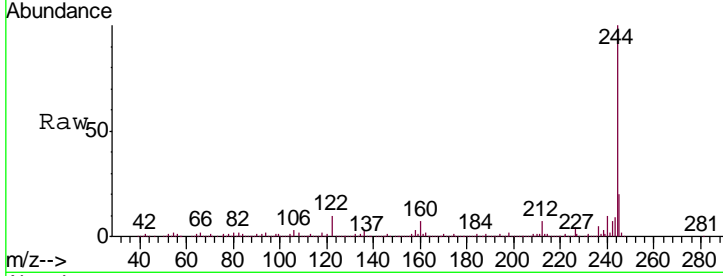




#79
 Terphenyl-d14
 Concen: 58.016 ng
 RT: 12.96 min Scan# 1849
 Delta R.T. -0.01 min
 Lab File: BF118509.D
 Acq: 8 Jan 2020 20:17

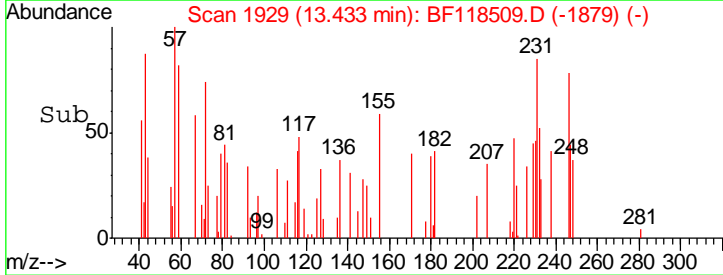
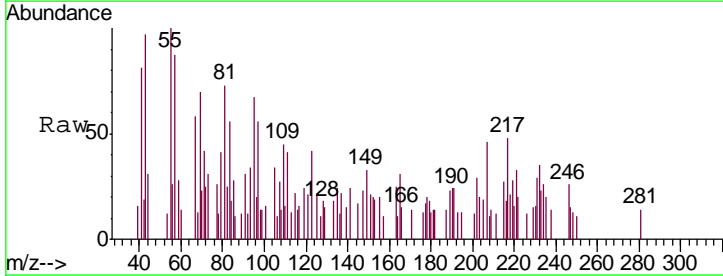
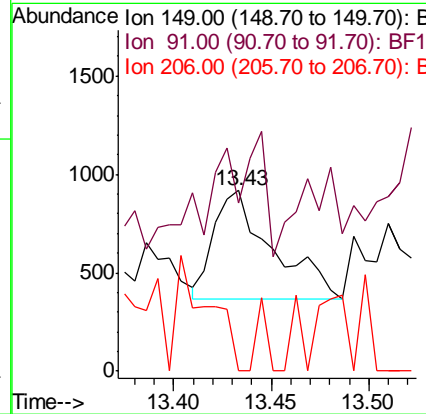
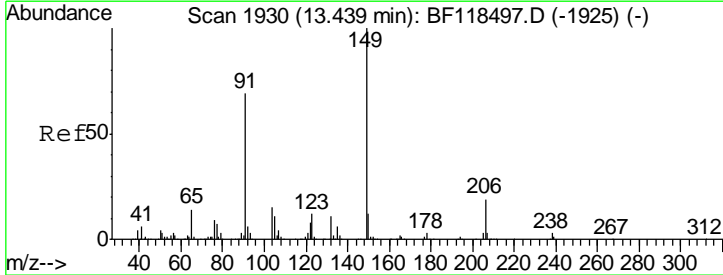
Instrument :
 BNA_F
 ClientSampled :
 TP-4

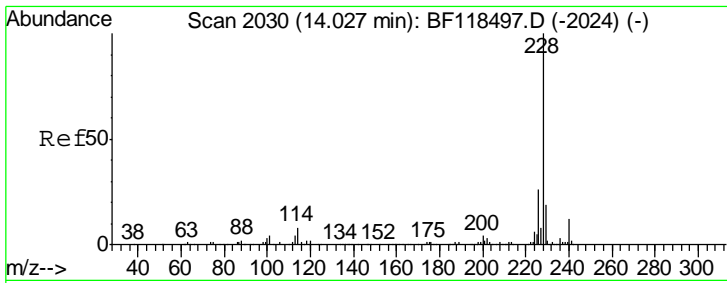
Tgt Ion	Ratio	Lower	Upper
244	100		
212	6.9	5.6	8.4
122	9.6	9.0	13.6



#80
 Butylbenzylphthalate
 Concen: 0.163 ng
 RT: 13.43 min Scan# 1929
 Delta R.T. -0.01 min
 Lab File: BF118509.D
 Acq: 8 Jan 2020 20:17

Tgt Ion	Ratio	Lower	Upper
149	100		
91	92.9	55.2	82.8#
206	0.0	15.1	22.7#

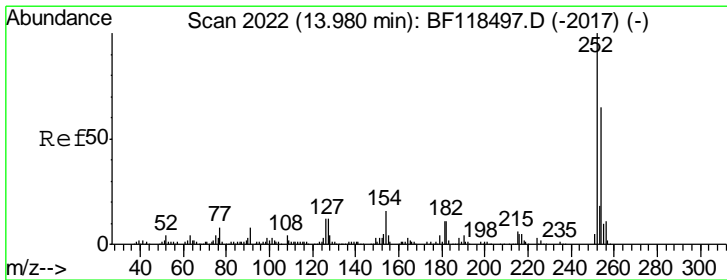
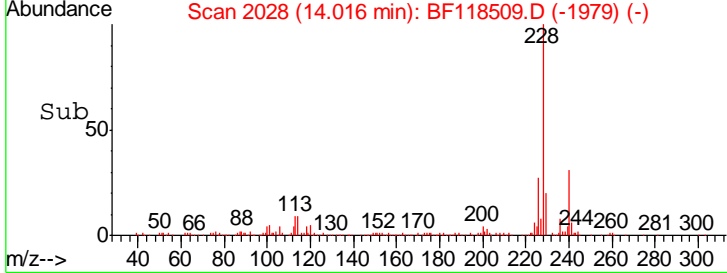
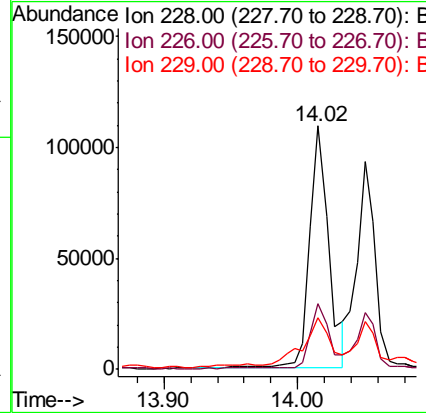
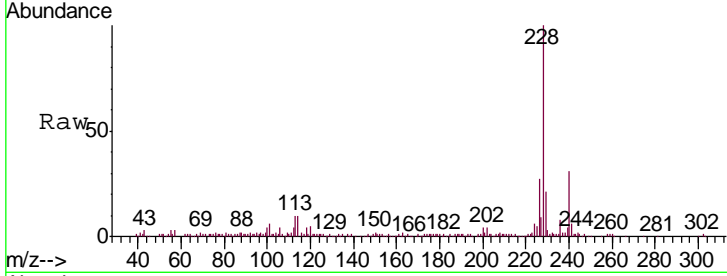




#81
 Benzo(a)anthracene
 Concen: 8.233 ng
 RT: 14.02 min Scan# 2028
 Delta R.T. -0.01 min
 Lab File: BF118509.D
 Acq: 8 Jan 2020 20:17

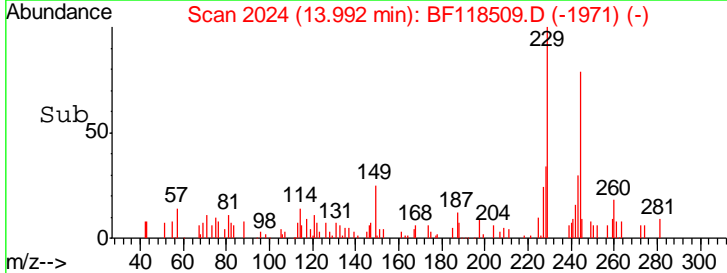
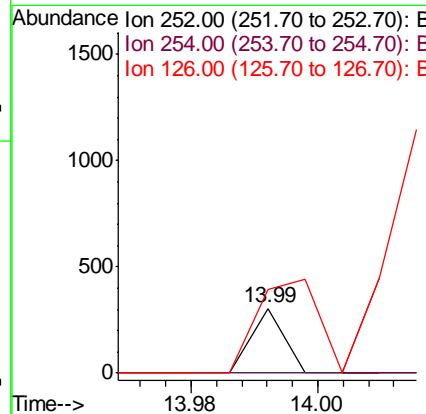
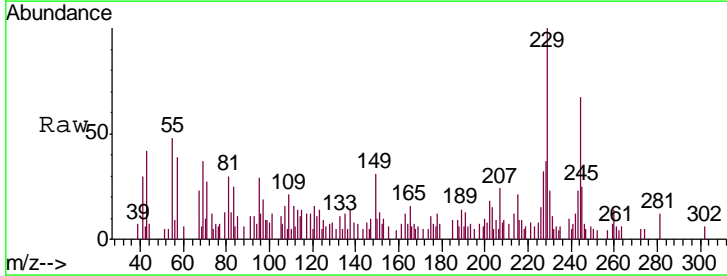
Instrument :
 BNA_F
 ClientSampled :
 TP-4

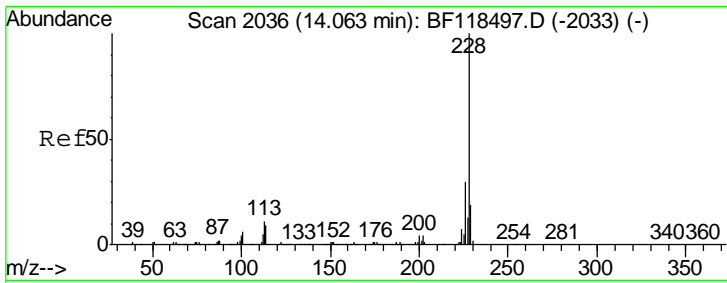
Tgt Ion	Resp	Lower	Upper
228	107243		
226	27.0	20.7	31.1
229	21.1	15.4	23.2



#82
 3,3'-Dichlorobenzidine
 Concen: 0.025 ng
 RT: 13.99 min Scan# 2024
 Delta R.T. 0.01 min
 Lab File: BF118509.D
 Acq: 8 Jan 2020 20:17

Tgt Ion	Resp	Lower	Upper
252	108		
254	0.0	52.1	78.1#
126	129.8	9.6	14.4#

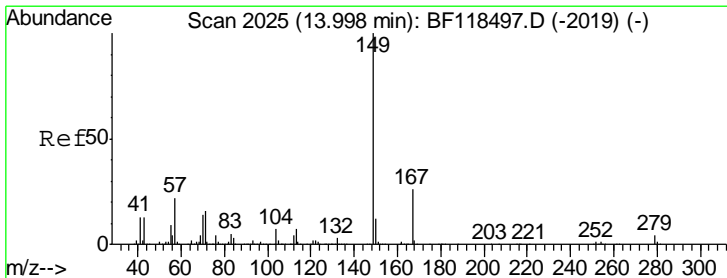
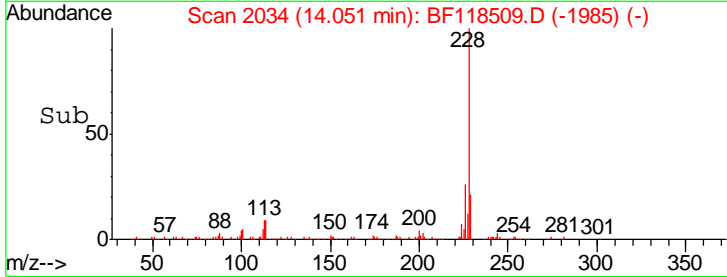
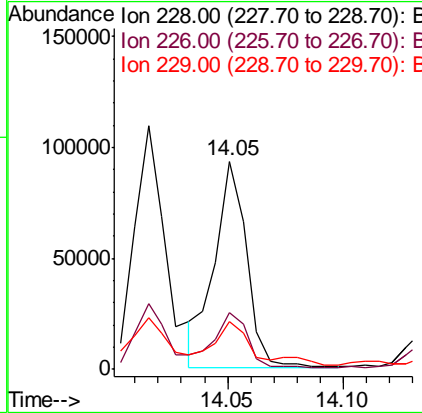
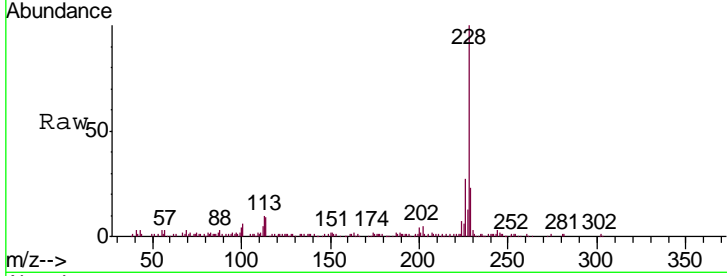




#83
 Chrysene
 Concen: 7.143 ng
 RT: 14.05 min Scan# 2034
 Delta R.T. -0.01 min
 Lab File: BF118509.D
 Acq: 8 Jan 2020 20:17

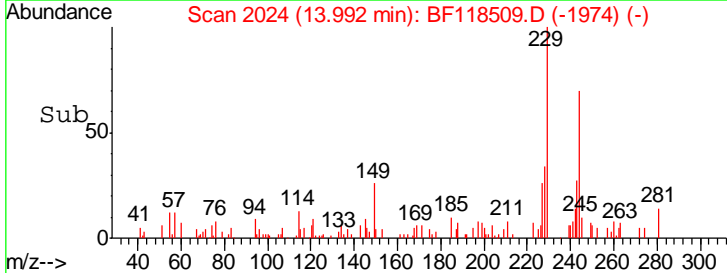
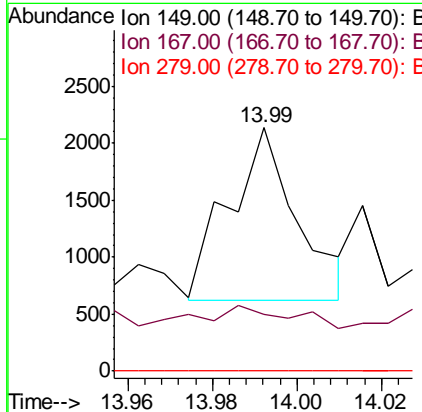
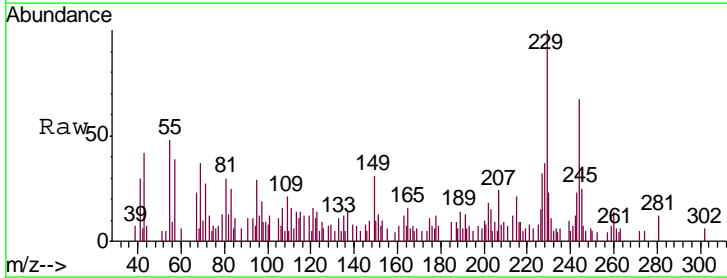
Instrument :
 BNA_F
 ClientSampled :
 TP-4

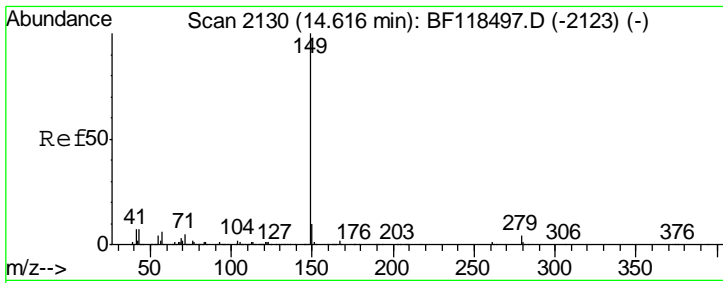
Tgt Ion	Resp	Lower	Upper
228	100		
226	27.0	23.6	35.4
229	22.7	15.6	23.4



#84
 Bis(2-ethylhexyl)phthalate
 Concen: 0.178 ng
 RT: 13.99 min Scan# 2024
 Delta R.T. -0.01 min
 Lab File: BF118509.D
 Acq: 8 Jan 2020 20:17

Tgt Ion	Resp	Lower	Upper
149	100		
167	23.2	20.6	30.8
279	0.0	3.1	4.7#

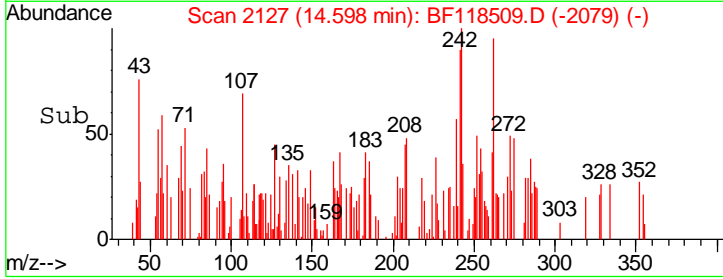
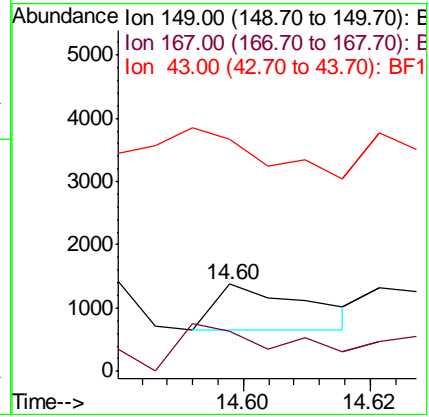
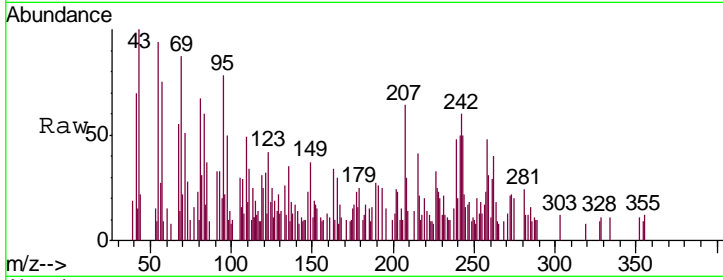




#85
 Di-n-octyl phthalate
 Concen: 0.054 ng
 RT: 14.60 min Scan# 2127
 Delta R.T. -0.02 min
 Lab File: BF118509.D
 Acq: 8 Jan 2020 20:17

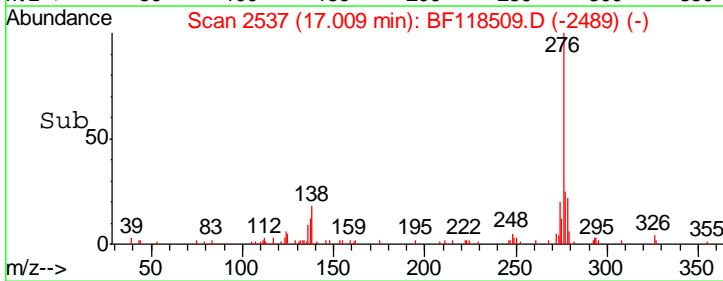
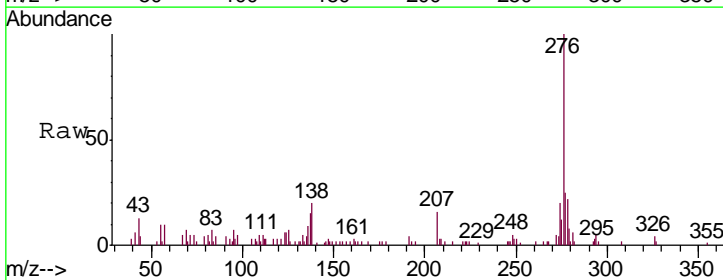
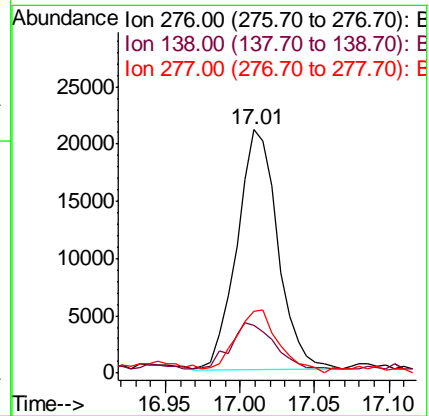
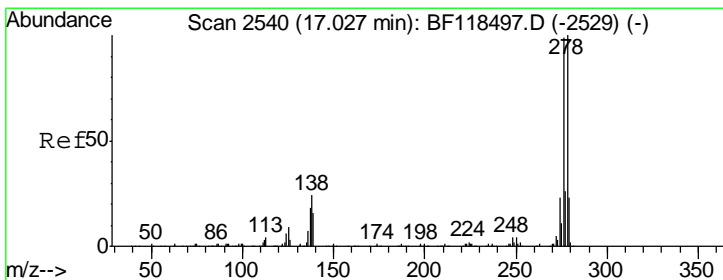
Instrument :
 BNA_F
 ClientSampled :
 TP-4

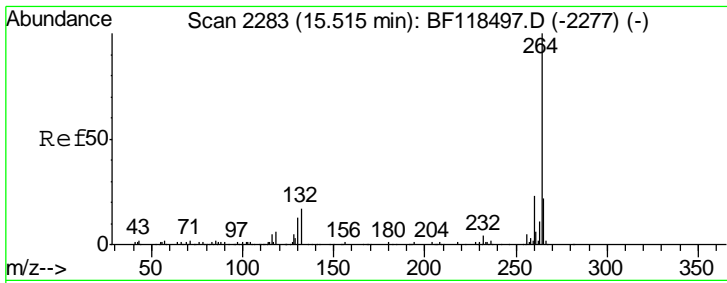
Tgt Ion	Resp	Lower	Upper
149	100		
167	122.4	1.2	1.8#
43	0.0	6.4	9.6#



#86
 Indeno(1,2,3-cd)pyrene
 Concen: 3.919 ng
 RT: 17.01 min Scan# 2537
 Delta R.T. -0.02 min
 Lab File: BF118509.D
 Acq: 8 Jan 2020 20:17

Tgt Ion	Resp	Lower	Upper
276	100		
138	22.4	19.0	28.4
277	27.9	20.5	30.7

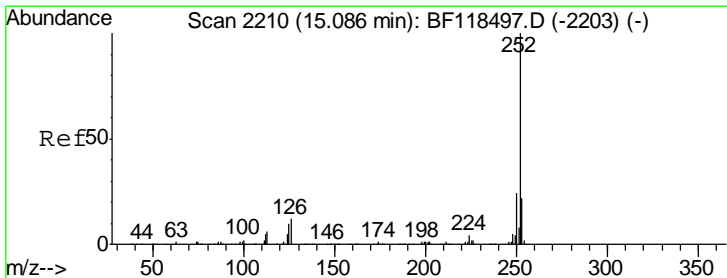
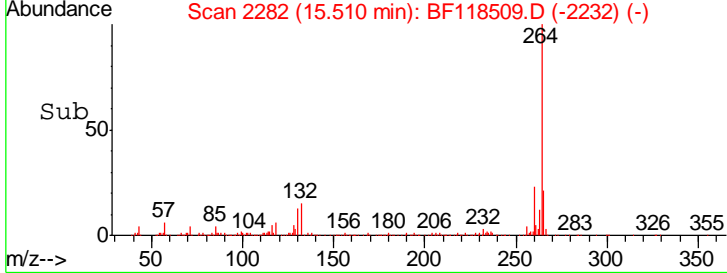
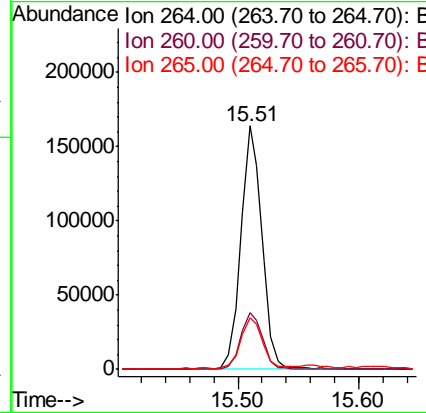
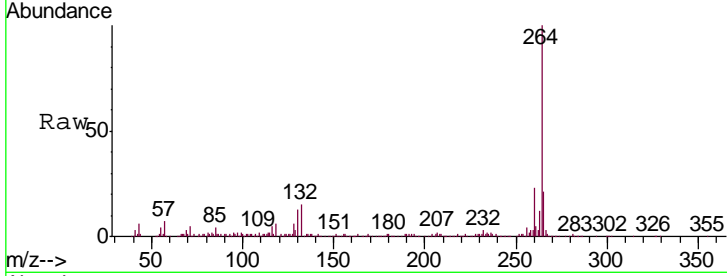




#87
 Perylene-d12
 Concen: 20.000 ng
 RT: 15.51 min Scan# 2282
 Delta R.T. -0.01 min
 Lab File: BF118509.D
 Acq: 8 Jan 2020 20:17

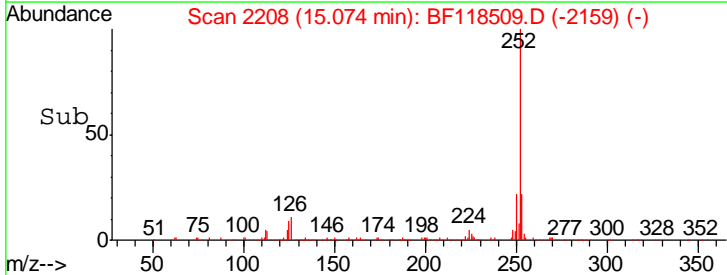
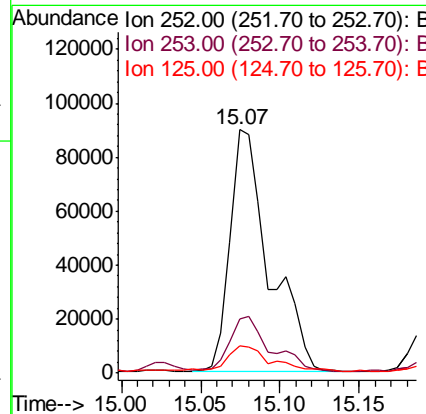
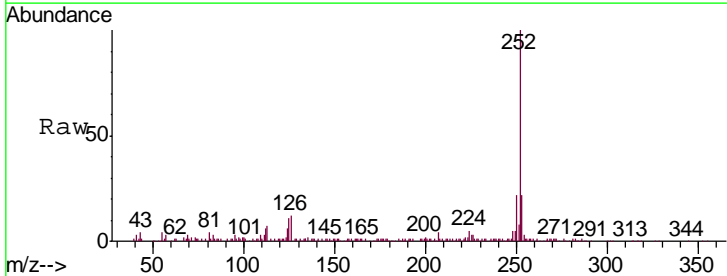
Instrument :
 BNA_F
 ClientSampled :
 TP-4

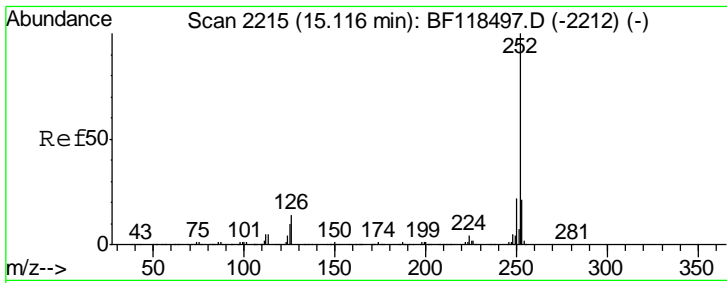
Tgt Ion	Resp	Lower	Upper
264	199951		
260	23.4	18.8	28.2
265	21.0	17.5	26.3



#88
 Benzo(b)fluoranthene
 Concen: 10.708 ng
 RT: 15.07 min Scan# 2208
 Delta R.T. -0.01 min
 Lab File: BF118509.D
 Acq: 8 Jan 2020 20:17

Tgt Ion	Resp	Lower	Upper
252	154798		
253	22.1	17.6	26.4
125	11.0	7.8	11.6

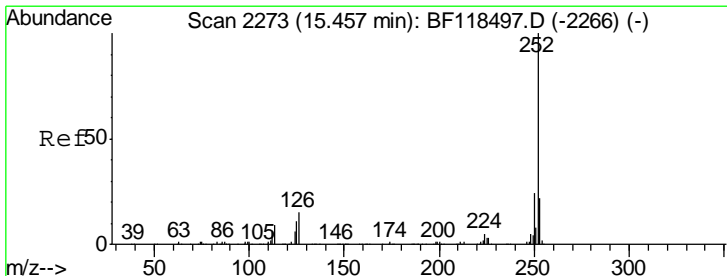
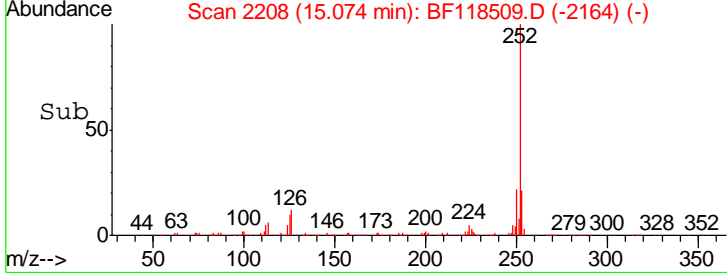
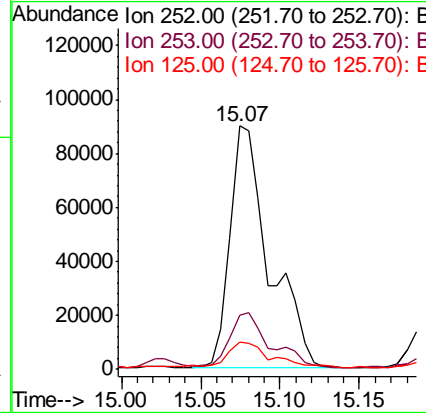
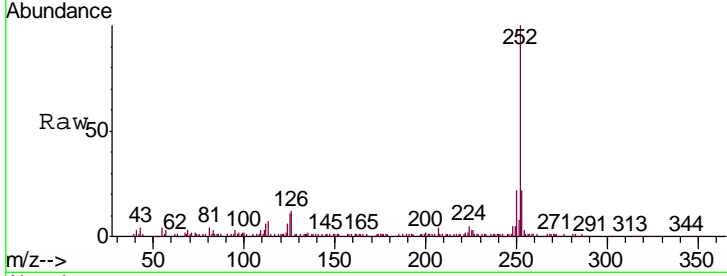




#89
 Benzo(k)fluoranthene
 Concen: 11.218 ng
 RT: 15.07 min Scan# 2208
 Delta R.T. -0.04 min
 Lab File: BF118509.D
 Acq: 8 Jan 2020 20:17

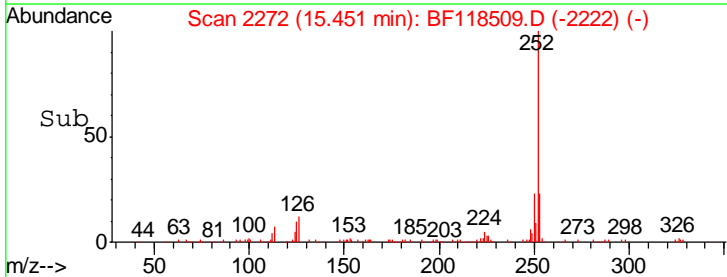
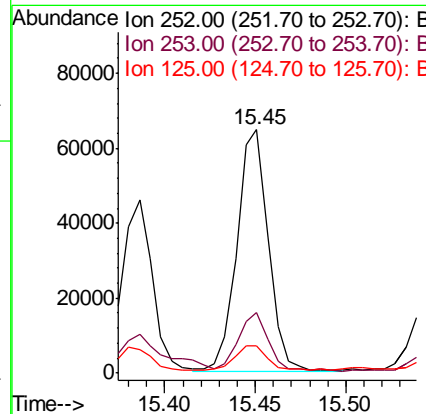
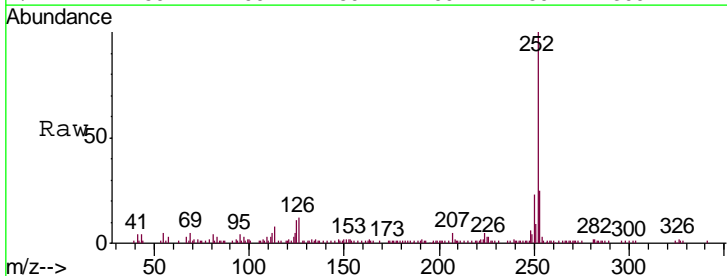
Instrument :
 BNA_F
 ClientSampled :
 TP-4

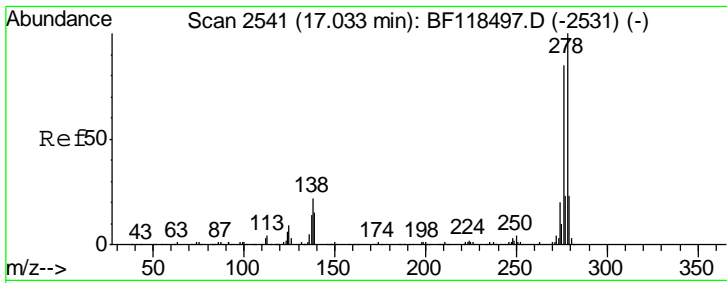
Tgt Ion	Resp	Lower	Upper
252	154798		
253	22.1	17.0	25.4
125	11.0	7.8	11.6



#90
 Benzo(a)pyrene
 Concen: 6.565 ng
 RT: 15.45 min Scan# 2272
 Delta R.T. -0.01 min
 Lab File: BF118509.D
 Acq: 8 Jan 2020 20:17

Tgt Ion	Resp	Lower	Upper
252	77773		
253	24.7	17.7	26.5
125	11.0	9.0	13.6

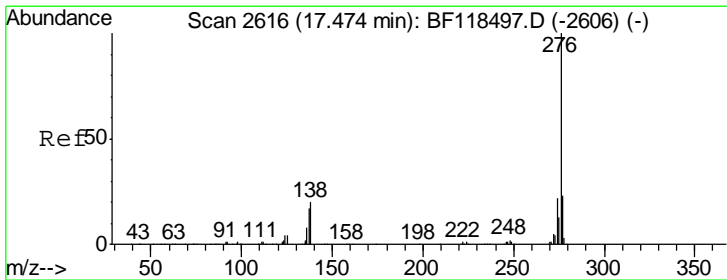
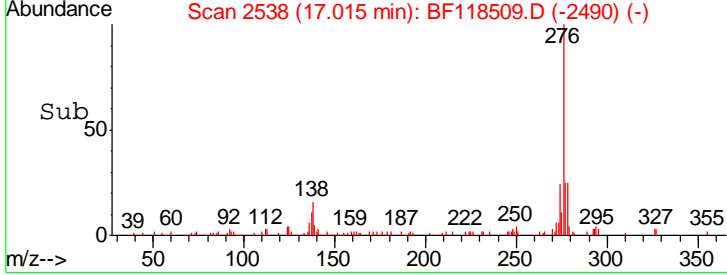
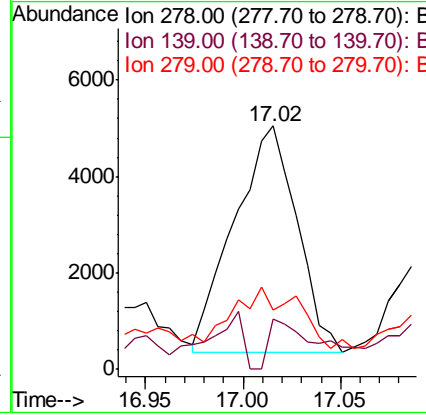
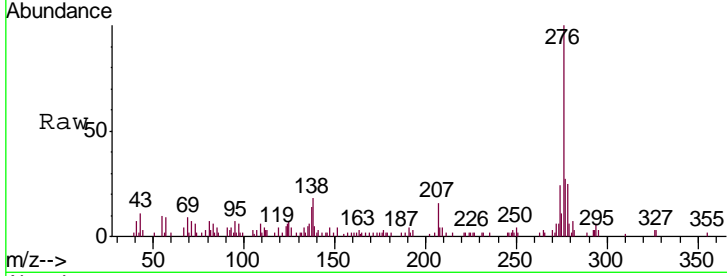




#91
 Dibenzo(a,h)anthracene
 Concen: 0.942 ng
 RT: 17.02 min Scan# 2538
 Delta R.T. -0.02 min
 Lab File: BF118509.D
 Acq: 8 Jan 2020 20:17

Instrument :
 BNA_F
 ClientSampled :
 TP-4

Tgt Ion	Resp	Lower	Upper
278	10469		
139	20.9	11.9	17.9#
279	24.4	18.6	27.8



#92
 Benzo(g,h,i)perylene
 Concen: 3.936 ng
 RT: 17.47 min Scan# 2615
 Delta R.T. -0.01 min
 Lab File: BF118509.D
 Acq: 8 Jan 2020 20:17

Tgt Ion	Resp	Lower	Upper
276	41429		
277	28.7	18.2	27.4#
138	24.2	16.3	24.5

