

Data Path : U:\HPCHEM1\BNA F\DATA\BF011018\
 Data File : BF101999.D
 Acq On : 11 Jan 2018 00:23
 Operator : SJ/JU
 Sample : J1076-16 50X
 Misc :
 ALS Vial : 20 Sample Multiplier: 1

Instrument :
 BNA_F
 ClientSampled :
 WC-53-01

Manual Integrations
 APPROVED

Sohil
 1/11/2018 10:53:23 AM

Quant Time: Jan 11 04:38:02 2018
 Quant Method : Z:\HPCHEM1\BNA F\METHODS\8270-BF010918.M
 Quant Title : ASP BNA STANDARDS FOR 5 POINT CALIBRATION
 QLast Update : Tue Jan 09 15:20:36 2018
 Response via : Initial Calibration

Internal Standards	R.T.	QIon	Response	Conc	Units	Dev(Min)
1) 1,4-Dichlorobenzene-d4	6.73	152	209393	20.00	ng	0.00
21) Naphthalene-d8	8.01	136	845562	20.00	ng	0.00
38) Acenaphthene-d10	9.76	164	346526	20.00	ng	0.00
63) Phenanthrene-d10	11.24	188	510723	20.00	ng	0.00
75) Chrysene-d12	13.87	240	322648	20.00	ng	0.00
86) Perylene-d12	15.29	264	379859	20.00	ng	0.00

System Monitoring Compounds

5) 2-Fluorophenol	5.32	112	6925	0.47	ng	0.00
7) Phenol-d6	6.35	99	8919	0.50	ng	0.00
23) Nitrobenzene-d5	7.28	82	4856	0.34	ng	-0.01
41) 2,4,6-Tribromophenol	10.54	330	916	0.30	ng	0.00
44) 2-Fluorobiphenyl	9.08	172	8874	0.40	ng	-0.01
78) Terphenyl-d14	12.82	244	5710	0.37	ng	-0.01

Target Compounds

						Qvalue
31) Naphthalene	8.03	128	1107824	26.220	ng	99
37) 2-Methylnaphthalene	8.72	142	115096	4.138	ng	99
48) Acenaphthylene	9.62	152	107585	2.854	ng	98
54) Dibenzofuran	9.96	168	153611	4.892	ng	99
57) Fluorene	10.30	166	178912	8.243	ng	98
70) Phenanthrene	11.27	178	623858	20.912	ng	97
71) Anthracene	11.32	178	190430	6.294	ng	99
74) Fluoranthene	12.45	202	401840	13.691	ng	99
77) Pyrene	12.68	202	328896	11.532	ng	98
80) Benzo(a)anthracene	13.86	228	144110m	7.000	ng	
82) Chrysene	13.90	228	107595	5.012	ng	98
85) Indeno(1,2,3-cd)pyrene	16.66	276	75504	4.833	ng	98
87) Benzo(b)fluoranthene	14.89	252	161764m	6.531	ng	
88) Benzo(k)fluoranthene	14.91	252	50464m	2.112	ng	
89) Benzo(a)pyrene	15.23	252	134849	6.050	ng	# 97
91) Benzo(a,h,i)perylene	17.07	276	69401	3.874	ng	98

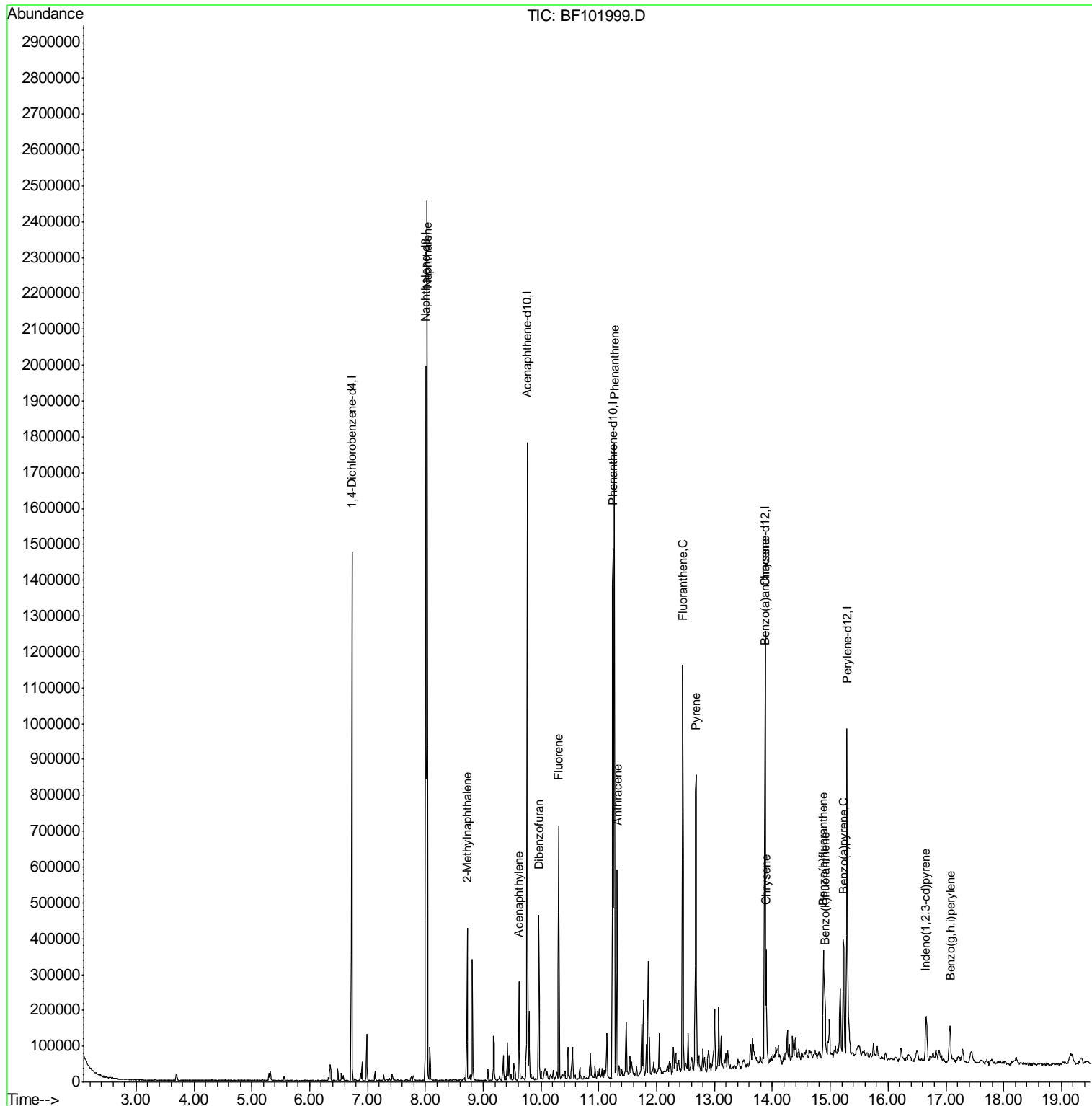
(#) = qualifier out of range (m) = manual integration (+) = signals summed

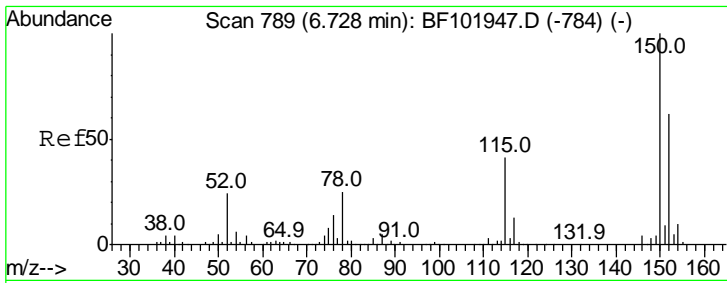
Data Path : U:\HPCHEM1\BNA F\DATA\BF011018\
 Data File : BF101999.D
 Acq On : 11 Jan 2018 00:23
 Operator : SJ/JU
 Sample : J1076-16 50X
 Misc :
 ALS Vial : 20 Sample Multiplier: 1

Instrument :
 BNA_F
 Client Sampled :
 WC-53-01

Manual Integrations
APPROVED
 Sohil
 1/11/2018 10:53:23 AM

Quant Time: Jan 11 04:38:02 2018
 Quant Method : Z:\HPCHEM1\BNA F\METHODS\8270-BF010918.M
 Quant Title : ASP BNA STANDARDS FOR 5 POINT CALIBRATION
 QLast Update : Tue Jan 09 15:20:36 2018
 Response via : Initial Calibration





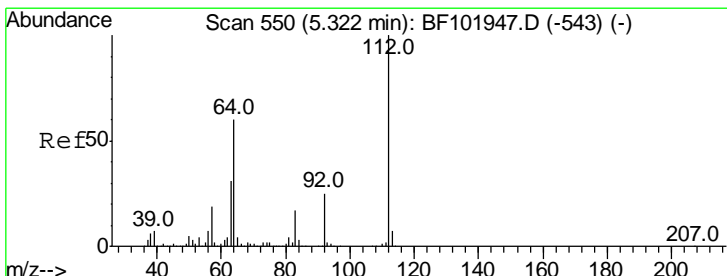
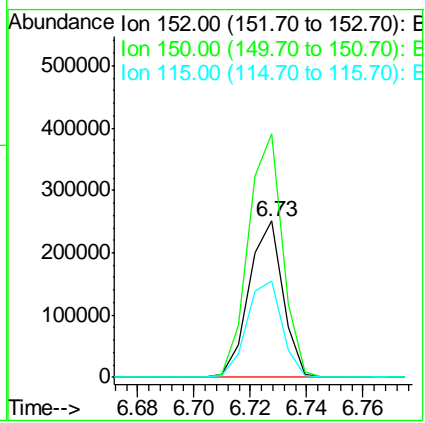
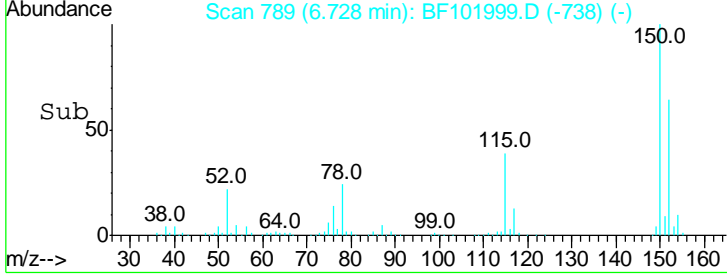
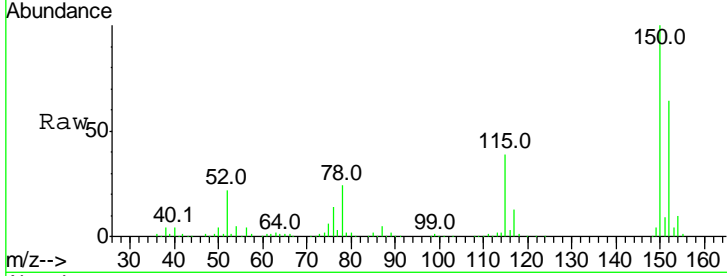
#1
 1,4-Dichlorobenzene-d4
 Concen: 20.000 ng
 RT: 6.73 min Scan# 789
 Delta R.T. -0.00 min
 Lab File: BF101999.D
 Acq: 11 Jan 2018 00:23

Instrument :
 BNA_F
 ClientSampled :
 WC-53-01

Tgt Ion:152 Resp: 209393

Ion	Ratio	Lower	Upper
152	100		
150	155.9	124.6	186.8
115	61.4	50.1	75.1

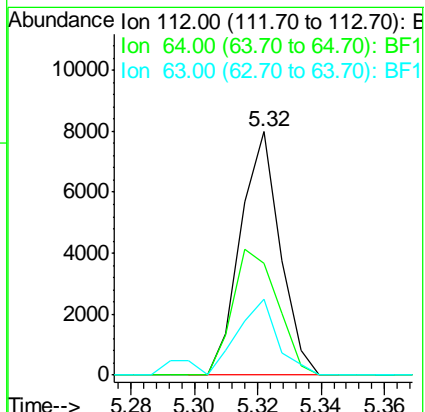
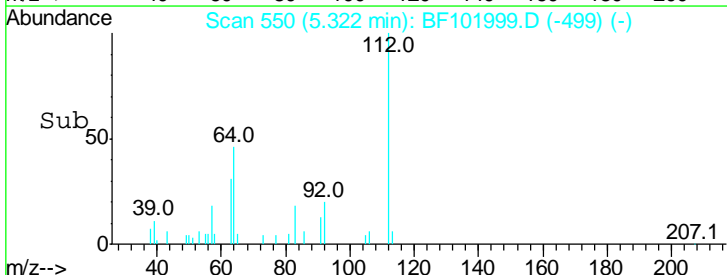
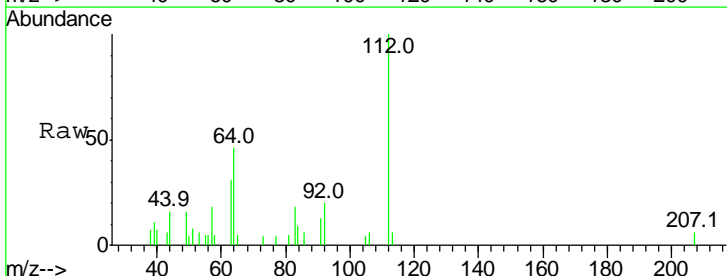
Manual Integrations
APPROVED
 Sohil
 1/11/2018 10:53:23 AM

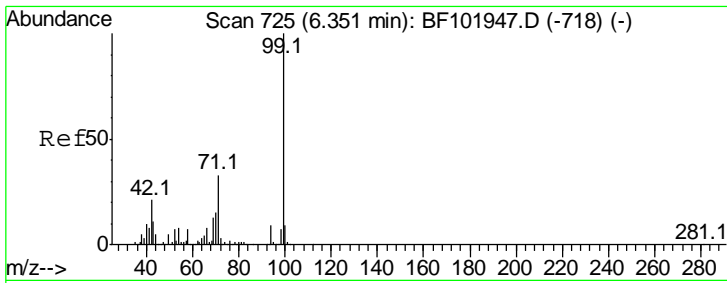


#5
 2-Fluorophenol
 Concen: 0.467 ng
 RT: 5.32 min Scan# 550
 Delta R.T. -0.00 min
 Lab File: BF101999.D
 Acq: 11 Jan 2018 00:23

Tgt Ion:112 Resp: 6925

Ion	Ratio	Lower	Upper
112	100		
64	45.8	47.9	71.9#
63	31.2	23.7	35.5





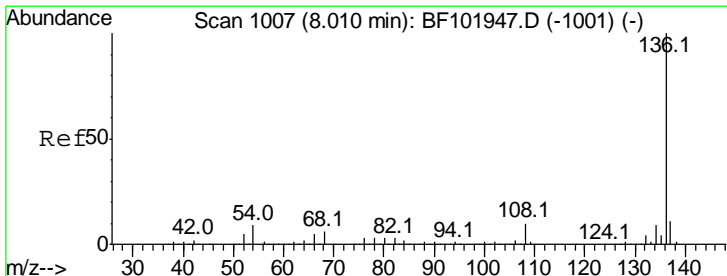
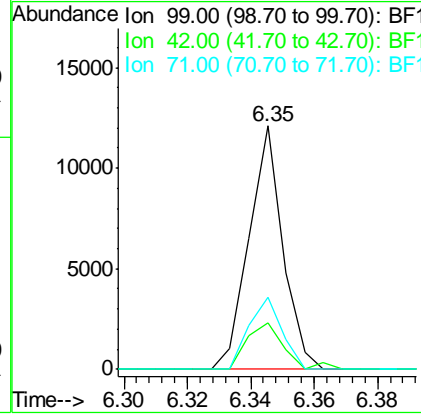
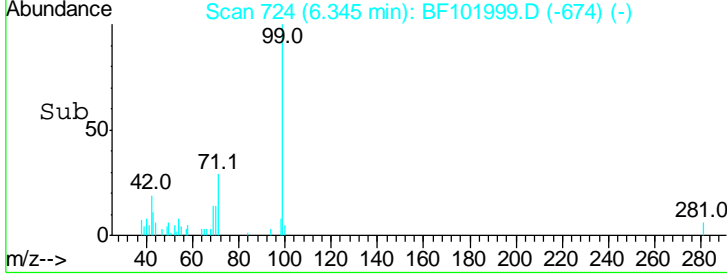
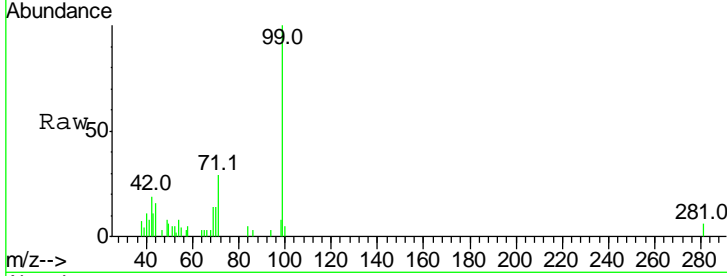
#7
 Phenol-d6
 Concen: 0.504 ng
 RT: 6.35 min Scan# 724
 Delta R.T. -0.01 min
 Lab File: BF101999.D
 Acq: 11 Jan 2018 00:23

Instrument :
 BNA_F
ClientSampled :
 WC-53-01

Tgt Ion	Resp	Lower	Upper
99	8919		
99	100		
42	19.3	14.5	21.7
71	29.4	25.4	38.0

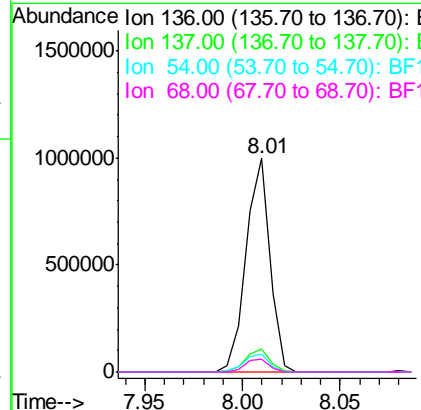
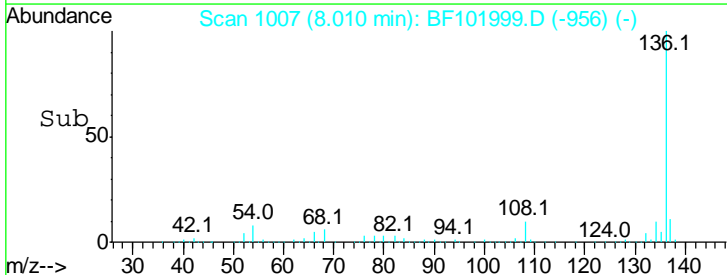
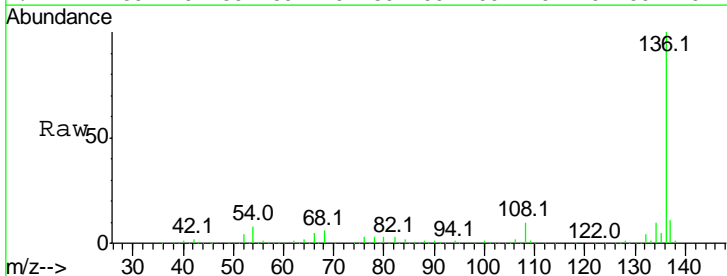
Manual Integrations
APPROVED

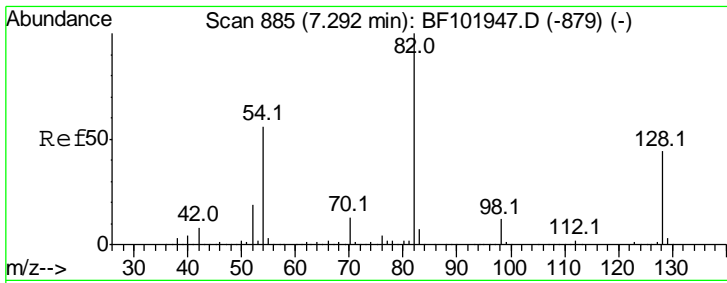
Sohil
 1/11/2018 10:53:23 AM



#21
 Naphthalene-d8
 Concen: 20.000 ng
 RT: 8.01 min Scan# 1007
 Delta R.T. -0.00 min
 Lab File: BF101999.D
 Acq: 11 Jan 2018 00:23

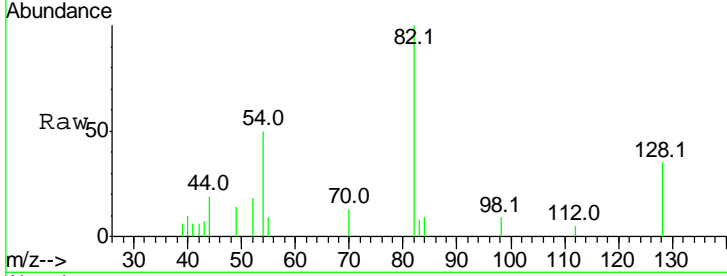
Tgt Ion	Resp	Lower	Upper
136	845562		
136	100		
137	10.9	8.9	13.3
54	8.3	6.6	9.8
68	5.9	5.0	7.4





#23
 Nitrobenzene-d5
 Concen: 0.337 ng
 RT: 7.28 min Scan# 883
 Delta R.T. -0.01 min
 Lab File: BF101999.D
 Acq: 11 Jan 2018 00:23

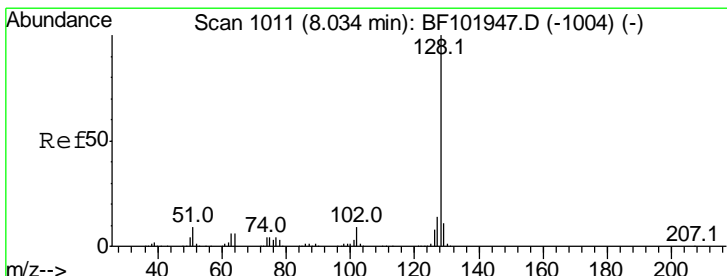
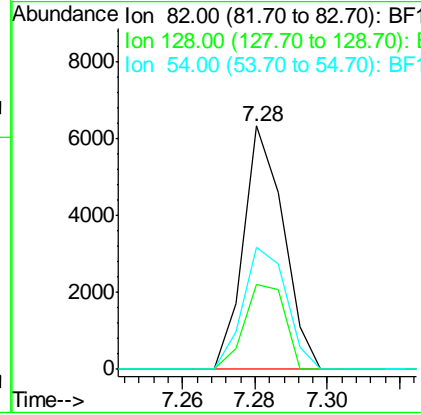
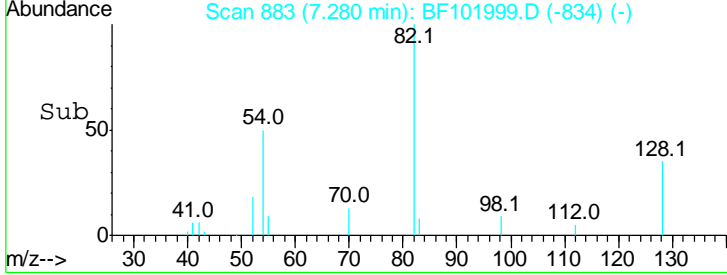
Instrument :
 BNA_F
ClientSampled :
 WC-53-01



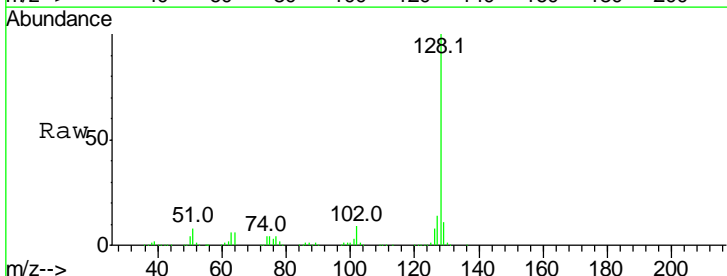
Tgt Ion: 82 Resp: 4856

Ion	Ratio	Lower	Upper
82	100		
128	34.6	36.1	54.1#
54	50.4	41.4	62.2

Manual Integrations
APPROVED
 Sohil
 1/11/2018 10:53:23 AM

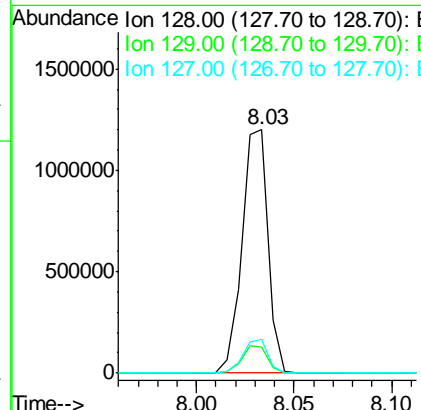
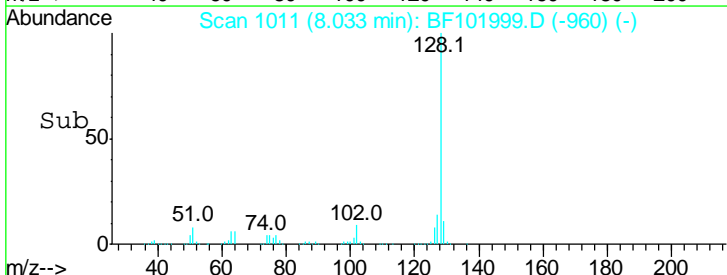


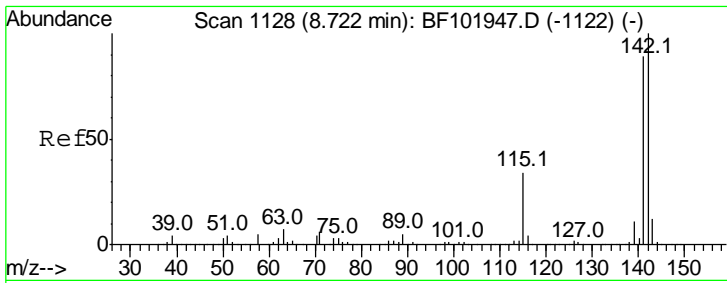
#31
 Naphthalene
 Concen: 26.220 ng
 RT: 8.03 min Scan# 1011
 Delta R.T. -0.00 min
 Lab File: BF101999.D
 Acq: 11 Jan 2018 00:23



Tgt Ion: 128 Resp: 1107824

Ion	Ratio	Lower	Upper
128	100		
129	10.8	8.8	13.2
127	13.9	10.9	16.3





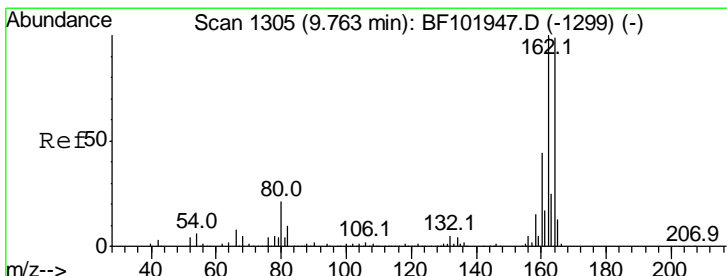
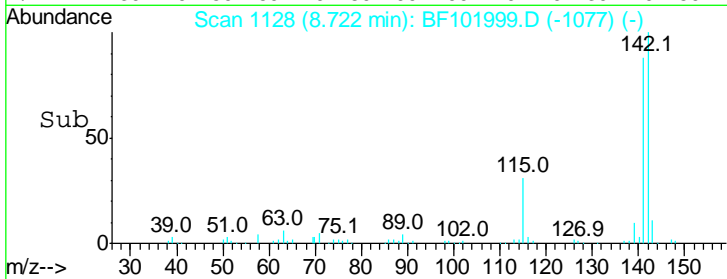
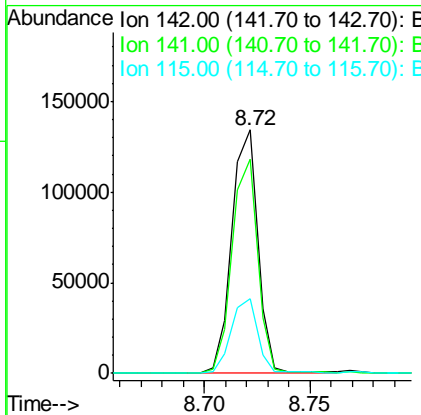
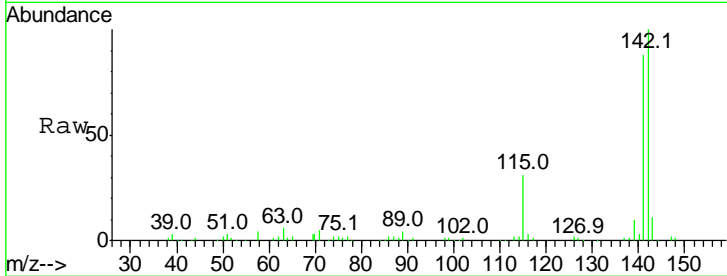
#37
 2-Methylnaphthalene
 Concen: 4.138 ng
 RT: 8.72 min Scan# 1128
 Delta R.T. -0.00 min
 Lab File: BF101999.D
 Acq: 11 Jan 2018 00:23

Instrument :
 BNA_F
ClientSampled :
 WC-53-01

Tgt Ion	Resp	Lower	Upper
142	100		
141	88.2	70.8	106.2
115	30.7	26.1	39.1

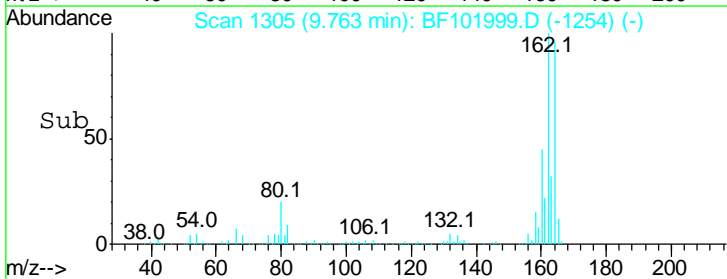
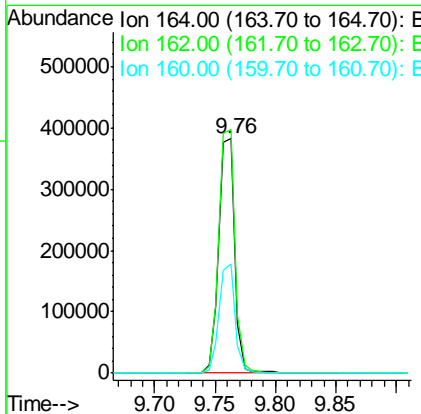
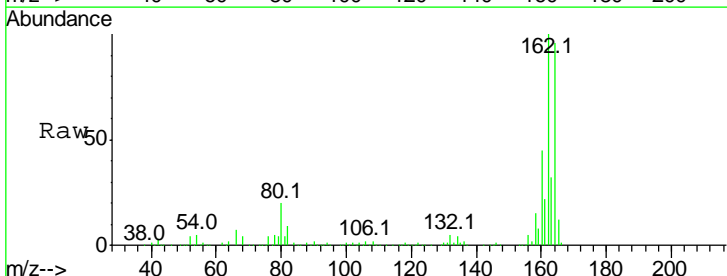
Manual Integrations
APPROVED

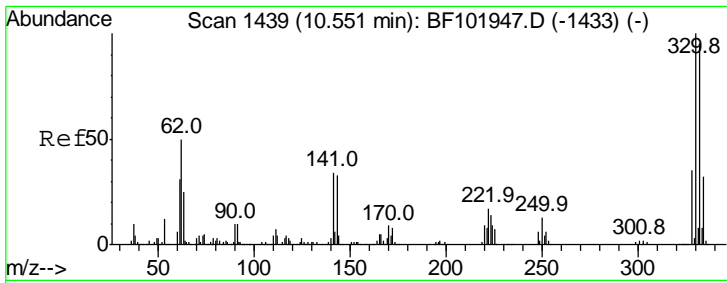
Sohil
 1/11/2018 10:53:23 AM



#38
 Acenaphthene-d10
 Concen: 20.000 ng
 RT: 9.76 min Scan# 1305
 Delta R.T. -0.00 min
 Lab File: BF101999.D
 Acq: 11 Jan 2018 00:23

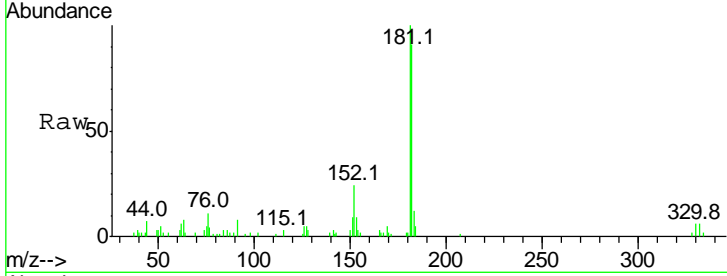
Tgt Ion	Resp	Lower	Upper
164	100		
162	103.8	86.1	129.1
160	46.7	38.3	57.5





#41
 2,4,6-Tribromophenol
 Concen: 0.303 ng
 RT: 10.54 min Scan# 1438
 Delta R.T. -0.01 min
 Lab File: BF101999.D
 Acq: 11 Jan 2018 00:23

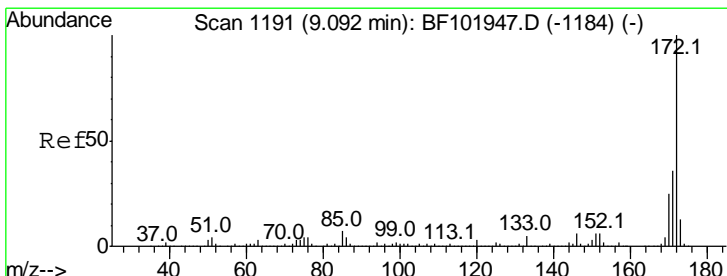
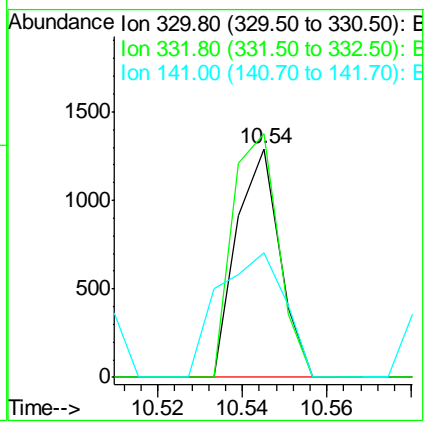
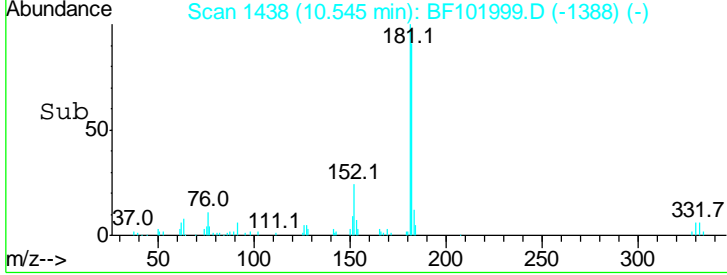
Instrument :
 BNA_F
 ClientSampled :
 WC-53-01



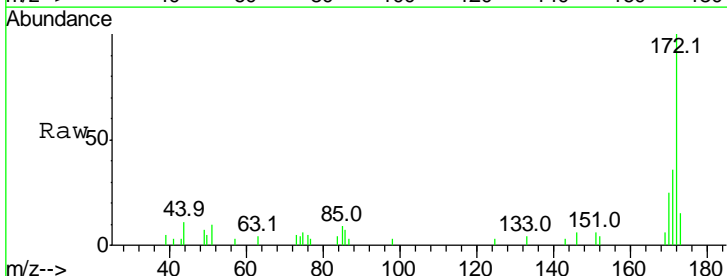
Tgt Ion: 330 Resp: 916

Ion	Ratio	Lower	Upper
330	100		
332	113.4	77.0	115.6
141	84.5	29.9	44.9

Manual Integrations
APPROVED
 Sohil
 1/11/2018 10:53:23 AM

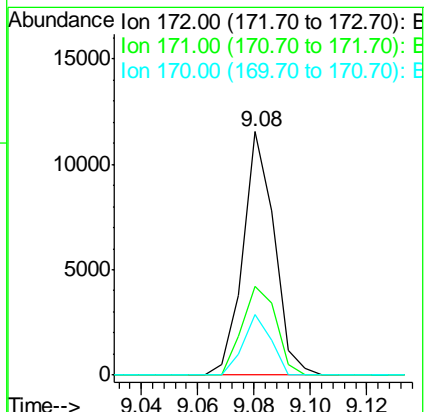
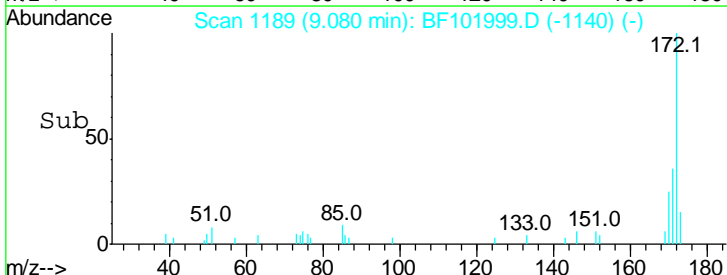


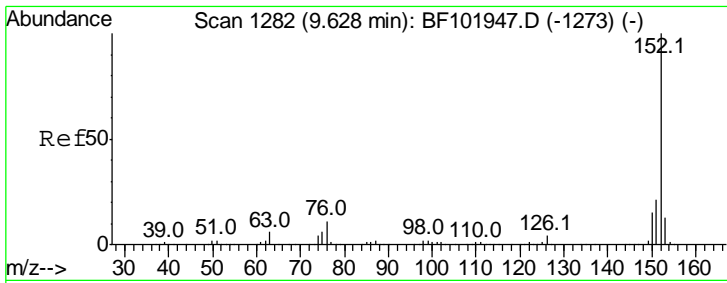
#44
 2-Fluorobiphenyl
 Concen: 0.400 ng
 RT: 9.08 min Scan# 1189
 Delta R.T. -0.01 min
 Lab File: BF101999.D
 Acq: 11 Jan 2018 00:23



Tgt Ion: 172 Resp: 8874

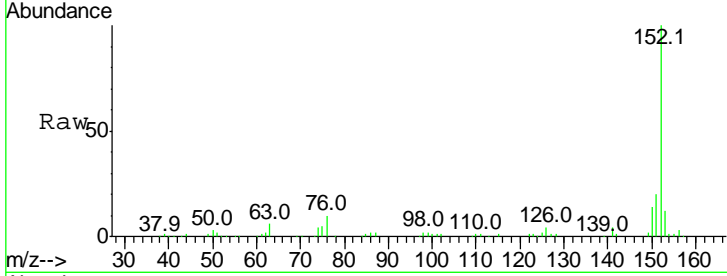
Ion	Ratio	Lower	Upper
172	100		
171	36.5	29.7	44.5
170	25.0	19.6	29.4





#48
 Acenaphthylene
 Concen: 2.854 ng
 RT: 9.62 min Scan# 1281
 Delta R.T. -0.01 min
 Lab File: BF101999.D
 Acq: 11 Jan 2018 00:23

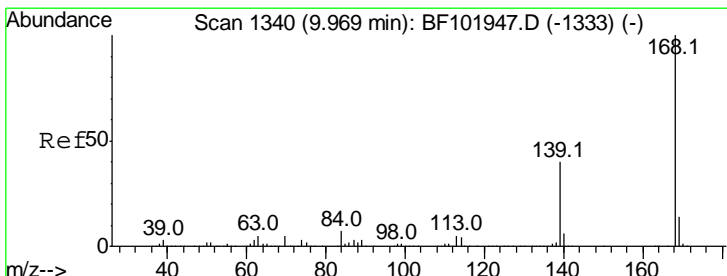
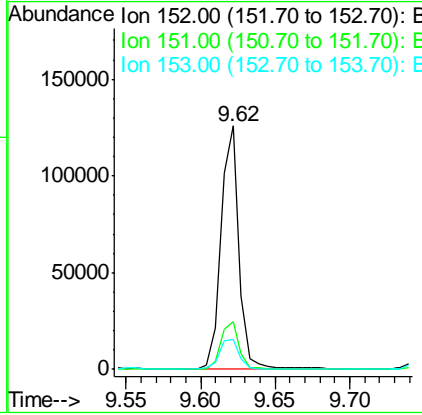
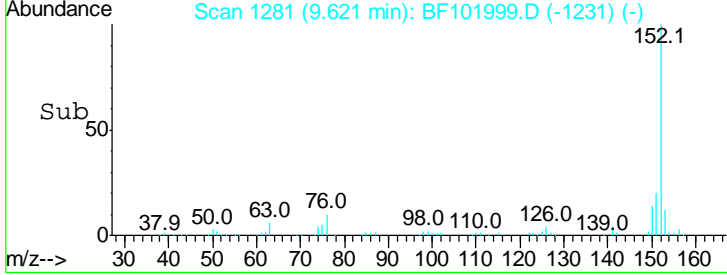
Instrument :
 BNA_F
ClientSampled :
 WC-53-01



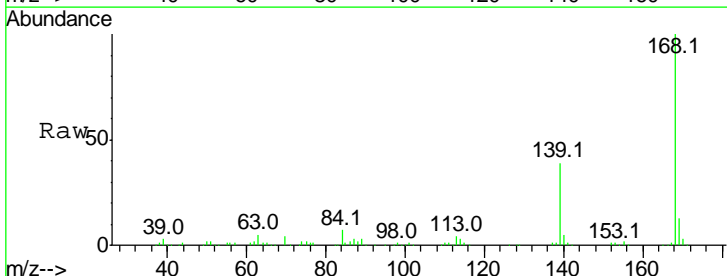
Tgt Ion: 152 Resp: 107585

Ion	Ratio	Lower	Upper
152	100		
151	19.8	16.3	24.5
153	12.3	10.7	16.1

Manual Integrations
APPROVED
 Sohil
 1/11/2018 10:53:23 AM

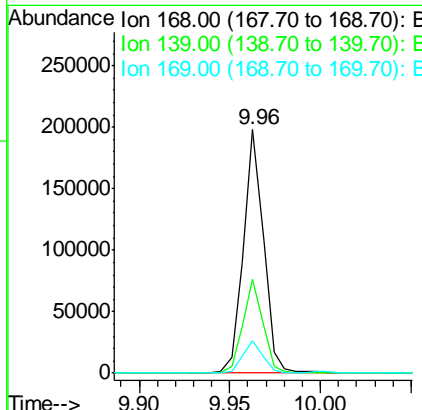
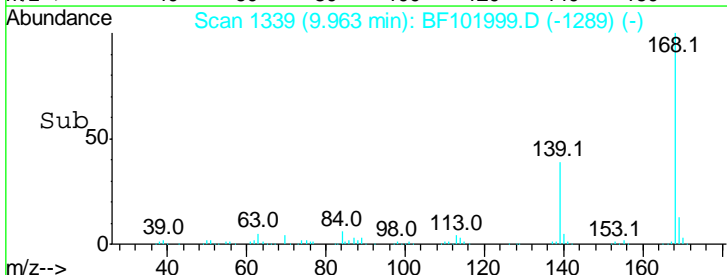


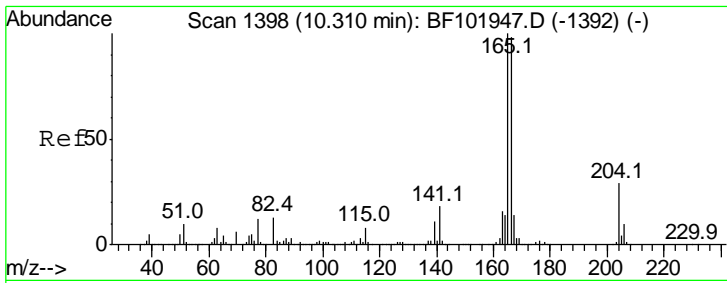
#54
 Dibenzofuran
 Concen: 4.892 ng
 RT: 9.96 min Scan# 1339
 Delta R.T. -0.01 min
 Lab File: BF101999.D
 Acq: 11 Jan 2018 00:23



Tgt Ion: 168 Resp: 153611

Ion	Ratio	Lower	Upper
168	100		
139	38.5	30.1	45.1
169	13.4	10.9	16.3





#57
 Fluorene
 Concen: 8.243 ng
 RT: 10.30 min Scan# 1397
 Delta R.T. -0.01 min
 Lab File: BF101999.D
 Acq: 11 Jan 2018 00:23

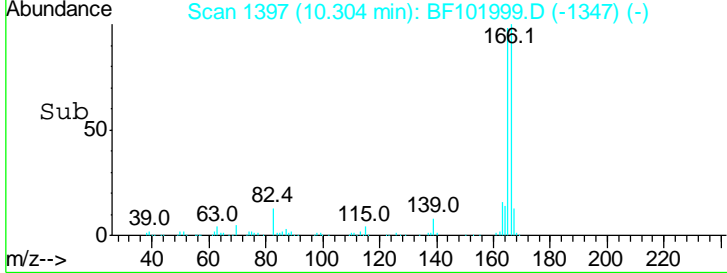
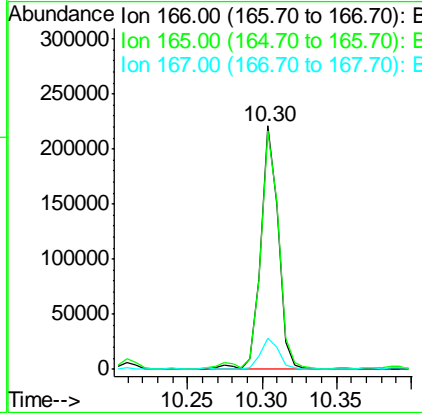
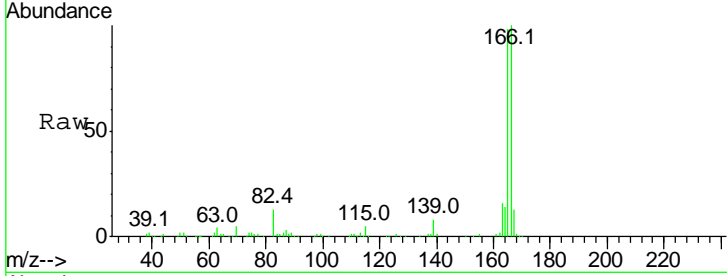
Instrument :
 BNA_F
ClientSampled :
 WC-53-01

Tgt Ion: 166 Resp: 178912

Ion	Ratio	Lower	Upper
166	100		
165	97.9	79.8	119.8
167	12.9	10.6	16.0

Manual Integrations
APPROVED

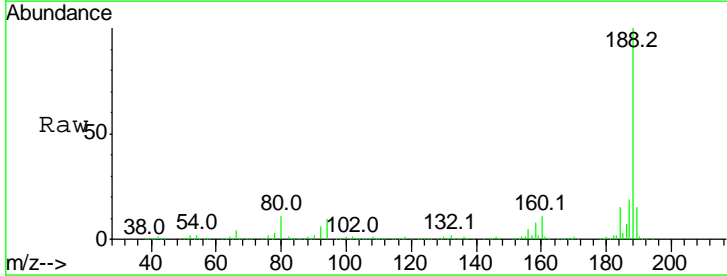
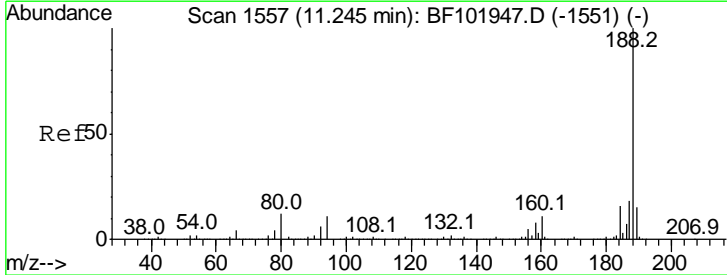
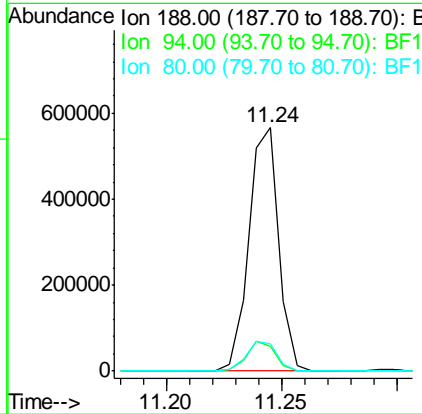
Sohil
 1/11/2018 10:53:23 AM

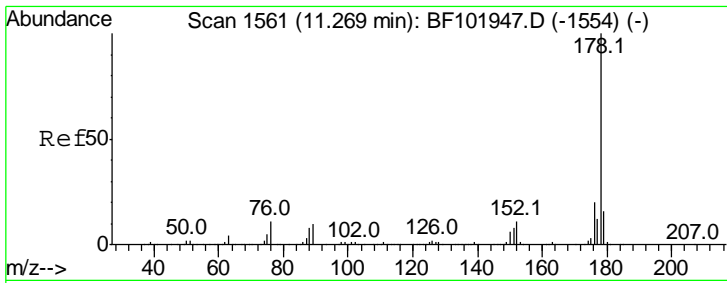


#63
 Phenanthrene-d10
 Concen: 20.000 ng
 RT: 11.24 min Scan# 1557
 Delta R.T. -0.00 min
 Lab File: BF101999.D
 Acq: 11 Jan 2018 00:23

Tgt Ion: 188 Resp: 510723

Ion	Ratio	Lower	Upper
188	100		
94	10.4	8.5	12.7
80	11.0	9.2	13.8





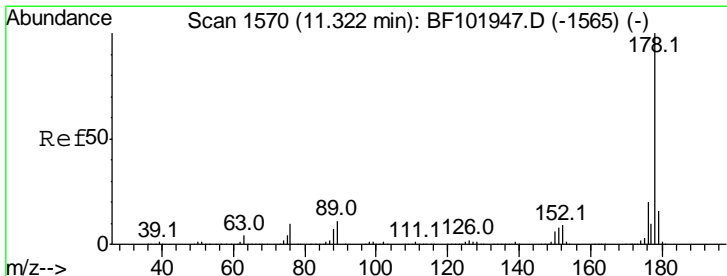
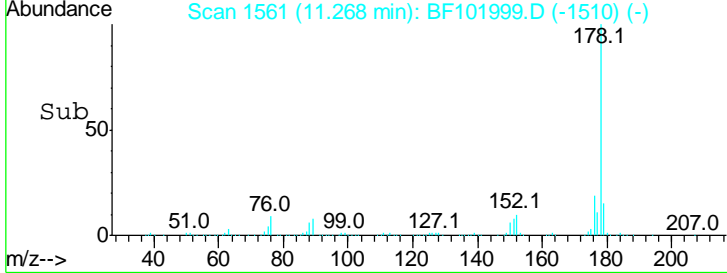
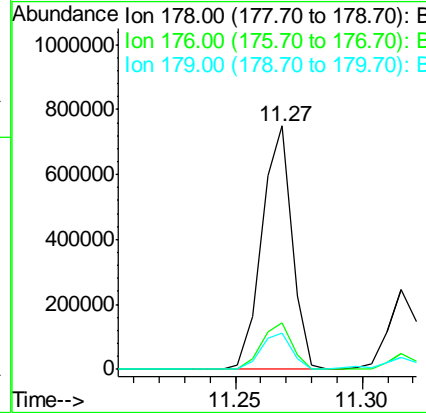
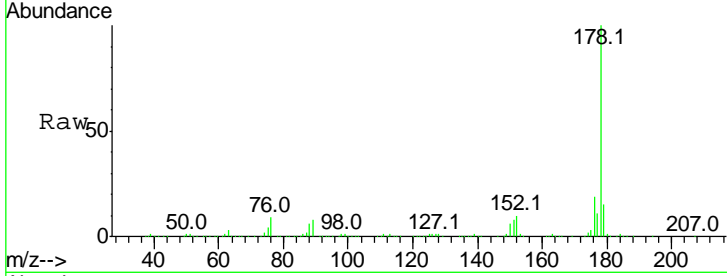
#70
 Phenanthrene
 Concen: 20.912 ng
 RT: 11.27 min Scan# 1561
 Delta R.T. -0.00 min
 Lab File: BF101999.D
 Acq: 11 Jan 2018 00:23

Instrument :
 BNA_F
ClientSampled :
 WC-53-01

Tgt Ion	Resp	Lower	Upper
178	100		
176	18.9	15.8	23.8
179	14.8	13.0	19.6

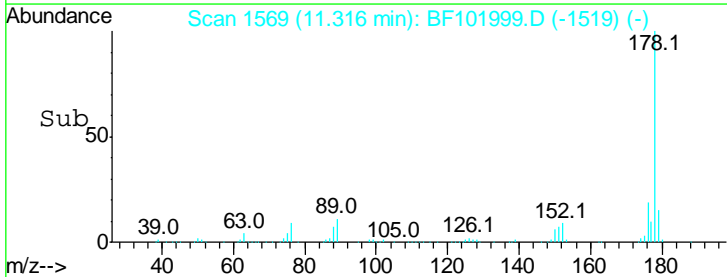
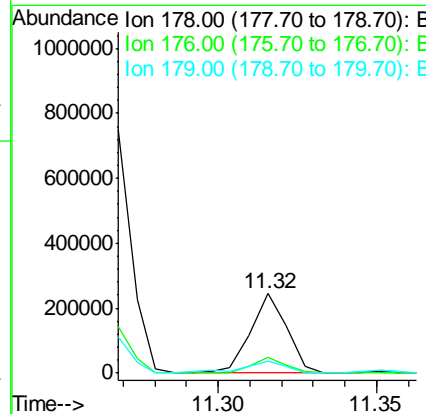
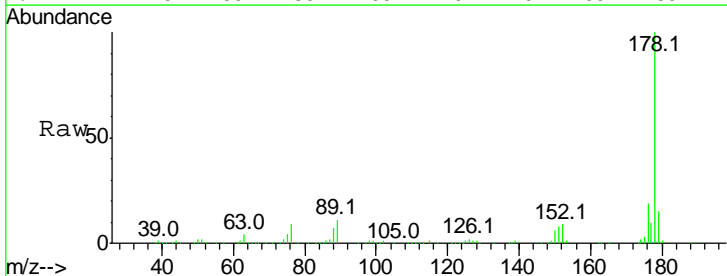
Manual Integrations
APPROVED

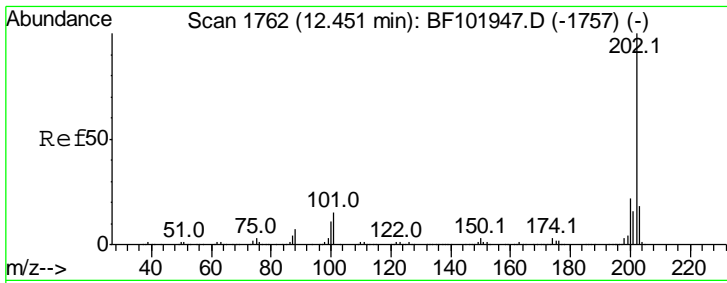
Sohil
 1/11/2018 10:53:23 AM



#71
 Anthracene
 Concen: 6.294 ng
 RT: 11.32 min Scan# 1569
 Delta R.T. -0.01 min
 Lab File: BF101999.D
 Acq: 11 Jan 2018 00:23

Tgt Ion	Resp	Lower	Upper
178	100		
176	19.3	15.4	23.2
179	15.3	12.6	19.0





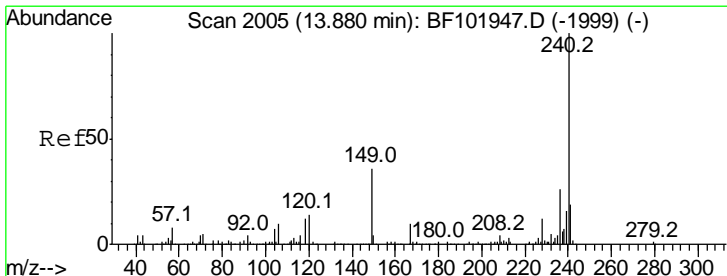
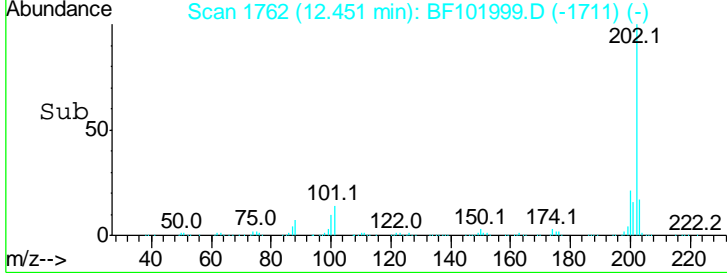
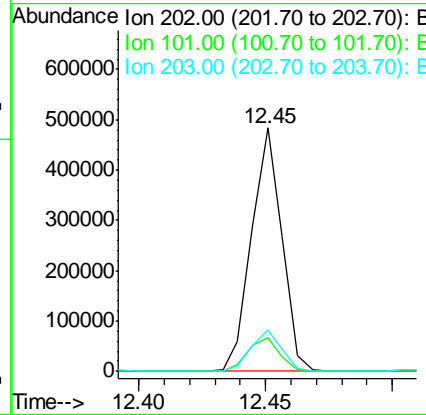
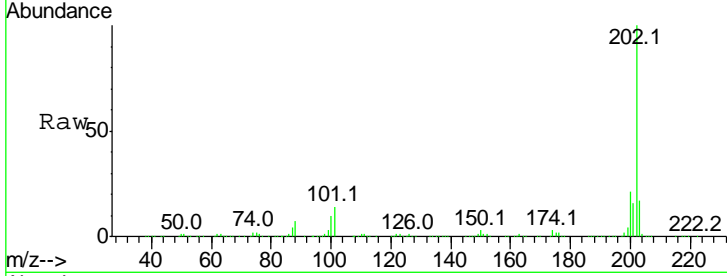
#74
 Fluoranthene
 Concen: 13.691 ng
 RT: 12.45 min Scan# 1762
 Delta R.T. -0.00 min
 Lab File: BF101999.D
 Acq: 11 Jan 2018 00:23

Instrument :
 BNA_F
 ClientSampled :
 WC-53-01

Tgt Ion	Ratio	Lower	Upper
202	100		
101	14.1	0.0	34.1
203	17.1	0.0	38.1

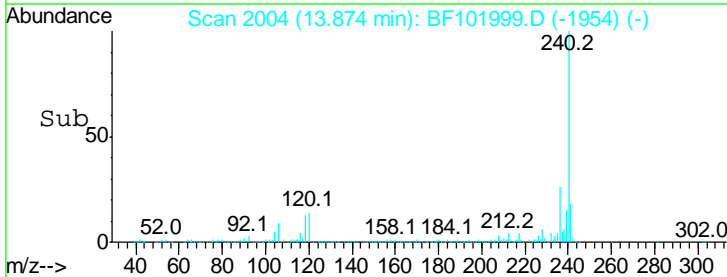
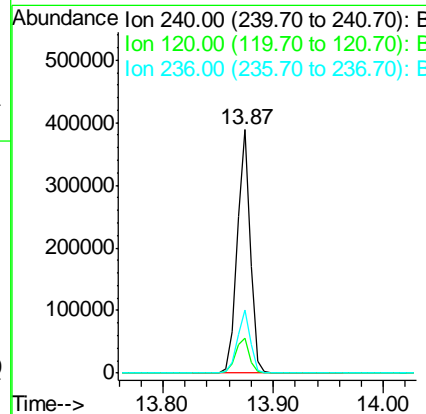
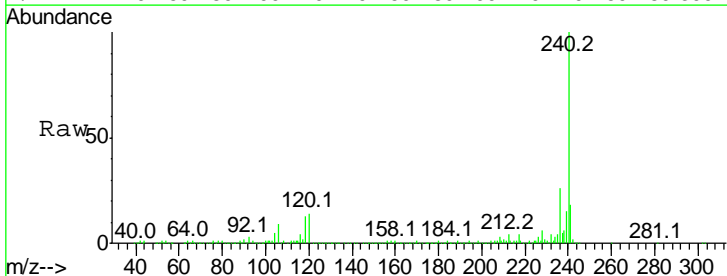
Manual Integrations
 APPROVED

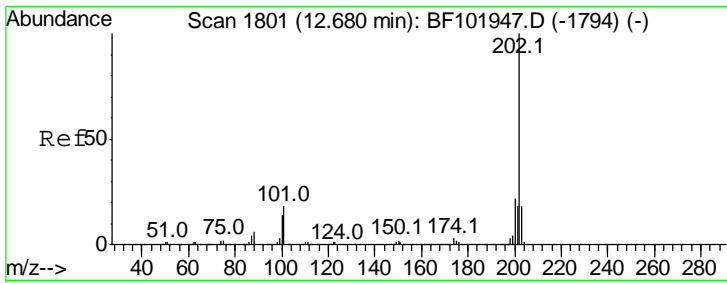
Sohil
 1/11/2018 10:53:23 AM



#75
 Chrysene-d12
 Concen: 20.000 ng
 RT: 13.87 min Scan# 2004
 Delta R.T. -0.01 min
 Lab File: BF101999.D
 Acq: 11 Jan 2018 00:23

Tgt Ion	Ratio	Lower	Upper
240	100		
120	14.2	9.5	14.3
236	26.2	20.7	31.1





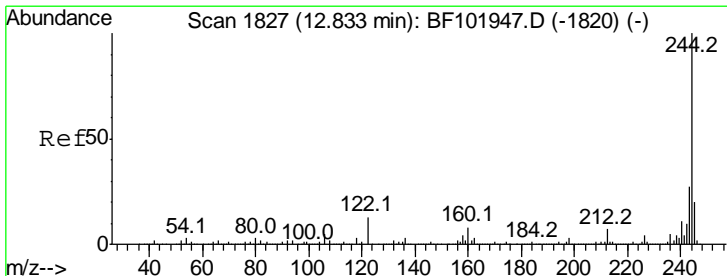
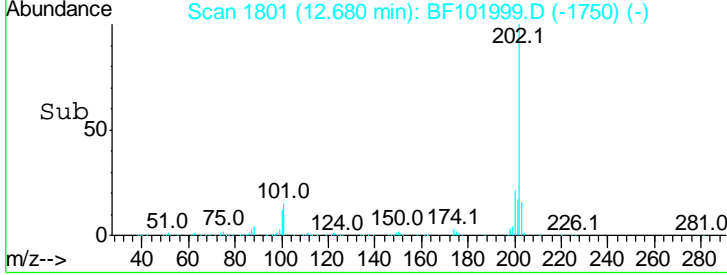
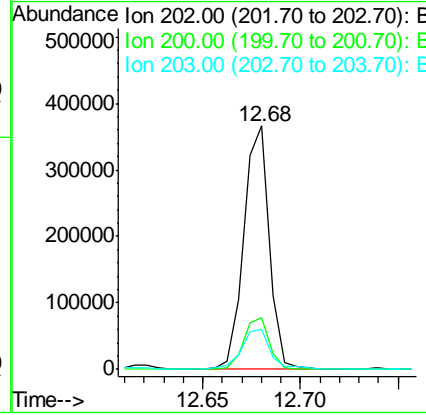
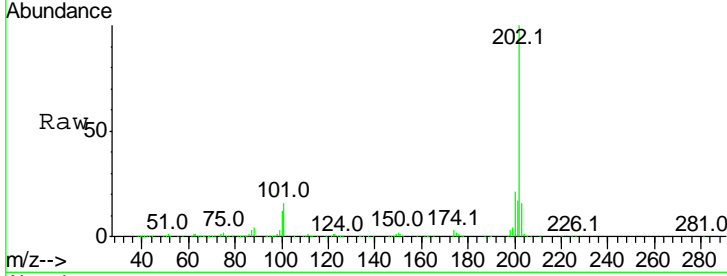
#77
 Pyrene
 Concen: 11.532 ng
 RT: 12.68 min Scan# 1801
 Delta R.T. -0.00 min
 Lab File: BF101999.D
 Acq: 11 Jan 2018 00:23

Instrument :
 BNA_F
ClientSampled :
 WC-53-01

Tgt Ion	Ratio	Lower	Upper
202	100		
200	21.3	17.4	26.2
203	16.5	14.3	21.5

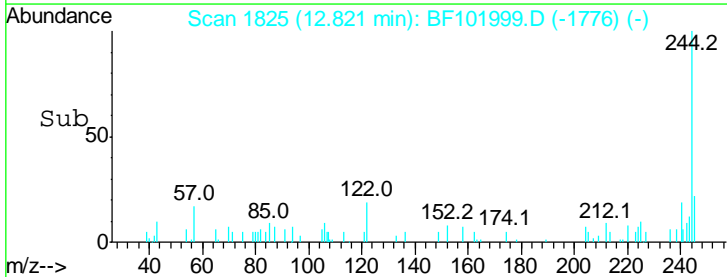
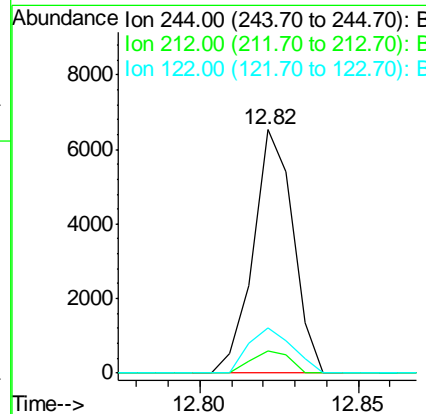
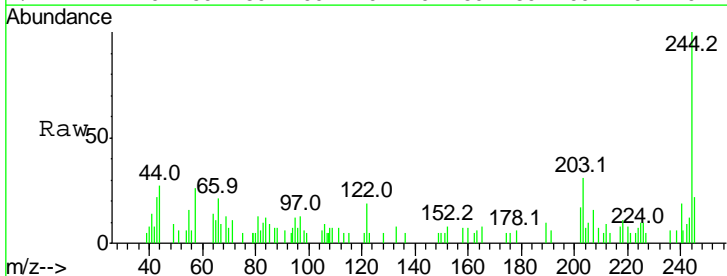
Manual Integrations
APPROVED

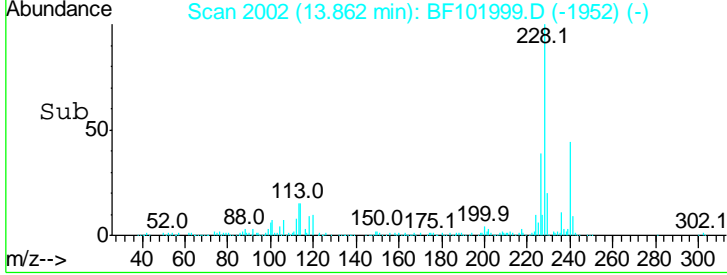
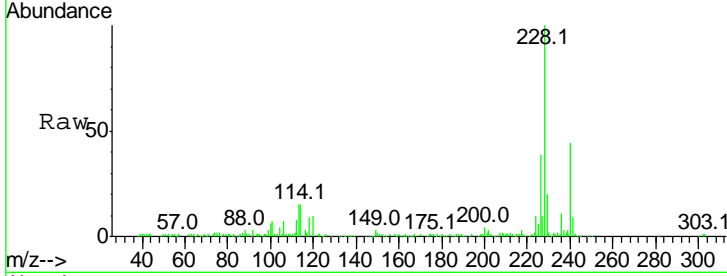
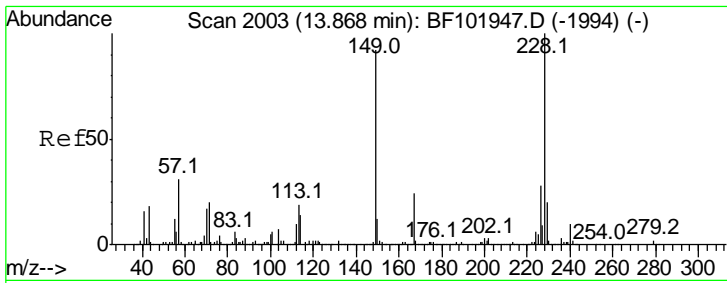
Sohil
 1/11/2018 10:53:23 AM



#78
 Terphenyl-d14
 Concen: 0.367 ng
 RT: 12.82 min Scan# 1825
 Delta R.T. -0.01 min
 Lab File: BF101999.D
 Acq: 11 Jan 2018 00:23

Tgt Ion	Ratio	Lower	Upper
244	100		
212	9.3	5.4	8.0#
122	18.5	11.0	16.4#



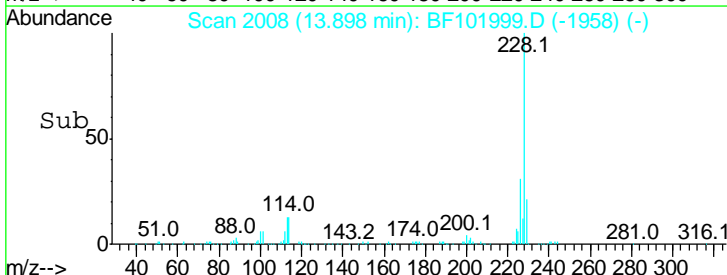
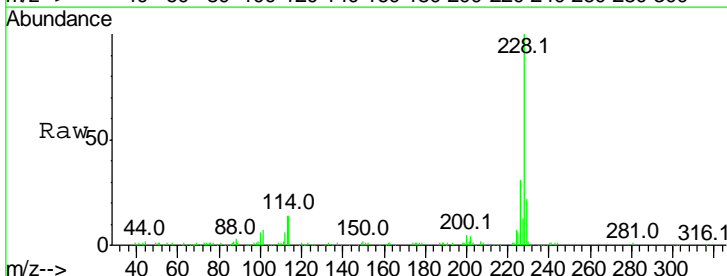
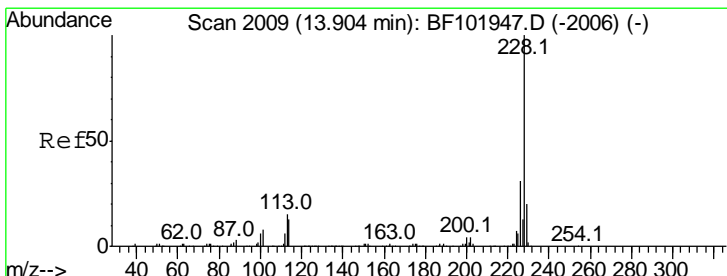
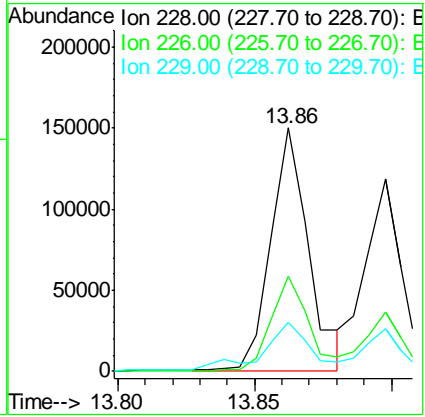


#80
 Benzo(a)anthracene
 Concen: 7.000 ng m
 RT: 13.86 min Scan# 2002
 Delta R.T. -0.01 min
 Lab File: BF101999.D
 Acq: 11 Jan 2018 00:23

Tgt Ion	Resp	Lower	Upper
228	144110		
226	39.3	22.6	33.8#
229	20.1	15.8	23.6

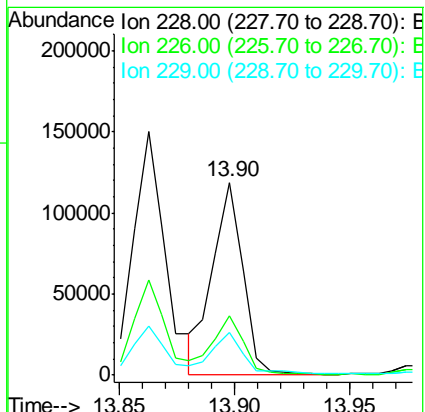
Instrument : BNA_F
 Client Sampled : WC-53-01

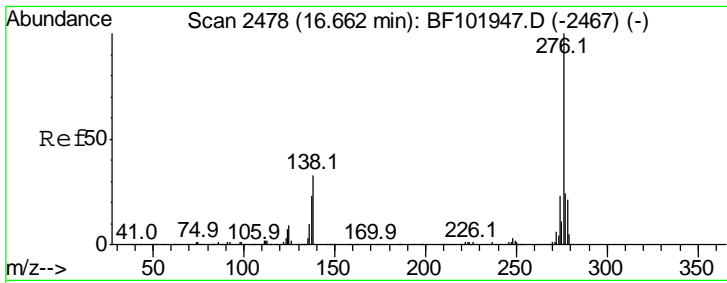
Manual Integrations APPROVED
 Sohil
 1/11/2018 10:53:23 AM



#82
 Chrysene
 Concen: 5.012 ng
 RT: 13.90 min Scan# 2008
 Delta R.T. -0.01 min
 Lab File: BF101999.D
 Acq: 11 Jan 2018 00:23

Tgt Ion	Resp	Lower	Upper
228	107595		
226	31.1	25.0	37.6
229	22.2	16.2	24.4





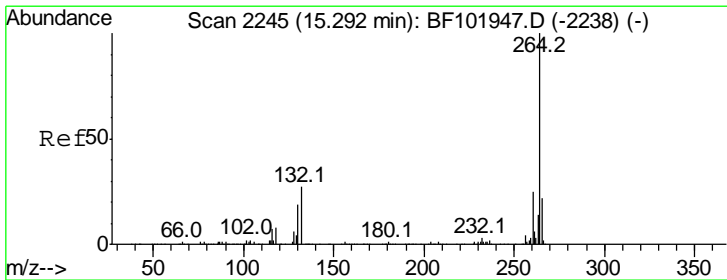
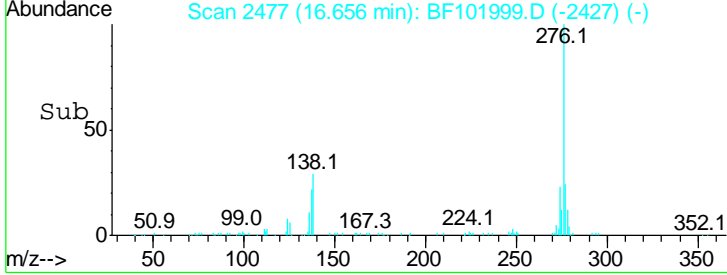
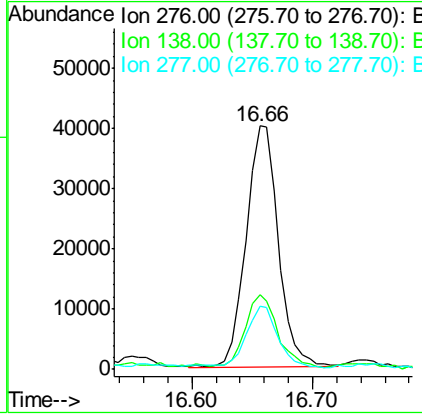
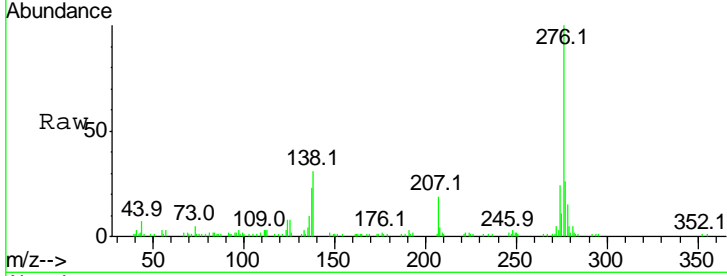
#85
 Indeno(1,2,3-cd)pyrene
 Concen: 4.833 ng
 RT: 16.66 min Scan# 2477
 Delta R.T. -0.01 min
 Lab File: BF101999.D
 Acq: 11 Jan 2018 00:23

Instrument :
 BNA_F
ClientSampled :
 WC-53-01

Tgt Ion	Resp	Lower	Upper
276	100		
138	29.8	25.0	37.6
277	24.9	20.1	30.1

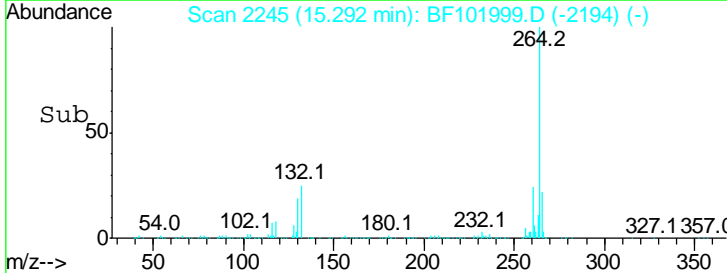
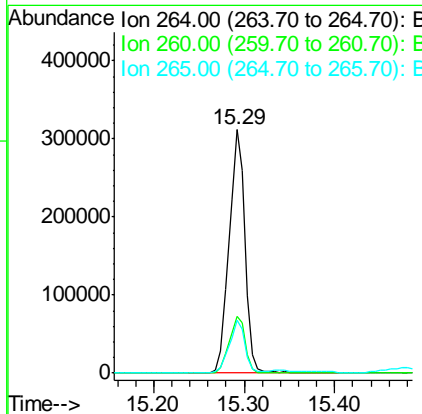
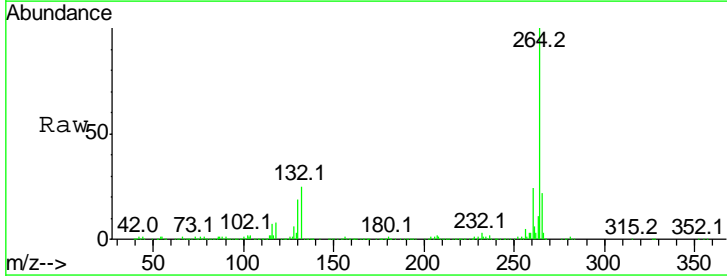
Manual Integrations
APPROVED

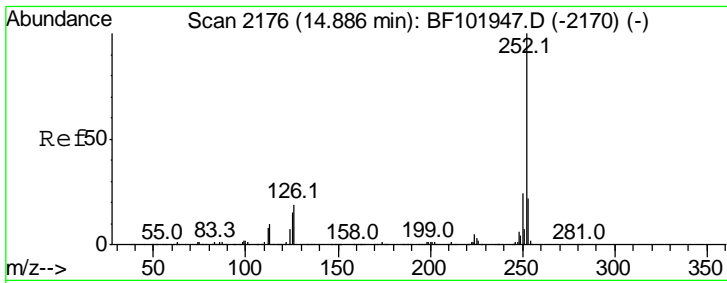
Sohil
 1/11/2018 10:53:23 AM



#86
 Perylene-d12
 Concen: 20.000 ng
 RT: 15.29 min Scan# 2245
 Delta R.T. -0.00 min
 Lab File: BF101999.D
 Acq: 11 Jan 2018 00:23

Tgt Ion	Resp	Lower	Upper
264	100		
260	23.5	19.2	28.8
265	21.9	17.5	26.3





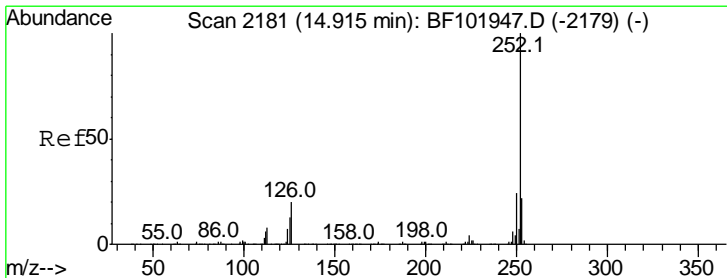
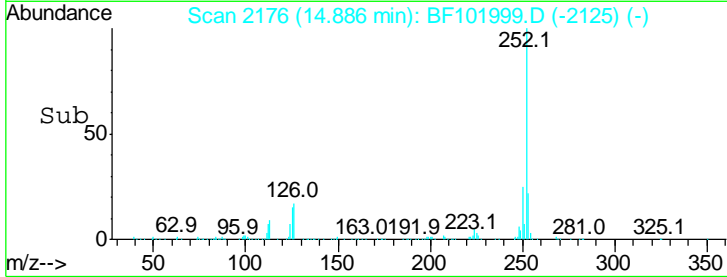
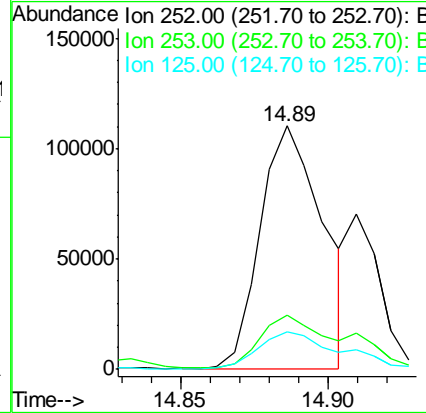
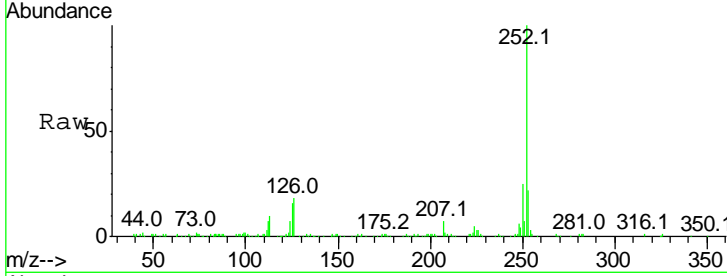
#87
 Benzo(b)fluoranthene
 Concen: 6.531 ng m
 RT: 14.89 min Scan# 2176
 Delta R.T. -0.00 min
 Lab File: BF101999.D
 Acq: 11 Jan 2018 00:23

Instrument :
 BNA_F
 ClientSampled :
 WC-53-01

Tgt Ion	Resp	Lower	Upper
252	161764		
253	22.4	17.0	25.6
125	15.5	9.0	13.6

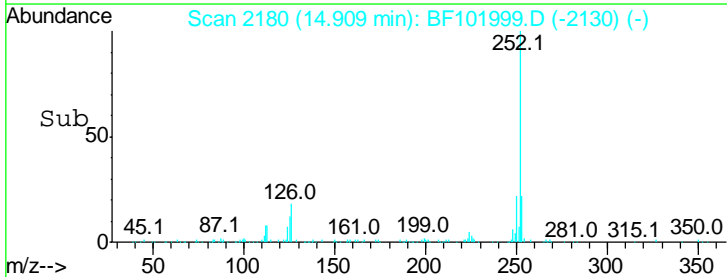
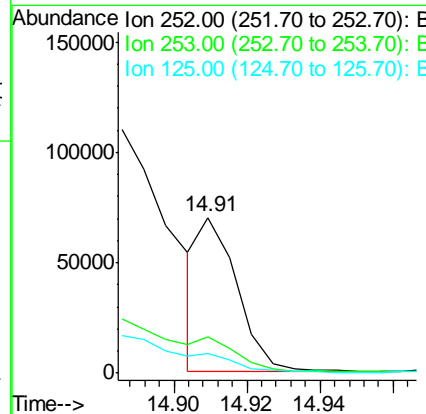
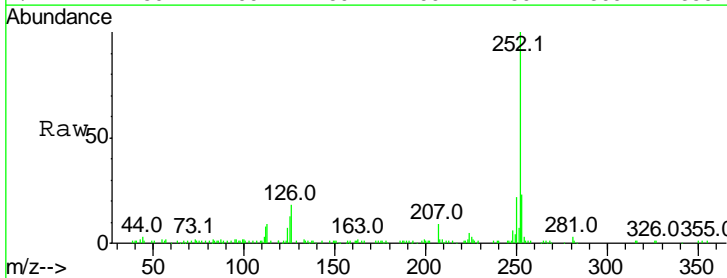
Manual Integrations
 APPROVED

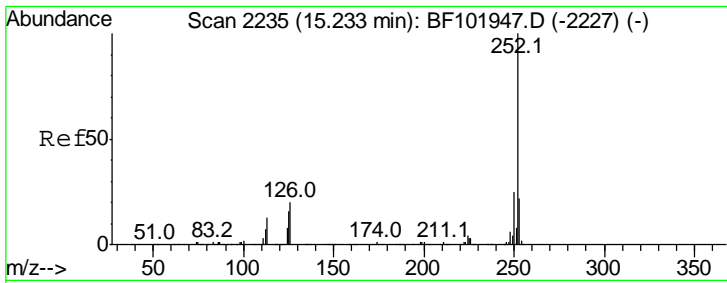
Sohil
 1/11/2018 10:53:23 AM



#88
 Benzo(k)fluoranthene
 Concen: 2.112 ng m
 RT: 14.91 min Scan# 2180
 Delta R.T. -0.01 min
 Lab File: BF101999.D
 Acq: 11 Jan 2018 00:23

Tgt Ion	Resp	Lower	Upper
252	50464		
253	23.2	17.9	26.9
125	12.7	10.2	15.2





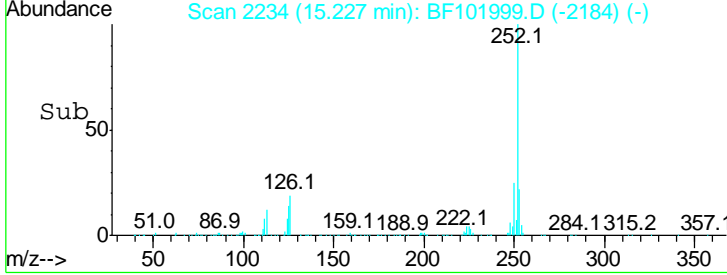
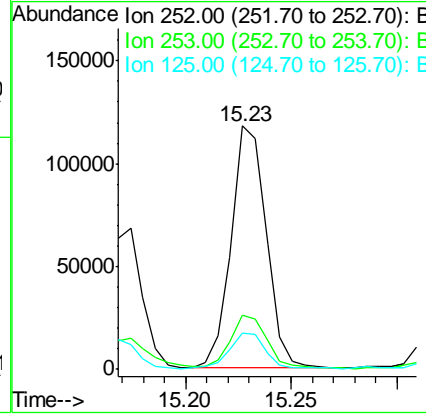
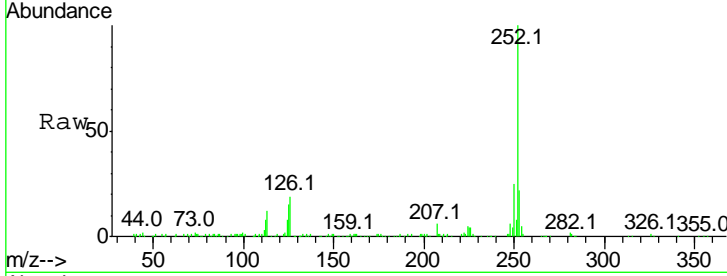
#89
 Benzo(a)pyrene
 Concen: 6.050 ng
 RT: 15.23 min Scan# 2234
 Delta R.T. -0.01 min
 Lab File: BF101999.D
 Acq: 11 Jan 2018 00:23

Instrument :
 BNA_F
ClientSampled :
 WC-53-01

Tgt Ion	Resp	Lower	Upper
252	100		
253	22.2	17.1	25.7
125	14.7	9.8	14.6

Manual Integrations
APPROVED

Sohil
 1/11/2018 10:53:23 AM



#91
 Benzo(g,h,i)perylene
 Concen: 3.874 ng
 RT: 17.07 min Scan# 2548
 Delta R.T. -0.01 min
 Lab File: BF101999.D
 Acq: 11 Jan 2018 00:23

Tgt Ion	Resp	Lower	Upper
276	100		
277	22.4	17.9	26.9
138	29.2	21.8	32.8

