

Data Path : U:\HPCHEM1\BNA F\DATA\BF011118\  
 Data File : BF102035.D  
 Acq On : 11 Jan 2018 22:47  
 Operator : SJ/JU  
 Sample : J1071-01  
 Misc :  
 ALS Vial : 19 Sample Multiplier: 1

Instrument :  
 BNA\_F  
 ClientSampleId :  
 NAA-WS

Integration Parameters: rteint.p  
 Integrator: RTE  
 Smoothing : ON Filtering: 5  
 Sampling : 1 Min Area: 3 % of largest Peak  
 Start Thrs: 0.2 Max Peaks: 100  
 Stop Thrs : 0 Peak Location: TOP

If leading or trailing edge < 100 prefer < Baseline drop else tangent >  
 Peak separation: 5

Method : Z:\HPCHEM1\BNA F\METHODS\8270-BF010918.M  
 Title : ASP BNA STANDARDS FOR 5 POINT CALIBRATION

Signal : TIC

peak #	R.T. min	first scan	max scan	last scan	PK TY	peak height	corr. area	corr. % max.	% of total
1	4.928	476	483	490	rBV	387552	535743	12.68%	1.515%
2	5.334	547	552	555	rBV	3942887	4225450	100.00%	11.951%
3	6.363	721	727	731	rBV	3649669	4190357	99.17%	11.852%
4	6.492	744	749	752	rBV	4163098	4167755	98.63%	11.788%
5	6.728	785	789	792	rVB	1345577	1144758	27.09%	3.238%
6	6.881	811	815	818	rBV	3756195	3314754	78.45%	9.375%
7	7.292	879	885	888	rBV	2801869	2625458	62.13%	7.426%
8	8.004	1002	1006	1010	rBV	1690284	1440745	34.10%	4.075%
9	9.086	1185	1190	1193	rBV	4638356	4039984	95.61%	11.427%
10	9.169	1201	1204	1209	rVB2	79031	79308	1.88%	0.224%
11	9.480	1253	1257	1260	rBV	311231	303311	7.18%	0.858%
12	9.698	1291	1294	1297	rVB	167328	145231	3.44%	0.411%
13	9.757	1301	1304	1309	rVB	1522501	1287360	30.47%	3.641%
14	10.192	1375	1378	1381	rVB	174705	143797	3.40%	0.407%
15	10.416	1411	1416	1418	rBV	39954	49443	1.17%	0.140%
16	10.545	1433	1438	1441	rBV	1929295	1751347	41.45%	4.954%
17	10.669	1455	1459	1467	rVB	116110	131856	3.12%	0.373%
18	11.239	1552	1556	1559	rBV	1210498	972058	23.00%	2.749%
19	12.827	1822	1826	1829	rBV	2688733	2456461	58.13%	6.948%
20	13.310	1903	1908	1914	rVB2	37485	46809	1.11%	0.132%
21	13.721	1975	1978	1985	rBV	204255	192888	4.56%	0.546%
22	13.868	1999	2003	2007	rBV	944642	935571	22.14%	2.646%
23	15.292	2240	2245	2250	rBV	882238	1016517	24.06%	2.875%
24	15.786	2325	2329	2337	rBV10	30966	54063	1.28%	0.153%
25	17.209	2566	2571	2579	rVB8	50332	104682	2.48%	0.296%

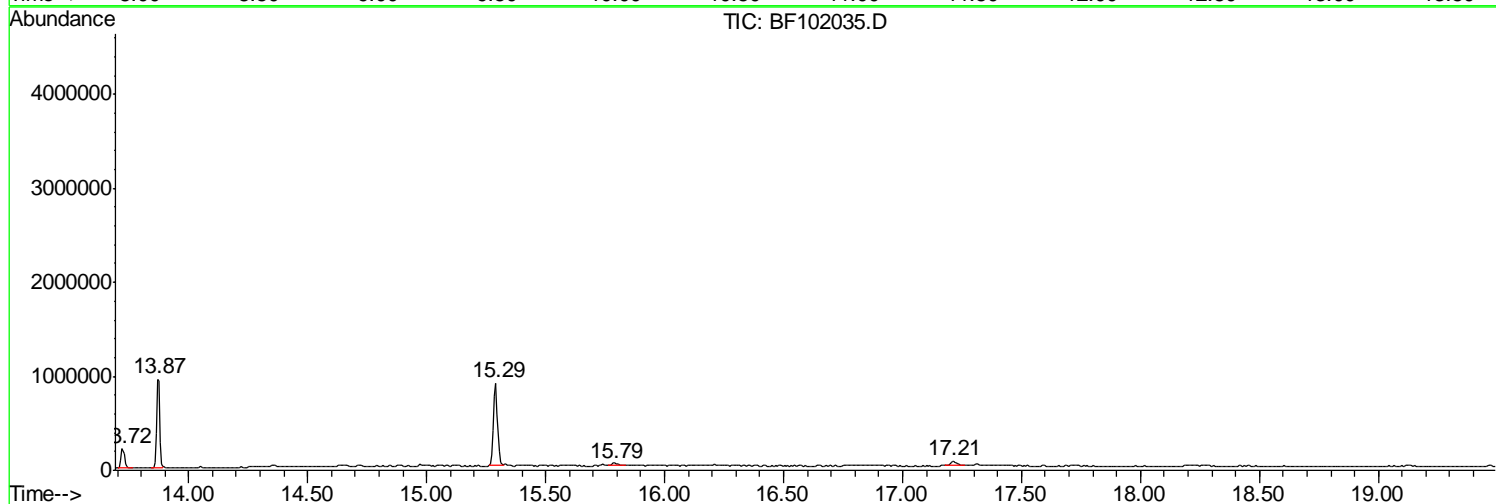
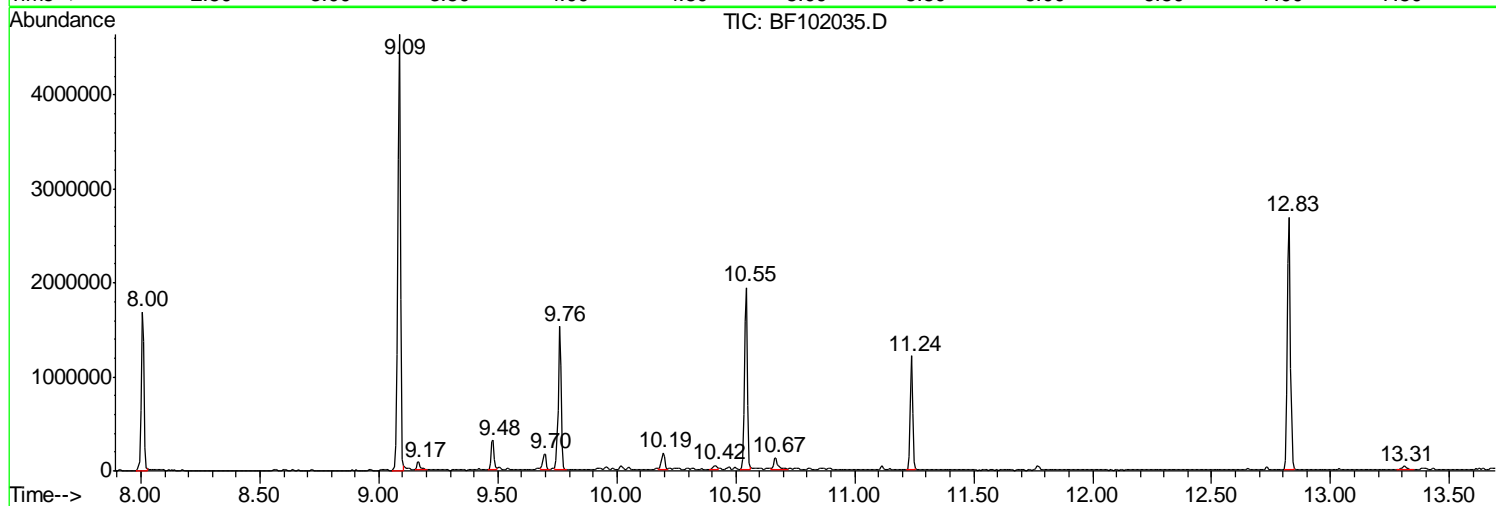
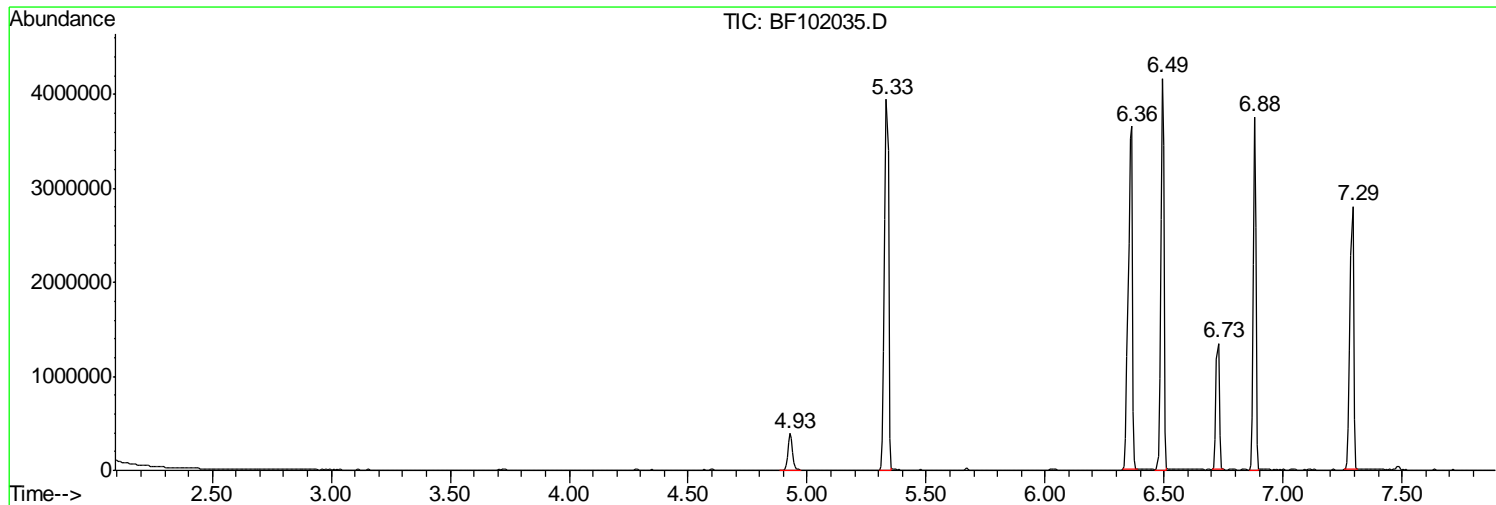
Sum of corrected areas: 35355706

Data Path : U:\HPCHEM1\BNA F\DATA\BF011118\  
Data File : BF102035.D  
Acq On : 11 Jan 2018 22:47  
Operator : SJ/JU  
Sample : J1071-01  
Misc :  
ALS Vial : 19 Sample Multiplier: 1

Instrument :  
BNA\_F  
ClientSampled :  
NAA-WS

Quant Method : Z:\HPCHEM1\BNA F\METHODS\8270-BF010918.M  
Quant Title : ASP BNA STANDARDS FOR 5 POINT CALIBRATION

TIC Library : C:\DATABASE\NIST11.L  
TIC Integration Parameters: LSCINT.P



Data Path : U:\HPCHEM1\BNA F\DATA\BF011118\  
 Data File : BF102035.D  
 Acq On : 11 Jan 2018 22:47  
 Operator : SJ/JU  
 Sample : J1071-01  
 Misc :  
 ALS Vial : 19 Sample Multiplier: 1

Instrument :  
 BNA\_F  
 ClientSampleID :  
 NAA-WS

Quant Method : Z:\HPCHEM1\BNA F\METHODS\8270-BF010918.M  
 Quant Title : ASP BNA STANDARDS FOR 5 POINT CALIBRATION

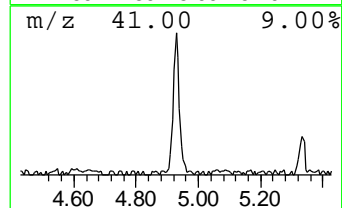
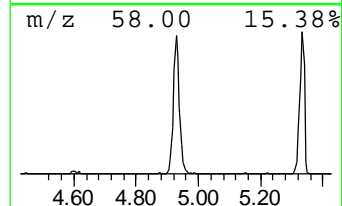
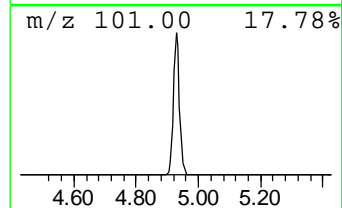
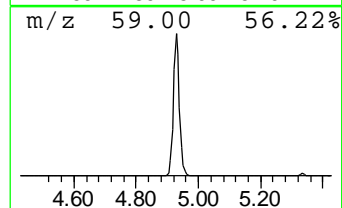
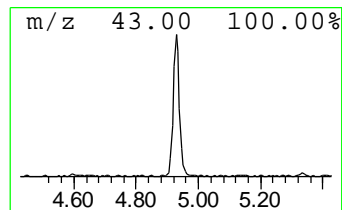
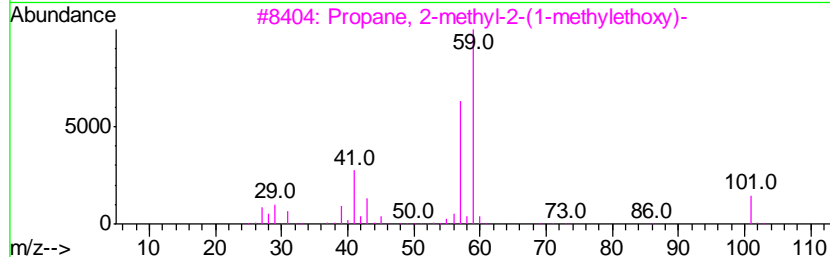
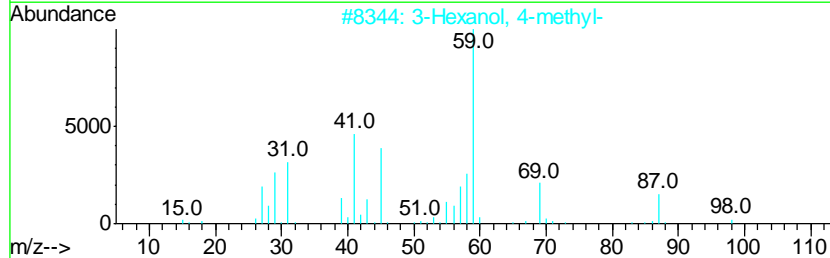
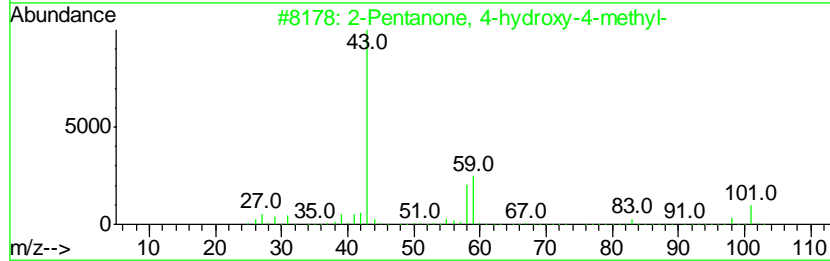
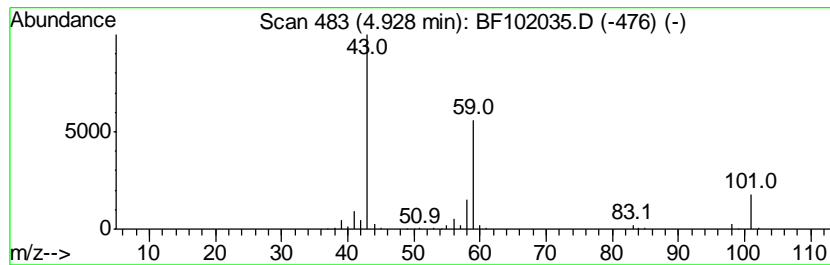
TIC Library : C:\DATABASE\NIST11.L  
 TIC Integration Parameters: LSCINT.P

\*\*\*\*\*  
 Peak Number 1 2-Pentanone, 4-hydroxy-4-me... Concentration Rank 3

R.T.	EstConc	Area	Relative to ISTD	R.T.
4.93	9.36 ng	535743	1,4-Dichlorobenzene-d4	6.73

Hit#	of	Tentative ID	MW	MolForm	CAS#	Qual
1	5	2-Pentanone, 4-hydroxy-4-methyl-	116	C6H12O2	000123-42-2	59
2		3-Hexanol, 4-methyl-	116	C7H16O	000615-29-2	33
3		Propane, 2-methyl-2-(1-methyleth...	116	C7H16O	017348-59-3	33
4		Acetic acid, cyano-, 1,1-dimethy...	141	C7H11NO2	001116-98-9	23
5		2,3-Butanedione, monooxime	101	C4H7NO2	000057-71-6	9



Data Path : U:\HPCHEM1\BNA F\DATA\BF011118\  
 Data File : BF102035.D  
 Acq On : 11 Jan 2018 22:47  
 Operator : SJ/JU  
 Sample : J1071-01  
 Misc :  
 ALS Vial : 19 Sample Multiplier: 1

Instrument :  
 BNA\_F  
 ClientSampleID :  
 NAA-WS

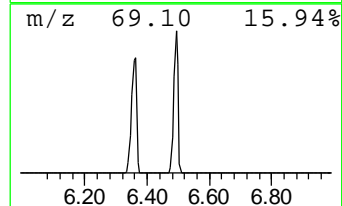
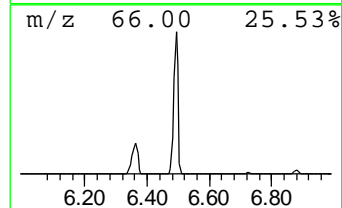
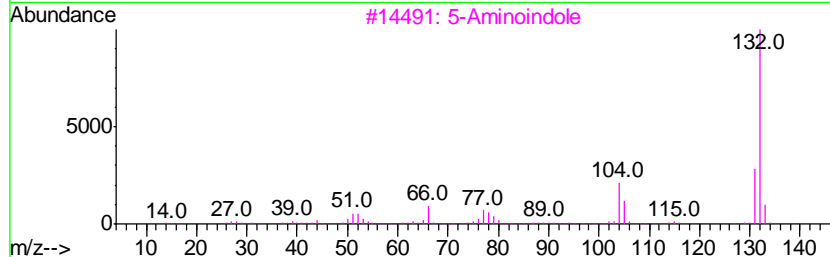
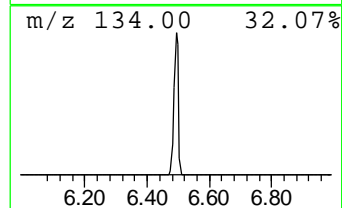
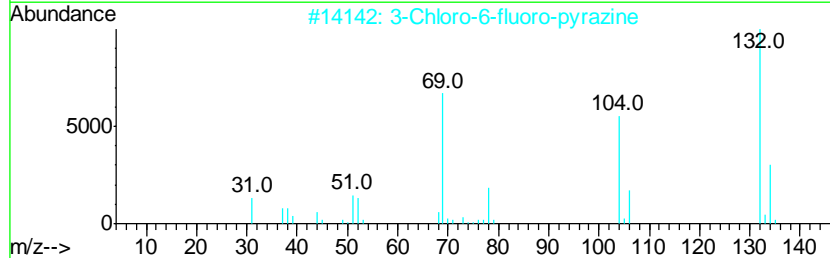
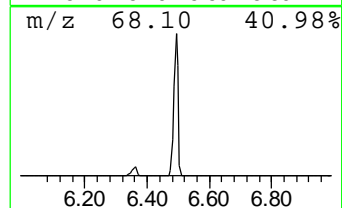
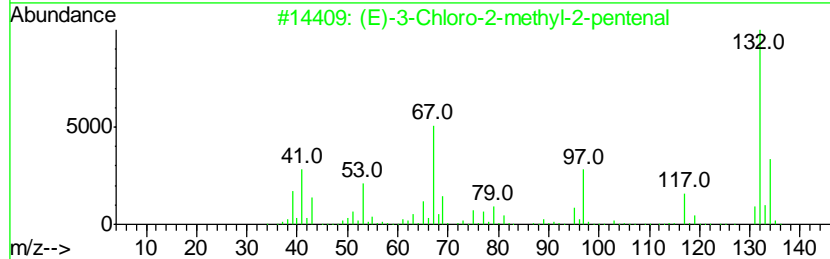
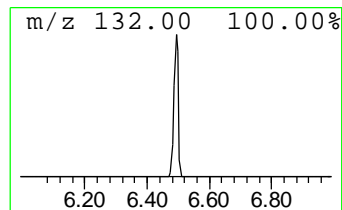
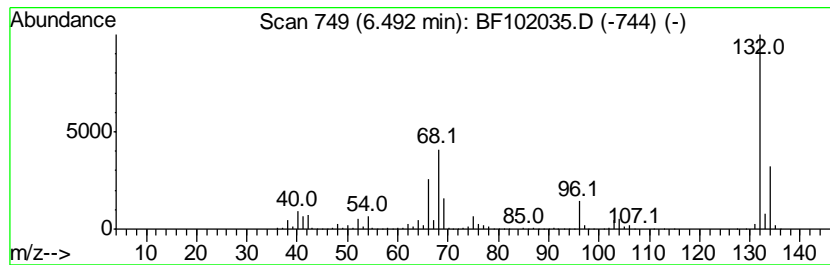
Quant Method : Z:\HPCHEM1\BNA F\METHODS\8270-BF010918.M  
 Quant Title : ASP BNA STANDARDS FOR 5 POINT CALIBRATION

TIC Library : C:\DATABASE\NIST11.L  
 TIC Integration Parameters: LSCINT.P

\*\*\*\*\*  
 Peak Number 2 unknown6.49 Concentration Rank 1

R.T.	EstConc	Area	Relative to ISTD	R.T.
6.49	72.81 ng	4167760	1,4-Dichlorobenzene-d4	6.73

Hit#	of	Tentative ID	MW	MolForm	CAS#	Qual
1	5	(E)-3-Chloro-2-methyl-2-pentenal	132	C6H9ClO	031357-76-3	27
2		3-Chloro-6-fluoro-pyrazine	132	C4H2ClFN2	1000146-10-7	27
3		5-Aminoindole	132	C8H8N2	005192-03-0	12
4		Tranylcypromine-propionyl	189	C12H15NO	1000123-86-3	10
5		Bicyclo[4.2.0]octa-1,3,5-triene,...	132	C10H12	028749-81-7	9



Data Path : U:\HPCHEM1\BNA F\DATA\BF011118\  
 Data File : BF102035.D  
 Acq On : 11 Jan 2018 22:47  
 Operator : SJ/JU  
 Sample : J1071-01  
 Misc :  
 ALS Vial : 19 Sample Multiplier: 1

Instrument :  
 BNA\_F  
 ClientSampleID :  
 NAA-WS

Quant Method : Z:\HPCHEM1\BNA F\METHODS\8270-BF010918.M  
 Quant Title : ASP BNA STANDARDS FOR 5 POINT CALIBRATION

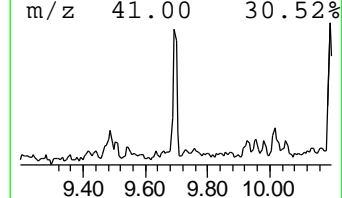
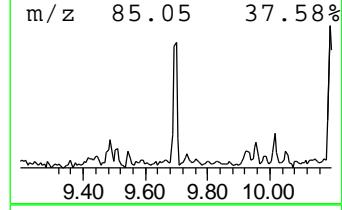
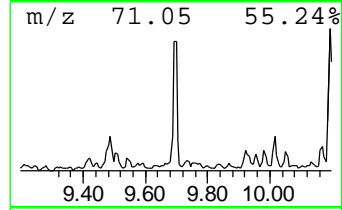
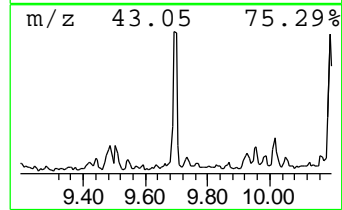
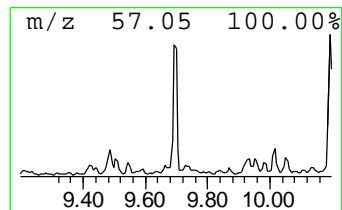
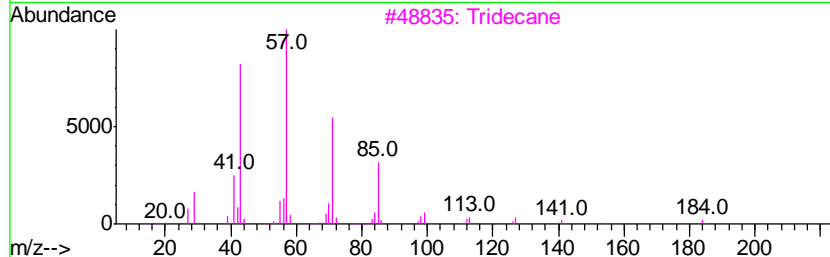
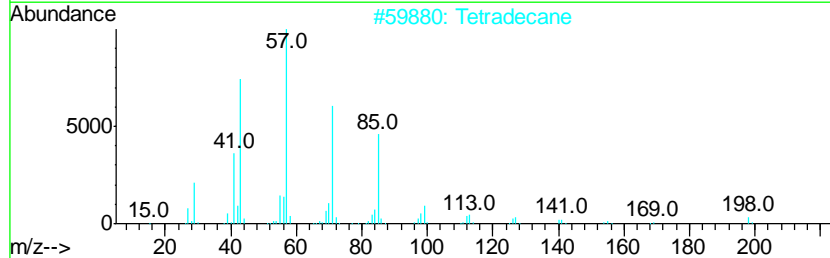
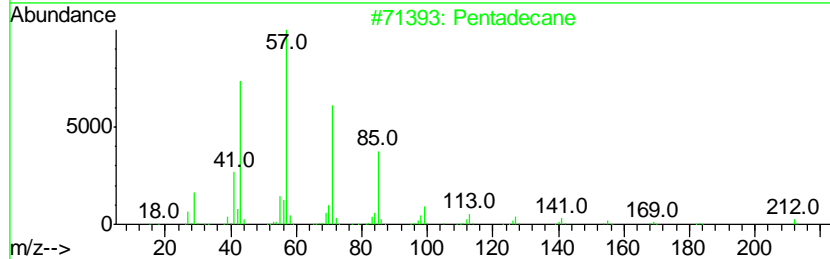
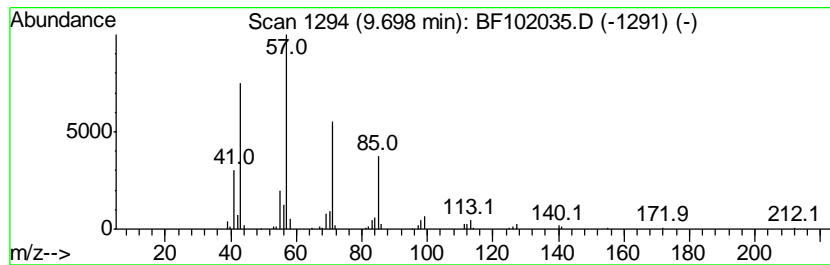
TIC Library : C:\DATABASE\NIST11.L  
 TIC Integration Parameters: LSCINT.P

\*\*\*\*\*  
 Peak Number 4 Pentadecane Concentration Rank 6

R.T.	EstConc	Area	Relative to ISTD	R.T.
9.70	2.26 ng	145231	Acenaphthene-d10	9.76

Hit#	of	Tentative ID	MW	MolForm	CAS#	Qual
1	5	Pentadecane	212	C15H32	000629-62-9	91
2		Tetradecane	198	C14H30	000629-59-4	91
3		Tridecane	184	C13H28	000629-50-5	90
4		Hexadecane	226	C16H34	000544-76-3	90
5		Dodecane	170	C12H26	000112-40-3	83



Data Path : U:\HPCHEM1\BNA F\DATA\BF011118\  
 Data File : BF102035.D  
 Acq On : 11 Jan 2018 22:47  
 Operator : SJ/JU  
 Sample : J1071-01  
 Misc :  
 ALS Vial : 19 Sample Multiplier: 1

Instrument :  
 BNA\_F  
 ClientSampleId :  
 NAA-WS

Quant Method : Z:\HPCHEM1\BNA F\METHODS\8270-BF010918.M  
 Quant Title : ASP BNA STANDARDS FOR 5 POINT CALIBRATION

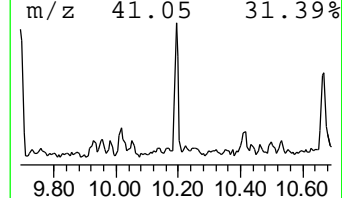
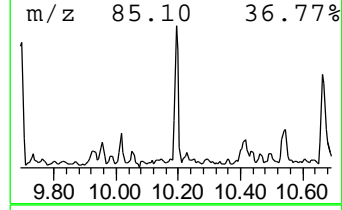
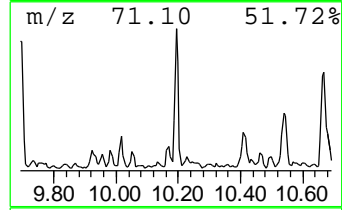
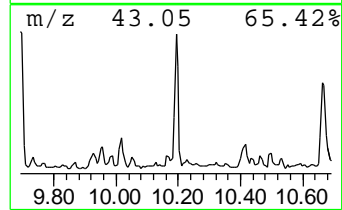
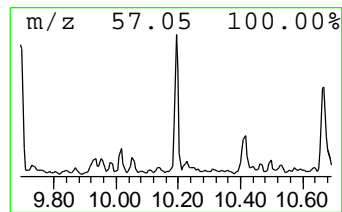
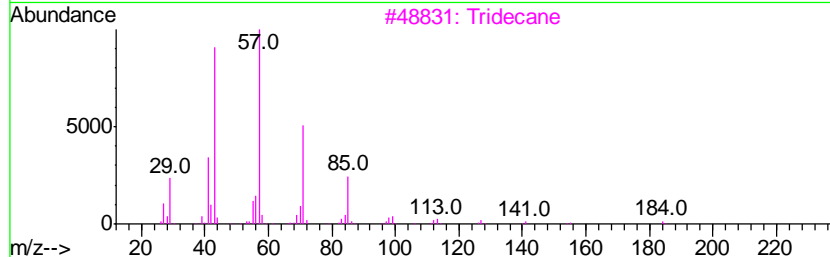
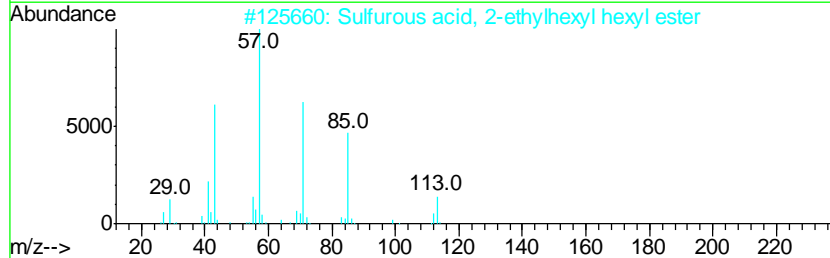
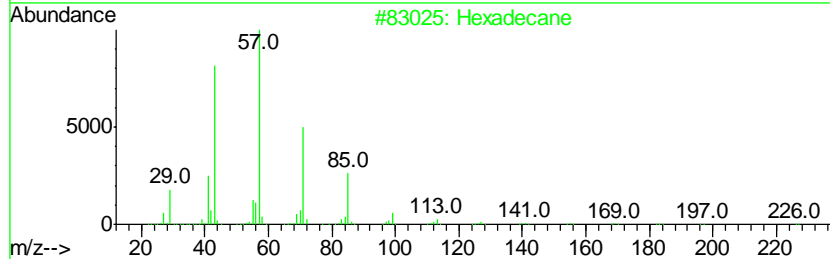
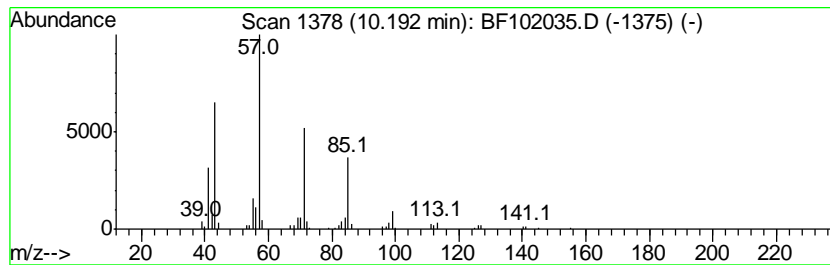
TIC Library : C:\DATABASE\NIST11.L  
 TIC Integration Parameters: LSCINT.P

\*\*\*\*\*  
 Peak Number 5 Hexadecane Concentration Rank 7

R.T.	EstConc	Area	Relative to ISTD	R.T.
10.19	2.23 ng	143797	Acenaphthene-d10	9.76

Hit#	of	Tentative ID	MW	MolForm	CAS#	Qual
1	5	Hexadecane	226	C16H34	000544-76-3	90
2		Sulfurous acid, 2-ethylhexyl hex...	278	C14H30O3S	1000309-20-2	80
3		Tridecane	184	C13H28	000629-50-5	64
4		Tetradecane	198	C14H30	000629-59-4	64
5		Sulfurous acid, hexyl octyl ester	278	C14H30O3S	1000309-13-0	59



Data Path : U:\HPCHEM1\BNA F\DATA\BF011118\  
 Data File : BF102035.D  
 Acq On : 11 Jan 2018 22:47  
 Operator : SJ/JU  
 Sample : J1071-01  
 Misc :  
 ALS Vial : 19 Sample Multiplier: 1

Instrument :  
 BNA\_F  
 ClientSampleID :  
 NAA-WS

Quant Method : Z:\HPCHEM1\BNA F\METHODS\8270-BF010918.M  
 Quant Title : ASP BNA STANDARDS FOR 5 POINT CALIBRATION

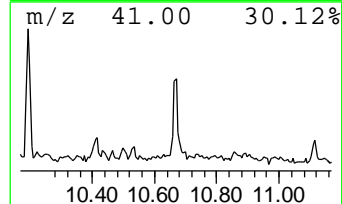
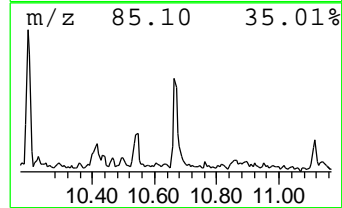
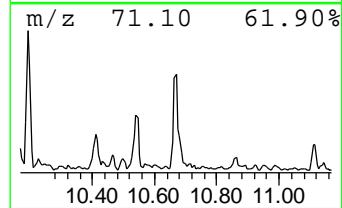
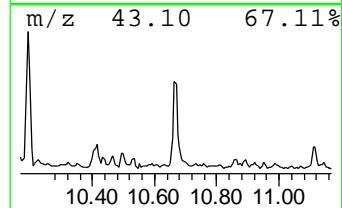
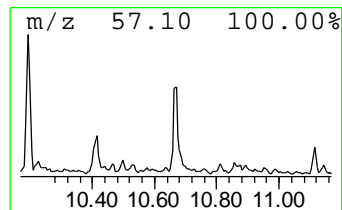
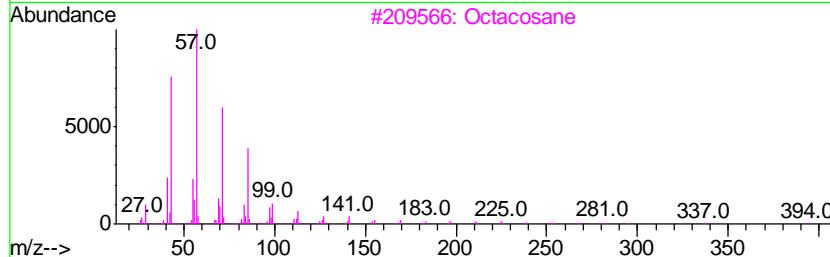
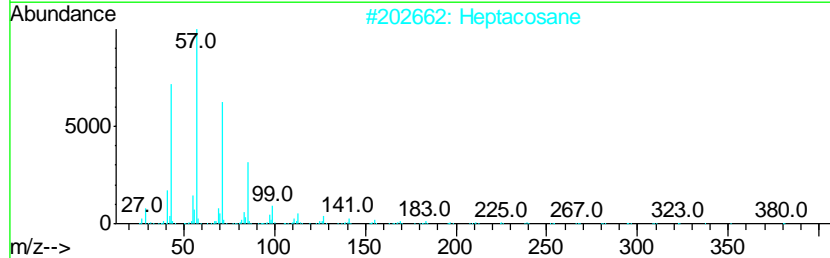
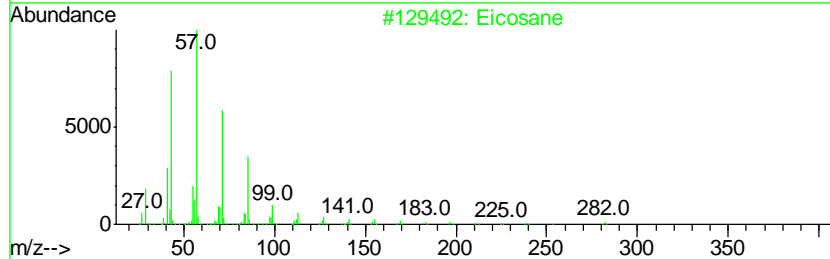
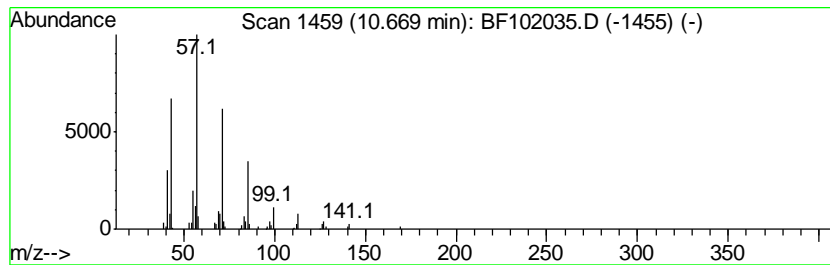
TIC Library : C:\DATABASE\NIST11.L  
 TIC Integration Parameters: LSCINT.P

\*\*\*\*\*  
 Peak Number 6 Eicosane Concentration Rank 5

R.T.	EstConc	Area	Relative to ISTD	R.T.
10.67	2.71 ng	131856	Phenanthrene-d10	11.24

Hit#	of	Tentative ID	MW	MolForm	CAS#	Qual
1	5	Eicosane	282	C20H42	000112-95-8	91
2		Heptacosane	380	C27H56	000593-49-7	91
3		Octacosane	394	C28H58	000630-02-4	90
4		2-Bromo dodecane	248	C12H25Br	013187-99-0	86
5		Tetracosane	338	C24H50	000646-31-1	86



Data Path : U:\HPCHEM1\BNA F\DATA\BF011118\  
 Data File : BF102035.D  
 Acq On : 11 Jan 2018 22:47  
 Operator : SJ/JU  
 Sample : J1071-01  
 Misc :  
 ALS Vial : 19 Sample Multiplier: 1

Instrument :  
 BNA\_F  
 ClientSampled :  
 NAA-WS

Quant Method : Z:\HPCHEM1\BNA F\METHODS\8270-BF010918.M  
 Quant Title : ASP BNA STANDARDS FOR 5 POINT CALIBRATION

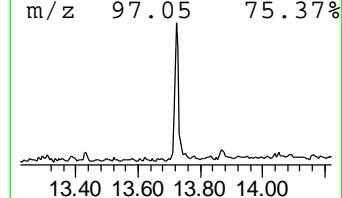
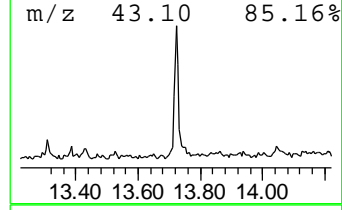
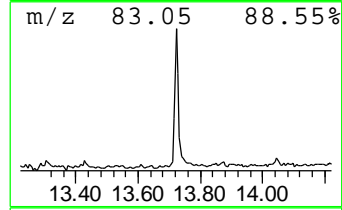
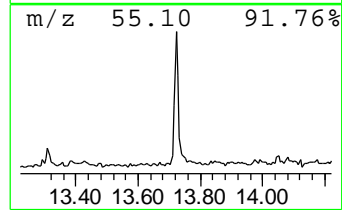
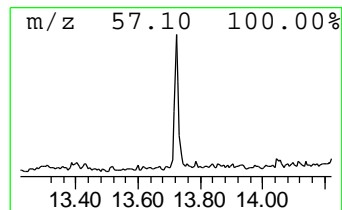
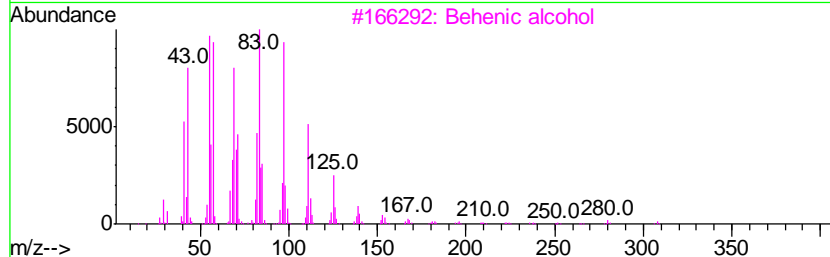
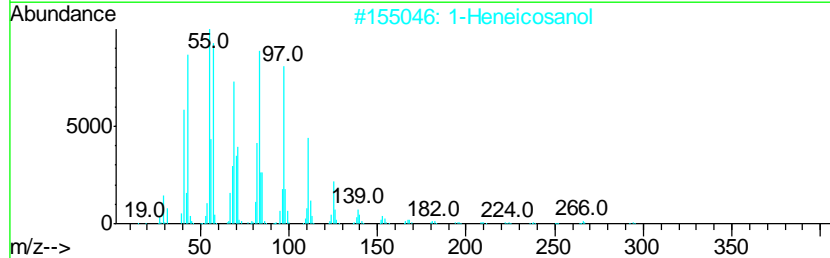
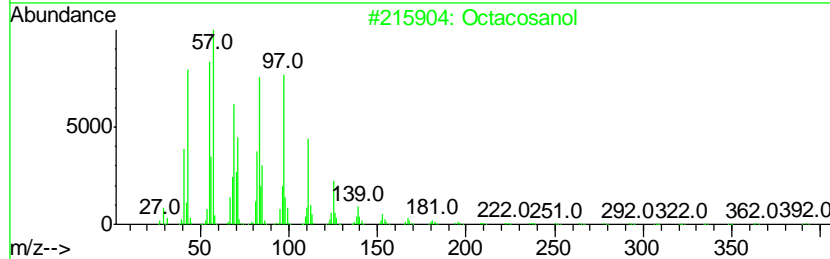
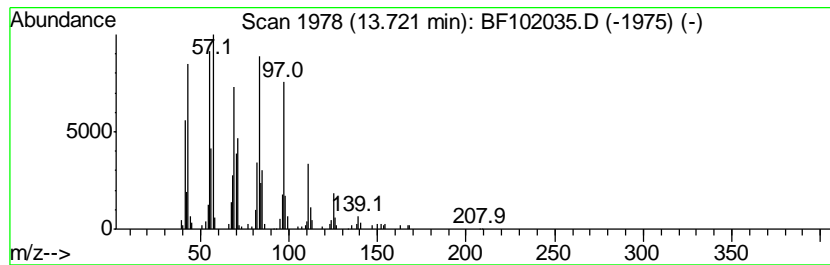
TIC Library : C:\DATABASE\NIST11.L  
 TIC Integration Parameters: LSCINT.P

\*\*\*\*\*  
 Peak Number 7 Octacosanol Concentration Rank 4

R.T.	EstConc	Area	Relative to ISTD	R.T.
13.72	4.12 ng	192888	Chrysene-d12	13.87

Hit#	of	Tentative ID	MW	MolForm	CAS#	Qual
1	5	Octacosanol	410	C28H58O	000557-61-9	91
2		1-Heneicosanol	312	C21H44O	015594-90-8	91
3		Behenic alcohol	326	C22H46O	000661-19-8	91
4		1-Nonadecene	266	C19H38	018435-45-5	91
5		n-Nonadecanol-1	284	C19H40O	001454-84-8	90





Data Path : U:\HPCHEM1\BNA F\DATA\BF011118\  
 Data File : BF102035.D  
 Acq On : 11 Jan 2018 22:47  
 Operator : SJ/JU  
 Sample : J1071-01  
 Misc :  
 ALS Vial : 19 Sample Multiplier: 1

Instrument :  
 BNA\_F  
 ClientSampleID :  
 NAA-WS

Quant Method : Z:\HPCHEM1\BNA F\METHODS\8270-BF010918.M  
 Quant Title : ASP BNA STANDARDS FOR 5 POINT CALIBRATION

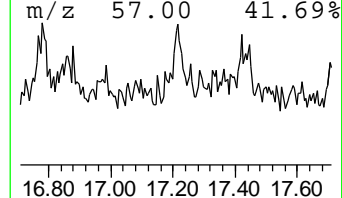
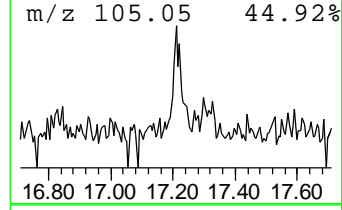
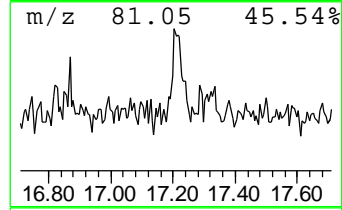
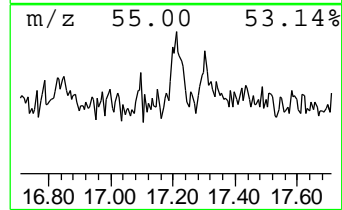
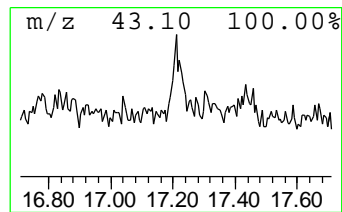
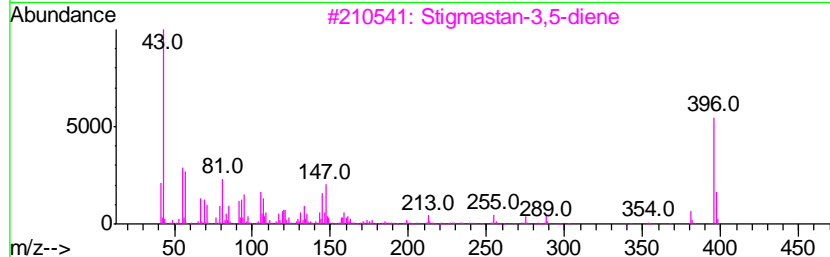
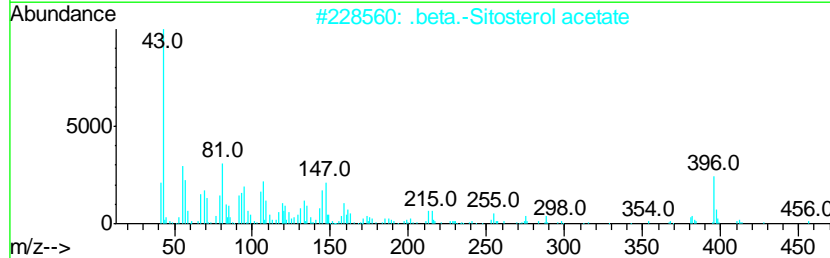
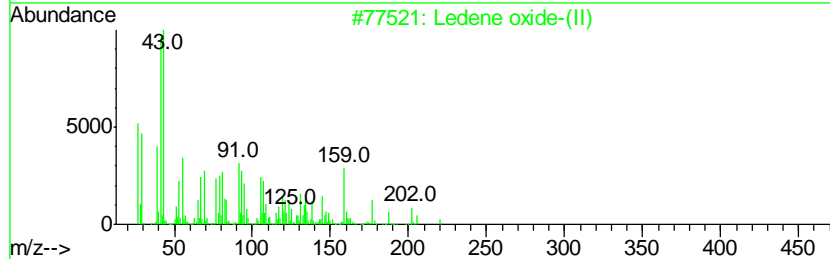
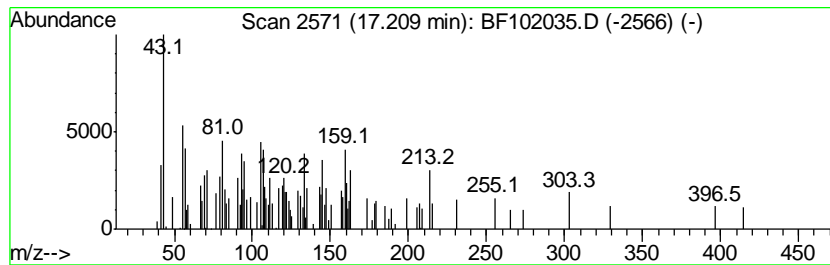
TIC Library : C:\DATABASE\NIST11.L  
 TIC Integration Parameters: LSCINT.P

\*\*\*\*\*  
 Peak Number 8 unknown17.21 Concentration Rank 8

R.T.	EstConc	Area	Relative to ISTD	R.T.
17.21	2.06 ng	104682	Perylene-d12	15.29

Hit#	of	Tentative ID	MW	MolForm	CAS#	Qual
1	5	Ledene oxide-(II)	220	C15H24O	1000159-36-7	25
2		.beta.-Sitosterol acetate	456	C31H52O2	000915-05-9	12
3		Stigmastan-3,5-diene	396	C29H48	1000214-16-4	12
4		Cholest-5-ene, 3-ethoxy-, (3.bet...	414	C29H50O	000986-19-6	10
5		Falcarinol	244	C17H24O	021852-80-2	10



Data Path : U:\HPCHEM1\BNA\_F\DATA\BF011118\  
 Data File : BF102035.D  
 Acq On : 11 Jan 2018 22:47  
 Operator : SJ/JU  
 Sample : J1071-01  
 Misc :  
 ALS Vial : 19 Sample Multiplier: 1

Instrument :  
 BNA\_F  
 ClientSampleId :  
 NAA-WS

Quant Method : Z:\HPCHEM1\BNA\_F\METHODS\8270-BF010918.M  
 Quant Title : ASP BNA STANDARDS FOR 5 POINT CALIBRATION

TIC Library : C:\DATABASE\NIST11.L  
 TIC Integration Parameters: LSCINT.P

TIC Top Hit name	RT	EstConc	Units	Response	--Internal Standard--			
					#	RT	Resp	Conc
2-Pentanone, 4-hy...	4.93	9.4	ng	535743	1	6.73	1144760	20.0
unknown6.49	6.49	72.8	ng	4167760	1	6.73	1144760	20.0
Pentadecane	9.70	2.3	ng	145231	3	9.76	1287360	20.0
Hexadecane	10.19	2.2	ng	143797	3	9.76	1287360	20.0
Eicosane	10.67	2.7	ng	131856	4	11.24	972058	20.0
Octacosanol	13.72	4.1	ng	192888	5	13.87	935571	20.0
unknown17.21	17.21	2.1	ng	104682	6	15.29	1016520	20.0