

Data Path : Z:\HPCHEM1\BNA F\DATA\BF011216\
 Data File : BF084437.D
 Acq On : 13 Jan 2016 4:14
 Operator : SJ/UM
 Sample : H1078-14
 Misc :
 ALS Vial : 24 Sample Multiplier: 1

Instrument :
 BNA_F
 ClientSampleId :
 FB2

Quant Time: Jan 13 05:56:41 2016
 Quant Method : Z:\HPCHEM1\BNA F\METHODS\8270-BF123115.M
 Quant Title : ASP BNA STANDARDS FOR 5 POINT CALIBRATION
 QLast Update : Mon Jan 04 12:22:40 2016
 Response via : Initial Calibration

Internal Standards	R.T.	QIon	Response	Conc	Units	Dev(Min)
1) 1,4-Dichlorobenzene-d4	6.84	152	266367	20.00	ng	-0.06
21) Naphthalene-d8	8.12	136	1005579	20.00	ng	-0.07
38) Acenaphthene-d10	9.88	164	492005	20.00	ng	-0.07
63) Phenanthrene-d10	11.37	188	876500	20.00	ng	-0.06
75) Chrysene-d12	14.00	240	539642	20.00	ng	-0.07
86) Perylene-d12	15.43	264	479105	20.00	ng	-0.08
System Monitoring Compounds						
5) 2-Fluorophenol	5.45	112	977639	59.37	ng	-0.04
7) Phenol-d6	6.49	99	795123	38.44	ng	-0.05
23) Nitrobenzene-d5	7.41	82	1726850	95.57	ng	-0.06
41) 2,4,6-Tribromophenol	10.67	330	550544	110.84	ng	-0.07
44) 2-Fluorobiphenyl	9.21	172	2389378	85.47	ng	-0.06
78) Terphenyl-d14	12.96	244	2201028	91.04	ng	-0.06

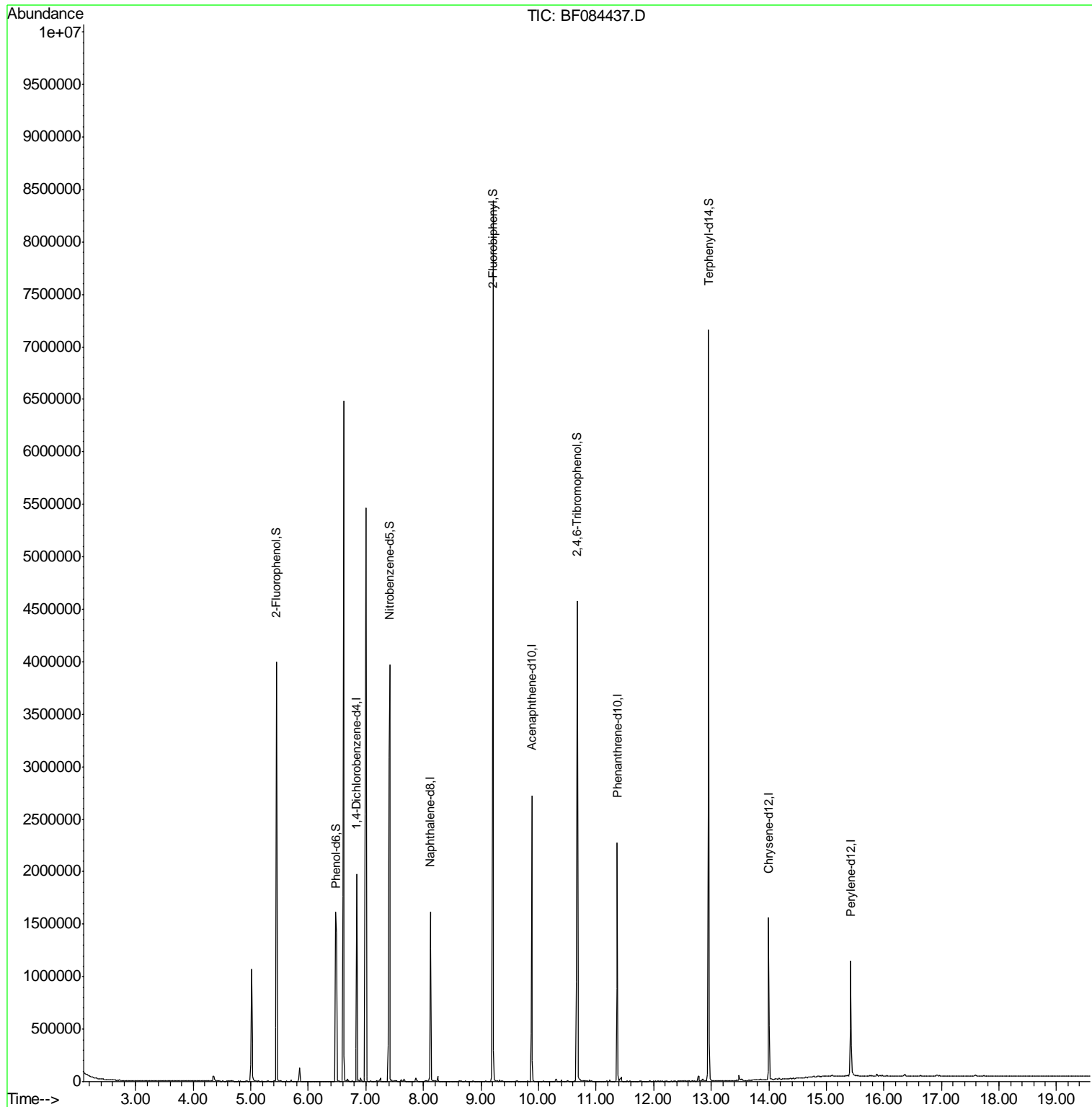
Target Compounds Qvalue

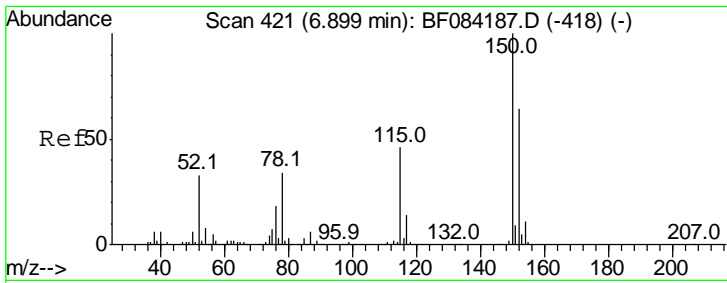
(#) = qualifier out of range (m) = manual integration (+) = signals summed

Data Path : Z:\HPCHEM1\BNA F\DATA\BF011216\
 Data File : BF084437.D
 Acq On : 13 Jan 2016 4:14
 Operator : SJ/UM
 Sample : H1078-14
 Misc :
 ALS Vial : 24 Sample Multiplier: 1

Instrument :
 BNA_F
 ClientSampled :
 FB2

Quant Time: Jan 13 05:56:41 2016
 Quant Method : Z:\HPCHEM1\BNA F\METHODS\8270-BF123115.M
 Quant Title : ASP BNA STANDARDS FOR 5 POINT CALIBRATION
 QLast Update : Mon Jan 04 12:22:40 2016
 Response via : Initial Calibration

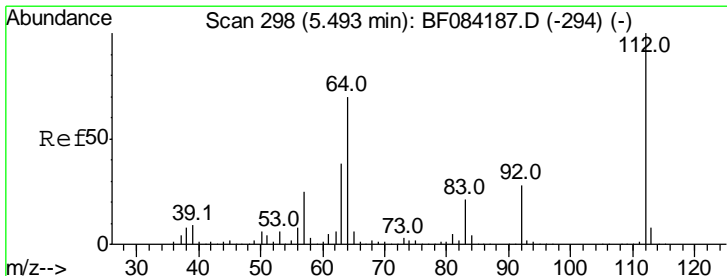
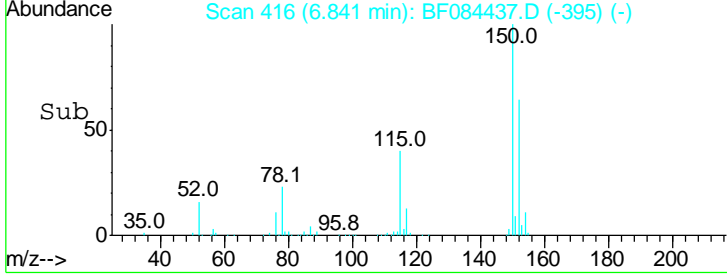
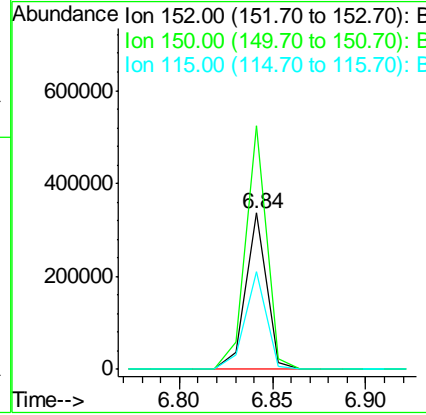
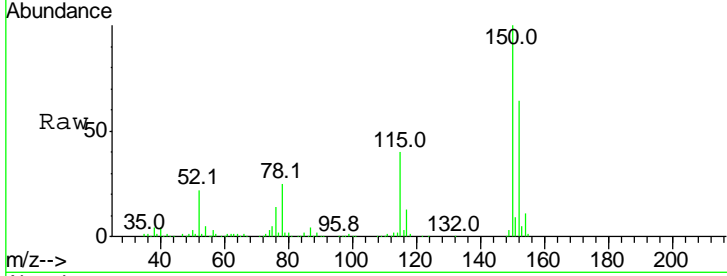




#1
 1,4-Dichlorobenzene-d4
 Concen: 20.00 ng
 RT: 6.84 min Scan# 416
 Delta R.T. -0.06 min
 Lab File: BF084437.D
 Acq: 13 Jan 2016 4:14

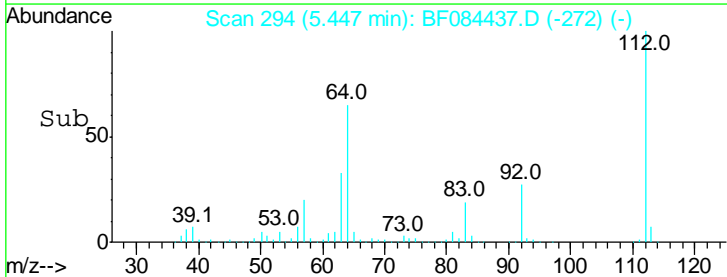
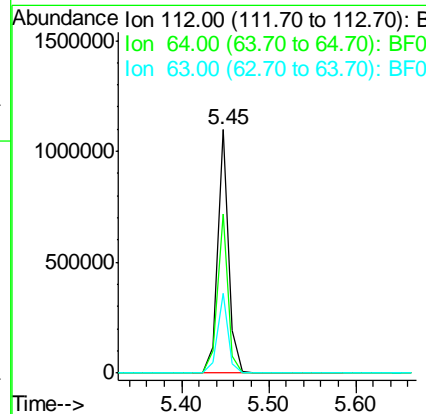
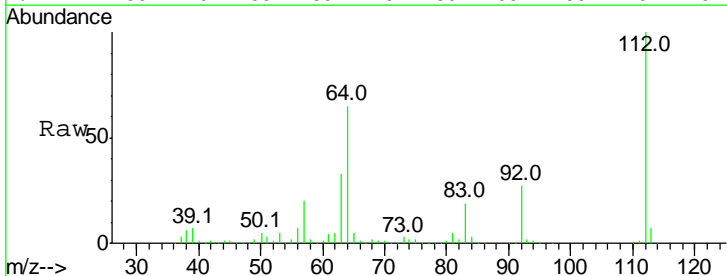
Instrument :
 BNA_F
ClientSampled :
 FB2

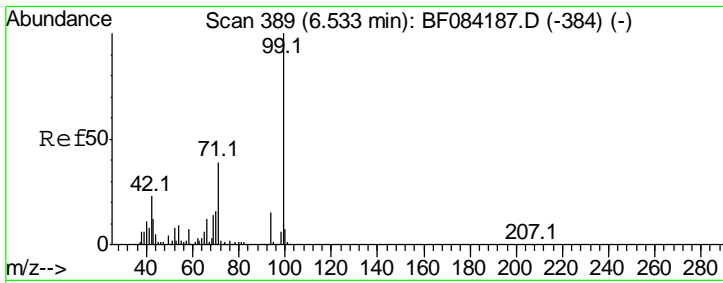
Tgt Ion	Resp	Lower	Upper
152	100		
150	156.1	123.0	184.4
115	62.9	51.4	77.2



#5
 2-Fluorophenol
 Concen: 59.37 ng
 RT: 5.45 min Scan# 294
 Delta R.T. -0.04 min
 Lab File: BF084437.D
 Acq: 13 Jan 2016 4:14

Tgt Ion	Resp	Lower	Upper
112	100		
64	65.5	36.6	55.0#
63	32.7	19.4	29.0#

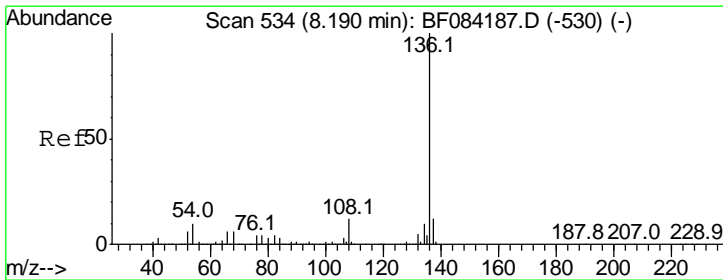
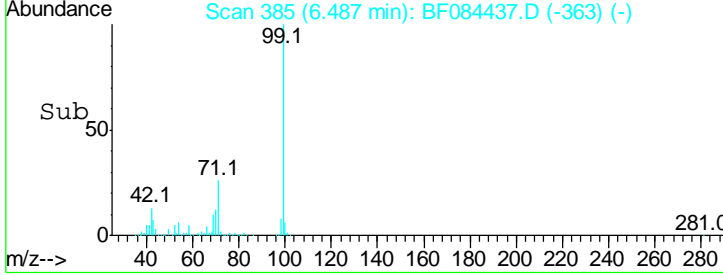
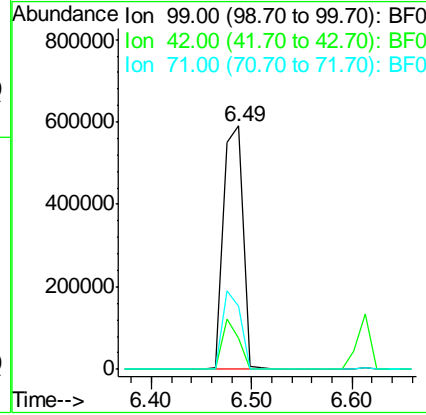
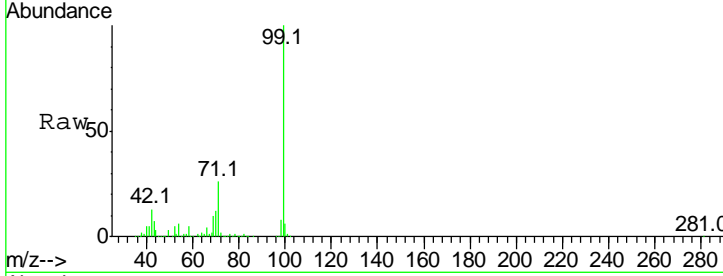




#7
 Phenol-d6
 Concen: 38.44 ng
 RT: 6.49 min Scan# 385
 Delta R.T. -0.05 min
 Lab File: BF084437.D
 Acq: 13 Jan 2016 4:14

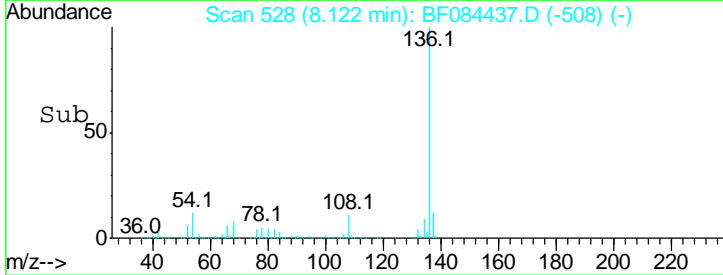
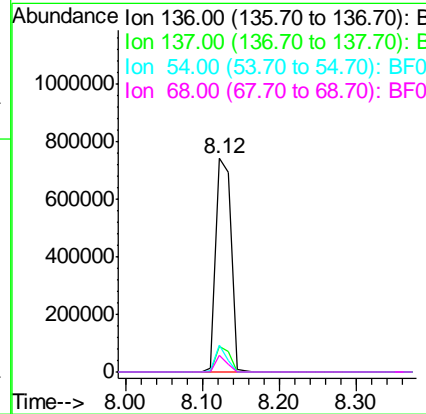
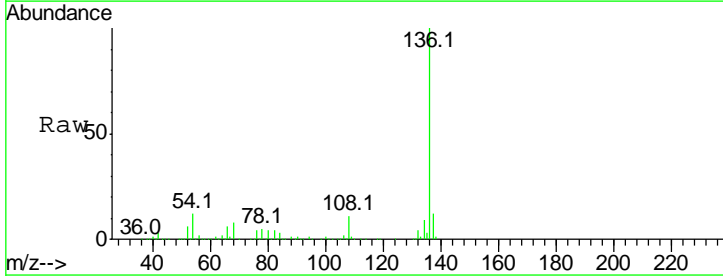
Instrument :
 BNA_F
 ClientSampled :
 FB2

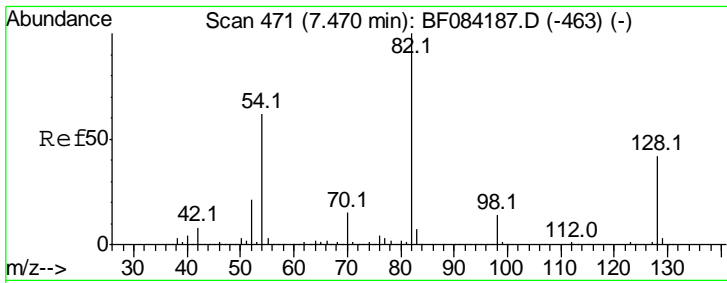
Tgt Ion	Resp	Lower	Upper
99	100		
42	12.5	12.8	19.2#
71	26.0	30.9	46.3#



#21
 Naphthalene-d8
 Concen: 20.00 ng
 RT: 8.12 min Scan# 528
 Delta R.T. -0.07 min
 Lab File: BF084437.D
 Acq: 13 Jan 2016 4:14

Tgt Ion	Resp	Lower	Upper
136	100		
137	12.0	8.7	13.1
54	12.4	5.8	8.8#
68	7.5	4.2	6.2#

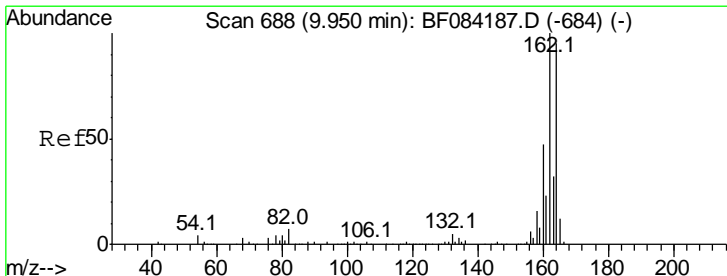
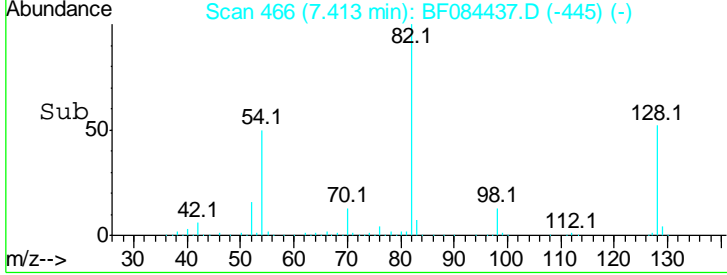
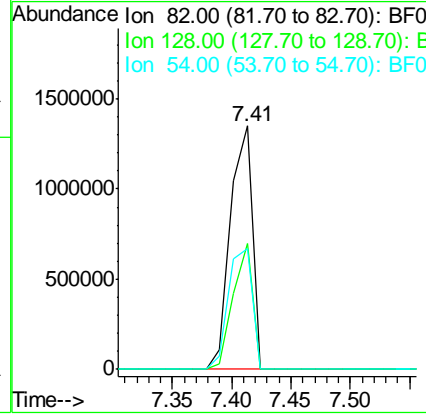
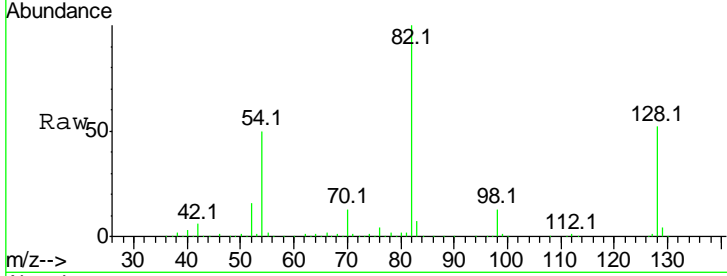




#23
 Nitrobenzene-d5
 Concen: 95.57 ng
 RT: 7.41 min Scan# 466
 Delta R.T. -0.06 min
 Lab File: BF084437.D
 Acq: 13 Jan 2016 4:14

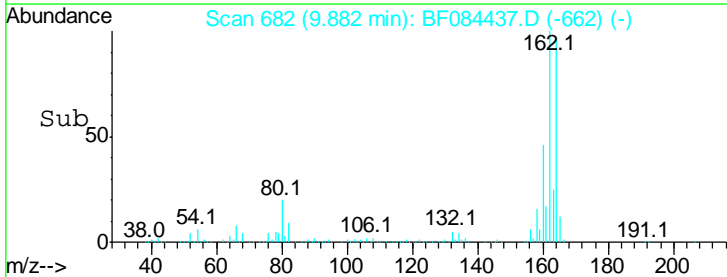
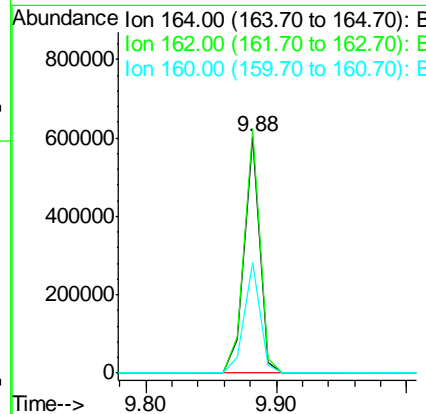
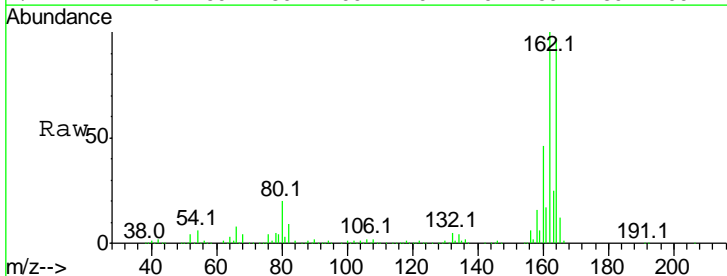
Instrument :
 BNA_F
 ClientSampled :
 FB2

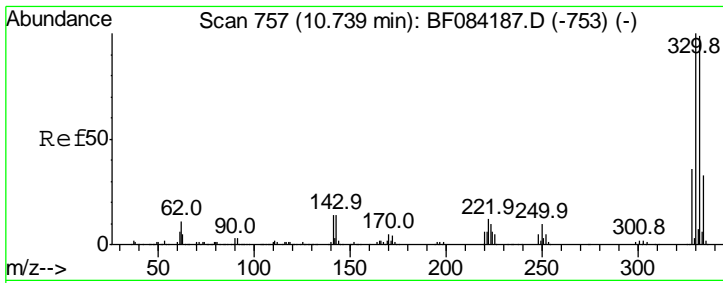
Tgt Ion	Resp	Lower	Upper
82	1726850		
82	100		
128	51.7	34.6	51.8
54	49.6	38.4	57.6



#38
 Acenaphthene-d10
 Concen: 20.00 ng
 RT: 9.88 min Scan# 682
 Delta R.T. -0.07 min
 Lab File: BF084437.D
 Acq: 13 Jan 2016 4:14

Tgt Ion	Resp	Lower	Upper
164	492005		
164	100		
162	103.1	85.1	127.7
160	47.0	37.5	56.3

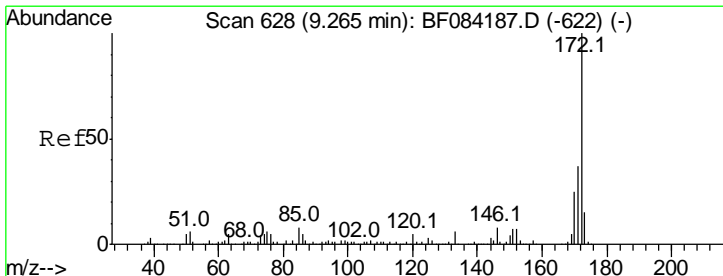
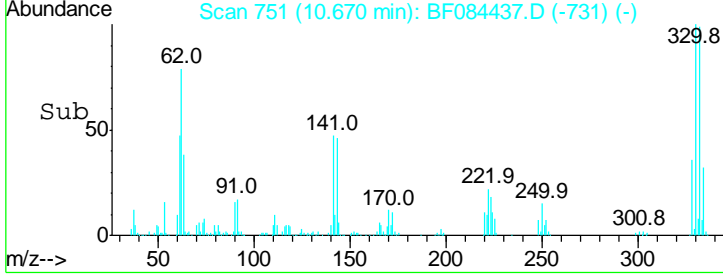
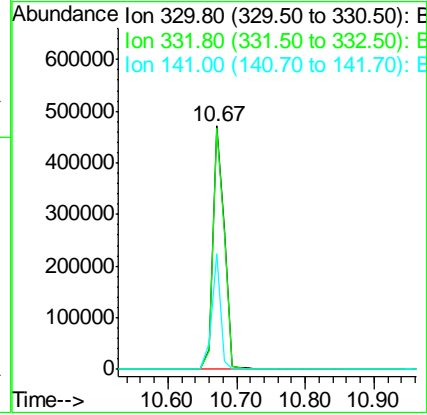
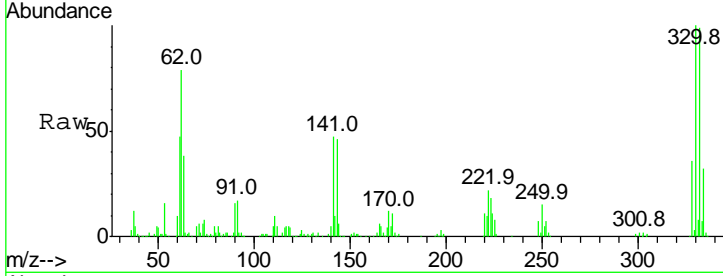




#41
 2,4,6-Tribromophenol
 Concen: 110.84 ng
 RT: 10.67 min Scan# 751
 Delta R.T. -0.07 min
 Lab File: BF084437.D
 Acq: 13 Jan 2016 4:14

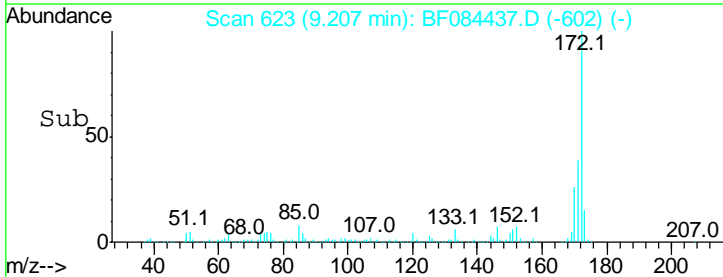
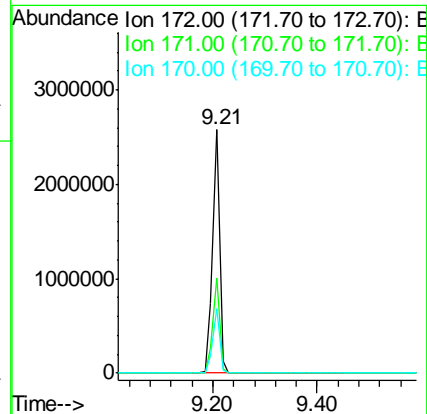
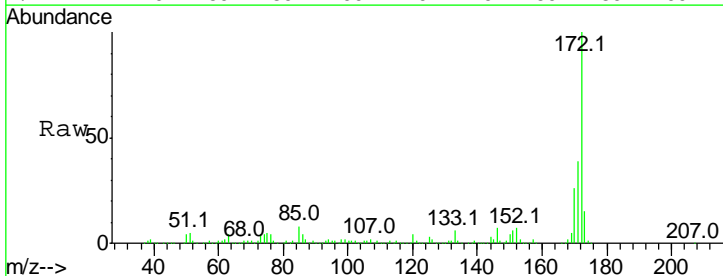
Instrument :
 BNA_F
 ClientSampled :
 FB2

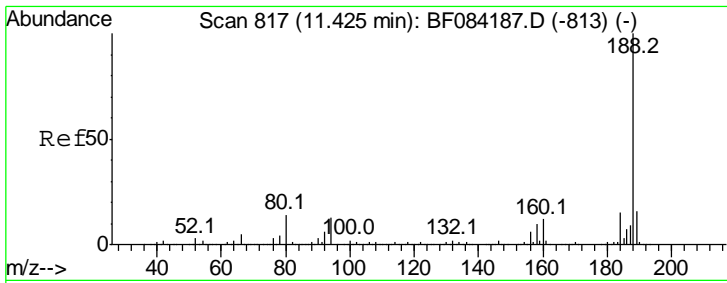
Tgt Ion	Resp	Lower	Upper
330	100		
332	98.3	76.6	114.8
141	36.8	27.8	41.6



#44
 2-Fluorobiphenyl
 Concen: 85.47 ng
 RT: 9.21 min Scan# 623
 Delta R.T. -0.06 min
 Lab File: BF084437.D
 Acq: 13 Jan 2016 4:14

Tgt Ion	Resp	Lower	Upper
172	100		
171	38.9	28.9	43.3
170	26.4	18.6	27.8

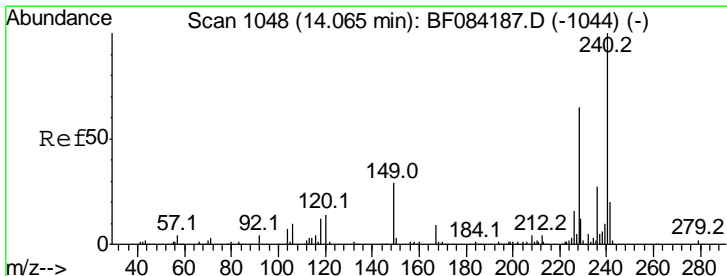
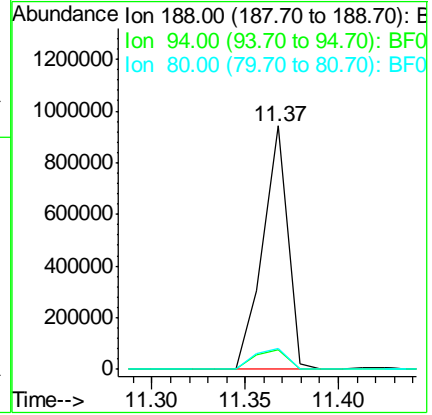
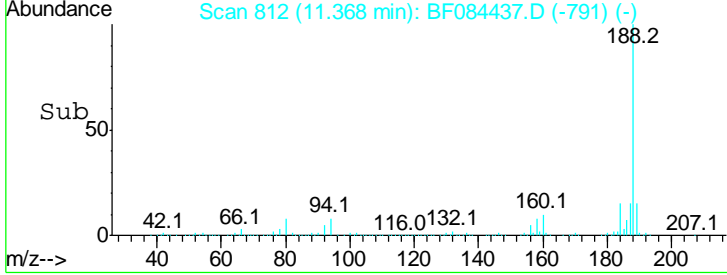
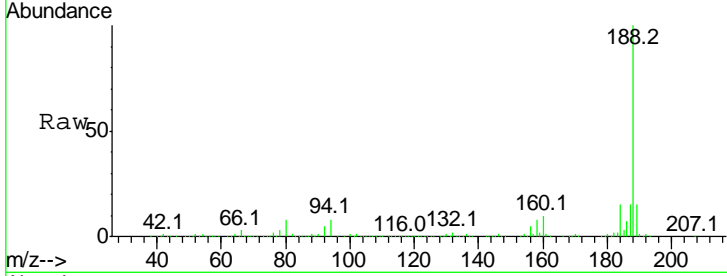




#63
 Phenanthrene-d10
 Concen: 20.00 ng
 RT: 11.37 min Scan# 812
 Delta R.T. -0.06 min
 Lab File: BF084437.D
 Acq: 13 Jan 2016 4:14

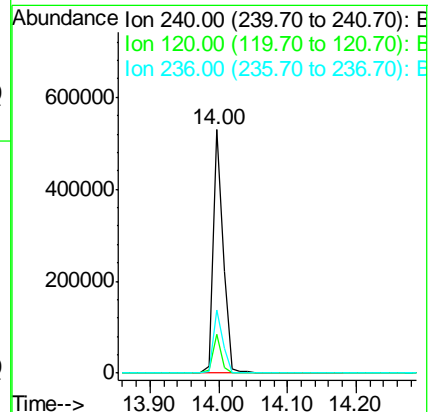
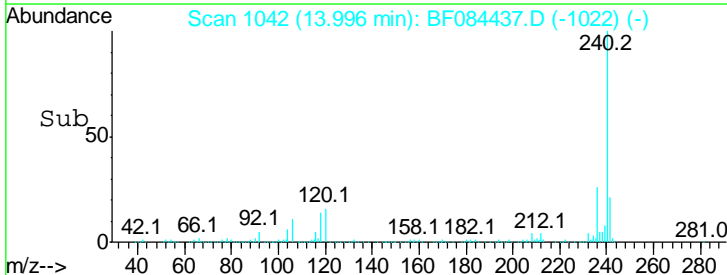
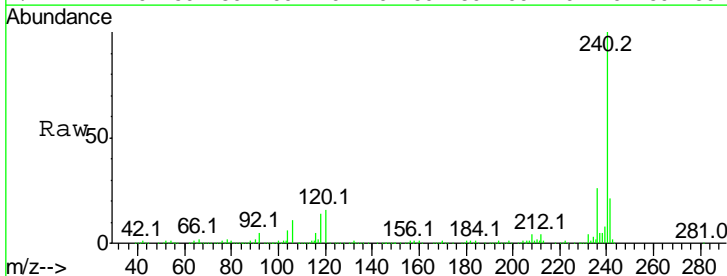
Instrument :
 BNA_F
 ClientSampled :
 FB2

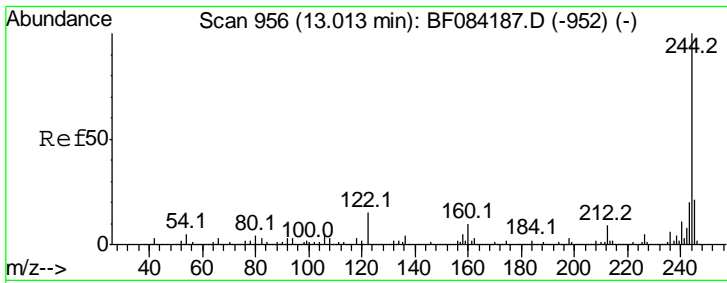
Tgt Ion	Ratio	Lower	Upper
188	100		
94	8.3	9.0	13.4#
80	8.4	9.6	14.4#



#75
 Chrysene-d12
 Concen: 20.00 ng
 RT: 14.00 min Scan# 1042
 Delta R.T. -0.07 min
 Lab File: BF084437.D
 Acq: 13 Jan 2016 4:14

Tgt Ion	Ratio	Lower	Upper
240	100		
120	16.0	9.5	14.3#
236	25.8	20.6	31.0



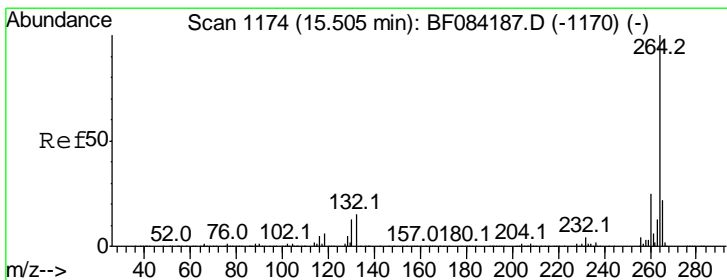
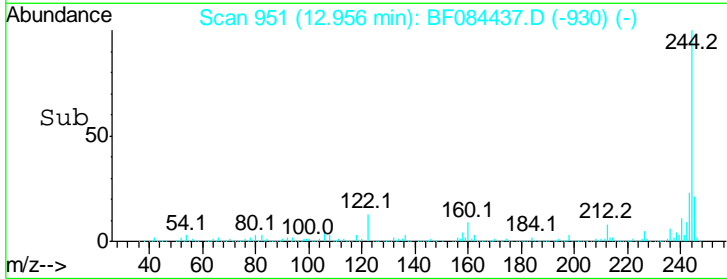
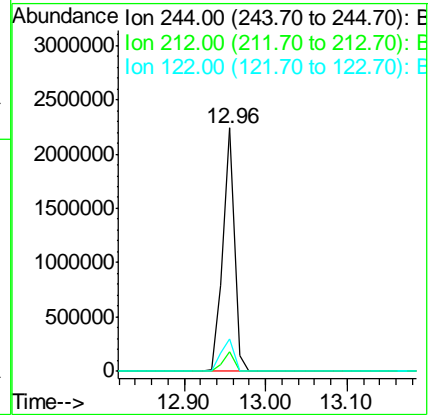
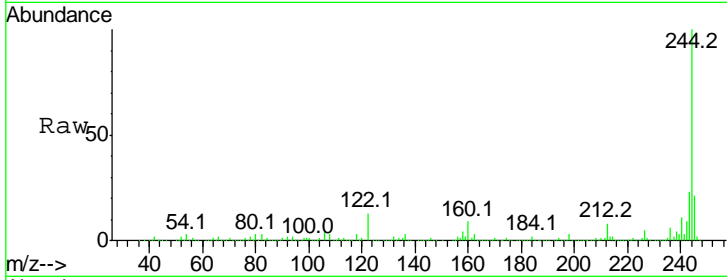


#78
 Terphenyl-d14
 Concen: 91.04 ng
 RT: 12.96 min Scan# 951
 Delta R.T. -0.06 min
 Lab File: BF084437.D
 Acq: 13 Jan 2016 4:14

Instrument :
 BNA_F
 ClientSampled :
 FB2

Tgt Ion: 244 Resp: 2201028

Ion	Ratio	Lower	Upper
244	100		
212	7.9	5.7	8.5
122	13.2	7.4	11.0



#86
 Perylene-d12
 Concen: 20.00 ng
 RT: 15.43 min Scan# 1167
 Delta R.T. -0.08 min
 Lab File: BF084437.D
 Acq: 13 Jan 2016 4:14

Tgt Ion: 264 Resp: 479105

Ion	Ratio	Lower	Upper
264	100		
260	23.2	19.4	29.2
265	22.2	17.8	26.6

