

Data Path : Z:\svoasrv\HPCHEM1\BNA_F\Data\BF011224\
 Data File : BF137046.D
 Acq On : 12 Jan 2024 13:57
 Operator : CG\JU
 Sample : PB158404BS
 Misc :
 ALS Vial : 4 Sample Multiplier: 1

Instrument :
 BNA_F
 ClientSampleId :
 PB158404BS

Quant Time: Jan 12 15:00:13 2024
 Quant Method : Z:\svoasrv\HPCHEM1\BNA_F\Methods\8270-BF122023.M
 Quant Title : ASP BNA STANDARDS FOR 5 POINT CALIBRATION
 QLast Update : Thu Dec 21 01:54:25 2023
 Response via : Initial Calibration

Compound	R.T.	QIon	Response	Conc	Units	Dev(Min)	
Internal Standards							
1) 1,4-Dichlorobenzene-d4	6.787	152	71734	20.000	ng	0.00	
21) Naphthalene-d8	8.063	136	278362	20.000	ng	0.00	
39) Acenaphthene-d10	9.822	164	146380	20.000	ng	0.00	
64) Phenanthrene-d10	11.316	188	277459	20.000	ng	0.00	
76) Chrysene-d12	13.974	240	139833	20.000	ng	0.00	
86) Perylene-d12	15.463	264	132142	20.000	ng	0.02	
System Monitoring Compounds							
5) 2-Fluorophenol	5.446	112	520472	113.208	ng	0.02	
7) Phenol-d6	6.445	99	654458	109.859	ng	0.00	
23) Nitrobenzene-d5	7.357	82	401506	73.809	ng	0.00	
42) 2,4,6-Tribromophenol	10.622	330	198916	115.384	ng	0.00	
45) 2-Fluorobiphenyl	9.145	172	818165	75.176	ng	0.00	
79) Terphenyl-d14	12.910	244	827190	82.668	ng	0.00	
Target Compounds							
2) 1,4-Dioxane	2.622	88	63286	33.037	ng		Qvalue 95
3) Pyridine	3.399	79	142363	30.460	ng		96
4) n-Nitrosodimethylamine	3.357	42	86465	34.643	ng		99
6) Aniline	6.457	93	185552	31.153	ng	#	3
8) 2-Chlorophenol	6.581	128	201516	40.053	ng		93
9) Benzaldehyde	6.345	77	60389	17.822	ng		94
10) Phenol	6.457	94	241370	37.955	ng		94
11) bis(2-Chloroethyl)ether	6.528	93	187274	38.723	ng		97
12) 1,3-Dichlorobenzene	6.728	146	201148	36.649	ng		97
13) 1,4-Dichlorobenzene	6.804	146	205122	36.577	ng		97
14) 1,2-Dichlorobenzene	6.951	146	193756	37.130	ng		99
15) Benzyl Alcohol	6.940	79	154332	38.401	ng		98
16) 2,2'-oxybis(1-Chloropr...	7.063	45	295368	37.356	ng		78
17) 2-Methylphenol	7.051	107	166427	39.930	ng		96
18) Hexachloroethane	7.287	117	73675	36.174	ng		99
19) n-Nitroso-di-n-propyla...	7.204	70	140801	38.990	ng		97
20) 3+4-Methylphenols	7.210	107	208713	40.082	ng	#	54
22) Acetophenone	7.198	105	281172	40.299	ng	#	89
24) Nitrobenzene	7.375	77	202366	37.136	ng		93
25) Isophorone	7.610	82	375699	37.956	ng		99
26) 2-Nitrophenol	7.687	139	107681	41.302	ng		98
27) 2,4-Dimethylphenol	7.728	122	180382	56.830	ng		97
28) bis(2-Chloroethoxy)met...	7.816	93	232554	38.651	ng		99
29) 2,4-Dichlorophenol	7.934	162	166404	40.722	ng		96
30) 1,2,4-Trichlorobenzene	8.004	180	171587	37.687	ng		95
31) Naphthalene	8.087	128	579979	37.926	ng		99
32) Benzoic acid	7.887	122	116106	37.805	ng		94
33) 4-Chloroaniline	8.139	127	121920	21.593	ng		98
34) Hexachlorobutadiene	8.198	225	102931	37.210	ng		97
35) Caprolactam	8.522	113	41421	30.726	ng		90
36) 4-Chloro-3-methylphenol	8.639	107	185028	40.220	ng		99
37) 2-Methylnaphthalene	8.775	142	379568	38.567	ng		100
38) 1-Methylnaphthalene	8.875	142	351814	36.436	ng		99
40) 1,2,4,5-Tetrachloroben...	8.945	216	179963	39.698	ng		99
41) Hexachlorocyclopentadiene	8.928	237	96725	67.719	ng		98
43) 2,4,6-Trichlorophenol	9.069	196	118390	40.722	ng		98

Data Path : Z:\svoasrv\HPCHEM1\BNA_F\Data\BF011224\
 Data File : BF137046.D
 Acq On : 12 Jan 2024 13:57
 Operator : CG\JU
 Sample : PB158404BS
 Misc :
 ALS Vial : 4 Sample Multiplier: 1

Instrument :
 BNA_F
 ClientSampleId :
 PB158404BS

Quant Time: Jan 12 15:00:13 2024
 Quant Method : Z:\svoasrv\HPCHEM1\BNA_F\Methods\8270-BF122023.M
 Quant Title : ASP BNA STANDARDS FOR 5 POINT CALIBRATION
 QLast Update : Thu Dec 21 01:54:25 2023
 Response via : Initial Calibration

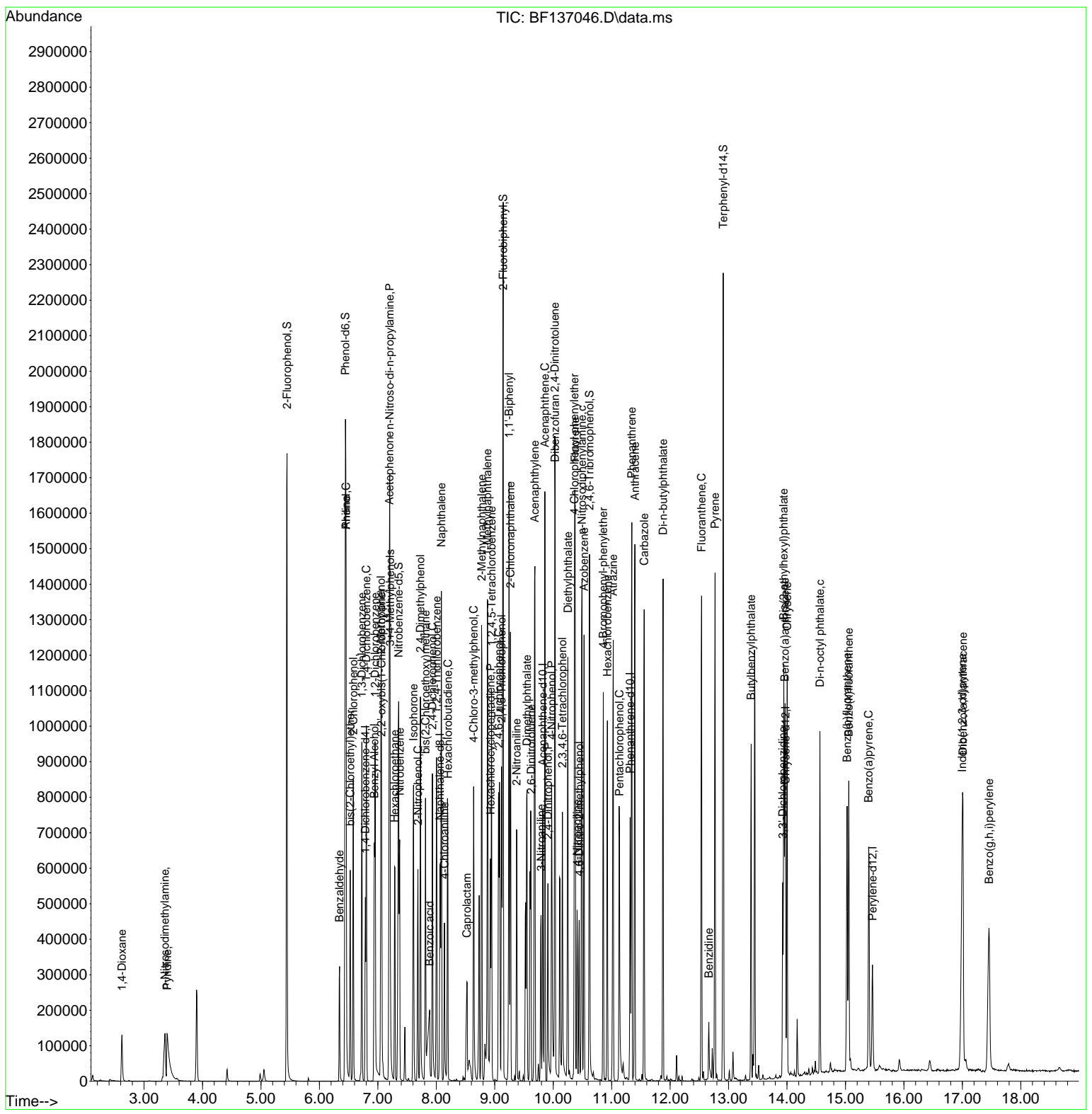
Compound	R.T.	QIon	Response	Conc	Units	Dev(Min)
44) 2,4,5-Trichlorophenol	9.116	196	123012	37.969	ng	96
46) 1,1'-Biphenyl	9.245	154	488875	39.799	ng	98
47) 2-Chloronaphthalene	9.269	162	355822	38.104	ng	99
48) 2-Nitroaniline	9.375	65	115381	39.457	ng	97
49) Acenaphthylene	9.686	152	571617	40.048	ng	100
50) Dimethylphthalate	9.551	163	426301	39.871	ng	99
51) 2,6-Dinitrotoluene	9.622	165	92494	38.117	ng	95
52) Acenaphthene	9.857	154	344057	38.887	ng	99
53) 3-Nitroaniline	9.792	138	76792	29.875	ng	90
54) 2,4-Dinitrophenol	9.910	184	83444	62.885	ng	95
55) Dibenzofuran	10.033	168	516156	38.485	ng	97
56) 4-Nitrophenol	9.975	139	104200	60.050	ng	92
57) 2,4-Dinitrotoluene	10.028	165	117210	37.208	ng #	86
58) Fluorene	10.375	166	421708	39.628	ng	99
59) 2,3,4,6-Tetrachlorophenol	10.157	232	105521	42.311	ng	96
60) Diethylphthalate	10.251	149	430772	38.831	ng	98
61) 4-Chlorophenyl-phenyle...	10.363	204	204128	39.463	ng	99
62) 4-Nitroaniline	10.410	138	84771	34.210	ng	95
63) Azobenzene	10.528	77	386428	37.295	ng	98
65) 4,6-Dinitro-2-methylph...	10.445	198	62270	39.161	ng	87
66) n-Nitrosodiphenylamine	10.492	169	374227	41.520	ng	98
67) 4-Bromophenyl-phenylether	10.857	248	126715	41.123	ng	96
68) Hexachlorobenzene	10.928	284	136255	39.679	ng	96
69) Atrazine	11.028	200	157065	68.132	ng	99
70) Pentachlorophenol	11.133	266	113913	71.169	ng	95
71) Phenanthrene	11.345	178	587740	41.284	ng	99
72) Anthracene	11.398	178	586813	40.700	ng	99
73) Carbazole	11.557	167	522966	38.472	ng	99
74) Di-n-butylphthalate	11.880	149	668214	40.285	ng	99
75) Fluoranthene	12.539	202	569862	37.421	ng	99
77) Benzidine	12.663	184	73198	17.753	ng	97
78) Pyrene	12.769	202	570638	41.571	ng	99
80) Butylbenzylphthalate	13.386	149	213020	42.648	ng	99
81) Benzo(a)anthracene	13.963	228	402530	41.456	ng	99
82) 3,3'-Dichlorobenzidine	13.927	252	109932	39.866	ng	97
83) Chrysene	14.004	228	371985	39.176	ng	97
84) Bis(2-ethylhexyl)phtha...	13.945	149	282497	44.952	ng	98
85) Di-n-octyl phthalate	14.563	149	428938	44.124	ng	98
87) Indeno(1,2,3-cd)pyrene	16.998	276	459199	48.130	ng	99
88) Benzo(b)fluoranthene	15.027	252	352701	39.962	ng	100
89) Benzo(k)fluoranthene	15.057	252	345031	41.372	ng	99
90) Benzo(a)pyrene	15.398	252	318755	42.786	ng	99
91) Dibenzo(a,h)anthracene	17.009	278	381733	48.769	ng	97
92) Benzo(g,h,i)perylene	17.456	276	387359	48.318	ng	99

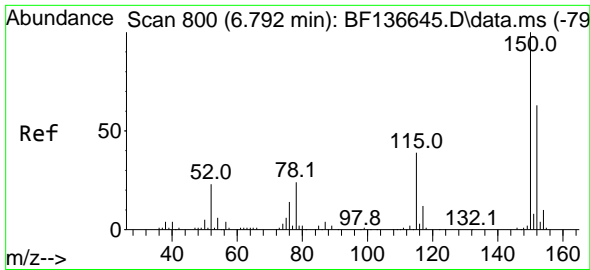
(#) = qualifier out of range (m) = manual integration (+) = signals summed

Data Path : Z:\svoasrv\HPCHEM1\BNA_F\Data\BF011224\
 Data File : BF137046.D
 Acq On : 12 Jan 2024 13:57
 Operator : CG\JU
 Sample : PB158404BS
 Misc :
 ALS Vial : 4 Sample Multiplier: 1

Instrument :
 BNA_F
Client Sample Id :
 PB158404BS

Quant Time: Jan 12 15:00:13 2024
 Quant Method : Z:\svoasrv\HPCHEM1\BNA_F\Methods\8270-BF122023.M
 Quant Title : ASP BNA STANDARDS FOR 5 POINT CALIBRATION
 QLast Update : Thu Dec 21 01:54:25 2023
 Response via : Initial Calibration

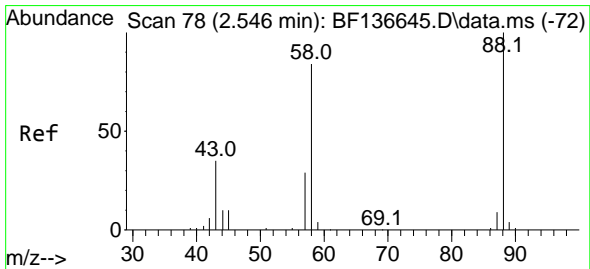
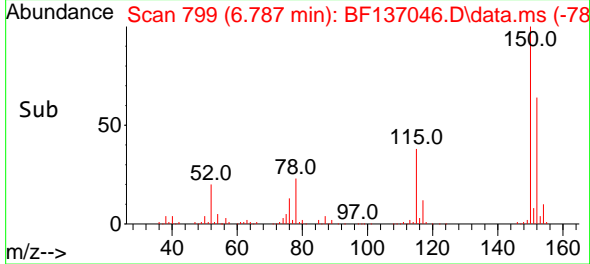
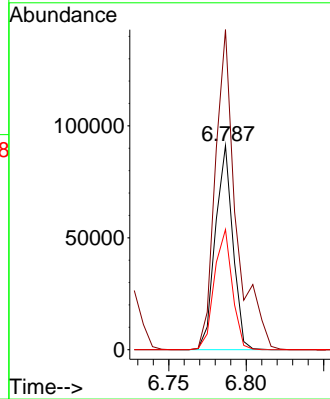
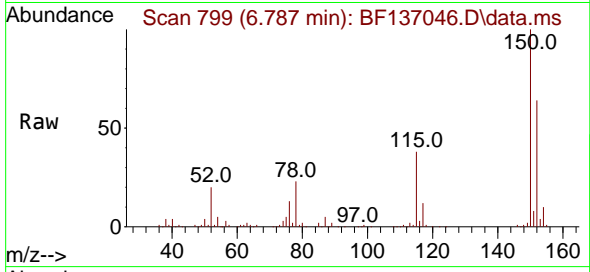




#1
 1,4-Dichlorobenzene-d4
 Concen: 20.000 ng
 RT: 6.787 min Scan# 79
 Delta R.T. -0.005 min
 Lab File: BF137046.D
 Acq: 12 Jan 2024 13:57

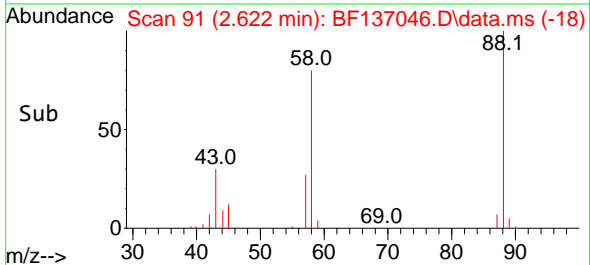
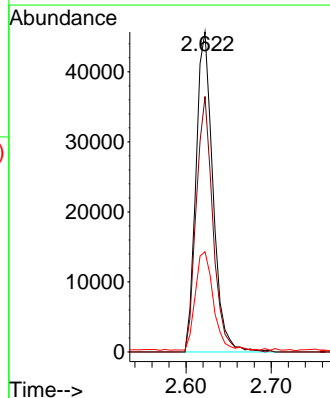
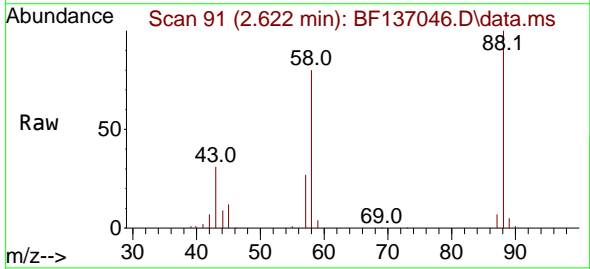
Instrument :
 BNA_F
 ClientSampleId :
 PB158404BS

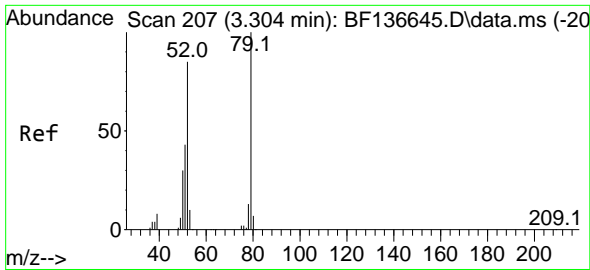
Tgt Ion:152 Resp: 71734
 Ion Ratio Lower Upper
 152 100
 150 156.7 127.0 190.6
 115 58.8 49.0 73.4



#2
 1,4-Dioxane
 Concen: 33.037 ng
 RT: 2.622 min Scan# 91
 Delta R.T. 0.077 min
 Lab File: BF137046.D
 Acq: 12 Jan 2024 13:57

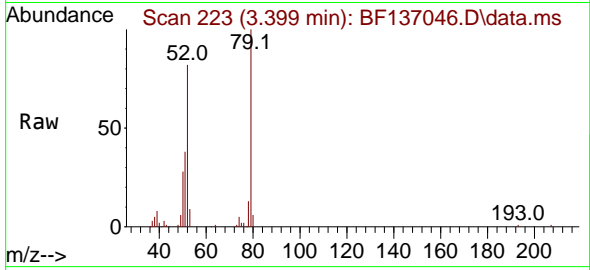
Tgt Ion: 88 Resp: 63286
 Ion Ratio Lower Upper
 88 100
 58 78.6 67.4 101.0
 43 32.5 27.7 41.5



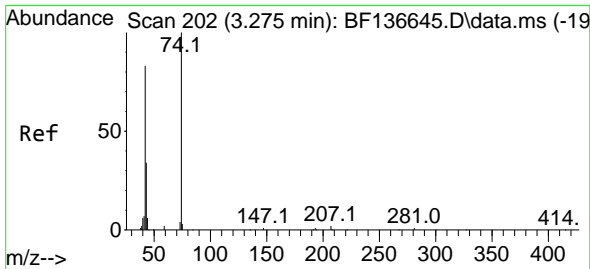
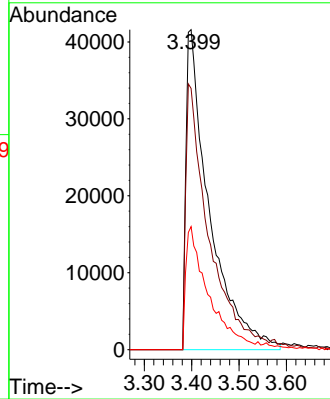
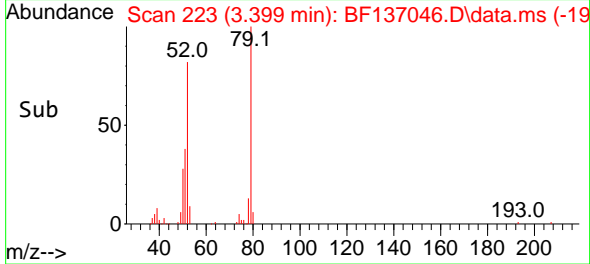


#3
 Pyridine
 Concen: 30.460 ng
 RT: 3.399 min Scan# 216
 Delta R.T. 0.094 min
 Lab File: BF137046.D
 Acq: 12 Jan 2024 13:57

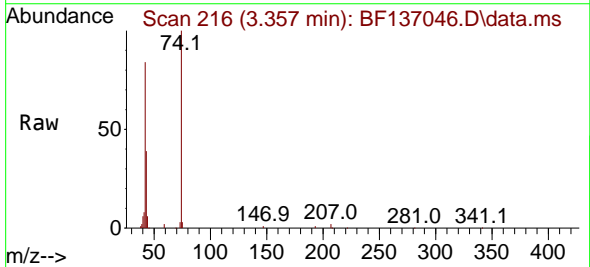
Instrument :
 BNA_F
 ClientSampleId :
 PB158404BS



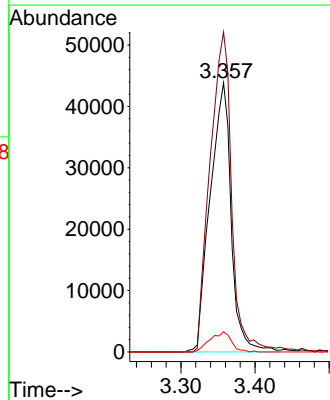
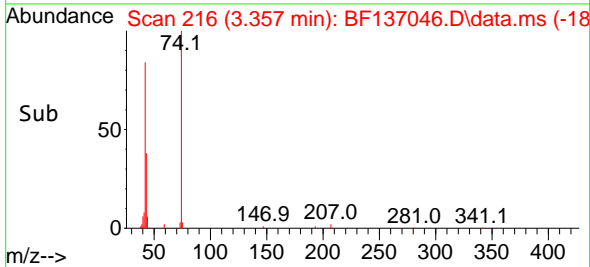
Tgt Ion: 79 Resp: 142363
 Ion Ratio Lower Upper
 79 100
 52 81.7 67.7 101.5
 51 38.4 34.0 51.0

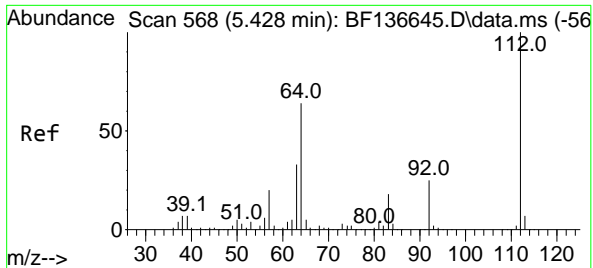


#4
 n-Nitrosodimethylamine
 Concen: 34.643 ng
 RT: 3.357 min Scan# 216
 Delta R.T. 0.083 min
 Lab File: BF137046.D
 Acq: 12 Jan 2024 13:57



Tgt Ion: 42 Resp: 86465
 Ion Ratio Lower Upper
 42 100
 74 118.9 96.0 144.0
 44 7.5 5.4 8.2



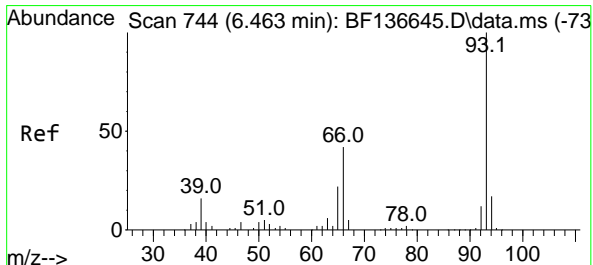
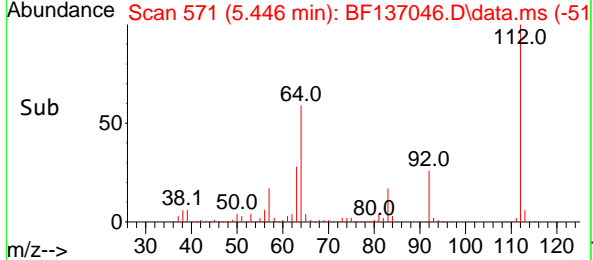
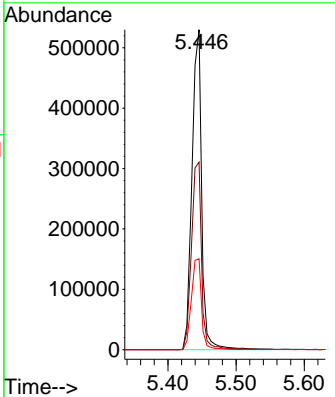
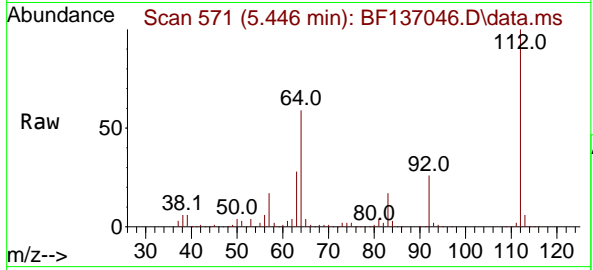


#5
 2-Fluorophenol
 Concen: 113.208 ng
 RT: 5.446 min Scan# 51
 Delta R.T. 0.018 min
 Lab File: BF137046.D
 Acq: 12 Jan 2024 13:57

Instrument : BNA_F
 ClientSampleId : PB158404BS

Tgt Ion:112 Resp: 520472

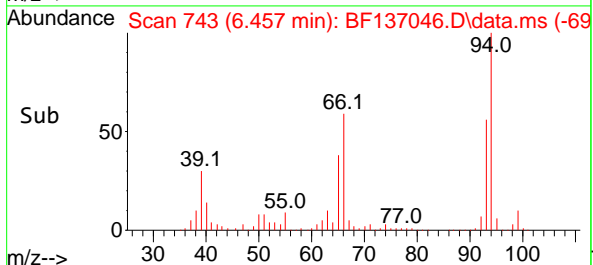
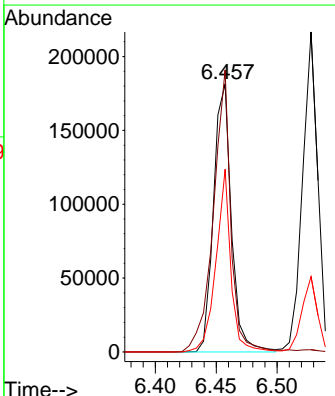
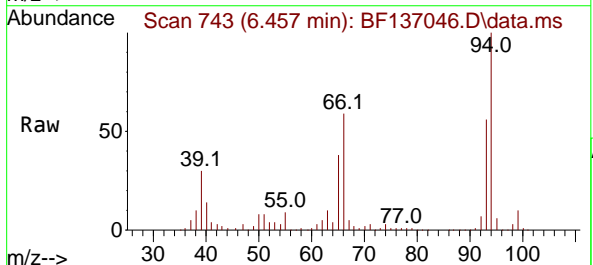
Ion	Ratio	Lower	Upper
112	100		
64	58.6	51.1	76.7
63	28.4	26.1	39.1

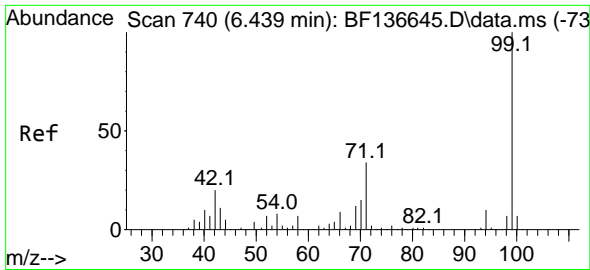


#6
 Aniline
 Concen: 31.153 ng
 RT: 6.457 min Scan# 743
 Delta R.T. -0.006 min
 Lab File: BF137046.D
 Acq: 12 Jan 2024 13:57

Tgt Ion: 93 Resp: 185552

Ion	Ratio	Lower	Upper
93	100		
66	105.3	34.6	51.8#
65	68.2	17.8	26.8#

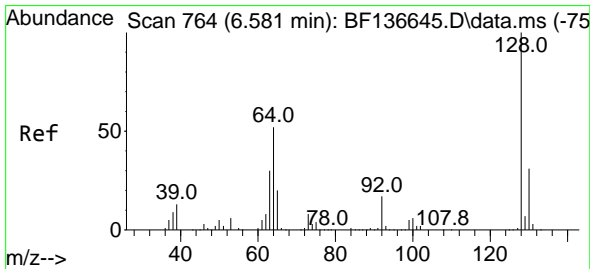
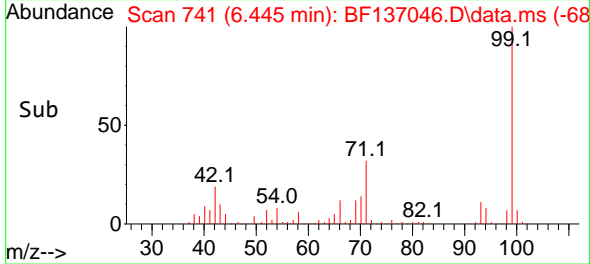
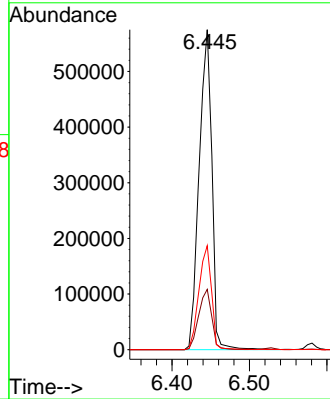
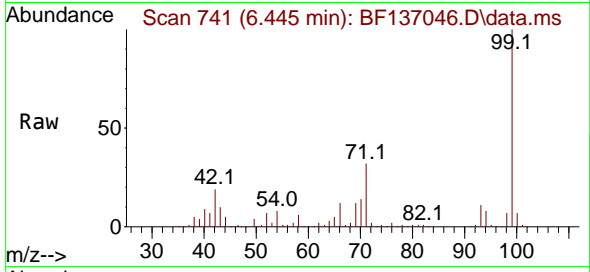




#7
Phenol-d6
Concen: 109.859 ng
RT: 6.445 min Scan# 741
Delta R.T. 0.006 min
Lab File: BF137046.D
Acq: 12 Jan 2024 13:57

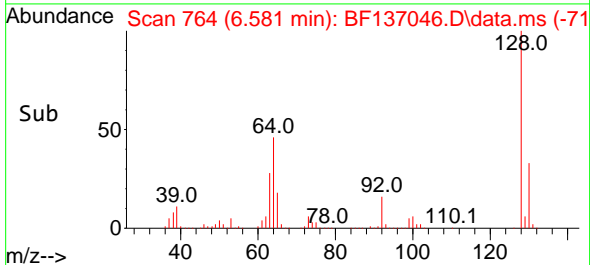
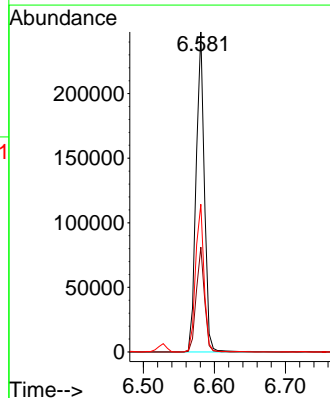
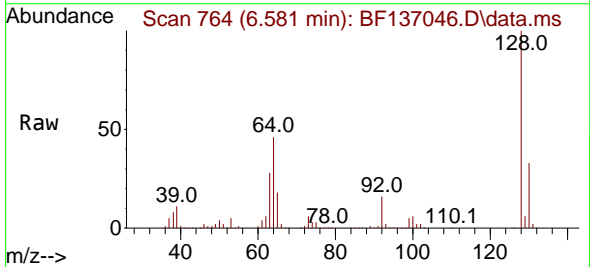
Instrument :
BNA_F
ClientSampleId :
PB158404BS

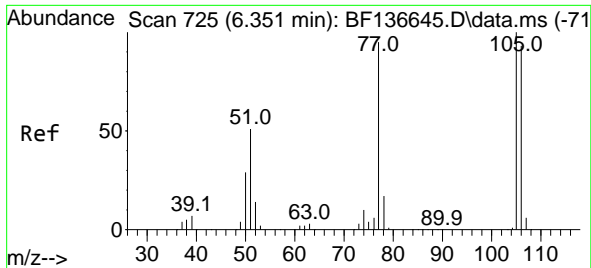
Tgt Ion: 99 Resp: 654458
Ion Ratio Lower Upper
99 100
42 18.8 16.1 24.1
71 32.5 27.4 41.2



#8
2-Chlorophenol
Concen: 40.053 ng
RT: 6.581 min Scan# 764
Delta R.T. 0.000 min
Lab File: BF137046.D
Acq: 12 Jan 2024 13:57

Tgt Ion:128 Resp: 201516
Ion Ratio Lower Upper
128 100
130 32.8 11.3 51.3
64 46.2 32.5 72.5

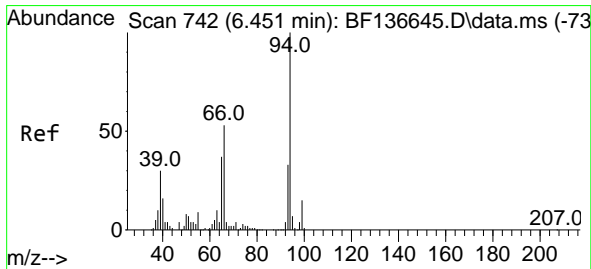
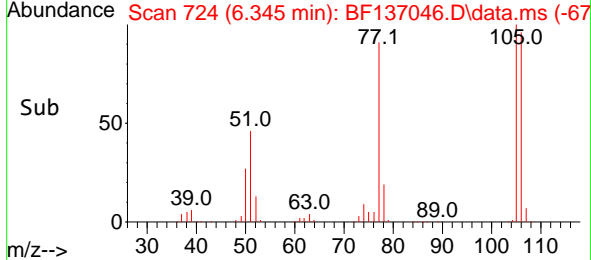
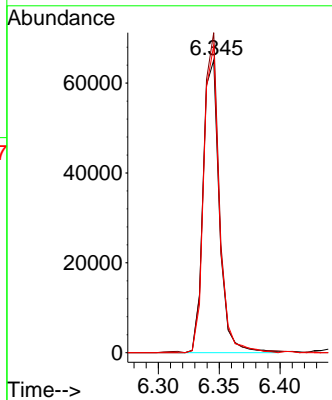
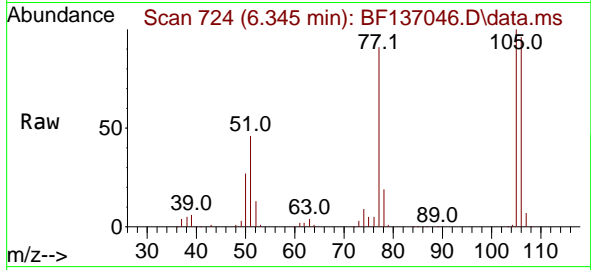




#9
 Benzaldehyde
 Concen: 17.822 ng
 RT: 6.345 min Scan# 71
 Delta R.T. -0.006 min
 Lab File: BF137046.D
 Acq: 12 Jan 2024 13:57

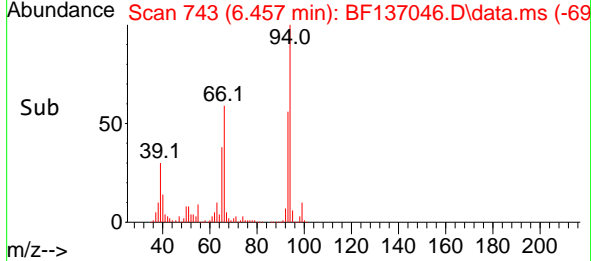
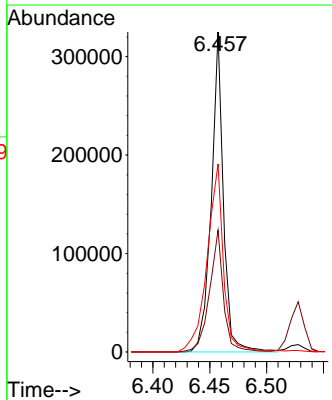
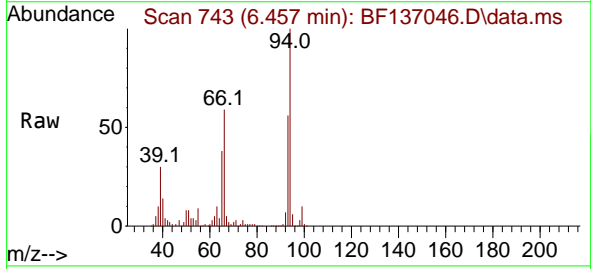
Instrument : BNA_F
 ClientSampleId : PB158404BS

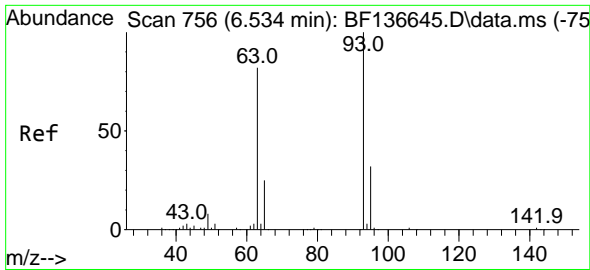
Tgt Ion	Resp	Lower	Upper
77	100		
105	109.4	84.8	124.8
106	105.1	77.8	117.8



#10
 Phenol
 Concen: 37.955 ng
 RT: 6.457 min Scan# 743
 Delta R.T. 0.006 min
 Lab File: BF137046.D
 Acq: 12 Jan 2024 13:57

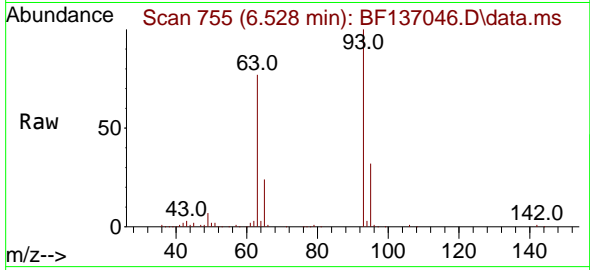
Tgt Ion	Resp	Lower	Upper
94	100		
65	38.1	16.6	56.6
66	58.8	32.6	72.6



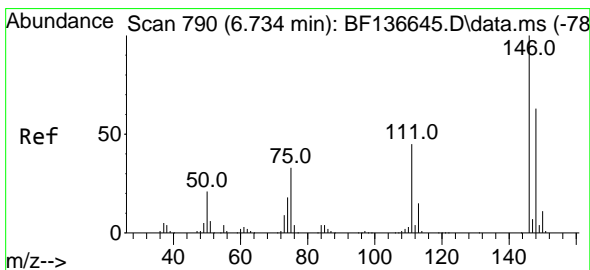
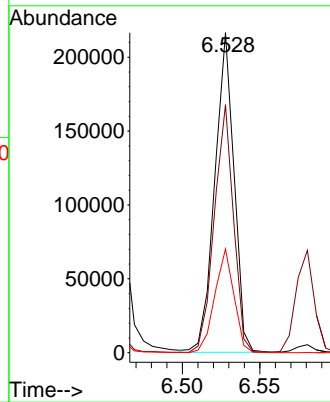
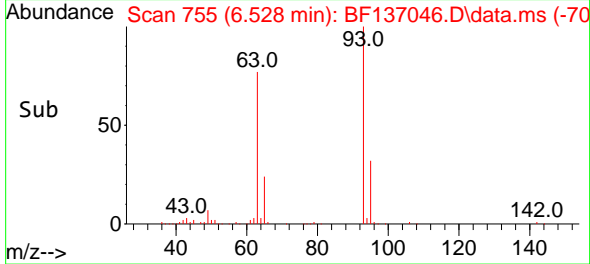


#11
 bis(2-Chloroethyl)ether
 Concen: 38.723 ng
 RT: 6.528 min Scan# 711
 Delta R.T. -0.006 min
 Lab File: BF137046.D
 Acq: 12 Jan 2024 13:57

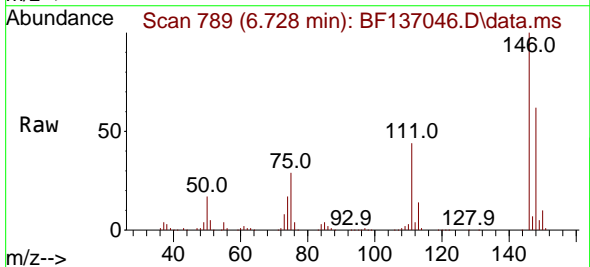
Instrument :
 BNA_F
 ClientSampleId :
 PB158404BS



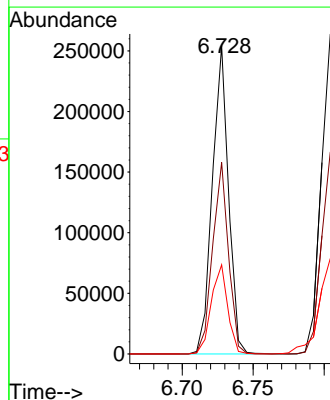
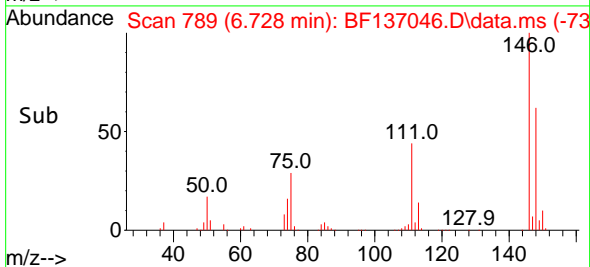
Tgt Ion: 93 Resp: 187274
 Ion Ratio Lower Upper
 93 100
 63 77.5 61.2 101.2
 95 32.4 11.6 51.6

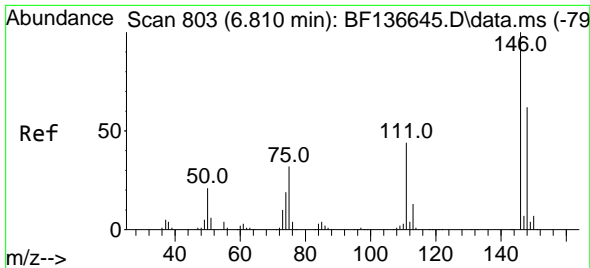


#12
 1,3-Dichlorobenzene
 Concen: 36.649 ng
 RT: 6.728 min Scan# 789
 Delta R.T. -0.006 min
 Lab File: BF137046.D
 Acq: 12 Jan 2024 13:57



Tgt Ion: 146 Resp: 201148
 Ion Ratio Lower Upper
 146 100
 148 62.1 50.5 75.7
 75 28.9 26.2 39.4

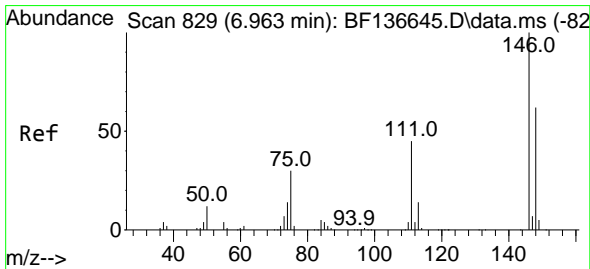
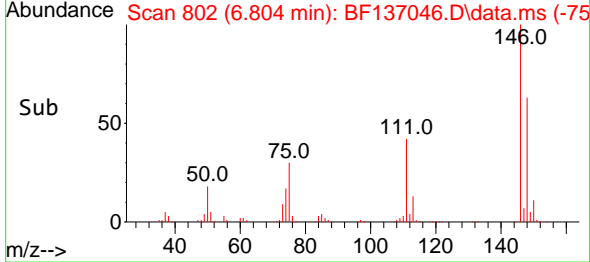
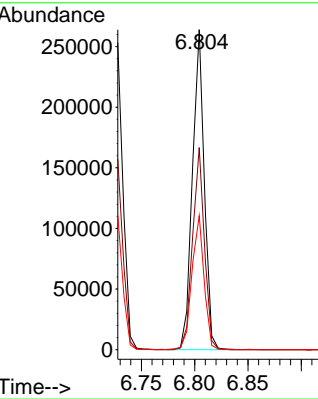
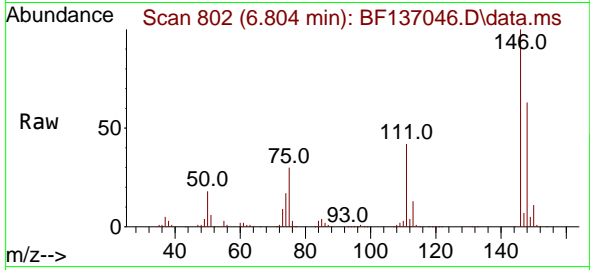




#13
 1,4-Dichlorobenzene
 Concen: 36.577 ng
 RT: 6.804 min Scan# 801
 Delta R.T. -0.006 min
 Lab File: BF137046.D
 Acq: 12 Jan 2024 13:57

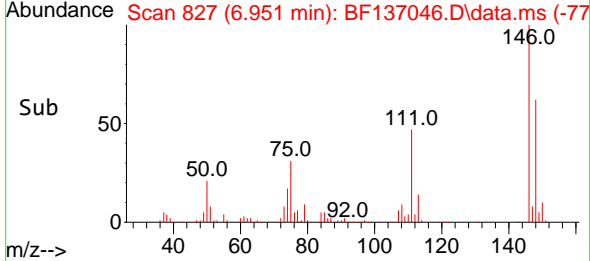
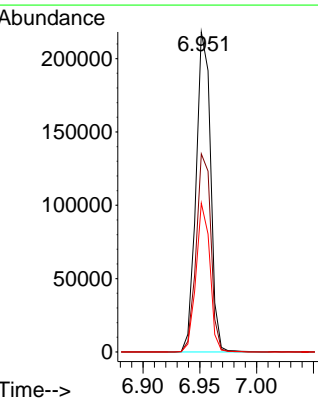
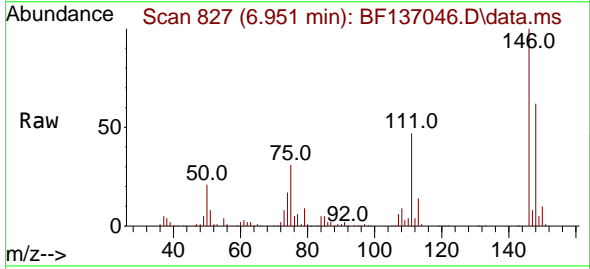
Instrument :
 BNA_F
 ClientSampleId :
 PB158404BS

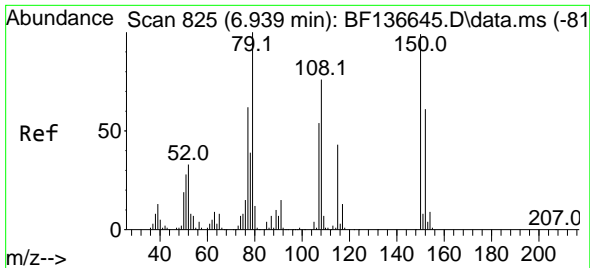
Tgt Ion:146 Resp: 205122
 Ion Ratio Lower Upper
 146 100
 148 63.2 49.2 73.8
 111 41.9 35.2 52.8



#14
 1,2-Dichlorobenzene
 Concen: 37.130 ng
 RT: 6.951 min Scan# 827
 Delta R.T. -0.012 min
 Lab File: BF137046.D
 Acq: 12 Jan 2024 13:57

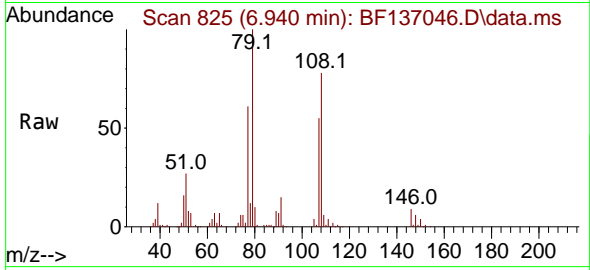
Tgt Ion:146 Resp: 193756
 Ion Ratio Lower Upper
 146 100
 148 61.9 49.6 74.4
 111 46.5 36.2 54.2





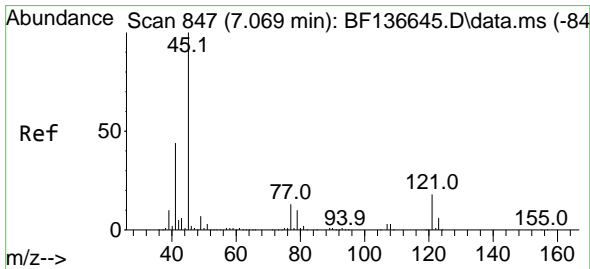
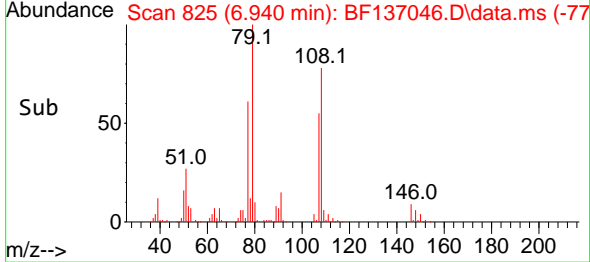
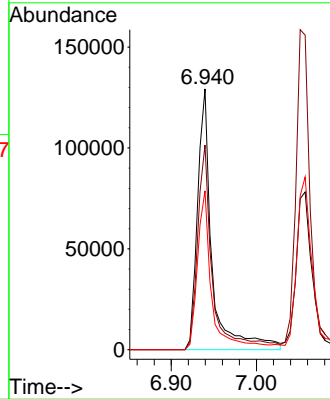
#15
Benzyl Alcohol
Concen: 38.401 ng
RT: 6.940 min Scan# 81
Delta R.T. 0.000 min
Lab File: BF137046.D
Acq: 12 Jan 2024 13:57

Instrument :
BNA_F
ClientSampleId :
PB158404BS



Tgt Ion: 79 Resp: 154332

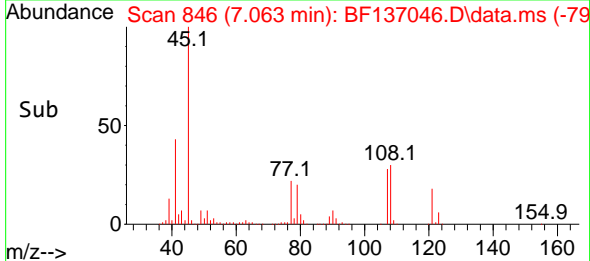
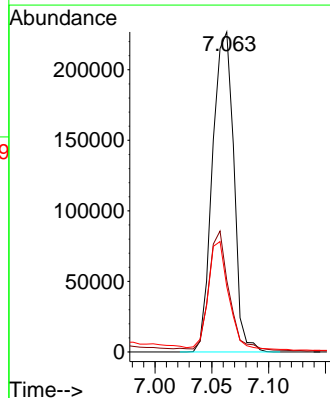
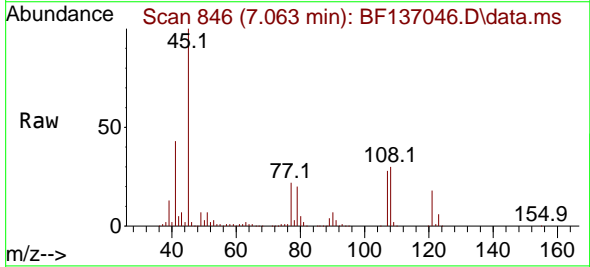
Ion	Ratio	Lower	Upper
79	100		
108	78.4	61.0	91.6
77	60.9	49.8	74.8

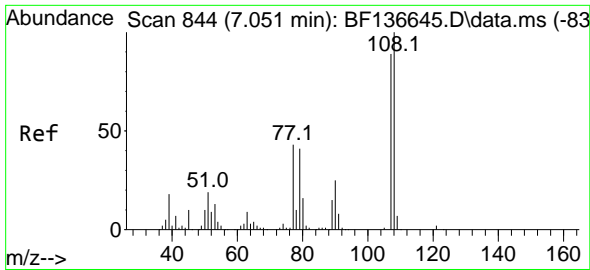


#16
2,2'-oxybis(1-Chloropropane)
Concen: 37.356 ng
RT: 7.063 min Scan# 846
Delta R.T. -0.006 min
Lab File: BF137046.D
Acq: 12 Jan 2024 13:57

Tgt Ion: 45 Resp: 295368

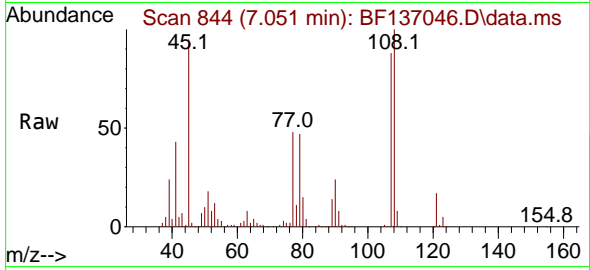
Ion	Ratio	Lower	Upper
45	100		
77	22.4	0.0	34.3
79	20.4	0.0	31.4



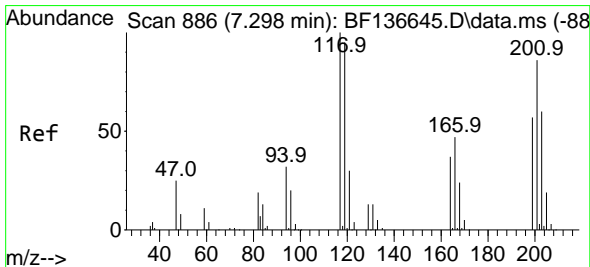
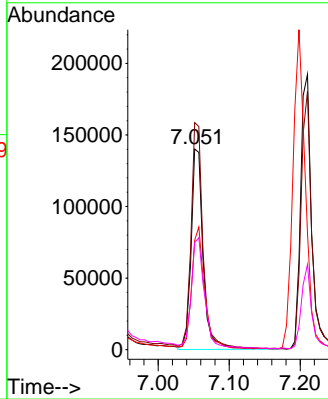
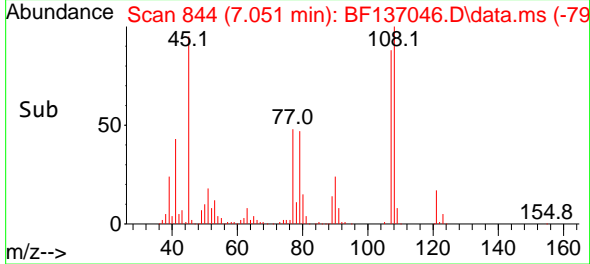


#17
 2-Methylphenol
 Concen: 39.930 ng
 RT: 7.051 min Scan# 844
 Delta R.T. 0.000 min
 Lab File: BF137046.D
 Acq: 12 Jan 2024 13:57

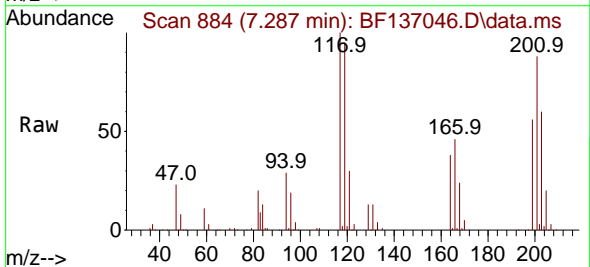
Instrument : BNA_F
 ClientSampleId : PB158404BS



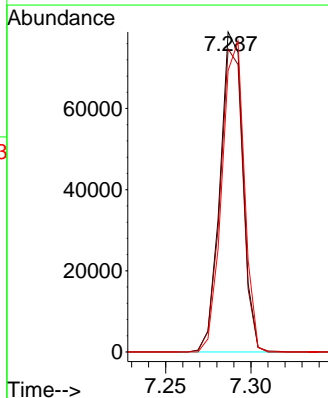
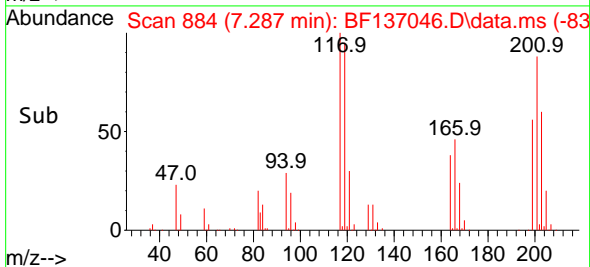
Tgt Ion	Resp	Lower	Upper
107	100		
108	113.1	90.3	135.5
77	54.5	38.7	58.1
79	53.4	37.8	56.6

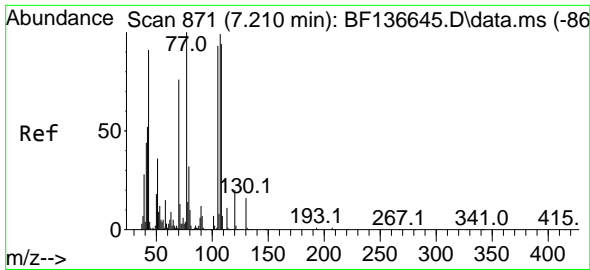


#18
 Hexachloroethane
 Concen: 36.174 ng
 RT: 7.287 min Scan# 884
 Delta R.T. -0.012 min
 Lab File: BF137046.D
 Acq: 12 Jan 2024 13:57



Tgt Ion	Resp	Lower	Upper
117	100		
119	94.7	75.8	113.6
201	87.9	69.1	103.7

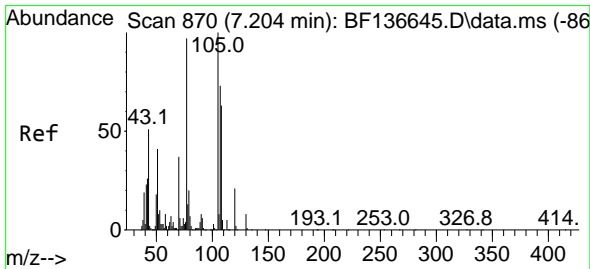
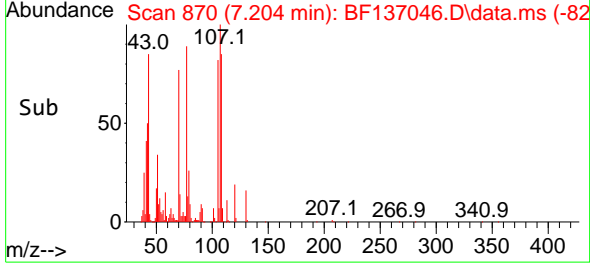
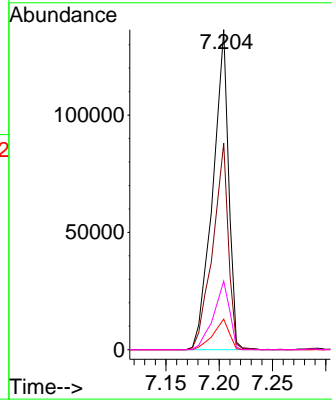
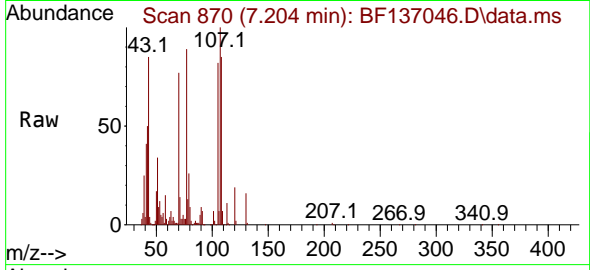




#19
 n-Nitroso-di-n-propylamine
 Concen: 38.990 ng
 RT: 7.204 min Scan# 81
 Delta R.T. -0.006 min
 Lab File: BF137046.D
 Acq: 12 Jan 2024 13:57

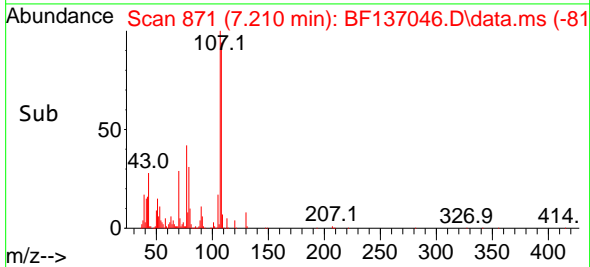
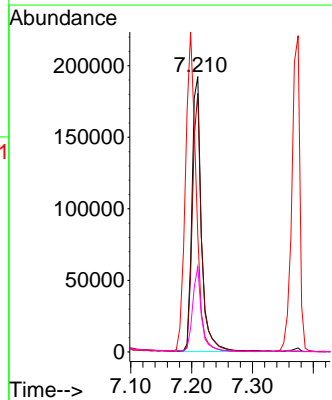
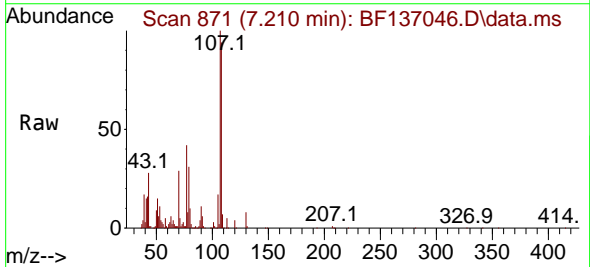
Instrument :
 BNA_F
 ClientSampleId :
 PB158404BS

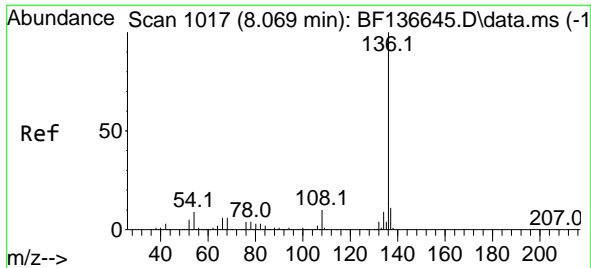
Tgt Ion: 70 Resp: 140801
 Ion Ratio Lower Upper
 70 100
 42 64.6 54.2 81.4
 101 9.6 7.6 11.4
 130 21.4 17.1 25.7



#20
 3+4-Methylphenols
 Concen: 40.082 ng
 RT: 7.210 min Scan# 871
 Delta R.T. 0.006 min
 Lab File: BF137046.D
 Acq: 12 Jan 2024 13:57

Tgt Ion: 107 Resp: 208713
 Ion Ratio Lower Upper
 107 100
 108 93.8 66.0 106.0
 77 42.4 114.2 154.2#
 79 31.0 7.2 47.2



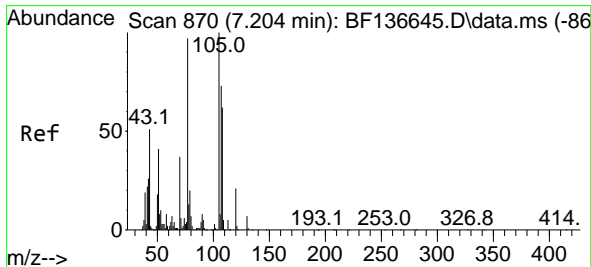
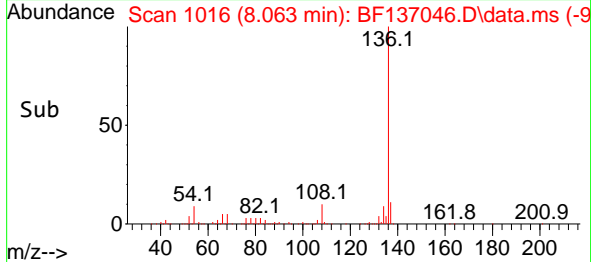
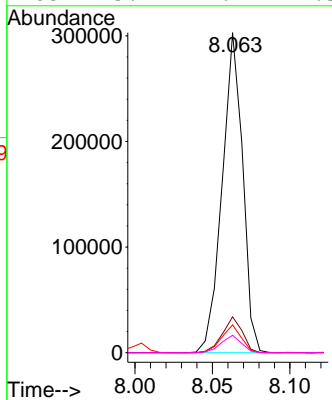
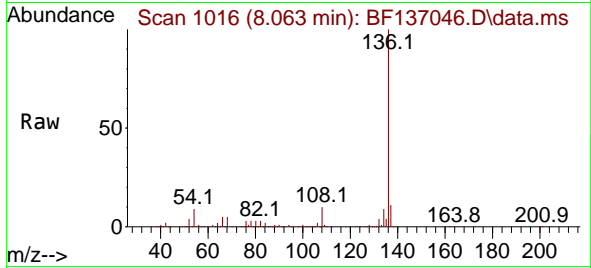


#21
 Naphthalene-d8
 Concen: 20.000 ng
 RT: 8.063 min Scan# 1016
 Delta R.T. -0.006 min
 Lab File: BF137046.D
 Acq: 12 Jan 2024 13:57

Instrument : BNA_F
 ClientSampleId : PB158404BS

Tgt Ion:136 Resp: 278362

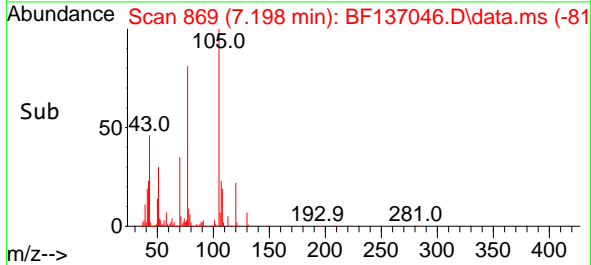
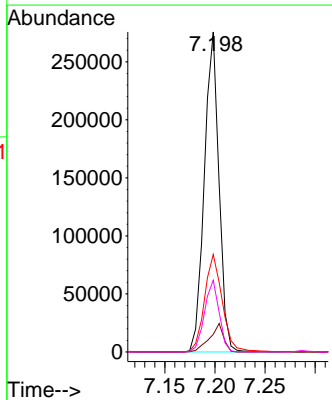
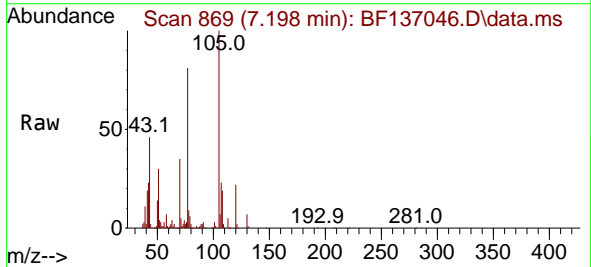
Ion	Ratio	Lower	Upper
136	100		
137	11.2	9.0	13.4
54	8.7	7.2	10.8
68	5.4	4.9	7.3

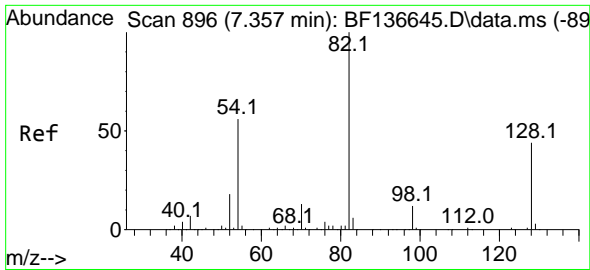


#22
 Acetophenone
 Concen: 40.299 ng
 RT: 7.198 min Scan# 869
 Delta R.T. -0.006 min
 Lab File: BF137046.D
 Acq: 12 Jan 2024 13:57

Tgt Ion:105 Resp: 281172

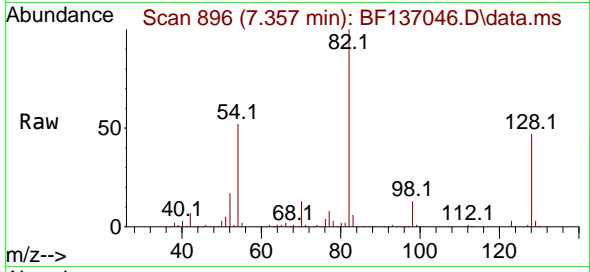
Ion	Ratio	Lower	Upper
105	100		
71	5.5	4.8	7.2
51	30.5	32.8	49.2#
120	22.4	17.0	25.6



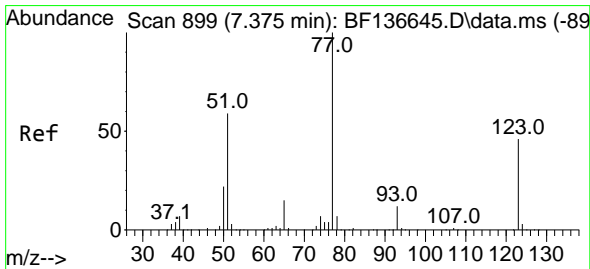
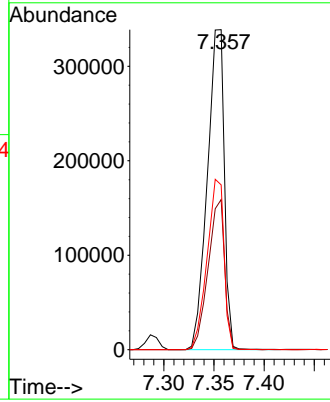
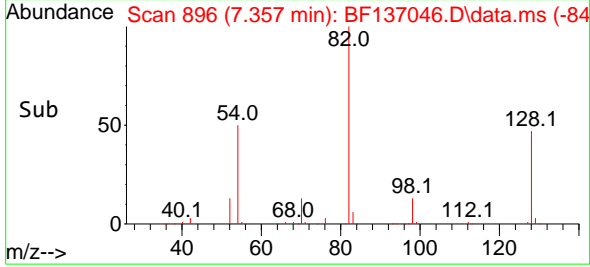


#23
 Nitrobenzene-d5
 Concen: 73.809 ng
 RT: 7.357 min Scan# 896
 Delta R.T. 0.000 min
 Lab File: BF137046.D
 Acq: 12 Jan 2024 13:57

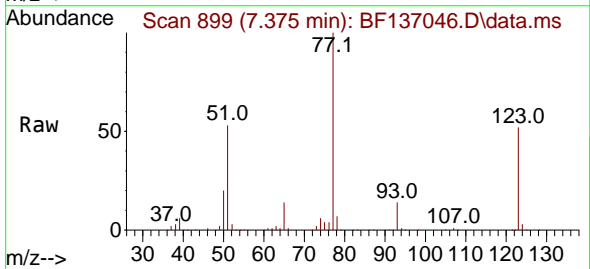
Instrument : BNA_F
 ClientSampleId : PB158404BS



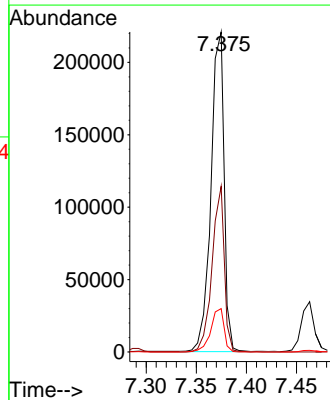
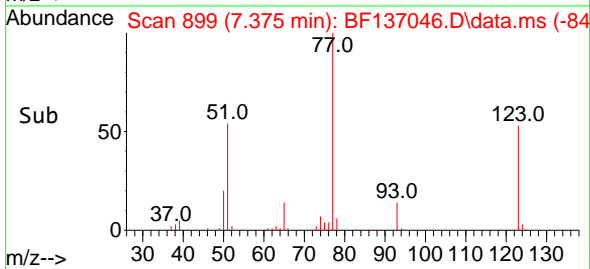
Tgt Ion: 82 Resp: 401506
 Ion Ratio Lower Upper
 82 100
 128 46.9 35.3 52.9
 54 51.5 44.5 66.7

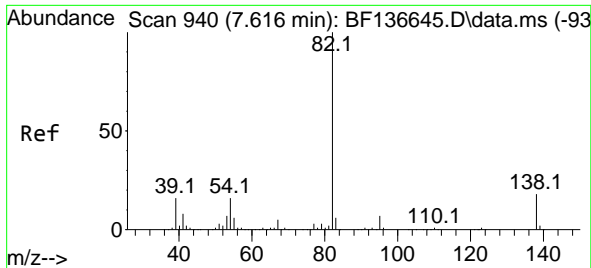


#24
 Nitrobenzene
 Concen: 37.136 ng
 RT: 7.375 min Scan# 899
 Delta R.T. 0.000 min
 Lab File: BF137046.D
 Acq: 12 Jan 2024 13:57



Tgt Ion: 77 Resp: 202366
 Ion Ratio Lower Upper
 77 100
 123 51.7 36.7 55.1
 65 13.5 11.8 17.6



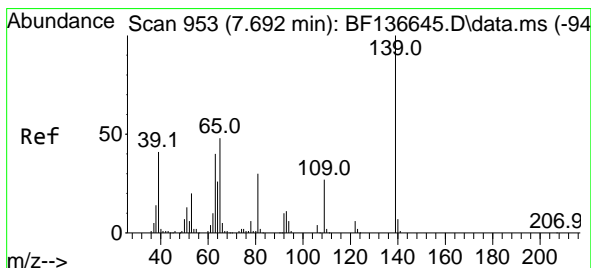
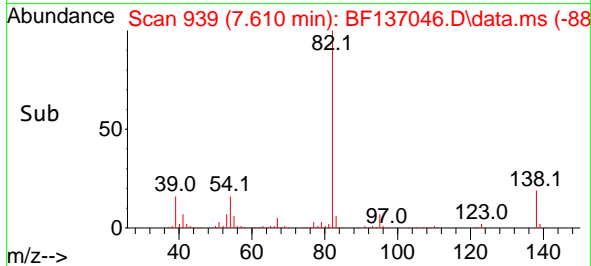
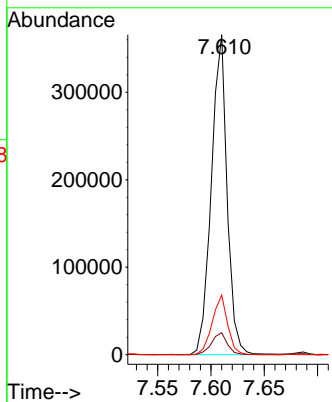
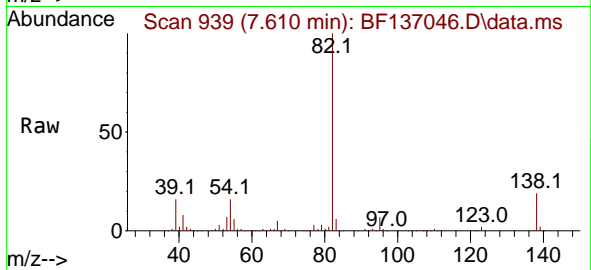


#25
 Isophorone
 Concen: 37.956 ng
 RT: 7.610 min Scan# 91
 Delta R.T. -0.006 min
 Lab File: BF137046.D
 Acq: 12 Jan 2024 13:57

Instrument : BNA_F
 Client SampleId : PB158404BS

Tgt Ion: 82 Resp: 375699

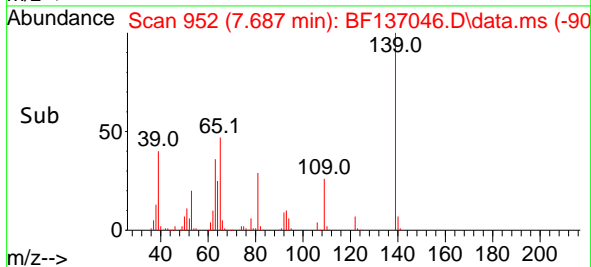
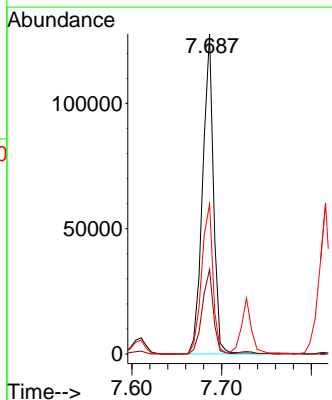
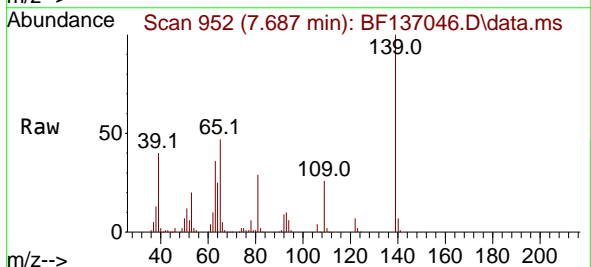
Ion	Ratio	Lower	Upper
82	100		
95	6.9	5.5	8.3
138	18.7	14.5	21.7

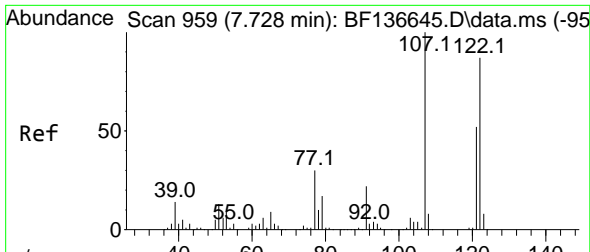


#26
 2-Nitrophenol
 Concen: 41.302 ng
 RT: 7.687 min Scan# 952
 Delta R.T. -0.006 min
 Lab File: BF137046.D
 Acq: 12 Jan 2024 13:57

Tgt Ion: 139 Resp: 107681

Ion	Ratio	Lower	Upper
139	100		
109	26.4	21.9	32.9
65	46.8	38.6	58.0





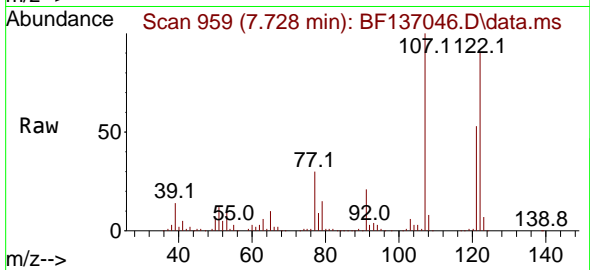
#27
 2,4-Dimethylphenol
 Concen: 56.830 ng
 RT: 7.728 min Scan# 911
 Delta R.T. 0.000 min
 Lab File: BF137046.D
 Acq: 12 Jan 2024 13:57

Instrument :

BNA_F

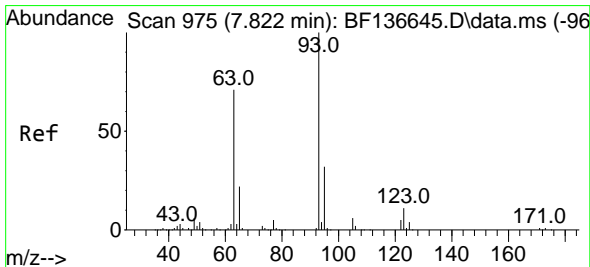
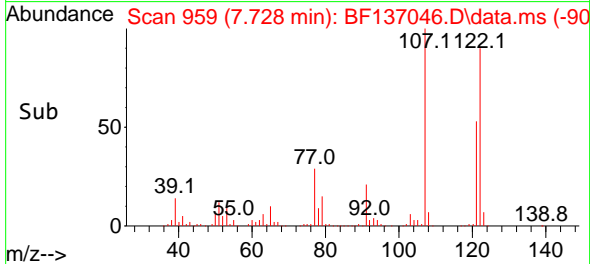
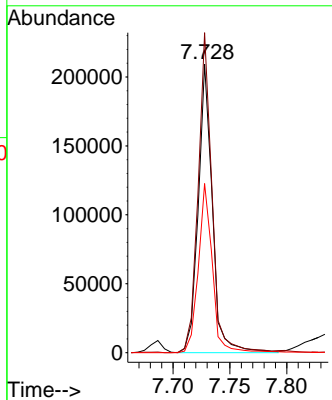
Client Sample Id :

PB158404BS



Tgt Ion:122 Resp: 180382

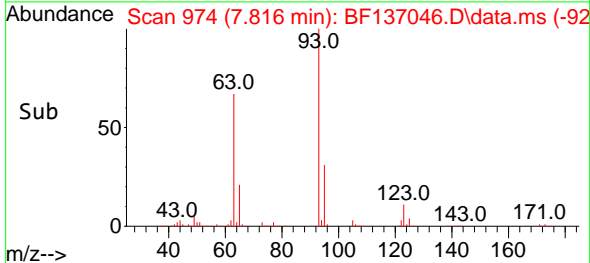
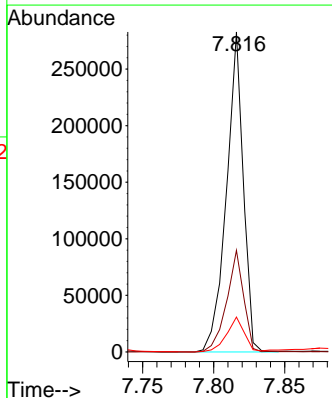
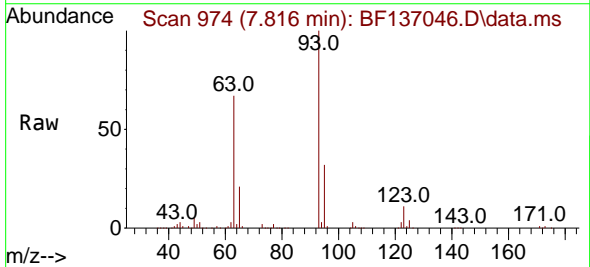
Ion	Ratio	Lower	Upper
122	100		
107	110.8	92.0	138.0
121	58.6	47.5	71.3

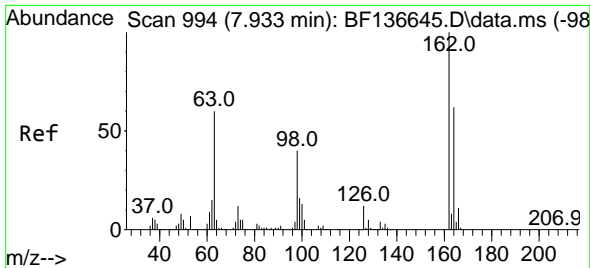


#28
 bis(2-Chloroethoxy)methane
 Concen: 38.651 ng
 RT: 7.816 min Scan# 974
 Delta R.T. -0.006 min
 Lab File: BF137046.D
 Acq: 12 Jan 2024 13:57

Tgt Ion: 93 Resp: 232554

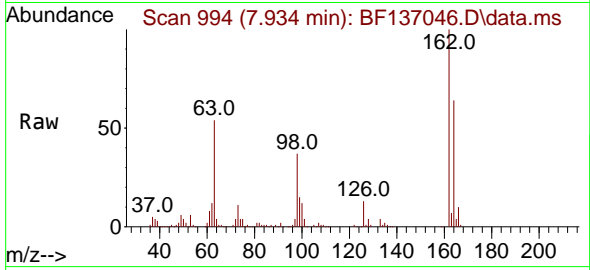
Ion	Ratio	Lower	Upper
93	100		
95	31.8	25.5	38.3
123	10.9	9.2	13.8





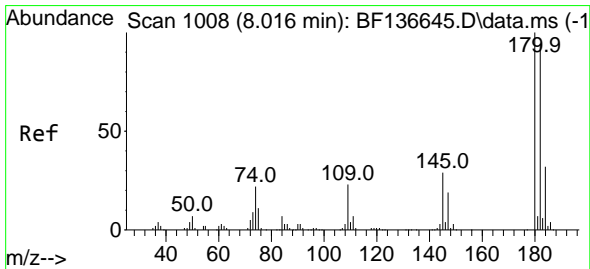
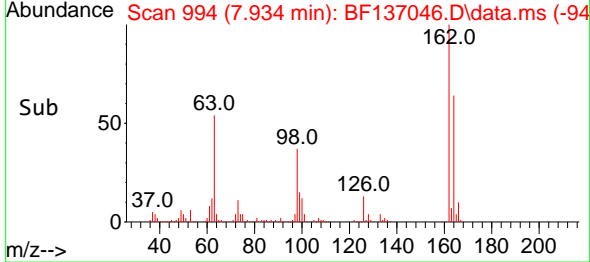
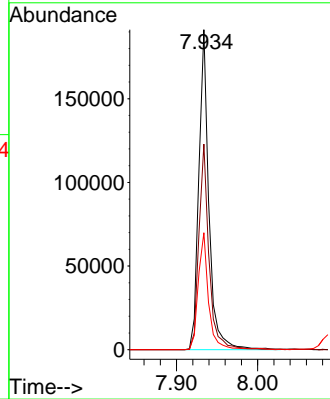
#29
 2,4-Dichlorophenol
 Concen: 40.722 ng
 RT: 7.934 min Scan# 994
 Delta R.T. 0.000 min
 Lab File: BF137046.D
 Acq: 12 Jan 2024 13:57

Instrument : BNA_F
 ClientSampleId : PB158404BS



Tgt Ion:162 Resp: 166404

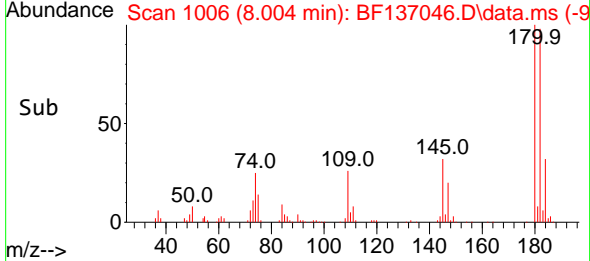
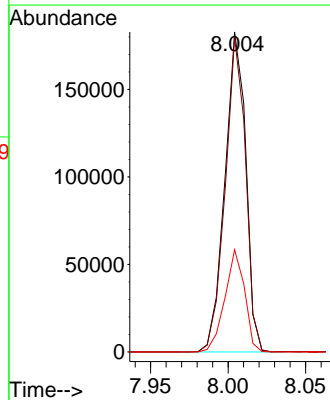
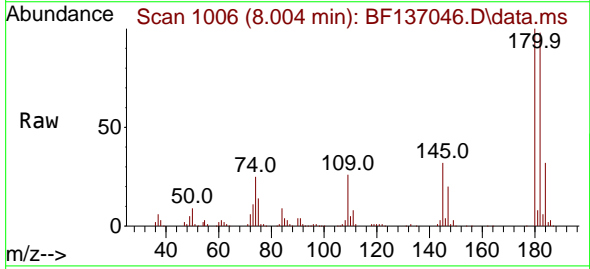
Ion	Ratio	Lower	Upper
162	100		
164	64.2	41.7	81.7
98	36.6	19.5	59.5

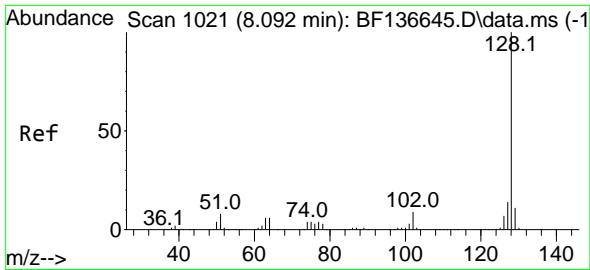


#30
 1,2,4-Trichlorobenzene
 Concen: 37.687 ng
 RT: 8.004 min Scan# 1006
 Delta R.T. -0.012 min
 Lab File: BF137046.D
 Acq: 12 Jan 2024 13:57

Tgt Ion:180 Resp: 171587

Ion	Ratio	Lower	Upper
180	100		
182	98.3	75.4	113.0
145	32.0	23.1	34.7

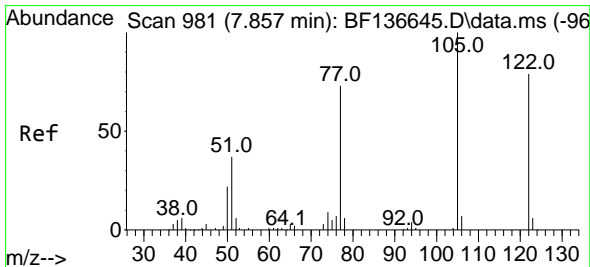
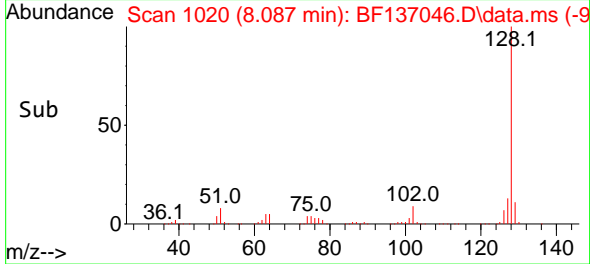
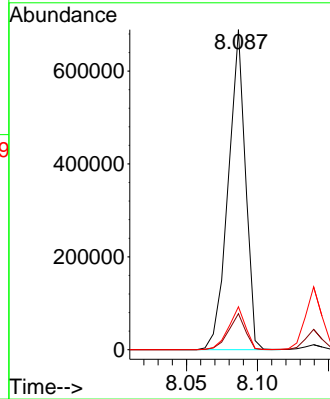
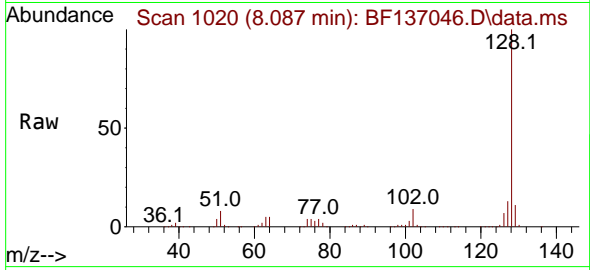




#31
 Naphthalene
 Concen: 37.926 ng
 RT: 8.087 min Scan# 10
 Delta R.T. -0.006 min
 Lab File: BF137046.D
 Acq: 12 Jan 2024 13:57

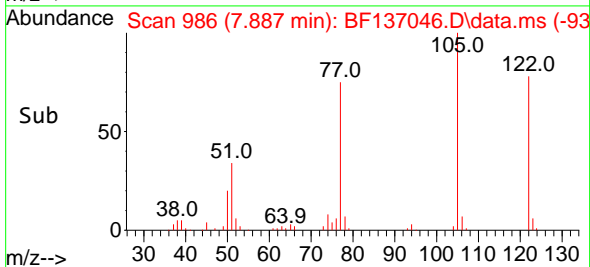
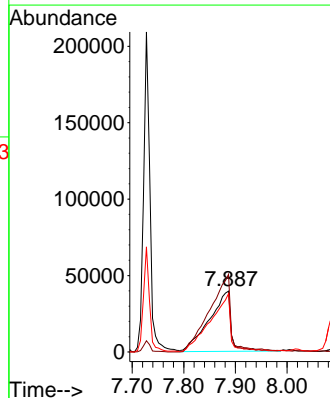
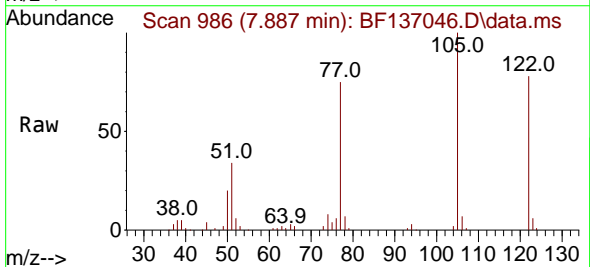
Instrument :
 BNA_F
 ClientSampleId :
 PB158404BS

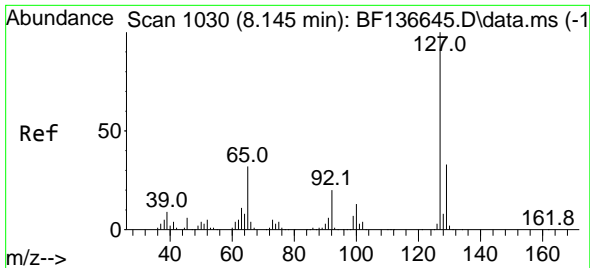
Tgt Ion:128 Resp: 579979
 Ion Ratio Lower Upper
 128 100
 129 11.2 8.7 13.1
 127 13.4 10.8 16.2



#32
 Benzoic acid
 Concen: 37.805 ng
 RT: 7.887 min Scan# 986
 Delta R.T. 0.030 min
 Lab File: BF137046.D
 Acq: 12 Jan 2024 13:57

Tgt Ion:122 Resp: 116106
 Ion Ratio Lower Upper
 122 100
 105 127.6 100.8 140.8
 77 95.9 70.9 110.9





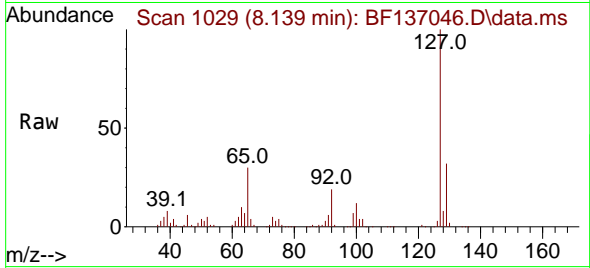
#33
 4-Chloroaniline
 Concen: 21.593 ng
 RT: 8.139 min Scan# 1030
 Delta R.T. -0.006 min
 Lab File: BF137046.D
 Acq: 12 Jan 2024 13:57

Instrument :

BNA_F

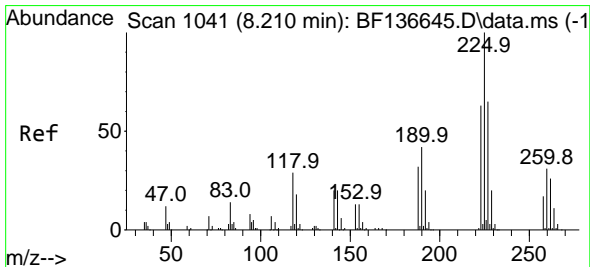
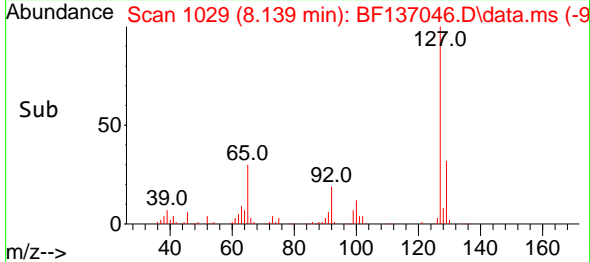
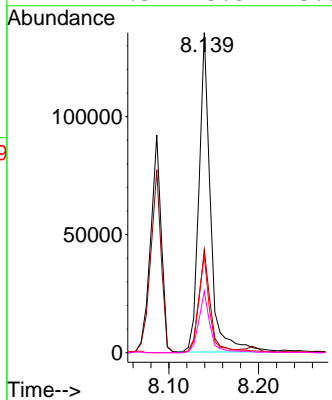
Client Sample Id :

PB158404BS



Tgt Ion:127 Resp: 121920

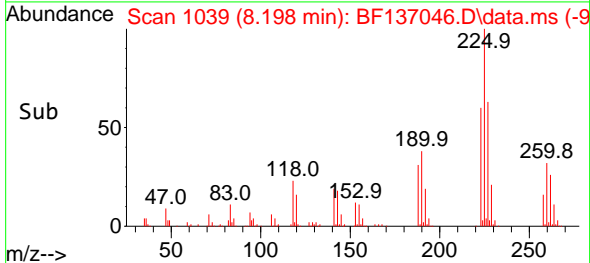
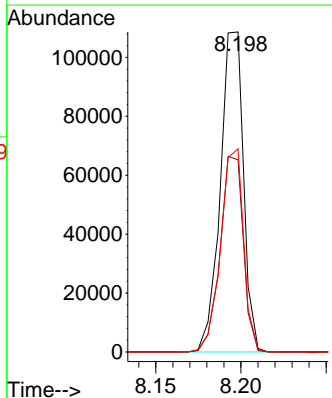
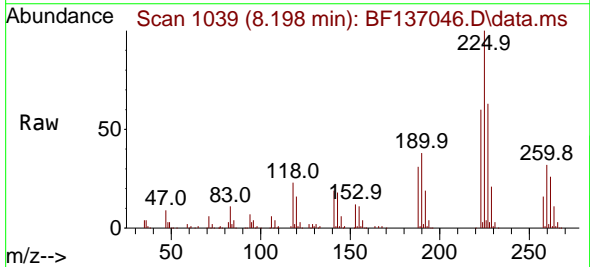
Ion	Ratio	Lower	Upper
127	100		
129	32.2	26.3	39.5
65	30.3	25.8	38.8
92	19.3	15.8	23.6

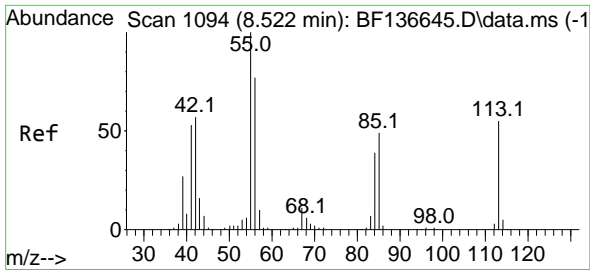


#34
 Hexachlorobutadiene
 Concen: 37.210 ng
 RT: 8.198 min Scan# 1039
 Delta R.T. -0.012 min
 Lab File: BF137046.D
 Acq: 12 Jan 2024 13:57

Tgt Ion:225 Resp: 102931

Ion	Ratio	Lower	Upper
225	100		
223	60.1	50.6	76.0
227	63.5	51.9	77.9

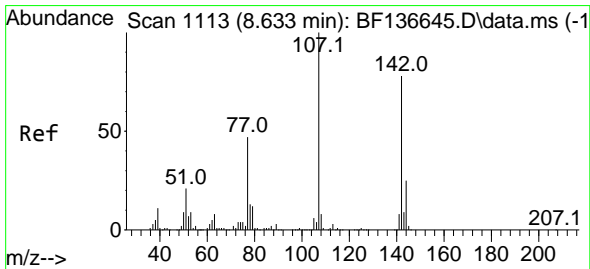
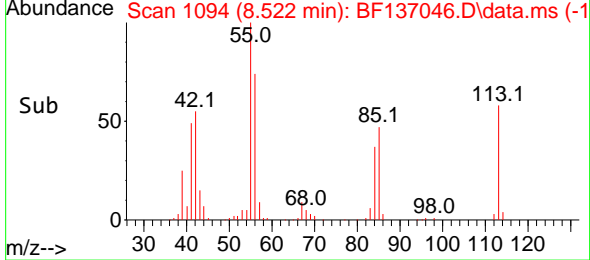
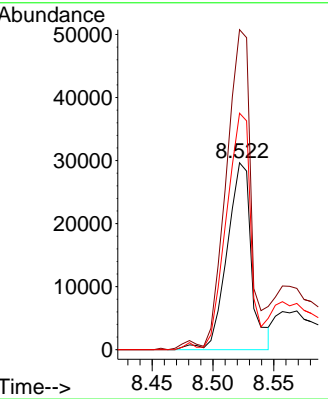
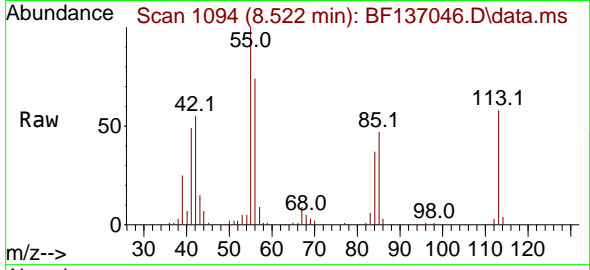




#35
 Caprolactam
 Concen: 30.726 ng
 RT: 8.522 min Scan# 1094
 Delta R.T. 0.000 min
 Lab File: BF137046.D
 Acq: 12 Jan 2024 13:57

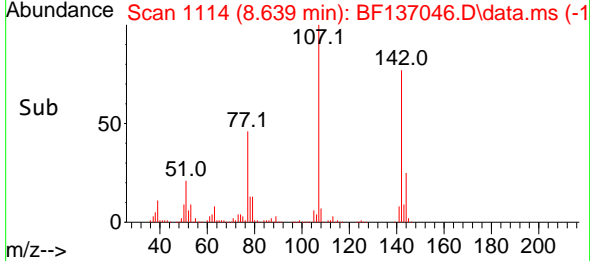
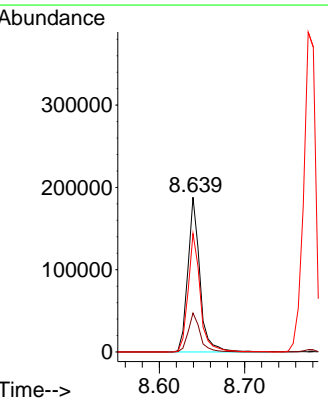
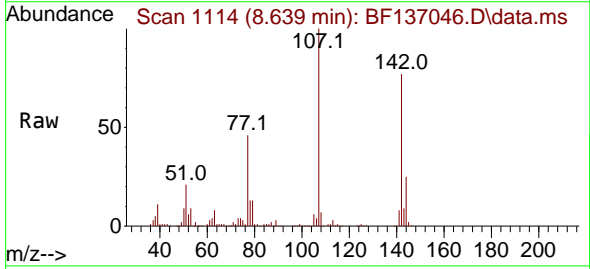
Instrument :
 BNA_F
 ClientSampleId :
 PB158404BS

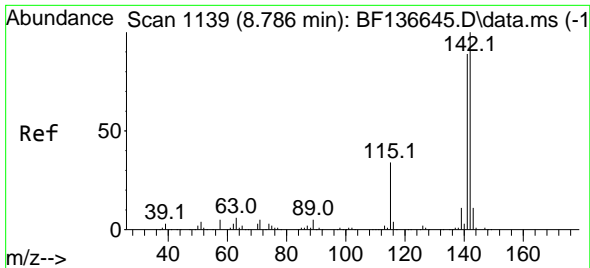
Tgt Ion:113 Resp: 41421
 Ion Ratio Lower Upper
 113 100
 55 171.2 163.1 203.1
 56 126.5 121.7 161.7



#36
 4-Chloro-3-methylphenol
 Concen: 40.220 ng
 RT: 8.639 min Scan# 1114
 Delta R.T. 0.006 min
 Lab File: BF137046.D
 Acq: 12 Jan 2024 13:57

Tgt Ion:107 Resp: 185028
 Ion Ratio Lower Upper
 107 100
 144 25.1 20.2 30.2
 142 76.6 62.3 93.5

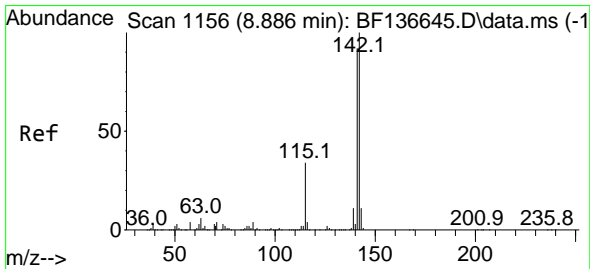
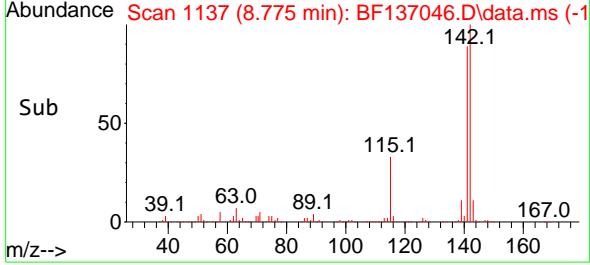
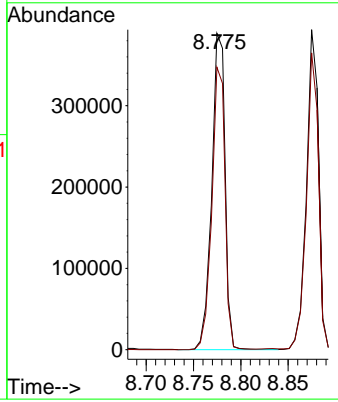
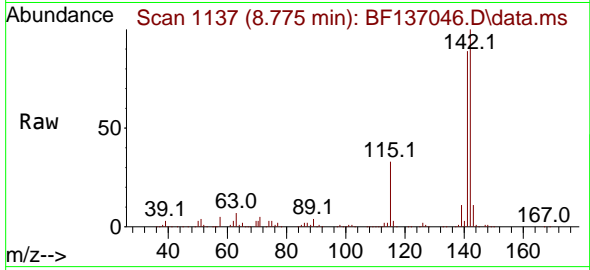




#37
 2-Methylnaphthalene
 Concen: 38.567 ng
 RT: 8.775 min Scan# 1114
 Delta R.T. -0.012 min
 Lab File: BF137046.D
 Acq: 12 Jan 2024 13:57

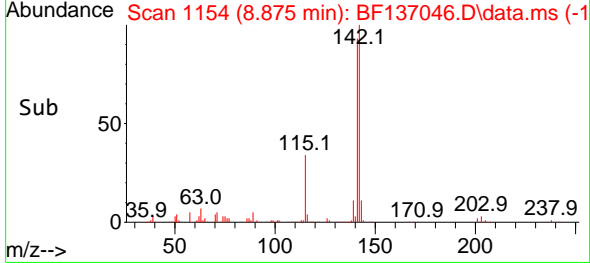
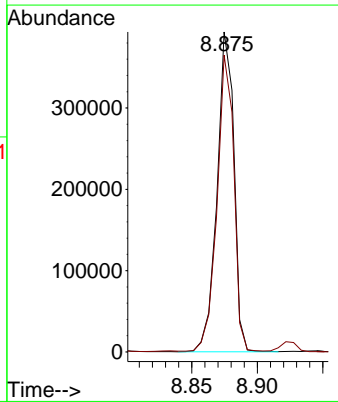
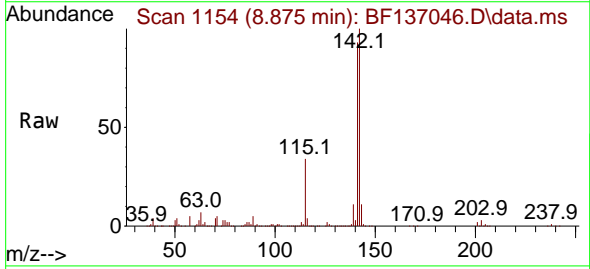
Instrument : BNA_F
 Client Sample Id : PB158404BS

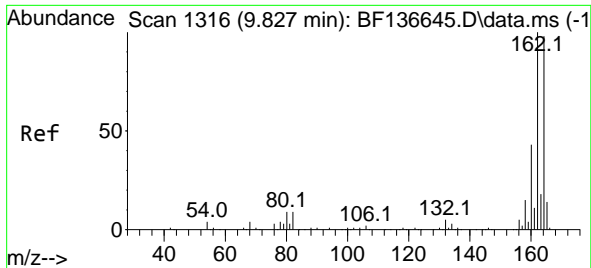
Tgt Ion:142 Resp: 379568
 Ion Ratio Lower Upper
 142 100
 141 89.3 71.1 106.7



#38
 1-Methylnaphthalene
 Concen: 36.436 ng
 RT: 8.875 min Scan# 1154
 Delta R.T. -0.012 min
 Lab File: BF137046.D
 Acq: 12 Jan 2024 13:57

Tgt Ion:142 Resp: 351814
 Ion Ratio Lower Upper
 142 100
 141 92.8 73.6 110.4



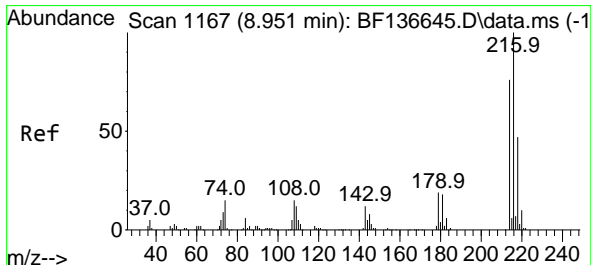
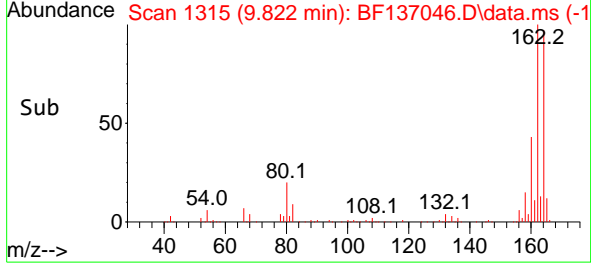
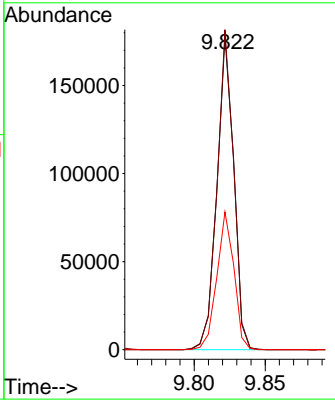
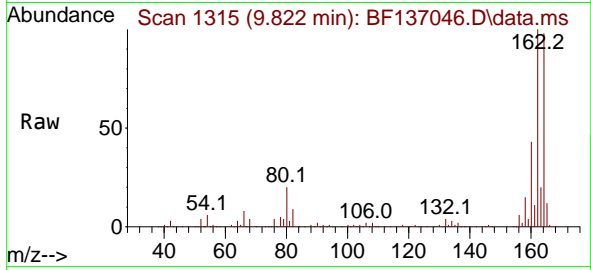


#39
 Acenaphthene-d10
 Concen: 20.000 ng
 RT: 9.822 min Scan# 1166
 Delta R.T. -0.006 min
 Lab File: BF137046.D
 Acq: 12 Jan 2024 13:57

Instrument : BNA_F
 ClientSampleId : PB158404BS

Tgt Ion:164 Resp: 146380

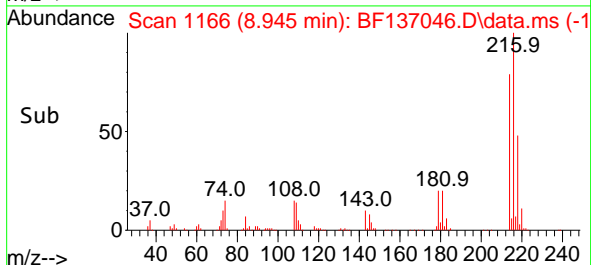
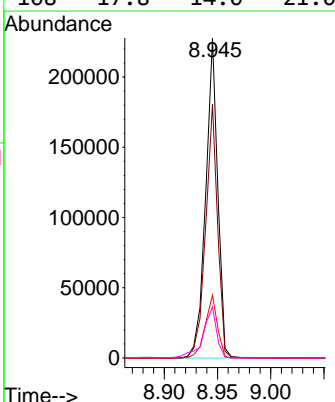
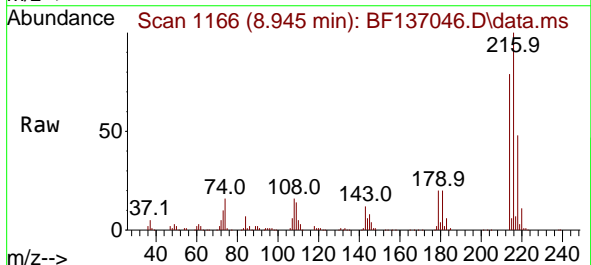
Ion	Ratio	Lower	Upper
164	100		
162	102.3	81.6	122.4
160	44.0	34.9	52.3

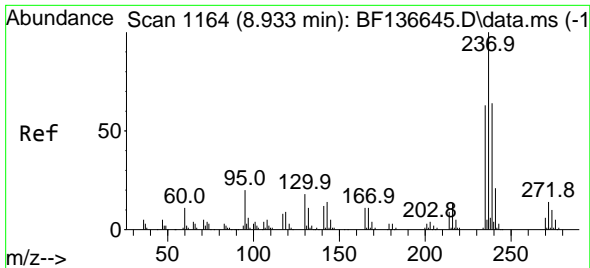


#40
 1,2,4,5-Tetrachlorobenzene
 Concen: 39.698 ng
 RT: 8.945 min Scan# 1166
 Delta R.T. -0.006 min
 Lab File: BF137046.D
 Acq: 12 Jan 2024 13:57

Tgt Ion:216 Resp: 179963

Ion	Ratio	Lower	Upper
216	100		
214	78.8	62.3	93.5
179	19.8	16.4	24.6
108	17.8	14.0	21.0





#41
 Hexachlorocyclopentadiene
 Concen: 67.719 ng
 RT: 8.928 min Scan# 1163
 Delta R.T. -0.006 min
 Lab File: BF137046.D
 Acq: 12 Jan 2024 13:57

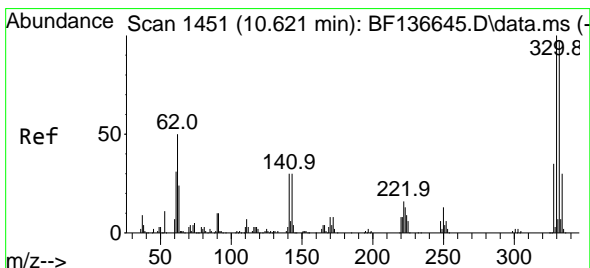
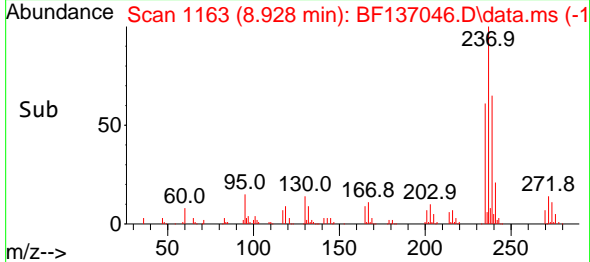
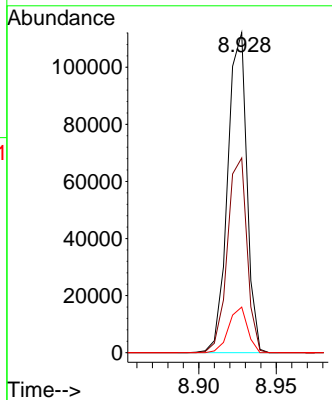
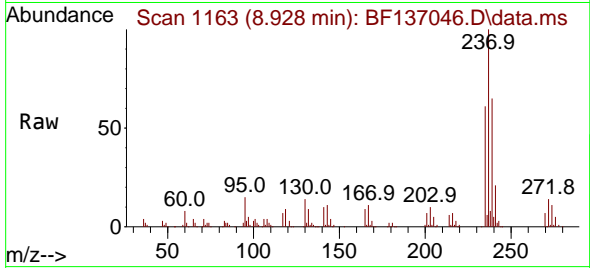
Instrument :

BNA_F

ClientSampleId :

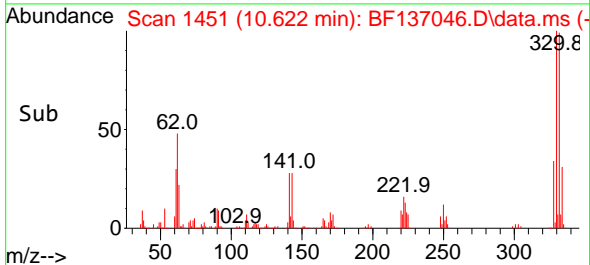
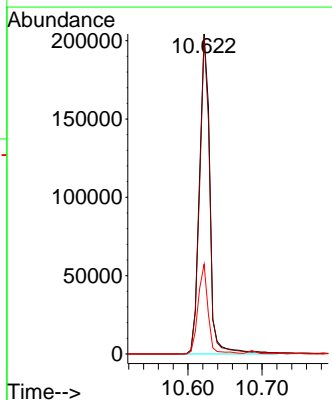
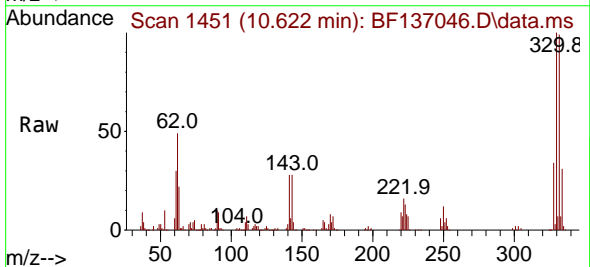
PB158404BS

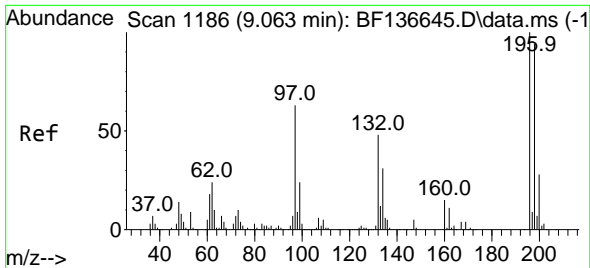
Tgt Ion:237 Resp: 96725
 Ion Ratio Lower Upper
 237 100
 235 60.9 43.2 83.2
 272 14.2 0.0 34.2



#42
 2,4,6-Tribromophenol
 Concen: 115.384 ng
 RT: 10.622 min Scan# 1451
 Delta R.T. 0.000 min
 Lab File: BF137046.D
 Acq: 12 Jan 2024 13:57

Tgt Ion:330 Resp: 198916
 Ion Ratio Lower Upper
 330 100
 332 96.7 77.4 116.0
 141 26.9 23.4 35.2



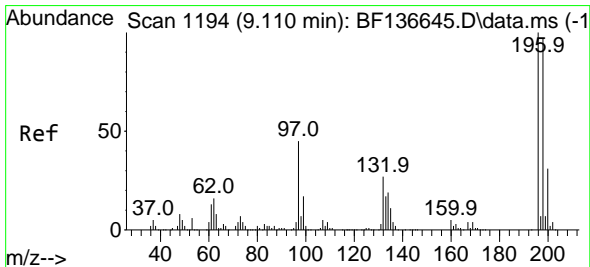
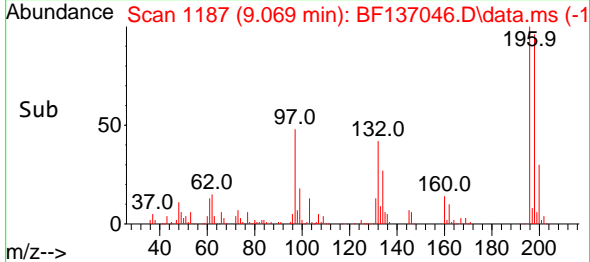
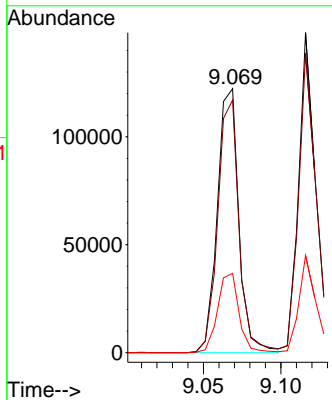
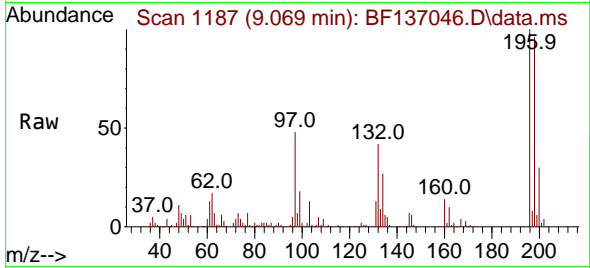


#43
 2,4,6-Trichlorophenol
 Concen: 40.722 ng
 RT: 9.069 min Scan# 1187
 Delta R.T. 0.006 min
 Lab File: BF137046.D
 Acq: 12 Jan 2024 13:57

Instrument : BNA_F
 ClientSampleId : PB158404BS

Tgt Ion:196 Resp: 118390

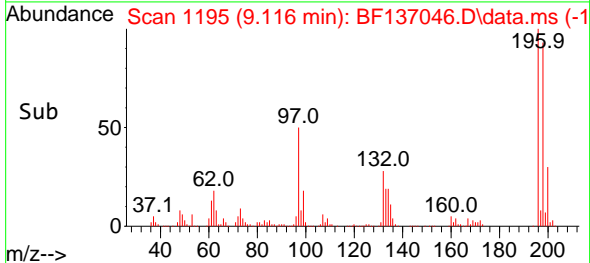
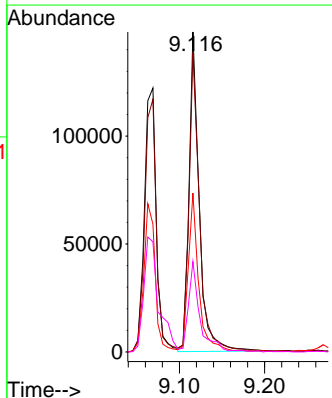
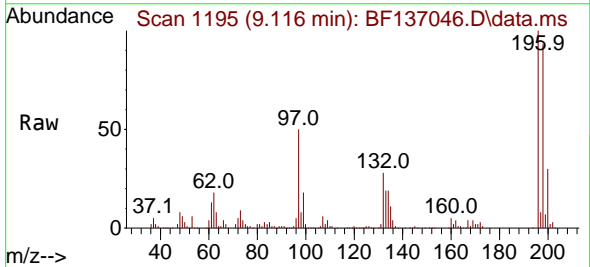
Ion	Ratio	Lower	Upper
196	100		
198	95.7	75.1	112.7
200	30.1	22.5	33.7

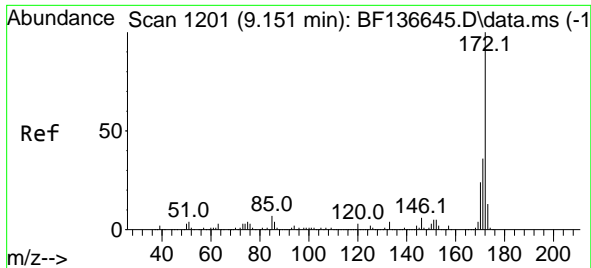


#44
 2,4,5-Trichlorophenol
 Concen: 37.969 ng
 RT: 9.116 min Scan# 1195
 Delta R.T. 0.006 min
 Lab File: BF137046.D
 Acq: 12 Jan 2024 13:57

Tgt Ion:196 Resp: 123012

Ion	Ratio	Lower	Upper
196	100		
198	93.5	77.0	115.6
97	49.6	36.1	54.1
132	28.2	21.8	32.6





#45
 2-Fluorobiphenyl
 Concen: 75.176 ng
 RT: 9.145 min Scan# 11
 Delta R.T. -0.006 min
 Lab File: BF137046.D
 Acq: 12 Jan 2024 13:57

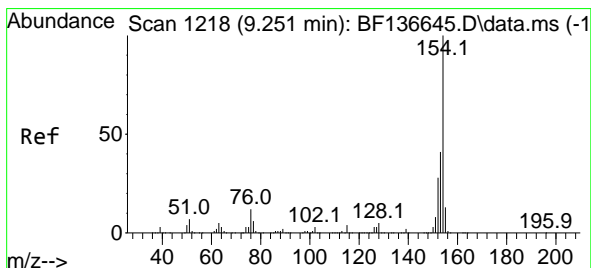
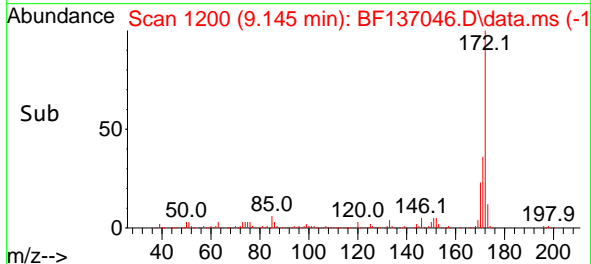
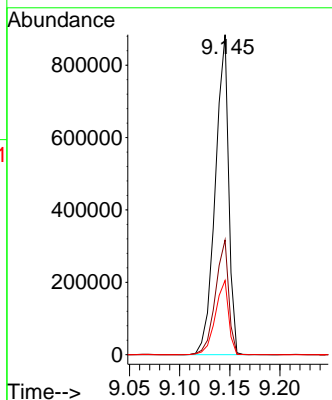
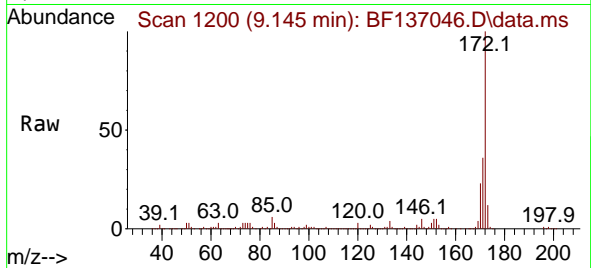
Instrument :

BNA_F

ClientSampleId :

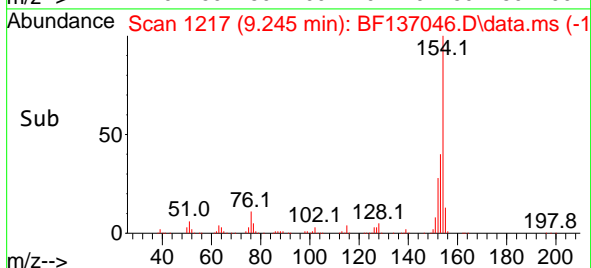
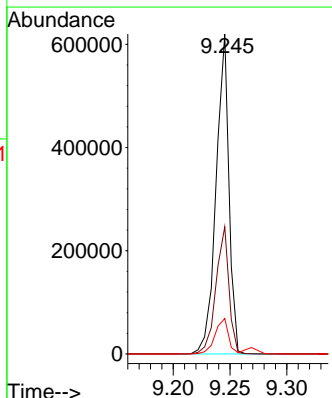
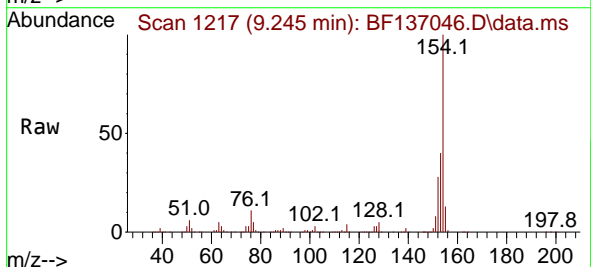
PB158404BS

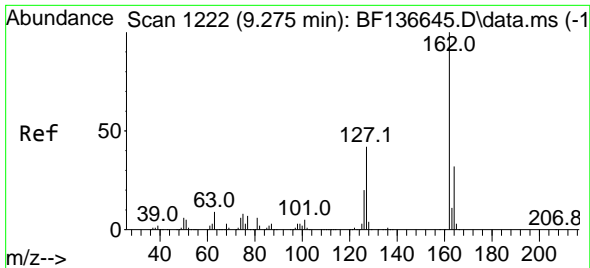
Tgt Ion:172 Resp: 818165
 Ion Ratio Lower Upper
 172 100
 171 35.9 29.0 43.6
 170 23.2 19.0 28.4



#46
 1,1'-Biphenyl
 Concen: 39.799 ng
 RT: 9.245 min Scan# 1217
 Delta R.T. -0.006 min
 Lab File: BF137046.D
 Acq: 12 Jan 2024 13:57

Tgt Ion:154 Resp: 488875
 Ion Ratio Lower Upper
 154 100
 153 39.8 21.1 61.1
 76 11.1 0.0 31.7

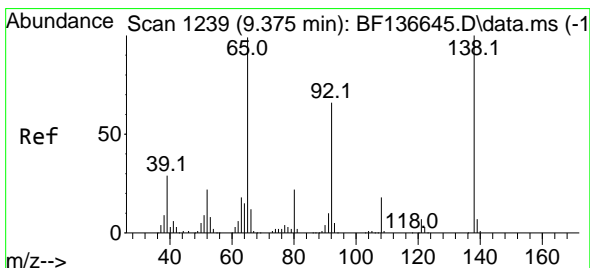
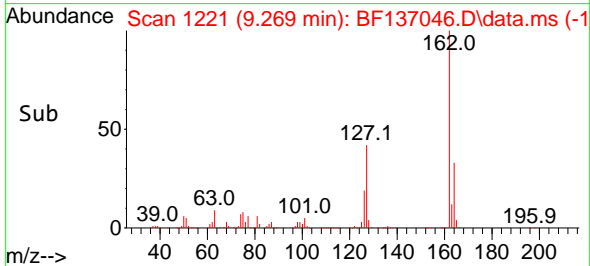
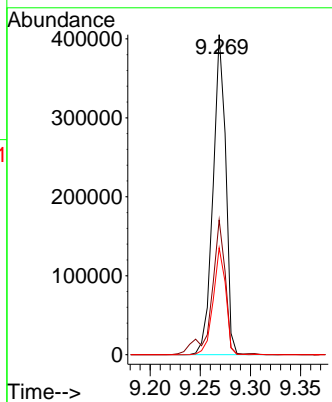
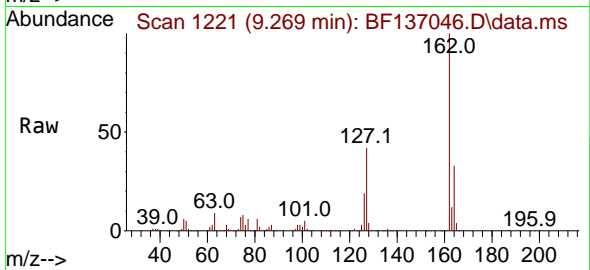




#47
 2-Chloronaphthalene
 Concen: 38.104 ng
 RT: 9.269 min Scan# 11
 Delta R.T. -0.006 min
 Lab File: BF137046.D
 Acq: 12 Jan 2024 13:57

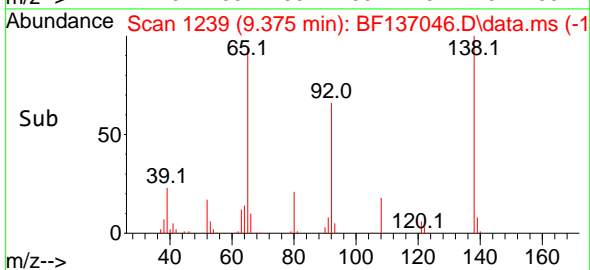
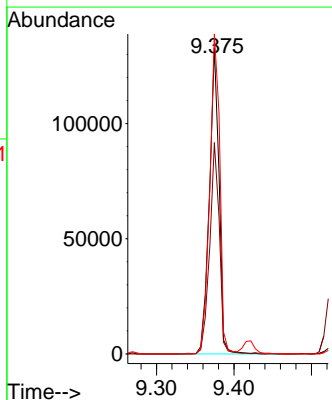
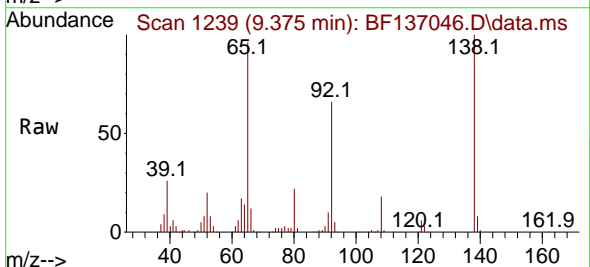
Instrument :
 BNA_F
 ClientSampleId :
 PB158404BS

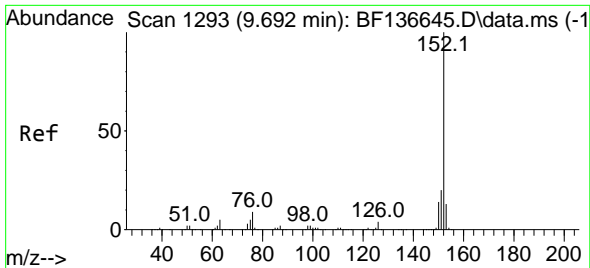
Tgt Ion:162 Resp: 355822
 Ion Ratio Lower Upper
 162 100
 127 42.1 33.6 50.4
 164 33.4 25.7 38.5



#48
 2-Nitroaniline
 Concen: 39.457 ng
 RT: 9.375 min Scan# 1239
 Delta R.T. 0.000 min
 Lab File: BF137046.D
 Acq: 12 Jan 2024 13:57

Tgt Ion: 65 Resp: 115381
 Ion Ratio Lower Upper
 65 100
 92 69.0 53.2 79.8
 138 104.5 81.1 121.7

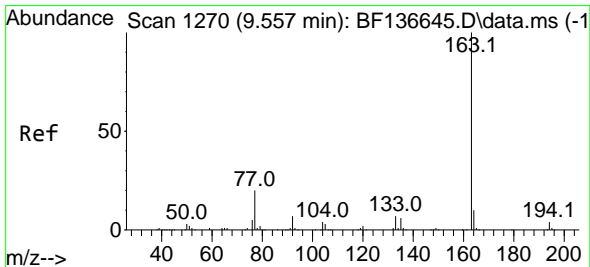
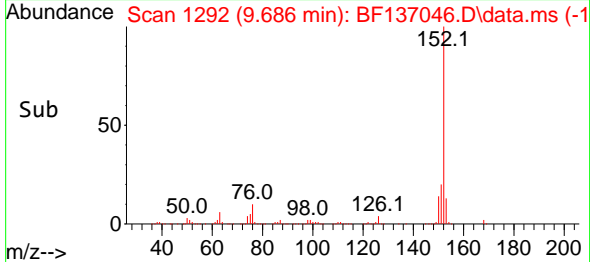
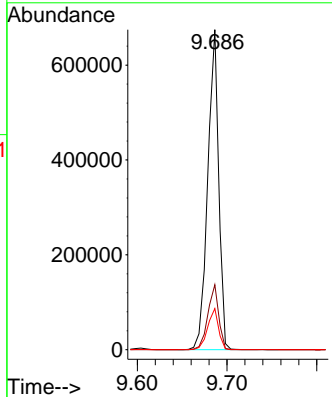
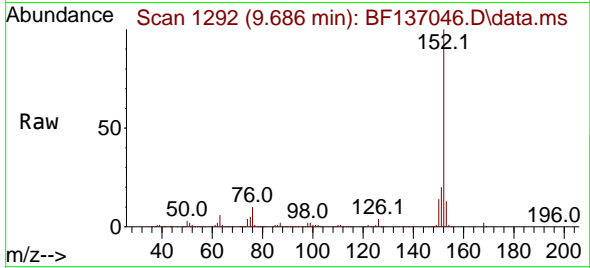




#49
 Acenaphthylene
 Concen: 40.048 ng
 RT: 9.686 min Scan# 11
 Delta R.T. -0.006 min
 Lab File: BF137046.D
 Acq: 12 Jan 2024 13:57

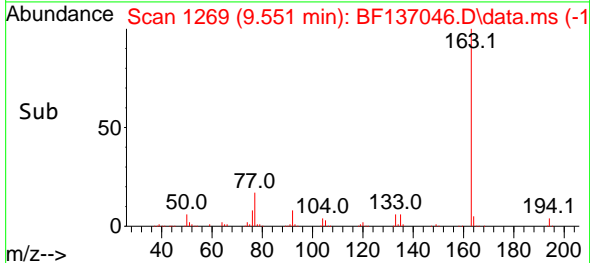
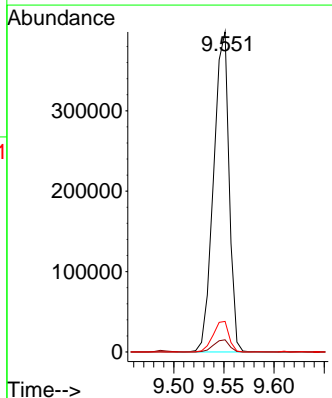
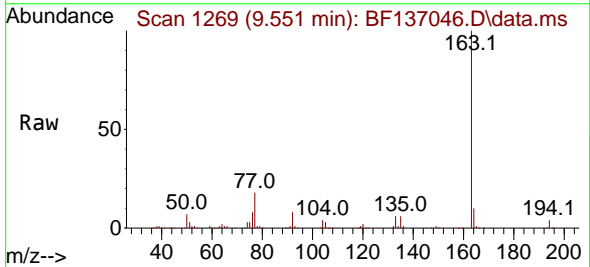
Instrument : BNA_F
 ClientSampleId : PB158404BS

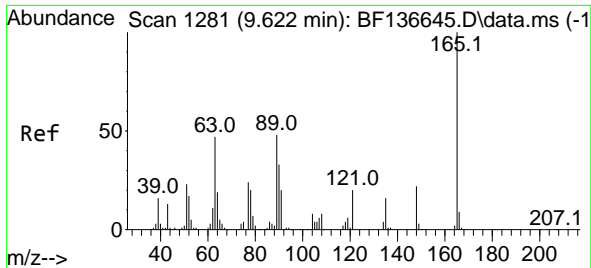
Tgt Ion	Resp	Lower	Upper
152	571617		
151	20.3	16.2	24.4
153	12.9	10.2	15.2



#50
 Dimethylphthalate
 Concen: 39.871 ng
 RT: 9.551 min Scan# 1269
 Delta R.T. -0.006 min
 Lab File: BF137046.D
 Acq: 12 Jan 2024 13:57

Tgt Ion	Resp	Lower	Upper
163	426301		
164	9.6	7.8	11.6





#51
 2,6-Dinitrotoluene
 Concen: 38.117 ng
 RT: 9.622 min Scan# 11
 Delta R.T. 0.000 min
 Lab File: BF137046.D
 Acq: 12 Jan 2024 13:57

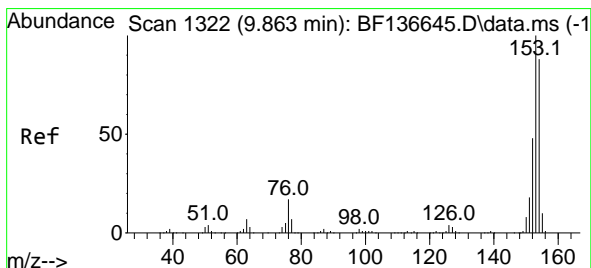
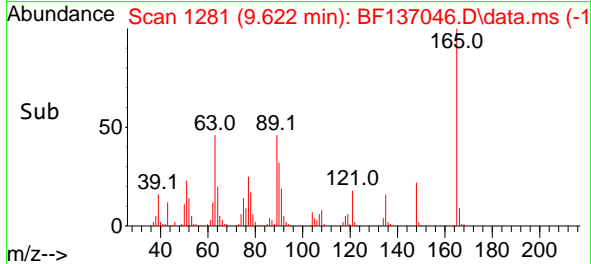
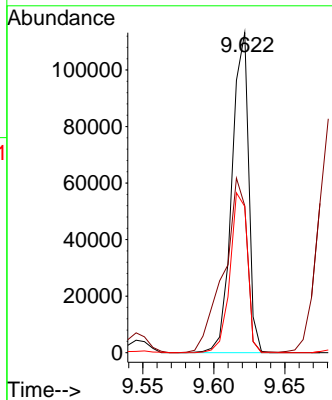
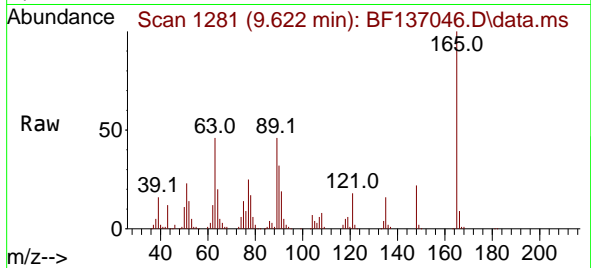
Instrument :

BNA_F

ClientSampleId :

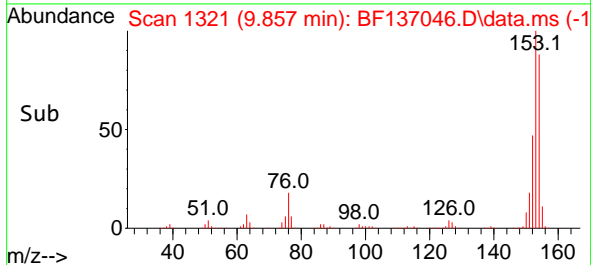
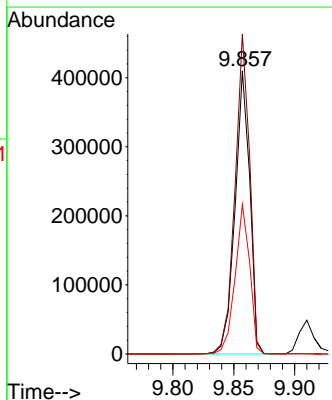
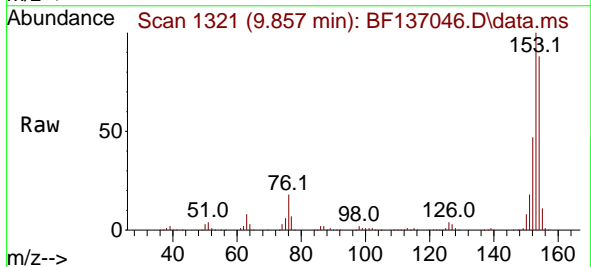
PB158404BS

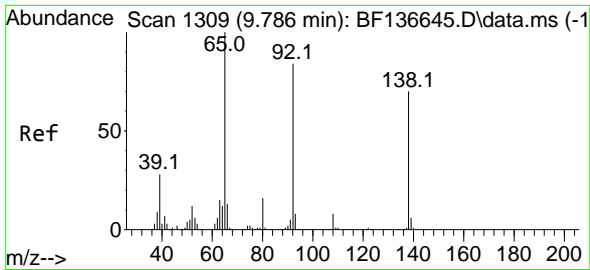
Tgt Ion:165 Resp: 92494
 Ion Ratio Lower Upper
 165 100
 63 45.9 39.8 59.6
 89 45.7 38.8 58.2



#52
 Acenaphthene
 Concen: 38.887 ng
 RT: 9.857 min Scan# 1321
 Delta R.T. -0.006 min
 Lab File: BF137046.D
 Acq: 12 Jan 2024 13:57

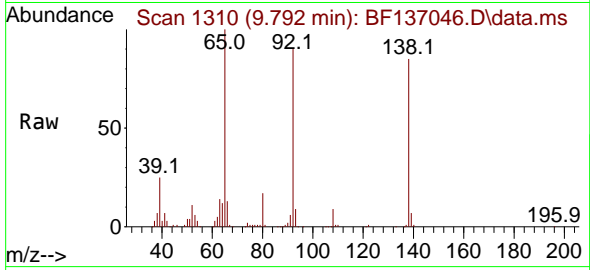
Tgt Ion:154 Resp: 344057
 Ion Ratio Lower Upper
 154 100
 153 113.1 90.7 136.1
 152 52.9 43.7 65.5



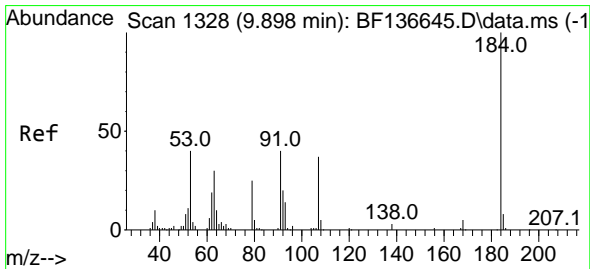
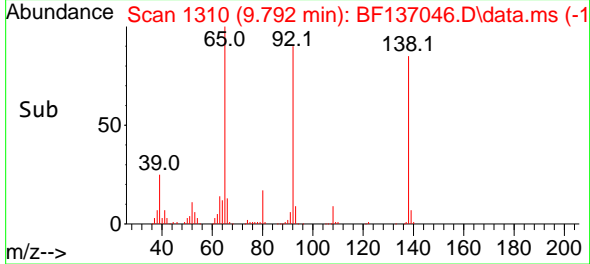
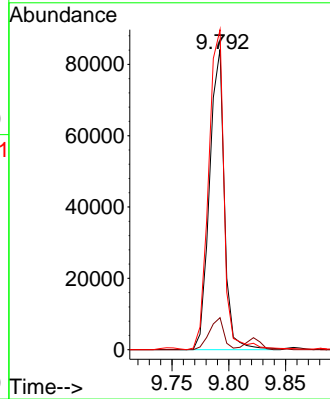


#53
 3-Nitroaniline
 Concen: 29.875 ng
 RT: 9.792 min Scan# 11
 Delta R.T. 0.006 min
 Lab File: BF137046.D
 Acq: 12 Jan 2024 13:57

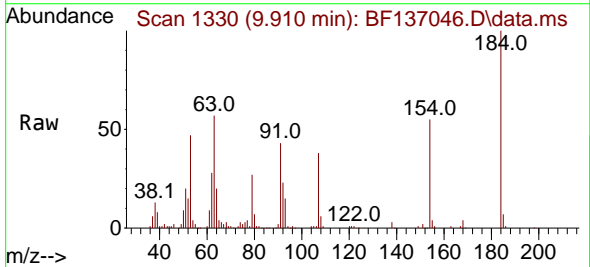
Instrument :
 BNA_F
 ClientSampleId :
 PB158404BS



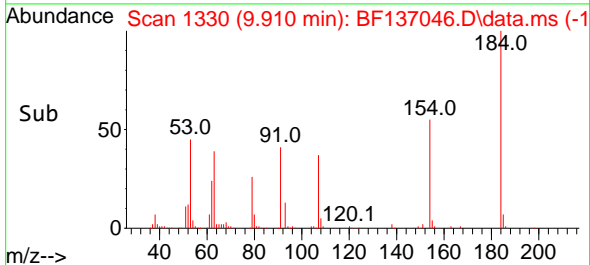
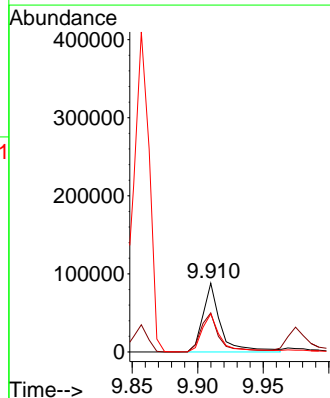
Tgt Ion:138 Resp: 76792
 Ion Ratio Lower Upper
 138 100
 108 10.7 8.6 12.8
 92 106.5 95.2 142.8

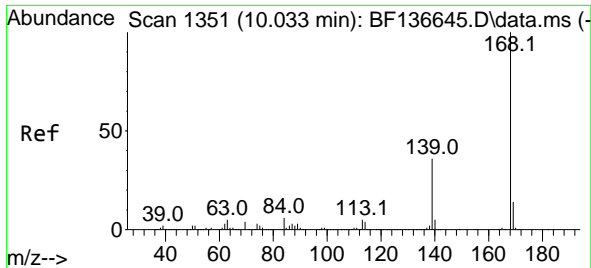


#54
 2,4-Dinitrophenol
 Concen: 62.885 ng
 RT: 9.910 min Scan# 1330
 Delta R.T. 0.012 min
 Lab File: BF137046.D
 Acq: 12 Jan 2024 13:57



Tgt Ion:184 Resp: 83444
 Ion Ratio Lower Upper
 184 100
 63 56.6 40.9 61.3
 154 55.4 42.7 64.1

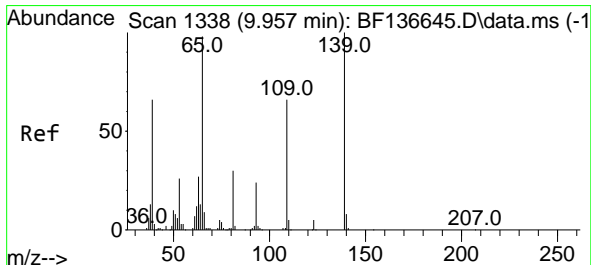
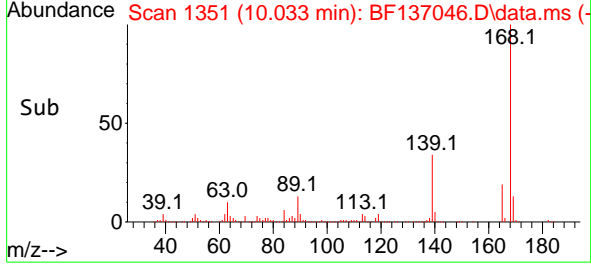
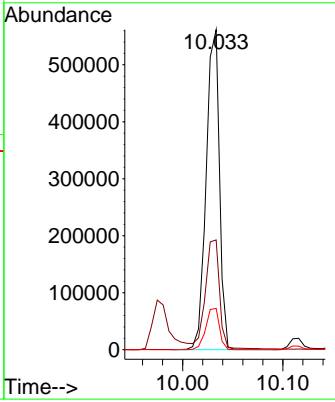
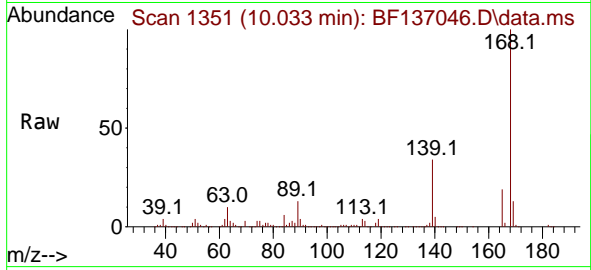




#55
 Dibenzenofuran
 Concen: 38.485 ng
 RT: 10.033 min Scan# 11
 Delta R.T. 0.000 min
 Lab File: BF137046.D
 Acq: 12 Jan 2024 13:57

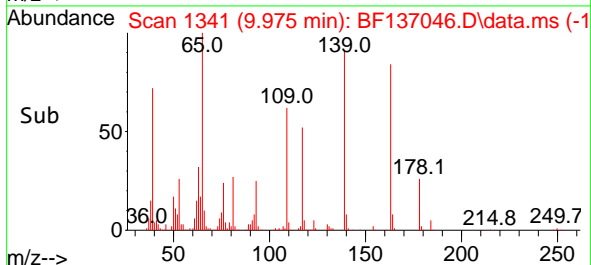
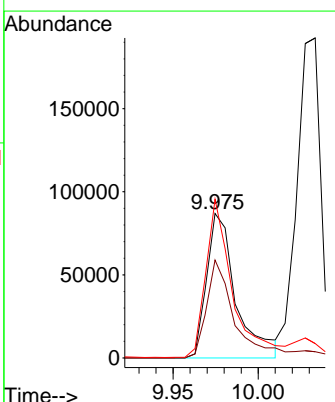
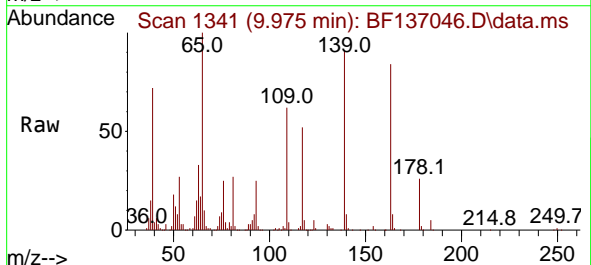
Instrument : BNA_F
 Client Sample Id : PB158404BS

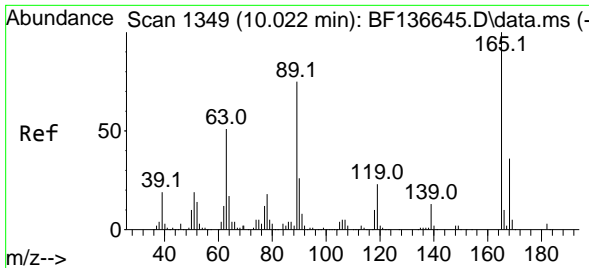
Tgt Ion	Resp	Lower	Upper
168	100		
139	34.3	29.3	43.9
169	12.9	11.0	16.4



#56
 4-Nitrophenol
 Concen: 60.050 ng
 RT: 9.975 min Scan# 1341
 Delta R.T. 0.018 min
 Lab File: BF137046.D
 Acq: 12 Jan 2024 13:57

Tgt Ion	Resp	Lower	Upper
139	100		
109	67.7	45.8	85.8
65	109.8	77.8	117.8



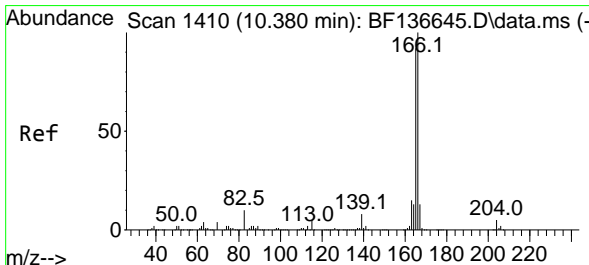
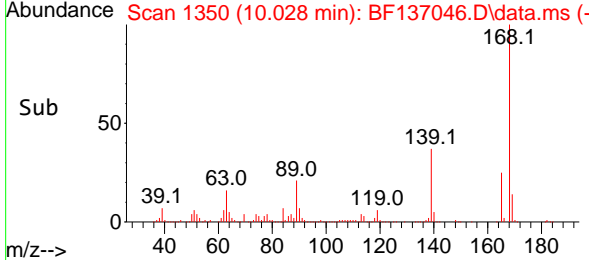
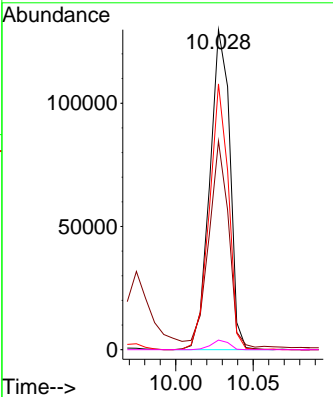
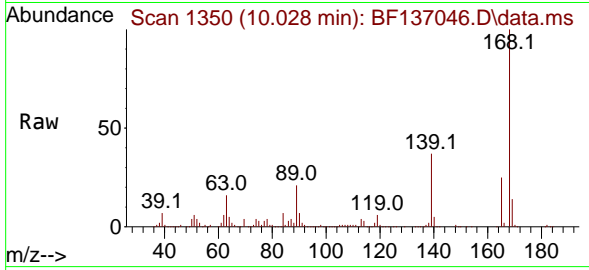


#57
 2,4-Dinitrotoluene
 Concen: 37.208 ng
 RT: 10.028 min Scan# 11
 Delta R.T. 0.006 min
 Lab File: BF137046.D
 Acq: 12 Jan 2024 13:57

Instrument : BNA_F
 ClientSampleId : PB158404BS

Tgt Ion:165 Resp: 117210

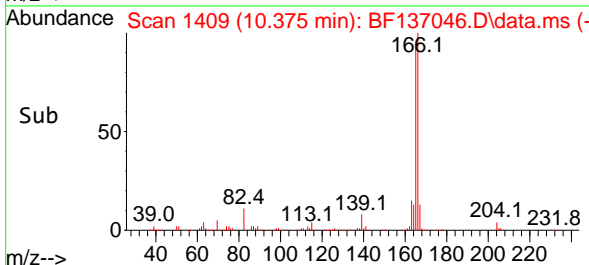
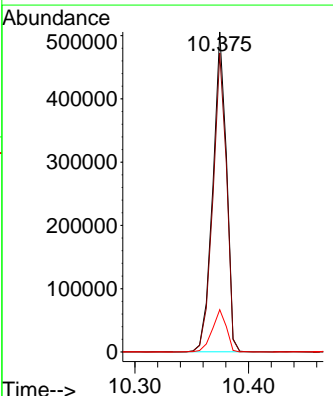
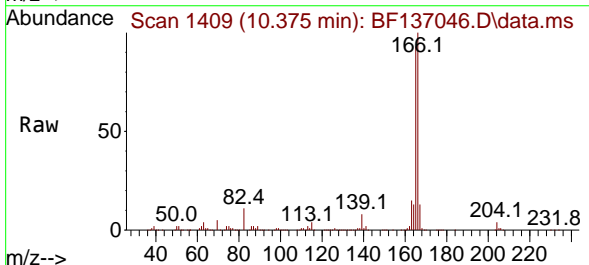
Ion	Ratio	Lower	Upper
165	100		
63	65.2	41.0	61.6#
89	83.1	59.9	89.9
182	3.0	2.0	3.0

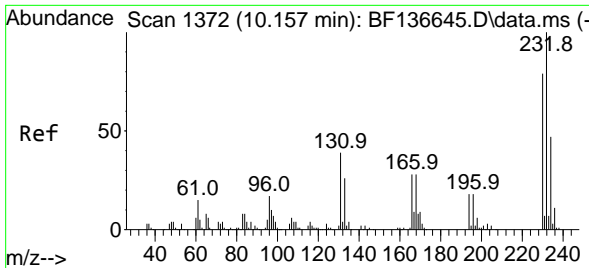


#58
 Fluorene
 Concen: 39.628 ng
 RT: 10.375 min Scan# 1409
 Delta R.T. -0.006 min
 Lab File: BF137046.D
 Acq: 12 Jan 2024 13:57

Tgt Ion:166 Resp: 421708

Ion	Ratio	Lower	Upper
166	100		
165	93.4	73.7	110.5
167	13.2	10.4	15.6





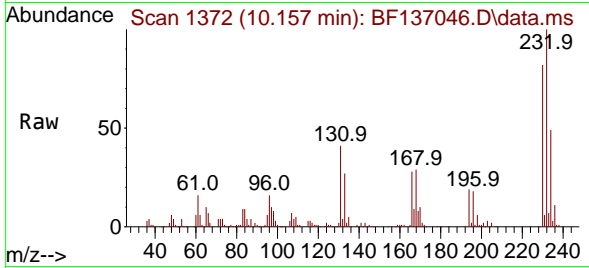
#59
 2,3,4,6-Tetrachlorophenol
 Concen: 42.311 ng
 RT: 10.157 min Scan# 11
 Delta R.T. 0.000 min
 Lab File: BF137046.D
 Acq: 12 Jan 2024 13:57

Instrument :

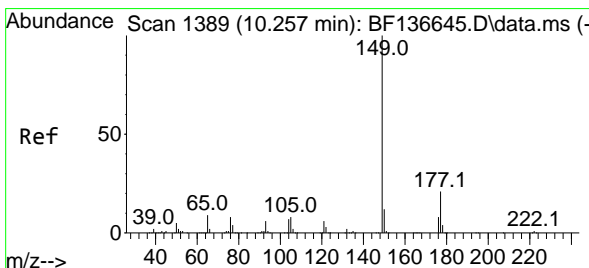
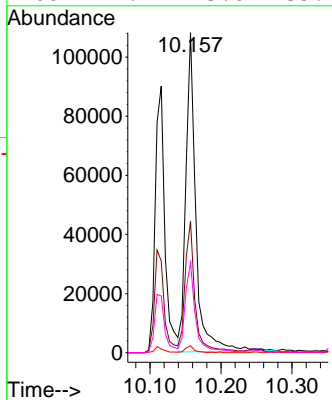
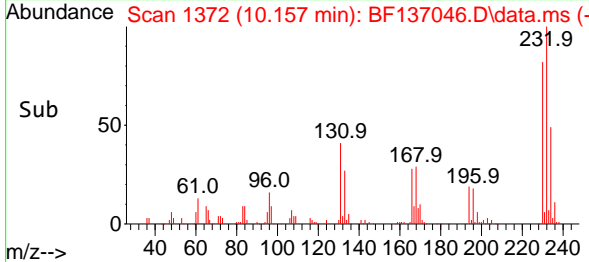
BNA_F

Client Sample Id :

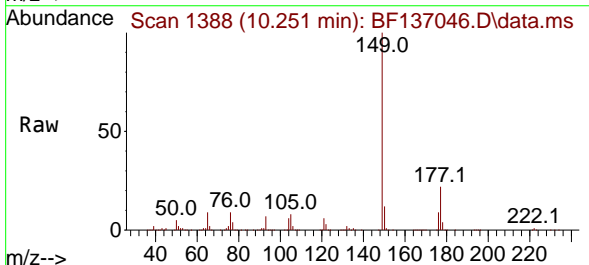
PB158404BS



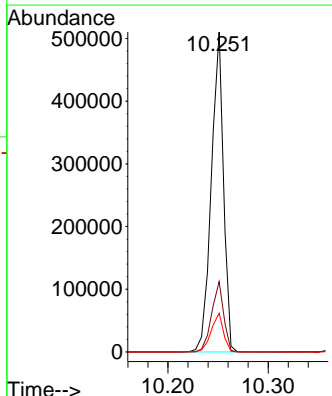
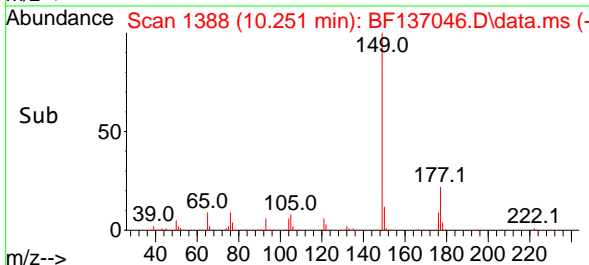
Tgt Ion:232 Resp: 105521
 Ion Ratio Lower Upper
 232 100
 131 40.6 35.1 52.7
 130 1.9 1.6 2.4
 166 27.9 23.6 35.4

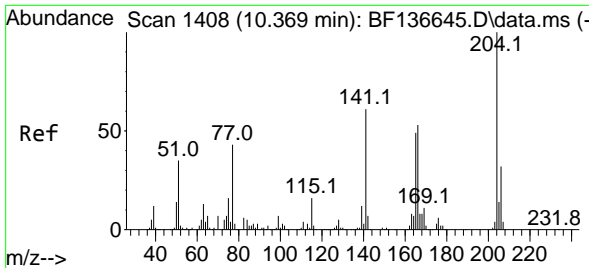


#60
 Diethylphthalate
 Concen: 38.831 ng
 RT: 10.251 min Scan# 1388
 Delta R.T. -0.006 min
 Lab File: BF137046.D
 Acq: 12 Jan 2024 13:57



Tgt Ion:149 Resp: 430772
 Ion Ratio Lower Upper
 149 100
 177 22.0 16.9 25.3
 150 12.1 9.3 13.9

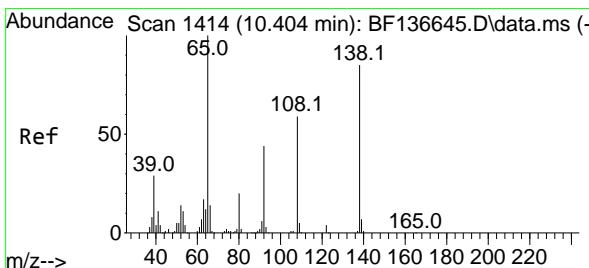
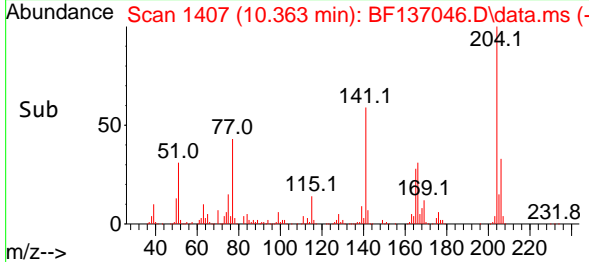
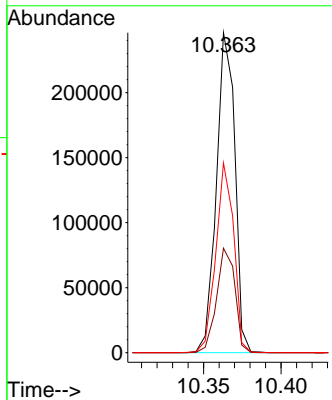
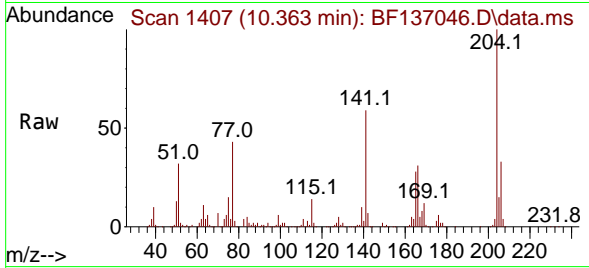




#61
 4-Chlorophenyl-phenylether
 Concen: 39.463 ng
 RT: 10.363 min Scan# 1415
 Delta R.T. -0.006 min
 Lab File: BF137046.D
 Acq: 12 Jan 2024 13:57

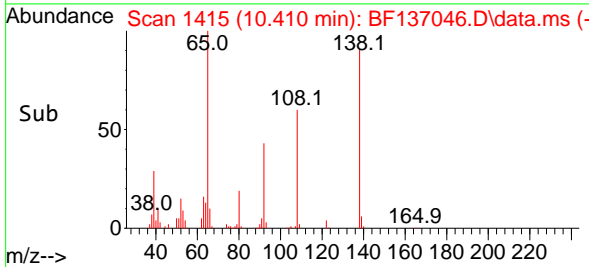
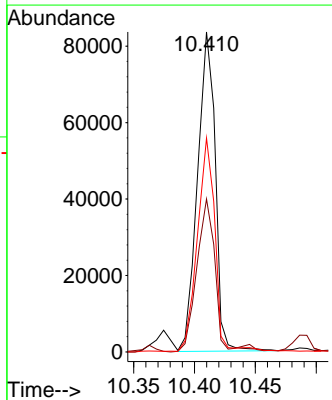
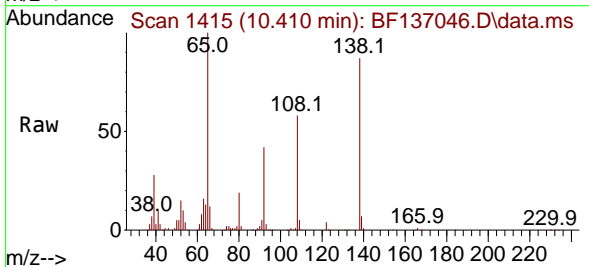
Instrument :
 BNA_F
 ClientSampleId :
 PB158404BS

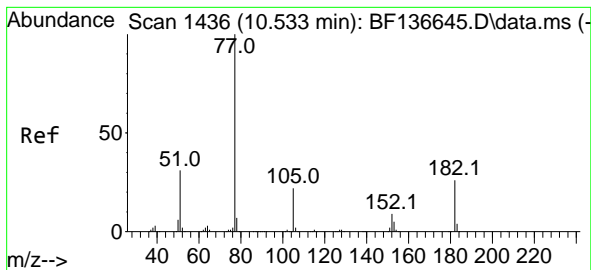
Tgt Ion	Resp	Lower	Upper
204	100		
206	32.6	25.6	38.4
141	59.3	48.4	72.6



#62
 4-Nitroaniline
 Concen: 34.210 ng
 RT: 10.410 min Scan# 1415
 Delta R.T. 0.006 min
 Lab File: BF137046.D
 Acq: 12 Jan 2024 13:57

Tgt Ion	Resp	Lower	Upper
138	100		
92	47.8	32.1	72.1
108	66.9	50.1	90.1





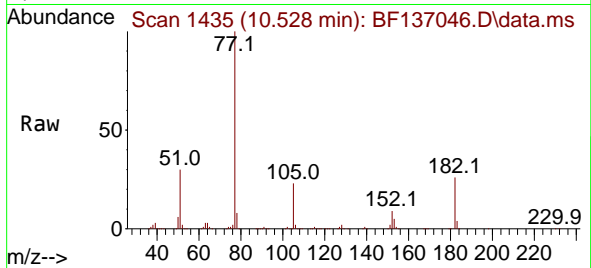
#63
 Azobenzene
 Concen: 37.295 ng
 RT: 10.528 min Scan# 14
 Delta R.T. -0.006 min
 Lab File: BF137046.D
 Acq: 12 Jan 2024 13:57

Instrument :

BNA_F

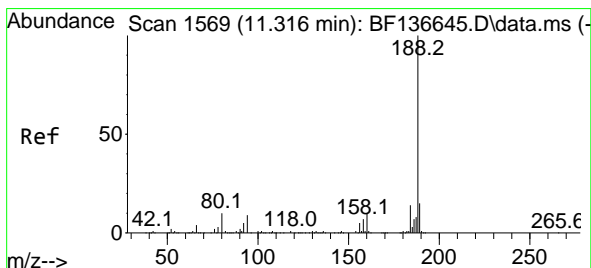
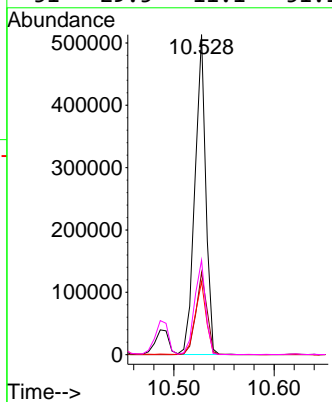
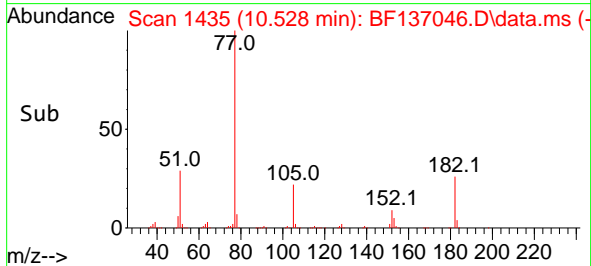
ClientSampleId :

PB158404BS

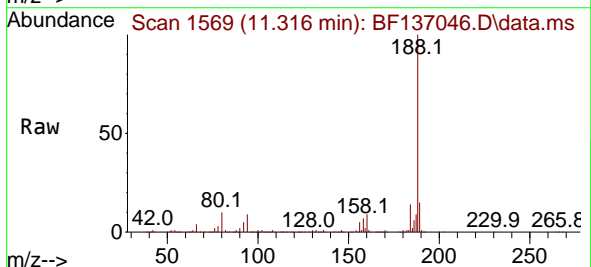


Tgt Ion: 77 Resp: 386428

Ion	Ratio	Lower	Upper
77	100		
182	25.7	6.0	46.0
105	22.9	2.3	42.3
51	29.5	11.1	51.1

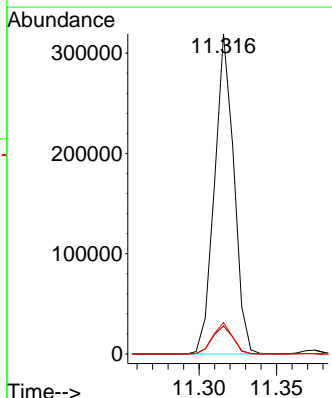
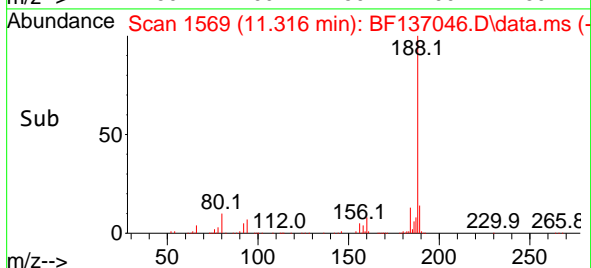


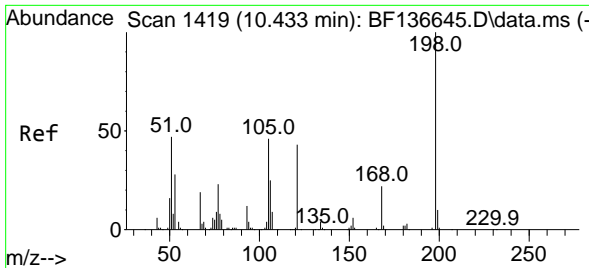
#64
 Phenanthrene-d10
 Concen: 20.000 ng
 RT: 11.316 min Scan# 1569
 Delta R.T. 0.000 min
 Lab File: BF137046.D
 Acq: 12 Jan 2024 13:57



Tgt Ion: 188 Resp: 277459

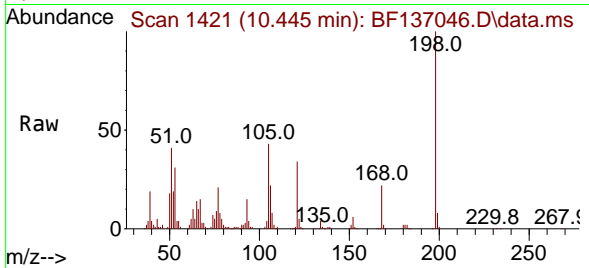
Ion	Ratio	Lower	Upper
188	100		
94	8.8	7.5	11.3
80	9.8	8.1	12.1



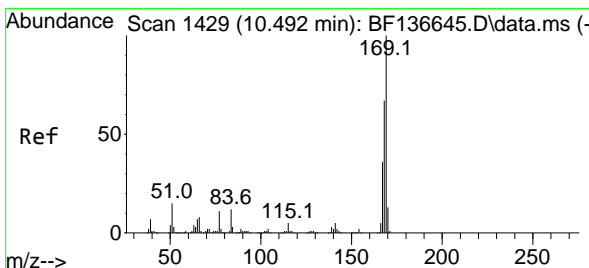
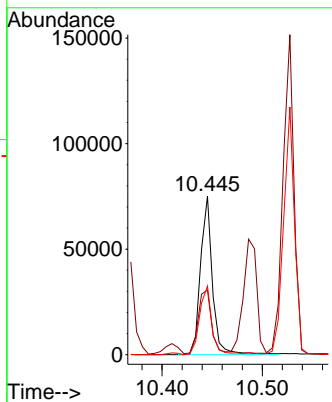
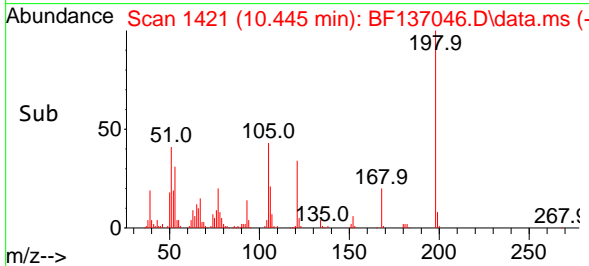


#65
 4,6-Dinitro-2-methylphenol
 Concen: 39.161 ng
 RT: 10.445 min Scan# 1419
 Delta R.T. 0.012 min
 Lab File: BF137046.D
 Acq: 12 Jan 2024 13:57

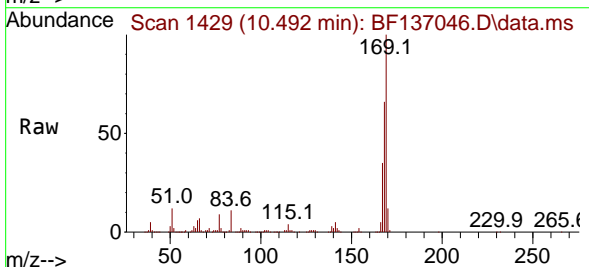
Instrument :
 BNA_F
 ClientSampleId :
 PB158404BS



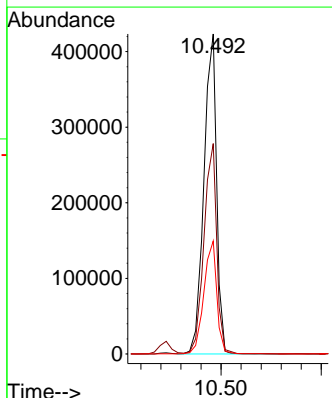
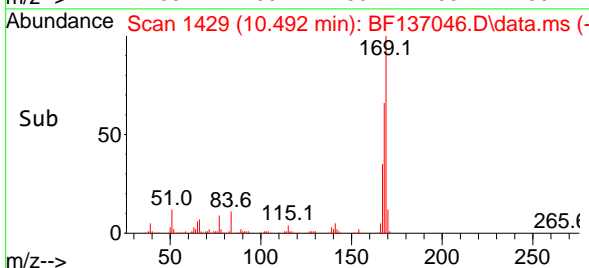
Tgt Ion:198 Resp: 62270
 Ion Ratio Lower Upper
 198 100
 51 40.8 34.1 74.1
 105 43.3 27.3 67.3

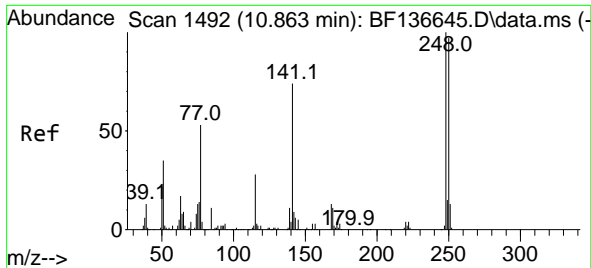


#66
 n-Nitrosodiphenylamine
 Concen: 41.520 ng
 RT: 10.492 min Scan# 1429
 Delta R.T. 0.000 min
 Lab File: BF137046.D
 Acq: 12 Jan 2024 13:57



Tgt Ion:169 Resp: 374227
 Ion Ratio Lower Upper
 169 100
 168 65.7 53.8 80.6
 167 35.3 28.7 43.1



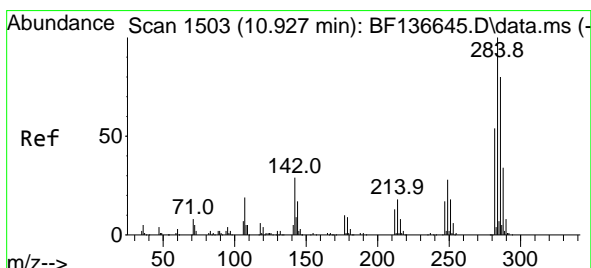
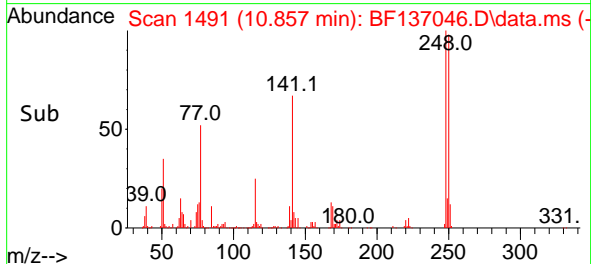
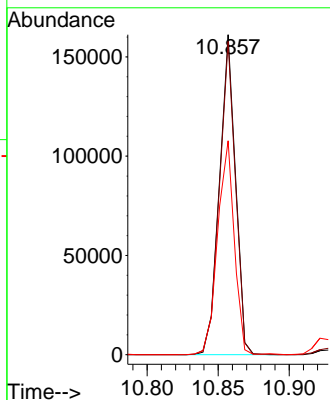
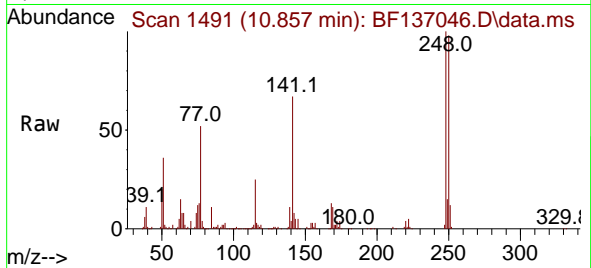


#67
 4-Bromophenyl-phenylether
 Concen: 41.123 ng
 RT: 10.857 min Scan# 1491
 Delta R.T. -0.006 min
 Lab File: BF137046.D
 Acq: 12 Jan 2024 13:57

Instrument :
 BNA_F
 ClientSampleId :
 PB158404BS

Tgt Ion:248 Resp: 126715

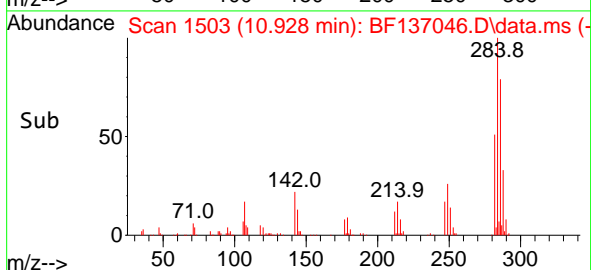
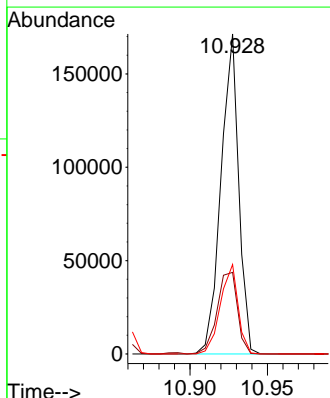
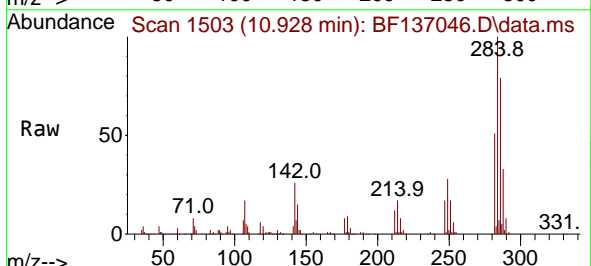
Ion	Ratio	Lower	Upper
248	100		
250	97.9	77.8	116.6
141	66.9	59.2	88.8

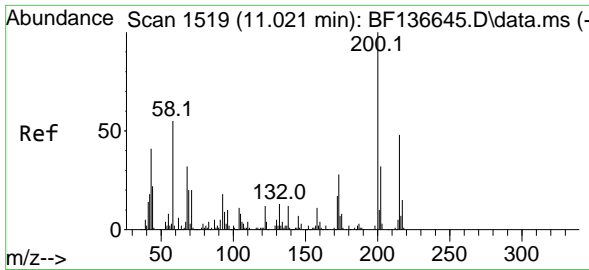


#68
 Hexachlorobenzene
 Concen: 39.679 ng
 RT: 10.928 min Scan# 1503
 Delta R.T. 0.000 min
 Lab File: BF137046.D
 Acq: 12 Jan 2024 13:57

Tgt Ion:284 Resp: 136255

Ion	Ratio	Lower	Upper
284	100		
142	25.5	23.4	35.0
249	27.9	22.3	33.5



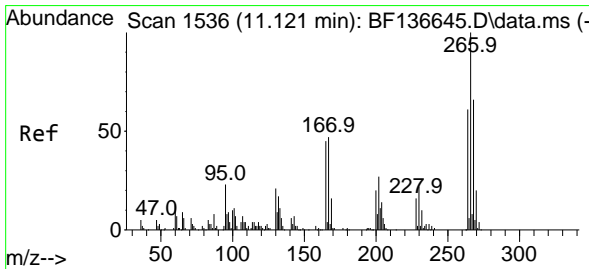
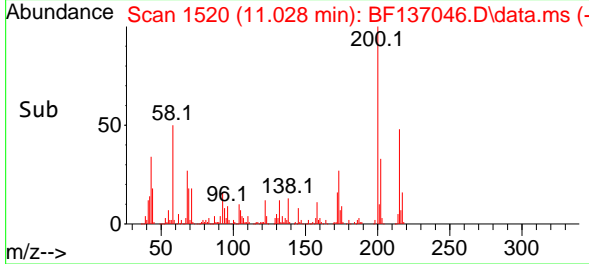
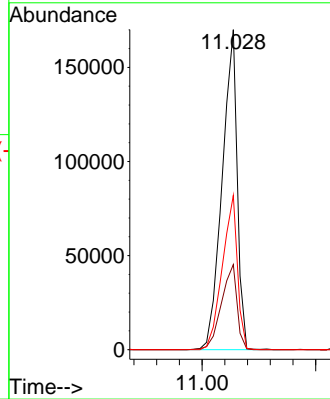
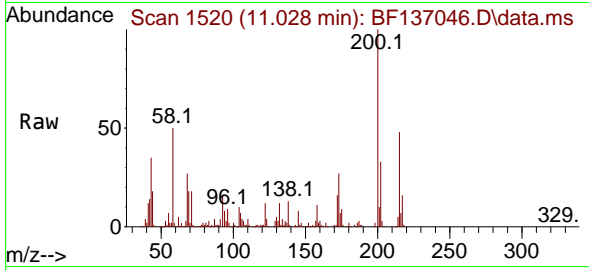


#69
 Atrazine
 Concen: 68.132 ng
 RT: 11.028 min Scan# 11
 Delta R.T. 0.006 min
 Lab File: BF137046.D
 Acq: 12 Jan 2024 13:57

Instrument :
 BNA_F
 ClientSampleId :
 PB158404BS

Tgt Ion:200 Resp: 157065

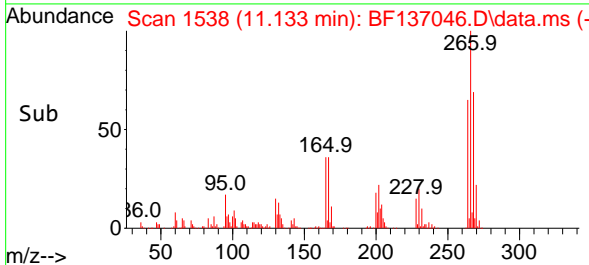
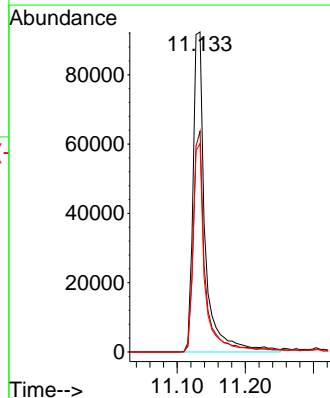
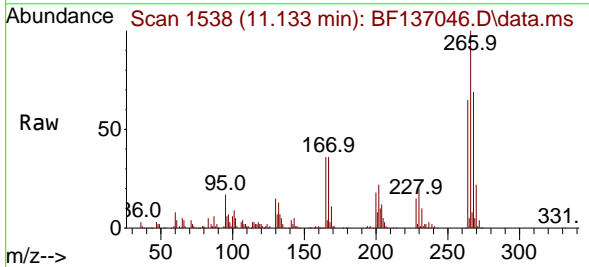
Ion	Ratio	Lower	Upper
200	100		
173	26.6	7.6	47.6
215	48.2	28.3	68.3

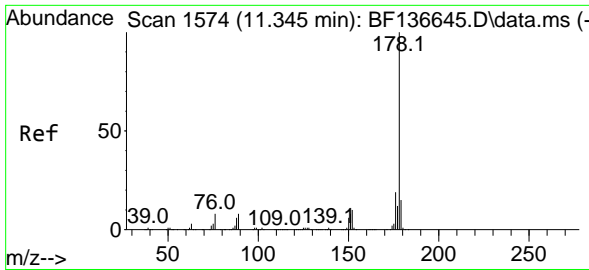


#70
 Pentachlorophenol
 Concen: 71.169 ng
 RT: 11.133 min Scan# 1538
 Delta R.T. 0.012 min
 Lab File: BF137046.D
 Acq: 12 Jan 2024 13:57

Tgt Ion:266 Resp: 113913

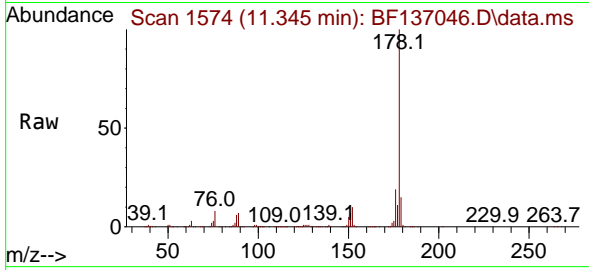
Ion	Ratio	Lower	Upper
266	100		
268	68.9	52.6	78.8
264	65.1	49.0	73.4



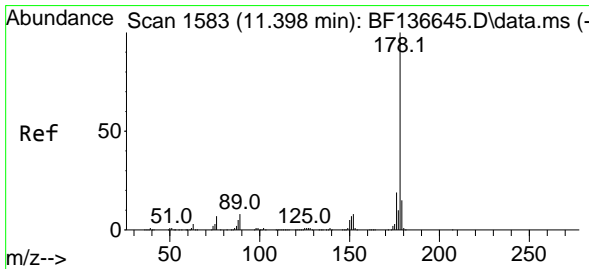
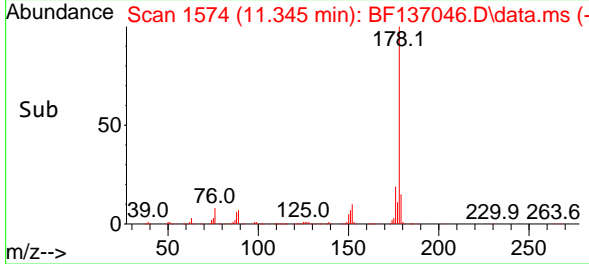
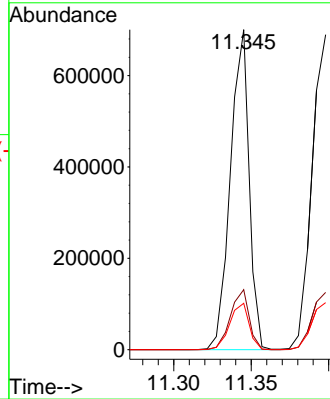


#71
 Phenanthrene
 Concen: 41.284 ng
 RT: 11.345 min Scan# 11
 Delta R.T. 0.000 min
 Lab File: BF137046.D
 Acq: 12 Jan 2024 13:57

Instrument :
 BNA_F
 ClientSampleId :
 PB158404BS

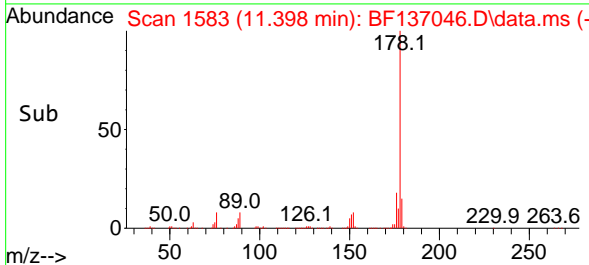
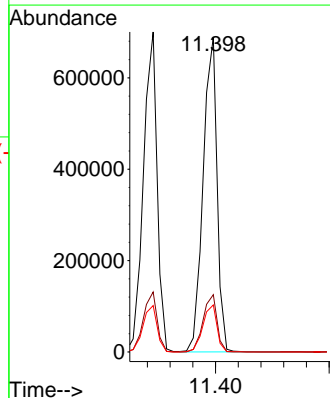
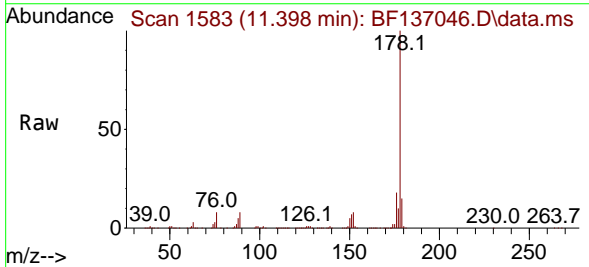


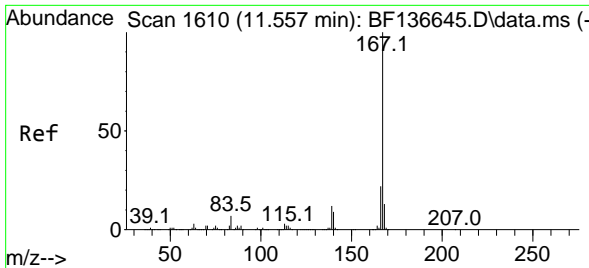
Tgt Ion:178 Resp: 587740
 Ion Ratio Lower Upper
 178 100
 176 18.7 15.3 22.9
 179 14.5 11.9 17.9



#72
 Anthracene
 Concen: 40.700 ng
 RT: 11.398 min Scan# 1583
 Delta R.T. 0.000 min
 Lab File: BF137046.D
 Acq: 12 Jan 2024 13:57

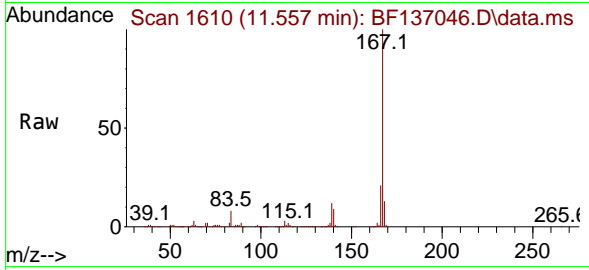
Tgt Ion:178 Resp: 586813
 Ion Ratio Lower Upper
 178 100
 176 18.2 14.9 22.3
 179 14.9 11.8 17.6





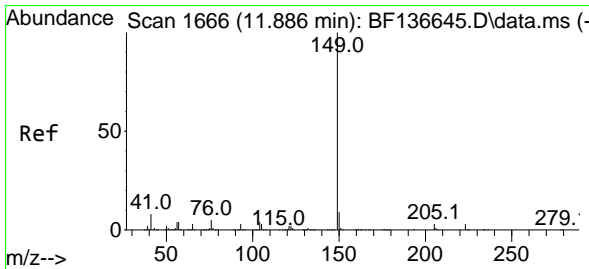
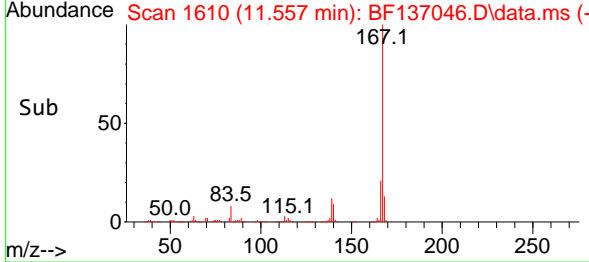
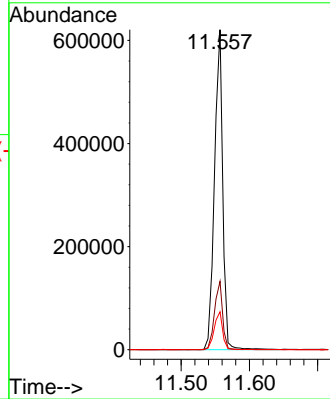
#73
 Carbazole
 Concen: 38.472 ng
 RT: 11.557 min Scan# 1610
 Delta R.T. 0.000 min
 Lab File: BF137046.D
 Acq: 12 Jan 2024 13:57

Instrument : BNA_F
 ClientSampleId : PB158404BS



Tgt Ion:167 Resp: 522966

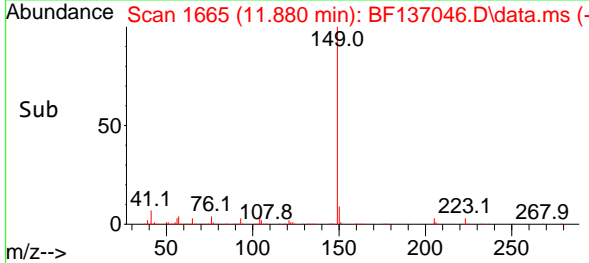
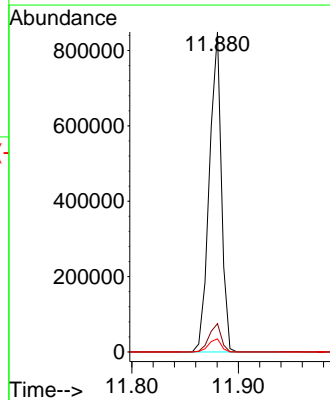
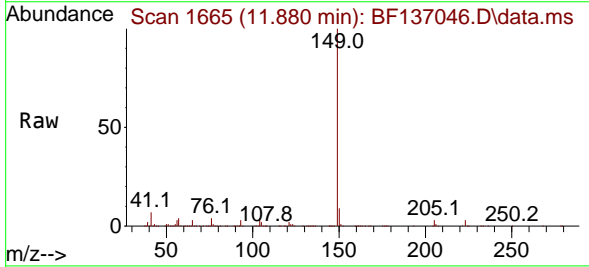
Ion	Ratio	Lower	Upper
167	100		
166	21.4	17.3	25.9
139	11.9	9.8	14.6

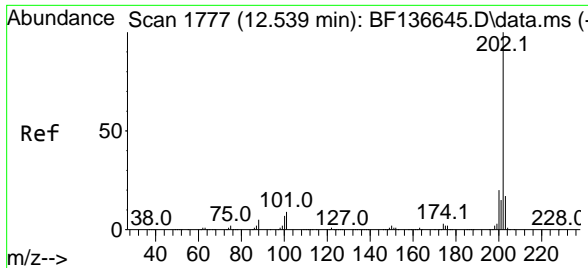


#74
 Di-n-butylphthalate
 Concen: 40.285 ng
 RT: 11.880 min Scan# 1665
 Delta R.T. -0.006 min
 Lab File: BF137046.D
 Acq: 12 Jan 2024 13:57

Tgt Ion:149 Resp: 668214

Ion	Ratio	Lower	Upper
149	100		
150	8.9	7.4	11.2
104	4.1	3.6	5.4



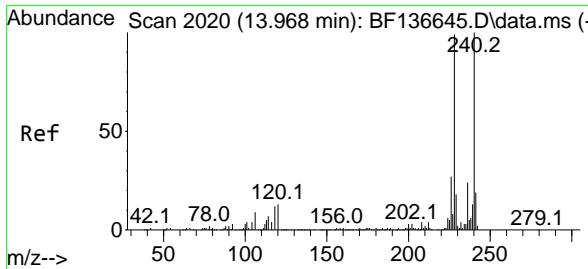
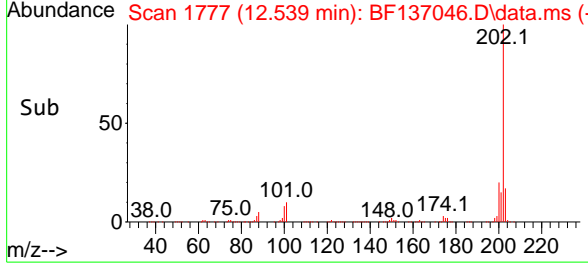
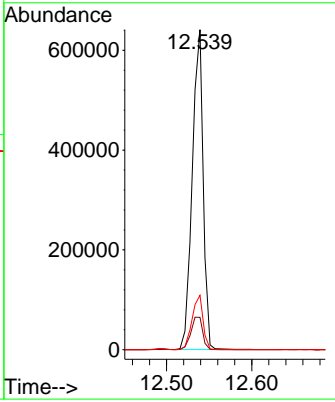
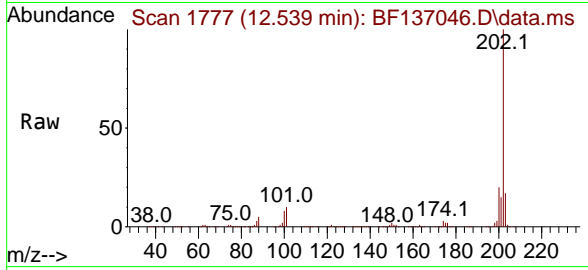


#75
 Fluoranthene
 Concen: 37.421 ng
 RT: 12.539 min Scan# 11
 Delta R.T. 0.000 min
 Lab File: BF137046.D
 Acq: 12 Jan 2024 13:57

Instrument : BNA_F
 ClientSampleId : PB158404BS

Tgt Ion: 202 Resp: 569862

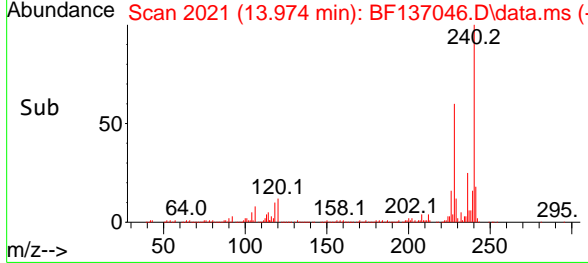
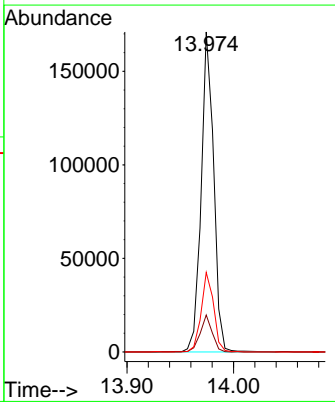
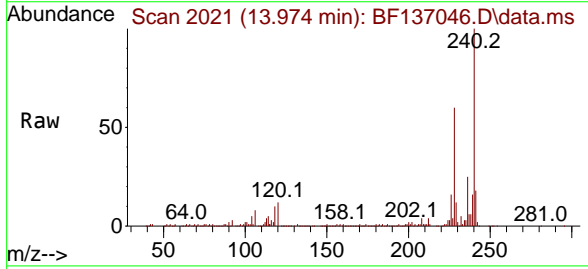
Ion	Ratio	Lower	Upper
202	100		
101	10.1	0.0	29.3
203	17.0	0.0	37.1

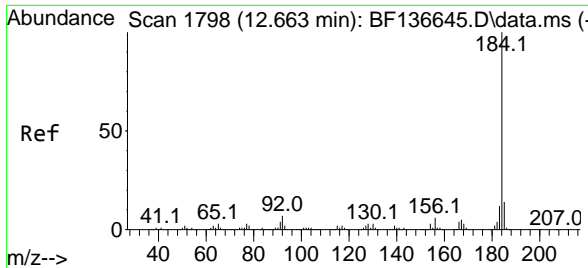


#76
 Chrysene-d12
 Concen: 20.000 ng
 RT: 13.974 min Scan# 2021
 Delta R.T. 0.006 min
 Lab File: BF137046.D
 Acq: 12 Jan 2024 13:57

Tgt Ion: 240 Resp: 139833

Ion	Ratio	Lower	Upper
240	100		
120	11.6	10.3	15.5
236	24.8	19.4	29.2



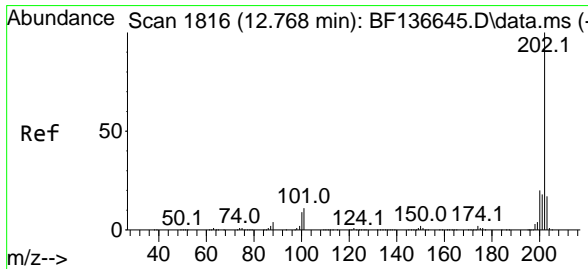
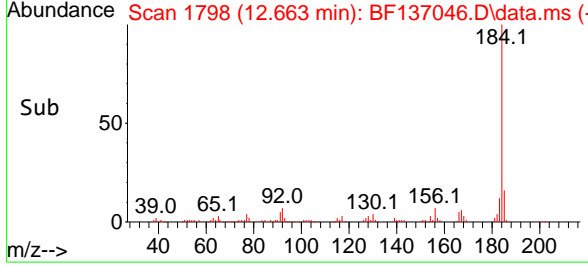
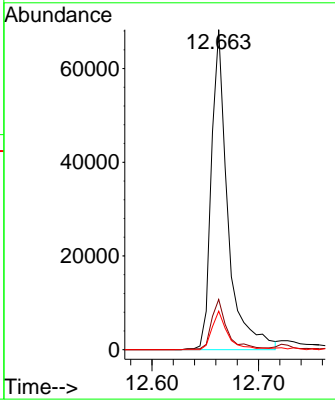
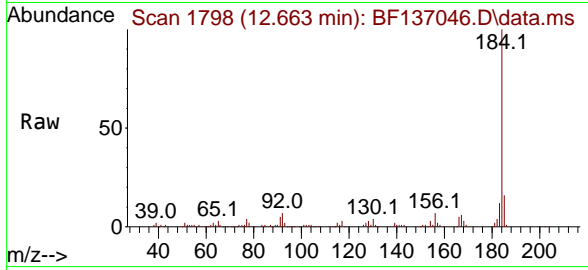


#77
Benzidine
Concen: 17.753 ng
RT: 12.663 min Scan# 11
Delta R.T. 0.000 min
Lab File: BF137046.D
Acq: 12 Jan 2024 13:57

Instrument : BNA_F
ClientSampleId : PB158404BS

Tgt Ion:184 Resp: 73198

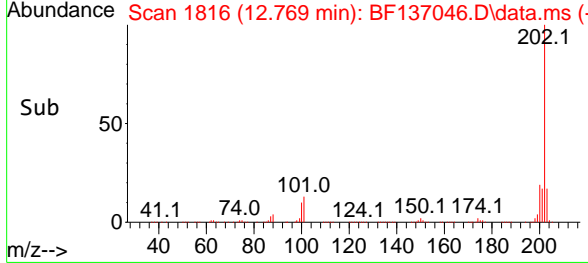
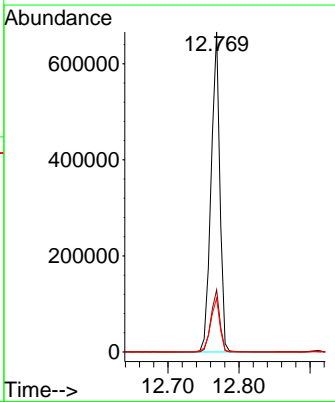
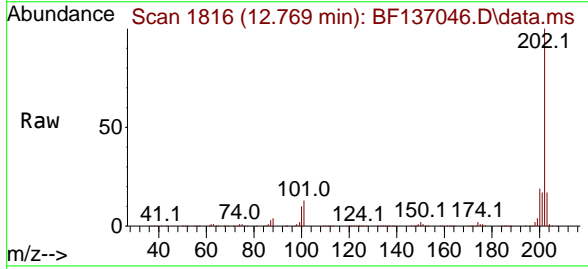
Ion	Ratio	Lower	Upper
184	100		
185	15.7	11.2	16.8
183	12.1	9.3	13.9

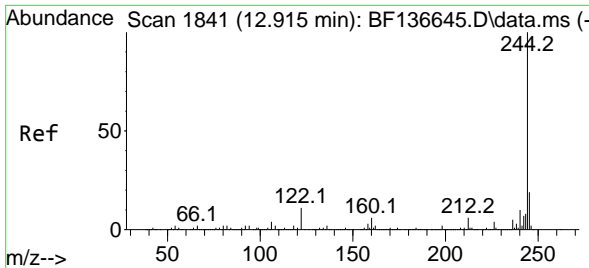


#78
Pyrene
Concen: 41.571 ng
RT: 12.769 min Scan# 1816
Delta R.T. 0.000 min
Lab File: BF137046.D
Acq: 12 Jan 2024 13:57

Tgt Ion:202 Resp: 570638

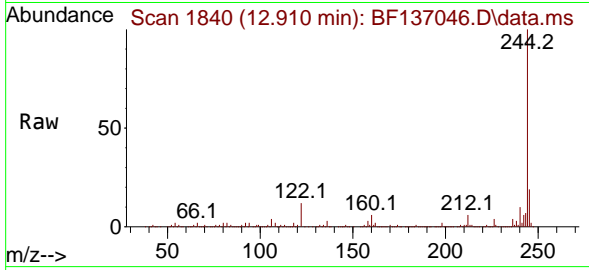
Ion	Ratio	Lower	Upper
202	100		
200	19.4	15.9	23.9
203	16.8	13.8	20.6



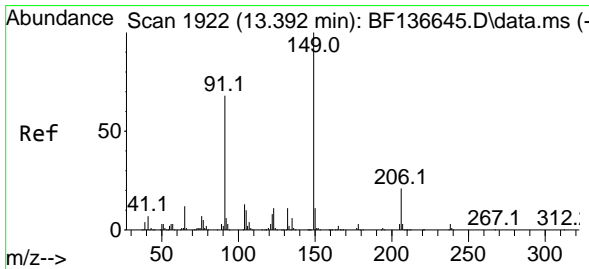
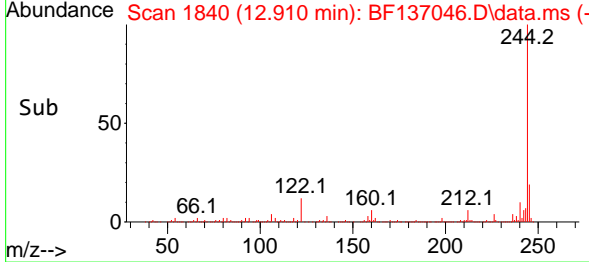
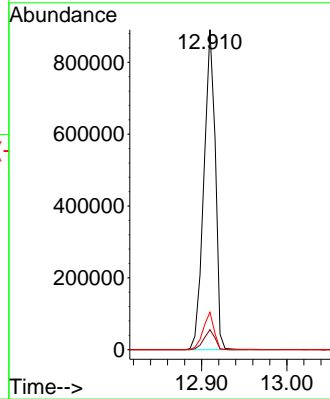


#79
 Terphenyl-d14
 Concen: 82.668 ng
 RT: 12.910 min Scan# 11
 Delta R.T. -0.006 min
 Lab File: BF137046.D
 Acq: 12 Jan 2024 13:57

Instrument :
 BNA_F
 ClientSampleId :
 PB158404BS

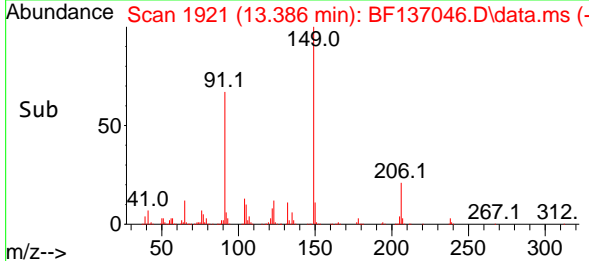
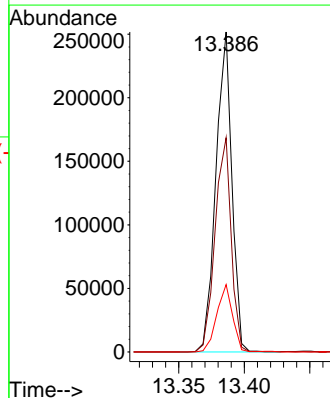
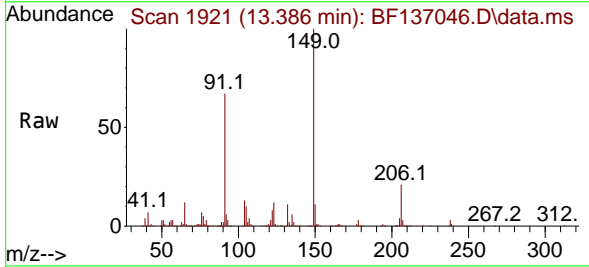


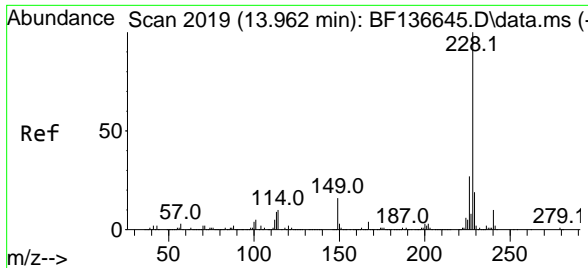
Tgt Ion:244 Resp: 827190
 Ion Ratio Lower Upper
 244 100
 212 6.2 5.0 7.4
 122 11.7 9.0 13.4



#80
 Butylbenzylphthalate
 Concen: 42.648 ng
 RT: 13.386 min Scan# 1921
 Delta R.T. -0.006 min
 Lab File: BF137046.D
 Acq: 12 Jan 2024 13:57

Tgt Ion:149 Resp: 213020
 Ion Ratio Lower Upper
 149 100
 91 66.9 54.1 81.1
 206 21.1 17.1 25.7



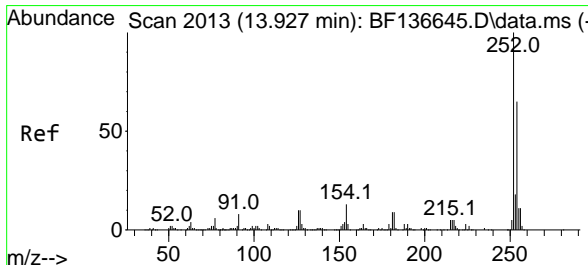
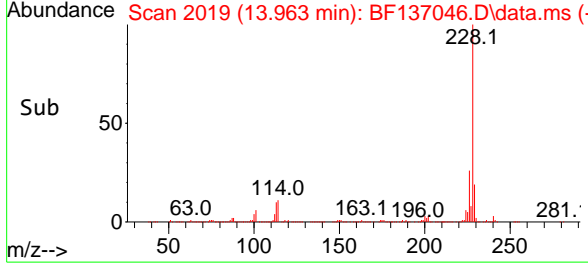
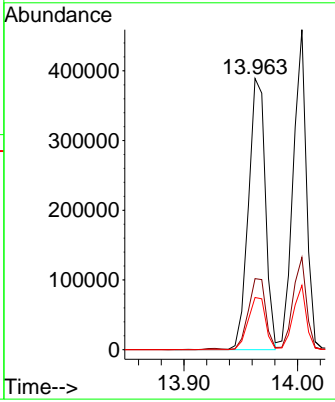
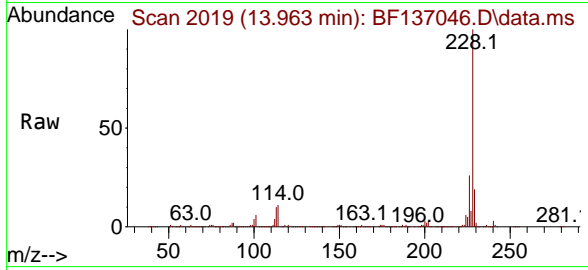


#81
 Benzo(a)anthracene
 Concen: 41.456 ng
 RT: 13.963 min Scan# 2019
 Delta R.T. 0.000 min
 Lab File: BF137046.D
 Acq: 12 Jan 2024 13:57

Instrument : BNA_F
 ClientSampleId : PB158404BS

Tgt Ion:228 Resp: 402530

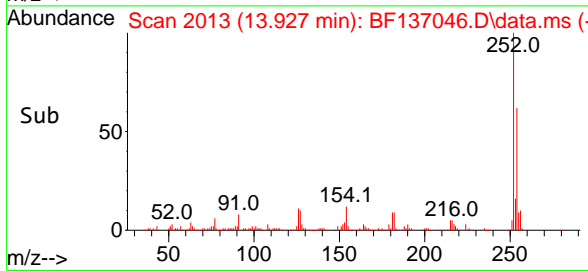
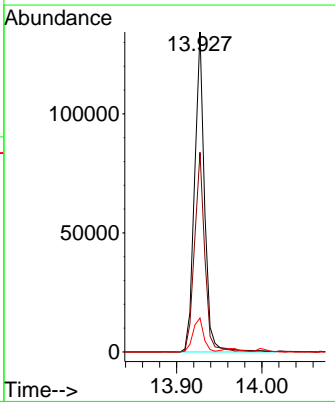
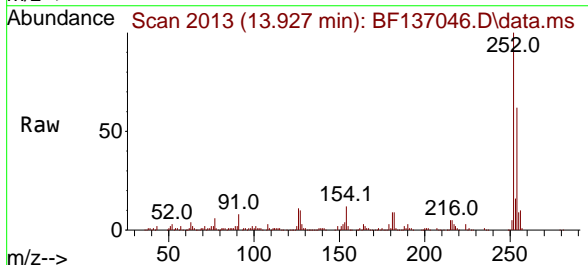
Ion	Ratio	Lower	Upper
228	100		
226	26.2	21.4	32.0
229	19.2	14.9	22.3

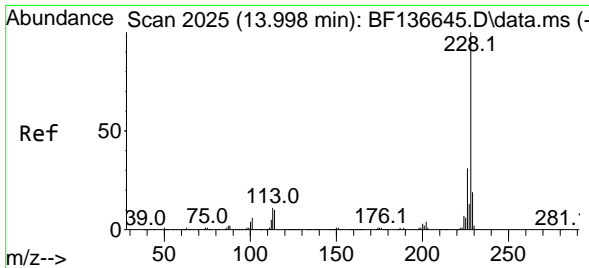


#82
 3,3'-Dichlorobenzidine
 Concen: 39.866 ng
 RT: 13.927 min Scan# 2013
 Delta R.T. 0.000 min
 Lab File: BF137046.D
 Acq: 12 Jan 2024 13:57

Tgt Ion:252 Resp: 109932

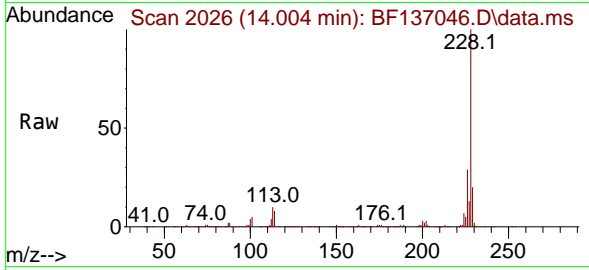
Ion	Ratio	Lower	Upper
252	100		
254	62.4	52.2	78.4
126	10.6	8.0	12.0





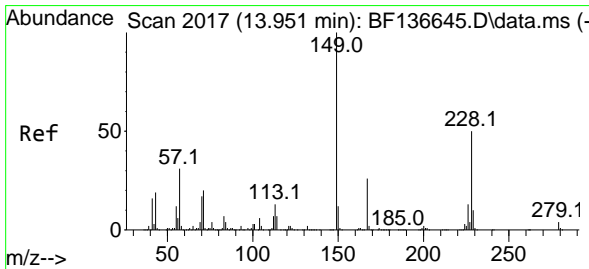
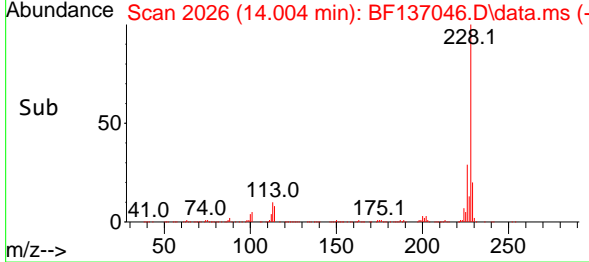
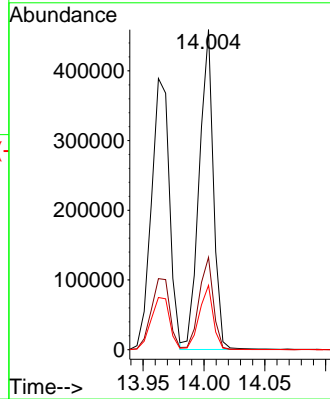
#83
 Chrysene
 Concen: 39.176 ng
 RT: 14.004 min Scan# 2016
 Delta R.T. 0.006 min
 Lab File: BF137046.D
 Acq: 12 Jan 2024 13:57

Instrument :
 BNA_F
 ClientSampleId :
 PB158404BS



Tgt Ion:228 Resp: 371985

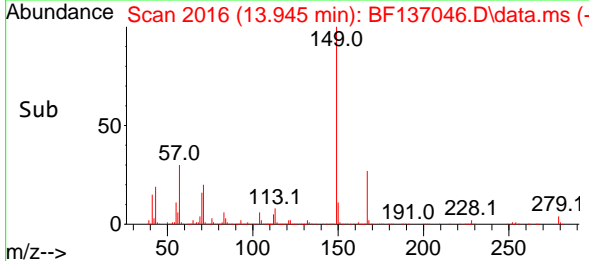
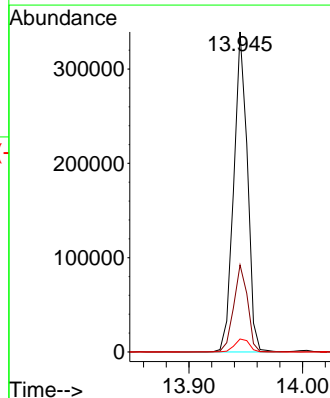
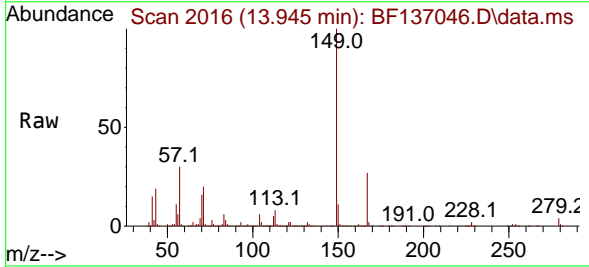
Ion	Ratio	Lower	Upper
228	100		
226	28.9	24.7	37.1
229	20.1	15.4	23.0

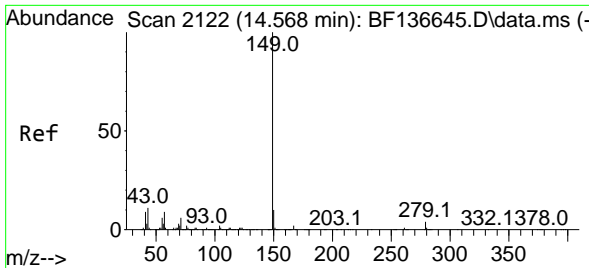


#84
 Bis(2-ethylhexyl)phthalate
 Concen: 44.952 ng
 RT: 13.945 min Scan# 2016
 Delta R.T. -0.006 min
 Lab File: BF137046.D
 Acq: 12 Jan 2024 13:57

Tgt Ion:149 Resp: 282497

Ion	Ratio	Lower	Upper
149	100		
167	27.2	20.9	31.3
279	4.1	2.9	4.3



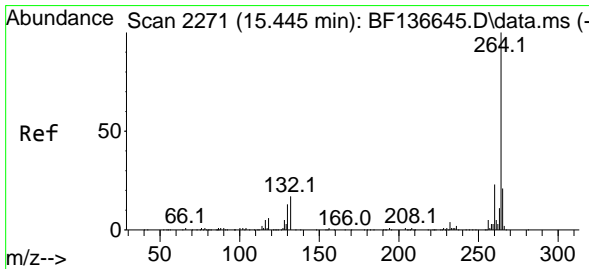
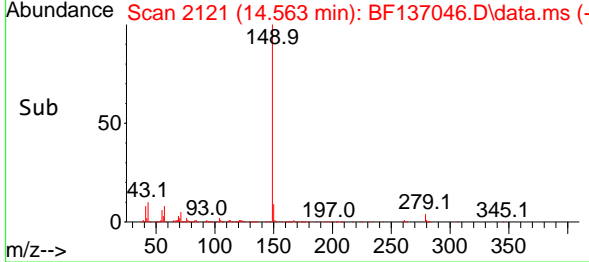
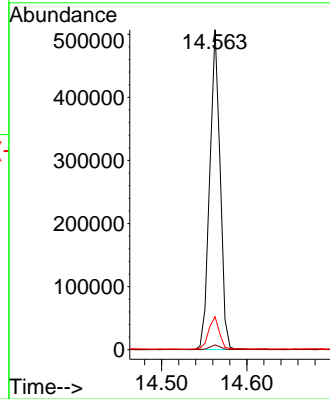
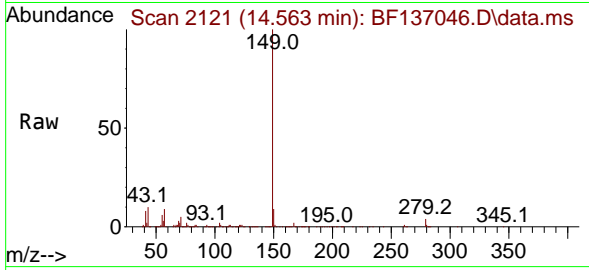


#85
 Di-n-octyl phthalate
 Concen: 44.124 ng
 RT: 14.563 min Scan# 2121
 Delta R.T. -0.006 min
 Lab File: BF137046.D
 Acq: 12 Jan 2024 13:57

Instrument :
 BNA_F
 ClientSampleId :
 PB158404BS

Tgt Ion:149 Resp: 428938

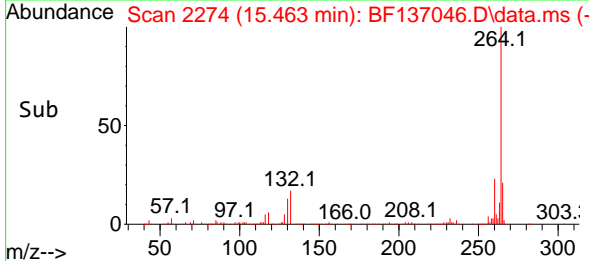
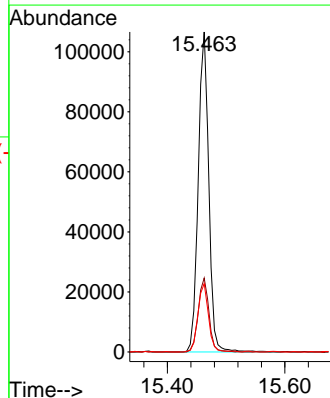
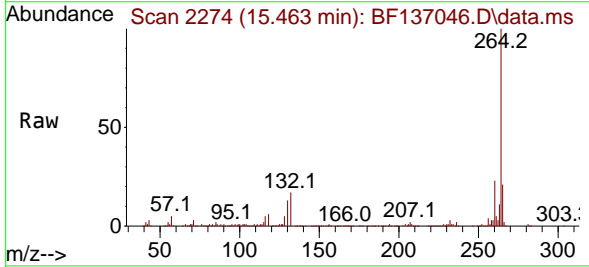
Ion	Ratio	Lower	Upper
149	100		
167	1.6	1.2	1.8
43	10.4	8.9	13.3

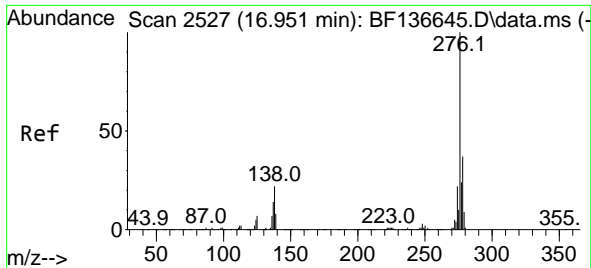


#86
 Perylene-d12
 Concen: 20.000 ng
 RT: 15.463 min Scan# 2274
 Delta R.T. 0.018 min
 Lab File: BF137046.D
 Acq: 12 Jan 2024 13:57

Tgt Ion:264 Resp: 132142

Ion	Ratio	Lower	Upper
264	100		
260	23.1	18.3	27.5
265	21.4	17.0	25.6

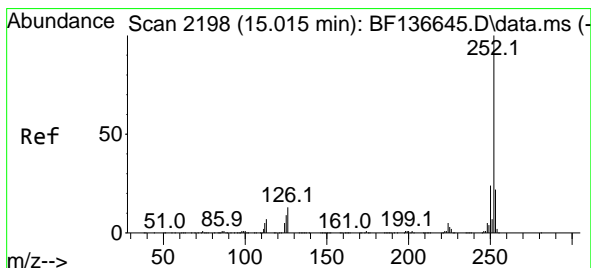
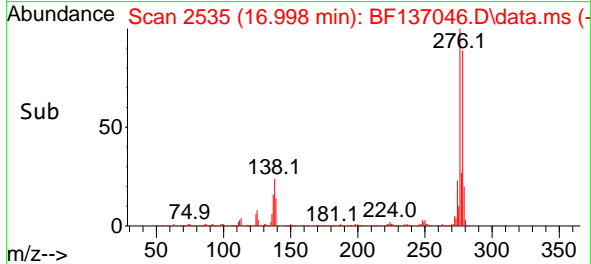
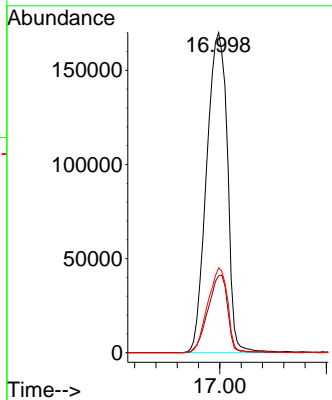
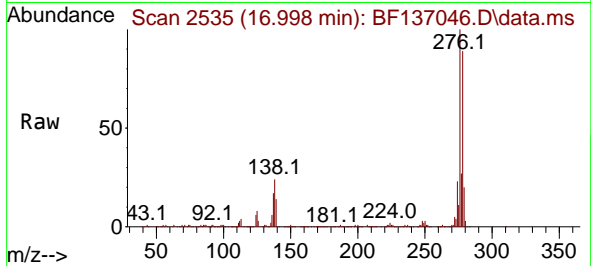




#87
 Indeno(1,2,3-cd)pyrene
 Concen: 48.130 ng
 RT: 16.998 min Scan# 21
 Delta R.T. 0.047 min
 Lab File: BF137046.D
 Acq: 12 Jan 2024 13:57

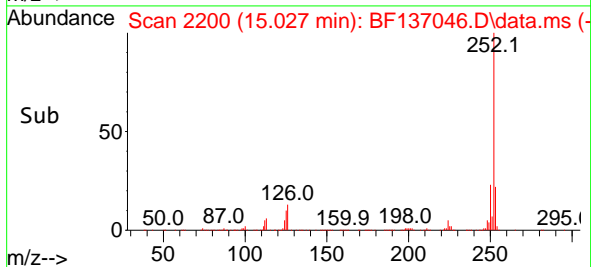
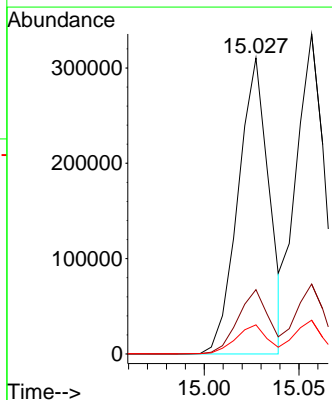
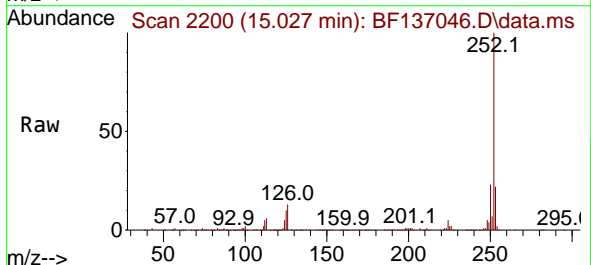
Instrument :
 BNA_F
 ClientSampleId :
 PB158404BS

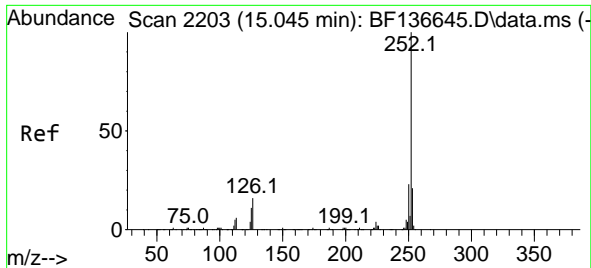
Tgt Ion:276 Resp: 459199
 Ion Ratio Lower Upper
 276 100
 138 22.9 18.7 28.1
 277 25.4 20.2 30.2



#88
 Benzo(b)fluoranthene
 Concen: 39.962 ng
 RT: 15.027 min Scan# 2200
 Delta R.T. 0.012 min
 Lab File: BF137046.D
 Acq: 12 Jan 2024 13:57

Tgt Ion:252 Resp: 352701
 Ion Ratio Lower Upper
 252 100
 253 21.7 17.4 26.0
 125 9.8 7.4 11.2

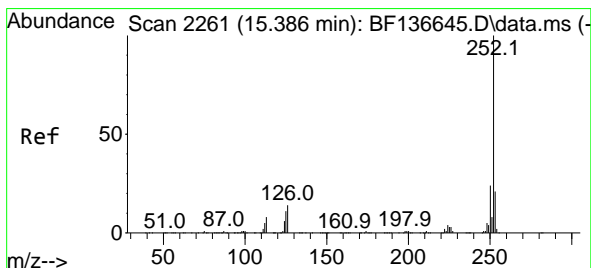
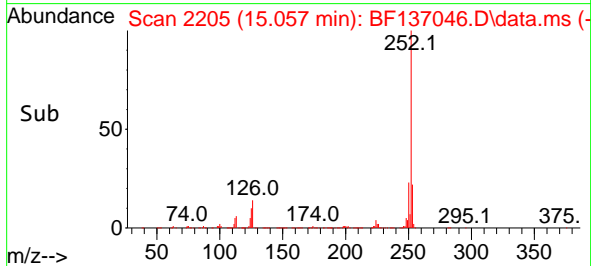
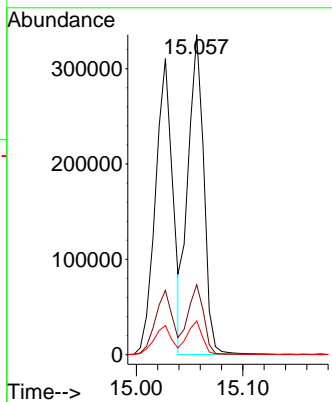
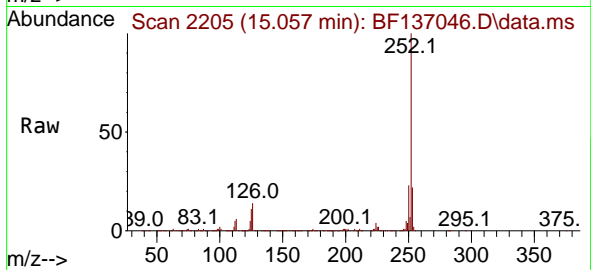




#89
 Benzo(k)fluoranthene
 Concen: 41.372 ng
 RT: 15.057 min Scan# 21
 Delta R.T. 0.012 min
 Lab File: BF137046.D
 Acq: 12 Jan 2024 13:57

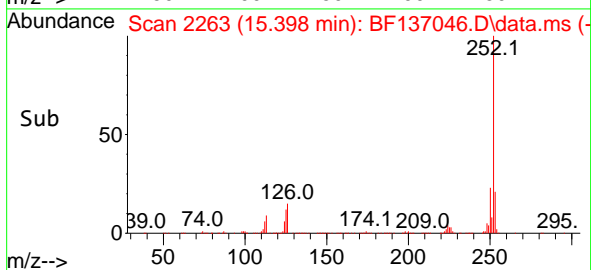
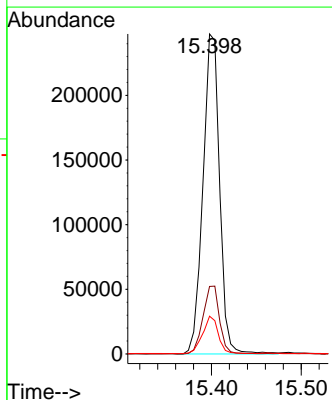
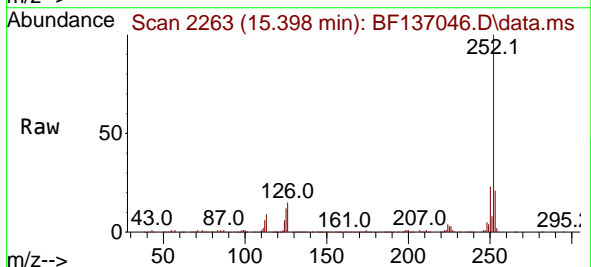
Instrument :
 BNA_F
 ClientSampleId :
 PB158404BS

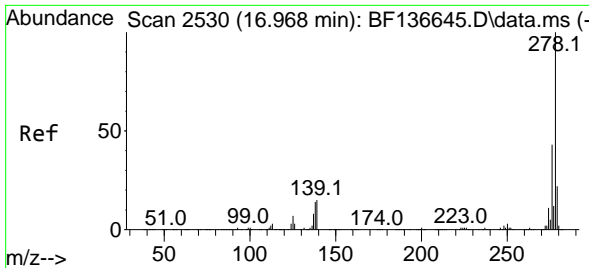
Tgt Ion:252 Resp: 345031
 Ion Ratio Lower Upper
 252 100
 253 21.9 17.0 25.6
 125 10.6 8.2 12.4



#90
 Benzo(a)pyrene
 Concen: 42.786 ng
 RT: 15.398 min Scan# 2263
 Delta R.T. 0.012 min
 Lab File: BF137046.D
 Acq: 12 Jan 2024 13:57

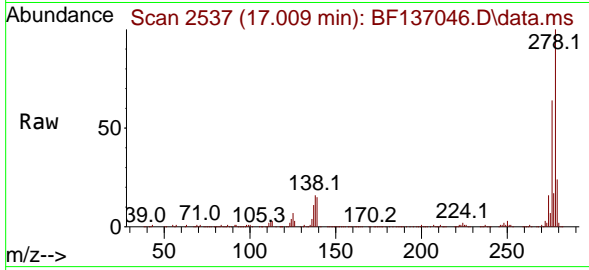
Tgt Ion:252 Resp: 318755
 Ion Ratio Lower Upper
 252 100
 253 21.1 17.0 25.6
 125 11.8 8.8 13.2



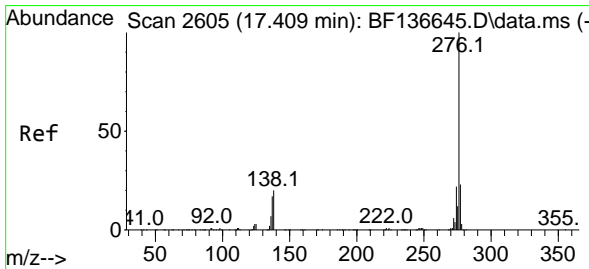
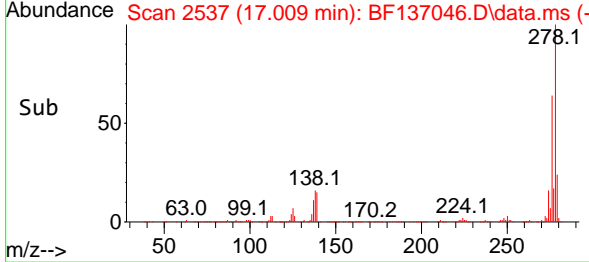
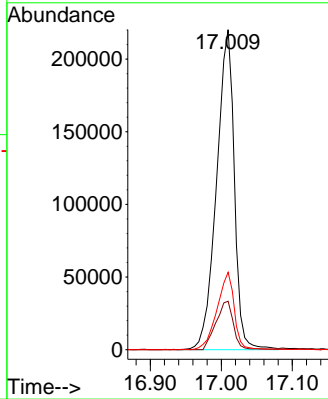


#91
 Dibenzo(a,h)anthracene
 Concen: 48.769 ng
 RT: 17.009 min Scan# 21
 Delta R.T. 0.041 min
 Lab File: BF137046.D
 Acq: 12 Jan 2024 13:57

Instrument :
 BNA_F
 ClientSampleId :
 PB158404BS



Tgt Ion:278 Resp: 381733
 Ion Ratio Lower Upper
 278 100
 139 15.2 12.2 18.4
 279 24.2 17.8 26.6



#92
 Benzo(g,h,i)perylene
 Concen: 48.318 ng
 RT: 17.456 min Scan# 2613
 Delta R.T. 0.047 min
 Lab File: BF137046.D
 Acq: 12 Jan 2024 13:57

Tgt Ion:276 Resp: 387359
 Ion Ratio Lower Upper
 276 100
 277 23.4 18.3 27.5
 138 19.8 15.6 23.4

