

Data Path : Z:\HPCHEM1\BNA_F\DATA\BF011315\
 Data File : BF076849.D
 Acq On : 13 Jan 2015 18:35
 Operator : IZ / TP
 Sample : G1062-04
 Misc : S
 ALS Vial : 12 Sample Multiplier: 1

Instrument :
 BNA_F
 ClientSampleId :
 FS-015

Quant Time: Jan 14 10:46:41 2015
 Quant Method : Z:\HPCHEM1\BNA_F\METHODS\8270-BF010915.M
 Quant Title : ASP BNA STANDARDS FOR 5 POINT CALIBRATION
 QLast Update : Mon Jan 12 10:43:48 2015
 Response via : Initial Calibration

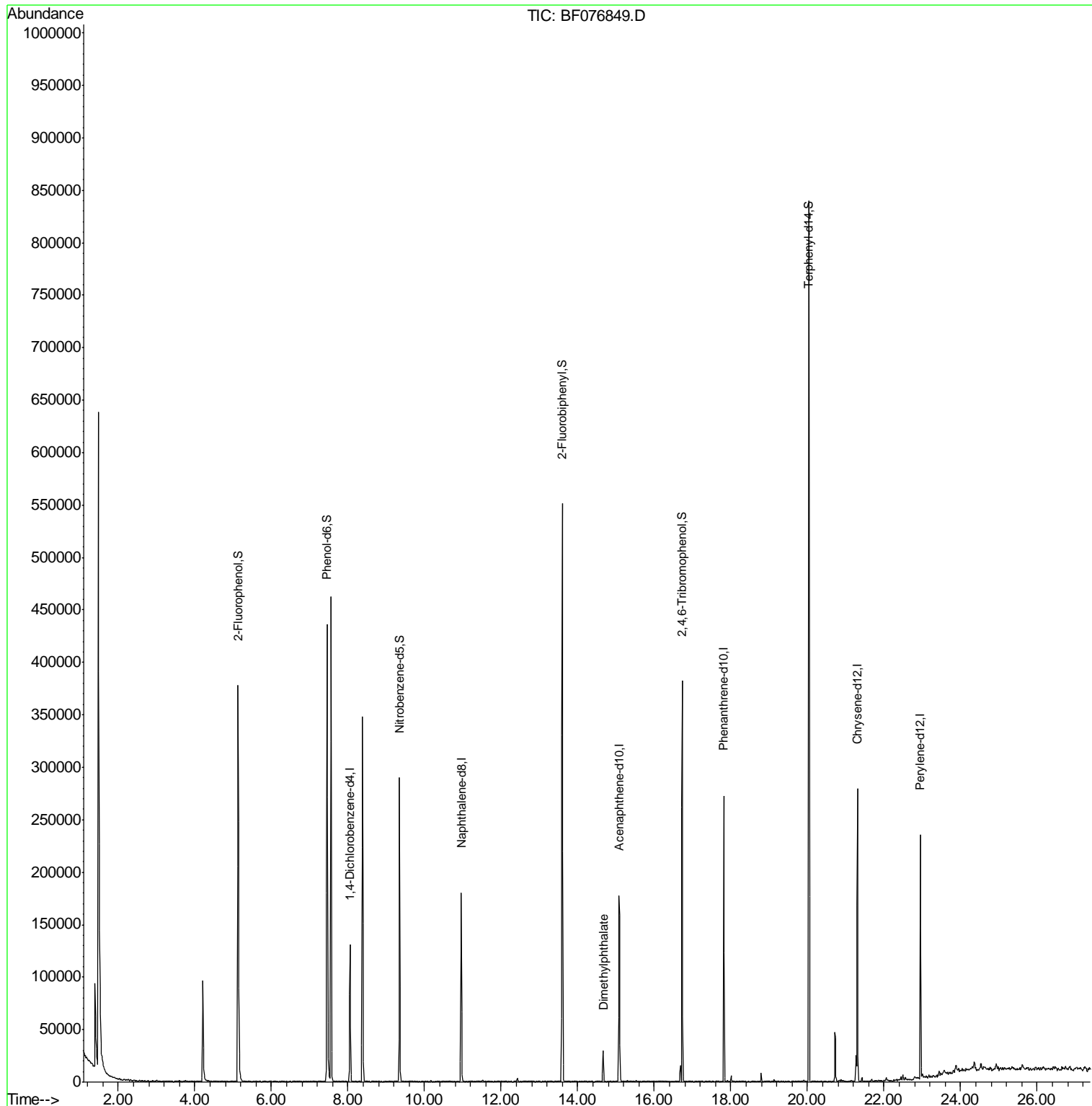
Internal Standards	R.T.	QIon	Response	Conc	Units	Dev(Min)
1) 1,4-Dichlorobenzene-d4	8.06	152	32744	20.00	ng	-0.02
21) Naphthalene-d8	10.96	136	139632	20.00	ng	-0.03
38) Acenaphthene-d10	15.08	164	73543	20.00	ng	-0.06
63) Phenanthrene-d10	17.82	188	128755	20.00	ng	-0.03
75) Chrysene-d12	21.31	240	123292	20.00	ng	-0.05
86) Perylene-d12	22.95	264	112239	20.00	ng	-0.07
System Monitoring Compounds						
5) 2-Fluorophenol	5.13	112	186629	95.11	ng	-0.04
7) Phenol-d6	7.45	99	239903	97.11	ng	-0.05
23) Nitrobenzene-d5	9.35	82	147480	58.69	ng	-0.03
41) 2,4,6-Tribromophenol	16.73	330	55205	89.93	ng	-0.05
44) 2-Fluorobiphenyl	13.60	172	283575	56.75	ng	-0.05
78) Terphenyl-d14	20.04	244	271437	48.34	ng	-0.03
Target Compounds						
49) Dimethylphthalate	14.67	163	24412	4.57	ng	# 99

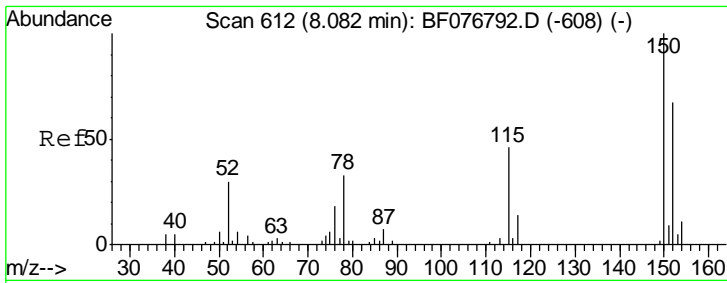
(#) = qualifier out of range (m) = manual integration (+) = signals summed

Data Path : Z:\HPCHEM1\BNA_F\DATA\BF011315\
 Data File : BF076849.D
 Acq On : 13 Jan 2015 18:35
 Operator : IZ / TP
 Sample : G1062-04
 Misc : S
 ALS Vial : 12 Sample Multiplier: 1

Instrument :
 BNA_F
 ClientSampleId :
 FS-015

Quant Time: Jan 14 10:46:41 2015
 Quant Method : Z:\HPCHEM1\BNA_F\METHODS\8270-BF010915.M
 Quant Title : ASP BNA STANDARDS FOR 5 POINT CALIBRATION
 QLast Update : Mon Jan 12 10:43:48 2015
 Response via : Initial Calibration

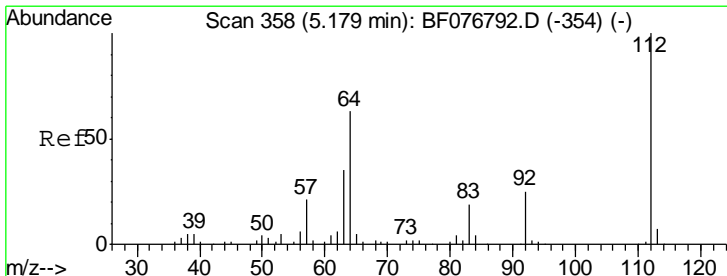
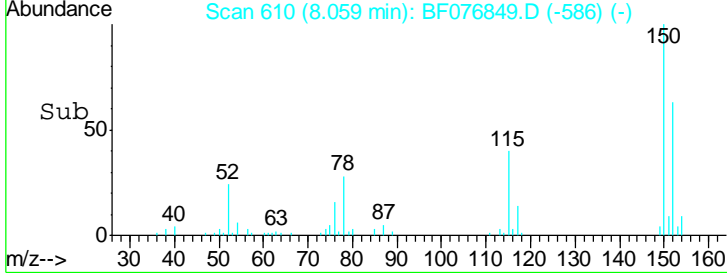
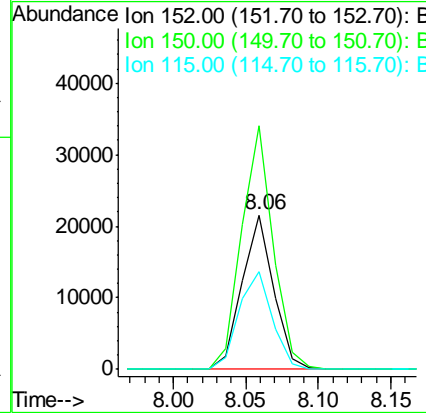
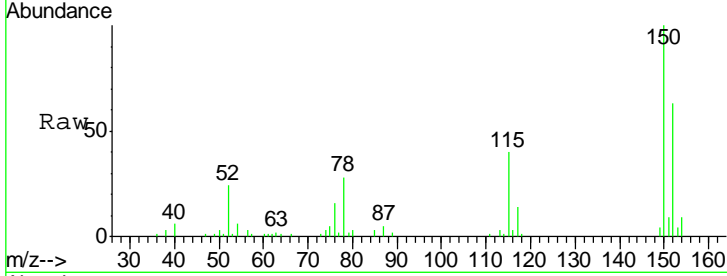




#1
 1,4-Dichlorobenzene-d4
 Concen: 20.00 ng
 RT: 8.06 min Scan# 610
 Delta R.T. -0.02 min
 Lab File: BF076849.D
 Acq: 13 Jan 2015 18:35

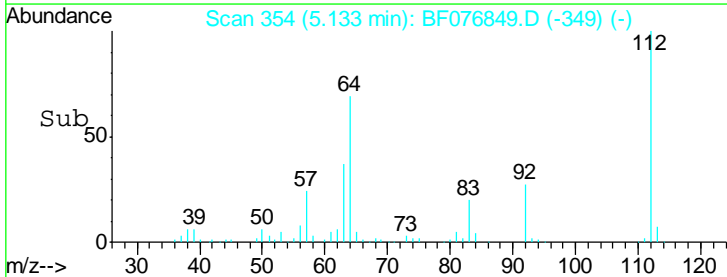
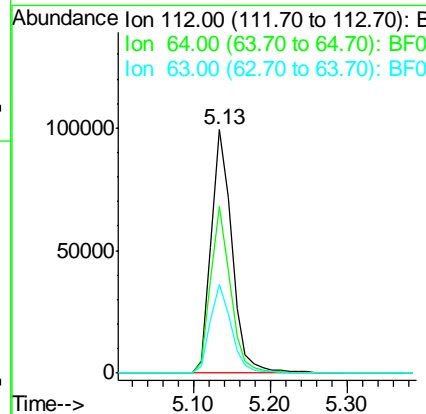
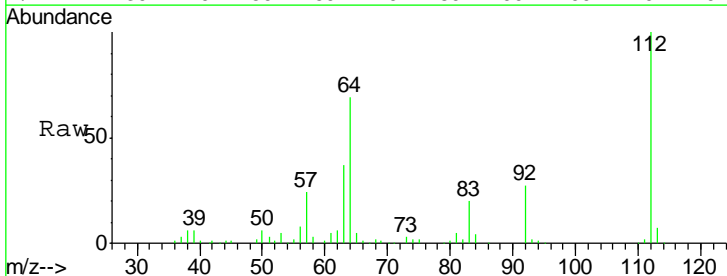
Instrument :
 BNA_F
ClientSampled :
 FS-015

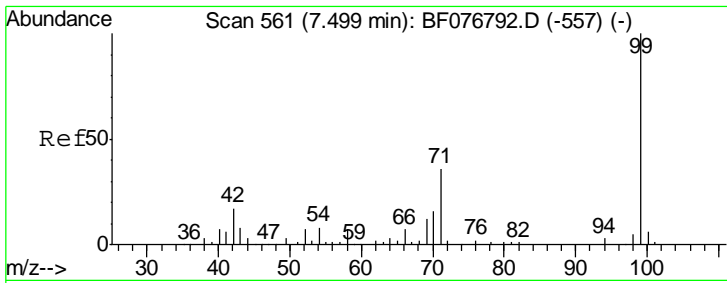
Tgt Ion	Resp	Lower	Upper
152	32744		
150	157.7	119.5	179.3
115	63.4	54.6	81.8



#5
 2-Fluorophenol
 Concen: 95.11 ng
 RT: 5.13 min Scan# 354
 Delta R.T. -0.04 min
 Lab File: BF076849.D
 Acq: 13 Jan 2015 18:35

Tgt Ion	Resp	Lower	Upper
112	186629		
64	68.6	50.2	75.4
63	36.5	27.8	41.6



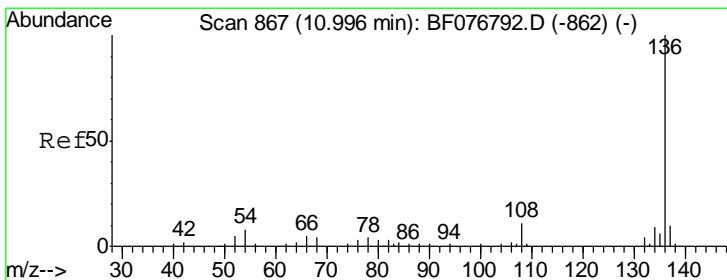
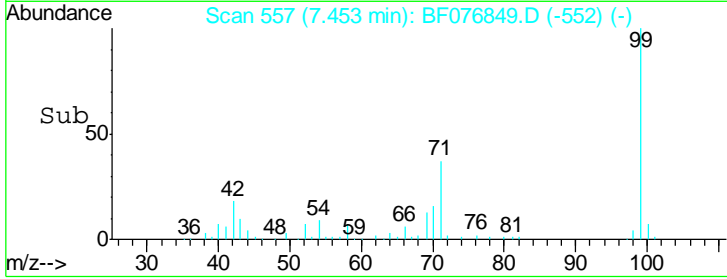
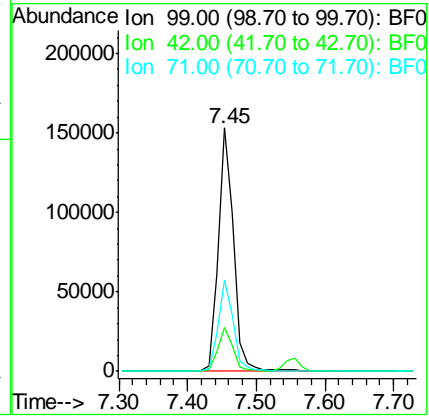
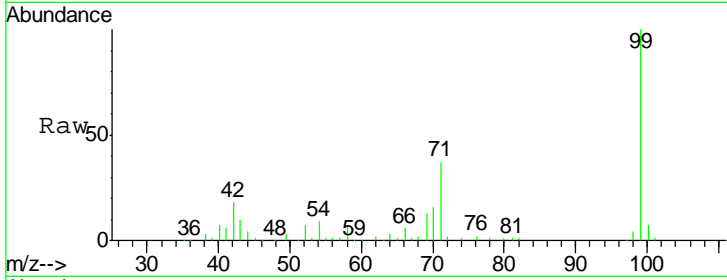


#7
 Phenol-d6
 Concen: 97.11 ng
 RT: 7.45 min Scan# 557
 Delta R.T. -0.05 min
 Lab File: BF076849.D
 Acq: 13 Jan 2015 18:35

Instrument :
 BNA_F
ClientSampled :
 FS-015

Tgt Ion: 99 Resp: 239903

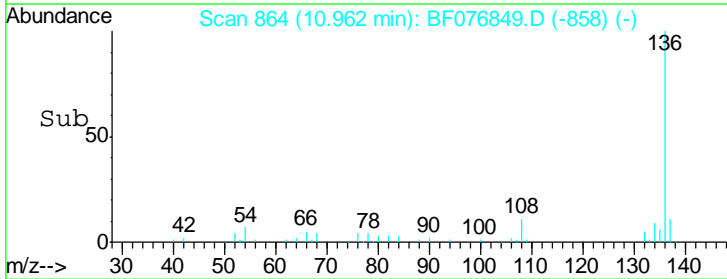
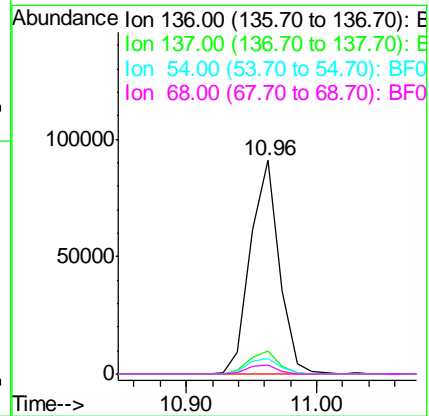
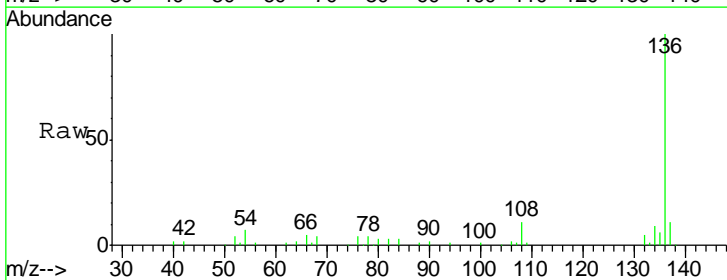
Ion	Ratio	Lower	Upper
99	100		
42	18.0	13.3	19.9
71	37.5	29.2	43.8

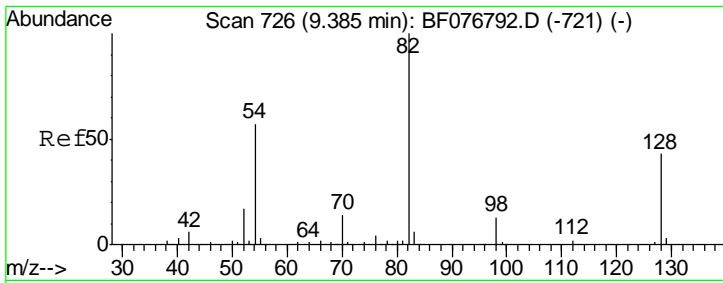


#21
 Naphthalene-d8
 Concen: 20.00 ng
 RT: 10.96 min Scan# 864
 Delta R.T. -0.03 min
 Lab File: BF076849.D
 Acq: 13 Jan 2015 18:35

Tgt Ion: 136 Resp: 139632

Ion	Ratio	Lower	Upper
136	100		
137	10.9	8.1	12.1
54	7.3	6.3	9.5
68	4.3	3.4	5.0

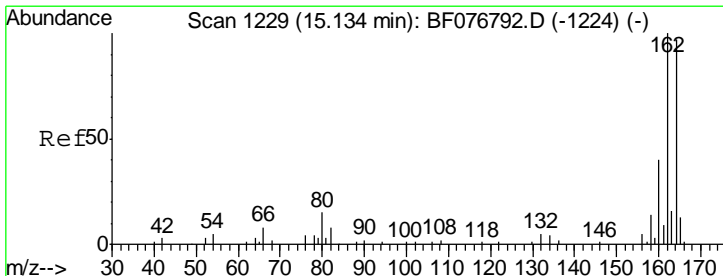
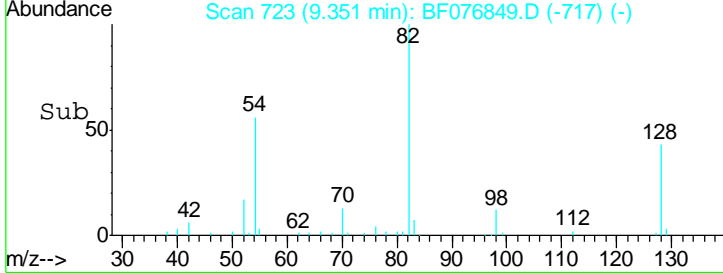
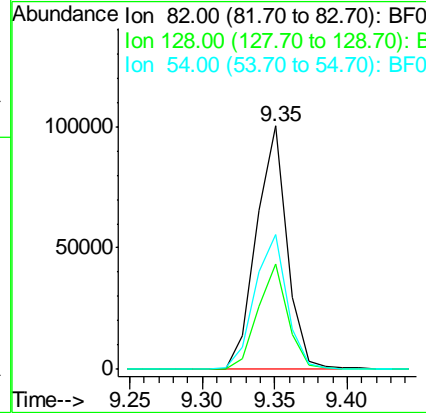
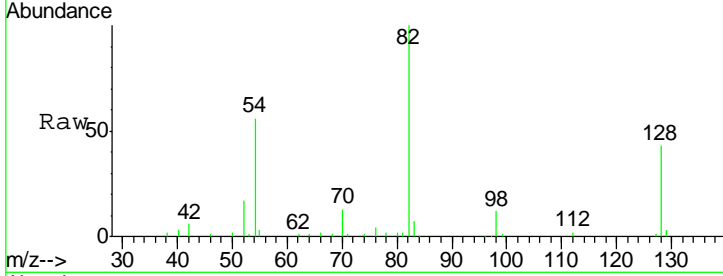




#23
 Nitrobenzene-d5
 Concen: 58.69 ng
 RT: 9.35 min Scan# 723
 Delta R.T. -0.03 min
 Lab File: BF076849.D
 Acq: 13 Jan 2015 18:35

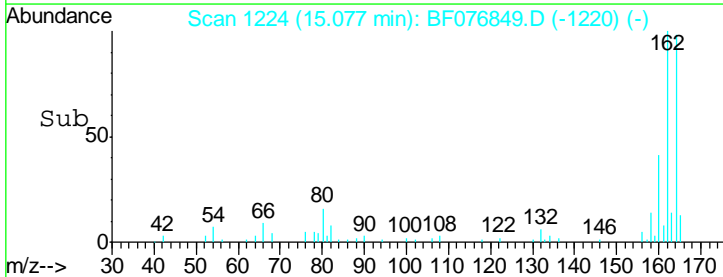
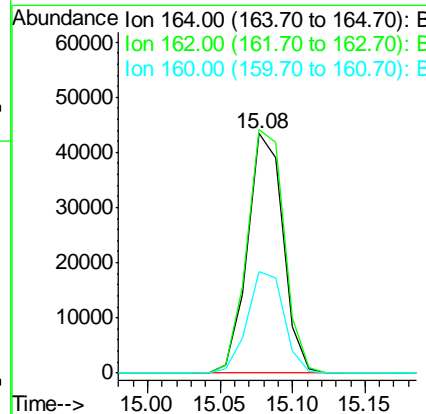
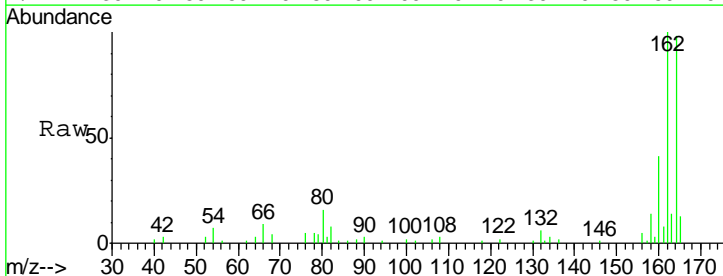
Instrument :
 BNA_F
 ClientSampleID :
 FS-015

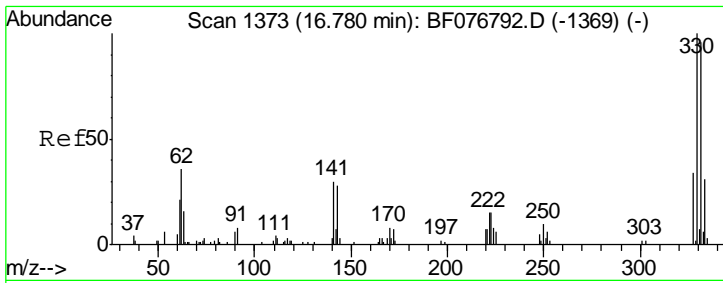
Tgt Ion	Resp	Lower	Upper
82	147480		
128	43.2	34.0	51.0
54	55.6	45.6	68.4



#38
 Acenaphthene-d10
 Concen: 20.00 ng
 RT: 15.08 min Scan# 1224
 Delta R.T. -0.06 min
 Lab File: BF076849.D
 Acq: 13 Jan 2015 18:35

Tgt Ion	Resp	Lower	Upper
164	73543		
162	101.6	82.5	123.7
160	42.1	33.1	49.7

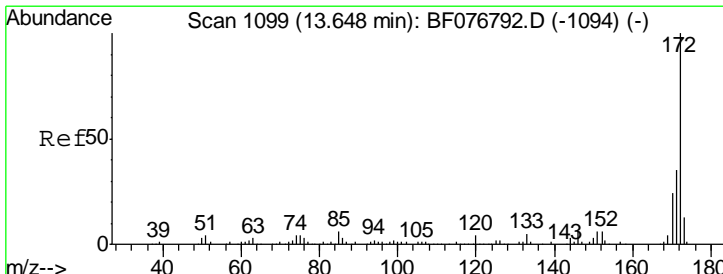
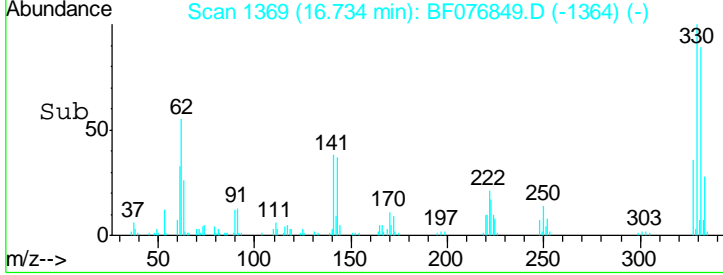
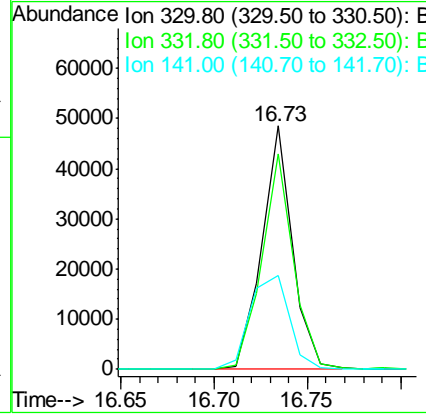
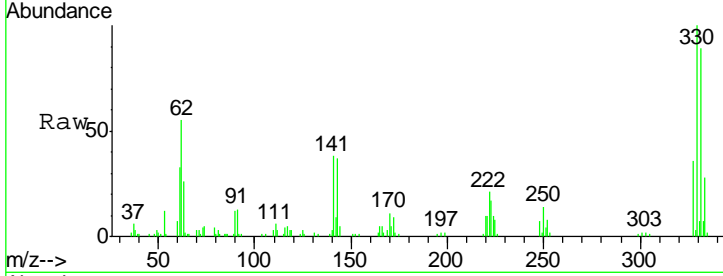




#41
 2,4,6-Tribromophenol
 Concen: 89.93 ng
 RT: 16.73 min Scan# 1369
 Delta R.T. -0.05 min
 Lab File: BF076849.D
 Acq: 13 Jan 2015 18:35

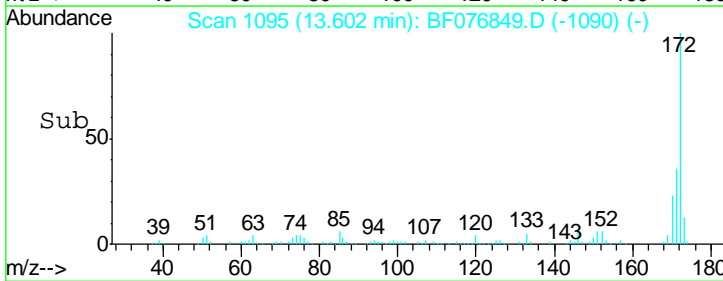
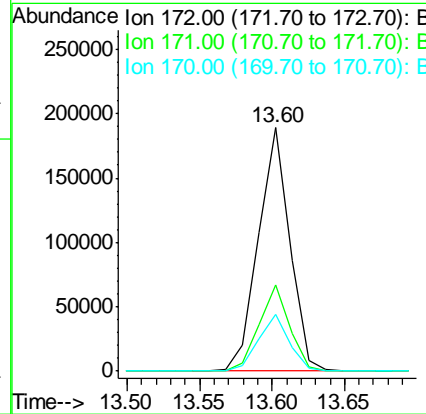
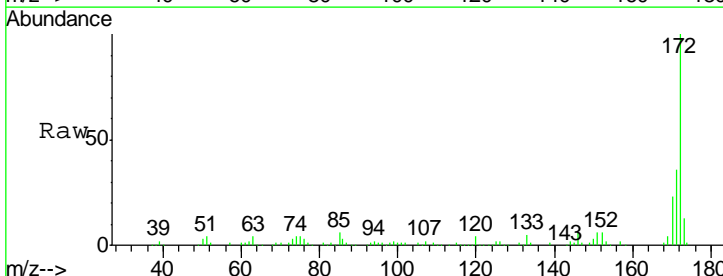
Instrument :
 BNA_F
 ClientSampled :
 FS-015

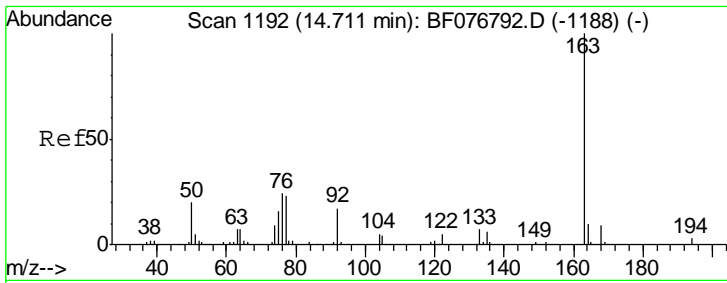
Tgt Ion	Resp	Lower	Upper
330	100		
332	91.4	74.8	112.2
141	49.3	42.4	63.6



#44
 2-Fluorobiphenyl
 Concen: 56.75 ng
 RT: 13.60 min Scan# 1095
 Delta R.T. -0.05 min
 Lab File: BF076849.D
 Acq: 13 Jan 2015 18:35

Tgt Ion	Resp	Lower	Upper
172	100		
171	35.6	27.8	41.8
170	23.5	18.8	28.2



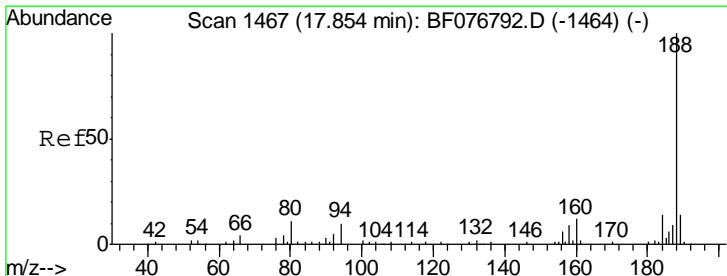
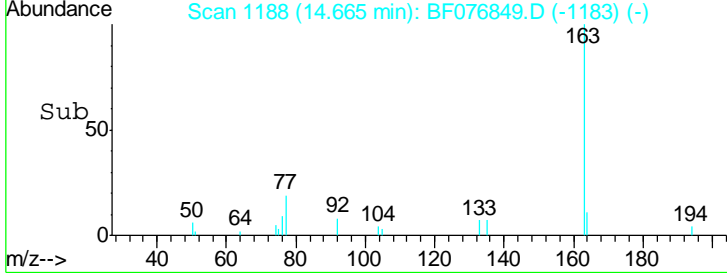
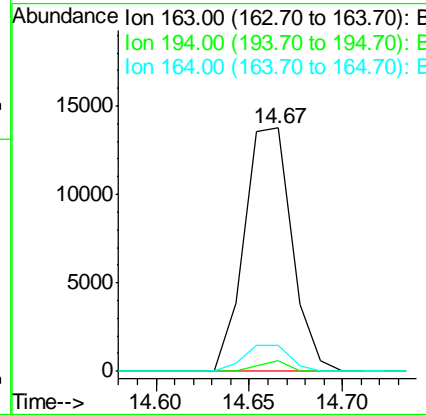
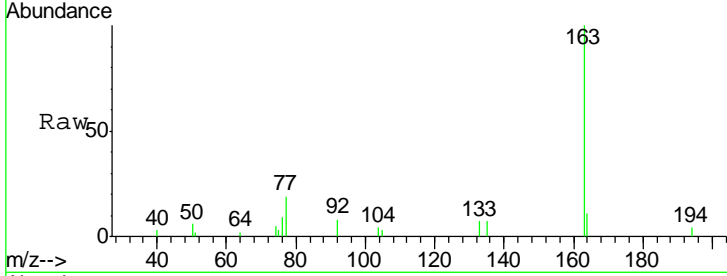


#49
 Dimethylphthalate
 Concen: 4.57 ng
 RT: 14.67 min Scan# 1188
 Delta R.T. -0.05 min
 Lab File: BF076849.D
 Acq: 13 Jan 2015 18:35

Instrument :
 BNA_F
 ClientSampled :
 FS-015

Tgt Ion:163 Resp: 24412

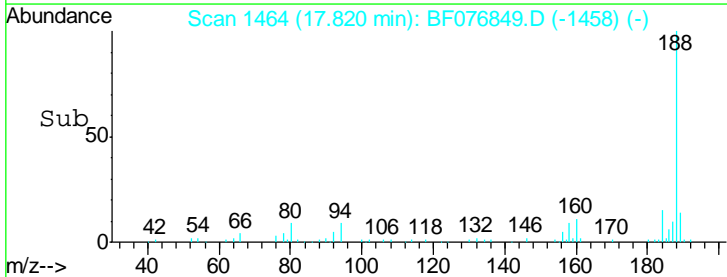
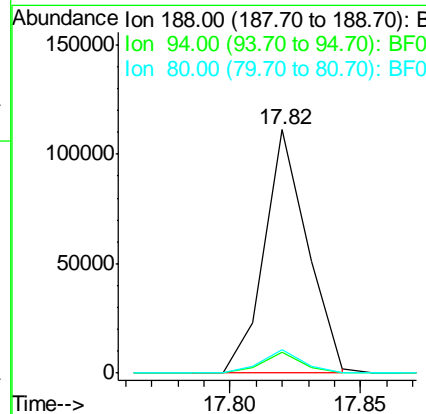
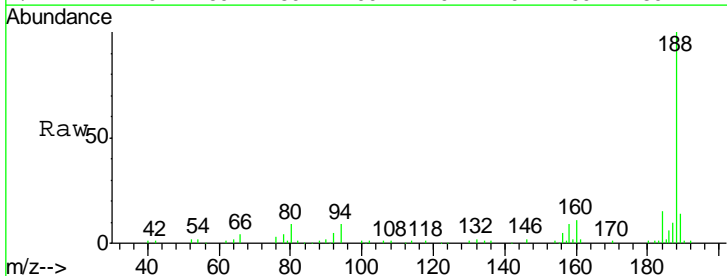
Ion	Ratio	Lower	Upper
163	100		
194	4.1	2.3	3.5#
164	10.7	8.3	12.5

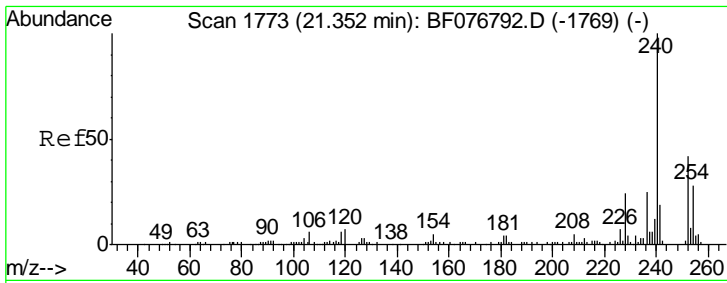


#63
 Phenanthrene-d10
 Concen: 20.00 ng
 RT: 17.82 min Scan# 1464
 Delta R.T. -0.03 min
 Lab File: BF076849.D
 Acq: 13 Jan 2015 18:35

Tgt Ion:188 Resp: 128755

Ion	Ratio	Lower	Upper
188	100		
94	8.8	7.8	11.6
80	9.4	8.6	13.0

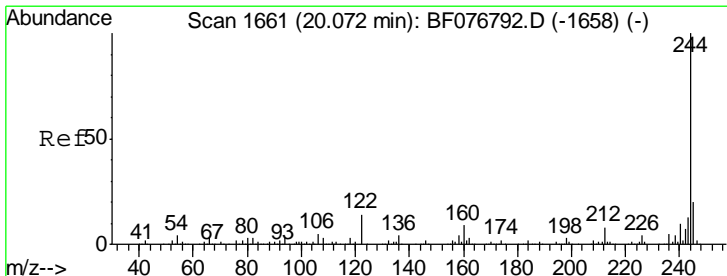
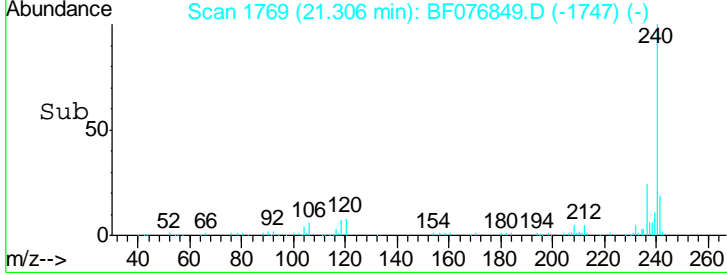
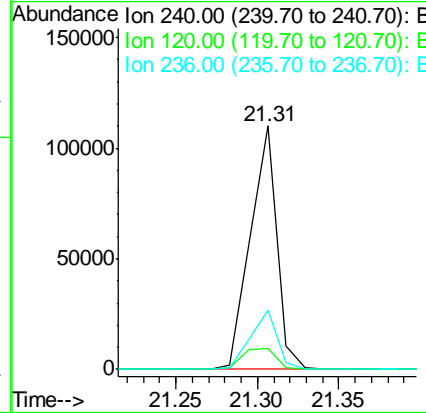
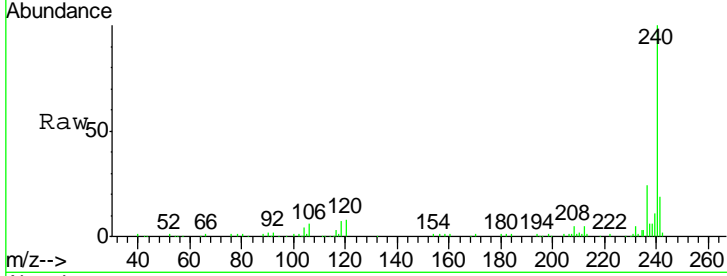




#75
 Chrysene-d12
 Concen: 20.00 ng
 RT: 21.31 min Scan# 1769
 Delta R.T. -0.05 min
 Lab File: BF076849.D
 Acq: 13 Jan 2015 18:35

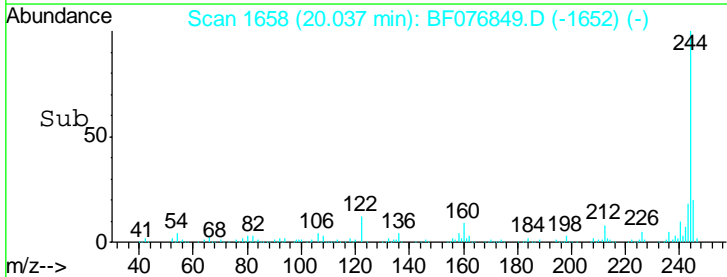
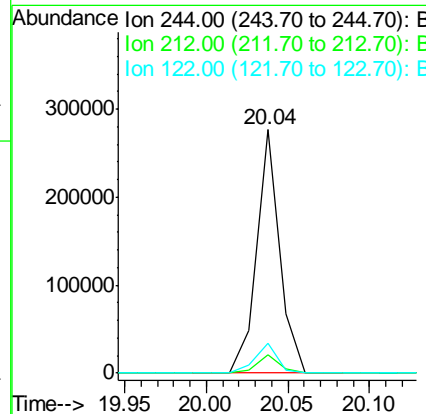
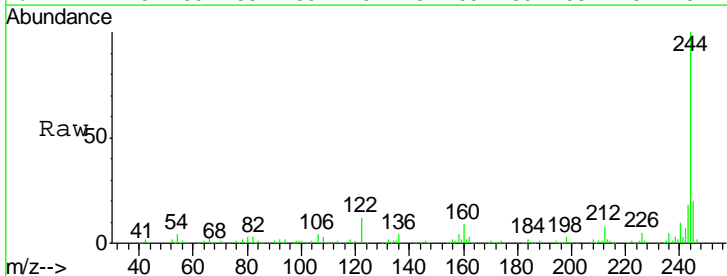
Instrument :
 BNA_F
 ClientSampled :
 FS-015

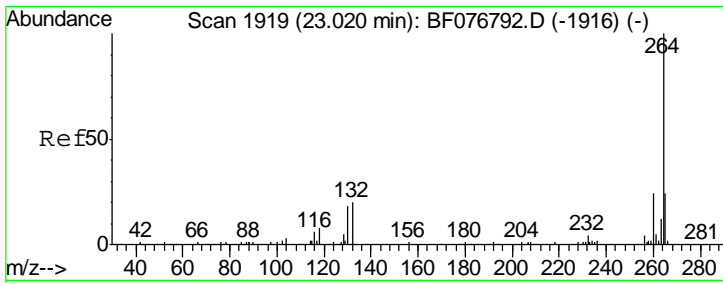
Tgt Ion	Resp	Lower	Upper
240	123292		
240	100		
120	8.4	5.7	8.5
236	24.4	19.7	29.5



#78
 Terphenyl-d14
 Concen: 48.34 ng
 RT: 20.04 min Scan# 1658
 Delta R.T. -0.03 min
 Lab File: BF076849.D
 Acq: 13 Jan 2015 18:35

Tgt Ion	Resp	Lower	Upper
244	271437		
244	100		
212	7.7	6.2	9.2
122	12.4	11.3	16.9





#86
 Perylene-d12
 Concen: 20.00 ng
 RT: 22.95 min Scan# 1913
 Delta R.T. -0.07 min
 Lab File: BF076849.D
 Acq: 13 Jan 2015 18:35

Instrument :
 BNA_F
ClientSampled :
 FS-015

Tgt Ion	Resp	Lower	Upper
264	112239		
260	23.7	19.4	29.0
265	21.2	18.9	28.3

