

Data Path : Z:\HPCHEM1\BNA F\DATA\BF011316\  
 Data File : BF084467.D  
 Acq On : 14 Jan 2016 4:06  
 Operator : SJ/UM  
 Sample : H1113-01  
 Misc :  
 ALS Vial : 21 Sample Multiplier: 1

Instrument :  
 BNA\_F  
 ClientSampleId :  
 MW-100

Integration Parameters: rteint.p  
 Integrator: RTE  
 Smoothing : ON  
 Sampling : 1  
 Start Thrs: 0.2  
 Stop Thrs : 0

Filtering: 5  
 Min Area: 3 % of largest Peak  
 Max Peaks: 100  
 Peak Location: TOP

If leading or trailing edge < 100 prefer < Baseline drop else tangent >  
 Peak separation: 5

Method : Z:\HPCHEM1\BNA F\METHODS\8270-BF123115.M  
 Title : ASP BNA STANDARDS FOR 5 POINT CALIBRATION

Signal : TIC

peak #	R.T. min	first scan	max scan	last scan	PK TY	peak height	corr. area	corr. % max.	% of total
1	5.001	252	255	261	rBV	765314	872808	11.48%	1.344%
2	5.436	290	293	295	rBV	2381947	2940781	38.69%	4.529%
3	5.836	325	328	330	rBV	113236	115288	1.52%	0.178%
4	6.464	381	383	386	rBV	2289227	1922727	25.30%	2.961%
5	6.602	392	395	397	rBV	5554340	5498812	72.35%	8.469%
6	6.830	413	415	417	rBV	1977894	1655681	21.79%	2.550%
7	6.990	426	429	430	rBV	5005699	4999475	65.78%	7.700%
8	7.013	430	431	433	rVB	274801	195633	2.57%	0.301%
9	7.173	442	445	448	rVB2	79225	98503	1.30%	0.152%
10	7.402	457	465	467	rBV	4390023	5161984	67.92%	7.950%
11	7.527	474	476	479	rBV	61816	78837	1.04%	0.121%
12	7.767	495	497	499	rVB2	94765	105135	1.38%	0.162%
13	7.859	502	505	507	rBV	172099	234685	3.09%	0.361%
14	7.927	509	511	515	rBV5	42019	77370	1.02%	0.119%
15	8.053	517	522	525	rBV4	50552	105257	1.38%	0.162%
16	8.122	525	528	529	rBV	1781882	2370587	31.19%	3.651%
17	8.167	529	532	534	rVV2	233643	351549	4.63%	0.541%
18	8.247	537	539	540	rBV2	93310	111481	1.47%	0.172%
19	8.362	547	549	550	rBV	228518	206295	2.71%	0.318%
20	8.396	550	552	555	rVB2	137727	235583	3.10%	0.363%
21	8.590	564	569	571	rBV2	330540	462546	6.09%	0.712%
22	8.682	571	577	578	rVV3	168043	293355	3.86%	0.452%
23	8.705	578	579	581	rVV2	268358	264762	3.48%	0.408%
24	8.750	581	583	584	rVV2	113393	166246	2.19%	0.256%
25	8.785	584	586	587	rVB2	147060	171456	2.26%	0.264%
26	8.922	595	598	599	rBV2	72344	106356	1.40%	0.164%
27	8.968	599	602	604	rVB2	101243	206632	2.72%	0.318%
28	9.036	604	608	609	rBV3	101788	191293	2.52%	0.295%
29	9.059	609	610	613	rVB2	86687	115160	1.52%	0.177%
30	9.116	613	615	617	rBV2	183547	171571	2.26%	0.264%
31	9.196	619	622	624	rVV	7751475	7266355	95.61%	11.191%
32	9.310	628	632	633	rBV2	254414	344455	4.53%	0.530%
33	9.333	633	634	638	rVV3	114718	240317	3.16%	0.370%
34	9.459	640	645	647	rBV4	134225	295297	3.89%	0.455%

Data Path : Z:\HPCHEM1\BNA F\DATA\BF011316\  
 Data File : BF084467.D  
 Acq On : 14 Jan 2016 4:06  
 Operator : SJ/UM  
 Sample : H1113-01  
 Misc :  
 ALS Vial : 21 Sample Multiplier: 1

Instrument :  
 BNA\_F  
 ClientSampleId :  
 MW-100

Integration Parameters: rteint.p  
 Integrator: RTE  
 Smoothing : ON  
 Sampling : 1  
 Start Thrs: 0.2  
 Stop Thrs : 0

Filtering: 5  
 Min Area: 3 % of largest Peak  
 Max Peaks: 100  
 Peak Location: TOP

If leading or trailing edge < 100 prefer < Baseline drop else tangent >  
 Peak separation: 5

Method : Z:\HPCHEM1\BNA F\METHODS\8270-BF123115.M  
 Title : ASP BNA STANDARDS FOR 5 POINT CALIBRATION

35	9.539	647	652	655	rBV5	180873	445521	5.86%	0.686%
36	9.596	655	657	660	rVB3	72421	137811	1.81%	0.212%
37	9.745	666	670	671	rBV4	48981	107403	1.41%	0.165%
38	9.870	678	681	684	rBV	2816545	2722987	35.83%	4.194%
39	9.928	684	686	687	rBV2	52195	93830	1.23%	0.145%
40	9.951	687	688	690	rVB	114744	101987	1.34%	0.157%
41	10.031	693	695	698	rVB4	181723	201153	2.65%	0.310%
42	10.191	707	709	711	rVB2	116916	160228	2.11%	0.247%
43	10.248	711	714	716	rBV3	95335	130488	1.72%	0.201%
44	10.305	716	719	720	rBV	155591	187023	2.46%	0.288%
45	10.362	722	724	728	rVB5	91805	147165	1.94%	0.227%
46	10.488	733	735	738	rBV	322348	501019	6.59%	0.772%
47	10.613	744	746	747	rBV	62230	80642	1.06%	0.124%
48	10.659	747	750	753	rBV	4442647	4977663	65.49%	7.666%
49	10.785	759	761	765	rVB	402095	481170	6.33%	0.741%
50	10.865	765	768	770	rBV4	96973	198134	2.61%	0.305%
51	11.013	777	781	783	rBV4	107640	237287	3.12%	0.365%
52	11.151	791	793	796	rBV2	160235	199419	2.62%	0.307%
53	11.231	798	800	801	rVV	99240	98436	1.30%	0.152%
54	11.299	804	806	807	rVV2	81522	137960	1.82%	0.212%
55	11.356	808	811	813	rVV	2514739	2521950	33.18%	3.884%
56	11.414	813	816	819	rVV5	60339	210759	2.77%	0.325%
57	11.471	819	821	824	rVB	269987	350986	4.62%	0.541%
58	11.562	827	829	832	rBV3	109154	164118	2.16%	0.253%
59	11.608	832	833	836	rVB3	75260	99638	1.31%	0.153%
60	11.711	840	842	844	rVV	240505	231947	3.05%	0.357%
61	11.756	844	846	847	rVB	87772	83189	1.09%	0.128%
62	11.928	859	861	862	rVB	73282	85890	1.13%	0.132%
63	11.962	862	864	868	rVB2	70952	123189	1.62%	0.190%
64	12.099	874	876	881	rVB2	67731	164657	2.17%	0.254%
65	12.945	947	950	952	rBV	7243355	7600085	100.00%	11.705%
66	13.859	1028	1030	1034	rBV2	59631	103564	1.36%	0.159%
67	13.985	1039	1041	1044	rBV	2087963	2132066	28.05%	3.284%
68	15.402	1162	1165	1168	rBV	1107902	1570900	20.67%	2.419%
69	15.974	1207	1215	1226	rVB2	98760	506760	6.67%	0.780%

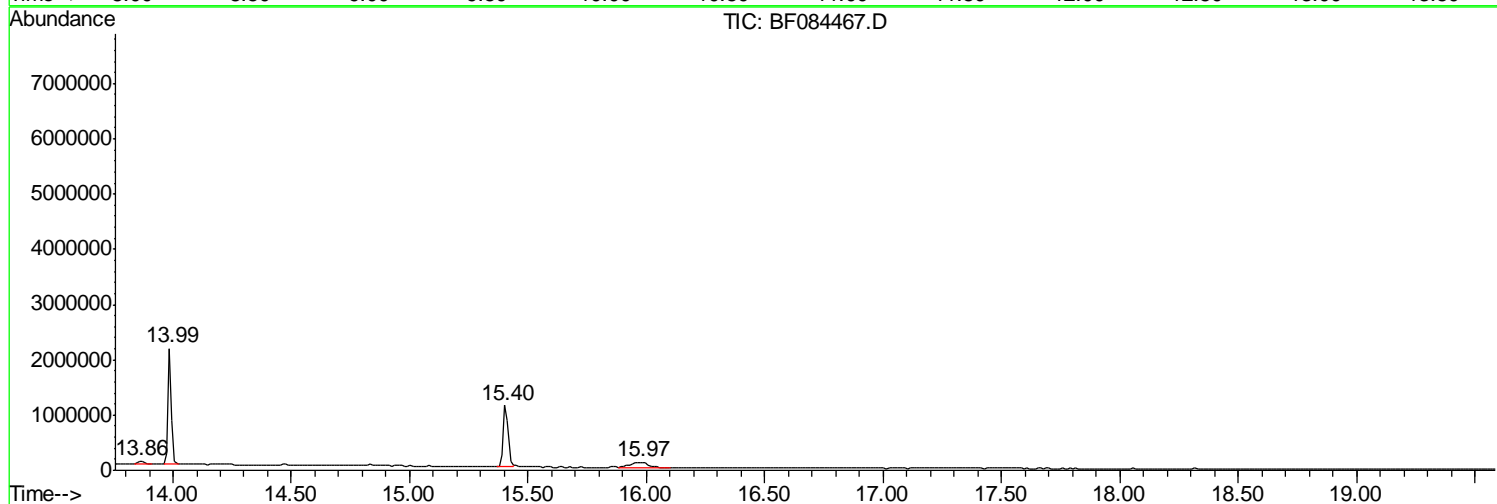
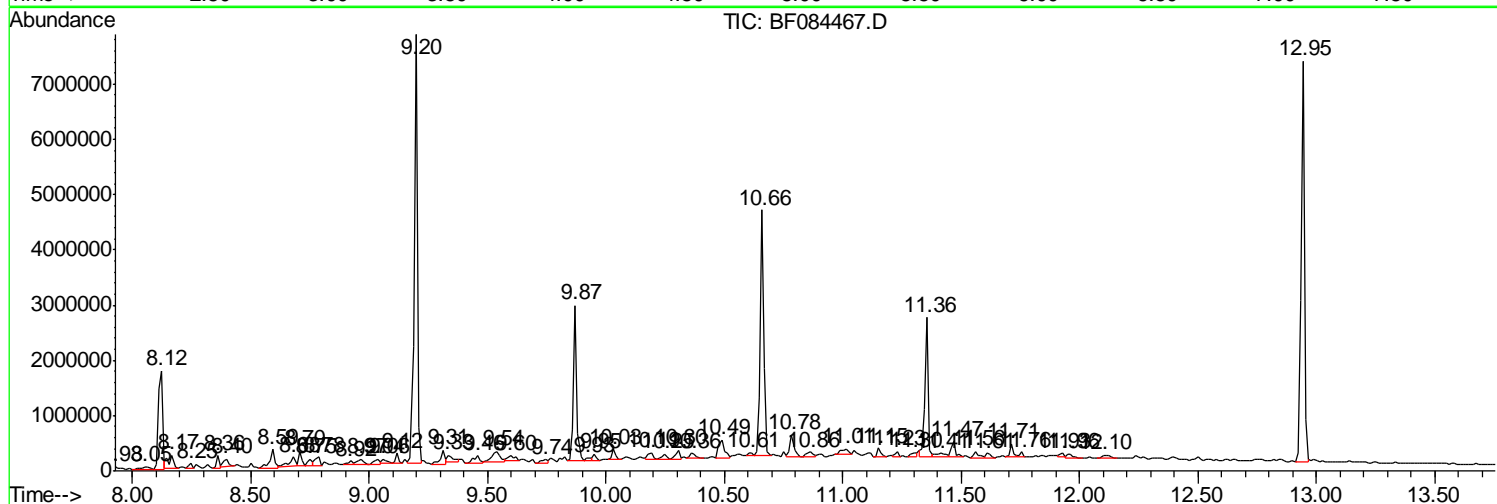
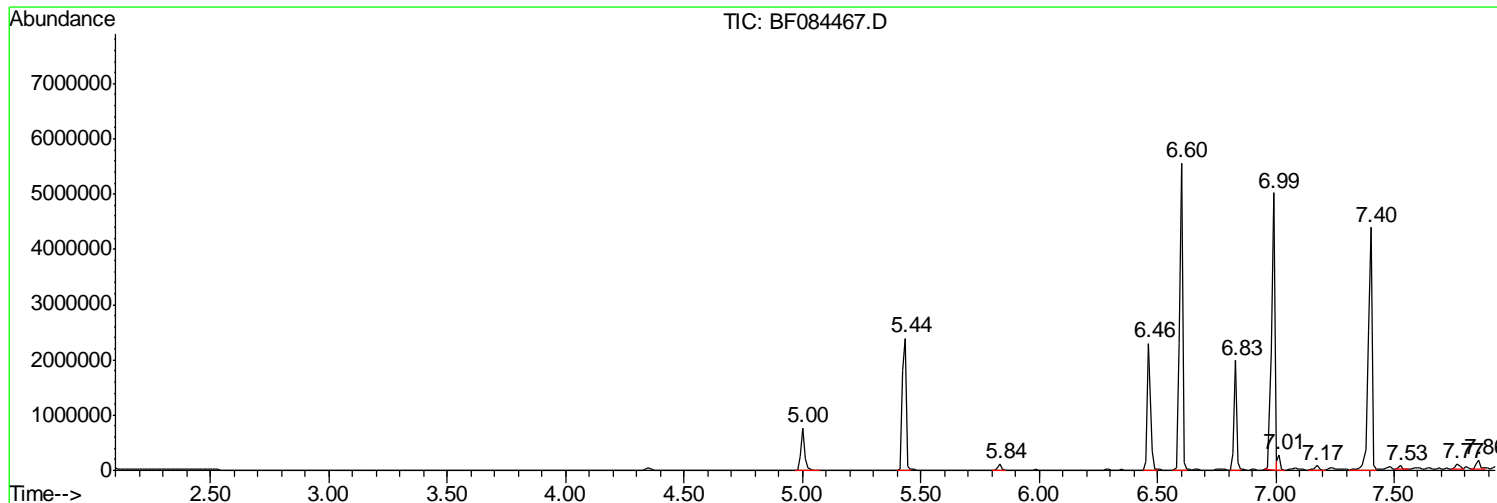
Sum of corrected areas: 64931296

Data Path : Z:\HPCHEM1\BNA F\DATA\BF011316\  
 Data File : BF084467.D  
 Acq On : 14 Jan 2016 4:06  
 Operator : SJ/UM  
 Sample : H1113-01  
 Misc :  
 ALS Vial : 21 Sample Multiplier: 1

Instrument :  
 BNA\_F  
 Client Sampled :  
 MW-100

Quant Method : Z:\HPCHEM1\BNA F\METHODS\8270-BF123115.M  
 Quant Title : ASP BNA STANDARDS FOR 5 POINT CALIBRATION

TIC Library : C:\DATABASE\NIST02.L  
 TIC Integration Parameters: LSCINT.P



Data Path : Z:\HPCHEM1\BNA F\DATA\BF011316\  
 Data File : BF084467.D  
 Acq On : 14 Jan 2016 4:06  
 Operator : SJ/UM  
 Sample : H1113-01  
 Misc :  
 ALS Vial : 21 Sample Multiplier: 1

Instrument :  
 BNA\_F  
 ClientSampled :  
 MW-100

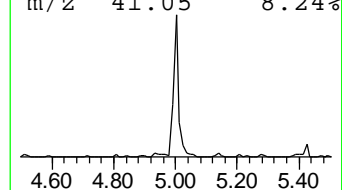
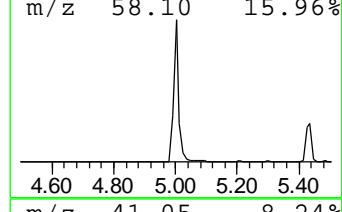
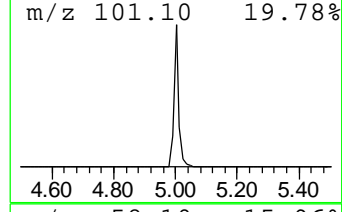
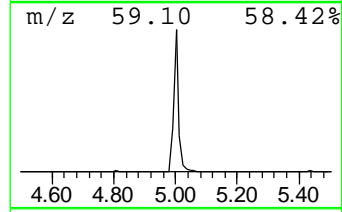
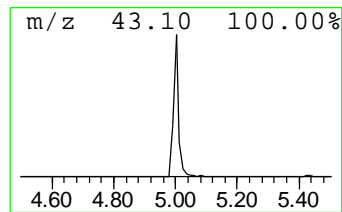
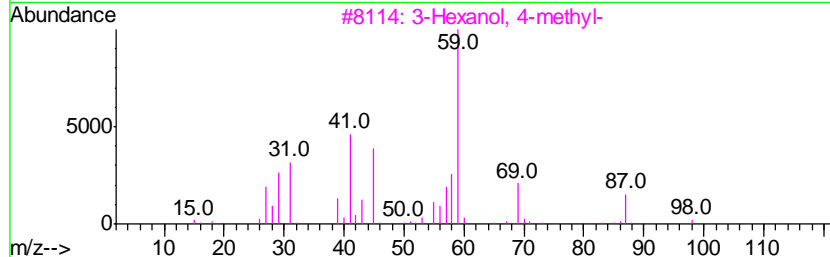
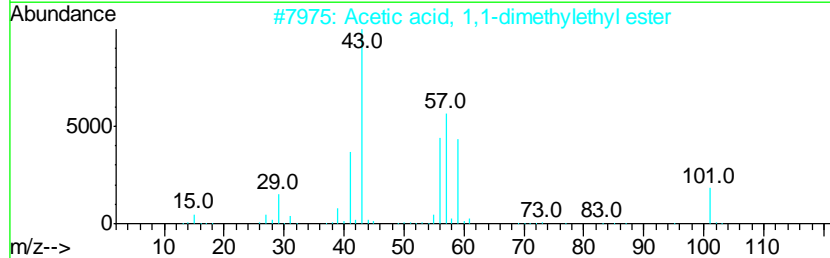
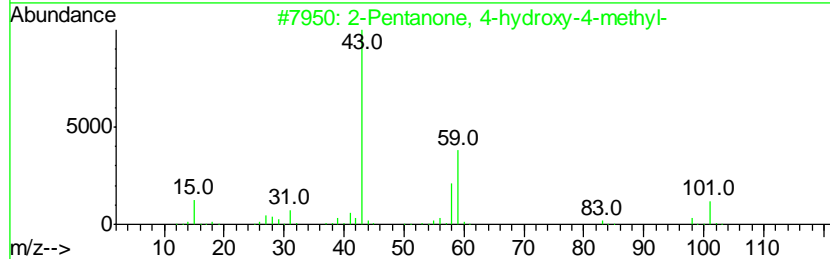
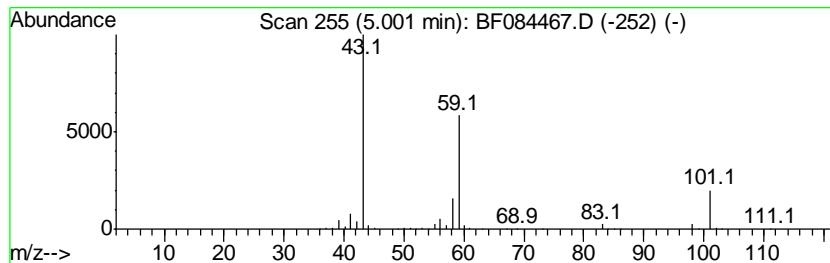
Quant Method : Z:\HPCHEM1\BNA F\METHODS\8270-BF123115.M  
 Quant Title : ASP BNA STANDARDS FOR 5 POINT CALIBRATION

TIC Library : C:\DATABASE\NIST02.L  
 TIC Integration Parameters: LSCINT.P

\*\*\*\*\*  
 Peak Number 1 2-Pentanone, 4-hydroxy-4-me... Concentration Rank 3

R.T.	EstConc	Area	Relative to ISTD	R.T.
5.00	10.54 ng	872808	1,4-Dichlorobenzene-d4	6.83

Hit#	of	Tentative ID	MW	MolForm	CAS#	Qual
1	5	2-Pentanone, 4-hydroxy-4-methyl-	116	C6H12O2	000123-42-2	72
2		Acetic acid, 1,1-dimethylethyl e...	116	C6H12O2	000540-88-5	39
3		3-Hexanol, 4-methyl-	116	C7H16O	000615-29-2	28
4		Acetic acid, cyano-, 1,1-dimethy...	141	C7H11NO2	001116-98-9	23
5		4-Pentene-2-ol, 2-methyl	100	C6H12O	000624-97-5	9



Data Path : Z:\HPCHEM1\BNA F\DATA\BF011316\  
 Data File : BF084467.D  
 Acq On : 14 Jan 2016 4:06  
 Operator : SJ/UM  
 Sample : H1113-01  
 Misc :  
 ALS Vial : 21 Sample Multiplier: 1

Instrument :  
 BNA\_F  
 ClientSampleID :  
 MW-100

Quant Method : Z:\HPCHEM1\BNA F\METHODS\8270-BF123115.M  
 Quant Title : ASP BNA STANDARDS FOR 5 POINT CALIBRATION

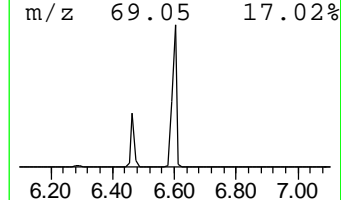
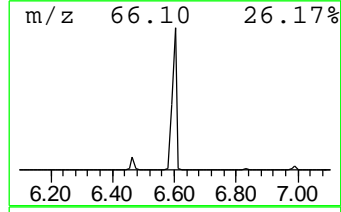
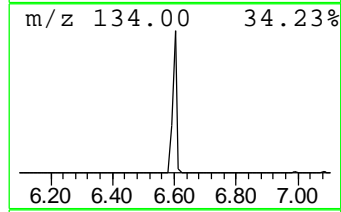
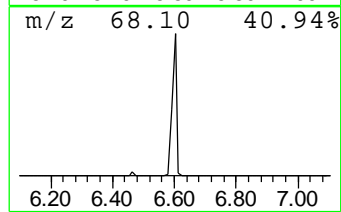
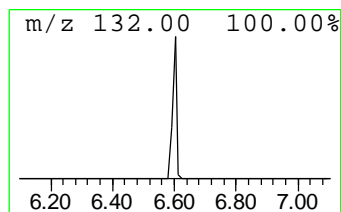
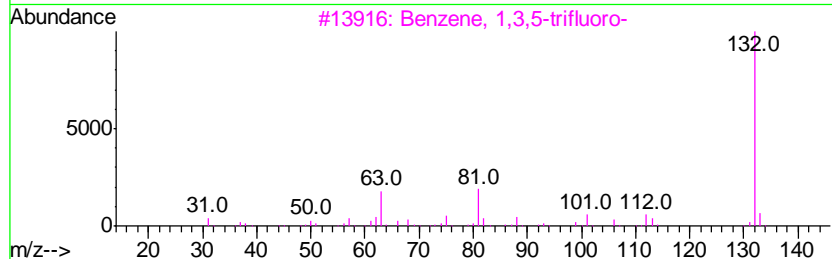
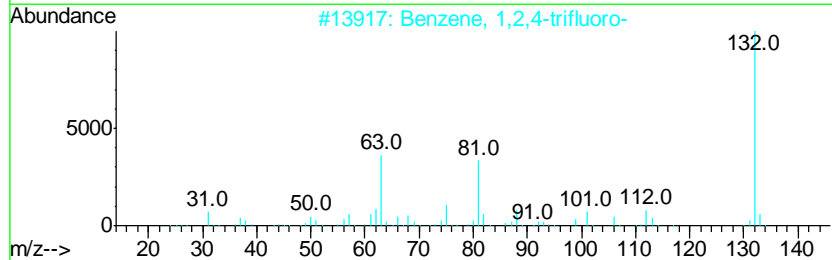
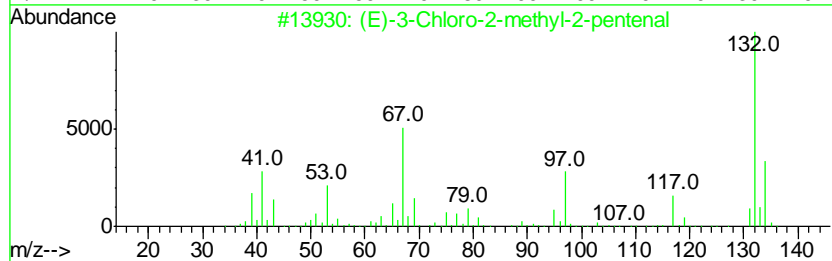
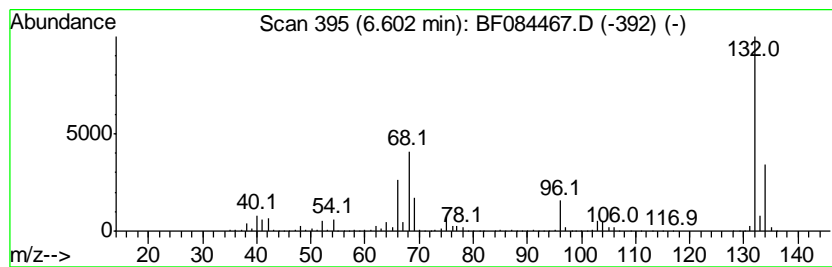
TIC Library : C:\DATABASE\NIST02.L  
 TIC Integration Parameters: LSCINT.P

\*\*\*\*\*  
 Peak Number 2 unknown6.60 Concentration Rank 1

R.T.	EstConc	Area	Relative to ISTD	R.T.
6.60	66.42 ng	5498810	1,4-Dichlorobenzene-d4	6.83

Hit#	of	Tentative ID	MW	MolForm	CAS#	Qual
1	5	(E)-3-Chloro-2-methyl-2-pentenal	132	C6H9ClO	031357-76-3	16
2		Benzene, 1,2,4-trifluoro-	132	C6H3F3	000367-23-7	9
3		Benzene, 1,3,5-trifluoro-	132	C6H3F3	000372-38-3	9
4		Bicyclo[4.2.0]octa-1,3,5-triene,...	132	C10H12	028749-81-7	9
5		2H-Cyclopenta[d]pyridazine, 2-me...	132	C8H8N2	022291-85-6	9



Data Path : Z:\HPCHEM1\BNA F\DATA\BF011316\  
 Data File : BF084467.D  
 Acq On : 14 Jan 2016 4:06  
 Operator : SJ/UM  
 Sample : H1113-01  
 Misc :  
 ALS Vial : 21 Sample Multiplier: 1

Instrument :  
 BNA\_F  
 ClientSampleID :  
 MW-100

Quant Method : Z:\HPCHEM1\BNA F\METHODS\8270-BF123115.M  
 Quant Title : ASP BNA STANDARDS FOR 5 POINT CALIBRATION

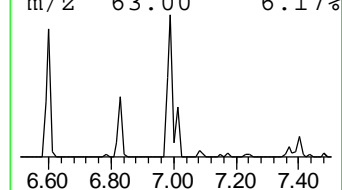
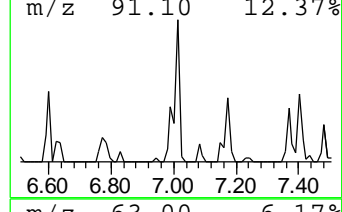
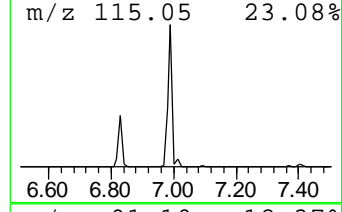
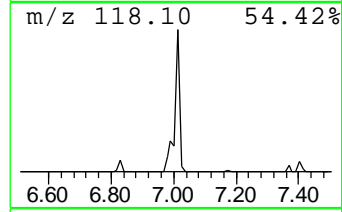
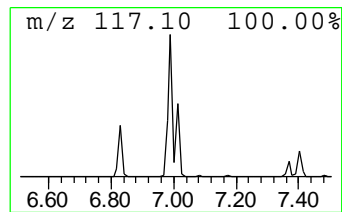
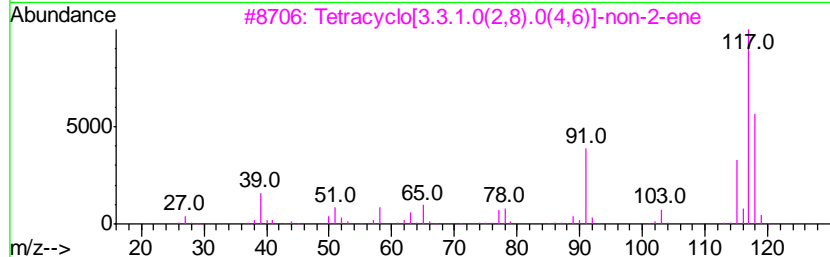
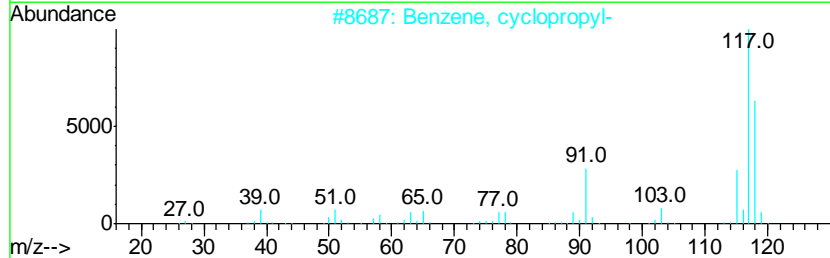
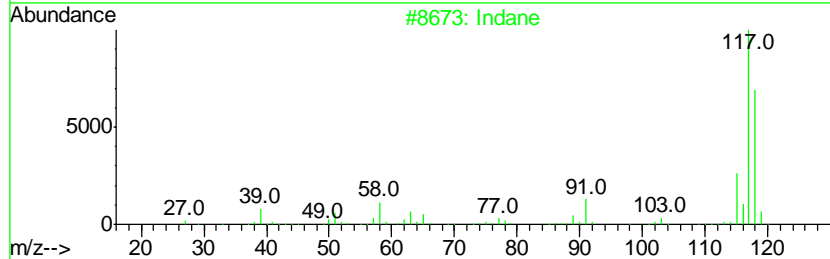
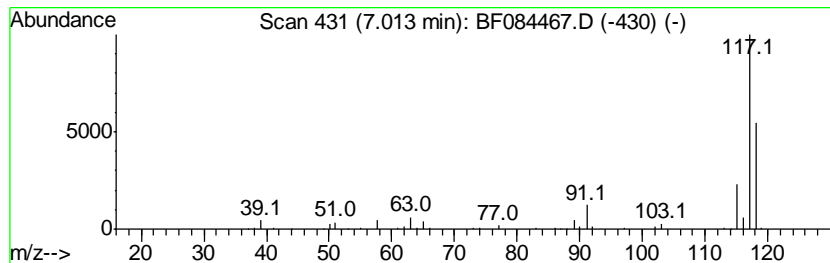
TIC Library : C:\DATABASE\NIST02.L  
 TIC Integration Parameters: LSCINT.P

\*\*\*\*\*  
 Peak Number 4 Indane Concentration Rank 12

R.T.	EstConc	Area	Relative to ISTD	R.T.
7.01	2.36 ng	195633	1,4-Dichlorobenzene-d4	6.83

Hit#	of	Tentative ID	MW	MolForm	CAS#	Qual
1	5	Indane	118	C9H10	000496-11-7	83
2		Benzene, cyclopropyl-	118	C9H10	000873-49-4	72
3		Tetracyclo[3.3.1.0(2,8).0(4,6)]-	118	C9H10	1000191-13-7	64
4		Benzene, 1-ethenyl-2-methyl-	118	C9H10	000611-15-4	45
5		m-Aminophenylacetylene	117	C8H7N	054060-30-9	43



Data Path : Z:\HPCHEM1\BNA F\DATA\BF011316\  
 Data File : BF084467.D  
 Acq On : 14 Jan 2016 4:06  
 Operator : SJ/UM  
 Sample : H1113-01  
 Misc :  
 ALS Vial : 21 Sample Multiplier: 1

Instrument :  
 BNA\_F  
 ClientSampleID :  
 MW-100

Quant Method : Z:\HPCHEM1\BNA F\METHODS\8270-BF123115.M  
 Quant Title : ASP BNA STANDARDS FOR 5 POINT CALIBRATION

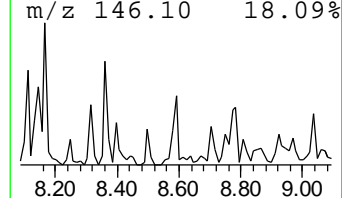
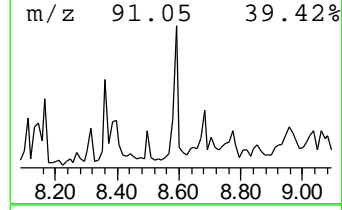
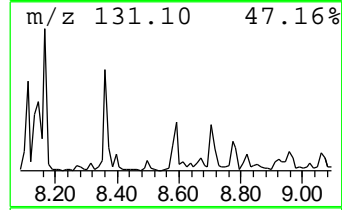
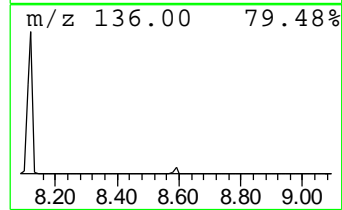
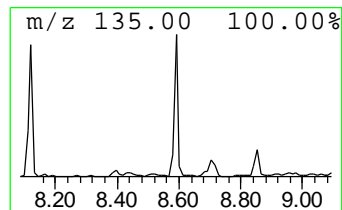
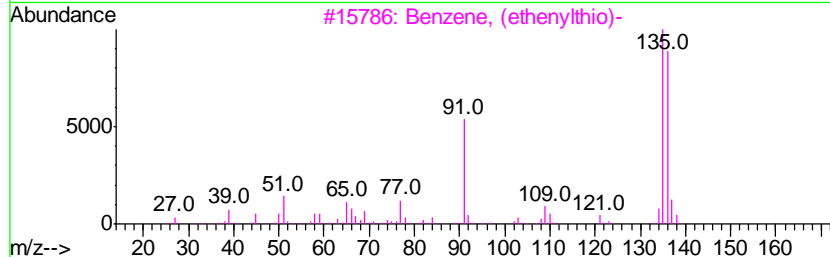
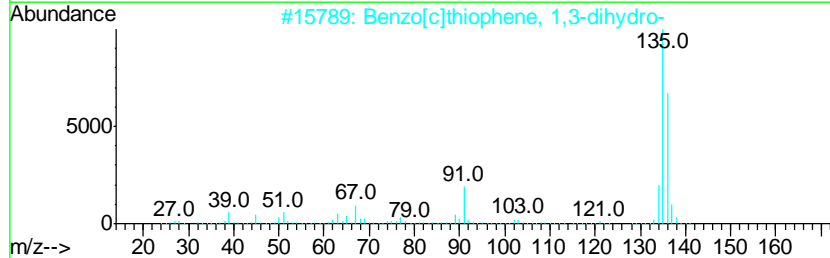
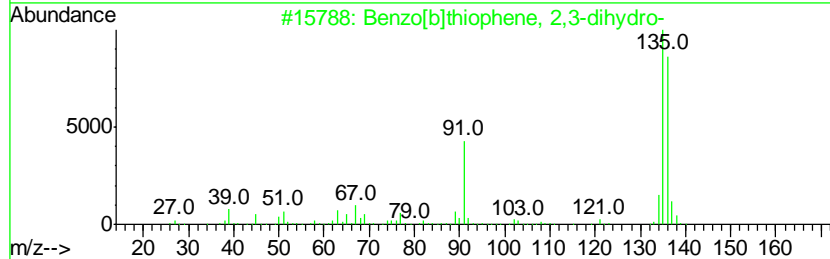
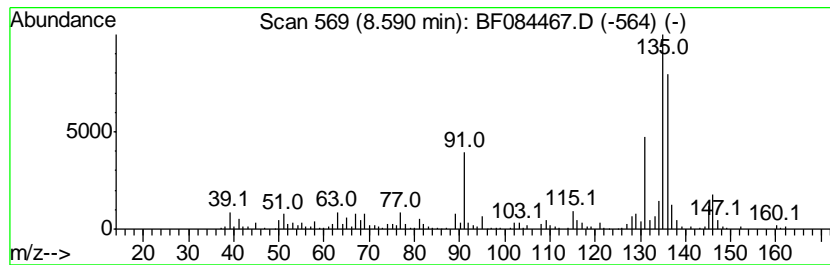
TIC Library : C:\DATABASE\NIST02.L  
 TIC Integration Parameters: LSCINT.P

\*\*\*\*\*  
 Peak Number 5 Benzo[b]thiophene, 2,3-dihy... Concentration Rank 5

R.T.	EstConc	Area	Relative to ISTD	R.T.
8.59	3.90 ng	462546	Napthalene-d8	8.12

Hit#	of	Tentative ID	MW	MolForm	CAS#	Qual
1	5	Benzo[b]thiophene, 2,3-dihydro-	136	C8H8S	004565-32-6	93
2		Benzo[c]thiophene, 1,3-dihydro-	136	C8H8S	002471-92-3	70
3		Benzene, (ethenylthio)-	136	C8H8S	001822-73-7	58
4		2-Hydroxy-4-methylbenzaldehyde	136	C8H8O2	000698-27-1	52
5		Pyrazine, 2,6-diethyl-	136	C8H12N2	013067-27-1	52



Data Path : Z:\HPCHEM1\BNA F\DATA\BF011316\  
 Data File : BF084467.D  
 Acq On : 14 Jan 2016 4:06  
 Operator : SJ/UM  
 Sample : H1113-01  
 Misc :  
 ALS Vial : 21 Sample Multiplier: 1

Instrument :  
 BNA\_F  
 ClientSampleID :  
 MW-100

Quant Method : Z:\HPCHEM1\BNA F\METHODS\8270-BF123115.M  
 Quant Title : ASP BNA STANDARDS FOR 5 POINT CALIBRATION

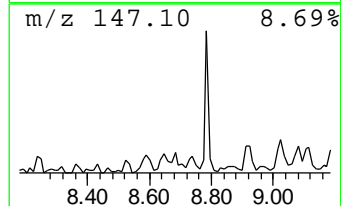
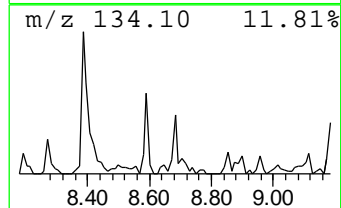
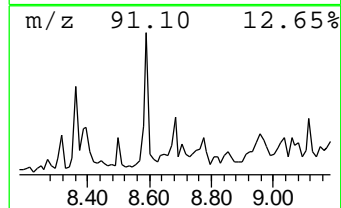
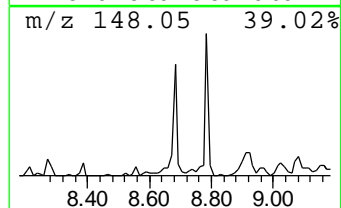
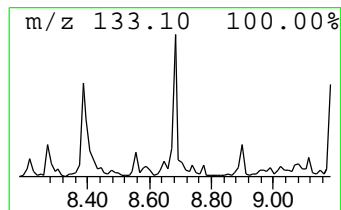
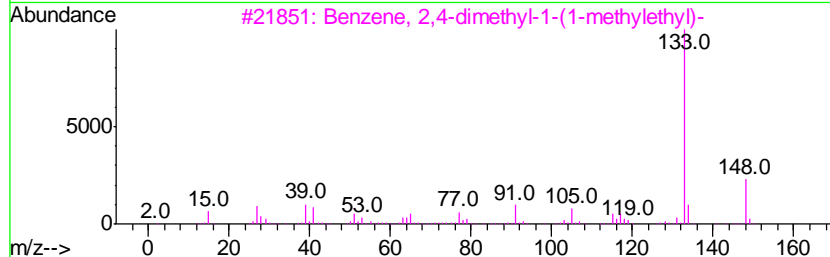
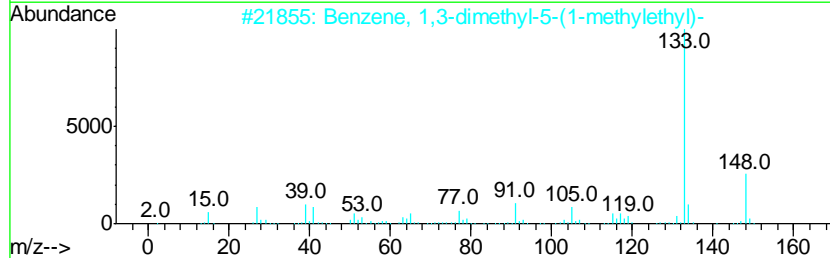
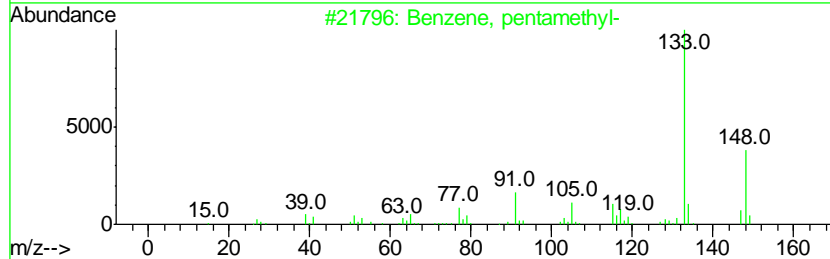
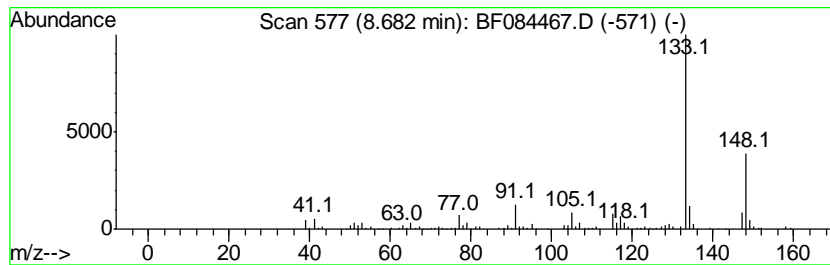
TIC Library : C:\DATABASE\NIST02.L  
 TIC Integration Parameters: LSCINT.P

\*\*\*\*\*  
 Peak Number 6 Benzene, pentamethyl- Concentration Rank 11

R.T.	EstConc	Area	Relative to ISTD	R.T.
8.68	2.47 ng	293355	Naphthalene-d8	8.12

Hit#	of	Tentative ID	MW	MolForm	CAS#	Qual
1	5	Benzene, pentamethyl-	148	C11H16	000700-12-9	94
2		Benzene, 1,3-dimethyl-5-(1-methyl-...)	148	C11H16	004706-90-5	91
3		Benzene, 2,4-dimethyl-1-(1-methyl-...)	148	C11H16	004706-89-2	90
4		Benzene, 1-ethyl-2,4,5-trimethyl-	148	C11H16	017851-27-3	80
5		Benzene, 1-ethyl-3-(1-methylethyl)-	148	C11H16	004920-99-4	80





Data Path : Z:\HPCHEM1\BNA F\DATA\BF011316\  
 Data File : BF084467.D  
 Acq On : 14 Jan 2016 4:06  
 Operator : SJ/UM  
 Sample : H1113-01  
 Misc :  
 ALS Vial : 21 Sample Multiplier: 1

Instrument :  
 BNA\_F  
 ClientSampled :  
 MW-100

Quant Method : Z:\HPCHEM1\BNA F\METHODS\8270-BF123115.M  
 Quant Title : ASP BNA STANDARDS FOR 5 POINT CALIBRATION

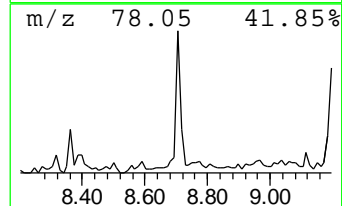
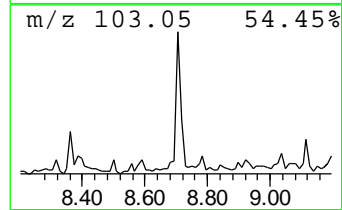
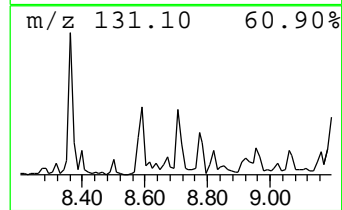
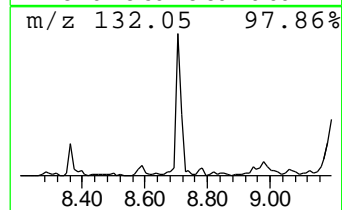
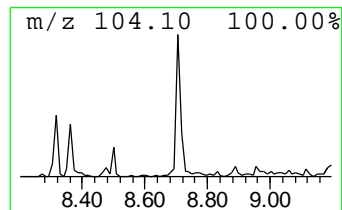
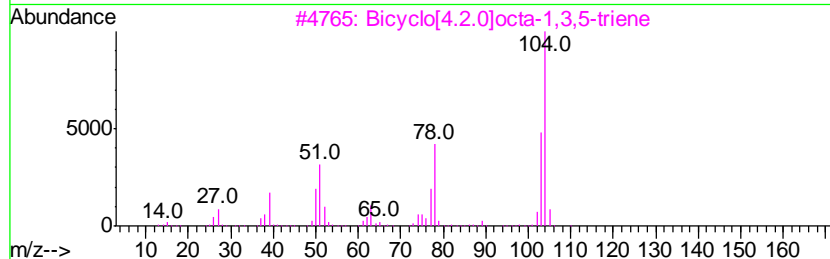
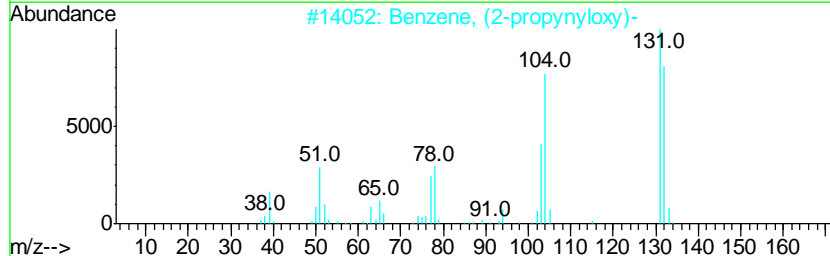
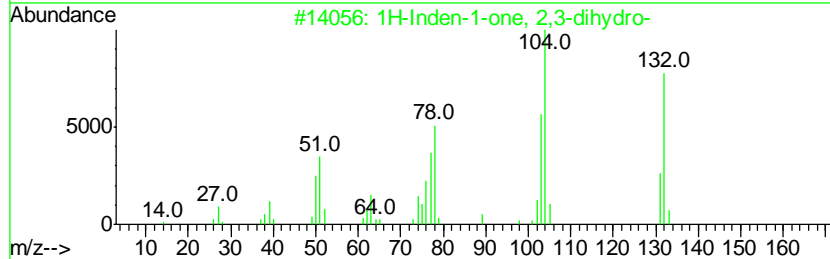
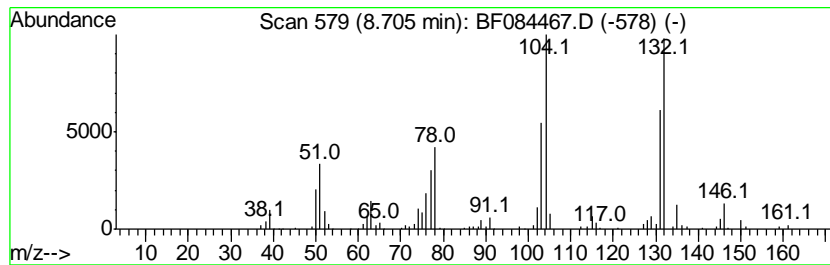
TIC Library : C:\DATABASE\NIST02.L  
 TIC Integration Parameters: LSCINT.P

\*\*\*\*\*  
 Peak Number 7 1H-Inden-1-one, 2,3-dihydro- Concentration Rank 13

R.T.	EstConc	Area	Relative to ISTD	R.T.
8.70	2.23 ng	264762	Naphthalene-d8	8.12

Hit#	of	Tentative ID	MW	MolForm	CAS#	Qual
1	5	1H-Inden-1-one, 2,3-dihydro-	132	C9H8O	000083-33-0	91
2		Benzene, (2-propynyloxy)-	132	C9H8O	013610-02-1	74
3		Bicyclo[4.2.0]octa-1,3,5-triene	104	C8H8	000694-87-1	55
4		Styrene	104	C8H8	000100-42-5	55
5		1,3,5,7-Cyclooctatetraene	104	C8H8	000629-20-9	55



Data Path : Z:\HPCHEM1\BNA F\DATA\BF011316\  
 Data File : BF084467.D  
 Acq On : 14 Jan 2016 4:06  
 Operator : SJ/UM  
 Sample : H1113-01  
 Misc :  
 ALS Vial : 21 Sample Multiplier: 1

Instrument :  
 BNA\_F  
 ClientSampleId :  
 MW-100

Quant Method : Z:\HPCHEM1\BNA F\METHODS\8270-BF123115.M  
 Quant Title : ASP BNA STANDARDS FOR 5 POINT CALIBRATION

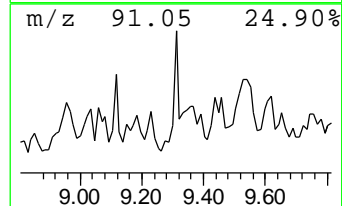
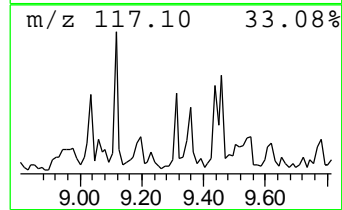
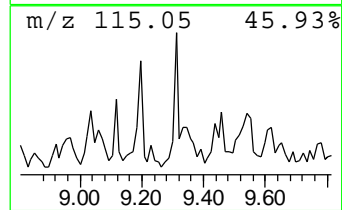
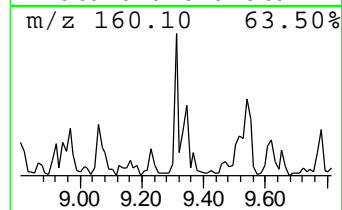
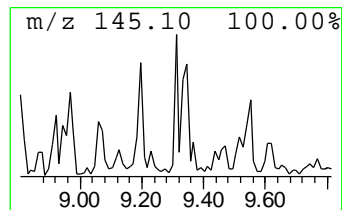
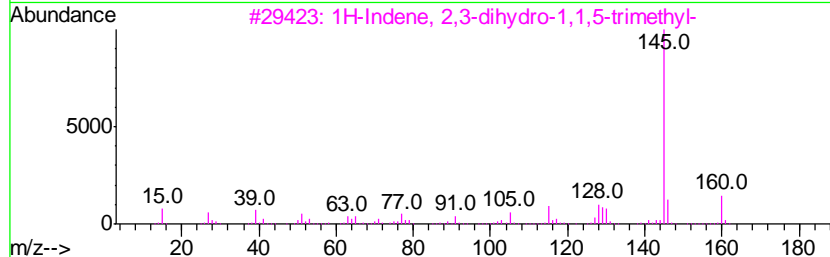
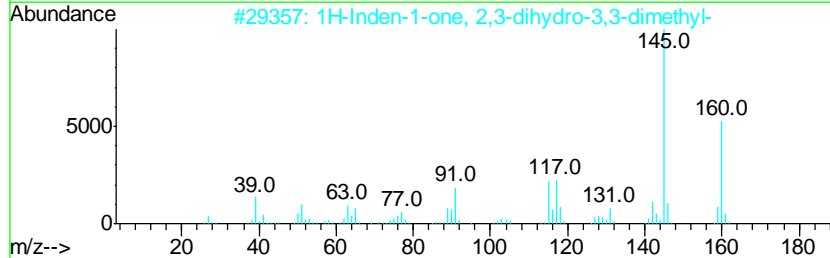
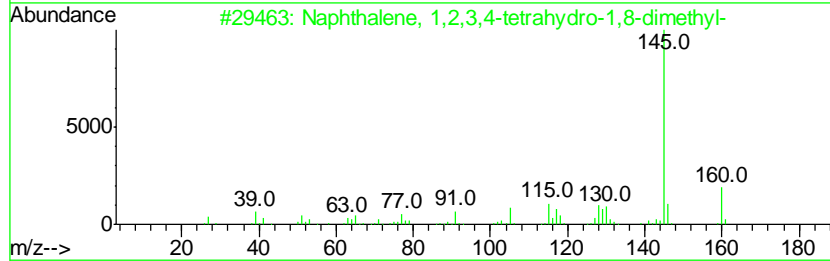
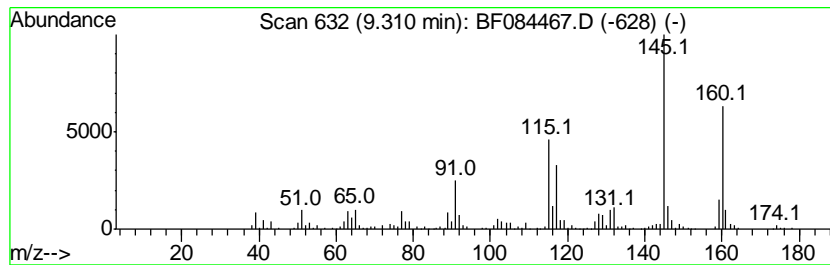
TIC Library : C:\DATABASE\NIST02.L  
 TIC Integration Parameters: LSCINT.P

\*\*\*\*\*  
 Peak Number 8 Naphthalene, 1,2,3,4-tetra... Concentration Rank 10

R.T.	EstConc	Area	Relative to ISTD	R.T.
9.31	2.53 ng	344455	Acenaphthene-d10	9.87

Hit#	of	Tentative ID	MW	MolForm	CAS#	Qual
1	5	Naphthalene, 1,2,3,4-tetrahydro-...	160	C12H16	025419-33-4	83
2		1H-Inden-1-one, 2,3-dihydro-3,3-...	160	C11H12O	026465-81-6	83
3		1H-Indene, 2,3-dihydro-1,1,5-tri...	160	C12H16	040650-41-7	81
4		Ethanone, 1-[4-(1-methylethenyl)...	160	C11H12O	005359-04-6	74
5		Benzene, 1-(1-methylethenyl)-3-(...	160	C12H16	001129-29-9	74



Data Path : Z:\HPCHEM1\BNA F\DATA\BF011316\  
 Data File : BF084467.D  
 Acq On : 14 Jan 2016 4:06  
 Operator : SJ/UM  
 Sample : H1113-01  
 Misc :  
 ALS Vial : 21 Sample Multiplier: 1

Instrument :  
 BNA\_F  
 ClientSampled :  
 MW-100

Quant Method : Z:\HPCHEM1\BNA F\METHODS\8270-BF123115.M  
 Quant Title : ASP BNA STANDARDS FOR 5 POINT CALIBRATION

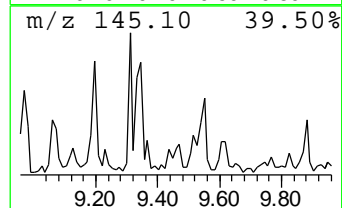
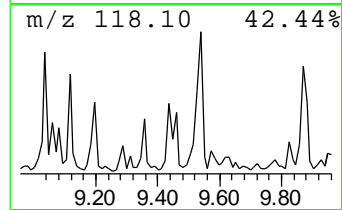
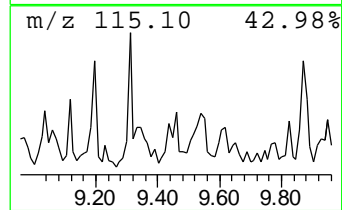
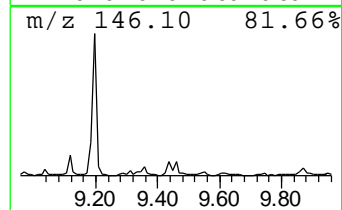
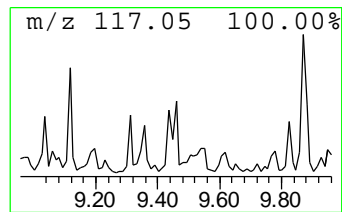
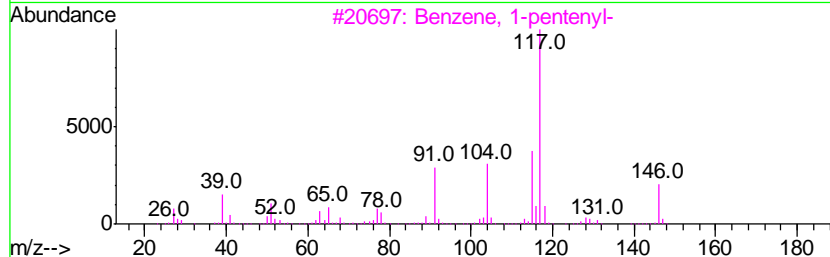
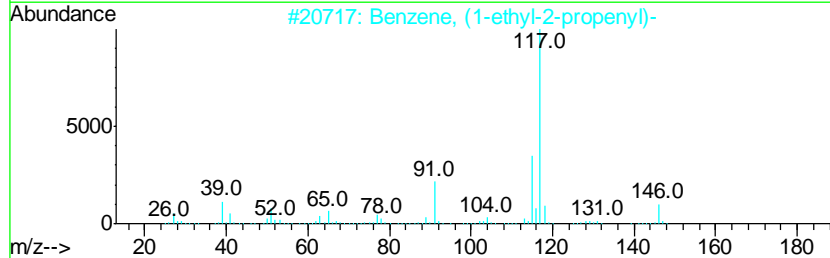
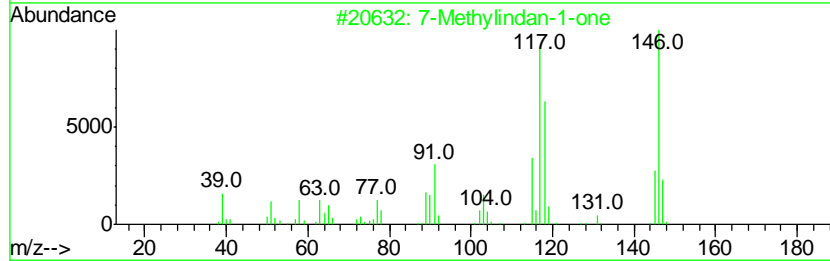
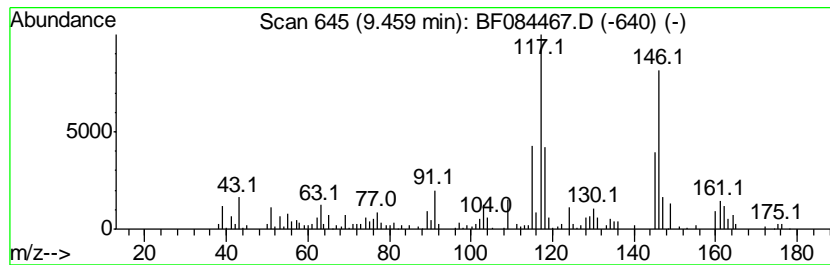
TIC Library : C:\DATABASE\NIST02.L  
 TIC Integration Parameters: LSCINT.P

\*\*\*\*\*  
 Peak Number 9 7-Methylindan-1-one Concentration Rank 14

R.T.	EstConc	Area	Relative to ISTD	R.T.
9.46	2.17 ng	295297	Acenaphthene-d10	9.87

Hit#	of	Tentative ID	MW	MolForm	CAS#	Qual
1	5	7-Methylindan-1-one	146	C10H10O	039627-61-7	78
2		Benzene, (1-ethyl-2-propenyl)-	146	C11H14	019947-22-9	64
3		Benzene, 1-pentenyl-	146	C11H14	000826-18-6	64
4		Benzene, 2-propenyl-	118	C9H10	000300-57-2	56
5		1H-Indene, 1-ethyl-2,3-dihydro-	146	C11H14	004830-99-3	55



Data Path : Z:\HPCHEM1\BNA F\DATA\BF011316\  
 Data File : BF084467.D  
 Acq On : 14 Jan 2016 4:06  
 Operator : SJ/UM  
 Sample : H1113-01  
 Misc :  
 ALS Vial : 21 Sample Multiplier: 1

Instrument :  
 BNA\_F  
 ClientSampleID :  
 MW-100

Quant Method : Z:\HPCHEM1\BNA F\METHODS\8270-BF123115.M  
 Quant Title : ASP BNA STANDARDS FOR 5 POINT CALIBRATION

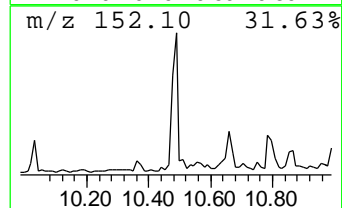
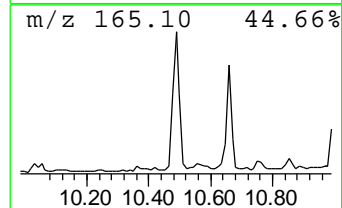
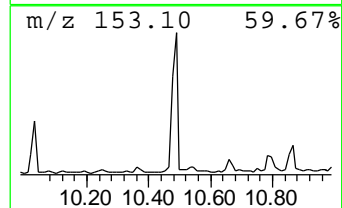
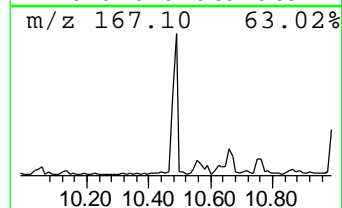
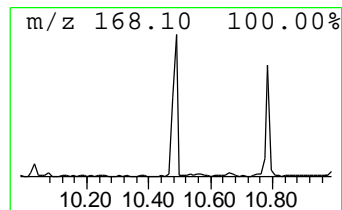
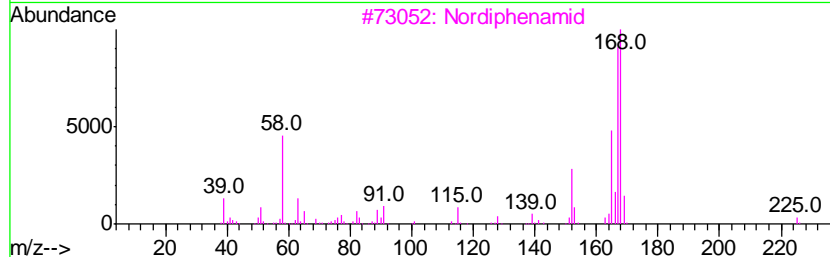
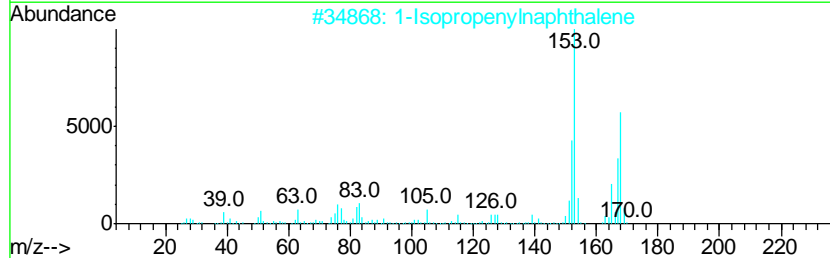
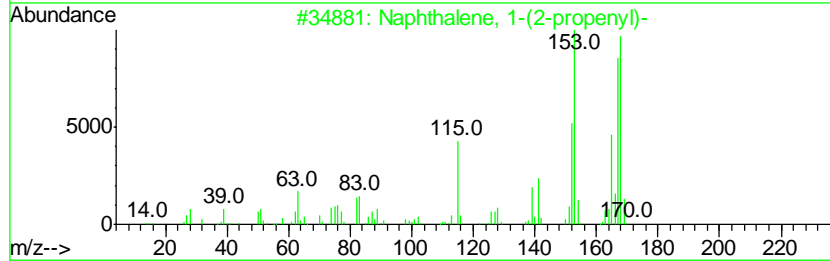
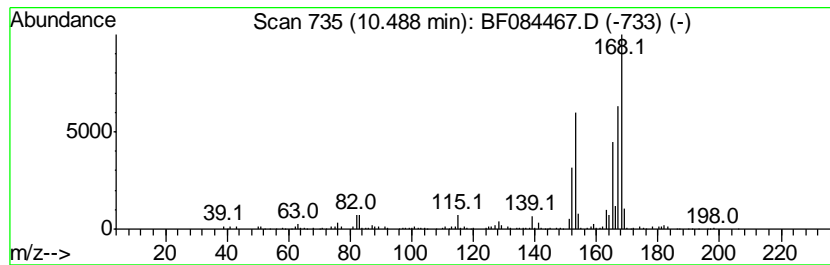
TIC Library : C:\DATABASE\NIST02.L  
 TIC Integration Parameters: LSCINT.P

\*\*\*\*\*  
 Peak Number 11 Naphthalene, 1-(2-propenyl)- Concentration Rank 7

R.T.	EstConc	Area	Relative to ISTD	R.T.
10.49	3.68 ng	501019	Acenaphthene-d10	9.87

Hit#	of	Tentative ID	MW	MolForm	CAS#	Qual
1	5	Naphthalene, 1-(2-propenyl)-	168	C13H12	002489-86-3	90
2		1-Isopropenylnaphthalene	168	C13H12	001855-47-6	68
3		Nordiphenamid	225	C15H15NO	000954-21-2	64
4		1,1'-Biphenyl, 3-methyl-	168	C13H12	000643-93-6	60
5		1,1'-Biphenyl, 2-methyl-	168	C13H12	000643-58-3	53



Data Path : Z:\HPCHEM1\BNA F\DATA\BF011316\  
 Data File : BF084467.D  
 Acq On : 14 Jan 2016 4:06  
 Operator : SJ/UM  
 Sample : H1113-01  
 Misc :  
 ALS Vial : 21 Sample Multiplier: 1

Instrument :  
 BNA\_F  
 ClientSampled :  
 MW-100

Quant Method : Z:\HPCHEM1\BNA F\METHODS\8270-BF123115.M  
 Quant Title : ASP BNA STANDARDS FOR 5 POINT CALIBRATION

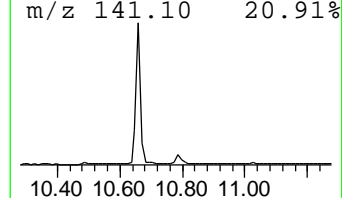
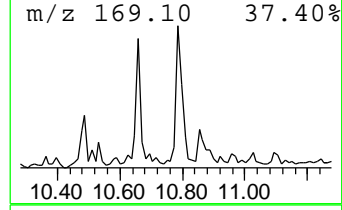
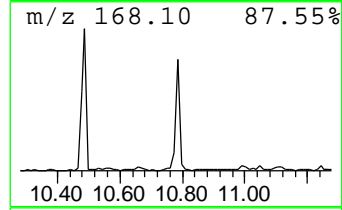
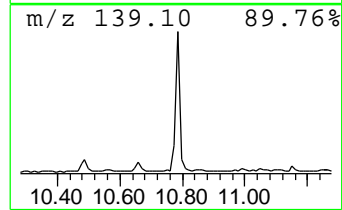
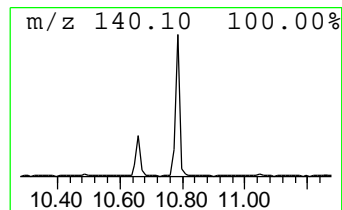
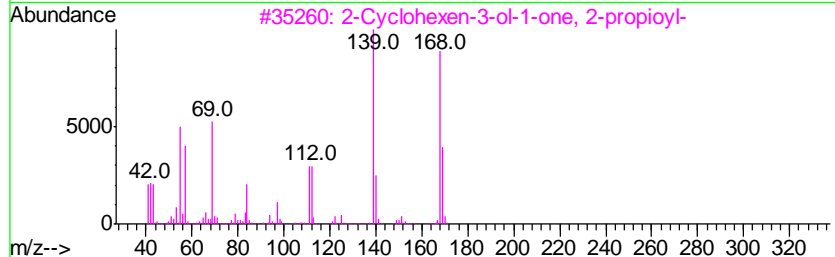
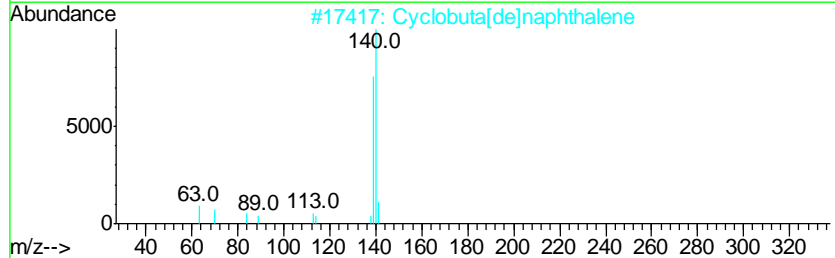
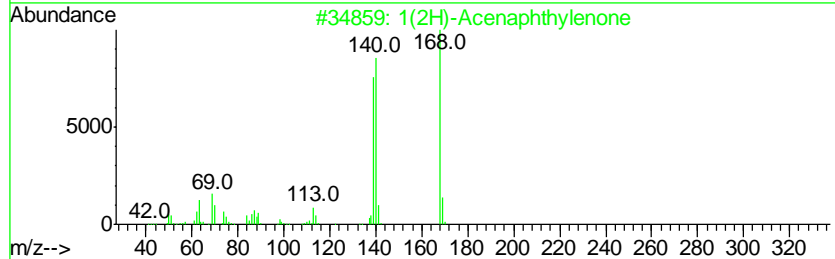
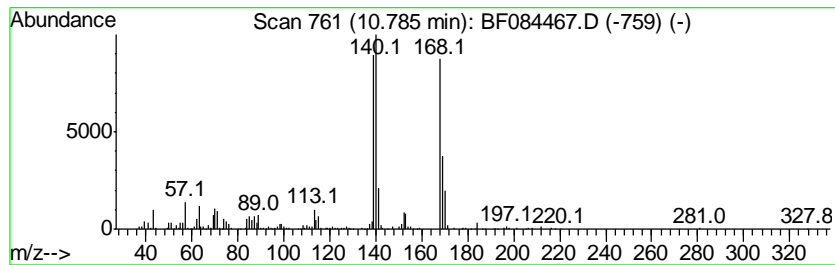
TIC Library : C:\DATABASE\NIST02.L  
 TIC Integration Parameters: LSCINT.P

\*\*\*\*\*  
 Peak Number 12 1(2H)-Acenaphthylenone Concentration Rank 6

R.T.	EstConc	Area	Relative to ISTD	R.T.
10.78	3.82 ng	481170	Phenanthrene-d10	11.36

Hit#	of	Tentative ID	MW	MolForm	CAS#	Qual
1	5	1(2H)-Acenaphthylenone	168	C12H8O	002235-15-6	94
2		Cyclobuta[de]naphthalene	140	C11H8	024973-91-9	49
3		2-Cyclohexen-3-ol-1-one, 2-propioyl-	168	C9H12O3	062847-90-9	47
4		Benzaldehyde, 2-fluoro-3-hydroxy-	140	C7H5FO2	103438-86-4	38
5		2-Dibenzofuransulfonic acid	248	C12H8O4S	083863-63-2	38



Data Path : Z:\HPCHEM1\BNA F\DATA\BF011316\  
 Data File : BF084467.D  
 Acq On : 14 Jan 2016 4:06  
 Operator : SJ/UM  
 Sample : H1113-01  
 Misc :  
 ALS Vial : 21 Sample Multiplier: 1

Instrument :  
 BNA\_F  
 ClientSampled :  
 MW-100

Quant Method : Z:\HPCHEM1\BNA F\METHODS\8270-BF123115.M  
 Quant Title : ASP BNA STANDARDS FOR 5 POINT CALIBRATION

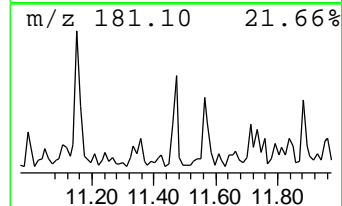
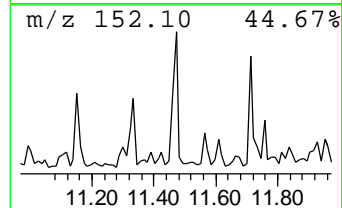
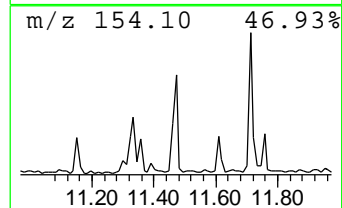
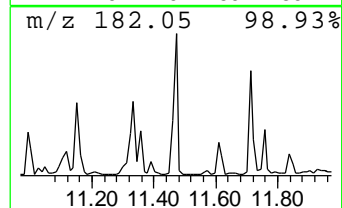
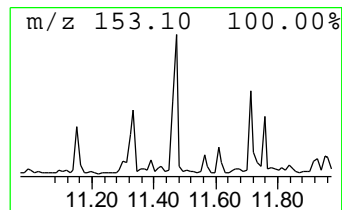
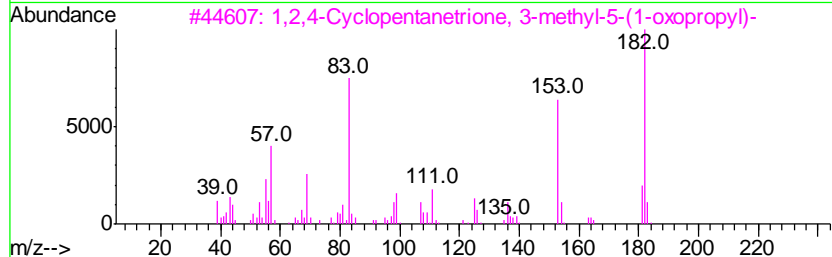
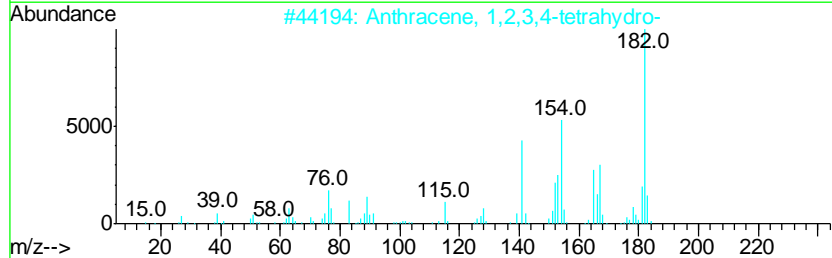
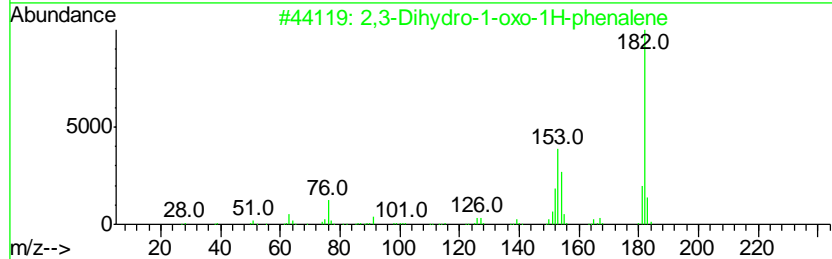
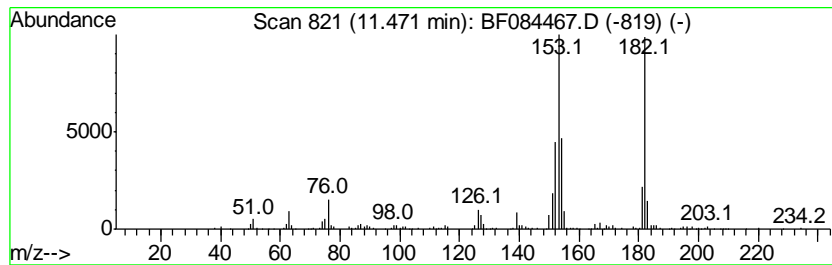
TIC Library : C:\DATABASE\NIST02.L  
 TIC Integration Parameters: LSCINT.P

\*\*\*\*\*  
 Peak Number 13 2,3-Dihydro-1-oxo-1H-phenalene Concentration Rank 9

R.T.	EstConc	Area	Relative to ISTD	R.T.
11.47	2.78 ng	350986	Phenanthrene-d10	11.36

Hit#	of	Tentative ID	MW	MolForm	CAS#	Qual
1	5	2,3-Dihydro-1-oxo-1H-phenalene	182	C13H10O	000518-85-4	94
2		Anthracene, 1,2,3,4-tetrahydro-	182	C14H14	002141-42-6	52
3		1,2,4-Cyclopentanetrione, 3-meth...	182	C9H10O4	057174-14-8	50
4		[1,1'-Biphenyl]-4-carboxaldehyde	182	C13H10O	003218-36-8	46
5		5H-Cyclopenta[2,1-b:3,4-b']dipyr...	182	C11H6N2O	050890-67-0	38



Data Path : Z:\HPCHEM1\BNA F\DATA\BF011316\  
 Data File : BF084467.D  
 Acq On : 14 Jan 2016 4:06  
 Operator : SJ/UM  
 Sample : H1113-01  
 Misc :  
 ALS Vial : 21 Sample Multiplier: 1

Instrument :  
 BNA\_F  
 ClientSampled :  
 MW-100

Quant Method : Z:\HPCHEM1\BNA F\METHODS\8270-BF123115.M  
 Quant Title : ASP BNA STANDARDS FOR 5 POINT CALIBRATION

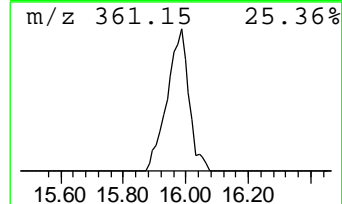
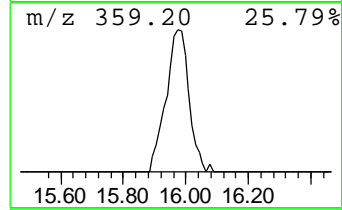
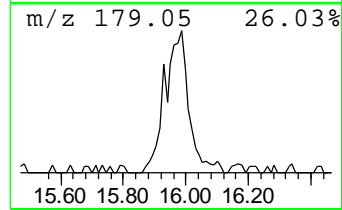
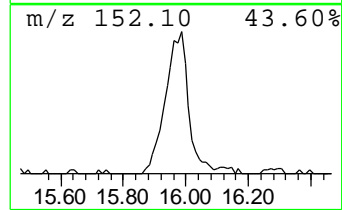
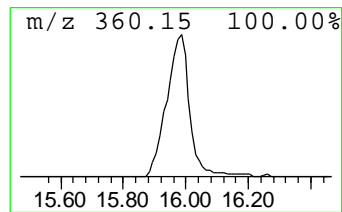
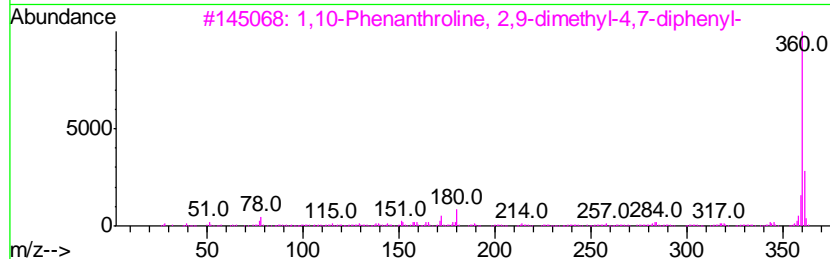
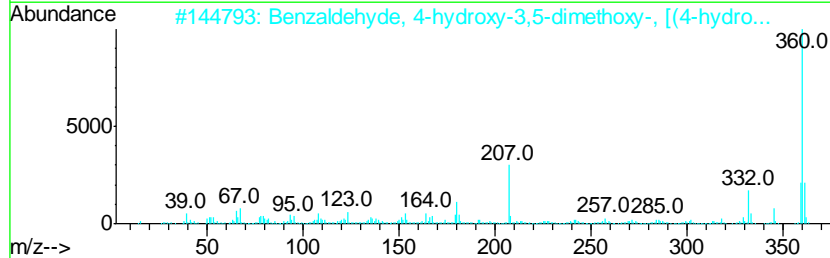
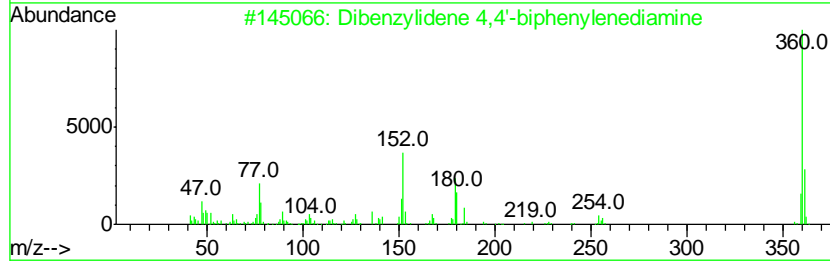
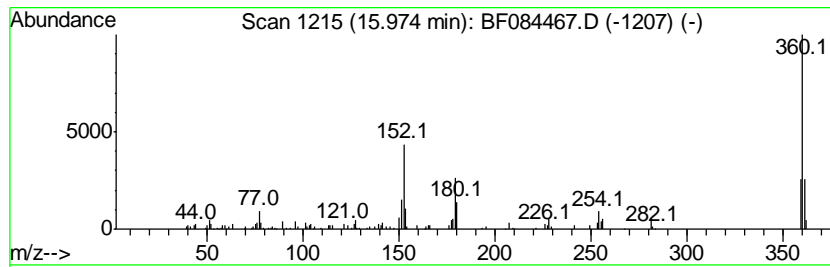
TIC Library : C:\DATABASE\NIST02.L  
 TIC Integration Parameters: LSCINT.P

\*\*\*\*\*  
 Peak Number 14 Dibenzylidene 4,4'-biphenyl... Concentration Rank 4

R.T.	EstConc	Area	Relative to ISTD	R.T.
15.97	6.45 ng	506760	Perylene-d12	15.40

Hit#	of	Tentative ID	MW	MolForm	CAS#	Qual
1	5	Dibenzylidene 4,4'-biphenylenedi...	360	C26H20N2	006311-48-4	93
2		Benzaldehyde, 4-hydroxy-3,5-dime...	360	C18H20N2O6	014414-32-5	47
3		1,10-Phenanthroline, 2,9-dimethy...	360	C26H20N2	004733-39-5	47
4		Ethene, 1-(anthracen-9-yl)-2-(4-...	360	C27H20O	1000163-55-1	43
5		N,N'-di-2-Naphthyl-p-phenylenedi...	360	C26H20N2	000093-46-9	43



Data Path : Z:\HPCHEM1\BNA\_F\DATA\BF011316\  
 Data File : BF084467.D  
 Acq On : 14 Jan 2016 4:06  
 Operator : SJ/UM  
 Sample : H1113-01  
 Misc :  
 ALS Vial : 21 Sample Multiplier: 1

Instrument :  
 BNA\_F  
 ClientSampleId :  
 MW-100

Quant Method : Z:\HPCHEM1\BNA\_F\METHODS\8270-BF123115.M  
 Quant Title : ASP BNA STANDARDS FOR 5 POINT CALIBRATION

TIC Library : C:\DATABASE\NIST02.L  
 TIC Integration Parameters: LSCINT.P

TIC Top Hit name	RT	EstConc	Units	Response	--Internal Standard--			
					#	RT	Resp	Conc
2-Pentanone, 4-hy...	5.00	10.5	ng	872808	1	6.83	1655680	20.0
unknown6.60	6.60	66.4	ng	5498810	1	6.83	1655680	20.0
Indane	7.01	2.4	ng	195633	1	6.83	1655680	20.0
Benzo[b]thiophene...	8.59	3.9	ng	462546	2	8.12	2370590	20.0
Benzene, pentamet...	8.68	2.5	ng	293355	2	8.12	2370590	20.0
1H-Inden-1-one, 2...	8.70	2.2	ng	264762	2	8.12	2370590	20.0
Naphthalene, 1,2,...	9.31	2.5	ng	344455	3	9.87	2722990	20.0
7-Methylindan-1-one	9.46	2.2	ng	295297	3	9.87	2722990	20.0
Naphthalene, 1-(2...	10.49	3.7	ng	501019	3	9.87	2722990	20.0
1(2H)-Acenaphthyl...	10.78	3.8	ng	481170	4	11.36	2521950	20.0
2,3-Dihydro-1-oxo...	11.47	2.8	ng	350986	4	11.36	2521950	20.0
Dibenzylidene 4,4...	15.97	6.5	ng	506760	6	15.40	1570900	20.0