

Data Path : Z:\svoasrv\HPCHEM1\BNA\_F\Data\BF011323\  
 Data File : BF132058.D  
 Acq On : 13 Jan 2023 14:23  
 Operator : CG\JU  
 Sample : PB150221BS  
 Misc :  
 ALS Vial : 4 Sample Multiplier: 1

Instrument :  
 BNA\_F  
 ClientSampleId :  
 PB150221BS

Quant Time: Jan 16 01:16:28 2023  
 Quant Method : Z:\svoasrv\HPCHEM1\BNA\_F\Methods\8270-BF010923.M  
 Quant Title : ASP BNA STANDARDS FOR 5 POINT CALIBRATION  
 QLast Update : Thu Jan 12 23:59:08 2023  
 Response via : Initial Calibration

Compound	R.T.	QIon	Response	Conc	Units	Dev(Min)	
Internal Standards							
1) 1,4-Dichlorobenzene-d4	6.775	152	71982	20.000	ng	0.00	
21) Naphthalene-d8	8.063	136	263534	20.000	ng	0.00	
39) Acenaphthene-d10	9.827	164	157235	20.000	ng	0.00	
64) Phenanthrene-d10	11.316	188	298734	20.000	ng	0.00	
76) Chrysene-d12	13.968	240	173885	20.000	ng	0.00	
86) Perylene-d12	15.421	264	131902	20.000	ng	0.00	
System Monitoring Compounds							
5) 2-Fluorophenol	5.404	112	598369	136.976	ng	0.02	
7) Phenol-d6	6.434	99	752556	129.930	ng	0.01	
23) Nitrobenzene-d5	7.351	82	536626	84.512	ng	0.00	
42) 2,4,6-Tribromophenol	10.627	330	223864	123.828	ng	0.00	
45) 2-Fluorobiphenyl	9.145	172	932903	80.096	ng	0.00	
79) Terphenyl-d14	12.910	244	1121168	92.414	ng	0.00	
Target Compounds							
2) 1,4-Dioxane	2.522	88	70291	36.842	ng		Qvalue 98
3) Pyridine	3.246	79	184273	34.414	ng		98
4) n-Nitrosodimethylamine	3.216	42	111126	44.158	ng		92
6) Aniline	6.439	93	169383	22.227	ng	#	1
8) 2-Chlorophenol	6.563	128	200790	45.812	ng		99
10) Phenol	6.445	94	278802	43.150	ng		88
11) bis(2-Chloroethyl)ether	6.516	93	211106	43.342	ng		99
12) 1,3-Dichlorobenzene	6.710	146	223910	45.867	ng		97
13) 1,4-Dichlorobenzene	6.792	146	226401	45.835	ng		98
14) 1,2-Dichlorobenzene	6.945	146	213667	45.547	ng		99
15) Benzyl Alcohol	6.928	79	220137	43.645	ng		99
16) 2,2'-oxybis(1-Chloropr...	7.051	45	262138	42.647	ng	#	1
17) 2-Methylphenol	7.051	107	181051	41.742	ng		92
18) Hexachloroethane	7.281	117	92021	45.049	ng		98
19) n-Nitroso-di-n-propyla...	7.198	70	173087	41.311	ng		99
20) 3+4-Methylphenols	7.204	107	233467	41.927	ng	#	68
22) Acetophenone	7.192	105	335214	43.688	ng	#	91
24) Nitrobenzene	7.369	77	271647	42.023	ng		99
25) Isophorone	7.610	82	479842	40.451	ng		100
26) 2-Nitrophenol	7.686	139	110813	43.567	ng		97
27) 2,4-Dimethylphenol	7.733	122	184187	43.384	ng		100
28) bis(2-Chloroethoxy)met...	7.822	93	264809	40.335	ng		99
29) 2,4-Dichlorophenol	7.933	162	186294	42.840	ng		96
30) 1,2,4-Trichlorobenzene	8.004	180	213954	42.960	ng		97
31) Naphthalene	8.086	128	581823	41.776	ng		100
32) Benzoic acid	7.892	122	103811	42.176	ng		96
33) 4-Chloroaniline	8.145	127	94071	16.368	ng		95
34) Hexachlorobutadiene	8.198	225	144876	41.957	ng		99
35) Caprolactam	8.533	113	34211	26.786	ng		100
36) 4-Chloro-3-methylphenol	8.645	107	215934	42.308	ng		99
37) 2-Methylnaphthalene	8.780	142	397705	39.760	ng		99
38) 1-Methylnaphthalene	8.880	142	368309	39.744	ng		99
40) 1,2,4,5-Tetrachloroben...	8.945	216	228774	41.290	ng		99
41) Hexachlorocyclopentadiene	8.928	237	160415	60.413	ng		99
43) 2,4,6-Trichlorophenol	9.069	196	134963	40.468	ng		100
44) 2,4,5-Trichlorophenol	9.122	196	145165	37.388	ng		97

Data Path : Z:\svoasrv\HPCHEM1\BNA\_F\Data\BF011323\  
 Data File : BF132058.D  
 Acq On : 13 Jan 2023 14:23  
 Operator : CG\JU  
 Sample : PB150221BS  
 Misc :  
 ALS Vial : 4 Sample Multiplier: 1

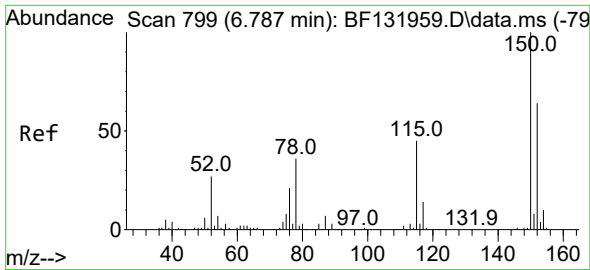
Instrument :  
 BNA\_F  
 ClientSampleId :  
 PB150221BS

Quant Time: Jan 16 01:16:28 2023  
 Quant Method : Z:\svoasrv\HPCHEM1\BNA\_F\Methods\8270-BF010923.M  
 Quant Title : ASP BNA STANDARDS FOR 5 POINT CALIBRATION  
 QLast Update : Thu Jan 12 23:59:08 2023  
 Response via : Initial Calibration

Compound	R.T.	QIon	Response	Conc	Units	Dev(Min)
46) 1,1'-Biphenyl	9.251	154	498874	41.107	ng	99
47) 2-Chloronaphthalene	9.275	162	404221	42.914	ng	99
48) 2-Nitroaniline	9.380	65	143868	42.052	ng	98
49) Acenaphthylene	9.686	152	596376	40.801	ng	100
50) Dimethylphthalate	9.557	163	486200	39.669	ng	100
51) 2,6-Dinitrotoluene	9.622	165	106182	41.191	ng	# 82
52) Acenaphthene	9.863	154	358013	40.804	ng	99
53) 3-Nitroaniline	9.792	138	59788	23.907	ng	90
54) 2,4-Dinitrophenol	9.910	184	112357	86.810	ng	98
55) Dibenzofuran	10.033	168	556658	40.249	ng	98
56) 4-Nitrophenol	9.986	139	100059	71.031	ng	91
57) 2,4-Dinitrotoluene	10.033	165	142795	41.433	ng	93
58) Fluorene	10.380	166	447750	40.527	ng	99
59) 2,3,4,6-Tetrachlorophenol	10.163	232	114047	39.421	ng	91
60) Diethylphthalate	10.257	149	467513	38.792	ng	99
61) 4-Chlorophenyl-phenyle...	10.369	204	245375	38.797	ng	96
62) 4-Nitroaniline	10.422	138	91896	40.865	ng	97
63) Azobenzene	10.527	77	504216	39.440	ng	98
65) 4,6-Dinitro-2-methylph...	10.445	198	80053	41.554	ng	93
66) n-Nitrosodiphenylamine	10.492	169	384886	41.067	ng	99
67) 4-Bromophenyl-phenylether	10.857	248	146620	39.234	ng	97
68) Hexachlorobenzene	10.922	284	161116	42.619	ng	# 91
69) Atrazine	11.022	200	101542	29.793	ng	99
70) Pentachlorophenol	11.127	266	108997	55.479	ng	97
71) Phenanthrene	11.345	178	658852	42.307	ng	100
72) Anthracene	11.398	178	662230	41.307	ng	99
73) Carbazole	11.557	167	577208	43.488	ng	100
74) Di-n-butylphthalate	11.880	149	736714	39.863	ng	99
75) Fluoranthene	12.533	202	727278	41.525	ng	99
77) Benzidine	12.663	184	84266	14.587	ng	98
78) Pyrene	12.763	202	728657	45.945	ng	99
80) Butylbenzylphthalate	13.380	149	259163	40.484	ng	99
81) Benzo(a)anthracene	13.957	228	521767	41.244	ng	99
82) 3,3'-Dichlorobenzidine	13.921	252	113578	28.767	ng	99
83) Chrysene	13.992	228	485086	41.030	ng	98
84) Bis(2-ethylhexyl)phtha...	13.939	149	319439	36.833	ng	99
85) Di-n-octyl phthalate	14.551	149	434861	36.642	ng	99
87) Indeno(1,2,3-cd)pyrene	16.892	276	448598	55.454	ng	100
88) Benzo(b)fluoranthene	15.004	252	413065	45.658	ng	99
89) Benzo(k)fluoranthene	15.033	252	393867	43.623	ng	100
90) Benzo(a)pyrene	15.368	252	348742	42.784	ng	99
91) Dibenzo(a,h)anthracene	16.903	278	385161	56.798	ng	99
92) Benzo(g,h,i)perylene	17.327	276	390449	53.348	ng	96

(#) = qualifier out of range (m) = manual integration (+) = signals summed

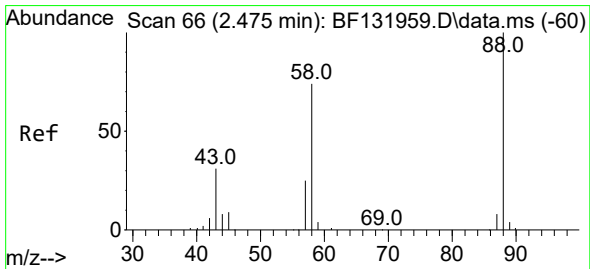
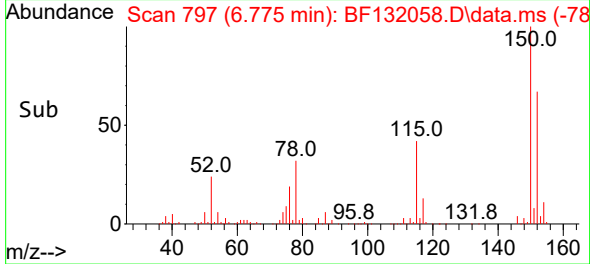
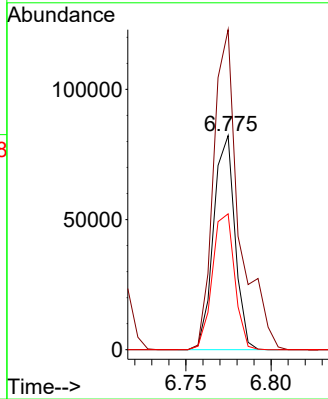
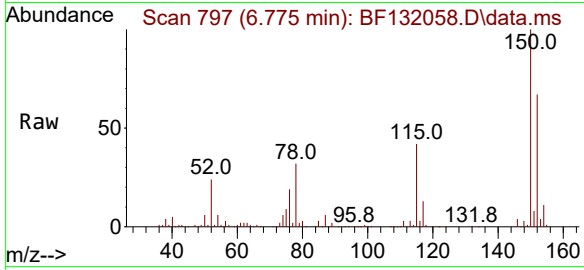




#1  
 1,4-Dichlorobenzene-d4  
 Concen: 20.000 ng  
 RT: 6.775 min Scan# 74  
 Delta R.T. -0.000 min  
 Lab File: BF132058.D  
 Acq: 13 Jan 2023 14:23

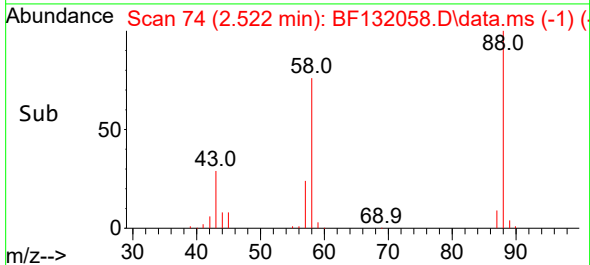
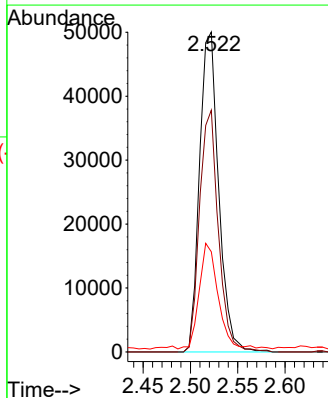
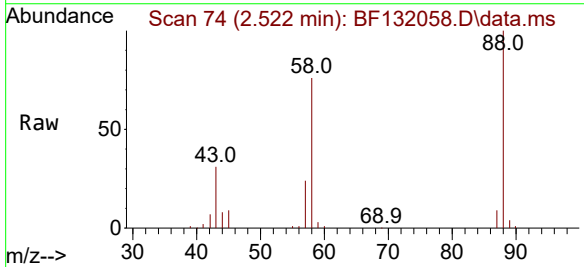
Instrument :  
 BNA\_F  
 ClientSampleId :  
 PB150221BS

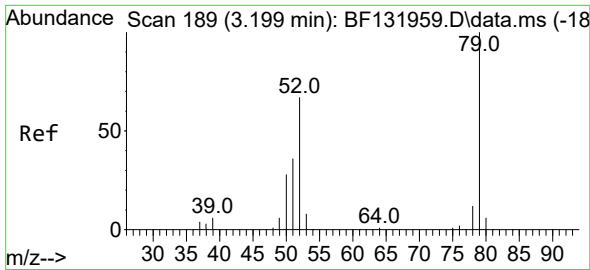
Tgt Ion:152 Resp: 71982  
 Ion Ratio Lower Upper  
 152 100  
 150 149.4 124.6 186.8  
 115 63.5 55.6 83.4



#2  
 1,4-Dioxane  
 Concen: 36.842 ng  
 RT: 2.522 min Scan# 74  
 Delta R.T. 0.088 min  
 Lab File: BF132058.D  
 Acq: 13 Jan 2023 14:23

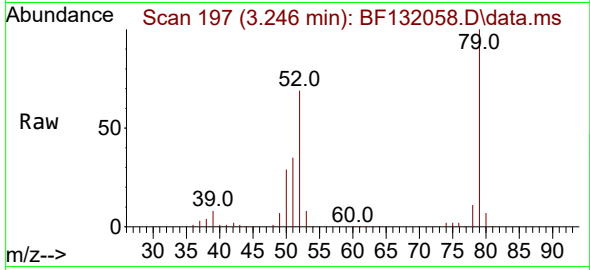
Tgt Ion: 88 Resp: 70291  
 Ion Ratio Lower Upper  
 88 100  
 58 74.5 59.0 88.4  
 43 32.8 24.6 37.0



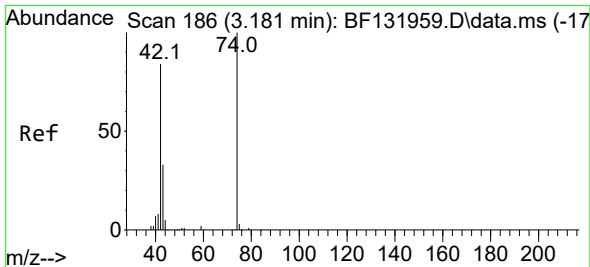
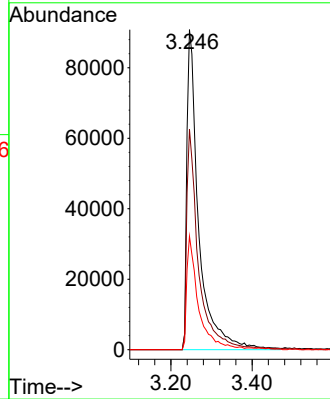
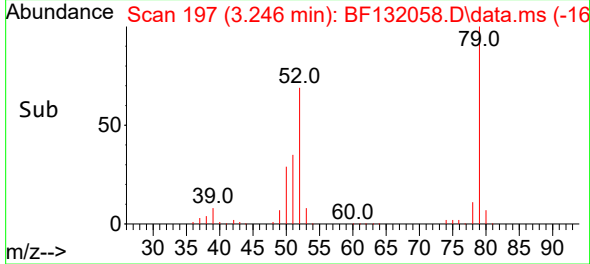


#3  
 Pyridine  
 Concen: 34.414 ng  
 RT: 3.246 min Scan# 197  
 Delta R.T. 0.088 min  
 Lab File: BF132058.D  
 Acq: 13 Jan 2023 14:23

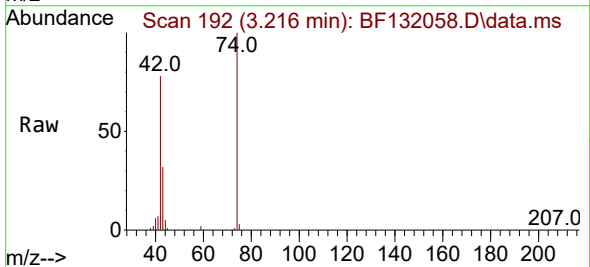
Instrument :  
 BNA\_F  
 ClientSampleId :  
 PB150221BS



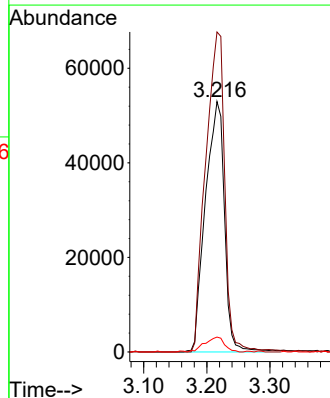
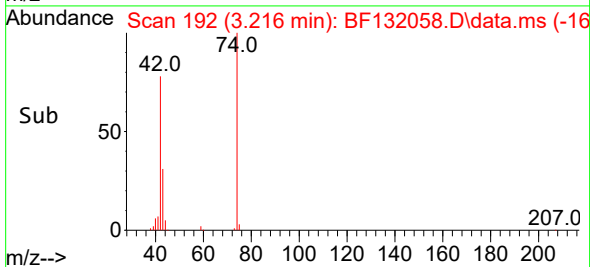
Tgt Ion: 79 Resp: 184273  
 Ion Ratio Lower Upper  
 79 100  
 52 68.8 53.7 80.5  
 51 35.5 28.6 43.0

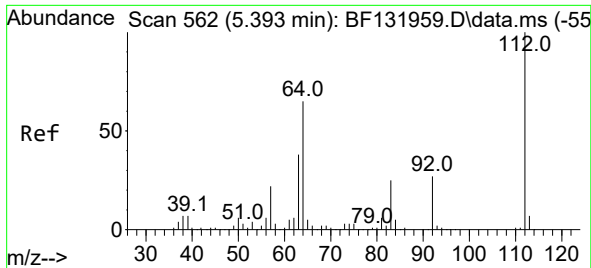


#4  
 n-Nitrosodimethylamine  
 Concen: 44.158 ng  
 RT: 3.216 min Scan# 192  
 Delta R.T. 0.082 min  
 Lab File: BF132058.D  
 Acq: 13 Jan 2023 14:23



Tgt Ion: 42 Resp: 111126  
 Ion Ratio Lower Upper  
 42 100  
 74 127.8 94.8 142.2  
 44 5.9 4.5 6.7



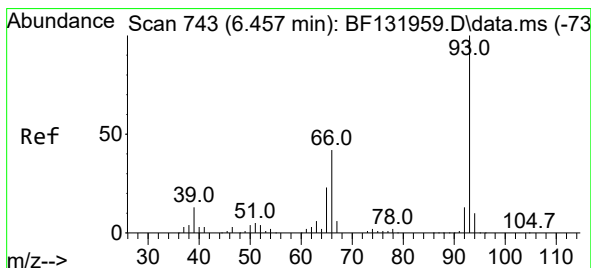
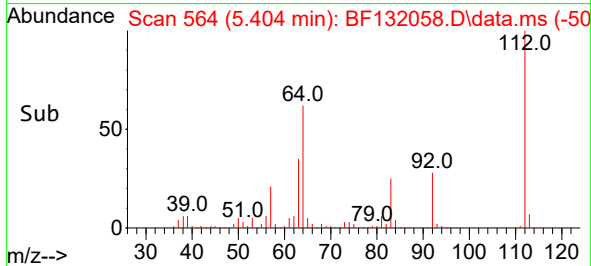
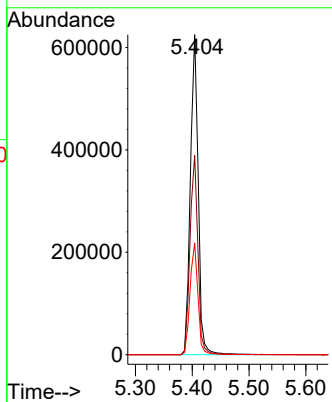
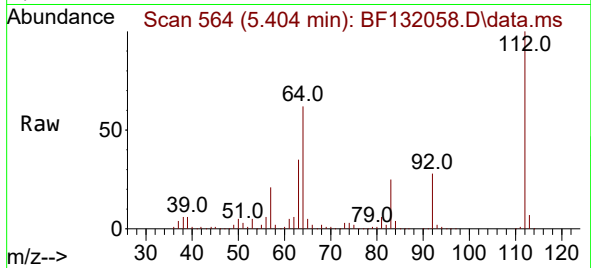


#5  
 2-Fluorophenol  
 Concen: 136.976 ng  
 RT: 5.404 min Scan# 50  
 Delta R.T. 0.023 min  
 Lab File: BF132058.D  
 Acq: 13 Jan 2023 14:23

Instrument : BNA\_F  
 ClientSampleId : PB150221BS

Tgt Ion:112 Resp: 598369

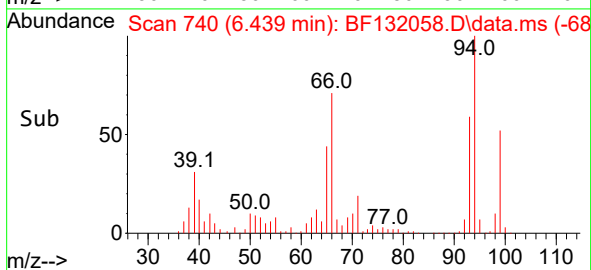
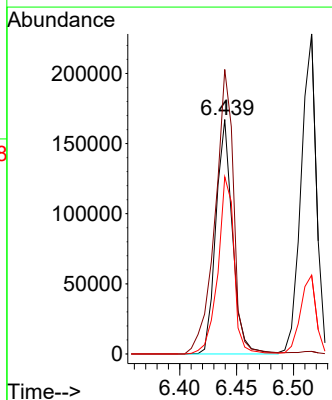
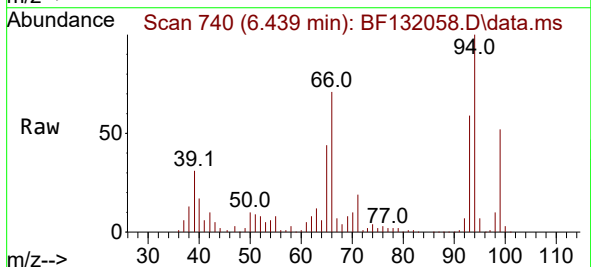
Ion	Ratio	Lower	Upper
112	100		
64	62.3	51.9	77.9
63	34.9	30.2	45.2

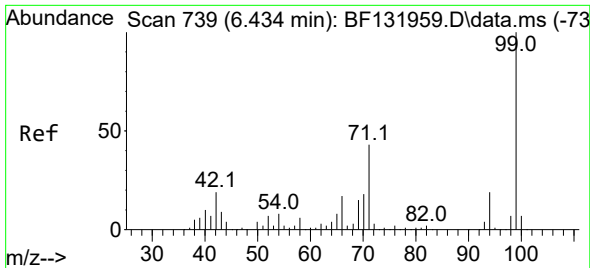


#6  
 Aniline  
 Concen: 22.227 ng  
 RT: 6.439 min Scan# 740  
 Delta R.T. -0.000 min  
 Lab File: BF132058.D  
 Acq: 13 Jan 2023 14:23

Tgt Ion: 93 Resp: 169383

Ion	Ratio	Lower	Upper
93	100		
66	121.4	34.6	51.8#
65	75.6	18.2	27.2#



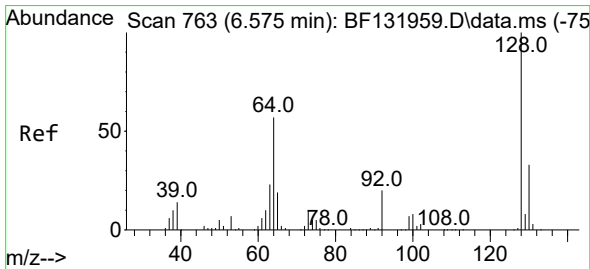
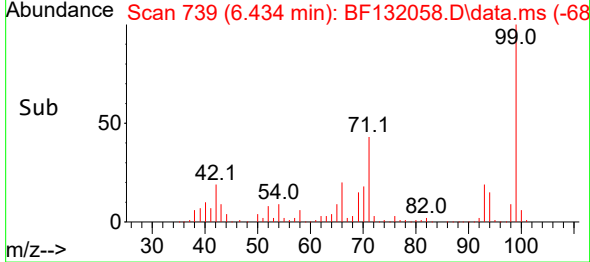
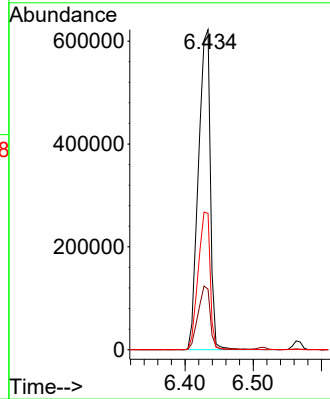
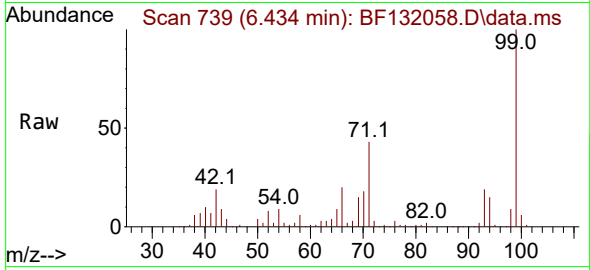


#7  
 Phenol-d6  
 Concen: 129.930 ng  
 RT: 6.434 min Scan# 711  
 Delta R.T. 0.012 min  
 Lab File: BF132058.D  
 Acq: 13 Jan 2023 14:23

Instrument :  
 BNA\_F  
 ClientSampleId :  
 PB150221BS

Tgt Ion: 99 Resp: 752556

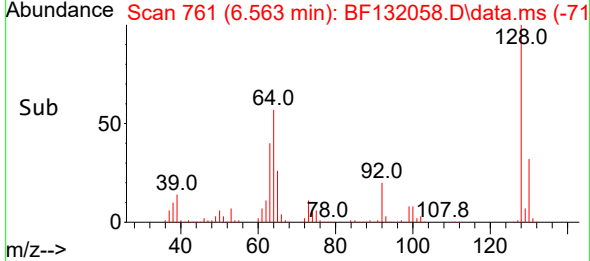
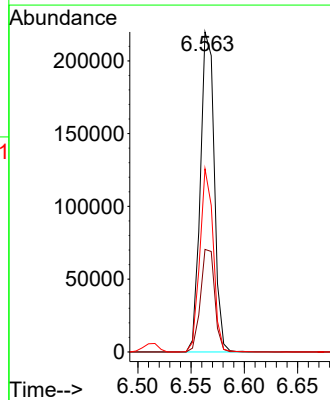
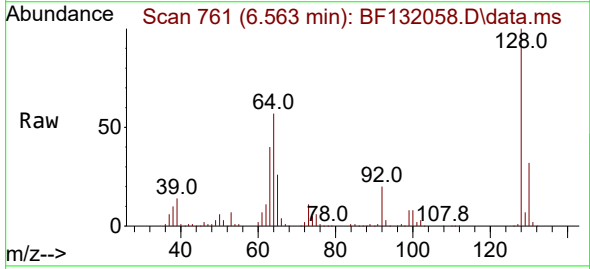
Ion	Ratio	Lower	Upper
99	100		
42	18.9	15.4	23.2
71	42.6	34.6	51.8

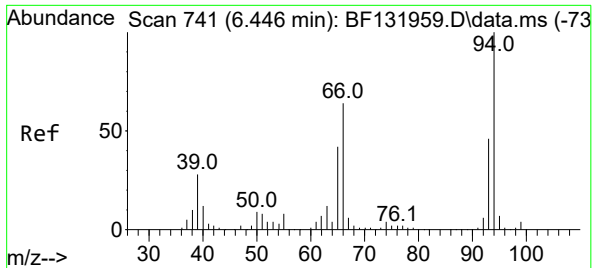


#8  
 2-Chlorophenol  
 Concen: 45.812 ng  
 RT: 6.563 min Scan# 761  
 Delta R.T. -0.000 min  
 Lab File: BF132058.D  
 Acq: 13 Jan 2023 14:23

Tgt Ion: 128 Resp: 200790

Ion	Ratio	Lower	Upper
128	100		
130	32.1	12.5	52.5
64	57.2	37.6	77.6



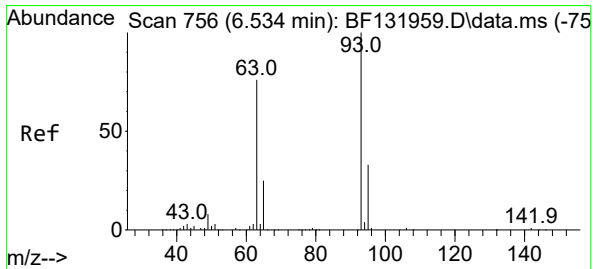
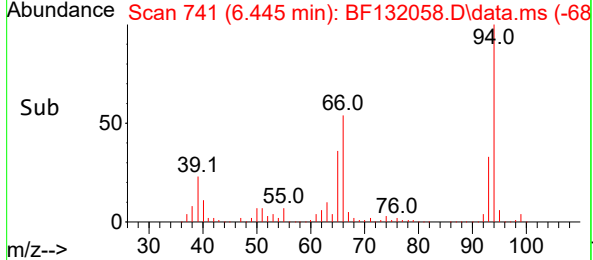
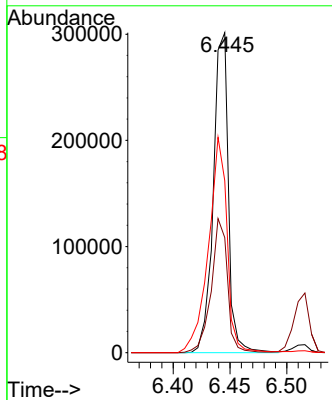
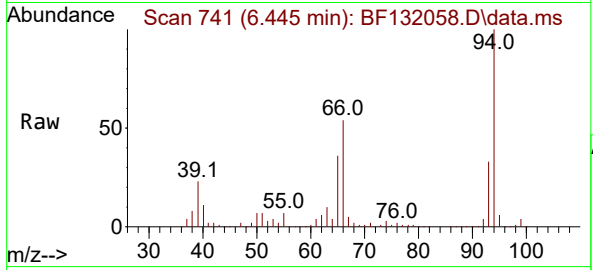


#10  
 Phenol  
 Concen: 43.150 ng  
 RT: 6.445 min Scan# 741  
 Delta R.T. 0.012 min  
 Lab File: BF132058.D  
 Acq: 13 Jan 2023 14:23

**Instrument :**  
 BNA\_F  
**ClientSampleId :**  
 PB150221BS

Tgt Ion: 94 Resp: 278802

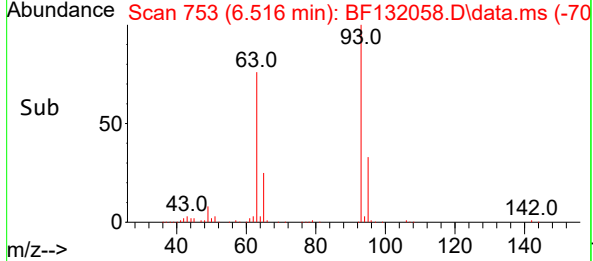
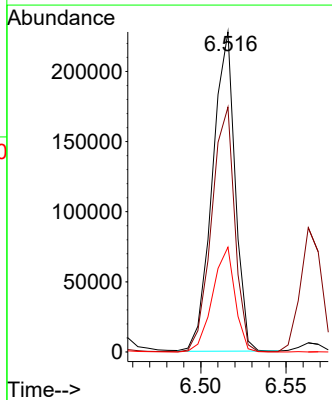
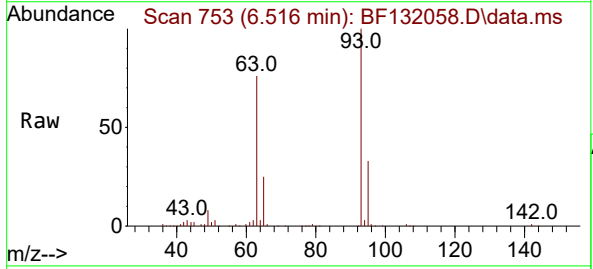
Ion	Ratio	Lower	Upper
94	100		
65	36.0	22.2	62.2
66	53.8	44.4	84.4



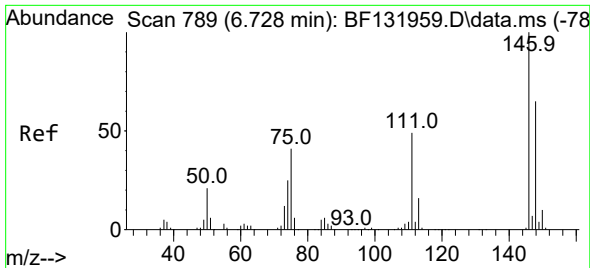
#11  
 bis(2-Chloroethyl)ether  
 Concen: 43.342 ng  
 RT: 6.516 min Scan# 753  
 Delta R.T. -0.000 min  
 Lab File: BF132058.D  
 Acq: 13 Jan 2023 14:23

Tgt Ion: 93 Resp: 211106

Ion	Ratio	Lower	Upper
93	100		
63	76.5	55.5	95.5
95	32.7	13.1	53.1





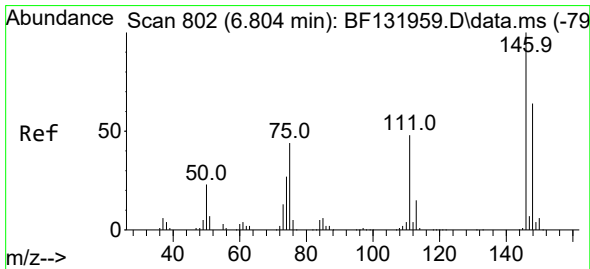
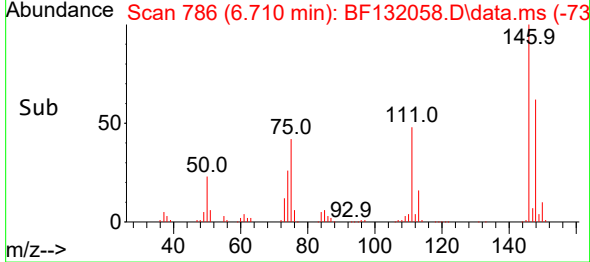
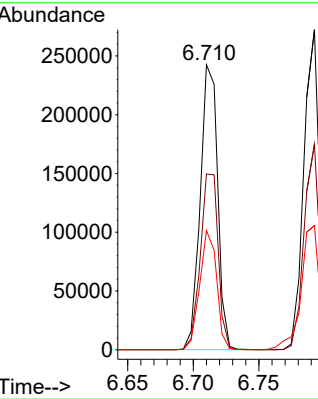
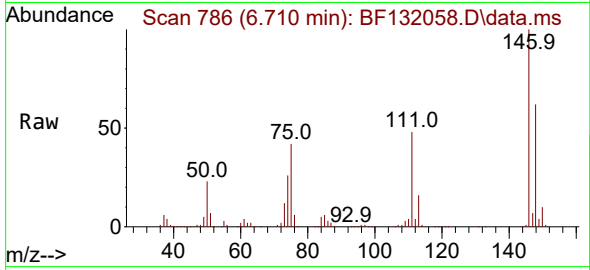


#12  
 1,3-Dichlorobenzene  
 Concen: 45.867 ng  
 RT: 6.710 min Scan# 710  
 Delta R.T. -0.000 min  
 Lab File: BF132058.D  
 Acq: 13 Jan 2023 14:23

Instrument : BNA\_F  
 ClientSampleId : PB150221BS

Tgt Ion:146 Resp: 223910

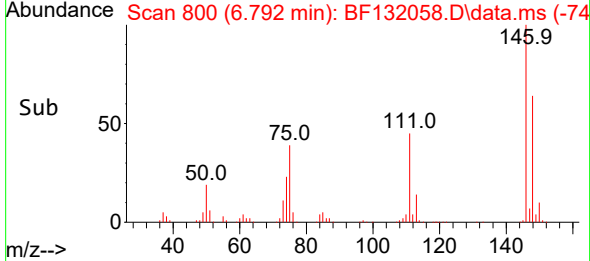
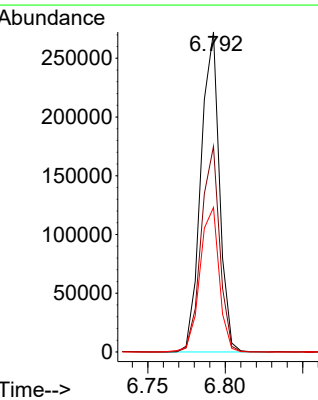
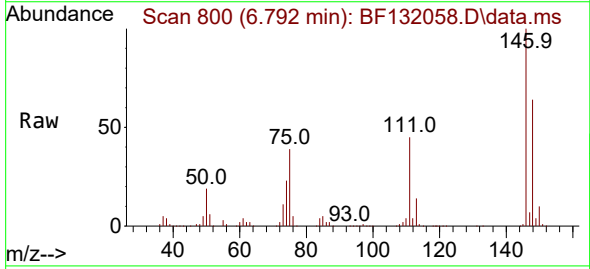
Ion	Ratio	Lower	Upper
146	100		
148	61.7	51.7	77.5
75	41.9	32.7	49.1

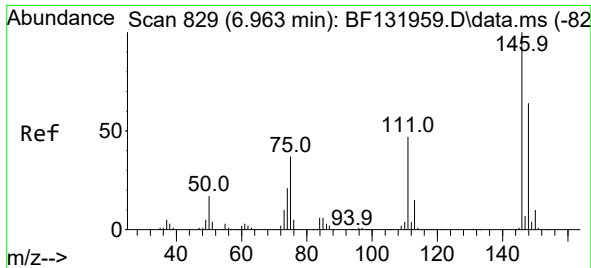


#13  
 1,4-Dichlorobenzene  
 Concen: 45.835 ng  
 RT: 6.792 min Scan# 800  
 Delta R.T. -0.000 min  
 Lab File: BF132058.D  
 Acq: 13 Jan 2023 14:23

Tgt Ion:146 Resp: 226401

Ion	Ratio	Lower	Upper
146	100		
148	64.3	51.0	76.6
111	45.1	38.5	57.7

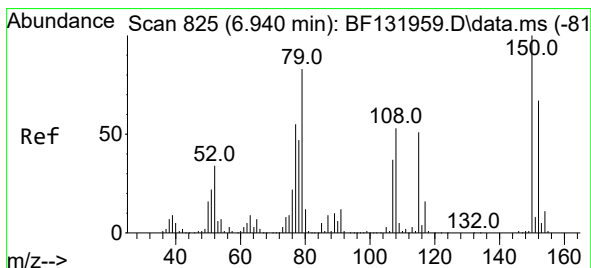
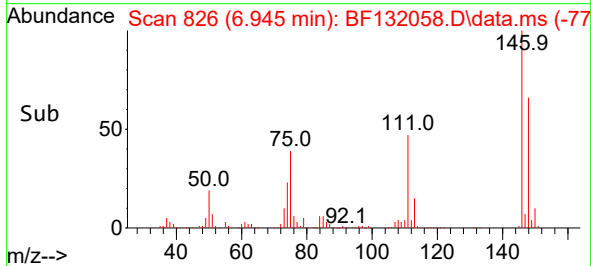
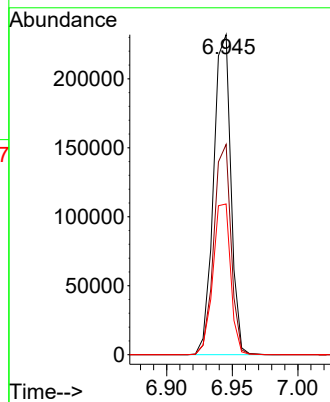
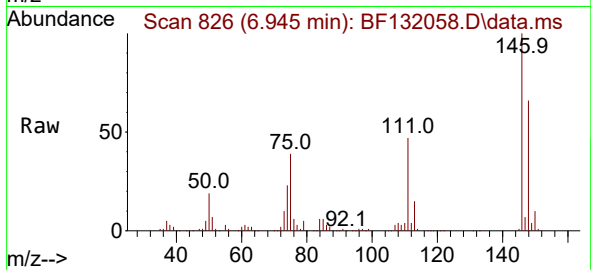




#14  
 1,2-Dichlorobenzene  
 Concen: 45.547 ng  
 RT: 6.945 min Scan# 81  
 Delta R.T. -0.000 min  
 Lab File: BF132058.D  
 Acq: 13 Jan 2023 14:23

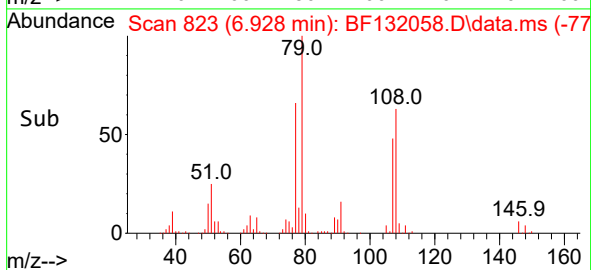
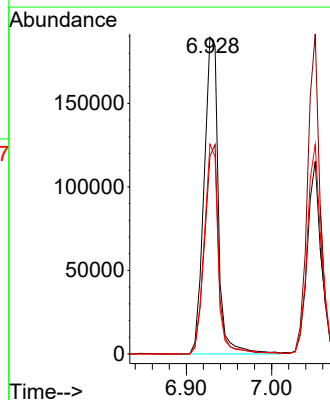
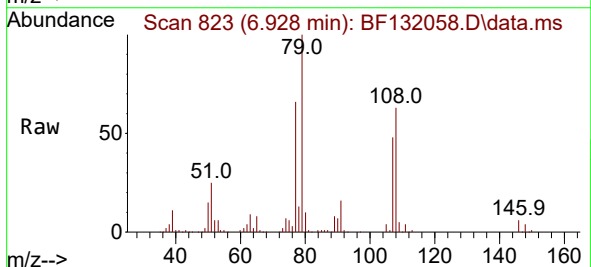
Instrument :  
 BNA\_F  
 ClientSampleId :  
 PB150221BS

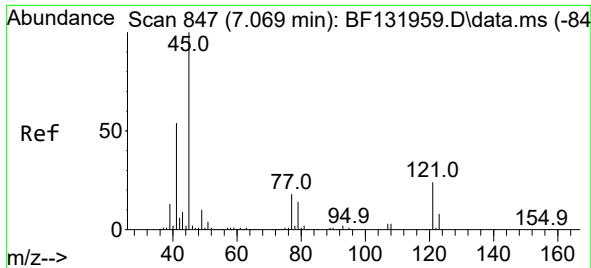
Tgt Ion:146 Resp: 213667  
 Ion Ratio Lower Upper  
 146 100  
 148 65.7 51.4 77.0  
 111 47.1 37.7 56.5



#15  
 Benzyl Alcohol  
 Concen: 43.645 ng  
 RT: 6.928 min Scan# 823  
 Delta R.T. -0.000 min  
 Lab File: BF132058.D  
 Acq: 13 Jan 2023 14:23

Tgt Ion: 79 Resp: 220137  
 Ion Ratio Lower Upper  
 79 100  
 108 62.6 51.7 77.5  
 77 66.2 52.9 79.3

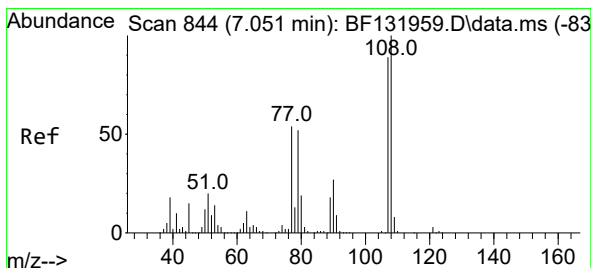
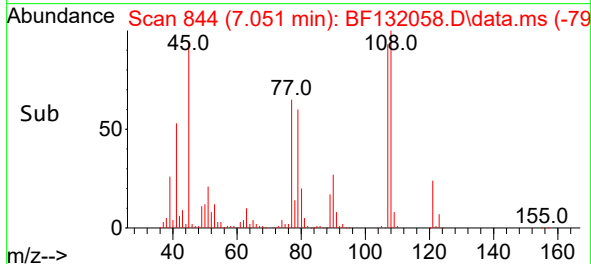
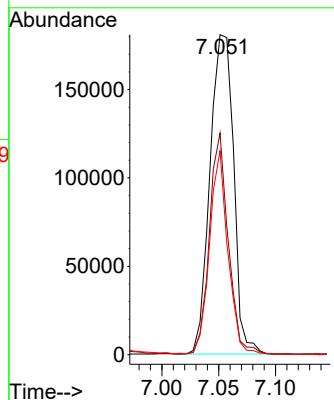
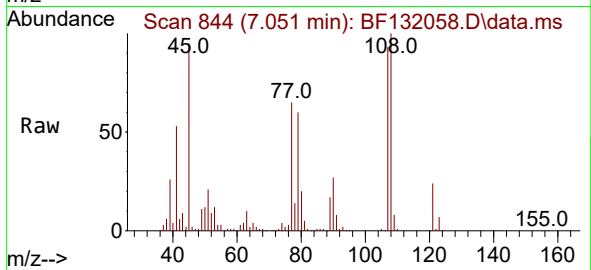




#16  
 2,2'-oxybis(1-Chloropropane)  
 Concen: 42.647 ng  
 RT: 7.051 min Scan# 844  
 Delta R.T. -0.006 min  
 Lab File: BF132058.D  
 Acq: 13 Jan 2023 14:23

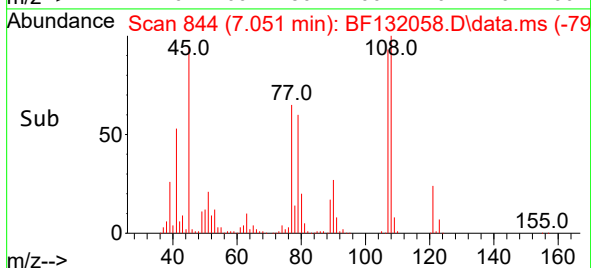
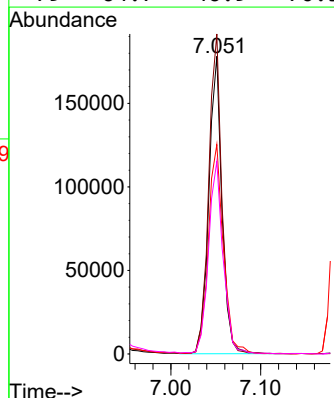
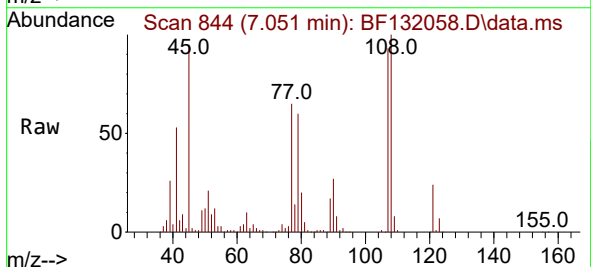
Instrument : BNA\_F  
 ClientSampleId : PB150221BS

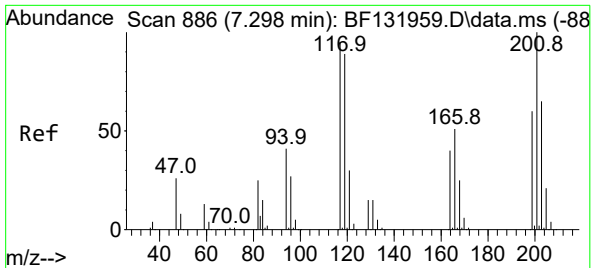
Tgt Ion	Resp	Lower	Upper
45	262138		
77	69.3	0.0	38.1#
79	63.7	0.0	34.6#



#17  
 2-Methylphenol  
 Concen: 41.742 ng  
 RT: 7.051 min Scan# 844  
 Delta R.T. 0.006 min  
 Lab File: BF132058.D  
 Acq: 13 Jan 2023 14:23

Tgt Ion	Resp	Lower	Upper
107	181051		
108	107.5	90.0	135.0
77	70.4	48.8	73.2
79	64.7	46.9	70.3



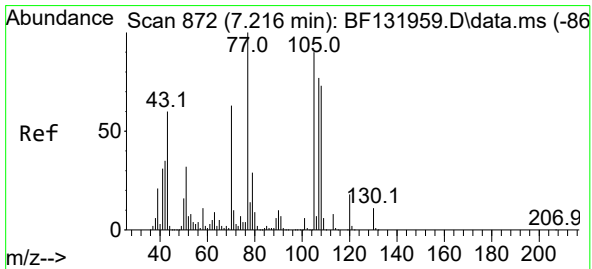
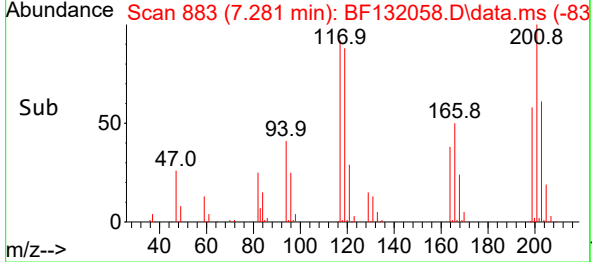
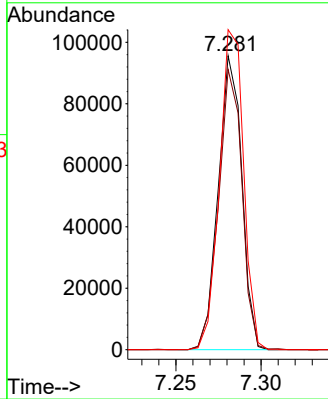
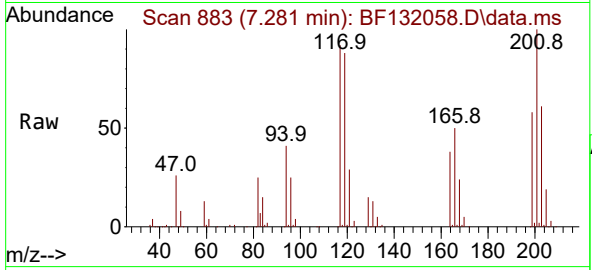


#18  
 Hexachloroethane  
 Concen: 45.049 ng  
 RT: 7.281 min Scan# 811  
 Delta R.T. -0.000 min  
 Lab File: BF132058.D  
 Acq: 13 Jan 2023 14:23

Instrument : BNA\_F  
 Client SampleId : PB150221BS

Tgt Ion:117 Resp: 92021

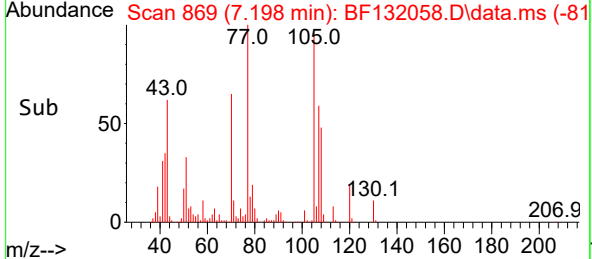
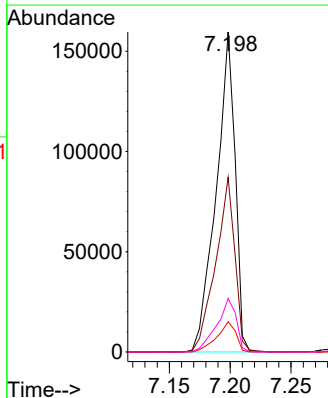
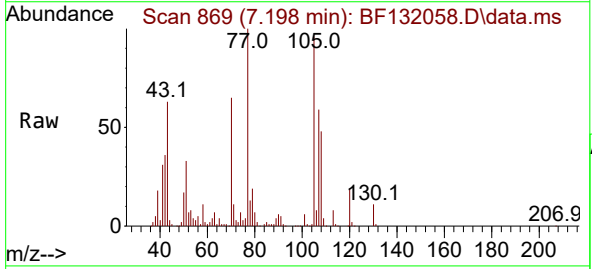
Ion	Ratio	Lower	Upper
117	100		
119	95.3	75.4	113.0
201	108.8	84.2	126.4

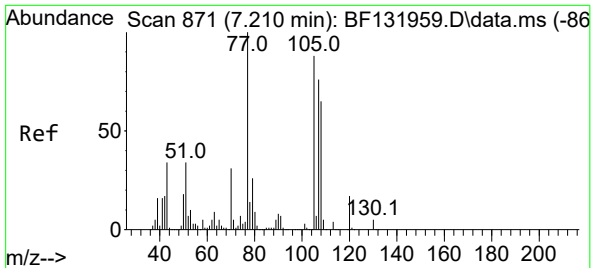


#19  
 n-Nitroso-di-n-propylamine  
 Concen: 41.311 ng  
 RT: 7.198 min Scan# 869  
 Delta R.T. -0.000 min  
 Lab File: BF132058.D  
 Acq: 13 Jan 2023 14:23

Tgt Ion: 70 Resp: 173087

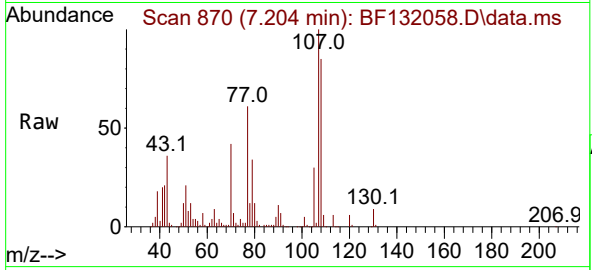
Ion	Ratio	Lower	Upper
70	100		
42	54.6	44.3	66.5
101	9.5	7.5	11.3
130	16.7	14.3	21.5





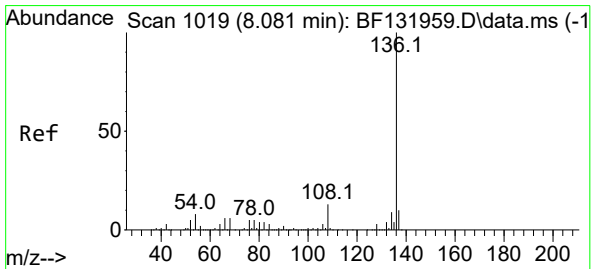
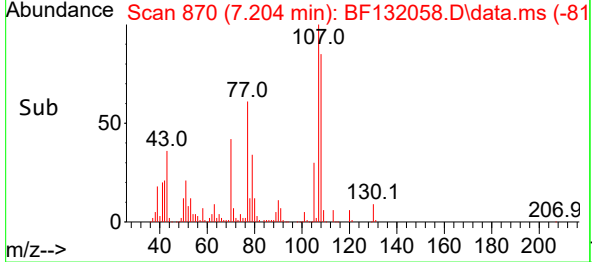
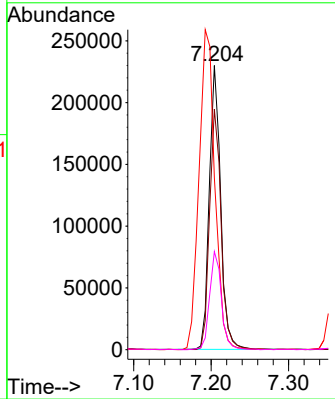
#20  
 3+4-Methylphenols  
 Concen: 41.927 ng  
 RT: 7.204 min Scan# 81  
 Delta R.T. 0.006 min  
 Lab File: BF132058.D  
 Acq: 13 Jan 2023 14:23

Instrument : BNA\_F  
 Client Sample Id : PB150221BS



Tgt Ion: 107 Resp: 233467

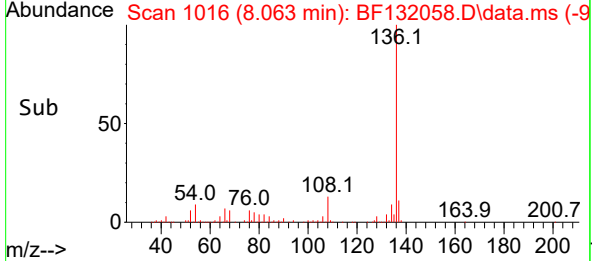
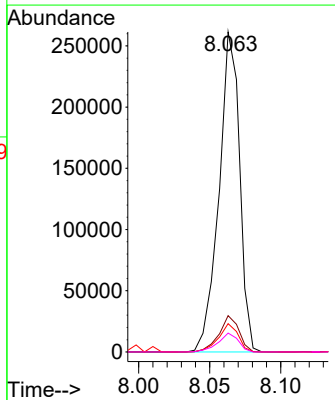
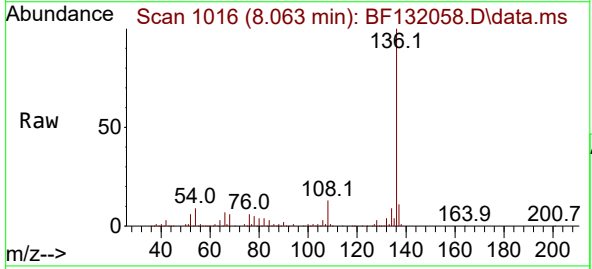
Ion	Ratio	Lower	Upper
107	100		
108	84.7	65.1	105.1
77	60.5	111.2	151.2#
79	34.5	14.4	54.4

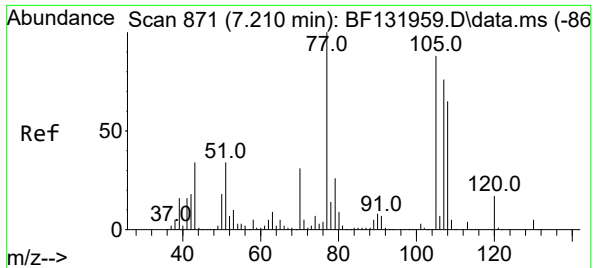


#21  
 Naphthalene-d8  
 Concen: 20.000 ng  
 RT: 8.063 min Scan# 1016  
 Delta R.T. -0.000 min  
 Lab File: BF132058.D  
 Acq: 13 Jan 2023 14:23

Tgt Ion: 136 Resp: 263534

Ion	Ratio	Lower	Upper
136	100		
137	11.3	8.2	12.2
54	8.9	6.6	9.8
68	5.9	4.5	6.7

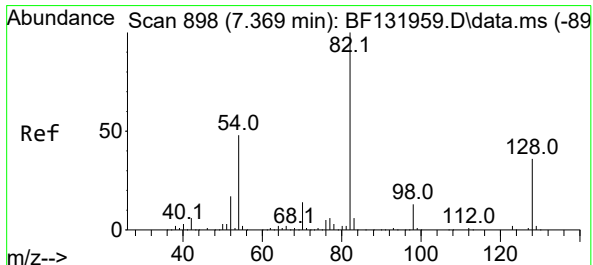
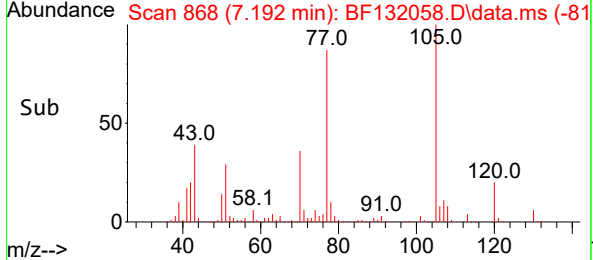
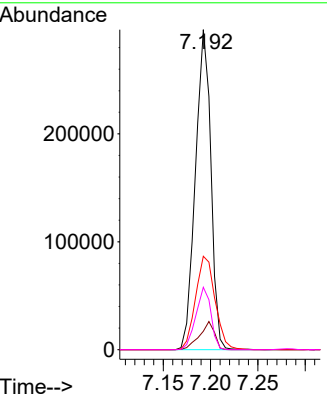
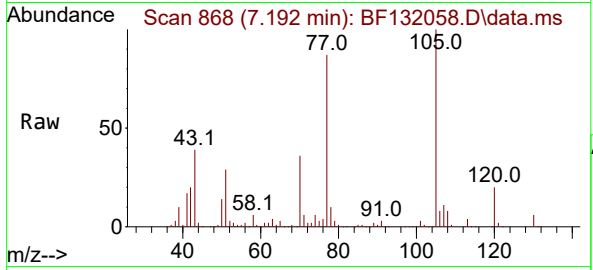




#22  
 Acetophenone  
 Concen: 43.688 ng  
 RT: 7.192 min Scan# 80  
 Delta R.T. -0.000 min  
 Lab File: BF132058.D  
 Acq: 13 Jan 2023 14:23

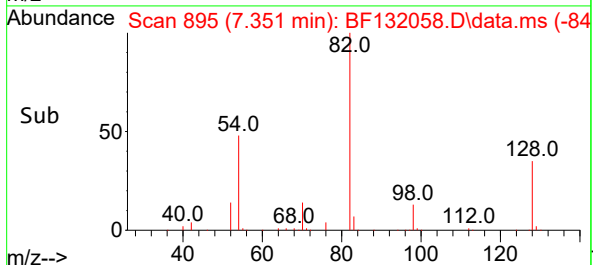
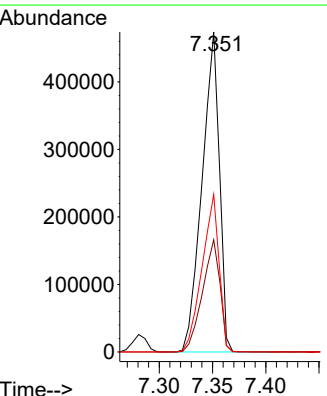
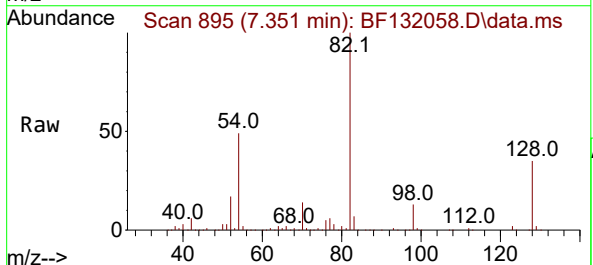
Instrument :  
 BNA\_F  
 ClientSampleId :  
 PB150221BS

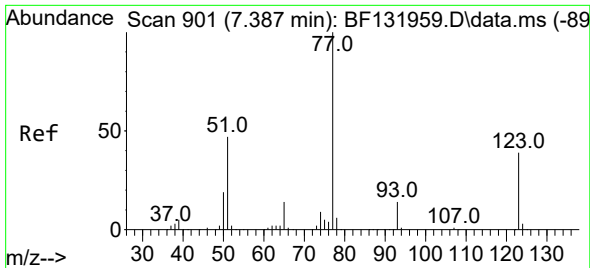
Tgt Ion:105 Resp: 335214  
 Ion Ratio Lower Upper  
 105 100  
 71 5.7 4.6 7.0  
 51 29.2 30.6 46.0#  
 120 19.5 15.3 22.9



#23  
 Nitrobenzene-d5  
 Concen: 84.512 ng  
 RT: 7.351 min Scan# 895  
 Delta R.T. -0.000 min  
 Lab File: BF132058.D  
 Acq: 13 Jan 2023 14:23

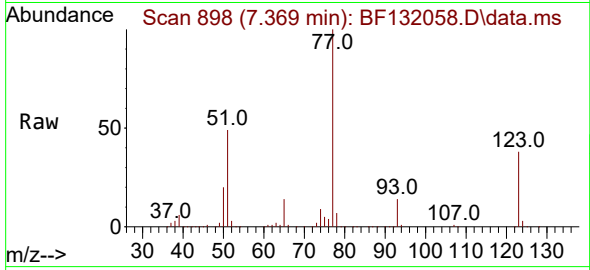
Tgt Ion: 82 Resp: 536626  
 Ion Ratio Lower Upper  
 82 100  
 128 35.1 28.7 43.1  
 54 49.2 38.1 57.1



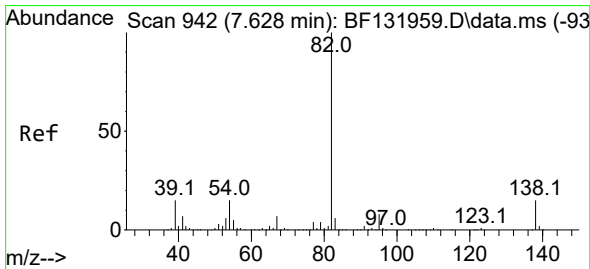
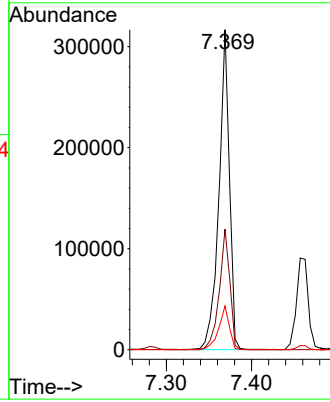
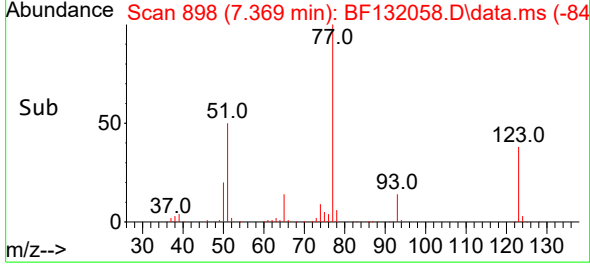


#24  
 Nitrobenzene  
 Concen: 42.023 ng  
 RT: 7.369 min Scan# 89  
 Delta R.T. -0.000 min  
 Lab File: BF132058.D  
 Acq: 13 Jan 2023 14:23

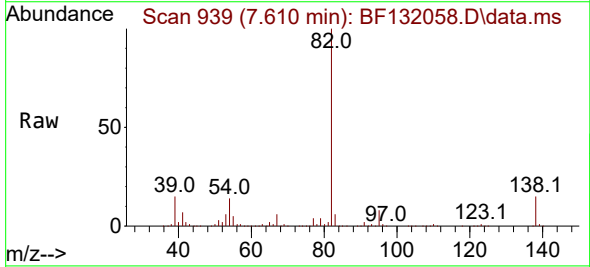
Instrument :  
 BNA\_F  
 Client SampleId :  
 PB150221BS



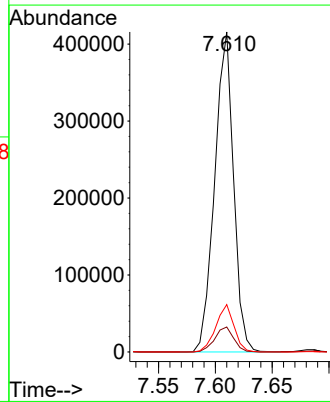
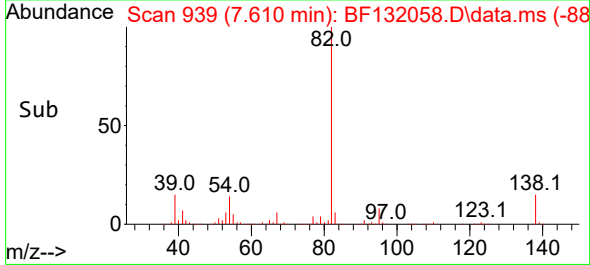
Tgt Ion: 77 Resp: 271647  
 Ion Ratio Lower Upper  
 77 100  
 123 37.7 30.9 46.3  
 65 13.7 10.8 16.2

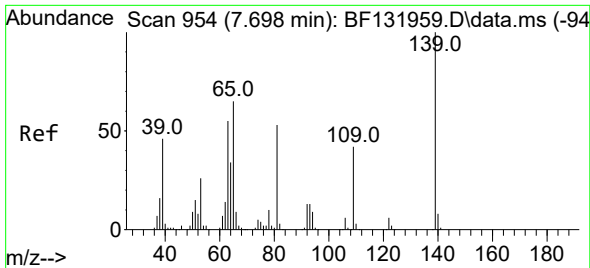


#25  
 Isophorone  
 Concen: 40.451 ng  
 RT: 7.610 min Scan# 939  
 Delta R.T. -0.000 min  
 Lab File: BF132058.D  
 Acq: 13 Jan 2023 14:23



Tgt Ion: 82 Resp: 479842  
 Ion Ratio Lower Upper  
 82 100  
 95 7.8 6.5 9.7  
 138 14.8 11.9 17.9



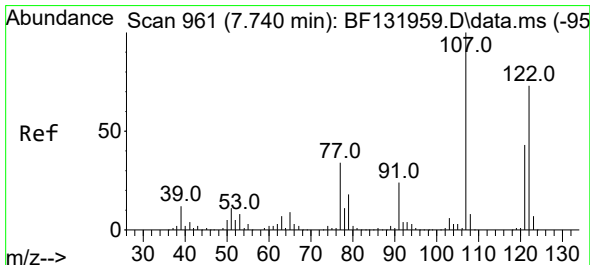
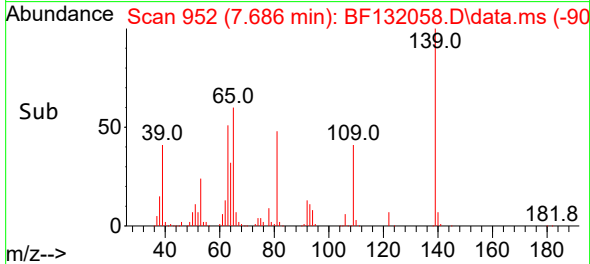
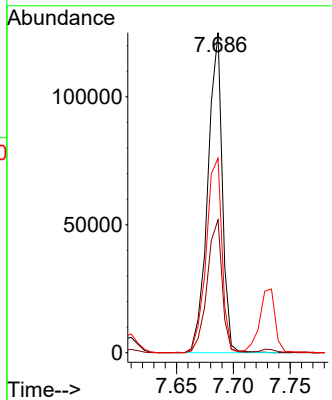
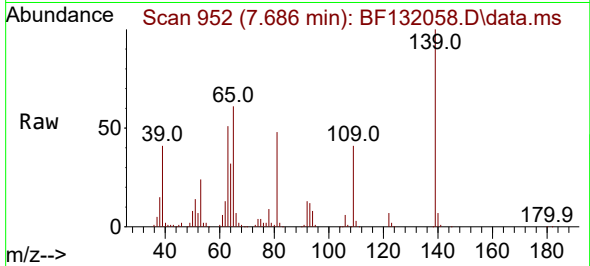


#26  
 2-Nitrophenol  
 Concen: 43.567 ng  
 RT: 7.686 min Scan# 91  
 Delta R.T. 0.006 min  
 Lab File: BF132058.D  
 Acq: 13 Jan 2023 14:23

Instrument : BNA\_F  
 ClientSampleId : PB150221BS

Tgt Ion:139 Resp: 110813

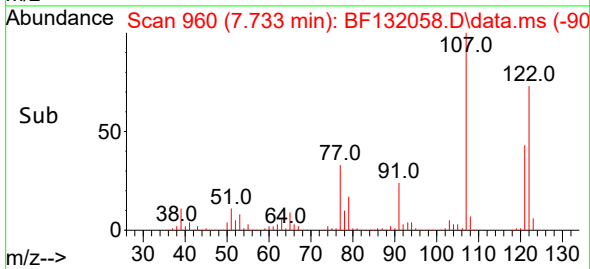
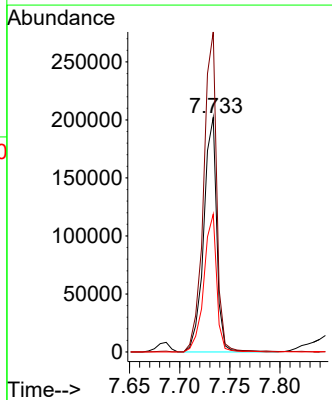
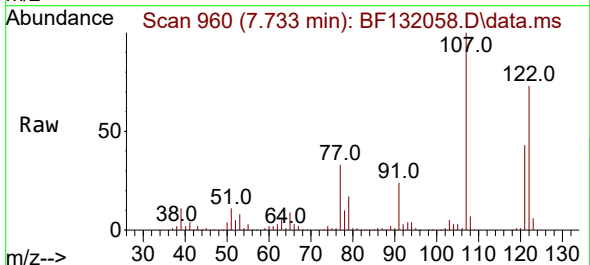
Ion	Ratio	Lower	Upper
139	100		
109	41.5	33.9	50.9
65	60.7	51.6	77.4



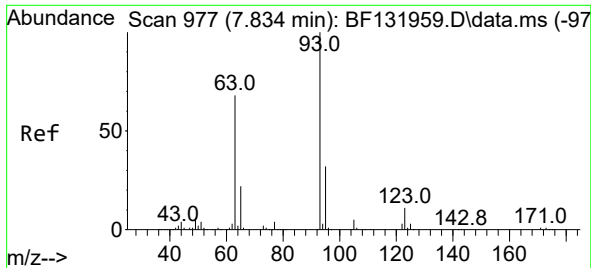
#27  
 2,4-Dimethylphenol  
 Concen: 43.384 ng  
 RT: 7.733 min Scan# 960  
 Delta R.T. 0.006 min  
 Lab File: BF132058.D  
 Acq: 13 Jan 2023 14:23

Tgt Ion:122 Resp: 184187

Ion	Ratio	Lower	Upper
122	100		
107	136.4	109.4	164.0
121	58.8	47.2	70.8







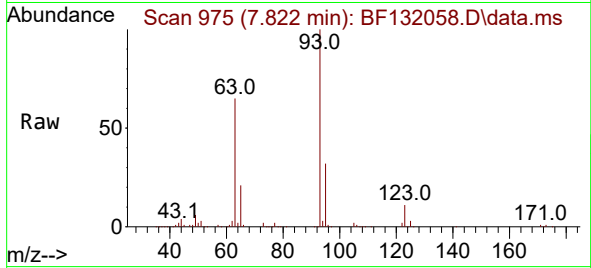
#28  
 bis(2-Chloroethoxy)methane  
 Concen: 40.335 ng  
 RT: 7.822 min Scan# 91  
 Delta R.T. 0.006 min  
 Lab File: BF132058.D  
 Acq: 13 Jan 2023 14:23

Instrument :

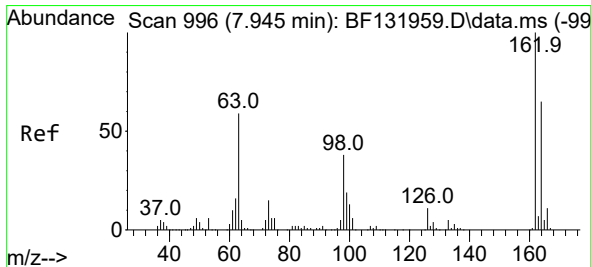
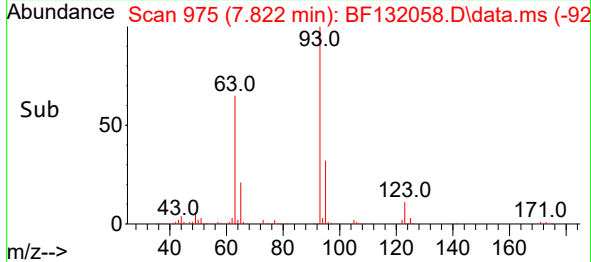
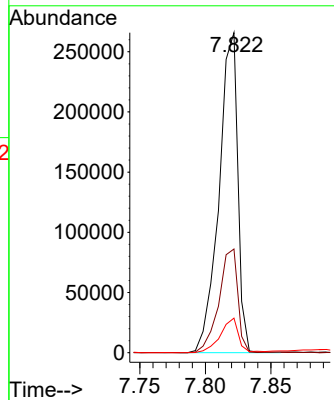
BNA\_F

ClientSampleId :

PB150221BS

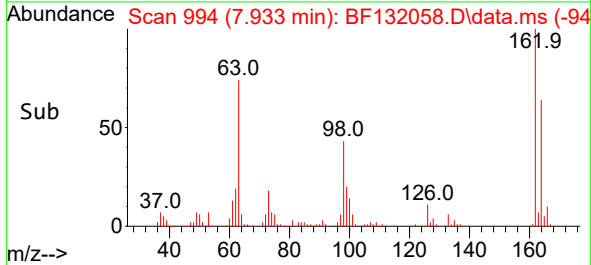
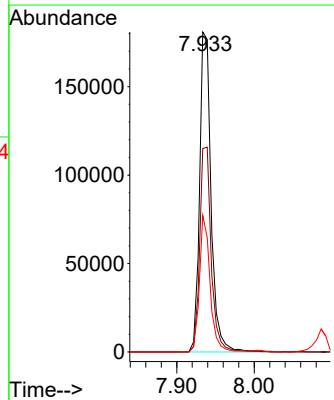
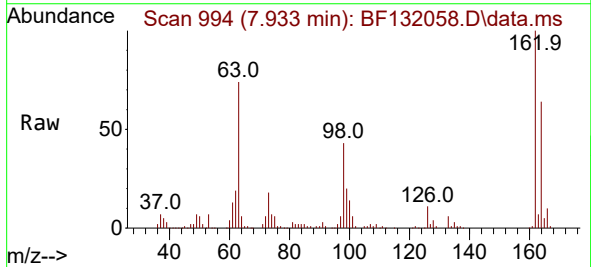


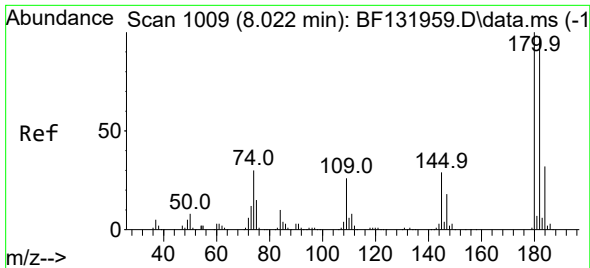
Tgt Ion: 93 Resp: 264809  
 Ion Ratio Lower Upper  
 93 100  
 95 32.4 25.8 38.6  
 123 10.8 8.4 12.6



#29  
 2,4-Dichlorophenol  
 Concen: 42.840 ng  
 RT: 7.933 min Scan# 994  
 Delta R.T. -0.000 min  
 Lab File: BF132058.D  
 Acq: 13 Jan 2023 14:23

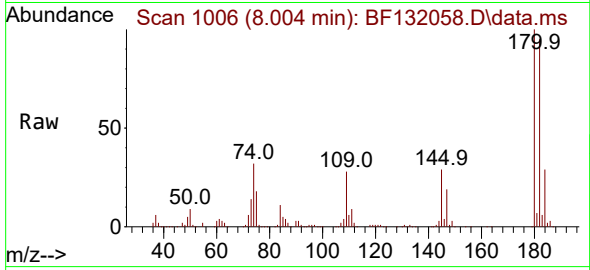
Tgt Ion:162 Resp: 186294  
 Ion Ratio Lower Upper  
 162 100  
 164 63.6 45.2 85.2  
 98 42.7 17.5 57.5



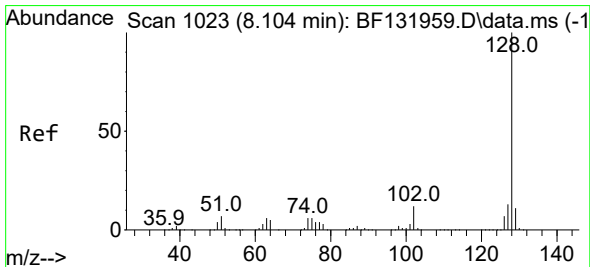
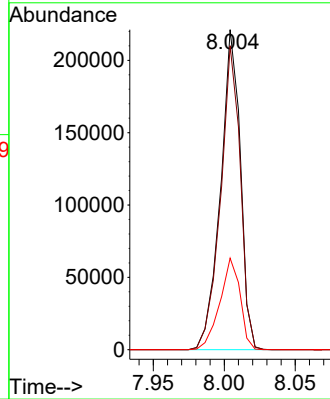
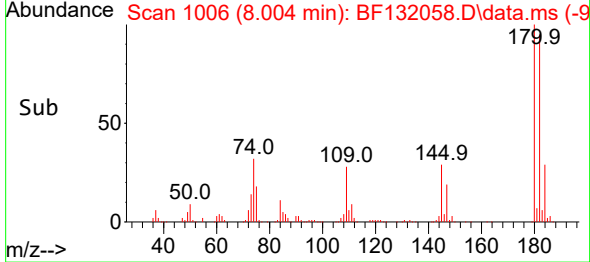


#30  
 1,2,4-Trichlorobenzene  
 Concen: 42.960 ng  
 RT: 8.004 min Scan# 1006  
 Delta R.T. -0.000 min  
 Lab File: BF132058.D  
 Acq: 13 Jan 2023 14:23

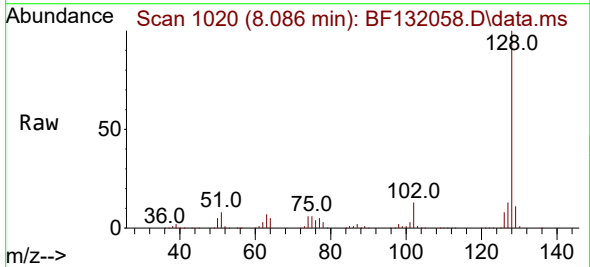
Instrument :  
 BNA\_F  
 ClientSampleId :  
 PB150221BS



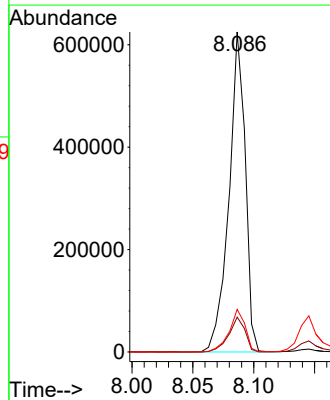
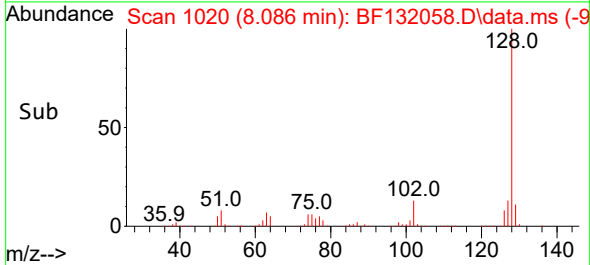
Tgt Ion:180 Resp: 213954  
 Ion Ratio Lower Upper  
 180 100  
 182 95.0 78.4 117.6  
 145 28.6 23.2 34.8

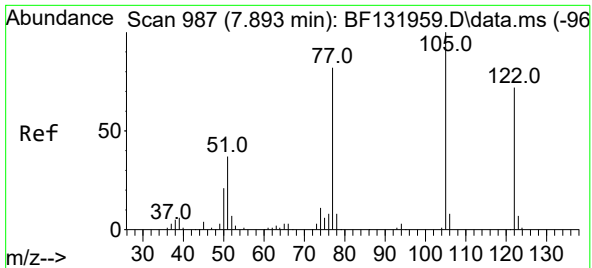


#31  
 Naphthalene  
 Concen: 41.776 ng  
 RT: 8.086 min Scan# 1020  
 Delta R.T. -0.000 min  
 Lab File: BF132058.D  
 Acq: 13 Jan 2023 14:23



Tgt Ion:128 Resp: 581823  
 Ion Ratio Lower Upper  
 128 100  
 129 10.9 8.8 13.2  
 127 13.3 10.5 15.7



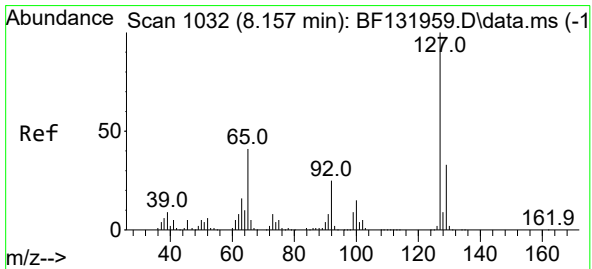
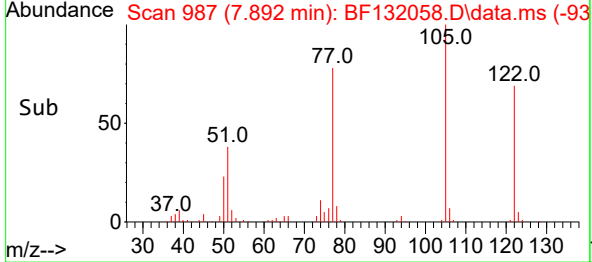
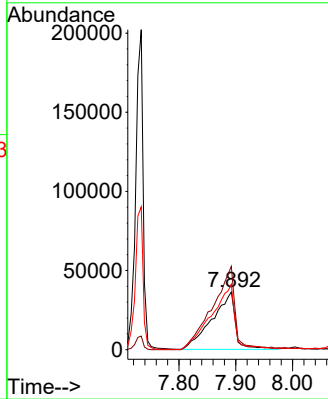
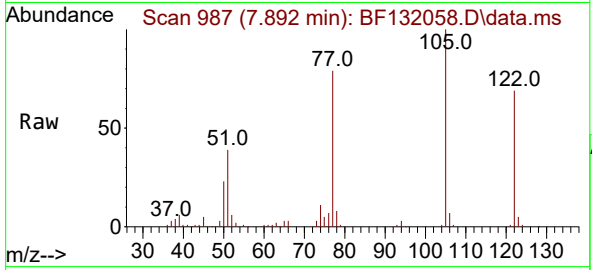


#32  
 Benzoic acid  
 Concen: 42.176 ng  
 RT: 7.892 min Scan# 91  
 Delta R.T. 0.018 min  
 Lab File: BF132058.D  
 Acq: 13 Jan 2023 14:23

Instrument : BNA\_F  
 ClientSampleId : PB150221BS

Tgt Ion:122 Resp: 103811

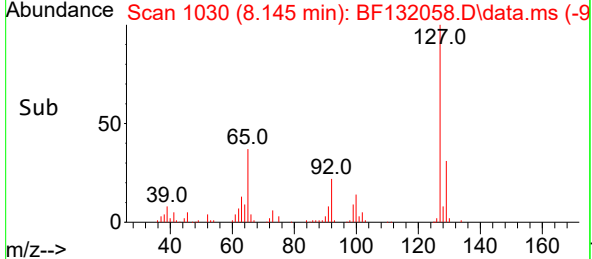
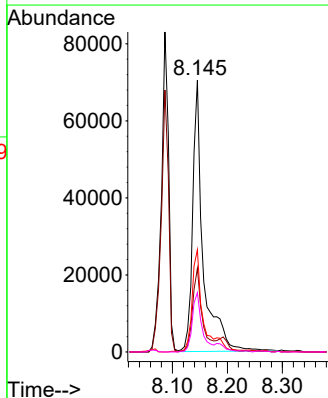
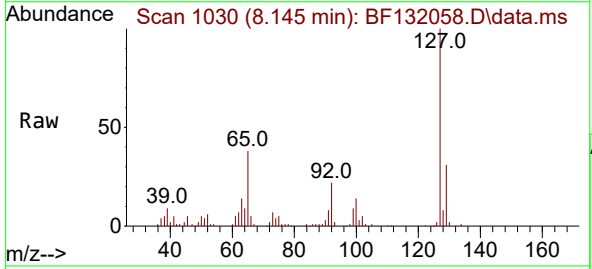
Ion	Ratio	Lower	Upper
122	100		
105	144.0	116.3	156.3
77	113.4	92.7	132.7

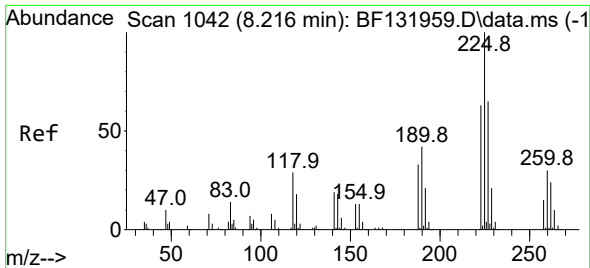


#33  
 4-Chloroaniline  
 Concen: 16.368 ng  
 RT: 8.145 min Scan# 1030  
 Delta R.T. -0.000 min  
 Lab File: BF132058.D  
 Acq: 13 Jan 2023 14:23

Tgt Ion:127 Resp: 94071

Ion	Ratio	Lower	Upper
127	100		
129	30.8	26.5	39.7
65	37.6	33.1	49.7
92	21.9	19.8	29.8





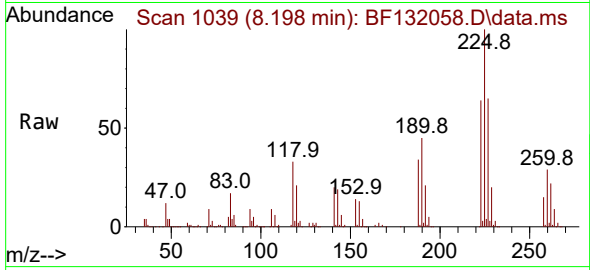
#34  
 Hexachlorobutadiene  
 Concen: 41.957 ng  
 RT: 8.198 min Scan# 1096  
 Delta R.T. -0.000 min  
 Lab File: BF132058.D  
 Acq: 13 Jan 2023 14:23

Instrument :

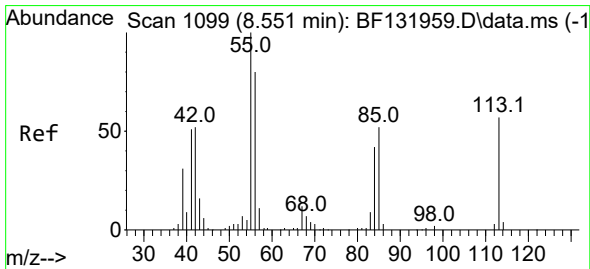
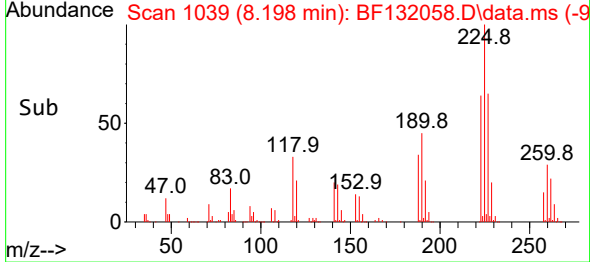
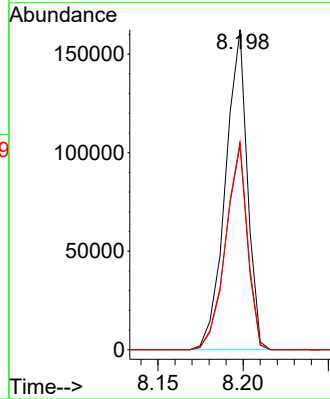
BNA\_F

Client SampleId :

PB150221BS

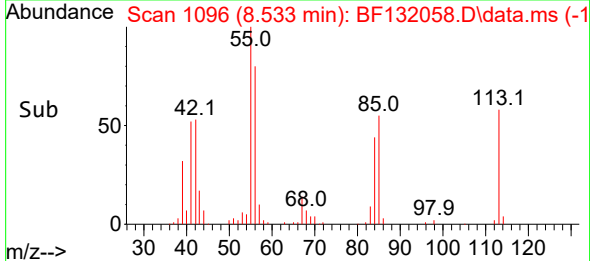
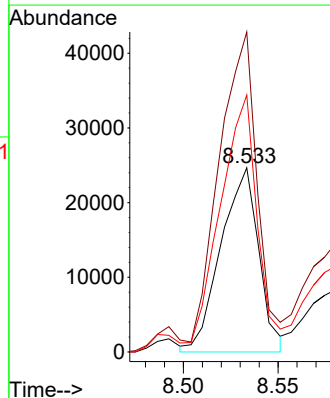
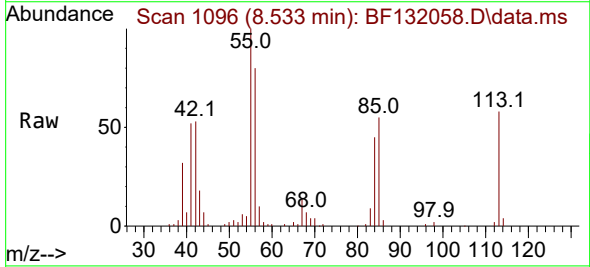


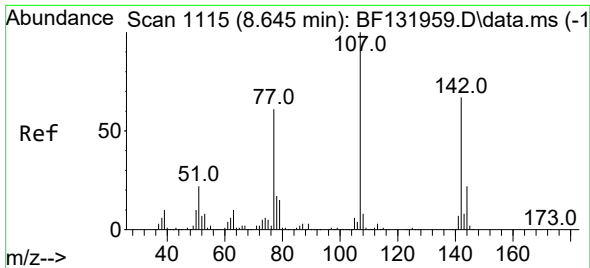
Tgt Ion:225 Resp: 144876  
 Ion Ratio Lower Upper  
 225 100  
 223 63.8 50.6 75.8  
 227 65.0 51.6 77.4



#35  
 Caprolactam  
 Concen: 26.786 ng  
 RT: 8.533 min Scan# 1096  
 Delta R.T. 0.006 min  
 Lab File: BF132058.D  
 Acq: 13 Jan 2023 14:23

Tgt Ion:113 Resp: 34211  
 Ion Ratio Lower Upper  
 113 100  
 55 173.8 154.4 194.4  
 56 139.6 119.6 159.6





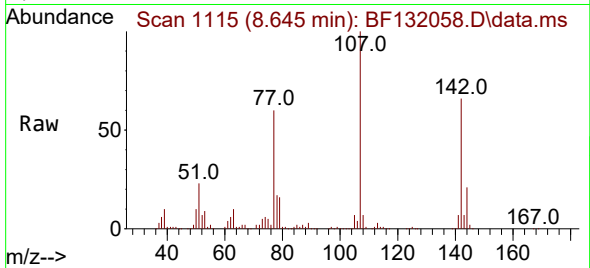
#36  
 4-Chloro-3-methylphenol  
 Concen: 42.308 ng  
 RT: 8.645 min Scan# 1115  
 Delta R.T. 0.012 min  
 Lab File: BF132058.D  
 Acq: 13 Jan 2023 14:23

Instrument :

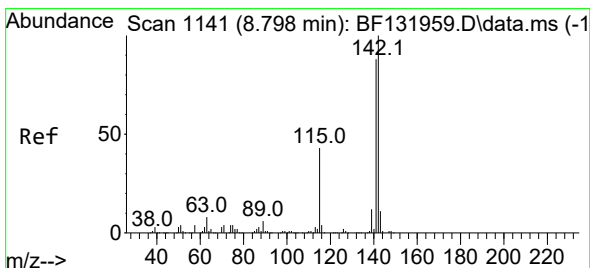
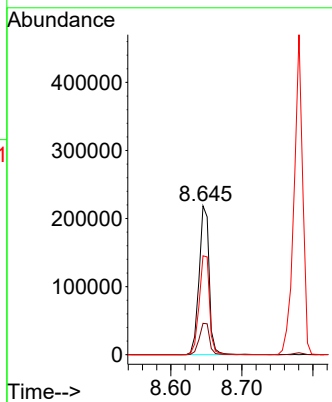
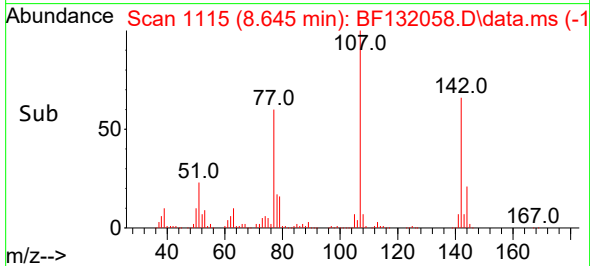
BNA\_F

ClientSampleId :

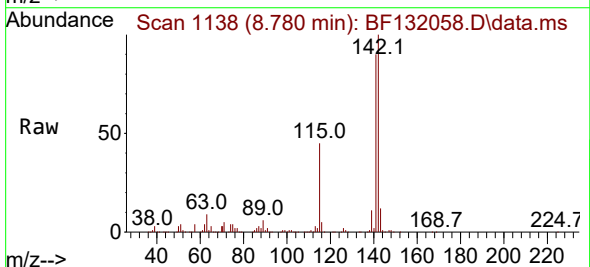
PB150221BS



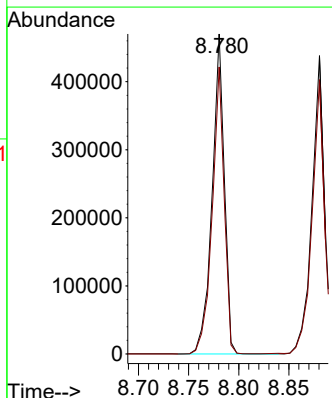
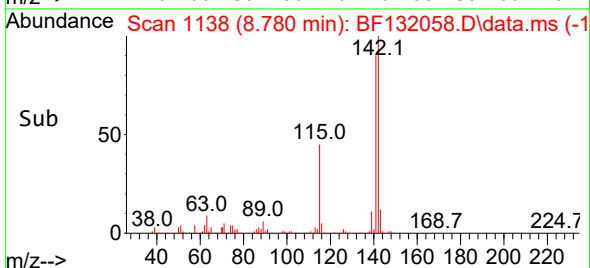
Tgt Ion:107 Resp: 215934  
 Ion Ratio Lower Upper  
 107 100  
 144 21.1 17.4 26.2  
 142 66.4 53.7 80.5

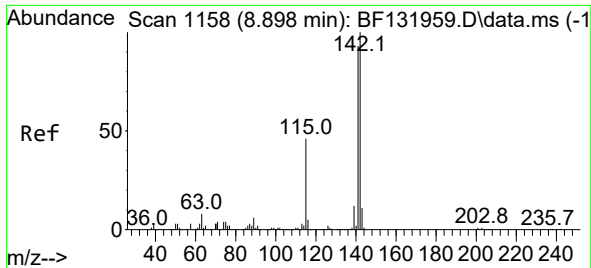


#37  
 2-Methylnaphthalene  
 Concen: 39.760 ng  
 RT: 8.780 min Scan# 1138  
 Delta R.T. -0.000 min  
 Lab File: BF132058.D  
 Acq: 13 Jan 2023 14:23



Tgt Ion:142 Resp: 397705  
 Ion Ratio Lower Upper  
 142 100  
 141 89.7 70.6 106.0

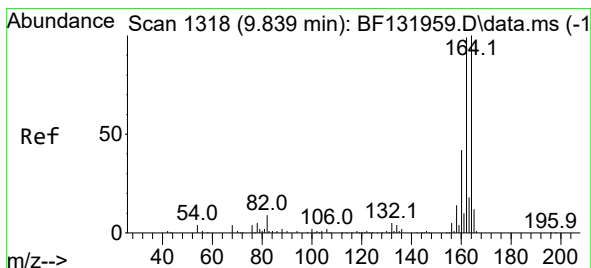
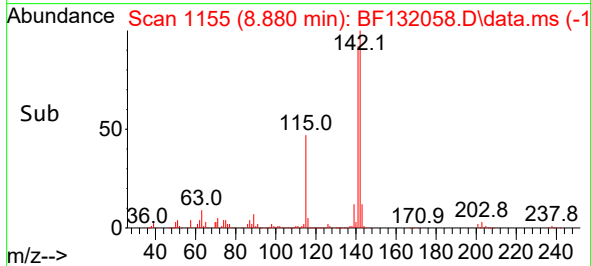
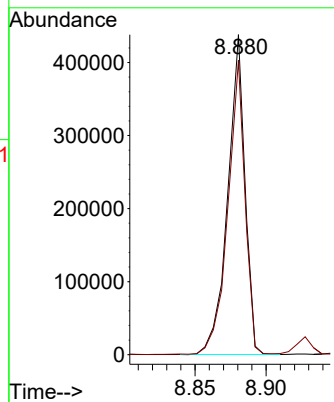
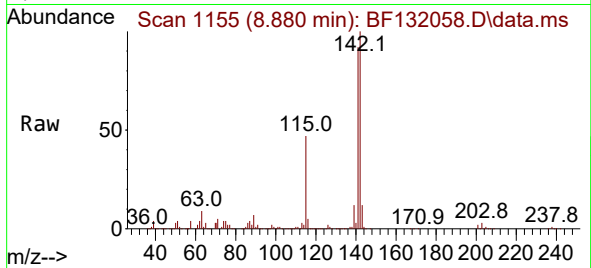




#38  
 1-Methylnaphthalene  
 Concen: 39.744 ng  
 RT: 8.880 min Scan# 1155  
 Delta R.T. -0.000 min  
 Lab File: BF132058.D  
 Acq: 13 Jan 2023 14:23

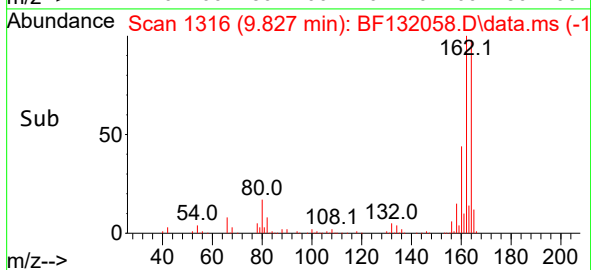
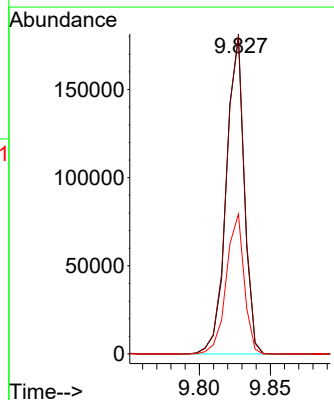
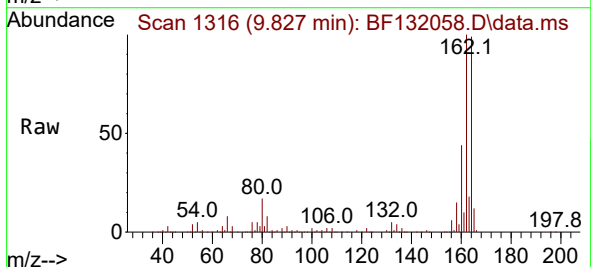
Instrument : BNA\_F  
 ClientSampleId : PB150221BS

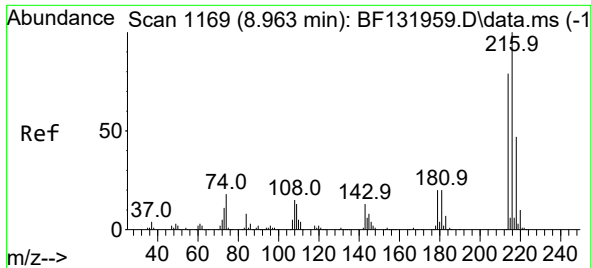
Tgt Ion:142 Resp: 368309  
 Ion Ratio Lower Upper  
 142 100  
 141 92.0 74.3 111.5



#39  
 Acenaphthene-d10  
 Concen: 20.000 ng  
 RT: 9.827 min Scan# 1316  
 Delta R.T. -0.000 min  
 Lab File: BF132058.D  
 Acq: 13 Jan 2023 14:23

Tgt Ion:164 Resp: 157235  
 Ion Ratio Lower Upper  
 164 100  
 162 101.2 79.4 119.0  
 160 44.3 33.9 50.9



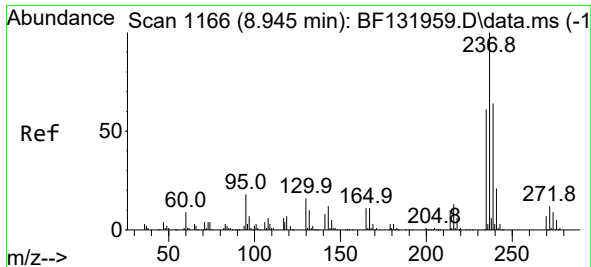
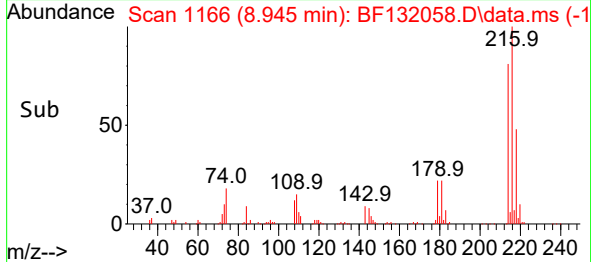
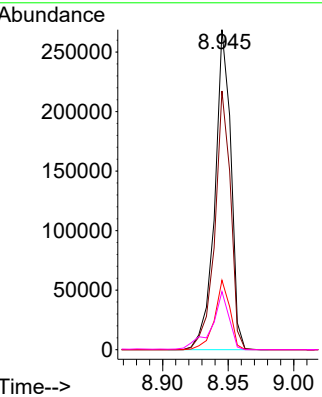
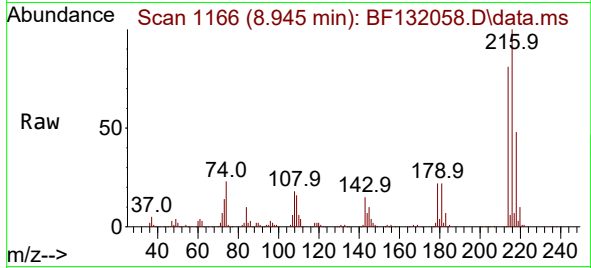


#40  
 1,2,4,5-Tetrachlorobenzene  
 Concen: 41.290 ng  
 RT: 8.945 min Scan# 1166  
 Delta R.T. -0.000 min  
 Lab File: BF132058.D  
 Acq: 13 Jan 2023 14:23

Instrument : BNA\_F  
 ClientSampleId : PB150221BS

Tgt Ion:216 Resp: 228774

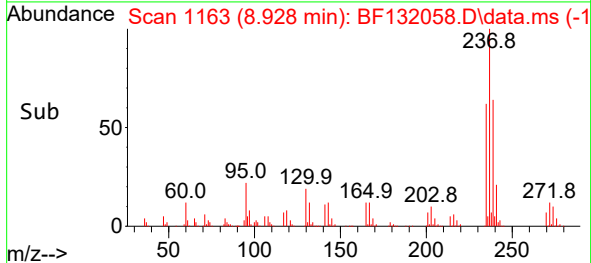
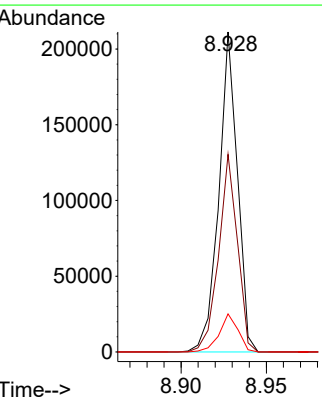
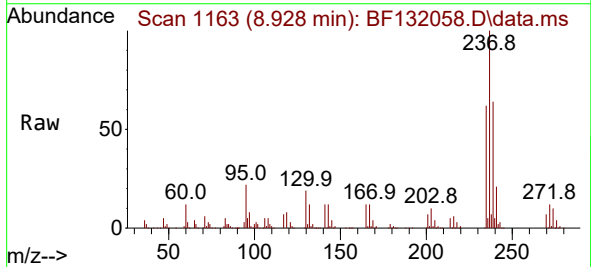
Ion	Ratio	Lower	Upper
216	100		
214	78.8	63.9	95.9
179	20.7	16.4	24.6
108	19.7	14.8	22.2

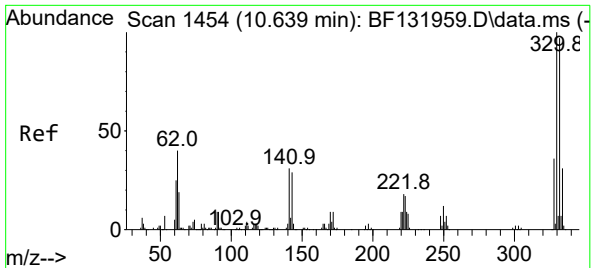


#41  
 Hexachlorocyclopentadiene  
 Concen: 60.413 ng  
 RT: 8.928 min Scan# 1163  
 Delta R.T. -0.000 min  
 Lab File: BF132058.D  
 Acq: 13 Jan 2023 14:23

Tgt Ion:237 Resp: 160415

Ion	Ratio	Lower	Upper
237	100		
235	61.8	41.2	81.2
272	11.9	0.0	31.7

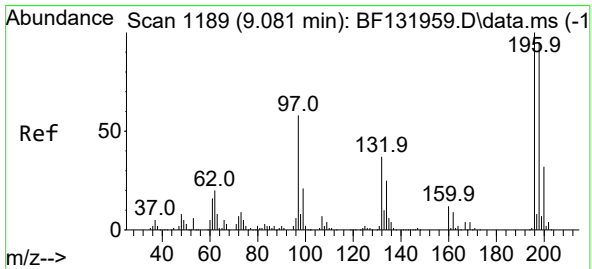
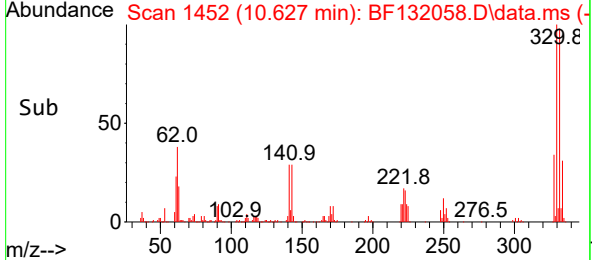
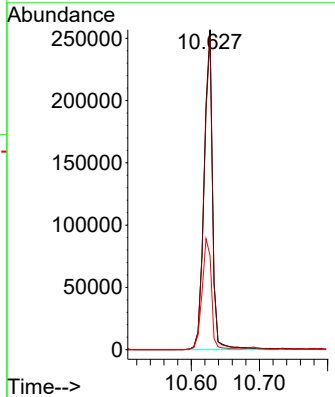
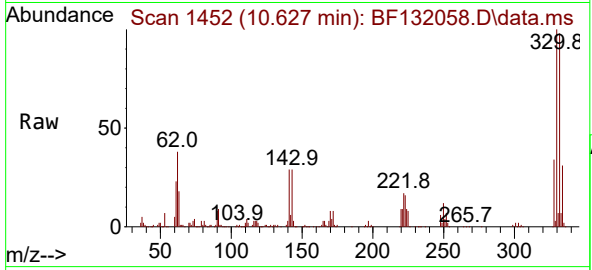




#42  
 2,4,6-Tribromophenol  
 Concen: 123.828 ng  
 RT: 10.627 min Scan# 1452  
 Delta R.T. 0.006 min  
 Lab File: BF132058.D  
 Acq: 13 Jan 2023 14:23

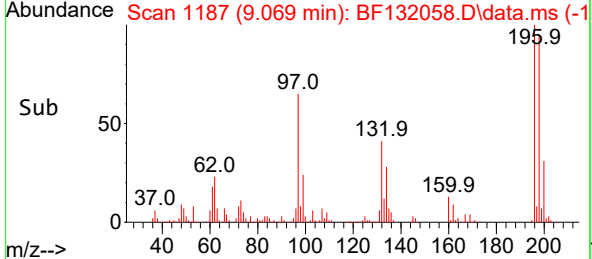
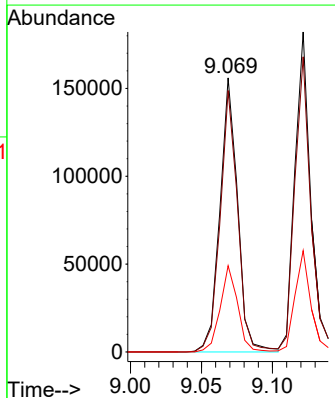
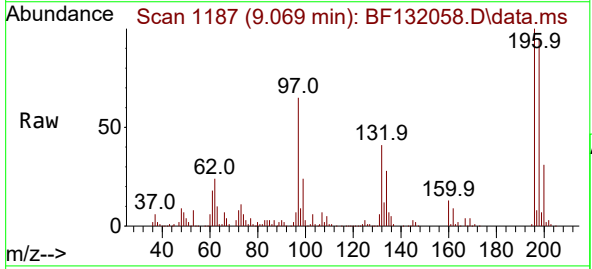
Instrument : BNA\_F  
 ClientSampleId : PB150221BS

Tgt Ion:330 Resp: 223864  
 Ion Ratio Lower Upper  
 330 100  
 332 97.3 76.9 115.3  
 141 38.1 31.3 46.9

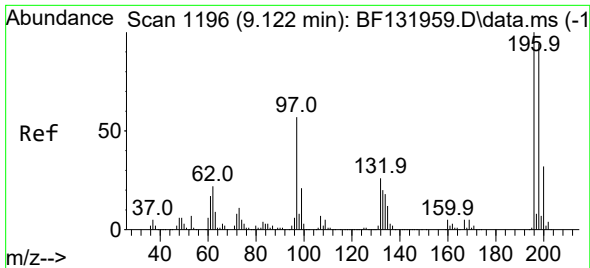


#43  
 2,4,6-Trichlorophenol  
 Concen: 40.468 ng  
 RT: 9.069 min Scan# 1187  
 Delta R.T. 0.006 min  
 Lab File: BF132058.D  
 Acq: 13 Jan 2023 14:23

Tgt Ion:196 Resp: 134963  
 Ion Ratio Lower Upper  
 196 100  
 198 95.4 76.3 114.5  
 200 31.4 25.8 38.6



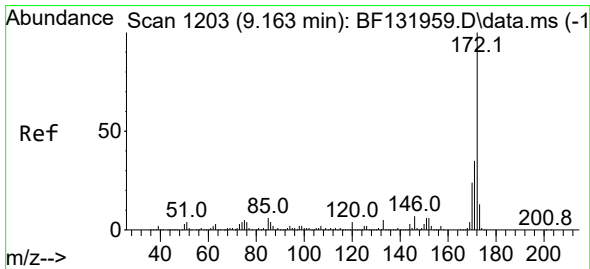
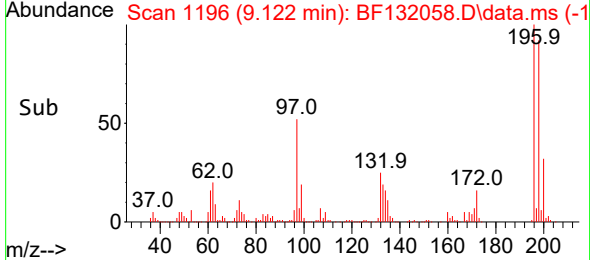
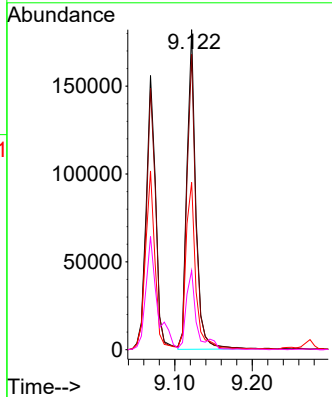
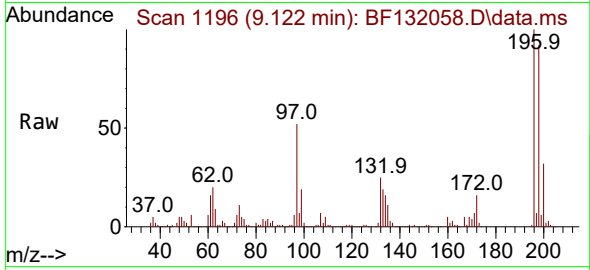




#44  
 2,4,5-Trichlorophenol  
 Concen: 37.388 ng  
 RT: 9.122 min Scan# 1196  
 Delta R.T. 0.012 min  
 Lab File: BF132058.D  
 Acq: 13 Jan 2023 14:23

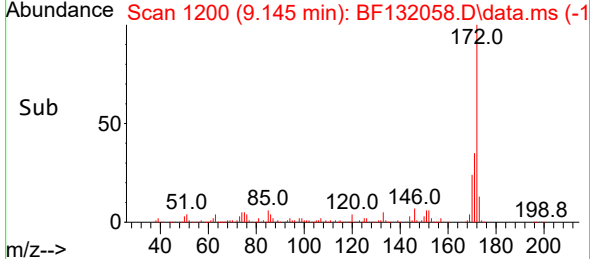
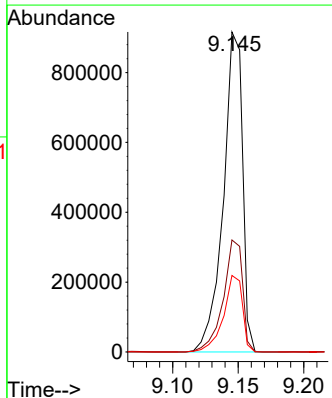
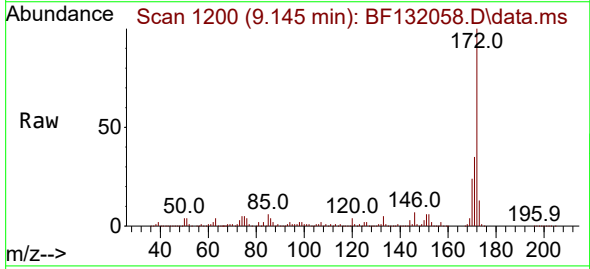
Instrument : BNA\_F  
 ClientSampleId : PB150221BS

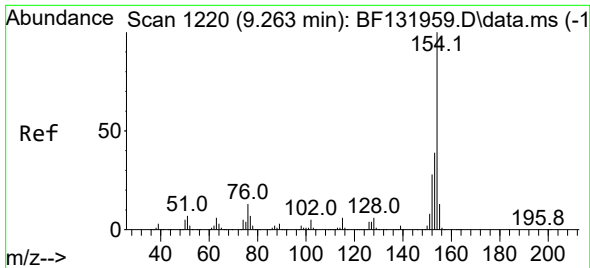
Tgt Ion	Resp	Lower	Upper
196	145165		
196	100		
198	92.3	75.3	112.9
97	52.3	45.6	68.4
132	24.7	20.9	31.3



#45  
 2-Fluorobiphenyl  
 Concen: 80.096 ng  
 RT: 9.145 min Scan# 1200  
 Delta R.T. -0.000 min  
 Lab File: BF132058.D  
 Acq: 13 Jan 2023 14:23

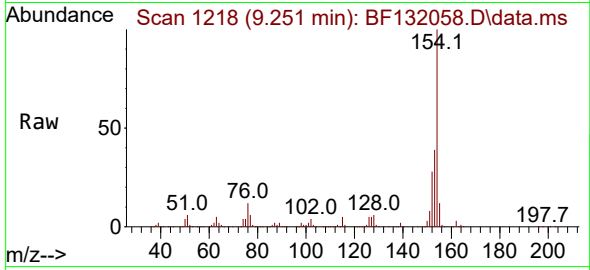
Tgt Ion	Resp	Lower	Upper
172	932903		
172	100		
171	35.0	28.0	42.0
170	23.9	18.9	28.3



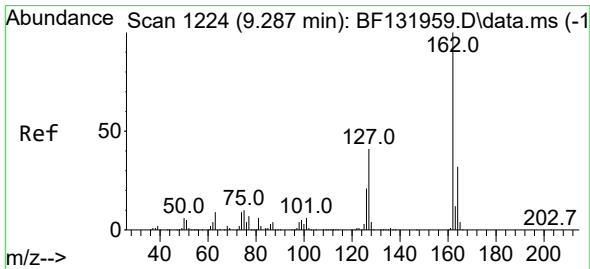
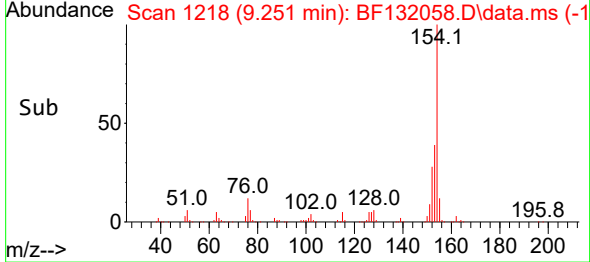
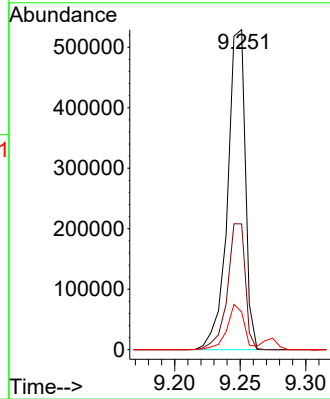


#46  
 1,1'-Biphenyl  
 Concen: 41.107 ng  
 RT: 9.251 min Scan# 11  
 Delta R.T. 0.006 min  
 Lab File: BF132058.D  
 Acq: 13 Jan 2023 14:23

Instrument :  
 BNA\_F  
 ClientSampleId :  
 PB150221BS

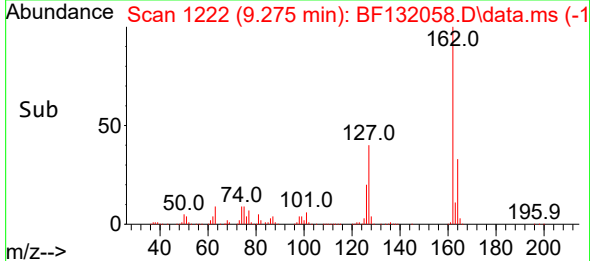
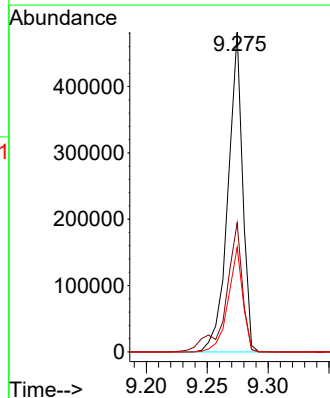
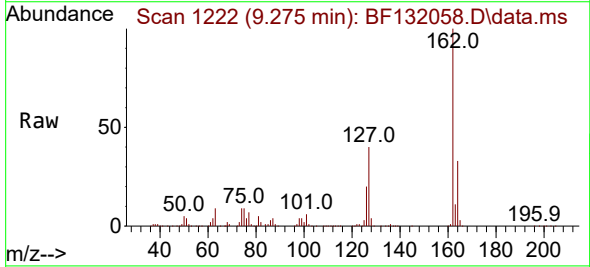


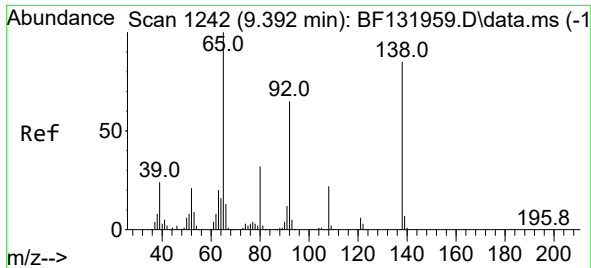
Tgt Ion:154 Resp: 498874  
 Ion Ratio Lower Upper  
 154 100  
 153 39.3 18.9 58.9  
 76 11.8 0.0 33.2



#47  
 2-Chloronaphthalene  
 Concen: 42.914 ng  
 RT: 9.275 min Scan# 1222  
 Delta R.T. -0.000 min  
 Lab File: BF132058.D  
 Acq: 13 Jan 2023 14:23

Tgt Ion:162 Resp: 404221  
 Ion Ratio Lower Upper  
 162 100  
 127 40.4 33.0 49.4  
 164 32.7 25.8 38.8



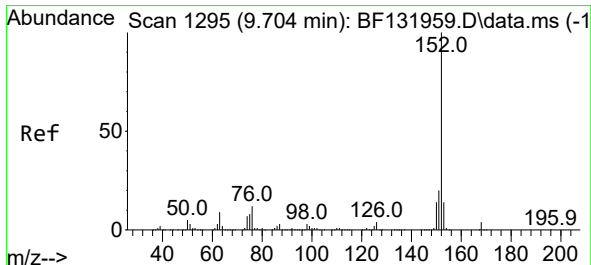
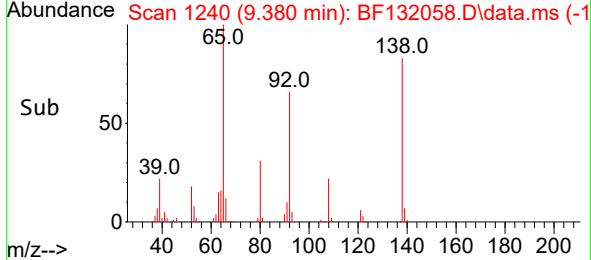
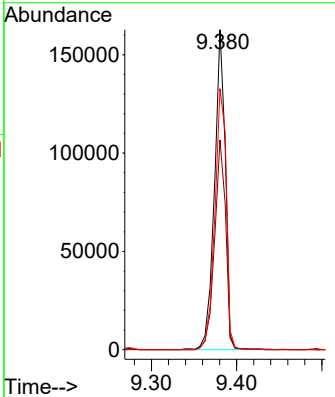
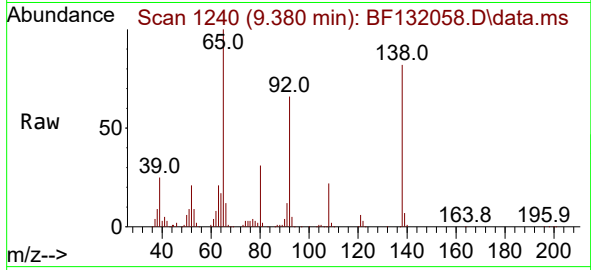


#48  
 2-Nitroaniline  
 Concen: 42.052 ng  
 RT: 9.380 min Scan# 11  
 Delta R.T. -0.000 min  
 Lab File: BF132058.D  
 Acq: 13 Jan 2023 14:23

Instrument : BNA\_F  
 Client Sample Id : PB150221BS

Tgt Ion: 65 Resp: 143868

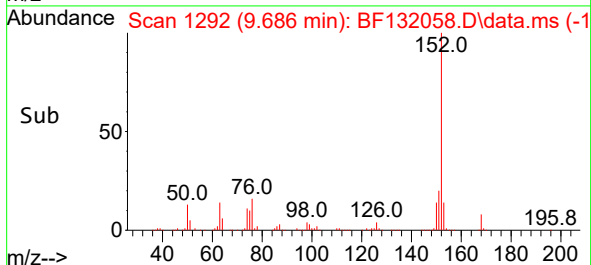
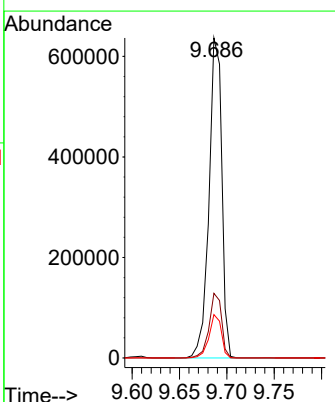
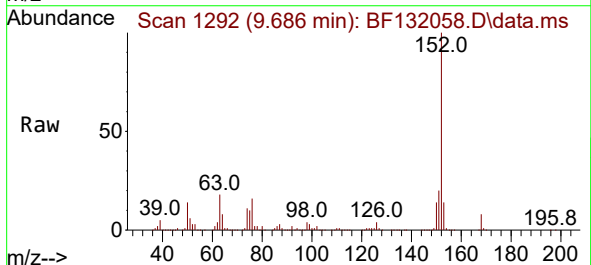
Ion	Ratio	Lower	Upper
65	100		
92	65.5	52.2	78.2
138	81.6	67.8	101.8

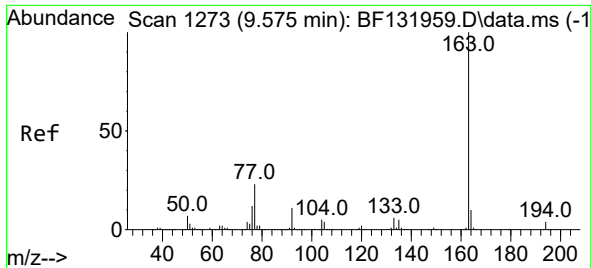


#49  
 Acenaphthylene  
 Concen: 40.801 ng  
 RT: 9.686 min Scan# 1292  
 Delta R.T. -0.000 min  
 Lab File: BF132058.D  
 Acq: 13 Jan 2023 14:23

Tgt Ion: 152 Resp: 596376

Ion	Ratio	Lower	Upper
152	100		
151	20.2	16.2	24.2
153	13.5	10.8	16.2

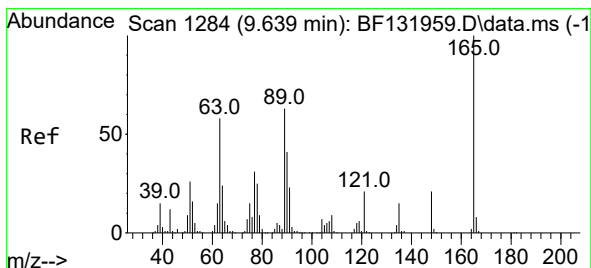
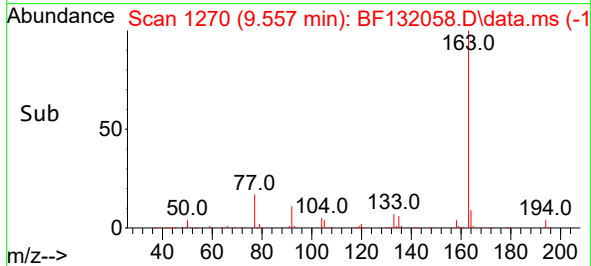
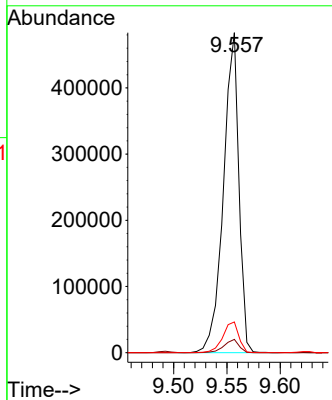
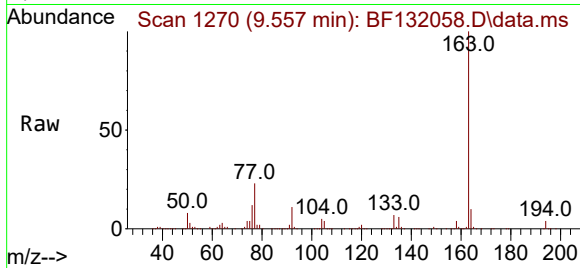




#50  
 Dimethylphthalate  
 Concen: 39.669 ng  
 RT: 9.557 min Scan# 11  
 Delta R.T. 0.006 min  
 Lab File: BF132058.D  
 Acq: 13 Jan 2023 14:23

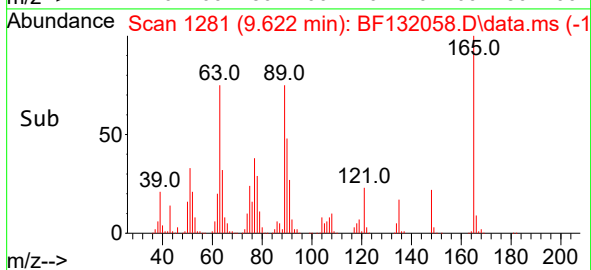
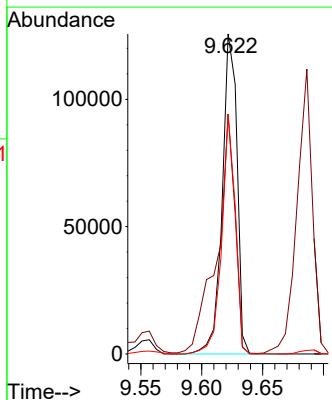
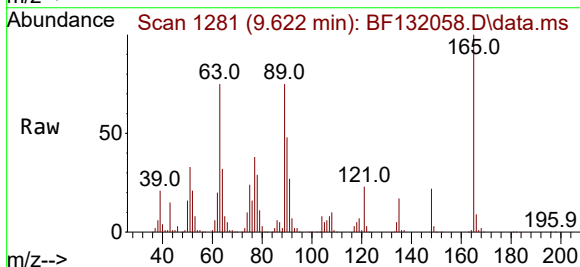
Instrument :  
 BNA\_F  
 ClientSampleId :  
 PB150221BS

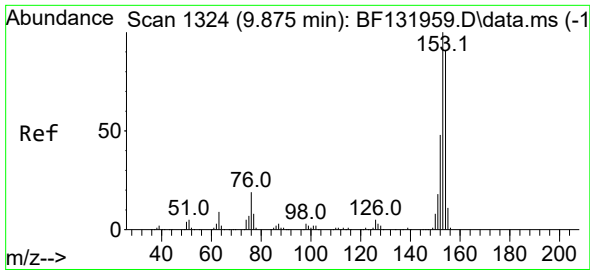
Tgt Ion:163 Resp: 486200  
 Ion Ratio Lower Upper  
 163 100  
 194 4.1 3.1 4.7  
 164 9.6 7.8 11.6



#51  
 2,6-Dinitrotoluene  
 Concen: 41.191 ng  
 RT: 9.622 min Scan# 1281  
 Delta R.T. -0.000 min  
 Lab File: BF132058.D  
 Acq: 13 Jan 2023 14:23

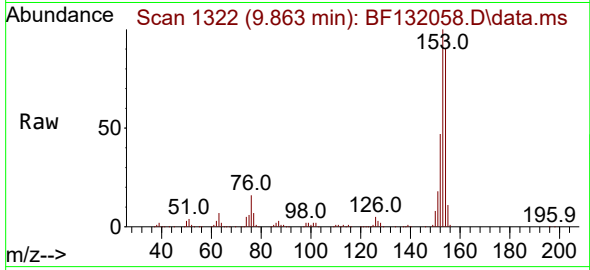
Tgt Ion:165 Resp: 106182  
 Ion Ratio Lower Upper  
 165 100  
 63 75.0 47.4 71.0#  
 89 75.0 50.2 75.2



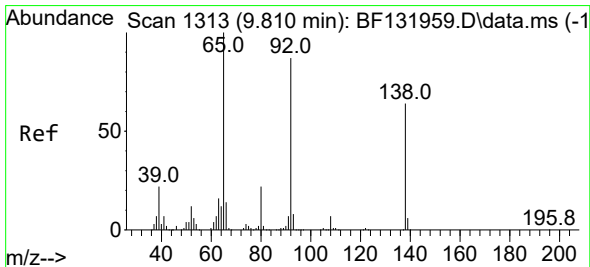
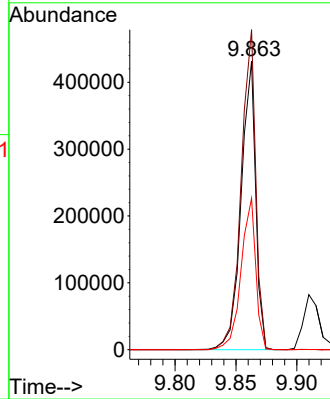
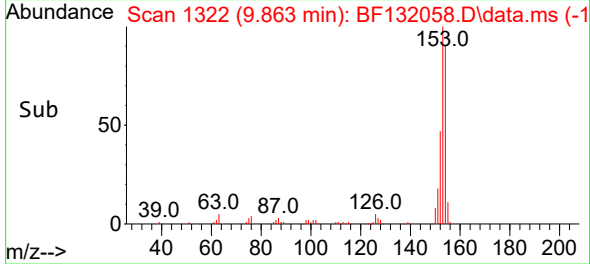


#52  
 Acenaphthene  
 Concen: 40.804 ng  
 RT: 9.863 min Scan# 11  
 Delta R.T. 0.006 min  
 Lab File: BF132058.D  
 Acq: 13 Jan 2023 14:23

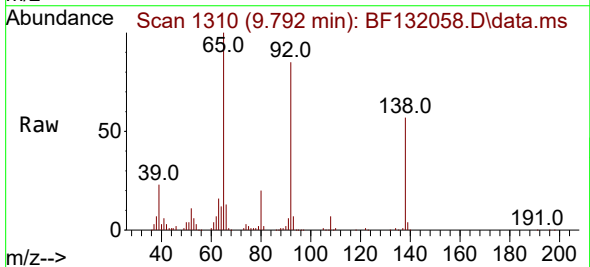
Instrument :  
 BNA\_F  
 ClientSampleId :  
 PB150221BS



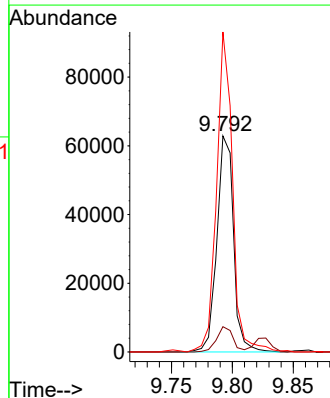
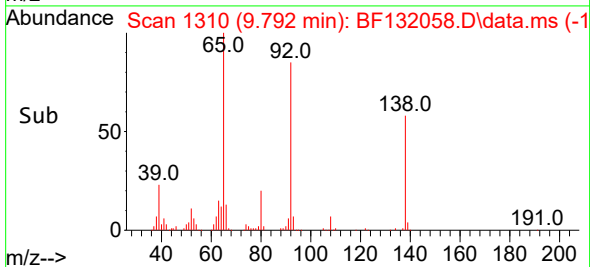
Tgt Ion:154 Resp: 358013  
 Ion Ratio Lower Upper  
 154 100  
 153 111.0 87.7 131.5  
 152 52.5 42.2 63.2

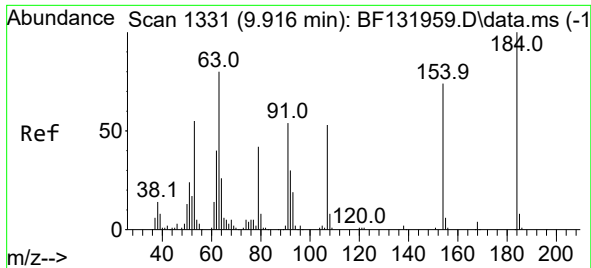


#53  
 3-Nitroaniline  
 Concen: 23.907 ng  
 RT: 9.792 min Scan# 1310  
 Delta R.T. -0.000 min  
 Lab File: BF132058.D  
 Acq: 13 Jan 2023 14:23



Tgt Ion:138 Resp: 59788  
 Ion Ratio Lower Upper  
 138 100  
 108 11.7 8.8 13.2  
 92 148.1 108.1 162.1

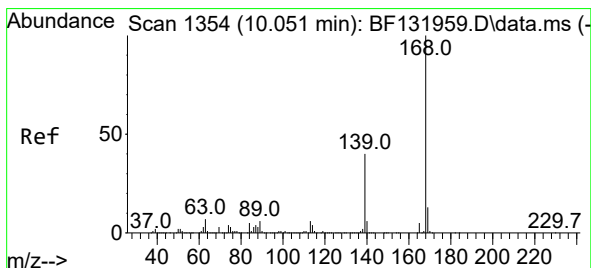
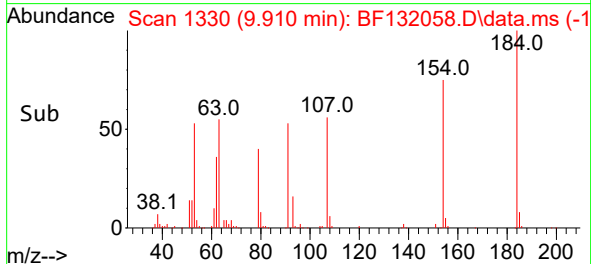
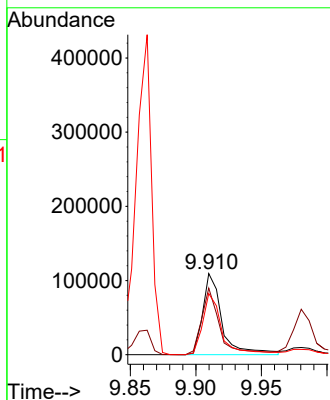
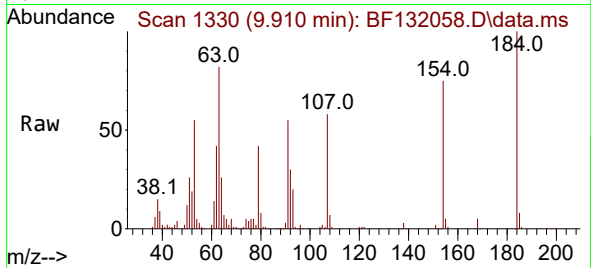




#54  
 2,4-Dinitrophenol  
 Concen: 86.810 ng  
 RT: 9.910 min Scan# 11  
 Delta R.T. 0.006 min  
 Lab File: BF132058.D  
 Acq: 13 Jan 2023 14:23

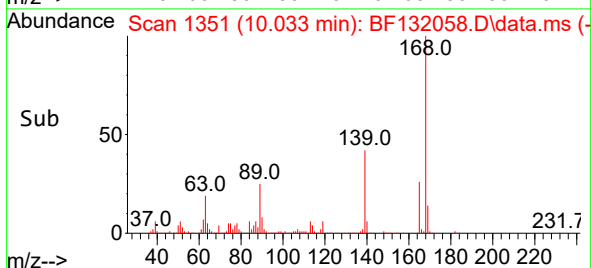
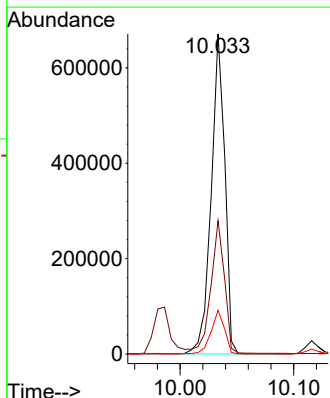
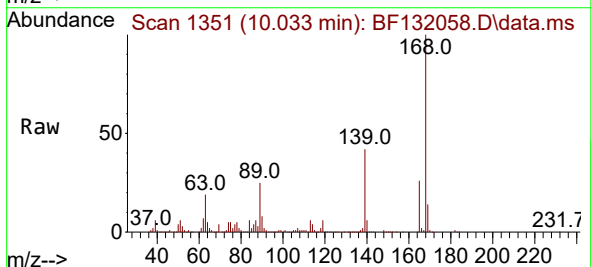
Instrument :  
 BNA\_F  
 ClientSampleId :  
 PB150221BS

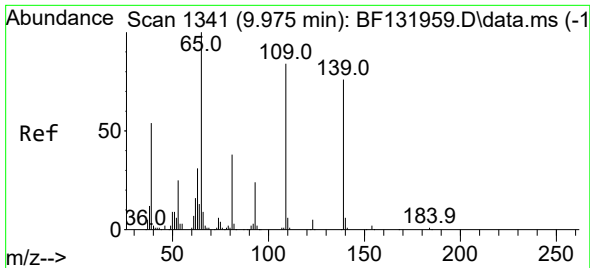
Tgt Ion:184 Resp: 112357  
 Ion Ratio Lower Upper  
 184 100  
 63 82.2 63.7 95.5  
 154 75.4 60.1 90.1



#55  
 Dibenzofuran  
 Concen: 40.249 ng  
 RT: 10.033 min Scan# 1351  
 Delta R.T. -0.000 min  
 Lab File: BF132058.D  
 Acq: 13 Jan 2023 14:23

Tgt Ion:168 Resp: 556658  
 Ion Ratio Lower Upper  
 168 100  
 139 41.6 32.4 48.6  
 169 13.7 10.7 16.1



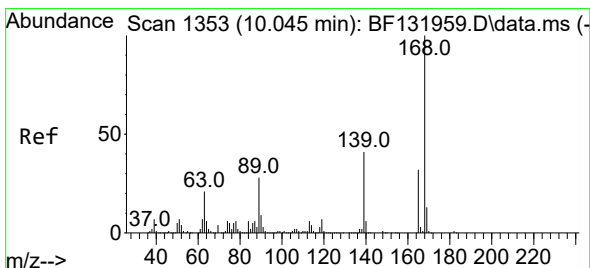
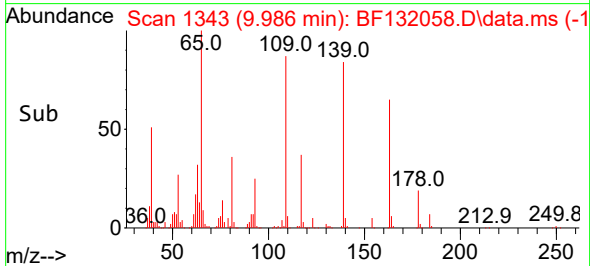
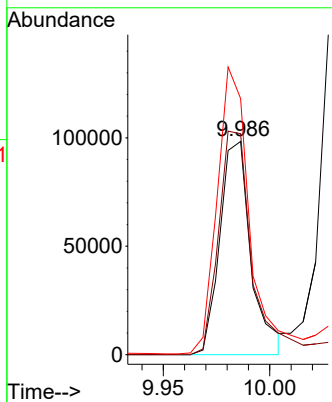
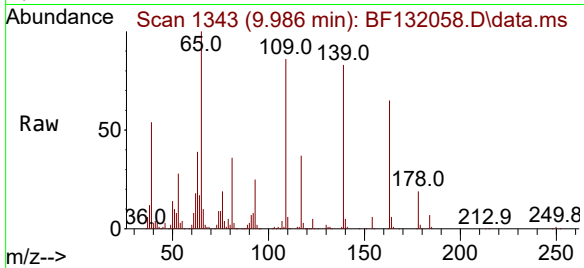


#56  
 4-Nitrophenol  
 Concen: 71.031 ng  
 RT: 9.986 min Scan# 11  
 Delta R.T. 0.018 min  
 Lab File: BF132058.D  
 Acq: 13 Jan 2023 14:23

Instrument : BNA\_F  
 ClientSampleId : PB150221BS

Tgt Ion:139 Resp: 100059

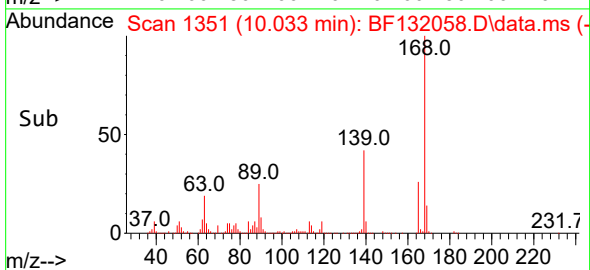
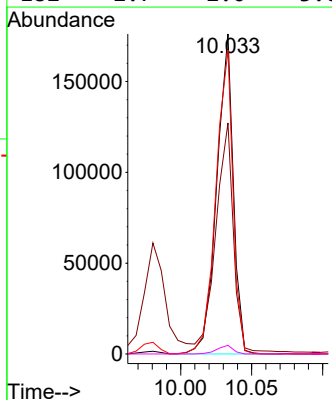
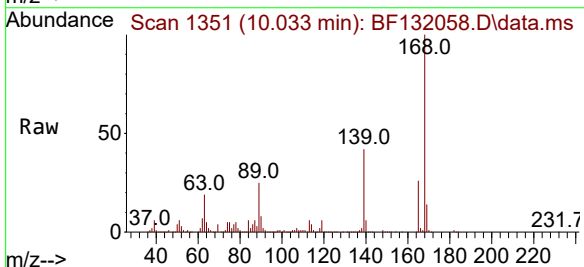
Ion	Ratio	Lower	Upper
139	100		
109	103.6	90.5	130.5
65	120.1	112.6	152.6

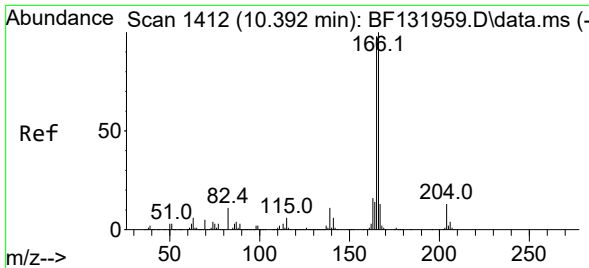


#57  
 2,4-Dinitrotoluene  
 Concen: 41.433 ng  
 RT: 10.033 min Scan# 1351  
 Delta R.T. 0.006 min  
 Lab File: BF132058.D  
 Acq: 13 Jan 2023 14:23

Tgt Ion:165 Resp: 142795

Ion	Ratio	Lower	Upper
165	100		
63	72.2	53.2	79.8
89	95.0	71.2	106.8
182	2.7	2.0	3.0



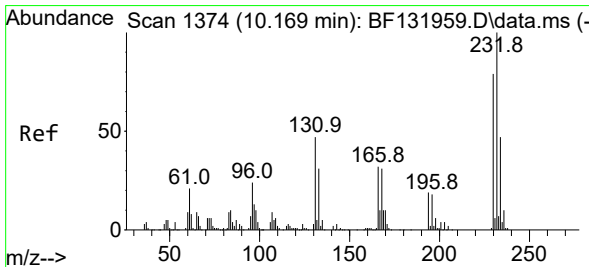
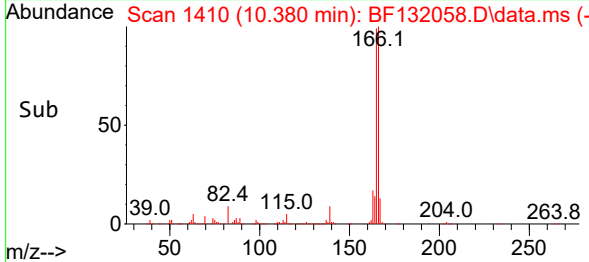
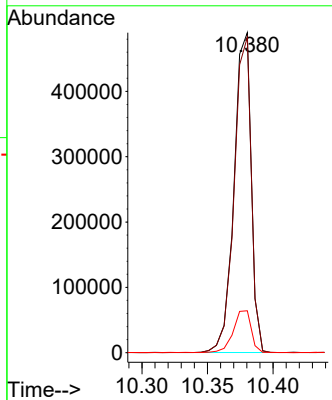
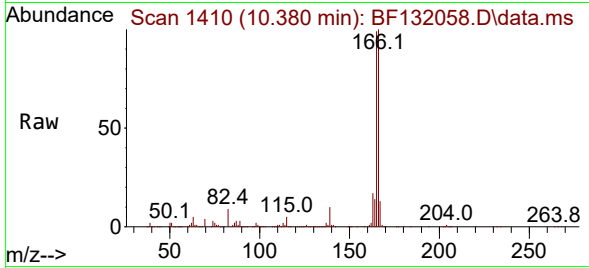


#58  
 Fluorene  
 Concen: 40.527 ng  
 RT: 10.380 min Scan# 14  
 Delta R.T. 0.006 min  
 Lab File: BF132058.D  
 Acq: 13 Jan 2023 14:23

Instrument : BNA\_F  
 ClientSampleId : PB150221BS

Tgt Ion:166 Resp: 447750

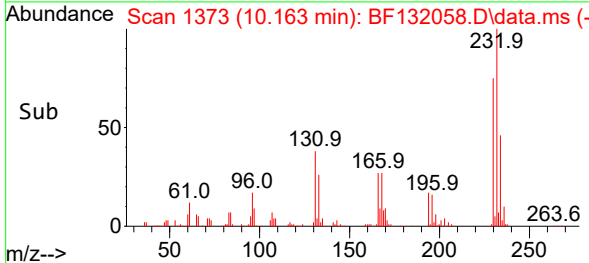
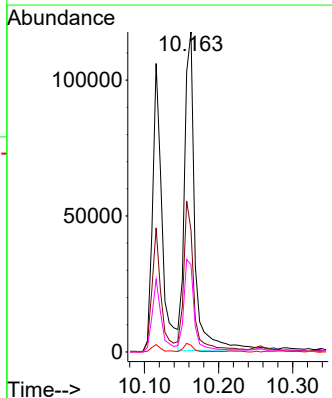
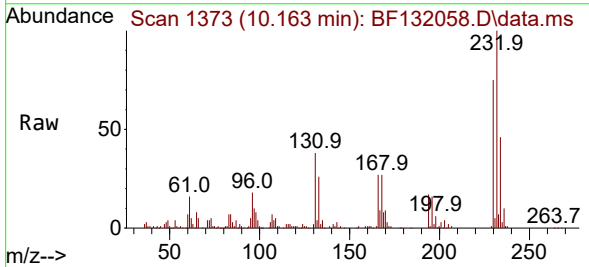
Ion	Ratio	Lower	Upper
166	100		
165	98.6	78.3	117.5
167	13.1	10.7	16.1



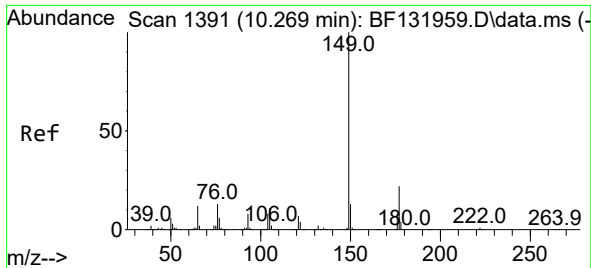
#59  
 2,3,4,6-Tetrachlorophenol  
 Concen: 39.421 ng  
 RT: 10.163 min Scan# 1373  
 Delta R.T. 0.006 min  
 Lab File: BF132058.D  
 Acq: 13 Jan 2023 14:23

Tgt Ion:232 Resp: 114047

Ion	Ratio	Lower	Upper
232	100		
131	47.5	33.0	49.4
130	2.6	1.8	2.8
166	29.2	20.3	30.5



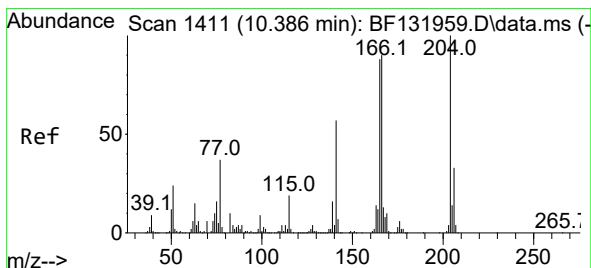
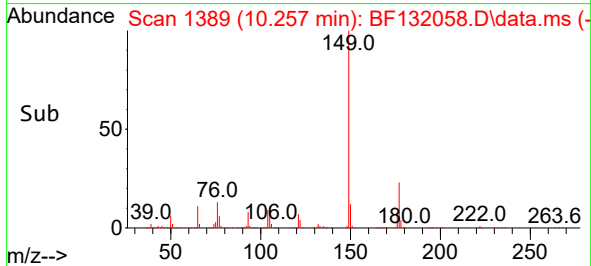
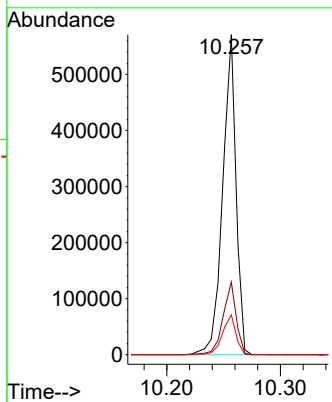
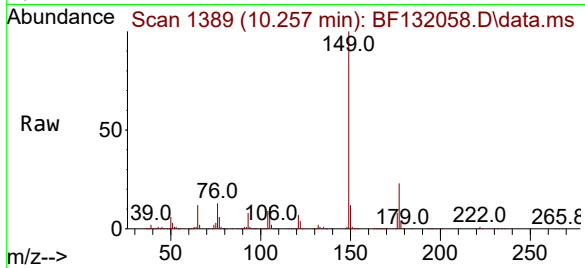




#60  
 Diethylphthalate  
 Concen: 38.792 ng  
 RT: 10.257 min Scan# 11  
 Delta R.T. 0.006 min  
 Lab File: BF132058.D  
 Acq: 13 Jan 2023 14:23

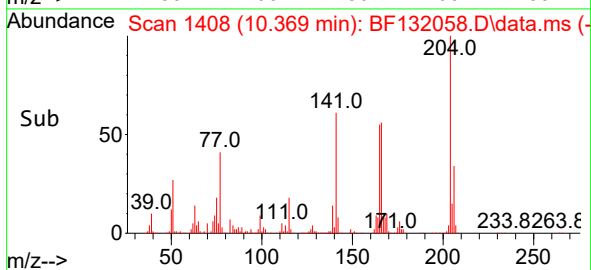
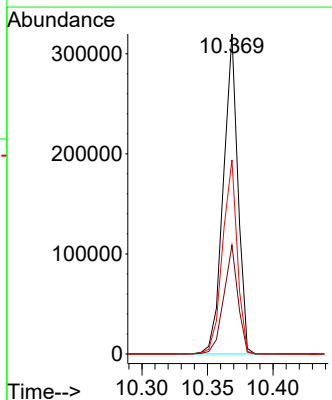
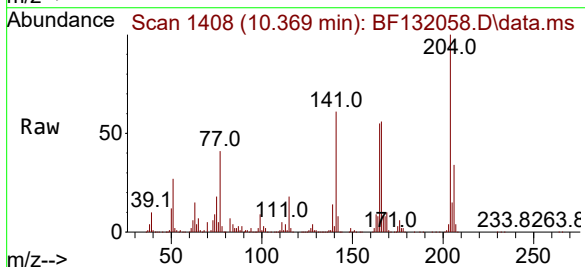
Instrument :  
 BNA\_F  
 ClientSampleId :  
 PB150221BS

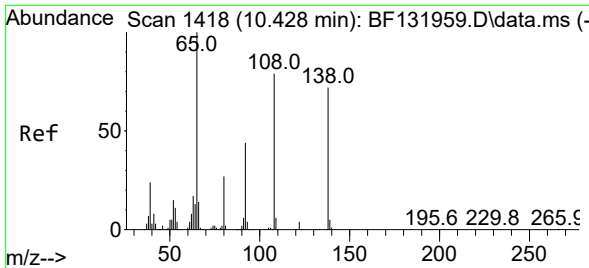
Tgt Ion:149 Resp: 467513  
 Ion Ratio Lower Upper  
 149 100  
 177 22.6 17.7 26.5  
 150 12.5 10.2 15.2



#61  
 4-Chlorophenyl-phenylether  
 Concen: 38.797 ng  
 RT: 10.369 min Scan# 1408  
 Delta R.T. -0.000 min  
 Lab File: BF132058.D  
 Acq: 13 Jan 2023 14:23

Tgt Ion:204 Resp: 245375  
 Ion Ratio Lower Upper  
 204 100  
 206 34.0 26.3 39.5  
 141 60.7 45.6 68.4

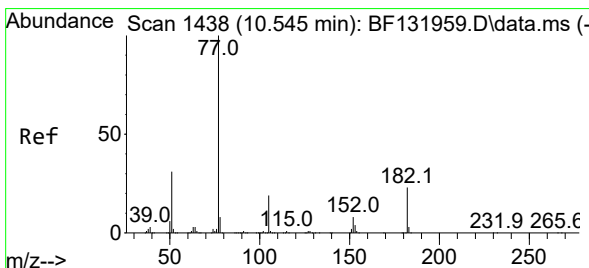
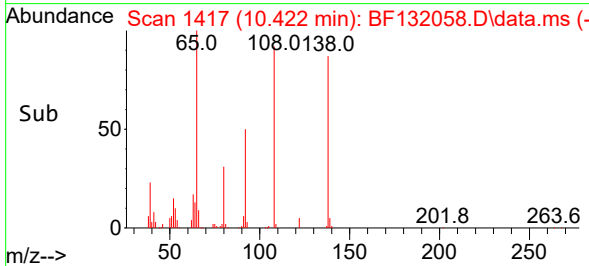
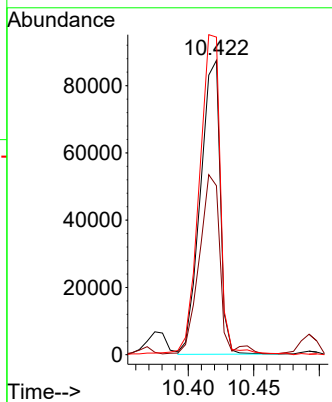
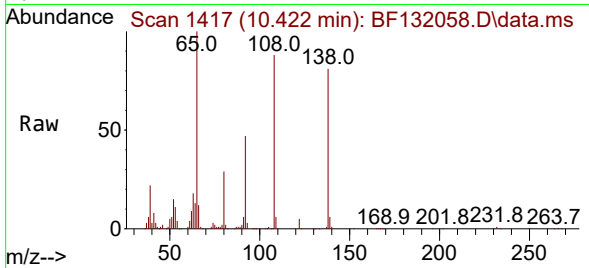




#62  
 4-Nitroaniline  
 Concen: 40.865 ng  
 RT: 10.422 min Scan# 1417  
 Delta R.T. 0.012 min  
 Lab File: BF132058.D  
 Acq: 13 Jan 2023 14:23

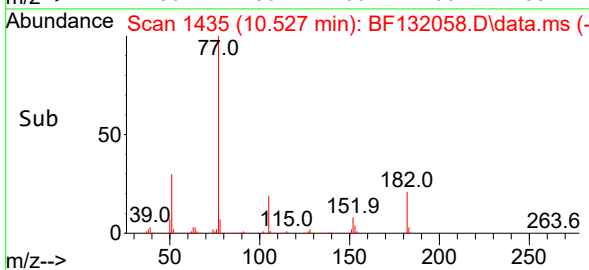
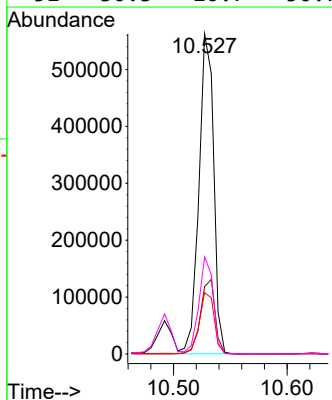
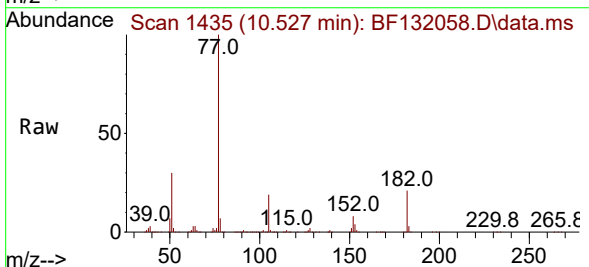
Instrument : BNA\_F  
 ClientSampleId : PB150221BS

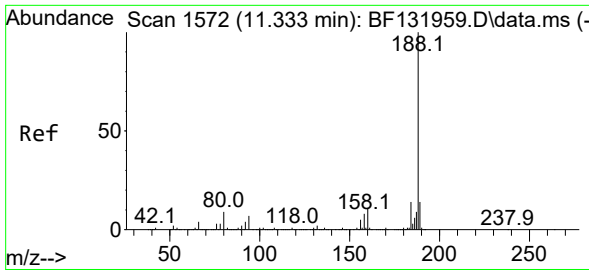
Tgt Ion	Resp	Lower	Upper
138	91896		
108	107.9	89.8	129.8
92	57.4	41.3	81.3
138	100		



#63  
 Azobenzene  
 Concen: 39.440 ng  
 RT: 10.527 min Scan# 1435  
 Delta R.T. -0.000 min  
 Lab File: BF132058.D  
 Acq: 13 Jan 2023 14:23

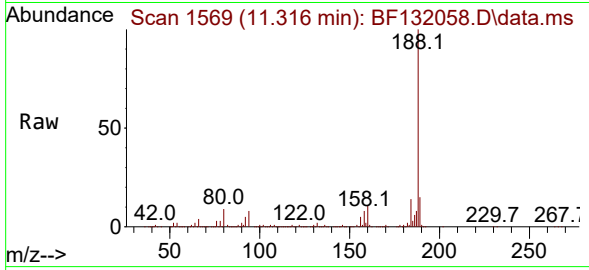
Tgt Ion	Resp	Lower	Upper
77	504216		
182	21.1	2.9	42.9
105	19.1	0.0	39.3
51	30.3	10.7	50.7
77	100		



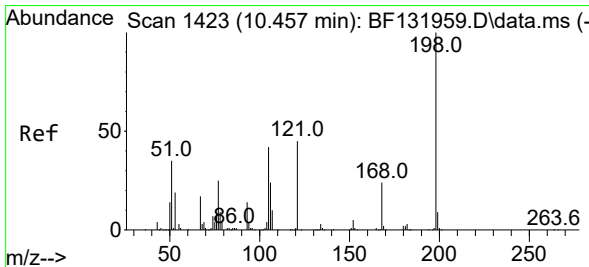
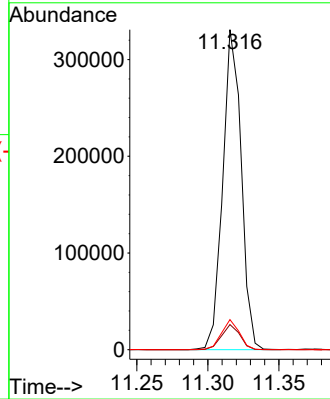
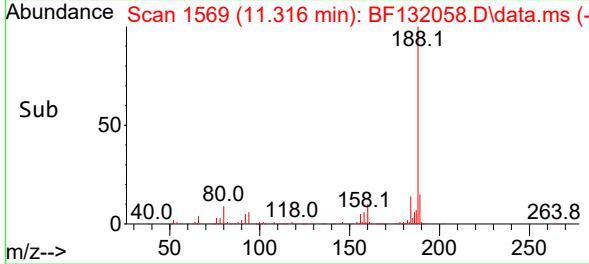


#64  
 Phenanthrene-d10  
 Concen: 20.000 ng  
 RT: 11.316 min Scan# 11  
 Delta R.T. -0.000 min  
 Lab File: BF132058.D  
 Acq: 13 Jan 2023 14:23

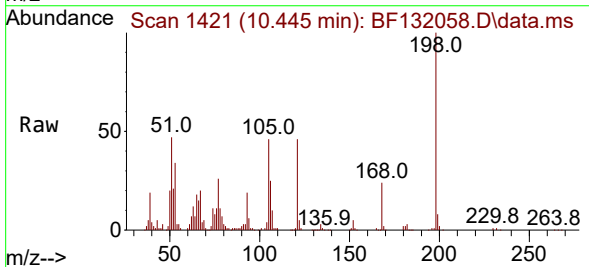
Instrument :  
 BNA\_F  
 ClientSampleId :  
 PB150221BS



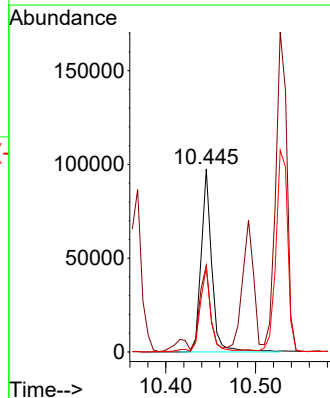
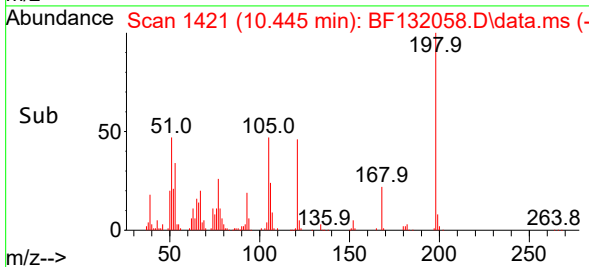
Tgt Ion:188 Resp: 298734  
 Ion Ratio Lower Upper  
 188 100  
 94 7.9 5.8 8.6  
 80 9.4 7.4 11.0

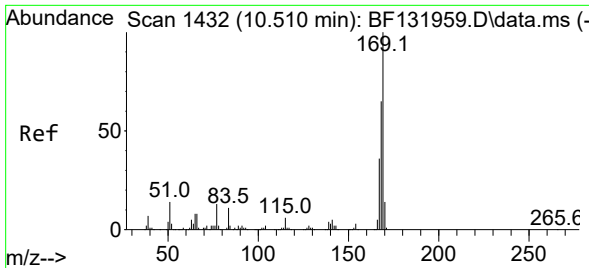


#65  
 4,6-Dinitro-2-methylphenol  
 Concen: 41.554 ng  
 RT: 10.445 min Scan# 1421  
 Delta R.T. 0.006 min  
 Lab File: BF132058.D  
 Acq: 13 Jan 2023 14:23



Tgt Ion:198 Resp: 80053  
 Ion Ratio Lower Upper  
 198 100  
 51 47.3 21.4 61.4  
 105 46.4 23.0 63.0



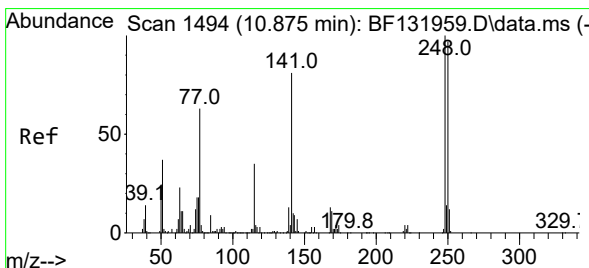
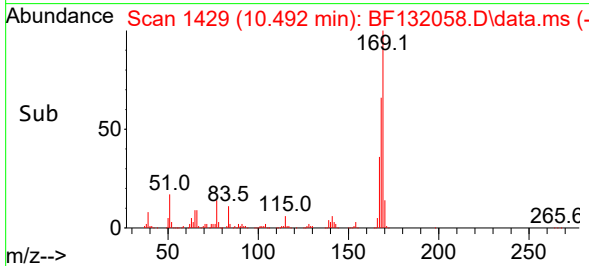
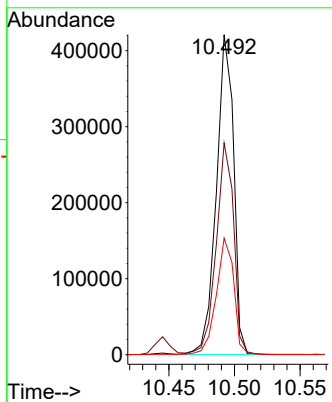
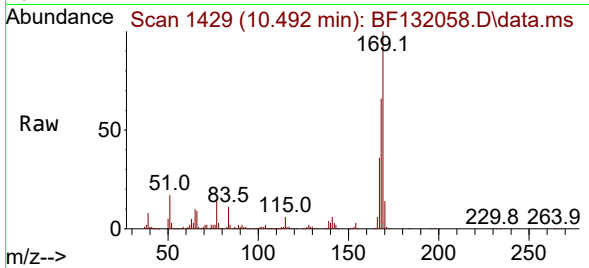


#66  
 n-Nitrosodiphenylamine  
 Concen: 41.067 ng  
 RT: 10.492 min Scan# 1429  
 Delta R.T. -0.000 min  
 Lab File: BF132058.D  
 Acq: 13 Jan 2023 14:23

Instrument : BNA\_F  
 ClientSampleId : PB150221BS

Tgt Ion:169 Resp: 384886

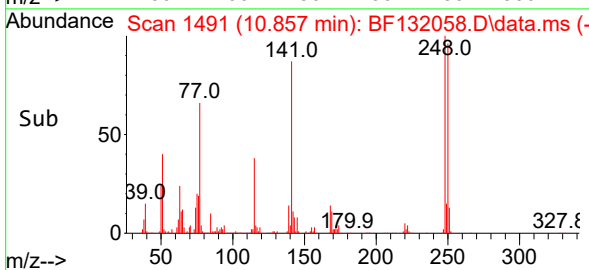
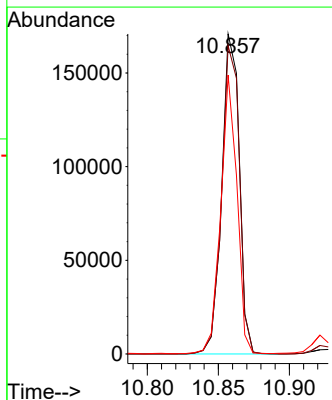
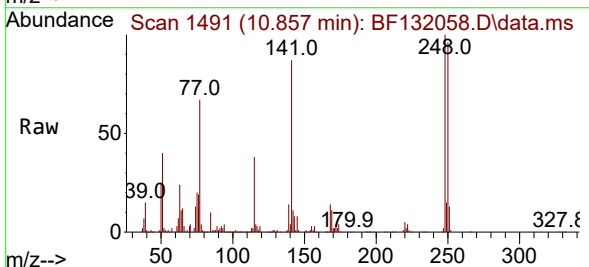
Ion	Ratio	Lower	Upper
169	100		
168	66.1	52.5	78.7
167	36.4	28.6	43.0

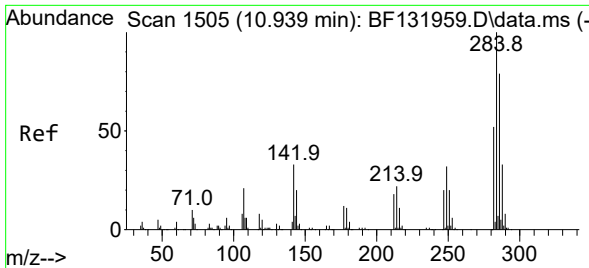


#67  
 4-Bromophenyl-phenylether  
 Concen: 39.234 ng  
 RT: 10.857 min Scan# 1491  
 Delta R.T. -0.000 min  
 Lab File: BF132058.D  
 Acq: 13 Jan 2023 14:23

Tgt Ion:248 Resp: 146620

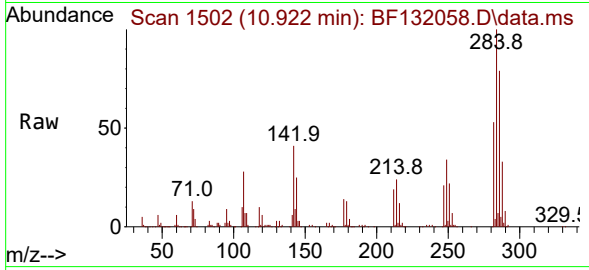
Ion	Ratio	Lower	Upper
248	100		
250	96.3	77.4	116.2
141	87.1	65.0	97.6



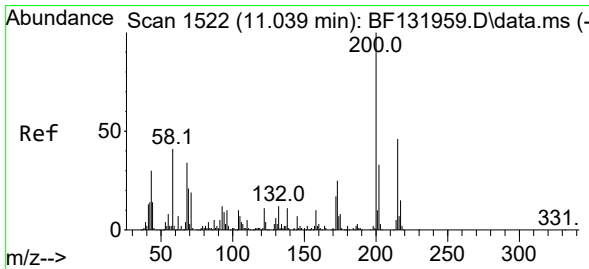
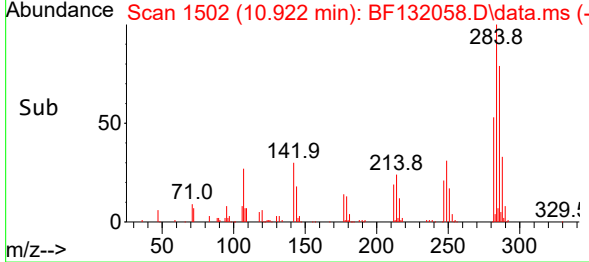
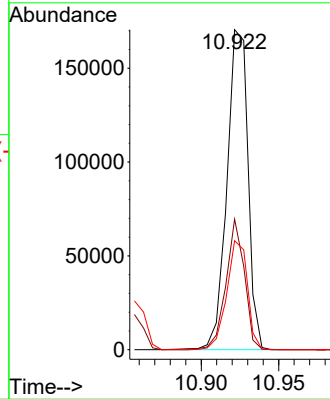


#68  
 Hexachlorobenzene  
 Concen: 42.619 ng  
 RT: 10.922 min Scan# 1519  
 Delta R.T. -0.000 min  
 Lab File: BF132058.D  
 Acq: 13 Jan 2023 14:23

Instrument :  
 BNA\_F  
 ClientSampleId :  
 PB150221BS

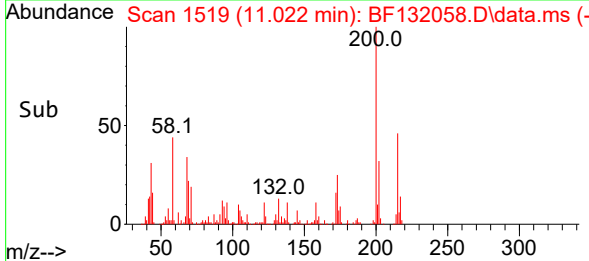
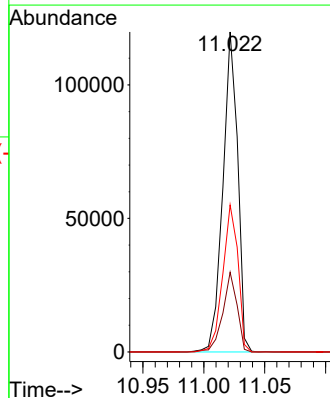
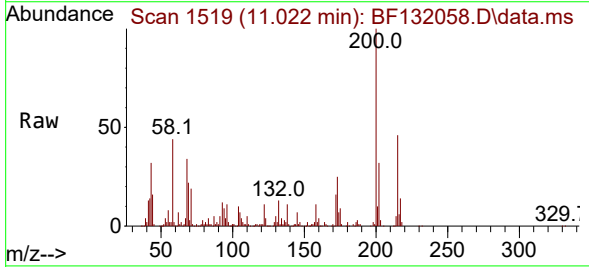


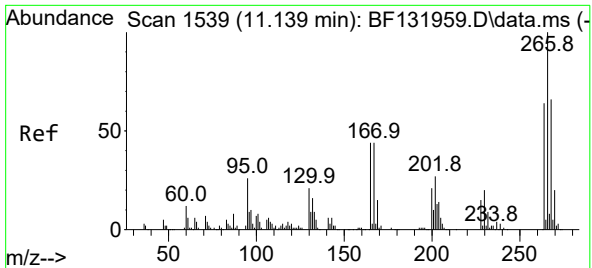
Tgt Ion:284 Resp: 161116  
 Ion Ratio Lower Upper  
 284 100  
 142 40.8 26.4 39.6#  
 249 34.0 25.4 38.2



#69  
 Atrazine  
 Concen: 29.793 ng  
 RT: 11.022 min Scan# 1519  
 Delta R.T. -0.000 min  
 Lab File: BF132058.D  
 Acq: 13 Jan 2023 14:23

Tgt Ion:200 Resp: 101542  
 Ion Ratio Lower Upper  
 200 100  
 173 24.9 5.1 45.1  
 215 46.0 25.6 65.6



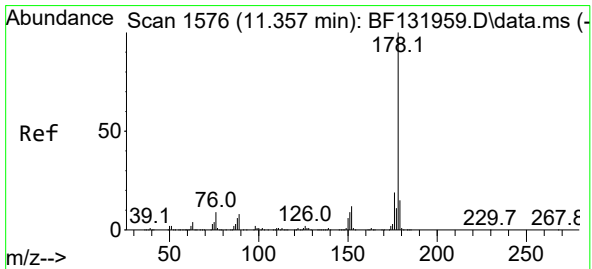
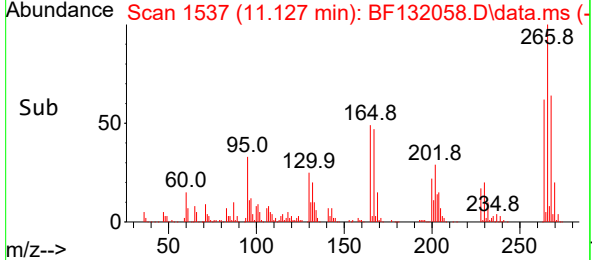
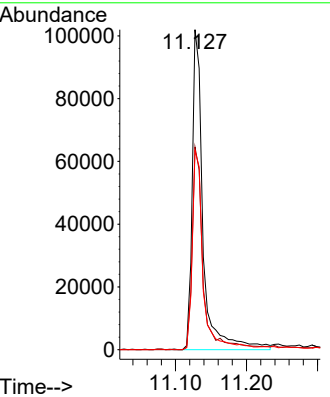
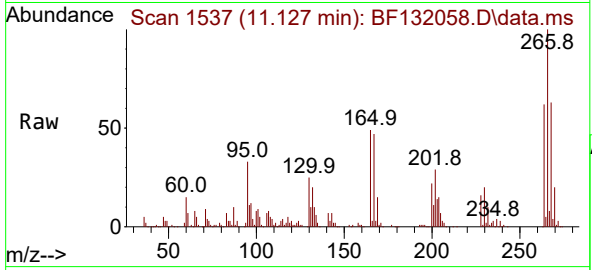


#70  
 Pentachlorophenol  
 Concen: 55.479 ng  
 RT: 11.127 min Scan# 11  
 Delta R.T. 0.006 min  
 Lab File: BF132058.D  
 Acq: 13 Jan 2023 14:23

Instrument : BNA\_F  
 Client Sample Id : PB150221BS

Tgt Ion:266 Resp: 108997

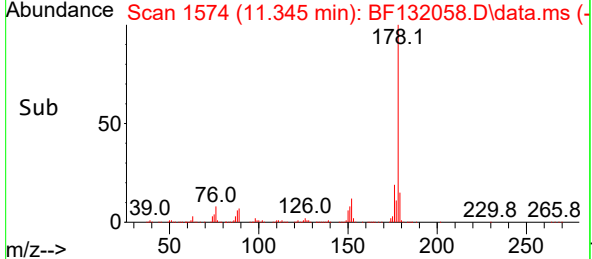
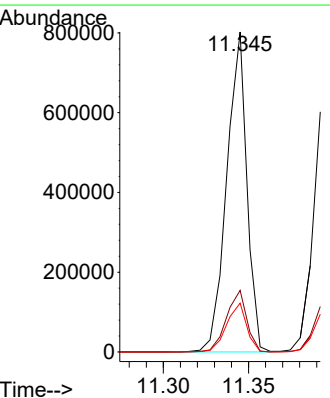
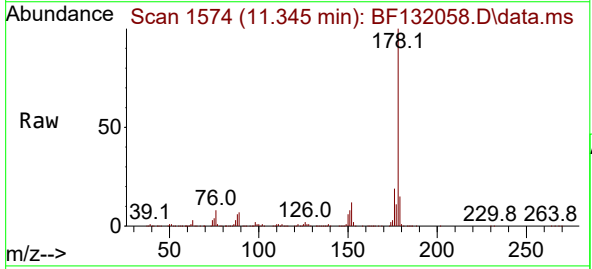
Ion	Ratio	Lower	Upper
266	100		
268	63.3	52.7	79.1
264	62.3	51.6	77.4

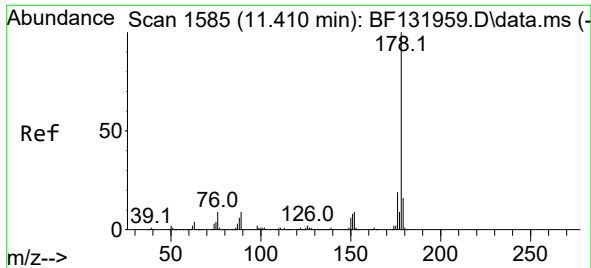


#71  
 Phenanthrene  
 Concen: 42.307 ng  
 RT: 11.345 min Scan# 1574  
 Delta R.T. 0.006 min  
 Lab File: BF132058.D  
 Acq: 13 Jan 2023 14:23

Tgt Ion:178 Resp: 658852

Ion	Ratio	Lower	Upper
178	100		
176	19.2	15.5	23.3
179	15.2	12.4	18.6



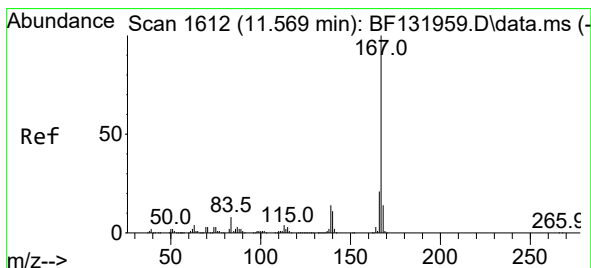
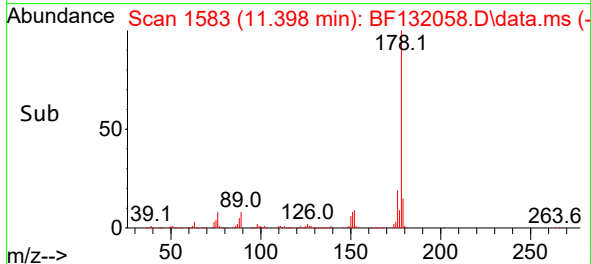
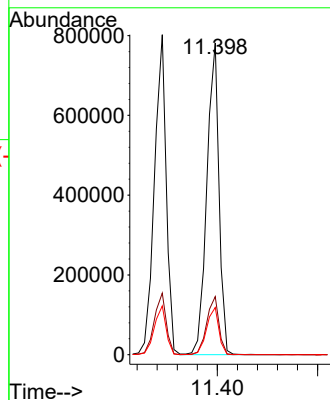
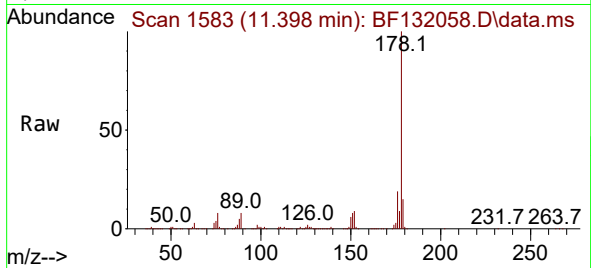


#72  
 Anthracene  
 Concen: 41.307 ng  
 RT: 11.398 min Scan# 11  
 Delta R.T. 0.006 min  
 Lab File: BF132058.D  
 Acq: 13 Jan 2023 14:23

Instrument :  
 BNA\_F  
 ClientSampleId :  
 PB150221BS

Tgt Ion:178 Resp: 662230

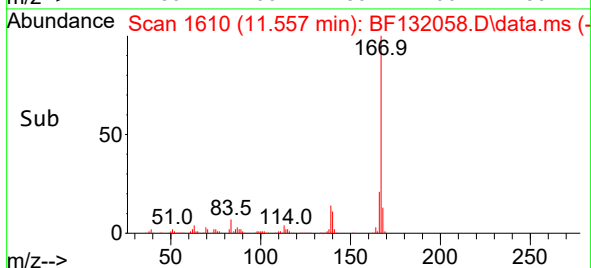
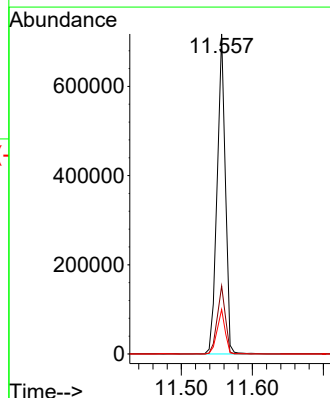
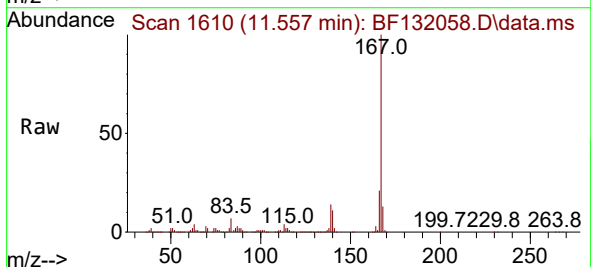
Ion	Ratio	Lower	Upper
178	100		
176	18.6	15.3	22.9
179	15.2	12.6	19.0

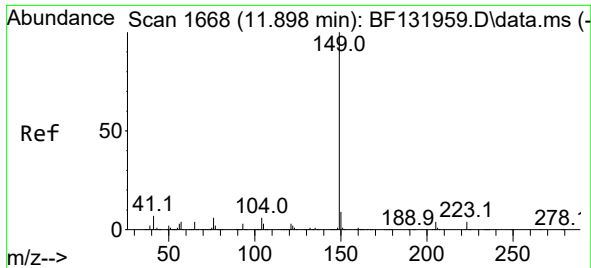


#73  
 Carbazole  
 Concen: 43.488 ng  
 RT: 11.557 min Scan# 1610  
 Delta R.T. 0.006 min  
 Lab File: BF132058.D  
 Acq: 13 Jan 2023 14:23

Tgt Ion:167 Resp: 577208

Ion	Ratio	Lower	Upper
167	100		
166	21.2	16.8	25.2
139	13.9	11.1	16.7

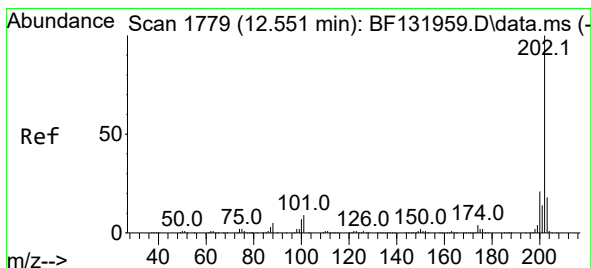
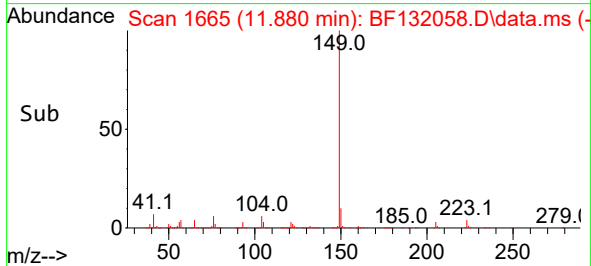
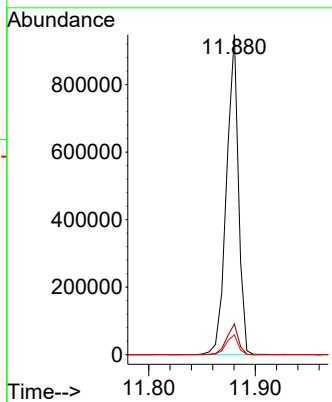
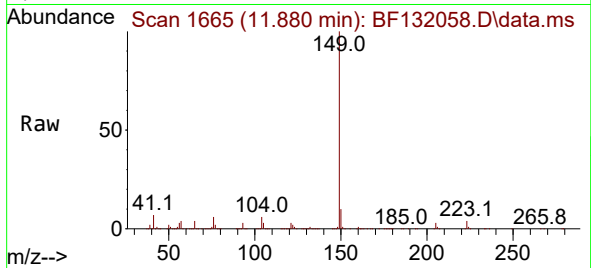




#74  
 Di-n-butylphthalate  
 Concen: 39.863 ng  
 RT: 11.880 min Scan# 11  
 Delta R.T. 0.006 min  
 Lab File: BF132058.D  
 Acq: 13 Jan 2023 14:23

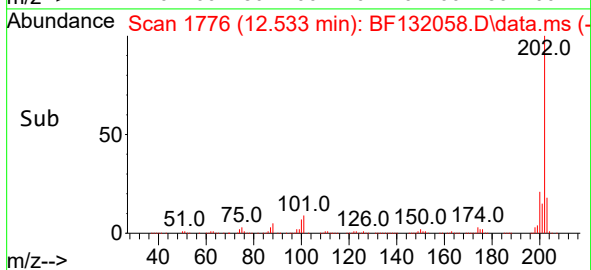
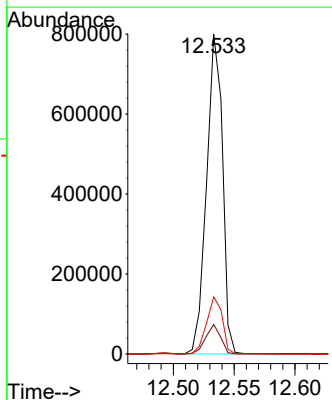
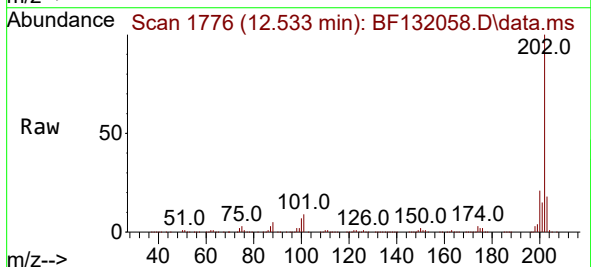
Instrument :  
 BNA\_F  
 ClientSampleId :  
 PB150221BS

Tgt Ion:149 Resp: 736714  
 Ion Ratio Lower Upper  
 149 100  
 150 9.6 7.3 10.9  
 104 6.2 5.0 7.6

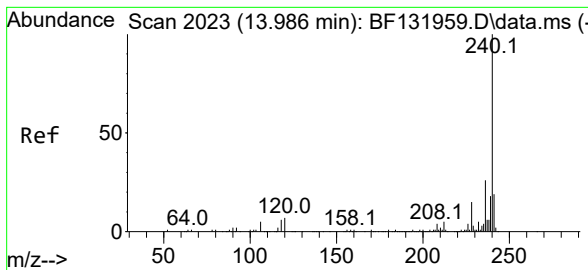


#75  
 Fluoranthene  
 Concen: 41.525 ng  
 RT: 12.533 min Scan# 1776  
 Delta R.T. -0.000 min  
 Lab File: BF132058.D  
 Acq: 13 Jan 2023 14:23

Tgt Ion:202 Resp: 727278  
 Ion Ratio Lower Upper  
 202 100  
 101 9.2 0.0 28.8  
 203 17.8 0.0 37.6

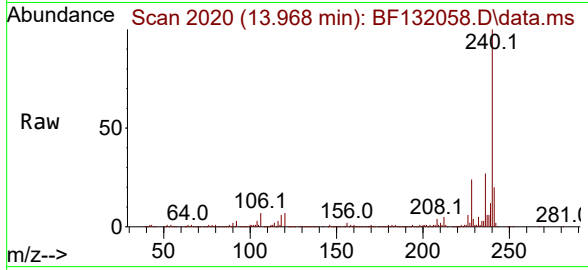




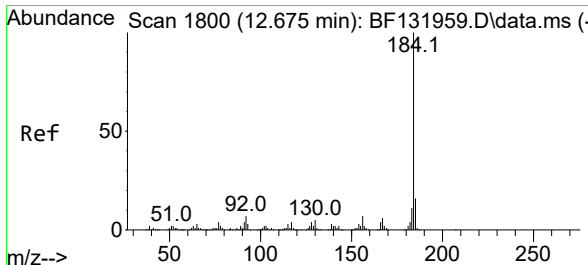
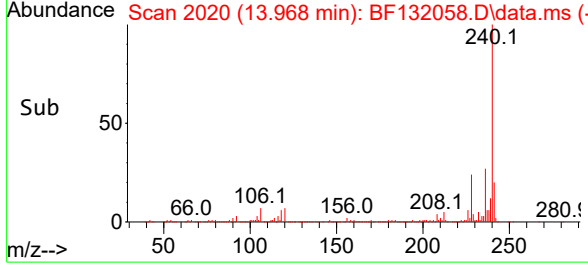
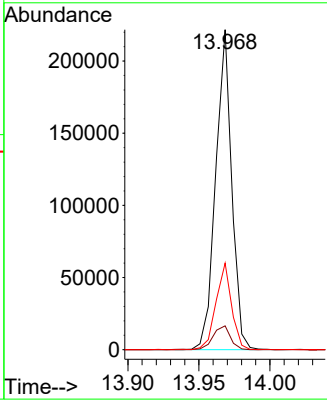


#76  
 Chrysene-d12  
 Concen: 20.000 ng  
 RT: 13.968 min Scan# 20  
 Delta R.T. 0.006 min  
 Lab File: BF132058.D  
 Acq: 13 Jan 2023 14:23

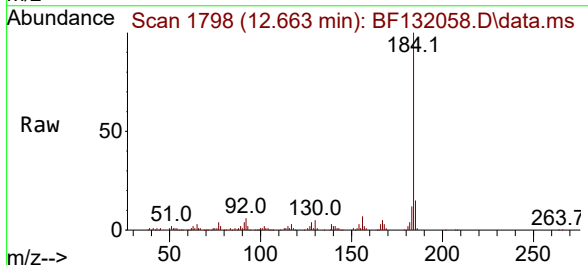
Instrument : BNA\_F  
 ClientSampleId : PB150221BS



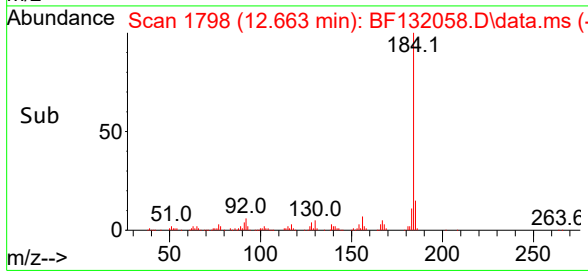
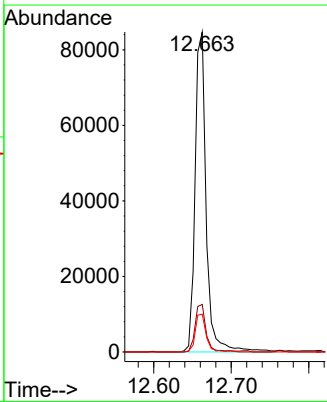
Tgt Ion:240 Resp: 173885  
 Ion Ratio Lower Upper  
 240 100  
 120 7.4 5.4 8.0  
 236 27.1 21.1 31.7

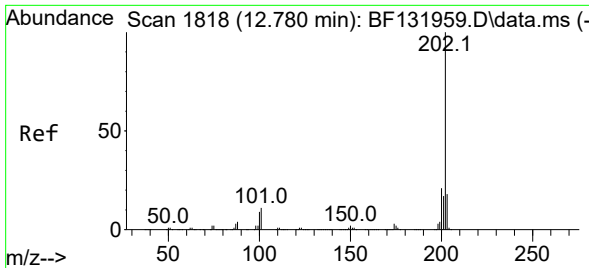


#77  
 Benzidine  
 Concen: 14.587 ng  
 RT: 12.663 min Scan# 1798  
 Delta R.T. 0.006 min  
 Lab File: BF132058.D  
 Acq: 13 Jan 2023 14:23



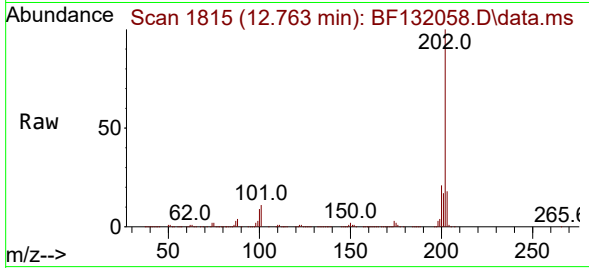
Tgt Ion:184 Resp: 84266  
 Ion Ratio Lower Upper  
 184 100  
 185 14.9 12.8 19.2  
 183 11.8 9.0 13.4



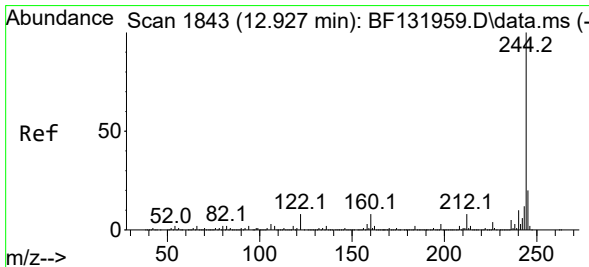
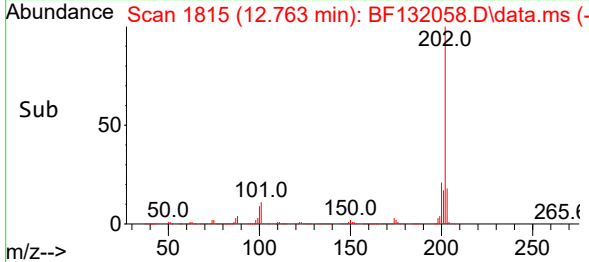
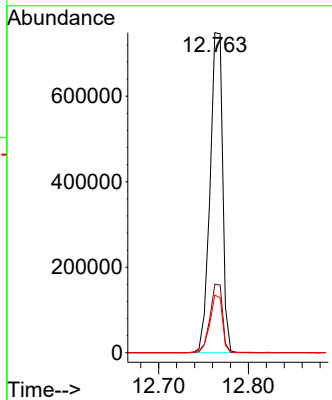


#78  
 Pyrene  
 Concen: 45.945 ng  
 RT: 12.763 min Scan# 1815  
 Delta R.T. -0.000 min  
 Lab File: BF132058.D  
 Acq: 13 Jan 2023 14:23

Instrument : BNA\_F  
 Client Sample Id : PB150221BS

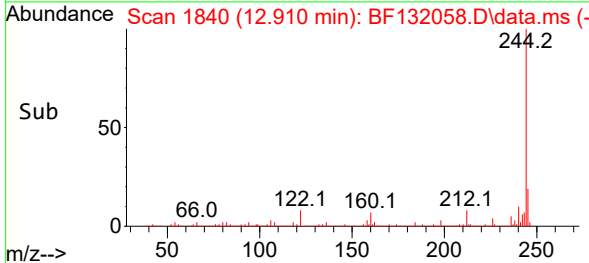
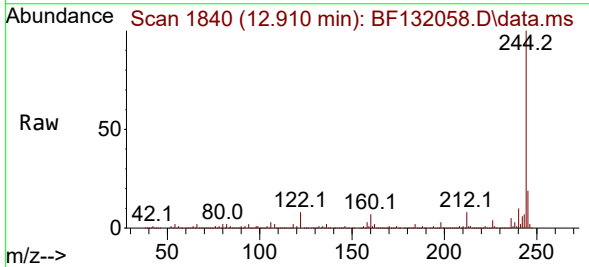
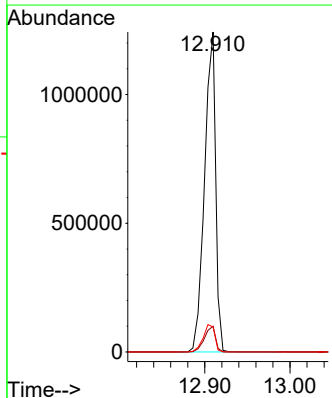


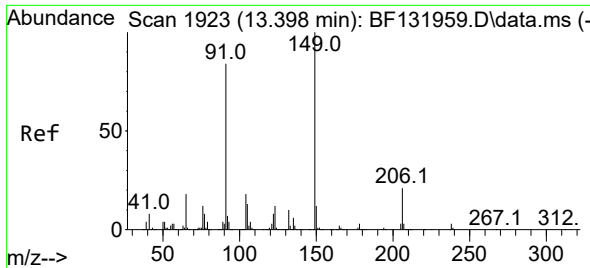
Tgt Ion: 202 Resp: 728657  
 Ion Ratio Lower Upper  
 202 100  
 200 21.4 17.0 25.6  
 203 18.0 14.1 21.1



#79  
 Terphenyl-d14  
 Concen: 92.414 ng  
 RT: 12.910 min Scan# 1840  
 Delta R.T. 0.006 min  
 Lab File: BF132058.D  
 Acq: 13 Jan 2023 14:23

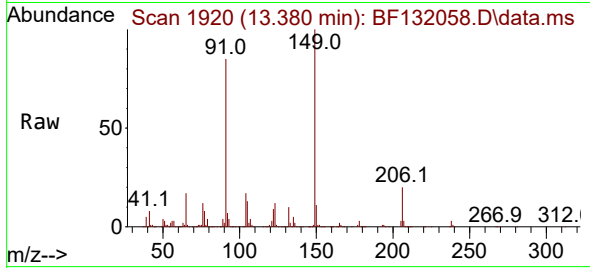
Tgt Ion: 244 Resp: 1121168  
 Ion Ratio Lower Upper  
 244 100  
 212 8.1 6.3 9.5  
 122 7.8 6.8 10.2



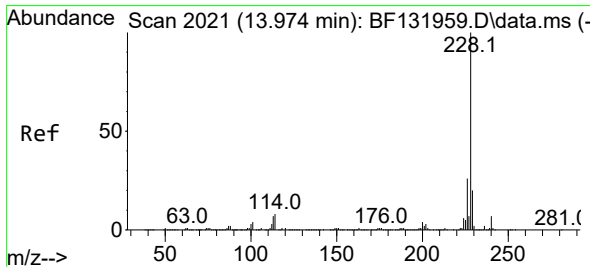
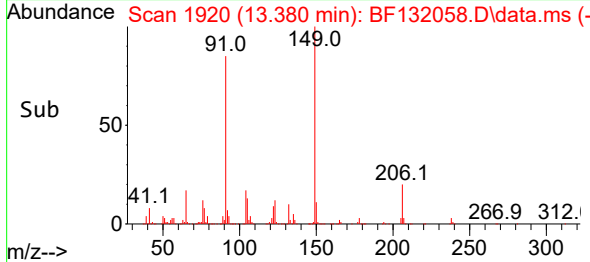
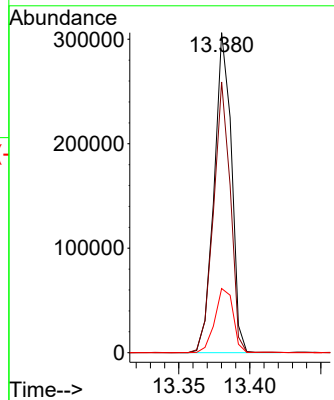


#80  
 Butylbenzylphthalate  
 Concen: 40.484 ng  
 RT: 13.380 min Scan# 1920  
 Delta R.T. -0.000 min  
 Lab File: BF132058.D  
 Acq: 13 Jan 2023 14:23

Instrument :  
 BNA\_F  
 ClientSampleId :  
 PB150221BS

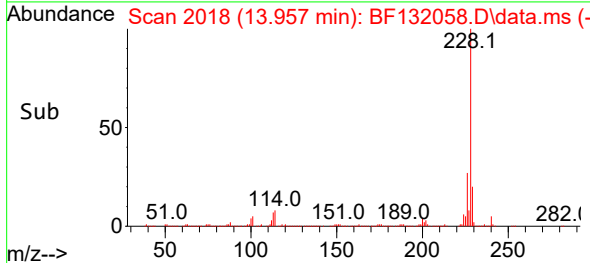
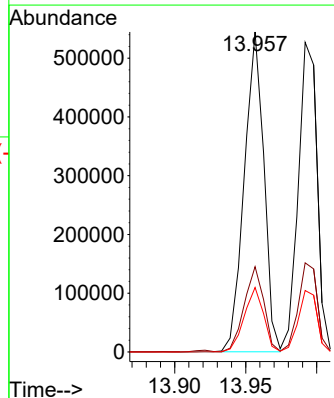
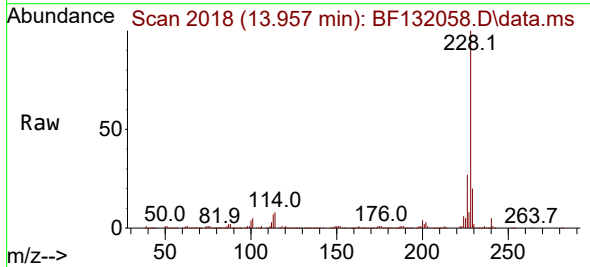


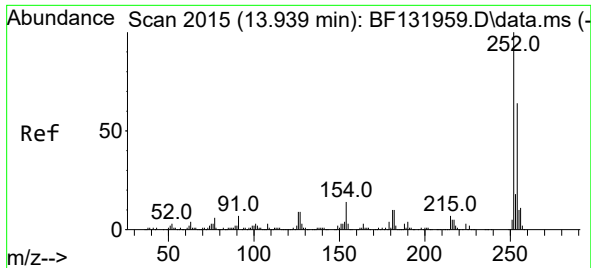
Tgt Ion:149 Resp: 259163  
 Ion Ratio Lower Upper  
 149 100  
 91 84.6 67.0 100.4  
 206 20.0 16.9 25.3



#81  
 Benzo(a)anthracene  
 Concen: 41.244 ng  
 RT: 13.957 min Scan# 2018  
 Delta R.T. 0.006 min  
 Lab File: BF132058.D  
 Acq: 13 Jan 2023 14:23

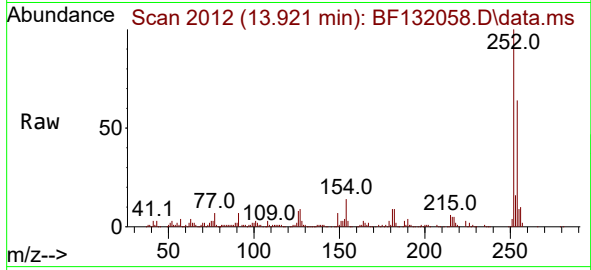
Tgt Ion:228 Resp: 521767  
 Ion Ratio Lower Upper  
 228 100  
 226 26.7 21.0 31.4  
 229 20.2 15.8 23.6



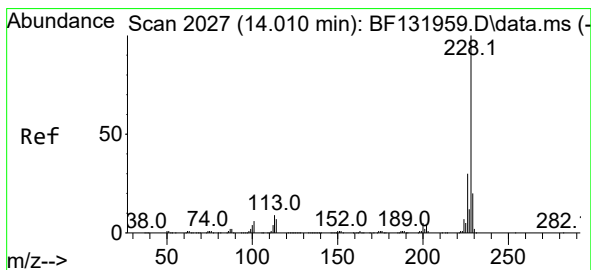
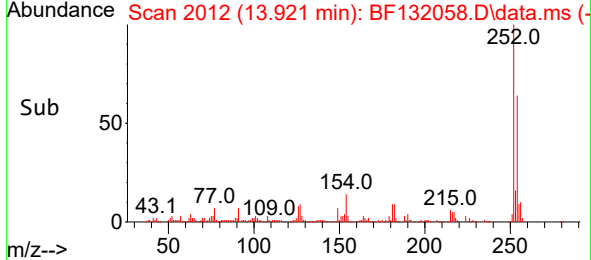
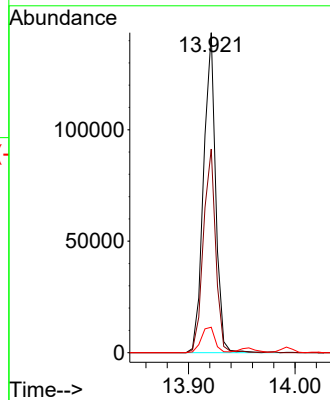


#82  
 3,3'-Dichlorobenzidine  
 Concen: 28.767 ng  
 RT: 13.921 min Scan# 2012  
 Delta R.T. 0.006 min  
 Lab File: BF132058.D  
 Acq: 13 Jan 2023 14:23

Instrument :  
 BNA\_F  
 ClientSampleId :  
 PB150221BS

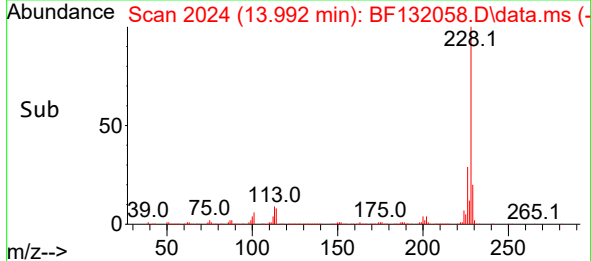
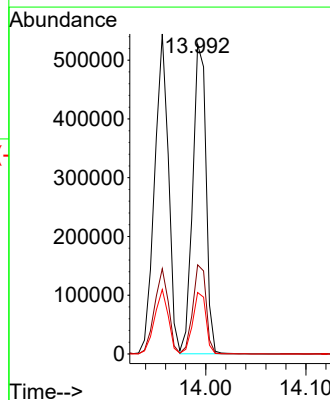
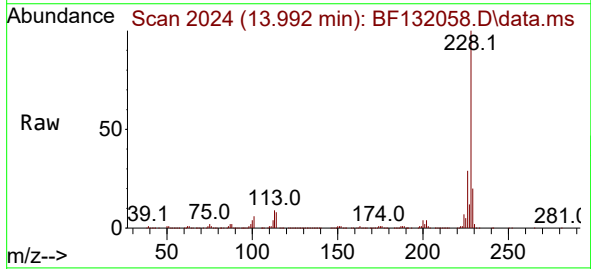


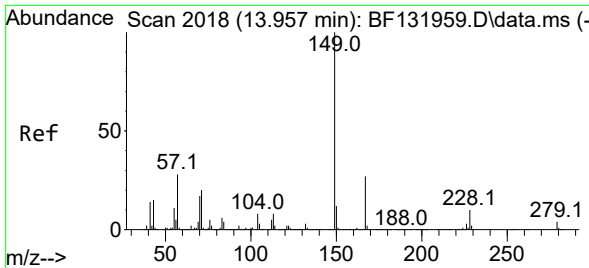
Tgt Ion:252 Resp: 113578  
 Ion Ratio Lower Upper  
 252 100  
 254 63.7 51.5 77.3  
 126 7.9 6.9 10.3



#83  
 Chrysene  
 Concen: 41.030 ng  
 RT: 13.992 min Scan# 2024  
 Delta R.T. -0.000 min  
 Lab File: BF132058.D  
 Acq: 13 Jan 2023 14:23

Tgt Ion:228 Resp: 485086  
 Ion Ratio Lower Upper  
 228 100  
 226 28.8 24.0 36.0  
 229 19.8 16.2 24.4



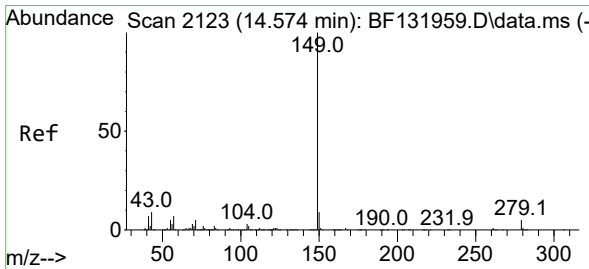
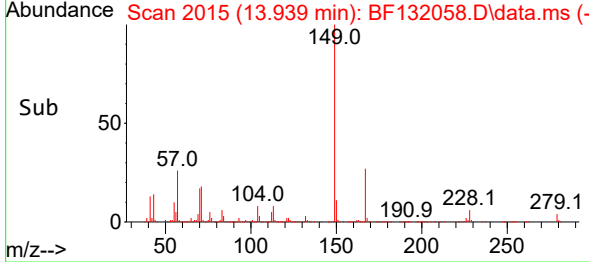
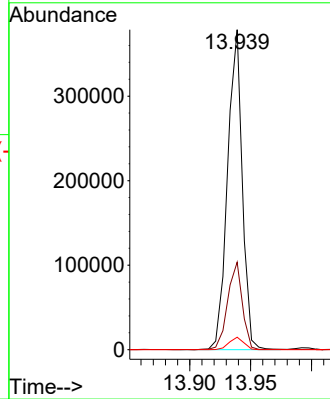
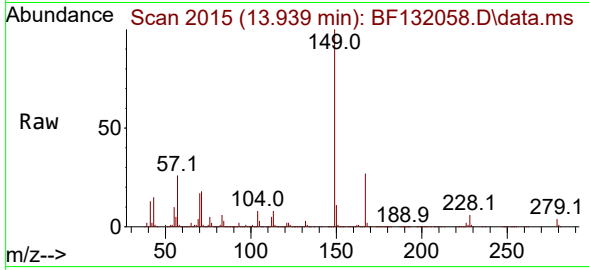


#84  
 Bis(2-ethylhexyl)phthalate  
 Concen: 36.833 ng  
 RT: 13.939 min Scan# 2015  
 Delta R.T. 0.006 min  
 Lab File: BF132058.D  
 Acq: 13 Jan 2023 14:23

Instrument : BNA\_F  
 ClientSampleId : PB150221BS

Tgt Ion:149 Resp: 319439

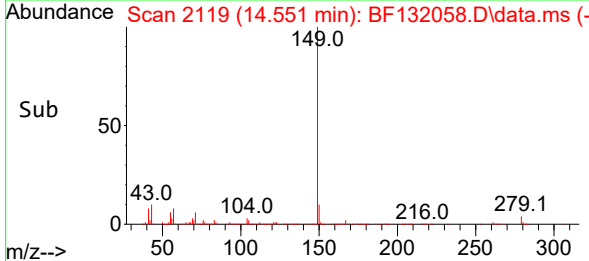
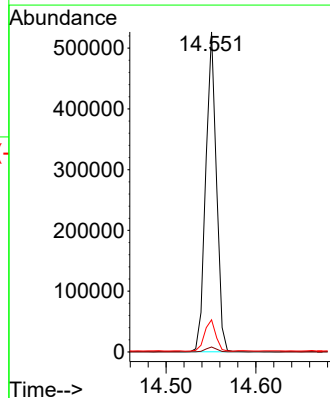
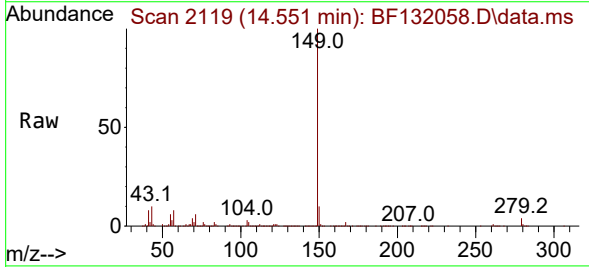
Ion	Ratio	Lower	Upper
149	100		
167	27.3	21.3	31.9
279	3.9	3.2	4.8

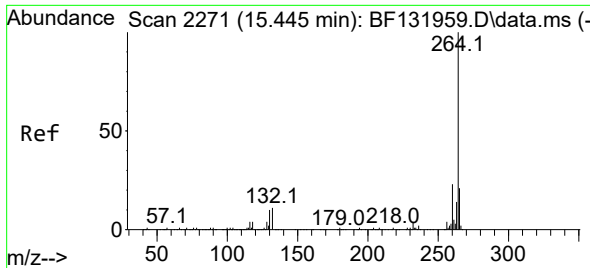


#85  
 Di-n-octyl phthalate  
 Concen: 36.642 ng  
 RT: 14.551 min Scan# 2119  
 Delta R.T. 0.006 min  
 Lab File: BF132058.D  
 Acq: 13 Jan 2023 14:23

Tgt Ion:149 Resp: 434861

Ion	Ratio	Lower	Upper
149	100		
167	1.5	1.3	1.9
43	10.2	7.8	11.6



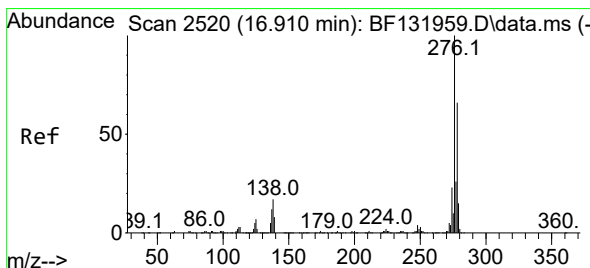
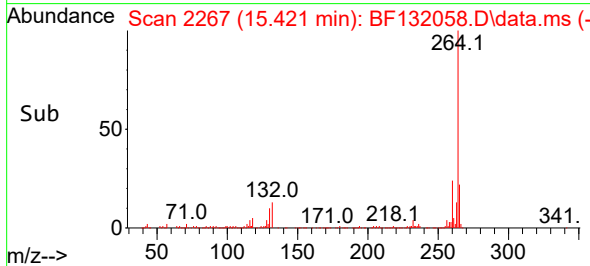
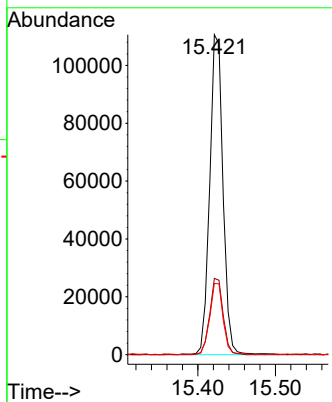
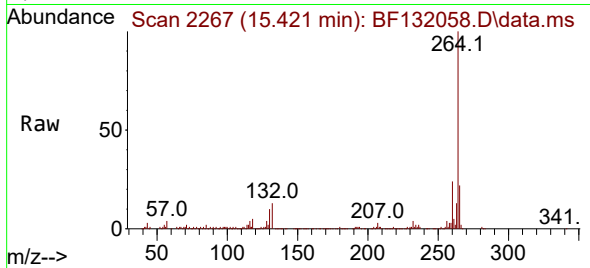


#86  
 Perylene-d12  
 Concen: 20.000 ng  
 RT: 15.421 min Scan# 21  
 Delta R.T. 0.006 min  
 Lab File: BF132058.D  
 Acq: 13 Jan 2023 14:23

Instrument :  
 BNA\_F  
 ClientSampleId :  
 PB150221BS

Tgt Ion: 264 Resp: 131902

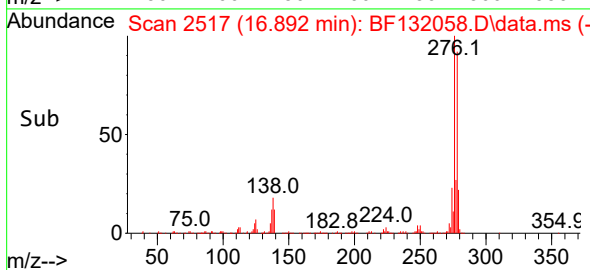
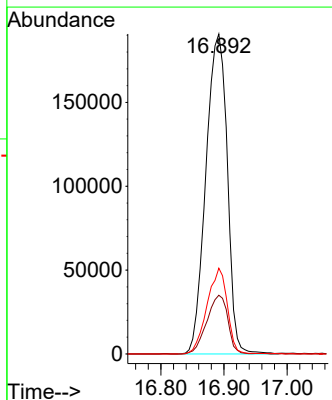
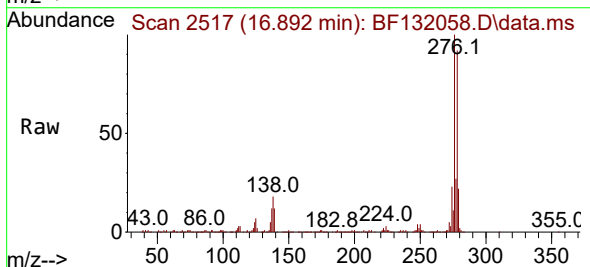
Ion	Ratio	Lower	Upper
264	100		
260	23.8	18.3	27.5
265	22.3	16.9	25.3

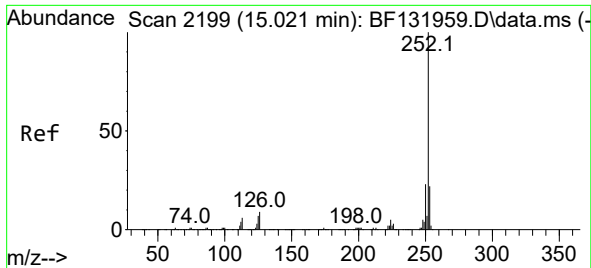


#87  
 Indeno(1,2,3-cd)pyrene  
 Concen: 55.454 ng  
 RT: 16.892 min Scan# 2517  
 Delta R.T. 0.012 min  
 Lab File: BF132058.D  
 Acq: 13 Jan 2023 14:23

Tgt Ion: 276 Resp: 448598

Ion	Ratio	Lower	Upper
276	100		
138	18.0	14.2	21.2
277	25.4	20.2	30.4

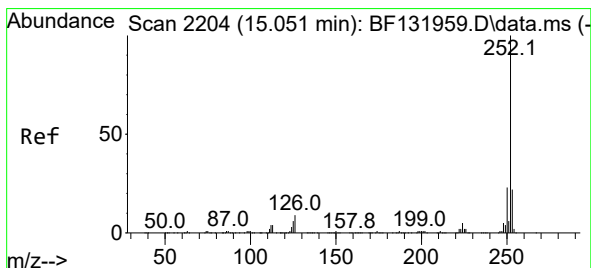
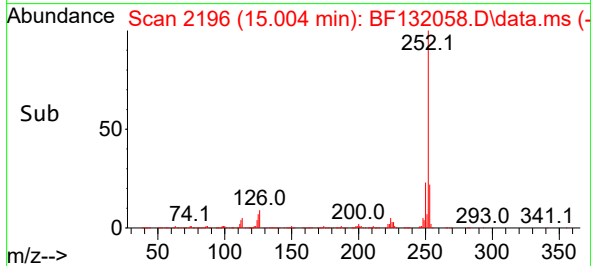
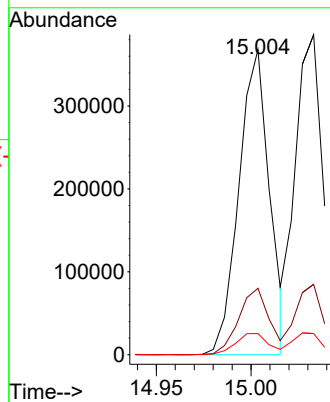
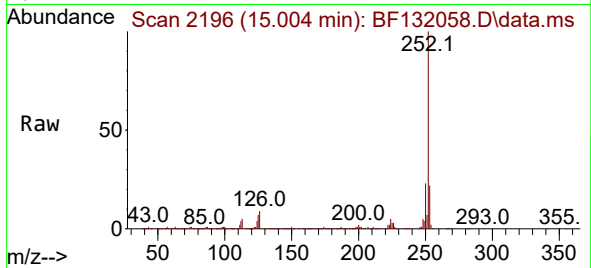




#88  
 Benzo(b)fluoranthene  
 Concen: 45.658 ng  
 RT: 15.004 min Scan# 2199  
 Delta R.T. 0.006 min  
 Lab File: BF132058.D  
 Acq: 13 Jan 2023 14:23

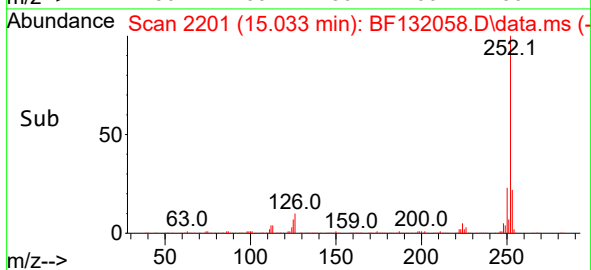
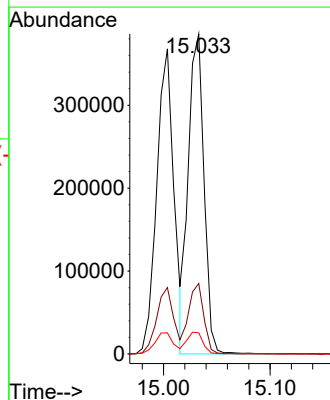
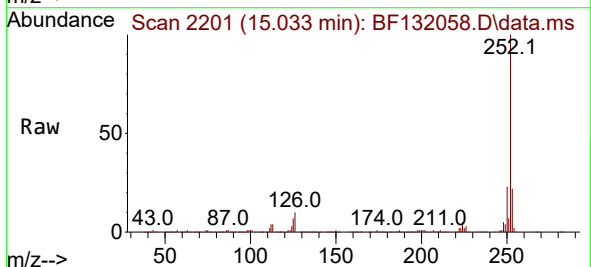
Instrument :  
 BNA\_F  
 ClientSampleId :  
 PB150221BS

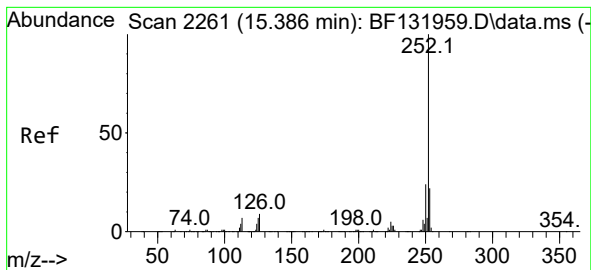
Tgt Ion:252 Resp: 413065  
 Ion Ratio Lower Upper  
 252 100  
 253 21.8 18.0 27.0  
 125 6.9 5.8 8.6



#89  
 Benzo(k)fluoranthene  
 Concen: 43.623 ng  
 RT: 15.033 min Scan# 2201  
 Delta R.T. 0.006 min  
 Lab File: BF132058.D  
 Acq: 13 Jan 2023 14:23

Tgt Ion:252 Resp: 393867  
 Ion Ratio Lower Upper  
 252 100  
 253 22.0 17.8 26.6  
 125 6.6 5.2 7.8

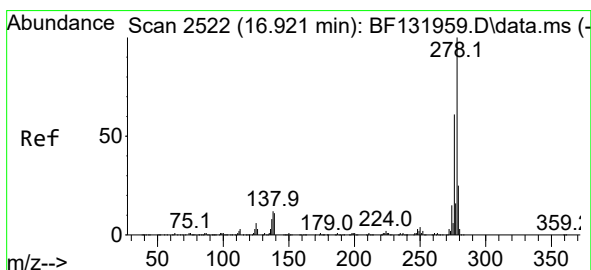
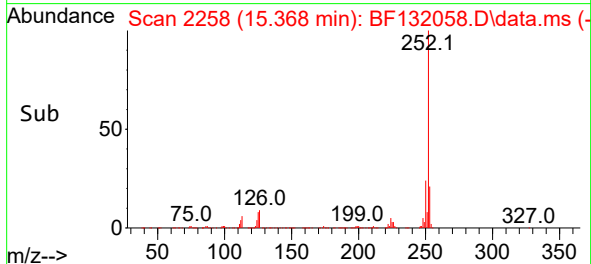
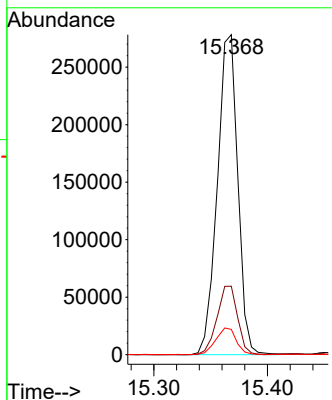
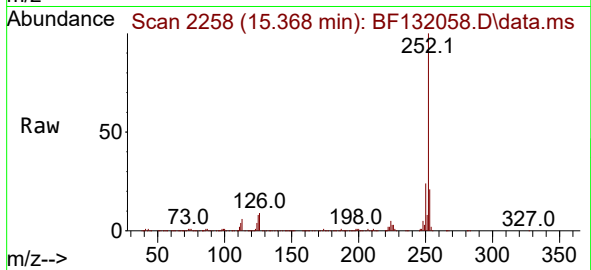




#90  
 Benzo(a)pyrene  
 Concen: 42.784 ng  
 RT: 15.368 min Scan# 21  
 Delta R.T. 0.012 min  
 Lab File: BF132058.D  
 Acq: 13 Jan 2023 14:23

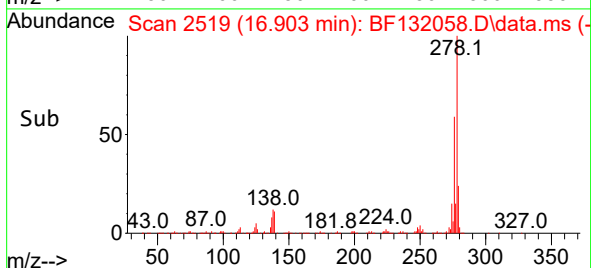
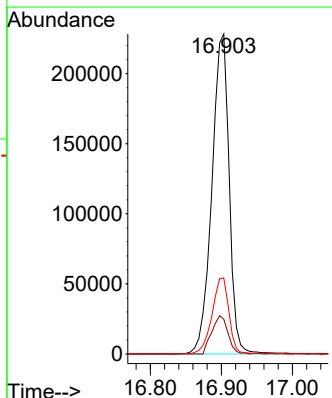
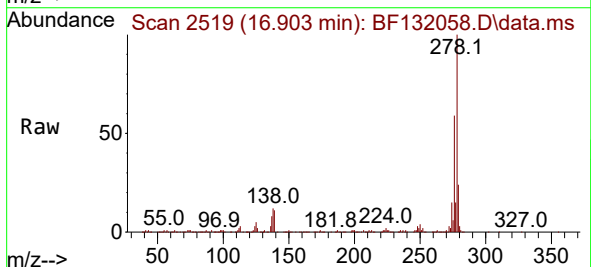
Instrument :  
 BNA\_F  
 ClientSampleId :  
 PB150221BS

Tgt Ion:252 Resp: 348742  
 Ion Ratio Lower Upper  
 252 100  
 253 21.4 17.4 26.0  
 125 7.9 5.7 8.5

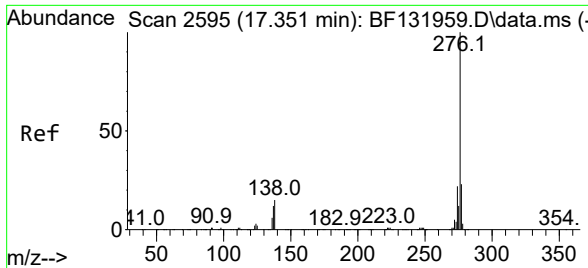


#91  
 Dibenzo(a,h)anthracene  
 Concen: 56.798 ng  
 RT: 16.903 min Scan# 2519  
 Delta R.T. 0.018 min  
 Lab File: BF132058.D  
 Acq: 13 Jan 2023 14:23

Tgt Ion:278 Resp: 385161  
 Ion Ratio Lower Upper  
 278 100  
 139 10.8 8.8 13.2  
 279 23.7 19.8 29.6

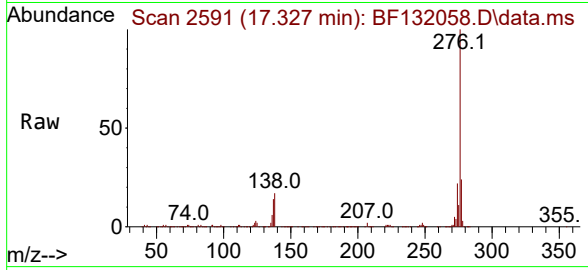






#92  
 Benzo(g,h,i)perylene  
 Concen: 53.348 ng  
 RT: 17.327 min Scan# 21  
 Delta R.T. 0.012 min  
 Lab File: BF132058.D  
 Acq: 13 Jan 2023 14:23

Instrument : BNA\_F  
 ClientSampleId : PB150221BS



Tgt Ion: 276 Resp: 390449

Ion	Ratio	Lower	Upper
276	100		
277	24.1	18.2	27.2
138	16.5	11.7	17.5

