

Data Path : Z:\svoasrv\HPCHEM1\BNA_F\Data\BF011425\
 Data File : BF141160.D
 Acq On : 14 Jan 2025 21:42
 Operator : RC/JU
 Sample : Q1068-01MSD
 Misc :
 ALS Vial : 17 Sample Multiplier: 1

Instrument :
 BNA_F
 ClientSampleId :
 TR-06-1-10-2025MSD

Quant Time: Jan 15 00:15:23 2025
 Quant Method : Z:\svoasrv\HPCHEM1\BNA_F\Methods\8270-BF011025.M
 Quant Title : ASP BNA STANDARDS FOR 5 POINT CALIBRATION
 QLast Update : Fri Jan 10 22:54:19 2025
 Response via : Initial Calibration

Compound	R.T.	QIon	Response	Conc	Units	Dev(Min)	
Internal Standards							
1) 1,4-Dichlorobenzene-d4	6.822	152	138181	20.000	ng	0.00	
21) Naphthalene-d8	8.104	136	515917	20.000	ng	0.00	
39) Acenaphthene-d10	9.857	164	250445	20.000	ng	0.00	
64) Phenanthrene-d10	11.345	188	380343	20.000	ng	0.00	
76) Chrysene-d12	13.992	240	290730	20.000	ng	0.00	
86) Perylene-d12	15.445	264	246582	20.000	ng	0.00	
System Monitoring Compounds							
5) 2-Fluorophenol	5.434	112	710203	79.398	ng	0.00	
7) Phenol-d6	6.445	99	1045653	92.286	ng	0.00	
23) Nitrobenzene-d5	7.380	82	679986	69.866	ng	0.00	
42) 2,4,6-Tribromophenol	10.645	330	120336	42.169	ng	0.00	
45) 2-Fluorobiphenyl	9.180	172	1233532	75.212	ng	0.00	
79) Terphenyl-d14	12.933	244	1186539	60.660	ng	0.00	
Target Compounds							
2) 1,4-Dioxane	2.593	88	105440	26.471	ng		Qvalue 98
3) Pyridine	3.328	79	263315	26.957	ng		97
4) n-Nitrosodimethylamine	3.275	42	151295	31.677	ng		99
6) Aniline	6.481	93	201870	20.067	ng		95
8) 2-Chlorophenol	6.604	128	307433	32.035	ng		97
9) Benzaldehyde	6.369	77	43653	6.541	ng		98
10) Phenol	6.463	94	400715	33.038	ng		97
11) bis(2-Chloroethyl)ether	6.557	93	311820	34.497	ng		97
12) 1,3-Dichlorobenzene	6.763	146	332076	31.025	ng		99
13) 1,4-Dichlorobenzene	6.839	146	337133	31.257	ng		99
14) 1,2-Dichlorobenzene	6.992	146	322455	32.050	ng		98
15) Benzyl Alcohol	6.957	79	287643	35.153	ng		100
16) 2,2'-oxybis(1-Chloropr...	7.098	45	414024	32.824	ng		98
17) 2-Methylphenol	7.069	107	260592	33.634	ng		99
18) Hexachloroethane	7.333	117	110937	28.442	ng		98
19) n-Nitroso-di-n-propyla...	7.233	70	225561	33.795	ng		99
20) 3+4-Methylphenols	7.222	107	328554	33.612	ng	#	87
22) Acetophenone	7.228	105	435878	35.539	ng		97
24) Nitrobenzene	7.398	77	331424	32.673	ng		100
25) Isophorone	7.639	82	601015	36.134	ng		99
26) 2-Nitrophenol	7.716	139	105947	22.961	ng		97
27) 2,4-Dimethylphenol	7.751	122	255373	41.032	ng		97
28) bis(2-Chloroethoxy)met...	7.851	93	375237	35.948	ng		99
29) 2,4-Dichlorophenol	7.957	162	237802	32.171	ng		99
30) 1,2,4-Trichlorobenzene	8.045	180	277310	32.821	ng		99
31) Naphthalene	8.127	128	967471	35.559	ng		99
33) 4-Chloroaniline	8.169	127	177459	18.860	ng		99
34) Hexachlorobutadiene	8.245	225	171702	33.726	ng		99
35) Caprolactam	8.522	113	79145	32.704	ng		96
36) 4-Chloro-3-methylphenol	8.651	107	277559	34.334	ng		99
37) 2-Methylnaphthalene	8.816	142	618426	35.670	ng		100
38) 1-Methylnaphthalene	8.916	142	573735	33.578	ng		100
40) 1,2,4,5-Tetrachloroben...	8.980	216	273565	38.057	ng		99
41) Hexachlorocyclopentadiene	8.969	237	69850	29.701	ng		100
43) 2,4,6-Trichlorophenol	9.092	196	96870	19.981	ng		99
44) 2,4,5-Trichlorophenol	9.133	196	133061	25.988	ng		100

Data Path : Z:\svoasrv\HPCHEM1\BNA_F\Data\BF011425\
 Data File : BF141160.D
 Acq On : 14 Jan 2025 21:42
 Operator : RC/JU
 Sample : Q1068-01MSD
 Misc :
 ALS Vial : 17 Sample Multiplier: 1

Instrument :
 BNA_F
 ClientSampleId :
 TR-06-1-10-2025MSD

Quant Time: Jan 15 00:15:23 2025
 Quant Method : Z:\svoasrv\HPCHEM1\BNA_F\Methods\8270-BF011025.M
 Quant Title : ASP BNA STANDARDS FOR 5 POINT CALIBRATION
 QLast Update : Fri Jan 10 22:54:19 2025
 Response via : Initial Calibration

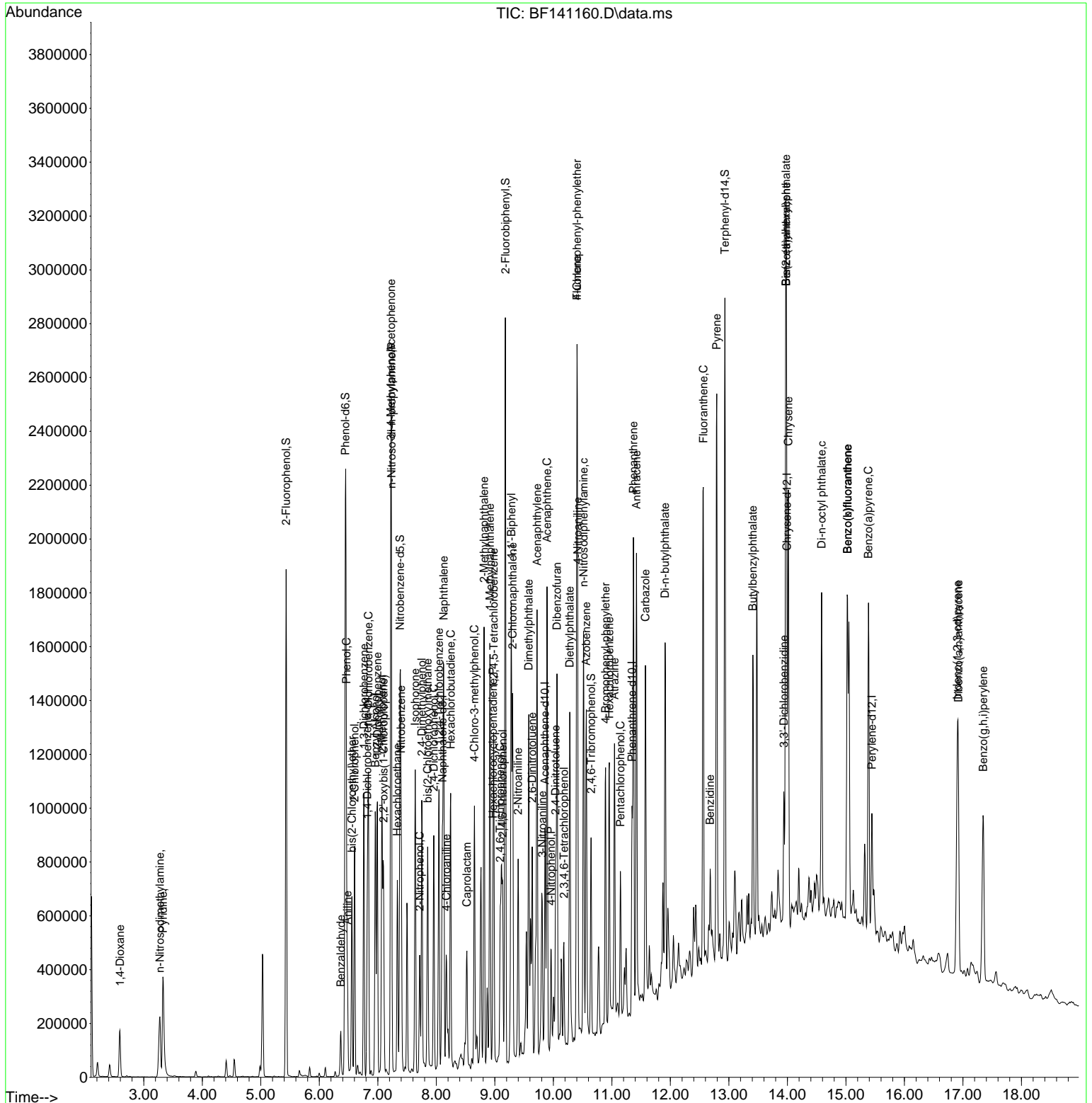
Compound	R.T.	QIon	Response	Conc	Units	Dev(Min)
46) 1,1'-Biphenyl	9.280	154	734139	37.746	ng	99
47) 2-Chloronaphthalene	9.304	162	540596	35.686	ng	99
48) 2-Nitroaniline	9.398	65	171931	38.287	ng	98
49) Acenaphthylene	9.721	152	993645	45.910	ng	100
50) Dimethylphthalate	9.580	163	658818	39.184	ng	100
51) 2,6-Dinitrotoluene	9.639	165	131549	33.645	ng	94
52) Acenaphthene	9.892	154	534225	35.330	ng	99
53) 3-Nitroaniline	9.810	138	127093	31.987	ng	98
55) Dibenzofuran	10.063	168	743325	36.141	ng	99
56) 4-Nitrophenol	9.963	139	85333	27.423	ng	97
57) 2,4-Dinitrotoluene	10.039	165	166379	33.020	ng	98
58) Fluorene	10.404	166	586443	36.701	ng	99
59) 2,3,4,6-Tetrachlorophenol	10.180	232	62364	14.653	ng	100
60) Diethylphthalate	10.280	149	618100	37.657	ng	100
61) 4-Chlorophenyl-phenyle...	10.404	204	278109	35.710	ng	99
62) 4-Nitroaniline	10.416	138	136974	35.222	ng	97
63) Azobenzene	10.563	77	614753	37.957	ng	93
66) n-Nitrosodiphenylamine	10.516	169	500146	40.769	ng	99
67) 4-Bromophenyl-phenylether	10.892	248	172968	39.500	ng	100
68) Hexachlorobenzene	10.957	284	181320	37.198	ng	99
69) Atrazine	11.045	200	169431	51.293	ng	99
70) Pentachlorophenol	11.145	266	84188	26.969	ng	98
71) Phenanthrene	11.368	178	917953	44.955	ng	100
72) Anthracene	11.421	178	940668	47.377	ng	100
73) Carbazole	11.574	167	702303	38.576	ng	100
74) Di-n-butylphthalate	11.910	149	889610	42.698	ng	100
75) Fluoranthene	12.562	202	1056993	51.873	ng	98
77) Benzidine	12.680	184	185251	34.360	ng	97
78) Pyrene	12.792	202	1247719	44.933	ng	99
80) Butylbenzylphthalate	13.409	149	346851	37.464	ng	99
81) Benzo(a)anthracene	13.980	228	910314	46.008	ng	94
82) 3,3'-Dichlorobenzidine	13.939	252	163939	26.021	ng	98
83) Chrysene	14.015	228	803945	43.425	ng	98
84) Bis(2-ethylhexyl)phtha...	13.974	149	478921	43.113	ng	99
85) Di-n-octyl phthalate	14.586	149	784314	46.756	ng	99
87) Indeno(1,2,3-cd)pyrene	16.903	276	692133	38.313	ng	96
88) Benzo(b)fluoranthene	15.027	252	848840	53.385	ng	99
89) Benzo(k)fluoranthene	15.027	252	848840	63.171	ng	100
90) Benzo(a)pyrene	15.386	252	756476	57.664	ng	99
91) Dibenzo(a,h)anthracene	16.921	278	453193	31.017	ng	98
92) Benzo(g,h,i)perylene	17.345	276	605763	39.858	ng	99

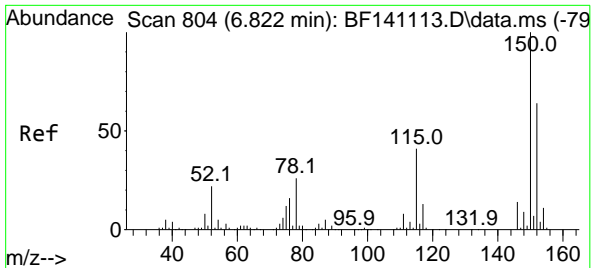
(#) = qualifier out of range (m) = manual integration (+) = signals summed

Data Path : Z:\svoasrv\HPCHEM1\BNA_F\Data\BF011425\
 Data File : BF141160.D
 Acq On : 14 Jan 2025 21:42
 Operator : RC/JU
 Sample : Q1068-01MSD
 Misc :
 ALS Vial : 17 Sample Multiplier: 1

Instrument :
 BNA_F
 ClientSampleId :
 TR-06-1-10-2025MSD

Quant Time: Jan 15 00:15:23 2025
 Quant Method : Z:\svoasrv\HPCHEM1\BNA_F\Methods\8270-BF011025.M
 Quant Title : ASP BNA STANDARDS FOR 5 POINT CALIBRATION
 QLast Update : Fri Jan 10 22:54:19 2025
 Response via : Initial Calibration



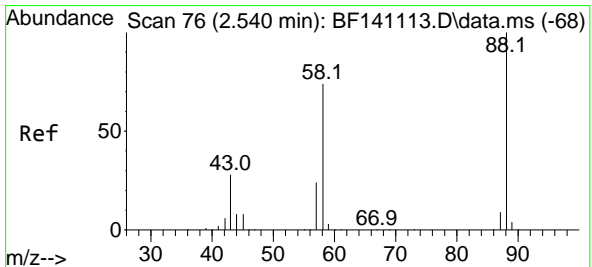
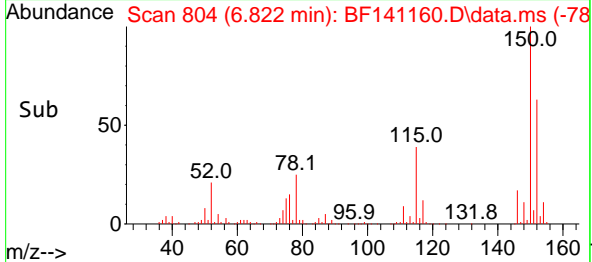
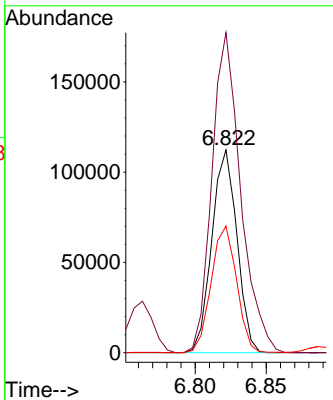
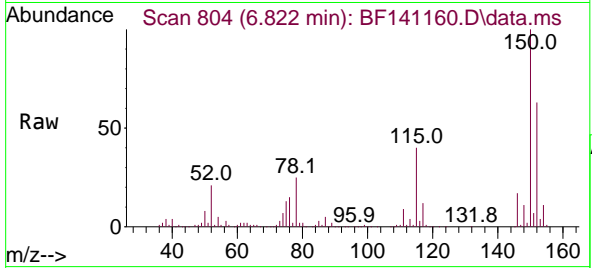


#1
 1,4-Dichlorobenzene-d4
 Concen: 20.000 ng
 RT: 6.822 min Scan# 80
 Delta R.T. -0.000 min
 Lab File: BF141160.D
 Acq: 14 Jan 2025 21:42

Instrument : BNA_F
 ClientSampleId : TR-06-1-10-2025MSD

Tgt Ion:152 Resp: 138181

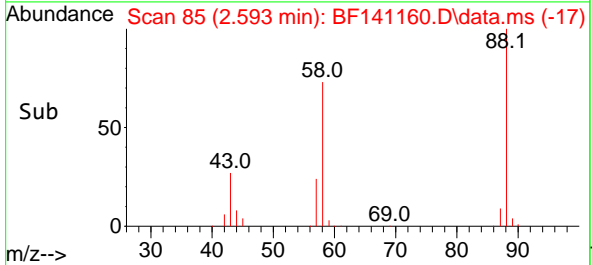
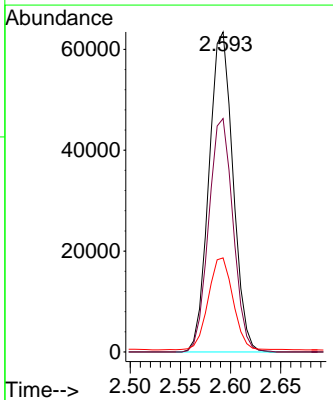
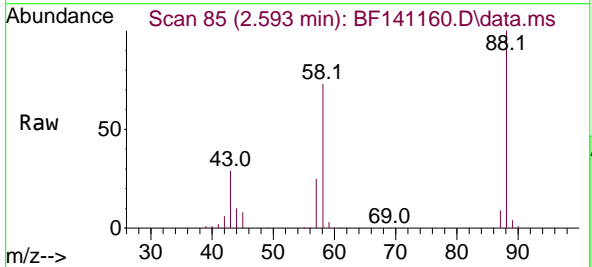
Ion	Ratio	Lower	Upper
152	100		
150	157.9	125.8	188.8
115	62.5	51.4	77.2

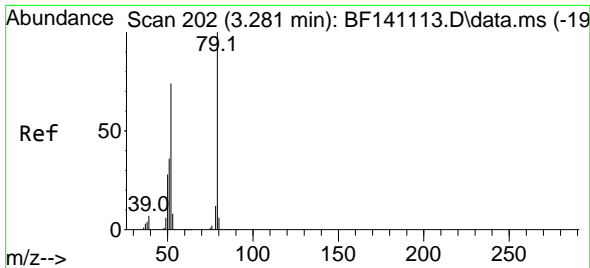


#2
 1,4-Dioxane
 Concen: 26.471 ng
 RT: 2.593 min Scan# 85
 Delta R.T. 0.053 min
 Lab File: BF141160.D
 Acq: 14 Jan 2025 21:42

Tgt Ion: 88 Resp: 105440

Ion	Ratio	Lower	Upper
88	100		
58	73.9	60.1	90.1
43	30.0	23.1	34.7



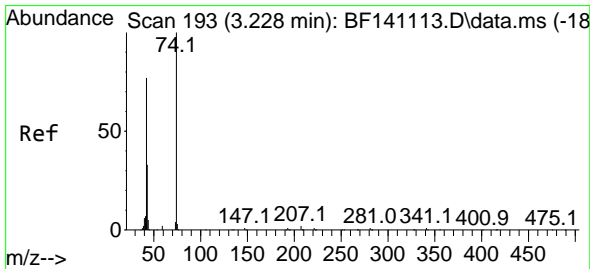
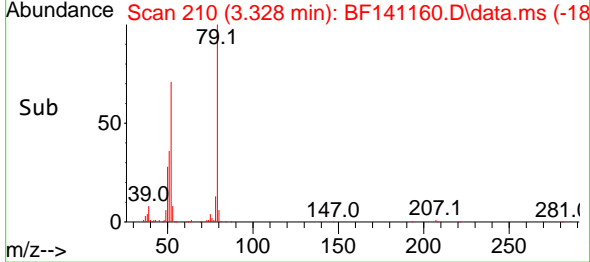
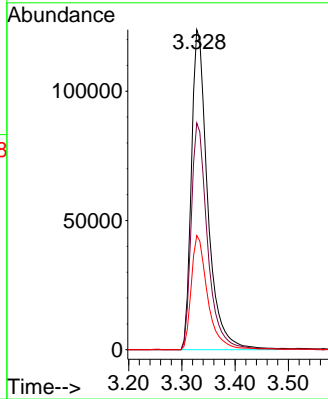
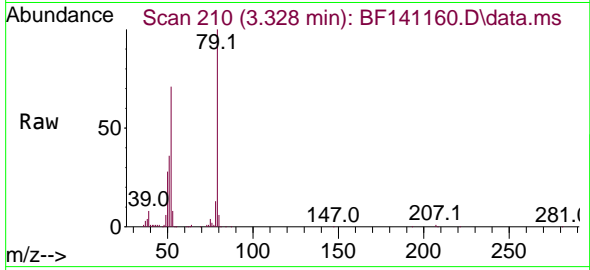


#3
 Pyridine
 Concen: 26.957 ng
 RT: 3.328 min Scan# 201
 Delta R.T. 0.047 min
 Lab File: BF141160.D
 Acq: 14 Jan 2025 21:42

Instrument :
 BNA_F
 ClientSampleId :
 TR-06-1-10-2025MSD

Tgt Ion: 79 Resp: 263315

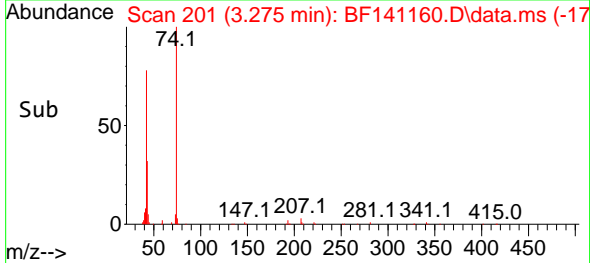
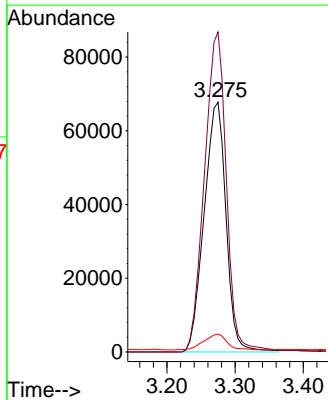
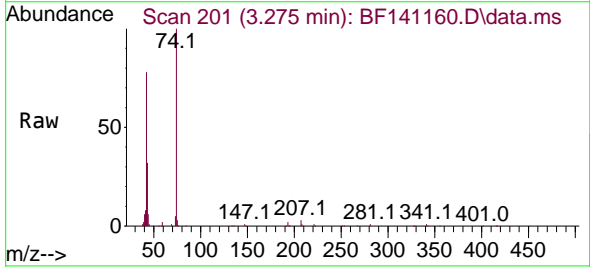
Ion	Ratio	Lower	Upper
79	100		
52	70.9	58.9	88.3
51	35.6	29.1	43.7

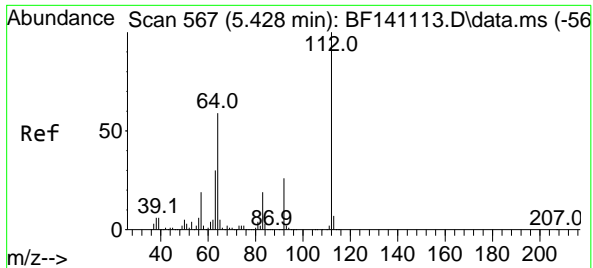


#4
 n-Nitrosodimethylamine
 Concen: 31.677 ng
 RT: 3.275 min Scan# 201
 Delta R.T. 0.047 min
 Lab File: BF141160.D
 Acq: 14 Jan 2025 21:42

Tgt Ion: 42 Resp: 151295

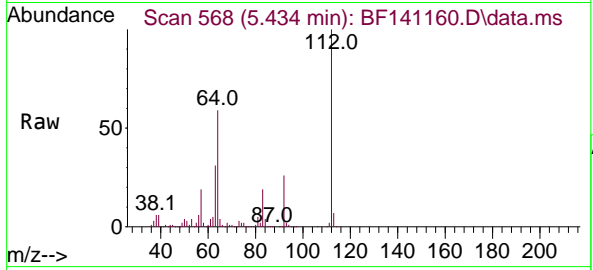
Ion	Ratio	Lower	Upper
42	100		
74	128.1	103.8	155.6
44	7.2	5.3	7.9





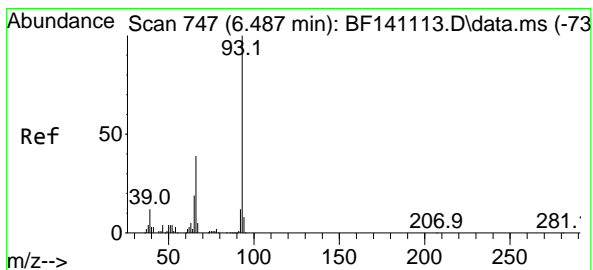
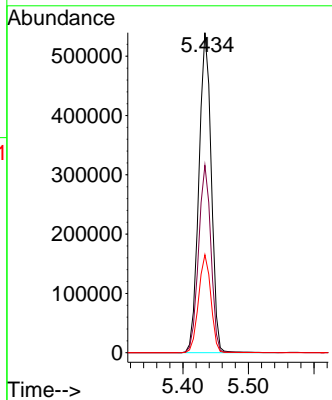
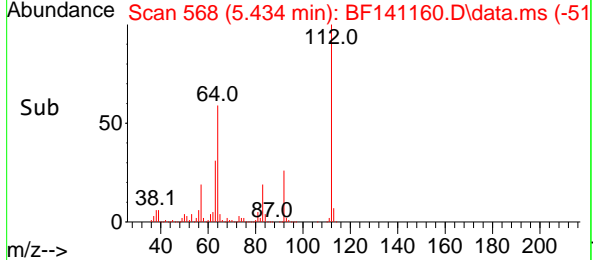
#5
 2-Fluorophenol
 Concen: 79.398 ng
 RT: 5.434 min Scan# 50
 Delta R.T. 0.006 min
 Lab File: BF141160.D
 Acq: 14 Jan 2025 21:42

Instrument :
 BNA_F
 ClientSampleId :
 TR-06-1-10-2025MSD



Tgt Ion: 112 Resp: 710203

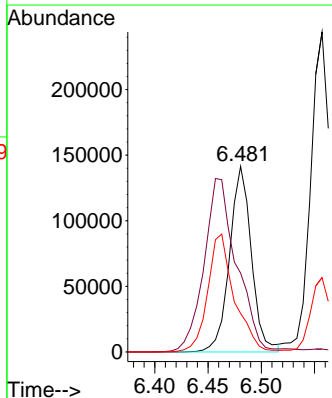
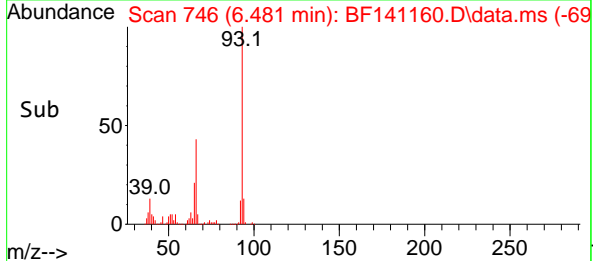
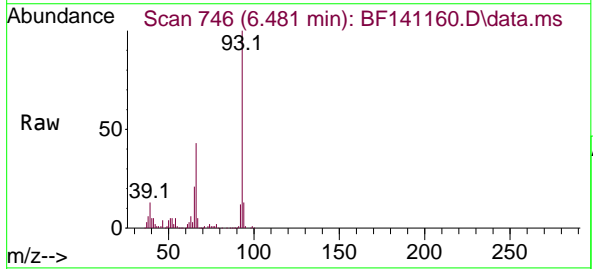
Ion	Ratio	Lower	Upper
112	100		
64	58.5	47.3	70.9
63	30.6	24.2	36.2

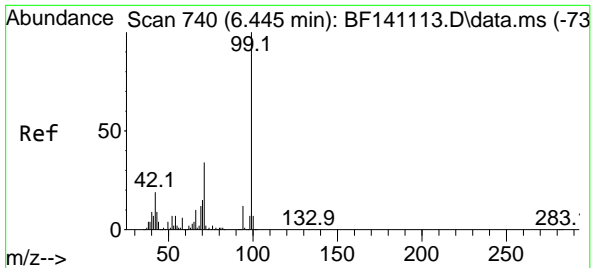


#6
 Aniline
 Concen: 20.067 ng
 RT: 6.481 min Scan# 746
 Delta R.T. -0.006 min
 Lab File: BF141160.D
 Acq: 14 Jan 2025 21:42

Tgt Ion: 93 Resp: 201870

Ion	Ratio	Lower	Upper
93	100		
66	42.5	31.5	47.3
65	20.8	15.3	22.9



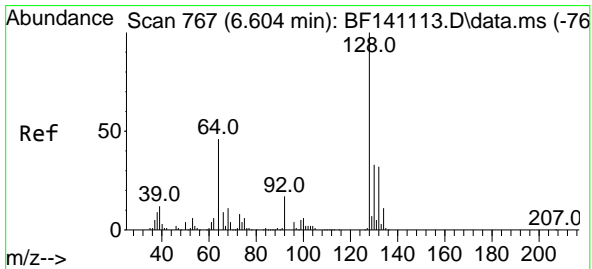
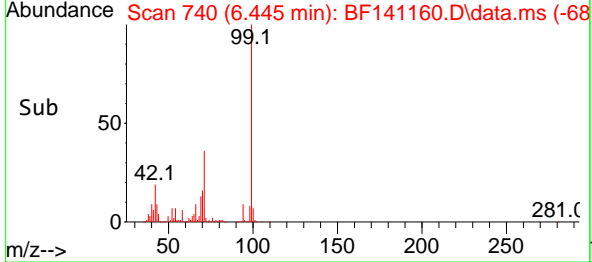
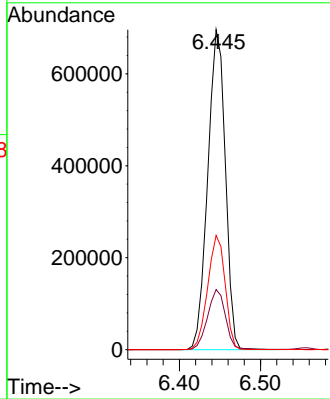
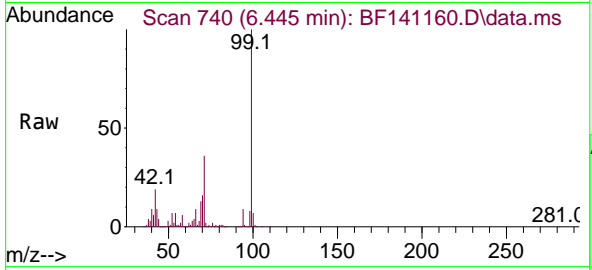


#7
 Phenol-d6
 Concen: 92.286 ng
 RT: 6.445 min Scan# 740
 Delta R.T. -0.000 min
 Lab File: BF141160.D
 Acq: 14 Jan 2025 21:42

Instrument : BNA_F
 ClientSampleId : TR-06-1-10-2025MSD

Tgt Ion: 99 Resp: 1045653

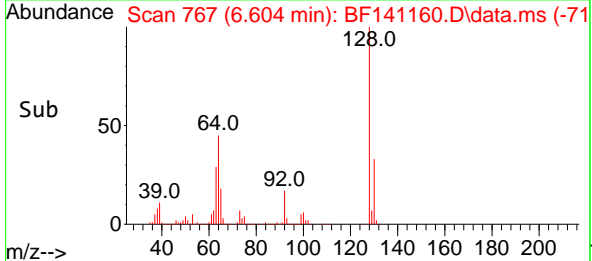
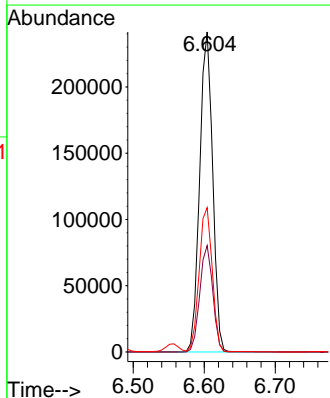
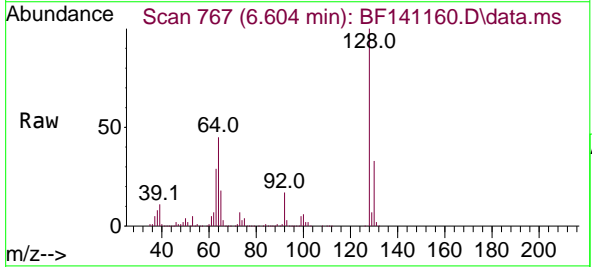
Ion	Ratio	Lower	Upper
99	100		
42	18.8	15.0	22.4
71	35.7	27.6	41.4

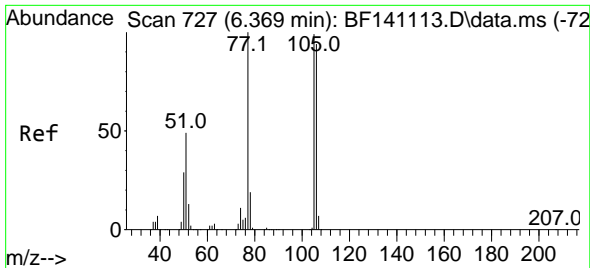


#8
 2-Chlorophenol
 Concen: 32.035 ng
 RT: 6.604 min Scan# 767
 Delta R.T. -0.000 min
 Lab File: BF141160.D
 Acq: 14 Jan 2025 21:42

Tgt Ion: 128 Resp: 307433

Ion	Ratio	Lower	Upper
128	100		
130	33.3	12.5	52.5
64	45.1	28.3	68.3



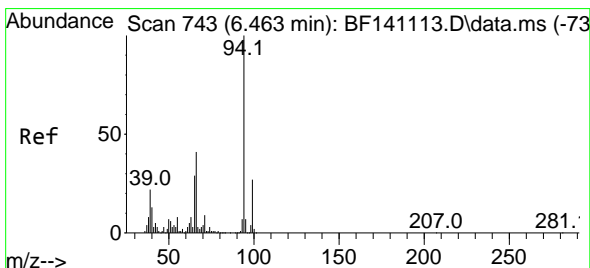
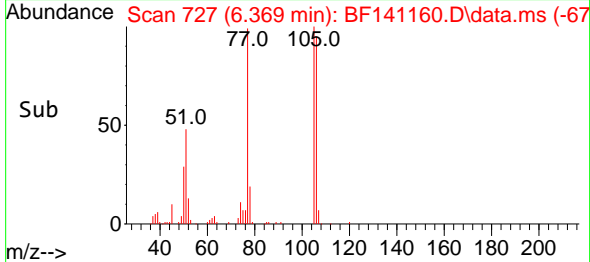
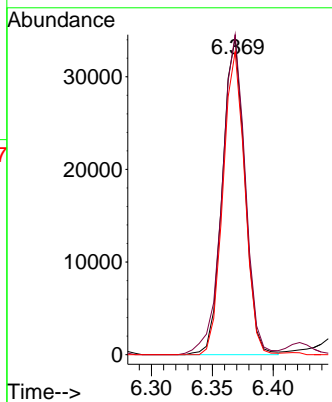
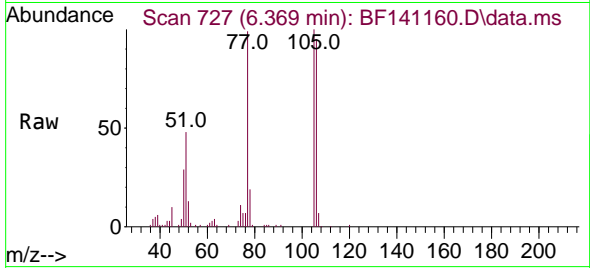


#9
 Benzaldehyde
 Concen: 6.541 ng
 RT: 6.369 min Scan# 712
 Delta R.T. -0.000 min
 Lab File: BF141160.D
 Acq: 14 Jan 2025 21:42

Instrument :
 BNA_F
ClientSampleId :
 TR-06-1-10-2025MSD

Tgt Ion: 77 Resp: 43653

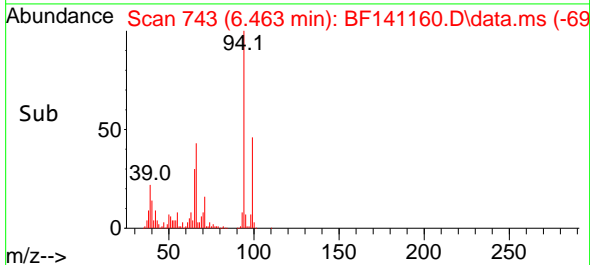
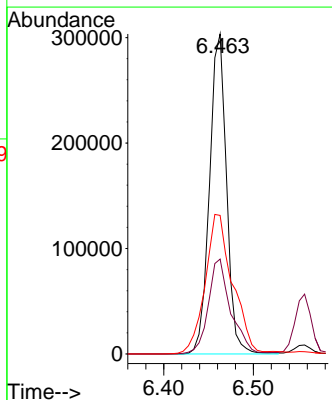
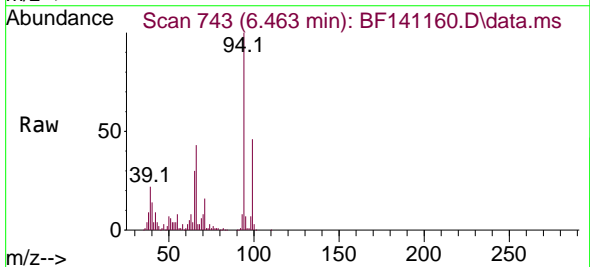
Ion	Ratio	Lower	Upper
77	100		
105	101.2	78.9	118.9
106	95.9	73.6	113.6

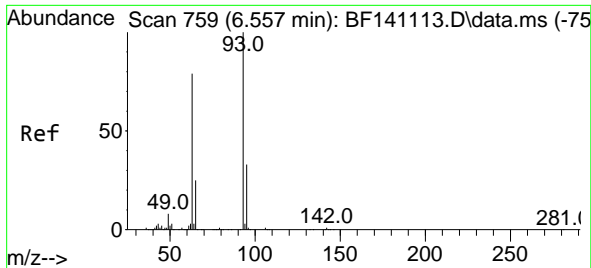


#10
 Phenol
 Concen: 33.038 ng
 RT: 6.463 min Scan# 743
 Delta R.T. -0.000 min
 Lab File: BF141160.D
 Acq: 14 Jan 2025 21:42

Tgt Ion: 94 Resp: 400715

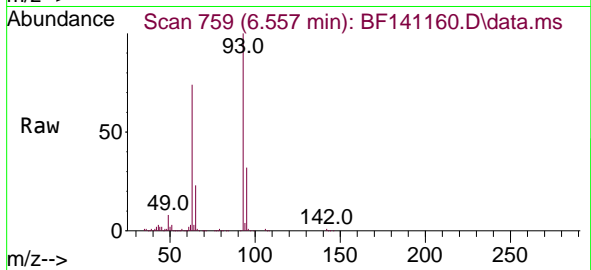
Ion	Ratio	Lower	Upper
94	100		
65	29.6	8.9	48.9
66	43.3	21.2	61.2



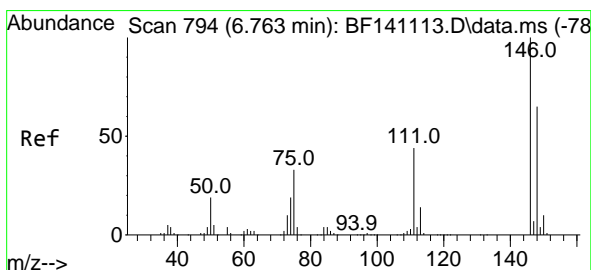
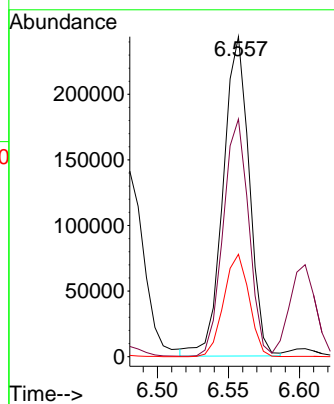
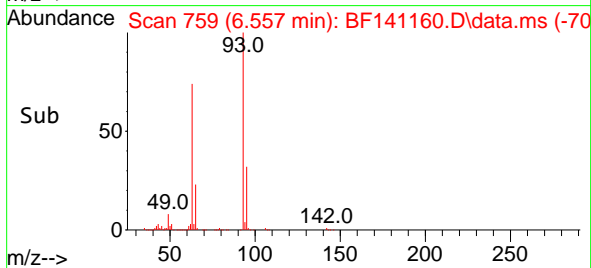


#11
 bis(2-Chloroethyl)ether
 Concen: 34.497 ng
 RT: 6.557 min Scan# 711
 Delta R.T. -0.000 min
 Lab File: BF141160.D
 Acq: 14 Jan 2025 21:42

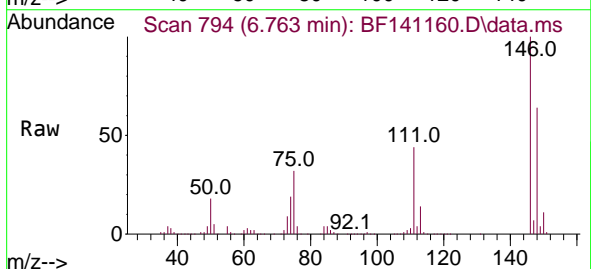
Instrument : BNA_F
 ClientSampleId : TR-06-1-10-2025MSD



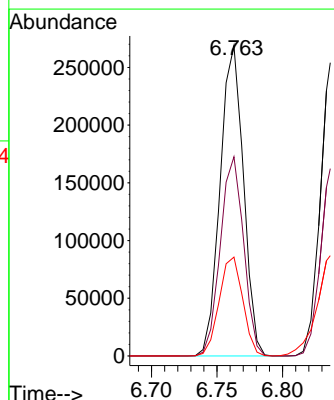
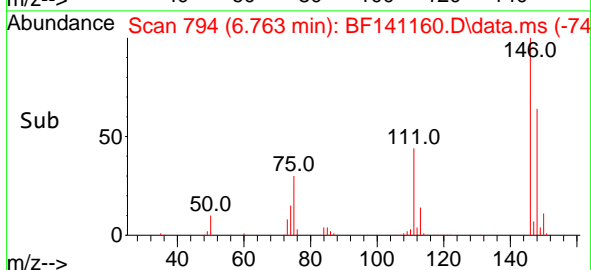
Tgt Ion: 93 Resp: 311820
 Ion Ratio Lower Upper
 93 100
 63 74.3 58.0 98.0
 95 32.0 12.5 52.5

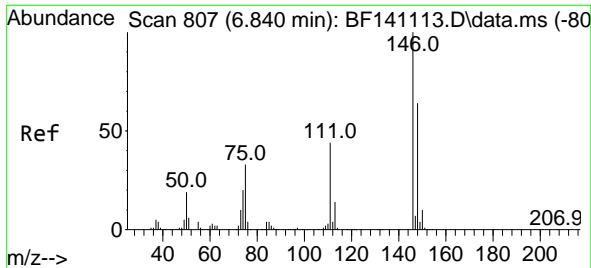


#12
 1,3-Dichlorobenzene
 Concen: 31.025 ng
 RT: 6.763 min Scan# 794
 Delta R.T. -0.000 min
 Lab File: BF141160.D
 Acq: 14 Jan 2025 21:42



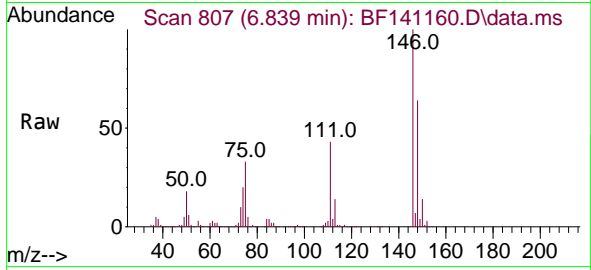
Tgt Ion:146 Resp: 332076
 Ion Ratio Lower Upper
 146 100
 148 64.2 51.6 77.4
 75 31.9 26.2 39.2





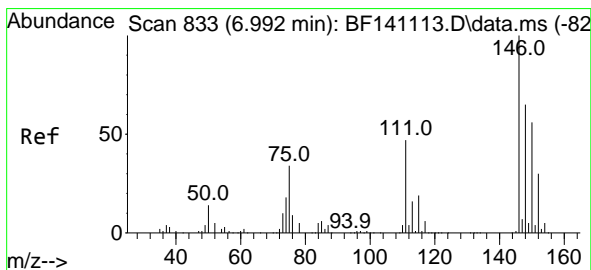
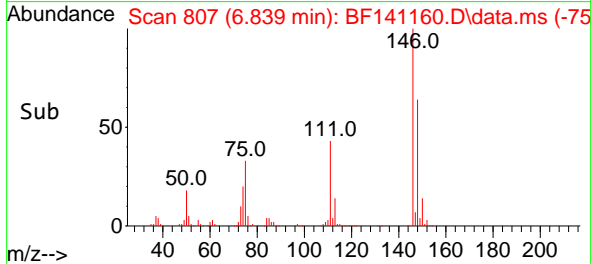
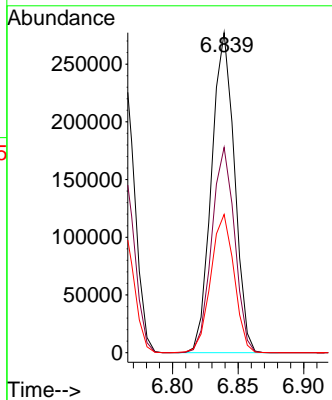
#13
 1,4-Dichlorobenzene
 Concen: 31.257 ng
 RT: 6.839 min Scan# 807
 Delta R.T. -0.000 min
 Lab File: BF141160.D
 Acq: 14 Jan 2025 21:42

Instrument :
 BNA_F
 ClientSampleId :
 TR-06-1-10-2025MSD



Tgt Ion:146 Resp: 337133

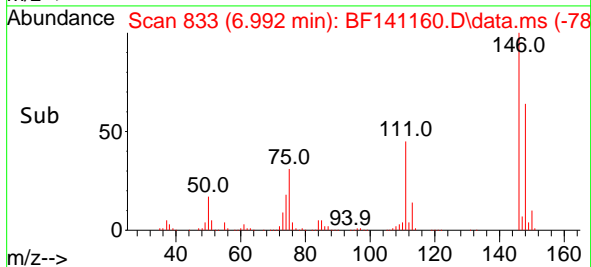
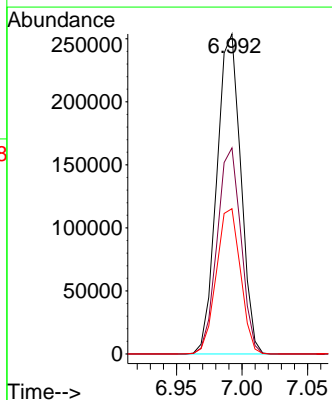
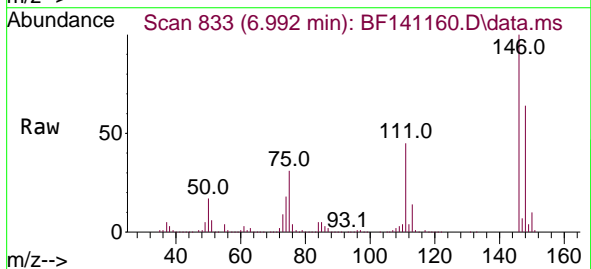
Ion	Ratio	Lower	Upper
146	100		
148	64.2	51.0	76.6
111	43.2	34.9	52.3

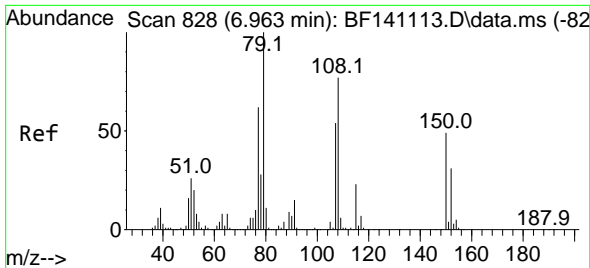


#14
 1,2-Dichlorobenzene
 Concen: 32.050 ng
 RT: 6.992 min Scan# 833
 Delta R.T. -0.000 min
 Lab File: BF141160.D
 Acq: 14 Jan 2025 21:42

Tgt Ion:146 Resp: 322455

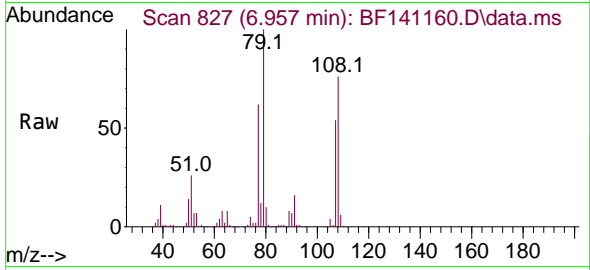
Ion	Ratio	Lower	Upper
146	100		
148	64.4	52.2	78.4
111	45.4	37.5	56.3





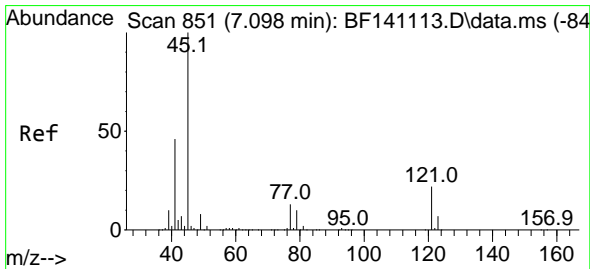
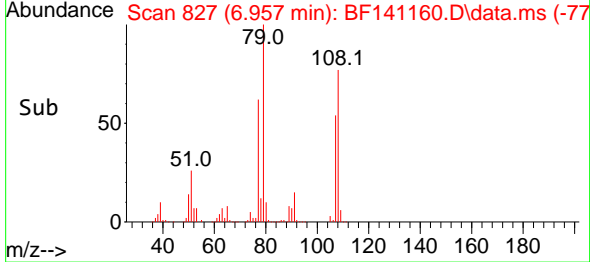
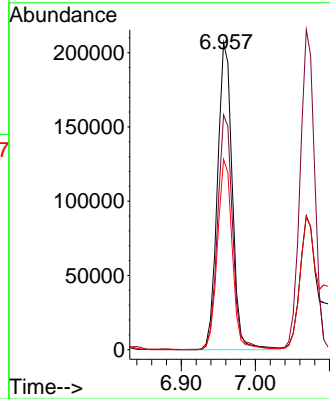
#15
Benzyl Alcohol
Concen: 35.153 ng
RT: 6.957 min Scan# 811
Delta R.T. -0.006 min
Lab File: BF141160.D
Acq: 14 Jan 2025 21:42

Instrument :
BNA_F
ClientSampleId :
TR-06-1-10-2025MSD

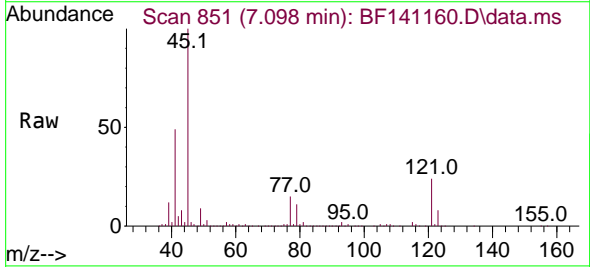


Tgt Ion: 79 Resp: 287643

Ion	Ratio	Lower	Upper
79	100		
108	76.5	61.4	92.0
77	62.0	49.8	74.6

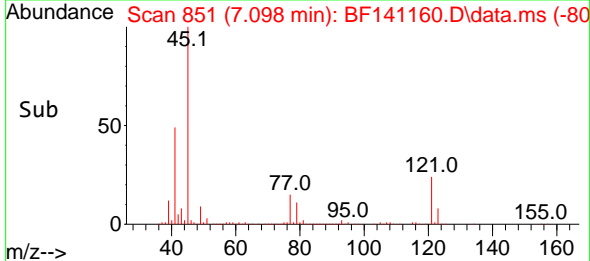
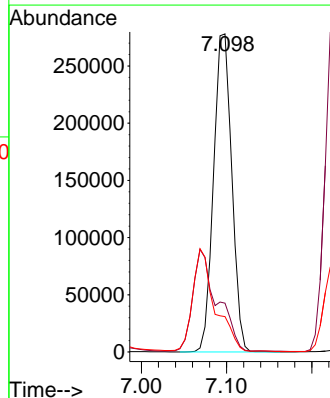


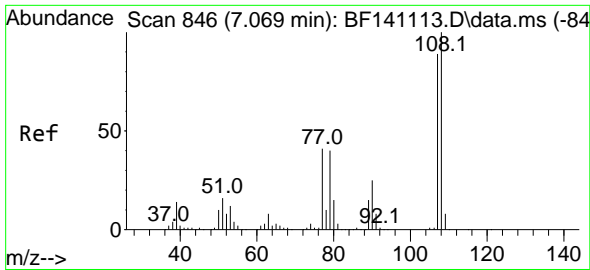
#16
2,2'-oxybis(1-Chloropropane)
Concen: 32.824 ng
RT: 7.098 min Scan# 851
Delta R.T. -0.000 min
Lab File: BF141160.D
Acq: 14 Jan 2025 21:42



Tgt Ion: 45 Resp: 414024

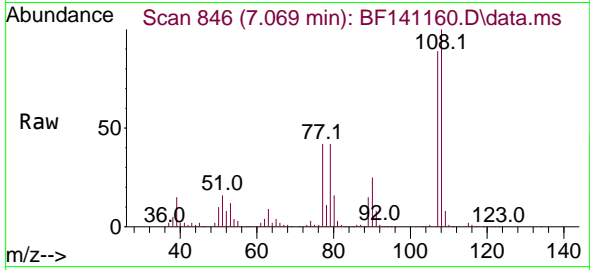
Ion	Ratio	Lower	Upper
45	100		
77	15.3	0.0	34.1
79	11.1	0.0	31.0





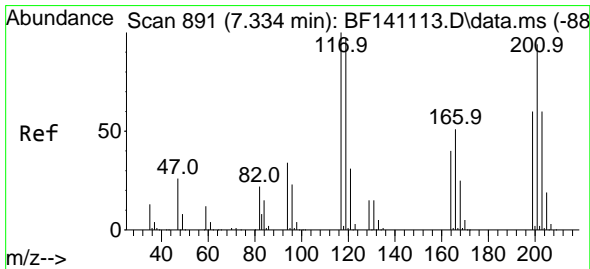
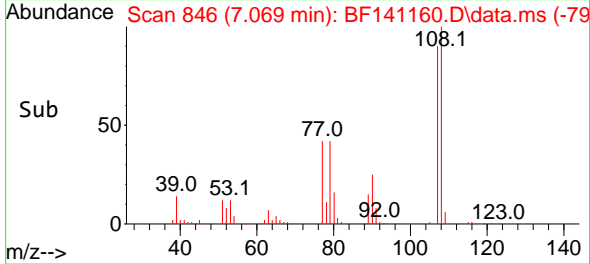
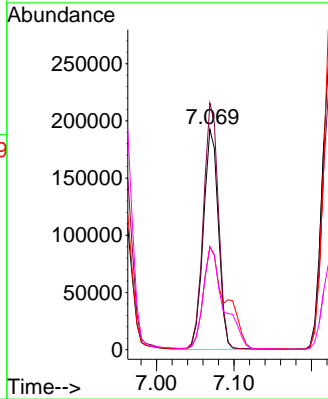
#17
 2-Methylphenol
 Concen: 33.634 ng
 RT: 7.069 min Scan# 84
 Delta R.T. -0.000 min
 Lab File: BF141160.D
 Acq: 14 Jan 2025 21:42

Instrument :
 BNA_F
 ClientSampleId :
 TR-06-1-10-2025MSD



Tgt Ion:107 Resp: 260592

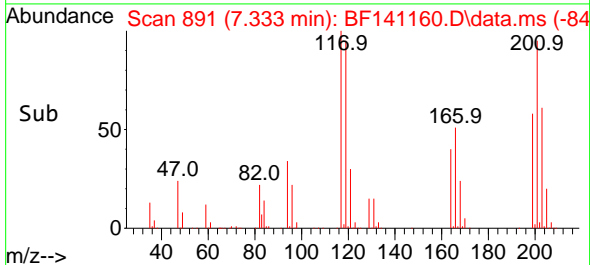
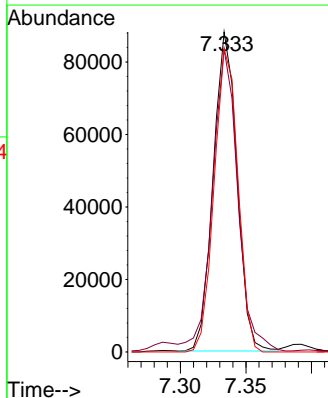
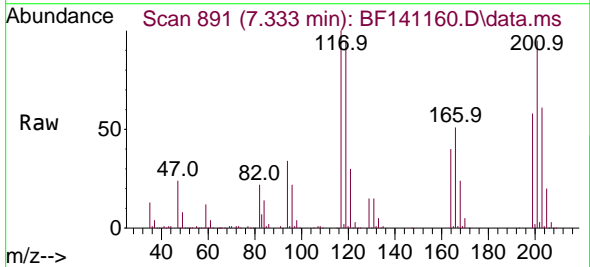
Ion	Ratio	Lower	Upper
107	100		
108	111.9	90.1	135.1
77	46.5	36.6	55.0
79	46.9	36.6	54.8

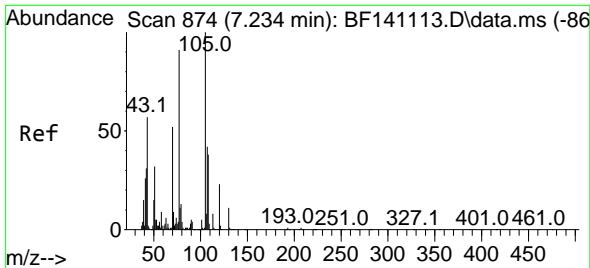


#18
 Hexachloroethane
 Concen: 28.442 ng
 RT: 7.333 min Scan# 891
 Delta R.T. -0.000 min
 Lab File: BF141160.D
 Acq: 14 Jan 2025 21:42

Tgt Ion:117 Resp: 110937

Ion	Ratio	Lower	Upper
117	100		
119	94.6	77.6	116.4
201	94.8	75.1	112.7



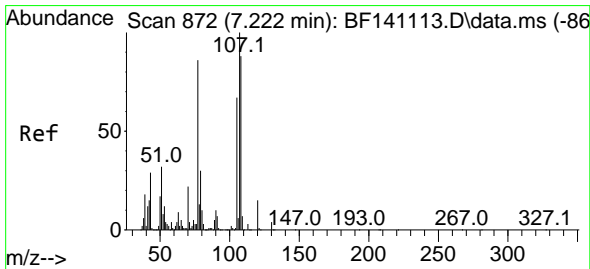
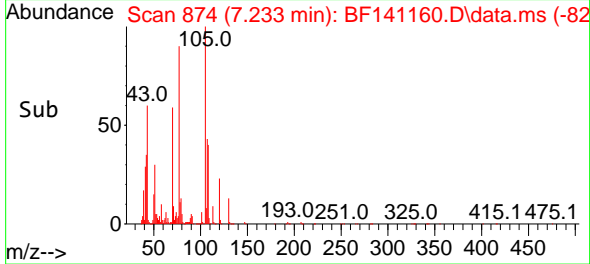
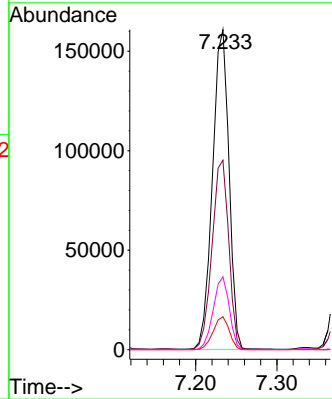
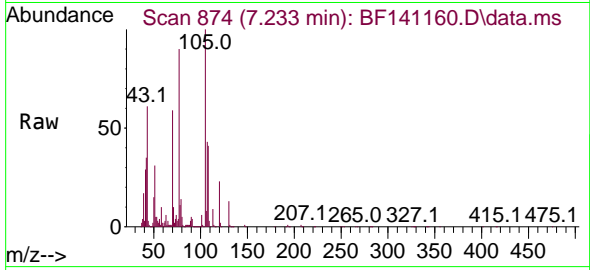


#19
 n-Nitroso-di-n-propylamine
 Concen: 33.795 ng
 RT: 7.233 min Scan# 81
 Delta R.T. -0.000 min
 Lab File: BF141160.D
 Acq: 14 Jan 2025 21:42

Instrument :
 BNA_F
 ClientSampleId :
 TR-06-1-10-2025MSD

Tgt Ion: 70 Resp: 225561

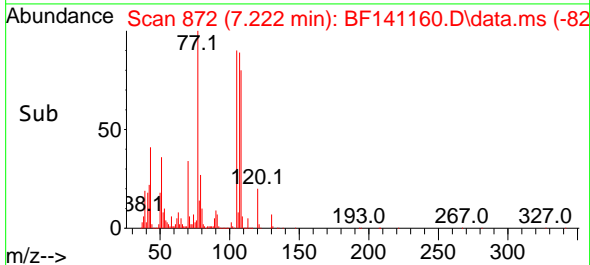
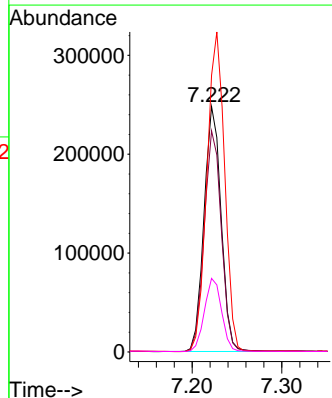
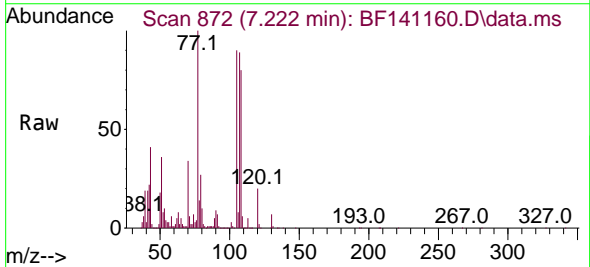
Ion	Ratio	Lower	Upper
70	100		
42	59.2	47.8	71.6
101	10.3	7.9	11.9
130	22.8	17.6	26.4

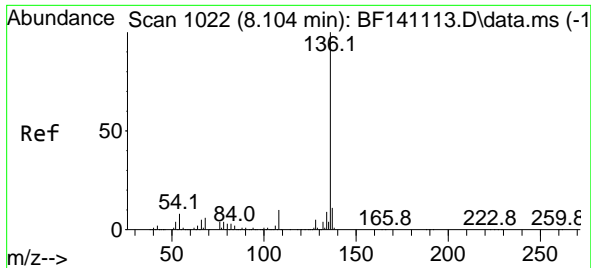


#20
 3+4-Methylphenols
 Concen: 33.612 ng
 RT: 7.222 min Scan# 872
 Delta R.T. -0.000 min
 Lab File: BF141160.D
 Acq: 14 Jan 2025 21:42

Tgt Ion: 107 Resp: 328554

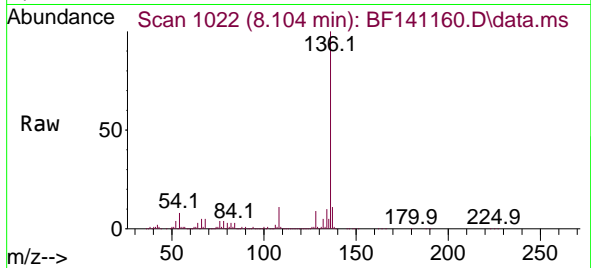
Ion	Ratio	Lower	Upper
107	100		
108	90.1	68.3	108.3
77	112.7	66.4	106.4#
79	30.0	9.6	49.6





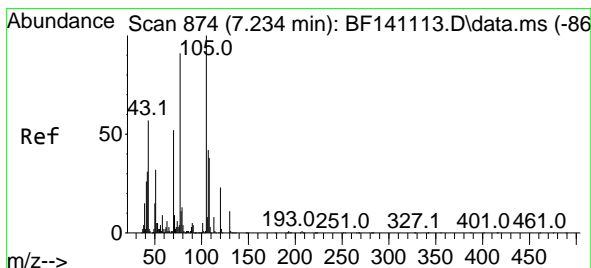
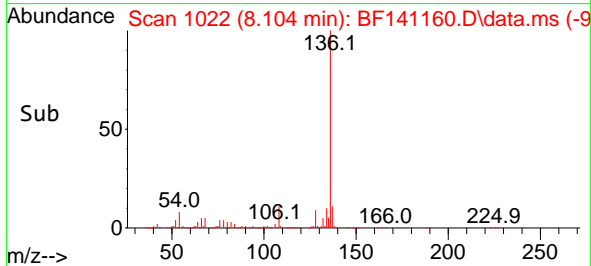
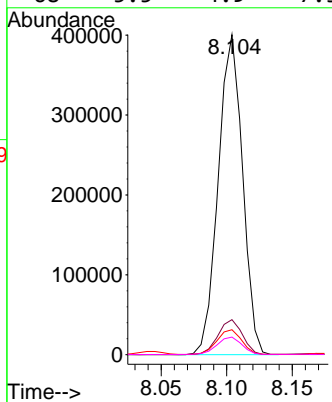
#21
 Naphthalene-d8
 Concen: 20.000 ng
 RT: 8.104 min Scan# 1022
 Delta R.T. -0.000 min
 Lab File: BF141160.D
 Acq: 14 Jan 2025 21:42

Instrument :
 BNA_F
 ClientSampleId :
 TR-06-1-10-2025MSD



Tgt Ion:136 Resp: 515917

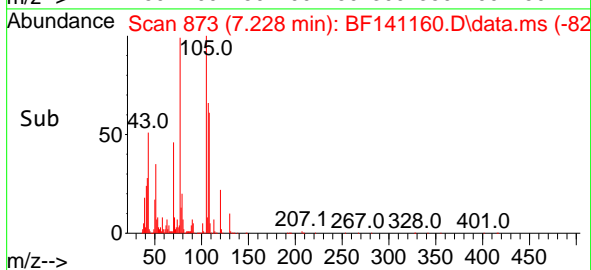
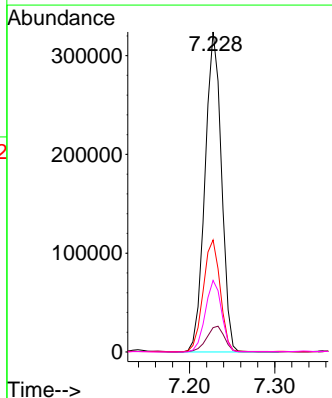
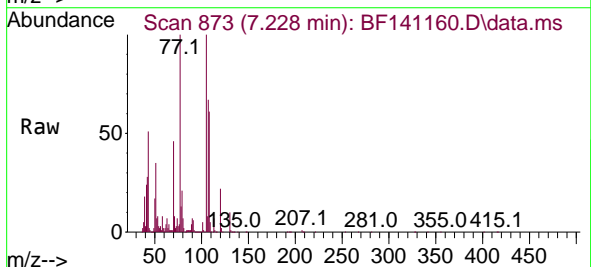
Ion	Ratio	Lower	Upper
136	100		
137	10.9	8.8	13.2
54	7.8	6.3	9.5
68	5.5	4.9	7.3

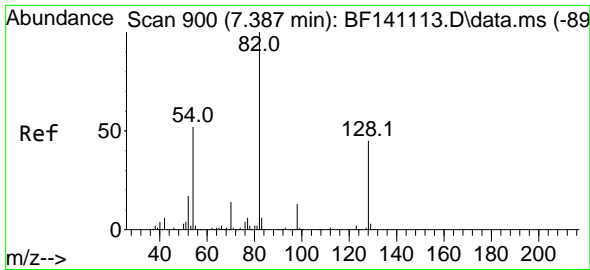


#22
 Acetophenone
 Concen: 35.539 ng
 RT: 7.228 min Scan# 873
 Delta R.T. -0.006 min
 Lab File: BF141160.D
 Acq: 14 Jan 2025 21:42

Tgt Ion:105 Resp: 435878

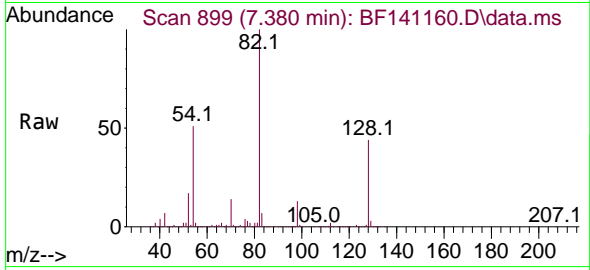
Ion	Ratio	Lower	Upper
105	100		
71	7.6	7.1	10.7
51	35.0	25.4	38.2
120	22.4	18.0	27.0



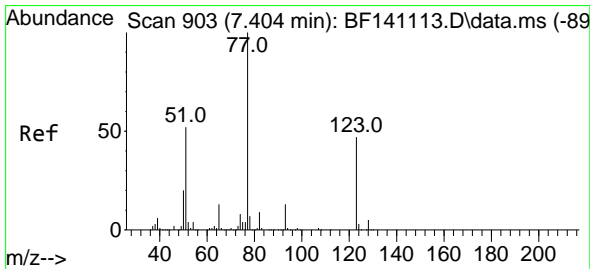
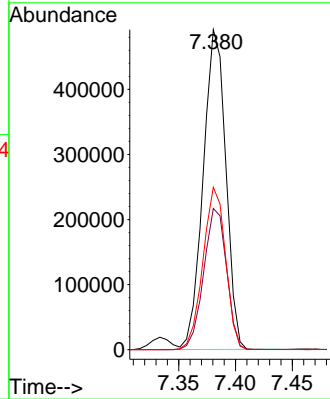
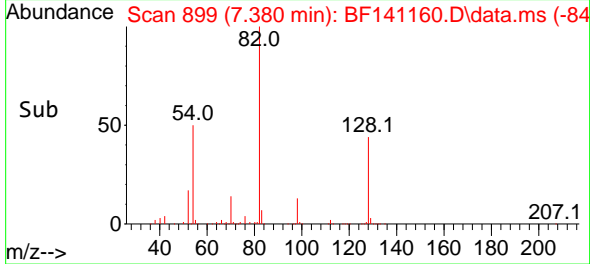


#23
 Nitrobenzene-d5
 Concen: 69.866 ng
 RT: 7.380 min Scan# 89
 Delta R.T. -0.006 min
 Lab File: BF141160.D
 Acq: 14 Jan 2025 21:42

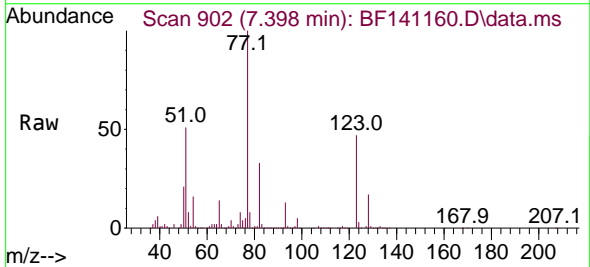
Instrument :
 BNA_F
 ClientSampleId :
 TR-06-1-10-2025MSD



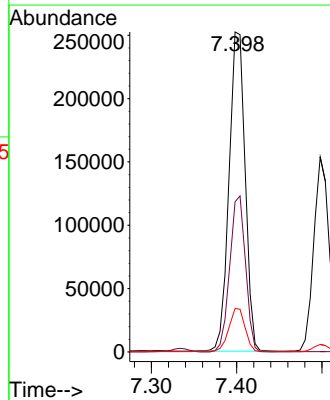
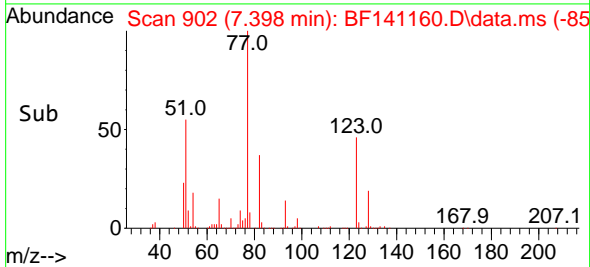
Tgt Ion: 82 Resp: 679986
 Ion Ratio Lower Upper
 82 100
 128 44.1 36.1 54.1
 54 50.7 41.0 61.4

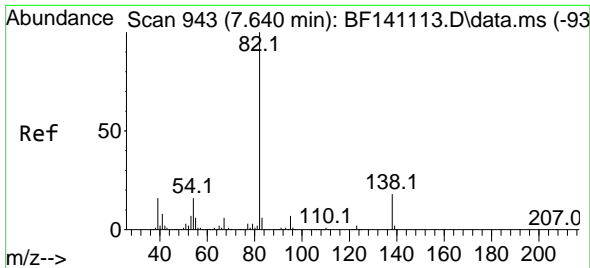


#24
 Nitrobenzene
 Concen: 32.673 ng
 RT: 7.398 min Scan# 902
 Delta R.T. -0.006 min
 Lab File: BF141160.D
 Acq: 14 Jan 2025 21:42



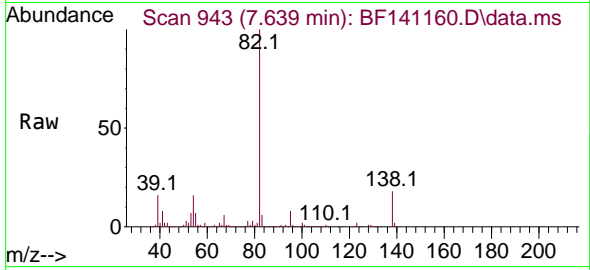
Tgt Ion: 77 Resp: 331424
 Ion Ratio Lower Upper
 77 100
 123 47.0 37.7 56.5
 65 13.6 10.6 16.0



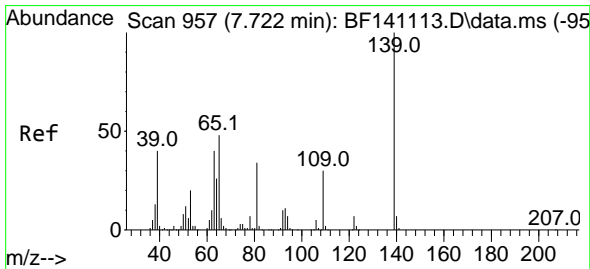
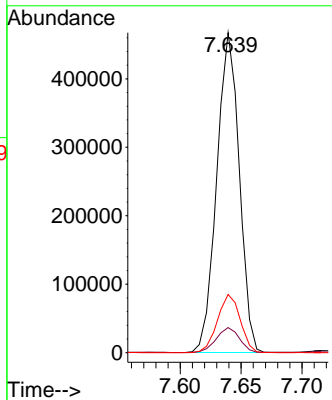
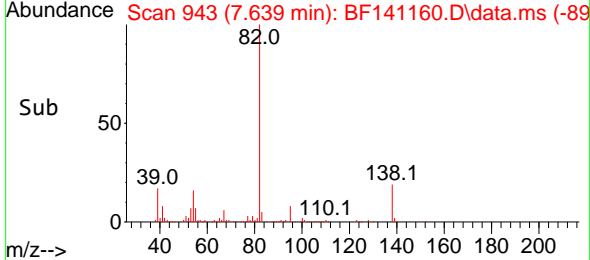


#25
 Isophorone
 Concen: 36.134 ng
 RT: 7.639 min Scan# 943
 Delta R.T. -0.000 min
 Lab File: BF141160.D
 Acq: 14 Jan 2025 21:42

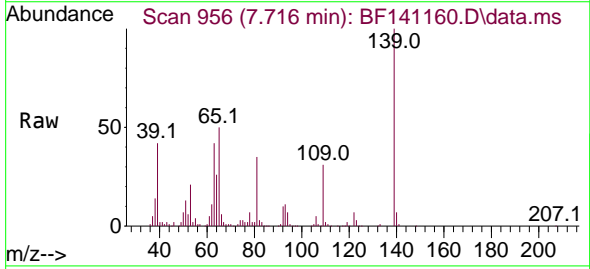
Instrument : BNA_F
 ClientSampleId : TR-06-1-10-2025MSD



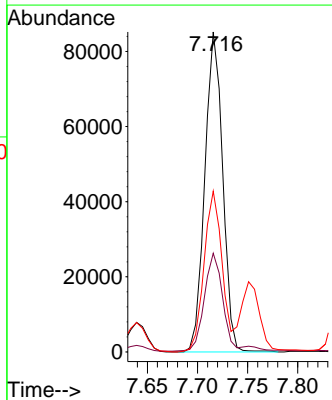
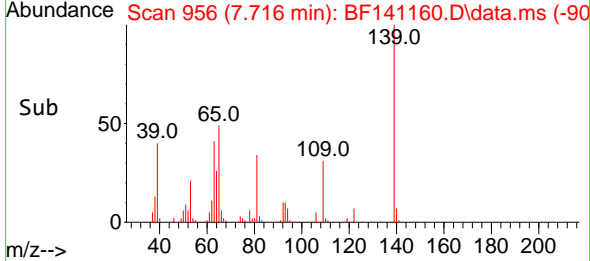
Tgt Ion: 82 Resp: 601015
 Ion Ratio Lower Upper
 82 100
 95 7.8 5.9 8.9
 138 18.2 14.2 21.2

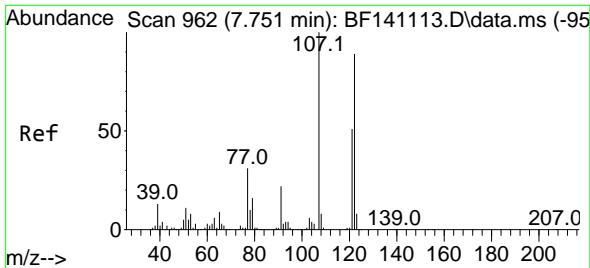


#26
 2-Nitrophenol
 Concen: 22.961 ng
 RT: 7.716 min Scan# 956
 Delta R.T. -0.006 min
 Lab File: BF141160.D
 Acq: 14 Jan 2025 21:42



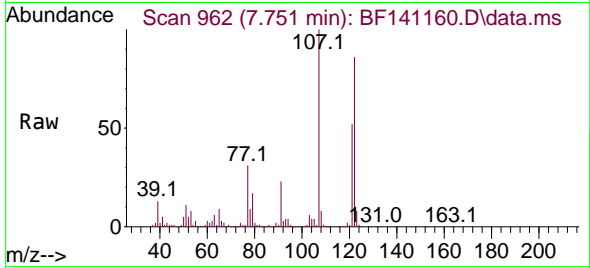
Tgt Ion: 139 Resp: 105947
 Ion Ratio Lower Upper
 139 100
 109 30.9 23.8 35.6
 65 50.2 38.5 57.7



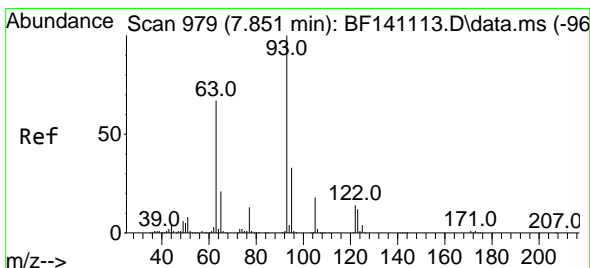
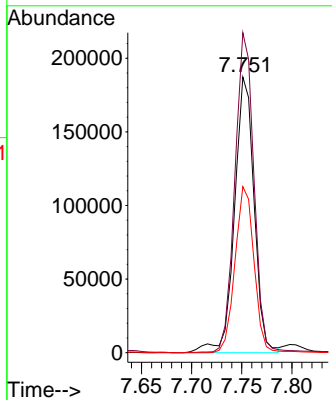
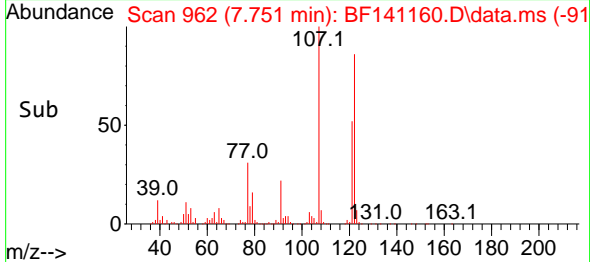


#27
 2,4-Dimethylphenol
 Concen: 41.032 ng
 RT: 7.751 min Scan# 90
 Delta R.T. -0.000 min
 Lab File: BF141160.D
 Acq: 14 Jan 2025 21:42

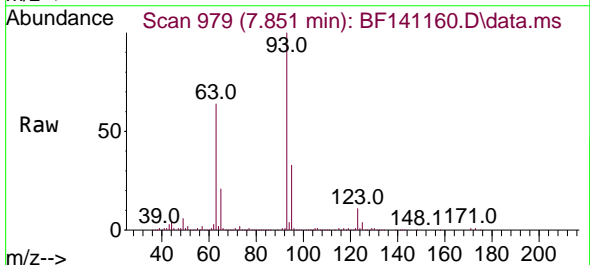
Instrument :
 BNA_F
 ClientSampleId :
 TR-06-1-10-2025MSD



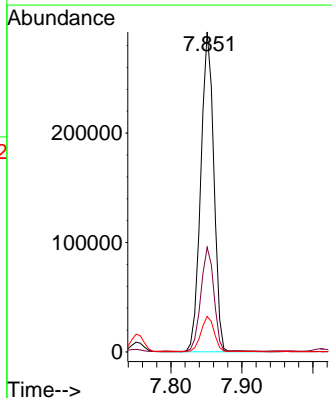
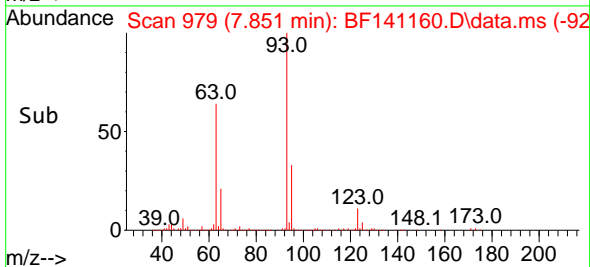
Tgt Ion:122 Resp: 255373
 Ion Ratio Lower Upper
 122 100
 107 116.1 90.3 135.5
 121 60.2 46.5 69.7

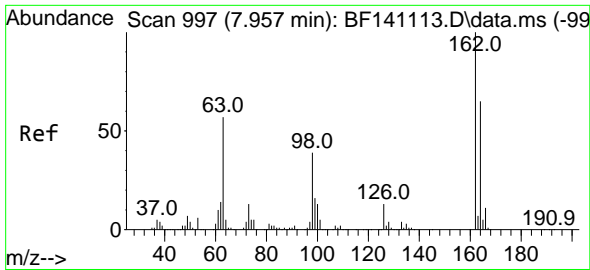


#28
 bis(2-Chloroethoxy)methane
 Concen: 35.948 ng
 RT: 7.851 min Scan# 979
 Delta R.T. -0.000 min
 Lab File: BF141160.D
 Acq: 14 Jan 2025 21:42



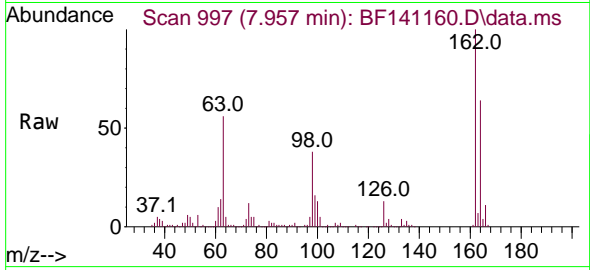
Tgt Ion: 93 Resp: 375237
 Ion Ratio Lower Upper
 93 100
 95 32.7 26.2 39.4
 123 11.1 10.1 15.1





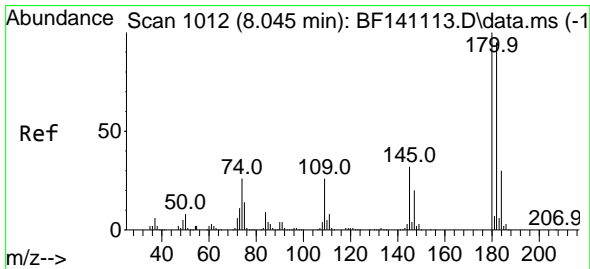
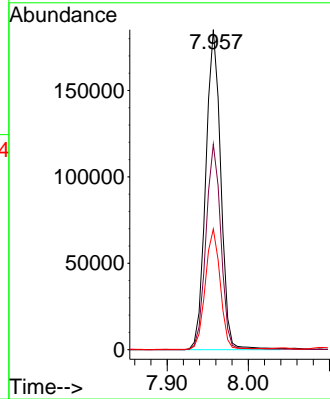
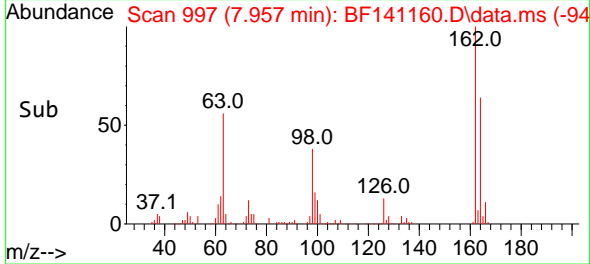
#29
 2,4-Dichlorophenol
 Concen: 32.171 ng
 RT: 7.957 min Scan# 997
 Delta R.T. -0.000 min
 Lab File: BF141160.D
 Acq: 14 Jan 2025 21:42

Instrument :
 BNA_F
 ClientSampleId :
 TR-06-1-10-2025MSD

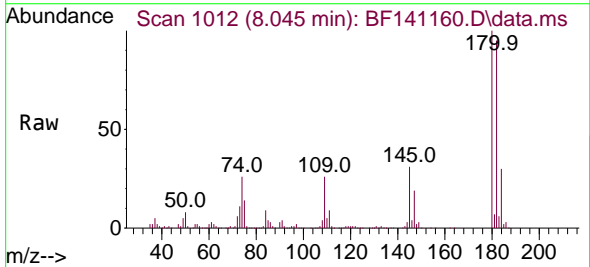


Tgt Ion:162 Resp: 237802

Ion	Ratio	Lower	Upper
162	100		
164	64.2	44.5	84.5
98	37.7	18.5	58.5

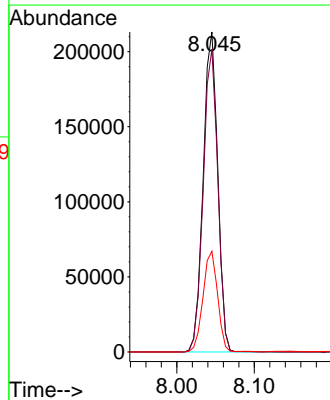
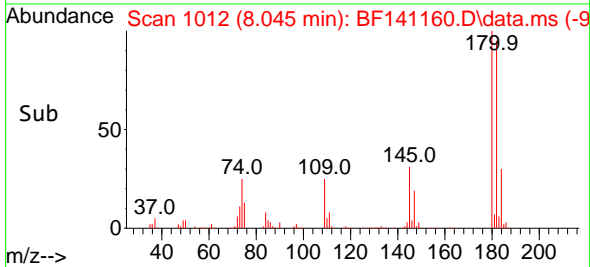


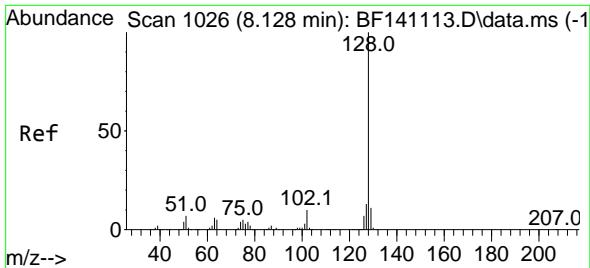
#30
 1,2,4-Trichlorobenzene
 Concen: 32.821 ng
 RT: 8.045 min Scan# 1012
 Delta R.T. -0.000 min
 Lab File: BF141160.D
 Acq: 14 Jan 2025 21:42



Tgt Ion:180 Resp: 277310

Ion	Ratio	Lower	Upper
180	100		
182	94.5	76.2	114.2
145	31.4	25.3	37.9



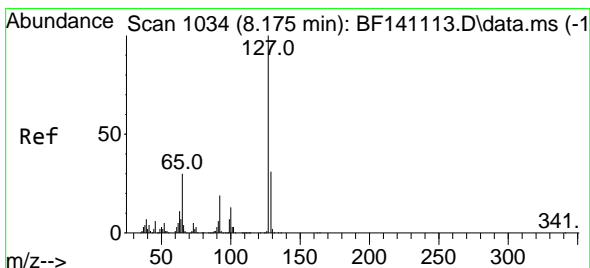
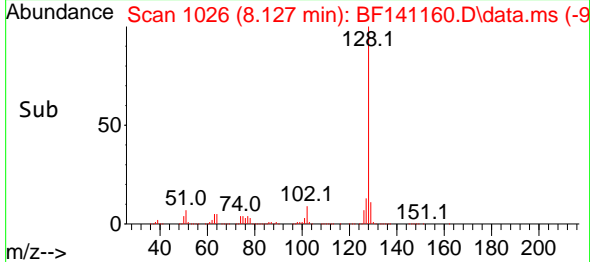
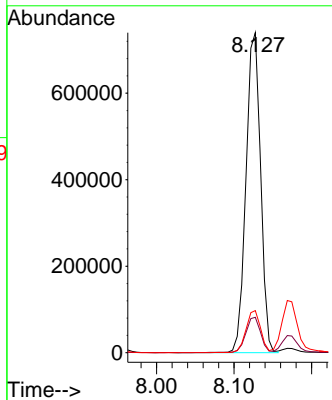
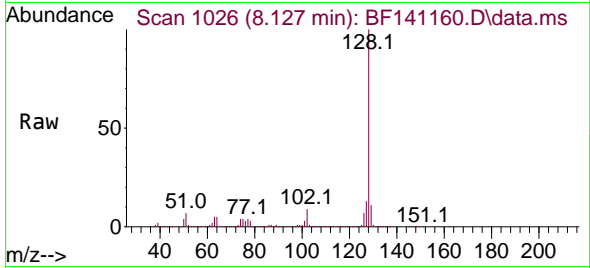


#31
 Naphthalene
 Concen: 35.559 ng
 RT: 8.127 min Scan# 1026
 Delta R.T. -0.000 min
 Lab File: BF141160.D
 Acq: 14 Jan 2025 21:42

Instrument : BNA_F
 ClientSampleId : TR-06-1-10-2025MSD

Tgt Ion:128 Resp: 967471

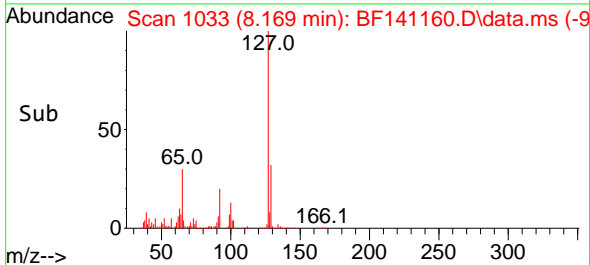
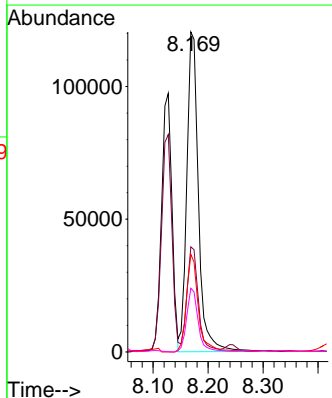
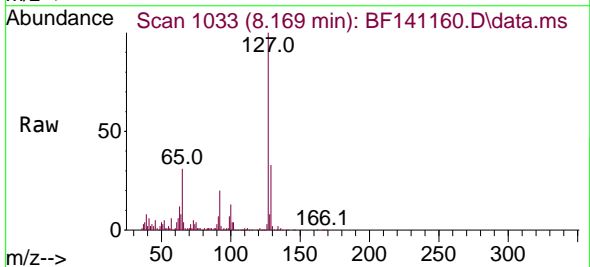
Ion	Ratio	Lower	Upper
128	100		
129	11.1	9.0	13.6
127	13.2	10.8	16.2

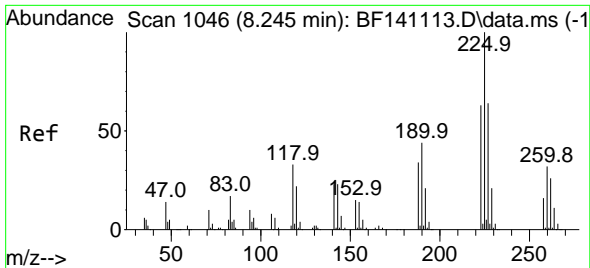


#33
 4-Chloroaniline
 Concen: 18.860 ng
 RT: 8.169 min Scan# 1033
 Delta R.T. -0.006 min
 Lab File: BF141160.D
 Acq: 14 Jan 2025 21:42

Tgt Ion:127 Resp: 177459

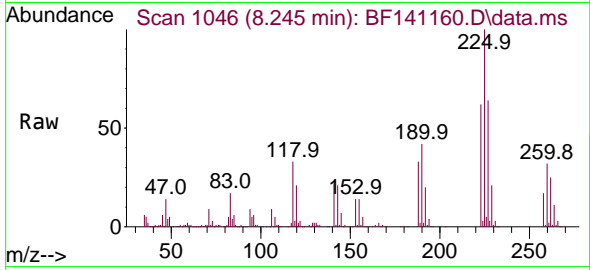
Ion	Ratio	Lower	Upper
127	100		
129	32.8	25.9	38.9
65	30.5	23.8	35.8
92	19.9	15.2	22.8



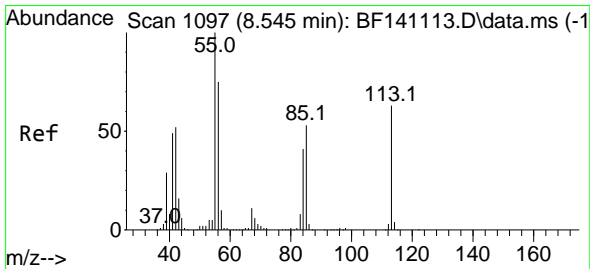
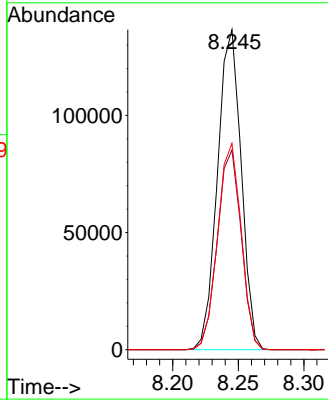
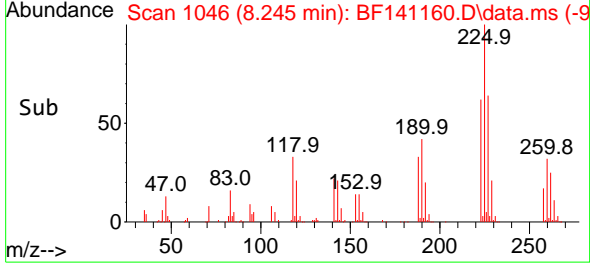


#34
 Hexachlorobutadiene
 Concen: 33.726 ng
 RT: 8.245 min Scan# 1046
 Delta R.T. -0.000 min
 Lab File: BF141160.D
 Acq: 14 Jan 2025 21:42

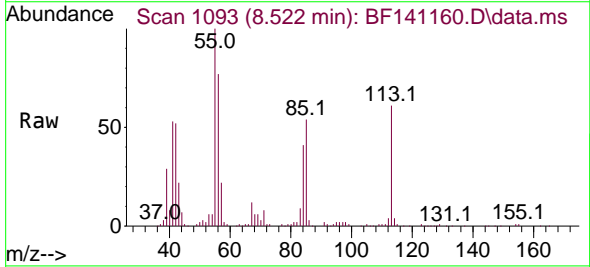
Instrument :
 BNA_F
 ClientSampleId :
 TR-06-1-10-2025MSD



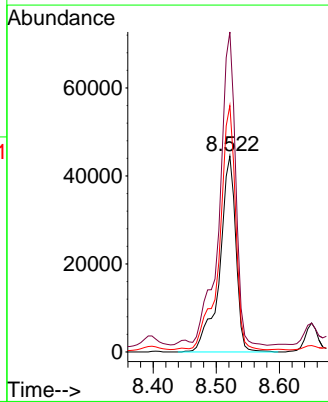
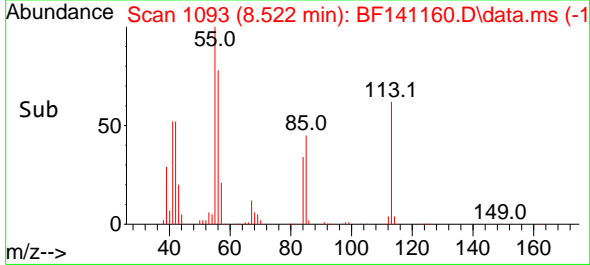
Tgt Ion:225 Resp: 171702
 Ion Ratio Lower Upper
 225 100
 223 62.4 50.6 76.0
 227 64.4 51.6 77.4

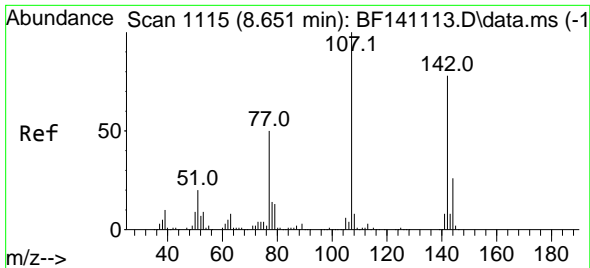


#35
 Caprolactam
 Concen: 32.704 ng
 RT: 8.522 min Scan# 1093
 Delta R.T. -0.024 min
 Lab File: BF141160.D
 Acq: 14 Jan 2025 21:42



Tgt Ion:113 Resp: 79145
 Ion Ratio Lower Upper
 113 100
 55 163.3 139.7 179.7
 56 125.8 99.4 139.4

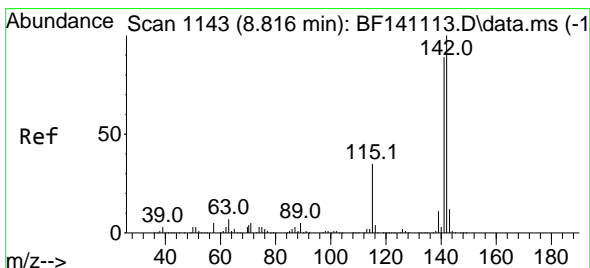
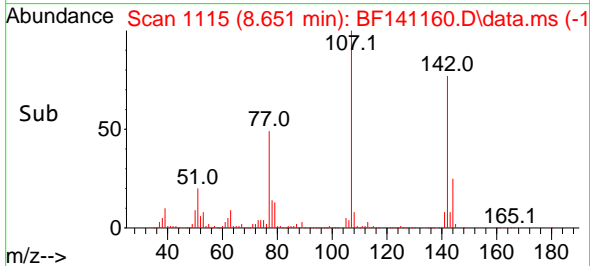
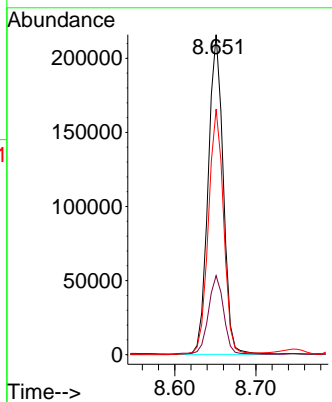
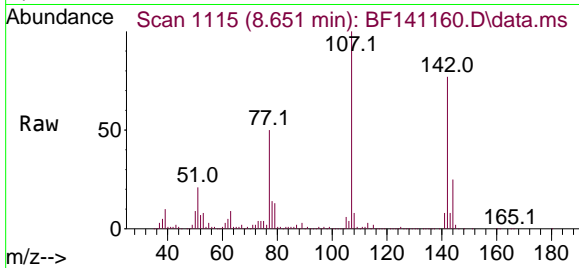




#36
 4-Chloro-3-methylphenol
 Concen: 34.334 ng
 RT: 8.651 min Scan# 1115
 Delta R.T. -0.000 min
 Lab File: BF141160.D
 Acq: 14 Jan 2025 21:42

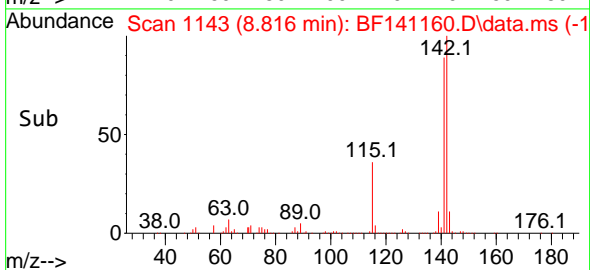
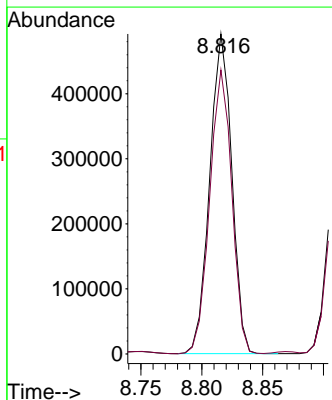
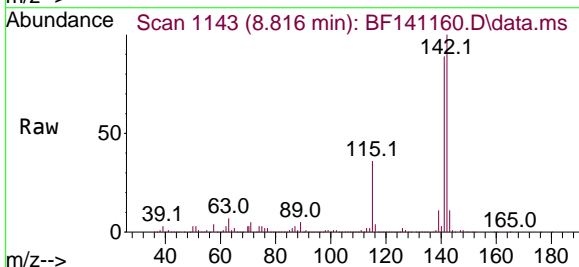
Instrument : BNA_F
 ClientSampleId : TR-06-1-10-2025MSD

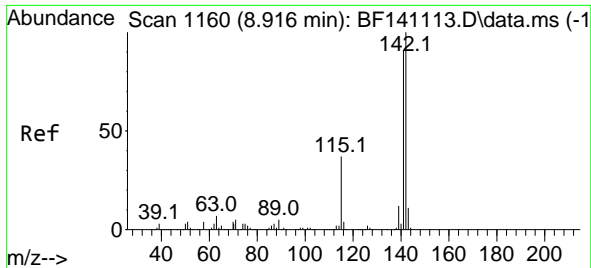
Tgt Ion	Resp	Lower	Upper
107	277559		
107	100		
144	24.7	20.4	30.6
142	76.8	62.2	93.2



#37
 2-Methylnaphthalene
 Concen: 35.670 ng
 RT: 8.816 min Scan# 1143
 Delta R.T. -0.000 min
 Lab File: BF141160.D
 Acq: 14 Jan 2025 21:42

Tgt Ion	Resp	Lower	Upper
142	618426		
142	100		
141	88.8	71.3	106.9

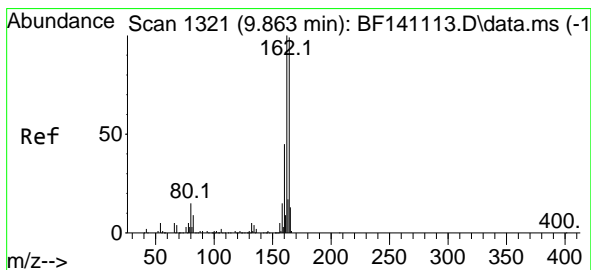
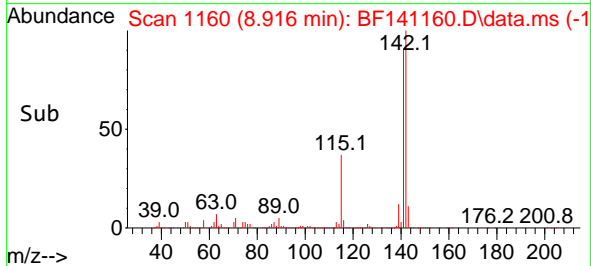
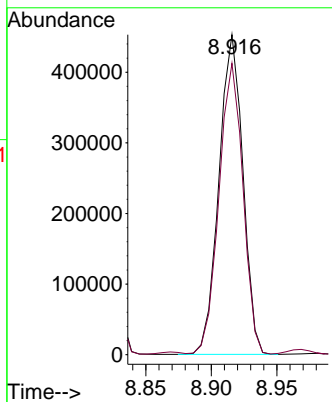
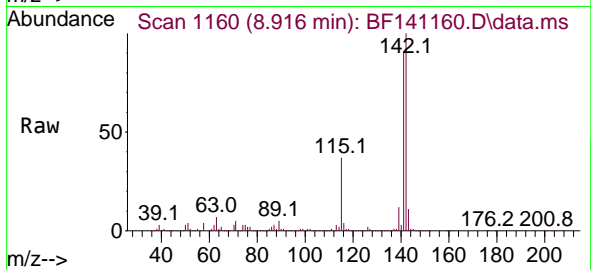




#38
 1-Methylnaphthalene
 Concen: 33.578 ng
 RT: 8.916 min Scan# 1160
 Delta R.T. -0.000 min
 Lab File: BF141160.D
 Acq: 14 Jan 2025 21:42

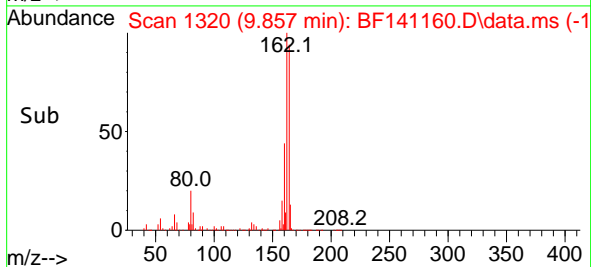
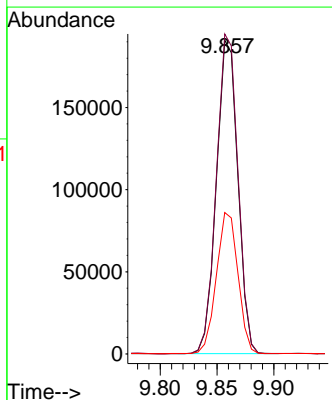
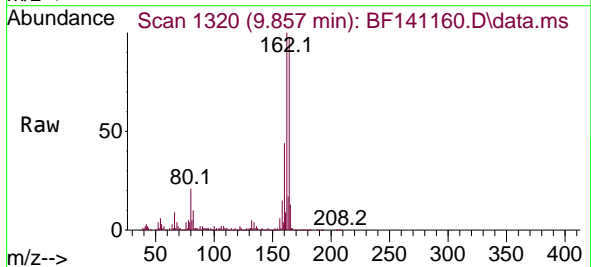
Instrument : BNA_F
 ClientSampleId : TR-06-1-10-2025MSD

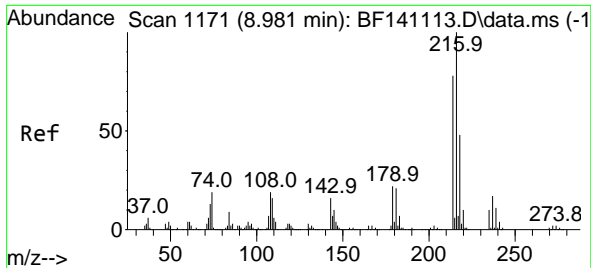
Tgt Ion:142 Resp: 573735
 Ion Ratio Lower Upper
 142 100
 141 91.0 73.1 109.7



#39
 Acenaphthene-d10
 Concen: 20.000 ng
 RT: 9.857 min Scan# 1320
 Delta R.T. -0.006 min
 Lab File: BF141160.D
 Acq: 14 Jan 2025 21:42

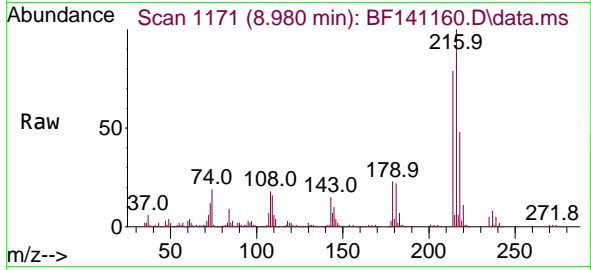
Tgt Ion:164 Resp: 250445
 Ion Ratio Lower Upper
 164 100
 162 102.0 81.0 121.4
 160 45.1 36.1 54.1





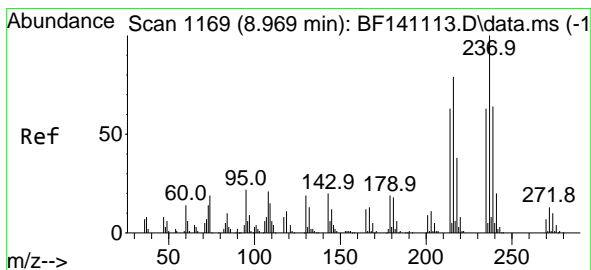
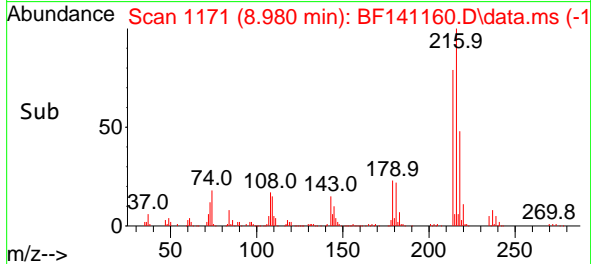
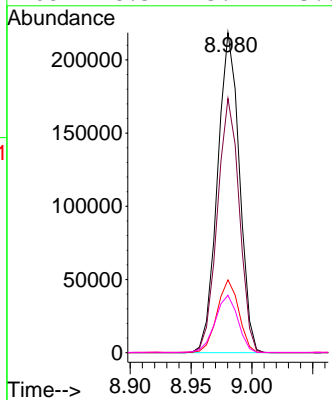
#40
 1,2,4,5-Tetrachlorobenzene
 Concen: 38.057 ng
 RT: 8.980 min Scan# 1171
 Delta R.T. -0.000 min
 Lab File: BF141160.D
 Acq: 14 Jan 2025 21:42

Instrument : BNA_F
 ClientSampleId : TR-06-1-10-2025MSD



Tgt Ion:216 Resp: 273565

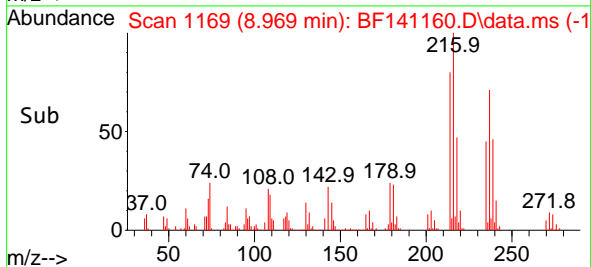
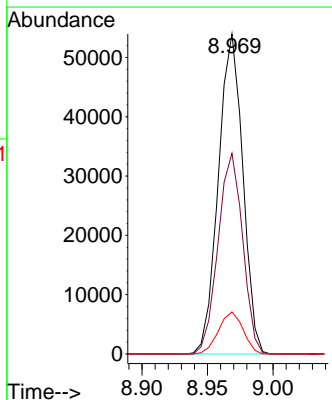
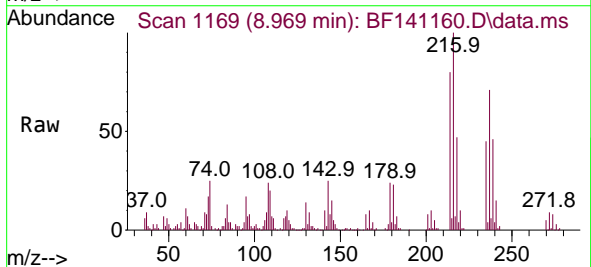
Ion	Ratio	Lower	Upper
216	100		
214	79.3	62.6	94.0
179	22.4	17.7	26.5
108	18.5	15.4	23.0

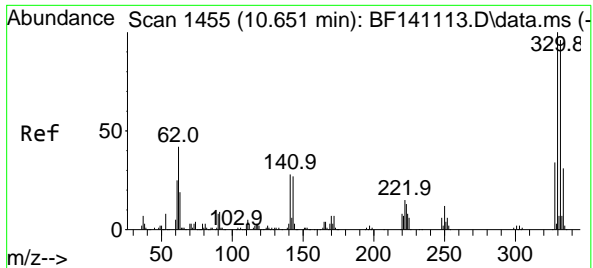


#41
 Hexachlorocyclopentadiene
 Concen: 29.701 ng
 RT: 8.969 min Scan# 1169
 Delta R.T. -0.000 min
 Lab File: BF141160.D
 Acq: 14 Jan 2025 21:42

Tgt Ion:237 Resp: 69850

Ion	Ratio	Lower	Upper
237	100		
235	62.7	43.0	83.0
272	13.2	0.0	33.0



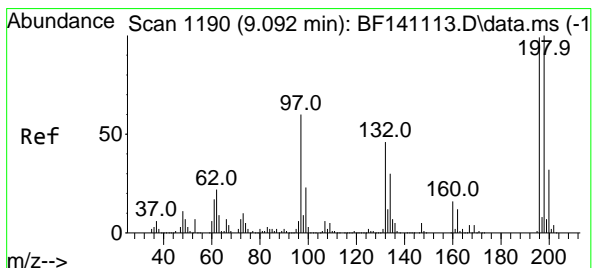
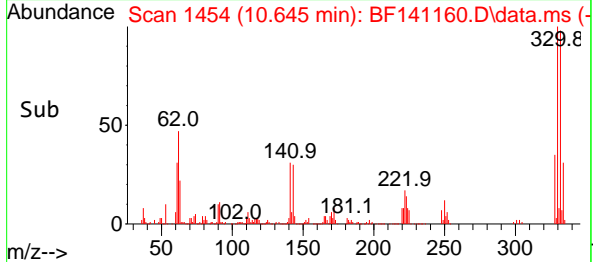
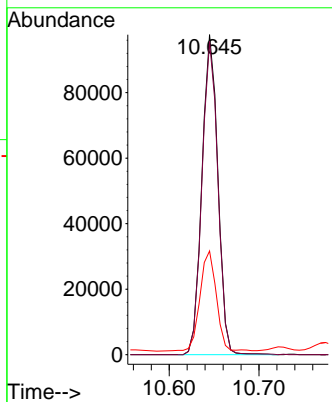
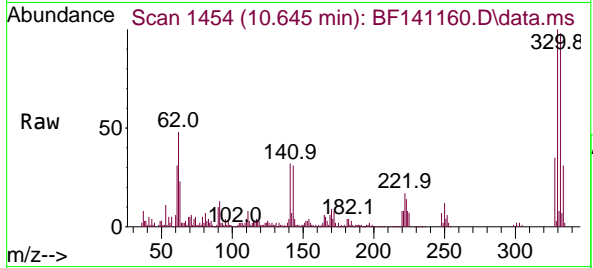


#42
 2,4,6-Tribromophenol
 Concen: 42.169 ng
 RT: 10.645 min Scan# 1455
 Delta R.T. -0.006 min
 Lab File: BF141160.D
 Acq: 14 Jan 2025 21:42

Instrument : BNA_F
 ClientSampleId : TR-06-1-10-2025MSD

Tgt Ion: 330 Resp: 120336

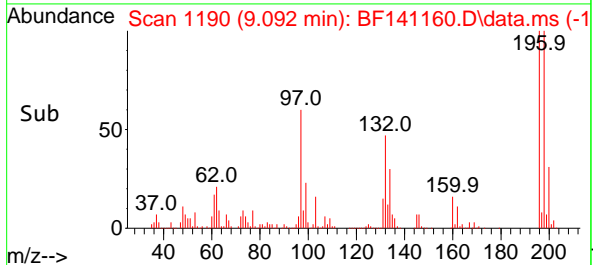
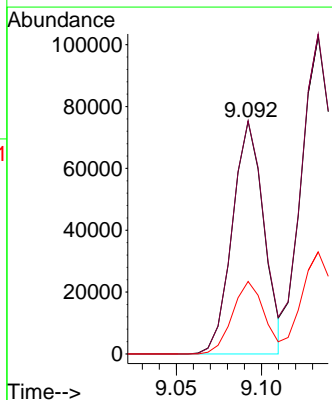
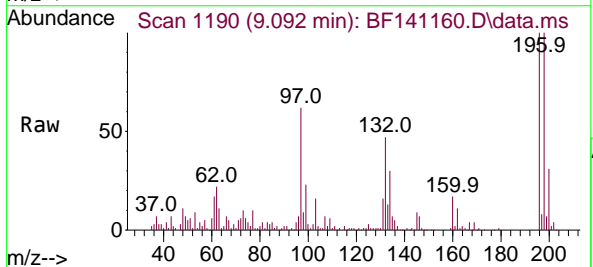
Ion	Ratio	Lower	Upper
330	100		
332	97.8	76.9	115.3
141	32.3	25.2	37.8

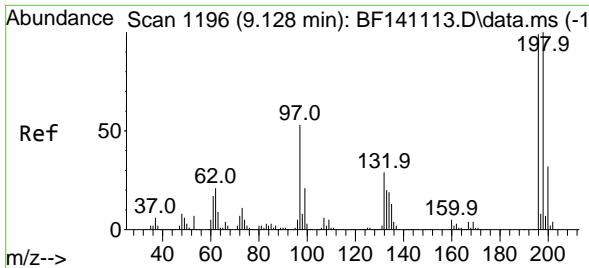


#43
 2,4,6-Trichlorophenol
 Concen: 19.981 ng
 RT: 9.092 min Scan# 1190
 Delta R.T. -0.000 min
 Lab File: BF141160.D
 Acq: 14 Jan 2025 21:42

Tgt Ion: 196 Resp: 96870

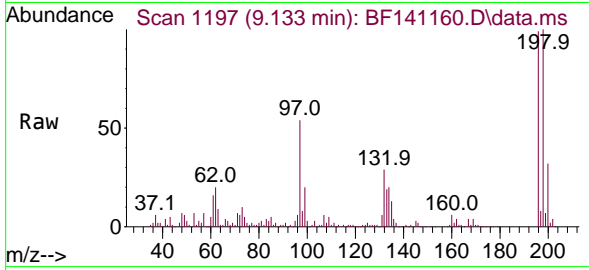
Ion	Ratio	Lower	Upper
196	100		
198	100.3	80.8	121.2
200	31.2	25.7	38.5





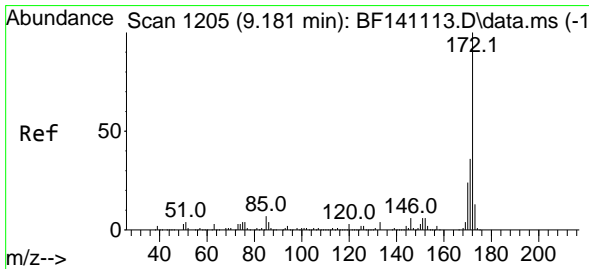
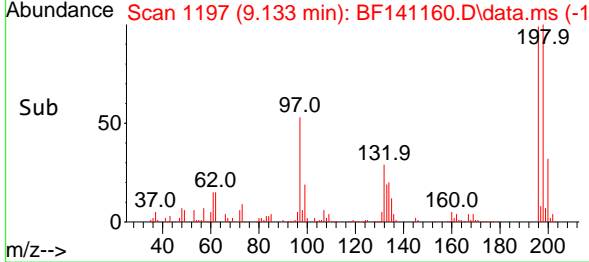
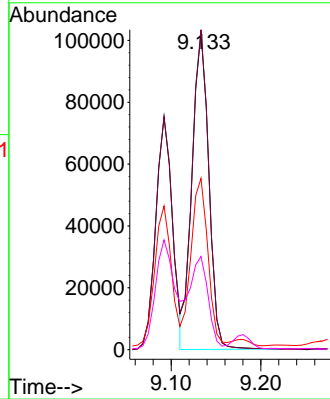
#44
 2,4,5-Trichlorophenol
 Concen: 25.988 ng
 RT: 9.133 min Scan# 1196
 Delta R.T. 0.006 min
 Lab File: BF141160.D
 Acq: 14 Jan 2025 21:42

Instrument : BNA_F
 ClientSampleId : TR-06-1-10-2025MSD



Tgt Ion:196 Resp: 133061

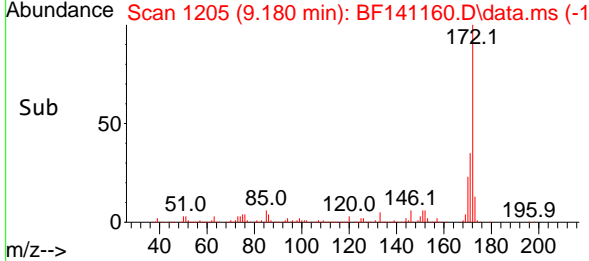
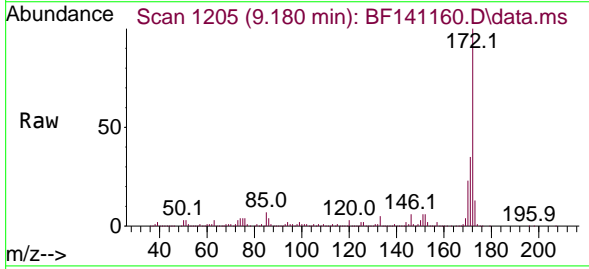
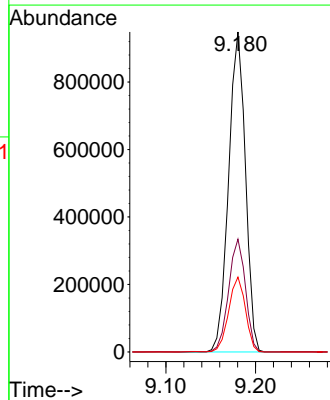
Ion	Ratio	Lower	Upper
196	100		
198	100.7	80.6	120.8
97	53.9	43.1	64.7
132	29.4	24.3	36.5

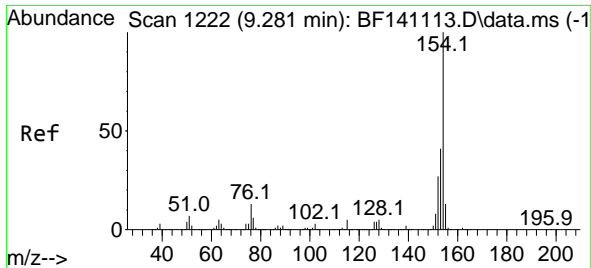


#45
 2-Fluorobiphenyl
 Concen: 75.212 ng
 RT: 9.180 min Scan# 1205
 Delta R.T. -0.000 min
 Lab File: BF141160.D
 Acq: 14 Jan 2025 21:42

Tgt Ion:172 Resp: 1233532

Ion	Ratio	Lower	Upper
172	100		
171	35.3	28.7	43.1
170	23.4	19.0	28.6



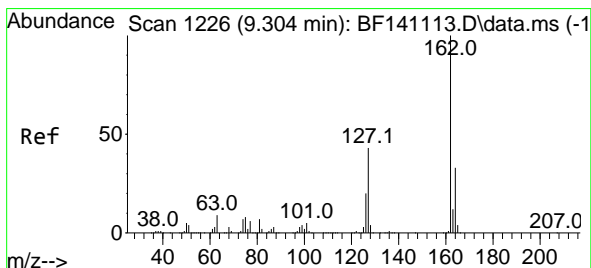
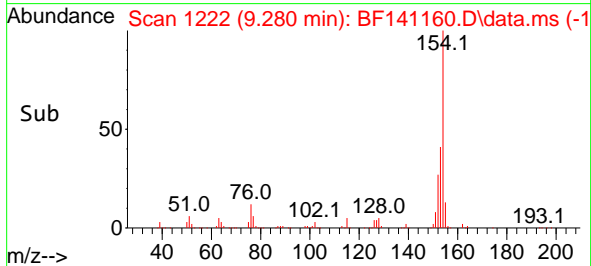
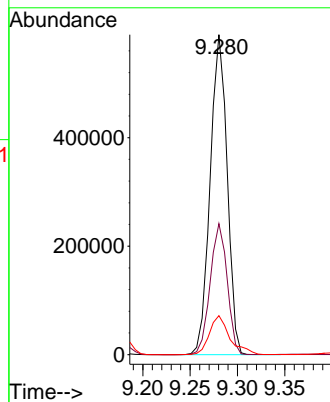
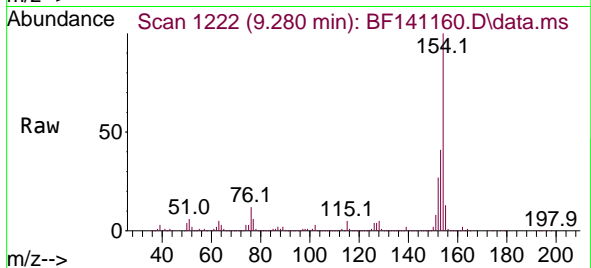


#46
 1,1'-Biphenyl
 Concen: 37.746 ng
 RT: 9.280 min Scan# 11
 Delta R.T. -0.000 min
 Lab File: BF141160.D
 Acq: 14 Jan 2025 21:42

Instrument :
 BNA_F
 ClientSampleId :
 TR-06-1-10-2025MSD

Tgt Ion:154 Resp: 734139

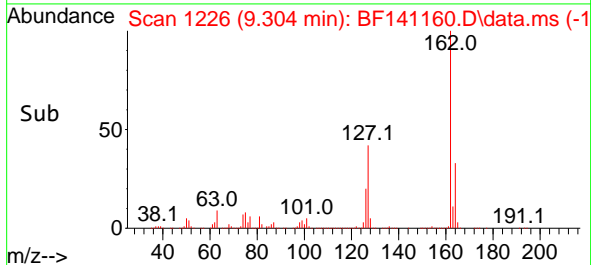
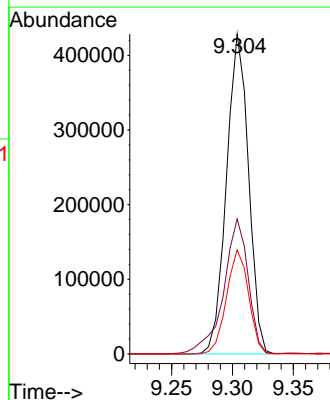
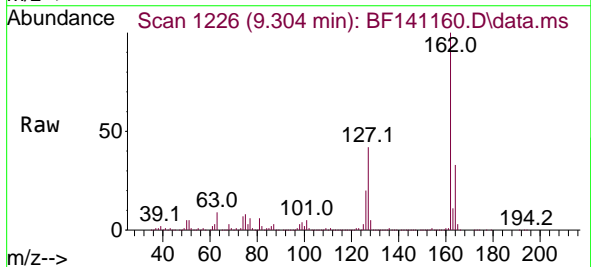
Ion	Ratio	Lower	Upper
154	100		
153	41.0	20.7	60.7
76	12.2	0.0	33.1

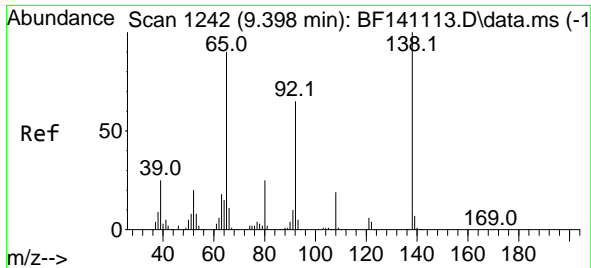


#47
 2-Chloronaphthalene
 Concen: 35.686 ng
 RT: 9.304 min Scan# 1226
 Delta R.T. -0.000 min
 Lab File: BF141160.D
 Acq: 14 Jan 2025 21:42

Tgt Ion:162 Resp: 540596

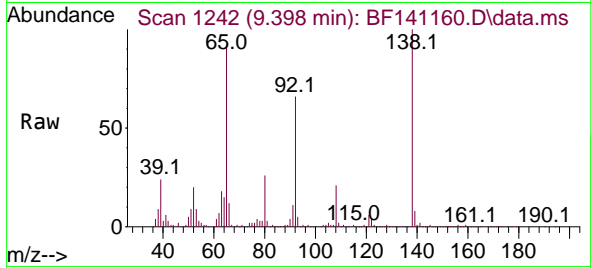
Ion	Ratio	Lower	Upper
162	100		
127	42.2	34.6	51.8
164	32.6	26.5	39.7



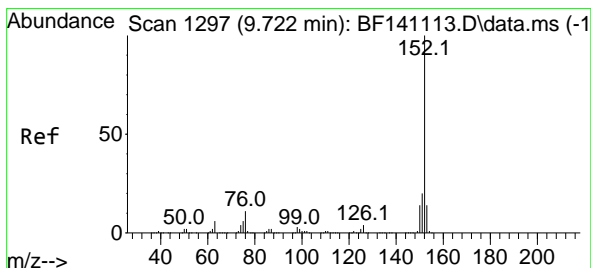
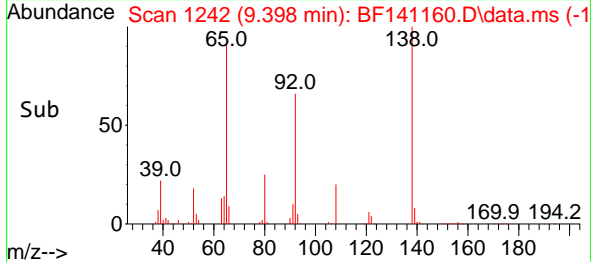
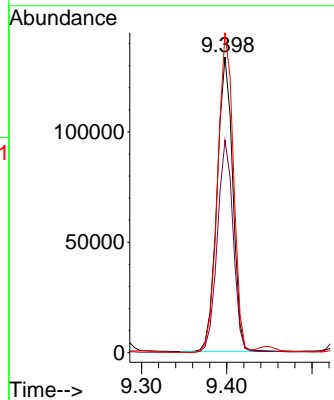


#48
 2-Nitroaniline
 Concen: 38.287 ng
 RT: 9.398 min Scan# 1242
 Delta R.T. -0.000 min
 Lab File: BF141160.D
 Acq: 14 Jan 2025 21:42

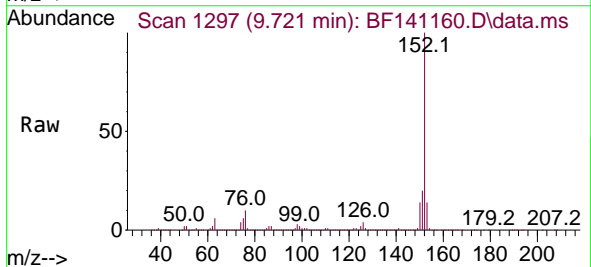
Instrument :
 BNA_F
 ClientSampleId :
 TR-06-1-10-2025MSD



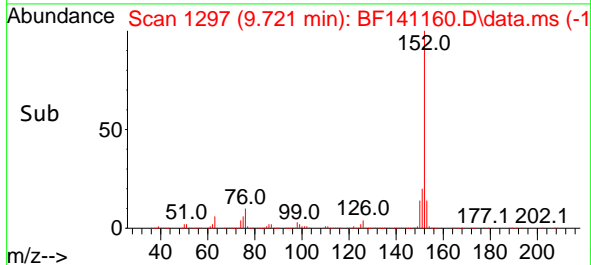
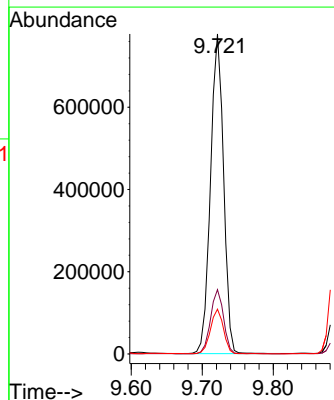
Tgt Ion: 65 Resp: 171931
 Ion Ratio Lower Upper
 65 100
 92 71.8 58.3 87.5
 138 108.2 89.1 133.7

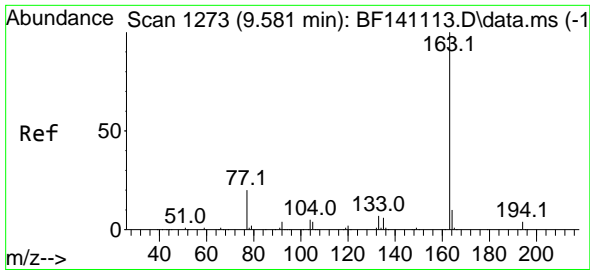


#49
 Acenaphthylene
 Concen: 45.910 ng
 RT: 9.721 min Scan# 1297
 Delta R.T. -0.001 min
 Lab File: BF141160.D
 Acq: 14 Jan 2025 21:42



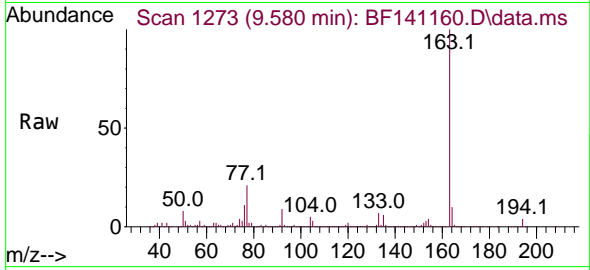
Tgt Ion: 152 Resp: 993645
 Ion Ratio Lower Upper
 152 100
 151 20.1 16.1 24.1
 153 14.0 11.1 16.7



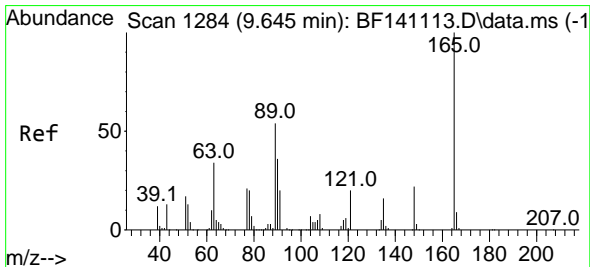
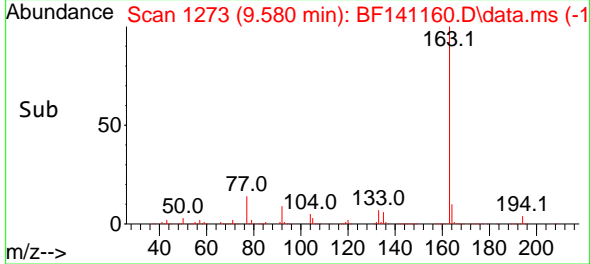
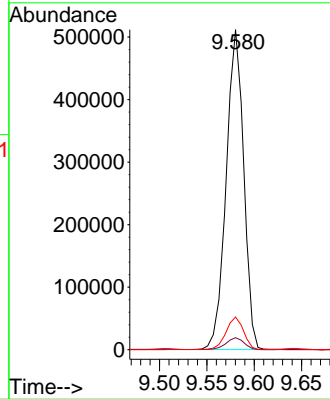


#50
 Dimethylphthalate
 Concen: 39.184 ng
 RT: 9.580 min Scan# 11
 Delta R.T. -0.000 min
 Lab File: BF141160.D
 Acq: 14 Jan 2025 21:42

Instrument :
 BNA_F
 ClientSampleId :
 TR-06-1-10-2025MSD

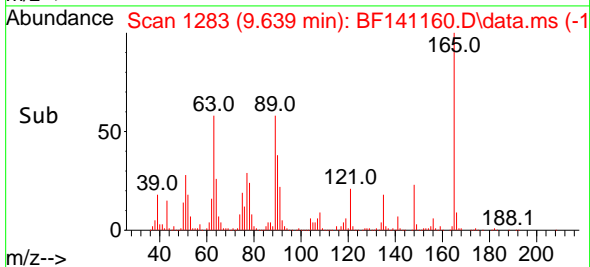
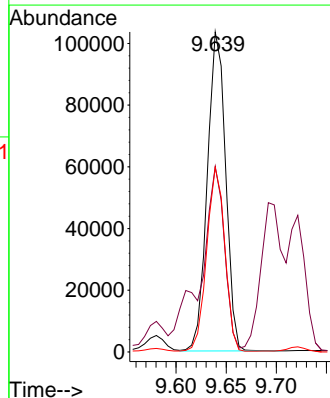
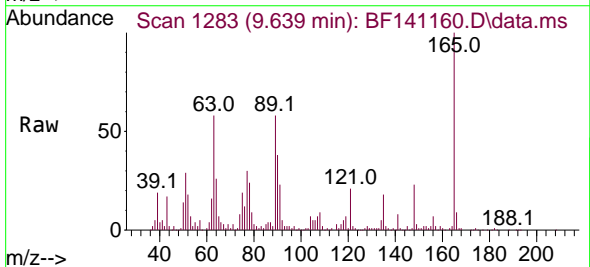


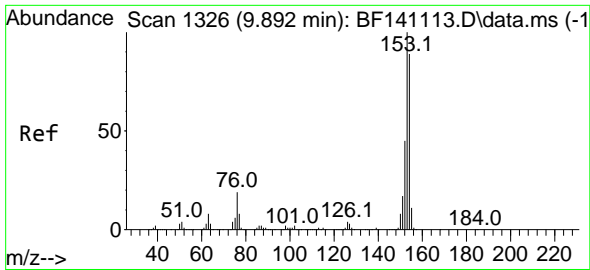
Tgt Ion:163 Resp: 658818
 Ion Ratio Lower Upper
 163 100
 194 3.8 3.0 4.6
 164 10.2 8.2 12.4



#51
 2,6-Dinitrotoluene
 Concen: 33.645 ng
 RT: 9.639 min Scan# 1283
 Delta R.T. -0.006 min
 Lab File: BF141160.D
 Acq: 14 Jan 2025 21:42

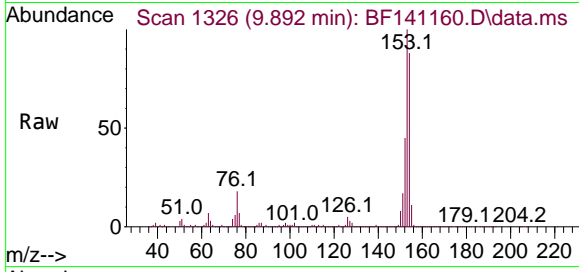
Tgt Ion:165 Resp: 131549
 Ion Ratio Lower Upper
 165 100
 63 57.9 42.3 63.5
 89 57.6 43.1 64.7



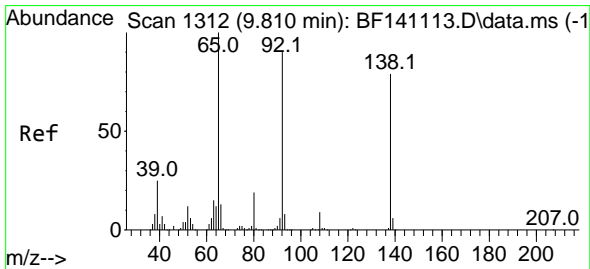
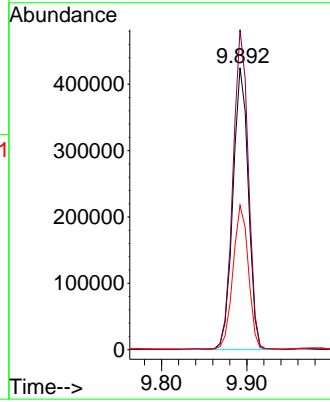
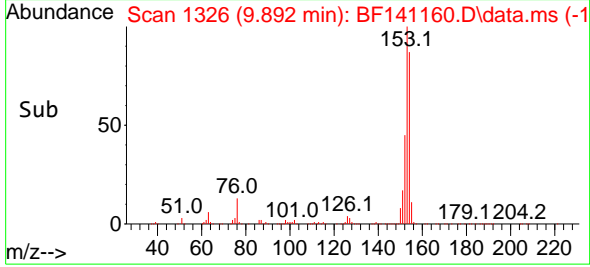


#52
 Acenaphthene
 Concen: 35.330 ng
 RT: 9.892 min Scan# 11
 Delta R.T. -0.000 min
 Lab File: BF141160.D
 Acq: 14 Jan 2025 21:42

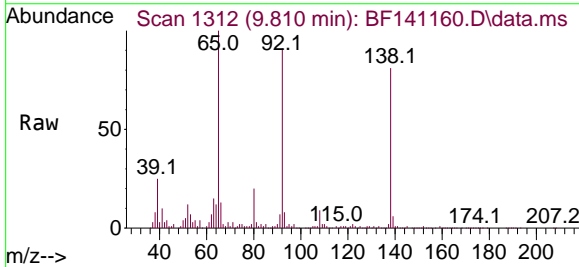
Instrument :
 BNA_F
 ClientSampleId :
 TR-06-1-10-2025MSD



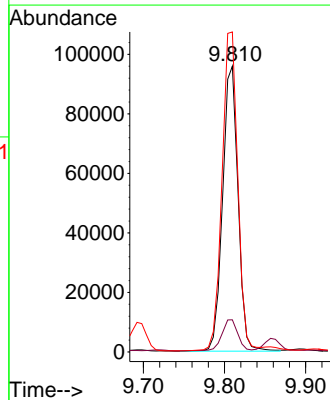
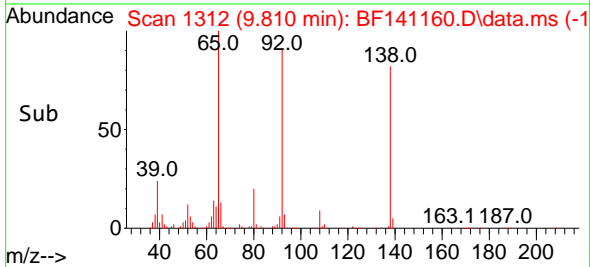
Tgt Ion:154 Resp: 534225
 Ion Ratio Lower Upper
 154 100
 153 113.5 89.8 134.6
 152 51.3 40.8 61.2

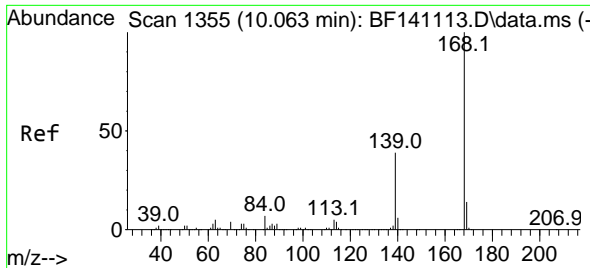


#53
 3-Nitroaniline
 Concen: 31.987 ng
 RT: 9.810 min Scan# 1312
 Delta R.T. -0.000 min
 Lab File: BF141160.D
 Acq: 14 Jan 2025 21:42



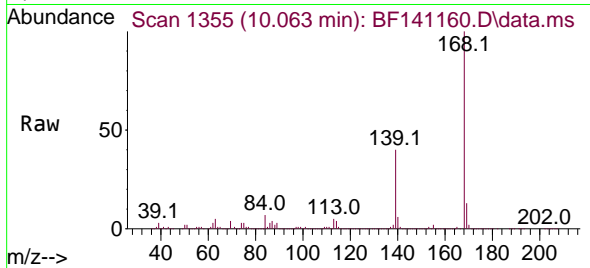
Tgt Ion:138 Resp: 127093
 Ion Ratio Lower Upper
 138 100
 108 11.2 8.8 13.2
 92 112.0 91.3 136.9



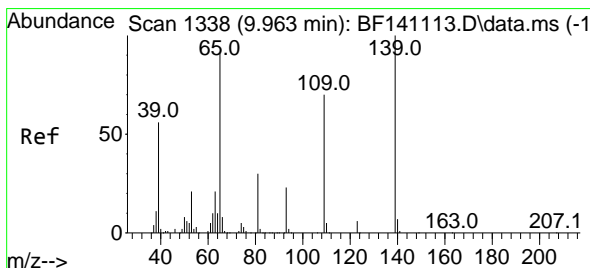
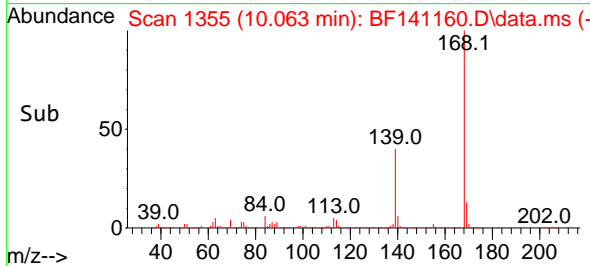
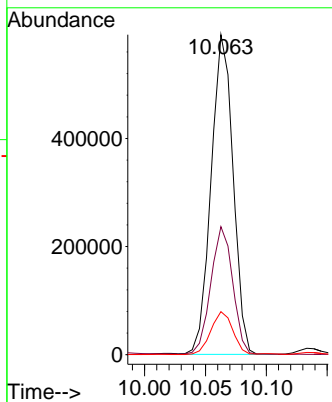


#55
 Dibenzenofuran
 Concen: 36.141 ng
 RT: 10.063 min Scan# 11
 Delta R.T. -0.000 min
 Lab File: BF141160.D
 Acq: 14 Jan 2025 21:42

Instrument :
 BNA_F
 ClientSampleId :
 TR-06-1-10-2025MSD

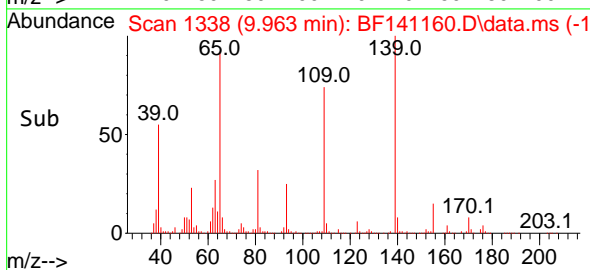
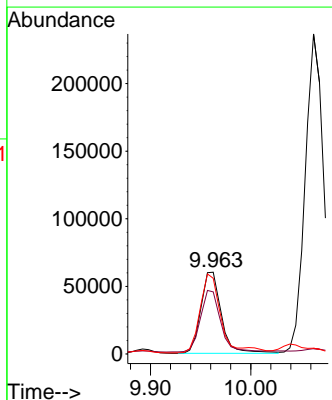
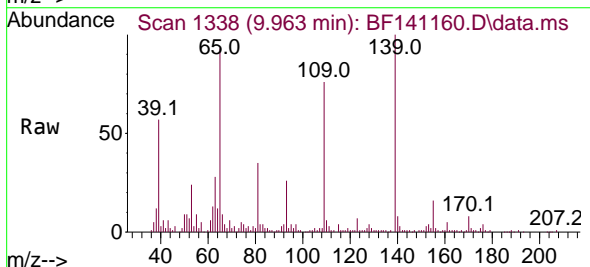


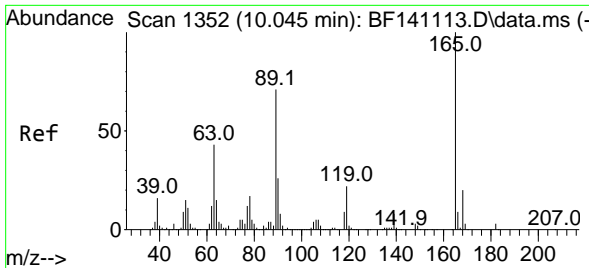
Tgt Ion:168 Resp: 743325
 Ion Ratio Lower Upper
 168 100
 139 40.0 31.4 47.0
 169 13.5 10.9 16.3



#56
 4-Nitrophenol
 Concen: 27.423 ng
 RT: 9.963 min Scan# 1338
 Delta R.T. -0.000 min
 Lab File: BF141160.D
 Acq: 14 Jan 2025 21:42

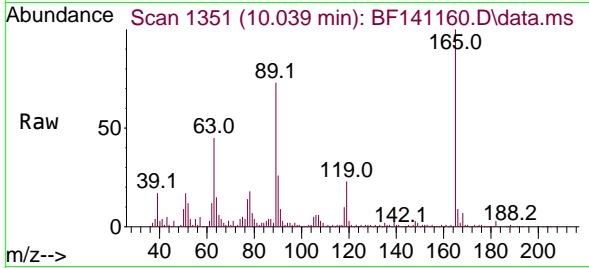
Tgt Ion:139 Resp: 85333
 Ion Ratio Lower Upper
 139 100
 109 76.0 50.2 90.2
 65 92.6 72.1 112.1





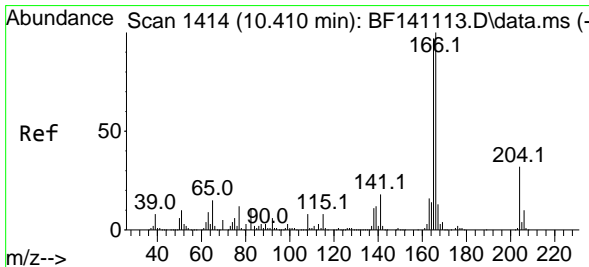
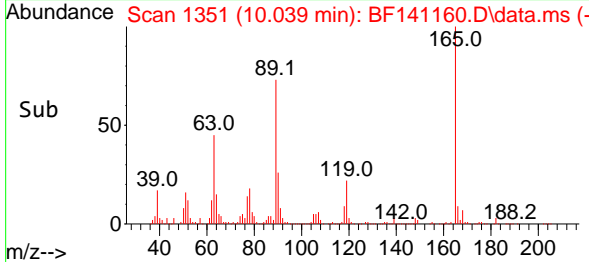
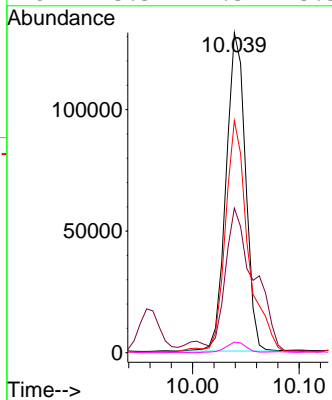
#57
 2,4-Dinitrotoluene
 Concen: 33.020 ng
 RT: 10.039 min Scan# 11
 Delta R.T. -0.006 min
 Lab File: BF141160.D
 Acq: 14 Jan 2025 21:42

Instrument :
 BNA_F
 ClientSampleId :
 TR-06-1-10-2025MSD



Tgt Ion:165 Resp: 166379

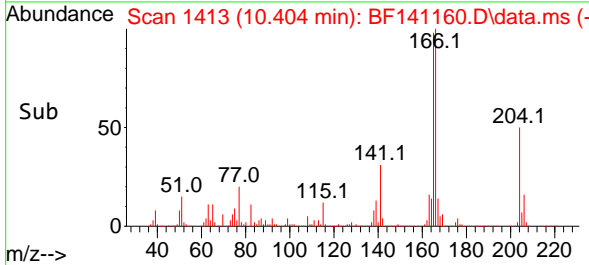
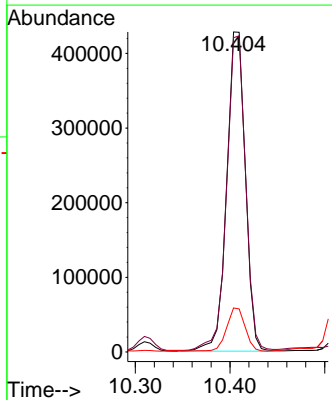
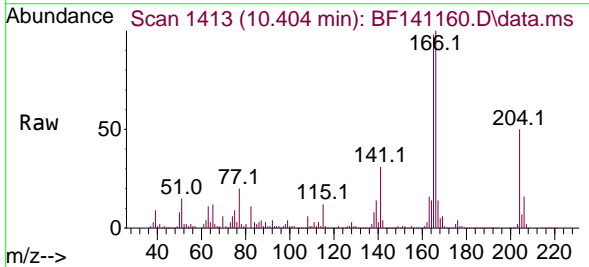
Ion	Ratio	Lower	Upper
165	100		
63	45.2	35.0	52.4
89	72.5	56.7	85.1
182	3.3	2.3	3.5

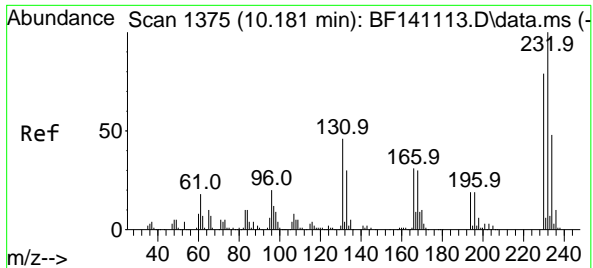


#58
 Fluorene
 Concen: 36.701 ng
 RT: 10.404 min Scan# 1413
 Delta R.T. -0.006 min
 Lab File: BF141160.D
 Acq: 14 Jan 2025 21:42

Tgt Ion:166 Resp: 586443

Ion	Ratio	Lower	Upper
166	100		
165	98.2	77.8	116.8
167	13.7	10.8	16.2



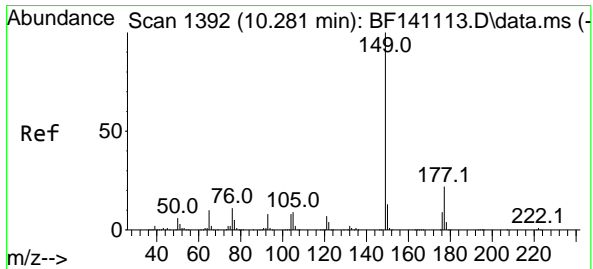
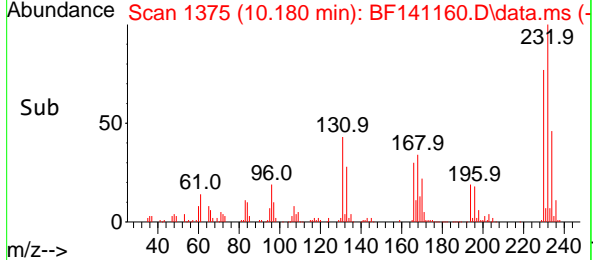
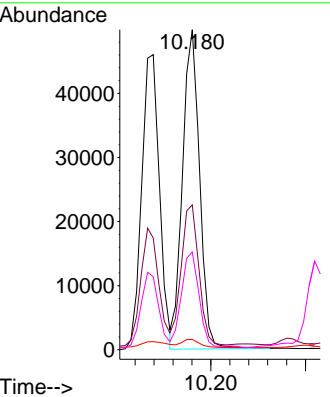
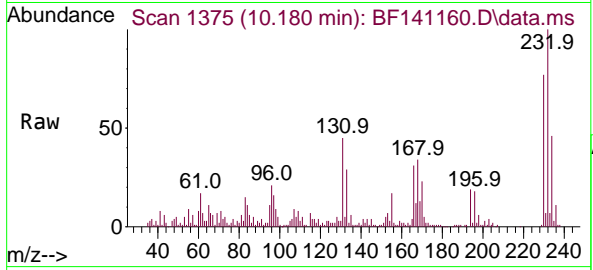


#59
 2,3,4,6-Tetrachlorophenol
 Concen: 14.653 ng
 RT: 10.180 min Scan# 111
 Delta R.T. -0.000 min
 Lab File: BF141160.D
 Acq: 14 Jan 2025 21:42

Instrument : BNA_F
 ClientSampleId : TR-06-1-10-2025MSD

Tgt Ion:232 Resp: 62364

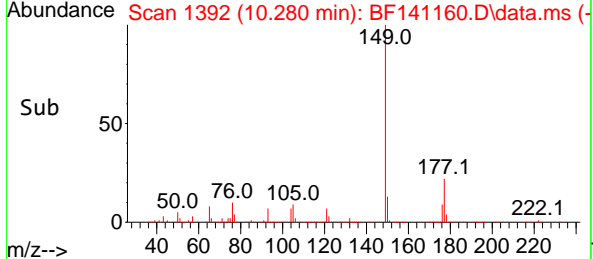
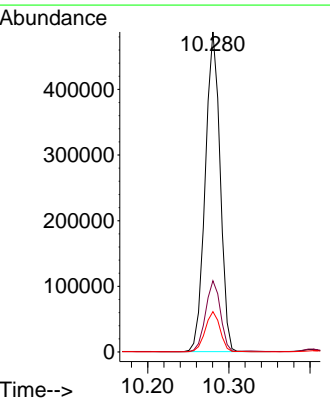
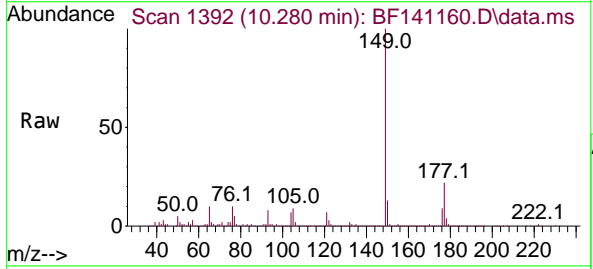
Ion	Ratio	Lower	Upper
232	100		
131	45.3	36.2	54.4
130	2.7	2.0	3.0
166	29.9	24.2	36.4

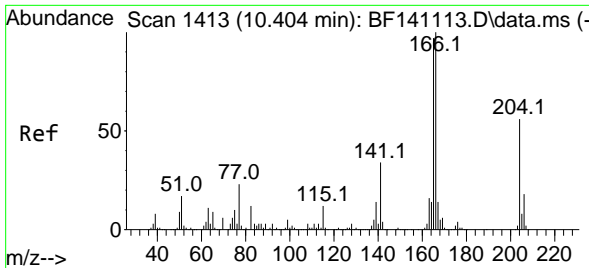


#60
 Diethylphthalate
 Concen: 37.657 ng
 RT: 10.280 min Scan# 1392
 Delta R.T. -0.000 min
 Lab File: BF141160.D
 Acq: 14 Jan 2025 21:42

Tgt Ion:149 Resp: 618100

Ion	Ratio	Lower	Upper
149	100		
177	22.2	17.9	26.9
150	12.6	10.2	15.2



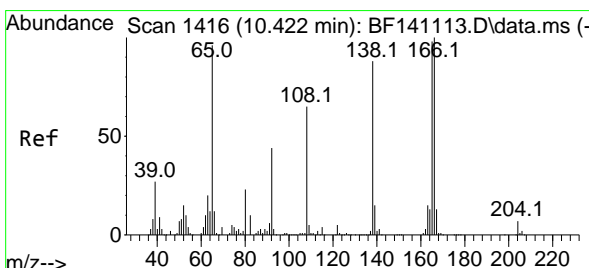
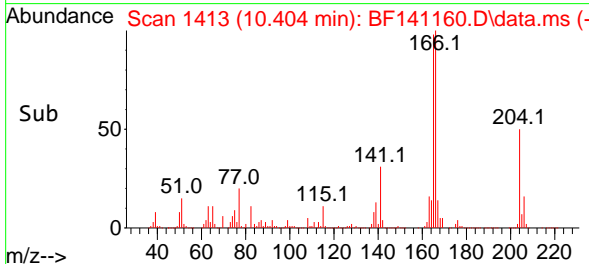
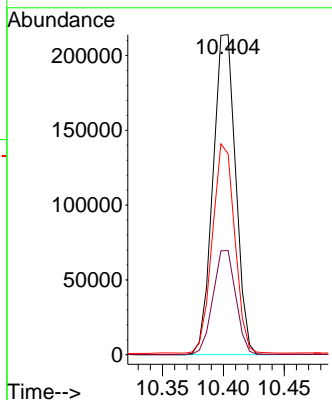
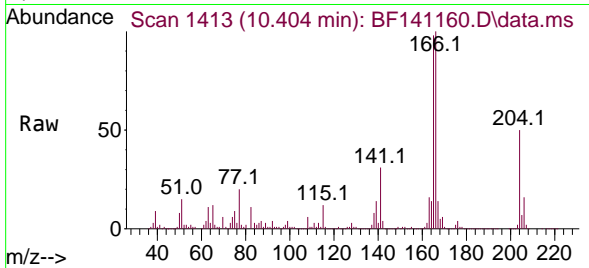


#61
 4-Chlorophenyl-phenylether
 Concen: 35.710 ng
 RT: 10.404 min Scan# 1413
 Delta R.T. -0.000 min
 Lab File: BF141160.D
 Acq: 14 Jan 2025 21:42

Instrument : BNA_F
 ClientSampleId : TR-06-1-10-2025MSD

Tgt Ion: 204 Resp: 278109

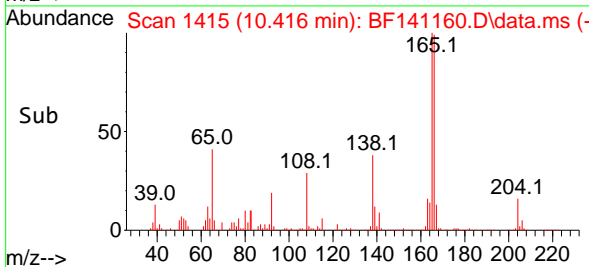
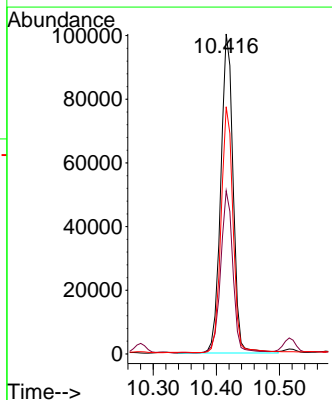
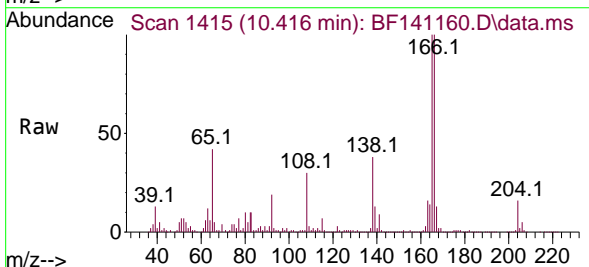
Ion	Ratio	Lower	Upper
204	100		
206	32.5	25.9	38.9
141	62.8	49.1	73.7

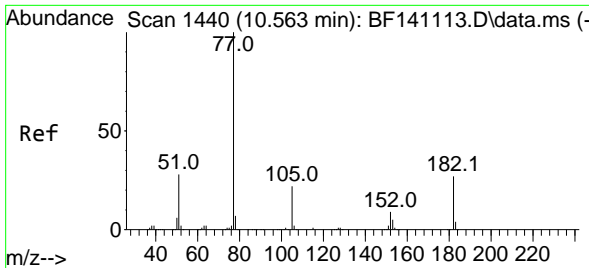


#62
 4-Nitroaniline
 Concen: 35.222 ng
 RT: 10.416 min Scan# 1415
 Delta R.T. -0.006 min
 Lab File: BF141160.D
 Acq: 14 Jan 2025 21:42

Tgt Ion: 138 Resp: 136974

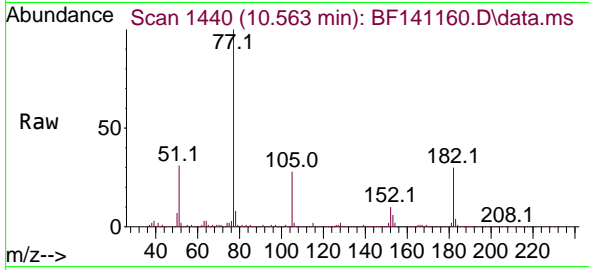
Ion	Ratio	Lower	Upper
138	100		
92	51.0	29.4	69.4
108	77.2	53.7	93.7





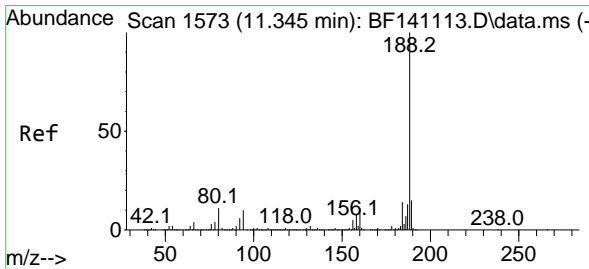
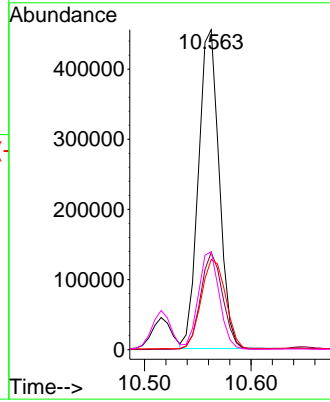
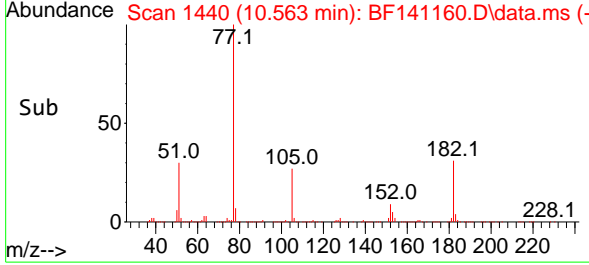
#63
 Azobenzene
 Concen: 37.957 ng
 RT: 10.563 min Scan# 14
 Delta R.T. -0.000 min
 Lab File: BF141160.D
 Acq: 14 Jan 2025 21:42

Instrument : BNA_F
 ClientSampleId : TR-06-1-10-2025MSD

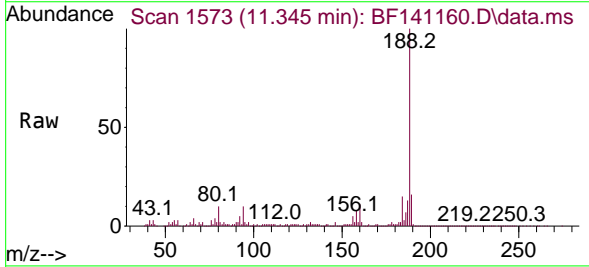


Tgt Ion: 77 Resp: 614753

Ion	Ratio	Lower	Upper
77	100		
182	30.4	6.1	46.1
105	28.2	2.1	42.1
51	30.6	10.0	50.0

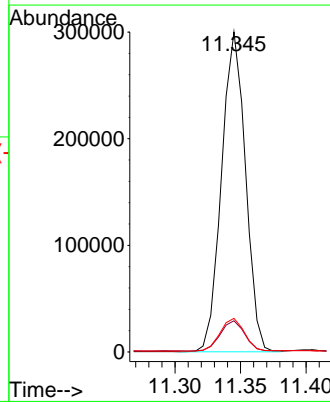
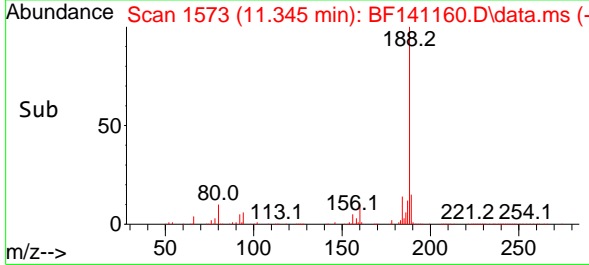


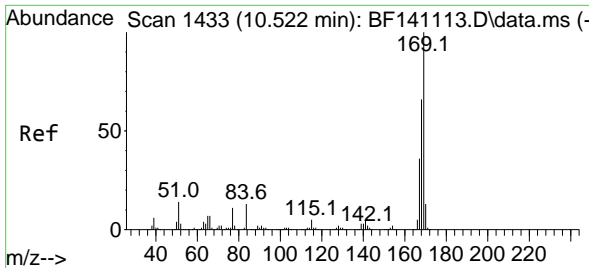
#64
 Phenanthrene-d10
 Concen: 20.000 ng
 RT: 11.345 min Scan# 1573
 Delta R.T. -0.000 min
 Lab File: BF141160.D
 Acq: 14 Jan 2025 21:42



Tgt Ion: 188 Resp: 380343

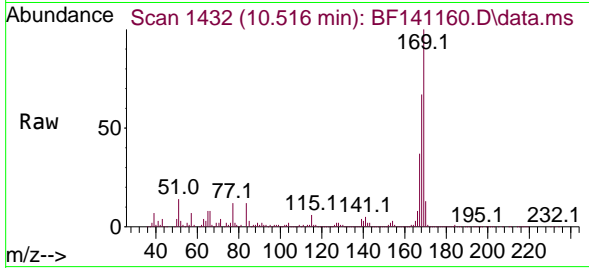
Ion	Ratio	Lower	Upper
188	100		
94	9.8	8.3	12.5
80	10.5	9.0	13.4



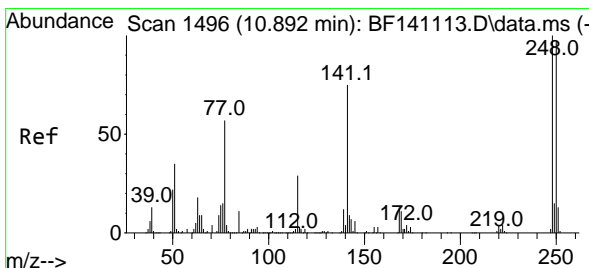
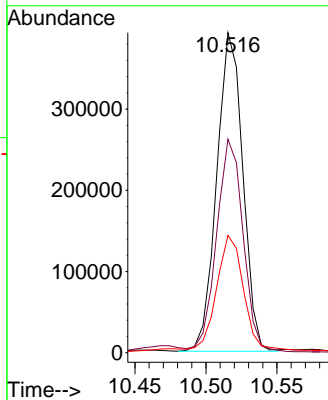
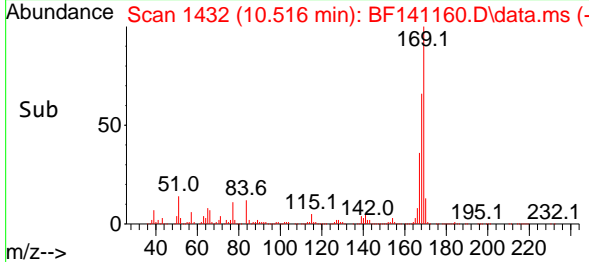


#66
 n-Nitrosodiphenylamine
 Concen: 40.769 ng
 RT: 10.516 min Scan# 14
 Delta R.T. -0.006 min
 Lab File: BF141160.D
 Acq: 14 Jan 2025 21:42

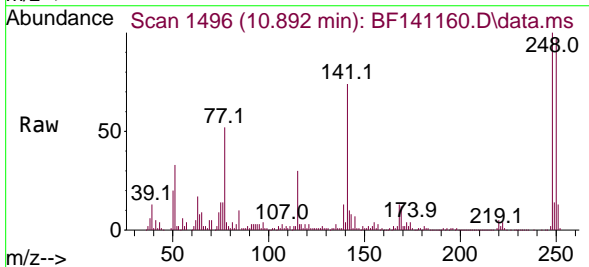
Instrument :
 BNA_F
 ClientSampleId :
 TR-06-1-10-2025MSD



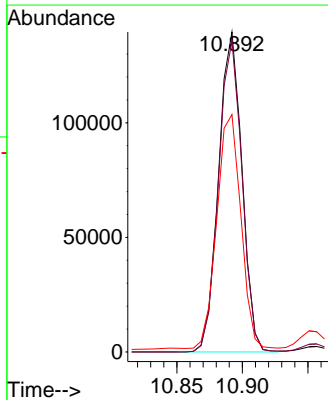
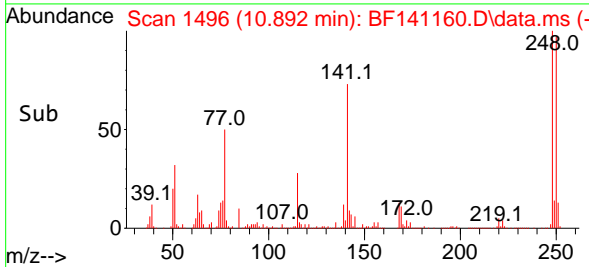
Tgt Ion:169 Resp: 500146
 Ion Ratio Lower Upper
 169 100
 168 66.7 52.5 78.7
 167 36.6 28.9 43.3

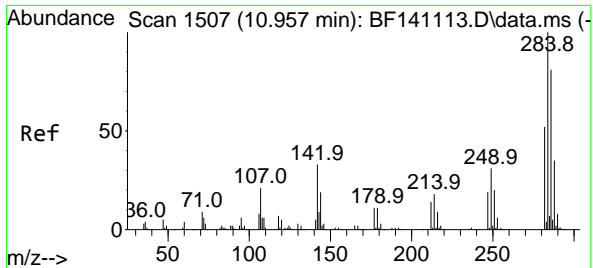


#67
 4-Bromophenyl-phenylether
 Concen: 39.500 ng
 RT: 10.892 min Scan# 1496
 Delta R.T. -0.000 min
 Lab File: BF141160.D
 Acq: 14 Jan 2025 21:42



Tgt Ion:248 Resp: 172968
 Ion Ratio Lower Upper
 248 100
 250 97.3 77.9 116.9
 141 74.2 59.9 89.9



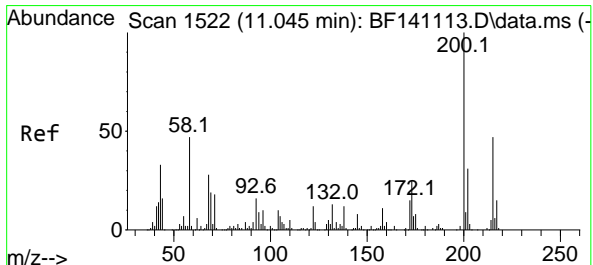
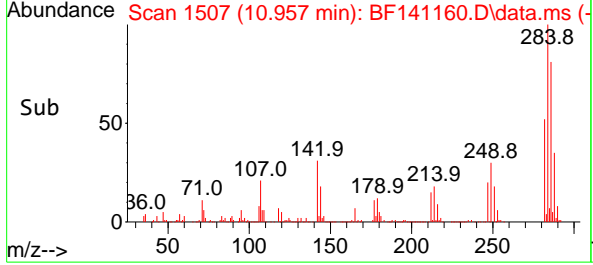
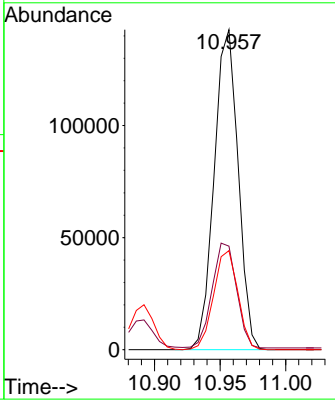
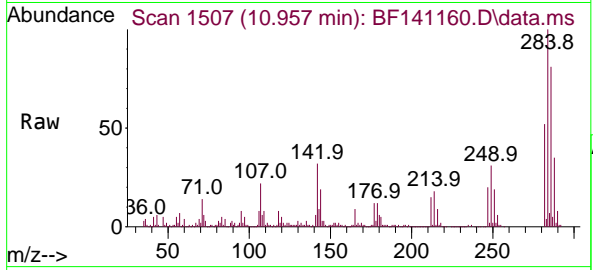


#68
 Hexachlorobenzene
 Concen: 37.198 ng
 RT: 10.957 min Scan# 11
 Delta R.T. -0.000 min
 Lab File: BF141160.D
 Acq: 14 Jan 2025 21:42

Instrument : BNA_F
 ClientSampleId : TR-06-1-10-2025MSD

Tgt Ion:284 Resp: 181320

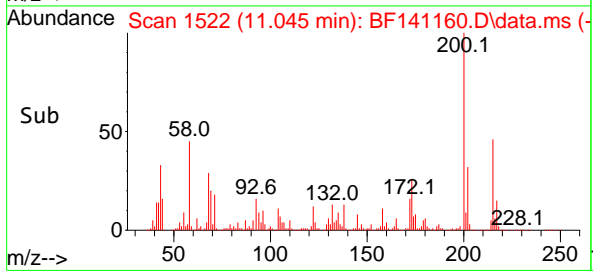
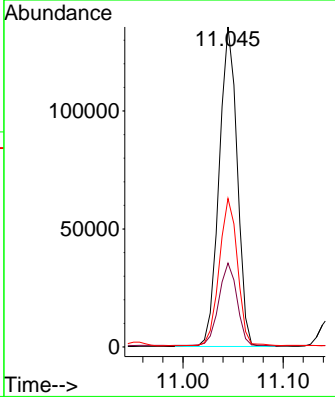
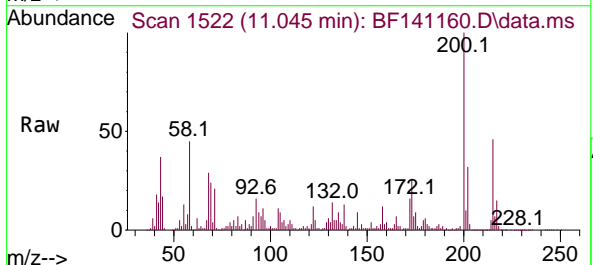
Ion	Ratio	Lower	Upper
284	100		
142	32.4	26.3	39.5
249	30.9	24.9	37.3

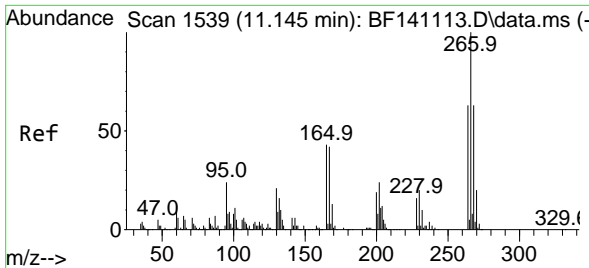


#69
 Atrazine
 Concen: 51.293 ng
 RT: 11.045 min Scan# 1522
 Delta R.T. -0.000 min
 Lab File: BF141160.D
 Acq: 14 Jan 2025 21:42

Tgt Ion:200 Resp: 169431

Ion	Ratio	Lower	Upper
200	100		
173	26.2	5.4	45.4
215	46.4	26.6	66.6



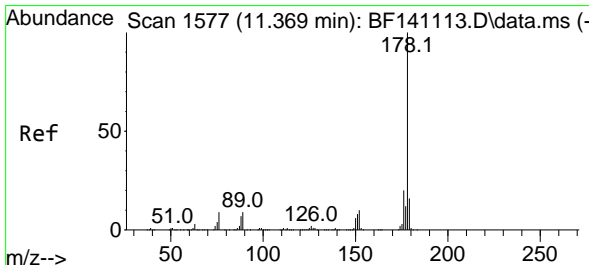
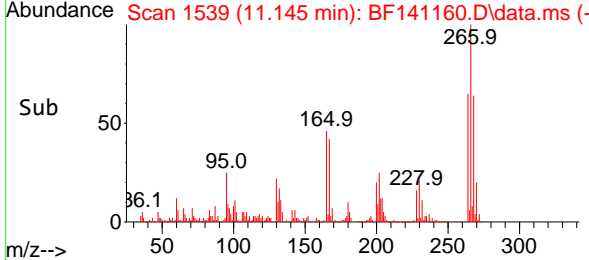
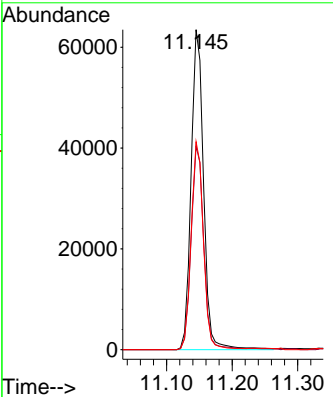
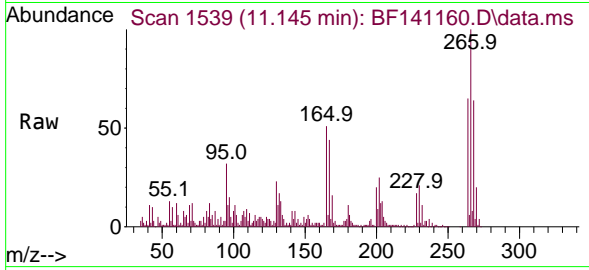


#70
 Pentachlorophenol
 Concen: 26.969 ng
 RT: 11.145 min Scan# 11
 Delta R.T. -0.000 min
 Lab File: BF141160.D
 Acq: 14 Jan 2025 21:42

Instrument : BNA_F
 ClientSampleId : TR-06-1-10-2025MSD

Tgt Ion:266 Resp: 84188

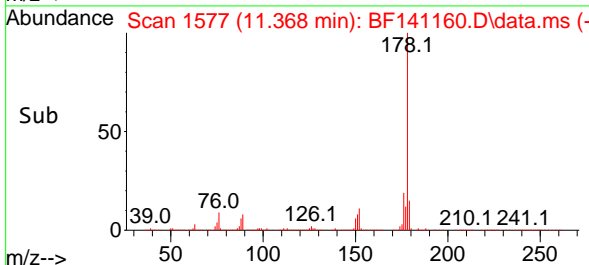
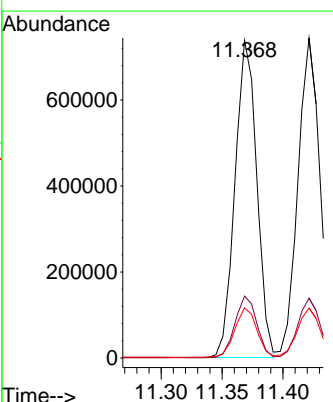
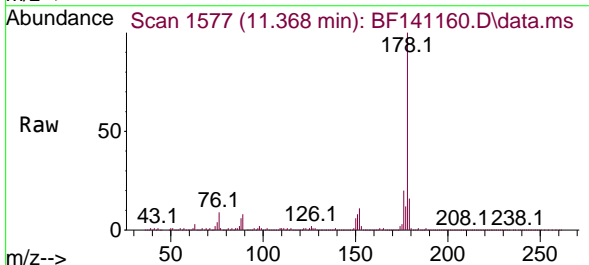
Ion	Ratio	Lower	Upper
266	100		
268	63.6	50.4	75.6
264	65.0	50.2	75.2

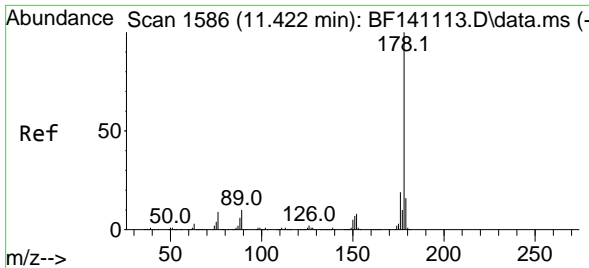


#71
 Phenanthrene
 Concen: 44.955 ng
 RT: 11.368 min Scan# 1577
 Delta R.T. -0.000 min
 Lab File: BF141160.D
 Acq: 14 Jan 2025 21:42

Tgt Ion:178 Resp: 917953

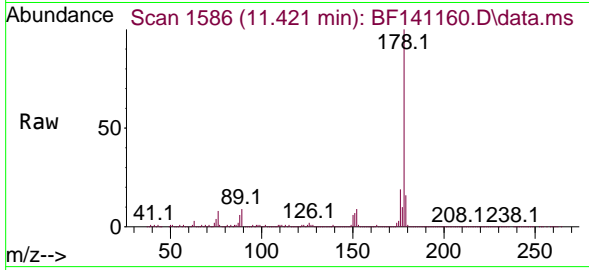
Ion	Ratio	Lower	Upper
178	100		
176	19.5	15.7	23.5
179	15.8	12.6	19.0



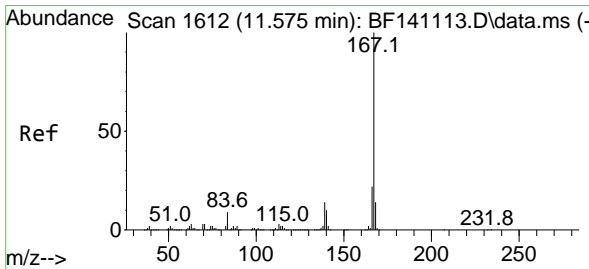
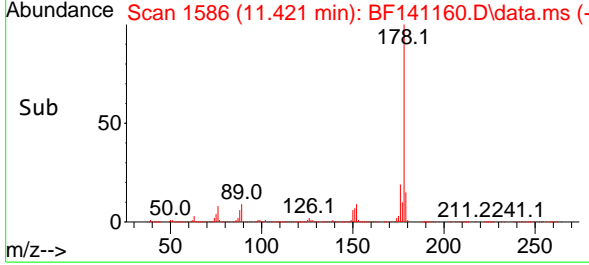
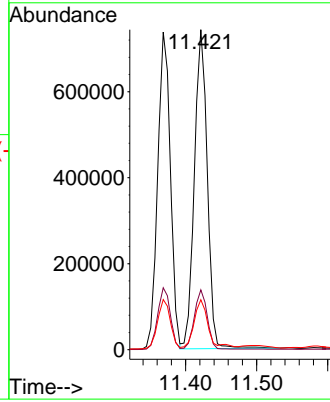


#72
 Anthracene
 Concen: 47.377 ng
 RT: 11.421 min Scan# 111
 Delta R.T. -0.000 min
 Lab File: BF141160.D
 Acq: 14 Jan 2025 21:42

Instrument :
 BNA_F
 ClientSampleId :
 TR-06-1-10-2025MSD

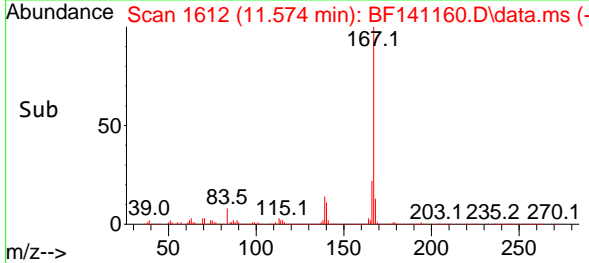
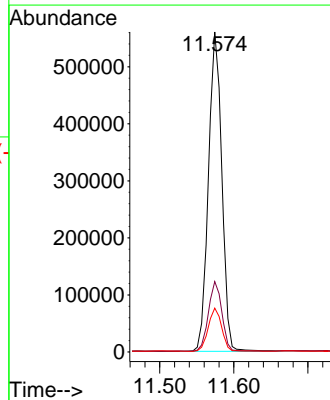
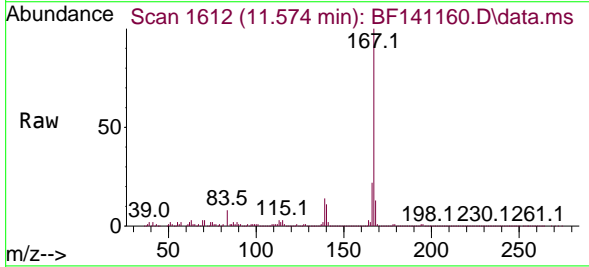


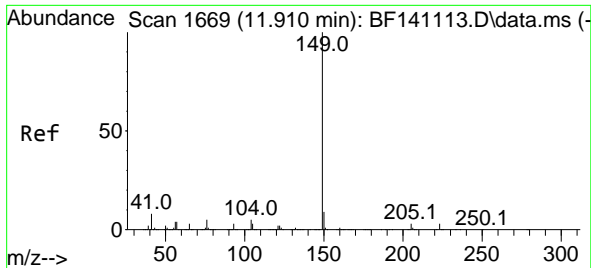
Tgt Ion:178 Resp: 940668
 Ion Ratio Lower Upper
 178 100
 176 18.7 14.9 22.3
 179 15.6 12.6 19.0



#73
 Carbazole
 Concen: 38.576 ng
 RT: 11.574 min Scan# 1612
 Delta R.T. -0.000 min
 Lab File: BF141160.D
 Acq: 14 Jan 2025 21:42

Tgt Ion:167 Resp: 702303
 Ion Ratio Lower Upper
 167 100
 166 22.0 17.4 26.2
 139 13.7 10.9 16.3



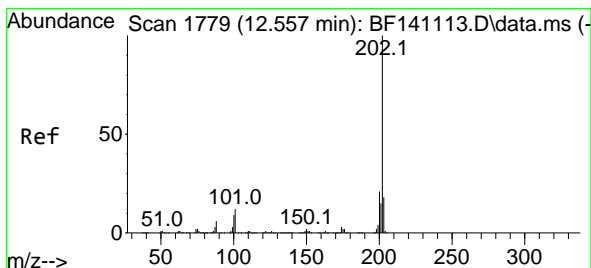
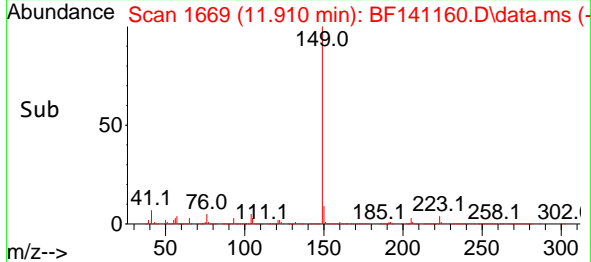
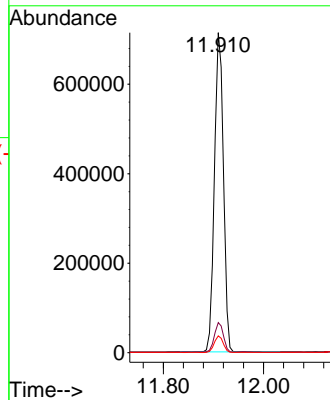
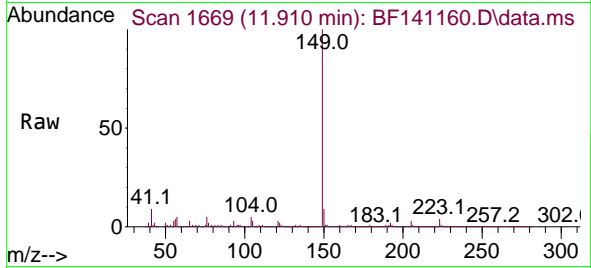


#74
 Di-n-butylphthalate
 Concen: 42.698 ng
 RT: 11.910 min Scan# 1669
 Delta R.T. -0.000 min
 Lab File: BF141160.D
 Acq: 14 Jan 2025 21:42

Instrument : BNA_F
 ClientSampleId : TR-06-1-10-2025MSD

Tgt Ion:149 Resp: 889610

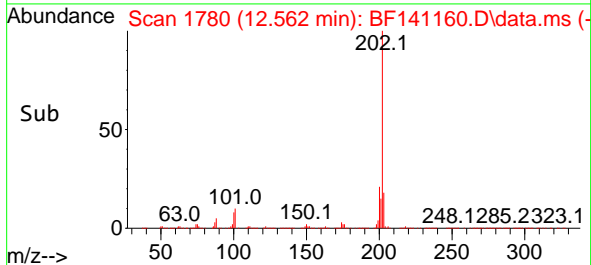
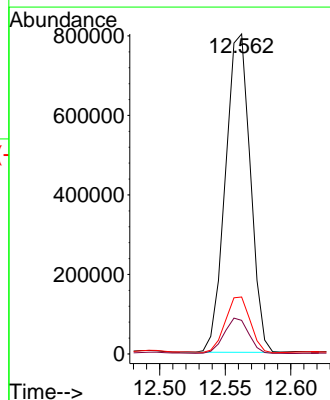
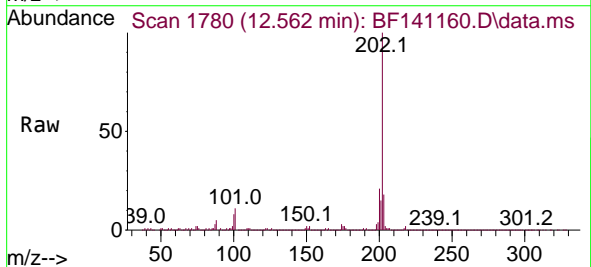
Ion	Ratio	Lower	Upper
149	100		
150	9.4	7.4	11.2
104	5.3	4.2	6.2

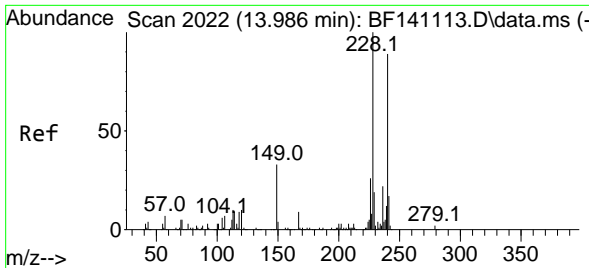


#75
 Fluoranthene
 Concen: 51.873 ng
 RT: 12.562 min Scan# 1780
 Delta R.T. 0.006 min
 Lab File: BF141160.D
 Acq: 14 Jan 2025 21:42

Tgt Ion:202 Resp: 1056993

Ion	Ratio	Lower	Upper
202	100		
101	10.5	0.0	32.3
203	17.8	0.0	37.7

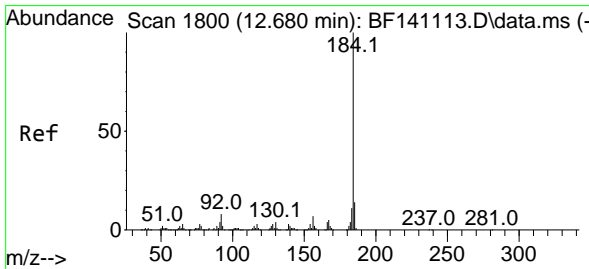
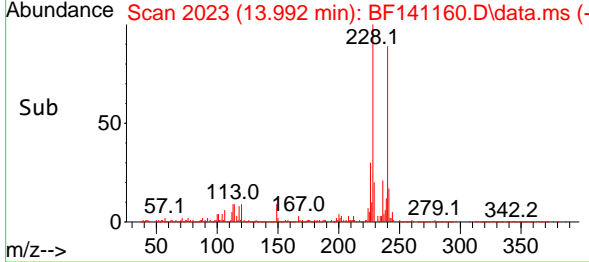
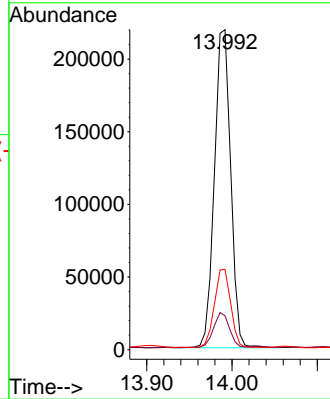
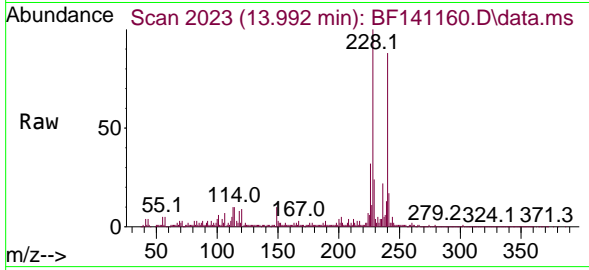




#76
 Chrysene-d12
 Concen: 20.000 ng
 RT: 13.992 min Scan# 20
 Delta R.T. 0.006 min
 Lab File: BF141160.D
 Acq: 14 Jan 2025 21:42

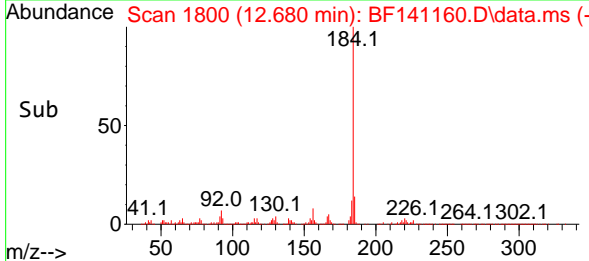
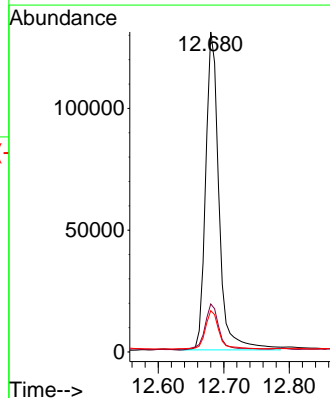
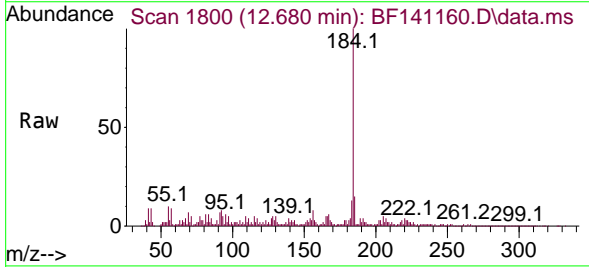
Instrument :
 BNA_F
 ClientSampleId :
 TR-06-1-10-2025MSD

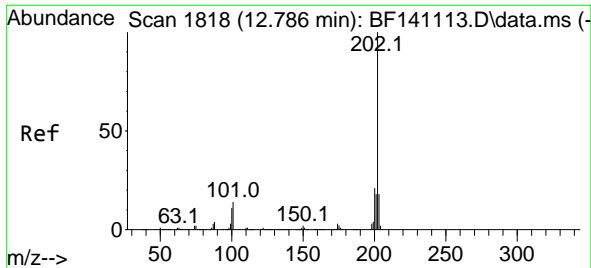
Tgt Ion:240 Resp: 290730
 Ion Ratio Lower Upper
 240 100
 120 10.6 9.1 13.7
 236 25.1 19.8 29.6



#77
 Benzidine
 Concen: 34.360 ng
 RT: 12.680 min Scan# 1800
 Delta R.T. -0.000 min
 Lab File: BF141160.D
 Acq: 14 Jan 2025 21:42

Tgt Ion:184 Resp: 185251
 Ion Ratio Lower Upper
 184 100
 185 15.0 11.4 17.0
 183 12.9 9.2 13.8



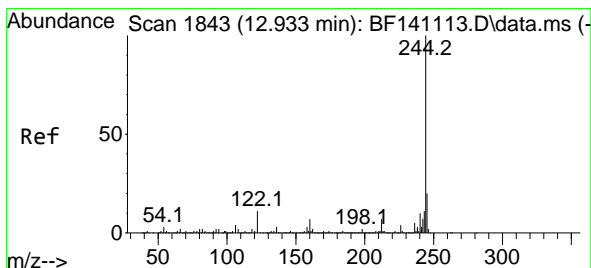
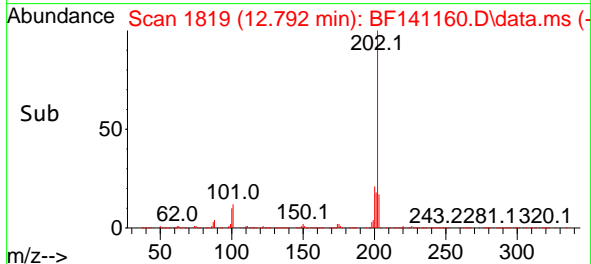
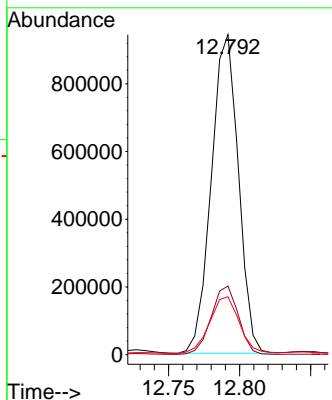
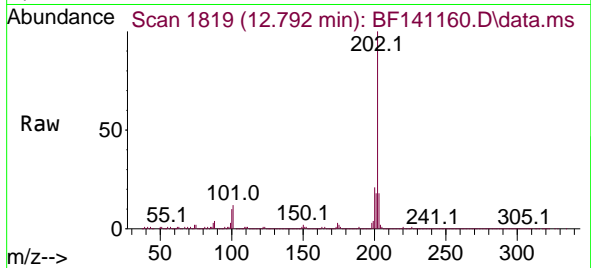


#78
 Pyrene
 Concen: 44.933 ng
 RT: 12.792 min Scan# 1819
 Delta R.T. 0.006 min
 Lab File: BF141160.D
 Acq: 14 Jan 2025 21:42

Instrument :
 BNA_F
 ClientSampleId :
 TR-06-1-10-2025MSD

Tgt Ion:202 Resp: 1247719

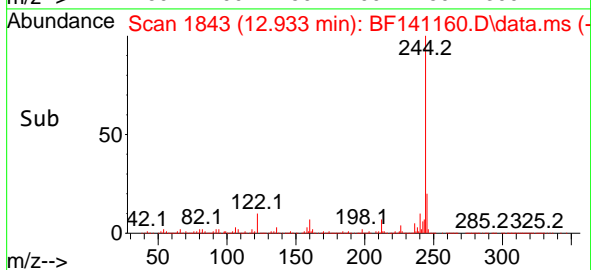
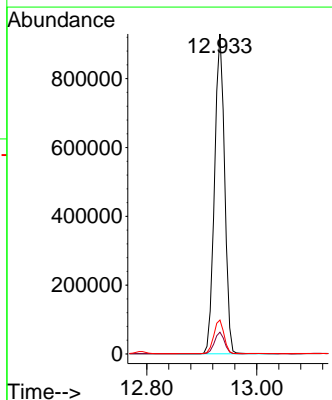
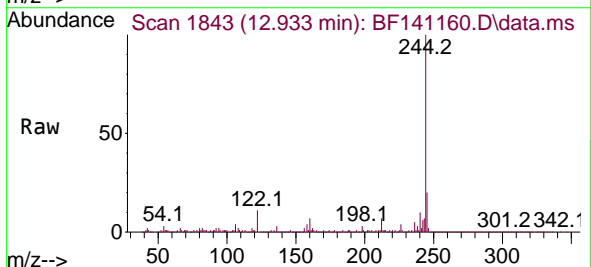
Ion	Ratio	Lower	Upper
202	100		
200	21.4	16.8	25.2
203	18.1	14.3	21.5

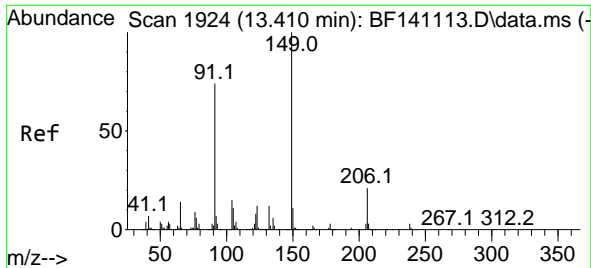


#79
 Terphenyl-d14
 Concen: 60.660 ng
 RT: 12.933 min Scan# 1843
 Delta R.T. -0.000 min
 Lab File: BF141160.D
 Acq: 14 Jan 2025 21:42

Tgt Ion:244 Resp: 1186539

Ion	Ratio	Lower	Upper
244	100		
212	6.8	5.4	8.2
122	10.6	8.8	13.2



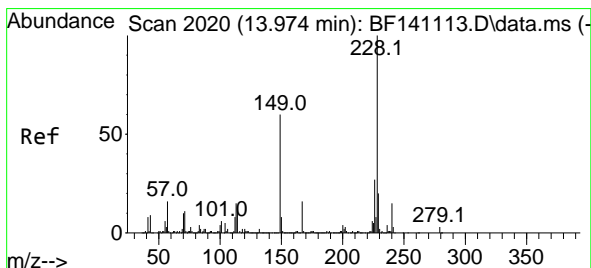
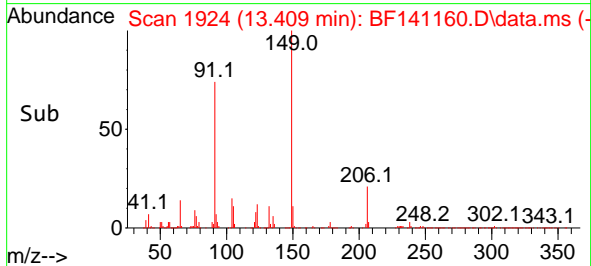
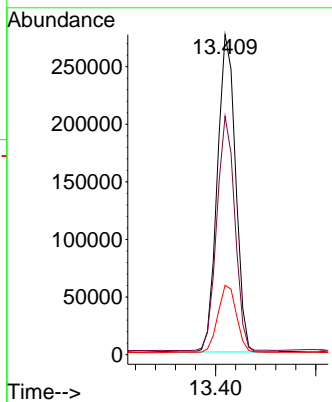
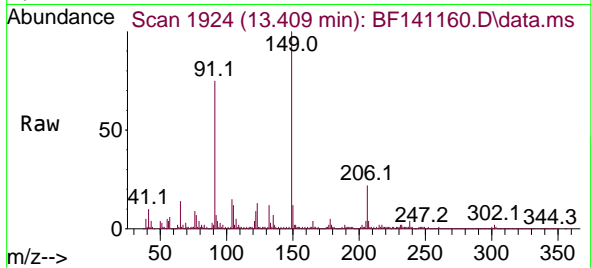


#80
 Butylbenzylphthalate
 Concen: 37.464 ng
 RT: 13.409 min Scan# 1924
 Delta R.T. -0.000 min
 Lab File: BF141160.D
 Acq: 14 Jan 2025 21:42

Instrument :
 BNA_F
 ClientSampleId :
 TR-06-1-10-2025MSD

Tgt Ion:149 Resp: 346851

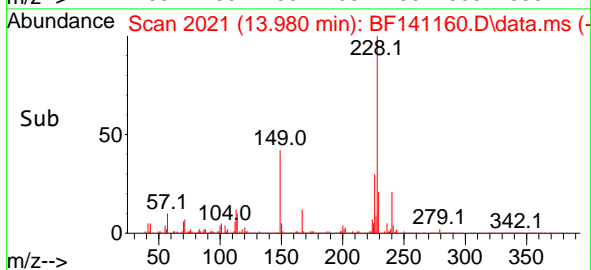
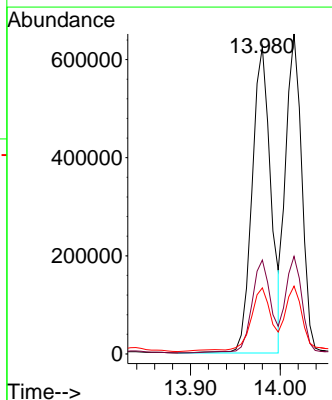
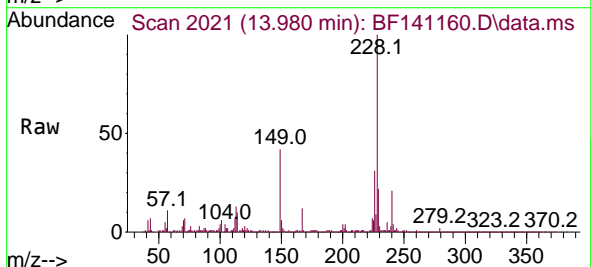
Ion	Ratio	Lower	Upper
149	100		
91	74.5	59.0	88.6
206	21.7	16.5	24.7

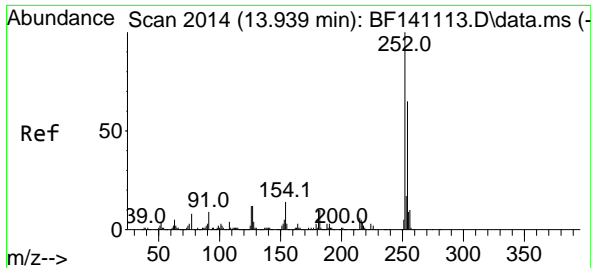


#81
 Benzo(a)anthracene
 Concen: 46.008 ng
 RT: 13.980 min Scan# 2021
 Delta R.T. 0.006 min
 Lab File: BF141160.D
 Acq: 14 Jan 2025 21:42

Tgt Ion:228 Resp: 910314

Ion	Ratio	Lower	Upper
228	100		
226	30.6	21.7	32.5
229	21.6	15.7	23.5



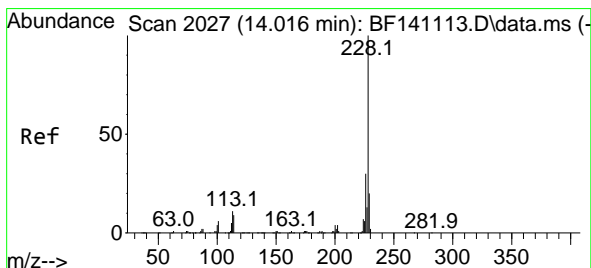
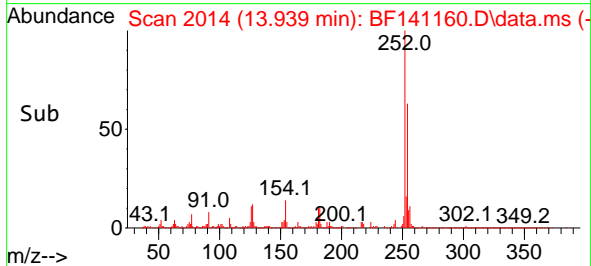
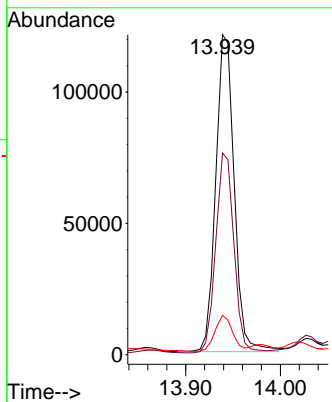
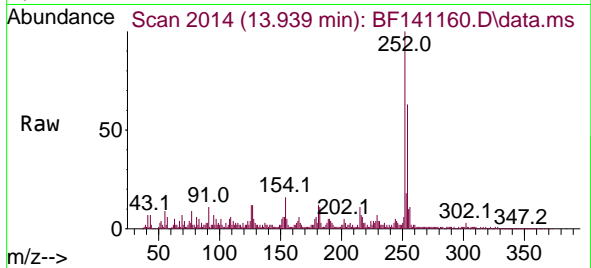


#82
 3,3'-Dichlorobenzidine
 Concen: 26.021 ng
 RT: 13.939 min Scan# 2014
 Delta R.T. -0.000 min
 Lab File: BF141160.D
 Acq: 14 Jan 2025 21:42

Instrument : BNA_F
 ClientSampleId : TR-06-1-10-2025MSD

Tgt Ion:252 Resp: 163939

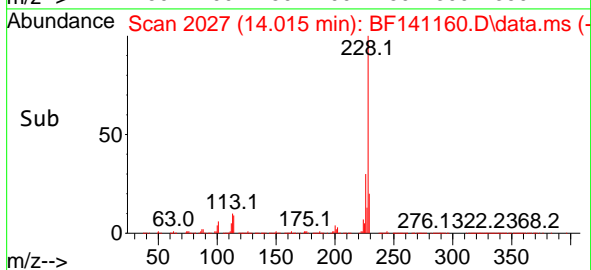
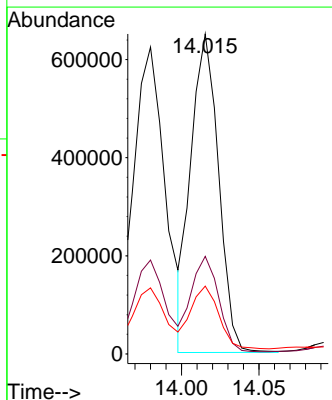
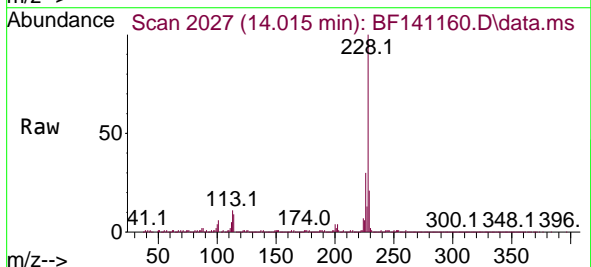
Ion	Ratio	Lower	Upper
252	100		
254	63.0	52.0	78.0
126	12.3	9.4	14.0

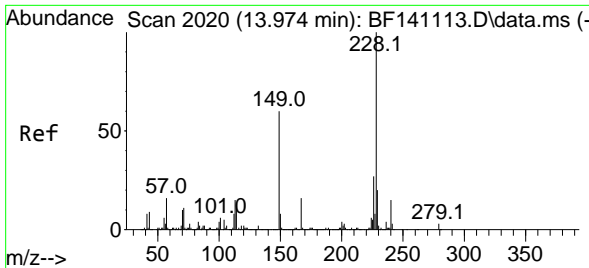


#83
 Chrysene
 Concen: 43.425 ng
 RT: 14.015 min Scan# 2027
 Delta R.T. -0.000 min
 Lab File: BF141160.D
 Acq: 14 Jan 2025 21:42

Tgt Ion:228 Resp: 803945

Ion	Ratio	Lower	Upper
228	100		
226	30.5	23.8	35.8
229	21.2	15.8	23.8

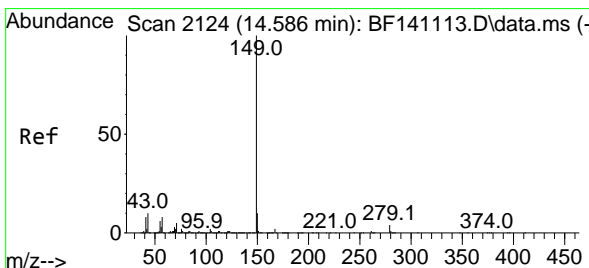
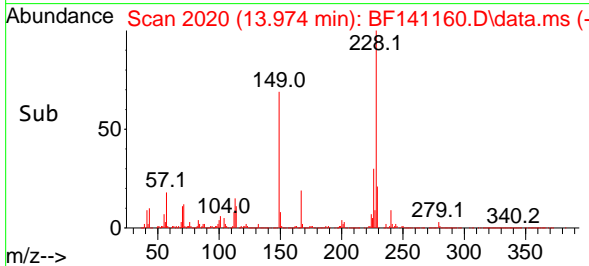
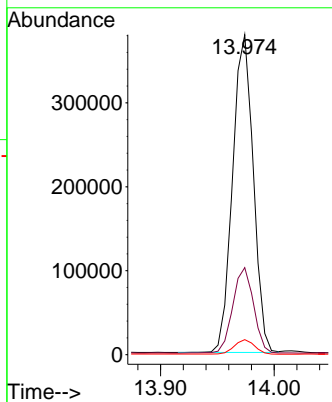
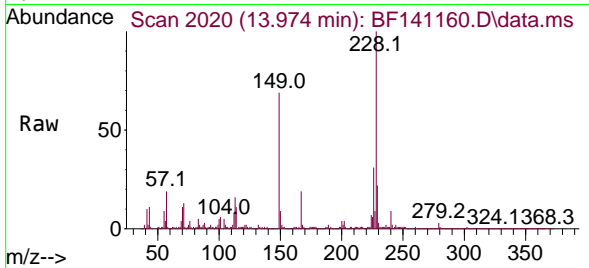




#84
 Bis(2-ethylhexyl)phthalate
 Concen: 43.113 ng
 RT: 13.974 min Scan# 2020
 Delta R.T. -0.000 min
 Lab File: BF141160.D
 Acq: 14 Jan 2025 21:42

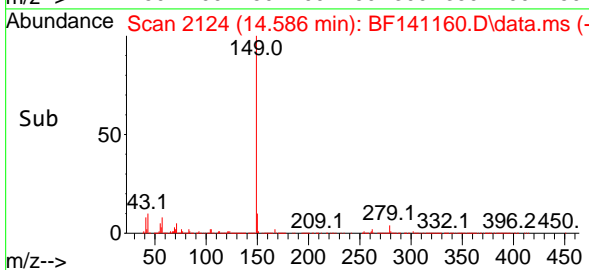
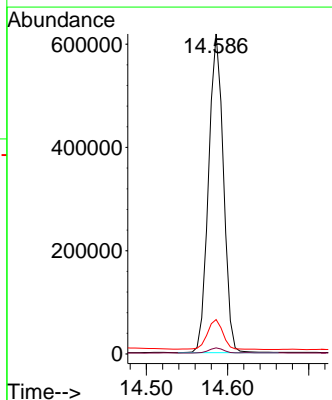
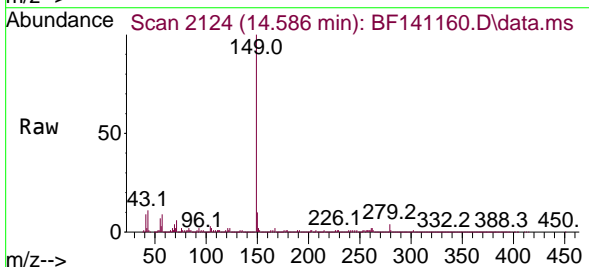
Instrument : BNA_F
 ClientSampleId : TR-06-1-10-2025MSD

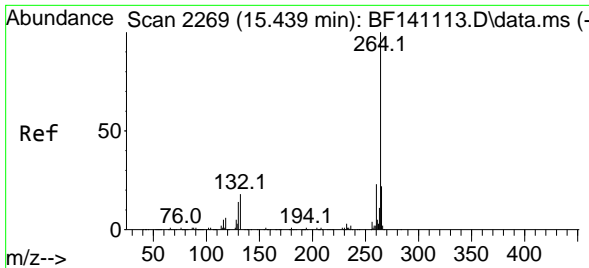
Tgt Ion	Resp	Lower	Upper
149	100		
167	27.2	21.4	32.2
279	4.7	3.4	5.2



#85
 Di-n-octyl phthalate
 Concen: 46.756 ng
 RT: 14.586 min Scan# 2124
 Delta R.T. -0.000 min
 Lab File: BF141160.D
 Acq: 14 Jan 2025 21:42

Tgt Ion	Resp	Lower	Upper
149	100		
167	1.6	1.3	1.9
43	9.9	8.4	12.6



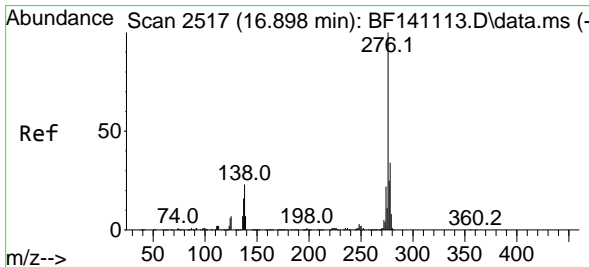
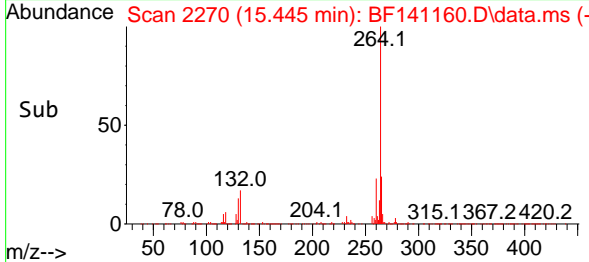
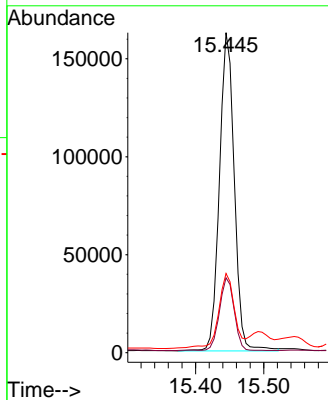
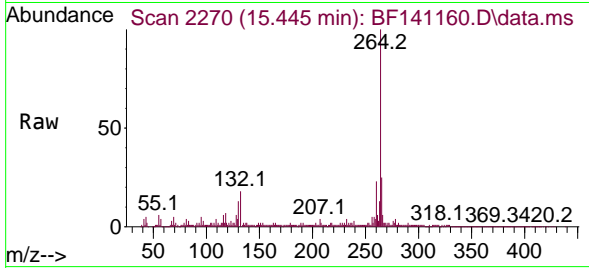


#86
 Perylene-d12
 Concen: 20.000 ng
 RT: 15.445 min Scan# 21
 Delta R.T. 0.006 min
 Lab File: BF141160.D
 Acq: 14 Jan 2025 21:42

Instrument :
 BNA_F
 ClientSampleId :
 TR-06-1-10-2025MSD

Tgt Ion:264 Resp: 246582

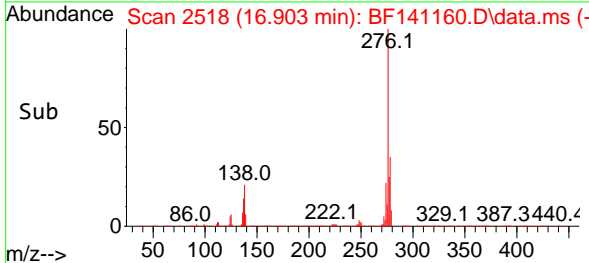
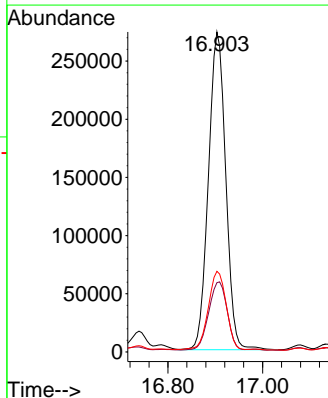
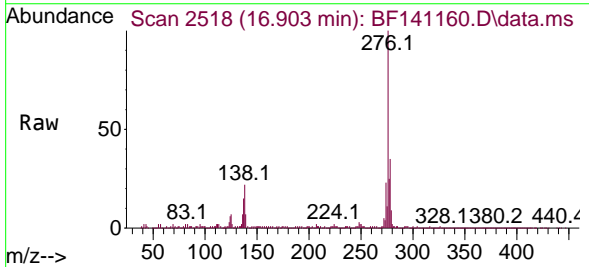
Ion	Ratio	Lower	Upper
264	100		
260	23.4	18.6	28.0
265	24.7	17.4	26.0

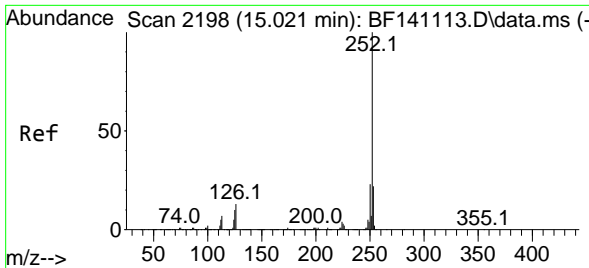


#87
 Indeno(1,2,3-cd)pyrene
 Concen: 38.313 ng
 RT: 16.903 min Scan# 2518
 Delta R.T. 0.006 min
 Lab File: BF141160.D
 Acq: 14 Jan 2025 21:42

Tgt Ion:276 Resp: 692133

Ion	Ratio	Lower	Upper
276	100		
138	22.8	20.7	31.1
277	25.1	20.6	30.8



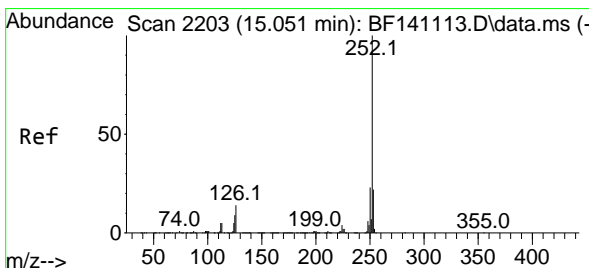
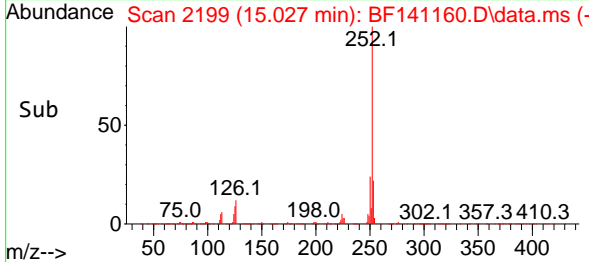
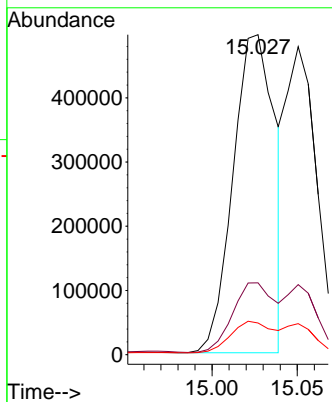
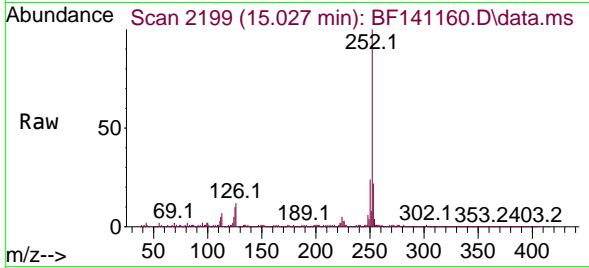


#88
 Benzo(b)fluoranthene
 Concen: 53.385 ng
 RT: 15.027 min Scan# 2199
 Delta R.T. 0.006 min
 Lab File: BF141160.D
 Acq: 14 Jan 2025 21:42

Instrument : BNA_F
 ClientSampleId : TR-06-1-10-2025MSD

Tgt Ion:252 Resp: 848840

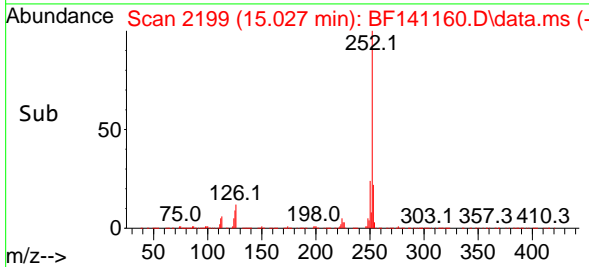
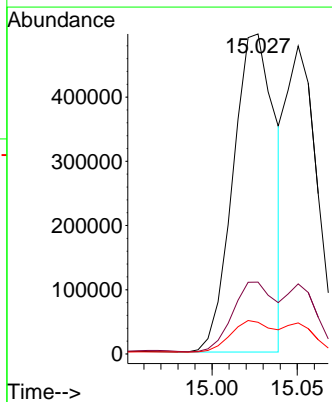
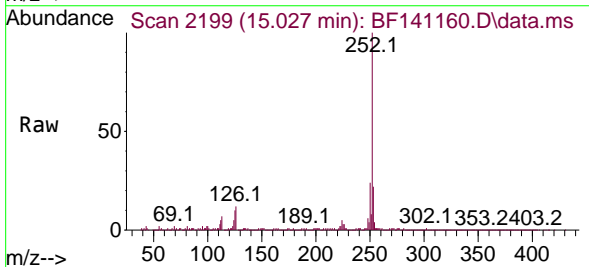
Ion	Ratio	Lower	Upper
252	100		
253	22.5	17.8	26.6
125	9.9	8.1	12.1

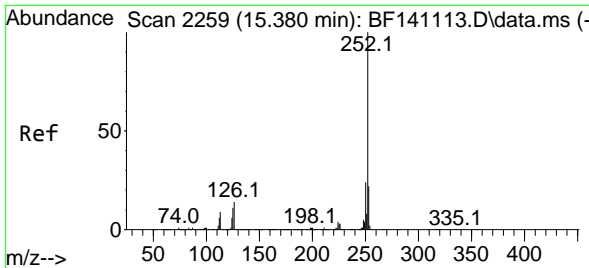


#89
 Benzo(k)fluoranthene
 Concen: 63.171 ng
 RT: 15.027 min Scan# 2199
 Delta R.T. -0.024 min
 Lab File: BF141160.D
 Acq: 14 Jan 2025 21:42

Tgt Ion:252 Resp: 848840

Ion	Ratio	Lower	Upper
252	100		
253	22.5	17.8	26.8
125	9.9	7.9	11.9



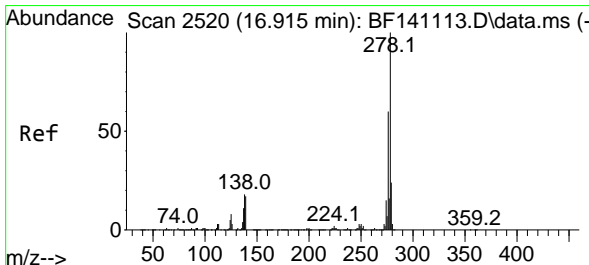
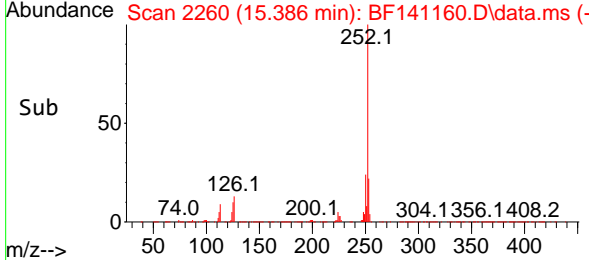
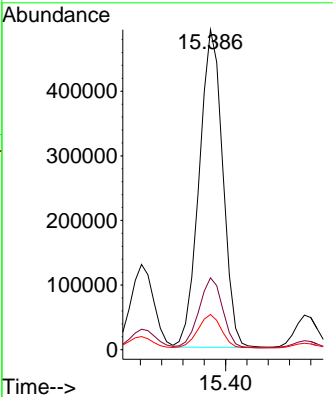
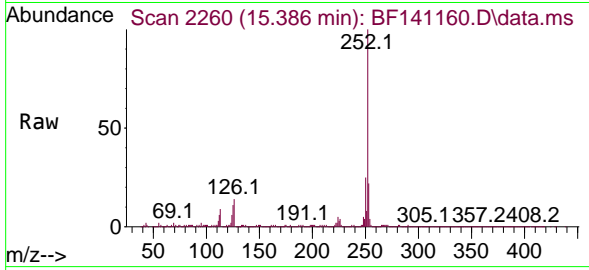


#90
 Benzo(a)pyrene
 Concen: 57.664 ng
 RT: 15.386 min Scan# 21
 Delta R.T. 0.006 min
 Lab File: BF141160.D
 Acq: 14 Jan 2025 21:42

Instrument : BNA_F
 ClientSampleId : TR-06-1-10-2025MSD

Tgt Ion:252 Resp: 756476

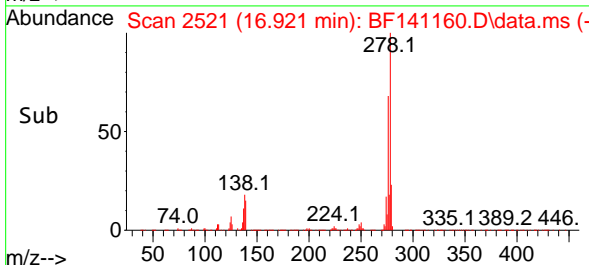
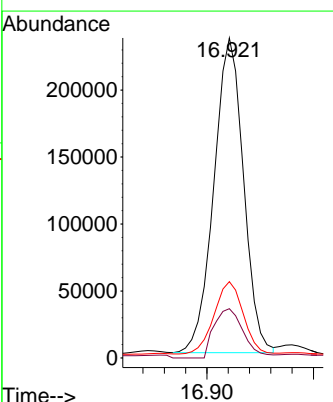
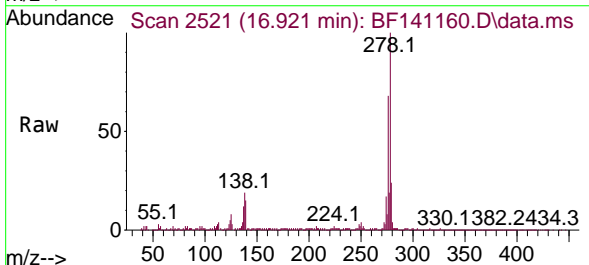
Ion	Ratio	Lower	Upper
252	100		
253	22.5	17.7	26.5
125	11.0	9.1	13.7

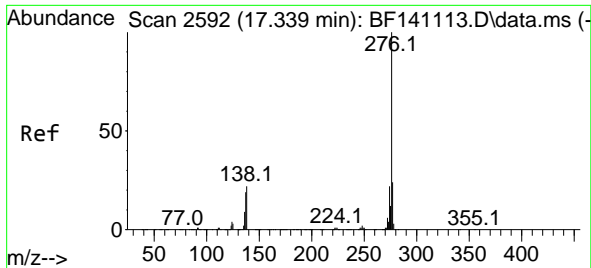


#91
 Dibenzo(a,h)anthracene
 Concen: 31.017 ng
 RT: 16.921 min Scan# 2521
 Delta R.T. 0.006 min
 Lab File: BF141160.D
 Acq: 14 Jan 2025 21:42

Tgt Ion:278 Resp: 453193

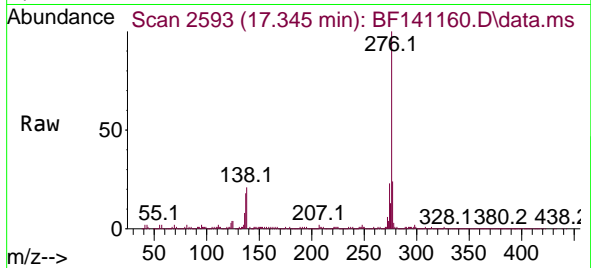
Ion	Ratio	Lower	Upper
278	100		
139	15.4	13.8	20.6
279	23.9	19.1	28.7





#92
 Benzo(g,h,i)perylene
 Concen: 39.858 ng
 RT: 17.345 min Scan# 21
 Delta R.T. 0.006 min
 Lab File: BF141160.D
 Acq: 14 Jan 2025 21:42

Instrument :
 BNA_F
 ClientSampleId :
 TR-06-1-10-2025MSD



Tgt Ion: 276 Resp: 605763

Ion	Ratio	Lower	Upper
276	100		
277	23.8	19.0	28.4
138	20.7	17.4	26.2

