

Data Path : Z:\HPCHEM1\BNA F\DATA\BF011515\
 Data File : BF076888.D
 Acq On : 15 Jan 2015 17:23
 Operator : IZ / TP
 Sample : G1030-12 5X
 Misc : S
 ALS Vial : 32 Sample Multiplier: 1

Instrument :
 BNA_F
 ClientSampleId :
 TP4-SS-3(6-8)

Integration Parameters: rteint.p
 Integrator: RTE
 Smoothing : ON
 Sampling : 1
 Start Thrs: 0.2
 Stop Thrs : 0

Filtering: 5
 Min Area: 3 % of largest Peak
 Max Peaks: 100
 Peak Location: TOP

If leading or trailing edge < 100 prefer < Baseline drop else tangent >
 Peak separation: 5

Method : Z:\HPCHEM1\BNA F\METHODS\8270-BF011415.M
 Title : ASP BNA STANDARDS FOR 5 POINT CALIBRATION

Signal : TIC

peak #	R.T. min	first scan	max scan	last scan	PK TY	peak height	corr. area	corr. % max.	% of total
1	1.395	26	27	32	rVV	18068	26629	2.34%	0.245%
2	1.475	32	34	51	rVB	619387	1137771	100.00%	10.450%
3	4.173	268	270	278	rBV	17413	39542	3.48%	0.363%
4	5.099	347	351	357	rBV	66545	138680	12.19%	1.274%
5	7.419	551	554	560	rBV	76286	133882	11.77%	1.230%
6	7.522	560	563	568	rVB	86730	157118	13.81%	1.443%
7	8.025	603	607	613	rVB	102149	160627	14.12%	1.475%
8	8.345	632	635	639	rBV	71290	109879	9.66%	1.009%
9	9.316	716	720	725	rBV	51785	90088	7.92%	0.827%
10	10.928	857	861	864	rBV	148056	224958	19.77%	2.066%
11	11.179	880	883	886	rVB	21765	32368	2.84%	0.297%
12	12.642	1008	1011	1015	rVB2	35719	64447	5.66%	0.592%
13	13.580	1090	1093	1098	rVV	106652	159908	14.05%	1.469%
14	14.014	1126	1131	1135	rVB	34060	66462	5.84%	0.610%
15	14.643	1183	1186	1190	rVV4	7766	20177	1.77%	0.185%
16	14.711	1190	1192	1194	rVV	14205	23768	2.09%	0.218%
17	14.780	1194	1198	1200	rVV	12084	26126	2.30%	0.240%
18	15.065	1220	1223	1226	rVB	158138	237994	20.92%	2.186%
19	15.134	1226	1229	1233	rVB	17102	28717	2.52%	0.264%
20	15.283	1239	1242	1246	rVB	36283	64387	5.66%	0.591%
21	16.266	1325	1328	1332	rBV3	20424	33200	2.92%	0.305%
22	16.357	1333	1336	1339	rBV	46347	65808	5.78%	0.604%
23	16.666	1360	1363	1365	rBV	16974	24321	2.14%	0.223%
24	16.723	1365	1368	1373	rVV3	76951	134408	11.81%	1.234%
25	17.180	1405	1408	1411	rVV2	44994	100557	8.84%	0.924%
26	17.534	1436	1439	1441	rVV2	12885	19750	1.74%	0.181%
27	17.648	1444	1449	1453	rBV4	11962	33855	2.98%	0.311%
28	17.809	1461	1463	1465	rBV	177805	264043	23.21%	2.425%
29	17.854	1465	1467	1469	rVV	255107	375781	33.03%	3.451%
30	17.923	1469	1473	1476	rVB	83434	121487	10.68%	1.116%
31	18.209	1495	1498	1500	rVV	28949	31360	2.76%	0.288%
32	18.460	1518	1520	1522	rVV	35852	40915	3.60%	0.376%
33	18.551	1526	1528	1530	rVV	40702	47795	4.20%	0.439%
34	18.586	1530	1531	1534	rVV	44081	53953	4.74%	0.496%

Data Path : Z:\HPCHEM1\BNA F\DATA\BF011515\
 Data File : BF076888.D
 Acq On : 15 Jan 2015 17:23
 Operator : IZ / TP
 Sample : G1030-12 5X
 Misc : S
 ALS Vial : 32 Sample Multiplier: 1

Instrument :
 BNA_F
 ClientSampleId :
 TP4-SS-3(6-8)

Integration Parameters: rteint.p
 Integrator: RTE
 Smoothing : ON
 Sampling : 1
 Start Thrs: 0.2
 Stop Thrs : 0

Filtering: 5
 Min Area: 3 % of largest Peak
 Max Peaks: 100
 Peak Location: TOP

If leading or trailing edge < 100 prefer < Baseline drop else tangent >
 Peak separation: 5

Method : Z:\HPCHEM1\BNA F\METHODS\8270-BF011415.M
 Title : ASP BNA STANDARDS FOR 5 POINT CALIBRATION

35	18.654	1535	1537	1538	rVV	28045	29459	2.59%	0.271%
36	18.689	1538	1540	1542	rVV2	53406	84534	7.43%	0.776%
37	18.723	1542	1543	1547	rVB	23779	34913	3.07%	0.321%
38	18.986	1564	1566	1571	rVB2	33933	80458	7.07%	0.739%
39	19.306	1591	1594	1595	rBV	22651	28213	2.48%	0.259%
40	19.340	1595	1597	1599	rVV2	11743	18371	1.61%	0.169%
41	19.386	1599	1601	1602	rVV2	16500	22902	2.01%	0.210%
42	19.489	1607	1610	1612	rBV	640037	653414	57.43%	6.001%
43	19.672	1624	1626	1632	rBV3	16285	27758	2.44%	0.255%
44	19.774	1632	1635	1637	rVV	539068	617937	54.31%	5.675%
45	19.832	1637	1640	1641	rVV2	30287	35976	3.16%	0.330%
46	19.854	1641	1642	1645	rVV2	16666	21270	1.87%	0.195%
47	19.957	1647	1651	1652	rVV2	20177	55197	4.85%	0.507%
48	19.980	1652	1653	1656	rVB2	24434	37518	3.30%	0.345%
49	20.037	1656	1658	1660	rBV	126128	175757	15.45%	1.614%
50	20.083	1660	1662	1664	rVB	23076	33058	2.91%	0.304%
51	20.220	1668	1674	1676	rBV2	55952	106706	9.38%	0.980%
52	20.300	1679	1681	1683	rBV	56883	58847	5.17%	0.540%
53	20.334	1683	1684	1691	rVV3	28579	64358	5.66%	0.591%
54	20.449	1691	1694	1696	rVV2	29759	35389	3.11%	0.325%
55	20.769	1714	1722	1724	rBV4	15981	49899	4.39%	0.458%
56	20.849	1724	1729	1734	rBV4	31608	83321	7.32%	0.765%
57	20.986	1739	1741	1743	rBV	43741	48018	4.22%	0.441%
58	21.032	1743	1745	1747	rBV2	43016	63177	5.55%	0.580%
59	21.077	1747	1749	1751	rVB2	26759	29425	2.59%	0.270%
60	21.123	1751	1753	1756	rVB	37959	42950	3.77%	0.394%
61	21.203	1756	1760	1764	rVB	13000	19162	1.68%	0.176%
62	21.295	1764	1768	1770	rBV2	376299	698163	61.36%	6.412%
63	21.340	1770	1772	1774	rVB2	243340	306233	26.92%	2.813%
64	21.432	1778	1780	1782	rBV	43211	54579	4.80%	0.501%
65	21.557	1789	1791	1794	rVB2	34063	57264	5.03%	0.526%
66	21.615	1794	1796	1800	rBV	32870	50420	4.43%	0.463%
67	21.729	1800	1806	1807	rBV4	8370	22201	1.95%	0.204%
68	21.797	1810	1812	1814	rBV	42671	49523	4.35%	0.455%
69	21.843	1814	1816	1818	rVB2	20713	28270	2.48%	0.260%
70	21.900	1818	1821	1822	rBV2	18716	29670	2.61%	0.272%
71	21.958	1822	1826	1829	rVB3	18739	54514	4.79%	0.501%

Data Path : Z:\HPCHEM1\BNA F\DATA\BF011515\
 Data File : BF076888.D
 Acq On : 15 Jan 2015 17:23
 Operator : IZ / TP
 Sample : G1030-12 5X
 Misc : S
 ALS Vial : 32 Sample Multiplier: 1

Instrument :
 BNA_F
 ClientSampleId :
 TP4-SS-3(6-8)

Integration Parameters: rteint.p
 Integrator: RTE
 Smoothing : ON Filtering: 5
 Sampling : 1 Min Area: 3 % of largest Peak
 Start Thrs: 0.2 Max Peaks: 100
 Stop Thrs : 0 Peak Location: TOP

If leading or trailing edge < 100 prefer < Baseline drop else tangent >
 Peak separation: 5

Method : Z:\HPCHEM1\BNA F\METHODS\8270-BF011415.M
 Title : ASP BNA STANDARDS FOR 5 POINT CALIBRATION

72	22.060	1833	1835	1838	rVB3	13191	22443	1.97%	0.206%
73	22.186	1842	1846	1848	rBV2	18050	34041	2.99%	0.313%
74	22.380	1860	1863	1866	rBV3	12040	26336	2.31%	0.242%
75	22.552	1875	1878	1883	rBV	255917	523393	46.00%	4.807%
76	22.666	1883	1888	1890	rBV2	48275	72487	6.37%	0.666%
77	22.723	1890	1893	1895	rVB4	9184	17598	1.55%	0.162%
78	22.769	1895	1897	1899	rBV3	18926	40407	3.55%	0.371%
79	22.849	1901	1904	1907	rVV	147393	168647	14.82%	1.549%
80	22.906	1907	1909	1912	rVB	223063	255701	22.47%	2.348%
81	22.963	1912	1914	1919	rBV2	191325	350673	30.82%	3.221%
82	23.180	1927	1933	1937	rBV6	19062	76626	6.73%	0.704%
83	23.260	1937	1940	1941	rBV2	11952	19999	1.76%	0.184%
84	23.443	1954	1956	1959	rVB2	15434	18966	1.67%	0.174%
85	23.558	1963	1966	1969	rBV4	16358	31360	2.76%	0.288%
86	23.809	1985	1988	1990	rBV4	11801	18111	1.59%	0.166%
87	23.889	1990	1995	2000	rVB6	19383	54354	4.78%	0.499%
88	23.981	2000	2003	2006	rBV2	31683	61747	5.43%	0.567%
89	24.095	2010	2013	2018	rVB2	105914	206139	18.12%	1.893%
90	24.232	2022	2025	2027	rBV	28277	54959	4.83%	0.505%
91	24.392	2036	2039	2047	rVB	88345	168389	14.80%	1.547%
92	24.552	2050	2053	2060	rVB3	28215	75430	6.63%	0.693%
93	24.815	2073	2076	2079	rBV5	8745	19429	1.71%	0.178%
94	24.941	2083	2087	2092	rVB5	11955	42859	3.77%	0.394%
95	25.924	2166	2173	2178	rBV3	25737	96934	8.52%	0.890%
96	26.049	2178	2184	2186	rBV2	19259	54865	4.82%	0.504%
97	26.484	2219	2222	2226	rVB5	5443	16875	1.48%	0.155%
98	26.712	2234	2242	2249	rBV7	16982	96152	8.45%	0.883%
99	26.861	2249	2255	2259	rVV6	11876	37872	3.33%	0.348%
100	26.941	2259	2262	2269	rVB8	6547	25731	2.26%	0.236%

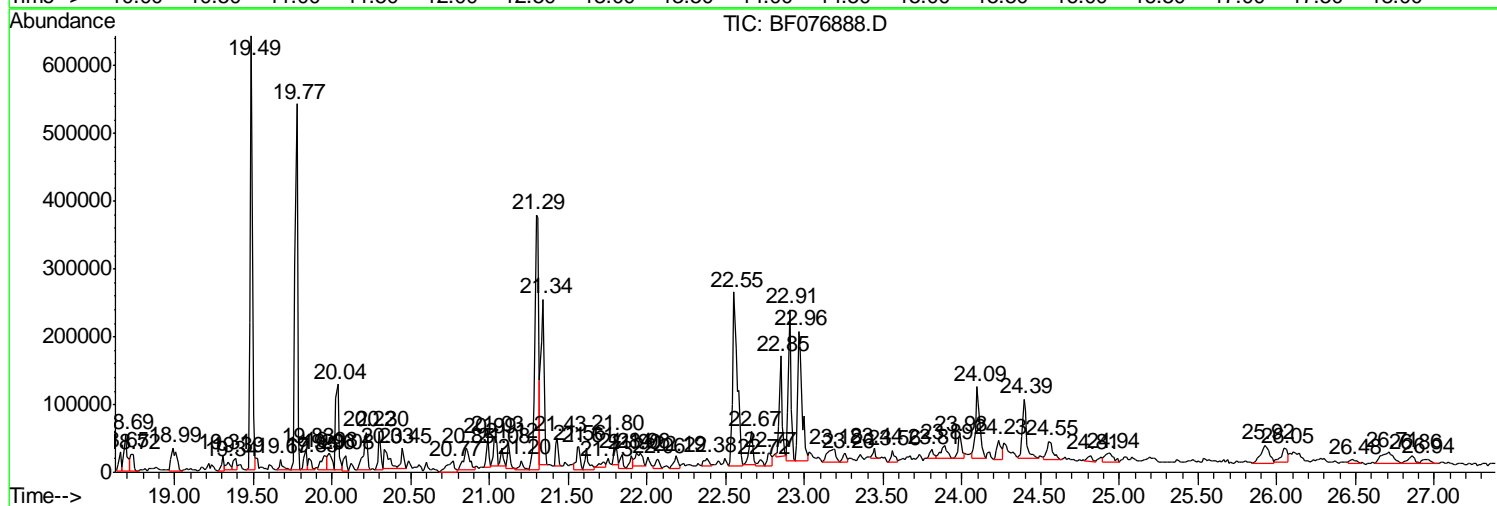
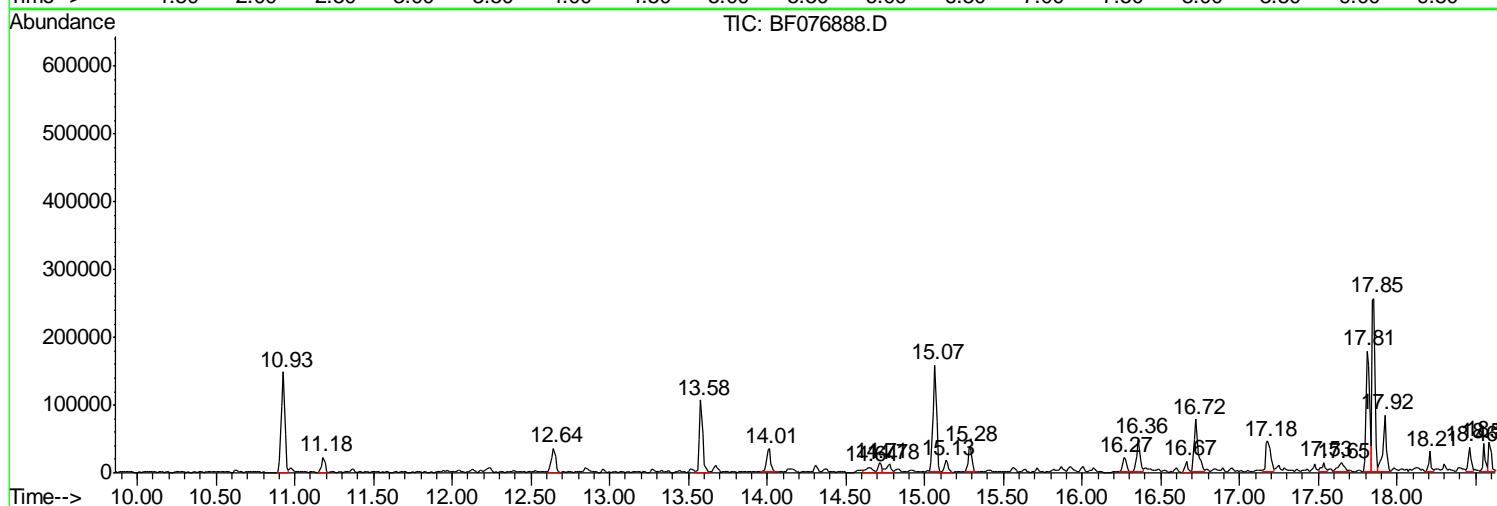
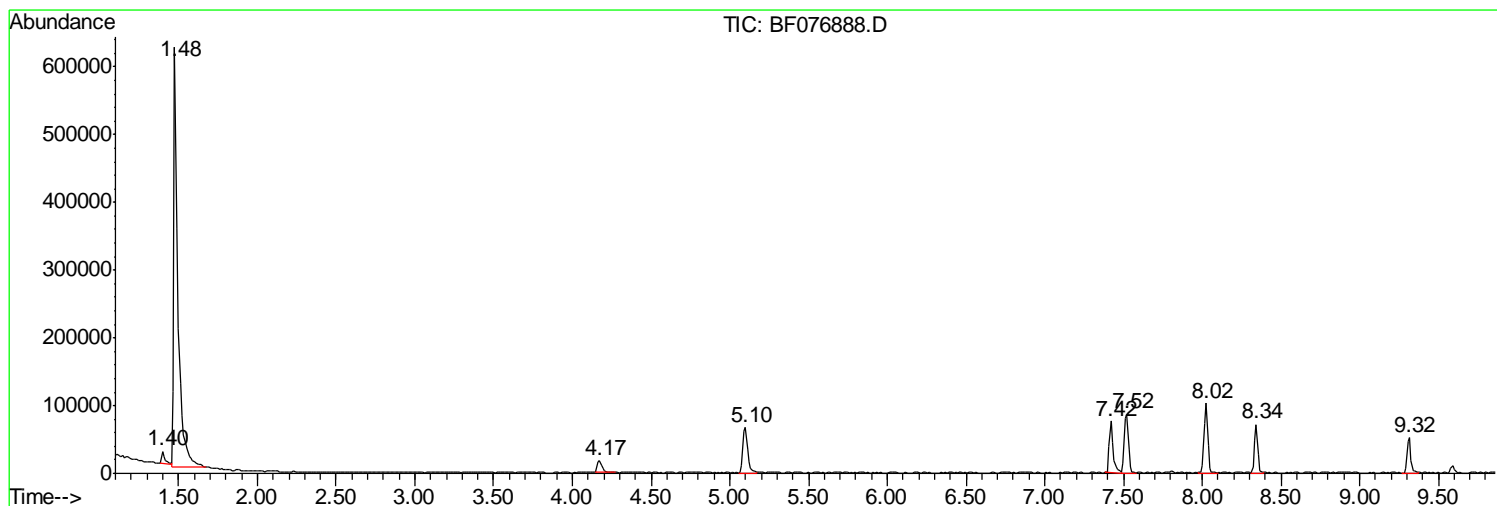
Sum of corrected areas: 10888108

Data Path : Z:\HPCHEM1\BNA F\DATA\BF011515\
 Data File : BF076888.D
 Acq On : 15 Jan 2015 17:23
 Operator : IZ / TP
 Sample : G1030-12 5X
 Misc : S
 ALS Vial : 32 Sample Multiplier: 1

Instrument :
 BNA_F
 ClientSampleId :
 TP4-SS-3(6-8)

Quant Method : Z:\HPCHEM1\BNA F\METHODS\8270-BF011415.M
 Quant Title : ASP BNA STANDARDS FOR 5 POINT CALIBRATION

TIC Library : C:\DATABASE\NIST02.L
 TIC Integration Parameters: LSCINT.P



Data Path : Z:\HPCHEM1\BNA F\DATA\BF011515\
 Data File : BF076888.D
 Acq On : 15 Jan 2015 17:23
 Operator : IZ / TP
 Sample : G1030-12 5X
 Misc : S
 ALS Vial : 32 Sample Multiplier: 1

Instrument :
 BNA_F
 ClientSampleID :
 TP4-SS-3(6-8)

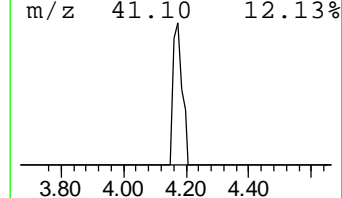
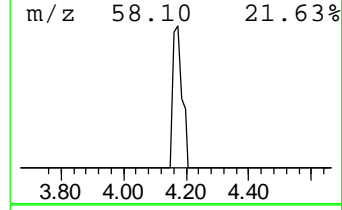
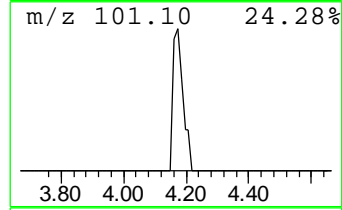
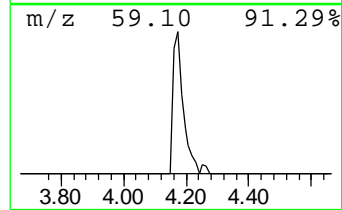
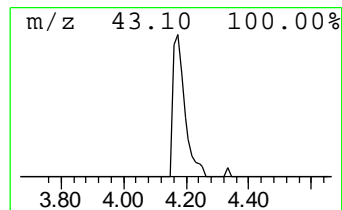
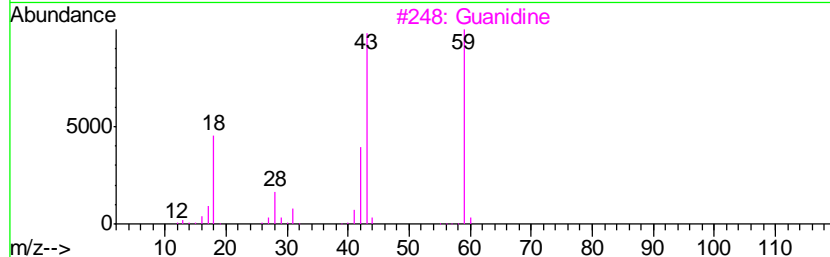
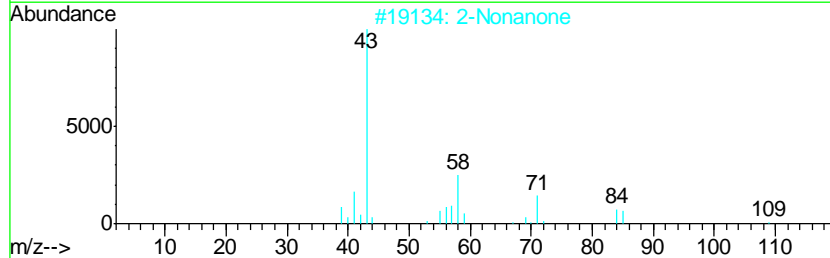
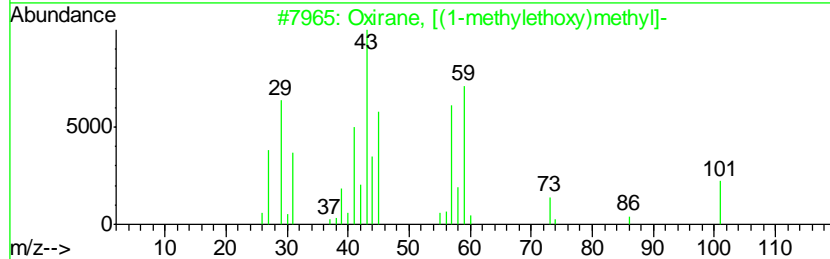
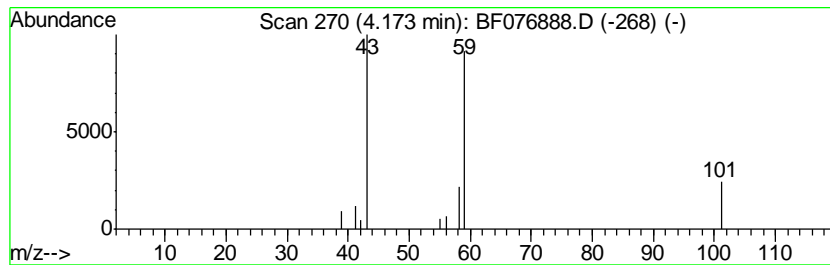
Quant Method : Z:\HPCHEM1\BNA F\METHODS\8270-BF011415.M
 Quant Title : ASP BNA STANDARDS FOR 5 POINT CALIBRATION

TIC Library : C:\DATABASE\NIST02.L
 TIC Integration Parameters: LSCINT.P

 Peak Number 2 Oxirane, [(1-methylethoxy)m... Concentration Rank 14

R.T.	EstConc	Area	Relative to ISTD	R.T.
4.17	4.92 ng	39542	1,4-Dichlorobenzene-d4	8.02

Hit#	of	Tentative ID	MW	MolForm	CAS#	Qual
1	5	Oxirane, [(1-methylethoxy)methyl]-	116	C6H12O2	004016-14-2	64
2		2-Nonanone	142	C9H18O	000821-55-6	9
3		Guanidine	59	CH5N3	000113-00-8	5
4		Morpholine, 4-methyl-	101	C5H11NO	000109-02-4	5
5		Diacetamide	101	C4H7NO2	000625-77-4	5



Data Path : Z:\HPCHEM1\BNA F\DATA\BF011515\
 Data File : BF076888.D
 Acq On : 15 Jan 2015 17:23
 Operator : IZ / TP
 Sample : G1030-12 5X
 Misc : S
 ALS Vial : 32 Sample Multiplier: 1

Instrument :
 BNA_F
 ClientSampleID :
 TP4-SS-3(6-8)

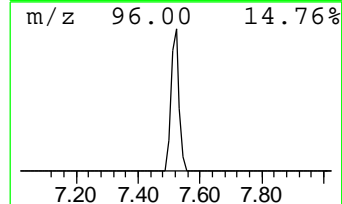
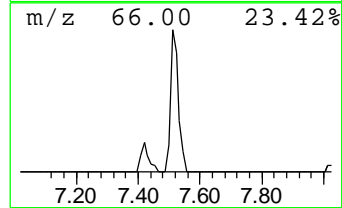
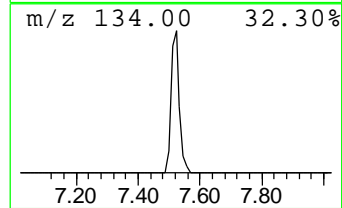
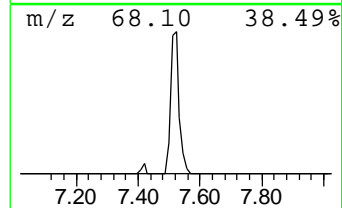
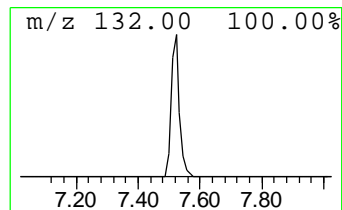
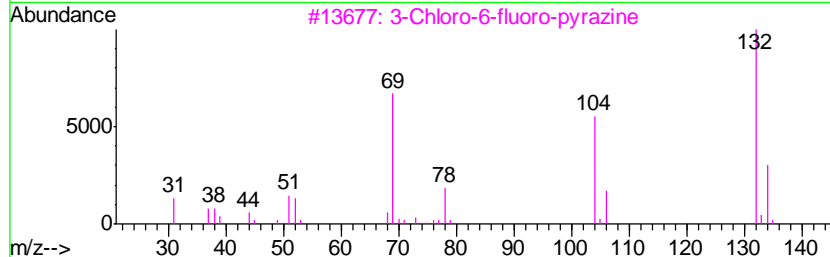
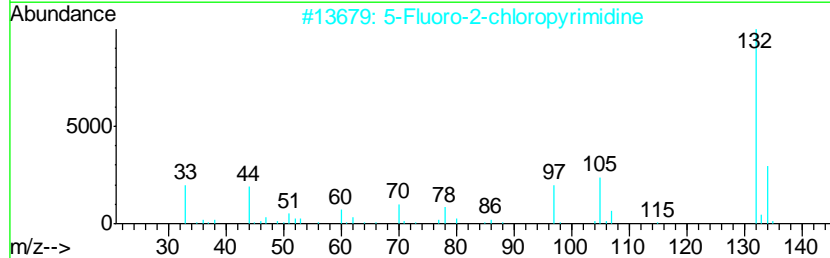
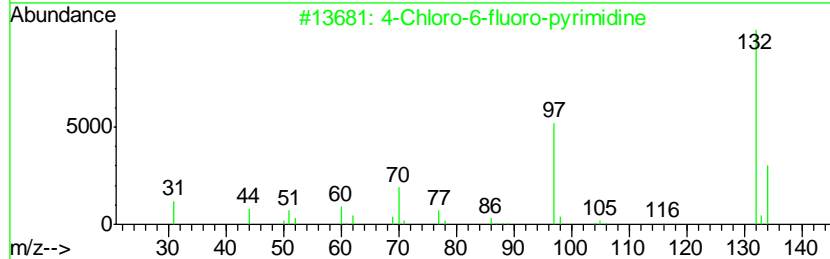
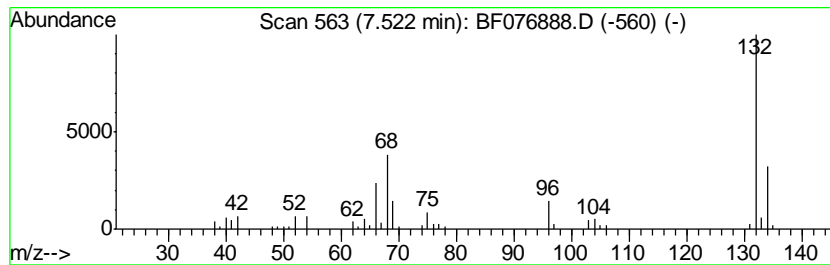
Quant Method : Z:\HPCHEM1\BNA F\METHODS\8270-BF011415.M
 Quant Title : ASP BNA STANDARDS FOR 5 POINT CALIBRATION

TIC Library : C:\DATABASE\NIST02.L
 TIC Integration Parameters: LSCINT.P

 Peak Number 3 unknown7.52 Concentration Rank 2

R.T.	EstConc	Area	Relative to ISTD	R.T.
7.52	19.56 ng	157118	1,4-Dichlorobenzene-d4	8.02

Hit#	of	Tentative ID	MW	MolForm	CAS#	Qual
1	5	4-Chloro-6-fluoro-pyrimidine	132	C4H2ClFN2	051422-01-6	27
2		5-Fluoro-2-chloropyrimidine	132	C4H2ClFN2	062802-42-0	16
3		3-Chloro-6-fluoro-pyrazine	132	C4H2ClFN2	1000146-10-7	16
4		Benzene, 1,2,4-trifluoro-	132	C6H3F3	000367-23-7	10
5		5-Aminoindole	132	C8H8N2	005192-03-0	9



Data Path : Z:\HPCHEM1\BNA F\DATA\BF011515\
 Data File : BF076888.D
 Acq On : 15 Jan 2015 17:23
 Operator : IZ / TP
 Sample : G1030-12 5X
 Misc : S
 ALS Vial : 32 Sample Multiplier: 1

Instrument :
 BNA_F
 ClientSampleId :
 TP4-SS-3(6-8)

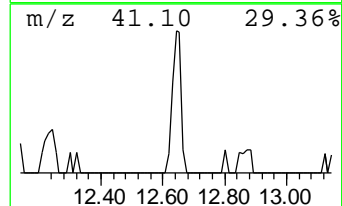
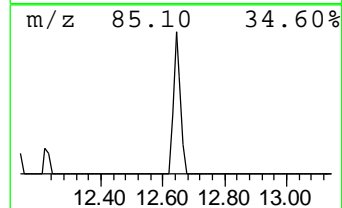
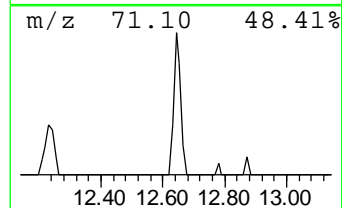
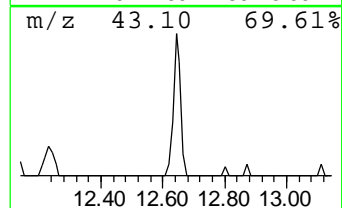
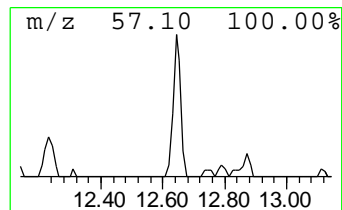
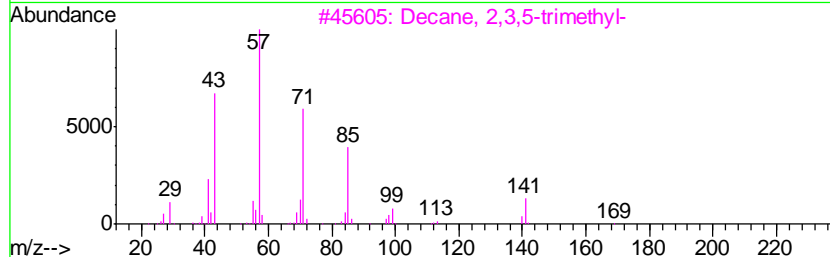
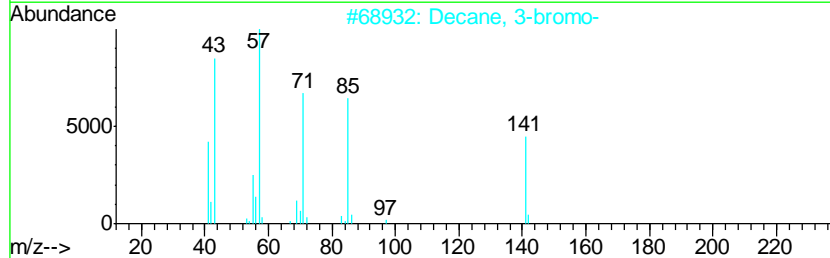
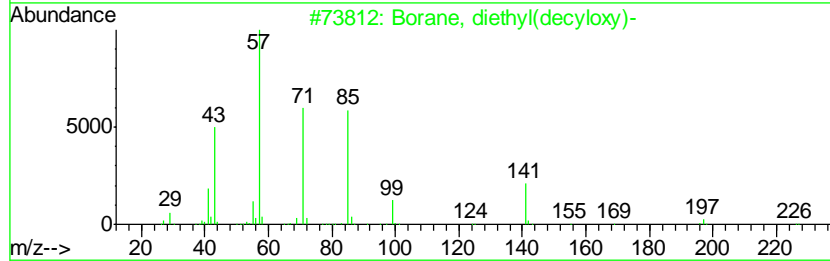
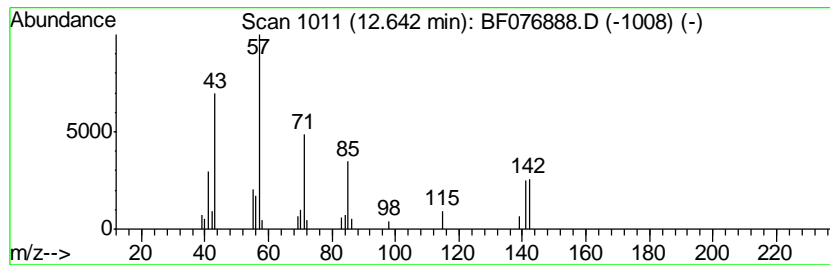
Quant Method : Z:\HPCHEM1\BNA F\METHODS\8270-BF011415.M
 Quant Title : ASP BNA STANDARDS FOR 5 POINT CALIBRATION

TIC Library : C:\DATABASE\NIST02.L
 TIC Integration Parameters: LSCINT.P

 Peak Number 5 Borane, diethyl(decyloxy)- Concentration Rank 8

R.T.	EstConc	Area	Relative to ISTD	R.T.
12.64	5.73 ng	64447	Naphthalene-d8	10.93

Hit#	of	Tentative ID	MW	MolForm	CAS#	Qual
1	5	Borane, diethyl(decyloxy)-	226	C14H31BO	1000152-34-3	53
2		Decane, 3-bromo-	220	C10H21Br	030571-71-2	50
3		Decane, 2,3,5-trimethyl-	184	C13H28	062238-11-3	50
4		Eicosane	282	C20H42	000112-95-8	47
5		Hexadecane	226	C16H34	000544-76-3	47



Data Path : Z:\HPCHEM1\BNA F\DATA\BF011515\
 Data File : BF076888.D
 Acq On : 15 Jan 2015 17:23
 Operator : IZ / TP
 Sample : G1030-12 5X
 Misc : S
 ALS Vial : 32 Sample Multiplier: 1

Instrument :
 BNA_F
 ClientSampleID :
 TP4-SS-3(6-8)

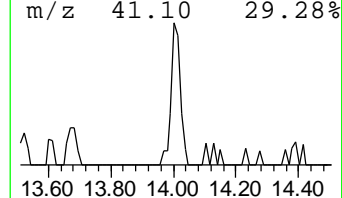
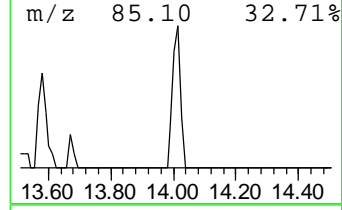
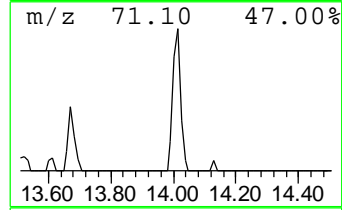
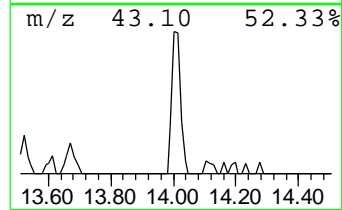
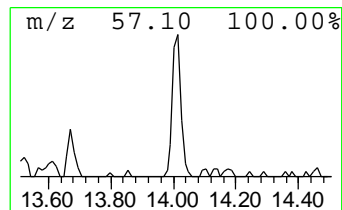
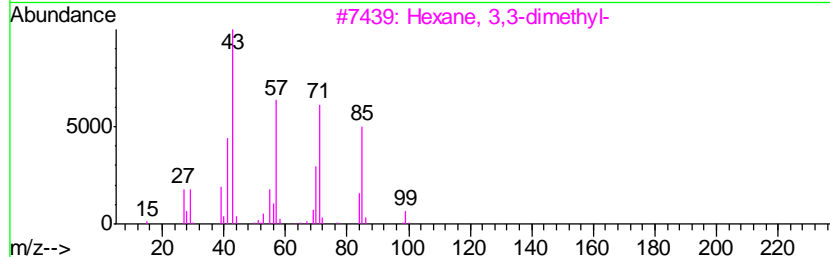
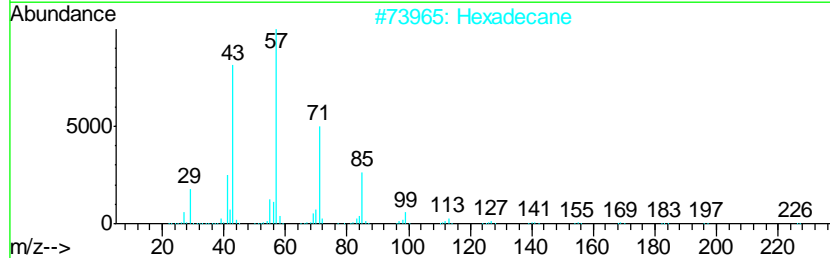
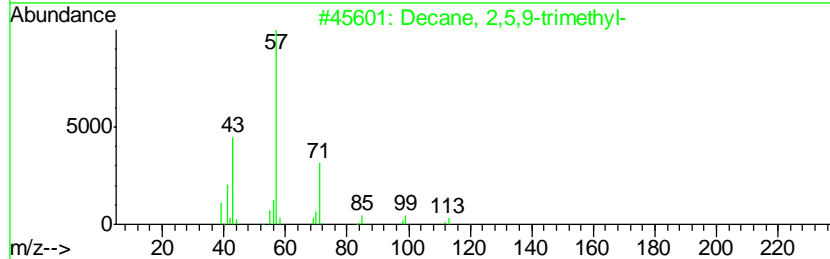
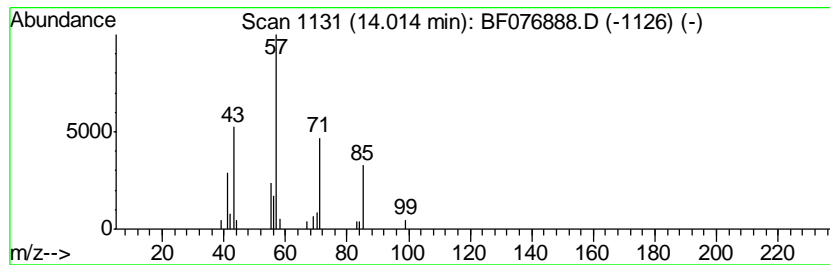
Quant Method : Z:\HPCHEM1\BNA F\METHODS\8270-BF011415.M
 Quant Title : ASP BNA STANDARDS FOR 5 POINT CALIBRATION

TIC Library : C:\DATABASE\NIST02.L
 TIC Integration Parameters: LSCINT.P

 Peak Number 6 Decane, 2,5,9-trimethyl- Concentration Rank 9

R.T.	EstConc	Area	Relative to ISTD	R.T.
14.01	5.59 ng	66462	Acenaphthene-d10	15.07

Hit#	of	Tentative ID	MW	MolForm	CAS#	Qual
1	5	Decane, 2,5,9-trimethyl-	184	C13H28	062108-22-9	59
2		Hexadecane	226	C16H34	000544-76-3	53
3		Hexane, 3,3-dimethyl-	114	C8H18	000563-16-6	40
4		Octane, 2,4,6-trimethyl-	156	C11H24	062016-37-9	39
5		Decane, 5-methyl-	156	C11H24	013151-35-4	38



Data Path : Z:\HPCHEM1\BNA F\DATA\BF011515\
 Data File : BF076888.D
 Acq On : 15 Jan 2015 17:23
 Operator : IZ / TP
 Sample : G1030-12 5X
 Misc : S
 ALS Vial : 32 Sample Multiplier: 1

Instrument :
 BNA_F
 ClientSampleID :
 TP4-SS-3(6-8)

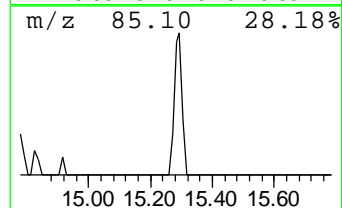
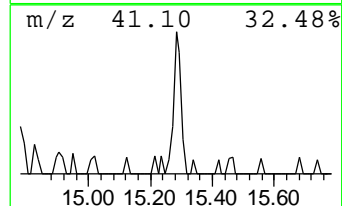
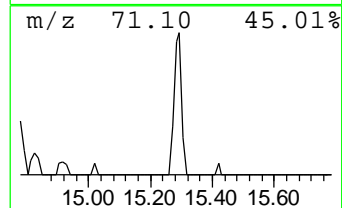
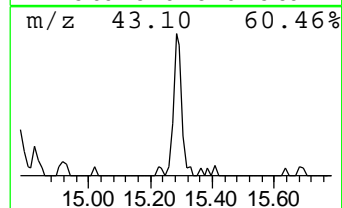
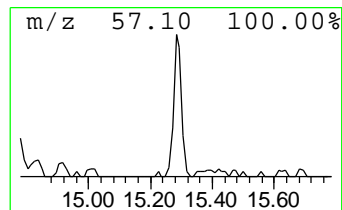
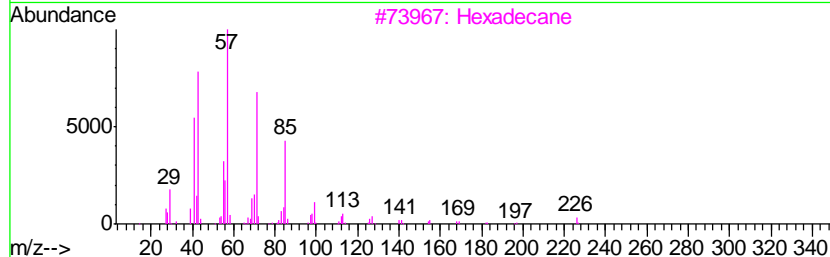
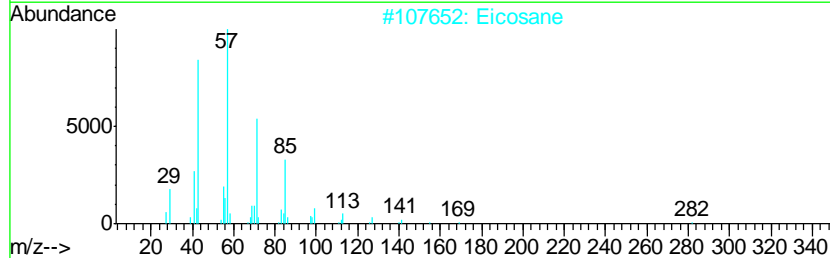
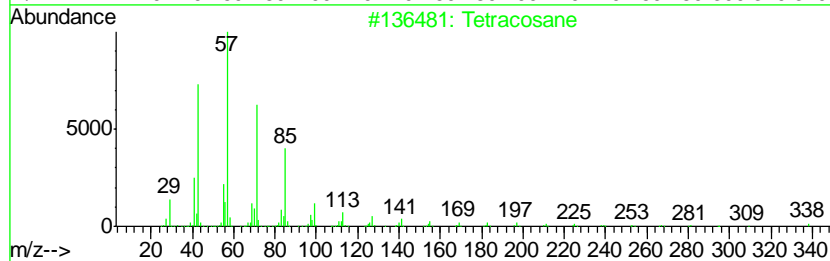
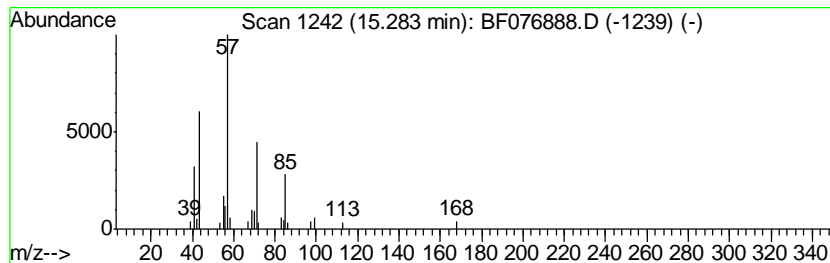
Quant Method : Z:\HPCHEM1\BNA F\METHODS\8270-BF011415.M
 Quant Title : ASP BNA STANDARDS FOR 5 POINT CALIBRATION

TIC Library : C:\DATABASE\NIST02.L
 TIC Integration Parameters: LSCINT.P

 Peak Number 7 Tetracosane Concentration Rank 13

R.T.	EstConc	Area	Relative to ISTD	R.T.
15.28	5.41 ng	64387	Acenaphthene-d10	15.07

Hit#	of	Tentative ID	MW	MolForm	CAS#	Qual
1	5	Tetracosane	338	C24H50	000646-31-1	83
2		Eicosane	282	C20H42	000112-95-8	80
3		Hexadecane	226	C16H34	000544-76-3	72
4		Heptacosane	380	C27H56	000593-49-7	72
5		Octacosane	394	C28H58	000630-02-4	72



Data Path : Z:\HPCHEM1\BNA F\DATA\BF011515\
 Data File : BF076888.D
 Acq On : 15 Jan 2015 17:23
 Operator : IZ / TP
 Sample : G1030-12 5X
 Misc : S
 ALS Vial : 32 Sample Multiplier: 1

Instrument :
 BNA_F
 ClientSampleID :
 TP4-SS-3(6-8)

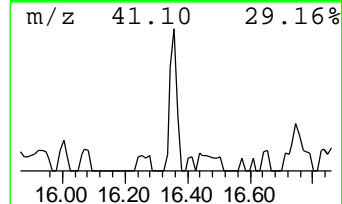
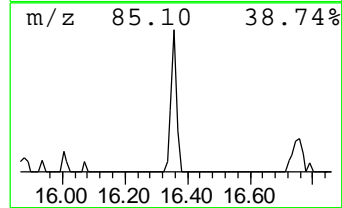
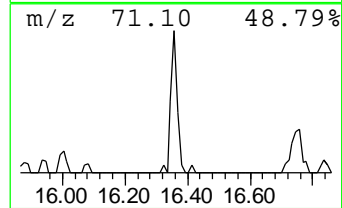
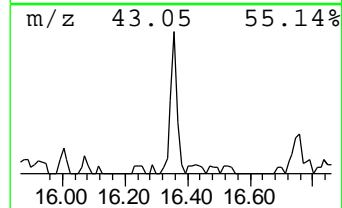
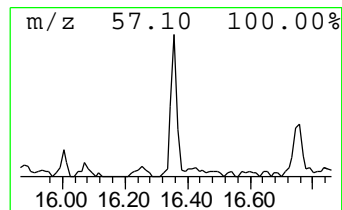
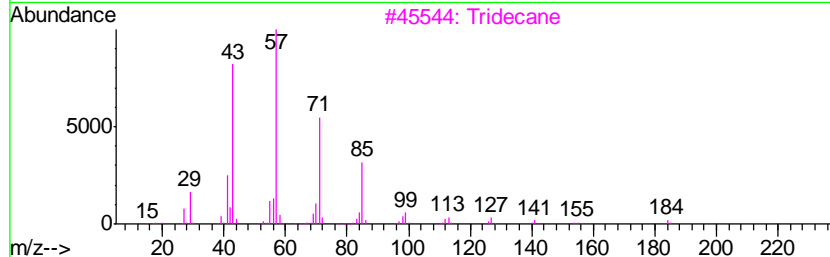
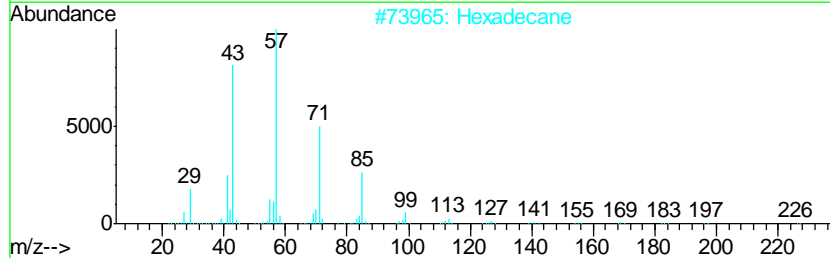
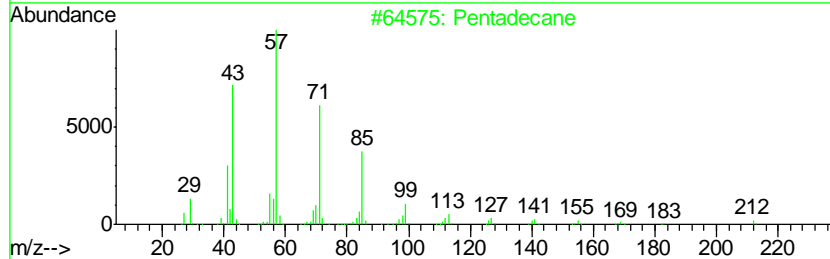
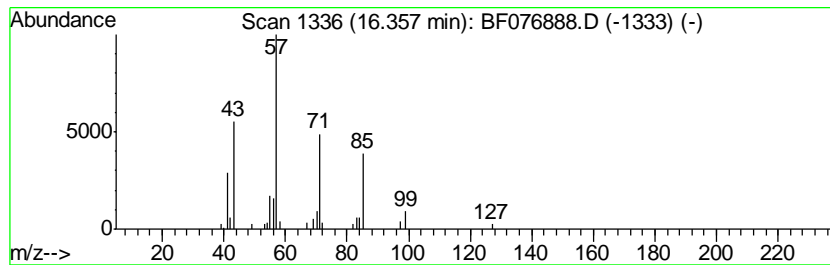
Quant Method : Z:\HPCHEM1\BNA F\METHODS\8270-BF011415.M
 Quant Title : ASP BNA STANDARDS FOR 5 POINT CALIBRATION

TIC Library : C:\DATABASE\NIST02.L
 TIC Integration Parameters: LSCINT.P

 Peak Number 8 Pentadecane Concentration Rank 10

R.T.	EstConc	Area	Relative to ISTD	R.T.
16.36	5.53 ng	65808	Acenaphthene-d10	15.07

Hit#	of	Tentative ID	MW	MolForm	CAS#	Qual
1	5	Pentadecane	212	C15H32	000629-62-9	83
2		Hexadecane	226	C16H34	000544-76-3	83
3		Tridecane	184	C13H28	000629-50-5	83
4		Nonadecane	268	C19H40	000629-92-5	78
5		Undecane, 5,7-dimethyl-	184	C13H28	017312-83-3	72



Data Path : Z:\HPCHEM1\BNA F\DATA\BF011515\
 Data File : BF076888.D
 Acq On : 15 Jan 2015 17:23
 Operator : IZ / TP
 Sample : G1030-12 5X
 Misc : S
 ALS Vial : 32 Sample Multiplier: 1

Instrument :
 BNA_F
 ClientSampleID :
 TP4-SS-3(6-8)

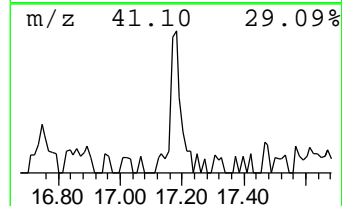
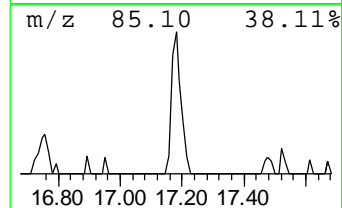
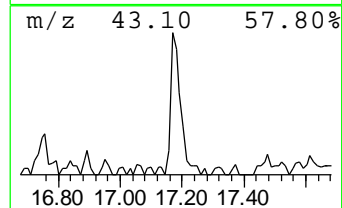
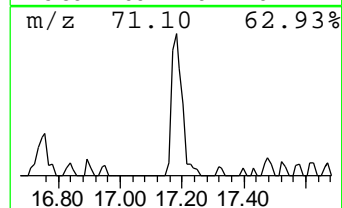
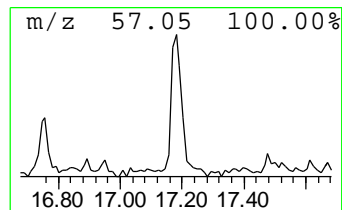
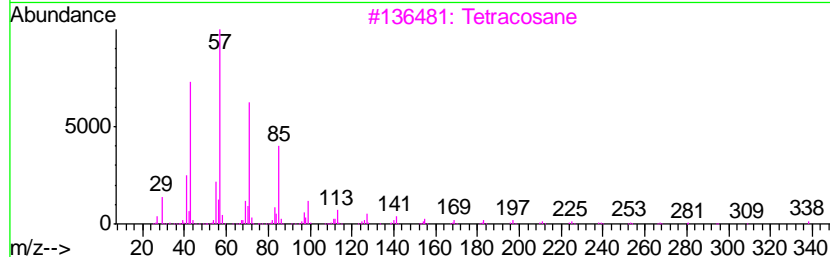
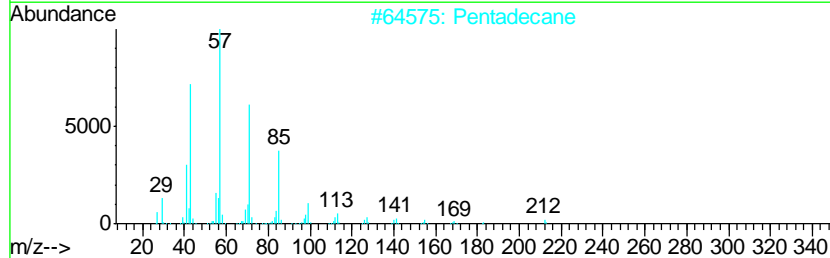
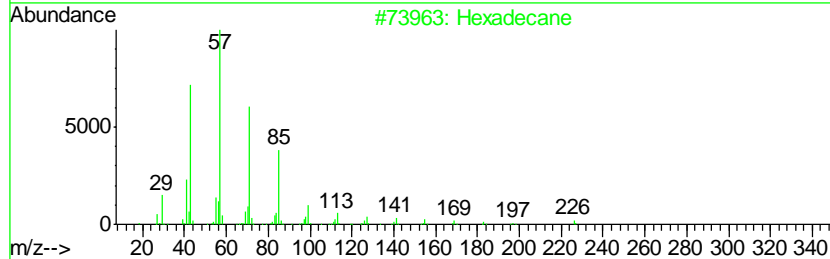
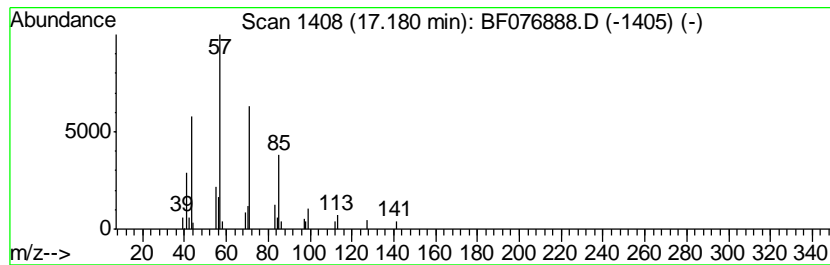
Quant Method : Z:\HPCHEM1\BNA F\METHODS\8270-BF011415.M
 Quant Title : ASP BNA STANDARDS FOR 5 POINT CALIBRATION

TIC Library : C:\DATABASE\NIST02.L
 TIC Integration Parameters: LSCINT.P

 Peak Number 9 Hexadecane Concentration Rank 5

R.T.	EstConc	Area	Relative to ISTD	R.T.
17.18	7.62 ng	100557	Phenanthrene-d10	17.81

Hit#	of	Tentative ID	MW	MolForm	CAS#	Qual
1	5	Hexadecane	226	C16H34	000544-76-3	90
2		Pentadecane	212	C15H32	000629-62-9	90
3		Tetracosane	338	C24H50	000646-31-1	90
4		Eicosane	282	C20H42	000112-95-8	90
5		Heptadecane	240	C17H36	000629-78-7	90



Data Path : Z:\HPCHEM1\BNA F\DATA\BF011515\
 Data File : BF076888.D
 Acq On : 15 Jan 2015 17:23
 Operator : IZ / TP
 Sample : G1030-12 5X
 Misc : S
 ALS Vial : 32 Sample Multiplier: 1

Instrument :
 BNA_F
 ClientSampleId :
 TP4-SS-3(6-8)

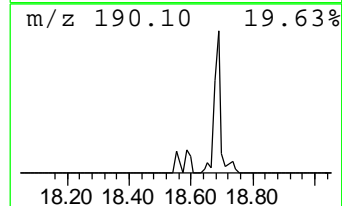
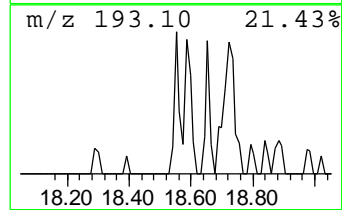
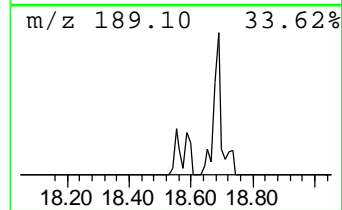
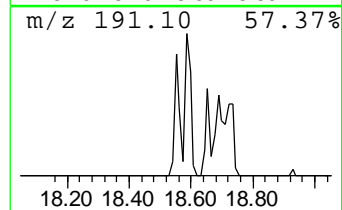
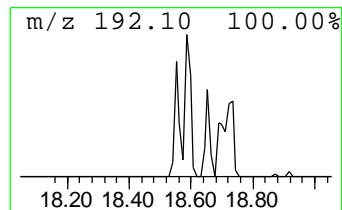
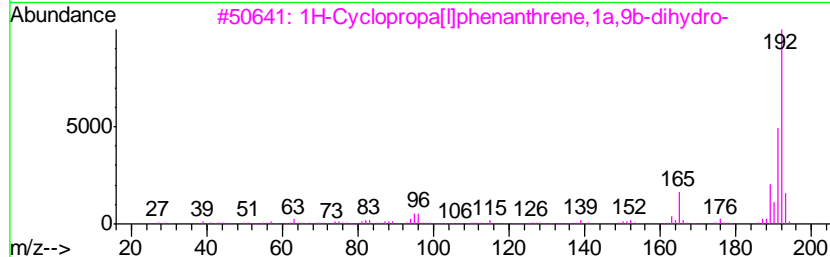
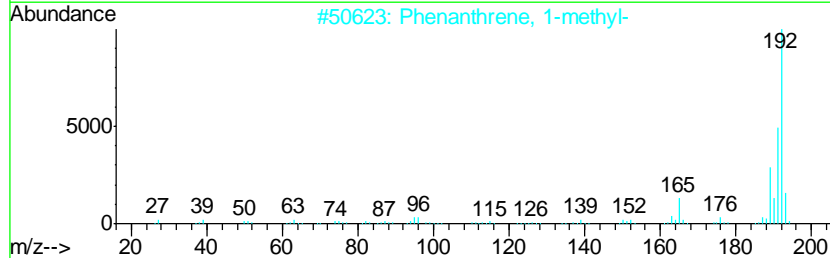
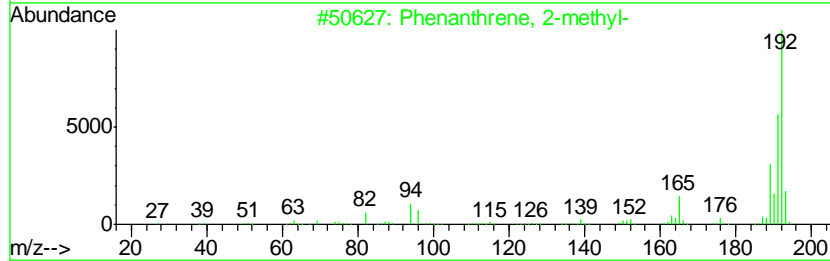
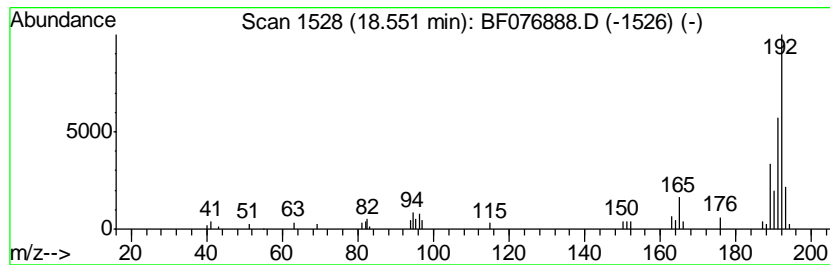
Quant Method : Z:\HPCHEM1\BNA F\METHODS\8270-BF011415.M
 Quant Title : ASP BNA STANDARDS FOR 5 POINT CALIBRATION

TIC Library : C:\DATABASE\NIST02.L
 TIC Integration Parameters: LSCINT.P

 Peak Number 10 Phenanthrene, 2-methyl- Concentration Rank 19

R.T.	EstConc	Area	Relative to ISTD	R.T.
18.55	3.62 ng	47795	Phenanthrene-d10	17.81

Hit#	of	Tentative ID	MW	MolForm	CAS#	Qual
1	5	Phenanthrene, 2-methyl-	192	C15H12	002531-84-2	96
2		Phenanthrene, 1-methyl-	192	C15H12	000832-69-9	94
3		1H-Cyclopropa[1]phenanthrene,1a,...	192	C15H12	000949-41-7	94
4		Anthracene, 2-methyl-	192	C15H12	000613-12-7	81
5		1H-Indene, 2-phenyl-	192	C15H12	004505-48-0	81



Data Path : Z:\HPCHEM1\BNA F\DATA\BF011515\
 Data File : BF076888.D
 Acq On : 15 Jan 2015 17:23
 Operator : IZ / TP
 Sample : G1030-12 5X
 Misc : S
 ALS Vial : 32 Sample Multiplier: 1

Instrument :
 BNA_F
 ClientSampleID :
 TP4-SS-3(6-8)

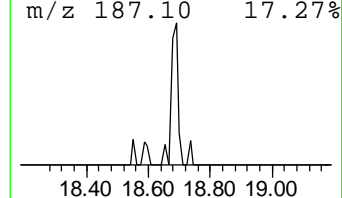
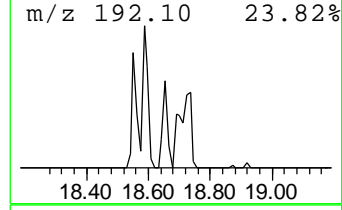
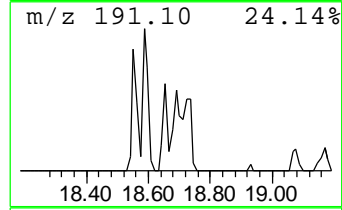
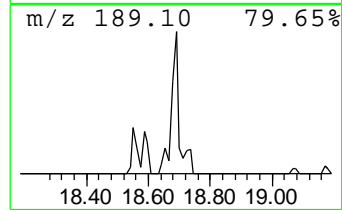
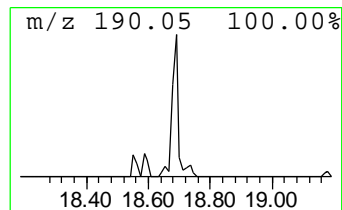
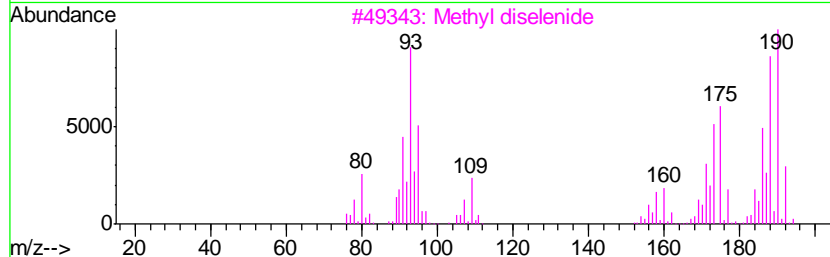
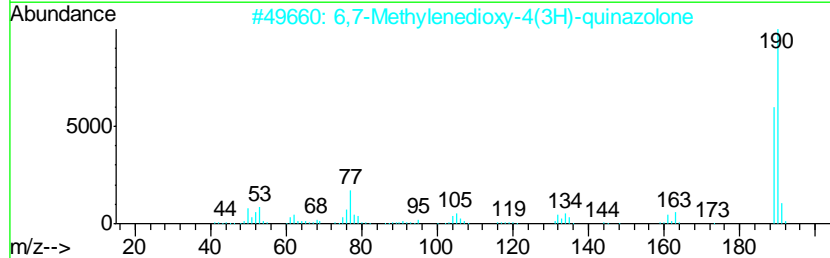
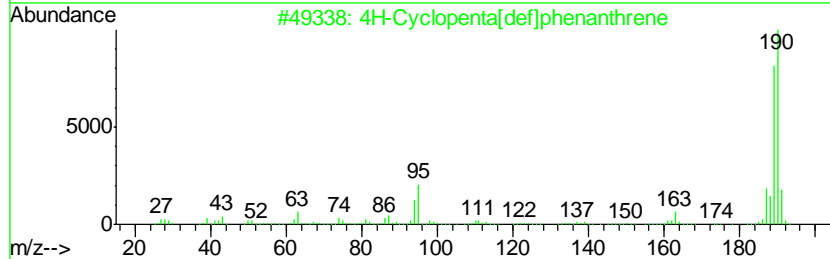
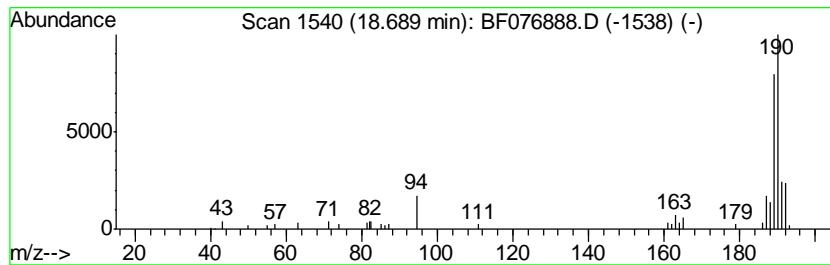
Quant Method : Z:\HPCHEM1\BNA F\METHODS\8270-BF011415.M
 Quant Title : ASP BNA STANDARDS FOR 5 POINT CALIBRATION

TIC Library : C:\DATABASE\NIST02.L
 TIC Integration Parameters: LSCINT.P

 Peak Number 12 4H-Cyclopenta[def]phenanthrene Concentration Rank 6

R.T.	EstConc	Area	Relative to ISTD	R.T.
18.69	6.40 ng	84534	Phenanthrene-d10	17.81

Hit#	of	Tentative ID	MW	MolForm	CAS#	Qual
1	5	4H-Cyclopenta[def]phenanthrene	190	C15H10	000203-64-5	87
2		6,7-Methylenedioxy-4(3H)-quinazo...	190	C9H6N2O3	028310-11-4	36
3		Methyl diselenide	190	C2H6Se2	007101-31-7	22
4		4-Cyano-4-hydroxy-3-methyl-2-phe...	216	C13H16N2O	1000216-11-7	22
5		1,4-Naphthalenedione, 2,5-dihydr...	190	C10H6O4	004923-55-1	17



Data Path : Z:\HPCHEM1\BNA F\DATA\BF011515\
 Data File : BF076888.D
 Acq On : 15 Jan 2015 17:23
 Operator : IZ / TP
 Sample : G1030-12 5X
 Misc : S
 ALS Vial : 32 Sample Multiplier: 1

Instrument :
 BNA_F
 ClientSampleId :
 TP4-SS-3(6-8)

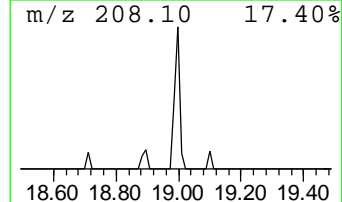
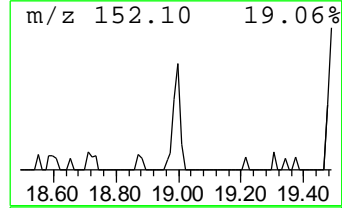
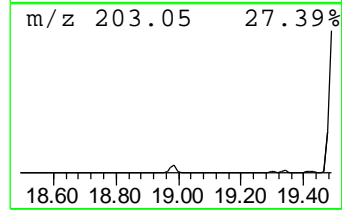
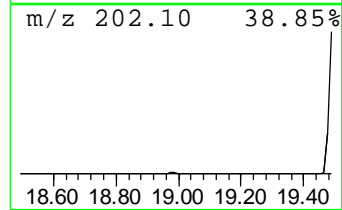
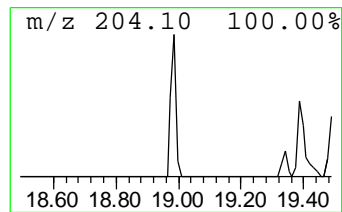
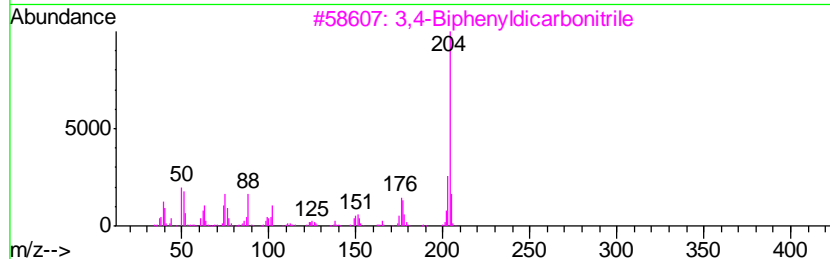
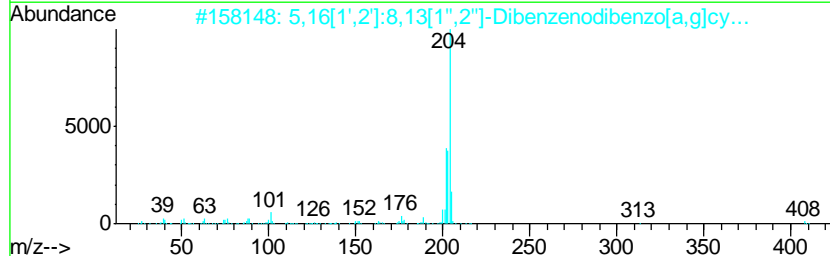
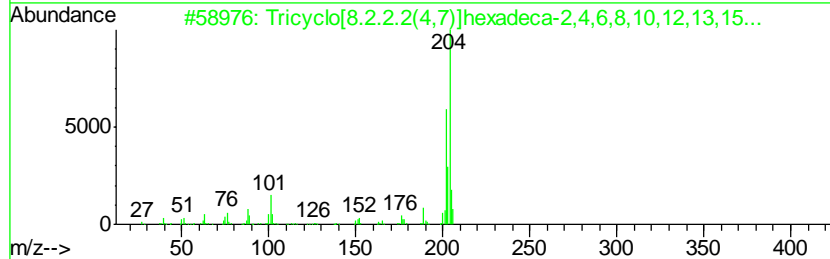
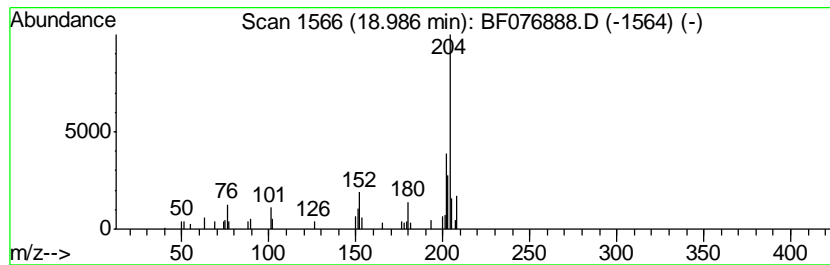
Quant Method : Z:\HPCHEM1\BNA F\METHODS\8270-BF011415.M
 Quant Title : ASP BNA STANDARDS FOR 5 POINT CALIBRATION

TIC Library : C:\DATABASE\NIST02.L
 TIC Integration Parameters: LSCINT.P

 Peak Number 13 Tricyclo[8.2.2.2(4,7)]hexad... Concentration Rank 7

R.T.	EstConc	Area	Relative to ISTD	R.T.
18.99	6.09 ng	80458	Phenanthrene-d10	17.81

Hit#	of	Tentative ID	MW	MolForm	CAS#	Qual
1	5	Tricyclo[8.2.2.2(4,7)]hexadeca-2...	204	C16H12	006572-60-7	55
2		5,16[1',2']:8,13[1'',2'']-Dibenz...	408	C32H24	005672-97-9	53
3		3,4-Biphenyldicarbonitrile	204	C14H8N2	004128-63-6	47
4		Naphthalene, 2-phenyl-	204	C16H12	000612-94-2	47
5		9,10-Bis(bromomethyl)anthracene	362	C16H12Br2	034373-96-1	43



Data Path : Z:\HPCHEM1\BNA F\DATA\BF011515\
 Data File : BF076888.D
 Acq On : 15 Jan 2015 17:23
 Operator : IZ / TP
 Sample : G1030-12 5X
 Misc : S
 ALS Vial : 32 Sample Multiplier: 1

Instrument :
 BNA_F
 ClientSampleID :
 TP4-SS-3(6-8)

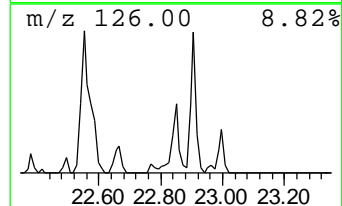
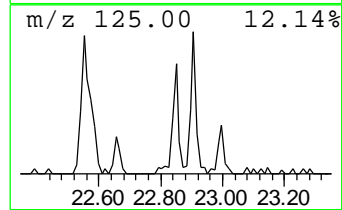
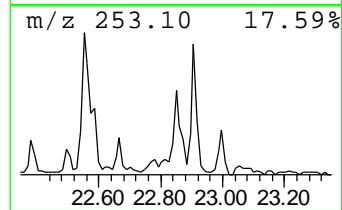
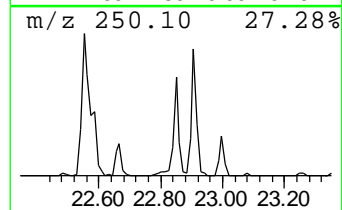
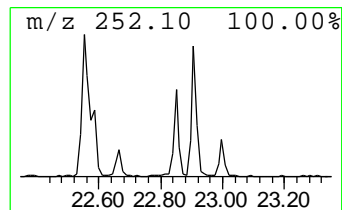
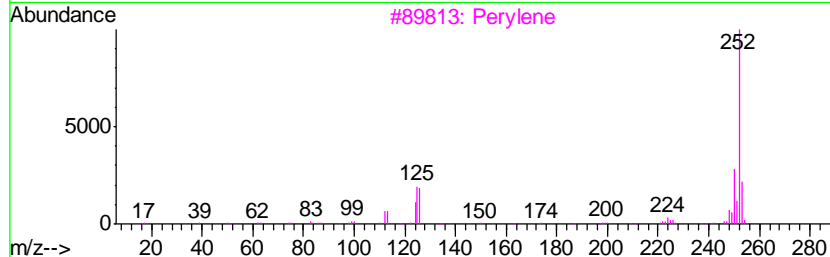
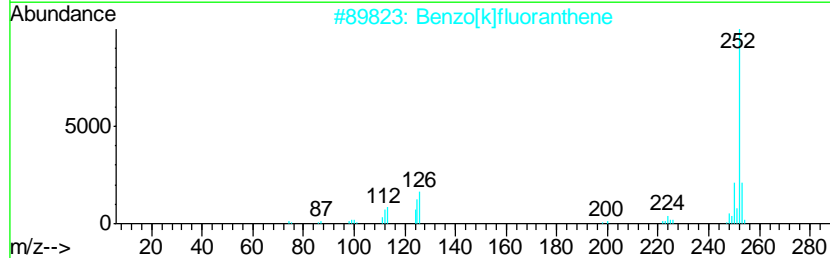
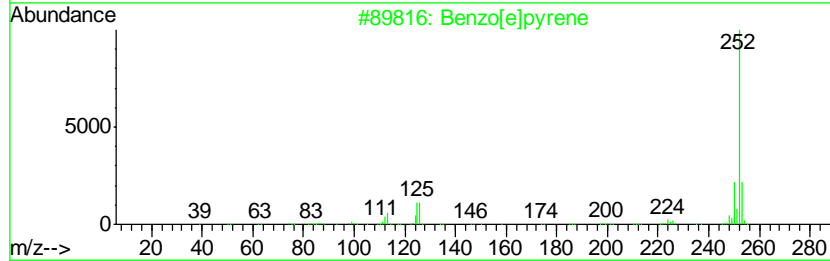
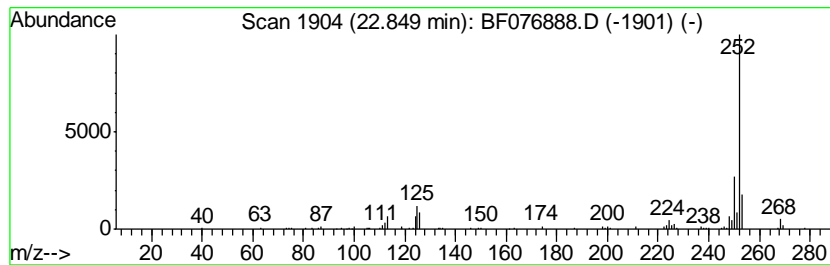
Quant Method : Z:\HPCHEM1\BNA F\METHODS\8270-BF011415.M
 Quant Title : ASP BNA STANDARDS FOR 5 POINT CALIBRATION

TIC Library : C:\DATABASE\NIST02.L
 TIC Integration Parameters: LSCINT.P

 Peak Number 15 Benzo[e]pyrene Concentration Rank 4

R.T.	EstConc	Area	Relative to ISTD	R.T.
22.85	9.62 ng	168647	Perylene-d12	22.97

Hit#	of	Tentative ID	MW	MolForm	CAS#	Qual
1	5	Benzo[e]pyrene	252	C20H12	000192-97-2	95
2		Benzo[k]fluoranthene	252	C20H12	000207-08-9	95
3		Perylene	252	C20H12	000198-55-0	94
4		Benzo[i]fluoranthene	252	C20H12	000205-82-3	90
5		Benz[e]acephenanthrylene	252	C20H12	000205-99-2	89



Data Path : Z:\HPCHEM1\BNA F\DATA\BF011515\
 Data File : BF076888.D
 Acq On : 15 Jan 2015 17:23
 Operator : IZ / TP
 Sample : G1030-12 5X
 Misc : S
 ALS Vial : 32 Sample Multiplier: 1

Instrument :
 BNA_F
 ClientSampleId :
 TP4-SS-3(6-8)

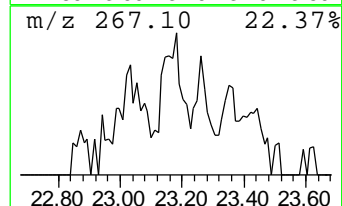
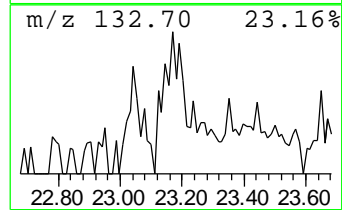
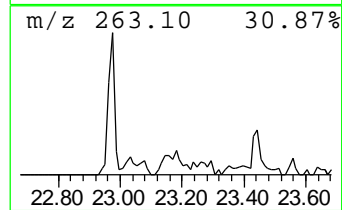
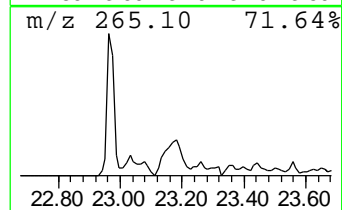
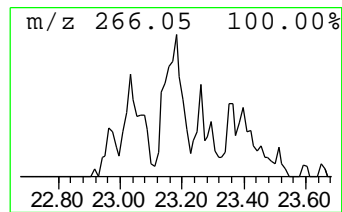
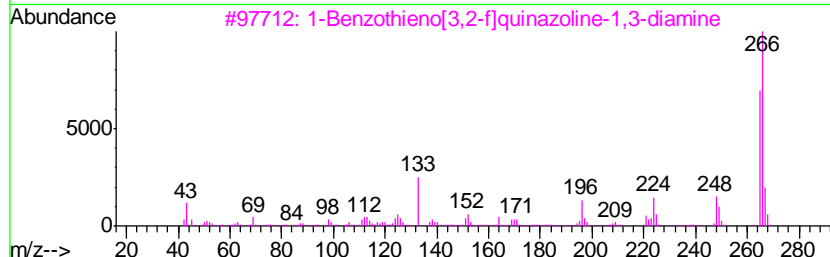
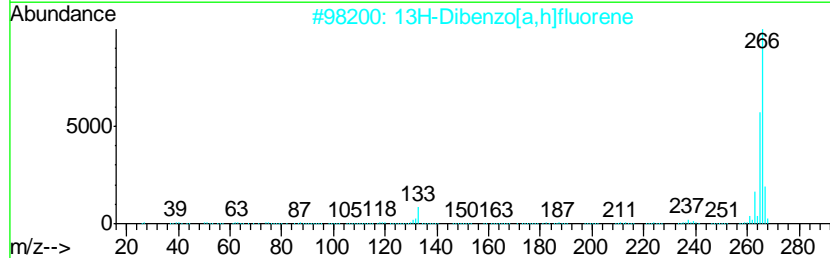
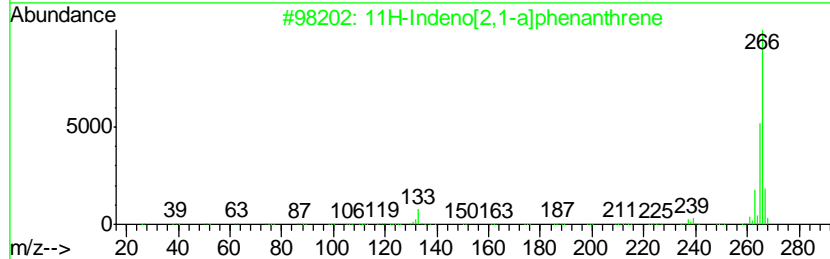
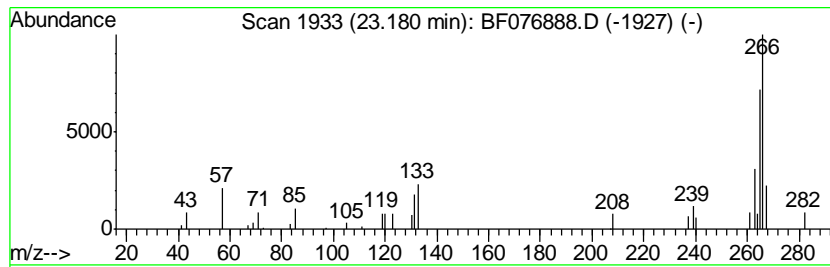
Quant Method : Z:\HPCHEM1\BNA F\METHODS\8270-BF011415.M
 Quant Title : ASP BNA STANDARDS FOR 5 POINT CALIBRATION

TIC Library : C:\DATABASE\NIST02.L
 TIC Integration Parameters: LSCINT.P

 Peak Number 16 11H-Indeno[2,1-a]phenanthrene Concentration Rank 15

R.T.	EstConc	Area	Relative to ISTD	R.T.
23.18	4.37 ng	76626	Perylene-d12	22.97

Hit#	of	Tentative ID	MW	MolForm	CAS#	Qual
1	5	11H-Indeno[2,1-a]phenanthrene	266	C21H14	000220-97-3	80
2		13H-Dibenzo[a,h]fluorene	266	C21H14	000239-85-0	64
3		1-Benzothieno[3,2-f]quinazoline-...	266	C14H10N4S	065642-92-4	59
4		8H-Indeno[2,1-b]phenanthrene	266	C21H14	000241-28-1	59
5		4,6-Dimethyl-4'-hydroxy-2-benzyl...	266	C17H14O3	002567-73-9	58



Data Path : Z:\HPCHEM1\BNA F\DATA\BF011515\
 Data File : BF076888.D
 Acq On : 15 Jan 2015 17:23
 Operator : IZ / TP
 Sample : G1030-12 5X
 Misc : S
 ALS Vial : 32 Sample Multiplier: 1

Instrument :
 BNA_F
 ClientSampled :
 TP4-SS-3(6-8)

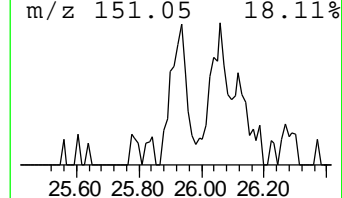
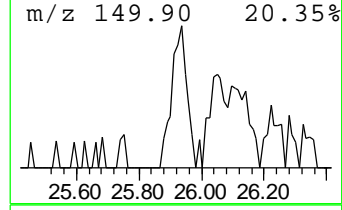
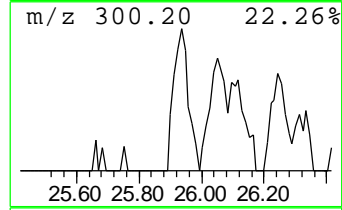
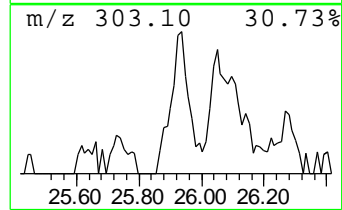
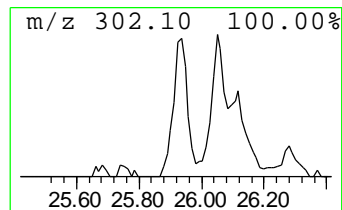
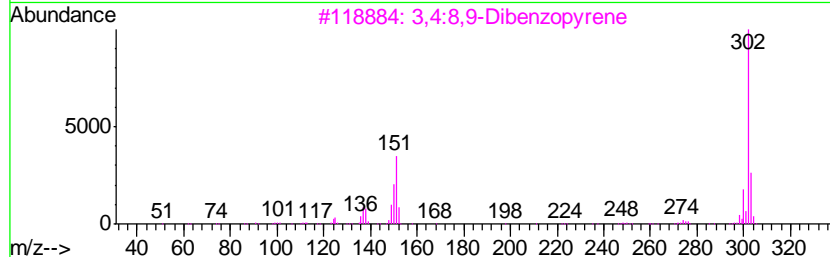
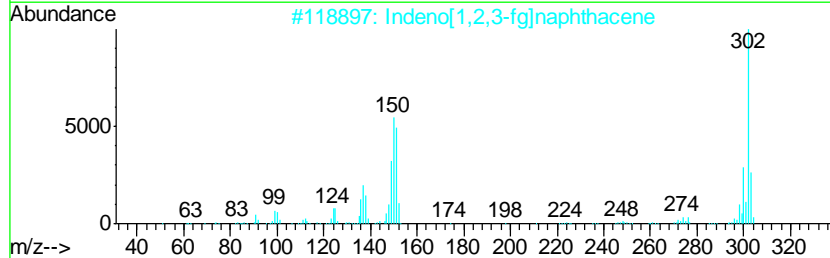
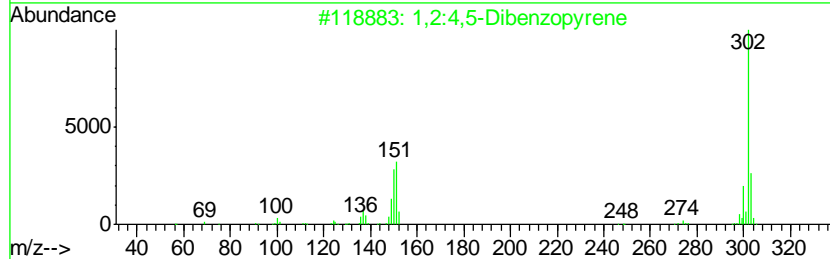
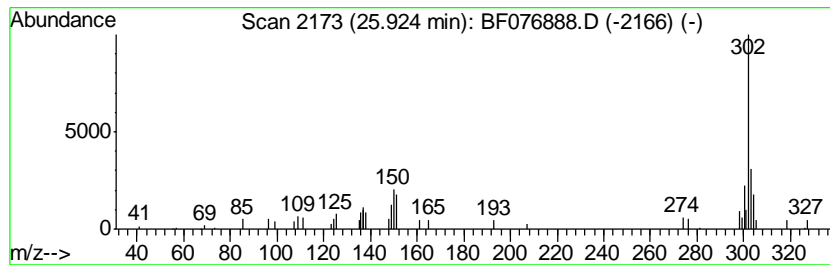
Quant Method : Z:\HPCHEM1\BNA F\METHODS\8270-BF011415.M
 Quant Title : ASP BNA STANDARDS FOR 5 POINT CALIBRATION

TIC Library : C:\DATABASE\NIST02.L
 TIC Integration Parameters: LSCINT.P

 Peak Number 19 1,2:4,5-Dibenzopyrene Concentration Rank 11

R.T.	EstConc	Area	Relative to ISTD	R.T.
25.92	5.53 ng	96934	Perylene-d12	22.97

Hit#	of	Tentative ID	MW	MolForm	CAS#	Qual
1	5	1,2:4,5-Dibenzopyrene	302	C24H14	000192-65-4	70
2		Indeno[1,2,3-fg]naphthacene	302	C24H14	000203-11-2	70
3		3,4:8,9-Dibenzopyrene	302	C24H14	000189-64-0	62
4		Dibenz(a,e)aceanthrylene	302	C24H14	005385-75-1	58
5		3,4:9,10-Dibenzopyrene	302	C24H14	000189-55-9	52



Data Path : Z:\HPCHEM1\BNA F\DATA\BF011515\
 Data File : BF076888.D
 Acq On : 15 Jan 2015 17:23
 Operator : IZ / TP
 Sample : G1030-12 5X
 Misc : S
 ALS Vial : 32 Sample Multiplier: 1

Instrument :
 BNA_F
 ClientSampleID :
 TP4-SS-3(6-8)

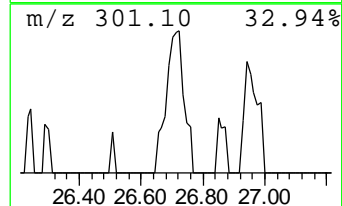
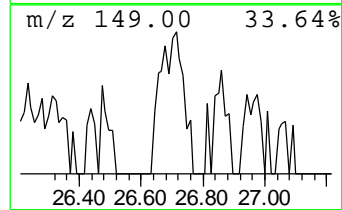
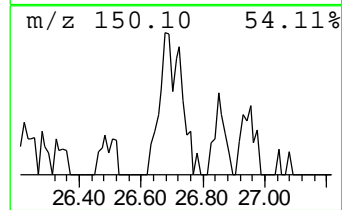
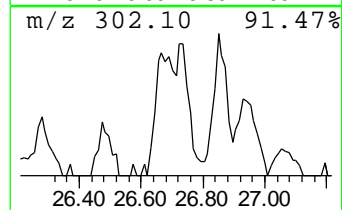
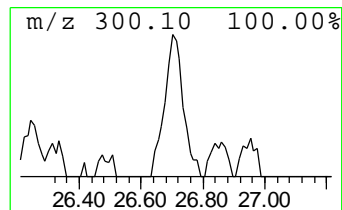
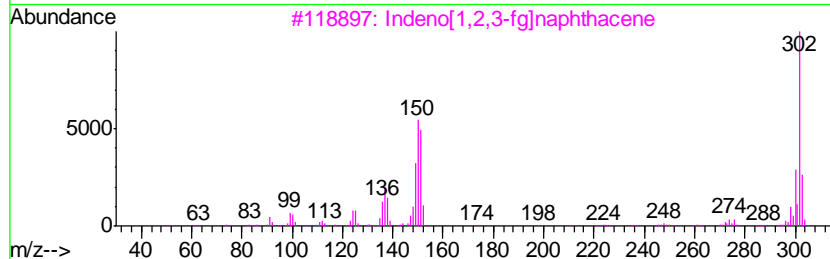
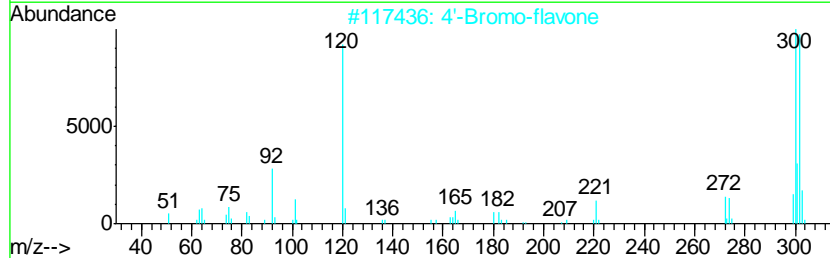
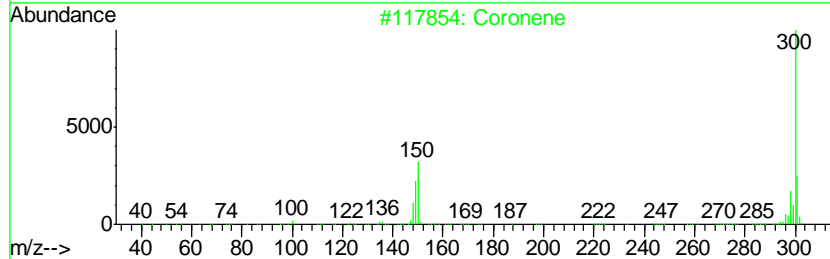
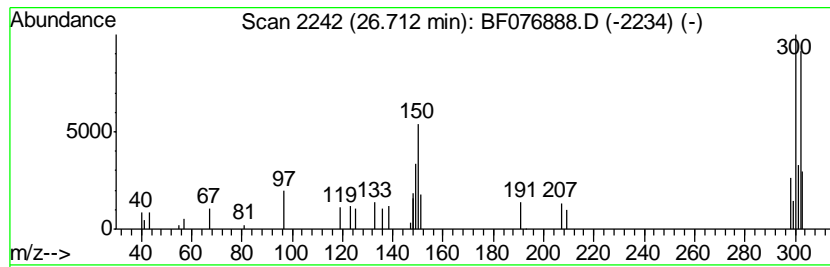
Quant Method : Z:\HPCHEM1\BNA F\METHODS\8270-BF011415.M
 Quant Title : ASP BNA STANDARDS FOR 5 POINT CALIBRATION

TIC Library : C:\DATABASE\NIST02.L
 TIC Integration Parameters: LSCINT.P

 Peak Number 20 unknown26.71 Concentration Rank 12

R.T.	EstConc	Area	Relative to ISTD	R.T.
26.71	5.48 ng	96152	Perylene-d12	22.97

Hit#	of	Tentative ID	MW	MolForm	CAS#	Qual
1	5	Coronene	300	C24H12	000191-07-1	47
2		4'-Bromo-flavone	300	C15H9BrO2	020525-20-6	47
3		Indeno[1,2,3-fg]naphthacene	302	C24H14	000203-11-2	46
4		10H-Phenothiaphosphine, 7-chloro...	300	C12H7ClFO2PS	054934-84-8	38
5		3,4:8,9-Dibenzopyrene	302	C24H14	000189-64-0	37



Data Path : Z:\HPCHEM1\BNA_F\DATA\BF011515\
 Data File : BF076888.D
 Acq On : 15 Jan 2015 17:23
 Operator : IZ / TP
 Sample : G1030-12 5X
 Misc : S
 ALS Vial : 32 Sample Multiplier: 1

Instrument :
 BNA_F
 ClientSampleId :
 TP4-SS-3(6-8)

Quant Method : Z:\HPCHEM1\BNA_F\METHODS\8270-BF011415.M
 Quant Title : ASP BNA STANDARDS FOR 5 POINT CALIBRATION

TIC Library : C:\DATABASE\NIST02.L
 TIC Integration Parameters: LSCINT.P

TIC Top Hit name	RT	EstConc	Units	Response	--Internal Standard--			
					#	RT	Resp	Conc
Oxirane, [(1-meth...	4.17	4.9	ng	39542	1	8.02	160627	20.0
unknown7.52	7.52	19.6	ng	157118	1	8.02	160627	20.0
Borane, diethyl(d...	12.64	5.7	ng	64447	2	10.93	224958	20.0
Decane, 2,5,9-tri...	14.01	5.6	ng	66462	3	15.07	237994	20.0
Tetracosane	15.28	5.4	ng	64387	3	15.07	237994	20.0
Pentadecane	16.36	5.5	ng	65808	3	15.07	237994	20.0
Hexadecane	17.18	7.6	ng	100557	4	17.81	264043	20.0
Phenanthrene, 2-m...	18.55	3.6	ng	47795	4	17.81	264043	20.0
4H-Cyclopenta[def...	18.69	6.4	ng	84534	4	17.81	264043	20.0
Tricyclo[8.2.2.2(...	18.99	6.1	ng	80458	4	17.81	264043	20.0
Benzo[e]pyrene	22.85	9.6	ng	168647	6	22.97	350673	20.0
11H-Indeno[2,1-a]...	23.18	4.4	ng	76626	6	22.97	350673	20.0
1,2:4,5-Dibenzopy...	25.92	5.5	ng	96934	6	22.97	350673	20.0
unknown26.71	26.71	5.5	ng	96152	6	22.97	350673	20.0