

Data Path : Z:\svoasrv\HPCHEM1\BNA\_F\Data\BF011625\  
 Data File : BF141180.D  
 Acq On : 16 Jan 2025 12:55  
 Operator : RC/JU  
 Sample : PB166074BL  
 Misc :  
 ALS Vial : 3 Sample Multiplier: 1

Instrument :  
 BNA\_F  
 ClientSampleId :  
 PB166074BL

Integration Parameters: rteint.p  
 Integrator: RTE  
 Smoothing : ON Filtering: 5  
 Sampling : 1 Min Area: 3 % of largest Peak  
 Start Thrs: 0.2 Max Peaks: 100  
 Stop Thrs : 0 Peak Location: TOP

If leading or trailing edge < 100 prefer < Baseline drop else tangent >  
 Peak separation: 5

Method : Z:\svoasrv\HPCHEM1\BNA\_F\Methods\8270-BF011025.M  
 Title : ASP BNA STANDARDS FOR 5 POINT CALIBRATION

Signal : TIC: BF141180.D\data.ms

peak #	R.T. min	first scan	max scan	last scan	PK TY	peak height	corr. area	corr. % max.	% of total
1	2.140	3	8	16	rVB	44882	76597	1.14%	0.210%
2	2.246	17	26	33	rVB	89443	147060	2.18%	0.403%
3	5.046	490	502	510	rBV	200595	331458	4.92%	0.909%
4	5.434	561	568	573	rBV	3261475	4600730	68.25%	12.621%
5	6.440	731	739	744	rBV	2980045	4596630	68.19%	12.610%
6	6.810	797	802	807	rBV	698683	866563	12.85%	2.377%
7	7.375	891	898	903	rBV	2095440	3081907	45.72%	8.455%
8	8.092	1014	1020	1026	rBV	863937	1166781	17.31%	3.201%
9	9.175	1196	1204	1209	rBV	4180236	5896157	87.46%	16.175%
10	9.851	1312	1319	1324	rBV	1064280	1362985	20.22%	3.739%
11	10.639	1446	1453	1474	rBV	2966231	3997053	59.29%	10.965%
12	11.339	1566	1572	1577	rBV	1122561	1422238	21.10%	3.902%
13	12.933	1836	1843	1848	rBV	4861107	6741200	100.00%	18.493%
14	13.980	2015	2021	2033	rBV	915658	1189185	17.64%	3.262%
15	15.439	2263	2269	2275	rBV	632909	975465	14.47%	2.676%

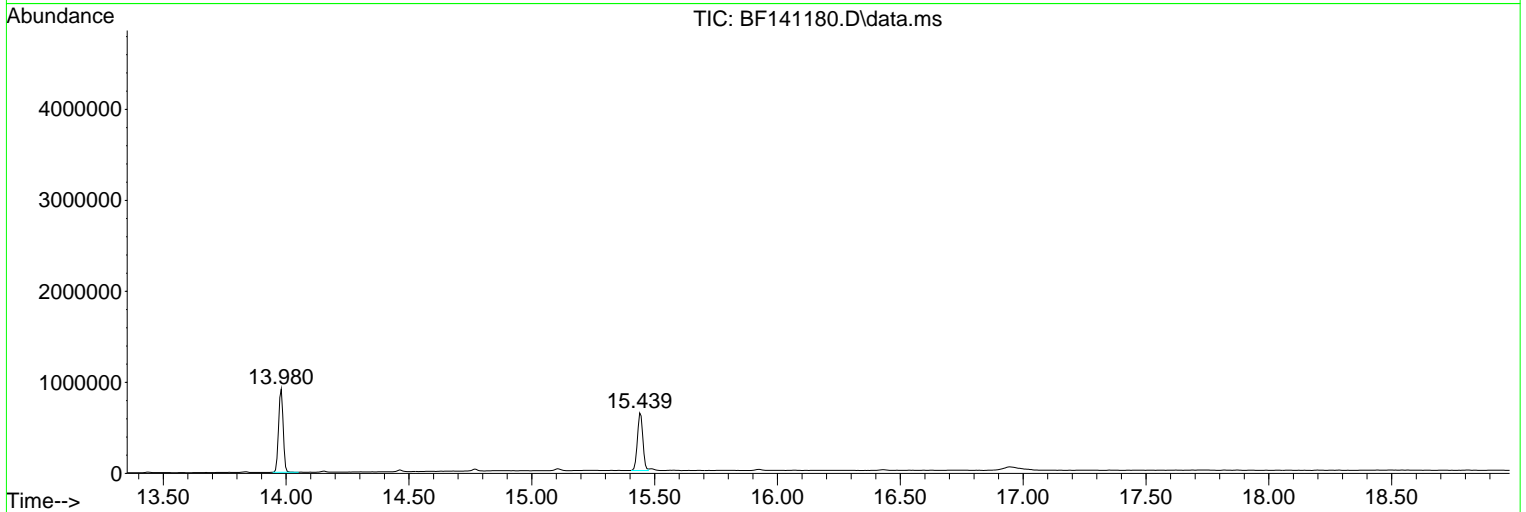
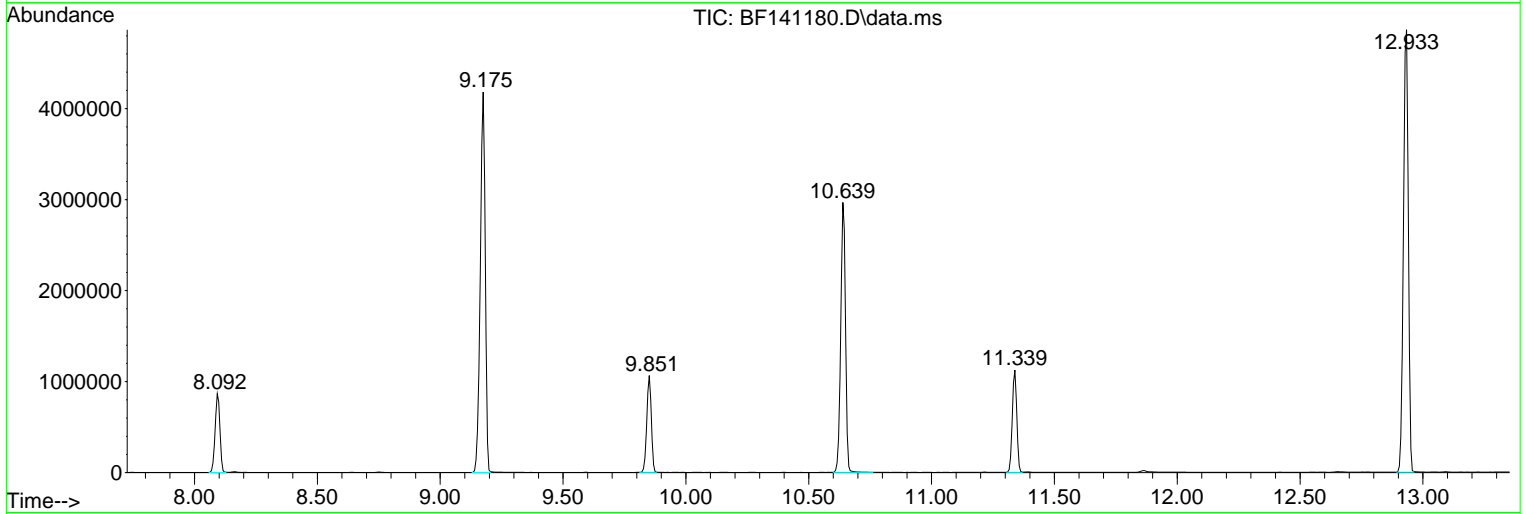
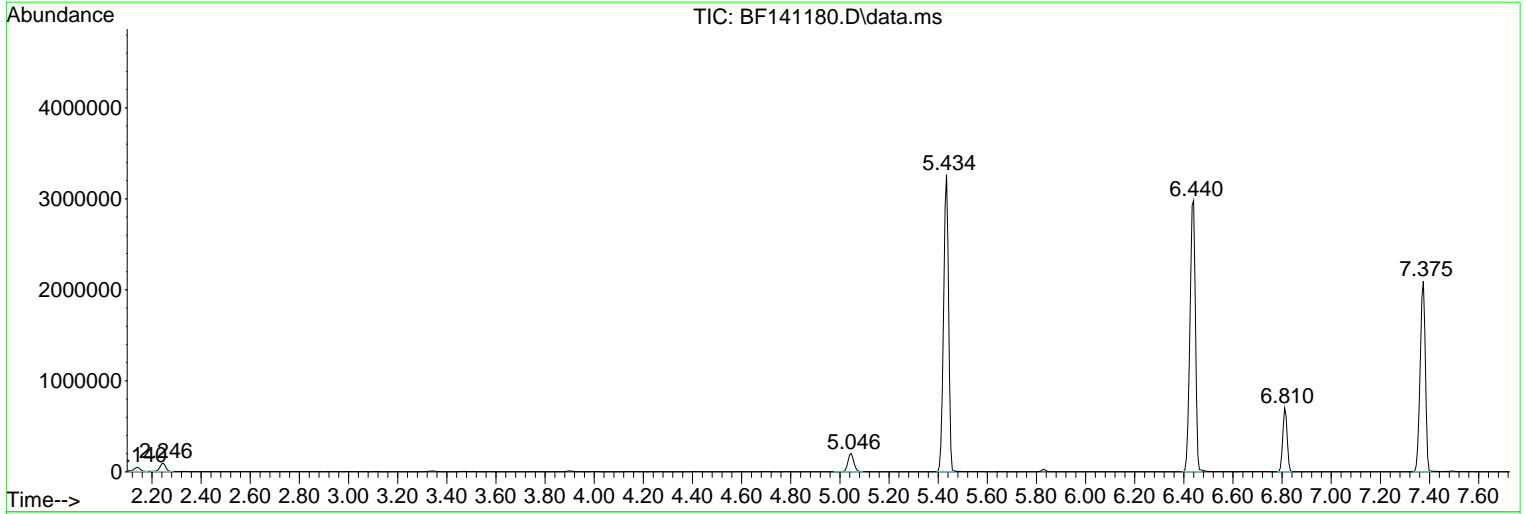
Sum of corrected areas: 36452009

Data Path : Z:\svoasrv\HPCHEM1\BNA\_F\Data\BF011625\  
 Data File : BF141180.D  
 Acq On : 16 Jan 2025 12:55  
 Operator : RC/JU  
 Sample : PB166074BL  
 Misc :  
 ALS Vial : 3 Sample Multiplier: 1

**Instrument :**  
 BNA\_F  
**ClientSampleId :**  
 PB166074BL

Quant Method : Z:\svoasrv\HPCHEM1\BNA\_F\Methods\8270-BF011025.M  
 Quant Title : ASP BNA STANDARDS FOR 5 POINT CALIBRATION

TIC Library : C:\Database\NIST20.L  
 TIC Integration Parameters: LSCINT.P



Data Path : Z:\svoasrv\HPCHEM1\BNA\_F\Data\BF011625\  
 Data File : BF141180.D  
 Acq On : 16 Jan 2025 12:55  
 Operator : RC/JU  
 Sample : PB166074BL  
 Misc :  
 ALS Vial : 3 Sample Multiplier: 1

Instrument :  
 BNA\_F  
 ClientSampleId :  
 PB166074BL

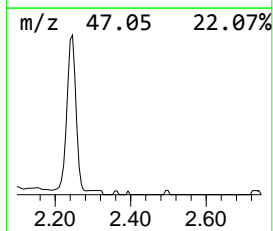
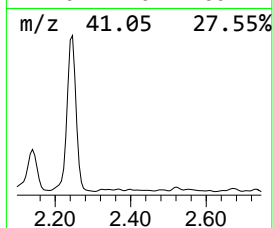
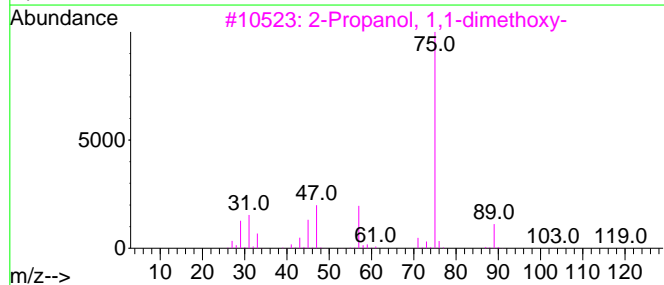
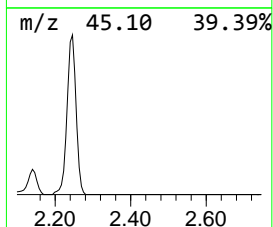
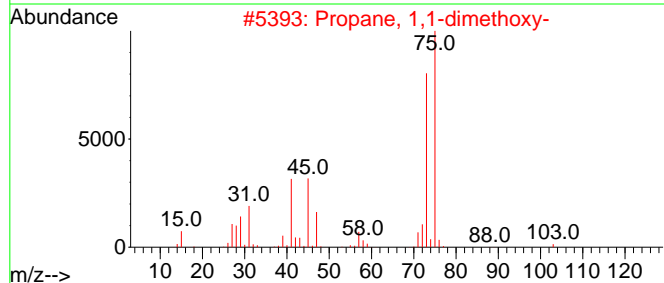
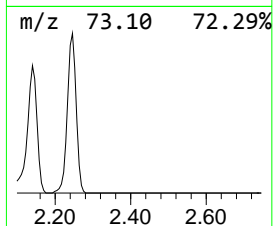
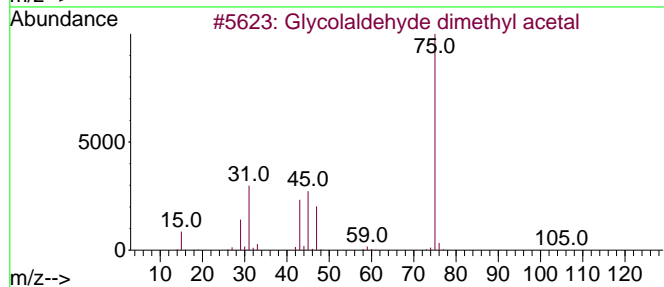
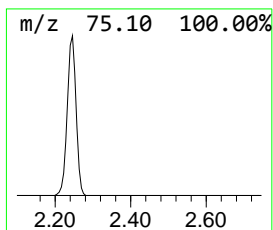
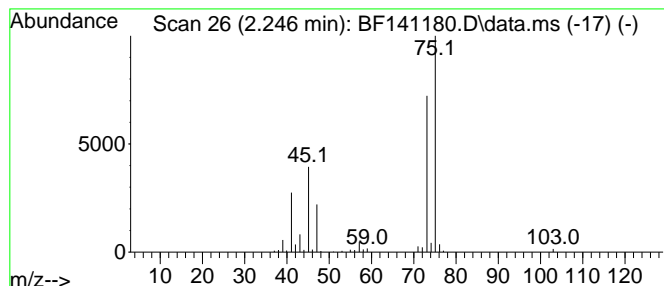
Quant Method : Z:\svoasrv\HPCHEM1\BNA\_F\Methods\8270-BF011025.M  
 Quant Title : ASP BNA STANDARDS FOR 5 POINT CALIBRATION

TIC Library : C:\Database\NIST20.L  
 TIC Integration Parameters: LSCINT.P

\*\*\*\*\*  
 Peak Number 1 Glycolaldehyde dimethyl acetal Concentration Rank 2

R.T.	EstConc	Area	Relative to ISTD	R.T.
2.246	3.39 ng	147060	1,4-Dichlorobenzene-d4	6.810

Hit#	of	5	Tentative ID	MW	MolForm	CAS#	Qual
1			Glycolaldehyde dimethyl acetal	106	C4H10O3	030934-97-5	78
2			Propane, 1,1-dimethoxy-	104	C5H12O2	004744-10-9	64
3			2-Propanol, 1,1-dimethoxy-	120	C5H12O3	042919-42-6	42
4			Pentane, 3-methoxy-	102	C6H14O	036839-67-5	22
5			2,5-Diethoxy-3-methyl-3-vinylhexane	214	C13H26O2	1000432-70-8	10



Data Path : Z:\svoasrv\HPCHEM1\BNA\_F\Data\BF011625\  
 Data File : BF141180.D  
 Acq On : 16 Jan 2025 12:55  
 Operator : RC/JU  
 Sample : PB166074BL  
 Misc :  
 ALS Vial : 3 Sample Multiplier: 1

Instrument :  
 BNA\_F  
 ClientSampleId :  
 PB166074BL

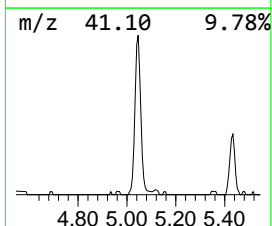
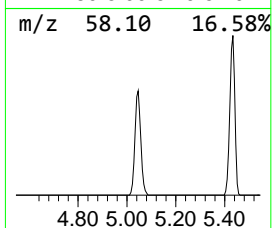
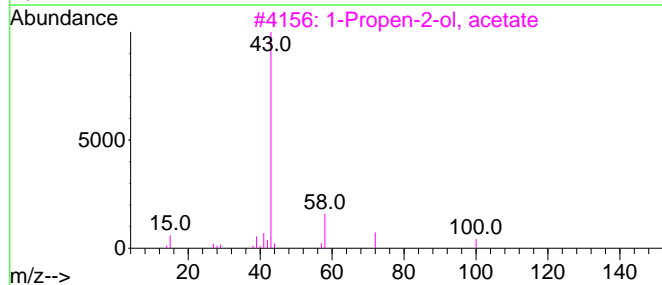
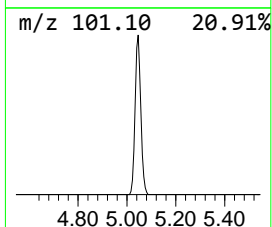
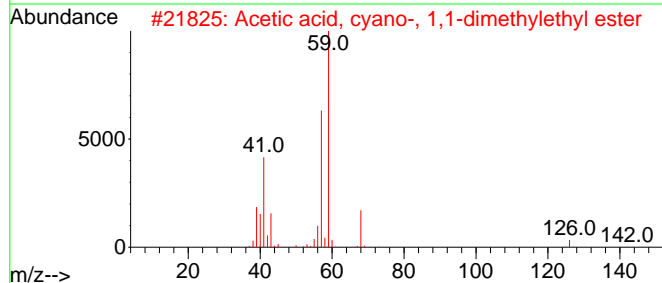
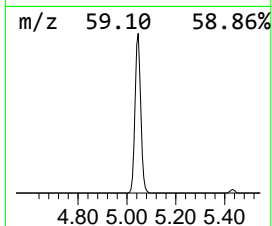
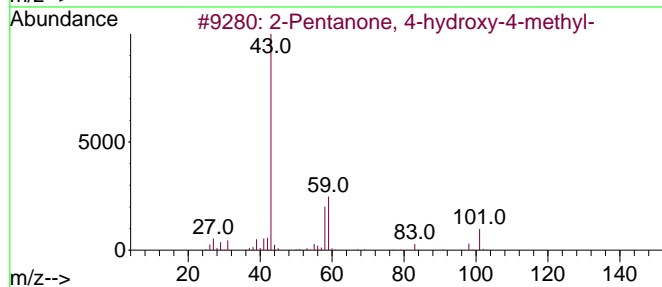
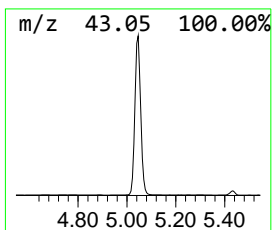
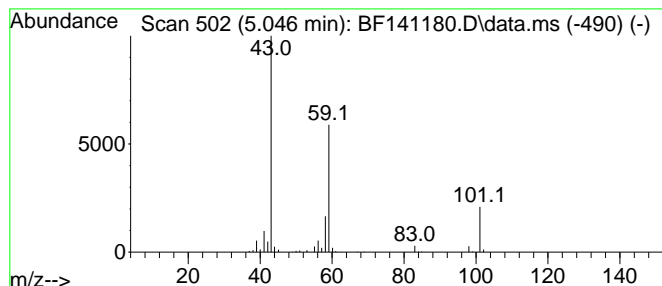
Quant Method : Z:\svoasrv\HPCHEM1\BNA\_F\Methods\8270-BF011025.M  
 Quant Title : ASP BNA STANDARDS FOR 5 POINT CALIBRATION

TIC Library : C:\Database\NIST20.L  
 TIC Integration Parameters: LSCINT.P

\*\*\*\*\*  
 Peak Number 2 2-Pentanone, 4-hydroxy-4-me... Concentration Rank 1

R.T.	EstConc	Area	Relative to ISTD	R.T.
5.046	7.65 ng	331458	1,4-Dichlorobenzene-d4	6.810

Hit#	of 5	Tentative ID	MW	MolForm	CAS#	Qual
1		2-Pentanone, 4-hydroxy-4-methyl-	116	C6H12O2	000123-42-2	56
2		Acetic acid, cyano-, 1,1-dimethy...	141	C7H11NO2	001116-98-9	23
3		1-Propen-2-ol, acetate	100	C5H8O2	000108-22-5	10
4		2,3-Butanedione, monooxime	101	C4H7NO2	000057-71-6	9
5		Butane, 1-ethoxy-	102	C6H14O	000628-81-9	9



Data Path : Z:\svoasrv\HPCHEM1\BNA\_F\Data\BF011625\  
Data File : BF141180.D  
Acq On : 16 Jan 2025 12:55  
Operator : RC/JU  
Sample : PB166074BL  
Misc :  
ALS Vial : 3 Sample Multiplier: 1

Instrument :  
BNA\_F  
ClientSampleId :  
PB166074BL

Quant Method : Z:\svoasrv\HPCHEM1\BNA\_F\Methods\8270-BF011025.M  
Quant Title : ASP BNA STANDARDS FOR 5 POINT CALIBRATION

TIC Library : C:\Database\NIST20.L  
TIC Integration Parameters: LSCINT.P

TIC Top Hit name	RT	EstConc	Units	Response	--Internal Standard--			
					#	RT	Resp	Conc
Glycolaldehyde ...	2.246	3.4	ng	147060	1	6.810	866563	20.0
2-Pentanone, 4-...	5.046	7.7	ng	331458	1	6.810	866563	20.0