

Data Path : W:\HPCHEM1\MSVOA_R\Data\2015\VR111315\
 Data File : VR017352.D
 Acq On : 13 Nov 2015 22:59
 Operator : MD\SY
 Sample : G4365-10
 Misc : 25mL/MSVOA_R/WATER
 ALS Vial : 18 Sample Multiplier: 1

Instrument :
 BNA_F
 ClientSampleID :

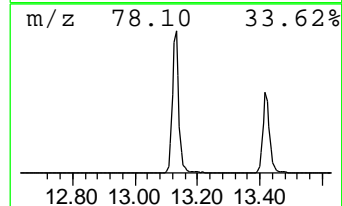
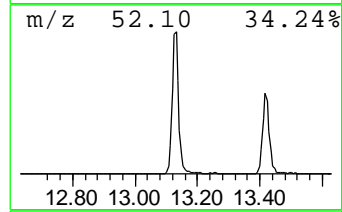
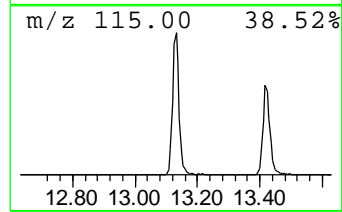
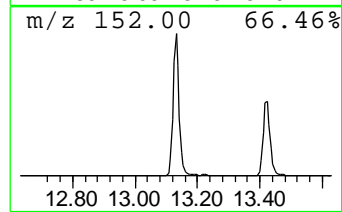
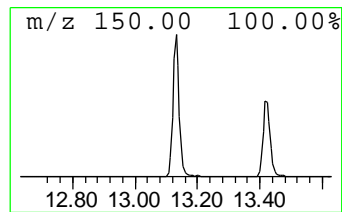
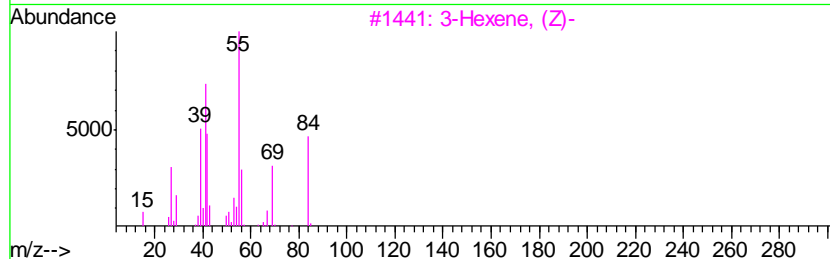
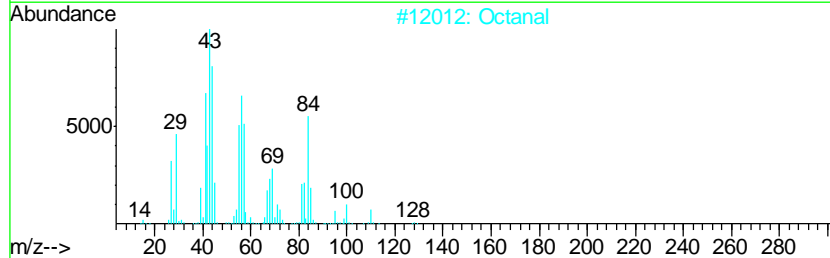
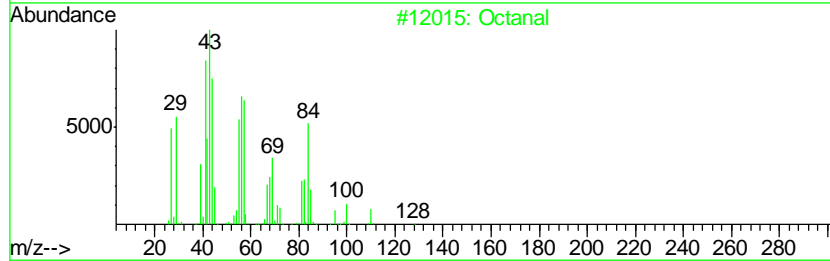
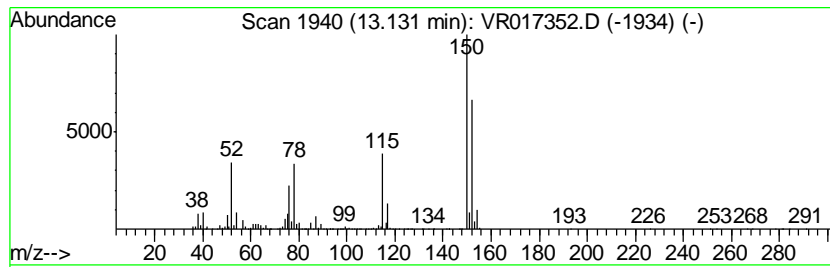
Quant Method : W:\HPCHEM1\MSVOA_R\METHODS\SOMRTR111315W.M
 Quant Title : TRACE VOA SOM01.0

TIC Library : C:\DATABASE\NIST02.L
 TIC Integration Parameters: LSCINT.P

 Peak Number 5 Octanal Concentration Rank 5

| R.T. | EstConc | Area | Relative to ISTD | R.T. |
|-------|-----------|---------|------------------------|-------|
| 13.13 | 5.00 ug/L | 1524170 | 1,4-Dichlorobenzene-d4 | 13.13 |

| Hit# | of | Tentative ID | MW | MolForm | CAS# | Qual |
|------|----|----------------|-----|---------|-------------|------|
| 1 | 5 | Octanal | 128 | C8H16O | 000124-13-0 | 47 |
| 2 | | Octanal | 128 | C8H16O | 000124-13-0 | 43 |
| 3 | | 3-Hexene, (Z)- | 84 | C6H12 | 007642-09-3 | 38 |
| 4 | | Octanal | 128 | C8H16O | 000124-13-0 | 38 |
| 5 | | 2-Hexene, (Z)- | 84 | C6H12 | 007688-21-3 | 30 |



Data Path : W:\HPCHEM1\MSVOA_R\Data\2015\VR111315\
 Data File : VR017352.D
 Acq On : 13 Nov 2015 22:59
 Operator : MD\SY
 Sample : G4365-10
 Misc : 25mL/MSVOA_R/WATER
 ALS Vial : 18 Sample Multiplier: 1

Instrument :
 BNA_F
 ClientSampleId :

Quant Method : W:\HPCHEM1\MSVOA_R\METHODS\SOMRTR111315W.M
 Quant Title : TRACE VOA SOM01.0

TIC Library : C:\DATABASE\NIST02.L
 TIC Integration Parameters: LSCINT.P

| TIC Top Hit name | RT | EstConc | Units | Response | --Internal Standard-- | | | |
|--|-------|---------|-------|----------|-----------------------|-------|---------|------|
| | | | | | # | RT | Resp | Conc |
| d-Alanine | 1.52 | 85.5 | ug/L | 32430000 | 1 | 8.33 | 1895710 | 5.0 |
| 3-Butenoic acid | 1.69 | 3.2 | ug/L | 1196020 | 1 | 8.33 | 1895710 | 5.0 |
| 2-Propanol, 1,3-d... | 9.57 | 0.9 | ug/L | 338618 | 1 | 8.33 | 1895710 | 5.0 |
| Nonanal | 13.91 | 3.1 | ug/L | 941654 | 3 | 13.13 | 1524170 | 5.0 |
| SOMRTR111315W.M Wed Jan 20 04:43:12 2016 | | | | | | | | |
| Octanal | 13.13 | 5.0 | ug/L | 1524170 | 3 | 13.13 | 1524170 | 5.0 |