

Data Path : Z:\svoasrv\HPCHEM1\BNA_F\Data\BF011924\
 Data File : BF137109.D
 Acq On : 19 Jan 2024 13:55
 Operator : CG\JU
 Sample : SSTDICC010
 Misc :
 ALS Vial : 4 Sample Multiplier: 1

Instrument :
 BNA_F
 ClientSampleId :
 SSTDICC010

Quant Time: Jan 20 00:06:06 2024
 Quant Method : Z:\svoasrv\HPCHEM1\BNA_F\Methods\8270-BF011924.M
 Quant Title : ASP BNA STANDARDS FOR 5 POINT CALIBRATION
 QLast Update : Sat Jan 20 00:04:02 2024
 Response via : Initial Calibration

Compound	R.T.	QIon	Response	Conc	Units	Dev(Min)
Internal Standards						
1) 1,4-Dichlorobenzene-d4	6.816	152	159699	20.000	ng	0.00
21) Naphthalene-d8	8.092	136	660109	20.000	ng	0.00
39) Acenaphthene-d10	9.851	164	346168	20.000	ng	0.00
64) Phenanthrene-d10	11.339	188	643688	20.000	ng	0.00
76) Chrysene-d12	13.998	240	416660	20.000	ng	0.00
86) Perylene-d12	15.486	264	347236	20.000	ng	0.00
System Monitoring Compounds						
5) 2-Fluorophenol	5.434	112	234043	21.478	ng	-0.01
7) Phenol-d6	6.434	99	289812	21.185	ng	-0.01
23) Nitrobenzene-d5	7.369	82	215928	18.719	ng	-0.01
42) 2,4,6-Tribromophenol	10.639	330	70597	21.063	ng	0.00
45) 2-Fluorobiphenyl	9.169	172	524609	22.746	ng	0.00
79) Terphenyl-d14	12.939	244	583344	20.012	ng	0.00
Target Compounds						
2) 1,4-Dioxane	2.593	88	49968	10.159	ng	99
3) Pyridine	3.352	79	121301	10.159	ng	100
4) n-Nitrosodimethylamine	3.299	42	64838	9.755	ng	98
6) Aniline	6.475	93	142065	10.709	ng	99
8) 2-Chlorophenol	6.598	128	122899	10.663	ng	100
9) Benzaldehyde	6.369	77	92887	12.077	ng	93
10) Phenol	6.446	94	148192	10.318	ng	98
11) bis(2-Chloroethyl)ether	6.551	93	118209	9.913	ng	97
12) 1,3-Dichlorobenzene	6.757	146	135708	10.718	ng	97
13) 1,4-Dichlorobenzene	6.834	146	136092	10.673	ng	96
14) 1,2-Dichlorobenzene	6.981	146	128601	10.884	ng	100
15) Benzyl Alcohol	6.951	79	104434	10.582	ng	96
16) 2,2'-oxybis(1-Chloropr...	7.093	45	207236	10.610	ng	100
17) 2-Methylphenol	7.057	107	98854	10.459	ng	98
18) Hexachloroethane	7.328	117	47861	10.250	ng	97
19) n-Nitroso-di-n-propyla...	7.222	70	90335	10.723	ng	97
20) 3+4-Methylphenols	7.210	107	128092	11.045	ng	# 85
22) Acetophenone	7.216	105	176594	10.815	ng	# 96
24) Nitrobenzene	7.387	77	122218	9.705	ng	97
25) Isophorone	7.628	82	243633	10.260	ng	98
26) 2-Nitrophenol	7.710	139	35613	7.857	ng	90
27) 2,4-Dimethylphenol	7.745	122	78157	10.252	ng	98
28) bis(2-Chloroethoxy)met...	7.845	93	149137	10.360	ng	100
29) 2,4-Dichlorophenol	7.945	162	95354	10.072	ng	99
30) 1,2,4-Trichlorobenzene	8.034	180	111919	10.234	ng	98
31) Naphthalene	8.116	128	372936	10.651	ng	99
32) Benzoic acid	7.810	122	46530	7.249	ng	100
33) 4-Chloroaniline	8.163	127	130855	10.157	ng	98
34) Hexachlorobutadiene	8.234	225	66992	10.529	ng	100
35) Caprolactam	8.498	113	30002	9.933	ng	94
36) 4-Chloro-3-methylphenol	8.634	107	105616	10.213	ng	98
37) 2-Methylnaphthalene	8.804	142	240524	10.793	ng	99
38) 1-Methylnaphthalene	8.904	142	233180	10.727	ng	98
40) 1,2,4,5-Tetrachloroben...	8.969	216	107995	10.659	ng	98
41) Hexachlorocyclopentadiene	8.963	237	36633	9.411	ng	99
43) 2,4,6-Trichlorophenol	9.081	196	67907	10.297	ng	100

Data Path : Z:\svoasrv\HPCHEM1\BNA_F\Data\BF011924\
 Data File : BF137109.D
 Acq On : 19 Jan 2024 13:55
 Operator : CG\JU
 Sample : SSTDICC010
 Misc :
 ALS Vial : 4 Sample Multiplier: 1

Instrument :
 BNA_F
 ClientSampleId :
 SSTDICC010

Quant Time: Jan 20 00:06:06 2024
 Quant Method : Z:\svoasrv\HPCHEM1\BNA_F\Methods\8270-BF011924.M
 Quant Title : ASP BNA STANDARDS FOR 5 POINT CALIBRATION
 QLast Update : Sat Jan 20 00:04:02 2024
 Response via : Initial Calibration

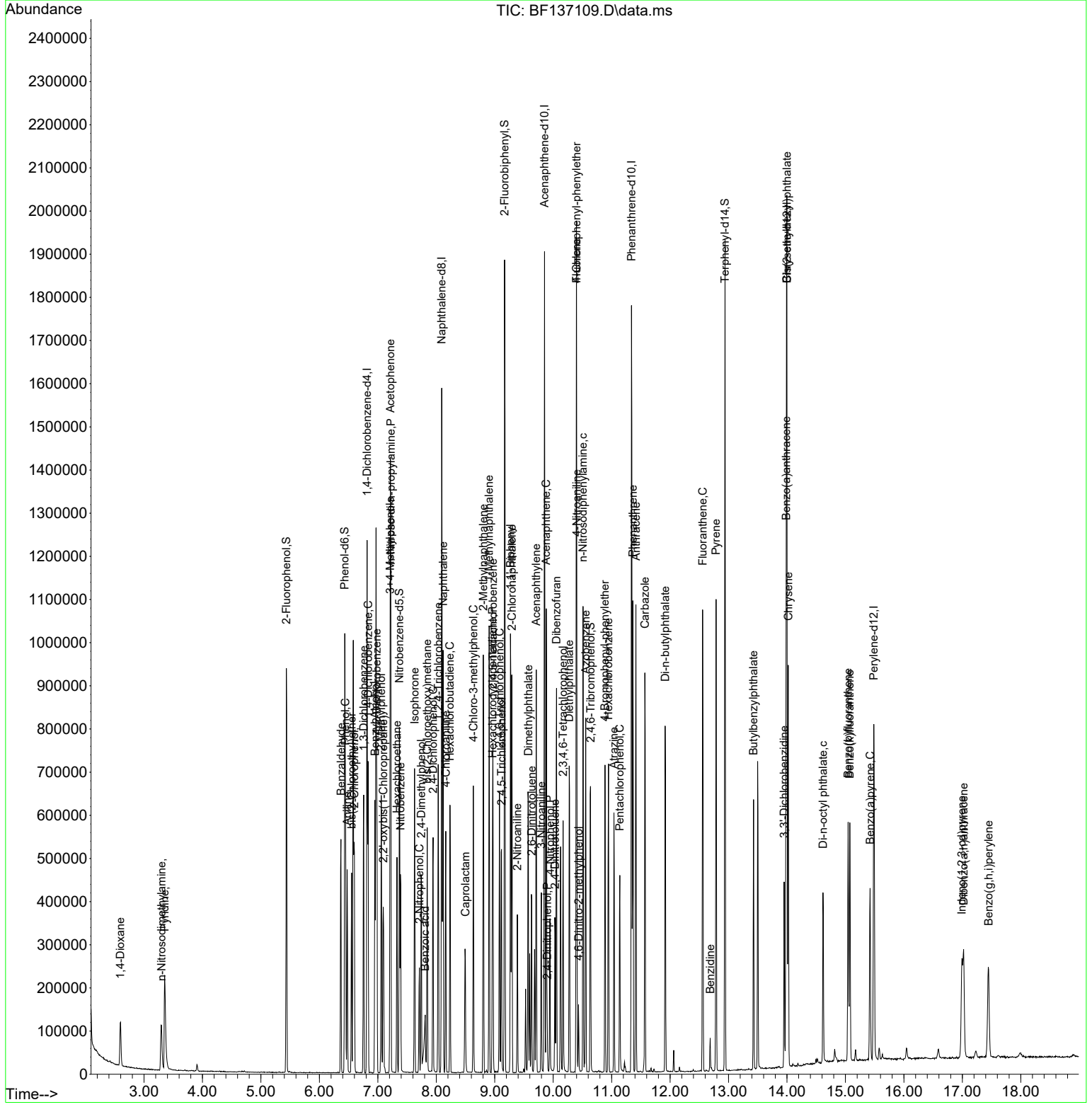
Compound	R.T.	QIon	Response	Conc	Units	Dev(Min)
44) 2,4,5-Trichlorophenol	9.116	196	74060	10.302	ng	95
46) 1,1'-Biphenyl	9.269	154	298491	10.592	ng	99
47) 2-Chloronaphthalene	9.292	162	229894	10.534	ng	99
48) 2-Nitroaniline	9.386	65	48092	8.389	ng	98
49) Acenaphthylene	9.710	152	330594	10.637	ng	100
50) Dimethylphthalate	9.575	163	256398	10.586	ng	99
51) 2,6-Dinitrotoluene	9.634	165	44443	9.205	ng	92
52) Acenaphthene	9.881	154	223111	10.776	ng	99
53) 3-Nitroaniline	9.798	138	47319	9.194	ng	# 98
54) 2,4-Dinitrophenol	9.898	184	8591	5.629	ng	# 77
55) Dibenzofuran	10.057	168	315847	10.815	ng	98
56) 4-Nitrophenol	9.945	139	38548	9.230	ng	96
57) 2,4-Dinitrotoluene	10.034	165	48968	8.481	ng	87
58) Fluorene	10.398	166	247434	11.256	ng	98
59) 2,3,4,6-Tetrachlorophenol	10.169	232	59536	10.677	ng	98
60) Diethylphthalate	10.275	149	250938	10.527	ng	98
61) 4-Chlorophenyl-phenyle...	10.398	204	122565	11.162	ng	92
62) 4-Nitroaniline	10.404	138	46256	9.427	ng	97
63) Azobenzene	10.557	77	263773	10.572	ng	99
65) 4,6-Dinitro-2-methylph...	10.434	198	14021	5.831	ng	91
66) n-Nitrosodiphenylamine	10.510	169	215387	10.481	ng	98
67) 4-Bromophenyl-phenylether	10.886	248	72667	10.446	ng	99
68) Hexachlorobenzene	10.945	284	82220	10.477	ng	99
69) Atrazine	11.039	200	59004	14.294	ng	97
70) Pentachlorophenol	11.139	266	48044	10.355	ng	99
71) Phenanthrene	11.363	178	366427	10.683	ng	99
72) Anthracene	11.416	178	364592	10.671	ng	99
73) Carbazole	11.569	167	333652	10.767	ng	99
74) Di-n-butylphthalate	11.916	149	373652	10.517	ng	100
75) Fluoranthene	12.557	202	383012	10.963	ng	98
77) Benzidine	12.686	184	26326	6.259	ng	# 95
78) Pyrene	12.786	202	391036	9.400	ng	99
80) Butylbenzylphthalate	13.427	149	114576	8.509	ng	95
81) Benzo(a)anthracene	13.986	228	301528	9.745	ng	99
82) 3,3'-Dichlorobenzidine	13.951	252	76543	10.089	ng	97
83) Chrysene	14.022	228	291726	9.754	ng	99
84) Bis(2-ethylhexyl)phtha...	13.998	149	140440	8.578	ng	100
85) Di-n-octyl phthalate	14.616	149	186032	7.347	ng	98
87) Indeno(1,2,3-cd)pyrene	16.992	276	197160	8.403	ng	100
88) Benzo(b)fluoranthene	15.045	252	238448	10.793	ng	98
89) Benzo(k)fluoranthene	15.074	252	216418	10.714	ng	97
90) Benzo(a)pyrene	15.421	252	181023	9.931	ng	100
91) Dibenzo(a,h)anthracene	17.021	278	163804	8.503	ng	97
92) Benzo(g,h,i)perylene	17.451	276	165162	8.239	ng	96

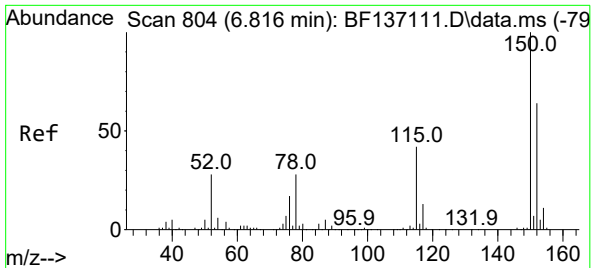
(#) = qualifier out of range (m) = manual integration (+) = signals summed

Data Path : Z:\svoasrv\HPCHEM1\BNA_F\Data\BF011924\
 Data File : BF137109.D
 Acq On : 19 Jan 2024 13:55
 Operator : CG\JU
 Sample : SSTDICC010
 Misc :
 ALS Vial : 4 Sample Multiplier: 1

Instrument :
 BNA_F
 ClientSampleId :
 SSTDICC010

Quant Time: Jan 20 00:06:06 2024
 Quant Method : Z:\svoasrv\HPCHEM1\BNA_F\Methods\8270-BF011924.M
 Quant Title : ASP BNA STANDARDS FOR 5 POINT CALIBRATION
 QLast Update : Sat Jan 20 00:04:02 2024
 Response via : Initial Calibration

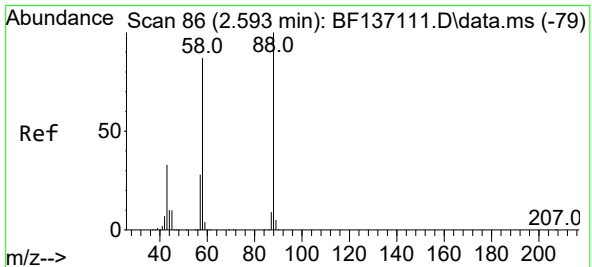
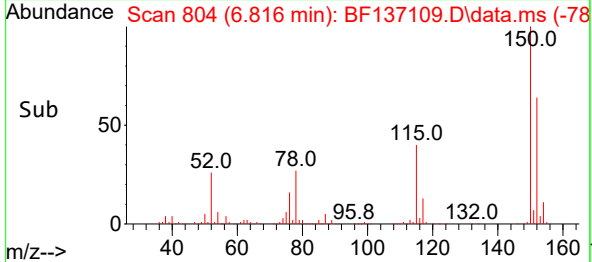
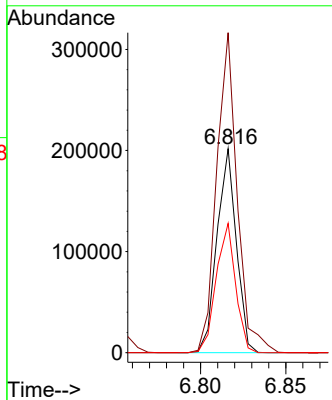
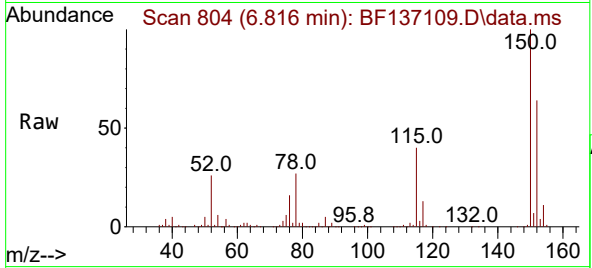




#1
 1,4-Dichlorobenzene-d4
 Concen: 20.000 ng
 RT: 6.816 min Scan# 80
 Delta R.T. 0.000 min
 Lab File: BF137109.D
 Acq: 19 Jan 2024 13:55

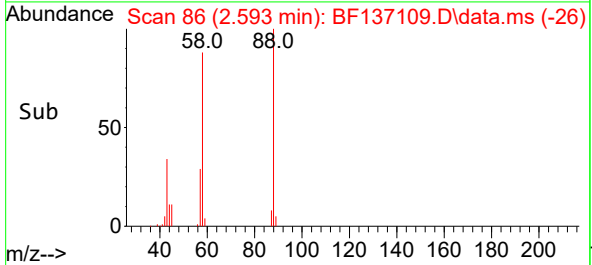
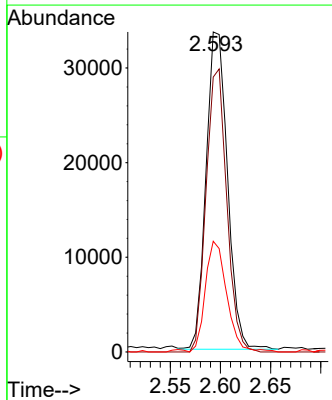
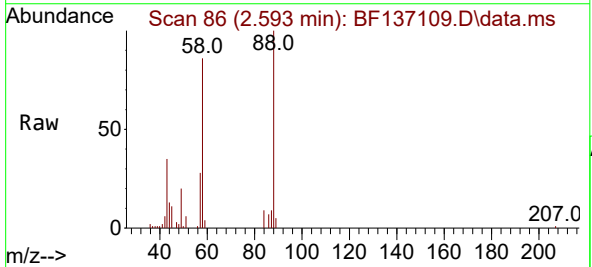
Instrument : BNA_F
 ClientSampleId : SSTDICC010

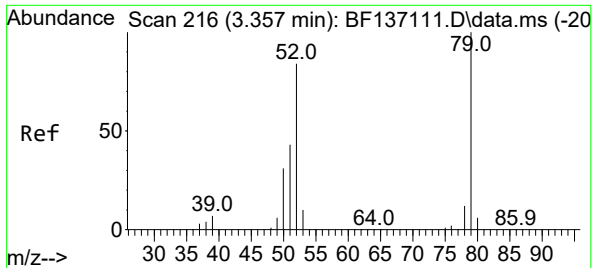
Tgt Ion:152 Resp: 159699
 Ion Ratio Lower Upper
 152 100
 150 156.9 125.1 187.7
 115 63.4 52.3 78.5



#2
 1,4-Dioxane
 Concen: 10.159 ng
 RT: 2.593 min Scan# 86
 Delta R.T. 0.000 min
 Lab File: BF137109.D
 Acq: 19 Jan 2024 13:55

Tgt Ion: 88 Resp: 49968
 Ion Ratio Lower Upper
 88 100
 58 85.7 68.5 102.7
 43 34.9 26.9 40.3



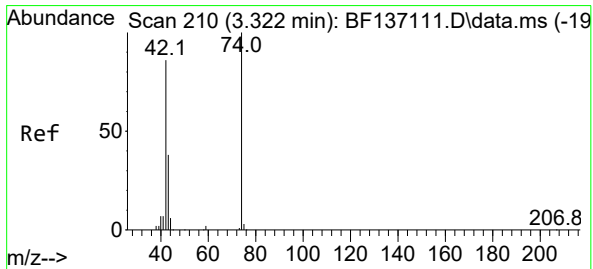
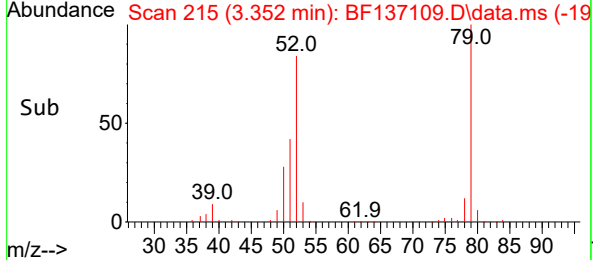
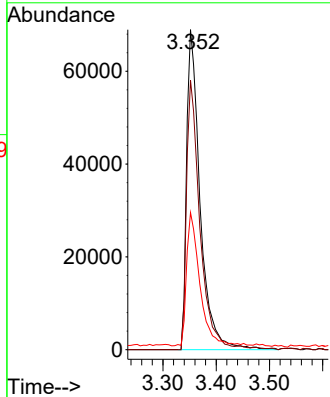
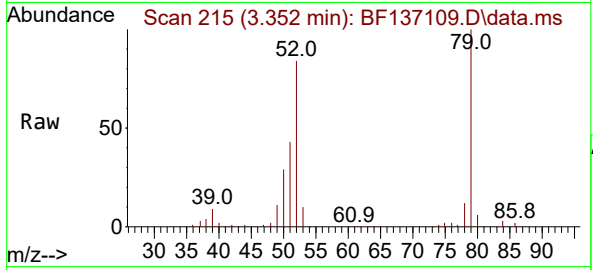


#3
 Pyridine
 Concen: 10.159 ng
 RT: 3.352 min Scan# 21
 Delta R.T. -0.006 min
 Lab File: BF137109.D
 Acq: 19 Jan 2024 13:55

Instrument : BNA_F
 ClientSampleId : SSTDICC010

Tgt Ion: 79 Resp: 121301

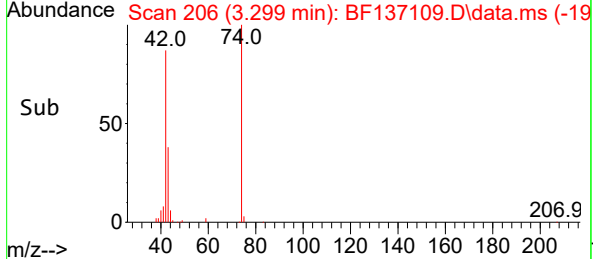
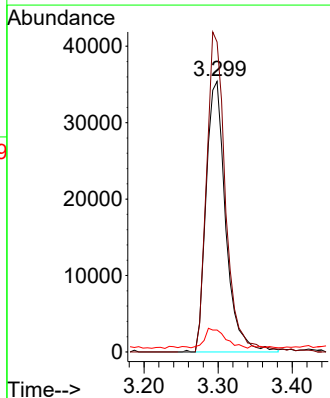
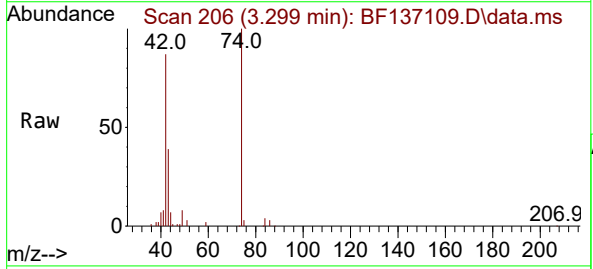
Ion	Ratio	Lower	Upper
79	100		
52	84.2	67.0	100.4
51	42.8	34.4	51.6

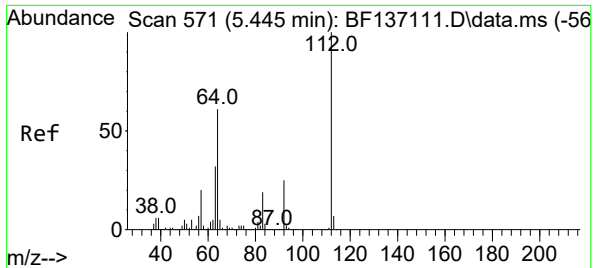


#4
 n-Nitrosodimethylamine
 Concen: 9.755 ng
 RT: 3.299 min Scan# 206
 Delta R.T. -0.023 min
 Lab File: BF137109.D
 Acq: 19 Jan 2024 13:55

Tgt Ion: 42 Resp: 64838

Ion	Ratio	Lower	Upper
42	100		
74	114.5	93.1	139.7
44	8.1	5.6	8.4





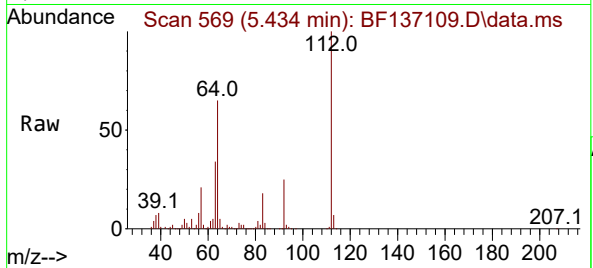
#5
 2-Fluorophenol
 Concen: 21.478 ng
 RT: 5.434 min Scan# 50
 Delta R.T. -0.012 min
 Lab File: BF137109.D
 Acq: 19 Jan 2024 13:55

Instrument :

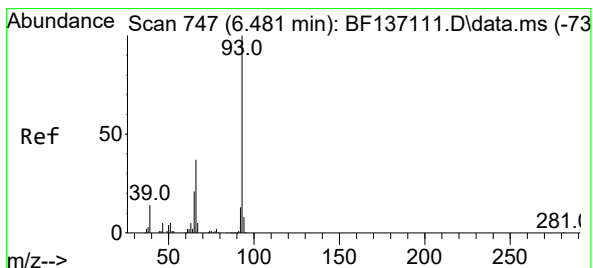
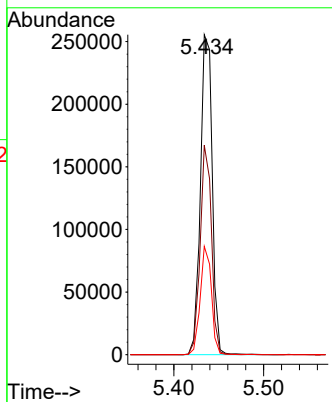
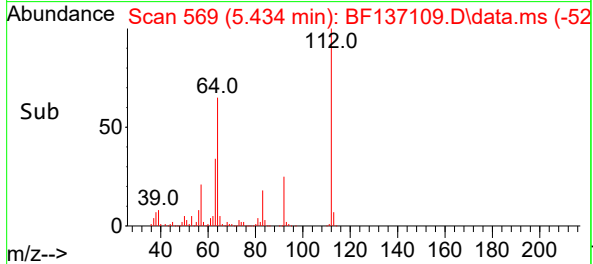
BNA_F

ClientSampleId :

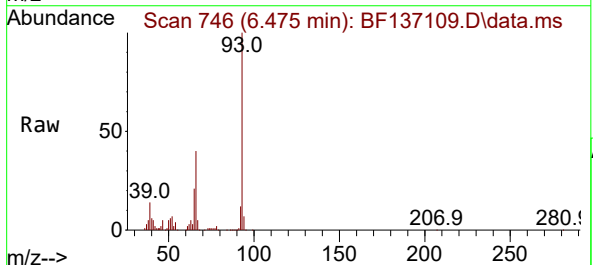
SSTDICC010



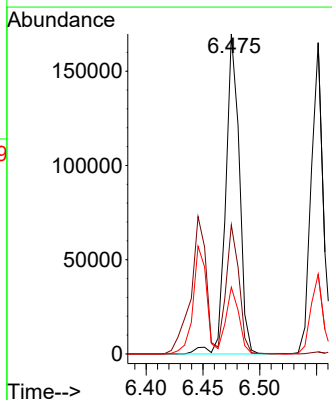
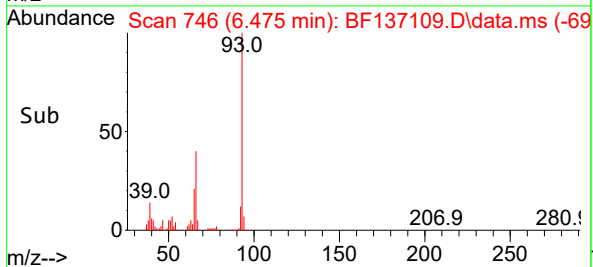
Tgt Ion:112 Resp: 234043
 Ion Ratio Lower Upper
 112 100
 64 65.5 48.6 73.0
 63 33.9 25.5 38.3

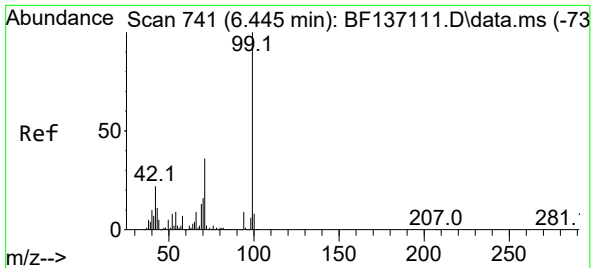


#6
 Aniline
 Concen: 10.709 ng
 RT: 6.475 min Scan# 746
 Delta R.T. -0.006 min
 Lab File: BF137109.D
 Acq: 19 Jan 2024 13:55



Tgt Ion: 93 Resp: 142065
 Ion Ratio Lower Upper
 93 100
 66 40.3 32.0 48.0
 65 20.9 17.0 25.4



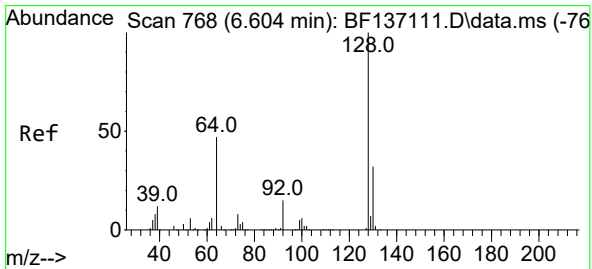
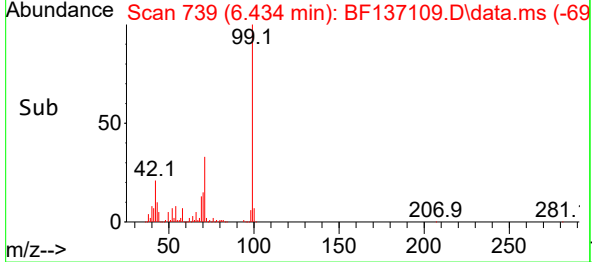
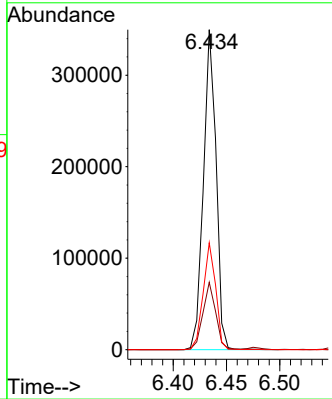
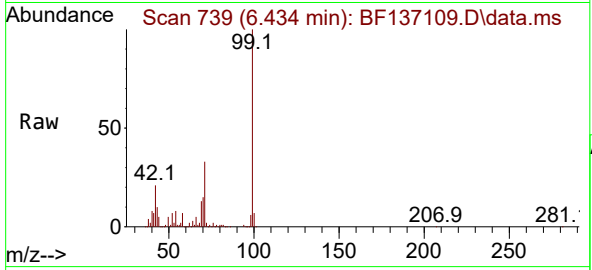


#7
 Phenol-d6
 Concen: 21.185 ng
 RT: 6.434 min Scan# 71
 Delta R.T. -0.012 min
 Lab File: BF137109.D
 Acq: 19 Jan 2024 13:55

Instrument : BNA_F
 ClientSampleId : SSTDICC010

Tgt Ion: 99 Resp: 289812

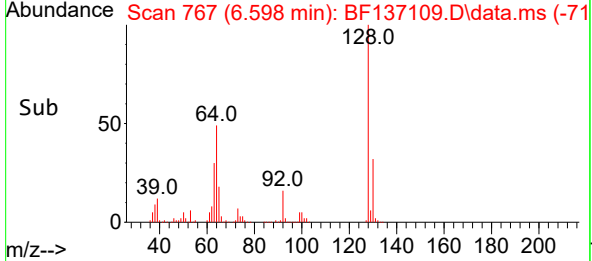
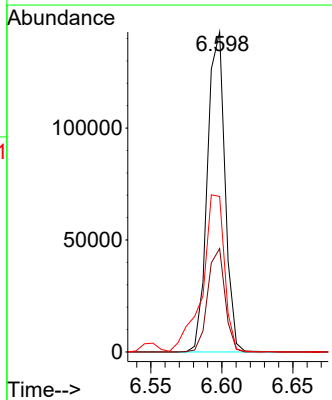
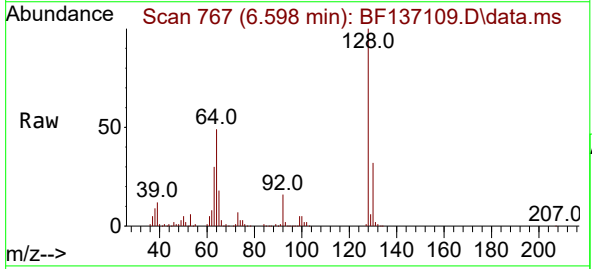
Ion	Ratio	Lower	Upper
99	100		
42	21.1	17.5	26.3
71	33.4	28.6	42.8

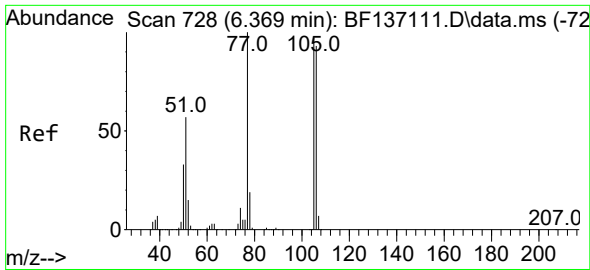


#8
 2-Chlorophenol
 Concen: 10.663 ng
 RT: 6.598 min Scan# 767
 Delta R.T. -0.006 min
 Lab File: BF137109.D
 Acq: 19 Jan 2024 13:55

Tgt Ion: 128 Resp: 122899

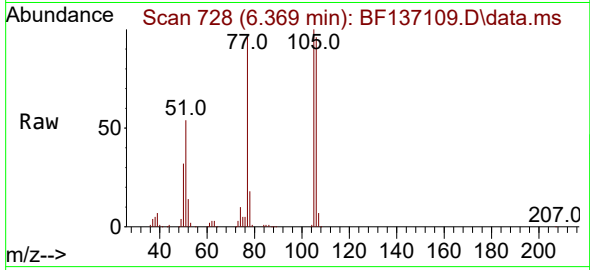
Ion	Ratio	Lower	Upper
128	100		
130	32.3	12.4	52.4
64	48.6	28.7	68.7



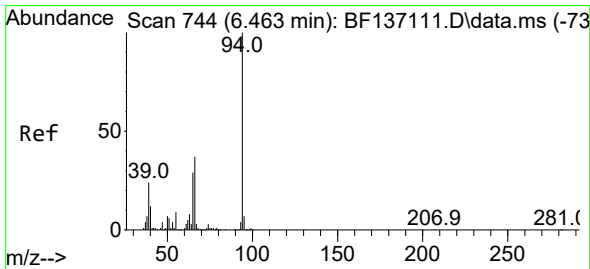
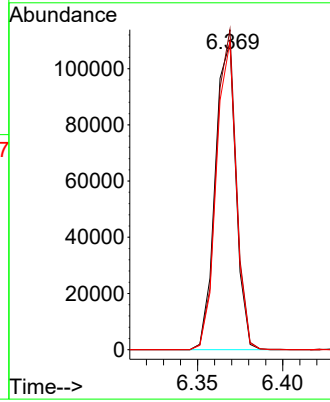
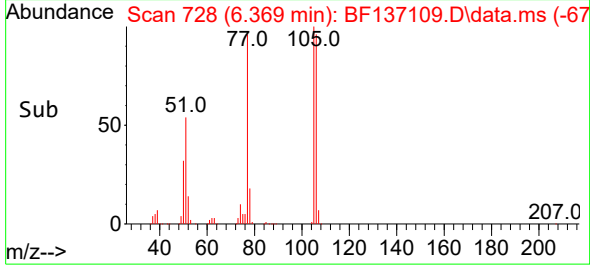


#9
 Benzaldehyde
 Concen: 12.077 ng
 RT: 6.369 min Scan# 711
 Delta R.T. 0.000 min
 Lab File: BF137109.D
 Acq: 19 Jan 2024 13:55

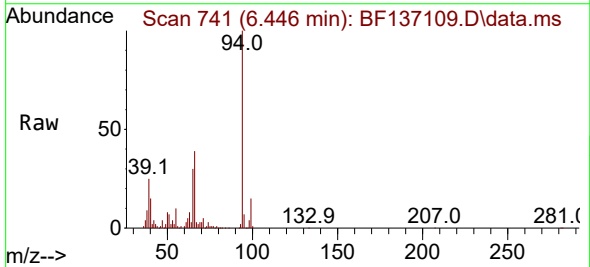
Instrument : BNA_F
 Client Sample Id : SSTDICC010



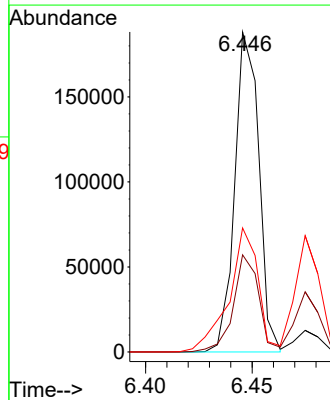
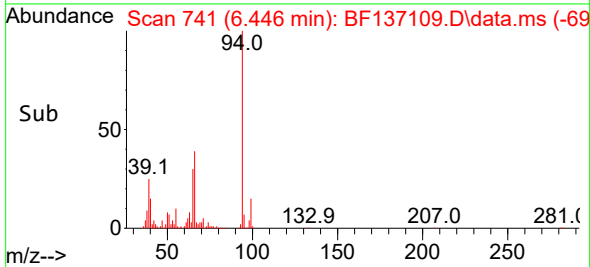
Tgt Ion: 77 Resp: 92887
 Ion Ratio Lower Upper
 77 100
 105 104.1 77.1 117.1
 106 100.1 73.2 113.2

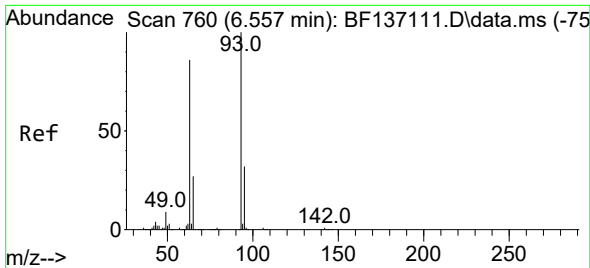


#10
 Phenol
 Concen: 10.318 ng
 RT: 6.446 min Scan# 741
 Delta R.T. -0.017 min
 Lab File: BF137109.D
 Acq: 19 Jan 2024 13:55



Tgt Ion: 94 Resp: 148192
 Ion Ratio Lower Upper
 94 100
 65 30.4 9.3 49.3
 66 38.8 17.4 57.4





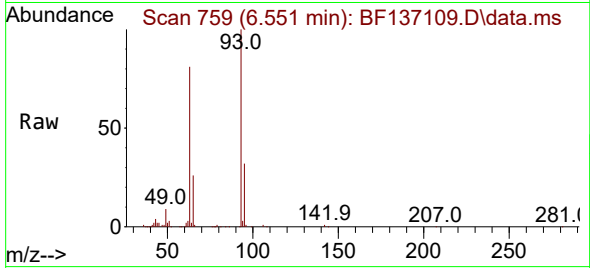
#11
 bis(2-Chloroethyl)ether
 Concen: 9.913 ng
 RT: 6.551 min Scan# 710
 Delta R.T. -0.006 min
 Lab File: BF137109.D
 Acq: 19 Jan 2024 13:55

Instrument :

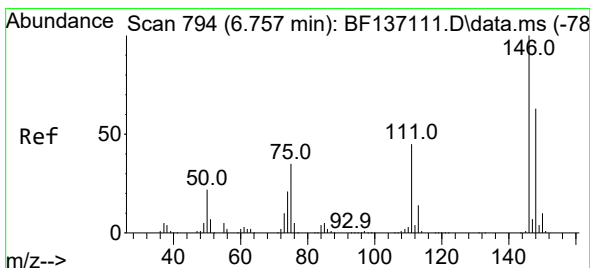
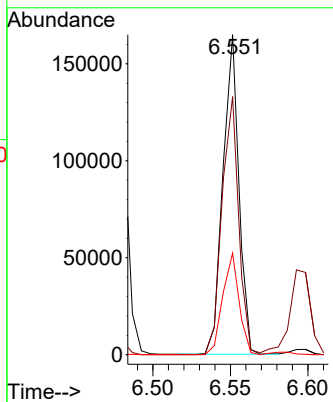
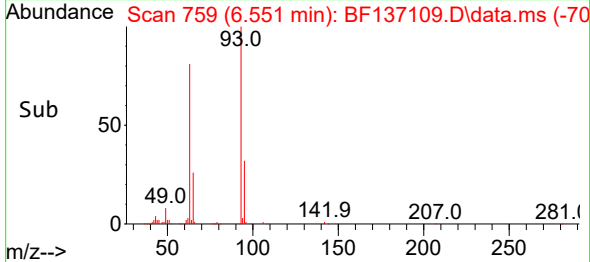
BNA_F

ClientSampleId :

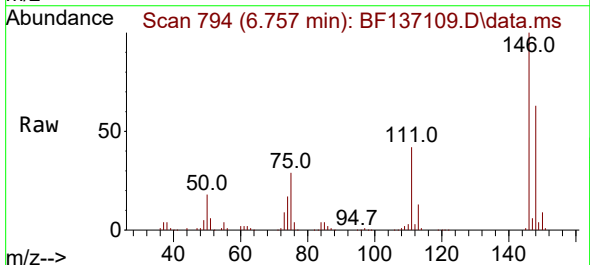
SSTDICC010



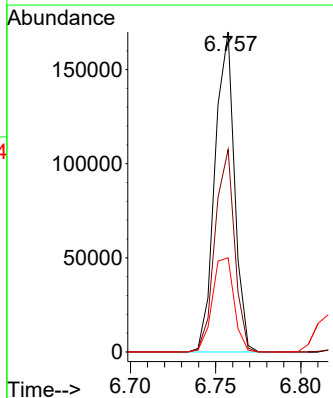
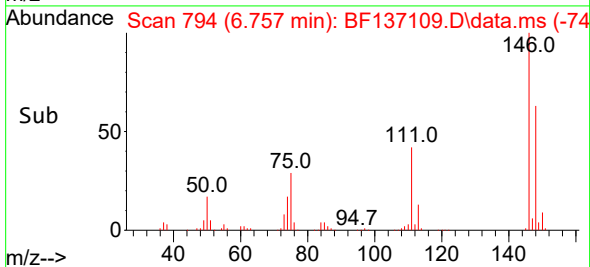
Tgt Ion: 93 Resp: 118209
 Ion Ratio Lower Upper
 93 100
 63 80.7 64.7 104.7
 95 31.7 11.6 51.6

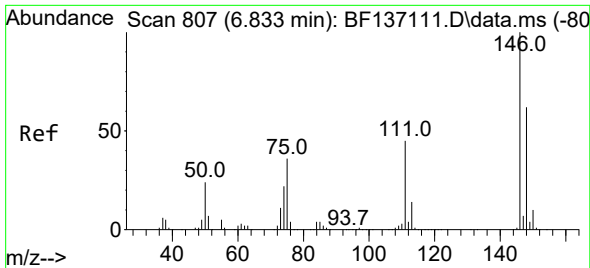


#12
 1,3-Dichlorobenzene
 Concen: 10.718 ng
 RT: 6.757 min Scan# 794
 Delta R.T. 0.000 min
 Lab File: BF137109.D
 Acq: 19 Jan 2024 13:55



Tgt Ion:146 Resp: 135708
 Ion Ratio Lower Upper
 146 100
 148 63.2 50.6 75.8
 75 29.4 27.8 41.6



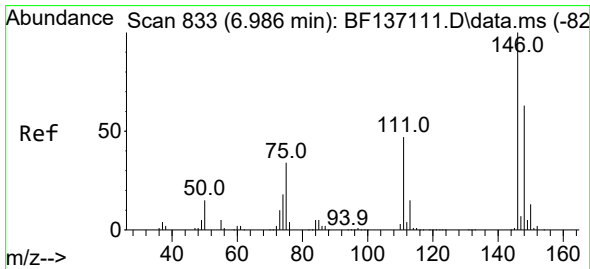
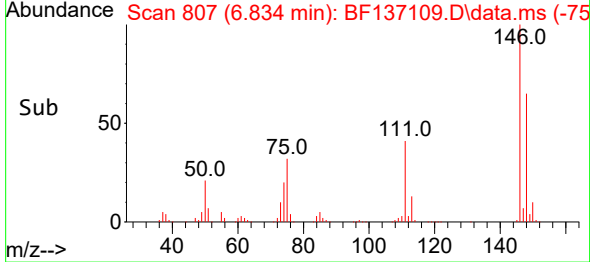
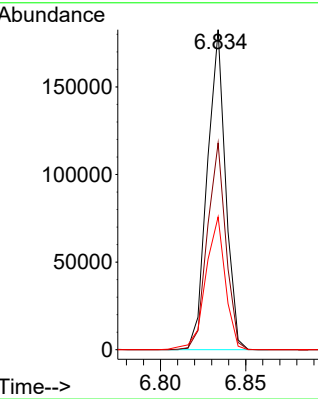
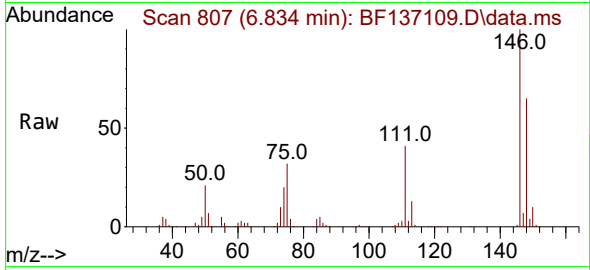


#13
 1,4-Dichlorobenzene
 Concen: 10.673 ng
 RT: 6.834 min Scan# 807
 Delta R.T. 0.000 min
 Lab File: BF137109.D
 Acq: 19 Jan 2024 13:55

Instrument : BNA_F
 ClientSampleId : SSTDICC010

Tgt Ion:146 Resp: 136092

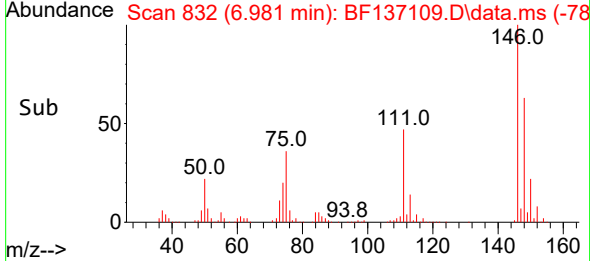
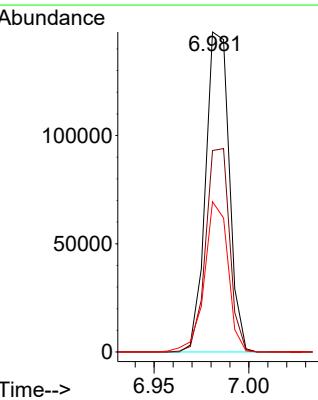
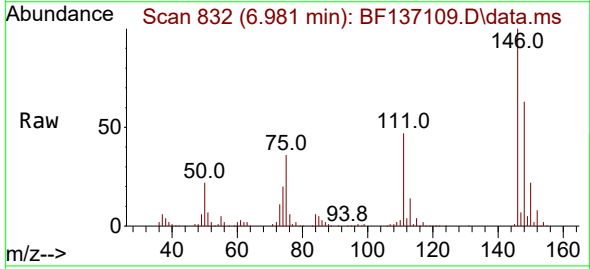
Ion	Ratio	Lower	Upper
146	100		
148	64.6	49.8	74.6
111	41.5	35.9	53.9

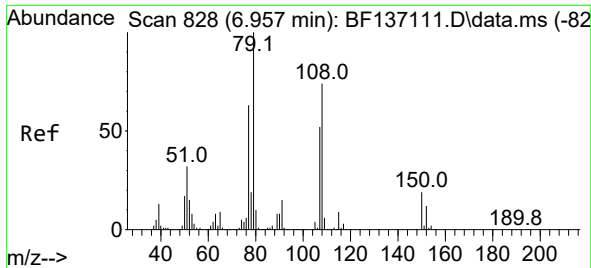


#14
 1,2-Dichlorobenzene
 Concen: 10.884 ng
 RT: 6.981 min Scan# 832
 Delta R.T. -0.006 min
 Lab File: BF137109.D
 Acq: 19 Jan 2024 13:55

Tgt Ion:146 Resp: 128601

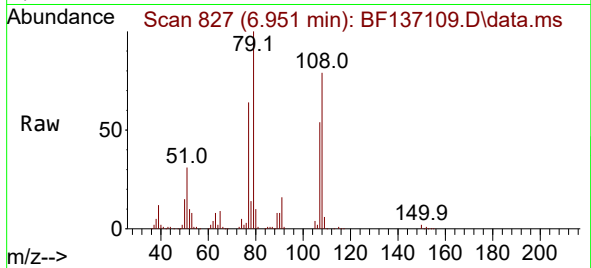
Ion	Ratio	Lower	Upper
146	100		
148	63.0	50.7	76.1
111	47.0	37.4	56.0



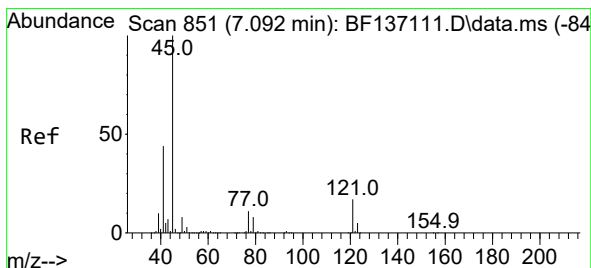
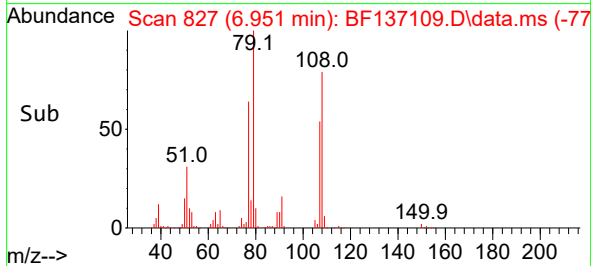
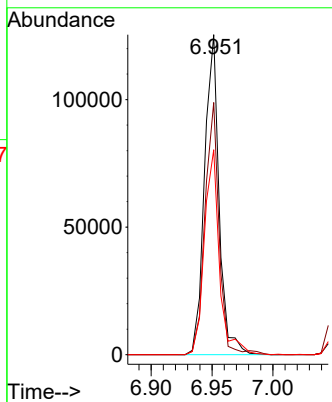


#15
 Benzyl Alcohol
 Concen: 10.582 ng
 RT: 6.951 min Scan# 811
 Delta R.T. -0.006 min
 Lab File: BF137109.D
 Acq: 19 Jan 2024 13:55

Instrument :
 BNA_F
 ClientSampleId :
 SSTDICC010

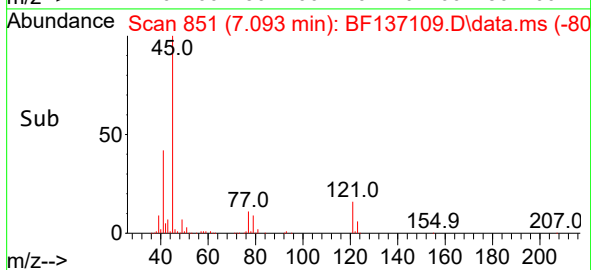
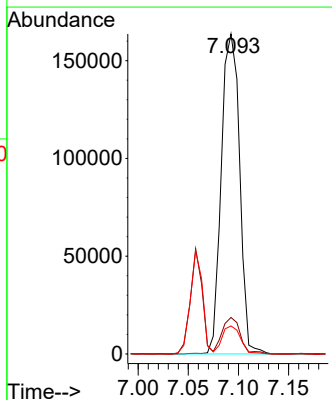
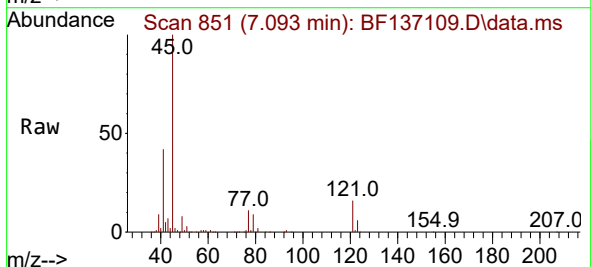


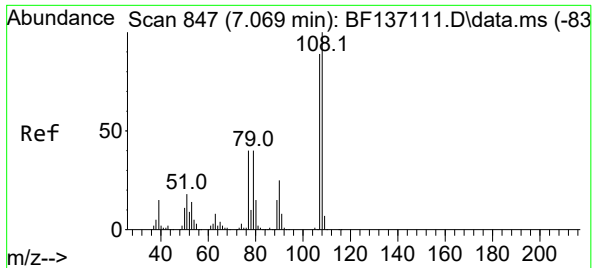
Tgt Ion: 79 Resp: 104434
 Ion Ratio Lower Upper
 79 100
 108 78.8 59.3 88.9
 77 64.0 50.2 75.4



#16
 2,2'-oxybis(1-Chloropropane)
 Concen: 10.610 ng
 RT: 7.093 min Scan# 851
 Delta R.T. 0.000 min
 Lab File: BF137109.D
 Acq: 19 Jan 2024 13:55

Tgt Ion: 45 Resp: 207236
 Ion Ratio Lower Upper
 45 100
 77 11.4 0.0 31.6
 79 8.7 0.0 28.6

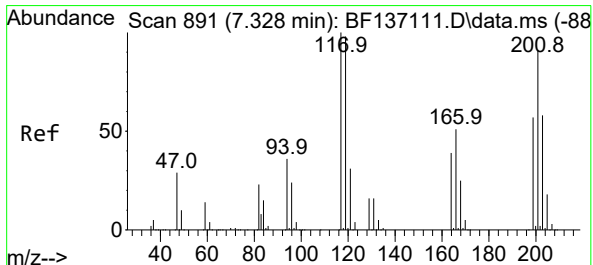
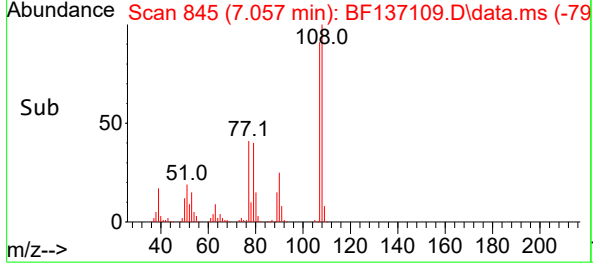
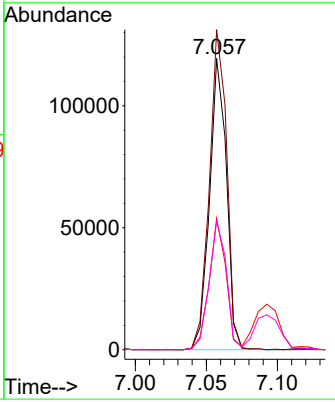
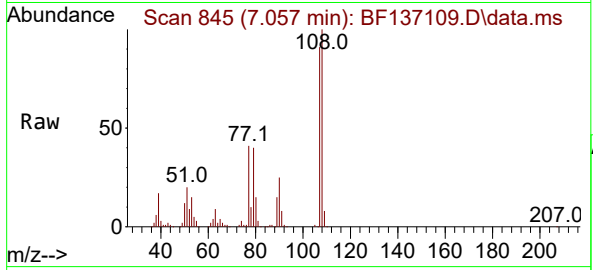




#17
 2-Methylphenol
 Concen: 10.459 ng
 RT: 7.057 min Scan# 845
 Delta R.T. -0.011 min
 Lab File: BF137109.D
 Acq: 19 Jan 2024 13:55

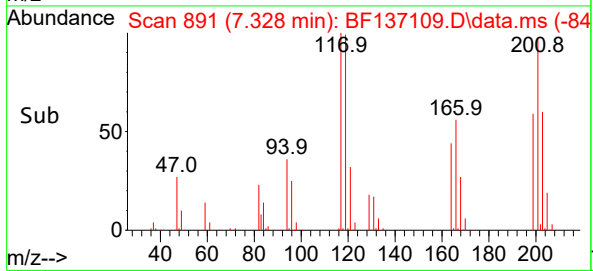
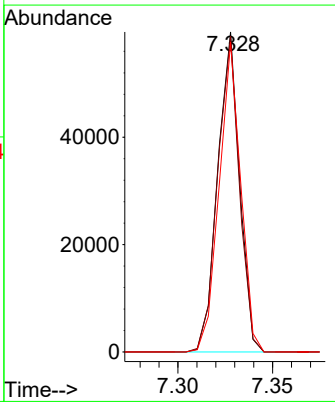
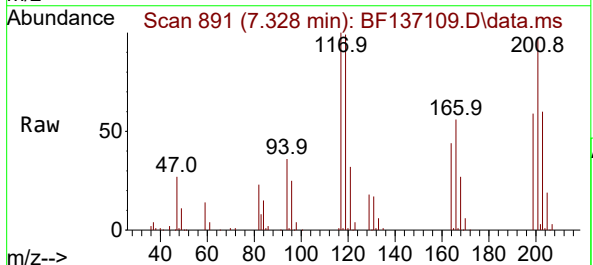
Instrument : BNA_F
 ClientSampleId : SSTDICC010

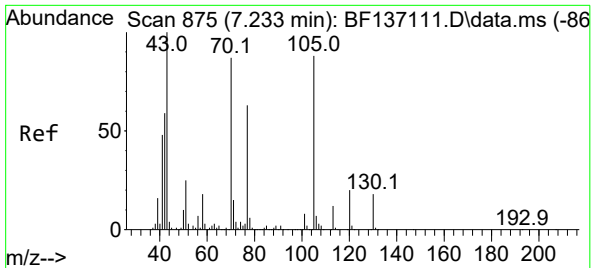
Tgt Ion	Resp	Lower	Upper
107	98854		
107	100		
108	109.9	90.2	135.2
77	45.1	36.6	54.8
79	44.1	36.1	54.1



#18
 Hexachloroethane
 Concen: 10.250 ng
 RT: 7.328 min Scan# 891
 Delta R.T. 0.000 min
 Lab File: BF137109.D
 Acq: 19 Jan 2024 13:55

Tgt Ion	Resp	Lower	Upper
117	47861		
117	100		
119	98.7	78.3	117.5
201	96.8	73.2	109.8





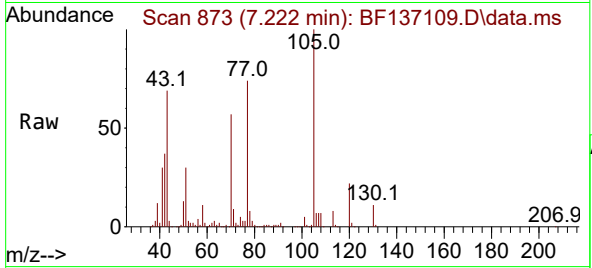
#19
 n-Nitroso-di-n-propylamine
 Concen: 10.723 ng
 RT: 7.222 min Scan# 81
 Delta R.T. -0.012 min
 Lab File: BF137109.D
 Acq: 19 Jan 2024 13:55

Instrument :

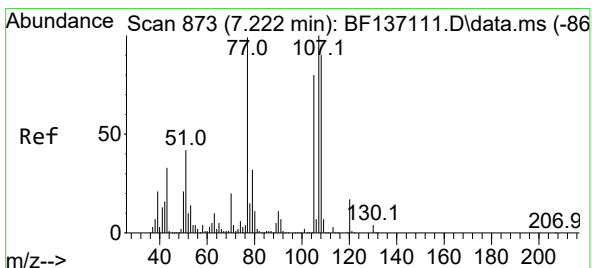
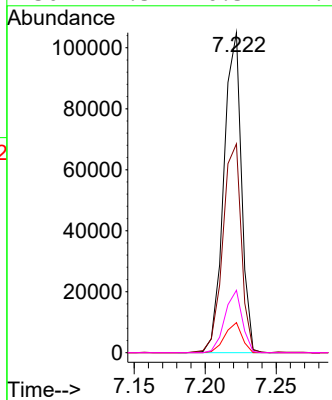
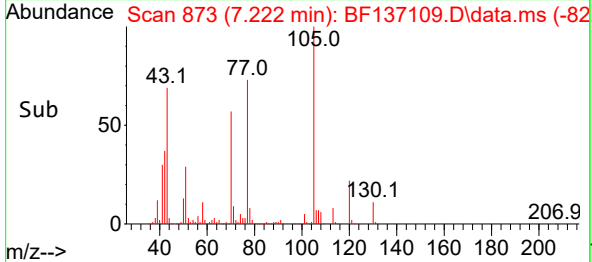
BNA_F

ClientSampleId :

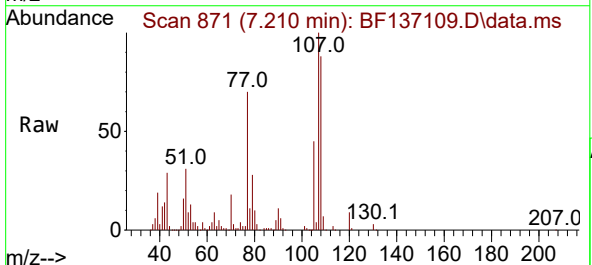
SSTDICC010



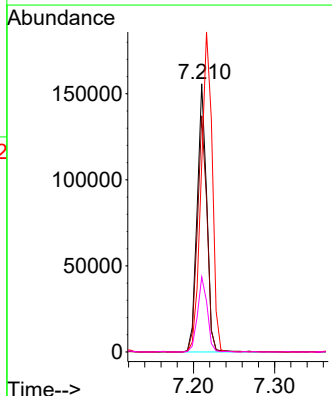
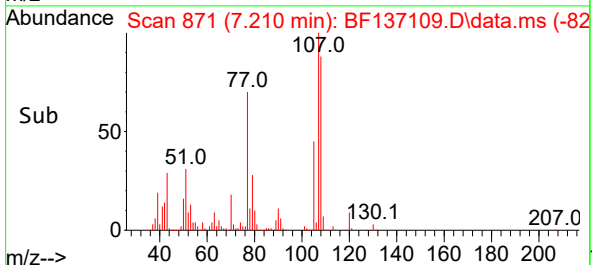
Tgt Ion: 70 Resp: 90335
 Ion Ratio Lower Upper
 70 100
 42 65.3 54.2 81.4
 101 9.4 7.6 11.4
 130 19.5 16.5 24.7

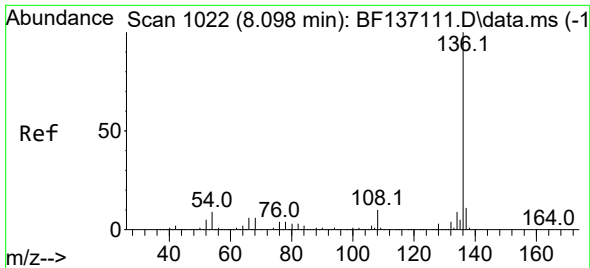


#20
 3+4-Methylphenols
 Concen: 11.045 ng
 RT: 7.210 min Scan# 871
 Delta R.T. -0.012 min
 Lab File: BF137109.D
 Acq: 19 Jan 2024 13:55



Tgt Ion: 107 Resp: 128092
 Ion Ratio Lower Upper
 107 100
 108 88.1 70.4 110.4
 77 70.0 78.5 118.5#
 79 28.0 11.7 51.7



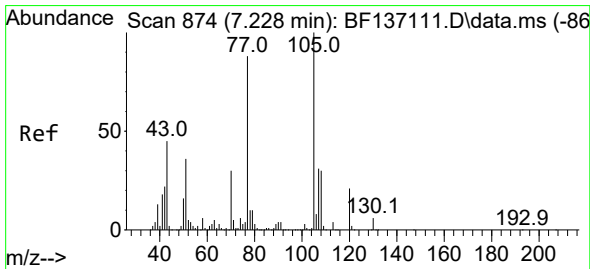
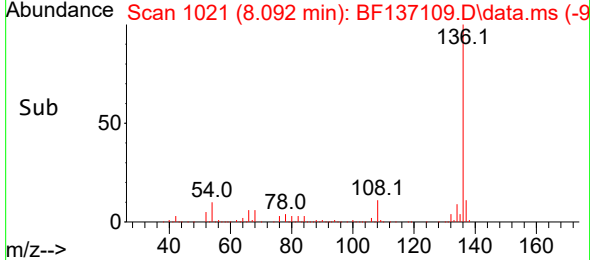
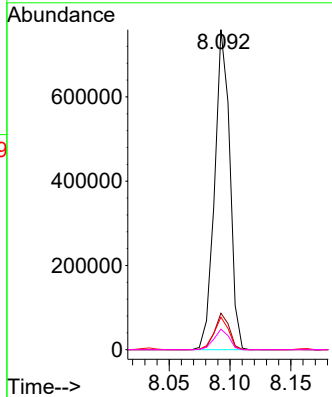
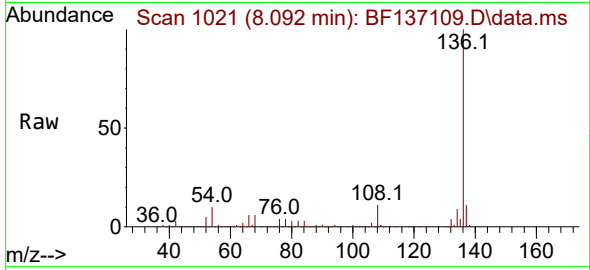


#21
 Naphthalene-d8
 Concen: 20.000 ng
 RT: 8.092 min Scan# 1021
 Delta R.T. -0.006 min
 Lab File: BF137109.D
 Acq: 19 Jan 2024 13:55

Instrument : BNA_F
 ClientSampleId : SSTDICC010

Tgt Ion:136 Resp: 660109

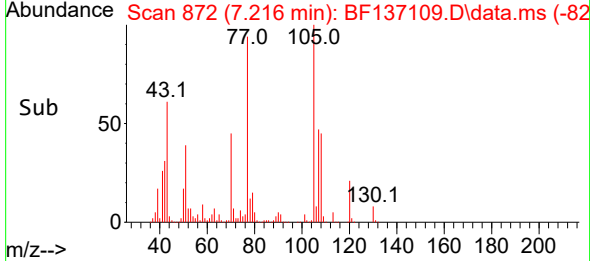
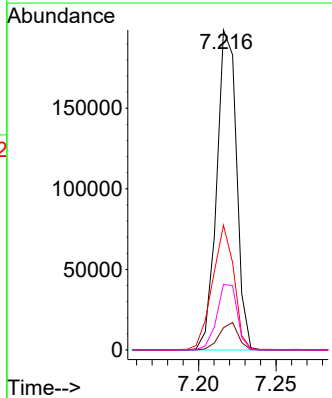
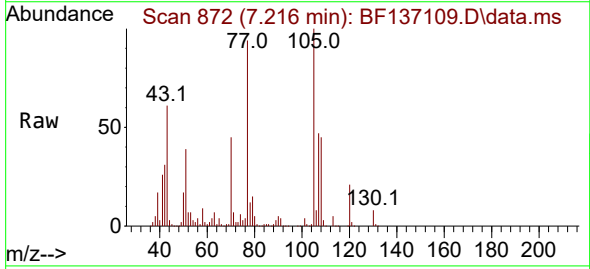
Ion	Ratio	Lower	Upper
136	100		
137	11.4	8.5	12.7
54	10.2	7.4	11.2
68	6.4	4.9	7.3

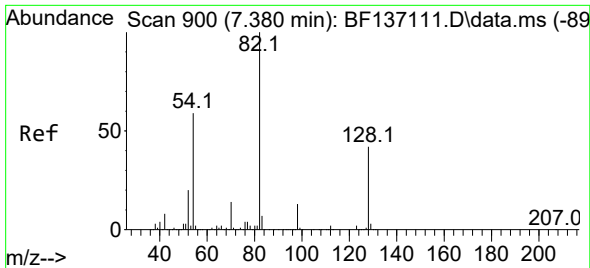


#22
 Acetophenone
 Concen: 10.815 ng
 RT: 7.216 min Scan# 872
 Delta R.T. -0.012 min
 Lab File: BF137109.D
 Acq: 19 Jan 2024 13:55

Tgt Ion:105 Resp: 176594

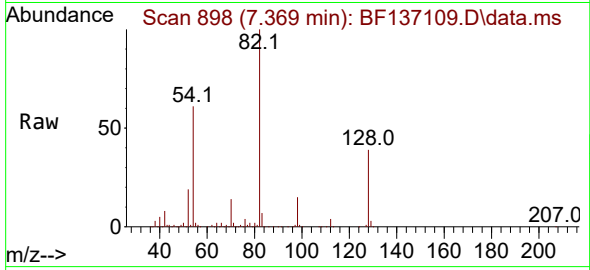
Ion	Ratio	Lower	Upper
105	100		
71	6.9	4.0	6.0
51	39.0	28.8	43.2
120	20.5	16.6	25.0



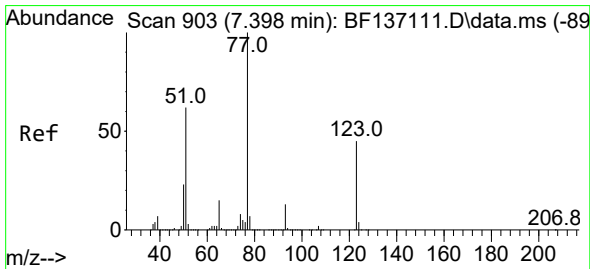
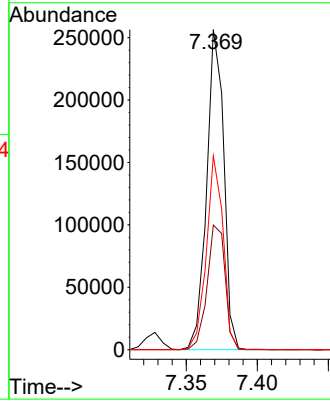
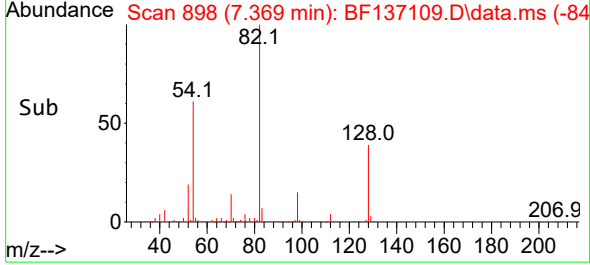


#23
 Nitrobenzene-d5
 Concen: 18.719 ng
 RT: 7.369 min Scan# 89
 Delta R.T. -0.012 min
 Lab File: BF137109.D
 Acq: 19 Jan 2024 13:55

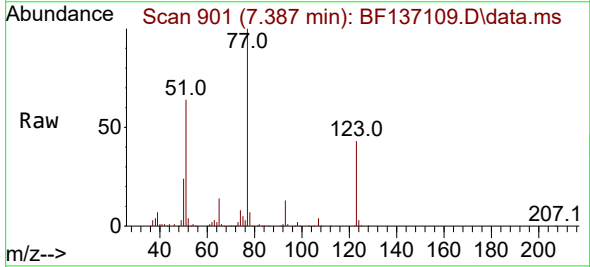
Instrument :
 BNA_F
 ClientSampleId :
 SSTDICC010



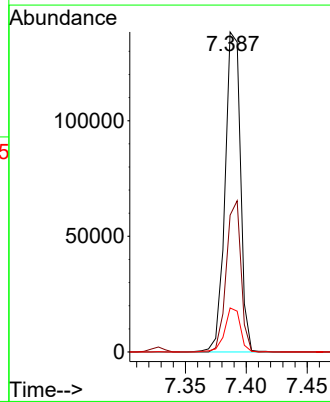
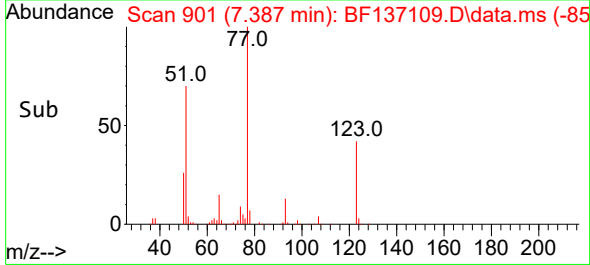
Tgt Ion: 82 Resp: 215928
 Ion Ratio Lower Upper
 82 100
 128 39.0 33.8 50.8
 54 60.6 47.4 71.0

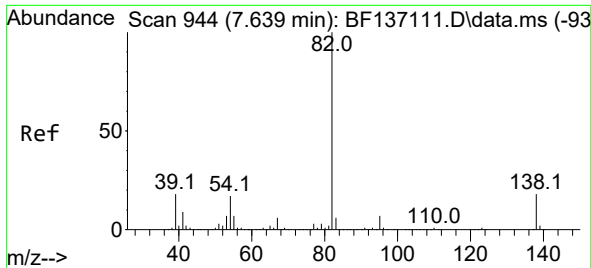


#24
 Nitrobenzene
 Concen: 9.705 ng
 RT: 7.387 min Scan# 901
 Delta R.T. -0.012 min
 Lab File: BF137109.D
 Acq: 19 Jan 2024 13:55



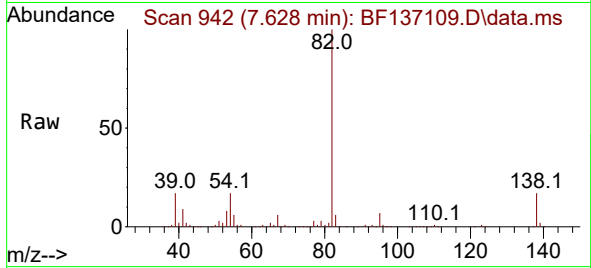
Tgt Ion: 77 Resp: 122218
 Ion Ratio Lower Upper
 77 100
 123 42.8 35.8 53.6
 65 13.8 11.7 17.5



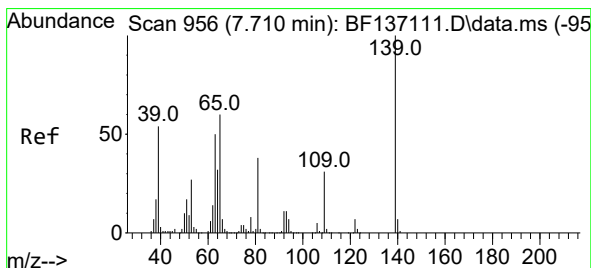
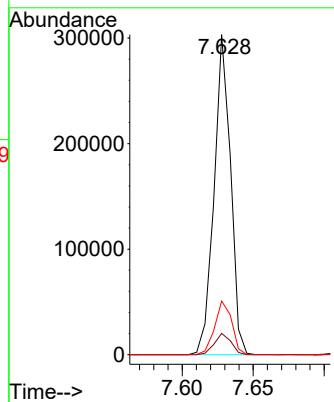
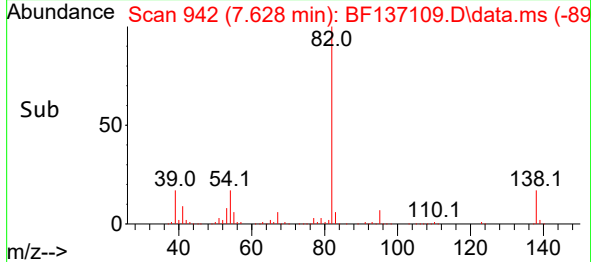


#25
 Isophorone
 Concen: 10.260 ng
 RT: 7.628 min Scan# 942
 Delta R.T. -0.012 min
 Lab File: BF137109.D
 Acq: 19 Jan 2024 13:55

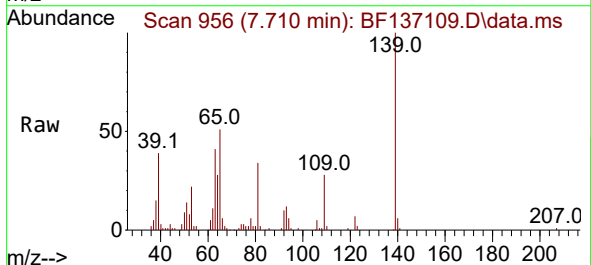
Instrument : BNA_F
 ClientSampleId : SSTDICC010



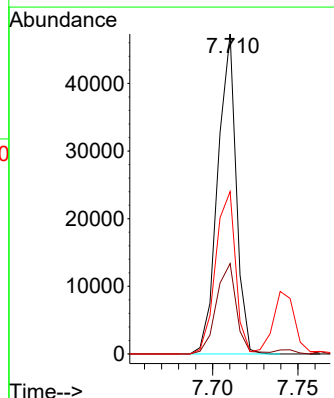
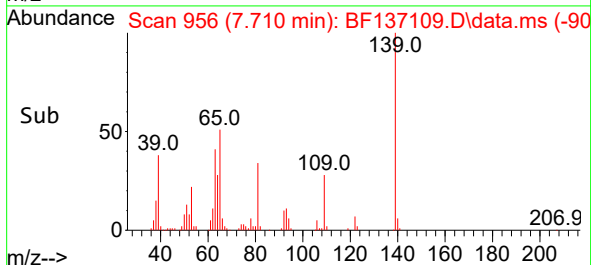
Tgt Ion: 82 Resp: 243633
 Ion Ratio Lower Upper
 82 100
 95 6.7 5.8 8.8
 138 16.7 14.3 21.5

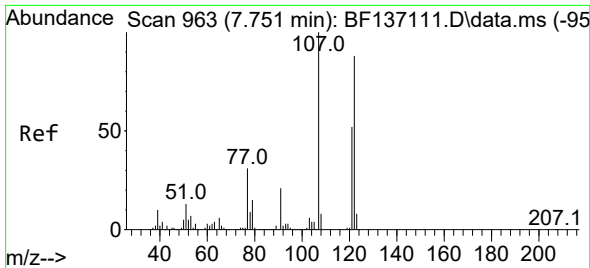


#26
 2-Nitrophenol
 Concen: 7.857 ng
 RT: 7.710 min Scan# 956
 Delta R.T. 0.000 min
 Lab File: BF137109.D
 Acq: 19 Jan 2024 13:55



Tgt Ion: 139 Resp: 35613
 Ion Ratio Lower Upper
 139 100
 109 28.2 25.2 37.8
 65 50.8 47.6 71.4

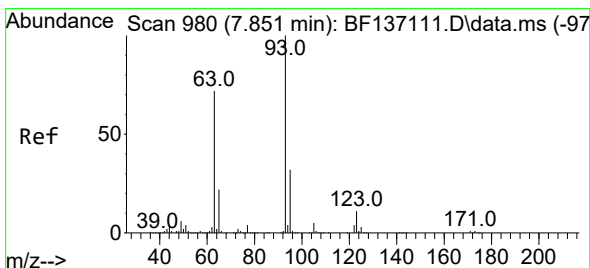
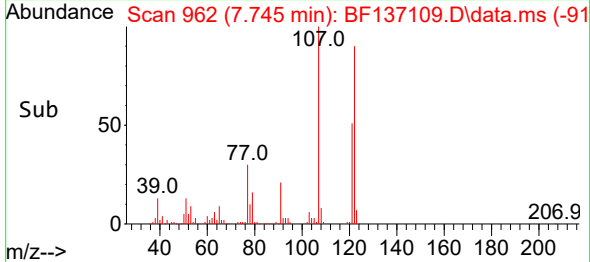
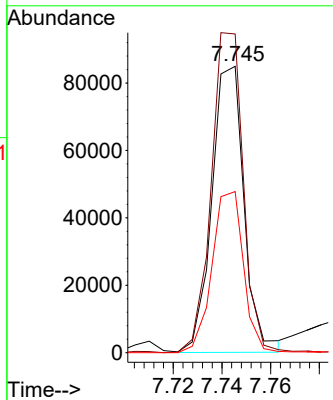
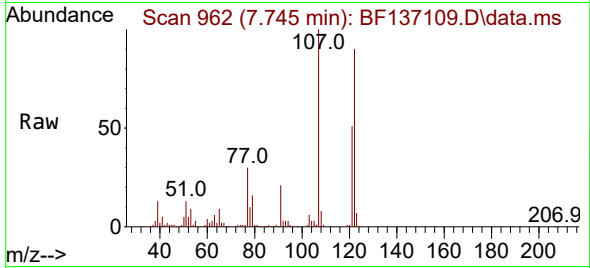




#27
 2,4-Dimethylphenol
 Concen: 10.252 ng
 RT: 7.745 min Scan# 909
 Delta R.T. -0.006 min
 Lab File: BF137109.D
 Acq: 19 Jan 2024 13:55

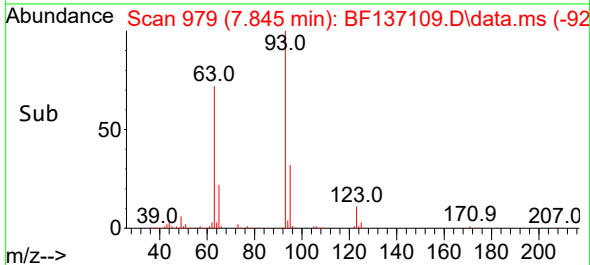
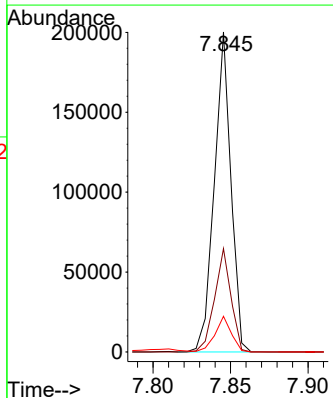
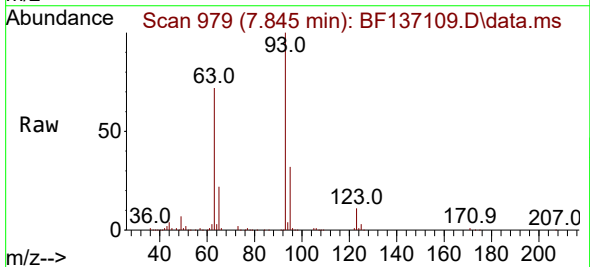
Instrument :
 BNA_F
 ClientSampleId :
 SSTDICC010

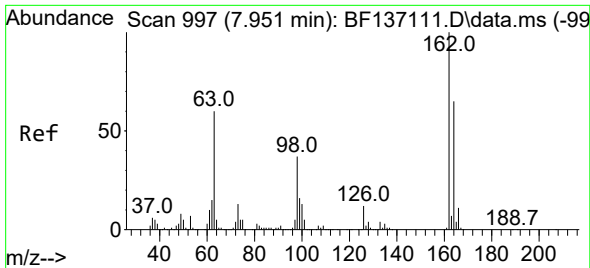
Tgt Ion	Resp	Lower	Upper
122	78157		
107	111.3	90.3	135.5
121	56.3	46.6	69.8



#28
 bis(2-Chloroethoxy)methane
 Concen: 10.360 ng
 RT: 7.845 min Scan# 979
 Delta R.T. -0.006 min
 Lab File: BF137109.D
 Acq: 19 Jan 2024 13:55

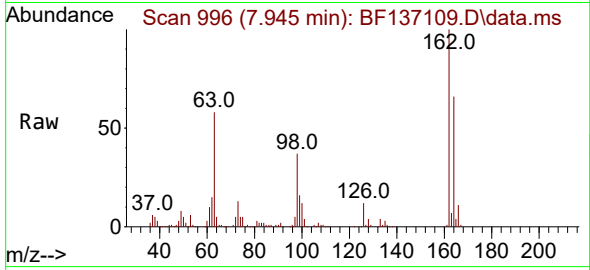
Tgt Ion	Resp	Lower	Upper
93	149137		
95	32.3	25.8	38.8
123	11.2	9.0	13.6



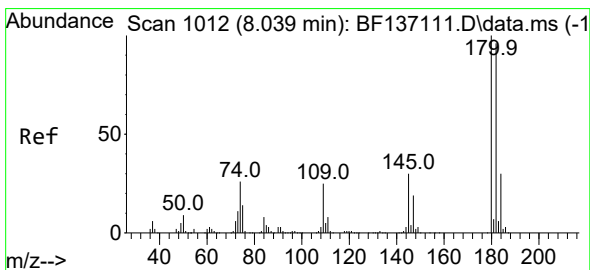
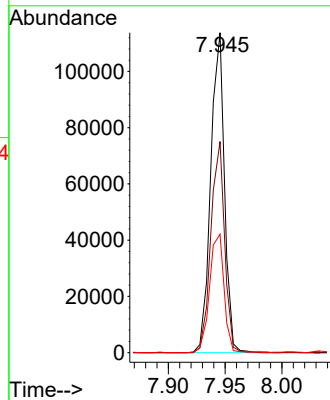
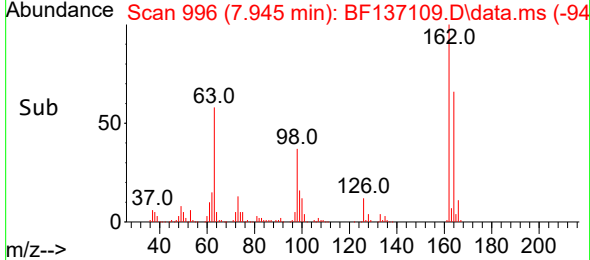


#29
 2,4-Dichlorophenol
 Concen: 10.072 ng
 RT: 7.945 min Scan# 996
 Delta R.T. -0.006 min
 Lab File: BF137109.D
 Acq: 19 Jan 2024 13:55

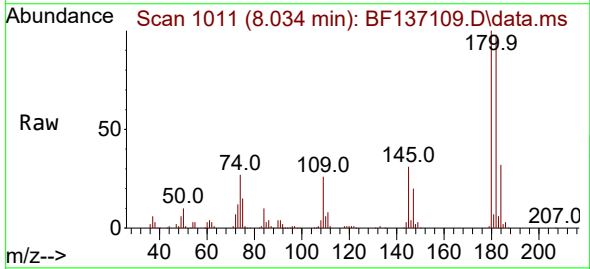
Instrument :
 BNA_F
 ClientSampleId :
 SSTDICC010



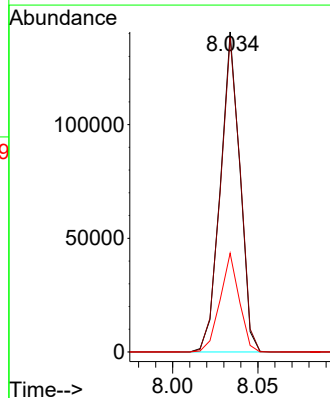
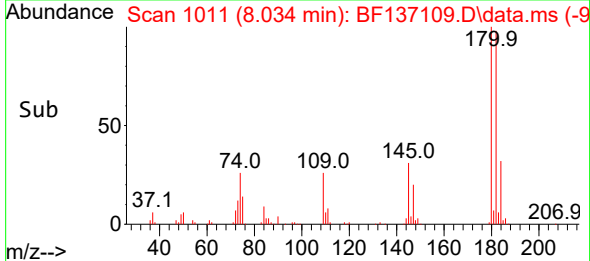
Tgt Ion:162 Resp: 95354
 Ion Ratio Lower Upper
 162 100
 164 66.0 45.1 85.1
 98 37.0 17.3 57.3

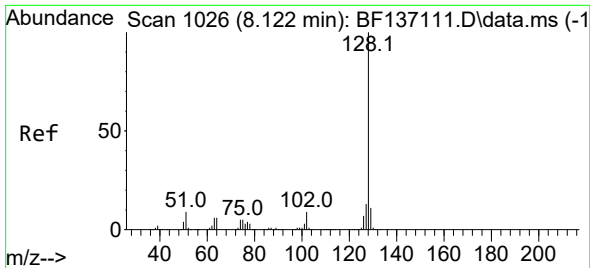


#30
 1,2,4-Trichlorobenzene
 Concen: 10.234 ng
 RT: 8.034 min Scan# 1011
 Delta R.T. -0.006 min
 Lab File: BF137109.D
 Acq: 19 Jan 2024 13:55



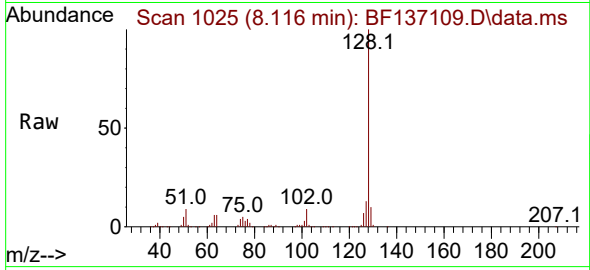
Tgt Ion:180 Resp: 111919
 Ion Ratio Lower Upper
 180 100
 182 98.3 77.0 115.6
 145 30.9 24.1 36.1



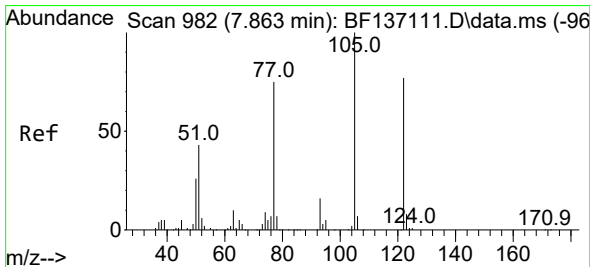
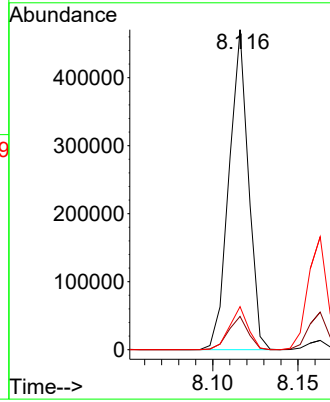
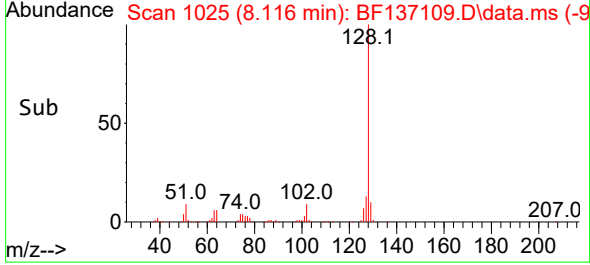


#31
 Naphthalene
 Concen: 10.651 ng
 RT: 8.116 min Scan# 1026
 Delta R.T. -0.006 min
 Lab File: BF137109.D
 Acq: 19 Jan 2024 13:55

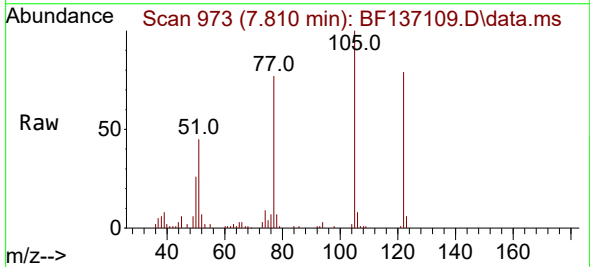
Instrument : BNA_F
 ClientSampleId : SSTDICC010



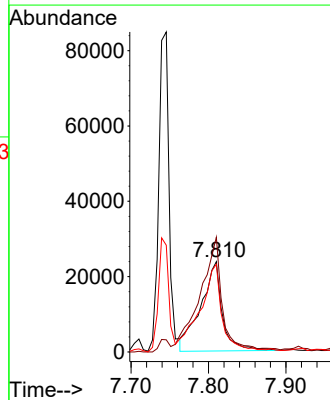
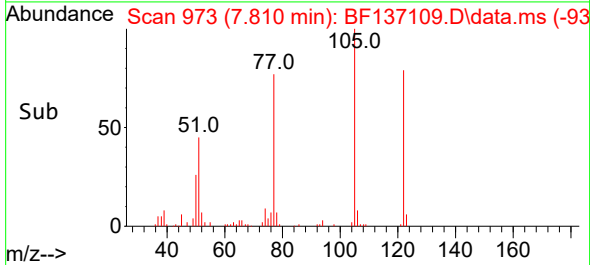
Tgt Ion:128 Resp: 372936
 Ion Ratio Lower Upper
 128 100
 129 10.4 8.7 13.1
 127 13.4 10.6 15.8

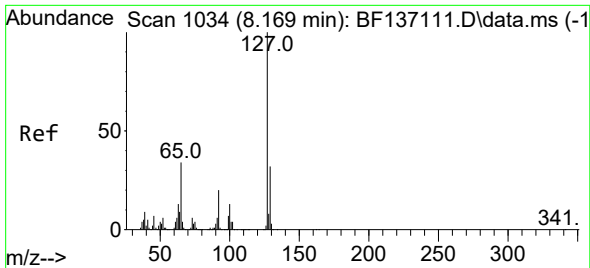


#32
 Benzoic acid
 Concen: 7.249 ng
 RT: 7.810 min Scan# 973
 Delta R.T. -0.053 min
 Lab File: BF137109.D
 Acq: 19 Jan 2024 13:55



Tgt Ion:122 Resp: 46530
 Ion Ratio Lower Upper
 122 100
 105 127.1 107.0 147.0
 77 97.3 76.3 116.3



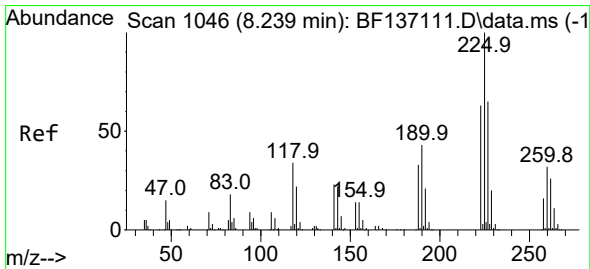
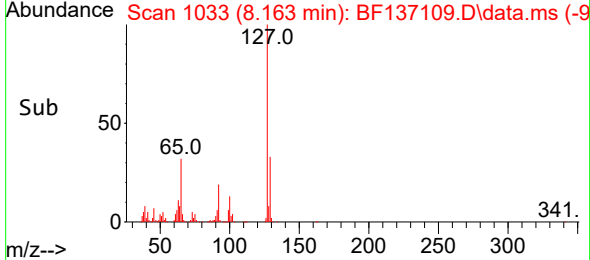
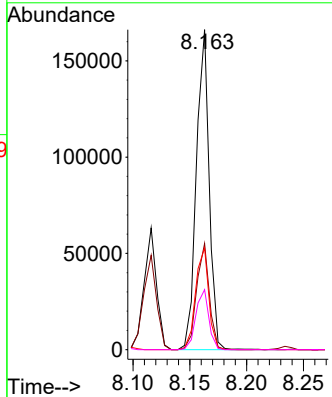
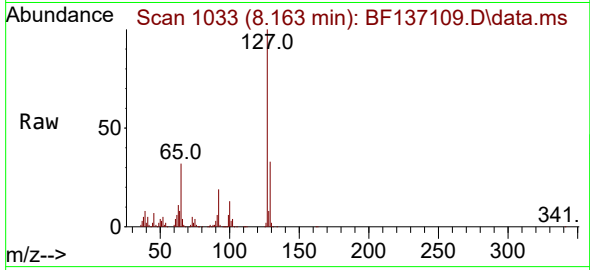


#33
 4-Chloroaniline
 Concen: 10.157 ng
 RT: 8.163 min Scan# 1033
 Delta R.T. -0.006 min
 Lab File: BF137109.D
 Acq: 19 Jan 2024 13:55

Instrument : BNA_F
 ClientSampleId : SSTDICC010

Tgt Ion:127 Resp: 130855

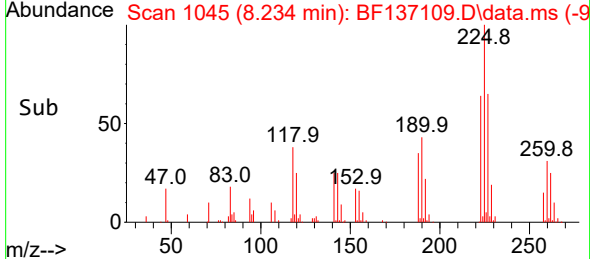
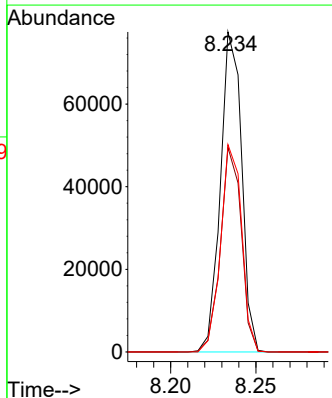
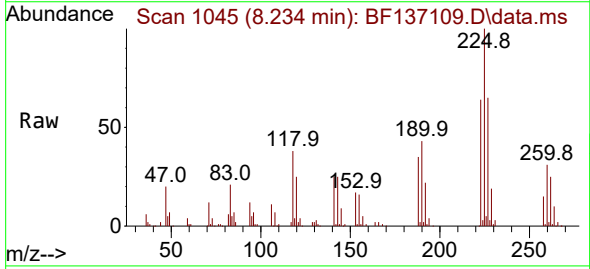
Ion	Ratio	Lower	Upper
127	100		
129	33.2	25.8	38.6
65	31.8	26.9	40.3
92	18.7	15.8	23.6

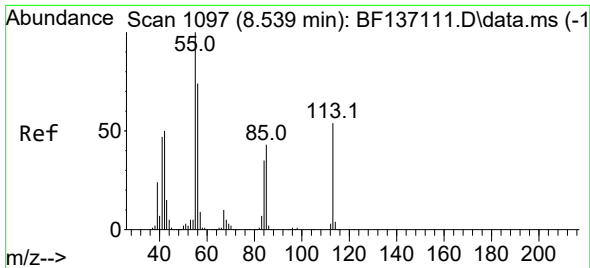


#34
 Hexachlorobutadiene
 Concen: 10.529 ng
 RT: 8.234 min Scan# 1045
 Delta R.T. -0.006 min
 Lab File: BF137109.D
 Acq: 19 Jan 2024 13:55

Tgt Ion:225 Resp: 66992

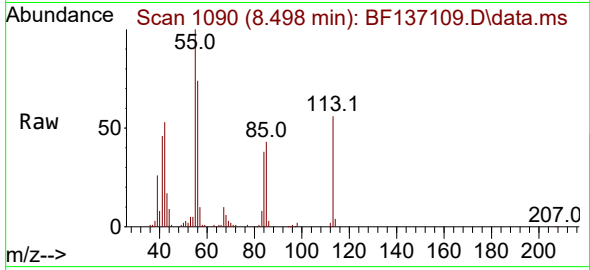
Ion	Ratio	Lower	Upper
225	100		
223	63.9	50.6	76.0
227	64.8	51.9	77.9



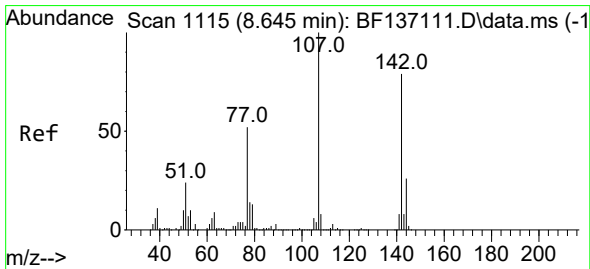
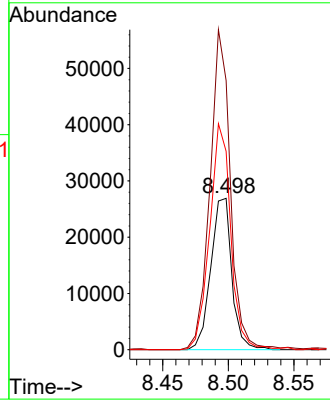
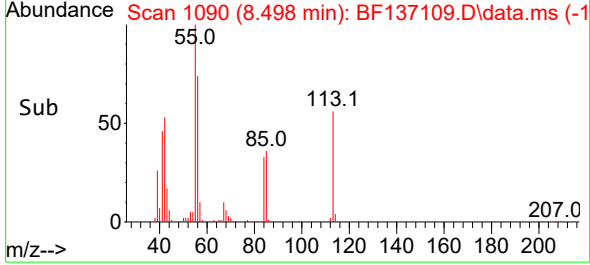


#35
 Caprolactam
 Concen: 9.933 ng
 RT: 8.498 min Scan# 1097
 Delta R.T. -0.041 min
 Lab File: BF137109.D
 Acq: 19 Jan 2024 13:55

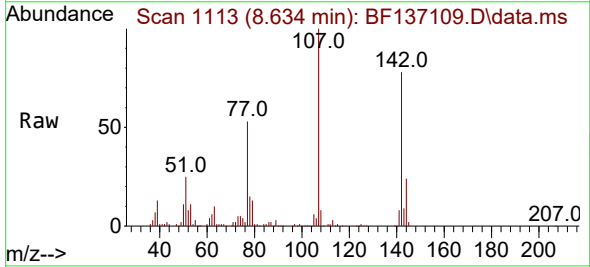
Instrument : BNA_F
 ClientSampleId : SSTDICC010



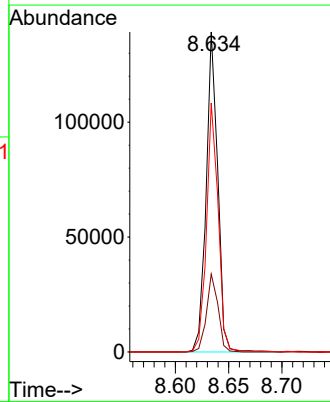
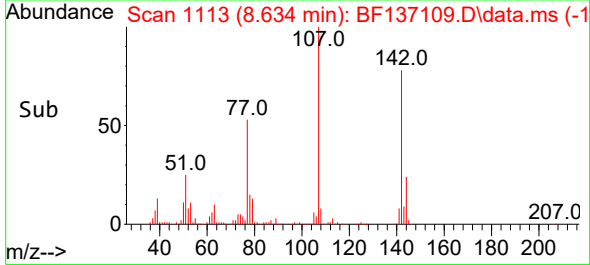
Tgt Ion:113 Resp: 30002
 Ion Ratio Lower Upper
 113 100
 55 177.8 166.5 206.5
 56 131.1 117.1 157.1

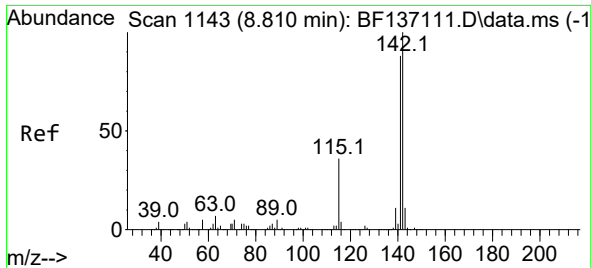


#36
 4-Chloro-3-methylphenol
 Concen: 10.213 ng
 RT: 8.634 min Scan# 1113
 Delta R.T. -0.011 min
 Lab File: BF137109.D
 Acq: 19 Jan 2024 13:55



Tgt Ion:107 Resp: 105616
 Ion Ratio Lower Upper
 107 100
 144 24.3 20.5 30.7
 142 77.8 63.3 94.9

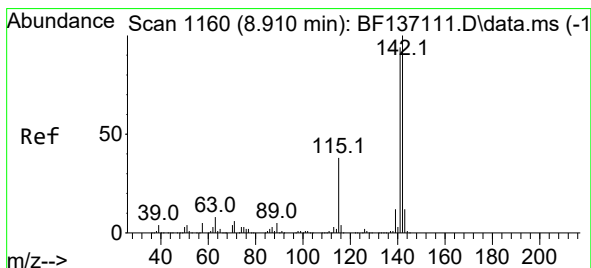
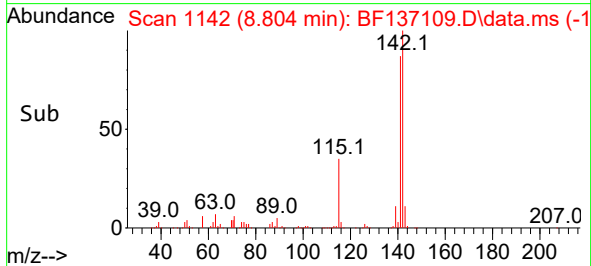
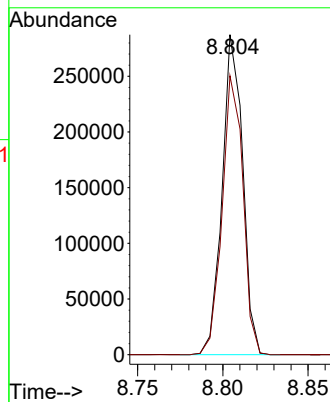
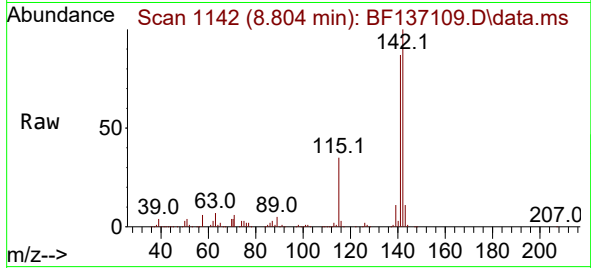




#37
 2-Methylnaphthalene
 Concen: 10.793 ng
 RT: 8.804 min Scan# 1142
 Delta R.T. -0.006 min
 Lab File: BF137109.D
 Acq: 19 Jan 2024 13:55

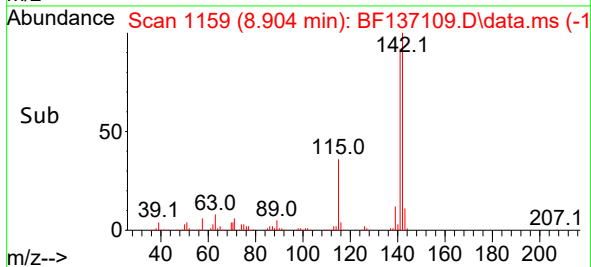
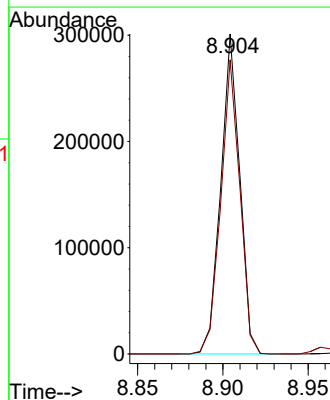
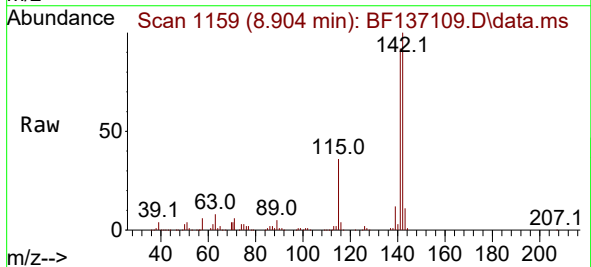
Instrument : BNA_F
 Client SampleId : SSTDICC010

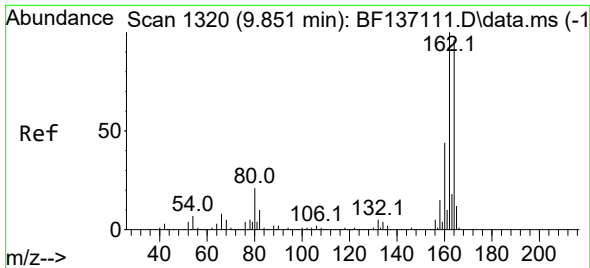
Tgt Ion:142 Resp: 240524
 Ion Ratio Lower Upper
 142 100
 141 87.2 70.7 106.1



#38
 1-Methylnaphthalene
 Concen: 10.727 ng
 RT: 8.904 min Scan# 1159
 Delta R.T. -0.006 min
 Lab File: BF137109.D
 Acq: 19 Jan 2024 13:55

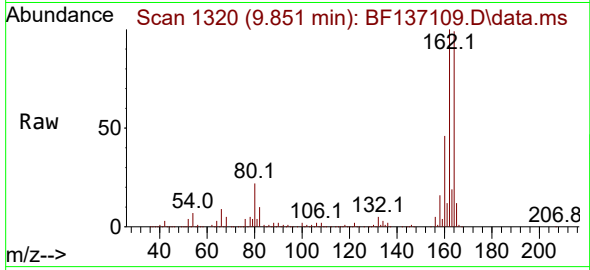
Tgt Ion:142 Resp: 233180
 Ion Ratio Lower Upper
 142 100
 141 92.0 74.8 112.2



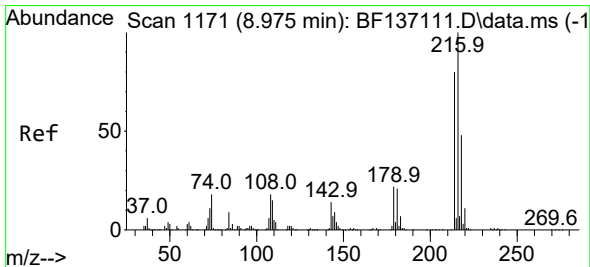
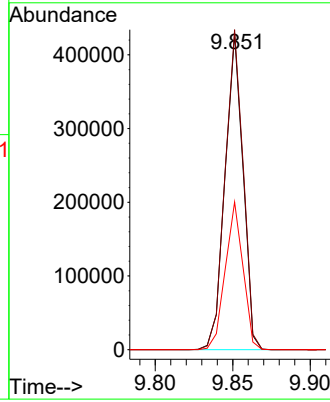
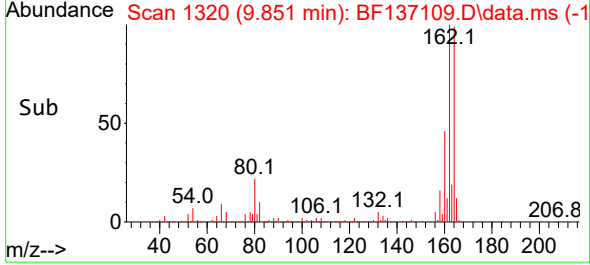


#39
 Acenaphthene-d10
 Concen: 20.000 ng
 RT: 9.851 min Scan# 11170
 Delta R.T. 0.000 min
 Lab File: BF137109.D
 Acq: 19 Jan 2024 13:55

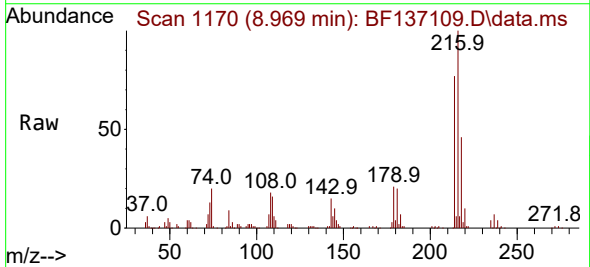
Instrument : BNA_F
 ClientSampleId : SSTDICC010



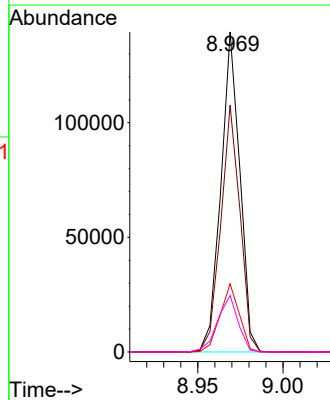
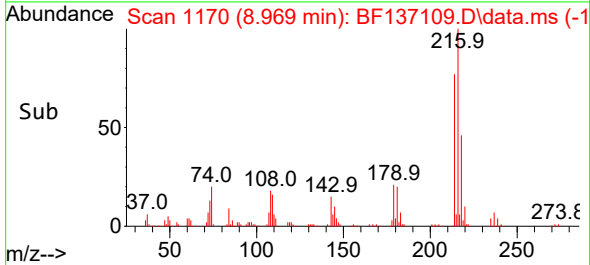
Tgt Ion:164 Resp: 346168
 Ion Ratio Lower Upper
 164 100
 162 101.3 83.1 124.7
 160 46.8 36.7 55.1

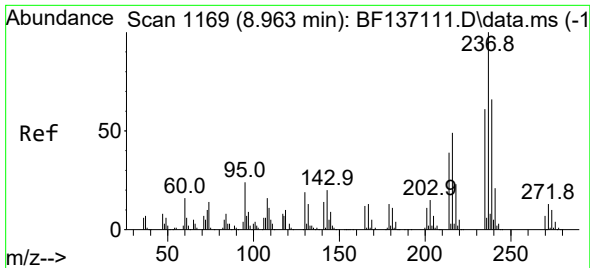


#40
 1,2,4,5-Tetrachlorobenzene
 Concen: 10.659 ng
 RT: 8.969 min Scan# 1170
 Delta R.T. -0.006 min
 Lab File: BF137109.D
 Acq: 19 Jan 2024 13:55



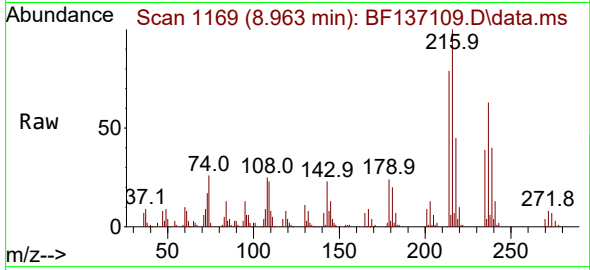
Tgt Ion:216 Resp: 107995
 Ion Ratio Lower Upper
 216 100
 214 77.7 63.4 95.2
 179 21.6 18.2 27.4
 108 19.2 16.6 24.8



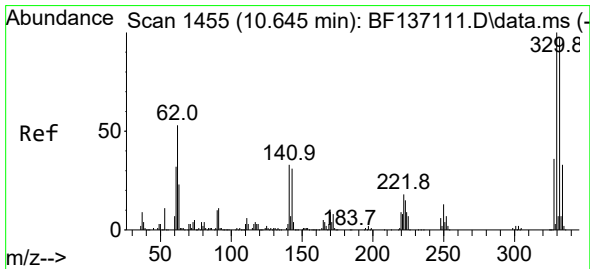
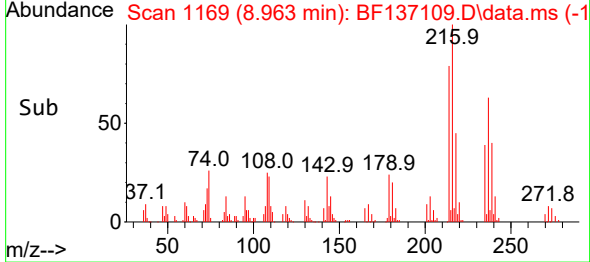
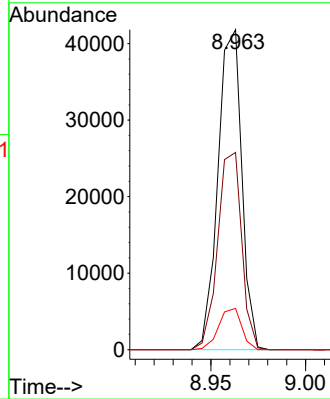


#41
 Hexachlorocyclopentadiene
 Concen: 9.411 ng
 RT: 8.963 min Scan# 1169
 Delta R.T. 0.000 min
 Lab File: BF137109.D
 Acq: 19 Jan 2024 13:55

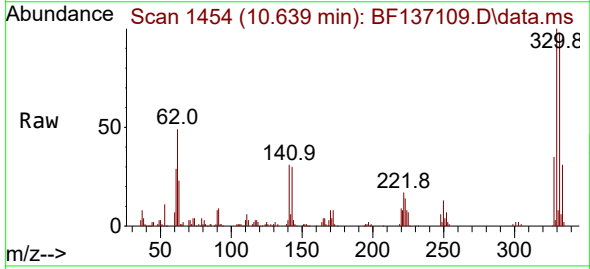
Instrument : BNA_F
 ClientSampleId : SSTDICC010



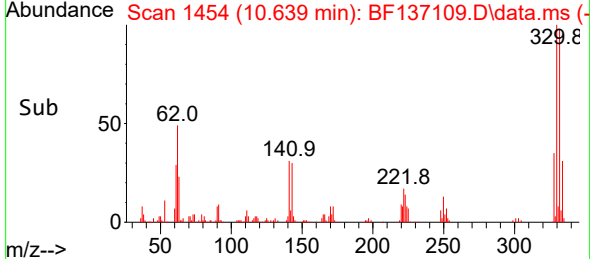
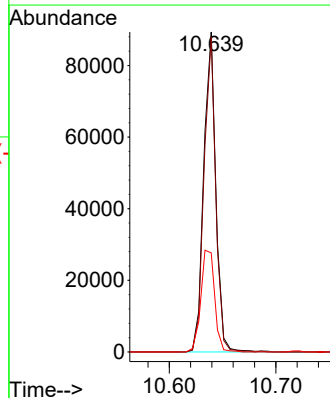
Tgt Ion:237 Resp: 36633
 Ion Ratio Lower Upper
 237 100
 235 61.7 41.3 81.3
 272 12.9 0.0 32.5

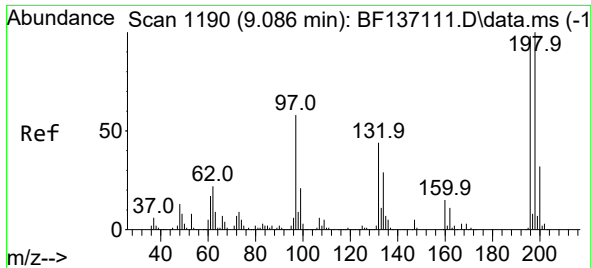


#42
 2,4,6-Tribromophenol
 Concen: 21.063 ng
 RT: 10.639 min Scan# 1454
 Delta R.T. -0.006 min
 Lab File: BF137109.D
 Acq: 19 Jan 2024 13:55



Tgt Ion:330 Resp: 70597
 Ion Ratio Lower Upper
 330 100
 332 95.1 77.3 115.9
 141 36.5 30.2 45.4



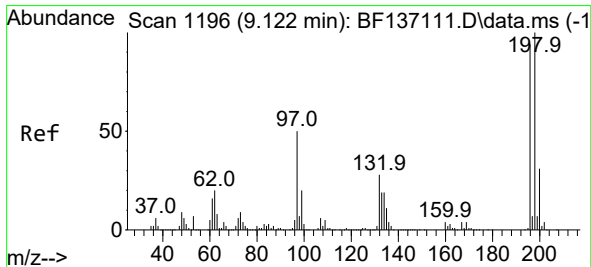
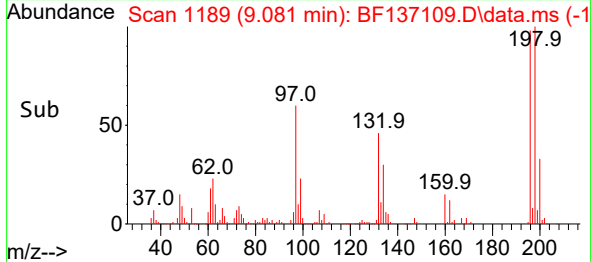
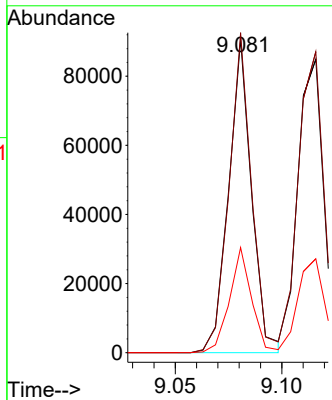
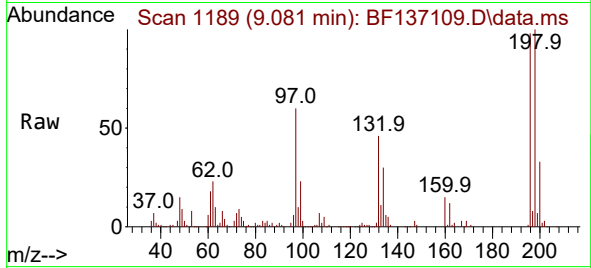


#43
 2,4,6-Trichlorophenol
 Concen: 10.297 ng
 RT: 9.081 min Scan# 1118
 Delta R.T. -0.006 min
 Lab File: BF137109.D
 Acq: 19 Jan 2024 13:55

Instrument : BNA_F
 Client Sample Id : SSTDICC010

Tgt Ion:196 Resp: 67907

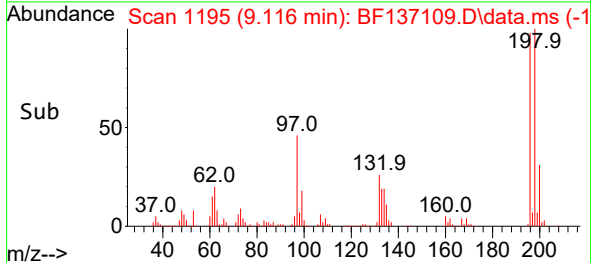
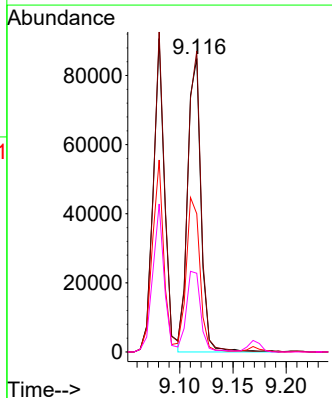
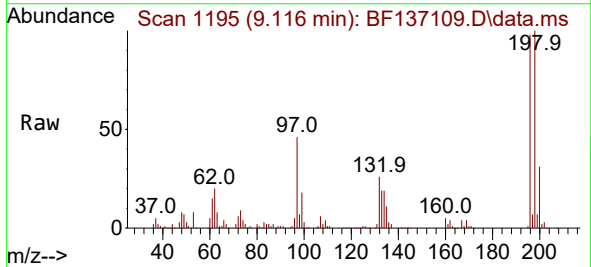
Ion	Ratio	Lower	Upper
196	100		
198	102.1	81.8	122.8
200	33.5	26.3	39.5

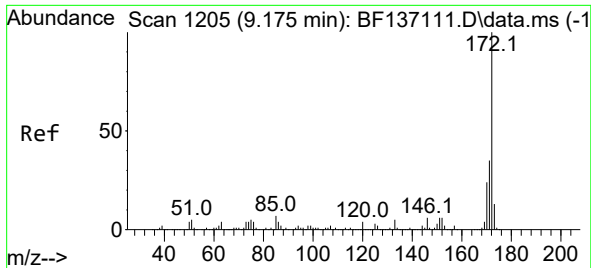


#44
 2,4,5-Trichlorophenol
 Concen: 10.302 ng
 RT: 9.116 min Scan# 1195
 Delta R.T. -0.006 min
 Lab File: BF137109.D
 Acq: 19 Jan 2024 13:55

Tgt Ion:196 Resp: 74060

Ion	Ratio	Lower	Upper
196	100		
198	102.5	84.6	126.8
97	47.1	41.8	62.8
132	26.8	23.7	35.5

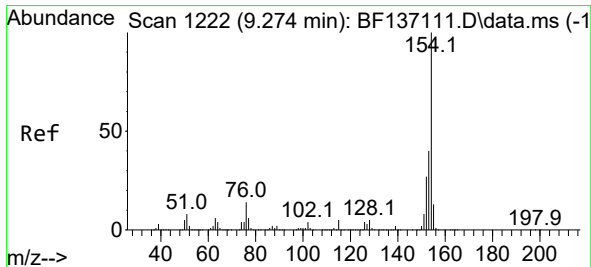
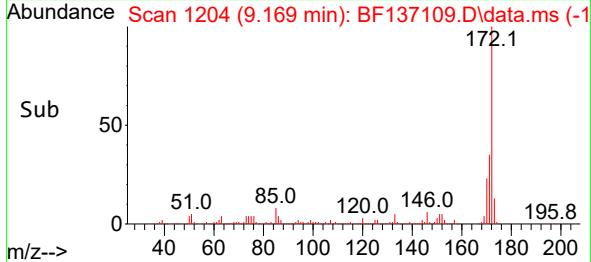
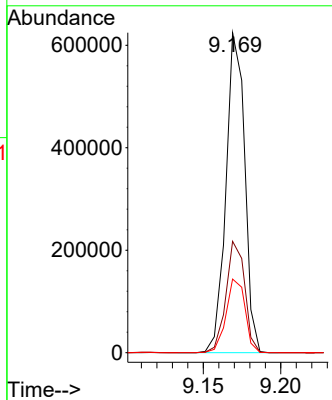
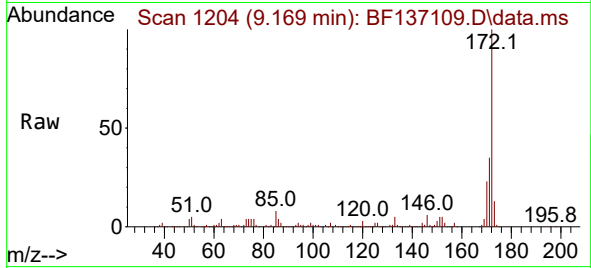




#45
 2-Fluorobiphenyl
 Concen: 22.746 ng
 RT: 9.169 min Scan# 11
 Delta R.T. -0.006 min
 Lab File: BF137109.D
 Acq: 19 Jan 2024 13:55

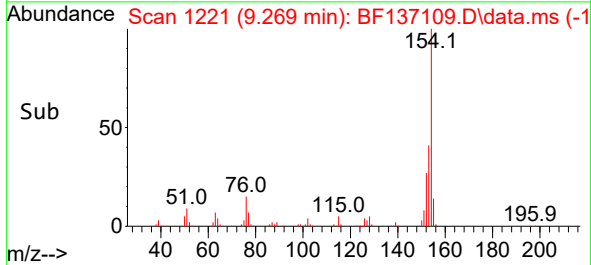
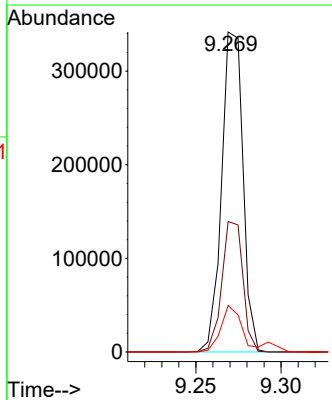
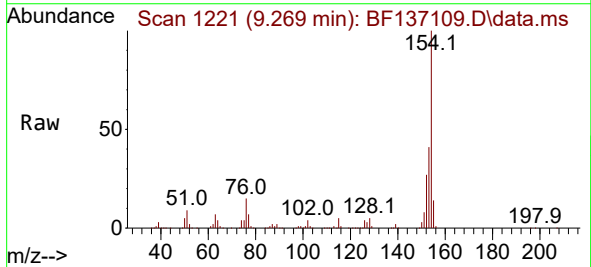
Instrument : BNA_F
 ClientSampleId : SSTDICC010

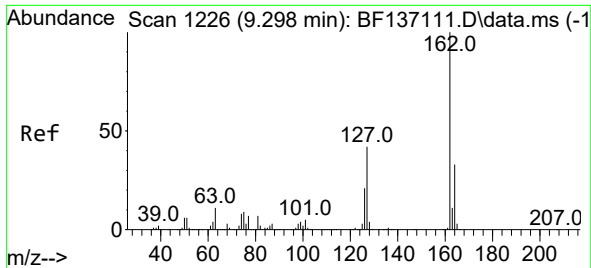
Tgt Ion	Resp	Lower	Upper
172	524609		
171	100	34.8	42.5
170	100	23.0	28.6



#46
 1,1'-Biphenyl
 Concen: 10.592 ng
 RT: 9.269 min Scan# 1221
 Delta R.T. -0.006 min
 Lab File: BF137109.D
 Acq: 19 Jan 2024 13:55

Tgt Ion	Resp	Lower	Upper
154	298491		
153	100	40.8	60.1
76	100	14.5	33.5





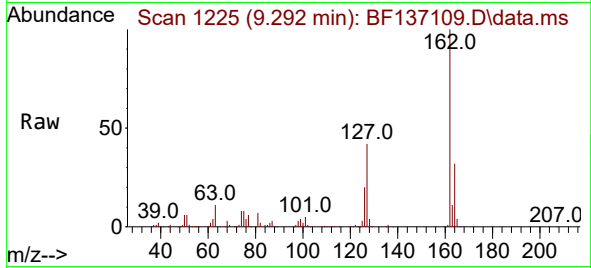
#47
 2-Chloronaphthalene
 Concen: 10.534 ng
 RT: 9.292 min Scan# 11
 Delta R.T. -0.006 min
 Lab File: BF137109.D
 Acq: 19 Jan 2024 13:55

Instrument :

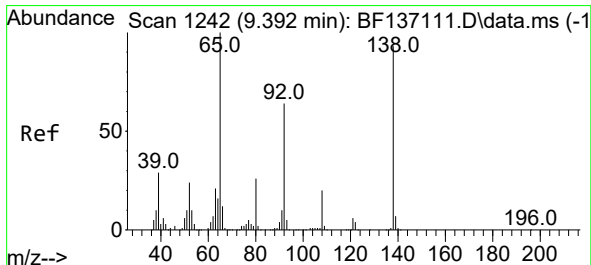
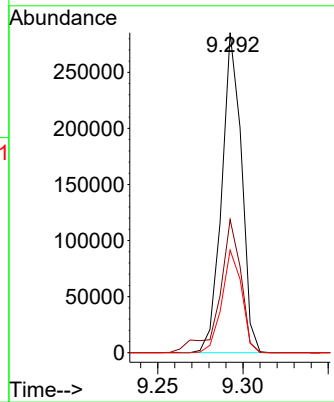
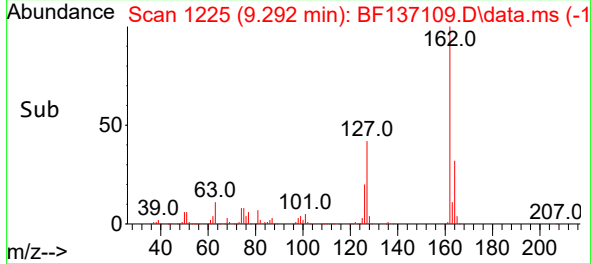
BNA_F

ClientSampleId :

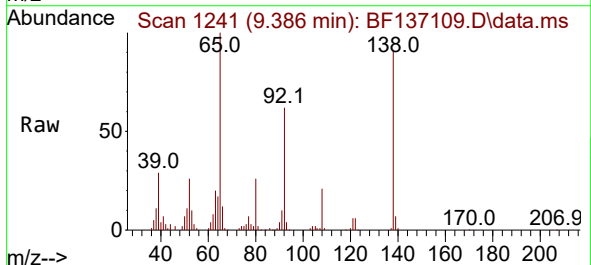
SSTDICC010



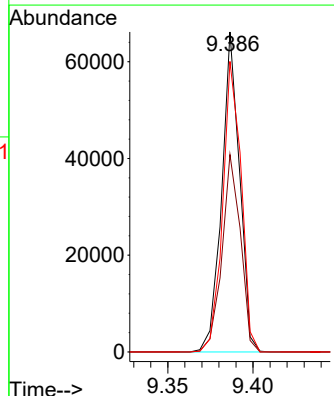
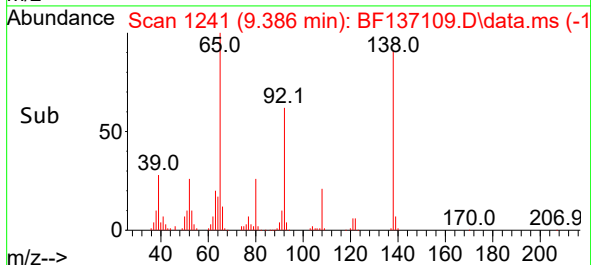
Tgt Ion:162 Resp: 229894
 Ion Ratio Lower Upper
 162 100
 127 41.6 33.8 50.8
 164 32.0 26.4 39.6

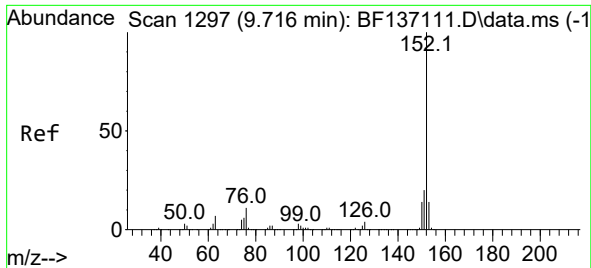


#48
 2-Nitroaniline
 Concen: 8.389 ng
 RT: 9.386 min Scan# 1241
 Delta R.T. -0.005 min
 Lab File: BF137109.D
 Acq: 19 Jan 2024 13:55



Tgt Ion: 65 Resp: 48092
 Ion Ratio Lower Upper
 65 100
 92 61.7 51.1 76.7
 138 90.8 74.2 111.4





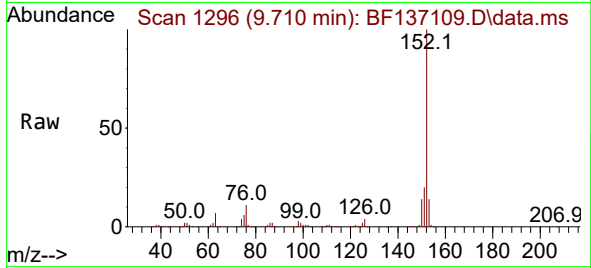
#49
 Acenaphthylene
 Concen: 10.637 ng
 RT: 9.710 min Scan# 11
 Delta R.T. -0.006 min
 Lab File: BF137109.D
 Acq: 19 Jan 2024 13:55

Instrument :

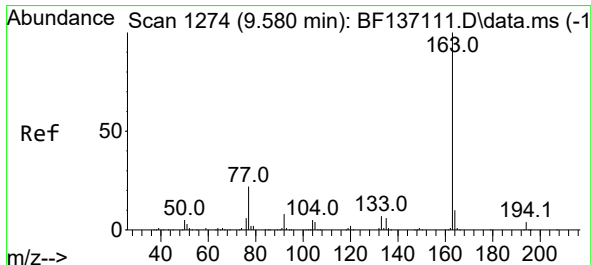
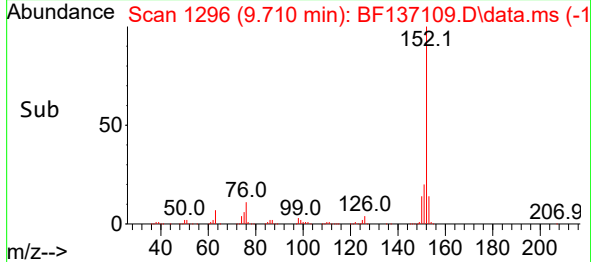
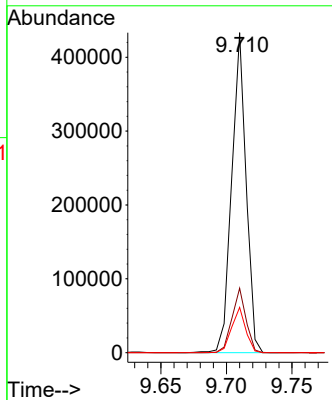
BNA_F

ClientSampleId :

SSTDICC010

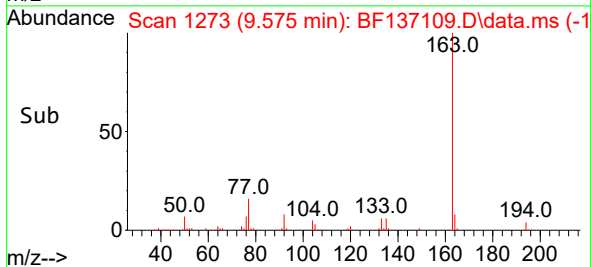
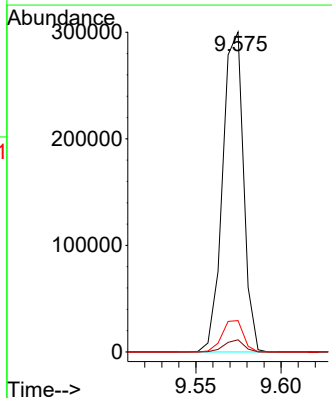
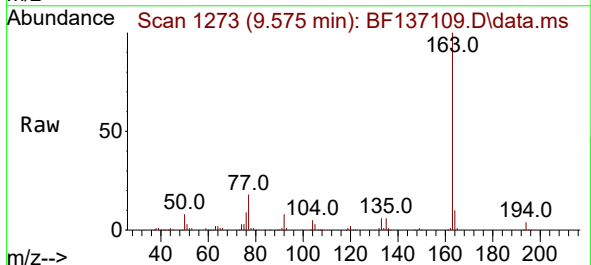


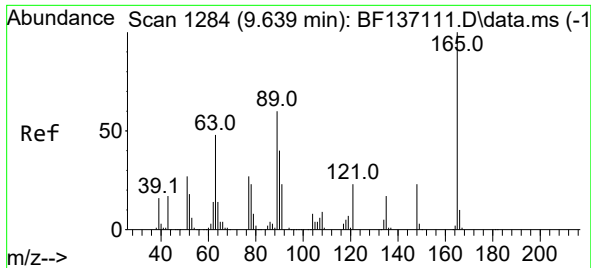
Tgt Ion:152 Resp: 330594
 Ion Ratio Lower Upper
 152 100
 151 20.2 16.2 24.2
 153 14.2 11.0 16.6



#50
 Dimethylphthalate
 Concen: 10.586 ng
 RT: 9.575 min Scan# 1273
 Delta R.T. -0.006 min
 Lab File: BF137109.D
 Acq: 19 Jan 2024 13:55

Tgt Ion:163 Resp: 256398
 Ion Ratio Lower Upper
 163 100
 194 3.8 3.0 4.6
 164 9.8 8.3 12.5





#51
 2,6-Dinitrotoluene
 Concen: 9.205 ng
 RT: 9.634 min Scan# 11
 Delta R.T. -0.006 min
 Lab File: BF137109.D
 Acq: 19 Jan 2024 13:55

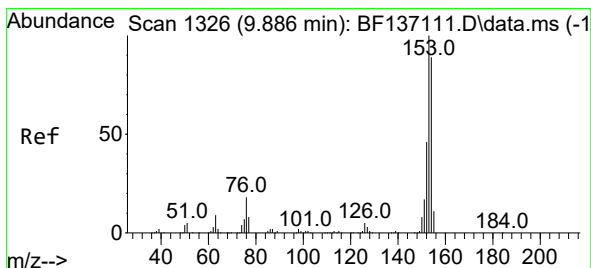
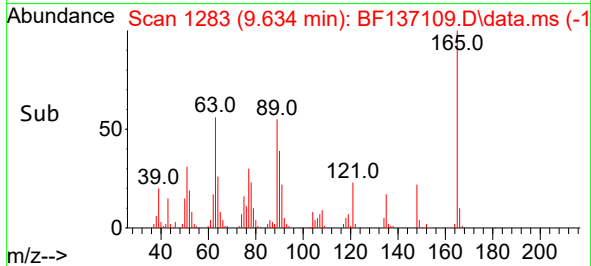
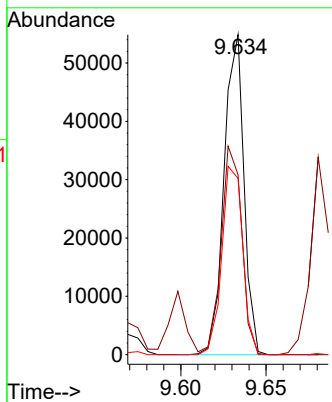
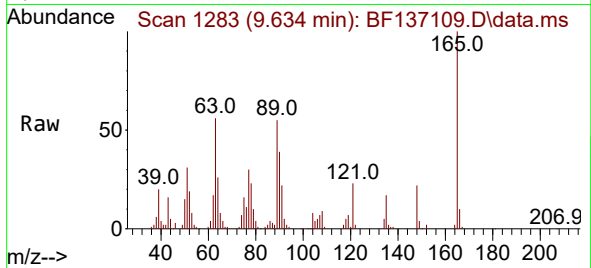
Instrument :

BNA_F

ClientSampleId :

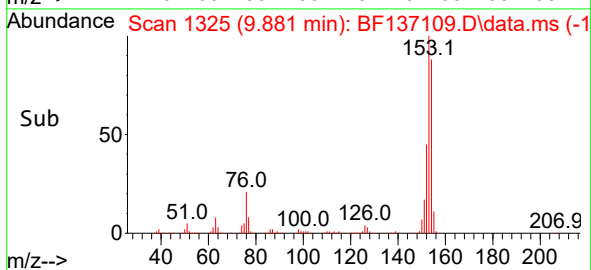
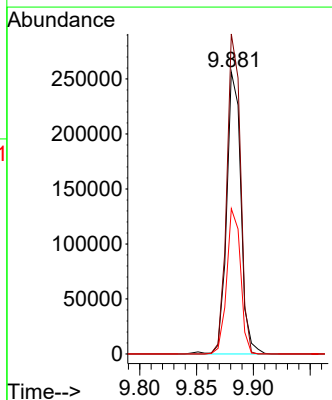
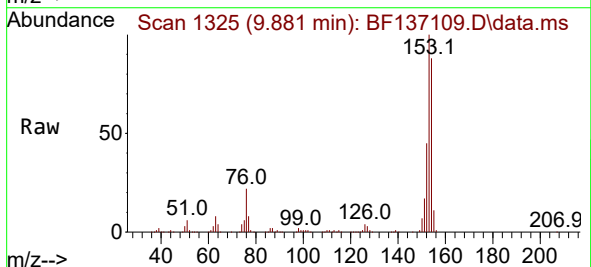
SSTDICC010

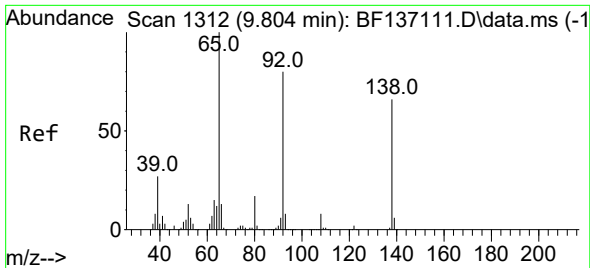
Tgt Ion:165 Resp: 44443
 Ion Ratio Lower Upper
 165 100
 63 56.2 50.8 76.2
 89 55.1 48.1 72.1



#52
 Acenaphthene
 Concen: 10.776 ng
 RT: 9.881 min Scan# 1325
 Delta R.T. -0.006 min
 Lab File: BF137109.D
 Acq: 19 Jan 2024 13:55

Tgt Ion:154 Resp: 223111
 Ion Ratio Lower Upper
 154 100
 153 113.5 89.9 134.9
 152 51.5 41.1 61.7

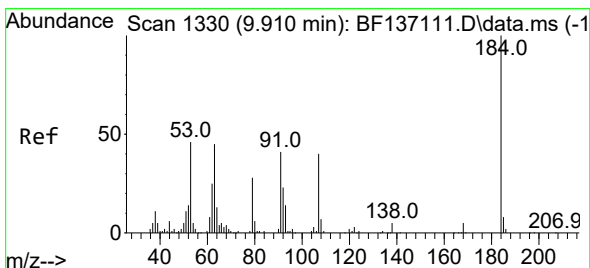
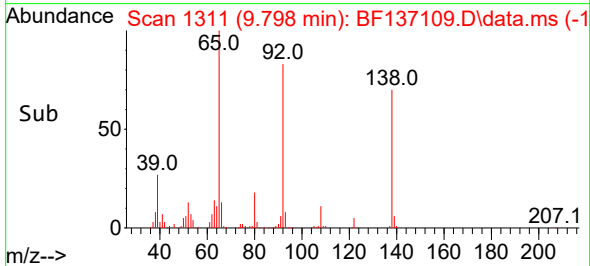
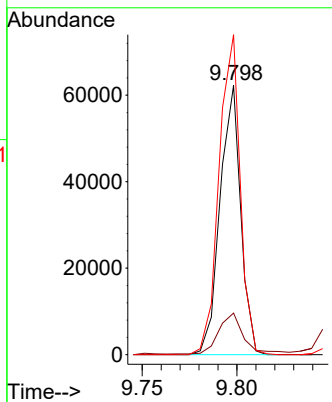
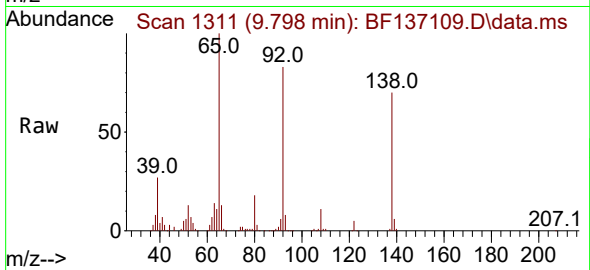




#53
 3-Nitroaniline
 Concen: 9.194 ng
 RT: 9.798 min Scan# 11
 Delta R.T. -0.006 min
 Lab File: BF137109.D
 Acq: 19 Jan 2024 13:55

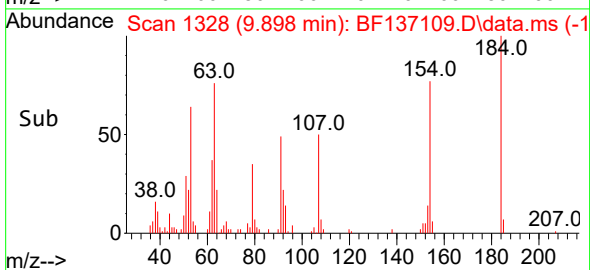
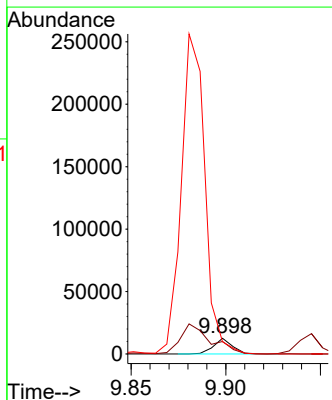
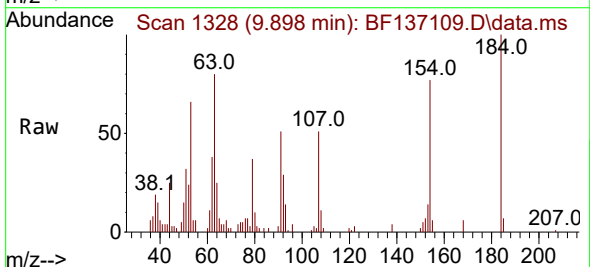
Instrument : BNA_F
 ClientSampleId : SSTDICC010

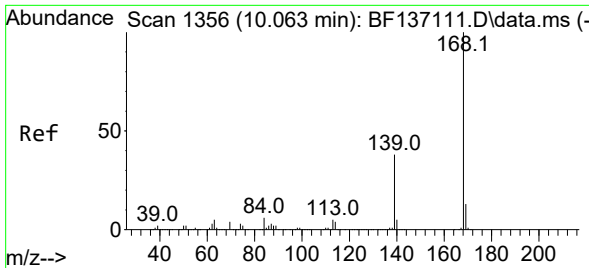
Tgt Ion:138 Resp: 47319
 Ion Ratio Lower Upper
 138 100
 108 15.5 10.1 15.1#
 92 118.8 96.8 145.2



#54
 2,4-Dinitrophenol
 Concen: 5.629 ng
 RT: 9.898 min Scan# 1328
 Delta R.T. -0.012 min
 Lab File: BF137109.D
 Acq: 19 Jan 2024 13:55

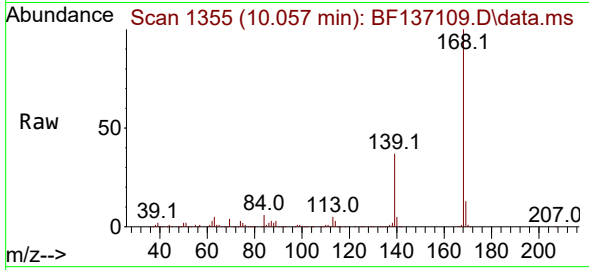
Tgt Ion:184 Resp: 8591
 Ion Ratio Lower Upper
 184 100
 63 79.6 47.8 71.8#
 154 77.2 49.2 73.8#



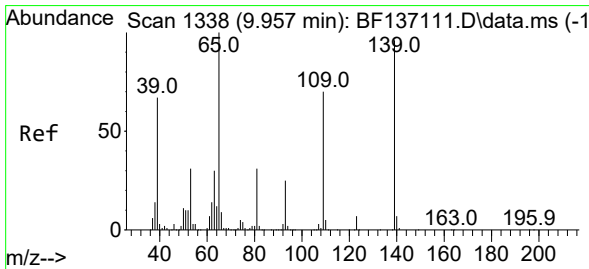
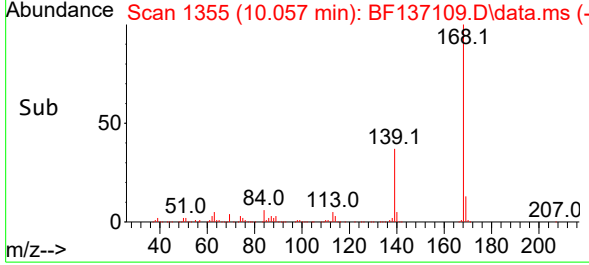
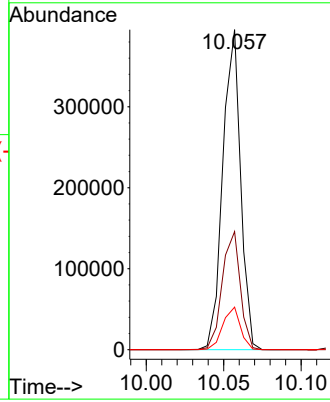


#55
 Dibenzofuran
 Concen: 10.815 ng
 RT: 10.057 min Scan# 11
 Delta R.T. -0.006 min
 Lab File: BF137109.D
 Acq: 19 Jan 2024 13:55

Instrument :
 BNA_F
 ClientSampleId :
 SSTDICC010

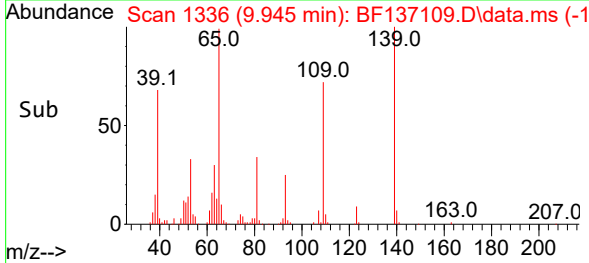
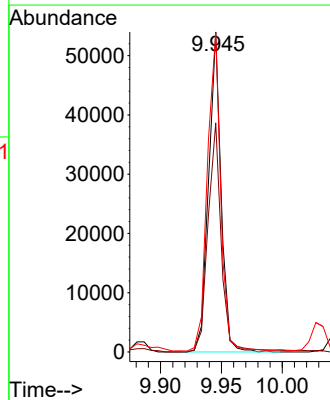
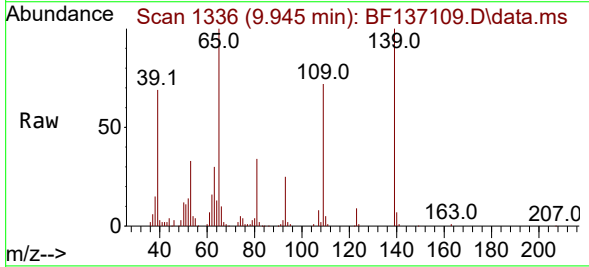


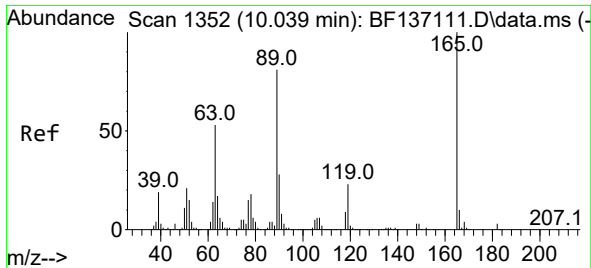
Tgt Ion:168 Resp: 315847
 Ion Ratio Lower Upper
 168 100
 139 36.9 30.6 45.8
 169 13.3 10.6 16.0



#56
 4-Nitrophenol
 Concen: 9.230 ng
 RT: 9.945 min Scan# 1336
 Delta R.T. -0.012 min
 Lab File: BF137109.D
 Acq: 19 Jan 2024 13:55

Tgt Ion:139 Resp: 38548
 Ion Ratio Lower Upper
 139 100
 109 71.6 53.4 93.4
 65 99.8 84.7 124.7





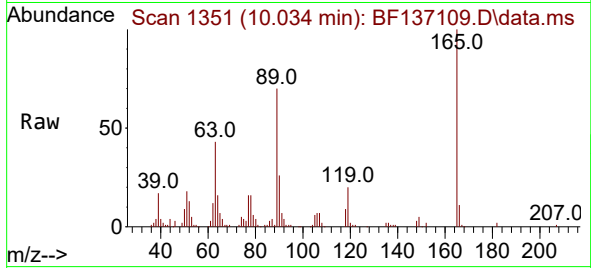
#57
 2,4-Dinitrotoluene
 Concen: 8.481 ng
 RT: 10.034 min Scan# 11
 Delta R.T. -0.005 min
 Lab File: BF137109.D
 Acq: 19 Jan 2024 13:55

Instrument :

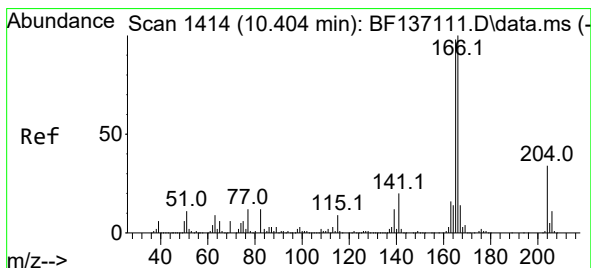
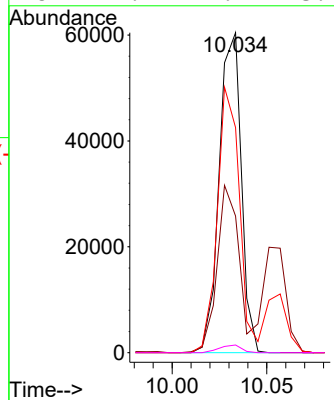
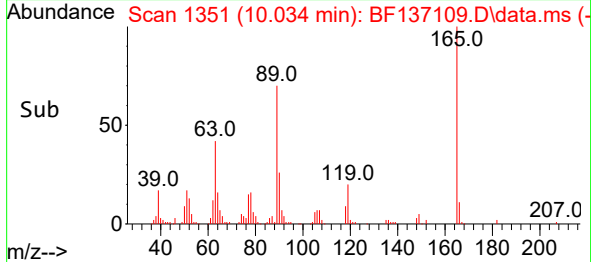
BNA_F

ClientSampleId :

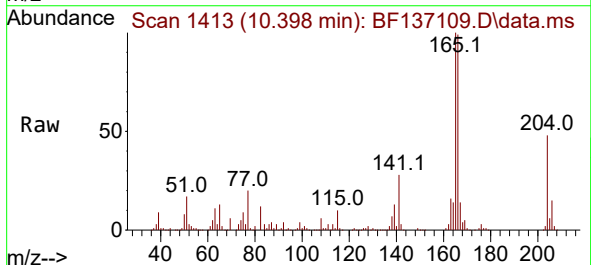
SSTDICC010



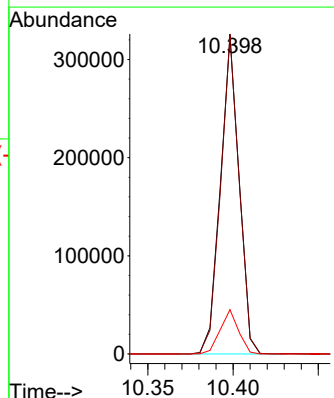
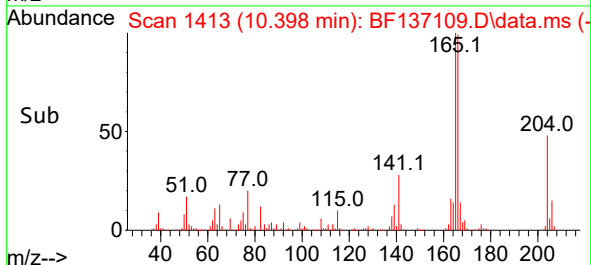
Tgt Ion:165 Resp: 48968
 Ion Ratio Lower Upper
 165 100
 63 42.7 42.3 63.5
 89 70.3 65.0 97.4
 182 2.4 2.2 3.2

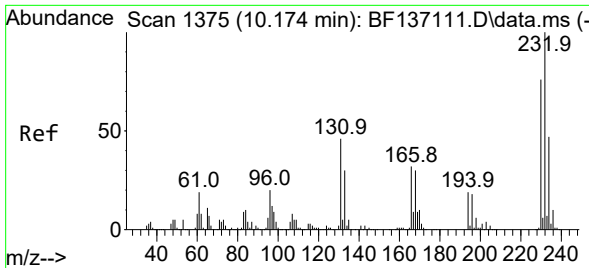


#58
 Fluorene
 Concen: 11.256 ng
 RT: 10.398 min Scan# 1413
 Delta R.T. -0.006 min
 Lab File: BF137109.D
 Acq: 19 Jan 2024 13:55



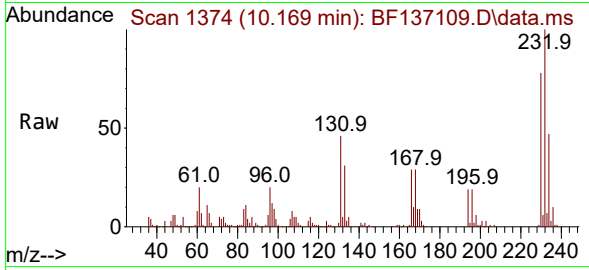
Tgt Ion:166 Resp: 247434
 Ion Ratio Lower Upper
 166 100
 165 100.6 78.5 117.7
 167 13.9 11.0 16.6



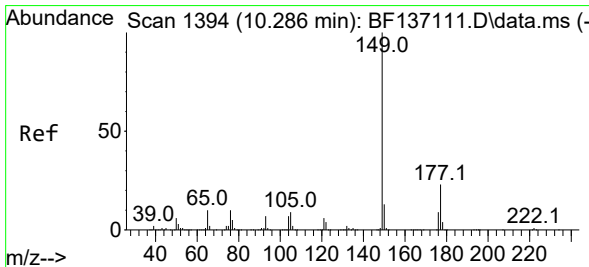
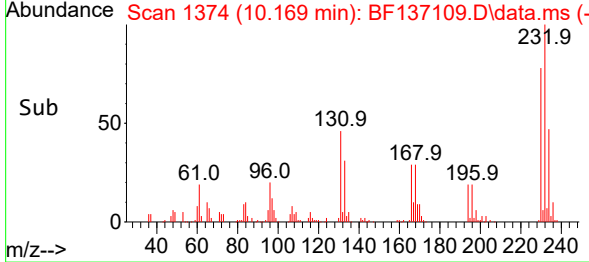
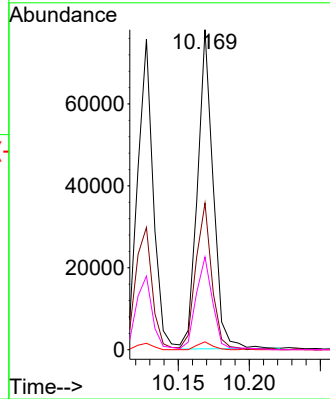


#59
 2,3,4,6-Tetrachlorophenol
 Concen: 10.677 ng
 RT: 10.169 min Scan# 1374
 Delta R.T. -0.006 min
 Lab File: BF137109.D
 Acq: 19 Jan 2024 13:55

Instrument : BNA_F
 ClientSampleId : SSTDICC010

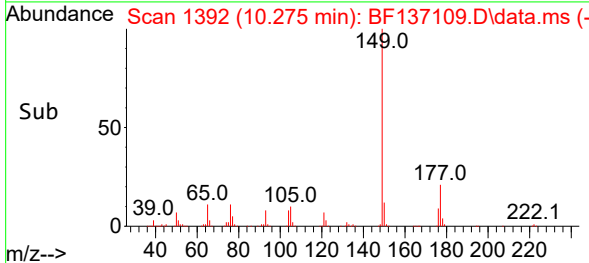
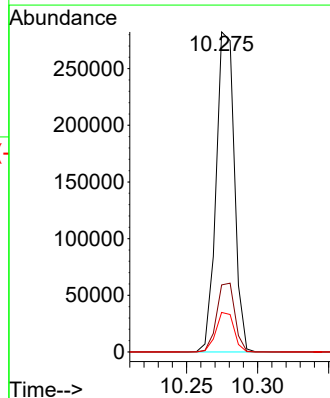
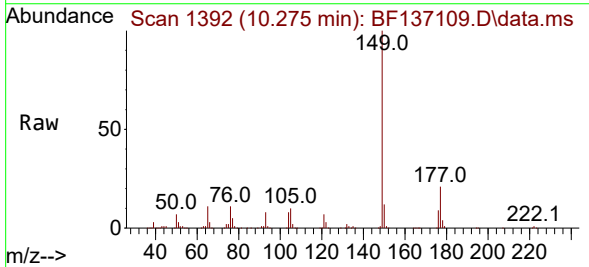


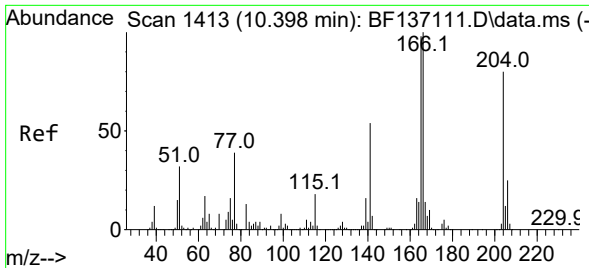
Tgt Ion:232 Resp: 59536
 Ion Ratio Lower Upper
 232 100
 131 47.1 38.4 57.6
 130 2.4 1.9 2.9
 166 31.1 26.0 39.0



#60
 Diethylphthalate
 Concen: 10.527 ng
 RT: 10.275 min Scan# 1392
 Delta R.T. -0.012 min
 Lab File: BF137109.D
 Acq: 19 Jan 2024 13:55

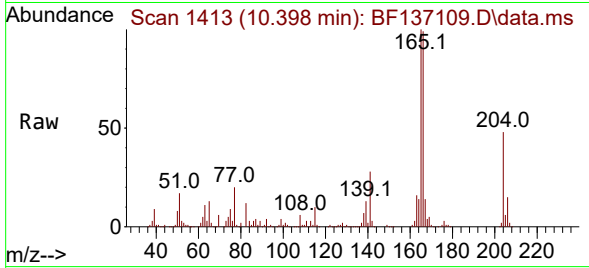
Tgt Ion:149 Resp: 250938
 Ion Ratio Lower Upper
 149 100
 177 21.0 18.1 27.1
 150 12.3 10.1 15.1



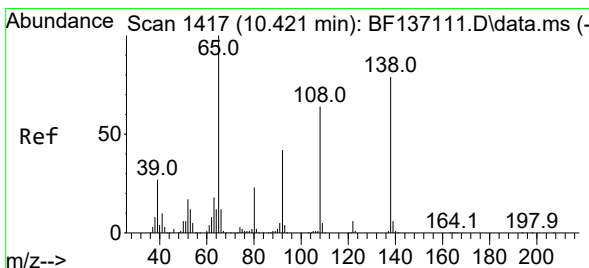
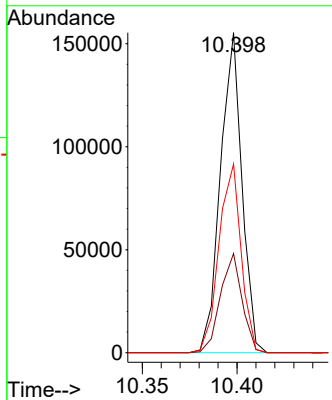
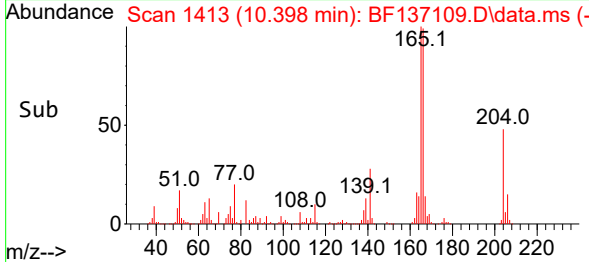


#61
 4-Chlorophenyl-phenylether
 Concen: 11.162 ng
 RT: 10.398 min Scan# 1413
 Delta R.T. 0.000 min
 Lab File: BF137109.D
 Acq: 19 Jan 2024 13:55

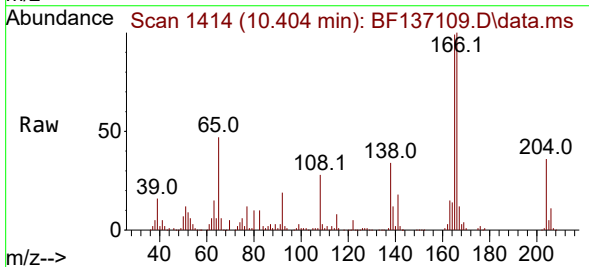
Instrument : BNA_F
 ClientSampleId : SSTDICC010



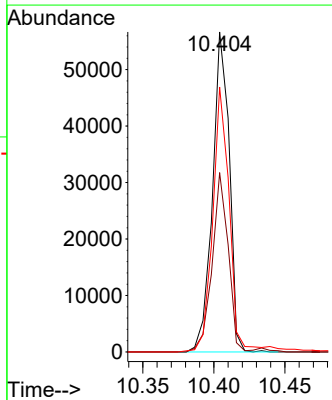
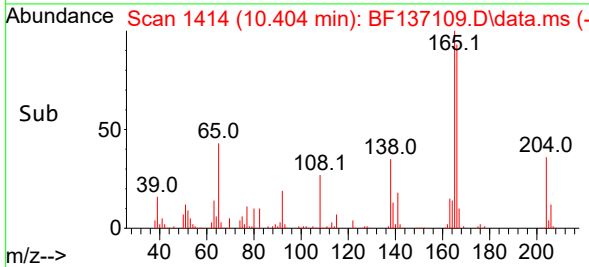
Tgt Ion: 204 Resp: 122565
 Ion Ratio Lower Upper
 204 100
 206 31.0 25.4 38.2
 141 59.0 54.4 81.6

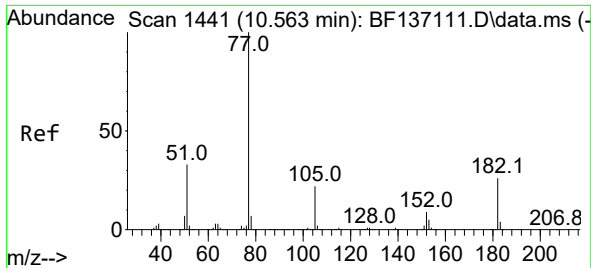


#62
 4-Nitroaniline
 Concen: 9.427 ng
 RT: 10.404 min Scan# 1414
 Delta R.T. -0.017 min
 Lab File: BF137109.D
 Acq: 19 Jan 2024 13:55



Tgt Ion: 138 Resp: 46256
 Ion Ratio Lower Upper
 138 100
 92 56.1 33.1 73.1
 108 82.8 60.6 100.6





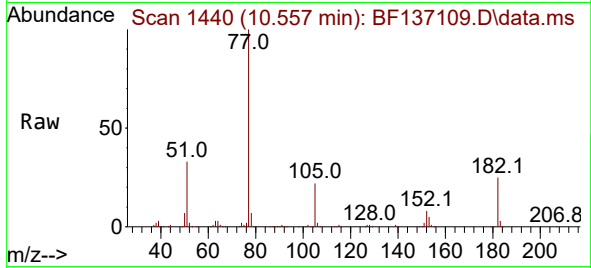
#63
 Azobenzene
 Concen: 10.572 ng
 RT: 10.557 min Scan# 14
 Delta R.T. -0.006 min
 Lab File: BF137109.D
 Acq: 19 Jan 2024 13:55

Instrument :

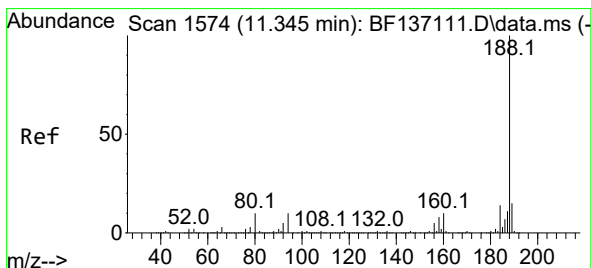
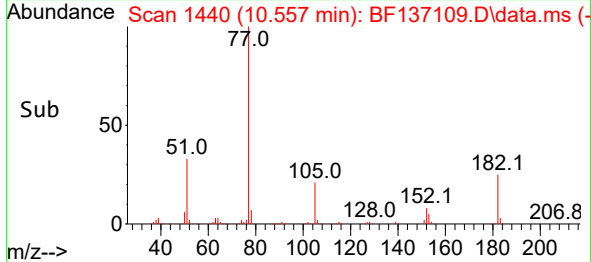
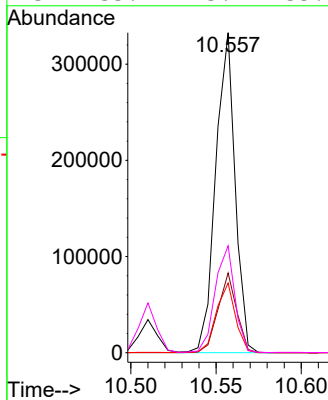
BNA_F

ClientSampleId :

SSTDICC010

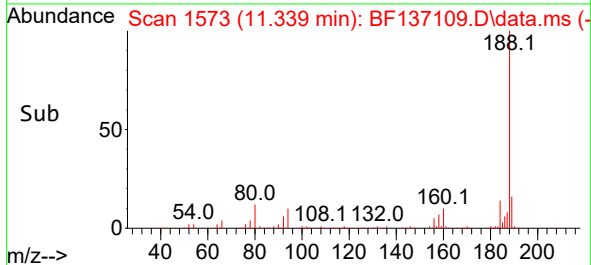
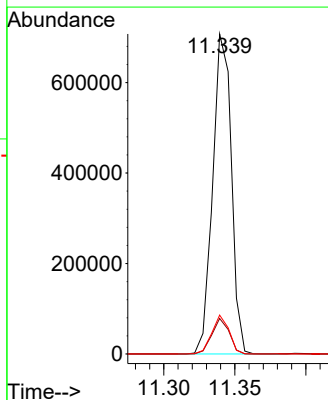
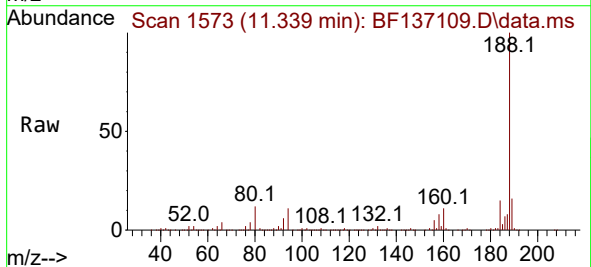


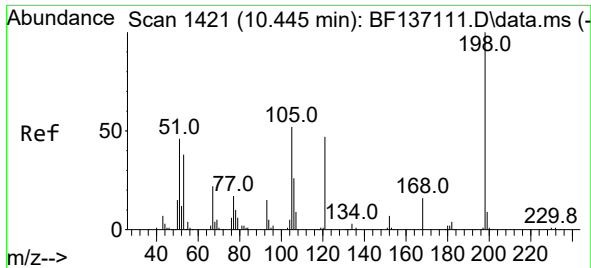
Tgt Ion: 77 Resp: 263773
 Ion Ratio Lower Upper
 77 100
 182 24.9 6.1 46.1
 105 21.7 2.2 42.2
 51 33.4 13.2 53.2



#64
 Phenanthrene-d10
 Concen: 20.000 ng
 RT: 11.339 min Scan# 1573
 Delta R.T. -0.006 min
 Lab File: BF137109.D
 Acq: 19 Jan 2024 13:55

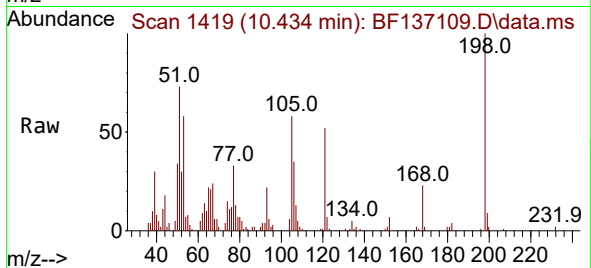
Tgt Ion: 188 Resp: 643688
 Ion Ratio Lower Upper
 188 100
 94 11.1 7.8 11.6
 80 12.1 8.2 12.2



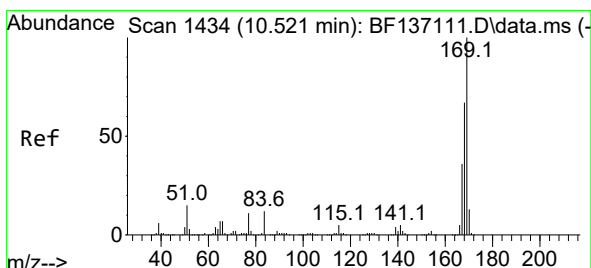
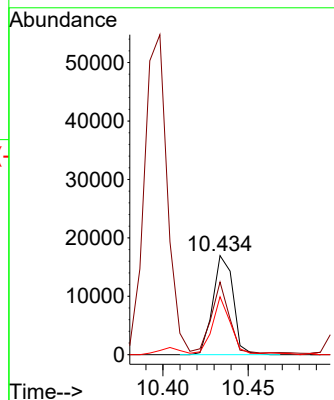
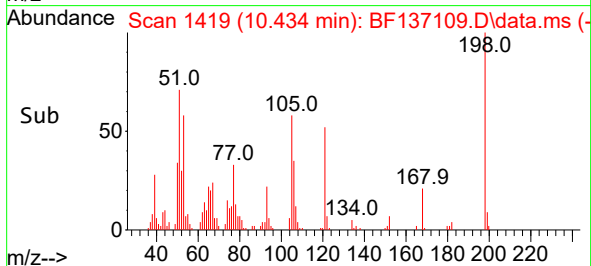


#65
 4,6-Dinitro-2-methylphenol
 Concen: 5.831 ng
 RT: 10.434 min Scan# 1419
 Delta R.T. -0.011 min
 Lab File: BF137109.D
 Acq: 19 Jan 2024 13:55

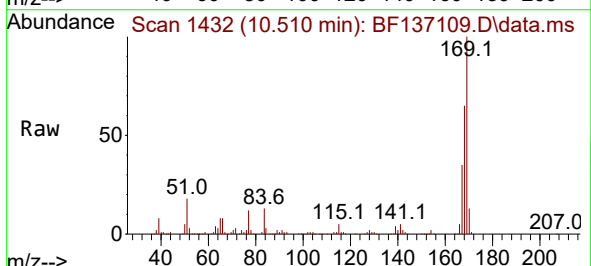
Instrument :
 BNA_F
 ClientSampleId :
 SSTDICC010



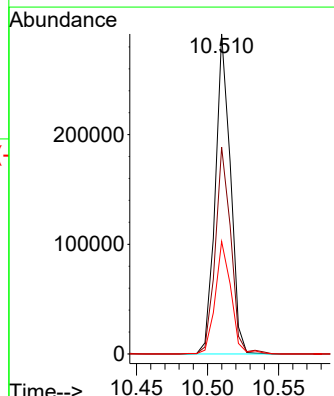
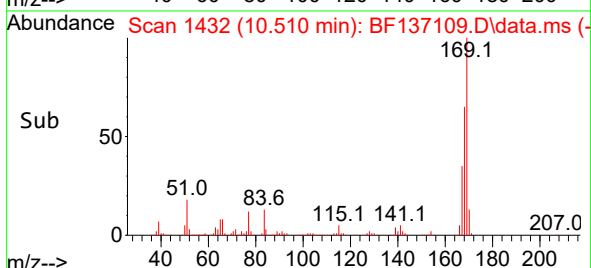
Tgt Ion:198 Resp: 14021
 Ion Ratio Lower Upper
 198 100
 51 73.2 44.4 84.4
 105 58.4 33.6 73.6

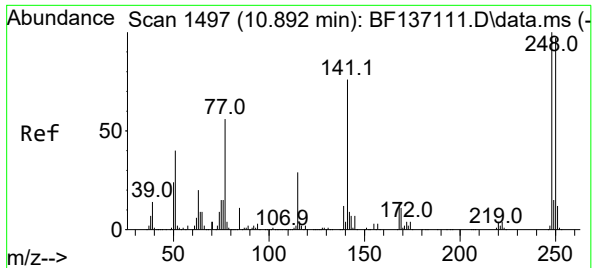


#66
 n-Nitrosodiphenylamine
 Concen: 10.481 ng
 RT: 10.510 min Scan# 1432
 Delta R.T. -0.011 min
 Lab File: BF137109.D
 Acq: 19 Jan 2024 13:55



Tgt Ion:169 Resp: 215387
 Ion Ratio Lower Upper
 169 100
 168 64.7 53.4 80.0
 167 35.2 28.8 43.2

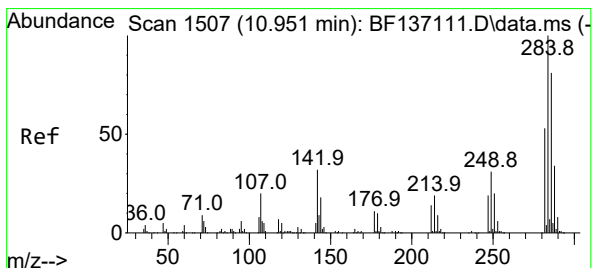
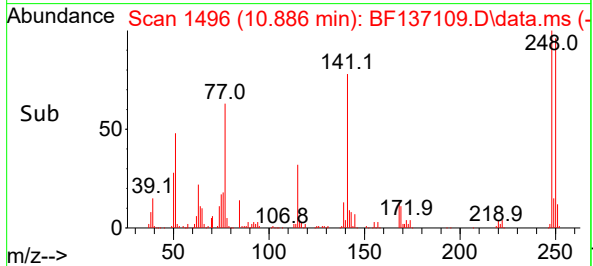
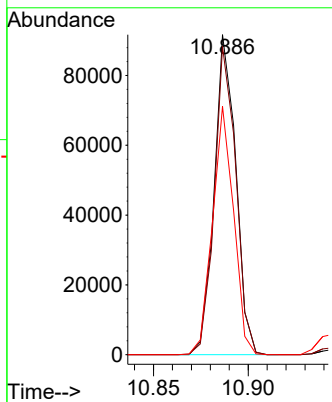
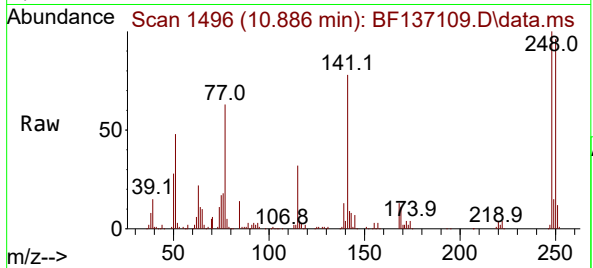




#67
 4-Bromophenyl-phenylether
 Concen: 10.446 ng
 RT: 10.886 min Scan# 1496
 Delta R.T. -0.006 min
 Lab File: BF137109.D
 Acq: 19 Jan 2024 13:55

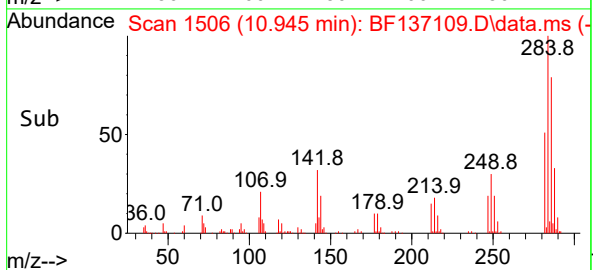
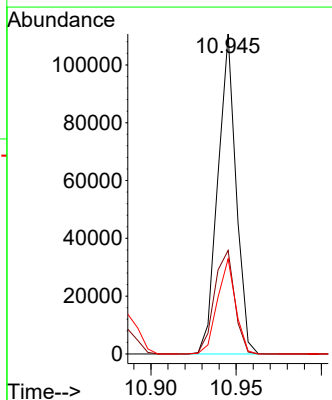
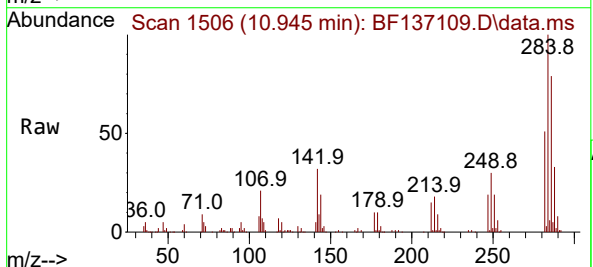
Instrument : BNA_F
 ClientSampleId : SSTDICC010

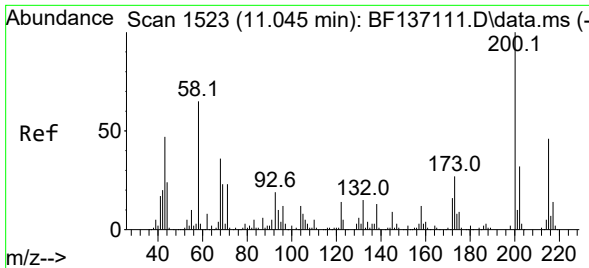
Tgt Ion	Resp	Lower	Upper
248	100		
250	96.3	77.3	115.9
141	77.6	61.2	91.8



#68
 Hexachlorobenzene
 Concen: 10.477 ng
 RT: 10.945 min Scan# 1506
 Delta R.T. -0.006 min
 Lab File: BF137109.D
 Acq: 19 Jan 2024 13:55

Tgt Ion	Resp	Lower	Upper
284	100		
142	32.3	25.8	38.8
249	29.8	24.4	36.6





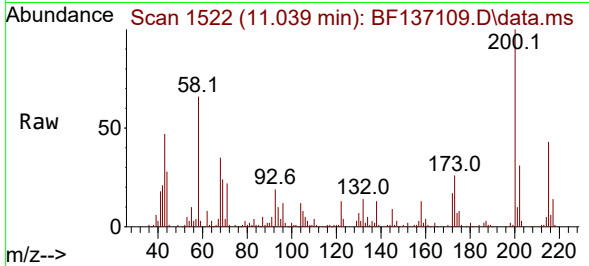
#69
 Atrazine
 Concen: 14.294 ng
 RT: 11.039 min Scan# 11
 Delta R.T. -0.006 min
 Lab File: BF137109.D
 Acq: 19 Jan 2024 13:55

Instrument :

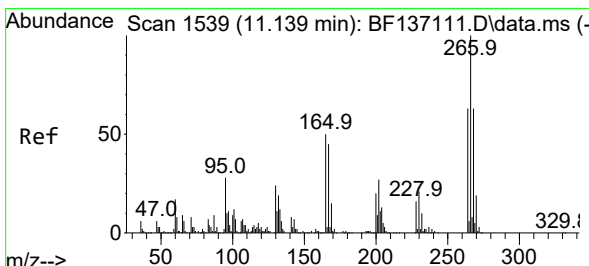
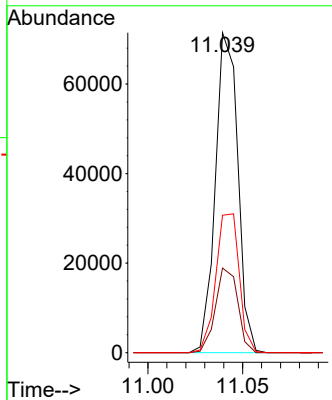
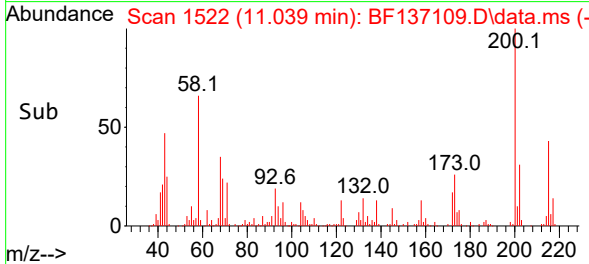
BNA_F

ClientSampleId :

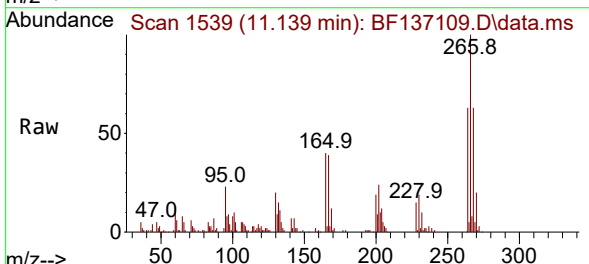
SSTDICC010



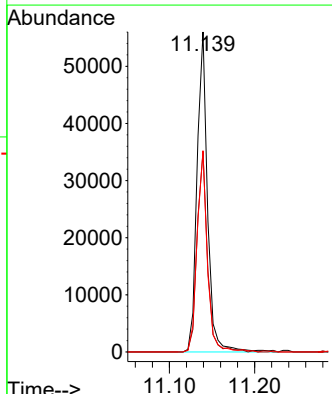
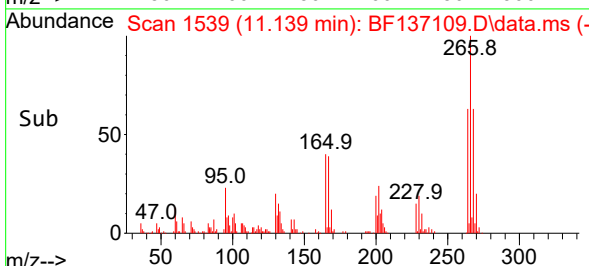
Tgt Ion:200 Resp: 59004
 Ion Ratio Lower Upper
 200 100
 173 26.4 6.8 46.8
 215 42.9 25.9 65.9

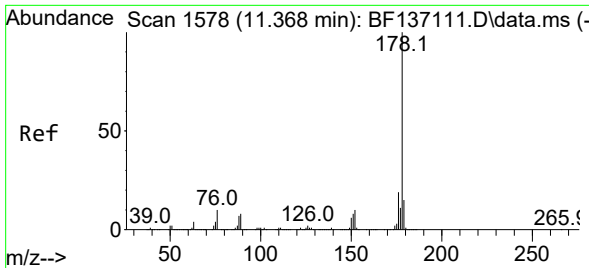


#70
 Pentachlorophenol
 Concen: 10.355 ng
 RT: 11.139 min Scan# 1539
 Delta R.T. 0.000 min
 Lab File: BF137109.D
 Acq: 19 Jan 2024 13:55



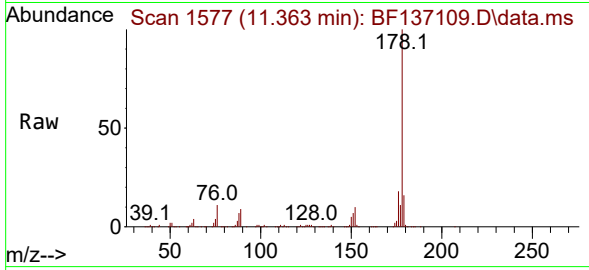
Tgt Ion:266 Resp: 48044
 Ion Ratio Lower Upper
 266 100
 268 62.5 50.7 76.1
 264 62.9 50.1 75.1



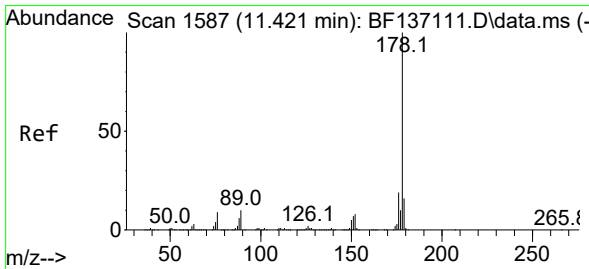
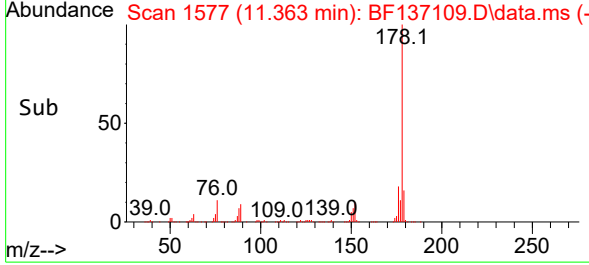
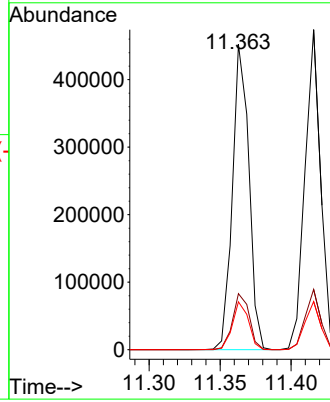


#71
 Phenanthrene
 Concen: 10.683 ng
 RT: 11.363 min Scan# 11
 Delta R.T. -0.006 min
 Lab File: BF137109.D
 Acq: 19 Jan 2024 13:55

Instrument :
 BNA_F
 ClientSampleId :
 SSTDICC010

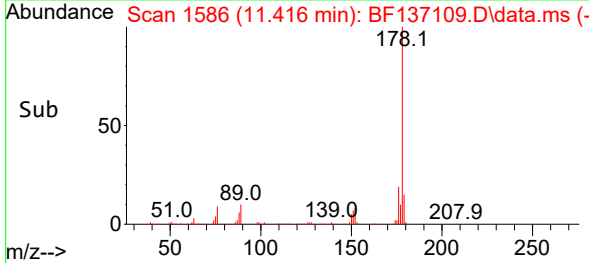
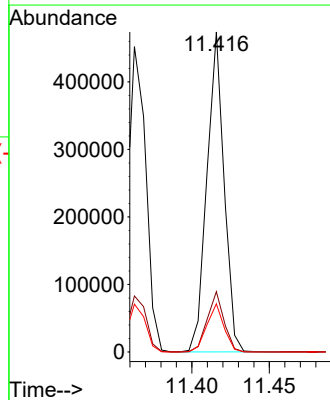
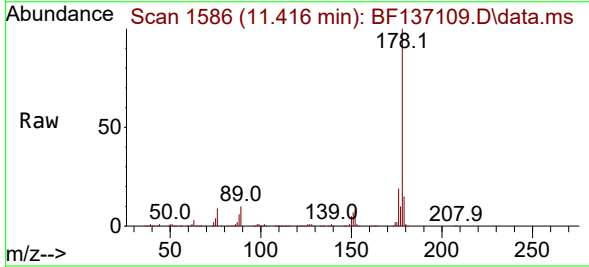


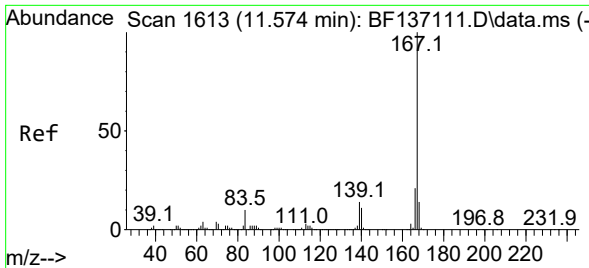
Tgt Ion:178 Resp: 366427
 Ion Ratio Lower Upper
 178 100
 176 18.3 15.4 23.2
 179 15.7 12.3 18.5



#72
 Anthracene
 Concen: 10.671 ng
 RT: 11.416 min Scan# 1586
 Delta R.T. -0.006 min
 Lab File: BF137109.D
 Acq: 19 Jan 2024 13:55

Tgt Ion:178 Resp: 364592
 Ion Ratio Lower Upper
 178 100
 176 18.9 14.9 22.3
 179 15.1 12.4 18.6





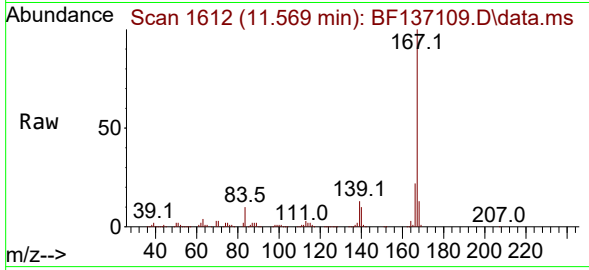
#73
 Carbazole
 Concen: 10.767 ng
 RT: 11.569 min Scan# 1612
 Delta R.T. -0.006 min
 Lab File: BF137109.D
 Acq: 19 Jan 2024 13:55

Instrument :

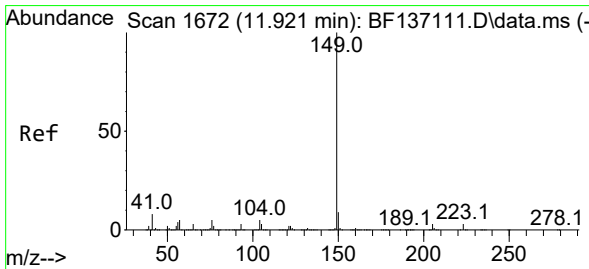
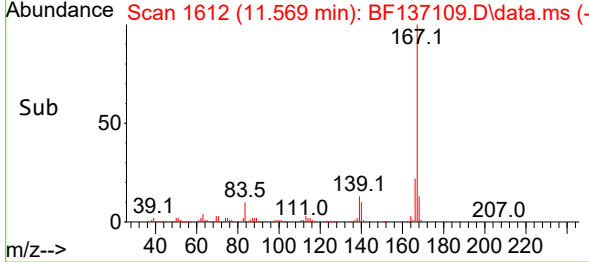
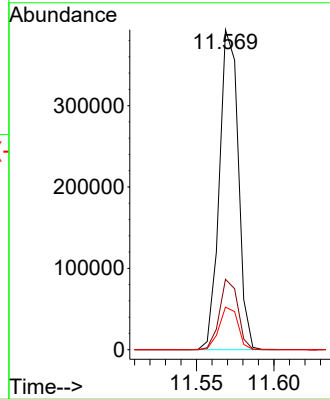
BNA_F

ClientSampleId :

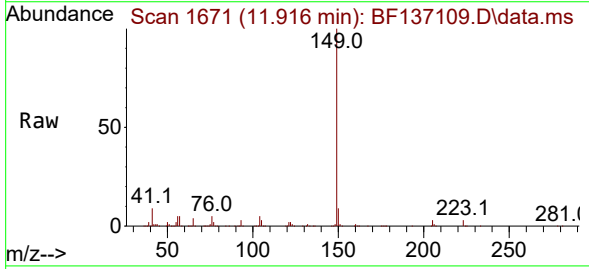
SSTDICC010



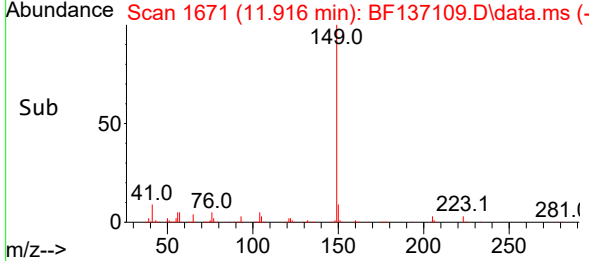
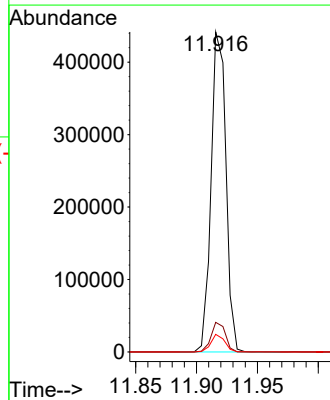
Tgt Ion:167 Resp: 333652
 Ion Ratio Lower Upper
 167 100
 166 22.0 17.1 25.7
 139 13.3 11.0 16.4

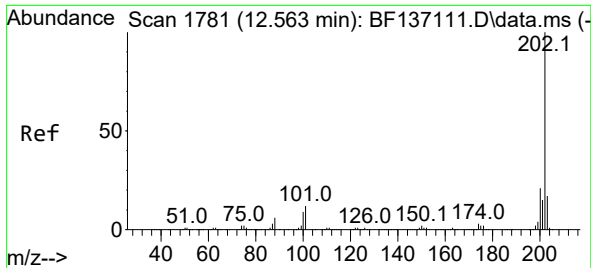


#74
 Di-n-butylphthalate
 Concen: 10.517 ng
 RT: 11.916 min Scan# 1671
 Delta R.T. -0.006 min
 Lab File: BF137109.D
 Acq: 19 Jan 2024 13:55



Tgt Ion:149 Resp: 373652
 Ion Ratio Lower Upper
 149 100
 150 9.2 7.4 11.0
 104 5.5 4.1 6.1





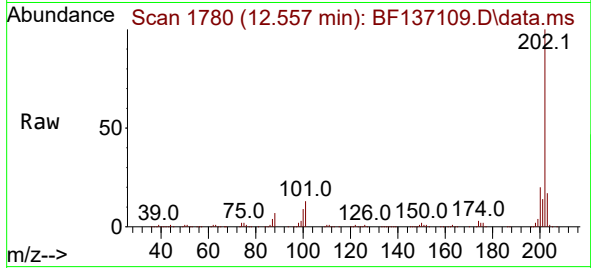
#75
 Fluoranthene
 Concen: 10.963 ng
 RT: 12.557 min Scan# 1780
 Delta R.T. -0.006 min
 Lab File: BF137109.D
 Acq: 19 Jan 2024 13:55

Instrument :

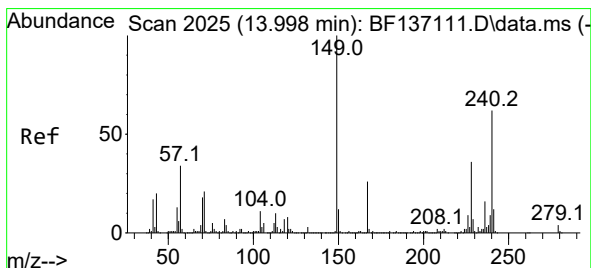
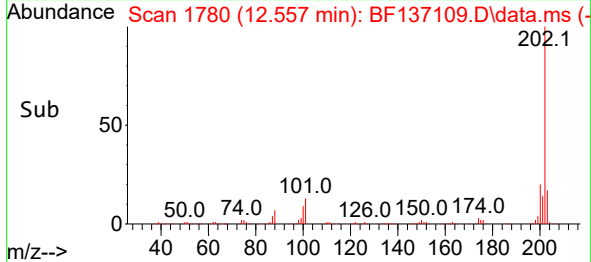
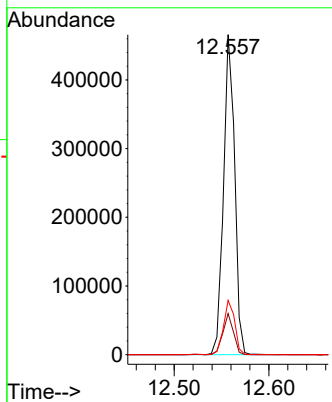
BNA_F

ClientSampleId :

SSTDICC010

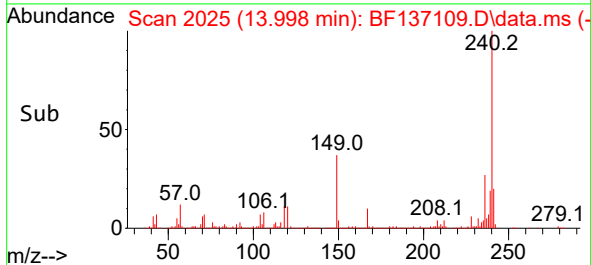
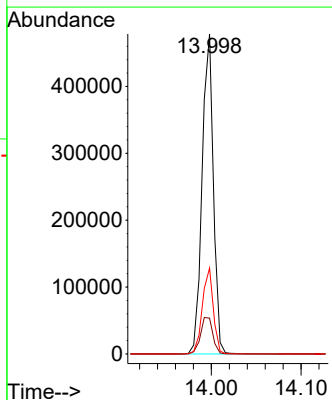
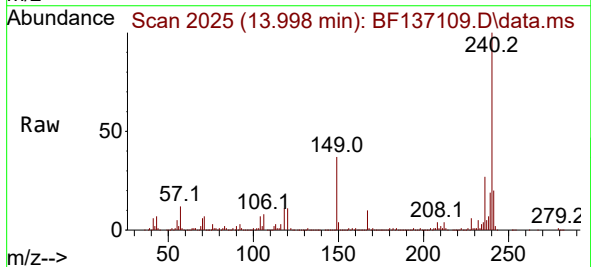


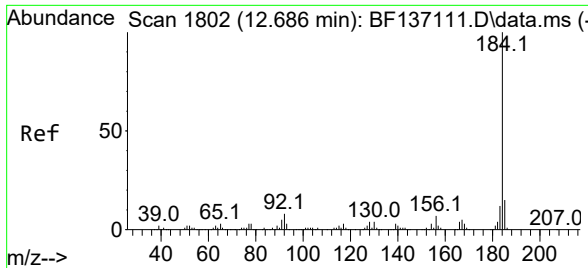
Tgt Ion:202 Resp: 383012
 Ion Ratio Lower Upper
 202 100
 101 12.9 0.0 31.6
 203 17.0 0.0 37.5



#76
 Chrysene-d12
 Concen: 20.000 ng
 RT: 13.998 min Scan# 2025
 Delta R.T. 0.000 min
 Lab File: BF137109.D
 Acq: 19 Jan 2024 13:55

Tgt Ion:240 Resp: 416660
 Ion Ratio Lower Upper
 240 100
 120 11.2 10.3 15.5
 236 26.8 20.1 30.1



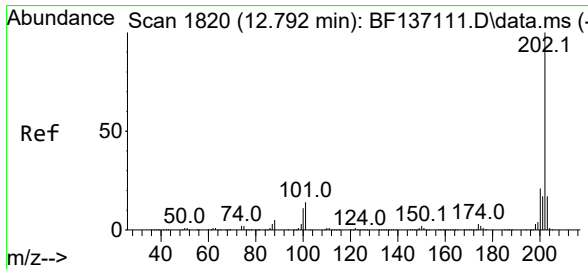
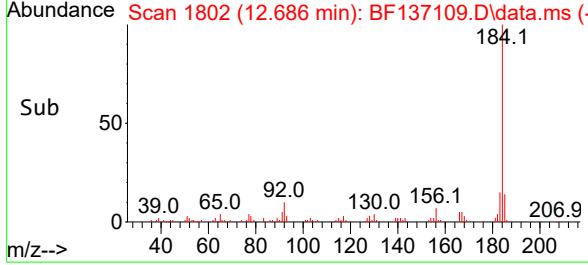
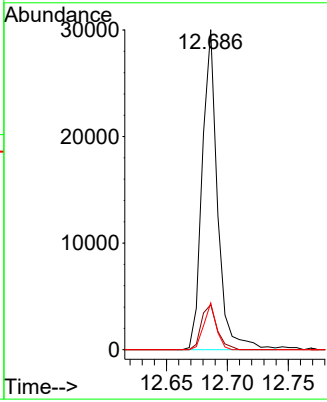
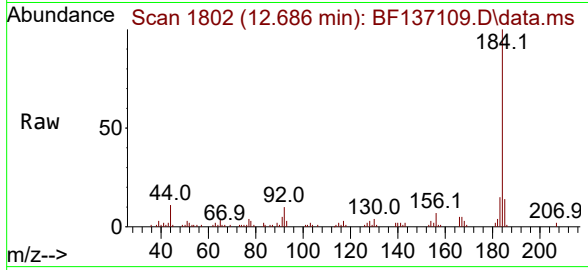


#77
Benzidine
Concen: 6.259 ng
RT: 12.686 min Scan# 1819
Delta R.T. 0.000 min
Lab File: BF137109.D
Acq: 19 Jan 2024 13:55

Instrument : BNA_F
Client Sample Id : SSTDICC010

Tgt Ion:184 Resp: 26326

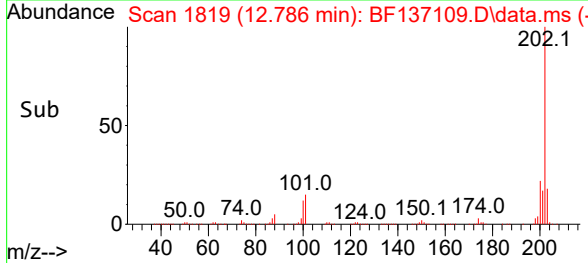
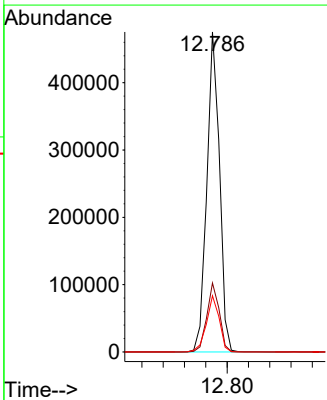
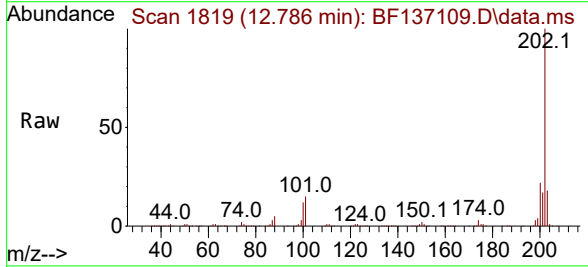
Ion	Ratio	Lower	Upper
184	100		
185	14.0	12.2	18.2
183	14.6	9.2	13.8

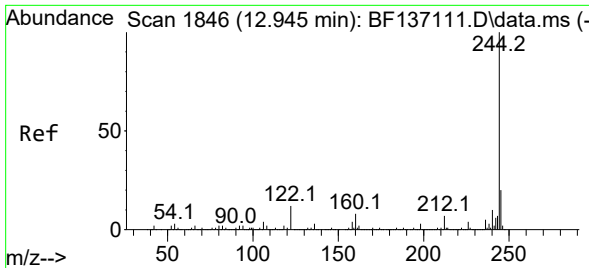


#78
Pyrene
Concen: 9.400 ng
RT: 12.786 min Scan# 1819
Delta R.T. -0.006 min
Lab File: BF137109.D
Acq: 19 Jan 2024 13:55

Tgt Ion:202 Resp: 391036

Ion	Ratio	Lower	Upper
202	100		
200	21.6	16.8	25.2
203	17.6	13.8	20.6





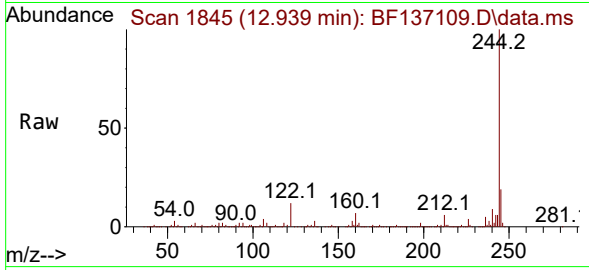
#79
 Terphenyl-d14
 Concen: 20.012 ng
 RT: 12.939 min Scan# 1845
 Delta R.T. -0.006 min
 Lab File: BF137109.D
 Acq: 19 Jan 2024 13:55

Instrument :

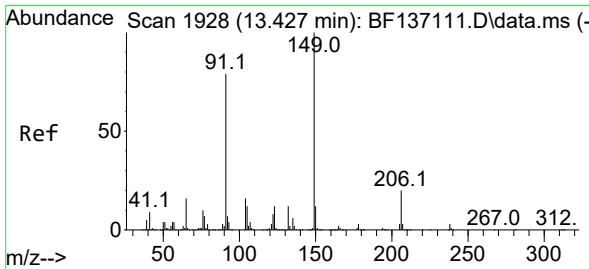
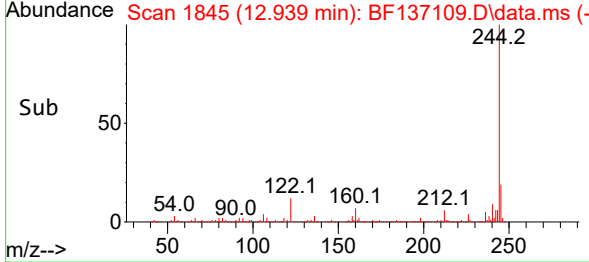
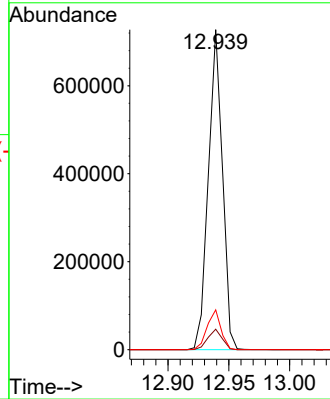
BNA_F

ClientSampleId :

SSTDICC010

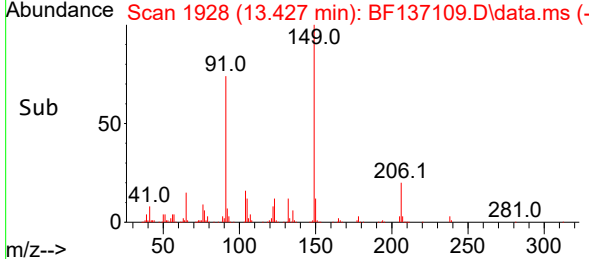
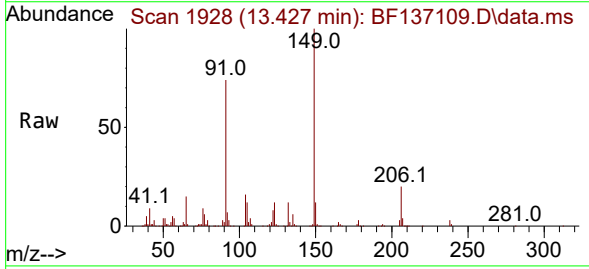
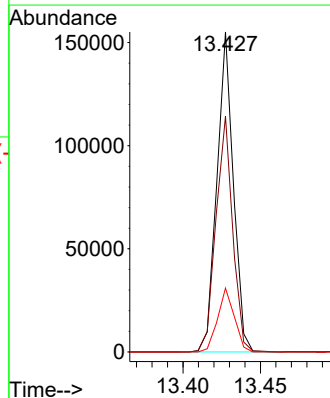


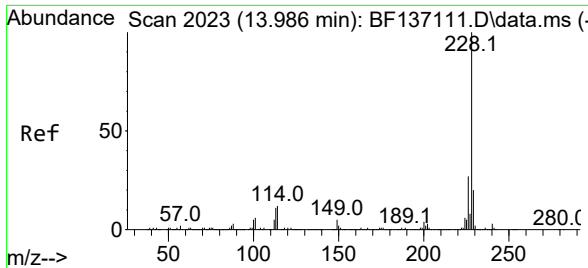
Tgt Ion:244 Resp: 583344
 Ion Ratio Lower Upper
 244 100
 212 6.4 5.6 8.4
 122 12.5 9.4 14.2



#80
 Butylbenzylphthalate
 Concen: 8.509 ng
 RT: 13.427 min Scan# 1928
 Delta R.T. 0.000 min
 Lab File: BF137109.D
 Acq: 19 Jan 2024 13:55

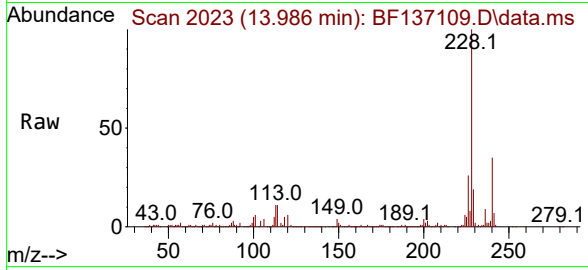
Tgt Ion:149 Resp: 114576
 Ion Ratio Lower Upper
 149 100
 91 73.7 63.0 94.6
 206 19.9 15.8 23.6





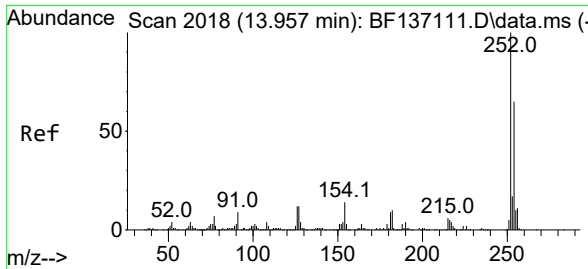
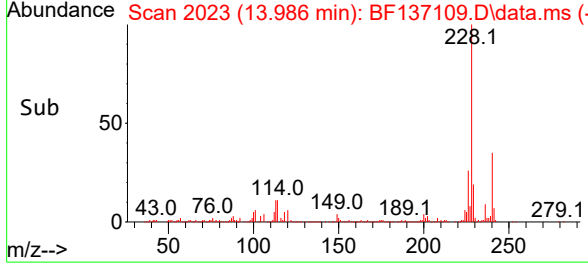
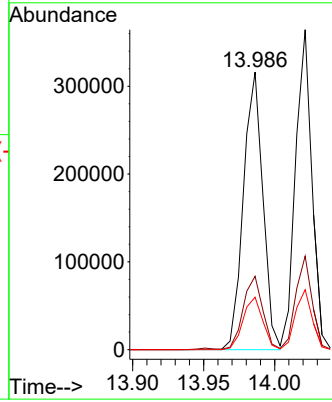
#81
 Benzo(a)anthracene
 Concen: 9.745 ng
 RT: 13.986 min Scan# 2023
 Delta R.T. 0.000 min
 Lab File: BF137109.D
 Acq: 19 Jan 2024 13:55

Instrument : BNA_F
 ClientSampleId : SSTDICC010

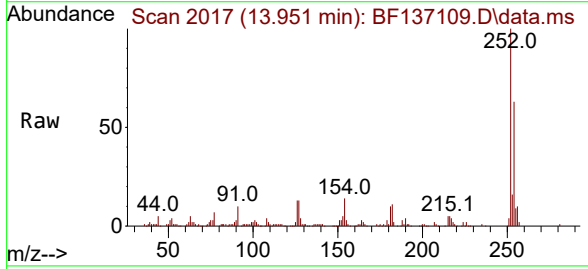


Tgt Ion:228 Resp: 301528

Ion	Ratio	Lower	Upper
228	100		
226	26.5	21.4	32.2
229	18.9	15.9	23.9

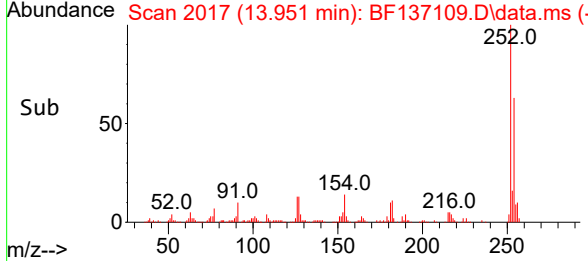
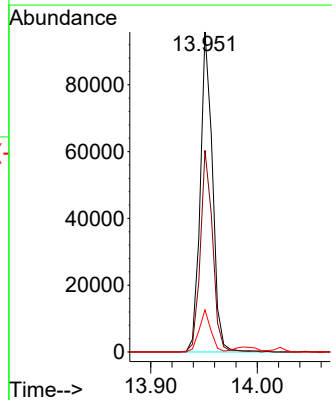


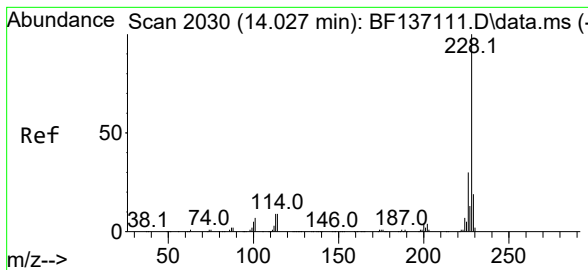
#82
 3,3'-Dichlorobenzidine
 Concen: 10.089 ng
 RT: 13.951 min Scan# 2017
 Delta R.T. -0.006 min
 Lab File: BF137109.D
 Acq: 19 Jan 2024 13:55



Tgt Ion:252 Resp: 76543

Ion	Ratio	Lower	Upper
252	100		
254	63.0	52.0	78.0
126	13.2	9.5	14.3





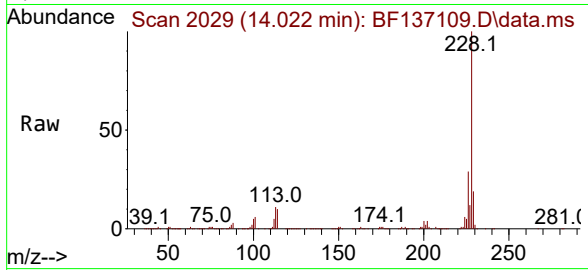
#83
 Chrysene
 Concen: 9.754 ng
 RT: 14.022 min Scan# 2029
 Delta R.T. -0.006 min
 Lab File: BF137109.D
 Acq: 19 Jan 2024 13:55

Instrument :

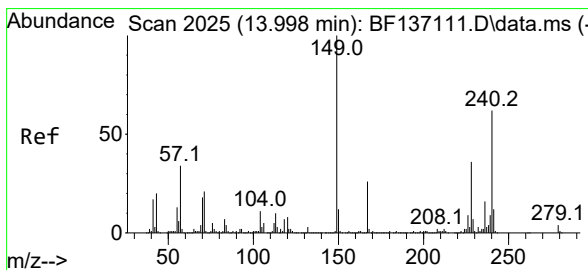
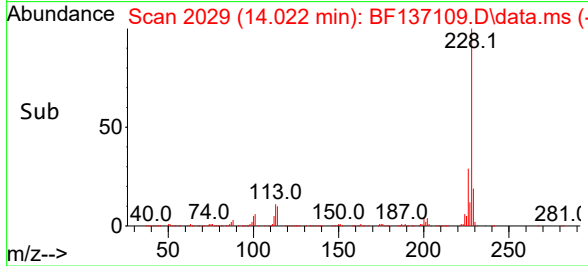
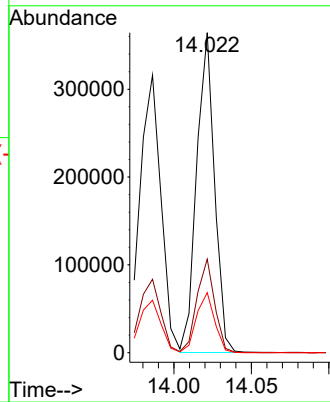
BNA_F

ClientSampleId :

SSTDICC010

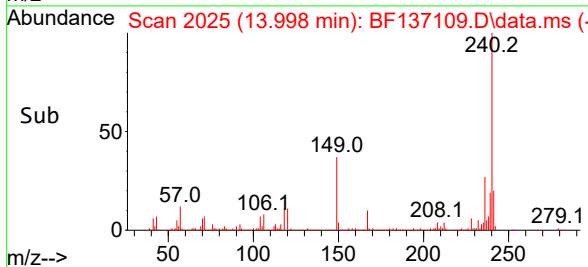
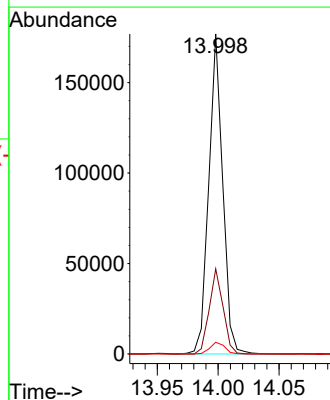
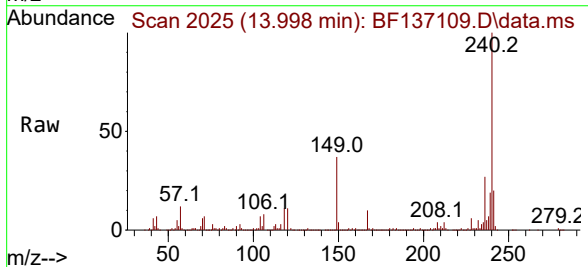


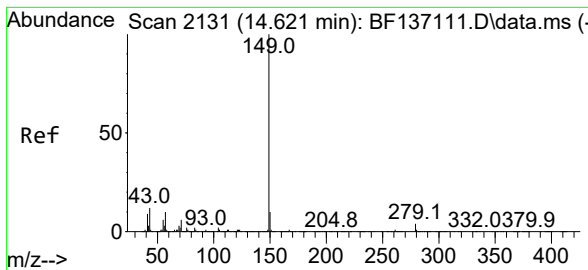
Tgt Ion:228 Resp: 291726
 Ion Ratio Lower Upper
 228 100
 226 29.3 23.5 35.3
 229 18.8 15.5 23.3



#84
 Bis(2-ethylhexyl)phthalate
 Concen: 8.578 ng
 RT: 13.998 min Scan# 2025
 Delta R.T. 0.000 min
 Lab File: BF137109.D
 Acq: 19 Jan 2024 13:55

Tgt Ion:149 Resp: 140440
 Ion Ratio Lower Upper
 149 100
 167 26.6 21.2 31.8
 279 3.6 2.9 4.3



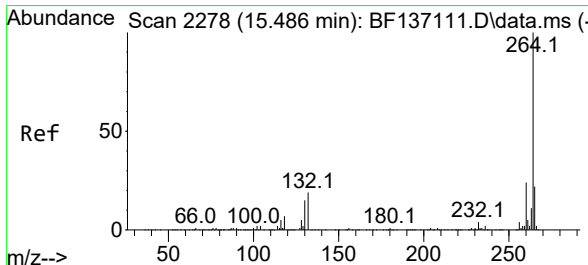
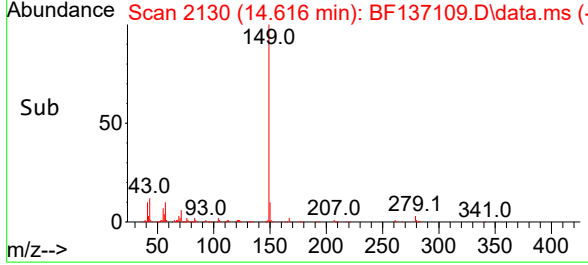
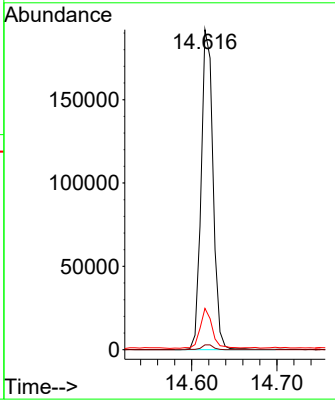
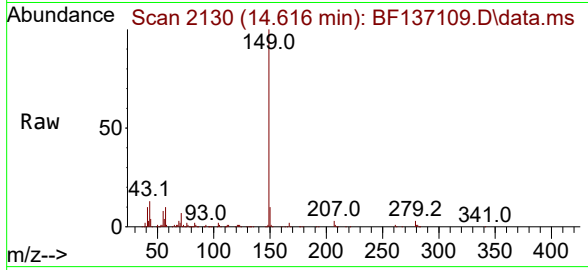


#85
 Di-n-octyl phthalate
 Concen: 7.347 ng
 RT: 14.616 min Scan# 2130
 Delta R.T. -0.005 min
 Lab File: BF137109.D
 Acq: 19 Jan 2024 13:55

Instrument : BNA_F
 Client Sample Id : BF137109.D
 SSTDICC010

Tgt Ion:149 Resp: 186032

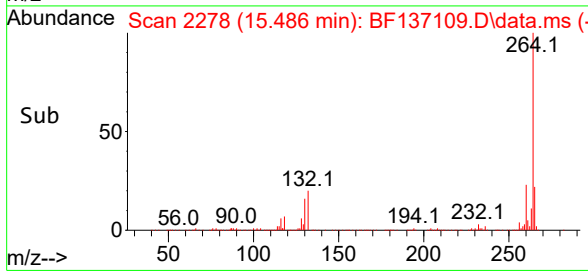
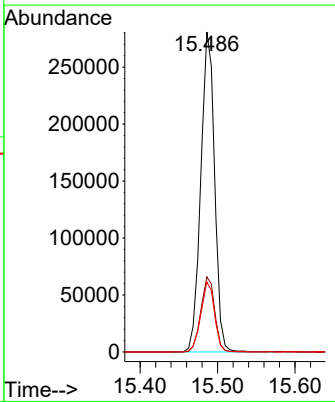
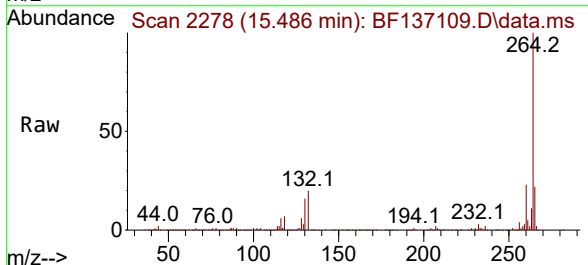
Ion	Ratio	Lower	Upper
149	100		
167	1.5	1.2	1.8
43	12.8	10.9	16.3

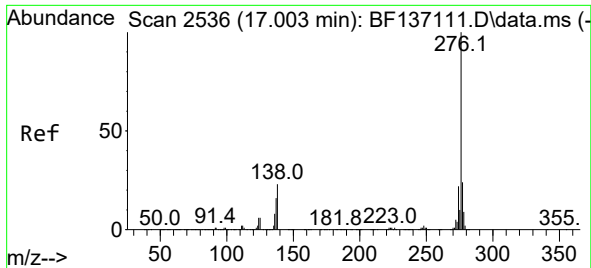


#86
 Perylene-d12
 Concen: 20.000 ng
 RT: 15.486 min Scan# 2278
 Delta R.T. 0.000 min
 Lab File: BF137109.D
 Acq: 19 Jan 2024 13:55

Tgt Ion:264 Resp: 347236

Ion	Ratio	Lower	Upper
264	100		
260	23.4	19.5	29.3
265	21.8	17.8	26.6





#87
 Indeno(1,2,3-cd)pyrene
 Concen: 8.403 ng
 RT: 16.992 min Scan# 21
 Delta R.T. -0.012 min
 Lab File: BF137109.D
 Acq: 19 Jan 2024 13:55

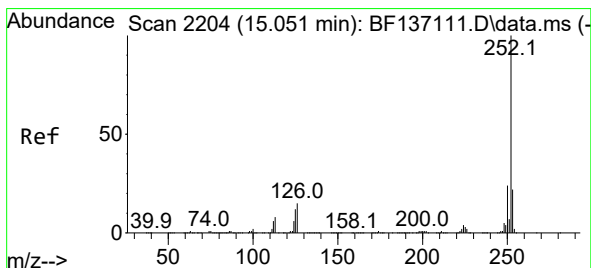
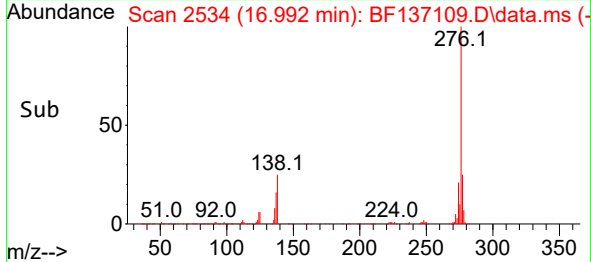
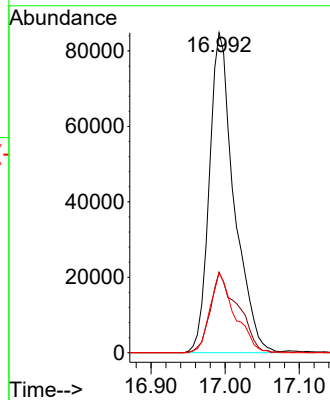
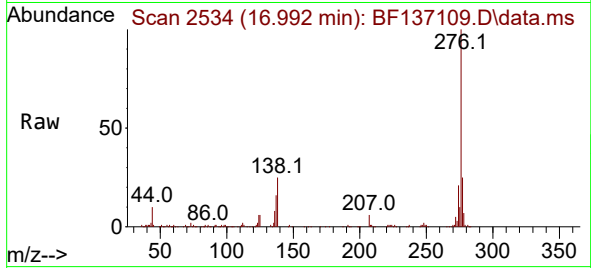
Instrument :

BNA_F

ClientSampleId :

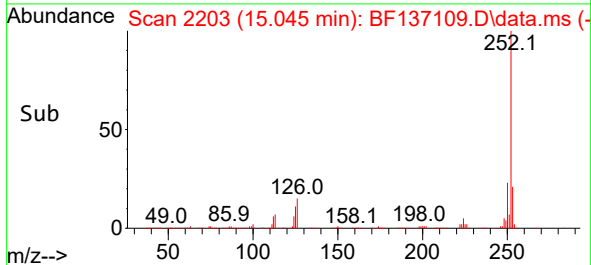
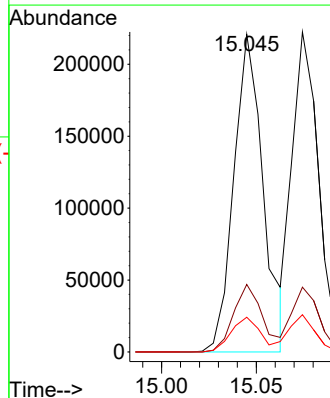
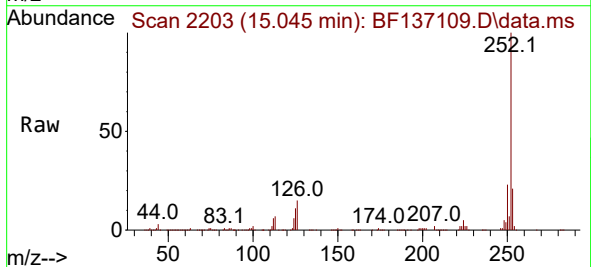
SSTDICC010

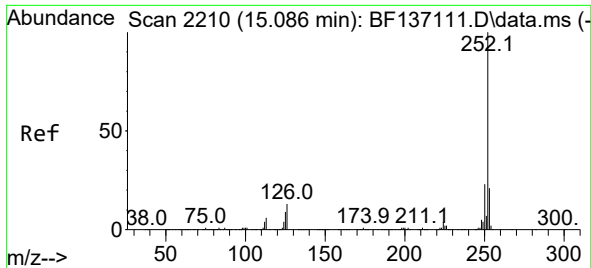
Tgt Ion:276 Resp: 197160
 Ion Ratio Lower Upper
 276 100
 138 28.0 22.2 33.4
 277 25.0 20.2 30.2



#88
 Benzo(b)fluoranthene
 Concen: 10.793 ng
 RT: 15.045 min Scan# 2203
 Delta R.T. -0.006 min
 Lab File: BF137109.D
 Acq: 19 Jan 2024 13:55

Tgt Ion:252 Resp: 238448
 Ion Ratio Lower Upper
 252 100
 253 21.3 17.8 26.6
 125 11.0 9.6 14.4

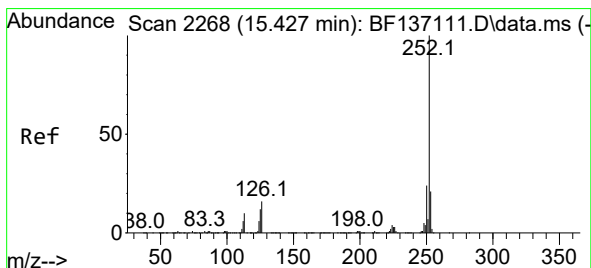
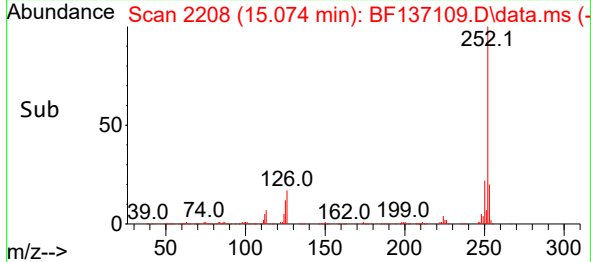
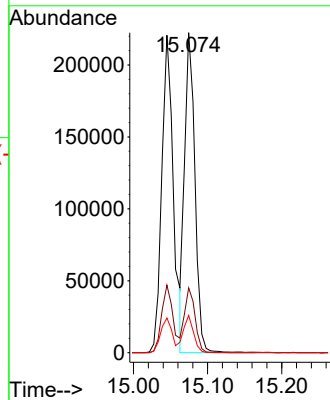
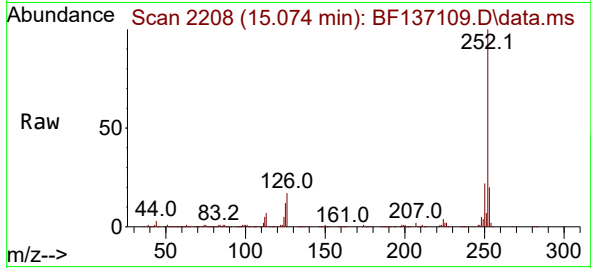




#89
 Benzo(k)fluoranthene
 Concen: 10.714 ng
 RT: 15.074 min Scan# 21
 Delta R.T. -0.012 min
 Lab File: BF137109.D
 Acq: 19 Jan 2024 13:55

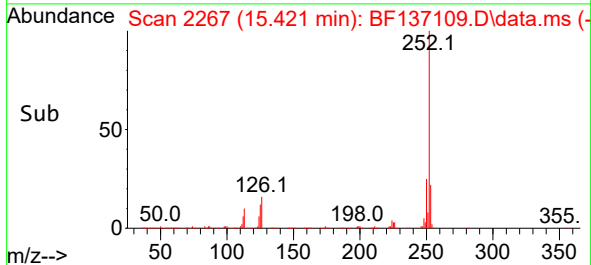
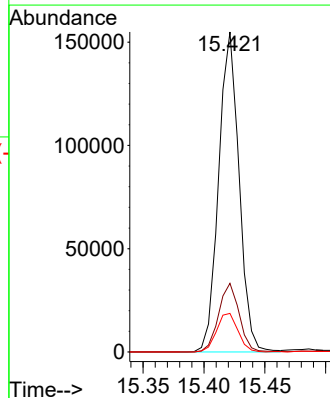
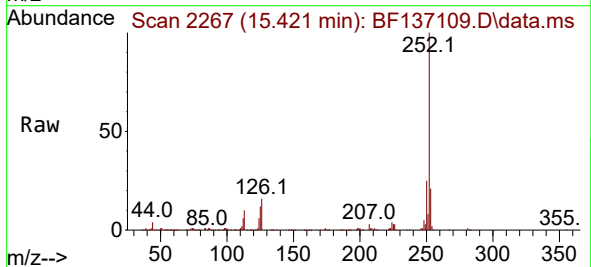
Instrument :
 BNA_F
 ClientSampleId :
 SSTDICC010

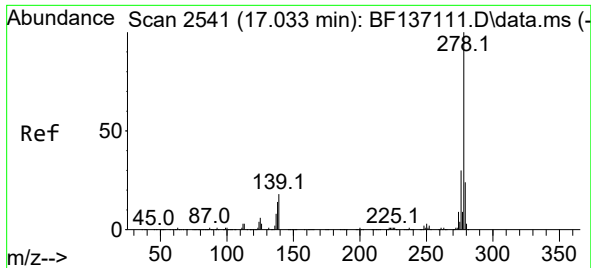
Tgt Ion:252 Resp: 216418
 Ion Ratio Lower Upper
 252 100
 253 20.2 17.3 25.9
 125 11.6 8.3 12.5



#90
 Benzo(a)pyrene
 Concen: 9.931 ng
 RT: 15.421 min Scan# 2267
 Delta R.T. -0.006 min
 Lab File: BF137109.D
 Acq: 19 Jan 2024 13:55

Tgt Ion:252 Resp: 181023
 Ion Ratio Lower Upper
 252 100
 253 21.5 17.0 25.6
 125 12.0 9.6 14.4





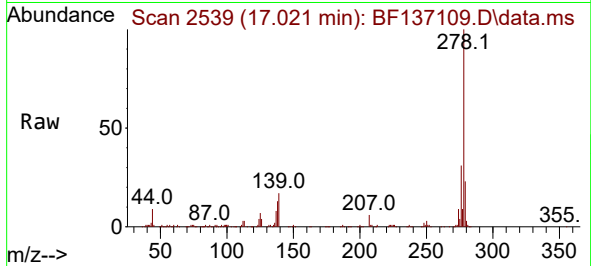
#91
 Dibenzo(a,h)anthracene
 Concen: 8.503 ng
 RT: 17.021 min Scan# 21
 Delta R.T. -0.012 min
 Lab File: BF137109.D
 Acq: 19 Jan 2024 13:55

Instrument :

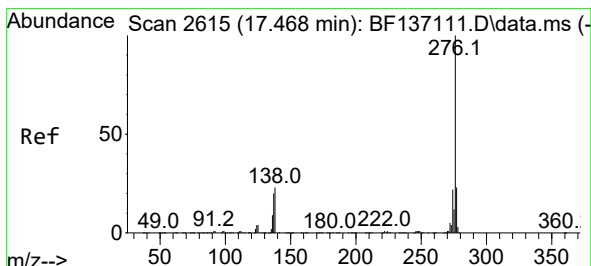
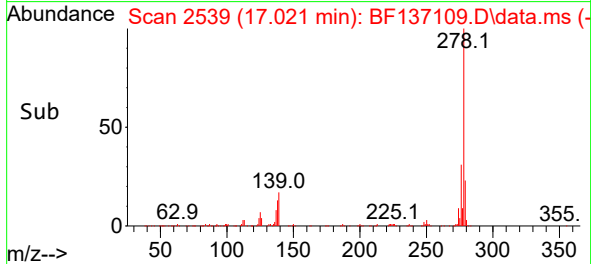
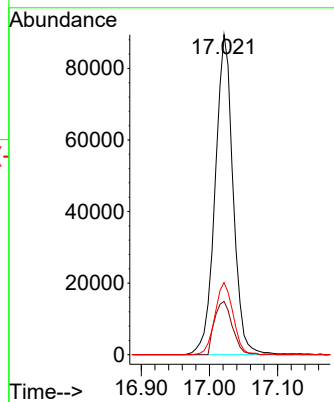
BNA_F

ClientSampleId :

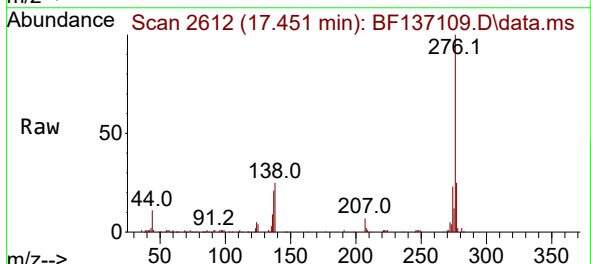
SSTDICC010



Tgt Ion:278 Resp: 163804
 Ion Ratio Lower Upper
 278 100
 139 16.7 14.2 21.4
 279 22.6 19.1 28.7



#92
 Benzo(g,h,i)perylene
 Concen: 8.239 ng
 RT: 17.451 min Scan# 2612
 Delta R.T. -0.017 min
 Lab File: BF137109.D
 Acq: 19 Jan 2024 13:55



Tgt Ion:276 Resp: 165162
 Ion Ratio Lower Upper
 276 100
 277 24.7 18.3 27.5
 138 24.7 18.4 27.6

