

Data Path : Z:\svoasrv\HPCHEM1\BNA_F\Data\BF011924\
 Data File : BF137110.D
 Acq On : 19 Jan 2024 14:25
 Operator : CG\JU
 Sample : SSTDICC020
 Misc :
 ALS Vial : 5 Sample Multiplier: 1

Instrument :
 BNA_F
 ClientSampleId :
 SSTDICC020

Quant Time: Jan 20 00:48:48 2024
 Quant Method : Z:\svoasrv\HPCHEM1\BNA_F\Methods\8270-BF011924.M
 Quant Title : ASP BNA STANDARDS FOR 5 POINT CALIBRATION
 QLast Update : Sat Jan 20 00:41:02 2024
 Response via : Initial Calibration

Compound	R.T.	QIon	Response	Conc	Units	Dev(Min)
Internal Standards						
1) 1,4-Dichlorobenzene-d4	6.816	152	160644	20.000	ng	0.00
21) Naphthalene-d8	8.098	136	654825	20.000	ng	0.00
39) Acenaphthene-d10	9.851	164	343837	20.000	ng	0.00
64) Phenanthrene-d10	11.345	188	613948	20.000	ng	0.00
76) Chrysene-d12	13.998	240	374440	20.000	ng	0.00
86) Perylene-d12	15.486	264	335903	20.000	ng	0.00
System Monitoring Compounds						
5) 2-Fluorophenol	5.440	112	470814	42.951	ng	0.00
7) Phenol-d6	6.440	99	593531	43.131	ng	0.00
23) Nitrobenzene-d5	7.375	82	484206	42.314	ng	0.00
42) 2,4,6-Tribromophenol	10.639	330	140255	42.130	ng	0.00
45) 2-Fluorobiphenyl	9.175	172	984839	42.990	ng	0.00
79) Terphenyl-d14	12.945	244	1077497	41.133	ng	0.00
Target Compounds						
2) 1,4-Dioxane	2.593	88	106704	21.567	ng	98
3) Pyridine	3.352	79	258805	21.547	ng	99
4) n-Nitrosodimethylamine	3.305	42	136927	20.480	ng	# 100
6) Aniline	6.481	93	299822	22.386	ng	99
8) 2-Chlorophenol	6.598	128	247564	21.352	ng	96
9) Benzaldehyde	6.369	77	182215	23.693	ng	96
10) Phenol	6.451	94	327241m	21.981	ng	
11) bis(2-Chloroethyl)ether	6.551	93	243257	20.618	ng	99
12) 1,3-Dichlorobenzene	6.757	146	270756	21.258	ng	98
13) 1,4-Dichlorobenzene	6.834	146	276042	21.522	ng	99
14) 1,2-Dichlorobenzene	6.987	146	258570	21.756	ng	98
15) Benzyl Alcohol	6.951	79	213868	21.544	ng	99
16) 2,2'-oxybis(1-Chloropr...	7.093	45	422883	21.522	ng	98
17) 2-Methylphenol	7.063	107	201655	21.211	ng	99
18) Hexachloroethane	7.328	117	99521	21.189	ng	97
19) n-Nitroso-di-n-propyla...	7.228	70	179614	21.195	ng	96
20) 3+4-Methylphenols	7.216	107	258051	22.121	ng	97
22) Acetophenone	7.222	105	351732	21.714	ng	# 98
24) Nitrobenzene	7.392	77	265052	21.216	ng	99
25) Isophorone	7.634	82	495144	21.020	ng	99
26) 2-Nitrophenol	7.710	139	92110	20.023	ng	95
27) 2,4-Dimethylphenol	7.745	122	161625	21.282	ng	99
28) bis(2-Chloroethoxy)met...	7.845	93	306956	21.496	ng	98
29) 2,4-Dichlorophenol	7.945	162	200345	21.332	ng	98
30) 1,2,4-Trichlorobenzene	8.034	180	232348	21.417	ng	97
31) Naphthalene	8.116	128	746897	21.503	ng	100
32) Benzoic acid	7.834	122	122802	18.280	ng	97
33) 4-Chloroaniline	8.163	127	274911	21.510	ng	100
34) Hexachlorobutadiene	8.234	225	134642	21.333	ng	99
35) Caprolactam	8.516	113	61643m	20.679	ng	
36) 4-Chloro-3-methylphenol	8.639	107	217492	21.200	ng	99
37) 2-Methylnaphthalene	8.810	142	478560	21.648	ng	98
38) 1-Methylnaphthalene	8.904	142	466084	21.614	ng	99
40) 1,2,4,5-Tetrachloroben...	8.969	216	213848	21.251	ng	99
41) Hexachlorocyclopentadiene	8.963	237	80004	20.693	ng	99
43) 2,4,6-Trichlorophenol	9.081	196	138747	21.181	ng	100

Data Path : Z:\svoasrv\HPCHEM1\BNA_F\Data\BF011924\
 Data File : BF137110.D
 Acq On : 19 Jan 2024 14:25
 Operator : CG\JU
 Sample : SSTDICC020
 Misc :
 ALS Vial : 5 Sample Multiplier: 1

Instrument :
 BNA_F
 ClientSampleId :
 SSTDICC020

Quant Time: Jan 20 00:48:48 2024
 Quant Method : Z:\svoasrv\HPCHEM1\BNA_F\Methods\8270-BF011924.M
 Quant Title : ASP BNA STANDARDS FOR 5 POINT CALIBRATION
 QLast Update : Sat Jan 20 00:41:02 2024
 Response via : Initial Calibration

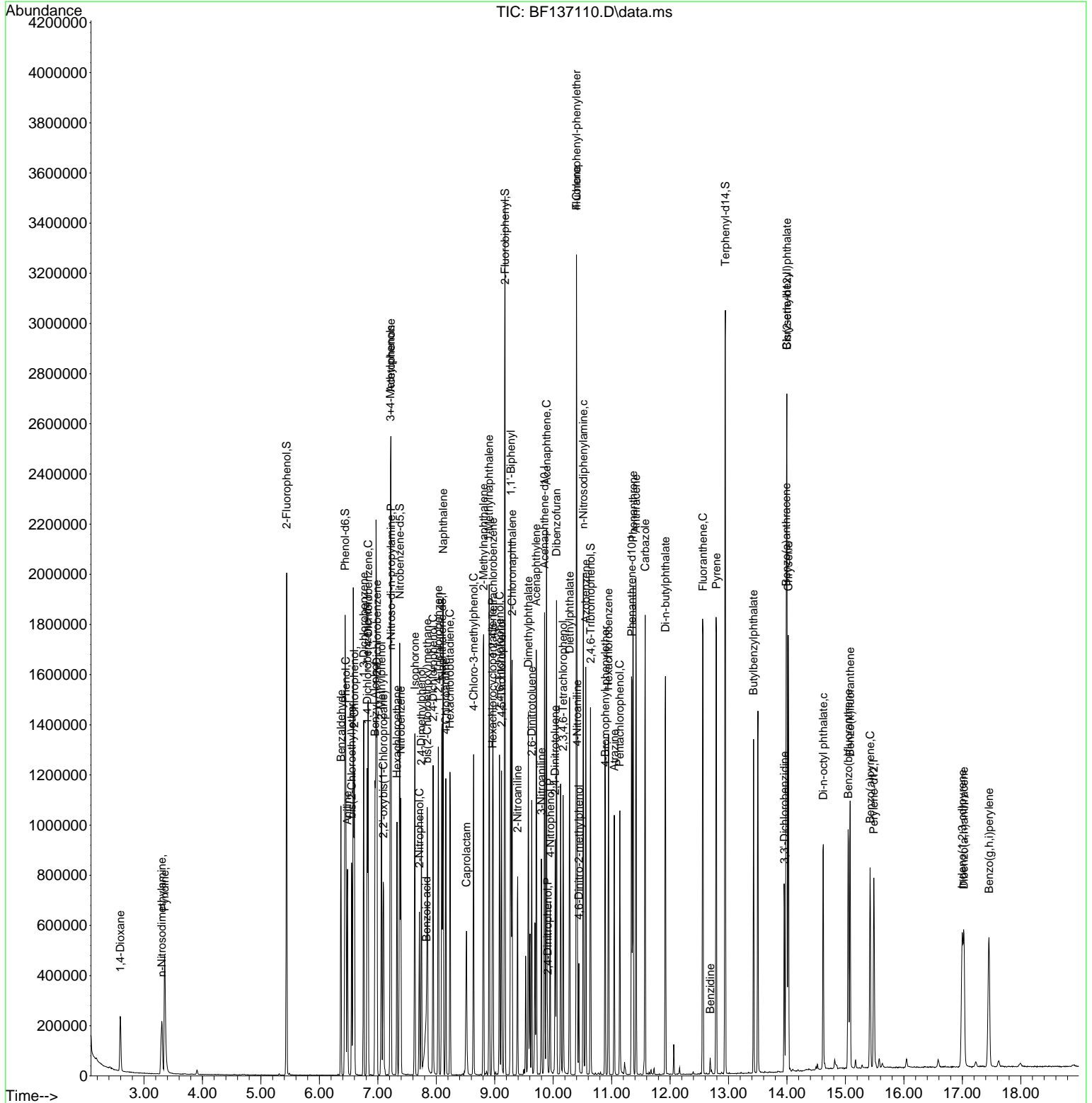
Compound	R.T.	QIon	Response	Conc	Units	Dev(Min)
44) 2,4,5-Trichlorophenol	9.116	196	151099	21.162	ng	97
46) 1,1'-Biphenyl	9.275	154	594202	21.228	ng	99
47) 2-Chloronaphthalene	9.298	162	462693	21.344	ng	96
48) 2-Nitroaniline	9.392	65	117980	20.719	ng	91
49) Acenaphthylene	9.710	152	657523	21.300	ng	100
50) Dimethylphthalate	9.575	163	507336	21.089	ng	99
51) 2,6-Dinitrotoluene	9.634	165	101451	21.155	ng	96
52) Acenaphthene	9.886	154	444650	21.217	ng	99
53) 3-Nitroaniline	9.798	138	107266	20.982	ng	95
54) 2,4-Dinitrophenol	9.904	184	25026	19.957	ng	97
55) Dibenzofuran	10.057	168	619236	21.347	ng	99
56) 4-Nitrophenol	9.951	139	86489	20.850	ng	97
57) 2,4-Dinitrotoluene	10.033	165	121851	21.248	ng	99
58) Fluorene	10.398	166	468338	21.450	ng	99
59) 2,3,4,6-Tetrachlorophenol	10.169	232	121481	21.933	ng	99
60) Diethylphthalate	10.281	149	502005	21.202	ng	99
61) 4-Chlorophenyl-phenyle...	10.398	204	227943	21.511	ng	95
62) 4-Nitroaniline	10.410	138	103105	21.156	ng	97
63) Azobenzene	10.557	77	527126	21.271	ng	96
65) 4,6-Dinitro-2-methylph...	10.439	198	39420	20.115	ng	91
66) n-Nitrosodiphenylamine	10.516	169	418474	21.349	ng	99
67) 4-Bromophenyl-phenylether	10.892	248	139684	21.053	ng	93
68) Hexachlorobenzene	10.945	284	160649	21.462	ng	94
69) Atrazine	11.045	200	98201	24.942	ng	97
70) Pentachlorophenol	11.139	266	97441	22.018	ng	99
71) Phenanthrene	11.369	178	708110	21.645	ng	100
72) Anthracene	11.416	178	712739	21.871	ng	100
73) Carbazole	11.575	167	649676	21.980	ng	99
74) Di-n-butylphthalate	11.922	149	744894	21.983	ng	99
75) Fluoranthene	12.563	202	736966	22.116	ng	99
77) Benzidine	12.686	184	22466	5.944	ng	99
78) Pyrene	12.792	202	762026	20.384	ng	99
80) Butylbenzylphthalate	13.427	149	241765	19.979	ng	98
81) Benzo(a)anthracene	13.986	228	578558	20.806	ng	99
82) 3,3'-Dichlorobenzidine	13.957	252	145662	21.364	ng	96
83) Chrysene	14.021	228	551752	20.528	ng	99
84) Bis(2-ethylhexyl)phtha...	13.998	149	296914	20.180	ng	100
85) Di-n-octyl phthalate	14.621	149	428526	18.048	ng	98
87) Indeno(1,2,3-cd)pyrene	16.998	276	455338	20.062	ng	100
88) Benzo(b)fluoranthene	15.051	252	444988	20.821	ng	96
89) Benzo(k)fluoranthene	15.080	252	422481	21.621	ng	100
90) Benzo(a)pyrene	15.421	252	363940	20.639	ng	96
91) Dibenzo(a,h)anthracene	17.027	278	382149	20.507	ng	97
92) Benzo(g,h,i)perylene	17.457	276	391945	20.211	ng	98

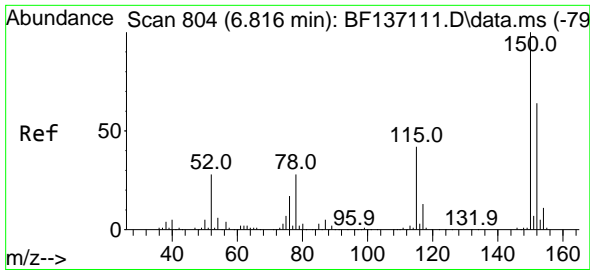
(#) = qualifier out of range (m) = manual integration (+) = signals summed

Data Path : Z:\svoasrv\HPCHEM1\BNA_F\Data\BF011924\
 Data File : BF137110.D
 Acq On : 19 Jan 2024 14:25
 Operator : CG\JU
 Sample : SSTDICC020
 Misc :
 ALS Vial : 5 Sample Multiplier: 1

Instrument :
 BNA_F
 Client Sample Id :
 SSTDICC020

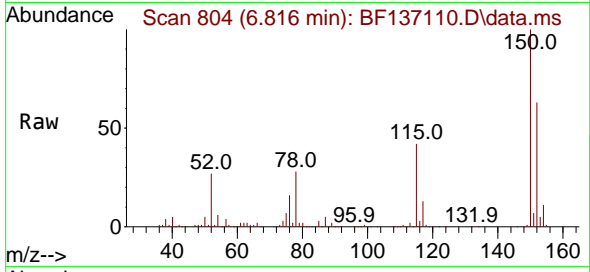
Quant Time: Jan 20 00:48:48 2024
 Quant Method : Z:\svoasrv\HPCHEM1\BNA_F\Methods\8270-BF011924.M
 Quant Title : ASP BNA STANDARDS FOR 5 POINT CALIBRATION
 QLast Update : Sat Jan 20 00:41:02 2024
 Response via : Initial Calibration



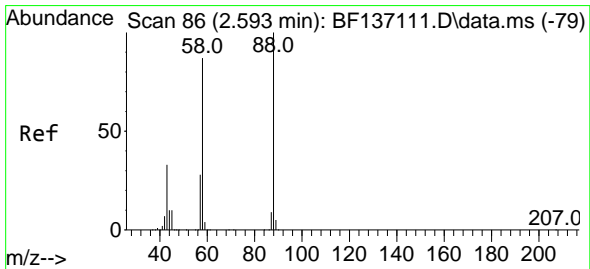
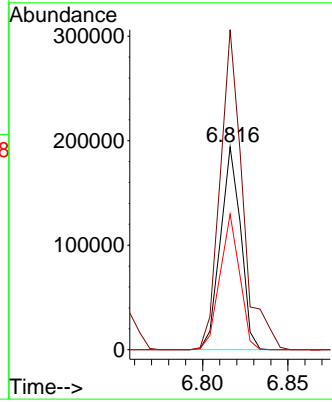
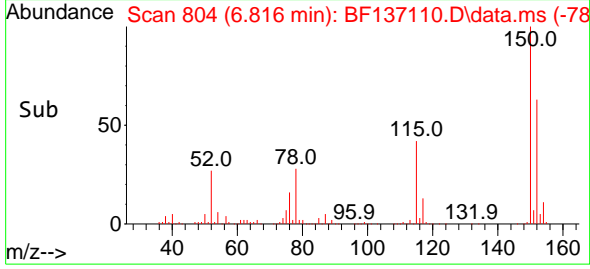


#1
 1,4-Dichlorobenzene-d4
 Concen: 20.000 ng
 RT: 6.816 min Scan# 80
 Delta R.T. 0.000 min
 Lab File: BF137110.D
 Acq: 19 Jan 2024 14:25

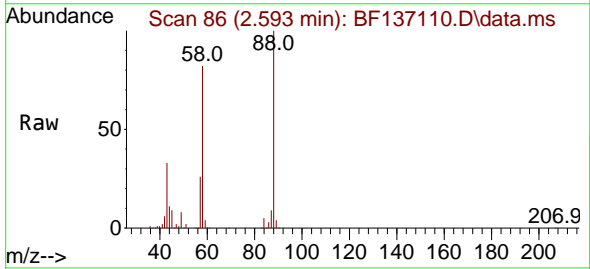
Instrument :
 BNA_F
 ClientSampleId :
 SSTDICC020



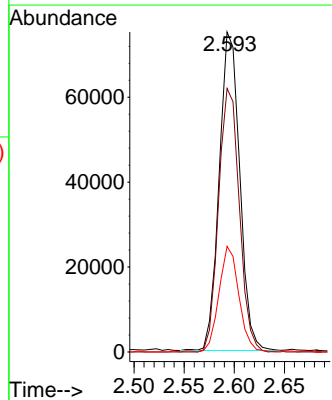
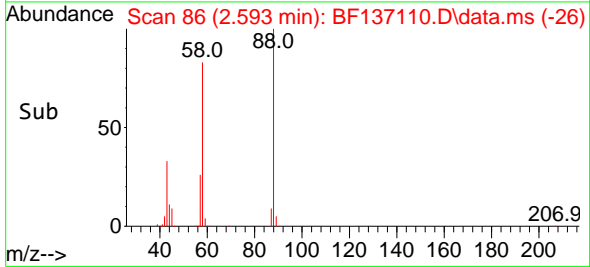
Tgt Ion:152 Resp: 160644
 Ion Ratio Lower Upper
 152 100
 150 157.8 125.1 187.7
 115 66.8 52.3 78.5

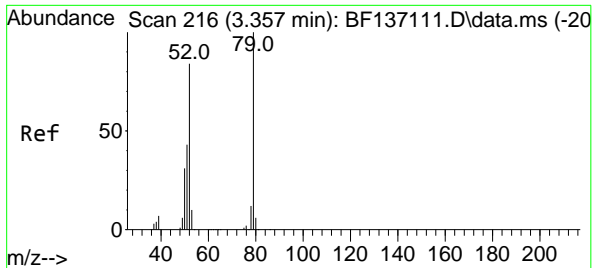


#2
 1,4-Dioxane
 Concen: 21.567 ng
 RT: 2.593 min Scan# 86
 Delta R.T. 0.000 min
 Lab File: BF137110.D
 Acq: 19 Jan 2024 14:25



Tgt Ion: 88 Resp: 106704
 Ion Ratio Lower Upper
 88 100
 58 83.5 68.5 102.7
 43 32.3 26.9 40.3

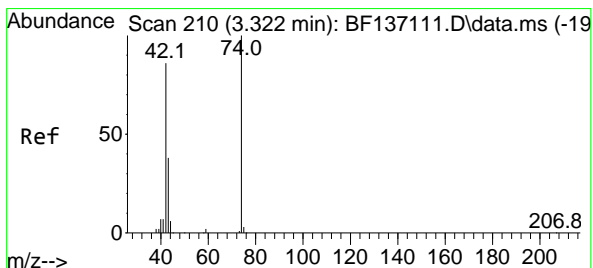
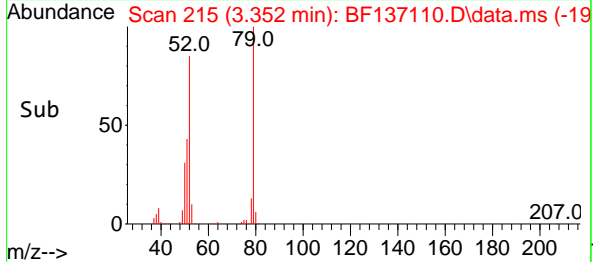
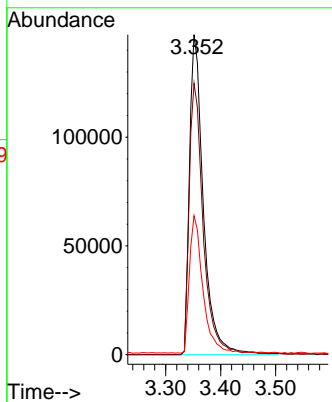
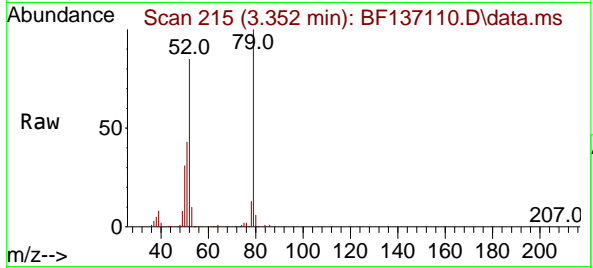




#3
 Pyridine
 Concen: 21.547 ng
 RT: 3.352 min Scan# 21
 Delta R.T. -0.006 min
 Lab File: BF137110.D
 Acq: 19 Jan 2024 14:25

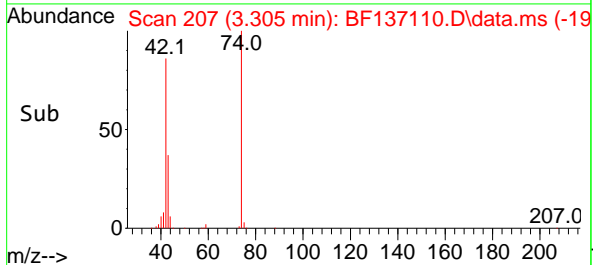
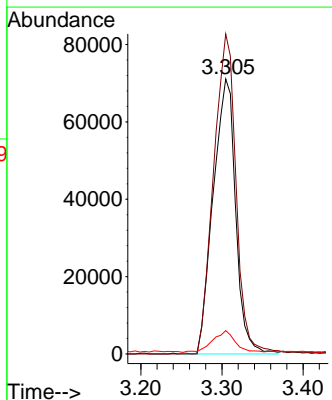
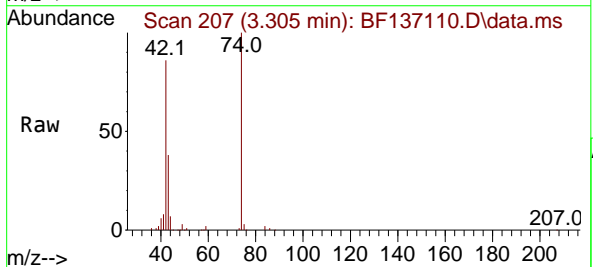
Instrument :
 BNA_F
 ClientSampleId :
 SSTDICC020

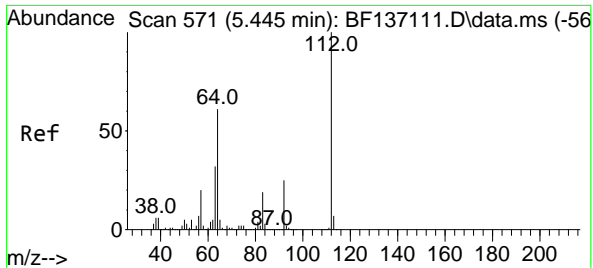
Tgt Ion	Resp	Lower	Upper
79	100		
52	84.8	67.0	100.4
51	43.5	34.4	51.6



#4
 n-Nitrosodimethylamine
 Concen: 20.480 ng
 RT: 3.305 min Scan# 207
 Delta R.T. -0.017 min
 Lab File: BF137110.D
 Acq: 19 Jan 2024 14:25

Tgt Ion	Resp	Lower	Upper
42	100		
74	116.4	93.1	139.7
44	8.5	5.6	8.4





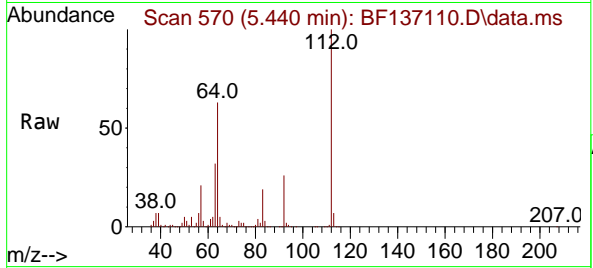
#5
 2-Fluorophenol
 Concen: 42.951 ng
 RT: 5.440 min Scan# 51
 Delta R.T. -0.006 min
 Lab File: BF137110.D
 Acq: 19 Jan 2024 14:25

Instrument :

BNA_F

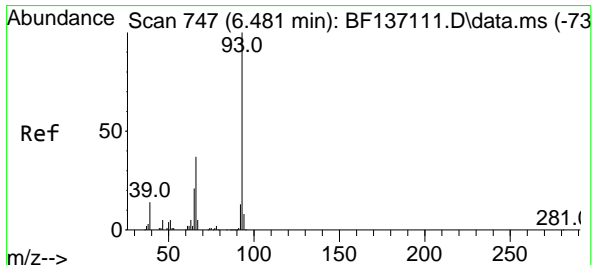
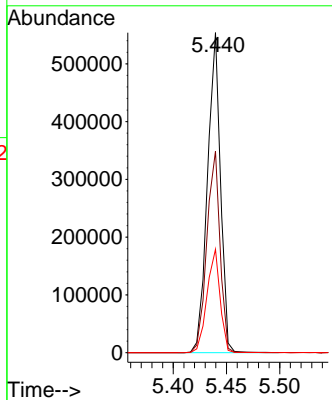
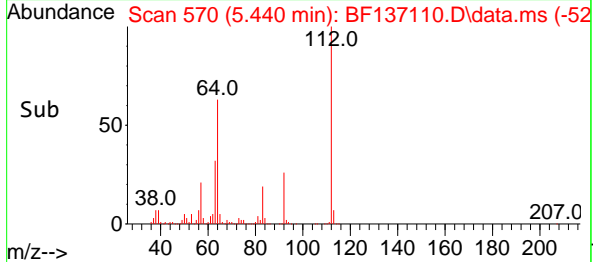
ClientSampleId :

SSTDICC020



Tgt Ion: 112 Resp: 470814

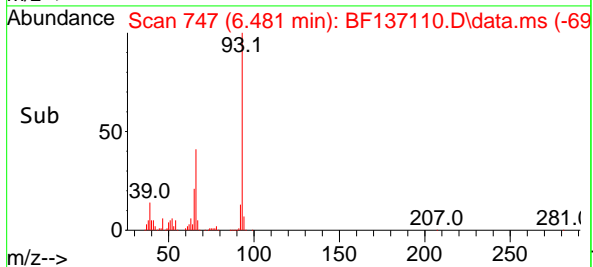
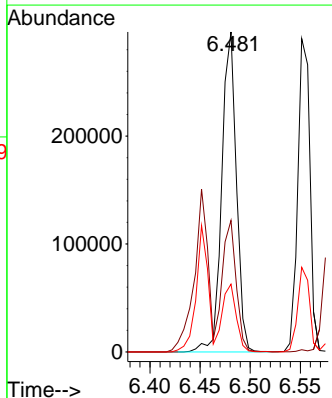
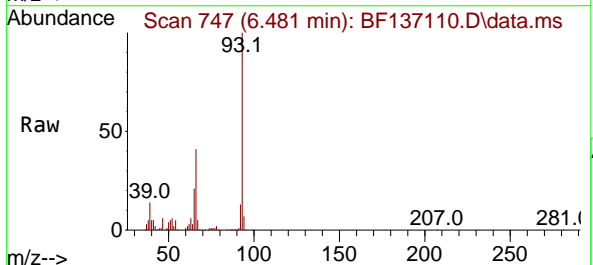
Ion	Ratio	Lower	Upper
112	100		
64	63.0	48.6	73.0
63	32.3	25.5	38.3

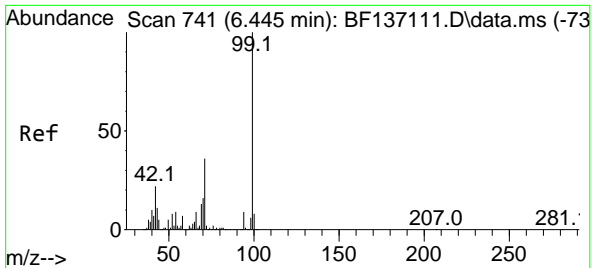


#6
 Aniline
 Concen: 22.386 ng
 RT: 6.481 min Scan# 747
 Delta R.T. 0.000 min
 Lab File: BF137110.D
 Acq: 19 Jan 2024 14:25

Tgt Ion: 93 Resp: 299822

Ion	Ratio	Lower	Upper
93	100		
66	41.1	32.0	48.0
65	21.2	17.0	25.4

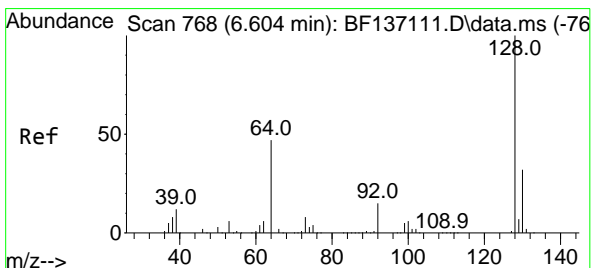
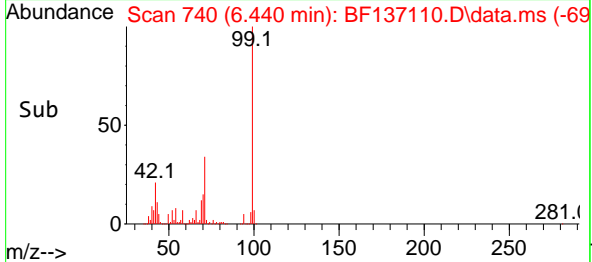
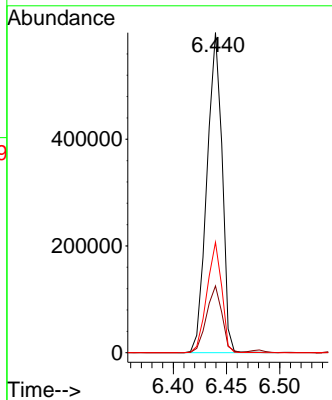
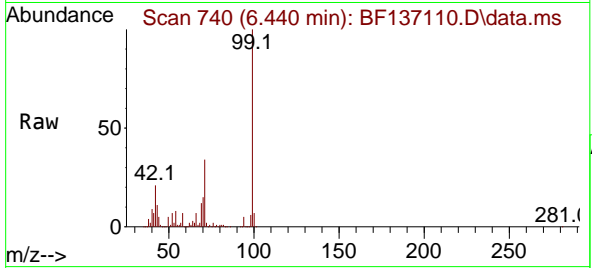




#7
 Phenol-d6
 Concen: 43.131 ng
 RT: 6.440 min Scan# 741
 Delta R.T. -0.006 min
 Lab File: BF137110.D
 Acq: 19 Jan 2024 14:25

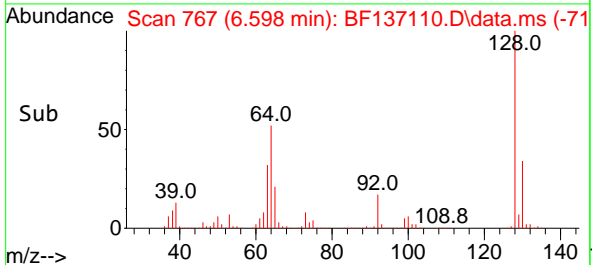
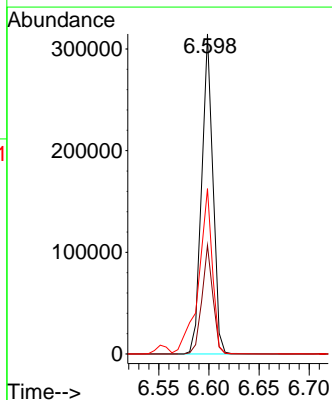
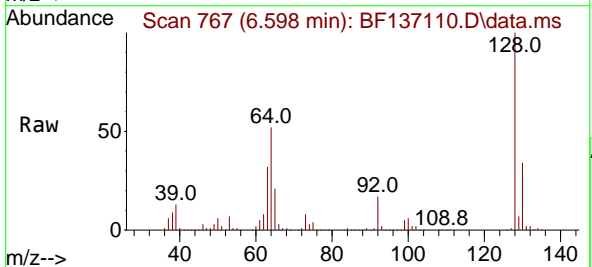
Instrument : BNA_F
 ClientSampleId : SSTDICC020

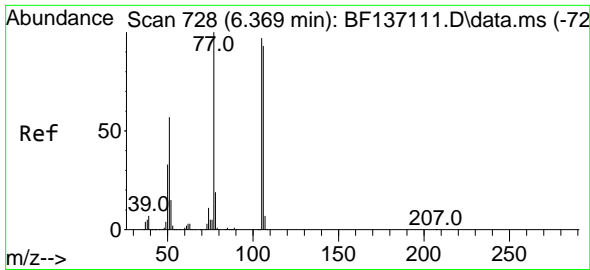
Tgt Ion	Resp	Ion Ratio	Lower	Upper
99	593531	100		
42		20.9	17.5	26.3
71		34.5	28.6	42.8



#8
 2-Chlorophenol
 Concen: 21.352 ng
 RT: 6.598 min Scan# 767
 Delta R.T. -0.006 min
 Lab File: BF137110.D
 Acq: 19 Jan 2024 14:25

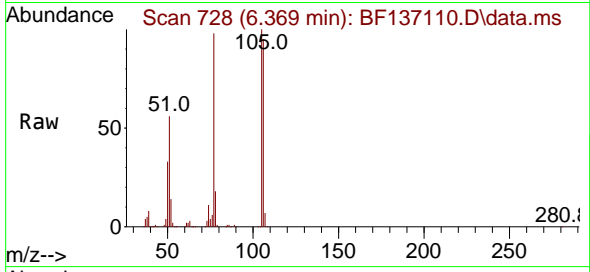
Tgt Ion	Resp	Ion Ratio	Lower	Upper
128	247564	100		
130		33.9	12.4	52.4
64		51.7	28.7	68.7



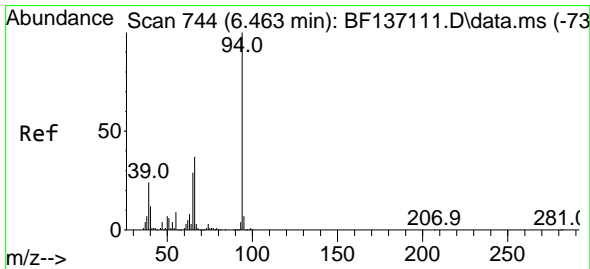
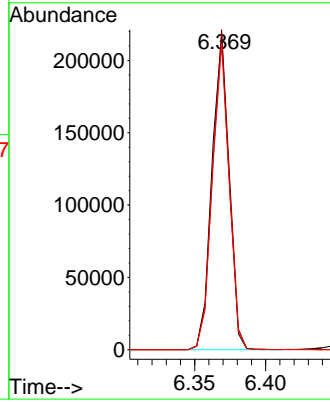
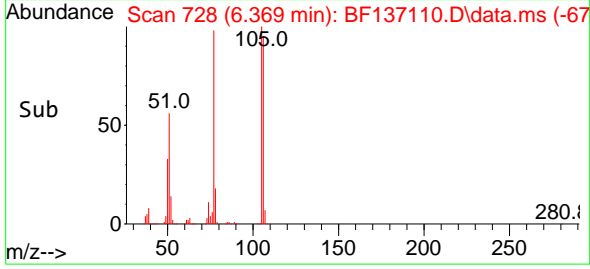


#9
 Benzaldehyde
 Concen: 23.693 ng
 RT: 6.369 min Scan# 710
 Delta R.T. 0.000 min
 Lab File: BF137110.D
 Acq: 19 Jan 2024 14:25

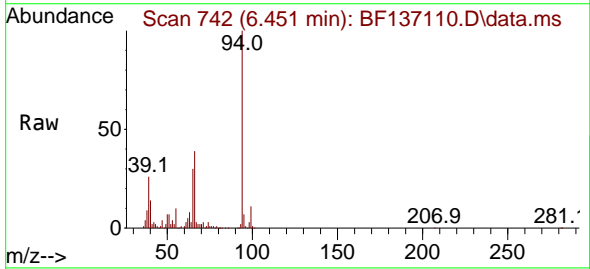
Instrument :
 BNA_F
 ClientSampleId :
 SSTDICC020



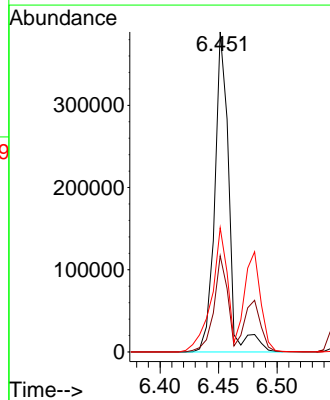
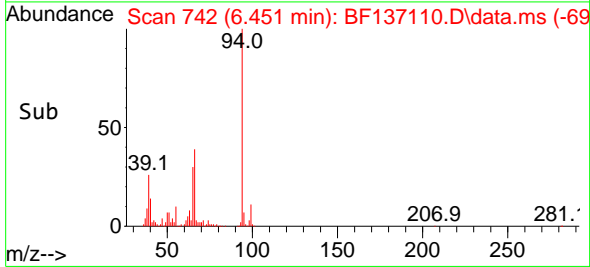
Tgt Ion: 77 Resp: 182215
 Ion Ratio Lower Upper
 77 100
 105 101.6 77.1 117.1
 106 96.9 73.2 113.2

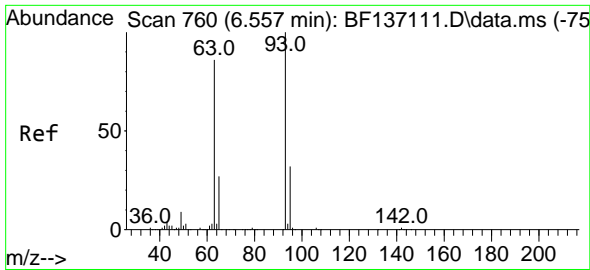


#10
 Phenol
 Concen: 21.981 ng m
 RT: 6.451 min Scan# 742
 Delta R.T. -0.012 min
 Lab File: BF137110.D
 Acq: 19 Jan 2024 14:25



Tgt Ion: 94 Resp: 327241
 Ion Ratio Lower Upper
 94 100
 65 30.1 9.3 49.3
 66 38.8 17.4 57.4





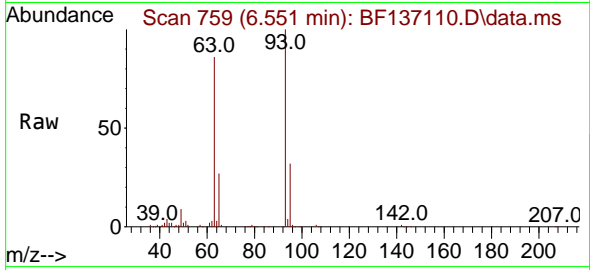
#11
 bis(2-Chloroethyl)ether
 Concen: 20.618 ng
 RT: 6.551 min Scan# 711
 Delta R.T. -0.006 min
 Lab File: BF137110.D
 Acq: 19 Jan 2024 14:25

Instrument :

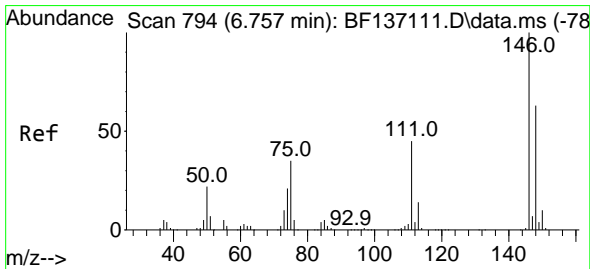
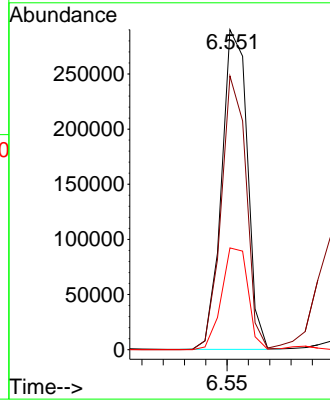
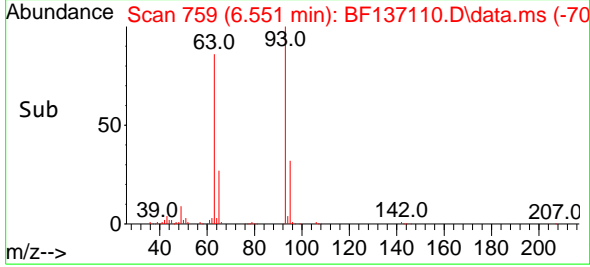
BNA_F

ClientSampleId :

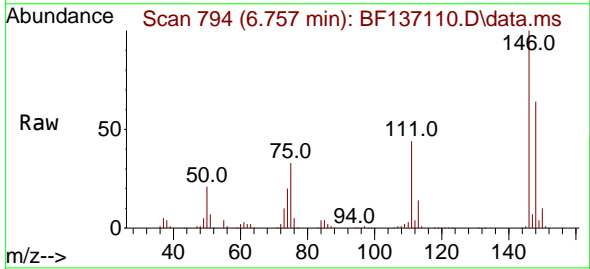
SSTDICC020



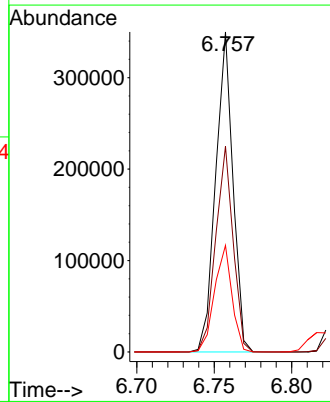
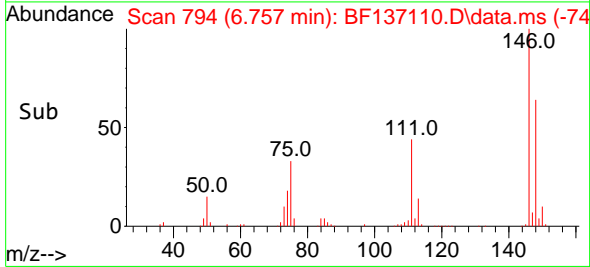
Tgt Ion: 93 Resp: 243257
 Ion Ratio Lower Upper
 93 100
 63 85.5 64.7 104.7
 95 31.8 11.6 51.6

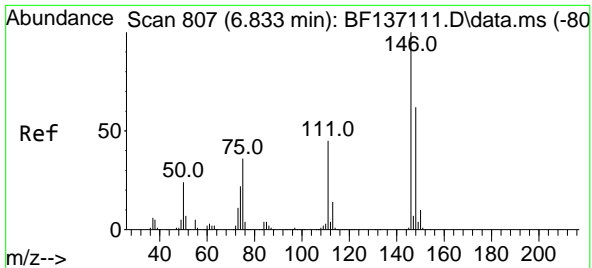


#12
 1,3-Dichlorobenzene
 Concen: 21.258 ng
 RT: 6.757 min Scan# 794
 Delta R.T. 0.000 min
 Lab File: BF137110.D
 Acq: 19 Jan 2024 14:25



Tgt Ion: 146 Resp: 270756
 Ion Ratio Lower Upper
 146 100
 148 64.3 50.6 75.8
 75 33.3 27.8 41.6





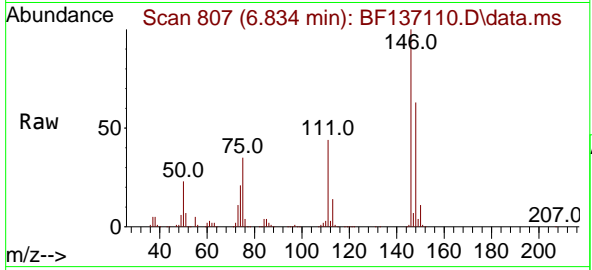
#13
 1,4-Dichlorobenzene
 Concen: 21.522 ng
 RT: 6.834 min Scan# 807
 Delta R.T. 0.000 min
 Lab File: BF137110.D
 Acq: 19 Jan 2024 14:25

Instrument :

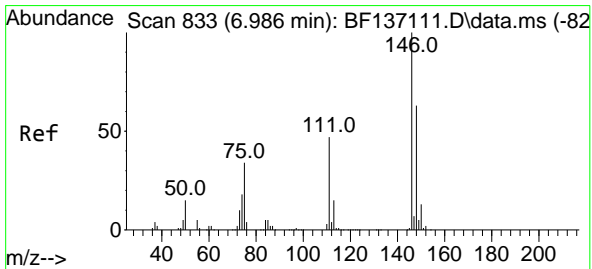
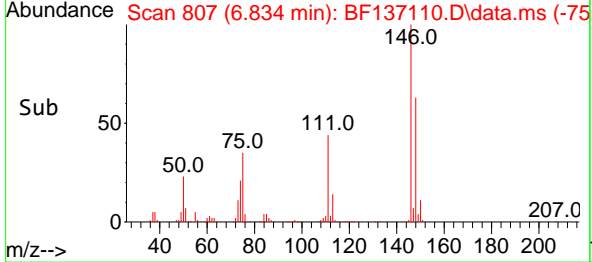
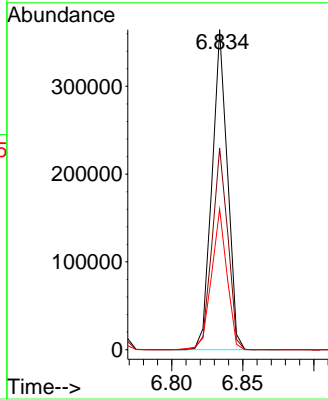
BNA_F

ClientSampleId :

SSTDICC020

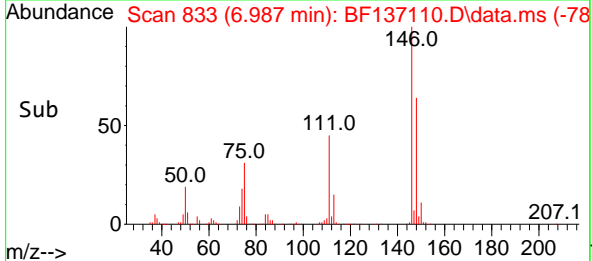
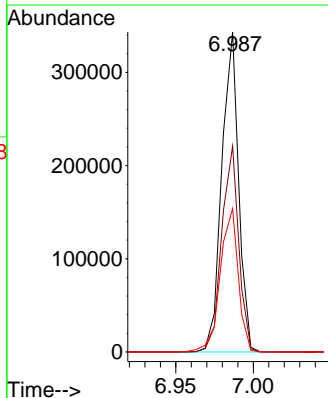
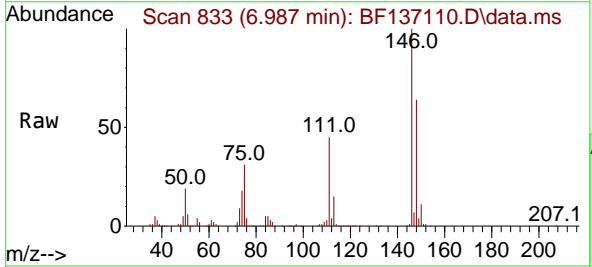


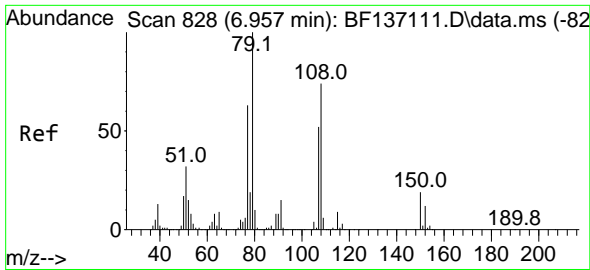
Tgt Ion:146 Resp: 276042
 Ion Ratio Lower Upper
 146 100
 148 63.0 49.8 74.6
 111 44.0 35.9 53.9



#14
 1,2-Dichlorobenzene
 Concen: 21.756 ng
 RT: 6.987 min Scan# 833
 Delta R.T. 0.000 min
 Lab File: BF137110.D
 Acq: 19 Jan 2024 14:25

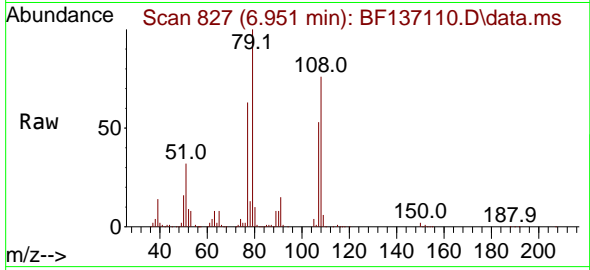
Tgt Ion:146 Resp: 258570
 Ion Ratio Lower Upper
 146 100
 148 64.3 50.7 76.1
 111 44.8 37.4 56.0



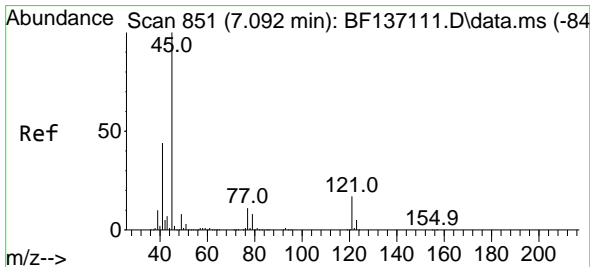
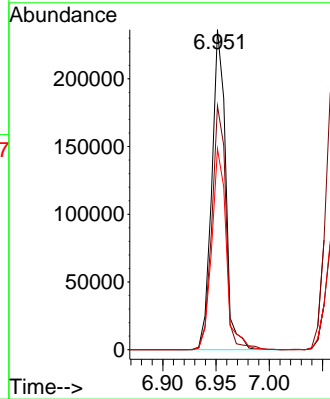
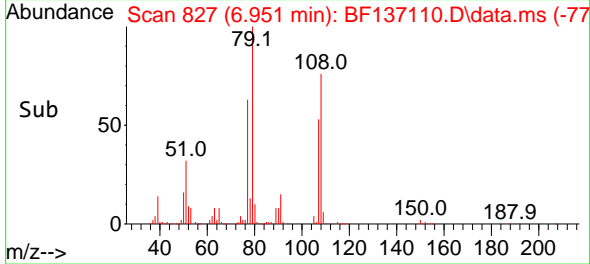


#15
 Benzyl Alcohol
 Concen: 21.544 ng
 RT: 6.951 min Scan# 811
 Delta R.T. -0.006 min
 Lab File: BF137110.D
 Acq: 19 Jan 2024 14:25

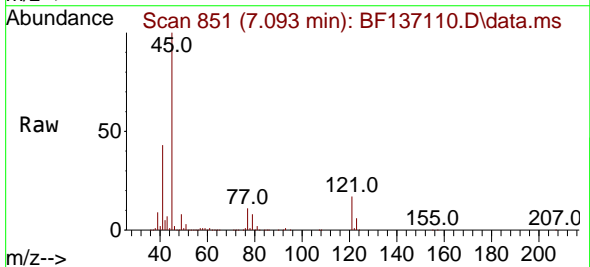
Instrument :
 BNA_F
 ClientSampleId :
 SSTDICC020



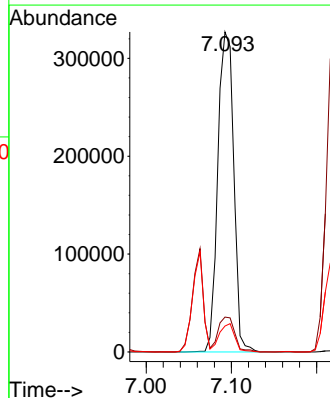
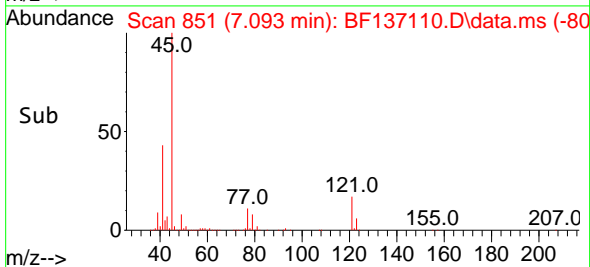
Tgt Ion: 79 Resp: 213868
 Ion Ratio Lower Upper
 79 100
 108 76.2 59.3 88.9
 77 62.7 50.2 75.4

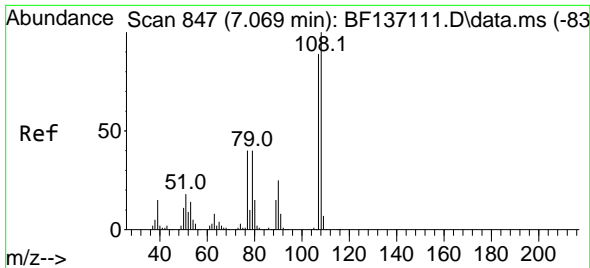


#16
 2,2'-oxybis(1-Chloropropane)
 Concen: 21.522 ng
 RT: 7.093 min Scan# 851
 Delta R.T. 0.000 min
 Lab File: BF137110.D
 Acq: 19 Jan 2024 14:25



Tgt Ion: 45 Resp: 422883
 Ion Ratio Lower Upper
 45 100
 77 10.9 0.0 31.6
 79 8.1 0.0 28.6





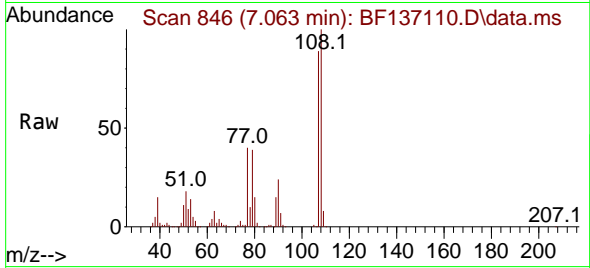
#17
 2-Methylphenol
 Concen: 21.211 ng
 RT: 7.063 min Scan# 846
 Delta R.T. -0.006 min
 Lab File: BF137110.D
 Acq: 19 Jan 2024 14:25

Instrument :

BNA_F

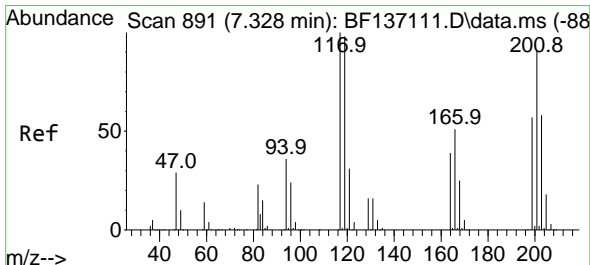
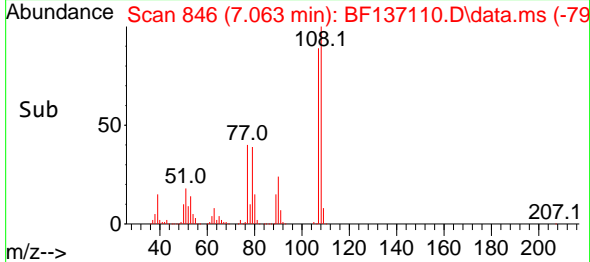
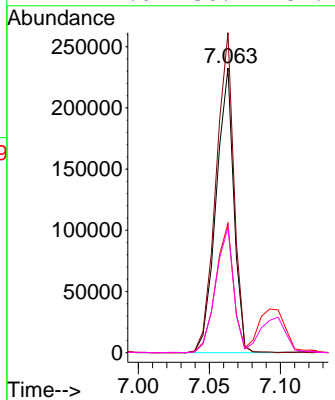
ClientSampleId :

SSTDICC020



Tgt Ion:107 Resp: 201655

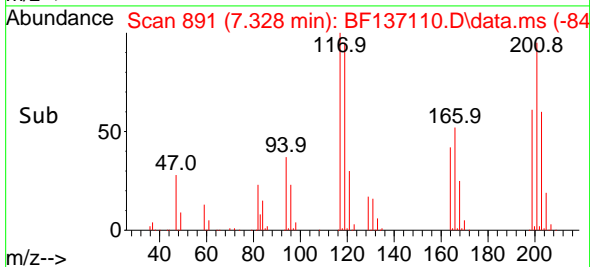
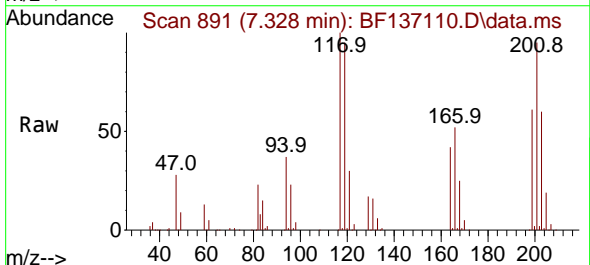
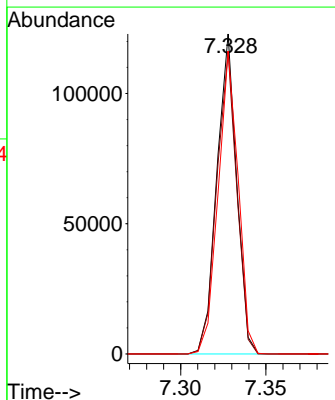
Ion	Ratio	Lower	Upper
107	100		
108	112.4	90.2	135.2
77	45.4	36.6	54.8
79	44.0	36.1	54.1

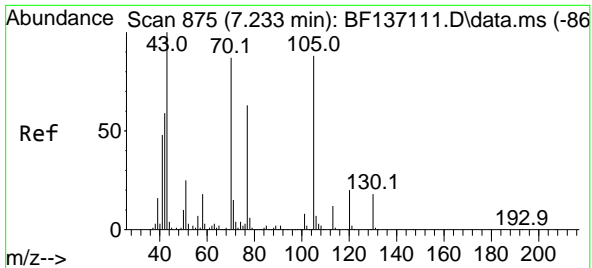


#18
 Hexachloroethane
 Concen: 21.189 ng
 RT: 7.328 min Scan# 891
 Delta R.T. 0.000 min
 Lab File: BF137110.D
 Acq: 19 Jan 2024 14:25

Tgt Ion:117 Resp: 99521

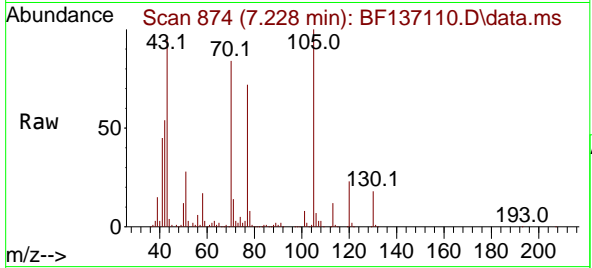
Ion	Ratio	Lower	Upper
117	100		
119	94.6	78.3	117.5
201	94.7	73.2	109.8



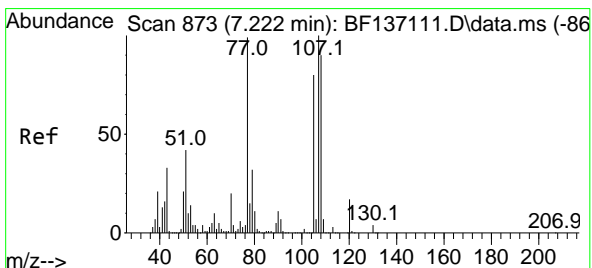
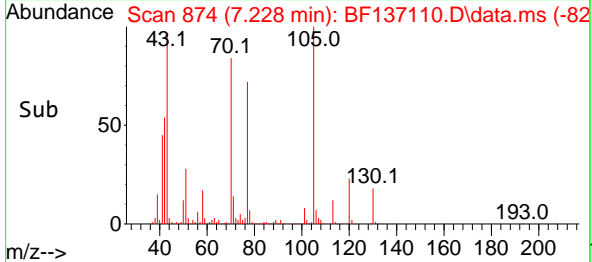
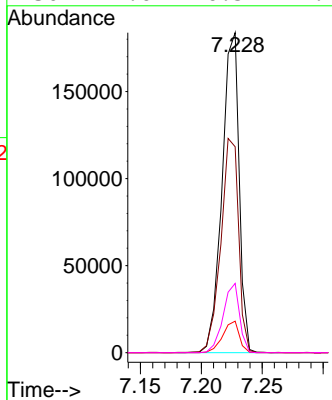


#19
 n-Nitroso-di-n-propylamine
 Concen: 21.195 ng
 RT: 7.228 min Scan# 81
 Delta R.T. -0.006 min
 Lab File: BF137110.D
 Acq: 19 Jan 2024 14:25

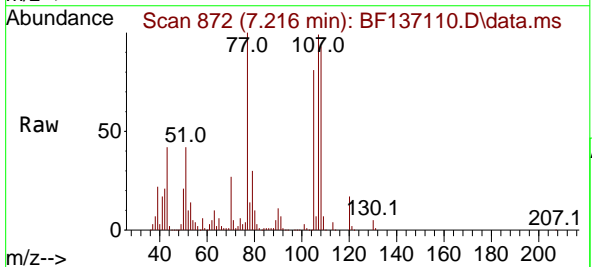
Instrument :
 BNA_F
 ClientSampleId :
 SSTDICC020



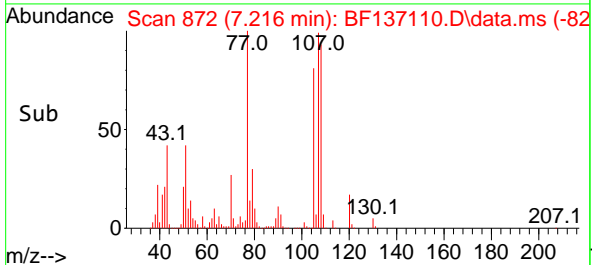
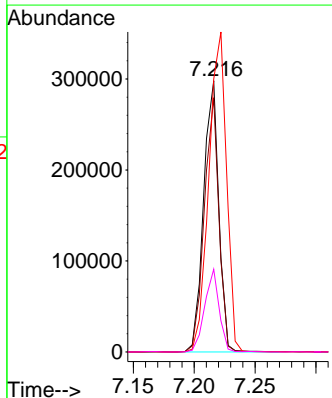
Tgt Ion: 70 Resp: 179614
 Ion Ratio Lower Upper
 70 100
 42 64.4 54.2 81.4
 101 9.9 7.6 11.4
 130 21.6 16.5 24.7

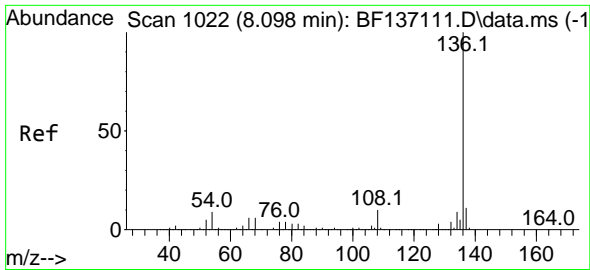


#20
 3+4-Methylphenols
 Concen: 22.121 ng
 RT: 7.216 min Scan# 872
 Delta R.T. -0.006 min
 Lab File: BF137110.D
 Acq: 19 Jan 2024 14:25



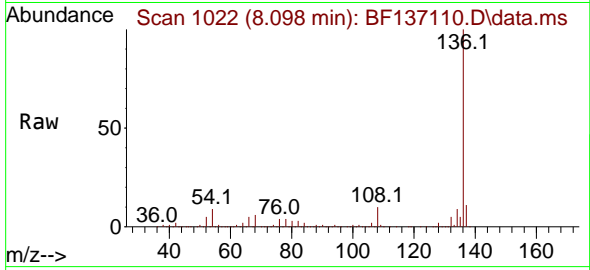
Tgt Ion: 107 Resp: 258051
 Ion Ratio Lower Upper
 107 100
 108 93.7 70.4 110.4
 77 100.6 78.5 118.5
 79 30.5 11.7 51.7



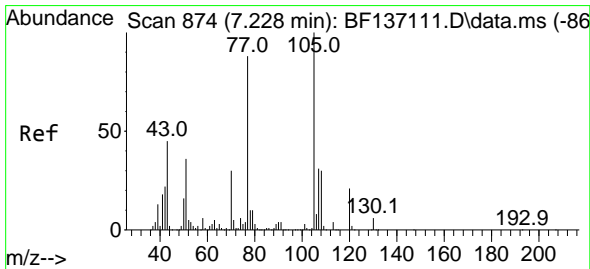
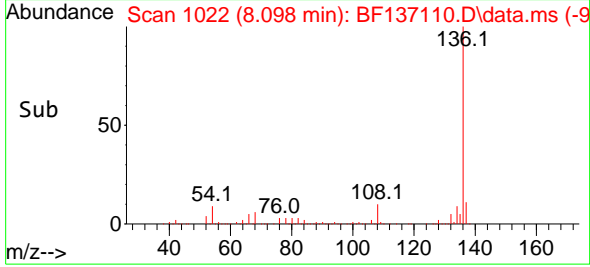
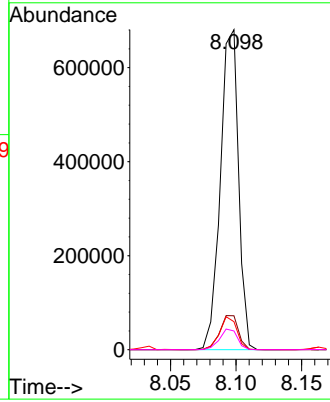


#21
 Naphthalene-d8
 Concen: 20.000 ng
 RT: 8.098 min Scan# 1022
 Delta R.T. 0.000 min
 Lab File: BF137110.D
 Acq: 19 Jan 2024 14:25

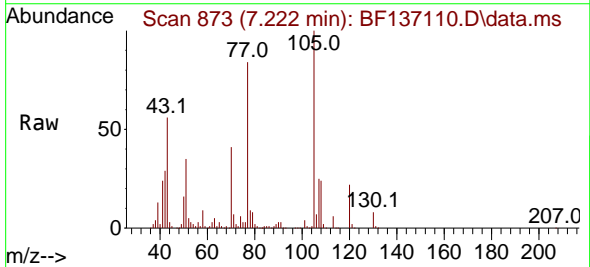
Instrument :
 BNA_F
 ClientSampleId :
 SSTDICC020



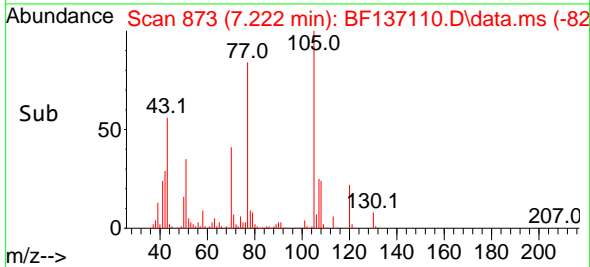
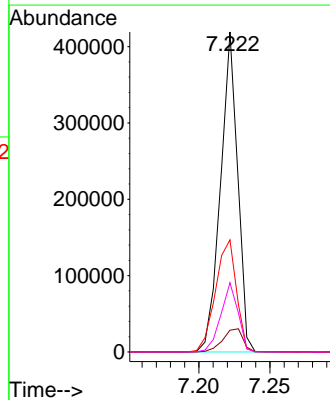
Tgt Ion:136 Resp: 654825
 Ion Ratio Lower Upper
 136 100
 137 10.6 8.5 12.7
 54 8.8 7.4 11.2
 68 5.8 4.9 7.3

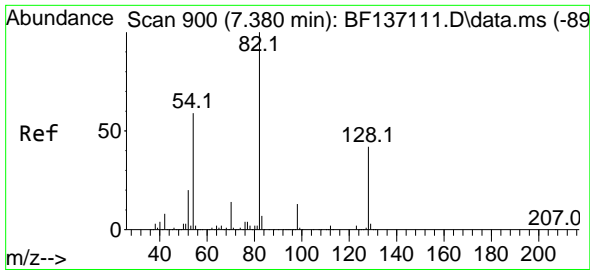


#22
 Acetophenone
 Concen: 21.714 ng
 RT: 7.222 min Scan# 873
 Delta R.T. -0.006 min
 Lab File: BF137110.D
 Acq: 19 Jan 2024 14:25



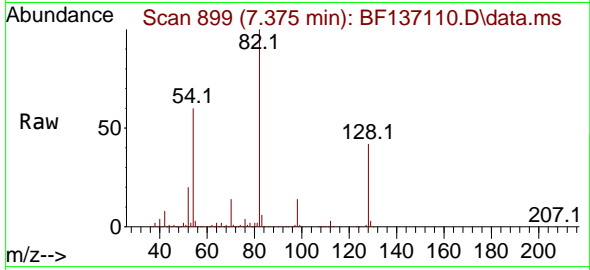
Tgt Ion:105 Resp: 351732
 Ion Ratio Lower Upper
 105 100
 71 6.8 4.0 6.0#
 51 35.0 28.8 43.2
 120 21.6 16.6 25.0



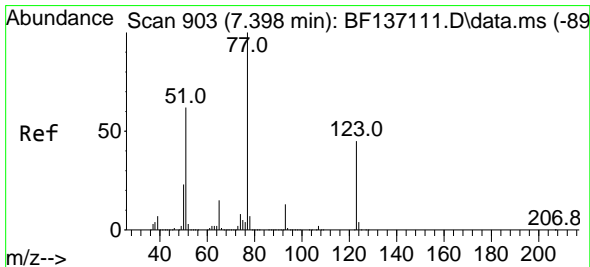
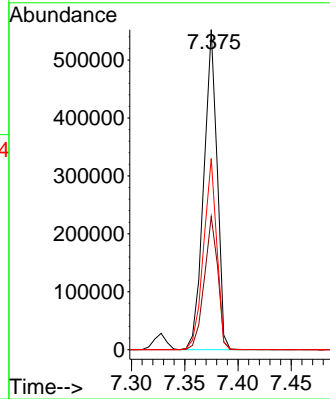
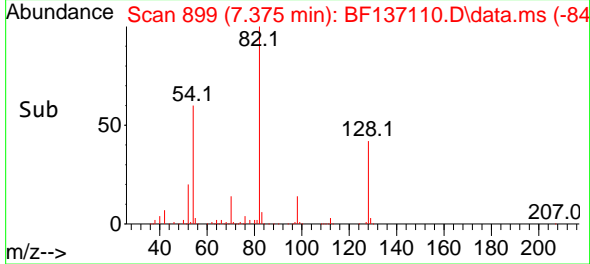


#23
 Nitrobenzene-d5
 Concen: 42.314 ng
 RT: 7.375 min Scan# 899
 Delta R.T. -0.006 min
 Lab File: BF137110.D
 Acq: 19 Jan 2024 14:25

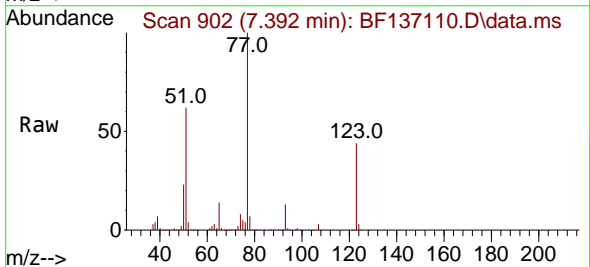
Instrument :
 BNA_F
 ClientSampleId :
 SSTDICC020



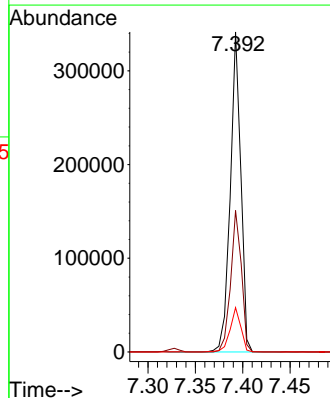
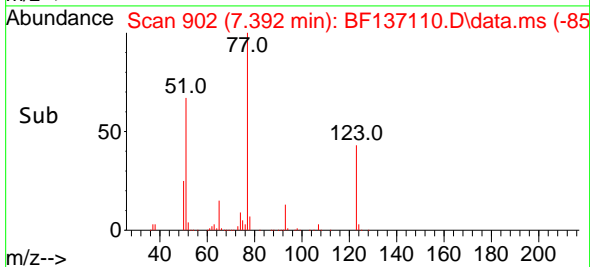
Tgt Ion: 82 Resp: 484206
 Ion Ratio Lower Upper
 82 100
 128 41.6 33.8 50.8
 54 59.7 47.4 71.0

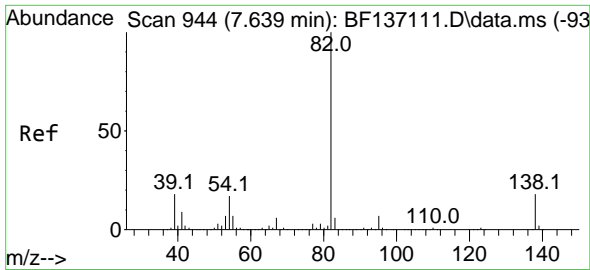


#24
 Nitrobenzene
 Concen: 21.216 ng
 RT: 7.392 min Scan# 902
 Delta R.T. -0.006 min
 Lab File: BF137110.D
 Acq: 19 Jan 2024 14:25



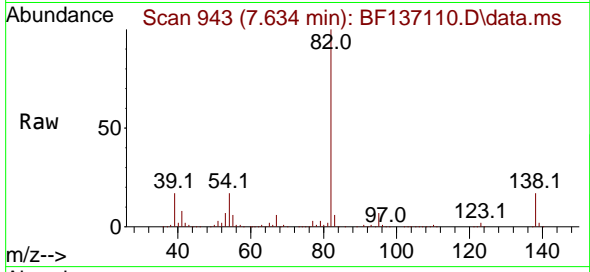
Tgt Ion: 77 Resp: 265052
 Ion Ratio Lower Upper
 77 100
 123 44.2 35.8 53.6
 65 13.8 11.7 17.5



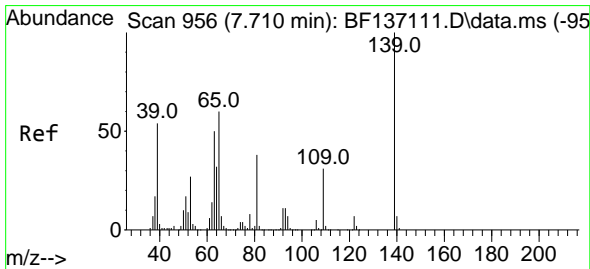
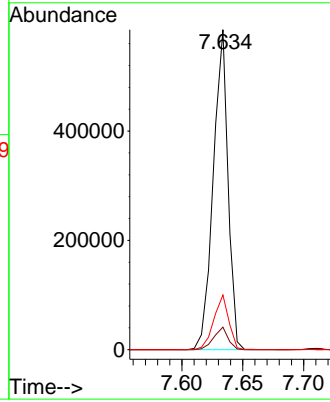
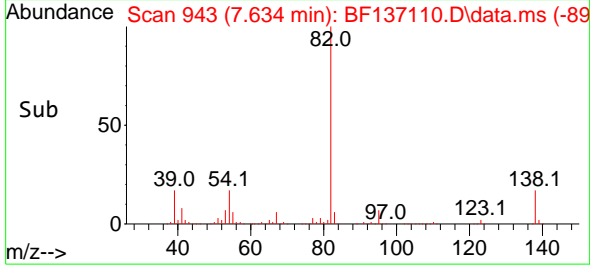


#25
 Isophorone
 Concen: 21.020 ng
 RT: 7.634 min Scan# 943
 Delta R.T. -0.006 min
 Lab File: BF137110.D
 Acq: 19 Jan 2024 14:25

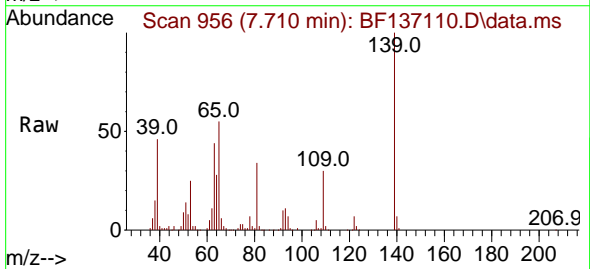
Instrument : BNA_F
 ClientSampleId : SSTDICC020



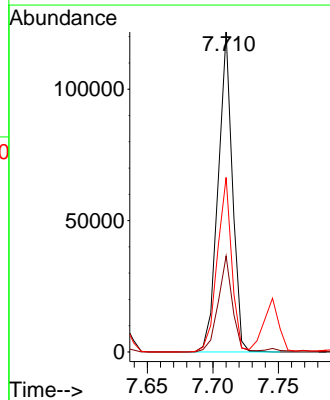
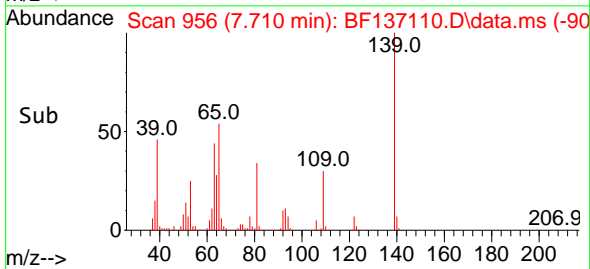
Tgt Ion: 82 Resp: 495144
 Ion Ratio Lower Upper
 82 100
 95 7.1 5.8 8.8
 138 17.1 14.3 21.5

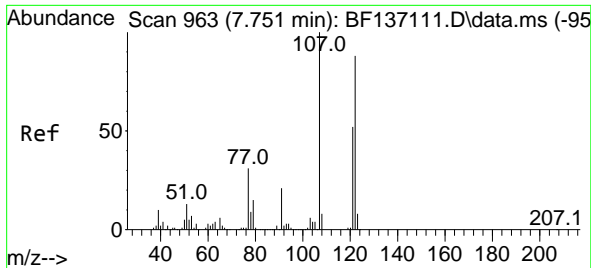


#26
 2-Nitrophenol
 Concen: 20.023 ng
 RT: 7.710 min Scan# 956
 Delta R.T. 0.000 min
 Lab File: BF137110.D
 Acq: 19 Jan 2024 14:25



Tgt Ion: 139 Resp: 92110
 Ion Ratio Lower Upper
 139 100
 109 30.0 25.2 37.8
 65 54.6 47.6 71.4





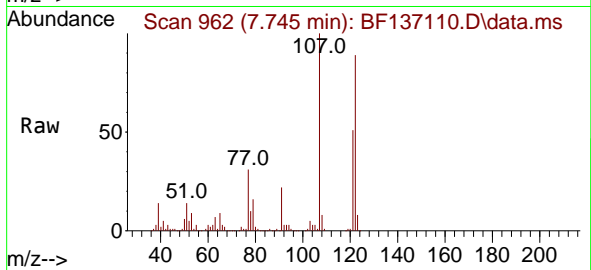
#27
 2,4-Dimethylphenol
 Concen: 21.282 ng
 RT: 7.745 min Scan# 909
 Delta R.T. -0.006 min
 Lab File: BF137110.D
 Acq: 19 Jan 2024 14:25

Instrument :

BNA_F

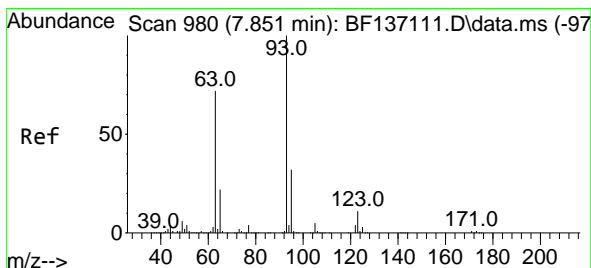
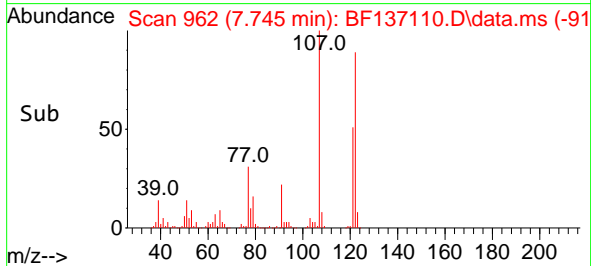
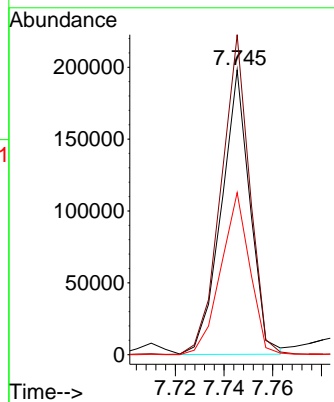
ClientSampleId :

SSTDICC020



Tgt Ion:122 Resp: 161625

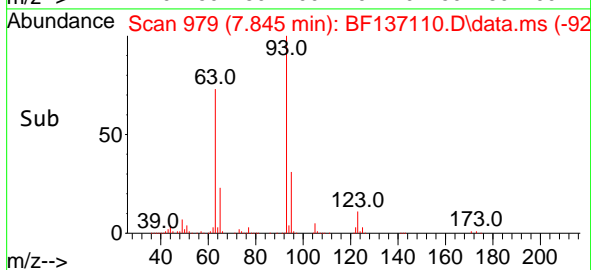
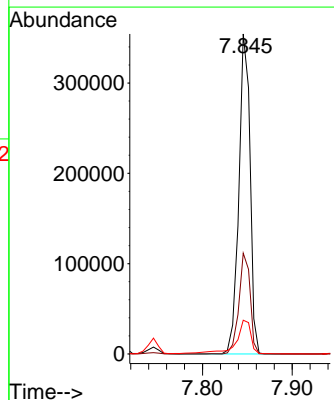
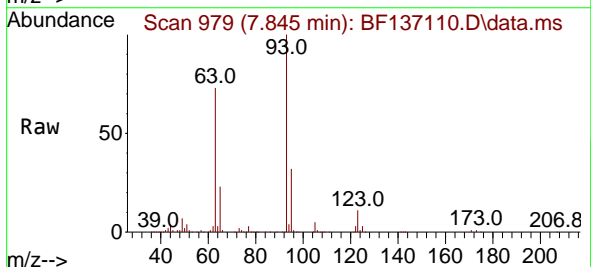
Ion	Ratio	Lower	Upper
122	100		
107	112.3	90.3	135.5
121	56.9	46.6	69.8

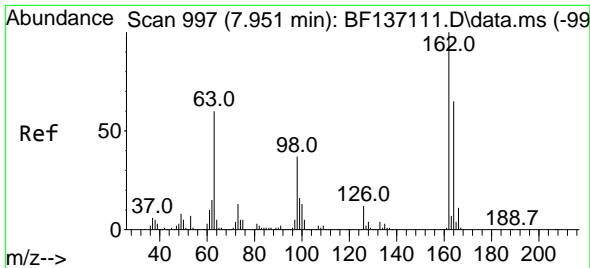


#28
 bis(2-Chloroethoxy)methane
 Concen: 21.496 ng
 RT: 7.845 min Scan# 979
 Delta R.T. -0.006 min
 Lab File: BF137110.D
 Acq: 19 Jan 2024 14:25

Tgt Ion: 93 Resp: 306956

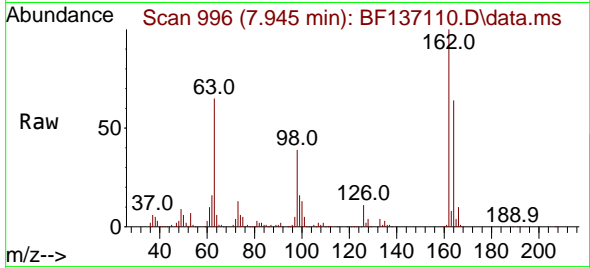
Ion	Ratio	Lower	Upper
93	100		
95	31.5	25.8	38.8
123	10.6	9.0	13.6



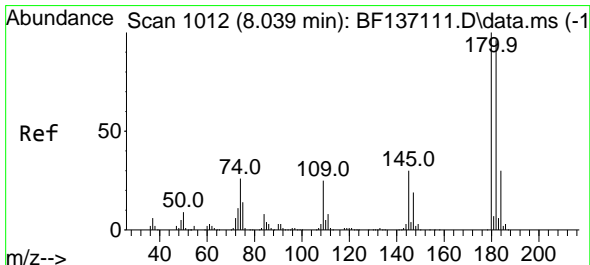
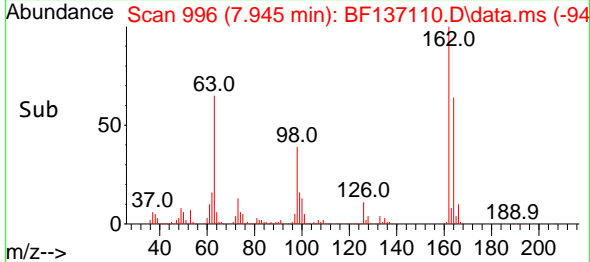
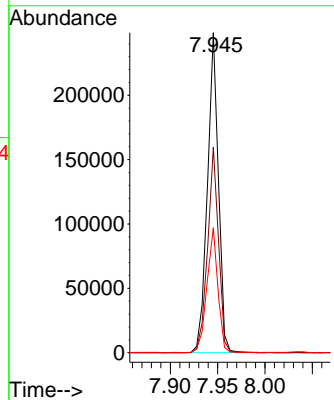


#29
 2,4-Dichlorophenol
 Concen: 21.332 ng
 RT: 7.945 min Scan# 996
 Delta R.T. -0.006 min
 Lab File: BF137110.D
 Acq: 19 Jan 2024 14:25

Instrument :
 BNA_F
 ClientSampleId :
 SSTDICC020

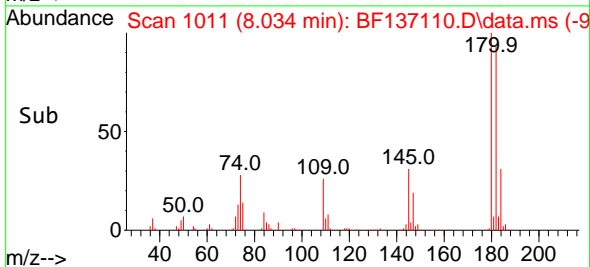
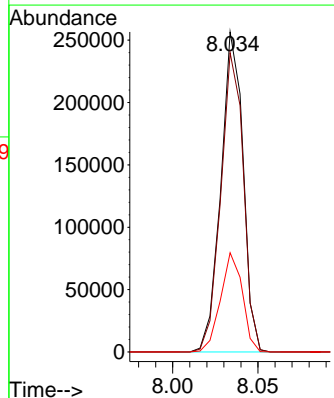
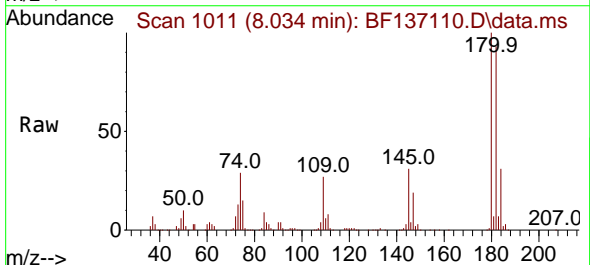


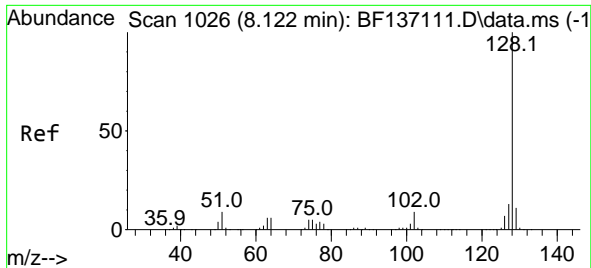
Tgt Ion:162 Resp: 200345
 Ion Ratio Lower Upper
 162 100
 164 64.2 45.1 85.1
 98 39.0 17.3 57.3



#30
 1,2,4-Trichlorobenzene
 Concen: 21.417 ng
 RT: 8.034 min Scan# 1011
 Delta R.T. -0.006 min
 Lab File: BF137110.D
 Acq: 19 Jan 2024 14:25

Tgt Ion:180 Resp: 232348
 Ion Ratio Lower Upper
 180 100
 182 93.5 77.0 115.6
 145 31.0 24.1 36.1





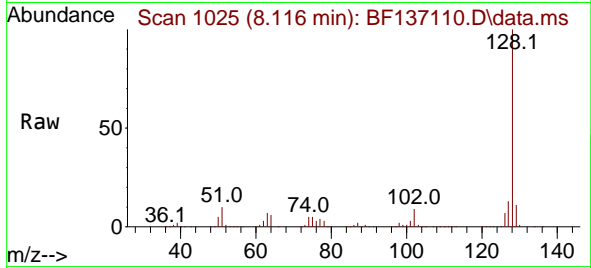
#31
 Naphthalene
 Concen: 21.503 ng
 RT: 8.116 min Scan# 10
 Delta R.T. -0.006 min
 Lab File: BF137110.D
 Acq: 19 Jan 2024 14:25

Instrument :

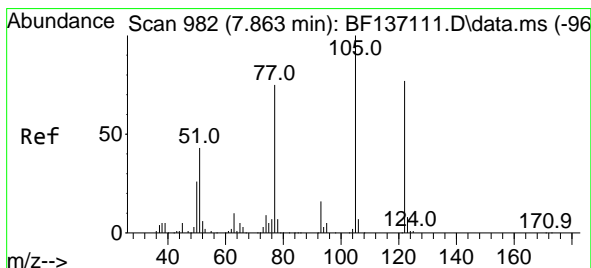
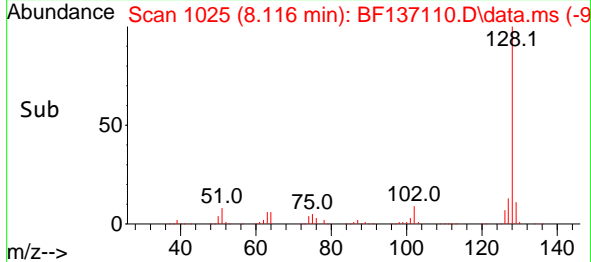
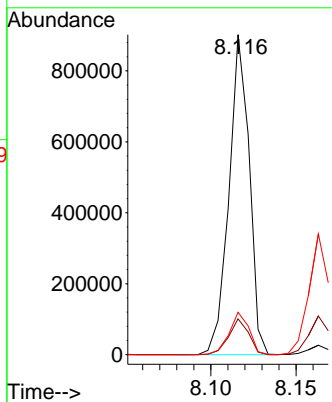
BNA_F

ClientSampleId :

SSTDICC020

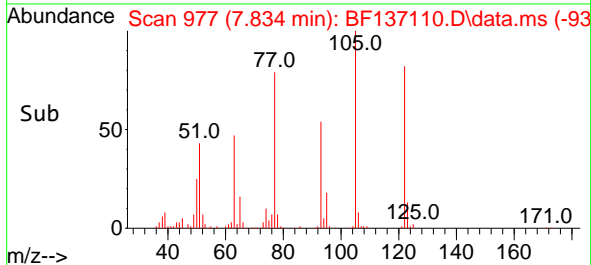
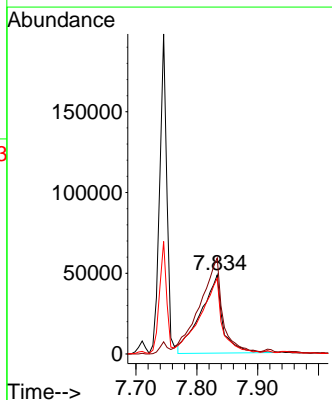
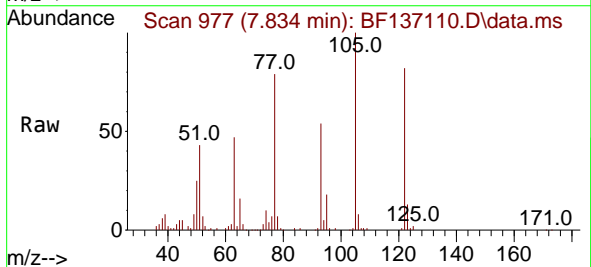


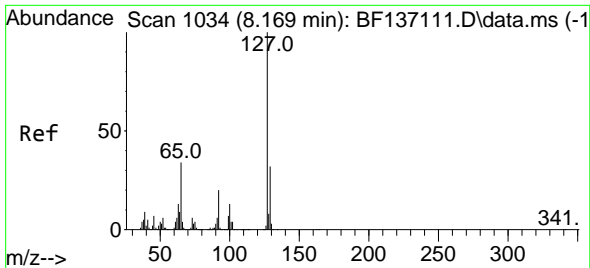
Tgt Ion:128 Resp: 746897
 Ion Ratio Lower Upper
 128 100
 129 11.2 8.7 13.1
 127 13.2 10.6 15.8



#32
 Benzoic acid
 Concen: 18.280 ng
 RT: 7.834 min Scan# 977
 Delta R.T. -0.029 min
 Lab File: BF137110.D
 Acq: 19 Jan 2024 14:25

Tgt Ion:122 Resp: 122802
 Ion Ratio Lower Upper
 122 100
 105 121.4 107.0 147.0
 77 95.8 76.3 116.3





#33
 4-Chloroaniline
 Concen: 21.510 ng
 RT: 8.163 min Scan# 1033
 Delta R.T. -0.006 min
 Lab File: BF137110.D
 Acq: 19 Jan 2024 14:25

Instrument :

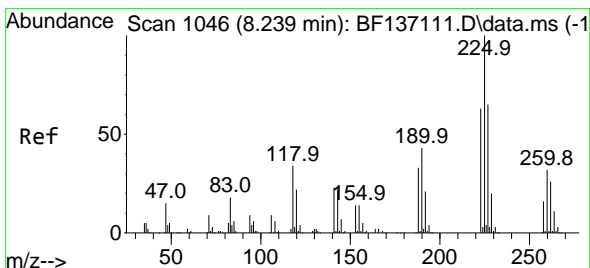
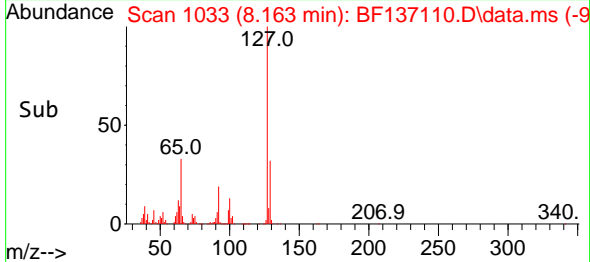
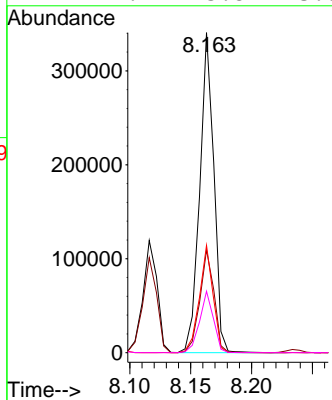
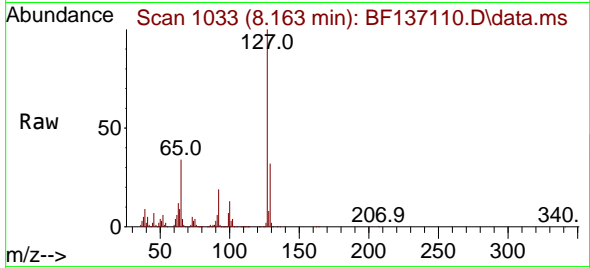
BNA_F

ClientSampleId :

SSTDICC020

Tgt Ion:127 Resp: 274911

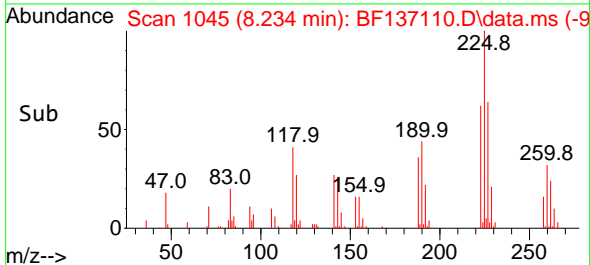
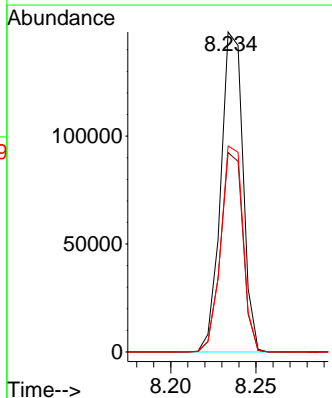
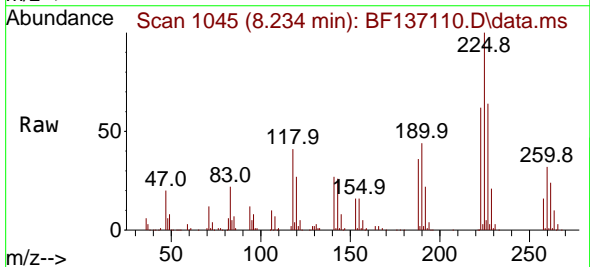
Ion	Ratio	Lower	Upper
127	100		
129	32.1	25.8	38.6
65	33.6	26.9	40.3
92	19.2	15.8	23.6

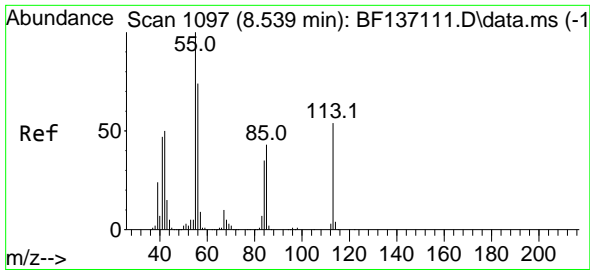


#34
 Hexachlorobutadiene
 Concen: 21.333 ng
 RT: 8.234 min Scan# 1045
 Delta R.T. -0.006 min
 Lab File: BF137110.D
 Acq: 19 Jan 2024 14:25

Tgt Ion:225 Resp: 134642

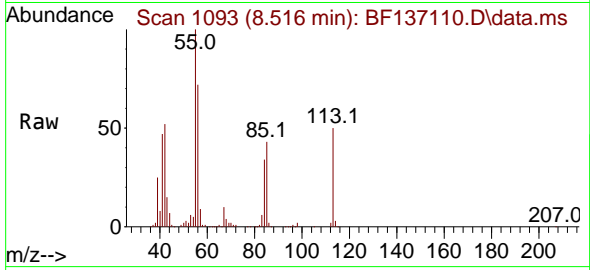
Ion	Ratio	Lower	Upper
225	100		
223	62.3	50.6	76.0
227	64.3	51.9	77.9



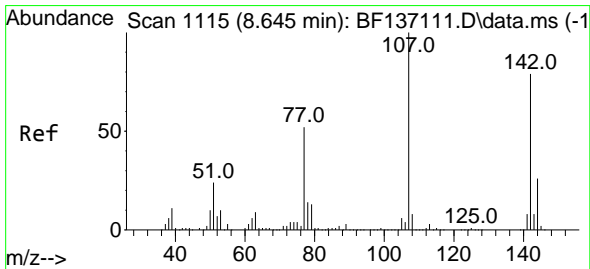
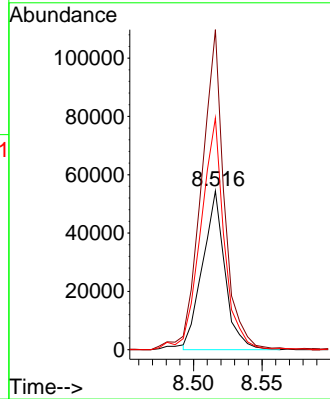
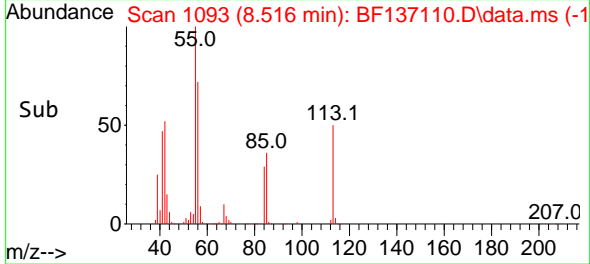


#35
 Caprolactam
 Concen: 20.679 ng m
 RT: 8.516 min Scan# 1093
 Delta R.T. -0.023 min
 Lab File: BF137110.D
 Acq: 19 Jan 2024 14:25

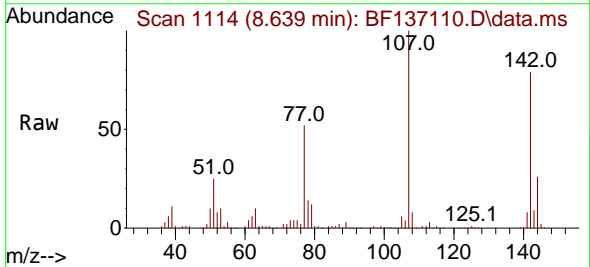
Instrument : BNA_F
 ClientSampleId : SSTDICC020



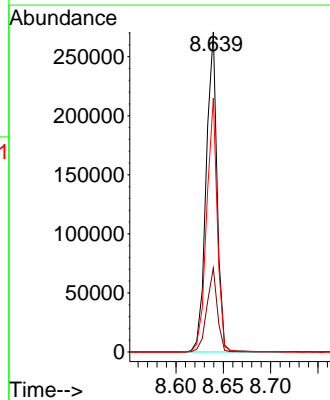
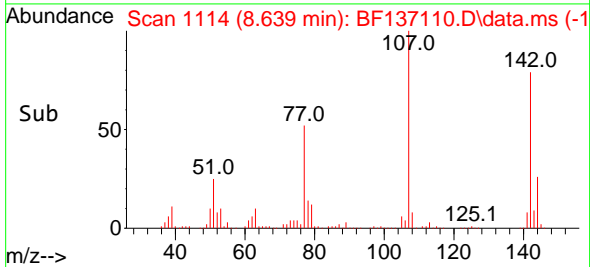
Tgt Ion:113 Resp: 61643
 Ion Ratio Lower Upper
 113 100
 55 201.6 166.5 206.5
 56 146.0 117.1 157.1

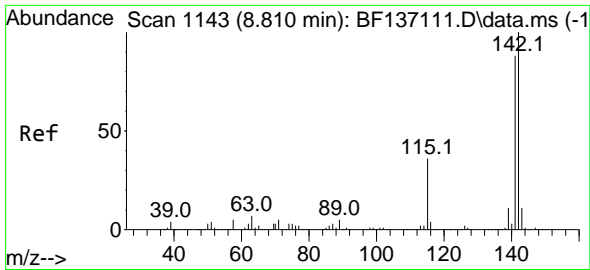


#36
 4-Chloro-3-methylphenol
 Concen: 21.200 ng
 RT: 8.639 min Scan# 1114
 Delta R.T. -0.006 min
 Lab File: BF137110.D
 Acq: 19 Jan 2024 14:25



Tgt Ion:107 Resp: 217492
 Ion Ratio Lower Upper
 107 100
 144 26.2 20.5 30.7
 142 79.4 63.3 94.9





#37
 2-Methylnaphthalene
 Concen: 21.648 ng
 RT: 8.810 min Scan# 1110
 Delta R.T. 0.000 min
 Lab File: BF137110.D
 Acq: 19 Jan 2024 14:25

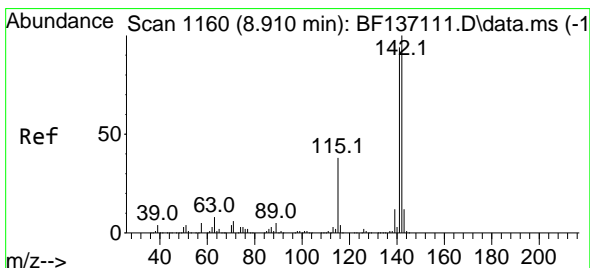
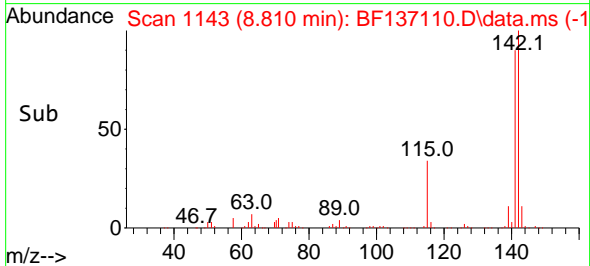
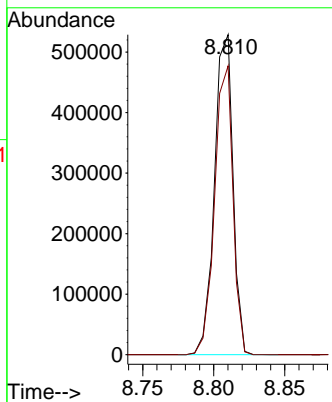
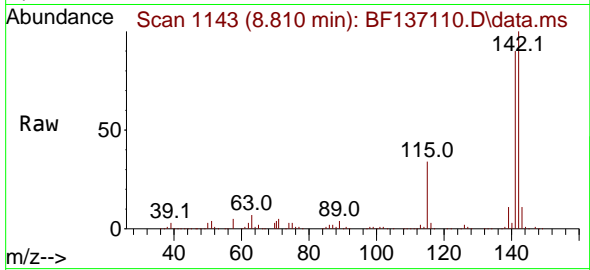
Instrument :

BNA_F

ClientSampleId :

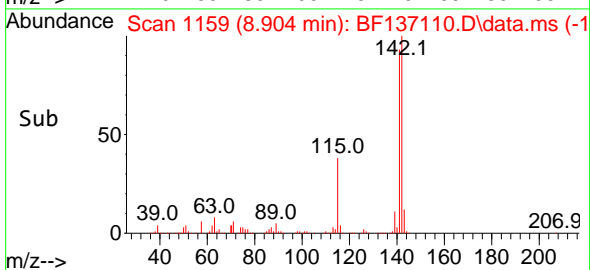
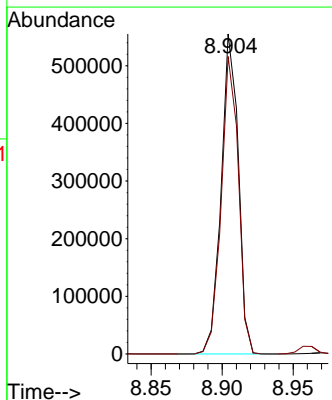
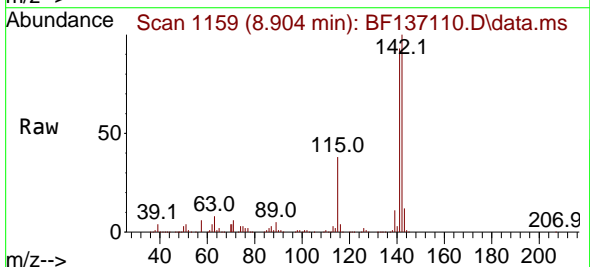
SSTDICC020

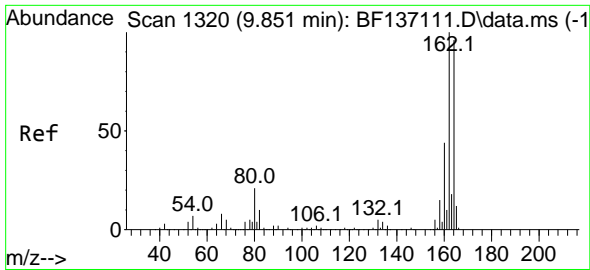
Tgt Ion:142 Resp: 478560
 Ion Ratio Lower Upper
 142 100
 141 90.3 70.7 106.1



#38
 1-Methylnaphthalene
 Concen: 21.614 ng
 RT: 8.904 min Scan# 1159
 Delta R.T. -0.006 min
 Lab File: BF137110.D
 Acq: 19 Jan 2024 14:25

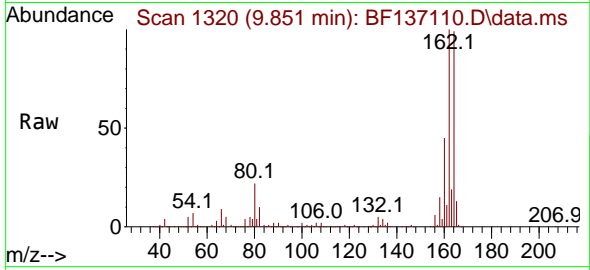
Tgt Ion:142 Resp: 466084
 Ion Ratio Lower Upper
 142 100
 141 93.0 74.8 112.2



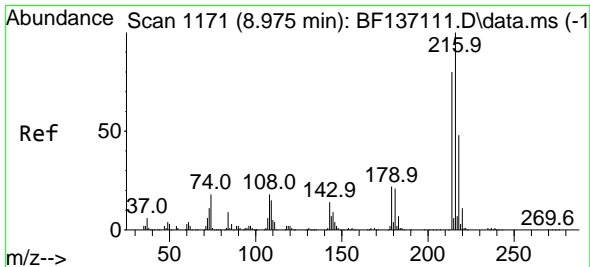
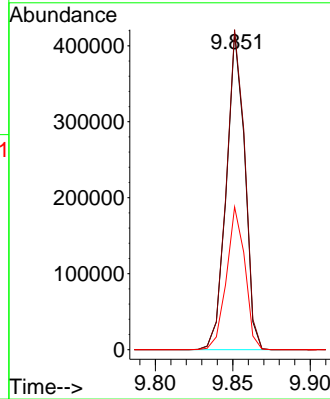
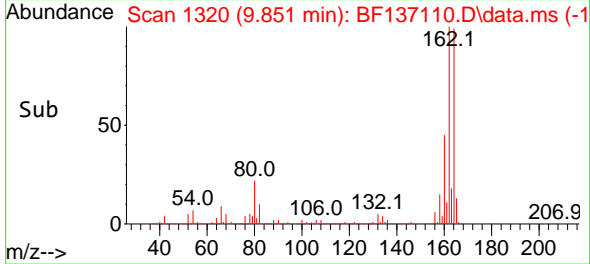


#39
 Acenaphthene-d10
 Concen: 20.000 ng
 RT: 9.851 min Scan# 11170
 Delta R.T. 0.000 min
 Lab File: BF137110.D
 Acq: 19 Jan 2024 14:25

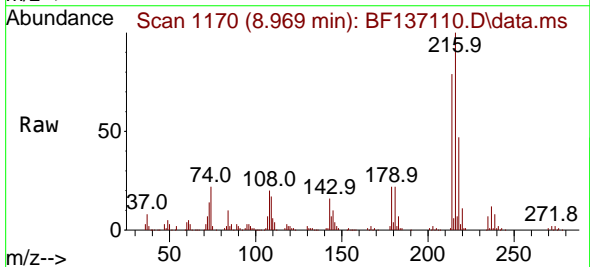
Instrument : BNA_F
 ClientSampleId : SSTDICC020



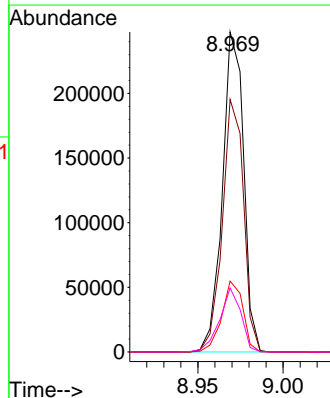
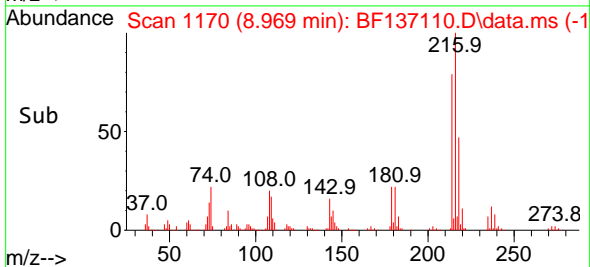
Tgt Ion:164 Resp: 343837
 Ion Ratio Lower Upper
 164 100
 162 100.9 83.1 124.7
 160 45.0 36.7 55.1

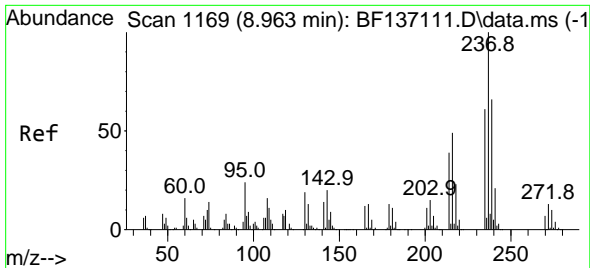


#40
 1,2,4,5-Tetrachlorobenzene
 Concen: 21.251 ng
 RT: 8.969 min Scan# 1170
 Delta R.T. -0.006 min
 Lab File: BF137110.D
 Acq: 19 Jan 2024 14:25



Tgt Ion:216 Resp: 213848
 Ion Ratio Lower Upper
 216 100
 214 78.9 63.4 95.2
 179 22.1 18.2 27.4
 108 20.2 16.6 24.8

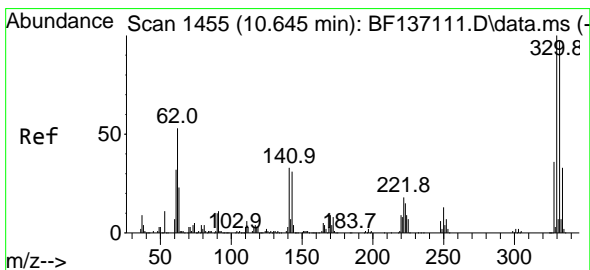
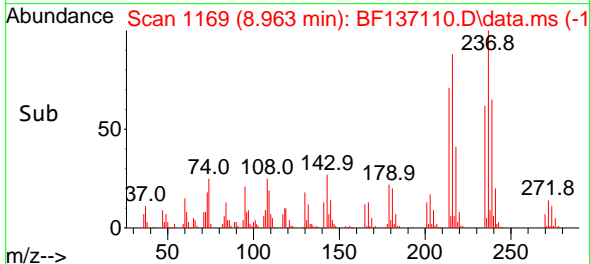
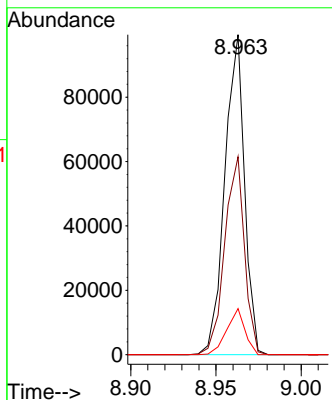
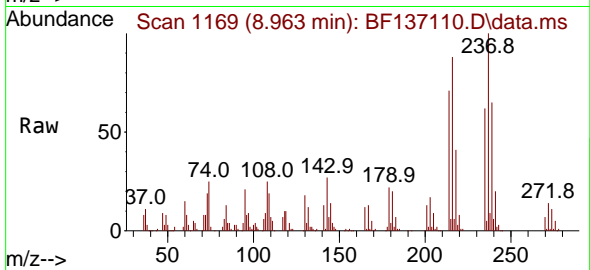




#41
 Hexachlorocyclopentadiene
 Concen: 20.693 ng
 RT: 8.963 min Scan# 11169
 Delta R.T. 0.000 min
 Lab File: BF137110.D
 Acq: 19 Jan 2024 14:25

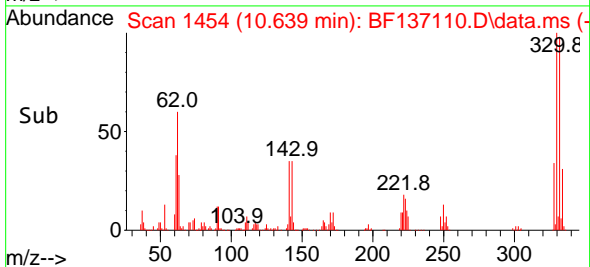
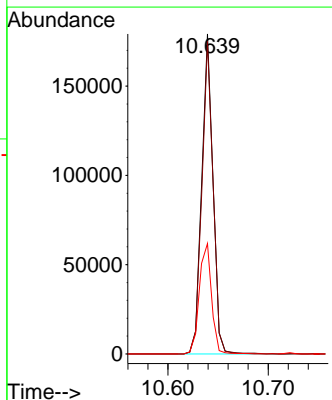
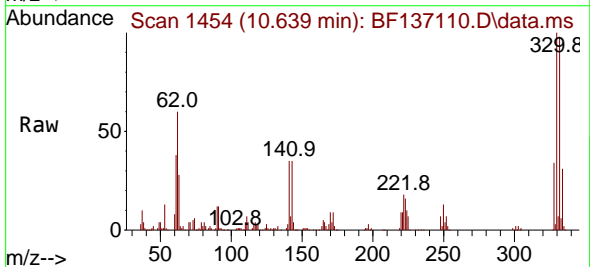
Instrument :
 BNA_F
 ClientSampleId :
 SSTDICC020

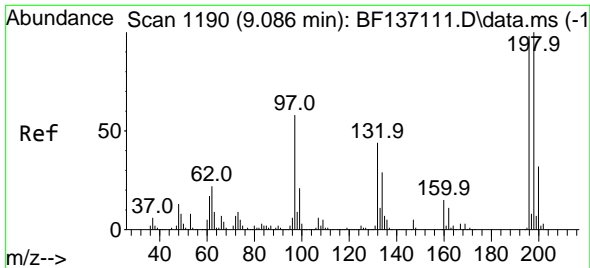
Tgt Ion	Resp	Lower	Upper
237	100		
235	61.8	41.3	81.3
272	14.4	0.0	32.5



#42
 2,4,6-Tribromophenol
 Concen: 42.130 ng
 RT: 10.639 min Scan# 1454
 Delta R.T. -0.006 min
 Lab File: BF137110.D
 Acq: 19 Jan 2024 14:25

Tgt Ion	Resp	Lower	Upper
330	100		
332	97.5	77.3	115.9
141	37.5	30.2	45.4

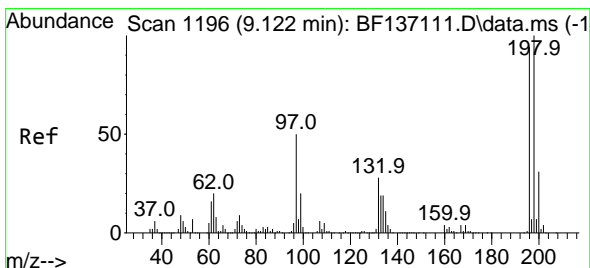
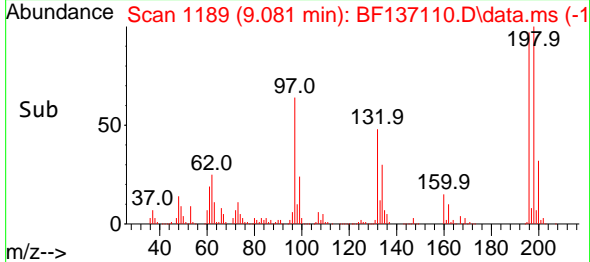
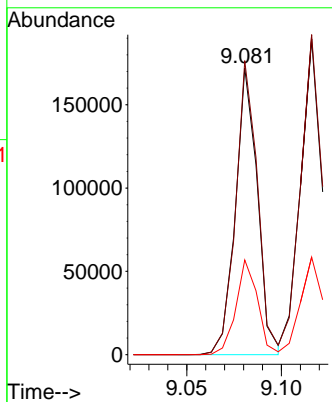
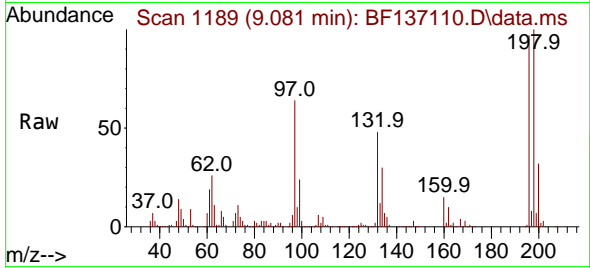




#43
 2,4,6-Trichlorophenol
 Concen: 21.181 ng
 RT: 9.081 min Scan# 1189
 Delta R.T. -0.006 min
 Lab File: BF137110.D
 Acq: 19 Jan 2024 14:25

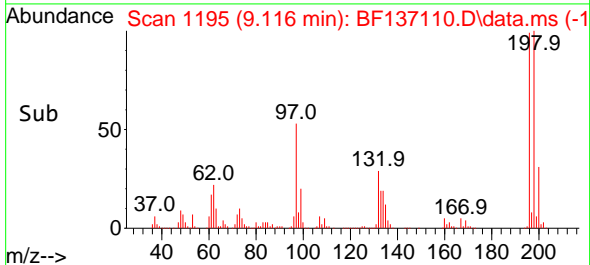
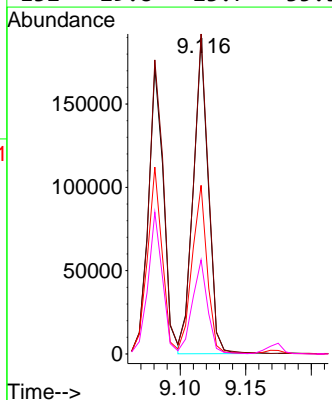
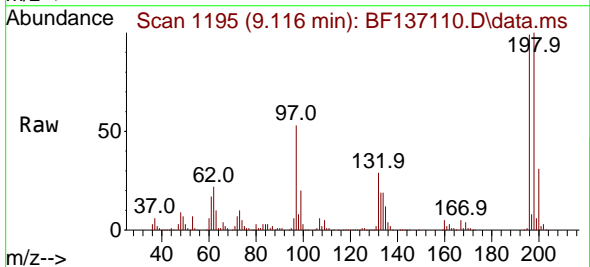
Instrument : BNA_F
 ClientSampleId : SSTDICC020

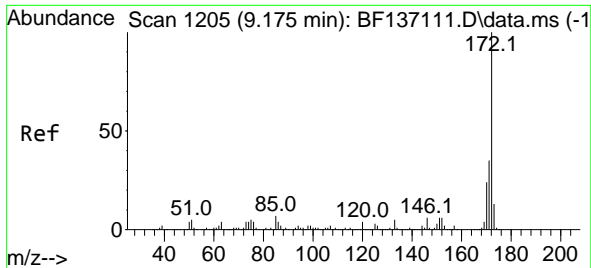
Tgt Ion:196 Resp: 138747
 Ion Ratio Lower Upper
 196 100
 198 102.6 81.8 122.8
 200 33.0 26.3 39.5



#44
 2,4,5-Trichlorophenol
 Concen: 21.162 ng
 RT: 9.116 min Scan# 1195
 Delta R.T. -0.006 min
 Lab File: BF137110.D
 Acq: 19 Jan 2024 14:25

Tgt Ion:196 Resp: 151099
 Ion Ratio Lower Upper
 196 100
 198 101.4 84.6 126.8
 97 53.4 41.8 62.8
 132 29.8 23.7 35.5



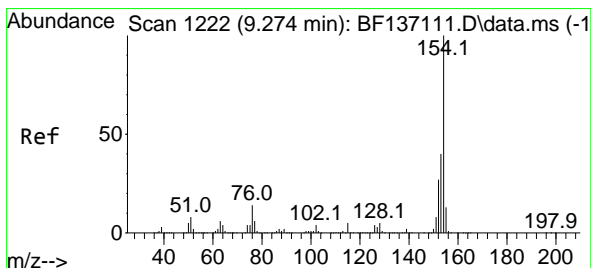
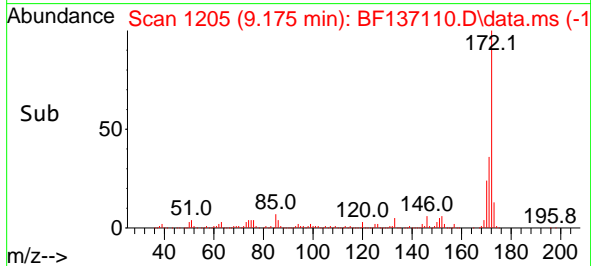
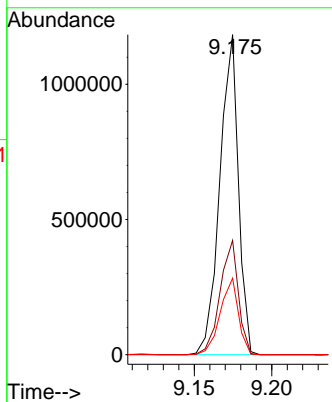
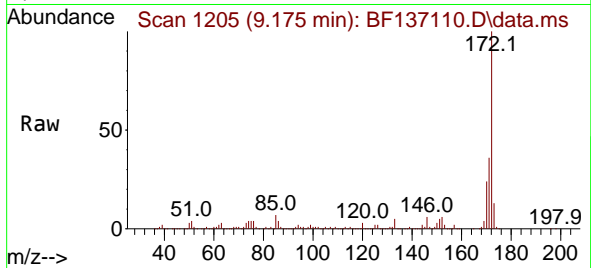


#45
 2-Fluorobiphenyl
 Concen: 42.990 ng
 RT: 9.175 min Scan# 111
 Delta R.T. 0.000 min
 Lab File: BF137110.D
 Acq: 19 Jan 2024 14:25

Instrument :
 BNA_F
 ClientSampleId :
 SSTDICC020

Tgt Ion:172 Resp: 984839

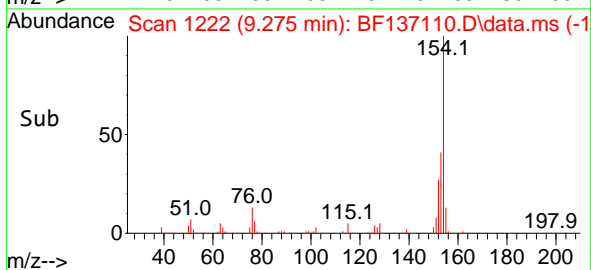
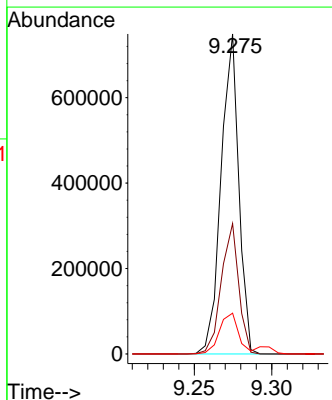
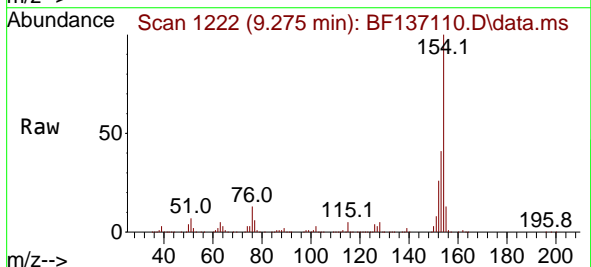
Ion	Ratio	Lower	Upper
172	100		
171	35.7	28.3	42.5
170	23.9	19.0	28.6

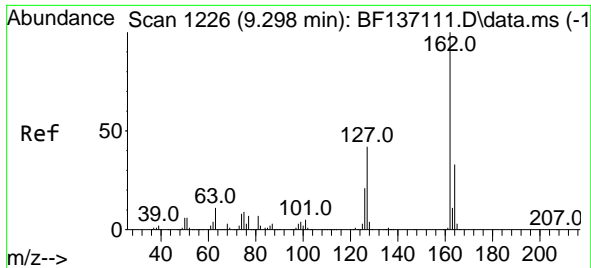


#46
 1,1'-Biphenyl
 Concen: 21.228 ng
 RT: 9.275 min Scan# 1222
 Delta R.T. 0.000 min
 Lab File: BF137110.D
 Acq: 19 Jan 2024 14:25

Tgt Ion:154 Resp: 594202

Ion	Ratio	Lower	Upper
154	100		
153	40.7	20.1	60.1
76	12.8	0.0	33.5





#47
 2-Chloronaphthalene
 Concen: 21.344 ng
 RT: 9.298 min Scan# 11
 Delta R.T. 0.000 min
 Lab File: BF137110.D
 Acq: 19 Jan 2024 14:25

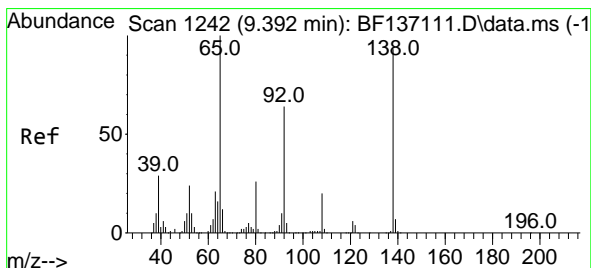
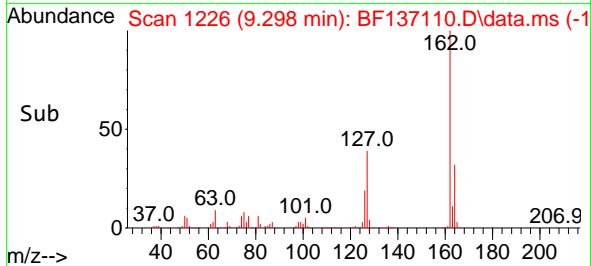
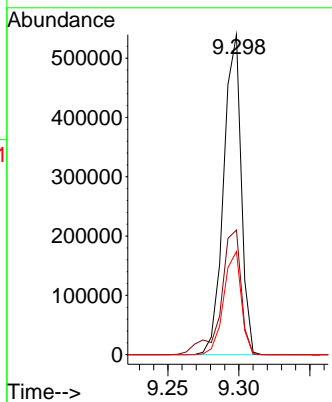
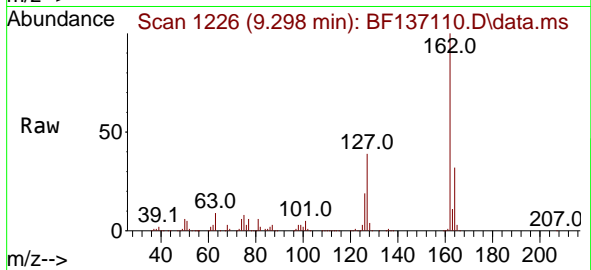
Instrument :

BNA_F

ClientSampleId :

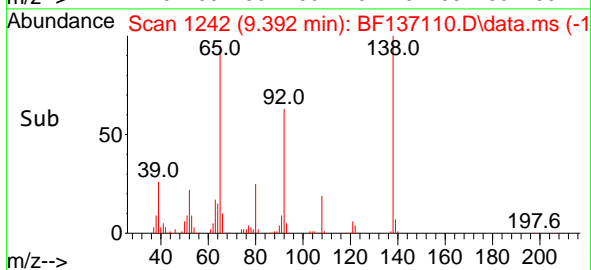
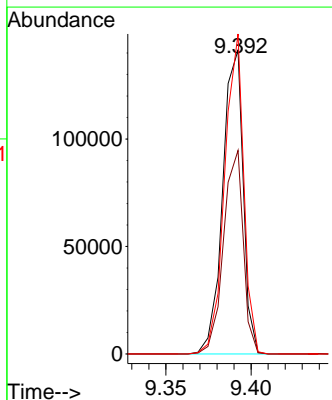
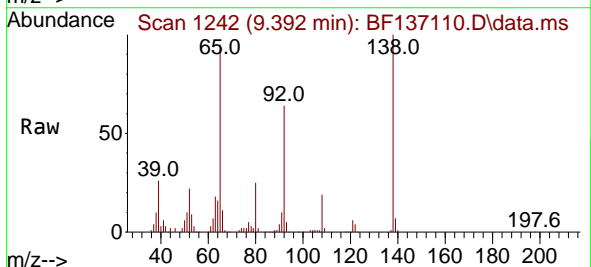
SSTDICC020

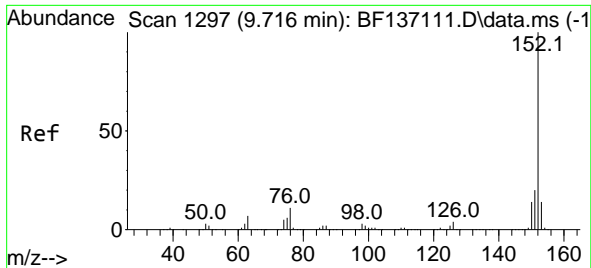
Tgt Ion:162 Resp: 462693
 Ion Ratio Lower Upper
 162 100
 127 39.0 33.8 50.8
 164 32.3 26.4 39.6



#48
 2-Nitroaniline
 Concen: 20.719 ng
 RT: 9.392 min Scan# 1242
 Delta R.T. 0.000 min
 Lab File: BF137110.D
 Acq: 19 Jan 2024 14:25

Tgt Ion: 65 Resp: 117980
 Ion Ratio Lower Upper
 65 100
 92 66.9 51.1 76.7
 138 105.3 74.2 111.4



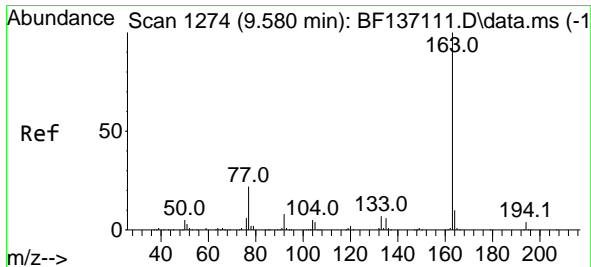
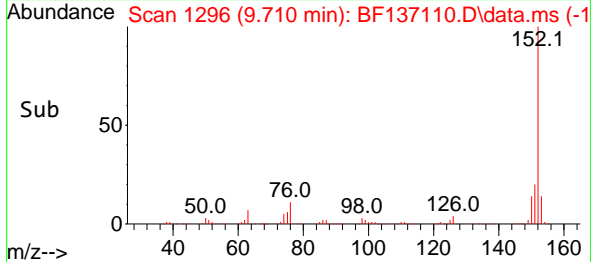
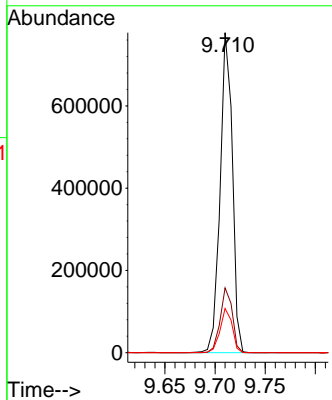
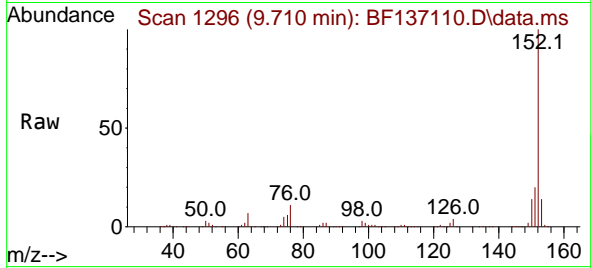


#49
 Acenaphthylene
 Concen: 21.300 ng
 RT: 9.710 min Scan# 11
 Delta R.T. -0.006 min
 Lab File: BF137110.D
 Acq: 19 Jan 2024 14:25

Instrument : BNA_F
 ClientSampleId : SSTDICC020

Tgt Ion:152 Resp: 657523

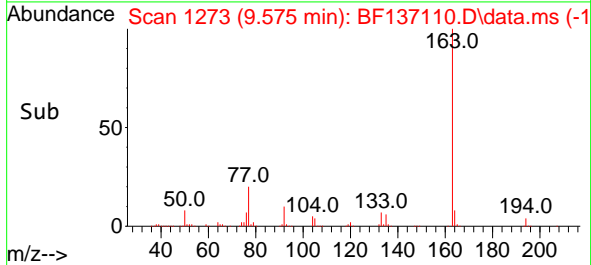
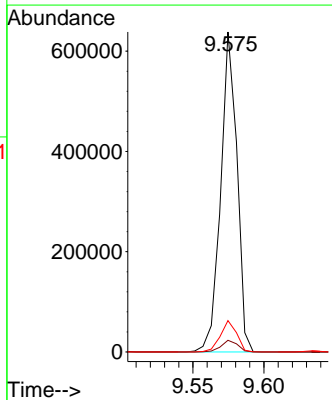
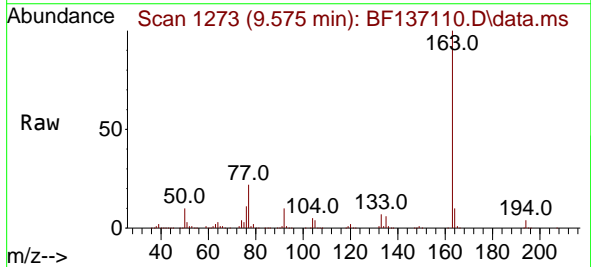
Ion	Ratio	Lower	Upper
152	100		
151	20.3	16.2	24.2
153	13.8	11.0	16.6

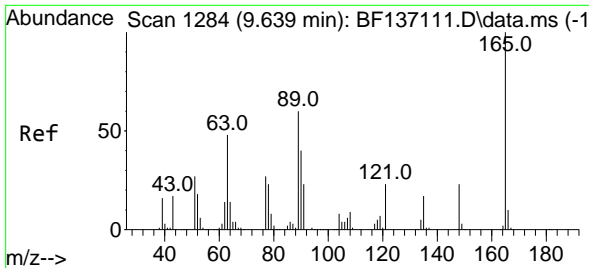


#50
 Dimethylphthalate
 Concen: 21.089 ng
 RT: 9.575 min Scan# 1273
 Delta R.T. -0.006 min
 Lab File: BF137110.D
 Acq: 19 Jan 2024 14:25

Tgt Ion:163 Resp: 507336

Ion	Ratio	Lower	Upper
163	100		
194	3.7	3.0	4.6
164	9.8	8.3	12.5





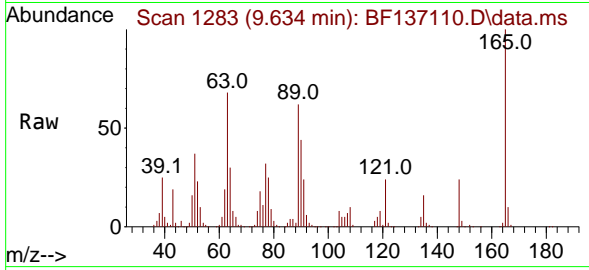
#51
 2,6-Dinitrotoluene
 Concen: 21.155 ng
 RT: 9.634 min Scan# 11
 Delta R.T. -0.006 min
 Lab File: BF137110.D
 Acq: 19 Jan 2024 14:25

Instrument :

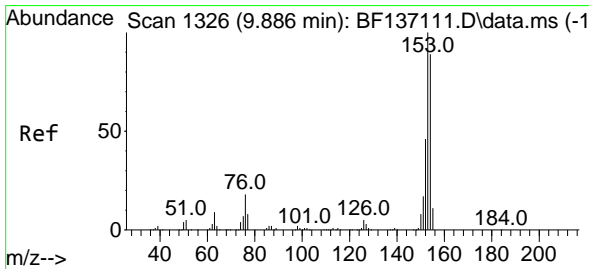
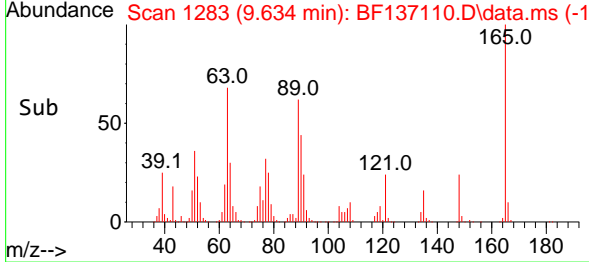
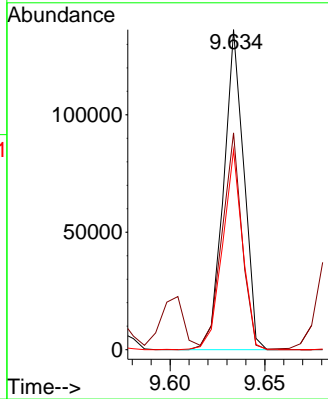
BNA_F

ClientSampleId :

SSTDICC020

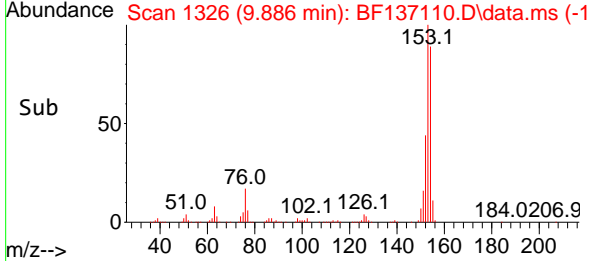
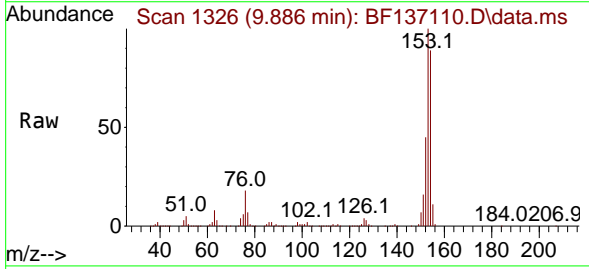
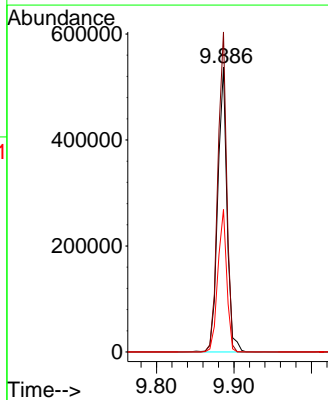


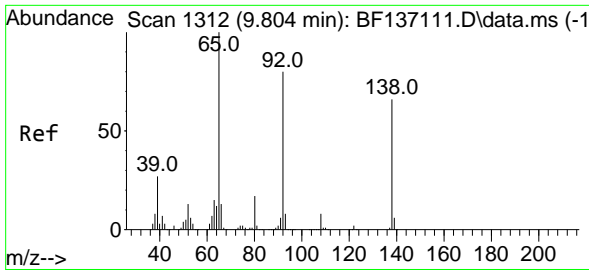
Tgt Ion:165 Resp: 101451
 Ion Ratio Lower Upper
 165 100
 63 67.8 50.8 76.2
 89 62.4 48.1 72.1



#52
 Acenaphthene
 Concen: 21.217 ng
 RT: 9.886 min Scan# 1326
 Delta R.T. 0.000 min
 Lab File: BF137110.D
 Acq: 19 Jan 2024 14:25

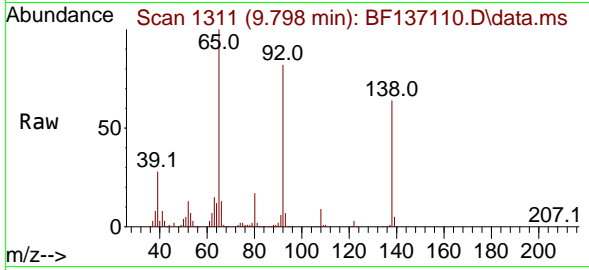
Tgt Ion:154 Resp: 444650
 Ion Ratio Lower Upper
 154 100
 153 112.5 89.9 134.9
 152 50.1 41.1 61.7



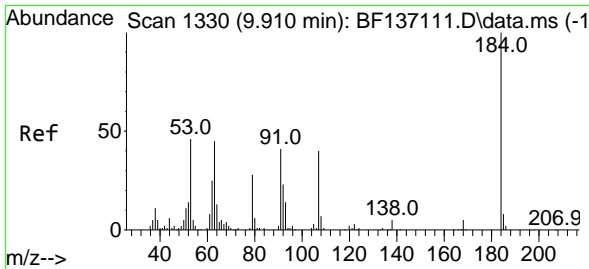
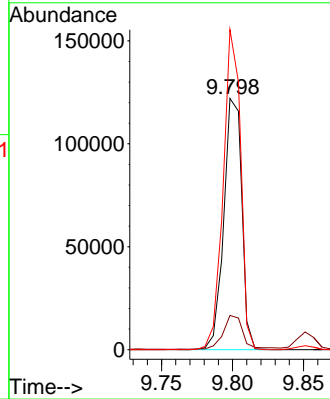
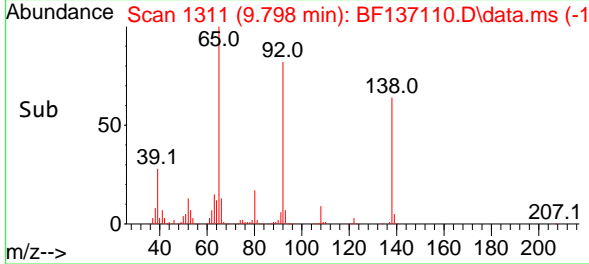


#53
 3-Nitroaniline
 Concen: 20.982 ng
 RT: 9.798 min Scan# 11
 Delta R.T. -0.006 min
 Lab File: BF137110.D
 Acq: 19 Jan 2024 14:25

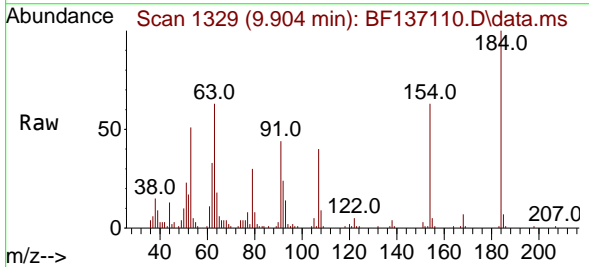
Instrument :
 BNA_F
 ClientSampleId :
 SSTDICC020



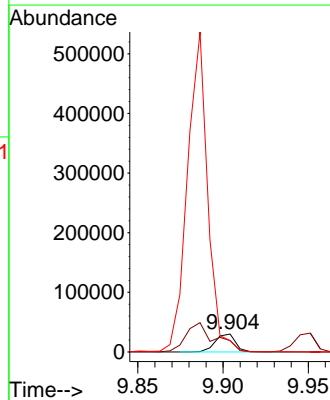
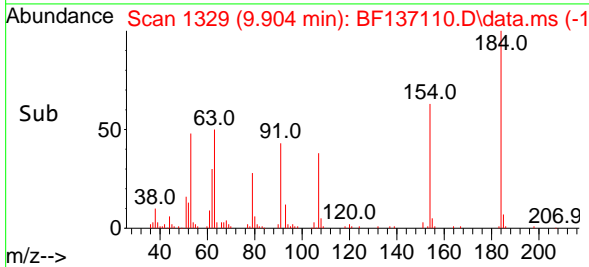
Tgt Ion:138 Resp: 107266
 Ion Ratio Lower Upper
 138 100
 108 13.6 10.1 15.1
 92 127.4 96.8 145.2

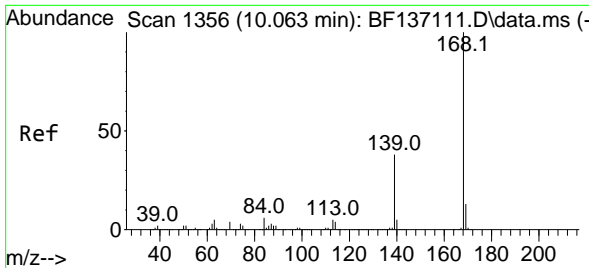


#54
 2,4-Dinitrophenol
 Concen: 19.957 ng
 RT: 9.904 min Scan# 1329
 Delta R.T. -0.006 min
 Lab File: BF137110.D
 Acq: 19 Jan 2024 14:25



Tgt Ion:184 Resp: 25026
 Ion Ratio Lower Upper
 184 100
 63 62.9 47.8 71.8
 154 63.2 49.2 73.8



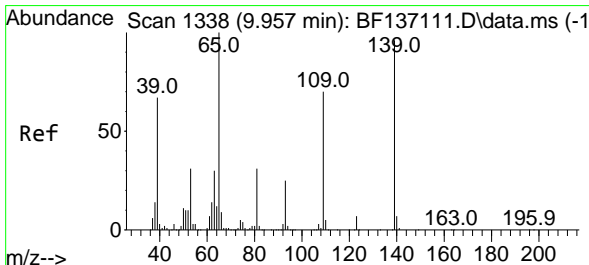
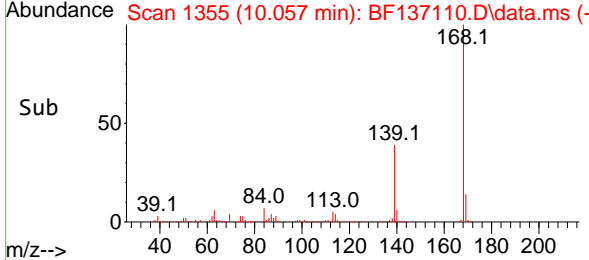
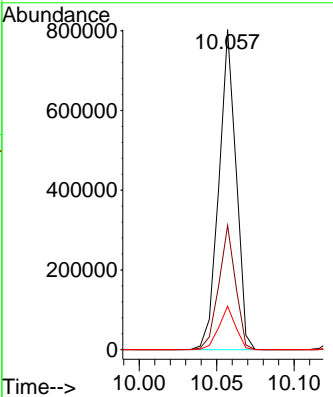
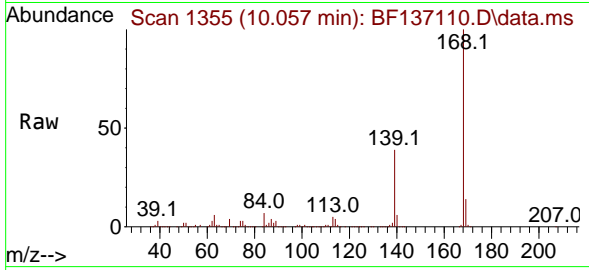


#55
 Dibenzofuran
 Concen: 21.347 ng
 RT: 10.057 min Scan# 11
 Delta R.T. -0.006 min
 Lab File: BF137110.D
 Acq: 19 Jan 2024 14:25

Instrument : BNA_F
 ClientSampleId : SSTDICC020

Tgt Ion:168 Resp: 619236

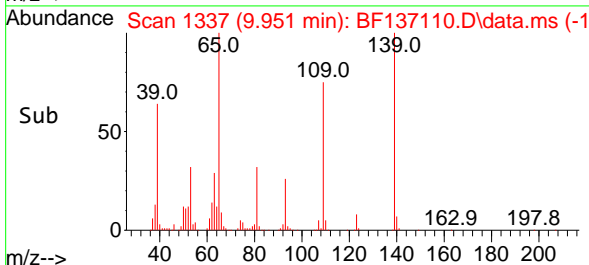
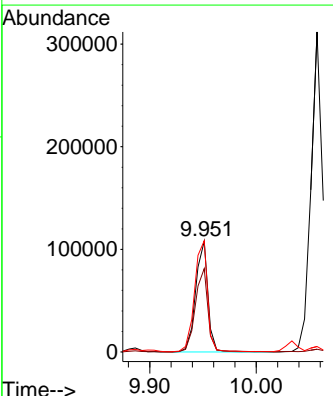
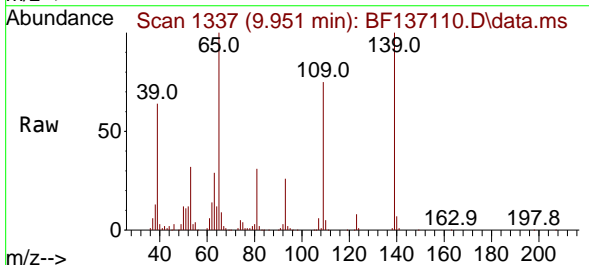
Ion	Ratio	Lower	Upper
168	100		
139	38.9	30.6	45.8
169	13.6	10.6	16.0

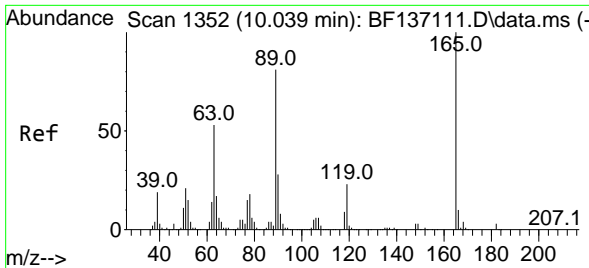


#56
 4-Nitrophenol
 Concen: 20.850 ng
 RT: 9.951 min Scan# 1337
 Delta R.T. -0.006 min
 Lab File: BF137110.D
 Acq: 19 Jan 2024 14:25

Tgt Ion:139 Resp: 86489

Ion	Ratio	Lower	Upper
139	100		
109	75.3	53.4	93.4
65	100.4	84.7	124.7





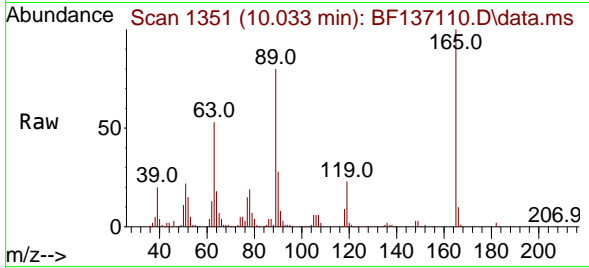
#57
 2,4-Dinitrotoluene
 Concen: 21.248 ng
 RT: 10.033 min Scan# 11
 Delta R.T. -0.006 min
 Lab File: BF137110.D
 Acq: 19 Jan 2024 14:25

Instrument :

BNA_F

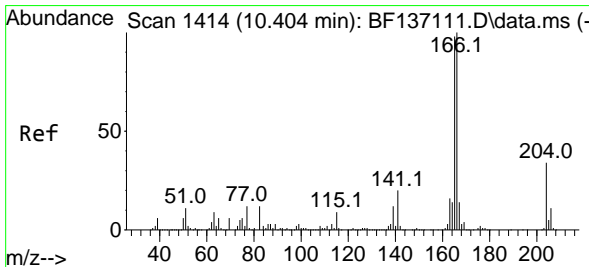
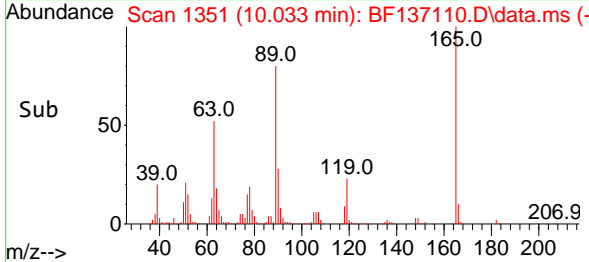
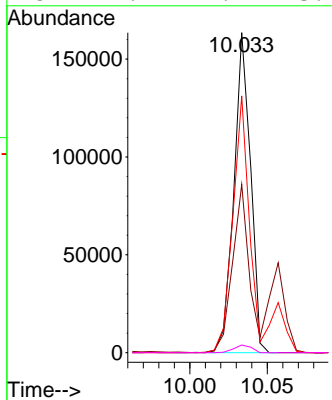
ClientSampleId :

SSTDICC020



Tgt Ion:165 Resp: 121851

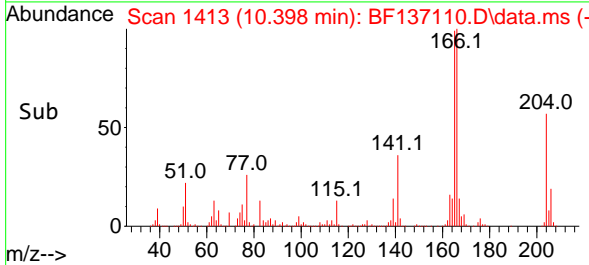
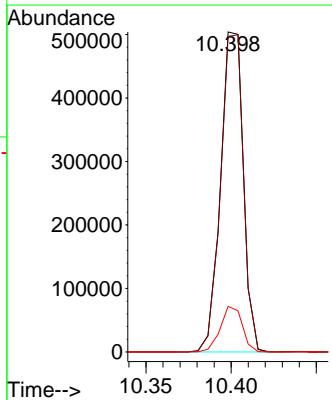
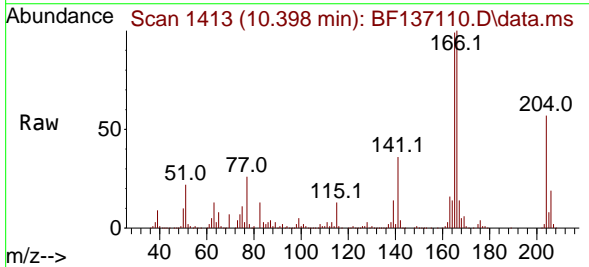
Ion	Ratio	Lower	Upper
165	100		
63	52.6	42.3	63.5
89	80.2	65.0	97.4
182	2.4	2.2	3.2

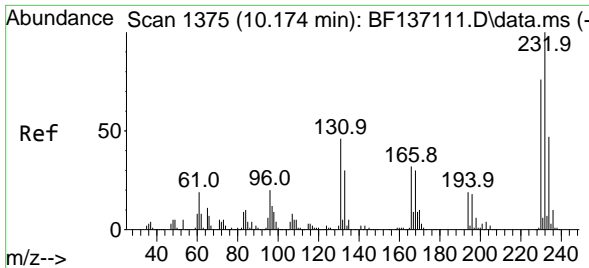


#58
 Fluorene
 Concen: 21.450 ng
 RT: 10.398 min Scan# 1413
 Delta R.T. -0.006 min
 Lab File: BF137110.D
 Acq: 19 Jan 2024 14:25

Tgt Ion:166 Resp: 468338

Ion	Ratio	Lower	Upper
166	100		
165	98.6	78.5	117.7
167	14.2	11.0	16.6



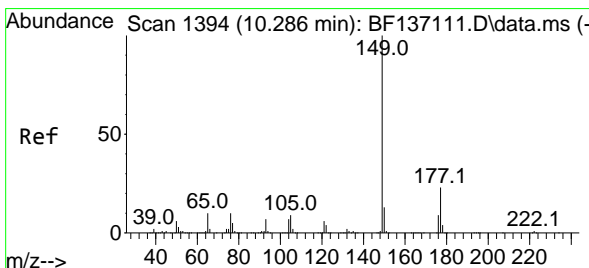
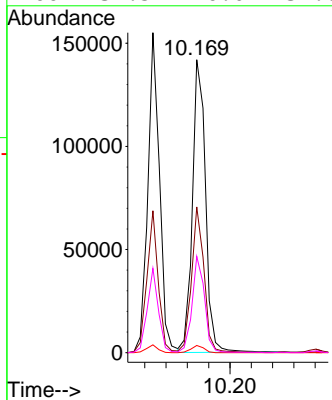
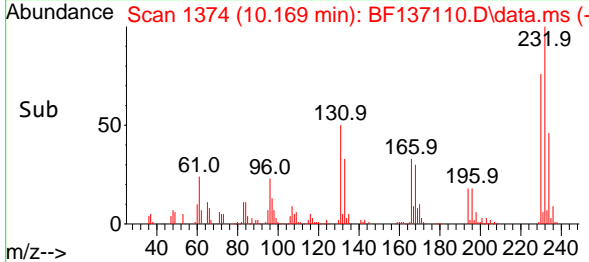
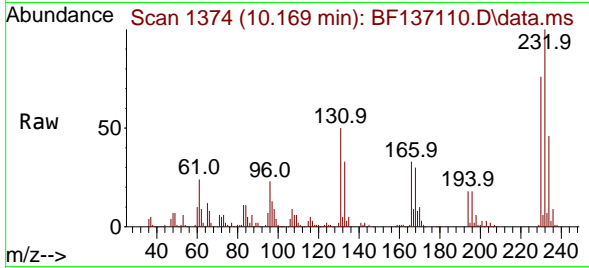


#59
 2,3,4,6-Tetrachlorophenol
 Concen: 21.933 ng
 RT: 10.169 min Scan# 11
 Delta R.T. -0.006 min
 Lab File: BF137110.D
 Acq: 19 Jan 2024 14:25

Instrument : BNA_F
 ClientSampleId : SSTDICC020

Tgt Ion:232 Resp: 121481

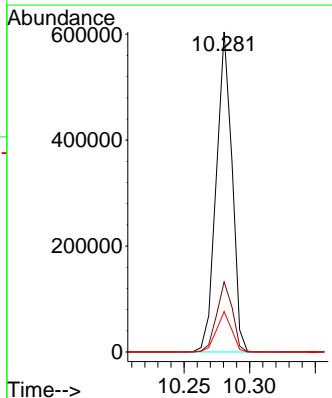
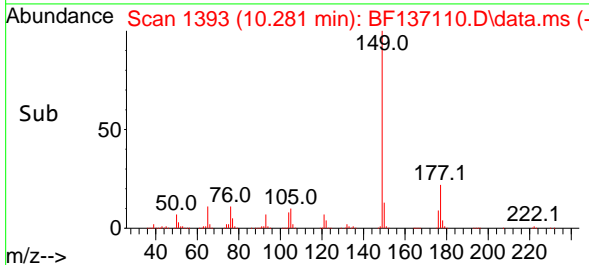
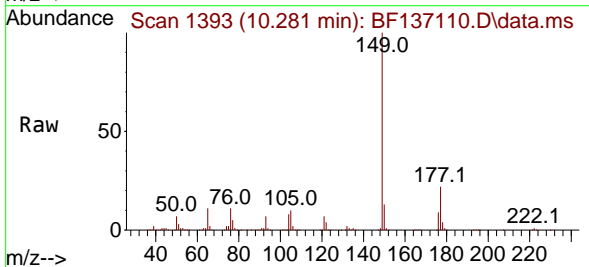
Ion	Ratio	Lower	Upper
232	100		
131	47.4	38.4	57.6
130	2.4	1.9	2.9
166	31.5	26.0	39.0

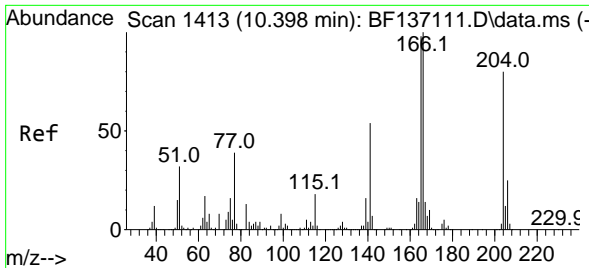


#60
 Diethylphthalate
 Concen: 21.202 ng
 RT: 10.281 min Scan# 1393
 Delta R.T. -0.006 min
 Lab File: BF137110.D
 Acq: 19 Jan 2024 14:25

Tgt Ion:149 Resp: 502005

Ion	Ratio	Lower	Upper
149	100		
177	21.9	18.1	27.1
150	12.6	10.1	15.1



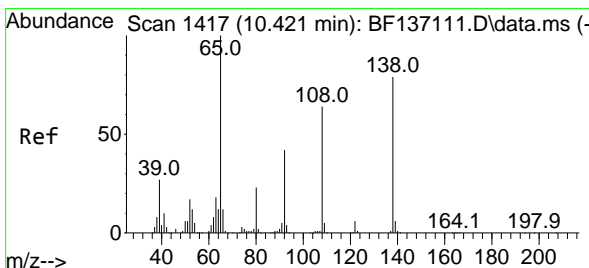
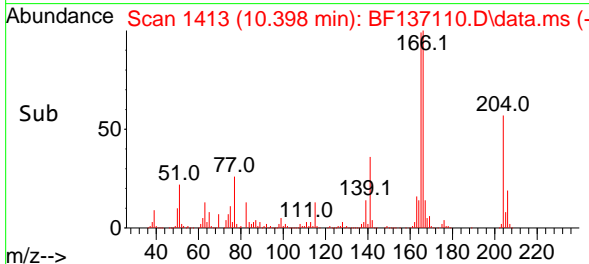
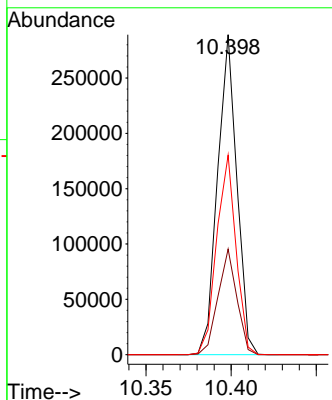
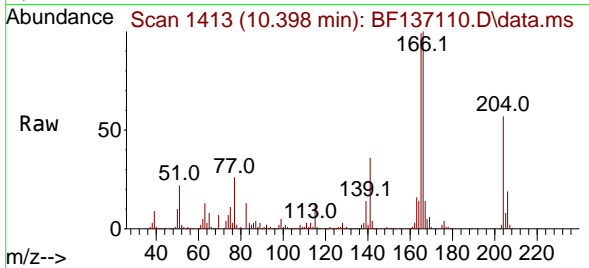


#61
 4-Chlorophenyl-phenylether
 Concen: 21.511 ng
 RT: 10.398 min Scan# 1413
 Delta R.T. 0.000 min
 Lab File: BF137110.D
 Acq: 19 Jan 2024 14:25

Instrument :
 BNA_F
 ClientSampleId :
 SSTDICC020

Tgt Ion: 204 Resp: 227943

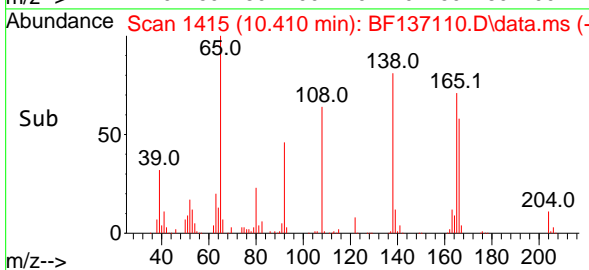
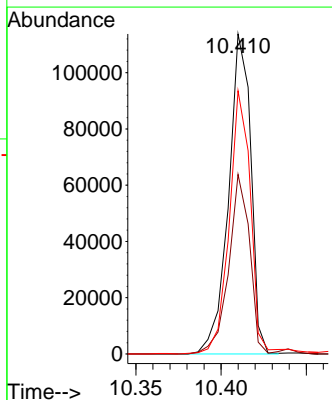
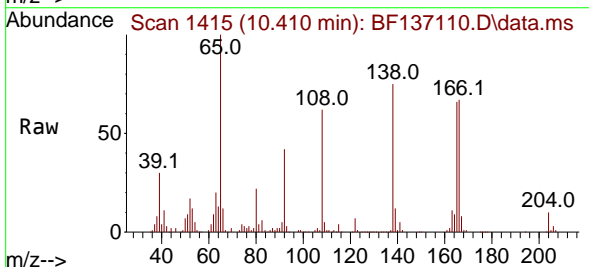
Ion	Ratio	Lower	Upper
204	100		
206	33.0	25.4	38.2
141	62.4	54.4	81.6

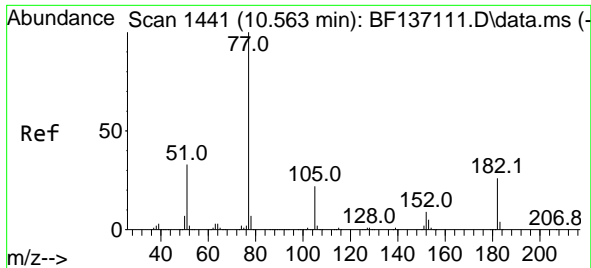


#62
 4-Nitroaniline
 Concen: 21.156 ng
 RT: 10.410 min Scan# 1415
 Delta R.T. -0.012 min
 Lab File: BF137110.D
 Acq: 19 Jan 2024 14:25

Tgt Ion: 138 Resp: 103105

Ion	Ratio	Lower	Upper
138	100		
92	56.1	33.1	73.1
108	82.3	60.6	100.6

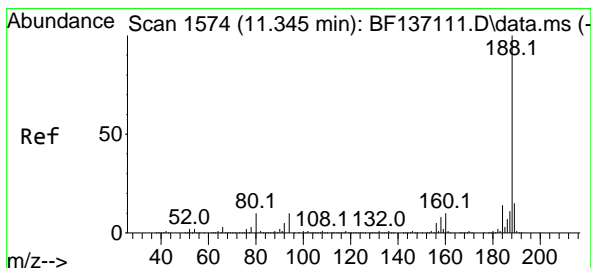
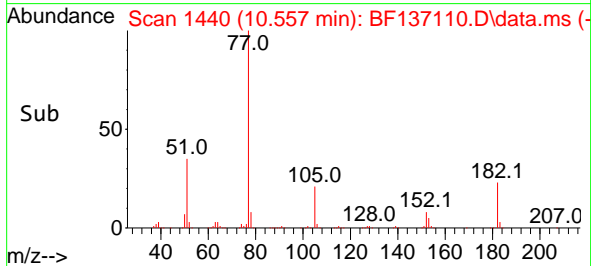
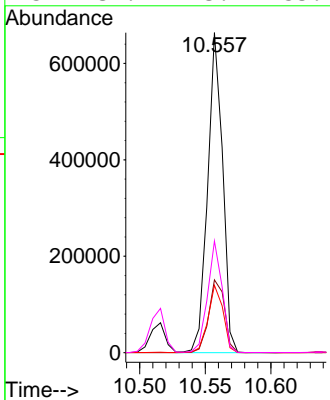
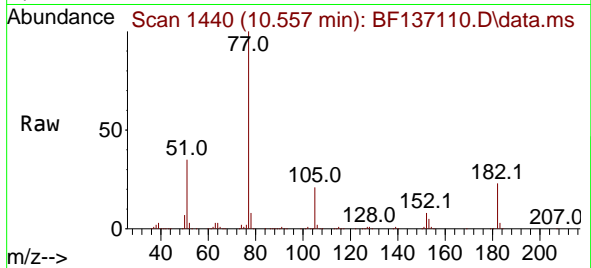




#63
 Azobenzene
 Concen: 21.271 ng
 RT: 10.557 min Scan# 14
 Delta R.T. -0.006 min
 Lab File: BF137110.D
 Acq: 19 Jan 2024 14:25

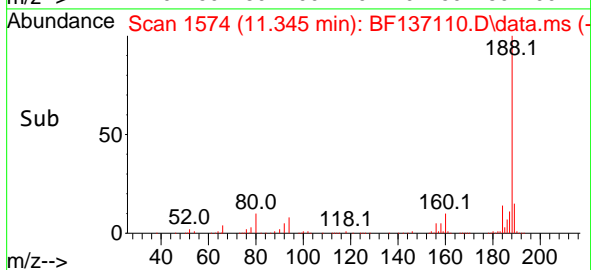
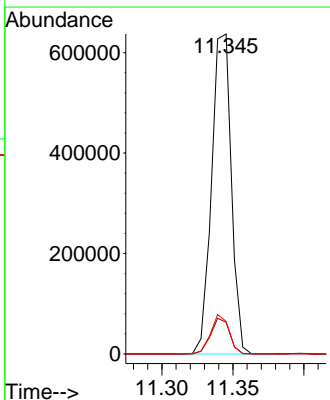
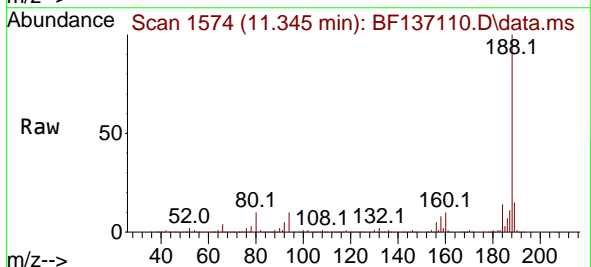
Instrument : BNA_F
 ClientSampleId : SSTDICC020

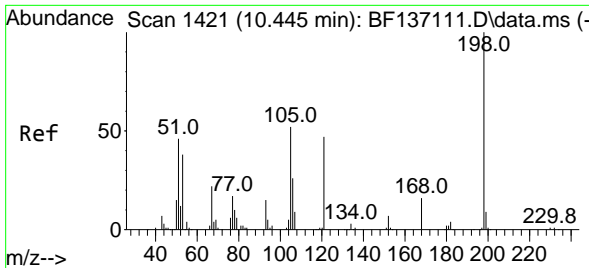
Tgt Ion	Resp	Lower	Upper
77	100		
182	22.8	6.1	46.1
105	21.0	2.2	42.2
51	34.9	13.2	53.2



#64
 Phenanthrene-d10
 Concen: 20.000 ng
 RT: 11.345 min Scan# 1574
 Delta R.T. 0.000 min
 Lab File: BF137110.D
 Acq: 19 Jan 2024 14:25

Tgt Ion	Resp	Lower	Upper
188	100		
94	9.9	7.8	11.6
80	10.2	8.2	12.2



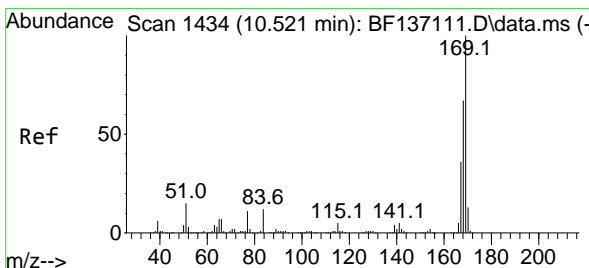
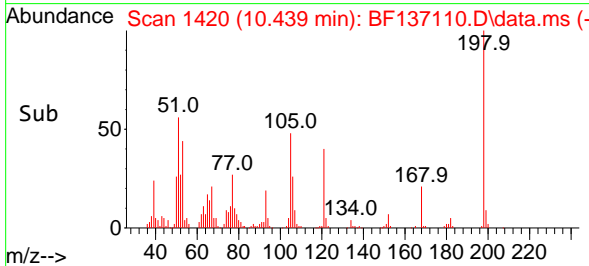
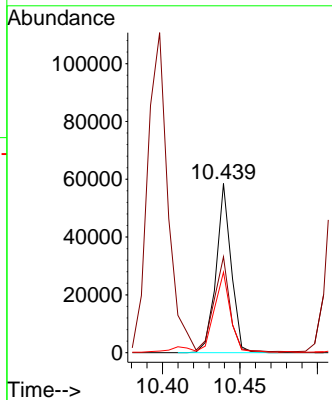
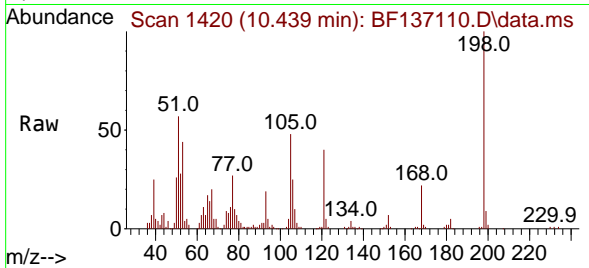


#65
 4,6-Dinitro-2-methylphenol
 Concen: 20.115 ng
 RT: 10.439 min Scan# 1420
 Delta R.T. -0.006 min
 Lab File: BF137110.D
 Acq: 19 Jan 2024 14:25

Instrument :
 BNA_F
 ClientSampleId :
 SSTDICC020

Tgt Ion:198 Resp: 39420

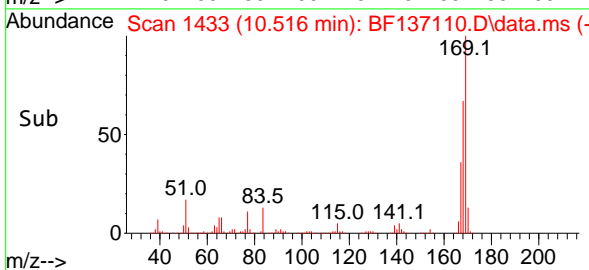
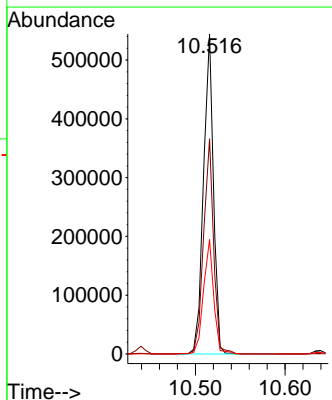
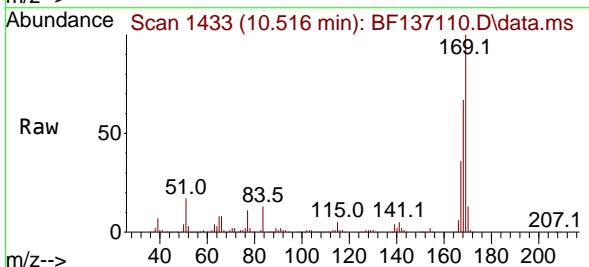
Ion	Ratio	Lower	Upper
198	100		
51	56.7	44.4	84.4
105	47.6	33.6	73.6

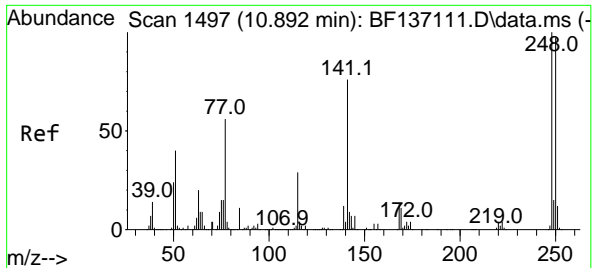


#66
 n-Nitrosodiphenylamine
 Concen: 21.349 ng
 RT: 10.516 min Scan# 1433
 Delta R.T. -0.006 min
 Lab File: BF137110.D
 Acq: 19 Jan 2024 14:25

Tgt Ion:169 Resp: 418474

Ion	Ratio	Lower	Upper
169	100		
168	67.2	53.4	80.0
167	35.7	28.8	43.2





#67
 4-Bromophenyl-phenylether
 Concen: 21.053 ng
 RT: 10.892 min Scan# 14
 Delta R.T. 0.000 min
 Lab File: BF137110.D
 Acq: 19 Jan 2024 14:25

Instrument :

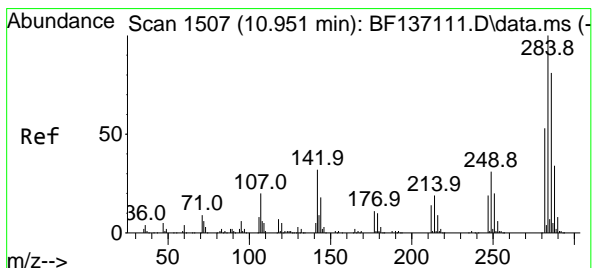
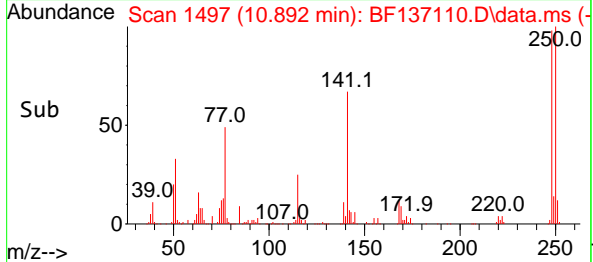
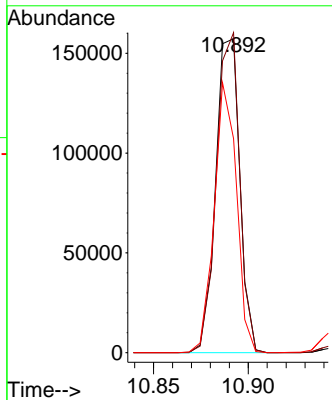
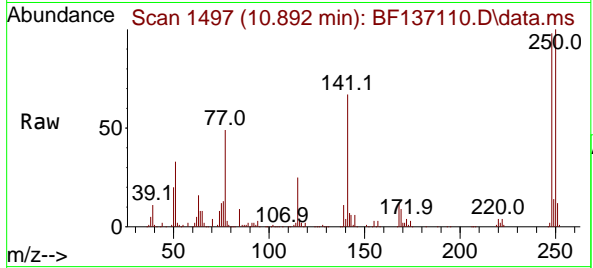
BNA_F

ClientSampleId :

SSTDICC020

Tgt Ion:248 Resp: 139684

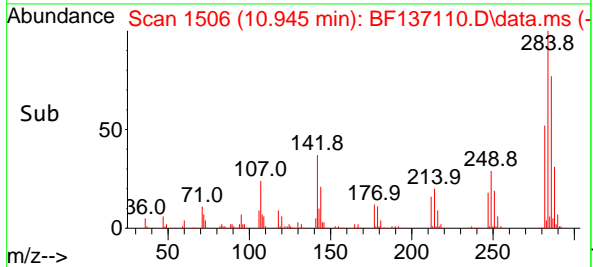
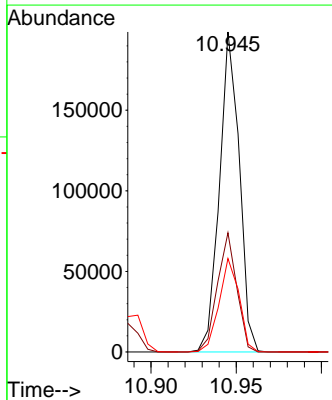
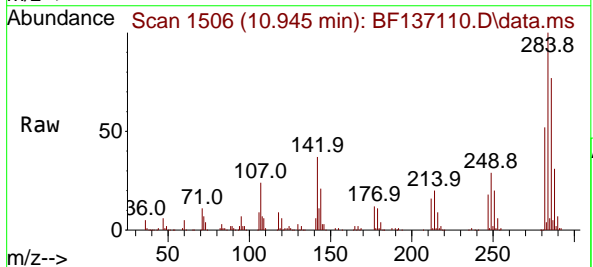
Ion	Ratio	Lower	Upper
248	100		
250	102.0	77.3	115.9
141	68.2	61.2	91.8

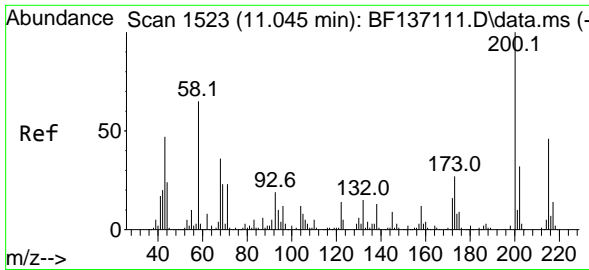


#68
 Hexachlorobenzene
 Concen: 21.462 ng
 RT: 10.945 min Scan# 1506
 Delta R.T. -0.006 min
 Lab File: BF137110.D
 Acq: 19 Jan 2024 14:25

Tgt Ion:284 Resp: 160649

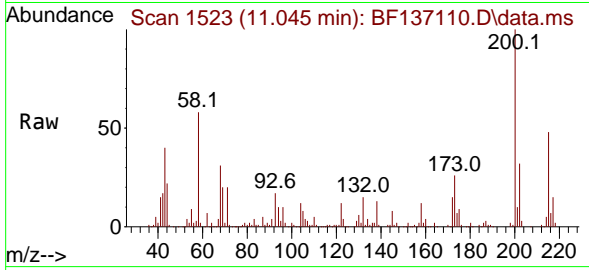
Ion	Ratio	Lower	Upper
284	100		
142	37.3	25.8	38.8
249	29.2	24.4	36.6



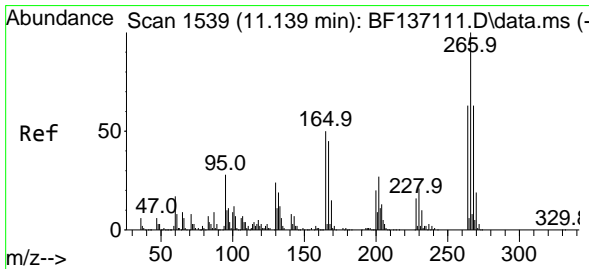
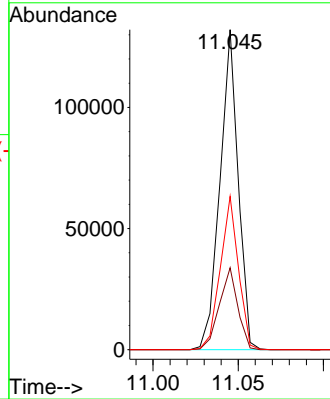
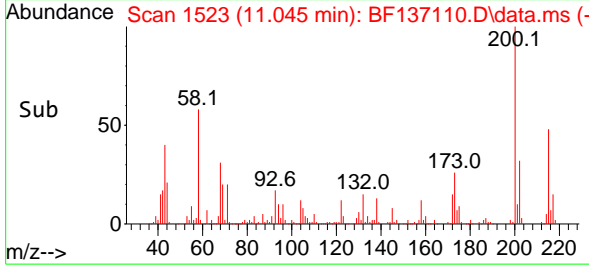


#69
 Atrazine
 Concen: 24.942 ng
 RT: 11.045 min Scan# 1523
 Delta R.T. 0.000 min
 Lab File: BF137110.D
 Acq: 19 Jan 2024 14:25

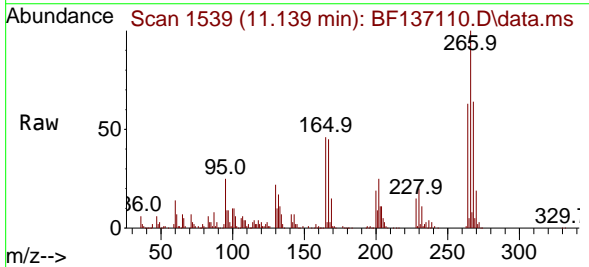
Instrument :
 BNA_F
 ClientSampleId :
 SSTDICC020



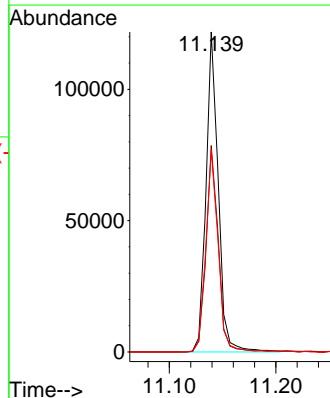
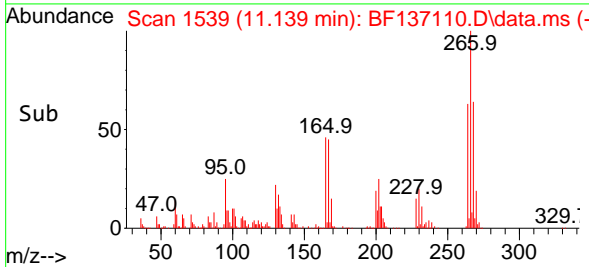
Tgt Ion:200 Resp: 98201
 Ion Ratio Lower Upper
 200 100
 173 25.6 6.8 46.8
 215 47.9 25.9 65.9

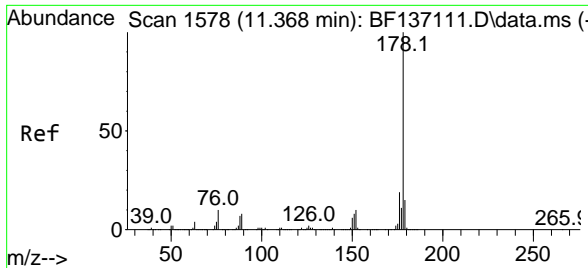


#70
 Pentachlorophenol
 Concen: 22.018 ng
 RT: 11.139 min Scan# 1539
 Delta R.T. 0.000 min
 Lab File: BF137110.D
 Acq: 19 Jan 2024 14:25



Tgt Ion:266 Resp: 97441
 Ion Ratio Lower Upper
 266 100
 268 64.5 50.7 76.1
 264 63.1 50.1 75.1



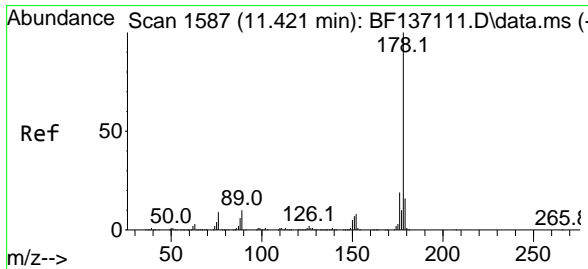
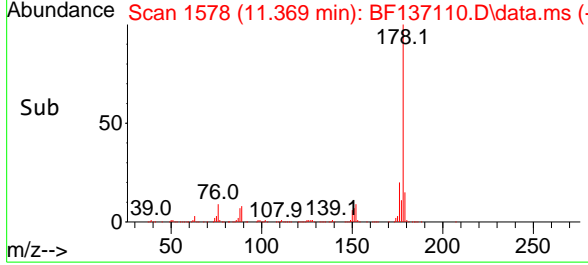
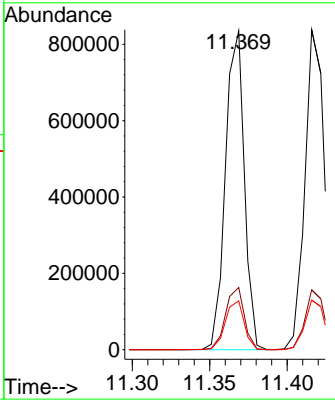
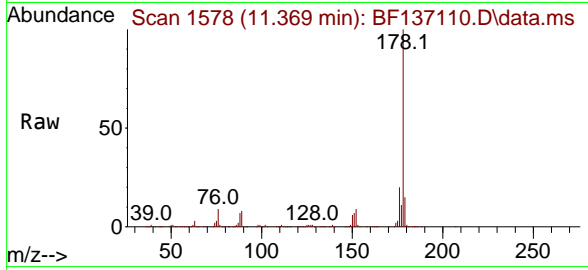


#71
 Phenanthrene
 Concen: 21.645 ng
 RT: 11.369 min Scan# 1578
 Delta R.T. 0.000 min
 Lab File: BF137110.D
 Acq: 19 Jan 2024 14:25

Instrument : BNA_F
 Client Sample Id : SSTDIC020

Tgt Ion:178 Resp: 708110

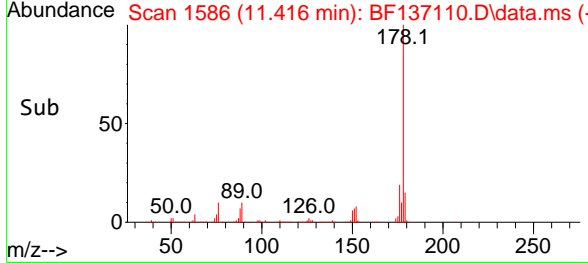
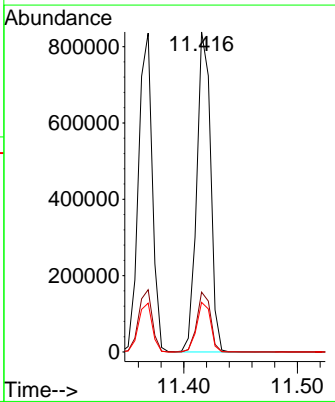
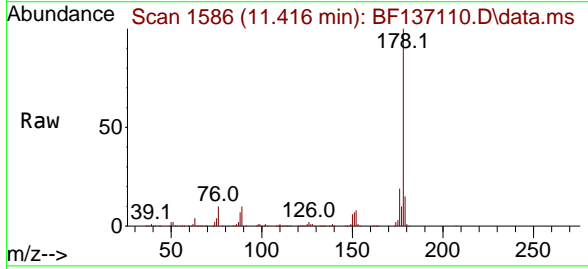
Ion	Ratio	Lower	Upper
178	100		
176	19.5	15.4	23.2
179	15.3	12.3	18.5

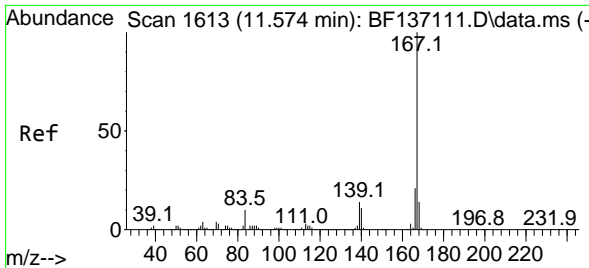


#72
 Anthracene
 Concen: 21.871 ng
 RT: 11.416 min Scan# 1586
 Delta R.T. -0.006 min
 Lab File: BF137110.D
 Acq: 19 Jan 2024 14:25

Tgt Ion:178 Resp: 712739

Ion	Ratio	Lower	Upper
178	100		
176	18.7	14.9	22.3
179	15.5	12.4	18.6



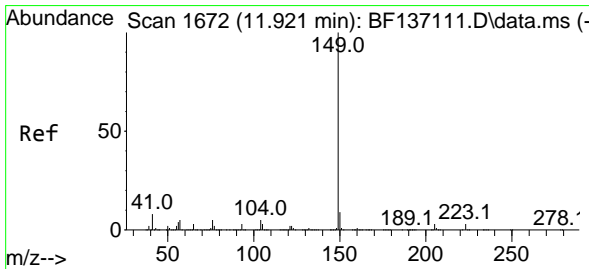
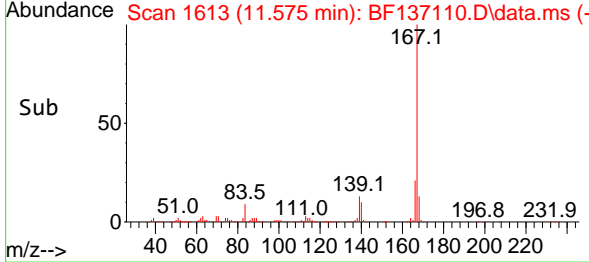
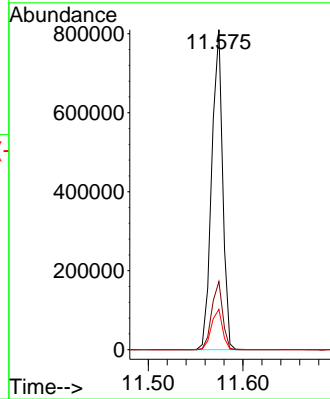
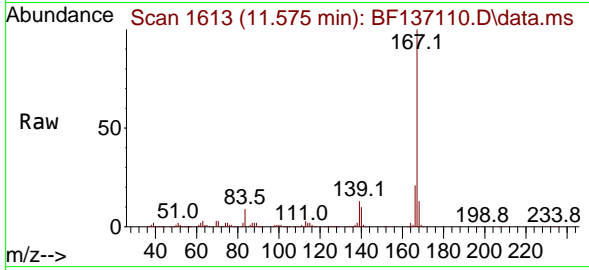


#73
 Carbazole
 Concen: 21.980 ng
 RT: 11.575 min Scan# 1613
 Delta R.T. 0.000 min
 Lab File: BF137110.D
 Acq: 19 Jan 2024 14:25

Instrument : BNA_F
 Client Sample Id : BF137110.D
 SSTDICC020

Tgt Ion: 167 Resp: 649676

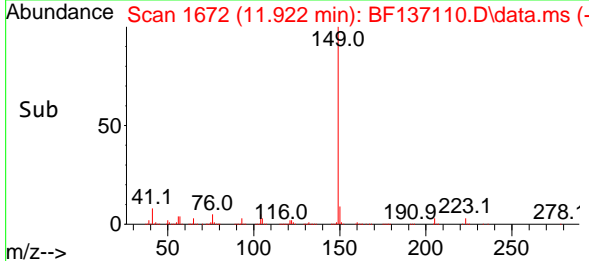
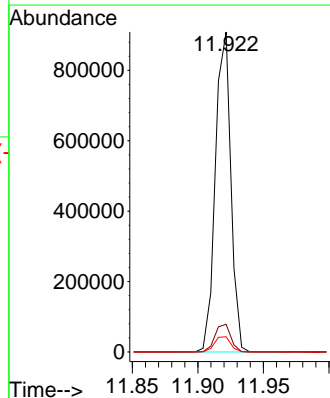
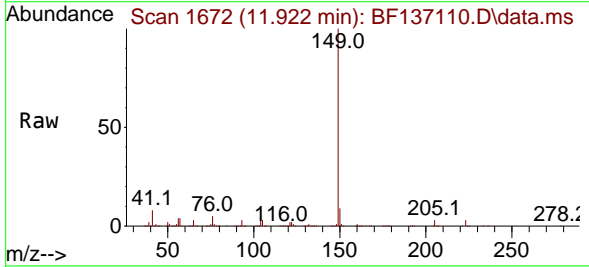
Ion	Ratio	Lower	Upper
167	100		
166	21.3	17.1	25.7
139	12.6	11.0	16.4

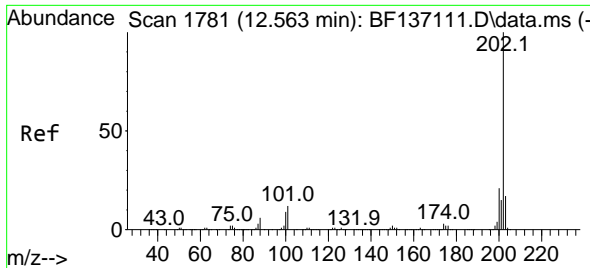


#74
 Di-n-butylphthalate
 Concen: 21.983 ng
 RT: 11.922 min Scan# 1672
 Delta R.T. 0.000 min
 Lab File: BF137110.D
 Acq: 19 Jan 2024 14:25

Tgt Ion: 149 Resp: 744894

Ion	Ratio	Lower	Upper
149	100		
150	8.6	7.4	11.0
104	4.8	4.1	6.1





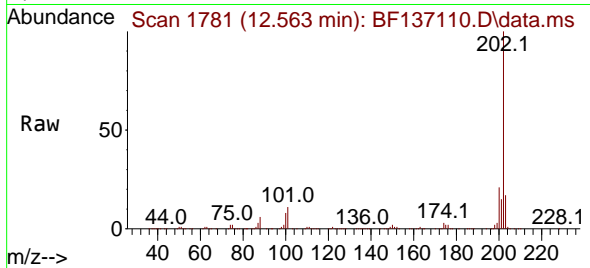
#75
 Fluoranthene
 Concen: 22.116 ng
 RT: 12.563 min Scan# 11
 Delta R.T. 0.000 min
 Lab File: BF137110.D
 Acq: 19 Jan 2024 14:25

Instrument :

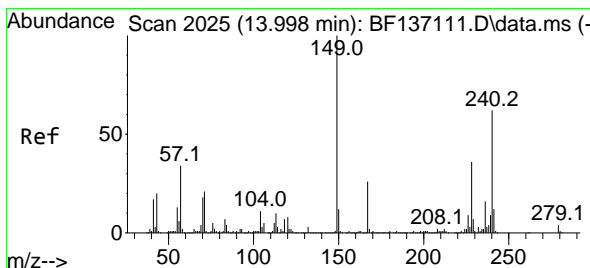
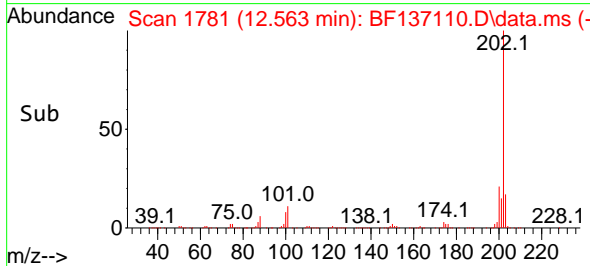
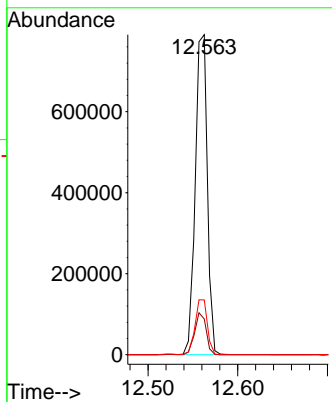
BNA_F

ClientSampleId :

SSTDICC020

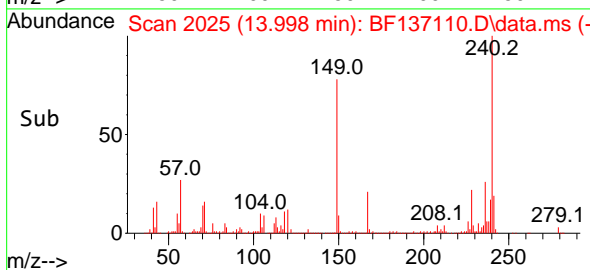
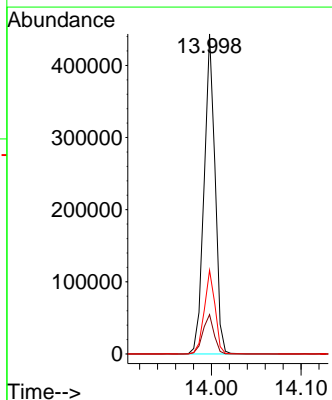
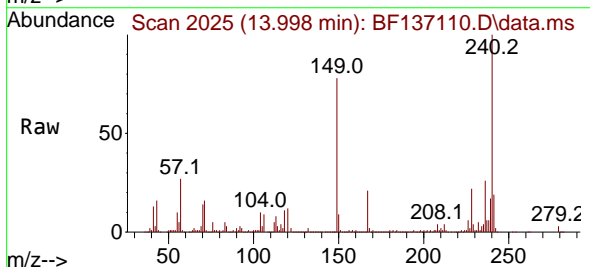


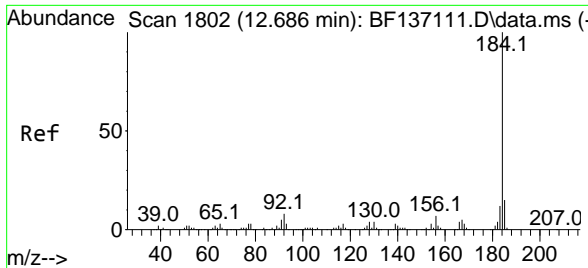
Tgt Ion:202 Resp: 736966
 Ion Ratio Lower Upper
 202 100
 101 11.1 0.0 31.6
 203 17.1 0.0 37.5



#76
 Chrysene-d12
 Concen: 20.000 ng
 RT: 13.998 min Scan# 2025
 Delta R.T. 0.000 min
 Lab File: BF137110.D
 Acq: 19 Jan 2024 14:25

Tgt Ion:240 Resp: 374440
 Ion Ratio Lower Upper
 240 100
 120 12.3 10.3 15.5
 236 26.2 20.1 30.1



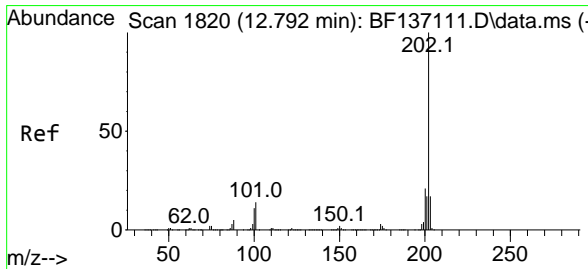
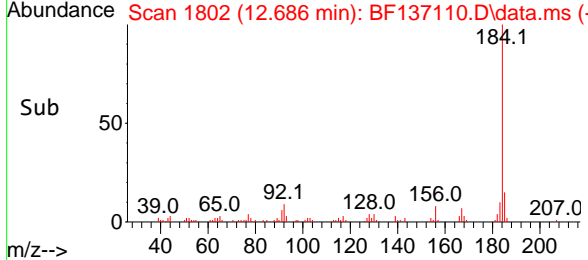
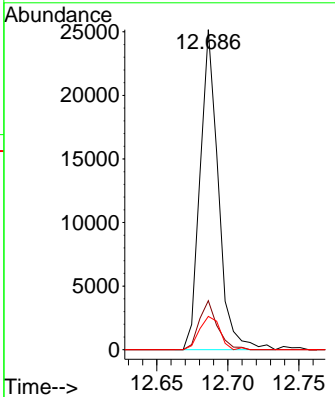
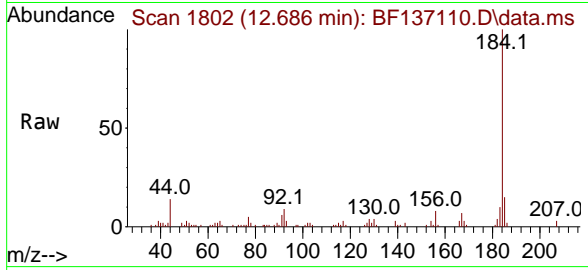


#77
 Benzidine
 Concen: 5.944 ng
 RT: 12.686 min Scan# 1802
 Delta R.T. 0.000 min
 Lab File: BF137110.D
 Acq: 19 Jan 2024 14:25

Instrument : BNA_F
 Client Sample Id : BF137110.D
 SSTDICC020

Tgt Ion:184 Resp: 22466

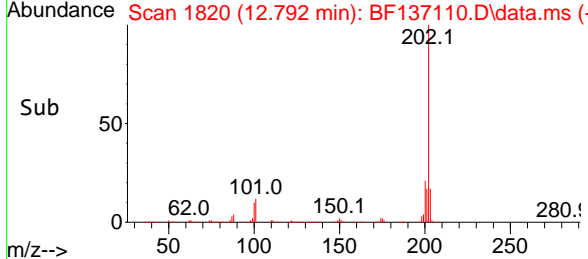
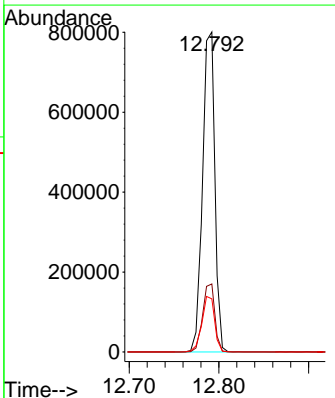
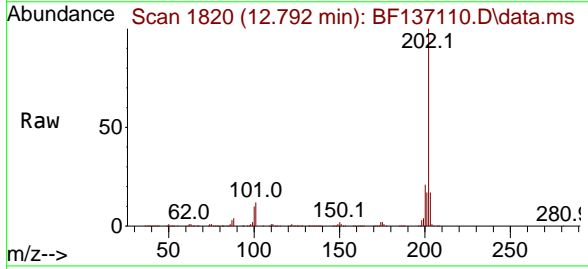
Ion	Ratio	Lower	Upper
184	100		
185	15.3	12.2	18.2
183	10.4	9.2	13.8

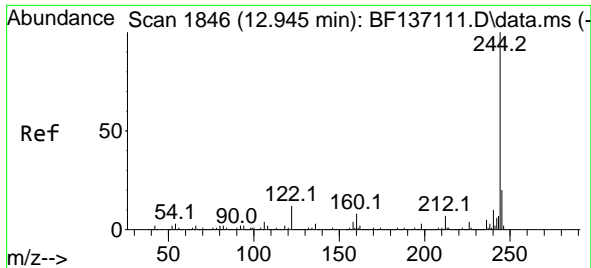


#78
 Pyrene
 Concen: 20.384 ng
 RT: 12.792 min Scan# 1820
 Delta R.T. 0.000 min
 Lab File: BF137110.D
 Acq: 19 Jan 2024 14:25

Tgt Ion:202 Resp: 762026

Ion	Ratio	Lower	Upper
202	100		
200	21.3	16.8	25.2
203	16.6	13.8	20.6





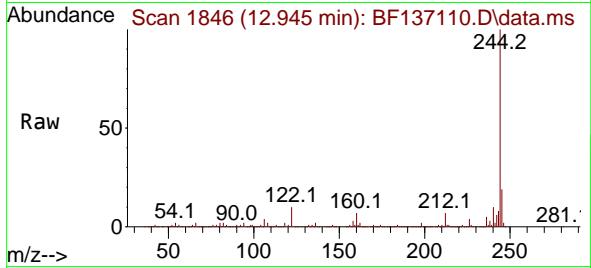
#79
 Terphenyl-d14
 Concen: 41.133 ng
 RT: 12.945 min Scan# 11
 Delta R.T. 0.000 min
 Lab File: BF137110.D
 Acq: 19 Jan 2024 14:25

Instrument :

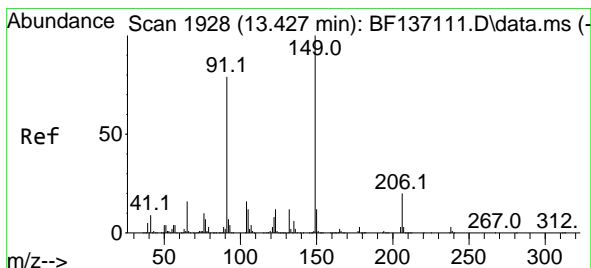
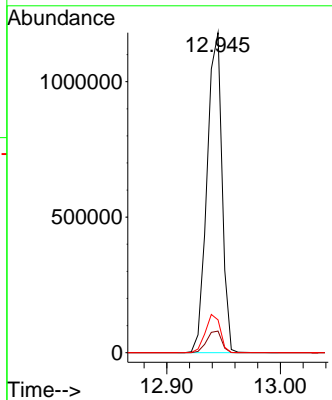
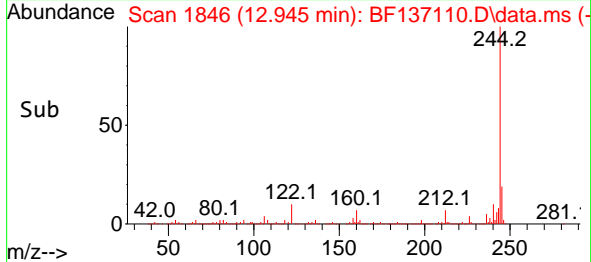
BNA_F

ClientSampleId :

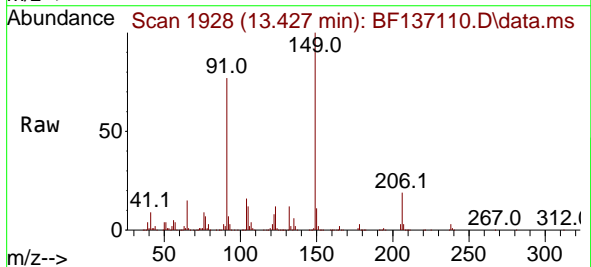
SSTDICC020



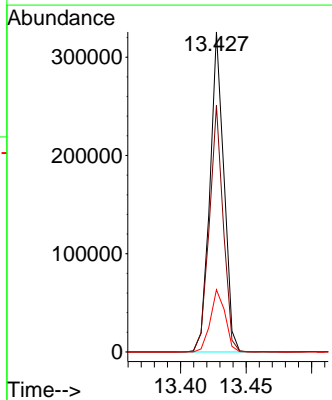
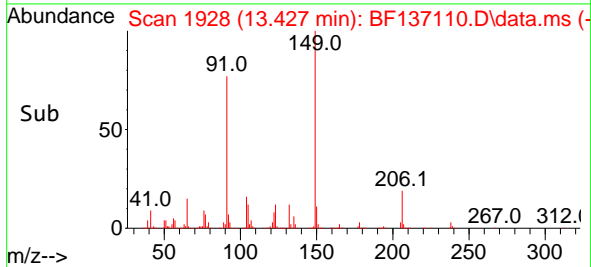
Tgt Ion:244 Resp: 1077497
 Ion Ratio Lower Upper
 244 100
 212 6.7 5.6 8.4
 122 10.3 9.4 14.2

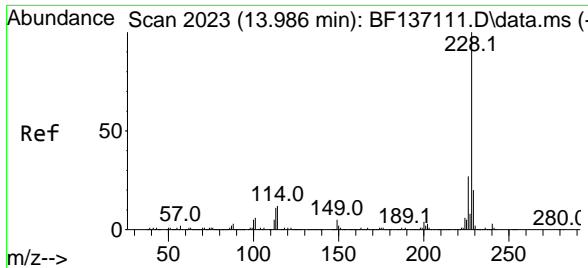


#80
 Butylbenzylphthalate
 Concen: 19.979 ng
 RT: 13.427 min Scan# 1928
 Delta R.T. 0.000 min
 Lab File: BF137110.D
 Acq: 19 Jan 2024 14:25



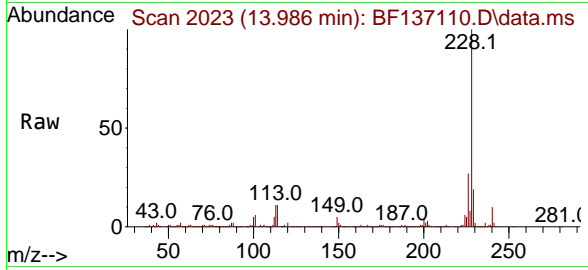
Tgt Ion:149 Resp: 241765
 Ion Ratio Lower Upper
 149 100
 91 77.1 63.0 94.6
 206 19.4 15.8 23.6



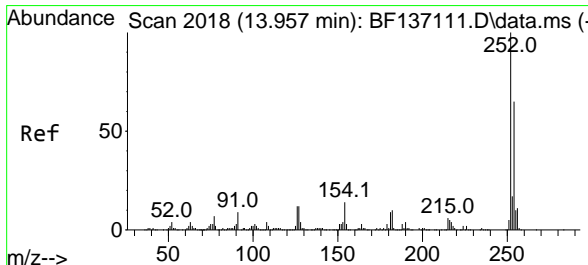
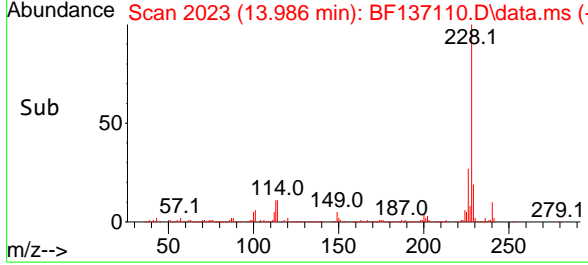
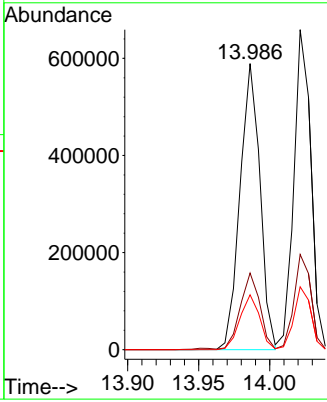


#81
 Benzo(a)anthracene
 Concen: 20.806 ng
 RT: 13.986 min Scan# 2018
 Delta R.T. 0.000 min
 Lab File: BF137110.D
 Acq: 19 Jan 2024 14:25

Instrument : BNA_F
 ClientSampleId : SSTDICC020

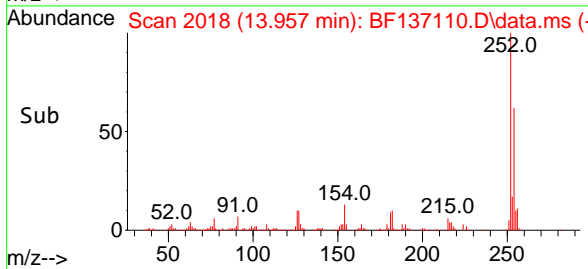
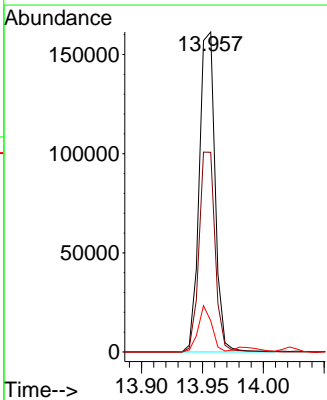
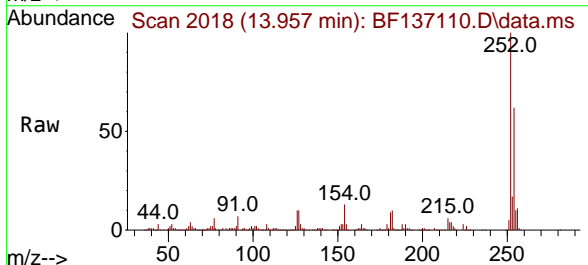


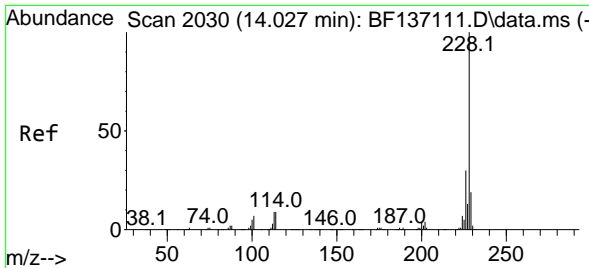
Tgt Ion:228 Resp: 578558
 Ion Ratio Lower Upper
 228 100
 226 26.8 21.4 32.2
 229 19.2 15.9 23.9



#82
 3,3'-Dichlorobenzidine
 Concen: 21.364 ng
 RT: 13.957 min Scan# 2018
 Delta R.T. 0.000 min
 Lab File: BF137110.D
 Acq: 19 Jan 2024 14:25

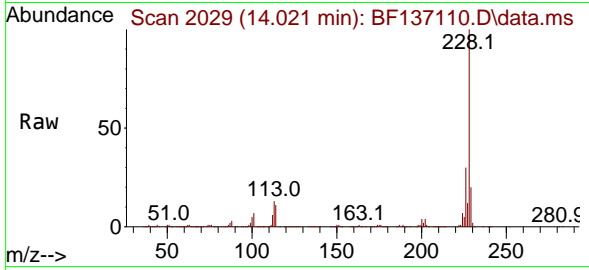
Tgt Ion:252 Resp: 145662
 Ion Ratio Lower Upper
 252 100
 254 62.4 52.0 78.0
 126 9.8 9.5 14.3



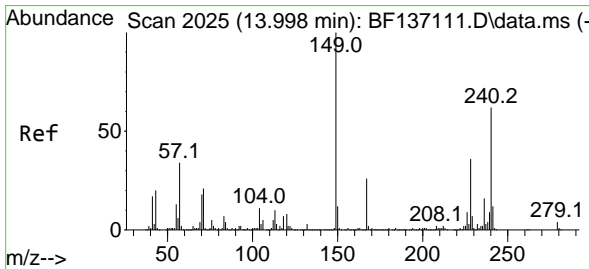
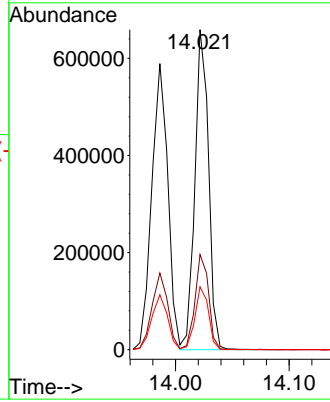
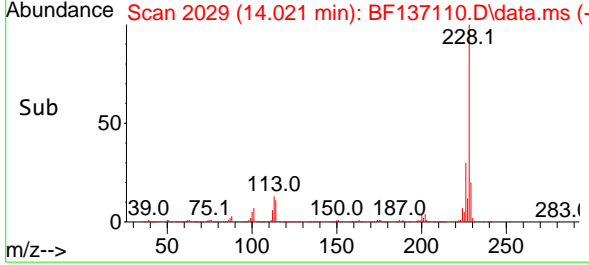


#83
 Chrysene
 Concen: 20.528 ng
 RT: 14.021 min Scan# 2029
 Delta R.T. -0.006 min
 Lab File: BF137110.D
 Acq: 19 Jan 2024 14:25

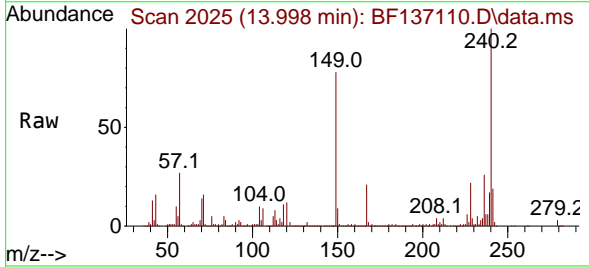
Instrument : BNA_F
 ClientSampleId : SSTDICC020



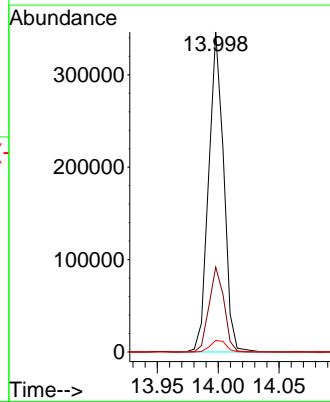
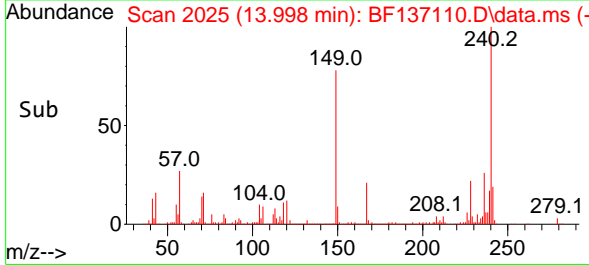
Tgt Ion:228 Resp: 551752
 Ion Ratio Lower Upper
 228 100
 226 29.8 23.5 35.3
 229 19.7 15.5 23.3

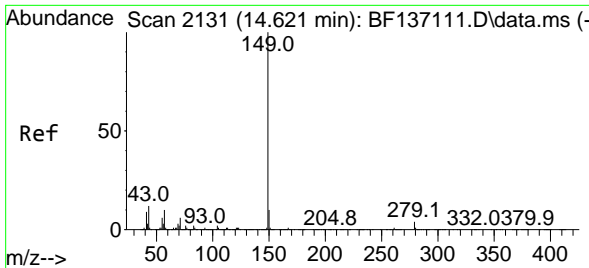


#84
 Bis(2-ethylhexyl)phthalate
 Concen: 20.180 ng
 RT: 13.998 min Scan# 2025
 Delta R.T. 0.000 min
 Lab File: BF137110.D
 Acq: 19 Jan 2024 14:25



Tgt Ion:149 Resp: 296914
 Ion Ratio Lower Upper
 149 100
 167 26.5 21.2 31.8
 279 3.6 2.9 4.3



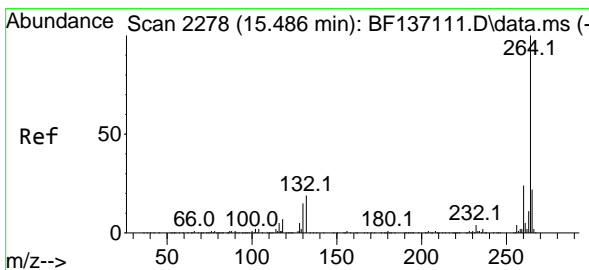
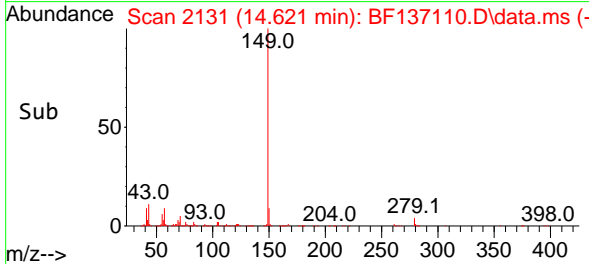
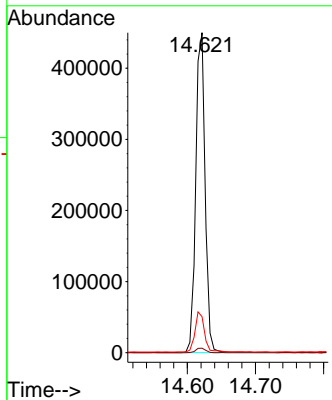
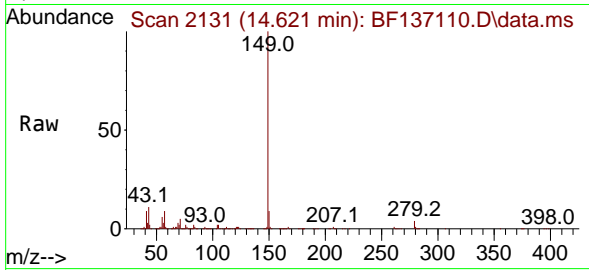


#85
 Di-n-octyl phthalate
 Concen: 18.048 ng
 RT: 14.621 min Scan# 2131
 Delta R.T. 0.000 min
 Lab File: BF137110.D
 Acq: 19 Jan 2024 14:25

Instrument : BNA_F
 Client Sample Id : SSTDICC020

Tgt Ion:149 Resp: 428526

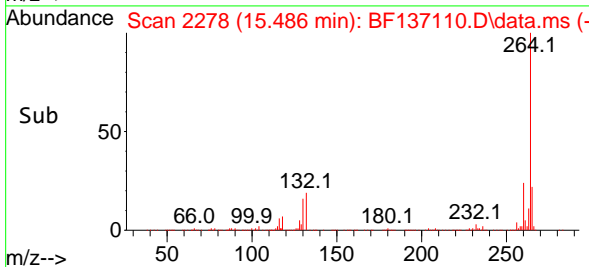
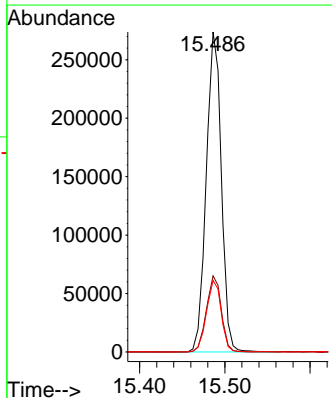
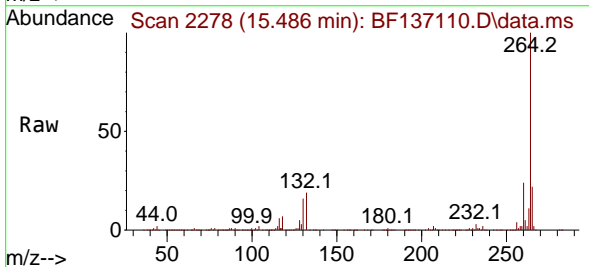
Ion	Ratio	Lower	Upper
149	100		
167	1.5	1.2	1.8
43	12.7	10.9	16.3

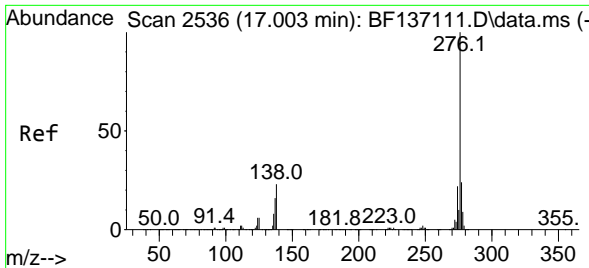


#86
 Perylene-d12
 Concen: 20.000 ng
 RT: 15.486 min Scan# 2278
 Delta R.T. 0.000 min
 Lab File: BF137110.D
 Acq: 19 Jan 2024 14:25

Tgt Ion:264 Resp: 335903

Ion	Ratio	Lower	Upper
264	100		
260	23.8	19.5	29.3
265	22.3	17.8	26.6





#87
 Indeno(1,2,3-cd)pyrene
 Concen: 20.062 ng
 RT: 16.998 min Scan# 21
 Delta R.T. -0.006 min
 Lab File: BF137110.D
 Acq: 19 Jan 2024 14:25

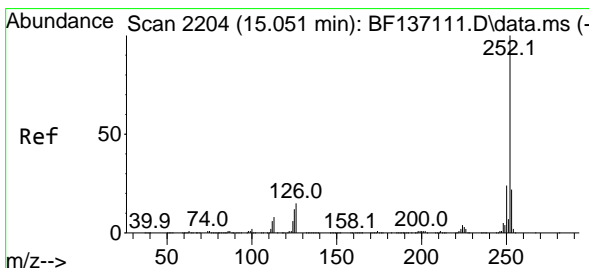
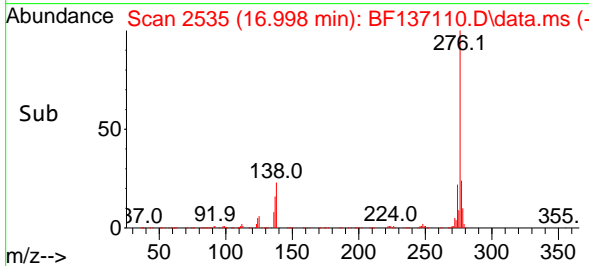
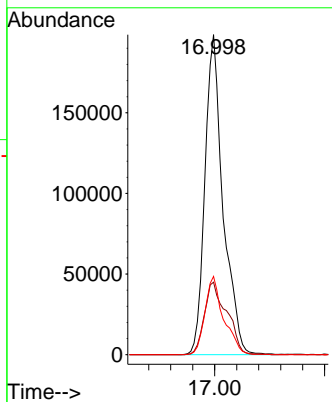
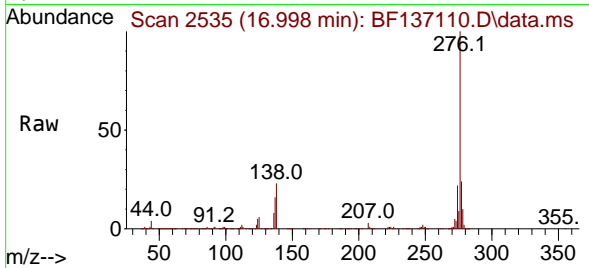
Instrument :

BNA_F

ClientSampleId :

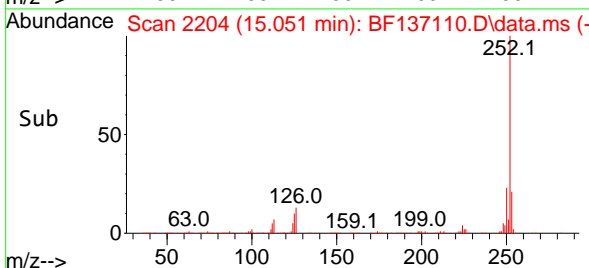
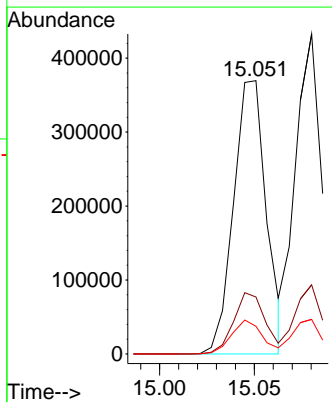
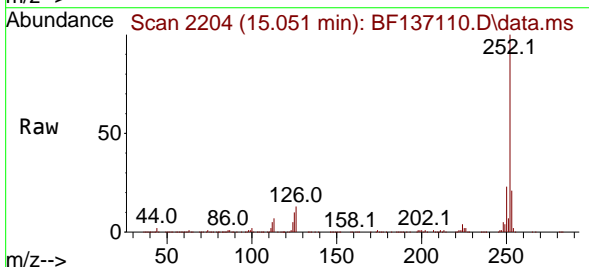
SSTDICC020

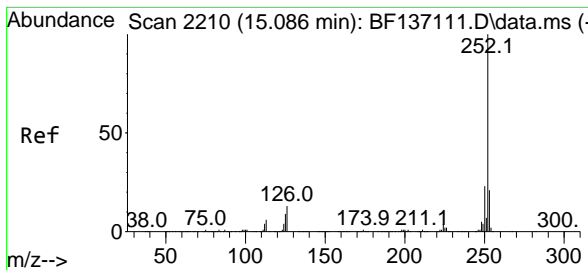
Tgt Ion:276 Resp: 455338
 Ion Ratio Lower Upper
 276 100
 138 28.0 22.2 33.4
 277 25.1 20.2 30.2



#88
 Benzo(b)fluoranthene
 Concen: 20.821 ng
 RT: 15.051 min Scan# 2204
 Delta R.T. 0.000 min
 Lab File: BF137110.D
 Acq: 19 Jan 2024 14:25

Tgt Ion:252 Resp: 444988
 Ion Ratio Lower Upper
 252 100
 253 20.8 17.8 26.6
 125 10.1 9.6 14.4



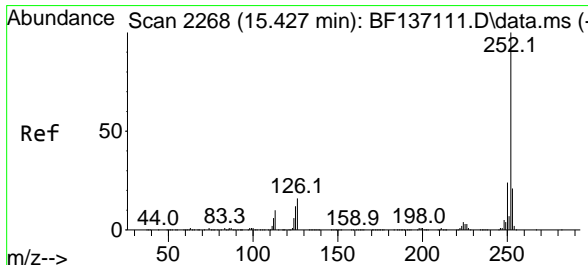
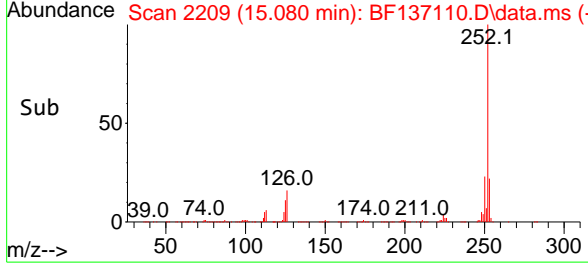
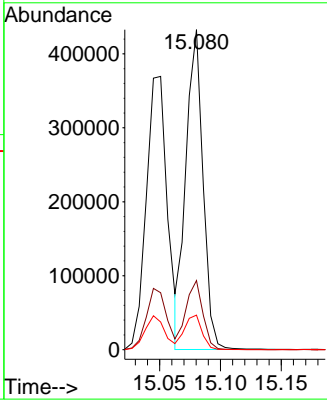
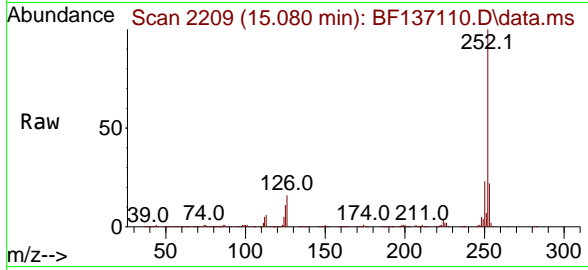


#89
 Benzo(k)fluoranthene
 Concen: 21.621 ng
 RT: 15.080 min Scan# 21
 Delta R.T. -0.006 min
 Lab File: BF137110.D
 Acq: 19 Jan 2024 14:25

Instrument : BNA_F
 ClientSampleId : SSTDICC020

Tgt Ion:252 Resp: 422481

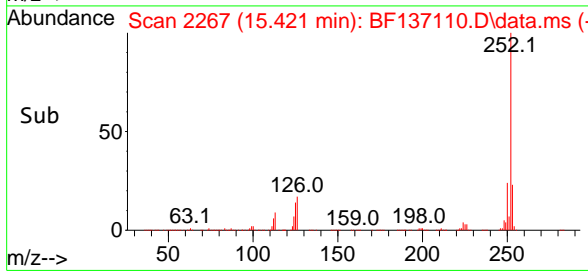
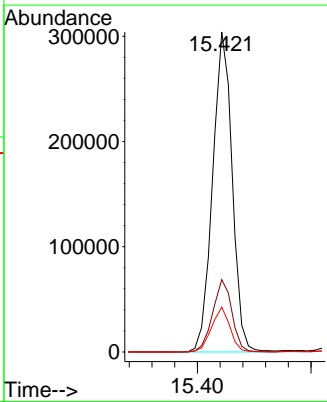
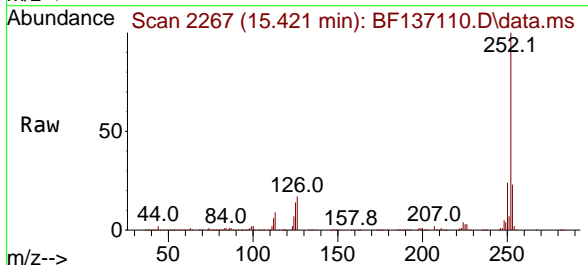
Ion	Ratio	Lower	Upper
252	100		
253	21.6	17.3	25.9
125	10.8	8.3	12.5

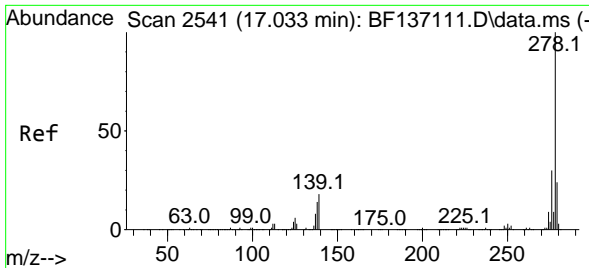


#90
 Benzo(a)pyrene
 Concen: 20.639 ng
 RT: 15.421 min Scan# 2267
 Delta R.T. -0.006 min
 Lab File: BF137110.D
 Acq: 19 Jan 2024 14:25

Tgt Ion:252 Resp: 363940

Ion	Ratio	Lower	Upper
252	100		
253	22.6	17.0	25.6
125	14.0	9.6	14.4





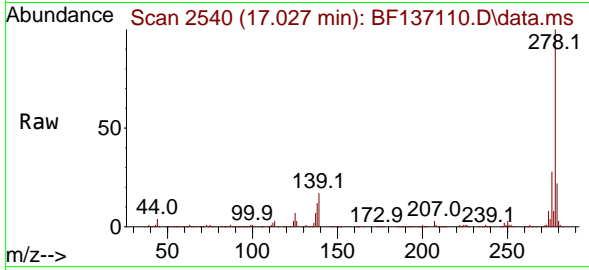
#91
 Dibenzo(a,h)anthracene
 Concen: 20.507 ng
 RT: 17.027 min Scan# 21
 Delta R.T. -0.006 min
 Lab File: BF137110.D
 Acq: 19 Jan 2024 14:25

Instrument :

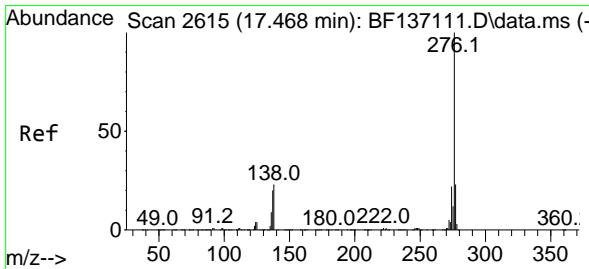
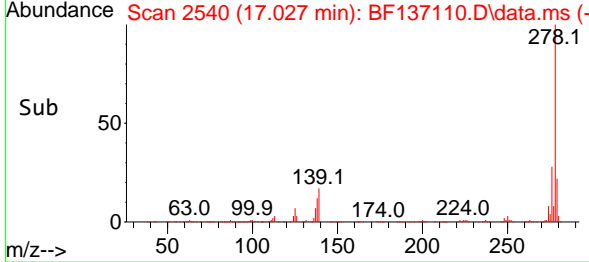
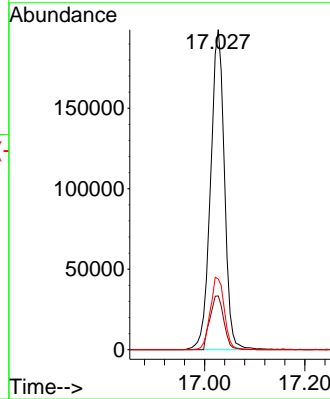
BNA_F

ClientSampleId :

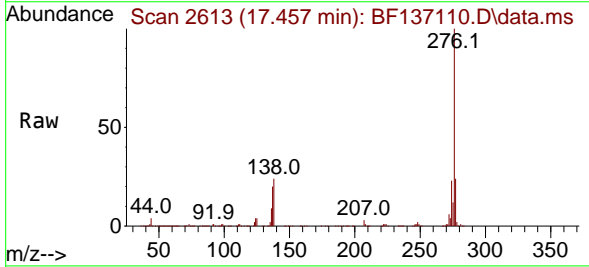
SSTDICC020



Tgt Ion:278 Resp: 382149
 Ion Ratio Lower Upper
 278 100
 139 16.8 14.2 21.4
 279 22.1 19.1 28.7



#92
 Benzo(g,h,i)perylene
 Concen: 20.211 ng
 RT: 17.457 min Scan# 2613
 Delta R.T. -0.012 min
 Lab File: BF137110.D
 Acq: 19 Jan 2024 14:25



Tgt Ion:276 Resp: 391945
 Ion Ratio Lower Upper
 276 100
 277 24.1 18.3 27.5
 138 24.2 18.4 27.6

