

Data Path : U:\HPCHEM1\BNA F\DATA\BF012018\
 Data File : BF102266.D
 Acq On : 20 Jan 2018 15:26
 Operator : SJ/JU
 Sample : J1115-19
 Misc :
 ALS Vial : 16 Sample Multiplier: 1

Instrument :
 BNA_F
 ClientSampleId :

Quant Time: Jan 22 01:22:33 2018
 Quant Method : Z:\HPCHEM1\BNA F\METHODS\8270-BF010918.M
 Quant Title : ASP BNA STANDARDS FOR 5 POINT CALIBRATION
 QLast Update : Fri Jan 19 13:31:35 2018
 Response via : Initial Calibration

Internal Standards	R.T.	QIon	Response	Conc	Units	Dev(Min)
1) 1,4-Dichlorobenzene-d4	6.72	152	154354	20.00	ng	0.00
21) Naphthalene-d8	8.00	136	618498	20.00	ng	-0.01
38) Acenaphthene-d10	9.75	164	253912	20.00	ng	0.00
63) Phenanthrene-d10	11.24	188	365532	20.00	ng	0.00
75) Chrysene-d12	13.87	240	290663	20.00	ng	0.00
86) Perylene-d12	15.29	264	264991	20.00	ng	0.00

System Monitoring Compounds

5) 2-Fluorophenol	5.33	112	1052757	96.31	ng	0.00
7) Phenol-d6	6.36	99	1257520	96.42	ng	0.00
23) Nitrobenzene-d5	7.29	82	783982	74.49	ng	-0.01
41) 2,4,6-Tribromophenol	10.55	330	214967	97.01	ng	0.00
44) 2-Fluorobiphenyl	9.08	172	1224765	75.36	ng	0.00
78) Terphenyl-d14	12.82	244	798506	57.04	ng	0.00

Target Compounds

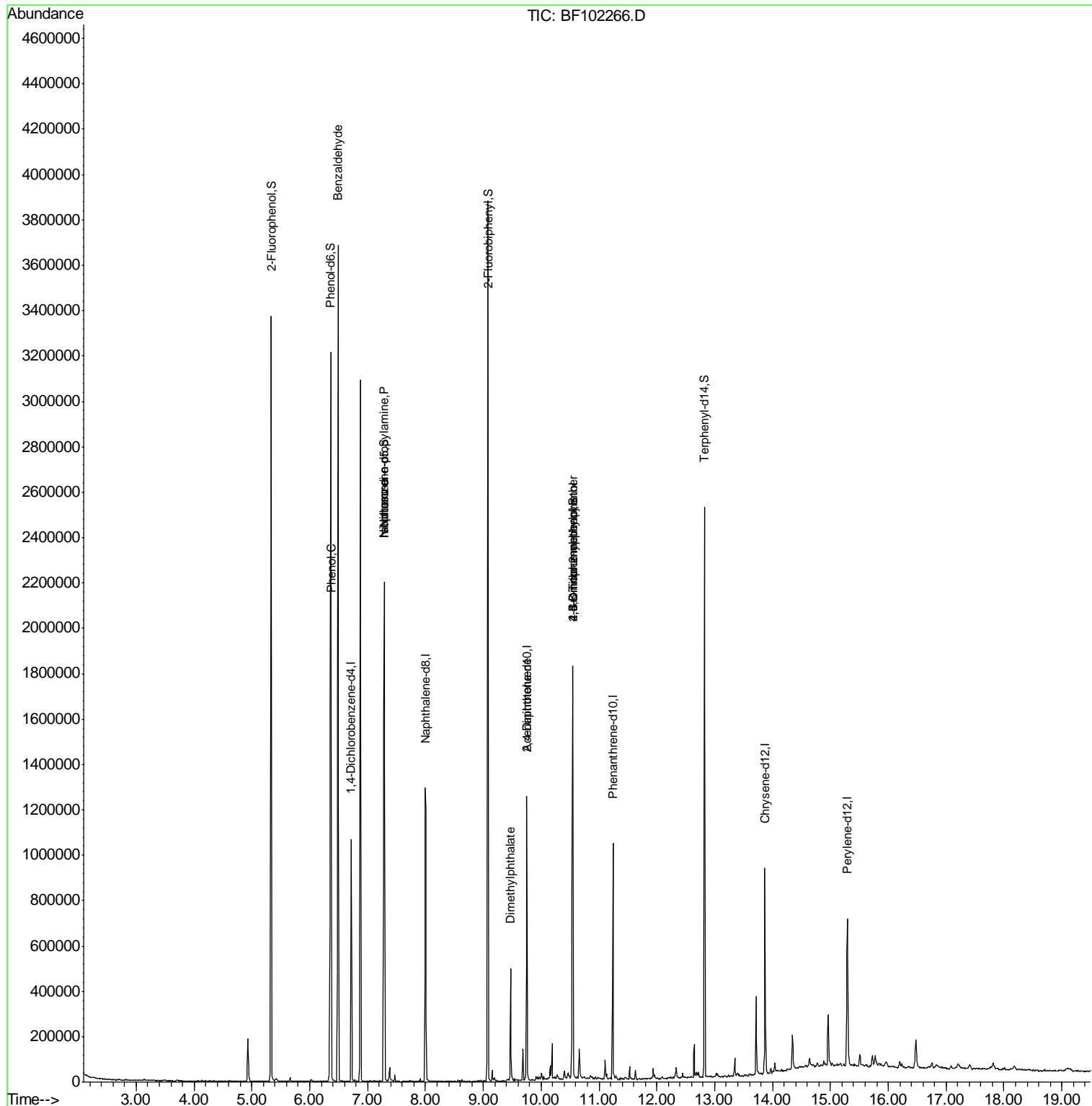
						Qvalue
9) Benzaldehyde	6.49	77	21425	2.366	ng	82
10) Phenol	6.37	94	51265	3.478	ng	97
19) n-Nitroso-di-n-propylamine	7.29	70	104133	12.184	ng	# 81
25) Isophorone	7.29	82	783976	37.697	ng	# 64
49) Dimethylphthalate	9.47	163	205473	10.088	ng	99
56) 2,4-Dinitrotoluene	9.75	165	32189	6.312	ng	# 23
64) 4,6-Dinitro-2-methylphenol	10.55	198	422	5.850	ng	# 1
66) 4-Bromophenyl-phenylether	10.55	248	14378	3.725	ng	# 1

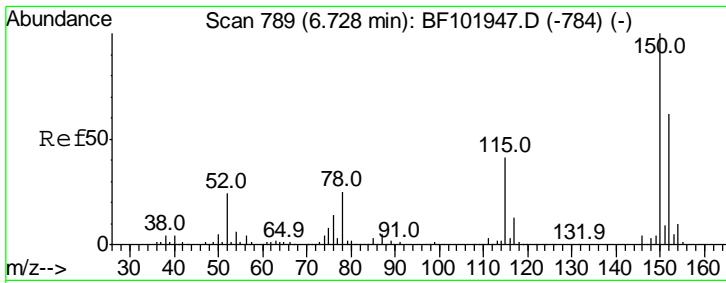
(#) = qualifier out of range (m) = manual integration (+) = signals summed

Data Path : U:\HPCHEM1\BNA F\DATA\BF012018\
 Data File : BF102266.D
 Acq On : 20 Jan 2018 15:26
 Operator : SJ/JU
 Sample : J1115-19
 Misc :
 ALS Vial : 16 Sample Multiplier: 1

Instrument :
 BNA_F
 ClientSampled :

Quant Time: Jan 22 01:22:33 2018
 Quant Method : Z:\HPCHEM1\BNA F\METHODS\8270-BF010918.M
 Quant Title : ASP BNA STANDARDS FOR 5 POINT CALIBRATION
 QLast Update : Fri Jan 19 13:31:35 2018
 Response via : Initial Calibration

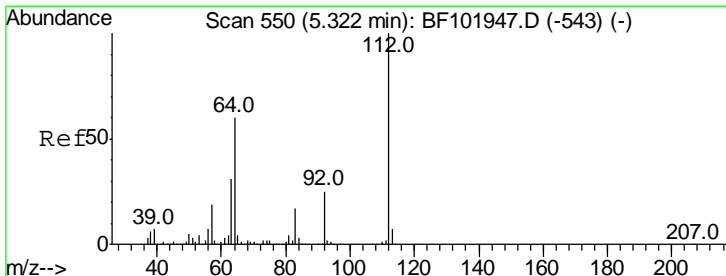
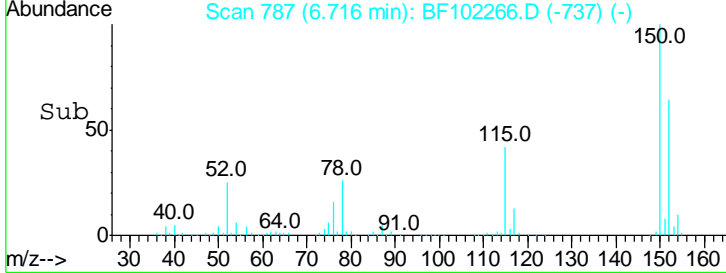
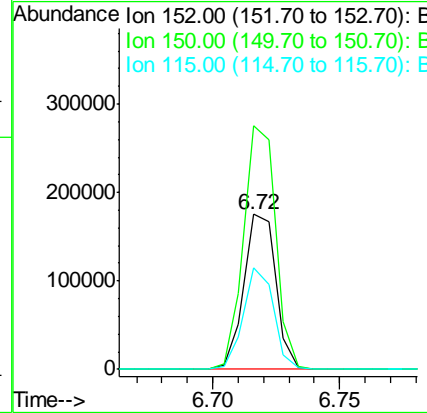
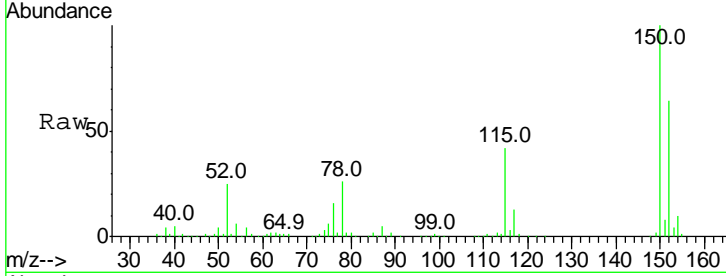




#1
 1,4-Dichlorobenzene-d4
 Concen: 20.000 ng
 RT: 6.72 min Scan# 787
 Delta R.T. -0.01 min
 Lab File: BF102266.D
 Acq: 20 Jan 2018 15:26

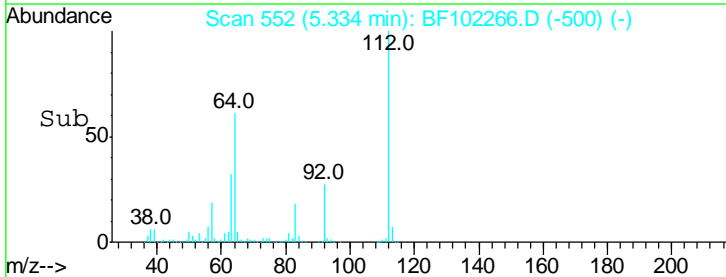
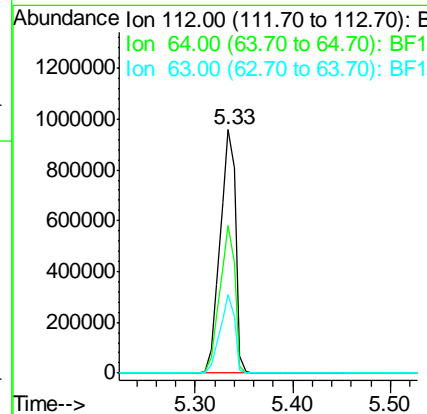
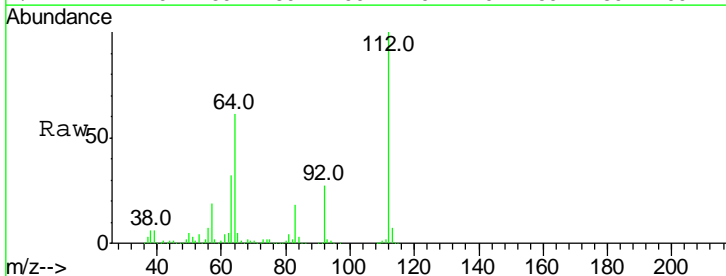
Instrument :
 BNA_F
 ClientSampled :

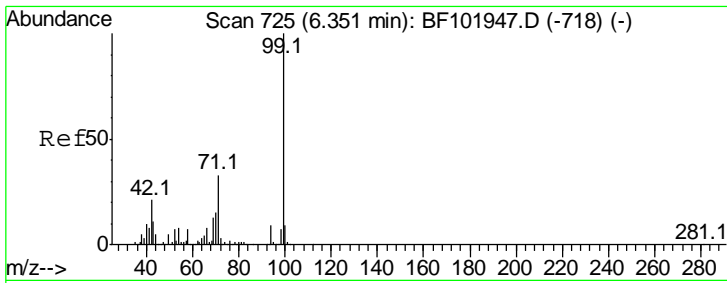
Tgt Ion	Resp	Lower	Upper
152	154354		
152	100		
150	156.9	124.6	186.8
115	65.3	50.1	75.1



#5
 2-Fluorophenol
 Concen: 96.310 ng
 RT: 5.33 min Scan# 552
 Delta R.T. 0.01 min
 Lab File: BF102266.D
 Acq: 20 Jan 2018 15:26

Tgt Ion	Resp	Lower	Upper
112	1052757		
112	100		
64	60.8	47.9	71.9
63	32.3	23.7	35.5

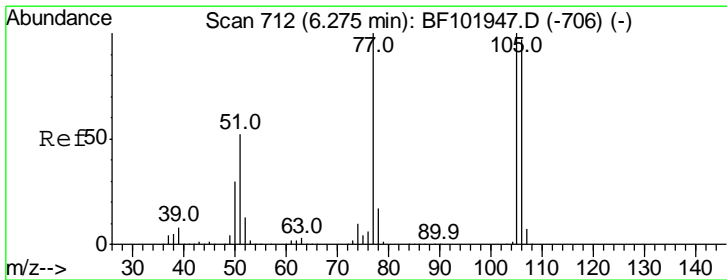
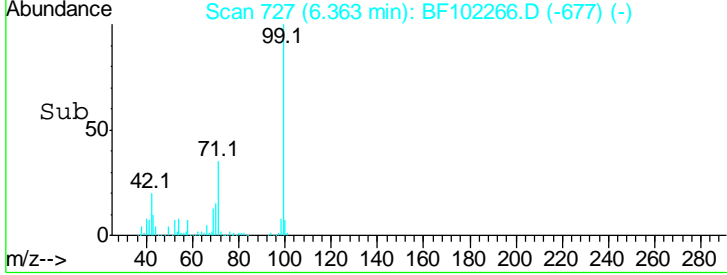
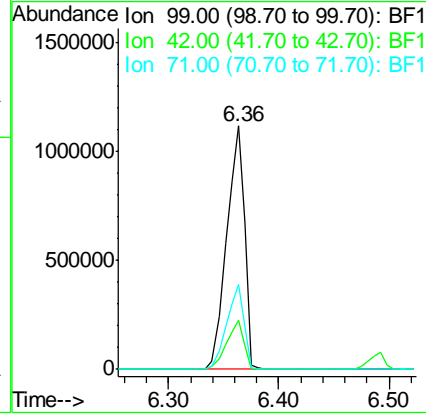
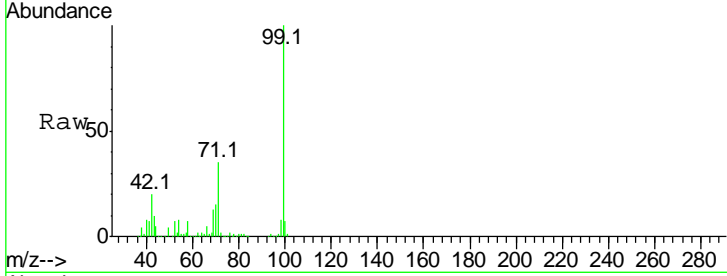




#7
 Phenol-d6
 Concen: 96.423 ng
 RT: 6.36 min Scan# 727
 Delta R.T. -0.01 min
 Lab File: BF102266.D
 Acq: 20 Jan 2018 15:26

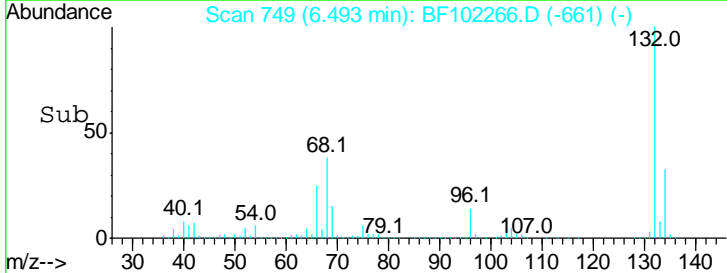
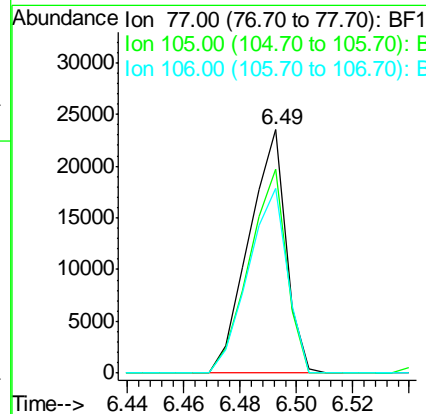
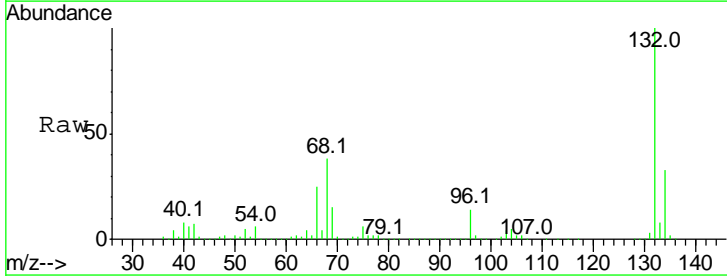
Instrument :
 BNA_F
 ClientSampled :

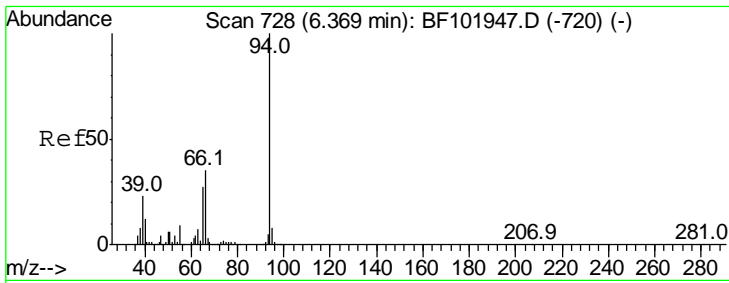
Tgt Ion	Resp	Lower	Upper
99	100		
42	19.9	14.5	21.7
71	34.8	25.4	38.0



#9
 Benzaldehyde
 Concen: 2.366 ng
 RT: 6.49 min Scan# 749
 Delta R.T. 0.22 min
 Lab File: BF102266.D
 Acq: 20 Jan 2018 15:26

Tgt Ion	Resp	Lower	Upper
77	100		
105	83.8	81.1	121.1
106	75.7	74.5	114.5

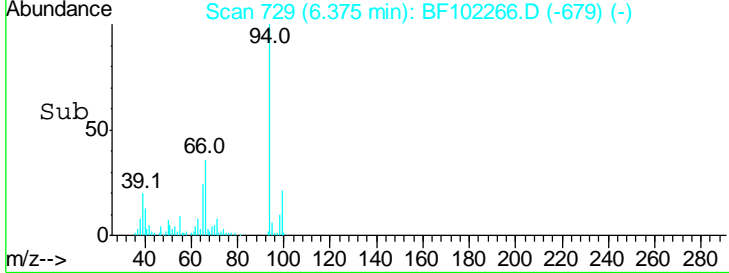
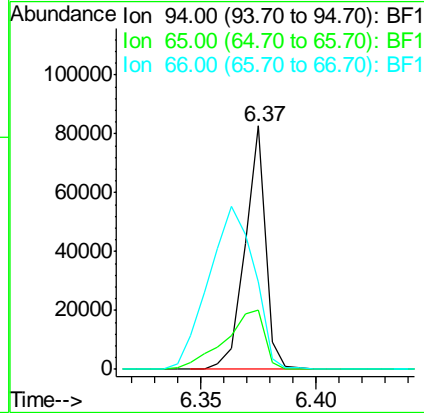
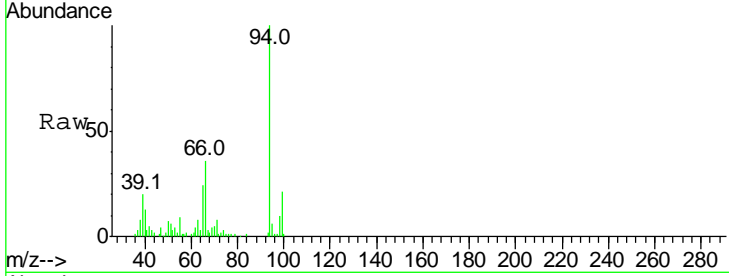




#10
 Phenol
 Concen: 3.478 ng
 RT: 6.37 min Scan# 729
 Delta R.T. -0.01 min
 Lab File: BF102266.D
 Acq: 20 Jan 2018 15:26

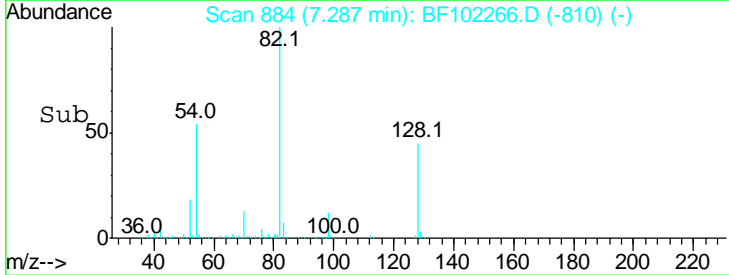
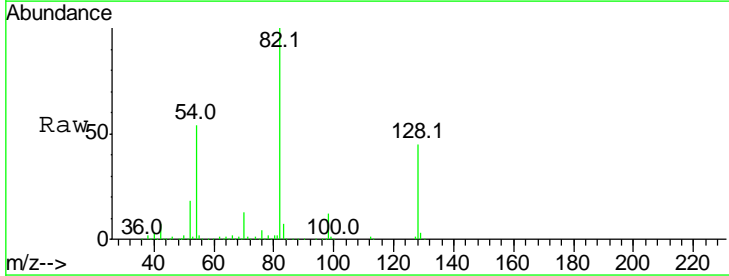
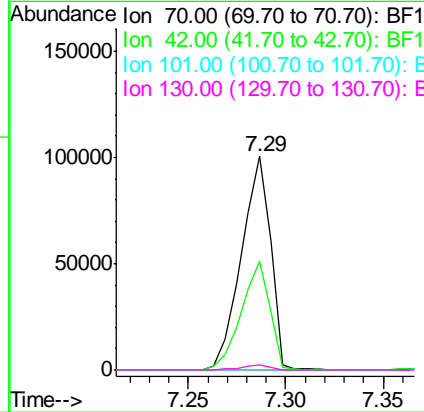
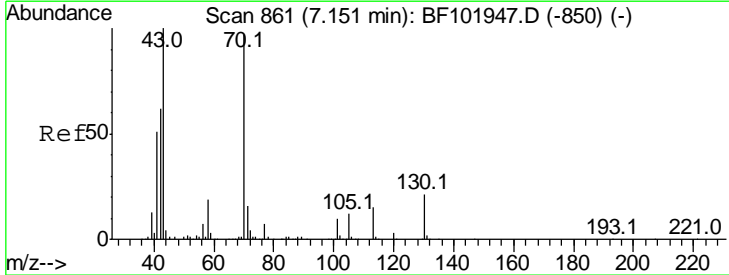
Instrument :
 BNA_F
 ClientSampled :

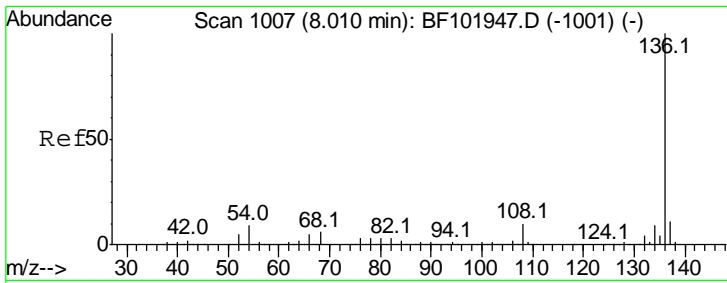
Tgt Ion	Resp	Lower	Upper
94	100		
65	24.3	7.9	47.9
66	35.9	16.2	56.2



#19
 n-Nitroso-di-n-propylamine
 Concen: 12.184 ng
 RT: 7.29 min Scan# 884
 Delta R.T. 0.14 min
 Lab File: BF102266.D
 Acq: 20 Jan 2018 15:26

Tgt Ion	Resp	Lower	Upper
70	100		
42	50.9	47.5	71.3
101	0.0	7.4	11.2#
130	2.2	16.6	25.0#



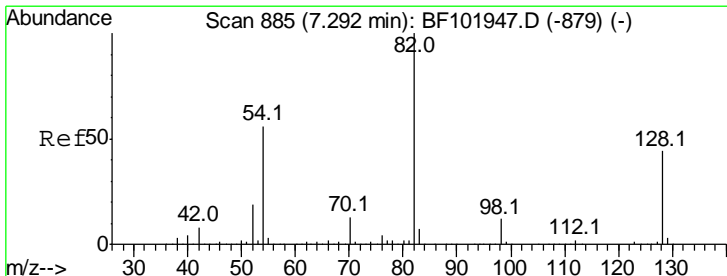
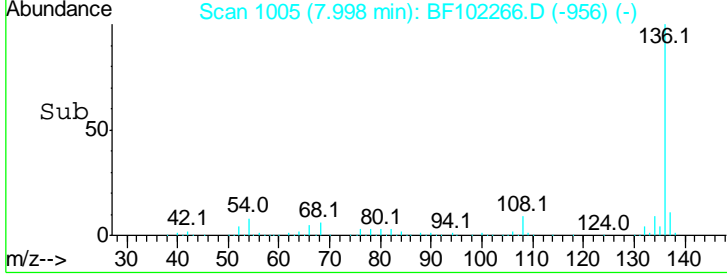
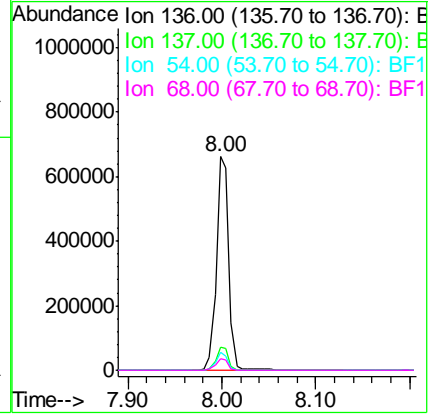
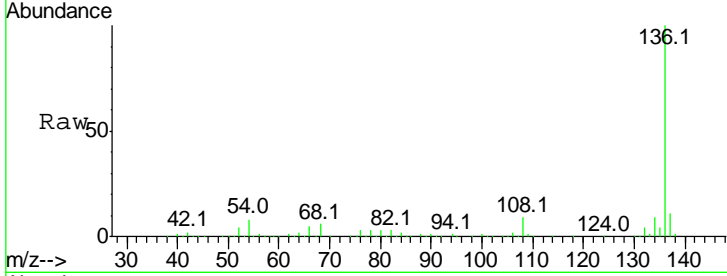


#21
 Naphthalene-d8
 Concen: 20.000 ng
 RT: 8.00 min Scan# 1005
 Delta R.T. -0.01 min
 Lab File: BF102266.D
 Acq: 20 Jan 2018 15:26

Instrument :
 BNA_F
 ClientSampled :

Tot Ion: 136 Resp: 618498

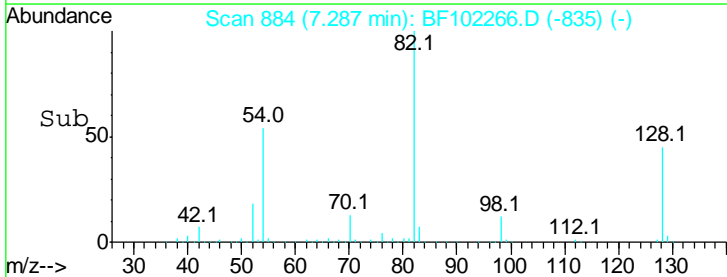
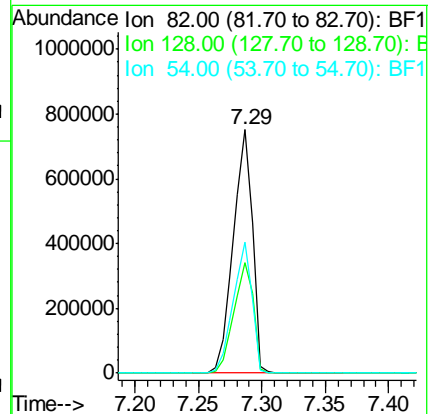
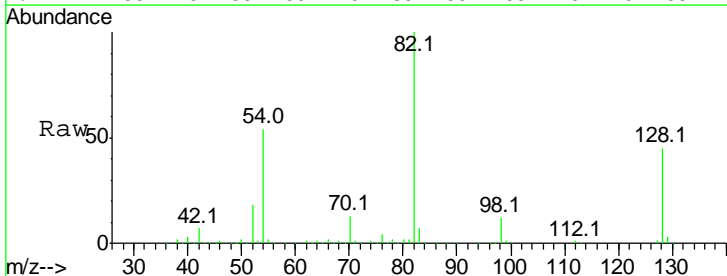
Ion	Ratio	Lower	Upper
136	100		
137	10.8	8.9	13.3
54	8.4	6.6	9.8
68	5.6	5.0	7.4

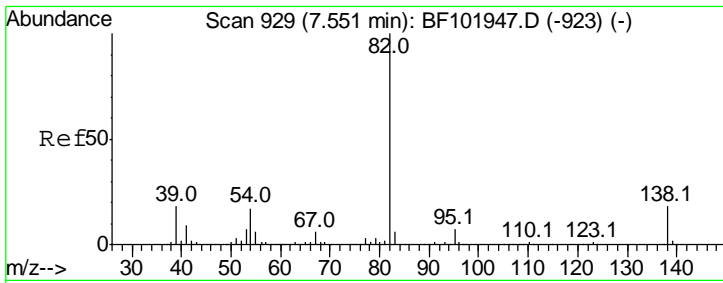


#23
 Nitrobenzene-d5
 Concen: 74.487 ng
 RT: 7.29 min Scan# 884
 Delta R.T. -0.01 min
 Lab File: BF102266.D
 Acq: 20 Jan 2018 15:26

Tgt Ion: 82 Resp: 783982

Ion	Ratio	Lower	Upper
82	100		
128	45.3	36.1	54.1
54	53.8	41.4	62.2

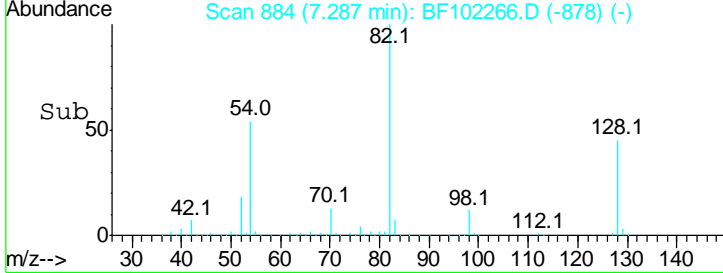
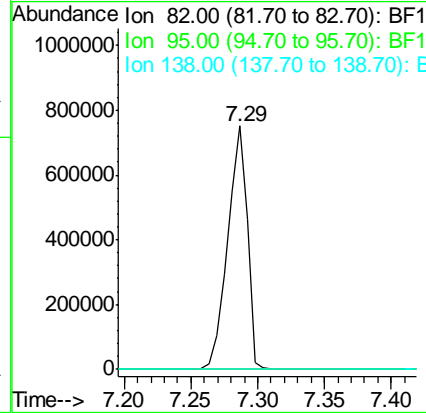
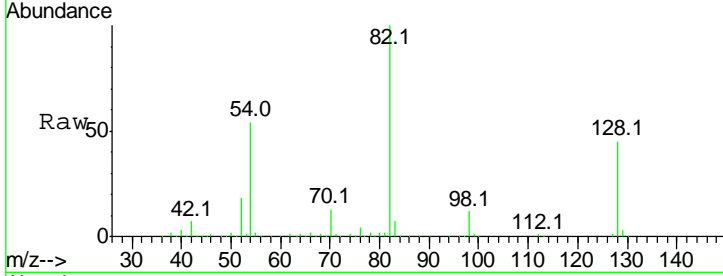




#25
 Isophorone
 Concen: 37.697 ng
 RT: 7.29 min Scan# 884
 Delta R.T. -0.26 min
 Lab File: BF102266.D
 Acq: 20 Jan 2018 15:26

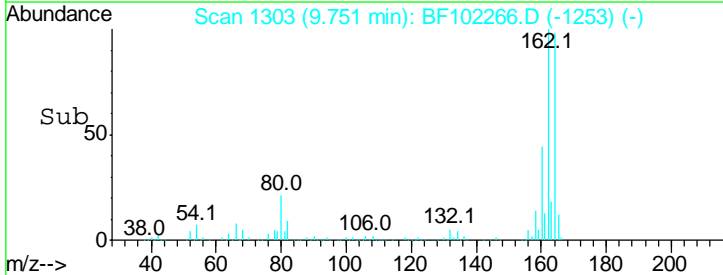
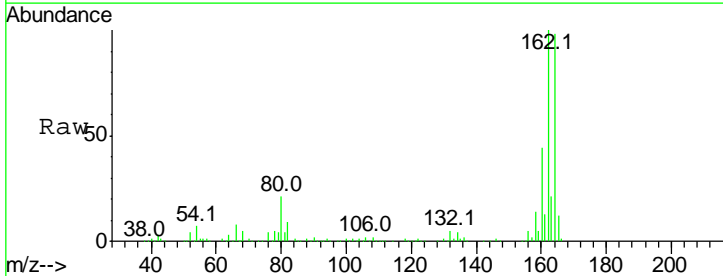
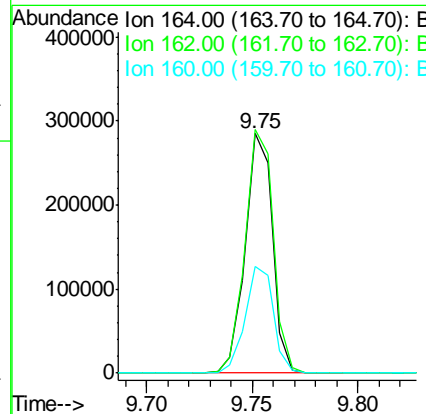
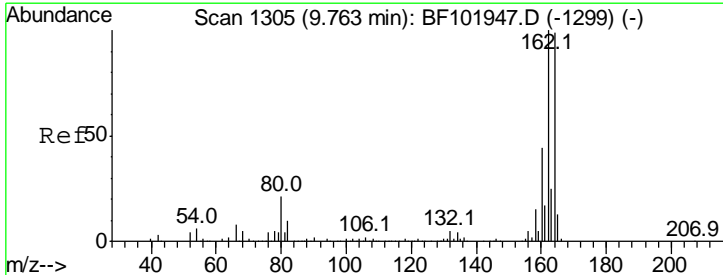
Instrument :
 BNA_F
 ClientSampleID :

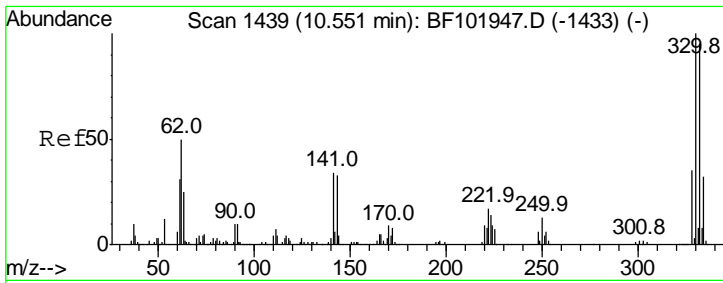
Tgt Ion	Resp	Lower	Upper
82	100		
95	0.0	5.2	7.8#
138	0.0	14.9	22.3#



#38
 Acenaphthene-d10
 Concen: 20.000 ng
 RT: 9.75 min Scan# 1303
 Delta R.T. -0.01 min
 Lab File: BF102266.D
 Acq: 20 Jan 2018 15:26

Tgt Ion	Resp	Lower	Upper
164	100		
162	101.6	86.1	129.1
160	44.3	38.3	57.5

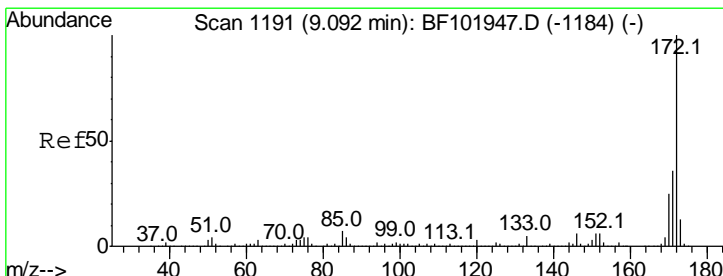
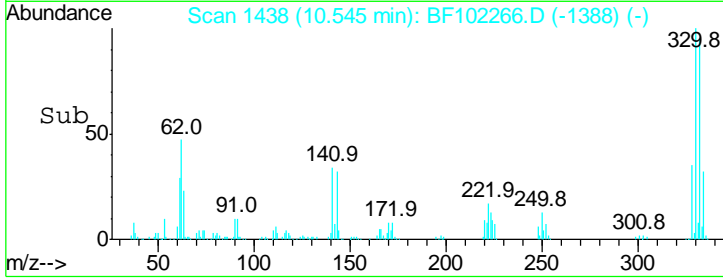
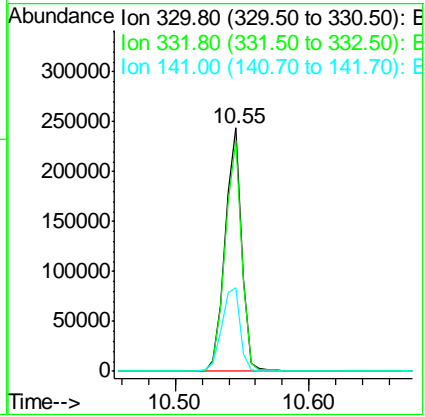
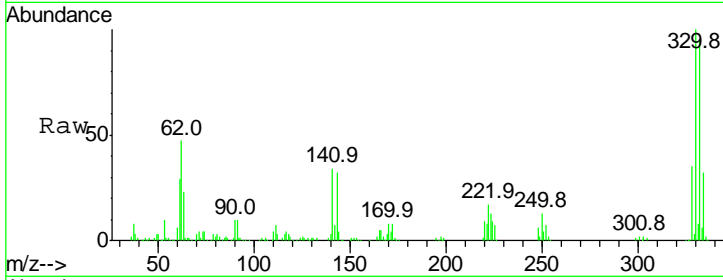




#41
 2,4,6-Tribromophenol
 Concen: 97.013 ng
 RT: 10.55 min Scan# 1438
 Delta R.T. -0.01 min
 Lab File: BF102266.D
 Acq: 20 Jan 2018 15:26

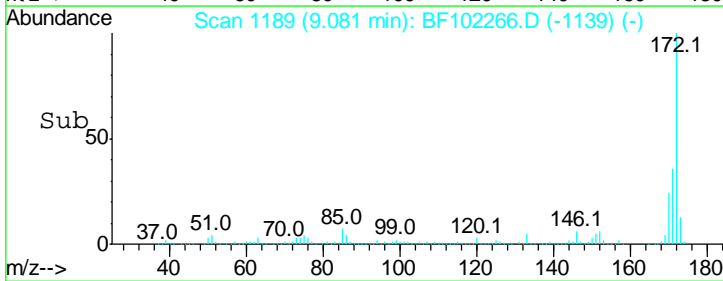
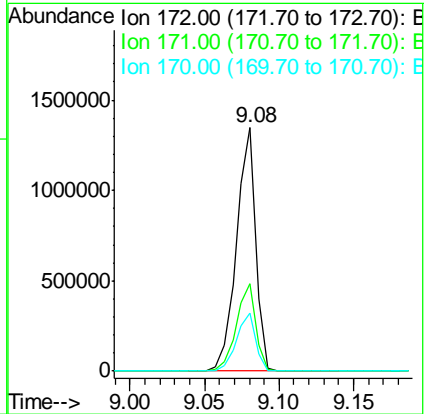
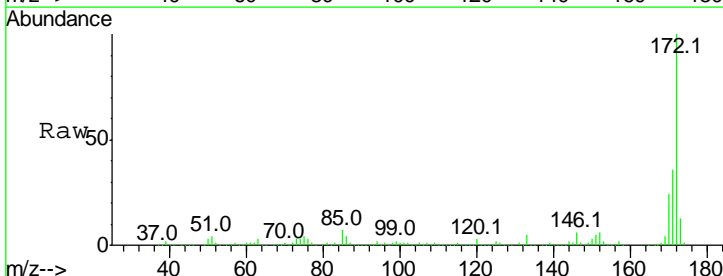
Instrument :
 BNA_F
 ClientSampled :

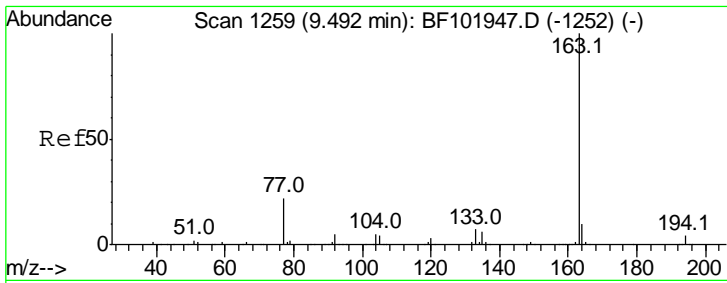
Tgt Ion	Resp	Lower	Upper
330	100		
332	95.4	77.0	115.6
141	38.2	29.9	44.9



#44
 2-Fluorobiphenyl
 Concen: 75.357 ng
 RT: 9.08 min Scan# 1189
 Delta R.T. -0.01 min
 Lab File: BF102266.D
 Acq: 20 Jan 2018 15:26

Tgt Ion	Resp	Lower	Upper
172	100		
171	35.9	29.7	44.5
170	23.8	19.6	29.4



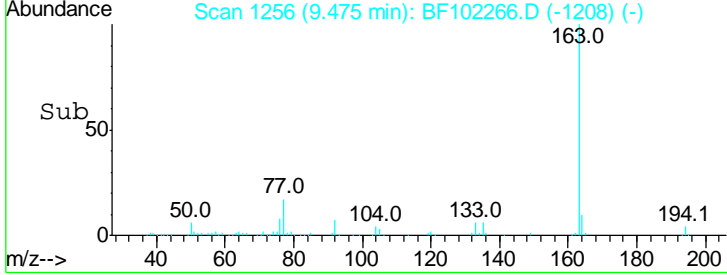
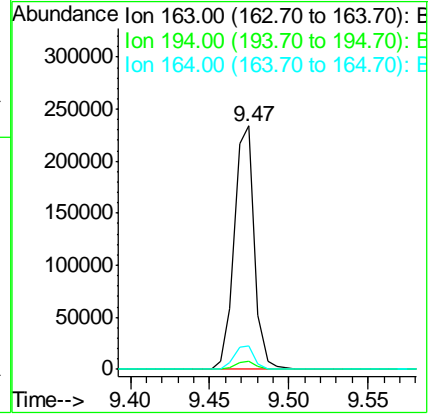
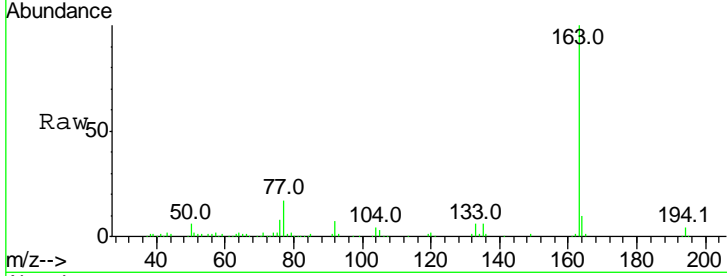


#49
 Dimethylphthalate
 Concen: 10.088 ng
 RT: 9.47 min Scan# 1256
 Delta R.T. -0.02 min
 Lab File: BF102266.D
 Acq: 20 Jan 2018 15:26

Instrument :
 BNA_F
 ClientSampled :

Tgt Ion:163 Resp: 205473

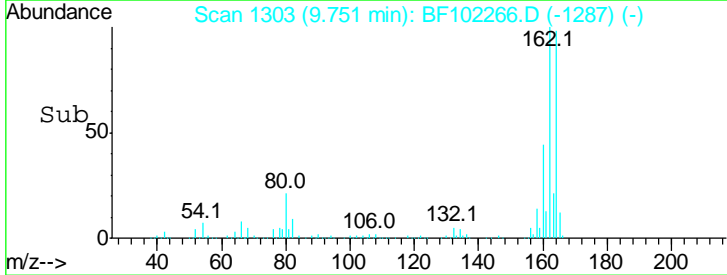
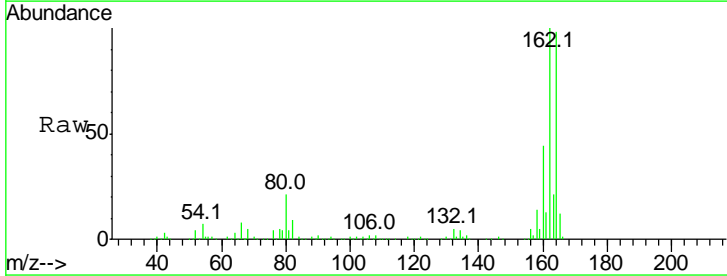
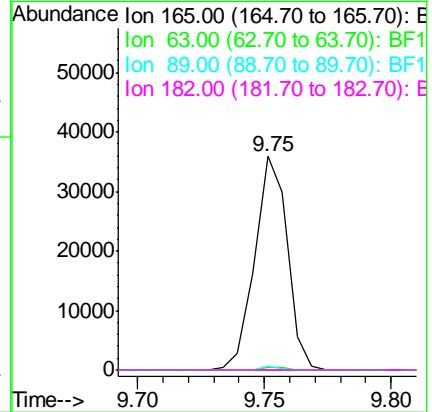
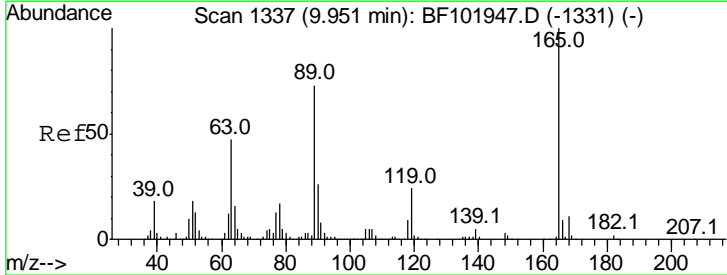
Ion	Ratio	Lower	Upper
163	100		
194	3.6	2.7	4.1
164	9.8	8.2	12.2

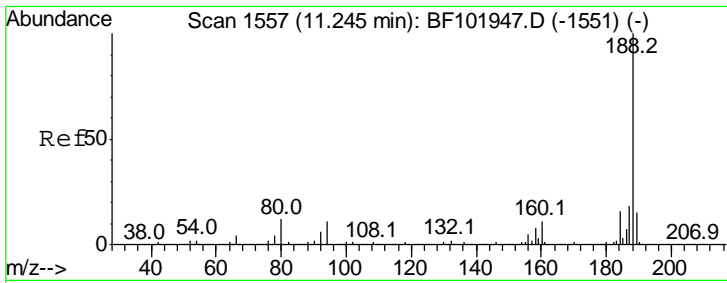


#56
 2,4-Dinitrotoluene
 Concen: 6.312 ng
 RT: 9.75 min Scan# 1303
 Delta R.T. -0.21 min
 Lab File: BF102266.D
 Acq: 20 Jan 2018 15:26

Tgt Ion:165 Resp: 32189

Ion	Ratio	Lower	Upper
165	100		
63	1.3	36.4	54.6#
89	1.6	57.8	86.6#
182	0.0	1.6	2.4#

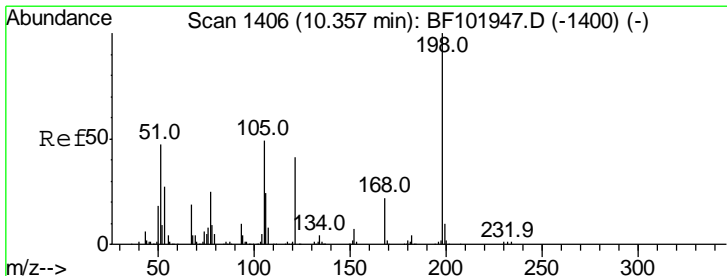
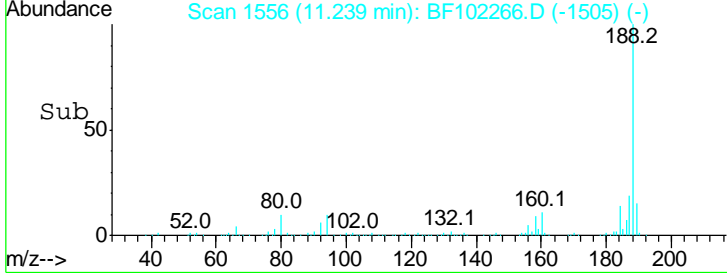
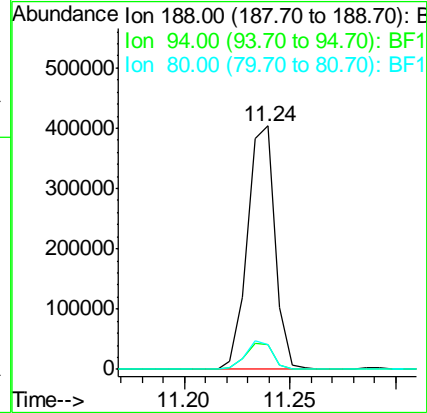
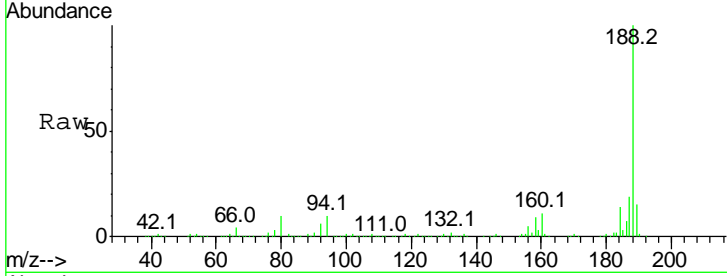




#63
 Phenanthrene-d10
 Concen: 20.000 ng
 RT: 11.24 min Scan# 1556
 Delta R.T. 0.00 min
 Lab File: BF102266.D
 Acq: 20 Jan 2018 15:26

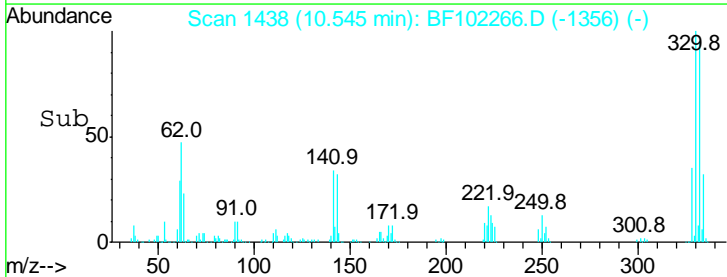
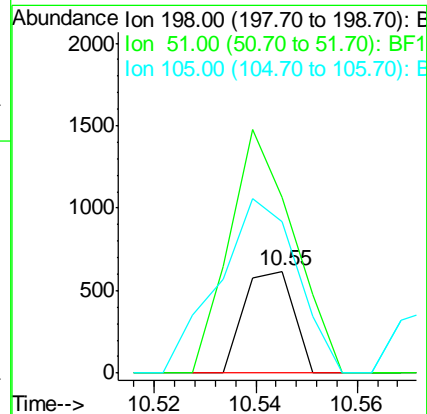
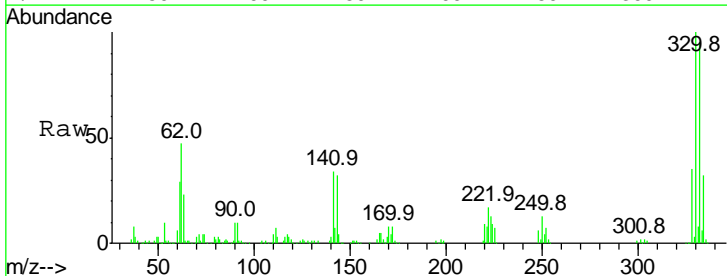
Instrument :
 BNA_F
 ClientSampled :

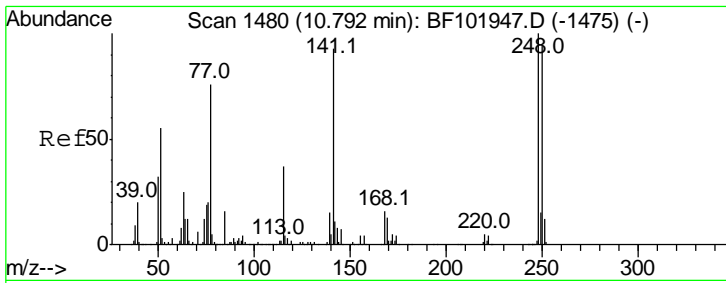
Tgt Ion	Resp	Lower	Upper
188	100		
94	10.0	8.5	12.7
80	10.4	9.2	13.8



#64
 4,6-Dinitro-2-methylphenol
 Concen: 5.850 ng
 RT: 10.55 min Scan# 1438
 Delta R.T. 0.18 min
 Lab File: BF102266.D
 Acq: 20 Jan 2018 15:26

Tgt Ion	Resp	Lower	Upper
198	100		
51	172.1	37.7	77.7#
105	148.6	36.3	76.3#

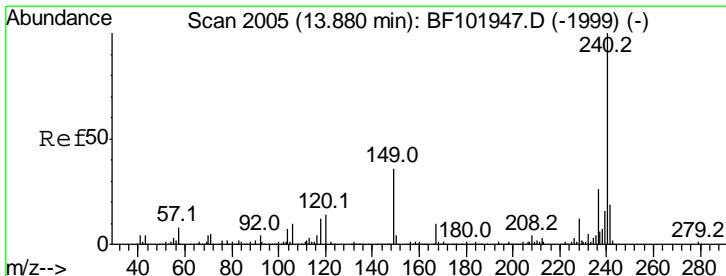
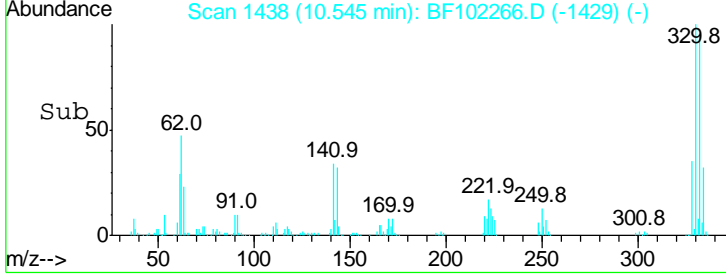
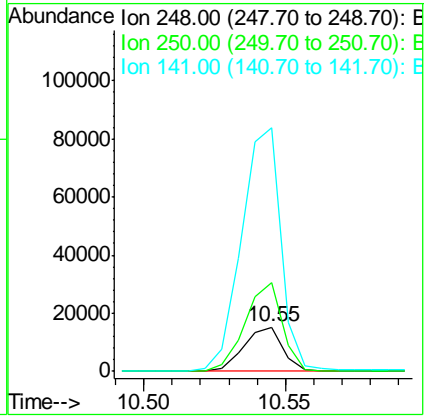
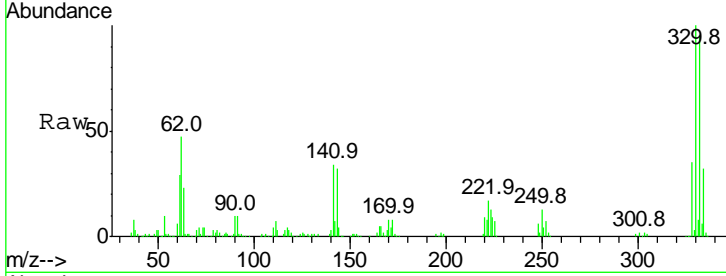




#66
 4-Bromophenyl-phenylether
 Concen: 3.725 ng
 RT: 10.55 min Scan# 1438
 Delta R.T. -0.25 min
 Lab File: BF102266.D
 Acq: 20 Jan 2018 15:26

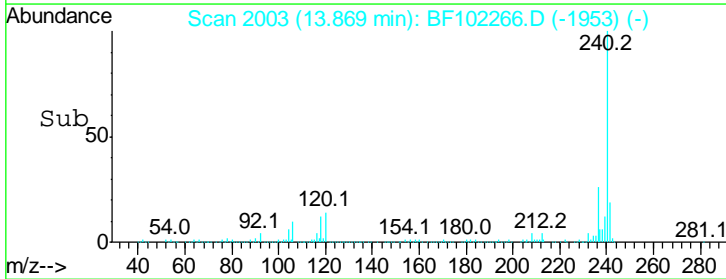
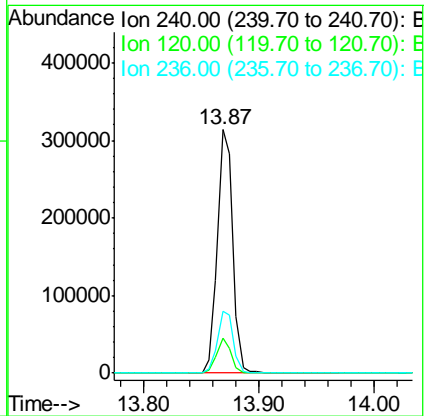
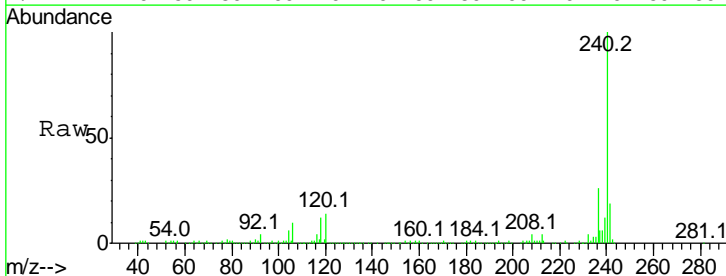
Instrument :
 BNA_F
 ClientSampled :

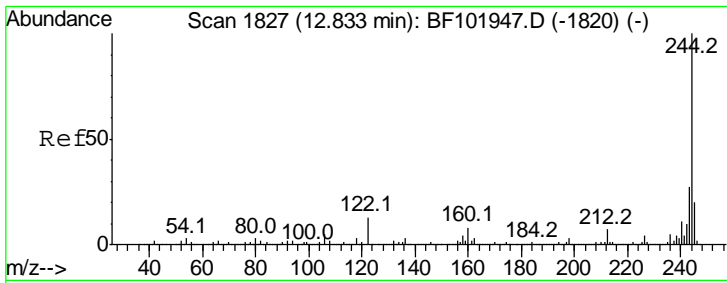
Tgt Ion	Resp	Lower	Upper
248	100		
250	201.2	76.9	115.3#
141	548.3	74.4	111.6#



#75
 Chrysene-d12
 Concen: 20.000 ng
 RT: 13.87 min Scan# 2003
 Delta R.T. -0.01 min
 Lab File: BF102266.D
 Acq: 20 Jan 2018 15:26

Tgt Ion	Resp	Lower	Upper
240	100		
120	14.3	9.5	14.3#
236	25.5	20.7	31.1

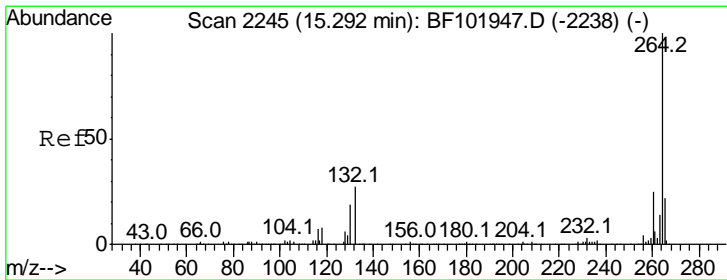
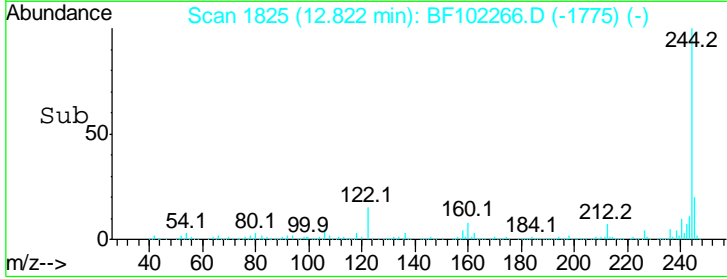
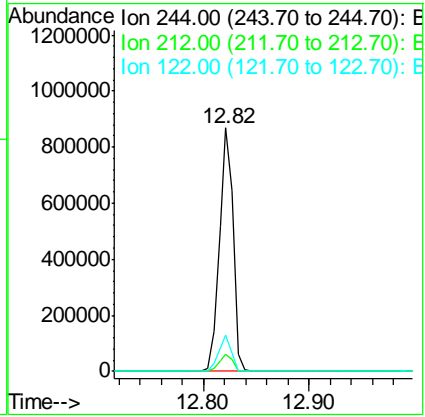
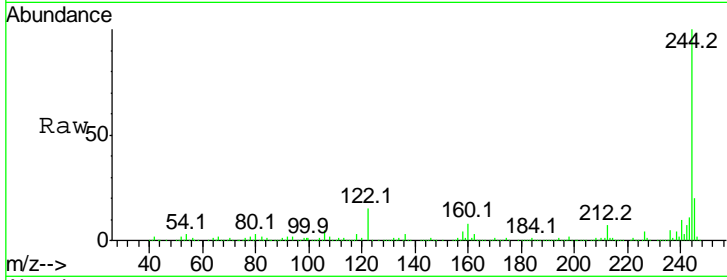




#78
 Terphenyl-d14
 Concen: 57.039 ng
 RT: 12.82 min Scan# 1825
 Delta R.T. -0.01 min
 Lab File: BF102266.D
 Acq: 20 Jan 2018 15:26

Instrument :
 BNA_F
 ClientSampled :

Tgt Ion	Resp	Lower	Upper
244	100		
212	6.9	5.4	8.0
122	14.8	11.0	16.4



#86
 Perylene-d12
 Concen: 20.000 ng
 RT: 15.29 min Scan# 2245
 Delta R.T. 0.00 min
 Lab File: BF102266.D
 Acq: 20 Jan 2018 15:26

Tgt Ion	Resp	Lower	Upper
264	100		
260	23.4	19.2	28.8
265	21.6	17.5	26.3

