

Data Path : Z:\SVOASRV\HPCHEM1\BNA F\DATA\BF012120\
 Data File : BF118634.D
 Acq On : 21 Jan 2020 14:35
 Operator : CG/JU
 Sample : PB126190BL
 Misc :
 ALS Vial : 4 Sample Multiplier: 1

Instrument :
 BNA_F
 ClientSampleId :
 PB126190BL

Quant Time: Jan 21 15:36:01 2020
 Quant Method : Z:\SVOASRV\HPCHEM1\BNA F\METHODS\8270-BF012020.M
 Quant Title : ASP BNA STANDARDS FOR 5 POINT CALIBRATION
 QLast Update : Mon Jan 20 14:45:03 2020
 Response via : Initial Calibration

Internal Standards	R.T.	QIon	Response	Conc	Units	Dev(Min)
1) 1,4-Dichlorobenzene-d4	6.88	152	386140	20.00	ng	0.00
21) Naphthalene-d8	8.16	136	1413718	20.00	ng	0.00
39) Acenaphthene-d10	9.92	164	802669	20.00	ng	-0.01
64) Phenanthrene-d10	11.40	188	1522695	20.00	ng	0.00
76) Chrysene-d12	14.03	240	1219148	20.00	ng	-0.01
87) Perylene-d12	15.51	264	1050222	20.00	ng	0.00
System Monitoring Compounds						
5) 2-Fluorophenol	5.51	112	2648899	127.41	ng	0.01
7) Phenol-d6	6.51	99	3441673	127.36	ng	0.00
23) Nitrobenzene-d5	7.44	82	2108557	83.43	ng	0.00
42) 2,4,6-Tribromophenol	10.71	330	1244440	134.04	ng	0.00
45) 2-Fluorobiphenyl	9.24	172	4016527	82.25	ng	0.00
79) Terphenyl-d14	12.99	244	4890121	87.49	ng	0.00

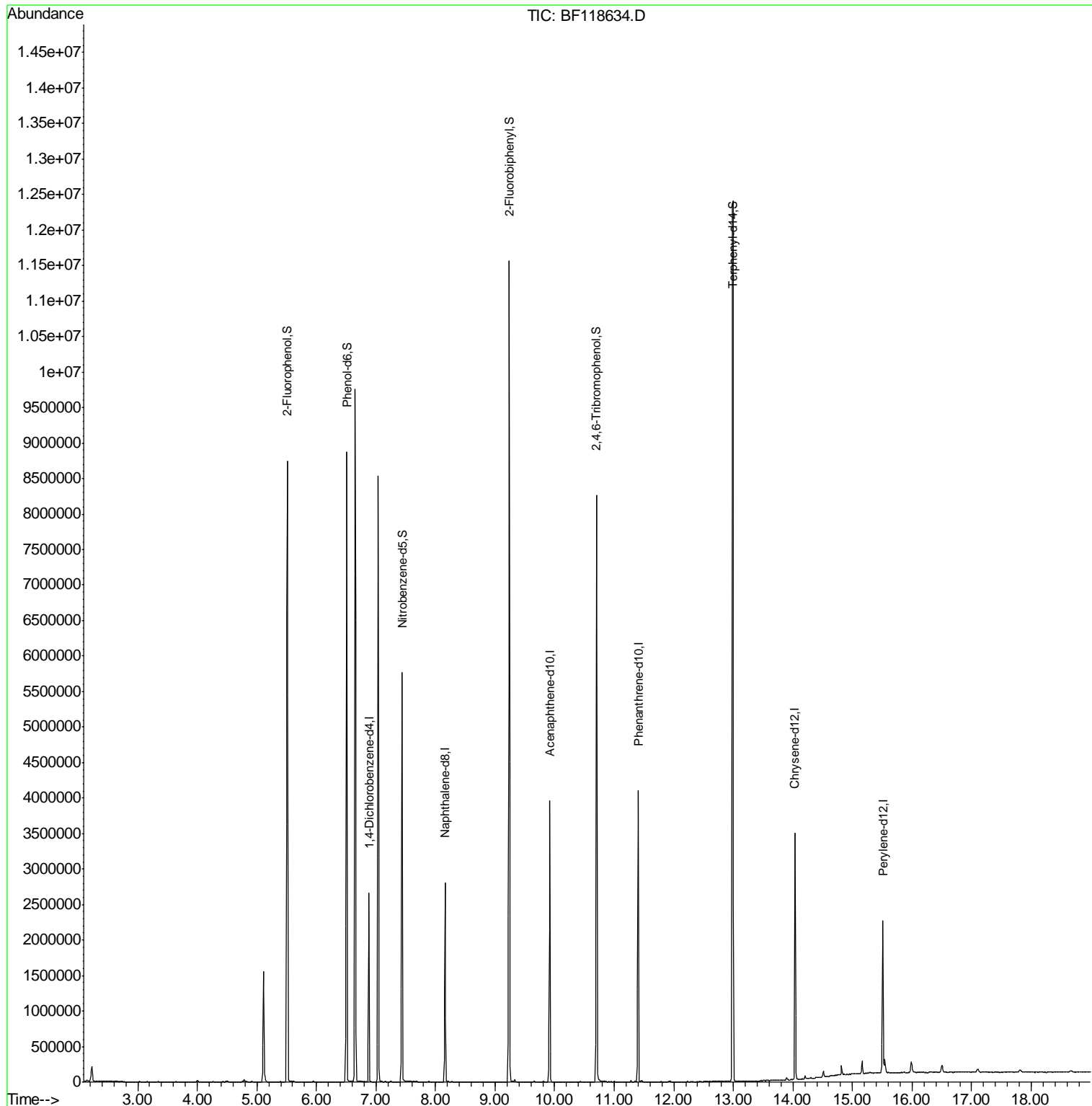
Target Compounds Qvalue

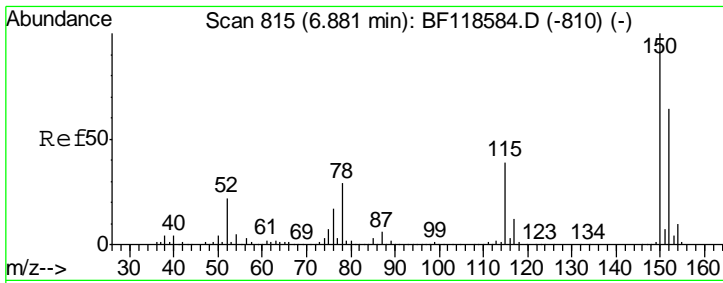
(#) = qualifier out of range (m) = manual integration (+) = signals summed

Data Path : Z:\SVOASRV\HPCHEM1\BNA F\DATA\BF012120\
 Data File : BF118634.D
 Acq On : 21 Jan 2020 14:35
 Operator : CG/JU
 Sample : PB126190BL
 Misc :
 ALS Vial : 4 Sample Multiplier: 1

Instrument :
 BNA_F
 ClientSampled :
 PB126190BL

Quant Time: Jan 21 15:36:01 2020
 Quant Method : Z:\SVOASRV\HPCHEM1\BNA F\METHODS\8270-BF012020.M
 Quant Title : ASP BNA STANDARDS FOR 5 POINT CALIBRATION
 QLast Update : Mon Jan 20 14:45:03 2020
 Response via : Initial Calibration

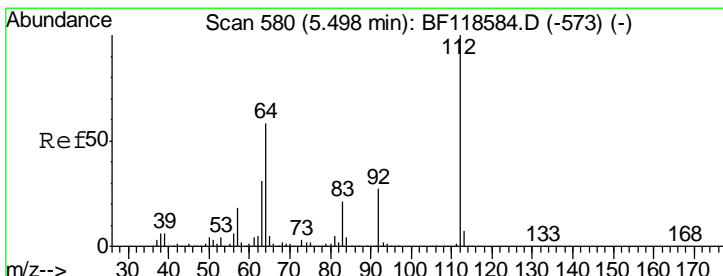
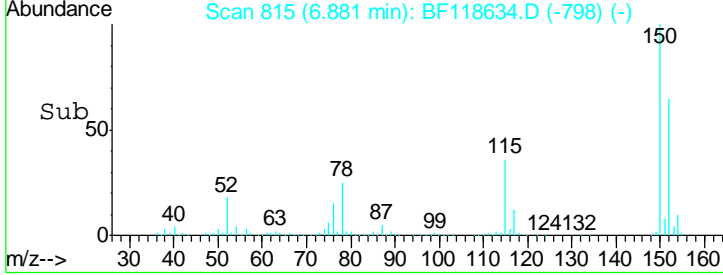
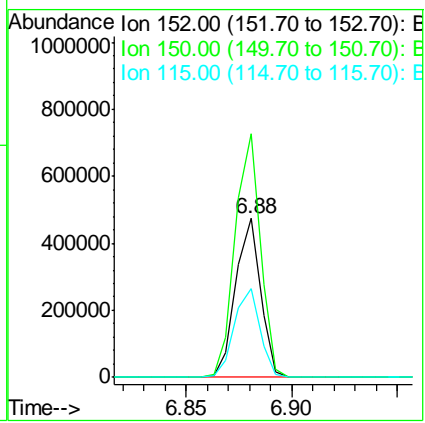
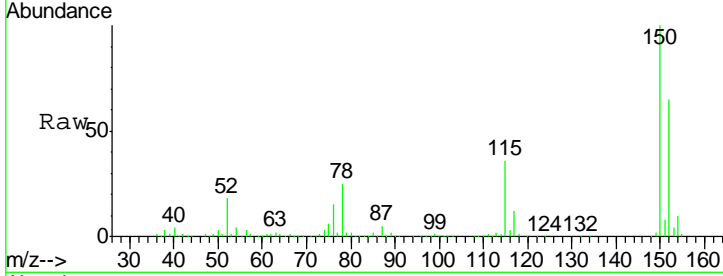




#1
 1,4-Dichlorobenzene-d4
 Concen: 20.000 ng
 RT: 6.88 min Scan# 815
 Delta R.T. 0.00 min
 Lab File: BF118634.D
 Acq: 21 Jan 2020 14:35

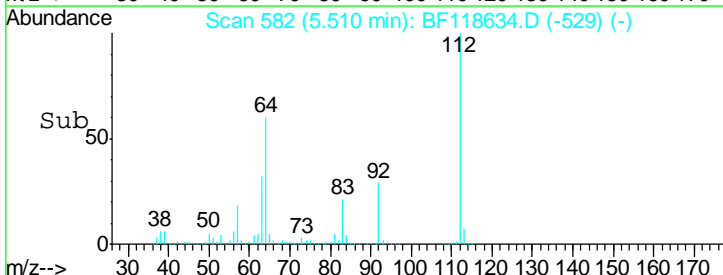
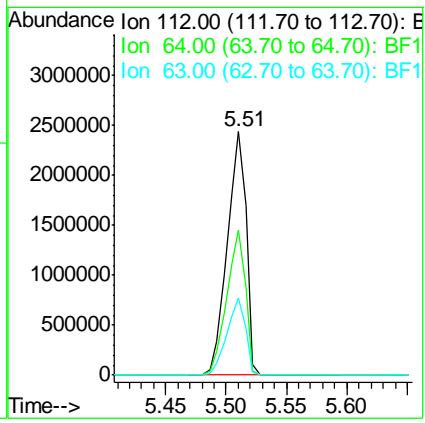
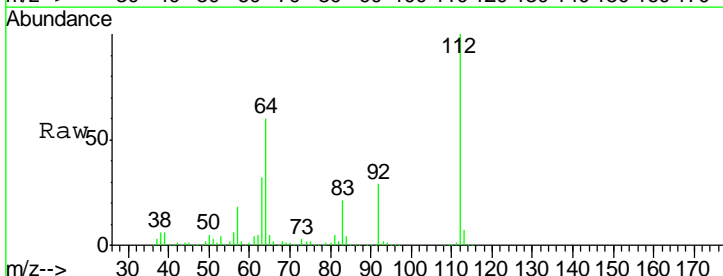
Instrument :
 BNA_F
ClientSampled :
 PB126190BL

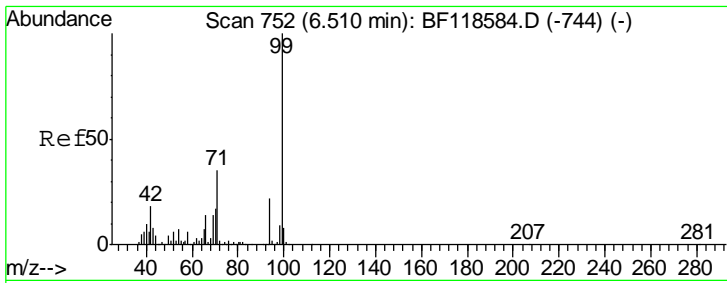
Tgt Ion	Resp	Lower	Upper
152	386140		
150	153.4	125.6	188.4
115	55.8	48.4	72.6



#5
 2-Fluorophenol
 Concen: 127.407 ng
 RT: 5.51 min Scan# 582
 Delta R.T. 0.01 min
 Lab File: BF118634.D
 Acq: 21 Jan 2020 14:35

Tgt Ion	Resp	Lower	Upper
112	2648899		
64	59.7	46.6	70.0
63	31.6	25.1	37.7

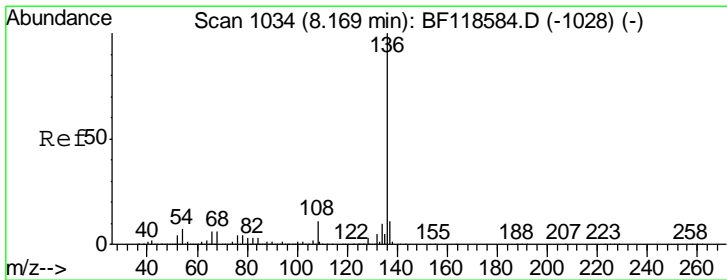
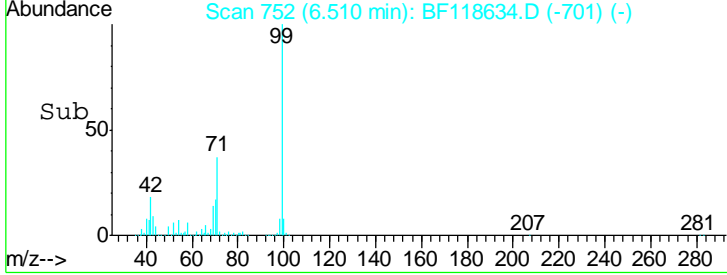
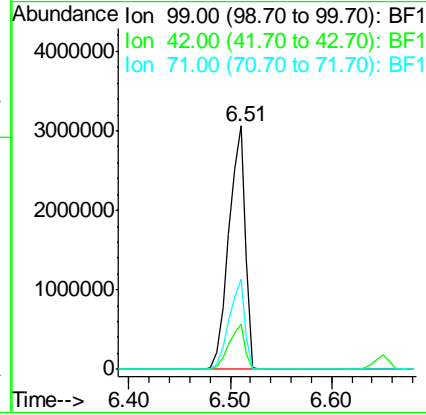
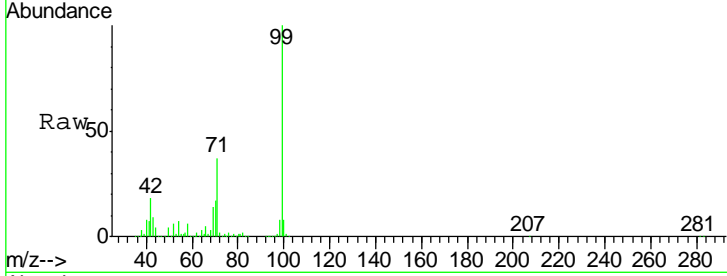




#7
 Phenol-d6
 Concen: 127.362 ng
 RT: 6.51 min Scan# 752
 Delta R.T. 0.00 min
 Lab File: BF118634.D
 Acq: 21 Jan 2020 14:35

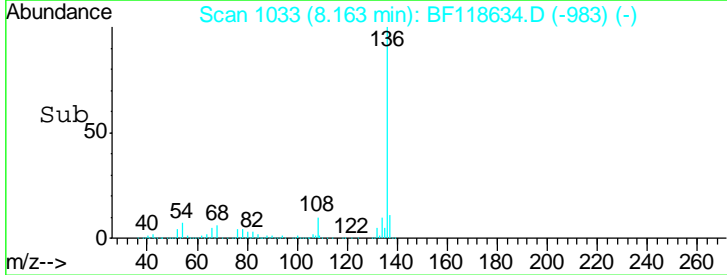
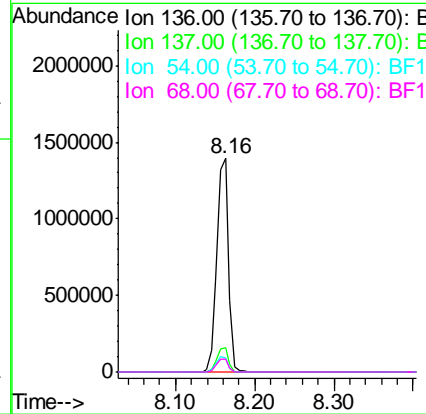
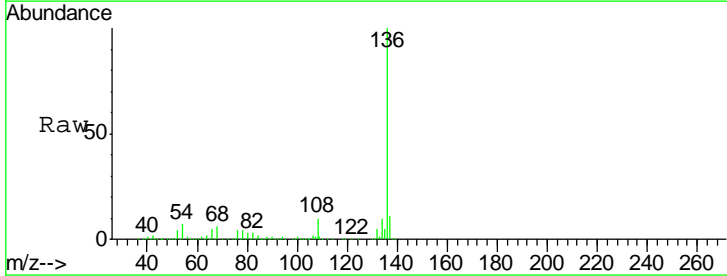
Instrument :
 BNA_F
ClientSampled :
 PB126190BL

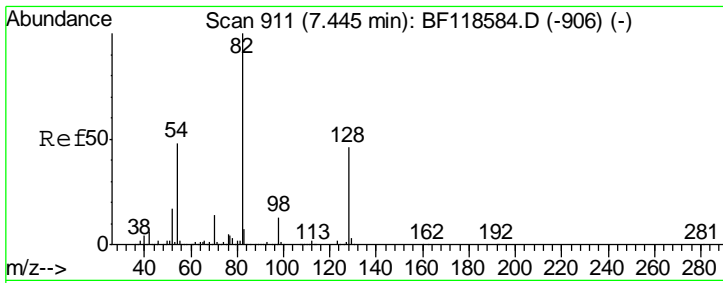
Tgt Ion	Resp	Lower	Upper
99	3441673		
42	18.4	14.2	21.2
71	37.2	27.8	41.6



#21
 Naphthalene-d8
 Concen: 20.000 ng
 RT: 8.16 min Scan# 1033
 Delta R.T. -0.01 min
 Lab File: BF118634.D
 Acq: 21 Jan 2020 14:35

Tgt Ion	Resp	Lower	Upper
136	1413718		
137	11.3	9.1	13.7
54	6.8	5.8	8.6
68	6.0	5.0	7.4

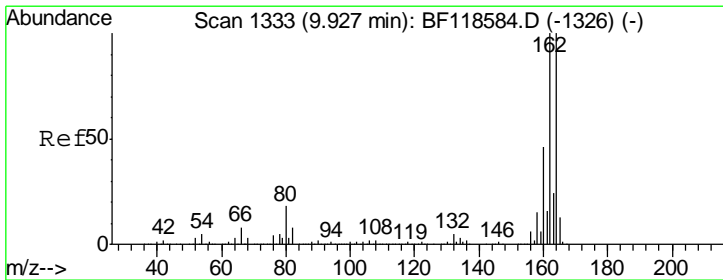
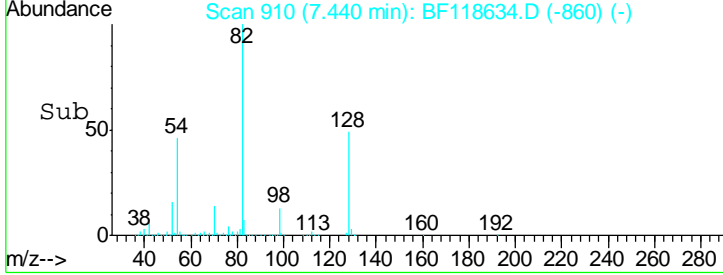
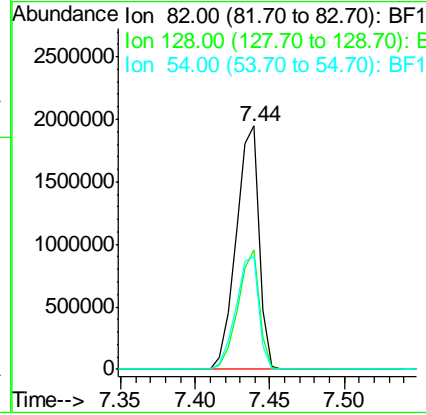
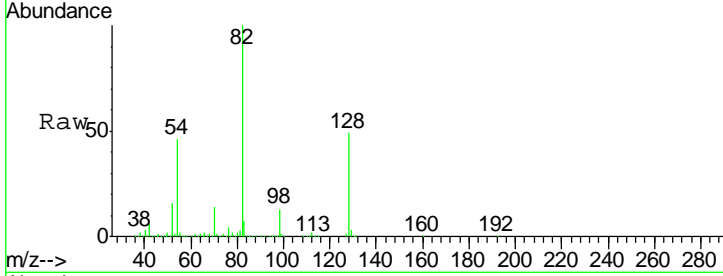




#23
 Nitrobenzene-d5
 Concen: 83.425 ng
 RT: 7.44 min Scan# 910
 Delta R.T. -0.01 min
 Lab File: BF118634.D
 Acq: 21 Jan 2020 14:35

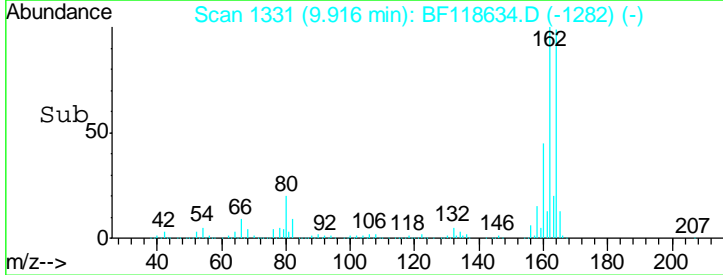
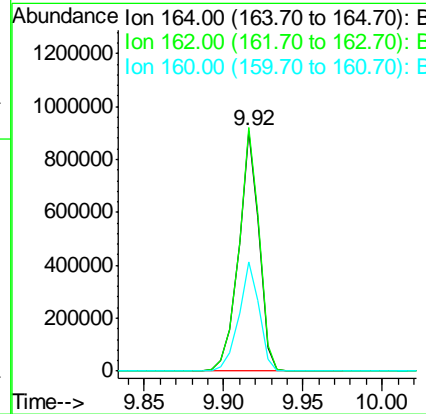
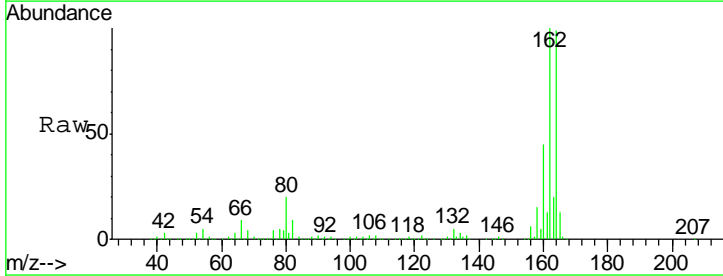
Instrument :
 BNA_F
ClientSampled :
 PB126190BL

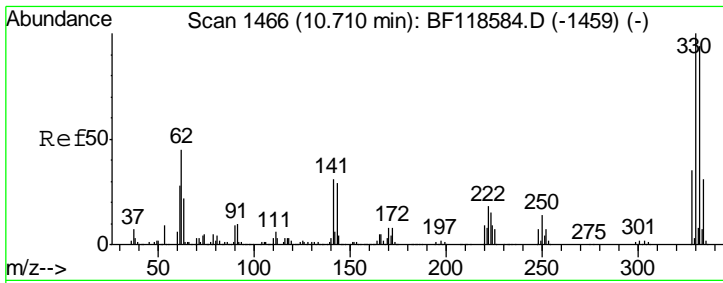
Tgt Ion	Resp	Lower	Upper
82	2108557		
128	49.1	36.6	54.8
54	46.5	38.0	57.0



#39
 Acenaphthene-d10
 Concen: 20.000 ng
 RT: 9.92 min Scan# 1331
 Delta R.T. -0.01 min
 Lab File: BF118634.D
 Acq: 21 Jan 2020 14:35

Tgt Ion	Resp	Lower	Upper
164	802669		
162	101.3	80.4	120.6
160	45.3	36.6	55.0



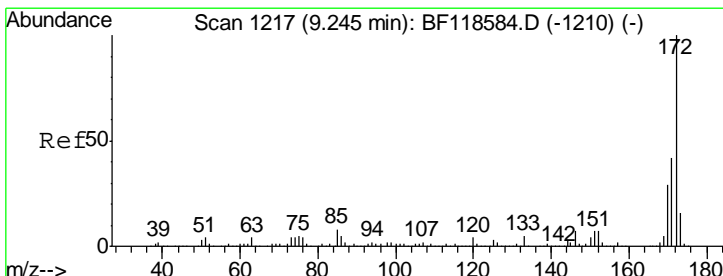
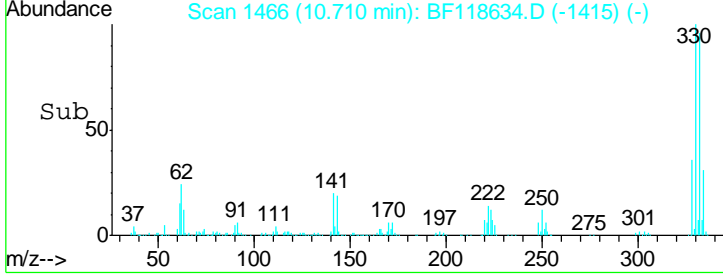
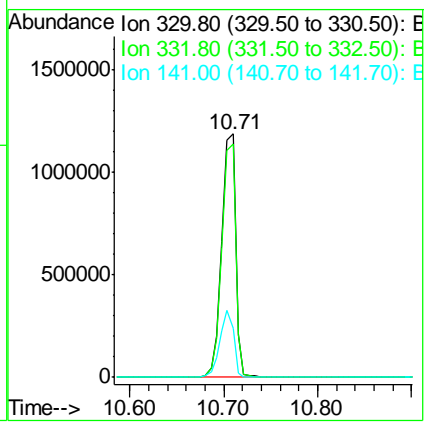
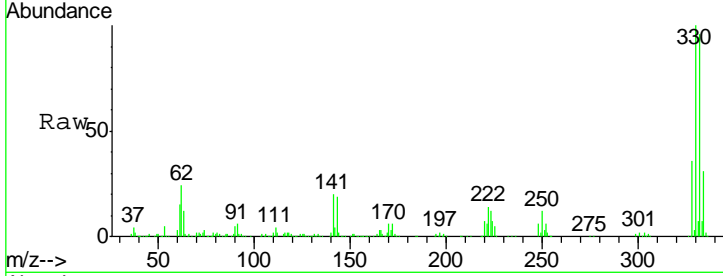


#42
 2,4,6-Tribromophenol
 Concen: 134.043 ng
 RT: 10.71 min Scan# 1466
 Delta R.T. 0.00 min
 Lab File: BF118634.D
 Acq: 21 Jan 2020 14:35

Instrument :
 BNA_F
 ClientSampled :
 PB126190BL

Tgt Ion: 330 Resp: 1244440

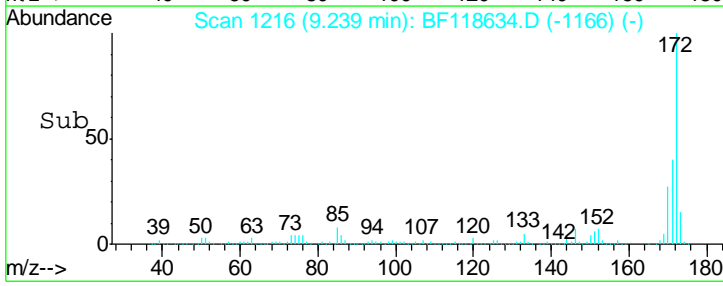
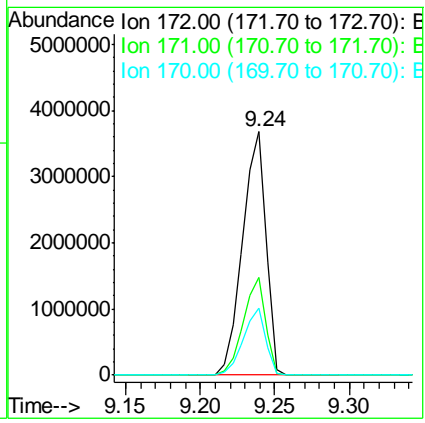
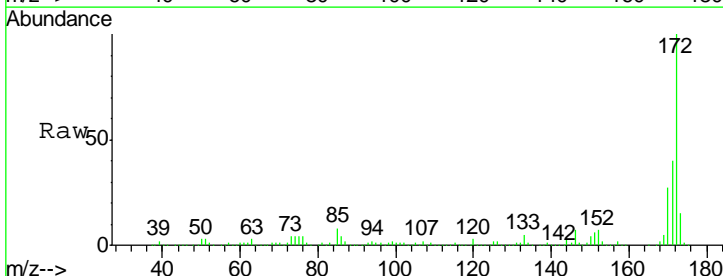
Ion	Ratio	Lower	Upper
330	100		
332	96.0	76.2	114.4
141	27.1	23.9	35.9

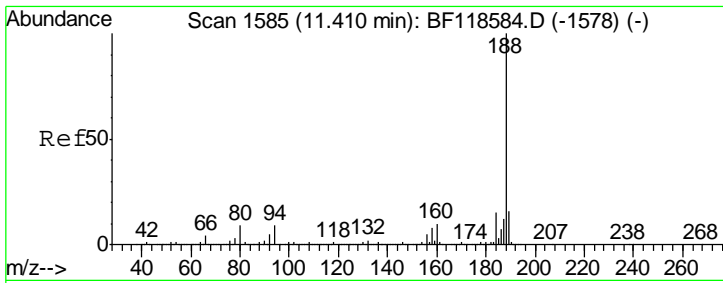


#45
 2-Fluorobiphenyl
 Concen: 82.246 ng
 RT: 9.24 min Scan# 1216
 Delta R.T. -0.01 min
 Lab File: BF118634.D
 Acq: 21 Jan 2020 14:35

Tgt Ion: 172 Resp: 4016527

Ion	Ratio	Lower	Upper
172	100		
171	40.2	33.4	50.2
170	27.5	23.2	34.8



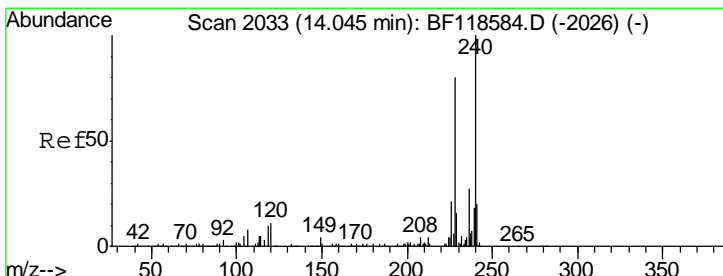
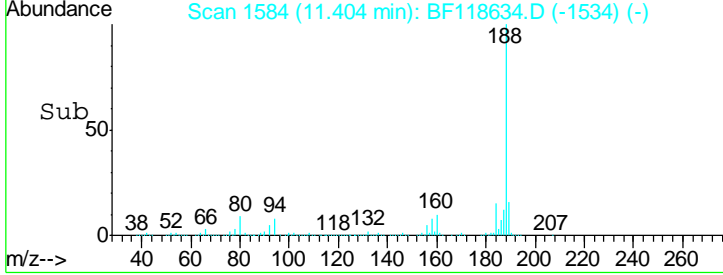
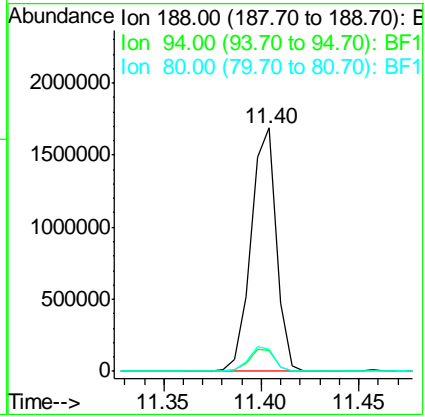
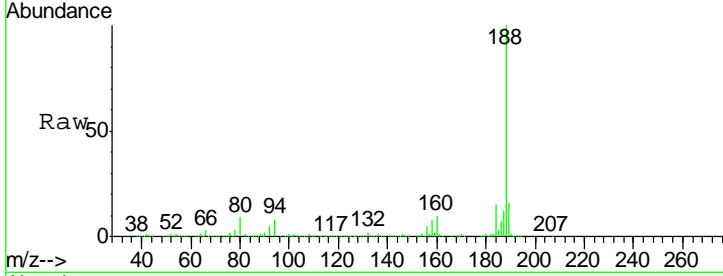


#64
 Phenanthrene-d10
 Concen: 20.000 ng
 RT: 11.40 min Scan# 1584
 Delta R.T. -0.01 min
 Lab File: BF118634.D
 Acq: 21 Jan 2020 14:35

Instrument :
 BNA_F
 ClientSampled :
 PB126190BL

Tgt Ion:188 Resp: 1522695

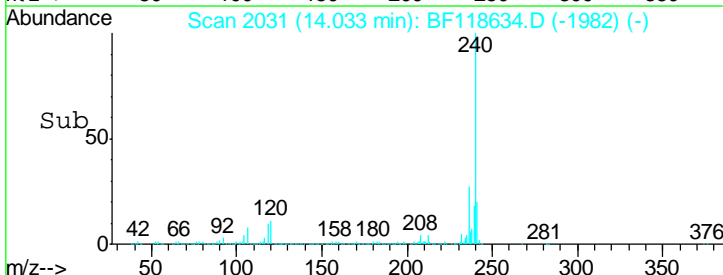
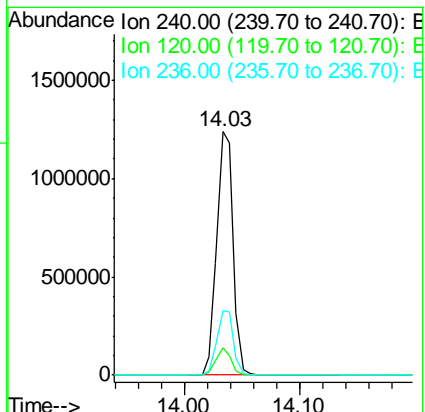
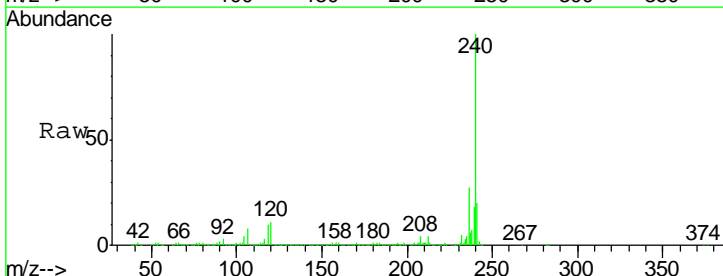
Ion	Ratio	Lower	Upper
188	100		
94	8.5	7.1	10.7
80	9.3	7.5	11.3

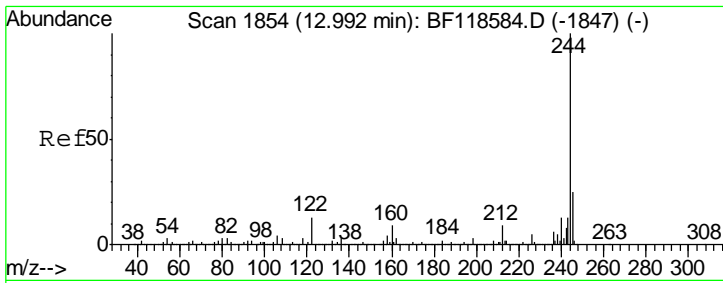


#76
 Chrysene-d12
 Concen: 20.000 ng
 RT: 14.03 min Scan# 2031
 Delta R.T. -0.01 min
 Lab File: BF118634.D
 Acq: 21 Jan 2020 14:35

Tgt Ion:240 Resp: 1219148

Ion	Ratio	Lower	Upper
240	100		
120	11.0	8.9	13.3
236	26.6	21.5	32.3



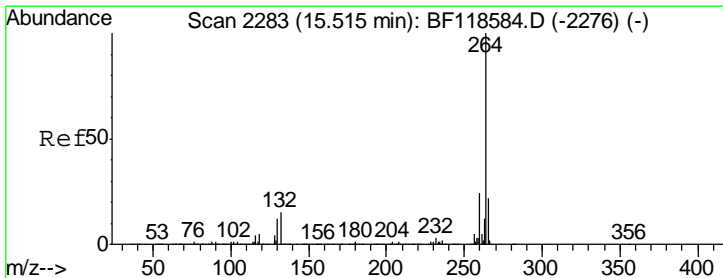
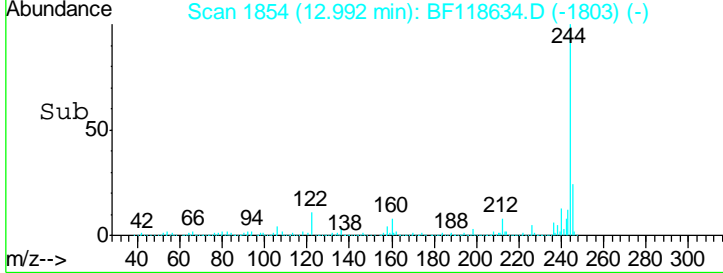
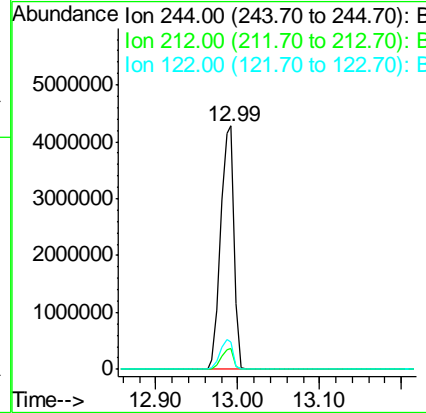
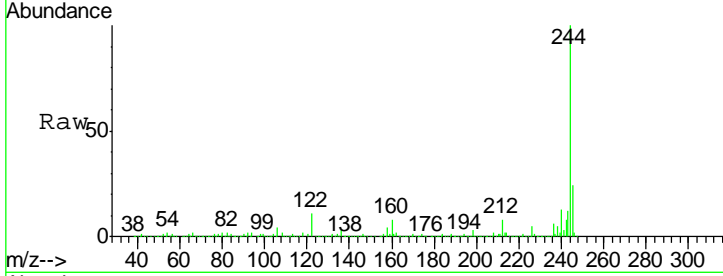


#79
 Terphenyl-d14
 Concen: 87.486 ng
 RT: 12.99 min Scan# 1854
 Delta R.T. 0.00 min
 Lab File: BF118634.D
 Acq: 21 Jan 2020 14:35

Instrument :
 BNA_F
 ClientSampled :
 PB126190BL

Tgt Ion: 244 Resp: 4890121

Ion	Ratio	Lower	Upper
244	100		
212	8.4	7.0	10.4
122	11.4	10.7	16.1



#87
 Perylene-d12
 Concen: 20.000 ng
 RT: 15.51 min Scan# 2282
 Delta R.T. -0.01 min
 Lab File: BF118634.D
 Acq: 21 Jan 2020 14:35

Tgt Ion: 264 Resp: 1050222

Ion	Ratio	Lower	Upper
264	100		
260	24.1	19.6	29.4
265	22.2	17.7	26.5

