

Data Path : Z:\HPCHEM1\BNA\_F\DATA\BF012216\  
 Data File : BF084590.D  
 Acq On : 22 Jan 2016 15:36  
 Operator : SJ/IZ  
 Sample : H1185-01 5X  
 Misc :  
 ALS Vial : 8 Sample Multiplier: 1

Instrument :  
 BNA\_F  
 ClientSampleId :  
 GRAB

Quant Time: Jan 22 22:08:14 2016  
 Quant Method : Z:\HPCHEM1\BNA\_F\METHODS\8270-BF123115.M  
 Quant Title : ASP BNA STANDARDS FOR 5 POINT CALIBRATION  
 QLast Update : Thu Jan 14 14:15:52 2016  
 Response via : Initial Calibration

Internal Standards	R.T.	QIon	Response	Conc	Units	Dev(Min)
1) 1,4-Dichlorobenzene-d4	6.90	152	21539	20.00	ng	0.07
21) Naphthalene-d8	8.03	136	813032	20.00	ng	-0.09
38) Acenaphthene-d10	9.79	164	344341	20.00	ng	-0.08
63) Phenanthrene-d10	11.26	188	649663	20.00	ng	-0.09
75) Chrysene-d12	13.89	240	440866	20.00	ng	-0.10
86) Perylene-d12	15.29	264	385129	20.00	ng	-0.13

## System Monitoring Compounds

5) 2-Fluorophenol	5.33	112	14744	11.07	ng	-0.10
7) Phenol-d6	6.40	99	15241	9.11	ng	-0.08
23) Nitrobenzene-d5	7.31	82	37264	2.55	ng	-0.09
41) 2,4,6-Tribromophenol	10.57	330	4333	1.25	ng	-0.10
44) 2-Fluorobiphenyl	9.10	172	63854	-3.31	ng	-0.09
78) Terphenyl-d14	12.85	244	57377	2.91	ng	-0.09

## Target Compounds

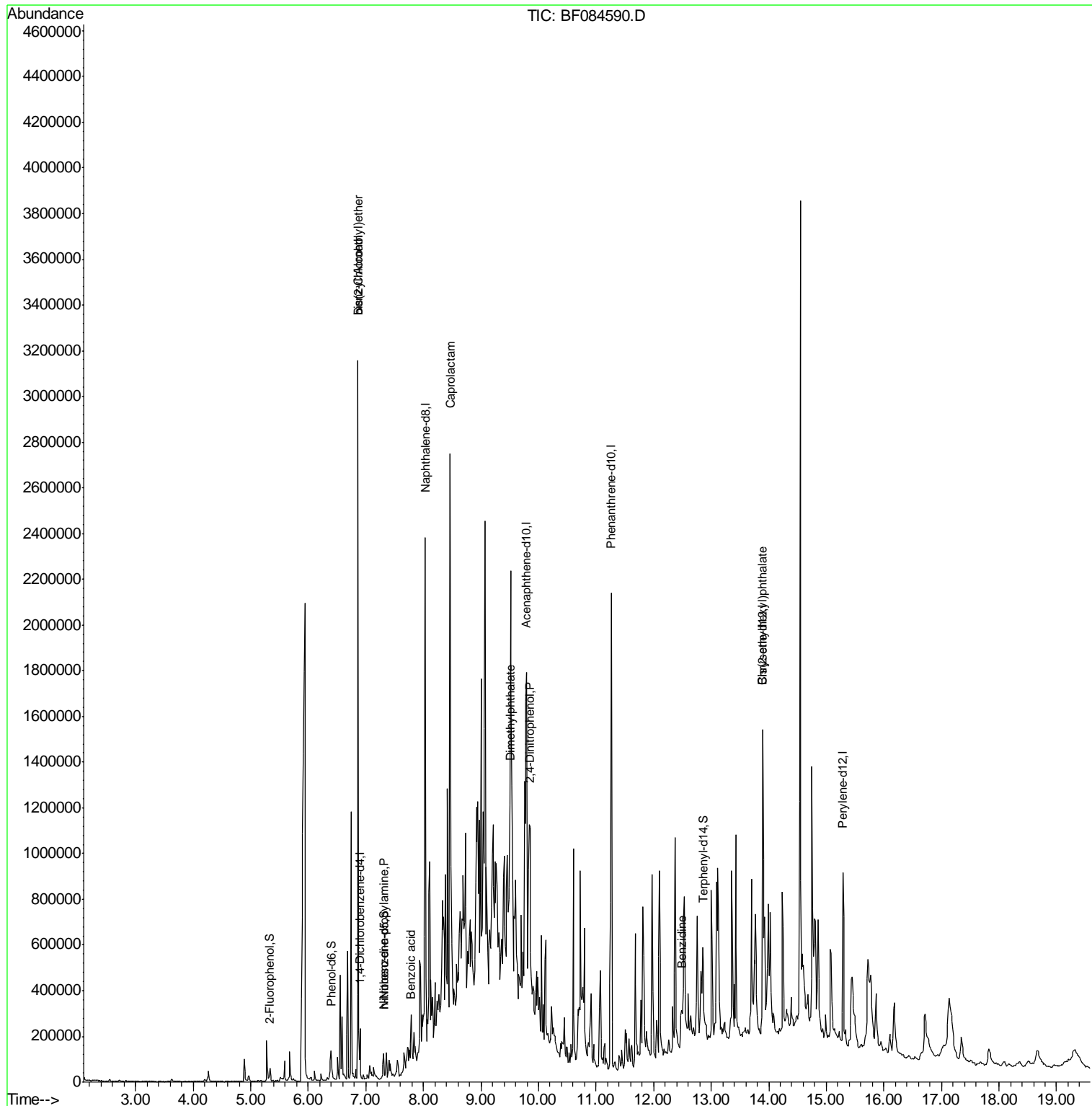
						Qvalue
11) bis(2-Chloroethyl)ether	6.86	93	274005	186.01	ng	# 36
15) Benzyl Alcohol	6.86	79	169064	120.17	ng	# 54
19) n-Nitroso-di-n-propylamine	7.31	70	7597	6.71	ng	# 68
32) Benzoic acid	7.78	122	19756	8.21	ng	97
35) Caprolactam	8.46	113	46938	12.25	ng	# 1
49) Dimethylphthalate	9.50	163	60822	2.47	ng	# 94
53) 2,4-Dinitrophenol	9.85	184	3774	5.12	ng	# 34
54) Dibenzofuran	9.98	168	2159	Below Cal		# 12
57) Fluorene	10.33	166	344	Below Cal		# 31
73) Di-n-butylphthalate	11.84	149	18801	Below Cal		# 96
76) Benzidine	12.50	184	79749	5.05	ng	# 88
83) Bis(2-ethylhexyl)phthalate	13.89	149	89538	4.73	ng	# 99

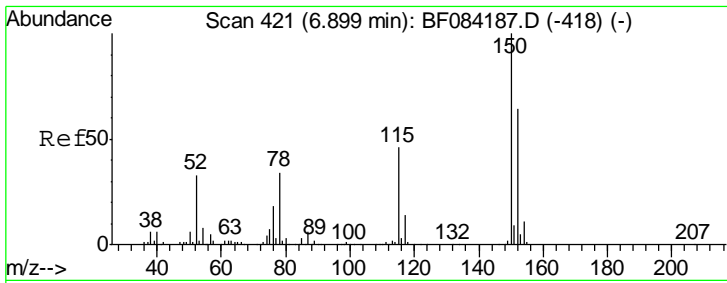
(#) = qualifier out of range (m) = manual integration (+) = signals summed

Data Path : Z:\HPCHEM1\BNA\_F\DATA\BF012216\  
 Data File : BF084590.D  
 Acq On : 22 Jan 2016 15:36  
 Operator : SJ/IZ  
 Sample : H1185-01 5X  
 Misc :  
 ALS Vial : 8 Sample Multiplier: 1

Instrument :  
 BNA\_F  
 ClientSampled :  
 GRAB

Quant Time: Jan 22 22:08:14 2016  
 Quant Method : Z:\HPCHEM1\BNA\_F\METHODS\8270-BF123115.M  
 Quant Title : ASP BNA STANDARDS FOR 5 POINT CALIBRATION  
 QLast Update : Thu Jan 14 14:15:52 2016  
 Response via : Initial Calibration

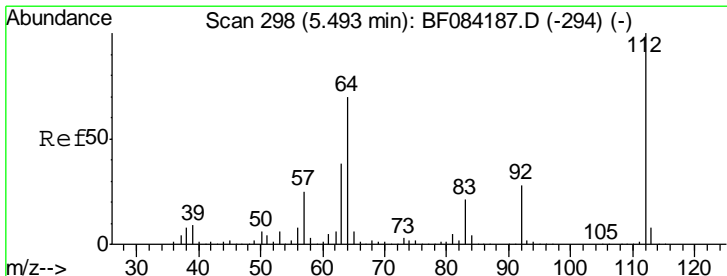
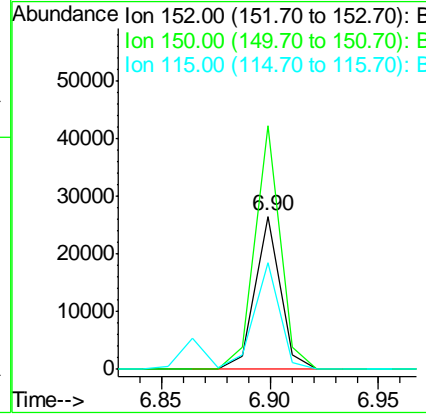
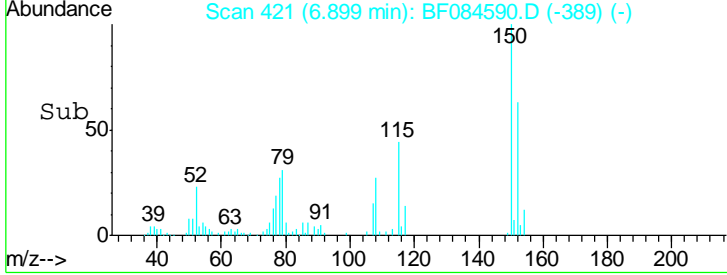
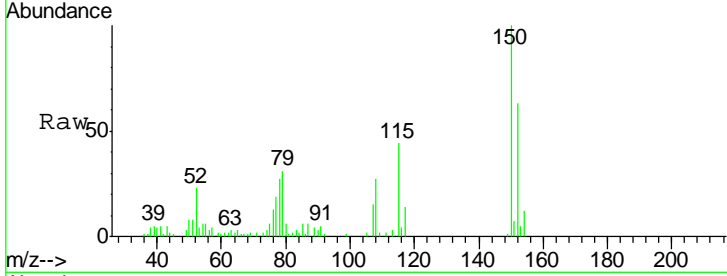




#1  
 1,4-Dichlorobenzene-d4  
 Concen: 20.00 ng  
 RT: 6.90 min Scan# 421  
 Delta R.T. 0.07 min  
 Lab File: BF084590.D  
 Acq: 22 Jan 2016 15:36

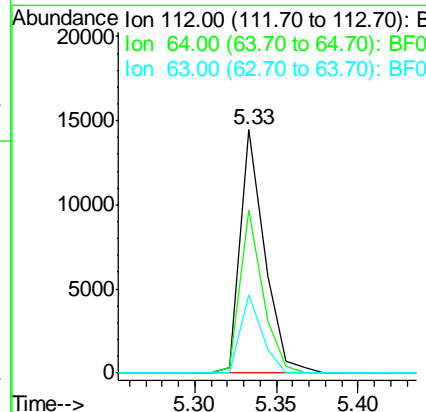
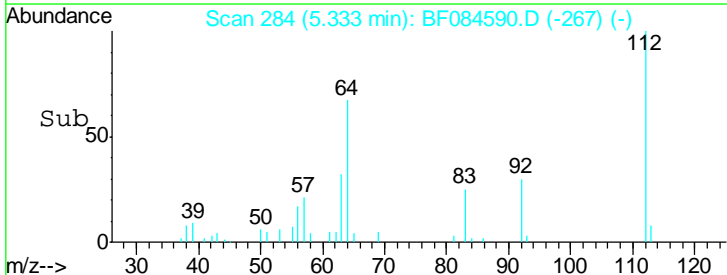
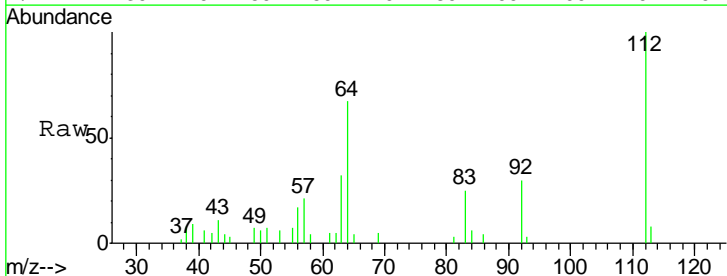
**Instrument :**  
 BNA\_F  
**ClientSampled :**  
 GRAB

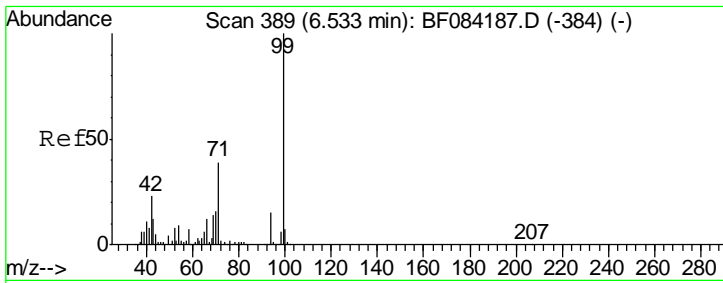
Tgt Ion	Resp	Lower	Upper
152	21539		
150	158.8	123.0	184.4
115	69.5	51.4	77.2



#5  
 2-Fluorophenol  
 Concen: 11.07 ng  
 RT: 5.33 min Scan# 284  
 Delta R.T. -0.10 min  
 Lab File: BF084590.D  
 Acq: 22 Jan 2016 15:36

Tgt Ion	Resp	Lower	Upper
112	14744		
64	67.2	36.6	55.0#
63	32.3	19.4	29.0#

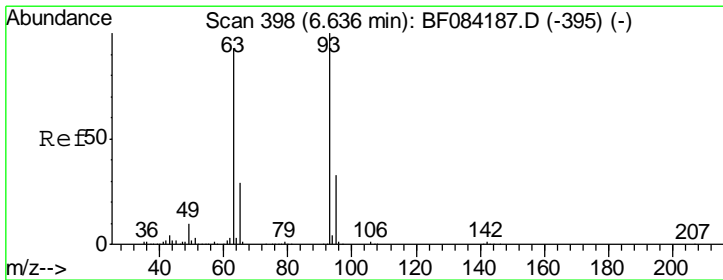
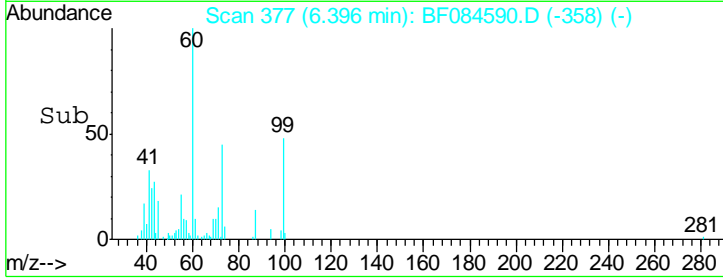
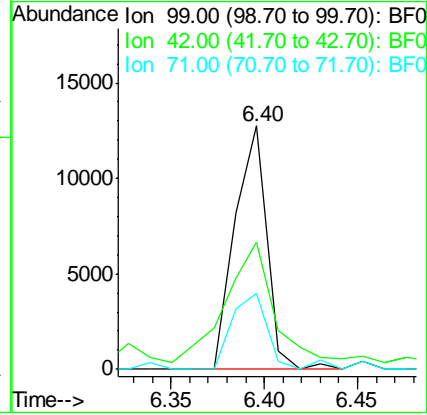
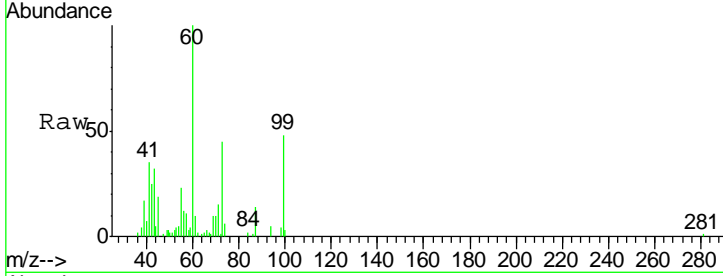




#7  
 Phenol-d6  
 Concen: 9.11 ng  
 RT: 6.40 min Scan# 377  
 Delta R.T. -0.08 min  
 Lab File: BF084590.D  
 Acq: 22 Jan 2016 15:36

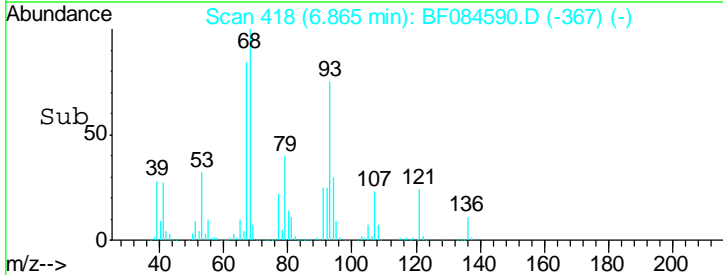
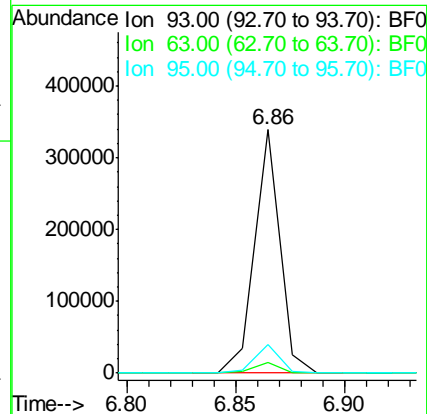
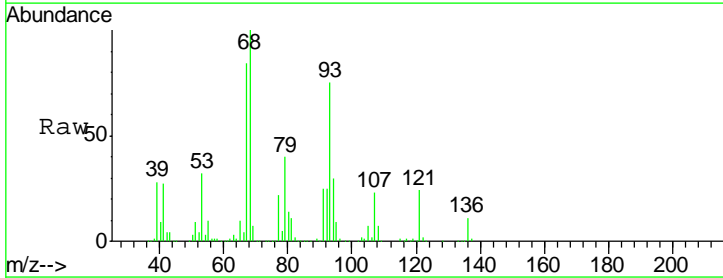
Instrument :  
 BNA\_F  
 ClientSampled :  
 GRAB

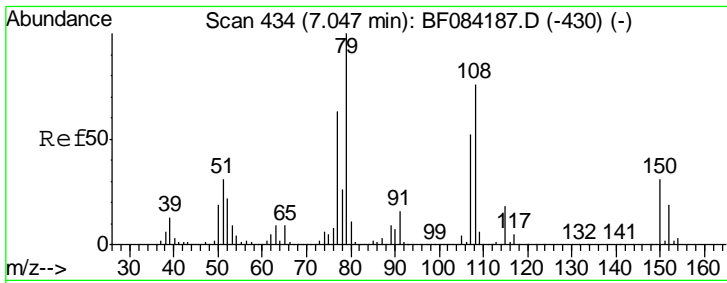
Tgt Ion	Resp	Lower	Upper
99	15241		
42	52.4	12.8	19.2#
71	31.3	30.9	46.3



#11  
 bis(2-Chloroethyl)ether  
 Concen: 186.01 ng  
 RT: 6.86 min Scan# 418  
 Delta R.T. 0.29 min  
 Lab File: BF084590.D  
 Acq: 22 Jan 2016 15:36

Tgt Ion	Resp	Lower	Upper
93	274005		
63	4.5	45.9	85.9#
95	11.6	12.3	52.3#

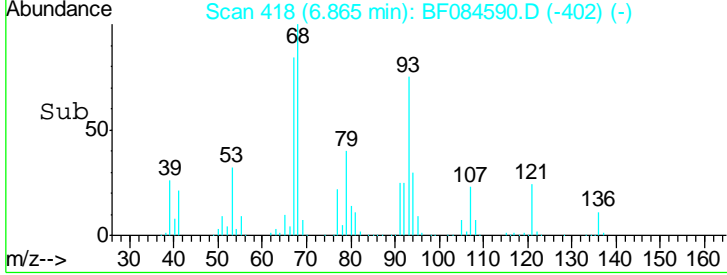
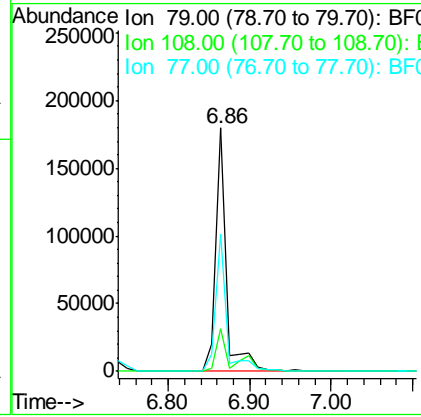
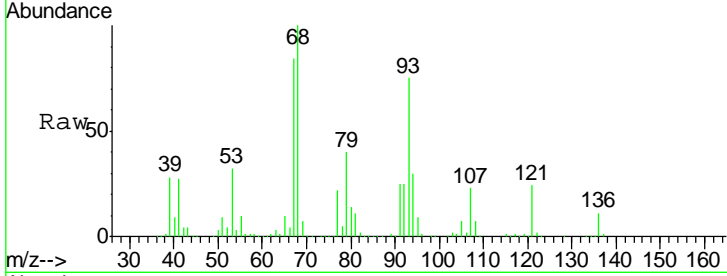




#15  
 Benzyl Alcohol  
 Concen: 120.17 ng  
 RT: 6.86 min Scan# 418  
 Delta R.T. -0.11 min  
 Lab File: BF084590.D  
 Acq: 22 Jan 2016 15:36

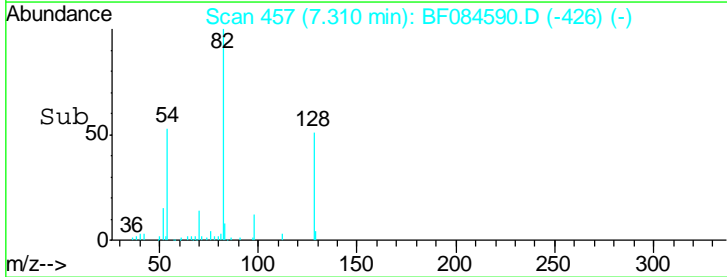
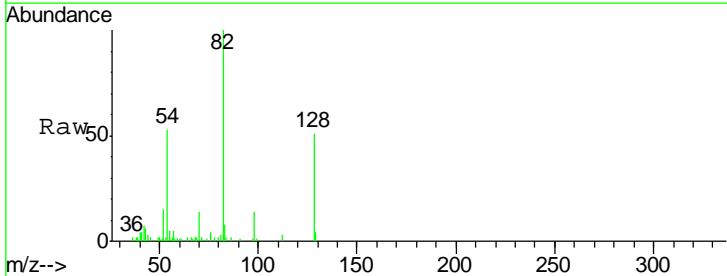
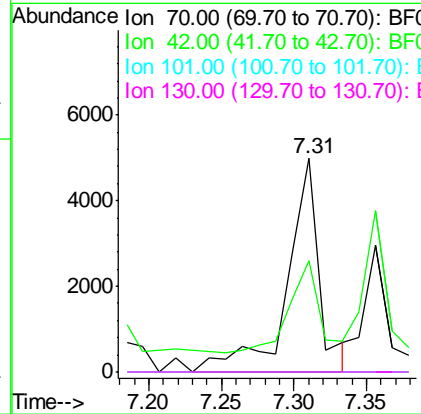
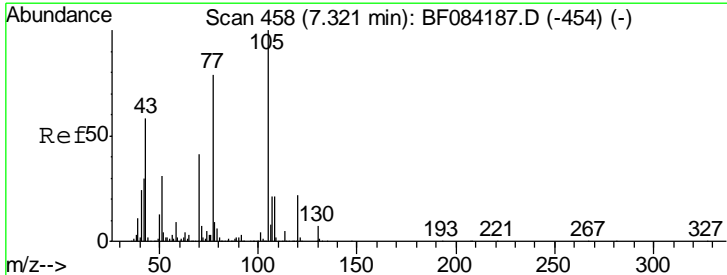
Instrument :  
 BNA\_F  
 ClientSampled :  
 GRAB

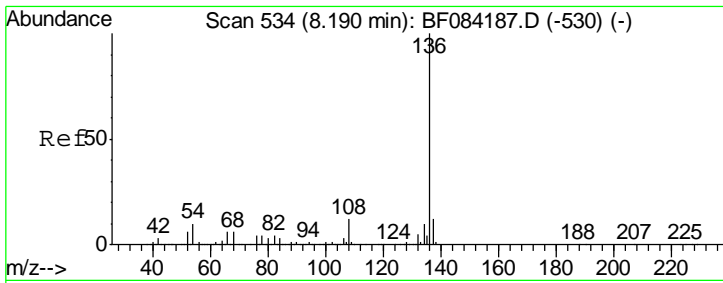
Tgt Ion	Resp	Lower	Upper
79	169064		
79	100		
108	17.5	69.0	103.4#
77	56.7	50.0	75.0



#19  
 n-Nitroso-di-n-propylamine  
 Concen: 6.71 ng  
 RT: 7.31 min Scan# 457  
 Delta R.T. 0.06 min  
 Lab File: BF084590.D  
 Acq: 22 Jan 2016 15:36

Tgt Ion	Resp	Lower	Upper
70	7597		
70	100		
42	52.1	33.3	49.9#
101	0.0	9.3	13.9#
130	0.0	23.4	35.0#

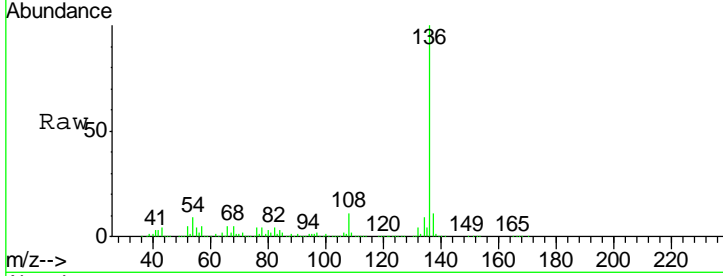




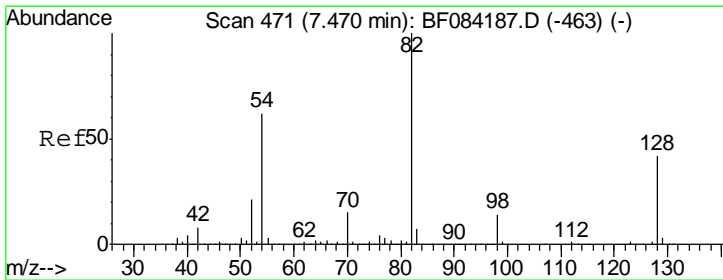
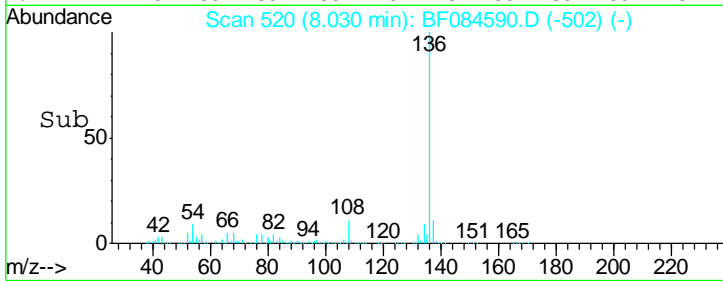
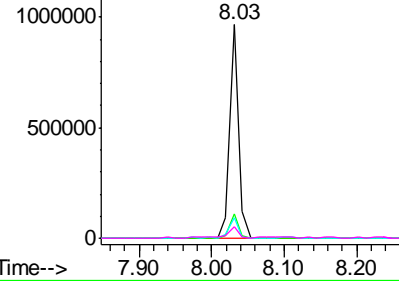
#21  
 Naphthalene-d8  
 Concen: 20.00 ng  
 RT: 8.03 min Scan# 520  
 Delta R.T. -0.09 min  
 Lab File: BF084590.D  
 Acq: 22 Jan 2016 15:36

Instrument :  
 BNA\_F  
 ClientSampled :  
 GRAB

Tgt Ion	Resp	Lower	Upper
136	100		
137	11.5	8.7	13.1
54	9.5	5.8	8.8#
68	5.4	4.2	6.2

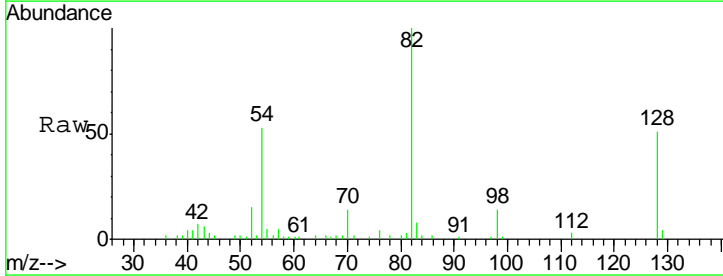


Abundance Ion 136.00 (135.70 to 136.70): E  
 1500000 Ion 137.00 (136.70 to 137.70): E  
 Ion 54.00 (53.70 to 54.70): BF0  
 Ion 68.00 (67.70 to 68.70): BF0

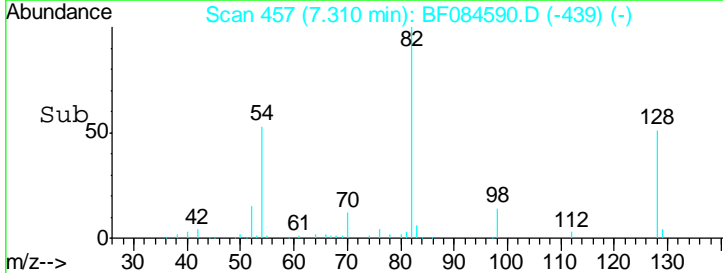
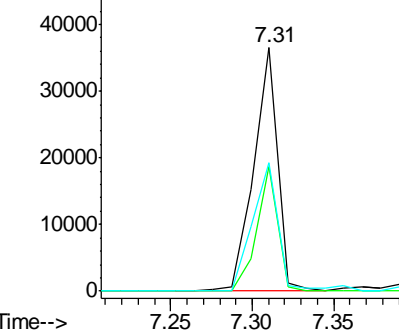


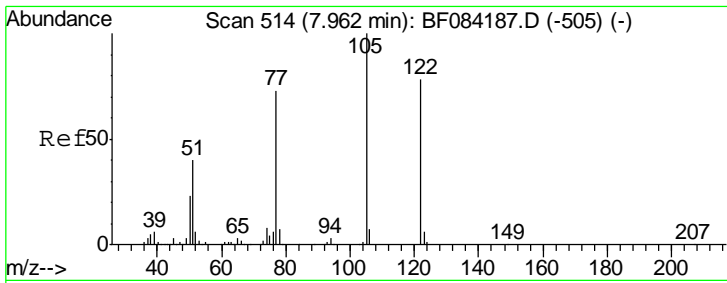
#23  
 Nitrobenzene-d5  
 Concen: 2.55 ng  
 RT: 7.31 min Scan# 457  
 Delta R.T. -0.09 min  
 Lab File: BF084590.D  
 Acq: 22 Jan 2016 15:36

Tgt Ion	Resp	Lower	Upper
82	100		
128	51.4	34.6	51.8
54	52.9	38.4	57.6



Abundance Ion 82.00 (81.70 to 82.70): BF0  
 50000 Ion 128.00 (127.70 to 128.70): E  
 Ion 54.00 (53.70 to 54.70): BF0

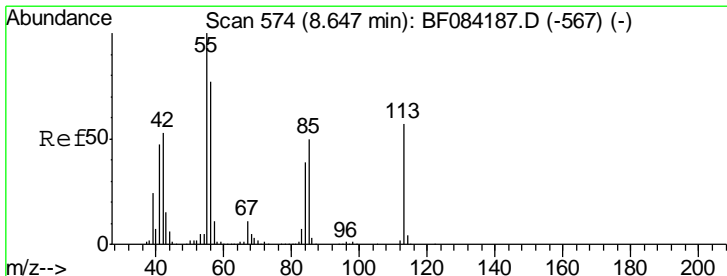
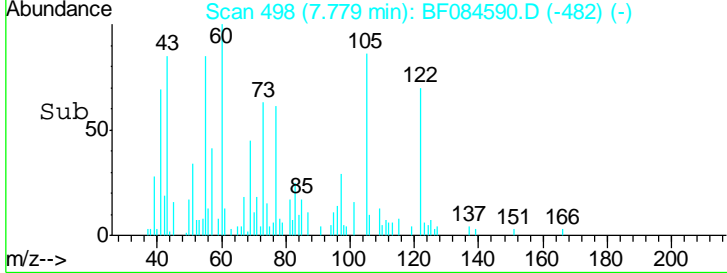
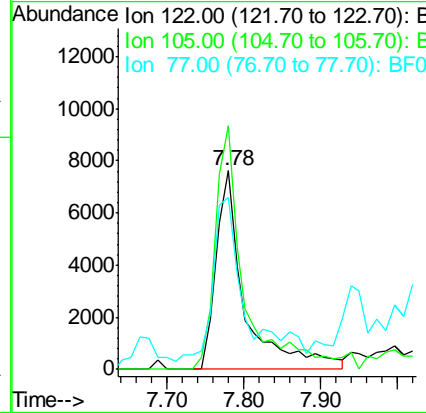
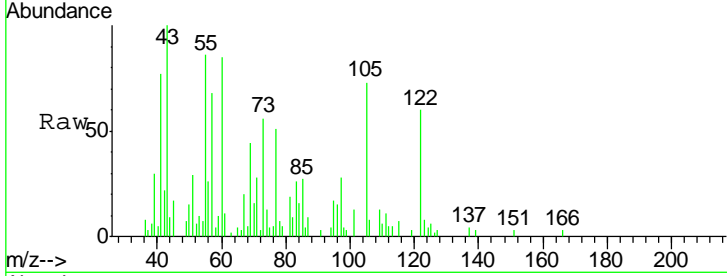




#32  
 Benzoic acid  
 Concen: 8.21 ng  
 RT: 7.78 min Scan# 498  
 Delta R.T. -0.11 min  
 Lab File: BF084590.D  
 Acq: 22 Jan 2016 15:36

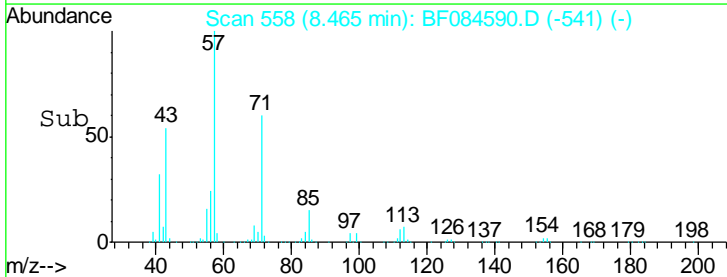
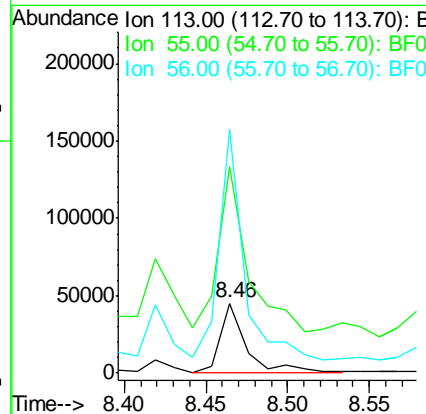
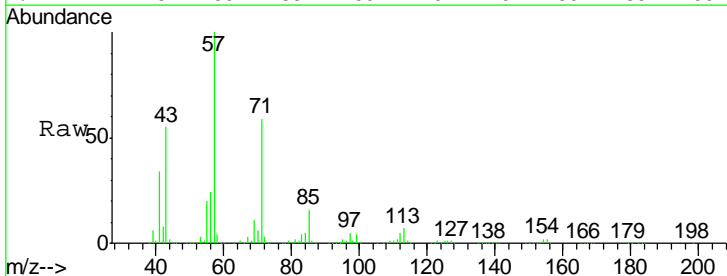
Instrument :  
 BNA\_F  
 ClientSampled :  
 GRAB

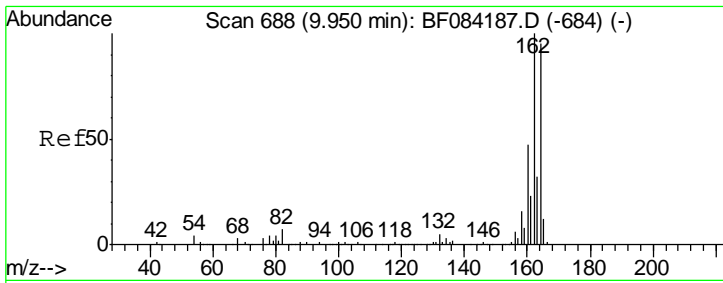
Tgt Ion	Resp	Lower	Upper
122	19756		
105	122.8	100.3	140.3
77	86.4	63.5	103.5



#35  
 Caprolactam  
 Concen: 12.25 ng  
 RT: 8.46 min Scan# 558  
 Delta R.T. -0.10 min  
 Lab File: BF084590.D  
 Acq: 22 Jan 2016 15:36

Tgt Ion	Resp	Lower	Upper
113	46938		
55	296.0	116.9	156.9#
56	349.1	93.8	133.8#

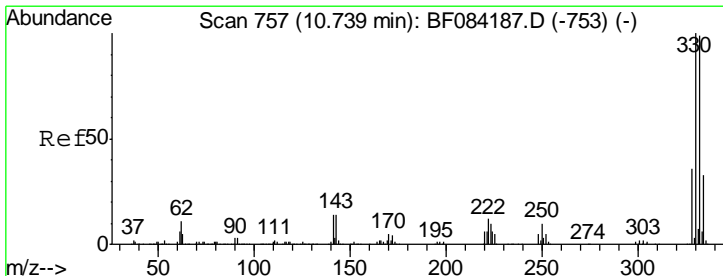
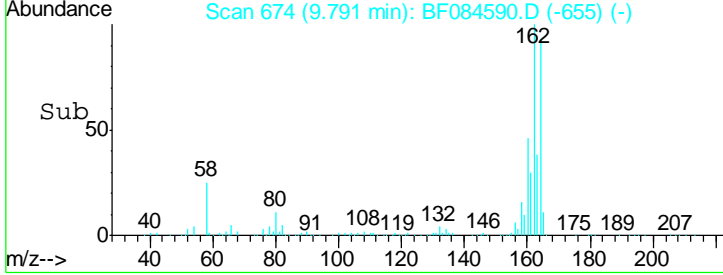
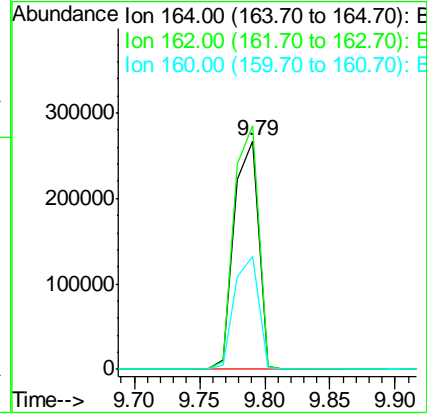
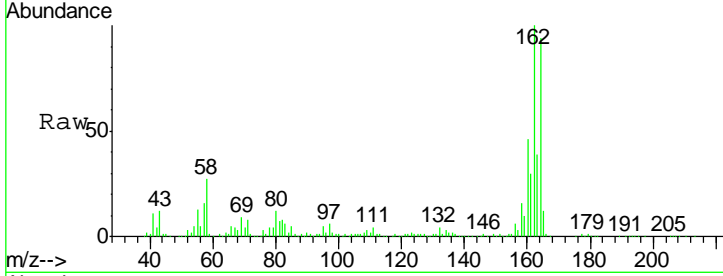




#38  
 Acenaphthene-d10  
 Concen: 20.00 ng  
 RT: 9.79 min Scan# 674  
 Delta R.T. -0.08 min  
 Lab File: BF084590.D  
 Acq: 22 Jan 2016 15:36

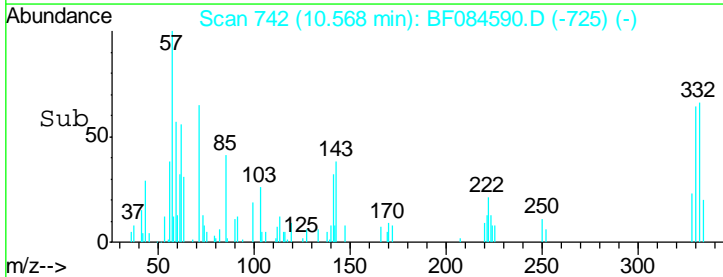
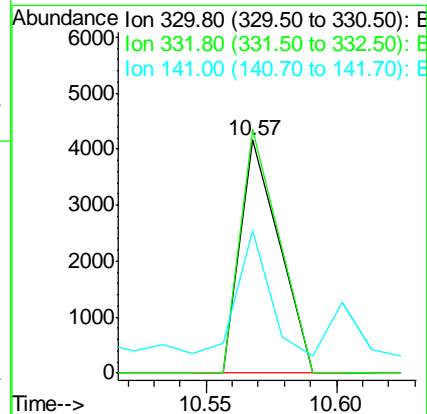
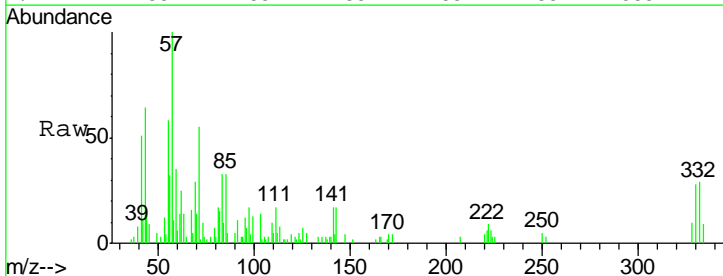
Instrument :  
 BNA\_F  
 ClientSampled :  
 GRAB

Tgt Ion	Resp	Lower	Upper
164	100		
162	106.6	85.1	127.7
160	49.4	37.5	56.3

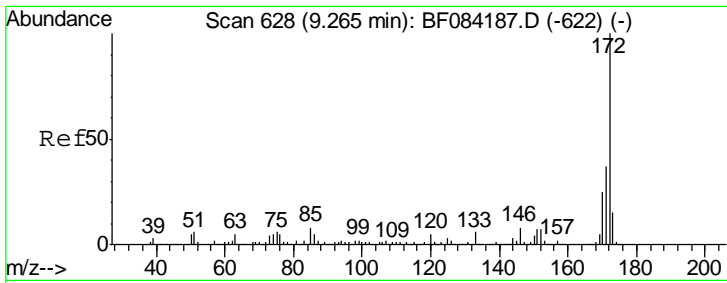


#41  
 2,4,6-Tribromophenol  
 Concen: 1.25 ng  
 RT: 10.57 min Scan# 742  
 Delta R.T. -0.10 min  
 Lab File: BF084590.D  
 Acq: 22 Jan 2016 15:36

Tgt Ion	Resp	Lower	Upper
330	100		
332	103.9	76.6	114.8
141	64.0	27.8	41.6#



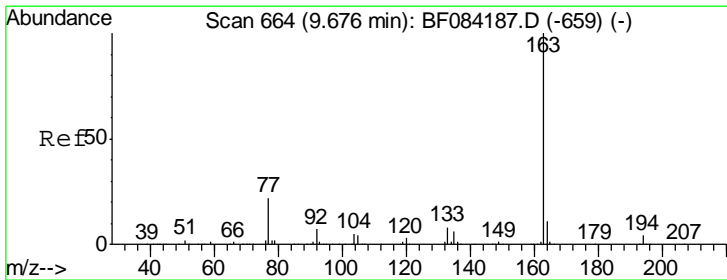
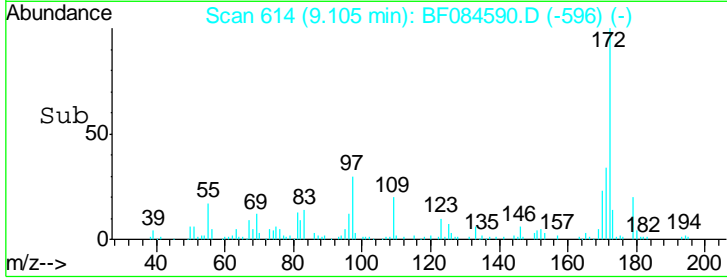
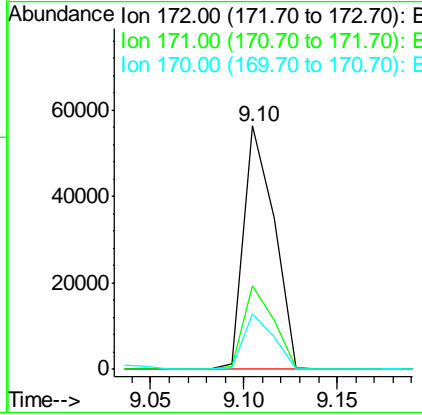
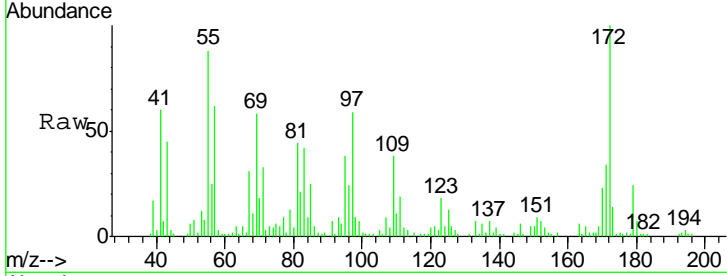




#44  
 2-Fluorobiphenyl  
 Concen: -3.31 ng  
 RT: 9.10 min Scan# 614  
 Delta R.T. -0.09 min  
 Lab File: BF084590.D  
 Acq: 22 Jan 2016 15:36

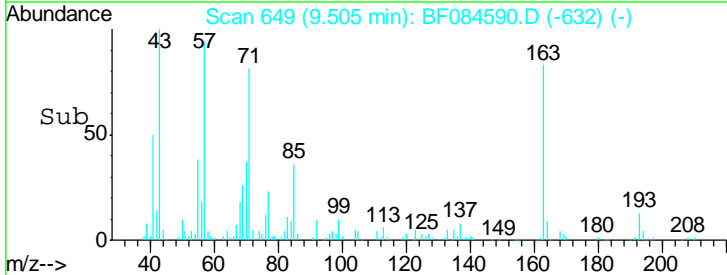
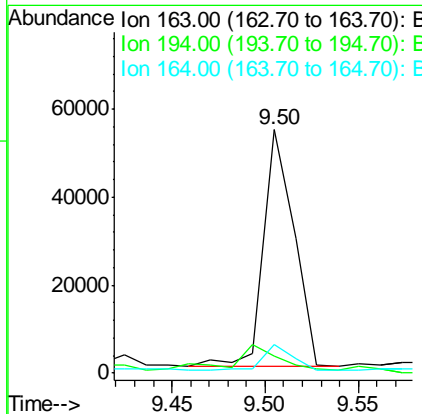
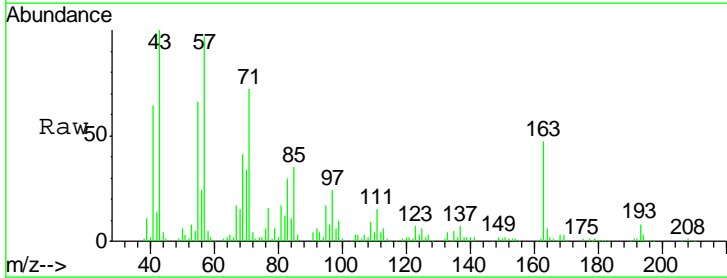
Instrument :  
 BNA\_F  
 ClientSampled :  
 GRAB

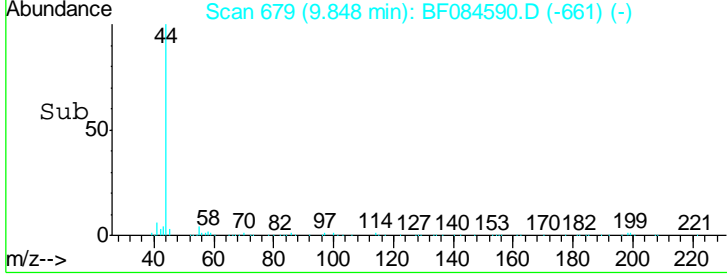
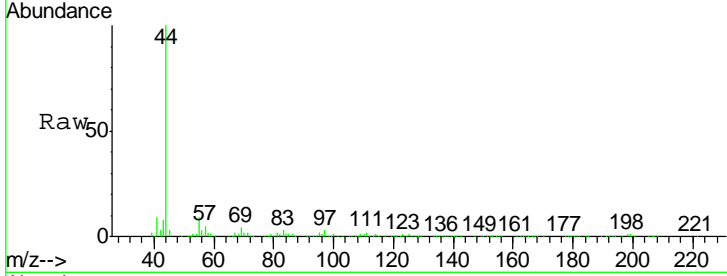
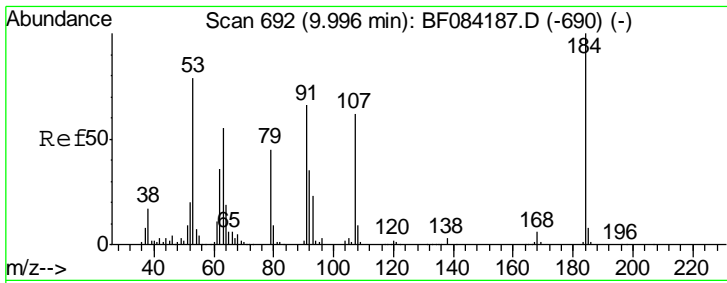
Tgt Ion	Resp	Lower	Upper
172	100		
171	34.1	28.9	43.3
170	23.0	18.6	27.8



#49  
 Dimethylphthalate  
 Concen: 2.47 ng  
 RT: 9.50 min Scan# 649  
 Delta R.T. -0.10 min  
 Lab File: BF084590.D  
 Acq: 22 Jan 2016 15:36

Tgt Ion	Resp	Lower	Upper
163	100		
194	7.0	8.0	12.0#
164	11.9	8.0	12.0

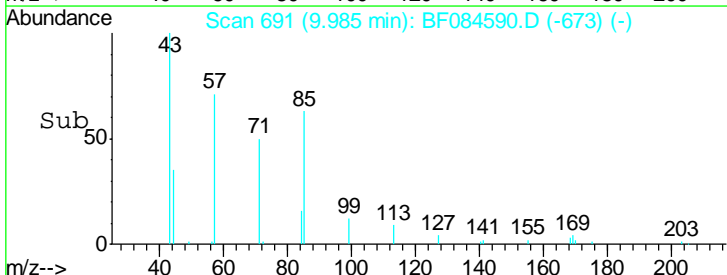
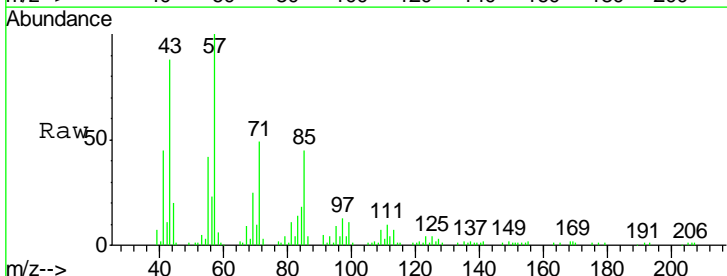
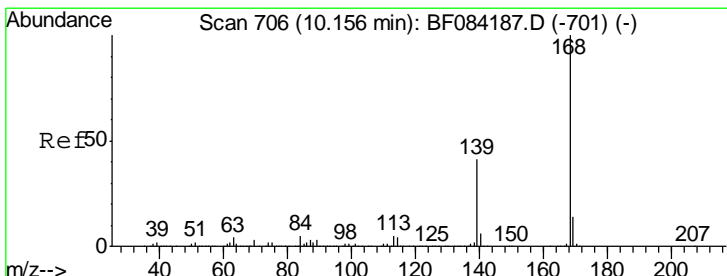
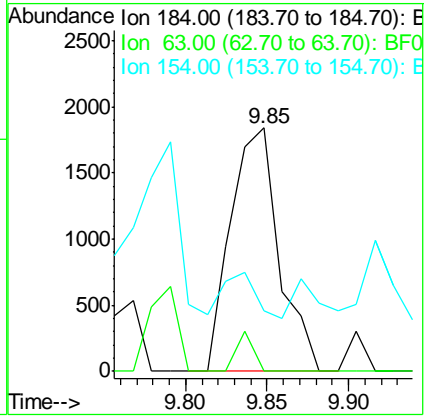




#53  
 2,4-Dinitrophenol  
 Concen: 5.12 ng  
 RT: 9.85 min Scan# 679  
 Delta R.T. -0.09 min  
 Lab File: BF084590.D  
 Acq: 22 Jan 2016 15:36

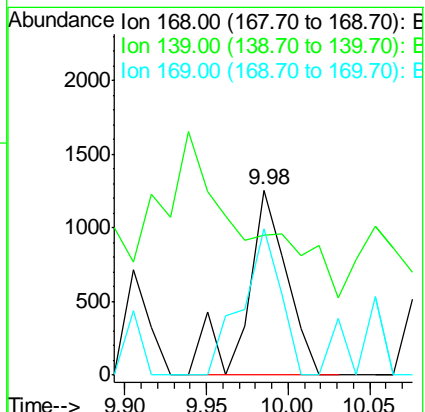
Instrument :  
 BNA\_F  
 ClientSampled :  
 GRAB

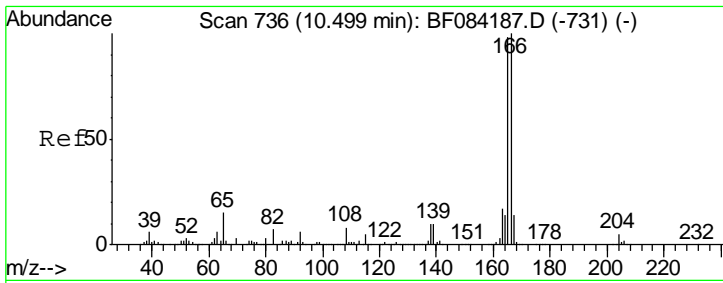
Tgt Ion	Resp	Lower	Upper
184	3774		
63	0.0	43.1	64.7#
154	24.7	60.5	90.7#



#54  
 Dibenzofuran  
 Concen: Below Cal  
 RT: 9.98 min Scan# 691  
 Delta R.T. -0.09 min  
 Lab File: BF084590.D  
 Acq: 22 Jan 2016 15:36

Tgt Ion	Resp	Lower	Upper
168	2159		
139	75.4	30.5	45.7#
169	79.1	10.4	15.6#

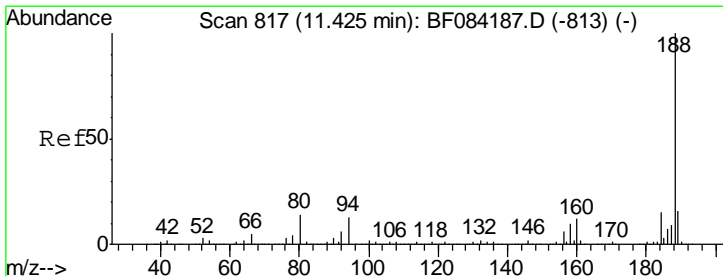
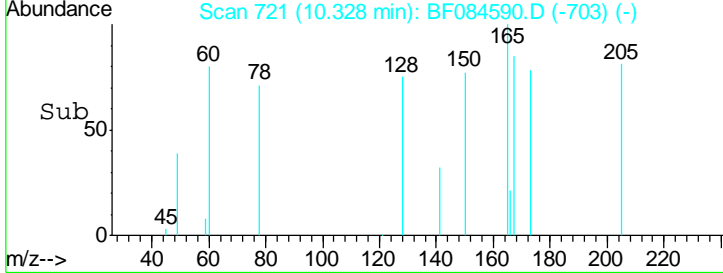
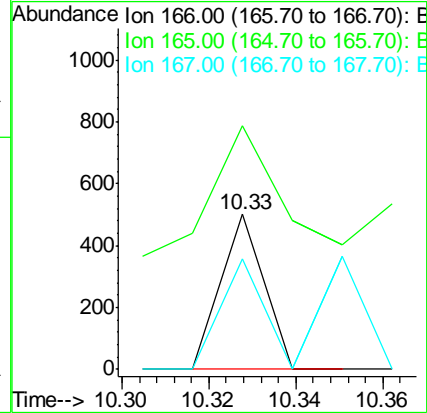
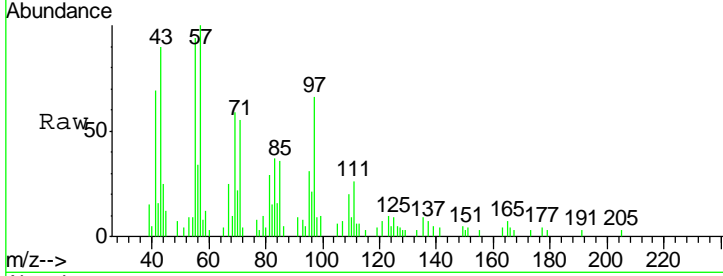




#57  
 Fluorene  
 Concen: Below Cal  
 RT: 10.33 min Scan# 721  
 Delta R.T. -0.09 min  
 Lab File: BF084590.D  
 Acq: 22 Jan 2016 15:36

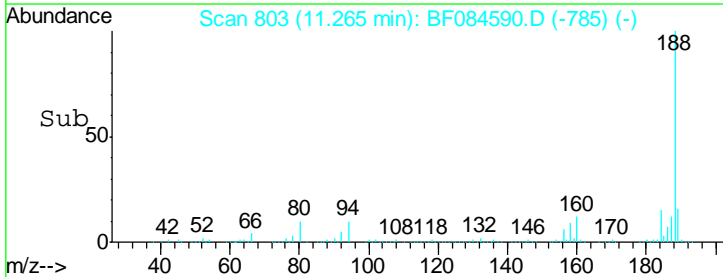
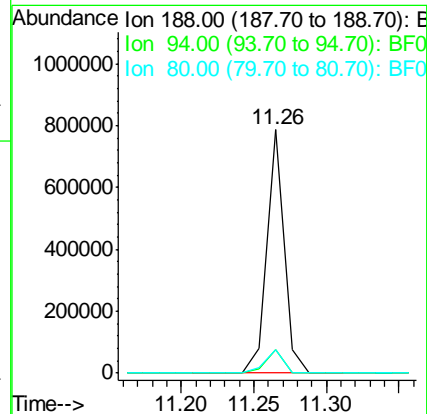
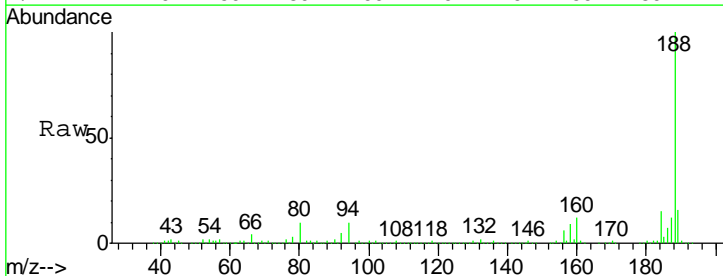
Instrument :  
 BNA\_F  
 ClientSampled :  
 GRAB

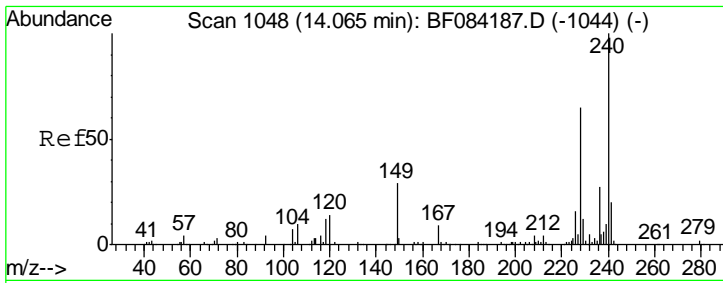
Tgt Ion	Resp	Lower	Upper
166	100		
165	157.1	79.1	118.7#
167	71.7	10.4	15.6#



#63  
 Phenanthrene-d10  
 Concen: 20.00 ng  
 RT: 11.26 min Scan# 803  
 Delta R.T. -0.09 min  
 Lab File: BF084590.D  
 Acq: 22 Jan 2016 15:36

Tgt Ion	Resp	Lower	Upper
188	100		
94	9.6	9.0	13.4
80	9.6	9.6	14.4#

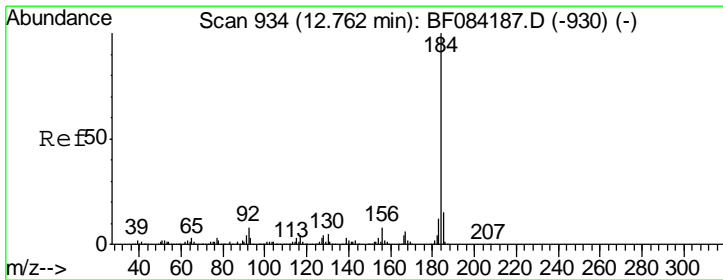
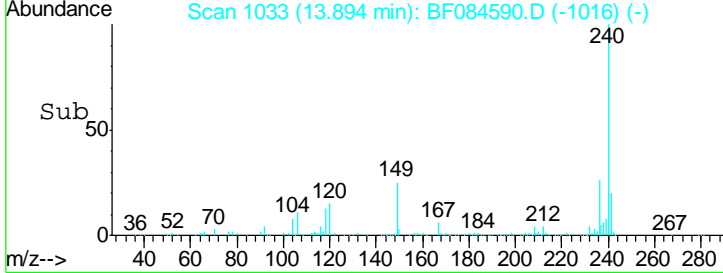
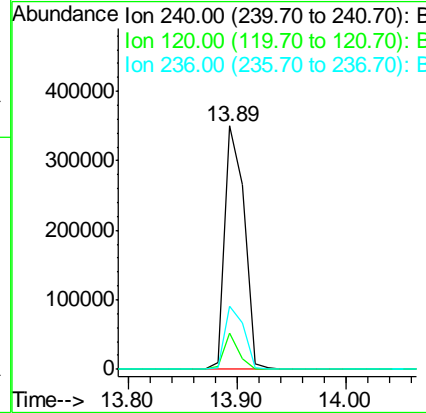
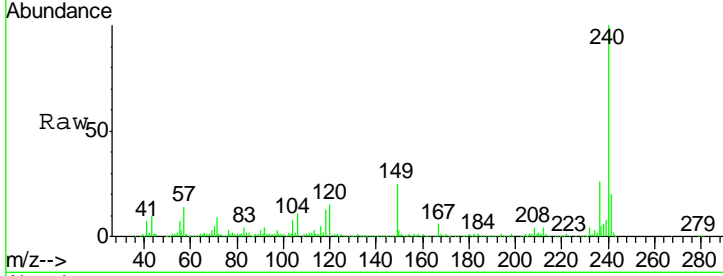




#75  
 Chrysene-d12  
 Concen: 20.00 ng  
 RT: 13.89 min Scan# 1033  
 Delta R.T. -0.10 min  
 Lab File: BF084590.D  
 Acq: 22 Jan 2016 15:36

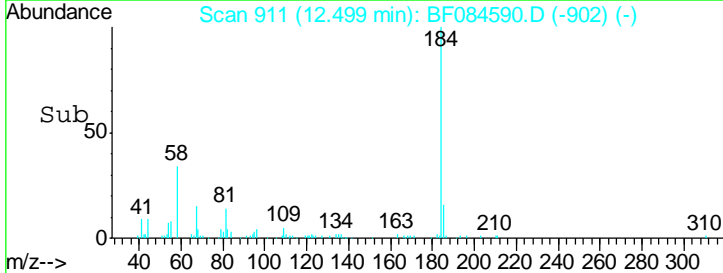
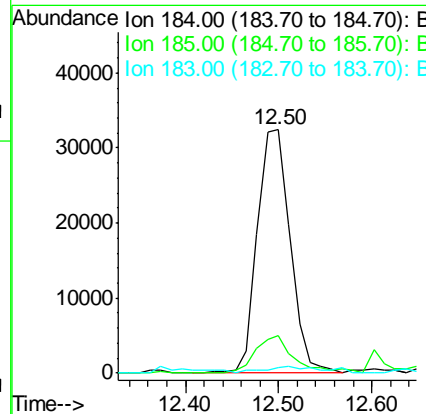
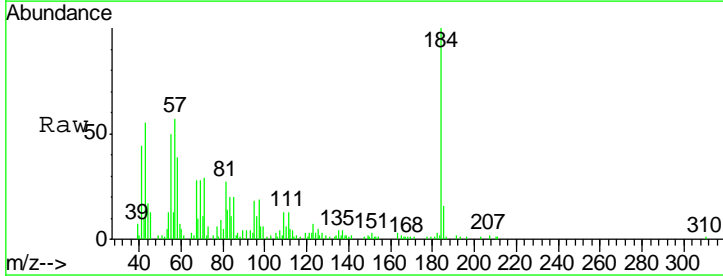
Instrument :  
 BNA\_F  
 ClientSampleId :  
 GRAB

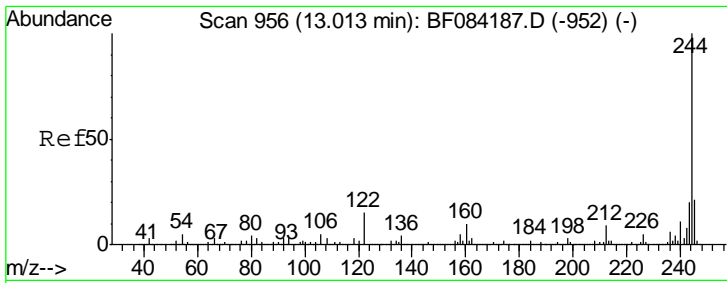
Tgt Ion	Resp	Lower	Upper
240	100		
120	15.0	9.5	14.3#
236	25.7	20.6	31.0



#76  
 Benzidine  
 Concen: 5.05 ng  
 RT: 12.50 min Scan# 911  
 Delta R.T. -0.19 min  
 Lab File: BF084590.D  
 Acq: 22 Jan 2016 15:36

Tgt Ion	Resp	Lower	Upper
184	100		
185	15.6	12.2	18.2
183	2.3	9.8	14.8#

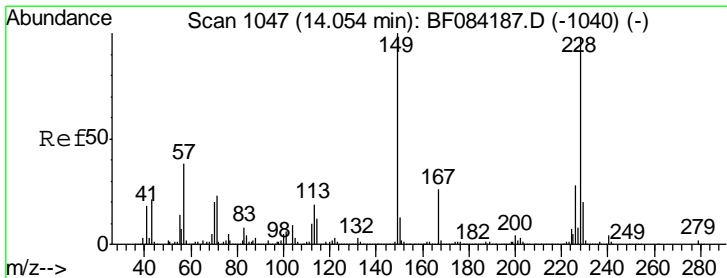
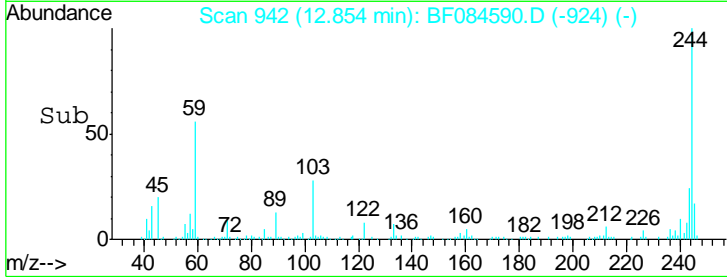
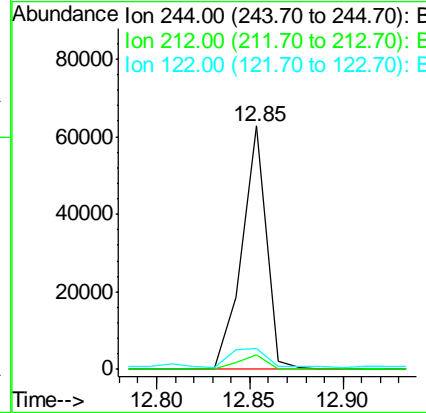
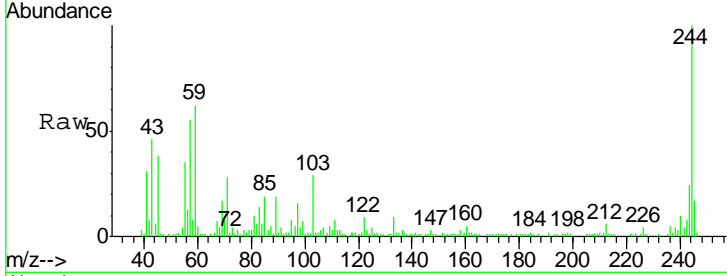




#78  
 Terphenyl-d14  
 Concen: 2.91 ng  
 RT: 12.85 min Scan# 942  
 Delta R.T. -0.09 min  
 Lab File: BF084590.D  
 Acq: 22 Jan 2016 15:36

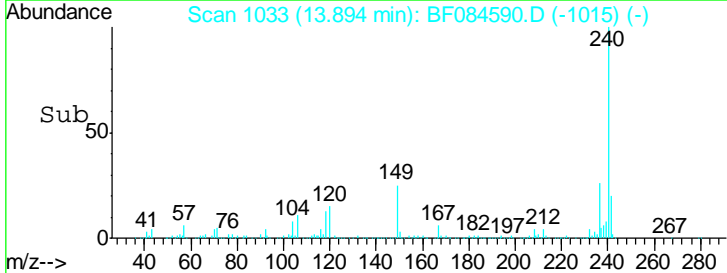
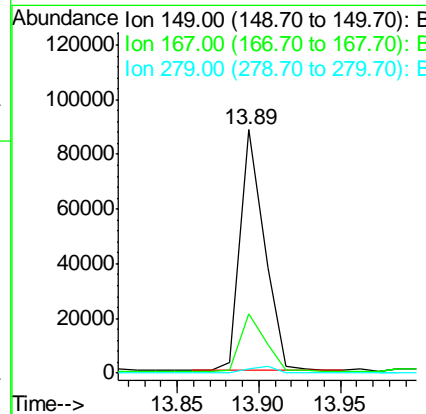
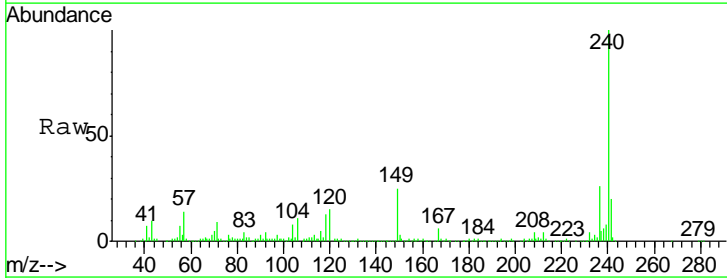
Instrument :  
 BNA\_F  
 ClientSampled :  
 GRAB

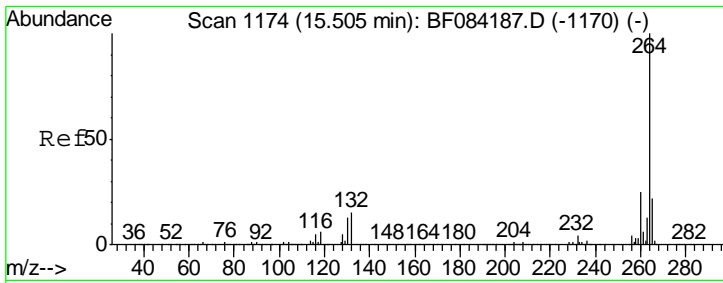
Tgt Ion	Ratio	Lower	Upper
244	100		
212	6.1	5.7	8.5
122	8.6	7.4	11.0



#83  
 Bis(2-ethylhexyl)phthalate  
 Concen: 4.73 ng  
 RT: 13.89 min Scan# 1033  
 Delta R.T. -0.09 min  
 Lab File: BF084590.D  
 Acq: 22 Jan 2016 15:36

Tgt Ion	Ratio	Lower	Upper
149	100		
167	24.2	19.7	29.5
279	1.7	1.8	2.6#





#86  
 Perylene-d12  
 Concen: 20.00 ng  
 RT: 15.29 min Scan# 1155  
 Delta R.T. -0.13 min  
 Lab File: BF084590.D  
 Acq: 22 Jan 2016 15:36

**Instrument :**  
 BNA\_F  
**ClientSampled :**  
 GRAB

Tgt Ion	Resp	Lower	Upper
264	100		
260	23.7	19.4	29.2
265	21.3	17.8	26.6

