

Data Path : Z:\svoasrv\HPCHEM1\BNA_F\Data\BF012325\
 Data File : BF141251.D
 Acq On : 23 Jan 2025 15:49
 Operator : RC/JU
 Sample : Q1154-01
 Misc :
 ALS Vial : 9 Sample Multiplier: 1

Instrument :
 BNA_F
 ClientSampleId :
 VNJ-220

Quant Time: Jan 23 16:18:05 2025
 Quant Method : Z:\svoasrv\HPCHEM1\BNA_F\Methods\8270-BF011025.M
 Quant Title : ASP BNA STANDARDS FOR 5 POINT CALIBRATION
 QLast Update : Fri Jan 10 22:54:19 2025
 Response via : Initial Calibration

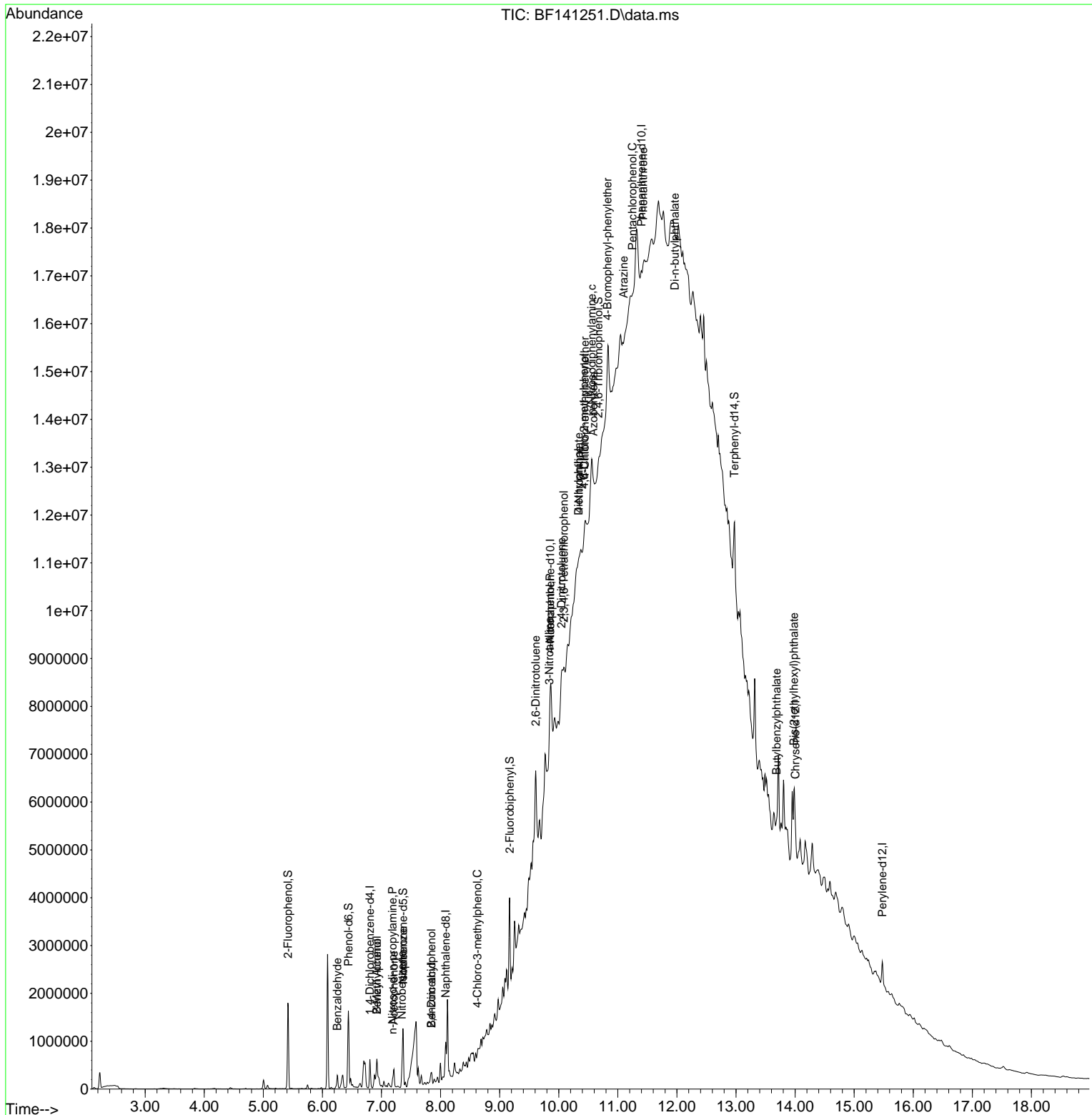
Compound	R.T.	QIon	Response	Conc	Units	Dev(Min)
Internal Standards						
1) 1,4-Dichlorobenzene-d4	6.804	152	122509	20.000	ng	-0.02
21) Naphthalene-d8	8.087	136	472381	20.000	ng	-0.02
39) Acenaphthene-d10	9.857	164	177032	20.000	ng	0.00
64) Phenanthrene-d10	11.398	188	155127	20.000	ng	# 0.05
76) Chrysene-d12	14.004	240	276478	20.000	ng	0.02
86) Perylene-d12	15.474	264	330257	20.000	ng	0.04
System Monitoring Compounds						
5) 2-Fluorophenol	5.416	112	718717	90.628	ng	-0.01
7) Phenol-d6	6.440	99	895760	89.170	ng	0.00
23) Nitrobenzene-d5	7.363	82	529941	59.468	ng	-0.02
42) 2,4,6-Tribromophenol	10.669	330	187481	92.943	ng	0.02
45) 2-Fluorobiphenyl	9.169	172	813239	70.148	ng	-0.01
79) Terphenyl-d14	12.974	244	767498	41.260	ng	0.04
Target Compounds						
9) Benzaldehyde	6.251	77	19598	3.312	ng	# 21
15) Benzyl Alcohol	6.922	79	36644	5.051	ng	# 58
17) 2-Methylphenol	6.922	107	19343	2.816	ng	# 1
19) n-Nitroso-di-n-propyla...	7.187	70	23821	4.026	ng	# 64
22) Acetophenone	7.210	105	132543	11.803	ng	# 90
24) Nitrobenzene	7.345	77	28140	3.030	ng	# 44
25) Isophorone	7.363	82	526037	34.541	ng	# 66
27) 2,4-Dimethylphenol	7.845	122	69938	12.273	ng	# 6
32) Benzoic acid	7.845	122	69938	12.794	ng	99
36) 4-Chloro-3-methylphenol	8.622	107	16307	2.203	ng	# 20
51) 2,6-Dinitrotoluene	9.610	165	296039	107.114	ng	# 30
53) 3-Nitroaniline	9.839	138	26108	9.296	ng	# 26
56) 4-Nitrophenol	9.851	139	11302	5.138	ng	# 1
57) 2,4-Dinitrotoluene	10.045	165	12456	3.497	ng	# 38
59) 2,3,4,6-Tetrachlorophenol	10.086	232	6203	2.062	ng	# 1
60) Diethylphthalate	10.333	149	58897	5.076	ng	# 26
61) 4-Chlorophenyl-phenyle...	10.439	204	34223	6.217	ng	# 1
62) 4-Nitroaniline	10.339	138	34942	12.711	ng	# 55
63) Azobenzene	10.586	77	70154	6.128	ng	# 38
65) 4,6-Dinitro-2-methylph...	10.428	198	11100	12.348	ng	# 1
66) n-Nitrosodiphenylamine	10.557	169	55256	11.043	ng	# 80
67) 4-Bromophenyl-phenylether	10.822	248	16124	9.028	ng	# 1
69) Atrazine	11.098	200	50864	37.754	ng	# 1
70) Pentachlorophenol	11.245	266	22121	17.374	ng	# 4
71) Phenanthrene	11.427	178	34209	4.108	ng	# 1
74) Di-n-butylphthalate	11.963	149	74443	8.760	ng	# 32
80) Butylbenzylphthalate	13.686	149	21056	2.392	ng	# 55
84) Bis(2-ethylhexyl)phtha...	13.980	149	57109	5.406	ng	# 58

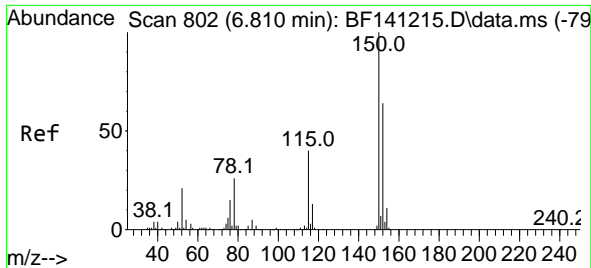
(#) = qualifier out of range (m) = manual integration (+) = signals summed

Data Path : Z:\svoasrv\HPCHEM1\BNA_F\Data\BF012325\
 Data File : BF141251.D
 Acq On : 23 Jan 2025 15:49
 Operator : RC/JU
 Sample : Q1154-01
 Misc :
 ALS Vial : 9 Sample Multiplier: 1

Instrument :
 BNA_F
 ClientSampleId :
 VNJ-220

Quant Time: Jan 23 16:18:05 2025
 Quant Method : Z:\svoasrv\HPCHEM1\BNA_F\Methods\8270-BF011025.M
 Quant Title : ASP BNA STANDARDS FOR 5 POINT CALIBRATION
 QLast Update : Fri Jan 10 22:54:19 2025
 Response via : Initial Calibration



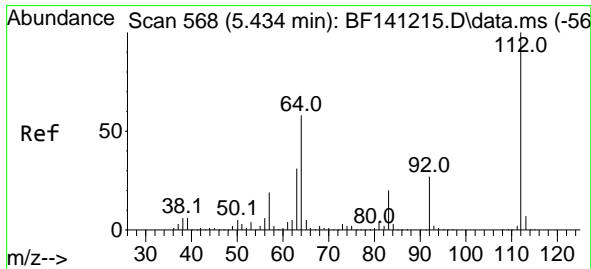
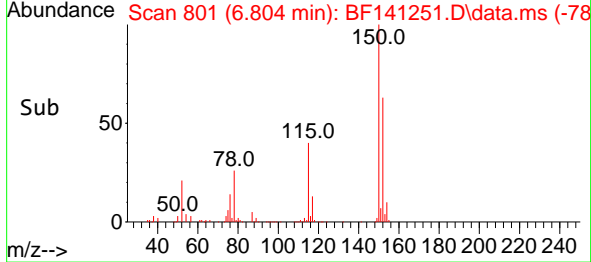
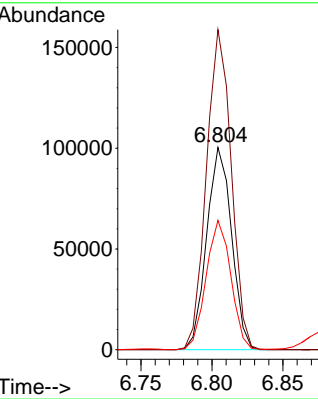
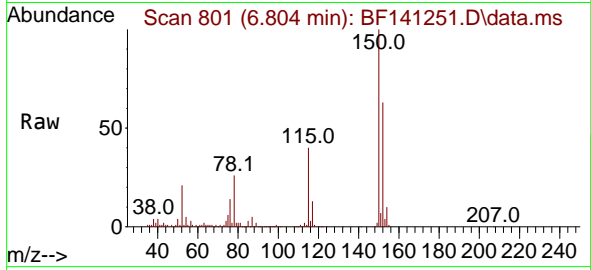


#1
 1,4-Dichlorobenzene-d4
 Concen: 20.000 ng
 RT: 6.804 min Scan# 80
 Delta R.T. -0.018 min
 Lab File: BF141251.D
 Acq: 23 Jan 2025 15:49

Instrument :
 BNA_F
 ClientSampleId :
 VNJ-220

Tgt Ion:152 Resp: 122509

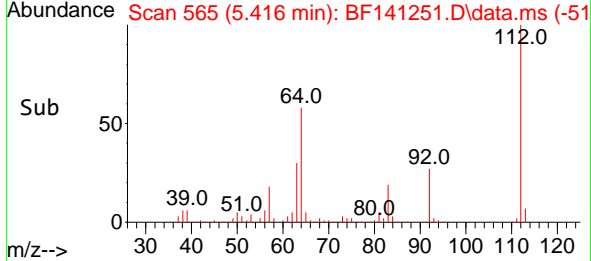
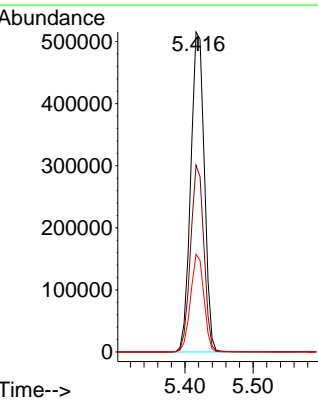
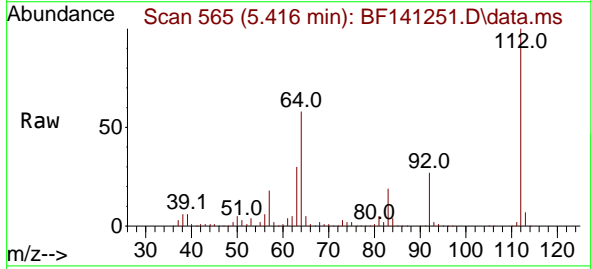
Ion	Ratio	Lower	Upper
152	100		
150	158.2	125.8	188.8
115	63.9	51.4	77.2

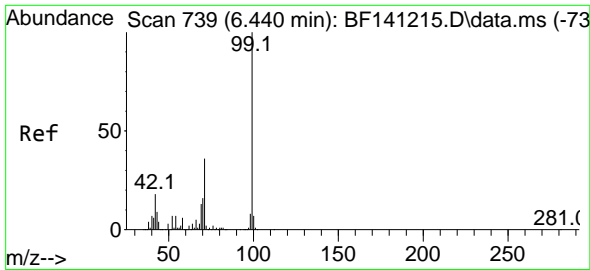


#5
 2-Fluorophenol
 Concen: 90.628 ng
 RT: 5.416 min Scan# 565
 Delta R.T. -0.012 min
 Lab File: BF141251.D
 Acq: 23 Jan 2025 15:49

Tgt Ion:112 Resp: 718717

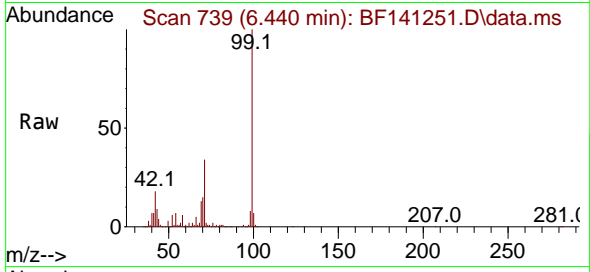
Ion	Ratio	Lower	Upper
112	100		
64	58.3	47.3	70.9
63	30.5	24.2	36.2



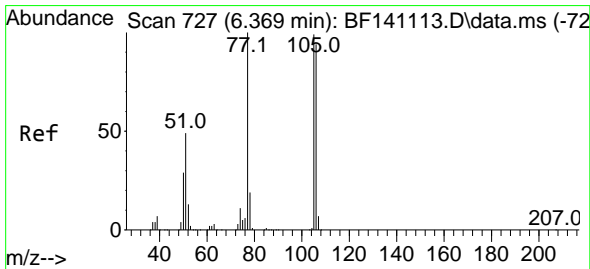
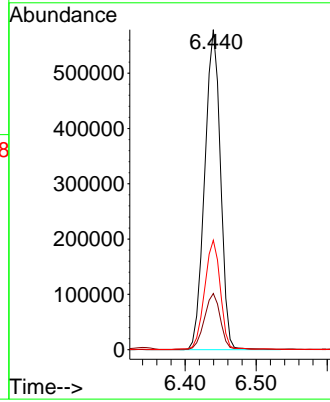
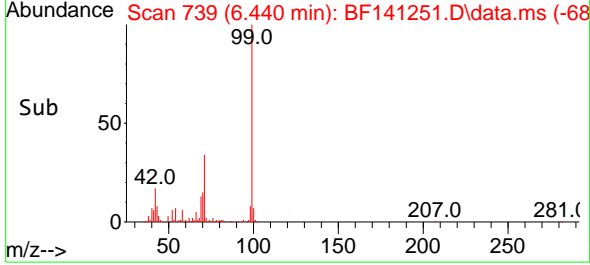


#7
 Phenol-d6
 Concen: 89.170 ng
 RT: 6.440 min Scan# 71
 Delta R.T. -0.006 min
 Lab File: BF141251.D
 Acq: 23 Jan 2025 15:49

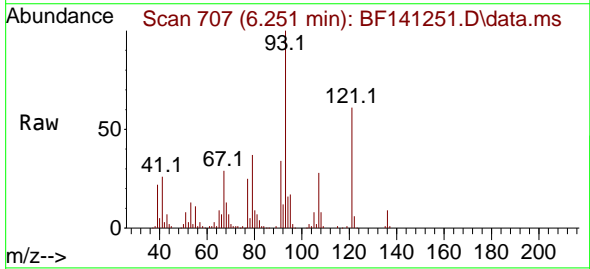
Instrument :
 BNA_F
 ClientSampleId :
 VNJ-220



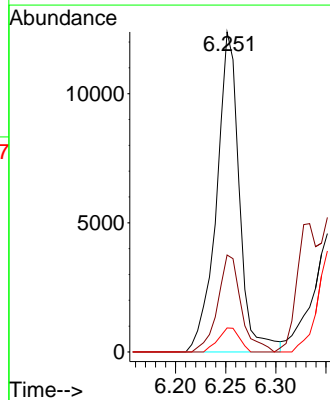
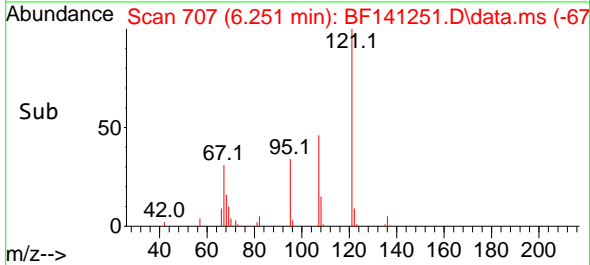
Tgt Ion: 99 Resp: 895760
 Ion Ratio Lower Upper
 99 100
 42 17.5 15.0 22.4
 71 34.2 27.6 41.4

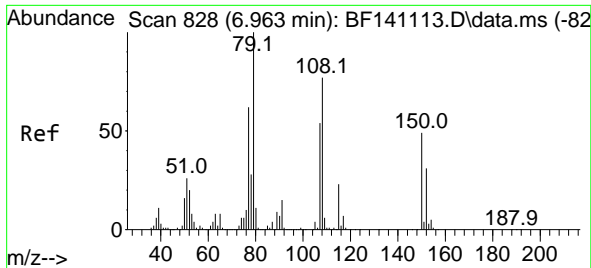


#9
 Benzaldehyde
 Concen: 3.312 ng
 RT: 6.251 min Scan# 707
 Delta R.T. -0.118 min
 Lab File: BF141251.D
 Acq: 23 Jan 2025 15:49



Tgt Ion: 77 Resp: 19598
 Ion Ratio Lower Upper
 77 100
 105 30.3 78.9 118.9#
 106 7.5 73.6 113.6#

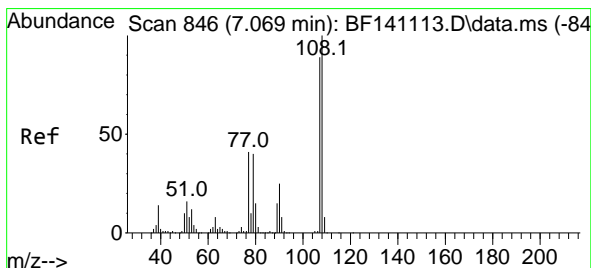
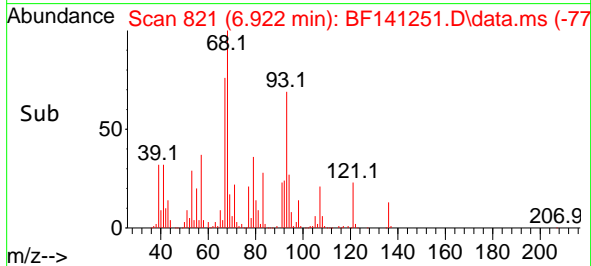
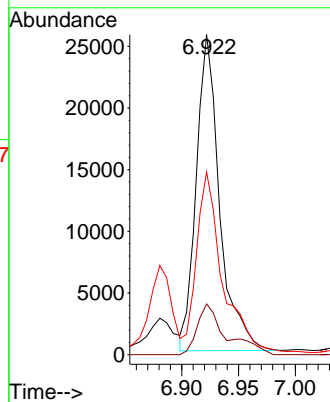
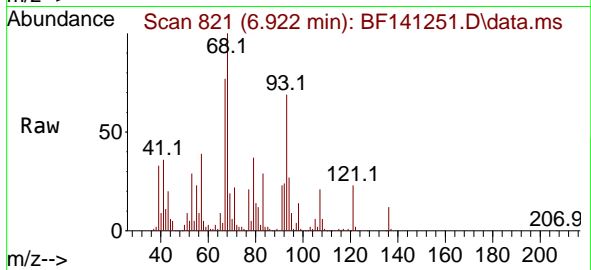




#15
 Benzyl Alcohol
 Concen: 5.051 ng
 RT: 6.922 min Scan# 81
 Delta R.T. -0.041 min
 Lab File: BF141251.D
 Acq: 23 Jan 2025 15:49

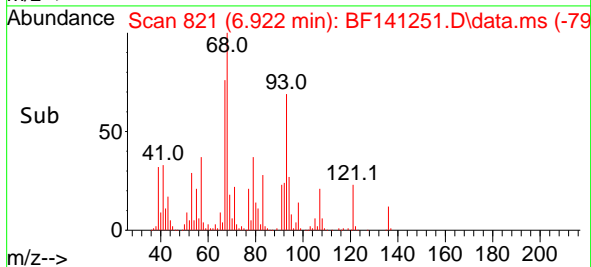
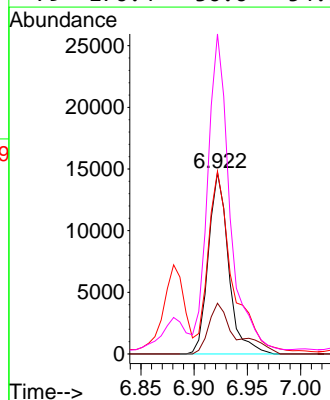
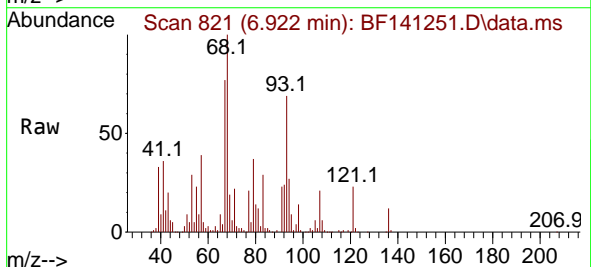
Instrument :
 BNA_F
 ClientSampleId :
 VNJ-220

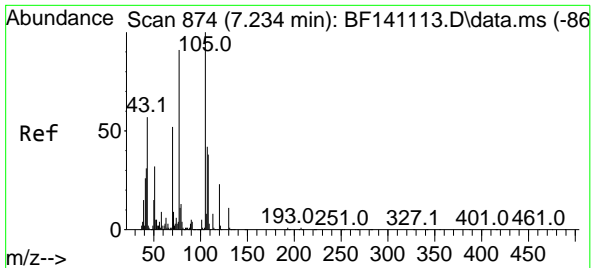
Tgt Ion: 79 Resp: 36644
 Ion Ratio Lower Upper
 79 100
 108 15.8 61.4 92.0#
 77 57.1 49.8 74.6



#17
 2-Methylphenol
 Concen: 2.816 ng
 RT: 6.922 min Scan# 821
 Delta R.T. -0.147 min
 Lab File: BF141251.D
 Acq: 23 Jan 2025 15:49

Tgt Ion: 107 Resp: 19343
 Ion Ratio Lower Upper
 107 100
 108 27.9 90.1 135.1#
 77 100.7 36.6 55.0#
 79 176.4 36.6 54.8#

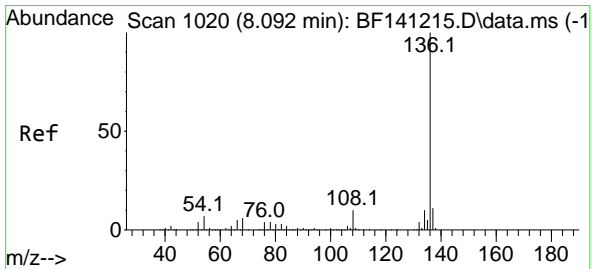
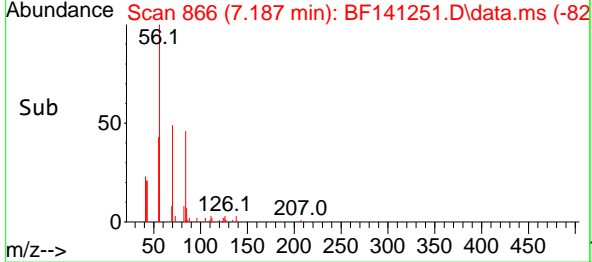
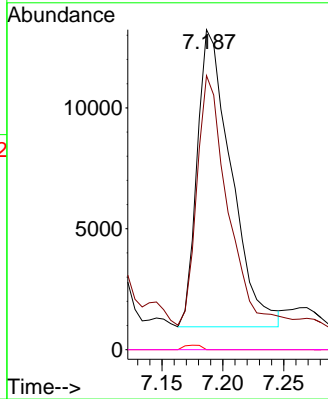
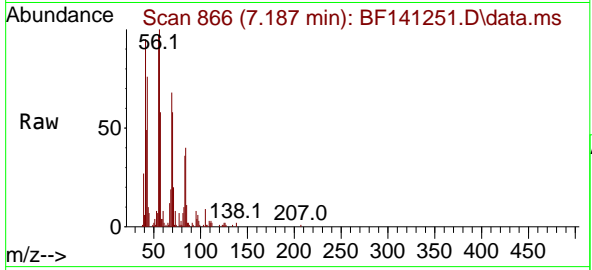




#19
 n-Nitroso-di-n-propylamine
 Concen: 4.026 ng
 RT: 7.187 min Scan# 80
 Delta R.T. -0.047 min
 Lab File: BF141251.D
 Acq: 23 Jan 2025 15:49

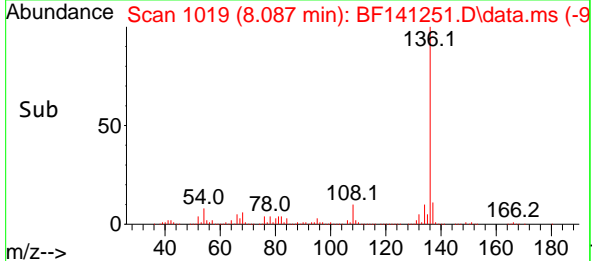
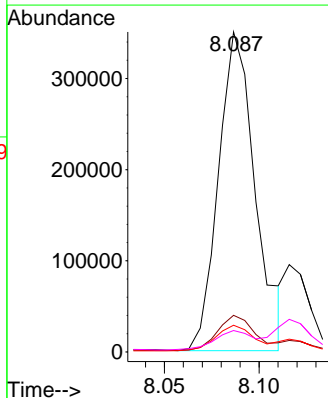
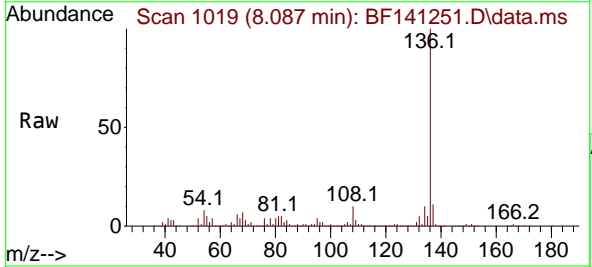
Instrument : BNA_F
 ClientSampleId : VNJ-220

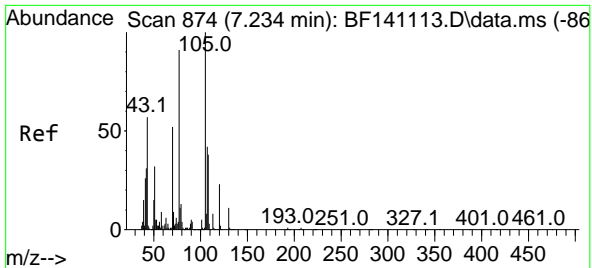
Tgt Ion	Resp	Ion Ratio	Lower	Upper
70	23821	100		
42		85.7	47.8	71.6#
101		0.0	7.9	11.9#
130		0.0	17.6	26.4#



#21
 Naphthalene-d8
 Concen: 20.000 ng
 RT: 8.087 min Scan# 1019
 Delta R.T. -0.018 min
 Lab File: BF141251.D
 Acq: 23 Jan 2025 15:49

Tgt Ion	Resp	Ion Ratio	Lower	Upper
136	472381	100		
137		11.5	8.8	13.2
54		8.4	6.3	9.5
68		6.7	4.9	7.3

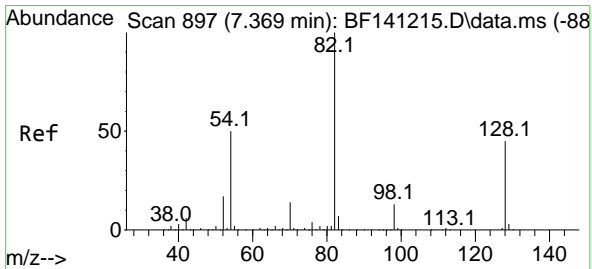
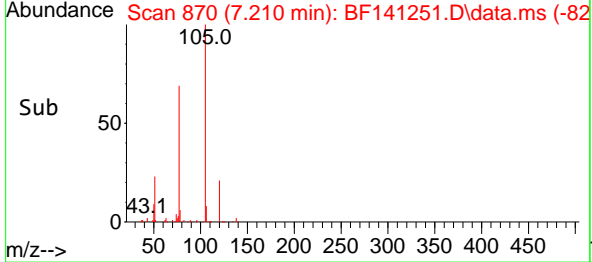
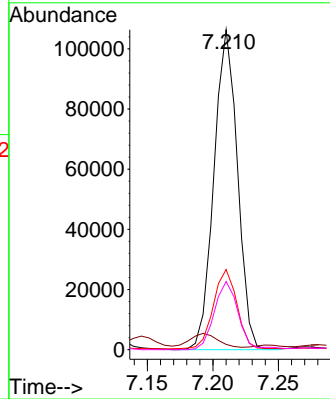
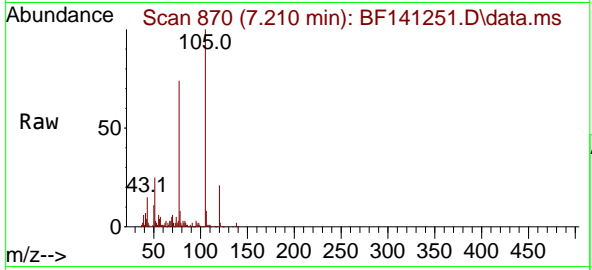




#22
 Acetophenone
 Concen: 11.803 ng
 RT: 7.210 min Scan# 81
 Delta R.T. -0.024 min
 Lab File: BF141251.D
 Acq: 23 Jan 2025 15:49

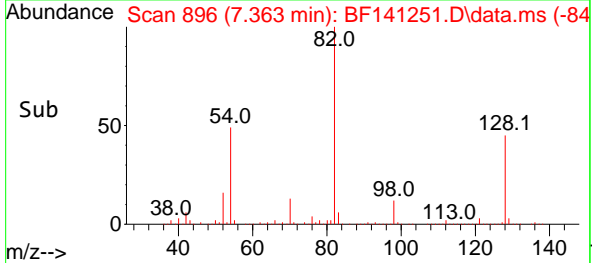
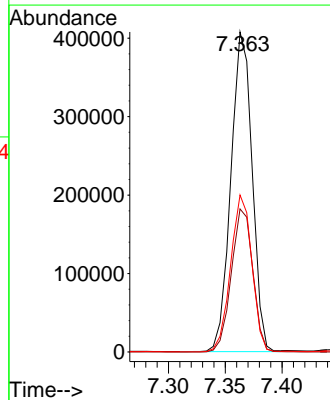
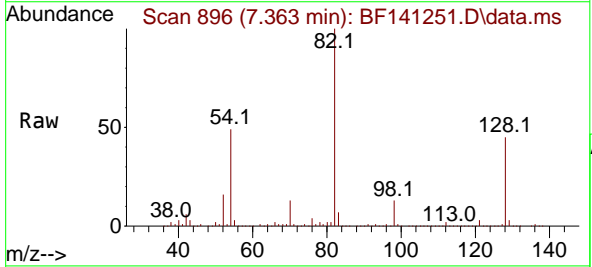
Instrument :
 BNA_F
 ClientSampleId :
 VNJ-220

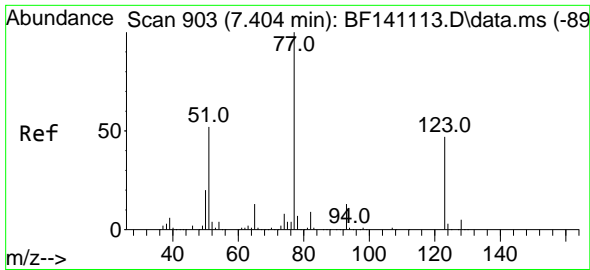
Tgt Ion: 105 Resp: 132543
 Ion Ratio Lower Upper
 105 100
 71 1.7 7.1 10.7#
 51 25.1 25.4 38.2#
 120 21.3 18.0 27.0



#23
 Nitrobenzene-d5
 Concen: 59.468 ng
 RT: 7.363 min Scan# 896
 Delta R.T. -0.024 min
 Lab File: BF141251.D
 Acq: 23 Jan 2025 15:49

Tgt Ion: 82 Resp: 529941
 Ion Ratio Lower Upper
 82 100
 128 44.7 36.1 54.1
 54 49.0 41.0 61.4

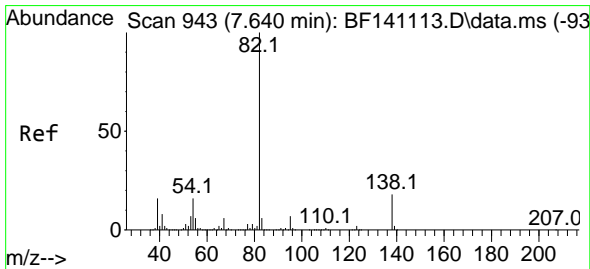
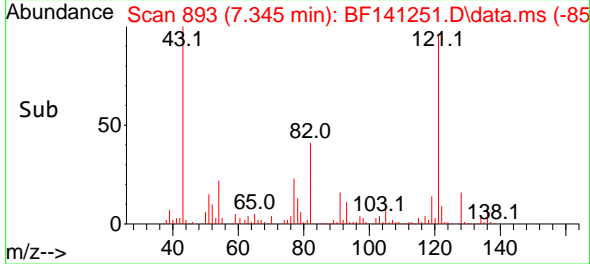
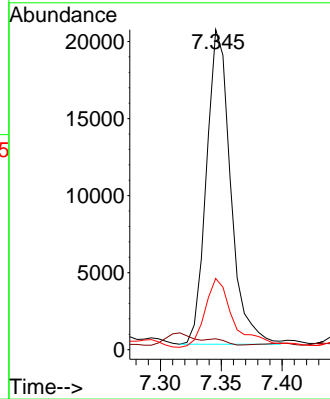
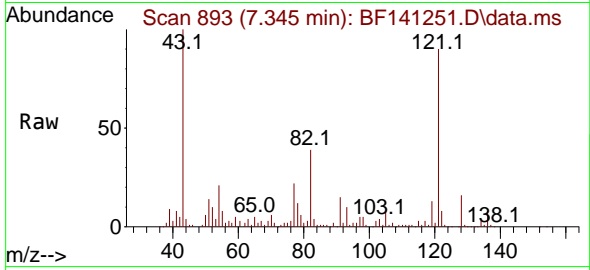




#24
 Nitrobenzene
 Concen: 3.030 ng
 RT: 7.345 min Scan# 895
 Delta R.T. -0.059 min
 Lab File: BF141251.D
 Acq: 23 Jan 2025 15:49

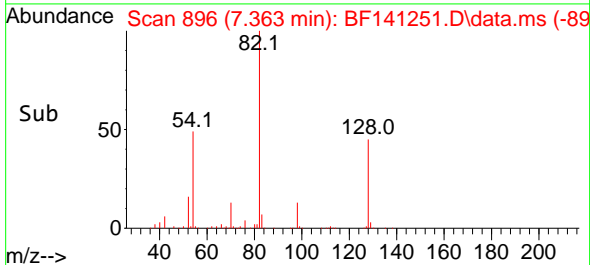
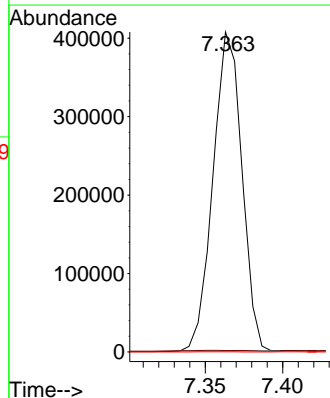
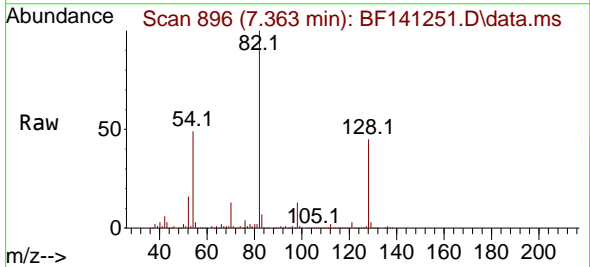
Instrument :
 BNA_F
 ClientSampleId :
 VNJ-220

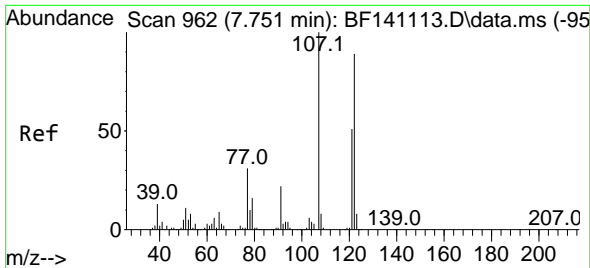
Tgt Ion: 77 Resp: 28140
 Ion Ratio Lower Upper
 77 100
 123 3.4 37.7 56.5#
 65 22.3 10.6 16.0#



#25
 Isophorone
 Concen: 34.541 ng
 RT: 7.363 min Scan# 896
 Delta R.T. -0.276 min
 Lab File: BF141251.D
 Acq: 23 Jan 2025 15:49

Tgt Ion: 82 Resp: 526037
 Ion Ratio Lower Upper
 82 100
 95 0.5 5.9 8.9#
 138 0.0 14.2 21.2#

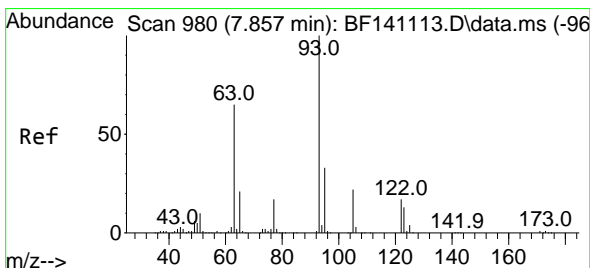
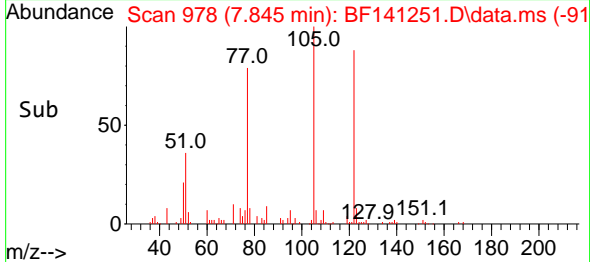
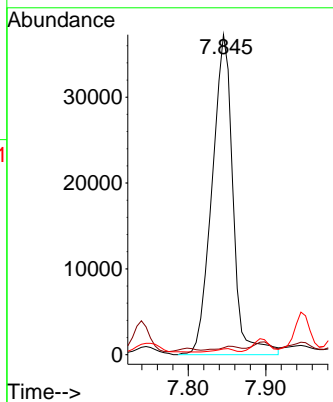
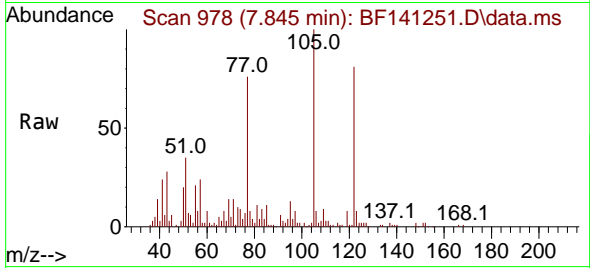




#27
 2,4-Dimethylphenol
 Concen: 12.273 ng
 RT: 7.845 min Scan# 91
 Delta R.T. 0.094 min
 Lab File: BF141251.D
 Acq: 23 Jan 2025 15:49

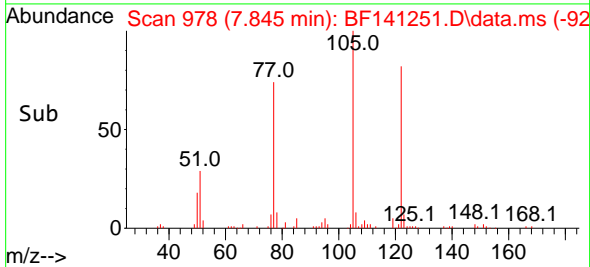
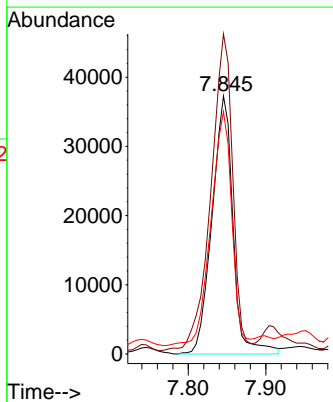
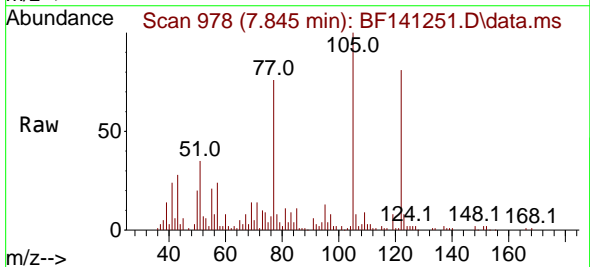
Instrument :
 BNA_F
 ClientSampleId :
 VNJ-220

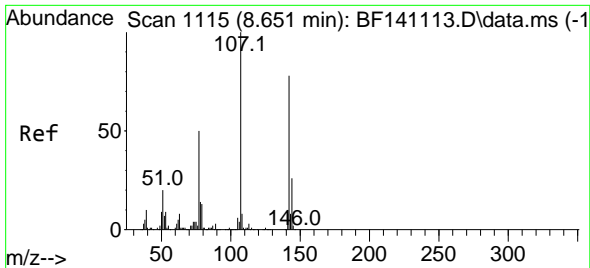
Tgt Ion:122 Resp: 69938
 Ion Ratio Lower Upper
 122 100
 107 2.2 90.3 135.5#
 121 1.8 46.5 69.7#



#32
 Benzoic acid
 Concen: 12.794 ng
 RT: 7.845 min Scan# 978
 Delta R.T. -0.012 min
 Lab File: BF141251.D
 Acq: 23 Jan 2025 15:49

Tgt Ion:122 Resp: 69938
 Ion Ratio Lower Upper
 122 100
 105 124.1 105.5 145.5
 77 93.9 75.1 115.1



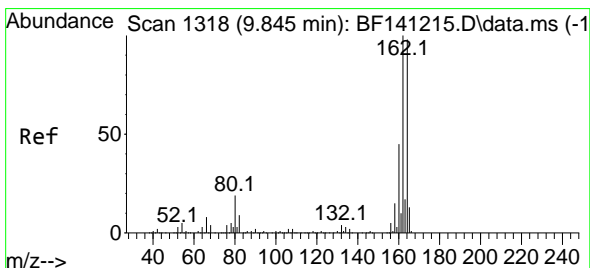
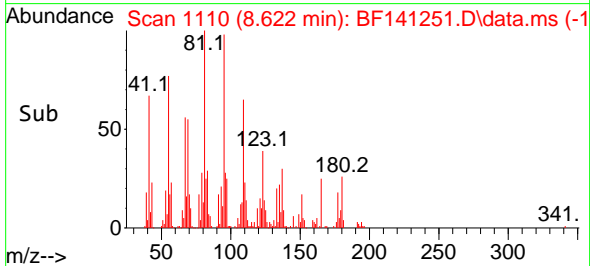
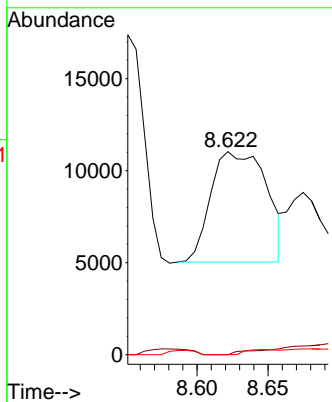
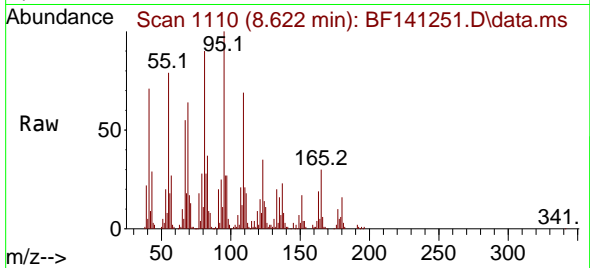


#36
 4-Chloro-3-methylphenol
 Concen: 2.203 ng
 RT: 8.622 min Scan# 1110
 Delta R.T. -0.029 min
 Lab File: BF141251.D
 Acq: 23 Jan 2025 15:49

Instrument :
 BNA_F
 ClientSampleId :
 VNJ-220

Tgt Ion:107 Resp: 16307

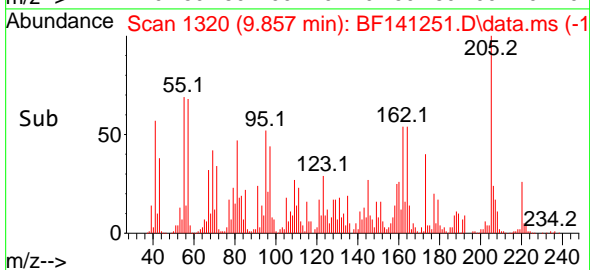
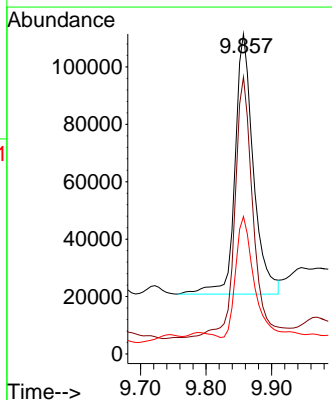
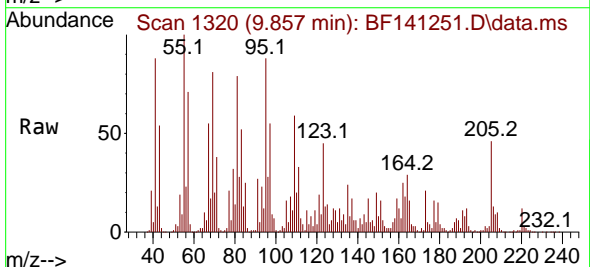
Ion	Ratio	Lower	Upper
107	100		
144	0.0	20.4	30.6#
142	0.0	62.2	93.2#

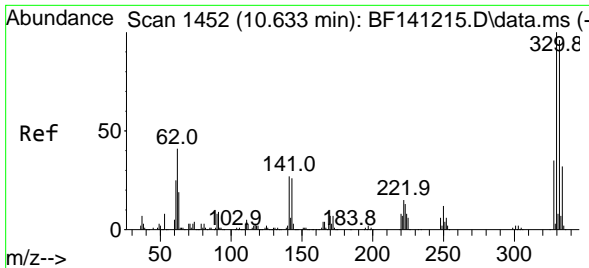


#39
 Acenaphthene-d10
 Concen: 20.000 ng
 RT: 9.857 min Scan# 1320
 Delta R.T. -0.006 min
 Lab File: BF141251.D
 Acq: 23 Jan 2025 15:49

Tgt Ion:164 Resp: 177032

Ion	Ratio	Lower	Upper
164	100		
162	86.5	81.0	121.4
160	43.0	36.1	54.1

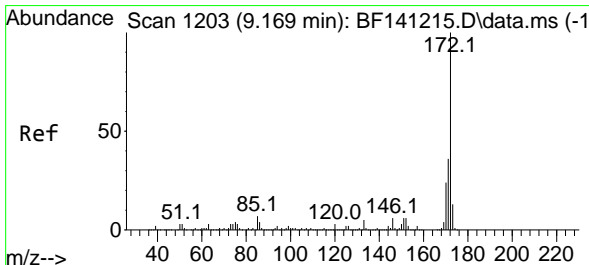
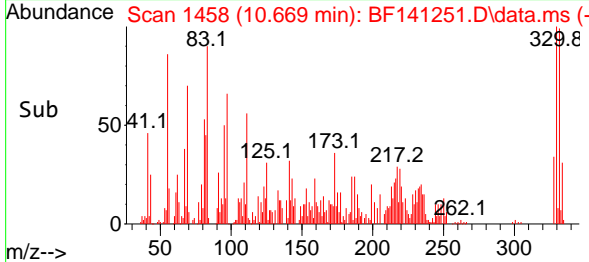
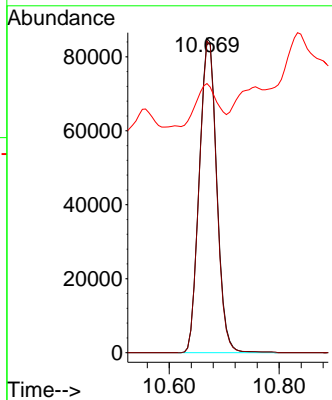
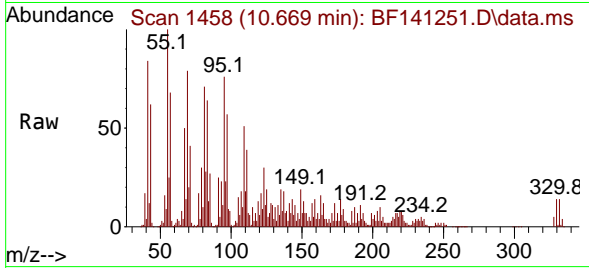




#42
 2,4,6-Tribromophenol
 Concen: 92.943 ng
 RT: 10.669 min Scan# 1458
 Delta R.T. 0.018 min
 Lab File: BF141251.D
 Acq: 23 Jan 2025 15:49

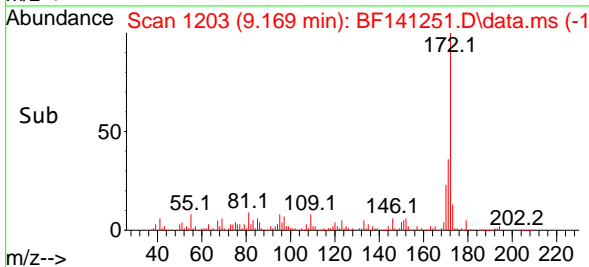
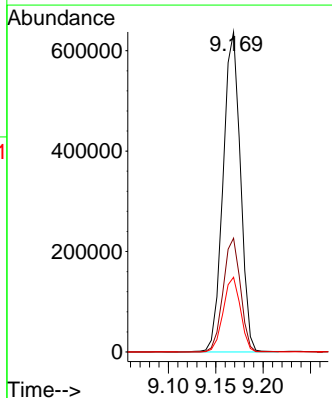
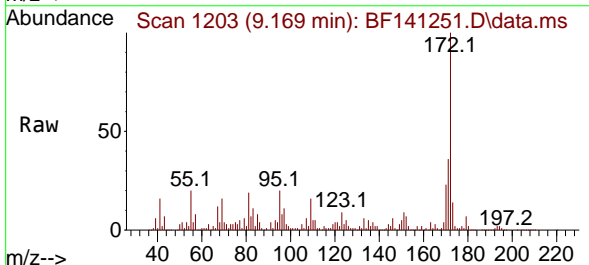
Instrument :
 BNA_F
 ClientSampleId :
 VNJ-220

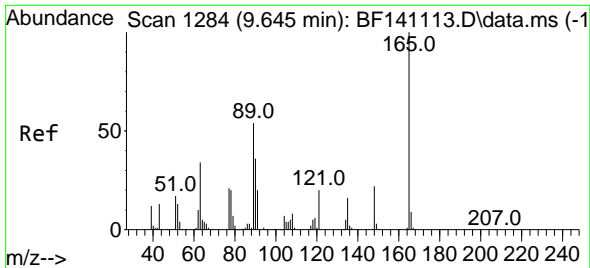
Tgt Ion:330 Resp: 187481
 Ion Ratio Lower Upper
 330 100
 332 98.5 76.9 115.3
 141 12.9 25.2 37.8#



#45
 2-Fluorobiphenyl
 Concen: 70.148 ng
 RT: 9.169 min Scan# 1203
 Delta R.T. -0.012 min
 Lab File: BF141251.D
 Acq: 23 Jan 2025 15:49

Tgt Ion:172 Resp: 813239
 Ion Ratio Lower Upper
 172 100
 171 35.5 28.7 43.1
 170 23.4 19.0 28.6



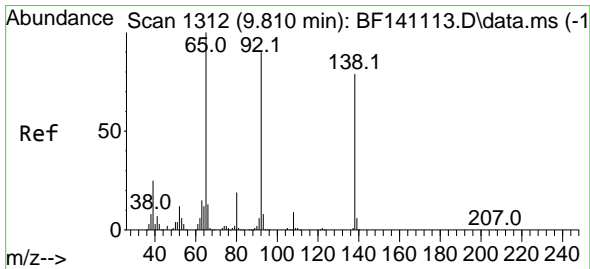
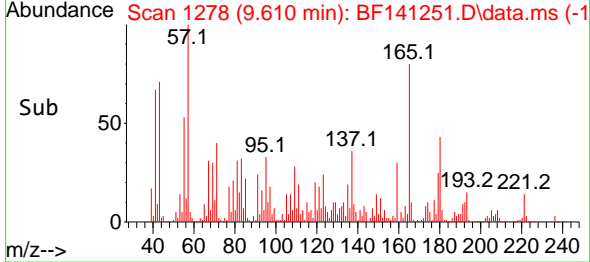
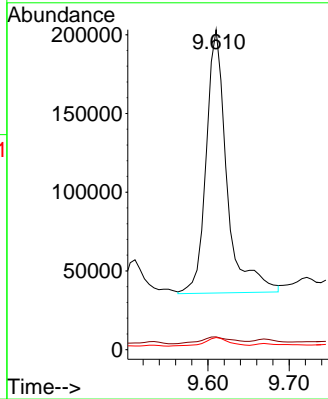
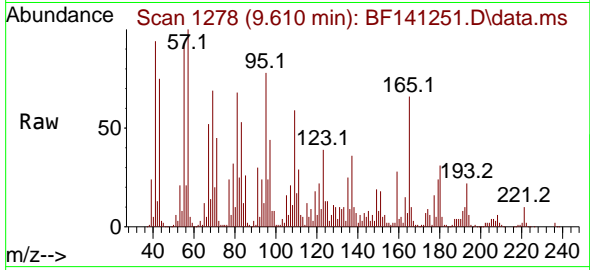


#51
 2,6-Dinitrotoluene
 Concen: 107.114 ng
 RT: 9.610 min Scan# 11
 Delta R.T. -0.035 min
 Lab File: BF141251.D
 Acq: 23 Jan 2025 15:49

Instrument :
 BNA_F
 ClientSampleId :
 VNJ-220

Tgt Ion:165 Resp: 296039

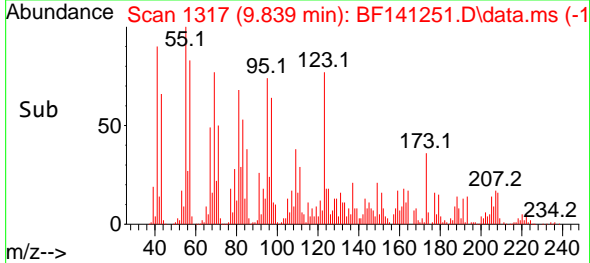
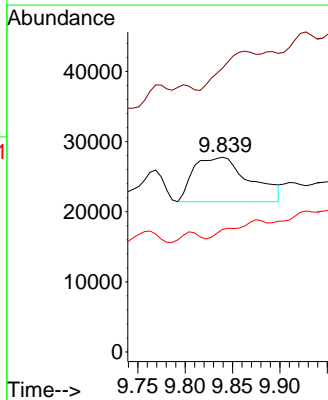
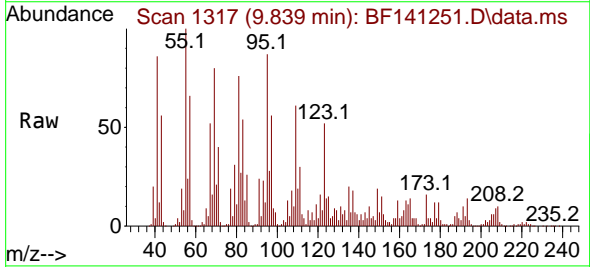
Ion	Ratio	Lower	Upper
165	100		
63	4.0	42.3	63.5#
89	3.8	43.1	64.7#

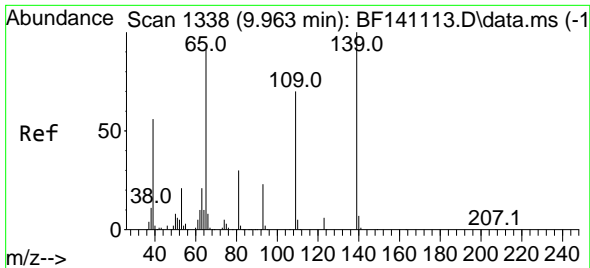


#53
 3-Nitroaniline
 Concen: 9.296 ng
 RT: 9.839 min Scan# 1317
 Delta R.T. 0.029 min
 Lab File: BF141251.D
 Acq: 23 Jan 2025 15:49

Tgt Ion:138 Resp: 26108

Ion	Ratio	Lower	Upper
138	100		
108	145.8	8.8	13.2#
92	62.9	91.3	136.9#

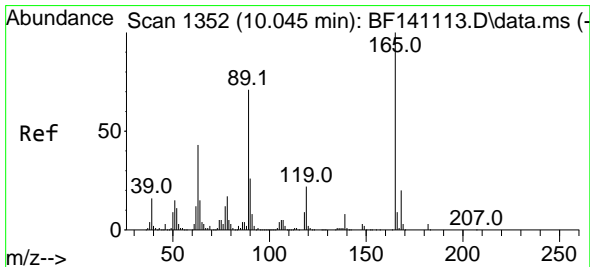
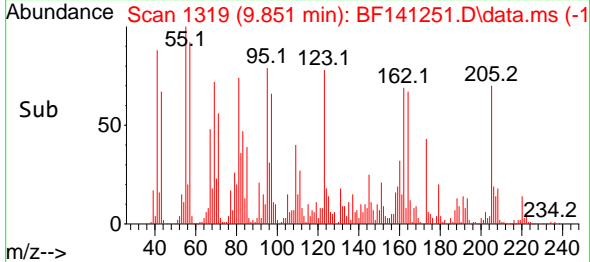
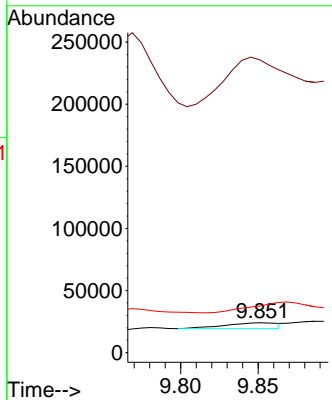
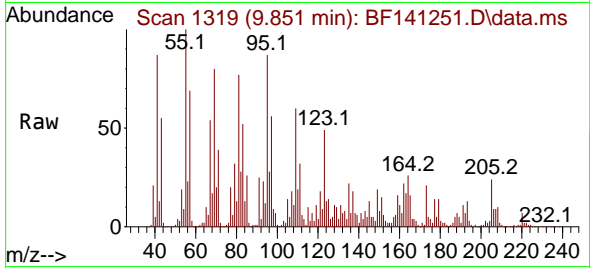




#56
 4-Nitrophenol
 Concen: 5.138 ng
 RT: 9.851 min Scan# 11
 Delta R.T. -0.112 min
 Lab File: BF141251.D
 Acq: 23 Jan 2025 15:49

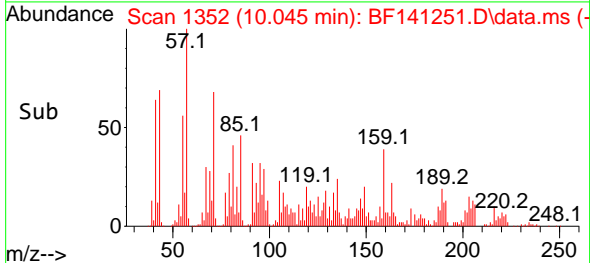
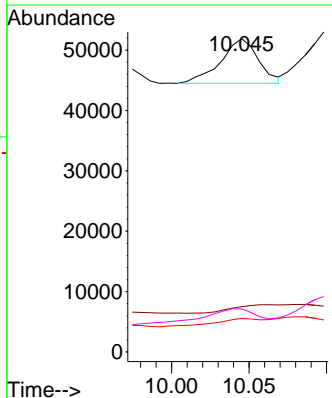
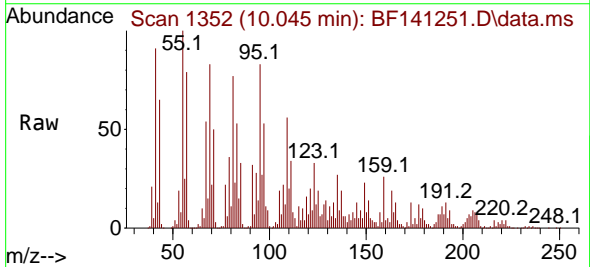
Instrument :
 BNA_F
 ClientSampleId :
 VNJ-220

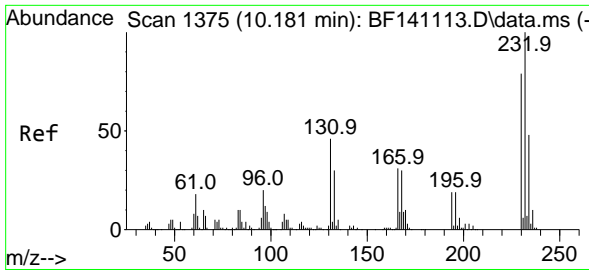
Tgt Ion:139 Resp: 11302
 Ion Ratio Lower Upper
 139 100
 109 978.9 50.2 90.2#
 65 156.3 72.1 112.1#



#57
 2,4-Dinitrotoluene
 Concen: 3.497 ng
 RT: 10.045 min Scan# 1352
 Delta R.T. 0.000 min
 Lab File: BF141251.D
 Acq: 23 Jan 2025 15:49

Tgt Ion:165 Resp: 12456
 Ion Ratio Lower Upper
 165 100
 63 14.4 35.0 52.4#
 89 10.7 56.7 85.1#
 182 13.7 2.3 3.5#



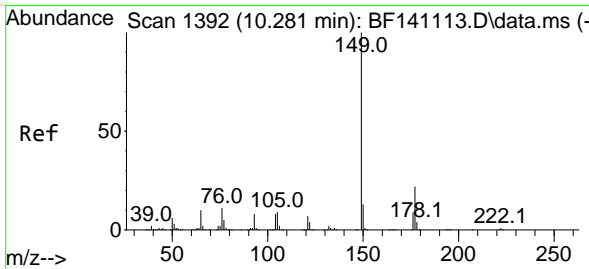
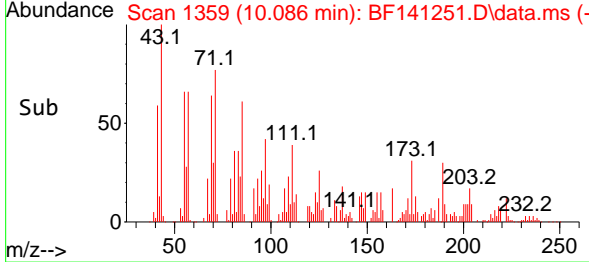
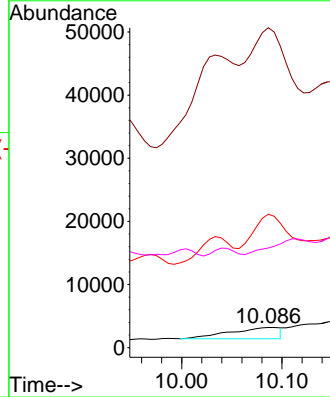
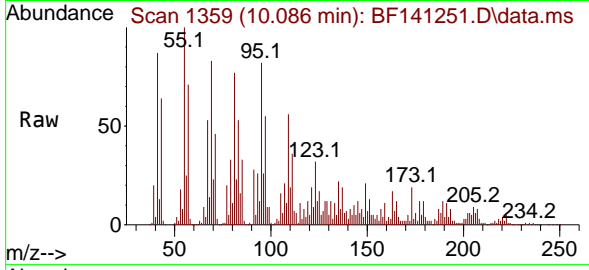


#59
 2,3,4,6-Tetrachlorophenol
 Concen: 2.062 ng
 RT: 10.086 min Scan# 11
 Delta R.T. -0.094 min
 Lab File: BF141251.D
 Acq: 23 Jan 2025 15:49

Instrument :
 BNA_F
 ClientSampleId :
 VNJ-220

Tgt Ion: 232 Resp: 6203

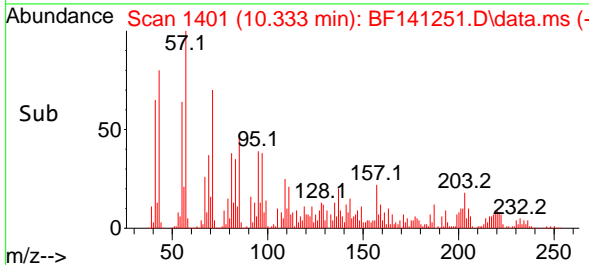
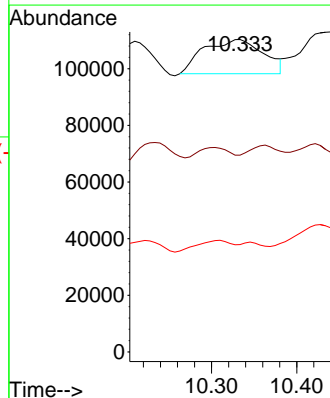
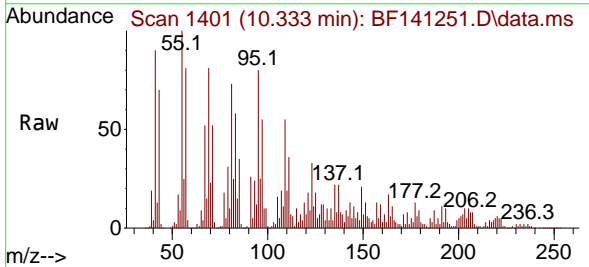
Ion	Ratio	Lower	Upper
232	100		
131	407.1	36.2	54.4#
130	199.0	2.0	3.0#
166	0.0	24.2	36.4#

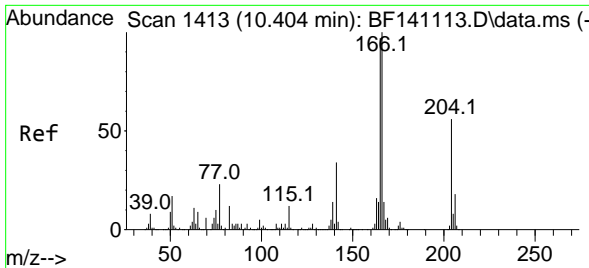


#60
 Diethylphthalate
 Concen: 5.076 ng
 RT: 10.333 min Scan# 1401
 Delta R.T. 0.053 min
 Lab File: BF141251.D
 Acq: 23 Jan 2025 15:49

Tgt Ion: 149 Resp: 58897

Ion	Ratio	Lower	Upper
149	100		
177	63.0	17.9	26.9#
150	34.4	10.2	15.2#

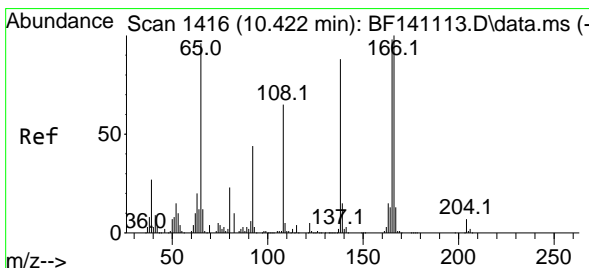
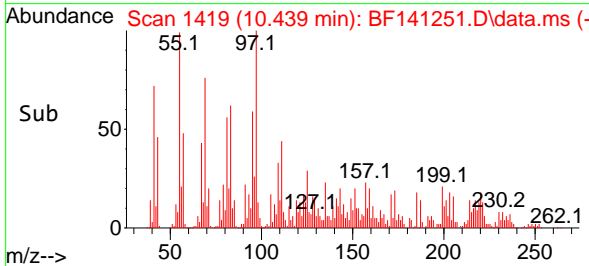
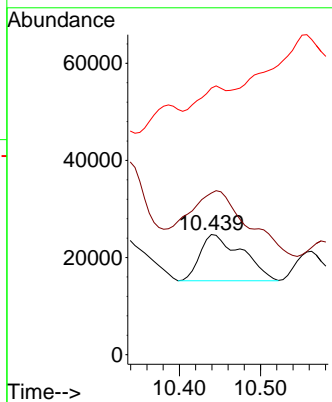
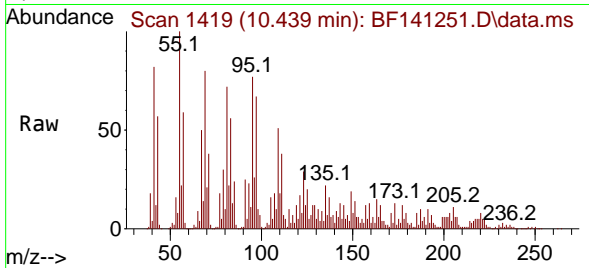




#61
 4-Chlorophenyl-phenylether
 Concen: 6.217 ng
 RT: 10.439 min Scan# 1419
 Delta R.T. 0.035 min
 Lab File: BF141251.D
 Acq: 23 Jan 2025 15:49

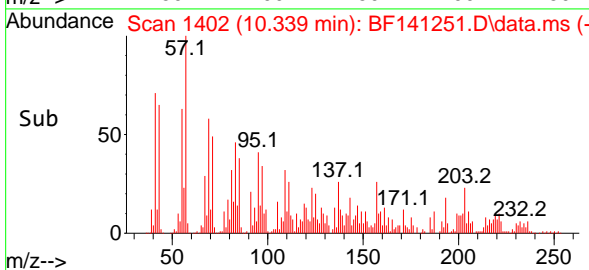
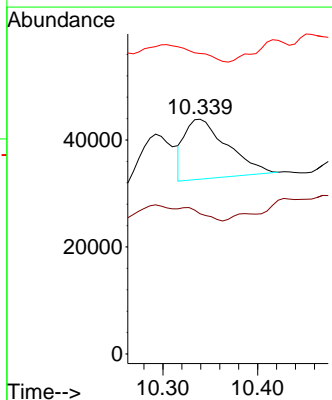
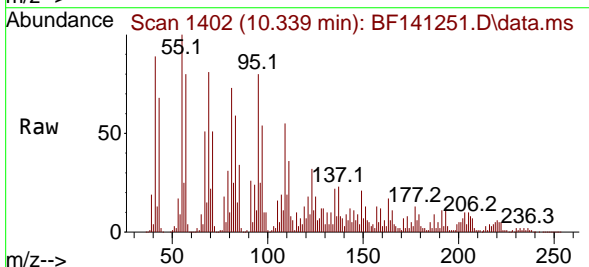
Instrument : BNA_F
 ClientSampleId : VNJ-220

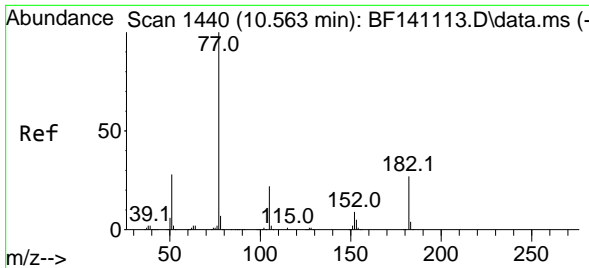
Tgt Ion	Resp	Lower	Upper
204	34223	100	
206	134.6	25.9	38.9#
141	221.9	49.1	73.7#



#62
 4-Nitroaniline
 Concen: 12.711 ng
 RT: 10.339 min Scan# 1402
 Delta R.T. -0.082 min
 Lab File: BF141251.D
 Acq: 23 Jan 2025 15:49

Tgt Ion	Resp	Lower	Upper
138	34942	100	
92	59.7	29.4	69.4
108	128.0	53.7	93.7#



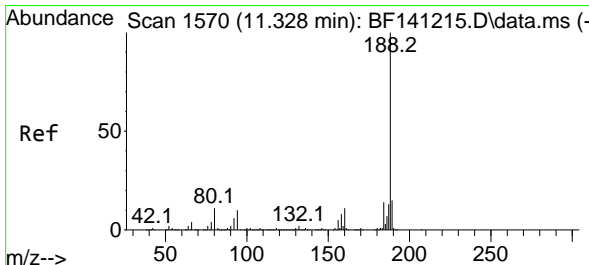
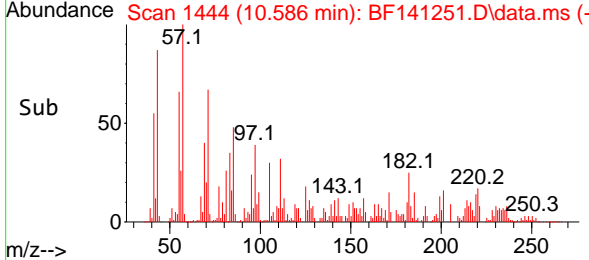
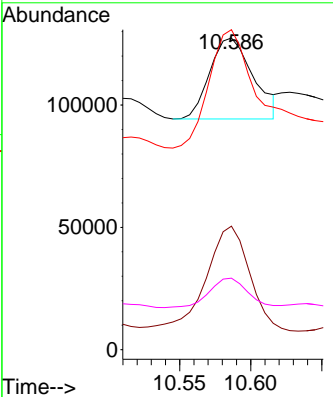
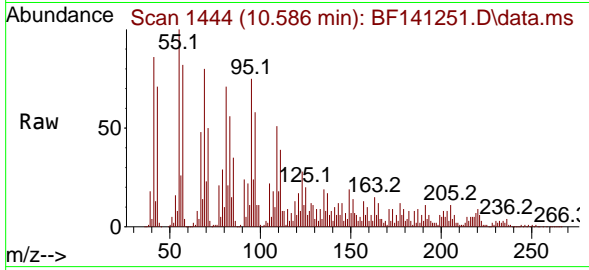


#63
 Azobenzene
 Concen: 6.128 ng
 RT: 10.586 min Scan# 14
 Delta R.T. 0.024 min
 Lab File: BF141251.D
 Acq: 23 Jan 2025 15:49

Instrument : BNA_F
 ClientSampleId : VNJ-220

Tgt Ion: 77 Resp: 70154

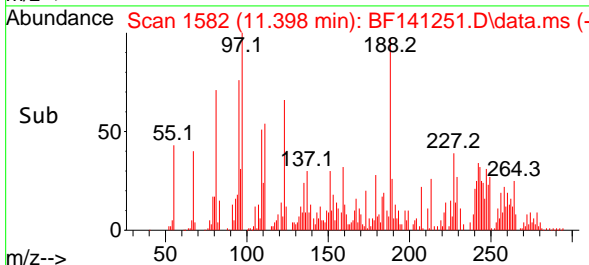
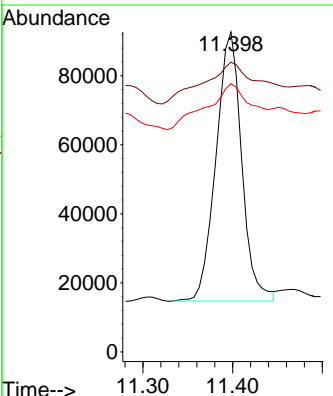
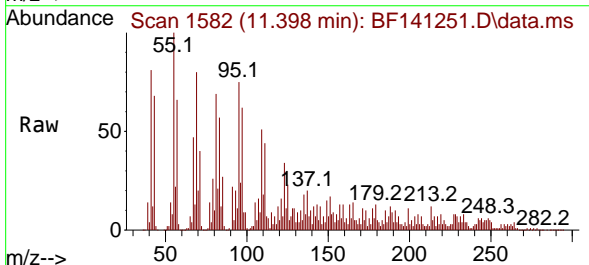
Ion	Ratio	Lower	Upper
77	100		
182	39.6	6.1	46.1
105	102.6	2.1	42.1#
51	22.9	10.0	50.0

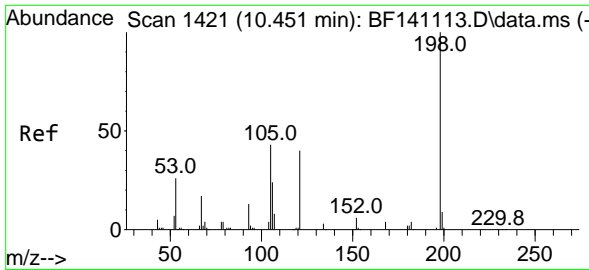


#64
 Phenanthrene-d10
 Concen: 20.000 ng
 RT: 11.398 min Scan# 1582
 Delta R.T. 0.053 min
 Lab File: BF141251.D
 Acq: 23 Jan 2025 15:49

Tgt Ion: 188 Resp: 155127

Ion	Ratio	Lower	Upper
188	100		
94	90.5	8.3	12.5#
80	83.8	9.0	13.4#

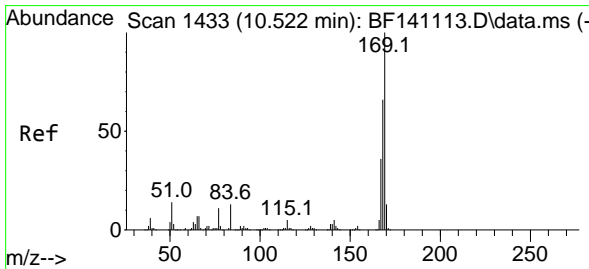
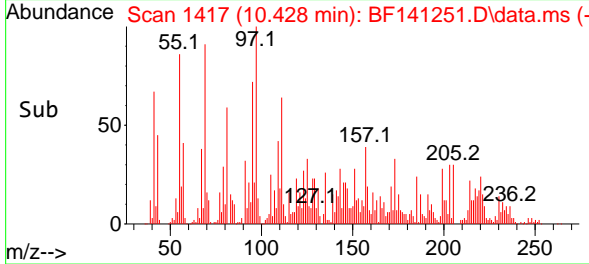
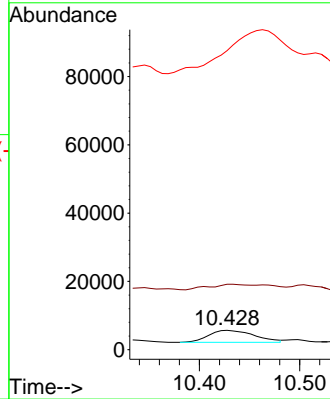
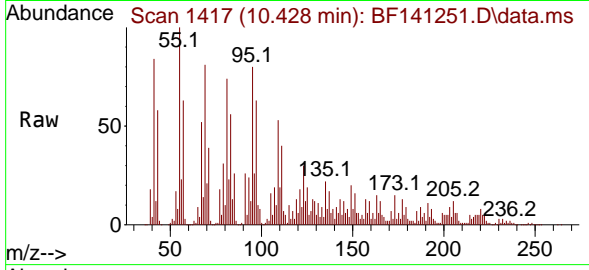




#65
 4,6-Dinitro-2-methylphenol
 Concen: 12.348 ng
 RT: 10.428 min Scan# 1417
 Delta R.T. -0.024 min
 Lab File: BF141251.D
 Acq: 23 Jan 2025 15:49

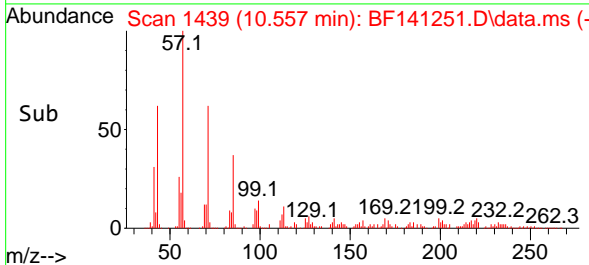
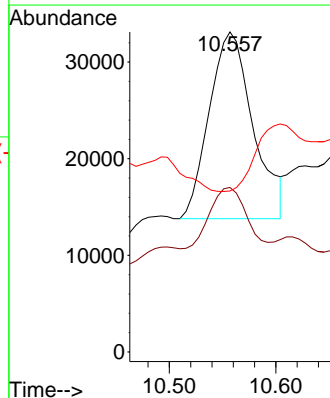
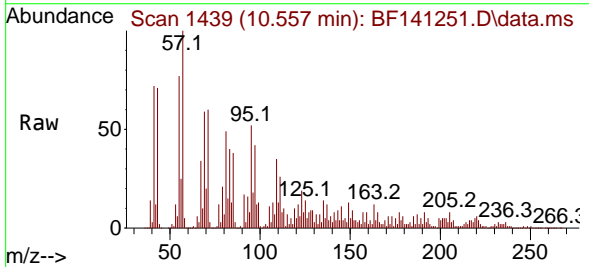
Instrument :
 BNA_F
 ClientSampleId :
 VNJ-220

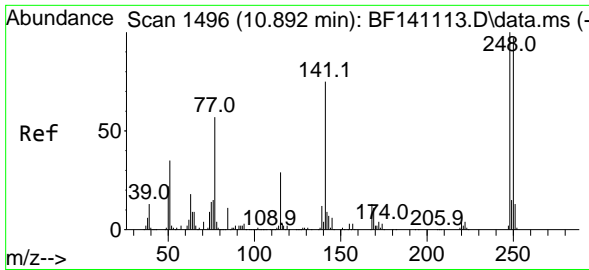
Tgt Ion:198 Resp: 11100
 Ion Ratio Lower Upper
 198 100
 51 337.9 27.1 67.1#
 105 1544.1 24.2 64.2#



#66
 n-Nitrosodiphenylamine
 Concen: 11.043 ng
 RT: 10.557 min Scan# 1439
 Delta R.T. 0.035 min
 Lab File: BF141251.D
 Acq: 23 Jan 2025 15:49

Tgt Ion:169 Resp: 55256
 Ion Ratio Lower Upper
 169 100
 168 51.4 52.5 78.7#
 167 50.3 28.9 43.3#

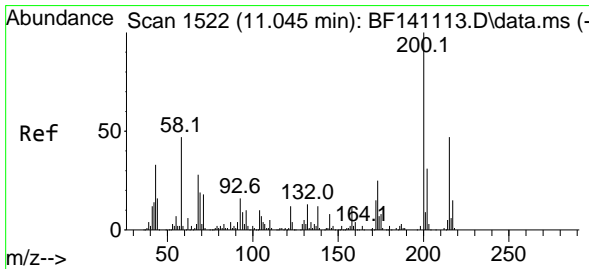
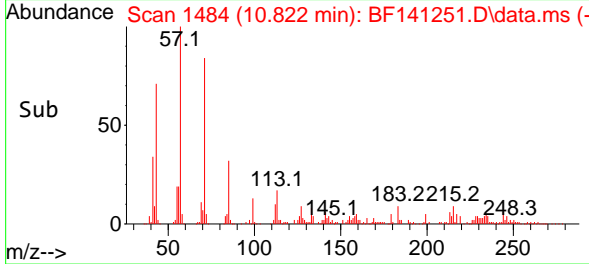
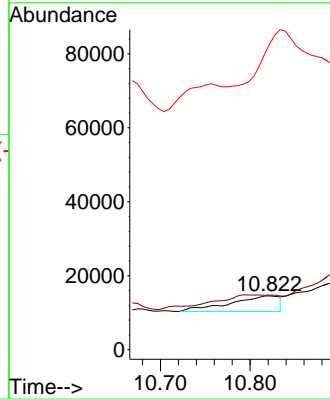
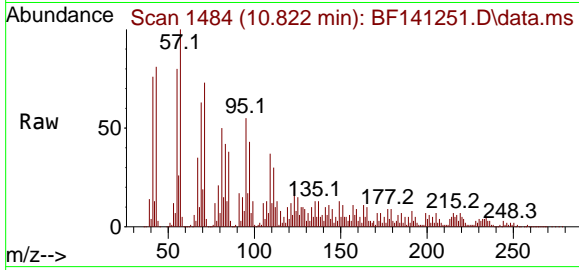




#67
 4-Bromophenyl-phenylether
 Concen: 9.028 ng
 RT: 10.822 min Scan# 1496
 Delta R.T. -0.071 min
 Lab File: BF141251.D
 Acq: 23 Jan 2025 15:49

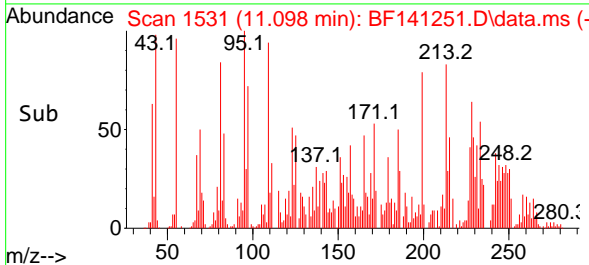
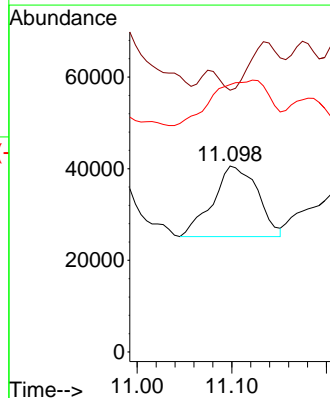
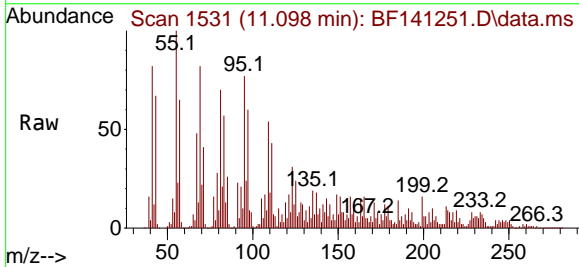
Instrument :
 BNA_F
 ClientSampleId :
 VNJ-220

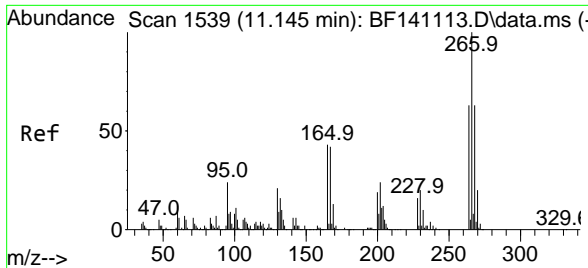
Tgt Ion	Resp	Lower	Upper
248	16124		
250	101.2	77.9	116.9
141	567.8	59.9	89.9#



#69
 Atrazine
 Concen: 37.754 ng
 RT: 11.098 min Scan# 1531
 Delta R.T. 0.053 min
 Lab File: BF141251.D
 Acq: 23 Jan 2025 15:49

Tgt Ion	Resp	Lower	Upper
200	50864		
200	100		
173	140.7	5.4	45.4#
215	143.7	26.6	66.6#



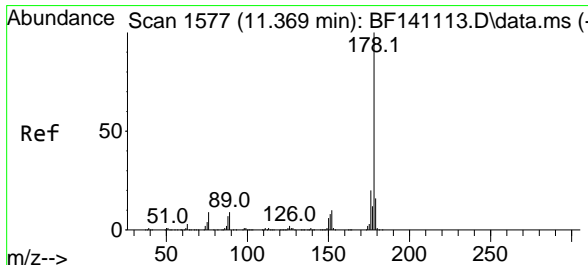
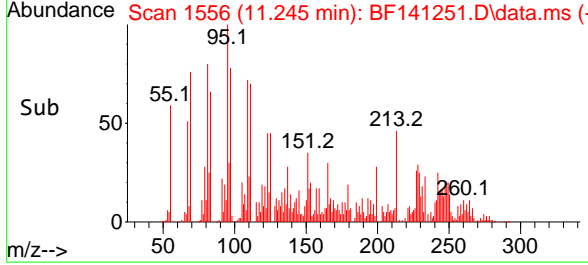
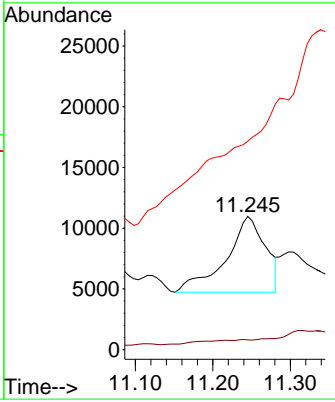
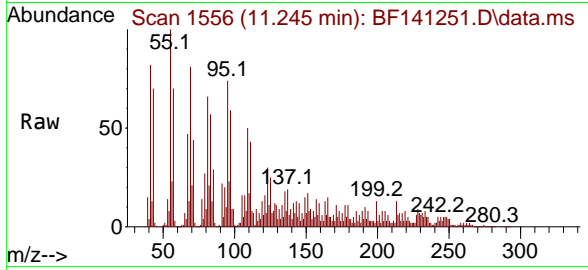


#70
 Pentachlorophenol
 Concen: 17.374 ng
 RT: 11.245 min Scan# 1556
 Delta R.T. 0.100 min
 Lab File: BF141251.D
 Acq: 23 Jan 2025 15:49

Instrument : BNA_F
 ClientSampleId : VNJ-220

Tgt Ion:266 Resp: 22121

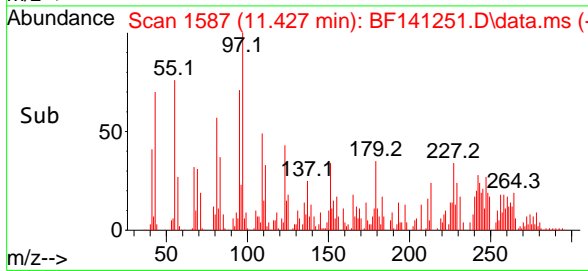
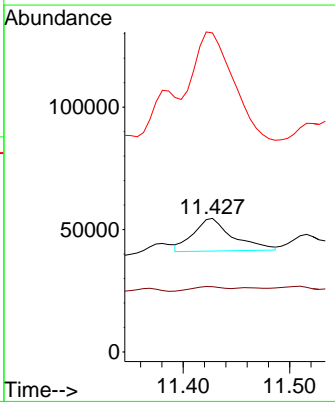
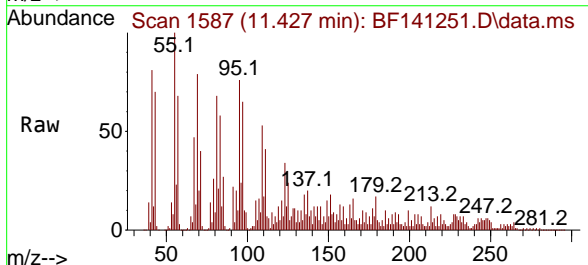
Ion	Ratio	Lower	Upper
266	100		
268	7.4	50.4	75.6#
264	156.4	50.2	75.2#

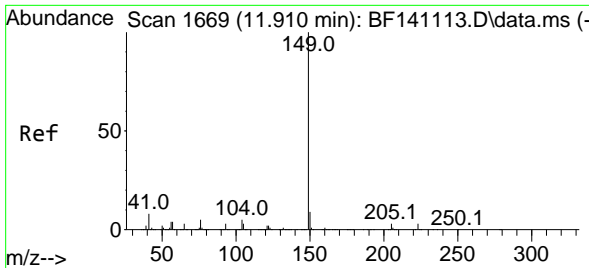


#71
 Phenanthrene
 Concen: 4.108 ng
 RT: 11.427 min Scan# 1587
 Delta R.T. 0.059 min
 Lab File: BF141251.D
 Acq: 23 Jan 2025 15:49

Tgt Ion:178 Resp: 34209

Ion	Ratio	Lower	Upper
178	100		
176	48.9	15.7	23.5#
179	238.9	12.6	19.0#



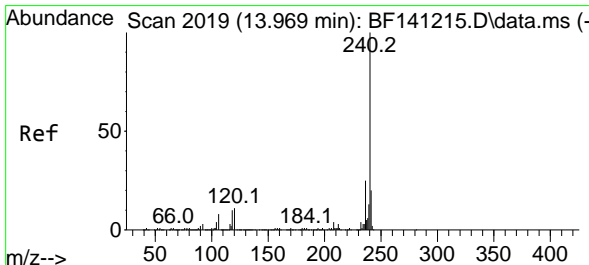
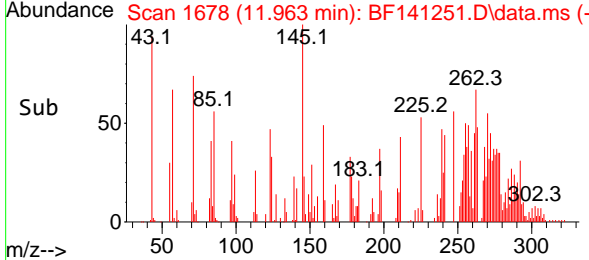
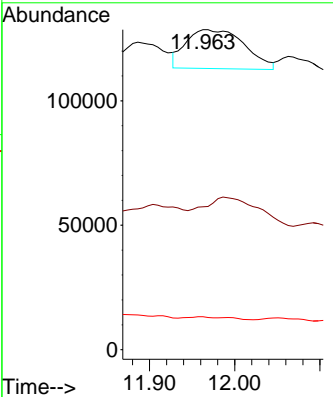
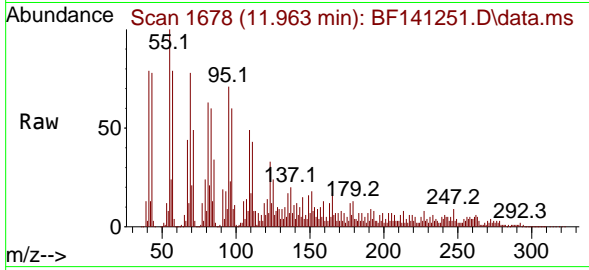


#74
 Di-n-butylphthalate
 Concen: 8.760 ng
 RT: 11.963 min Scan# 10
 Delta R.T. 0.053 min
 Lab File: BF141251.D
 Acq: 23 Jan 2025 15:49

Instrument : BNA_F
 ClientSampleId : VNJ-220

Tgt Ion:149 Resp: 74443

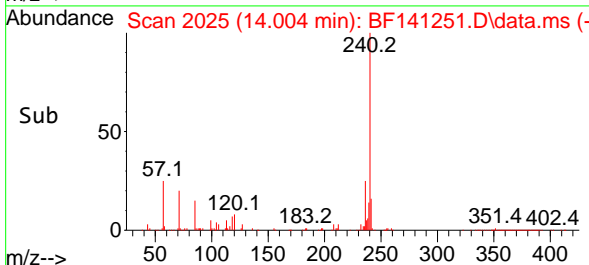
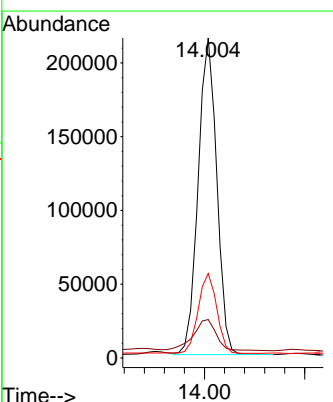
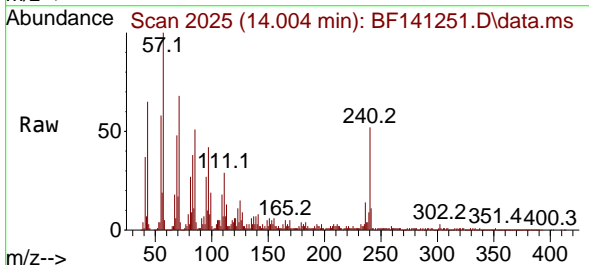
Ion	Ratio	Lower	Upper
149	100		
150	44.7	7.4	11.2#
104	10.3	4.2	6.2#

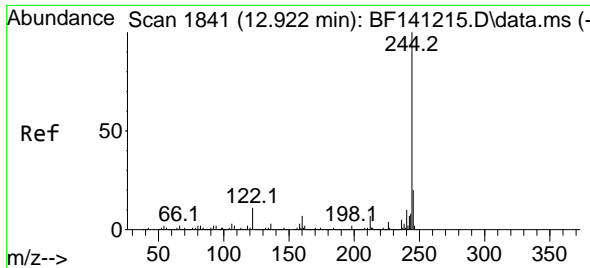


#76
 Chrysene-d12
 Concen: 20.000 ng
 RT: 14.004 min Scan# 2025
 Delta R.T. 0.018 min
 Lab File: BF141251.D
 Acq: 23 Jan 2025 15:49

Tgt Ion:240 Resp: 276478

Ion	Ratio	Lower	Upper
240	100		
120	12.0	9.1	13.7
236	26.4	19.8	29.6

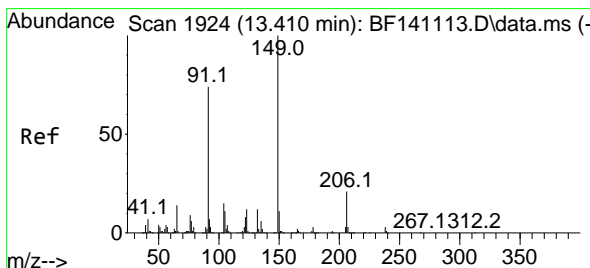
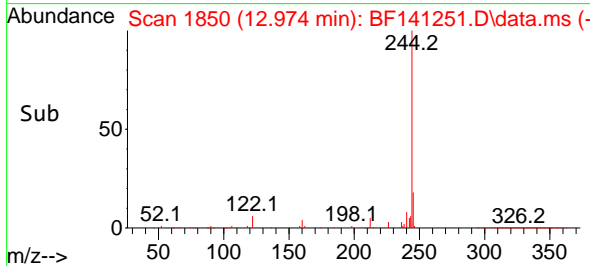
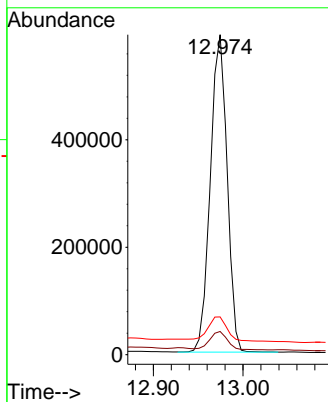
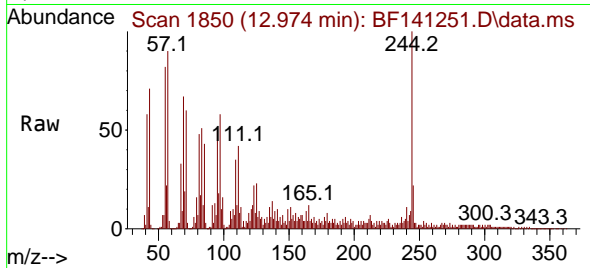




#79
 Terphenyl-d14
 Concen: 41.260 ng
 RT: 12.974 min Scan# 1841
 Delta R.T. 0.041 min
 Lab File: BF141251.D
 Acq: 23 Jan 2025 15:49

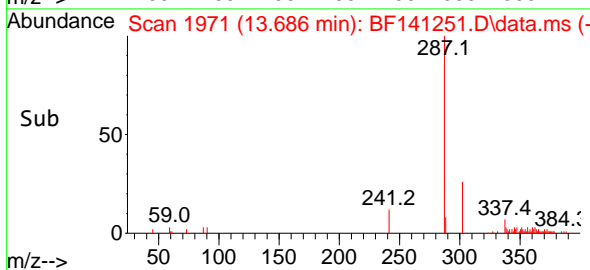
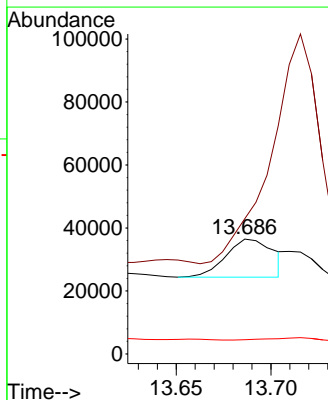
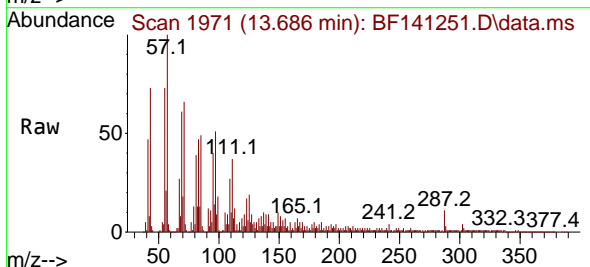
Instrument :
 BNA_F
 ClientSampleId :
 VNJ-220

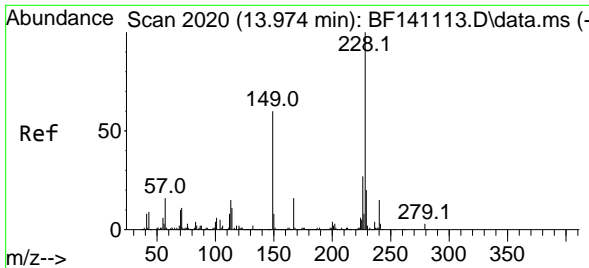
Tgt Ion	Resp	Lower	Upper
244	100		
212	7.2	5.4	8.2
122	11.8	8.8	13.2



#80
 Butylbenzylphthalate
 Concen: 2.392 ng
 RT: 13.686 min Scan# 1971
 Delta R.T. 0.276 min
 Lab File: BF141251.D
 Acq: 23 Jan 2025 15:49

Tgt Ion	Resp	Lower	Upper
149	100		
91	117.8	59.0	88.6#
206	12.5	16.5	24.7#



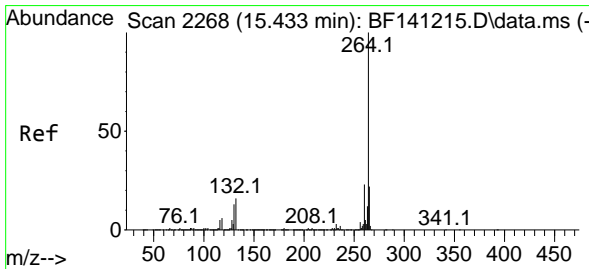
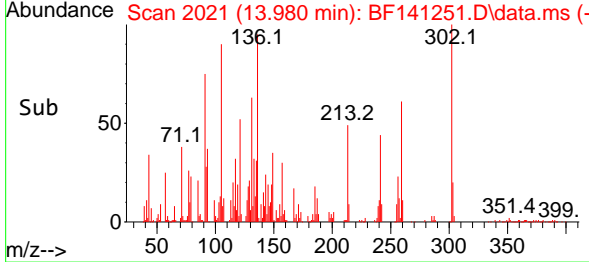
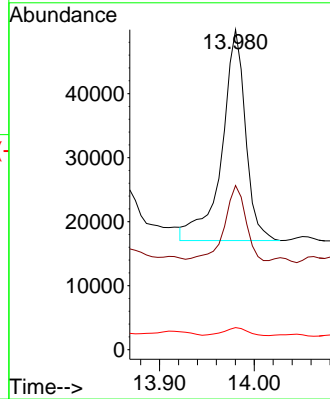
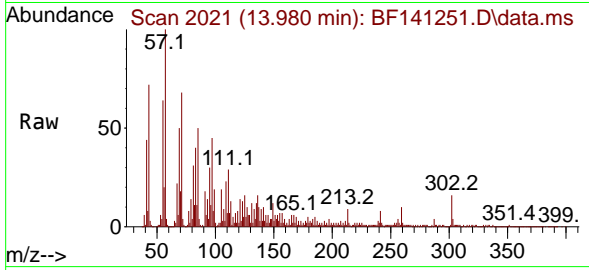


#84
 Bis(2-ethylhexyl)phthalate
 Concen: 5.406 ng
 RT: 13.980 min Scan# 20
 Delta R.T. 0.006 min
 Lab File: BF141251.D
 Acq: 23 Jan 2025 15:49

Instrument :
 BNA_F
 ClientSampleId :
 VNJ-220

Tgt Ion:149 Resp: 57109

Ion	Ratio	Lower	Upper
149	100		
167	51.3	21.4	32.2#
279	6.9	3.4	5.2#



#86
 Perylene-d12
 Concen: 20.000 ng
 RT: 15.474 min Scan# 2275
 Delta R.T. 0.035 min
 Lab File: BF141251.D
 Acq: 23 Jan 2025 15:49

Tgt Ion:264 Resp: 330257

Ion	Ratio	Lower	Upper
264	100		
260	22.8	18.6	28.0
265	21.7	17.4	26.0

