

Data Path : Z:\HPCHEM1\BNA F\DATA\BF012517\
 Data File : BF092476.D
 Acq On : 25 Jan 2017 15:05
 Operator : SJ/MA
 Sample : PB96241BL
 Misc :
 ALS Vial : 14 Sample Multiplier: 1

Instrument :
 BNA_F
 ClientSampleId :

Quant Time: Jan 25 17:22:52 2017
 Quant Method : Z:\HPCHEM1\BNA F\METHODS\8270-BF012417.M
 Quant Title : ASP BNA STANDARDS FOR 5 POINT CALIBRATION
 QLast Update : Tue Jan 24 13:48:07 2017
 Response via : Initial Calibration

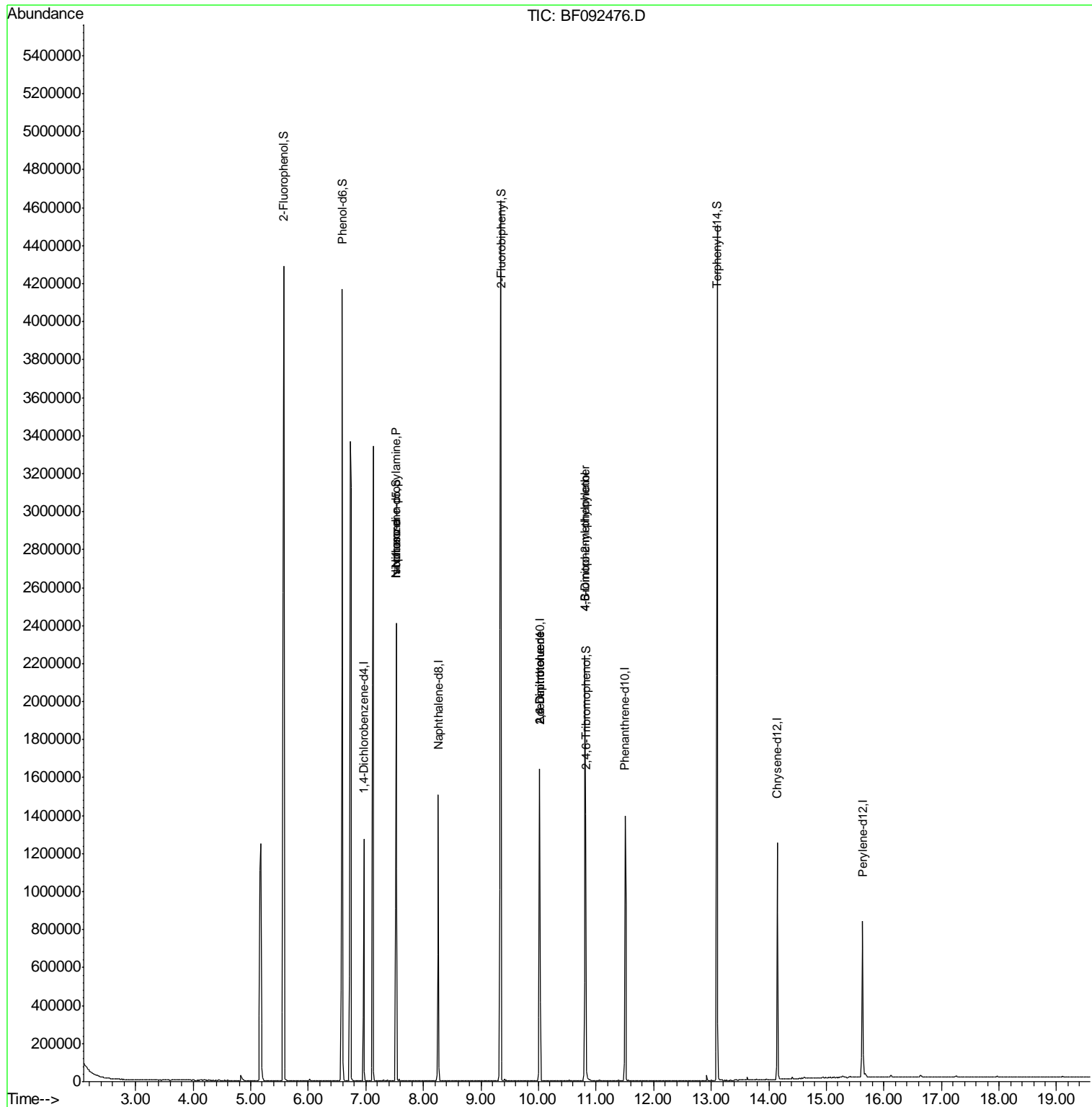
Internal Standards	R.T.	QIon	Response	Conc	Units	Dev(Min)
1) 1,4-Dichlorobenzene-d4	6.97	152	184137	20.00	ng	0.00
21) Naphthalene-d8	8.26	136	754024	20.00	ng	-0.01
38) Acenaphthene-d10	10.02	164	391062	20.00	ng	-0.01
63) Phenanthrene-d10	11.50	188	660798	20.00	ng	-0.02
75) Chrysene-d12	14.15	240	560692	20.00	ng	-0.02
86) Perylene-d12	15.63	264	433954	20.00	ng	-0.01
System Monitoring Compounds						
5) 2-Fluorophenol	5.57	112	1345688	113.70	ng	0.02
7) Phenol-d6	6.59	99	1614893	107.12	ng	0.00
23) Nitrobenzene-d5	7.53	82	1033624	74.88	ng	-0.01
41) 2,4,6-Tribromophenol	10.82	330	364306	136.70	ng	0.00
44) 2-Fluorobiphenyl	9.34	172	1875441	88.68	ng	-0.01
78) Terphenyl-d14	13.11	244	1567332	74.44	ng	-0.01
Target Compounds						
19) n-Nitroso-di-n-propylamine	7.53	70	134331	13.08	ng	# 84
25) Isophorone	7.53	82	819276	30.12	ng	# 65
50) 2,6-Dinitrotoluene	10.02	165	50156	9.87	ng	# 31
56) 2,4-Dinitrotoluene	10.02	165	50147	7.43	ng	# 20
64) 4,6-Dinitro-2-methylphenol	10.81	198	809	5.15	ng	# 1
66) 4-Bromophenyl-phenylether	10.81	248	25923	3.89	ng	# 1

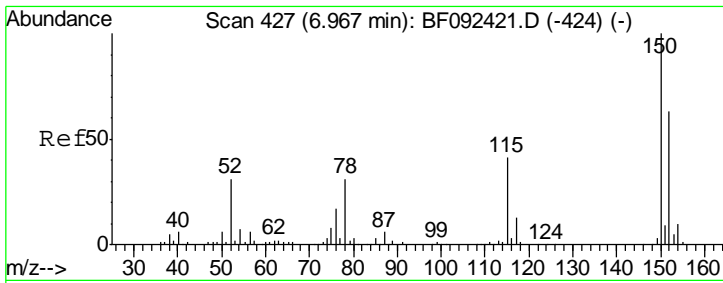
(#) = qualifier out of range (m) = manual integration (+) = signals summed

Data Path : Z:\HPCHEM1\BNA F\DATA\BF012517\
 Data File : BF092476.D
 Acq On : 25 Jan 2017 15:05
 Operator : SJ/MA
 Sample : PB96241BL
 Misc :
 ALS Vial : 14 Sample Multiplier: 1

Instrument :
 BNA_F
 ClientSampled :

Quant Time: Jan 25 17:22:52 2017
 Quant Method : Z:\HPCHEM1\BNA F\METHODS\8270-BF012417.M
 Quant Title : ASP BNA STANDARDS FOR 5 POINT CALIBRATION
 QLast Update : Tue Jan 24 13:48:07 2017
 Response via : Initial Calibration

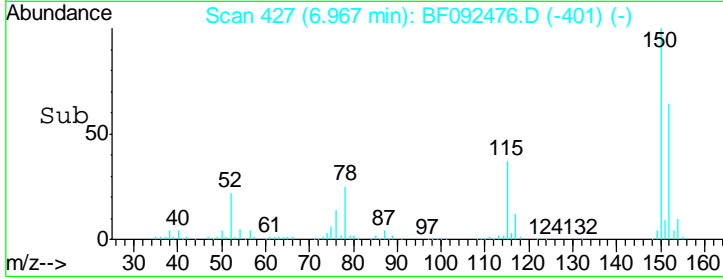
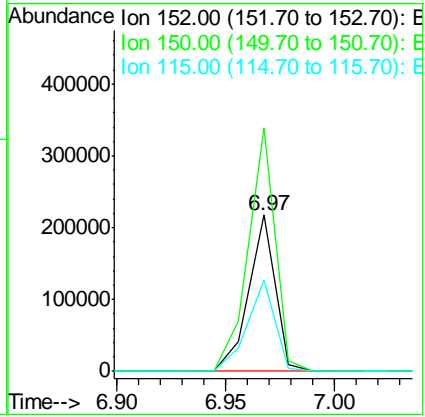
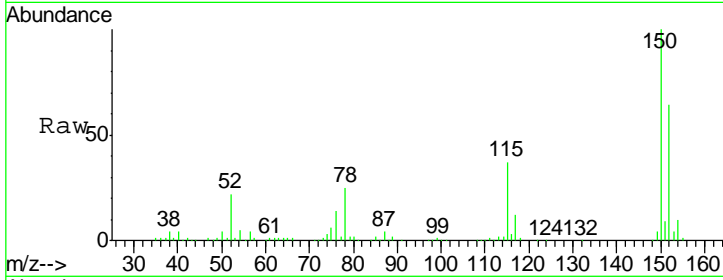




#1
 1,4-Dichlorobenzene-d4
 Concen: 20.00 ng
 RT: 6.97 min Scan# 427
 Delta R.T. -0.00 min
 Lab File: BF092476.D
 Acq: 25 Jan 2017 15:05

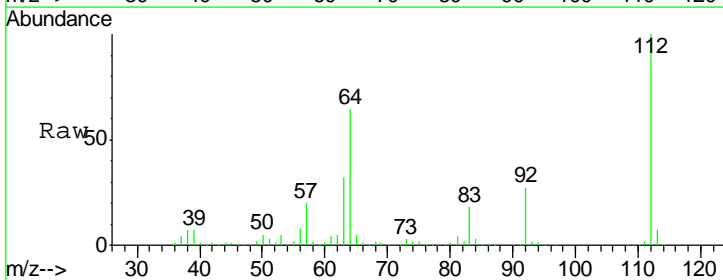
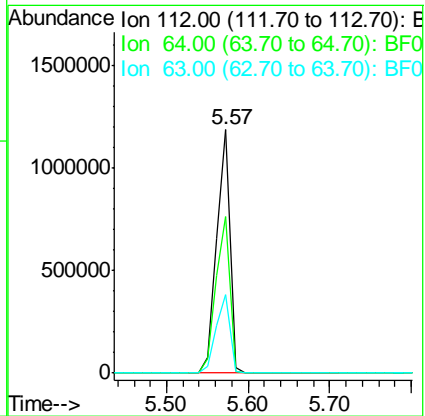
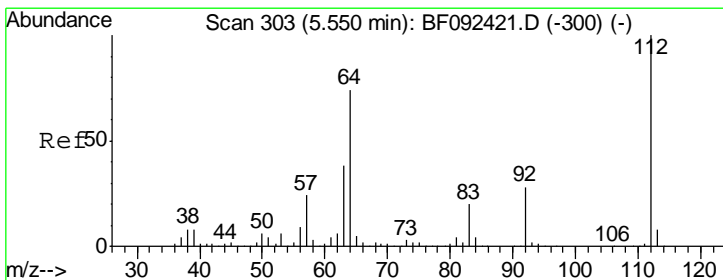
Instrument :
 BNA_F
 ClientSampled :

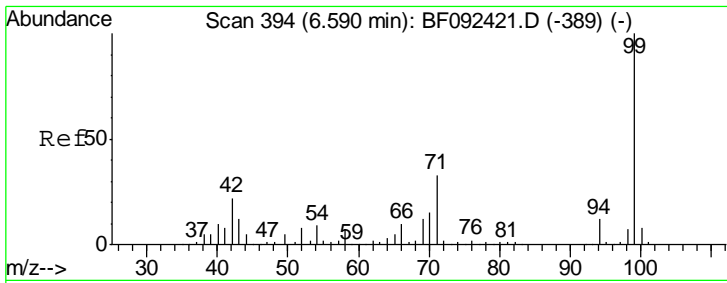
Tgt Ion	Resp	Lower	Upper
152	184137		
150	156.0	124.9	187.3
115	58.3	46.0	69.0



#5
 2-Fluorophenol
 Concen: 113.70 ng
 RT: 5.57 min Scan# 305
 Delta R.T. 0.02 min
 Lab File: BF092476.D
 Acq: 25 Jan 2017 15:05

Tgt Ion	Resp	Lower	Upper
112	1345688		
64	64.2	46.1	69.1
63	32.5	23.8	35.6



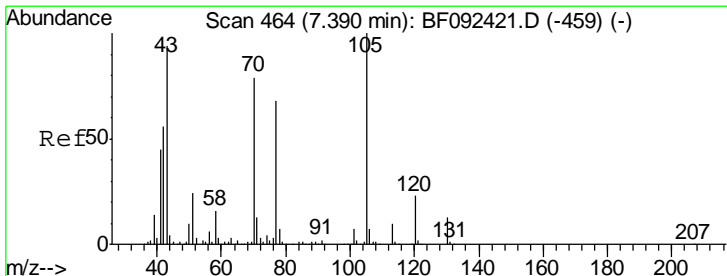
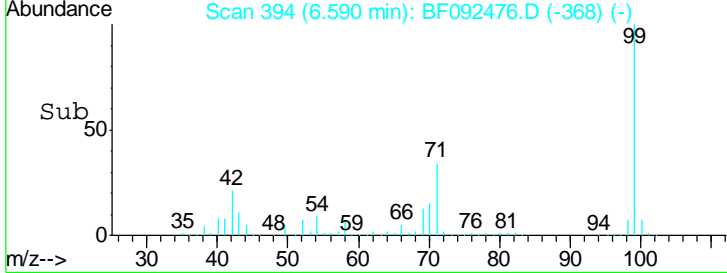
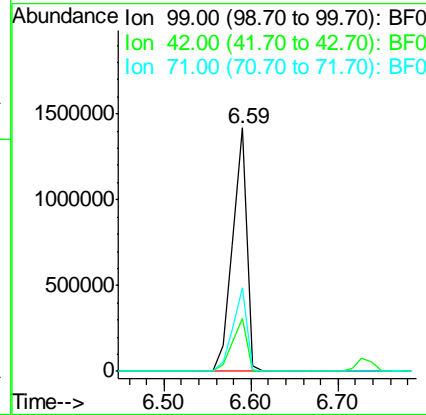
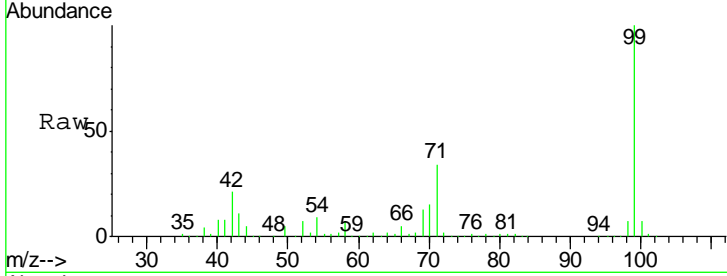


#7
 Phenol-d6
 Concen: 107.12 ng
 RT: 6.59 min Scan# 394
 Delta R.T. -0.00 min
 Lab File: BF092476.D
 Acq: 25 Jan 2017 15:05

Instrument :
 BNA_F
 ClientSampled :

Tgt Ion: 99 Resp: 1614893

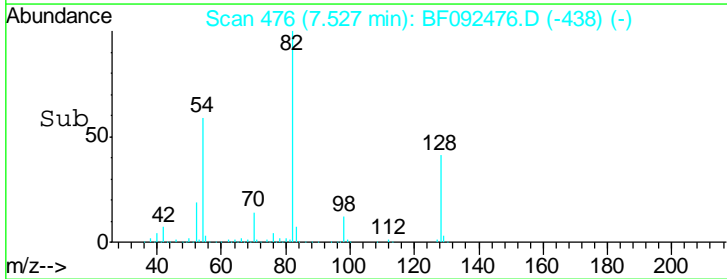
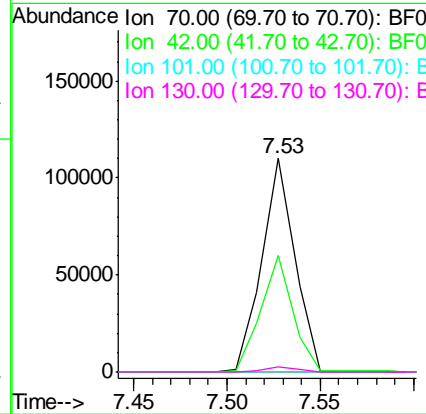
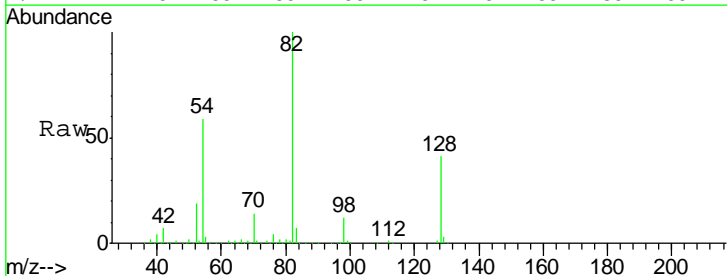
Ion	Ratio	Lower	Upper
99	100		
42	21.5	15.6	23.4
71	34.1	27.5	41.3

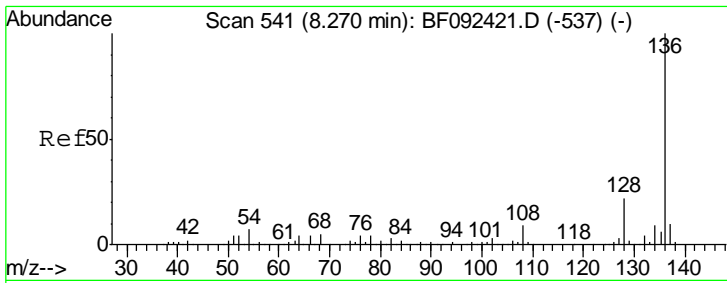


#19
 n-Nitroso-di-n-propylamine
 Concen: 13.08 ng
 RT: 7.53 min Scan# 476
 Delta R.T. 0.14 min
 Lab File: BF092476.D
 Acq: 25 Jan 2017 15:05

Tgt Ion: 70 Resp: 134331

Ion	Ratio	Lower	Upper
70	100		
42	54.6	49.4	74.0
101	0.0	7.4	11.2#
130	2.3	14.2	21.4#



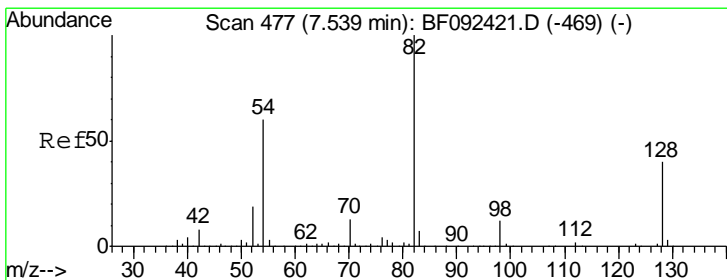
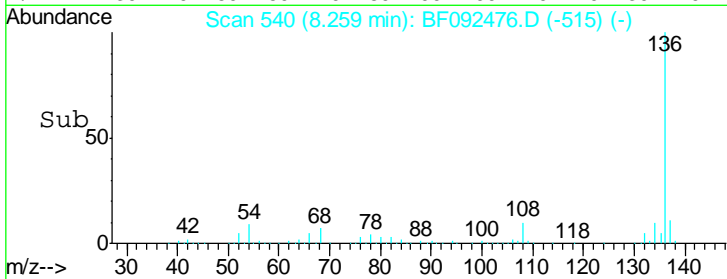
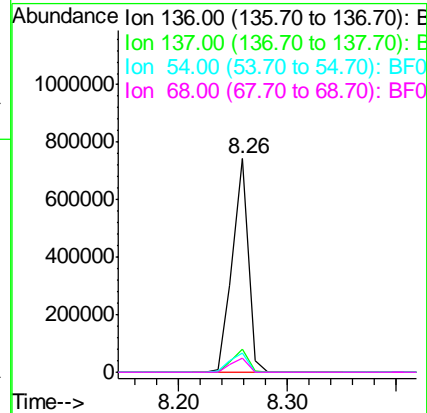
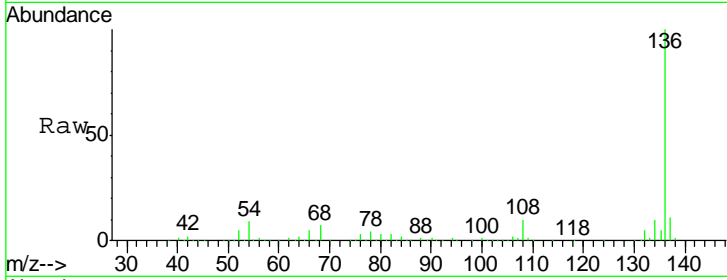


#21
 Naphthalene-d8
 Concen: 20.00 ng
 RT: 8.26 min Scan# 540
 Delta R.T. -0.01 min
 Lab File: BF092476.D
 Acq: 25 Jan 2017 15:05

Instrument :
 BNA_F
 ClientSampled :

Tgt Ion: 136 Resp: 754024

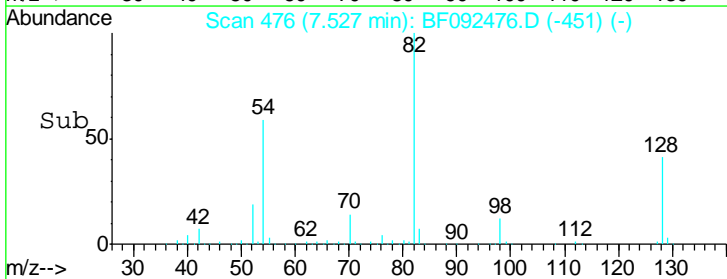
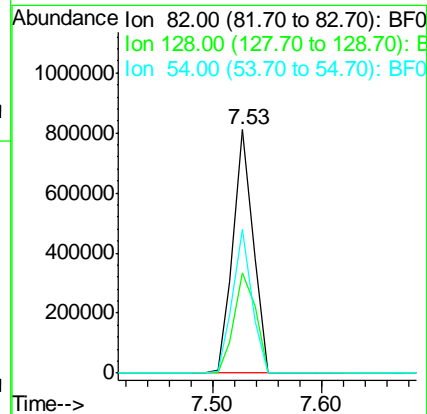
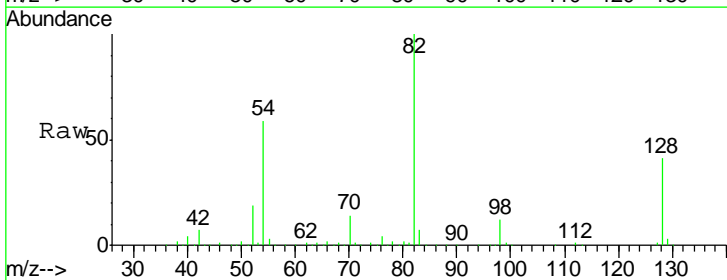
Ion	Ratio	Lower	Upper
136	100		
137	11.0	8.4	12.6
54	9.1	4.5	6.7#
68	6.7	3.6	5.4#

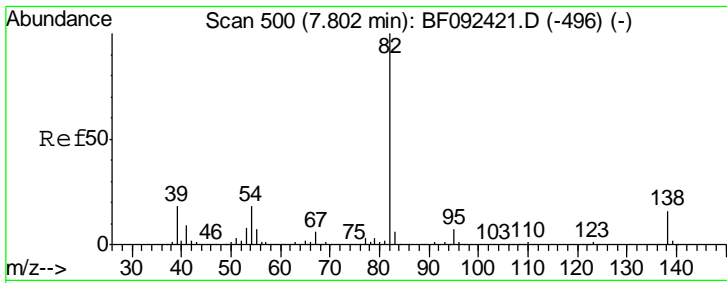


#23
 Nitrobenzene-d5
 Concen: 74.88 ng
 RT: 7.53 min Scan# 476
 Delta R.T. -0.01 min
 Lab File: BF092476.D
 Acq: 25 Jan 2017 15:05

Tgt Ion: 82 Resp: 1033624

Ion	Ratio	Lower	Upper
82	100		
128	41.3	34.6	52.0
54	59.0	39.5	59.3

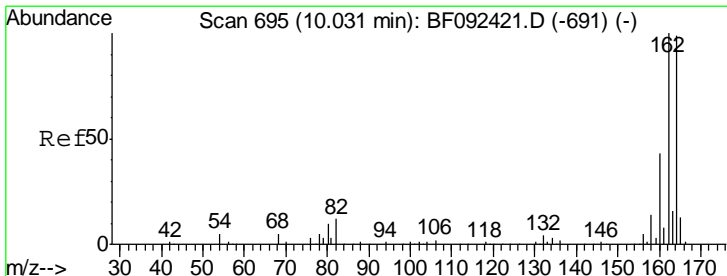
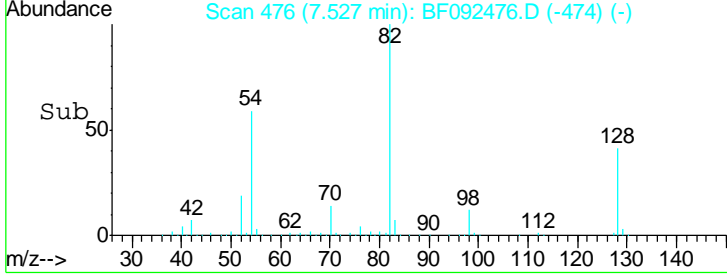
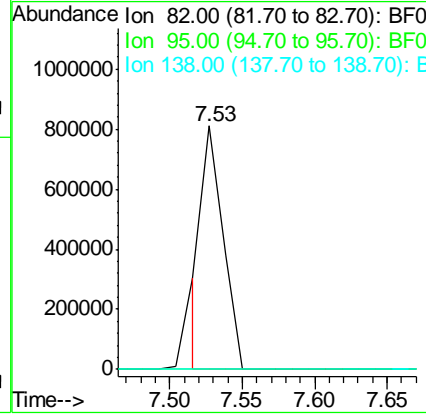
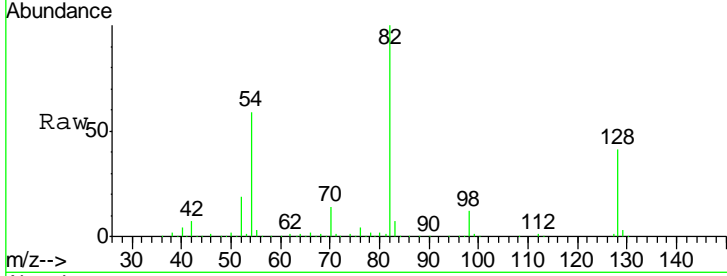




#25
 Isophorone
 Concen: 30.12 ng
 RT: 7.53 min Scan# 476
 Delta R.T. -0.27 min
 Lab File: BF092476.D
 Acq: 25 Jan 2017 15:05

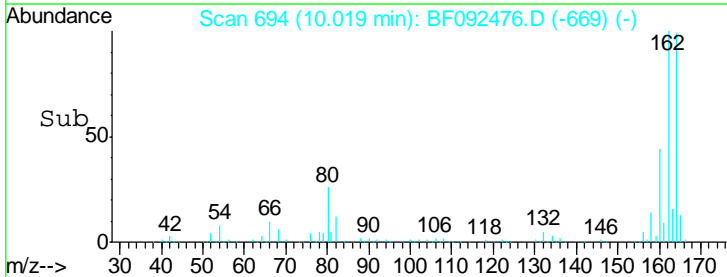
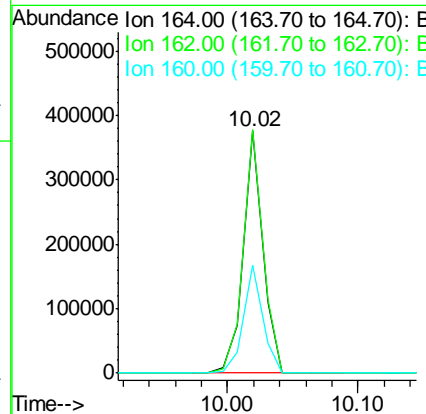
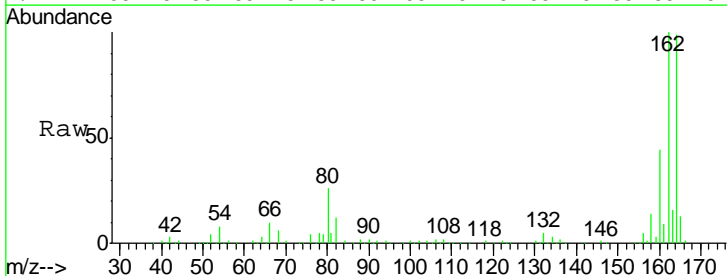
Instrument :
 BNA_F
 ClientSampled :

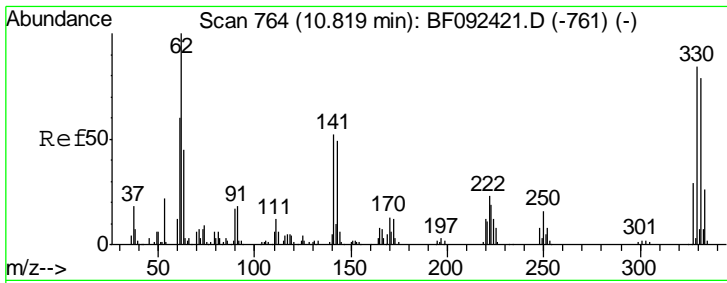
Tgt Ion	Resp	Lower	Upper
82	100		
95	0.0	5.6	8.4#
138	0.0	14.6	22.0#



#38
 Acenaphthene-d10
 Concen: 20.00 ng
 RT: 10.02 min Scan# 694
 Delta R.T. -0.01 min
 Lab File: BF092476.D
 Acq: 25 Jan 2017 15:05

Tgt Ion	Resp	Lower	Upper
164	100		
162	100.6	80.2	120.2
160	44.6	36.9	55.3

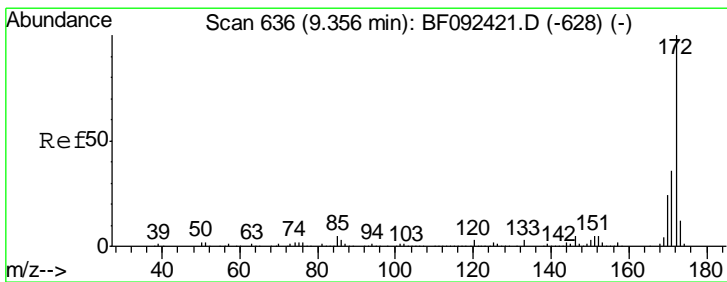
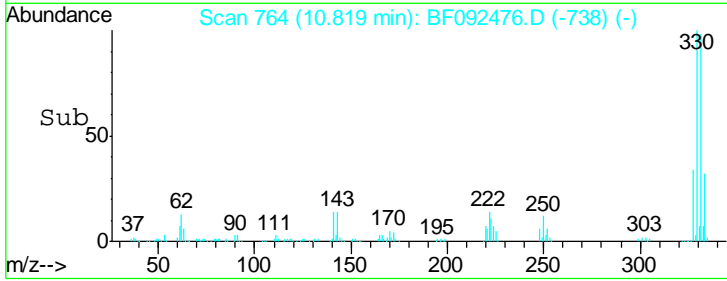
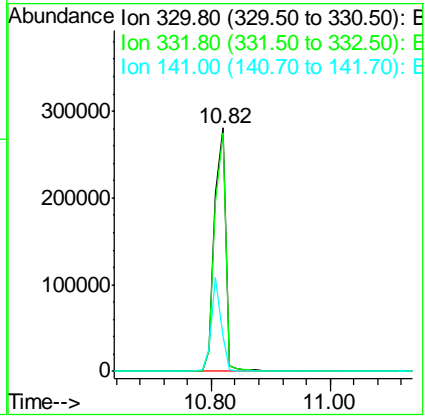
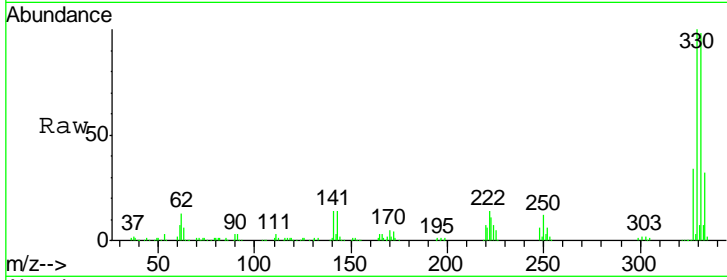




#41
 2,4,6-Tribromophenol
 Concen: 136.70 ng
 RT: 10.82 min Scan# 764
 Delta R.T. -0.00 min
 Lab File: BF092476.D
 Acq: 25 Jan 2017 15:05

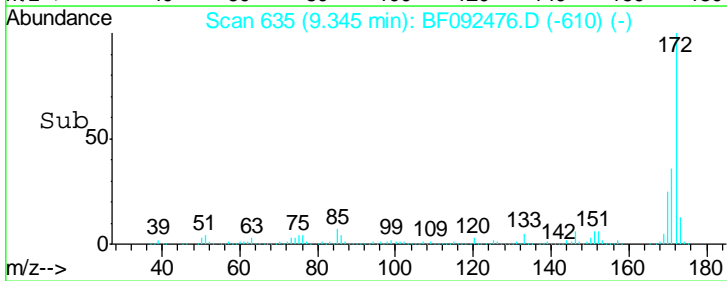
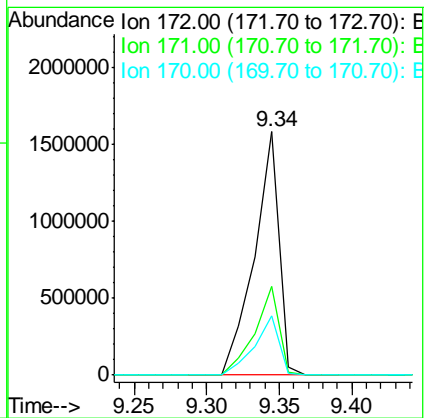
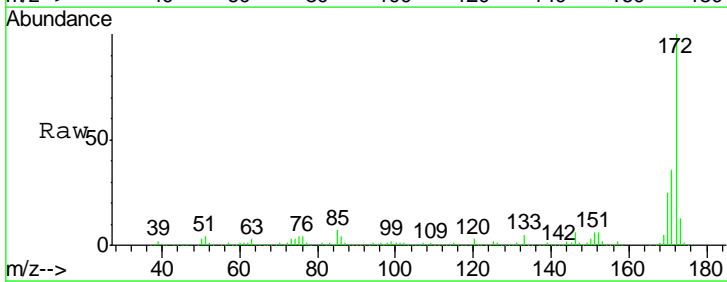
Instrument :
 BNA_F
 ClientSampled :

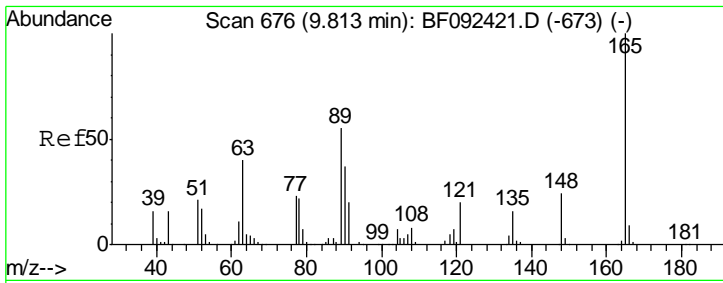
Tgt Ion	Resp	Lower	Upper
330	100		
332	96.6	77.4	116.2
141	34.6	34.1	51.1



#44
 2-Fluorobiphenyl
 Concen: 88.68 ng
 RT: 9.34 min Scan# 635
 Delta R.T. -0.01 min
 Lab File: BF092476.D
 Acq: 25 Jan 2017 15:05

Tgt Ion	Resp	Lower	Upper
172	100		
171	36.4	29.4	44.0
170	24.5	20.2	30.4

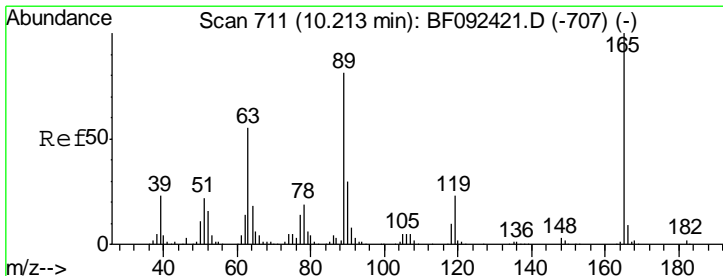
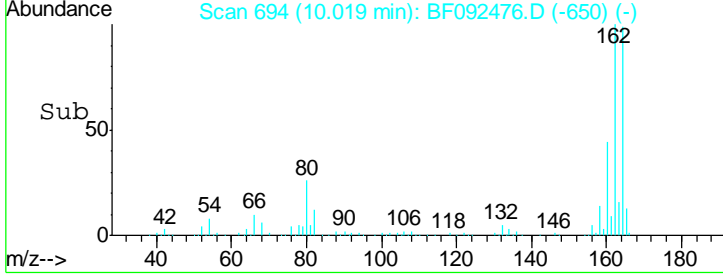
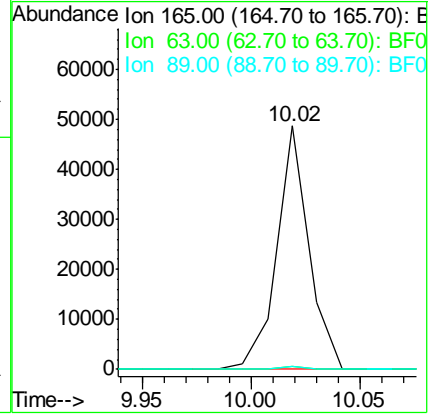
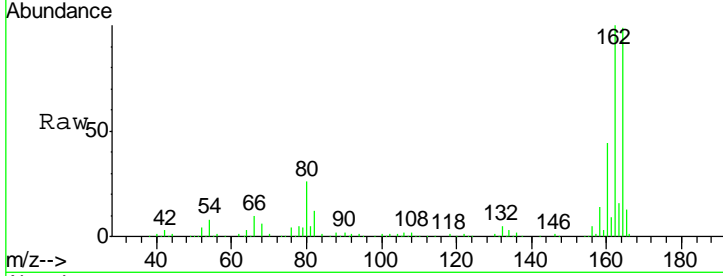




#50
 2,6-Dinitrotoluene
 Concen: 9.87 ng
 RT: 10.02 min Scan# 694
 Delta R.T. 0.21 min
 Lab File: BF092476.D
 Acq: 25 Jan 2017 15:05

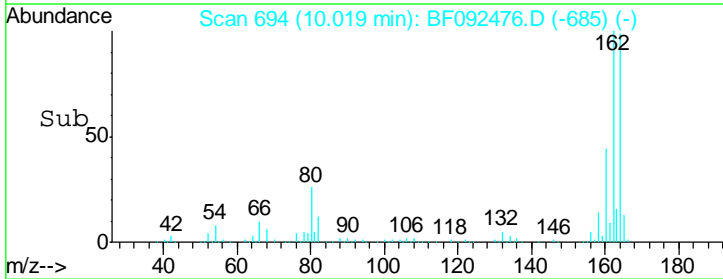
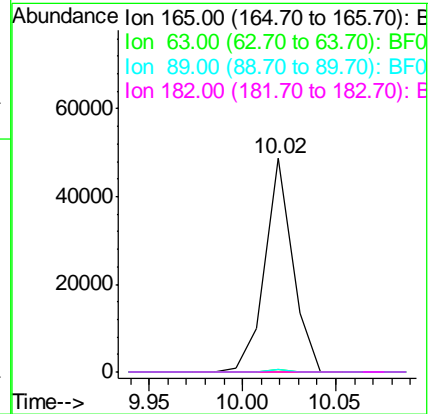
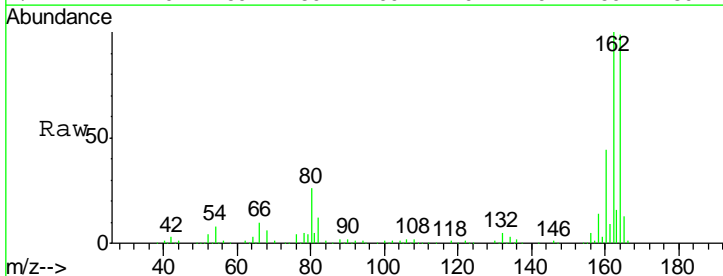
Instrument :
 BNA_F
 ClientSampled :

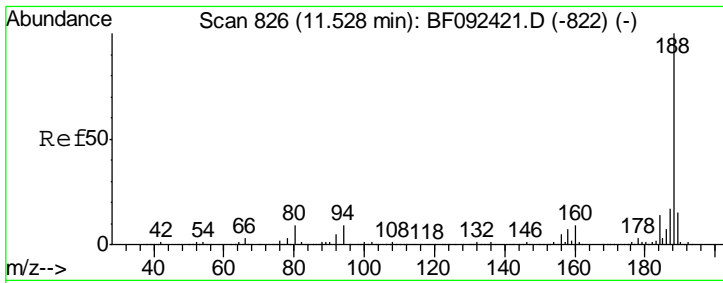
Tgt Ion	Resp	Lower	Upper
165	100		
63	1.1	36.2	54.4#
89	1.2	40.2	60.4#



#56
 2,4-Dinitrotoluene
 Concen: 7.43 ng
 RT: 10.02 min Scan# 694
 Delta R.T. -0.19 min
 Lab File: BF092476.D
 Acq: 25 Jan 2017 15:05

Tgt Ion	Resp	Lower	Upper
165	100		
63	1.1	40.2	60.4#
89	1.2	62.5	93.7#
182	0.0	1.8	2.8#

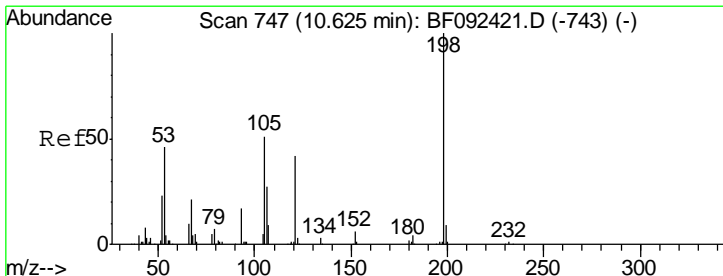
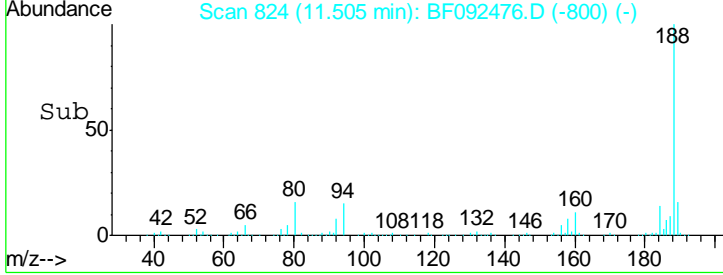
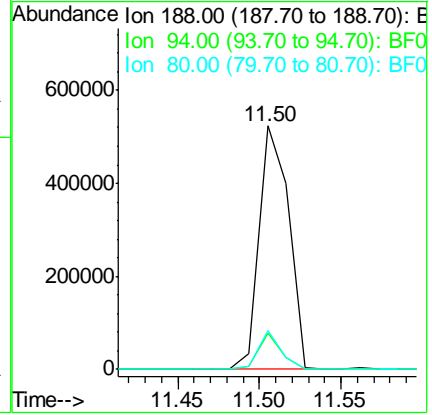
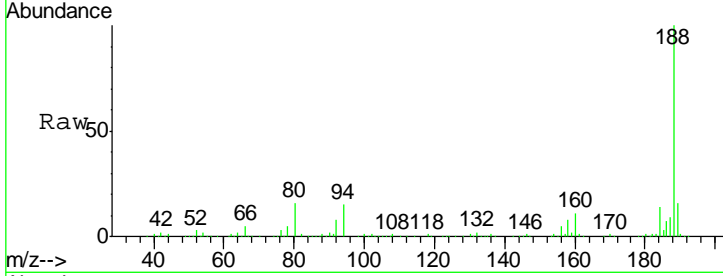




#63
 Phenanthrene-d10
 Concen: 20.00 ng
 RT: 11.50 min Scan# 824
 Delta R.T. -0.02 min
 Lab File: BF092476.D
 Acq: 25 Jan 2017 15:05

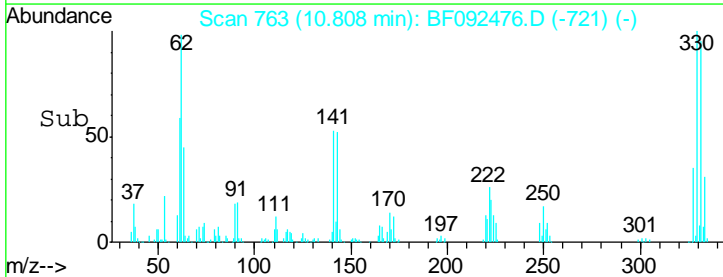
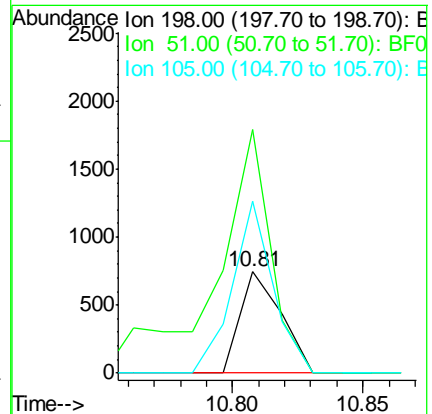
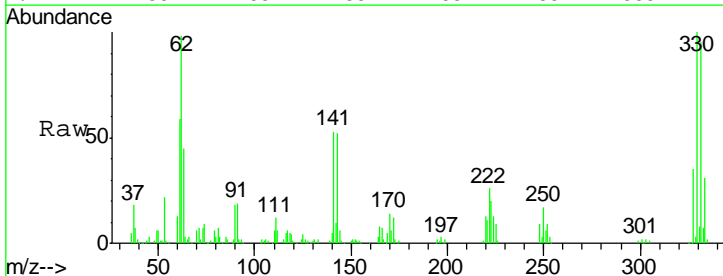
Instrument :
 BNA_F
 ClientSampled :

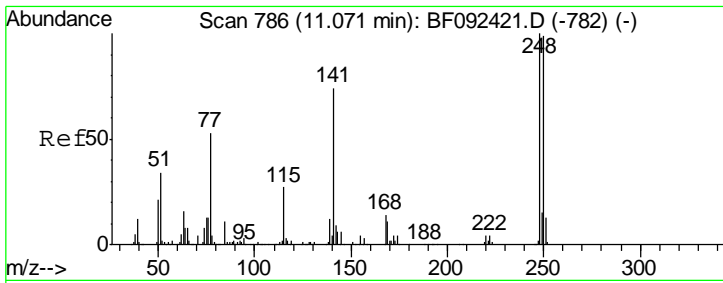
Tgt Ion	Resp	Lower	Upper
188	100		
94	15.0	10.0	15.0
80	16.1	11.2	16.8



#64
 4,6-Dinitro-2-methylphenol
 Concen: 5.15 ng
 RT: 10.81 min Scan# 763
 Delta R.T. 0.18 min
 Lab File: BF092476.D
 Acq: 25 Jan 2017 15:05

Tgt Ion	Resp	Lower	Upper
198	100		
51	240.6	6.7	46.7#
105	170.4	16.6	56.6#

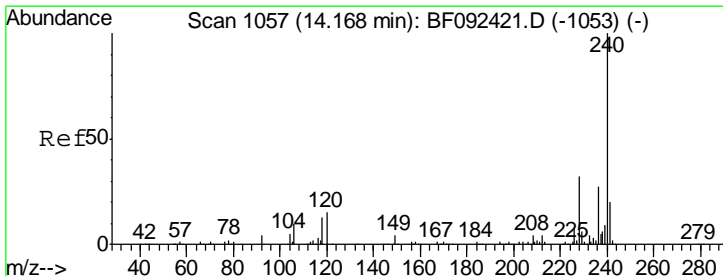
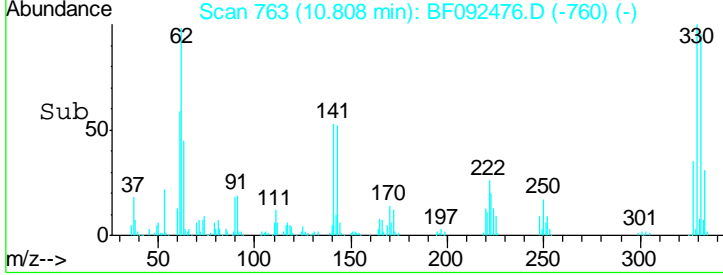
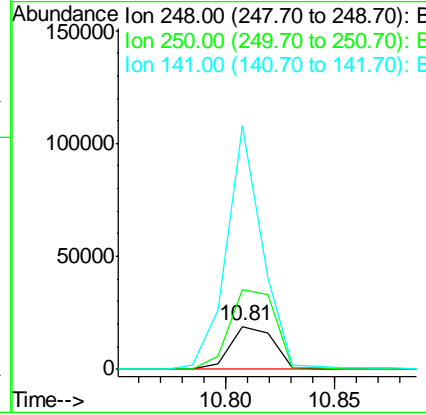
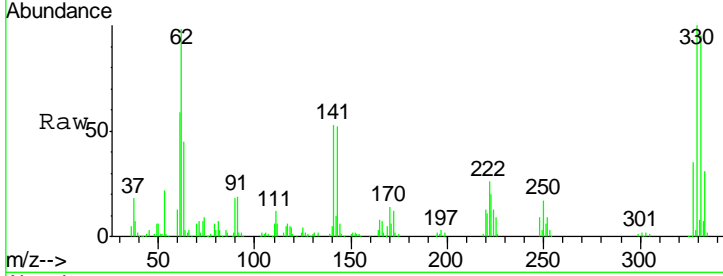




#66
 4-Bromophenyl-phenylether
 Concen: 3.89 ng
 RT: 10.81 min Scan# 763
 Delta R.T. -0.26 min
 Lab File: BF092476.D
 Acq: 25 Jan 2017 15:05

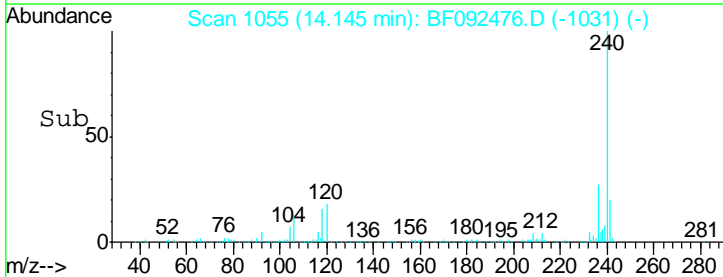
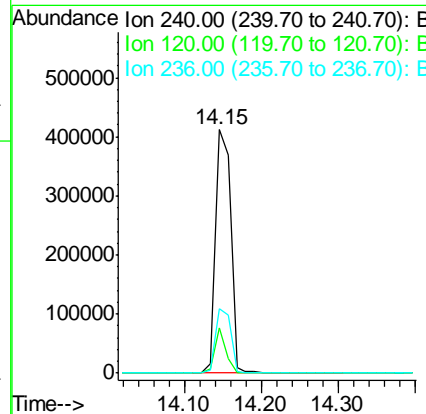
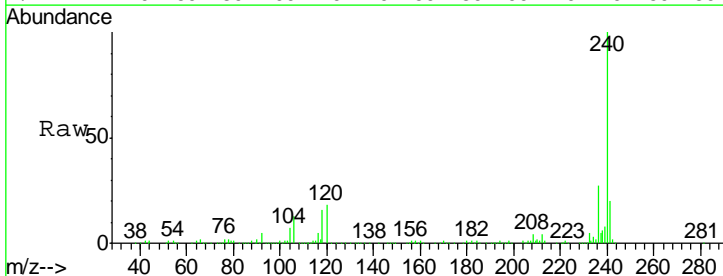
Instrument :
 BNA_F
 ClientSampled :

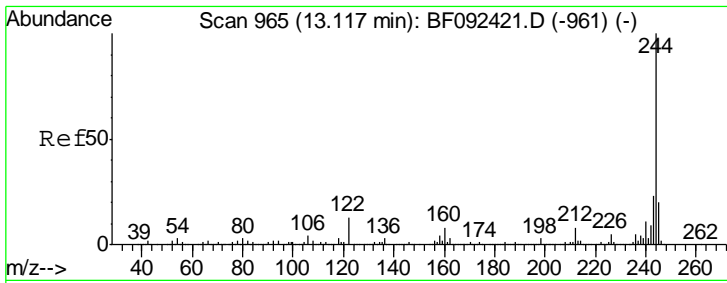
Tgt Ion	Resp	Lower	Upper
248	25923		
250	185.6	76.9	115.3#
141	565.9	68.2	102.4#



#75
 Chrysene-d12
 Concen: 20.00 ng
 RT: 14.15 min Scan# 1055
 Delta R.T. -0.02 min
 Lab File: BF092476.D
 Acq: 25 Jan 2017 15:05

Tgt Ion	Resp	Lower	Upper
240	560692		
120	18.4	12.9	19.3
236	26.7	20.9	31.3



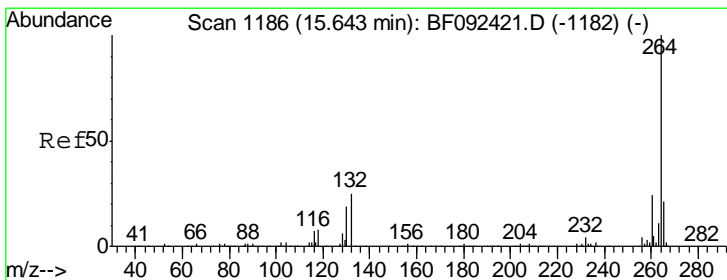
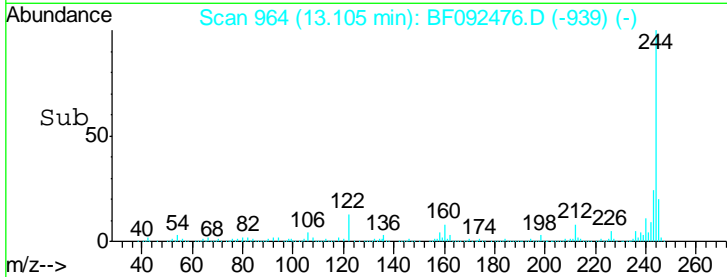
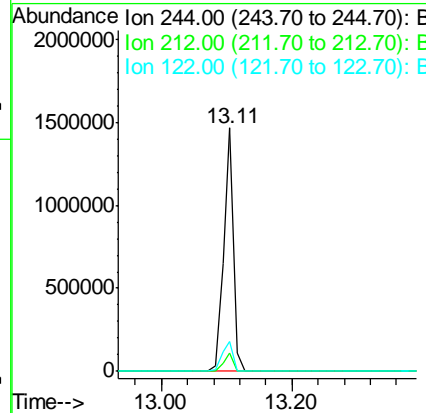
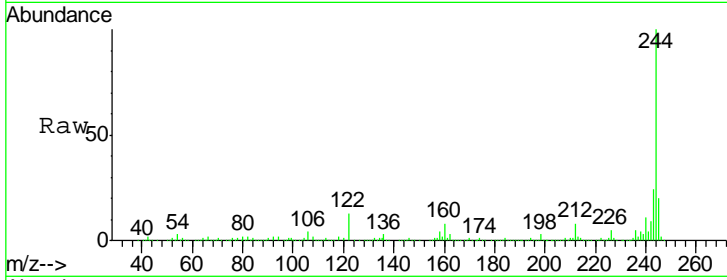


#78
 Terphenyl-d14
 Concen: 74.44 ng
 RT: 13.11 min Scan# 964
 Delta R.T. -0.01 min
 Lab File: BF092476.D
 Acq: 25 Jan 2017 15:05

Instrument :
 BNA_F
 ClientSampled :

Tgt Ion: 244 Resp: 1567332

Ion	Ratio	Lower	Upper
244	100		
212	7.7	6.2	9.2
122	12.5	11.4	17.2



#86
 Perylene-d12
 Concen: 20.00 ng
 RT: 15.63 min Scan# 1185
 Delta R.T. -0.01 min
 Lab File: BF092476.D
 Acq: 25 Jan 2017 15:05

Tgt Ion: 264 Resp: 433954

Ion	Ratio	Lower	Upper
264	100		
260	24.6	19.2	28.8
265	21.7	17.4	26.0

