

Data Path : U:\HPCHEM1\BNA F\DATA\BF012518\
 Data File : BF102429.D
 Acq On : 25 Jan 2018 16:34
 Operator : SJ/JU
 Sample : J1308-03DL 250X
 Misc :
 ALS Vial : 16 Sample Multiplier: 1

Instrument :
 BNA_F
 ClientSampleId :
 A2-SB70-E-S-8DL

Manual Integrations
 APPROVED

Sohil
 1/25/2018 5:42:36 PM

Quant Time: Jan 25 17:22:54 2018
 Quant Method : Z:\HPCHEM1\BNA F\METHODS\8270-BF012218.M
 Quant Title : ASP BNA STANDARDS FOR 5 POINT CALIBRATION
 QLast Update : Thu Jan 25 13:44:56 2018
 Response via : Initial Calibration

Internal Standards	R.T.	QIon	Response	Conc	Units	Dev(Min)
1) 1,4-Dichlorobenzene-d4	6.72	152	128501	20.00	ng	0.00
21) Naphthalene-d8	8.00	136	525733	20.00	ng	0.00
38) Acenaphthene-d10	9.75	164	226836	20.00	ng	0.00
63) Phenanthrene-d10	11.24	188	351089	20.00	ng	0.00
75) Chrysene-d12	13.87	240	244718	20.00	ng	0.00
86) Perylene-d12	15.30	264	242918	20.00	ng	0.00

System Monitoring Compounds

5) 2-Fluorophenol	0.00	112	0	0.00	ng	
7) Phenol-d6	0.00	99	0	0.00	ng	
23) Nitrobenzene-d5	7.29	82	246	0.03	ng	0.00
41) 2,4,6-Tribromophenol	0.00	330	0	0.00	ng	
44) 2-Fluorobiphenyl	9.07	172	944	0.06	ng	-0.01
78) Terphenyl-d14	12.82	244	1274	0.12	ng	-0.01

Target Compounds

						Qvalue
31) Naphthalene	8.03	128	1780837	67.844	ng	100
37) 2-Methylnaphthalene	8.71	142	271474	15.530	ng	98
45) 1,1'-Biphenyl	9.17	154	63948	3.153	ng	97
48) Acenaphthylene	9.61	152	73445	2.990	ng	97
51) Acenaphthene	9.79	154	207517	14.466	ng	99
54) Dibenzofuran	9.96	168	223052	11.489	ng	98
57) Fluorene	10.30	166	259357	16.859	ng	99
70) Phenanthrene	11.26	178	697381	34.087	ng	99
71) Anthracene	11.31	178	203895	9.764	ng	98
72) Carbazole	11.47	167	77331	3.796	ng	99
74) Fluoranthene	12.45	202	395953	18.979	ng	95
77) Pyrene	12.67	202	284445	15.034	ng	98
80) Benzo(a)anthracene	13.86	228	134106m	8.901	ng	
82) Chrysene	13.90	228	94882	6.201	ng	98
85) Indeno(1,2,3-cd)pyrene	16.69	276	32721	2.590	ng	95
87) Benzo(b)fluoranthene	14.89	252	115550m	7.339	ng	
88) Benzo(k)fluoranthene	14.92	252	39347m	2.645	ng	
89) Benzo(a)pyrene	15.24	252	86755	6.110	ng	98
91) Benzo(a,h,i)perylene	17.10	276	28670	2.524	ng	# 89

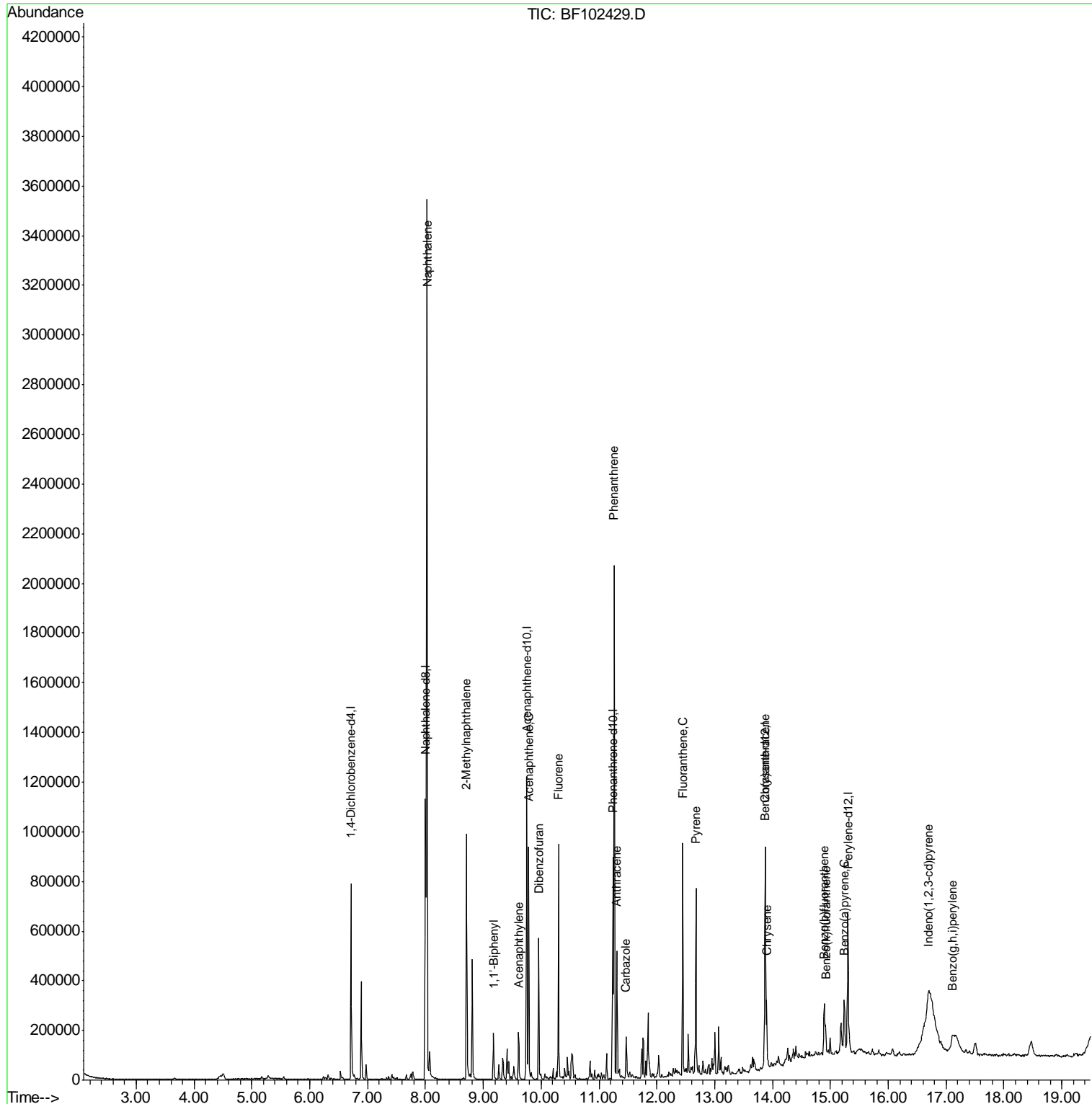
(#) = qualifier out of range (m) = manual integration (+) = signals summed

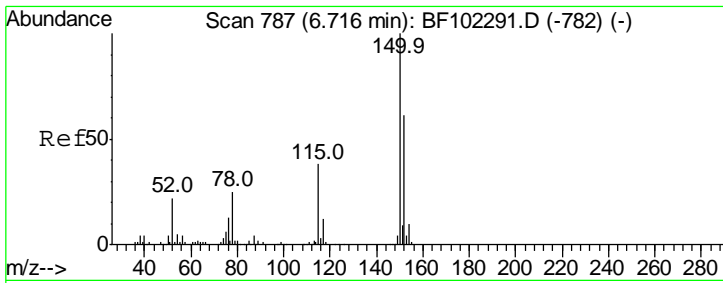
Data Path : U:\HPCHEM1\BNA F\DATA\BF012518\
 Data File : BF102429.D
 Acq On : 25 Jan 2018 16:34
 Operator : SJ/JU
 Sample : J1308-03DL 250X
 Misc :
 ALS Vial : 16 Sample Multiplier: 1

Instrument :
 BNA_F
Client Sampled :
 A2-SB70-E-S-8DL

Manual Integrations
APPROVED
 Sohil
 1/25/2018 5:42:36 PM

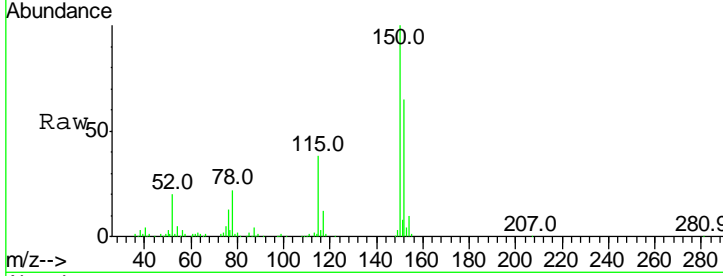
Quant Time: Jan 25 17:22:54 2018
 Quant Method : Z:\HPCHEM1\BNA F\METHODS\8270-BF012218.M
 Quant Title : ASP BNA STANDARDS FOR 5 POINT CALIBRATION
 QLast Update : Thu Jan 25 13:44:56 2018
 Response via : Initial Calibration





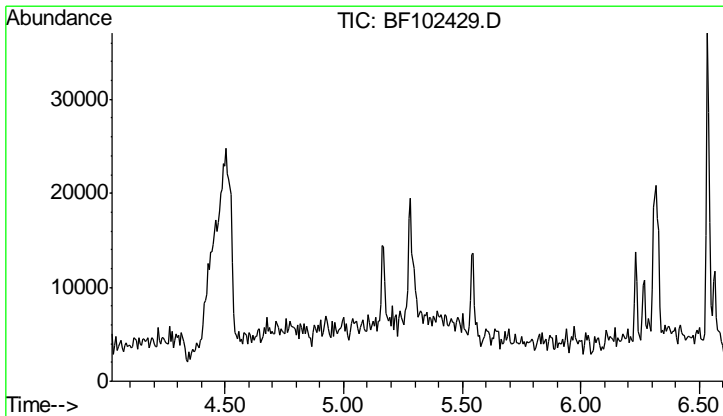
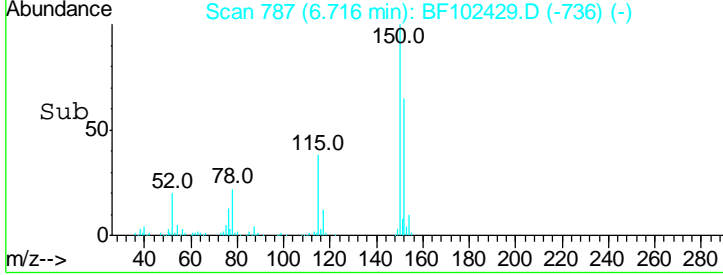
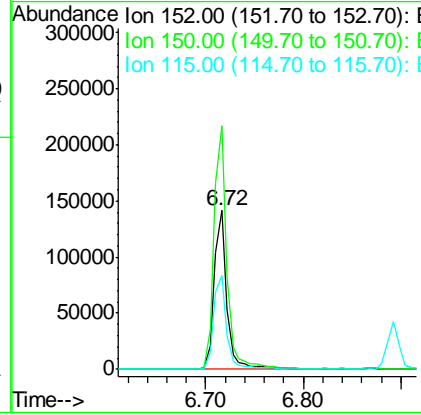
#1
 1,4-Dichlorobenzene-d4
 Concen: 20.000 ng
 RT: 6.72 min Scan# 787
 Delta R.T. 0.00 min
 Lab File: BF102429.D
 Acq: 25 Jan 2018 16:34

Instrument :
 BNA_F
ClientSampled :
 A2-SB70-E-S-8DL



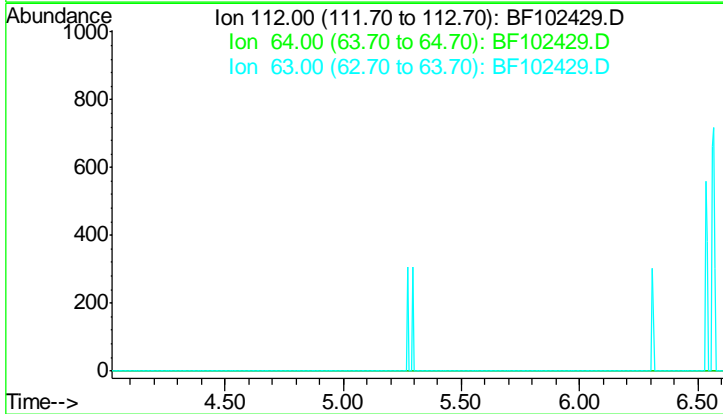
Tgt Ion	Resp	Lower	Upper
152	128501		
152	100		
150	153.5	124.6	186.8
115	59.0	50.1	75.1

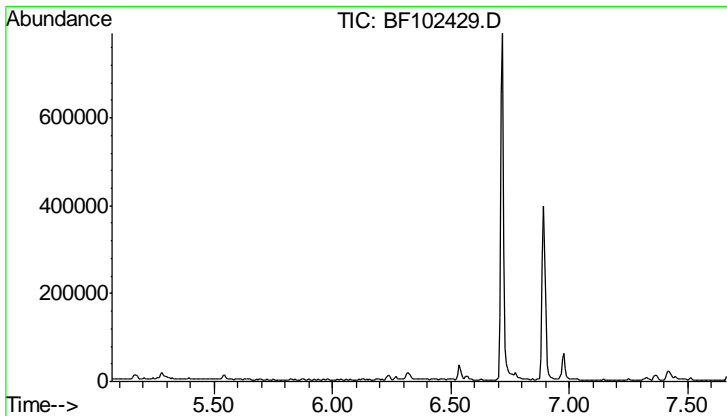
Manual Integrations
APPROVED
 Sohil
 1/25/2018 5:42:36 PM



#5
 2-Fluorophenol
 Concen: 0.000 ng
 Expected RT: 5.32 min
 Lab File: BF102429.D
 Acq: 25 Jan 2018 16:34

Tgt Ion	Sig	Exp Ratio
112	100	
64	59.9	
63	29.6	



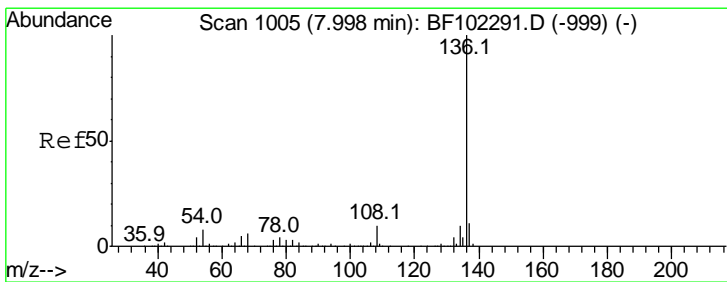
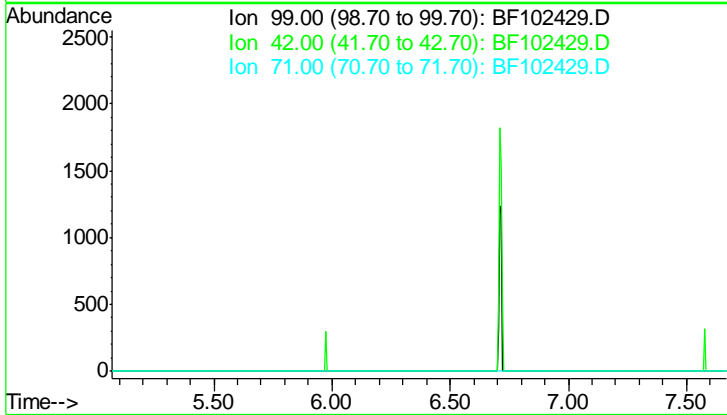


#7
 Phenol-d6
 Concen: 0.000 ng
 Expected RT: 6.37 min
 Lab File: BF102429.D
 Acq: 25 Jan 2018 16:34

Instrument :
 BNA_F
ClientSampled :
 A2-SB70-E-S-8DL

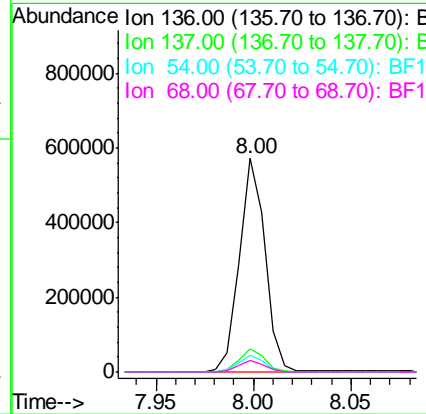
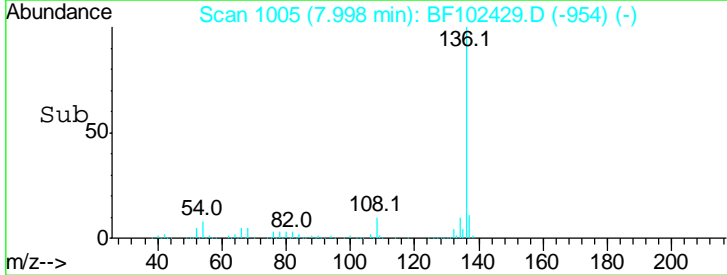
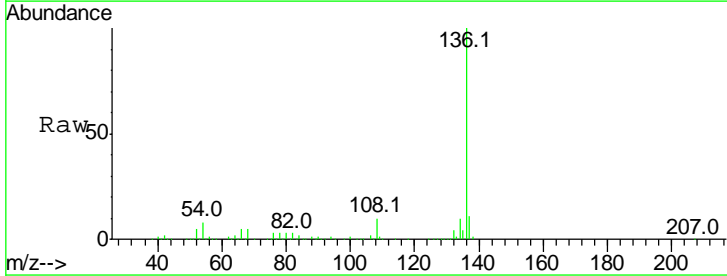
Tgt Ion	Exp Ratio
99	100
42	18.1
71	31.7

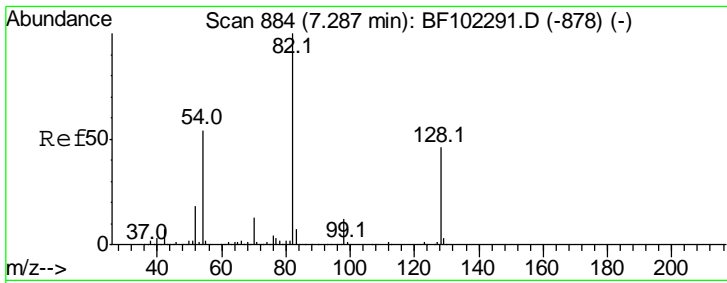
Manual Integrations
APPROVED
 Sohil
 1/25/2018 5:42:36 PM



#21
 Naphthalene-d8
 Concen: 20.000 ng
 RT: 8.00 min Scan# 1005
 Delta R.T. 0.00 min
 Lab File: BF102429.D
 Acq: 25 Jan 2018 16:34

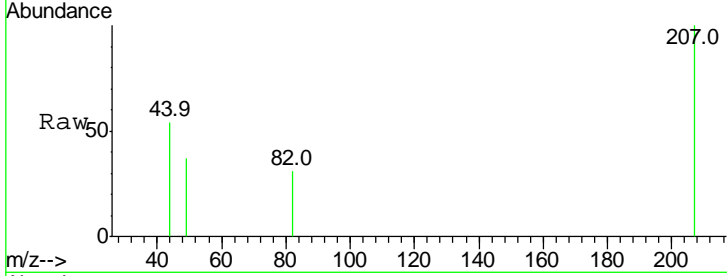
Tgt Ion	Resp	Lower	Upper
136	525733		
136	100		
137	11.1	8.9	13.3
54	7.8	6.6	9.8
68	5.5	5.0	7.4





#23
 Nitrobenzene-d5
 Concen: 0.027 ng
 RT: 7.29 min Scan# 884
 Delta R.T. -0.01 min
 Lab File: BF102429.D
 Acq: 25 Jan 2018 16:34

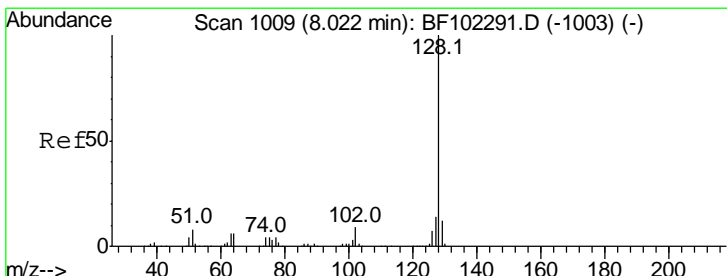
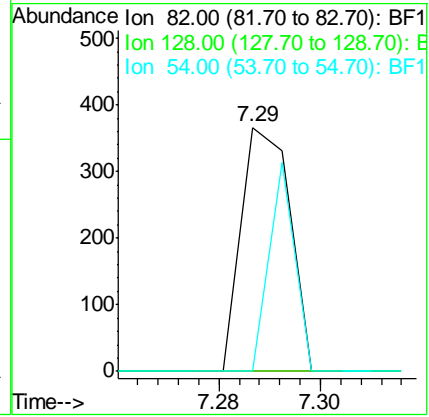
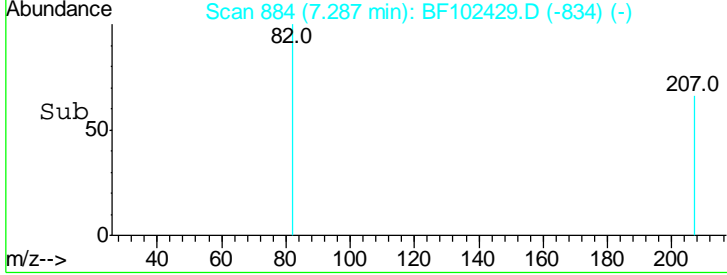
Instrument :
 BNA_F
ClientSampled :
 A2-SB70-E-S-8DL



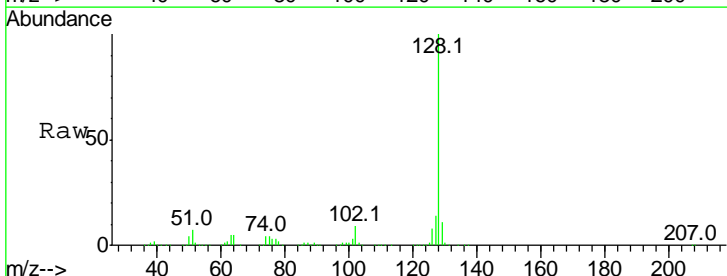
Tgt Ion: 82 Resp: 246

Ion	Ratio	Lower	Upper
82	100		
128	0.0	36.1	54.1#
54	0.0	41.4	62.2#

Manual Integrations
APPROVED
 Sohil
 1/25/2018 5:42:36 PM

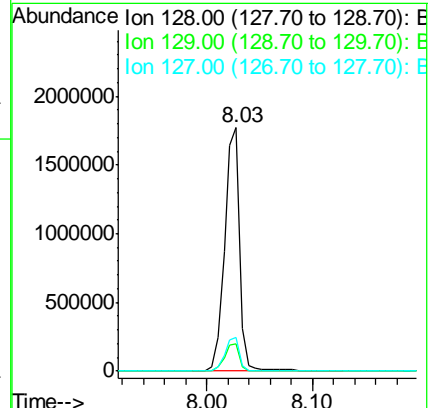
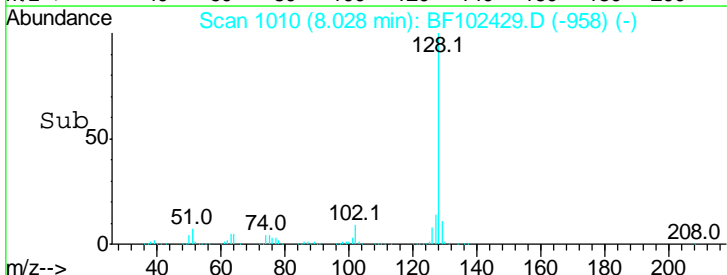


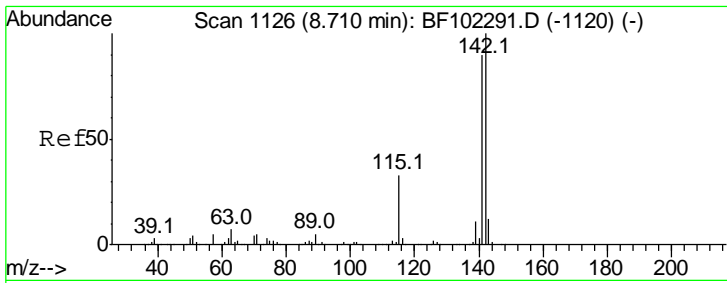
#31
 Naphthalene
 Concen: 67.844 ng
 RT: 8.03 min Scan# 1010
 Delta R.T. 0.01 min
 Lab File: BF102429.D
 Acq: 25 Jan 2018 16:34



Tgt Ion: 128 Resp: 1780837

Ion	Ratio	Lower	Upper
128	100		
129	11.1	8.8	13.2
127	13.6	10.9	16.3



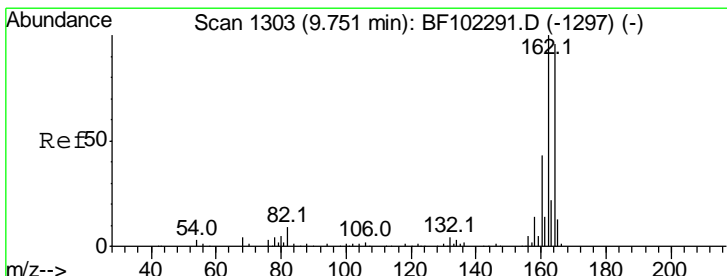
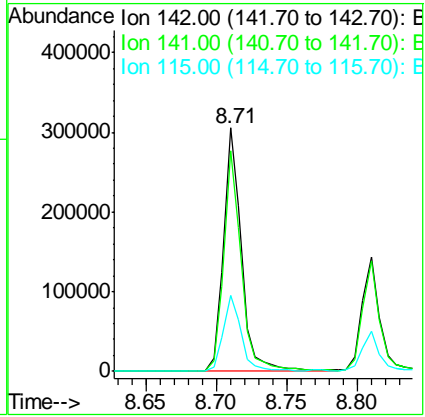
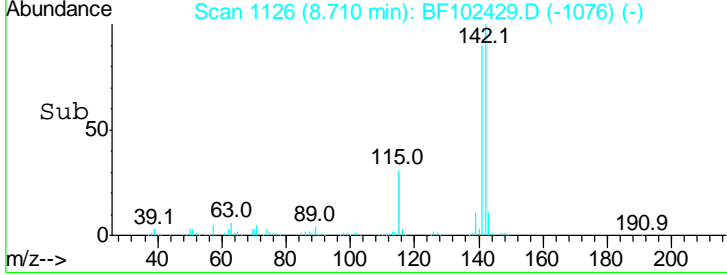
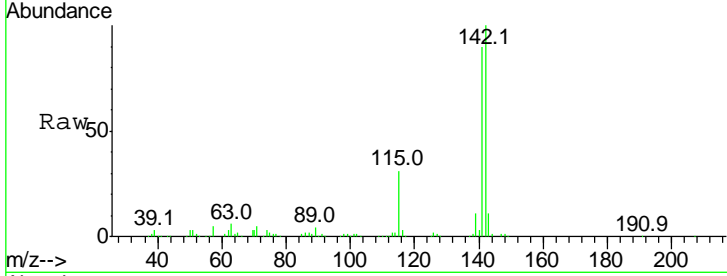


#37
 2-Methylnaphthalene
 Concen: 15.530 ng
 RT: 8.71 min Scan# 1126
 Delta R.T. -0.01 min
 Lab File: BF102429.D
 Acq: 25 Jan 2018 16:34

Instrument :
 BNA_F
ClientSampled :
 A2-SB70-E-S-8DL

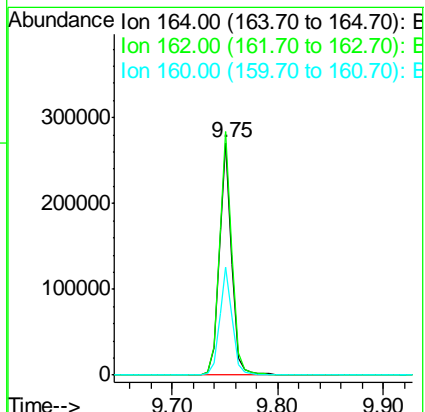
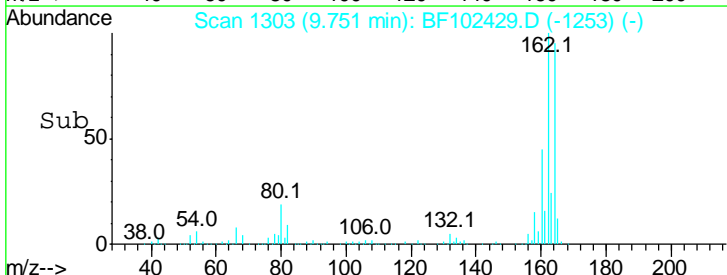
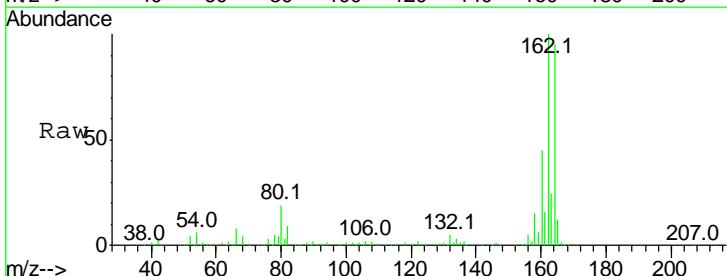
Tgt Ion	Resp	Lower	Upper
142	100		
141	90.4	70.8	106.2
115	31.2	26.1	39.1

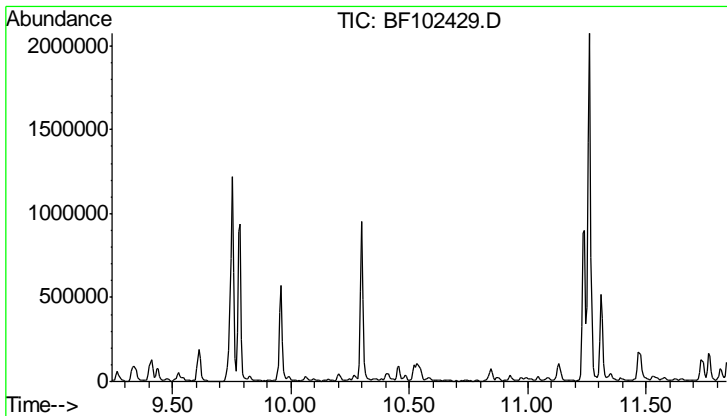
Manual Integrations
APPROVED
 Sohil
 1/25/2018 5:42:36 PM



#38
 Acenaphthene-d10
 Concen: 20.000 ng
 RT: 9.75 min Scan# 1303
 Delta R.T. -0.01 min
 Lab File: BF102429.D
 Acq: 25 Jan 2018 16:34

Tgt Ion	Resp	Lower	Upper
164	100		
162	104.7	86.1	129.1
160	46.7	38.3	57.5



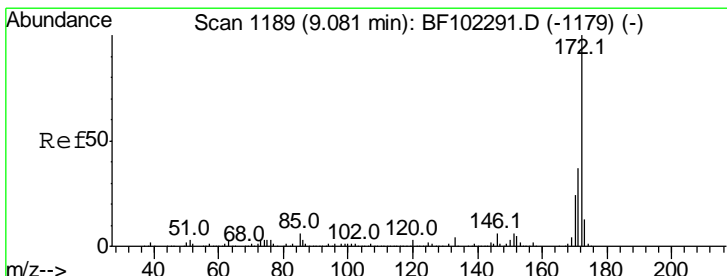
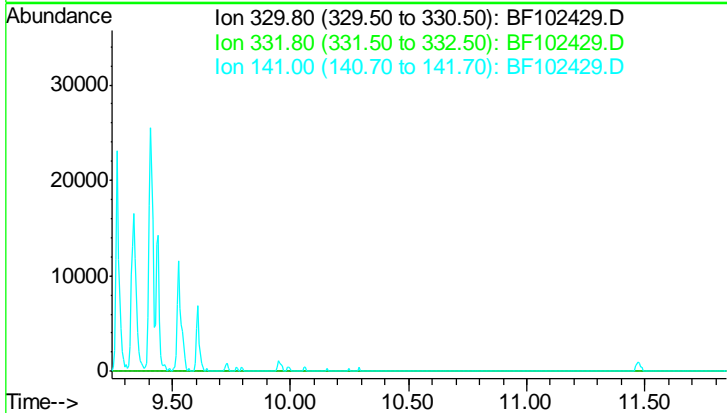


#41
 2,4,6-Tribromophenol
 Concen: 0.000 ng
 Expected RT: 10.55 min
 Lab File: BF102429.D
 Acq: 25 Jan 2018 16:34

Instrument :
 BNA_F
ClientSampled :
 A2-SB70-E-S-8DL

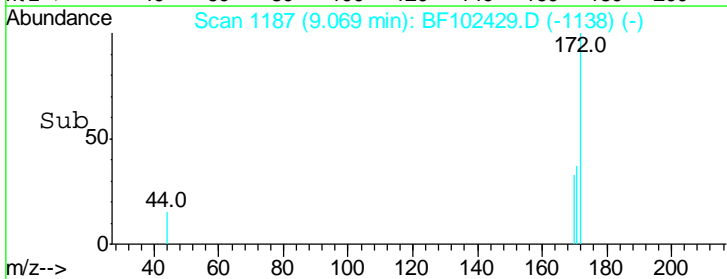
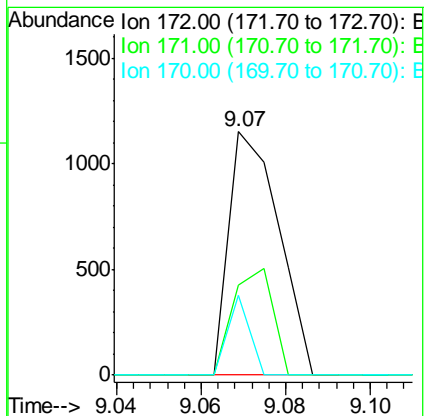
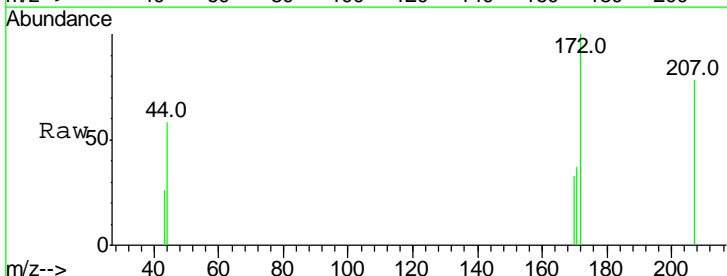
Tgt Ion	Exp Ratio
330	100
332	96.3
141	37.4

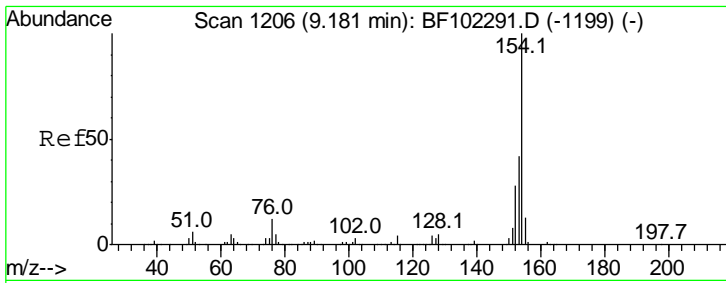
Manual Integrations
APPROVED
 Sohil
 1/25/2018 5:42:36 PM



#44
 2-Fluorobiphenyl
 Concen: 0.061 ng
 RT: 9.07 min Scan# 1187
 Delta R.T. -0.01 min
 Lab File: BF102429.D
 Acq: 25 Jan 2018 16:34

Tgt Ion	Resp	Lower	Upper
172	100		
171	36.9	29.7	44.5
170	32.7	19.6	29.4





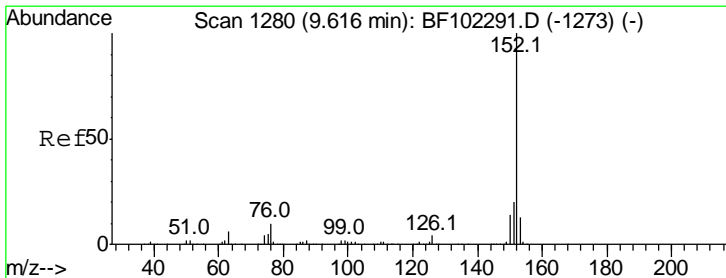
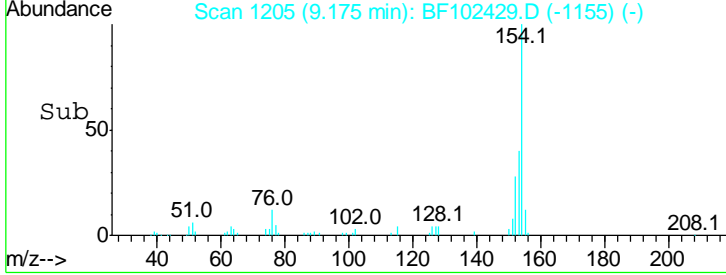
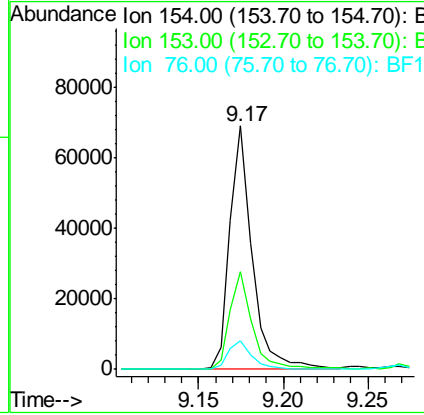
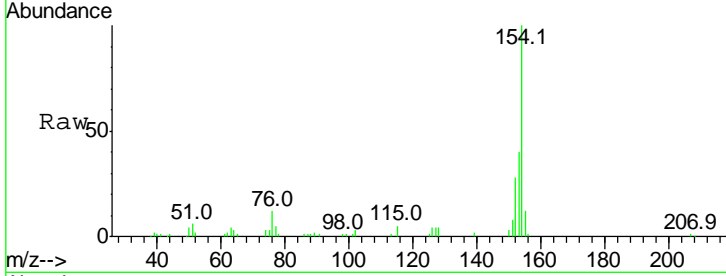
#45
 1,1'-Biphenyl
 Concen: 3.153 ng
 RT: 9.17 min Scan# 1205
 Delta R.T. -0.01 min
 Lab File: BF102429.D
 Acq: 25 Jan 2018 16:34

Instrument :
 BNA_F
ClientSampled :
 A2-SB70-E-S-8DL

Tgt Ion	Resp	Lower	Upper
154	100		
153	39.9	21.3	61.3
76	11.5	0.0	34.0

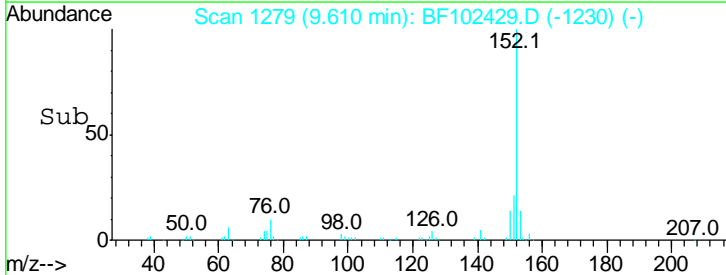
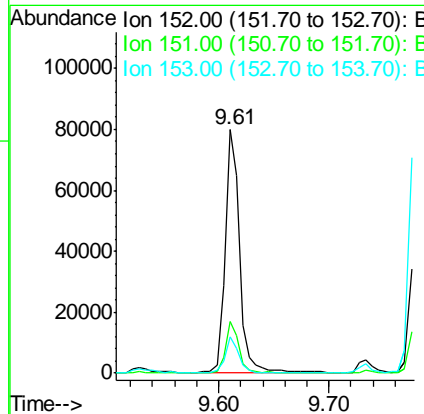
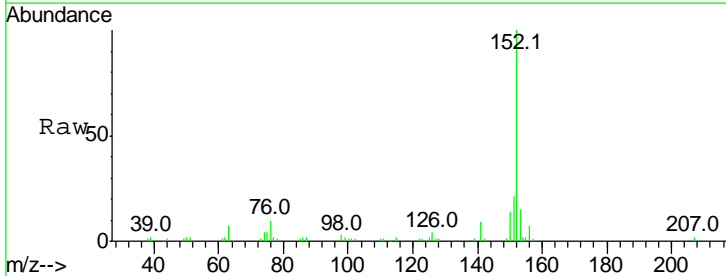
Manual Integrations
APPROVED

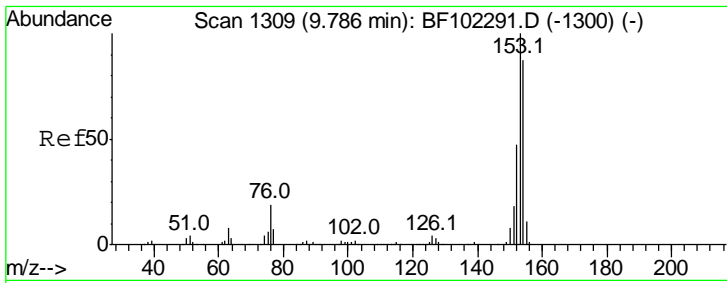
Sohil
 1/25/2018 5:42:36 PM



#48
 Acenaphthylene
 Concen: 2.990 ng
 RT: 9.61 min Scan# 1279
 Delta R.T. -0.01 min
 Lab File: BF102429.D
 Acq: 25 Jan 2018 16:34

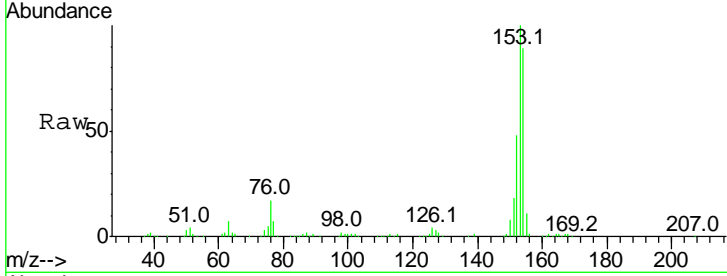
Tgt Ion	Resp	Lower	Upper
152	100		
151	21.3	16.3	24.5
153	14.8	10.7	16.1





#51
 Acenaphthene
 Concen: 14.466 ng
 RT: 9.79 min Scan# 1309
 Delta R.T. -0.01 min
 Lab File: BF102429.D
 Acq: 25 Jan 2018 16:34

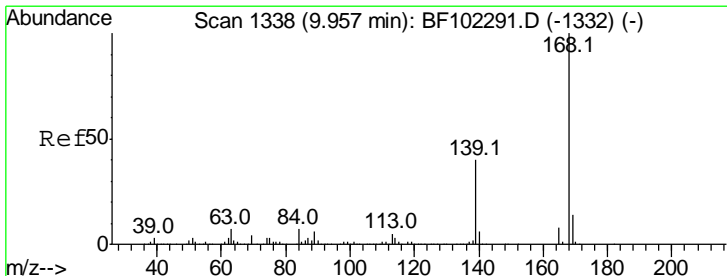
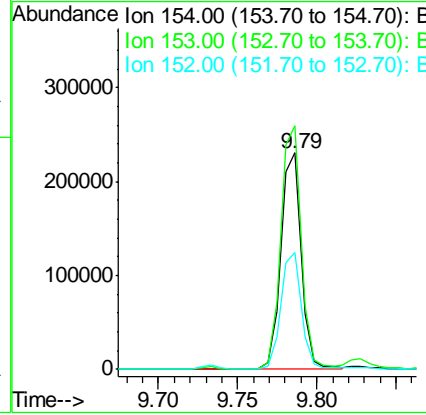
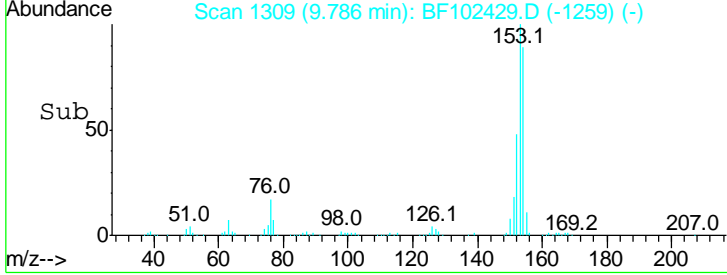
Instrument :
 BNA_F
 ClientSampled :
 A2-SB70-E-S-8DL



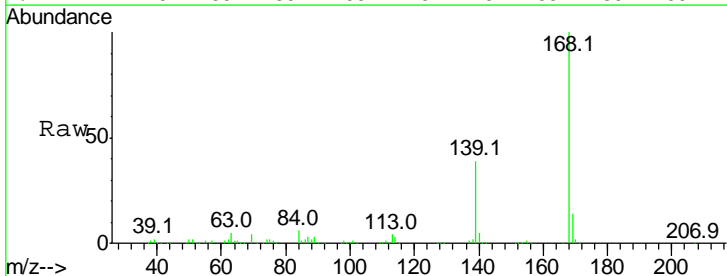
Tgt Ion:154 Resp: 207517

Ion	Ratio	Lower	Upper
154	100		
153	112.4	91.2	136.8
152	54.2	43.8	65.8

Manual Integrations
 APPROVED
 Sohil
 1/25/2018 5:42:36 PM

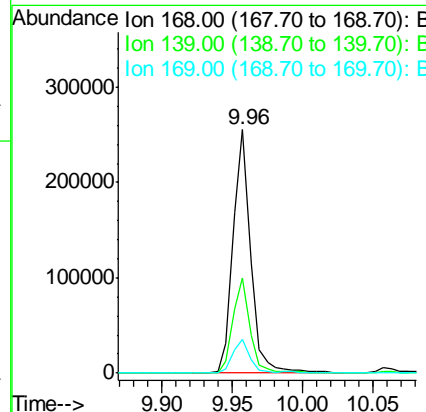
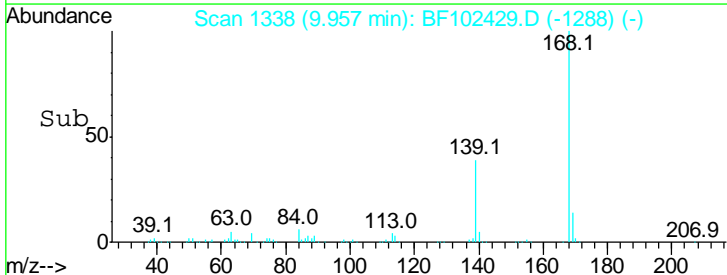


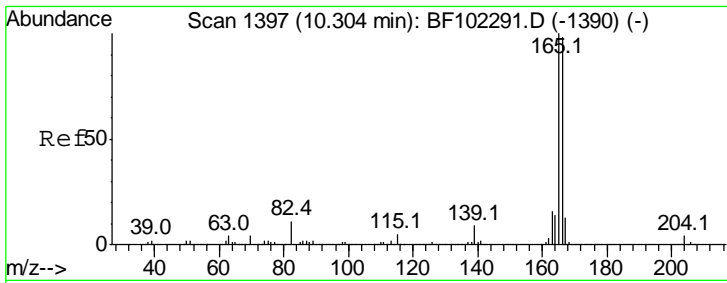
#54
 Dibenzofuran
 Concen: 11.489 ng
 RT: 9.96 min Scan# 1338
 Delta R.T. -0.01 min
 Lab File: BF102429.D
 Acq: 25 Jan 2018 16:34



Tgt Ion:168 Resp: 223052

Ion	Ratio	Lower	Upper
168	100		
139	39.1	30.1	45.1
169	13.8	10.9	16.3





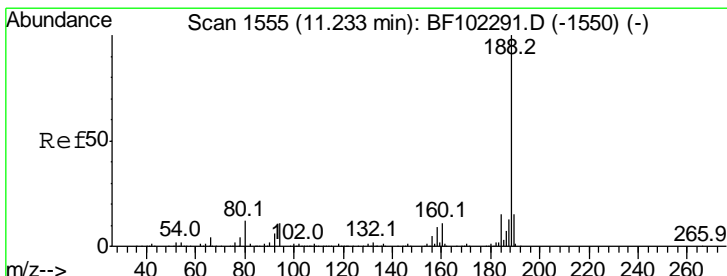
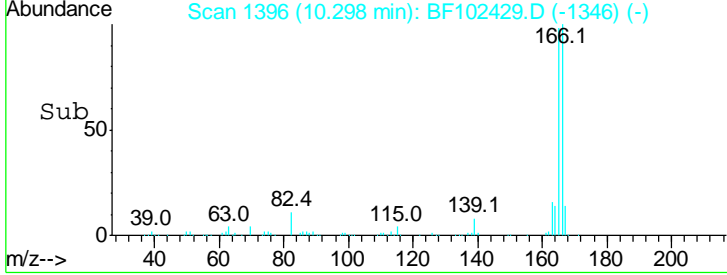
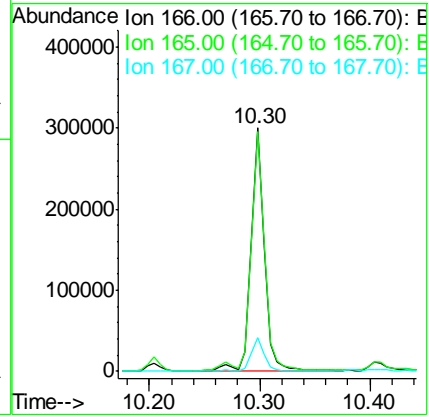
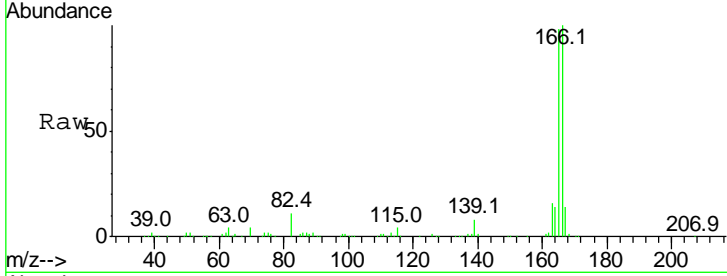
#57
 Fluorene
 Concen: 16.859 ng
 RT: 10.30 min Scan# 1396
 Delta R.T. -0.01 min
 Lab File: BF102429.D
 Acq: 25 Jan 2018 16:34

Instrument :
 BNA_F
Client Sampled :
 A2-SB70-E-S-8DL

Tgt Ion	Resp	Lower	Upper
166	100		
165	98.4	79.8	119.8
167	13.7	10.6	16.0

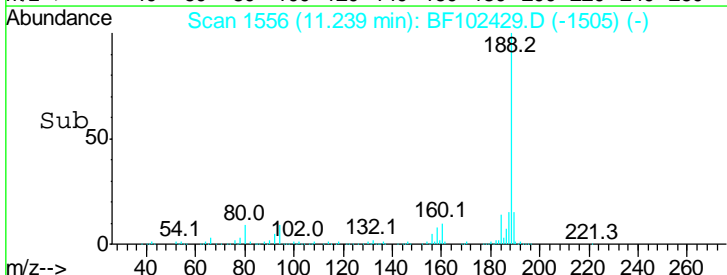
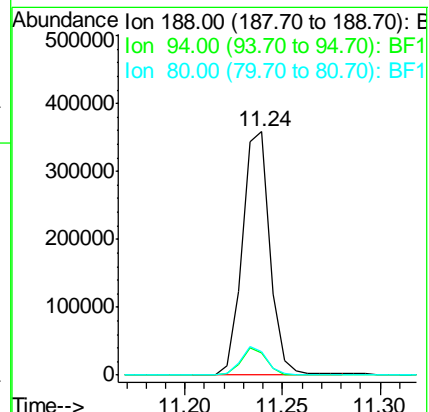
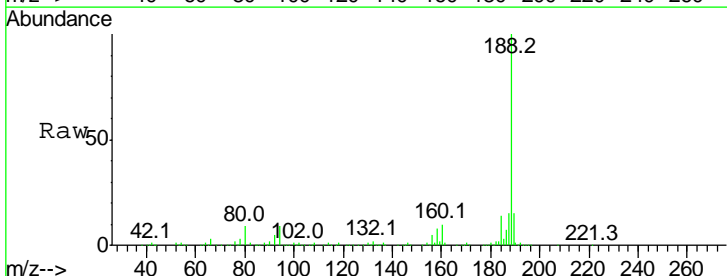
Manual Integrations
APPROVED

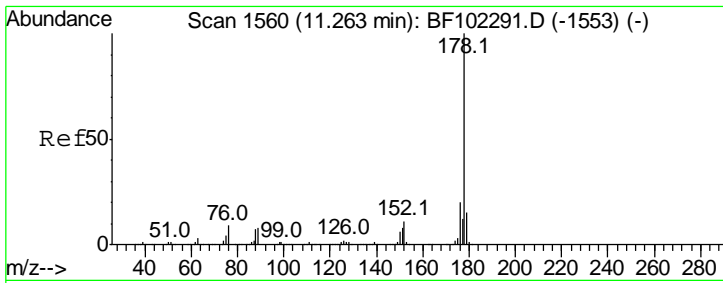
Sohil
 1/25/2018 5:42:36 PM



#63
 Phenanthrene-d10
 Concen: 20.000 ng
 RT: 11.24 min Scan# 1556
 Delta R.T. 0.00 min
 Lab File: BF102429.D
 Acq: 25 Jan 2018 16:34

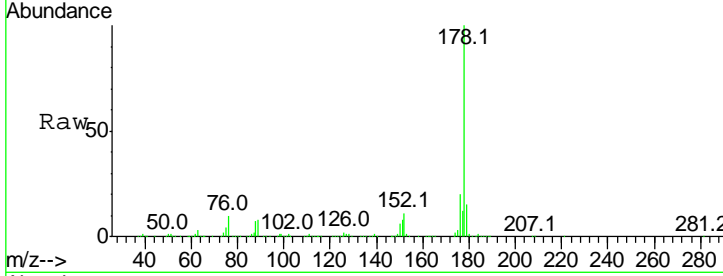
Tgt Ion	Resp	Lower	Upper
188	100		
94	9.2	8.5	12.7
80	9.5	9.2	13.8





#70
 Phenanthrene
 Concen: 34.087 ng
 RT: 11.26 min Scan# 1560
 Delta R.T. 0.00 min
 Lab File: BF102429.D
 Acq: 25 Jan 2018 16:34

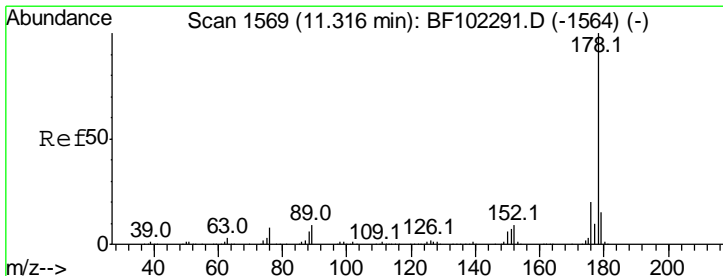
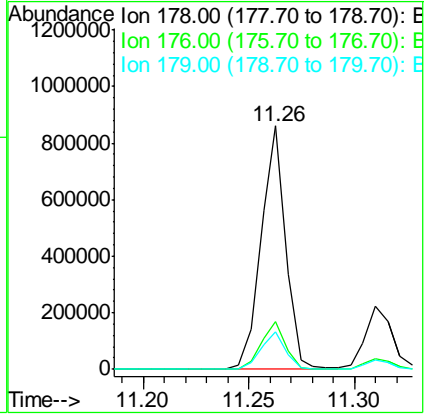
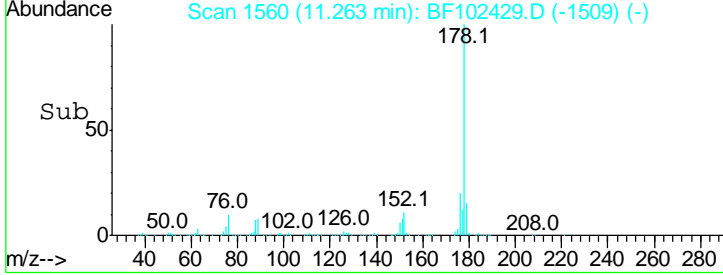
Instrument :
 BNA_F
 ClientSampled :
 A2-SB70-E-S-8DL



Tgt Ion:178 Resp: 697381

Ion	Ratio	Lower	Upper
178	100		
176	19.8	15.8	23.8
179	15.4	13.0	19.6

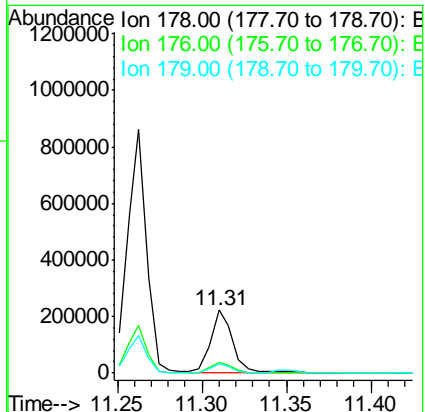
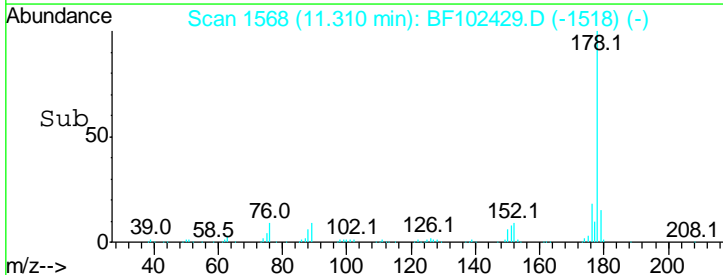
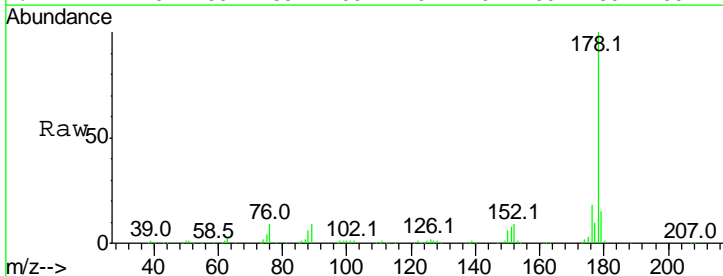
Manual Integrations
APPROVED
 Sohil
 1/25/2018 5:42:36 PM

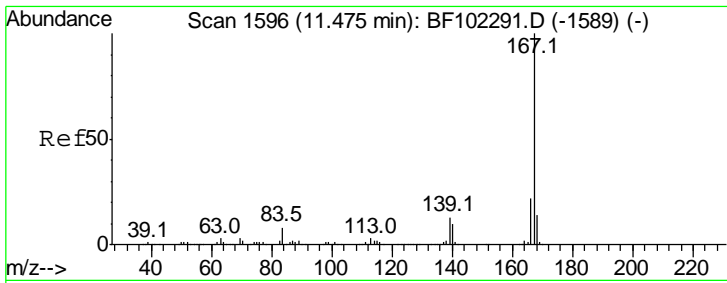


#71
 Anthracene
 Concen: 9.764 ng
 RT: 11.31 min Scan# 1568
 Delta R.T. -0.01 min
 Lab File: BF102429.D
 Acq: 25 Jan 2018 16:34

Tgt Ion:178 Resp: 203895

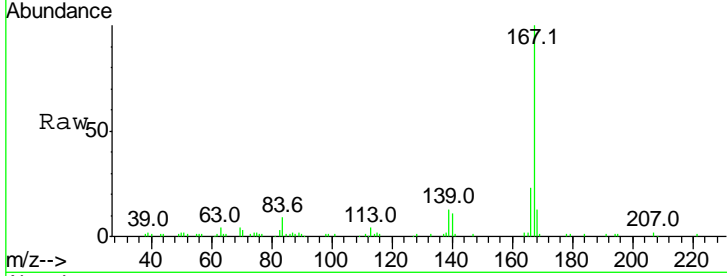
Ion	Ratio	Lower	Upper
178	100		
176	17.7	15.4	23.2
179	15.3	12.6	19.0





#72
 Carbazole
 Concen: 3.796 ng
 RT: 11.47 min Scan# 1595
 Delta R.T. -0.01 min
 Lab File: BF102429.D
 Acq: 25 Jan 2018 16:34

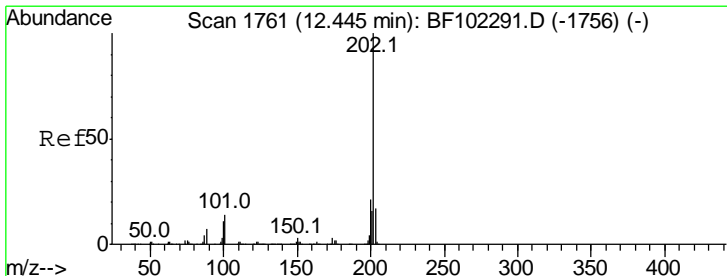
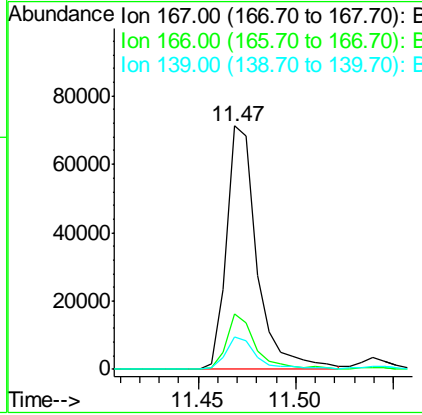
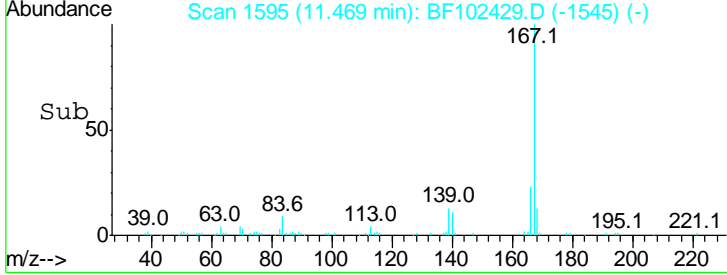
Instrument :
 BNA_F
ClientSampled :
 A2-SB70-E-S-8DL



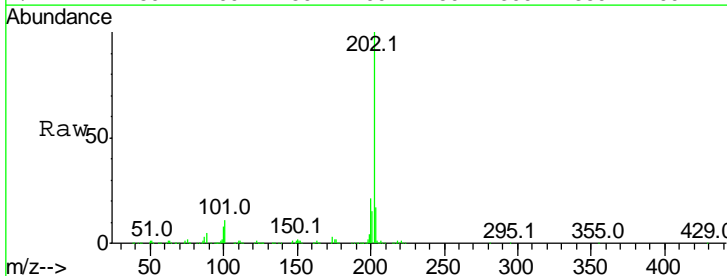
Tgt Ion:167 Resp: 77331

Ion	Ratio	Lower	Upper
167	100		
166	22.6	17.6	26.4
139	13.4	10.9	16.3

Manual Integrations
APPROVED
 Sohil
 1/25/2018 5:42:36 PM

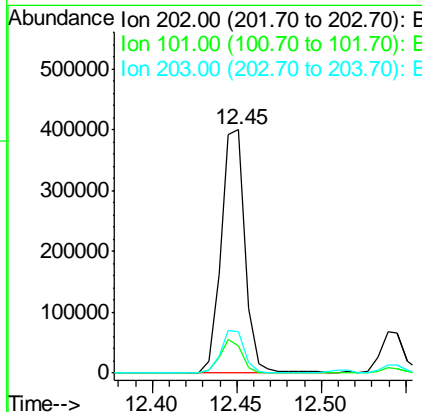
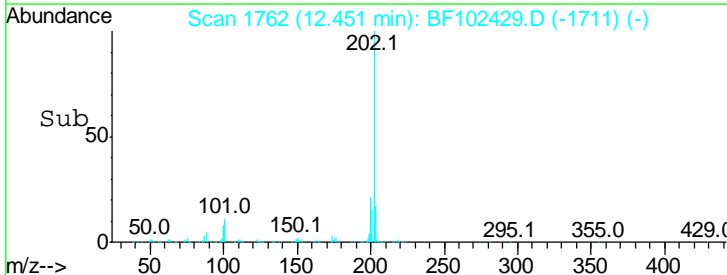


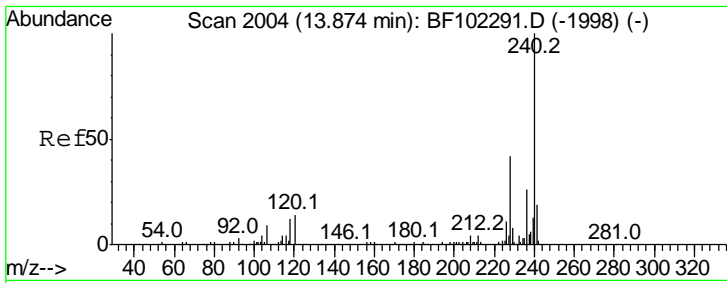
#74
 Fluoranthene
 Concen: 18.979 ng
 RT: 12.45 min Scan# 1762
 Delta R.T. 0.00 min
 Lab File: BF102429.D
 Acq: 25 Jan 2018 16:34



Tgt Ion:202 Resp: 395953

Ion	Ratio	Lower	Upper
202	100		
101	11.3	0.0	34.1
203	16.9	0.0	38.1





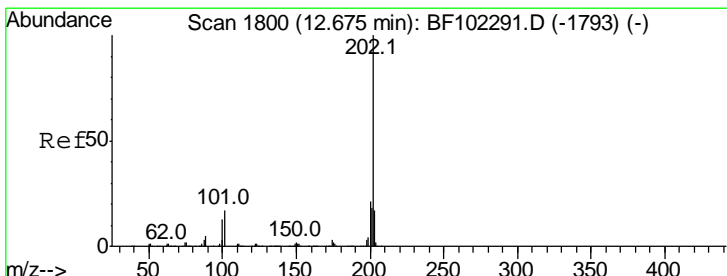
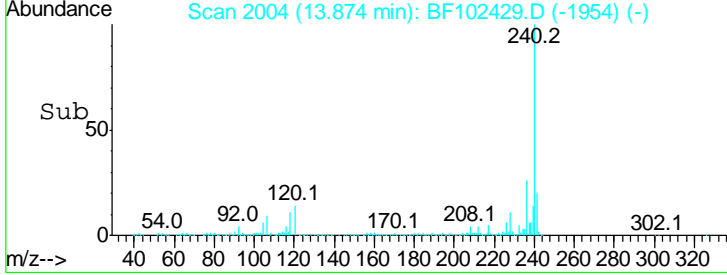
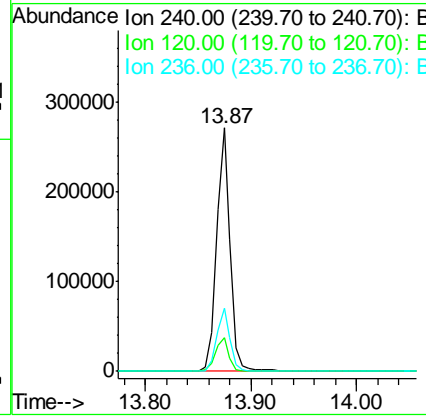
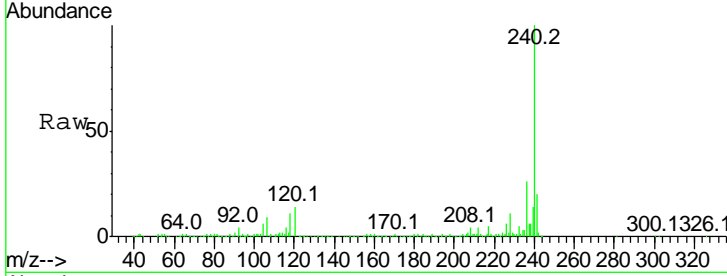
#75
 Chrysene-d12
 Concen: 20.000 ng
 RT: 13.87 min Scan# 2004
 Delta R.T. -0.01 min
 Lab File: BF102429.D
 Acq: 25 Jan 2018 16:34

Instrument :
 BNA_F
ClientSampled :
 A2-SB70-E-S-8DL

Tgt Ion	Resp	Lower	Upper
240	100		
120	13.8	9.5	14.3
236	26.2	20.7	31.1

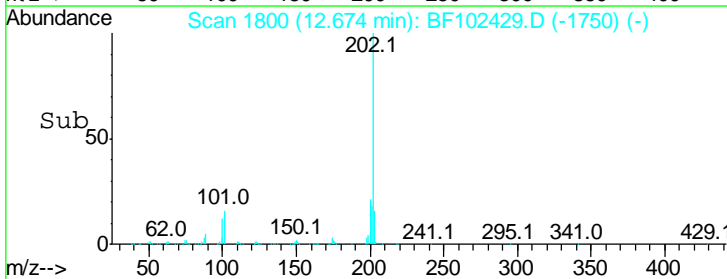
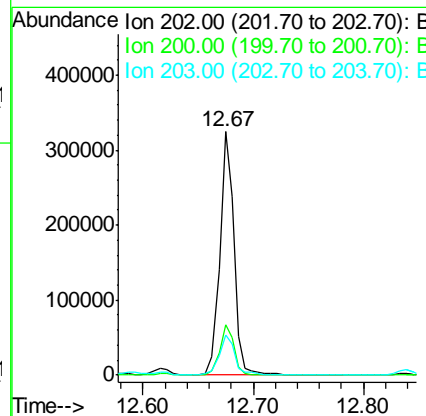
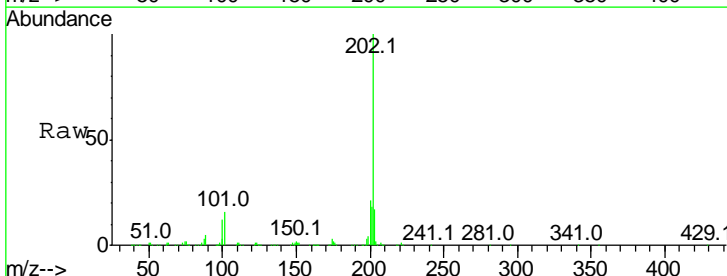
Manual Integrations
APPROVED

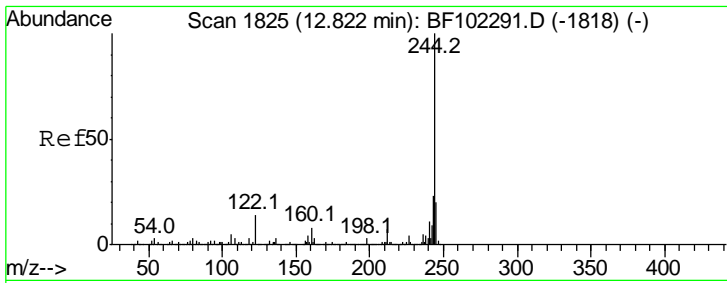
Sohil
 1/25/2018 5:42:36 PM



#77
 Pyrene
 Concen: 15.034 ng
 RT: 12.67 min Scan# 1800
 Delta R.T. -0.01 min
 Lab File: BF102429.D
 Acq: 25 Jan 2018 16:34

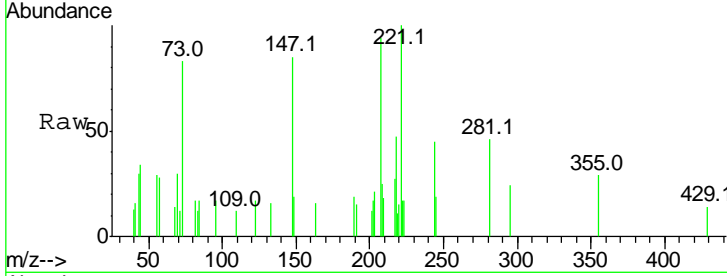
Tgt Ion	Resp	Lower	Upper
202	100		
200	20.9	17.4	26.2
203	16.7	14.3	21.5





#78
 Terphenyl-d14
 Concen: 0.117 ng
 RT: 12.82 min Scan# 1824
 Delta R.T. -0.01 min
 Lab File: BF102429.D
 Acq: 25 Jan 2018 16:34

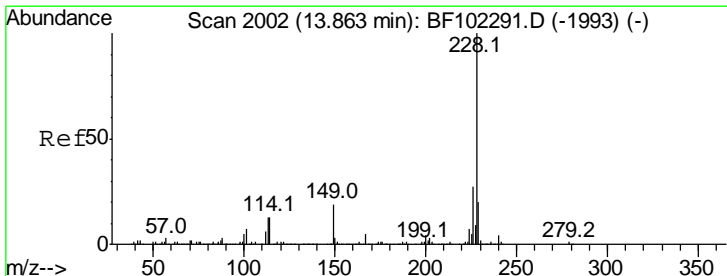
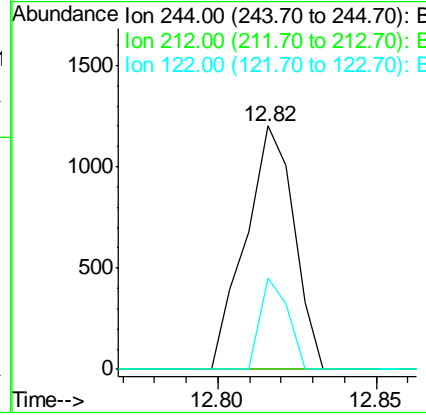
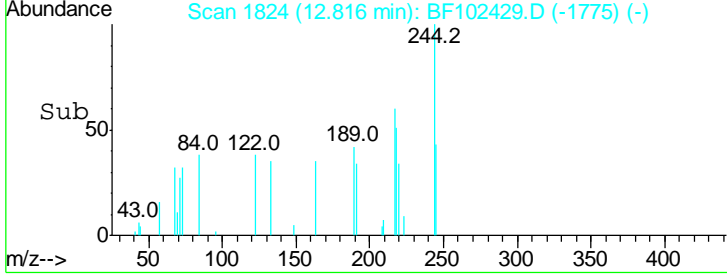
Instrument :
 BNA_F
ClientSampled :
 A2-SB70-E-S-8DL



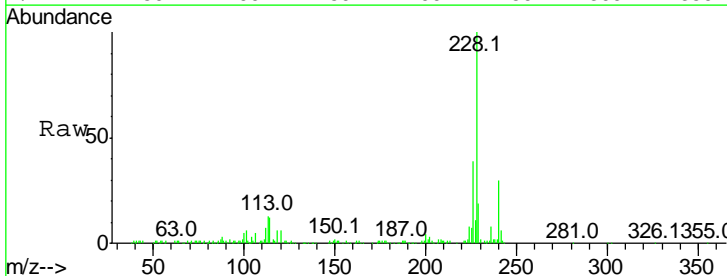
Tgt Ion	Ratio	Lower	Upper
244	100		
212	0.0	5.4	8.0#
122	37.5	11.0	16.4#

Manual Integrations
APPROVED

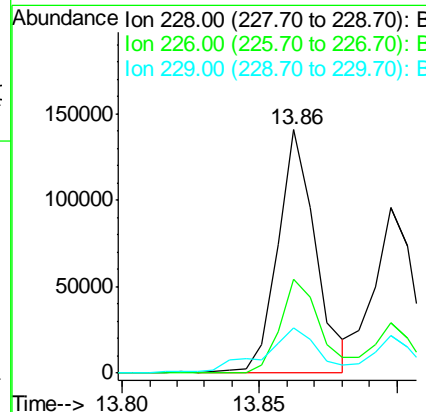
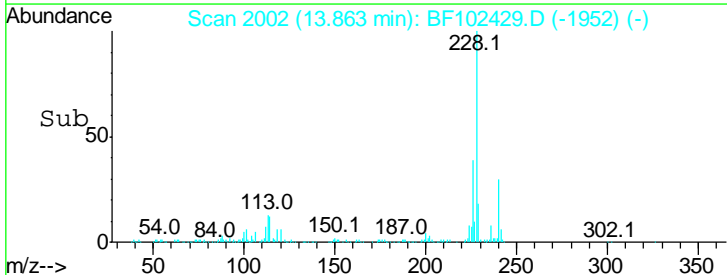
Sohil
 1/25/2018 5:42:36 PM

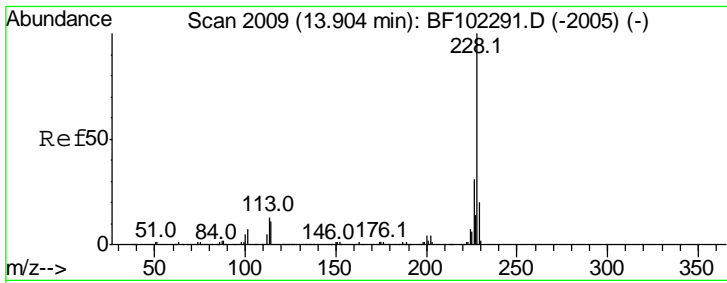


#80
 Benzo(a)anthracene
 Concen: 8.901 ng m
 RT: 13.86 min Scan# 2002
 Delta R.T. -0.01 min
 Lab File: BF102429.D
 Acq: 25 Jan 2018 16:34



Tgt Ion	Ratio	Lower	Upper
228	100		
226	38.7	22.6	33.8#
229	18.8	15.8	23.6





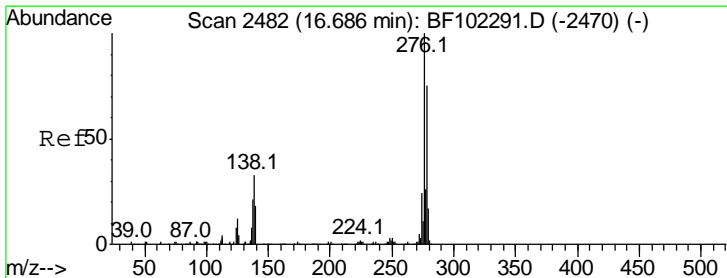
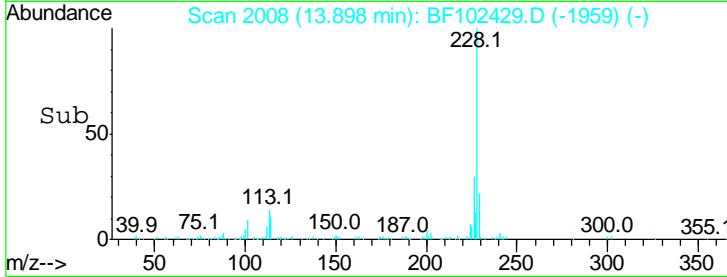
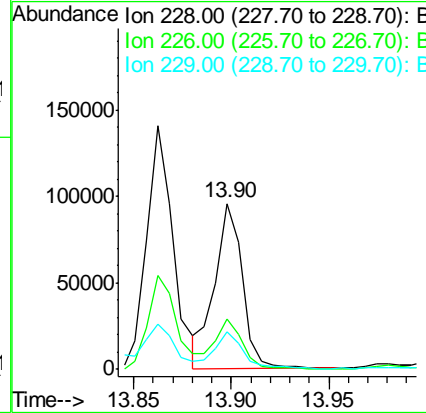
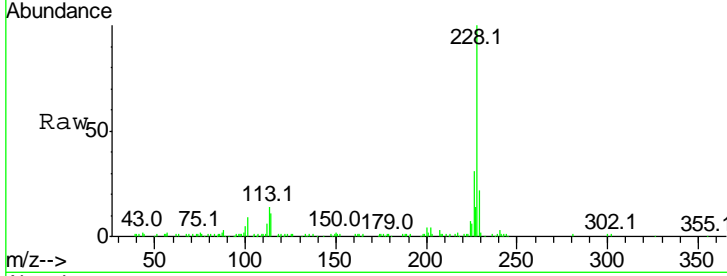
#82
 Chrysene
 Concen: 6.201 ng
 RT: 13.90 min Scan# 2008
 Delta R.T. -0.01 min
 Lab File: BF102429.D
 Acq: 25 Jan 2018 16:34

Instrument :
 BNA_F
Client Sampled :
 A2-SB70-E-S-8DL

Tgt Ion	Resp	Lower	Upper
228	100		
226	30.6	25.0	37.6
229	22.2	16.2	24.4

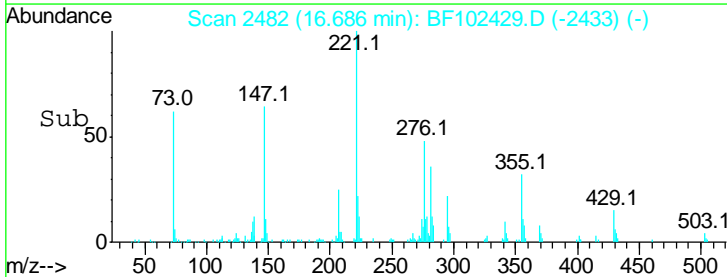
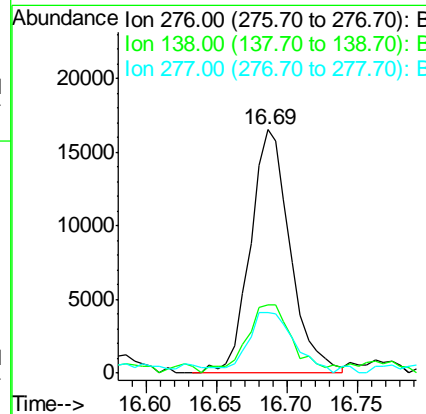
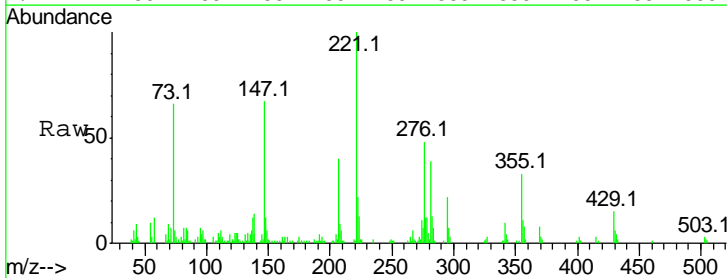
Manual Integrations
APPROVED

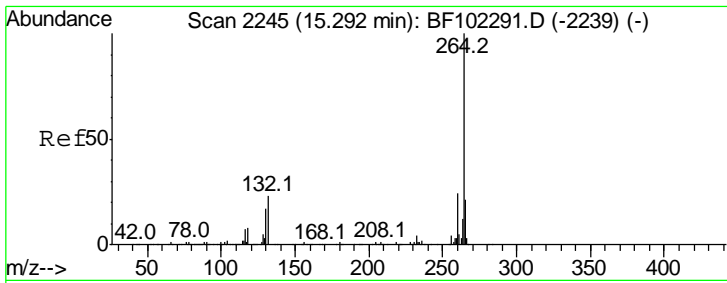
Sohil
 1/25/2018 5:42:36 PM



#85
 Indeno(1,2,3-cd)pyrene
 Concen: 2.590 ng
 RT: 16.69 min Scan# 2482
 Delta R.T. -0.01 min
 Lab File: BF102429.D
 Acq: 25 Jan 2018 16:34

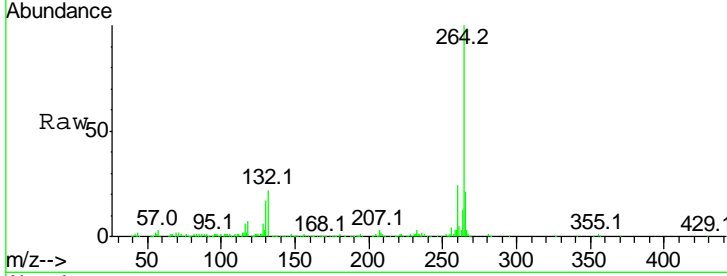
Tgt Ion	Resp	Lower	Upper
276	100		
138	33.2	25.0	37.6
277	28.7	20.1	30.1





#86
 Perylene-d12
 Concen: 20.000 ng
 RT: 15.30 min Scan# 2247
 Delta R.T. 0.01 min
 Lab File: BF102429.D
 Acq: 25 Jan 2018 16:34

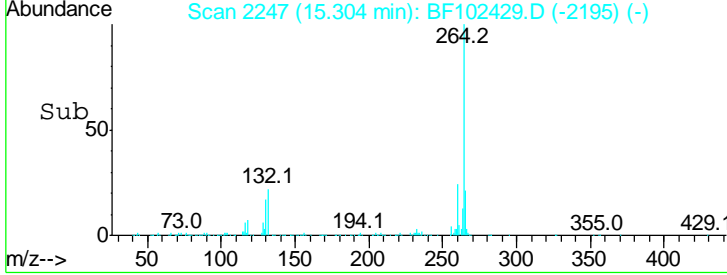
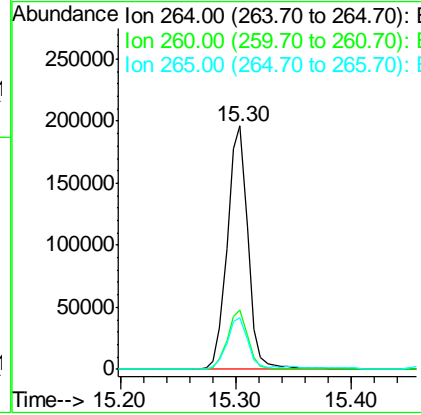
Instrument :
 BNA_F
ClientSampled :
 A2-SB70-E-S-8DL



Tgt Ion: 264 Resp: 242918

Ion	Ratio	Lower	Upper
264	100		
260	24.2	19.2	28.8
265	21.3	17.5	26.3

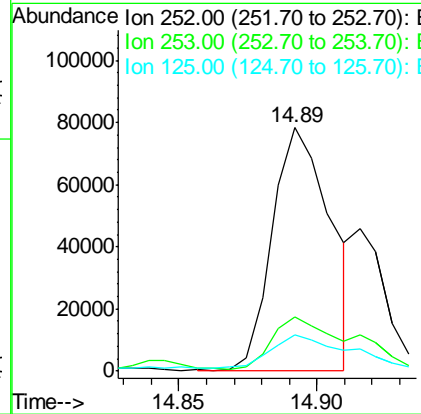
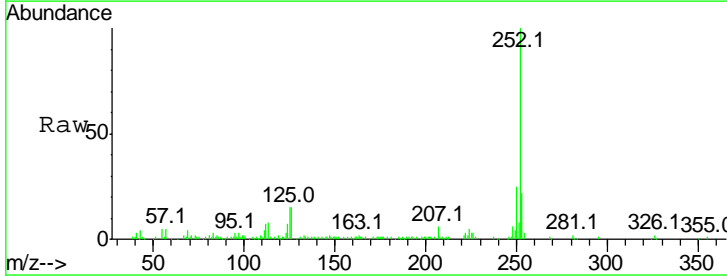
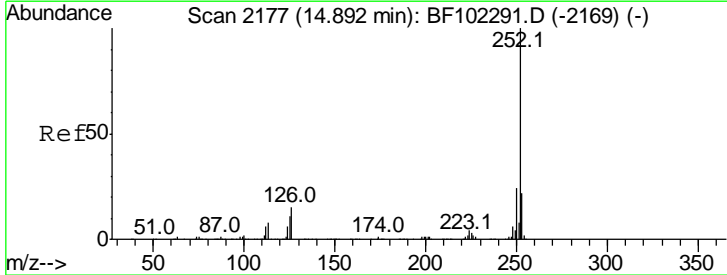
Manual Integrations
APPROVED
 Sohil
 1/25/2018 5:42:36 PM

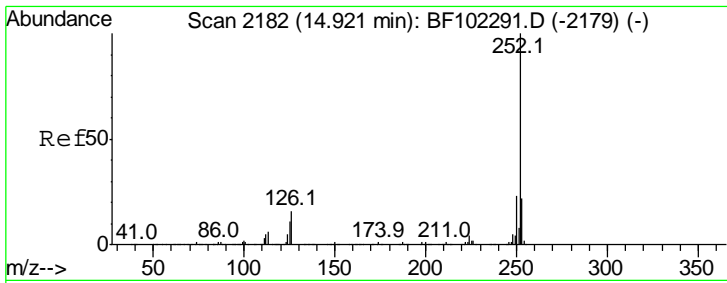


#87
 Benzo(b)fluoranthene
 Concen: 7.339 ng m
 RT: 14.89 min Scan# 2177
 Delta R.T. 0.00 min
 Lab File: BF102429.D
 Acq: 25 Jan 2018 16:34

Tgt Ion: 252 Resp: 115550

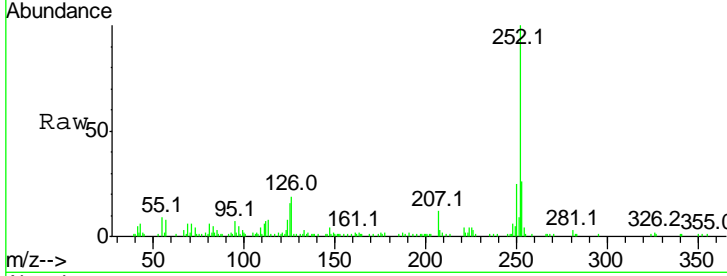
Ion	Ratio	Lower	Upper
252	100		
253	22.3	17.0	25.6
125	15.0	9.0	13.6#





#88
 Benzo(k)fluoranthene
 Concen: 2.645 ng m
 RT: 14.92 min Scan# 2181
 Delta R.T. -0.01 min
 Lab File: BF102429.D
 Acq: 25 Jan 2018 16:34

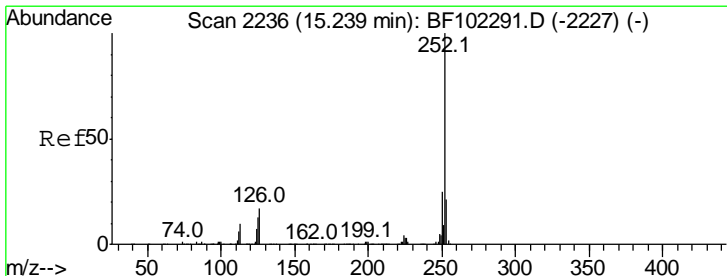
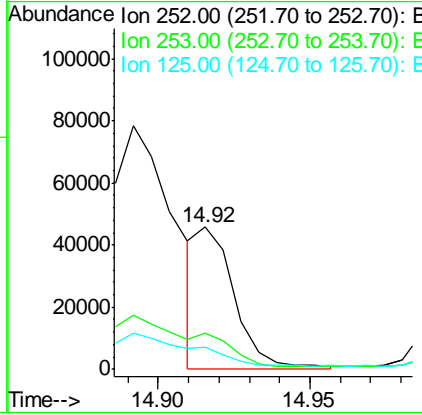
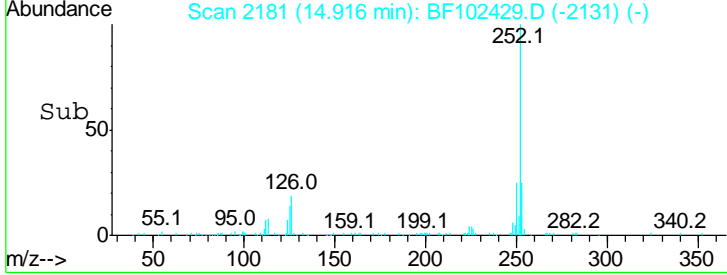
Instrument :
 BNA_F
 ClientSampled :
 A2-SB70-E-S-8DL



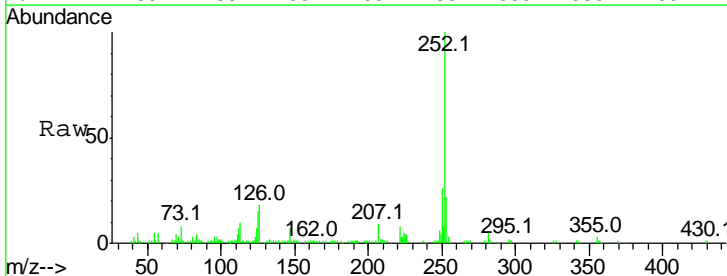
Tgt Ion	Resp	Lower	Upper
252	100		
253	25.5	17.9	26.9
125	15.5	10.2	15.2#

Manual Integrations
 APPROVED

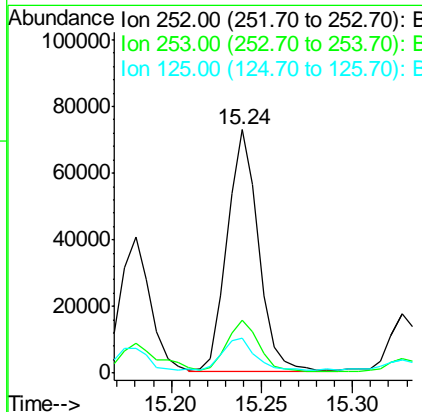
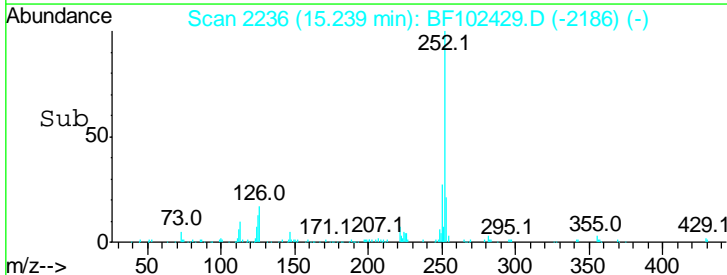
Sohil
 1/25/2018 5:42:36 PM

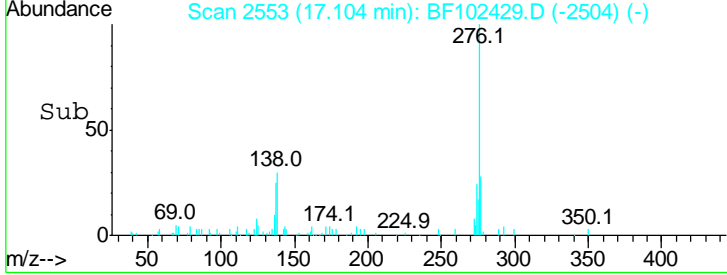
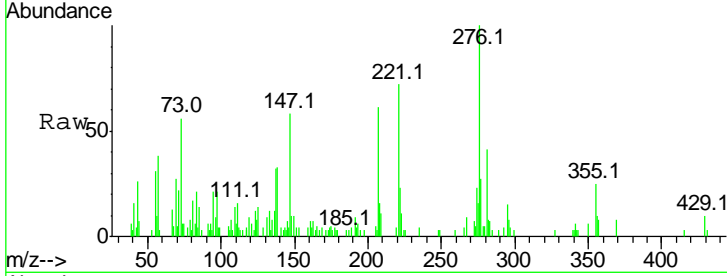
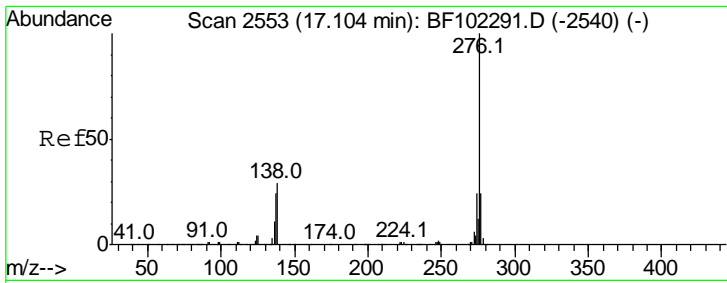


#89
 Benzo(a)pyrene
 Concen: 6.110 ng
 RT: 15.24 min Scan# 2236
 Delta R.T. -0.01 min
 Lab File: BF102429.D
 Acq: 25 Jan 2018 16:34



Tgt Ion	Resp	Lower	Upper
252	100		
253	21.6	17.1	25.7
125	14.5	9.8	14.6





#91
 Benzo(a,h,i)perylene
 Concen: 2.524 ng
 RT: 17.10 min Scan# 2553
 Delta R.T. -0.01 min
 Lab File: BF102429.D
 Acq: 25 Jan 2018 16:34

Tot Ion	Ratio	Lower	Upper
276	100		
277	27.1	17.9	26.9#
138	33.2	21.8	32.8#

Instrument : BNA_F
 ClientSampled : A2-SB70-E-S-8DL

Manual Integrations
APPROVED
 Sohil
 1/25/2018 5:42:36 PM

