

Data Path : U:\HPCHEM1\BNA F\DATA\BF012518\
 Data File : BF102438.D
 Acq On : 25 Jan 2018 21:58
 Operator : SJ/JU
 Sample : J1256-03
 Misc :
 ALS Vial : 9 Sample Multiplier: 1

Instrument :
 BNA_F
ClientSampled :
 DB-OF-E-W-(NW0-4)

Manual Integrations
APPROVED

Sohil
 1/26/2018 11:25:16 AM

Quant Time: Jan 26 01:01:40 2018
 Quant Method : Z:\HPCHEM1\BNA F\METHODS\8270-BF012218.M
 Quant Title : ASP BNA STANDARDS FOR 5 POINT CALIBRATION
 QLast Update : Thu Jan 25 13:44:56 2018
 Response via : Initial Calibration

Internal Standards	R.T.	QIon	Response	Conc	Units	Dev(Min)
1) 1,4-Dichlorobenzene-d4	6.72	152	132402	20.00	ng	0.00
21) Naphthalene-d8	8.00	136	535373	20.00	ng	0.00
38) Acenaphthene-d10	9.75	164	226217	20.00	ng	0.00
63) Phenanthrene-d10	11.24	188	331288	20.00	ng	0.00
75) Chrysene-d12	13.89	240	185430	20.00	ng	0.01
86) Perylene-d12	15.35	264	171765	20.00	ng	0.05

System Monitoring Compounds

5) 2-Fluorophenol	5.33	112	792459	90.75	ng	0.00
7) Phenol-d6	6.36	99	983440	93.42	ng	0.00
23) Nitrobenzene-d5	7.29	82	605632	65.01	ng	0.00
41) 2,4,6-Tribromophenol	10.55	330	178353	79.57	ng	0.00
44) 2-Fluorobiphenyl	9.07	172	1042968	67.79	ng	0.00
78) Terphenyl-d14	12.83	244	651156	79.16	ng	0.00

Target Compounds

	R.T.	QIon	Response	Conc	Units	Qvalue
10) Phenol	6.37	94	52921	4.605	ng	96
49) Dimethylphthalate	9.47	163	195173	10.438	ng	100
51) Acenaphthene	9.78	154	35679	2.494	ng	98
54) Dibenzofuran	9.96	168	43465	2.245	ng	96
57) Fluorene	10.30	166	49263	3.211	ng	97
70) Phenanthrene	11.26	178	357264	18.506	ng	100
71) Anthracene	11.32	178	99319	5.040	ng	97
72) Carbazole	11.47	167	45215	2.352	ng	# 91
74) Fluoranthene	12.46	202	522559	26.544	ng	99
77) Pyrene	12.69	202	505931	35.289	ng	99
80) Benzo(a)anthracene	13.88	228	202168	17.709	ng	95
82) Chrysene	13.92	228	194454m	16.773	ng	
83) Bis(2-ethylhexyl)phthalate	13.87	149	97671	10.186	ng	# 97
85) Indeno(1,2,3-cd)pyrene	16.76	276	144078	15.048	ng	95
87) Benzo(b)fluoranthene	14.93	252	257581m	23.137	ng	
88) Benzo(k)fluoranthene	14.94	252	81917m	7.788	ng	
89) Benzo(a)pyrene	15.29	252	168893	16.821	ng	# 67
90) Dibenzo(a,h)anthracene	16.76	278	36253	4.457	ng	# 60
91) Benzo(a,h,i)perylene	17.19	276	156401	19.475	ng	95

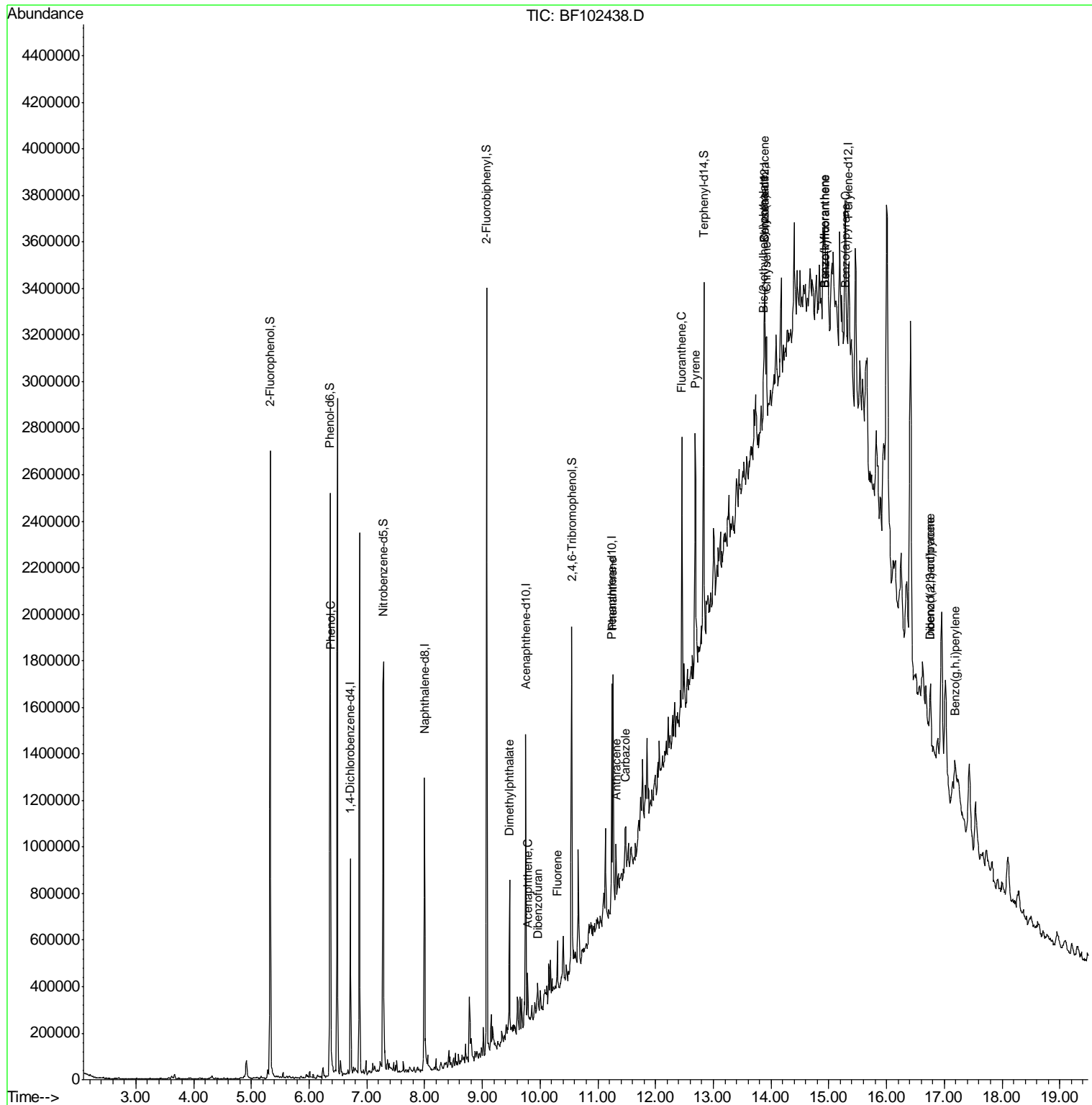
(#) = qualifier out of range (m) = manual integration (+) = signals summed

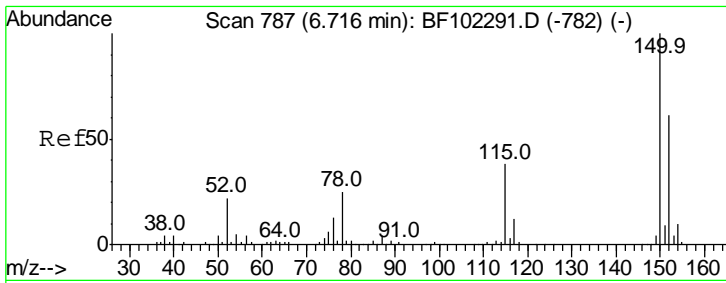
Data Path : U:\HPCHEM1\BNA F\DATA\BF012518\
 Data File : BF102438.D
 Acq On : 25 Jan 2018 21:58
 Operator : SJ/JU
 Sample : J1256-03
 Misc :
 ALS Vial : 9 Sample Multiplier: 1

Instrument :
 BNA_F
Client Sampled :
 DB-OF-E-W-(NW0-4)

Manual Integrations
APPROVED
 Sohil
 1/26/2018 11:25:16 AM

Quant Time: Jan 26 01:01:40 2018
 Quant Method : Z:\HPCHEM1\BNA F\METHODS\8270-BF012218.M
 Quant Title : ASP BNA STANDARDS FOR 5 POINT CALIBRATION
 QLast Update : Thu Jan 25 13:44:56 2018
 Response via : Initial Calibration





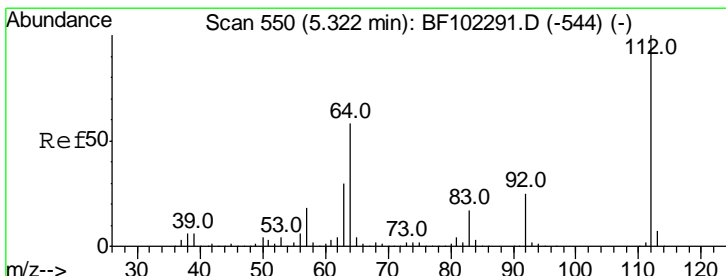
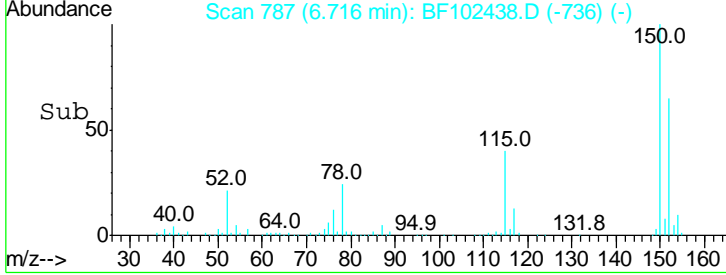
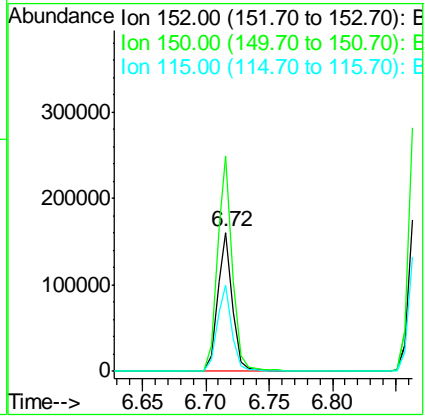
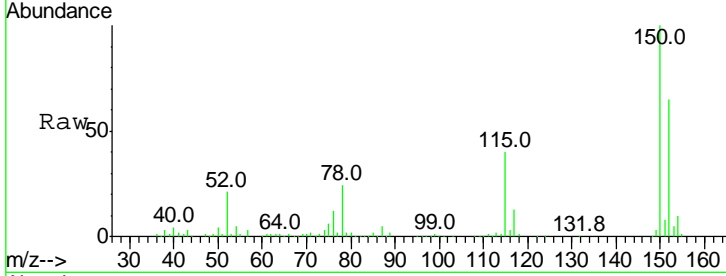
#1
 1,4-Dichlorobenzene-d4
 Concen: 20.000 ng
 RT: 6.72 min Scan# 787
 Delta R.T. 0.00 min
 Lab File: BF102438.D
 Acq: 25 Jan 2018 21:58

Instrument :
 BNA_F
ClientSampled :
 DB-OF-E-W-(NW0-4)

Tgt Ion	Resp	Lower	Upper
152	132402		
152	100		
150	154.9	124.6	186.8
115	61.6	50.1	75.1

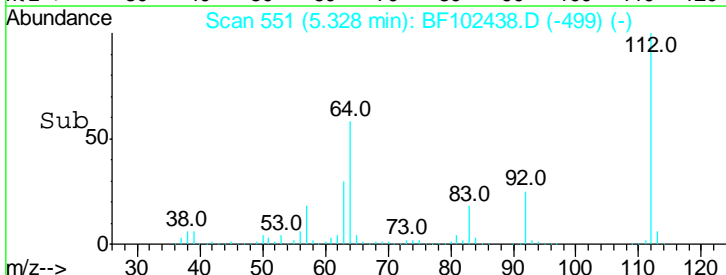
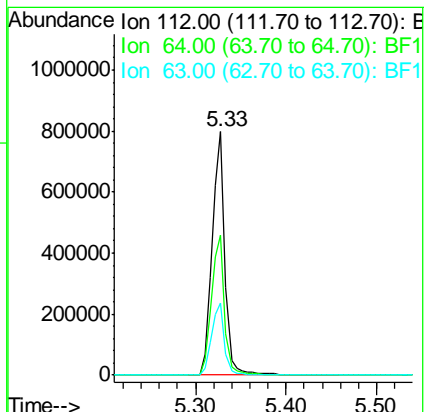
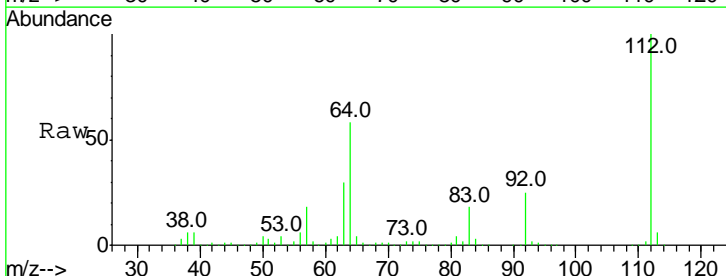
Manual Integrations
APPROVED

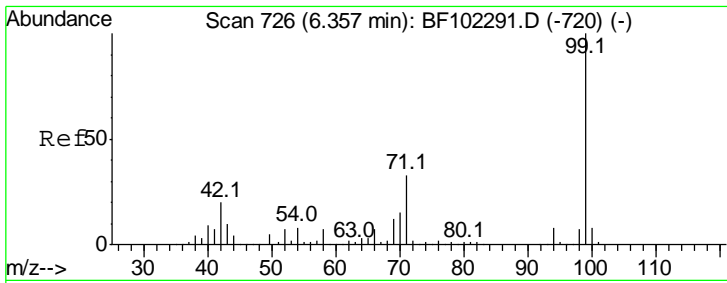
Sohil
 1/26/2018 11:25:16 AM



#5
 2-Fluorophenol
 Concen: 90.752 ng
 RT: 5.33 min Scan# 551
 Delta R.T. 0.01 min
 Lab File: BF102438.D
 Acq: 25 Jan 2018 21:58

Tgt Ion	Resp	Lower	Upper
112	792459		
112	100		
64	57.6	47.9	71.9
63	29.9	23.7	35.5





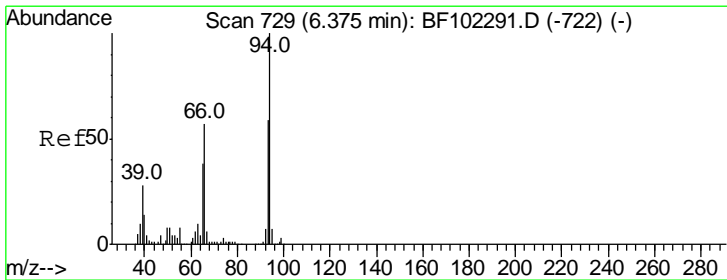
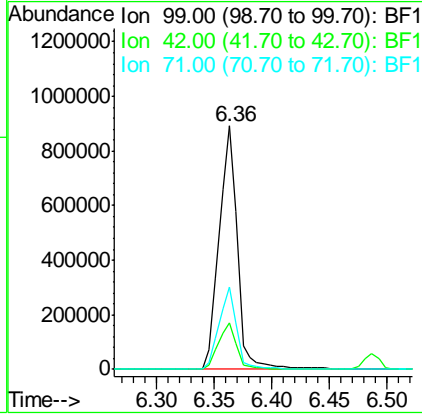
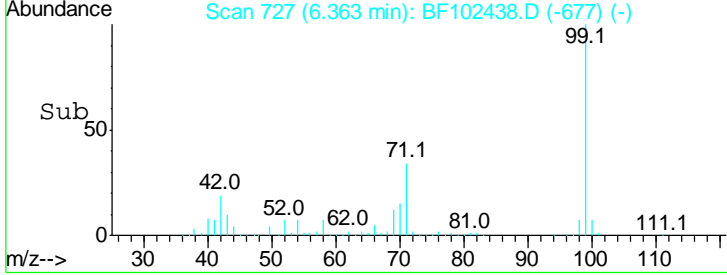
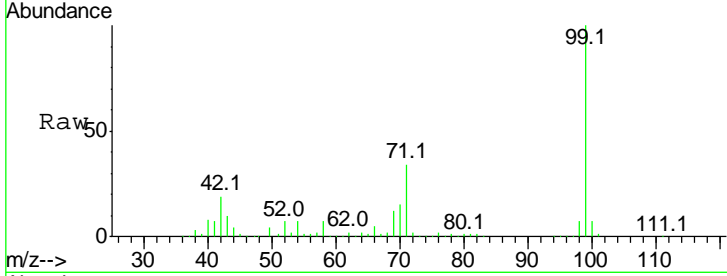
#7
 Phenol-d6
 Concen: 93.417 ng
 RT: 6.36 min Scan# 727
 Delta R.T. -0.01 min
 Lab File: BF102438.D
 Acq: 25 Jan 2018 21:58

Instrument :
 BNA_F
ClientSampled :
 DB-OF-E-W-(NW0-4)

Tgt Ion	Resp	Lower	Upper
99	100		
42	19.2	14.5	21.7
71	33.7	25.4	38.0

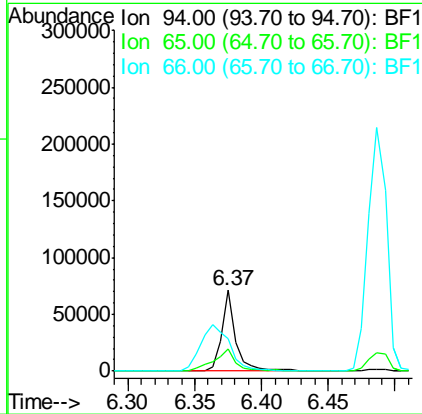
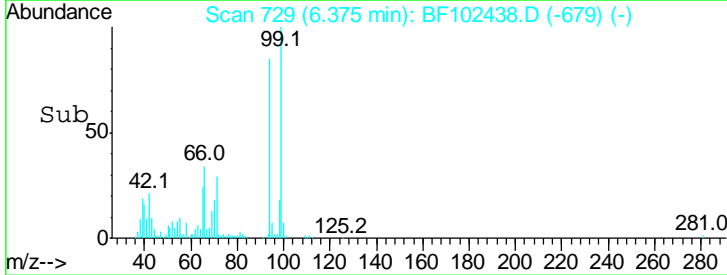
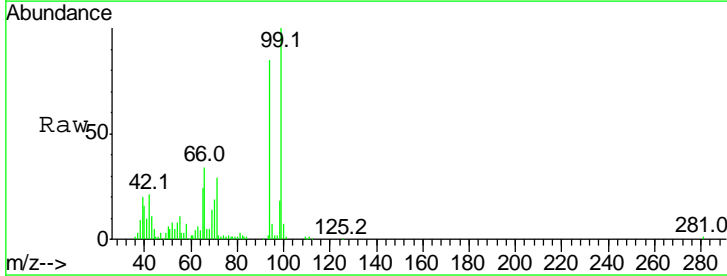
Manual Integrations
APPROVED

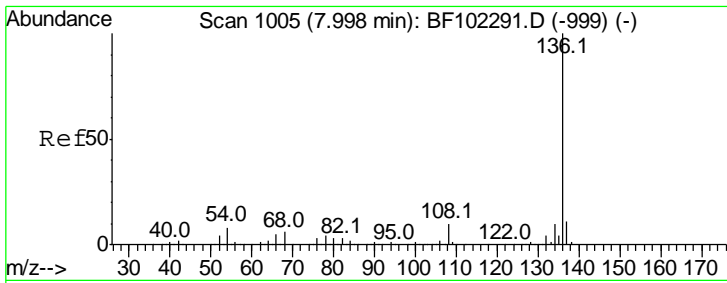
Sohil
 1/26/2018 11:25:16 AM



#10
 Phenol
 Concen: 4.605 ng
 RT: 6.37 min Scan# 729
 Delta R.T. -0.01 min
 Lab File: BF102438.D
 Acq: 25 Jan 2018 21:58

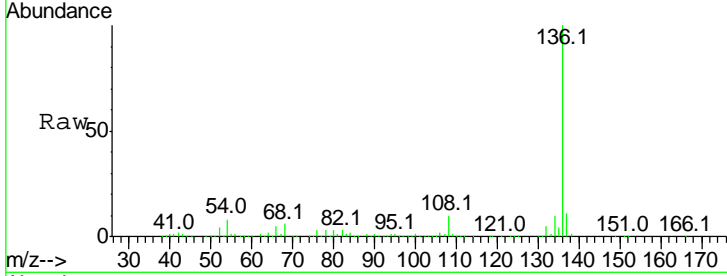
Tgt Ion	Resp	Lower	Upper
94	100		
65	28.2	7.9	47.9
66	39.8	16.2	56.2





#21
 Naphthalene-d8
 Concen: 20.000 ng
 RT: 8.00 min Scan# 1005
 Delta R.T. 0.00 min
 Lab File: BF102438.D
 Acq: 25 Jan 2018 21:58

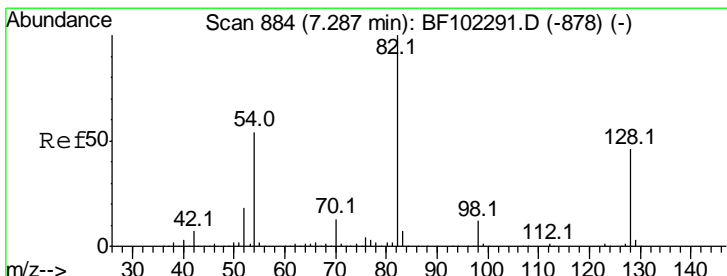
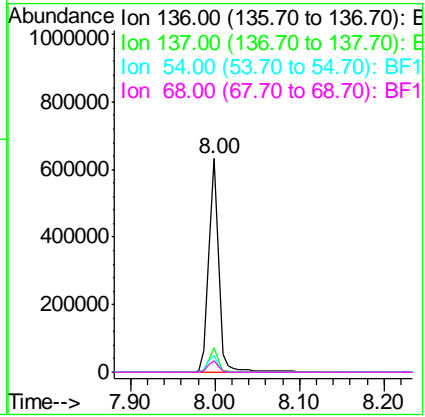
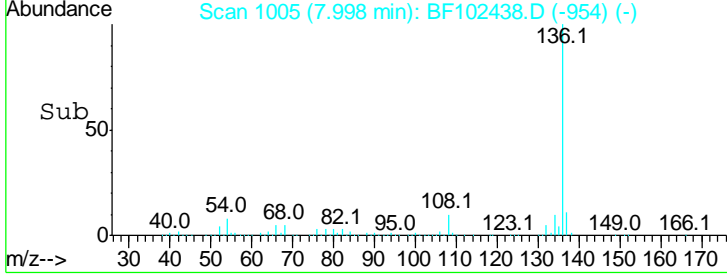
Instrument :
 BNA_F
ClientSampleId :
 DB-OF-E-W-(NW0-4)



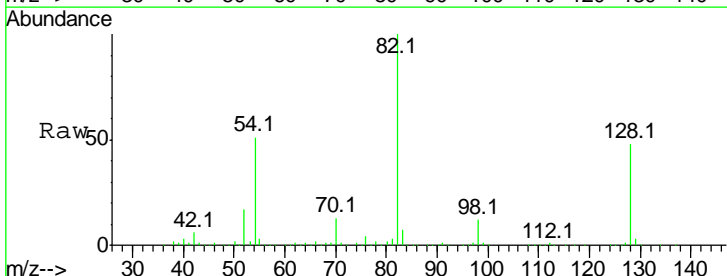
Tgt Ion: 136 Resp: 535373

Ion	Ratio	Lower	Upper
136	100		
137	11.4	8.9	13.3
54	8.0	6.6	9.8
68	5.5	5.0	7.4

Manual Integrations
APPROVED
 Sohil
 1/26/2018 11:25:16 AM

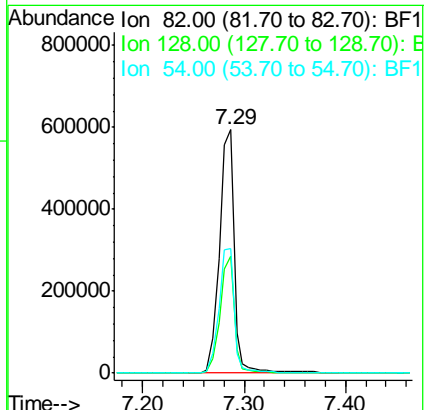
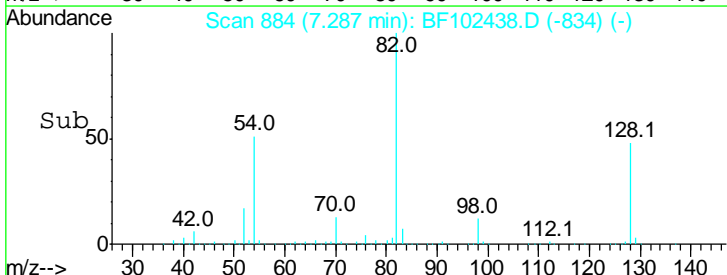


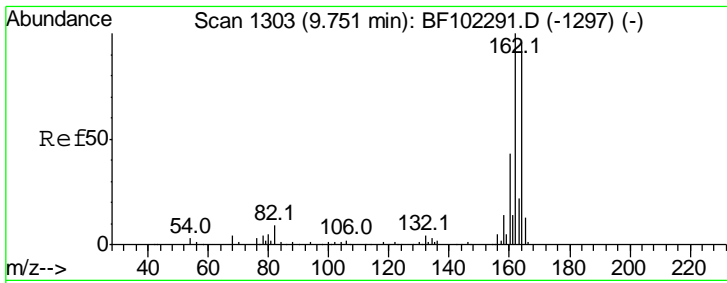
#23
 Nitrobenzene-d5
 Concen: 65.008 ng
 RT: 7.29 min Scan# 884
 Delta R.T. -0.01 min
 Lab File: BF102438.D
 Acq: 25 Jan 2018 21:58



Tgt Ion: 82 Resp: 605632

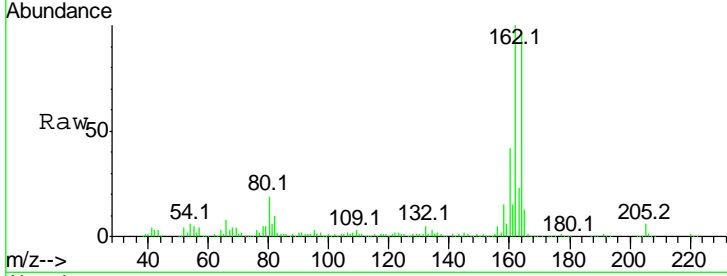
Ion	Ratio	Lower	Upper
82	100		
128	48.1	36.1	54.1
54	50.9	41.4	62.2





#38
 Acenaphthene-d10
 Concen: 20.000 ng
 RT: 9.75 min Scan# 1303
 Delta R.T. -0.01 min
 Lab File: BF102438.D
 Acq: 25 Jan 2018 21:58

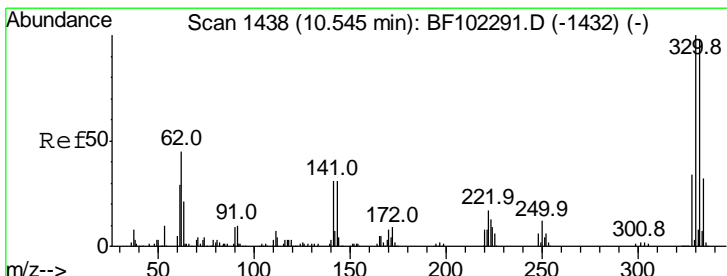
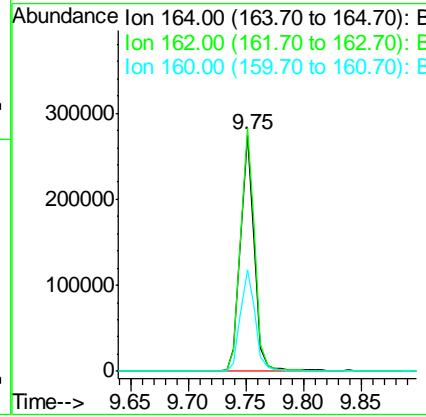
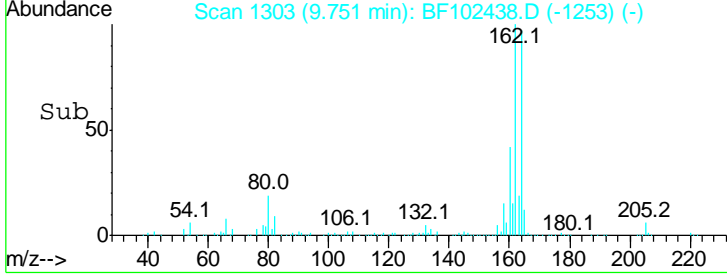
Instrument :
 BNA_F
ClientSampled :
 DB-OF-E-W-(NW0-4)



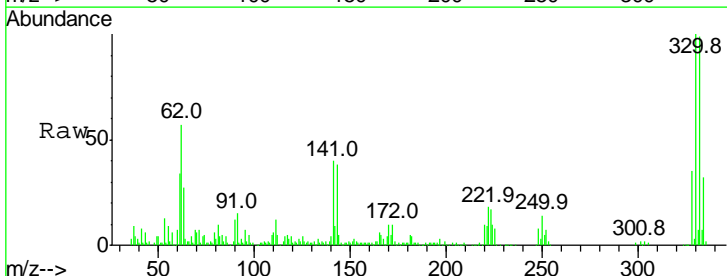
Tgt Ion:164 Resp: 226217

Ion	Ratio	Lower	Upper
164	100		
162	103.1	86.1	129.1
160	43.2	38.3	57.5

Manual Integrations
APPROVED
 Sohil
 1/26/2018 11:25:16 AM

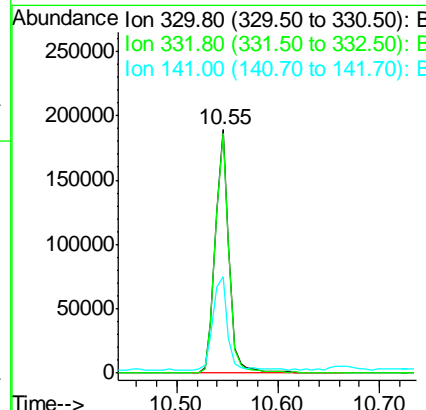
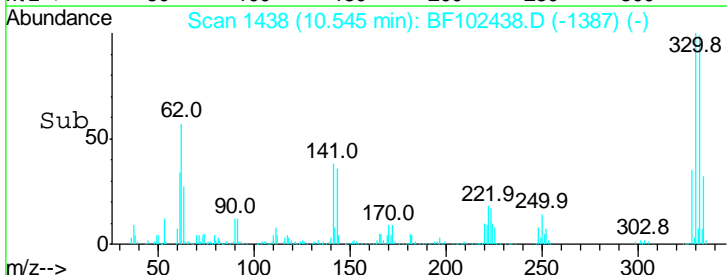


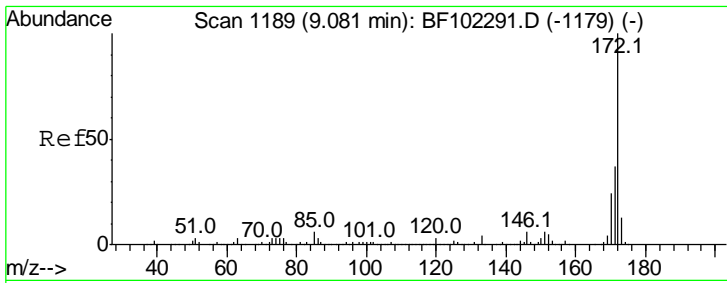
#41
 2,4,6-Tribromophenol
 Concen: 79.569 ng
 RT: 10.55 min Scan# 1438
 Delta R.T. 0.00 min
 Lab File: BF102438.D
 Acq: 25 Jan 2018 21:58



Tgt Ion:330 Resp: 178353

Ion	Ratio	Lower	Upper
330	100		
332	97.9	77.0	115.6
141	40.6	29.9	44.9





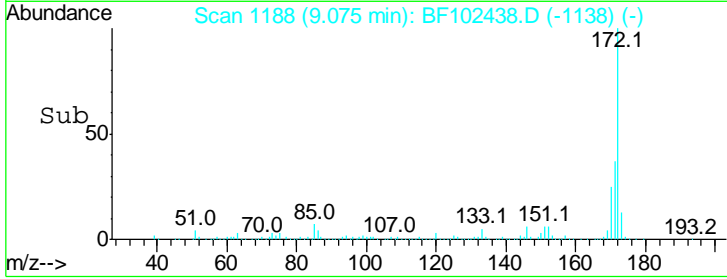
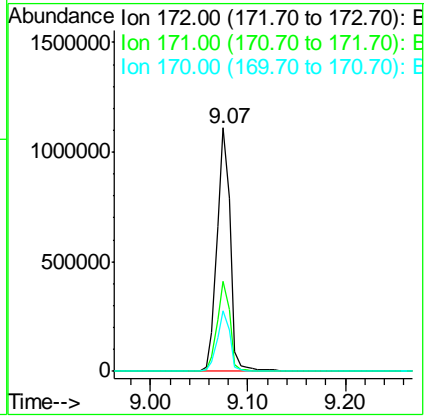
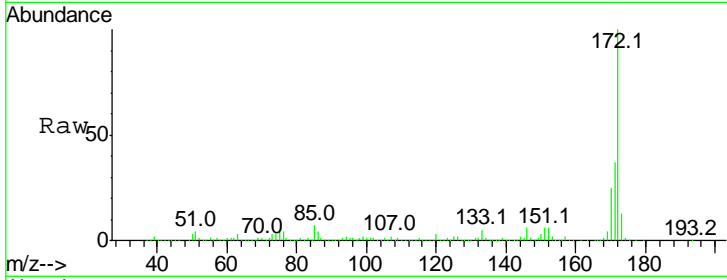
#44
 2-Fluorobiphenyl
 Concen: 67.790 ng
 RT: 9.07 min Scan# 1188
 Delta R.T. -0.01 min
 Lab File: BF102438.D
 Acq: 25 Jan 2018 21:58

Instrument :
 BNA_F
ClientSampleId :
 DB-OF-E-W-(NW0-4)

Tgt Ion	Resp	Lower	Upper
172	100		
171	37.0	29.7	44.5
170	24.8	19.6	29.4

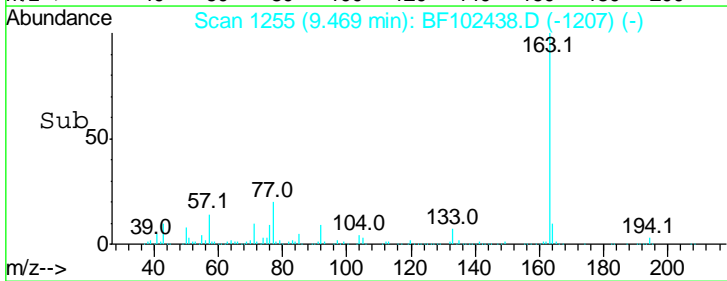
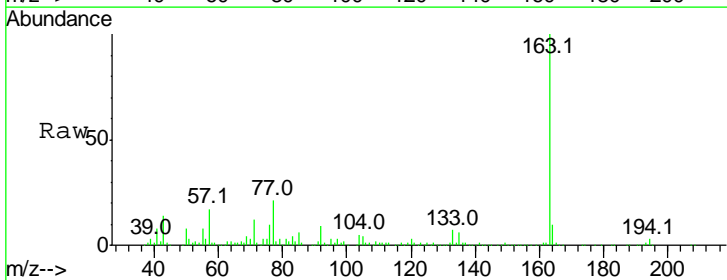
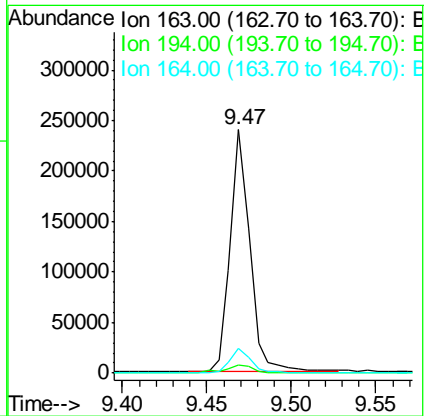
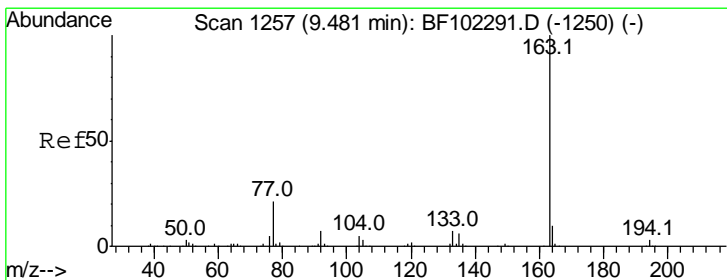
Manual Integrations
APPROVED

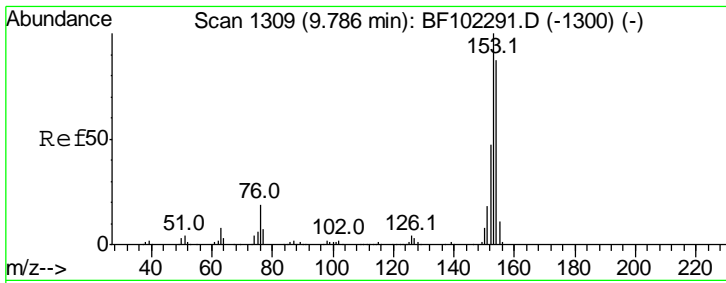
Sohil
 1/26/2018 11:25:16 AM



#49
 Dimethylphthalate
 Concen: 10.438 ng
 RT: 9.47 min Scan# 1255
 Delta R.T. -0.02 min
 Lab File: BF102438.D
 Acq: 25 Jan 2018 21:58

Tgt Ion	Resp	Lower	Upper
163	100		
194	3.4	2.7	4.1
164	10.4	8.2	12.2





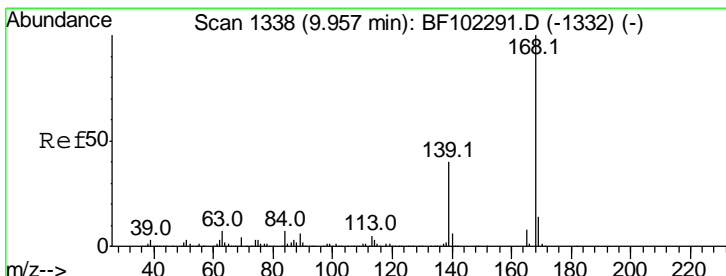
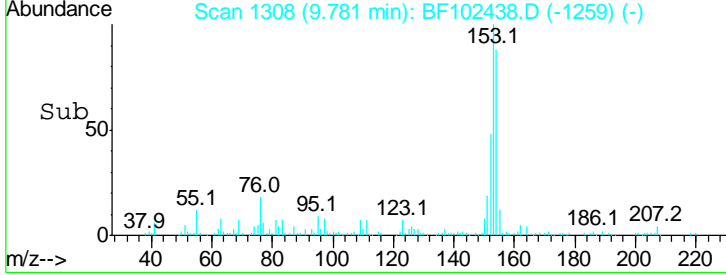
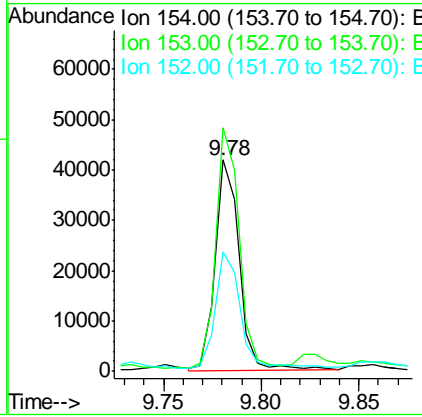
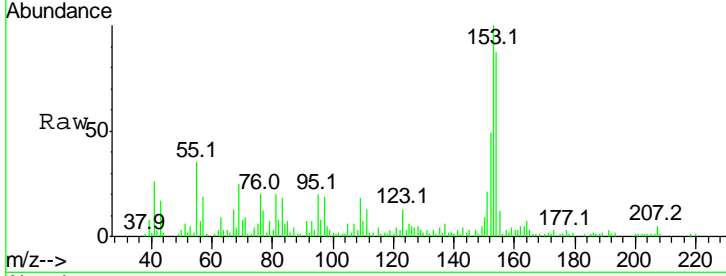
#51
 Acenaphthene
 Concen: 2.494 ng
 RT: 9.78 min Scan# 1308
 Delta R.T. -0.01 min
 Lab File: BF102438.D
 Acq: 25 Jan 2018 21:58

Instrument :
 BNA_F
 ClientSampled :
 DB-OF-E-W-(NW0-4)

Tgt Ion	Resp	Lower	Upper
154	100		
153	115.3	91.2	136.8
152	56.7	43.8	65.8

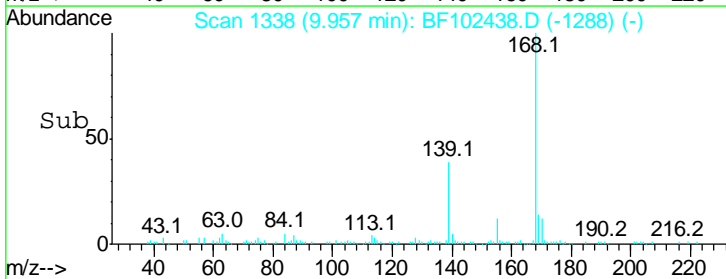
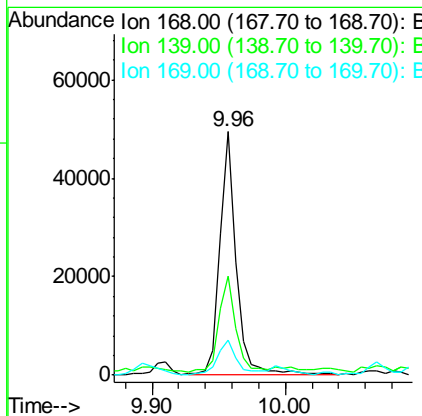
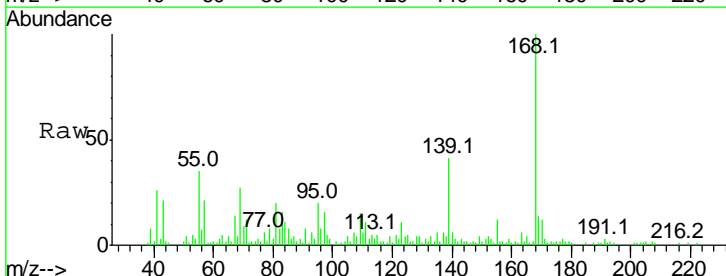
Manual Integrations
 APPROVED

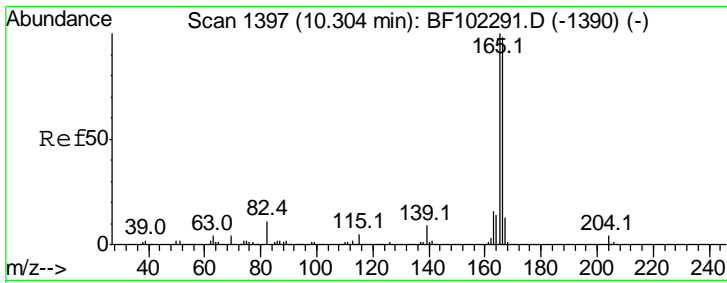
Sohil
 1/26/2018 11:25:16 AM



#54
 Dibenzofuran
 Concen: 2.245 ng
 RT: 9.96 min Scan# 1338
 Delta R.T. -0.01 min
 Lab File: BF102438.D
 Acq: 25 Jan 2018 21:58

Tgt Ion	Resp	Lower	Upper
168	100		
139	40.6	30.1	45.1
169	14.5	10.9	16.3





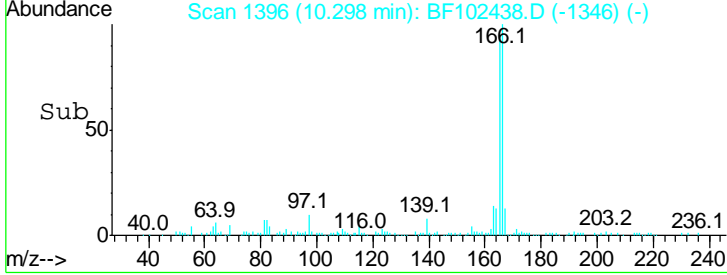
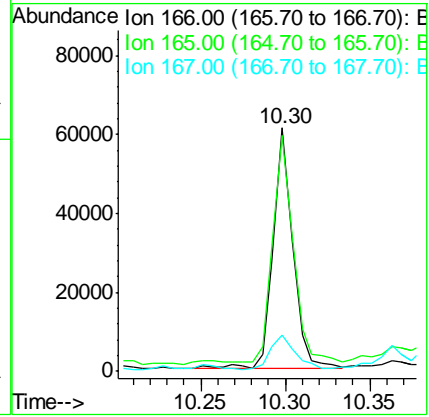
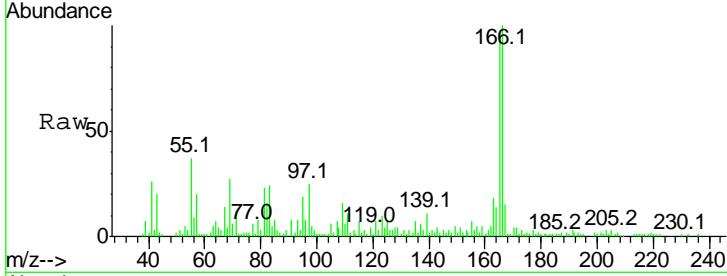
#57
 Fluorene
 Concen: 3.211 ng
 RT: 10.30 min Scan# 1396
 Delta R.T. -0.01 min
 Lab File: BF102438.D
 Acq: 25 Jan 2018 21:58

Instrument :
 BNA_F
ClientSampled :
 DB-OF-E-W-(NW0-4)

Tgt Ion	Resp	Lower	Upper
166	100		
165	97.1	79.8	119.8
167	14.7	10.6	16.0

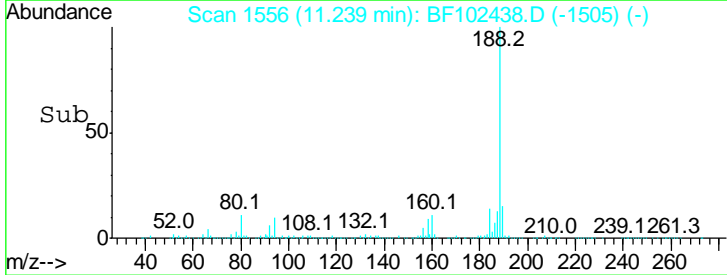
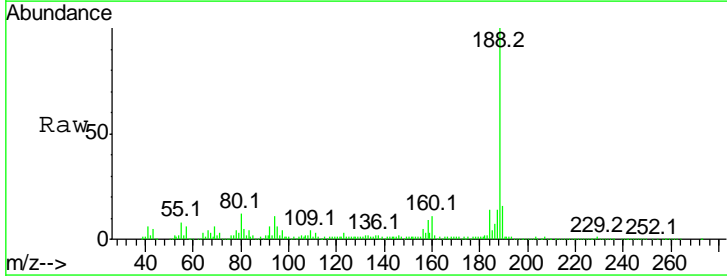
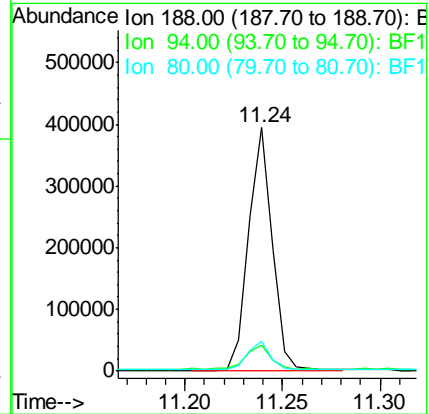
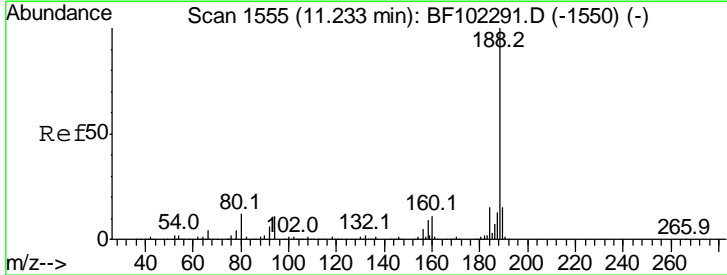
Manual Integrations
APPROVED

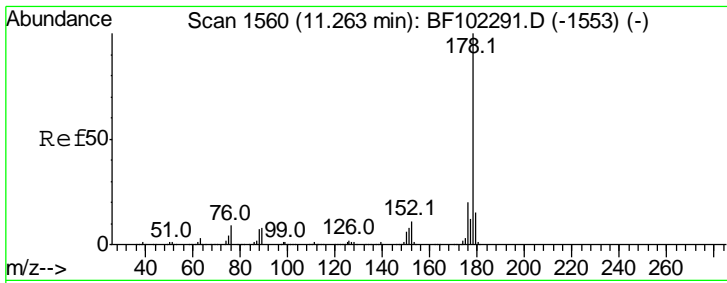
Sohil
 1/26/2018 11:25:16 AM



#63
 Phenanthrene-d10
 Concen: 20.000 ng
 RT: 11.24 min Scan# 1556
 Delta R.T. 0.00 min
 Lab File: BF102438.D
 Acq: 25 Jan 2018 21:58

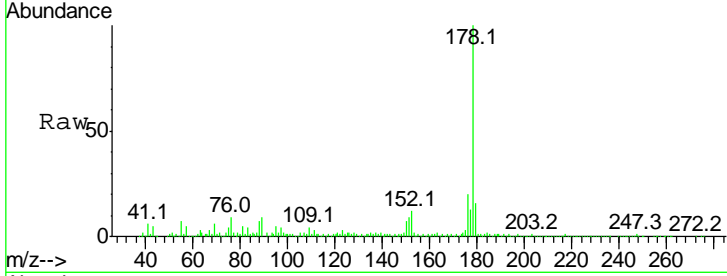
Tgt Ion	Resp	Lower	Upper
188	100		
94	10.9	8.5	12.7
80	12.0	9.2	13.8





#70
 Phenanthrene
 Concen: 18.506 ng
 RT: 11.26 min Scan# 1560
 Delta R.T. 0.00 min
 Lab File: BF102438.D
 Acq: 25 Jan 2018 21:58

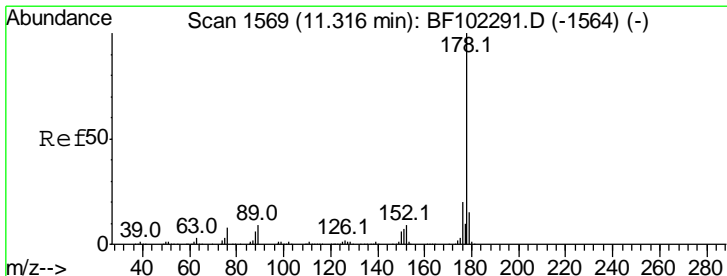
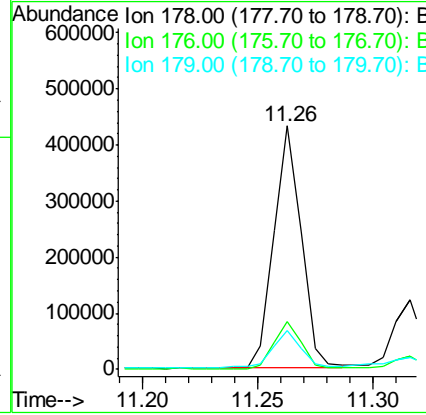
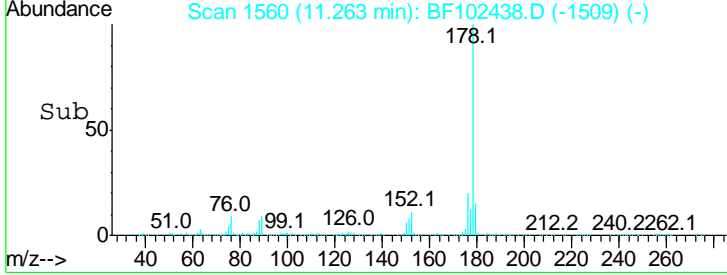
Instrument :
 BNA_F
 ClientSampled :
 DB-OF-E-W-(NW0-4)



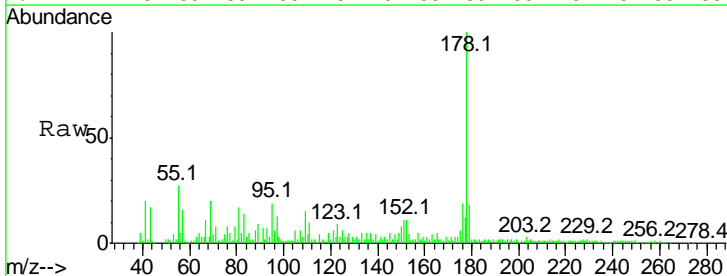
Tgt Ion:178 Resp: 357264

Ion	Ratio	Lower	Upper
178	100		
176	19.8	15.8	23.8
179	16.2	13.0	19.6

Manual Integrations
APPROVED
 Sohil
 1/26/2018 11:25:16 AM

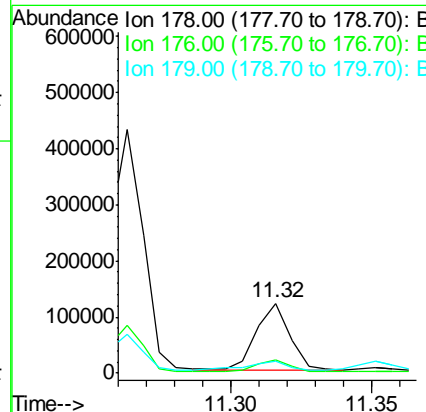
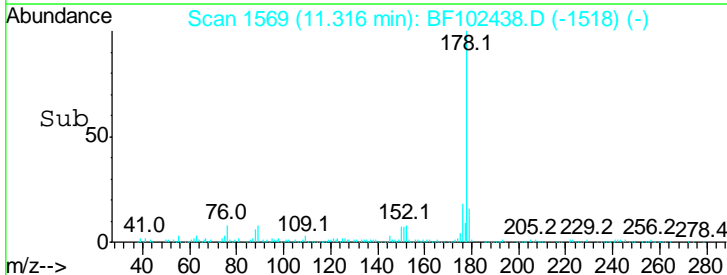


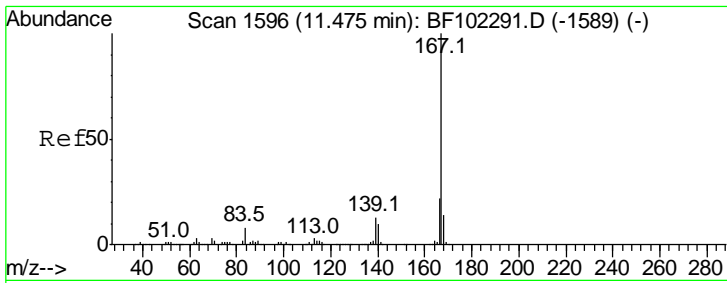
#71
 Anthracene
 Concen: 5.040 ng
 RT: 11.32 min Scan# 1569
 Delta R.T. 0.00 min
 Lab File: BF102438.D
 Acq: 25 Jan 2018 21:58



Tgt Ion:178 Resp: 99319

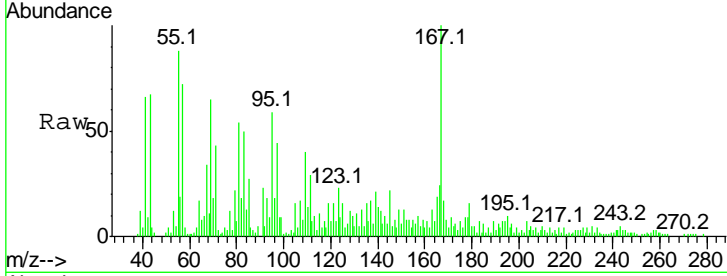
Ion	Ratio	Lower	Upper
178	100		
176	18.6	15.4	23.2
179	17.7	12.6	19.0





#72
 Carbazole
 Concen: 2.352 ng
 RT: 11.47 min Scan# 1596
 Delta R.T. 0.00 min
 Lab File: BF102438.D
 Acq: 25 Jan 2018 21:58

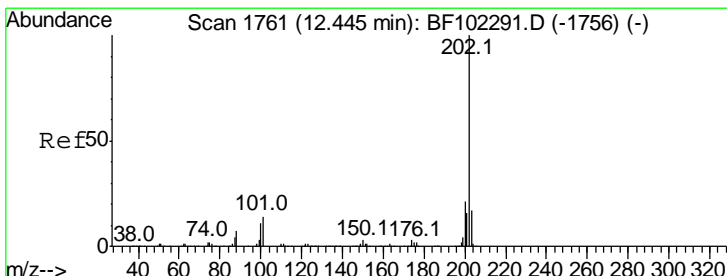
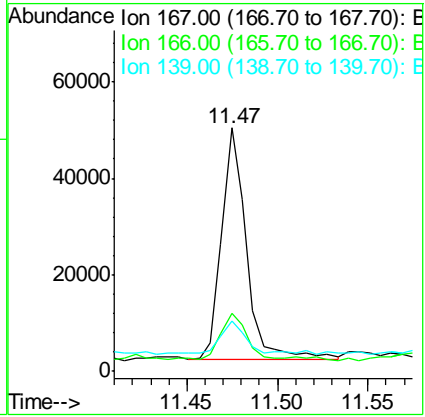
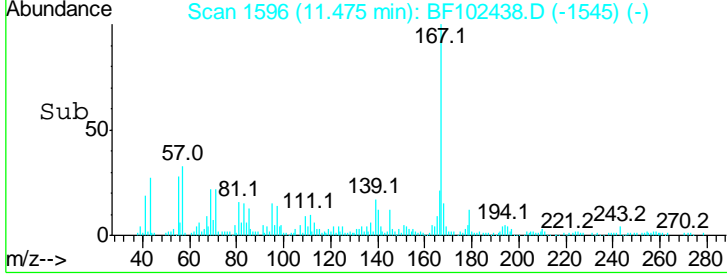
Instrument :
 BNA_F
 ClientSampled :
 DB-OF-E-W-(NW0-4)



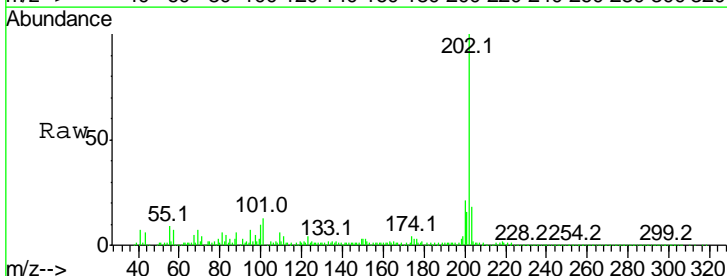
Tgt Ion: 167 Resp: 45215

Ion	Ratio	Lower	Upper
167	100		
166	24.1	17.6	26.4
139	20.8	10.9	16.3

Manual Integrations
APPROVED
 Sohil
 1/26/2018 11:25:16 AM

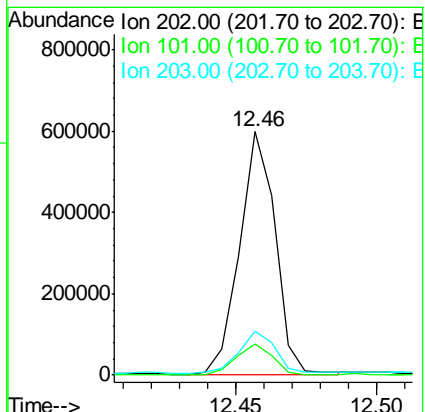
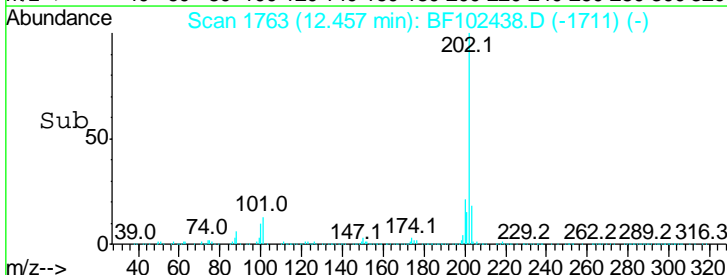


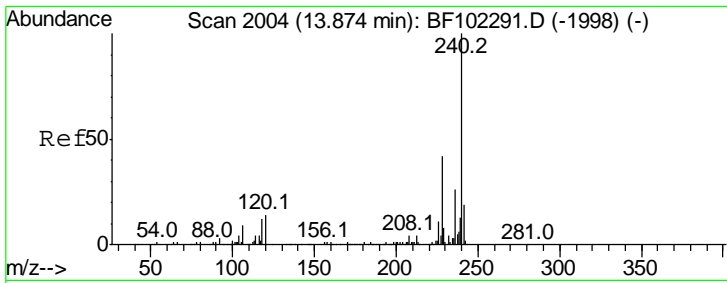
#74
 Fluoranthene
 Concen: 26.544 ng
 RT: 12.46 min Scan# 1763
 Delta R.T. 0.01 min
 Lab File: BF102438.D
 Acq: 25 Jan 2018 21:58



Tgt Ion: 202 Resp: 522559

Ion	Ratio	Lower	Upper
202	100		
101	12.8	0.0	34.1
203	18.2	0.0	38.1



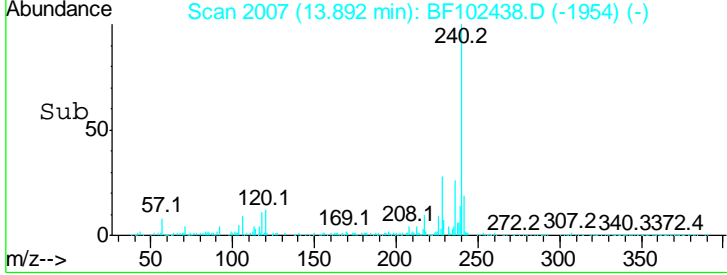
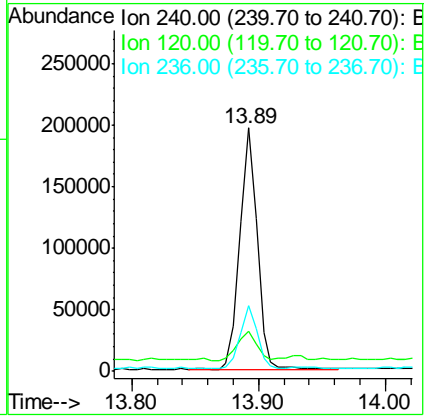
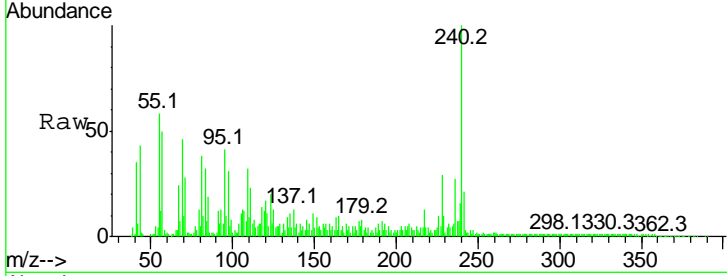


#75
 Chrysene-d12
 Concen: 20.000 ng
 RT: 13.89 min Scan# 2007
 Delta R.T. 0.01 min
 Lab File: BF102438.D
 Acq: 25 Jan 2018 21:58

Instrument :
 BNA_F
ClientSampled :
 DB-OF-E-W-(NW0-4)

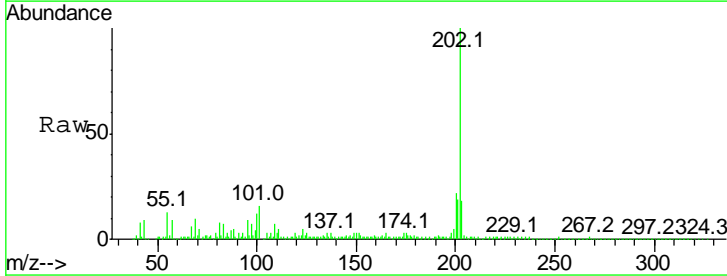
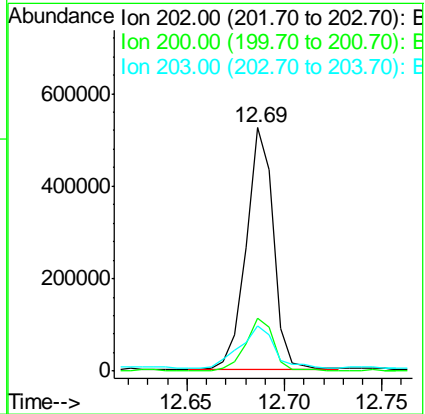
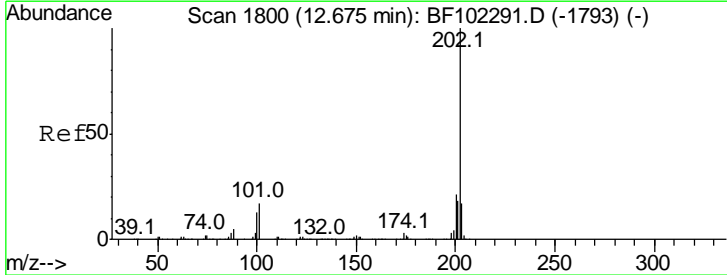
Tgt Ion	Ratio	Lower	Upper
240	100		
120	16.5	9.5	14.3#
236	27.1	20.7	31.1

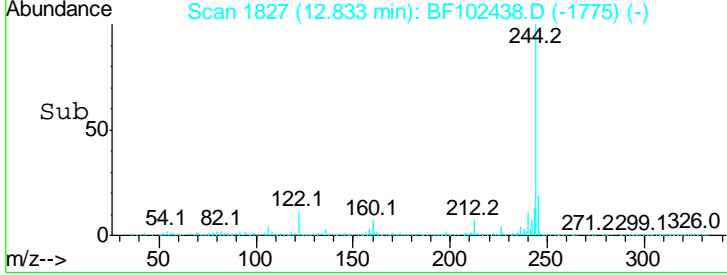
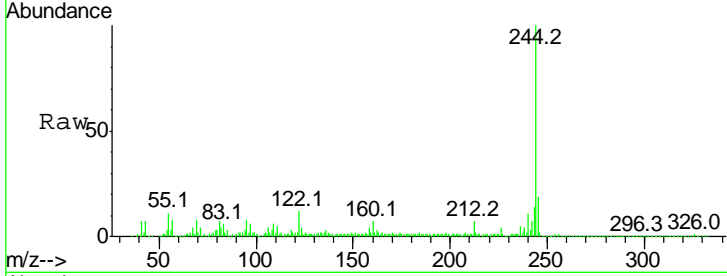
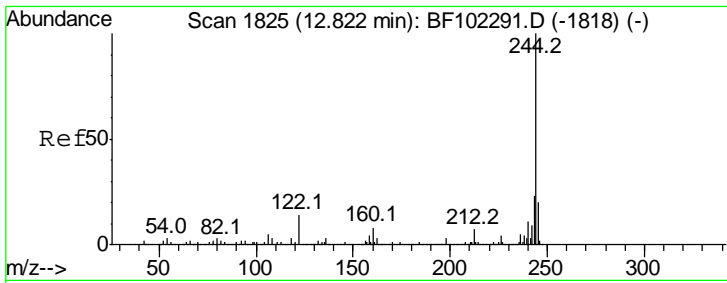
Manual Integrations
APPROVED
 Sohil
 1/26/2018 11:25:16 AM



#77
 Pyrene
 Concen: 35.289 ng
 RT: 12.69 min Scan# 1802
 Delta R.T. 0.01 min
 Lab File: BF102438.D
 Acq: 25 Jan 2018 21:58

Tgt Ion	Ratio	Lower	Upper
202	100		
200	21.6	17.4	26.2
203	18.4	14.3	21.5



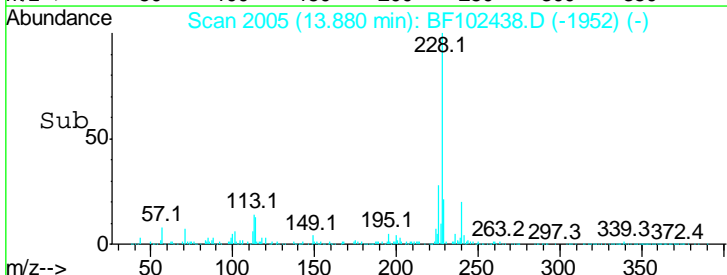
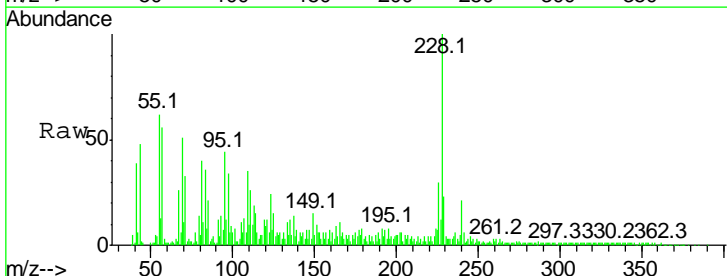
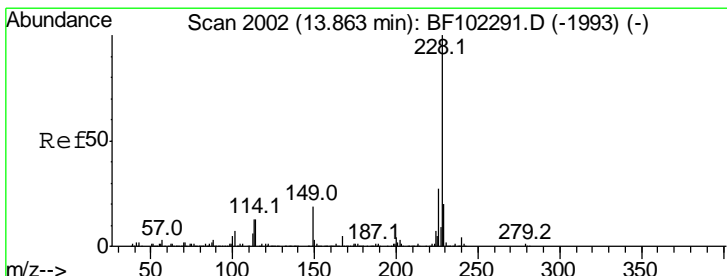
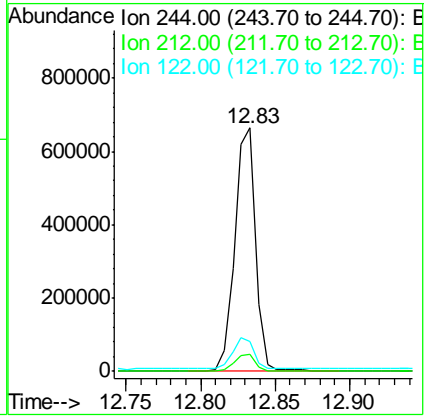


#78
 Terphenyl-d14
 Concen: 79.164 ng
 RT: 12.83 min Scan# 1827
 Delta R.T. 0.01 min
 Lab File: BF102438.D
 Acq: 25 Jan 2018 21:58

Tgt Ion	Ratio	Lower	Upper
244	100		
212	6.8	5.4	8.0
122	12.2	11.0	16.4

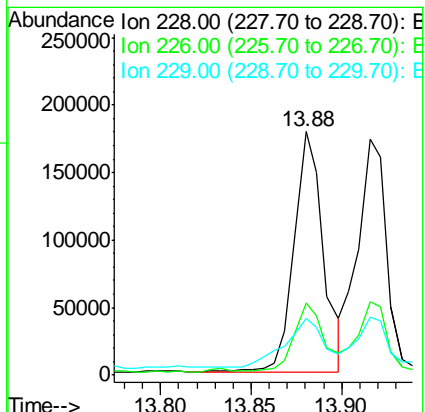
Instrument : BNA_F
 ClientSampled : DB-OF-E-W-(NW0-4)

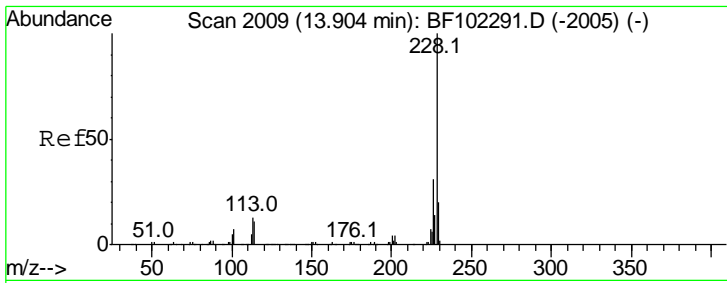
Manual Integrations APPROVED
 Sohil
 1/26/2018 11:25:16 AM



#80
 Benzo(a)anthracene
 Concen: 17.709 ng
 RT: 13.88 min Scan# 2005
 Delta R.T. 0.01 min
 Lab File: BF102438.D
 Acq: 25 Jan 2018 21:58

Tgt Ion	Ratio	Lower	Upper
228	100		
226	29.7	22.6	33.8
229	23.2	15.8	23.6





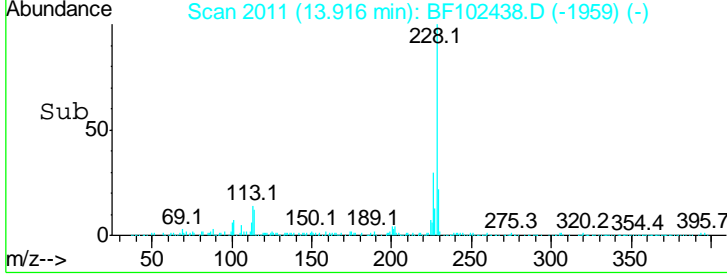
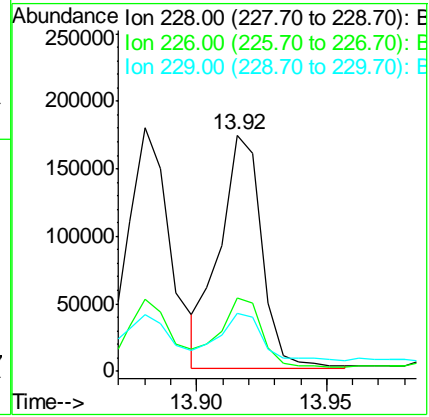
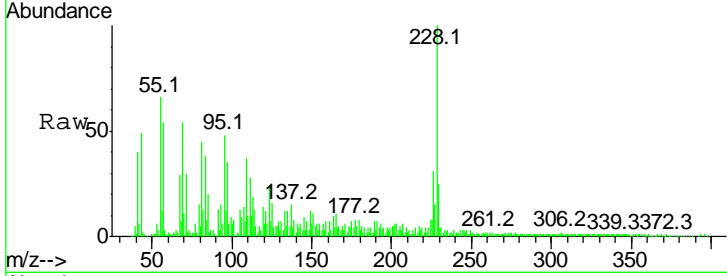
#82
 Chrysene
 Concen: 16.773 ng m
 RT: 13.92 min Scan# 2011
 Delta R.T. 0.01 min
 Lab File: BF102438.D
 Acq: 25 Jan 2018 21:58

Instrument :
 BNA_F
ClientSampleId :
 DB-OF-E-W-(NW0-4)

Tgt Ion	Resp	Lower	Upper
228	100		
226	30.9	25.0	37.6
229	24.5	16.2	24.4#

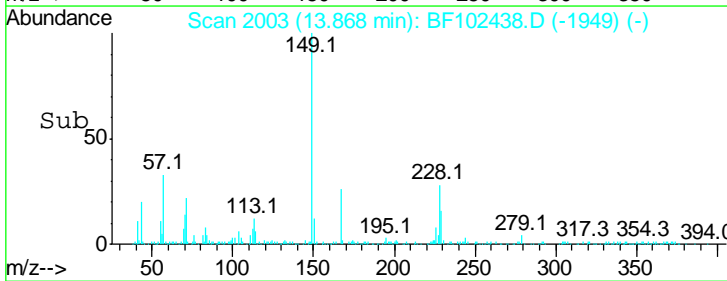
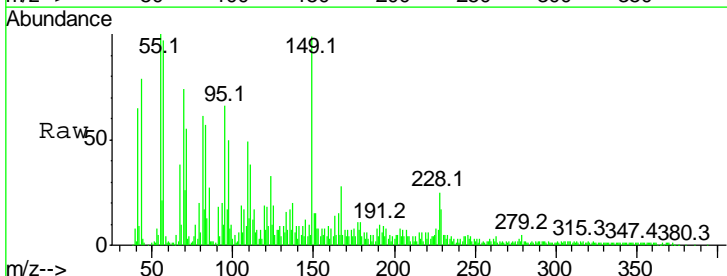
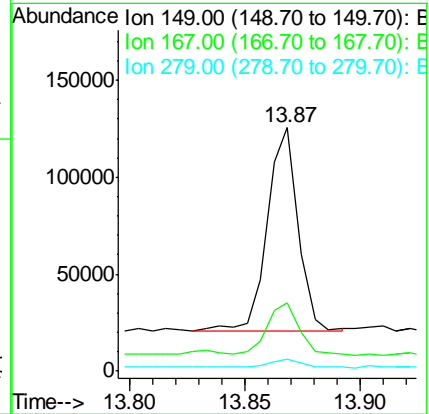
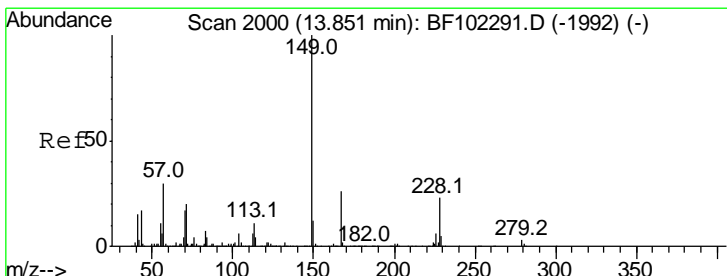
Manual Integrations
APPROVED

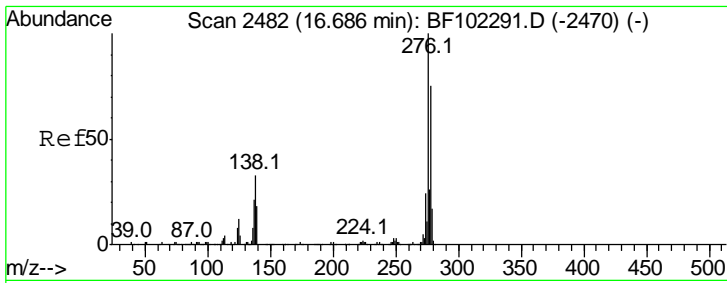
Sohil
 1/26/2018 11:25:16 AM



#83
 Bis(2-ethylhexyl)phthalate
 Concen: 10.186 ng
 RT: 13.87 min Scan# 2003
 Delta R.T. 0.02 min
 Lab File: BF102438.D
 Acq: 25 Jan 2018 21:58

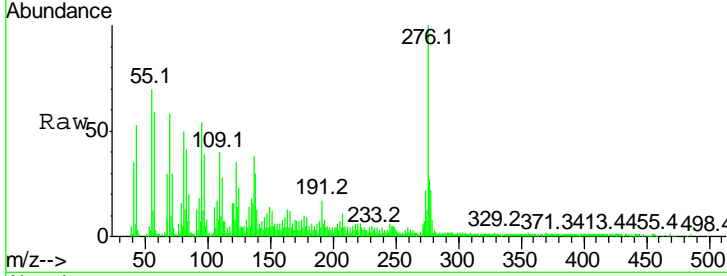
Tgt Ion	Resp	Lower	Upper
149	100		
167	28.3	21.3	31.9
279	5.1	3.0	4.4#





#85
 Indeno(1,2,3-cd)pyrene
 Concen: 15.048 ng
 RT: 16.76 min Scan# 2494
 Delta R.T. 0.06 min
 Lab File: BF102438.D
 Acq: 25 Jan 2018 21:58

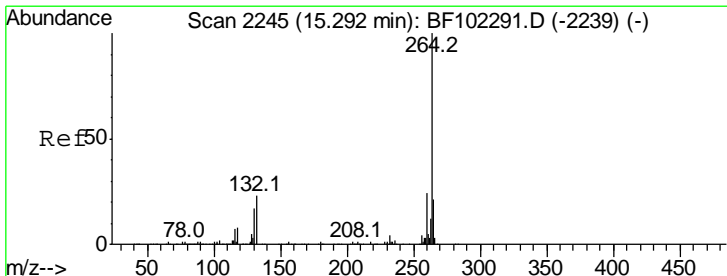
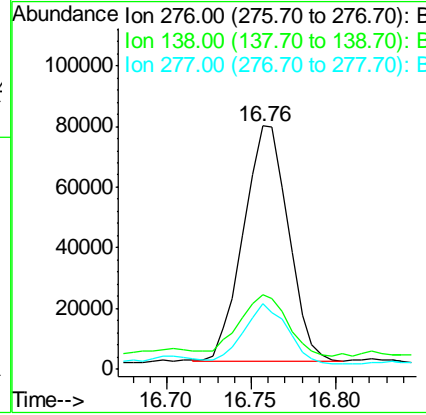
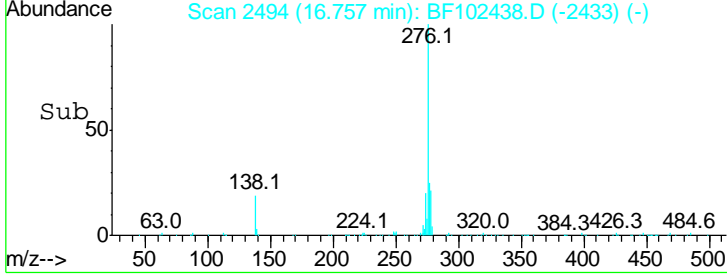
Instrument :
 BNA_F
 ClientSampled :
 DB-OF-E-W-(NW0-4)



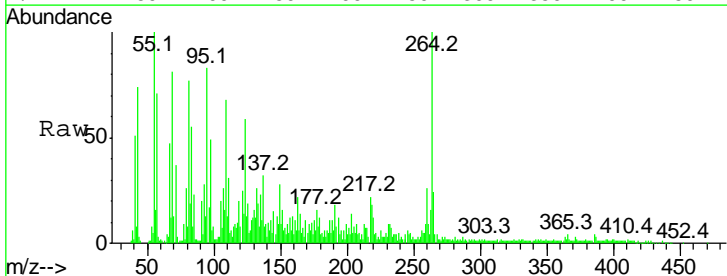
Tgt Ion: 276 Resp: 144078

Ion	Ratio	Lower	Upper
276	100		
138	27.2	25.0	37.6
277	24.1	20.1	30.1

Manual Integrations
APPROVED
 Sohil
 1/26/2018 11:25:16 AM

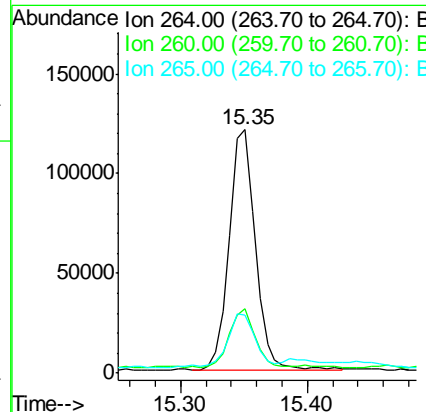
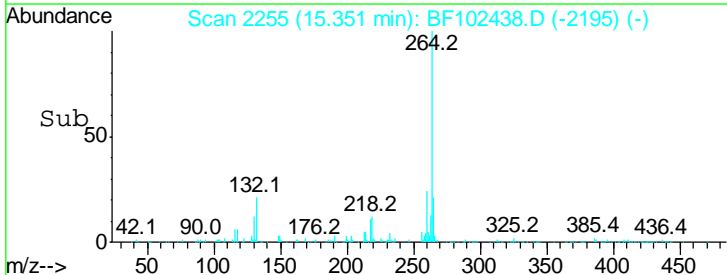


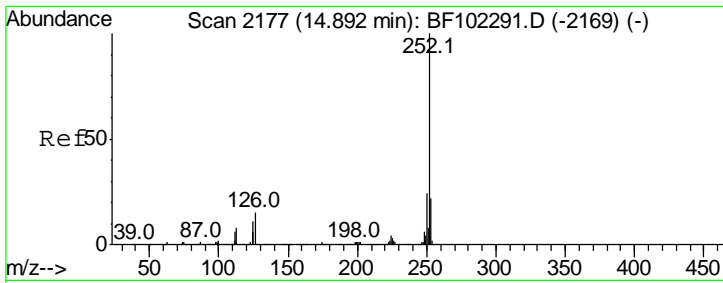
#86
 Perylene-d12
 Concen: 20.000 ng
 RT: 15.35 min Scan# 2255
 Delta R.T. 0.05 min
 Lab File: BF102438.D
 Acq: 25 Jan 2018 21:58



Tgt Ion: 264 Resp: 171765

Ion	Ratio	Lower	Upper
264	100		
260	26.5	19.2	28.8
265	23.7	17.5	26.3





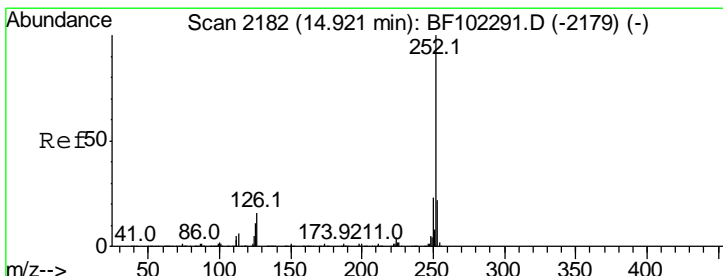
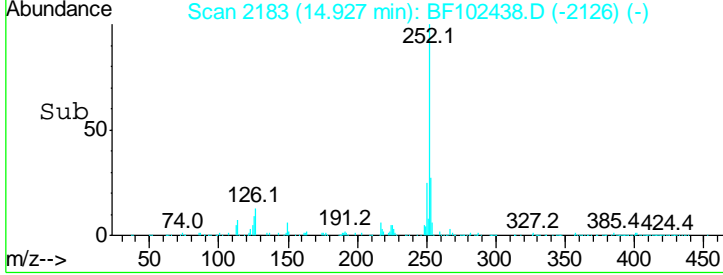
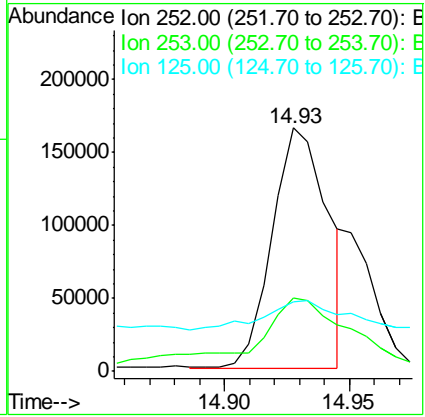
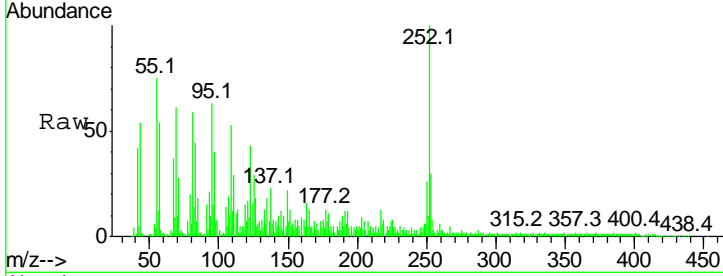
#87
 Benzo(b)fluoranthene
 Concen: 23.137 ng m
 RT: 14.93 min Scan# 2183
 Delta R.T. 0.04 min
 Lab File: BF102438.D
 Acq: 25 Jan 2018 21:58

Instrument :
 BNA_F
 ClientSampled :
 DB-OF-E-W-(NW0-4)

Tgt Ion	Resp	Lower	Upper
252	100		
253	30.3	17.0	25.6#
125	28.7	9.0	13.6#

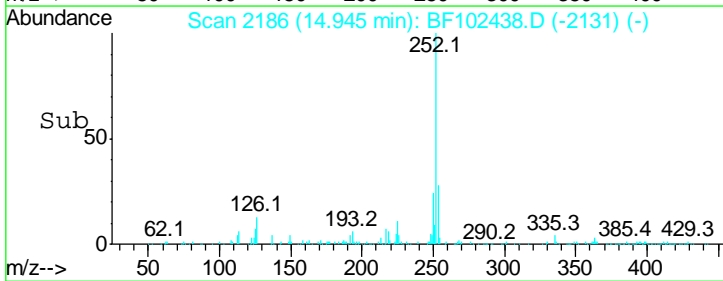
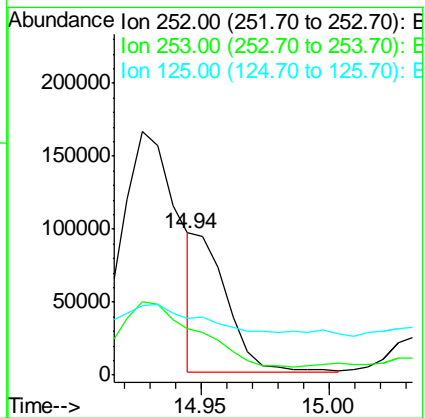
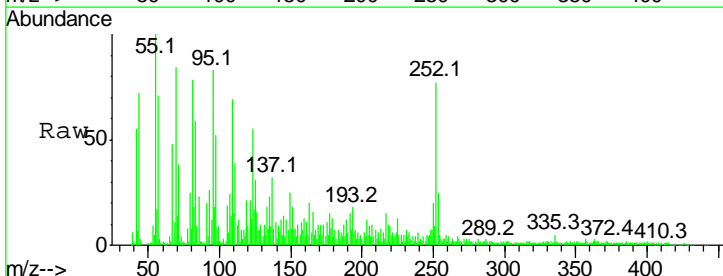
Manual Integrations
 APPROVED

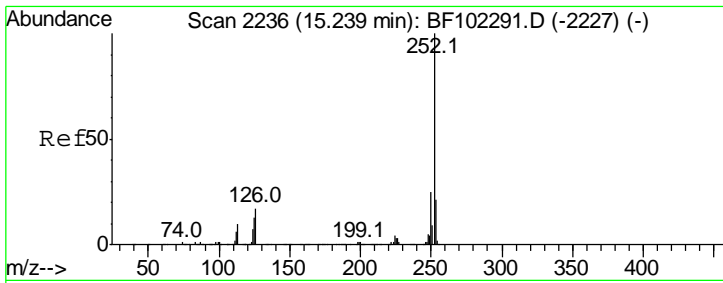
Sohil
 1/26/2018 11:25:16 AM



#88
 Benzo(k)fluoranthene
 Concen: 7.788 ng m
 RT: 14.94 min Scan# 2186
 Delta R.T. 0.02 min
 Lab File: BF102438.D
 Acq: 25 Jan 2018 21:58

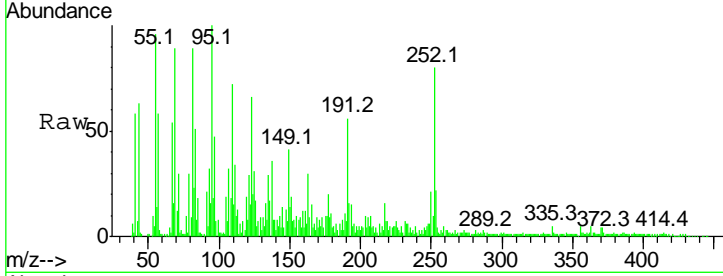
Tgt Ion	Resp	Lower	Upper
252	100		
253	32.4	17.9	26.9#
125	39.7	10.2	15.2#





#89
 Benzo(a)pyrene
 Concen: 16.821 ng
 RT: 15.29 min Scan# 2244
 Delta R.T. 0.04 min
 Lab File: BF102438.D
 Acq: 25 Jan 2018 21:58

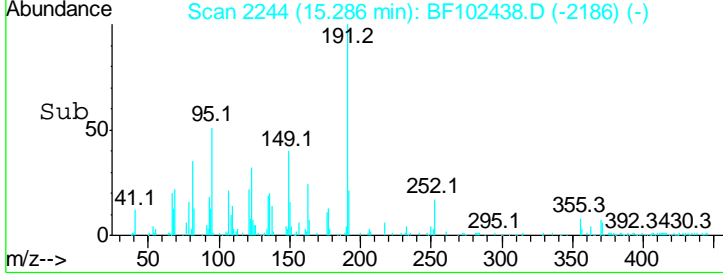
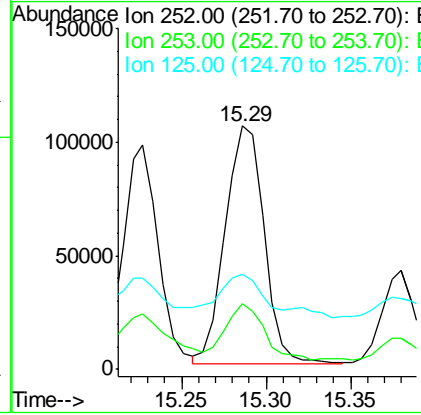
Instrument :
 BNA_F
 ClientSampleId :
 DB-OF-E-W-(NW0-4)



Tgt Ion	Resp	Lower	Upper
252	100		
253	27.2	17.1	25.7#
125	39.0	9.8	14.6#

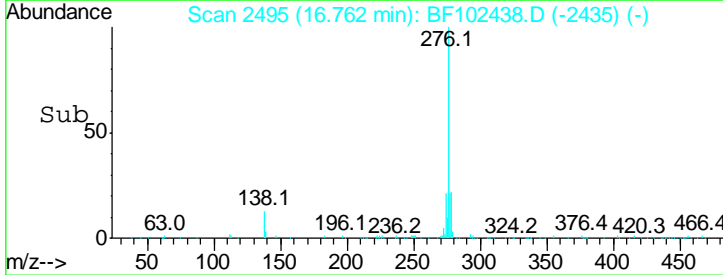
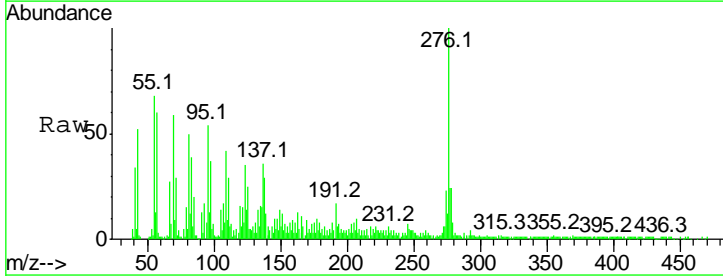
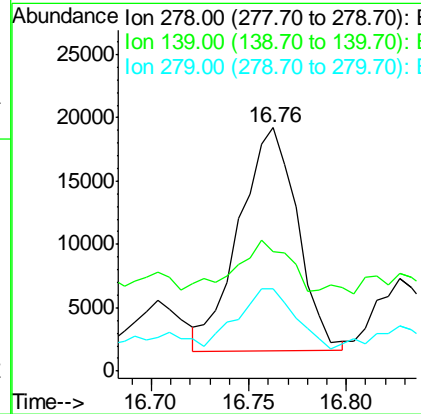
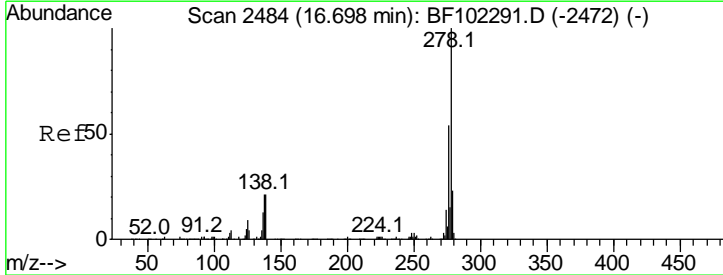
Manual Integrations
 APPROVED

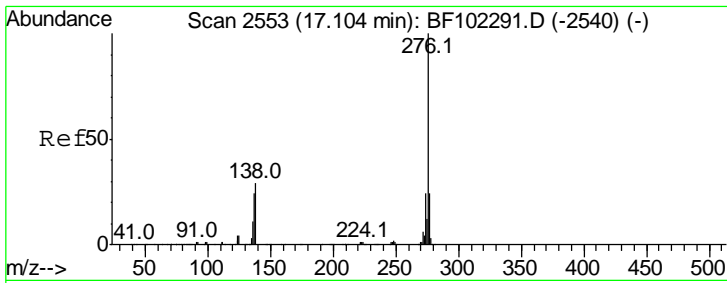
Sohil
 1/26/2018 11:25:16 AM



#90
 Dibenzo(a,h)anthracene
 Concen: 4.457 ng
 RT: 16.76 min Scan# 2495
 Delta R.T. 0.05 min
 Lab File: BF102438.D
 Acq: 25 Jan 2018 21:58

Tgt Ion	Resp	Lower	Upper
278	100		
139	49.3	15.9	23.9#
279	33.8	19.0	28.4#





#91
 Benzo(a,h,i)perylene
 Concen: 19.475 ng
 RT: 17.19 min Scan# 2567
 Delta R.T. 0.07 min
 Lab File: BF102438.D
 Acq: 25 Jan 2018 21:58

Instrument :
 BNA_F
ClientSampled :
 DB-OF-E-W-(NW0-4)

Tot Ion	Ratio	Lower	Upper
276	100		
277	25.7	17.9	26.9
138	29.1	21.8	32.8

Manual Integrations
APPROVED
 Sohil
 1/26/2018 11:25:16 AM

