

Data Path : U:\HPCHEM1\BNA F\DATA\BF012518\
 Data File : BF102422.D
 Acq On : 25 Jan 2018 13:25
 Operator : SJ/JU
 Sample : J1256-06
 Misc :
 ALS Vial : 9 Sample Multiplier: 1

Instrument :
 BNA_F
 ClientSampleId :
 DB-OF-N-S-(WW4-8)

Integration Parameters: rteint.p
 Integrator: RTE
 Smoothing : ON Filtering: 5
 Sampling : 1 Min Area: 3 % of largest Peak
 Start Thrs: 0.2 Max Peaks: 100
 Stop Thrs : 0 Peak Location: TOP

If leading or trailing edge < 100 prefer < Baseline drop else tangent >
 Peak separation: 5

Method : Z:\HPCHEM1\BNA F\METHODS\8270-BF012218.M
 Title : ASP BNA STANDARDS FOR 5 POINT CALIBRATION

Signal : TIC

peak #	R.T. min	first scan	max scan	last scan	PK TY	peak height	corr. area	corr. % max.	% of total
1	4.922	478	482	494	rVB	65019	99473	3.77%	0.315%
2	5.334	547	552	555	rBV	2500238	2478083	93.92%	7.846%
3	6.010	664	667	670	rBV	32178	26747	1.01%	0.085%
4	6.239	703	706	709	rBV2	44861	46695	1.77%	0.148%
5	6.363	723	727	738	rBV	2295087	2638373	100.00%	8.354%
6	6.492	744	749	752	rBV	2728299	2514699	95.31%	7.962%
7	6.545	754	758	761	rBV4	31810	34222	1.30%	0.108%
8	6.716	784	787	793	rVB	881944	763761	28.95%	2.418%
9	6.875	809	814	817	rBV	2192106	1953936	74.06%	6.187%
10	6.981	830	832	837	rVB4	38738	49586	1.88%	0.157%
11	7.104	848	853	856	rBV3	34265	41605	1.58%	0.132%
12	7.239	872	876	877	rBV2	26593	28029	1.06%	0.089%
13	7.286	879	884	887	rVV	1455332	1432194	54.28%	4.535%
14	7.310	887	888	892	rVV	59221	45287	1.72%	0.143%
15	7.357	892	896	899	rVB5	27802	40309	1.53%	0.128%
16	7.433	906	909	912	rVB2	86547	68469	2.60%	0.217%
17	7.463	912	914	917	rVB	31636	28025	1.06%	0.089%
18	7.998	999	1005	1008	rBV	1016853	932547	35.35%	2.953%
19	8.022	1008	1009	1012	rVV	149173	94958	3.60%	0.301%
20	8.057	1013	1015	1018	rVB	53443	44161	1.67%	0.140%
21	8.286	1049	1054	1057	rBV4	22178	32479	1.23%	0.103%
22	8.416	1073	1076	1078	rBV	60549	55390	2.10%	0.175%
23	8.533	1093	1096	1099	rBV4	26562	26700	1.01%	0.085%
24	8.710	1124	1126	1130	rBV	51929	50296	1.91%	0.159%
25	8.810	1140	1143	1147	rVB	59967	50482	1.91%	0.160%
26	8.874	1151	1154	1156	rBV3	20929	27195	1.03%	0.086%
27	8.904	1157	1159	1163	rVB5	22811	27067	1.03%	0.086%
28	9.016	1175	1178	1183	rVB	119974	103089	3.91%	0.326%
29	9.074	1183	1188	1191	rBV	2558866	2230543	84.54%	7.063%
30	9.157	1198	1202	1204	rBV	84992	96941	3.67%	0.307%
31	9.345	1231	1234	1236	rBV2	35098	28243	1.07%	0.089%
32	9.410	1242	1245	1247	rBV2	58141	59900	2.27%	0.190%
33	9.469	1251	1255	1259	rVV	567660	547683	20.76%	1.734%
34	9.574	1269	1273	1277	rVB4	39771	55377	2.10%	0.175%

Data Path : U:\HPCHEM1\BNA F\DATA\BF012518\
 Data File : BF102422.D
 Acq On : 25 Jan 2018 13:25
 Operator : SJ/JU
 Sample : J1256-06
 Misc :
 ALS Vial : 9 Sample Multiplier: 1

Instrument :
 BNA_F
 ClientSampleId :
 DB-OF-N-S-(WW4-8)

Integration Parameters: rteint.p
 Integrator: RTE
 Smoothing : ON
 Sampling : 1
 Start Thrs: 0.2
 Stop Thrs : 0

Filtering: 5
 Min Area: 3 % of largest Peak
 Max Peaks: 100
 Peak Location: TOP

If leading or trailing edge < 100 prefer < Baseline drop else tangent >
 Peak separation: 5

Method : Z:\HPCHEM1\BNA F\METHODS\8270-BF012218.M
 Title : ASP BNA STANDARDS FOR 5 POINT CALIBRATION

35	9.616	1277	1280	1284	rBV3	103914	113242	4.29%	0.359%
36	9.657	1284	1287	1289	rBV2	97229	89727	3.40%	0.284%
37	9.680	1289	1291	1296	rBV2	86047	87805	3.33%	0.278%
38	9.751	1300	1303	1307	rVV	826542	793042	30.06%	2.511%
39	9.786	1307	1309	1313	rVB2	99533	85476	3.24%	0.271%
40	9.857	1319	1321	1324	rBV4	46607	43646	1.65%	0.138%
41	9.939	1333	1335	1343	rBV2	100179	172323	6.53%	0.546%
42	10.004	1343	1346	1349	rBV3	184198	183823	6.97%	0.582%
43	10.069	1354	1357	1358	rBV2	59609	56533	2.14%	0.179%
44	10.157	1369	1372	1374	rBV2	109989	128887	4.89%	0.408%
45	10.180	1374	1376	1378	rVV	127052	109510	4.15%	0.347%
46	10.210	1378	1381	1383	rVV3	63667	67562	2.56%	0.214%
47	10.298	1394	1396	1400	rVB3	123464	118673	4.50%	0.376%
48	10.404	1410	1414	1419	rVB	639349	653052	24.75%	2.068%
49	10.451	1420	1422	1426	rVB3	91063	97835	3.71%	0.310%
50	10.545	1435	1438	1443	rBV	951715	878944	33.31%	2.783%
51	10.586	1443	1445	1448	rVB2	173831	155046	5.88%	0.491%
52	10.616	1448	1450	1454	rVB3	77878	83357	3.16%	0.264%
53	10.668	1454	1459	1466	rBV	1048289	1155842	43.81%	3.660%
54	10.845	1487	1489	1490	rBV	87742	59742	2.26%	0.189%
55	11.133	1535	1538	1543	rVB	1057775	997794	37.82%	3.159%
56	11.239	1553	1556	1558	rBV	748799	684130	25.93%	2.166%
57	11.263	1558	1560	1563	rVB	697136	581437	22.04%	1.841%
58	11.480	1594	1597	1600	rVB2	302728	284327	10.78%	0.900%
59	11.851	1658	1660	1663	rVB	181712	146823	5.56%	0.465%
60	12.221	1720	1723	1727	rBV	188676	195498	7.41%	0.619%
61	12.457	1760	1763	1766	rVB	702215	598395	22.68%	1.895%
62	12.680	1799	1801	1807	rVB	601992	535818	20.31%	1.697%
63	12.827	1821	1826	1833	rBV	1525417	1671719	63.36%	5.293%
64	13.886	2003	2006	2008	rBV2	557665	558224	21.16%	1.767%
65	15.986	2359	2363	2380	rVB	951710	1988953	75.39%	6.298%
66	16.392	2429	2432	2446	rVB	758016	1453045	55.07%	4.601%

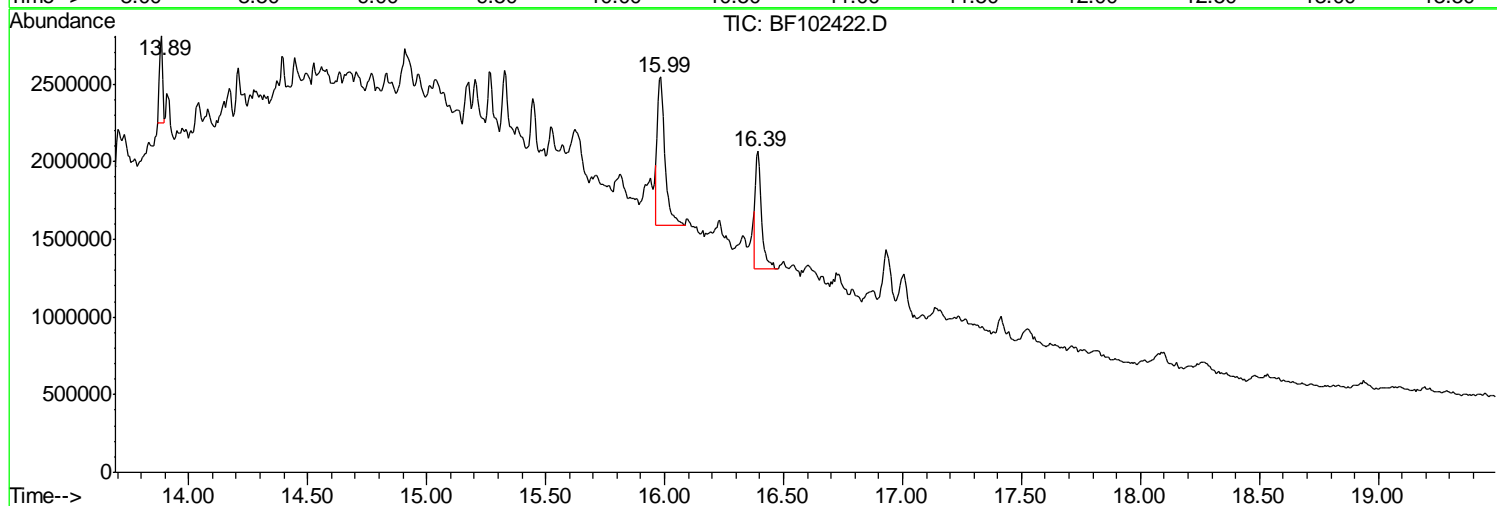
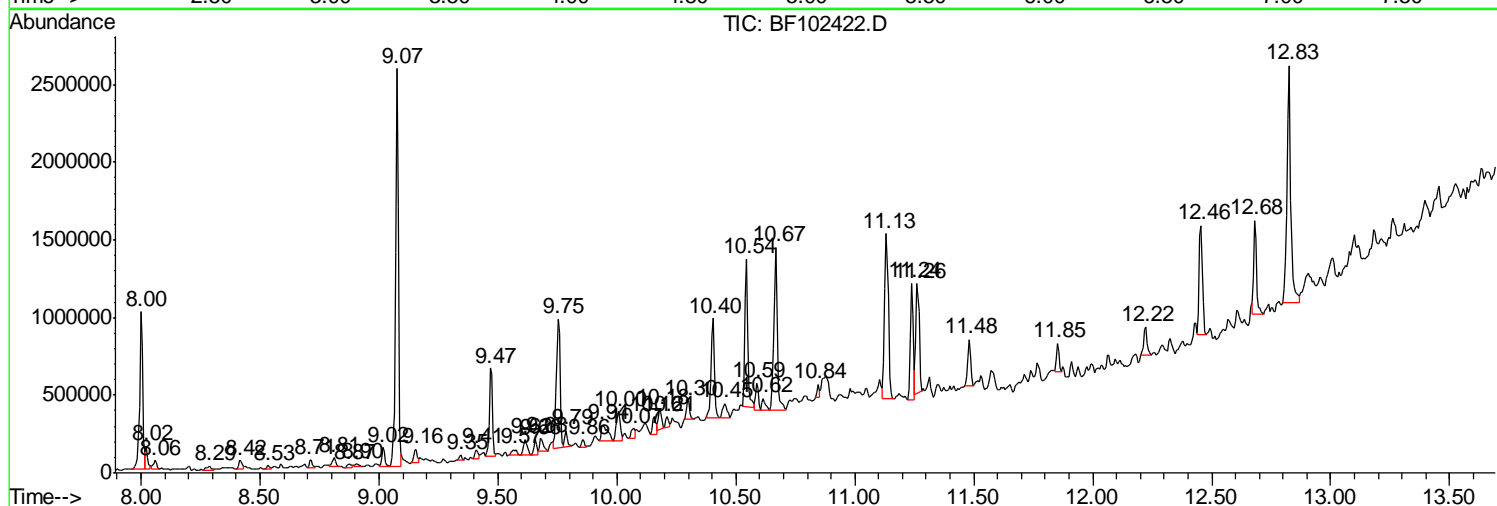
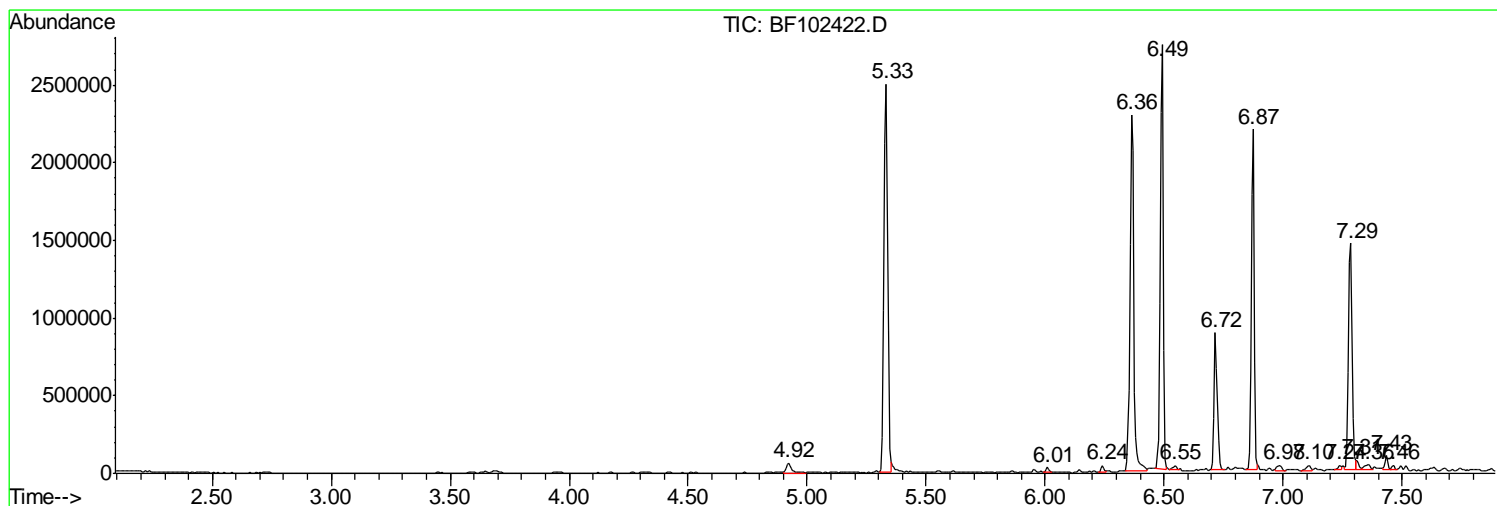
Sum of corrected areas: 31582774

Data Path : U:\HPCHEM1\BNA F\DATA\BF012518\
 Data File : BF102422.D
 Acq On : 25 Jan 2018 13:25
 Operator : SJ/JU
 Sample : J1256-06
 Misc :
 ALS Vial : 9 Sample Multiplier: 1

Instrument :
 BNA_F
 Client Sampled :
 DB-OF-N-S-(WW4-8)

Quant Method : Z:\HPCHEM1\BNA F\METHODS\8270-BF012218.M
 Quant Title : ASP BNA STANDARDS FOR 5 POINT CALIBRATION

TIC Library : C:\DATABASE\NIST11.L
 TIC Integration Parameters: LSCINT.P



Data Path : U:\HPCHEM1\BNA F\DATA\BF012518\
 Data File : BF102422.D
 Acq On : 25 Jan 2018 13:25
 Operator : SJ/JU
 Sample : J1256-06
 Misc :
 ALS Vial : 9 Sample Multiplier: 1

Instrument :
 BNA_F
 ClientSampled :
 DB-OF-N-S-(WW4-8)

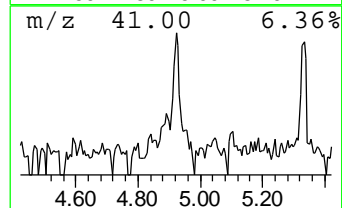
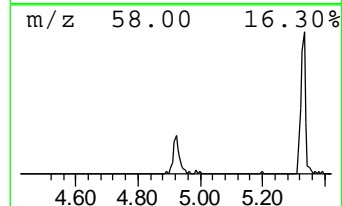
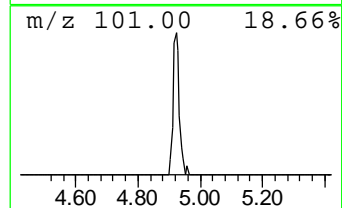
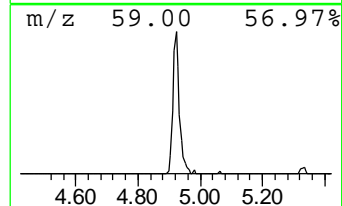
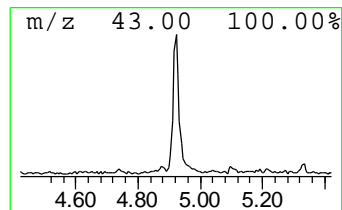
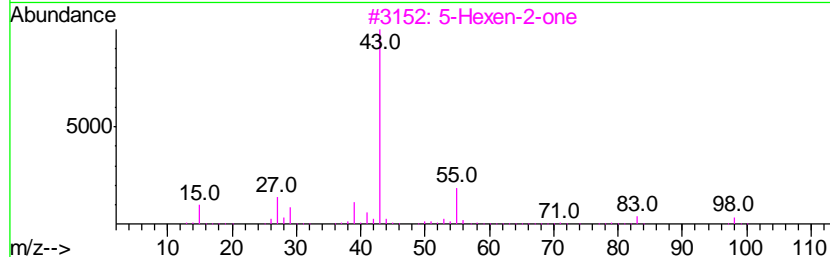
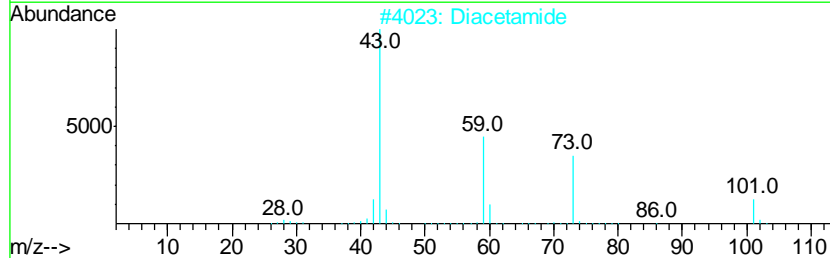
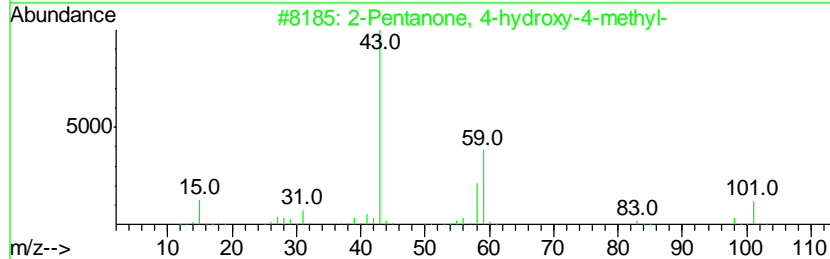
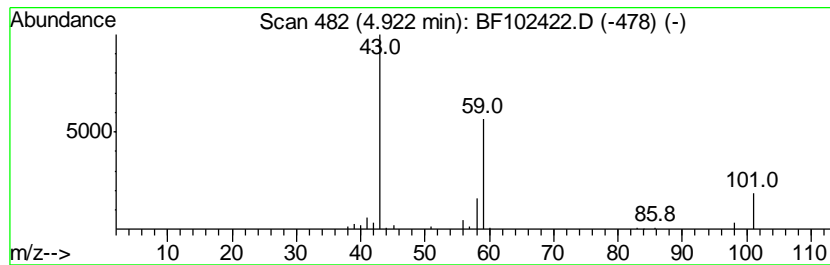
Quant Method : Z:\HPCHEM1\BNA F\METHODS\8270-BF012218.M
 Quant Title : ASP BNA STANDARDS FOR 5 POINT CALIBRATION

TIC Library : C:\DATABASE\NIST11.L
 TIC Integration Parameters: LSCINT.P

 Peak Number 1 unknown4.92 Concentration Rank 15

R.T.	EstConc	Area	Relative to ISTD	R.T.
4.92	2.60 ng	99473	1,4-Dichlorobenzene-d4	6.72

Hit#	of	Tentative ID	MW	MolForm	CAS#	Qual
1	5	2-Pentanone, 4-hydroxy-4-methyl-	116	C6H12O2	000123-42-2	36
2		Diacetamide	101	C4H7NO2	000625-77-4	36
3		5-Hexen-2-one	98	C6H10O	000109-49-9	9
4		2,3-Butanedione, monooxime	101	C4H7NO2	000057-71-6	9
5		Guanidine	59	CH5N3	000113-00-8	5



Data Path : U:\HPCHEM1\BNA F\DATA\BF012518\
 Data File : BF102422.D
 Acq On : 25 Jan 2018 13:25
 Operator : SJ/JU
 Sample : J1256-06
 Misc :
 ALS Vial : 9 Sample Multiplier: 1

Instrument :
 BNA_F
 ClientSampleId :
 DB-OF-N-S-(WW4-8)

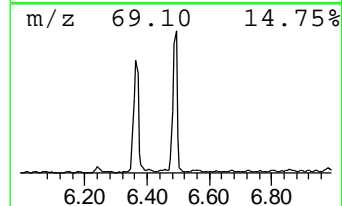
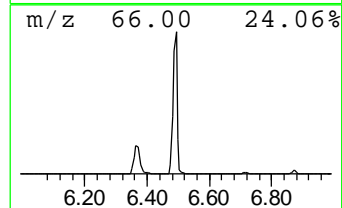
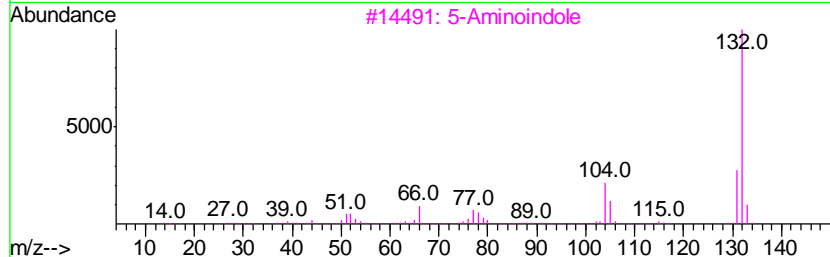
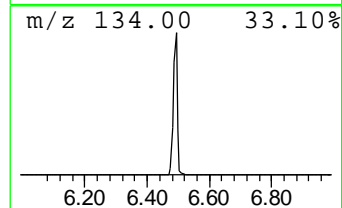
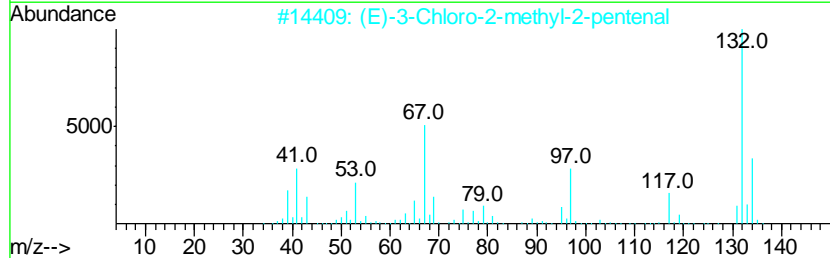
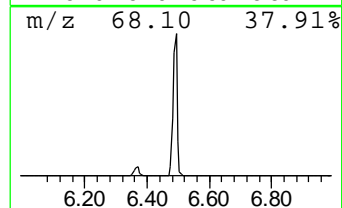
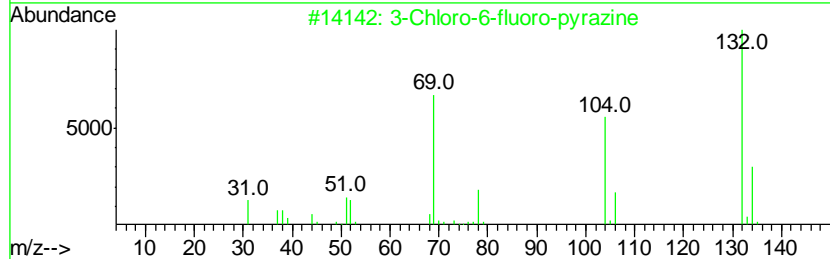
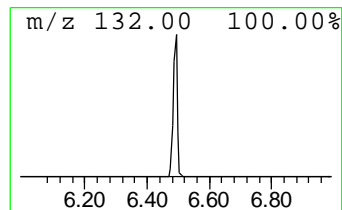
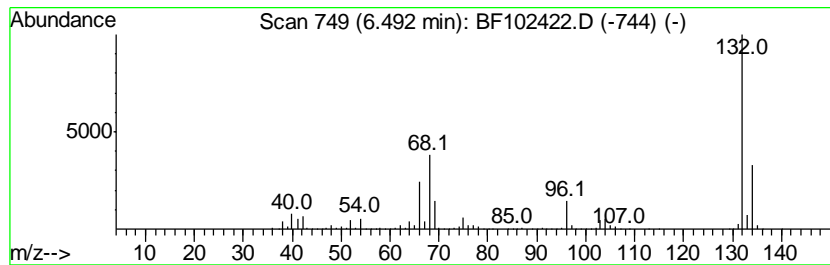
Quant Method : Z:\HPCHEM1\BNA F\METHODS\8270-BF012218.M
 Quant Title : ASP BNA STANDARDS FOR 5 POINT CALIBRATION

TIC Library : C:\DATABASE\NIST11.L
 TIC Integration Parameters: LSCINT.P

 Peak Number 2 unknown6.49 Concentration Rank 1

R.T.	EstConc	Area	Relative to ISTD	R.T.
6.49	65.85 ng	2514700	1,4-Dichlorobenzene-d4	6.72

Hit#	of	Tentative ID	MW	MolForm	CAS#	Qual
1	5	3-Chloro-6-fluoro-pyrazine	132	C4H2ClFN2	1000146-10-7	35
2		(E)-3-Chloro-2-methyl-2-pentenal	132	C6H9ClO	031357-76-3	17
3		5-Aminoindole	132	C8H8N2	005192-03-0	12
4		4-Chloro-2-fluoro-pyrimidine	132	C4H2ClFN2	051422-00-5	9
5		1-Methylpyrrolo[1,2-a]pyrazine	132	C8H8N2	064608-59-9	9



Data Path : U:\HPCHEM1\BNA F\DATA\BF012518\
 Data File : BF102422.D
 Acq On : 25 Jan 2018 13:25
 Operator : SJ/JU
 Sample : J1256-06
 Misc :
 ALS Vial : 9 Sample Multiplier: 1

Instrument :
 BNA_F
 ClientSampleId :
 DB-OF-N-S-(WW4-8)

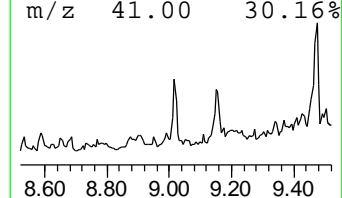
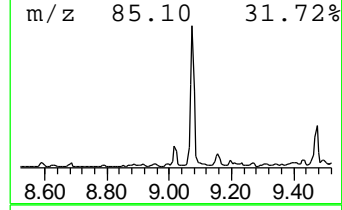
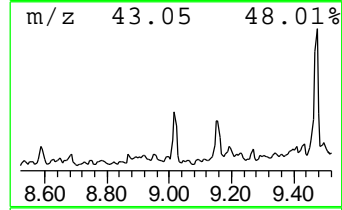
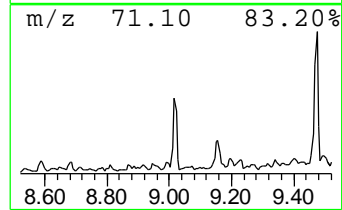
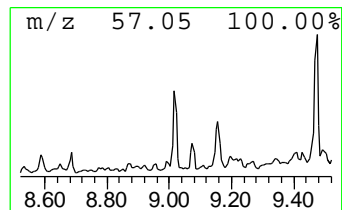
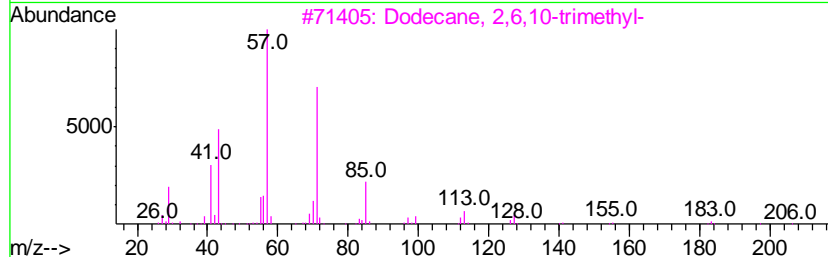
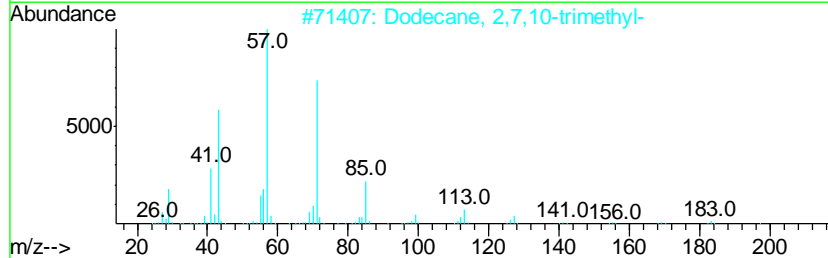
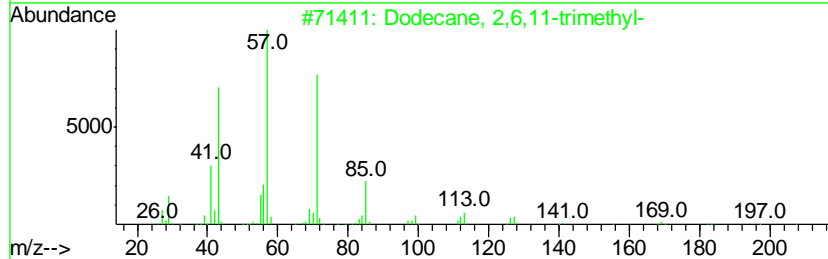
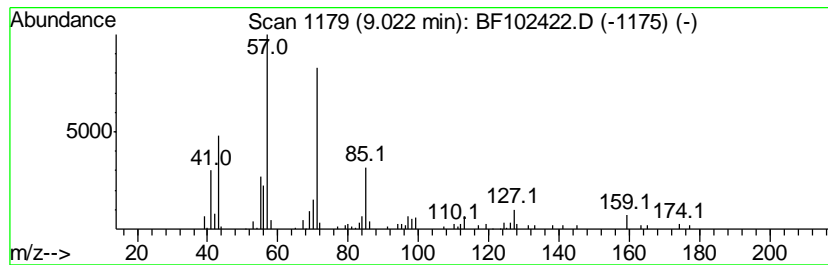
Quant Method : Z:\HPCHEM1\BNA F\METHODS\8270-BF012218.M
 Quant Title : ASP BNA STANDARDS FOR 5 POINT CALIBRATION

TIC Library : C:\DATABASE\NIST11.L
 TIC Integration Parameters: LSCINT.P

 Peak Number 4 Dodecane, 2,6,11-trimethyl- Concentration Rank 16

R.T.	EstConc	Area	Relative to ISTD	R.T.
9.02	2.60 ng	103089	Acenaphthene-d10	9.75

Hit#	of	Tentative ID	MW	MolForm	CAS#	Qual
1	5	Dodecane, 2,6,11-trimethyl-	212	C15H32	031295-56-4	90
2		Dodecane, 2,7,10-trimethyl-	212	C15H32	074645-98-0	86
3		Dodecane, 2,6,10-trimethyl-	212	C15H32	003891-98-3	72
4		Nonane, 3,7-dimethyl-	156	C11H24	017302-32-8	64
5		Hexadecane	226	C16H34	000544-76-3	59



Data Path : U:\HPCHEM1\BNA F\DATA\BF012518\
 Data File : BF102422.D
 Acq On : 25 Jan 2018 13:25
 Operator : SJ/JU
 Sample : J1256-06
 Misc :
 ALS Vial : 9 Sample Multiplier: 1

Instrument :
 BNA_F
 ClientSampleId :
 DB-OF-N-S-(WW4-8)

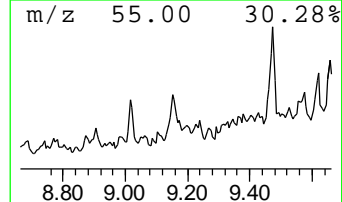
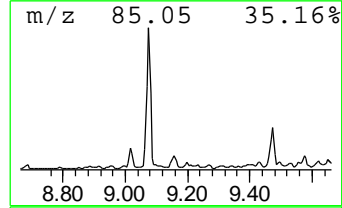
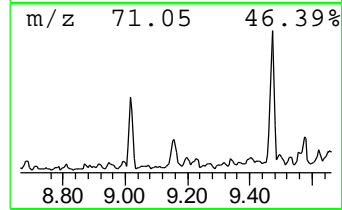
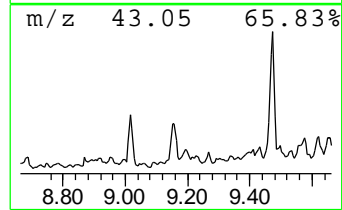
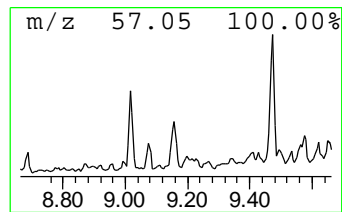
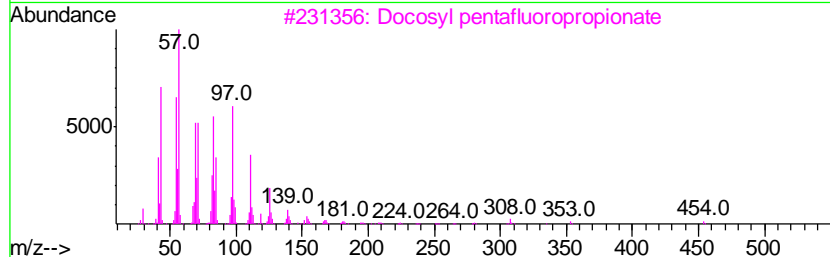
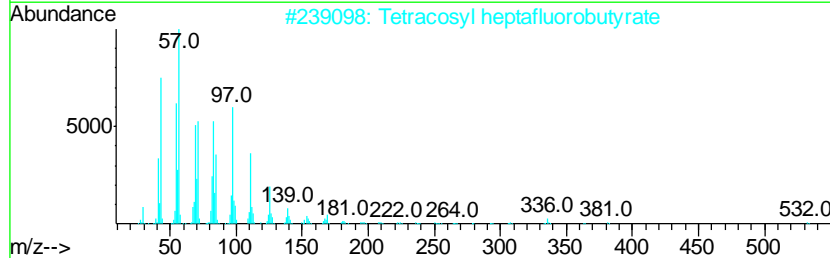
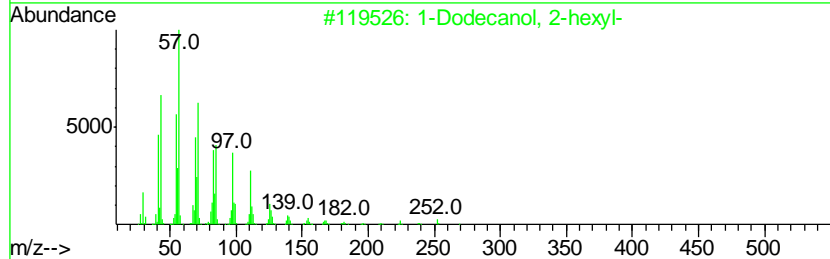
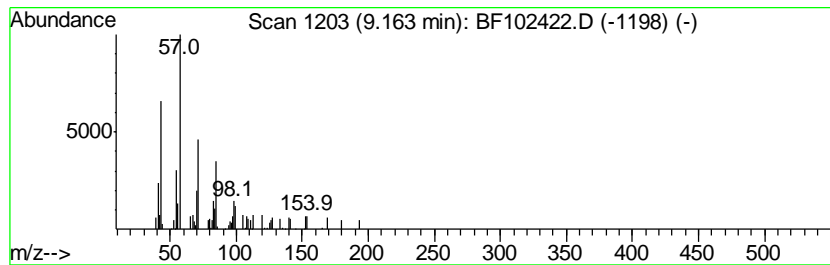
Quant Method : Z:\HPCHEM1\BNA F\METHODS\8270-BF012218.M
 Quant Title : ASP BNA STANDARDS FOR 5 POINT CALIBRATION

TIC Library : C:\DATABASE\NIST11.L
 TIC Integration Parameters: LSCINT.P

 Peak Number 5 1-Dodecanol, 2-hexyl- Concentration Rank 18

R.T.	EstConc	Area	Relative to ISTD	R.T.
9.16	2.44 ng	96941	Acenaphthene-d10	9.75

Hit#	of	Tentative ID	MW	MolForm	CAS#	Qual
1	5	1-Dodecanol, 2-hexyl-	270	C18H38O	110225-00-8	90
2		Tetracosyl heptafluorobutyrate	550	C28H49F7O2	1000351-83-7	87
3		Docosyl pentafluoropropionate	472	C25H45F5O2	1000351-80-9	80
4		Hydroxylamine, O-decyl-	173	C10H23NO	029812-79-1	72
5		Decane	142	C10H22	000124-18-5	72



Data Path : U:\HPCHEM1\BNA F\DATA\BF012518\
 Data File : BF102422.D
 Acq On : 25 Jan 2018 13:25
 Operator : SJ/JU
 Sample : J1256-06
 Misc :
 ALS Vial : 9 Sample Multiplier: 1

Instrument :
 BNA_F
 ClientSampled :
 DB-OF-N-S-(WW4-8)

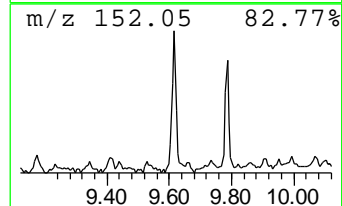
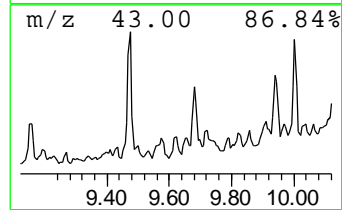
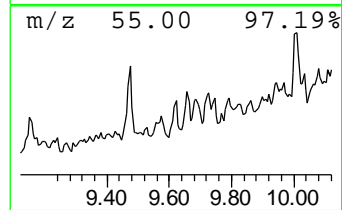
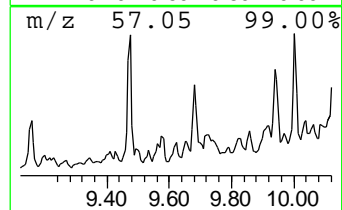
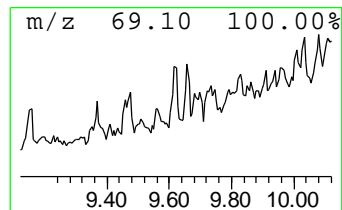
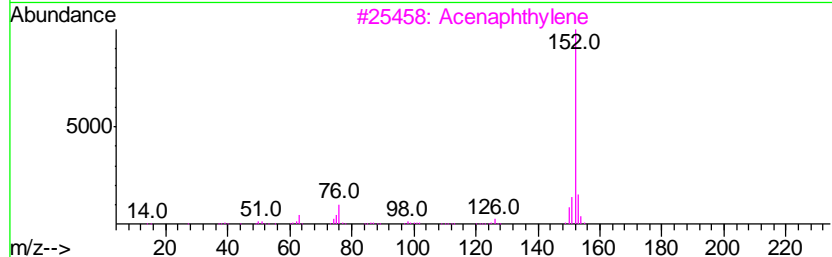
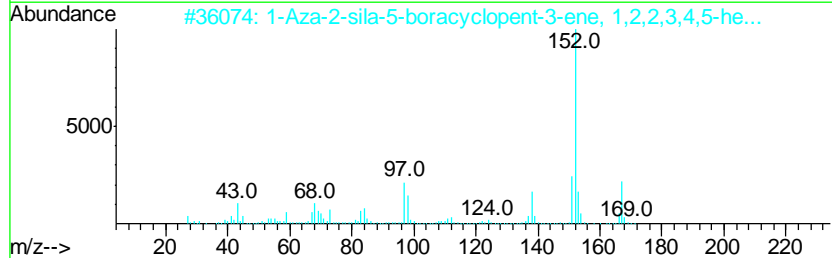
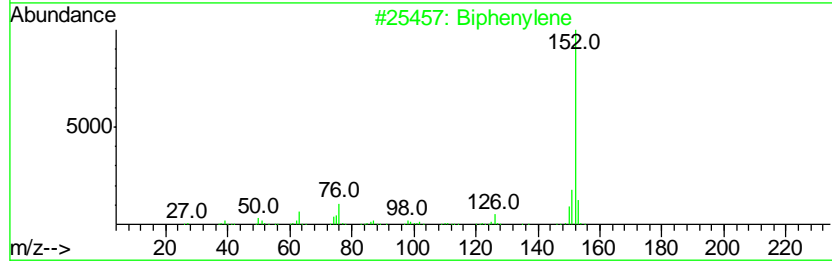
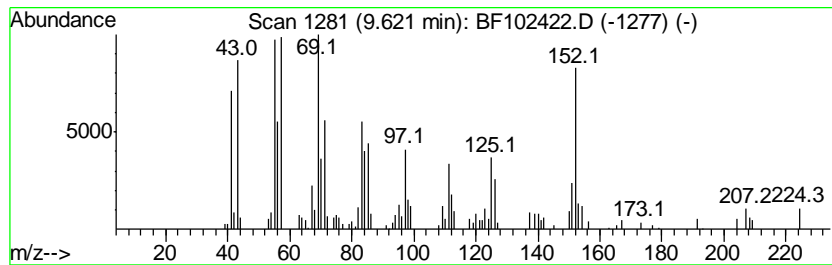
Quant Method : Z:\HPCHEM1\BNA F\METHODS\8270-BF012218.M
 Quant Title : ASP BNA STANDARDS FOR 5 POINT CALIBRATION

TIC Library : C:\DATABASE\NIST11.L
 TIC Integration Parameters: LSCINT.P

 Peak Number 6 Biphenylene Concentration Rank 13

R.T.	EstConc	Area	Relative to ISTD	R.T.
9.62	2.86 ng	113242	Acenaphthene-d10	9.75

Hit#	of	Tentative ID	MW	MolForm	CAS#	Qual
1	5	Biphenylene	152	C12H8	000259-79-0	64
2		1-Aza-2-sila-5-boracyclopent-3-e...	167	C8H18BNSi	125212-69-3	53
3		Acenaphthylene	152	C12H8	000208-96-8	46
4		1,4-Benzenediol, 2,3,5-trimethyl-	152	C9H12O2	000700-13-0	43
5		2H-Pyrrol-2-one, 1,5-dihydro-4-(...	152	C8H12N2O	105776-93-0	43



Data Path : U:\HPCHEM1\BNA F\DATA\BF012518\
 Data File : BF102422.D
 Acq On : 25 Jan 2018 13:25
 Operator : SJ/JU
 Sample : J1256-06
 Misc :
 ALS Vial : 9 Sample Multiplier: 1

Instrument :
 BNA_F
 ClientSampleID :
 DB-OF-N-S-(WW4-8)

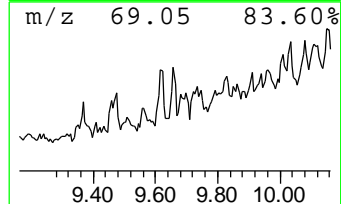
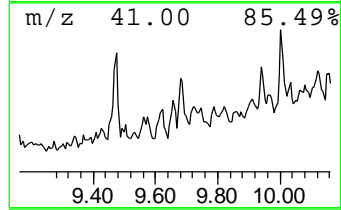
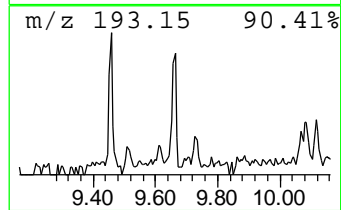
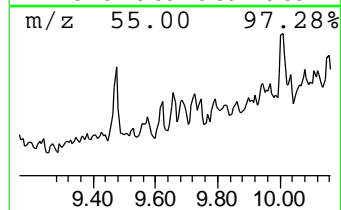
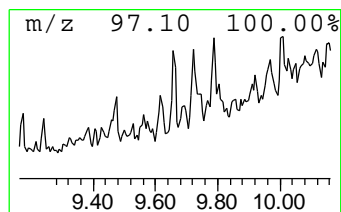
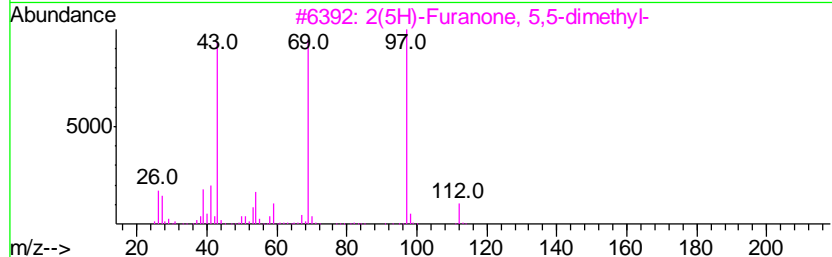
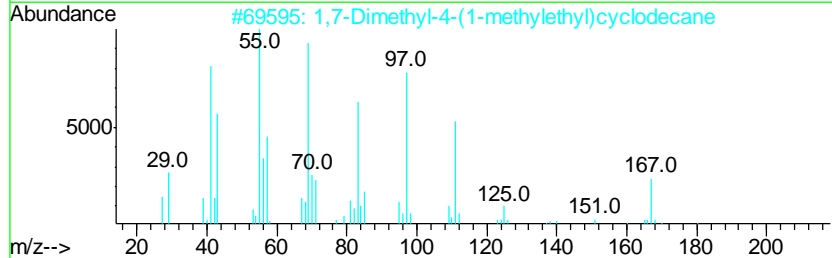
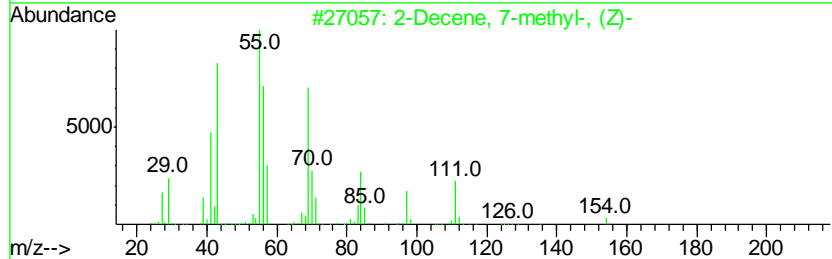
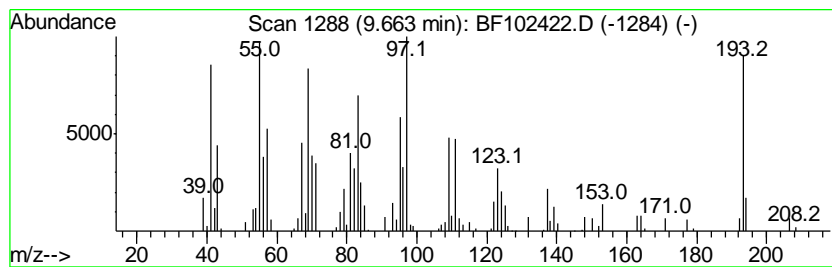
Quant Method : Z:\HPCHEM1\BNA F\METHODS\8270-BF012218.M
 Quant Title : ASP BNA STANDARDS FOR 5 POINT CALIBRATION

TIC Library : C:\DATABASE\NIST11.L
 TIC Integration Parameters: LSCINT.P

 Peak Number 7 unknown9.66 Concentration Rank 20

R.T.	EstConc	Area	Relative to ISTD	R.T.
9.66	2.26 ng	89727	Acenaphthene-d10	9.75

Hit#	of	Tentative ID	MW	MolForm	CAS#	Qual
1	5	2-Decene, 7-methyl-, (Z)-	154	C11H22	074630-23-2	30
2		1,7-Dimethyl-4-(1-methylethyl)cy...	210	C15H30	000645-10-3	27
3		2(5H)-Furanone, 5,5-dimethyl-	112	C6H8O2	020019-64-1	25
4		Cyclopentane, 1-pentyl-2-propyl-	182	C13H26	062199-51-3	25
5		2-Undecene, 8-methyl-, (Z)-	168	C12H24	074630-44-7	20



Data Path : U:\HPCHEM1\BNA F\DATA\BF012518\
 Data File : BF102422.D
 Acq On : 25 Jan 2018 13:25
 Operator : SJ/JU
 Sample : J1256-06
 Misc :
 ALS Vial : 9 Sample Multiplier: 1

Instrument :
 BNA_F
 ClientSampleId :
 DB-OF-N-S-(WW4-8)

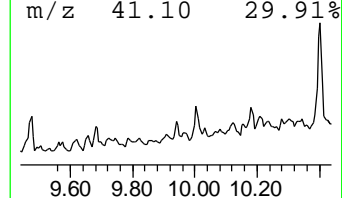
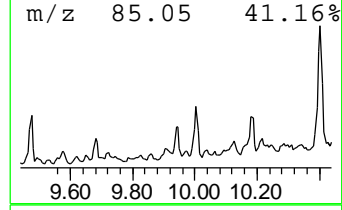
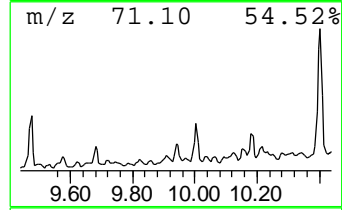
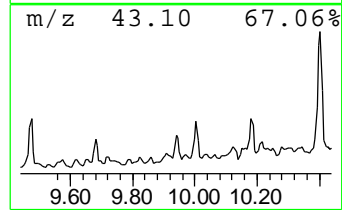
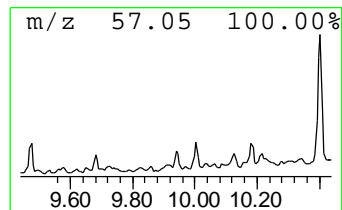
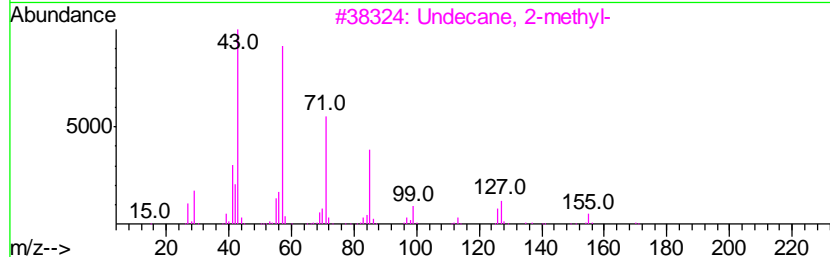
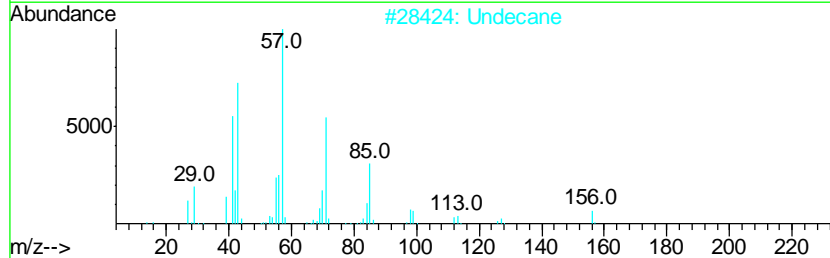
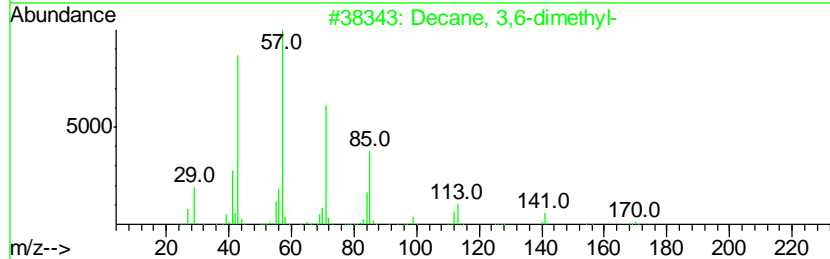
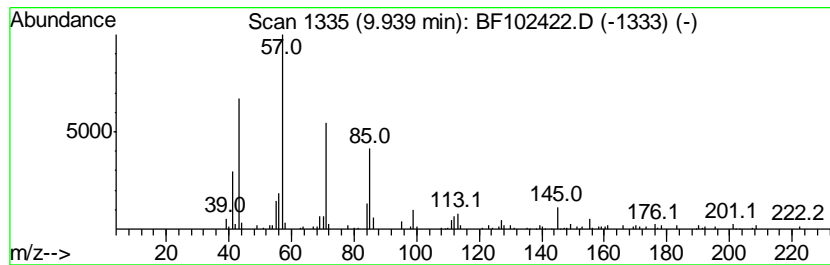
Quant Method : Z:\HPCHEM1\BNA F\METHODS\8270-BF012218.M
 Quant Title : ASP BNA STANDARDS FOR 5 POINT CALIBRATION

TIC Library : C:\DATABASE\NIST11.L
 TIC Integration Parameters: LSCINT.P

 Peak Number 8 Decane, 3,6-dimethyl- Concentration Rank 10

R.T.	EstConc	Area	Relative to ISTD	R.T.
9.94	4.35 ng	172323	Acenaphthene-d10	9.75

Hit#	of	Tentative ID	MW	MolForm	CAS#	Qual
1	5	Decane, 3,6-dimethyl-	170	C12H26	017312-53-7	93
2		Undecane	156	C11H24	001120-21-4	83
3		Undecane, 2-methyl-	170	C12H26	007045-71-8	72
4		Undecane, 5-methyl-	170	C12H26	001632-70-8	64
5		Undecane, 3-methyl-	170	C12H26	001002-43-3	64



Data Path : U:\HPCHEM1\BNA F\DATA\BF012518\
 Data File : BF102422.D
 Acq On : 25 Jan 2018 13:25
 Operator : SJ/JU
 Sample : J1256-06
 Misc :
 ALS Vial : 9 Sample Multiplier: 1

Instrument :
 BNA_F
 ClientSampleId :
 DB-OF-N-S-(WW4-8)

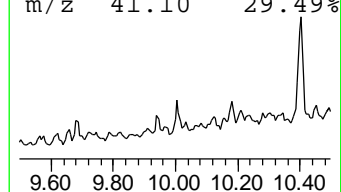
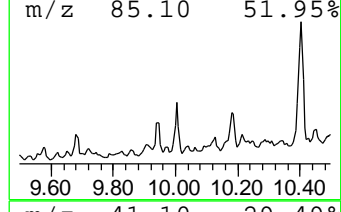
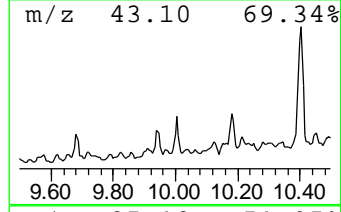
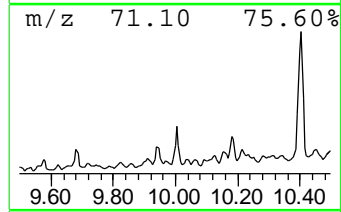
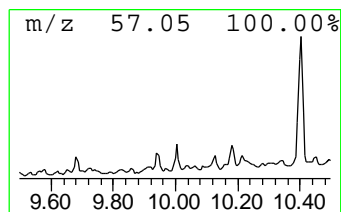
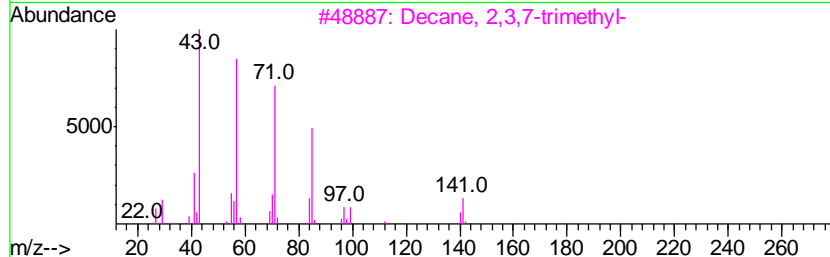
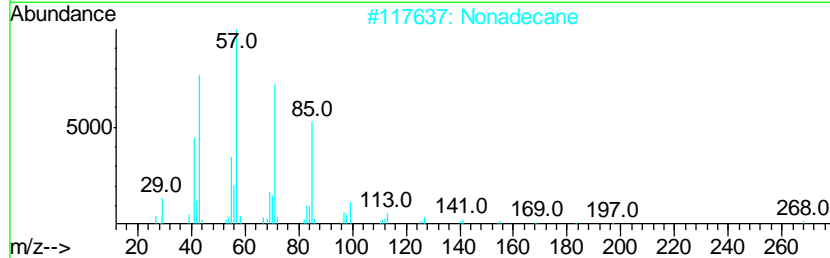
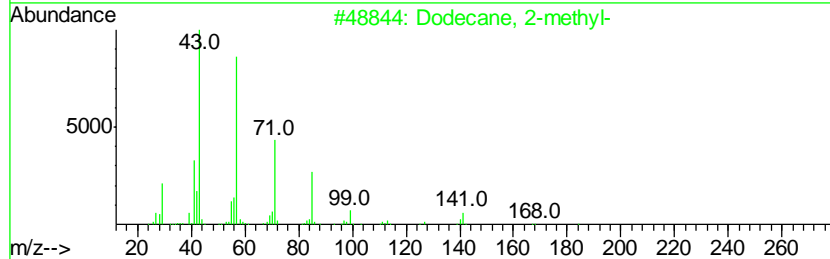
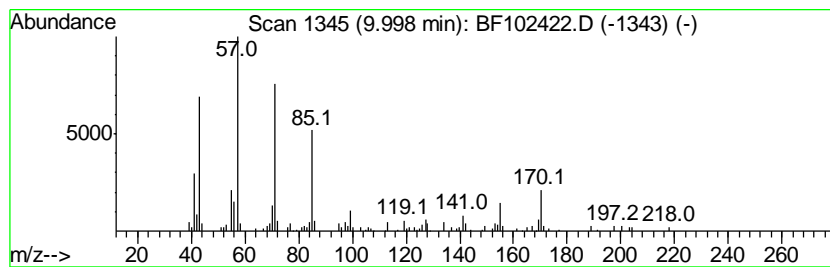
Quant Method : Z:\HPCHEM1\BNA F\METHODS\8270-BF012218.M
 Quant Title : ASP BNA STANDARDS FOR 5 POINT CALIBRATION

TIC Library : C:\DATABASE\NIST11.L
 TIC Integration Parameters: LSCINT.P

 Peak Number 9 Dodecane, 2-methyl- Concentration Rank 9

R.T.	EstConc	Area	Relative to ISTD	R.T.
10.00	4.64 ng	183823	Acenaphthene-d10	9.75

Hit#	of	Tentative ID	MW	MolForm	CAS#	Qual
1	5	Dodecane, 2-methyl-	184	C13H28	001560-97-0	80
2		Nonadecane	268	C19H40	000629-92-5	80
3		Decane, 2,3,7-trimethyl-	184	C13H28	062238-13-5	72
4		Tetradecane	198	C14H30	000629-59-4	72
5		Heptacosane	380	C27H56	000593-49-7	72



Data Path : U:\HPCHEM1\BNA F\DATA\BF012518\
 Data File : BF102422.D
 Acq On : 25 Jan 2018 13:25
 Operator : SJ/JU
 Sample : J1256-06
 Misc :
 ALS Vial : 9 Sample Multiplier: 1

Instrument :
 BNA_F
 ClientSampleId :
 DB-OF-N-S-(WW4-8)

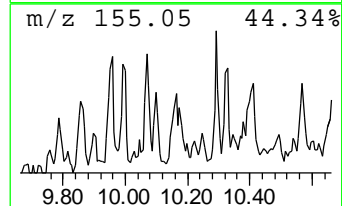
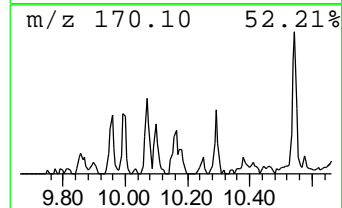
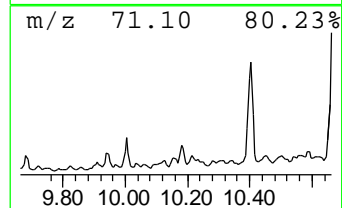
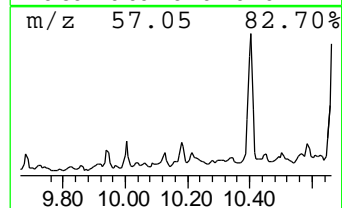
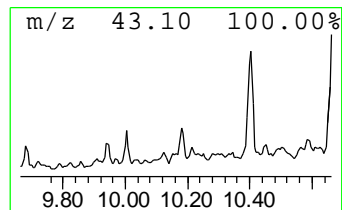
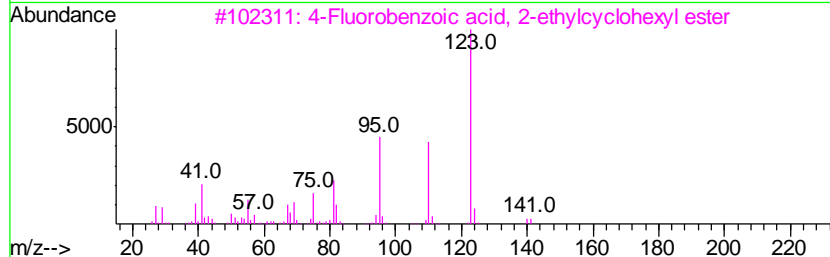
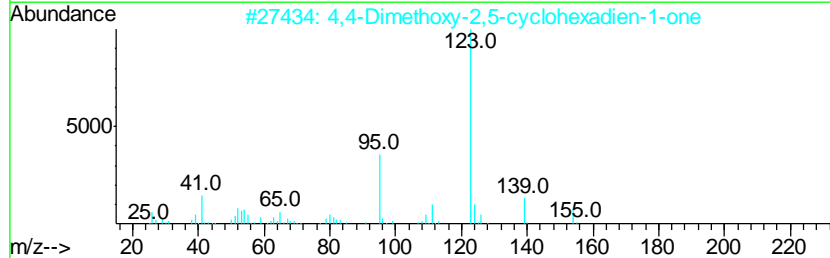
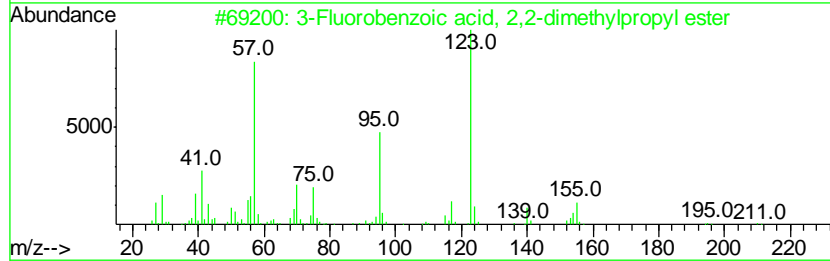
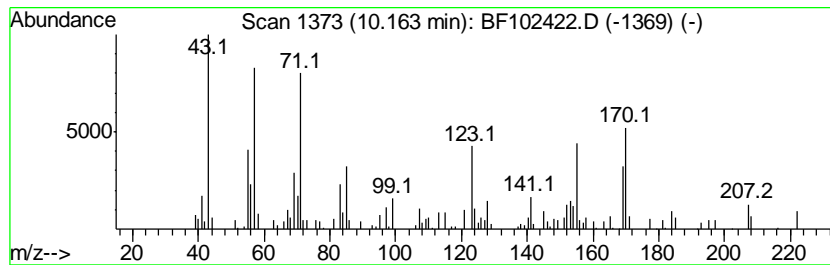
Quant Method : Z:\HPCHEM1\BNA F\METHODS\8270-BF012218.M
 Quant Title : ASP BNA STANDARDS FOR 5 POINT CALIBRATION

TIC Library : C:\DATABASE\NIST11.L
 TIC Integration Parameters: LSCINT.P

 Peak Number 10 unknown10.16 Concentration Rank 12

R.T.	EstConc	Area	Relative to ISTD	R.T.
10.16	3.25 ng	128887	Acenaphthene-d10	9.75

Hit#	of	Tentative ID	MW	MolForm	CAS#	Qual
1	5	3-Fluorobenzoic acid, 2,2-dimeth...	210	C12H15FO2	204779-85-1	35
2		4,4-Dimethoxy-2,5-cyclohexadien-...	154	C8H10O3	000935-50-2	30
3		4-Fluorobenzoic acid, 2-ethylcyc...	250	C15H19FO2	1000279-06-0	27
4		1-Trimethylsilylpent-1-en-4-yne	138	C8H14Si	079516-25-9	27
5		3-Fluorobenzoic acid, 3-tridecyl...	322	C20H31FO2	1000280-60-3	27



Data Path : U:\HPCHEM1\BNA F\DATA\BF012518\
 Data File : BF102422.D
 Acq On : 25 Jan 2018 13:25
 Operator : SJ/JU
 Sample : J1256-06
 Misc :
 ALS Vial : 9 Sample Multiplier: 1

Instrument :
 BNA_F
 ClientSampleId :
 DB-OF-N-S-(WW4-8)

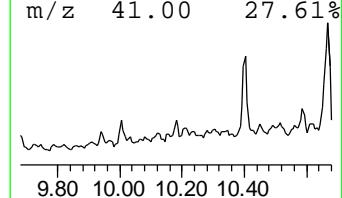
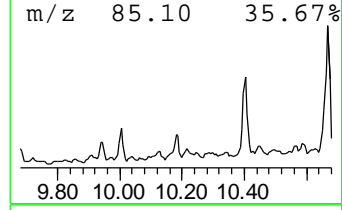
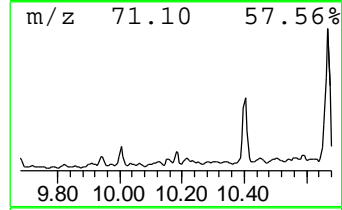
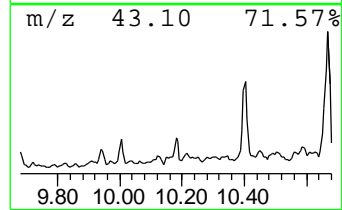
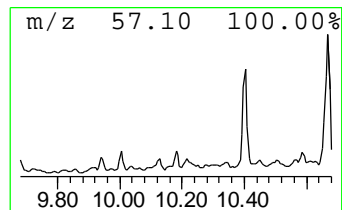
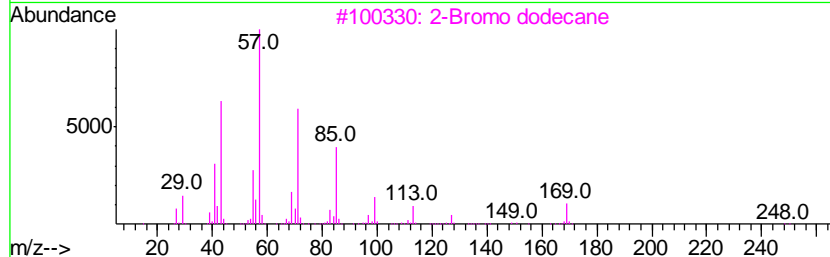
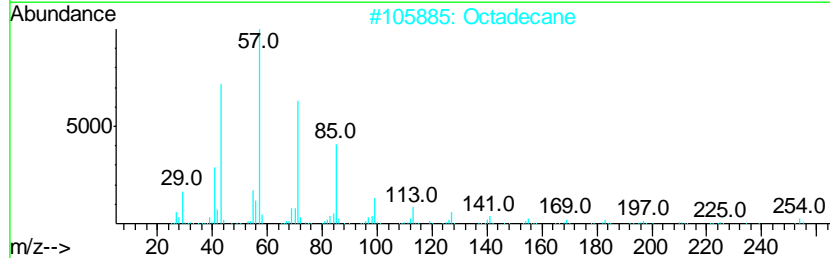
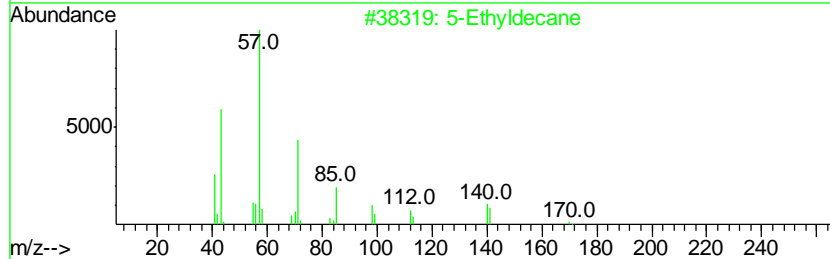
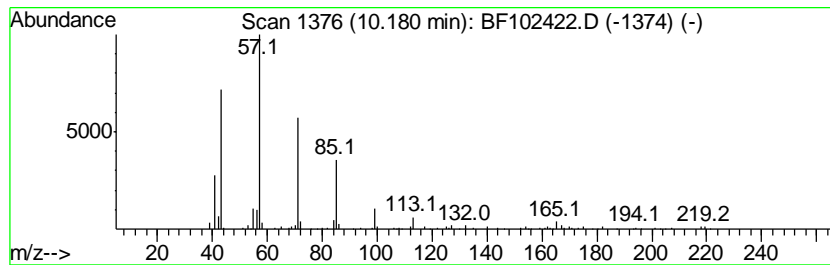
Quant Method : Z:\HPCHEM1\BNA F\METHODS\8270-BF012218.M
 Quant Title : ASP BNA STANDARDS FOR 5 POINT CALIBRATION

TIC Library : C:\DATABASE\NIST11.L
 TIC Integration Parameters: LSCINT.P

 Peak Number 11 5-Ethyldecane Concentration Rank 14

R.T.	EstConc	Area	Relative to ISTD	R.T.
10.18	2.76 ng	109510	Acenaphthene-d10	9.75

Hit#	of	Tentative ID	MW	MolForm	CAS#	Qual
1	5	5-Ethyldecane	170	C12H26	017302-36-2	80
2		Octadecane	254	C18H38	000593-45-3	78
3		2-Bromo dodecane	248	C12H25Br	013187-99-0	78
4		Hexatriacontane	507	C36H74	000630-06-8	78
5		Decane, 2,3,8-trimethyl-	184	C13H28	062238-14-6	72



Data Path : U:\HPCHEM1\BNA F\DATA\BF012518\
 Data File : BF102422.D
 Acq On : 25 Jan 2018 13:25
 Operator : SJ/JU
 Sample : J1256-06
 Misc :
 ALS Vial : 9 Sample Multiplier: 1

Instrument :
 BNA_F
 ClientSampleId :
 DB-OF-N-S-(WW4-8)

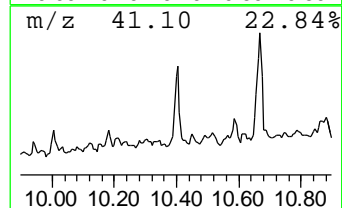
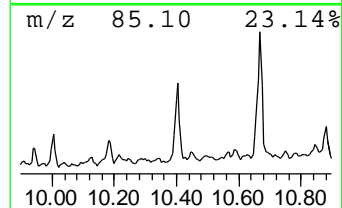
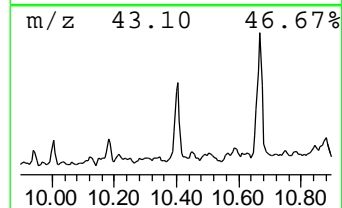
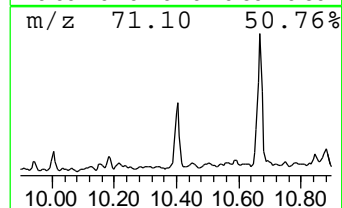
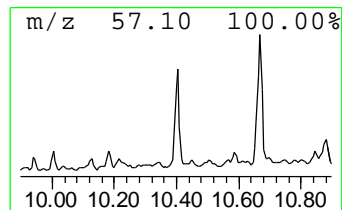
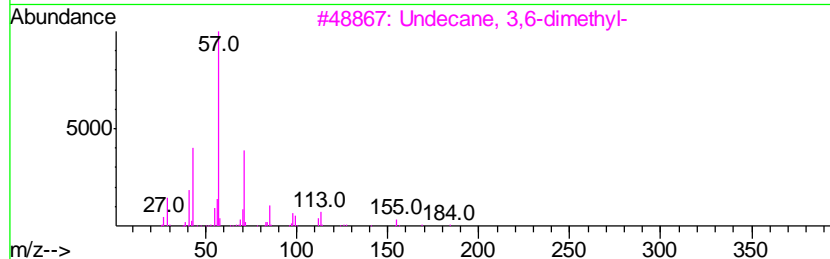
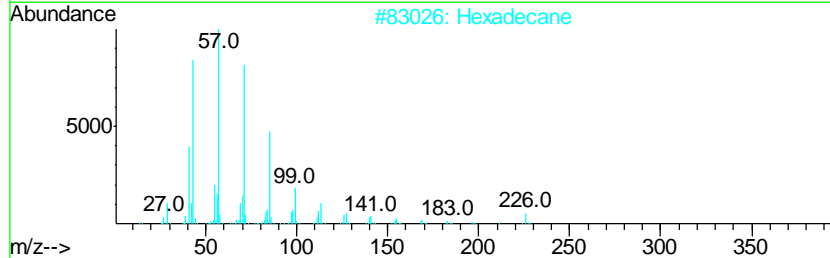
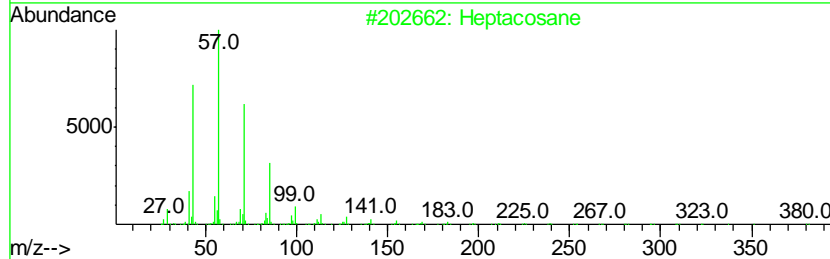
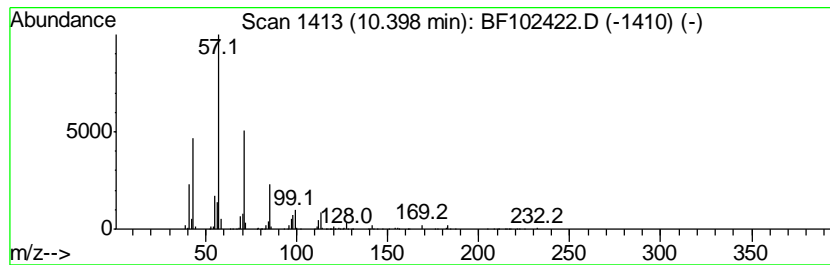
Quant Method : Z:\HPCHEM1\BNA F\METHODS\8270-BF012218.M
 Quant Title : ASP BNA STANDARDS FOR 5 POINT CALIBRATION

TIC Library : C:\DATABASE\NIST11.L
 TIC Integration Parameters: LSCINT.P

 Peak Number 12 Heptacosane Concentration Rank 6

R.T.	EstConc	Area	Relative to ISTD	R.T.
10.40	16.47 ng	653052	Acenaphthene-d10	9.75

Hit#	of	Tentative ID	MW	MolForm	CAS#	Qual
1	5	Heptacosane	380	C27H56	000593-49-7	90
2		Hexadecane	226	C16H34	000544-76-3	86
3		Undecane, 3,6-dimethyl-	184	C13H28	017301-28-9	81
4		Heneicosane	296	C21H44	000629-94-7	80
5		Tetracosane	338	C24H50	000646-31-1	80



Data Path : U:\HPCHEM1\BNA F\DATA\BF012518\
 Data File : BF102422.D
 Acq On : 25 Jan 2018 13:25
 Operator : SJ/JU
 Sample : J1256-06
 Misc :
 ALS Vial : 9 Sample Multiplier: 1

Instrument :
 BNA_F
 ClientSampleId :
 DB-OF-N-S-(WW4-8)

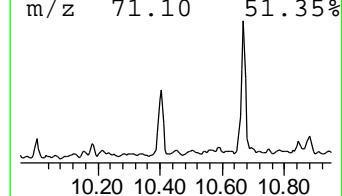
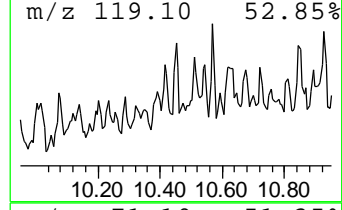
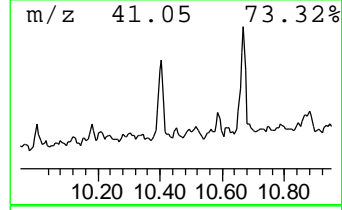
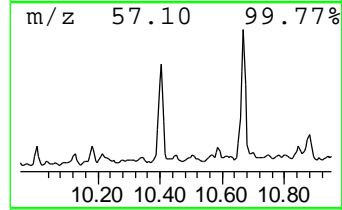
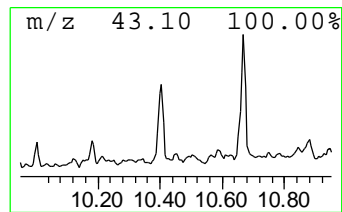
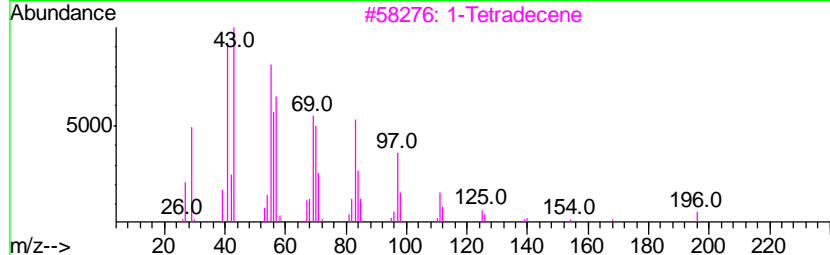
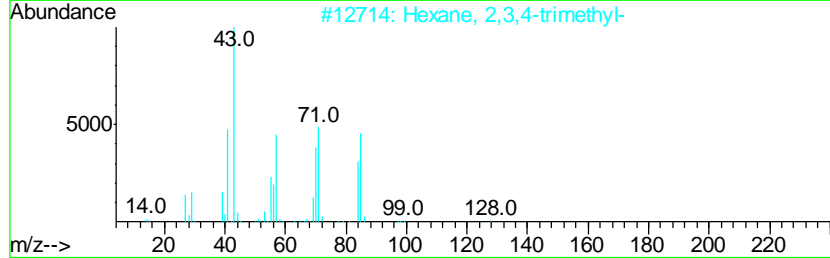
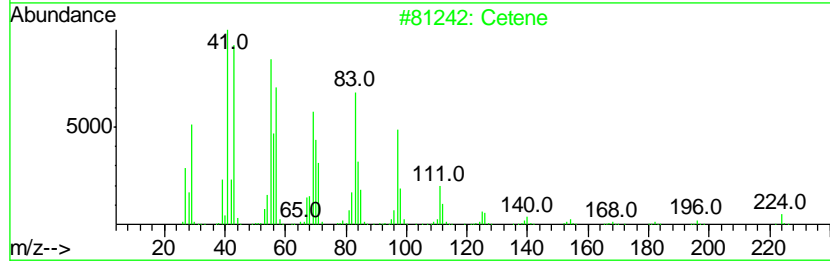
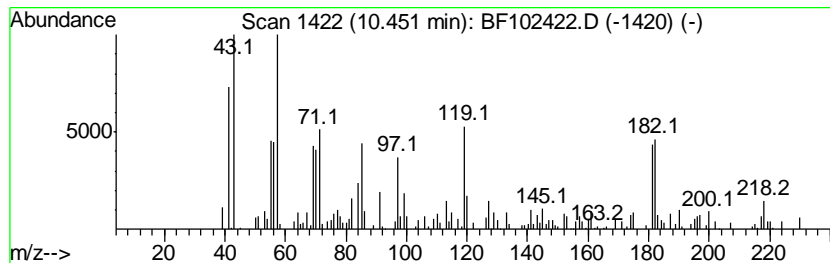
Quant Method : Z:\HPCHEM1\BNA F\METHODS\8270-BF012218.M
 Quant Title : ASP BNA STANDARDS FOR 5 POINT CALIBRATION

TIC Library : C:\DATABASE\NIST11.L
 TIC Integration Parameters: LSCINT.P

 Peak Number 13 Cetene Concentration Rank 17

R.T.	EstConc	Area	Relative to ISTD	R.T.
10.45	2.47 ng	97835	Acenaphthene-d10	9.75

Hit#	of	Tentative ID	MW	MolForm	CAS#	Qual
1	5	Cetene	224	C16H32	000629-73-2	41
2		Hexane, 2,3,4-trimethyl-	128	C9H20	000921-47-1	38
3		1-Tetradecene	196	C14H28	001120-36-1	38
4		2-Methyl-1-pentanol, pentafluoro...	248	C9H13F5O2	1000352-35-9	35
5		Hexane, 3-methyl-	100	C7H16	000589-34-4	30



Data Path : U:\HPCHEM1\BNA F\DATA\BF012518\
 Data File : BF102422.D
 Acq On : 25 Jan 2018 13:25
 Operator : SJ/JU
 Sample : J1256-06
 Misc :
 ALS Vial : 9 Sample Multiplier: 1

Instrument :
 BNA_F
 ClientSampleId :
 DB-OF-N-S-(WW4-8)

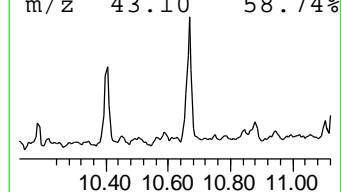
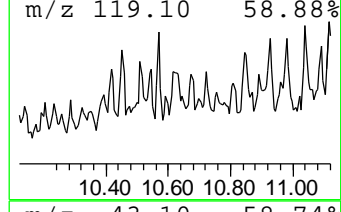
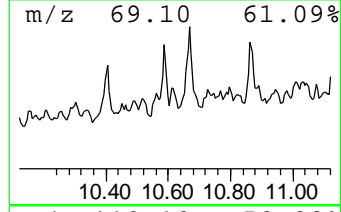
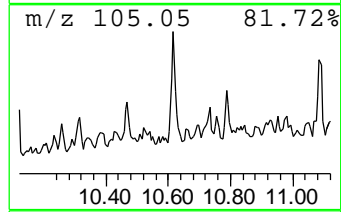
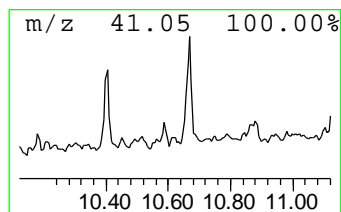
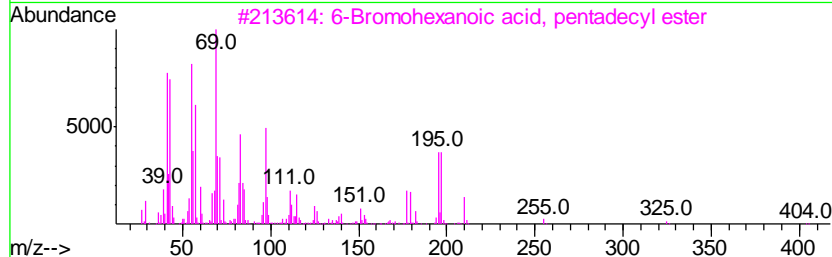
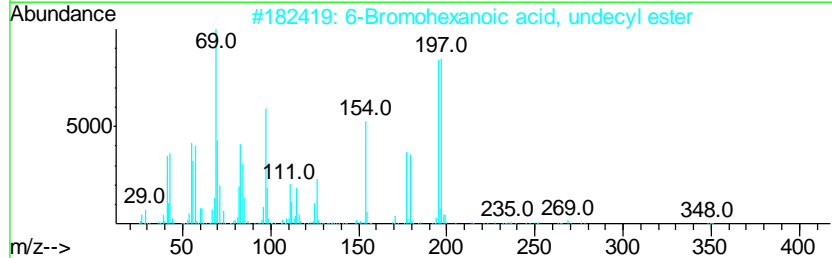
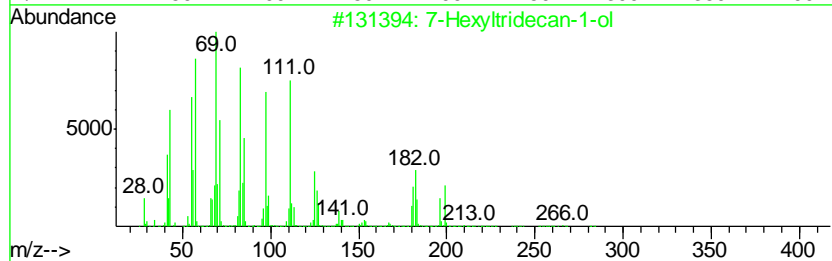
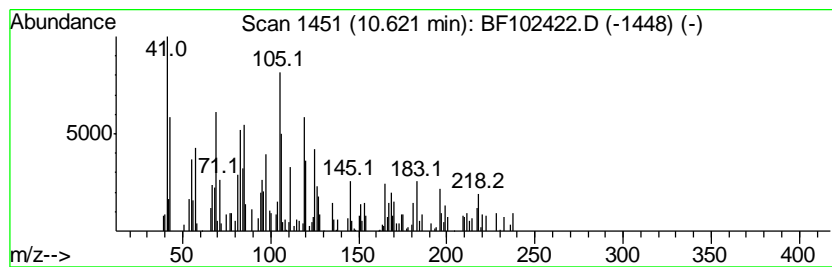
Quant Method : Z:\HPCHEM1\BNA F\METHODS\8270-BF012218.M
 Quant Title : ASP BNA STANDARDS FOR 5 POINT CALIBRATION

TIC Library : C:\DATABASE\NIST11.L
 TIC Integration Parameters: LSCINT.P

 Peak Number 14 unknown10.62 Concentration Rank 19

R.T.	EstConc	Area	Relative to ISTD	R.T.
10.62	2.44 ng	83357	Phenanthrene-d10	11.24

Hit#	of	Tentative ID	MW	MolForm	CAS#	Qual
1	5	7-Hexyltridecan-1-ol	284	C19H40O	1000197-13-2	16
2		6-Bromohexanoic acid, undecyl ester	348	C17H33BrO2	1000282-90-4	11
3		6-Bromohexanoic acid, pentadecyl...	404	C21H41BrO2	1000281-91-9	10
4		Cyclopentane, 1-pentyl-2-propyl-	182	C13H26	062199-51-3	10
5		Acetic acid, trifluoro-, dodecyl...	282	C14H25F3O2	006222-00-0	10



Data Path : U:\HPCHEM1\BNA F\DATA\BF012518\
 Data File : BF102422.D
 Acq On : 25 Jan 2018 13:25
 Operator : SJ/JU
 Sample : J1256-06
 Misc :
 ALS Vial : 9 Sample Multiplier: 1

Instrument :
 BNA_F
 ClientSampleId :
 DB-OF-N-S-(WW4-8)

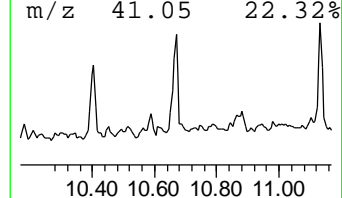
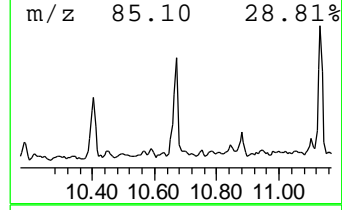
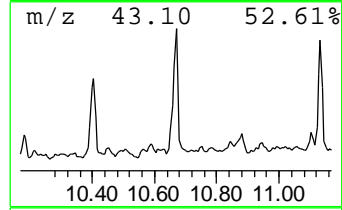
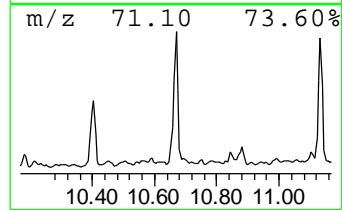
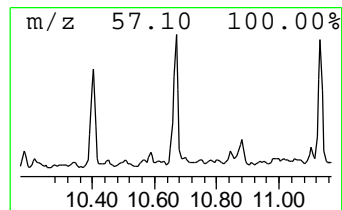
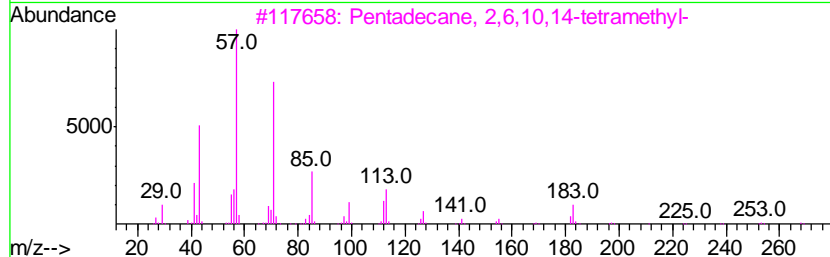
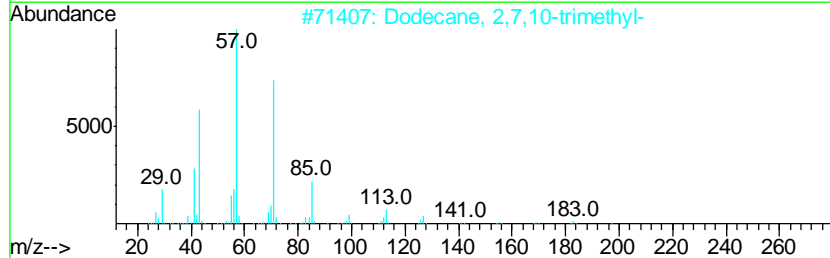
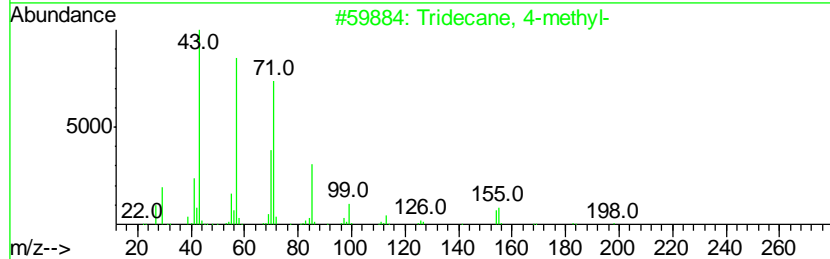
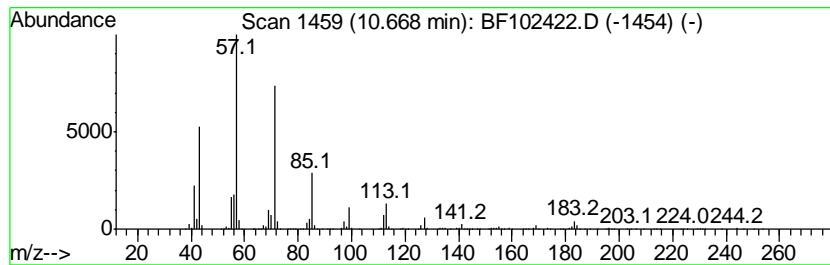
Quant Method : Z:\HPCHEM1\BNA F\METHODS\8270-BF012218.M
 Quant Title : ASP BNA STANDARDS FOR 5 POINT CALIBRATION

TIC Library : C:\DATABASE\NIST11.L
 TIC Integration Parameters: LSCINT.P

 Peak Number 15 Tridecane, 4-methyl- Concentration Rank 3

R.T.	EstConc	Area	Relative to ISTD	R.T.
10.67	33.79 ng	1155840	Phenanthrene-d10	11.24

Hit#	of	Tentative ID	MW	MolForm	CAS#	Qual
1	5	Tridecane, 4-methyl-	198	C14H30	026730-12-1	87
2		Dodecane, 2,7,10-trimethyl-	212	C15H32	074645-98-0	86
3		Pentadecane, 2,6,10,14-tetramethyl-	268	C19H40	001921-70-6	86
4		Tridecane	184	C13H28	000629-50-5	80
5		Dodecane, 4,6-dimethyl-	198	C14H30	061141-72-8	74



Data Path : U:\HPCHEM1\BNA F\DATA\BF012518\
 Data File : BF102422.D
 Acq On : 25 Jan 2018 13:25
 Operator : SJ/JU
 Sample : J1256-06
 Misc :
 ALS Vial : 9 Sample Multiplier: 1

Instrument :
 BNA_F
 ClientSampleId :
 DB-OF-N-S-(WW4-8)

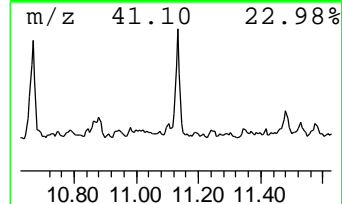
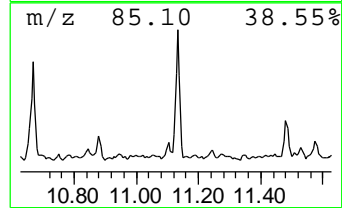
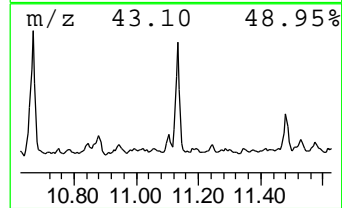
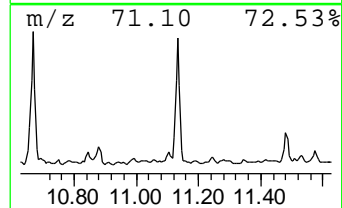
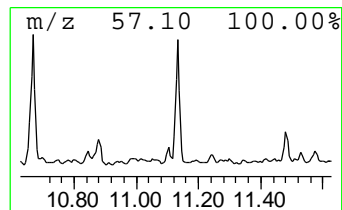
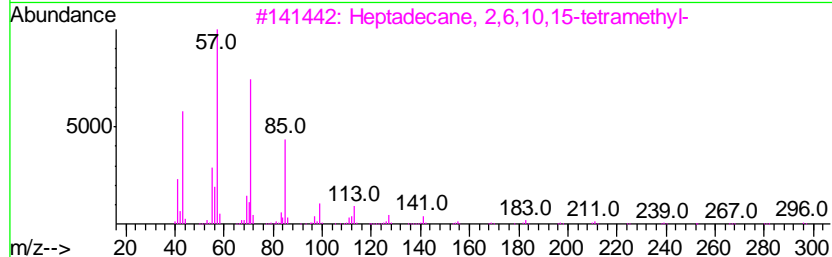
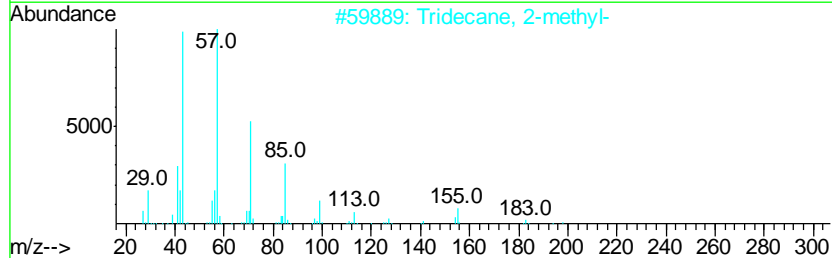
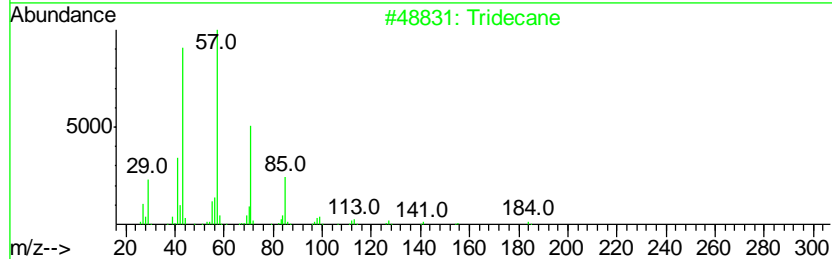
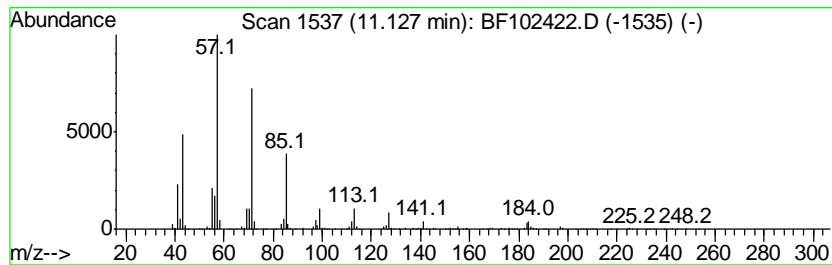
Quant Method : Z:\HPCHEM1\BNA F\METHODS\8270-BF012218.M
 Quant Title : ASP BNA STANDARDS FOR 5 POINT CALIBRATION

TIC Library : C:\DATABASE\NIST11.L
 TIC Integration Parameters: LSCINT.P

 Peak Number 16 Tridecane Concentration Rank 4

R.T.	EstConc	Area	Relative to ISTD	R.T.
11.13	29.17 ng	997794	Phenanthrene-d10	11.24

Hit#	of	Tentative ID	MW	MolForm	CAS#	Qual
1	5	Tridecane	184	C13H28	000629-50-5	90
2		Tridecane, 2-methyl-	198	C14H30	001560-96-9	90
3		Heptadecane, 2,6,10,15-tetramethyl-	296	C21H44	054833-48-6	87
4		Heptacosane	380	C27H56	000593-49-7	86
5		Tridecane, 3-methyl-	198	C14H30	006418-41-3	80



Data Path : U:\HPCHEM1\BNA F\DATA\BF012518\
 Data File : BF102422.D
 Acq On : 25 Jan 2018 13:25
 Operator : SJ/JU
 Sample : J1256-06
 Misc :
 ALS Vial : 9 Sample Multiplier: 1

Instrument :
 BNA_F
 ClientSampleId :
 DB-OF-N-S-(WW4-8)

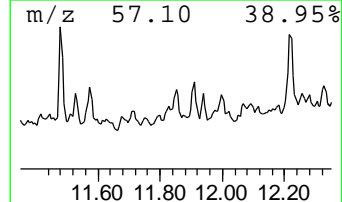
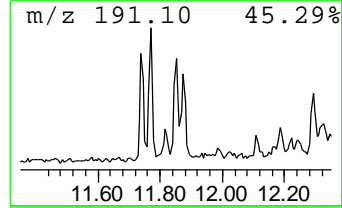
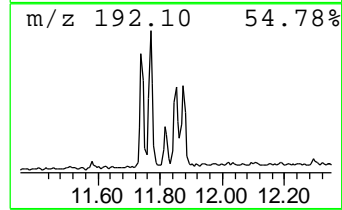
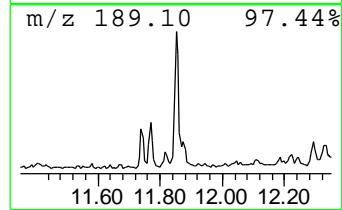
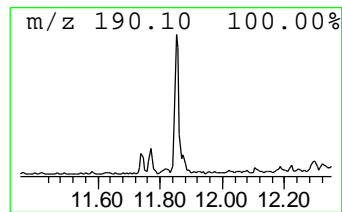
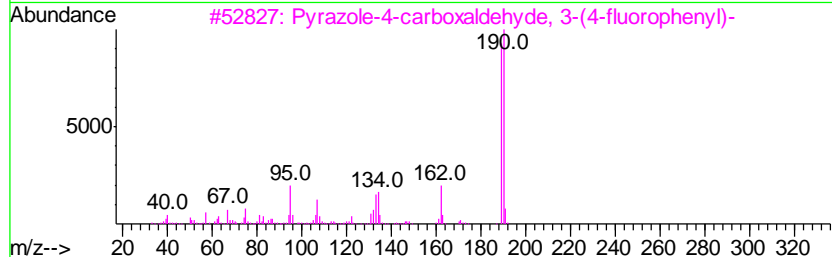
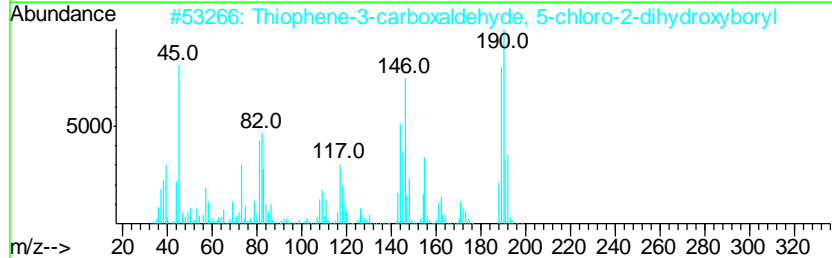
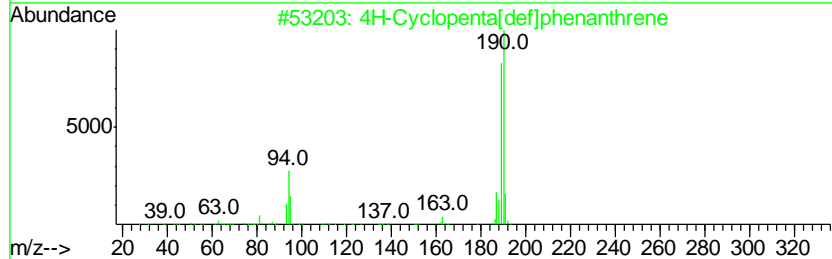
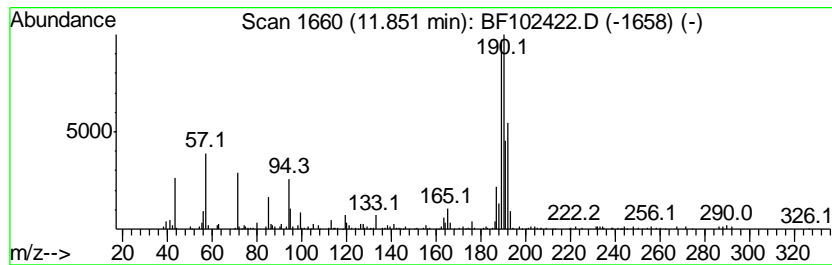
Quant Method : Z:\HPCHEM1\BNA F\METHODS\8270-BF012218.M
 Quant Title : ASP BNA STANDARDS FOR 5 POINT CALIBRATION

TIC Library : C:\DATABASE\NIST11.L
 TIC Integration Parameters: LSCINT.P

 Peak Number 17 4H-Cyclopenta[def]phenanthrene Concentration Rank 11

R.T.	EstConc	Area	Relative to ISTD	R.T.
11.85	4.29 ng	146823	Phenanthrene-d10	11.24

Hit#	of	Tentative ID	MW	MolForm	CAS#	Qual
1	5	4H-Cyclopenta[def]phenanthrene	190	C15H10	000203-64-5	70
2		Thiophene-3-carboxaldehyde, 5-ch...	190	C5H4BClO3S	036155-87-0	50
3		Pyrazole-4-carboxaldehyde, 3-(4-...	190	C10H7FN2O	306936-57-2	43
4		Phenanthrene, 4-methyl-	192	C15H12	000832-64-4	25
5		Naphtho[1,2-b]norbornadiene	192	C15H12	1000210-14-8	14



Data Path : U:\HPCHEM1\BNA F\DATA\BF012518\
 Data File : BF102422.D
 Acq On : 25 Jan 2018 13:25
 Operator : SJ/JU
 Sample : J1256-06
 Misc :
 ALS Vial : 9 Sample Multiplier: 1

Instrument :
 BNA_F
 ClientSampleId :
 DB-OF-N-S-(WW4-8)

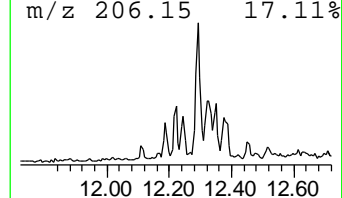
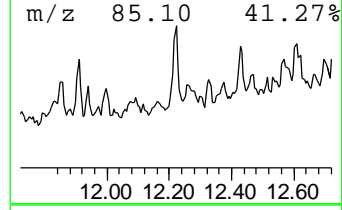
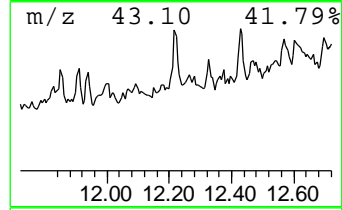
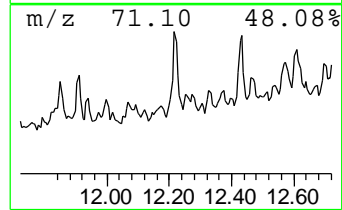
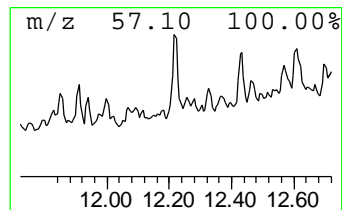
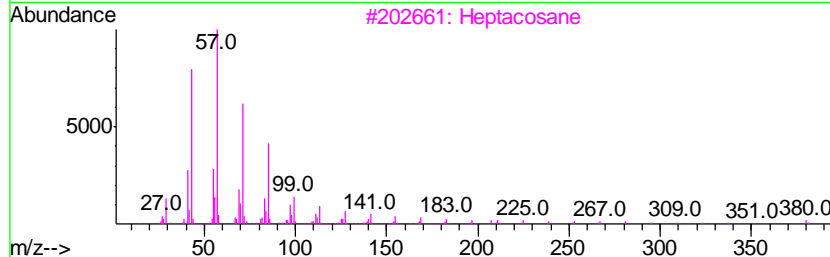
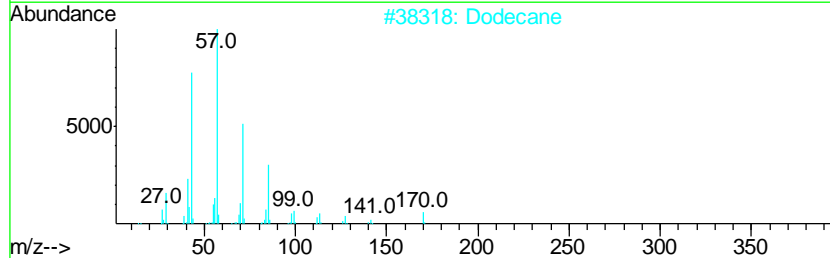
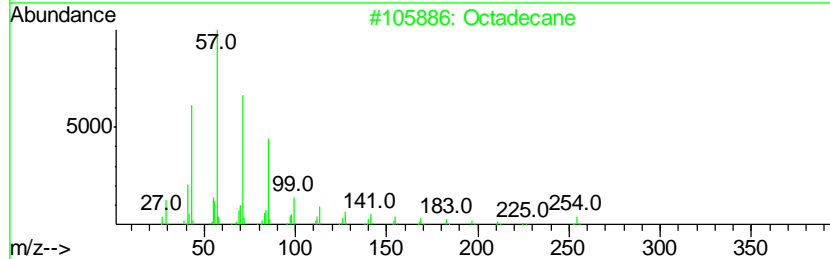
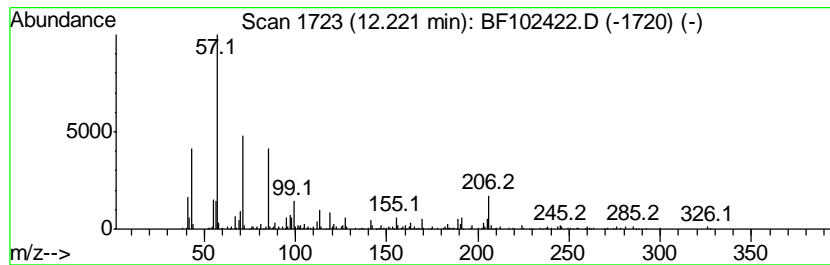
Quant Method : Z:\HPCHEM1\BNA F\METHODS\8270-BF012218.M
 Quant Title : ASP BNA STANDARDS FOR 5 POINT CALIBRATION

TIC Library : C:\DATABASE\NIST11.L
 TIC Integration Parameters: LSCINT.P

 Peak Number 18 Octadecane Concentration Rank 8

R.T.	EstConc	Area	Relative to ISTD	R.T.
12.22	5.72 ng	195498	Phenanthrene-d10	11.24

Hit#	of	Tentative ID	MW	MolForm	CAS#	Qual
1	5	Octadecane	254	C18H38	000593-45-3	83
2		Dodecane	170	C12H26	000112-40-3	81
3		Heptacosane	380	C27H56	000593-49-7	80
4		Hexatriacontane	507	C36H74	000630-06-8	72
5		Heptadecane	240	C17H36	000629-78-7	72



Data Path : U:\HPCHEM1\BNA F\DATA\BF012518\
 Data File : BF102422.D
 Acq On : 25 Jan 2018 13:25
 Operator : SJ/JU
 Sample : J1256-06
 Misc :
 ALS Vial : 9 Sample Multiplier: 1

Instrument :
 BNA_F
 ClientSampleID :
 DB-OF-N-S-(WW4-8)

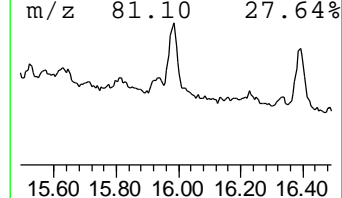
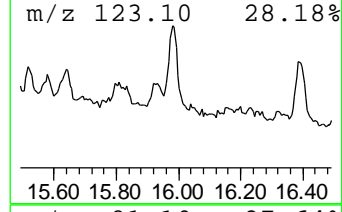
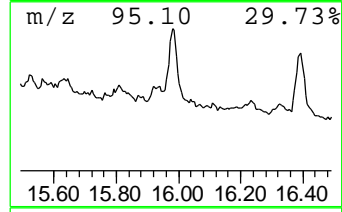
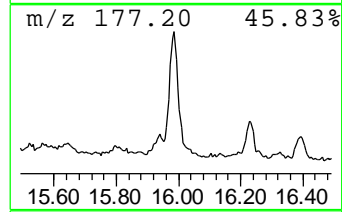
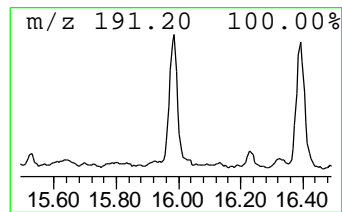
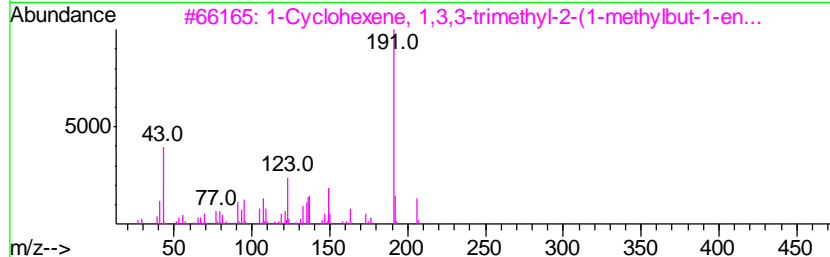
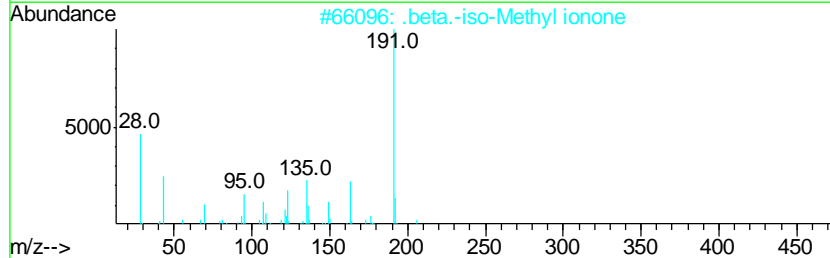
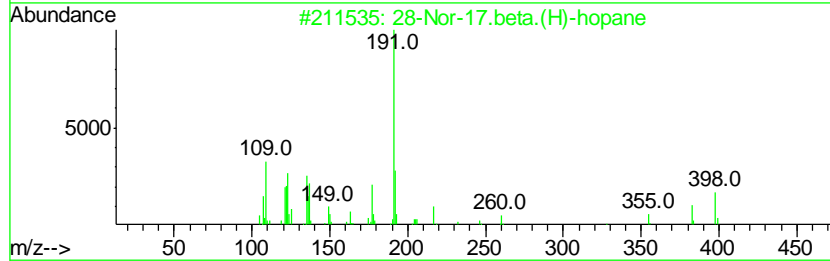
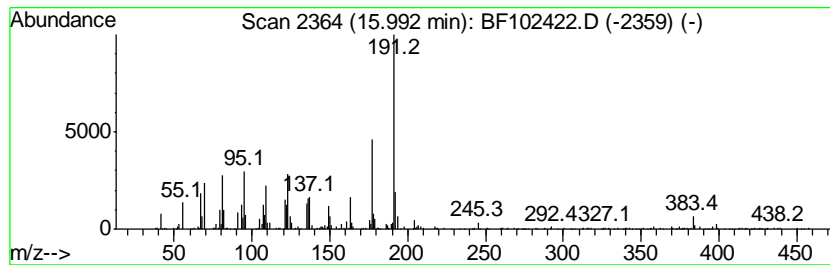
Quant Method : Z:\HPCHEM1\BNA F\METHODS\8270-BF012218.M
 Quant Title : ASP BNA STANDARDS FOR 5 POINT CALIBRATION

TIC Library : C:\DATABASE\NIST11.L
 TIC Integration Parameters: LSCINT.P

 Peak Number 19 28-Nor-17.beta.(H)-hopane Concentration Rank 5

R.T.	EstConc	Area	Relative to ISTD	R.T.
15.99	20.00 ng	1988950	Perylene-d12	15.33

Hit#	of	Tentative ID	MW	MolForm	CAS#	Qual
1	5	28-Nor-17.beta.(H)-hopane	398	C29H50	036728-72-0	52
2		.beta.-iso-Methyl ionone	206	C14H22O	1000285-40-2	46
3		1-Cyclohexene, 1,3,3-trimethyl-2...	206	C14H22O	1000197-08-4	37
4		5-(p-Aminophenyl)-2-thiazolamine	191	C9H9N3S	090349-87-4	27
5		1,4-Benzenediol, 2-[(1,4,4a,5,6,...	314	C21H30O2	039707-55-6	27



Data Path : U:\HPCHEM1\BNA F\DATA\BF012518\
 Data File : BF102422.D
 Acq On : 25 Jan 2018 13:25
 Operator : SJ/JU
 Sample : J1256-06
 Misc :
 ALS Vial : 9 Sample Multiplier: 1

Instrument :
 BNA_F
 ClientSampleId :
 DB-OF-N-S-(WW4-8)

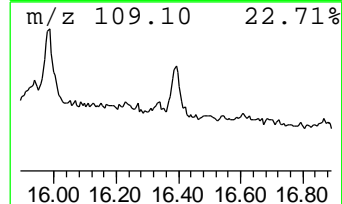
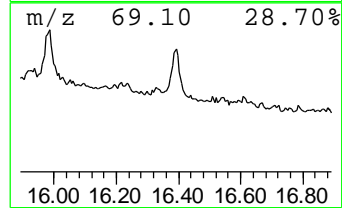
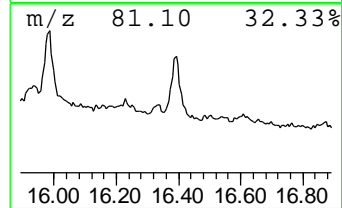
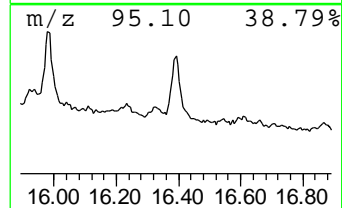
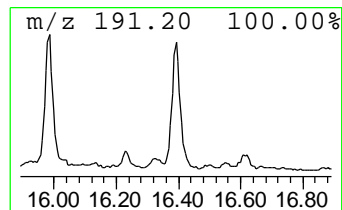
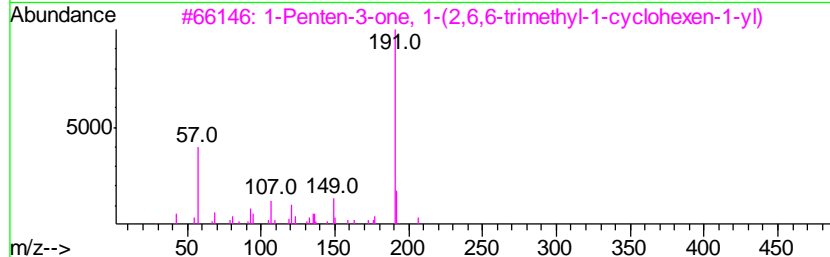
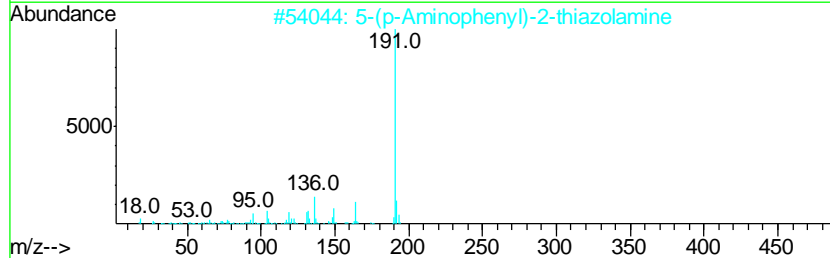
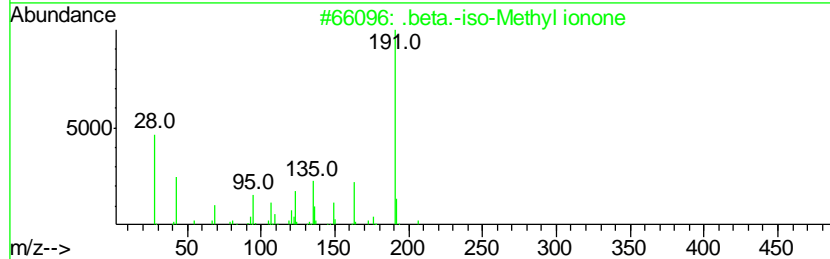
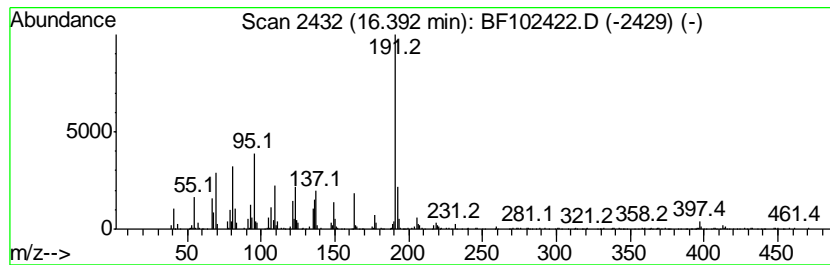
Quant Method : Z:\HPCHEM1\BNA F\METHODS\8270-BF012218.M
 Quant Title : ASP BNA STANDARDS FOR 5 POINT CALIBRATION

TIC Library : C:\DATABASE\NIST11.L
 TIC Integration Parameters: LSCINT.P

 Peak Number 20 .beta.-iso-Methyl ionone Concentration Rank 7

R.T.	EstConc	Area	Relative to ISTD	R.T.
16.39	14.61 ng	1453050	Perylene-d12	15.33

Hit#	of	Tentative ID	MW	MolForm	CAS#	Qual
1	5	.beta.-iso-Methyl ionone	206	C14H22O	1000285-40-2	60
2		5-(p-Aminophenyl)-2-thiazolamine	191	C9H9N3S	090349-87-4	35
3		1-Penten-3-one, 1-(2,6,6-trimeth...	206	C14H22O	000127-43-5	35
4		(3-Cyano-6-ethyl-5-methyl-pyridi...	264	C13H16N2O2S	1000300-45-4	35
5		2-[4-(Thiophene-2-carbonyl)-phen...	450	C29H22O3S	1000188-88-5	35



Data Path : U:\HPCHEM1\BNA_F\DATA\BF012518\
 Data File : BF102422.D
 Acq On : 25 Jan 2018 13:25
 Operator : SJ/JU
 Sample : J1256-06
 Misc :
 ALS Vial : 9 Sample Multiplier: 1

Instrument :
 BNA_F
 ClientSampleId :
 DB-OF-N-S-(WW4-8)

Quant Method : Z:\HPCHEM1\BNA_F\METHODS\8270-BF012218.M
 Quant Title : ASP BNA STANDARDS FOR 5 POINT CALIBRATION

TIC Library : C:\DATABASE\NIST11.L
 TIC Integration Parameters: LSCINT.P

TIC Top Hit name	RT	EstConc	Units	Response	--Internal Standard--			
					#	RT	Resp	Conc
unknown4.92	4.92	2.6	ng	99473	1	6.72	763761	20.0
unknown6.49	6.49	65.8	ng	2514700	1	6.72	763761	20.0
Dodecane, 2,6,11-...	9.02	2.6	ng	103089	3	9.75	793042	20.0
1-Dodecanol, 2-he...	9.16	2.4	ng	96941	3	9.75	793042	20.0
Biphenylene	9.62	2.9	ng	113242	3	9.75	793042	20.0
unknown9.66	9.66	2.3	ng	89727	3	9.75	793042	20.0
Decane, 3,6-dimet...	9.94	4.3	ng	172323	3	9.75	793042	20.0
Dodecane, 2-methyl-	10.00	4.6	ng	183823	3	9.75	793042	20.0
unknown10.16	10.16	3.3	ng	128887	3	9.75	793042	20.0
5-Ethyldecane	10.18	2.8	ng	109510	3	9.75	793042	20.0
Heptacosane	10.40	16.5	ng	653052	3	9.75	793042	20.0
Cetene	10.45	2.5	ng	97835	3	9.75	793042	20.0
unknown10.62	10.62	2.4	ng	83357	4	11.24	684130	20.0
Tridecane, 4-methyl-	10.67	33.8	ng	1155840	4	11.24	684130	20.0
Tridecane	11.13	29.2	ng	997794	4	11.24	684130	20.0
4H-Cyclopenta[def...	11.85	4.3	ng	146823	4	11.24	684130	20.0
Octadecane	12.22	5.7	ng	195498	4	11.24	684130	20.0
28-Nor-17.beta.(H...	15.99	20.0	ng	1988950	6	15.33	1988950	20.0
.beta.-iso-Methyl...	16.39	14.6	ng	1453050	6	15.33	1988950	20.0