

Data Path : U:\HPCHEM1\BNA F\DATA\BF012618\  
 Data File : BF102474.D  
 Acq On : 26 Jan 2018 17:48  
 Operator : SJ/JU  
 Sample : J1281-01 2X  
 Misc :  
 ALS Vial : 13 Sample Multiplier: 1

Instrument :  
 BNA\_F  
 Client Sampled :  
 SP-A

Integration Parameters: rteint.p  
 Integrator: RTE  
 Smoothing : ON  
 Sampling : 1  
 Start Thrs: 0.2  
 Stop Thrs : 0

Filtering: 5  
 Min Area: 3 % of largest Peak  
 Max Peaks: 100  
 Peak Location: TOP

If leading or trailing edge < 100 prefer < Baseline drop else tangent >  
 Peak separation: 5

Method : Z:\HPCHEM1\BNA F\METHODS\8270-BF012218.M  
 Title : ASP BNA STANDARDS FOR 5 POINT CALIBRATION

Signal : TIC

peak #	R.T. min	first scan	max scan	last scan	PK TY	peak height	corr. area	corr. % max.	% of total
1	2.240	23	26	32	rVB2	27598	39416	1.68%	0.169%
2	4.904	476	479	486	rBV	35331	46785	1.99%	0.200%
3	5.328	547	551	568	rVV	1985457	2043014	86.97%	8.740%
4	6.363	723	727	745	rBV	2300981	2349189	100.00%	10.050%
5	6.492	745	749	755	rVV	2308824	2067684	88.02%	8.846%
6	6.722	784	788	794	rBV	1171634	1016369	43.26%	4.348%
7	6.875	810	814	822	rBV	1937266	1625278	69.18%	6.953%
8	7.287	880	884	894	rBV	1077935	1049433	44.67%	4.490%
9	7.751	959	963	967	rBV4	22220	44405	1.89%	0.190%
10	8.004	1002	1006	1008	rBV	1549647	1238593	52.72%	5.299%
11	8.022	1008	1009	1018	rVB	176117	177569	7.56%	0.760%
12	8.592	1103	1106	1109	rBV	52590	42965	1.83%	0.184%
13	8.716	1124	1127	1135	rBV	386998	339780	14.46%	1.454%
14	8.816	1140	1144	1152	rBV	393606	355766	15.14%	1.522%
15	8.951	1164	1167	1171	rVB6	20238	24134	1.03%	0.103%
16	9.022	1176	1179	1185	rVV3	30610	32667	1.39%	0.140%
17	9.081	1185	1189	1199	rVV	2128633	2042996	86.97%	8.740%
18	9.157	1199	1202	1204	rVV	91183	83982	3.57%	0.359%
19	9.181	1204	1206	1212	rVB	65543	66468	2.83%	0.284%
20	9.275	1217	1222	1228	rVB	112426	155666	6.63%	0.666%
21	9.345	1230	1234	1239	rBV	154612	219352	9.34%	0.938%
22	9.416	1242	1246	1249	rBV	298139	314423	13.38%	1.345%
23	9.445	1249	1251	1254	rVV	168426	184793	7.87%	0.791%
24	9.475	1254	1256	1259	rVV	190031	150920	6.42%	0.646%
25	9.533	1263	1266	1271	rBV	148651	160209	6.82%	0.685%
26	9.616	1277	1280	1283	rVB	125939	108118	4.60%	0.463%
27	9.657	1283	1287	1289	rVV4	33976	41096	1.75%	0.176%
28	9.686	1289	1292	1295	rVV	97667	79994	3.41%	0.342%
29	9.757	1296	1304	1309	rBV2	1389557	1354735	57.67%	5.796%
30	9.816	1313	1314	1318	rVB3	30086	25183	1.07%	0.108%
31	9.863	1318	1322	1326	rBV3	58385	84367	3.59%	0.361%
32	9.904	1326	1329	1333	rVV3	31163	35600	1.52%	0.152%
33	9.957	1333	1338	1343	rVV4	69616	119083	5.07%	0.509%
34	9.998	1343	1345	1350	rVB3	61467	60661	2.58%	0.260%

Data Path : U:\HPCHEM1\BNA F\DATA\BF012618\  
 Data File : BF102474.D  
 Acq On : 26 Jan 2018 17:48  
 Operator : SJ/JU  
 Sample : J1281-01 2X  
 Misc :  
 ALS Vial : 13 Sample Multiplier: 1

Instrument :  
 BNA\_F  
 ClientSampleId :  
 SP-A

Integration Parameters: rteint.p  
 Integrator: RTE  
 Smoothing : ON Filtering: 5  
 Sampling : 1 Min Area: 3 % of largest Peak  
 Start Thrs: 0.2 Max Peaks: 100  
 Stop Thrs : 0 Peak Location: TOP

If leading or trailing edge < 100 prefer < Baseline drop else tangent >  
 Peak separation: 5

Method : Z:\HPCHEM1\BNA F\METHODS\8270-BF012218.M  
 Title : ASP BNA STANDARDS FOR 5 POINT CALIBRATION

35	10.075	1355	1358	1361	rBV	47394	45103	1.92%	0.193%
36	10.157	1369	1372	1374	rBV3	49200	55536	2.36%	0.238%
37	10.180	1374	1376	1380	rVB	96702	84215	3.58%	0.360%
38	10.404	1410	1414	1419	rBV2	30660	47068	2.00%	0.201%
39	10.469	1421	1425	1432	rVB3	43793	64086	2.73%	0.274%
40	10.551	1435	1439	1453	rVB	724673	816327	34.75%	3.492%
41	10.657	1454	1457	1462	rBV2	75323	97504	4.15%	0.417%
42	10.798	1478	1481	1485	rVB4	26511	30208	1.29%	0.129%
43	11.016	1515	1518	1522	rVB2	40690	42096	1.79%	0.180%
44	11.104	1530	1533	1536	rBV2	44904	38322	1.63%	0.164%
45	11.245	1553	1557	1560	rBV	1125122	994645	42.34%	4.255%
46	11.269	1560	1561	1564	rVB	84275	49523	2.11%	0.212%
47	11.533	1603	1606	1608	rVB2	30398	23746	1.01%	0.102%
48	11.727	1637	1639	1642	rBV4	29482	36506	1.55%	0.156%
49	11.774	1645	1647	1649	rVV2	27196	23801	1.01%	0.102%
50	11.939	1673	1675	1677	rBV3	33848	28346	1.21%	0.121%
51	12.298	1733	1736	1739	rBV4	52503	71445	3.04%	0.306%
52	12.327	1739	1741	1744	rVB2	45351	43471	1.85%	0.186%
53	12.457	1760	1763	1767	rBV	164601	154439	6.57%	0.661%
54	12.492	1767	1769	1772	rVB2	65146	57610	2.45%	0.246%
55	12.686	1799	1802	1807	rBV	146062	152000	6.47%	0.650%
56	12.827	1822	1826	1830	rBV	1358288	1155218	49.18%	4.942%
57	12.939	1842	1845	1847	rBV	134507	102732	4.37%	0.439%
58	13.886	2003	2006	2009	rBV	866767	829143	35.29%	3.547%
59	15.321	2247	2250	2254	rVB	470445	551370	23.47%	2.359%

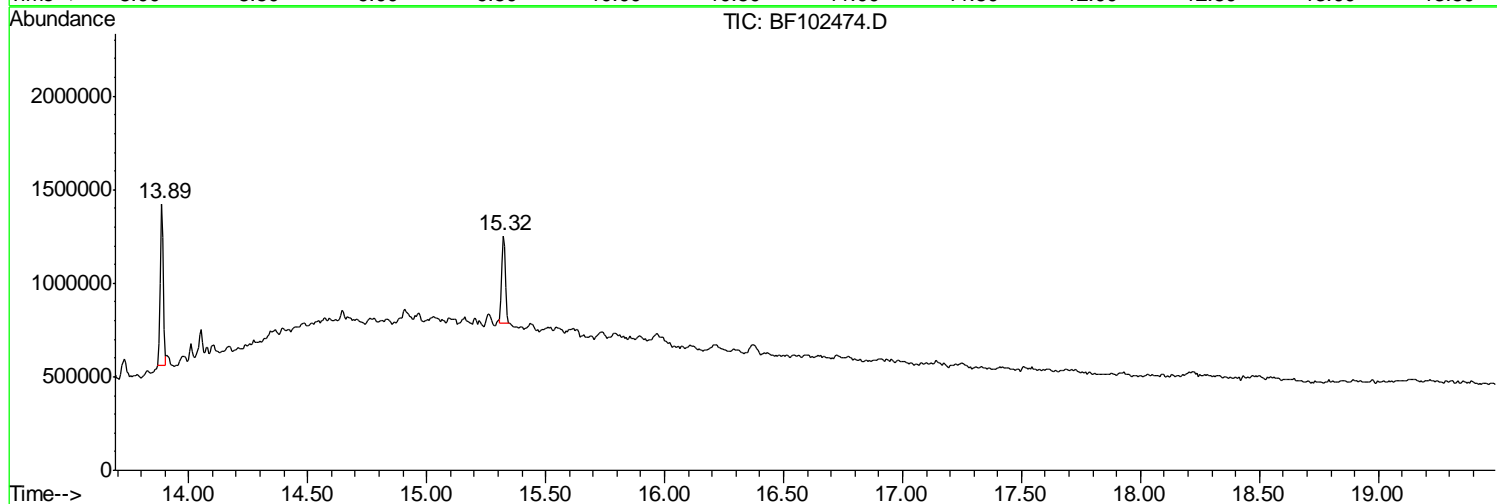
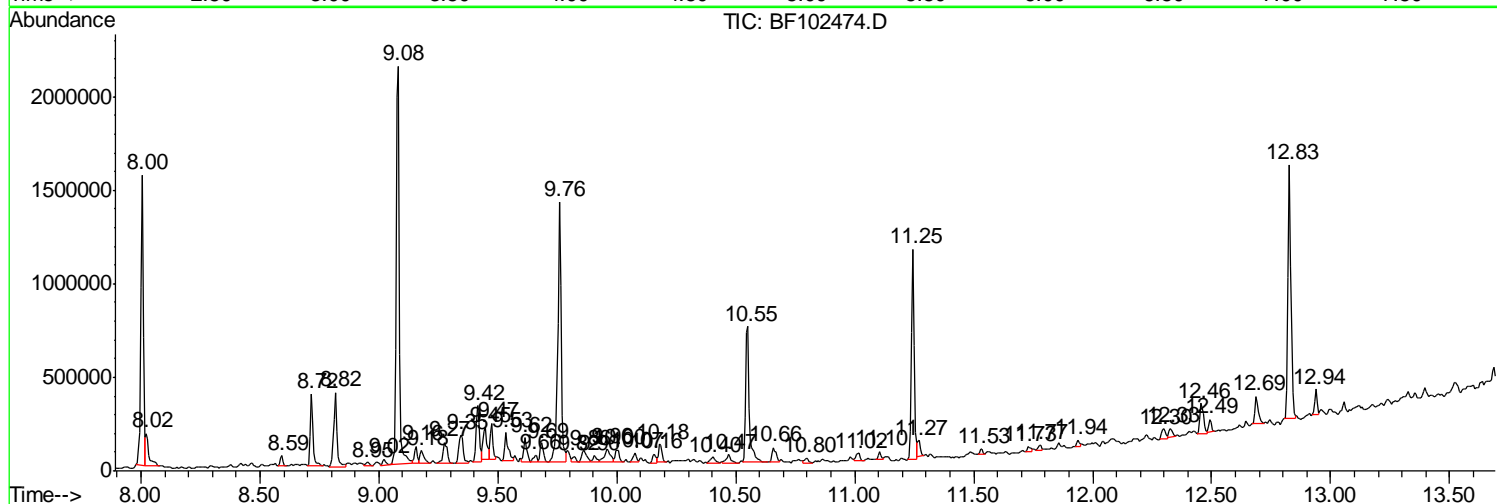
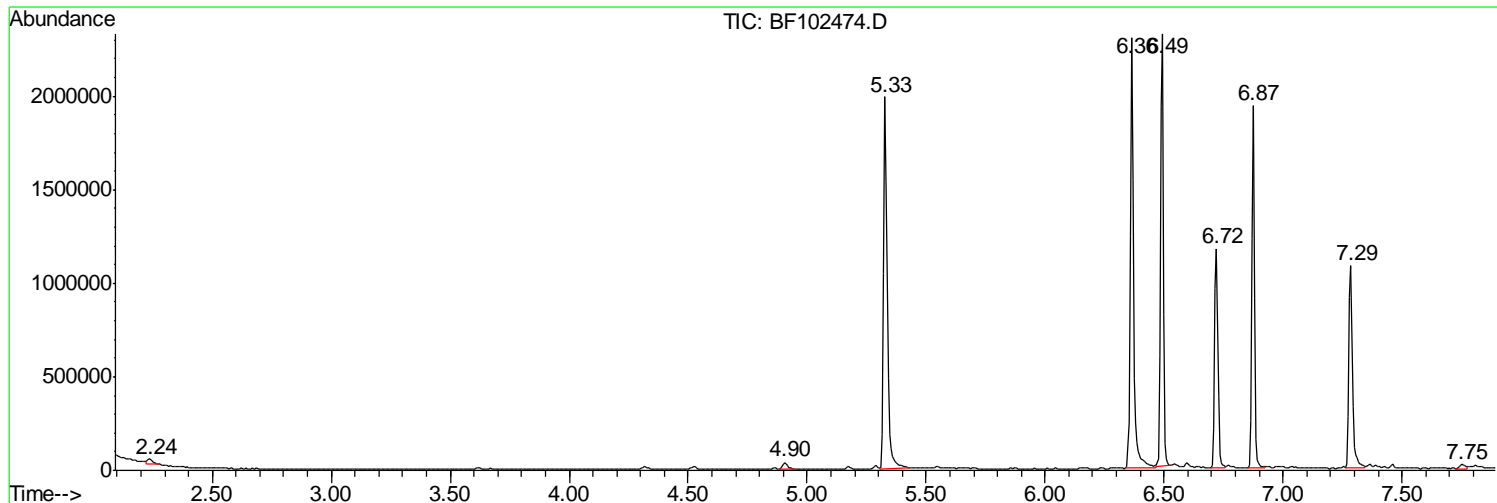
Sum of corrected areas: 23375153

Data Path : U:\HPCHEM1\BNA F\DATA\BF012618\  
 Data File : BF102474.D  
 Acq On : 26 Jan 2018 17:48  
 Operator : SJ/JU  
 Sample : J1281-01 2X  
 Misc :  
 ALS Vial : 13 Sample Multiplier: 1

**Instrument :**  
 BNA\_F  
**Client Sampled :**  
 SP-A

Quant Method : Z:\HPCHEM1\BNA F\METHODS\8270-BF012218.M  
 Quant Title : ASP BNA STANDARDS FOR 5 POINT CALIBRATION

TIC Library : C:\DATABASE\NIST11.L  
 TIC Integration Parameters: LSCINT.P



Data Path : U:\HPCHEM1\BNA F\DATA\BF012618\  
 Data File : BF102474.D  
 Acq On : 26 Jan 2018 17:48  
 Operator : SJ/JU  
 Sample : J1281-01 2X  
 Misc :  
 ALS Vial : 13 Sample Multiplier: 1

Instrument :  
 BNA\_F  
 ClientSampled :  
 SP-A

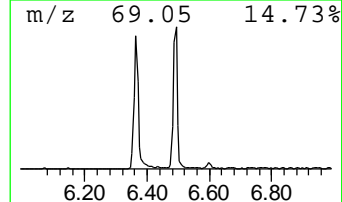
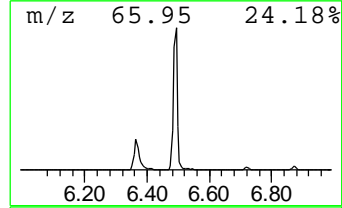
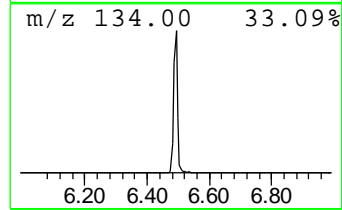
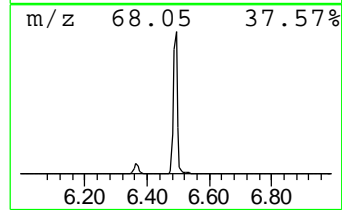
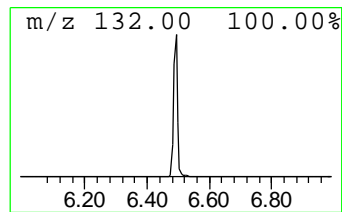
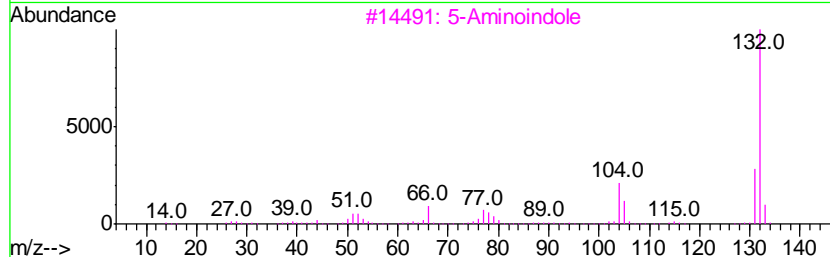
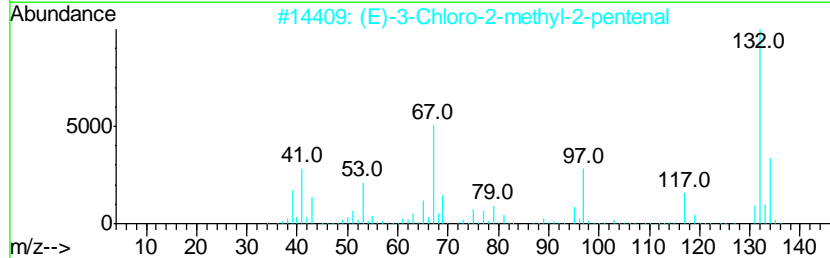
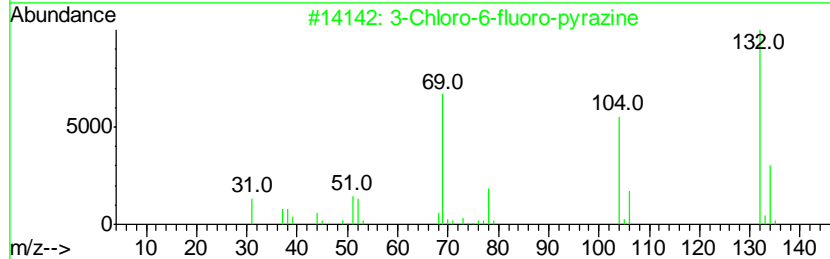
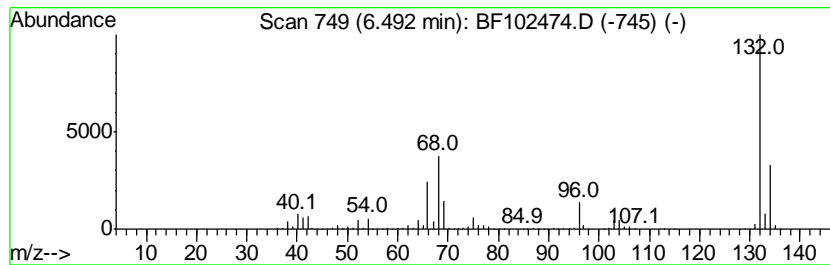
Quant Method : Z:\HPCHEM1\BNA F\METHODS\8270-BF012218.M  
 Quant Title : ASP BNA STANDARDS FOR 5 POINT CALIBRATION

TIC Library : C:\DATABASE\NIST11.L  
 TIC Integration Parameters: LSCINT.P

\*\*\*\*\*  
 Peak Number 1 unknown6.49 Concentration Rank 1

R.T.	EstConc	Area	Relative to ISTD	R.T.
6.49	40.69 ng	2067680	1,4-Dichlorobenzene-d4	6.72

Hit#	of	Tentative ID	MW	MolForm	CAS#	Qual
1	5	3-Chloro-6-fluoro-pyrazine	132	C4H2ClFN2	1000146-10-7	35
2		(E)-3-Chloro-2-methyl-2-pentenal	132	C6H9ClO	031357-76-3	35
3		5-Aminoindole	132	C8H8N2	005192-03-0	12
4		1-Methylpyrrolo[1,2-a]pyrazine	132	C8H8N2	064608-59-9	9
5		5-Fluoro-2-chloropyrimidine	132	C4H2ClFN2	062802-42-0	9



Data Path : U:\HPCHEM1\BNA F\DATA\BF012618\  
 Data File : BF102474.D  
 Acq On : 26 Jan 2018 17:48  
 Operator : SJ/JU  
 Sample : J1281-01 2X  
 Misc :  
 ALS Vial : 13 Sample Multiplier: 1

Instrument :  
 BNA\_F  
 ClientSampled :  
 SP-A

Quant Method : Z:\HPCHEM1\BNA F\METHODS\8270-BF012218.M  
 Quant Title : ASP BNA STANDARDS FOR 5 POINT CALIBRATION

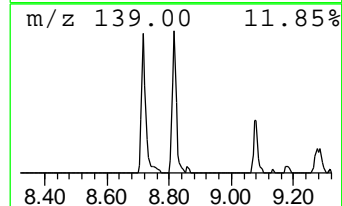
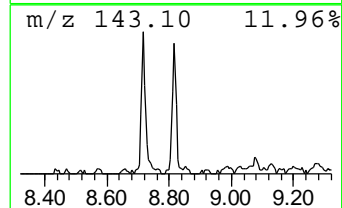
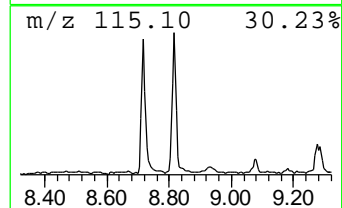
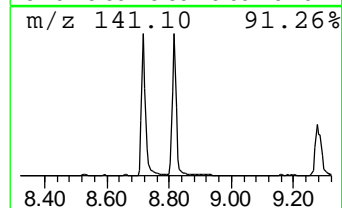
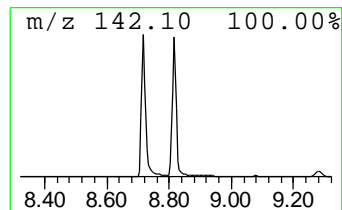
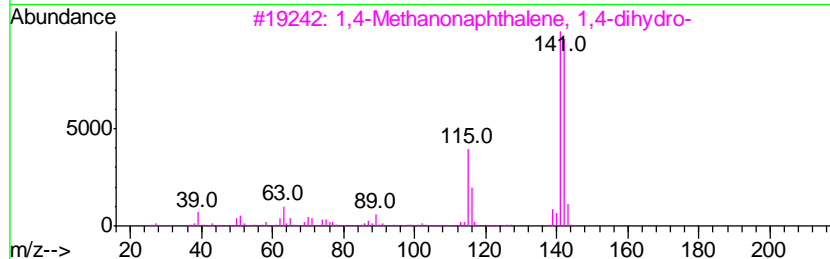
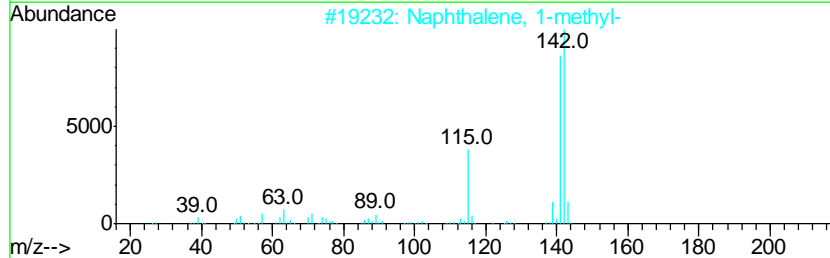
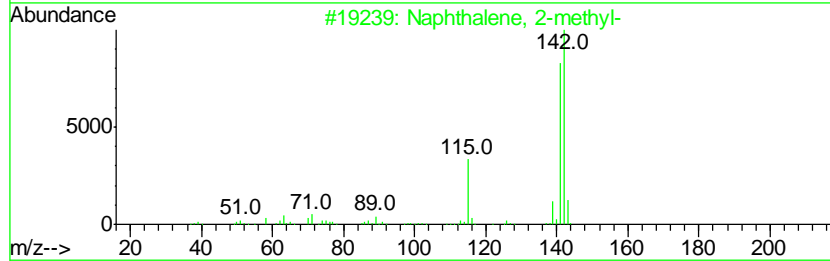
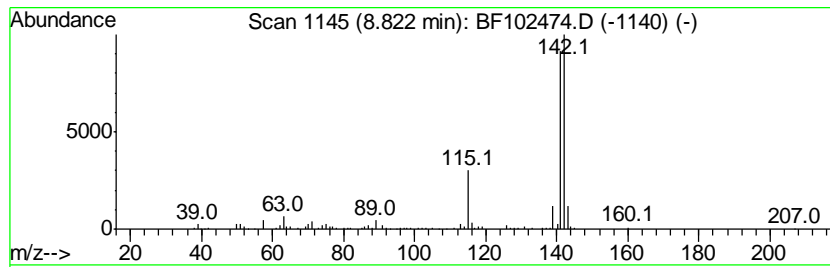
TIC Library : C:\DATABASE\NIST11.L  
 TIC Integration Parameters: LSCINT.P

\*\*\*\*\*  
 Peak Number 3 Naphthalene, 2-methyl- Concentration Rank 3

R.T.	EstConc	Area	Relative to ISTD	R.T.
8.82	5.74 ng	355766	Naphthalene-d8	8.00

Hit#	of	Tentative ID	MW	MolForm	CAS#	Qual
1	5	Naphthalene, 2-methyl-	142	C11H10	000091-57-6	96
2		Naphthalene, 1-methyl-	142	C11H10	000090-12-0	96
3		1,4-Methanonaphthalene, 1,4-dihy...	142	C11H10	004453-90-1	94
4		Benzocycloheptatriene	142	C11H10	000264-09-5	91
5		1H-Indene, 1-ethylidene-	142	C11H10	002471-83-2	87



Data Path : U:\HPCHEM1\BNA F\DATA\BF012618\  
 Data File : BF102474.D  
 Acq On : 26 Jan 2018 17:48  
 Operator : SJ/JU  
 Sample : J1281-01 2X  
 Misc :  
 ALS Vial : 13 Sample Multiplier: 1

Instrument :  
 BNA\_F  
 ClientSampled :  
 SP-A

Quant Method : Z:\HPCHEM1\BNA F\METHODS\8270-BF012218.M  
 Quant Title : ASP BNA STANDARDS FOR 5 POINT CALIBRATION

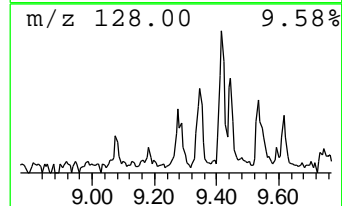
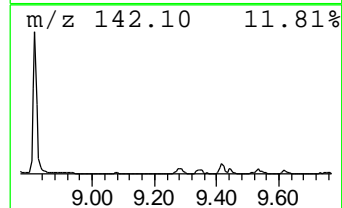
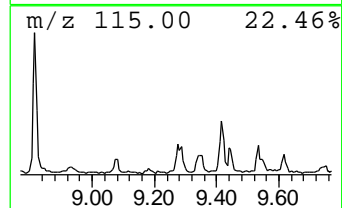
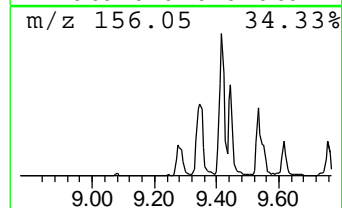
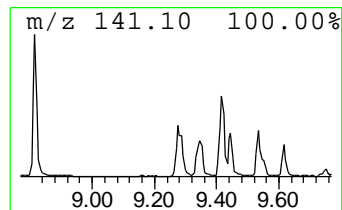
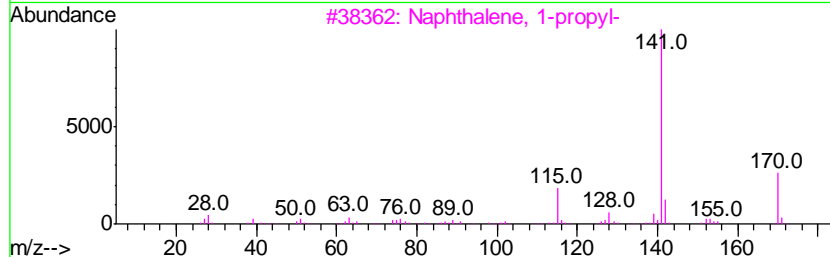
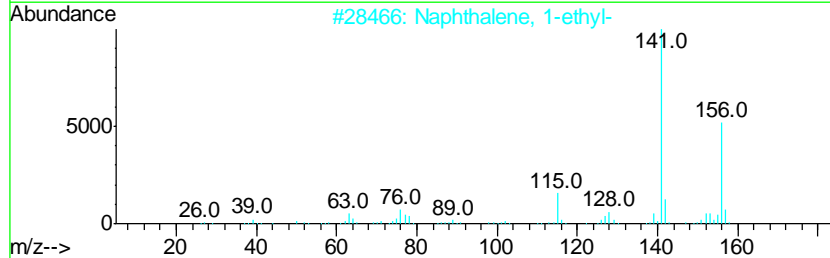
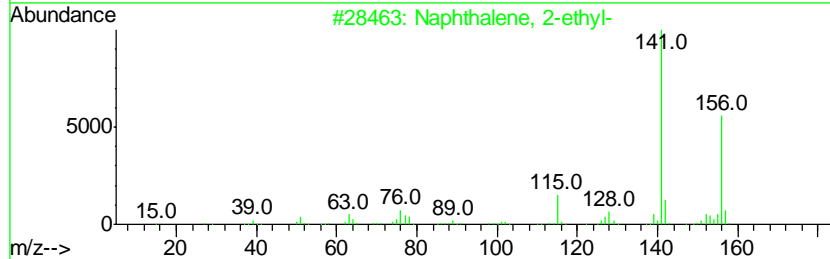
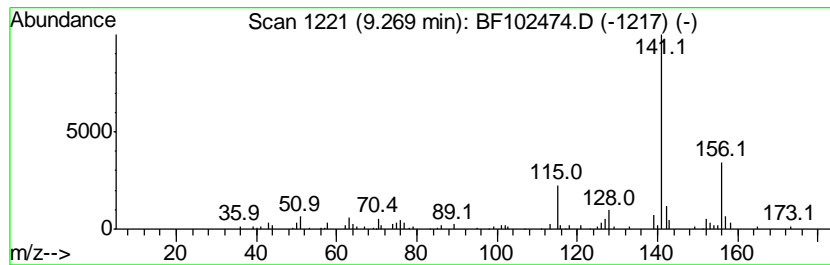
TIC Library : C:\DATABASE\NIST11.L  
 TIC Integration Parameters: LSCINT.P

\*\*\*\*\*  
 Peak Number 4 Naphthalene, 2-ethyl- Concentration Rank 8

R.T.	EstConc	Area	Relative to ISTD	R.T.
9.27	2.30 ng	155666	Acenaphthene-d10	9.76

Hit#	of	Tentative ID	MW	MolForm	CAS#	Qual
1	5	Naphthalene, 2-ethyl-	156	C12H12	000939-27-5	95
2		Naphthalene, 1-ethyl-	156	C12H12	001127-76-0	95
3		Naphthalene, 1-propyl-	170	C13H14	002765-18-6	64
4		1-Naphthaleneethanol	172	C12H12O	000773-99-9	53
5		1-Ethanone, 1-[4-(1-naphthalenyl...]	276	C19H16O2	1000338-30-5	53



Data Path : U:\HPCHEM1\BNA F\DATA\BF012618\  
 Data File : BF102474.D  
 Acq On : 26 Jan 2018 17:48  
 Operator : SJ/JU  
 Sample : J1281-01 2X  
 Misc :  
 ALS Vial : 13 Sample Multiplier: 1

Instrument :  
 BNA\_F  
 ClientSampleId :  
 SP-A

Quant Method : Z:\HPCHEM1\BNA F\METHODS\8270-BF012218.M  
 Quant Title : ASP BNA STANDARDS FOR 5 POINT CALIBRATION

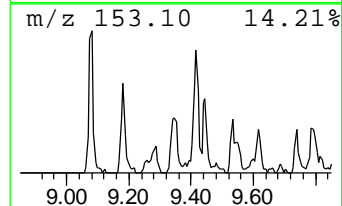
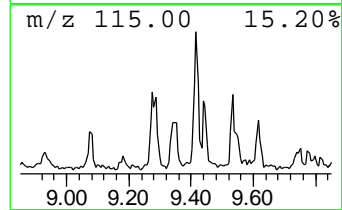
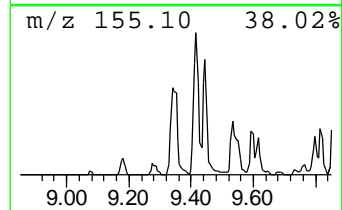
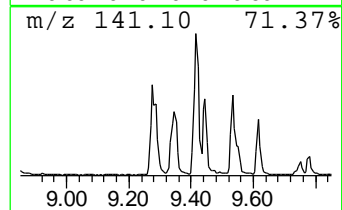
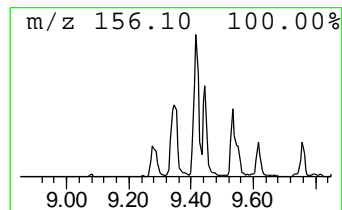
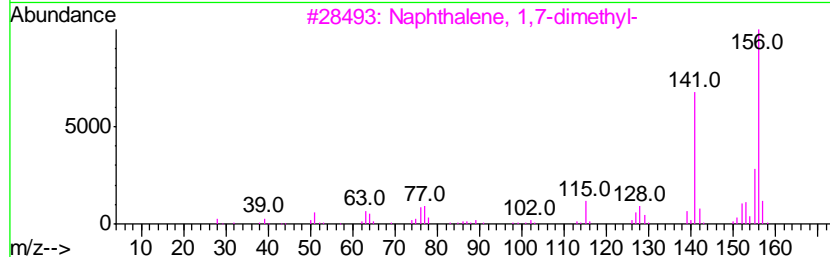
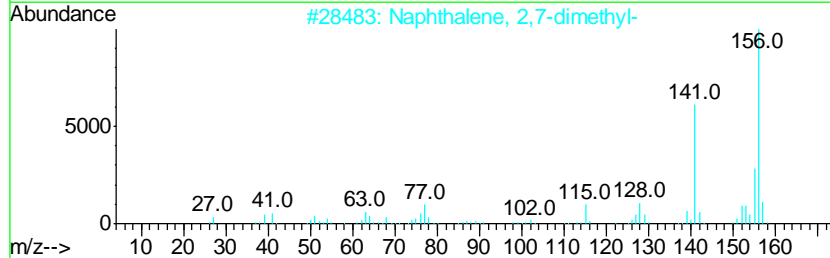
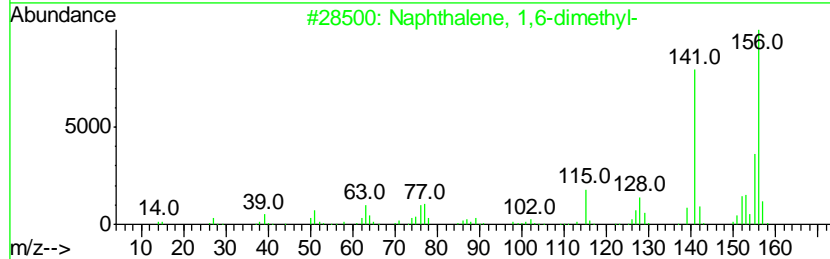
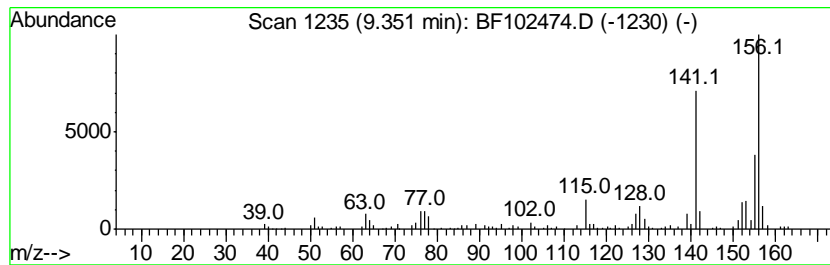
TIC Library : C:\DATABASE\NIST11.L  
 TIC Integration Parameters: LSCINT.P

\*\*\*\*\*  
 Peak Number 5 Naphthalene, 1,6-dimethyl- Concentration Rank 5

R.T.	EstConc	Area	Relative to ISTD	R.T.
9.35	3.24 ng	219352	Acenaphthene-d10	9.76

Hit#	of	Tentative ID	MW	MolForm	CAS#	Qual
1	5	Naphthalene, 1,6-dimethyl-	156	C12H12	000575-43-9	97
2		Naphthalene, 2,7-dimethyl-	156	C12H12	000582-16-1	97
3		Naphthalene, 1,7-dimethyl-	156	C12H12	000575-37-1	97
4		Naphthalene, 1,5-dimethyl-	156	C12H12	000571-61-9	97
5		Naphthalene, 2,3-dimethyl-	156	C12H12	000581-40-8	96



Data Path : U:\HPCHEM1\BNA F\DATA\BF012618\  
 Data File : BF102474.D  
 Acq On : 26 Jan 2018 17:48  
 Operator : SJ/JU  
 Sample : J1281-01 2X  
 Misc :  
 ALS Vial : 13 Sample Multiplier: 1

Instrument :  
 BNA\_F  
 ClientSampleID :  
 SP-A

Quant Method : Z:\HPCHEM1\BNA F\METHODS\8270-BF012218.M  
 Quant Title : ASP BNA STANDARDS FOR 5 POINT CALIBRATION

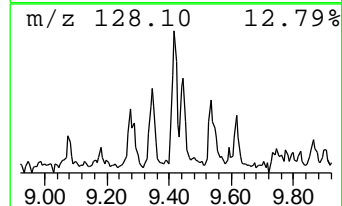
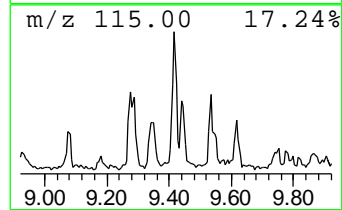
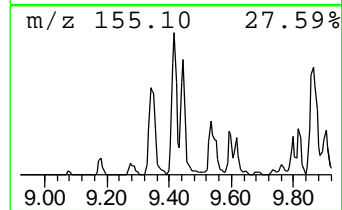
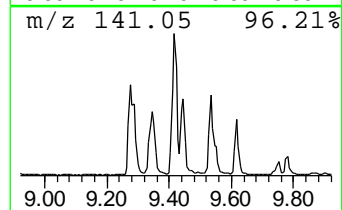
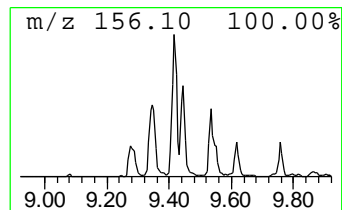
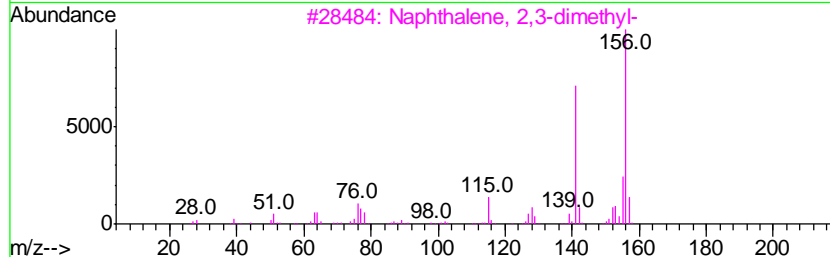
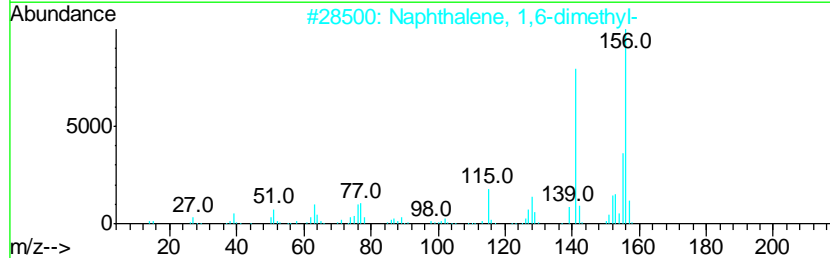
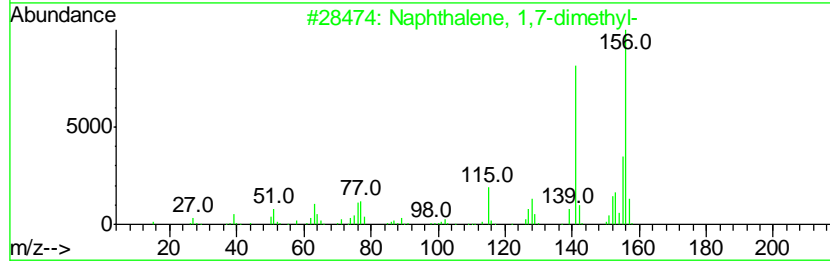
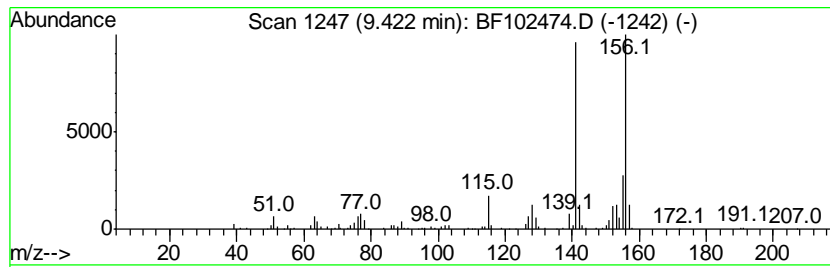
TIC Library : C:\DATABASE\NIST11.L  
 TIC Integration Parameters: LSCINT.P

\*\*\*\*\*  
 Peak Number 6 Naphthalene, 1,7-dimethyl- Concentration Rank 4

R.T.	EstConc	Area	Relative to ISTD	R.T.
9.42	4.64 ng	314423	Acenaphthene-d10	9.76

Hit#	of	Tentative ID	MW	MolForm	CAS#	Qual
1	5	Naphthalene, 1,7-dimethyl-	156	C12H12	000575-37-1	98
2		Naphthalene, 1,6-dimethyl-	156	C12H12	000575-43-9	98
3		Naphthalene, 2,3-dimethyl-	156	C12H12	000581-40-8	97
4		Naphthalene, 2,6-dimethyl-	156	C12H12	000581-42-0	97
5		Naphthalene, 1,3-dimethyl-	156	C12H12	000575-41-7	97





Data Path : U:\HPCHEM1\BNA F\DATA\BF012618\  
 Data File : BF102474.D  
 Acq On : 26 Jan 2018 17:48  
 Operator : SJ/JU  
 Sample : J1281-01 2X  
 Misc :  
 ALS Vial : 13 Sample Multiplier: 1

Instrument :  
 BNA\_F  
 ClientSampled :  
 SP-A

Quant Method : Z:\HPCHEM1\BNA F\METHODS\8270-BF012218.M  
 Quant Title : ASP BNA STANDARDS FOR 5 POINT CALIBRATION

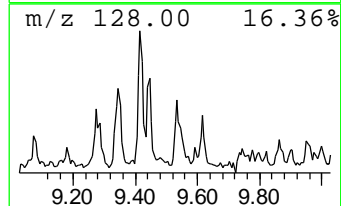
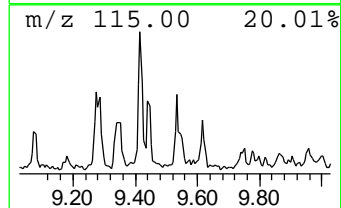
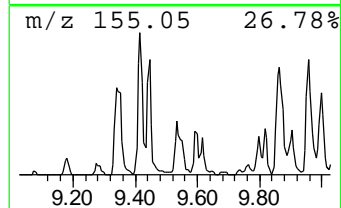
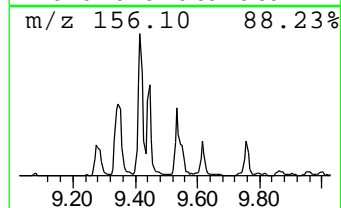
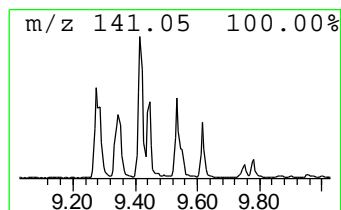
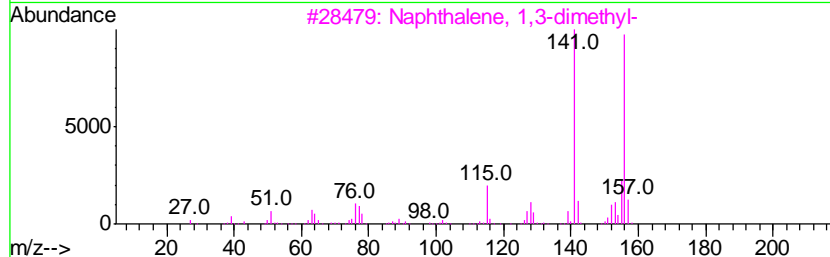
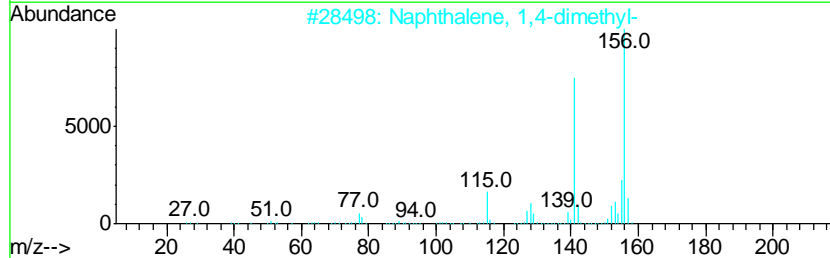
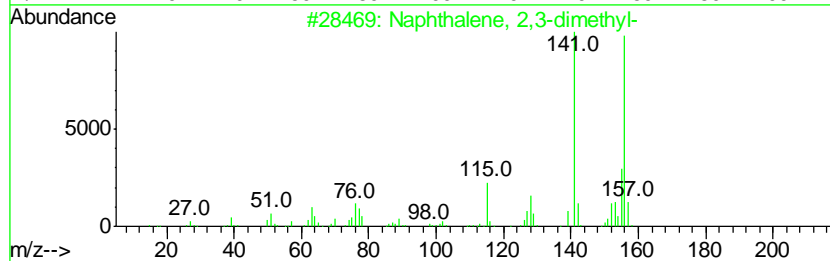
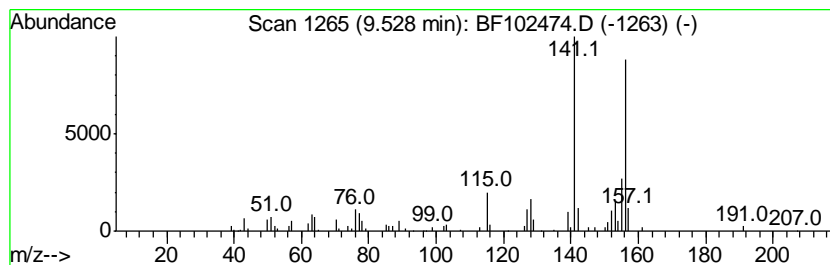
TIC Library : C:\DATABASE\NIST11.L  
 TIC Integration Parameters: LSCINT.P

\*\*\*\*\*  
 Peak Number 7 Naphthalene, 2,3-dimethyl- Concentration Rank 7

R.T.	EstConc	Area	Relative to ISTD	R.T.
9.53	2.37 ng	160209	Acenaphthene-d10	9.76

Hit#	of	Tentative ID	MW	MolForm	CAS#	Qual
1	5	Naphthalene, 2,3-dimethyl-	156	C12H12	000581-40-8	97
2		Naphthalene, 1,4-dimethyl-	156	C12H12	000571-58-4	97
3		Naphthalene, 1,3-dimethyl-	156	C12H12	000575-41-7	96
4		Naphthalene, 1,2-dimethyl-	156	C12H12	000573-98-8	96
5		Naphthalene, 1,8-dimethyl-	156	C12H12	000569-41-5	95



Data Path : U:\HPCHEM1\BNA F\DATA\BF012618\  
 Data File : BF102474.D  
 Acq On : 26 Jan 2018 17:48  
 Operator : SJ/JU  
 Sample : J1281-01 2X  
 Misc :  
 ALS Vial : 13 Sample Multiplier: 1

Instrument :  
 BNA\_F  
 ClientSampleId :  
 SP-A

Quant Method : Z:\HPCHEM1\BNA F\METHODS\8270-BF012218.M  
 Quant Title : ASP BNA STANDARDS FOR 5 POINT CALIBRATION

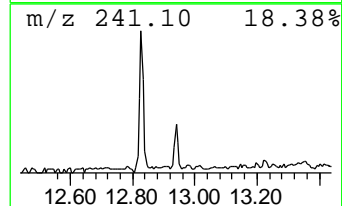
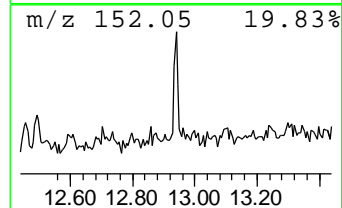
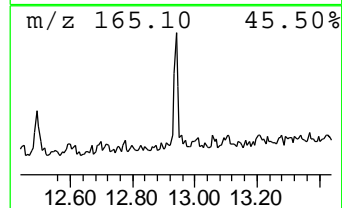
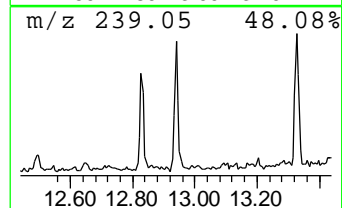
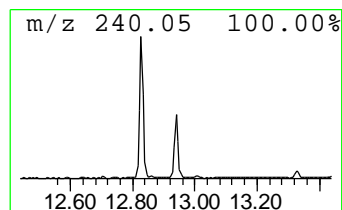
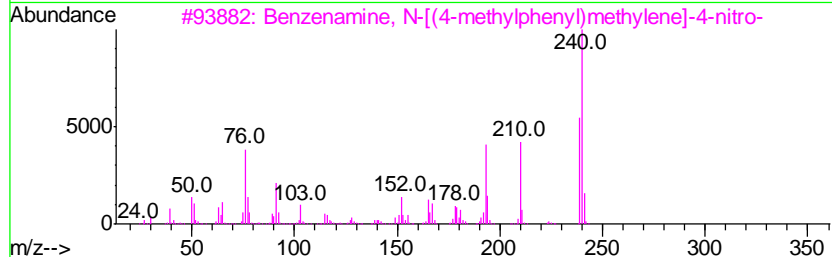
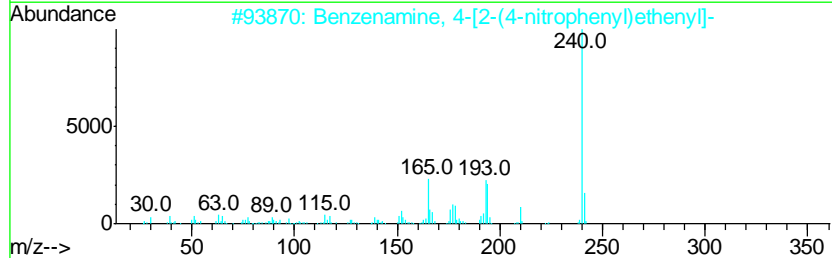
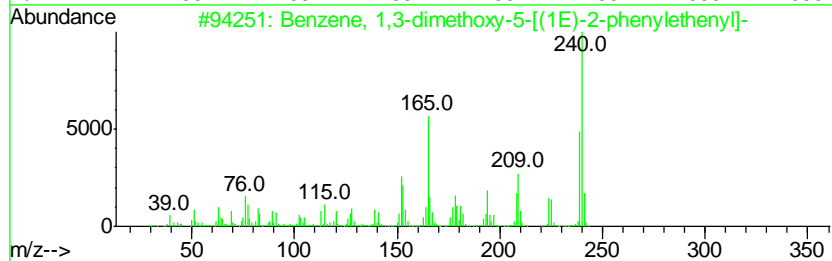
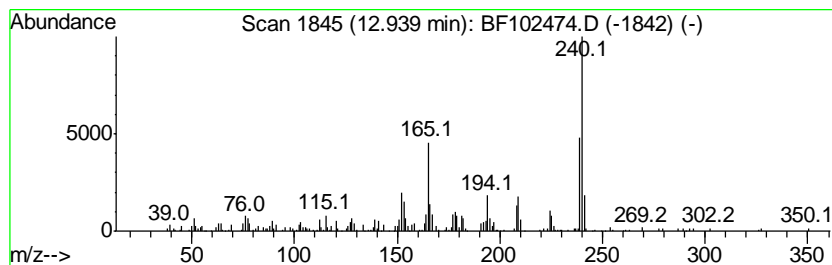
TIC Library : C:\DATABASE\NIST11.L  
 TIC Integration Parameters: LSCINT.P

\*\*\*\*\*  
 Peak Number 8 Benzene, 1,3-dimethoxy-5-[(... Concentration Rank 6

R.T.	EstConc	Area	Relative to ISTD	R.T.
12.94	2.48 ng	102732	Chrysene-d12	13.89

Hit#	of	Tentative ID	MW	MolForm	CAS#	Qual
1	5	Benzene, 1,3-dimethoxy-5-[(1E)-2...	240	C16H16O2	021956-56-9	76
2		Benzenamine, 4-[2-(4-nitrophenyl)...	240	C14H12N2O2	004629-58-7	64
3		Benzenamine, N-[(4-methylphenyl)...	240	C14H12N2O2	020192-50-1	58
4		Benzene, 1,3-dimethoxy-4-[(1E)-2...	240	C16H16O2	1000368-46-0	58
5		4-[2-(4-Hydroxy-phenyl)-vinyl]-b...	240	C15H12O3	152027-61-7	52



Data Path : U:\HPCHEM1\BNA\_F\DATA\BF012618\  
 Data File : BF102474.D  
 Acq On : 26 Jan 2018 17:48  
 Operator : SJ/JU  
 Sample : J1281-01 2X  
 Misc :  
 ALS Vial : 13 Sample Multiplier: 1

Instrument :  
 BNA\_F  
 ClientSampleId :  
 SP-A

Quant Method : Z:\HPCHEM1\BNA\_F\METHODS\8270-BF012218.M  
 Quant Title : ASP BNA STANDARDS FOR 5 POINT CALIBRATION

TIC Library : C:\DATABASE\NIST11.L  
 TIC Integration Parameters: LSCINT.P

TIC Top Hit name	RT	EstConc	Units	Response	--Internal Standard--			
					#	RT	Resp	Conc
unknown6.49	6.49	40.7	ng	2067680	1	6.72	1016370	20.0
Naphthalene, 2-me...	8.82	5.7	ng	355766	2	8.00	1238590	20.0
Naphthalene, 2-et...	9.27	2.3	ng	155666	3	9.76	1354740	20.0
Naphthalene, 1,6-...	9.35	3.2	ng	219352	3	9.76	1354740	20.0
Naphthalene, 1,7-...	9.42	4.6	ng	314423	3	9.76	1354740	20.0
Naphthalene, 2,3-...	9.53	2.4	ng	160209	3	9.76	1354740	20.0
Benzene, 1,3-dime...	12.94	2.5	ng	102732	5	13.89	829143	20.0