

Data Path : Z:\HPCHEM1\BNA\_F\DATA\BF012717\  
 Data File : BF092621.D  
 Acq On : 28 Jan 2017 12:28  
 Operator : SJ/MA  
 Sample : I1528-18  
 Misc :  
 ALS Vial : 25 Sample Multiplier: 1

Instrument :  
 BNA\_F  
 ClientSampleId :  
 SB-23-COMP

Integration Parameters: rteint.p  
 Integrator: RTE  
 Smoothing : ON  
 Sampling : 1  
 Start Thrs: 0.2  
 Stop Thrs : 0

Filtering: 5  
 Min Area: 3 % of largest Peak  
 Max Peaks: 100  
 Peak Location: TOP

If leading or trailing edge < 100 prefer < Baseline drop else tangent >  
 Peak separation: 5

Method : Z:\HPCHEM1\BNA\_F\METHODS\8270-BF012417.M  
 Title : ASP BNA STANDARDS FOR 5 POINT CALIBRATION

Signal : TIC

peak #	R.T. min	first scan	max scan	last scan	PK TY	peak height	corr. area	corr. % max.	% of total
1	5.161	266	269	279	rBV	1187287	1871171	37.93%	5.064%
2	5.596	304	307	309	rBV	3856552	4741636	96.11%	12.832%
3	6.613	393	396	399	rBV	3285050	4933562	100.00%	13.351%
4	6.750	405	408	410	rBV	3597040	4568618	92.60%	12.364%
5	6.967	425	427	430	rVB	998301	988299	20.03%	2.675%
6	7.127	439	441	444	rBV	3250888	3249819	65.87%	8.795%
7	7.539	474	477	480	rBV	2455052	2460751	49.88%	6.659%
8	8.259	538	540	543	rBV	894294	1223025	24.79%	3.310%
9	9.345	632	635	638	rBV	3592906	4096699	83.04%	11.086%
10	9.745	668	670	672	rBV	207425	226350	4.59%	0.613%
11	10.030	692	695	697	rBV	1392752	1262129	25.58%	3.416%
12	10.453	731	732	734	rVB	82919	64107	1.30%	0.173%
13	10.819	762	764	767	rBV	1615502	1673437	33.92%	4.529%
14	10.933	772	774	777	rVB	67961	95555	1.94%	0.259%
15	11.379	811	813	814	rBV	67098	59418	1.20%	0.161%
16	11.516	823	825	828	rBV	1155833	1021531	20.71%	2.764%
17	13.105	961	964	967	rBV	2995787	2818699	57.13%	7.628%
18	14.031	1041	1045	1050	rBV2	22677	75725	1.53%	0.205%
19	14.157	1054	1056	1059	rVV	784712	861671	17.47%	2.332%
20	15.642	1183	1186	1193	rVB	372927	659969	13.38%	1.786%

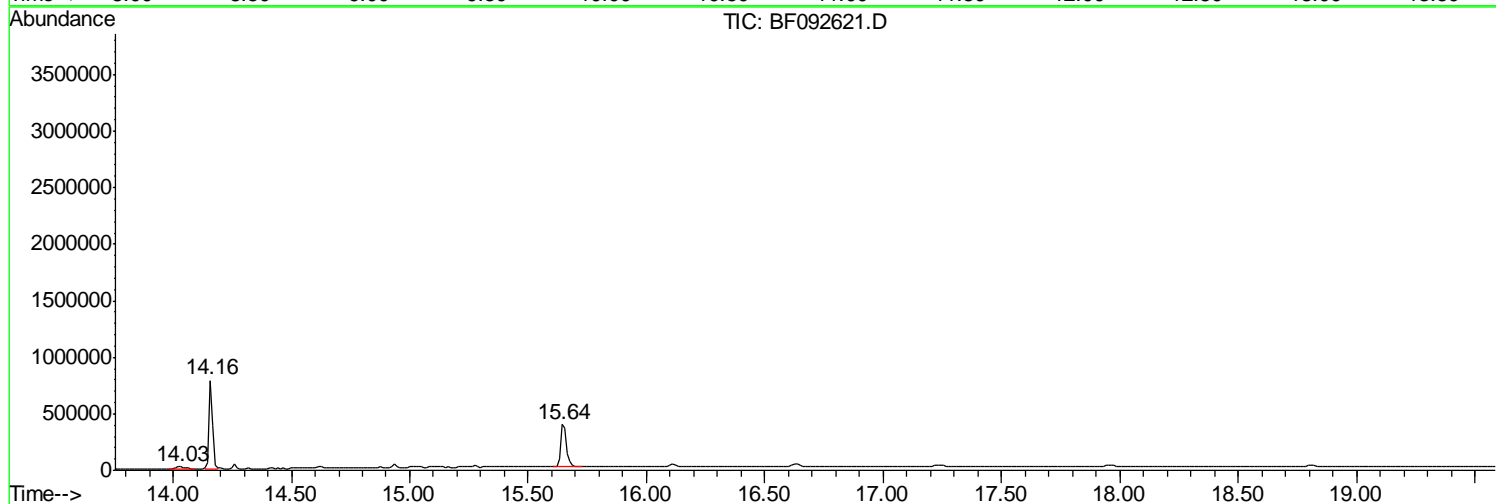
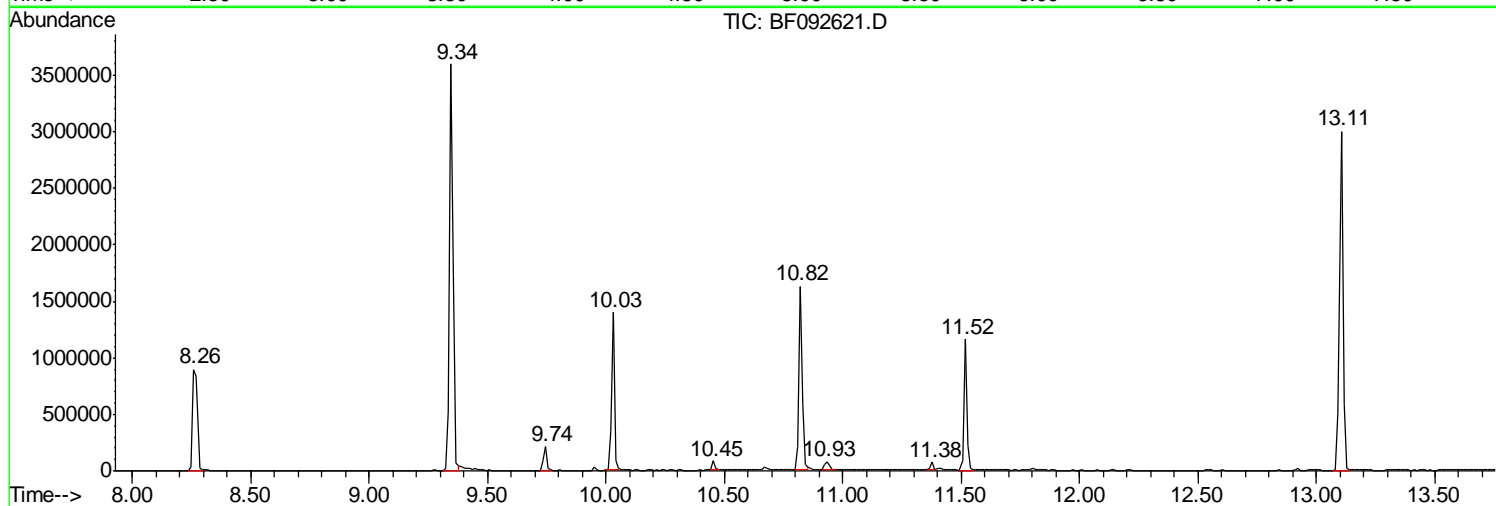
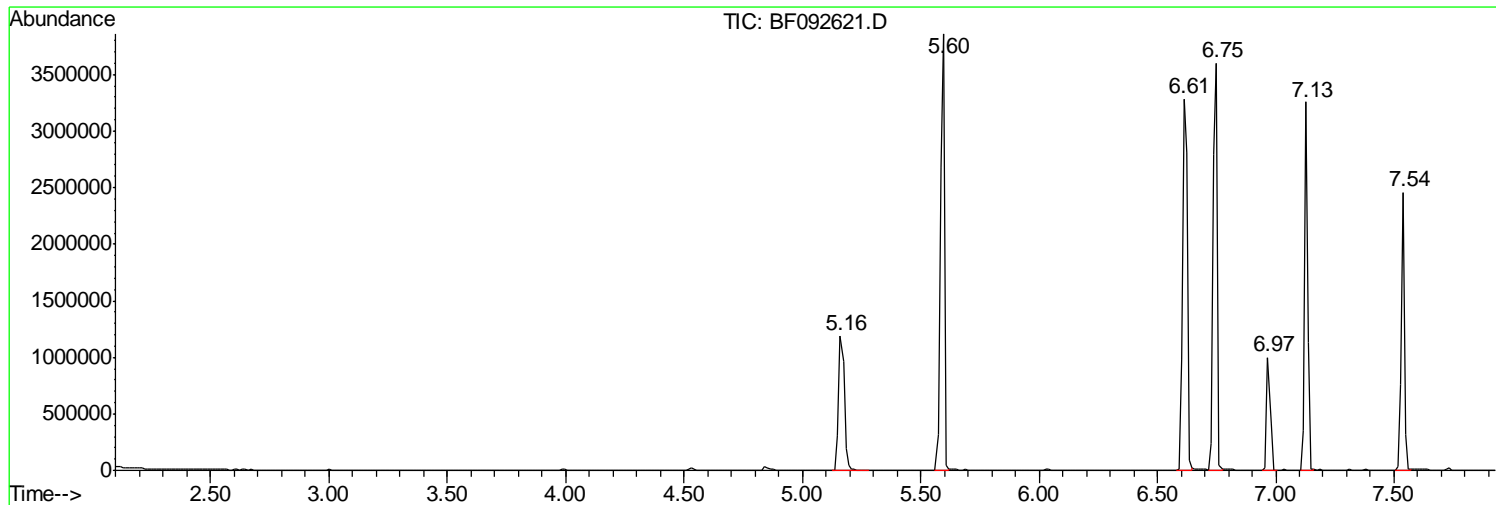
Sum of corrected areas: 36952171

Data Path : Z:\HPCHEM1\BNA\_F\DATA\BF012717\  
Data File : BF092621.D  
Acq On : 28 Jan 2017 12:28  
Operator : SJ/MA  
Sample : I1528-18  
Misc :  
ALS Vial : 25 Sample Multiplier: 1

Instrument :  
BNA\_F  
ClientSampleId :  
SB-23-COMP

Quant Method : Z:\HPCHEM1\BNA\_F\METHODS\8270-BF012417.M  
Quant Title : ASP BNA STANDARDS FOR 5 POINT CALIBRATION

TIC Library : C:\DATABASE\NIST02.L  
TIC Integration Parameters: LSCINT.P



Data Path : Z:\HPCHEM1\BNA\_F\DATA\BF012717\  
 Data File : BF092621.D  
 Acq On : 28 Jan 2017 12:28  
 Operator : SJ/MA  
 Sample : I1528-18  
 Misc :  
 ALS Vial : 25 Sample Multiplier: 1

Instrument :  
 BNA\_F  
 ClientSampled :  
 SB-23-COMP

Quant Method : Z:\HPCHEM1\BNA\_F\METHODS\8270-BF012417.M  
 Quant Title : ASP BNA STANDARDS FOR 5 POINT CALIBRATION

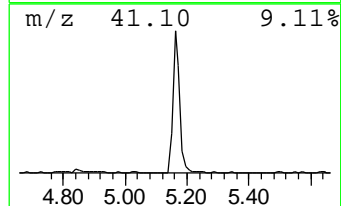
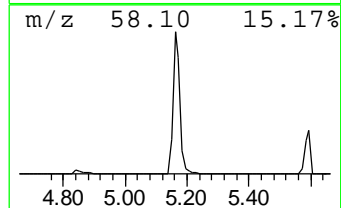
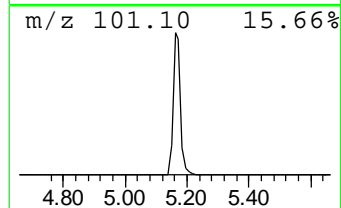
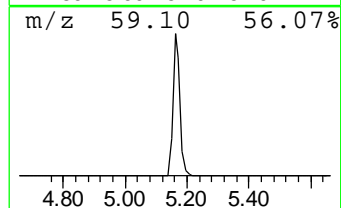
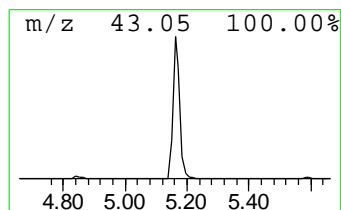
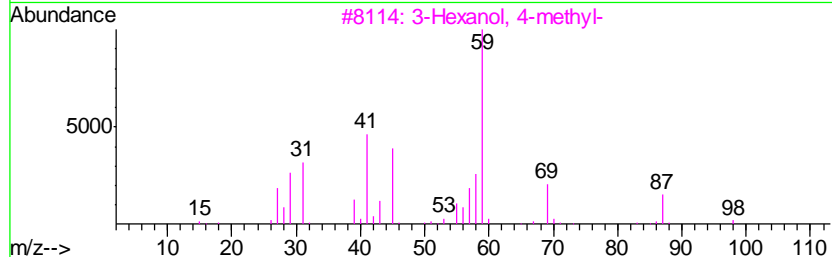
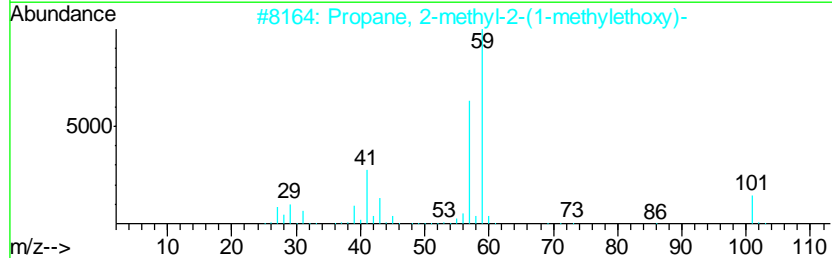
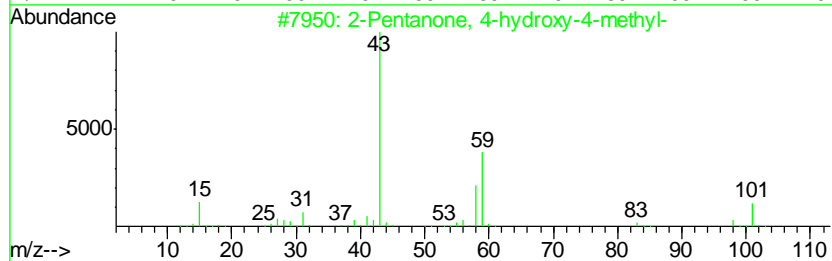
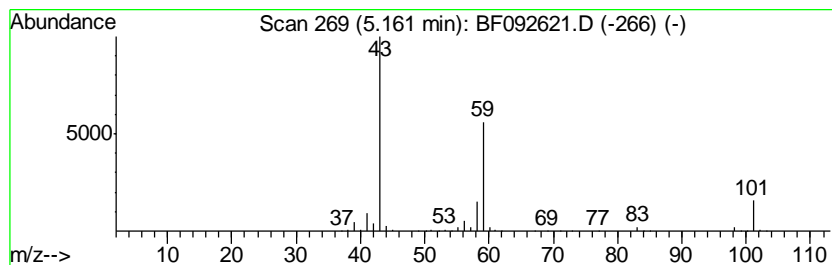
TIC Library : C:\DATABASE\NIST02.L  
 TIC Integration Parameters: LSCINT.P

\*\*\*\*\*  
 Peak Number 1 2-Pentanone, 4-hydroxy-4-me... Concentration Rank 3

R.T.	EstConc	Area	Relative to ISTD	R.T.
5.16	37.87 ng	1871170	1,4-Dichlorobenzene-d4	6.97

Hit#	of	Tentative ID	MW	MolForm	CAS#	Qual
1	5	2-Pentanone, 4-hydroxy-4-methyl-	116	C6H12O2	000123-42-2	64
2		Propane, 2-methyl-2-(1-methyleth...	116	C7H16O	017348-59-3	42
3		3-Hexanol, 4-methyl-	116	C7H16O	000615-29-2	33
4		Acetic acid, cyano-, 1,1-dimethy...	141	C7H11NO2	001116-98-9	32
5		2-Hexanol, 2-methyl-	116	C7H16O	000625-23-0	28



Data Path : Z:\HPCHEM1\BNA\_F\DATA\BF012717\  
 Data File : BF092621.D  
 Acq On : 28 Jan 2017 12:28  
 Operator : SJ/MA  
 Sample : I1528-18  
 Misc :  
 ALS Vial : 25 Sample Multiplier: 1

Instrument :  
 BNA\_F  
 ClientSampleID :  
 SB-23-COMP

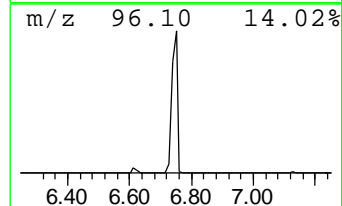
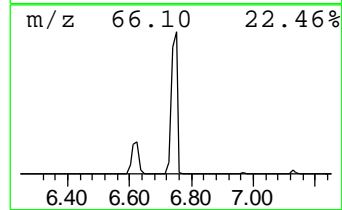
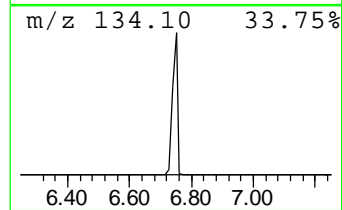
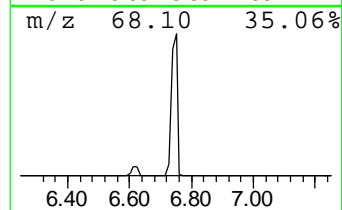
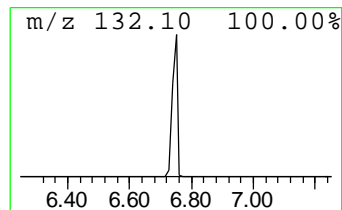
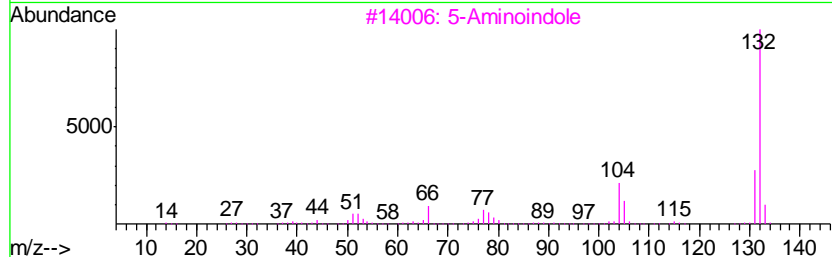
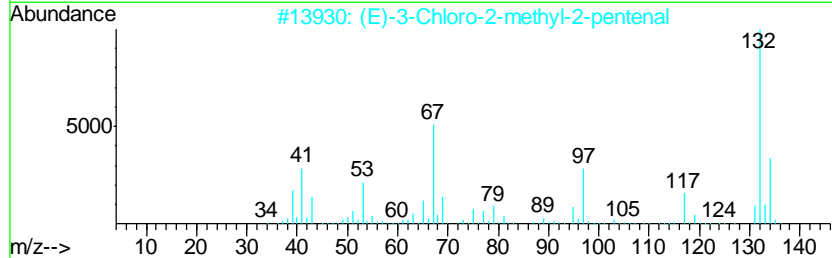
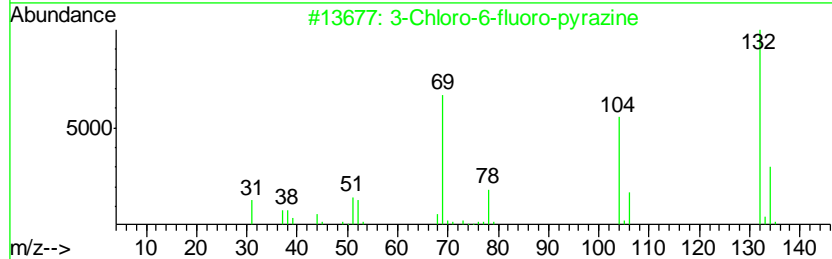
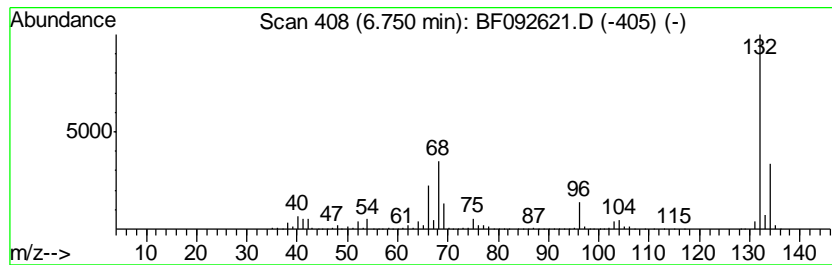
Quant Method : Z:\HPCHEM1\BNA\_F\METHODS\8270-BF012417.M  
 Quant Title : ASP BNA STANDARDS FOR 5 POINT CALIBRATION

TIC Library : C:\DATABASE\NIST02.L  
 TIC Integration Parameters: LSCINT.P

\*\*\*\*\*  
 Peak Number 2 unknown6.75 Concentration Rank 1

R.T.	EstConc	Area	Relative to ISTD	R.T.
6.75	92.45 ng	4568620	1,4-Dichlorobenzene-d4	6.97

Hit#	of	Tentative ID	MW	MolForm	CAS#	Qual
1	5	3-Chloro-6-fluoro-pyrazine	132	C4H2ClFN2	1000146-10-7	38
2		(E)-3-Chloro-2-methyl-2-pentenal	132	C6H9ClO	031357-76-3	25
3		5-Aminoindole	132	C8H8N2	005192-03-0	16
4		Tranylcypromine-propionyl	189	C12H15NO	1000123-86-3	16
5		5-Fluoro-2-chloropyrimidine	132	C4H2ClFN2	062802-42-0	9



Data Path : Z:\HPCHEM1\BNA\_F\DATA\BF012717\  
Data File : BF092621.D  
Acq On : 28 Jan 2017 12:28  
Operator : SJ/MA  
Sample : I1528-18  
Misc :  
ALS Vial : 25 Sample Multiplier: 1

Instrument :  
BNA\_F  
ClientSampleId :  
SB-23-COMP

Quant Method : Z:\HPCHEM1\BNA\_F\METHODS\8270-BF012417.M  
Quant Title : ASP BNA STANDARDS FOR 5 POINT CALIBRATION

TIC Library : C:\DATABASE\NIST02.L  
TIC Integration Parameters: LSCINT.P

TIC Top Hit name	RT	EstConc	Units	Response	--Internal Standard--			
					#	RT	Resp	Conc
2-Pentanone, 4-hy...	5.16	37.9	ng	1871170	1	6.97	988299	20.0
unknown6.75	6.75	92.5	ng	4568620	1	6.97	988299	20.0