

Data Path : Z:\svoasrv\HPCHEM1\BNA\_F\Data\BF012825\  
 Data File : BF141288.D  
 Acq On : 28 Jan 2025 18:56  
 Operator : RC/JU  
 Sample : PB166167BL  
 Misc :  
 ALS Vial : 12 Sample Multiplier: 1

Instrument :  
 BNA\_F  
 ClientSampleId :  
 PB166167BL

Quant Time: Jan 28 23:57:49 2025  
 Quant Method : Z:\svoasrv\HPCHEM1\BNA\_F\Methods\8270-BF012825.M  
 Quant Title : ASP BNA STANDARDS FOR 5 POINT CALIBRATION  
 QLast Update : Tue Jan 28 23:51:29 2025  
 Response via : Initial Calibration

Compound	R.T.	QIon	Response	Conc	Units	Dev(Min)
Internal Standards						
1) 1,4-Dichlorobenzene-d4	6.798	152	129691	20.000	ng	0.00
21) Naphthalene-d8	8.081	136	528400	20.000	ng	0.00
39) Acenaphthene-d10	9.833	164	286472	20.000	ng	0.00
64) Phenanthrene-d10	11.322	188	505979	20.000	ng	0.00
76) Chrysene-d12	13.963	240	325514	20.000	ng	0.00
86) Perylene-d12	15.415	264	271131	20.000	ng	-0.01
System Monitoring Compounds						
5) 2-Fluorophenol	5.416	112	1098036	130.951	ng	0.00
7) Phenol-d6	6.428	99	1374190	129.663	ng	-0.01
23) Nitrobenzene-d5	7.357	82	892235	89.161	ng	-0.01
42) 2,4,6-Tribromophenol	10.622	330	388003	132.474	ng	-0.01
45) 2-Fluorobiphenyl	9.157	172	1591309	86.130	ng	0.00
79) Terphenyl-d14	12.916	244	1821418	87.541	ng	0.00
Target Compounds						
3) Pyridine	3.451	79	3852	0.447	ng	92
6) Aniline	6.457	93	7430	0.910	ng	97
9) Benzaldehyde	6.428	77	2236	0.351	ng	# 1
10) Phenol	6.439	94	1028	0.092	ng	# 1
11) bis(2-Chloroethyl)ether	6.457	93	7430	0.850	ng	# 23
15) Benzyl Alcohol	6.798	79	4113	0.552	ng	# 33
19) n-Nitroso-di-n-propyla...	7.357	70	119644	19.114	ng	# 76
24) Nitrobenzene	7.357	77	2519	0.244	ng	# 35
25) Isophorone	7.357	82	876239	50.742	ng	# 65
31) Naphthalene	8.151	128	136	0.005	ng	# 1
33) 4-Chloroaniline	8.151	127	4494	0.515	ng	97
35) Caprolactam	8.733	113	274	0.111	ng	# 1
36) 4-Chloro-3-methylphenol	8.633	107	213	0.026	ng	# 82
37) 2-Methylnaphthalene	8.628	142	113	0.006	ng	# 6
38) 1-Methylnaphthalene	9.157	142	746	0.043	ng	88
46) 1,1'-Biphenyl	9.157	154	3160	0.141	ng	# 1
48) 2-Nitroaniline	9.151	65	2926	0.538	ng	# 1
49) Acenaphthylene	9.869	152	107	0.004	ng	# 60
50) Dimethylphthalate	9.833	163	43653	2.287	ng	# 1
51) 2,6-Dinitrotoluene	9.833	165	36213	8.173	ng	# 23
52) Acenaphthene	9.863	154	127	0.007	ng	# 16
57) 2,4-Dinitrotoluene	9.833	165	36213	6.411	ng	# 21
58) Fluorene	10.622	166	15544	0.865	ng	# 88
60) Diethylphthalate	10.251	149	182	0.010	ng	# 58
63) Azobenzene	10.533	77	122	0.007	ng	# 47
65) 4,6-Dinitro-2-methylph...	10.622	198	874	0.288	ng	# 1
66) n-Nitrosodiphenylamine	10.622	169	11338	0.696	ng	# 47
67) 4-Bromophenyl-phenylether	10.622	248	22955	4.064	ng	# 1
71) Phenanthrene	11.339	178	481	0.018	ng	# 60
72) Anthracene	11.398	178	139	0.005	ng	# 60
73) Carbazole	11.563	167	260	0.011	ng	# 59
74) Di-n-butylphthalate	11.886	149	376	0.013	ng	# 78
75) Fluoranthene	12.533	202	303	0.011	ng	64
77) Benzidine	12.916	184	23286	5.976	ng	# 93
78) Pyrene	12.763	202	493	0.016	ng	# 57
81) Benzo(a)anthracene	13.963	228	1150	0.052	ng	# 65

Data Path : Z:\svoasrv\HPCHEM1\BNA\_F\Data\BF012825\  
Data File : BF141288.D  
Acq On : 28 Jan 2025 18:56  
Operator : RC/JU  
Sample : PB166167BL  
Misc :  
ALS Vial : 12 Sample Multiplier: 1

Instrument :  
BNA\_F  
ClientSampleId :  
PB166167BL

Quant Time: Jan 28 23:57:49 2025  
Quant Method : Z:\svoasrv\HPCHEM1\BNA\_F\Methods\8270-BF012825.M  
Quant Title : ASP BNA STANDARDS FOR 5 POINT CALIBRATION  
QLast Update : Tue Jan 28 23:51:29 2025  
Response via : Initial Calibration

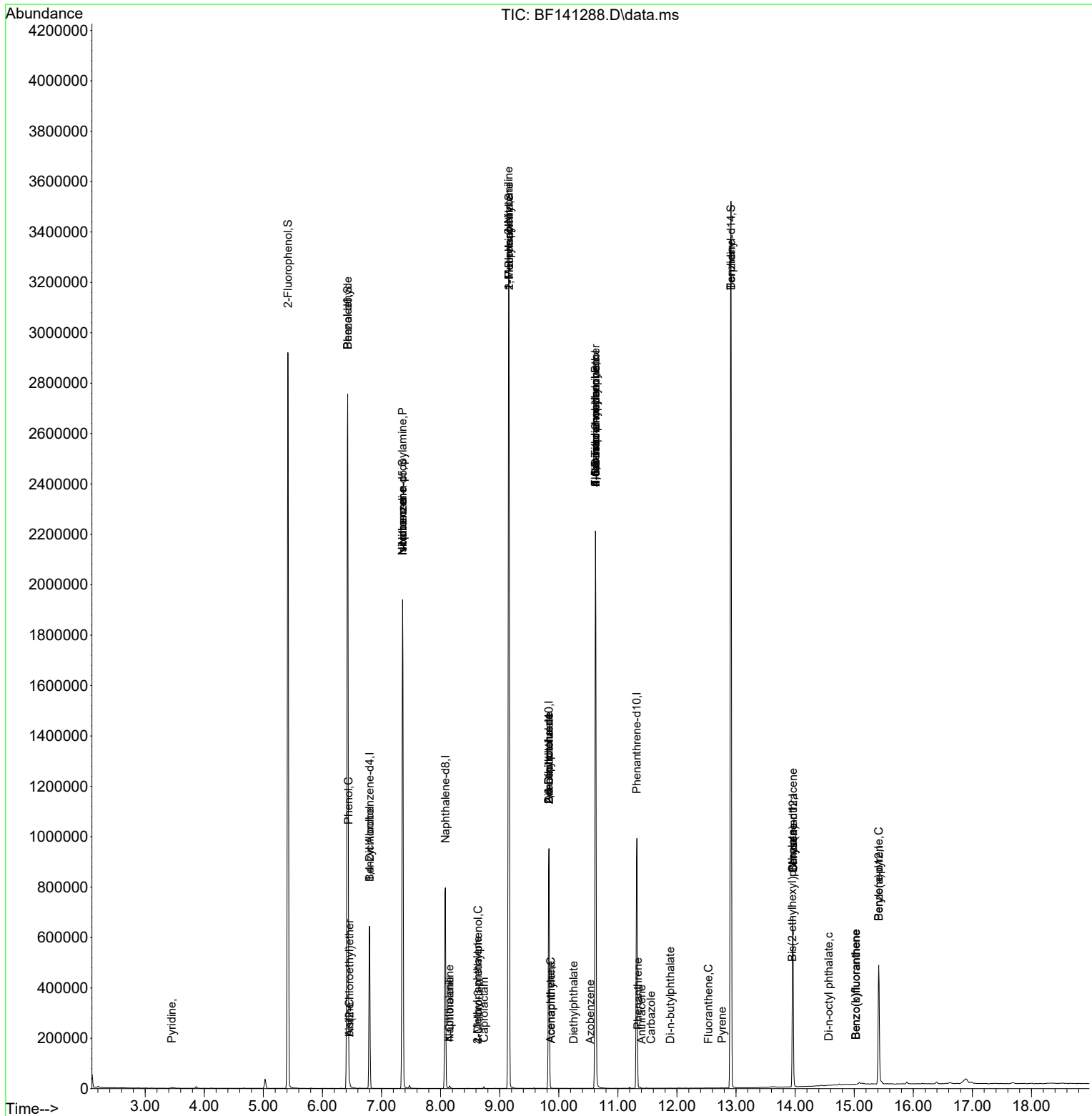
Compound	R.T.	QIon	Response	Conc	Units	Dev(Min)
83) Chrysene	13.963	228	1150	0.055	ng #	62
84) Bis(2-ethylhexyl)phtha...	13.951	149	228	0.017	ng #	53
85) Di-n-octyl phthalate	14.568	149	115	0.005	ng #	72
88) Benzo(b)fluoranthene	15.027	252	201	0.012	ng #	60
89) Benzo(k)fluoranthene	15.027	252	201	0.013	ng #	60
90) Benzo(a)pyrene	15.415	252	1043	0.072	ng #	86

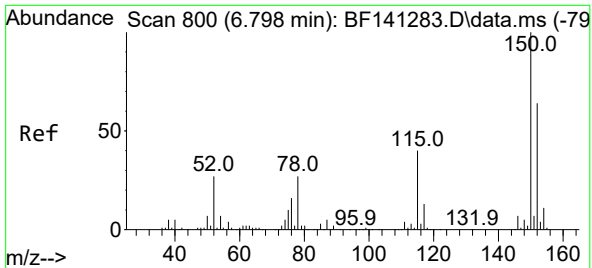
(#) = qualifier out of range (m) = manual integration (+) = signals summed

Data Path : Z:\svoasrv\HPCHEM1\BNA\_F\Data\BF012825\  
 Data File : BF141288.D  
 Acq On : 28 Jan 2025 18:56  
 Operator : RC/JU  
 Sample : PB166167BL  
 Misc :  
 ALS Vial : 12 Sample Multiplier: 1

Instrument :  
 BNA\_F  
 ClientSampleId :  
 PB166167BL

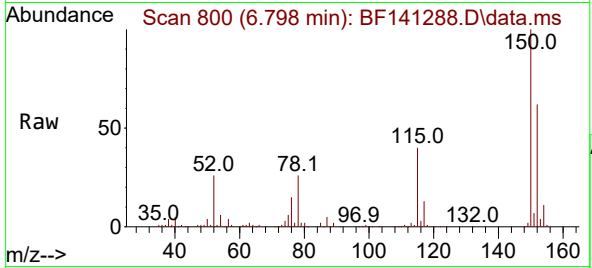
Quant Time: Jan 28 23:57:49 2025  
 Quant Method : Z:\svoasrv\HPCHEM1\BNA\_F\Methods\8270-BF012825.M  
 Quant Title : ASP BNA STANDARDS FOR 5 POINT CALIBRATION  
 QLast Update : Tue Jan 28 23:51:29 2025  
 Response via : Initial Calibration



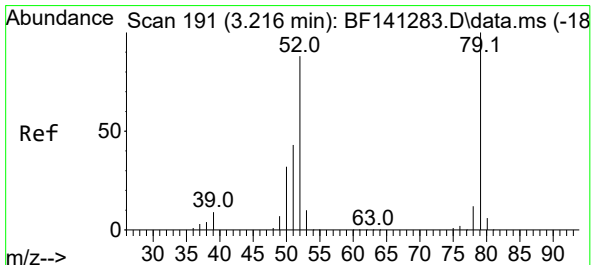
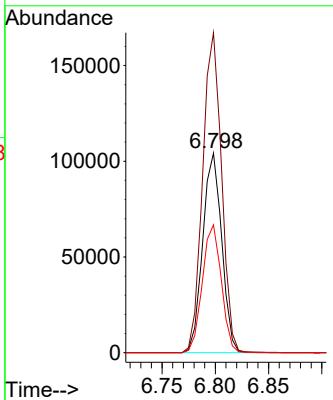
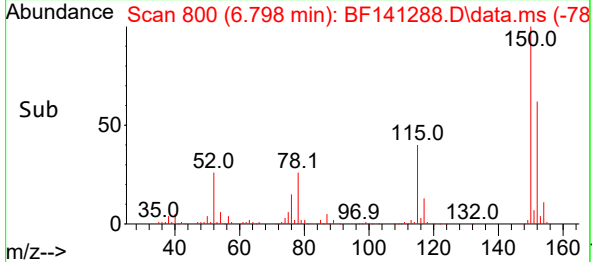


#1  
 1,4-Dichlorobenzene-d4  
 Concen: 20.000 ng  
 RT: 6.798 min Scan# 80  
 Delta R.T. -0.006 min  
 Lab File: BF141288.D  
 Acq: 28 Jan 2025 18:56

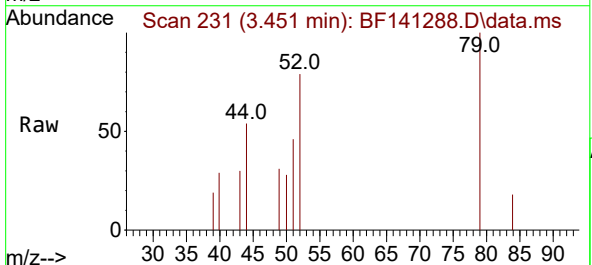
Instrument :  
 BNA\_F  
 ClientSampleId :  
 PB166167BL



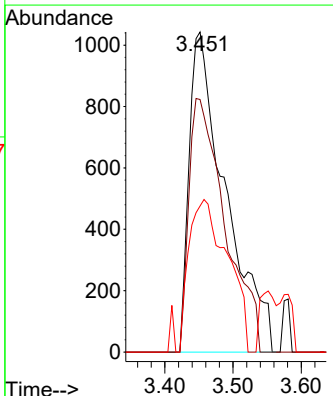
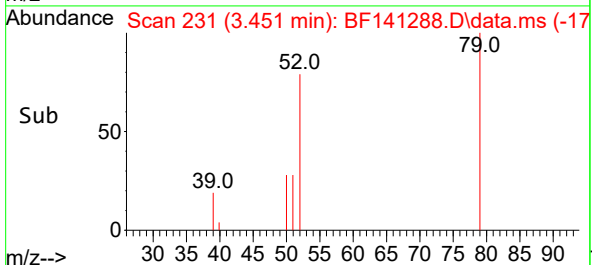
Tgt Ion:152 Resp: 129691  
 Ion Ratio Lower Upper  
 152 100  
 150 160.4 125.6 188.4  
 115 64.0 50.3 75.5

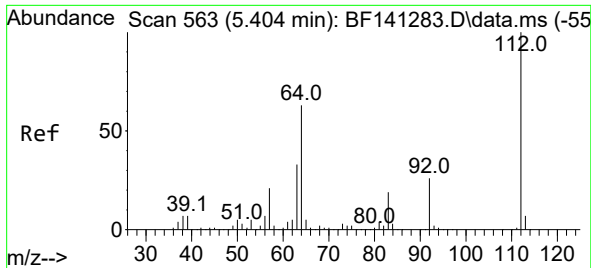


#3  
 Pyridine  
 Concen: 0.447 ng  
 RT: 3.451 min Scan# 231  
 Delta R.T. 0.229 min  
 Lab File: BF141288.D  
 Acq: 28 Jan 2025 18:56



Tgt Ion: 79 Resp: 3852  
 Ion Ratio Lower Upper  
 79 100  
 52 78.9 70.5 105.7  
 51 45.6 34.6 51.8

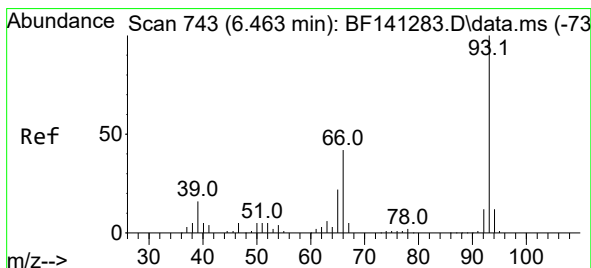
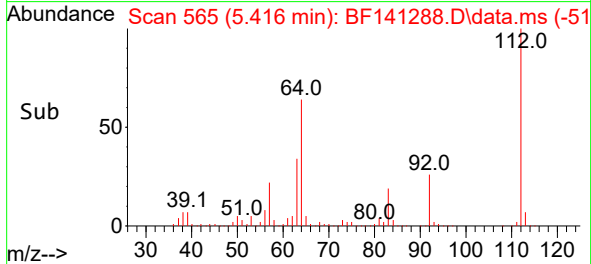
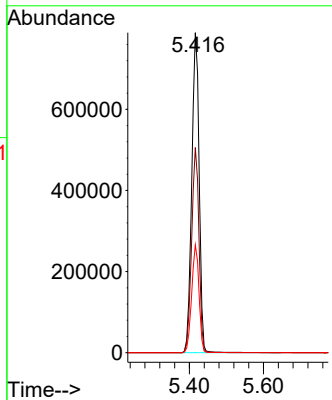
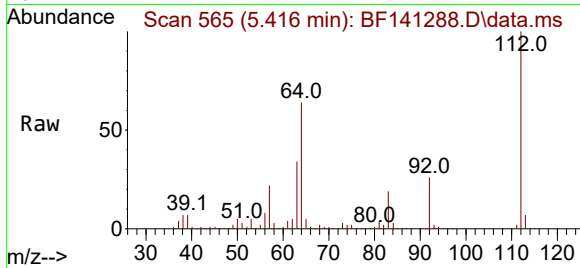




#5  
 2-Fluorophenol  
 Concen: 130.951 ng  
 RT: 5.416 min Scan# 50  
 Delta R.T. 0.006 min  
 Lab File: BF141288.D  
 Acq: 28 Jan 2025 18:56

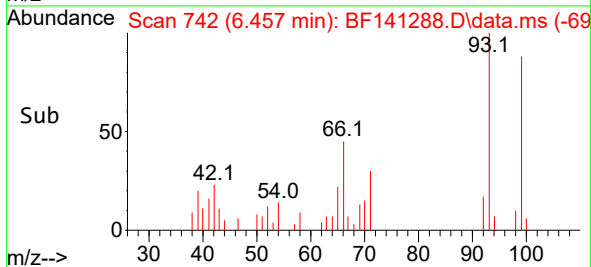
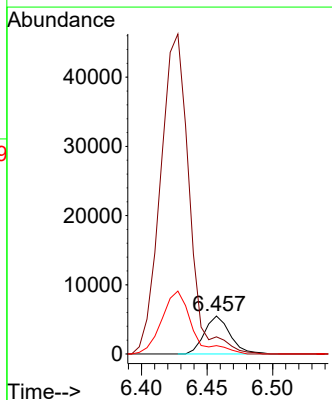
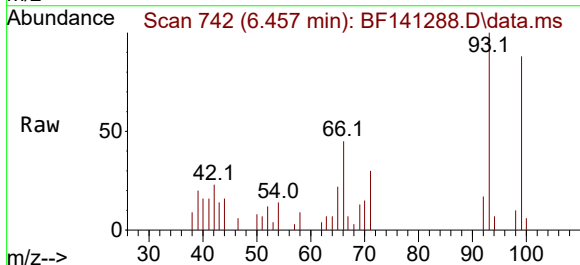
Instrument :  
 BNA\_F  
 ClientSampleId :  
 PB166167BL

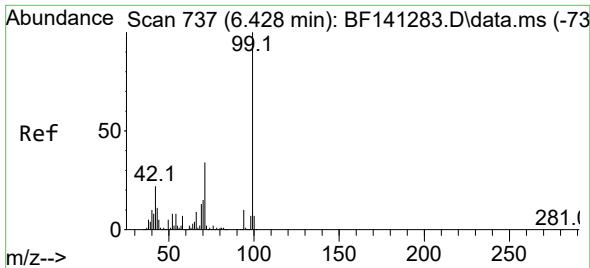
Tgt Ion:112 Resp: 1098036  
 Ion Ratio Lower Upper  
 112 100  
 64 64.1 50.5 75.7  
 63 33.7 26.3 39.5



#6  
 Aniline  
 Concen: 0.910 ng  
 RT: 6.457 min Scan# 742  
 Delta R.T. -0.012 min  
 Lab File: BF141288.D  
 Acq: 28 Jan 2025 18:56

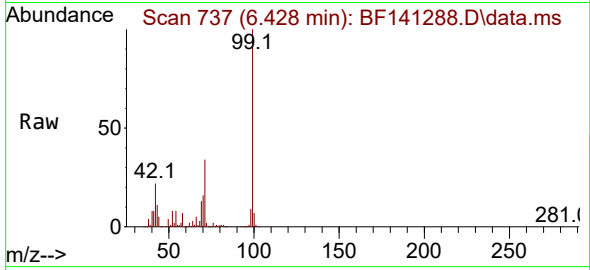
Tgt Ion: 93 Resp: 7430  
 Ion Ratio Lower Upper  
 93 100  
 66 45.0 33.8 50.8  
 65 22.0 17.4 26.0



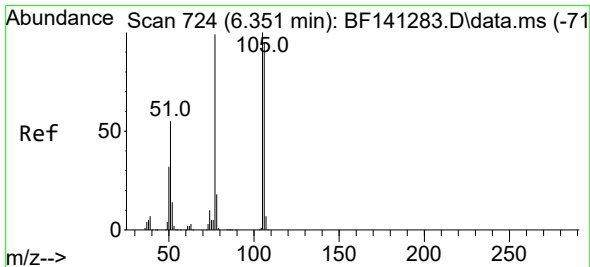
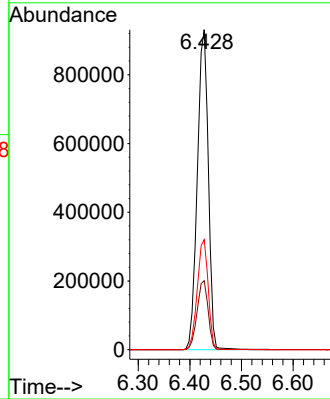
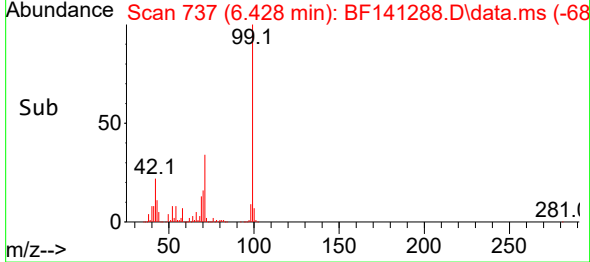


#7  
 Phenol-d6  
 Concen: 129.663 ng  
 RT: 6.428 min Scan# 71  
 Delta R.T. -0.012 min  
 Lab File: BF141288.D  
 Acq: 28 Jan 2025 18:56

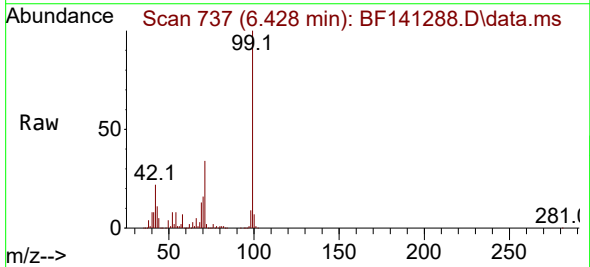
Instrument :  
 BNA\_F  
 ClientSampleId :  
 PB166167BL



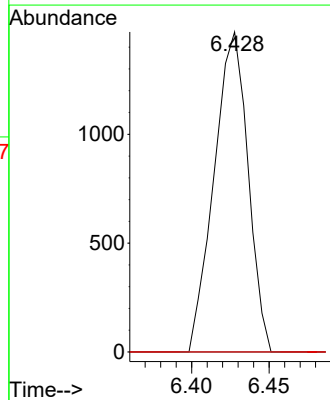
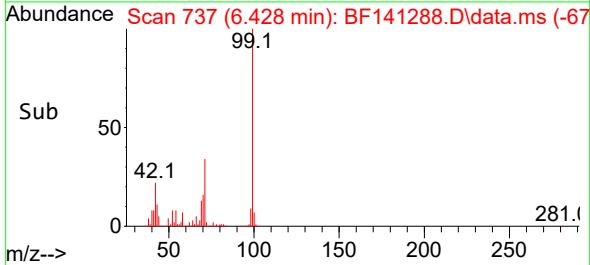
Tgt Ion: 99 Resp: 1374190  
 Ion Ratio Lower Upper  
 99 100  
 42 21.5 17.3 25.9  
 71 34.4 27.2 40.8

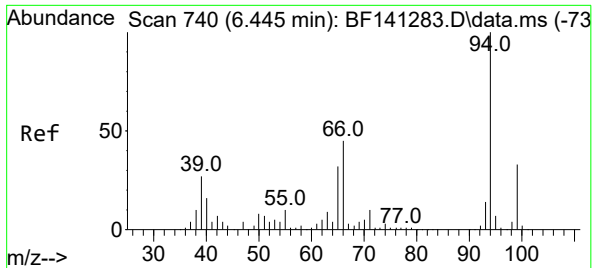


#9  
 Benzaldehyde  
 Concen: 0.351 ng  
 RT: 6.428 min Scan# 737  
 Delta R.T. 0.077 min  
 Lab File: BF141288.D  
 Acq: 28 Jan 2025 18:56



Tgt Ion: 77 Resp: 2236  
 Ion Ratio Lower Upper  
 77 100  
 105 0.0 81.4 121.4#  
 106 0.0 76.2 116.2#

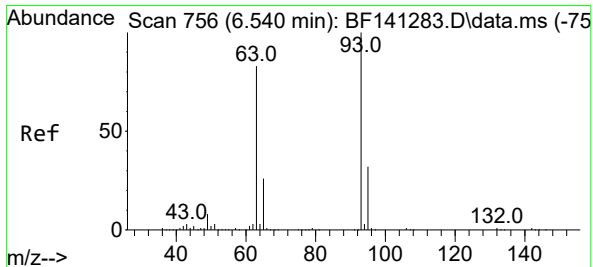
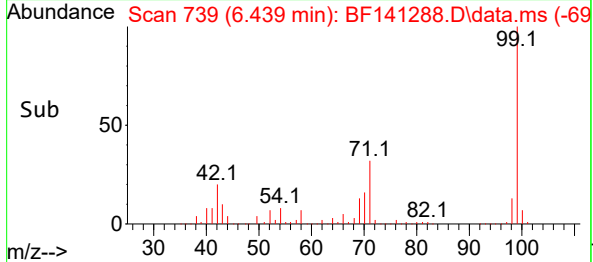
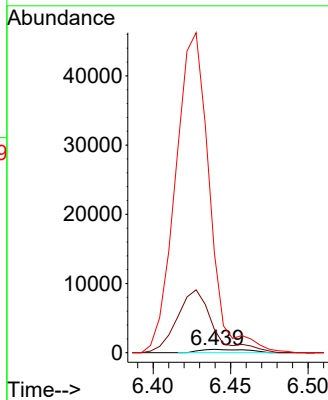
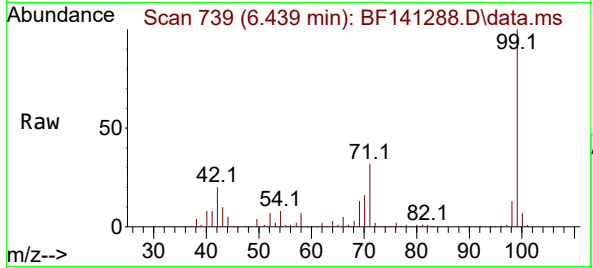




#10  
 Phenol  
 Concen: 0.092 ng  
 RT: 6.439 min Scan# 710  
 Delta R.T. -0.018 min  
 Lab File: BF141288.D  
 Acq: 28 Jan 2025 18:56

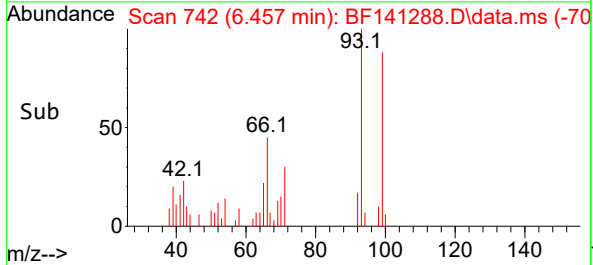
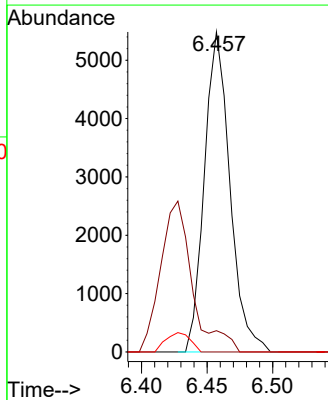
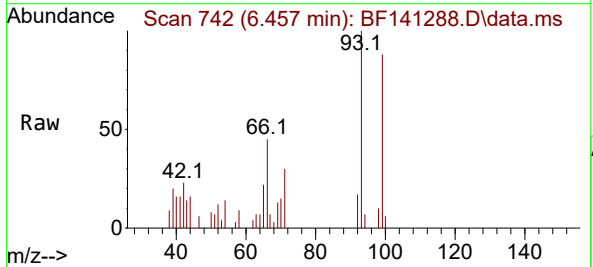
Instrument :  
 BNA\_F  
 ClientSampleId :  
 PB166167BL

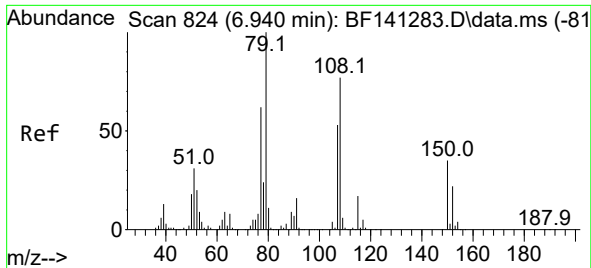
Tgt Ion: 94 Resp: 1028  
 Ion Ratio Lower Upper  
 94 100  
 65 701.9 12.1 52.1#  
 66 3004.8 24.8 64.8#



#11  
 bis(2-Chloroethyl)ether  
 Concen: 0.850 ng  
 RT: 6.457 min Scan# 742  
 Delta R.T. -0.088 min  
 Lab File: BF141288.D  
 Acq: 28 Jan 2025 18:56

Tgt Ion: 93 Resp: 7430  
 Ion Ratio Lower Upper  
 93 100  
 63 6.7 62.3 102.3#  
 95 0.0 11.9 51.9#



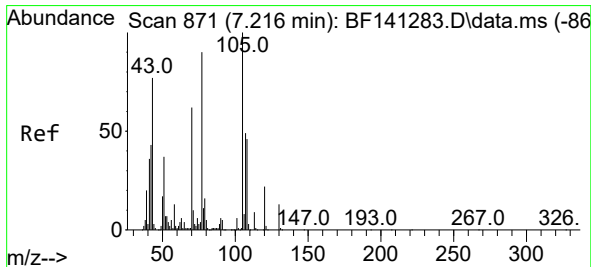
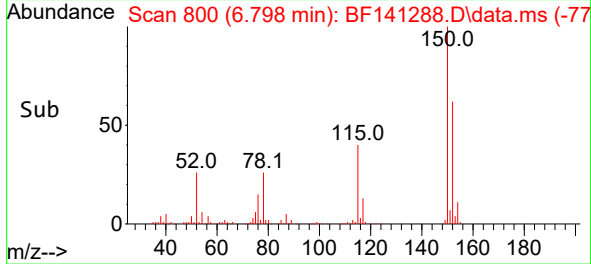
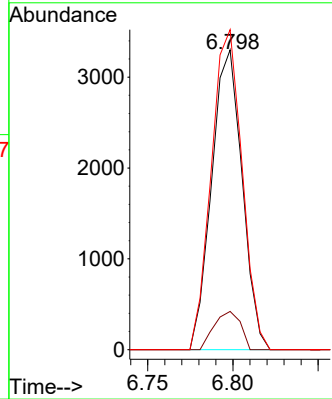
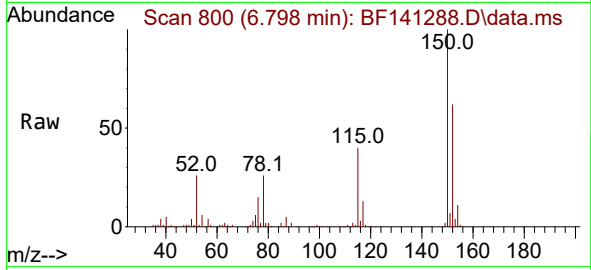


#15  
 Benzyl Alcohol  
 Concen: 0.552 ng  
 RT: 6.798 min Scan# 800  
 Delta R.T. -0.147 min  
 Lab File: BF141288.D  
 Acq: 28 Jan 2025 18:56

Instrument :  
 BNA\_F  
 ClientSampleId :  
 PB166167BL

Tgt Ion: 79 Resp: 4113

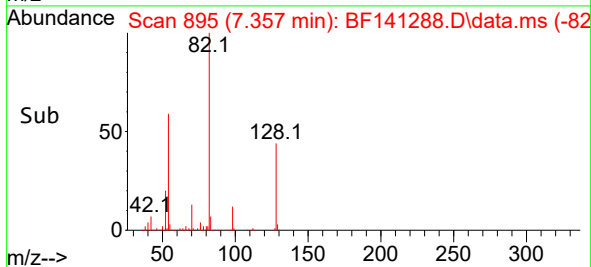
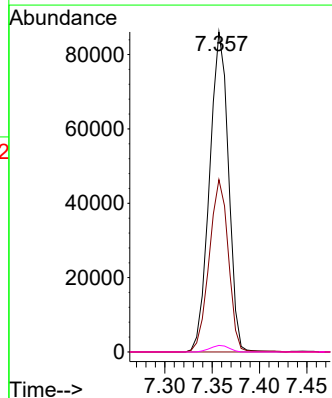
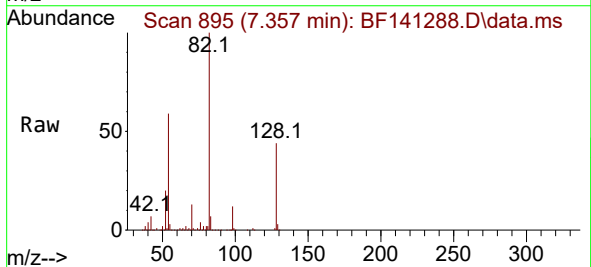
Ion	Ratio	Lower	Upper
79	100		
108	12.7	61.9	92.9#
77	106.7	49.9	74.9#



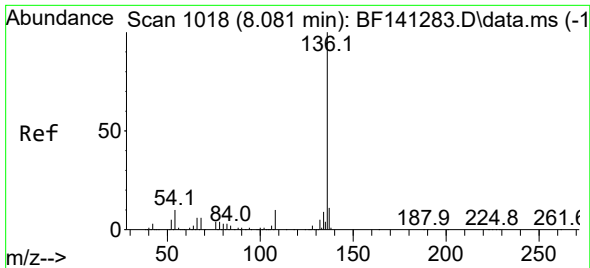
#19  
 n-Nitroso-di-n-propylamine  
 Concen: 19.114 ng  
 RT: 7.357 min Scan# 895  
 Delta R.T. 0.129 min  
 Lab File: BF141288.D  
 Acq: 28 Jan 2025 18:56

Tgt Ion: 70 Resp: 119644

Ion	Ratio	Lower	Upper
70	100		
42	53.9	55.0	82.4#
101	0.0	7.9	11.9#
130	2.1	17.2	25.8#

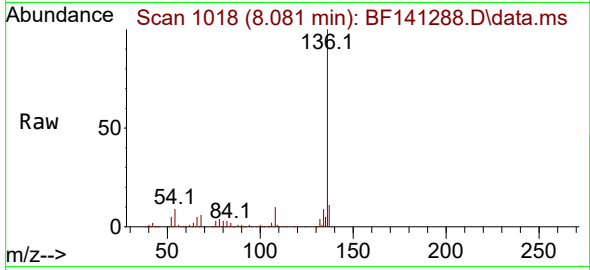




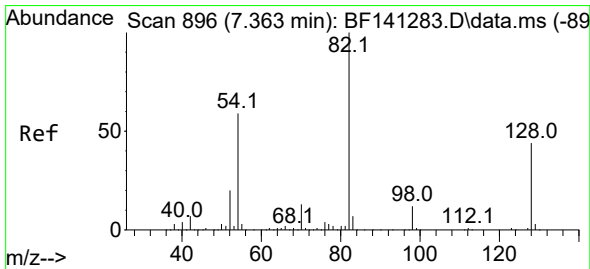
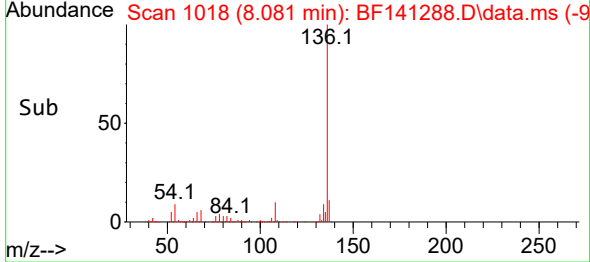
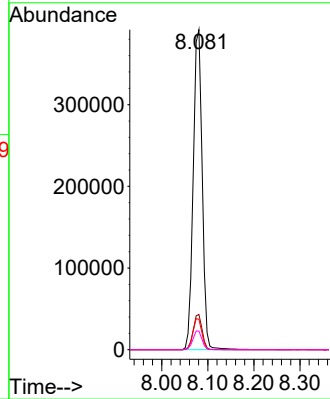


#21  
 Naphthalene-d8  
 Concen: 20.000 ng  
 RT: 8.081 min Scan# 1018  
 Delta R.T. -0.006 min  
 Lab File: BF141288.D  
 Acq: 28 Jan 2025 18:56

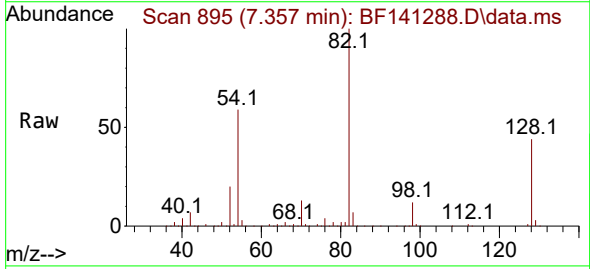
Instrument : BNA\_F  
 ClientSampleId : PB166167BL



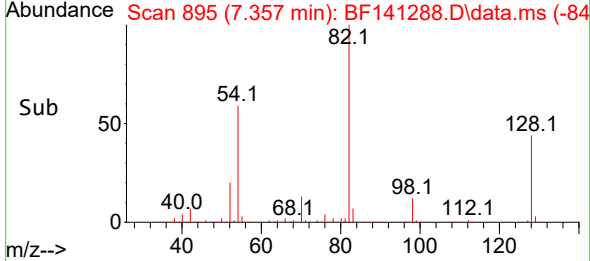
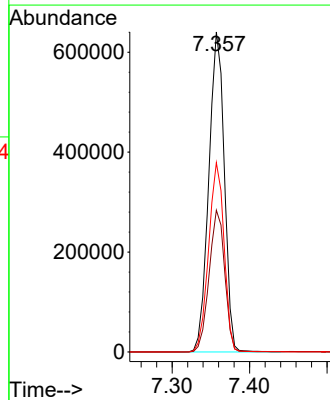
Tgt Ion:136 Resp: 528400  
 Ion Ratio Lower Upper  
 136 100  
 137 11.0 9.0 13.4  
 54 9.5 8.1 12.1  
 68 5.8 5.0 7.4

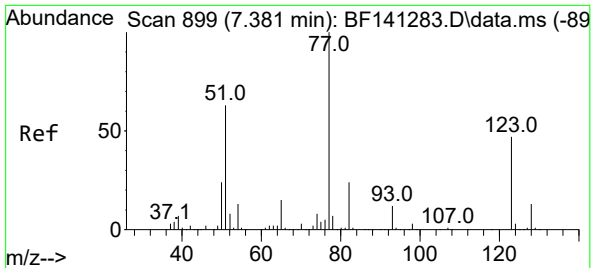


#23  
 Nitrobenzene-d5  
 Concen: 89.161 ng  
 RT: 7.357 min Scan# 895  
 Delta R.T. -0.012 min  
 Lab File: BF141288.D  
 Acq: 28 Jan 2025 18:56



Tgt Ion: 82 Resp: 892235  
 Ion Ratio Lower Upper  
 82 100  
 128 44.3 35.2 52.8  
 54 59.1 47.3 70.9

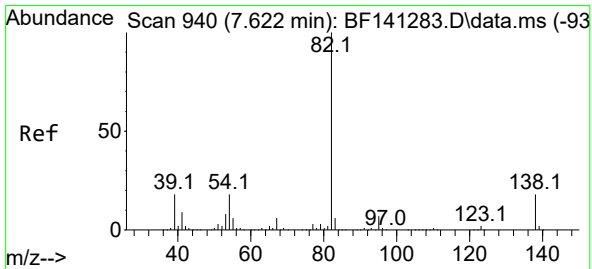
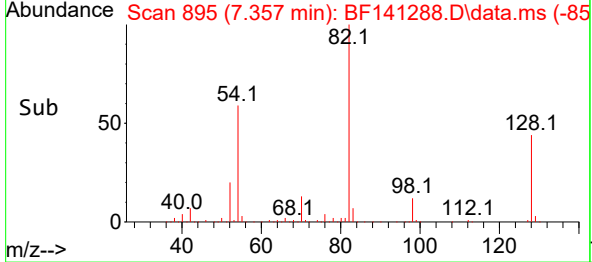
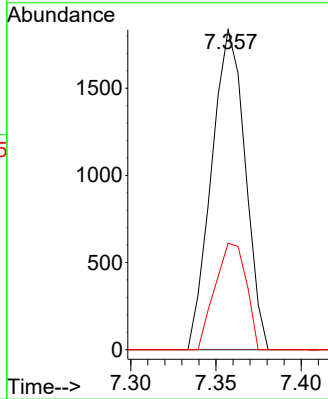
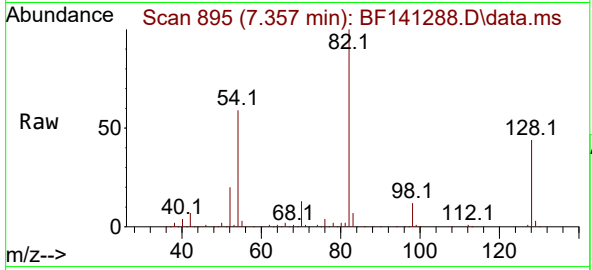




#24  
 Nitrobenzene  
 Concen: 0.244 ng  
 RT: 7.357 min Scan# 895  
 Delta R.T. -0.035 min  
 Lab File: BF141288.D  
 Acq: 28 Jan 2025 18:56

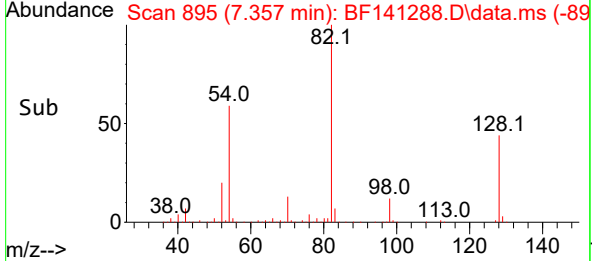
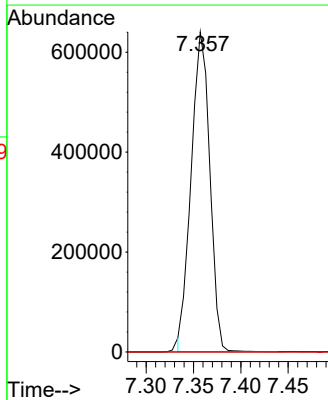
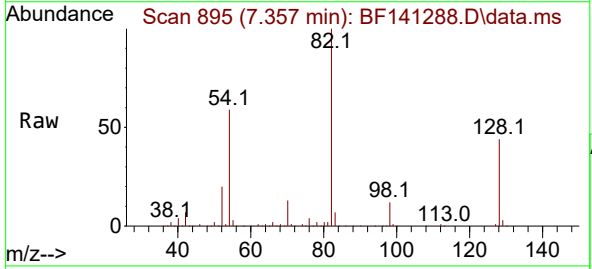
Instrument :  
 BNA\_F  
 Client Sample Id :  
 PB166167BL

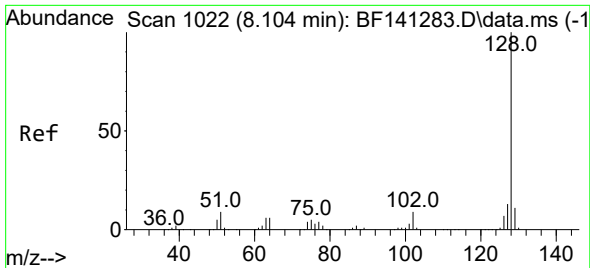
Tgt Ion	Resp	Lower	Upper
77	2519	100	
123	0.0	37.9	56.9#
65	33.3	11.7	17.5#



#25  
 Isophorone  
 Concen: 50.742 ng  
 RT: 7.357 min Scan# 895  
 Delta R.T. -0.271 min  
 Lab File: BF141288.D  
 Acq: 28 Jan 2025 18:56

Tgt Ion	Resp	Lower	Upper
82	876239	100	
95	0.0	5.8	8.8#
138	0.0	14.6	22.0#

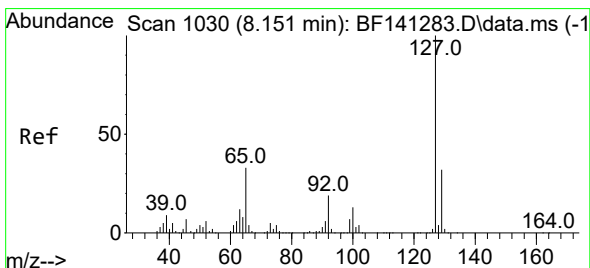
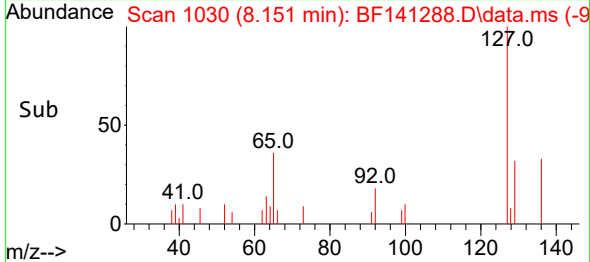
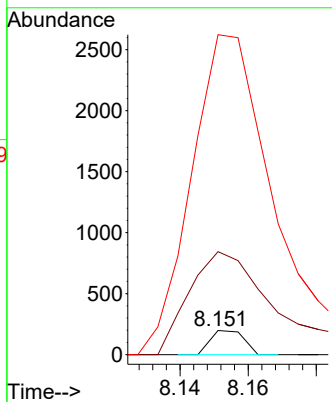
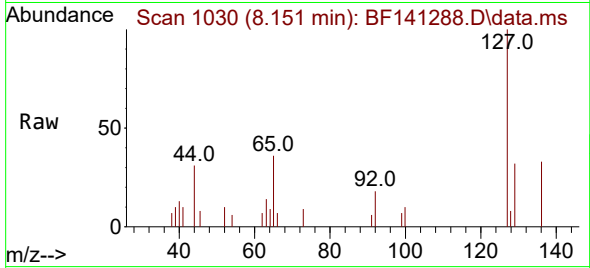




#31  
 Naphthalene  
 Concen: 0.005 ng  
 RT: 8.151 min Scan# 1030  
 Delta R.T. 0.041 min  
 Lab File: BF141288.D  
 Acq: 28 Jan 2025 18:56

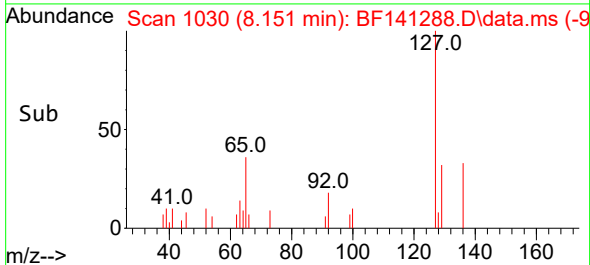
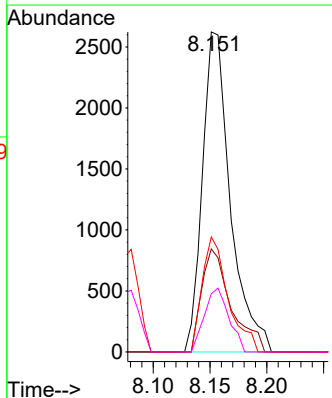
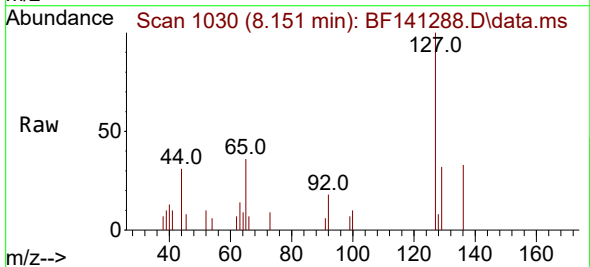
Instrument : BNA\_F  
 ClientSampleId : PB166167BL

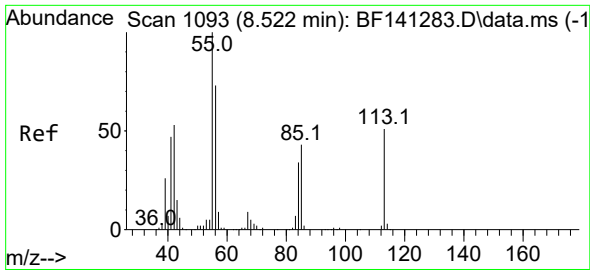
Tgt Ion:128 Resp: 136  
 Ion Ratio Lower Upper  
 128 100  
 129 426.3 9.0 13.6#  
 127 1324.7 10.8 16.2#



#33  
 4-Chloroaniline  
 Concen: 0.515 ng  
 RT: 8.151 min Scan# 1030  
 Delta R.T. -0.012 min  
 Lab File: BF141288.D  
 Acq: 28 Jan 2025 18:56

Tgt Ion:127 Resp: 4494  
 Ion Ratio Lower Upper  
 127 100  
 129 32.2 25.8 38.8  
 65 36.0 26.2 39.4  
 92 18.2 15.5 23.3

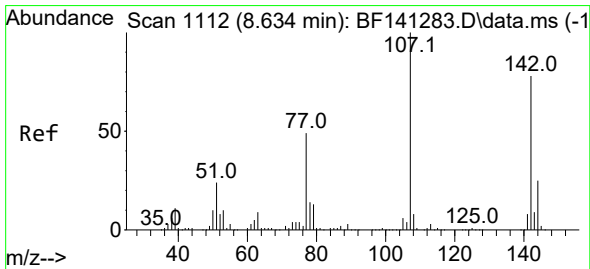
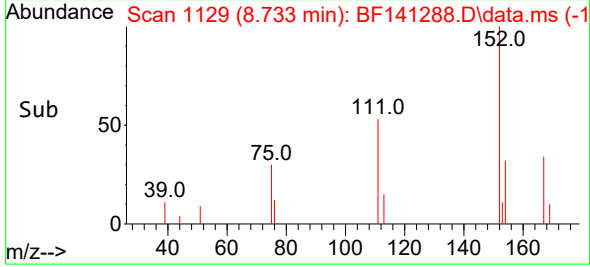
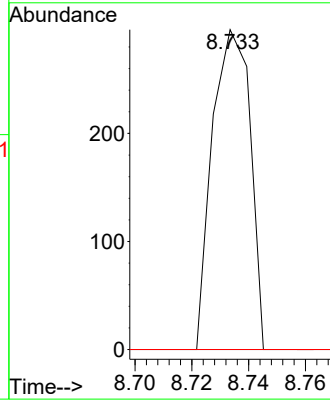
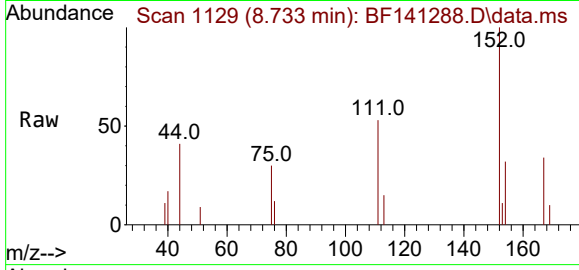




#35  
 Caprolactam  
 Concen: 0.111 ng  
 RT: 8.733 min Scan# 1129  
 Delta R.T. 0.188 min  
 Lab File: BF141288.D  
 Acq: 28 Jan 2025 18:56

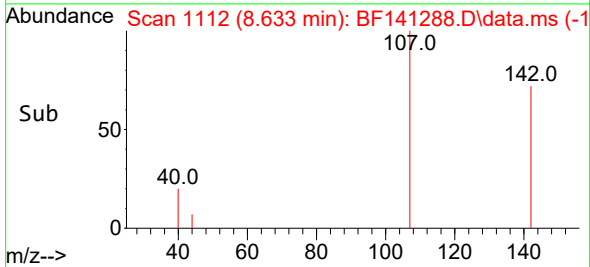
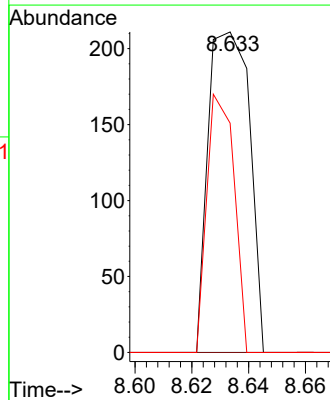
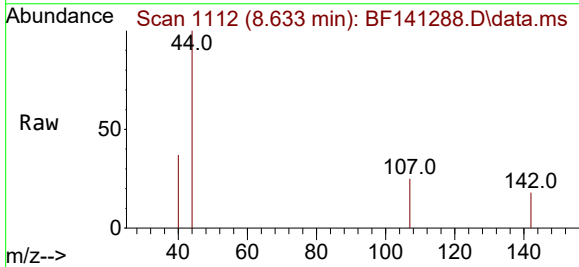
Instrument :  
 BNA\_F  
 ClientSampleId :  
 PB166167BL

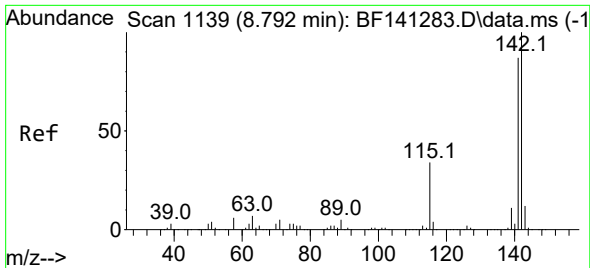
Tgt Ion:113 Resp: 274  
 Ion Ratio Lower Upper  
 113 100  
 55 0.0 177.8 217.8#  
 56 0.0 123.7 163.7#



#36  
 4-Chloro-3-methylphenol  
 Concen: 0.026 ng  
 RT: 8.633 min Scan# 1112  
 Delta R.T. -0.006 min  
 Lab File: BF141288.D  
 Acq: 28 Jan 2025 18:56

Tgt Ion:107 Resp: 213  
 Ion Ratio Lower Upper  
 107 100  
 144 0.0 20.2 30.2#  
 142 71.6 62.2 93.4

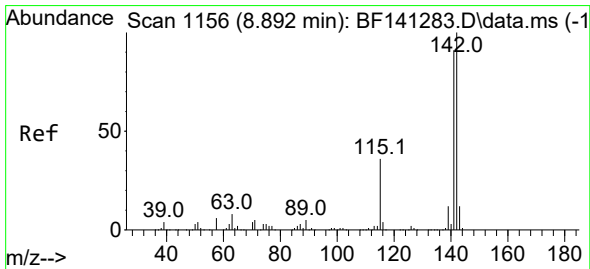
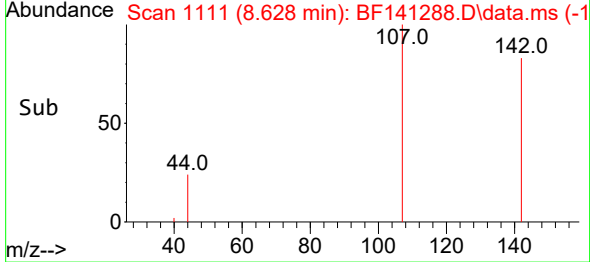
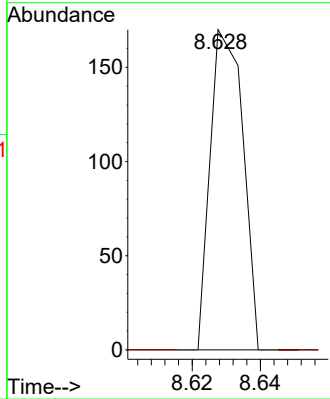
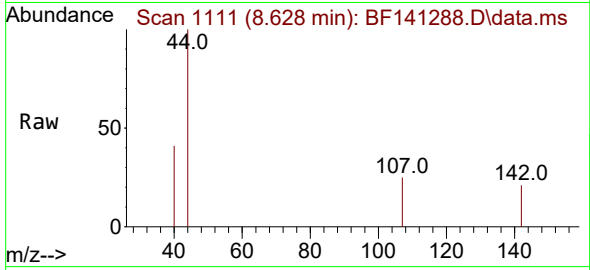




#37  
 2-Methylnaphthalene  
 Concen: 0.006 ng  
 RT: 8.628 min Scan# 1111  
 Delta R.T. -0.171 min  
 Lab File: BF141288.D  
 Acq: 28 Jan 2025 18:56

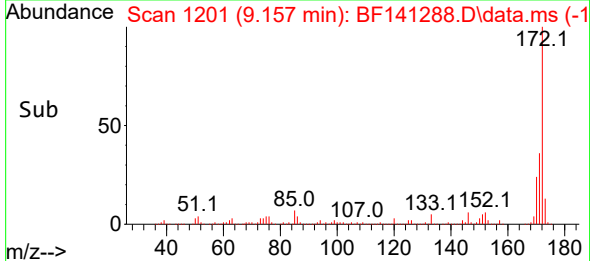
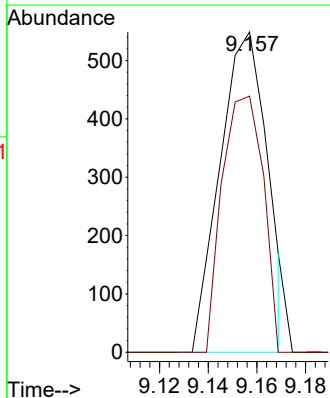
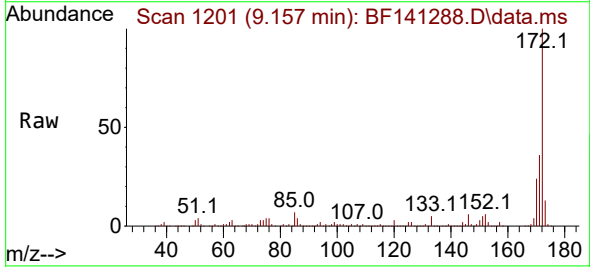
Instrument : BNA\_F  
 ClientSampleId : PB166167BL

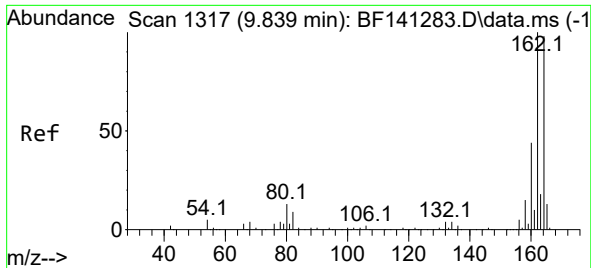
Tgt Ion:142 Resp: 113  
 Ion Ratio Lower Upper  
 142 100  
 141 0.0 70.0 105.0#



#38  
 1-Methylnaphthalene  
 Concen: 0.043 ng  
 RT: 9.157 min Scan# 1201  
 Delta R.T. 0.259 min  
 Lab File: BF141288.D  
 Acq: 28 Jan 2025 18:56

Tgt Ion:142 Resp: 746  
 Ion Ratio Lower Upper  
 142 100  
 141 80.0 72.9 109.3



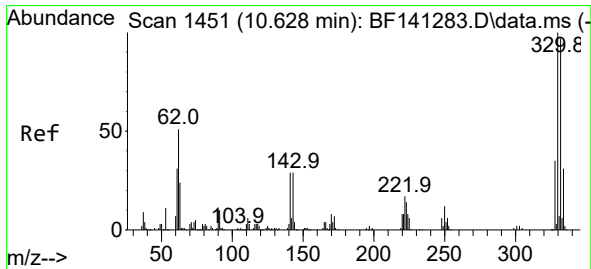
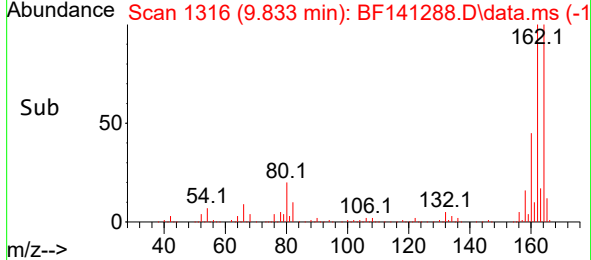
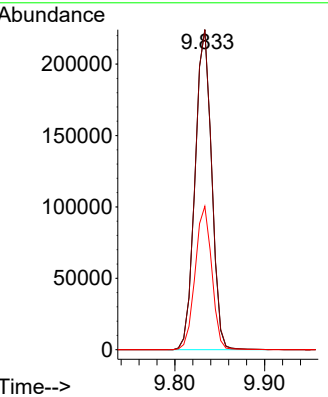
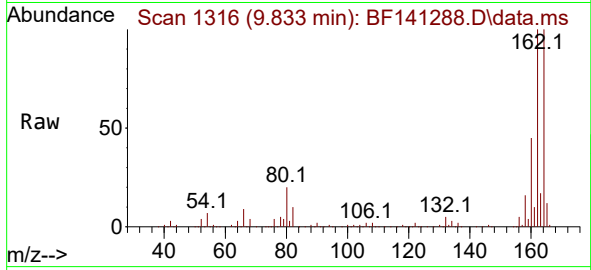


#39  
 Acenaphthene-d10  
 Concen: 20.000 ng  
 RT: 9.833 min Scan# 11  
 Delta R.T. -0.006 min  
 Lab File: BF141288.D  
 Acq: 28 Jan 2025 18:56

Instrument :  
 BNA\_F  
 Client Sample Id :  
 PB166167BL

Tgt Ion:164 Resp: 286472

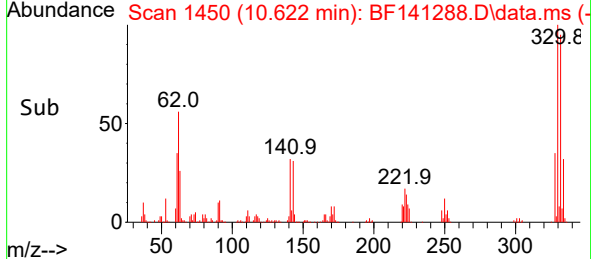
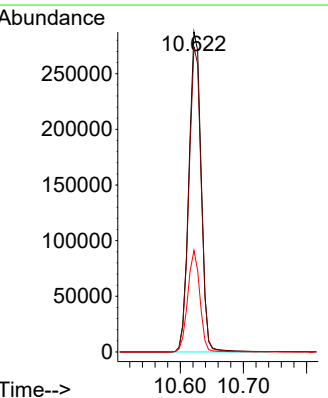
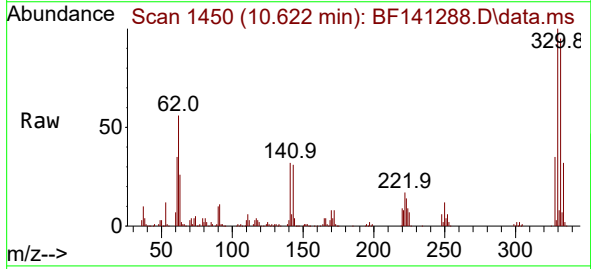
Ion	Ratio	Lower	Upper
164	100		
162	100.0	81.3	121.9
160	44.8	36.0	54.0

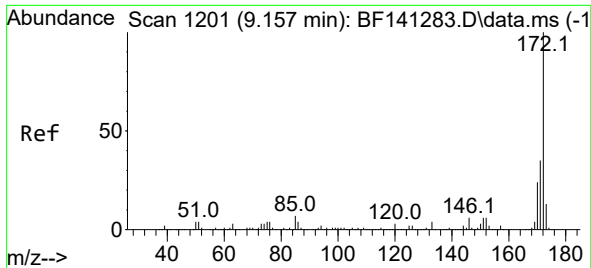


#42  
 2,4,6-Tribromophenol  
 Concen: 132.474 ng  
 RT: 10.622 min Scan# 1450  
 Delta R.T. -0.012 min  
 Lab File: BF141288.D  
 Acq: 28 Jan 2025 18:56

Tgt Ion:330 Resp: 388003

Ion	Ratio	Lower	Upper
330	100		
332	95.7	77.4	116.2
141	31.3	25.5	38.3



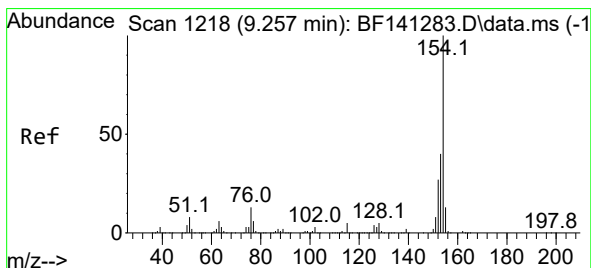
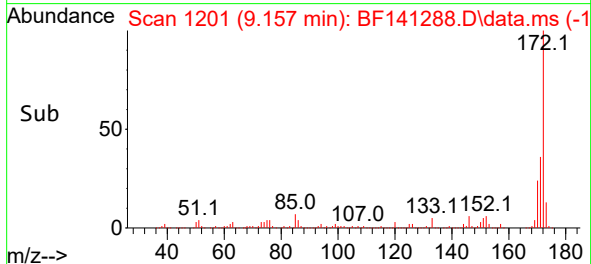
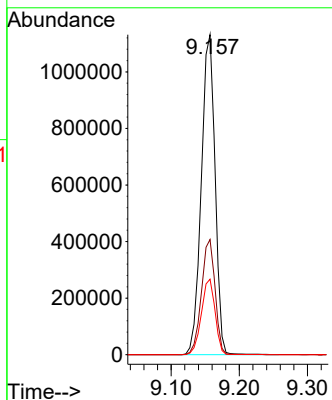
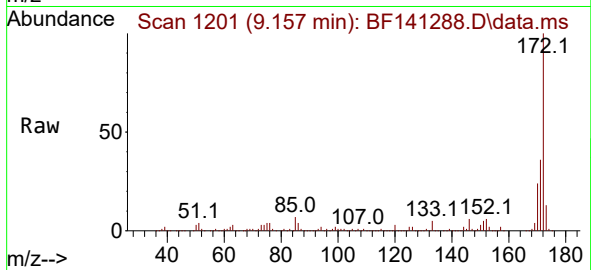


#45  
 2-Fluorobiphenyl  
 Concen: 86.130 ng  
 RT: 9.157 min Scan# 11  
 Delta R.T. -0.006 min  
 Lab File: BF141288.D  
 Acq: 28 Jan 2025 18:56

Instrument : BNA\_F  
 ClientSampleId : PB166167BL

Tgt Ion:172 Resp: 1591309

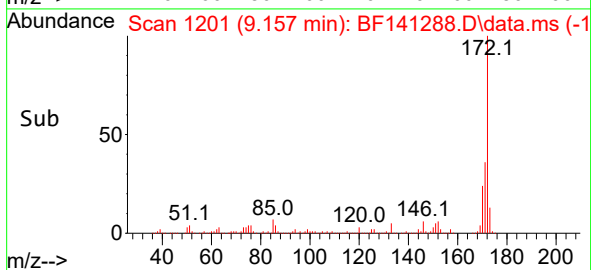
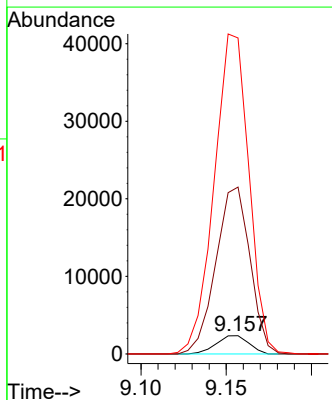
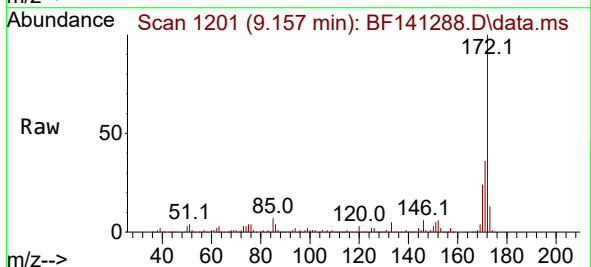
Ion	Ratio	Lower	Upper
172	100		
171	36.0	28.4	42.6
170	23.6	18.9	28.3

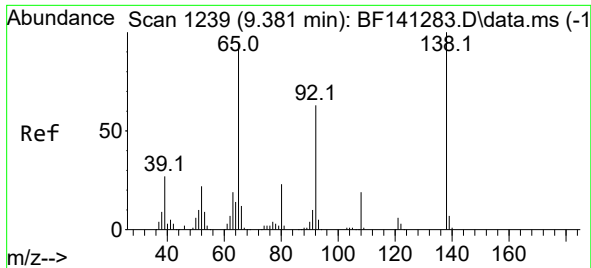


#46  
 1,1'-Biphenyl  
 Concen: 0.141 ng  
 RT: 9.157 min Scan# 1201  
 Delta R.T. -0.106 min  
 Lab File: BF141288.D  
 Acq: 28 Jan 2025 18:56

Tgt Ion:154 Resp: 3160

Ion	Ratio	Lower	Upper
154	100		
153	910.7	20.4	60.4#
76	1723.9	0.0	33.1#



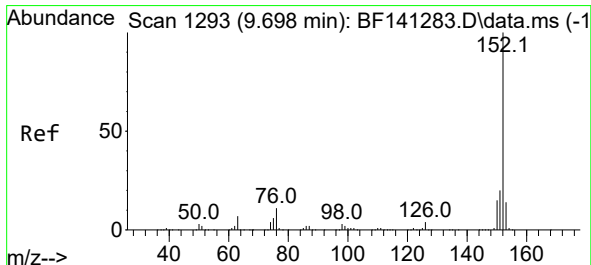
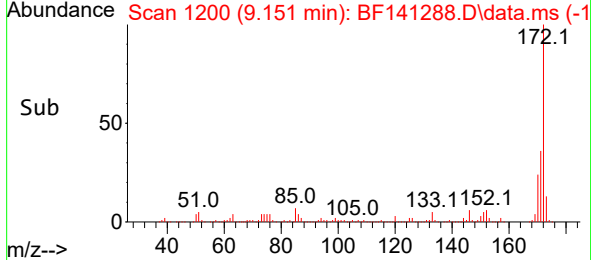
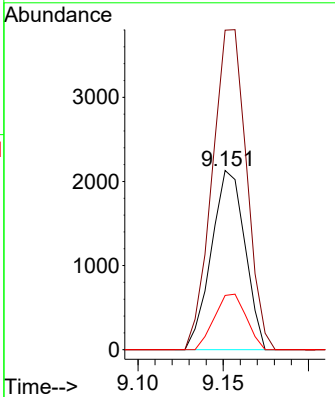
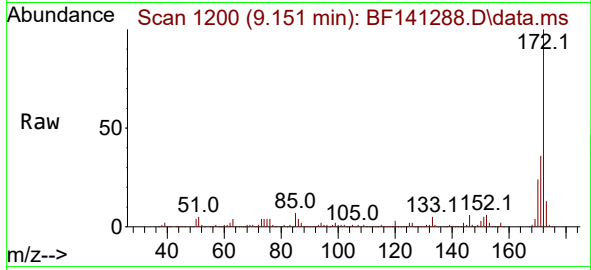


#48  
 2-Nitroaniline  
 Concen: 0.538 ng  
 RT: 9.151 min Scan# 111  
 Delta R.T. -0.230 min  
 Lab File: BF141288.D  
 Acq: 28 Jan 2025 18:56

Instrument : BNA\_F  
 ClientSampleId : PB166167BL

Tgt Ion: 65 Resp: 2926

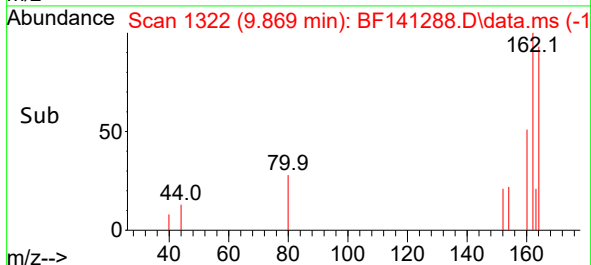
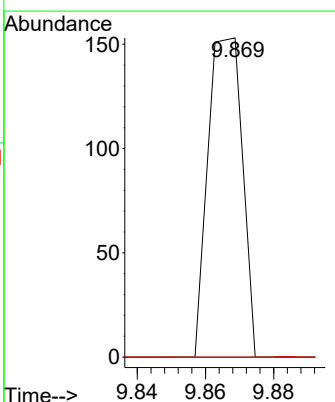
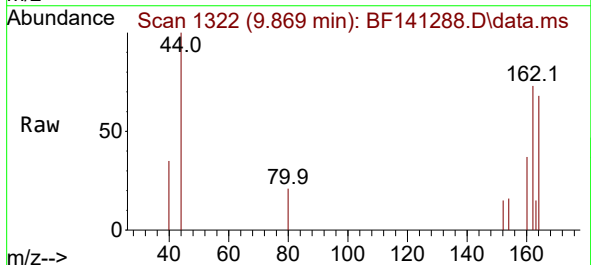
Ion	Ratio	Lower	Upper
65	100		
92	178.3	53.3	79.9#
138	30.2	84.4	126.6#



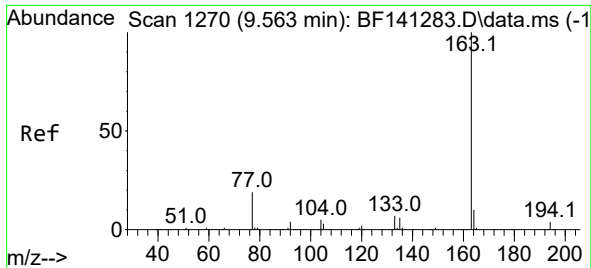
#49  
 Acenaphthylene  
 Concen: 0.004 ng  
 RT: 9.869 min Scan# 1322  
 Delta R.T. 0.165 min  
 Lab File: BF141288.D  
 Acq: 28 Jan 2025 18:56

Tgt Ion: 152 Resp: 107

Ion	Ratio	Lower	Upper
152	100		
151	0.0	16.2	24.4#
153	0.0	11.4	17.0#







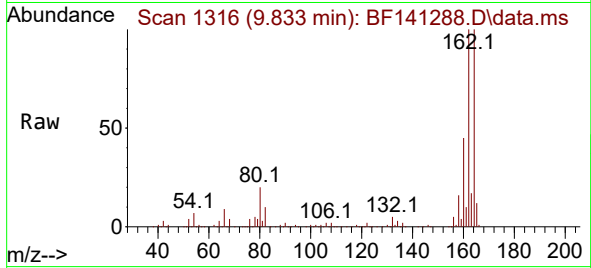
#50  
 Dimethylphthalate  
 Concen: 2.287 ng  
 RT: 9.833 min Scan# 1316  
 Delta R.T. 0.265 min  
 Lab File: BF141288.D  
 Acq: 28 Jan 2025 18:56

Instrument :

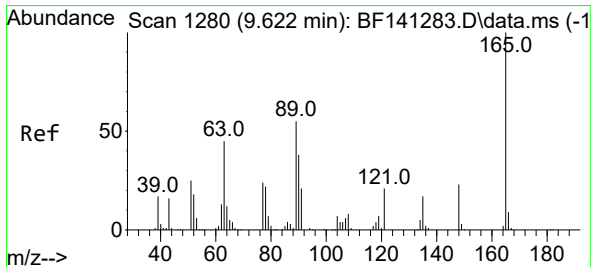
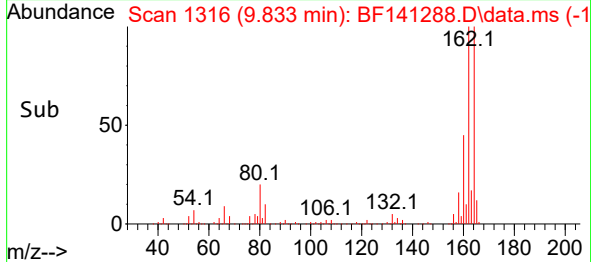
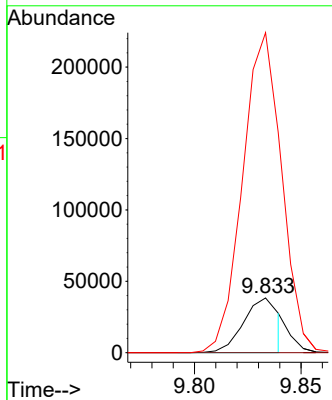
BNA\_F

ClientSampleId :

PB166167BL

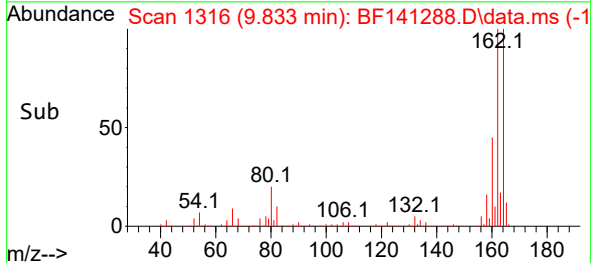
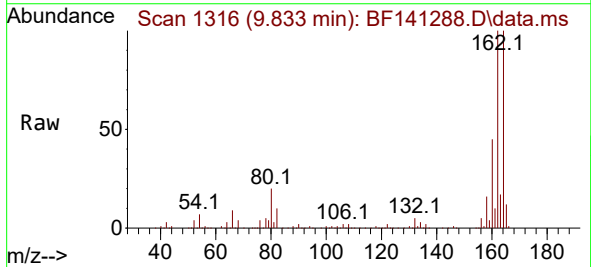
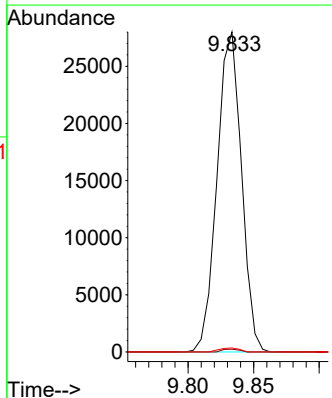


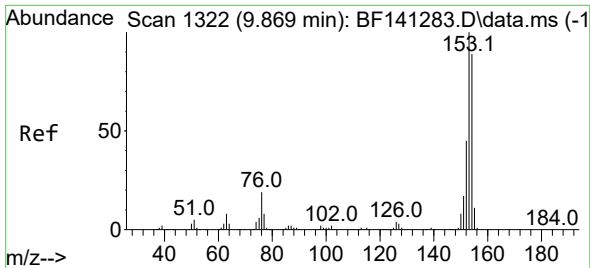
Tgt Ion:163 Resp: 43653  
 Ion Ratio Lower Upper  
 163 100  
 194 0.0 3.0 4.6#  
 164 584.3 8.3 12.5#



#51  
 2,6-Dinitrotoluene  
 Concen: 8.173 ng  
 RT: 9.833 min Scan# 1316  
 Delta R.T. 0.206 min  
 Lab File: BF141288.D  
 Acq: 28 Jan 2025 18:56

Tgt Ion:165 Resp: 36213  
 Ion Ratio Lower Upper  
 165 100  
 63 0.9 48.3 72.5#  
 89 1.2 44.2 66.4#



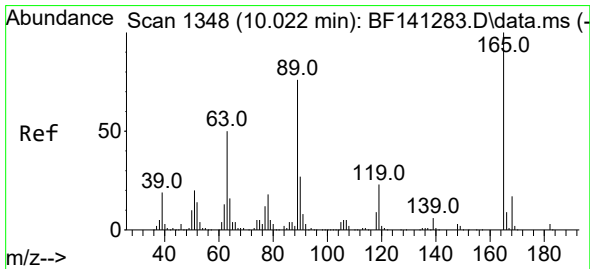
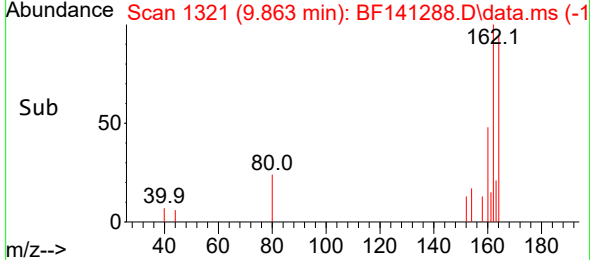
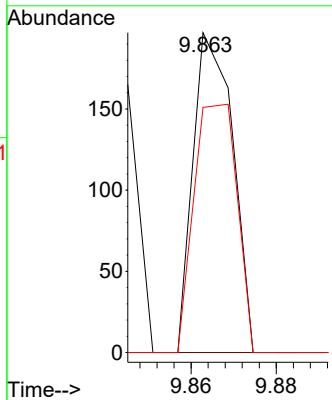
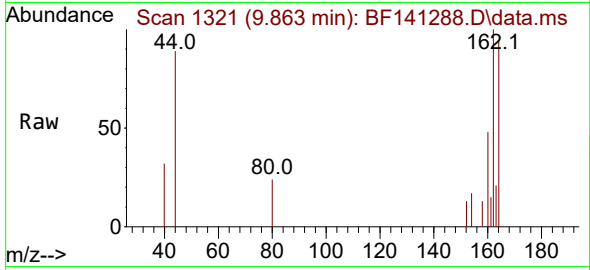


#52  
 Acenaphthene  
 Concen: 0.007 ng  
 RT: 9.863 min Scan# 11  
 Delta R.T. -0.012 min  
 Lab File: BF141288.D  
 Acq: 28 Jan 2025 18:56

Instrument :  
 BNA\_F  
 ClientSampleId :  
 PB166167BL

Tgt Ion:154 Resp: 127

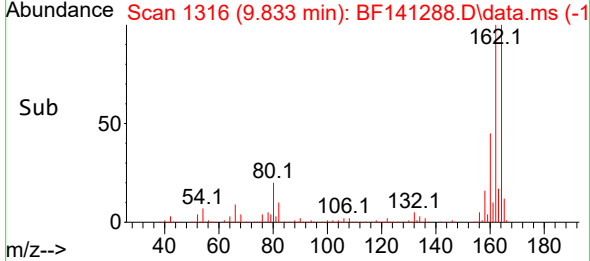
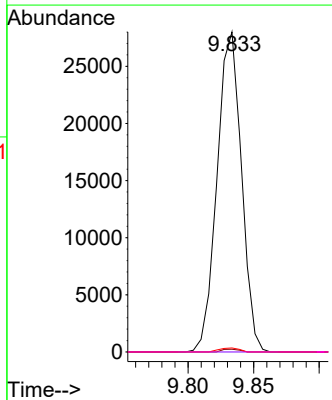
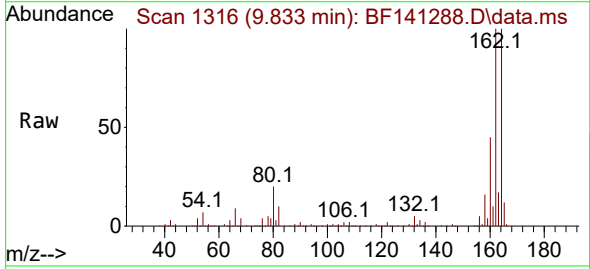
Ion	Ratio	Lower	Upper
154	100		
153	0.0	89.4	134.2#
152	76.6	40.3	60.5#

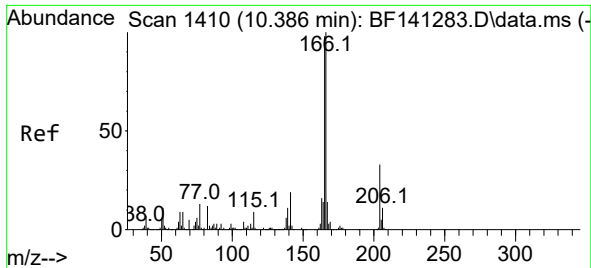


#57  
 2,4-Dinitrotoluene  
 Concen: 6.411 ng  
 RT: 9.833 min Scan# 1316  
 Delta R.T. -0.200 min  
 Lab File: BF141288.D  
 Acq: 28 Jan 2025 18:56

Tgt Ion:165 Resp: 36213

Ion	Ratio	Lower	Upper
165	100		
63	0.9	40.6	60.8#
89	1.2	60.4	90.6#
182	0.0	2.0	3.0#

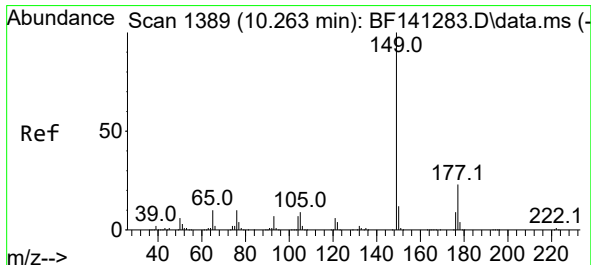
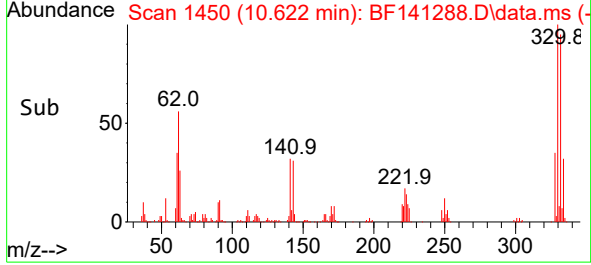
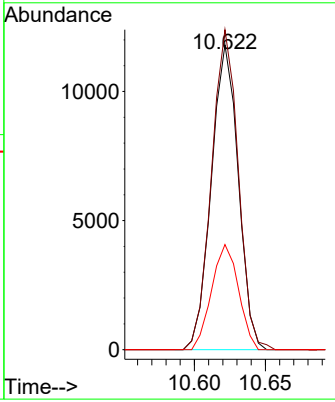
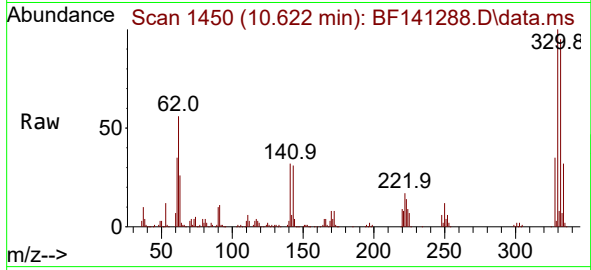




#58  
 Fluorene  
 Concen: 0.865 ng  
 RT: 10.622 min Scan# 1410  
 Delta R.T. 0.229 min  
 Lab File: BF141288.D  
 Acq: 28 Jan 2025 18:56

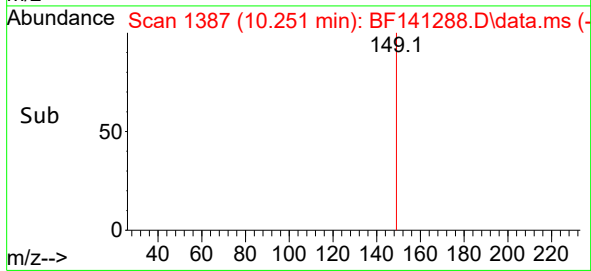
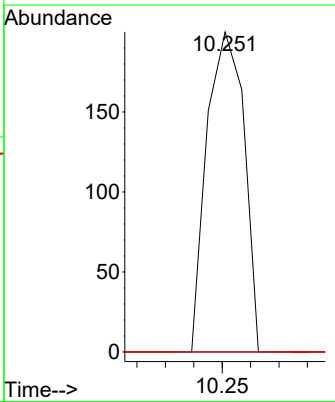
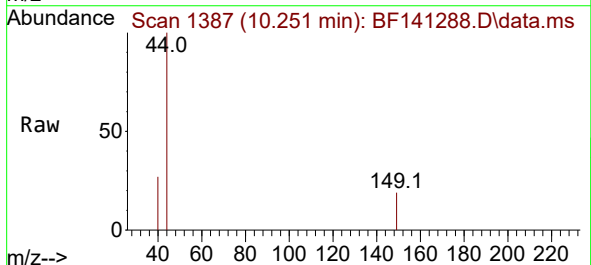
Instrument : BNA\_F  
 ClientSampleId : PB166167BL

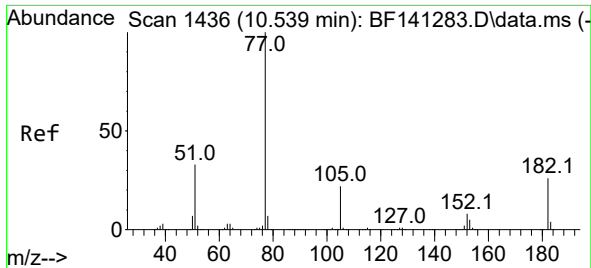
Tgt Ion	Resp	Lower	Upper
166	15544		
165	105.0	78.5	117.7
167	34.5	10.8	16.2#



#60  
 Diethylphthalate  
 Concen: 0.010 ng  
 RT: 10.251 min Scan# 1387  
 Delta R.T. -0.018 min  
 Lab File: BF141288.D  
 Acq: 28 Jan 2025 18:56

Tgt Ion	Resp	Lower	Upper
149	182		
177	0.0	18.6	28.0#
150	0.0	9.9	14.9#

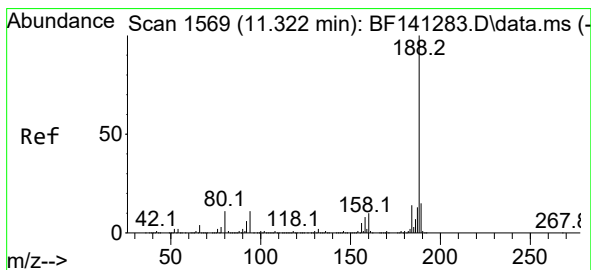
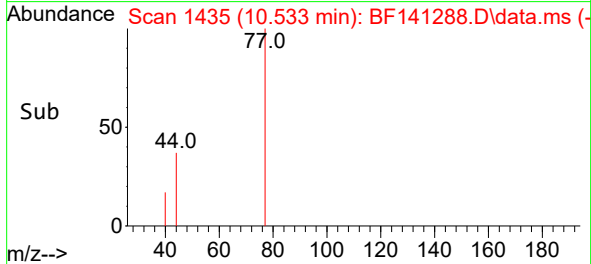
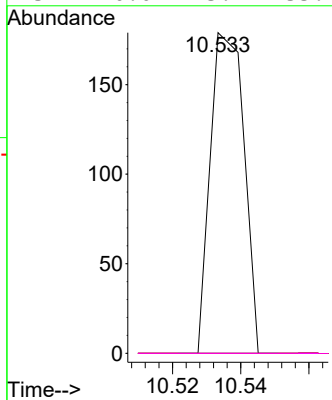
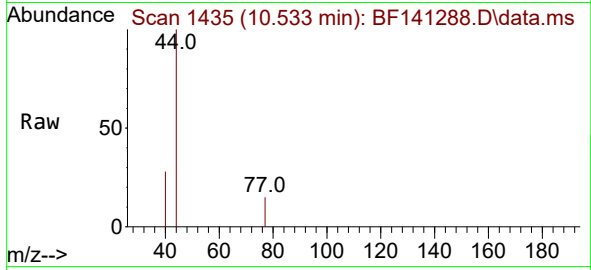




#63  
 Azobenzene  
 Concen: 0.007 ng  
 RT: 10.533 min Scan# 1435  
 Delta R.T. -0.012 min  
 Lab File: BF141288.D  
 Acq: 28 Jan 2025 18:56

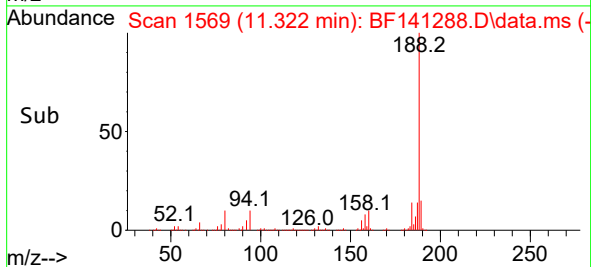
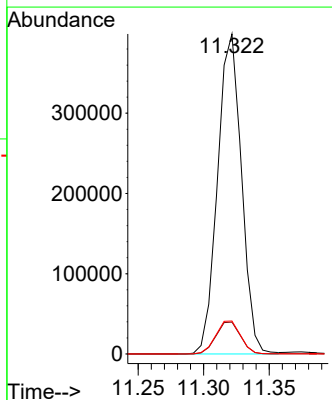
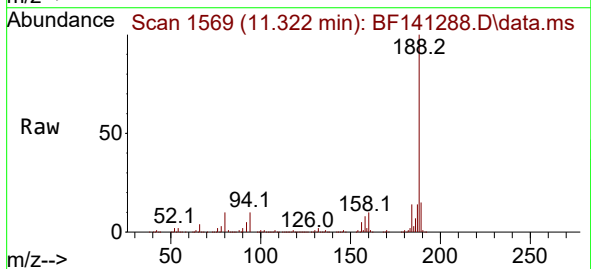
Instrument : BNA\_F  
 Client Sample Id : PB166167BL

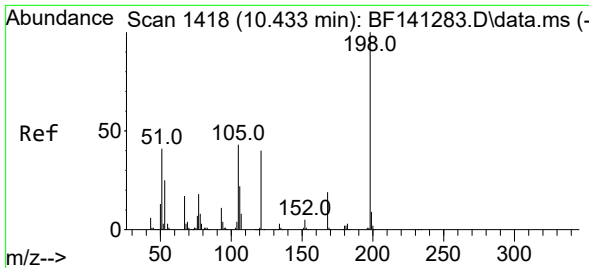
Tgt Ion	Resp	Lower	Upper
77	100		
182	0.0	5.5	45.5#
105	0.0	1.7	41.7#
51	0.0	13.7	53.7#



#64  
 Phenanthrene-d10  
 Concen: 20.000 ng  
 RT: 11.322 min Scan# 1569  
 Delta R.T. -0.000 min  
 Lab File: BF141288.D  
 Acq: 28 Jan 2025 18:56

Tgt Ion	Resp	Lower	Upper
188	100		
94	10.0	8.4	12.6
80	10.3	8.9	13.3

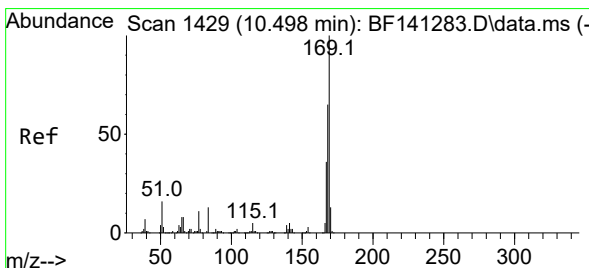
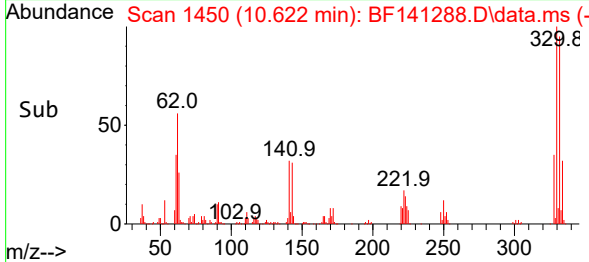
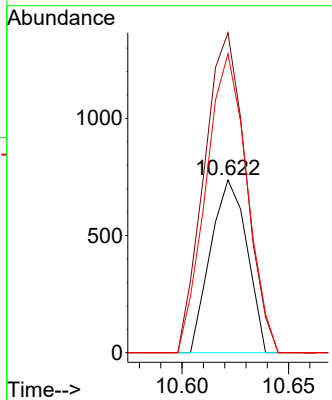
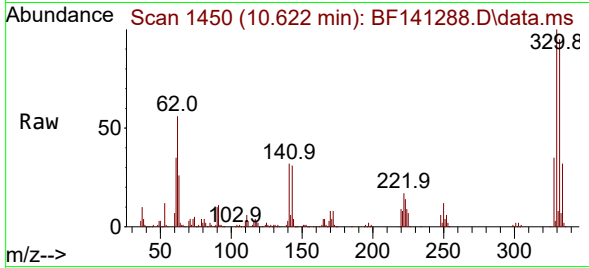




#65  
 4,6-Dinitro-2-methylphenol  
 Concen: 0.288 ng  
 RT: 10.622 min Scan# 1450  
 Delta R.T. 0.182 min  
 Lab File: BF141288.D  
 Acq: 28 Jan 2025 18:56

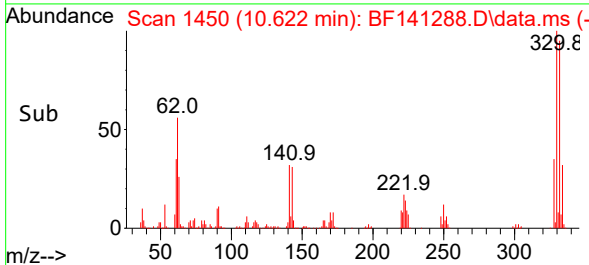
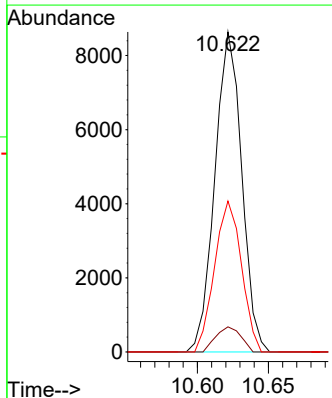
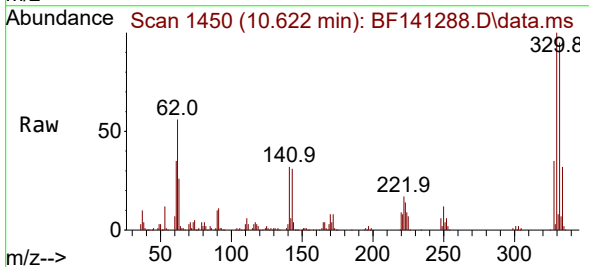
Instrument :  
 BNA\_F  
 ClientSampleId :  
 PB166167BL

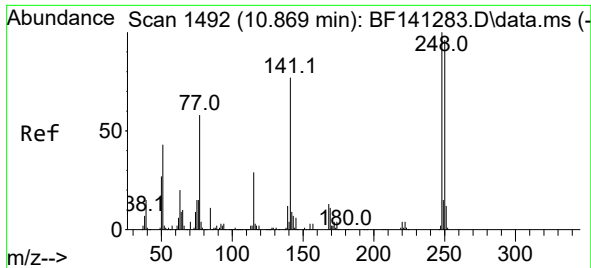
Tgt Ion:198 Resp: 874  
 Ion Ratio Lower Upper  
 198 100  
 51 185.3 33.0 73.0#  
 105 173.1 23.9 63.9#



#66  
 n-Nitrosodiphenylamine  
 Concen: 0.696 ng  
 RT: 10.622 min Scan# 1450  
 Delta R.T. 0.117 min  
 Lab File: BF141288.D  
 Acq: 28 Jan 2025 18:56

Tgt Ion:169 Resp: 11338  
 Ion Ratio Lower Upper  
 169 100  
 168 7.8 52.5 78.7#  
 167 47.2 29.0 43.6#



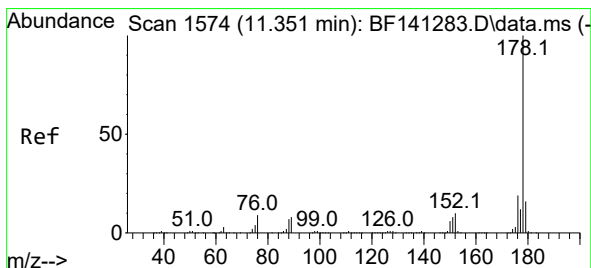
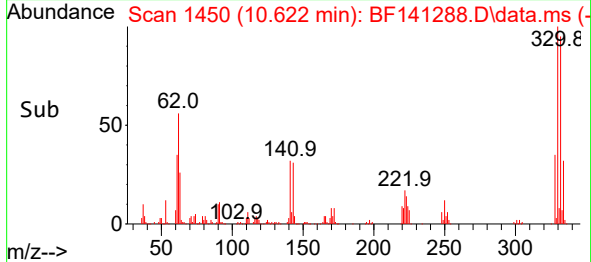
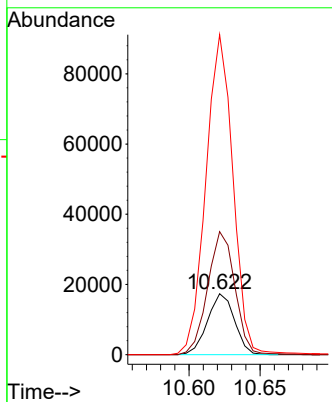
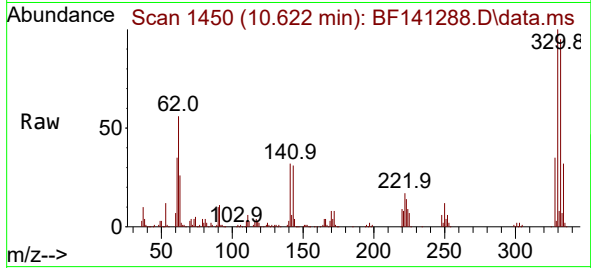


#67  
 4-Bromophenyl-phenylether  
 Concen: 4.064 ng  
 RT: 10.622 min Scan# 14  
 Delta R.T. -0.253 min  
 Lab File: BF141288.D  
 Acq: 28 Jan 2025 18:56

Instrument :  
 BNA\_F  
 ClientSampleId :  
 PB166167BL

Tgt Ion:248 Resp: 22955

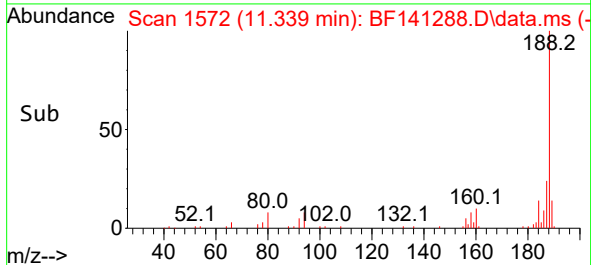
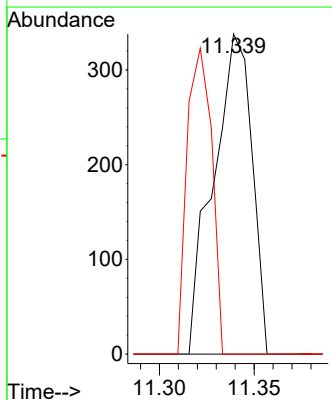
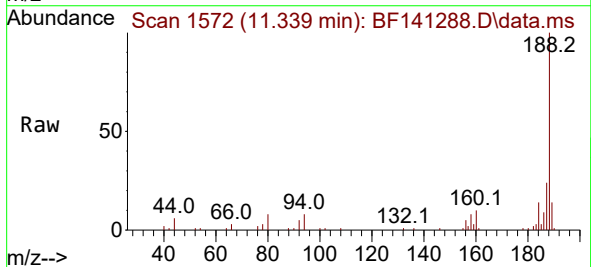
Ion	Ratio	Lower	Upper
248	100		
250	202.0	77.0	115.4#
141	525.3	61.4	92.0#

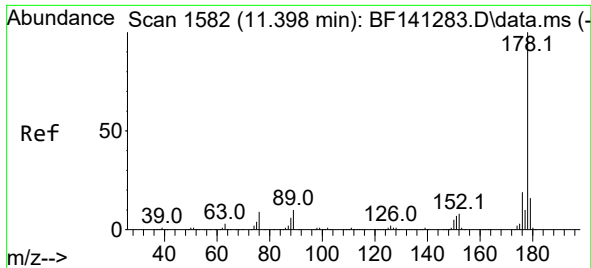


#71  
 Phenanthrene  
 Concen: 0.018 ng  
 RT: 11.339 min Scan# 1572  
 Delta R.T. -0.012 min  
 Lab File: BF141288.D  
 Acq: 28 Jan 2025 18:56

Tgt Ion:178 Resp: 481

Ion	Ratio	Lower	Upper
178	100		
176	0.0	15.4	23.2#
179	0.0	12.6	18.8#

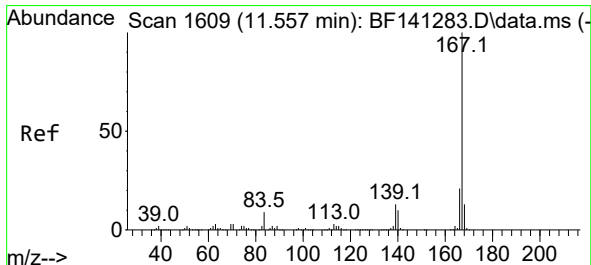
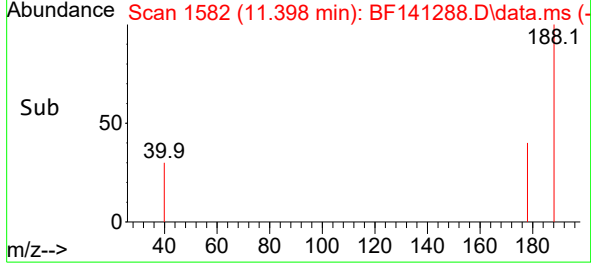
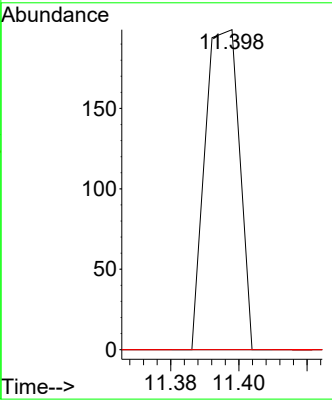
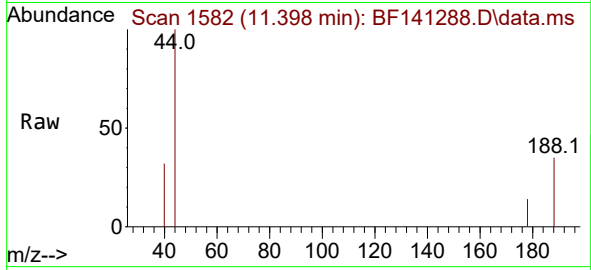




#72  
 Anthracene  
 Concen: 0.005 ng  
 RT: 11.398 min Scan# 111  
 Delta R.T. -0.006 min  
 Lab File: BF141288.D  
 Acq: 28 Jan 2025 18:56

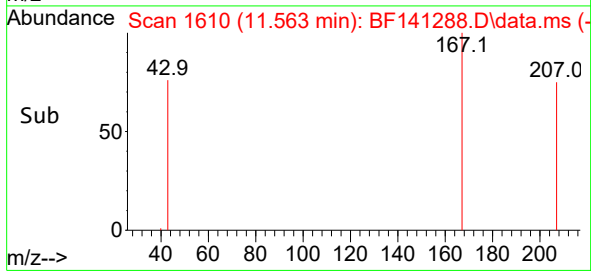
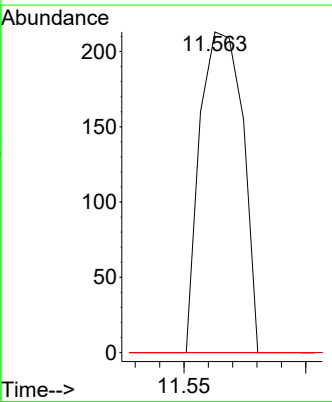
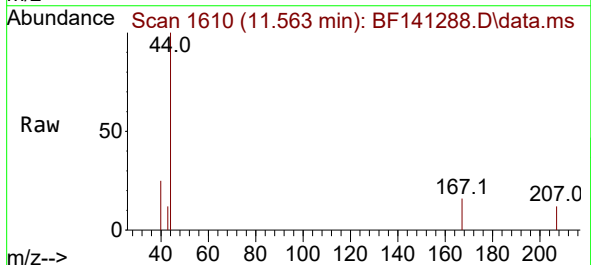
Instrument : BNA\_F  
 Client Sample Id : PB166167BL

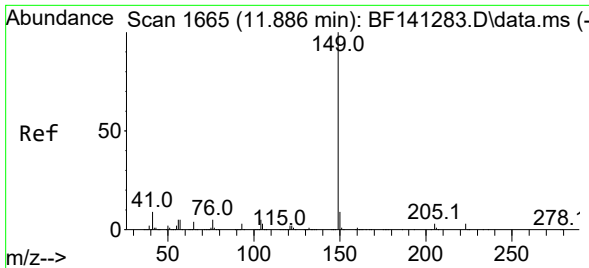
Tgt Ion	Resp	Lower	Upper
178	100		
176	0.0	14.9	22.3#
179	0.0	12.5	18.7#



#73  
 Carbazole  
 Concen: 0.011 ng  
 RT: 11.563 min Scan# 1610  
 Delta R.T. 0.006 min  
 Lab File: BF141288.D  
 Acq: 28 Jan 2025 18:56

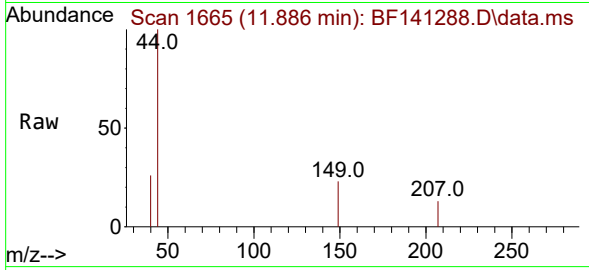
Tgt Ion	Resp	Lower	Upper
167	100		
166	0.0	17.1	25.7#
139	0.0	10.4	15.6#



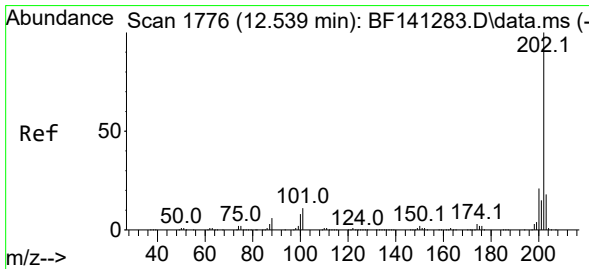
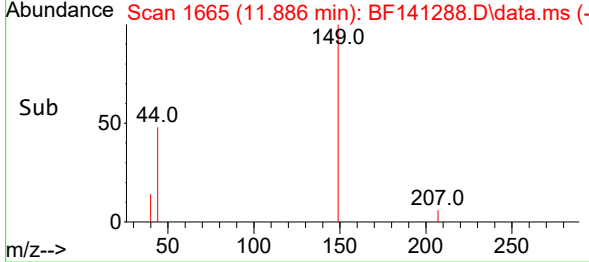
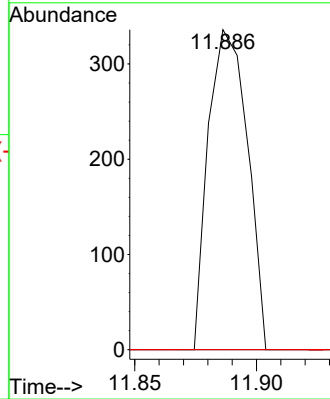


#74  
 Di-n-butylphthalate  
 Concen: 0.013 ng  
 RT: 11.886 min Scan# 11  
 Delta R.T. -0.006 min  
 Lab File: BF141288.D  
 Acq: 28 Jan 2025 18:56

Instrument : BNA\_F  
 ClientSampleId : PB166167BL

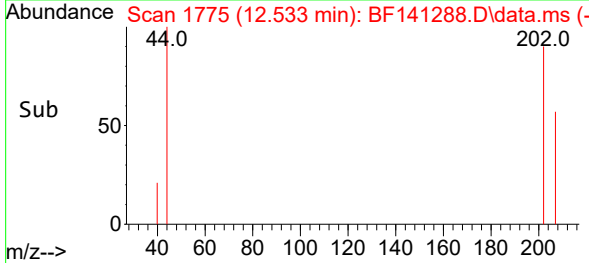
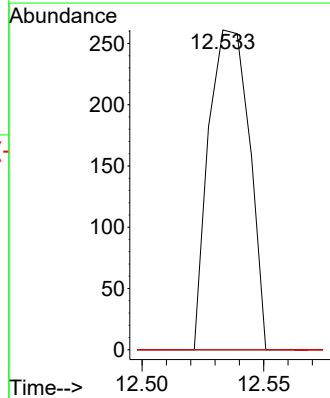
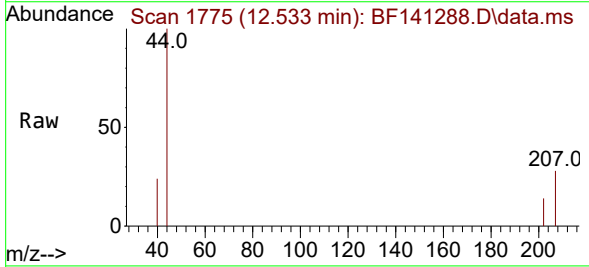


Tgt Ion:149 Resp: 376  
 Ion Ratio Lower Upper  
 149 100  
 150 0.0 7.5 11.3#  
 104 0.0 4.0 6.0#

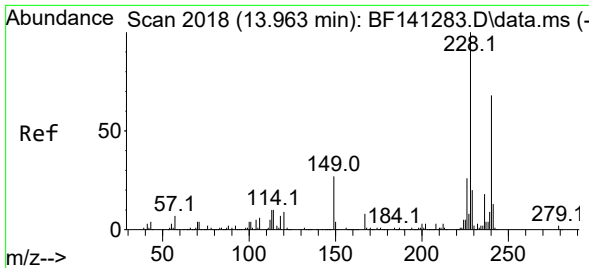


#75  
 Fluoranthene  
 Concen: 0.011 ng  
 RT: 12.533 min Scan# 1775  
 Delta R.T. -0.006 min  
 Lab File: BF141288.D  
 Acq: 28 Jan 2025 18:56

Tgt Ion:202 Resp: 303  
 Ion Ratio Lower Upper  
 202 100  
 101 0.0 0.0 31.3  
 203 0.0 0.0 37.5

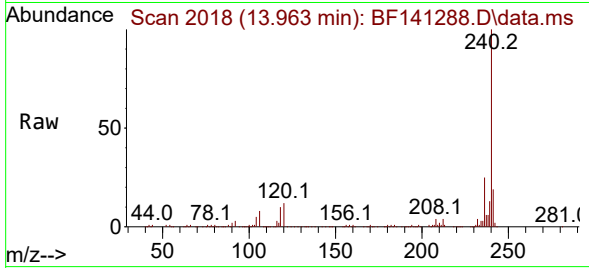




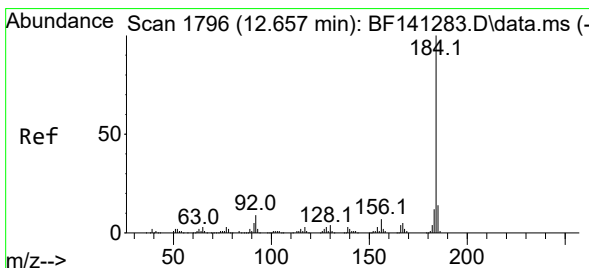
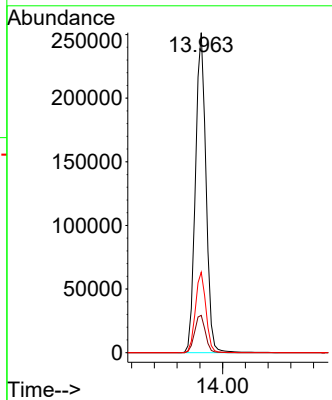
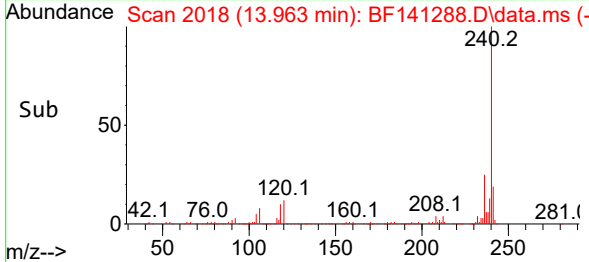


#76  
 Chrysene-d12  
 Concen: 20.000 ng  
 RT: 13.963 min Scan# 20  
 Delta R.T. -0.006 min  
 Lab File: BF141288.D  
 Acq: 28 Jan 2025 18:56

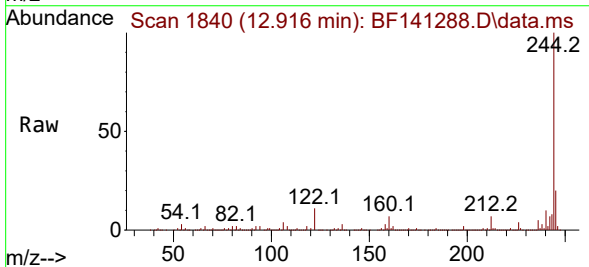
Instrument :  
 BNA\_F  
 ClientSampleId :  
 PB166167BL



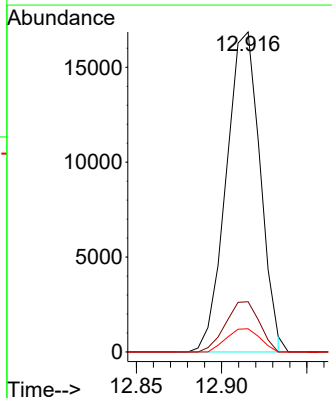
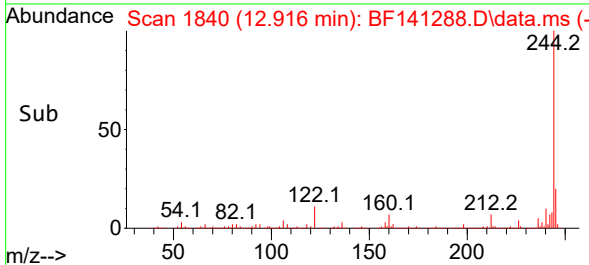
Tgt Ion:240 Resp: 325514  
 Ion Ratio Lower Upper  
 240 100  
 120 11.7 10.2 15.2  
 236 25.1 21.0 31.4

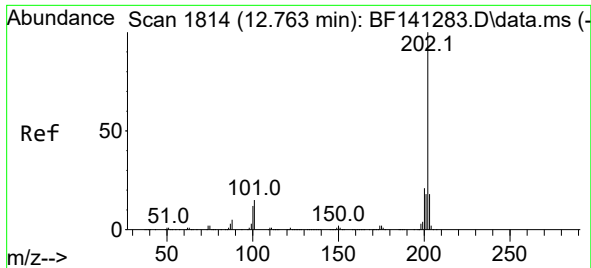


#77  
 Benzdine  
 Concen: 5.976 ng  
 RT: 12.916 min Scan# 1840  
 Delta R.T. 0.253 min  
 Lab File: BF141288.D  
 Acq: 28 Jan 2025 18:56



Tgt Ion:184 Resp: 23286  
 Ion Ratio Lower Upper  
 184 100  
 185 15.7 11.3 16.9  
 183 7.3 9.4 14.0#

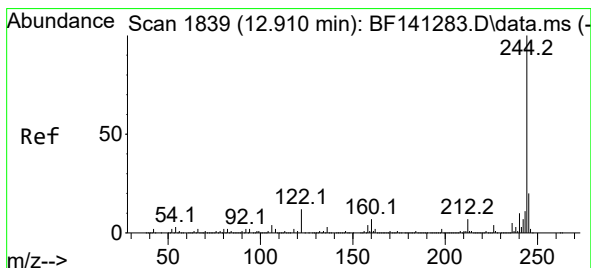
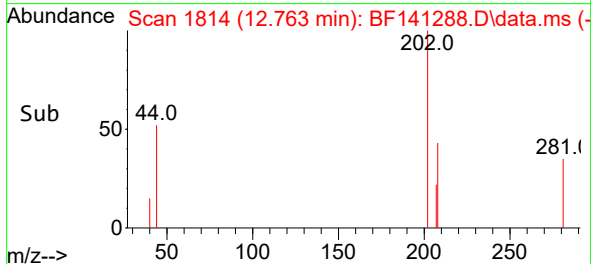
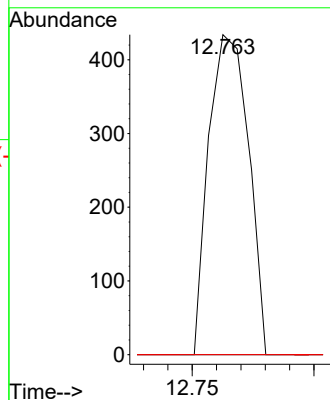
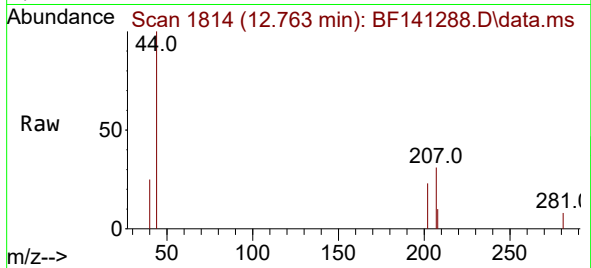




#78  
 Pyrene  
 Concen: 0.016 ng  
 RT: 12.763 min Scan# 1814  
 Delta R.T. -0.006 min  
 Lab File: BF141288.D  
 Acq: 28 Jan 2025 18:56

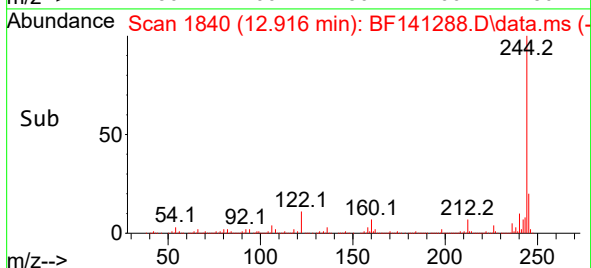
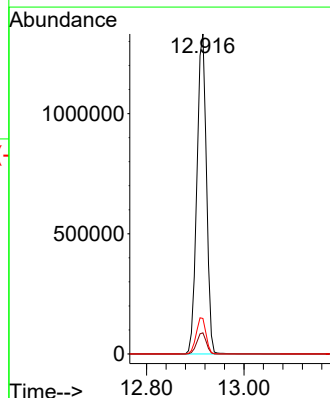
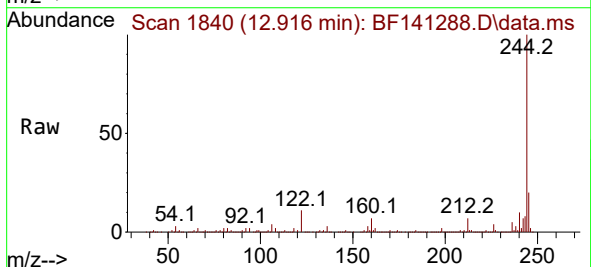
Instrument : BNA\_F  
 ClientSampleId : PB166167BL

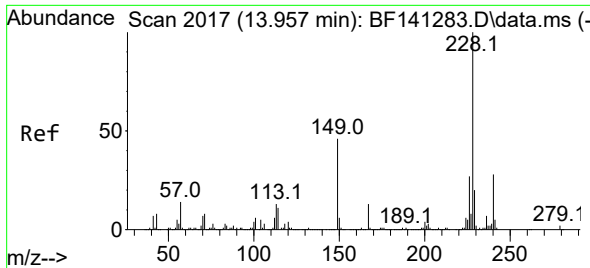
Tgt Ion	Resp	Lower	Upper
202	100		
200	0.0	16.9	25.3#
203	0.0	14.4	21.6#



#79  
 Terphenyl-d14  
 Concen: 87.541 ng  
 RT: 12.916 min Scan# 1840  
 Delta R.T. -0.000 min  
 Lab File: BF141288.D  
 Acq: 28 Jan 2025 18:56

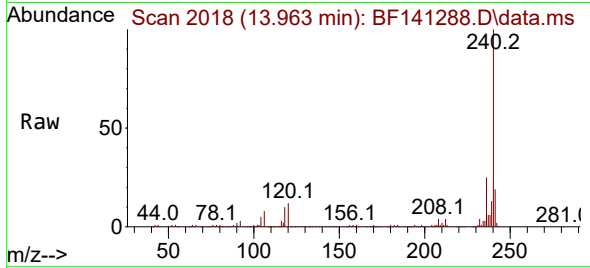
Tgt Ion	Resp	Lower	Upper
244	100		
212	6.6	5.4	8.2
122	11.1	9.6	14.4



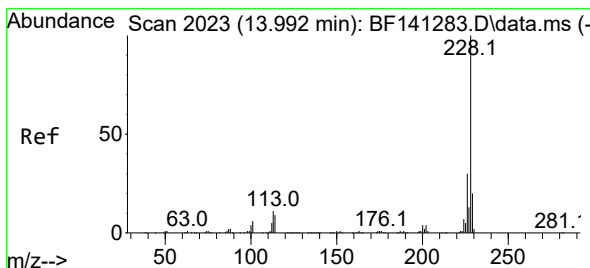
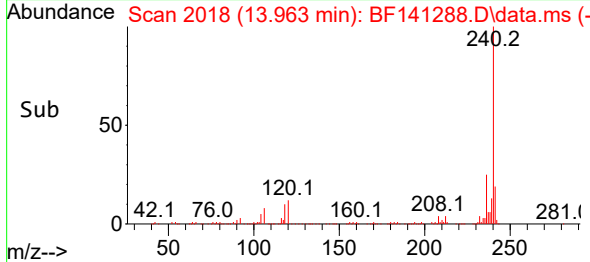
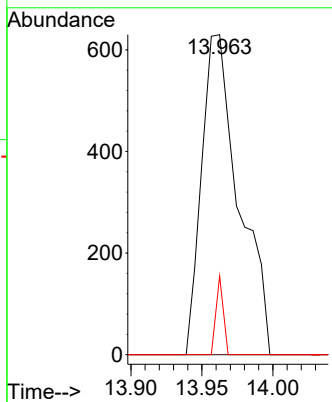


#81  
 Benzo(a)anthracene  
 Concen: 0.052 ng  
 RT: 13.963 min Scan# 2018  
 Delta R.T. 0.006 min  
 Lab File: BF141288.D  
 Acq: 28 Jan 2025 18:56

Instrument :  
 BNA\_F  
 ClientSampleId :  
 PB166167BL

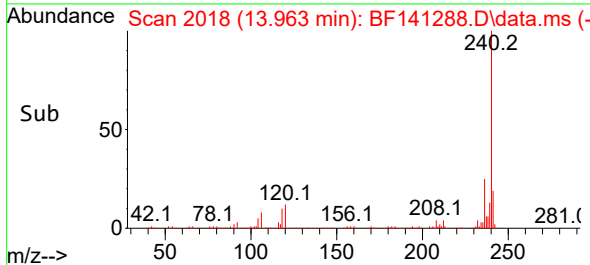
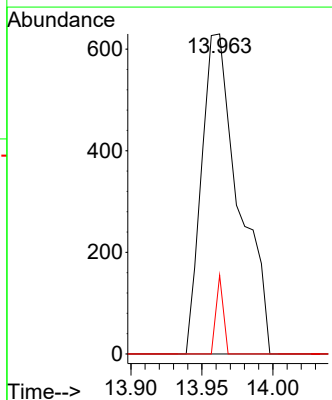
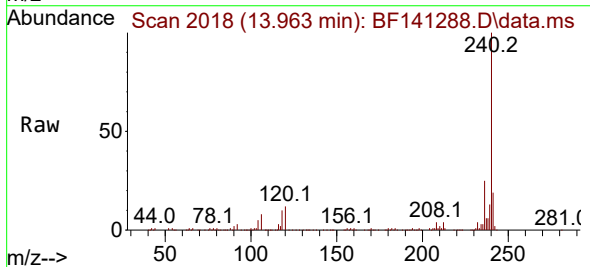


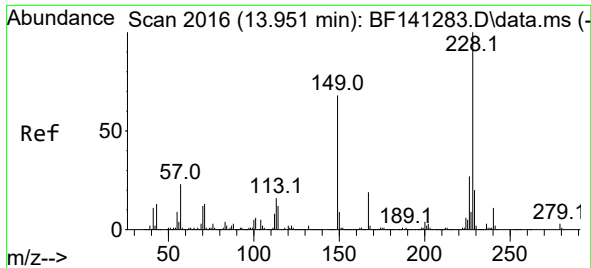
Tgt Ion:228 Resp: 1150  
 Ion Ratio Lower Upper  
 228 100  
 226 0.0 21.7 32.5#  
 229 24.6 15.8 23.6#



#83  
 Chrysene  
 Concen: 0.055 ng  
 RT: 13.963 min Scan# 2018  
 Delta R.T. -0.035 min  
 Lab File: BF141288.D  
 Acq: 28 Jan 2025 18:56

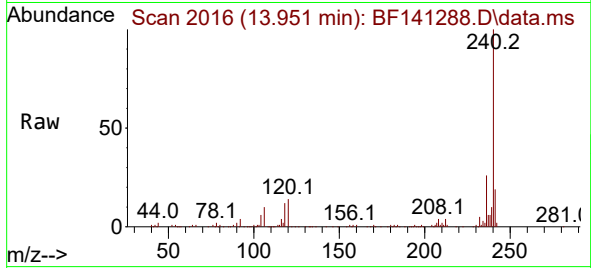
Tgt Ion:228 Resp: 1150  
 Ion Ratio Lower Upper  
 228 100  
 226 0.0 24.2 36.2#  
 229 24.6 15.9 23.9#





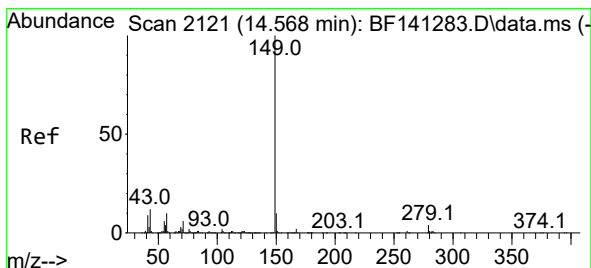
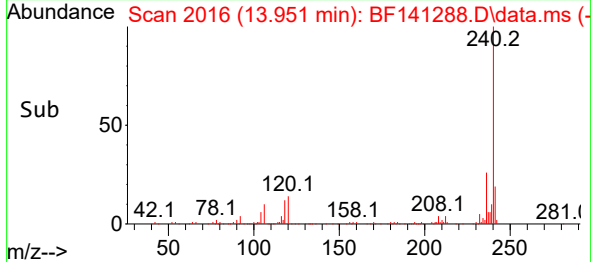
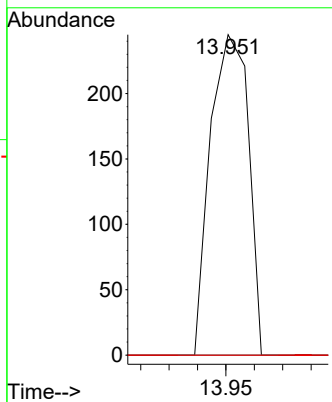
#84  
 Bis(2-ethylhexyl)phthalate  
 Concen: 0.017 ng  
 RT: 13.951 min Scan# 2016  
 Delta R.T. -0.000 min  
 Lab File: BF141288.D  
 Acq: 28 Jan 2025 18:56

Instrument :  
 BNA\_F  
 ClientSampleId :  
 PB166167BL



Tgt Ion:149 Resp: 228

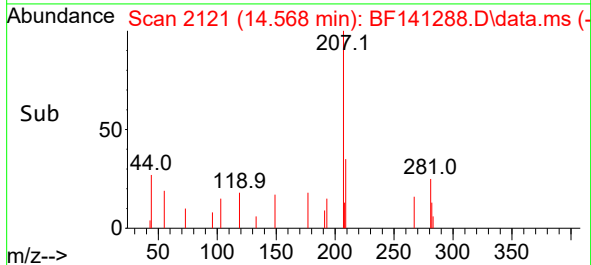
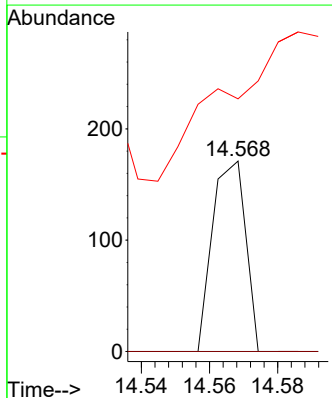
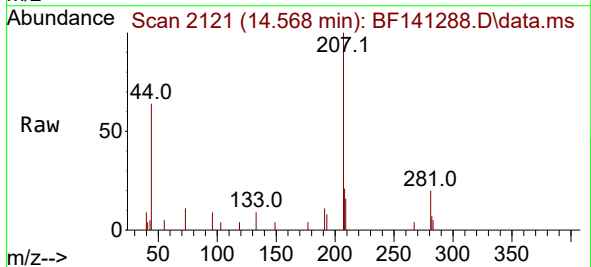
Ion	Ratio	Lower	Upper
149	100		
167	0.0	22.0	33.0#
279	0.0	3.4	5.2#

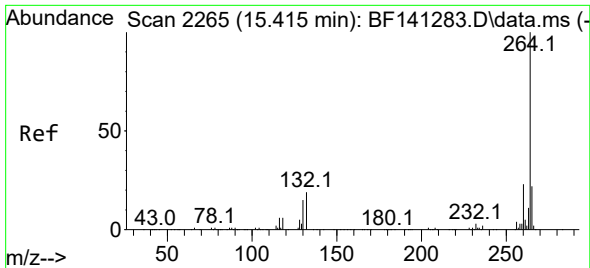


#85  
 Di-n-octyl phthalate  
 Concen: 0.005 ng  
 RT: 14.568 min Scan# 2121  
 Delta R.T. -0.012 min  
 Lab File: BF141288.D  
 Acq: 28 Jan 2025 18:56

Tgt Ion:149 Resp: 115

Ion	Ratio	Lower	Upper
149	100		
167	0.0	1.3	1.9#
43	0.0	9.8	14.8#



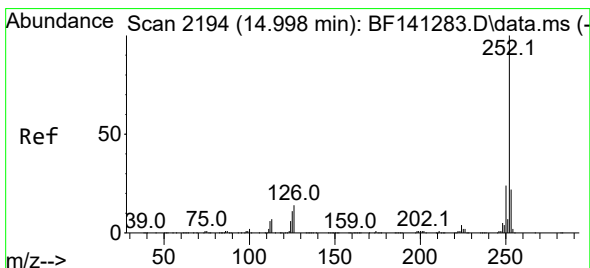
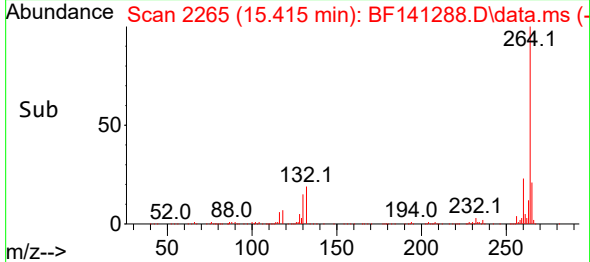
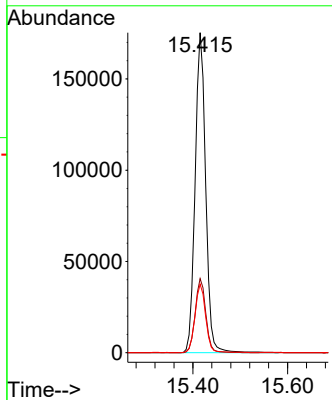
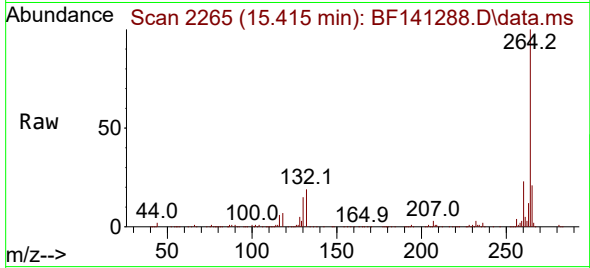


#86  
 Perylene-d12  
 Concen: 20.000 ng  
 RT: 15.415 min Scan# 2199  
 Delta R.T. -0.012 min  
 Lab File: BF141288.D  
 Acq: 28 Jan 2025 18:56

Instrument :  
 BNA\_F  
 ClientSampleId :  
 PB166167BL

Tgt Ion:264 Resp: 271131

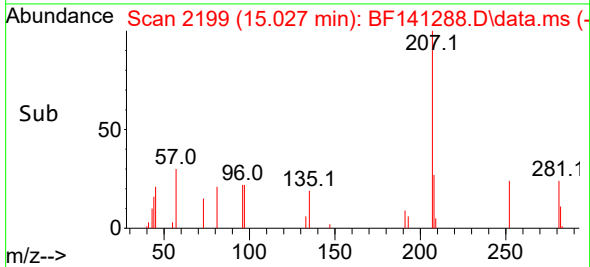
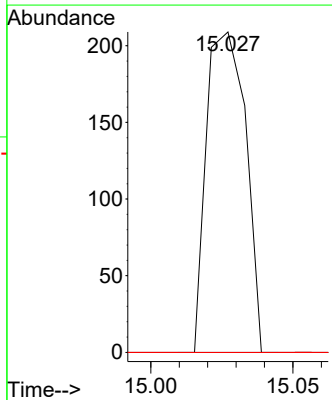
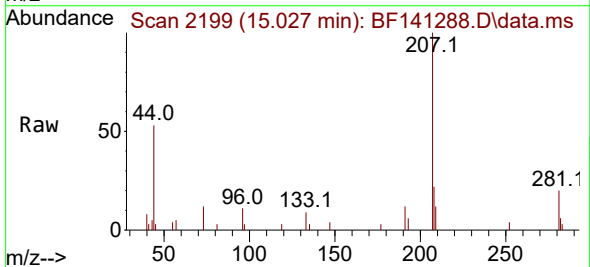
Ion	Ratio	Lower	Upper
264	100		
260	23.2	18.8	28.2
265	21.4	17.4	26.0

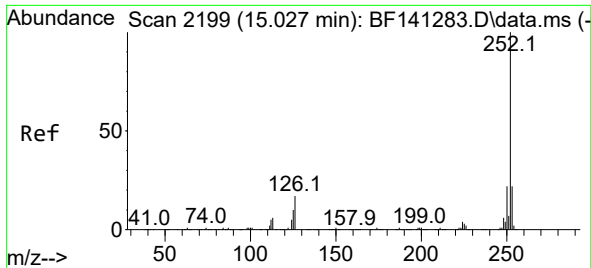


#88  
 Benzo(b)fluoranthene  
 Concen: 0.012 ng  
 RT: 15.027 min Scan# 2199  
 Delta R.T. 0.012 min  
 Lab File: BF141288.D  
 Acq: 28 Jan 2025 18:56

Tgt Ion:252 Resp: 201

Ion	Ratio	Lower	Upper
252	100		
253	0.0	17.7	26.5#
125	0.0	8.6	13.0#





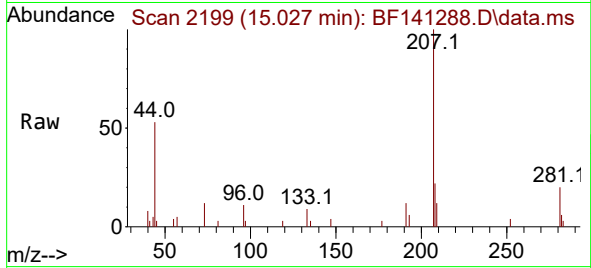
#89  
 Benzo(k)fluoranthene  
 Concen: 0.013 ng  
 RT: 15.027 min Scan# 2199  
 Delta R.T. -0.018 min  
 Lab File: BF141288.D  
 Acq: 28 Jan 2025 18:56

Instrument :

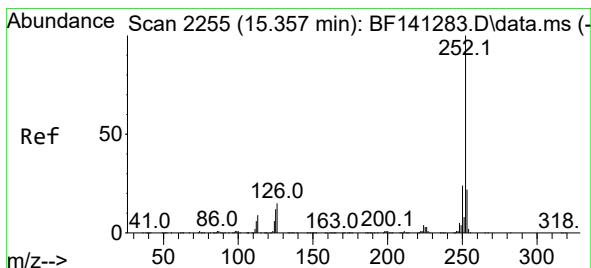
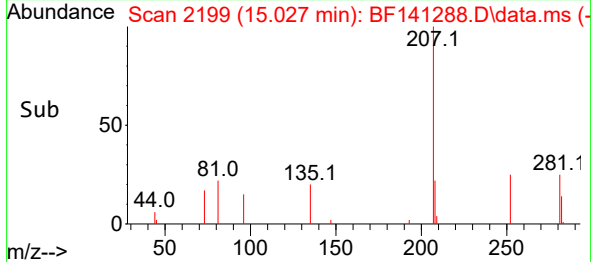
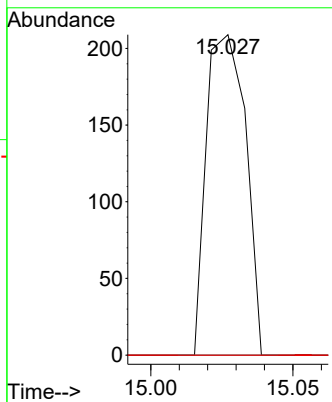
BNA\_F

Client Sample Id :

PB166167BL



Tgt Ion	Resp	Lower	Upper
252	100		
253	0.0	17.5	26.3#
125	0.0	8.3	12.5#



#90  
 Benzo(a)pyrene  
 Concen: 0.072 ng  
 RT: 15.415 min Scan# 2265  
 Delta R.T. 0.041 min  
 Lab File: BF141288.D  
 Acq: 28 Jan 2025 18:56

Tgt Ion	Resp	Lower	Upper
252	100		
253	24.3	17.6	26.4
125	23.8	9.4	14.2#

