

Data Path : U:\HPCHEM1\BNA F\DATA\BF020318\
 Data File : BF102721.D
 Acq On : 3 Feb 2018 17:09
 Operator : SJ/JU
 Sample : J1431-04
 Misc :
 ALS Vial : 9 Sample Multiplier: 1

Instrument :
 BNA_F
 ClientSampleId :
 132-1-PH-2

Quant Time: Feb 05 02:19:07 2018
 Quant Method : Z:\HPCHEM1\BNA F\METHODS\8270-BF020318.M
 Quant Title : ASP BNA STANDARDS FOR 5 POINT CALIBRATION
 QLast Update : Mon Feb 05 00:38:27 2018
 Response via : Initial Calibration

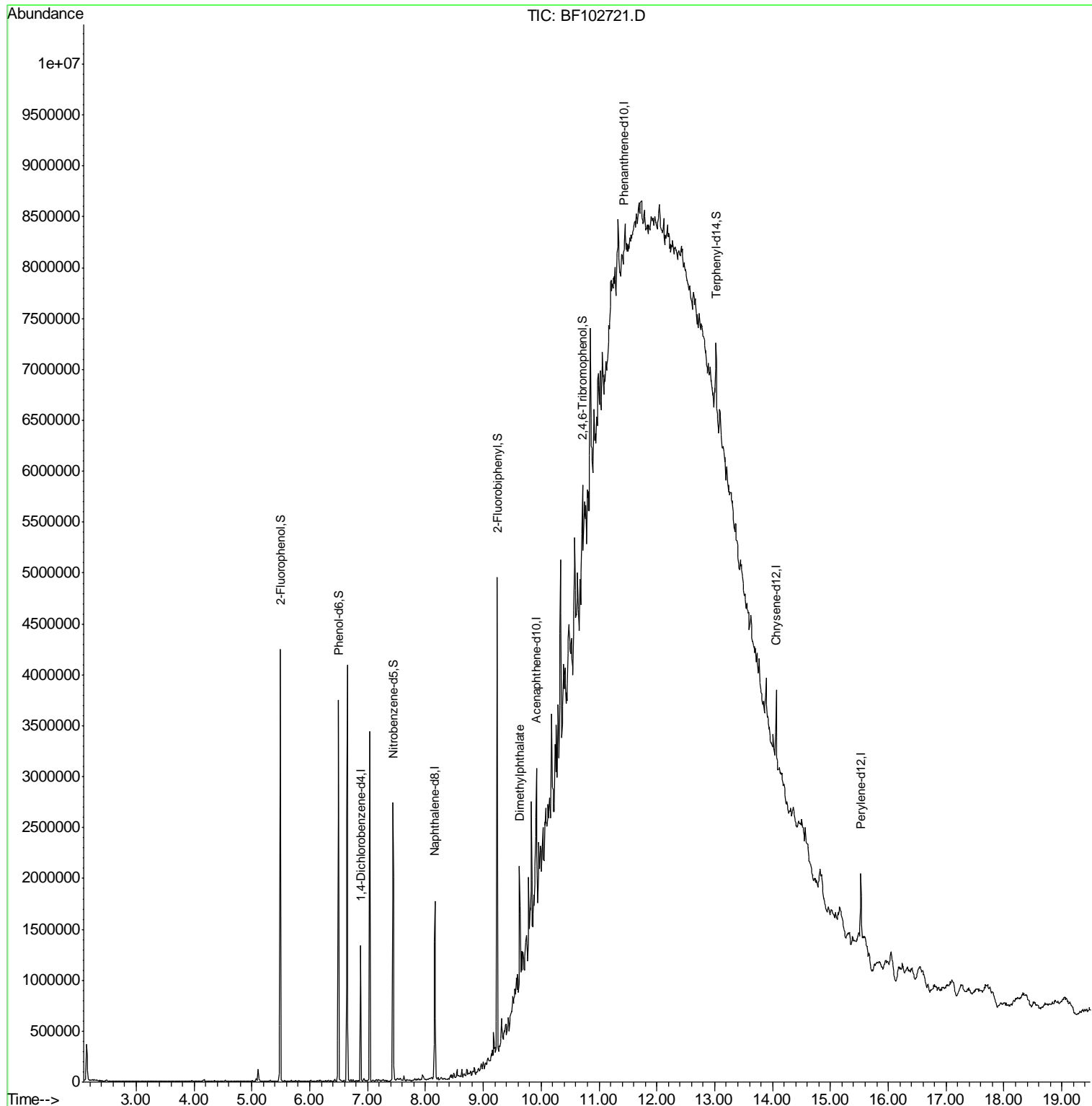
Internal Standards	R.T.	QIon	Response	Conc	Units	Dev(Min)
1) 1,4-Dichlorobenzene-d4	6.88	152	174977	20.00	ng	0.00
21) Naphthalene-d8	8.16	136	711514	20.00	ng	0.00
38) Acenaphthene-d10	9.92	164	259436	20.00	ng	0.00
63) Phenanthrene-d10	11.43	188	199500	20.00	ng	0.03
75) Chrysene-d12	14.06	240	275329	20.00	ng	0.02
86) Perylene-d12	15.53	264	334562	20.00	ng	0.02
System Monitoring Compounds						
5) 2-Fluorophenol	5.49	112	1181662	102.56	ng	0.00
7) Phenol-d6	6.50	99	1420000	102.36	ng	0.00
23) Nitrobenzene-d5	7.44	82	855926	83.45	ng	0.00
41) 2,4,6-Tribromophenol	10.72	330	198523	95.07	ng	0.01
44) 2-Fluorobiphenyl	9.24	172	1410679	90.23	ng	0.00
78) Terphenyl-d14	13.02	244	639532	55.00	ng	0.04
Target Compounds						
49) Dimethylphthalate	9.63	163	75511	3.733	ng	Qvalue # 87

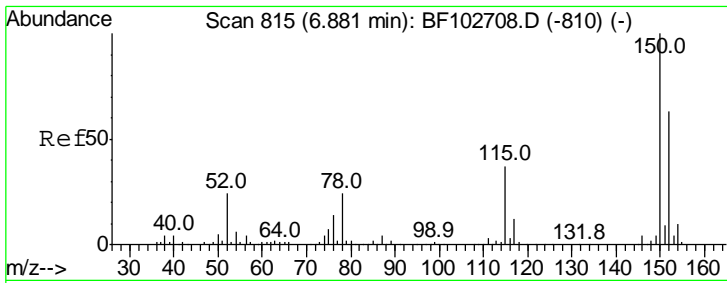
(#) = qualifier out of range (m) = manual integration (+) = signals summed

Data Path : U:\HPCHEM1\BNA F\DATA\BF020318\
 Data File : BF102721.D
 Acq On : 3 Feb 2018 17:09
 Operator : SJ/JU
 Sample : J1431-04
 Misc :
 ALS Vial : 9 Sample Multiplier: 1

Instrument :
 BNA_F
 ClientSampleId :
 132-1-PH-2

Quant Time: Feb 05 02:19:07 2018
 Quant Method : Z:\HPCHEM1\BNA F\METHODS\8270-BF020318.M
 Quant Title : ASP BNA STANDARDS FOR 5 POINT CALIBRATION
 QLast Update : Mon Feb 05 00:38:27 2018
 Response via : Initial Calibration

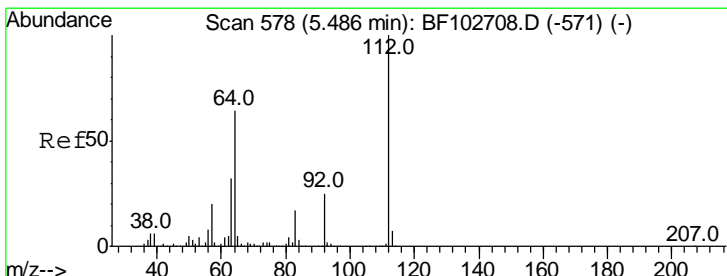
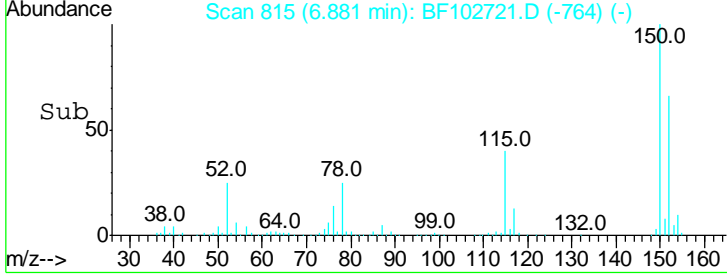
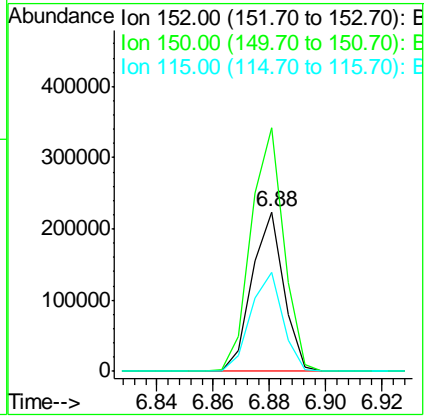
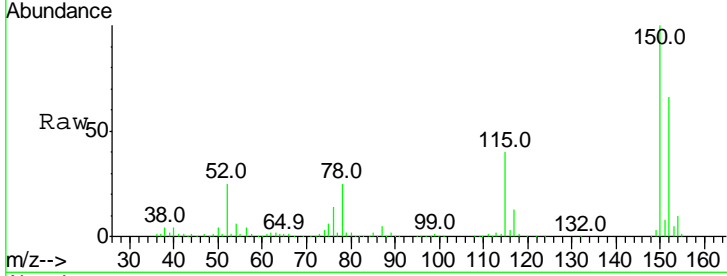




#1
 1,4-Dichlorobenzene-d4
 Concen: 20.000 ng
 RT: 6.88 min Scan# 815
 Delta R.T. 0.00 min
 Lab File: BF102721.D
 Acq: 3 Feb 2018 17:09

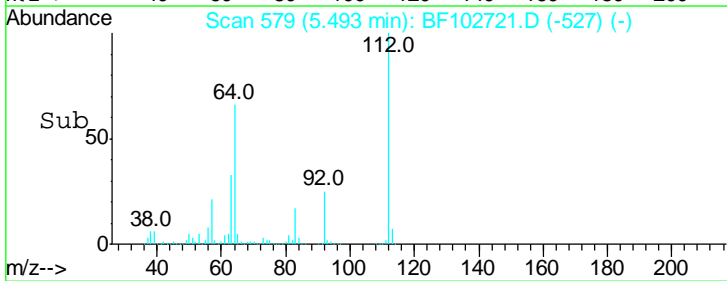
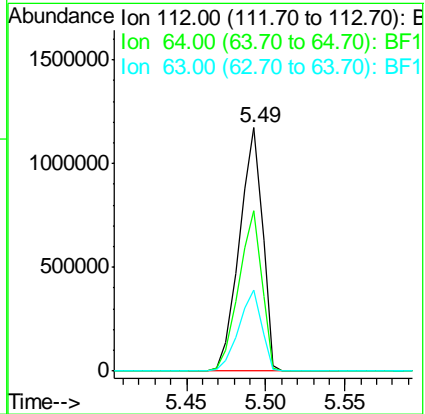
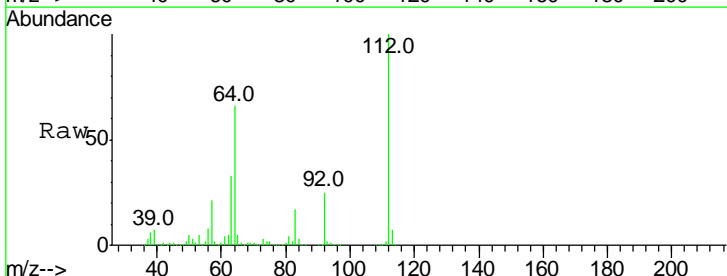
Instrument :
 BNA_F
 ClientSampled :
 132-1-PH-2

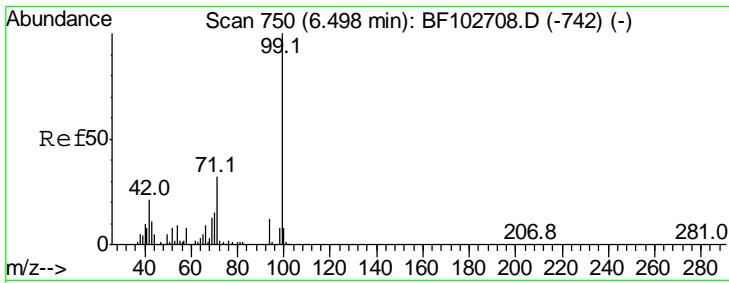
Tgt Ion	Resp	Lower	Upper
152	174977		
152	100		
150	152.5	124.6	186.8
115	61.7	50.1	75.1



#5
 2-Fluorophenol
 Concen: 102.559 ng
 RT: 5.49 min Scan# 579
 Delta R.T. 0.01 min
 Lab File: BF102721.D
 Acq: 3 Feb 2018 17:09

Tgt Ion	Resp	Lower	Upper
112	1181662		
112	100		
64	65.8	47.9	71.9
63	33.4	23.7	35.5



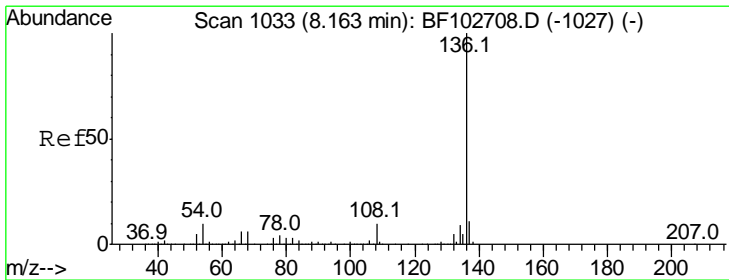
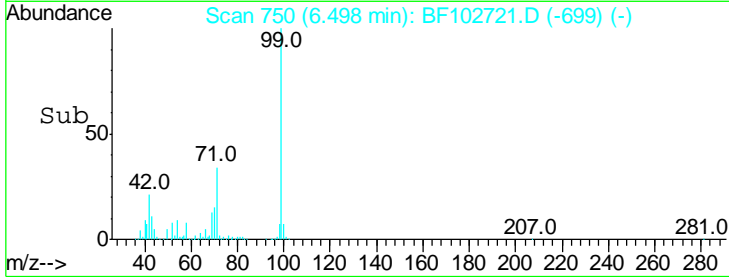
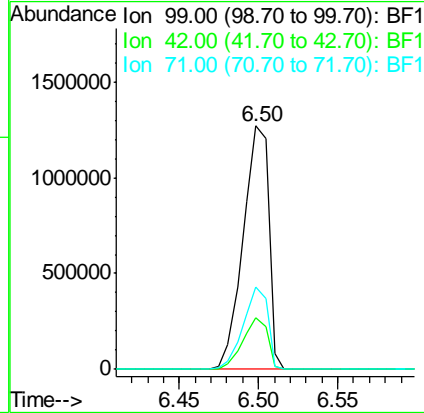
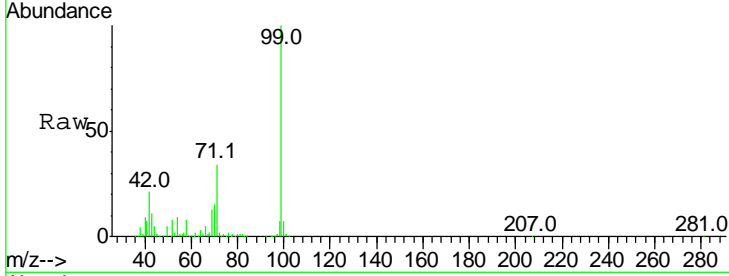


#7
 Phenol-d6
 Concen: 102.357 ng
 RT: 6.50 min Scan# 750
 Delta R.T. 0.00 min
 Lab File: BF102721.D
 Acq: 3 Feb 2018 17:09

Instrument :
 BNA_F
 ClientSampled :
 132-1-PH-2

Tgt Ion: 99 Resp: 1420000

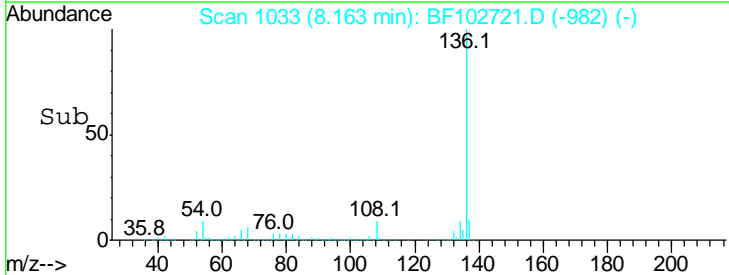
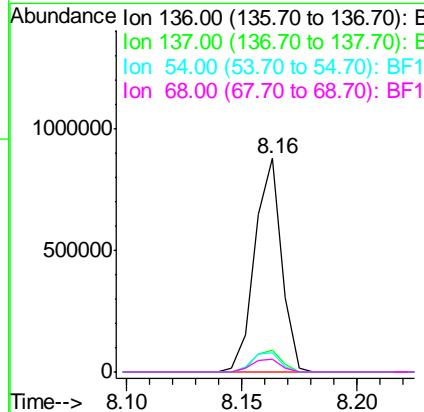
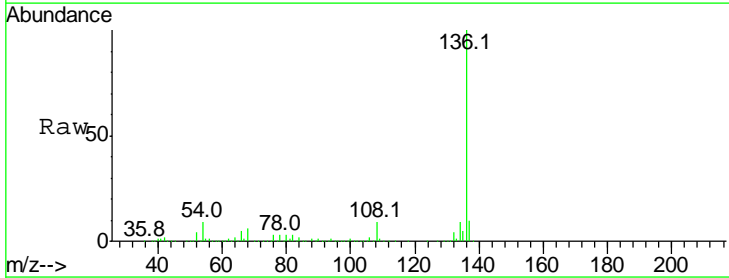
Ion	Ratio	Lower	Upper
99	100		
42	21.0	14.5	21.7
71	33.8	25.4	38.0

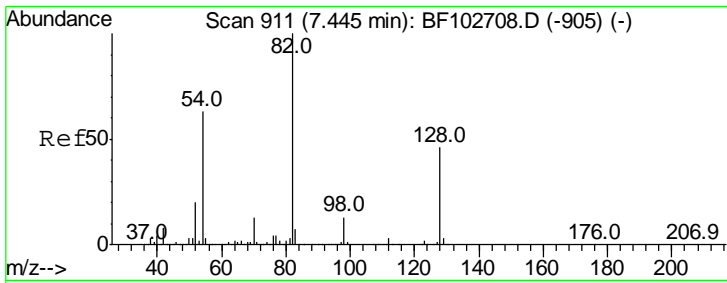


#21
 Naphthalene-d8
 Concen: 20.000 ng
 RT: 8.16 min Scan# 1033
 Delta R.T. 0.00 min
 Lab File: BF102721.D
 Acq: 3 Feb 2018 17:09

Tgt Ion: 136 Resp: 711514

Ion	Ratio	Lower	Upper
136	100		
137	10.5	8.9	13.3
54	9.0	6.6	9.8
68	6.0	5.0	7.4

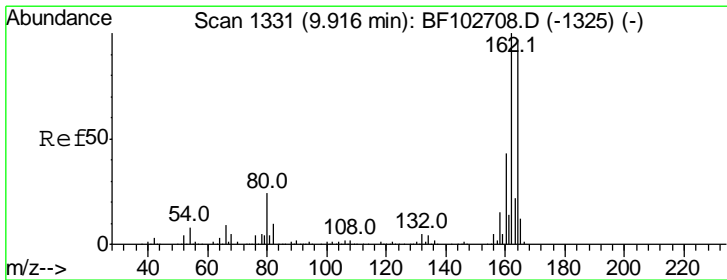
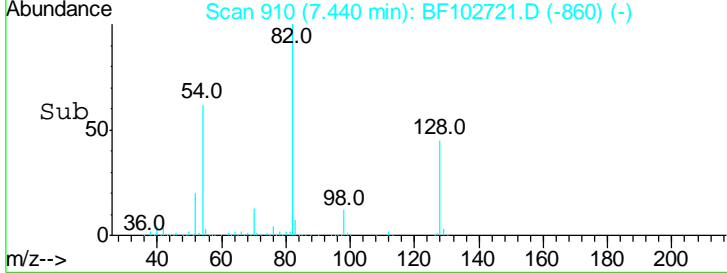
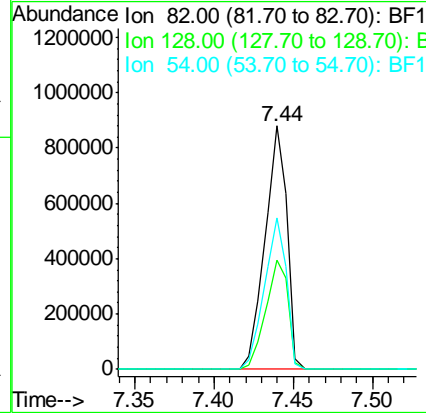
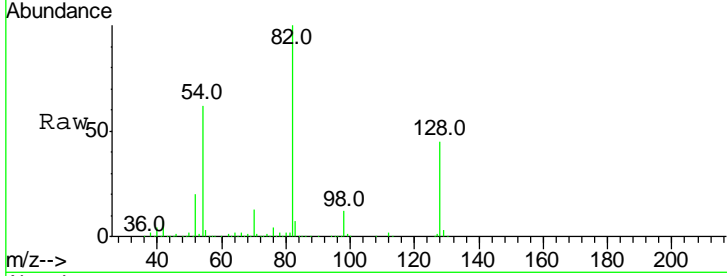




#23
 Nitrobenzene-d5
 Concen: 83.450 ng
 RT: 7.44 min Scan# 910
 Delta R.T. -0.01 min
 Lab File: BF102721.D
 Acq: 3 Feb 2018 17:09

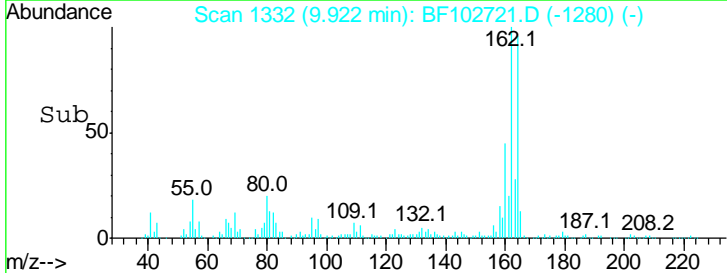
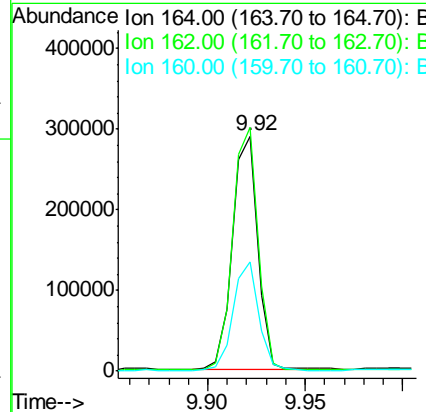
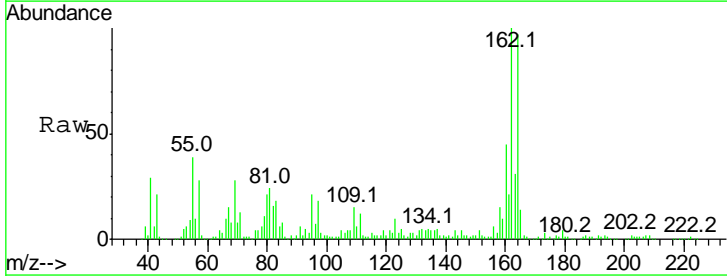
Instrument :
 BNA_F
ClientSampled :
 132-1-PH-2

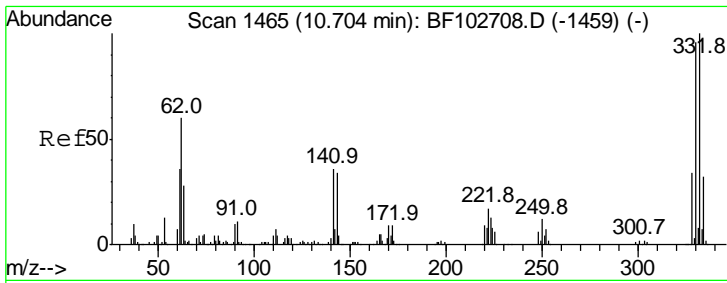
Tgt Ion	Resp	Lower	Upper
82	100		
128	44.9	36.1	54.1
54	62.4	41.4	62.2#



#38
 Acenaphthene-d10
 Concen: 20.000 ng
 RT: 9.92 min Scan# 1332
 Delta R.T. 0.01 min
 Lab File: BF102721.D
 Acq: 3 Feb 2018 17:09

Tgt Ion	Resp	Lower	Upper
164	100		
162	103.6	86.1	129.1
160	46.7	38.3	57.5

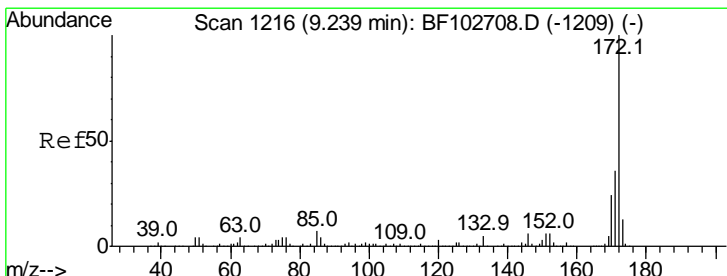
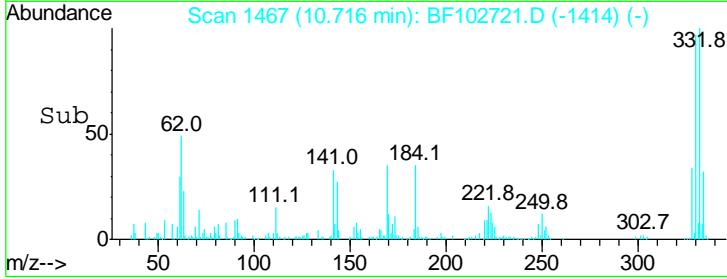
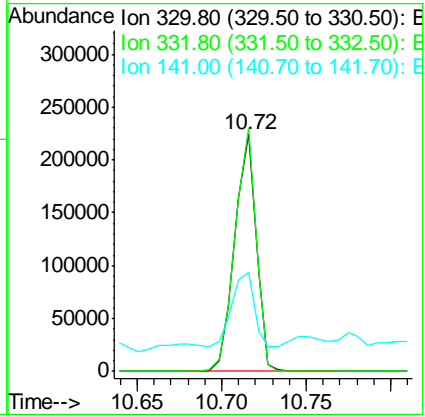
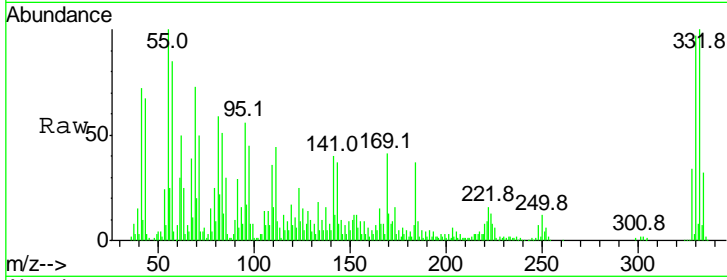




#41
 2,4,6-Tribromophenol
 Concen: 95.071 ng
 RT: 10.72 min Scan# 1467
 Delta R.T. 0.01 min
 Lab File: BF102721.D
 Acq: 3 Feb 2018 17:09

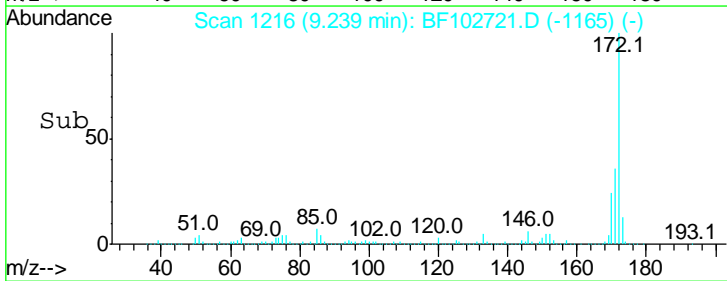
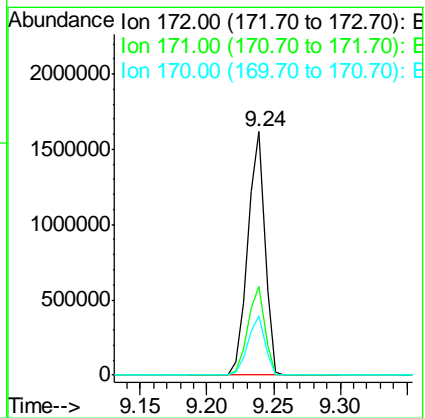
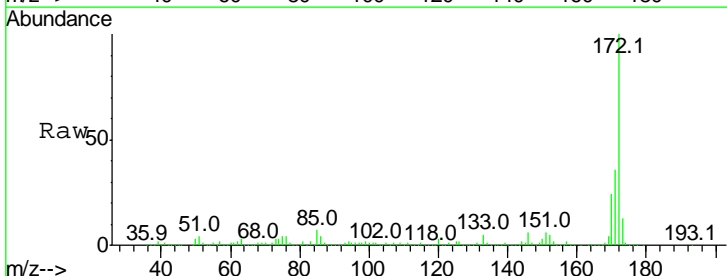
Instrument :
 BNA_F
 ClientSampleId :
 132-1-PH-2

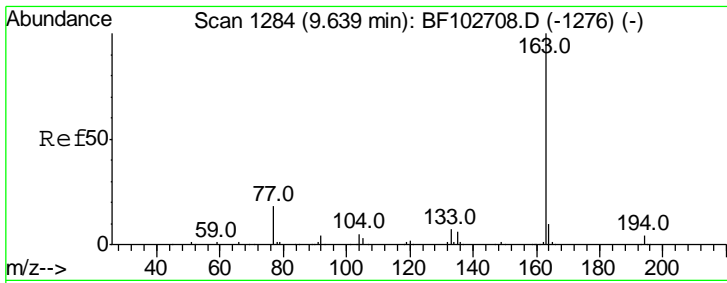
Tgt Ion	Resp	Lower	Upper
330	100		
332	101.6	77.0	115.6
141	32.4	29.9	44.9



#44
 2-Fluorobiphenyl
 Concen: 90.227 ng
 RT: 9.24 min Scan# 1216
 Delta R.T. 0.00 min
 Lab File: BF102721.D
 Acq: 3 Feb 2018 17:09

Tgt Ion	Resp	Lower	Upper
172	100		
171	36.5	29.7	44.5
170	24.4	19.6	29.4

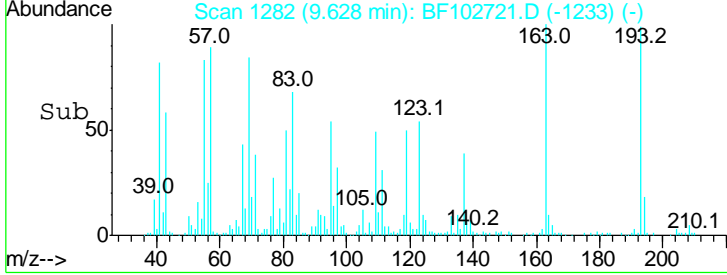
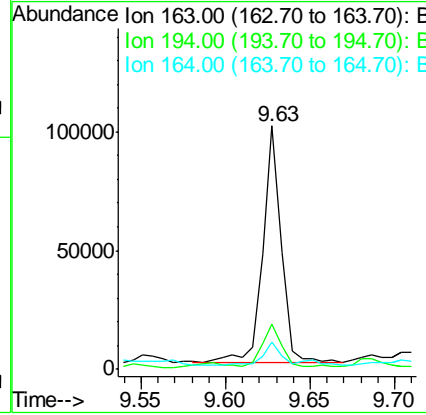
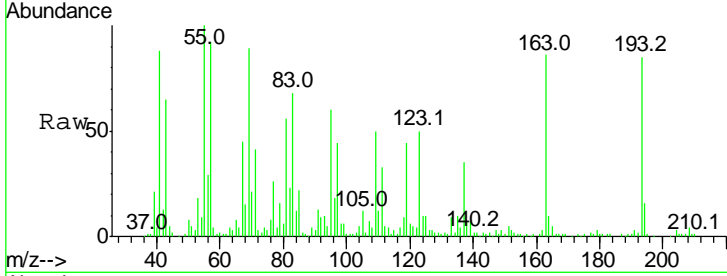




#49
 Dimethylphthalate
 Concen: 3.733 ng
 RT: 9.63 min Scan# 1282
 Delta R.T. -0.01 min
 Lab File: BF102721.D
 Acq: 3 Feb 2018 17:09

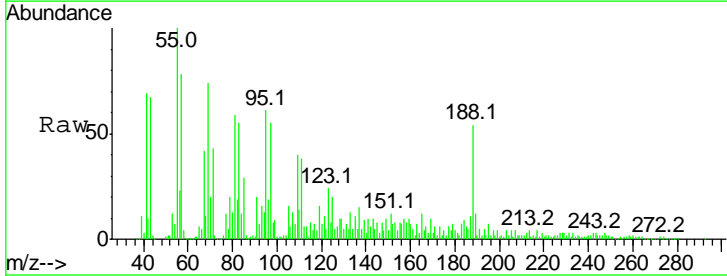
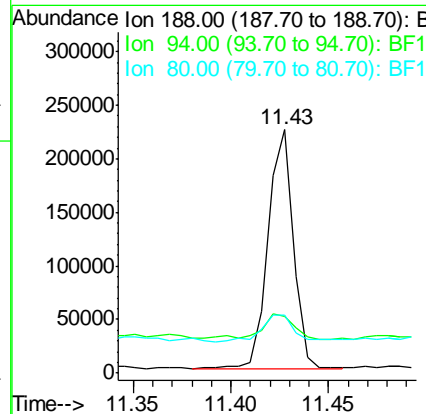
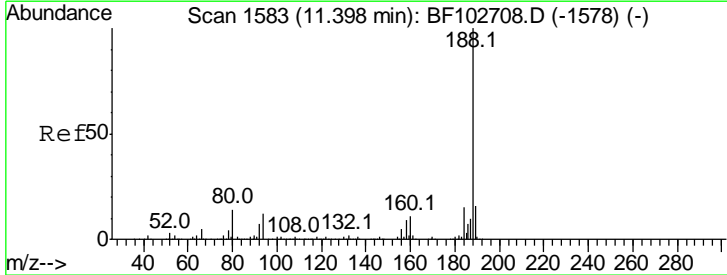
Instrument :
 BNA_F
ClientSampled :
 132-1-PH-2

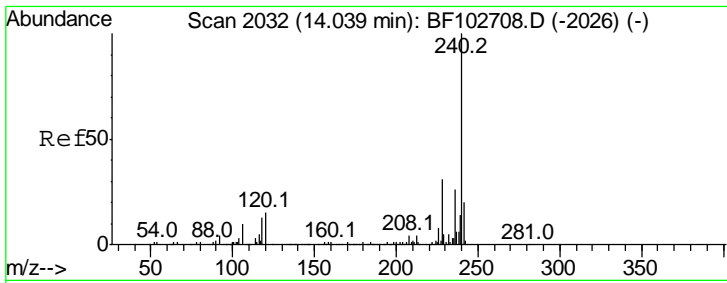
Tgt Ion	Resp	Lower	Upper
163	100		
194	18.8	2.7	4.1#
164	11.1	8.2	12.2



#63
 Phenanthrene-d10
 Concen: 20.000 ng
 RT: 11.43 min Scan# 1588
 Delta R.T. 0.03 min
 Lab File: BF102721.D
 Acq: 3 Feb 2018 17:09

Tgt Ion	Resp	Lower	Upper
188	100		
94	23.5	8.5	12.7#
80	23.9	9.2	13.8#

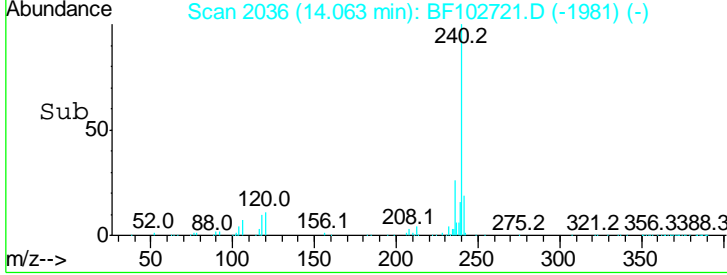
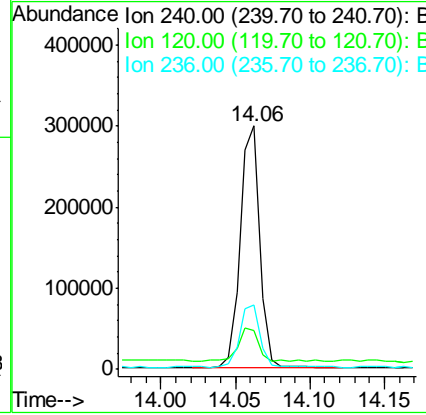
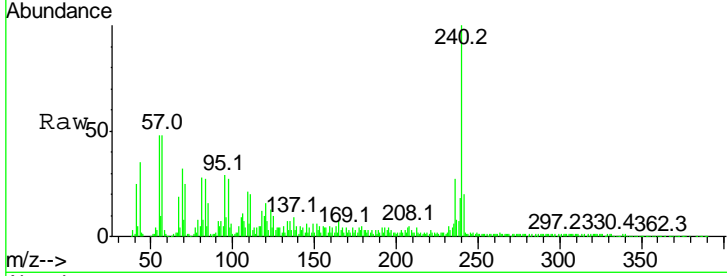




#75
 Chrysene-d12
 Concen: 20.000 ng
 RT: 14.06 min Scan# 2036
 Delta R.T. 0.02 min
 Lab File: BF102721.D
 Acq: 3 Feb 2018 17:09

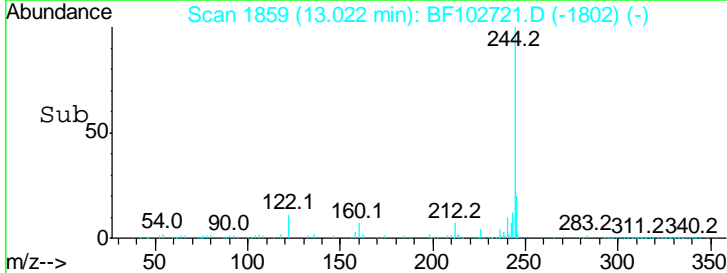
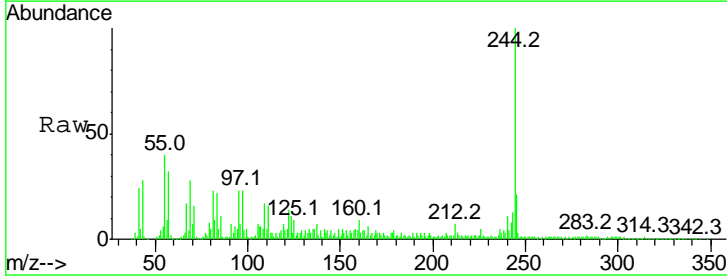
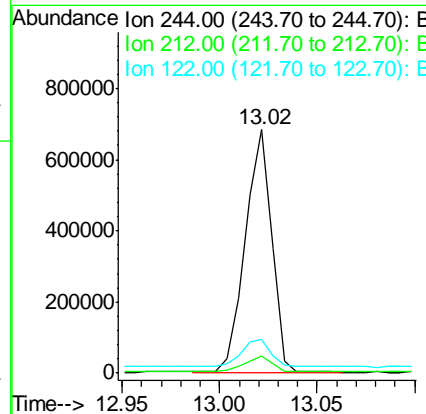
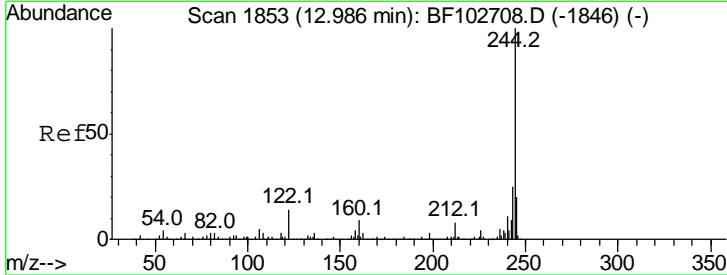
Instrument :
 BNA_F
ClientSampled :
 132-1-PH-2

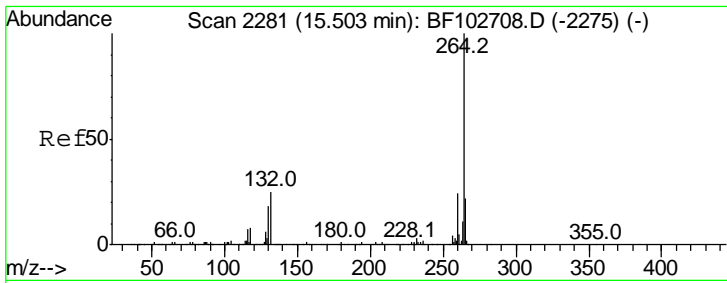
Tgt Ion	Resp	Lower	Upper
240	100		
120	15.9	9.5	14.3#
236	26.7	20.7	31.1



#78
 Terphenyl-d14
 Concen: 54.998 ng
 RT: 13.02 min Scan# 1859
 Delta R.T. 0.04 min
 Lab File: BF102721.D
 Acq: 3 Feb 2018 17:09

Tgt Ion	Resp	Lower	Upper
244	100		
212	7.1	5.4	8.0
122	13.7	11.0	16.4



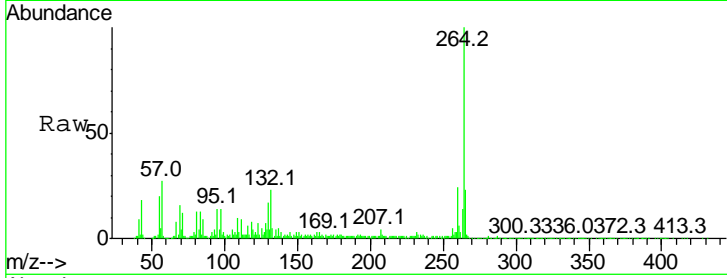


#86
 Perylene-d12
 Concen: 20.000 ng
 RT: 15.53 min Scan# 2285
 Delta R.T. 0.02 min
 Lab File: BF102721.D
 Acq: 3 Feb 2018 17:09

Instrument :
 BNA_F
 ClientSampled :
 132-1-PH-2

Tot Ion: 264 Resp: 334562

Ion	Ratio	Lower	Upper
264	100		
260	24.2	19.2	28.8
265	22.5	17.5	26.3



Abundance Ion 264.00 (263.70 to 264.70): E
 Ion 260.00 (259.70 to 260.70): E
 Ion 265.00 (264.70 to 265.70): E

