

Data Path : Z:\HPCHEM1\BNA_F\DATA\BF020416\
 Data File : BF084838.D
 Acq On : 4 Feb 2016 19:43
 Operator : SJ/IZ
 Sample : H1320-07
 Misc :
 ALS Vial : 10 Sample Multiplier: 1

Instrument :
 BNA_F
 ClientSampleId :
 S4-B012(1-3)

Quant Time: Feb 05 01:38:46 2016
 Quant Method : Z:\HPCHEM1\BNA_F\METHODS\8270-BF020116.M
 Quant Title : ASP BNA STANDARDS FOR 5 POINT CALIBRATION
 QLast Update : Wed Feb 03 14:16:01 2016
 Response via : Initial Calibration

Internal Standards	R.T.	QIon	Response	Conc	Units	Dev(Min)
1) 1,4-Dichlorobenzene-d4	6.67	152	145997	20.00	ng	-0.01
21) Naphthalene-d8	7.96	136	610781	20.00	ng	-0.01
38) Acenaphthene-d10	9.71	164	277014	20.00	ng	-0.02
63) Phenanthrene-d10	11.18	188	465787	20.00	ng	-0.02
75) Chrysene-d12	13.81	240	315164	20.00	ng	-0.02
86) Perylene-d12	15.20	264	293801	20.00	ng	-0.01

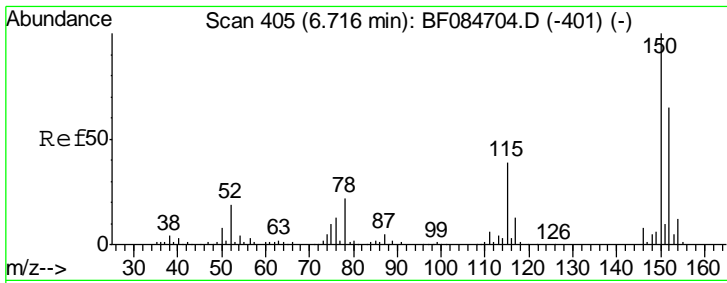
System Monitoring Compounds

5) 2-Fluorophenol	5.26	112	1031137	110.01	ng	-0.01
7) Phenol-d6	6.33	99	1428636	122.95	ng	-0.01
23) Nitrobenzene-d5	7.24	82	769818	71.00	ng	-0.02
41) 2,4,6-Tribromophenol	10.50	330	319306	110.51	ng	-0.02
44) 2-Fluorobiphenyl	9.04	172	1267208	73.68	ng	-0.02
78) Terphenyl-d14	12.77	244	1005616	72.30	ng	-0.02

Target Compounds

Target Compounds	R.T.	QIon	Response	Conc	Units	Qvalue
19) n-Nitroso-di-n-propylamine	7.24	70	106506	14.62	ng	# 72
49) Dimethylphthalate	9.44	163	260669	12.35	ng	# 90
55) 4-Nitrophenol	9.92	139	8887	2.33	ng	# 13
56) 2,4-Dinitrotoluene	9.71	165	36547	6.22	ng	# 22
66) 4-Bromophenyl-phenylether	10.50	248	20907	4.06	ng	# 1
70) Phenanthrene	11.21	178	306736	11.87	ng	99
71) Anthracene	11.26	178	69861	2.68	ng	98
74) Fluoranthene	12.40	202	451962	17.29	ng	96
77) Pyrene	12.62	202	417682	17.31	ng	98
80) Benzo(a)anthracene	13.80	228	182369	9.32	ng	97
82) Chrysene	13.80	228	182369	9.61	ng	98
85) Indeno(1,2,3-cd)pyrene	16.47	276	95365	6.39	ng	95
87) Benzo(b)fluoranthene	14.82	252	241223	12.22	ng	# 96
88) Benzo(k)fluoranthene	14.82	252	241223	14.78	ng	99
89) Benzo(a)pyrene	15.14	252	142988	8.50	ng	96
91) Benzo(g,h,i)perylene	16.85	276	93329	6.54	ng	98

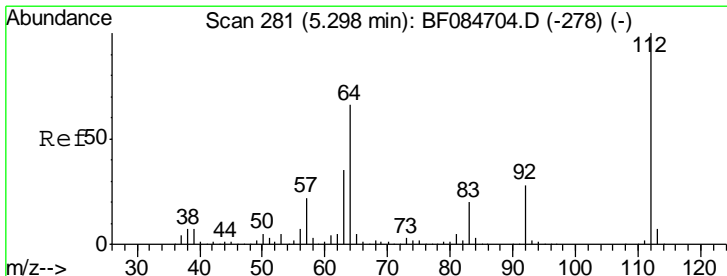
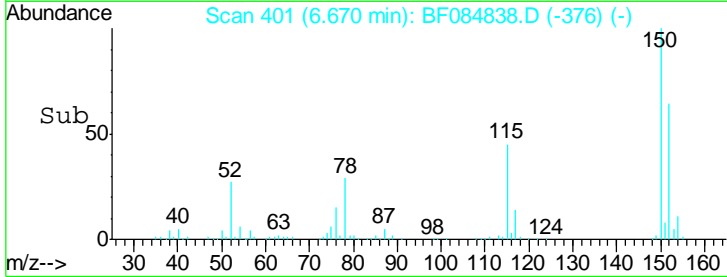
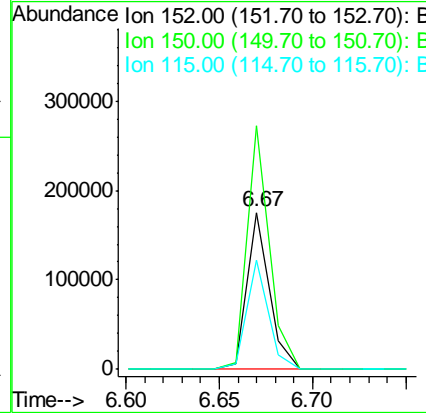
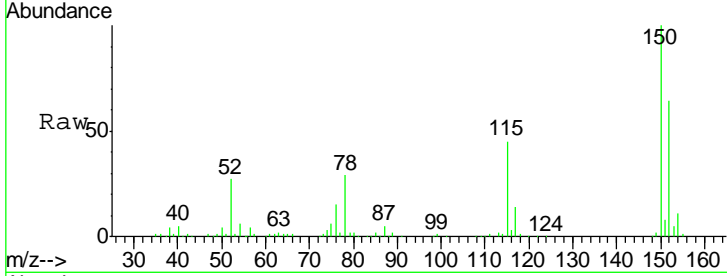
(#) = qualifier out of range (m) = manual integration (+) = signals summed



#1
 1,4-Dichlorobenzene-d4
 Concen: 20.00 ng
 RT: 6.67 min Scan# 401
 Delta R.T. -0.01 min
 Lab File: BF084838.D
 Acq: 4 Feb 2016 19:43

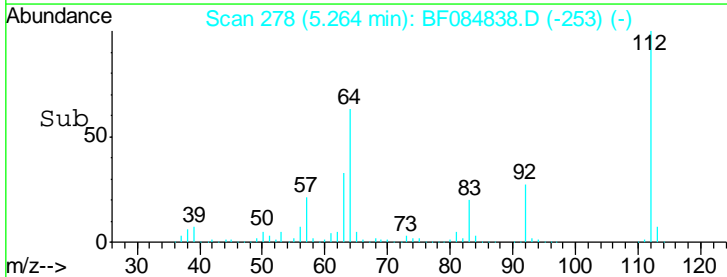
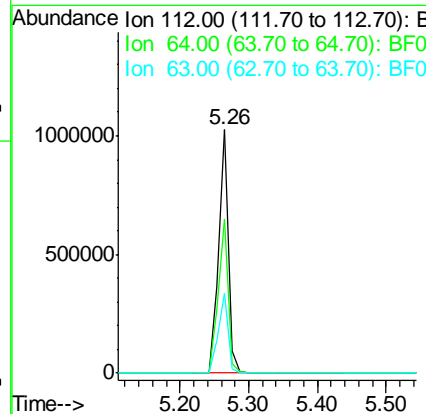
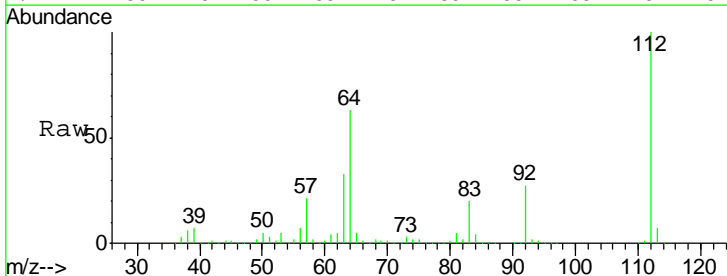
Instrument :
 BNA_F
 ClientSampled :
 S4-B012(1-3)

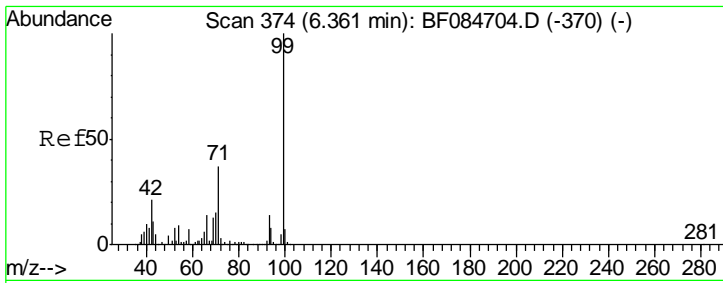
Tgt Ion	Resp	Lower	Upper
152	145997		
152	100		
150	155.5	123.0	184.4
115	69.6	51.4	77.2



#5
 2-Fluorophenol
 Concen: 110.01 ng
 RT: 5.26 min Scan# 278
 Delta R.T. -0.01 min
 Lab File: BF084838.D
 Acq: 4 Feb 2016 19:43

Tgt Ion	Resp	Lower	Upper
112	1031137		
112	100		
64	63.0	36.6	55.0#
63	32.9	19.4	29.0#

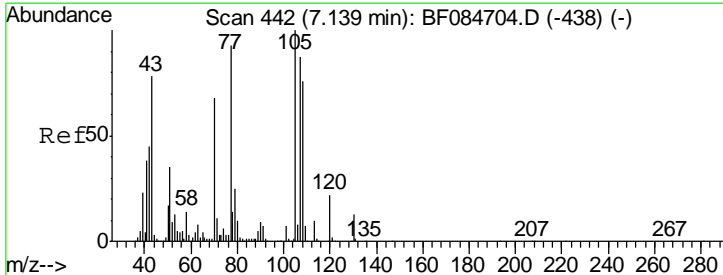
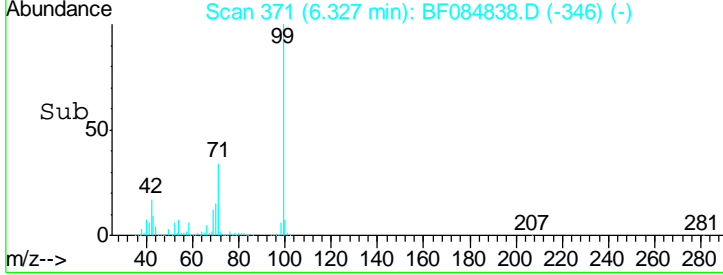
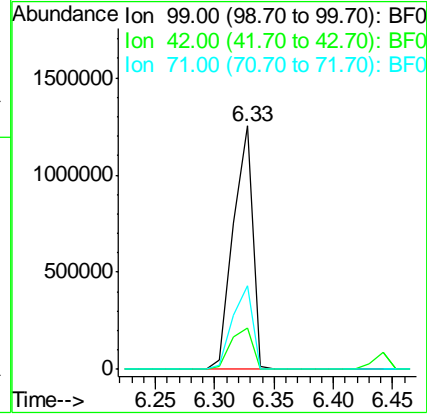
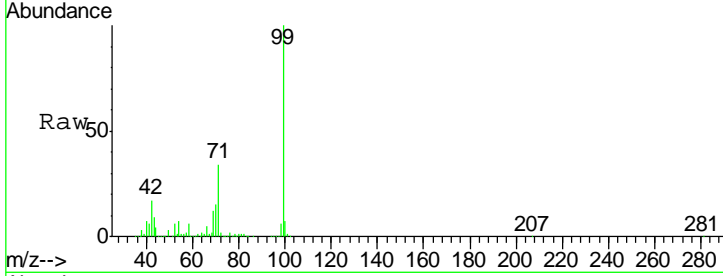




#7
 Phenol-d6
 Concen: 122.95 ng
 RT: 6.33 min Scan# 371
 Delta R.T. -0.01 min
 Lab File: BF084838.D
 Acq: 4 Feb 2016 19:43

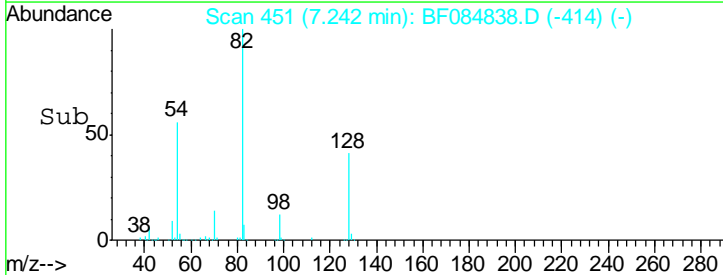
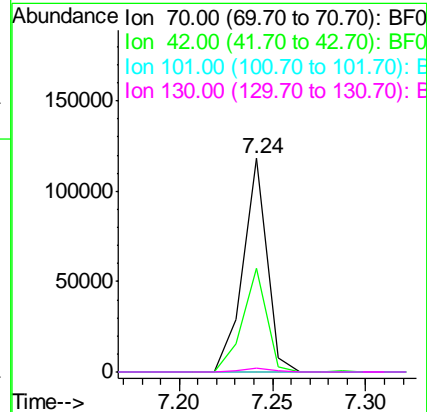
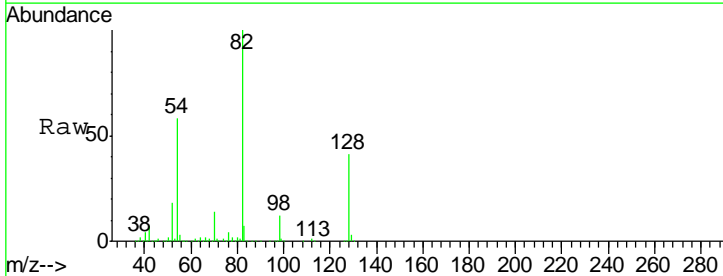
Instrument :
 BNA_F
 ClientSampleId :
 S4-B012(1-3)

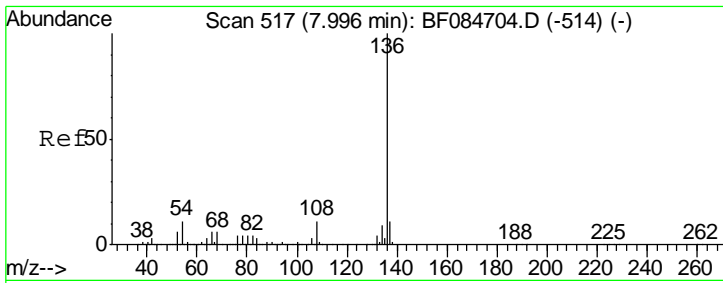
Tgt Ion	Resp	Lower	Upper
99	1428636		
42	16.9	12.8	19.2
71	34.3	30.9	46.3



#19
 n-Nitroso-di-n-propylamine
 Concen: 14.62 ng
 RT: 7.24 min Scan# 451
 Delta R.T. 0.13 min
 Lab File: BF084838.D
 Acq: 4 Feb 2016 19:43

Tgt Ion	Resp	Lower	Upper
70	106506		
42	48.5	33.3	49.9
101	0.0	9.3	13.9#
130	1.8	23.4	35.0#

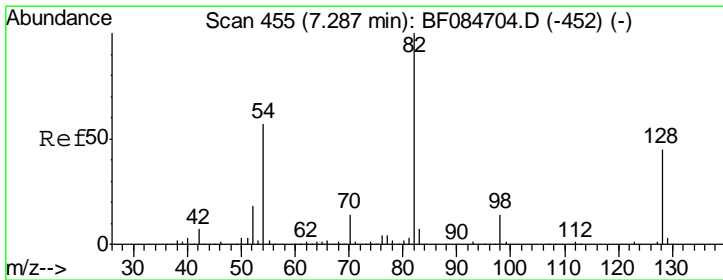
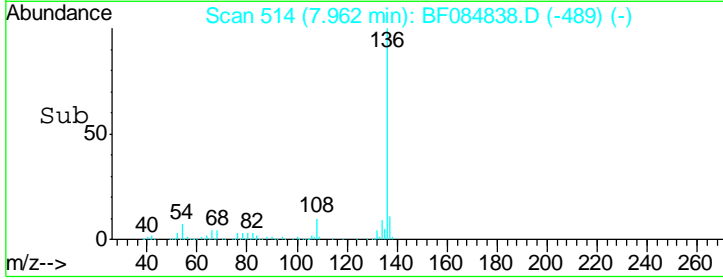
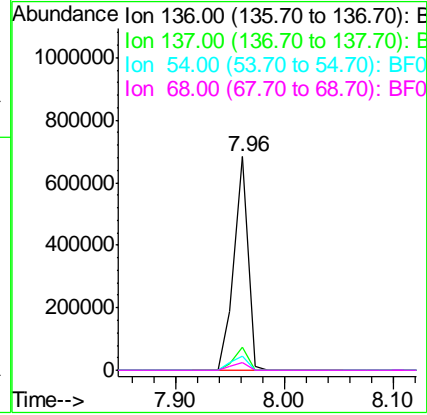
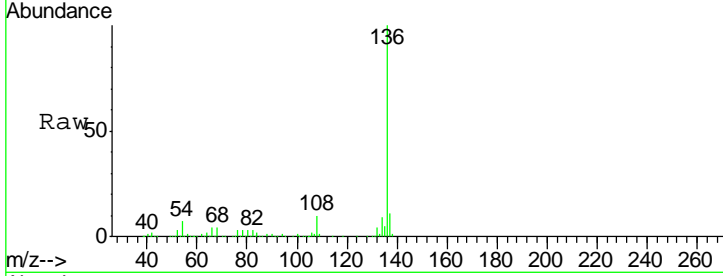




#21
 Naphthalene-d8
 Concen: 20.00 ng
 RT: 7.96 min Scan# 514
 Delta R.T. -0.01 min
 Lab File: BF084838.D
 Acq: 4 Feb 2016 19:43

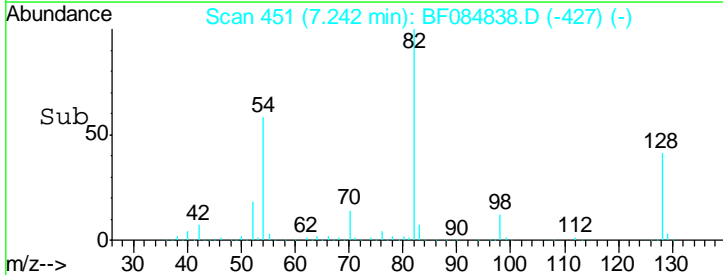
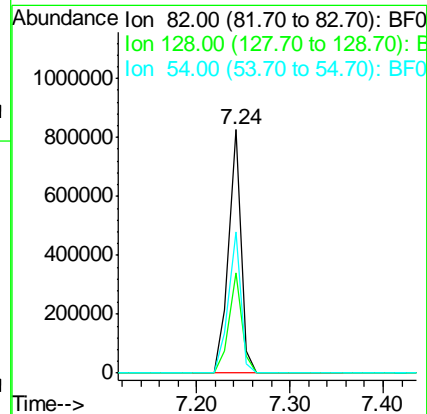
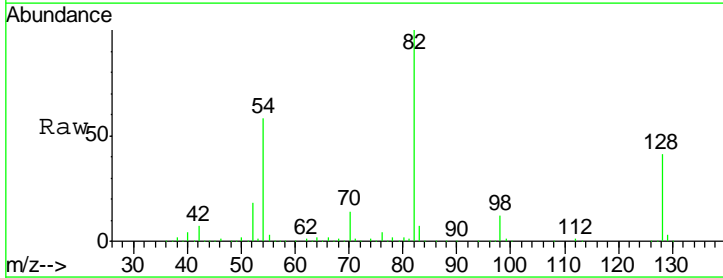
Instrument :
 BNA_F
 ClientSampled :
 S4-B012(1-3)

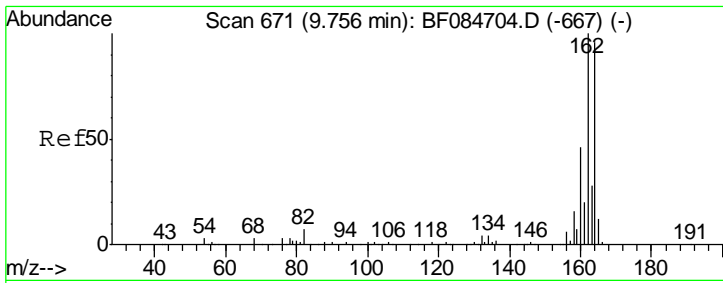
Tgt Ion	Resp	Lower	Upper
136	100		
137	10.9	8.7	13.1
54	6.8	5.8	8.8
68	3.8	4.2	6.2#



#23
 Nitrobenzene-d5
 Concen: 71.00 ng
 RT: 7.24 min Scan# 451
 Delta R.T. -0.02 min
 Lab File: BF084838.D
 Acq: 4 Feb 2016 19:43

Tgt Ion	Resp	Lower	Upper
82	100		
128	41.3	34.6	51.8
54	58.0	38.4	57.6#

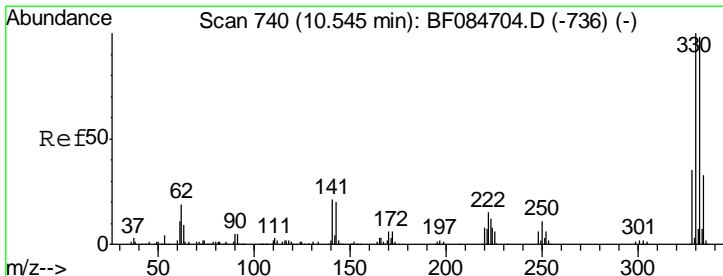
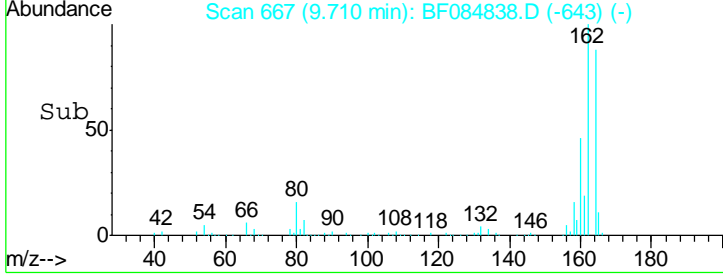
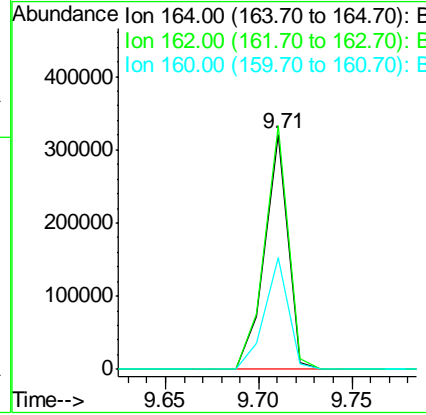
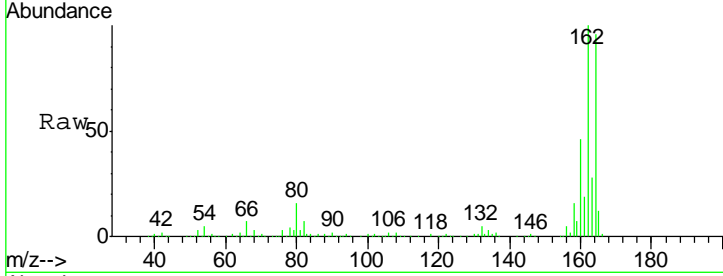




#38
 Acenaphthene-d10
 Concen: 20.00 ng
 RT: 9.71 min Scan# 667
 Delta R.T. -0.02 min
 Lab File: BF084838.D
 Acq: 4 Feb 2016 19:43

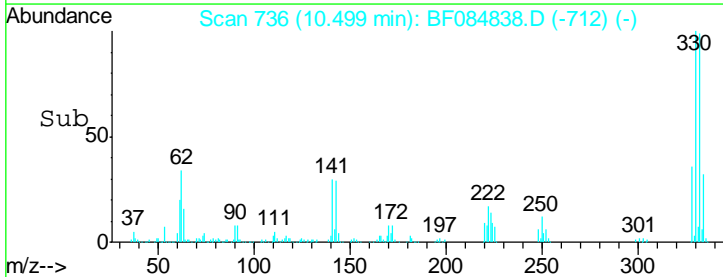
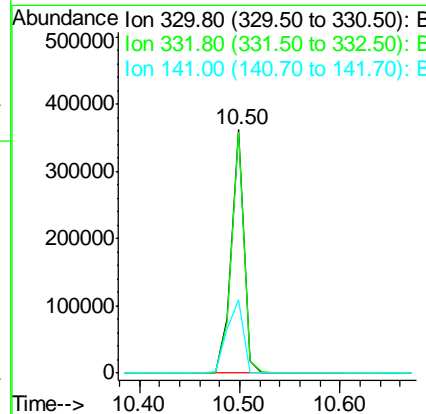
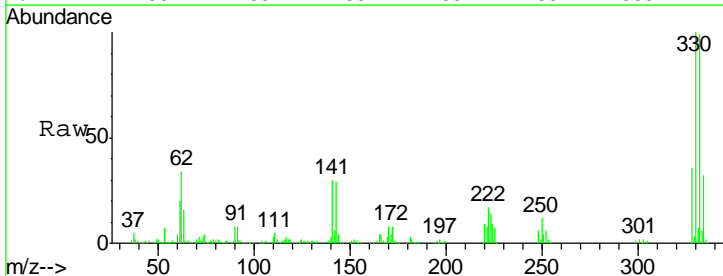
Instrument :
 BNA_F
 ClientSampleId :
 S4-B012(1-3)

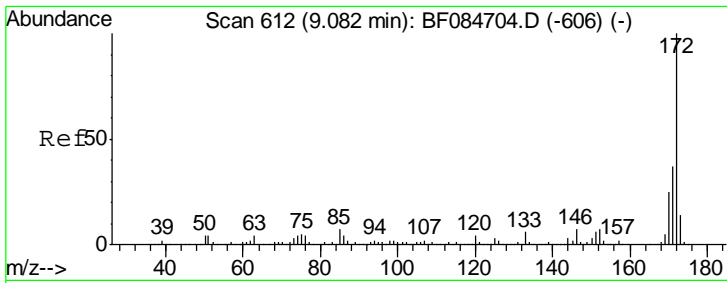
Tgt Ion	Resp	Lower	Upper
164	100		
162	103.7	85.1	127.7
160	47.5	37.5	56.3



#41
 2,4,6-Tribromophenol
 Concen: 110.51 ng
 RT: 10.50 min Scan# 736
 Delta R.T. -0.02 min
 Lab File: BF084838.D
 Acq: 4 Feb 2016 19:43

Tgt Ion	Resp	Lower	Upper
330	100		
332	98.2	76.6	114.8
141	38.4	27.8	41.6



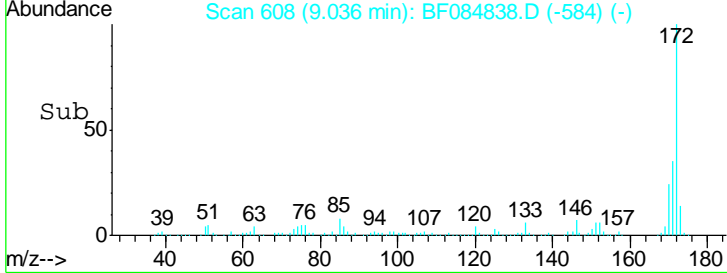
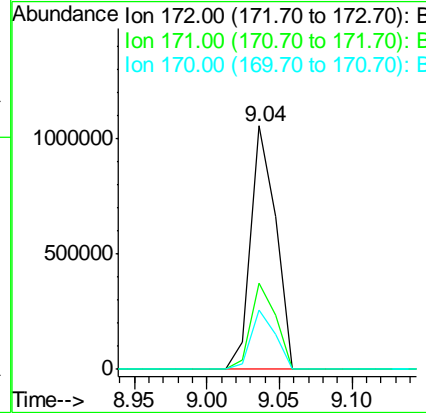
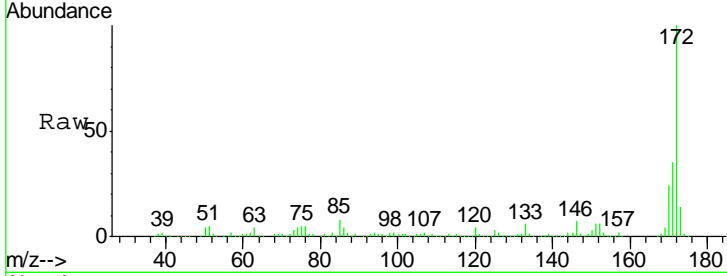


#44
 2-Fluorobiphenyl
 Concen: 73.68 ng
 RT: 9.04 min Scan# 608
 Delta R.T. -0.02 min
 Lab File: BF084838.D
 Acq: 4 Feb 2016 19:43

Instrument :
 BNA_F
ClientSampled :
 S4-B012(1-3)

Tgt Ion:172 Resp: 1267208

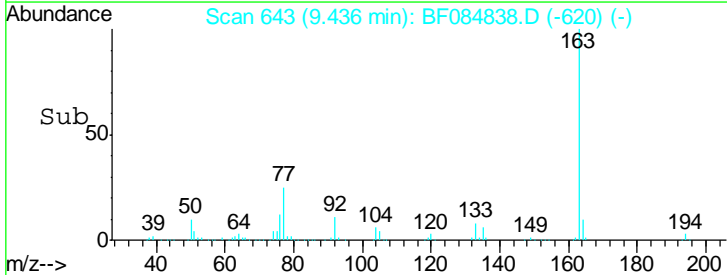
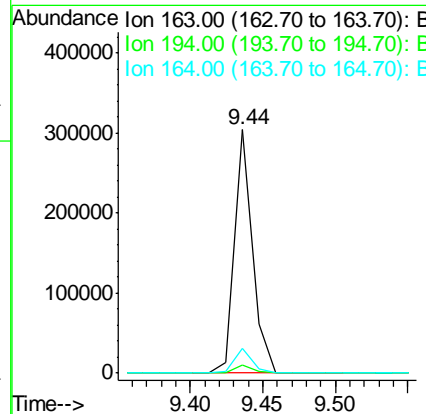
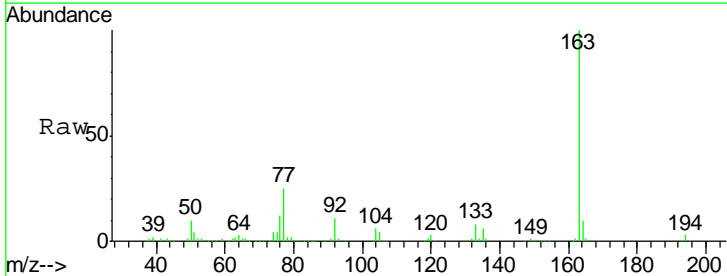
Ion	Ratio	Lower	Upper
172	100		
171	35.5	28.9	43.3
170	24.4	18.6	27.8

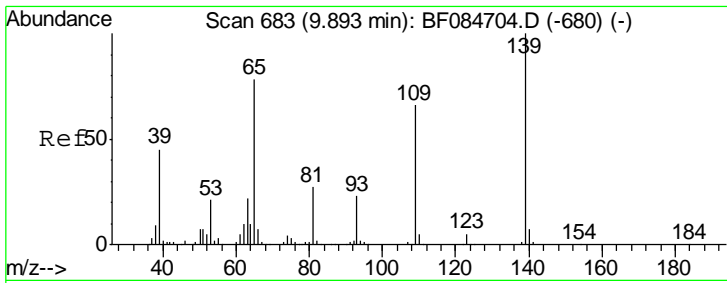


#49
 Dimethylphthalate
 Concen: 12.35 ng
 RT: 9.44 min Scan# 643
 Delta R.T. -0.03 min
 Lab File: BF084838.D
 Acq: 4 Feb 2016 19:43

Tgt Ion:163 Resp: 260669

Ion	Ratio	Lower	Upper
163	100		
194	3.2	8.0	12.0#
164	10.3	8.0	12.0

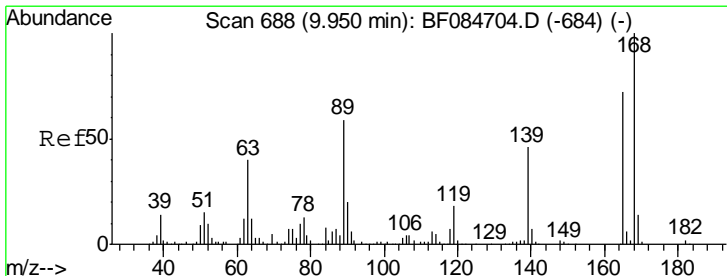
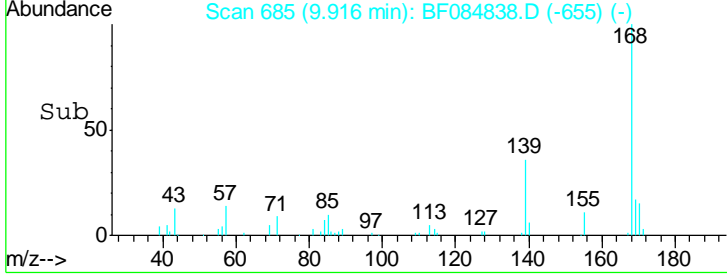
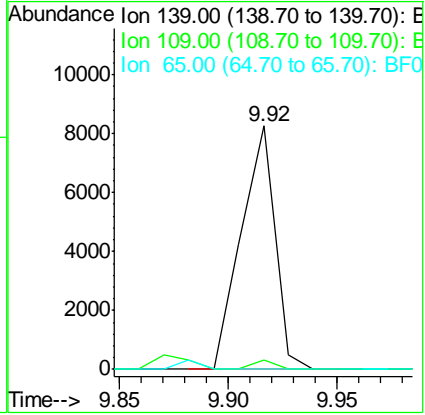
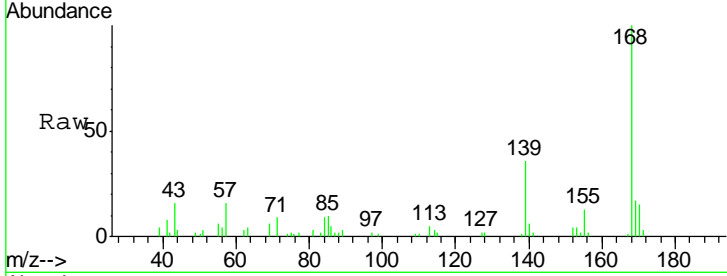




#55
 4-Nitrophenol
 Concen: 2.33 ng
 RT: 9.92 min Scan# 685
 Delta R.T. 0.05 min
 Lab File: BF084838.D
 Acq: 4 Feb 2016 19:43

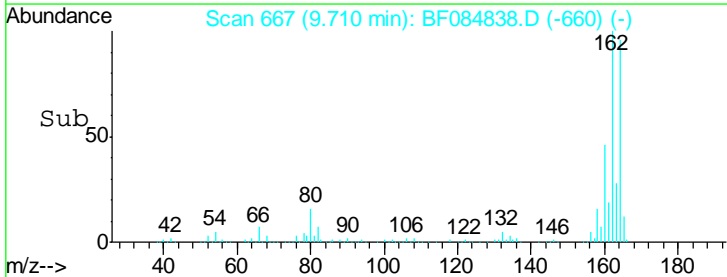
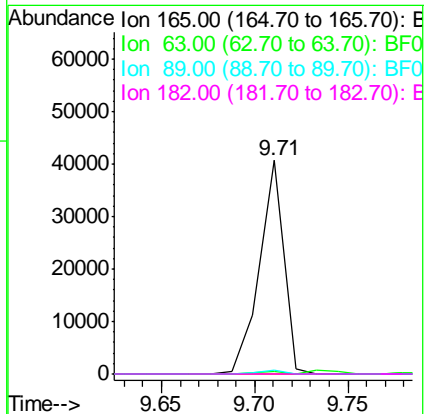
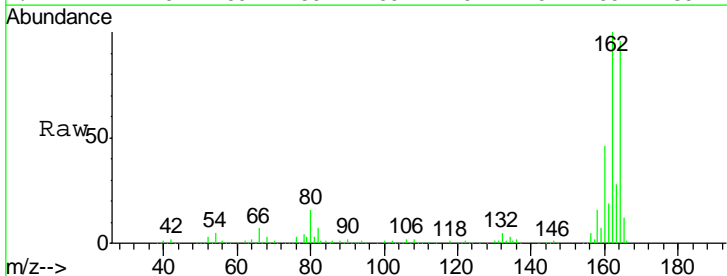
Instrument :
 BNA_F
ClientSampled :
 S4-B012(1-3)

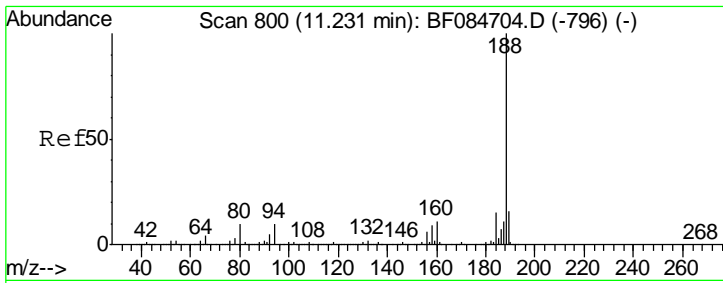
Tgt Ion	Resp	Lower	Upper
139	100		
109	3.9	58.5	98.5#
65	0.0	57.6	97.6#



#56
 2,4-Dinitrotoluene
 Concen: 6.22 ng
 RT: 9.71 min Scan# 667
 Delta R.T. -0.22 min
 Lab File: BF084838.D
 Acq: 4 Feb 2016 19:43

Tgt Ion	Resp	Lower	Upper
165	100		
63	1.2	36.7	55.1#
89	2.1	61.9	92.9#
182	0.0	2.0	3.0#

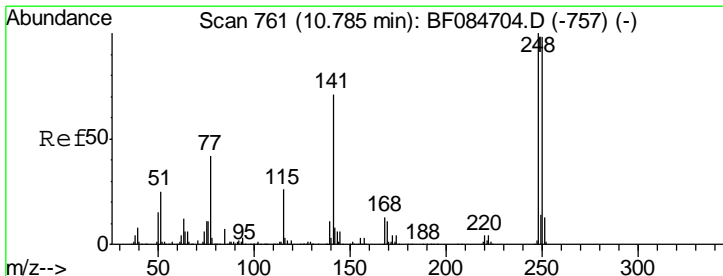
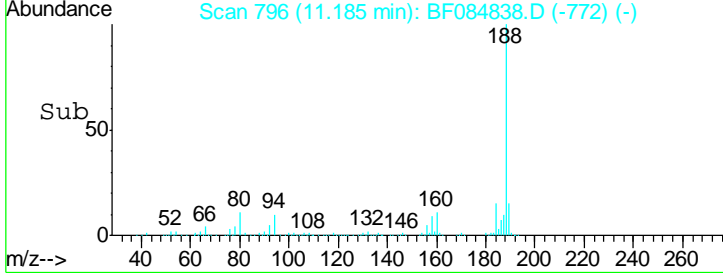
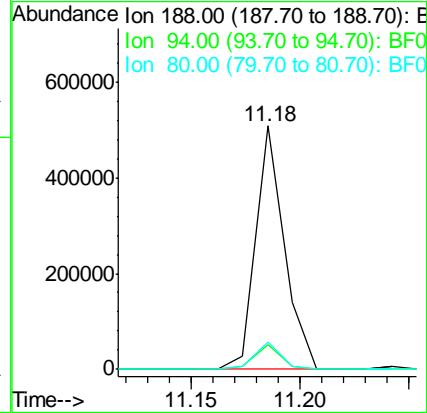
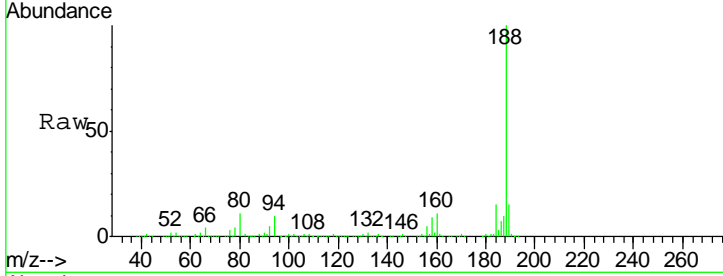




#63
 Phenanthrene-d10
 Concen: 20.00 ng
 RT: 11.18 min Scan# 796
 Delta R.T. -0.02 min
 Lab File: BF084838.D
 Acq: 4 Feb 2016 19:43

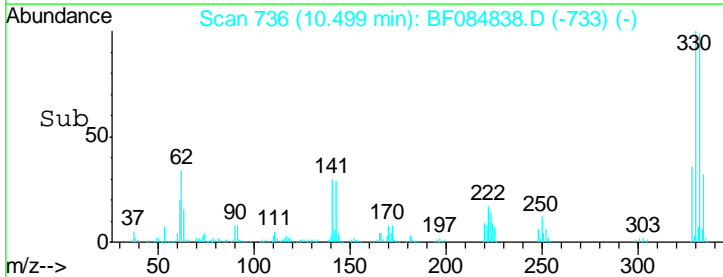
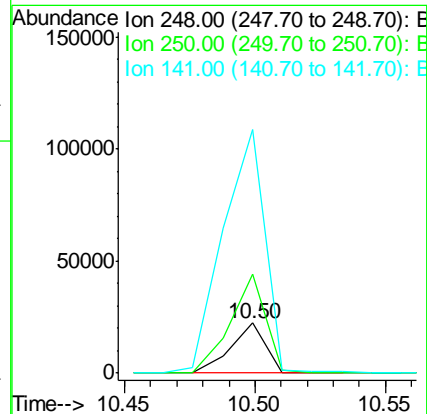
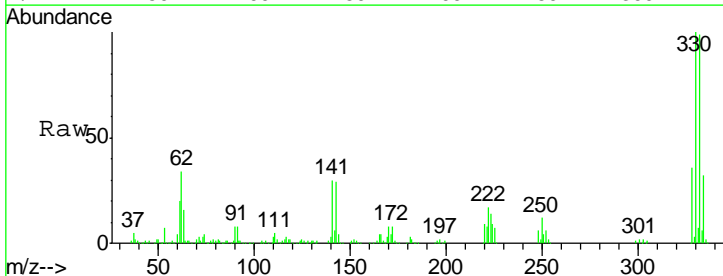
Instrument :
 BNA_F
 ClientSampled :
 S4-B012(1-3)

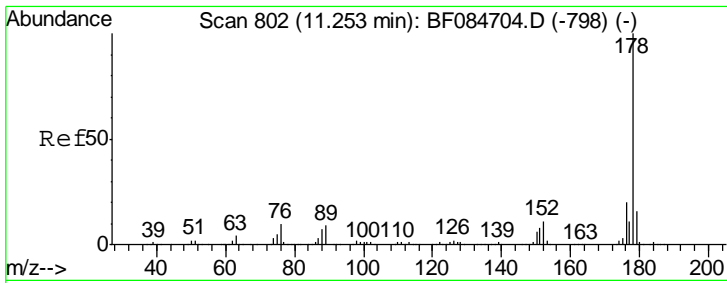
Tgt Ion	Resp	Lower	Upper
188	100		
94	10.1	9.0	13.4
80	11.0	9.6	14.4



#66
 4-Bromophenyl-phenylether
 Concen: 4.06 ng
 RT: 10.50 min Scan# 736
 Delta R.T. -0.26 min
 Lab File: BF084838.D
 Acq: 4 Feb 2016 19:43

Tgt Ion	Resp	Lower	Upper
248	100		
250	198.2	78.4	117.6#
141	484.9	44.0	66.0#



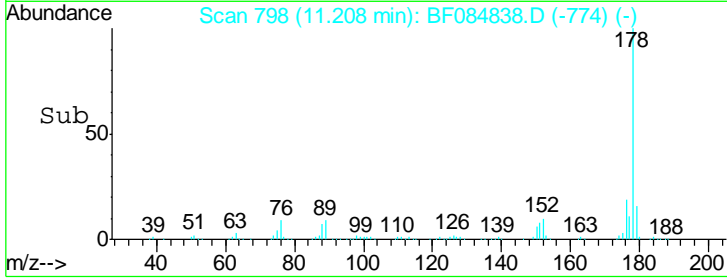
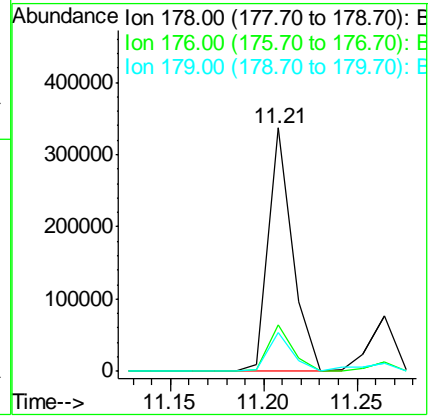
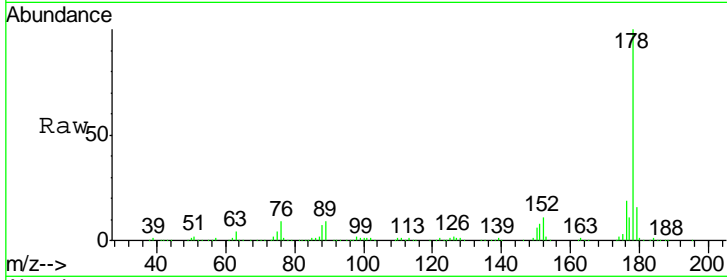


#70
 Phenanthrene
 Concen: 11.87 ng
 RT: 11.21 min Scan# 798
 Delta R.T. -0.02 min
 Lab File: BF084838.D
 Acq: 4 Feb 2016 19:43

Instrument :
 BNA_F
 ClientSampled :
 S4-B012(1-3)

Tgt Ion:178 Resp: 306736

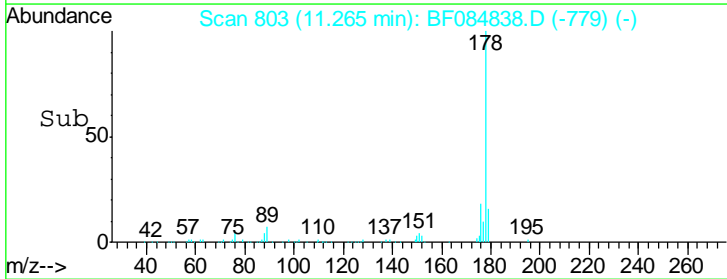
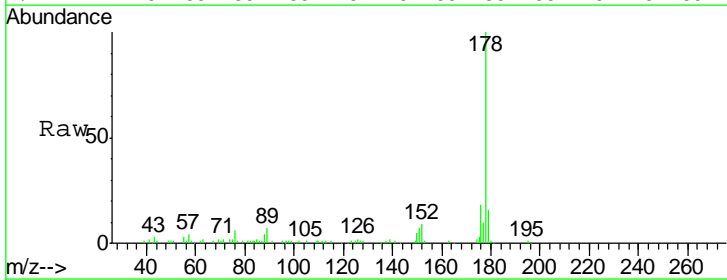
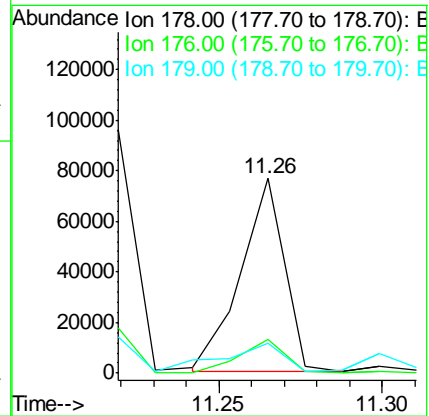
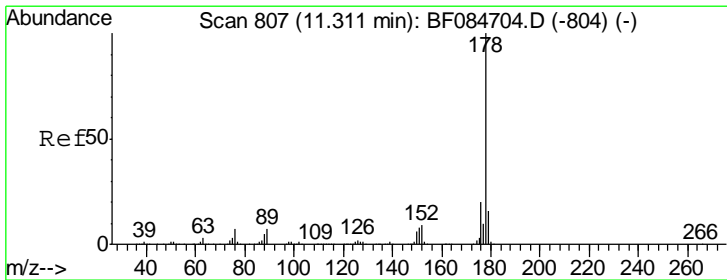
Ion	Ratio	Lower	Upper
178	100		
176	19.1	15.3	22.9
179	15.9	12.0	18.0

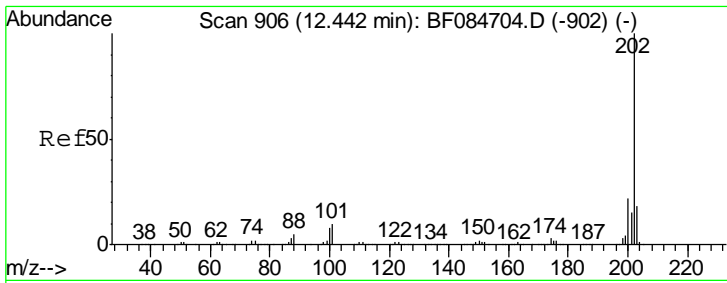


#71
 Anthracene
 Concen: 2.68 ng
 RT: 11.26 min Scan# 803
 Delta R.T. -0.02 min
 Lab File: BF084838.D
 Acq: 4 Feb 2016 19:43

Tgt Ion:178 Resp: 69861

Ion	Ratio	Lower	Upper
178	100		
176	17.6	15.4	23.0
179	15.5	12.5	18.7

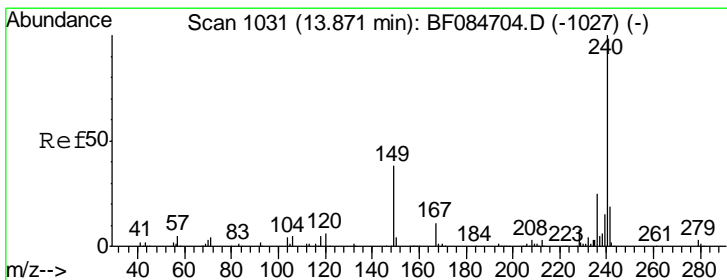
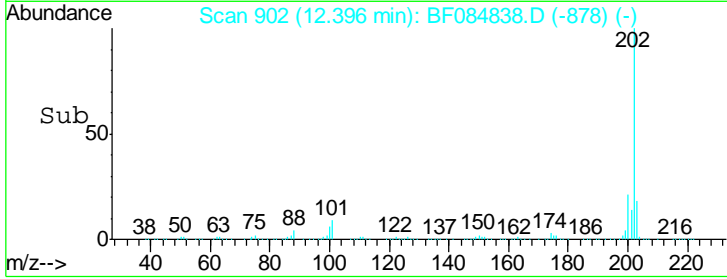
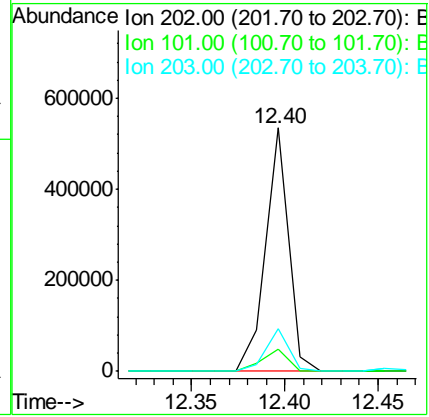
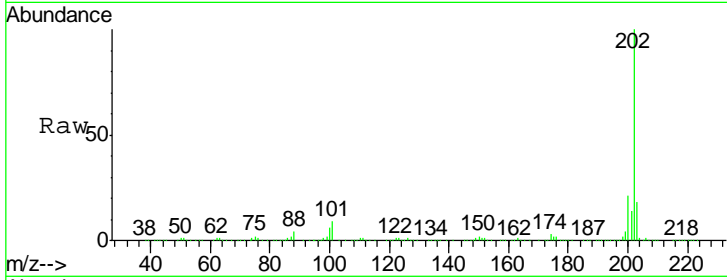




#74
 Fluoranthene
 Concen: 17.29 ng
 RT: 12.40 min Scan# 902
 Delta R.T. -0.02 min
 Lab File: BF084838.D
 Acq: 4 Feb 2016 19:43

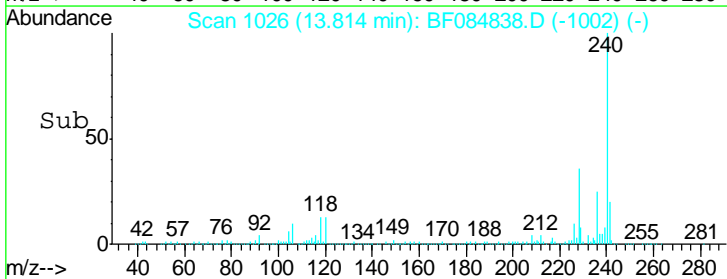
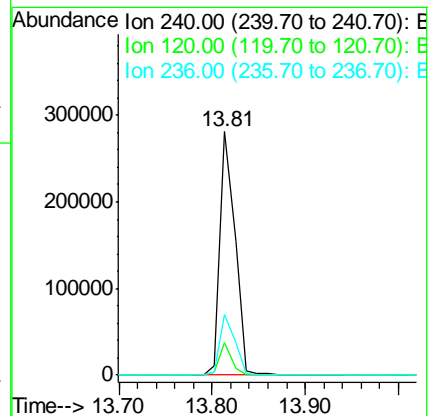
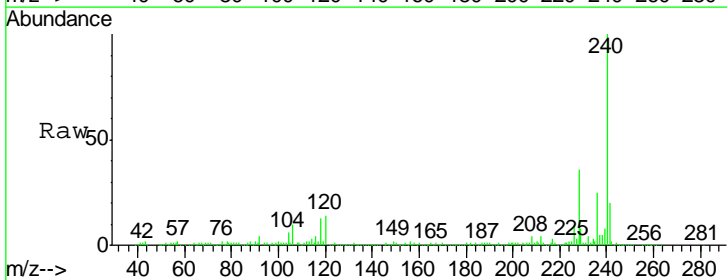
Instrument :
 BNA_F
 ClientSampled :
 S4-B012(1-3)

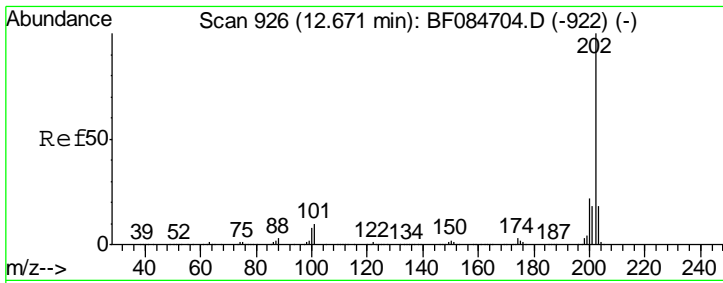
Tgt Ion	Resp	Lower	Upper
202	451962		
101	9.3	0.0	32.8
203	17.6	0.0	37.9



#75
 Chrysene-d12
 Concen: 20.00 ng
 RT: 13.81 min Scan# 1026
 Delta R.T. -0.02 min
 Lab File: BF084838.D
 Acq: 4 Feb 2016 19:43

Tgt Ion	Resp	Lower	Upper
240	315164		
120	13.6	9.5	14.3
236	25.0	20.6	31.0



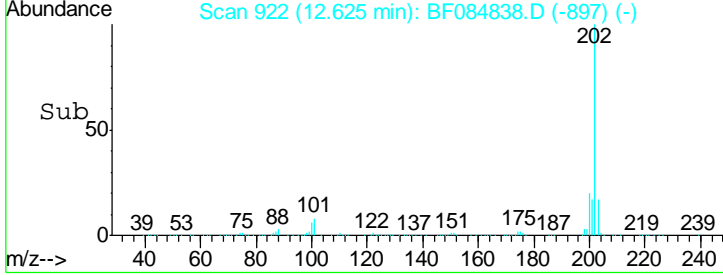
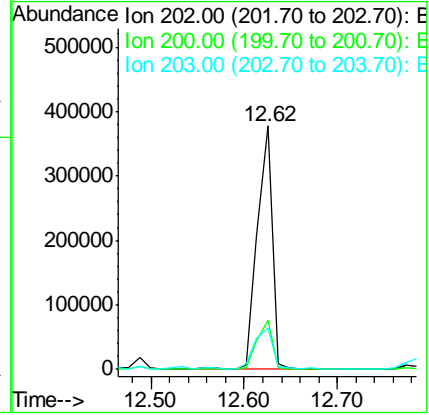
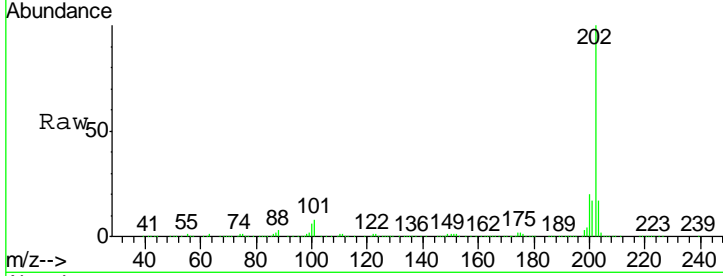


#77
 Pyrene
 Concen: 17.31 ng
 RT: 12.62 min Scan# 922
 Delta R.T. -0.01 min
 Lab File: BF084838.D
 Acq: 4 Feb 2016 19:43

Instrument :
 BNA_F
ClientSampled :
 S4-B012(1-3)

Tgt Ion: 202 Resp: 417682

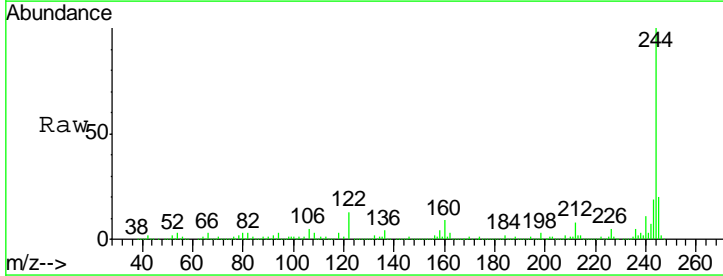
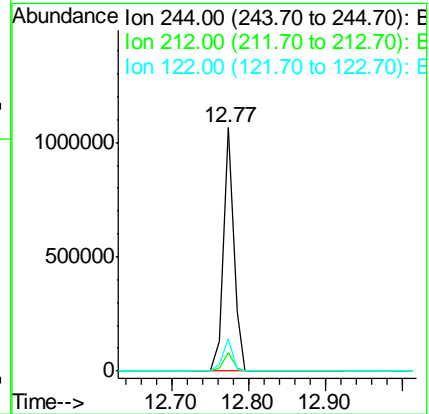
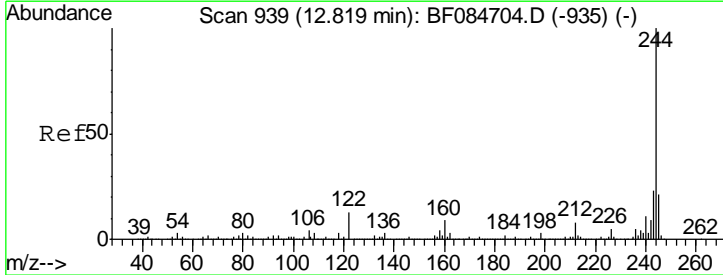
Ion	Ratio	Lower	Upper
202	100		
200	20.2	17.2	25.8
203	17.1	14.3	21.5

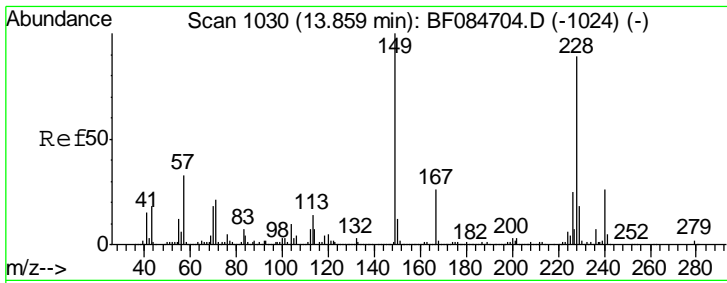


#78
 Terphenyl-d14
 Concen: 72.30 ng
 RT: 12.77 min Scan# 935
 Delta R.T. -0.02 min
 Lab File: BF084838.D
 Acq: 4 Feb 2016 19:43

Tgt Ion: 244 Resp: 1005616

Ion	Ratio	Lower	Upper
244	100		
212	7.6	5.7	8.5
122	13.2	7.4	11.0#

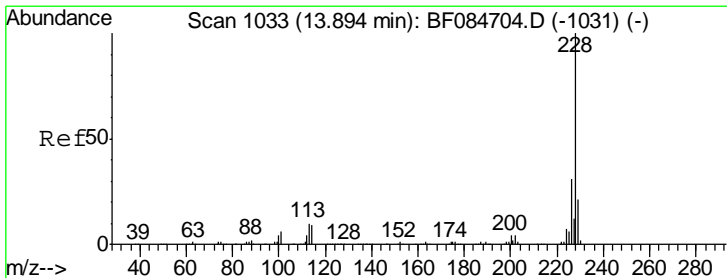
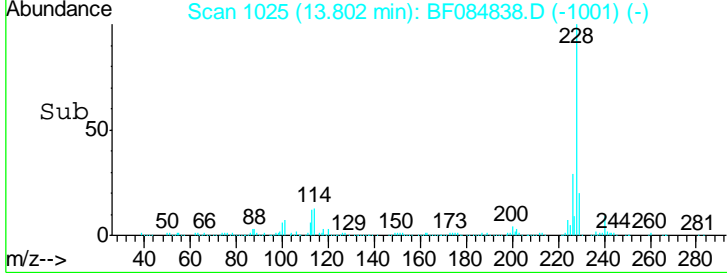
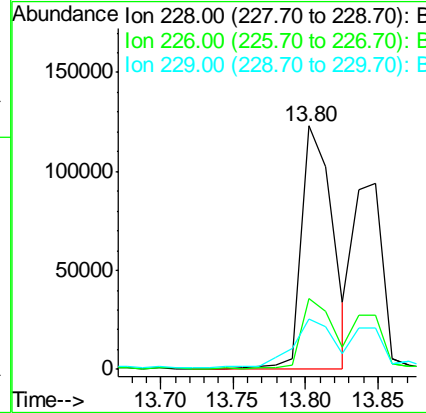
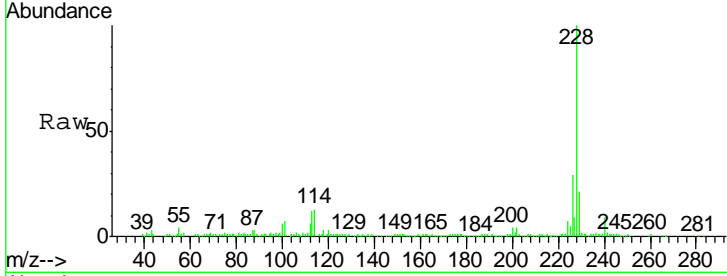




#80
 Benzo(a)anthracene
 Concen: 9.32 ng
 RT: 13.80 min Scan# 1025
 Delta R.T. -0.02 min
 Lab File: BF084838.D
 Acq: 4 Feb 2016 19:43

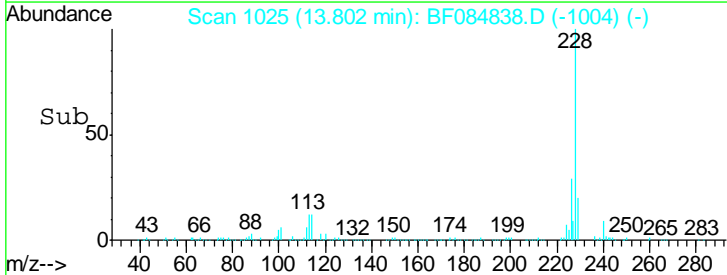
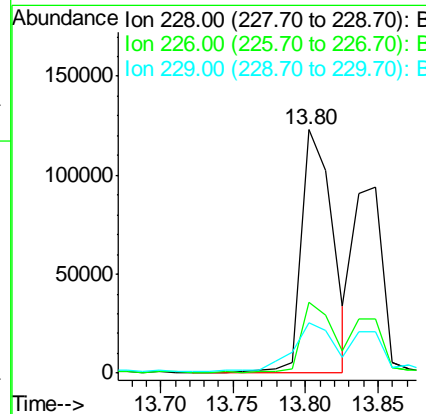
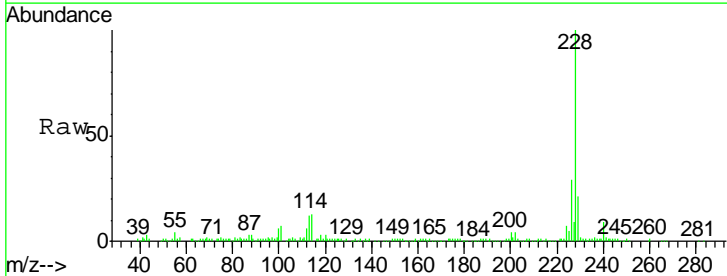
Instrument :
 BNA_F
 ClientSampled :
 S4-B012(1-3)

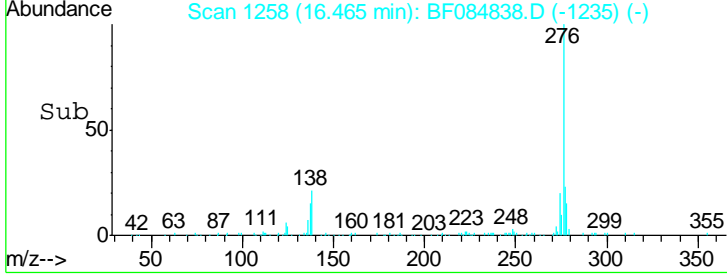
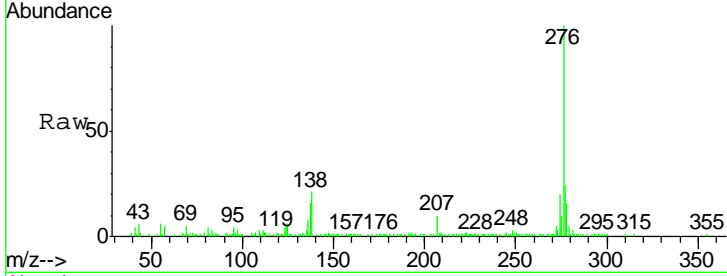
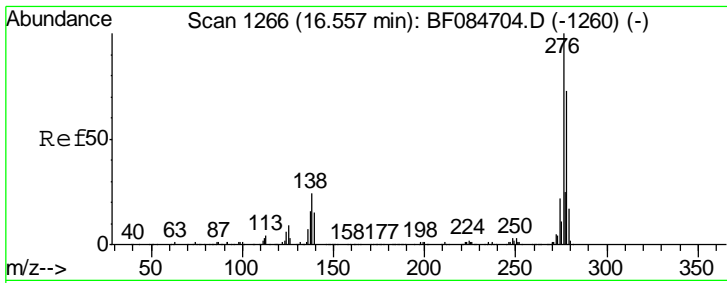
Tgt Ion	Resp	Lower	Upper
228	182369		
226	29.3	21.8	32.6
229	20.7	15.8	23.8



#82
 Chrysene
 Concen: 9.61 ng
 RT: 13.80 min Scan# 1025
 Delta R.T. -0.06 min
 Lab File: BF084838.D
 Acq: 4 Feb 2016 19:43

Tgt Ion	Resp	Lower	Upper
228	182369		
226	29.3	24.3	36.5
229	20.7	16.1	24.1

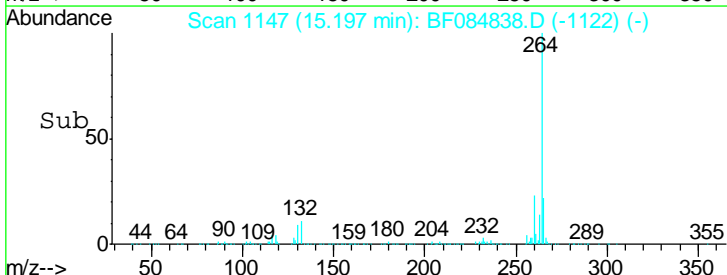
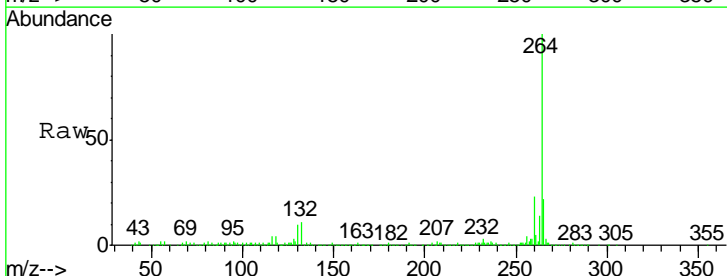
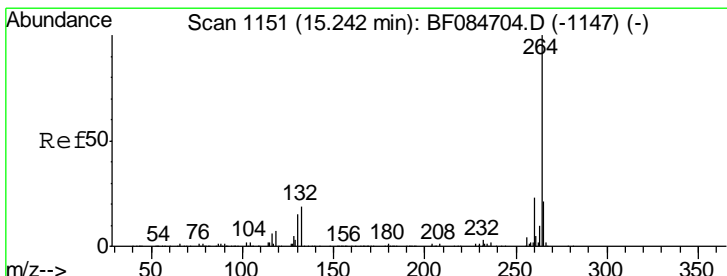
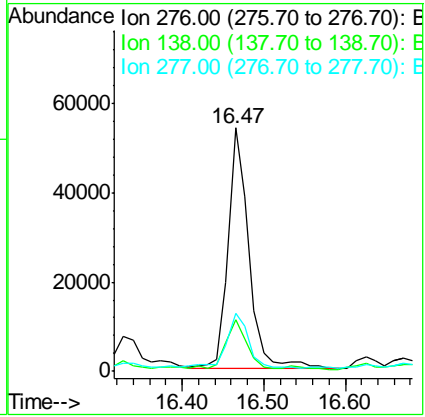




#85
 Indeno(1,2,3-cd)pyrene
 Concen: 6.39 ng
 RT: 16.47 min Scan# 1258
 Delta R.T. -0.03 min
 Lab File: BF084838.D
 Acq: 4 Feb 2016 19:43

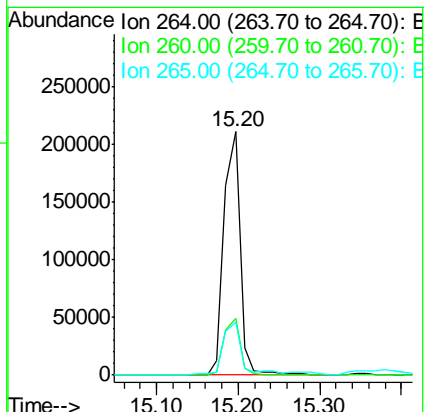
Instrument :
 BNA_F
 ClientSampleId :
 S4-B012(1-3)

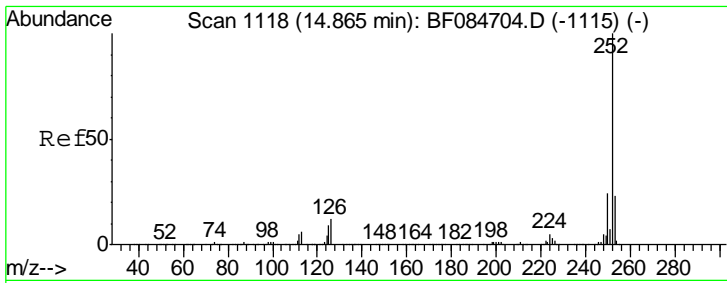
Tgt Ion	Resp	Lower	Upper
276	95365		
276	100		
138	21.3	20.6	30.8
277	25.4	20.1	30.1



#86
 Perylene-d12
 Concen: 20.00 ng
 RT: 15.20 min Scan# 1147
 Delta R.T. -0.01 min
 Lab File: BF084838.D
 Acq: 4 Feb 2016 19:43

Tgt Ion	Resp	Lower	Upper
264	293801		
264	100		
260	23.4	19.4	29.2
265	21.9	17.8	26.6

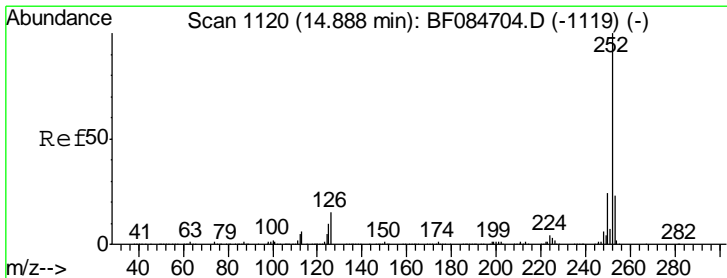
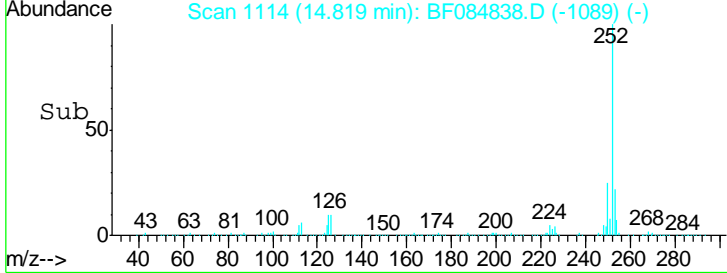
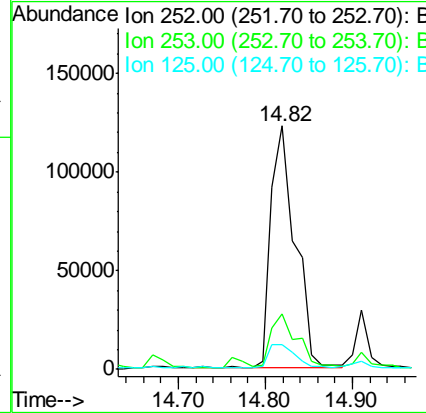
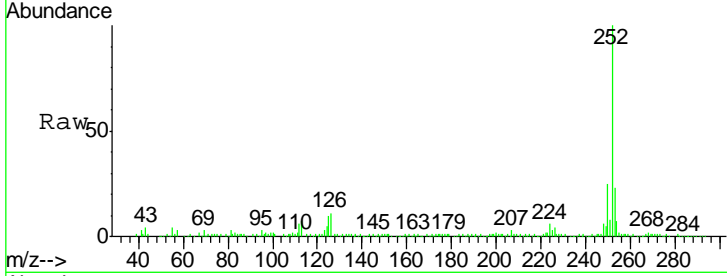




#87
 Benzo(b)fluoranthene
 Concen: 12.22 ng
 RT: 14.82 min Scan# 1114
 Delta R.T. -0.01 min
 Lab File: BF084838.D
 Acq: 4 Feb 2016 19:43

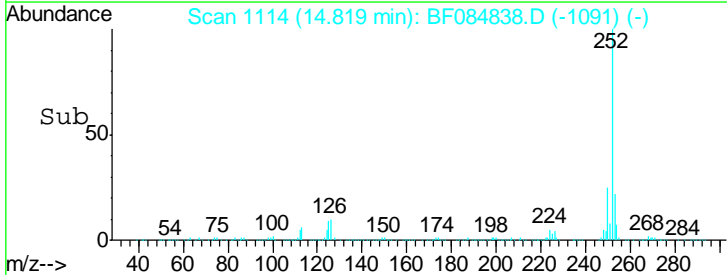
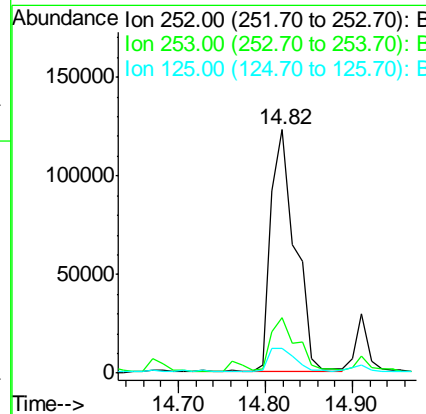
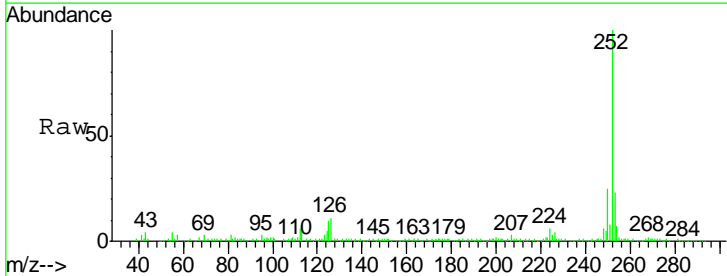
Instrument :
 BNA_F
 ClientSampled :
 S4-B012(1-3)

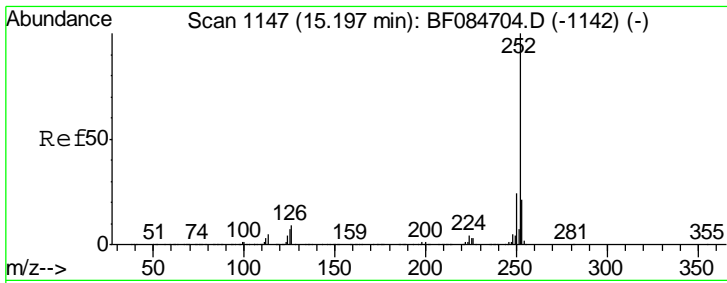
Tgt Ion	Resp	Lower	Upper
252	100		
253	22.9	17.3	25.9
125	10.3	6.5	9.7#



#88
 Benzo(k)fluoranthene
 Concen: 14.78 ng
 RT: 14.82 min Scan# 1114
 Delta R.T. -0.03 min
 Lab File: BF084838.D
 Acq: 4 Feb 2016 19:43

Tgt Ion	Resp	Lower	Upper
252	100		
253	22.9	18.1	27.1
125	10.3	9.0	13.6

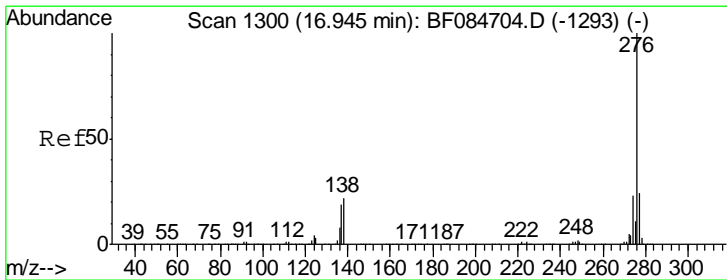
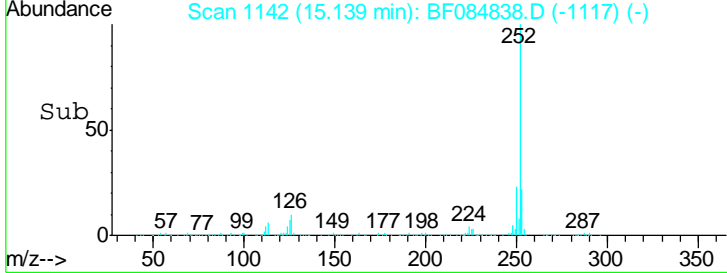
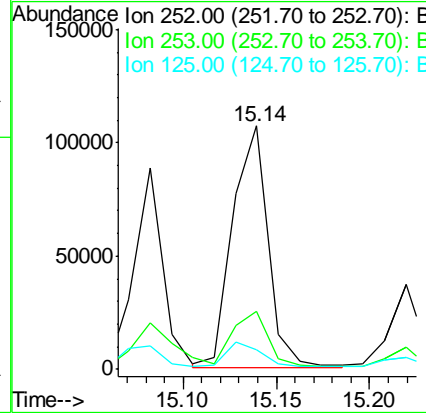
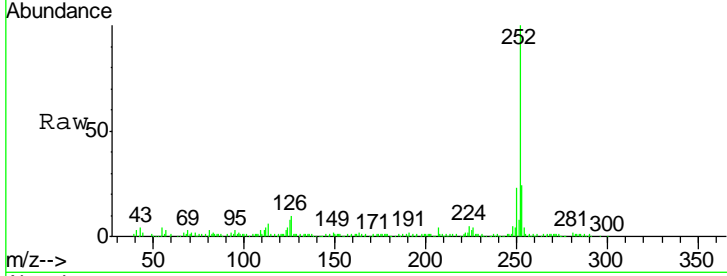




#89
 Benzo(a)pyrene
 Concen: 8.50 ng
 RT: 15.14 min Scan# 1142
 Delta R.T. -0.01 min
 Lab File: BF084838.D
 Acq: 4 Feb 2016 19:43

Instrument :
 BNA_F
 ClientSampled :
 S4-B012(1-3)

Tgt Ion	Resp	Lower	Upper
252	142988		
253	23.8	17.3	25.9
125	8.2	7.0	10.4



#91
 Benzo(g,h,i)perylene
 Concen: 6.54 ng
 RT: 16.85 min Scan# 1292
 Delta R.T. -0.03 min
 Lab File: BF084838.D
 Acq: 4 Feb 2016 19:43

Tgt Ion	Resp	Lower	Upper
276	93329		
277	25.1	18.8	28.2
138	22.9	17.8	26.6

