

Data Path : Z:\SVOASRV\HPCHEM1\BNA F\DATA\BF020420\  
 Data File : BF118814.D  
 Acq On : 4 Feb 2020 21:12  
 Operator : CG/JU  
 Sample : L1383-04  
 Misc :  
 ALS Vial : 16 Sample Multiplier: 1

Instrument :  
 BNA\_F  
 ClientSampleId :  
 TP-A-1

Quant Time: Feb 05 07:04:56 2020  
 Quant Method : Z:\SVOASRV\HPCHEM1\BNA F\METHODS\8270-BF020320.M  
 Quant Title : ASP BNA STANDARDS FOR 5 POINT CALIBRATION  
 QLast Update : Mon Feb 03 16:26:03 2020  
 Response via : Initial Calibration

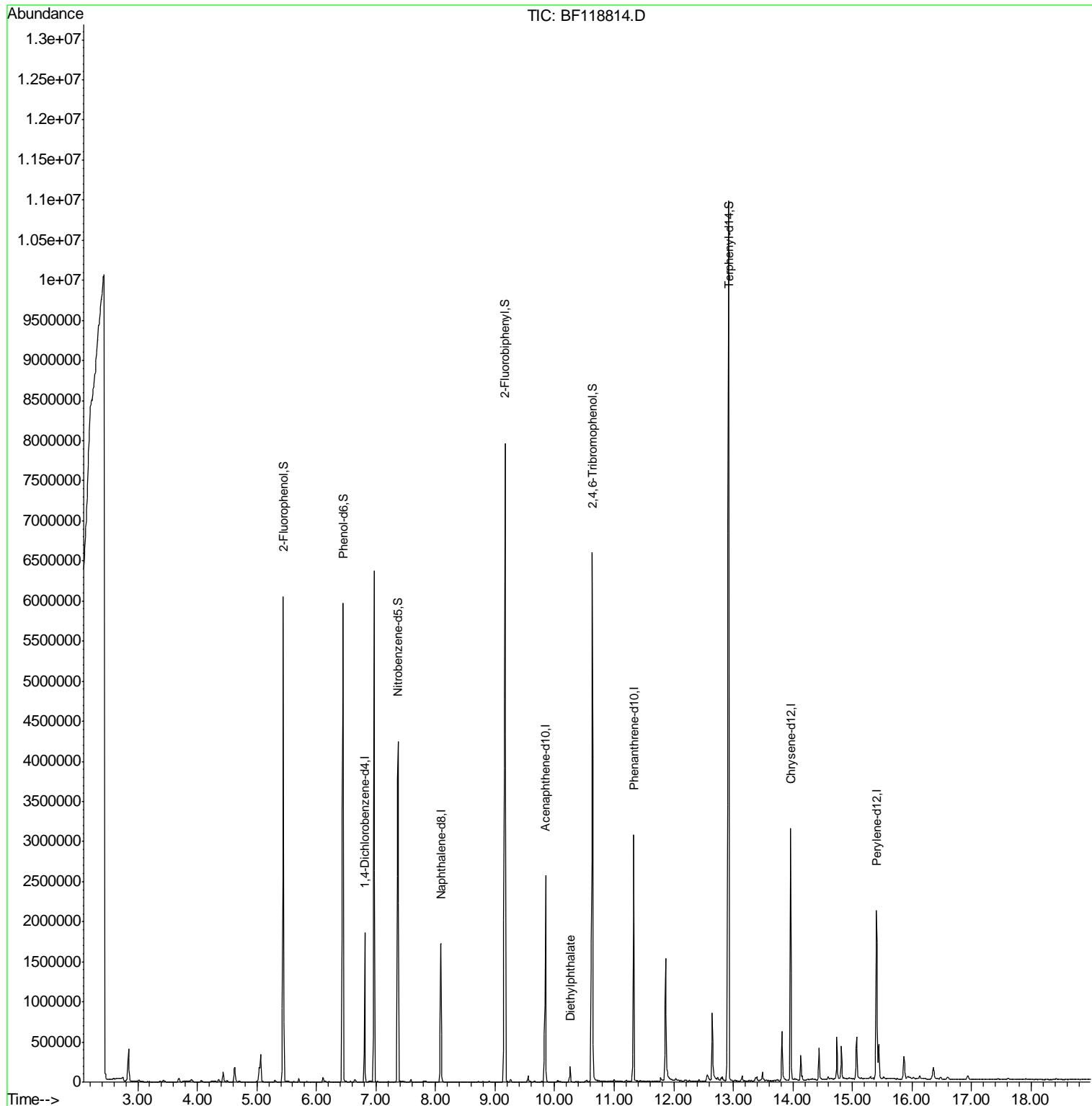
Internal Standards	R.T.	QIon	Response	Conc	Units	Dev(Min)
1) 1,4-Dichlorobenzene-d4	6.81	152	286585	20.00	ng	0.00
21) Naphthalene-d8	8.09	136	1089922	20.00	ng	-0.01
39) Acenaphthene-d10	9.85	164	625229	20.00	ng	-0.01
64) Phenanthrene-d10	11.33	188	1216885	20.00	ng	-0.01
76) Chrysene-d12	13.96	240	1034211	20.00	ng	-0.02
87) Perylene-d12	15.40	264	1014094	20.00	ng	-0.02
System Monitoring Compounds						
5) 2-Fluorophenol	5.45	112	2112142	139.51	ng	0.01
7) Phenol-d6	6.45	99	2469139	131.38	ng	0.00
23) Nitrobenzene-d5	7.37	82	1757618	96.12	ng	-0.01
42) 2,4,6-Tribromophenol	10.63	330	1192634	159.42	ng	-0.01
45) 2-Fluorobiphenyl	9.17	172	3647364	104.29	ng	-0.01
79) Terphenyl-d14	12.92	244	4730861	93.96	ng	0.00
Target Compounds						Qvalue
60) Diethylphthalate	10.26	149	85697	2.070	ng	98

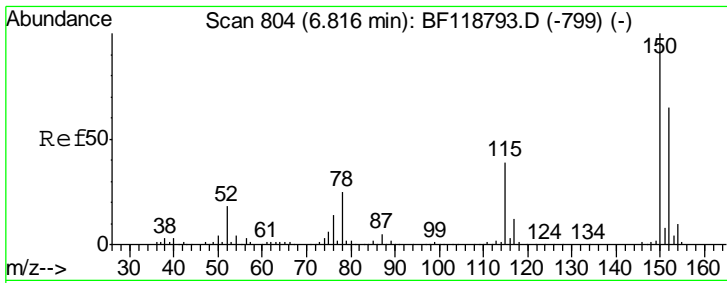
(#) = qualifier out of range (m) = manual integration (+) = signals summed

Data Path : Z:\SVOASRV\HPCHEM1\BNA F\DATA\BF020420\  
 Data File : BF118814.D  
 Acq On : 4 Feb 2020 21:12  
 Operator : CG/JU  
 Sample : L1383-04  
 Misc :  
 ALS Vial : 16 Sample Multiplier: 1

Instrument :  
 BNA\_F  
 ClientSampled :  
 TP-A-1

Quant Time: Feb 05 07:04:56 2020  
 Quant Method : Z:\SVOASRV\HPCHEM1\BNA F\METHODS\8270-BF020320.M  
 Quant Title : ASP BNA STANDARDS FOR 5 POINT CALIBRATION  
 QLast Update : Mon Feb 03 16:26:03 2020  
 Response via : Initial Calibration

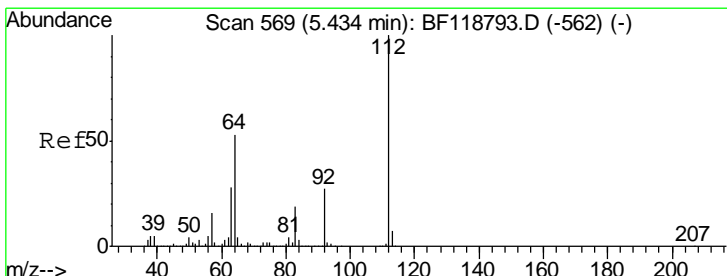
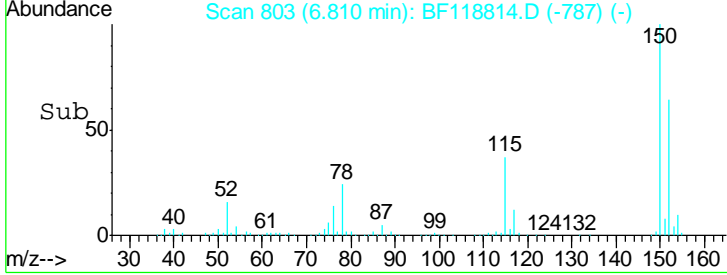
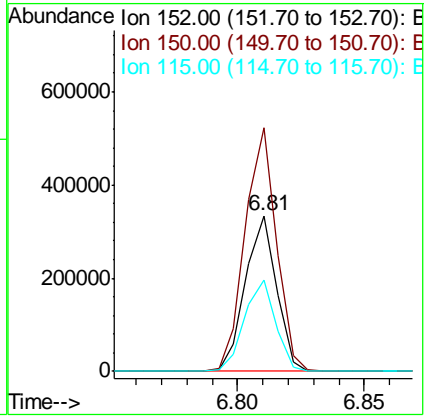
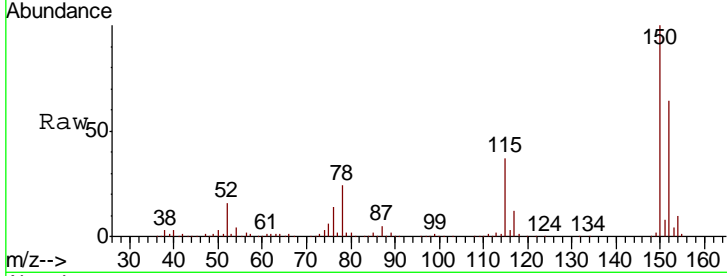




#1  
 1,4-Dichlorobenzene-d4  
 Concen: 20.000 ng  
 RT: 6.81 min Scan# 803  
 Delta R.T. -0.01 min  
 Lab File: BF118814.D  
 Acq: 4 Feb 2020 21:12

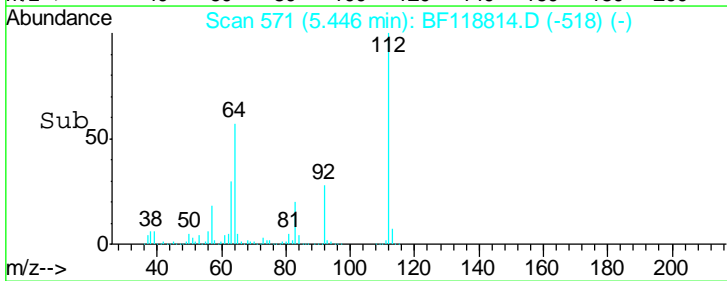
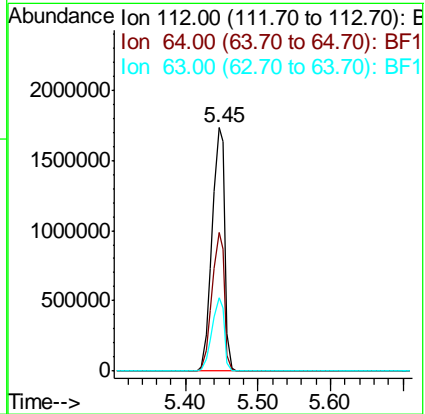
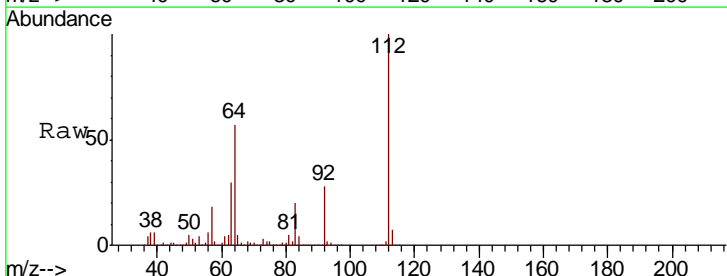
Instrument :  
 BNA\_F  
 ClientSampled :  
 TP-A-1

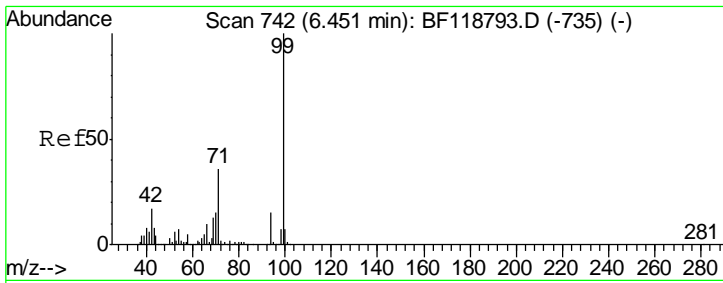
Tgt Ion	Resp	Lower	Upper
152	100		
150	156.7	123.6	185.4
115	58.6	48.2	72.2



#5  
 2-Fluorophenol  
 Concen: 139.509 ng  
 RT: 5.45 min Scan# 571  
 Delta R.T. 0.01 min  
 Lab File: BF118814.D  
 Acq: 4 Feb 2020 21:12

Tgt Ion	Resp	Lower	Upper
112	100		
64	57.1	42.6	63.8
63	30.3	22.2	33.4

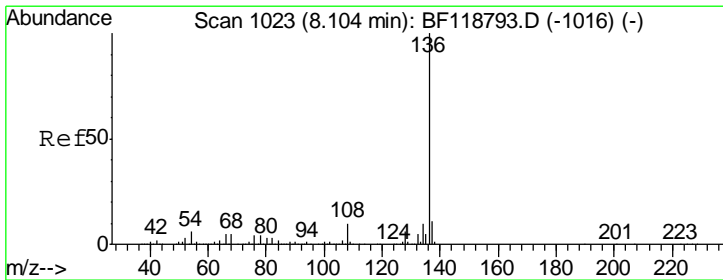
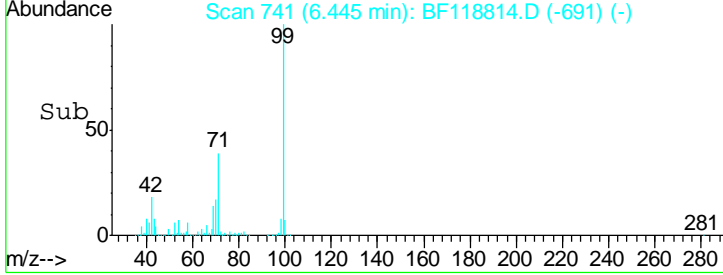
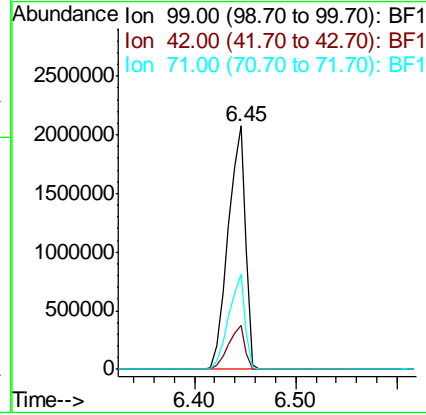
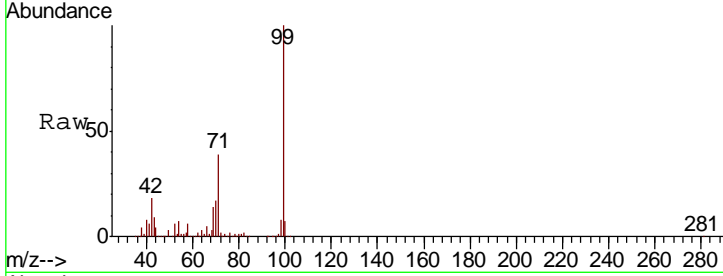




#7  
 Phenol-d6  
 Concen: 131.380 ng  
 RT: 6.45 min Scan# 741  
 Delta R.T. -0.01 min  
 Lab File: BF118814.D  
 Acq: 4 Feb 2020 21:12

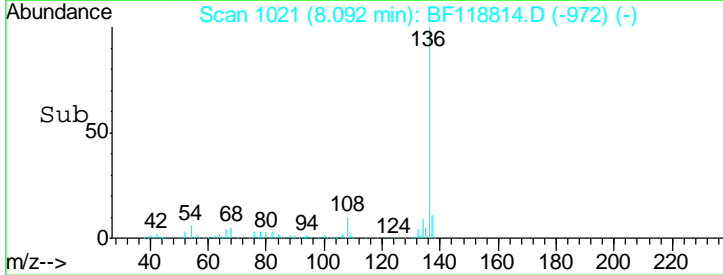
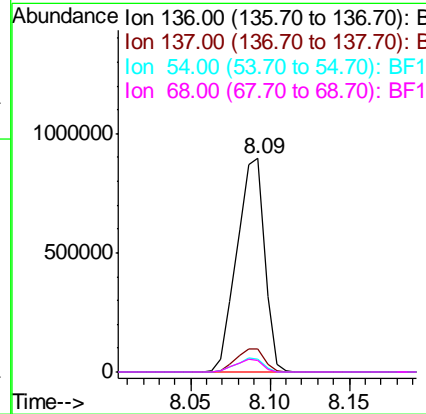
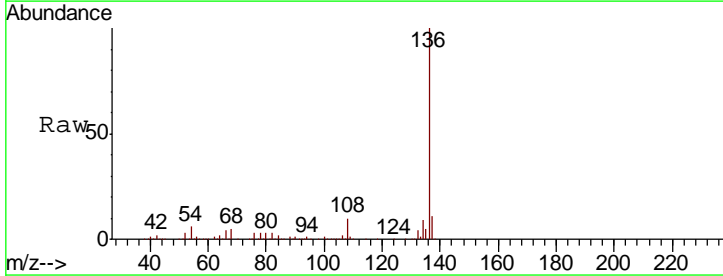
Instrument :  
 BNA\_F  
 ClientSampled :  
 TP-A-1

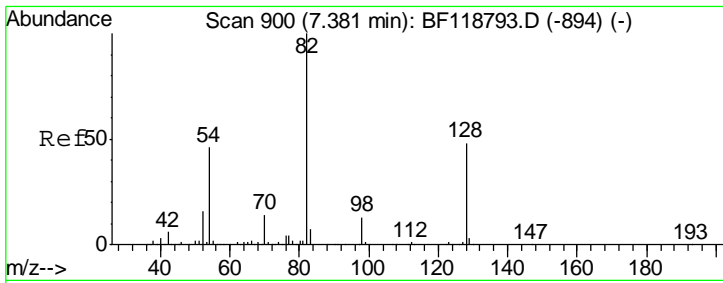
Tgt Ion	Resp	Lower	Upper
99	100		
42	17.9	13.4	20.0
71	39.0	29.0	43.6



#21  
 Naphthalene-d8  
 Concen: 20.000 ng  
 RT: 8.09 min Scan# 1021  
 Delta R.T. -0.01 min  
 Lab File: BF118814.D  
 Acq: 4 Feb 2020 21:12

Tgt Ion	Resp	Lower	Upper
136	100		
137	10.8	8.7	13.1
54	6.1	5.0	7.6
68	5.2	4.2	6.4

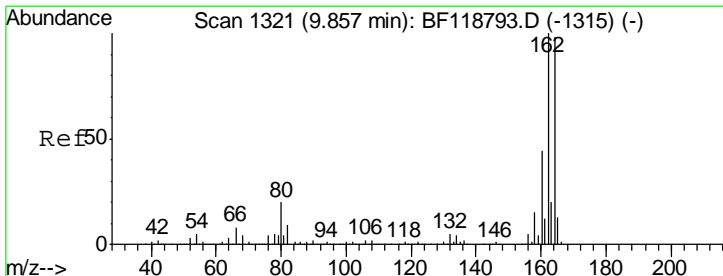
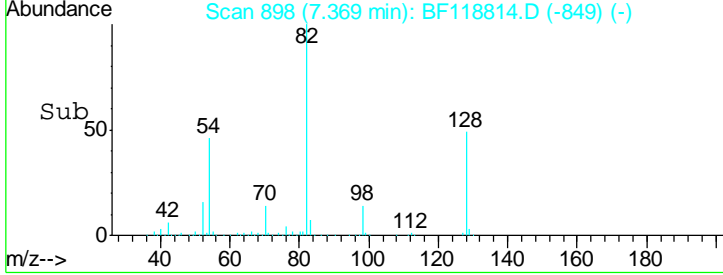
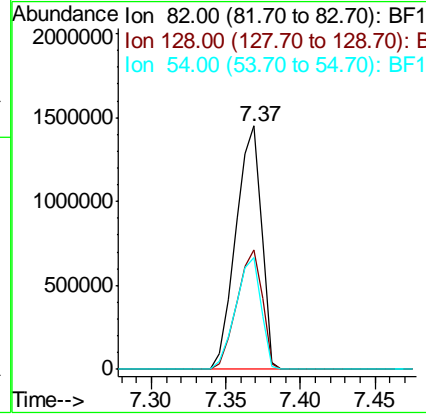
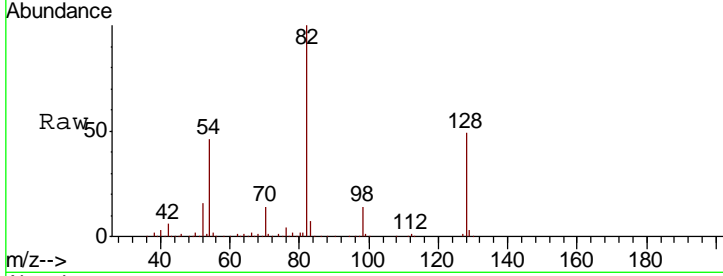




#23  
 Nitrobenzene-d5  
 Concen: 96.119 ng  
 RT: 7.37 min Scan# 898  
 Delta R.T. -0.01 min  
 Lab File: BF118814.D  
 Acq: 4 Feb 2020 21:12

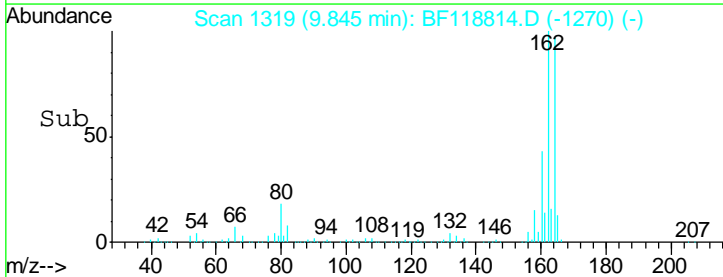
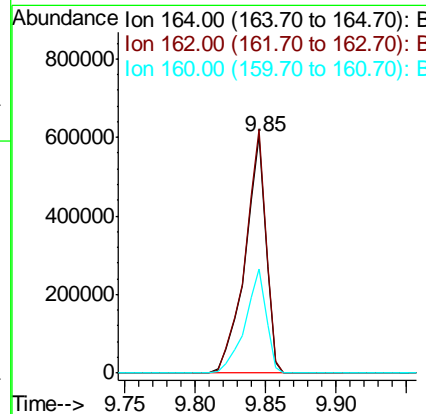
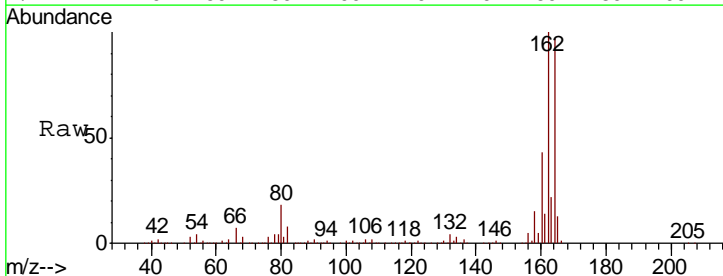
Instrument :  
 BNA\_F  
 ClientSampled :  
 TP-A-1

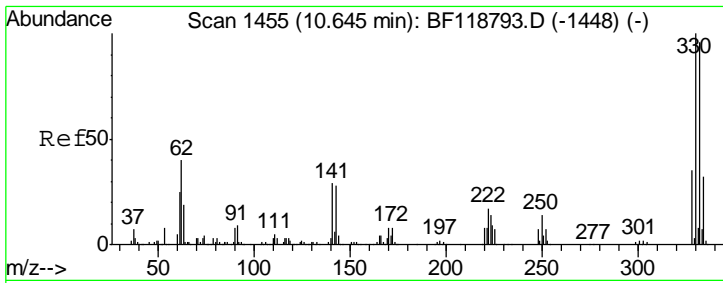
Tgt Ion	Resp	Lower	Upper
82	1757618		
128	49.2	38.5	57.7
54	45.7	36.7	55.1



#39  
 Acenaphthene-d10  
 Concen: 20.000 ng  
 RT: 9.85 min Scan# 1319  
 Delta R.T. -0.01 min  
 Lab File: BF118814.D  
 Acq: 4 Feb 2020 21:12

Tgt Ion	Resp	Lower	Upper
164	625229		
162	102.7	81.4	122.2
160	44.0	35.6	53.4

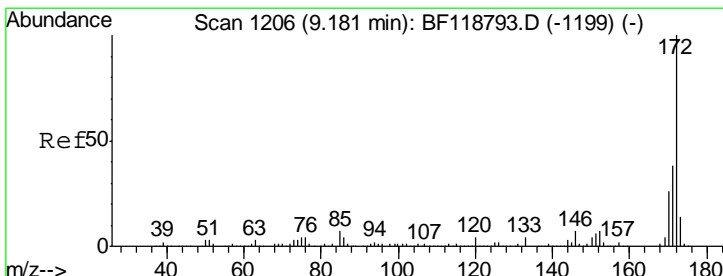
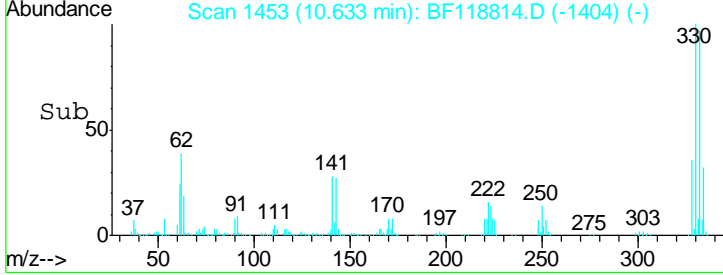
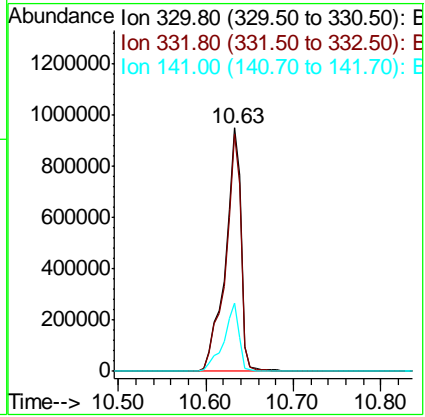
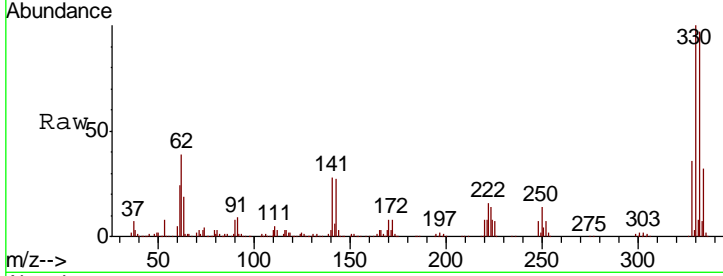




#42  
 2,4,6-Tribromophenol  
 Concen: 159.421 ng  
 RT: 10.63 min Scan# 1453  
 Delta R.T. -0.01 min  
 Lab File: BF118814.D  
 Acq: 4 Feb 2020 21:12

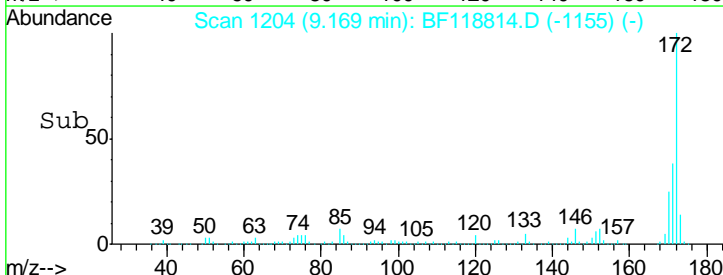
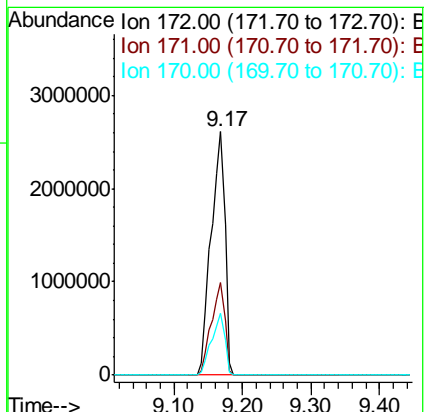
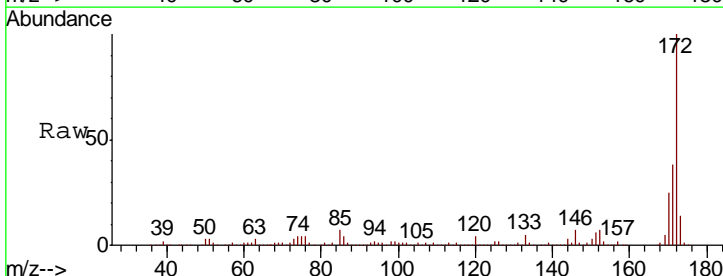
Instrument :  
 BNA\_F  
 ClientSampled :  
 TP-A-1

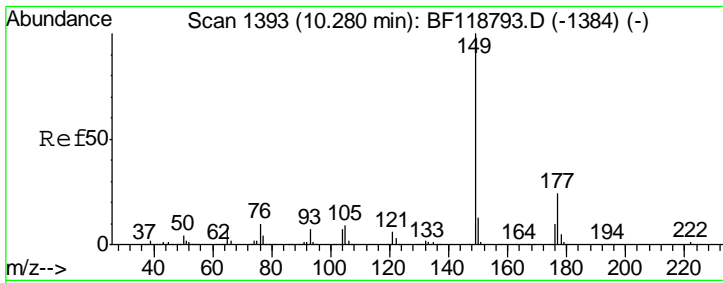
Tgt Ion	Resp	Lower	Upper
330	1192634		
332	96.5	77.3	115.9
141	27.3	22.4	33.6



#45  
 2-Fluorobiphenyl  
 Concen: 104.288 ng  
 RT: 9.17 min Scan# 1204  
 Delta R.T. -0.01 min  
 Lab File: BF118814.D  
 Acq: 4 Feb 2020 21:12

Tgt Ion	Resp	Lower	Upper
172	3647364		
171	37.9	30.8	46.2
170	25.2	20.5	30.7

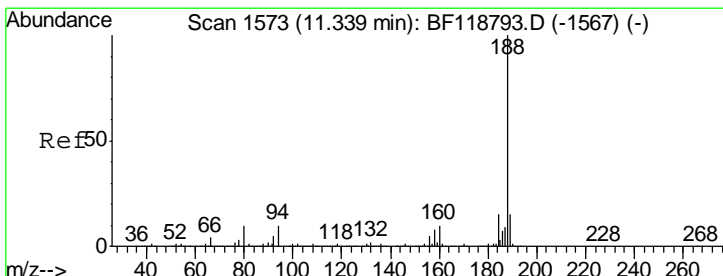
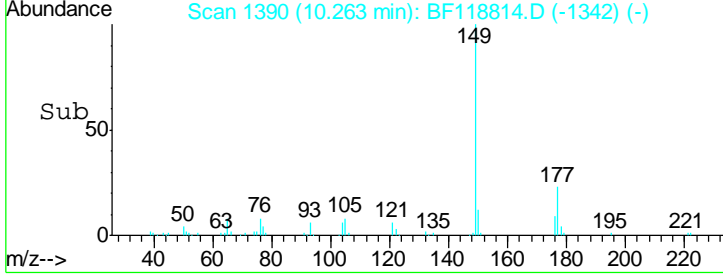
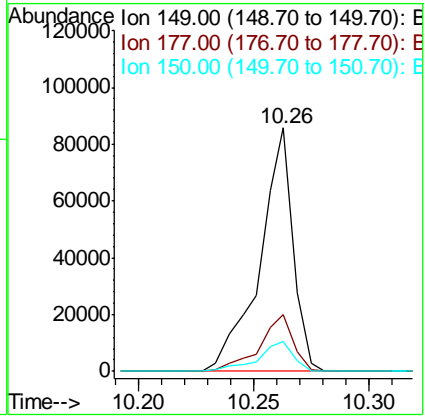
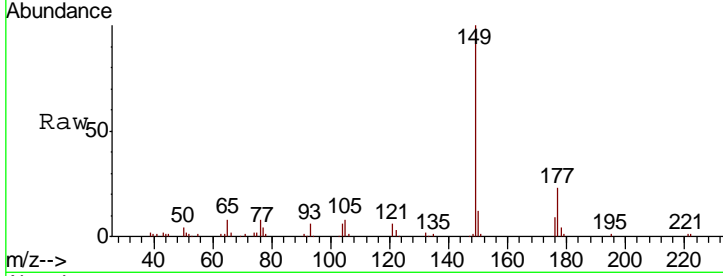




#60  
 Diethylphthalate  
 Concen: 2.070 ng  
 RT: 10.26 min Scan# 1390  
 Delta R.T. -0.02 min  
 Lab File: BF118814.D  
 Acq: 4 Feb 2020 21:12

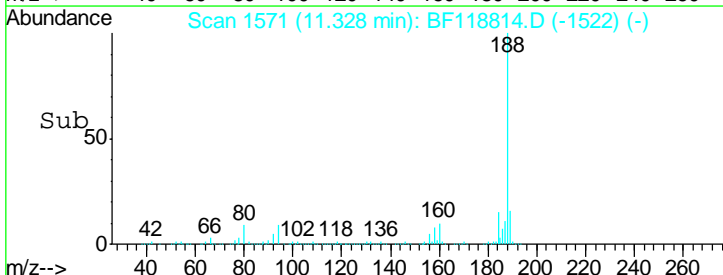
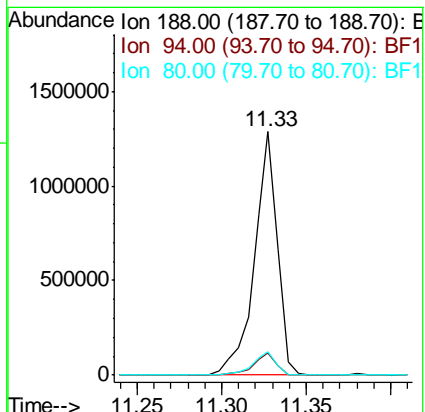
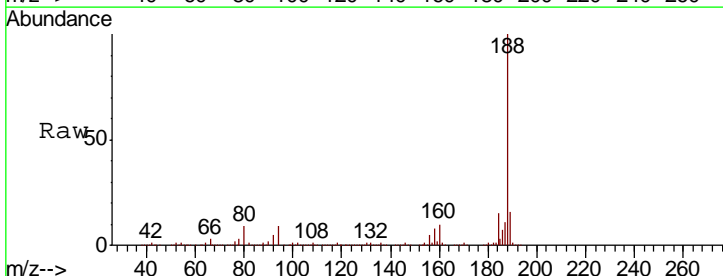
Instrument :  
 BNA\_F  
 ClientSampled :  
 TP-A-1

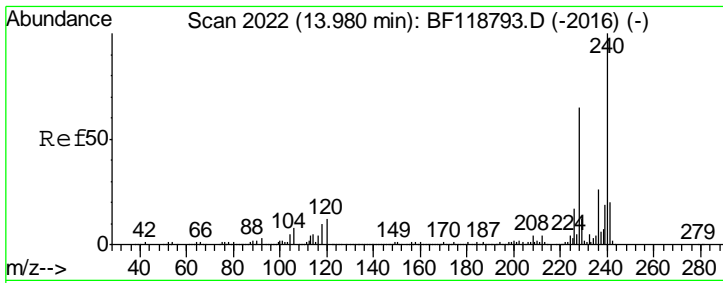
Tgt Ion	Resp	Lower	Upper
149	85697		
177	23.1	19.3	28.9
150	12.5	10.4	15.6



#64  
 Phenanthrene-d10  
 Concen: 20.000 ng  
 RT: 11.33 min Scan# 1571  
 Delta R.T. -0.01 min  
 Lab File: BF118814.D  
 Acq: 4 Feb 2020 21:12

Tgt Ion	Resp	Lower	Upper
188	1216885		
94	8.9	7.9	11.9
80	9.4	8.4	12.6

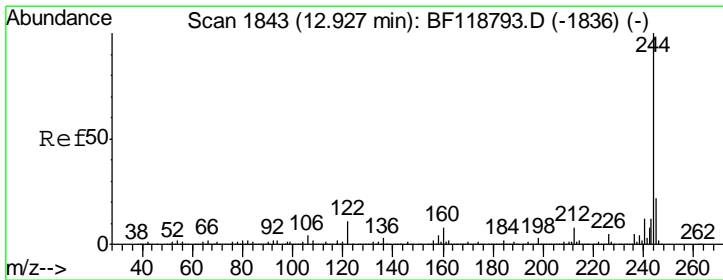
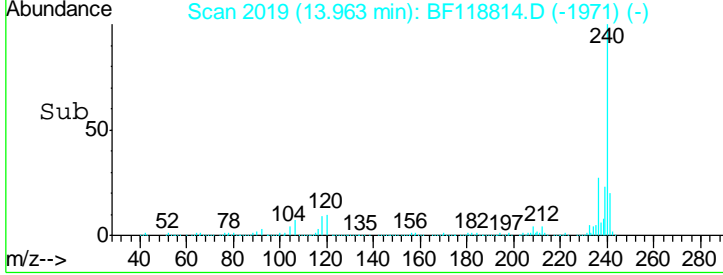
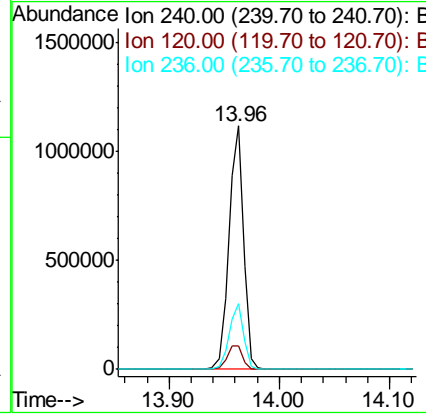
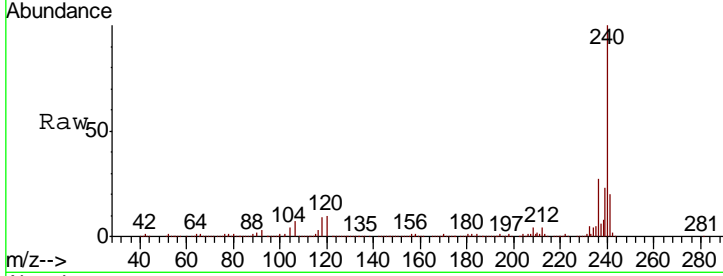




#76  
 Chrysene-d12  
 Concen: 20.000 ng  
 RT: 13.96 min Scan# 2019  
 Delta R.T. -0.02 min  
 Lab File: BF118814.D  
 Acq: 4 Feb 2020 21:12

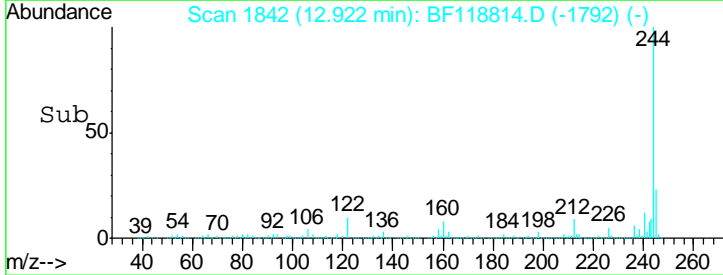
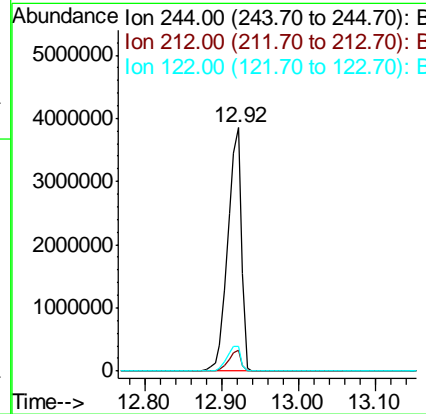
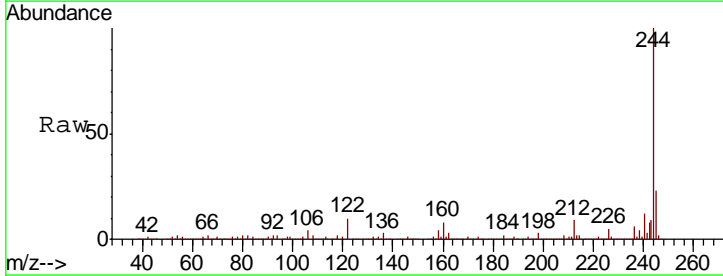
Instrument :  
 BNA\_F  
 ClientSampled :  
 TP-A-1

Tgt Ion	Resp	Lower	Upper
240	1034211		
120	9.9	9.4	14.0
236	26.7	21.0	31.6

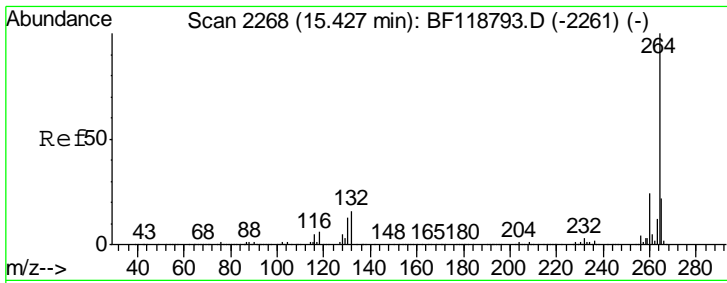


#79  
 Terphenyl-d14  
 Concen: 93.959 ng  
 RT: 12.92 min Scan# 1842  
 Delta R.T. -0.01 min  
 Lab File: BF118814.D  
 Acq: 4 Feb 2020 21:12

Tgt Ion	Resp	Lower	Upper
244	4730861		
212	8.7	6.5	9.7
122	10.4	8.9	13.3







#87  
 Perylene-d12  
 Concen: 20.000 ng  
 RT: 15.40 min Scan# 2264  
 Delta R.T. -0.02 min  
 Lab File: BF118814.D  
 Acq: 4 Feb 2020 21:12

Instrument :  
 BNA\_F  
 ClientSampled :  
 TP-A-1

Tot Ion: 264 Resp: 1014094

Ion	Ratio	Lower	Upper
264	100		
260	23.4	19.1	28.7
265	22.1	17.2	25.8

