

Data Path : Z:\svoasrv\HPCHEM1\BNA_F\Data\BF020421\
 Data File : BF123123.D
 Acq On : 4 Feb 2021 20:33
 Operator : JU/CG
 Sample : M1293-02MSD
 Misc :
 ALS Vial : 6 Sample Multiplier: 1

Instrument :
 BNA_F
 ClientSampled :
 TEST-PIT-4MSD

Quant Time: Feb 04 23:32:49 2021
 Quant Method : Z:\SVOASRV\HPCHEM1\BNA_F\METHODS\8270-BF012721.M
 Quant Title : ASP BNA STANDARDS FOR 5 POINT CALIBRATION
 QLast Update : Fri Jan 29 12:29:00 2021
 Response via : Initial Calibration

Compound	R.T.	QIon	Response	Conc Units	Dev(Min)	
Internal Standards						
1) 1,4-Dichlorobenzene-d4	6.898	152	239226	20.00 ng	0.00	
21) Naphthalene-d8	8.180	136	952156	20.00 ng	# 0.00	
39) Acenaphthene-d10	9.945	164	521325	20.00 ng	0.00	
64) Phenanthrene-d10	11.433	188	951200	20.00 ng	0.00	
76) Chrysene-d12	14.092	240	736433	20.00 ng	0.00	
86) Perylene-d12	15.574	264	634290	20.00 ng	0.00	
System Monitoring Compounds						
5) 2-Fluorophenol	5.534	112	1811401	116.80 ng	0.03	
7) Phenol-d6	6.534	99	2219916	105.60 ng	0.02	
23) Nitrobenzene-d5	7.463	82	1558152	82.36 ng	0.00	
42) 2,4,6-Tribromophenol	10.739	330	809489	143.04 ng	0.00	
45) 2-Fluorobiphenyl	9.263	172	2802617	79.92 ng	0.00	
79) Terphenyl-d14	13.027	244	3209502	85.63 ng	0.00	
Target Compounds						
2) 1,4-Dioxane	2.893	88	266313	34.51 ng	# 81	
3) Pyridine	3.593	79	697056	33.78 ng	95	
4) n-Nitrosodimethylamine	3.528	42	370020	42.61 ng	95	
6) Aniline	6.563	93	366456	14.16 ng	97	
8) 2-Chlorophenol	6.686	128	831979	49.49 ng	98	
9) Benzaldehyde	6.445	77	280366	29.17 ng	97	
10) Phenol	6.545	94	951573	45.64 ng	89	
11) bis(2-Chloroethyl)ether	6.634	93	781803	45.06 ng	98	
12) 1,3-Dichlorobenzene	6.839	146	802804	40.95 ng	98	
13) 1,4-Dichlorobenzene	6.916	146	817367	40.03 ng	99	
14) 1,2-Dichlorobenzene	7.069	146	786788	41.19 ng	99	
15) Benzyl Alcohol	7.039	79	728079	49.40 ng	100	
16) 2,2'-oxybis(1-Chloropr...	7.169	45	1099950	41.12 ng	99	
17) 2-Methylphenol	7.151	107	703674	49.19 ng	99	
18) Hexachloroethane	7.410	117	305787	42.76 ng	93	
19) n-Nitroso-di-n-propyla...	7.316	70	576459	45.60 ng	97	
20) 3+4-Methylphenols	7.304	107	800130	47.49 ng	95	
22) Acetophenone	7.310	105	1062390	42.82 ng	98	
24) Nitrobenzene	7.481	77	870763	44.67 ng	99	
25) Isophorone	7.722	82	1623984	46.86 ng	99	
26) 2-Nitrophenol	7.798	139	446075	55.34 ng	94	
27) 2,4-Dimethylphenol	7.833	122	724946	49.84 ng	98	
28) bis(2-Chloroethoxy)met...	7.928	93	1012159	42.81 ng	98	
29) 2,4-Dichlorophenol	8.039	162	726887	47.79 ng	98	
30) 1,2,4-Trichlorobenzene	8.122	180	739868	43.18 ng	99	
31) Naphthalene	8.204	128	2253368	43.14 ng	98	
32) Benzoic acid	7.963	122	540071	46.29 ng	96	
33) 4-Chloroaniline	8.245	127	186835	8.06 ng	98	
34) Hexachlorobutadiene	8.322	225	432012	43.64 ng	100	
35) Caprolactam	8.633	113	134271	26.12 ng	97	
36) 4-Chloro-3-methylphenol	8.733	107	810080	51.22 ng	96	
37) 2-Methylnaphthalene	8.898	142	1576219	45.46 ng	100	
38) 1-Methylnaphthalene	8.998	142	1491636	45.44 ng	99	
40) 1,2,4,5-Tetrachloroben...	9.063	216	732036	45.14 ng	99	
41) Hexachlorocyclopentadiene	9.051	237	762350	99.03 ng	97	
43) 2,4,6-Trichlorophenol	9.175	196	555645	49.98 ng	98	

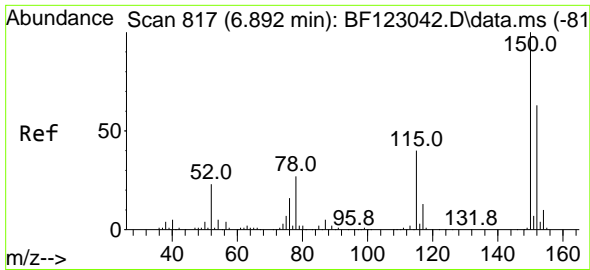
Data Path : Z:\svoasrv\HPCHEM1\BNA_F\Data\BF020421\
 Data File : BF123123.D
 Acq On : 4 Feb 2021 20:33
 Operator : JU/CG
 Sample : M1293-02MSD
 Misc :
 ALS Vial : 6 Sample Multiplier: 1

Instrument :
 BNA_F
 ClientSampleId :
 TEST-PIT-4MSD

Quant Time: Feb 04 23:32:49 2021
 Quant Method : Z:\SVOASRV\HPCHEM1\BNA_F\METHODS\8270-BF012721.M
 Quant Title : ASP BNA STANDARDS FOR 5 POINT CALIBRATION
 QLast Update : Fri Jan 29 12:29:00 2021
 Response via : Initial Calibration

Compound	R.T.	QIon	Response	Conc	Units	Dev(Min)
44) 2,4,5-Trichlorophenol	9.216	196	592366	50.95	ng	97
46) 1,1'-Biphenyl	9.363	154	1928315	45.09	ng	100
47) 2-Chloronaphthalene	9.386	162	1533441	42.84	ng	99
48) 2-Nitroaniline	9.480	65	499131	46.01	ng	87
49) Acenaphthylene	9.804	152	2352911	44.91	ng	99
50) Dimethylphthalate	9.669	163	1920432	46.95	ng	99
51) 2,6-Dinitrotoluene	9.722	165	436172	50.06	ng	# 86
52) Acenaphthene	9.980	154	1655604	49.20	ng	99
53) 3-Nitroaniline	9.886	138	156312	15.17	ng	90
54) 2,4-Dinitrophenol	10.004	184	409118	100.74	ng	92
55) Dibenzofuran	10.151	168	2115440	43.20	ng	99
56) 4-Nitrophenol	10.063	139	696698	93.55	ng	89
57) 2,4-Dinitrotoluene	10.133	165	586552	51.77	ng	96
58) Fluorene	10.498	166	1644407	42.03	ng	100
59) 2,3,4,6-Tetrachlorophenol	10.269	232	507528	51.47	ng	96
60) Diethylphthalate	10.369	149	1864673	46.36	ng	99
61) 4-Chlorophenyl-phenyle...	10.486	204	821272	44.68	ng	96
62) 4-Nitroaniline	10.516	138	394344	38.09	ng	99
63) Azobenzene	10.645	77	1740425	44.22	ng	97
65) 4,6-Dinitro-2-methylph...	10.539	198	292587	54.93	ng	89
66) n-Nitrosodiphenylamine	10.604	169	1525019	44.48	ng	99
67) 4-Bromophenyl-phenylether	10.974	248	564131	46.57	ng	99
68) Hexachlorobenzene	11.045	284	613252	47.20	ng	99
69) Atrazine	11.133	200	446677	47.18	ng	98
70) Pentachlorophenol	11.239	266	725799	103.07	ng	99
71) Phenanthrene	11.463	178	2480851	41.99	ng	99
72) Anthracene	11.516	178	2532407	44.69	ng	99
73) Carbazole	11.669	167	2287990	43.50	ng	100
74) Di-n-butylphthalate	11.998	149	2844719	45.62	ng	99
75) Fluoranthene	12.657	202	2619853	44.37	ng	99
77) Benzidine	12.768	184	455250	27.32	ng	100
78) Pyrene	12.886	202	2590370	46.59	ng	98
80) Butylbenzylphthalate	13.504	149	1243729	51.99	ng	99
81) Benzo(a)anthracene	14.080	228	2321395	46.58	ng	99
82) 3,3'-Dichlorobenzidine	14.039	252	533224	33.99	ng	97
83) Chrysene	14.115	228	2257983	45.27	ng	98
84) Bis(2-ethylhexyl)phtha...	14.062	149	1681801	52.91	ng	99
85) Di-n-octyl phthalate	14.680	149	2849808	53.38	ng	100
87) Indeno(1,2,3-cd)pyrene	17.086	276	2166286	51.29	ng	99
88) Benzo(b)fluoranthene	15.145	252	2280212	49.80	ng	100
89) Benzo(k)fluoranthene	15.174	252	1978206	46.50	ng	98
90) Benzo(a)pyrene	15.515	252	1887445	46.94	ng	100
91) Dibenzo(a,h)anthracene	17.109	278	1780105	51.20	ng	99
92) Benzo(g,h,i)perylene	17.545	276	1745106	51.80	ng	99

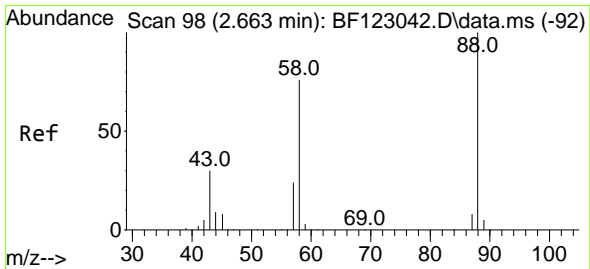
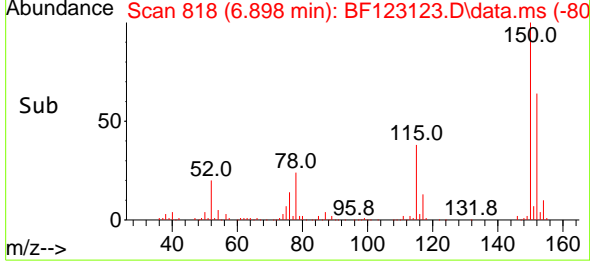
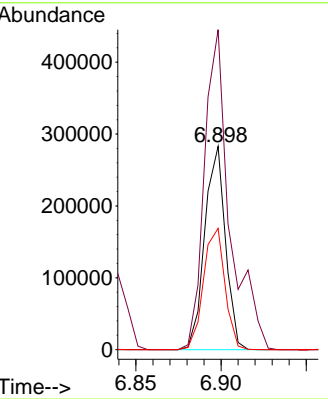
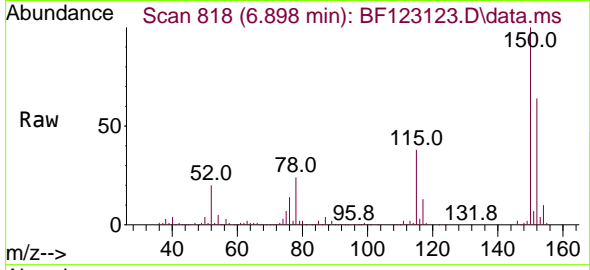
(#) = qualifier out of range (m) = manual integration (+) = signals summed



#1
 1,4-Dichlorobenzene-d4
 Concen: 20.00 ng
 RT: 6.898 min Scan# 818
 Delta R.T. 0.006 min
 Lab File: BF123123.D
 Acq: 4 Feb 2021 20:33

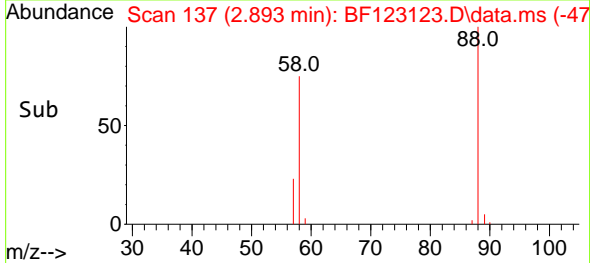
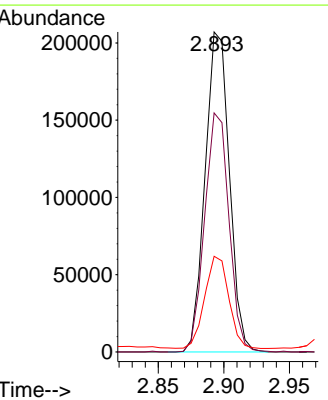
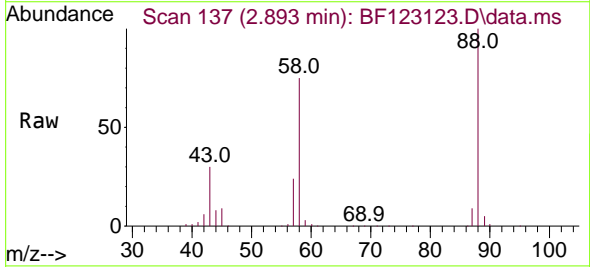
Instrument :
 BNA_F
 ClientSampleId :
 TEST-PIT-4MSD

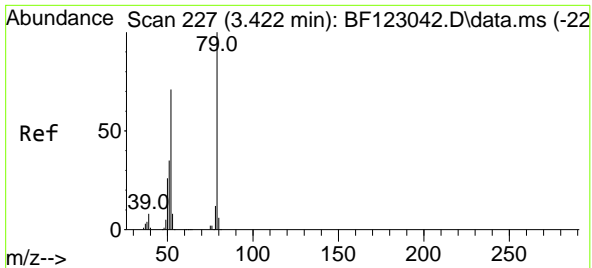
Tgt Ion:152 Resp: 239226
 Ion Ratio Lower Upper
 152 100
 150 157.4 125.8 188.6
 115 59.7 49.3 73.9



#2
 1,4-Dioxane
 Concen: 34.51 ng
 RT: 2.893 min Scan# 137
 Delta R.T. 0.229 min
 Lab File: BF123123.D
 Acq: 4 Feb 2021 20:33

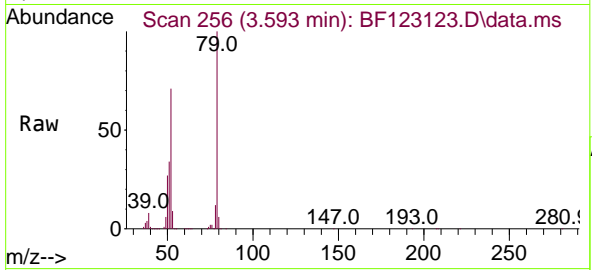
Tgt Ion: 88 Resp: 266313
 Ion Ratio Lower Upper
 88 100
 58 74.8 56.2 84.2
 43 0.0 21.8 32.6#





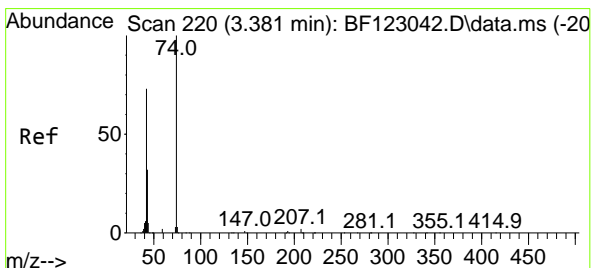
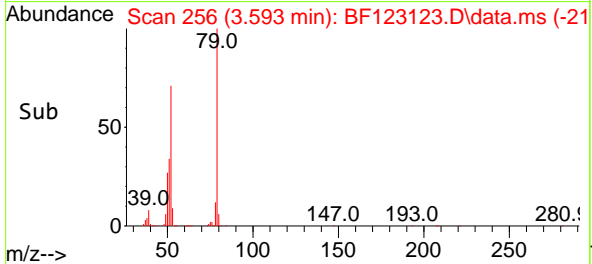
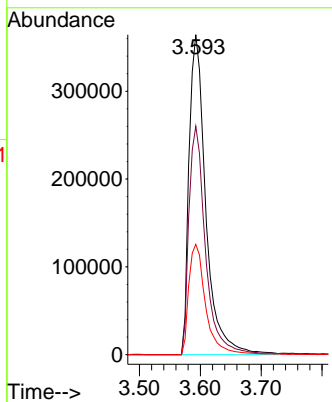
#3
 Pyridine
 Concen: 33.78 ng
 RT: 3.593 min Scan# 256
 Delta R.T. 0.170 min
 Lab File: BF123123.D
 Acq: 4 Feb 2021 20:33

Instrument :
 BNA_F
 ClientSampled :
 TEST-PIT-4MSD

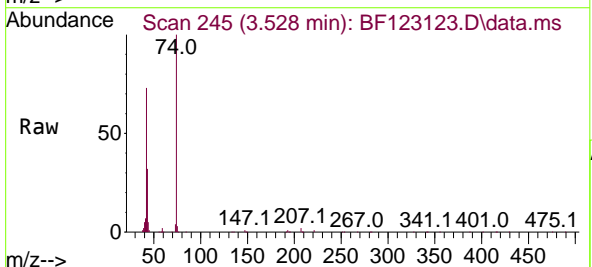


Tgt Ion: 79 Resp: 697056

Ion	Ratio	Lower	Upper
79	100		
52	71.4	53.0	79.4
51	34.5	26.6	39.8

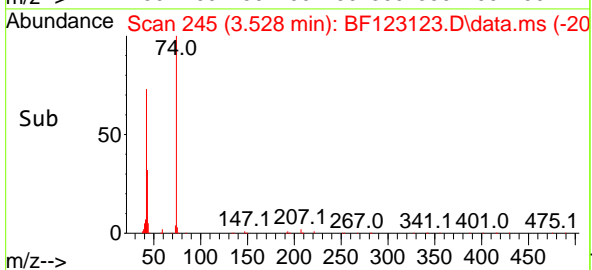
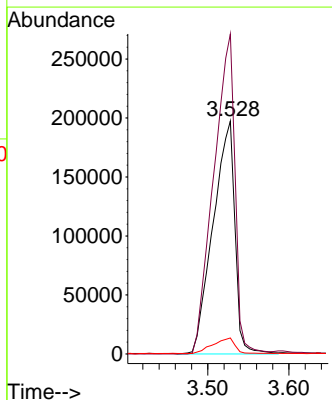


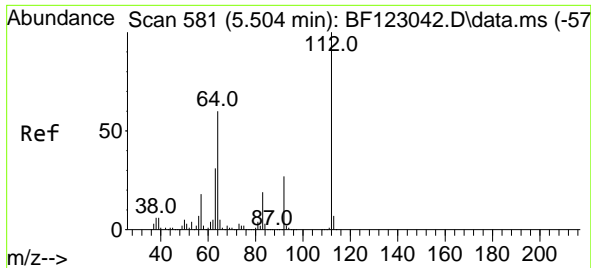
#4
 n-Nitrosodimethylamine
 Concen: 42.61 ng
 RT: 3.528 min Scan# 245
 Delta R.T. 0.147 min
 Lab File: BF123123.D
 Acq: 4 Feb 2021 20:33



Tgt Ion: 42 Resp: 370020

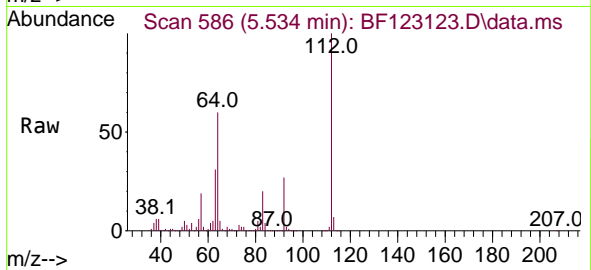
Ion	Ratio	Lower	Upper
42	100		
74	137.3	115.2	172.8
44	6.8	5.4	8.0





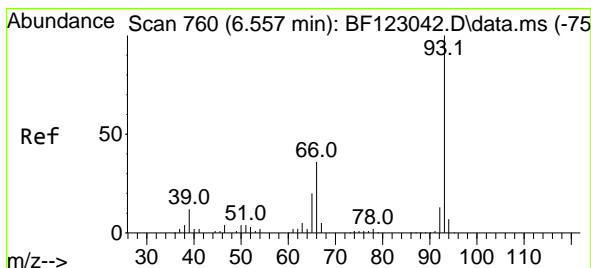
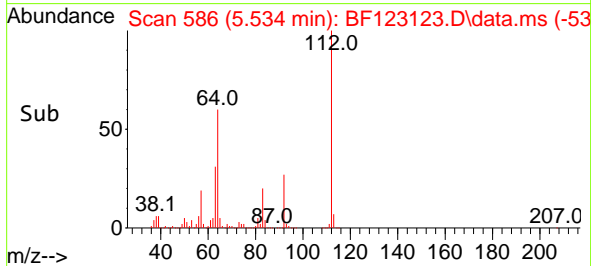
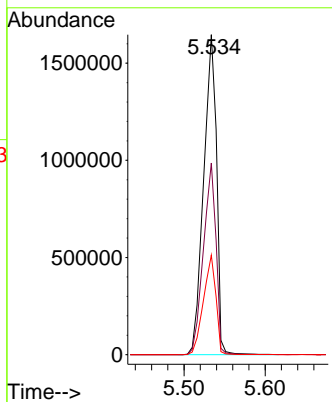
#5
 2-Fluorophenol
 Concen: 116.80 ng
 RT: 5.534 min Scan# 586
 Delta R.T. 0.029 min
 Lab File: BF123123.D
 Acq: 4 Feb 2021 20:33

Instrument :
 BNA_F
 ClientSampleId :
 TEST-PIT-4MSD



Tgt Ion:112 Resp: 1811401

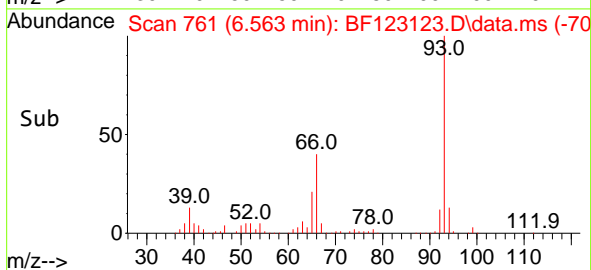
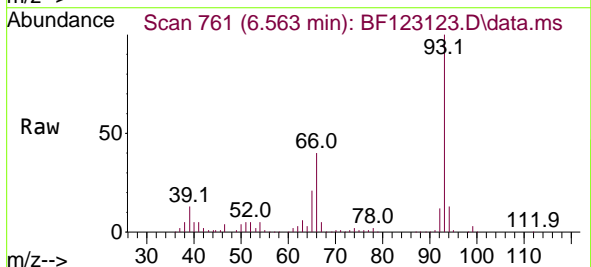
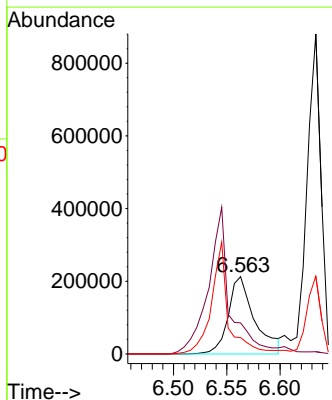
Ion	Ratio	Lower	Upper
112	100		
64	59.9	46.9	70.3
63	31.1	24.5	36.7

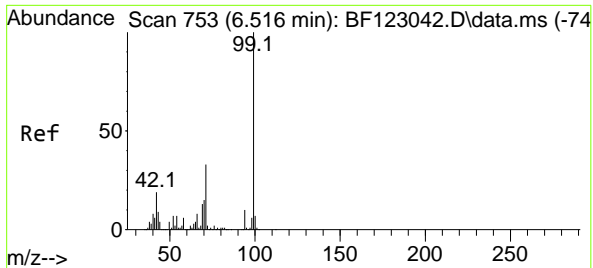


#6
 Aniline
 Concen: 14.16 ng
 RT: 6.563 min Scan# 761
 Delta R.T. 0.006 min
 Lab File: BF123123.D
 Acq: 4 Feb 2021 20:33

Tgt Ion: 93 Resp: 366456

Ion	Ratio	Lower	Upper
93	100		
66	40.3	31.3	46.9
65	21.2	15.6	23.4

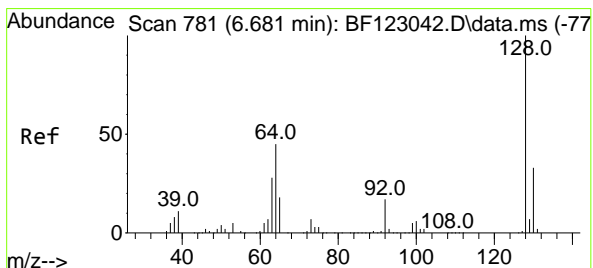
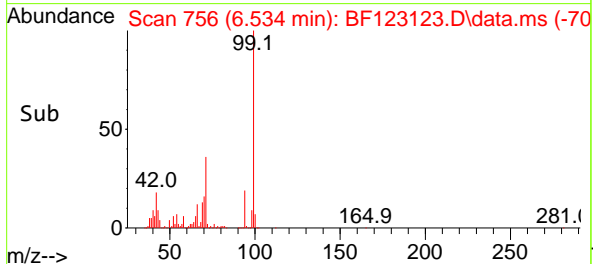
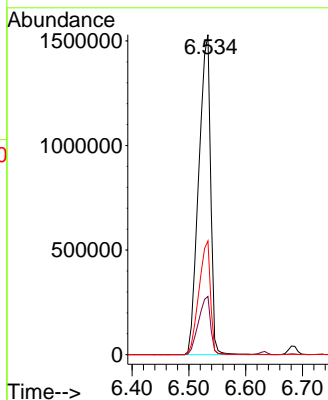
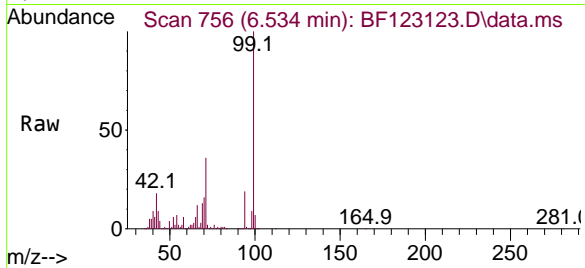




#7
 Phenol-d6
 Concen: 105.60 ng
 RT: 6.534 min Scan# 756
 Delta R.T. 0.018 min
 Lab File: BF123123.D
 Acq: 4 Feb 2021 20:33

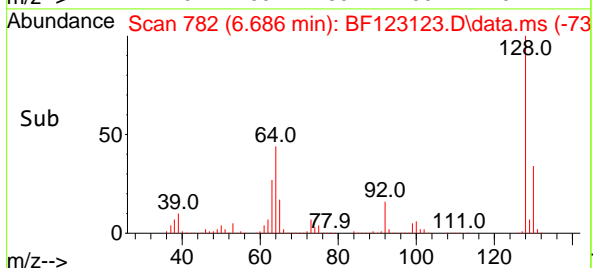
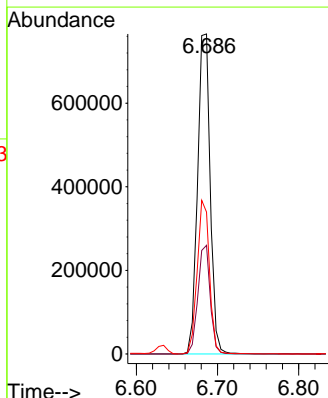
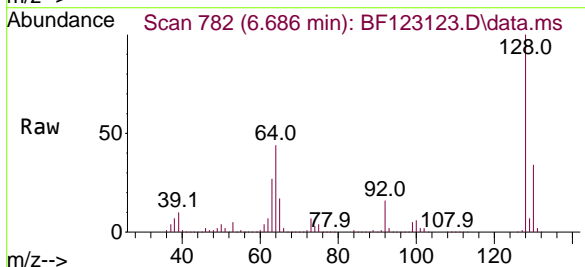
Instrument :
 BNA_F
 ClientSampleId :
 TEST-PIT-4MSD

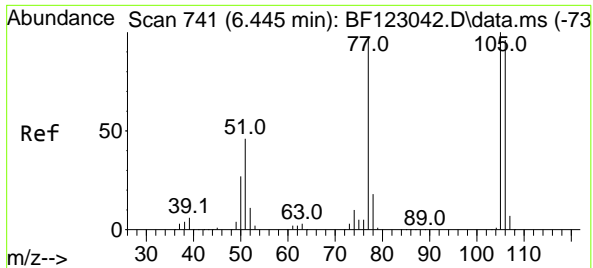
Tgt Ion: 99 Resp: 2219916
 Ion Ratio Lower Upper
 99 100
 42 18.2 13.8 20.6
 71 35.5 26.9 40.3



#8
 2-Chlorophenol
 Concen: 49.49 ng
 RT: 6.686 min Scan# 782
 Delta R.T. 0.006 min
 Lab File: BF123123.D
 Acq: 4 Feb 2021 20:33

Tgt Ion:128 Resp: 831979
 Ion Ratio Lower Upper
 128 100
 130 33.9 12.3 52.3
 64 44.3 25.5 65.5



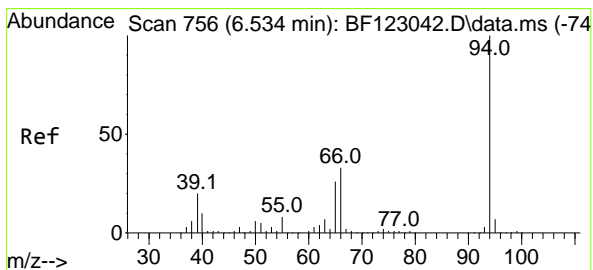
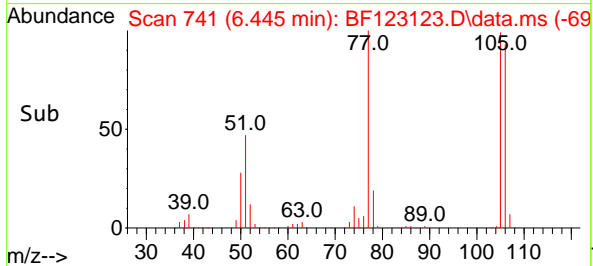
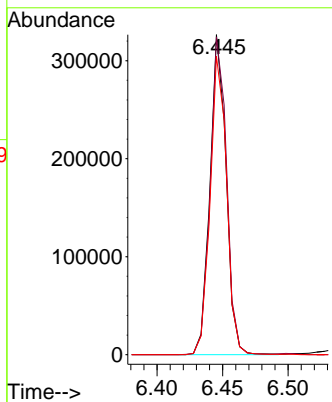
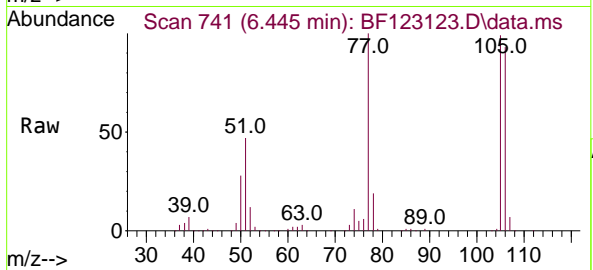


#9
Benzaldehyde
Concen: 29.17 ng
RT: 6.445 min Scan# 741
Delta R.T. -0.000 min
Lab File: BF123123.D
Acq: 4 Feb 2021 20:33

Instrument :
BNA_F
ClientSampleId :
TEST-PIT-4MSD

Tgt Ion: 77 Resp: 280366

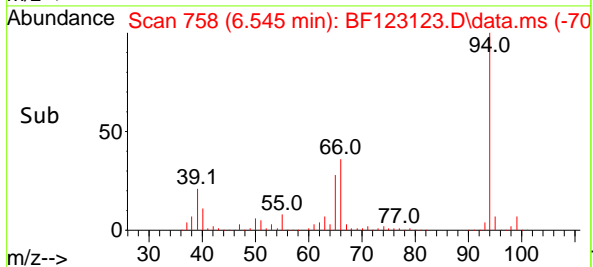
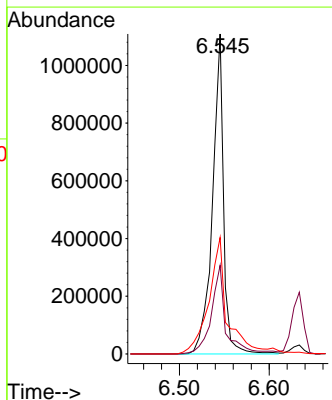
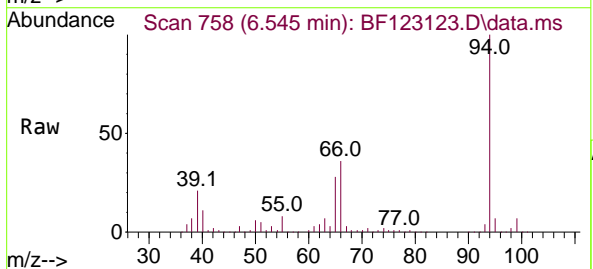
Ion	Ratio	Lower	Upper
77	100		
105	99.3	80.6	120.6
106	93.3	77.2	117.2

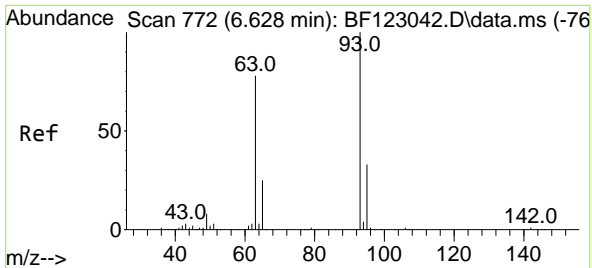


#10
Phenol
Concen: 45.64 ng
RT: 6.545 min Scan# 758
Delta R.T. 0.012 min
Lab File: BF123123.D
Acq: 4 Feb 2021 20:33

Tgt Ion: 94 Resp: 951573

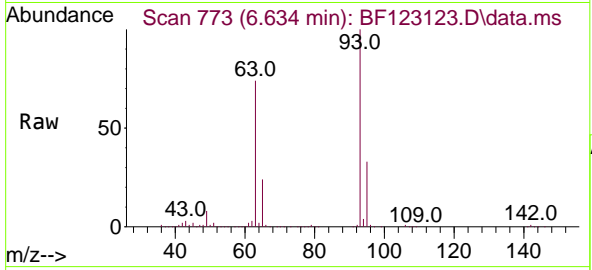
Ion	Ratio	Lower	Upper
94	100		
65	27.7	11.2	51.2
66	36.4	25.8	65.8



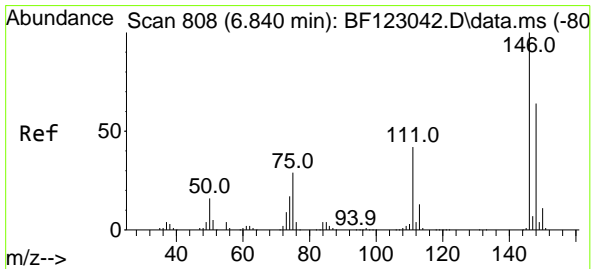
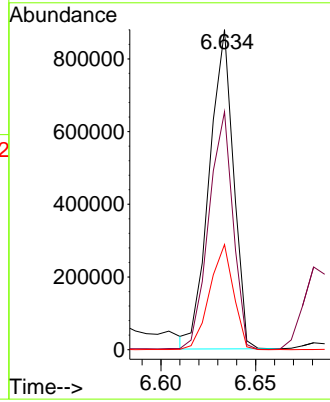
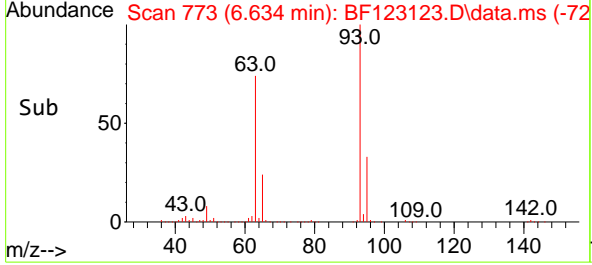


#11
 bis(2-Chloroethyl)ether
 Concen: 45.06 ng
 RT: 6.634 min Scan# 773
 Delta R.T. 0.006 min
 Lab File: BF123123.D
 Acq: 4 Feb 2021 20:33

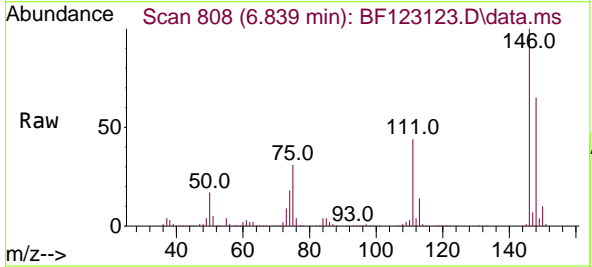
Instrument :
 BNA_F
 ClientSampleId :
 TEST-PIT-4MSD



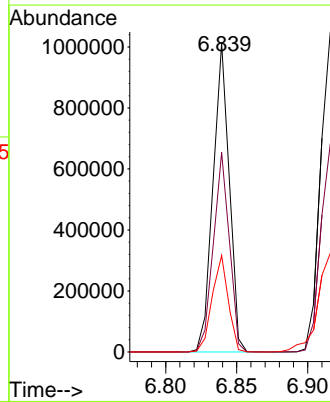
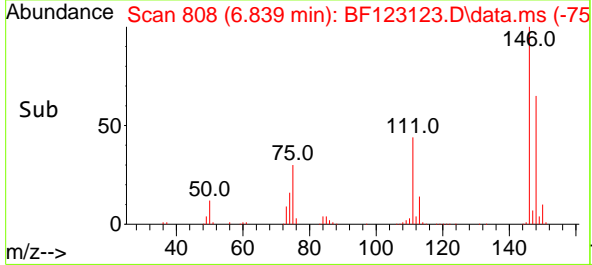
Tgt Ion: 93 Resp: 781803
 Ion Ratio Lower Upper
 93 100
 63 74.4 52.6 92.6
 95 32.9 12.6 52.6

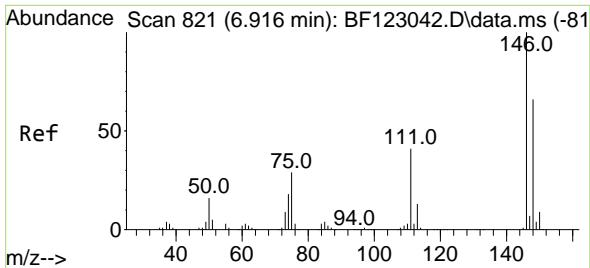


#12
 1,3-Dichlorobenzene
 Concen: 40.95 ng
 RT: 6.839 min Scan# 808
 Delta R.T. -0.000 min
 Lab File: BF123123.D
 Acq: 4 Feb 2021 20:33



Tgt Ion: 146 Resp: 802804
 Ion Ratio Lower Upper
 146 100
 148 64.5 51.8 77.8
 75 31.2 22.5 33.7

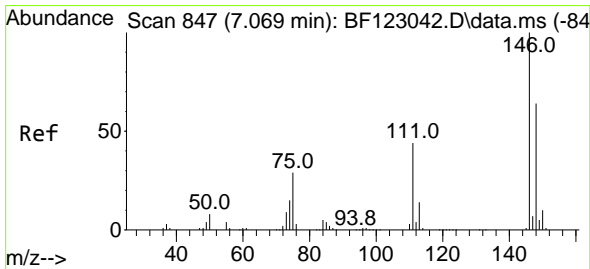
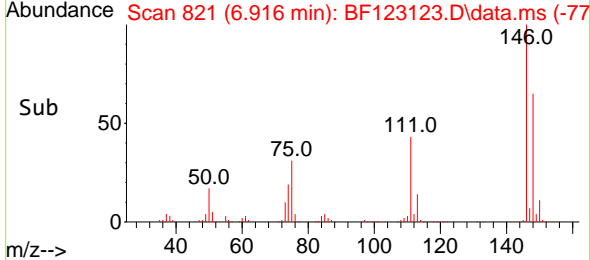
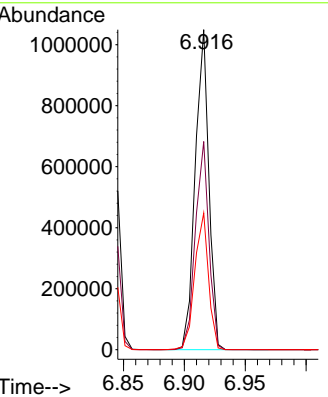
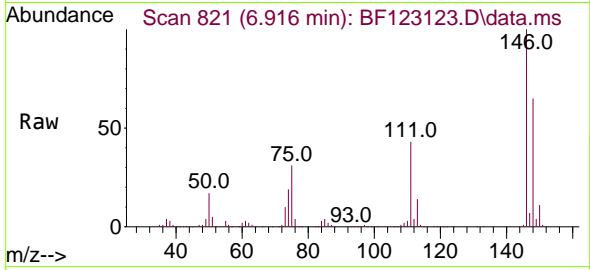




#13
 1,4-Dichlorobenzene
 Concen: 40.03 ng
 RT: 6.916 min Scan# 821
 Delta R.T. -0.000 min
 Lab File: BF123123.D
 Acq: 4 Feb 2021 20:33

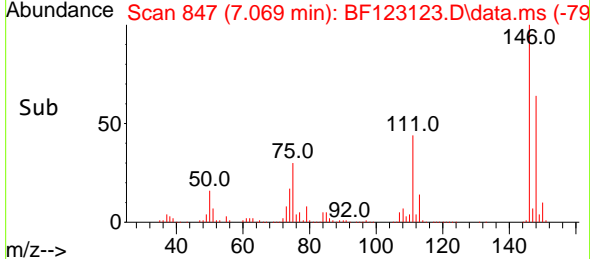
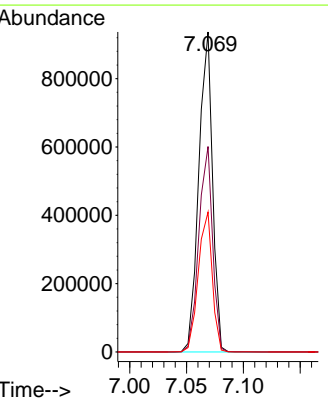
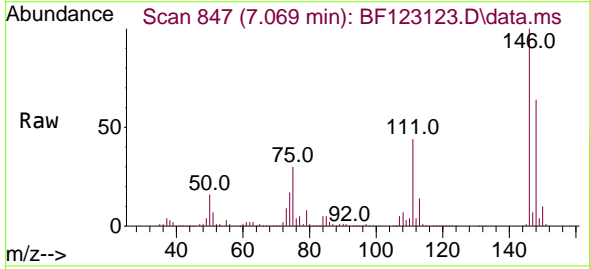
Instrument :
 BNA_F
 ClientSampled :
 TEST-PIT-4MSD

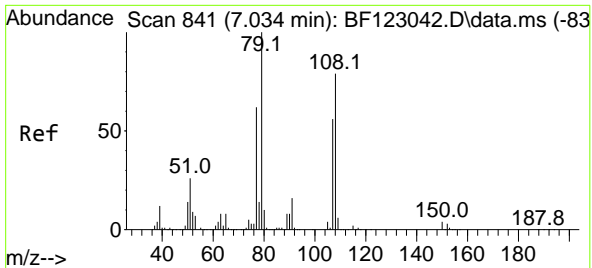
Tgt Ion	Resp	Lower	Upper
146	100		
148	65.0	52.0	78.0
111	42.7	32.3	48.5



#14
 1,2-Dichlorobenzene
 Concen: 41.19 ng
 RT: 7.069 min Scan# 847
 Delta R.T. -0.000 min
 Lab File: BF123123.D
 Acq: 4 Feb 2021 20:33

Tgt Ion	Resp	Lower	Upper
146	100		
148	64.2	51.5	77.3
111	43.7	34.2	51.2

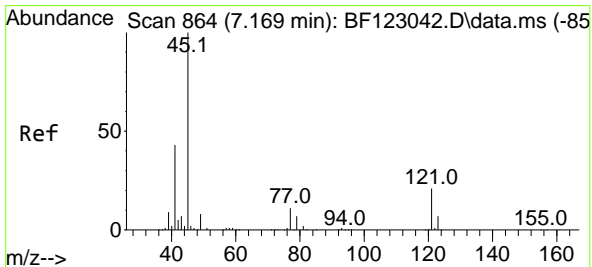
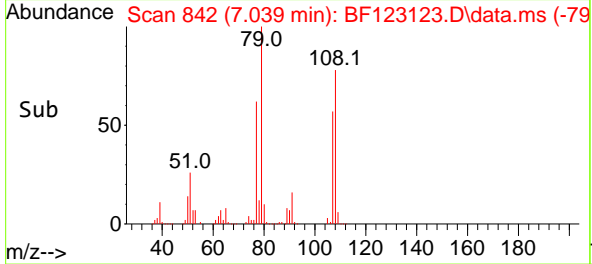
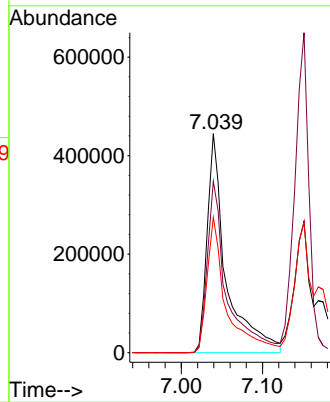
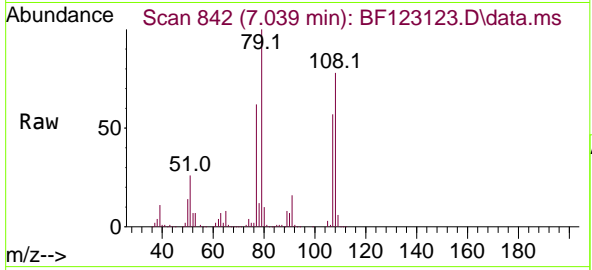




#15
 Benzyl Alcohol
 Concen: 49.40 ng
 RT: 7.039 min Scan# 842
 Delta R.T. 0.006 min
 Lab File: BF123123.D
 Acq: 4 Feb 2021 20:33

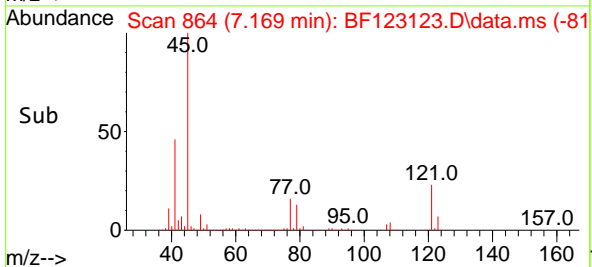
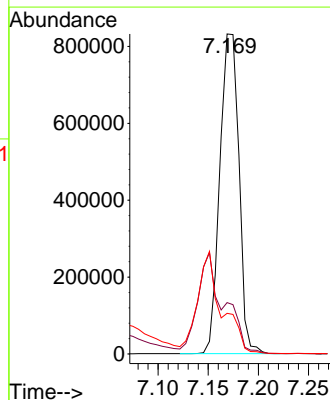
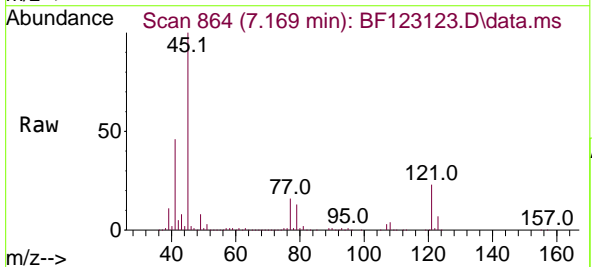
Instrument :
 BNA_F
 ClientSampleId :
 TEST-PIT-4MSD

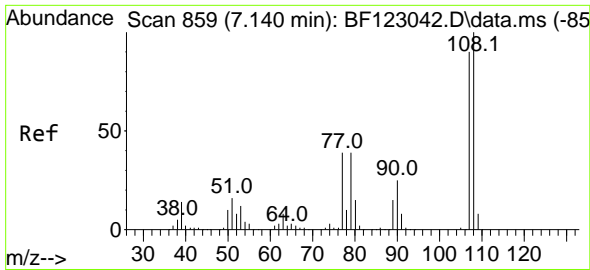
Tgt Ion: 79 Resp: 728079
 Ion Ratio Lower Upper
 79 100
 108 78.2 62.4 93.6
 77 61.8 49.0 73.6



#16
 2,2'-oxybis(1-Chloropropane)
 Concen: 41.12 ng
 RT: 7.169 min Scan# 864
 Delta R.T. -0.000 min
 Lab File: BF123123.D
 Acq: 4 Feb 2021 20:33

Tgt Ion: 45 Resp: 1099950
 Ion Ratio Lower Upper
 45 100
 77 16.0 0.0 35.6
 79 12.7 0.0 32.4



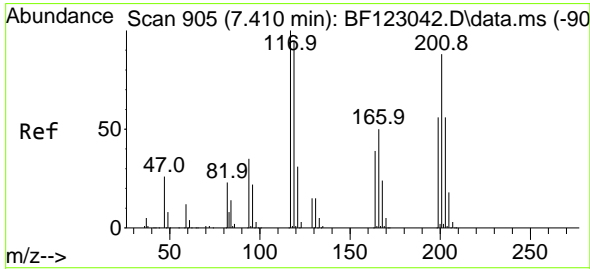
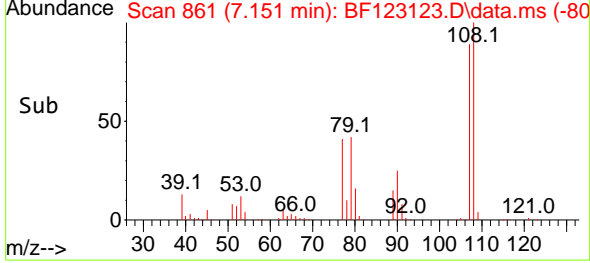
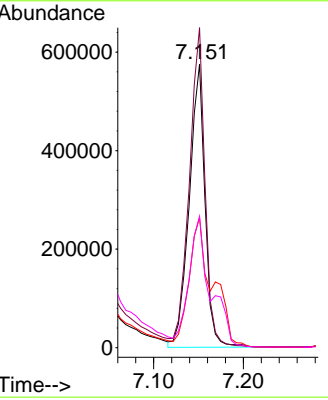
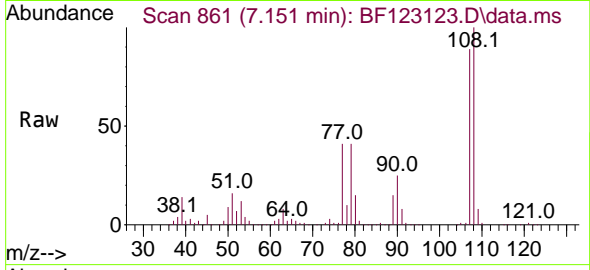


#17
 2-Methylphenol
 Concen: 49.19 ng
 RT: 7.151 min Scan# 861
 Delta R.T. 0.012 min
 Lab File: BF123123.D
 Acq: 4 Feb 2021 20:33

Instrument :
 BNA_F
 ClientSampled :
 TEST-PIT-4MSD

Tgt Ion:107 Resp: 703674

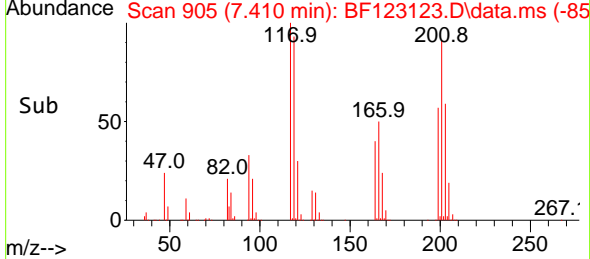
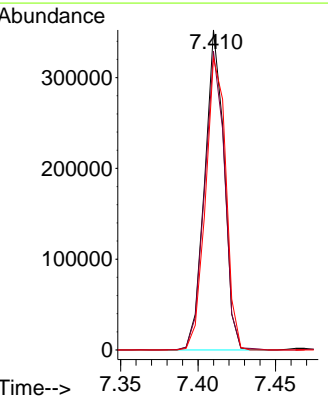
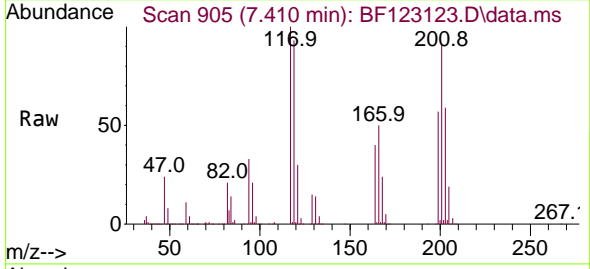
Ion	Ratio	Lower	Upper
107	100		
108	112.8	91.1	136.7
77	45.8	36.3	54.5
79	46.3	36.8	55.2

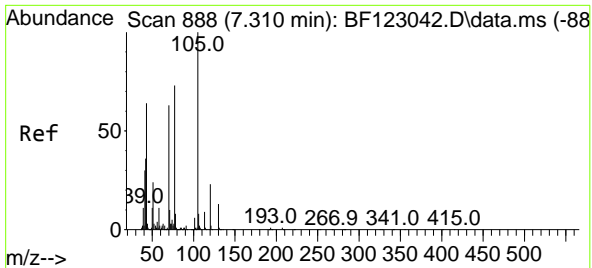


#18
 Hexachloroethane
 Concen: 42.76 ng
 RT: 7.410 min Scan# 905
 Delta R.T. -0.000 min
 Lab File: BF123123.D
 Acq: 4 Feb 2021 20:33

Tgt Ion:117 Resp: 305787

Ion	Ratio	Lower	Upper
117	100		
119	93.3	78.4	117.6
201	91.2	79.6	119.4



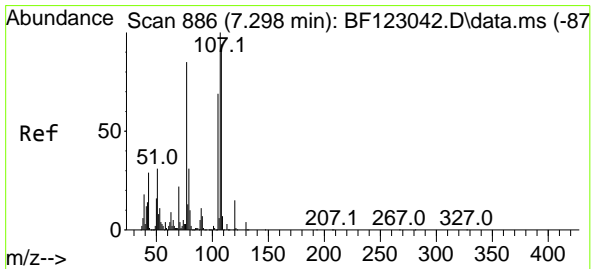
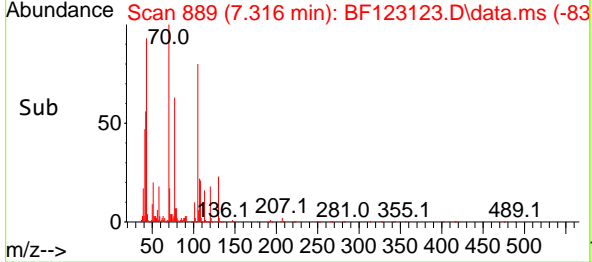
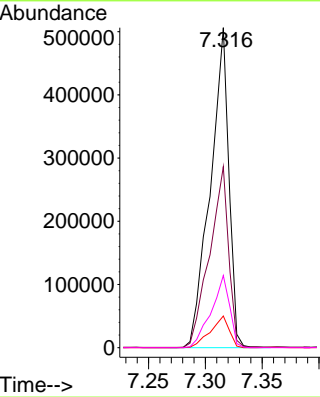
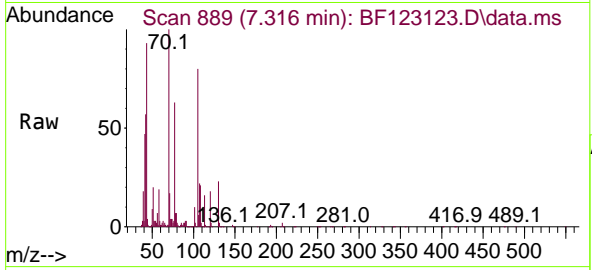


#19
 n-Nitroso-di-n-propylamine
 Concen: 45.60 ng
 RT: 7.316 min Scan# 889
 Delta R.T. 0.006 min
 Lab File: BF123123.D
 Acq: 4 Feb 2021 20:33

Instrument :
 BNA_F
 ClientSampleId :
 TEST-PIT-4MSD

Tgt Ion: 70 Resp: 576459

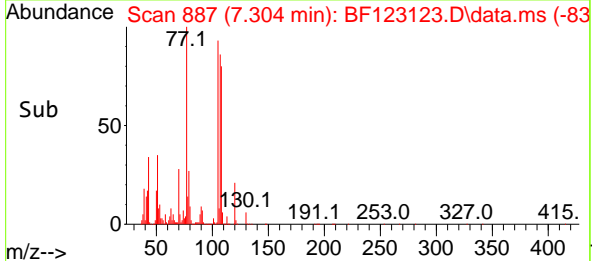
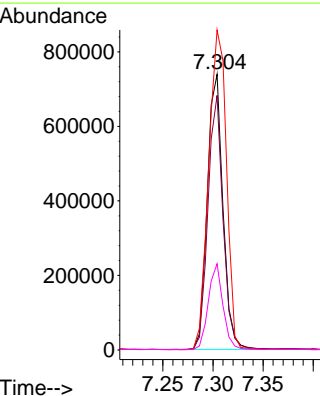
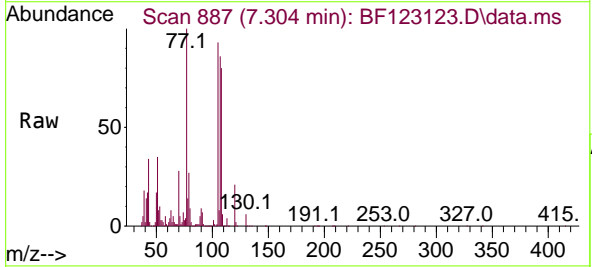
Ion	Ratio	Lower	Upper
70	100		
42	56.6	43.0	64.4
101	9.9	7.9	11.9
130	22.6	18.5	27.7

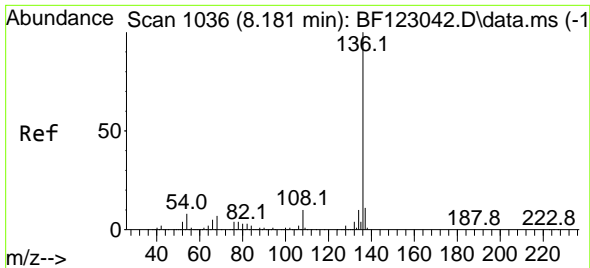


#20
 3+4-Methylphenols
 Concen: 47.49 ng
 RT: 7.304 min Scan# 887
 Delta R.T. 0.006 min
 Lab File: BF123123.D
 Acq: 4 Feb 2021 20:33

Tgt Ion: 107 Resp: 800130

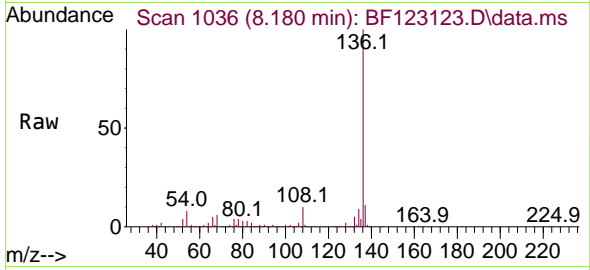
Ion	Ratio	Lower	Upper
107	100		
108	92.4	68.7	108.7
77	116.1	89.8	129.8
79	31.3	9.8	49.8



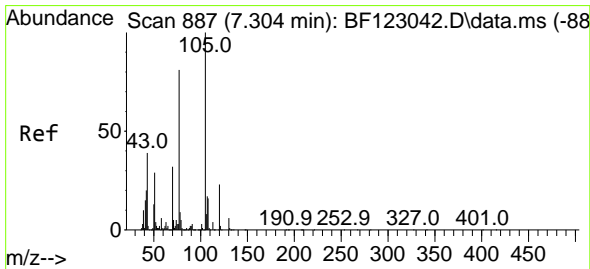
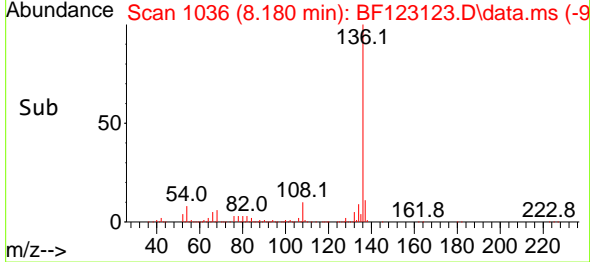
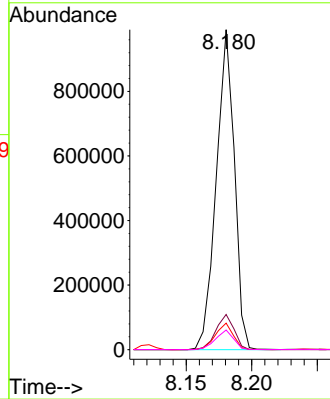


#21
 Naphthalene-d8
 Concen: 20.00 ng
 RT: 8.180 min Scan# 1036
 Delta R.T. -0.001 min
 Lab File: BF123123.D
 Acq: 4 Feb 2021 20:33

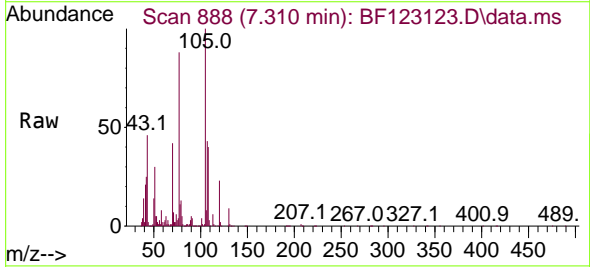
Instrument :
 BNA_F
 ClientSampleId :
 TEST-PIT-4MSD



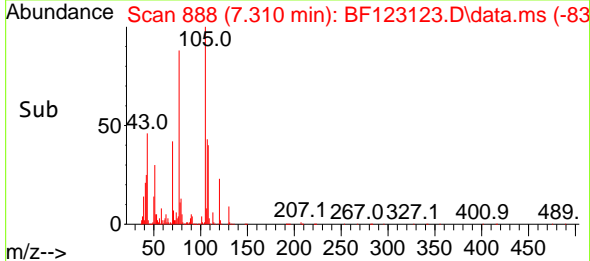
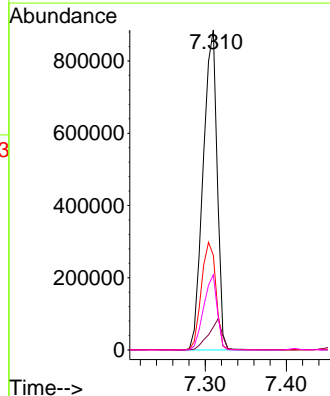
Tgt Ion:136 Resp: 952156
 Ion Ratio Lower Upper
 136 100
 137 11.0 8.8 13.2
 54 8.3 5.5 8.3#
 68 6.2 4.6 6.8

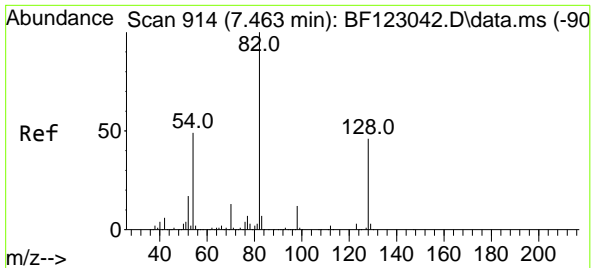


#22
 Acetophenone
 Concen: 42.82 ng
 RT: 7.310 min Scan# 888
 Delta R.T. 0.006 min
 Lab File: BF123123.D
 Acq: 4 Feb 2021 20:33



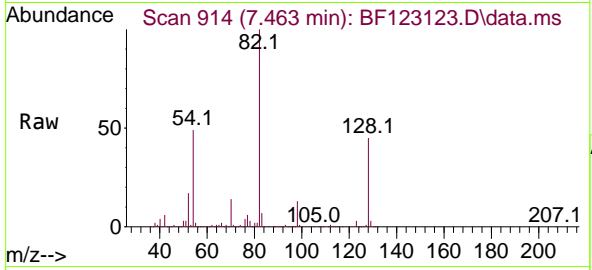
Tgt Ion:105 Resp: 1062390
 Ion Ratio Lower Upper
 105 100
 71 7.2 6.5 9.7
 51 29.6 24.3 36.5
 120 23.5 18.1 27.1





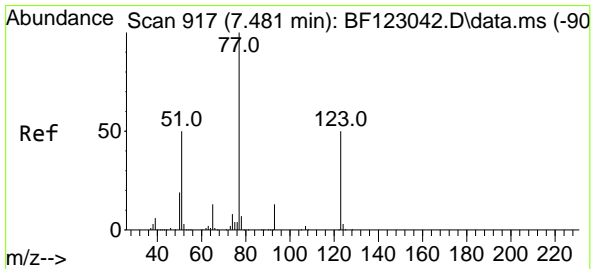
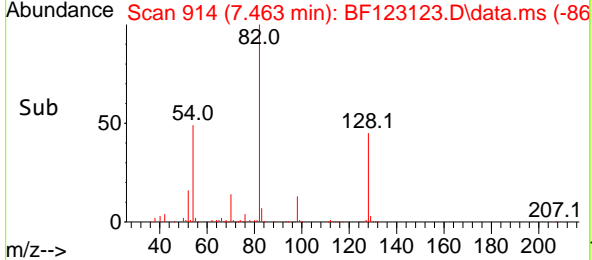
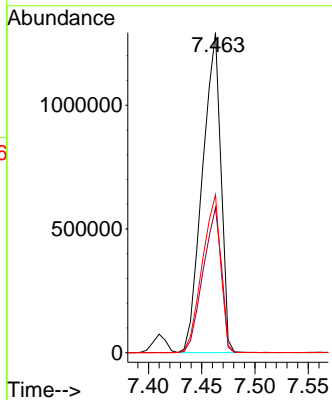
#23
 Nitrobenzene-d5
 Concen: 82.36 ng
 RT: 7.463 min Scan# 914
 Delta R.T. -0.000 min
 Lab File: BF123123.D
 Acq: 4 Feb 2021 20:33

Instrument :
 BNA_F
 ClientSampled :
 TEST-PIT-4MSD

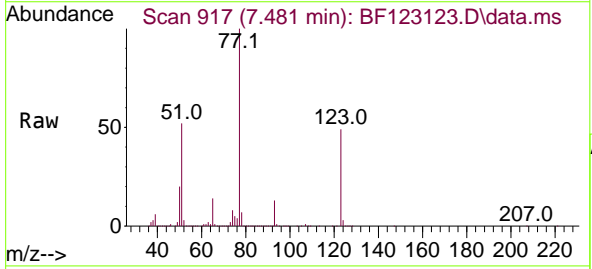


Tgt Ion: 82 Resp: 1558152

Ion	Ratio	Lower	Upper
82	100		
128	45.3	37.0	55.4
54	49.4	38.4	57.6

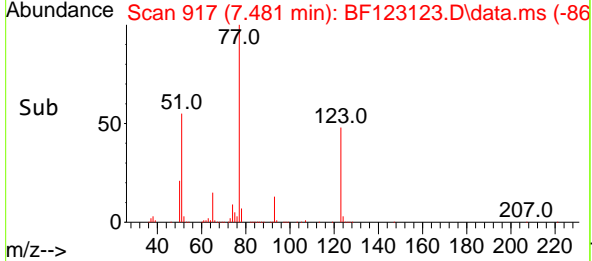
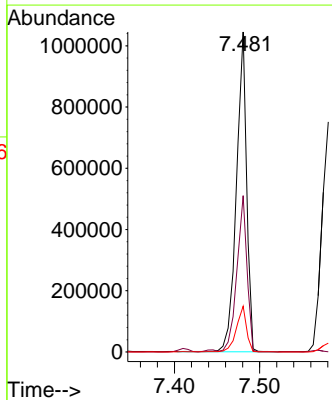


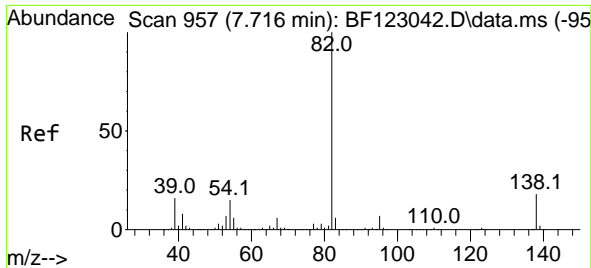
#24
 Nitrobenzene
 Concen: 44.67 ng
 RT: 7.481 min Scan# 917
 Delta R.T. -0.000 min
 Lab File: BF123123.D
 Acq: 4 Feb 2021 20:33



Tgt Ion: 77 Resp: 870763

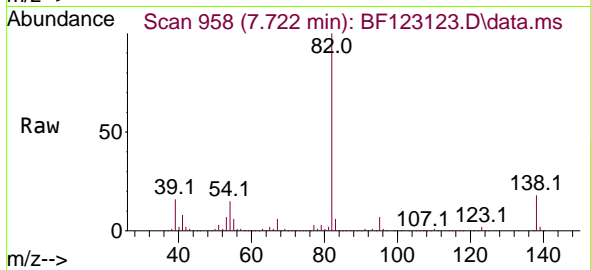
Ion	Ratio	Lower	Upper
77	100		
123	48.8	39.3	58.9
65	14.3	10.6	15.8



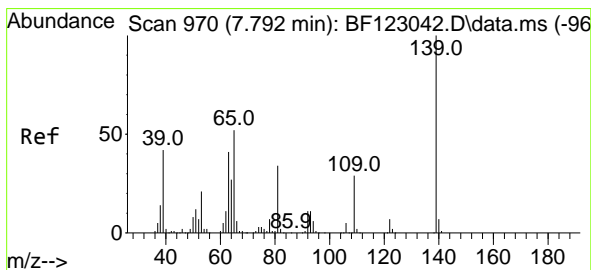
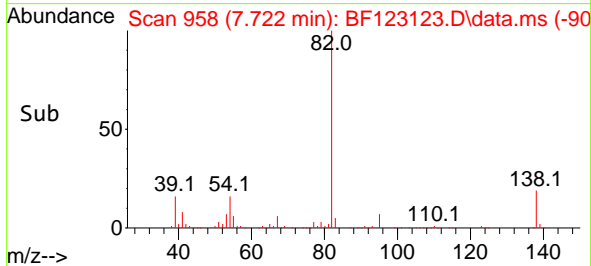
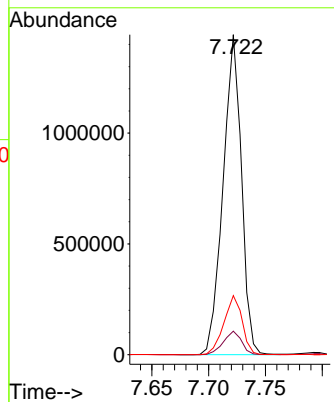


#25
 Isophorone
 Concen: 46.86 ng
 RT: 7.722 min Scan# 958
 Delta R.T. 0.006 min
 Lab File: BF123123.D
 Acq: 4 Feb 2021 20:33

Instrument :
 BNA_F
 ClientSampled :
 TEST-PIT-4MSD

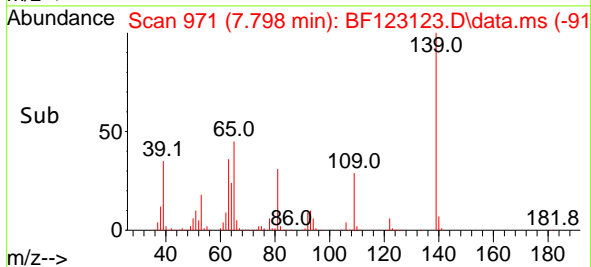
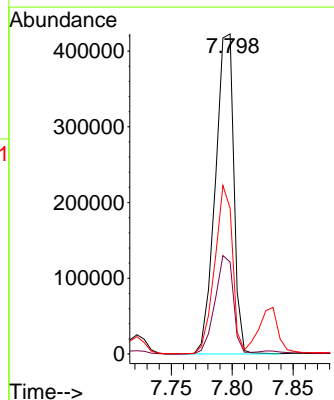
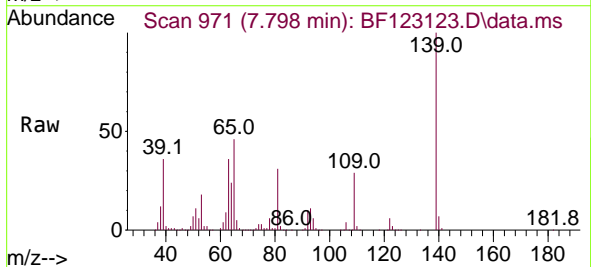


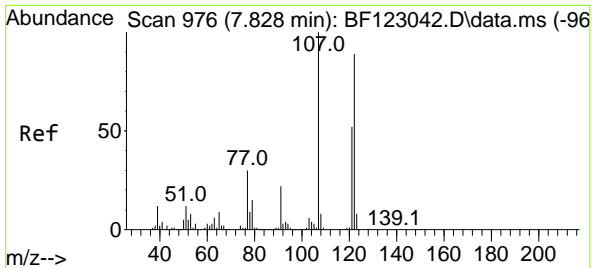
Tgt Ion: 82 Resp: 1623984
 Ion Ratio Lower Upper
 82 100
 95 7.4 5.8 8.6
 138 18.5 14.6 21.8



#26
 2-Nitrophenol
 Concen: 55.34 ng
 RT: 7.798 min Scan# 971
 Delta R.T. 0.006 min
 Lab File: BF123123.D
 Acq: 4 Feb 2021 20:33

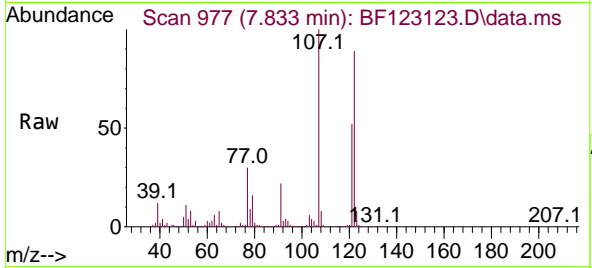
Tgt Ion: 139 Resp: 446075
 Ion Ratio Lower Upper
 139 100
 109 28.7 24.0 36.0
 65 45.5 40.9 61.3





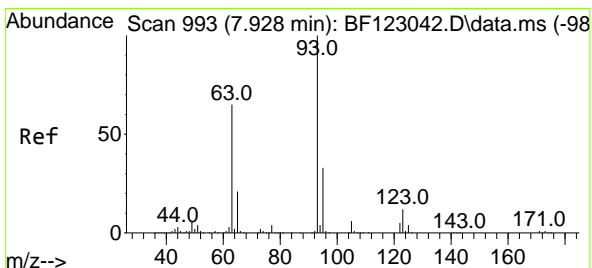
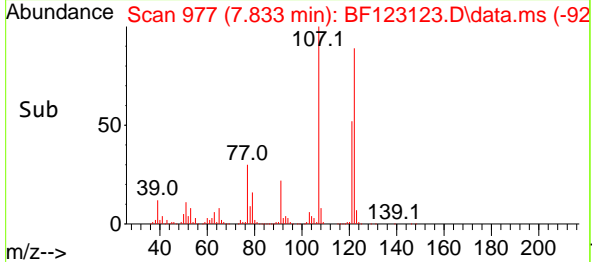
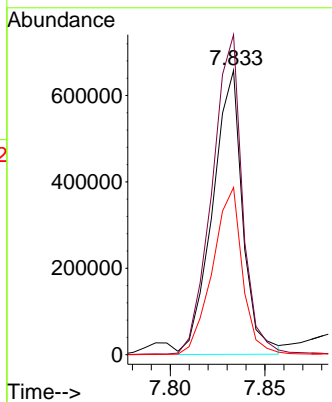
#27
 2,4-Dimethylphenol
 Concen: 49.84 ng
 RT: 7.833 min Scan# 977
 Delta R.T. 0.006 min
 Lab File: BF123123.D
 Acq: 4 Feb 2021 20:33

Instrument :
 BNA_F
 ClientSampleId :
 TEST-PIT-4MSD



Tgt Ion:122 Resp: 724946

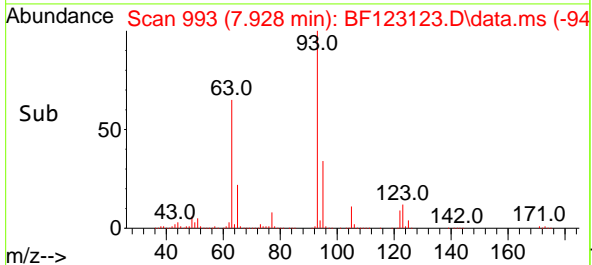
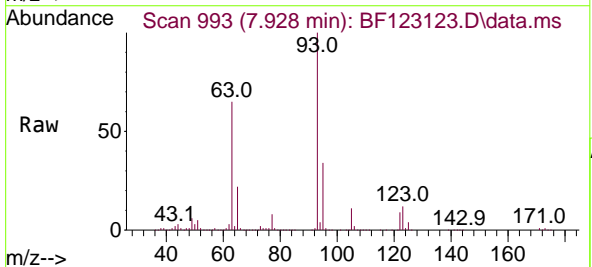
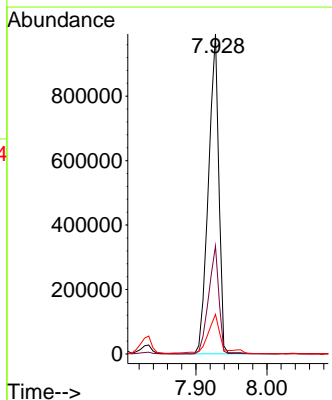
Ion	Ratio	Lower	Upper
122	100		
107	112.5	91.8	137.8
121	58.8	47.3	70.9

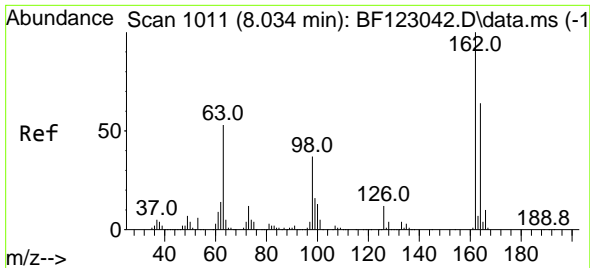


#28
 bis(2-Chloroethoxy)methane
 Concen: 42.81 ng
 RT: 7.928 min Scan# 993
 Delta R.T. -0.000 min
 Lab File: BF123123.D
 Acq: 4 Feb 2021 20:33

Tgt Ion: 93 Resp: 1012159

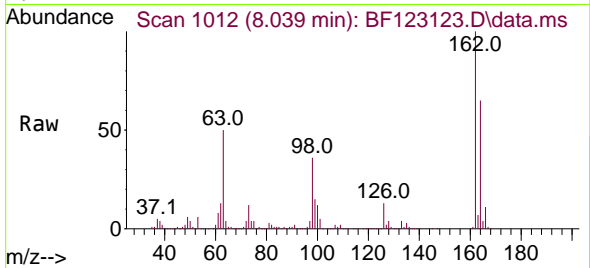
Ion	Ratio	Lower	Upper
93	100		
95	33.7	26.2	39.2
123	12.4	9.2	13.8



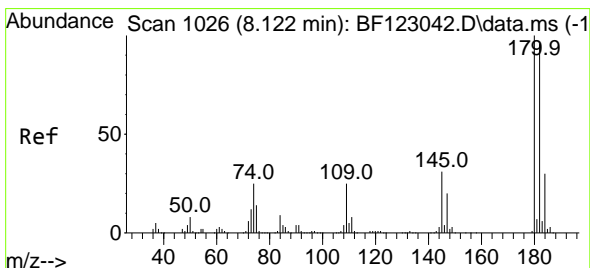
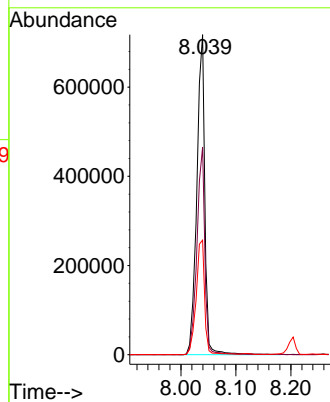
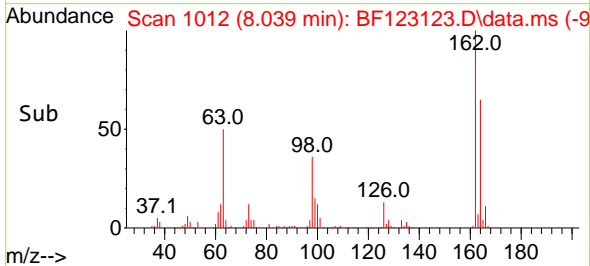


#29
 2,4-Dichlorophenol
 Concen: 47.79 ng
 RT: 8.039 min Scan# 1012
 Delta R.T. 0.006 min
 Lab File: BF123123.D
 Acq: 4 Feb 2021 20:33

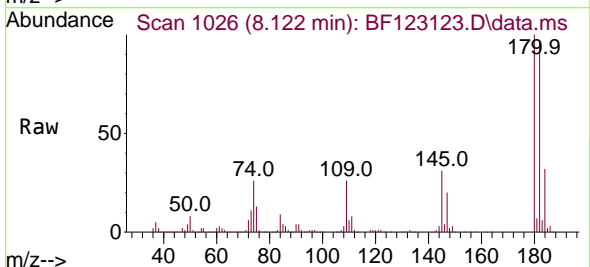
Instrument :
 BNA_F
 ClientSampled :
 TEST-PIT-4MSD



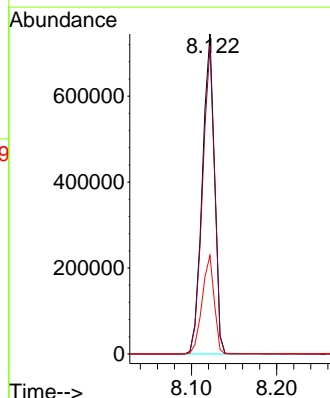
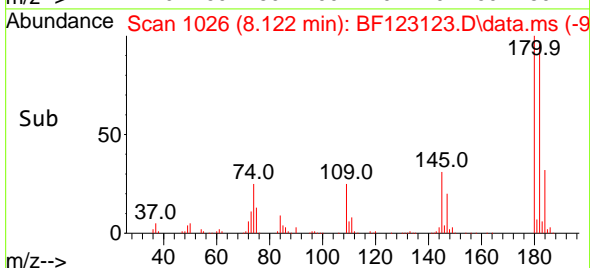
Tgt Ion:162 Resp: 726887
 Ion Ratio Lower Upper
 162 100
 164 64.9 43.2 83.2
 98 35.8 15.2 55.2

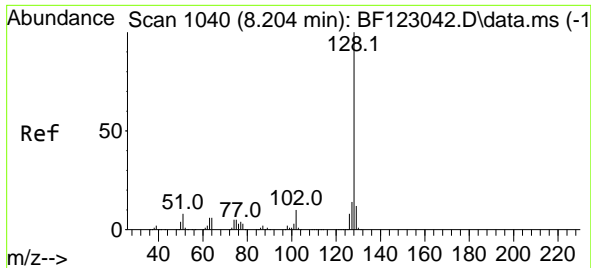


#30
 1,2,4-Trichlorobenzene
 Concen: 43.18 ng
 RT: 8.122 min Scan# 1026
 Delta R.T. -0.000 min
 Lab File: BF123123.D
 Acq: 4 Feb 2021 20:33



Tgt Ion:180 Resp: 739868
 Ion Ratio Lower Upper
 180 100
 182 96.2 75.7 113.5
 145 30.8 25.0 37.4

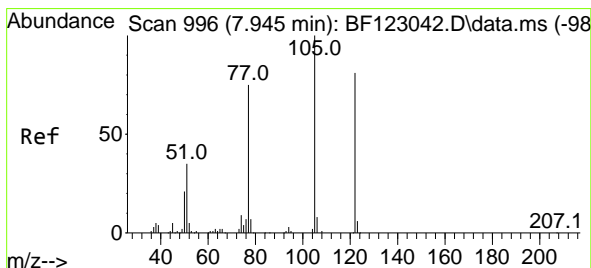
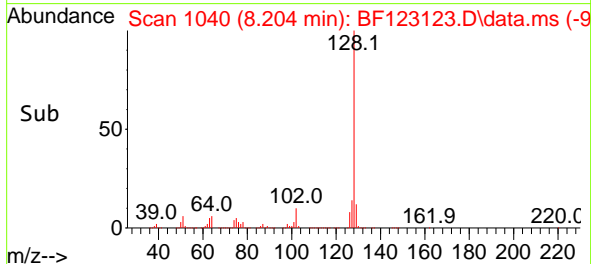
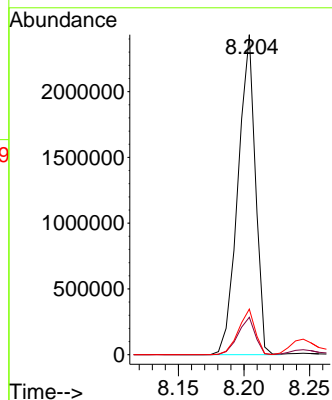
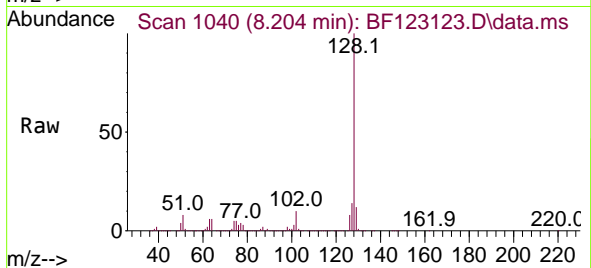




#31
 Naphthalene
 Concen: 43.14 ng
 RT: 8.204 min Scan# 1040
 Delta R.T. -0.000 min
 Lab File: BF123123.D
 Acq: 4 Feb 2021 20:33

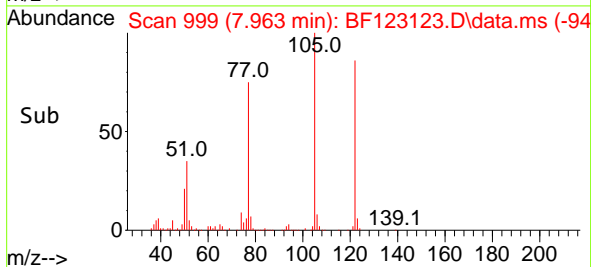
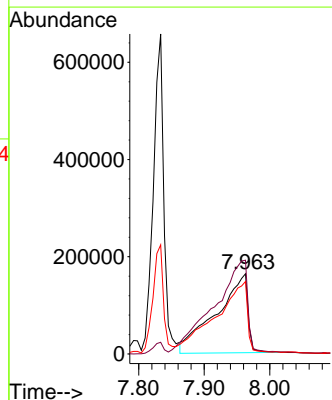
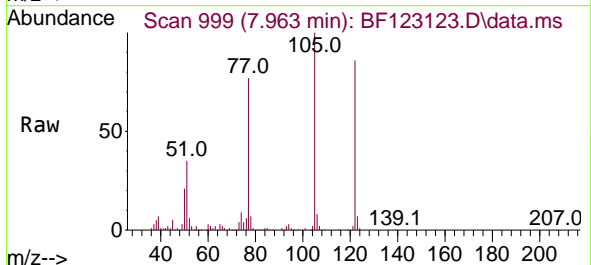
Instrument :
 BNA_F
 ClientSampleId :
 TEST-PIT-4MSD

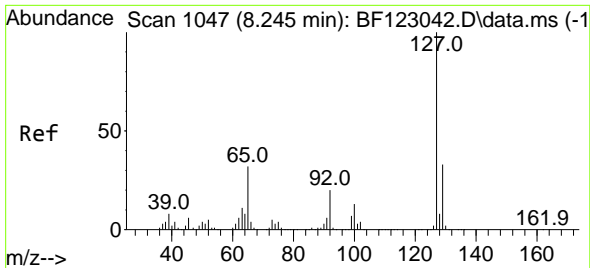
Tgt Ion:128 Resp: 2253368
 Ion Ratio Lower Upper
 128 100
 129 11.7 9.0 13.6
 127 14.3 10.7 16.1



#32
 Benzoic acid
 Concen: 46.29 ng
 RT: 7.963 min Scan# 999
 Delta R.T. 0.018 min
 Lab File: BF123123.D
 Acq: 4 Feb 2021 20:33

Tgt Ion:122 Resp: 540071
 Ion Ratio Lower Upper
 122 100
 105 116.9 104.8 144.8
 77 90.3 71.0 111.0

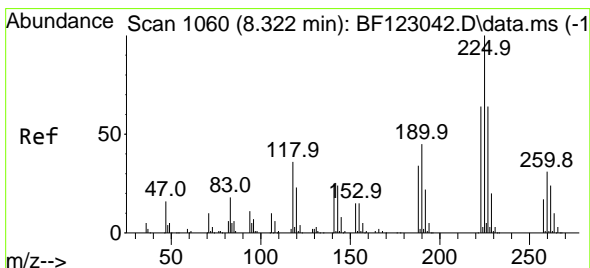
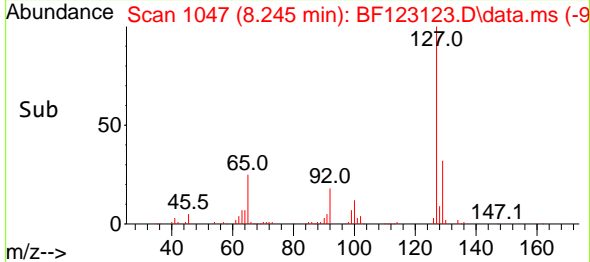
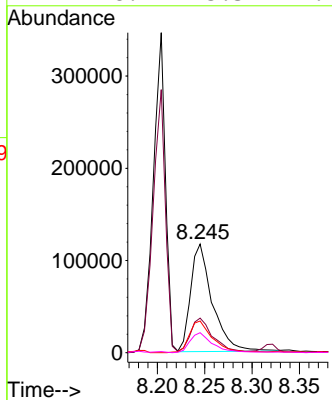
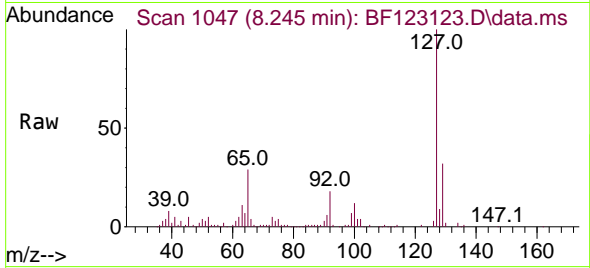




#33
 4-Chloroaniline
 Concen: 8.06 ng
 RT: 8.245 min Scan# 1047
 Delta R.T. -0.000 min
 Lab File: BF123123.D
 Acq: 4 Feb 2021 20:33

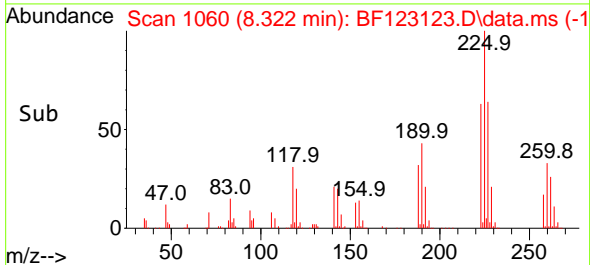
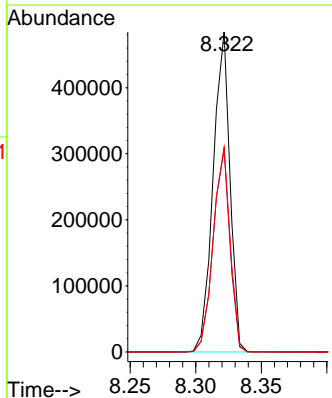
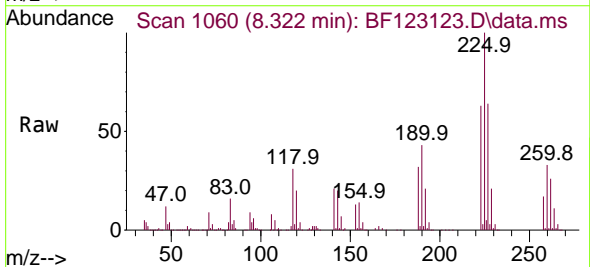
Instrument :
 BNA_F
 ClientSampled :
 TEST-PIT-4MSD

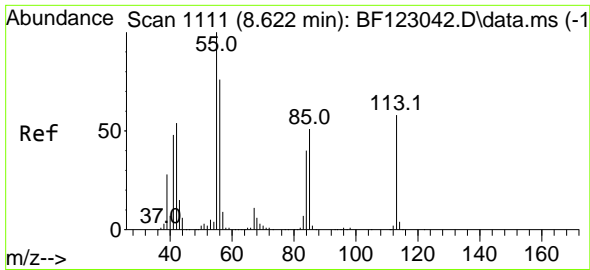
Tgt Ion	Resp	Lower	Upper
127	186835		
127	100		
129	31.8	26.2	39.2
65	29.2	22.2	33.2
92	18.4	15.3	22.9



#34
 Hexachlorobutadiene
 Concen: 43.64 ng
 RT: 8.322 min Scan# 1060
 Delta R.T. -0.000 min
 Lab File: BF123123.D
 Acq: 4 Feb 2021 20:33

Tgt Ion	Resp	Lower	Upper
225	432012		
225	100		
223	63.3	50.7	76.1
227	64.0	51.7	77.5

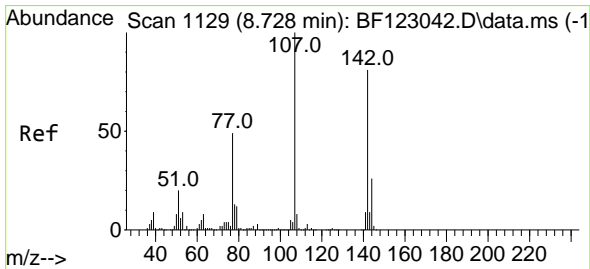
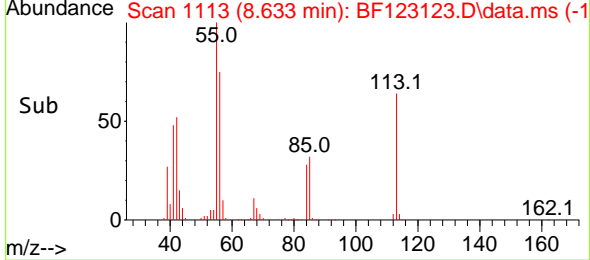
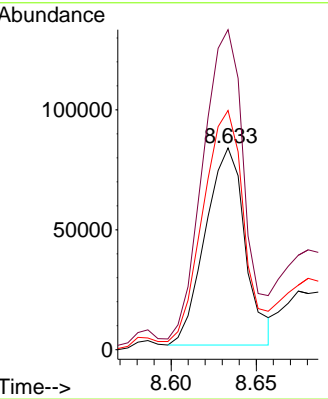
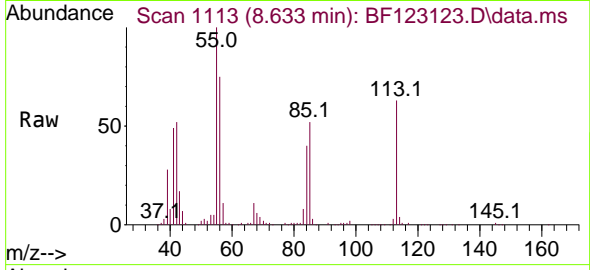




#35
 Caprolactam
 Concen: 26.12 ng
 RT: 8.633 min Scan# 1113
 Delta R.T. 0.012 min
 Lab File: BF123123.D
 Acq: 4 Feb 2021 20:33

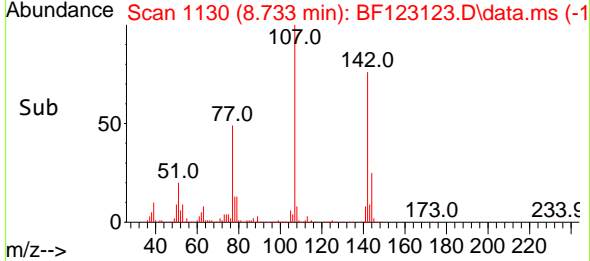
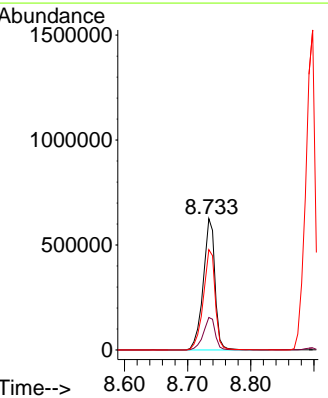
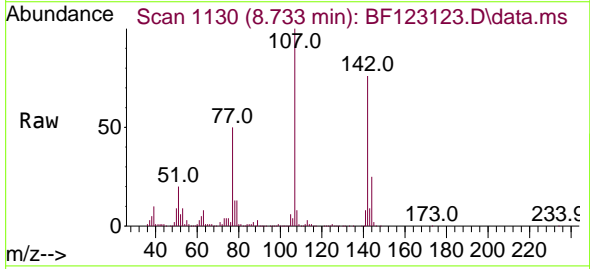
Instrument :
 BNA_F
 ClientSampleId :
 TEST-PIT-4MSD

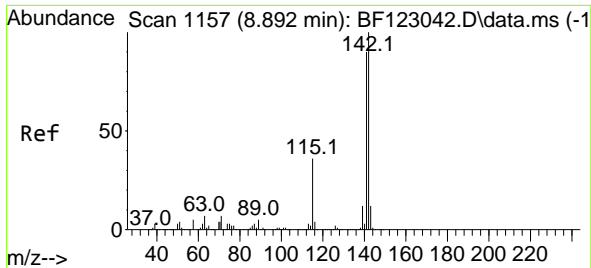
Tgt Ion:113 Resp: 134271
 Ion Ratio Lower Upper
 113 100
 55 158.6 133.7 173.7
 56 118.5 95.3 135.3



#36
 4-Chloro-3-methylphenol
 Concen: 51.22 ng
 RT: 8.733 min Scan# 1130
 Delta R.T. 0.006 min
 Lab File: BF123123.D
 Acq: 4 Feb 2021 20:33

Tgt Ion:107 Resp: 810080
 Ion Ratio Lower Upper
 107 100
 144 24.8 20.2 30.2
 142 76.4 64.4 96.6

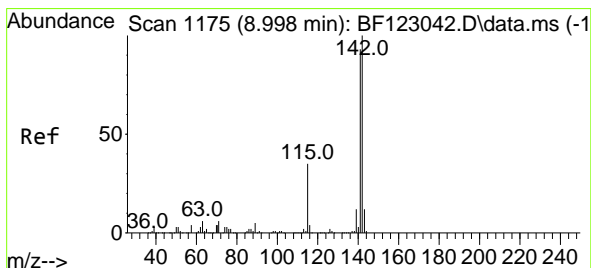
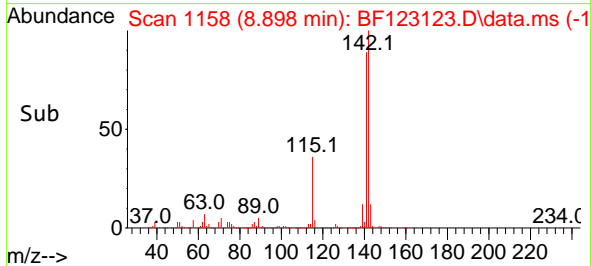
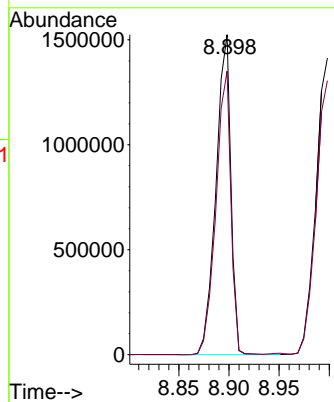
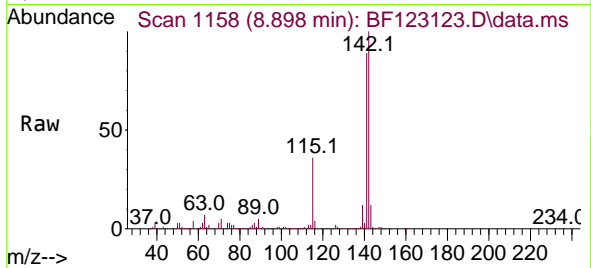




#37
 2-Methylnaphthalene
 Concen: 45.46 ng
 RT: 8.898 min Scan# 1158
 Delta R.T. 0.006 min
 Lab File: BF123123.D
 Acq: 4 Feb 2021 20:33

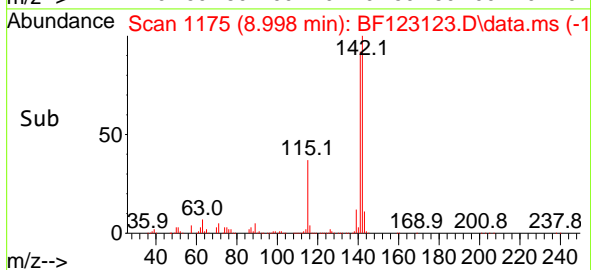
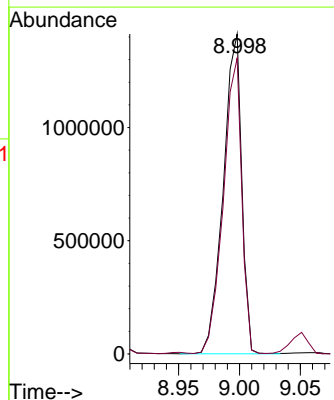
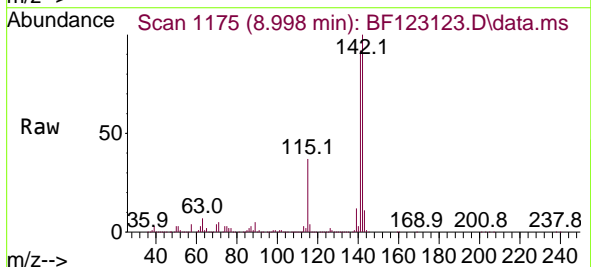
Instrument :
 BNA_F
 ClientSampleId :
 TEST-PIT-4MSD

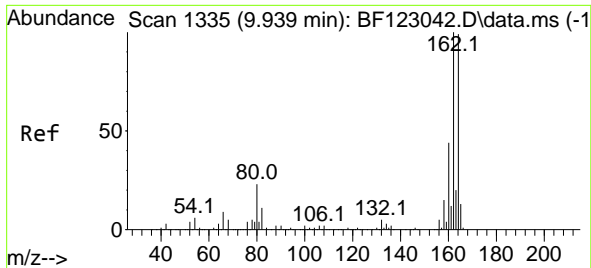
Tgt Ion:142 Resp: 1576219
 Ion Ratio Lower Upper
 142 100
 141 88.6 70.6 106.0



#38
 1-Methylnaphthalene
 Concen: 45.44 ng
 RT: 8.998 min Scan# 1175
 Delta R.T. -0.000 min
 Lab File: BF123123.D
 Acq: 4 Feb 2021 20:33

Tgt Ion:142 Resp: 1491636
 Ion Ratio Lower Upper
 142 100
 141 92.4 74.5 111.7

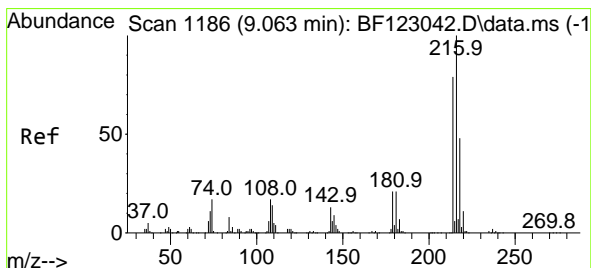
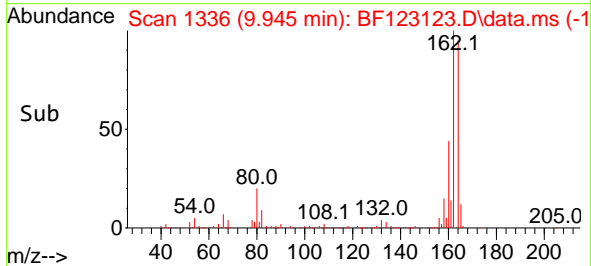
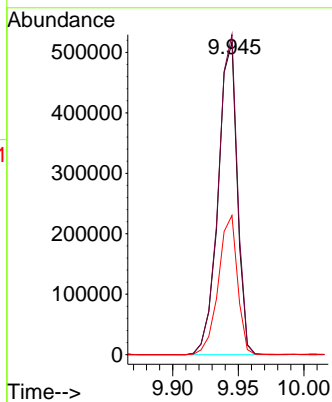
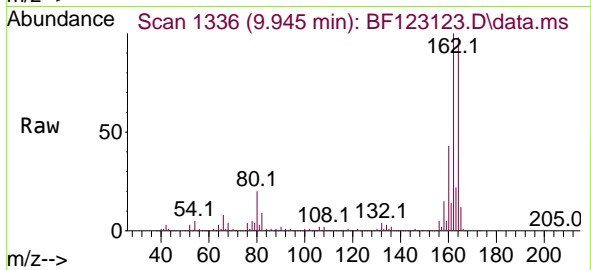




#39
 Acenaphthene-d10
 Concen: 20.00 ng
 RT: 9.945 min Scan# 1336
 Delta R.T. 0.006 min
 Lab File: BF123123.D
 Acq: 4 Feb 2021 20:33

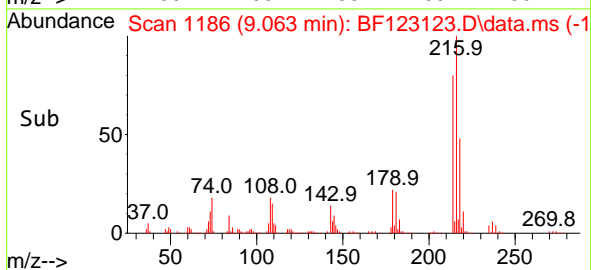
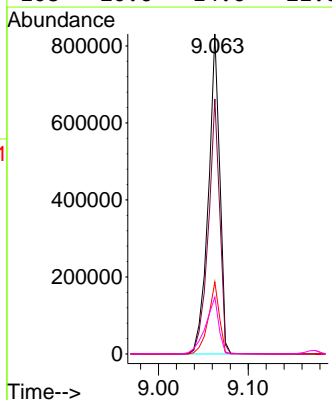
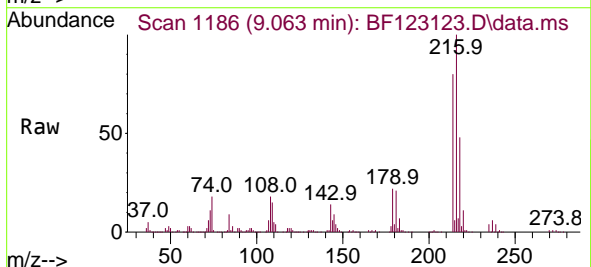
Instrument :
 BNA_F
 ClientSampled :
 TEST-PIT-4MSD

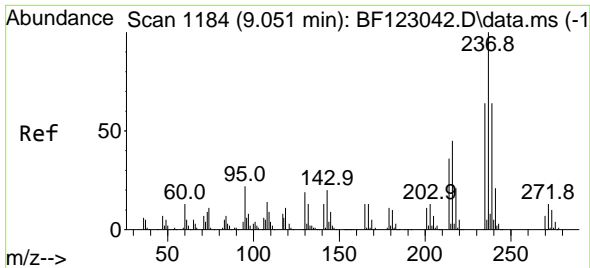
Tgt Ion	Resp	Lower	Upper
164	521325		
162	102.5	80.8	121.2
160	44.6	35.4	53.0



#40
 1,2,4,5-Tetrachlorobenzene
 Concen: 45.14 ng
 RT: 9.063 min Scan# 1186
 Delta R.T. -0.000 min
 Lab File: BF123123.D
 Acq: 4 Feb 2021 20:33

Tgt Ion	Resp	Lower	Upper
216	732036		
214	79.1	63.1	94.7
179	21.8	17.1	25.7
108	20.6	14.6	21.8

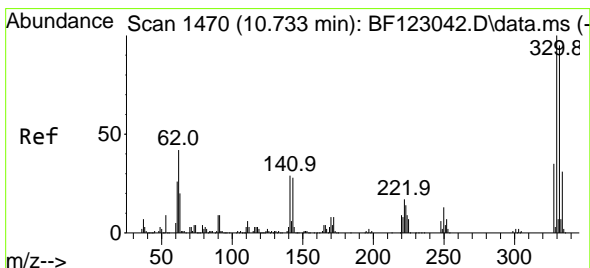
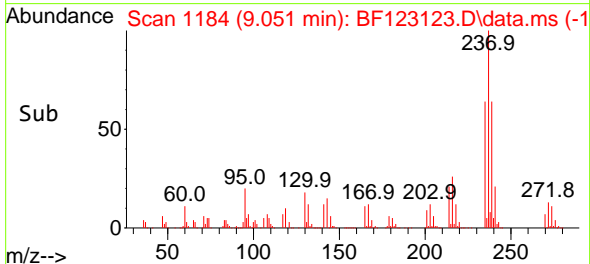
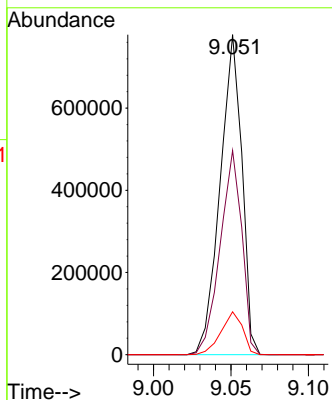
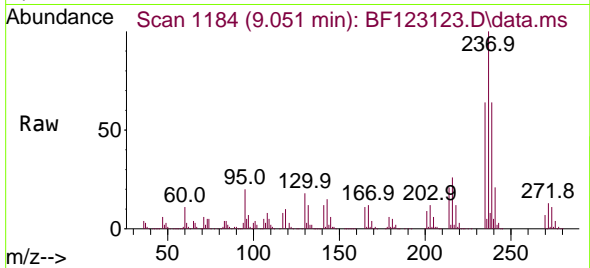




#41
 Hexachlorocyclopentadiene
 Concen: 99.03 ng
 RT: 9.051 min Scan# 1184
 Delta R.T. -0.000 min
 Lab File: BF123123.D
 Acq: 4 Feb 2021 20:33

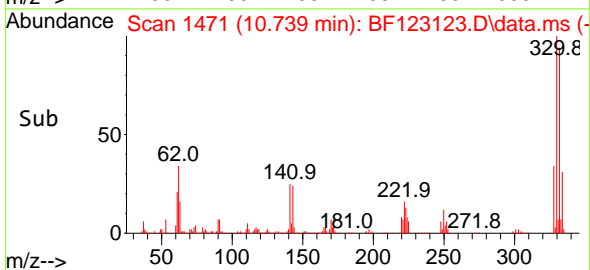
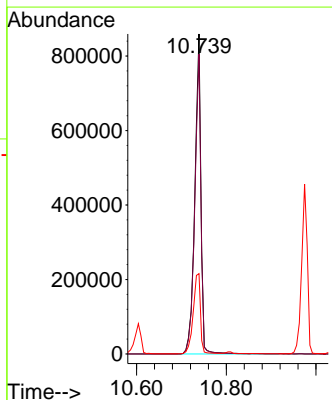
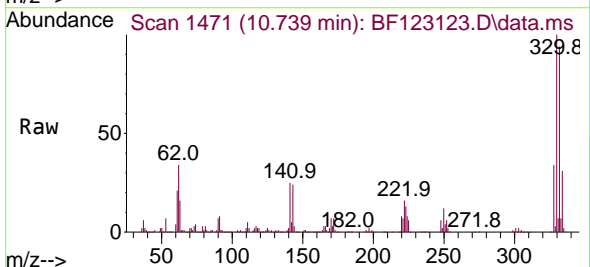
Instrument :
 BNA_F
 ClientSampleId :
 TEST-PIT-4MSD

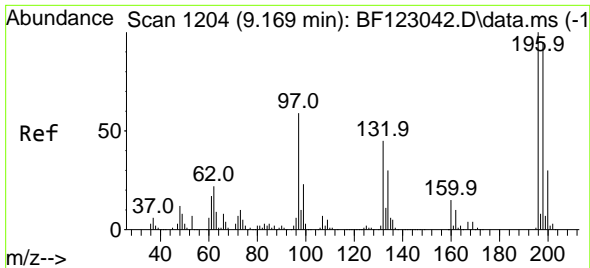
Tgt Ion	Resp	Lower	Upper
237	100		
235	63.8	40.9	80.9
272	13.4	0.0	33.4



#42
 2,4,6-Tribromophenol
 Concen: 143.04 ng
 RT: 10.739 min Scan# 1471
 Delta R.T. 0.006 min
 Lab File: BF123123.D
 Acq: 4 Feb 2021 20:33

Tgt Ion	Resp	Lower	Upper
330	100		
332	94.6	77.5	116.3
141	29.9	23.8	35.8

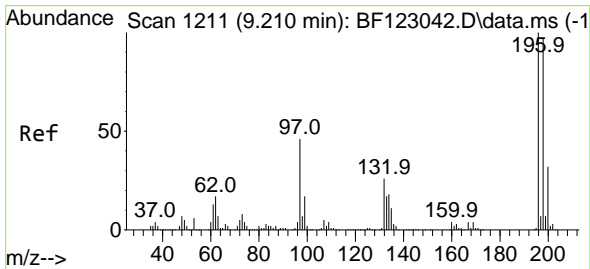
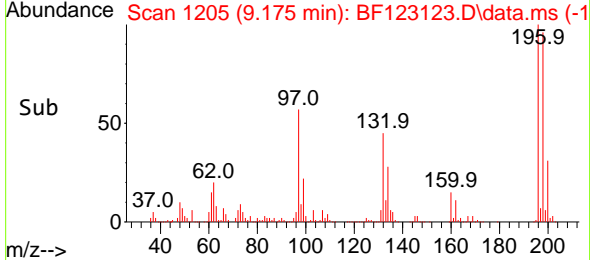
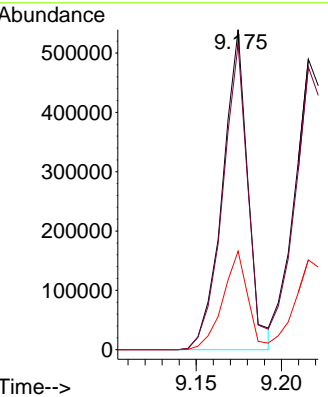
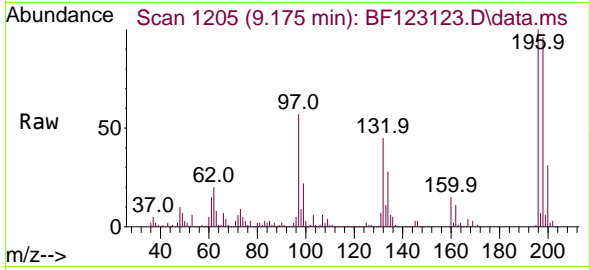




#43
 2,4,6-Trichlorophenol
 Concen: 49.98 ng
 RT: 9.175 min Scan# 1205
 Delta R.T. 0.006 min
 Lab File: BF123123.D
 Acq: 4 Feb 2021 20:33

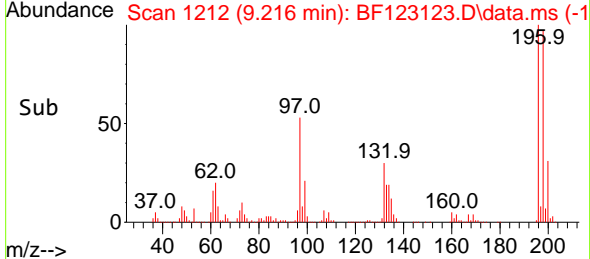
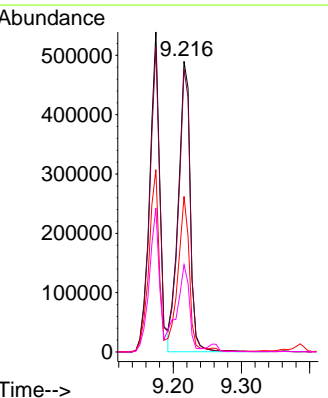
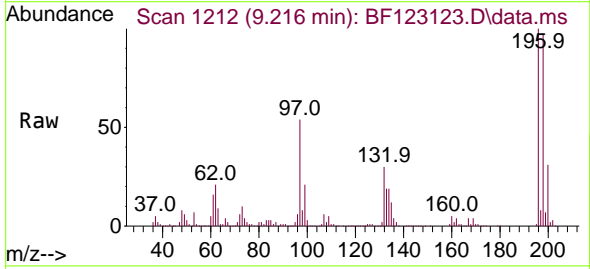
Instrument :
 BNA_F
 ClientSampleId :
 TEST-PIT-4MSD

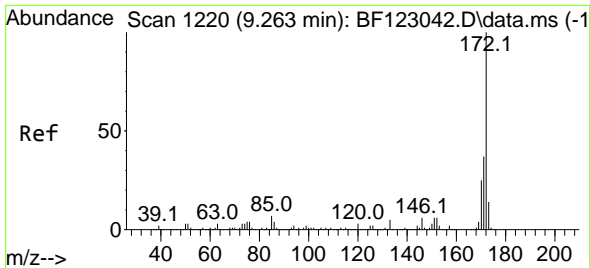
Tgt Ion:196 Resp: 555645
 Ion Ratio Lower Upper
 196 100
 198 95.5 75.1 112.7
 200 30.8 23.7 35.5



#44
 2,4,5-Trichlorophenol
 Concen: 50.95 ng
 RT: 9.216 min Scan# 1212
 Delta R.T. 0.006 min
 Lab File: BF123123.D
 Acq: 4 Feb 2021 20:33

Tgt Ion:196 Resp: 592366
 Ion Ratio Lower Upper
 196 100
 198 97.3 76.5 114.7
 97 53.5 40.1 60.1
 132 30.0 23.3 34.9



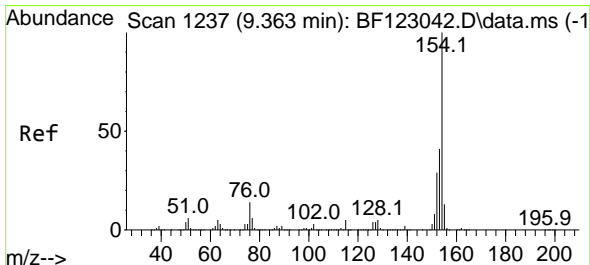
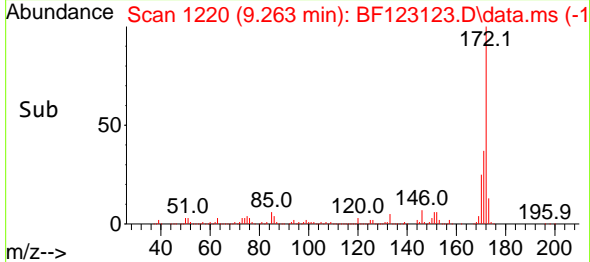
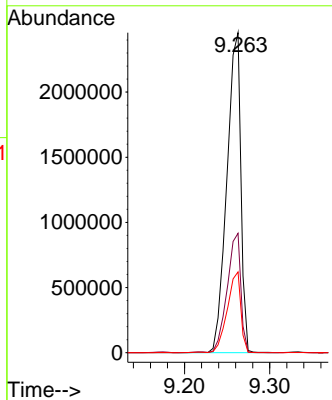
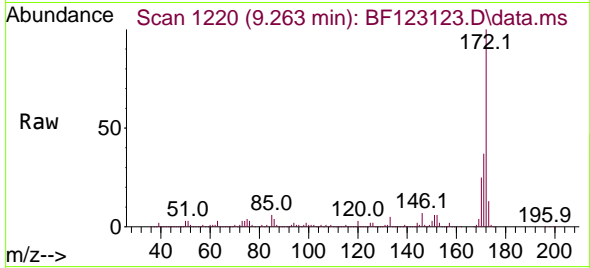


#45
 2-Fluorobiphenyl
 Concen: 79.92 ng
 RT: 9.263 min Scan# 1220
 Delta R.T. -0.000 min
 Lab File: BF123123.D
 Acq: 4 Feb 2021 20:33

Instrument :
 BNA_F
ClientSampled :
 TEST-PIT-4MSD

Tgt Ion:172 Resp: 2802617

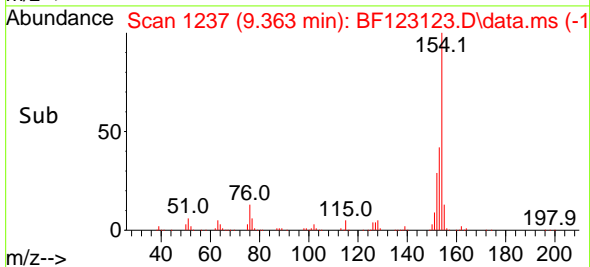
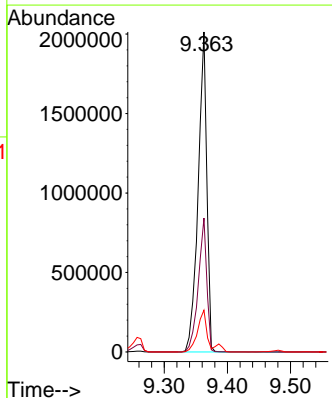
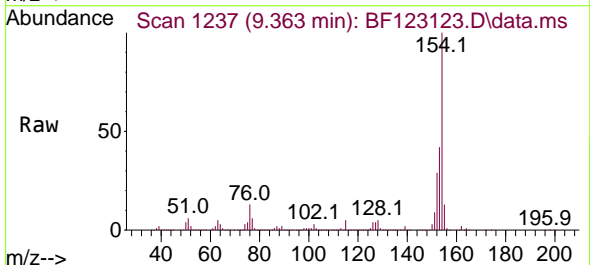
Ion	Ratio	Lower	Upper
172	100		
171	37.3	29.6	44.4
170	25.3	19.5	29.3

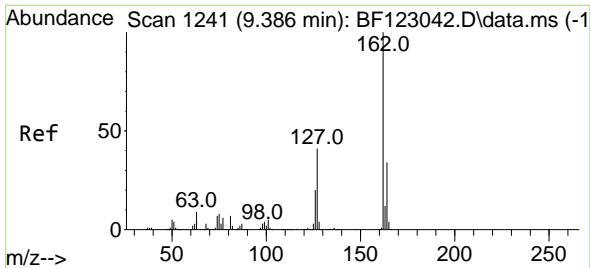


#46
 1,1'-Biphenyl
 Concen: 45.09 ng
 RT: 9.363 min Scan# 1237
 Delta R.T. -0.000 min
 Lab File: BF123123.D
 Acq: 4 Feb 2021 20:33

Tgt Ion:154 Resp: 1928315

Ion	Ratio	Lower	Upper
154	100		
153	41.8	21.8	61.8
76	13.1	0.0	33.4



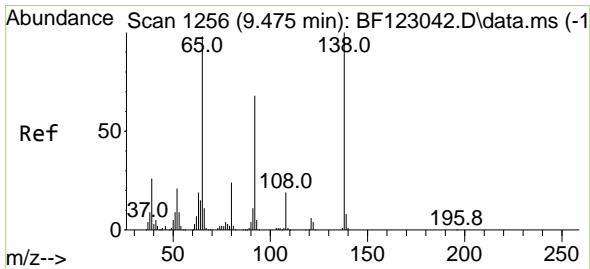
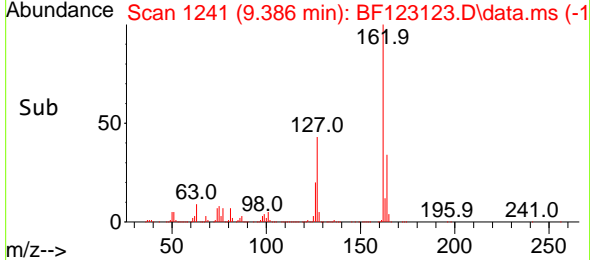
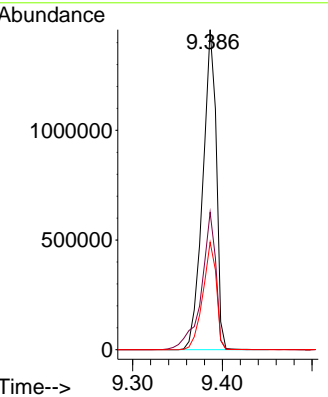
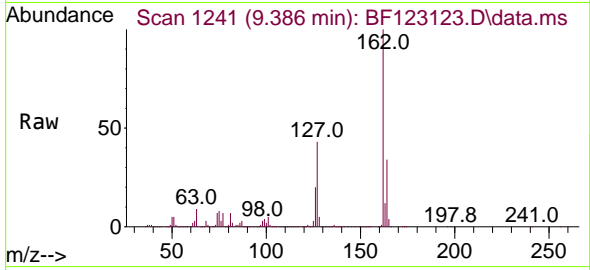


#47
 2-Chloronaphthalene
 Concen: 42.84 ng
 RT: 9.386 min Scan# 1241
 Delta R.T. -0.000 min
 Lab File: BF123123.D
 Acq: 4 Feb 2021 20:33

Instrument :
 BNA_F
 ClientSampleId :
 TEST-PIT-4MSD

Tgt Ion:162 Resp: 1533441

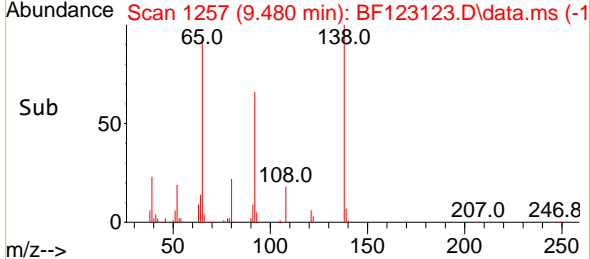
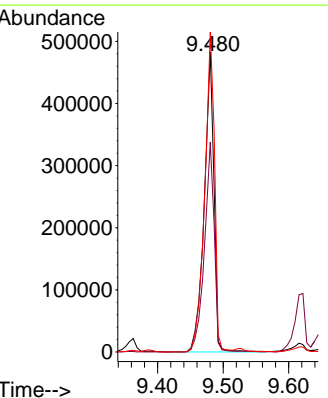
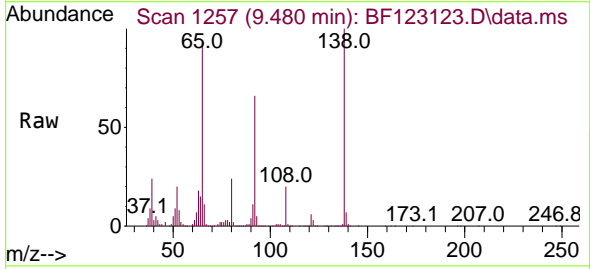
Ion	Ratio	Lower	Upper
162	100		
127	42.9	33.8	50.8
164	33.6	26.5	39.7

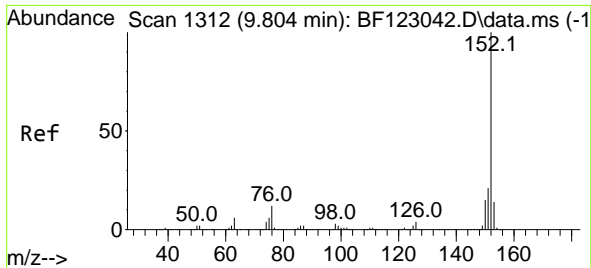


#48
 2-Nitroaniline
 Concen: 46.01 ng
 RT: 9.480 min Scan# 1257
 Delta R.T. 0.006 min
 Lab File: BF123123.D
 Acq: 4 Feb 2021 20:33

Tgt Ion: 65 Resp: 499131

Ion	Ratio	Lower	Upper
65	100		
92	70.0	60.0	90.0
138	106.8	100.6	151.0



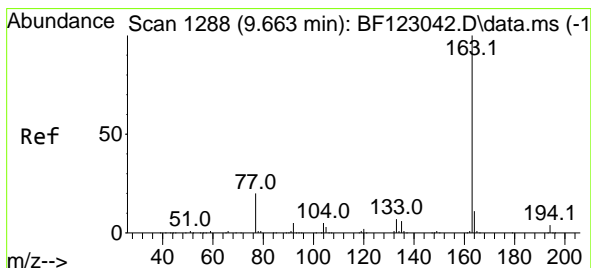
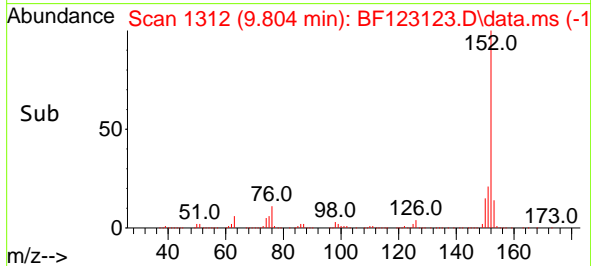
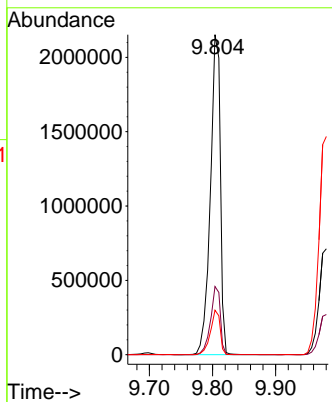
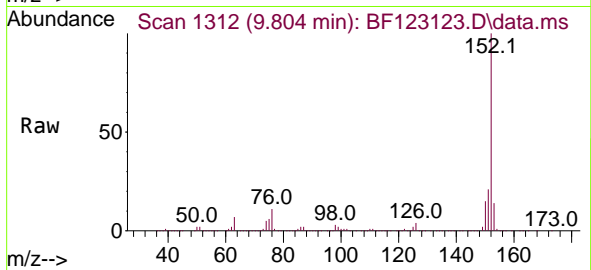


#49
 Acenaphthylene
 Concen: 44.91 ng
 RT: 9.804 min Scan# 1312
 Delta R.T. -0.000 min
 Lab File: BF123123.D
 Acq: 4 Feb 2021 20:33

Instrument :
 BNA_F
ClientSampled :
 TEST-PIT-4MSD

Tgt Ion:152 Resp: 2352911

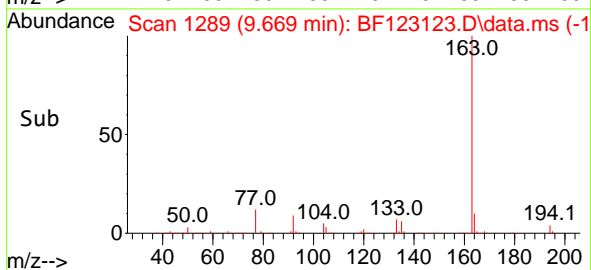
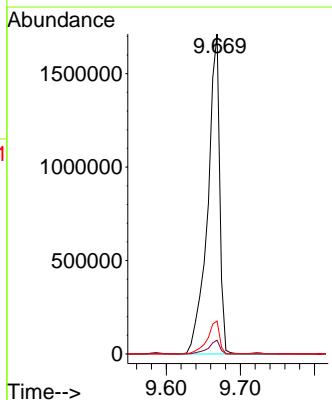
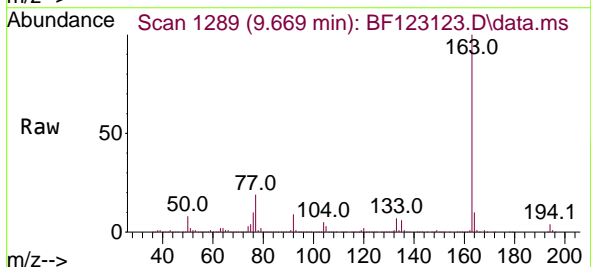
Ion	Ratio	Lower	Upper
152	100		
151	21.3	16.6	25.0
153	13.9	10.9	16.3

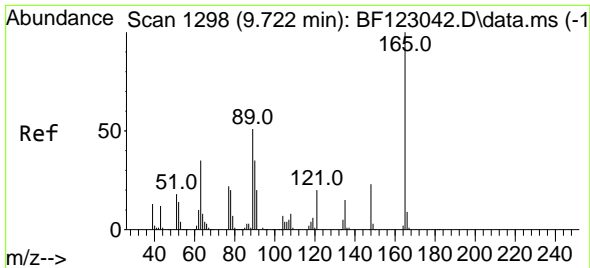


#50
 Dimethylphthalate
 Concen: 46.95 ng
 RT: 9.669 min Scan# 1289
 Delta R.T. 0.006 min
 Lab File: BF123123.D
 Acq: 4 Feb 2021 20:33

Tgt Ion:163 Resp: 1920432

Ion	Ratio	Lower	Upper
163	100		
194	4.3	3.4	5.0
164	10.3	8.1	12.1

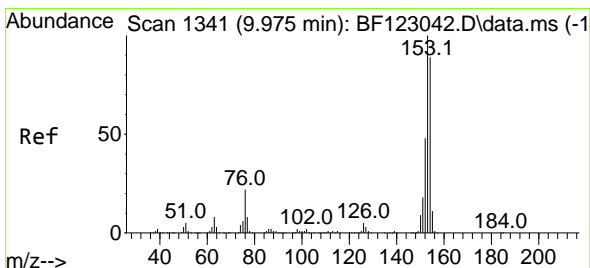
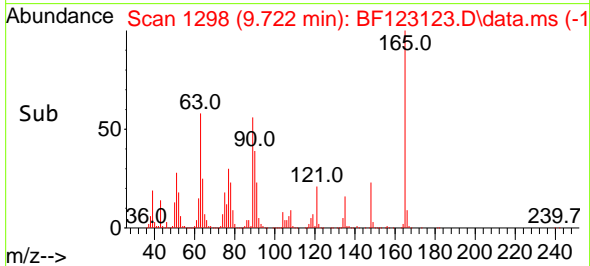
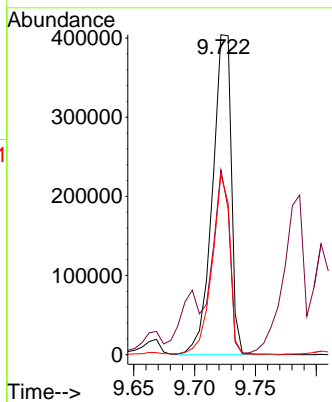
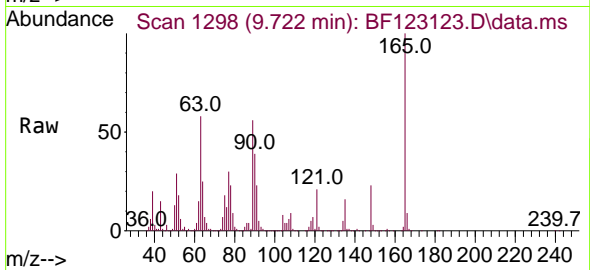




#51
 2,6-Dinitrotoluene
 Concen: 50.06 ng
 RT: 9.722 min Scan# 1298
 Delta R.T. -0.000 min
 Lab File: BF123123.D
 Acq: 4 Feb 2021 20:33

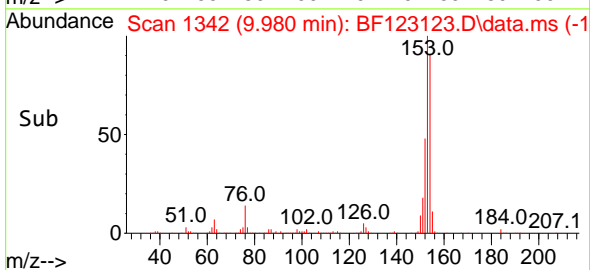
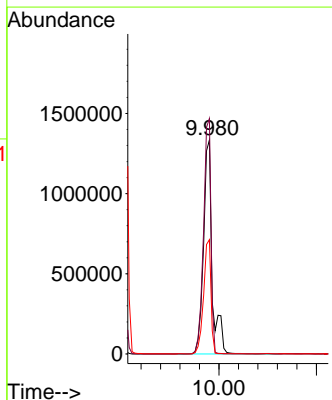
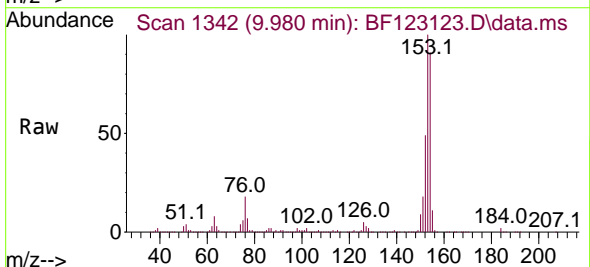
Instrument :
 BNA_F
 ClientSampleId :
 TEST-PIT-4MSD

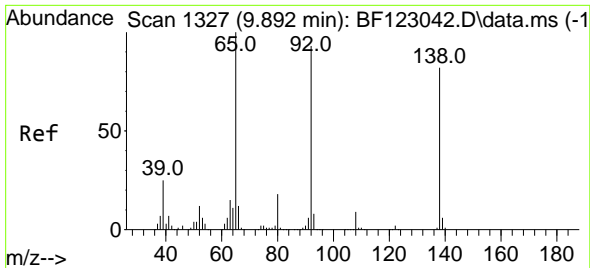
Tgt Ion:165 Resp: 436172
 Ion Ratio Lower Upper
 165 100
 63 57.7 36.6 55.0#
 89 56.4 39.4 59.0



#52
 Acenaphthene
 Concen: 49.20 ng
 RT: 9.980 min Scan# 1342
 Delta R.T. 0.006 min
 Lab File: BF123123.D
 Acq: 4 Feb 2021 20:33

Tgt Ion:154 Resp: 1655604
 Ion Ratio Lower Upper
 154 100
 153 110.1 89.0 133.6
 152 53.5 42.7 64.1

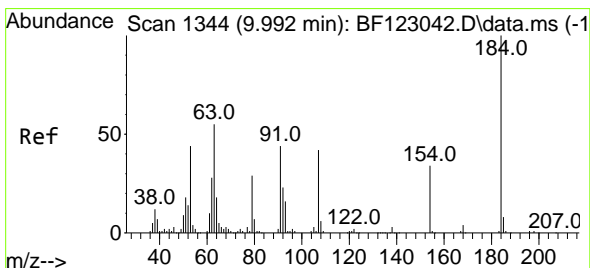
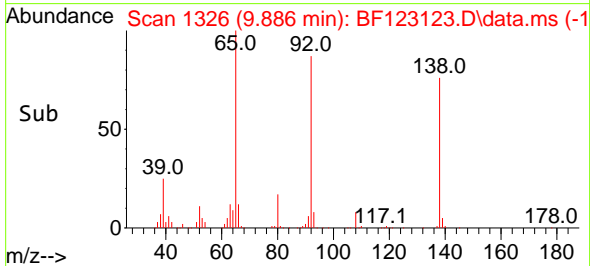
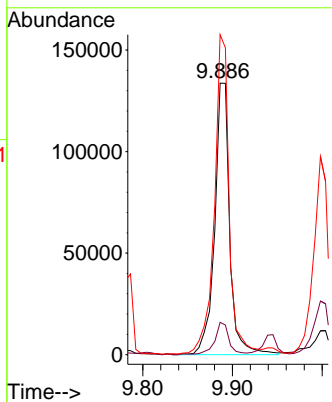
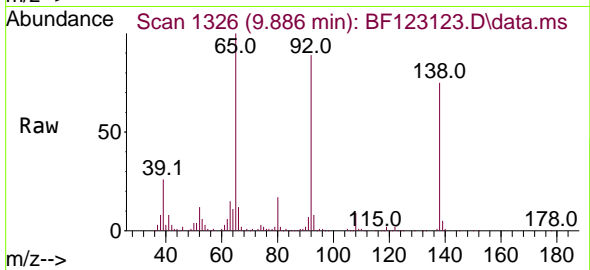




#53
 3-Nitroaniline
 Concen: 15.17 ng
 RT: 9.886 min Scan# 1326
 Delta R.T. -0.006 min
 Lab File: BF123123.D
 Acq: 4 Feb 2021 20:33

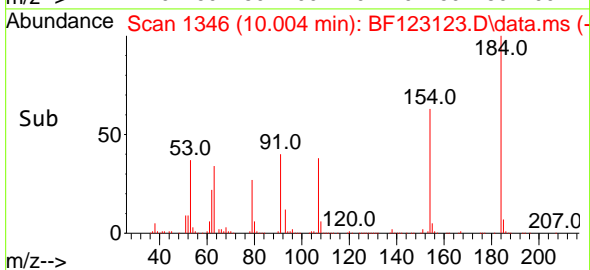
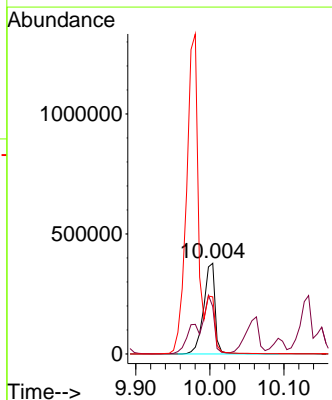
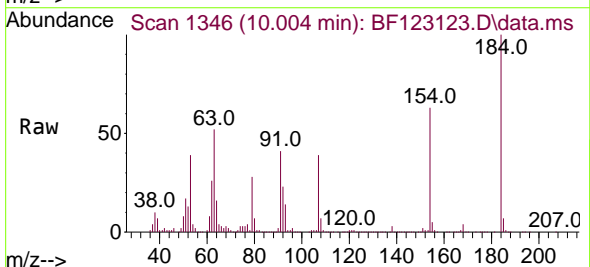
Instrument :
 BNA_F
 ClientSampleId :
 TEST-PIT-4MSD

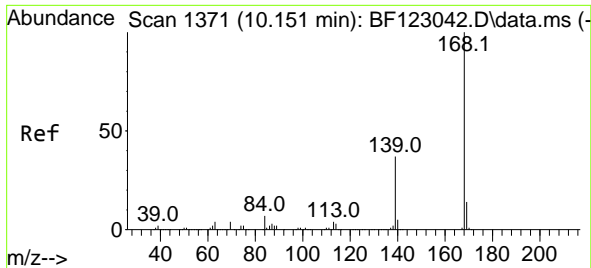
Tgt Ion:138 Resp: 156312
 Ion Ratio Lower Upper
 138 100
 108 11.9 8.2 12.2
 92 117.9 85.4 128.2



#54
 2,4-Dinitrophenol
 Concen: 100.74 ng
 RT: 10.004 min Scan# 1346
 Delta R.T. 0.012 min
 Lab File: BF123123.D
 Acq: 4 Feb 2021 20:33

Tgt Ion:184 Resp: 409118
 Ion Ratio Lower Upper
 184 100
 63 52.2 51.4 77.2
 154 63.0 49.7 74.5



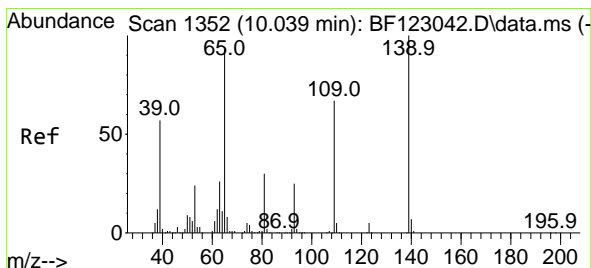
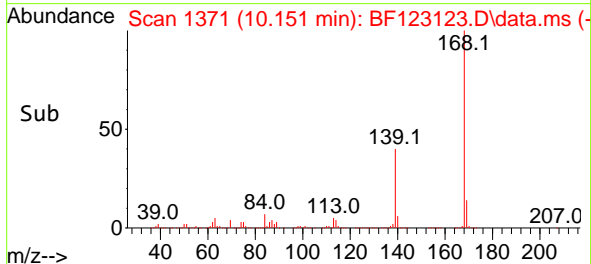
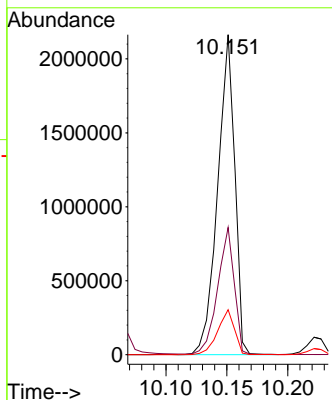
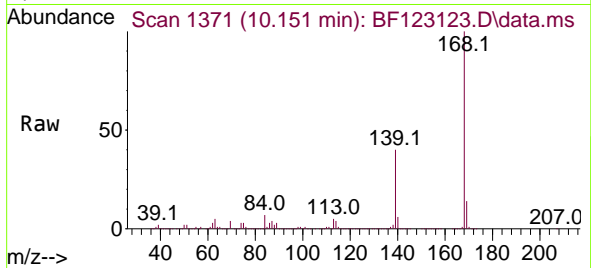


#55
 Dibenzofuran
 Concen: 43.20 ng
 RT: 10.151 min Scan# 1371
 Delta R.T. -0.000 min
 Lab File: BF123123.D
 Acq: 4 Feb 2021 20:33

Instrument :
 BNA_F
 ClientSampleId :
 TEST-PIT-4MSD

Tgt Ion:168 Resp: 2115440

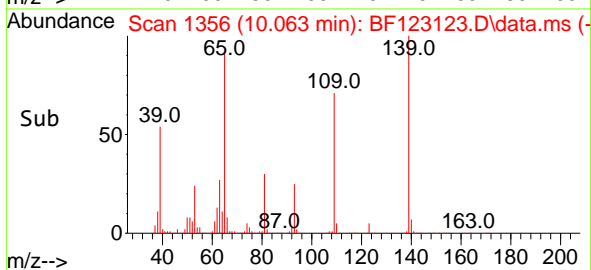
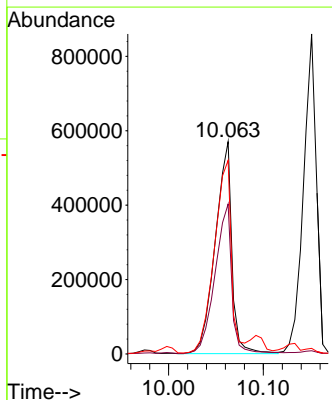
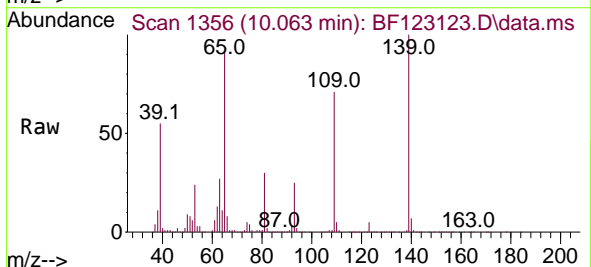
Ion	Ratio	Lower	Upper
168	100		
139	39.8	31.3	46.9
169	14.0	11.2	16.8

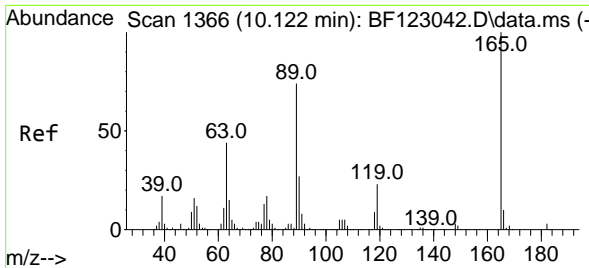


#56
 4-Nitrophenol
 Concen: 93.55 ng
 RT: 10.063 min Scan# 1356
 Delta R.T. 0.023 min
 Lab File: BF123123.D
 Acq: 4 Feb 2021 20:33

Tgt Ion:139 Resp: 696698

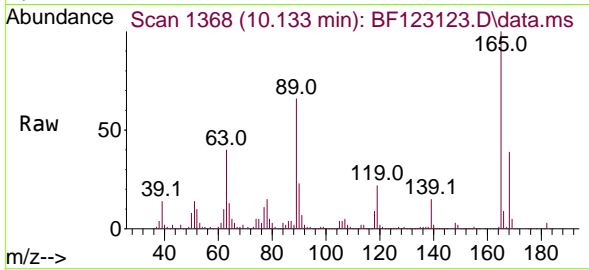
Ion	Ratio	Lower	Upper
139	100		
109	70.6	45.1	85.1
65	91.2	59.2	99.2





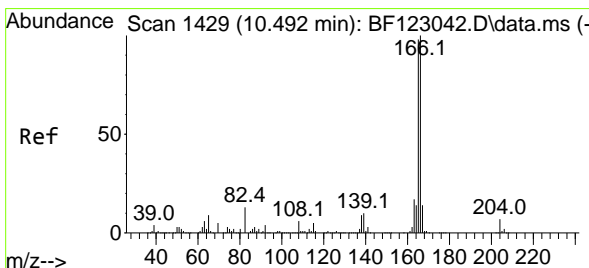
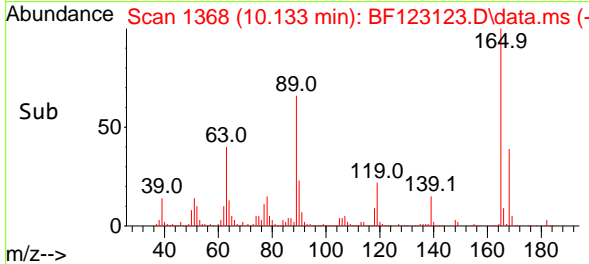
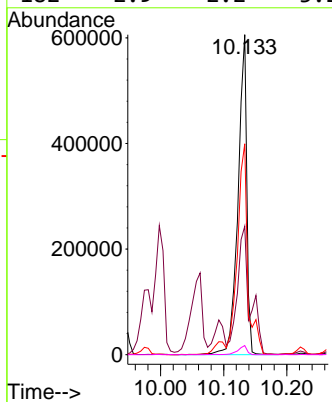
#57
 2,4-Dinitrotoluene
 Concen: 51.77 ng
 RT: 10.133 min Scan# 1368
 Delta R.T. 0.012 min
 Lab File: BF123123.D
 Acq: 4 Feb 2021 20:33

Instrument :
 BNA_F
ClientSampled :
 TEST-PIT-4MSD

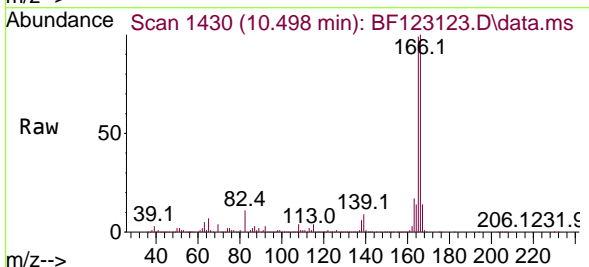


Tgt Ion:165 Resp: 586552

Ion	Ratio	Lower	Upper
165	100		
63	40.2	34.3	51.5
89	65.9	55.2	82.8
182	2.9	2.2	3.2

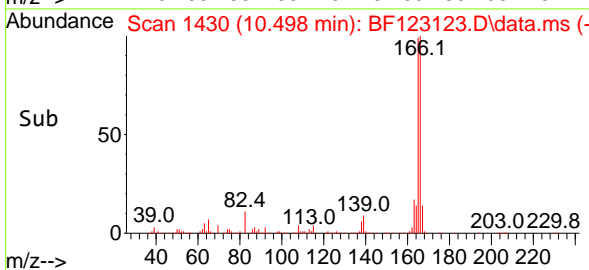
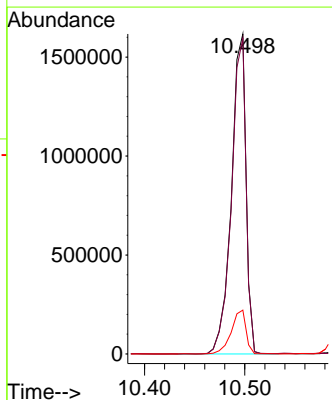


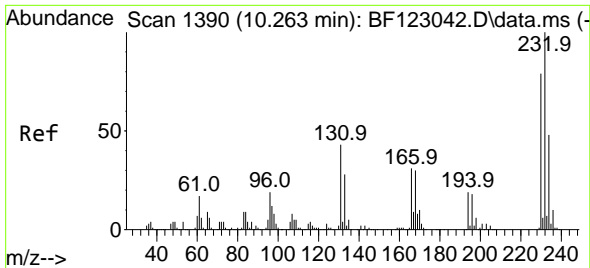
#58
 Fluorene
 Concen: 42.03 ng
 RT: 10.498 min Scan# 1430
 Delta R.T. 0.006 min
 Lab File: BF123123.D
 Acq: 4 Feb 2021 20:33



Tgt Ion:166 Resp: 1644407

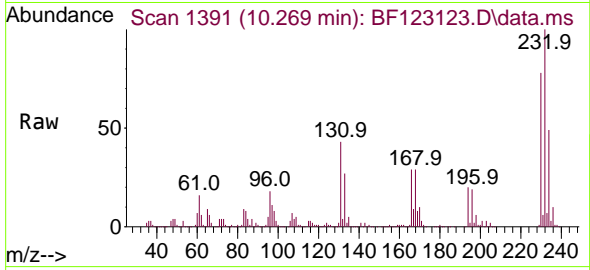
Ion	Ratio	Lower	Upper
166	100		
165	98.7	79.4	119.0
167	13.7	10.9	16.3



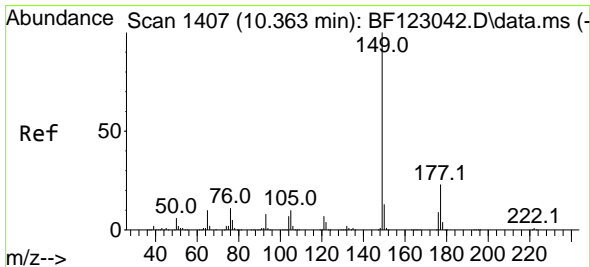
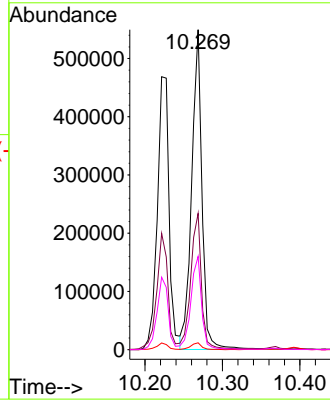
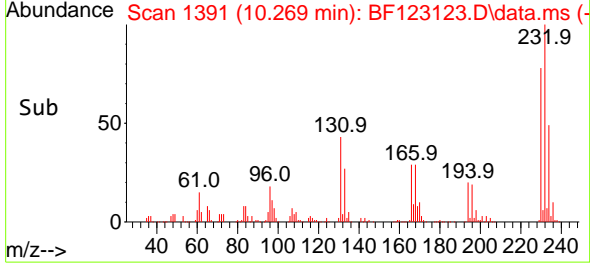


#59
 2,3,4,6-Tetrachlorophenol
 Concen: 51.47 ng
 RT: 10.269 min Scan# 1391
 Delta R.T. 0.006 min
 Lab File: BF123123.D
 Acq: 4 Feb 2021 20:33

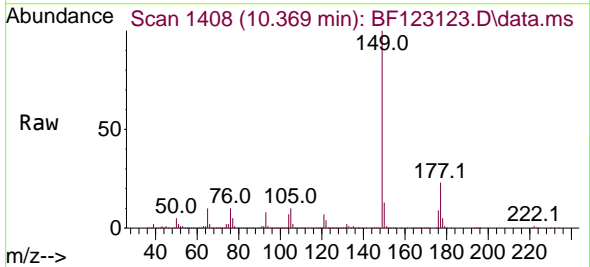
Instrument :
 BNA_F
 ClientSampleId :
 TEST-PIT-4MSD



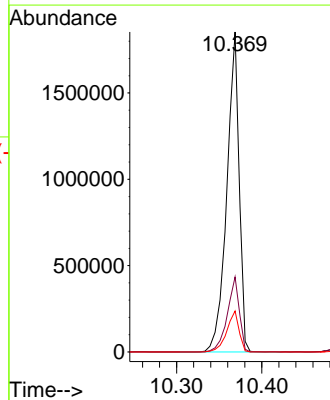
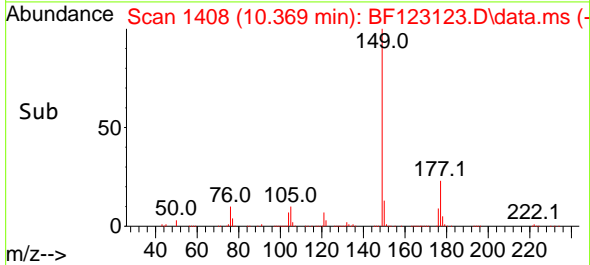
Tgt Ion:232 Resp: 507528
 Ion Ratio Lower Upper
 232 100
 131 44.1 33.0 49.4
 130 2.3 1.7 2.5
 166 30.3 23.0 34.4

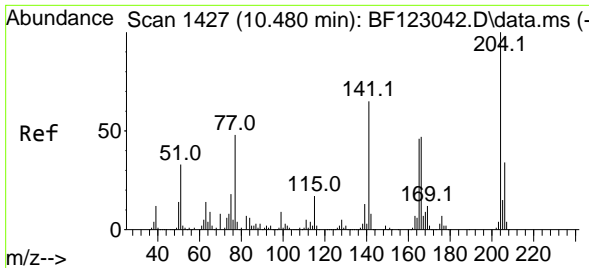


#60
 Diethylphthalate
 Concen: 46.36 ng
 RT: 10.369 min Scan# 1408
 Delta R.T. 0.006 min
 Lab File: BF123123.D
 Acq: 4 Feb 2021 20:33



Tgt Ion:149 Resp: 1864673
 Ion Ratio Lower Upper
 149 100
 177 23.5 18.2 27.4
 150 12.8 10.1 15.1

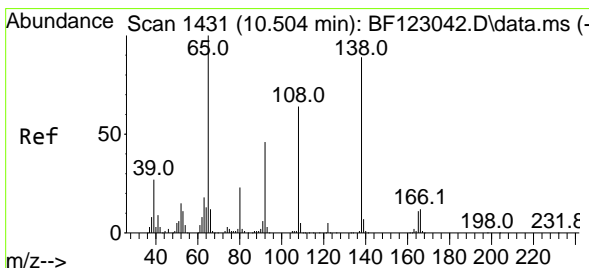
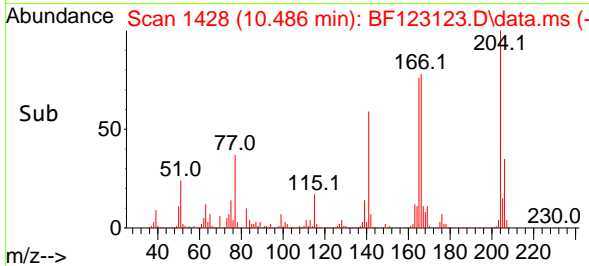
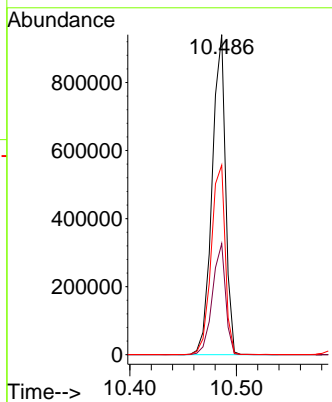
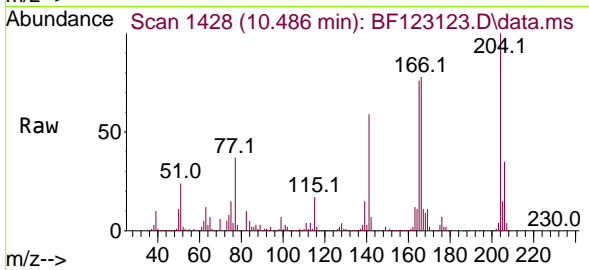




#61
 4-Chlorophenyl-phenylether
 Concen: 44.68 ng
 RT: 10.486 min Scan# 1428
 Delta R.T. 0.006 min
 Lab File: BF123123.D
 Acq: 4 Feb 2021 20:33

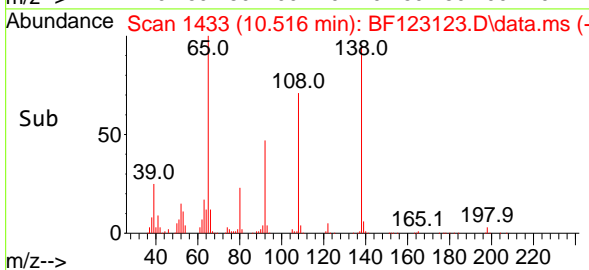
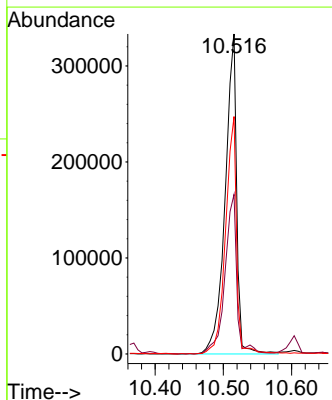
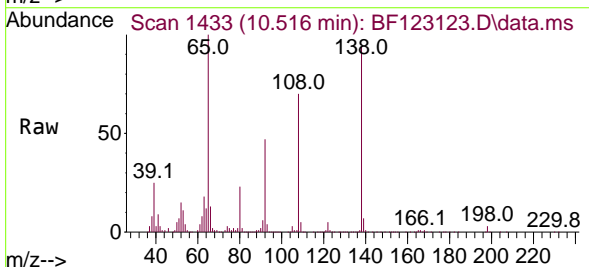
Instrument :
 BNA_F
 ClientSampleId :
 TEST-PIT-4MSD

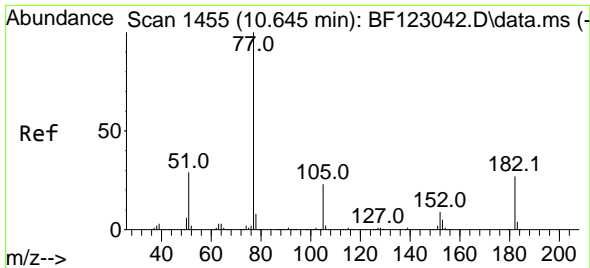
Tgt Ion	Resp	Lower	Upper
204	100		
206	34.7	27.0	40.4
141	59.3	50.4	75.6



#62
 4-Nitroaniline
 Concen: 38.09 ng
 RT: 10.516 min Scan# 1433
 Delta R.T. 0.012 min
 Lab File: BF123123.D
 Acq: 4 Feb 2021 20:33

Tgt Ion	Resp	Lower	Upper
138	100		
92	49.8	31.0	71.0
108	74.2	54.8	94.8



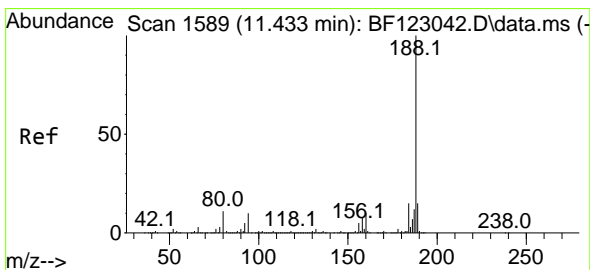
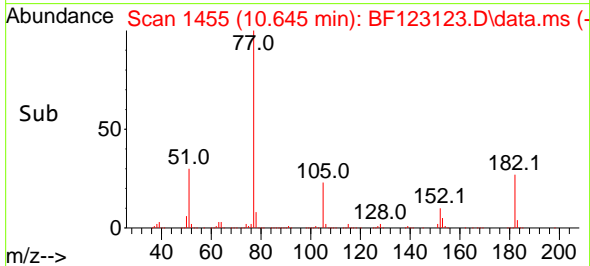
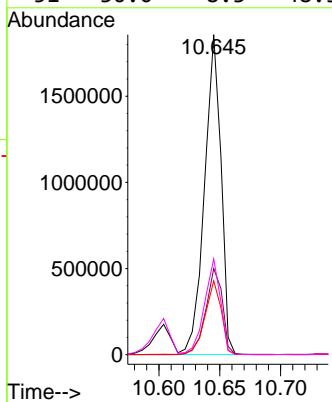
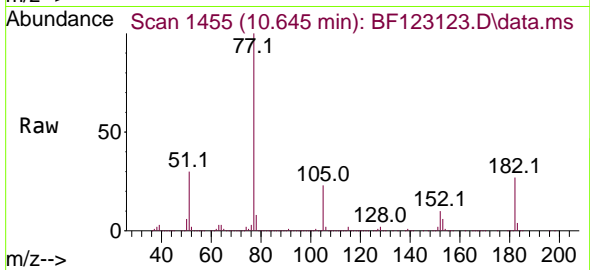


#63
 Azobenzene
 Concen: 44.22 ng
 RT: 10.645 min Scan# 1455
 Delta R.T. -0.000 min
 Lab File: BF123123.D
 Acq: 4 Feb 2021 20:33

Instrument :
 BNA_F
ClientSampled :
 TEST-PIT-4MSD

Tgt Ion: 77 Resp: 1740425

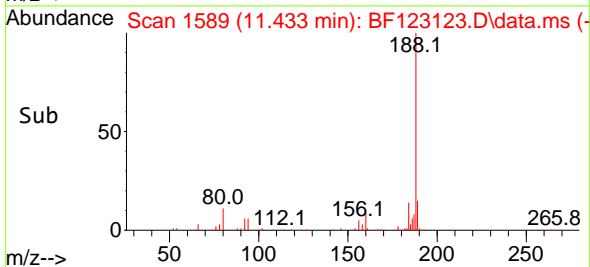
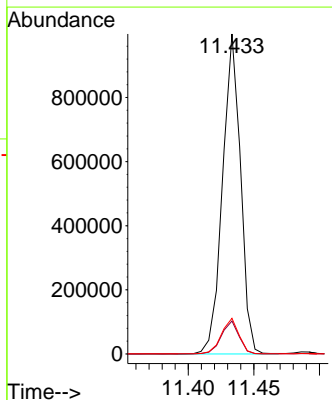
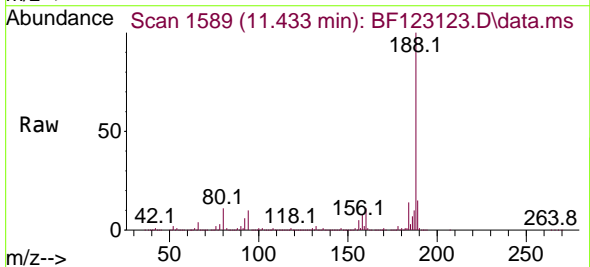
Ion	Ratio	Lower	Upper
77	100		
182	26.9	5.6	45.6
105	23.1	1.8	41.8
51	30.0	8.3	48.3

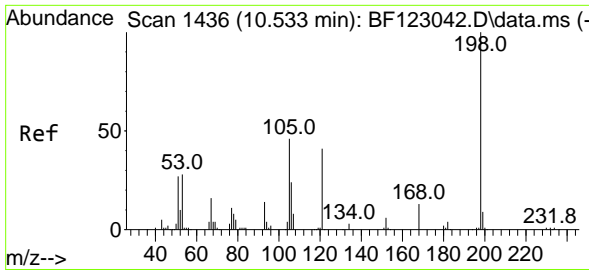


#64
 Phenanthrene-d10
 Concen: 20.00 ng
 RT: 11.433 min Scan# 1589
 Delta R.T. 0.000 min
 Lab File: BF123123.D
 Acq: 4 Feb 2021 20:33

Tgt Ion: 188 Resp: 951200

Ion	Ratio	Lower	Upper
188	100		
94	10.3	7.4	11.2
80	11.2	8.2	12.4

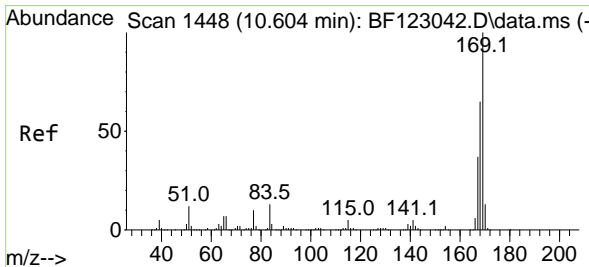
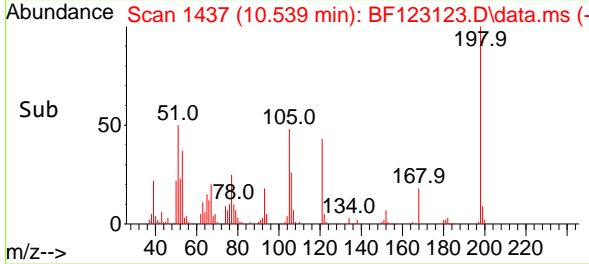
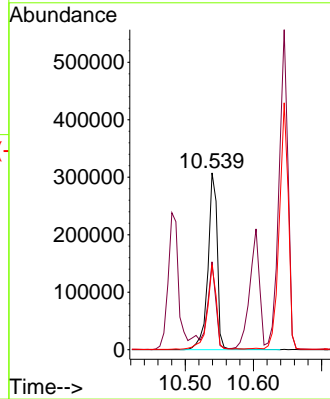
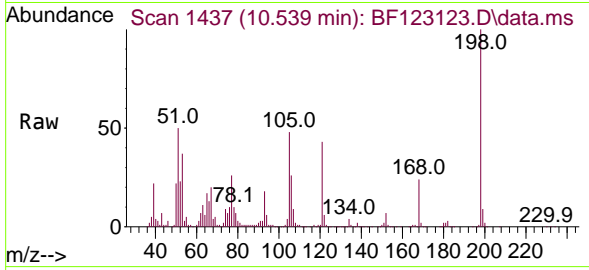




#65
 4,6-Dinitro-2-methylphenol
 Concen: 54.93 ng
 RT: 10.539 min Scan# 1437
 Delta R.T. 0.006 min
 Lab File: BF123123.D
 Acq: 4 Feb 2021 20:33

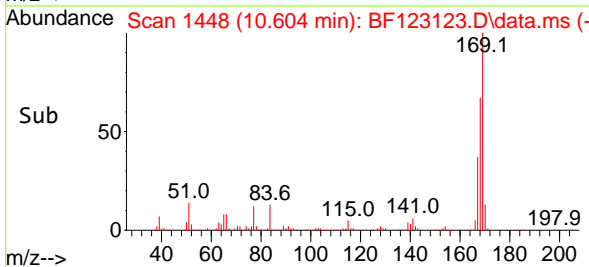
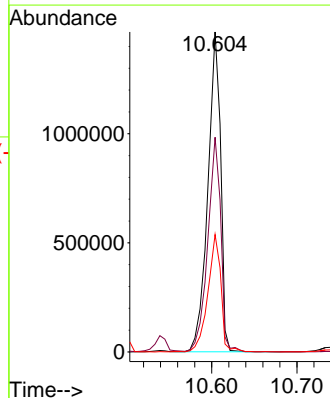
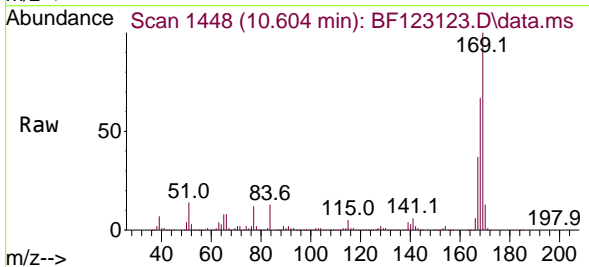
Instrument :
 BNA_F
 ClientSampled :
 TEST-PIT-4MSD

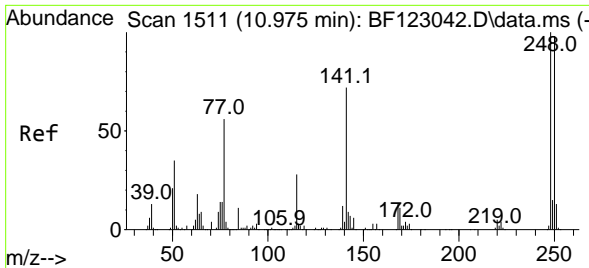
Tgt Ion:198 Resp: 292587
 Ion Ratio Lower Upper
 198 100
 51 49.6 20.3 60.3
 105 47.7 23.0 63.0



#66
 n-Nitrosodiphenylamine
 Concen: 44.48 ng
 RT: 10.604 min Scan# 1448
 Delta R.T. -0.000 min
 Lab File: BF123123.D
 Acq: 4 Feb 2021 20:33

Tgt Ion:169 Resp: 1525019
 Ion Ratio Lower Upper
 169 100
 168 67.1 54.2 81.2
 167 36.7 29.2 43.8



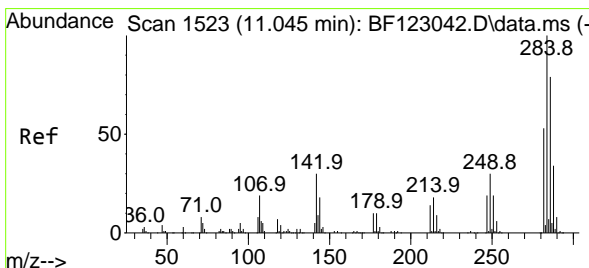
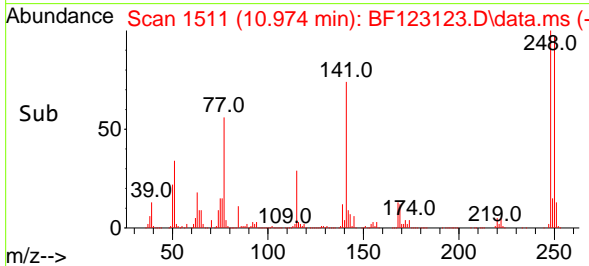
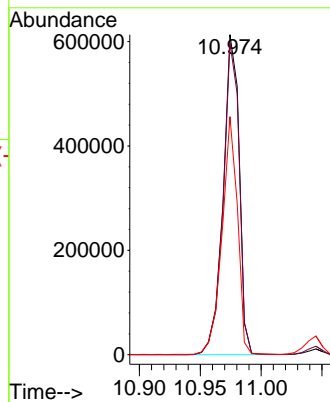
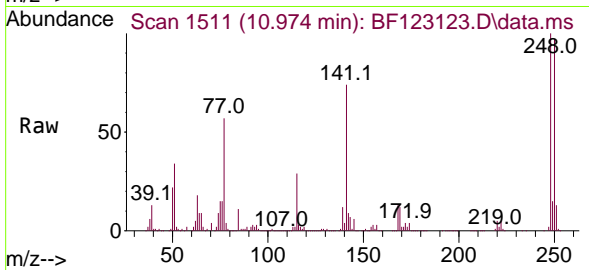


#67
 4-Bromophenyl-phenylether
 Concen: 46.57 ng
 RT: 10.974 min Scan# 1511
 Delta R.T. -0.000 min
 Lab File: BF123123.D
 Acq: 4 Feb 2021 20:33

Instrument :
 BNA_F
 ClientSampleId :
 TEST-PIT-4MSD

Tgt Ion:248 Resp: 564131

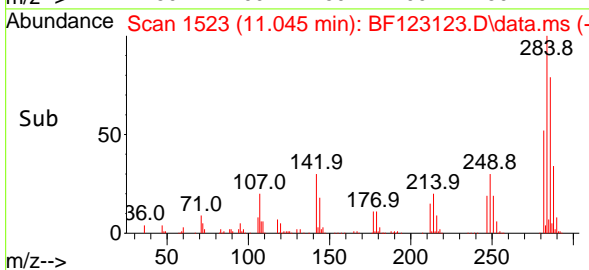
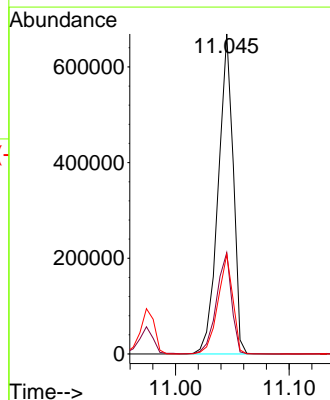
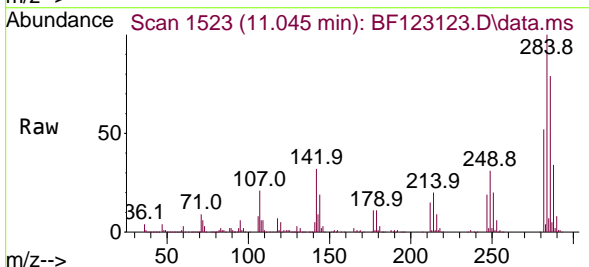
Ion	Ratio	Lower	Upper
248	100		
250	97.4	76.8	115.2
141	74.4	59.8	89.8

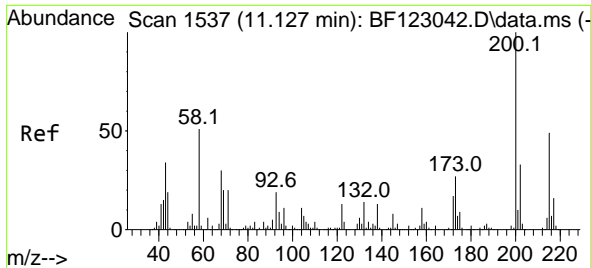


#68
 Hexachlorobenzene
 Concen: 47.20 ng
 RT: 11.045 min Scan# 1523
 Delta R.T. 0.000 min
 Lab File: BF123123.D
 Acq: 4 Feb 2021 20:33

Tgt Ion:284 Resp: 613252

Ion	Ratio	Lower	Upper
284	100		
142	31.6	25.6	38.4
249	31.1	25.1	37.7

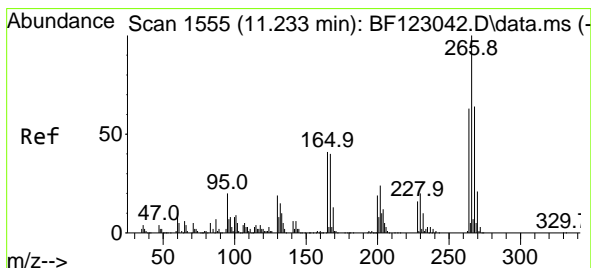
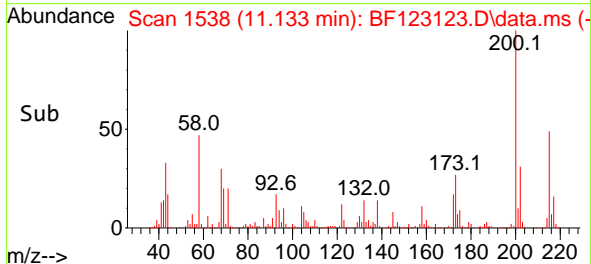
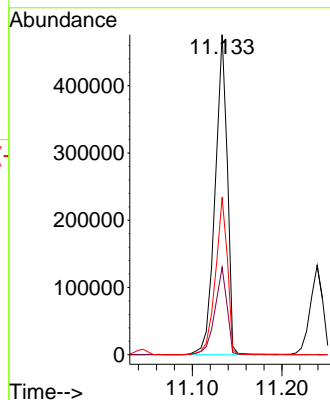
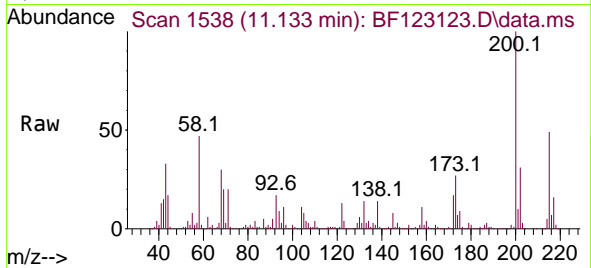




#69
 Atrazine
 Concen: 47.18 ng
 RT: 11.133 min Scan# 1538
 Delta R.T. 0.006 min
 Lab File: BF123123.D
 Acq: 4 Feb 2021 20:33

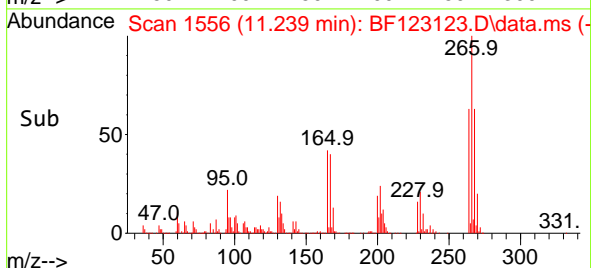
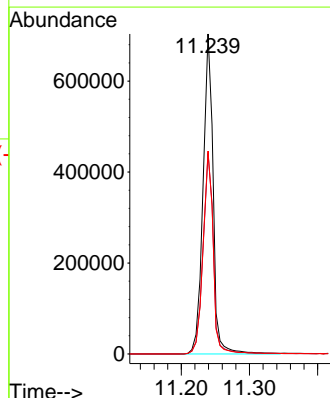
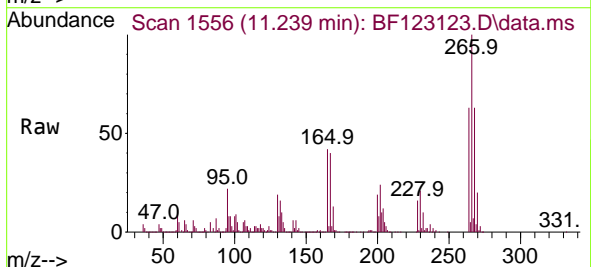
Instrument :
 BNA_F
 ClientSampleId :
 TEST-PIT-4MSD

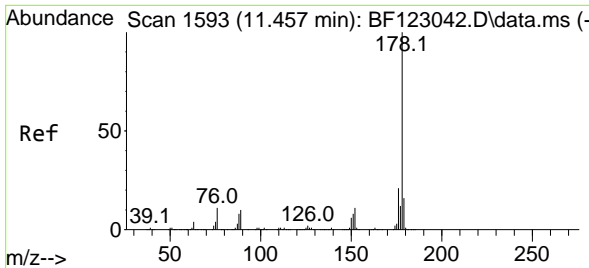
Tgt Ion:200 Resp: 446677
 Ion Ratio Lower Upper
 200 100
 173 27.3 6.6 46.6
 215 49.2 28.1 68.1



#70
 Pentachlorophenol
 Concen: 103.07 ng
 RT: 11.239 min Scan# 1556
 Delta R.T. 0.006 min
 Lab File: BF123123.D
 Acq: 4 Feb 2021 20:33

Tgt Ion:266 Resp: 725799
 Ion Ratio Lower Upper
 266 100
 268 62.7 50.5 75.7
 264 63.4 49.8 74.8

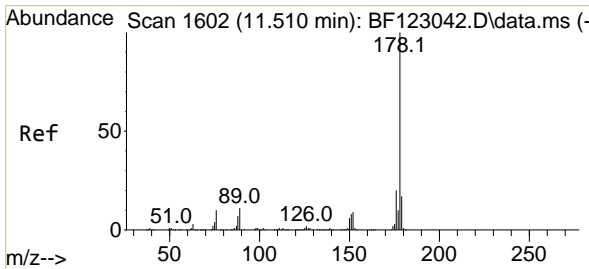
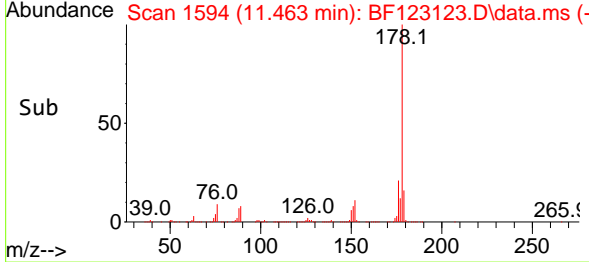
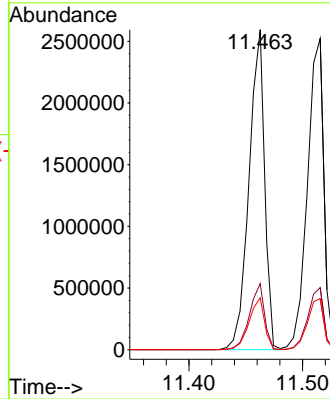
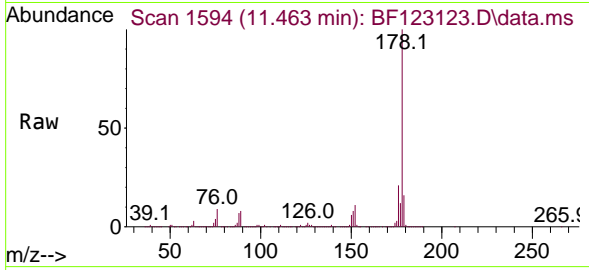




#71
 Phenanthrene
 Concen: 41.99 ng
 RT: 11.463 min Scan# 1594
 Delta R.T. 0.006 min
 Lab File: BF123123.D
 Acq: 4 Feb 2021 20:33

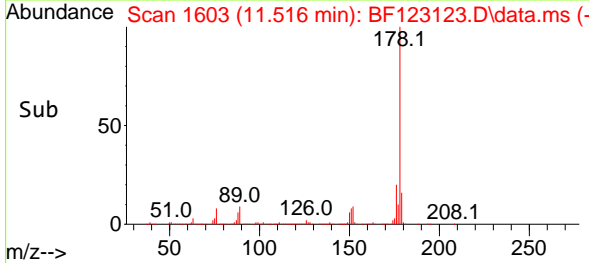
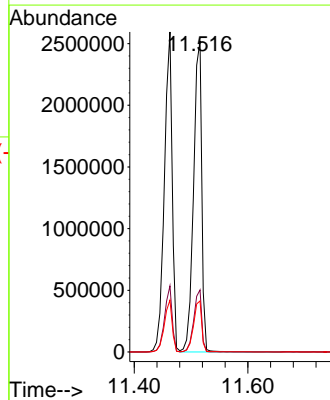
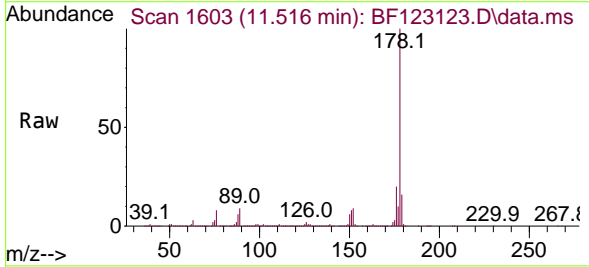
Instrument :
 BNA_F
 ClientSampleId :
 TEST-PIT-4MSD

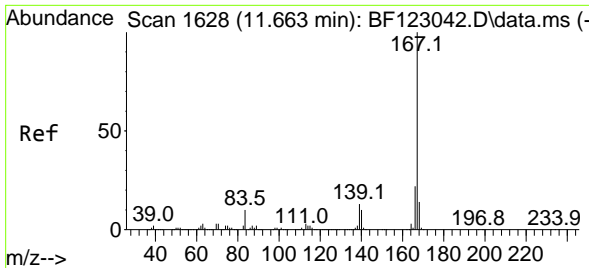
Tgt Ion:178 Resp: 2480851
 Ion Ratio Lower Upper
 178 100
 176 20.7 16.2 24.2
 179 16.2 12.7 19.1



#72
 Anthracene
 Concen: 44.69 ng
 RT: 11.516 min Scan# 1603
 Delta R.T. 0.006 min
 Lab File: BF123123.D
 Acq: 4 Feb 2021 20:33

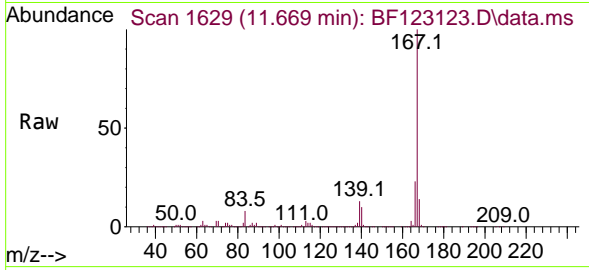
Tgt Ion:178 Resp: 2532407
 Ion Ratio Lower Upper
 178 100
 176 20.0 15.6 23.4
 179 16.4 12.8 19.2



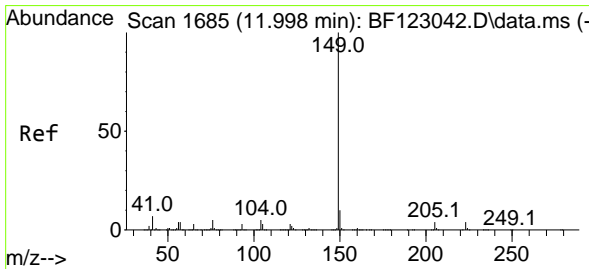
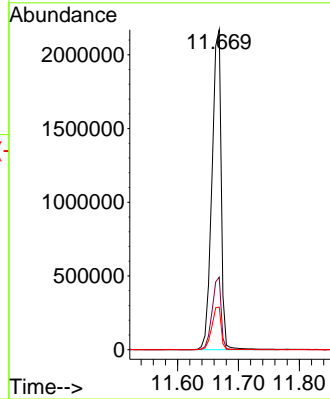
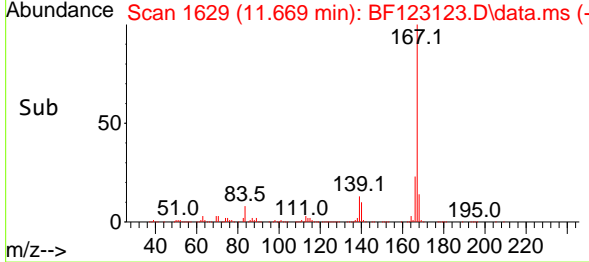


#73
 Carbazole
 Concen: 43.50 ng
 RT: 11.669 min Scan# 1629
 Delta R.T. 0.006 min
 Lab File: BF123123.D
 Acq: 4 Feb 2021 20:33

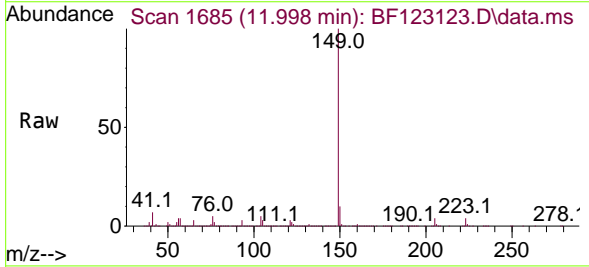
Instrument :
 BNA_F
 ClientSampled :
 TEST-PIT-4MSD



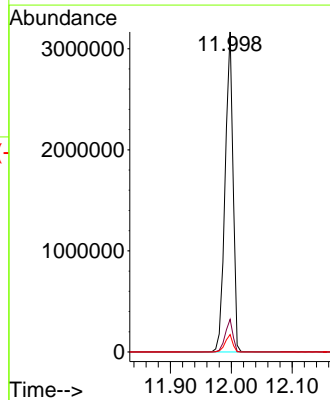
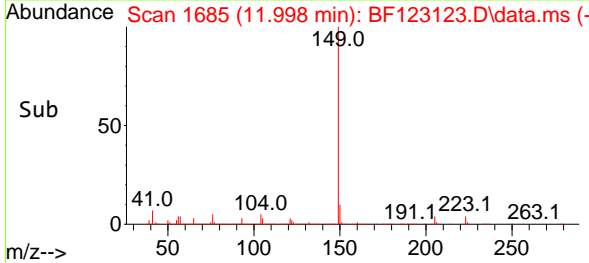
Tgt Ion:167 Resp: 2287990
 Ion Ratio Lower Upper
 167 100
 166 22.6 18.0 27.0
 139 13.3 10.9 16.3

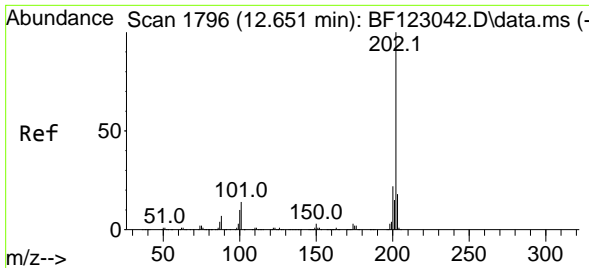


#74
 Di-n-butylphthalate
 Concen: 45.62 ng
 RT: 11.998 min Scan# 1685
 Delta R.T. -0.000 min
 Lab File: BF123123.D
 Acq: 4 Feb 2021 20:33



Tgt Ion:149 Resp: 2844719
 Ion Ratio Lower Upper
 149 100
 150 10.2 7.8 11.6
 104 5.4 4.2 6.4



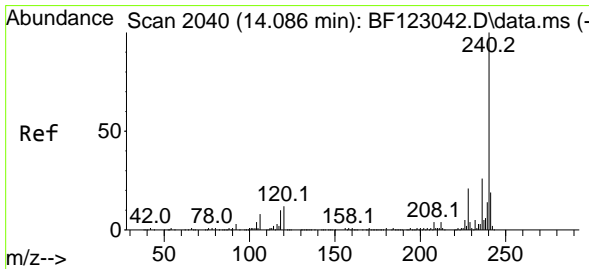
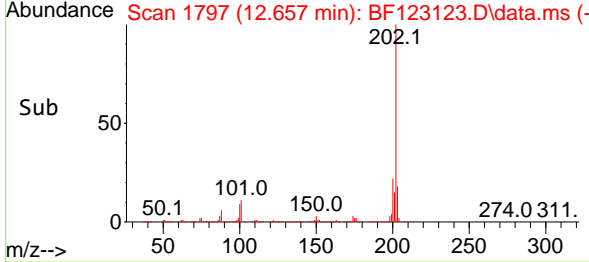
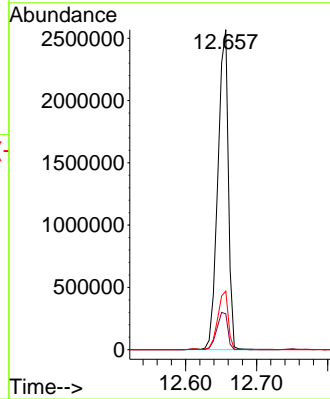
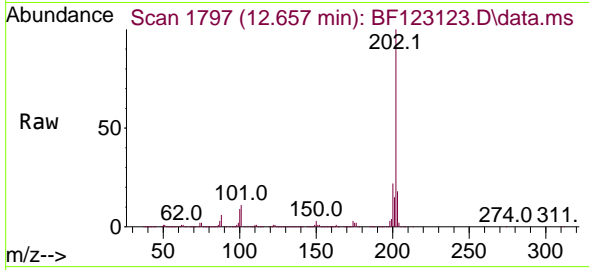


#75
 Fluoranthene
 Concen: 44.37 ng
 RT: 12.657 min Scan# 1797
 Delta R.T. 0.006 min
 Lab File: BF123123.D
 Acq: 4 Feb 2021 20:33

Instrument :
 BNA_F
ClientSampleId :
 TEST-PIT-4MSD

Tgt Ion:202 Resp: 2619853

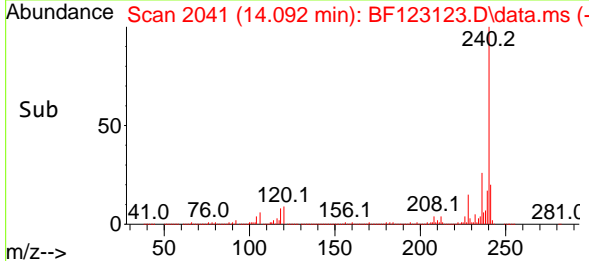
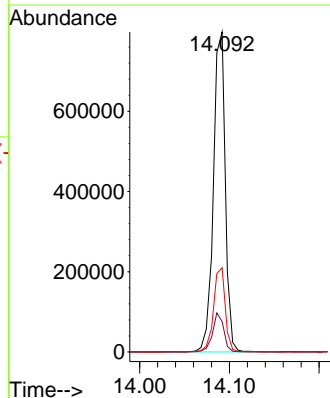
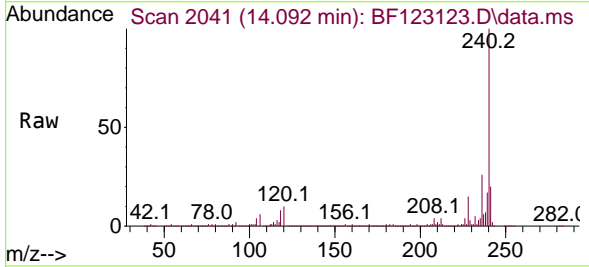
Ion	Ratio	Lower	Upper
202	100		
101	11.2	0.0	32.2
203	18.3	0.0	38.1

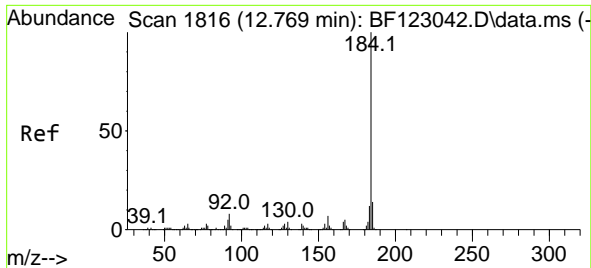


#76
 Chrysene-d12
 Concen: 20.00 ng
 RT: 14.092 min Scan# 2041
 Delta R.T. 0.006 min
 Lab File: BF123123.D
 Acq: 4 Feb 2021 20:33

Tgt Ion:240 Resp: 736433

Ion	Ratio	Lower	Upper
240	100		
120	9.5	8.6	12.8
236	26.3	20.3	30.5



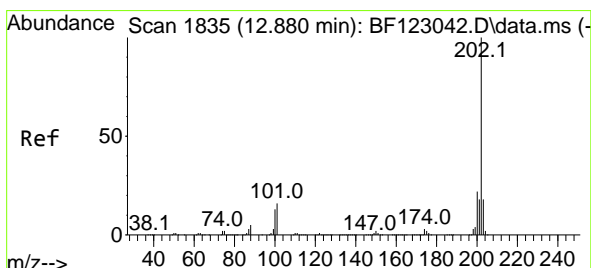
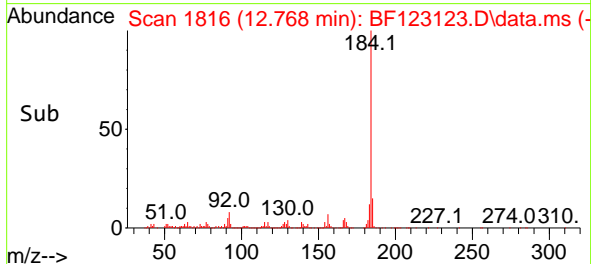
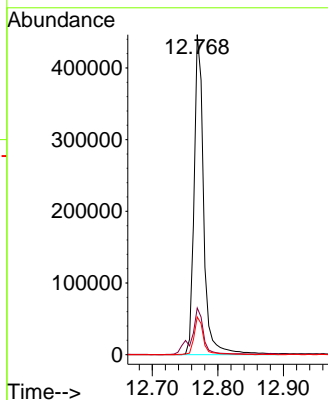
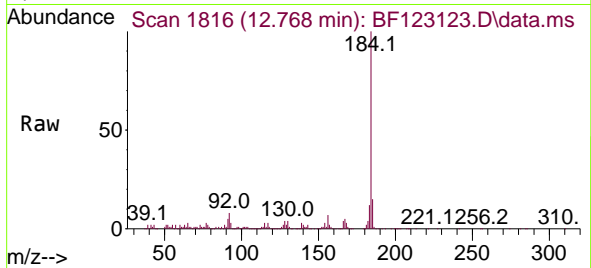


#77
Benzidine
Concen: 27.32 ng
RT: 12.768 min Scan# 1816
Delta R.T. -0.000 min
Lab File: BF123123.D
Acq: 4 Feb 2021 20:33

Instrument :
BNA_F
ClientSampleId :
TEST-PIT-4MSD

Tgt Ion:184 Resp: 455250

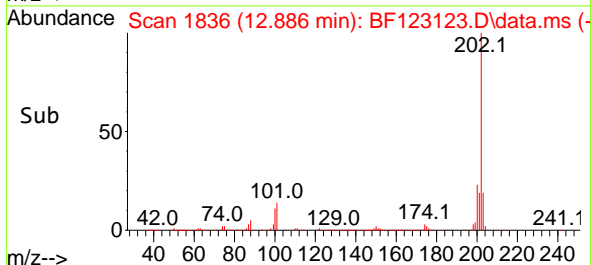
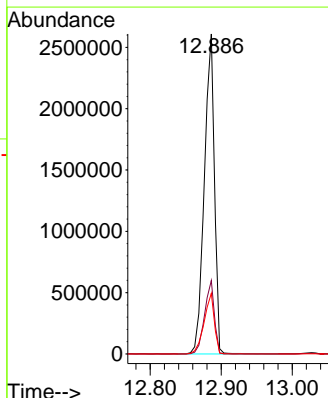
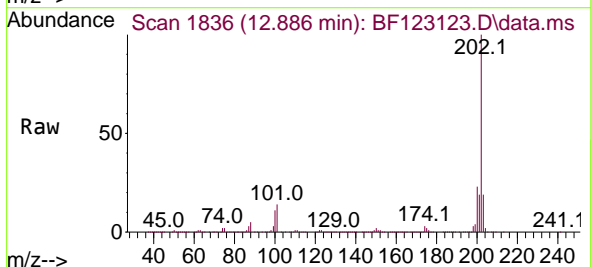
Ion	Ratio	Lower	Upper
184	100		
185	14.6	11.8	17.6
183	11.8	9.7	14.5

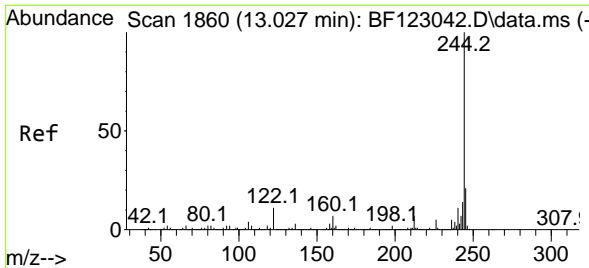


#78
Pyrene
Concen: 46.59 ng
RT: 12.886 min Scan# 1836
Delta R.T. 0.006 min
Lab File: BF123123.D
Acq: 4 Feb 2021 20:33

Tgt Ion:202 Resp: 2590370

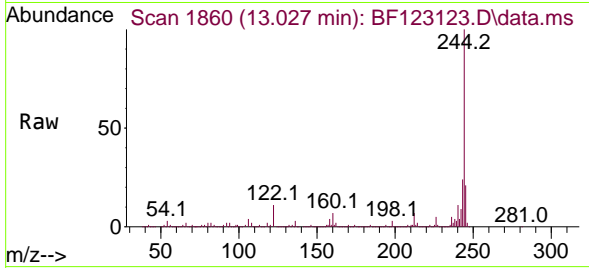
Ion	Ratio	Lower	Upper
202	100		
200	23.0	17.6	26.4
203	18.9	14.6	21.8



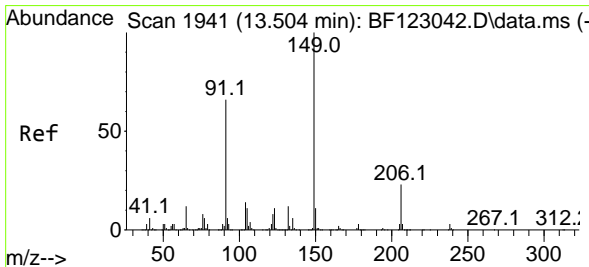
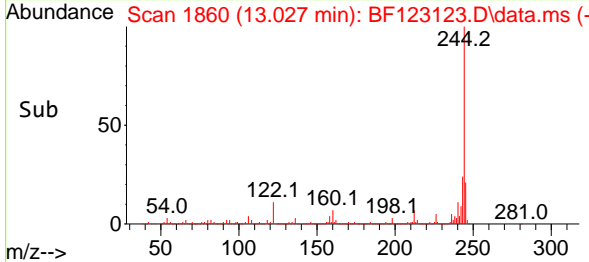
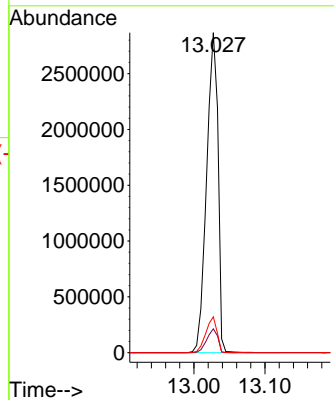


#79
 Terphenyl-d14
 Concen: 85.63 ng
 RT: 13.027 min Scan# 1860
 Delta R.T. -0.000 min
 Lab File: BF123123.D
 Acq: 4 Feb 2021 20:33

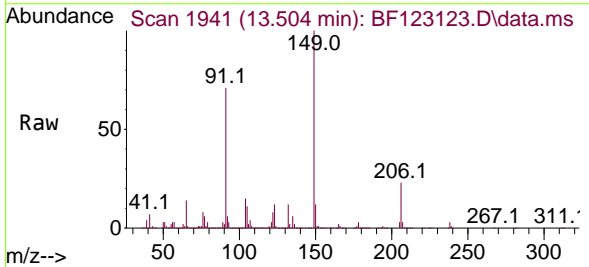
Instrument :
 BNA_F
 ClientSampled :
 TEST-PIT-4MSD



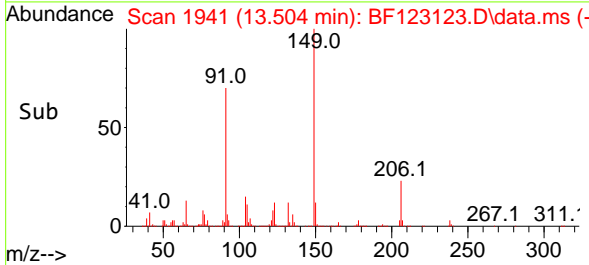
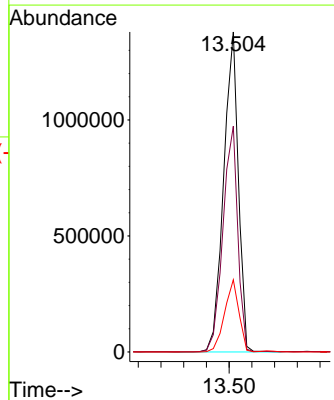
Tgt Ion:244 Resp: 3209502
 Ion Ratio Lower Upper
 244 100
 212 7.4 5.7 8.5
 122 11.2 8.3 12.5

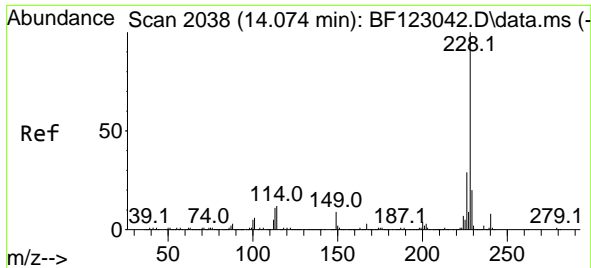


#80
 Butylbenzylphthalate
 Concen: 51.99 ng
 RT: 13.504 min Scan# 1941
 Delta R.T. -0.000 min
 Lab File: BF123123.D
 Acq: 4 Feb 2021 20:33



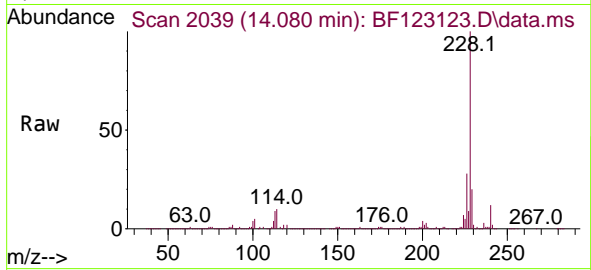
Tgt Ion:149 Resp: 1243729
 Ion Ratio Lower Upper
 149 100
 91 70.5 56.5 84.7
 206 22.6 17.0 25.6



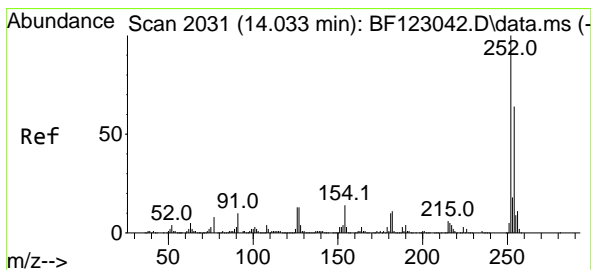
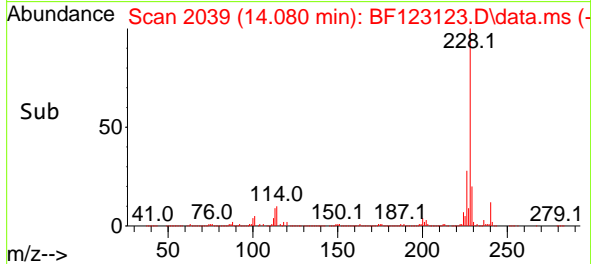
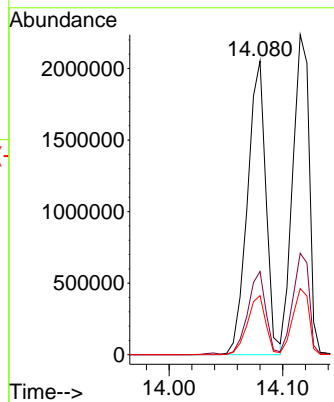


#81
 Benzo(a)anthracene
 Concen: 46.58 ng
 RT: 14.080 min Scan# 2039
 Delta R.T. 0.006 min
 Lab File: BF123123.D
 Acq: 4 Feb 2021 20:33

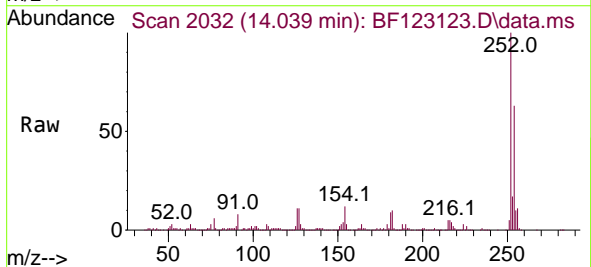
Instrument :
 BNA_F
 ClientSampleId :
 TEST-PIT-4MSD



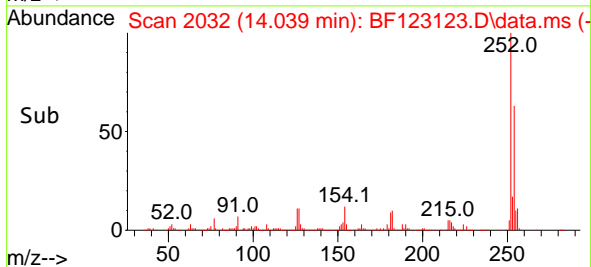
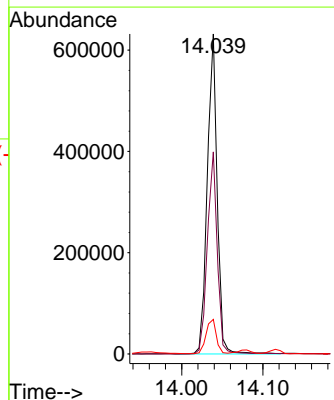
Tgt Ion:228 Resp: 2321395
 Ion Ratio Lower Upper
 228 100
 226 28.3 23.0 34.4
 229 20.1 16.6 24.8

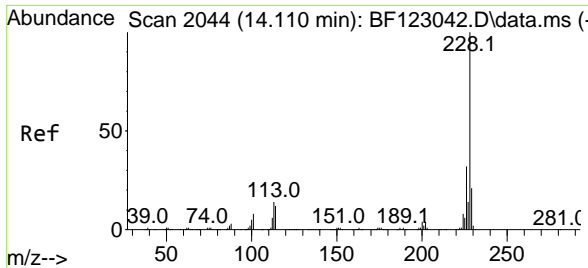


#82
 3,3'-Dichlorobenzidine
 Concen: 33.99 ng
 RT: 14.039 min Scan# 2032
 Delta R.T. 0.006 min
 Lab File: BF123123.D
 Acq: 4 Feb 2021 20:33



Tgt Ion:252 Resp: 533224
 Ion Ratio Lower Upper
 252 100
 254 63.2 52.7 79.1
 126 10.8 8.0 12.0



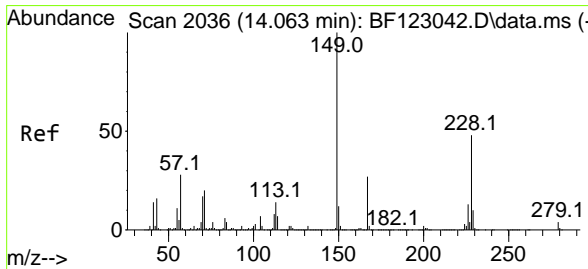
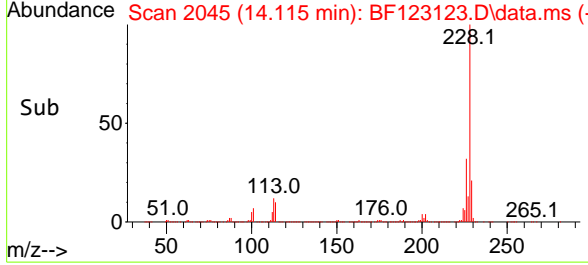
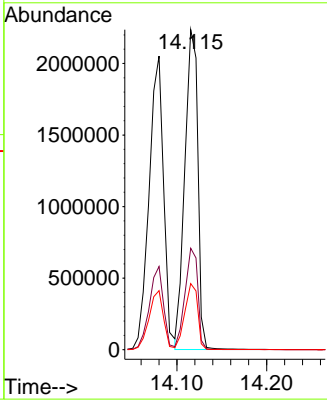
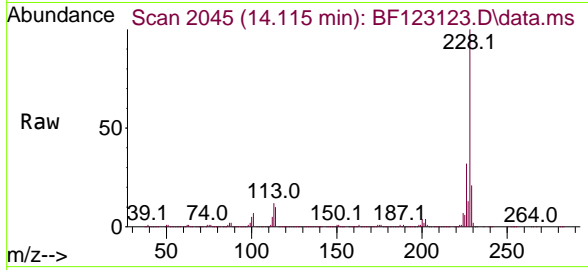


#83
 Chrysene
 Concen: 45.27 ng
 RT: 14.115 min Scan# 2045
 Delta R.T. 0.006 min
 Lab File: BF123123.D
 Acq: 4 Feb 2021 20:33

Instrument :
 BNA_F
ClientSampleId :
 TEST-PIT-4MSD

Tgt Ion:228 Resp: 2257983

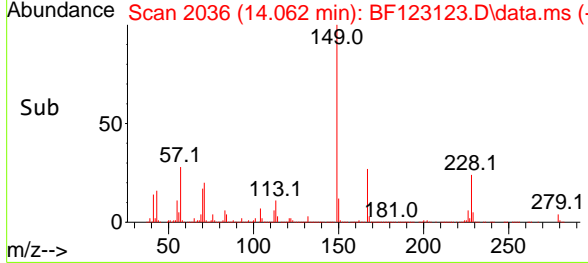
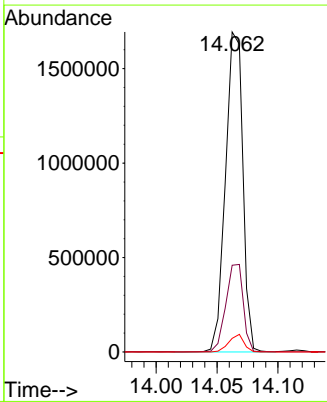
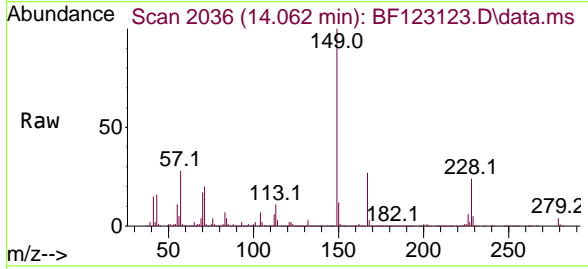
Ion	Ratio	Lower	Upper
228	100		
226	31.7	24.6	36.8
229	20.7	15.8	23.6

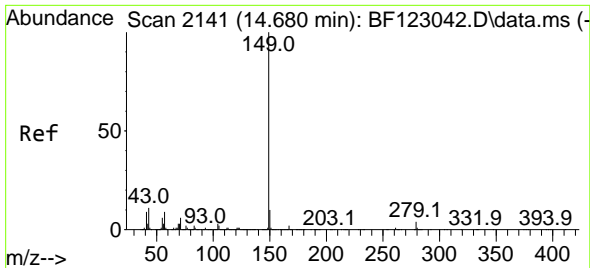


#84
 Bis(2-ethylhexyl)phthalate
 Concen: 52.91 ng
 RT: 14.062 min Scan# 2036
 Delta R.T. -0.000 min
 Lab File: BF123123.D
 Acq: 4 Feb 2021 20:33

Tgt Ion:149 Resp: 1681801

Ion	Ratio	Lower	Upper
149	100		
167	27.1	21.4	32.2
279	4.3	3.4	5.0



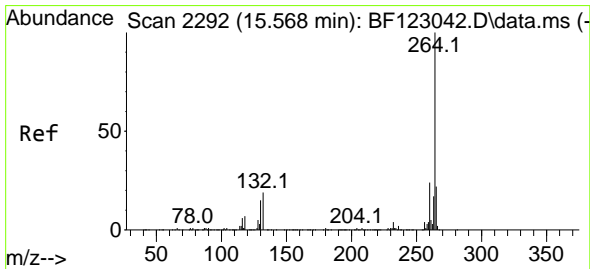
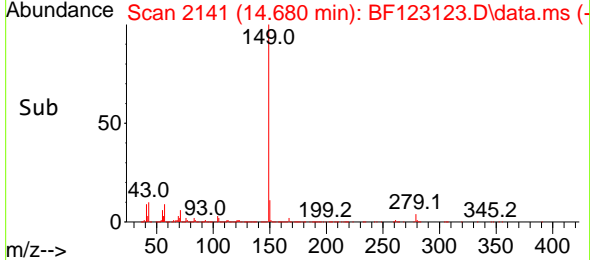
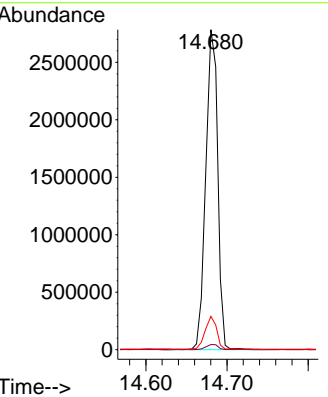
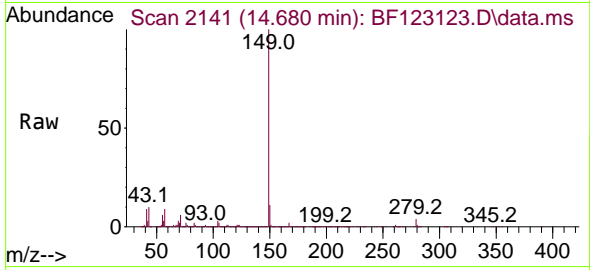


#85
 Di-n-octyl phthalate
 Concen: 53.38 ng
 RT: 14.680 min Scan# 2141
 Delta R.T. -0.000 min
 Lab File: BF123123.D
 Acq: 4 Feb 2021 20:33

Instrument :
 BNA_F
 ClientSampled :
 TEST-PIT-4MSD

Tgt Ion:149 Resp: 2849808

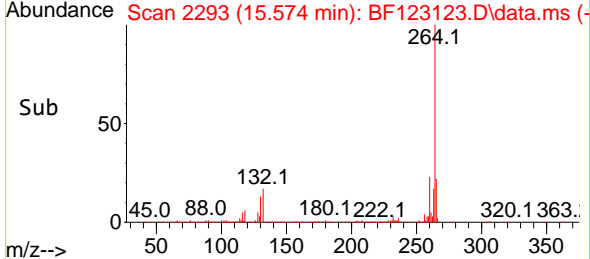
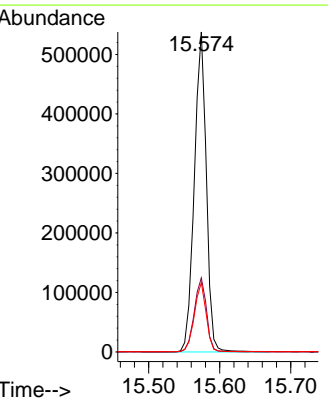
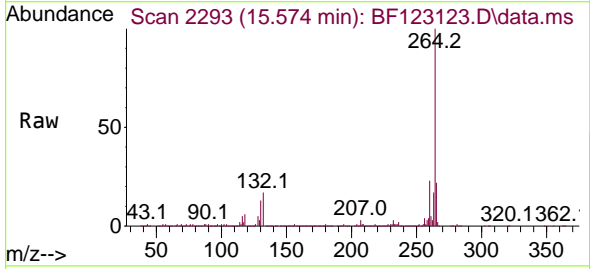
Ion	Ratio	Lower	Upper
149	100		
167	1.6	1.3	1.9
43	9.7	7.6	11.4

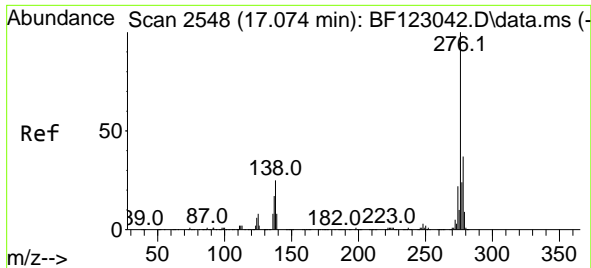


#86
 Perylene-d12
 Concen: 20.00 ng
 RT: 15.574 min Scan# 2293
 Delta R.T. 0.006 min
 Lab File: BF123123.D
 Acq: 4 Feb 2021 20:33

Tgt Ion:264 Resp: 634290

Ion	Ratio	Lower	Upper
264	100		
260	23.2	18.6	28.0
265	21.6	17.0	25.6

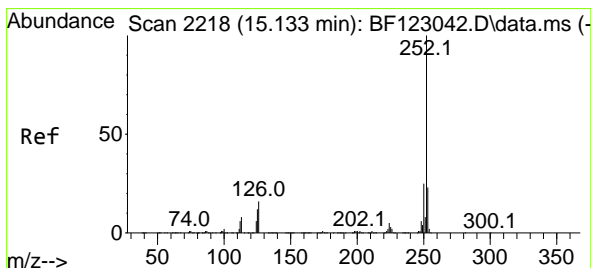
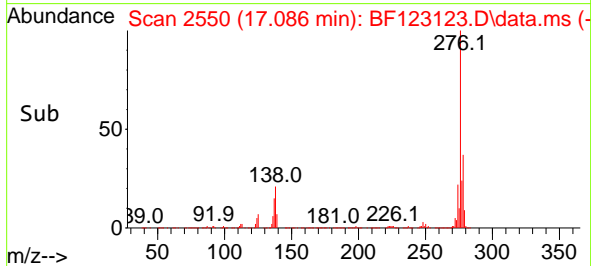
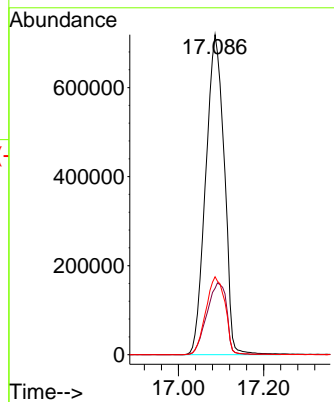
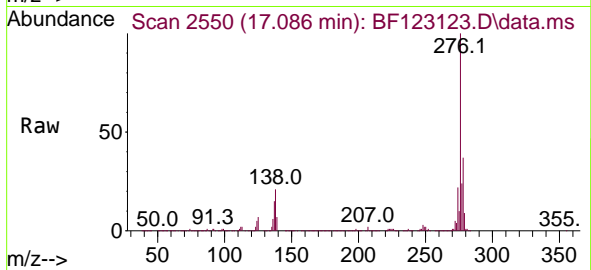




#87
 Indeno(1,2,3-cd)pyrene
 Concen: 51.29 ng
 RT: 17.086 min Scan# 2550
 Delta R.T. 0.012 min
 Lab File: BF123123.D
 Acq: 4 Feb 2021 20:33

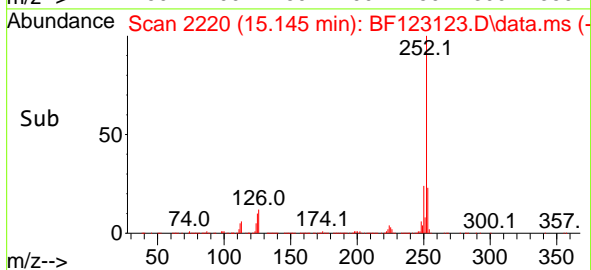
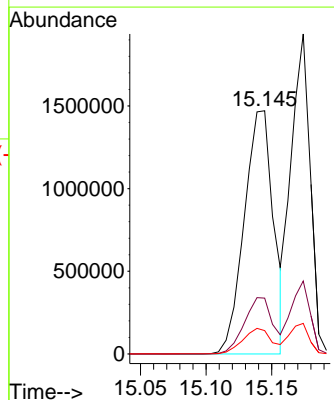
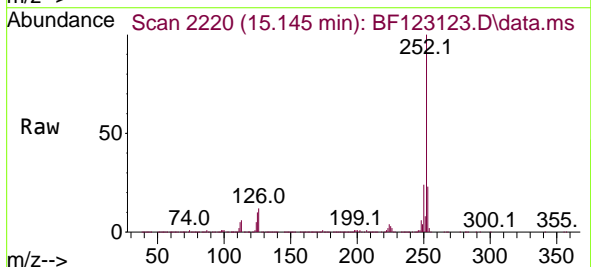
Instrument :
 BNA_F
 ClientSampleId :
 TEST-PIT-4MSD

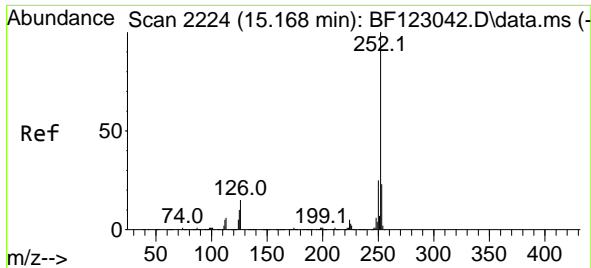
Tgt Ion:276 Resp: 2166286
 Ion Ratio Lower Upper
 276 100
 138 24.0 18.7 28.1
 277 25.4 20.2 30.4



#88
 Benzo(b)fluoranthene
 Concen: 49.80 ng
 RT: 15.145 min Scan# 2220
 Delta R.T. 0.012 min
 Lab File: BF123123.D
 Acq: 4 Feb 2021 20:33

Tgt Ion:252 Resp: 2280212
 Ion Ratio Lower Upper
 252 100
 253 23.0 18.3 27.5
 125 9.6 8.1 12.1



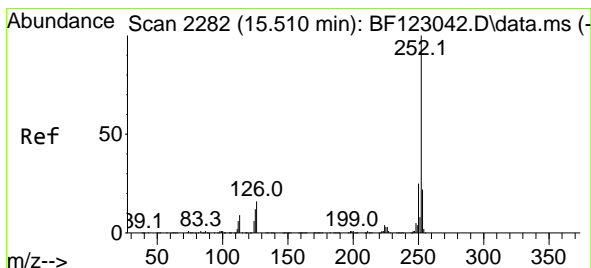
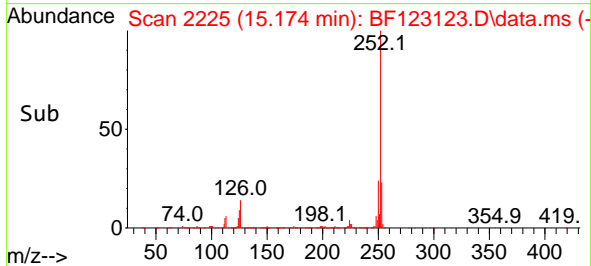
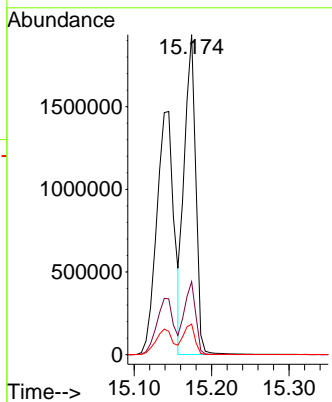
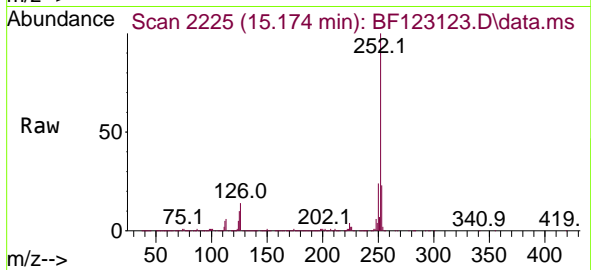


#89
 Benzo(k)fluoranthene
 Concen: 46.50 ng
 RT: 15.174 min Scan# 2225
 Delta R.T. 0.006 min
 Lab File: BF123123.D
 Acq: 4 Feb 2021 20:33

Instrument :
 BNA_F
ClientSampled :
 TEST-PIT-4MSD

Tgt Ion:252 Resp: 1978206

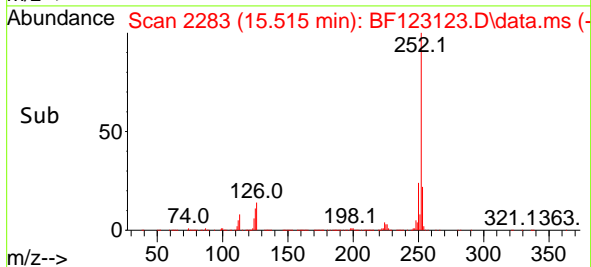
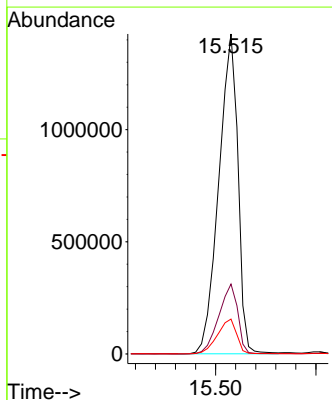
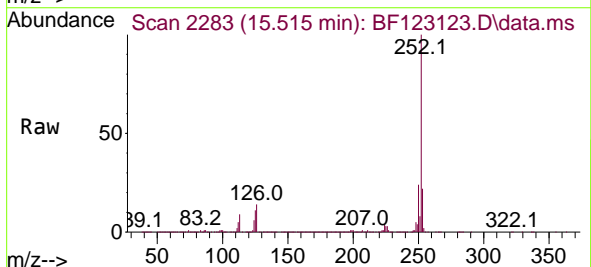
Ion	Ratio	Lower	Upper
252	100		
253	22.8	17.8	26.8
125	9.5	8.4	12.6

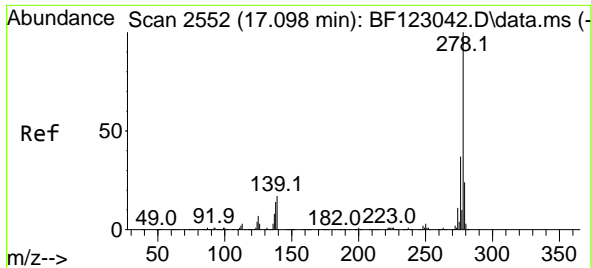


#90
 Benzo(a)pyrene
 Concen: 46.94 ng
 RT: 15.515 min Scan# 2283
 Delta R.T. 0.006 min
 Lab File: BF123123.D
 Acq: 4 Feb 2021 20:33

Tgt Ion:252 Resp: 1887445

Ion	Ratio	Lower	Upper
252	100		
253	21.8	17.5	26.3
125	10.9	8.6	12.8

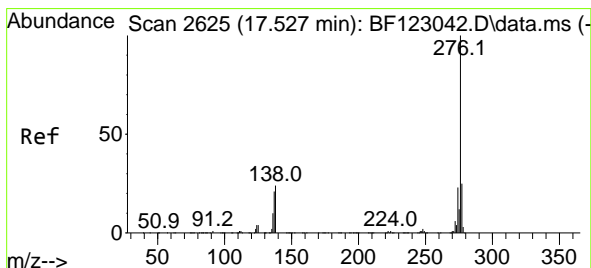
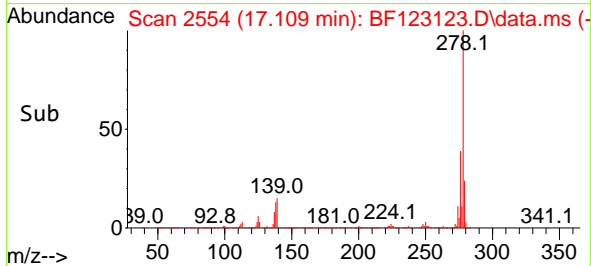
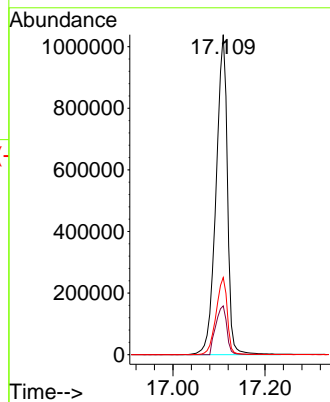
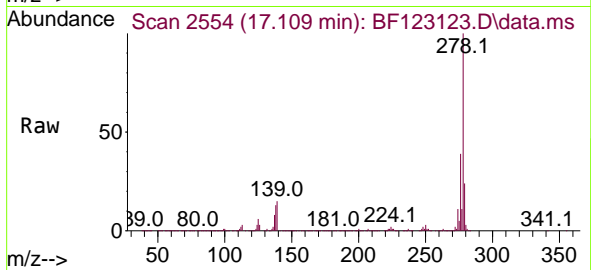




#91
 Dibenzo(a,h)anthracene
 Concen: 51.20 ng
 RT: 17.109 min Scan# 2554
 Delta R.T. 0.012 min
 Lab File: BF123123.D
 Acq: 4 Feb 2021 20:33

Instrument :
 BNA_F
 ClientSampleId :
 TEST-PIT-4MSD

Tgt Ion:278 Resp: 1780105
 Ion Ratio Lower Upper
 278 100
 139 15.3 12.0 18.0
 279 24.1 19.4 29.2



#92
 Benzo(g,h,i)perylene
 Concen: 51.80 ng
 RT: 17.545 min Scan# 2628
 Delta R.T. 0.018 min
 Lab File: BF123123.D
 Acq: 4 Feb 2021 20:33

Tgt Ion:276 Resp: 1745106
 Ion Ratio Lower Upper
 276 100
 277 23.3 19.3 28.9
 138 20.9 16.6 24.8

