

Data Path : Z:\svoasrv\HPCHEM1\BNA_F\Data\BF020425\
 Data File : BF141408.D
 Acq On : 04 Feb 2025 15:06
 Operator : RC/JU
 Sample : PB166294BL
 Misc :
 ALS Vial : 12 Sample Multiplier: 1

Instrument :
 BNA_F
 ClientSampleId :
 PB166294BL

Quant Time: Feb 04 16:08:27 2025
 Quant Method : Z:\svoasrv\HPCHEM1\BNA_F\Methods\8270-BF012925.M
 Quant Title : ASP BNA STANDARDS FOR 5 POINT CALIBRATION
 QLast Update : Wed Jan 29 17:41:25 2025
 Response via : Initial Calibration

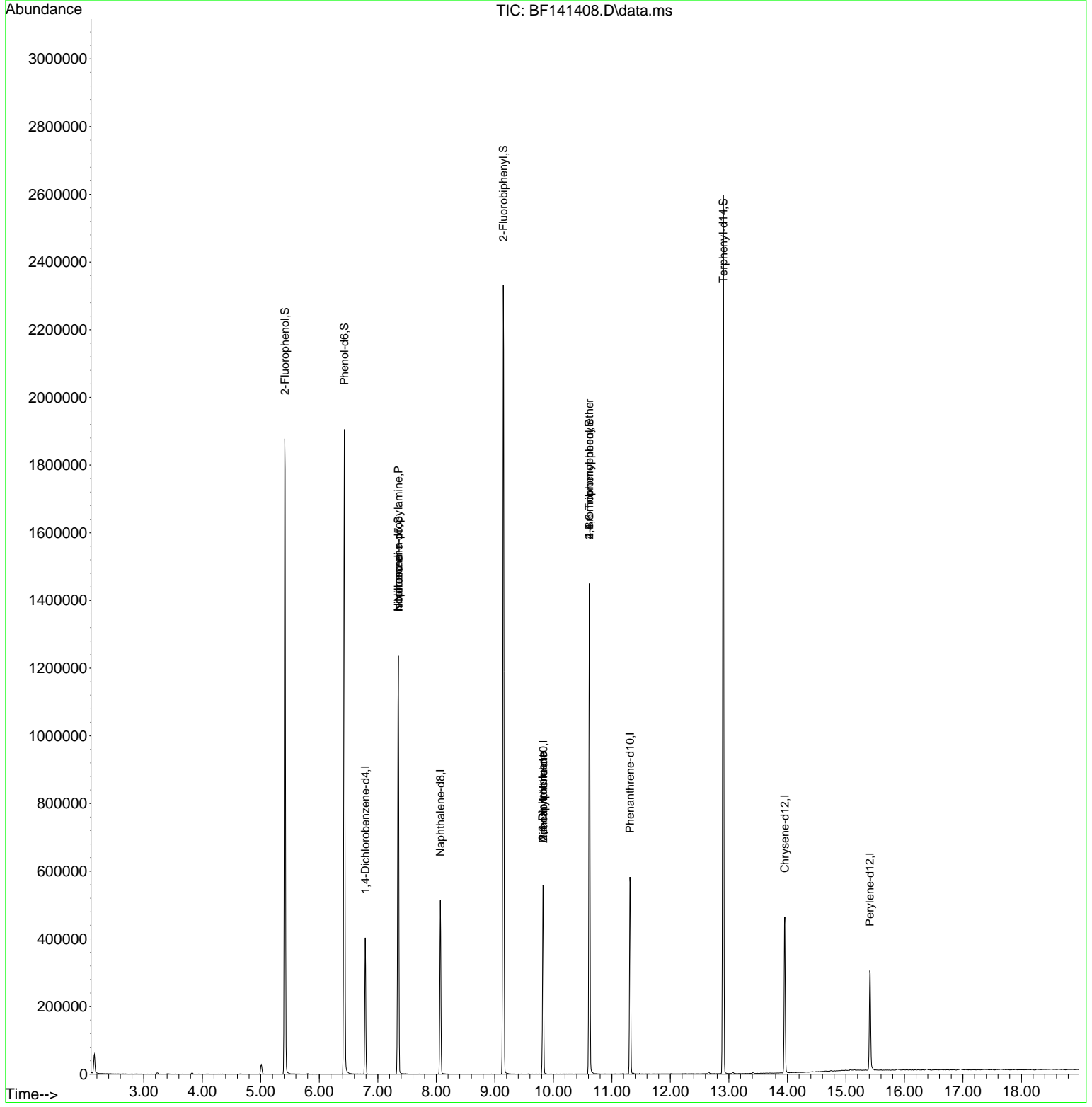
Compound	R.T.	QIon	Response	Conc	Units	Dev(Min)
Internal Standards						
1) 1,4-Dichlorobenzene-d4	6.787	152	79060	20.000	ng	-0.02
21) Naphthalene-d8	8.069	136	317518	20.000	ng	-0.02
39) Acenaphthene-d10	9.828	164	174923	20.000	ng	-0.01
64) Phenanthrene-d10	11.310	188	303054	20.000	ng	-0.02
76) Chrysene-d12	13.957	240	230654	20.000	ng	#-0.02
86) Perylene-d12	15.410	264	181526	20.000	ng	-0.03
System Monitoring Compounds						
5) 2-Fluorophenol	5.410	112	678321	131.718	ng	0.00
7) Phenol-d6	6.428	99	827808	126.359	ng	-0.01
23) Nitrobenzene-d5	7.351	82	552962	91.807	ng	-0.02
42) 2,4,6-Tribromophenol	10.616	330	228163	142.278	ng	-0.02
45) 2-Fluorobiphenyl	9.145	172	1055957	92.916	ng	-0.02
79) Terphenyl-d14	12.904	244	1280663	85.627	ng	-0.01
Target Compounds						
19) n-Nitroso-di-n-propyla...	7.351	70	74845	19.227	ng	# 76
25) Isophorone	7.351	82	548500	52.682	ng	# 64
50) Dimethylphthalate	9.828	163	27468	2.325	ng	# 1
51) 2,6-Dinitrotoluene	9.822	165	22503	8.203	ng	# 23
57) 2,4-Dinitrotoluene	9.822	165	22503	6.336	ng	# 23
67) 4-Bromophenyl-phenylether	10.616	248	15873	4.678	ng	# 1

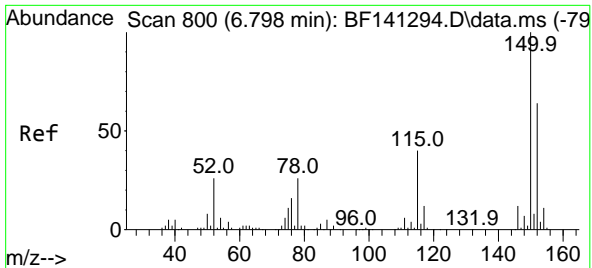
(#) = qualifier out of range (m) = manual integration (+) = signals summed

Data Path : Z:\svoasrv\HPCHEM1\BNA_F\Data\BF020425\
 Data File : BF141408.D
 Acq On : 04 Feb 2025 15:06
 Operator : RC/JU
 Sample : PB166294BL
 Misc :
 ALS Vial : 12 Sample Multiplier: 1

Instrument :
 BNA_F
 ClientSampleId :
 PB166294BL

Quant Time: Feb 04 16:08:27 2025
 Quant Method : Z:\svoasrv\HPCHEM1\BNA_F\Methods\8270-BF012925.M
 Quant Title : ASP BNA STANDARDS FOR 5 POINT CALIBRATION
 QLast Update : Wed Jan 29 17:41:25 2025
 Response via : Initial Calibration

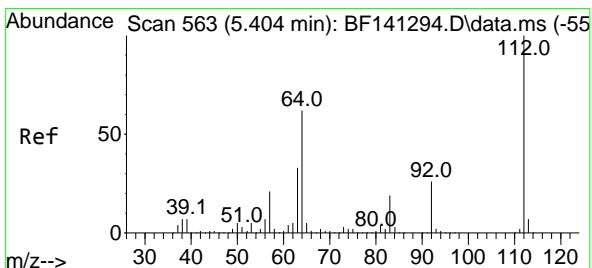
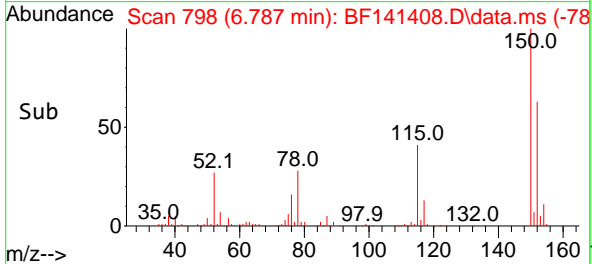
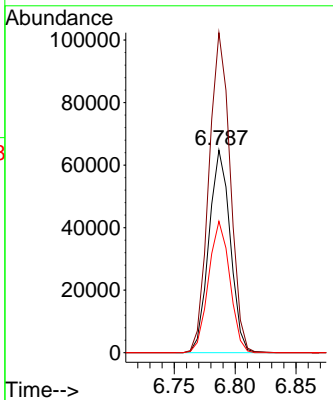
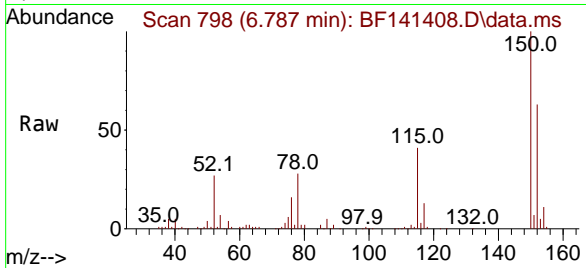




#1
 1,4-Dichlorobenzene-d4
 Concen: 20.000 ng
 RT: 6.787 min Scan# 79
 Delta R.T. -0.017 min
 Lab File: BF141408.D
 Acq: 04 Feb 2025 15:06

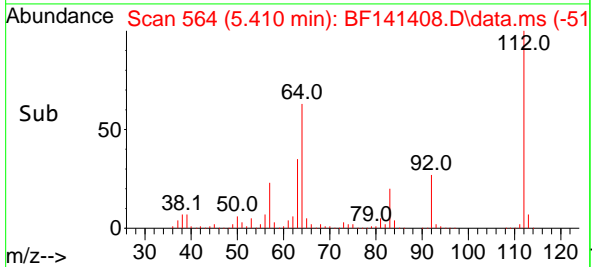
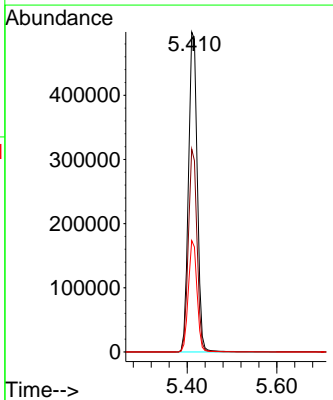
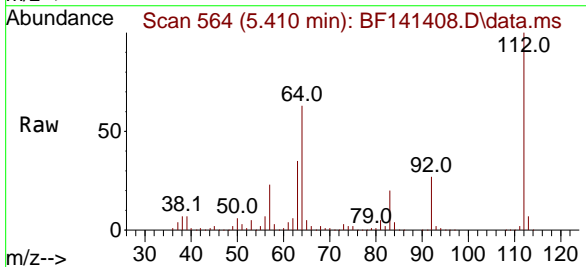
Instrument :
 BNA_F
 ClientSampleId :
 PB166294BL

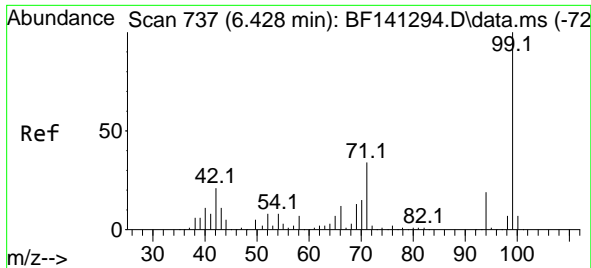
Tgt Ion:152 Resp: 79060
 Ion Ratio Lower Upper
 152 100
 150 158.0 125.9 188.9
 115 64.9 49.7 74.5



#5
 2-Fluorophenol
 Concen: 131.718 ng
 RT: 5.410 min Scan# 564
 Delta R.T. -0.000 min
 Lab File: BF141408.D
 Acq: 04 Feb 2025 15:06

Tgt Ion:112 Resp: 678321
 Ion Ratio Lower Upper
 112 100
 64 63.4 49.8 74.8
 63 34.8 26.1 39.1



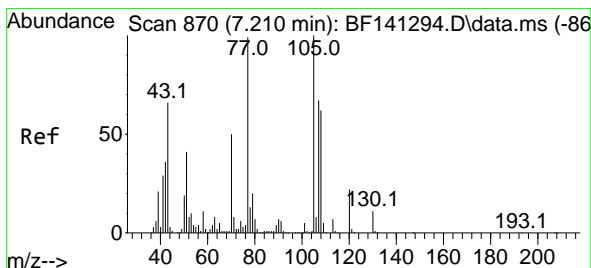
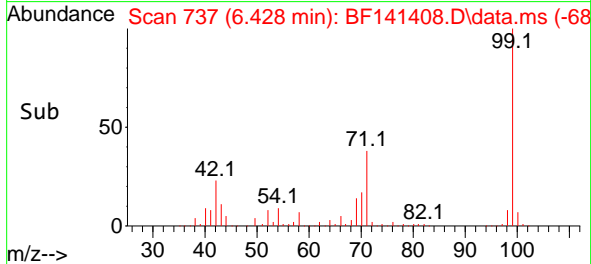
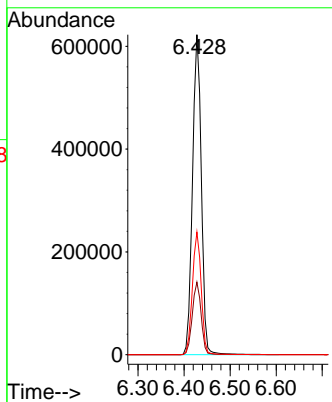
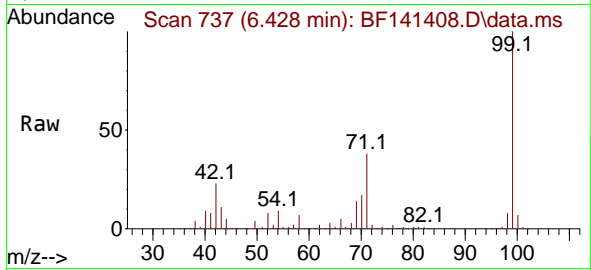


#7
 Phenol-d6
 Concen: 126.359 ng
 RT: 6.428 min Scan# 711
 Delta R.T. -0.012 min
 Lab File: BF141408.D
 Acq: 04 Feb 2025 15:06

Instrument :
 BNA_F
 ClientSampleId :
 PB166294BL

Tgt Ion: 99 Resp: 827808

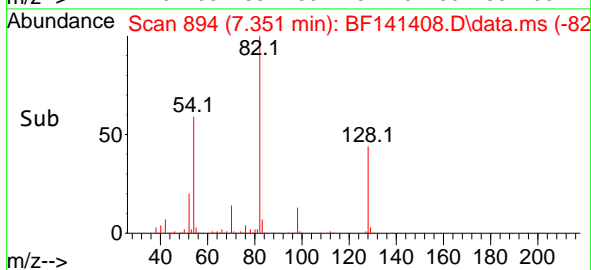
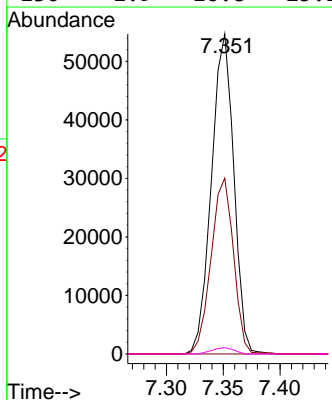
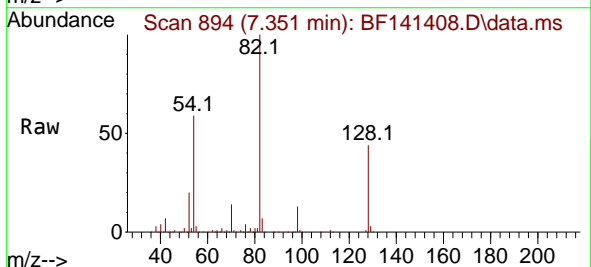
Ion	Ratio	Lower	Upper
99	100		
42	22.6	17.1	25.7
71	38.3	26.9	40.3

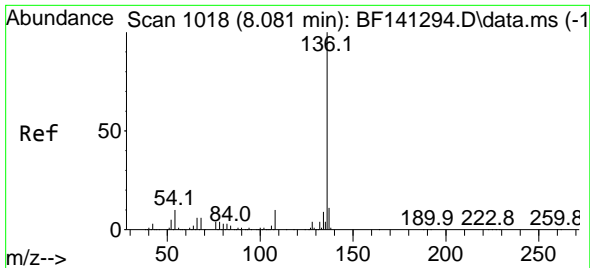


#19
 n-Nitroso-di-n-propylamine
 Concen: 19.227 ng
 RT: 7.351 min Scan# 894
 Delta R.T. 0.123 min
 Lab File: BF141408.D
 Acq: 04 Feb 2025 15:06

Tgt Ion: 70 Resp: 74845

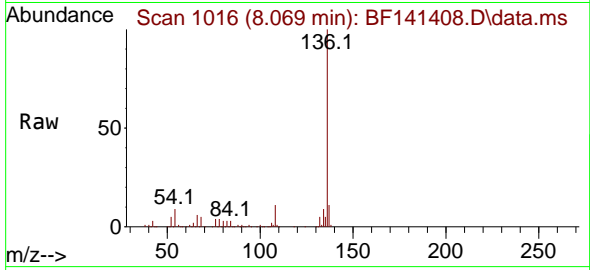
Ion	Ratio	Lower	Upper
70	100		
42	54.9	56.8	85.2#
101	0.0	7.7	11.5#
130	1.9	16.8	25.2#



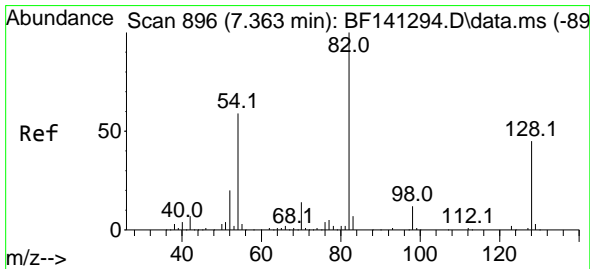
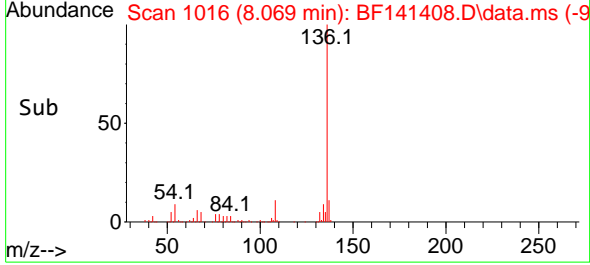
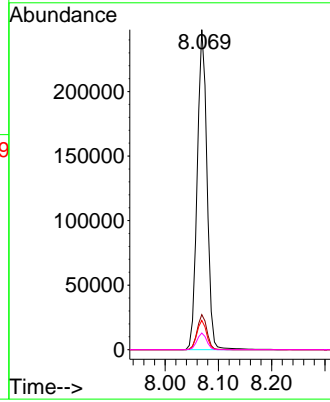


#21
 Naphthalene-d8
 Concen: 20.000 ng
 RT: 8.069 min Scan# 1016
 Delta R.T. -0.018 min
 Lab File: BF141408.D
 Acq: 04 Feb 2025 15:06

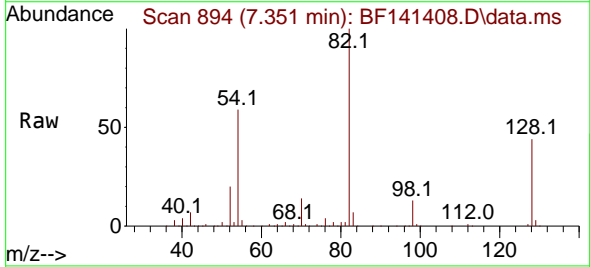
Instrument : BNA_F
 ClientSampleId : PB166294BL



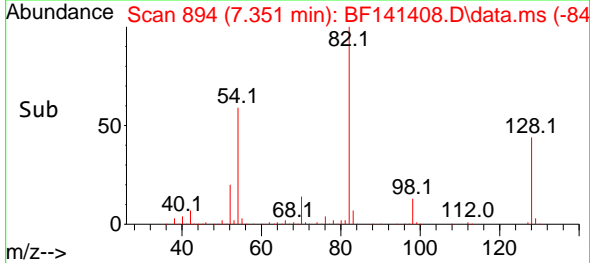
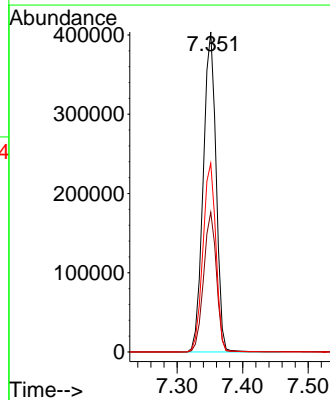
Tgt Ion:136 Resp: 317518
 Ion Ratio Lower Upper
 136 100
 137 10.9 8.6 13.0
 54 9.2 7.8 11.8
 68 5.2 4.9 7.3

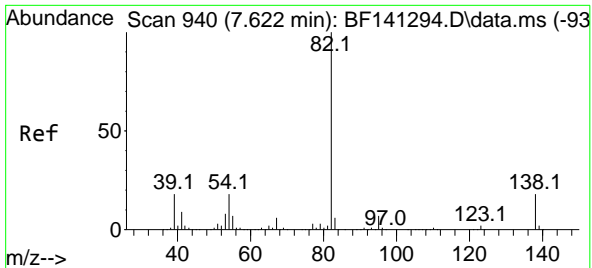


#23
 Nitrobenzene-d5
 Concen: 91.807 ng
 RT: 7.351 min Scan# 894
 Delta R.T. -0.018 min
 Lab File: BF141408.D
 Acq: 04 Feb 2025 15:06



Tgt Ion: 82 Resp: 552962
 Ion Ratio Lower Upper
 82 100
 128 43.6 35.7 53.5
 54 59.0 47.1 70.7

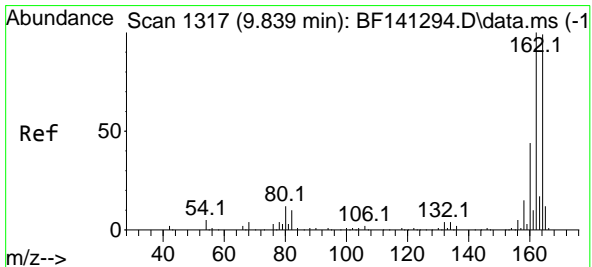
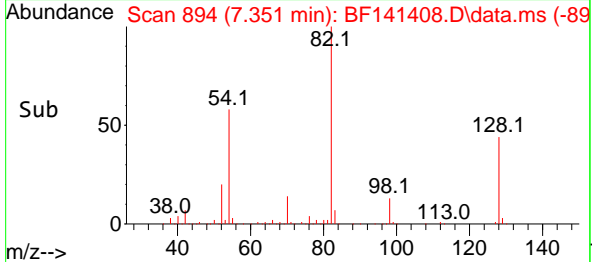
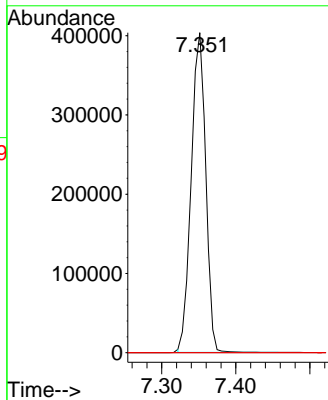
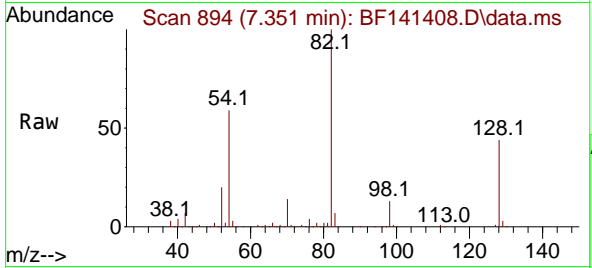




#25
 Isophorone
 Concen: 52.682 ng
 RT: 7.351 min Scan# 894
 Delta R.T. -0.277 min
 Lab File: BF141408.D
 Acq: 04 Feb 2025 15:06

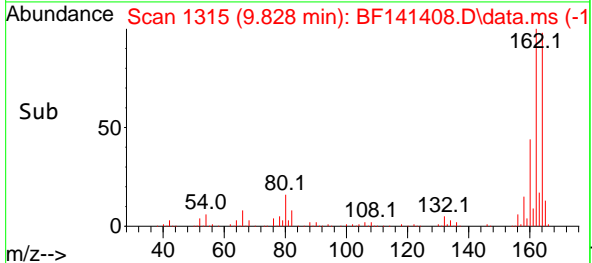
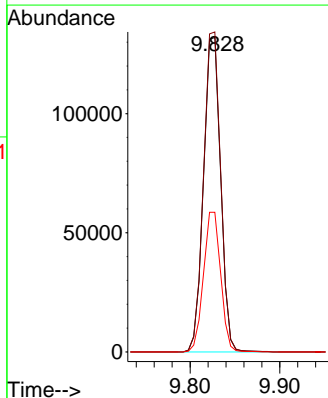
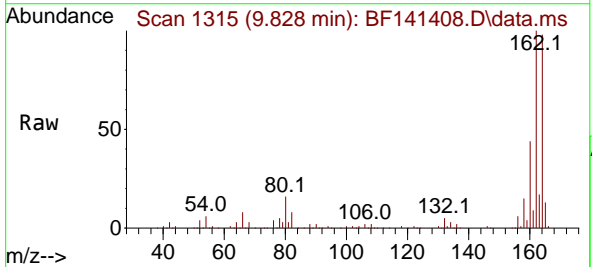
Instrument :
 BNA_F
 ClientSampleId :
 PB166294BL

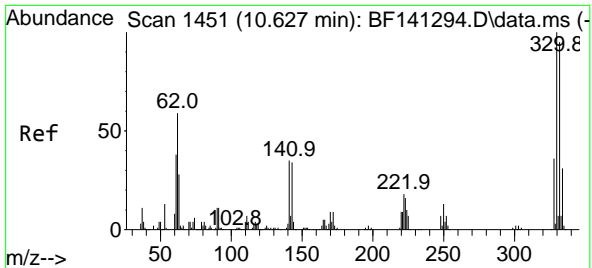
Tgt Ion: 82 Resp: 548500
 Ion Ratio Lower Upper
 82 100
 95 0.0 5.8 8.6#
 138 0.0 14.7 22.1#



#39
 Acenaphthene-d10
 Concen: 20.000 ng
 RT: 9.828 min Scan# 1315
 Delta R.T. -0.012 min
 Lab File: BF141408.D
 Acq: 04 Feb 2025 15:06

Tgt Ion:164 Resp: 174923
 Ion Ratio Lower Upper
 164 100
 162 101.8 80.6 121.0
 160 44.4 35.8 53.6



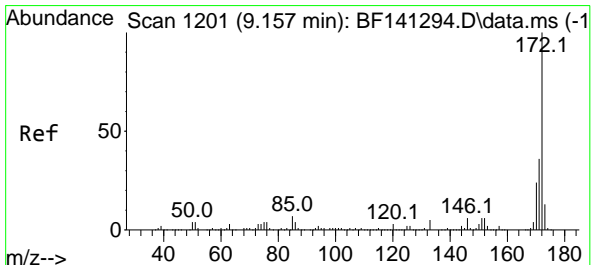
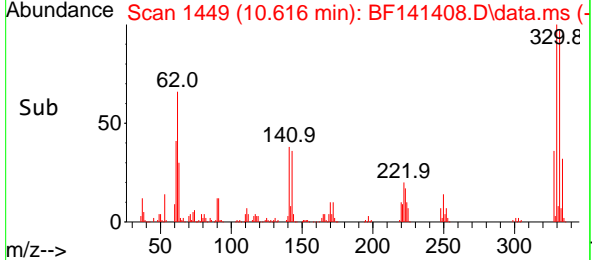
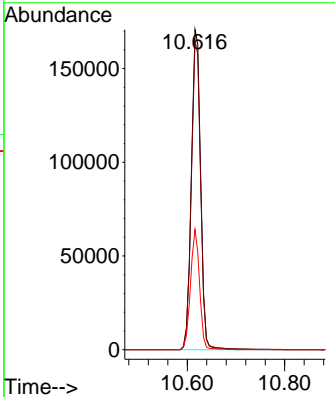
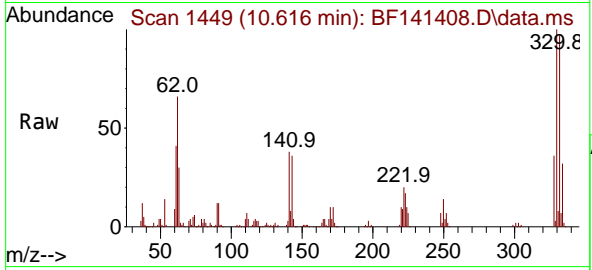


#42
 2,4,6-Tribromophenol
 Concen: 142.278 ng
 RT: 10.616 min Scan# 1449
 Delta R.T. -0.018 min
 Lab File: BF141408.D
 Acq: 04 Feb 2025 15:06

Instrument : BNA_F
 Client Sample Id : PB166294BL

Tgt Ion: 330 Resp: 228163

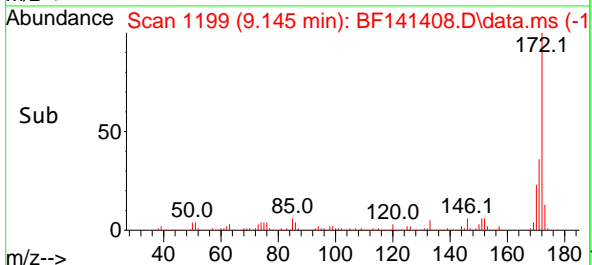
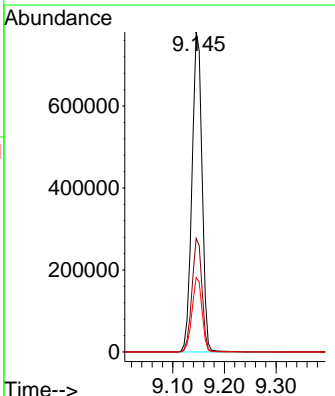
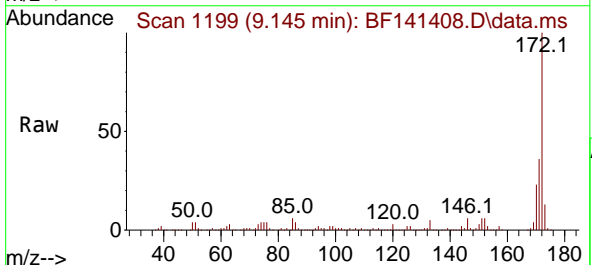
Ion	Ratio	Lower	Upper
330	100		
332	96.3	76.1	114.1
141	36.5	28.8	43.2

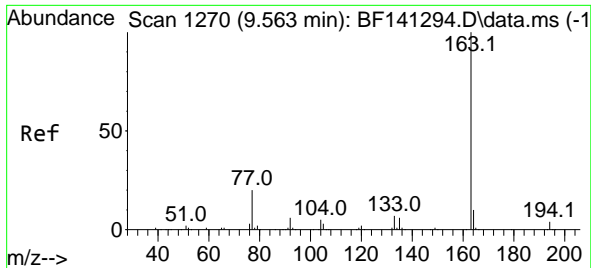


#45
 2-Fluorobiphenyl
 Concen: 92.916 ng
 RT: 9.145 min Scan# 1199
 Delta R.T. -0.018 min
 Lab File: BF141408.D
 Acq: 04 Feb 2025 15:06

Tgt Ion: 172 Resp: 1055957

Ion	Ratio	Lower	Upper
172	100		
171	35.5	28.8	43.2
170	23.3	19.0	28.6



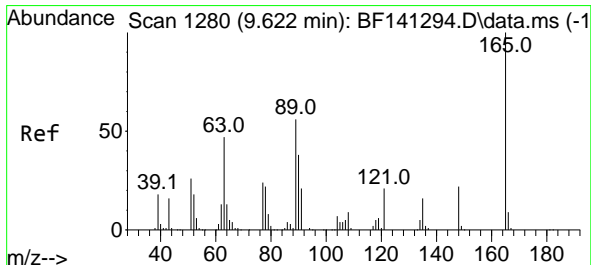
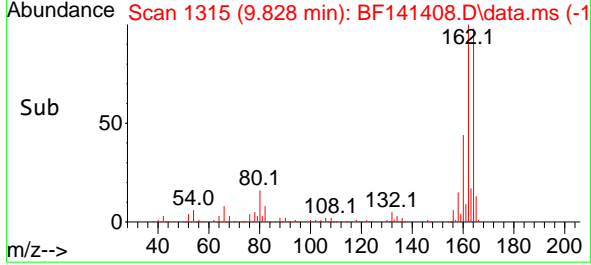
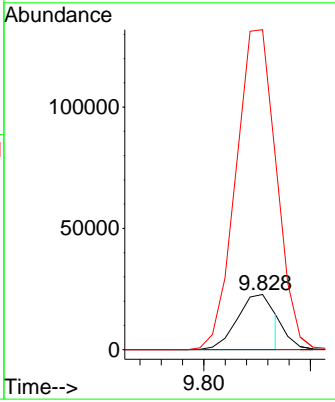
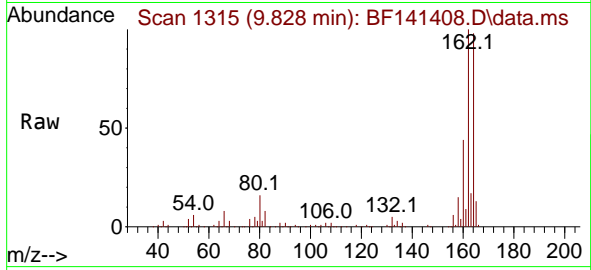


#50
 Dimethylphthalate
 Concen: 2.325 ng
 RT: 9.828 min Scan# 11
 Delta R.T. 0.259 min
 Lab File: BF141408.D
 Acq: 04 Feb 2025 15:06

Instrument : BNA_F
 ClientSampleId : PB166294BL

Tgt Ion:163 Resp: 27468

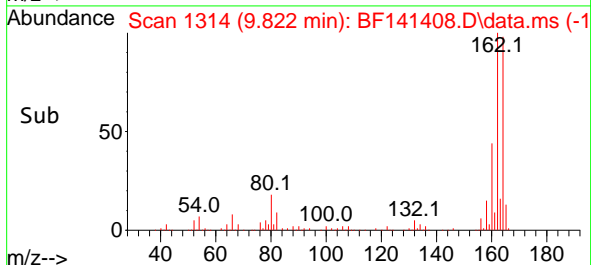
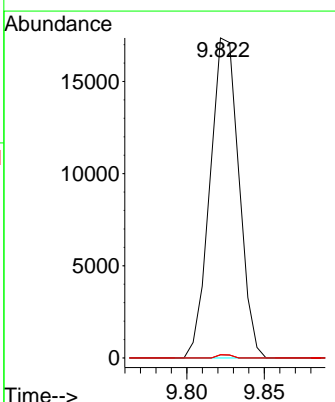
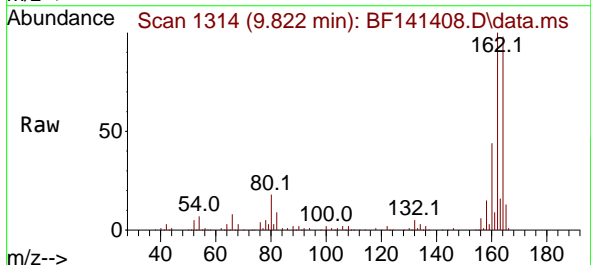
Ion	Ratio	Lower	Upper
163	100		
194	0.0	3.0	4.6#
164	580.4	8.0	12.0#

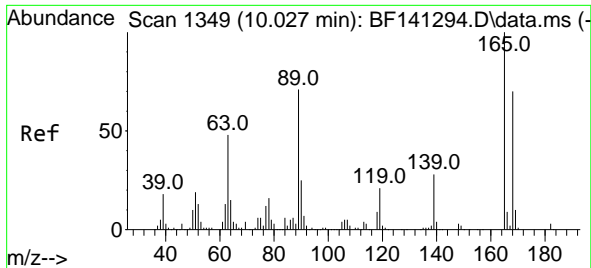


#51
 2,6-Dinitrotoluene
 Concen: 8.203 ng
 RT: 9.822 min Scan# 1314
 Delta R.T. 0.194 min
 Lab File: BF141408.D
 Acq: 04 Feb 2025 15:06

Tgt Ion:165 Resp: 22503

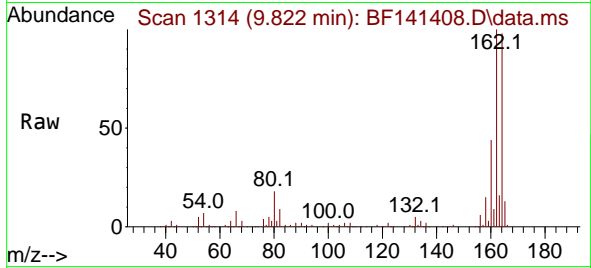
Ion	Ratio	Lower	Upper
165	100		
63	1.0	48.1	72.1#
89	1.0	44.9	67.3#





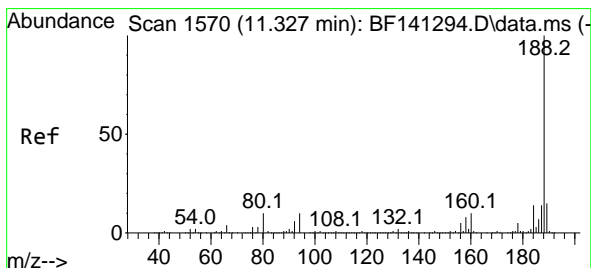
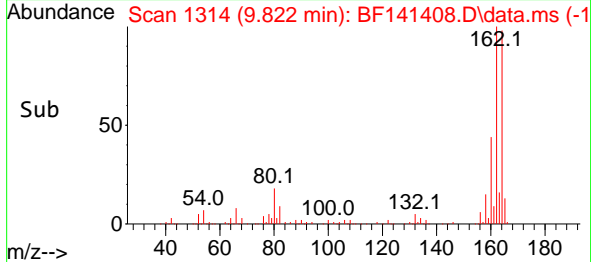
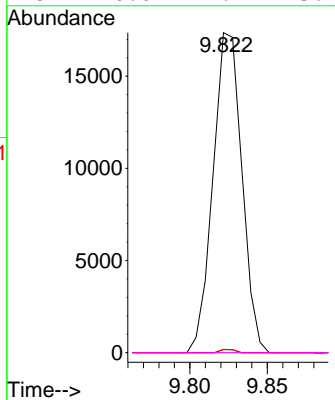
#57
 2,4-Dinitrotoluene
 Concen: 6.336 ng
 RT: 9.822 min Scan# 11
 Delta R.T. -0.212 min
 Lab File: BF141408.D
 Acq: 04 Feb 2025 15:06

Instrument :
 BNA_F
 ClientSampleId :
 PB166294BL



Tgt Ion:165 Resp: 22503

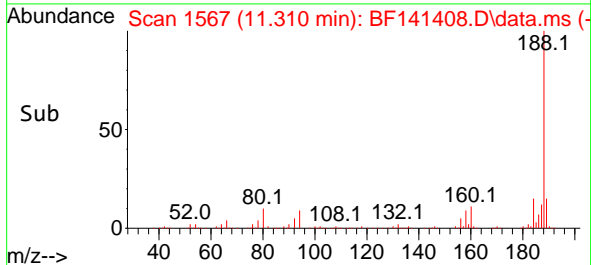
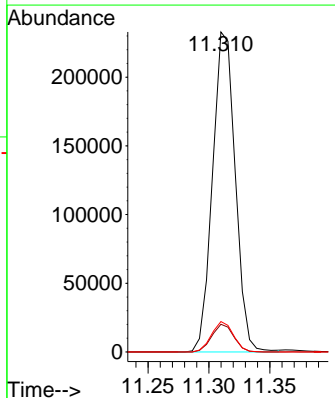
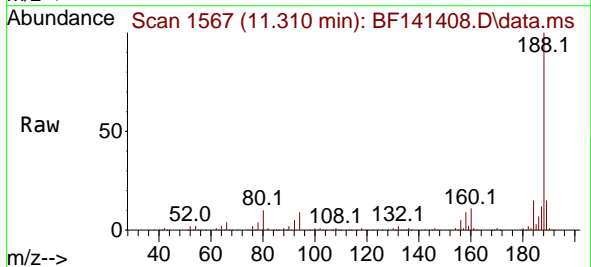
Ion	Ratio	Lower	Upper
165	100		
63	1.0	39.2	58.8#
89	1.0	56.9	85.3#
182	0.0	2.2	3.2#

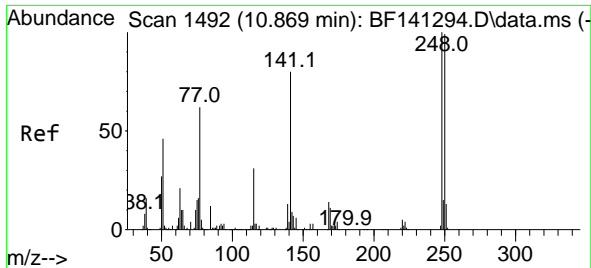


#64
 Phenanthrene-d10
 Concen: 20.000 ng
 RT: 11.310 min Scan# 1567
 Delta R.T. -0.018 min
 Lab File: BF141408.D
 Acq: 04 Feb 2025 15:06

Tgt Ion:188 Resp: 303054

Ion	Ratio	Lower	Upper
188	100		
94	8.7	7.8	11.6
80	9.5	8.2	12.4

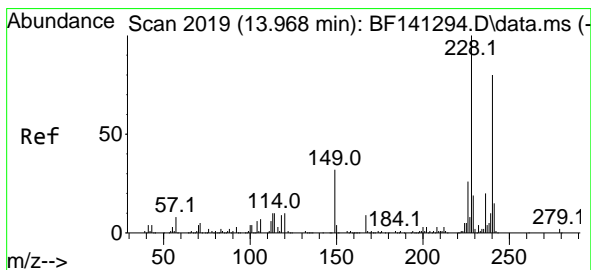
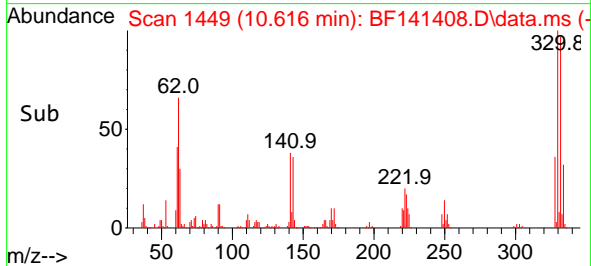
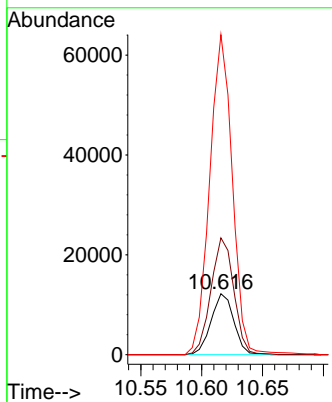
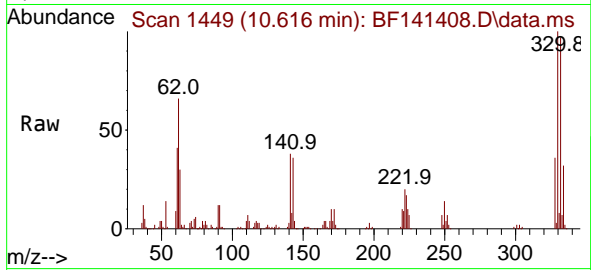




#67
 4-Bromophenyl-phenylether
 Concen: 4.678 ng
 RT: 10.616 min Scan# 14
 Delta R.T. -0.259 min
 Lab File: BF141408.D
 Acq: 04 Feb 2025 15:06

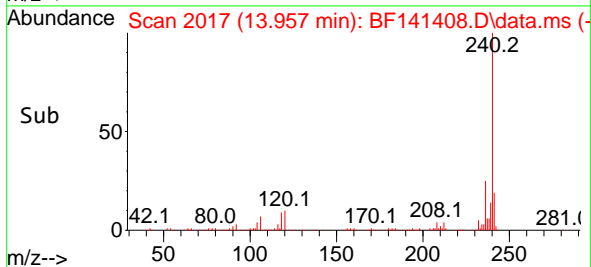
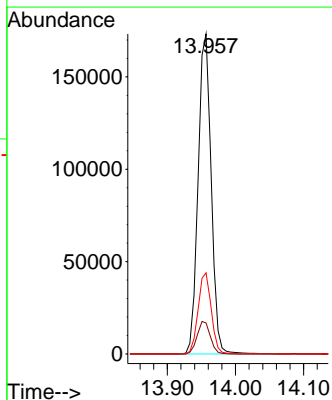
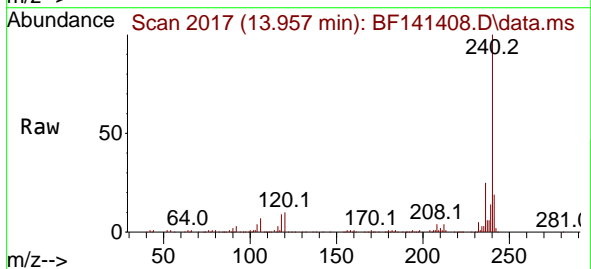
Instrument :
 BNA_F
 ClientSampleId :
 PB166294BL

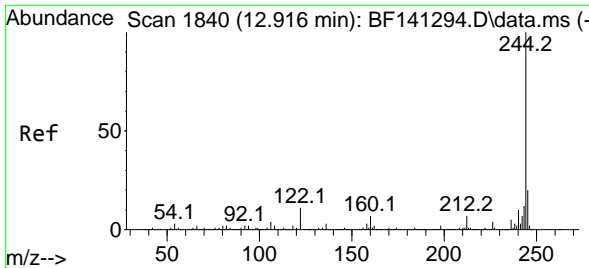
Tgt Ion:248 Resp: 15873
 Ion Ratio Lower Upper
 248 100
 250 191.6 79.0 118.4#
 141 524.6 63.7 95.5#



#76
 Chrysene-d12
 Concen: 20.000 ng
 RT: 13.957 min Scan# 2017
 Delta R.T. -0.018 min
 Lab File: BF141408.D
 Acq: 04 Feb 2025 15:06

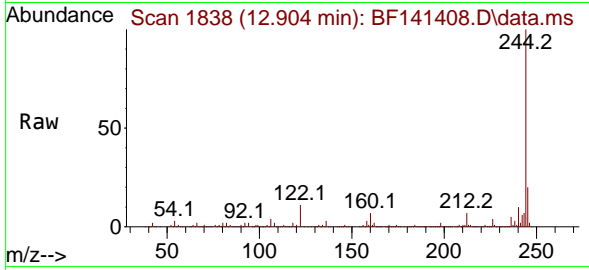
Tgt Ion:240 Resp: 230654
 Ion Ratio Lower Upper
 240 100
 120 9.7 10.0 15.0#
 236 25.4 19.7 29.5



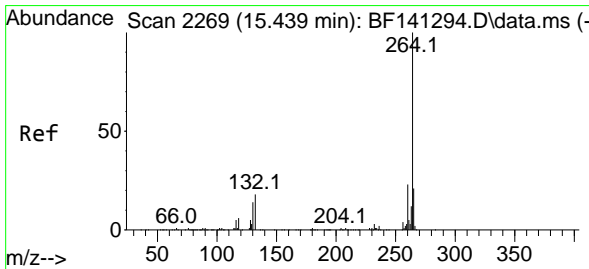
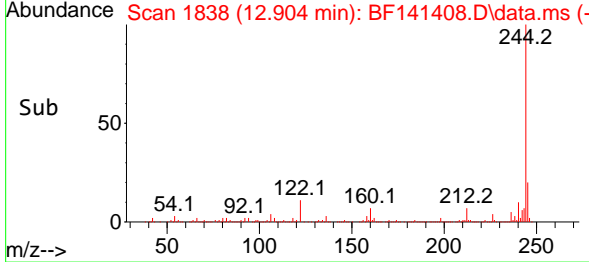
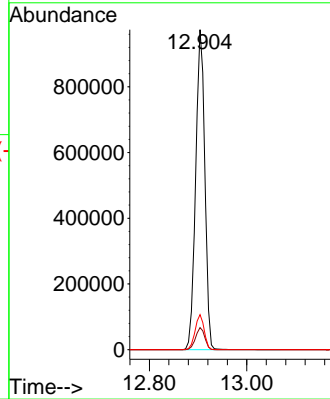


#79
 Terphenyl-d14
 Concen: 85.627 ng
 RT: 12.904 min Scan# 11
 Delta R.T. -0.012 min
 Lab File: BF141408.D
 Acq: 04 Feb 2025 15:06

Instrument :
 BNA_F
 ClientSampleId :
 PB166294BL



Tgt Ion:244 Resp: 1280663
 Ion Ratio Lower Upper
 244 100
 212 6.9 5.4 8.0
 122 11.0 8.8 13.2



#86
 Perylene-d12
 Concen: 20.000 ng
 RT: 15.410 min Scan# 2264
 Delta R.T. -0.030 min
 Lab File: BF141408.D
 Acq: 04 Feb 2025 15:06

Tgt Ion:264 Resp: 181526
 Ion Ratio Lower Upper
 264 100
 260 22.5 18.6 27.8
 265 21.4 16.7 25.1

