

Data Path : U:\HPCHEM1\BNA F\DATA\BF020518\
 Data File : BF102737.D
 Acq On : 5 Feb 2018 14:56
 Operator : SJ/JU
 Sample : J1399-03 5X
 Misc :
 ALS Vial : 12 Sample Multiplier: 1

Instrument :
 BNA_F
 ClientSampleId :
 OR-01-020218-B

Integration Parameters: rteint.p
 Integrator: RTE
 Smoothing : ON
 Sampling : 1
 Start Thrs: 0.2
 Stop Thrs : 0
 Filtering: 5
 Min Area: 3 % of largest Peak
 Max Peaks: 100
 Peak Location: TOP

If leading or trailing edge < 100 prefer < Baseline drop else tangent >
 Peak separation: 5

Method : Z:\HPCHEM1\BNA F\METHODS\8270-BF020318.M
 Title : ASP BNA STANDARDS FOR 5 POINT CALIBRATION

Signal : TIC

peak #	R.T. min	first scan	max scan	last scan	PK TY	peak height	corr. area	corr. % max.	% of total
1	2.134	4	8	15	rVB	144714	201552	5.39%	0.384%
2	5.481	573	577	581	rBV	1313527	1222391	32.69%	2.327%
3	6.492	745	749	752	rBV	1500188	1184891	31.69%	2.255%
4	6.645	771	775	778	rBV	1373761	1225521	32.78%	2.333%
5	6.881	811	815	818	rBV	1605911	1278034	34.18%	2.433%
6	7.034	837	841	844	rBV	1112805	905771	24.22%	1.724%
7	7.433	906	909	913	rVB	792867	687185	18.38%	1.308%
8	8.163	1027	1033	1035	rBV	2133163	1749906	46.80%	3.331%
9	8.186	1035	1037	1040	rVB	497784	378251	10.12%	0.720%
10	8.875	1151	1154	1157	rVB	386629	283451	7.58%	0.540%
11	8.975	1167	1171	1174	rVB	421815	327927	8.77%	0.624%
12	9.233	1212	1215	1219	rVB	1433308	1157311	30.95%	2.203%
13	9.433	1247	1249	1255	rVB	85161	84847	2.27%	0.162%
14	9.504	1256	1261	1264	rBV	178251	238684	6.38%	0.454%
15	9.575	1269	1273	1275	rBV	316809	284946	7.62%	0.542%
16	9.604	1275	1278	1280	rVB	164242	139690	3.74%	0.266%
17	9.627	1280	1282	1286	rVB3	118295	135423	3.62%	0.258%
18	9.692	1290	1293	1295	rBV	160210	132770	3.55%	0.253%
19	9.775	1305	1307	1311	rVB	252947	241380	6.46%	0.459%
20	9.827	1311	1316	1317	rVV3	74242	110230	2.95%	0.210%
21	9.922	1328	1332	1334	rVB	1747721	1528060	40.87%	2.909%
22	9.951	1334	1337	1340	rVB	1035452	791675	21.17%	1.507%
23	10.022	1345	1349	1353	rBV2	66040	81525	2.18%	0.155%
24	10.075	1353	1358	1360	rBV3	69538	85337	2.28%	0.162%
25	10.122	1362	1366	1369	rVB	607529	535470	14.32%	1.019%
26	10.157	1369	1372	1376	rVB2	119170	97045	2.60%	0.185%
27	10.233	1381	1385	1387	rBV2	110154	108927	2.91%	0.207%
28	10.322	1396	1400	1402	rBV3	86472	113714	3.04%	0.216%
29	10.345	1402	1404	1406	rVB	122398	91003	2.43%	0.173%
30	10.463	1421	1424	1430	rVB	987186	937070	25.06%	1.784%
31	10.533	1434	1436	1437	rVV	99685	82278	2.20%	0.157%
32	10.551	1437	1439	1441	rVV	156527	142467	3.81%	0.271%
33	10.574	1441	1443	1445	rVV2	72105	74345	1.99%	0.142%
34	10.622	1449	1451	1454	rVB	195720	152028	4.07%	0.289%

Data Path : U:\HPCHEM1\BNA F\DATA\BF020518\
 Data File : BF102737.D
 Acq On : 5 Feb 2018 14:56
 Operator : SJ/JU
 Sample : J1399-03 5X
 Misc :
 ALS Vial : 12 Sample Multiplier: 1

Instrument :
 BNA_F
 ClientSampleID :
 OR-01-020218-B

Integration Parameters: rteint.p
 Integrator: RTE
 Smoothing : ON
 Sampling : 1
 Start Thrs: 0.2
 Stop Thrs : 0

Filtering: 5
 Min Area: 3 % of largest Peak
 Max Peaks: 100
 Peak Location: TOP

If leading or trailing edge < 100 prefer < Baseline drop else tangent >
 Peak separation: 5

Method : Z:\HPCHEM1\BNA F\METHODS\8270-BF020318.M
 Title : ASP BNA STANDARDS FOR 5 POINT CALIBRATION

35	10.704	1459	1465	1469	rBV	917558	831513	22.24%	1.583%
36	10.827	1481	1486	1490	rBV2	158895	217014	5.80%	0.413%
37	11.010	1511	1517	1520	rBV2	190783	239043	6.39%	0.455%
38	11.039	1520	1522	1525	rVV2	114859	105819	2.83%	0.201%
39	11.098	1529	1532	1534	rVB	97814	88609	2.37%	0.169%
40	11.139	1534	1539	1541	rBV4	90732	118352	3.17%	0.225%
41	11.163	1541	1543	1545	rVV3	109500	93454	2.50%	0.178%
42	11.210	1548	1551	1554	rVV2	97174	96976	2.59%	0.185%
43	11.263	1554	1560	1563	rVV2	105820	188262	5.03%	0.358%
44	11.298	1563	1566	1572	rVB	316119	325205	8.70%	0.619%
45	11.404	1580	1584	1586	rBV	1378573	1350973	36.13%	2.572%
46	11.433	1586	1589	1592	rVV	3799369	3397984	90.88%	6.468%
47	11.480	1594	1597	1600	rVV	1366141	1119656	29.94%	2.131%
48	11.510	1600	1602	1605	rVB2	111964	108902	2.91%	0.207%
49	11.633	1616	1623	1625	rBV	384864	395881	10.59%	0.754%
50	11.698	1631	1634	1637	rVV2	92699	93311	2.50%	0.178%
51	11.733	1638	1640	1645	rVB2	112989	103628	2.77%	0.197%
52	11.816	1651	1654	1659	rVB	74596	83005	2.22%	0.158%
53	11.904	1666	1669	1671	rBV	450945	434068	11.61%	0.826%
54	11.933	1671	1674	1678	rVB	690685	632453	16.91%	1.204%
55	11.980	1679	1682	1685	rBV	285734	246588	6.59%	0.469%
56	12.021	1685	1689	1691	rVV2	899478	944746	25.27%	1.798%
57	12.039	1691	1692	1695	rVB	329529	209475	5.60%	0.399%
58	12.104	1700	1703	1706	rVV4	77247	81609	2.18%	0.155%
59	12.204	1717	1720	1722	rBV	295866	274343	7.34%	0.522%
60	12.221	1722	1723	1727	rVB2	139806	114994	3.08%	0.219%
61	12.380	1747	1750	1752	rBV	130261	98644	2.64%	0.188%
62	12.404	1752	1754	1756	rVB	111988	85297	2.28%	0.162%
63	12.457	1759	1763	1766	rBV	275138	299563	8.01%	0.570%
64	12.492	1766	1769	1771	rVV2	207724	236530	6.33%	0.450%
65	12.539	1775	1777	1782	rVV2	151229	171577	4.59%	0.327%
66	12.621	1787	1791	1795	rBV	3492080	3540007	94.67%	6.739%
67	12.663	1795	1798	1800	rVV	91866	101409	2.71%	0.193%
68	12.710	1803	1806	1809	rVB	124333	116070	3.10%	0.221%
69	12.768	1814	1816	1820	rVV2	161330	201285	5.38%	0.383%
70	12.851	1824	1830	1835	rVV2	2891510	3739134	100.00%	7.118%
71	12.898	1835	1838	1842	rVB2	159407	203018	5.43%	0.386%

Data Path : U:\HPCHEM1\BNA F\DATA\BF020518\
 Data File : BF102737.D
 Acq On : 5 Feb 2018 14:56
 Operator : SJ/JU
 Sample : J1399-03 5X
 Misc :
 ALS Vial : 12 Sample Multiplier: 1

Instrument :
 BNA_F
 ClientSampleId :
 OR-01-020218-B

Integration Parameters: rteint.p
 Integrator: RTE
 Smoothing : ON Filtering: 5
 Sampling : 1 Min Area: 3 % of largest Peak
 Start Thrs: 0.2 Max Peaks: 100
 Stop Thrs : 0 Peak Location: TOP

If leading or trailing edge < 100 prefer < Baseline drop else tangent >
 Peak separation: 5

Method : Z:\HPCHEM1\BNA F\METHODS\8270-BF020318.M
 Title : ASP BNA STANDARDS FOR 5 POINT CALIBRATION

72	12.968	1847	1850	1851	rBV	187079	197552	5.28%	0.376%
73	12.986	1851	1853	1860	rVB2	847214	872583	23.34%	1.661%
74	13.063	1862	1866	1869	rBV3	243385	378974	10.14%	0.721%
75	13.151	1878	1881	1882	rBV2	164067	168031	4.49%	0.320%
76	13.174	1882	1885	1888	rVB	704658	624775	16.71%	1.189%
77	13.239	1894	1896	1899	rVB	564954	469996	12.57%	0.895%
78	13.280	1899	1903	1905	rBV2	351518	332377	8.89%	0.633%
79	13.304	1905	1907	1910	rVB2	104051	100197	2.68%	0.191%
80	13.339	1910	1913	1916	rBV4	88140	108668	2.91%	0.207%
81	13.374	1916	1919	1921	rBV	153152	141095	3.77%	0.269%
82	13.404	1921	1924	1927	rBV	176411	191026	5.11%	0.364%
83	13.657	1964	1967	1969	rBV3	106445	145615	3.89%	0.277%
84	13.792	1988	1990	1993	rVB	216063	201773	5.40%	0.384%
85	13.821	1993	1995	1997	rVV	260137	193719	5.18%	0.369%
86	13.845	1997	1999	2003	rVV2	218026	297947	7.97%	0.567%
87	13.886	2003	2006	2013	rVB2	239633	326859	8.74%	0.622%
88	14.039	2028	2032	2036	rBV3	1918666	2738260	73.23%	5.212%
89	14.074	2036	2038	2043	rVB	1465969	1248549	33.39%	2.377%
90	14.151	2049	2051	2054	rBV	392499	281141	7.52%	0.535%
91	14.262	2067	2070	2074	rBV2	150760	213785	5.72%	0.407%
92	14.427	2096	2098	2101	rVB	243405	233026	6.23%	0.444%
93	14.462	2102	2104	2107	rVB	145560	115668	3.09%	0.220%
94	14.557	2117	2120	2122	rBV	179274	189712	5.07%	0.361%
95	15.092	2207	2211	2214	rBV	973346	1515086	40.52%	2.884%
96	15.198	2227	2229	2233	rVB	258014	259363	6.94%	0.494%
97	15.404	2260	2264	2270	rVB	583151	808319	21.62%	1.539%
98	15.462	2270	2274	2280	rBV	905136	1218274	32.58%	2.319%
99	15.527	2281	2285	2288	rBV	578132	791028	21.16%	1.506%
100	17.015	2534	2538	2547	rVB2	349183	690754	18.47%	1.315%

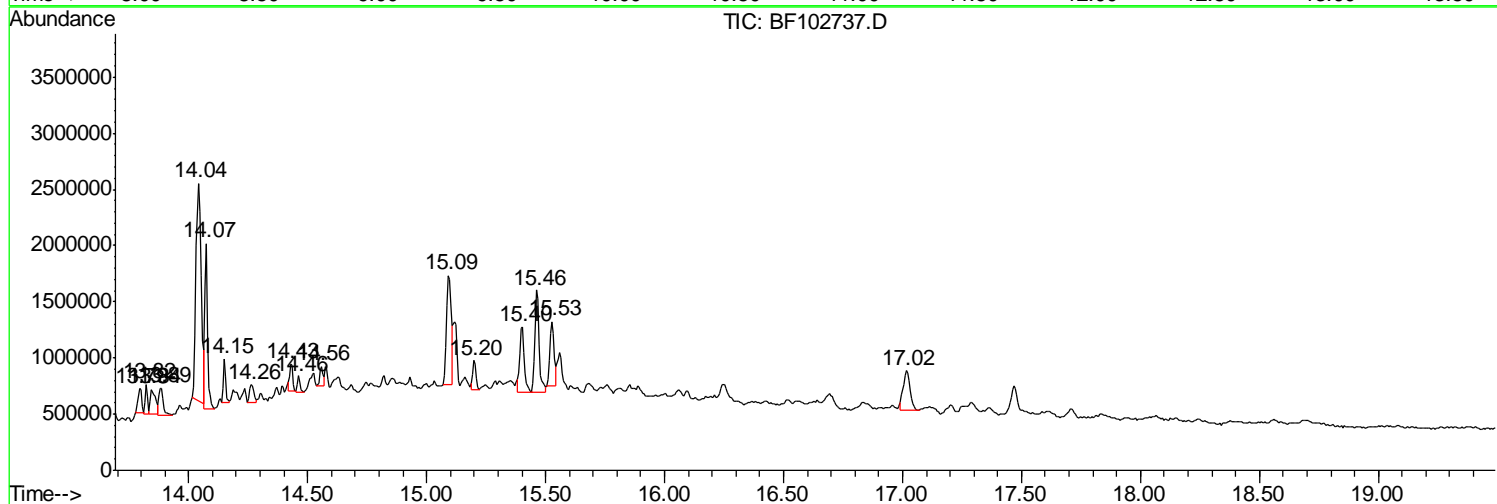
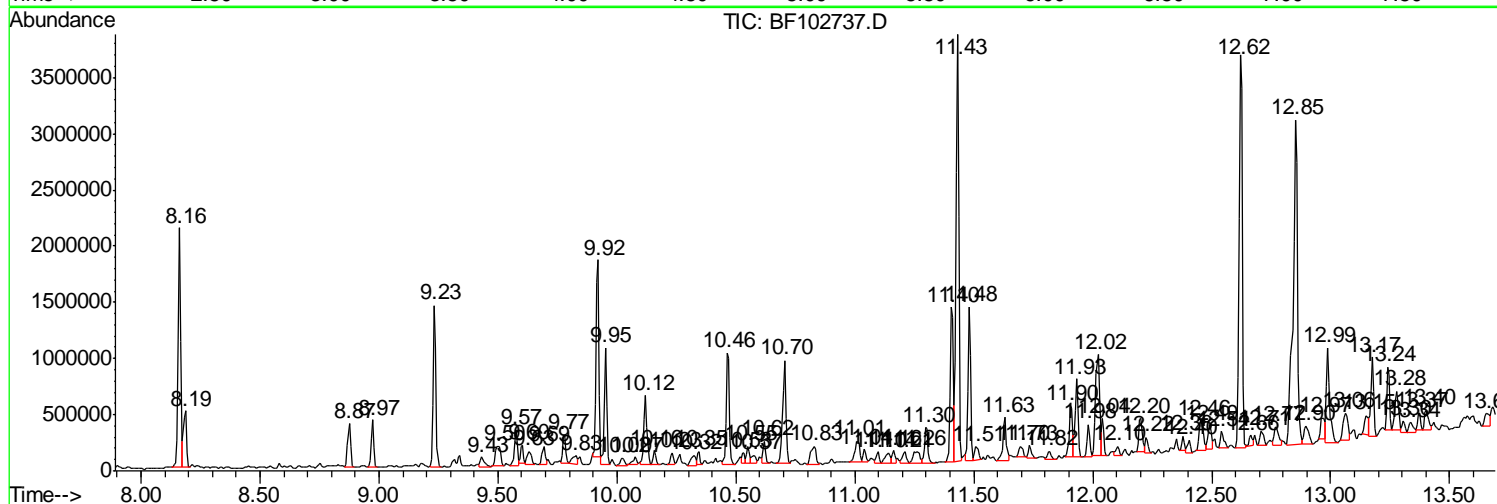
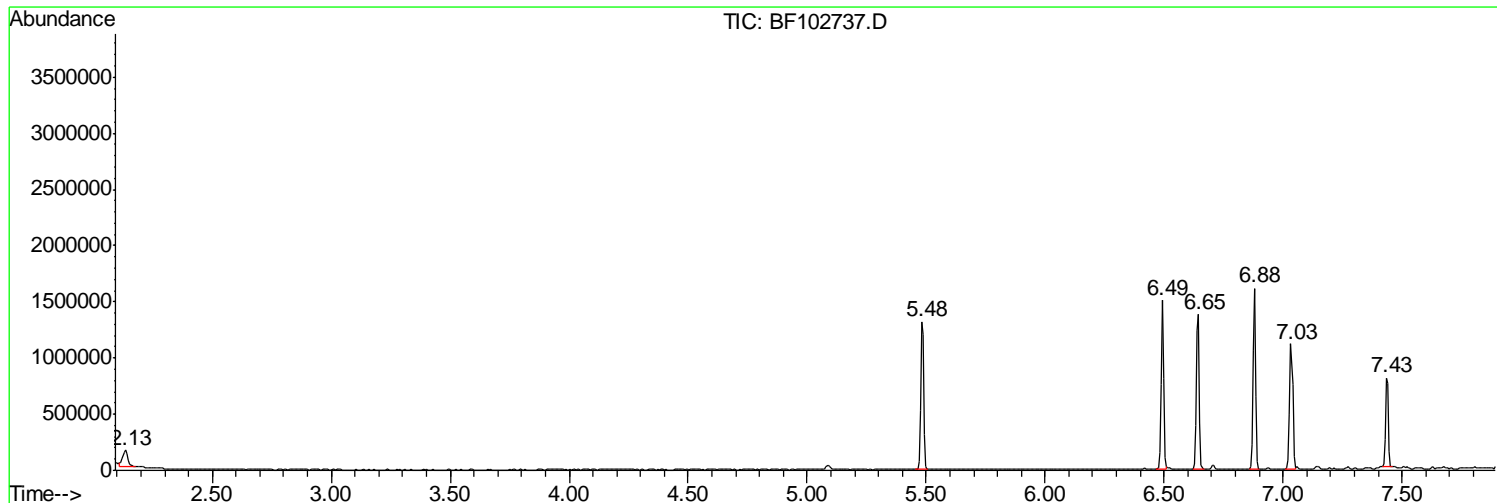
Sum of corrected areas: 52533654

Data Path : U:\HPCHEM1\BNA F\DATA\BF020518\
 Data File : BF102737.D
 Acq On : 5 Feb 2018 14:56
 Operator : SJ/JU
 Sample : J1399-03 5X
 Misc :
 ALS Vial : 12 Sample Multiplier: 1

Instrument :
 BNA_F
 ClientSampleId :
 OR-01-020218-B

Quant Method : Z:\HPCHEM1\BNA F\METHODS\8270-BF020318.M
 Quant Title : ASP BNA STANDARDS FOR 5 POINT CALIBRATION

TIC Library : C:\DATABASE\NIST11.L
 TIC Integration Parameters: LSCINT.P



Data Path : U:\HPCHEM1\BNA F\DATA\BF020518\
 Data File : BF102737.D
 Acq On : 5 Feb 2018 14:56
 Operator : SJ/JU
 Sample : J1399-03 5X
 Misc :
 ALS Vial : 12 Sample Multiplier: 1

Instrument :
 BNA_F
 ClientSampled :
 OR-01-020218-B

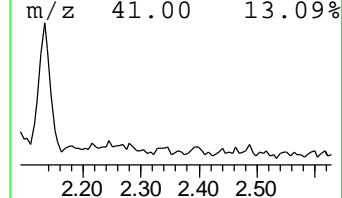
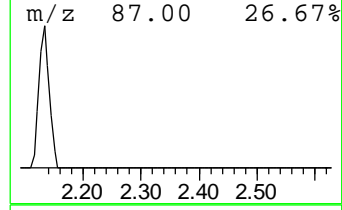
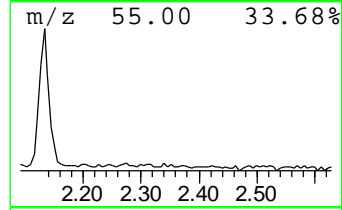
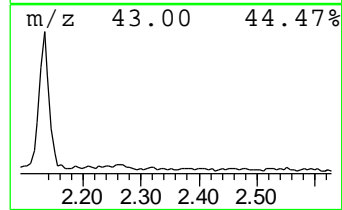
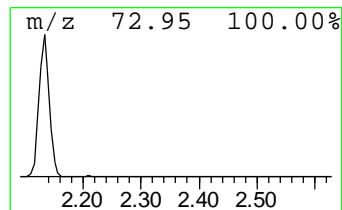
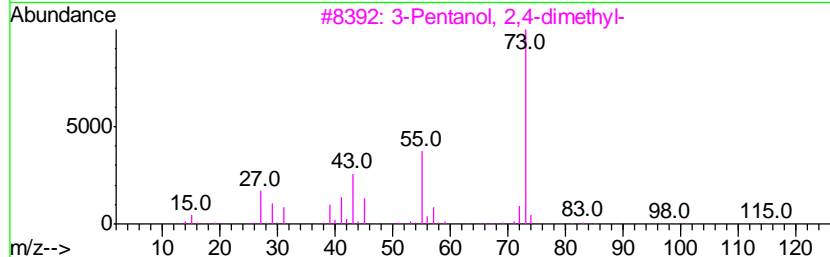
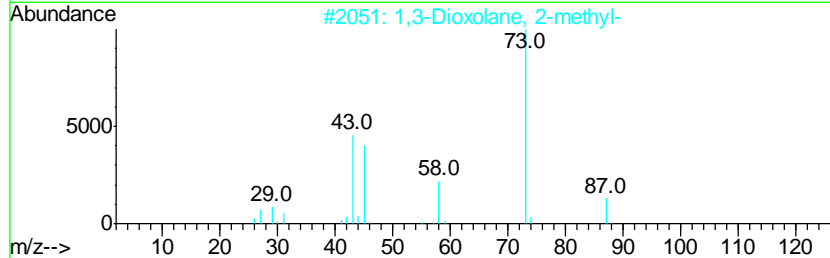
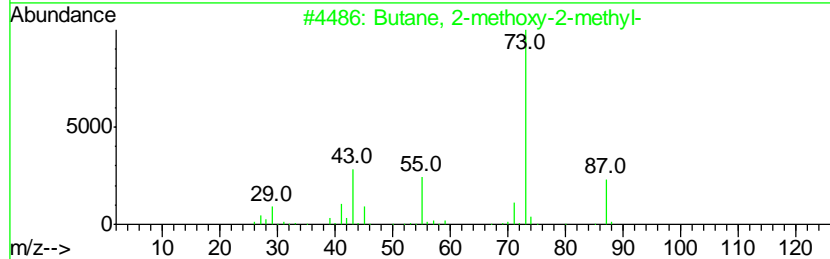
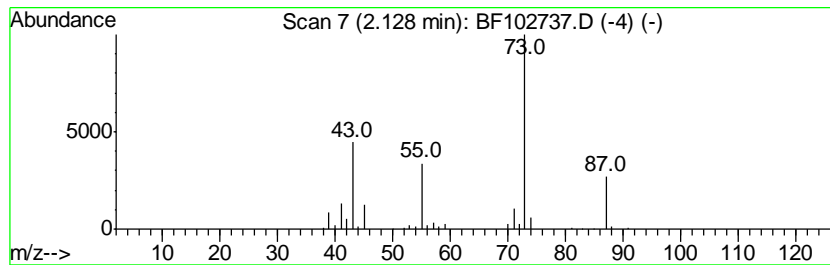
Quant Method : Z:\HPCHEM1\BNA F\METHODS\8270-BF020318.M
 Quant Title : ASP BNA STANDARDS FOR 5 POINT CALIBRATION

TIC Library : C:\DATABASE\NIST11.L
 TIC Integration Parameters: LSCINT.P

 Peak Number 1 Butane, 2-methoxy-2-methyl- Concentration Rank 19

R.T.	EstConc	Area	Relative to ISTD	R.T.
2.13	3.15 ng	201552	1,4-Dichlorobenzene-d4	6.88

Hit#	of	Tentative ID	MW	MolForm	CAS#	Qual
1	5	Butane, 2-methoxy-2-methyl-	102	C6H14O	000994-05-8	64
2		1,3-Dioxolane, 2-methyl-	88	C4H8O2	000497-26-7	38
3		3-Pentanol, 2,4-dimethyl-	116	C7H16O	000600-36-2	37
4		Silane, tetramethyl-	88	C4H12Si	000075-76-3	27
5		2-Hydroxy-2-methylbutyric acid	118	C5H10O3	003739-30-8	25



Data Path : U:\HPCHEM1\BNA F\DATA\BF020518\
 Data File : BF102737.D
 Acq On : 5 Feb 2018 14:56
 Operator : SJ/JU
 Sample : J1399-03 5X
 Misc :
 ALS Vial : 12 Sample Multiplier: 1

Instrument :
 BNA_F
 ClientSampleID :
 OR-01-020218-B

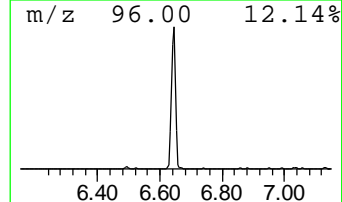
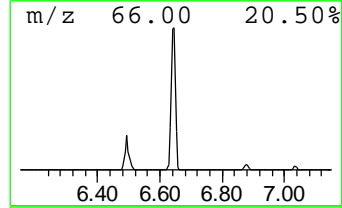
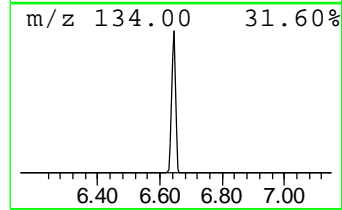
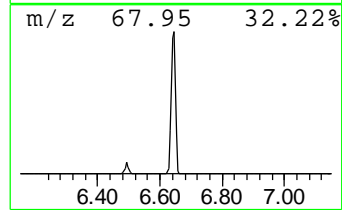
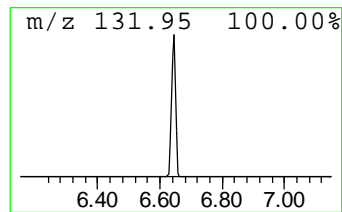
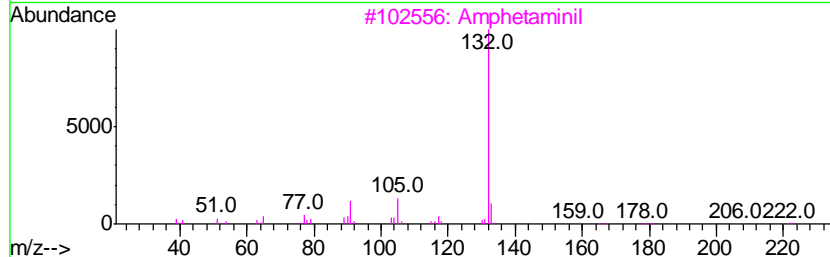
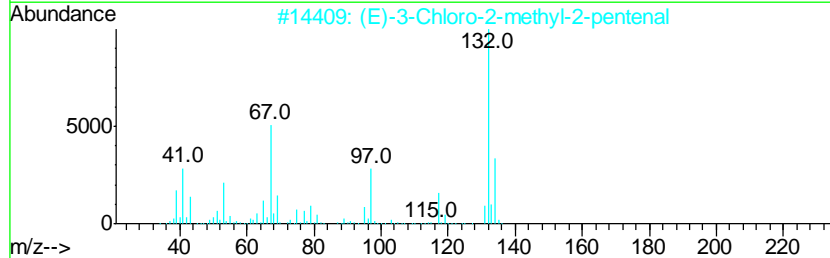
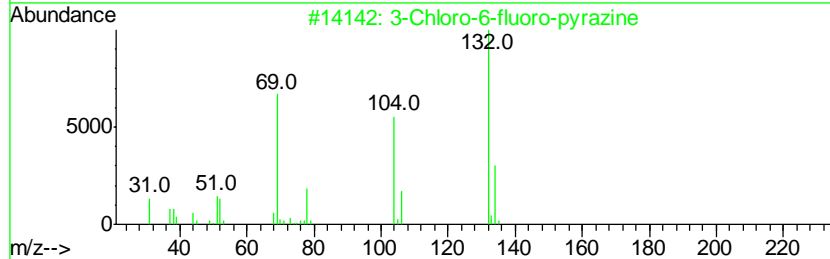
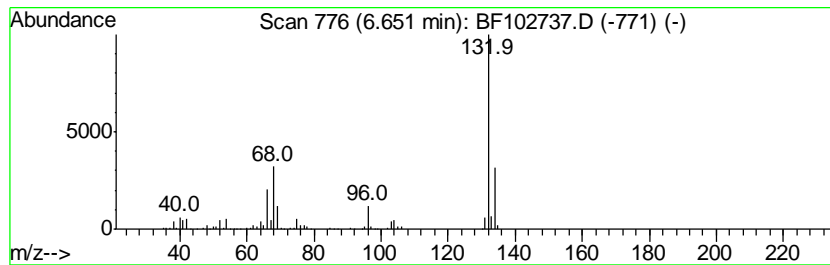
Quant Method : Z:\HPCHEM1\BNA F\METHODS\8270-BF020318.M
 Quant Title : ASP BNA STANDARDS FOR 5 POINT CALIBRATION

TIC Library : C:\DATABASE\NIST11.L
 TIC Integration Parameters: LSCINT.P

 Peak Number 2 unknown6.65 Concentration Rank 2

R.T.	EstConc	Area	Relative to ISTD	R.T.
6.65	19.18 ng	1225520	1,4-Dichlorobenzene-d4	6.88

Hit#	of	Tentative ID	MW	MolForm	CAS#	Qual
1	5	3-Chloro-6-fluoro-pyrazine	132	C4H2ClFN2	1000146-10-7	35
2		(E)-3-Chloro-2-methyl-2-pentenal	132	C6H9ClO	031357-76-3	25
3		Amphetaminil	250	C17H18N2	017590-01-1	12
4		Tranylcypromine-propionyl	189	C12H15NO	1000123-86-3	12
5		5-Aminoindole	132	C8H8N2	005192-03-0	12



Data Path : U:\HPCHEM1\BNA F\DATA\BF020518\
 Data File : BF102737.D
 Acq On : 5 Feb 2018 14:56
 Operator : SJ/JU
 Sample : J1399-03 5X
 Misc :
 ALS Vial : 12 Sample Multiplier: 1

Instrument :
 BNA_F
 ClientSampled :
 OR-01-020218-B

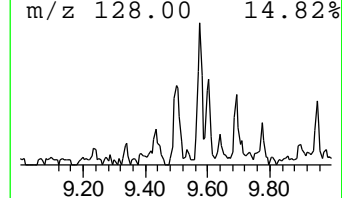
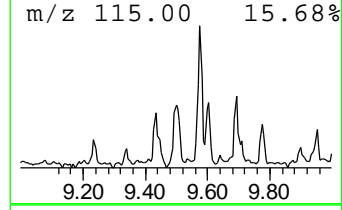
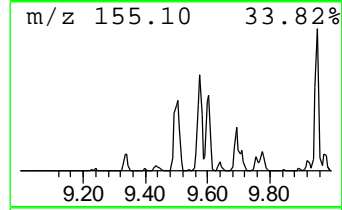
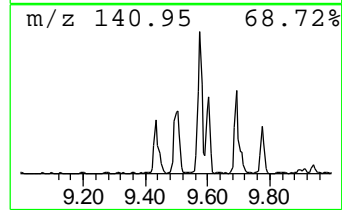
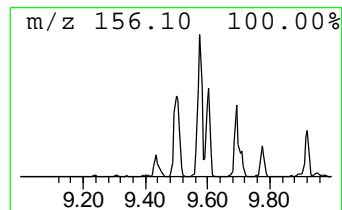
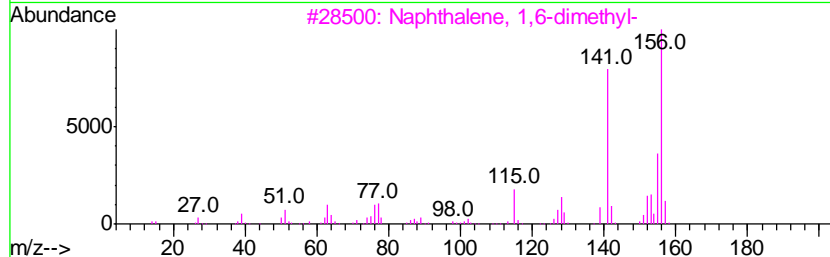
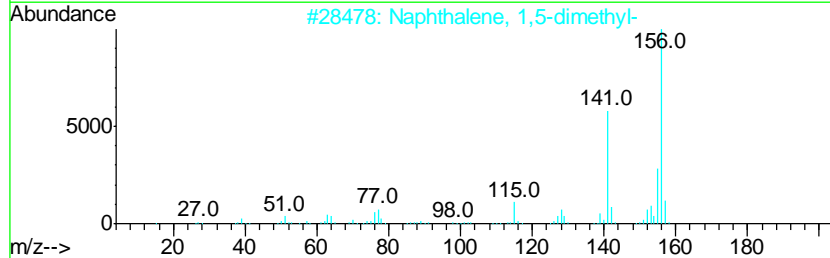
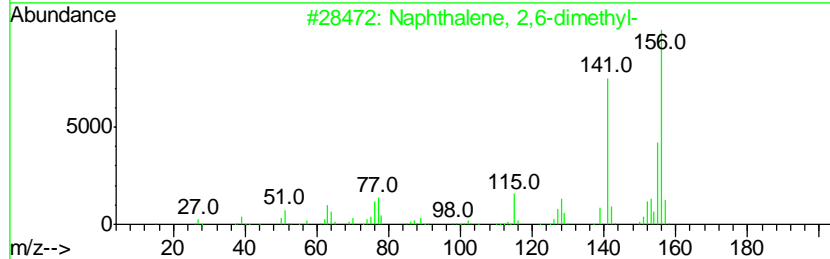
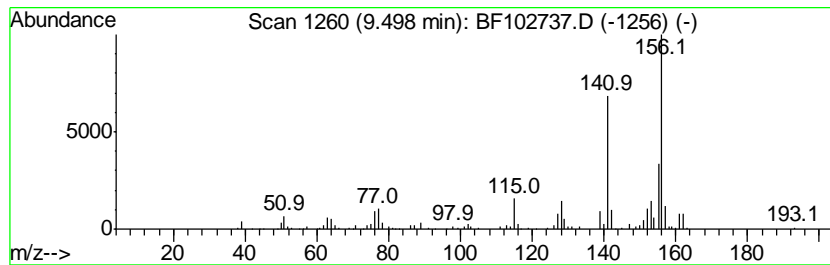
Quant Method : Z:\HPCHEM1\BNA F\METHODS\8270-BF020318.M
 Quant Title : ASP BNA STANDARDS FOR 5 POINT CALIBRATION

TIC Library : C:\DATABASE\NIST11.L
 TIC Integration Parameters: LSCINT.P

 Peak Number 5 Naphthalene, 2,6-dimethyl- Concentration Rank 20

R.T.	EstConc	Area	Relative to ISTD	R.T.
9.50	3.12 ng	238684	Acenaphthene-d10	9.92

Hit#	of	Tentative ID	MW	MolForm	CAS#	Qual
1	5	Naphthalene, 2,6-dimethyl-	156	C12H12	000581-42-0	98
2		Naphthalene, 1,5-dimethyl-	156	C12H12	000571-61-9	97
3		Naphthalene, 1,6-dimethyl-	156	C12H12	000575-43-9	97
4		Naphthalene, 2,7-dimethyl-	156	C12H12	000582-16-1	97
5		Naphthalene, 1,2-dimethyl-	156	C12H12	000573-98-8	96



Data Path : U:\HPCHEM1\BNA F\DATA\BF020518\
 Data File : BF102737.D
 Acq On : 5 Feb 2018 14:56
 Operator : SJ/JU
 Sample : J1399-03 5X
 Misc :
 ALS Vial : 12 Sample Multiplier: 1

Instrument :
 BNA_F
 ClientSampleID :
 OR-01-020218-B

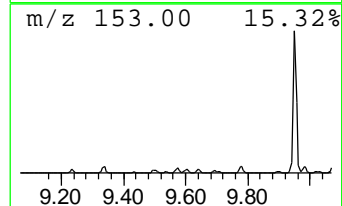
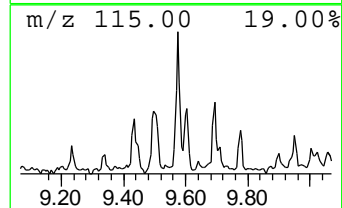
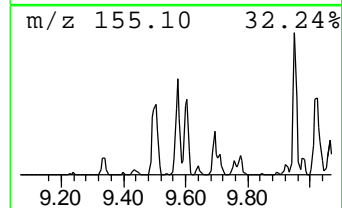
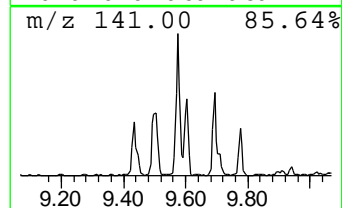
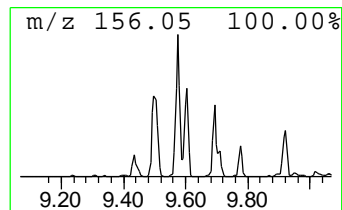
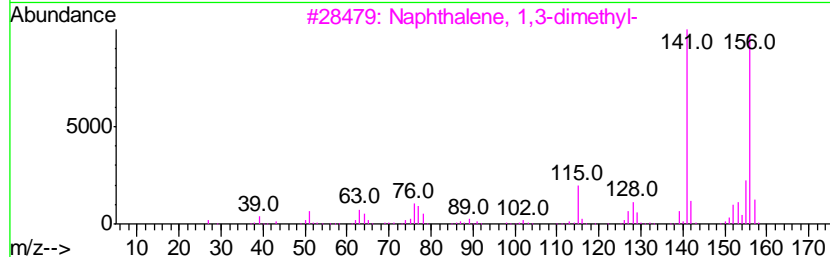
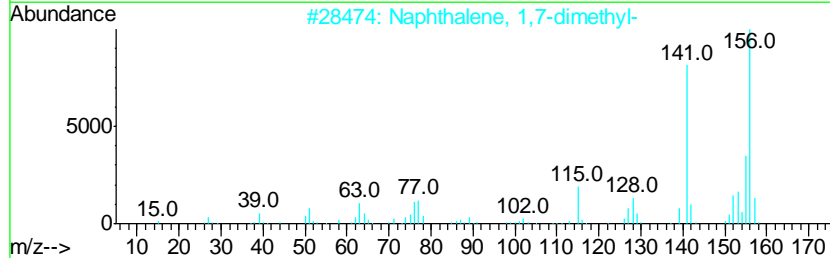
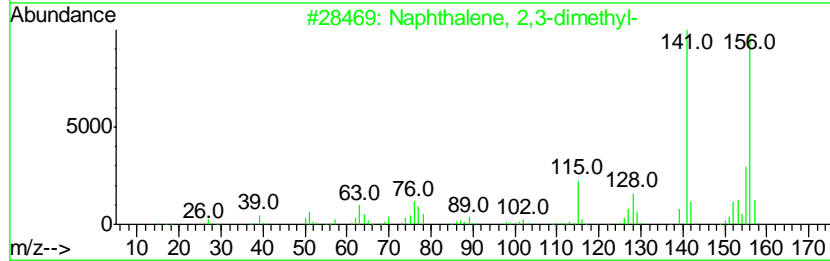
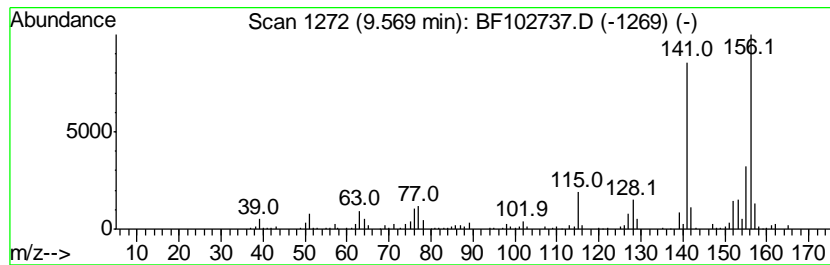
Quant Method : Z:\HPCHEM1\BNA F\METHODS\8270-BF020318.M
 Quant Title : ASP BNA STANDARDS FOR 5 POINT CALIBRATION

TIC Library : C:\DATABASE\NIST11.L
 TIC Integration Parameters: LSCINT.P

 Peak Number 6 Naphthalene, 2,3-dimethyl- Concentration Rank 13

R.T.	EstConc	Area	Relative to ISTD	R.T.
9.57	3.73 ng	284946	Acenaphthene-d10	9.92

Hit#	of	Tentative ID	MW	MolForm	CAS#	Qual
1	5	Naphthalene, 2,3-dimethyl-	156	C12H12	000581-40-8	98
2		Naphthalene, 1,7-dimethyl-	156	C12H12	000575-37-1	98
3		Naphthalene, 1,3-dimethyl-	156	C12H12	000575-41-7	98
4		Naphthalene, 1,6-dimethyl-	156	C12H12	000575-43-9	98
5		Naphthalene, 1,5-dimethyl-	156	C12H12	000571-61-9	97



Data Path : U:\HPCHEM1\BNA F\DATA\BF020518\
 Data File : BF102737.D
 Acq On : 5 Feb 2018 14:56
 Operator : SJ/JU
 Sample : J1399-03 5X
 Misc :
 ALS Vial : 12 Sample Multiplier: 1

Instrument :
 BNA_F
 ClientSampleID :
 OR-01-020218-B

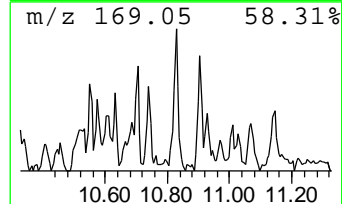
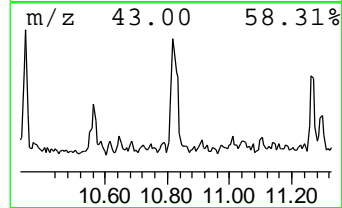
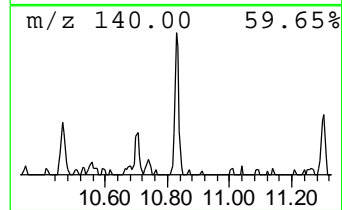
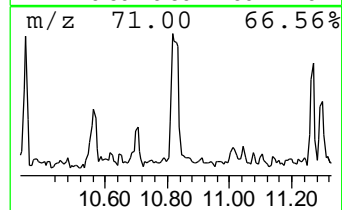
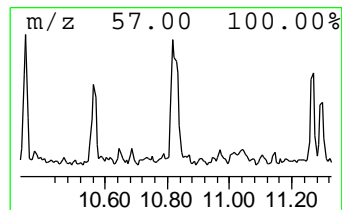
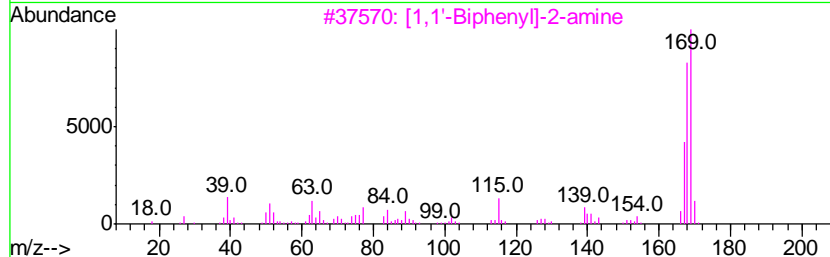
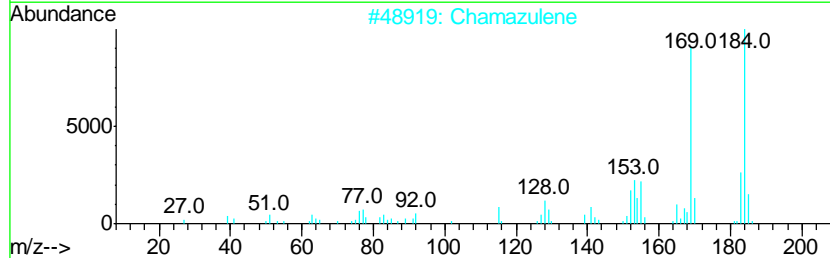
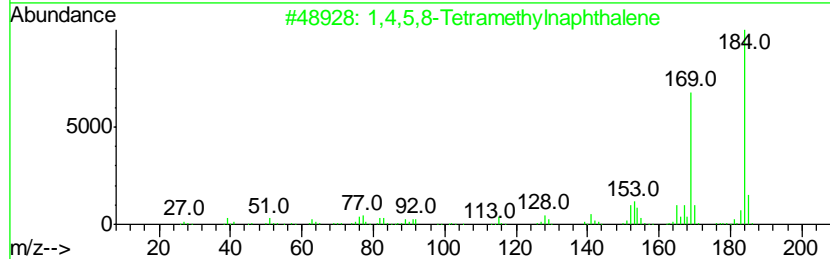
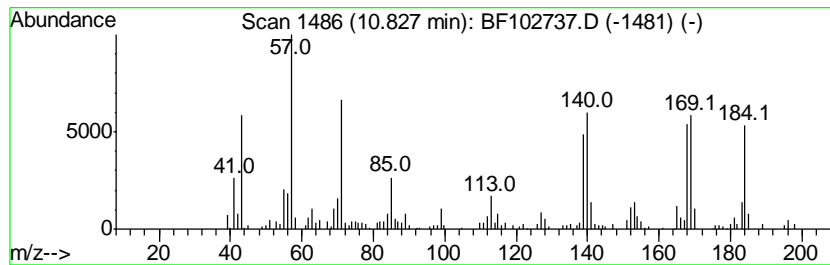
Quant Method : Z:\HPCHEM1\BNA F\METHODS\8270-BF020318.M
 Quant Title : ASP BNA STANDARDS FOR 5 POINT CALIBRATION

TIC Library : C:\DATABASE\NIST11.L
 TIC Integration Parameters: LSCINT.P

 Peak Number 7 unknown10.83 Concentration Rank 18

R.T.	EstConc	Area	Relative to ISTD	R.T.
10.83	3.21 ng	217014	Phenanthrene-d10	11.40

Hit#	of	Tentative ID	MW	MolForm	CAS#	Qual
1	5	1,4,5,8-Tetramethylnaphthalene	184	C14H16	002717-39-7	38
2		Chamazulene	184	C14H16	000529-05-5	38
3		[1,1'-Biphenyl]-2-amine	169	C12H11N	000090-41-5	38
4		1(2H)-Acenaphthylenone	168	C12H8O	002235-15-6	38
5		Naphthalene, 1,2,3,4-tetramethyl-	184	C14H16	003031-15-0	35



Data Path : U:\HPCHEM1\BNA F\DATA\BF020518\
 Data File : BF102737.D
 Acq On : 5 Feb 2018 14:56
 Operator : SJ/JU
 Sample : J1399-03 5X
 Misc :
 ALS Vial : 12 Sample Multiplier: 1

Instrument :
 BNA_F
 ClientSampleID :
 OR-01-020218-B

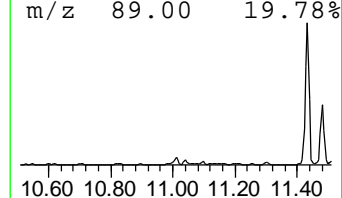
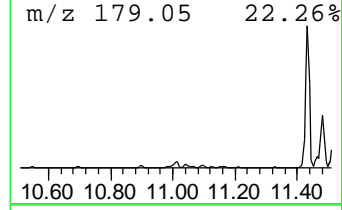
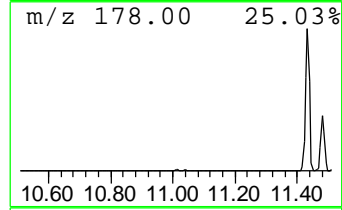
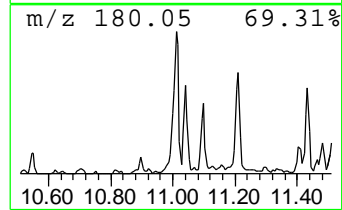
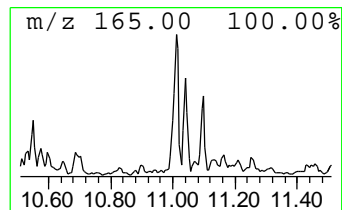
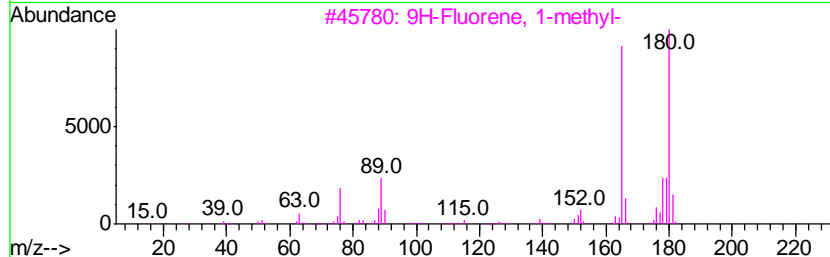
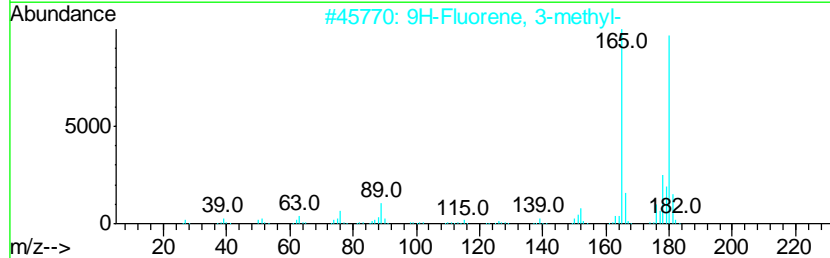
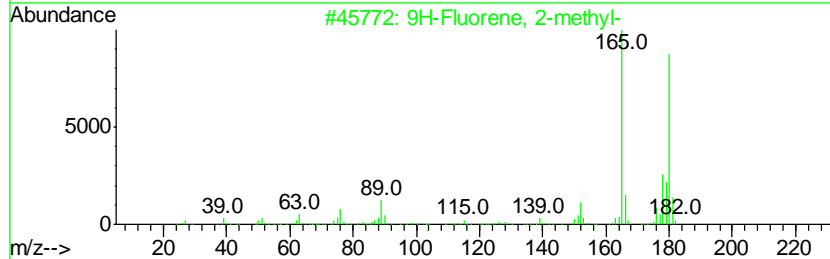
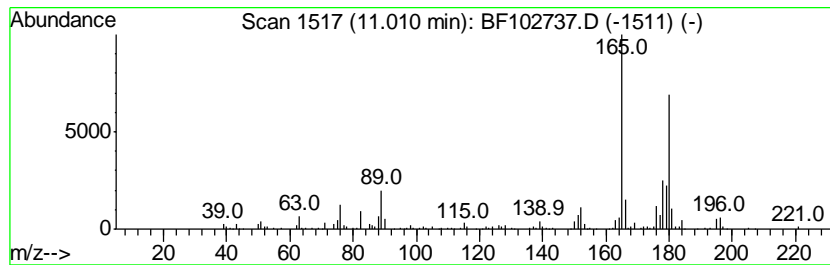
Quant Method : Z:\HPCHEM1\BNA F\METHODS\8270-BF020318.M
 Quant Title : ASP BNA STANDARDS FOR 5 POINT CALIBRATION

TIC Library : C:\DATABASE\NIST11.L
 TIC Integration Parameters: LSCINT.P

 Peak Number 8 9H-Fluorene, 2-methyl- Concentration Rank 15

R.T.	EstConc	Area	Relative to ISTD	R.T.
11.01	3.54 ng	239043	Phenanthrene-d10	11.40

Hit#	of	Tentative ID	MW	MolForm	CAS#	Qual
1	5	9H-Fluorene, 2-methyl-	180	C14H12	001430-97-3	96
2		9H-Fluorene, 3-methyl-	180	C14H12	002523-39-9	95
3		9H-Fluorene, 1-methyl-	180	C14H12	001730-37-6	95
4		9H-Fluorene, 9-methyl-	180	C14H12	002523-37-7	93
5		4a,9a-Methano-9H-fluorene	180	C14H12	019540-84-2	83



Data Path : U:\HPCHEM1\BNA F\DATA\BF020518\
 Data File : BF102737.D
 Acq On : 5 Feb 2018 14:56
 Operator : SJ/JU
 Sample : J1399-03 5X
 Misc :
 ALS Vial : 12 Sample Multiplier: 1

Instrument :
 BNA_F
 ClientSampleId :
 OR-01-020218-B

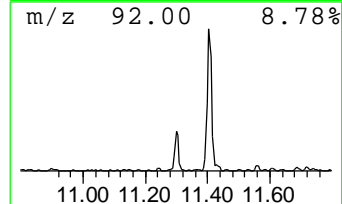
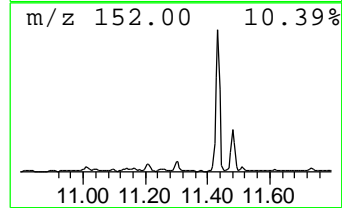
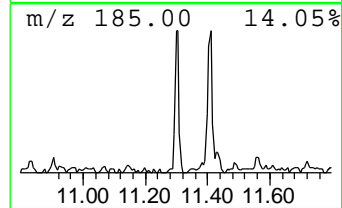
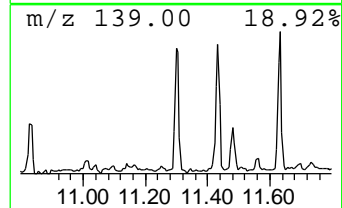
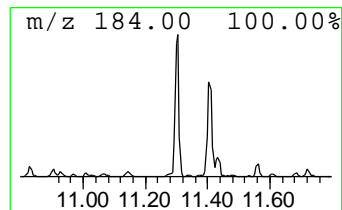
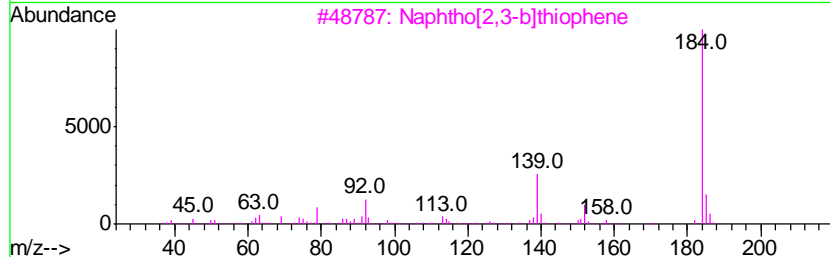
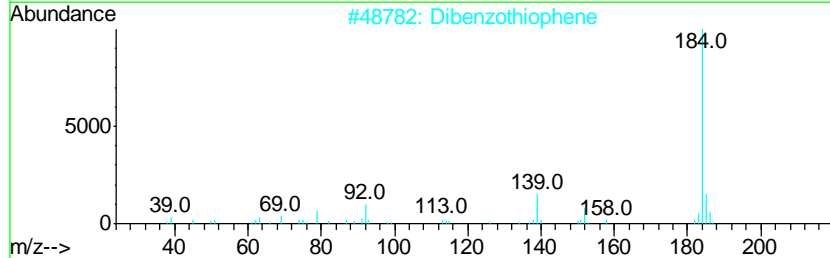
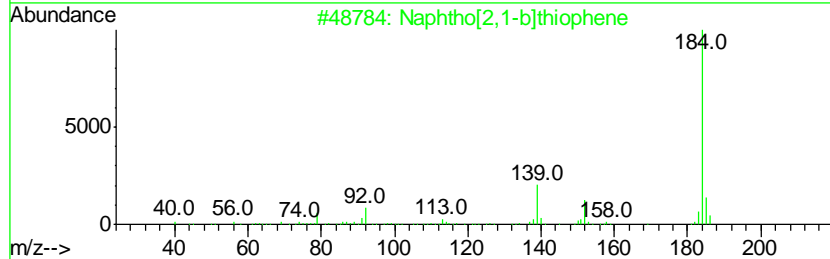
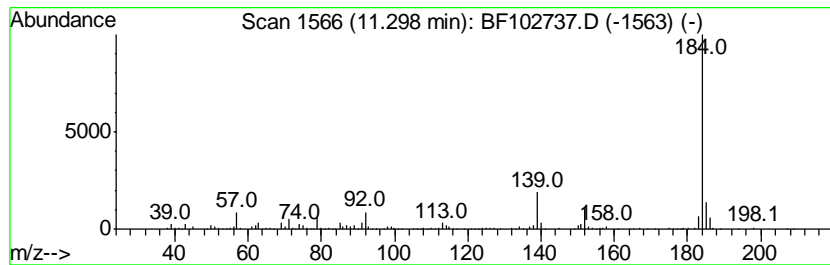
Quant Method : Z:\HPCHEM1\BNA F\METHODS\8270-BF020318.M
 Quant Title : ASP BNA STANDARDS FOR 5 POINT CALIBRATION

TIC Library : C:\DATABASE\NIST11.L
 TIC Integration Parameters: LSCINT.P

 Peak Number 9 Naphtho[2,1-b]thiophene Concentration Rank 8

R.T.	EstConc	Area	Relative to ISTD	R.T.
11.30	4.81 ng	325205	Phenanthrene-d10	11.40

Hit#	of	Tentative ID	MW	MolForm	CAS#	Qual
1	5	Naphtho[2,1-b]thiophene	184	C12H8S	000233-02-3	97
2		Dibenzothiophene	184	C12H8S	000132-65-0	97
3		Naphtho[2,3-b]thiophene	184	C12H8S	000268-77-9	94
4		Azuleno(2,1-b)thiophene	184	C12H8S	000248-13-5	91
5		Naphtho[1,2-b]thiophene	184	C12H8S	000234-41-3	87



Data Path : U:\HPCHEM1\BNA F\DATA\BF020518\
 Data File : BF102737.D
 Acq On : 5 Feb 2018 14:56
 Operator : SJ/JU
 Sample : J1399-03 5X
 Misc :
 ALS Vial : 12 Sample Multiplier: 1

Instrument :
 BNA_F
 ClientSampled :
 OR-01-020218-B

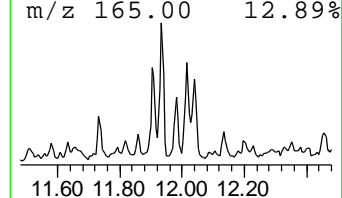
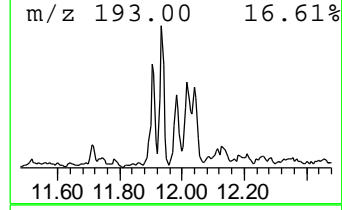
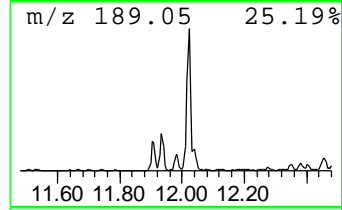
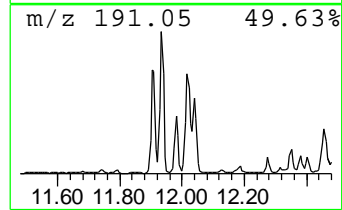
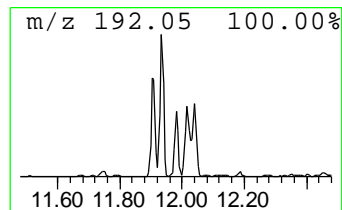
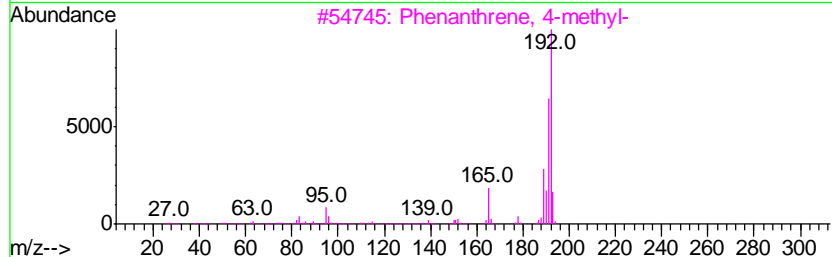
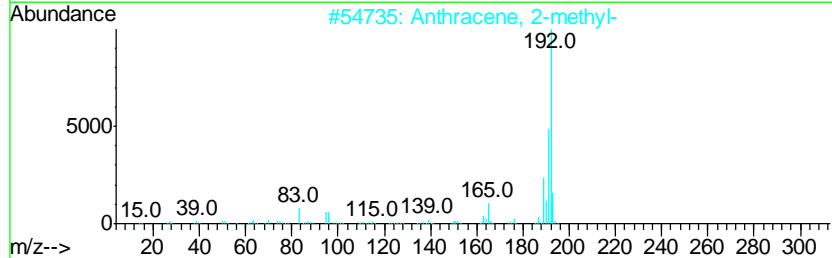
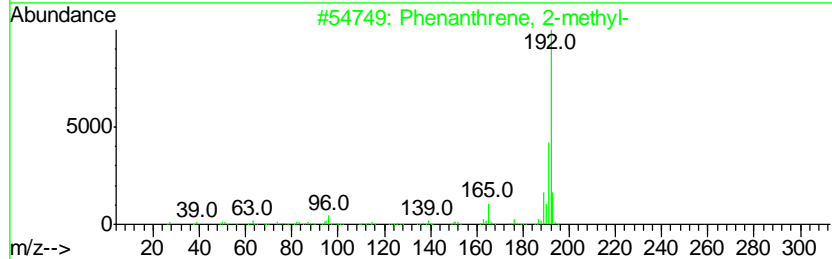
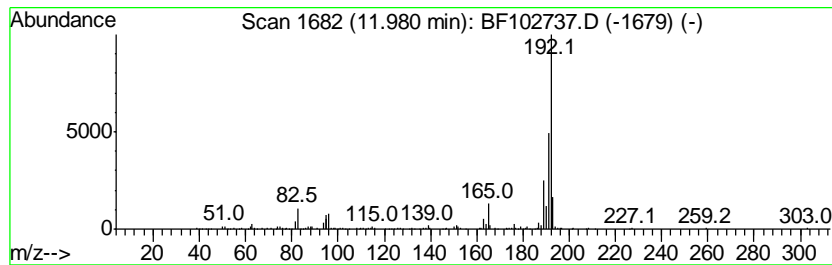
Quant Method : Z:\HPCHEM1\BNA F\METHODS\8270-BF020318.M
 Quant Title : ASP BNA STANDARDS FOR 5 POINT CALIBRATION

TIC Library : C:\DATABASE\NIST11.L
 TIC Integration Parameters: LSCINT.P

 Peak Number 12 Phenanthrene, 2-methyl- Concentration Rank 14

R.T.	EstConc	Area	Relative to ISTD	R.T.
11.98	3.65 ng	246588	Phenanthrene-d10	11.40

Hit#	of	Tentative ID	MW	MolForm	CAS#	Qual
1	5	Phenanthrene, 2-methyl-	192	C15H12	002531-84-2	96
2		Anthracene, 2-methyl-	192	C15H12	000613-12-7	96
3		Phenanthrene, 4-methyl-	192	C15H12	000832-64-4	94
4		Phenanthrene, 3-methyl-	192	C15H12	000832-71-3	93
5		Anthracene, 1-methyl-	192	C15H12	000610-48-0	91



Data Path : U:\HPCHEM1\BNA F\DATA\BF020518\
 Data File : BF102737.D
 Acq On : 5 Feb 2018 14:56
 Operator : SJ/JU
 Sample : J1399-03 5X
 Misc :
 ALS Vial : 12 Sample Multiplier: 1

Instrument :
 BNA_F
 ClientSampleID :
 OR-01-020218-B

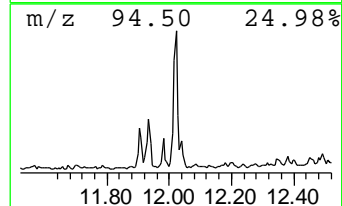
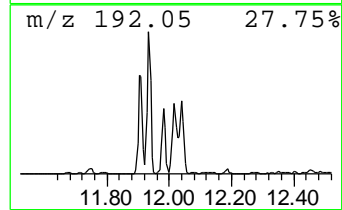
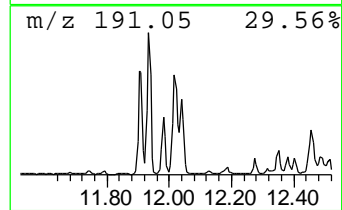
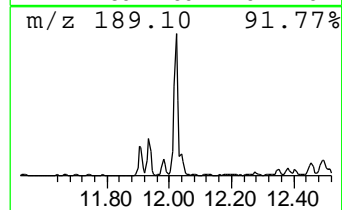
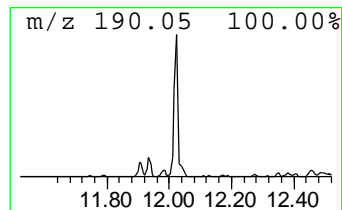
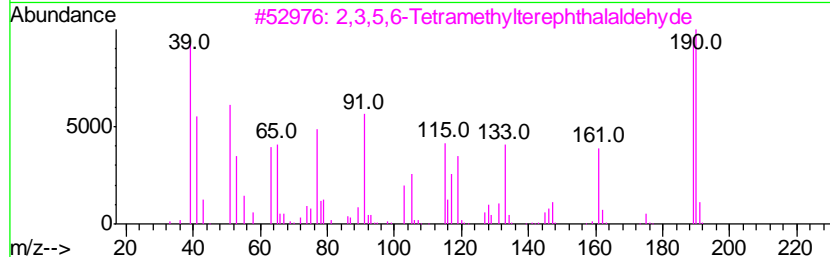
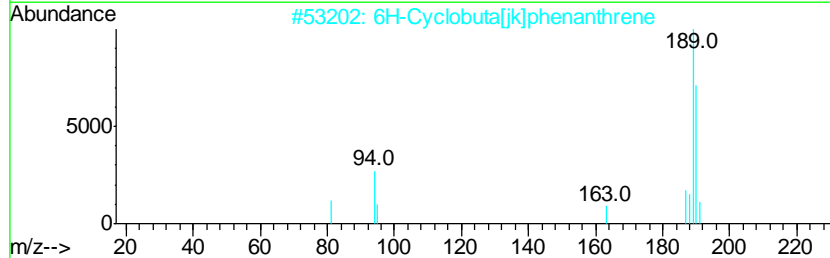
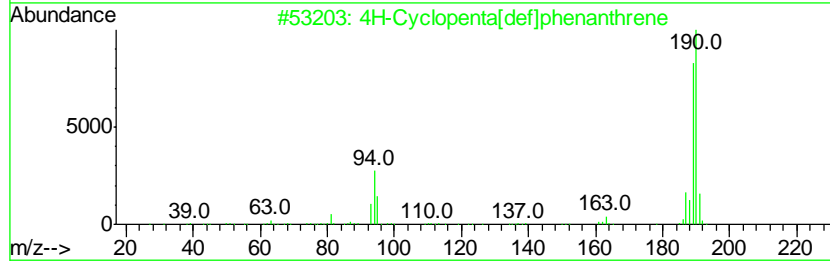
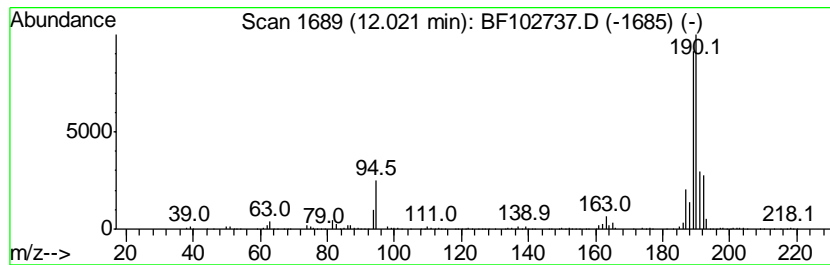
Quant Method : Z:\HPCHEM1\BNA F\METHODS\8270-BF020318.M
 Quant Title : ASP BNA STANDARDS FOR 5 POINT CALIBRATION

TIC Library : C:\DATABASE\NIST11.L
 TIC Integration Parameters: LSCINT.P

 Peak Number 13 4H-Cyclopenta[def]phenanthrene Concentration Rank 4

R.T.	EstConc	Area	Relative to ISTD	R.T.
12.02	13.99 ng	944746	Phenanthrene-d10	11.40

Hit#	of	Tentative ID	MW	MolForm	CAS#	Qual
1	5	4H-Cyclopenta[def]phenanthrene	190	C15H10	000203-64-5	94
2		6H-Cyclobuta[jk]phenanthrene	190	C15H10	083469-43-6	50
3		2,3,5,6-Tetramethylterephthalald...	190	C12H14O2	007072-01-7	50
4		2,2'-Bis(4,5-dimethylimidazole)	190	C10H14N4	069286-06-2	45
5		Methyl diselenide	190	C2H6Se2	007101-31-7	43



Data Path : U:\HPCHEM1\BNA F\DATA\BF020518\
 Data File : BF102737.D
 Acq On : 5 Feb 2018 14:56
 Operator : SJ/JU
 Sample : J1399-03 5X
 Misc :
 ALS Vial : 12 Sample Multiplier: 1

Instrument :
 BNA_F
 ClientSampled :
 OR-01-020218-B

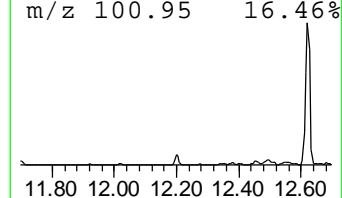
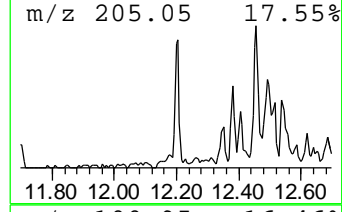
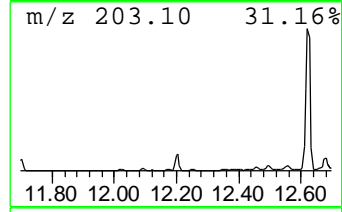
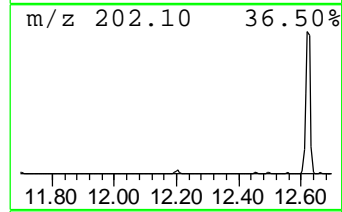
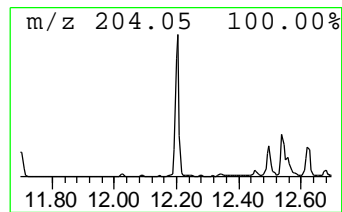
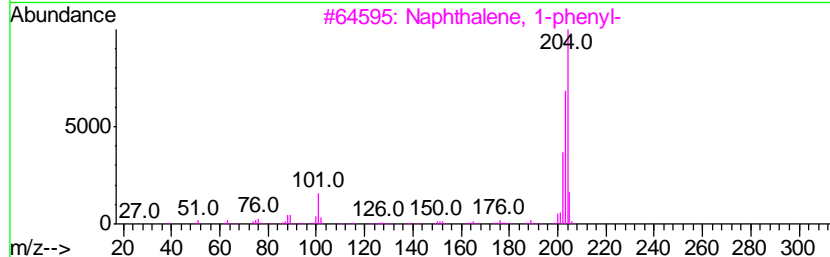
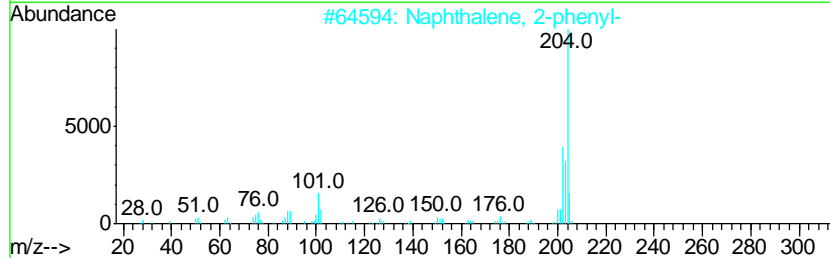
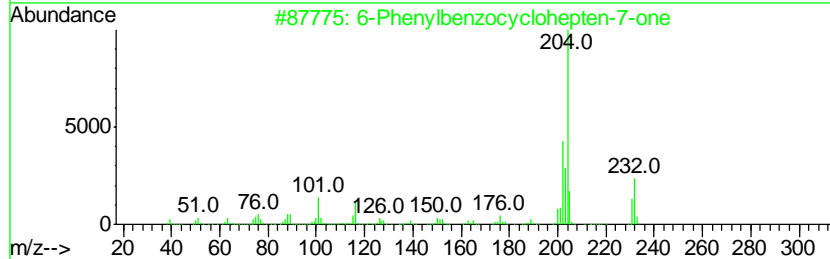
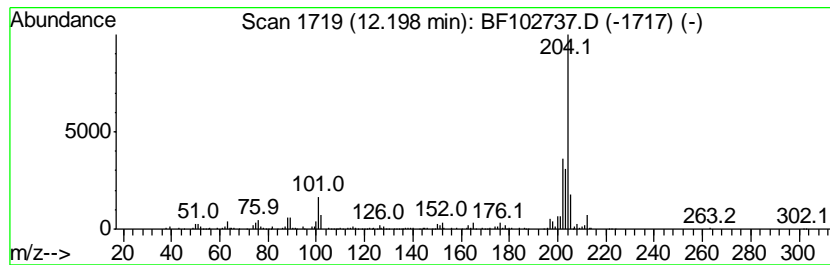
Quant Method : Z:\HPCHEM1\BNA F\METHODS\8270-BF020318.M
 Quant Title : ASP BNA STANDARDS FOR 5 POINT CALIBRATION

TIC Library : C:\DATABASE\NIST11.L
 TIC Integration Parameters: LSCINT.P

 Peak Number 14 6-Phenylbenzocyclohepten-7-one Concentration Rank 11

R.T.	EstConc	Area	Relative to ISTD	R.T.
12.20	4.06 ng	274343	Phenanthrene-d10	11.40

Hit#	of	Tentative ID	MW	MolForm	CAS#	Qual
1	5	6-Phenylbenzocyclohepten-7-one	232	C17H12O	093327-56-1	90
2		Naphthalene, 2-phenyl-	204	C16H12	000612-94-2	86
3		Naphthalene, 1-phenyl-	204	C16H12	000605-02-7	78
4		Tricyclo[8.2.2.2(4,7)]hexadeca-2...	204	C16H12	006572-60-7	52
5		3,4-Biphenyldicarbonitrile	204	C14H8N2	004128-63-6	49



Data Path : U:\HPCHEM1\BNA F\DATA\BF020518\
 Data File : BF102737.D
 Acq On : 5 Feb 2018 14:56
 Operator : SJ/JU
 Sample : J1399-03 5X
 Misc :
 ALS Vial : 12 Sample Multiplier: 1

Instrument :
 BNA_F
 ClientSampleID :
 OR-01-020218-B

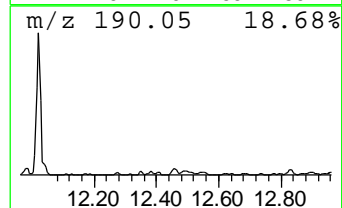
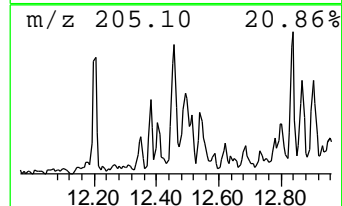
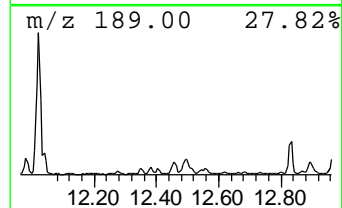
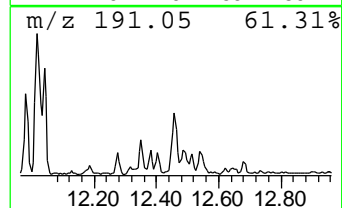
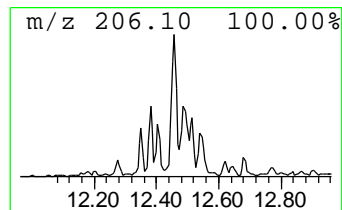
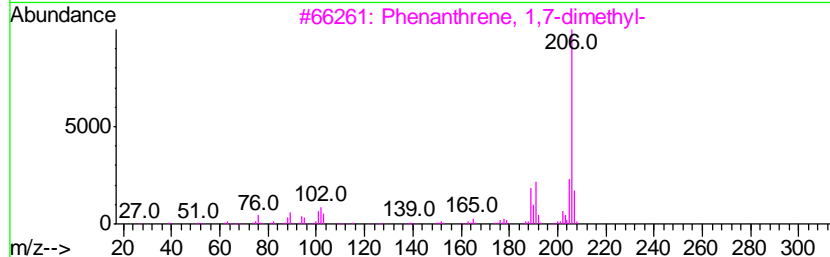
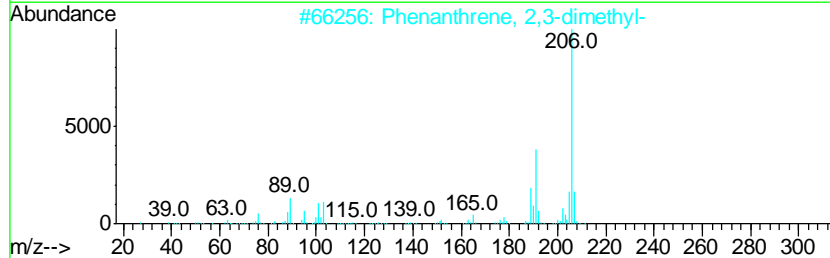
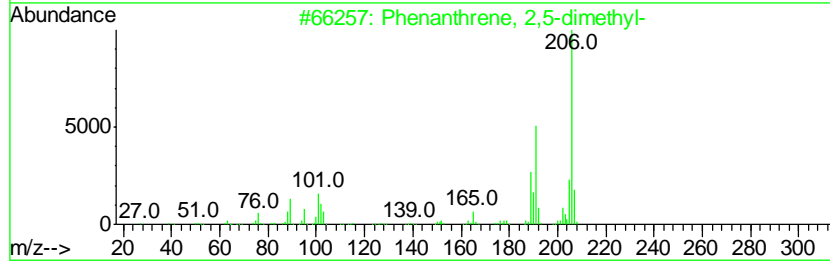
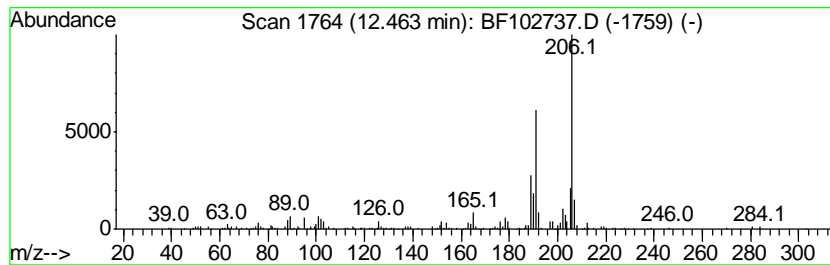
Quant Method : Z:\HPCHEM1\BNA F\METHODS\8270-BF020318.M
 Quant Title : ASP BNA STANDARDS FOR 5 POINT CALIBRATION

TIC Library : C:\DATABASE\NIST11.L
 TIC Integration Parameters: LSCINT.P

 Peak Number 15 Phenanthrene, 2,5-dimethyl- Concentration Rank 10

R.T.	EstConc	Area	Relative to ISTD	R.T.
12.46	4.43 ng	299563	Phenanthrene-d10	11.40

Hit#	of	Tentative ID	MW	MolForm	CAS#	Qual
1	5	Phenanthrene, 2,5-dimethyl-	206	C16H14	003674-66-6	96
2		Phenanthrene, 2,3-dimethyl-	206	C16H14	003674-65-5	93
3		Phenanthrene, 1,7-dimethyl-	206	C16H14	000483-87-4	90
4		Phenanthrene, 3,6-dimethyl-	206	C16H14	001576-67-6	87
5		Phenanthrene, 4,5-dimethyl-	206	C16H14	003674-69-9	87



Data Path : U:\HPCHEM1\BNA F\DATA\BF020518\
 Data File : BF102737.D
 Acq On : 5 Feb 2018 14:56
 Operator : SJ/JU
 Sample : J1399-03 5X
 Misc :
 ALS Vial : 12 Sample Multiplier: 1

Instrument :
 BNA_F
 ClientSampleID :
 OR-01-020218-B

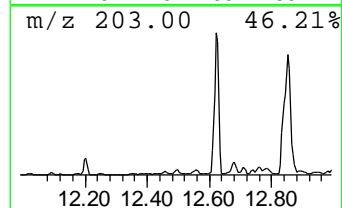
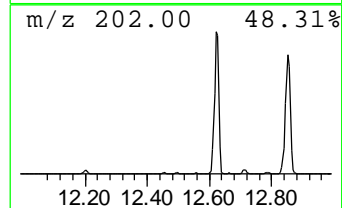
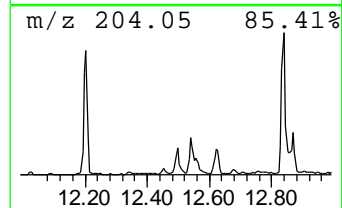
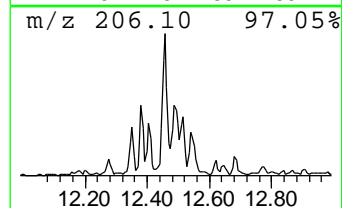
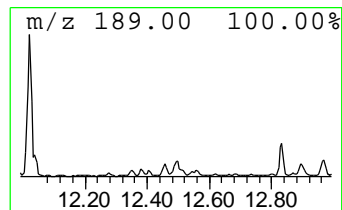
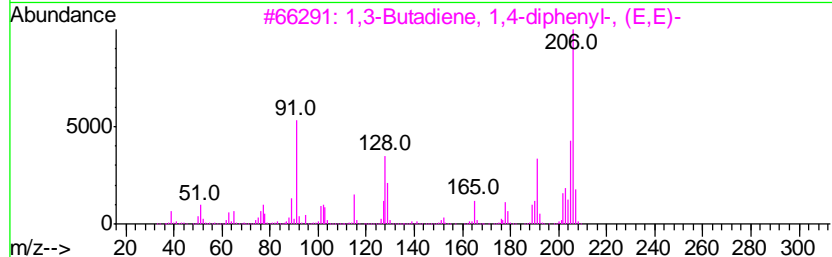
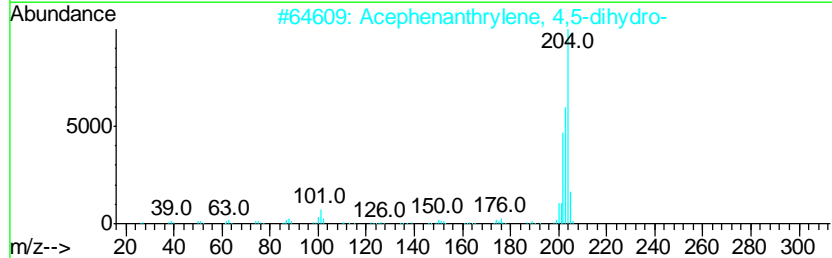
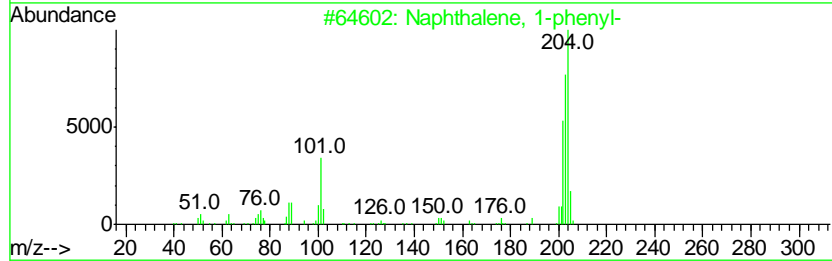
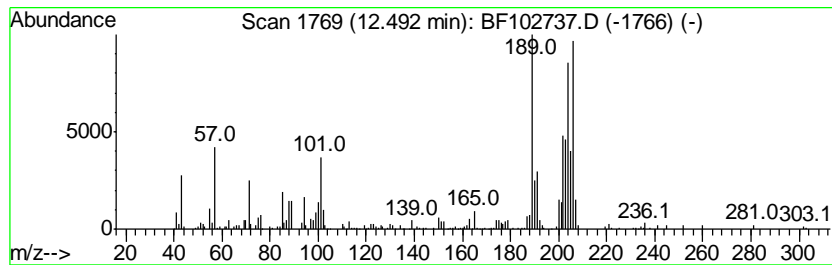
Quant Method : Z:\HPCHEM1\BNA F\METHODS\8270-BF020318.M
 Quant Title : ASP BNA STANDARDS FOR 5 POINT CALIBRATION

TIC Library : C:\DATABASE\NIST11.L
 TIC Integration Parameters: LSCINT.P

 Peak Number 16 Naphthalene, 1-phenyl- Concentration Rank 16

R.T.	EstConc	Area	Relative to ISTD	R.T.
12.49	3.50 ng	236530	Phenanthrene-d10	11.40

Hit#	of	Tentative ID	MW	MolForm	CAS#	Qual
1	5	Naphthalene, 1-phenyl-	204	C16H12	000605-02-7	72
2		Acephenanthrylene, 4,5-dihydro-	204	C16H12	006232-48-0	52
3		1,3-Butadiene, 1,4-diphenyl-, (E...)	206	C16H14	000538-81-8	38
4		Pyrene, 4,5,9,10-tetrahydro-	206	C16H14	000781-17-9	38
5		5H-Dibenzo[a,d]cycloheptene, 5-m...	204	C16H12	002975-79-3	35



Data Path : U:\HPCHEM1\BNA F\DATA\BF020518\
 Data File : BF102737.D
 Acq On : 5 Feb 2018 14:56
 Operator : SJ/JU
 Sample : J1399-03 5X
 Misc :
 ALS Vial : 12 Sample Multiplier: 1

Instrument :
 BNA_F
 ClientSampleID :
 OR-01-020218-B

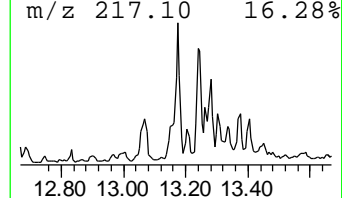
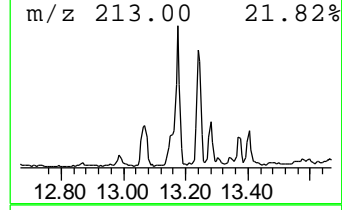
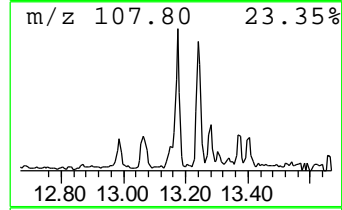
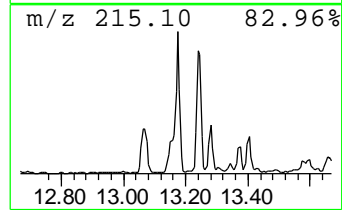
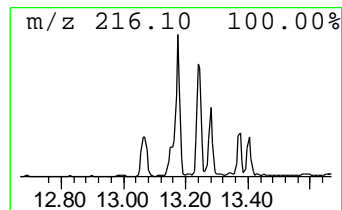
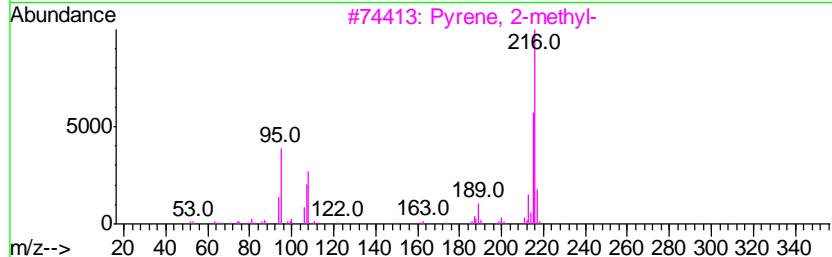
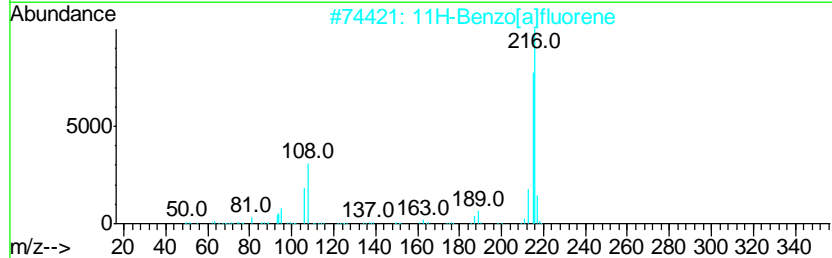
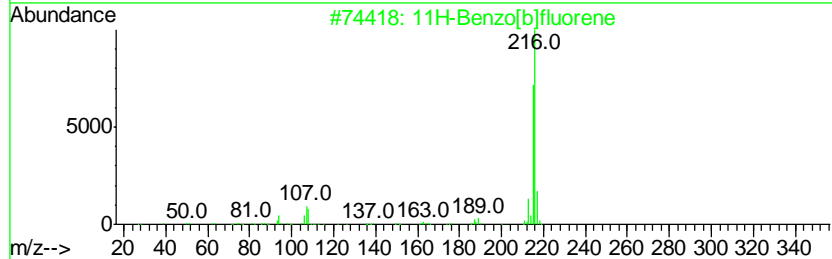
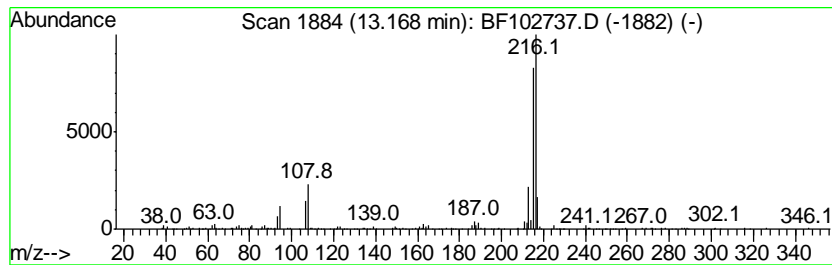
Quant Method : Z:\HPCHEM1\BNA F\METHODS\8270-BF020318.M
 Quant Title : ASP BNA STANDARDS FOR 5 POINT CALIBRATION

TIC Library : C:\DATABASE\NIST11.L
 TIC Integration Parameters: LSCINT.P

 Peak Number 17 11H-Benzo[b]fluorene Concentration Rank 9

R.T.	EstConc	Area	Relative to ISTD	R.T.
13.17	4.56 ng	624775	Chrysene-d12	14.04

Hit#	of	Tentative ID	MW	MolForm	CAS#	Qual
1	5	11H-Benzo[b]fluorene	216	C17H12	000243-17-4	83
2		11H-Benzo[a]fluorene	216	C17H12	000238-84-6	81
3		Pyrene, 2-methyl-	216	C17H12	003442-78-2	70
4		Fluoranthene, 2-methyl-	216	C17H12	033543-31-6	68
5		2-[3-Pyridyl]methylene-3-quinucl...	216	C13H16N2O	273748-56-4	59



Data Path : U:\HPCHEM1\BNA_F\DATA\BF020518\
 Data File : BF102737.D
 Acq On : 5 Feb 2018 14:56
 Operator : SJ/JU
 Sample : J1399-03 5X
 Misc :
 ALS Vial : 12 Sample Multiplier: 1

Instrument :
 BNA_F
 ClientSampleId :
 OR-01-020218-B

Quant Method : Z:\HPCHEM1\BNA_F\METHODS\8270-BF020318.M
 Quant Title : ASP BNA STANDARDS FOR 5 POINT CALIBRATION

TIC Library : C:\DATABASE\NIST11.L
 TIC Integration Parameters: LSCINT.P

TIC Top Hit name	RT	EstConc	Units	Response	--Internal Standard--			
					#	RT	Resp	Conc
Butane, 2-methoxy...	2.13	3.1	ng	201552	1	6.88	1278030	20.0
unknown6.65	6.65	19.2	ng	1225520	1	6.88	1278030	20.0
Naphthalene, 2,6-...	9.50	3.1	ng	238684	3	9.92	1528060	20.0
Naphthalene, 2,3-...	9.57	3.7	ng	284946	3	9.92	1528060	20.0
unknown10.83	10.83	3.2	ng	217014	4	11.40	1350970	20.0
9H-Fluorene, 2-me...	11.01	3.5	ng	239043	4	11.40	1350970	20.0
Naphtho[2,1-b]thi...	11.30	4.8	ng	325205	4	11.40	1350970	20.0
Phenanthrene, 2-m...	11.98	3.6	ng	246588	4	11.40	1350970	20.0
4H-Cyclopenta[def...	12.02	14.0	ng	944746	4	11.40	1350970	20.0
6-Phenylbenzocycl...	12.20	4.1	ng	274343	4	11.40	1350970	20.0
Phenanthrene, 2,5...	12.46	4.4	ng	299563	4	11.40	1350970	20.0
Naphthalene, 1-ph...	12.49	3.5	ng	236530	4	11.40	1350970	20.0
11H-Benzo[b]fluorene	13.17	4.6	ng	624775	5	14.04	2738260	20.0