

Data Path : Z:\HPCHEM1\BNA F\DATA\BF020617\
 Data File : BF092821.D
 Acq On : 7 Feb 2017 2:55
 Operator : SJ/MA
 Sample : I1695-03 2X
 Misc :
 ALS Vial : 25 Sample Multiplier: 1

Instrument :
 BNA_F
 ClientSampleId :
 B2-9

Integration Parameters: rteint.p
 Integrator: RTE
 Smoothing : ON
 Sampling : 1
 Start Thrs: 0.2
 Stop Thrs : 0

Filtering: 5
 Min Area: 3 % of largest Peak
 Max Peaks: 100
 Peak Location: TOP

If leading or trailing edge < 100 prefer < Baseline drop else tangent >
 Peak separation: 5

Method : Z:\HPCHEM1\BNA F\METHODS\8270-BF013017.M
 Title : ASP BNA STANDARDS FOR 5 POINT CALIBRATION

Signal : TIC

peak #	R.T. min	first scan	max scan	last scan	PK TY	peak height	corr. area	corr. % max.	% of total
1	5.081	260	262	265	rBV	506812	645924	28.57%	1.121%
2	5.516	298	300	303	rVB	1294734	1521984	67.33%	2.641%
3	6.156	353	356	359	rVV2	182874	276909	12.25%	0.481%
4	6.350	370	373	374	rBV	133140	200714	8.88%	0.348%
5	6.442	379	381	385	rBV3	209383	395921	17.51%	0.687%
6	6.556	389	391	393	rVV	1825938	1924994	85.16%	3.341%
7	6.647	396	399	400	rVV2	169116	363374	16.07%	0.631%
8	6.682	400	402	405	rVV	1762138	1905588	84.30%	3.307%
9	6.750	405	408	411	rVV4	240973	449532	19.89%	0.780%
10	6.876	411	419	420	rVV4	143906	510180	22.57%	0.885%
11	6.910	420	422	425	rVV2	868048	1278027	56.54%	2.218%
12	6.990	425	429	431	rVV2	453544	806121	35.66%	1.399%
13	7.024	431	432	434	rVV	229997	335883	14.86%	0.583%
14	7.070	434	436	438	rVV2	1600074	1906491	84.34%	3.309%
15	7.139	441	442	443	rVV	142060	179596	7.94%	0.312%
16	7.185	444	446	448	rVV2	264211	403139	17.83%	0.700%
17	7.219	448	449	451	rVV2	90386	166836	7.38%	0.290%
18	7.265	451	453	454	rVV	169004	248937	11.01%	0.432%
19	7.310	454	457	458	rVV	530013	629828	27.86%	1.093%
20	7.333	458	459	462	rVV3	185242	363963	16.10%	0.632%
21	7.390	462	464	466	rVV2	132776	265439	11.74%	0.461%
22	7.447	466	469	470	rVV2	517690	933546	41.30%	1.620%
23	7.482	470	472	474	rVV	1058046	1600918	70.82%	2.778%
24	7.516	474	475	476	rVV	352114	315164	13.94%	0.547%
25	7.562	476	479	481	rVV2	458718	809368	35.80%	1.405%
26	7.607	481	483	486	rVV2	235696	620395	27.44%	1.077%
27	7.699	486	491	492	rVV3	360493	960406	42.49%	1.667%
28	7.722	492	493	495	rVV	518194	565470	25.02%	0.981%
29	7.813	498	501	502	rVV3	424634	769957	34.06%	1.336%
30	7.836	502	503	506	rVV3	498598	795582	35.19%	1.381%
31	7.882	506	507	508	rVV	175085	191644	8.48%	0.333%
32	7.916	508	510	511	rVV	151069	264026	11.68%	0.458%
33	7.939	511	512	517	rVV5	262023	693921	30.70%	1.204%
34	8.019	517	519	522	rVV3	231651	444302	19.65%	0.771%

Data Path : Z:\HPCHEM1\BNA F\DATA\BF020617\
 Data File : BF092821.D
 Acq On : 7 Feb 2017 2:55
 Operator : SJ/MA
 Sample : I1695-03 2X
 Misc :
 ALS Vial : 25 Sample Multiplier: 1

Instrument :
 BNA_F
 ClientSampleId :
 B2-9

Integration Parameters: rteint.p
 Integrator: RTE
 Smoothing : ON
 Sampling : 1
 Start Thrs: 0.2
 Stop Thrs : 0

Filtering: 5
 Min Area: 3 % of largest Peak
 Max Peaks: 100
 Peak Location: TOP

If leading or trailing edge < 100 prefer < Baseline drop else tangent >
 Peak separation: 5

Method : Z:\HPCHEM1\BNA F\METHODS\8270-BF013017.M
 Title : ASP BNA STANDARDS FOR 5 POINT CALIBRATION

35	8.076	522	524	525	rVV2	218775	349549	15.46%	0.607%
36	8.099	525	526	528	rVV	147857	271489	12.01%	0.471%
37	8.156	528	531	532	rVV3	263687	607642	26.88%	1.055%
38	8.202	532	535	536	rVV	1420458	1790552	79.21%	3.107%
39	8.259	538	540	541	rVV2	524637	638590	28.25%	1.108%
40	8.293	541	543	544	rVV2	225358	346314	15.32%	0.601%
41	8.373	547	550	551	rVV2	147556	362047	16.02%	0.628%
42	8.408	551	553	556	rVV2	185289	416451	18.42%	0.723%
43	8.488	556	560	562	rVV3	394208	738950	32.69%	1.282%
44	8.545	564	565	567	rVV2	182852	285145	12.61%	0.495%
45	8.579	567	568	570	rVV2	200148	288357	12.76%	0.500%
46	8.625	570	572	574	rVV	451101	773443	34.22%	1.342%
47	8.705	578	579	580	rVV	149352	161325	7.14%	0.280%
48	8.739	580	582	583	rVV2	150693	255961	11.32%	0.444%
49	8.785	585	586	588	rVV2	204939	348236	15.41%	0.604%
50	8.830	588	590	591	rVV2	172406	312704	13.83%	0.543%
51	8.888	593	595	596	rVV2	238677	335892	14.86%	0.583%
52	8.979	601	603	604	rVV2	132074	235192	10.40%	0.408%
53	9.013	604	606	608	rVV	186804	326653	14.45%	0.567%
54	9.082	610	612	613	rVV2	109500	220390	9.75%	0.382%
55	9.105	613	614	616	rVV	215365	274147	12.13%	0.476%
56	9.150	616	618	620	rVV3	100991	210565	9.31%	0.365%
57	9.196	620	622	623	rVV2	107073	184591	8.17%	0.320%
58	9.219	623	624	626	rVV	458229	473209	20.93%	0.821%
59	9.276	627	629	631	rVV	1977206	1733202	76.67%	3.008%
60	9.356	633	636	638	rVV	167033	368991	16.32%	0.640%
61	9.425	640	642	645	rVV2	101944	215943	9.55%	0.375%
62	9.528	650	651	654	rVV3	119973	216447	9.58%	0.376%
63	9.608	657	658	660	rVV	134239	215686	9.54%	0.374%
64	9.676	660	664	665	rVV3	331709	599944	26.54%	1.041%
65	9.950	686	688	690	rVV	700939	1018636	45.06%	1.768%
66	10.499	734	736	740	rVB2	117187	177202	7.84%	0.308%
67	10.739	755	757	760	rBV2	550440	755182	33.41%	1.311%
68	10.865	766	768	772	rVB	162598	267741	11.84%	0.465%
69	11.334	808	809	812	rVB2	147254	167698	7.42%	0.291%
70	11.448	816	819	820	rBV	847983	1082964	47.91%	1.879%
71	11.471	820	821	823	rVV	1131758	803224	35.53%	1.394%

Data Path : Z:\HPCHEM1\BNA F\DATA\BF020617\
 Data File : BF092821.D
 Acq On : 7 Feb 2017 2:55
 Operator : SJ/MA
 Sample : I1695-03 2X
 Misc :
 ALS Vial : 25 Sample Multiplier: 1

Instrument :
 BNA_F
 ClientSampleId :
 B2-9

Integration Parameters: rteint.p
 Integrator: RTE
 Smoothing : ON
 Sampling : 1
 Start Thrs: 0.2
 Stop Thrs : 0

Filtering: 5
 Min Area: 3 % of largest Peak
 Max Peaks: 100
 Peak Location: TOP

If leading or trailing edge < 100 prefer < Baseline drop else tangent >
 Peak separation: 5

Method : Z:\HPCHEM1\BNA F\METHODS\8270-BF013017.M
 Title : ASP BNA STANDARDS FOR 5 POINT CALIBRATION

72	11.516	823	825	827	rVB	284065	249476	11.04%	0.433%
73	11.951	860	863	864	rVV	164992	244530	10.82%	0.424%
74	11.974	864	865	867	rVV	303161	257689	11.40%	0.447%
75	12.019	867	869	871	rVV2	108747	157228	6.96%	0.273%
76	12.054	871	872	876	rVB	310597	565364	25.01%	0.981%
77	12.145	877	880	882	rBV3	86010	159067	7.04%	0.276%
78	12.191	882	884	886	rVV2	187732	262579	11.62%	0.456%
79	12.236	886	888	892	rVB3	94791	192343	8.51%	0.334%
80	12.294	892	893	897	rBV3	140671	245483	10.86%	0.426%
81	12.396	899	902	903	rBV2	200067	282161	12.48%	0.490%
82	12.476	907	909	910	rBV	210001	195311	8.64%	0.339%
83	12.659	924	925	927	rBV	1276379	1664900	73.65%	2.889%
84	12.705	927	929	930	rVV	1299699	1417260	62.70%	2.460%
85	12.888	942	945	948	rBV	1433134	1796207	79.46%	3.117%
86	12.945	948	950	952	rVB2	107059	160703	7.11%	0.279%
87	13.025	955	957	961	rVB	1011406	1284957	56.84%	2.230%
88	13.105	961	964	966	rBV2	144961	283924	12.56%	0.493%
89	13.162	968	969	971	rVV	205992	276828	12.25%	0.480%
90	13.219	972	974	976	rVV	343666	368706	16.31%	0.640%
91	13.288	976	980	981	rVV2	194751	377422	16.70%	0.655%
92	13.322	981	983	986	rVB2	177008	261090	11.55%	0.453%
93	13.597	1005	1007	1010	rBV2	138035	231770	10.25%	0.402%
94	13.928	1035	1036	1039	rVB	219895	184244	8.15%	0.320%
95	14.088	1047	1050	1056	rVB2	1064073	2260509	100.00%	3.923%
96	15.128	1138	1141	1144	rBV	360927	825236	36.51%	1.432%
97	15.425	1165	1167	1170	rVB	215515	261406	11.56%	0.454%
98	15.482	1170	1172	1175	rVV	322799	456726	20.20%	0.793%
99	15.551	1175	1178	1187	rVB2	429325	881218	38.98%	1.529%
100	16.660	1273	1275	1278	rVB	140623	242504	10.73%	0.421%

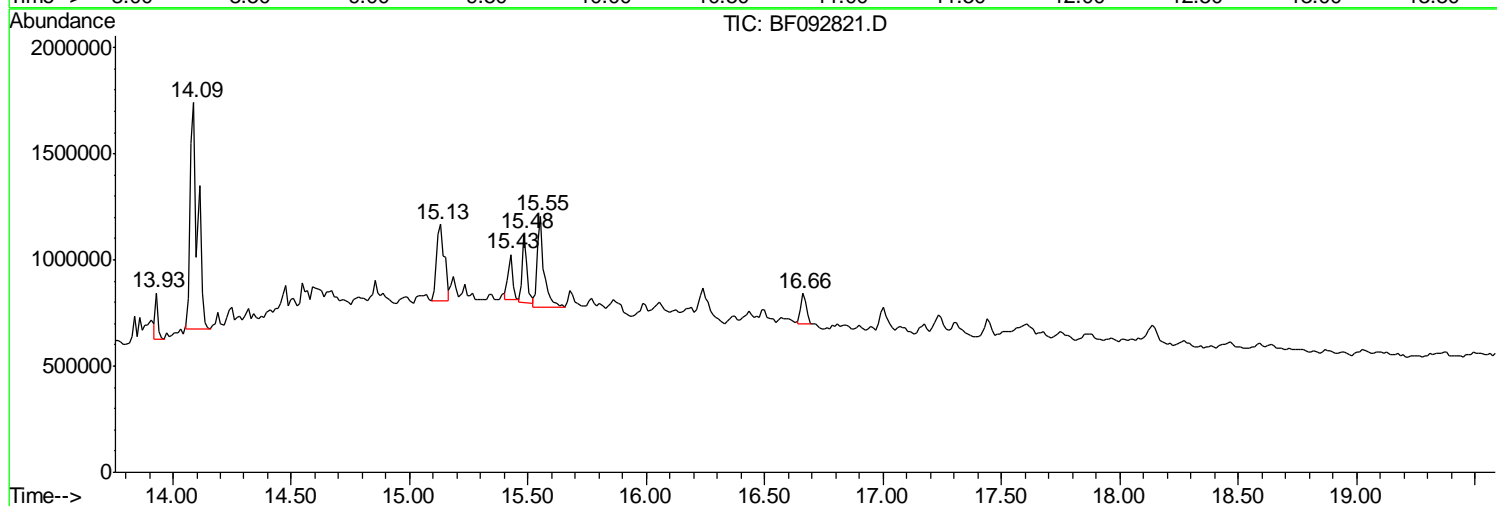
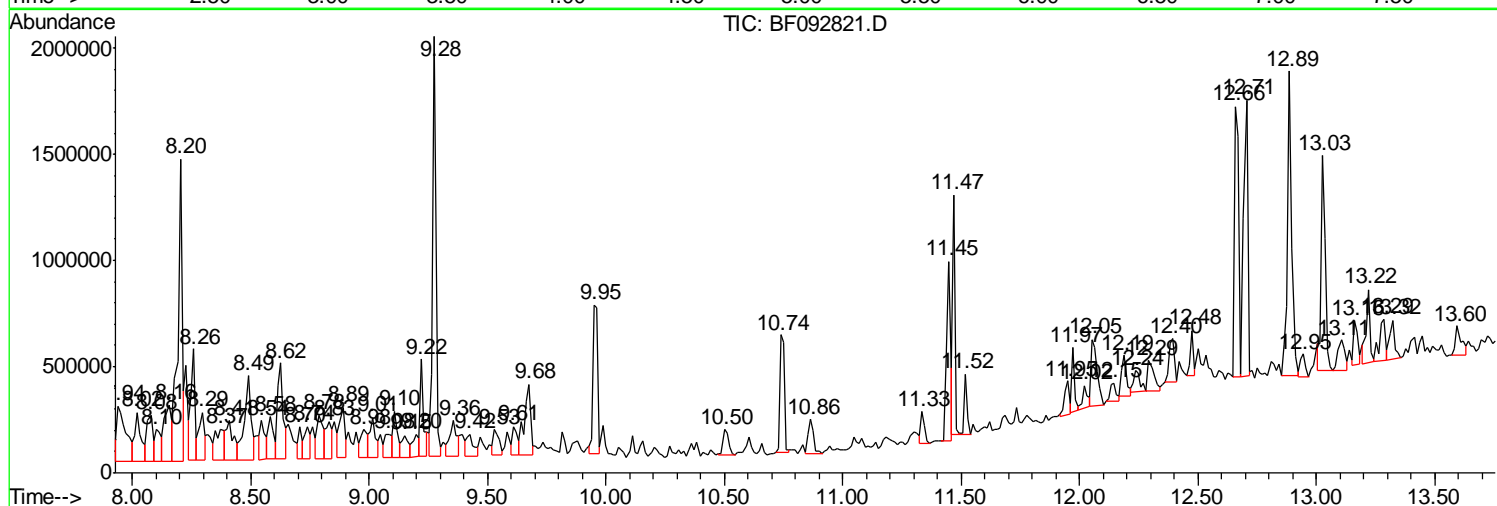
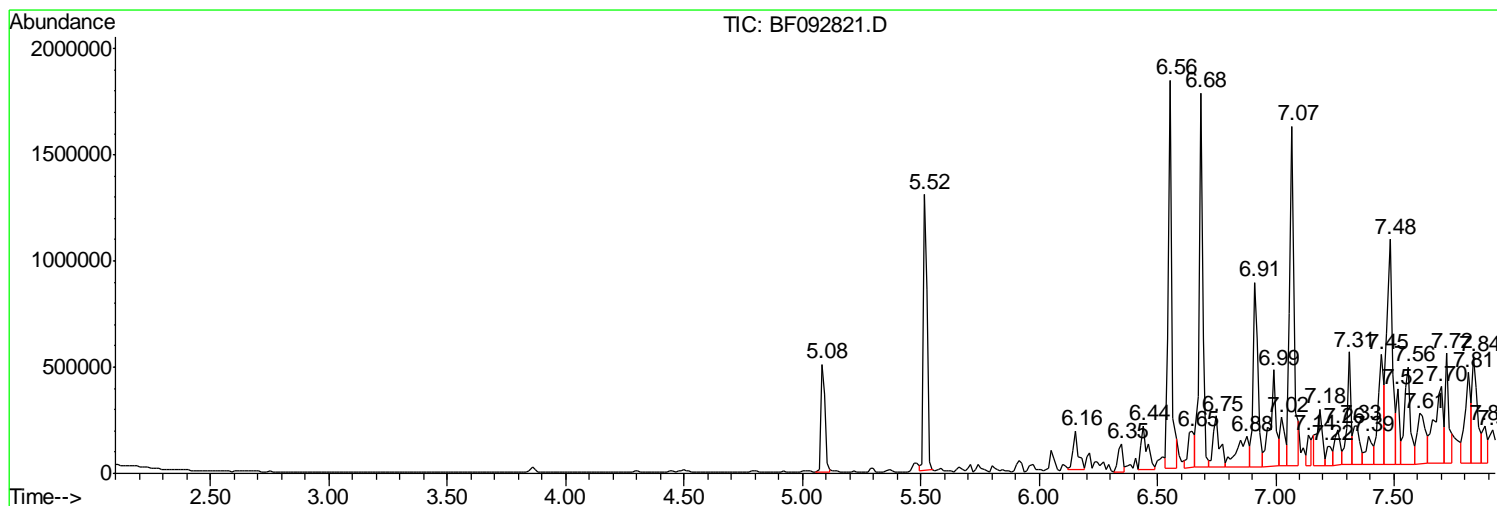
Sum of corrected areas: 57621174

Data Path : Z:\HPCHEM1\BNA F\DATA\BF020617\
 Data File : BF092821.D
 Acq On : 7 Feb 2017 2:55
 Operator : SJ/MA
 Sample : I1695-03 2X
 Misc :
 ALS Vial : 25 Sample Multiplier: 1

Instrument :
 BNA_F
 ClientSampled :
 B2-9

Quant Method : Z:\HPCHEM1\BNA F\METHODS\8270-BF013017.M
 Quant Title : ASP BNA STANDARDS FOR 5 POINT CALIBRATION

TIC Library : C:\DATABASE\NIST02.L
 TIC Integration Parameters: LSCINT.P



Data Path : Z:\HPCHEM1\BNA F\DATA\BF020617\
 Data File : BF092821.D
 Acq On : 7 Feb 2017 2:55
 Operator : SJ/MA
 Sample : I1695-03 2X
 Misc :
 ALS Vial : 25 Sample Multiplier: 1

Instrument :
 BNA_F
 ClientSampleID :
 B2-9

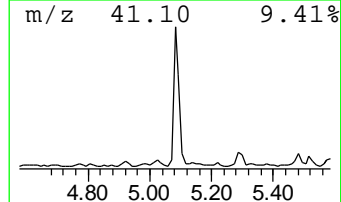
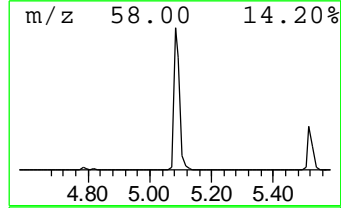
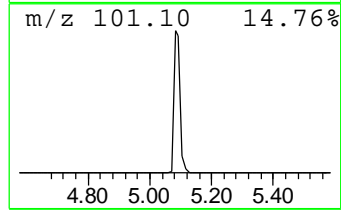
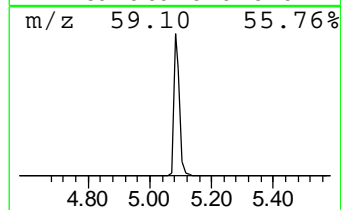
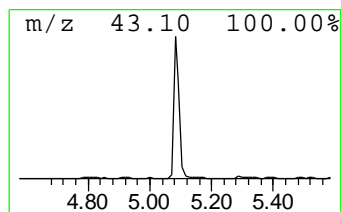
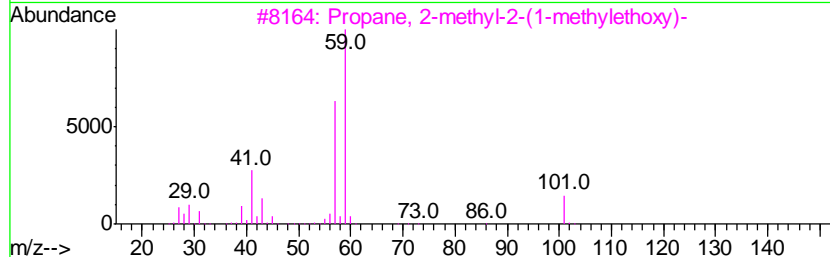
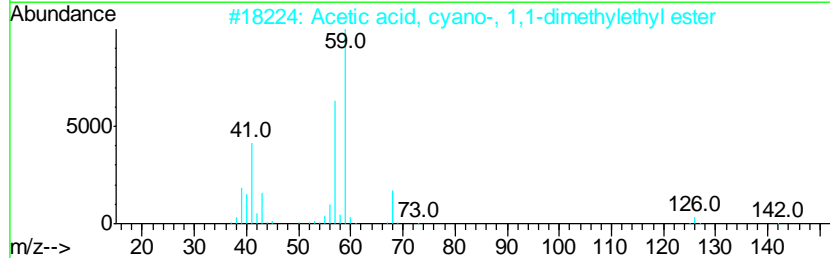
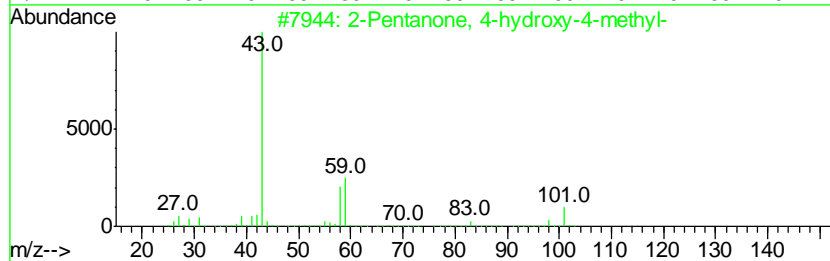
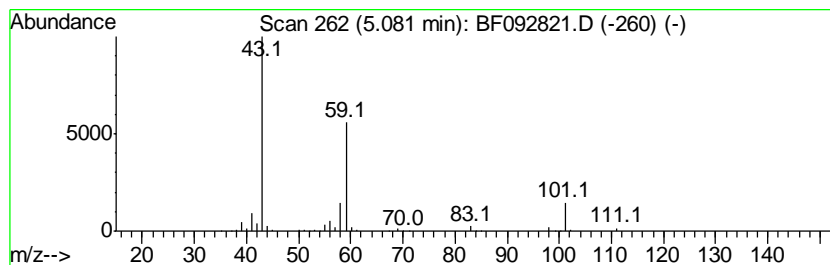
Quant Method : Z:\HPCHEM1\BNA F\METHODS\8270-BF013017.M
 Quant Title : ASP BNA STANDARDS FOR 5 POINT CALIBRATION

TIC Library : C:\DATABASE\NIST02.L
 TIC Integration Parameters: LSCINT.P

 Peak Number 1 2-Pentanone, 4-hydroxy-4-me... Concentration Rank 6

R.T.	EstConc	Area	Relative to ISTD	R.T.
5.08	10.11 ng	645924	1,4-Dichlorobenzene-d4	6.91

Hit#	of	Tentative ID	MW	MolForm	CAS#	Qual
1	5	2-Pentanone, 4-hydroxy-4-methyl-	116	C6H12O2	000123-42-2	59
2		Acetic acid, cyano-, 1,1-dimethyl...	141	C7H11NO2	001116-98-9	37
3		Propane, 2-methyl-2-(1-methyleth...	116	C7H16O	017348-59-3	36
4		3-Hexanol, 4-methyl-	116	C7H16O	000615-29-2	28
5		2-Hexanol, 2-methyl-	116	C7H16O	000625-23-0	28



Data Path : Z:\HPCHEM1\BNA F\DATA\BF020617\
 Data File : BF092821.D
 Acq On : 7 Feb 2017 2:55
 Operator : SJ/MA
 Sample : I1695-03 2X
 Misc :
 ALS Vial : 25 Sample Multiplier: 1

Instrument :
 BNA_F
 ClientSampled :
 B2-9

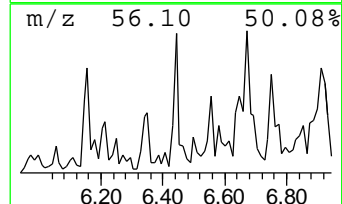
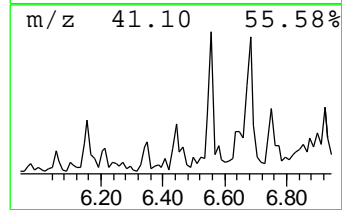
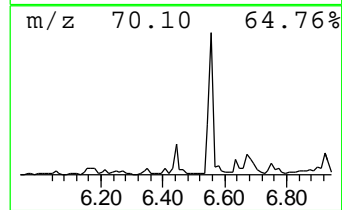
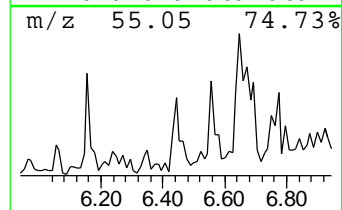
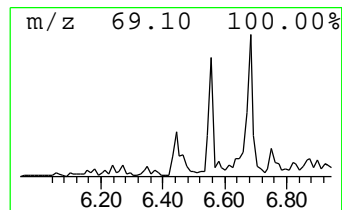
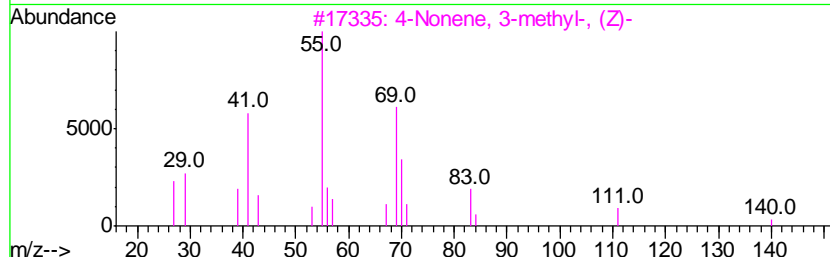
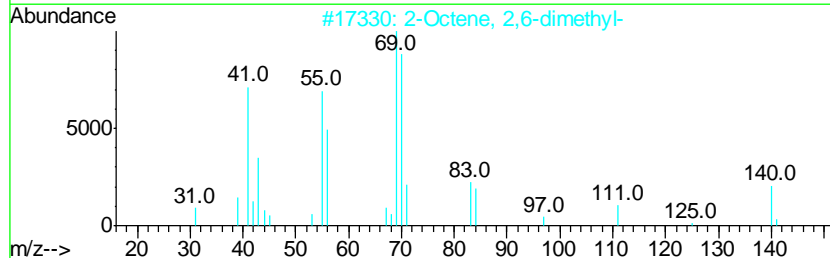
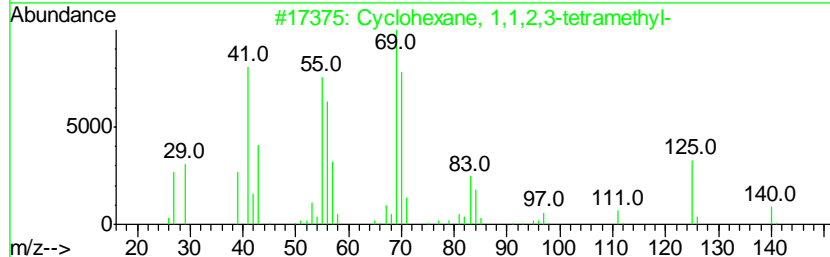
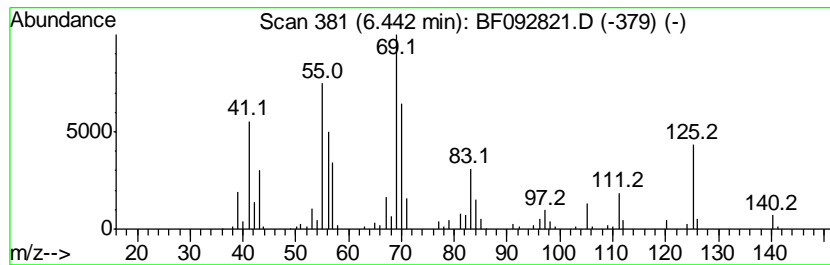
Quant Method : Z:\HPCHEM1\BNA F\METHODS\8270-BF013017.M
 Quant Title : ASP BNA STANDARDS FOR 5 POINT CALIBRATION

TIC Library : C:\DATABASE\NIST02.L
 TIC Integration Parameters: LSCINT.P

 Peak Number 2 Cyclohexane, 1,1,2,3-tetram... Concentration Rank 20

R.T.	EstConc	Area	Relative to ISTD	R.T.
6.44	6.20 ng	395921	1,4-Dichlorobenzene-d4	6.91

Hit#	of	Tentative ID	MW	MolForm	CAS#	Qual
1	5	Cyclohexane, 1,1,2,3-tetramethyl-	140	C10H20	006783-92-2	93
2		2-Octene, 2,6-dimethyl-	140	C10H20	004057-42-5	76
3		4-Nonene, 3-methyl-, (Z)-	140	C10H20	063830-69-3	52
4		1-Pentene, 2,3-dimethyl-	98	C7H14	003404-72-6	46
5		3-Ethyl-4-octene	140	C10H20	019781-32-9	43



Data Path : Z:\HPCHEM1\BNA F\DATA\BF020617\
 Data File : BF092821.D
 Acq On : 7 Feb 2017 2:55
 Operator : SJ/MA
 Sample : I1695-03 2X
 Misc :
 ALS Vial : 25 Sample Multiplier: 1

Instrument :
 BNA_F
 ClientSampled :
 B2-9

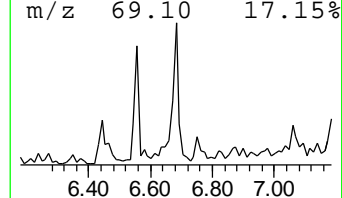
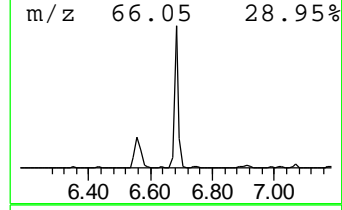
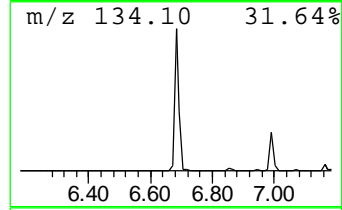
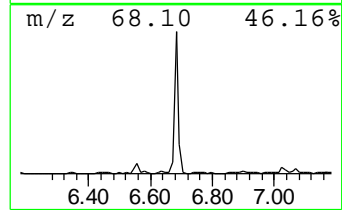
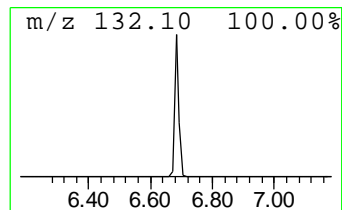
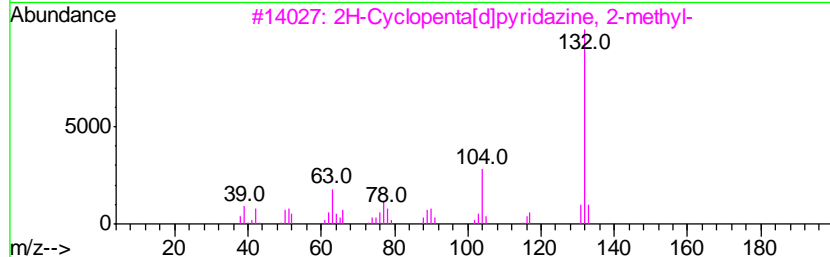
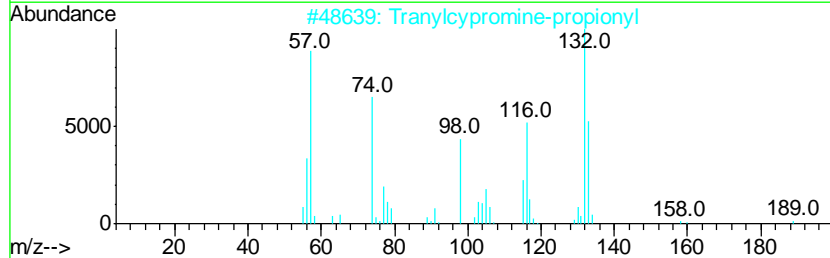
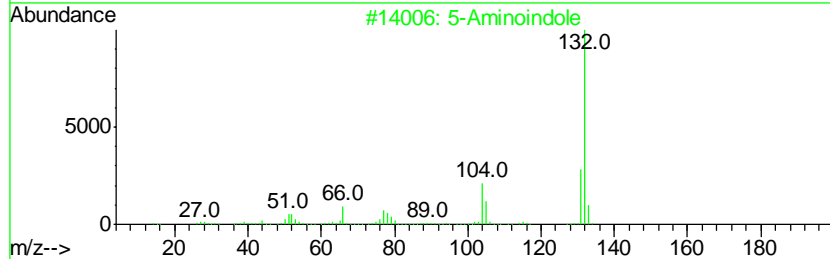
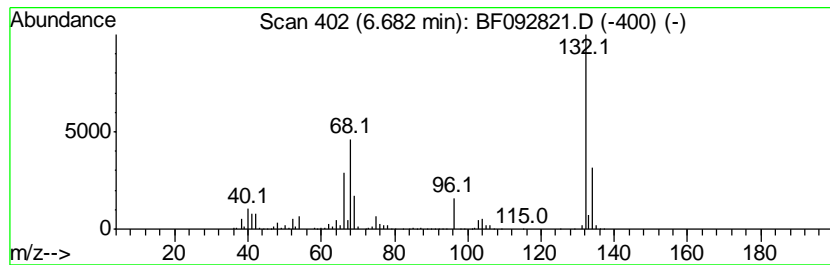
Quant Method : Z:\HPCHEM1\BNA F\METHODS\8270-BF013017.M
 Quant Title : ASP BNA STANDARDS FOR 5 POINT CALIBRATION

TIC Library : C:\DATABASE\NIST02.L
 TIC Integration Parameters: LSCINT.P

 Peak Number 3 unknown6.68 Concentration Rank 2

R.T.	EstConc	Area	Relative to ISTD	R.T.
6.68	29.82 ng	1905590	1,4-Dichlorobenzene-d4	6.91

Hit#	of	Tentative ID	MW	MolForm	CAS#	Qual
1	5	5-Aminoindole	132	C8H8N2	005192-03-0	12
2		Tranlycypromine-propionyl	189	C12H15NO	1000123-86-3	10
3		2H-Cyclopenta[d]pyridazine, 2-me...	132	C8H8N2	022291-85-6	9
4		4-Methylpyrrolo[1,2-a]pyrazine	132	C8H8N2	064608-60-2	9
5		5-Fluoro-2-chloropyrimidine	132	C4H2ClFN2	062802-42-0	9



Data Path : Z:\HPCHEM1\BNA F\DATA\BF020617\
 Data File : BF092821.D
 Acq On : 7 Feb 2017 2:55
 Operator : SJ/MA
 Sample : I1695-03 2X
 Misc :
 ALS Vial : 25 Sample Multiplier: 1

Instrument :
 BNA_F
 ClientSampled :
 B2-9

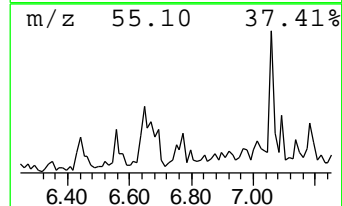
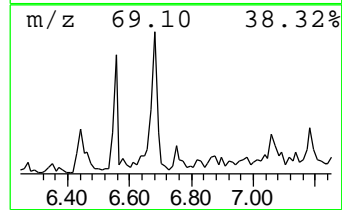
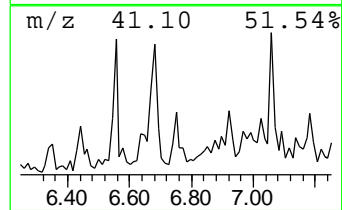
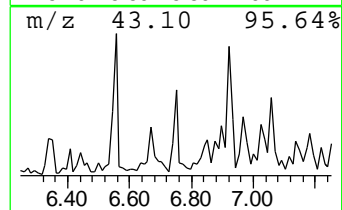
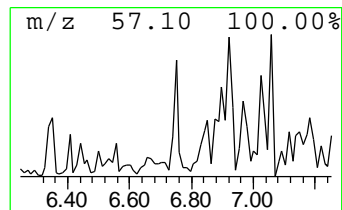
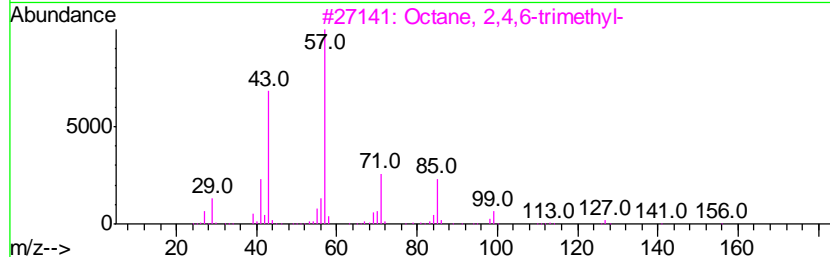
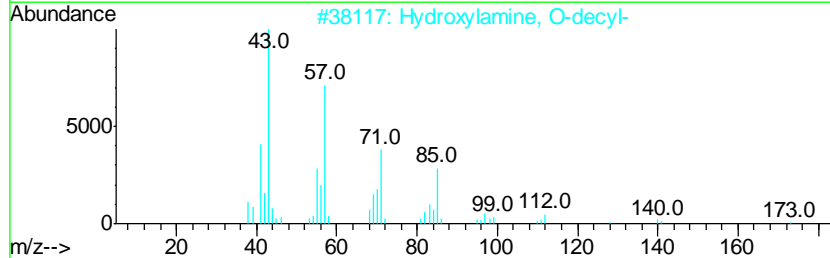
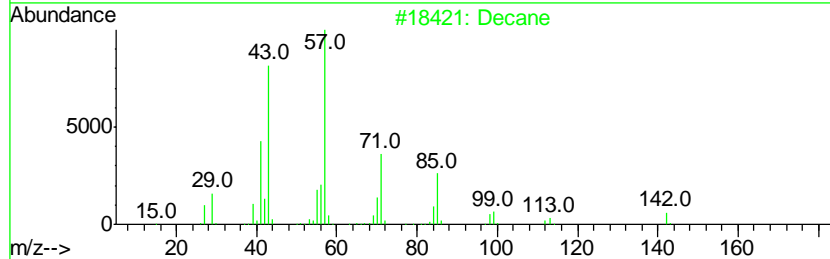
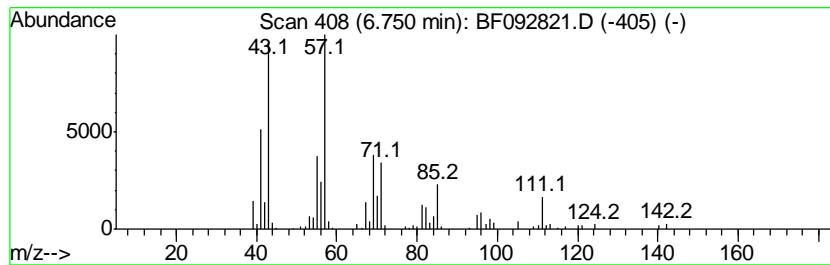
Quant Method : Z:\HPCHEM1\BNA F\METHODS\8270-BF013017.M
 Quant Title : ASP BNA STANDARDS FOR 5 POINT CALIBRATION

TIC Library : C:\DATABASE\NIST02.L
 TIC Integration Parameters: LSCINT.P

 Peak Number 4 Decane Concentration Rank 16

R.T.	EstConc	Area	Relative to ISTD	R.T.
6.75	7.03 ng	449532	1,4-Dichlorobenzene-d4	6.91

Hit#	of	Tentative ID	MW	MolForm	CAS#	Qual
1	5	Decane	142	C10H22	000124-18-5	76
2		Hydroxylamine, O-decyl-	173	C10H23NO	029812-79-1	53
3		Octane, 2,4,6-trimethyl-	156	C11H24	062016-37-9	50
4		Undecane	156	C11H24	001120-21-4	50
5		Tridecane	184	C13H28	000629-50-5	50



Data Path : Z:\HPCHEM1\BNA F\DATA\BF020617\
 Data File : BF092821.D
 Acq On : 7 Feb 2017 2:55
 Operator : SJ/MA
 Sample : I1695-03 2X
 Misc :
 ALS Vial : 25 Sample Multiplier: 1

Instrument :
 BNA_F
 ClientSampled :
 B2-9

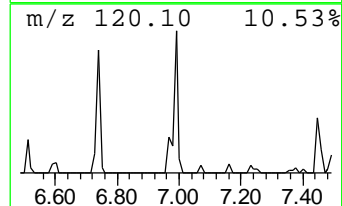
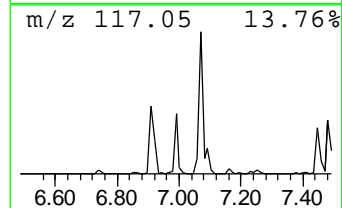
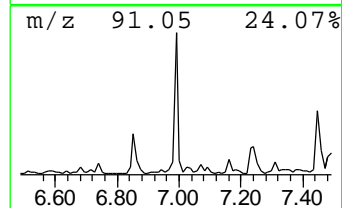
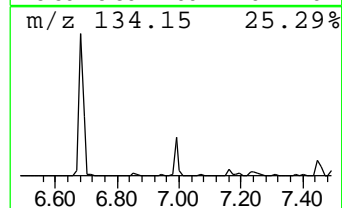
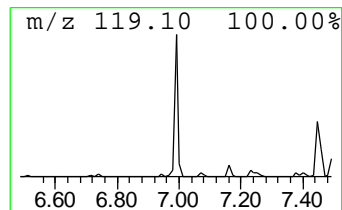
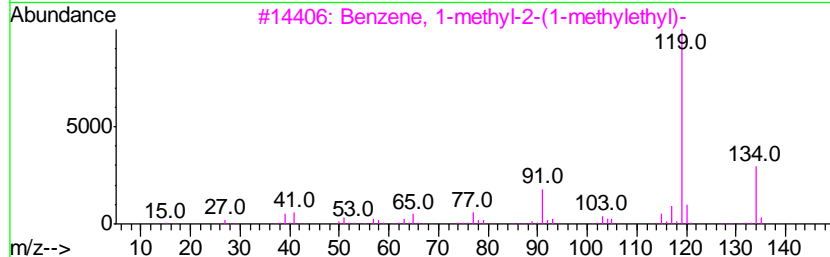
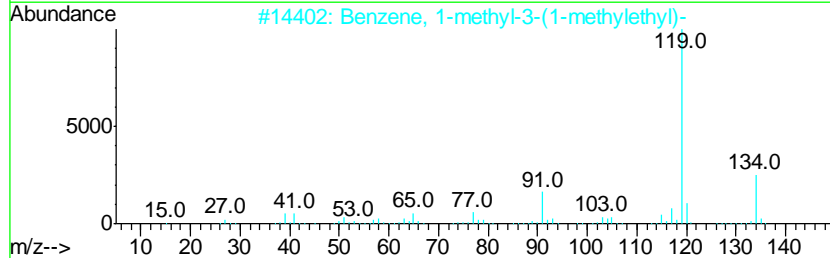
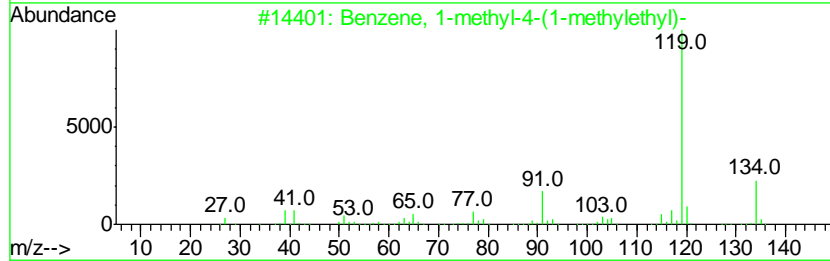
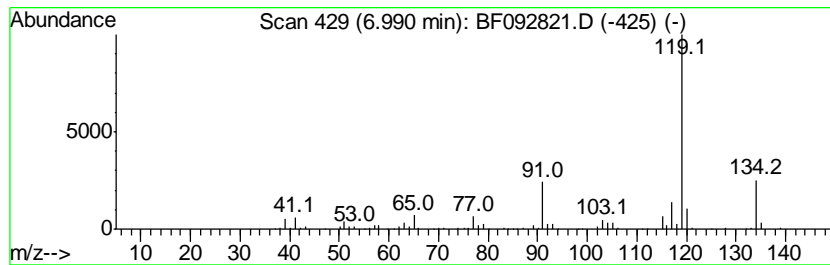
Quant Method : Z:\HPCHEM1\BNA F\METHODS\8270-BF013017.M
 Quant Title : ASP BNA STANDARDS FOR 5 POINT CALIBRATION

TIC Library : C:\DATABASE\NIST02.L
 TIC Integration Parameters: LSCINT.P

 Peak Number 5 Benzene, 1-methyl-4-(1-meth... Concentration Rank 3

R.T.	EstConc	Area	Relative to ISTD	R.T.
6.99	12.62 ng	806121	1,4-Dichlorobenzene-d4	6.91

Hit#	of	Tentative ID	MW	MolForm	CAS#	Qual
1	5	Benzene, 1-methyl-4-(1-methyleth...	134	C10H14	000099-87-6	97
2		Benzene, 1-methyl-3-(1-methyleth...	134	C10H14	000535-77-3	95
3		Benzene, 1-methyl-2-(1-methyleth...	134	C10H14	000527-84-4	95
4		Benzene, 1-ethyl-2,4-dimethyl-	134	C10H14	000874-41-9	91
5		Benzene, 1,2,3,4-tetramethyl-	134	C10H14	000488-23-3	91



Data Path : Z:\HPCHEM1\BNA F\DATA\BF020617\
 Data File : BF092821.D
 Acq On : 7 Feb 2017 2:55
 Operator : SJ/MA
 Sample : I1695-03 2X
 Misc :
 ALS Vial : 25 Sample Multiplier: 1

Instrument :
 BNA_F
 ClientSampled :
 B2-9

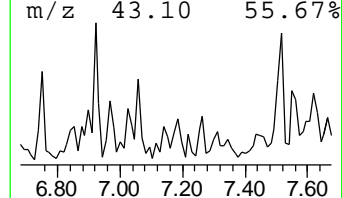
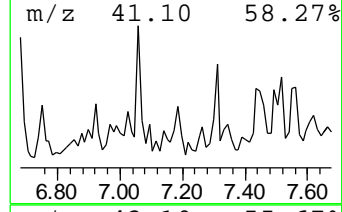
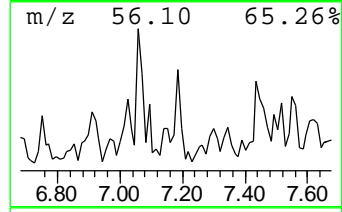
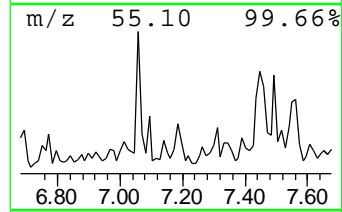
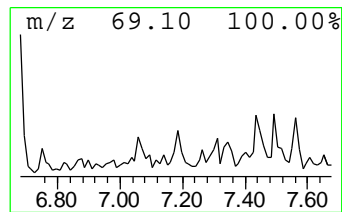
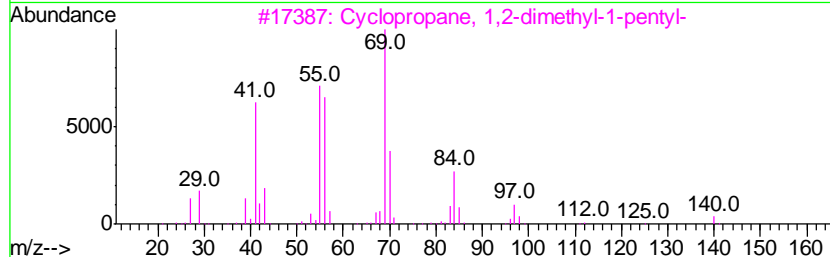
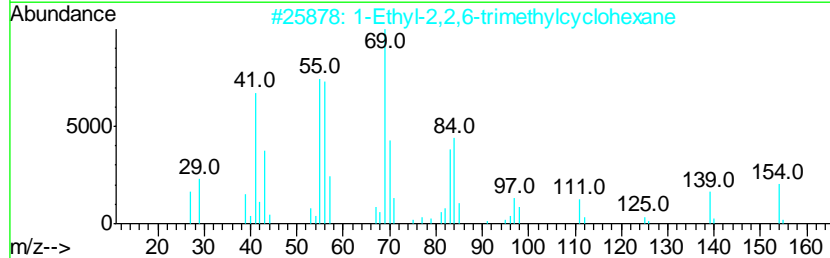
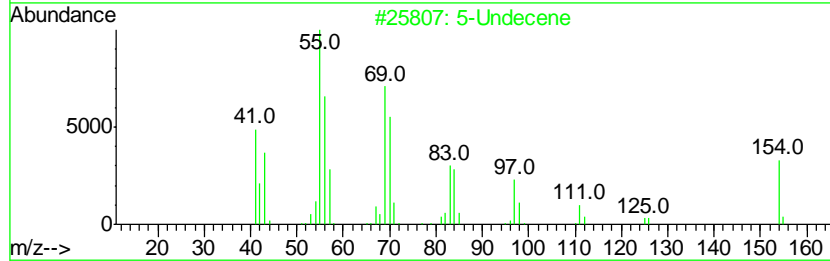
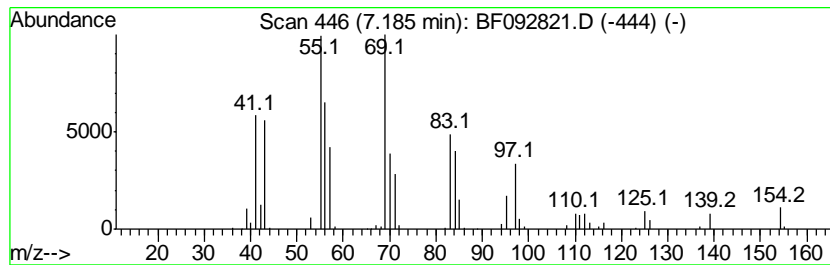
Quant Method : Z:\HPCHEM1\BNA F\METHODS\8270-BF013017.M
 Quant Title : ASP BNA STANDARDS FOR 5 POINT CALIBRATION

TIC Library : C:\DATABASE\NIST02.L
 TIC Integration Parameters: LSCINT.P

 Peak Number 7 5-Undecene Concentration Rank 19

R.T.	EstConc	Area	Relative to ISTD	R.T.
7.18	6.31 ng	403139	1,4-Dichlorobenzene-d4	6.91

Hit#	of	Tentative ID	MW	MolForm	CAS#	Qual
1	5	5-Undecene	154	C11H22	004941-53-1	81
2		1-Ethyl-2,2,6-trimethylcyclohexane	154	C11H22	071186-27-1	74
3		Cyclopropane, 1,2-dimethyl-1-pen...	140	C10H20	062238-04-4	59
4		Nonane, 2-methyl-3-methylene-	154	C11H22	055499-08-6	58
5		Cyclopropane, 1,2-dibutyl-	154	C11H22	041977-32-6	53



Data Path : Z:\HPCHEM1\BNA F\DATA\BF020617\
 Data File : BF092821.D
 Acq On : 7 Feb 2017 2:55
 Operator : SJ/MA
 Sample : I1695-03 2X
 Misc :
 ALS Vial : 25 Sample Multiplier: 1

Instrument :
 BNA_F
 ClientSampled :
 B2-9

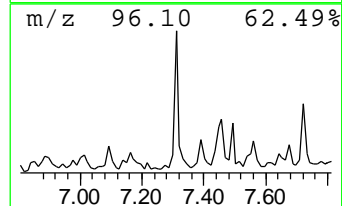
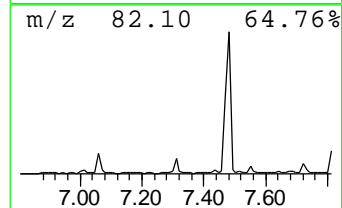
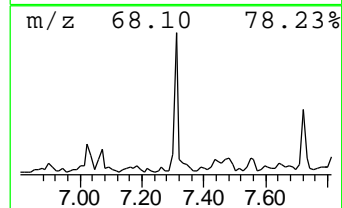
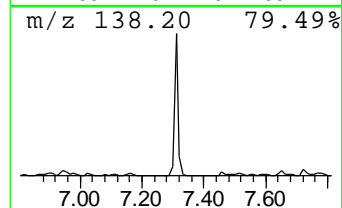
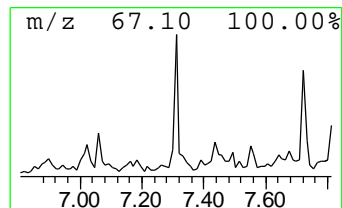
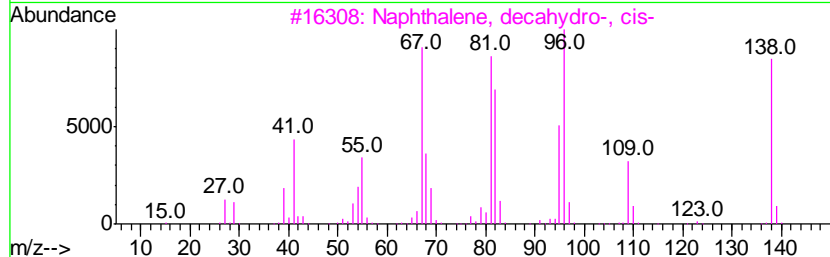
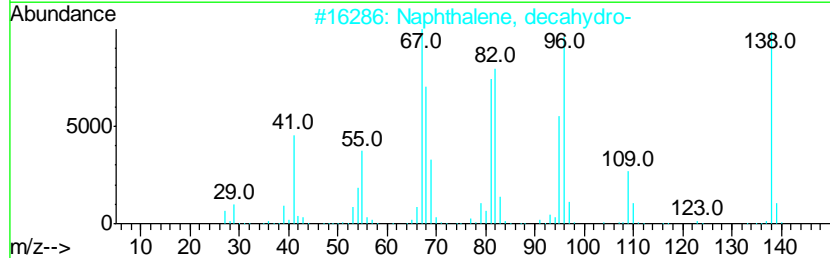
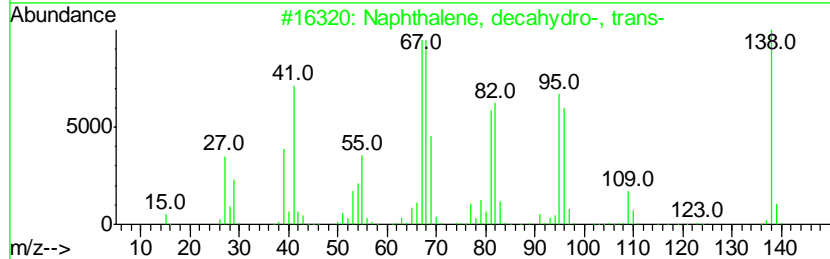
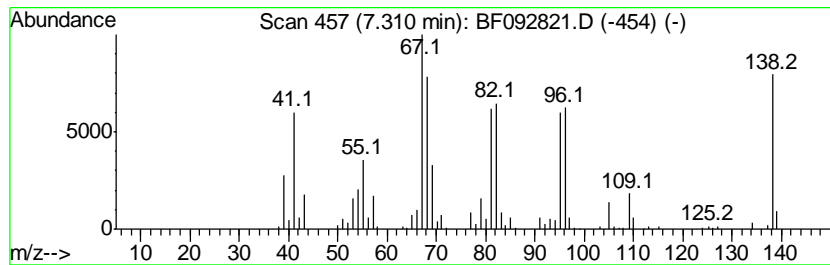
Quant Method : Z:\HPCHEM1\BNA F\METHODS\8270-BF013017.M
 Quant Title : ASP BNA STANDARDS FOR 5 POINT CALIBRATION

TIC Library : C:\DATABASE\NIST02.L
 TIC Integration Parameters: LSCINT.P

 Peak Number 8 Naphthalene, decahydro-, tr... Concentration Rank 7

R.T.	EstConc	Area	Relative to ISTD	R.T.
7.31	9.86 ng	629828	1,4-Dichlorobenzene-d4	6.91

Hit#	of	Tentative ID	MW	MolForm	CAS#	Qual
1	5	Naphthalene, decahydro-, trans-	138	C10H18	000493-02-7	97
2		Naphthalene, decahydro-	138	C10H18	000091-17-8	93
3		Naphthalene, decahydro-, cis-	138	C10H18	000493-01-6	89
4		Spiro[4.5]decane	138	C10H18	000176-63-6	86
5		2H-Inden-2-one, octahydro-, cis-	138	C9H14O	005689-04-3	80



Data Path : Z:\HPCHEM1\BNA F\DATA\BF020617\
 Data File : BF092821.D
 Acq On : 7 Feb 2017 2:55
 Operator : SJ/MA
 Sample : I1695-03 2X
 Misc :
 ALS Vial : 25 Sample Multiplier: 1

Instrument :
 BNA_F
 ClientSampled :
 B2-9

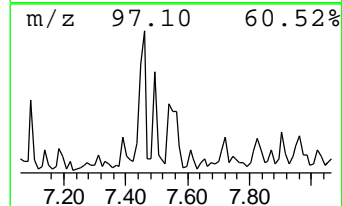
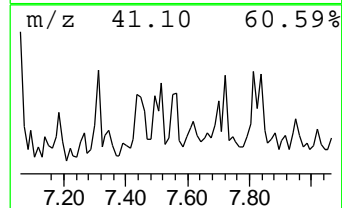
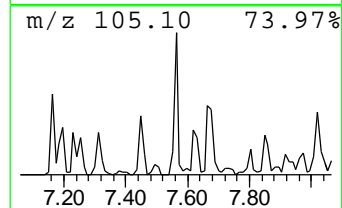
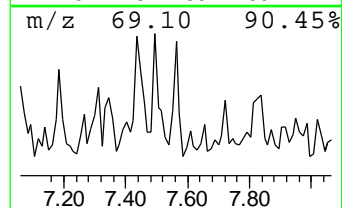
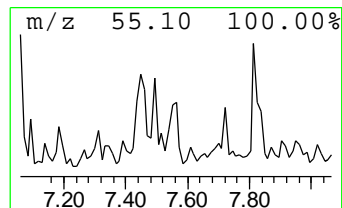
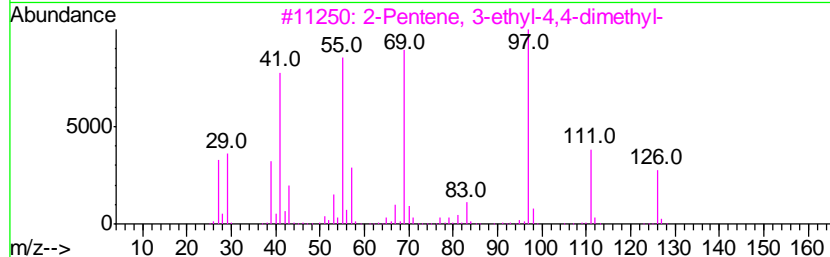
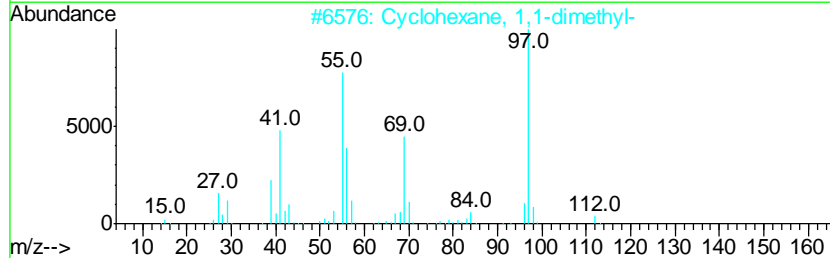
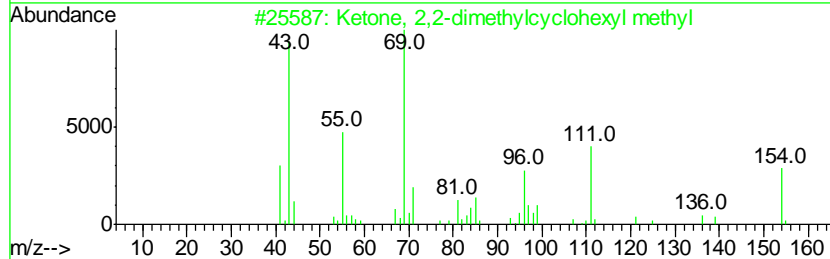
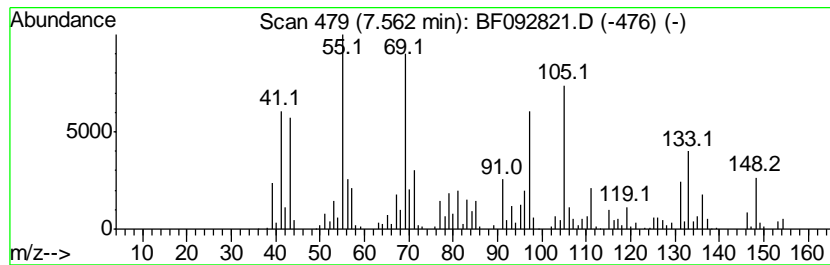
Quant Method : Z:\HPCHEM1\BNA F\METHODS\8270-BF013017.M
 Quant Title : ASP BNA STANDARDS FOR 5 POINT CALIBRATION

TIC Library : C:\DATABASE\NIST02.L
 TIC Integration Parameters: LSCINT.P

 Peak Number 9 unknown7.56 Concentration Rank 9

R.T.	EstConc	Area	Relative to ISTD	R.T.
7.56	9.04 ng	809368	Naphthalene-d8	8.20

Hit#	of	Tentative ID	MW	MolForm	CAS#	Qual
1	5	Ketone, 2,2-dimethylcyclohexyl m...	154	C10H18O	017983-26-5	38
2		Cyclohexane, 1,1-dimethyl-	112	C8H16	000590-66-9	35
3		2-Pentene, 3-ethyl-4,4-dimethyl-	126	C9H18	053907-59-8	35
4		Cyclohexane, 1,1,2-trimethyl-	126	C9H18	007094-26-0	30
5		Cyclooctane, cyclohexyl-	194	C14H26	092369-78-3	27



Data Path : Z:\HPCHEM1\BNA F\DATA\BF020617\
 Data File : BF092821.D
 Acq On : 7 Feb 2017 2:55
 Operator : SJ/MA
 Sample : I1695-03 2X
 Misc :
 ALS Vial : 25 Sample Multiplier: 1

Instrument :
 BNA_F
 ClientSampled :
 B2-9

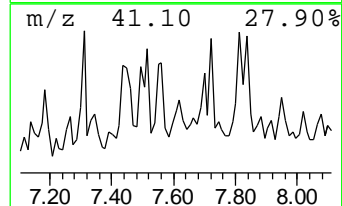
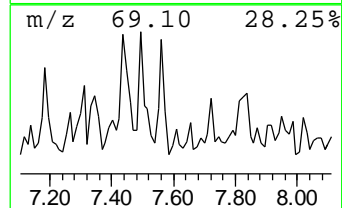
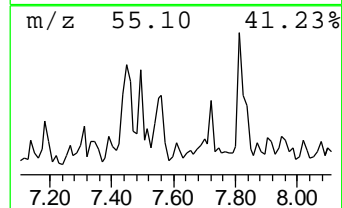
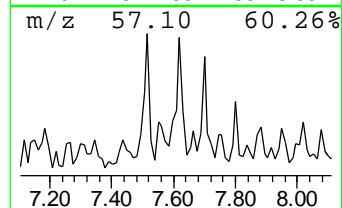
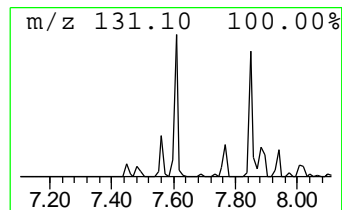
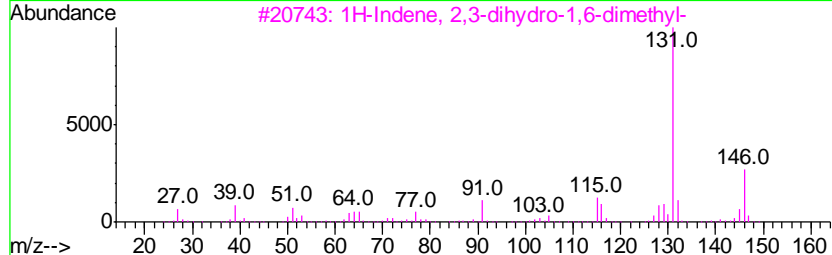
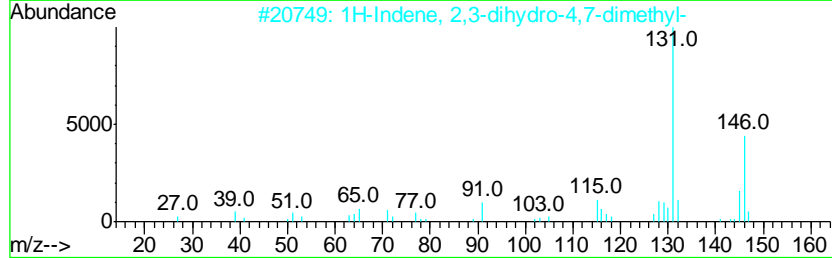
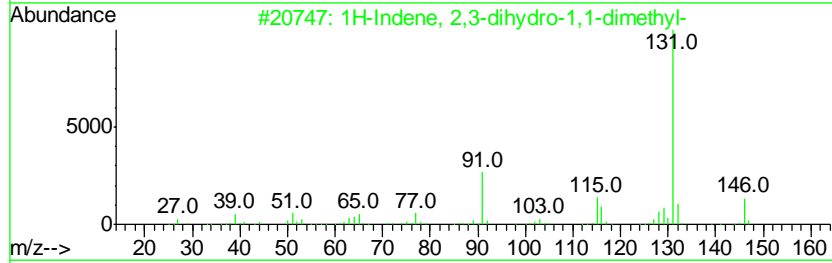
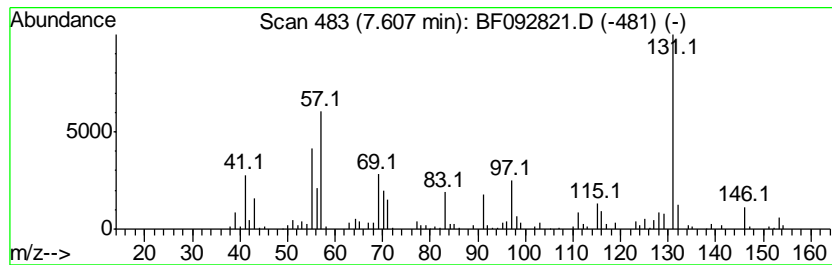
Quant Method : Z:\HPCHEM1\BNA F\METHODS\8270-BF013017.M
 Quant Title : ASP BNA STANDARDS FOR 5 POINT CALIBRATION

TIC Library : C:\DATABASE\NIST02.L
 TIC Integration Parameters: LSCINT.P

 Peak Number 10 1H-Indene, 2,3-dihydro-1,1-... Concentration Rank 17

R.T.	EstConc	Area	Relative to ISTD	R.T.
7.61	6.93 ng	620395	Naphthalene-d8	8.20

Hit#	of	Tentative ID	MW	MolForm	CAS#	Qual
1	5	1H-Indene, 2,3-dihydro-1,1-dimet...	146	C11H14	004912-92-9	91
2		1H-Indene, 2,3-dihydro-4,7-dimet...	146	C11H14	006682-71-9	64
3		1H-Indene, 2,3-dihydro-1,6-dimet...	146	C11H14	017059-48-2	64
4		1H-Indene, 2,3-dihydro-1,3-dimet...	146	C11H14	004175-53-5	58
5		1H-Indene, 2,3-dihydro-2,2-dimethyl-	146	C11H14	020836-11-7	58



Data Path : Z:\HPCHEM1\BNA F\DATA\BF020617\
 Data File : BF092821.D
 Acq On : 7 Feb 2017 2:55
 Operator : SJ/MA
 Sample : I1695-03 2X
 Misc :
 ALS Vial : 25 Sample Multiplier: 1

Instrument :
 BNA_F
 ClientSampled :
 B2-9

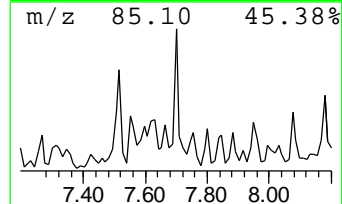
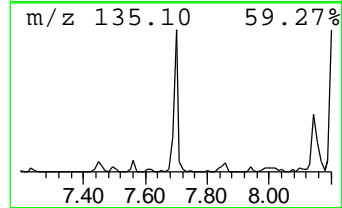
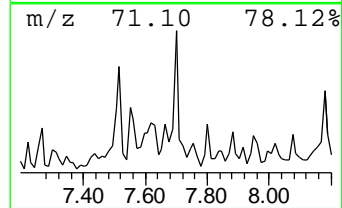
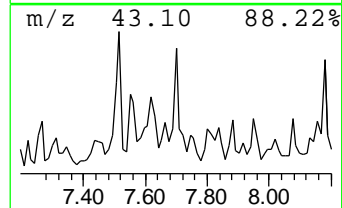
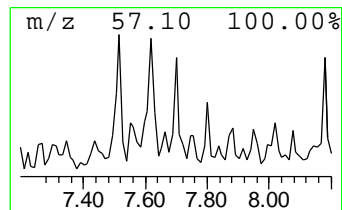
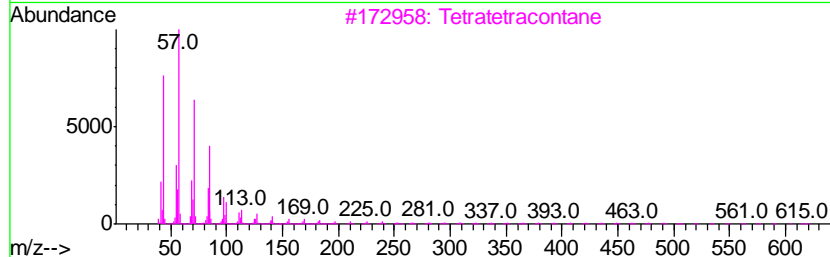
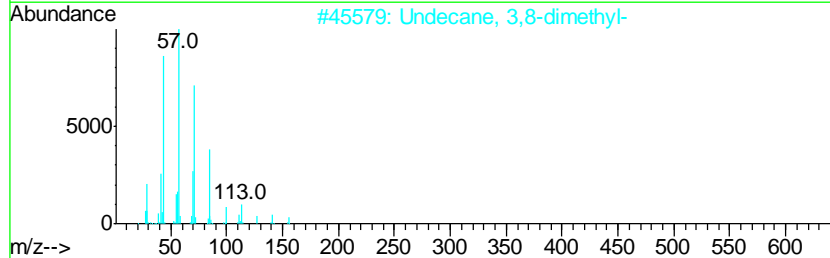
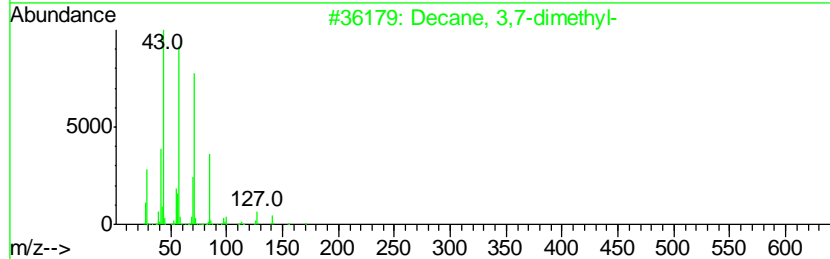
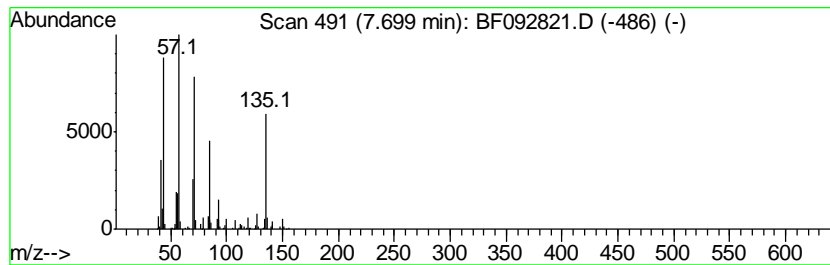
Quant Method : Z:\HPCHEM1\BNA F\METHODS\8270-BF013017.M
 Quant Title : ASP BNA STANDARDS FOR 5 POINT CALIBRATION

TIC Library : C:\DATABASE\NIST02.L
 TIC Integration Parameters: LSCINT.P

 Peak Number 11 Decane, 3,7-dimethyl- Concentration Rank 4

R.T.	EstConc	Area	Relative to ISTD	R.T.
7.70	10.73 ng	960406	Naphthalene-d8	8.20

Hit#	of	Tentative ID	MW	MolForm	CAS#	Qual
1	5	Decane, 3,7-dimethyl-	170	C12H26	017312-54-8	64
2		Undecane, 3,8-dimethyl-	184	C13H28	017301-30-3	59
3		Tetratetracontane	619	C44H90	007098-22-8	53
4		Decane, 5-propyl-	184	C13H28	017312-62-8	50
5		Tetracosane	338	C24H50	000646-31-1	50



Data Path : Z:\HPCHEM1\BNA F\DATA\BF020617\
 Data File : BF092821.D
 Acq On : 7 Feb 2017 2:55
 Operator : SJ/MA
 Sample : I1695-03 2X
 Misc :
 ALS Vial : 25 Sample Multiplier: 1

Instrument :
 BNA_F
 ClientSampled :
 B2-9

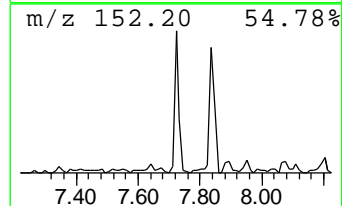
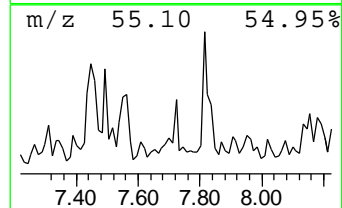
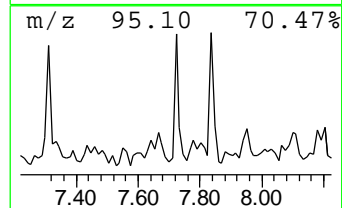
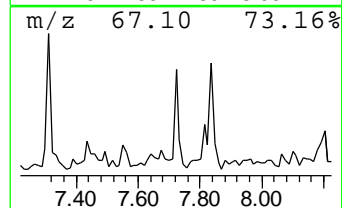
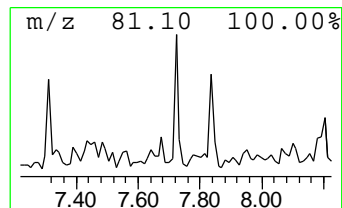
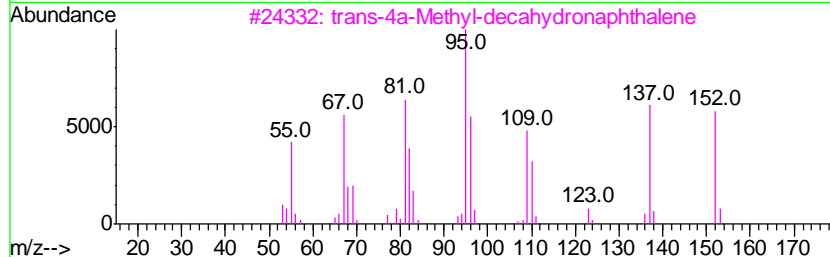
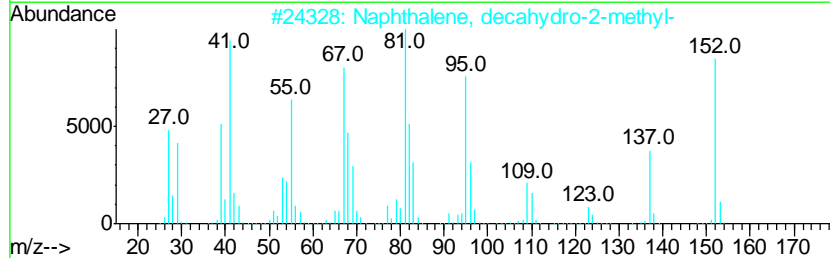
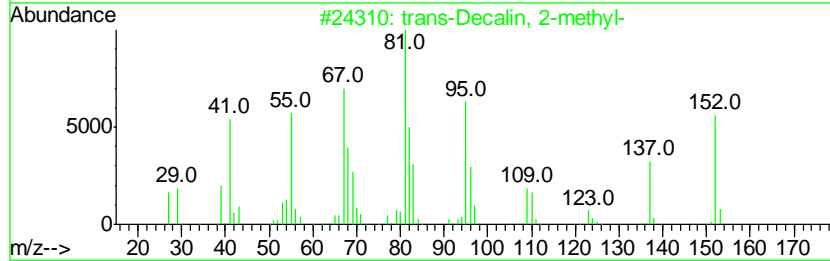
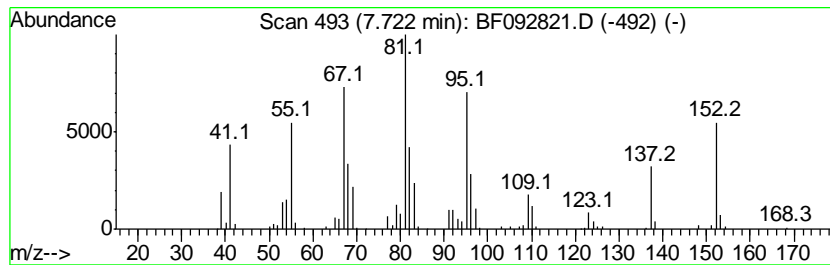
Quant Method : Z:\HPCHEM1\BNA F\METHODS\8270-BF013017.M
 Quant Title : ASP BNA STANDARDS FOR 5 POINT CALIBRATION

TIC Library : C:\DATABASE\NIST02.L
 TIC Integration Parameters: LSCINT.P

 Peak Number 12 trans-Decalin, 2-methyl- Concentration Rank 18

R.T.	EstConc	Area	Relative to ISTD	R.T.
7.72	6.32 ng	565470	Naphthalene-d8	8.20

Hit#	of	Tentative ID	MW	MolForm	CAS#	Qual
1	5	trans-Decalin, 2-methyl-	152	C11H20	1000152-47-3	98
2		Naphthalene, decahydro-2-methyl-	152	C11H20	002958-76-1	95
3		trans-4a-Methyl-decahydronaphtha...	152	C11H20	002547-27-5	86
4		5-Eicosyne	278	C20H38	074685-31-7	83
5		Pulegone	152	C10H16O	000089-82-7	81



Data Path : Z:\HPCHEM1\BNA F\DATA\BF020617\
 Data File : BF092821.D
 Acq On : 7 Feb 2017 2:55
 Operator : SJ/MA
 Sample : I1695-03 2X
 Misc :
 ALS Vial : 25 Sample Multiplier: 1

Instrument :
 BNA_F
 ClientSampled :
 B2-9

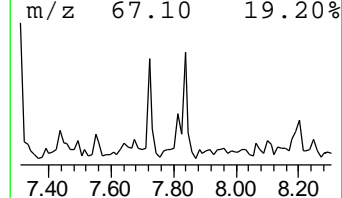
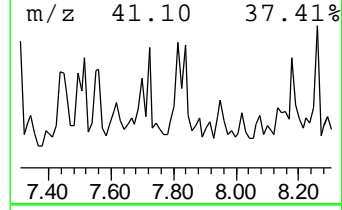
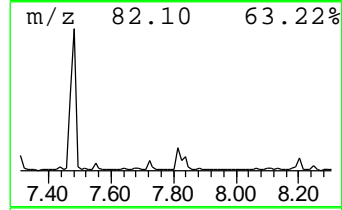
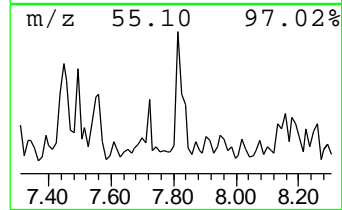
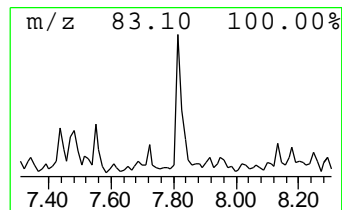
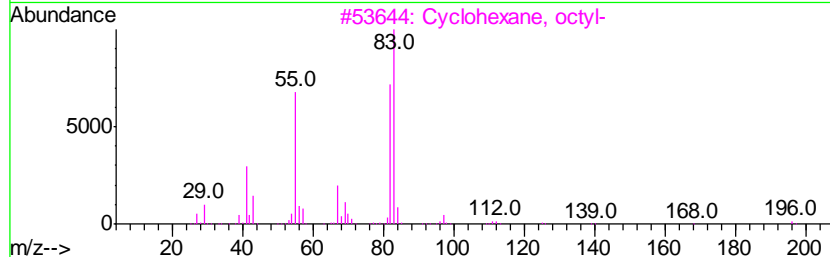
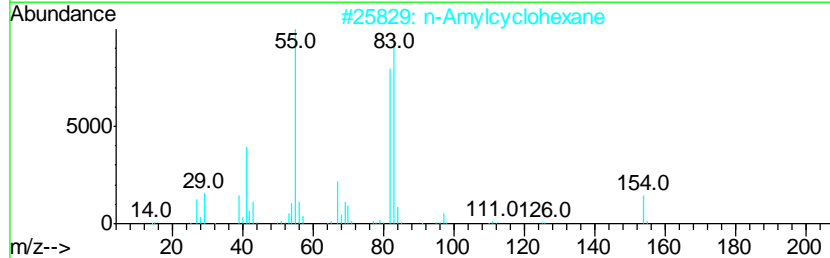
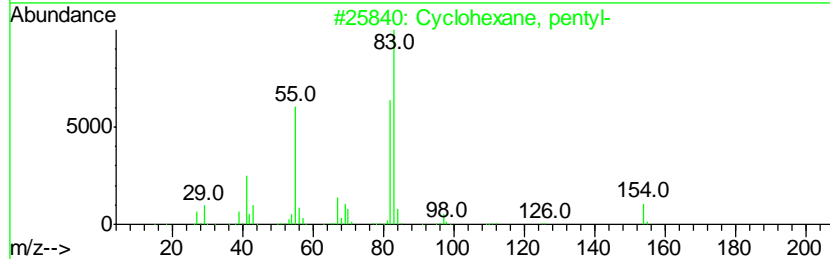
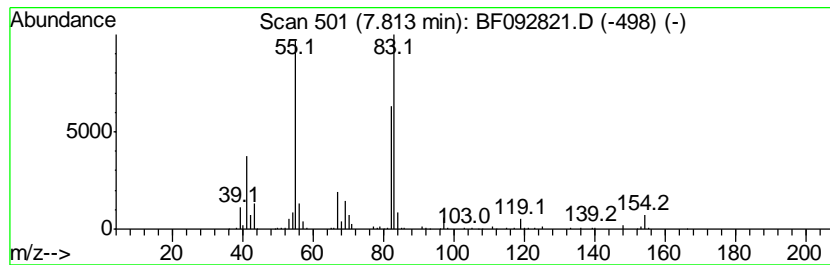
Quant Method : Z:\HPCHEM1\BNA F\METHODS\8270-BF013017.M
 Quant Title : ASP BNA STANDARDS FOR 5 POINT CALIBRATION

TIC Library : C:\DATABASE\NIST02.L
 TIC Integration Parameters: LSCINT.P

 Peak Number 13 Cyclohexane, pentyl- Concentration Rank 12

R.T.	EstConc	Area	Relative to ISTD	R.T.
7.81	8.60 ng	769957	Naphthalene-d8	8.20

Hit#	of	Tentative ID	MW	MolForm	CAS#	Qual
1	5	Cyclohexane, pentyl-	154	C11H22	004292-92-6	94
2		n-Amylcyclohexane	154	C11H22	029949-27-7	91
3		Cyclohexane, octyl-	196	C14H28	001795-15-9	86
4		Cyclohexane, butyl-	140	C10H20	001678-93-9	78
5		Cyclohexane, propyl-	126	C9H18	001678-92-8	78



Data Path : Z:\HPCHEM1\BNA F\DATA\BF020617\
 Data File : BF092821.D
 Acq On : 7 Feb 2017 2:55
 Operator : SJ/MA
 Sample : I1695-03 2X
 Misc :
 ALS Vial : 25 Sample Multiplier: 1

Instrument :
 BNA_F
 ClientSampled :
 B2-9

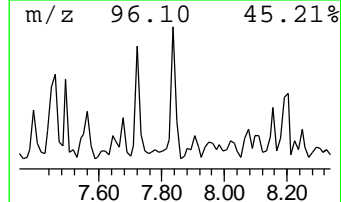
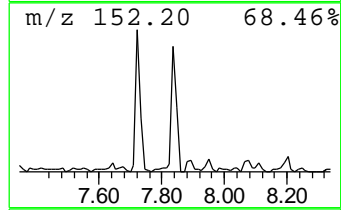
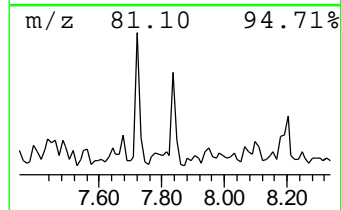
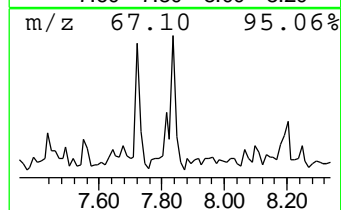
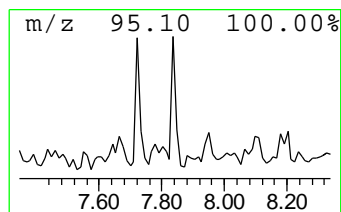
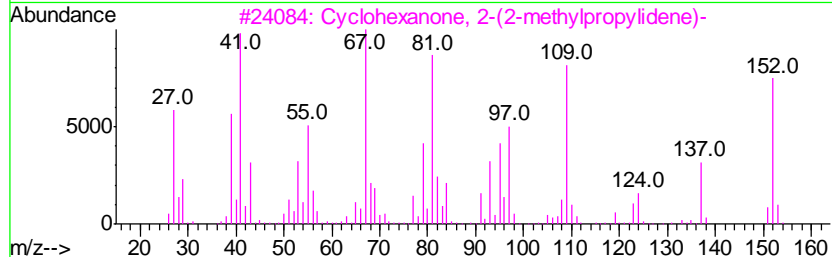
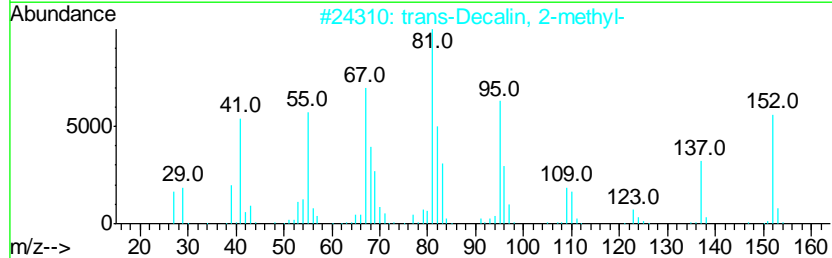
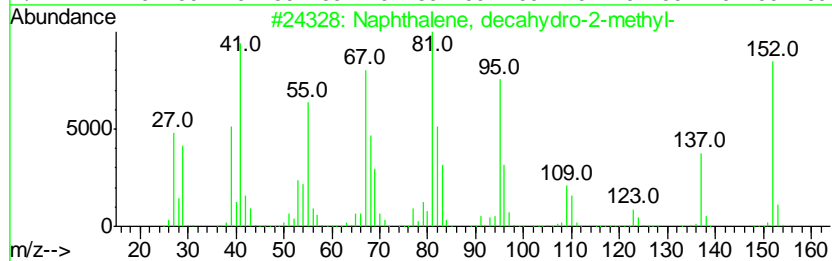
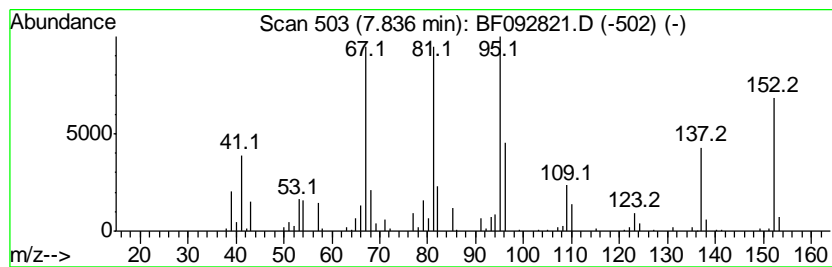
Quant Method : Z:\HPCHEM1\BNA F\METHODS\8270-BF013017.M
 Quant Title : ASP BNA STANDARDS FOR 5 POINT CALIBRATION

TIC Library : C:\DATABASE\NIST02.L
 TIC Integration Parameters: LSCINT.P

 Peak Number 14 Naphthalene, decahydro-2-me... Concentration Rank 10

R.T.	EstConc	Area	Relative to ISTD	R.T.
7.84	8.89 ng	795582	Naphthalene-d8	8.20

Hit#	of	Tentative ID	MW	MolForm	CAS#	Qual
1	5	Naphthalene, decahydro-2-methyl-	152	C11H20	002958-76-1	90
2		trans-Decalin, 2-methyl-	152	C11H20	1000152-47-3	64
3		Cyclohexanone, 2-(2-methylpropyl)-	152	C10H16O	043108-69-6	49
4		Cyclohexanone, 5-methyl-2-(1-met...)	152	C10H16O	000529-00-0	46
5		Pulegone	152	C10H16O	000089-82-7	43



Data Path : Z:\HPCHEM1\BNA F\DATA\BF020617\
 Data File : BF092821.D
 Acq On : 7 Feb 2017 2:55
 Operator : SJ/MA
 Sample : I1695-03 2X
 Misc :
 ALS Vial : 25 Sample Multiplier: 1

Instrument :
 BNA_F
 ClientSampleId :
 B2-9

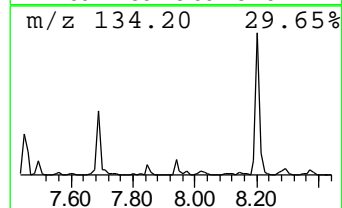
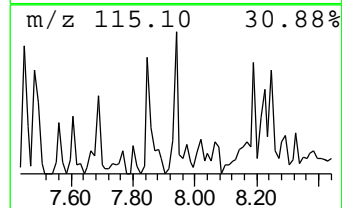
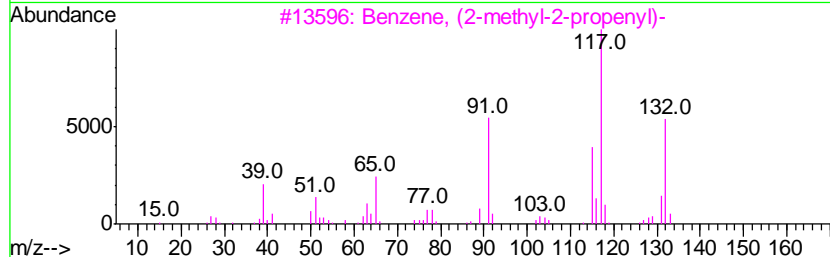
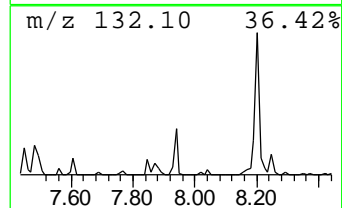
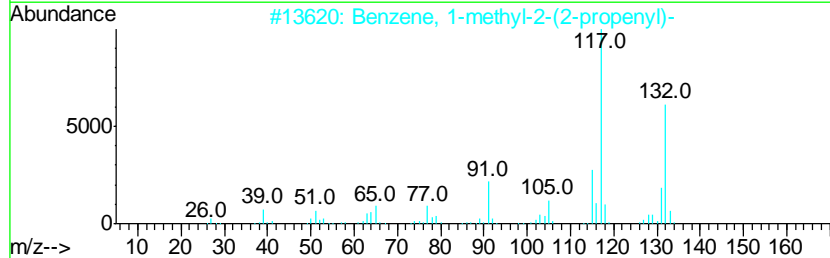
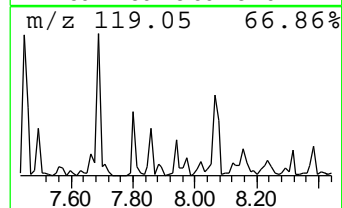
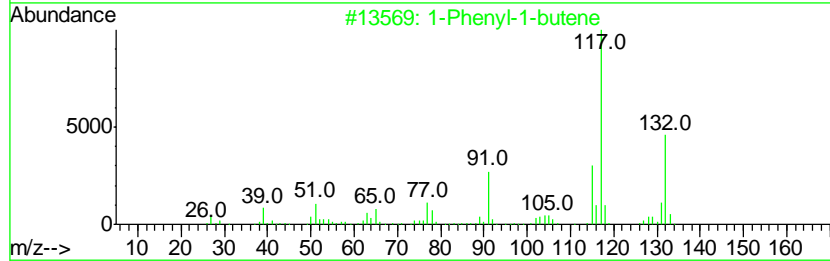
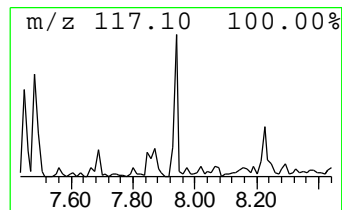
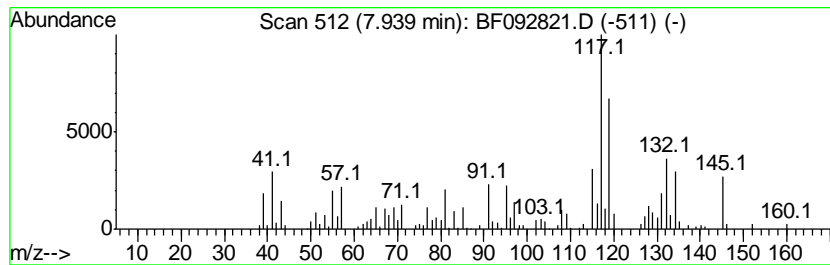
Quant Method : Z:\HPCHEM1\BNA F\METHODS\8270-BF013017.M
 Quant Title : ASP BNA STANDARDS FOR 5 POINT CALIBRATION

TIC Library : C:\DATABASE\NIST02.L
 TIC Integration Parameters: LSCINT.P

 Peak Number 15 1-Phenyl-1-butene Concentration Rank 14

R.T.	EstConc	Area	Relative to ISTD	R.T.
7.94	7.75 ng	693921	Naphthalene-d8	8.20

Hit#	of	Tentative ID	MW	MolForm	CAS#	Qual
1	5	1-Phenyl-1-butene	132	C10H12	000824-90-8	55
2		Benzene, 1-methyl-2-(2-propenyl)-	132	C10H12	001587-04-8	55
3		Benzene, (2-methyl-2-propenyl)-	132	C10H12	003290-53-7	55
4		Benzene, 2-ethenyl-1,4-dimethyl-	132	C10H12	002039-89-6	51
5		Benzene, 1-ethenyl-3-ethyl-	132	C10H12	007525-62-4	50



Data Path : Z:\HPCHEM1\BNA F\DATA\BF020617\
 Data File : BF092821.D
 Acq On : 7 Feb 2017 2:55
 Operator : SJ/MA
 Sample : I1695-03 2X
 Misc :
 ALS Vial : 25 Sample Multiplier: 1

Instrument :
 BNA_F
 ClientSampleID :
 B2-9

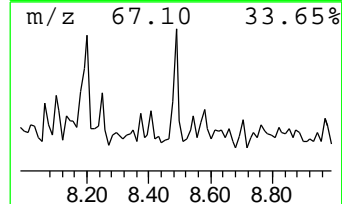
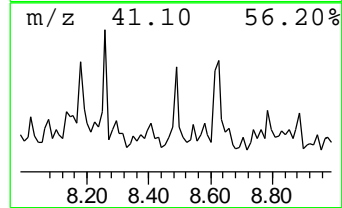
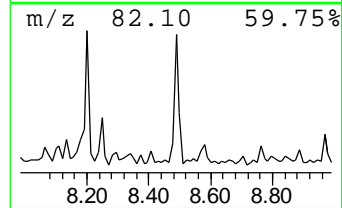
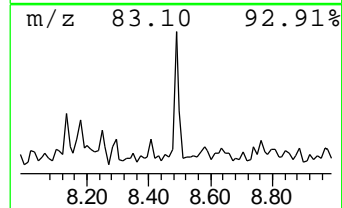
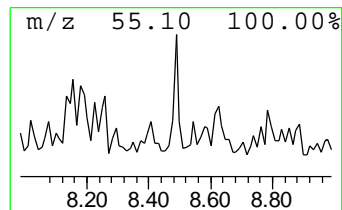
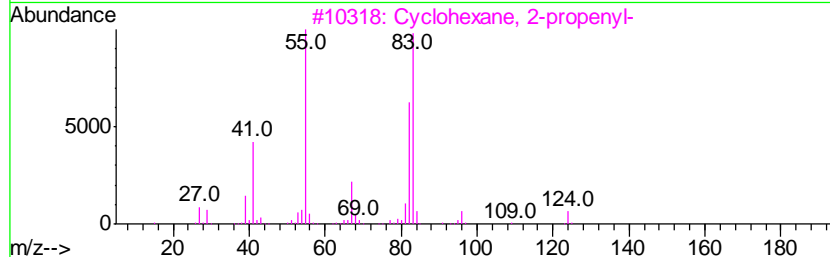
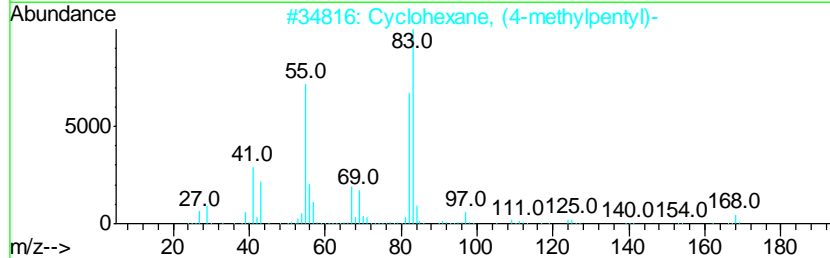
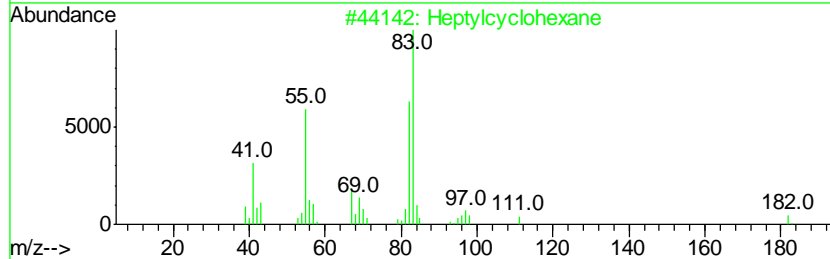
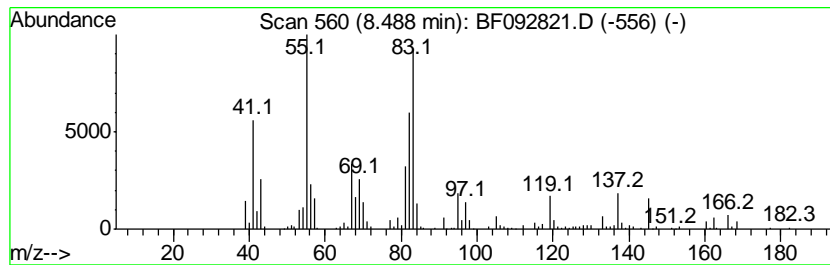
Quant Method : Z:\HPCHEM1\BNA F\METHODS\8270-BF013017.M
 Quant Title : ASP BNA STANDARDS FOR 5 POINT CALIBRATION

TIC Library : C:\DATABASE\NIST02.L
 TIC Integration Parameters: LSCINT.P

 Peak Number 16 Heptylcyclohexane Concentration Rank 13

R.T.	EstConc	Area	Relative to ISTD	R.T.
8.49	8.25 ng	738950	Naphthalene-d8	8.20

Hit#	of	Tentative ID	MW	MolForm	CAS#	Qual
1	5	Heptylcyclohexane	182	C13H26	005617-41-4	81
2		Cyclohexane, (4-methylpentyl)-	168	C12H24	061142-20-9	58
3		Cyclohexane, 2-propenyl-	124	C9H16	002114-42-3	53
4		n-Amylcyclohexane	154	C11H22	029949-27-7	50
5		Cyclopentane, 1-methyl-2-(2-prop...	124	C9H16	050746-53-7	49



Data Path : Z:\HPCHEM1\BNA F\DATA\BF020617\
 Data File : BF092821.D
 Acq On : 7 Feb 2017 2:55
 Operator : SJ/MA
 Sample : I1695-03 2X
 Misc :
 ALS Vial : 25 Sample Multiplier: 1

Instrument :
 BNA_F
 ClientSampleID :
 B2-9

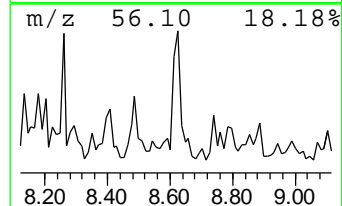
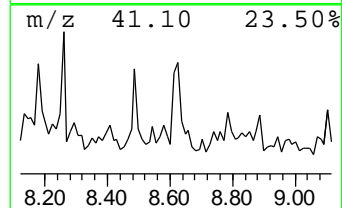
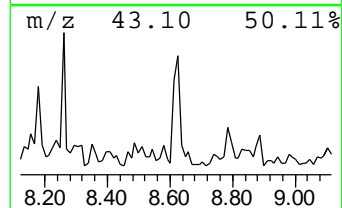
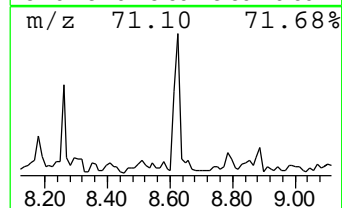
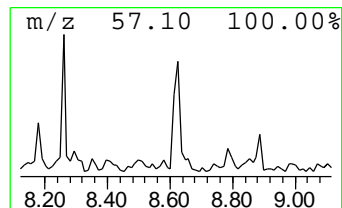
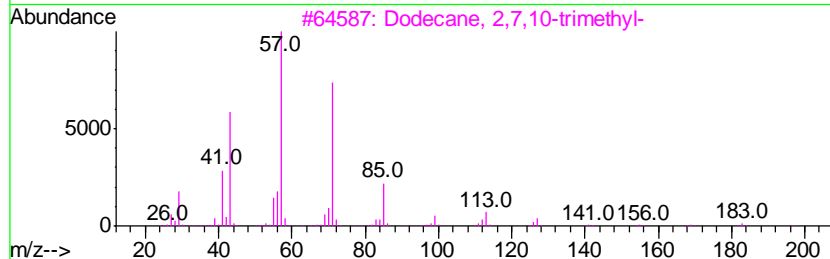
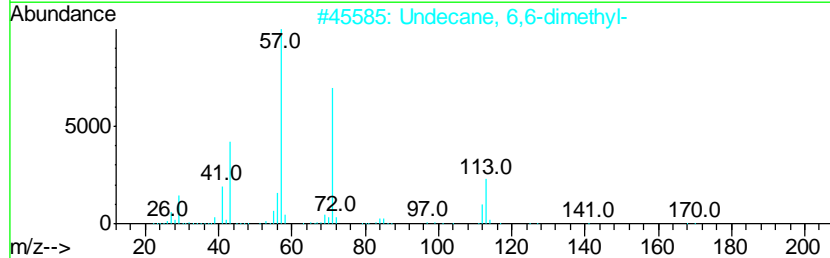
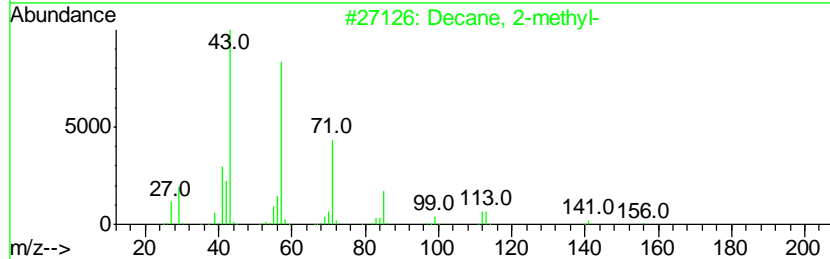
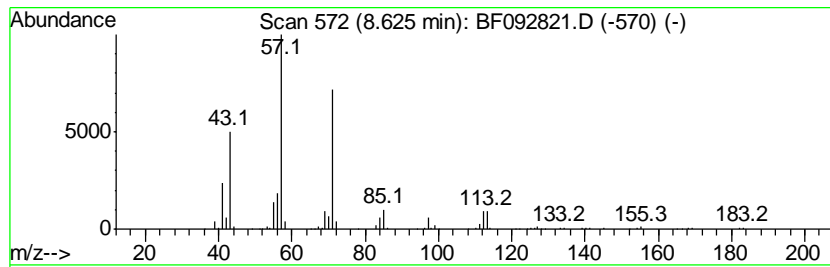
Quant Method : Z:\HPCHEM1\BNA F\METHODS\8270-BF013017.M
 Quant Title : ASP BNA STANDARDS FOR 5 POINT CALIBRATION

TIC Library : C:\DATABASE\NIST02.L
 TIC Integration Parameters: LSCINT.P

 Peak Number 17 Decane, 2-methyl- Concentration Rank 11

R.T.	EstConc	Area	Relative to ISTD	R.T.
8.62	8.64 ng	773443	Naphthalene-d8	8.20

Hit#	of	Tentative ID	MW	MolForm	CAS#	Qual
1	5	Decane, 2-methyl-	156	C11H24	006975-98-0	64
2		Undecane, 6,6-dimethyl-	184	C13H28	017312-76-4	64
3		Dodecane, 2,7,10-trimethyl-	212	C15H32	074645-98-0	64
4		Octane, 3,6-dimethyl-	142	C10H22	015869-94-0	59
5		Heptane, 3,3,5-trimethyl-	142	C10H22	007154-80-5	53



Data Path : Z:\HPCHEM1\BNA F\DATA\BF020617\
 Data File : BF092821.D
 Acq On : 7 Feb 2017 2:55
 Operator : SJ/MA
 Sample : I1695-03 2X
 Misc :
 ALS Vial : 25 Sample Multiplier: 1

Instrument :
 BNA_F
 ClientSampleID :
 B2-9

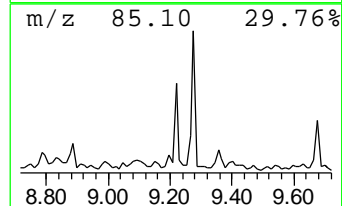
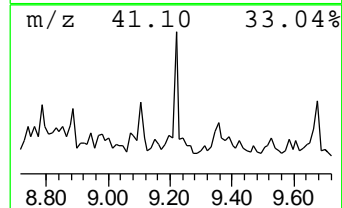
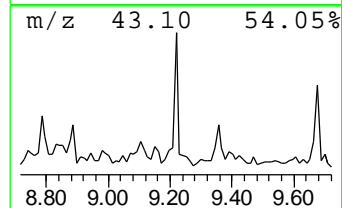
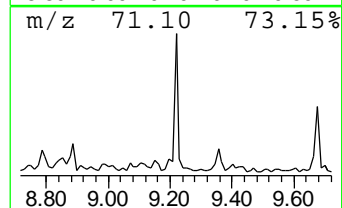
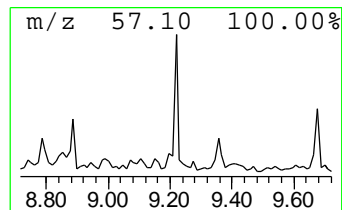
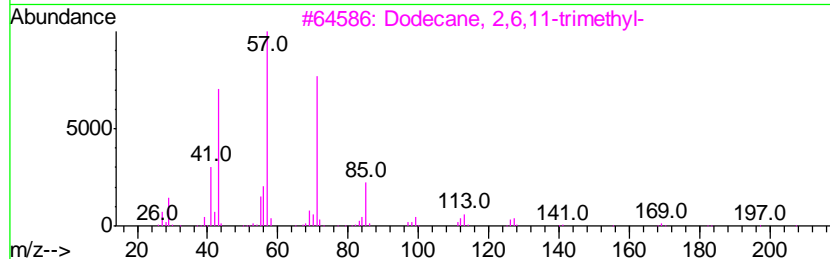
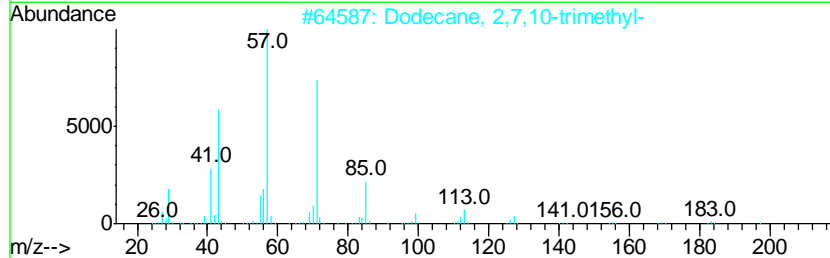
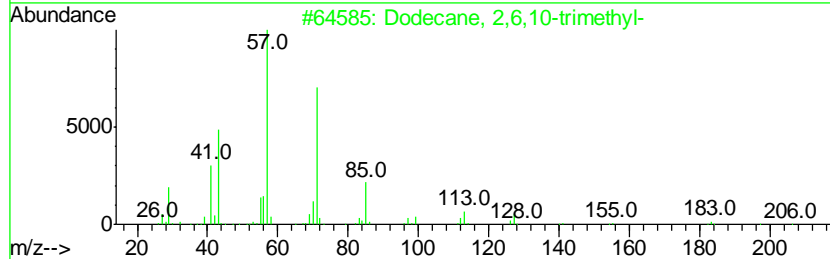
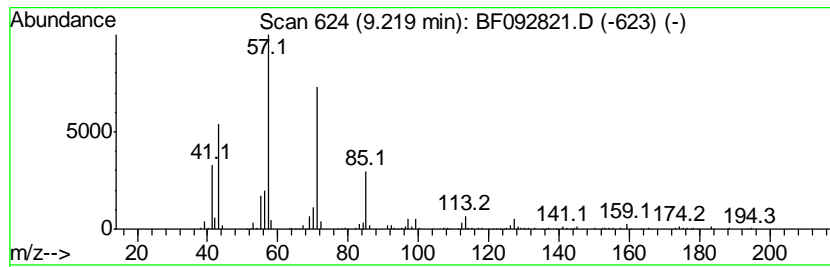
Quant Method : Z:\HPCHEM1\BNA F\METHODS\8270-BF013017.M
 Quant Title : ASP BNA STANDARDS FOR 5 POINT CALIBRATION

TIC Library : C:\DATABASE\NIST02.L
 TIC Integration Parameters: LSCINT.P

 Peak Number 18 Dodecane, 2,6,10-trimethyl- Concentration Rank 8

R.T.	EstConc	Area	Relative to ISTD	R.T.
9.22	9.29 ng	473209	Acenaphthene-d10	9.96

Hit#	of	Tentative ID	MW	MolForm	CAS#	Qual
1	5	Dodecane, 2,6,10-trimethyl-	212	C15H32	003891-98-3	90
2		Dodecane, 2,7,10-trimethyl-	212	C15H32	074645-98-0	86
3		Dodecane, 2,6,11-trimethyl-	212	C15H32	031295-56-4	78
4		Pentadecane, 7-methyl-	226	C16H34	006165-40-8	64
5		Decane, 5-propyl-	184	C13H28	017312-62-8	59



Data Path : Z:\HPCHEM1\BNA F\DATA\BF020617\
 Data File : BF092821.D
 Acq On : 7 Feb 2017 2:55
 Operator : SJ/MA
 Sample : I1695-03 2X
 Misc :
 ALS Vial : 25 Sample Multiplier: 1

Instrument :
 BNA_F
 ClientSampleID :
 B2-9

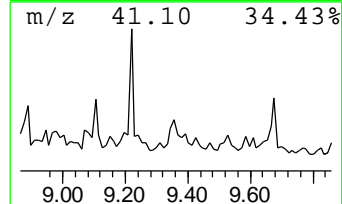
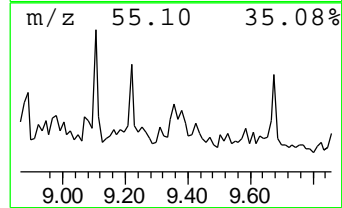
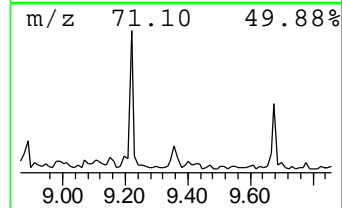
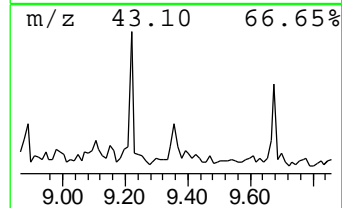
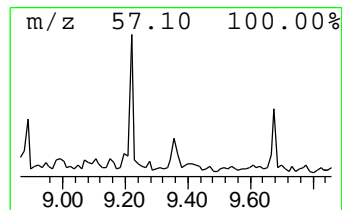
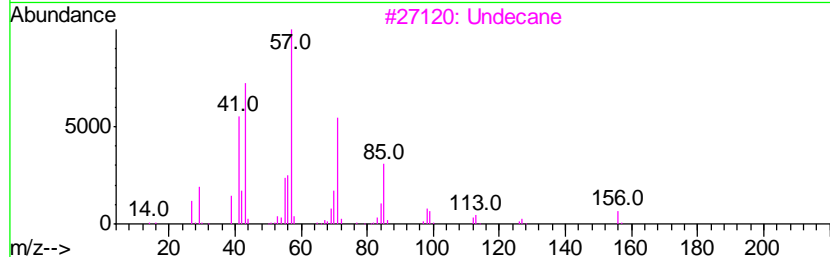
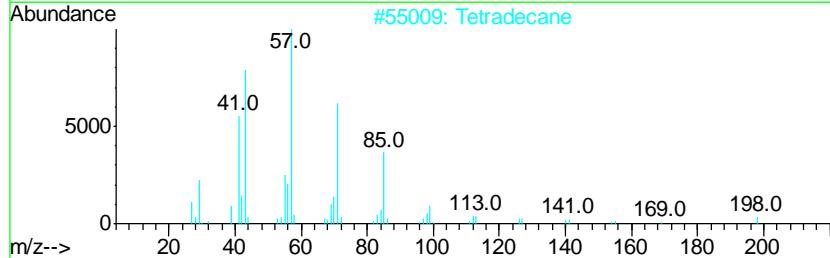
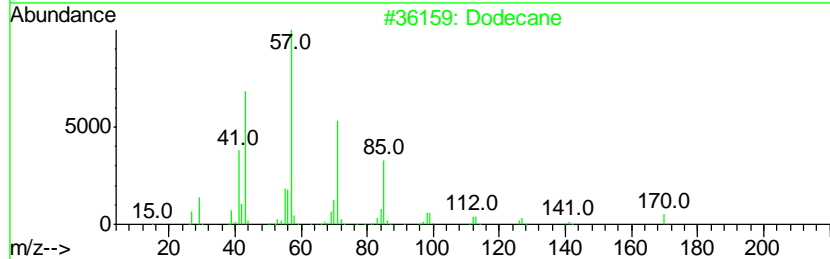
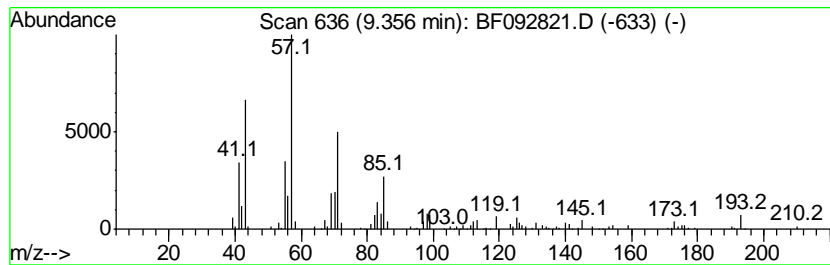
Quant Method : Z:\HPCHEM1\BNA F\METHODS\8270-BF013017.M
 Quant Title : ASP BNA STANDARDS FOR 5 POINT CALIBRATION

TIC Library : C:\DATABASE\NIST02.L
 TIC Integration Parameters: LSCINT.P

 Peak Number 19 Dodecane Concentration Rank 15

R.T.	EstConc	Area	Relative to ISTD	R.T.
9.36	7.24 ng	368991	Acenaphthene-d10	9.96

Hit#	of	Tentative ID	MW	MolForm	CAS#	Qual
1	5	Dodecane	170	C12H26	000112-40-3	58
2		Tetradecane	198	C14H30	000629-59-4	58
3		Undecane	156	C11H24	001120-21-4	58
4		Decane, 2,3,5,8-tetramethyl-	198	C14H30	192823-15-7	53
5		Eicosane	282	C20H42	000112-95-8	52



Data Path : Z:\HPCHEM1\BNA F\DATA\BF020617\
 Data File : BF092821.D
 Acq On : 7 Feb 2017 2:55
 Operator : SJ/MA
 Sample : I1695-03 2X
 Misc :
 ALS Vial : 25 Sample Multiplier: 1

Instrument :
 BNA_F
 ClientSampled :
 B2-9

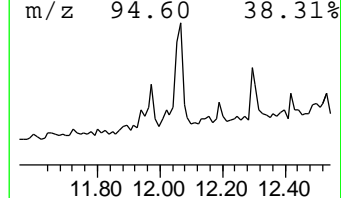
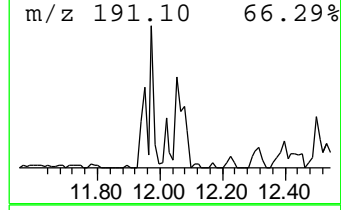
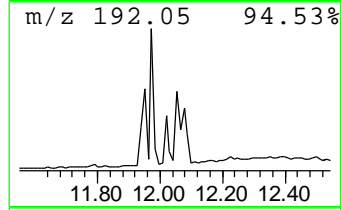
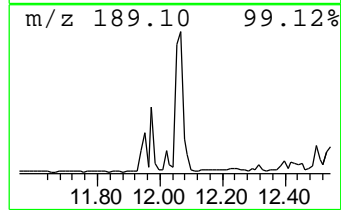
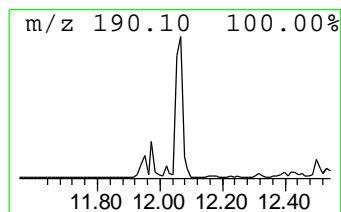
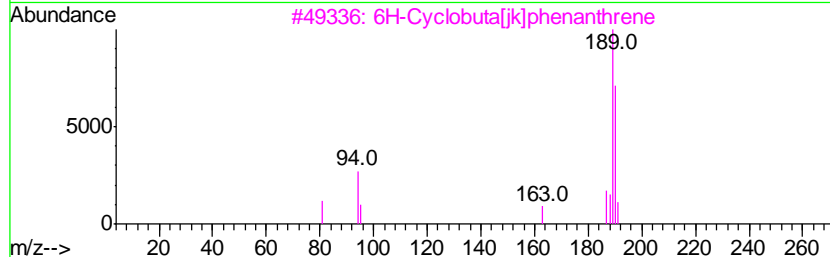
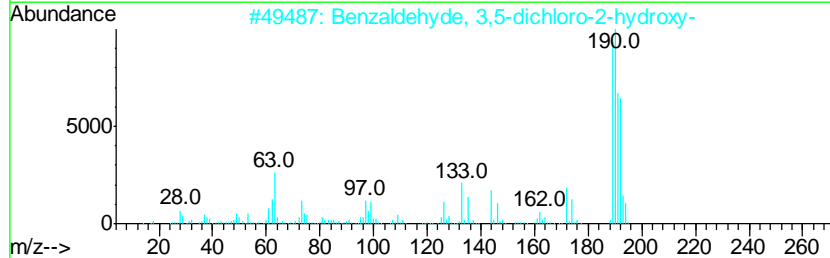
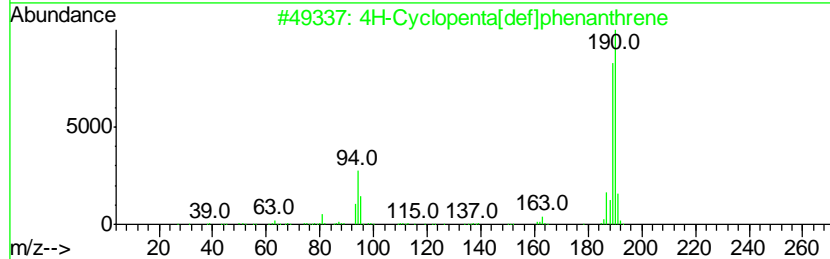
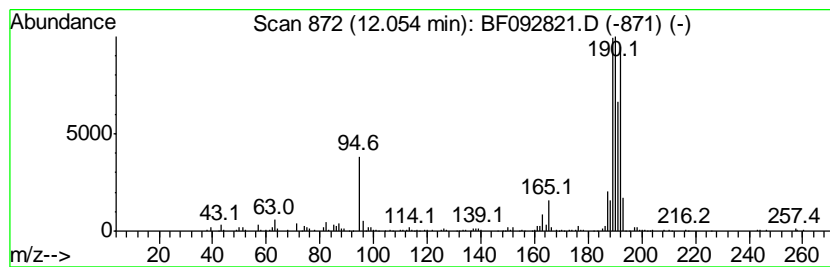
Quant Method : Z:\HPCHEM1\BNA F\METHODS\8270-BF013017.M
 Quant Title : ASP BNA STANDARDS FOR 5 POINT CALIBRATION

TIC Library : C:\DATABASE\NIST02.L
 TIC Integration Parameters: LSCINT.P

 Peak Number 20 4H-Cyclopenta[def]phenanthrene Concentration Rank 5

R.T.	EstConc	Area	Relative to ISTD	R.T.
12.05	10.44 ng	565364	Phenanthrene-d10	11.45

Hit#	of	Tentative ID	MW	MolForm	CAS#	Qual
1	5	4H-Cyclopenta[def]phenanthrene	190	C15H10	000203-64-5	64
2		Benzaldehyde, 3,5-dichloro-2-hyd...	190	C7H4Cl2O2	000090-60-8	59
3		6H-Cyclobuta[ik]phenanthrene	190	C15H10	083469-43-6	52
4		Anthracene, 1-methyl-	192	C15H12	000610-48-0	38
5		Propyne, 1,3-diphenyl-	192	C15H12	004980-70-5	30



Data Path : Z:\HPCHEM1\BNA_F\DATA\BF020617\
 Data File : BF092821.D
 Acq On : 7 Feb 2017 2:55
 Operator : SJ/MA
 Sample : I1695-03 2X
 Misc :
 ALS Vial : 25 Sample Multiplier: 1

Instrument :
 BNA_F
 ClientSampleId :
 B2-9

Quant Method : Z:\HPCHEM1\BNA_F\METHODS\8270-BF013017.M
 Quant Title : ASP BNA STANDARDS FOR 5 POINT CALIBRATION

TIC Library : C:\DATABASE\NIST02.L
 TIC Integration Parameters: LSCINT.P

TIC Top Hit name	RT	EstConc	Units	Response	--Internal Standard--			
					#	RT	Resp	Conc
2-Pentanone, 4-hy...	5.08	10.1	ng	645924	1	6.91	1278030	20.0
Cyclohexane, 1,1,...	6.44	6.2	ng	395921	1	6.91	1278030	20.0
unknown6.68	6.68	29.8	ng	1905590	1	6.91	1278030	20.0
Decane	6.75	7.0	ng	449532	1	6.91	1278030	20.0
Benzene, 1-methyl...	6.99	12.6	ng	806121	1	6.91	1278030	20.0
5-Undecene	7.18	6.3	ng	403139	1	6.91	1278030	20.0
Naphthalene, deca...	7.31	9.9	ng	629828	1	6.91	1278030	20.0
unknown7.56	7.56	9.0	ng	809368	2	8.20	1790550	20.0
1H-Indene, 2,3-di...	7.61	6.9	ng	620395	2	8.20	1790550	20.0
Decane, 3,7-dimet...	7.70	10.7	ng	960406	2	8.20	1790550	20.0
trans-Decalin, 2-...	7.72	6.3	ng	565470	2	8.20	1790550	20.0
Cyclohexane, pentyl-	7.81	8.6	ng	769957	2	8.20	1790550	20.0
Naphthalene, deca...	7.84	8.9	ng	795582	2	8.20	1790550	20.0
1-Phenyl-1-butene	7.94	7.8	ng	693921	2	8.20	1790550	20.0
Heptylcyclohexane	8.49	8.3	ng	738950	2	8.20	1790550	20.0
Decane, 2-methyl-	8.62	8.6	ng	773443	2	8.20	1790550	20.0
Dodecane, 2,6,10-...	9.22	9.3	ng	473209	3	9.96	1018640	20.0
Dodecane	9.36	7.2	ng	368991	3	9.96	1018640	20.0
4H-Cyclopenta[def...	12.05	10.4	ng	565364	4	11.45	1082960	20.0