

Data Path : Z:\HPCHEM1\BNA F\DATA\BF020718\  
 Data File : BF102822.D  
 Acq On : 7 Feb 2018 18:59  
 Operator : SJ/JU  
 Sample : J1400-01 2X  
 Misc :  
 ALS Vial : 6 Sample Multiplier: 1

Instrument :  
 BNA\_F  
 ClientSampleId :  
 EO-01-020618-A

Integration Parameters: rteint.p  
 Integrator: RTE  
 Smoothing : ON  
 Sampling : 1  
 Start Thrs: 0.2  
 Stop Thrs : 0

Filtering: 5  
 Min Area: 3 % of largest Peak  
 Max Peaks: 100  
 Peak Location: TOP

If leading or trailing edge < 100 prefer < Baseline drop else tangent >  
 Peak separation: 5

Method : Z:\HPCHEM1\BNA F\METHODS\8270-BF020318.M  
 Title : ASP BNA STANDARDS FOR 5 POINT CALIBRATION

Signal : TIC

peak #	R.T. min	first scan	max scan	last scan	PK TY	peak height	corr. area	corr. % max.	% of total
1	2.134	4	8	15	rVB	209551	266666	7.48%	0.741%
2	3.446	229	231	238	rBV	21627	54078	1.52%	0.150%
3	5.099	509	512	519	rVB	67817	75599	2.12%	0.210%
4	5.493	574	579	582	rBV	2569230	2315322	64.96%	6.438%
5	6.498	746	750	755	rBV	2380395	2392269	67.11%	6.652%
6	6.645	771	775	779	rBV	2696592	2327569	65.30%	6.472%
7	6.710	783	786	789	rBV2	52788	51102	1.43%	0.142%
8	6.881	811	815	818	rBV	1461823	1184450	33.23%	3.293%
9	7.034	837	841	845	rBV	2033857	1790892	50.24%	4.979%
10	7.440	906	910	913	rBV	1728847	1419450	39.82%	3.947%
11	7.469	913	915	919	rVB	81281	67822	1.90%	0.189%
12	7.510	919	922	927	rVB4	29949	47709	1.34%	0.133%
13	8.140	1026	1029	1030	rBV	80157	64674	1.81%	0.180%
14	8.163	1030	1033	1036	rVV	1934756	1565704	43.93%	4.353%
15	8.216	1039	1042	1045	rVB2	46960	47241	1.33%	0.131%
16	8.451	1077	1082	1086	rBV5	26969	39013	1.09%	0.108%
17	8.745	1130	1132	1136	rVB	122353	98416	2.76%	0.274%
18	9.110	1190	1194	1198	rVB5	31982	38948	1.09%	0.108%
19	9.175	1203	1205	1211	rVB2	59622	54774	1.54%	0.152%
20	9.234	1211	1215	1225	rBV	2470162	2351566	65.97%	6.538%
21	9.310	1225	1228	1231	rBV	220354	197405	5.54%	0.549%
22	9.504	1257	1261	1265	rVB3	29504	38064	1.07%	0.106%
23	9.569	1265	1272	1274	rBV5	51974	78398	2.20%	0.218%
24	9.628	1279	1282	1285	rVV2	256538	267961	7.52%	0.745%
25	9.657	1285	1287	1290	rVB3	43715	47430	1.33%	0.132%
26	9.692	1290	1293	1295	rBV2	56847	48770	1.37%	0.136%
27	9.781	1305	1308	1311	rBV4	37178	51136	1.43%	0.142%
28	9.839	1315	1318	1322	rVB	299797	275985	7.74%	0.767%
29	9.916	1328	1331	1335	rBV	1585554	1540809	43.23%	4.284%
30	10.075	1354	1358	1361	rBV4	37591	55878	1.57%	0.155%
31	10.163	1370	1373	1377	rBV3	79321	90256	2.53%	0.251%
32	10.339	1397	1403	1406	rBV	353586	357081	10.02%	0.993%
33	10.463	1418	1424	1433	rVB7	26822	71308	2.00%	0.198%
34	10.563	1436	1441	1447	rVB	139560	178767	5.02%	0.497%

Data Path : Z:\HPCHEM1\BNA F\DATA\BF020718\  
 Data File : BF102822.D  
 Acq On : 7 Feb 2018 18:59  
 Operator : SJ/JU  
 Sample : J1400-01 2X  
 Misc :  
 ALS Vial : 6 Sample Multiplier: 1

Instrument :  
 BNA\_F  
 ClientSampleId :  
 EO-01-020618-A

Integration Parameters: rteint.p  
 Integrator: RTE  
 Smoothing : ON  
 Sampling : 1  
 Start Thrs: 0.2  
 Stop Thrs : 0  
 Filtering: 5  
 Min Area: 3 % of largest Peak  
 Max Peaks: 100  
 Peak Location: TOP

If leading or trailing edge < 100 prefer < Baseline drop else tangent >  
 Peak separation: 5

Method : Z:\HPCHEM1\BNA F\METHODS\8270-BF020318.M  
 Title : ASP BNA STANDARDS FOR 5 POINT CALIBRATION

35	10.704	1459	1465	1477	rBV	1379076	1385078	38.86%	3.851%
36	10.816	1481	1484	1493	rVB	391616	503785	14.13%	1.401%
37	11.010	1514	1517	1521	rBV2	44010	62487	1.75%	0.174%
38	11.263	1557	1560	1563	rBV	292279	240164	6.74%	0.668%
39	11.292	1563	1565	1571	rVB2	158730	169138	4.75%	0.470%
40	11.404	1580	1584	1587	rBV	1480419	1373634	38.54%	3.819%
41	11.645	1621	1625	1627	rBV2	34887	37601	1.05%	0.105%
42	11.692	1629	1633	1636	rVV	206799	172126	4.83%	0.479%
43	11.792	1646	1650	1653	rBV	1414118	1110774	31.16%	3.088%
44	11.922	1667	1672	1676	rBV4	78587	125510	3.52%	0.349%
45	12.016	1685	1688	1691	rBV3	45540	51453	1.44%	0.143%
46	12.098	1699	1702	1706	rBV	177597	147001	4.12%	0.409%
47	12.380	1747	1750	1752	rBV3	52027	47274	1.33%	0.131%
48	12.480	1763	1767	1769	rBV	3725822	3564450	100.00%	9.911%
49	12.498	1769	1770	1777	rVV2	2340477	2082182	58.42%	5.789%
50	12.586	1781	1785	1788	rVV	466584	425496	11.94%	1.183%
51	12.616	1788	1790	1795	rVB	174732	151111	4.24%	0.420%
52	12.851	1827	1830	1835	rVB2	183106	251369	7.05%	0.699%
53	12.986	1849	1853	1860	rVB	1763244	1611392	45.21%	4.480%
54	13.216	1889	1892	1895	rBV	129711	140893	3.95%	0.392%
55	13.557	1947	1950	1953	rBV	139229	137356	3.85%	0.382%
56	13.880	2003	2005	2008	rVB	148286	131187	3.68%	0.365%
57	14.045	2029	2033	2036	rBV	1112643	1061689	29.79%	2.952%
58	14.198	2057	2059	2062	rVB	136532	115247	3.23%	0.320%
59	14.504	2109	2111	2116	rVB	150233	126951	3.56%	0.353%
60	15.527	2281	2285	2295	rVB	792402	1187997	33.33%	3.303%

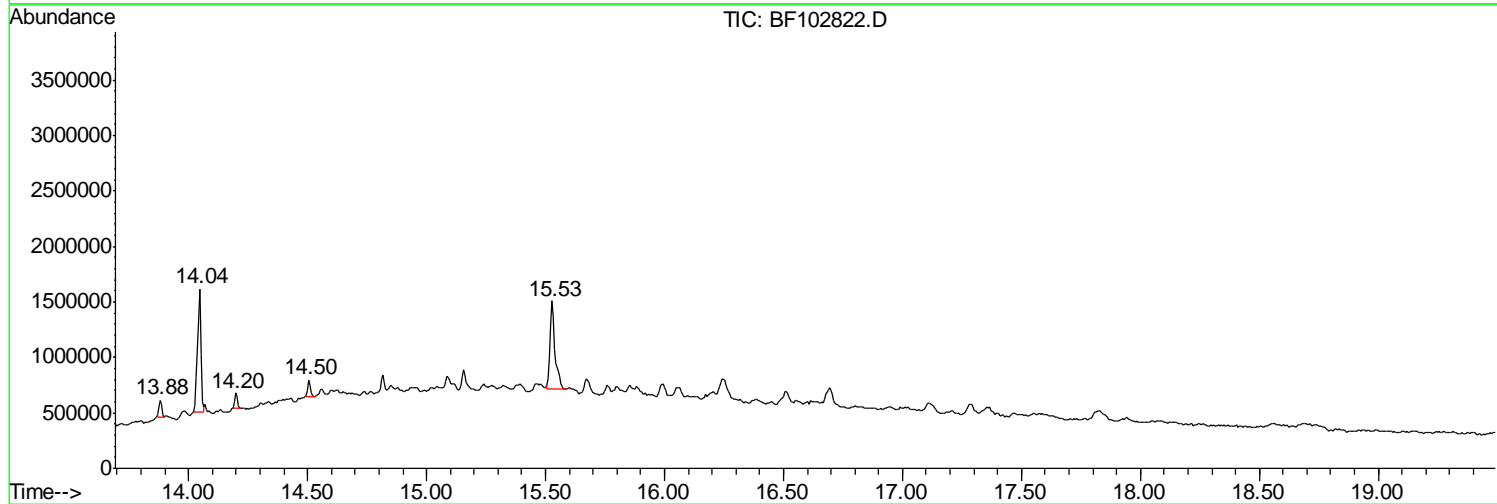
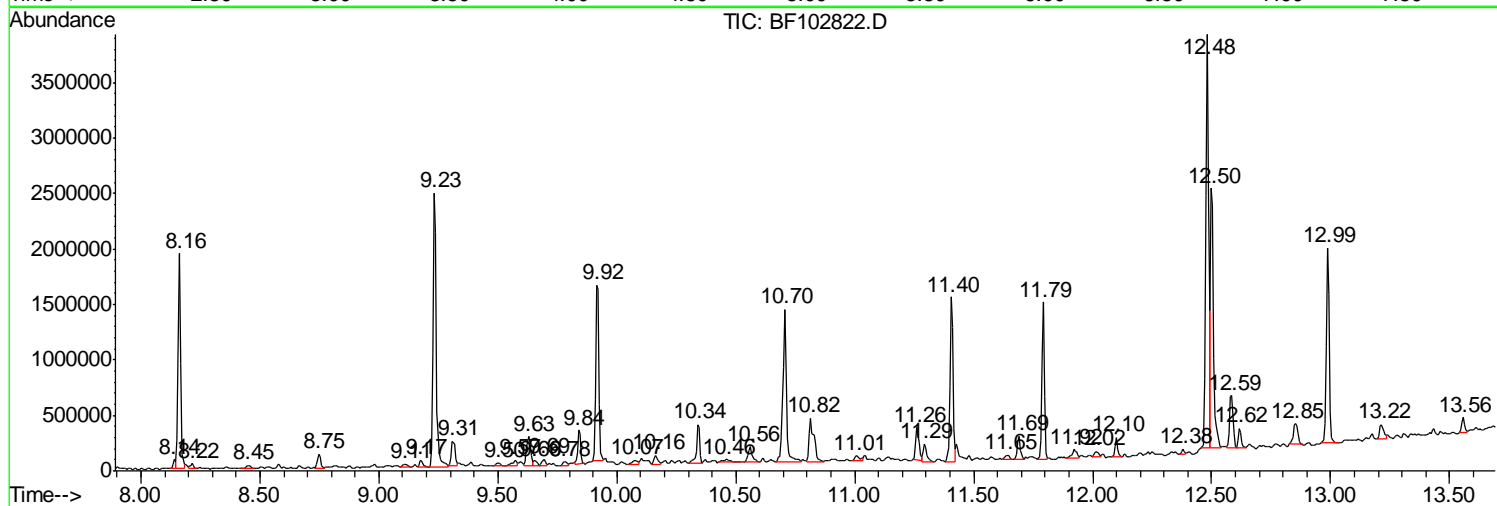
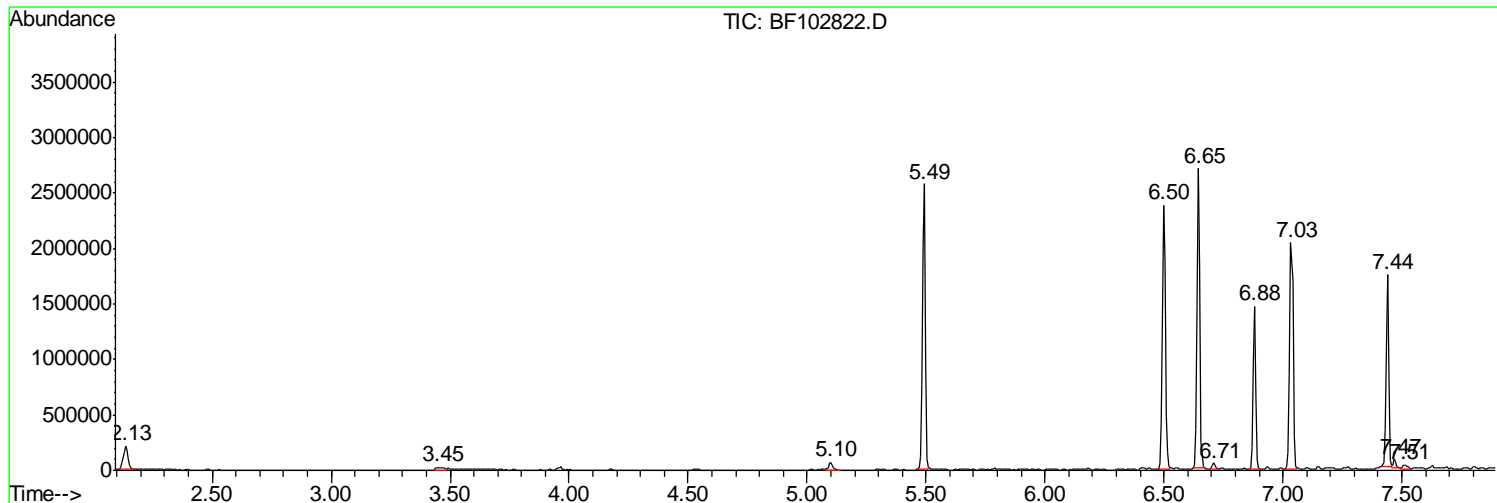
Sum of corrected areas: 35965857

Data Path : Z:\HPCHEM1\BNA F\DATA\BF020718\  
 Data File : BF102822.D  
 Acq On : 7 Feb 2018 18:59  
 Operator : SJ/JU  
 Sample : J1400-01 2X  
 Misc :  
 ALS Vial : 6 Sample Multiplier: 1

Instrument :  
 BNA\_F  
 Client Sampled :  
 EO-01-020618-A

Quant Method : Z:\HPCHEM1\BNA F\METHODS\8270-BF020318.M  
 Quant Title : ASP BNA STANDARDS FOR 5 POINT CALIBRATION

TIC Library : C:\DATABASE\NIST11.L  
 TIC Integration Parameters: LSCINT.P



Data Path : Z:\HPCHEM1\BNA F\DATA\BF020718\  
 Data File : BF102822.D  
 Acq On : 7 Feb 2018 18:59  
 Operator : SJ/JU  
 Sample : J1400-01 2X  
 Misc :  
 ALS Vial : 6 Sample Multiplier: 1

Instrument :  
 BNA\_F  
 ClientSampleID :  
 EO-01-020618-A

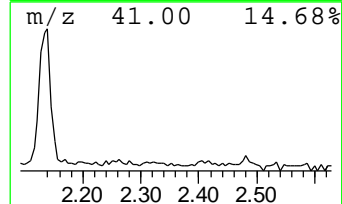
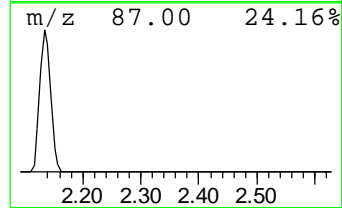
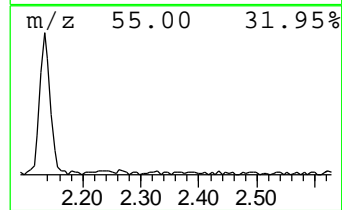
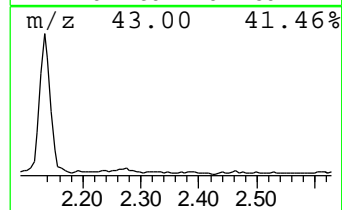
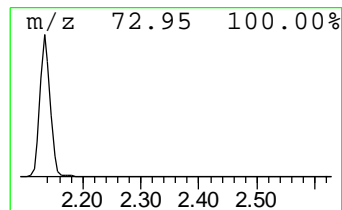
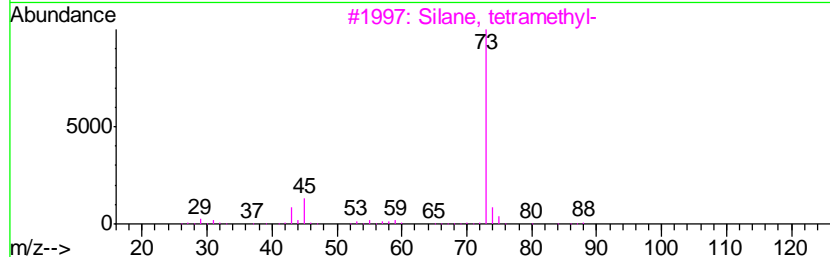
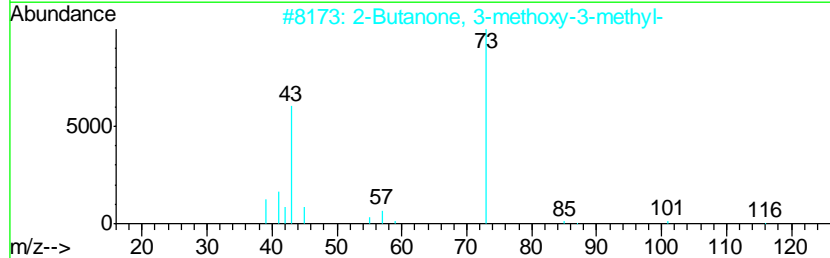
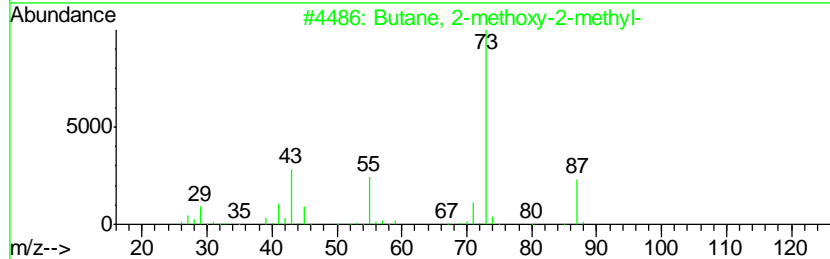
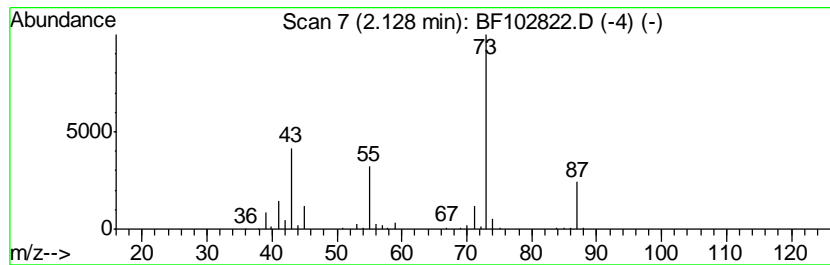
Quant Method : Z:\HPCHEM1\BNA F\METHODS\8270-BF020318.M  
 Quant Title : ASP BNA STANDARDS FOR 5 POINT CALIBRATION

TIC Library : C:\DATABASE\NIST11.L  
 TIC Integration Parameters: LSCINT.P

\*\*\*\*\*  
 Peak Number 1 Butane, 2-methoxy-2-methyl- Concentration Rank 8

R.T.	EstConc	Area	Relative to ISTD	R.T.
2.13	4.50 ng	266666	1,4-Dichlorobenzene-d4	6.88

Hit#	of	Tentative ID	MW	MolForm	CAS#	Qual
1	5	Butane, 2-methoxy-2-methyl-	102	C6H14O	000994-05-8	78
2		2-Butanone, 3-methoxy-3-methyl-	116	C6H12O2	036687-98-6	23
3		Silane, tetramethyl-	88	C4H12Si	000075-76-3	17
4		1,3-Dioxolane, 2-methyl-	88	C4H8O2	000497-26-7	17
5		Pentane, 3-methoxy-	102	C6H14O	036839-67-5	12



Data Path : Z:\HPCHEM1\BNA F\DATA\BF020718\  
 Data File : BF102822.D  
 Acq On : 7 Feb 2018 18:59  
 Operator : SJ/JU  
 Sample : J1400-01 2X  
 Misc :  
 ALS Vial : 6 Sample Multiplier: 1

Instrument :  
 BNA\_F  
 ClientSampleID :  
 EO-01-020618-A

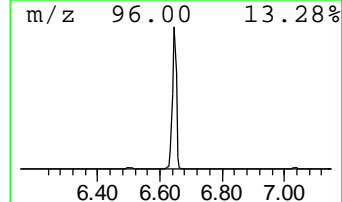
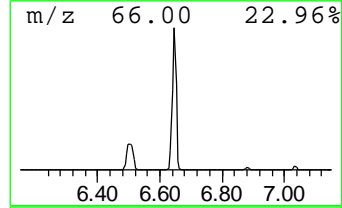
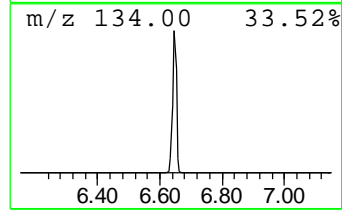
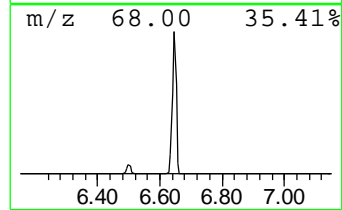
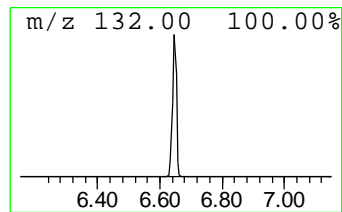
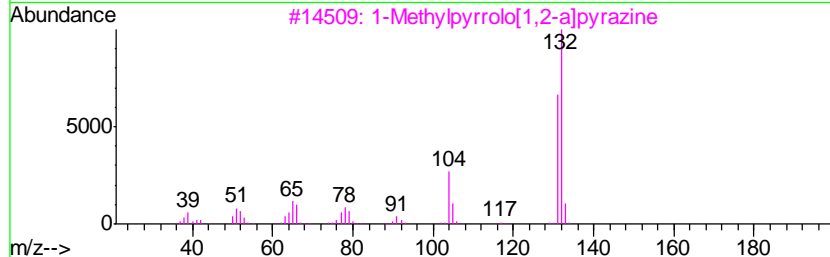
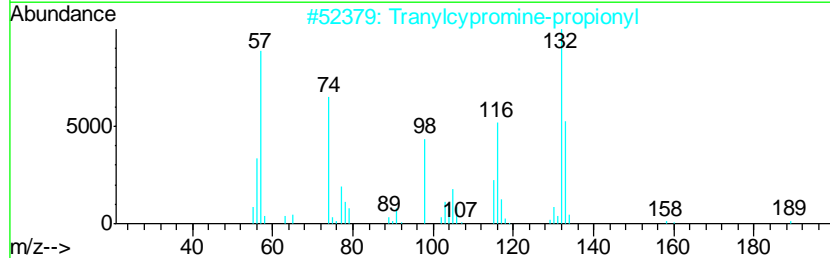
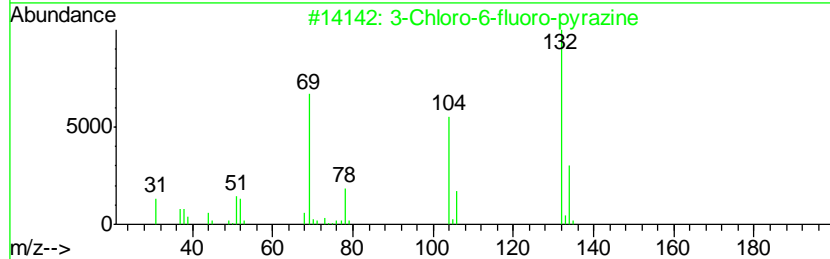
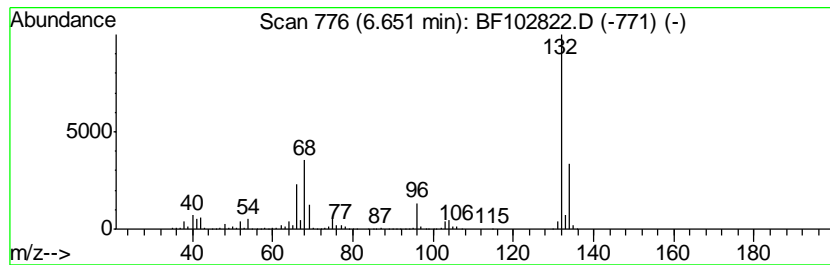
Quant Method : Z:\HPCHEM1\BNA F\METHODS\8270-BF020318.M  
 Quant Title : ASP BNA STANDARDS FOR 5 POINT CALIBRATION

TIC Library : C:\DATABASE\NIST11.L  
 TIC Integration Parameters: LSCINT.P

\*\*\*\*\*  
 Peak Number 2 unknown6.65 Concentration Rank 2

R.T.	EstConc	Area	Relative to ISTD	R.T.
6.65	39.30 ng	2327570	1,4-Dichlorobenzene-d4	6.88

Hit#	of	Tentative ID	MW	MolForm	CAS#	Qual
1	5	3-Chloro-6-fluoro-pyrazine	132	C4H2ClFN2	1000146-10-7	27
2		Tranlycypromine-propionyl	189	C12H15NO	1000123-86-3	10
3		1-Methylpyrrolo[1,2-a]pyrazine	132	C8H8N2	064608-59-9	9
4		Imidazole, 4,5-dicyano-1-methyl-	132	C6H4N4	019485-35-9	9
5		Bicyclo[4.2.0]octa-1,3,5-triene,...	132	C10H12	028749-81-7	9



Data Path : Z:\HPCHEM1\BNA F\DATA\BF020718\  
 Data File : BF102822.D  
 Acq On : 7 Feb 2018 18:59  
 Operator : SJ/JU  
 Sample : J1400-01 2X  
 Misc :  
 ALS Vial : 6 Sample Multiplier: 1

Instrument :  
 BNA\_F  
 ClientSampleID :  
 EO-01-020618-A

Quant Method : Z:\HPCHEM1\BNA F\METHODS\8270-BF020318.M  
 Quant Title : ASP BNA STANDARDS FOR 5 POINT CALIBRATION

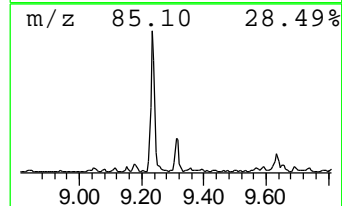
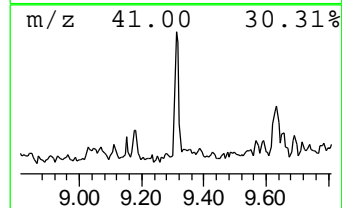
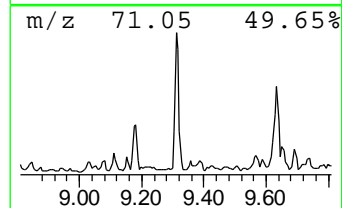
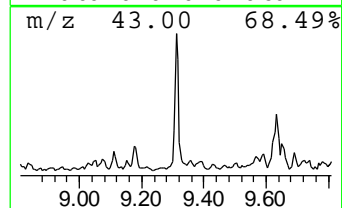
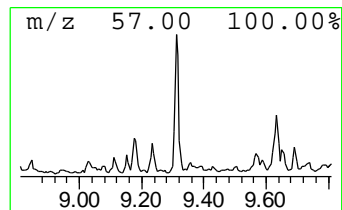
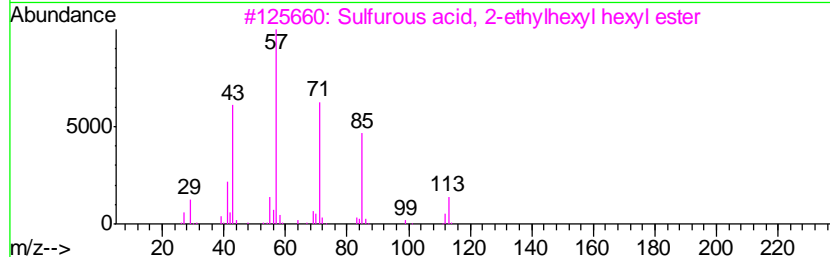
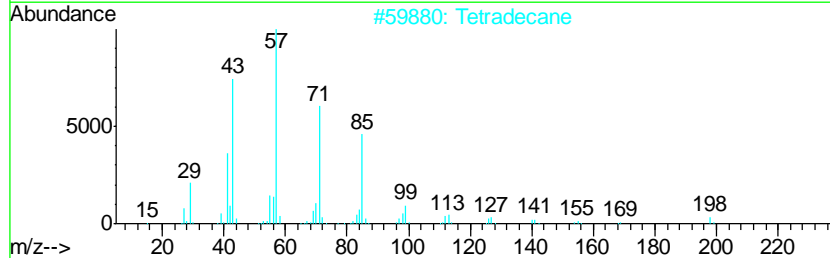
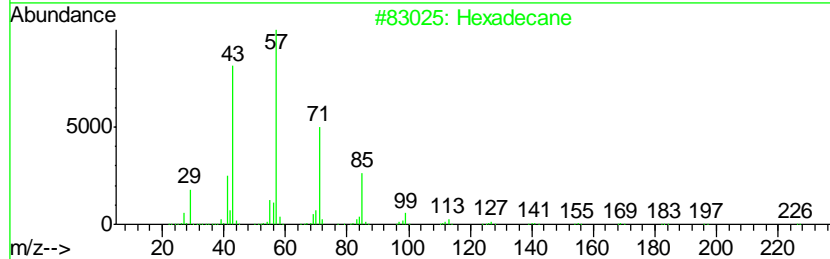
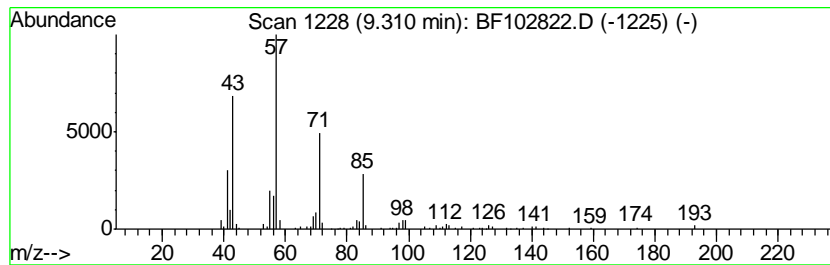
TIC Library : C:\DATABASE\NIST11.L  
 TIC Integration Parameters: LSCINT.P

\*\*\*\*\*  
 Peak Number 4 Hexadecane Concentration Rank 13

R.T.	EstConc	Area	Relative to ISTD	R.T.
9.31	2.56 ng	197405	Acenaphthene-d10	9.92

Hit#	of	Tentative ID	MW	MolForm	CAS#	Qual
1	5	Hexadecane	226	C16H34	000544-76-3	86
2		Tetradecane	198	C14H30	000629-59-4	83
3		Sulfurous acid, 2-ethylhexyl hex...	278	C14H30O3S	1000309-20-2	64
4		Nonane, 5-butyl-	184	C13H28	017312-63-9	64
5		Decane, 3,8-dimethyl-	170	C12H26	017312-55-9	64



Data Path : Z:\HPCHEM1\BNA F\DATA\BF020718\  
 Data File : BF102822.D  
 Acq On : 7 Feb 2018 18:59  
 Operator : SJ/JU  
 Sample : J1400-01 2X  
 Misc :  
 ALS Vial : 6 Sample Multiplier: 1

Instrument :  
 BNA\_F  
 ClientSampleId :  
 EO-01-020618-A

Quant Method : Z:\HPCHEM1\BNA F\METHODS\8270-BF020318.M  
 Quant Title : ASP BNA STANDARDS FOR 5 POINT CALIBRATION

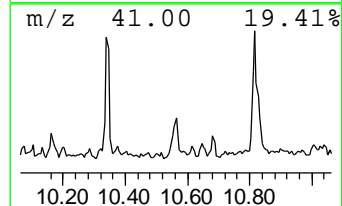
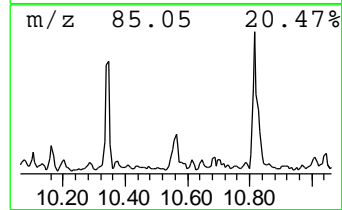
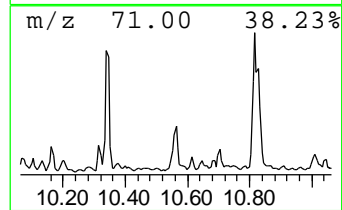
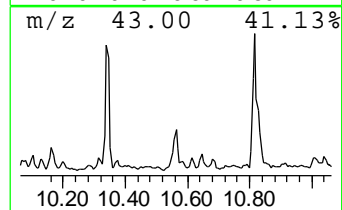
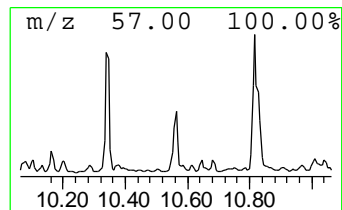
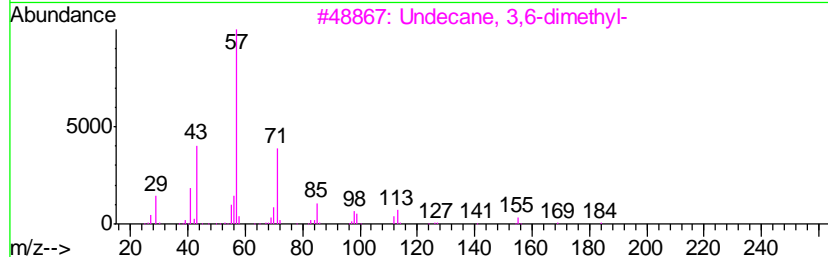
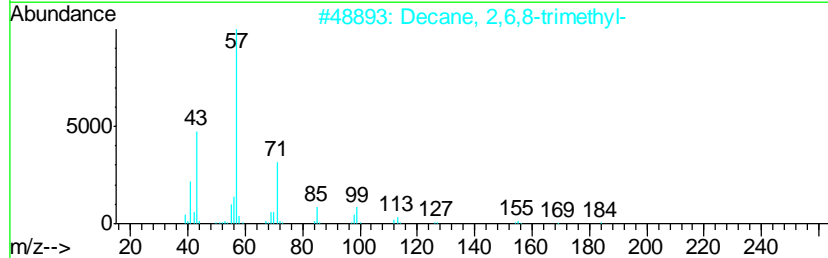
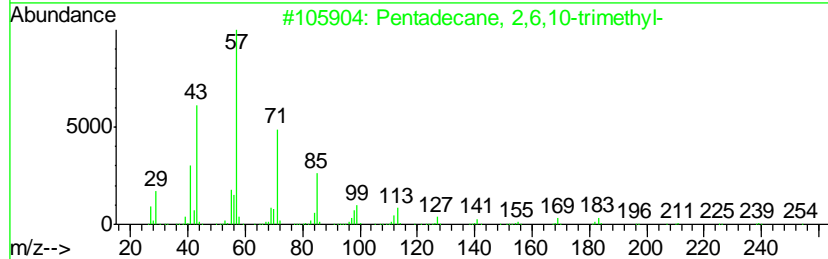
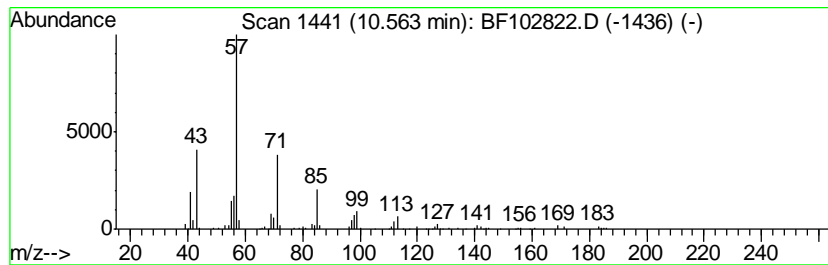
TIC Library : C:\DATABASE\NIST11.L  
 TIC Integration Parameters: LSCINT.P

\*\*\*\*\*  
 Peak Number 7 Pentadecane, 2,6,10-trimethyl- Concentration Rank 18

R.T.	EstConc	Area	Relative to ISTD	R.T.
10.56	2.32 ng	178767	Acenaphthene-d10	9.92

Hit#	of	Tentative ID	MW	MolForm	CAS#	Qual
1	5	Pentadecane, 2,6,10-trimethyl-	254	C18H38	003892-00-0	78
2		Decane, 2,6,8-trimethyl-	184	C13H28	062108-26-3	76
3		Undecane, 3,6-dimethyl-	184	C13H28	017301-28-9	74
4		Undecane, 2,6-dimethyl-	184	C13H28	017301-23-4	64
5		Undecane, 3,5-dimethyl-	184	C13H28	017312-81-1	64



Data Path : Z:\HPCHEM1\BNA F\DATA\BF020718\  
 Data File : BF102822.D  
 Acq On : 7 Feb 2018 18:59  
 Operator : SJ/JU  
 Sample : J1400-01 2X  
 Misc :  
 ALS Vial : 6 Sample Multiplier: 1

Instrument :  
 BNA\_F  
 ClientSampleId :  
 EO-01-020618-A

Quant Method : Z:\HPCHEM1\BNA F\METHODS\8270-BF020318.M  
 Quant Title : ASP BNA STANDARDS FOR 5 POINT CALIBRATION

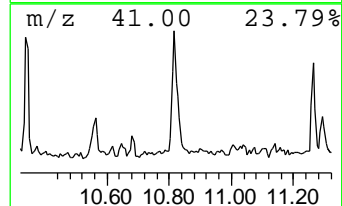
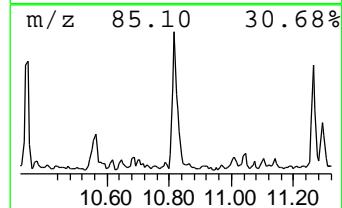
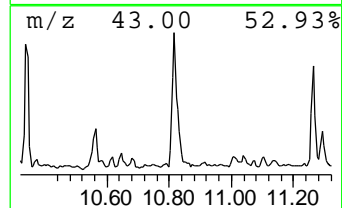
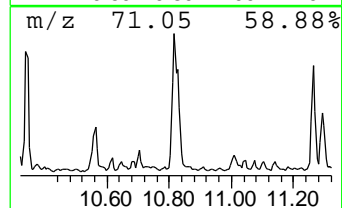
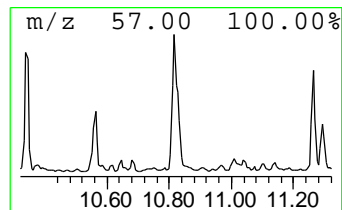
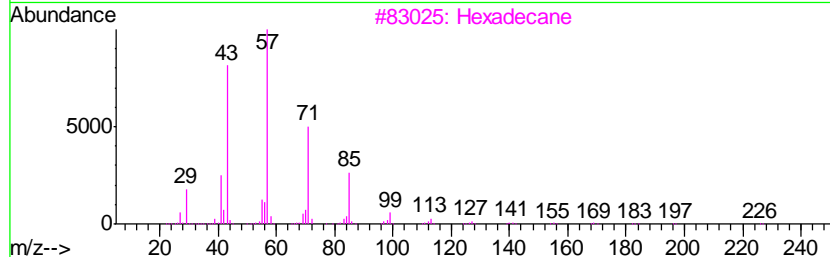
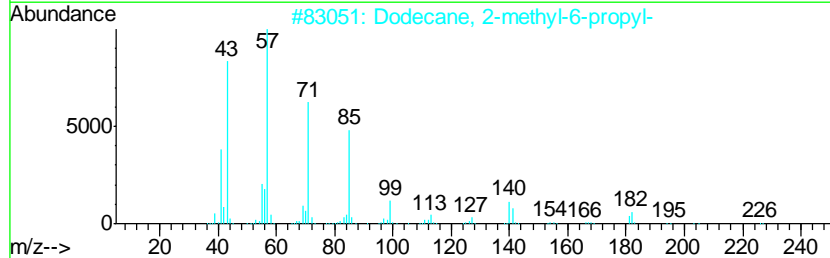
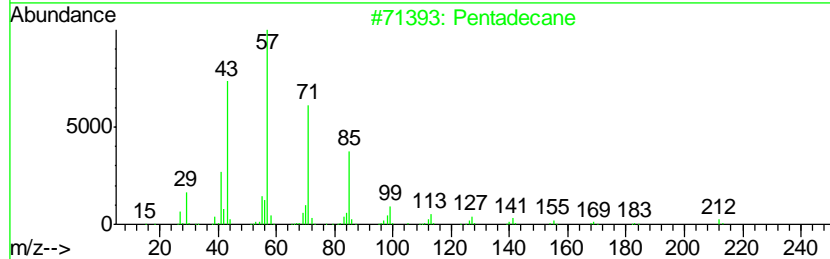
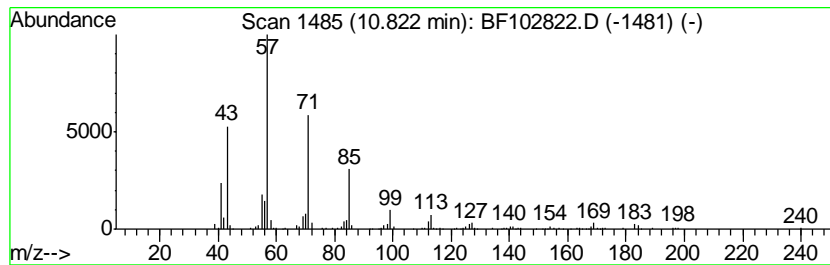
TIC Library : C:\DATABASE\NIST11.L  
 TIC Integration Parameters: LSCINT.P

\*\*\*\*\*  
 Peak Number 8 Pentadecane Concentration Rank 6

R.T.	EstConc	Area	Relative to ISTD	R.T.
10.82	7.34 ng	503785	Phenanthrene-d10	11.40

Hit#	of	Tentative ID	MW	MolForm	CAS#	Qual
1	5	Pentadecane	212	C15H32	000629-62-9	86
2		Dodecane, 2-methyl-6-propyl-	226	C16H34	055045-08-4	86
3		Hexadecane	226	C16H34	000544-76-3	86
4		Sulfurous acid, 2-ethylhexyl hex...	278	C14H30O3S	1000309-20-2	80
5		Tetradecane	198	C14H30	000629-59-4	80





Data Path : Z:\HPCHEM1\BNA F\DATA\BF020718\  
 Data File : BF102822.D  
 Acq On : 7 Feb 2018 18:59  
 Operator : SJ/JU  
 Sample : J1400-01 2X  
 Misc :  
 ALS Vial : 6 Sample Multiplier: 1

Instrument :  
 BNA\_F  
 ClientSampleId :  
 EO-01-020618-A

Quant Method : Z:\HPCHEM1\BNA F\METHODS\8270-BF020318.M  
 Quant Title : ASP BNA STANDARDS FOR 5 POINT CALIBRATION

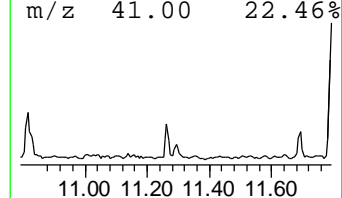
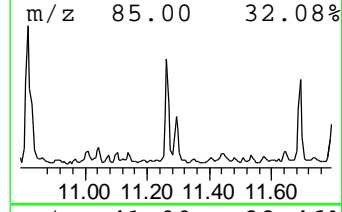
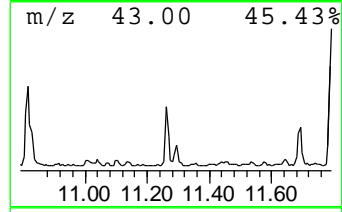
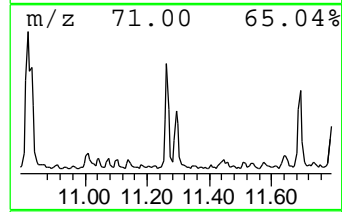
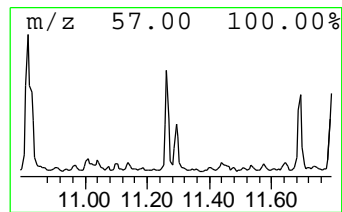
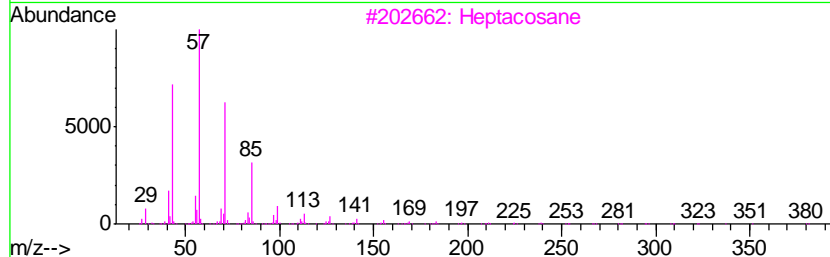
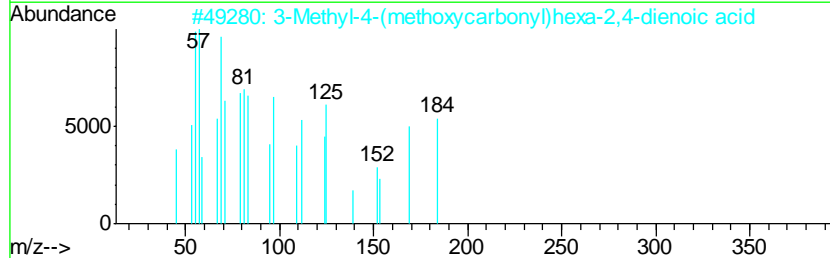
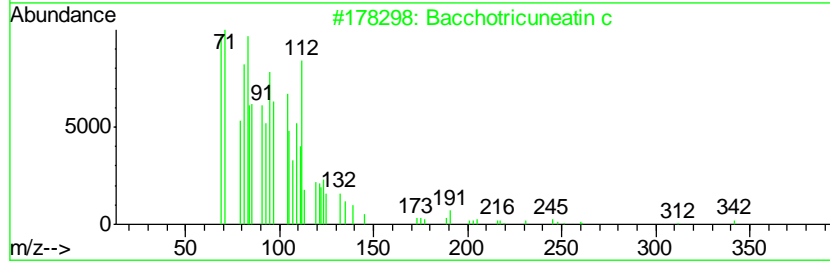
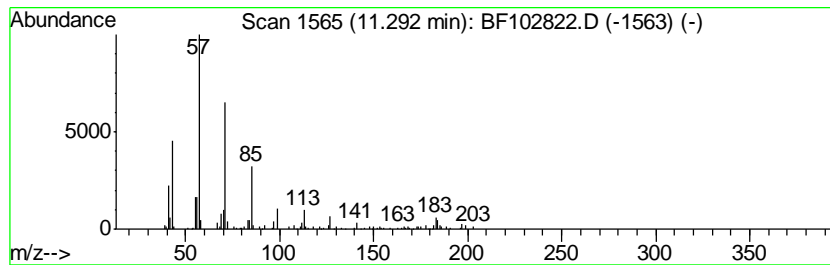
TIC Library : C:\DATABASE\NIST11.L  
 TIC Integration Parameters: LSCINT.P

\*\*\*\*\*  
 Peak Number 10 Bacchotricuneatin c Concentration Rank 16

R.T.	EstConc	Area	Relative to ISTD	R.T.
11.29	2.46 ng	169138	Phenanthrene-d10	11.40

Hit#	of	Tentative ID	MW	MolForm	CAS#	Qual
1	5	Bacchotricuneatin c	342	C20H22O5	066563-30-2	90
2		3-Methyl-4-(methoxycarbonyl)hexa...	184	C9H12O4	1000104-10-8	90
3		Heptacosane	380	C27H56	000593-49-7	86
4		Tetracosane	338	C24H50	000646-31-1	72
5		Dodecane, 2,7,10-trimethyl-	212	C15H32	074645-98-0	64



Data Path : Z:\HPCHEM1\BNA F\DATA\BF020718\  
 Data File : BF102822.D  
 Acq On : 7 Feb 2018 18:59  
 Operator : SJ/JU  
 Sample : J1400-01 2X  
 Misc :  
 ALS Vial : 6 Sample Multiplier: 1

Instrument :  
 BNA\_F  
 ClientSampleID :  
 EO-01-020618-A

Quant Method : Z:\HPCHEM1\BNA F\METHODS\8270-BF020318.M  
 Quant Title : ASP BNA STANDARDS FOR 5 POINT CALIBRATION

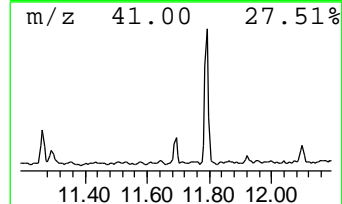
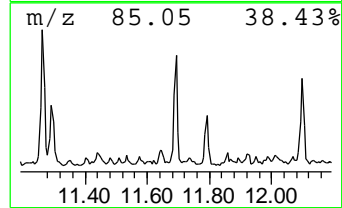
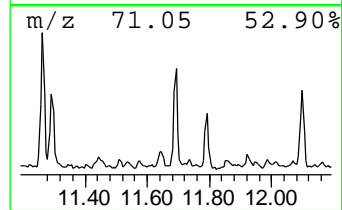
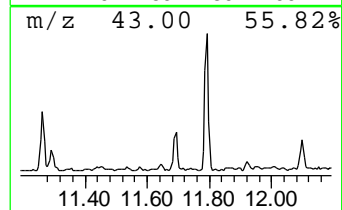
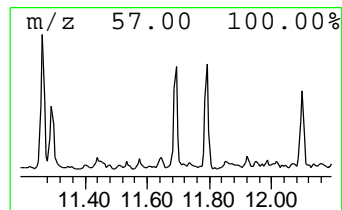
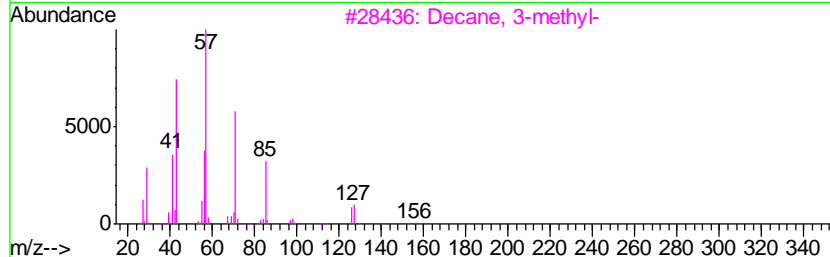
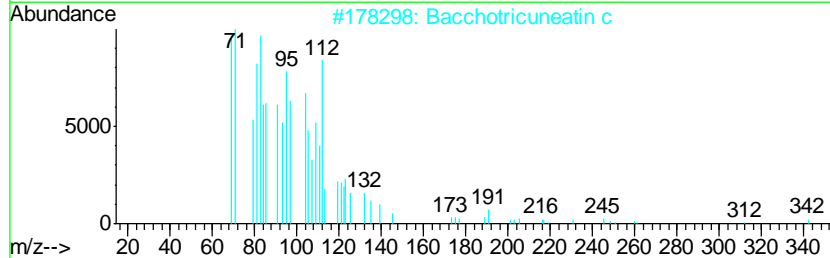
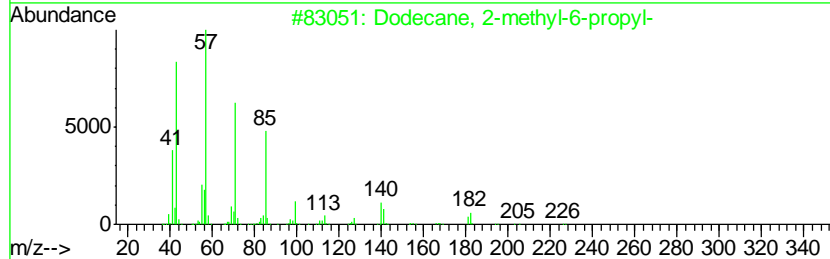
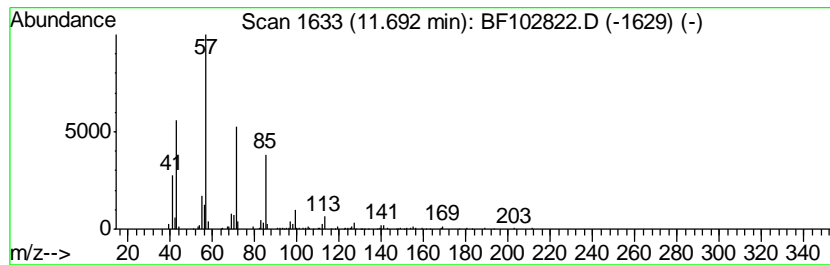
TIC Library : C:\DATABASE\NIST11.L  
 TIC Integration Parameters: LSCINT.P

\*\*\*\*\*  
 Peak Number 11 Dodecane, 2-methyl-6-propyl- Concentration Rank 14

R.T.	EstConc	Area	Relative to ISTD	R.T.
11.69	2.51 ng	172126	Phenanthrene-d10	11.40

Hit#	of	Tentative ID	MW	MolForm	CAS#	Qual
1	5	Dodecane, 2-methyl-6-propyl-	226	C16H34	055045-08-4	86
2		Bacchotricuneatin c	342	C20H22O5	066563-30-2	74
3		Decane, 3-methyl-	156	C11H24	013151-34-3	74
4		Dodecane, 1-iodo-	296	C12H25I	004292-19-7	64
5		Decane, 2-methyl-	156	C11H24	006975-98-0	58



Data Path : Z:\HPCHEM1\BNA F\DATA\BF020718\  
 Data File : BF102822.D  
 Acq On : 7 Feb 2018 18:59  
 Operator : SJ/JU  
 Sample : J1400-01 2X  
 Misc :  
 ALS Vial : 6 Sample Multiplier: 1

Instrument :  
 BNA\_F  
 ClientSampleID :  
 EO-01-020618-A

Quant Method : Z:\HPCHEM1\BNA F\METHODS\8270-BF020318.M  
 Quant Title : ASP BNA STANDARDS FOR 5 POINT CALIBRATION

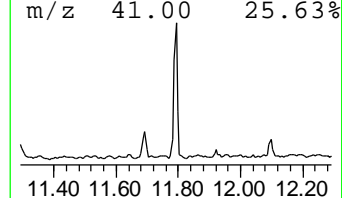
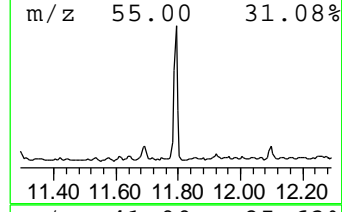
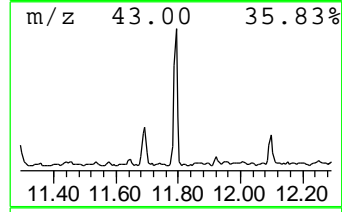
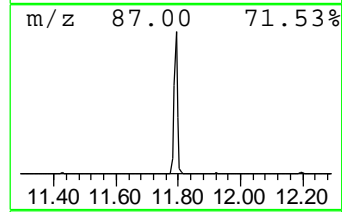
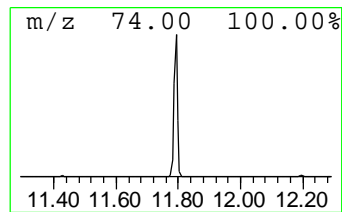
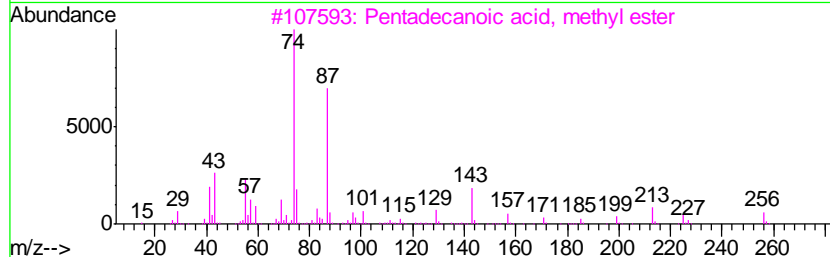
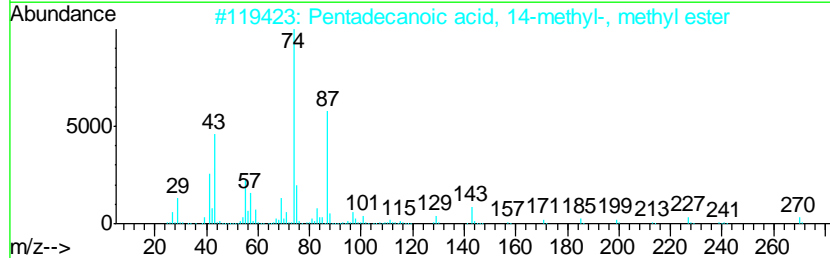
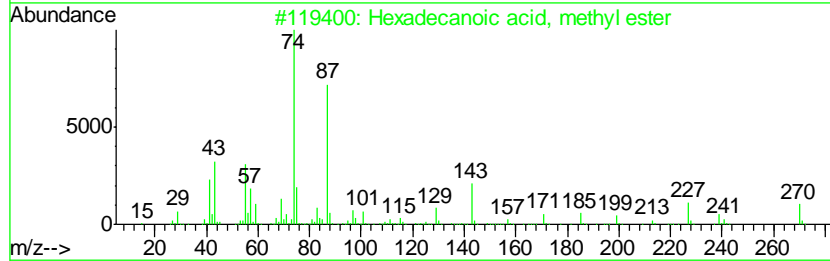
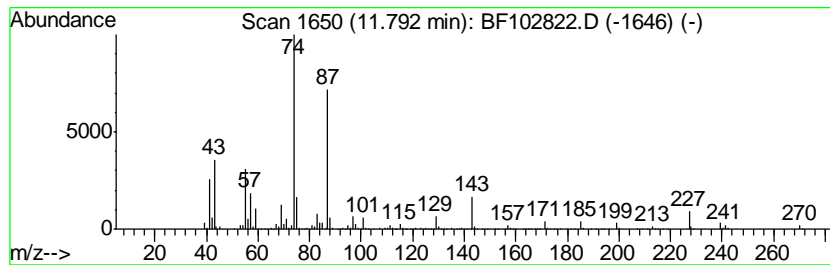
TIC Library : C:\DATABASE\NIST11.L  
 TIC Integration Parameters: LSCINT.P

\*\*\*\*\*  
 Peak Number 12 Hexadecanoic acid, methyl e... Concentration Rank 5

R.T.	EstConc	Area	Relative to ISTD	R.T.
11.79	16.17 ng	1110770	Phenanthrene-d10	11.40

Hit#	of	Tentative ID	MW	MolForm	CAS#	Qual
1	5	Hexadecanoic acid, methyl ester	270	C17H34O2	000112-39-0	91
2		Pentadecanoic acid, 14-methyl-, ...	270	C17H34O2	005129-60-2	90
3		Pentadecanoic acid, methyl ester	256	C16H32O2	007132-64-1	90
4		Methyl tetradecanoate	242	C15H30O2	000124-10-7	86
5		Hexadecanoic acid, 15-methyl-, m...	284	C18H36O2	006929-04-0	86



Data Path : Z:\HPCHEM1\BNA F\DATA\BF020718\  
 Data File : BF102822.D  
 Acq On : 7 Feb 2018 18:59  
 Operator : SJ/JU  
 Sample : J1400-01 2X  
 Misc :  
 ALS Vial : 6 Sample Multiplier: 1

Instrument :  
 BNA\_F  
 ClientSampled :  
 EO-01-020618-A

Quant Method : Z:\HPCHEM1\BNA F\METHODS\8270-BF020318.M  
 Quant Title : ASP BNA STANDARDS FOR 5 POINT CALIBRATION

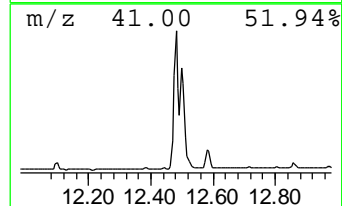
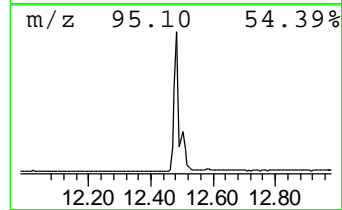
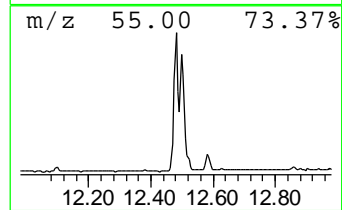
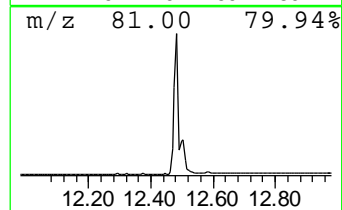
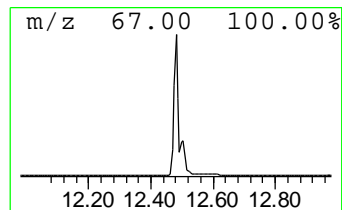
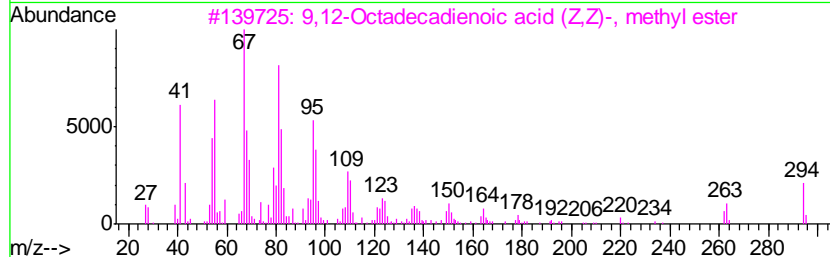
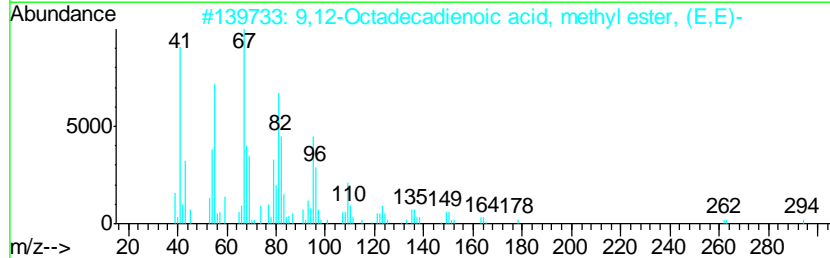
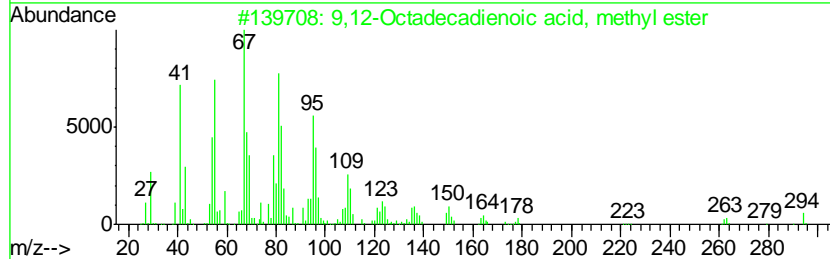
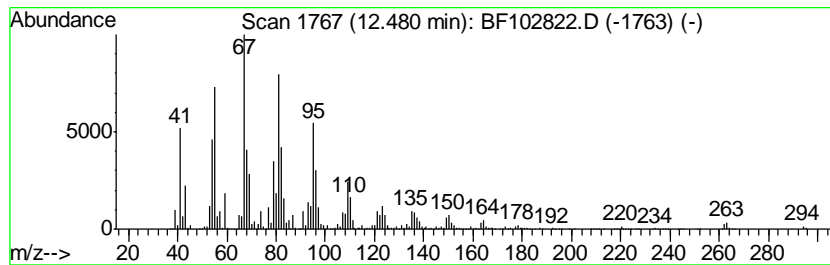
TIC Library : C:\DATABASE\NIST11.L  
 TIC Integration Parameters: LSCINT.P

\*\*\*\*\*  
 Peak Number 14 9,12-Octadecadienoic acid, ... Concentration Rank 1

R.T.	EstConc	Area	Relative to ISTD	R.T.
12.48	51.90 ng	3564450	Phenanthrene-d10	11.40

Hit#	of	Tentative ID	MW	MolForm	CAS#	Qual
1	5	9,12-Octadecadienoic acid, methy...	294	C19H34O2	002462-85-3	99
2		9,12-Octadecadienoic acid, methy...	294	C19H34O2	002566-97-4	99
3		9,12-Octadecadienoic acid (Z,Z)-...	294	C19H34O2	000112-63-0	99
4		10,13-Octadecadienoic acid, meth...	294	C19H34O2	056554-62-2	99
5		Methyl 9-cis,11-trans-octadecadi...	294	C19H34O2	1000336-44-0	99



Data Path : Z:\HPCHEM1\BNA F\DATA\BF020718\  
 Data File : BF102822.D  
 Acq On : 7 Feb 2018 18:59  
 Operator : SJ/JU  
 Sample : J1400-01 2X  
 Misc :  
 ALS Vial : 6 Sample Multiplier: 1

Instrument :  
 BNA\_F  
 ClientSampleID :  
 EO-01-020618-A

Quant Method : Z:\HPCHEM1\BNA F\METHODS\8270-BF020318.M  
 Quant Title : ASP BNA STANDARDS FOR 5 POINT CALIBRATION

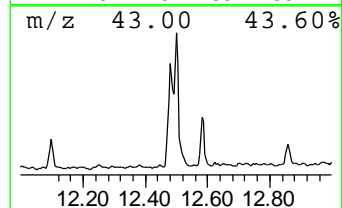
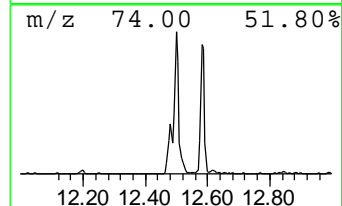
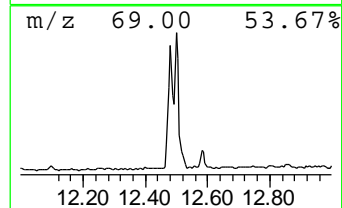
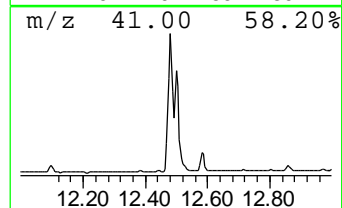
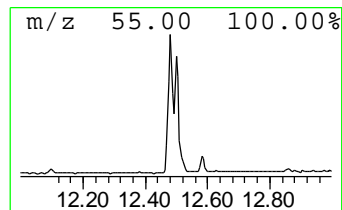
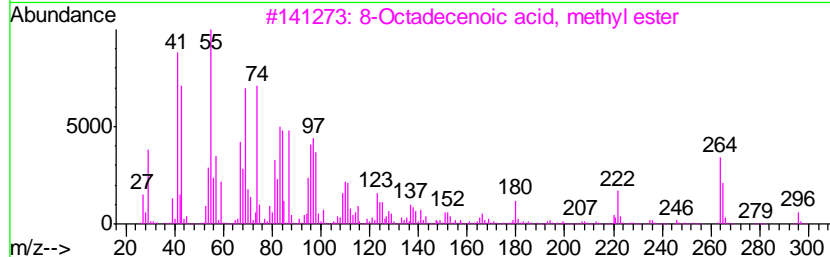
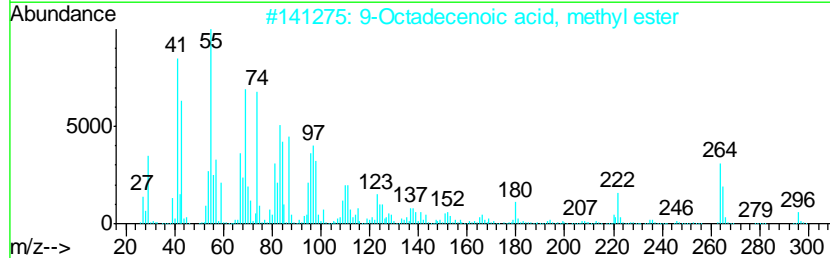
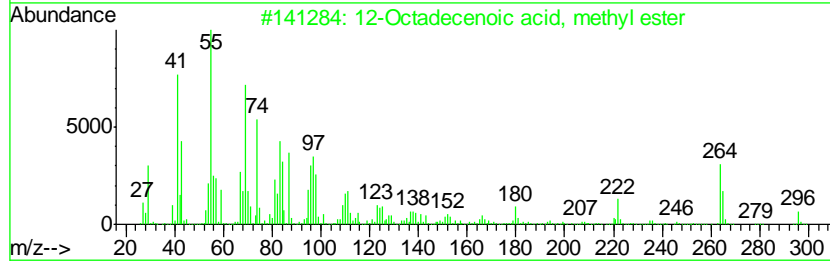
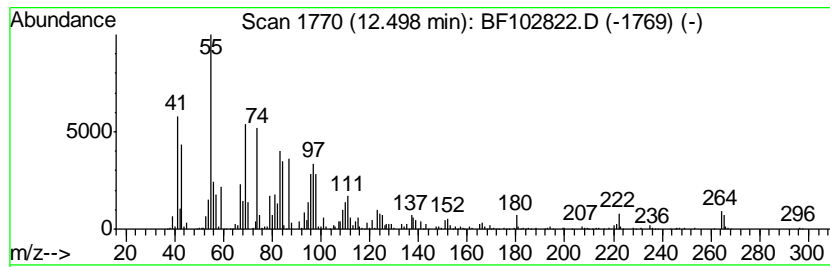
TIC Library : C:\DATABASE\NIST11.L  
 TIC Integration Parameters: LSCINT.P

\*\*\*\*\*  
 Peak Number 15 12-Octadecenoic acid, methyl... Concentration Rank 3

R.T.	EstConc	Area	Relative to ISTD	R.T.
12.50	30.32 ng	2082180	Phenanthrene-d10	11.40

Hit#	of	Tentative ID	MW	MolForm	CAS#	Qual
1	5	12-Octadecenoic acid, methyl ester	296	C19H36O2	056554-46-2	99
2		9-Octadecenoic acid, methyl ester	296	C19H36O2	002462-84-2	99
3		8-Octadecenoic acid, methyl ester	296	C19H36O2	002345-29-1	99
4		11-Octadecenoic acid, methyl est...	296	C19H36O2	001937-63-9	99
5		15-Octadecenoic acid, methyl ester	296	C19H36O2	004764-72-1	98



Data Path : Z:\HPCHEM1\BNA F\DATA\BF020718\  
 Data File : BF102822.D  
 Acq On : 7 Feb 2018 18:59  
 Operator : SJ/JU  
 Sample : J1400-01 2X  
 Misc :  
 ALS Vial : 6 Sample Multiplier: 1

Instrument :  
 BNA\_F  
 ClientSampleId :  
 EO-01-020618-A

Quant Method : Z:\HPCHEM1\BNA F\METHODS\8270-BF020318.M  
 Quant Title : ASP BNA STANDARDS FOR 5 POINT CALIBRATION

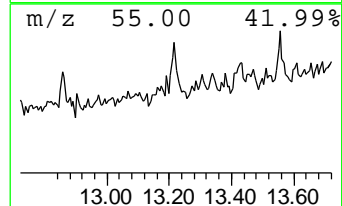
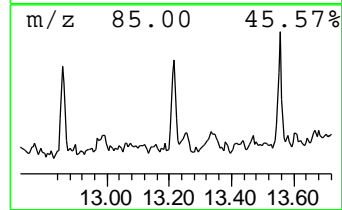
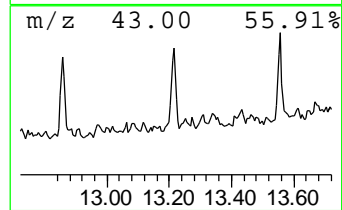
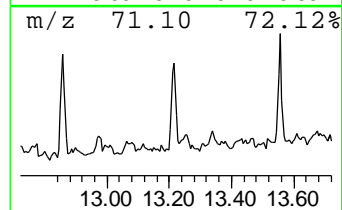
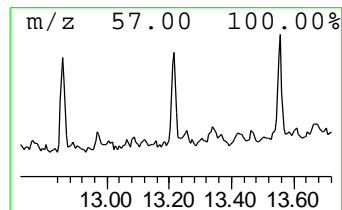
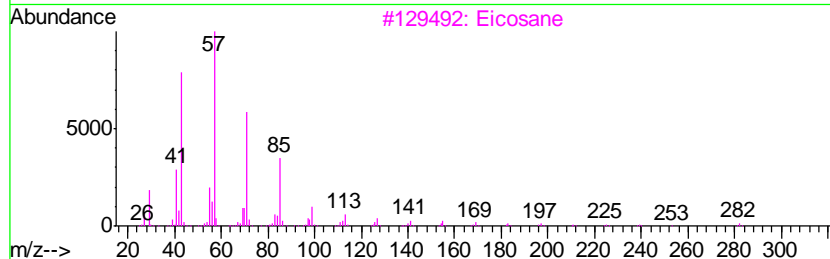
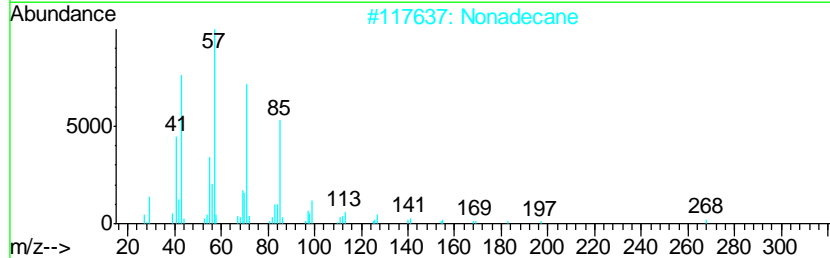
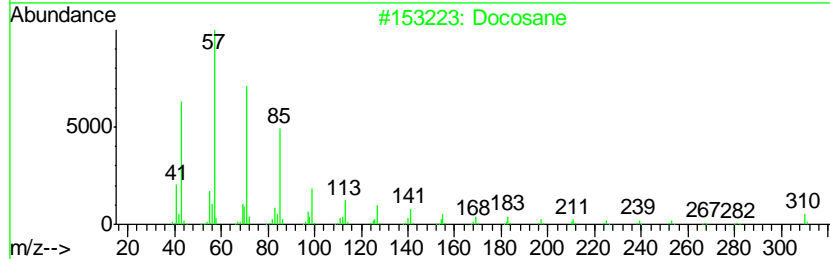
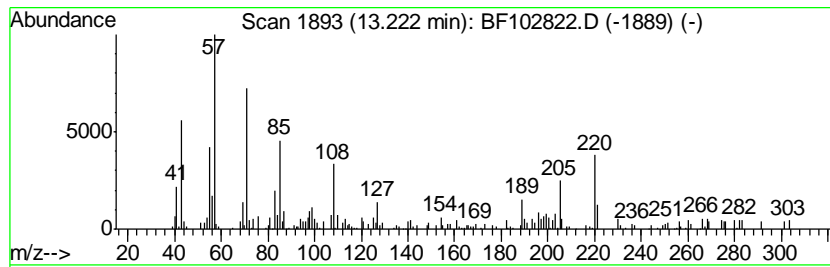
TIC Library : C:\DATABASE\NIST11.L  
 TIC Integration Parameters: LSCINT.P

\*\*\*\*\*  
 Peak Number 16 Docosane Concentration Rank 11

R.T.	EstConc	Area	Relative to ISTD	R.T.
13.22	2.65 ng	140893	Chrysene-d12	14.05

Hit#	of	Tentative ID	MW	MolForm	CAS#	Qual
1	5	Docosane	310	C22H46	000629-97-0	89
2		Nonadecane	268	C19H40	000629-92-5	83
3		Eicosane	282	C20H42	000112-95-8	64
4		Heneicosane	296	C21H44	000629-94-7	64
5		Heptacosane	380	C27H56	000593-49-7	64



Data Path : Z:\HPCHEM1\BNA F\DATA\BF020718\  
 Data File : BF102822.D  
 Acq On : 7 Feb 2018 18:59  
 Operator : SJ/JU  
 Sample : J1400-01 2X  
 Misc :  
 ALS Vial : 6 Sample Multiplier: 1

Instrument :  
 BNA\_F  
 ClientSampleID :  
 EO-01-020618-A

Quant Method : Z:\HPCHEM1\BNA F\METHODS\8270-BF020318.M  
 Quant Title : ASP BNA STANDARDS FOR 5 POINT CALIBRATION

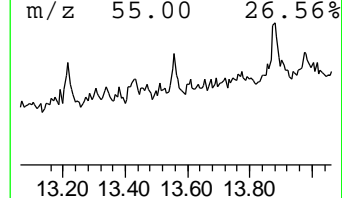
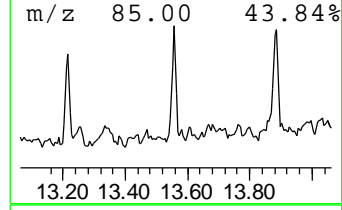
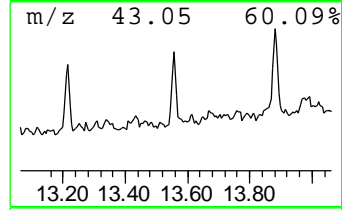
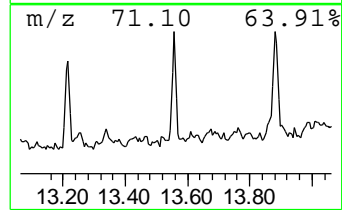
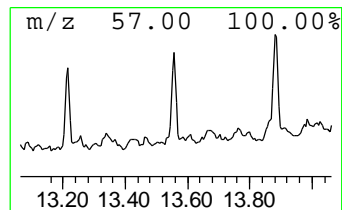
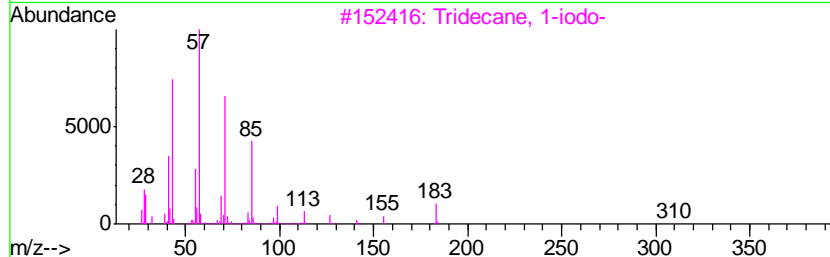
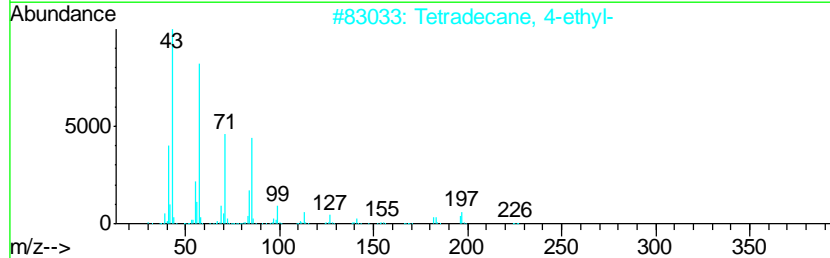
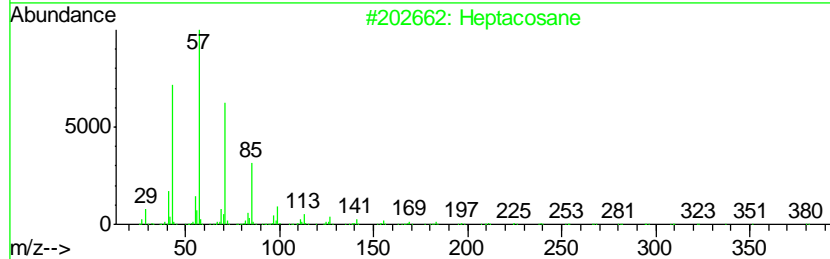
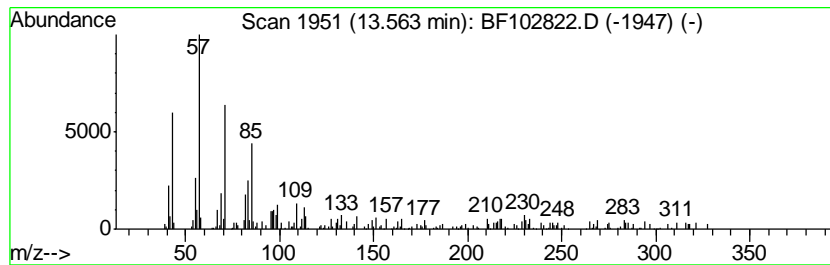
TIC Library : C:\DATABASE\NIST11.L  
 TIC Integration Parameters: LSCINT.P

\*\*\*\*\*  
 Peak Number 17 Heptacosane Concentration Rank 12

R.T.	EstConc	Area	Relative to ISTD	R.T.
13.56	2.59 ng	137356	Chrysene-d12	14.05

Hit#	of	Tentative ID	MW	MolForm	CAS#	Qual
1	5	Heptacosane	380	C27H56	000593-49-7	87
2		Tetradecane, 4-ethyl-	226	C16H34	055045-14-2	87
3		Tridecane, 1-iodo-	310	C13H27I	035599-77-0	86
4		Octadecane, 2-methyl-	268	C19H40	001560-88-9	86
5		Dodecane, 2-methyl-6-propyl-	226	C16H34	055045-08-4	86



Data Path : Z:\HPCHEM1\BNA F\DATA\BF020718\  
 Data File : BF102822.D  
 Acq On : 7 Feb 2018 18:59  
 Operator : SJ/JU  
 Sample : J1400-01 2X  
 Misc :  
 ALS Vial : 6 Sample Multiplier: 1

Instrument :  
 BNA\_F  
 ClientSampleId :  
 EO-01-020618-A

Quant Method : Z:\HPCHEM1\BNA F\METHODS\8270-BF020318.M  
 Quant Title : ASP BNA STANDARDS FOR 5 POINT CALIBRATION

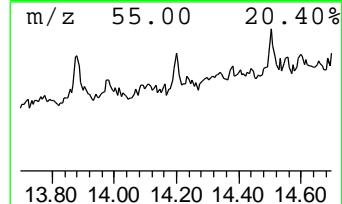
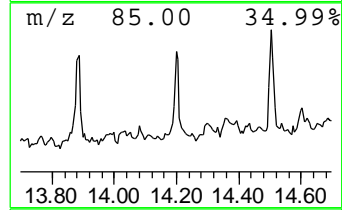
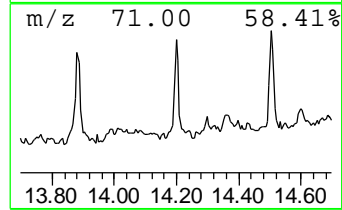
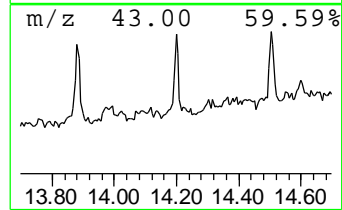
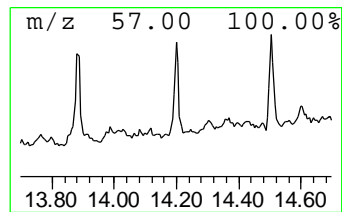
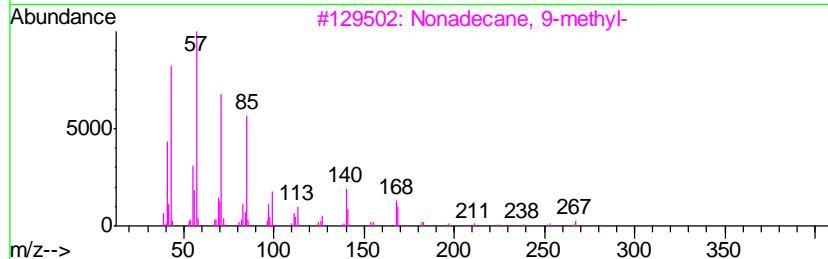
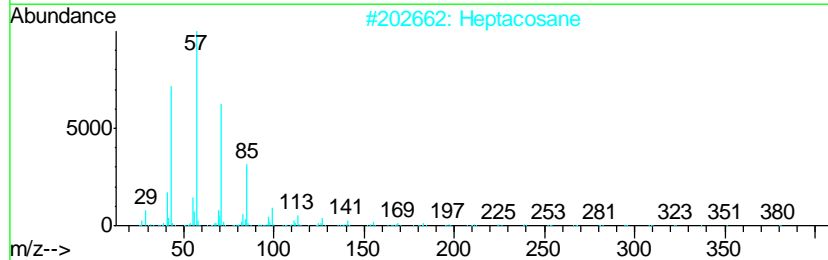
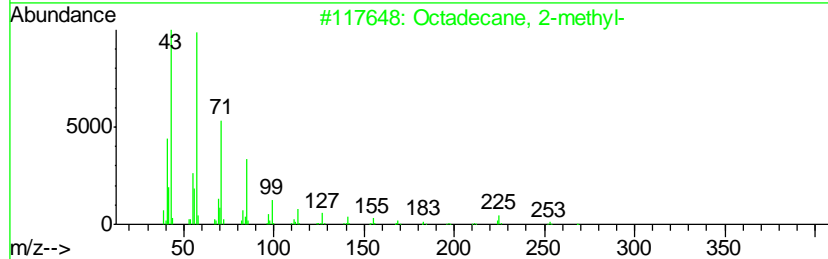
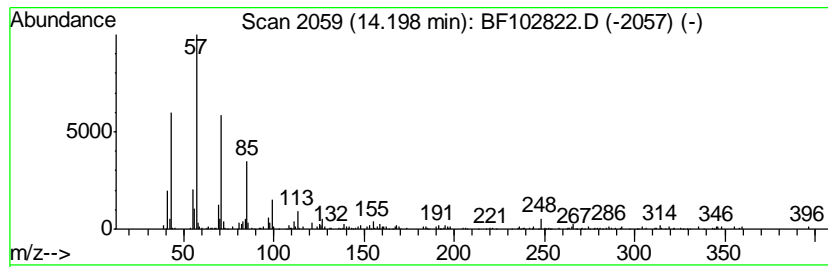
TIC Library : C:\DATABASE\NIST11.L  
 TIC Integration Parameters: LSCINT.P

\*\*\*\*\*  
 Peak Number 19 Octadecane, 2-methyl- Concentration Rank 19

R.T.	EstConc	Area	Relative to ISTD	R.T.
14.20	2.17 ng	115247	Chrysene-d12	14.05

Hit#	of	Tentative ID	MW	MolForm	CAS#	Qual
1	5	Octadecane, 2-methyl-	268	C19H40	001560-88-9	87
2		Heptacosane	380	C27H56	000593-49-7	83
3		Nonadecane, 9-methyl-	282	C20H42	013287-24-6	81
4		Tridecane, 2-methyl-	198	C14H30	001560-96-9	80
5		Eicosane	282	C20H42	000112-95-8	80





Data Path : Z:\HPCHEM1\BNA F\DATA\BF020718\  
 Data File : BF102822.D  
 Acq On : 7 Feb 2018 18:59  
 Operator : SJ/JU  
 Sample : J1400-01 2X  
 Misc :  
 ALS Vial : 6 Sample Multiplier: 1

Instrument :  
 BNA\_F  
 ClientSampleId :  
 EO-01-020618-A

Quant Method : Z:\HPCHEM1\BNA F\METHODS\8270-BF020318.M  
 Quant Title : ASP BNA STANDARDS FOR 5 POINT CALIBRATION

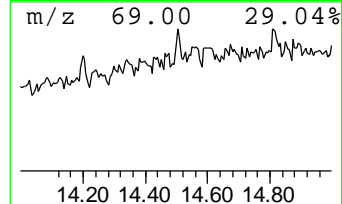
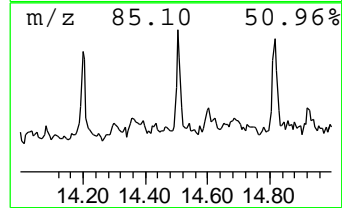
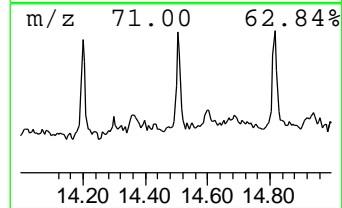
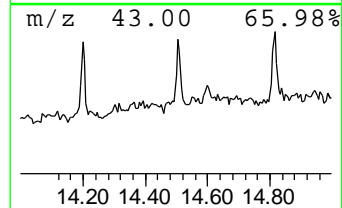
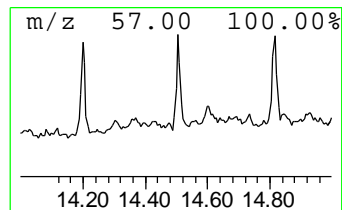
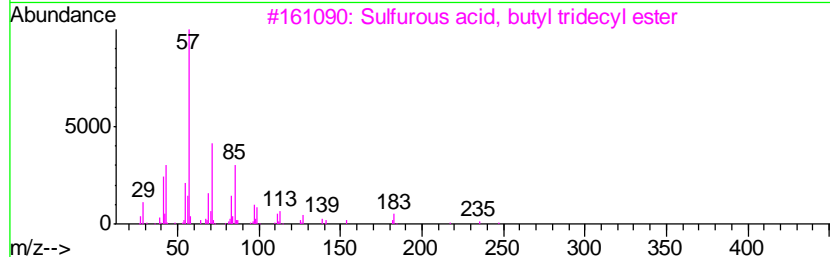
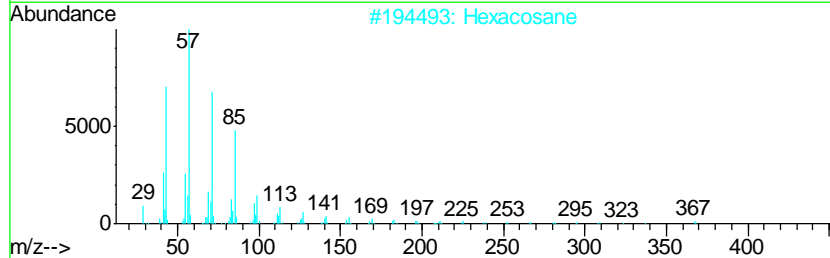
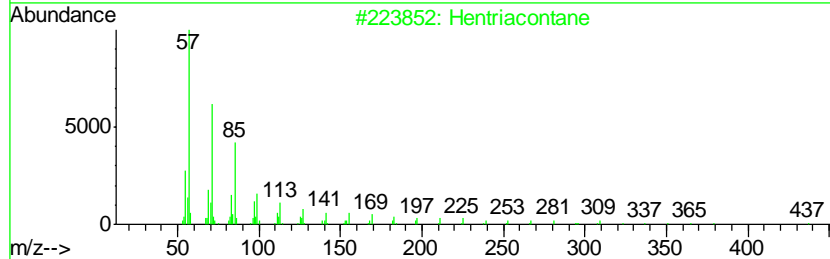
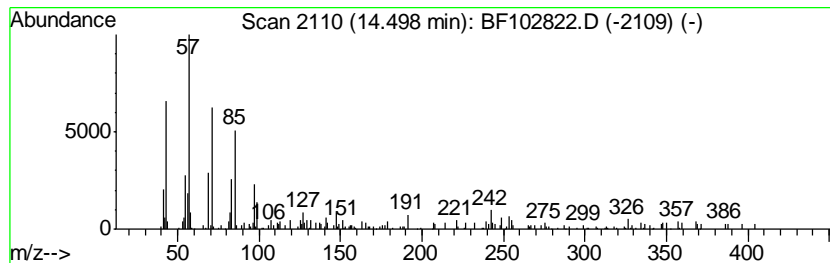
TIC Library : C:\DATABASE\NIST11.L  
 TIC Integration Parameters: LSCINT.P

\*\*\*\*\*  
 Peak Number 20 Hentriacontane Concentration Rank 17

R.T.	EstConc	Area	Relative to ISTD	R.T.
14.50	2.39 ng	126951	Chrysene-d12	14.05

Hit#	of	Tentative ID	MW	MolForm	CAS#	Qual
1	5	Hentriacontane	437	C31H64	000630-04-6	87
2		Hexacosane	366	C26H54	000630-01-3	87
3		Sulfurous acid, butyl tridecyl e...	320	C17H36O3S	1000309-18-0	87
4		Sulfurous acid, butyl dodecyl ester	306	C16H34O3S	1000309-17-9	86
5		Heneicosane, 11-(1-ethylpropyl)-	366	C26H54	055282-11-6	86



Data Path : Z:\HPCHEM1\BNA\_F\DATA\BF020718\  
 Data File : BF102822.D  
 Acq On : 7 Feb 2018 18:59  
 Operator : SJ/JU  
 Sample : J1400-01 2X  
 Misc :  
 ALS Vial : 6 Sample Multiplier: 1

Instrument :  
 BNA\_F  
 ClientSampleId :  
 EO-01-020618-A

Quant Method : Z:\HPCHEM1\BNA\_F\METHODS\8270-BF020318.M  
 Quant Title : ASP BNA STANDARDS FOR 5 POINT CALIBRATION

TIC Library : C:\DATABASE\NIST11.L  
 TIC Integration Parameters: LSCINT.P

TIC Top Hit name	RT	EstConc	Units	Response	--Internal Standard--			
					#	RT	Resp	Conc
Butane, 2-methoxy...	2.13	4.5	ng	266666	1	6.88	1184450	20.0
unknown6.65	6.65	39.3	ng	2327570	1	6.88	1184450	20.0
Hexadecane	9.31	2.6	ng	197405	3	9.92	1540810	20.0
Pentadecane, 2,6,...	10.56	2.3	ng	178767	3	9.92	1540810	20.0
Pentadecane	10.82	7.3	ng	503785	4	11.40	1373630	20.0
Bacchotricuneatin c	11.29	2.5	ng	169138	4	11.40	1373630	20.0
Dodecane, 2-methy...	11.69	2.5	ng	172126	4	11.40	1373630	20.0
Hexadecanoic acid...	11.79	16.2	ng	1110770	4	11.40	1373630	20.0
9,12-Octadecadien...	12.48	51.9	ng	3564450	4	11.40	1373630	20.0
12-Octadecenoic a...	12.50	30.3	ng	2082180	4	11.40	1373630	20.0
Docosane	13.22	2.6	ng	140893	5	14.05	1061690	20.0
Heptacosane	13.56	2.6	ng	137356	5	14.05	1061690	20.0
Octadecane, 2-met...	14.20	2.2	ng	115247	5	14.05	1061690	20.0
Hentriacontane	14.50	2.4	ng	126951	5	14.05	1061690	20.0