

Data Path : Z:\HPCHEM1\BNA F\DATA\BF020718\
 Data File : BF102838.D
 Acq On : 8 Feb 2018 2:10
 Operator : SJ/JU
 Sample : J1473-41
 Misc :
 ALS Vial : 22 Sample Multiplier: 1

Instrument :
 BNA_F
 Client Sampled :
 B11

Integration Parameters: rteint.p
 Integrator: RTE
 Smoothing : ON
 Sampling : 1
 Start Thrs: 0.2
 Stop Thrs : 0

Filtering: 5
 Min Area: 3 % of largest Peak
 Max Peaks: 100
 Peak Location: TOP

If leading or trailing edge < 100 prefer < Baseline drop else tangent >
 Peak separation: 5

Method : Z:\HPCHEM1\BNA F\METHODS\8270-BF020318.M
 Title : ASP BNA STANDARDS FOR 5 POINT CALIBRATION

Signal : TIC

peak #	R.T. min	first scan	max scan	last scan	PK TY	peak height	corr. area	corr. % max.	% of total
1	2.181	10	16	23	rVB	440321	592086	12.43%	1.511%
2	3.475	230	236	248	rBV	393891	984270	20.67%	2.511%
3	5.122	513	516	525	rVB	124959	162861	3.42%	0.416%
4	5.504	576	581	585	rBV	4206094	4647102	97.58%	11.857%
5	6.516	747	753	768	rBV2	3822501	4762562	100.00%	12.152%
6	6.657	772	777	780	rBV	4415745	4441233	93.25%	11.332%
7	6.881	812	815	819	rBV	1247066	1150872	24.16%	2.937%
8	7.040	838	842	846	rBV	3529419	3340113	70.13%	8.523%
9	7.445	906	911	914	rBV	2846306	2854880	59.94%	7.284%
10	7.516	920	923	933	rVB	48961	51118	1.07%	0.130%
11	8.169	1030	1034	1037	rBV	1605543	1460693	30.67%	3.727%
12	9.239	1211	1216	1226	rBV	4045466	4004690	84.09%	10.218%
13	9.316	1226	1229	1231	rVB	74723	57003	1.20%	0.145%
14	9.633	1279	1283	1286	rBV	309899	300050	6.30%	0.766%
15	9.845	1311	1319	1322	rBV	189209	159789	3.36%	0.408%
16	9.922	1328	1332	1342	rBV2	1503823	1350591	28.36%	3.446%
17	10.322	1396	1400	1402	rBV	54923	57119	1.20%	0.146%
18	10.345	1402	1404	1407	rVB	218929	153586	3.22%	0.392%
19	10.563	1436	1441	1444	rBV	49209	66661	1.40%	0.170%
20	10.710	1462	1466	1476	rVB	2151357	1997677	41.95%	5.097%
21	10.816	1481	1484	1493	rVB	161416	180817	3.80%	0.461%
22	11.269	1558	1561	1563	rBV	82448	74419	1.56%	0.190%
23	11.410	1581	1585	1589	rBV	1329677	1091420	22.92%	2.785%
24	11.927	1669	1673	1675	rBV	57073	56157	1.18%	0.143%
25	12.804	1820	1822	1826	rBV	72941	66180	1.39%	0.169%
26	12.992	1850	1854	1858	rBV	2928641	2782727	58.43%	7.100%
27	13.510	1939	1942	1945	rBV	54890	47664	1.00%	0.122%
28	13.880	2001	2005	2012	rBV	208129	243979	5.12%	0.623%
29	14.051	2030	2034	2037	rBV	1034531	971678	20.40%	2.479%
30	14.510	2109	2112	2117	rBV2	43257	60105	1.26%	0.153%
31	15.533	2281	2286	2300	rBV	552380	797568	16.75%	2.035%
32	15.992	2361	2364	2369	rVB2	49667	78315	1.64%	0.200%
33	17.209	2566	2571	2580	rVB10	69081	145608	3.06%	0.372%

Data Path : Z:\HPCHEM1\BNA_F\DATA\BF020718\
Data File : BF102838.D
Acq On : 8 Feb 2018 2:10
Operator : SJ/JU
Sample : J1473-41
Misc :
ALS Vial : 22 Sample Multiplier: 1

Instrument :
BNA_F
ClientSampleId :
B11

Integration Parameters: rteint.p
Integrator: RTE
Smoothing : ON Filtering: 5
Sampling : 1 Min Area: 3 % of largest Peak
Start Thrs: 0.2 Max Peaks: 100
Stop Thrs : 0 Peak Location: TOP

If leading or trailing edge < 100 prefer < Baseline drop else tangent >
Peak separation: 5

Method : Z:\HPCHEM1\BNA_F\METHODS\8270-BF020318.M
Title : ASP BNA STANDARDS FOR 5 POINT CALIBRATION

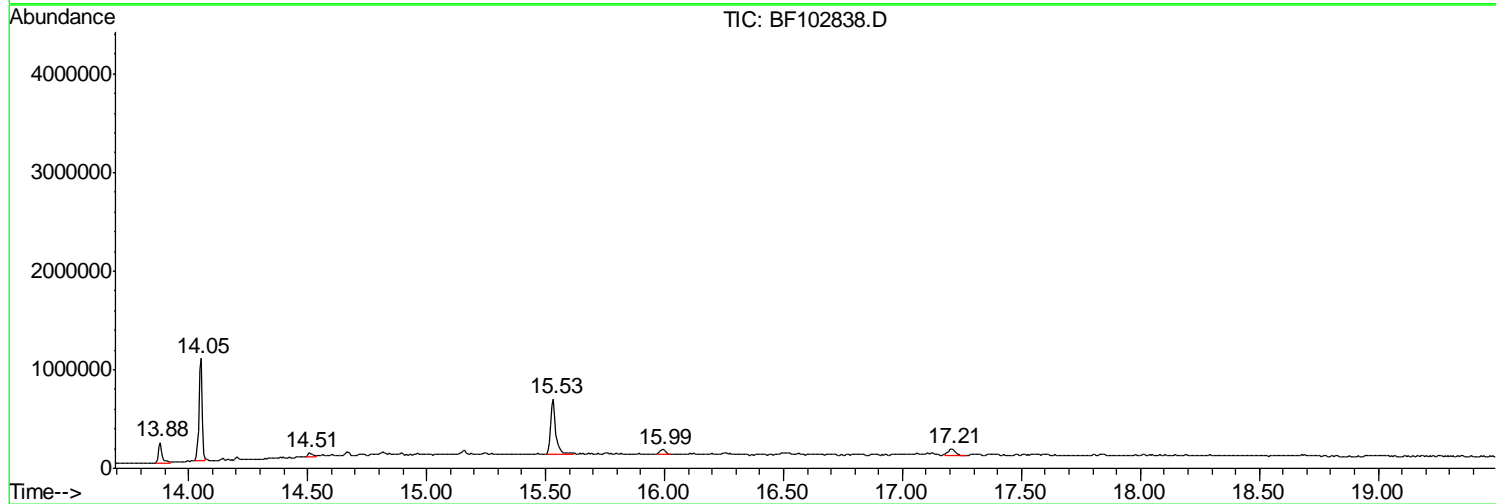
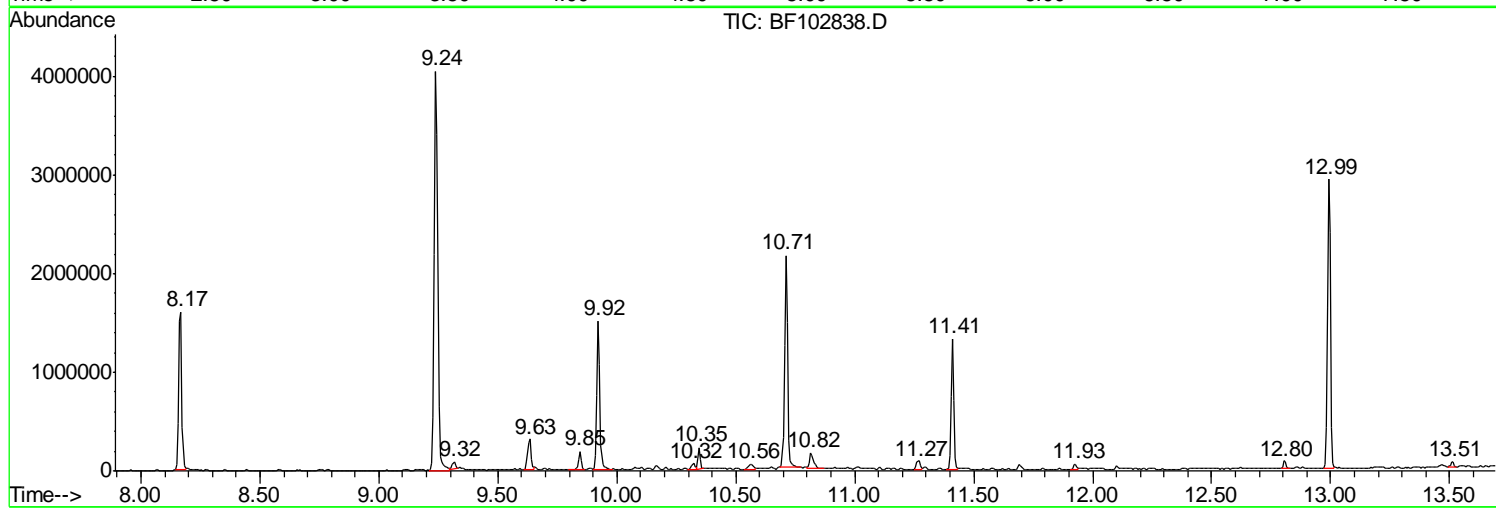
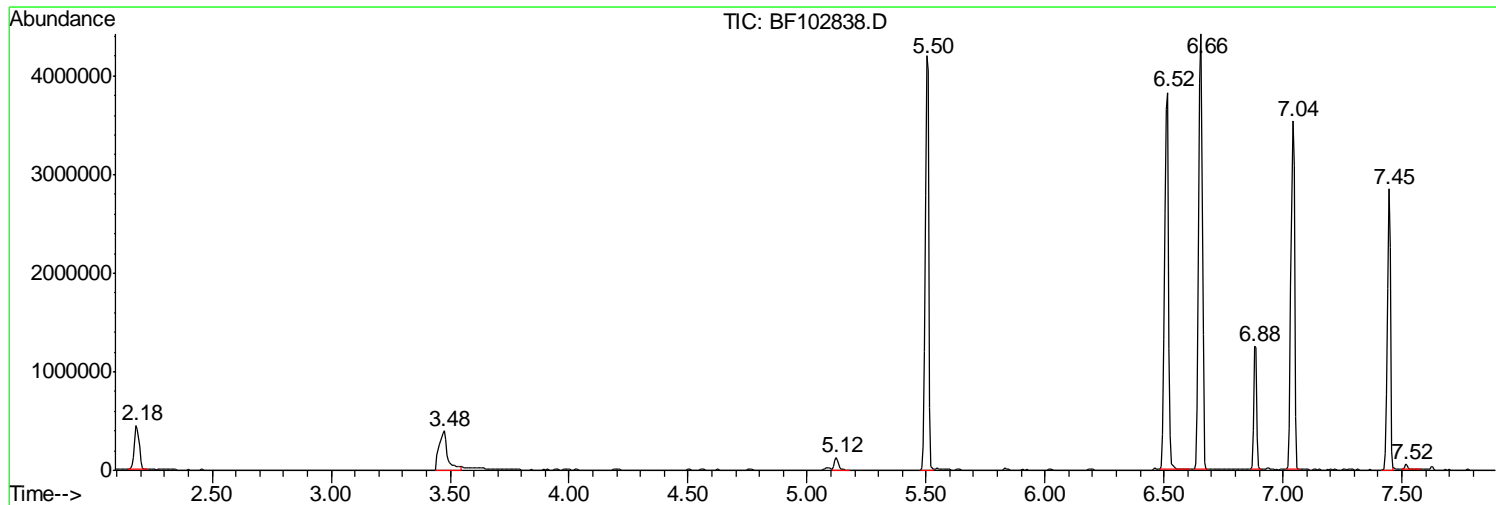
Sum of corrected areas: 39191593

Data Path : Z:\HPCHEM1\BNA F\DATA\BF020718\
Data File : BF102838.D
Acq On : 8 Feb 2018 2:10
Operator : SJ/JU
Sample : J1473-41
Misc :
ALS Vial : 22 Sample Multiplier: 1

Instrument :
BNA_F
ClientSampled :
B11

Quant Method : Z:\HPCHEM1\BNA F\METHODS\8270-BF020318.M
Quant Title : ASP BNA STANDARDS FOR 5 POINT CALIBRATION

TIC Library : C:\DATABASE\NIST11.L
TIC Integration Parameters: LSCINT.P



Data Path : Z:\HPCHEM1\BNA F\DATA\BF020718\
 Data File : BF102838.D
 Acq On : 8 Feb 2018 2:10
 Operator : SJ/JU
 Sample : J1473-41
 Misc :
 ALS Vial : 22 Sample Multiplier: 1

Instrument :
 BNA_F
 ClientSampleID :
 B11

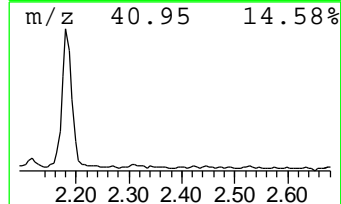
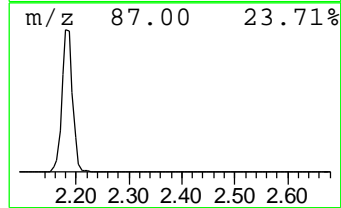
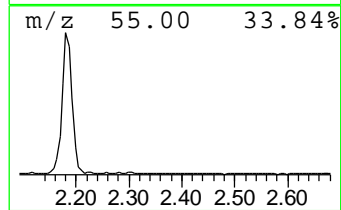
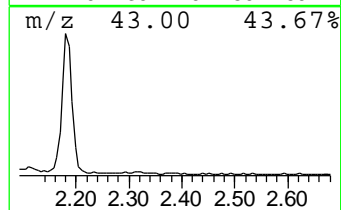
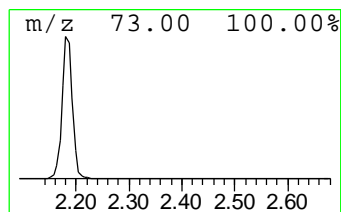
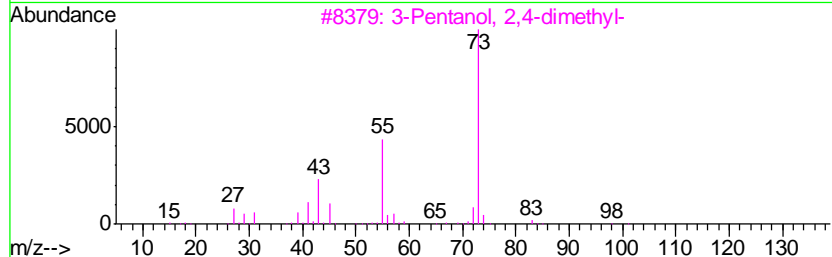
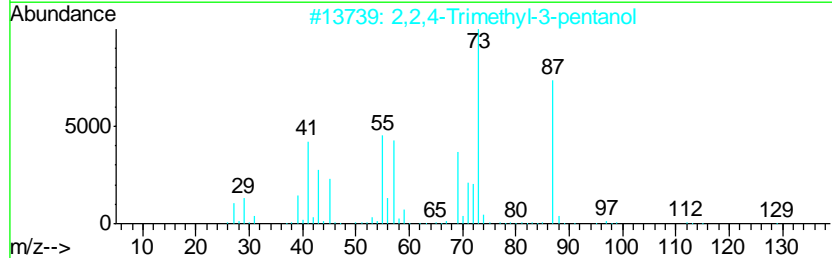
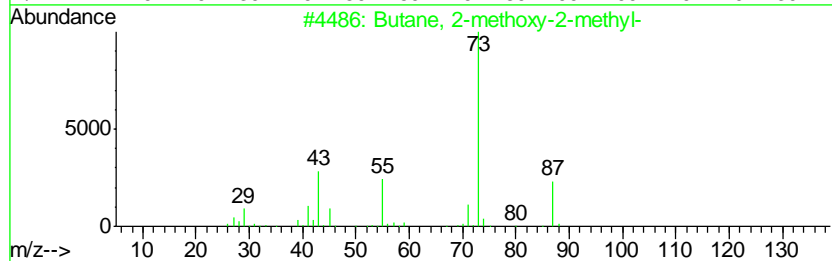
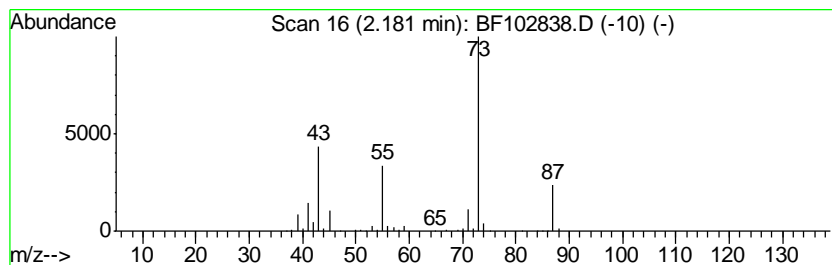
Quant Method : Z:\HPCHEM1\BNA F\METHODS\8270-BF020318.M
 Quant Title : ASP BNA STANDARDS FOR 5 POINT CALIBRATION

TIC Library : C:\DATABASE\NIST11.L
 TIC Integration Parameters: LSCINT.P

 Peak Number 1 Butane, 2-methoxy-2-methyl- Concentration Rank 4

R.T.	EstConc	Area	Relative to ISTD	R.T.
2.18	10.29 ng	592086	1,4-Dichlorobenzene-d4	6.89

Hit#	of	Tentative ID	MW	MolForm	CAS#	Qual
1	5	Butane, 2-methoxy-2-methyl-	102	C6H14O	000994-05-8	83
2		2,2,4-Trimethyl-3-pentanol	130	C8H18O	005162-48-1	39
3		3-Pentanol, 2,4-dimethyl-	116	C7H16O	000600-36-2	25
4		1,3-Dioxolane, 2-methyl-	88	C4H8O2	000497-26-7	25
5		2-Methyl-5-hexen-3-ol	114	C7H14O	032815-70-6	23



Data Path : Z:\HPCHEM1\BNA F\DATA\BF020718\
 Data File : BF102838.D
 Acq On : 8 Feb 2018 2:10
 Operator : SJ/JU
 Sample : J1473-41
 Misc :
 ALS Vial : 22 Sample Multiplier: 1

Instrument :
 BNA_F
 ClientSampled :
 B11

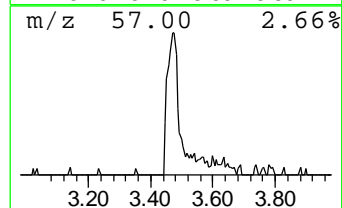
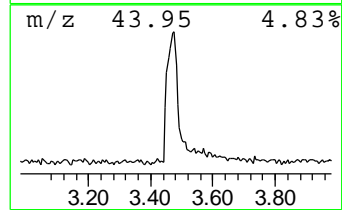
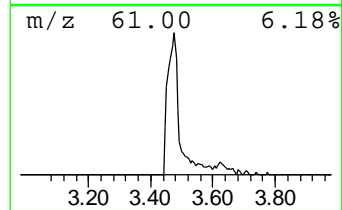
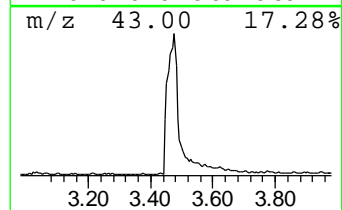
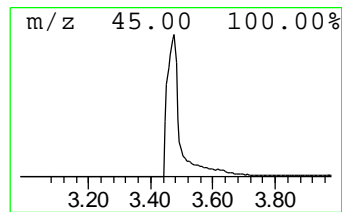
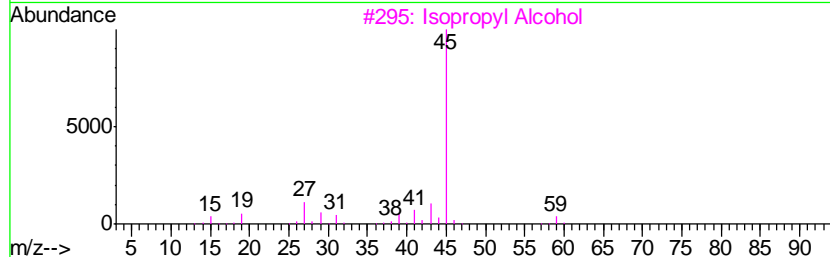
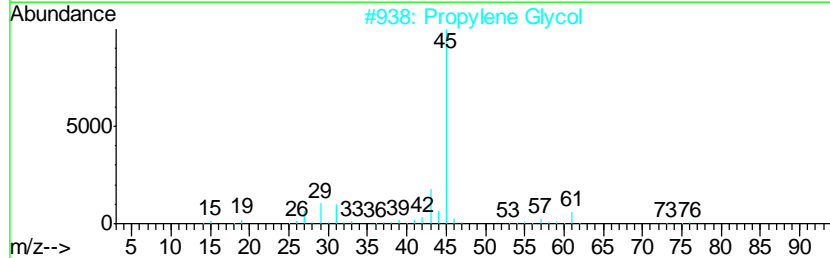
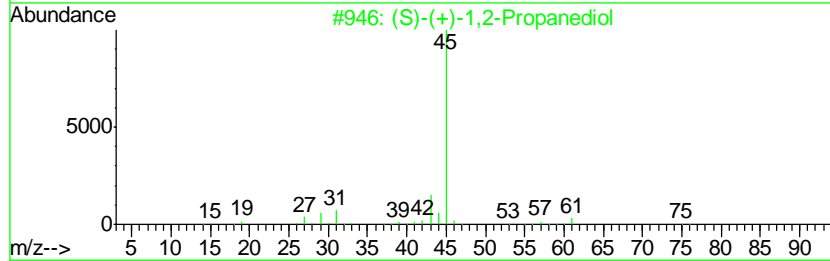
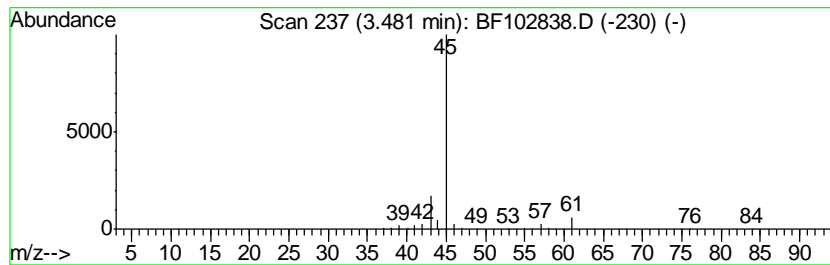
Quant Method : Z:\HPCHEM1\BNA F\METHODS\8270-BF020318.M
 Quant Title : ASP BNA STANDARDS FOR 5 POINT CALIBRATION

TIC Library : C:\DATABASE\NIST11.L
 TIC Integration Parameters: LSCINT.P

 Peak Number 2 (S)-(+)-1,2-Propanediol Concentration Rank 3

R.T.	EstConc	Area	Relative to ISTD	R.T.
3.48	17.10 ng	984270	1,4-Dichlorobenzene-d4	6.89

Hit#	of	Tentative ID	MW	MolForm	CAS#	Qual
1	5	(S)-(+)-1,2-Propanediol	76	C3H8O2	004254-15-3	64
2		Propylene Glycol	76	C3H8O2	000057-55-6	46
3		Isopropyl Alcohol	60	C3H8O	000067-63-0	9
4		2-Propanol, 1-(1-methylethoxy)-	118	C6H14O2	003944-36-3	9
5		Propanoic acid, 2-hydroxy-, meth...	104	C4H8O3	002155-30-8	9



Data Path : Z:\HPCHEM1\BNA F\DATA\BF020718\
 Data File : BF102838.D
 Acq On : 8 Feb 2018 2:10
 Operator : SJ/JU
 Sample : J1473-41
 Misc :
 ALS Vial : 22 Sample Multiplier: 1

Instrument :
 BNA_F
 ClientSampled :
 B11

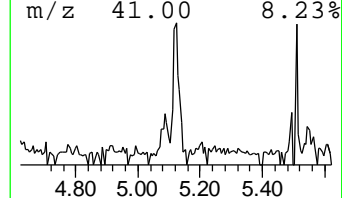
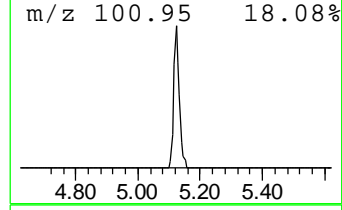
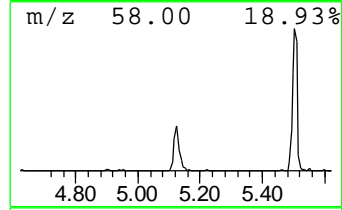
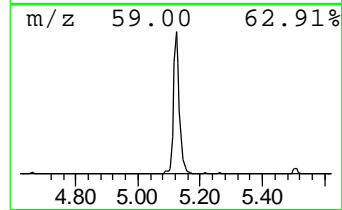
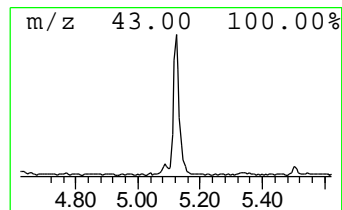
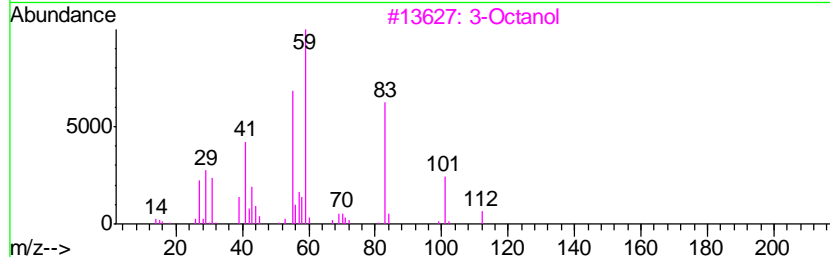
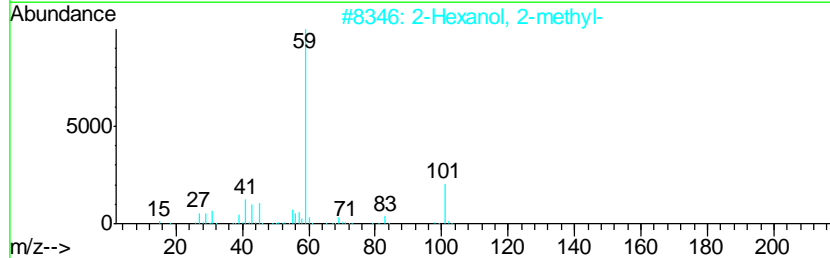
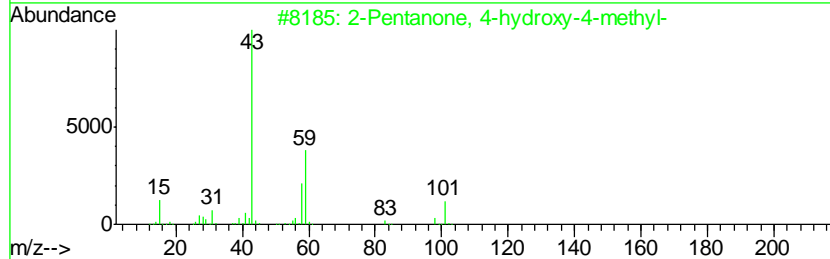
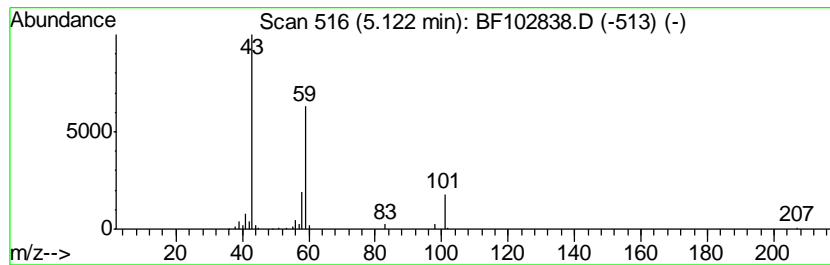
Quant Method : Z:\HPCHEM1\BNA F\METHODS\8270-BF020318.M
 Quant Title : ASP BNA STANDARDS FOR 5 POINT CALIBRATION

TIC Library : C:\DATABASE\NIST11.L
 TIC Integration Parameters: LSCINT.P

 Peak Number 3 2-Pentanone, 4-hydroxy-4-me... Concentration Rank 8

R.T.	EstConc	Area	Relative to ISTD	R.T.
5.12	2.83 ng	162861	1,4-Dichlorobenzene-d4	6.89

Hit#	of	Tentative ID	MW	MolForm	CAS#	Qual
1	5	2-Pentanone, 4-hydroxy-4-methyl-	116	C6H12O2	000123-42-2	50
2		2-Hexanol, 2-methyl-	116	C7H16O	000625-23-0	38
3		3-Octanol	130	C8H18O	000589-98-0	33
4		3-Hydroxy-3-methyl-2-butanone	102	C5H10O2	000115-22-0	23
5		2,3-Butanedione, monooxime	101	C4H7NO2	000057-71-6	9



Data Path : Z:\HPCHEM1\BNA F\DATA\BF020718\
 Data File : BF102838.D
 Acq On : 8 Feb 2018 2:10
 Operator : SJ/JU
 Sample : J1473-41
 Misc :
 ALS Vial : 22 Sample Multiplier: 1

Instrument :
 BNA_F
 ClientSampled :
 B11

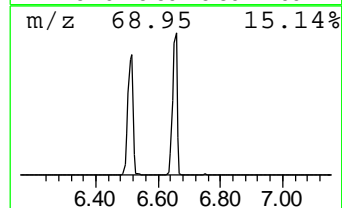
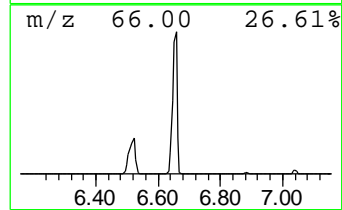
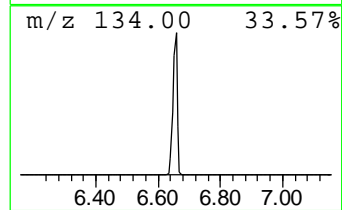
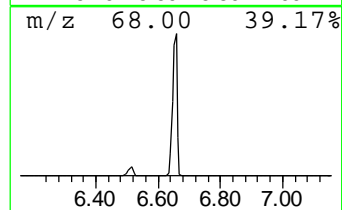
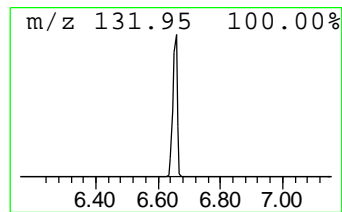
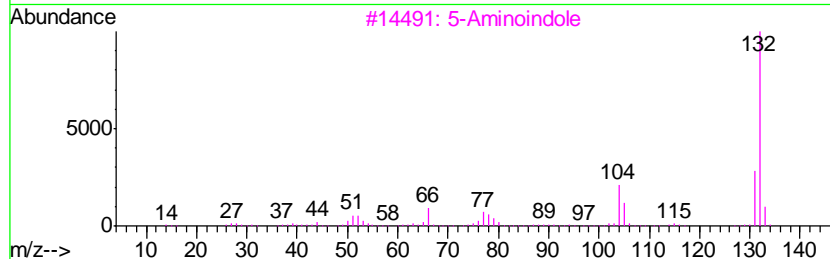
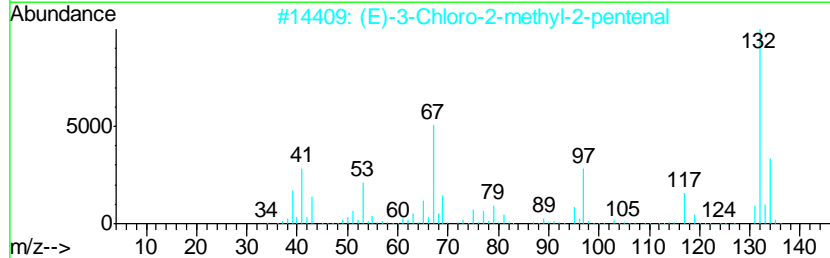
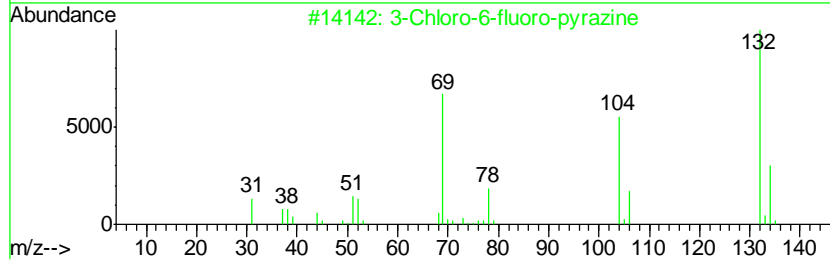
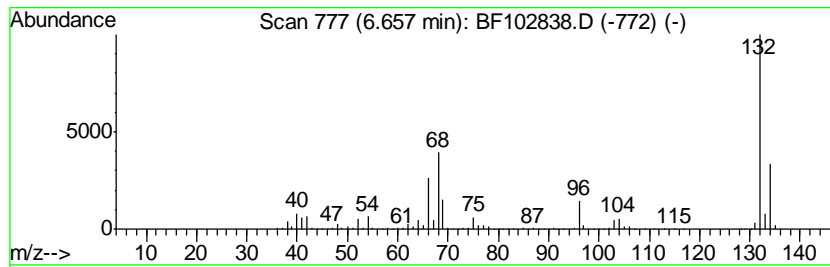
Quant Method : Z:\HPCHEM1\BNA F\METHODS\8270-BF020318.M
 Quant Title : ASP BNA STANDARDS FOR 5 POINT CALIBRATION

TIC Library : C:\DATABASE\NIST11.L
 TIC Integration Parameters: LSCINT.P

 Peak Number 4 unknown6.66 Concentration Rank 1

R.T.	EstConc	Area	Relative to ISTD	R.T.
6.66	77.18 ng	4441230	1,4-Dichlorobenzene-d4	6.89

Hit#	of	Tentative ID	MW	MolForm	CAS#	Qual
1	5	3-Chloro-6-fluoro-pyrazine	132	C4H2ClFN2	1000146-10-7	27
2		(E)-3-Chloro-2-methyl-2-pentenal	132	C6H9ClO	031357-76-3	17
3		5-Aminoindole	132	C8H8N2	005192-03-0	12
4		Tranylcypromine-propionyl	189	C12H15NO	1000123-86-3	10
5		Bicyclo[4.2.0]octa-1,3,5-triene,...	132	C10H12	028749-81-7	9



Data Path : Z:\HPCHEM1\BNA F\DATA\BF020718\
 Data File : BF102838.D
 Acq On : 8 Feb 2018 2:10
 Operator : SJ/JU
 Sample : J1473-41
 Misc :
 ALS Vial : 22 Sample Multiplier: 1

Instrument :
 BNA_F
 ClientSampleID :
 B11

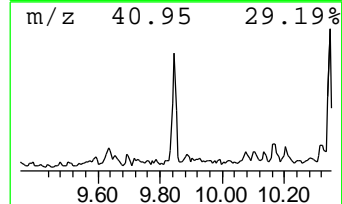
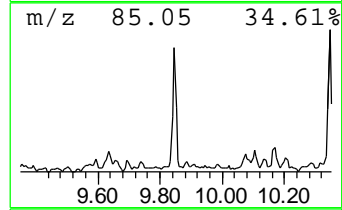
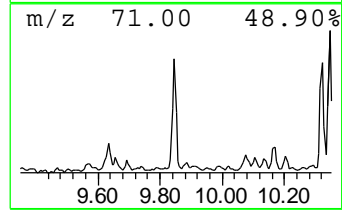
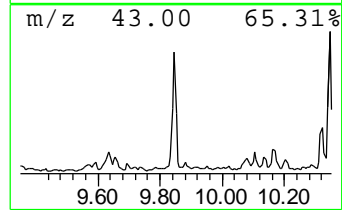
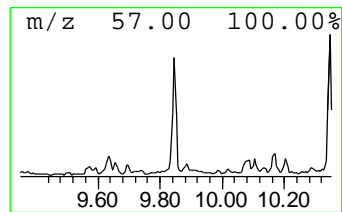
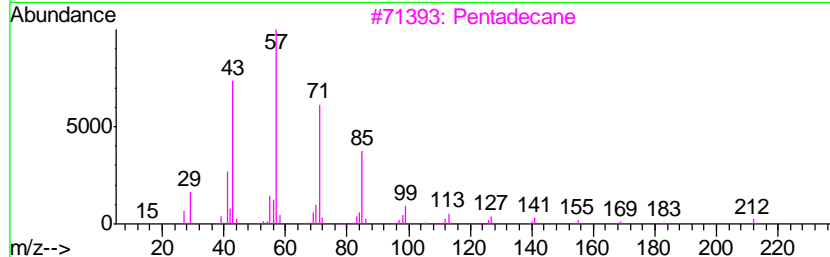
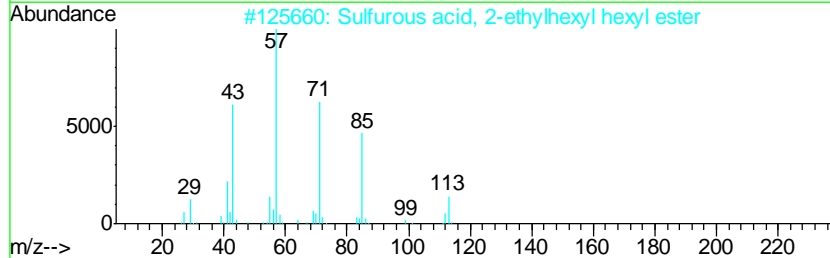
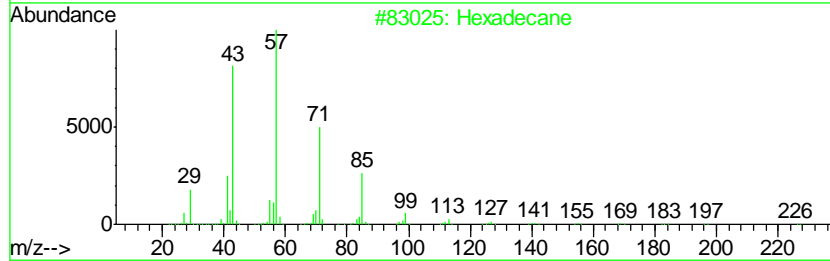
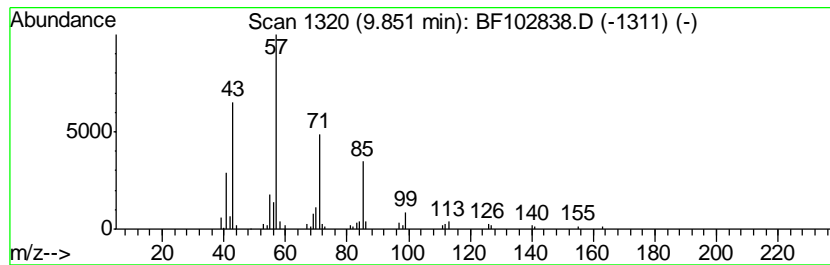
Quant Method : Z:\HPCHEM1\BNA F\METHODS\8270-BF020318.M
 Quant Title : ASP BNA STANDARDS FOR 5 POINT CALIBRATION

TIC Library : C:\DATABASE\NIST11.L
 TIC Integration Parameters: LSCINT.P

 Peak Number 6 Hexadecane Concentration Rank 9

R.T.	EstConc	Area	Relative to ISTD	R.T.
9.85	2.37 ng	159789	Acenaphthene-d10	9.92

Hit#	of	Tentative ID	MW	MolForm	CAS#	Qual
1	5	Hexadecane	226	C16H34	000544-76-3	91
2		Sulfurous acid, 2-ethylhexyl hex...	278	C14H30O3S	1000309-20-2	80
3		Pentadecane	212	C15H32	000629-62-9	72
4		Dodecane, 2,6,11-trimethyl-	212	C15H32	031295-56-4	72
5		Tetradecane	198	C14H30	000629-59-4	72



Data Path : Z:\HPCHEM1\BNA F\DATA\BF020718\
 Data File : BF102838.D
 Acq On : 8 Feb 2018 2:10
 Operator : SJ/JU
 Sample : J1473-41
 Misc :
 ALS Vial : 22 Sample Multiplier: 1

Instrument :
 BNA_F
 ClientSampleID :
 B11

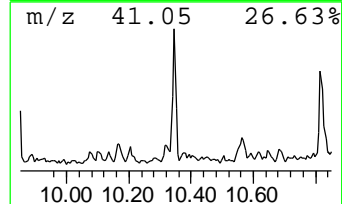
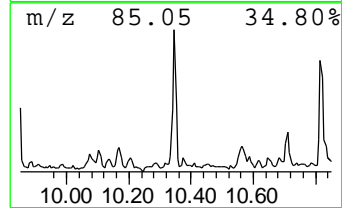
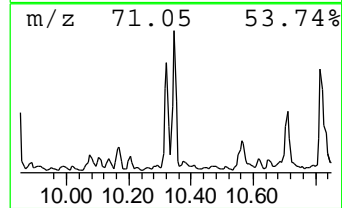
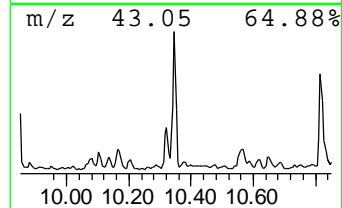
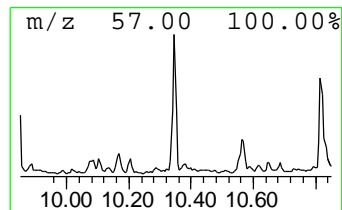
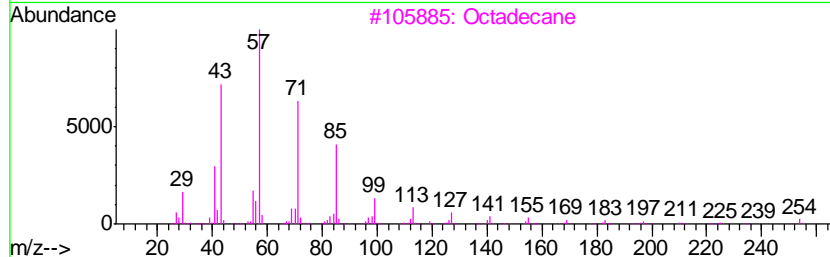
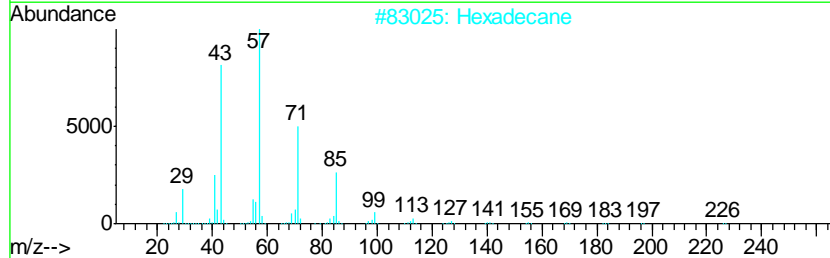
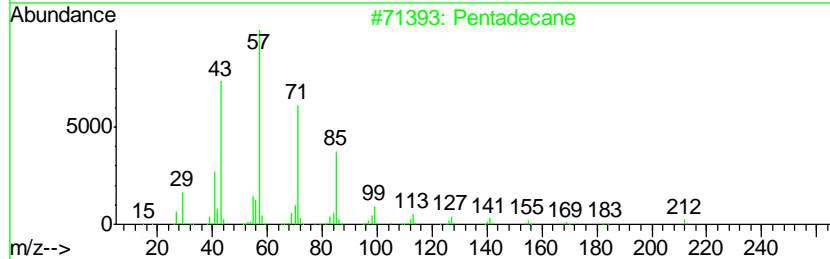
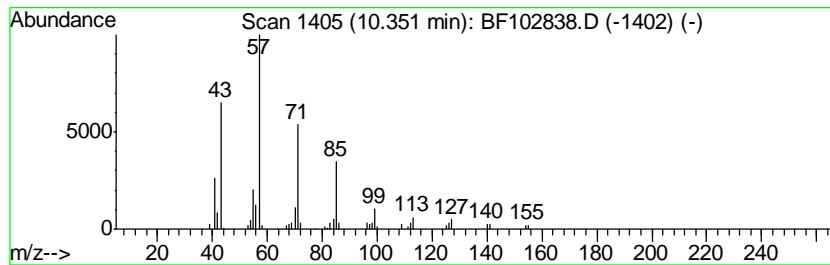
Quant Method : Z:\HPCHEM1\BNA F\METHODS\8270-BF020318.M
 Quant Title : ASP BNA STANDARDS FOR 5 POINT CALIBRATION

TIC Library : C:\DATABASE\NIST11.L
 TIC Integration Parameters: LSCINT.P

 Peak Number 7 Pentadecane Concentration Rank 10

R.T.	EstConc	Area	Relative to ISTD	R.T.
10.35	2.27 ng	153586	Acenaphthene-d10	9.92

Hit#	of	Tentative ID	MW	MolForm	CAS#	Qual
1	5	Pentadecane	212	C15H32	000629-62-9	90
2		Hexadecane	226	C16H34	000544-76-3	86
3		Octadecane	254	C18H38	000593-45-3	83
4		Tetratetracontane	619	C44H90	007098-22-8	83
5		Sulfurous acid, 2-ethylhexyl hex...	278	C14H30O3S	1000309-20-2	80



Data Path : Z:\HPCHEM1\BNA F\DATA\BF020718\
 Data File : BF102838.D
 Acq On : 8 Feb 2018 2:10
 Operator : SJ/JU
 Sample : J1473-41
 Misc :
 ALS Vial : 22 Sample Multiplier: 1

Instrument :
 BNA_F
 ClientSampled :
 B11

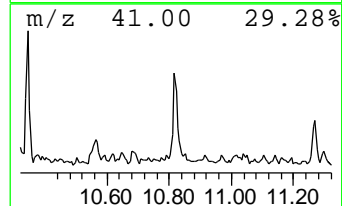
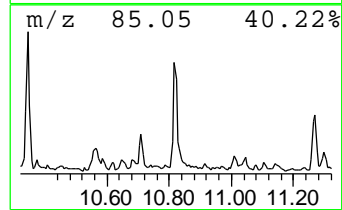
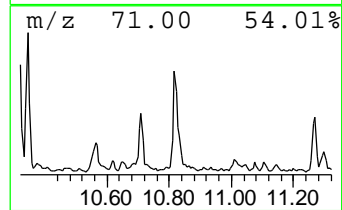
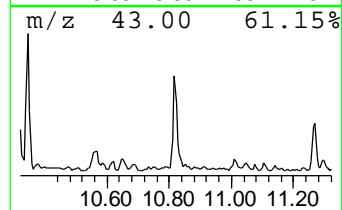
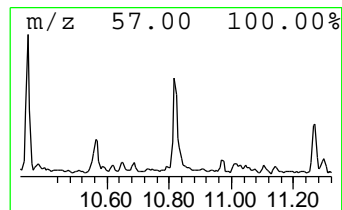
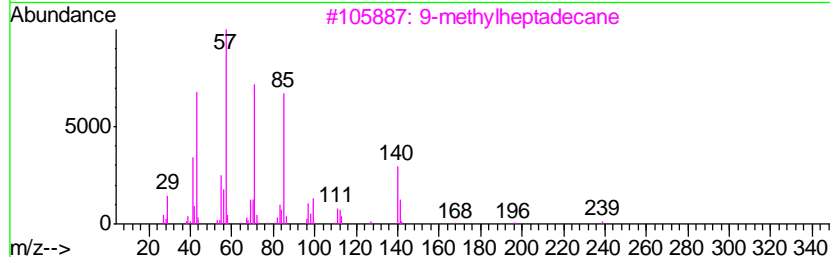
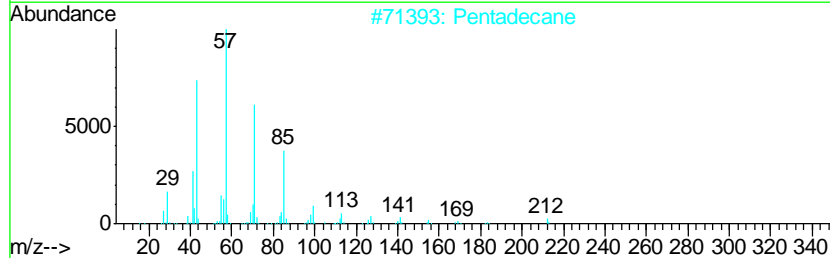
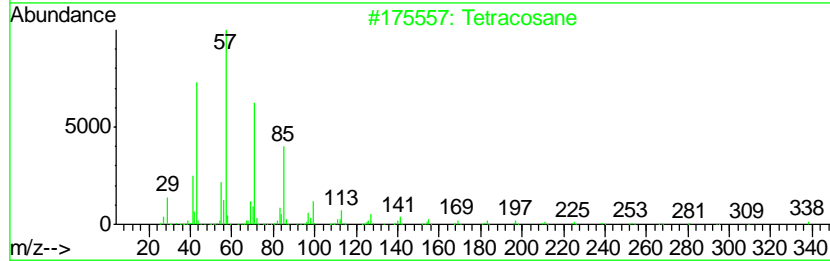
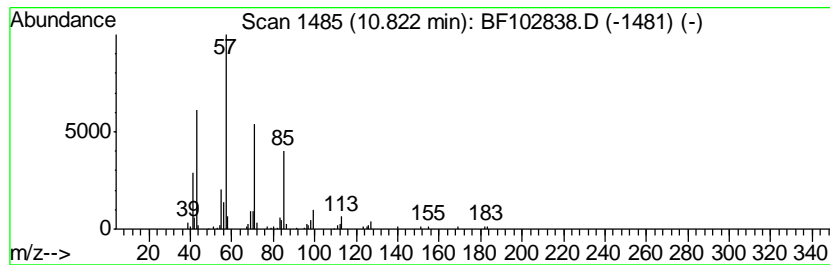
Quant Method : Z:\HPCHEM1\BNA F\METHODS\8270-BF020318.M
 Quant Title : ASP BNA STANDARDS FOR 5 POINT CALIBRATION

TIC Library : C:\DATABASE\NIST11.L
 TIC Integration Parameters: LSCINT.P

 Peak Number 8 Tetracosane Concentration Rank 7

R.T.	EstConc	Area	Relative to ISTD	R.T.
10.82	3.31 ng	180817	Phenanthrene-d10	11.41

Hit#	of	Tentative ID	MW	MolForm	CAS#	Qual
1	5	Tetracosane	338	C24H50	000646-31-1	83
2		Pentadecane	212	C15H32	000629-62-9	83
3		9-methylheptadecane	254	C18H38	026741-18-4	78
4		Sulfurous acid, 2-ethylhexyl hex...	278	C14H30O3S	1000309-20-2	72
5		Tetradecane	198	C14H30	000629-59-4	72



Data Path : Z:\HPCHEM1\BNA F\DATA\BF020718\
 Data File : BF102838.D
 Acq On : 8 Feb 2018 2:10
 Operator : SJ/JU
 Sample : J1473-41
 Misc :
 ALS Vial : 22 Sample Multiplier: 1

Instrument :
 BNA_F
 ClientSampled :
 B11

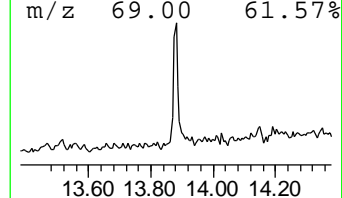
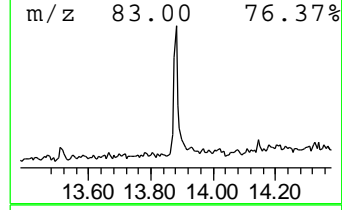
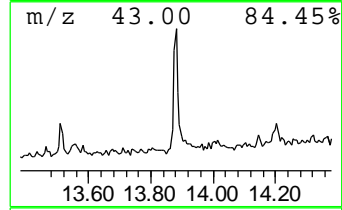
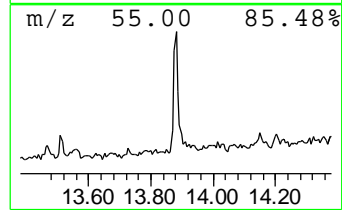
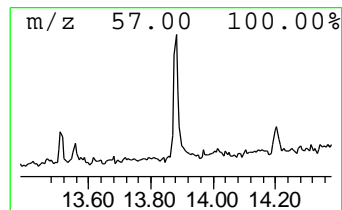
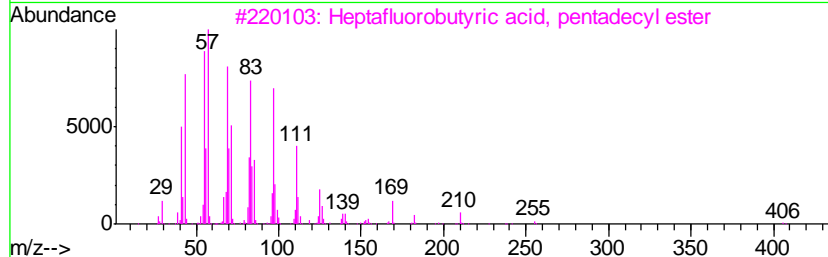
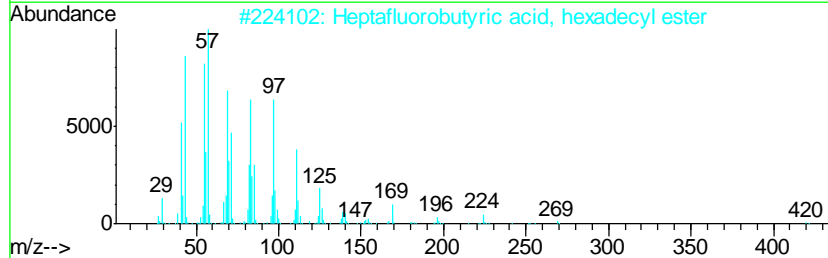
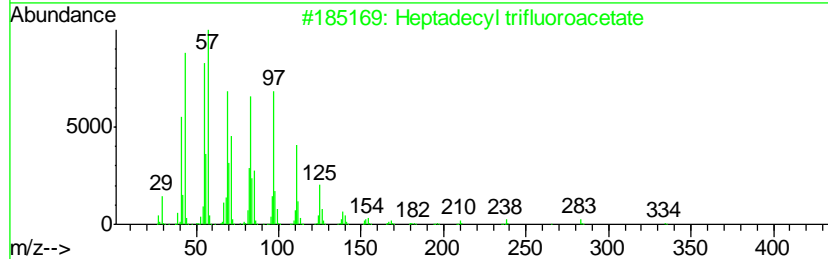
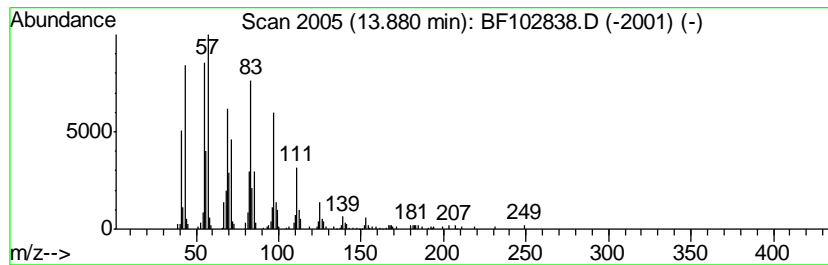
Quant Method : Z:\HPCHEM1\BNA F\METHODS\8270-BF020318.M
 Quant Title : ASP BNA STANDARDS FOR 5 POINT CALIBRATION

TIC Library : C:\DATABASE\NIST11.L
 TIC Integration Parameters: LSCINT.P

 Peak Number 9 Heptadecyl trifluoroacetate Concentration Rank 5

R.T.	EstConc	Area	Relative to ISTD	R.T.
13.88	5.02 ng	243979	Chrysene-d12	14.05

Hit#	of	Tentative ID	MW	MolForm	CAS#	Qual
1	5	Heptadecyl trifluoroacetate	352	C19H35F3O2	1000351-87-0	94
2		Heptafluorobutyric acid, hexadec...	438	C20H33F7O2	006385-15-5	94
3		Heptafluorobutyric acid, pentade...	424	C19H31F7O2	959261-23-5	94
4		Trifluoroacetoxy hexadecane	338	C18H33F3O2	006222-03-3	91
5		Pentafluoropropionic acid, hexad...	388	C19H33F5O2	006222-07-7	91



Data Path : Z:\HPCHEM1\BNA F\DATA\BF020718\
 Data File : BF102838.D
 Acq On : 8 Feb 2018 2:10
 Operator : SJ/JU
 Sample : J1473-41
 Misc :
 ALS Vial : 22 Sample Multiplier: 1

Instrument :
 BNA_F
 ClientSampled :
 B11

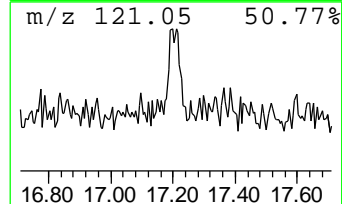
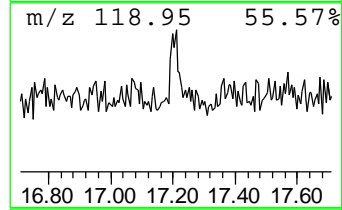
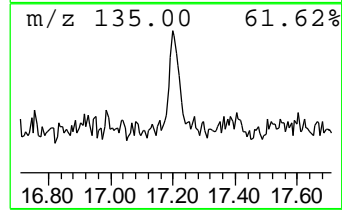
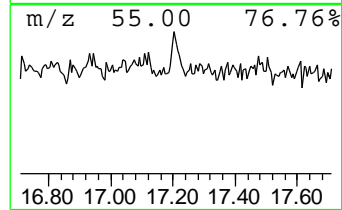
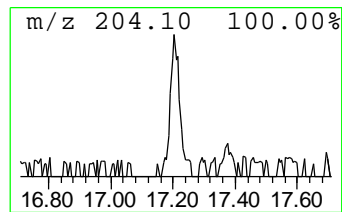
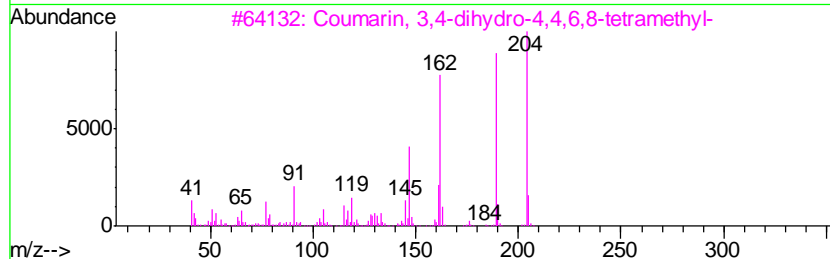
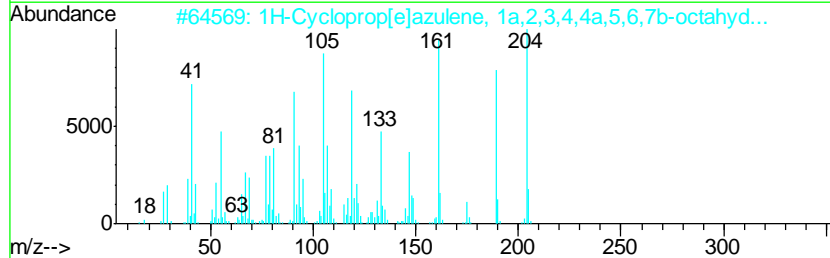
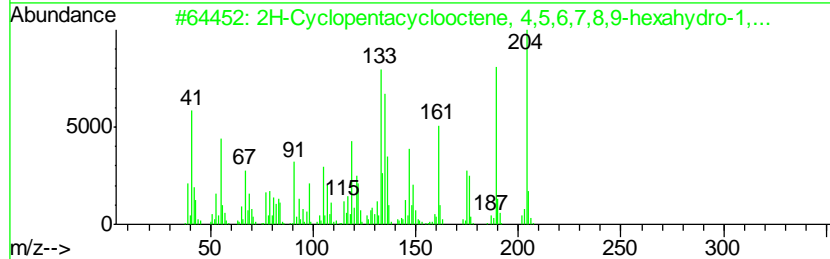
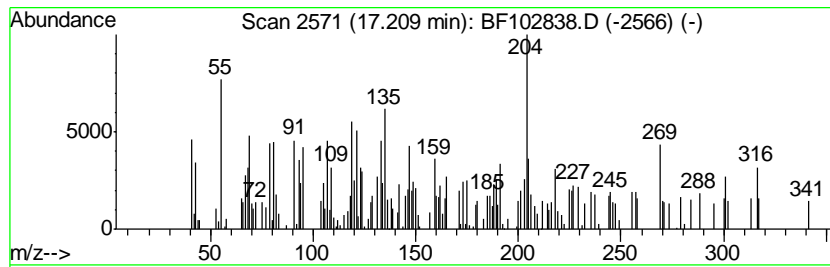
Quant Method : Z:\HPCHEM1\BNA F\METHODS\8270-BF020318.M
 Quant Title : ASP BNA STANDARDS FOR 5 POINT CALIBRATION

TIC Library : C:\DATABASE\NIST11.L
 TIC Integration Parameters: LSCINT.P

 Peak Number 10 2H-Cyclopentacyclooctene, 4... Concentration Rank 6

R.T.	EstConc	Area	Relative to ISTD	R.T.
17.21	3.65 ng	145608	Perylene-d12	15.53

Hit#	of	Tentative ID	MW	MolForm	CAS#	Qual
1	5	2H-Cyclopentacyclooctene, 4,5,6,...	204	C15H24	1000221-85-8	55
2		1H-Cycloprop[elazulene, 1a,2,3,4...	204	C15H24	000489-40-7	55
3		Coumarin, 3,4-dihydro-4,4,6,8-te...	204	C13H16O2	249629-60-5	46
4		1,4-Dimethyl-8-isopropylidenetri...	204	C15H24	1000140-07-7	43
5		1,2,4,8-Tetramethylbicyclo[6.3.0...	204	C15H24	137235-51-9	43



Data Path : Z:\HPCHEM1\BNA_F\DATA\BF020718\
 Data File : BF102838.D
 Acq On : 8 Feb 2018 2:10
 Operator : SJ/JU
 Sample : J1473-41
 Misc :
 ALS Vial : 22 Sample Multiplier: 1

Instrument :
 BNA_F
 ClientSampleId :
 B11

Quant Method : Z:\HPCHEM1\BNA_F\METHODS\8270-BF020318.M
 Quant Title : ASP BNA STANDARDS FOR 5 POINT CALIBRATION

TIC Library : C:\DATABASE\NIST11.L
 TIC Integration Parameters: LSCINT.P

TIC Top Hit name	RT	EstConc	Units	Response	--Internal Standard--			
					#	RT	Resp	Conc
Butane, 2-methoxy...	2.18	10.3	ng	592086	1	6.89	1150870	20.0
(S)-(+)-1,2-Propa...	3.48	17.1	ng	984270	1	6.89	1150870	20.0
2-Pentanone, 4-hy...	5.12	2.8	ng	162861	1	6.89	1150870	20.0
unknown6.66	6.66	77.2	ng	4441230	1	6.89	1150870	20.0
Hexadecane	9.85	2.4	ng	159789	3	9.92	1350590	20.0
Pentadecane	10.35	2.3	ng	153586	3	9.92	1350590	20.0
Tetracosane	10.82	3.3	ng	180817	4	11.41	1091420	20.0
Heptadecyl triflu...	13.88	5.0	ng	243979	5	14.05	971678	20.0
2H-Cyclopentacycl...	17.21	3.6	ng	145608	6	15.53	797568	20.0