

Data Path : Z:\HPCHEM1\BNA F\DATA\BF021015\
 Data File : BF077242.D
 Acq On : 10 Feb 2015 19:15
 Operator : TP/IZ
 Sample : G1254-05
 Misc :
 ALS Vial : 10 Sample Multiplier: 1

Instrument :
 BNA_F
 ClientSampleId :
 UB11A

Integration Parameters: rteint.p
 Integrator: RTE
 Smoothing : ON
 Sampling : 1
 Start Thrs: 0.2
 Stop Thrs : 0

Filtering: 5
 Min Area: 3 % of largest Peak
 Max Peaks: 100
 Peak Location: TOP

If leading or trailing edge < 100 prefer < Baseline drop else tangent >
 Peak separation: 5

Method : Z:\HPCHEM1\BNA F\METHODS\8270-BF011415.M
 Title : ASP BNA STANDARDS FOR 5 POINT CALIBRATION

Signal : TIC

peak #	R.T. min	first scan	max scan	last scan	PK TY	peak height	corr. area	corr. % max.	% of total
1	1.298	34	36	40	rBV	10029	21733	3.28%	0.259%
2	1.355	40	41	51	rVB	105016	197819	29.87%	2.357%
3	2.464	135	138	144	rBV3	4862	13902	2.10%	0.166%
4	3.607	235	238	247	rBV	45130	121458	18.34%	1.447%
5	4.384	302	306	309	rBV2	3772	9060	1.37%	0.108%
6	4.613	323	326	345	rVB	151245	390443	58.95%	4.652%
7	4.956	353	356	360	rBV2	2920	7349	1.11%	0.088%
8	5.207	374	378	382	rBV	15751	35290	5.33%	0.420%
9	5.893	434	438	441	rBB3	4053	9813	1.48%	0.117%
10	5.996	443	447	451	rVB	5631	12317	1.86%	0.147%
11	6.087	452	455	460	rBV2	4350	10881	1.64%	0.130%
12	6.385	478	481	483	rBV	6979	11708	1.77%	0.139%
13	6.545	492	495	498	rBV	23669	44798	6.76%	0.534%
14	6.602	498	500	503	rVV2	12256	29110	4.39%	0.347%
15	6.670	503	506	508	rVV	9274	16406	2.48%	0.195%
16	6.727	508	511	514	rVV	17696	30491	4.60%	0.363%
17	6.796	514	517	520	rVV2	9630	18196	2.75%	0.217%
18	6.865	520	523	534	rVB2	14218	46129	6.96%	0.550%
19	7.025	534	537	541	rBV	229768	432791	65.34%	5.156%
20	7.093	541	543	551	rVV	272138	516520	77.98%	6.154%
21	7.219	551	554	564	rVV	66006	125005	18.87%	1.489%
22	7.390	564	569	574	rVB	81096	145399	21.95%	1.732%
23	7.493	574	578	584	rBV4	4241	14179	2.14%	0.169%
24	7.596	584	587	592	rBV	152405	265257	40.05%	3.160%
25	7.733	596	599	602	rVV	33248	57028	8.61%	0.679%
26	7.802	602	605	609	rVV3	14888	28319	4.28%	0.337%
27	7.916	611	615	618	rVV	224710	375269	56.66%	4.471%
28	7.973	618	620	623	rVV2	10951	22552	3.40%	0.269%
29	8.030	623	625	628	rVV	5515	12891	1.95%	0.154%
30	8.099	628	631	635	rVB2	4762	10195	1.54%	0.121%
31	8.248	640	644	646	rBV2	5683	9273	1.40%	0.110%
32	8.305	646	649	654	rVB	23533	40850	6.17%	0.487%
33	8.419	654	659	663	rBV3	25343	74162	11.20%	0.884%
34	8.499	663	666	668	rVV	7385	10950	1.65%	0.130%

Data Path : Z:\HPCHEM1\BNA F\DATA\BF021015\
 Data File : BF077242.D
 Acq On : 10 Feb 2015 19:15
 Operator : TP/IZ
 Sample : G1254-05
 Misc :
 ALS Vial : 10 Sample Multiplier: 1

Instrument :
 BNA_F
 ClientSampleId :
 UB11A

Integration Parameters: rteint.p
 Integrator: RTE
 Smoothing : ON
 Sampling : 1
 Start Thrs: 0.2
 Stop Thrs : 0

Filtering: 5
 Min Area: 3 % of largest Peak
 Max Peaks: 100
 Peak Location: TOP

If leading or trailing edge < 100 prefer < Baseline drop else tangent >
 Peak separation: 5

Method : Z:\HPCHEM1\BNA F\METHODS\8270-BF011415.M
 Title : ASP BNA STANDARDS FOR 5 POINT CALIBRATION

35	8.568	668	672	676	rVB3	12590	31231	4.72%	0.372%
36	8.682	679	682	685	rVB	7475	12511	1.89%	0.149%
37	8.739	685	687	689	rBV	6140	12393	1.87%	0.148%
38	8.785	689	691	694	rVB2	8225	15726	2.37%	0.187%
39	8.899	698	701	706	rBV	154366	265012	40.01%	3.157%
40	9.196	723	727	731	rVB	65519	119632	18.06%	1.425%
41	9.402	740	745	746	rBV3	3125	7357	1.11%	0.088%
42	9.436	746	748	751	rVV2	6455	11789	1.78%	0.140%
43	9.493	751	753	756	rVB	5482	9919	1.50%	0.118%
44	9.608	760	763	765	rBV3	5433	10419	1.57%	0.124%
45	9.653	765	767	771	rVB3	4228	9259	1.40%	0.110%
46	9.756	772	776	779	rBV	5880	11680	1.76%	0.139%
47	9.996	792	797	799	rBV	4334	9929	1.50%	0.118%
48	10.042	799	801	805	rVV2	4092	9222	1.39%	0.110%
49	10.134	805	809	812	rVB3	3979	8581	1.30%	0.102%
50	10.225	813	817	820	rBV2	5972	11439	1.73%	0.136%
51	10.374	828	830	833	rBV	5705	10222	1.54%	0.122%
52	10.511	838	842	844	rVV	207383	371556	56.10%	4.427%
53	10.556	844	846	848	rVV	15696	25462	3.84%	0.303%
54	10.591	848	849	854	rVB2	5317	11543	1.74%	0.138%
55	10.785	863	866	869	rBB	17329	26586	4.01%	0.317%
56	11.837	954	958	964	rVB4	2794	8815	1.33%	0.105%
57	12.214	989	991	992	rBV	4837	8425	1.27%	0.100%
58	12.237	992	993	997	rVB	5562	9806	1.48%	0.117%
59	12.511	1014	1017	1021	rBB	4556	8174	1.23%	0.097%
60	13.162	1070	1074	1077	rBV	342009	567355	85.66%	6.759%
61	13.597	1108	1112	1115	rBV	5413	9483	1.43%	0.113%
62	14.237	1163	1168	1170	rBV	16617	27980	4.22%	0.333%
63	14.282	1170	1172	1175	rVB	10740	17036	2.57%	0.203%
64	14.625	1198	1202	1205	rBV	246771	403902	60.98%	4.812%
65	14.877	1220	1224	1228	rVB	7216	16263	2.46%	0.194%
66	15.505	1276	1279	1282	rBV2	2972	7266	1.10%	0.087%
67	15.631	1284	1290	1294	rVV4	2368	8170	1.23%	0.097%
68	15.700	1294	1296	1299	rVB4	4133	9029	1.36%	0.108%
69	15.906	1310	1314	1319	rBV4	3770	9315	1.41%	0.111%
70	16.008	1322	1323	1328	rBV3	3784	7825	1.18%	0.093%
71	16.328	1347	1351	1353	rBV	9693	17018	2.57%	0.203%

Data Path : Z:\HPCHEM1\BNA F\DATA\BF021015\
 Data File : BF077242.D
 Acq On : 10 Feb 2015 19:15
 Operator : TP/IZ
 Sample : G1254-05
 Misc :
 ALS Vial : 10 Sample Multiplier: 1

Instrument :
 BNA_F
 ClientSampleId :
 UB11A

Integration Parameters: rteint.p
 Integrator: RTE
 Smoothing : ON Filtering: 5
 Sampling : 1 Min Area: 3 % of largest Peak
 Start Thrs: 0.2 Max Peaks: 100
 Stop Thrs : 0 Peak Location: TOP

If leading or trailing edge < 100 prefer < Baseline drop else tangent >
 Peak separation: 5

Method : Z:\HPCHEM1\BNA F\METHODS\8270-BF011415.M
 Title : ASP BNA STANDARDS FOR 5 POINT CALIBRATION

72	16.374	1353	1355	1359	rVB	126413	174357	26.32%	2.077%
73	16.877	1396	1399	1403	rBV4	7741	19205	2.90%	0.229%
74	17.334	1436	1439	1443	rBV6	5915	14344	2.17%	0.171%
75	17.506	1451	1454	1456	rBV	364140	442812	66.85%	5.275%
76	17.540	1456	1457	1459	rVV	57876	51779	7.82%	0.617%
77	17.620	1462	1464	1466	rVB	25499	27805	4.20%	0.331%
78	17.711	1469	1472	1474	rBV4	6002	10378	1.57%	0.124%
79	17.940	1488	1492	1493	rBV3	7763	12736	1.92%	0.152%
80	18.009	1497	1498	1500	rVV2	8213	10644	1.61%	0.127%
81	18.054	1500	1502	1503	rVB2	6609	7335	1.11%	0.087%
82	18.191	1512	1514	1516	rBV2	9936	14422	2.18%	0.172%
83	18.260	1518	1520	1521	rBV	15130	17377	2.62%	0.207%
84	18.294	1521	1523	1528	rVB6	14870	30674	4.63%	0.365%
85	18.397	1530	1532	1533	rVV2	11009	13800	2.08%	0.164%
86	18.443	1533	1536	1538	rVB4	10201	18085	2.73%	0.215%
87	18.534	1541	1544	1547	rBV5	17217	38752	5.85%	0.462%
88	18.694	1557	1558	1561	rBV3	12495	23874	3.60%	0.284%
89	19.026	1584	1587	1588	rBV	17313	32243	4.87%	0.384%
90	19.197	1599	1602	1605	rBV	100665	121349	18.32%	1.446%
91	19.266	1606	1608	1609	rVV	13930	18772	2.83%	0.224%
92	19.323	1611	1613	1615	rVB	16822	18650	2.82%	0.222%
93	19.483	1624	1627	1629	rVB	94500	120531	18.20%	1.436%
94	19.574	1632	1635	1637	rBV3	19698	37103	5.60%	0.442%
95	19.620	1637	1639	1641	rVV2	13747	18166	2.74%	0.216%
96	19.757	1648	1651	1653	rBV	567245	644092	97.24%	7.673%
97	19.803	1653	1655	1657	rVB2	11014	18555	2.80%	0.221%
98	21.015	1758	1761	1766	rVB2	448534	662366	100.00%	7.891%
99	22.249	1867	1869	1871	rBV	72900	135343	20.43%	1.612%
100	22.649	1902	1904	1907	rBV	263189	333463	50.34%	3.973%

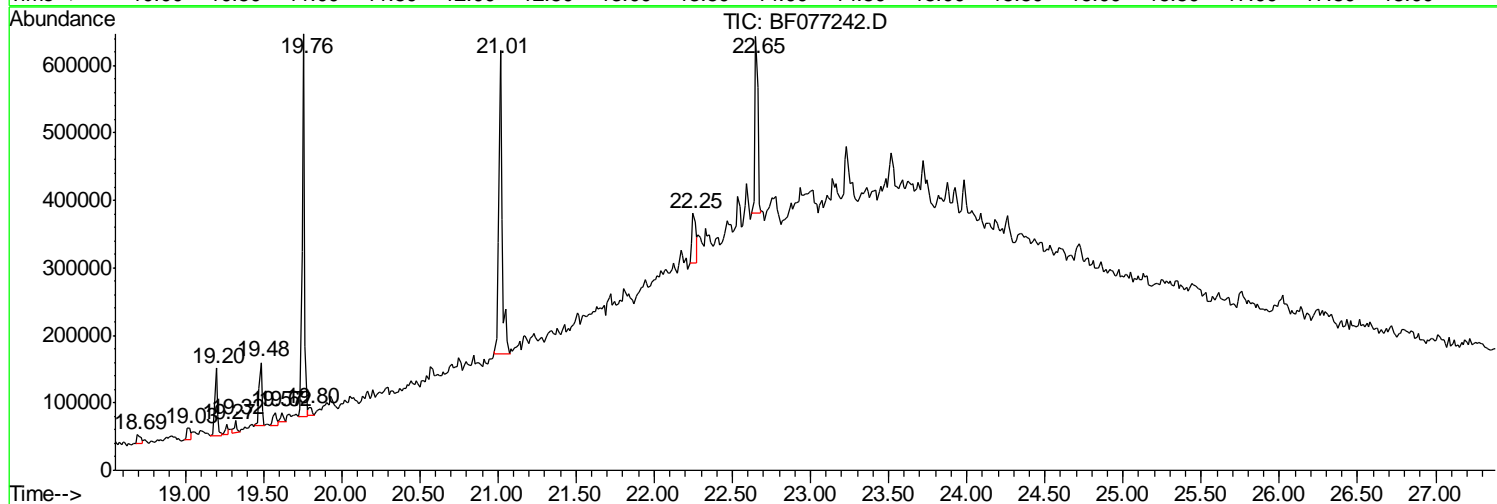
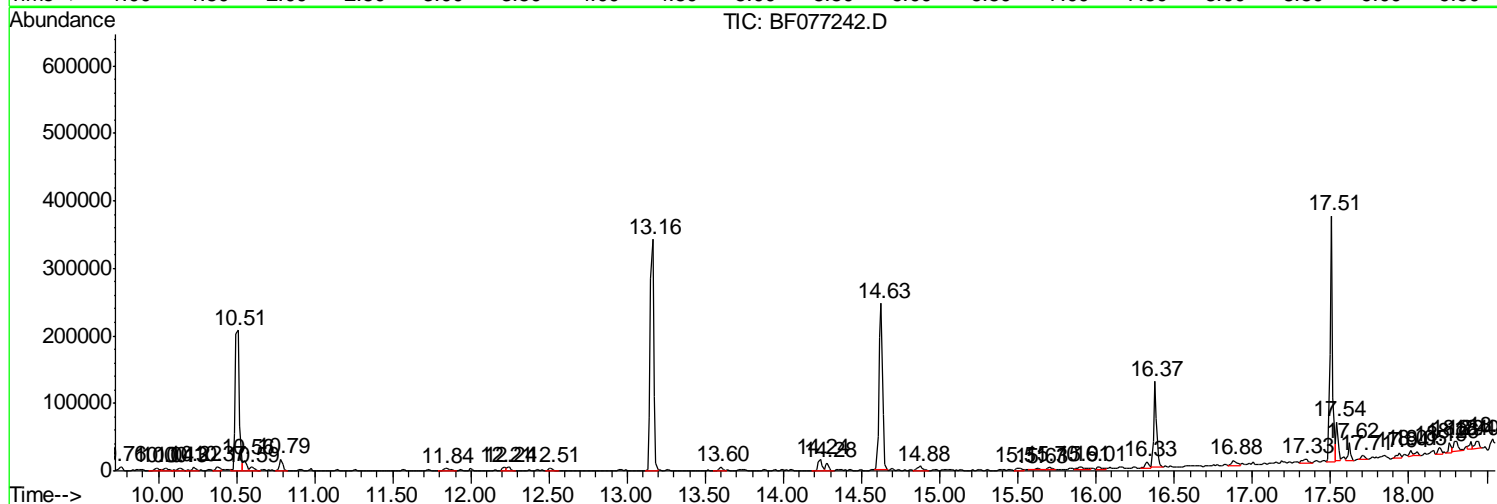
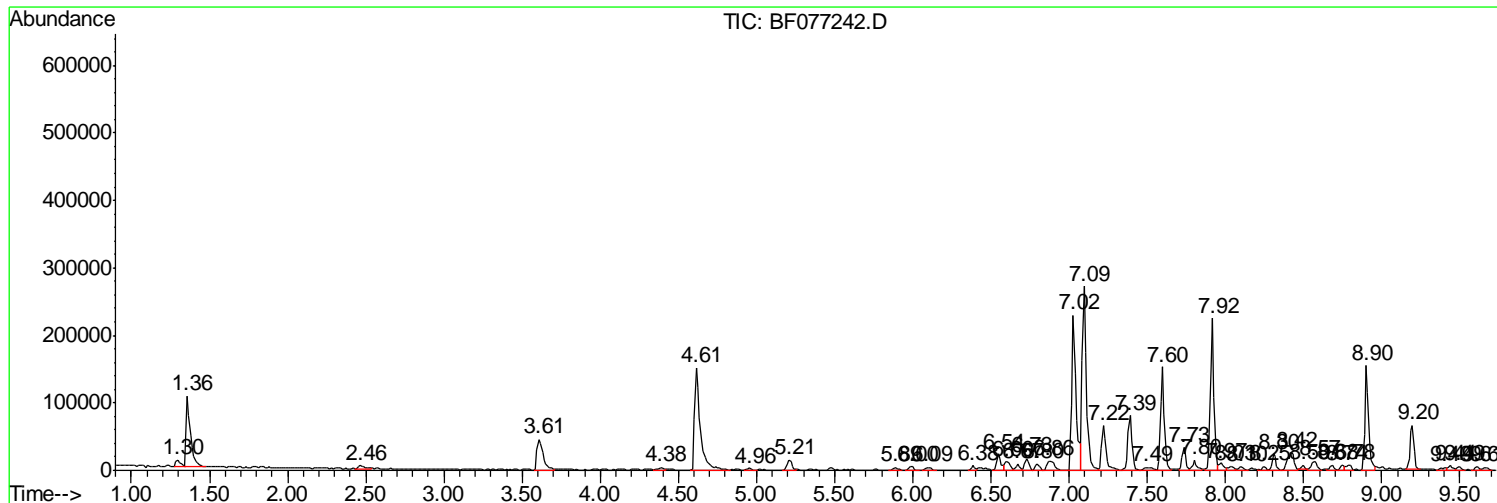
Sum of corrected areas: 8393885

Data Path : Z:\HPCHEM1\BNA F\DATA\BF021015\
 Data File : BF077242.D
 Acq On : 10 Feb 2015 19:15
 Operator : TP/IZ
 Sample : G1254-05
 Misc :
 ALS Vial : 10 Sample Multiplier: 1

Instrument :
 BNA_F
 ClientSampled :
 UB11A

Quant Method : Z:\HPCHEM1\BNA F\METHODS\8270-BF011415.M
 Quant Title : ASP BNA STANDARDS FOR 5 POINT CALIBRATION

TIC Library : C:\DATABASE\NIST02.L
 TIC Integration Parameters: LSCINT.P



Data Path : Z:\HPCHEM1\BNA F\DATA\BF021015\
 Data File : BF077242.D
 Acq On : 10 Feb 2015 19:15
 Operator : TP/IZ
 Sample : G1254-05
 Misc :
 ALS Vial : 10 Sample Multiplier: 1

Instrument :
 BNA_F
 ClientSampleId :
 UB11A

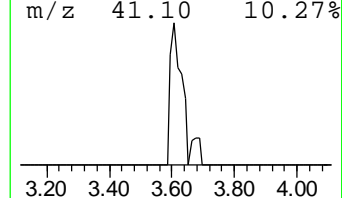
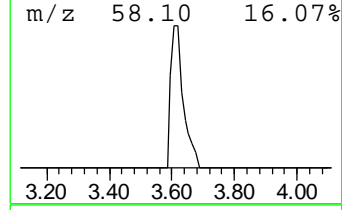
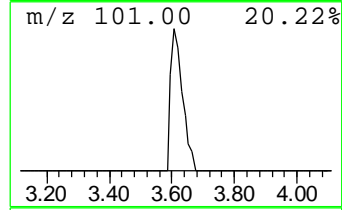
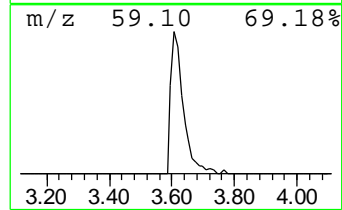
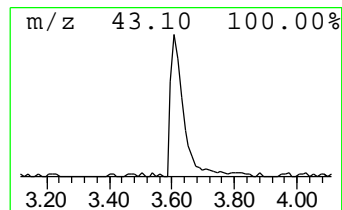
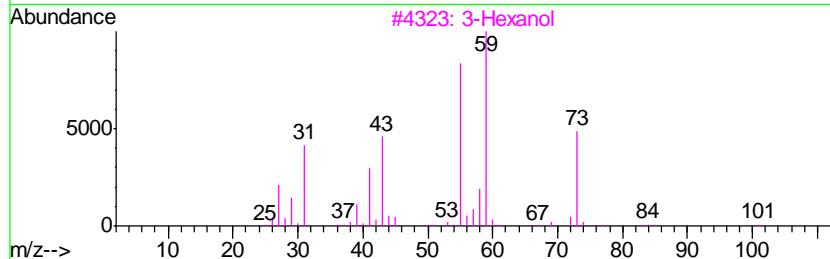
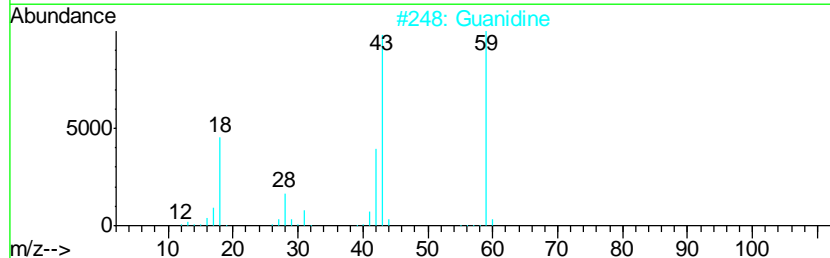
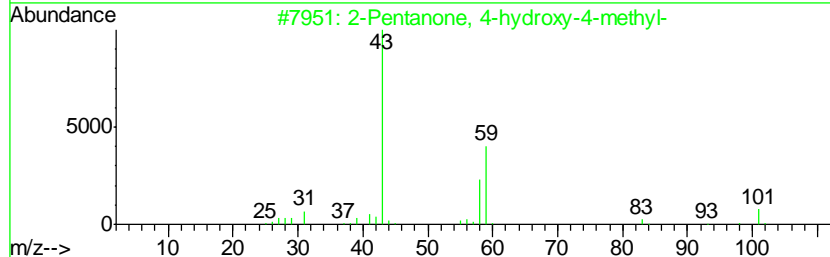
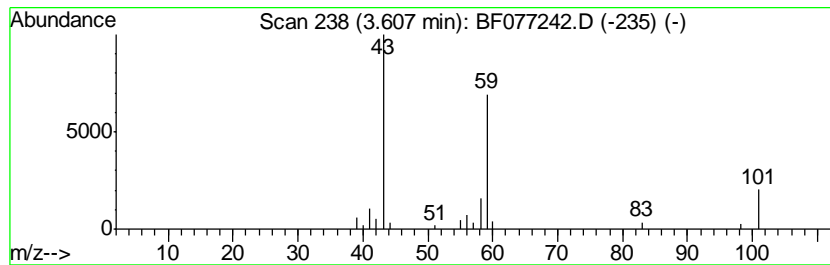
Quant Method : Z:\HPCHEM1\BNA F\METHODS\8270-BF011415.M
 Quant Title : ASP BNA STANDARDS FOR 5 POINT CALIBRATION

TIC Library : C:\DATABASE\NIST02.L
 TIC Integration Parameters: LSCINT.P

 Peak Number 2 2-Pentanone, 4-hydroxy-4-me... Concentration Rank 6

R.T.	EstConc	Area	Relative to ISTD	R.T.
3.61	9.16 ng	121458	1,4-Dichlorobenzene-d4	7.60

Hit#	of	Tentative ID	MW	MolForm	CAS#	Qual
1	5	2-Pentanone, 4-hydroxy-4-methyl-	116	C6H12O2	000123-42-2	53
2		Guanidine	59	CH5N3	000113-00-8	47
3		3-Hexanol	102	C6H14O	000623-37-0	28
4		1,8-Nonanediol, 8-methyl-	174	C10H22O2	054725-73-4	23
5		2-Propyn-1-ol, acetate	98	C5H6O2	000627-09-8	9



Data Path : Z:\HPCHEM1\BNA F\DATA\BF021015\
 Data File : BF077242.D
 Acq On : 10 Feb 2015 19:15
 Operator : TP/IZ
 Sample : G1254-05
 Misc :
 ALS Vial : 10 Sample Multiplier: 1

Instrument :
 BNA_F
 ClientSampled :
 UB11A

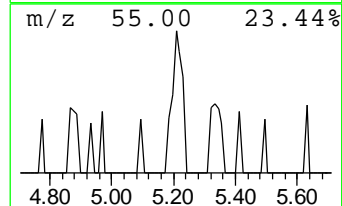
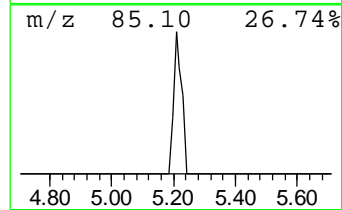
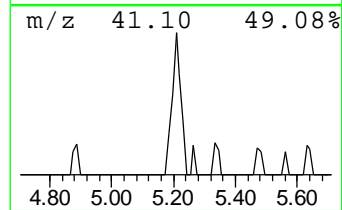
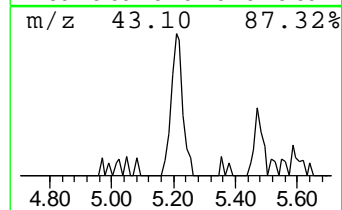
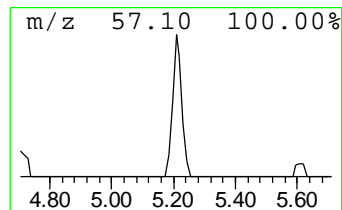
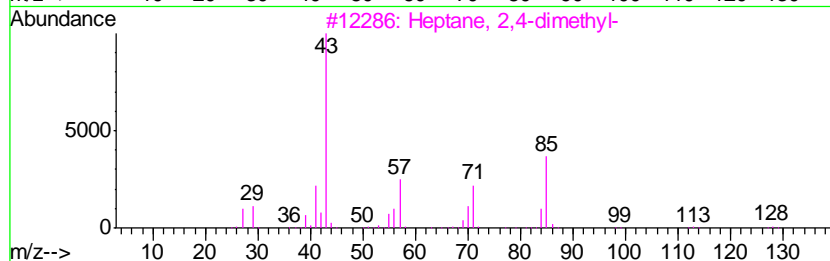
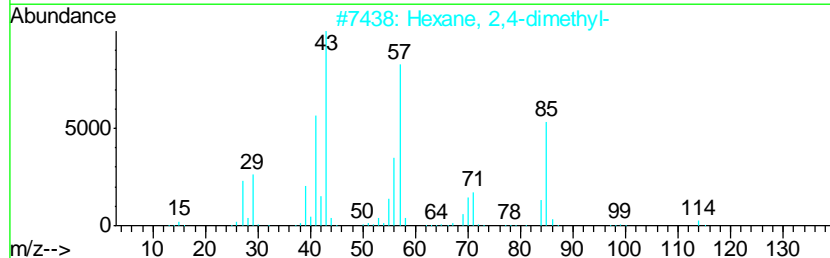
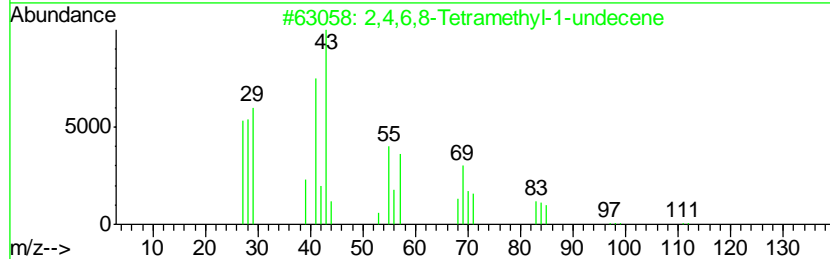
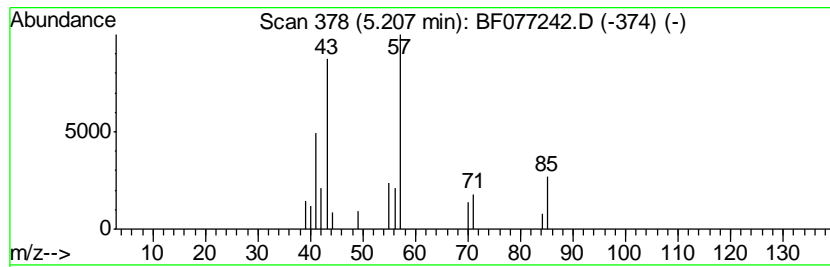
Quant Method : Z:\HPCHEM1\BNA F\METHODS\8270-BF011415.M
 Quant Title : ASP BNA STANDARDS FOR 5 POINT CALIBRATION

TIC Library : C:\DATABASE\NIST02.L
 TIC Integration Parameters: LSCINT.P

 Peak Number 3 unknown5.21 Concentration Rank 13

R.T.	EstConc	Area	Relative to ISTD	R.T.
5.21	2.66 ng	35290	1,4-Dichlorobenzene-d4	7.60

Hit#	of	Tentative ID	MW	MolForm	CAS#	Qual
1	5	2,4,6,8-Tetramethyl-1-undecene	210	C15H30	059920-26-2	43
2		Hexane, 2,4-dimethyl-	114	C8H18	000589-43-5	36
3		Heptane, 2,4-dimethyl-	128	C9H20	002213-23-2	28
4		Ether, hexyl pentyl	172	C11H24O	032357-83-8	28
5		Octane	114	C8H18	000111-65-9	28



Data Path : Z:\HPCHEM1\BNA F\DATA\BF021015\
 Data File : BF077242.D
 Acq On : 10 Feb 2015 19:15
 Operator : TP/IZ
 Sample : G1254-05
 Misc :
 ALS Vial : 10 Sample Multiplier: 1

Instrument :
 BNA_F
 ClientSampleID :
 UB11A

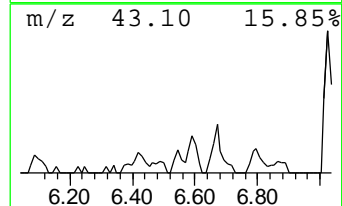
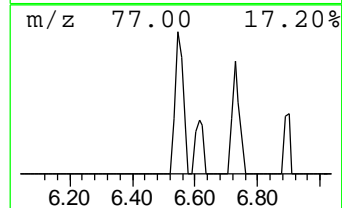
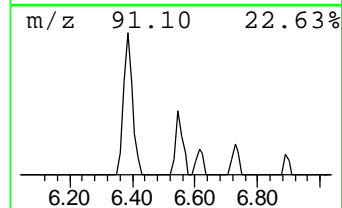
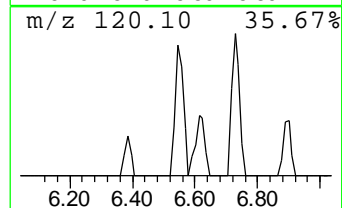
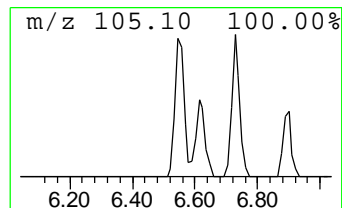
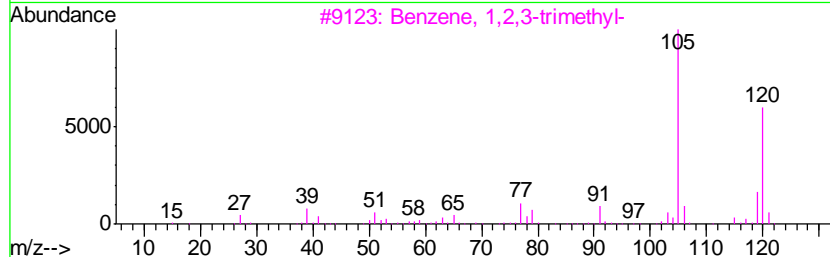
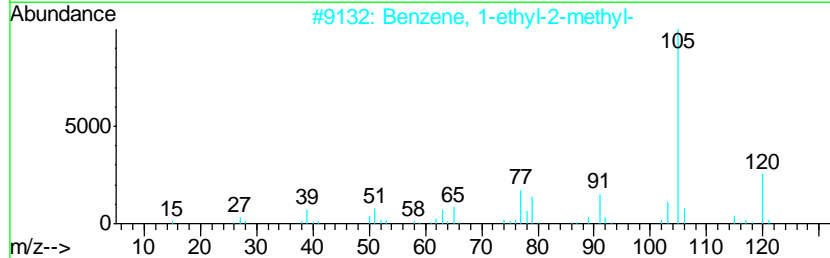
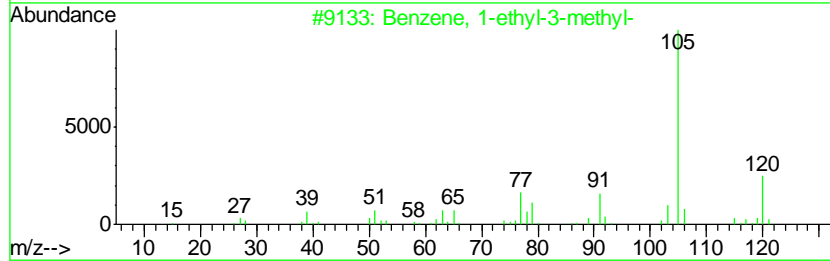
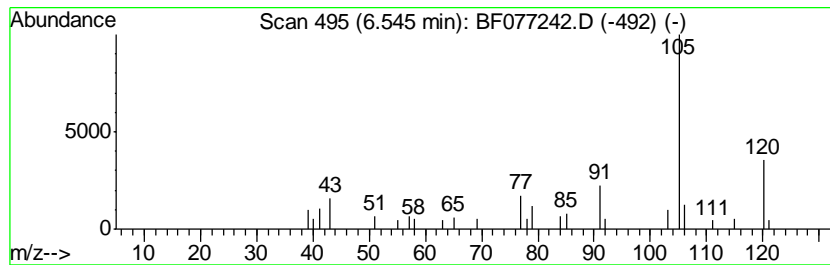
Quant Method : Z:\HPCHEM1\BNA F\METHODS\8270-BF011415.M
 Quant Title : ASP BNA STANDARDS FOR 5 POINT CALIBRATION

TIC Library : C:\DATABASE\NIST02.L
 TIC Integration Parameters: LSCINT.P

 Peak Number 4 Benzene, 1-ethyl-3-methyl- Concentration Rank 11

R.T.	EstConc	Area	Relative to ISTD	R.T.
6.54	3.38 ng	44798	1,4-Dichlorobenzene-d4	7.60

Hit#	of	Tentative ID	MW	MolForm	CAS#	Qual
1	5	Benzene, 1-ethyl-3-methyl-	120	C9H12	000620-14-4	83
2		Benzene, 1-ethyl-2-methyl-	120	C9H12	000611-14-3	80
3		Benzene, 1,2,3-trimethyl-	120	C9H12	000526-73-8	72
4		Benzene, 1,3,5-trimethyl-	120	C9H12	000108-67-8	72
5		Benzene, 1-ethyl-4-methyl-	120	C9H12	000622-96-8	72



Data Path : Z:\HPCHEM1\BNA F\DATA\BF021015\
 Data File : BF077242.D
 Acq On : 10 Feb 2015 19:15
 Operator : TP/IZ
 Sample : G1254-05
 Misc :
 ALS Vial : 10 Sample Multiplier: 1

Instrument :
 BNA_F
 ClientSampled :
 UB11A

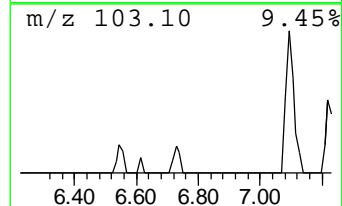
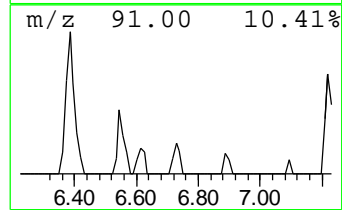
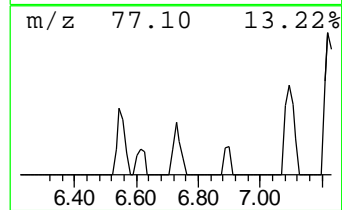
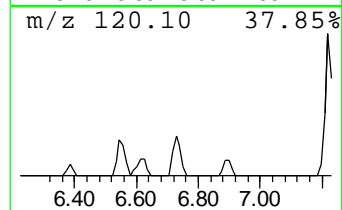
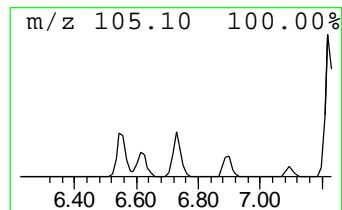
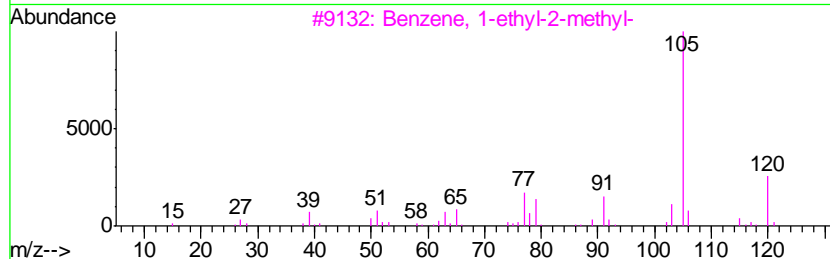
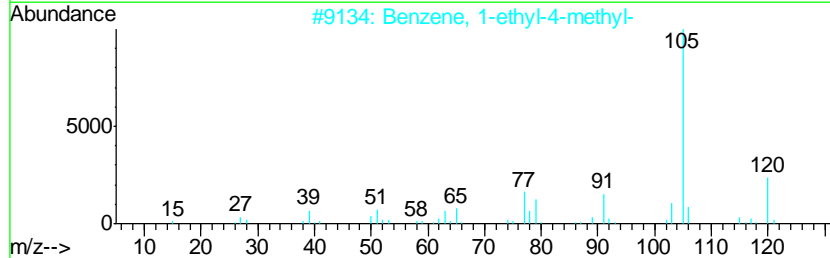
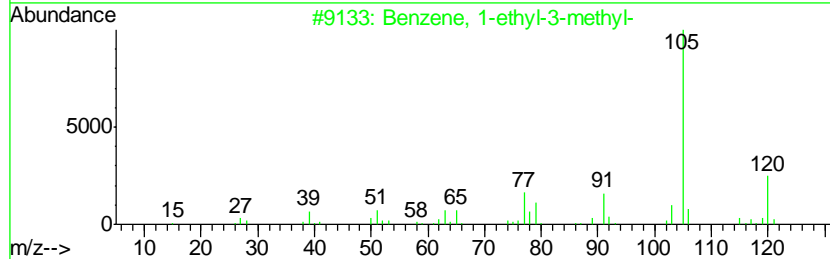
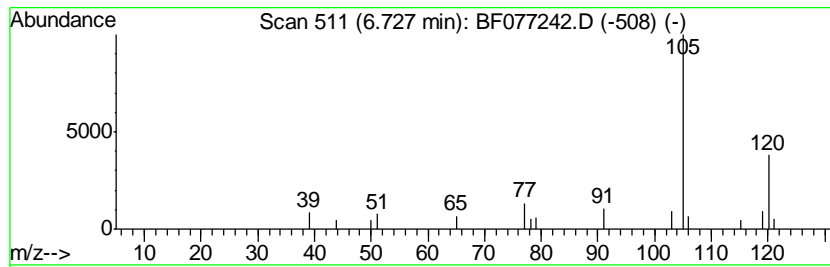
Quant Method : Z:\HPCHEM1\BNA F\METHODS\8270-BF011415.M
 Quant Title : ASP BNA STANDARDS FOR 5 POINT CALIBRATION

TIC Library : C:\DATABASE\NIST02.L
 TIC Integration Parameters: LSCINT.P

 Peak Number 6 Benzene, 1-ethyl-4-methyl- Concentration Rank 15

R.T.	EstConc	Area	Relative to ISTD	R.T.
6.73	2.30 ng	30491	1,4-Dichlorobenzene-d4	7.60

Hit#	of	Tentative ID	MW	MolForm	CAS#	Qual
1	5	Benzene, 1-ethyl-3-methyl-	120	C9H12	000620-14-4	90
2		Benzene, 1-ethyl-4-methyl-	120	C9H12	000622-96-8	86
3		Benzene, 1-ethyl-2-methyl-	120	C9H12	000611-14-3	86
4		Benzene, 1,2,4-trimethyl-	120	C9H12	000095-63-6	83
5		Benzene, 1,2,3-trimethyl-	120	C9H12	000526-73-8	78



Data Path : Z:\HPCHEM1\BNA F\DATA\BF021015\
 Data File : BF077242.D
 Acq On : 10 Feb 2015 19:15
 Operator : TP/IZ
 Sample : G1254-05
 Misc :
 ALS Vial : 10 Sample Multiplier: 1

Instrument :
 BNA_F
 ClientSampleID :
 UB11A

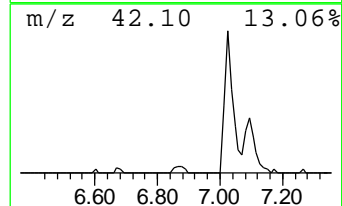
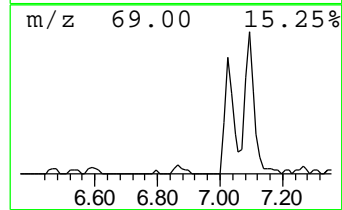
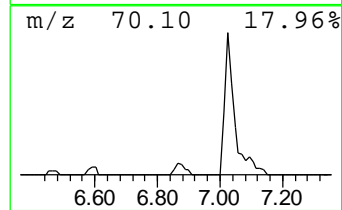
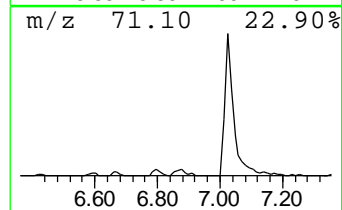
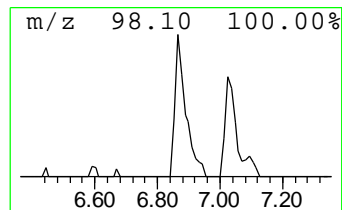
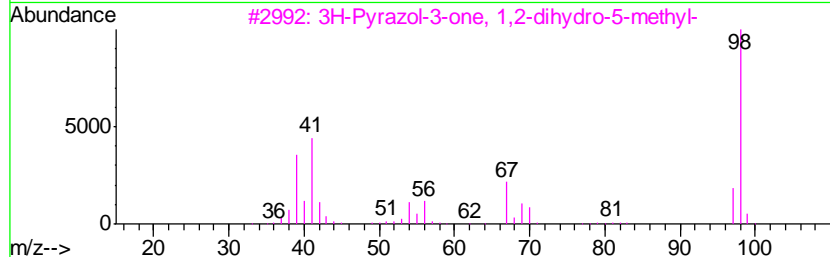
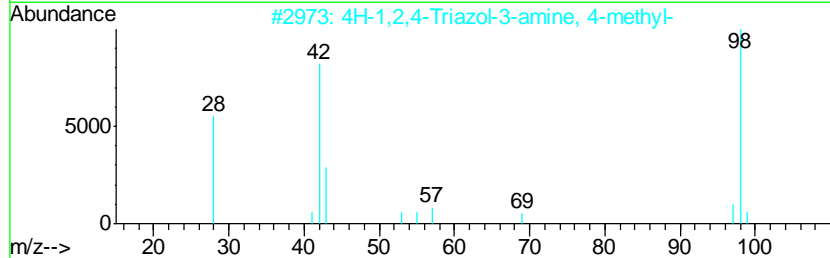
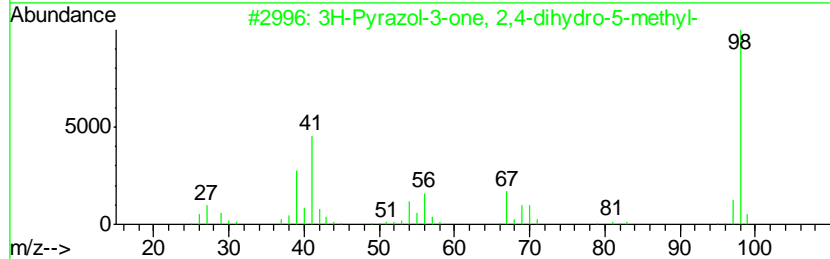
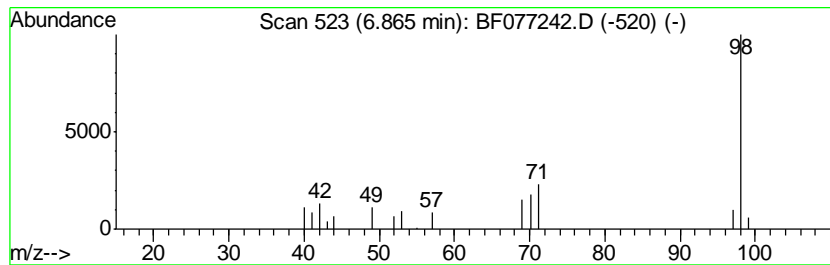
Quant Method : Z:\HPCHEM1\BNA F\METHODS\8270-BF011415.M
 Quant Title : ASP BNA STANDARDS FOR 5 POINT CALIBRATION

TIC Library : C:\DATABASE\NIST02.L
 TIC Integration Parameters: LSCINT.P

 Peak Number 7 3H-Pyrazol-3-one, 2,4-dihyd... Concentration Rank 10

R.T.	EstConc	Area	Relative to ISTD	R.T.
6.86	3.48 ng	46129	1,4-Dichlorobenzene-d4	7.60

Hit#	of	Tentative ID	MW	MolForm	CAS#	Qual
1	5	3H-Pyrazol-3-one, 2,4-dihydro-5-...	98	C4H6N2O	000108-26-9	59
2		4H-1,2,4-Triazol-3-amine, 4-methyl-	98	C3H6N4	016681-76-8	59
3		3H-Pyrazol-3-one, 1,2-dihydro-5-...	98	C4H6N2O	004344-87-0	53
4		Methylenecyclopropanecarboxylic ...	98	C5H6O2	062266-36-8	38
5		1-Methyl-2-piperidinemethanol	129	C7H15NO	020845-34-5	33



Data Path : Z:\HPCHEM1\BNA F\DATA\BF021015\
 Data File : BF077242.D
 Acq On : 10 Feb 2015 19:15
 Operator : TP/IZ
 Sample : G1254-05
 Misc :
 ALS Vial : 10 Sample Multiplier: 1

Instrument :
 BNA_F
 ClientSampleId :
 UB11A

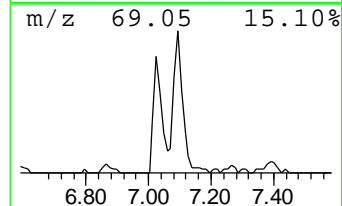
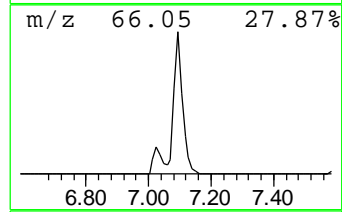
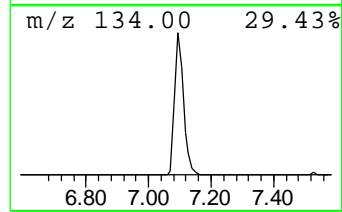
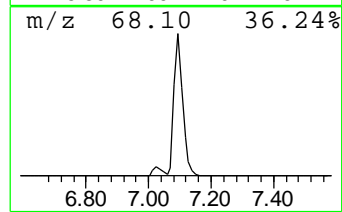
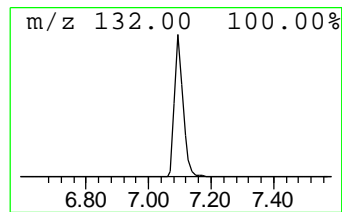
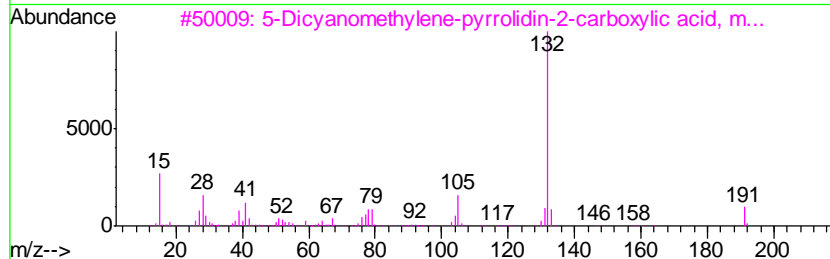
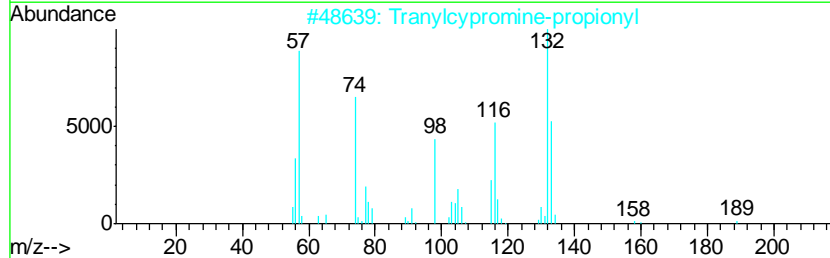
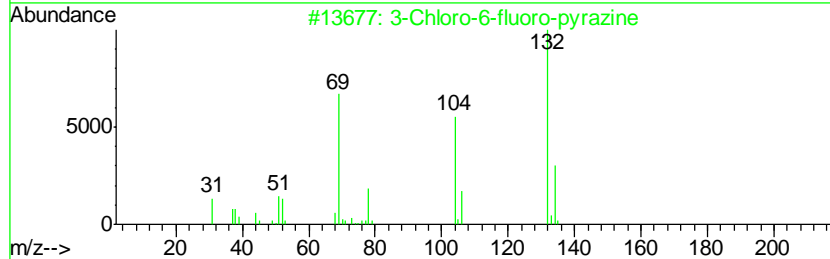
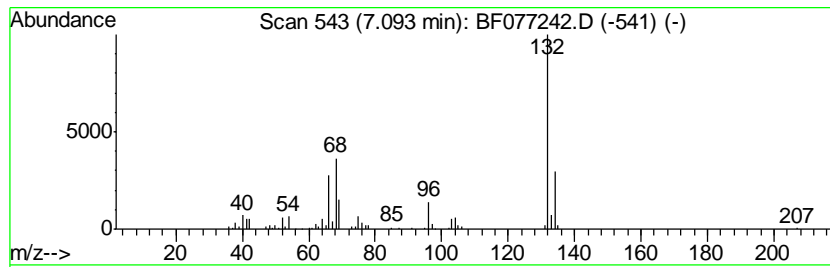
Quant Method : Z:\HPCHEM1\BNA F\METHODS\8270-BF011415.M
 Quant Title : ASP BNA STANDARDS FOR 5 POINT CALIBRATION

TIC Library : C:\DATABASE\NIST02.L
 TIC Integration Parameters: LSCINT.P

 Peak Number 8 unknown7.09 Concentration Rank 1

R.T.	EstConc	Area	Relative to ISTD	R.T.
7.09	38.94 ng	516520	1,4-Dichlorobenzene-d4	7.60

Hit#	of	Tentative ID	MW	MolForm	CAS#	Qual
1	5	3-Chloro-6-fluoro-pyrazine	132	C4H2ClFN2	1000146-10-7	35
2		Tranlycypromine-propionyl	189	C12H15NO	1000123-86-3	12
3		5-Dicyanomethylene-pyrrolidin-2-...	191	C9H9N3O2	1000287-77-2	10
4		(E)-3-Chloro-2-methyl-2-pentenal	132	C6H9ClO	031357-76-3	9
5		2H-Cyclopenta[d]pyridazine, 2-me...	132	C8H8N2	022291-85-6	9



Data Path : Z:\HPCHEM1\BNA F\DATA\BF021015\
 Data File : BF077242.D
 Acq On : 10 Feb 2015 19:15
 Operator : TP/IZ
 Sample : G1254-05
 Misc :
 ALS Vial : 10 Sample Multiplier: 1

Instrument :
 BNA_F
 ClientSampleID :
 UB11A

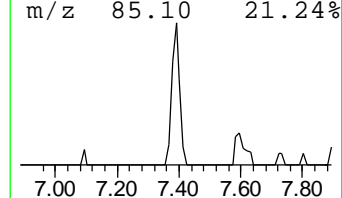
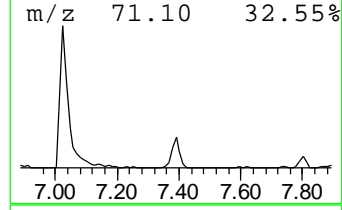
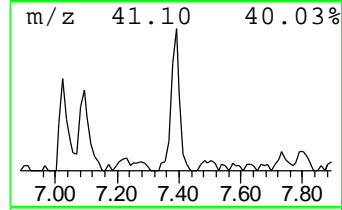
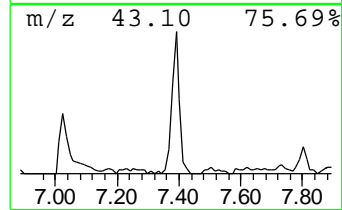
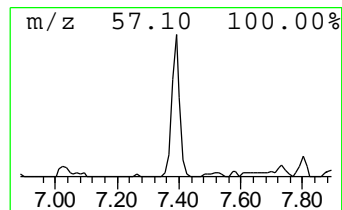
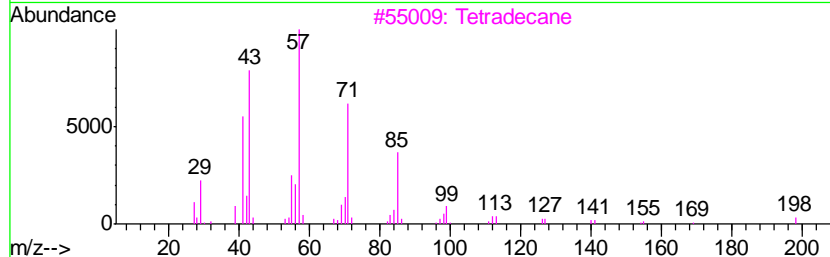
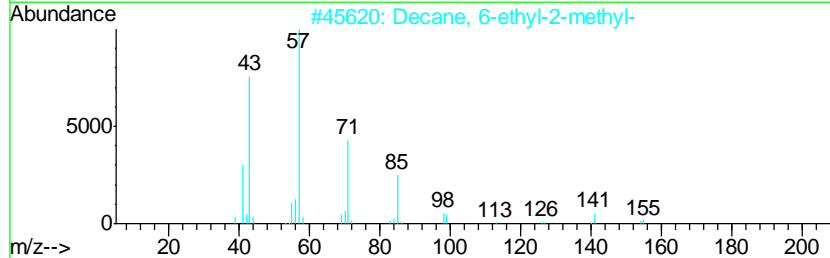
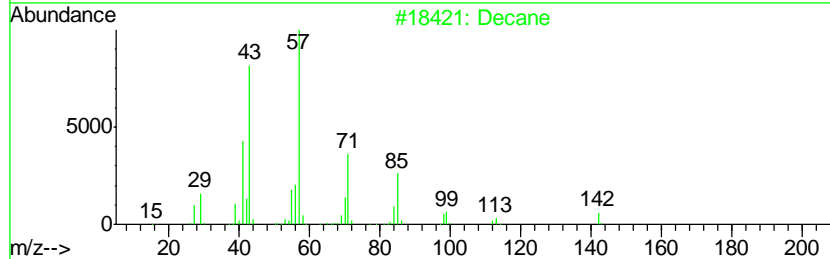
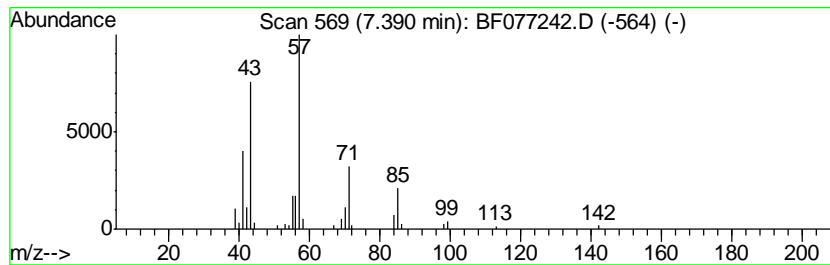
Quant Method : Z:\HPCHEM1\BNA F\METHODS\8270-BF011415.M
 Quant Title : ASP BNA STANDARDS FOR 5 POINT CALIBRATION

TIC Library : C:\DATABASE\NIST02.L
 TIC Integration Parameters: LSCINT.P

 Peak Number 10 Decane Concentration Rank 4

R.T.	EstConc	Area	Relative to ISTD	R.T.
7.39	10.96 ng	145399	1,4-Dichlorobenzene-d4	7.60

Hit#	of	Tentative ID	MW	MolForm	CAS#	Qual
1	5	Decane	142	C10H22	000124-18-5	83
2		Decane, 6-ethyl-2-methyl-	184	C13H28	062108-21-8	72
3		Tetradecane	198	C14H30	000629-59-4	72
4		Eicosane	282	C20H42	000112-95-8	72
5		Hexadecane	226	C16H34	000544-76-3	64



Data Path : Z:\HPCHEM1\BNA F\DATA\BF021015\
 Data File : BF077242.D
 Acq On : 10 Feb 2015 19:15
 Operator : TP/IZ
 Sample : G1254-05
 Misc :
 ALS Vial : 10 Sample Multiplier: 1

Instrument :
 BNA_F
 ClientSampled :
 UB11A

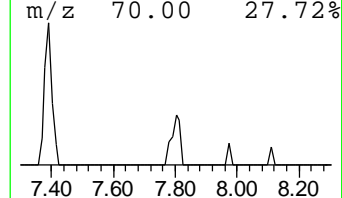
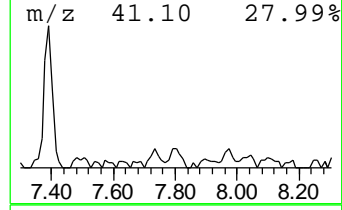
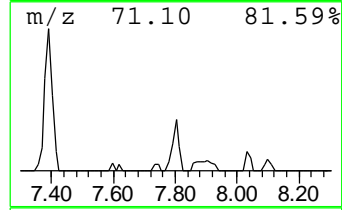
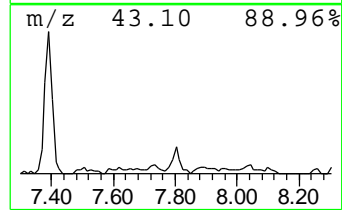
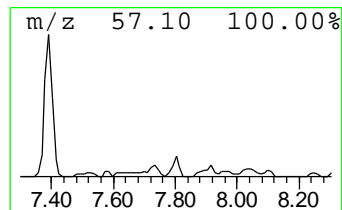
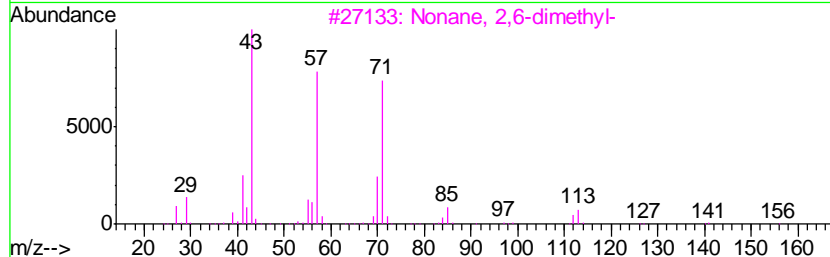
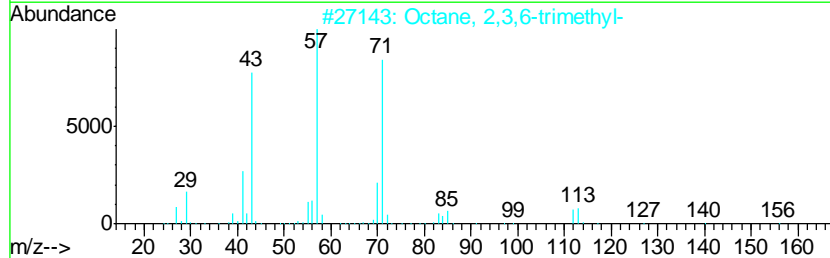
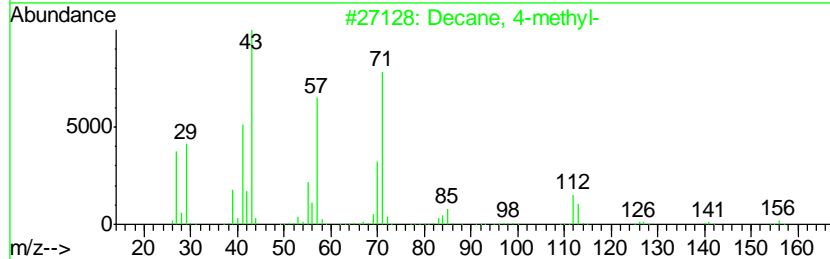
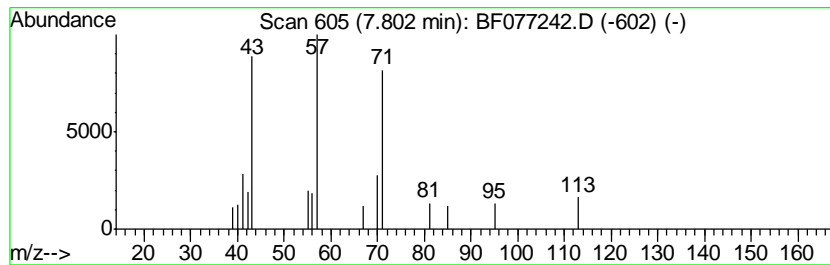
Quant Method : Z:\HPCHEM1\BNA F\METHODS\8270-BF011415.M
 Quant Title : ASP BNA STANDARDS FOR 5 POINT CALIBRATION

TIC Library : C:\DATABASE\NIST02.L
 TIC Integration Parameters: LSCINT.P

 Peak Number 12 Decane, 4-methyl- Concentration Rank 17

R.T.	EstConc	Area	Relative to ISTD	R.T.
7.80	2.14 ng	28319	1,4-Dichlorobenzene-d4	7.60

Hit#	of	Tentative ID	MW	MolForm	CAS#	Qual
1	5	Decane, 4-methyl-	156	C11H24	002847-72-5	50
2		Octane, 2,3,6-trimethyl-	156	C11H24	062016-33-5	45
3		Nonane, 2,6-dimethyl-	156	C11H24	017302-28-2	45
4		Octane, 1,1'-oxybis-	242	C16H34O	000629-82-3	38
5		Octane, 2,6-dimethyl-	142	C10H22	002051-30-1	36



Data Path : Z:\HPCHEM1\BNA F\DATA\BF021015\
 Data File : BF077242.D
 Acq On : 10 Feb 2015 19:15
 Operator : TP/IZ
 Sample : G1254-05
 Misc :
 ALS Vial : 10 Sample Multiplier: 1

Instrument :
 BNA_F
 ClientSampleID :
 UB11A

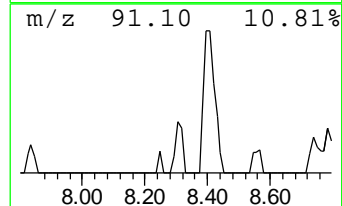
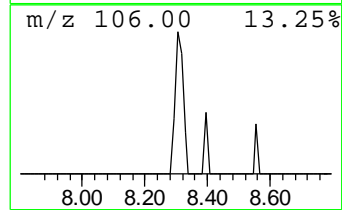
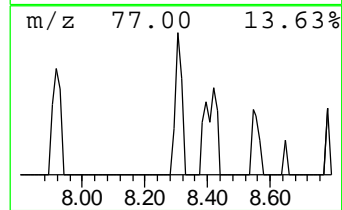
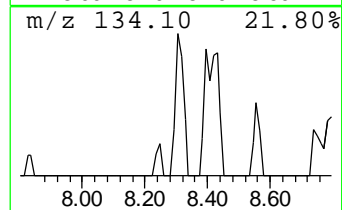
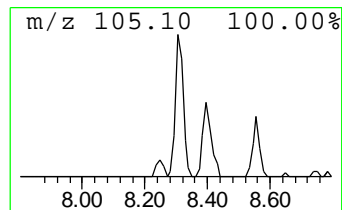
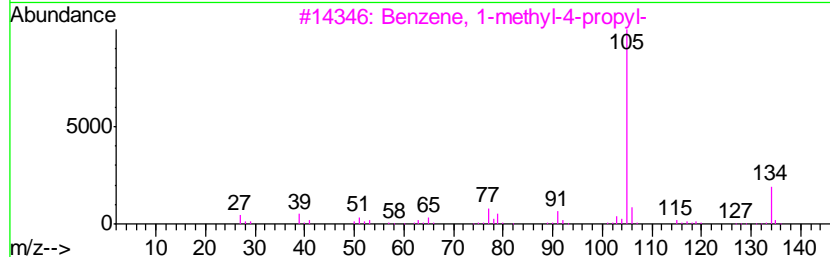
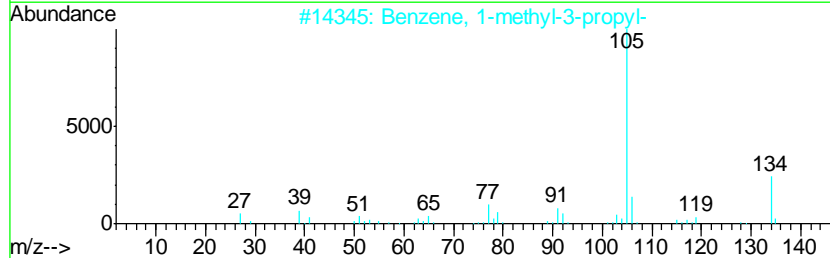
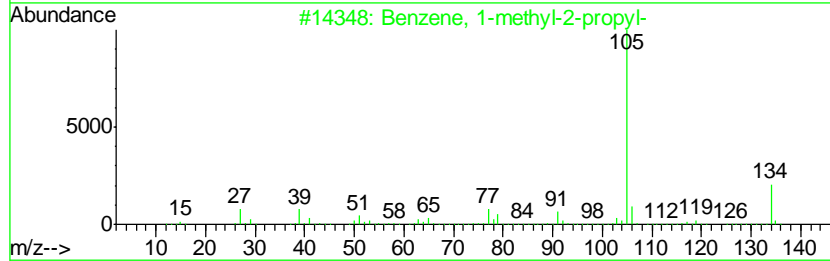
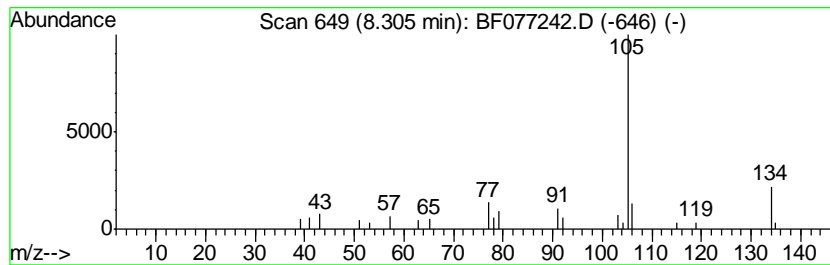
Quant Method : Z:\HPCHEM1\BNA F\METHODS\8270-BF011415.M
 Quant Title : ASP BNA STANDARDS FOR 5 POINT CALIBRATION

TIC Library : C:\DATABASE\NIST02.L
 TIC Integration Parameters: LSCINT.P

 Peak Number 14 Benzene, 1-methyl-2-propyl- Concentration Rank 12

R.T.	EstConc	Area	Relative to ISTD	R.T.
8.30	3.08 ng	40850	1,4-Dichlorobenzene-d4	7.60

Hit#	of	Tentative ID	MW	MolForm	CAS#	Qual
1	5	Benzene, 1-methyl-2-propyl-	134	C10H14	001074-17-5	91
2		Benzene, 1-methyl-3-propyl-	134	C10H14	001074-43-7	91
3		Benzene, 1-methyl-4-propyl-	134	C10H14	001074-55-1	91
4		Benzene, (1-methylpropyl)-	134	C10H14	000135-98-8	87
5		2-Tolyloxirane	134	C9H10O	002783-26-8	74



Data Path : Z:\HPCHEM1\BNA F\DATA\BF021015\
 Data File : BF077242.D
 Acq On : 10 Feb 2015 19:15
 Operator : TP/IZ
 Sample : G1254-05
 Misc :
 ALS Vial : 10 Sample Multiplier: 1

Instrument :
 BNA_F
 ClientSampleID :
 UB11A

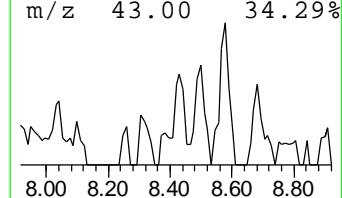
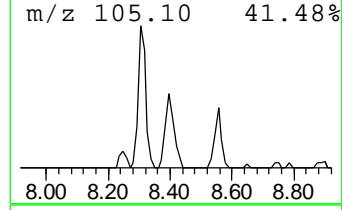
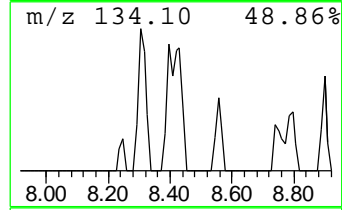
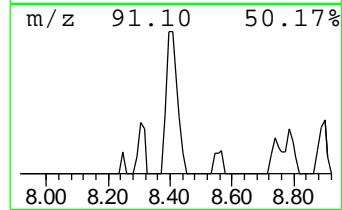
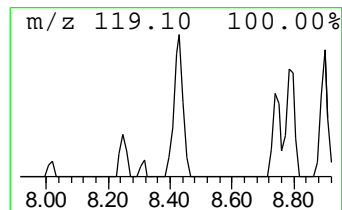
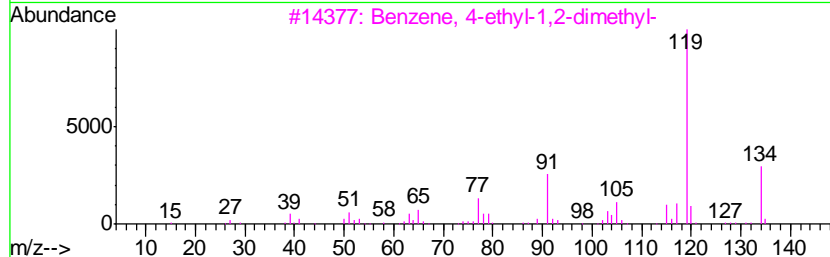
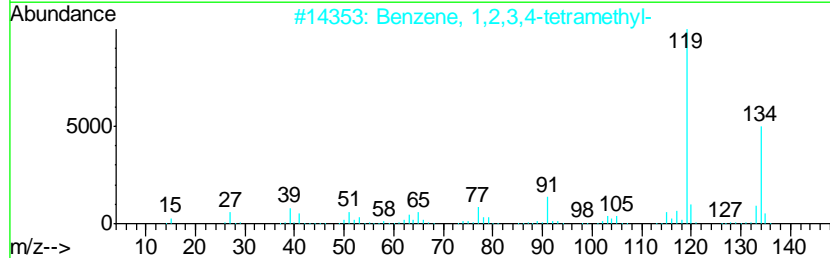
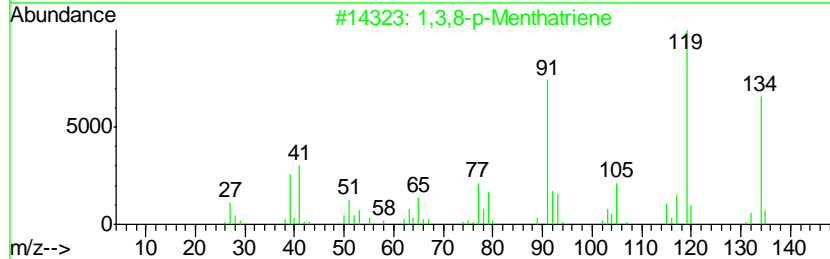
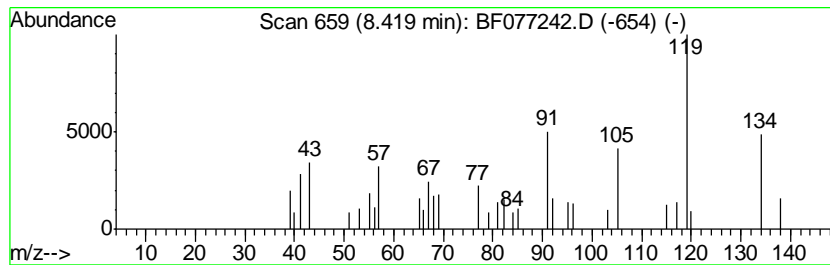
Quant Method : Z:\HPCHEM1\BNA F\METHODS\8270-BF011415.M
 Quant Title : ASP BNA STANDARDS FOR 5 POINT CALIBRATION

TIC Library : C:\DATABASE\NIST02.L
 TIC Integration Parameters: LSCINT.P

 Peak Number 15 1,3,8-p-Menthatriene Concentration Rank 8

R.T.	EstConc	Area	Relative to ISTD	R.T.
8.42	5.59 ng	74162	1,4-Dichlorobenzene-d4	7.60

Hit#	of	Tentative ID	MW	MolForm	CAS#	Qual
1	5	1,3,8-p-Menthatriene	134	C10H14	021195-59-5	72
2		Benzene, 1,2,3,4-tetramethyl-	134	C10H14	000488-23-3	64
3		Benzene, 4-ethyl-1,2-dimethyl-	134	C10H14	000934-80-5	64
4		Benzene, 1,2-diethyl-	134	C10H14	000135-01-3	64
5		Benzene, 1,4-diethyl-	134	C10H14	000105-05-5	64



Data Path : Z:\HPCHEM1\BNA F\DATA\BF021015\
 Data File : BF077242.D
 Acq On : 10 Feb 2015 19:15
 Operator : TP/IZ
 Sample : G1254-05
 Misc :
 ALS Vial : 10 Sample Multiplier: 1

Instrument :
 BNA_F
 ClientSampleID :
 UB11A

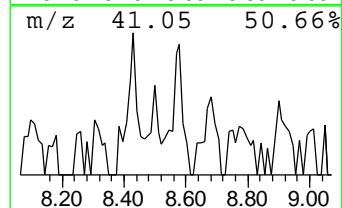
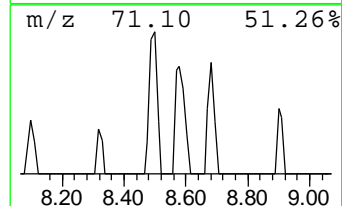
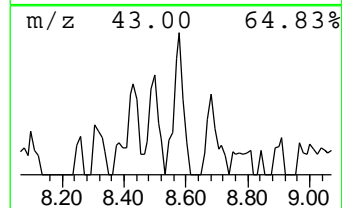
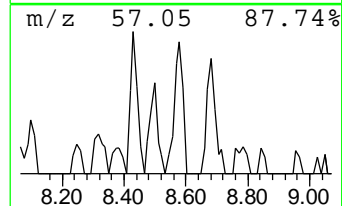
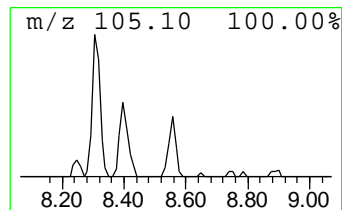
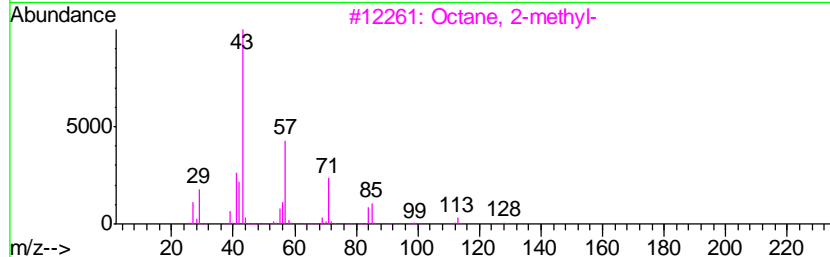
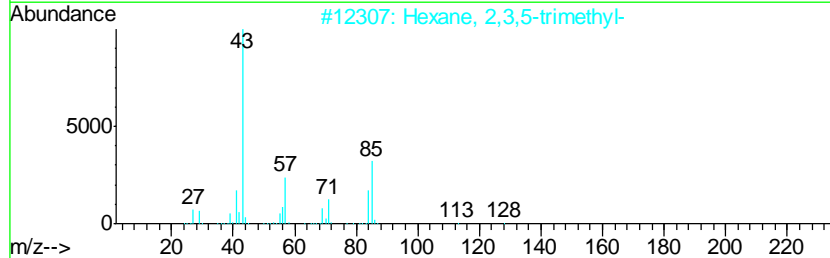
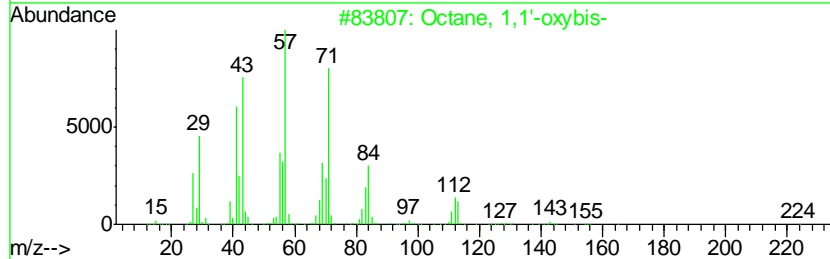
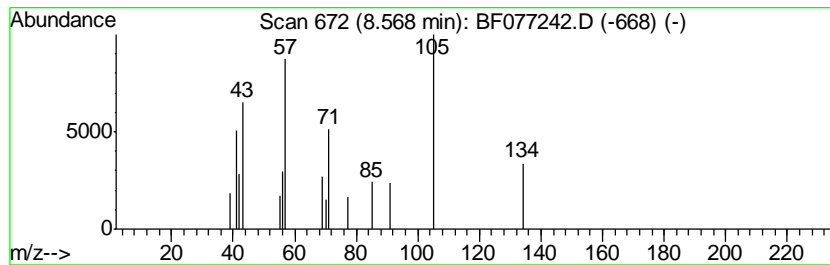
Quant Method : Z:\HPCHEM1\BNA F\METHODS\8270-BF011415.M
 Quant Title : ASP BNA STANDARDS FOR 5 POINT CALIBRATION

TIC Library : C:\DATABASE\NIST02.L
 TIC Integration Parameters: LSCINT.P

 Peak Number 16 unknown8.57 Concentration Rank 14

R.T.	EstConc	Area	Relative to ISTD	R.T.
8.57	2.35 ng	31231	1,4-Dichlorobenzene-d4	7.60

Hit#	of	Tentative ID	MW	MolForm	CAS#	Qual
1	5	Octane, 1,1'-oxybis-	242	C16H34O	000629-82-3	47
2		Hexane, 2,3,5-trimethyl-	128	C9H20	001069-53-0	38
3		Octane, 2-methyl-	128	C9H20	003221-61-2	37
4		Heptane, 2,6-dimethyl-	128	C9H20	001072-05-5	37
5		Nonane, 3,7-dimethyl-	156	C11H24	017302-32-8	37



Data Path : Z:\HPCHEM1\BNA F\DATA\BF021015\
 Data File : BF077242.D
 Acq On : 10 Feb 2015 19:15
 Operator : TP/IZ
 Sample : G1254-05
 Misc :
 ALS Vial : 10 Sample Multiplier: 1

Instrument :
 BNA_F
 ClientSampled :
 UB11A

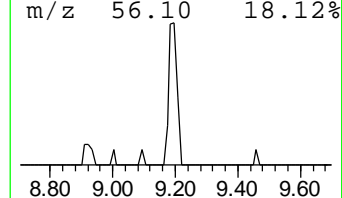
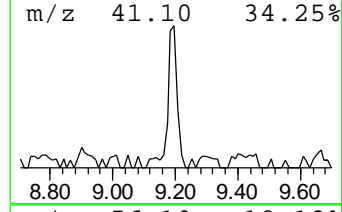
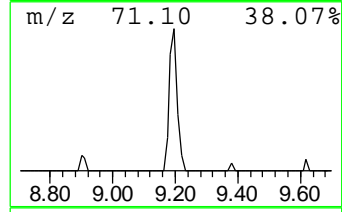
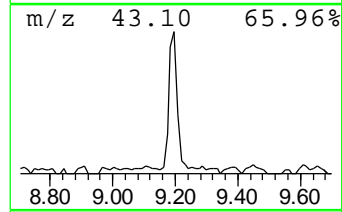
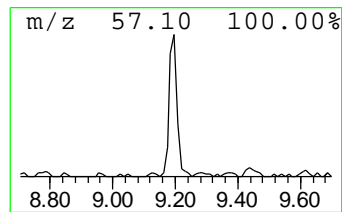
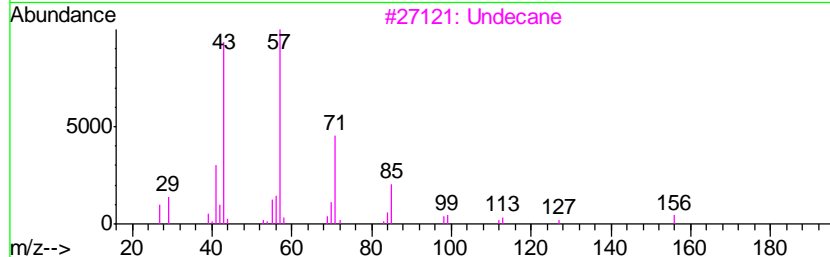
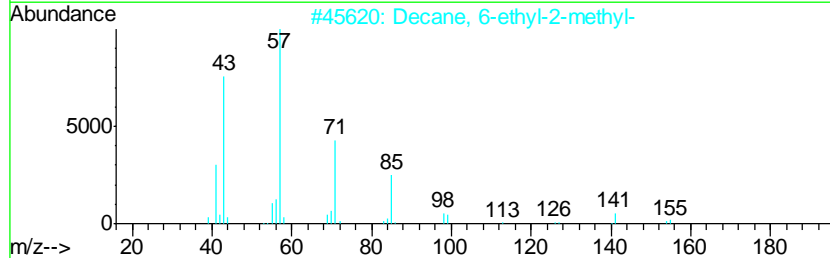
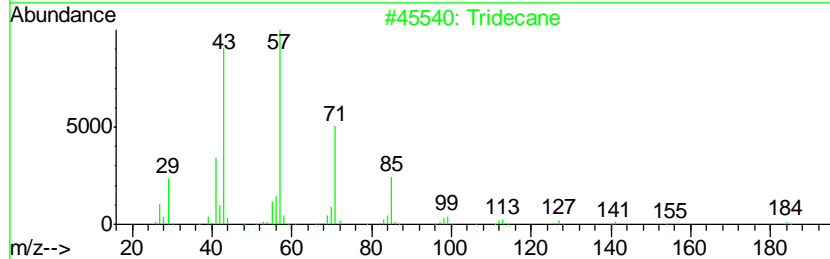
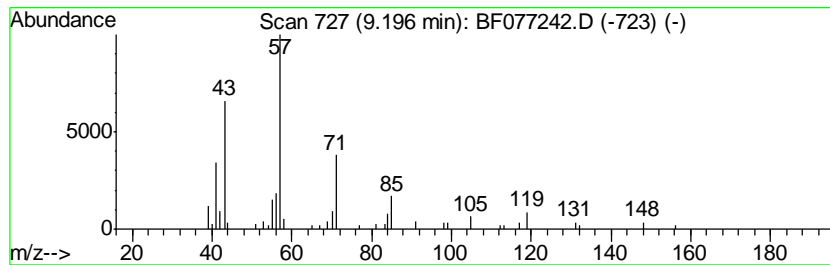
Quant Method : Z:\HPCHEM1\BNA F\METHODS\8270-BF011415.M
 Quant Title : ASP BNA STANDARDS FOR 5 POINT CALIBRATION

TIC Library : C:\DATABASE\NIST02.L
 TIC Integration Parameters: LSCINT.P

 Peak Number 17 Tridecane Concentration Rank 7

R.T.	EstConc	Area	Relative to ISTD	R.T.
9.20	6.44 ng	119632	Naphthalene-d8	10.51

Hit#	of	Tentative ID	MW	MolForm	CAS#	Qual
1	5	Tridecane	184	C13H28	000629-50-5	64
2		Decane, 6-ethyl-2-methyl-	184	C13H28	062108-21-8	64
3		Undecane	156	C11H24	001120-21-4	64
4		Nonane, 2-methyl-	142	C10H22	000871-83-0	59
5		Decane, 2,5,9-trimethyl-	184	C13H28	062108-22-9	59



Data Path : Z:\HPCHEM1\BNA_F\DATA\BF021015\
 Data File : BF077242.D
 Acq On : 10 Feb 2015 19:15
 Operator : TP/IZ
 Sample : G1254-05
 Misc :
 ALS Vial : 10 Sample Multiplier: 1

Instrument :
 BNA_F
 ClientSampleId :
 UB11A

Quant Method : Z:\HPCHEM1\BNA_F\METHODS\8270-BF011415.M
 Quant Title : ASP BNA STANDARDS FOR 5 POINT CALIBRATION

TIC Library : C:\DATABASE\NIST02.L
 TIC Integration Parameters: LSCINT.P

TIC Top Hit name	RT	EstConc	Units	Response	--Internal Standard--			
					#	RT	Resp	Conc
2-Pentanone, 4-hy...	3.61	9.2	ng	121458	1	7.60	265257	20.0
unknown5.21	5.21	2.7	ng	35290	1	7.60	265257	20.0
Benzene, 1-ethyl-...	6.54	3.4	ng	44798	1	7.60	265257	20.0
Benzene, 1-ethyl-...	6.73	2.3	ng	30491	1	7.60	265257	20.0
3H-Pyrazol-3-one,...	6.86	3.5	ng	46129	1	7.60	265257	20.0
unknown7.09	7.09	38.9	ng	516520	1	7.60	265257	20.0
Decane	7.39	11.0	ng	145399	1	7.60	265257	20.0
Decane, 4-methyl-	7.80	2.1	ng	28319	1	7.60	265257	20.0
Benzene, 1-methyl...	8.30	3.1	ng	40850	1	7.60	265257	20.0
1,3,8-p-Menthatriene	8.42	5.6	ng	74162	1	7.60	265257	20.0
unknown8.57	8.57	2.4	ng	31231	1	7.60	265257	20.0
Tridecane	9.20	6.4	ng	119632	2	10.51	371556	20.0