

Data Path : Z:\SVOASRV\HPCHEM1\BNA F\DATA\BF021120\
 Data File : BF118904.D
 Acq On : 12 Feb 2020 00:52
 Operator : CG/JU
 Sample : L1468-04DL 5X
 Misc :
 ALS Vial : 21 Sample Multiplier: 1

Instrument :
 BNA_F
 ClientSampleId :
 TP10-EP2-3DL

Manual Integrations
 APPROVED

mohammad
 2/12/2020 3:51:28 PM

Quant Time: Feb 12 08:18:50 2020
 Quant Method : Z:\SVOASRV\HPCHEM1\BNA F\METHODS\8270-BF020320.M
 Quant Title : ASP BNA STANDARDS FOR 5 POINT CALIBRATION
 QLast Update : Mon Feb 03 16:26:03 2020
 Response via : Initial Calibration

Internal Standards	R.T.	QIon	Response	Conc	Units	Dev(Min)
1) 1,4-Dichlorobenzene-d4	6.80	152	172059	20.00	ng	-0.01
21) Naphthalene-d8	8.09	136	684851	20.00	ng	-0.02
39) Acenaphthene-d10	9.85	164	502295	20.00	ng	-0.01
64) Phenanthrene-d10	11.33	188	1041478	20.00	ng	-0.01
76) Chrysene-d12	13.97	240	746753	20.00	ng	0.00
87) Perylene-d12	15.43	264	786555	20.00	ng	0.00

System Monitoring Compounds

5) 2-Fluorophenol	5.42	112	214691	23.62	ng	-0.01
7) Phenol-d6	6.44	99	227033	20.12	ng	-0.01
23) Nitrobenzene-d5	7.36	82	144478	12.57	ng	-0.02
42) 2,4,6-Tribromophenol	10.63	330	105326	17.52	ng	-0.01
45) 2-Fluorobiphenyl	9.16	172	386348	13.75	ng	-0.02
79) Terphenyl-d14	12.91	244	548345	15.08	ng	-0.02

Target Compounds

Target Compounds	R.T.	QIon	Response	Conc	Units	Qvalue
31) Naphthalene	8.11	128	1417470	45.254	ng	99
37) 2-Methylnaphthalene	8.80	142	363776	16.746	ng	98
38) 1-Methylnaphthalene	8.90	142	375782	18.389	ng	100
46) 1,1'-Biphenyl	9.26	154	166754	4.799	ng	98
49) Acenaphthylene	9.70	152	521625	12.507	ng	98
52) Acenaphthene	9.87	154	375957	13.680	ng	99
55) Dibenzofuran	10.05	168	461058	11.608	ng	96
58) Fluorene	10.39	166	734165	24.570	ng	99
71) Phenanthrene	11.36	178	3165598	61.777	ng	98
72) Anthracene	11.40	178	1095939	21.499	ng	98
73) Carbazole	11.56	167	283460	6.336	ng	97
75) Fluoranthene	12.55	202	2731633	48.825	ng	99
78) Pyrene	12.78	202	2666022	52.041	ng	99
81) Benzo(a)anthracene	13.96	228	1402876m	31.571	ng	
83) Chrysene	14.00	228	1124405	25.212	ng	98
86) Indeno(1,2,3-cd)pyrene	16.86	276	530486	11.839	ng	97
88) Benzo(b)fluoranthene	15.01	252	1431512m	29.330	ng	
89) Benzo(k)fluoranthene	15.03	252	483036m	11.365	ng	
90) Benzo(a)pyrene	15.36	252	1190778	28.508	ng	99
91) Dibenzo(a,h)anthracene	16.86	278	160783m	4.336	ng	
92) Benzo(q,h,i)perylene	17.30	276	479412	13.444	ng	97

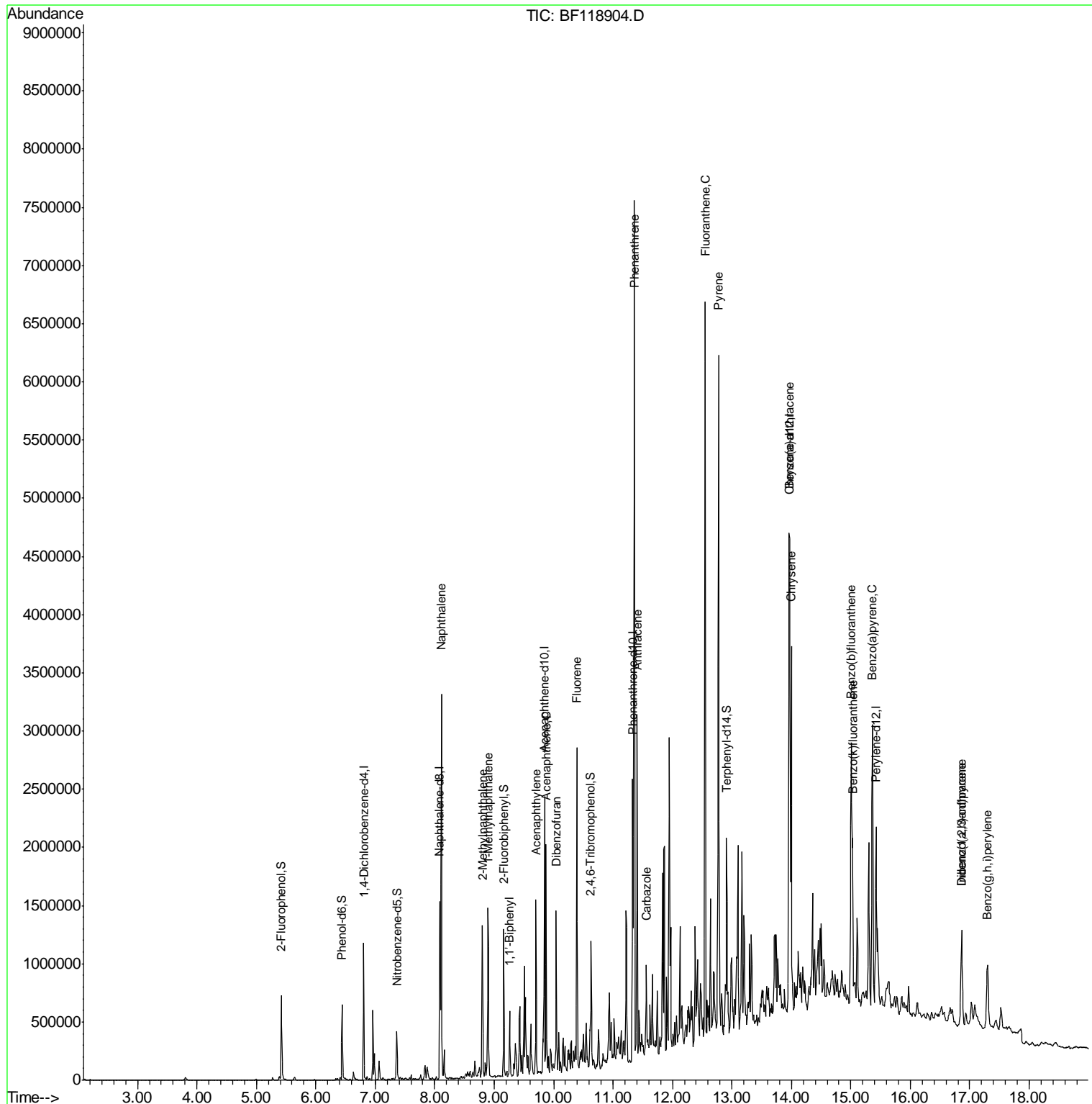
(#) = qualifier out of range (m) = manual integration (+) = signals summed

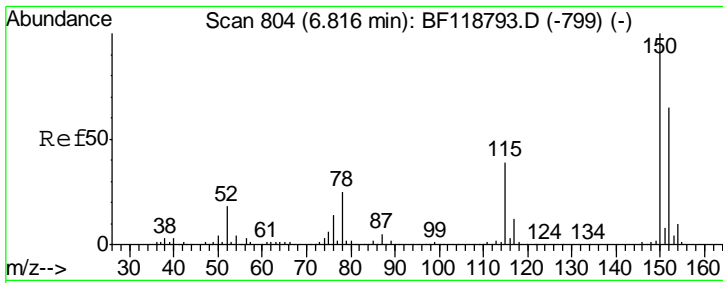
Data Path : Z:\SVOASRV\HPCHEM1\BNA F\DATA\BF021120\
 Data File : BF118904.D
 Acq On : 12 Feb 2020 00:52
 Operator : CG/JU
 Sample : L1468-04DL 5X
 Misc :
 ALS Vial : 21 Sample Multiplier: 1

Instrument :
 BNA_F
 Client Sampled :
 TP10-EP2-3DL

Manual Integrations
APPROVED
 mohammad
 2/12/2020 3:51:28 PM

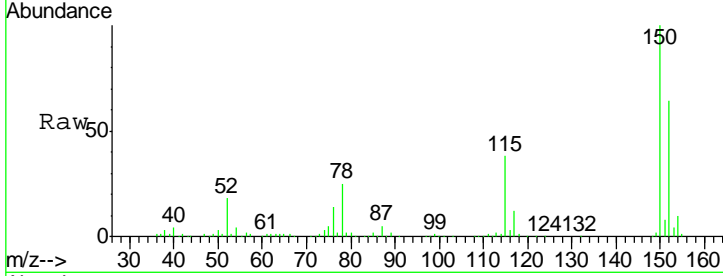
Quant Time: Feb 12 08:18:50 2020
 Quant Method : Z:\SVOASRV\HPCHEM1\BNA F\METHODS\8270-BF020320.M
 Quant Title : ASP BNA STANDARDS FOR 5 POINT CALIBRATION
 QLast Update : Mon Feb 03 16:26:03 2020
 Response via : Initial Calibration





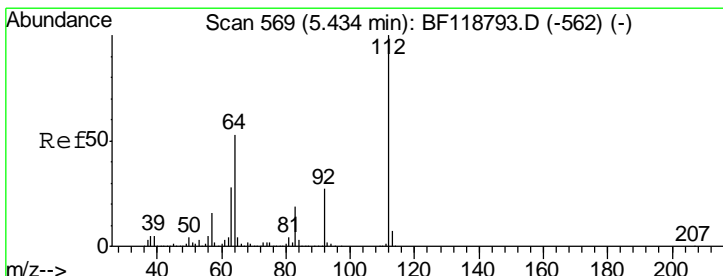
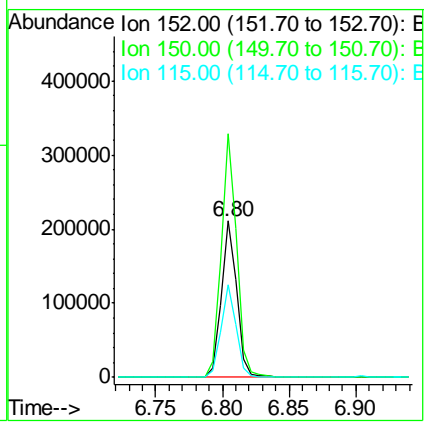
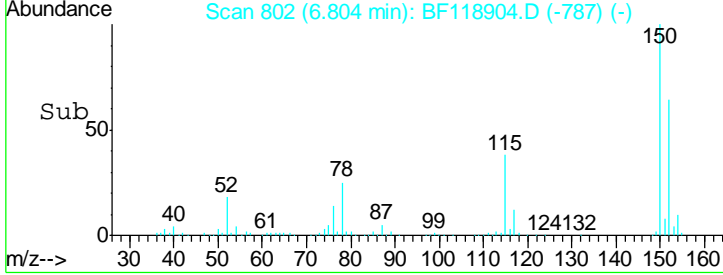
#1
 1,4-Dichlorobenzene-d4
 Concen: 20.000 ng
 RT: 6.80 min Scan# 802
 Delta R.T. -0.01 min
 Lab File: BF118904.D
 Acq: 12 Feb 2020 00:52

Instrument :
 BNA_F
ClientSampled :
 TP10-EP2-3DL

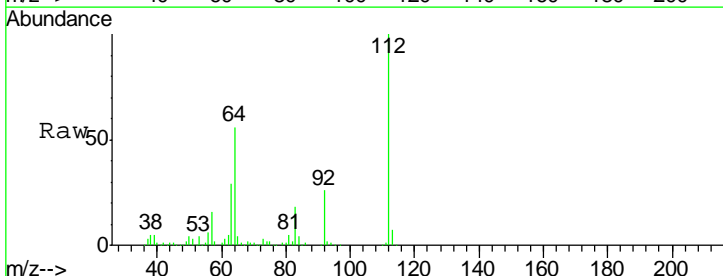


Tgt Ion	Resp	Lower	Upper
152	172059		
150	100	123.6	185.4
115	59.0	48.2	72.2

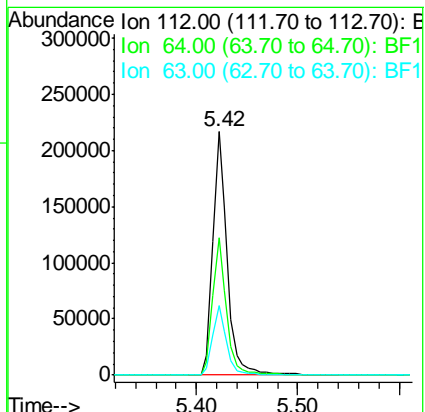
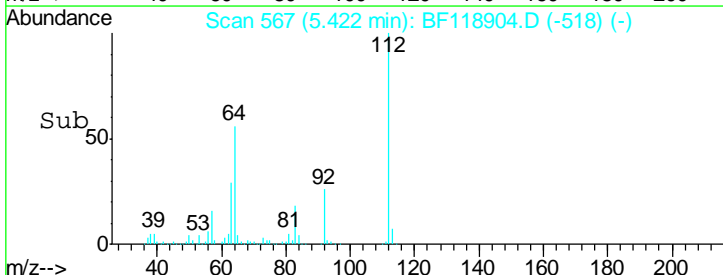
Manual Integrations
APPROVED
 mohammad
 2/12/2020 3:51:28 PM

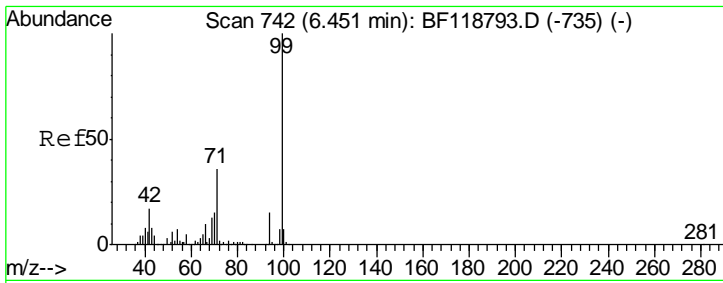


#5
 2-Fluorophenol
 Concen: 23.619 ng
 RT: 5.42 min Scan# 567
 Delta R.T. -0.01 min
 Lab File: BF118904.D
 Acq: 12 Feb 2020 00:52



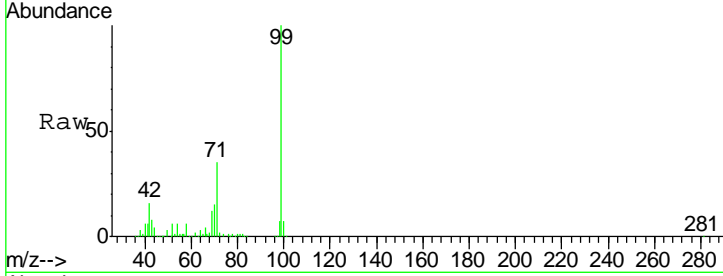
Tgt Ion	Resp	Lower	Upper
112	214691		
64	56.3	42.6	63.8
63	28.7	22.2	33.4





#7
 Phenol-d6
 Concen: 20.121 ng
 RT: 6.44 min Scan# 740
 Delta R.T. -0.01 min
 Lab File: BF118904.D
 Acq: 12 Feb 2020 00:52

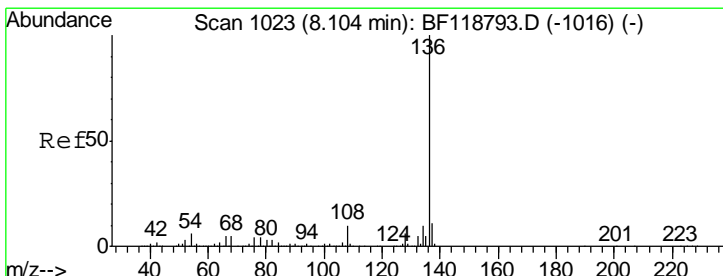
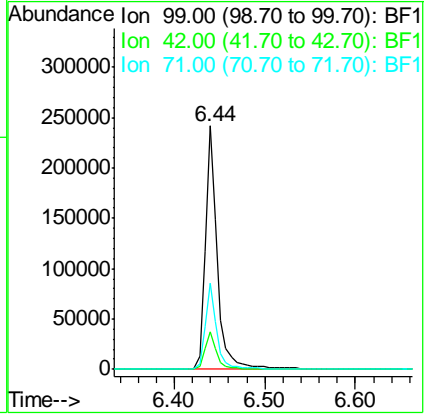
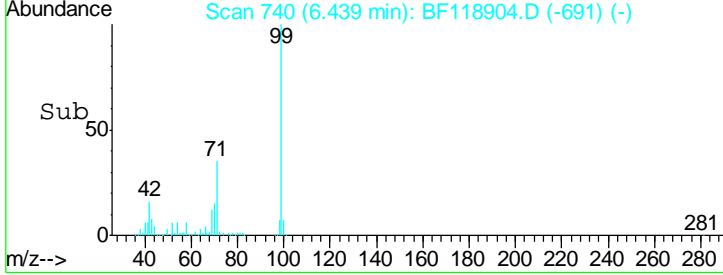
Instrument :
 BNA_F
ClientSampled :
 TP10-EP2-3DL



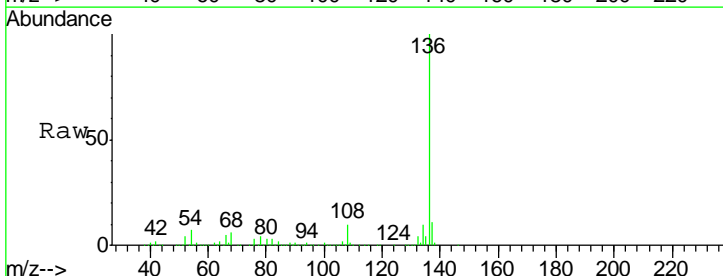
Tgt Ion: 99 Resp: 227033

Ion	Ratio	Lower	Upper
99	100		
42	15.6	13.4	20.0
71	35.1	29.0	43.6

Manual Integrations
APPROVED
 mohammad
 2/12/2020 3:51:28 PM

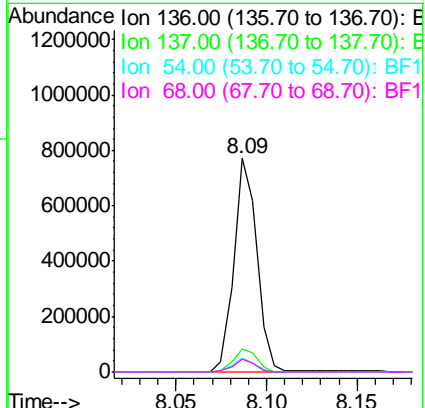
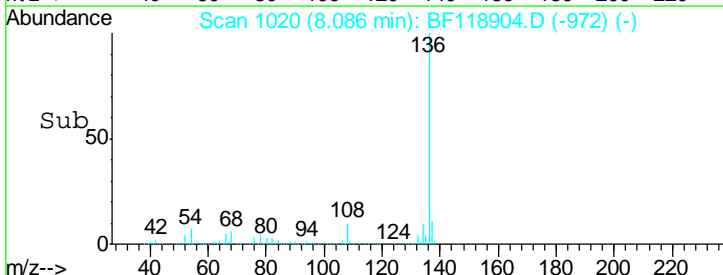


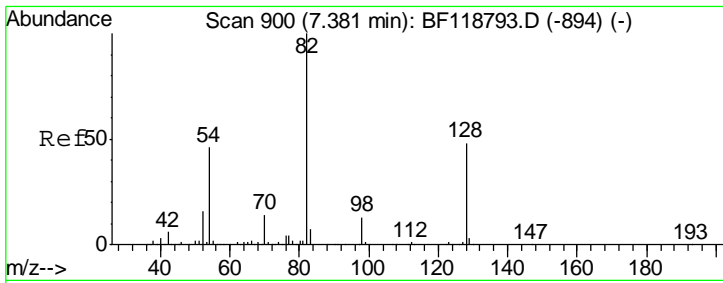
#21
 Naphthalene-d8
 Concen: 20.000 ng
 RT: 8.09 min Scan# 1020
 Delta R.T. -0.02 min
 Lab File: BF118904.D
 Acq: 12 Feb 2020 00:52



Tgt Ion: 136 Resp: 684851

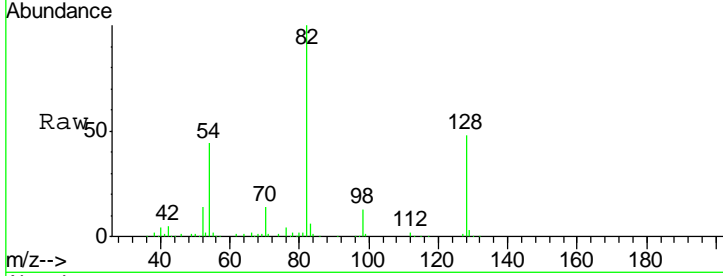
Ion	Ratio	Lower	Upper
136	100		
137	11.0	8.7	13.1
54	6.8	5.0	7.6
68	5.8	4.2	6.4





#23
 Nitrobenzene-d5
 Concen: 12.574 ng
 RT: 7.36 min Scan# 897
 Delta R.T. -0.02 min
 Lab File: BF118904.D
 Acq: 12 Feb 2020 00:52

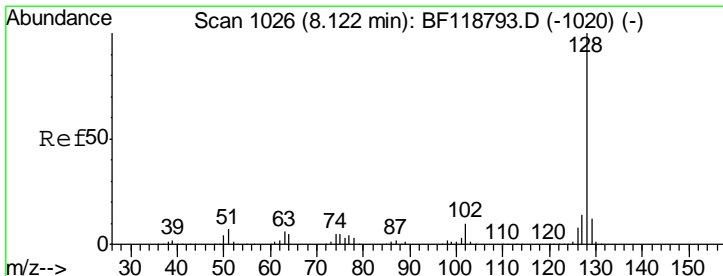
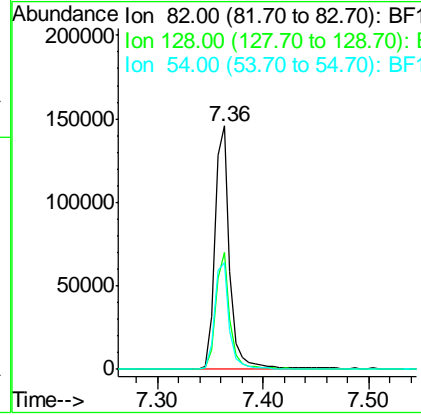
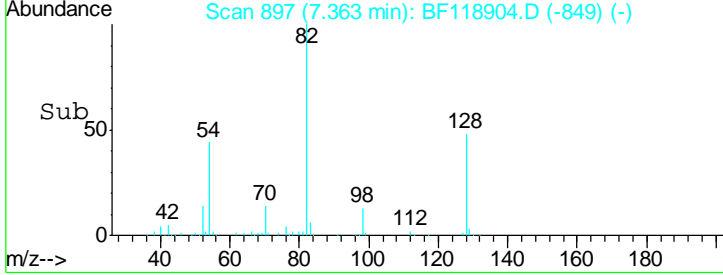
Instrument :
 BNA_F
ClientSampled :
 TP10-EP2-3DL



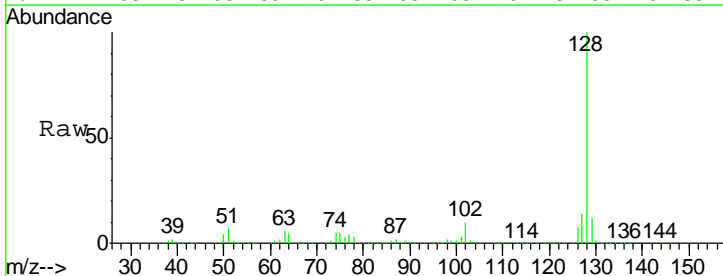
Tgt Ion: 82 Resp: 144478

Ion	Ratio	Lower	Upper
82	100		
128	48.0	38.5	57.7
54	44.0	36.7	55.1

Manual Integrations
APPROVED
 mohammad
 2/12/2020 3:51:28 PM

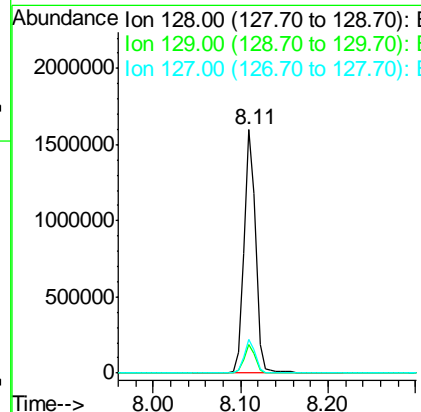
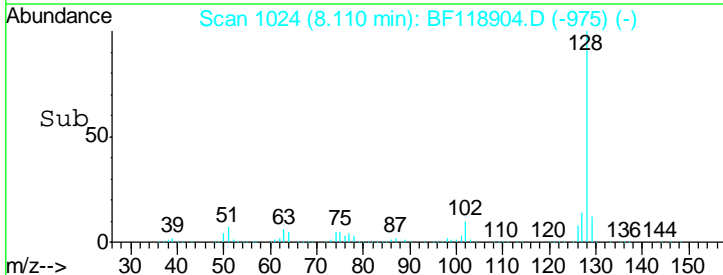


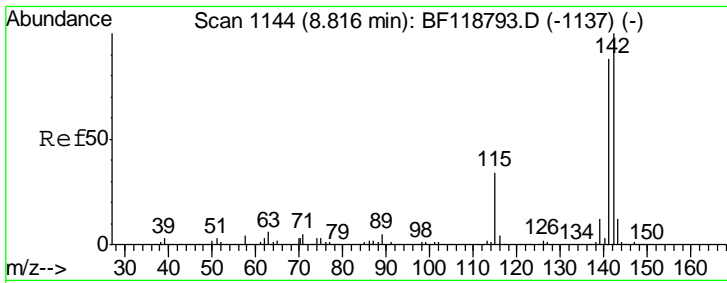
#31
 Naphthalene
 Concen: 45.254 ng
 RT: 8.11 min Scan# 1024
 Delta R.T. -0.01 min
 Lab File: BF118904.D
 Acq: 12 Feb 2020 00:52



Tgt Ion: 128 Resp: 1417470

Ion	Ratio	Lower	Upper
128	100		
129	11.6	9.4	14.2
127	13.6	11.3	16.9





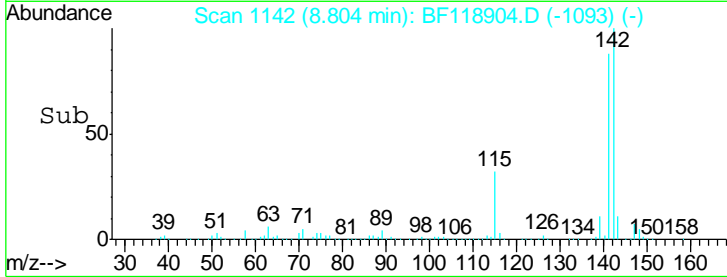
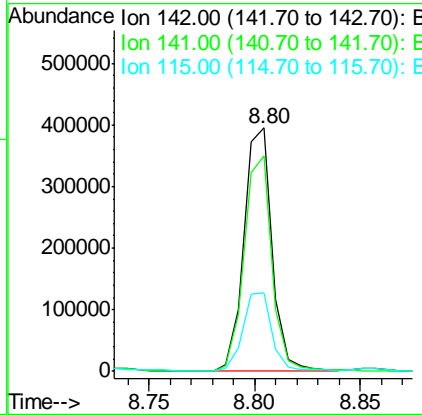
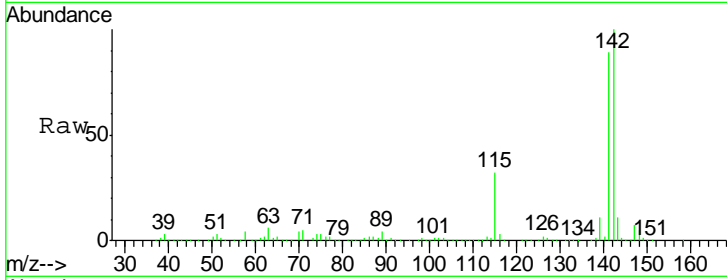
#37
 2-Methylnaphthalene
 Concen: 16.746 ng
 RT: 8.80 min Scan# 1142
 Delta R.T. -0.01 min
 Lab File: BF118904.D
 Acq: 12 Feb 2020 00:52

Instrument :
 BNA_F
ClientSampled :
 TP10-EP2-3DL

Tgt Ion	Resp	Lower	Upper
142	100		
141	88.7	70.1	105.1
115	32.4	27.3	40.9

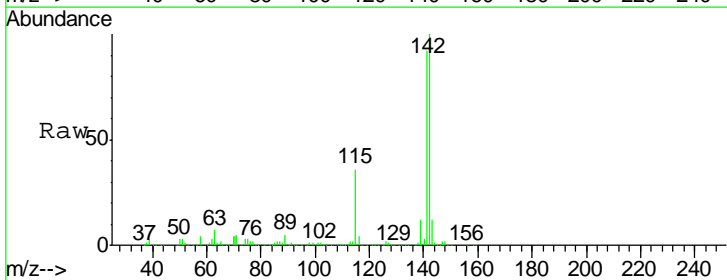
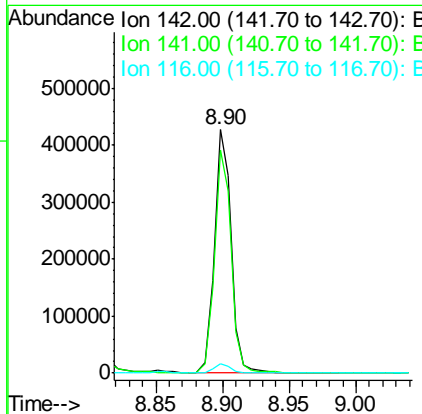
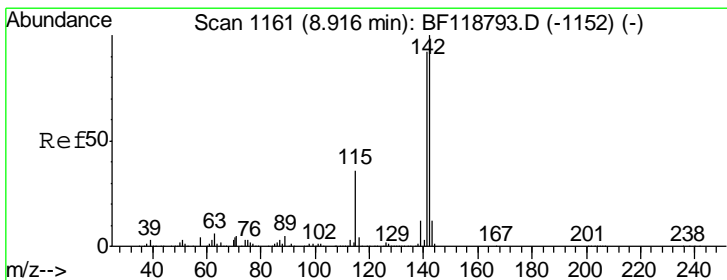
Manual Integrations
APPROVED

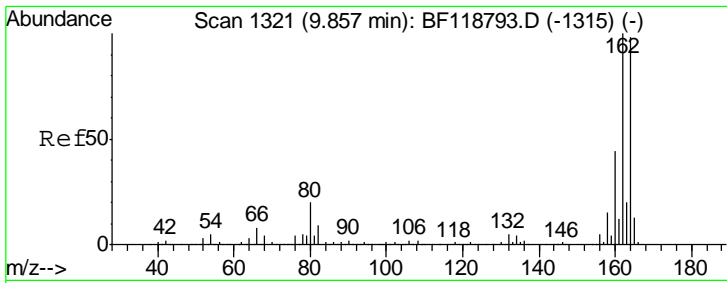
mohammad
 2/12/2020 3:51:28 PM



#38
 1-Methylnaphthalene
 Concen: 18.389 ng
 RT: 8.90 min Scan# 1158
 Delta R.T. -0.02 min
 Lab File: BF118904.D
 Acq: 12 Feb 2020 00:52

Tgt Ion	Resp	Lower	Upper
142	100		
141	91.8	73.8	110.6
116	3.8	3.0	4.4





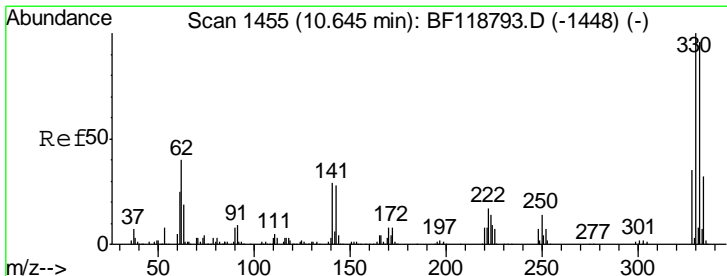
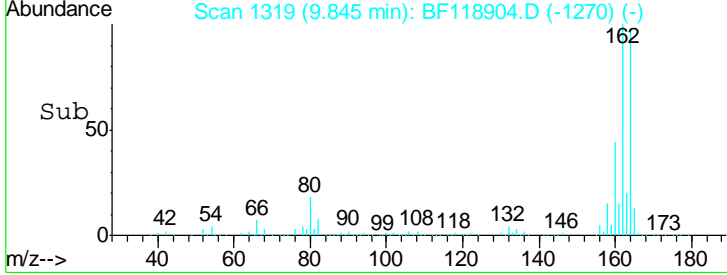
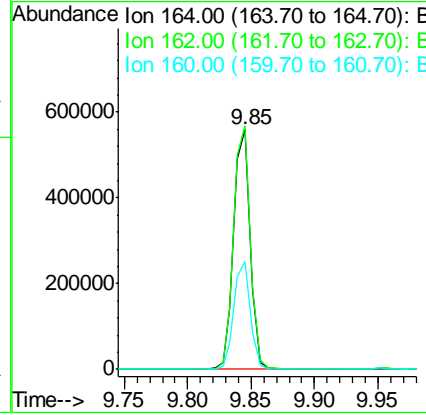
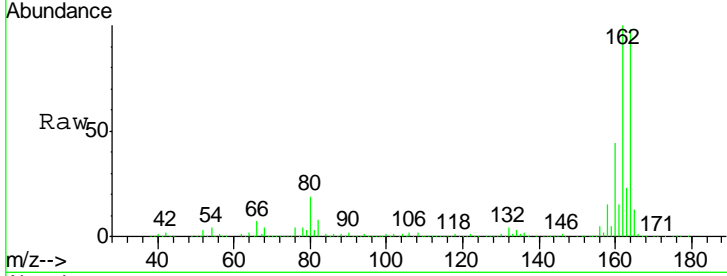
#39
 Acenaphthene-d10
 Concen: 20.000 ng
 RT: 9.85 min Scan# 1319
 Delta R.T. -0.01 min
 Lab File: BF118904.D
 Acq: 12 Feb 2020 00:52

Instrument :
 BNA_F
ClientSampled :
 TP10-EP2-3DL

Tgt Ion	Resp	Lower	Upper
164	100		
162	101.6	81.4	122.2
160	44.9	35.6	53.4

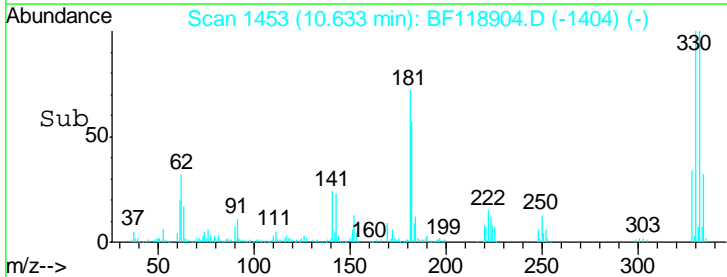
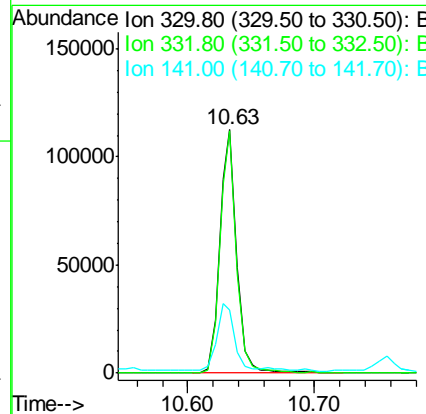
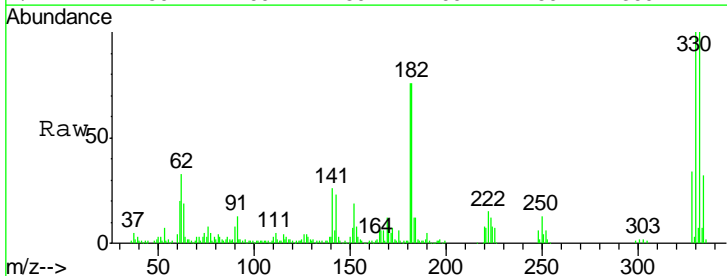
Manual Integrations
APPROVED

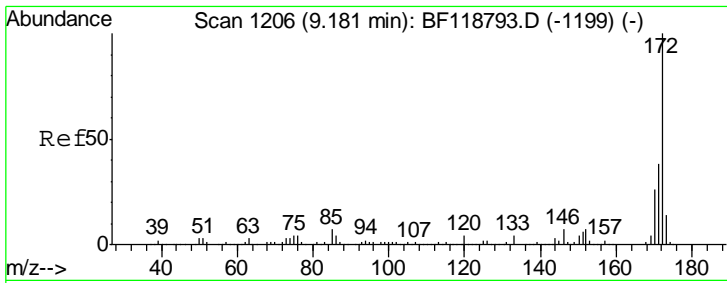
mohammad
 2/12/2020 3:51:28 PM



#42
 2,4,6-Tribromophenol
 Concen: 17.525 ng
 RT: 10.63 min Scan# 1453
 Delta R.T. -0.01 min
 Lab File: BF118904.D
 Acq: 12 Feb 2020 00:52

Tgt Ion	Resp	Lower	Upper
330	100		
332	96.9	77.3	115.9
141	27.9	22.4	33.6





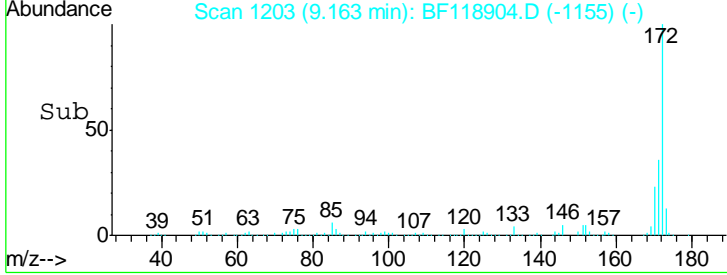
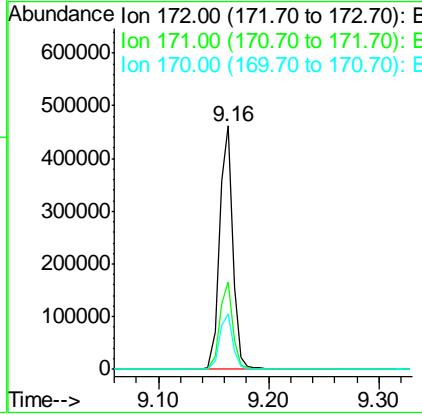
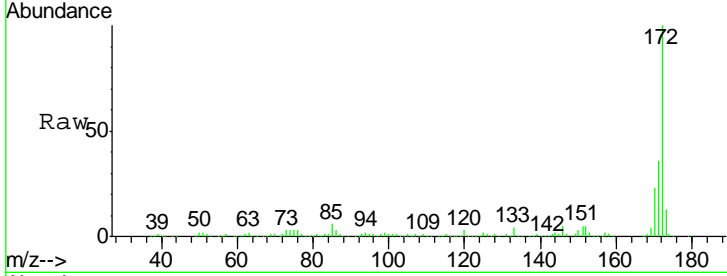
#45
 2-Fluorobiphenyl
 Concen: 13.750 ng
 RT: 9.16 min Scan# 1203
 Delta R.T. -0.02 min
 Lab File: BF118904.D
 Acq: 12 Feb 2020 00:52

Instrument :
 BNA_F
ClientSampled :
 TP10-EP2-3DL

Tgt Ion	Resp	Lower	Upper
172	100		
171	35.7	30.8	46.2
170	22.7	20.5	30.7

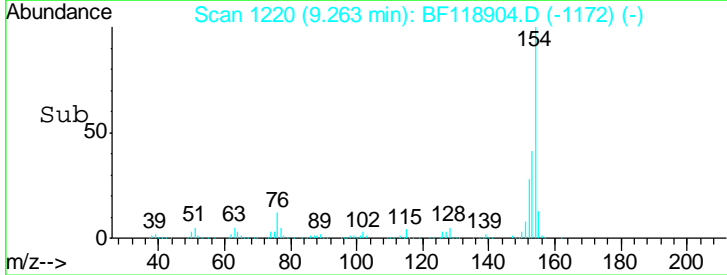
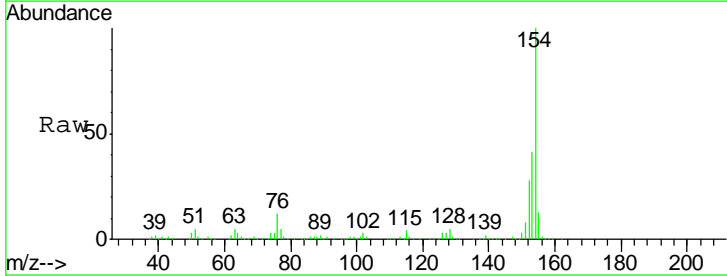
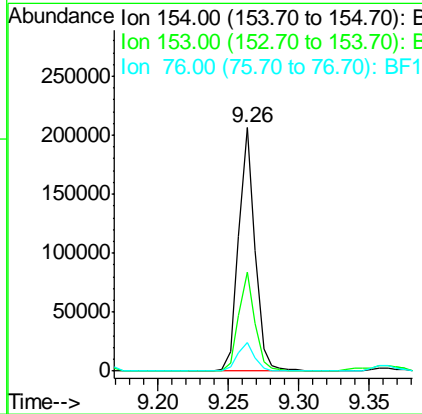
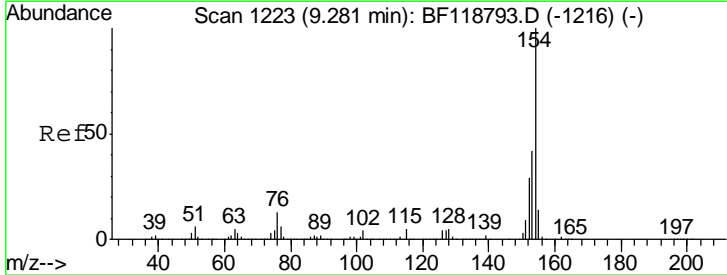
Manual Integrations
APPROVED

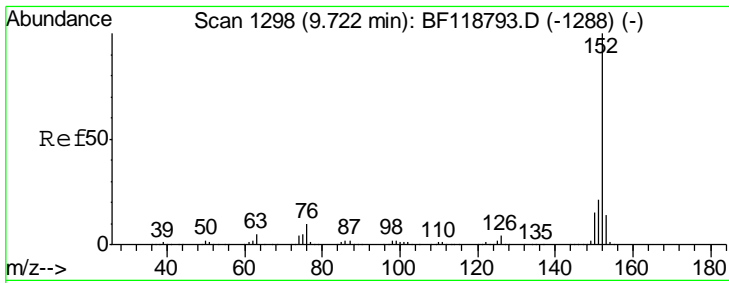
mohammad
 2/12/2020 3:51:28 PM



#46
 1,1'-Biphenyl
 Concen: 4.799 ng
 RT: 9.26 min Scan# 1220
 Delta R.T. -0.02 min
 Lab File: BF118904.D
 Acq: 12 Feb 2020 00:52

Tgt Ion	Resp	Lower	Upper
154	100		
153	40.8	22.4	62.4
76	11.8	0.0	32.7



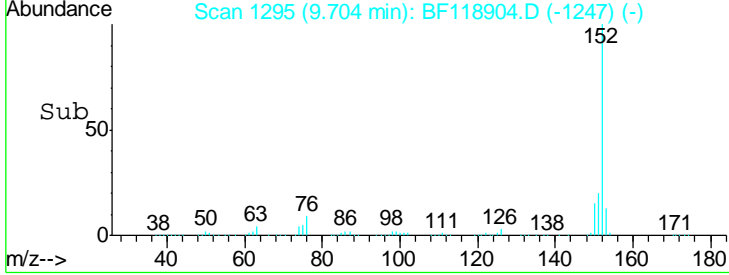
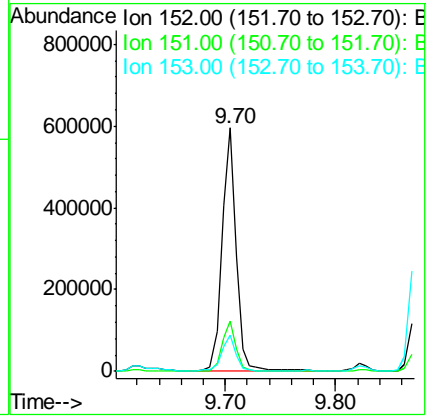
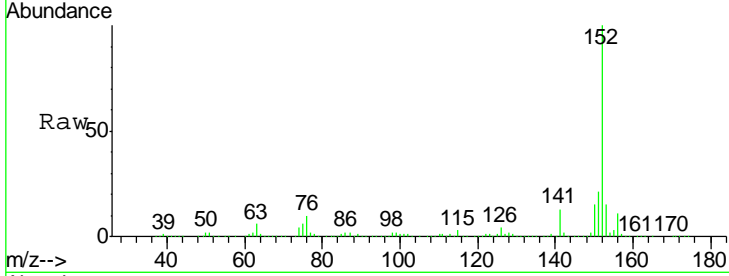


#49
 Acenaphthylene
 Concen: 12.507 ng
 RT: 9.70 min Scan# 1295
 Delta R.T. -0.02 min
 Lab File: BF118904.D
 Acq: 12 Feb 2020 00:52

Instrument :
 BNA_F
 ClientSampled :
 TP10-EP2-3DL

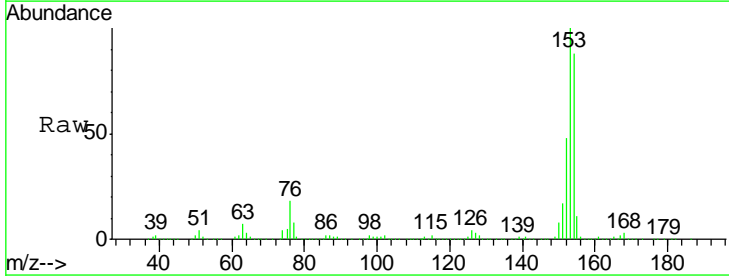
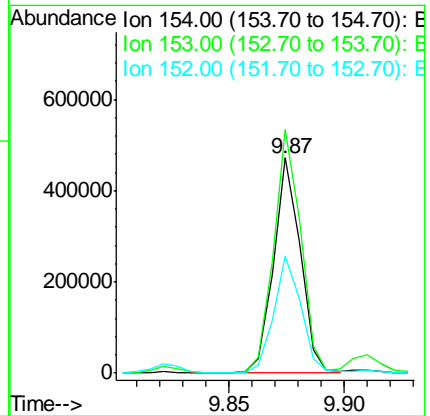
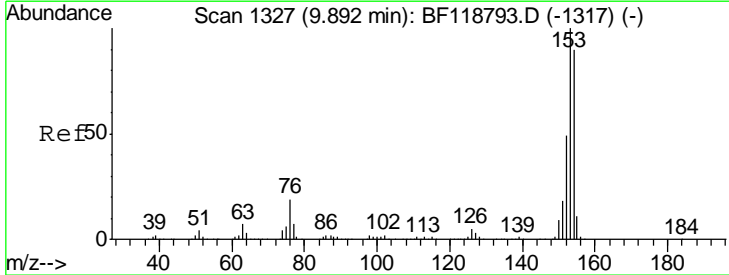
Tgt Ion	Resp	Lower	Upper
152	100		
151	20.6	17.1	25.7
153	14.7	11.0	16.4

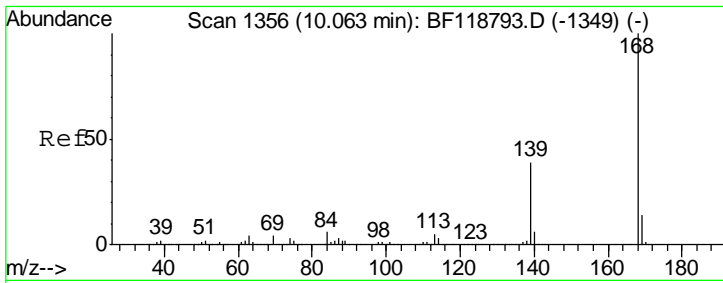
Manual Integrations
APPROVED
 mohammad
 2/12/2020 3:51:28 PM



#52
 Acenaphthene
 Concen: 13.680 ng
 RT: 9.87 min Scan# 1324
 Delta R.T. -0.02 min
 Lab File: BF118904.D
 Acq: 12 Feb 2020 00:52

Tgt Ion	Resp	Lower	Upper
154	100		
153	113.0	89.4	134.0
152	54.3	43.6	65.4



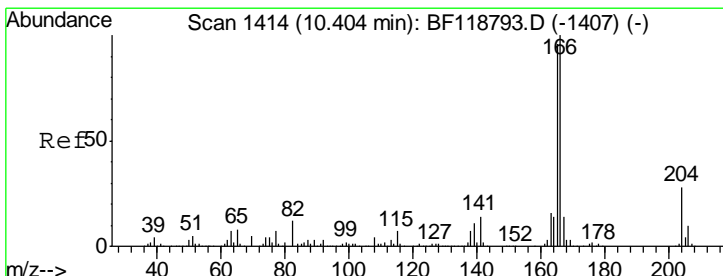
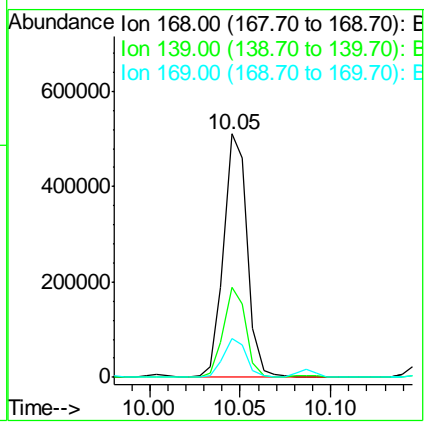
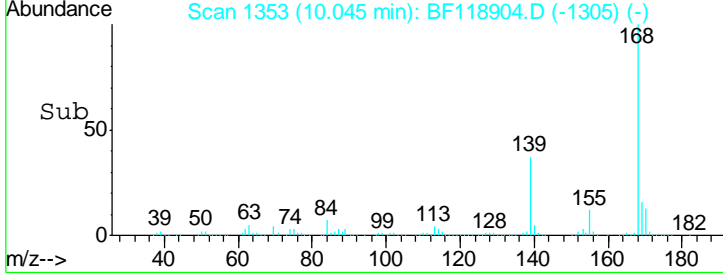
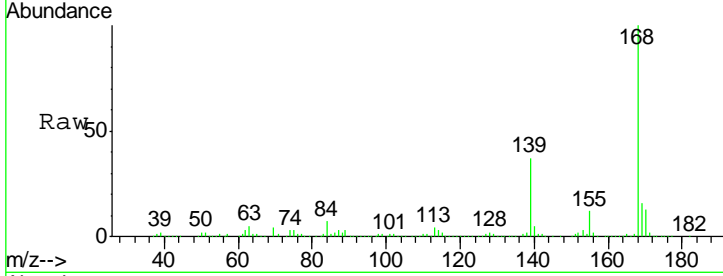


#55
 Dibenzofuran
 Concen: 11.608 ng
 RT: 10.05 min Scan# 1353
 Delta R.T. -0.02 min
 Lab File: BF118904.D
 Acq: 12 Feb 2020 00:52

Instrument :
 BNA_F
 ClientSampled :
 TP10-EP2-3DL

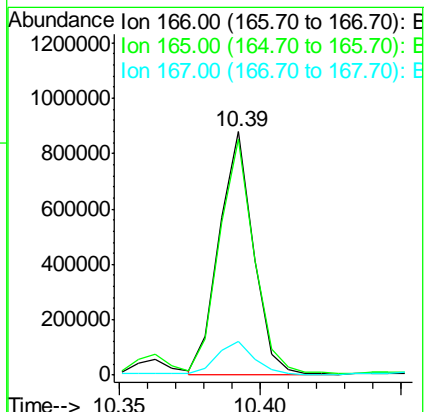
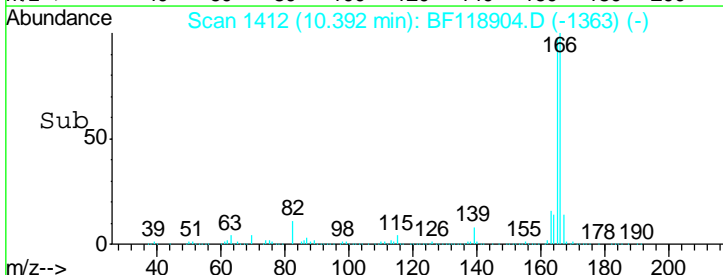
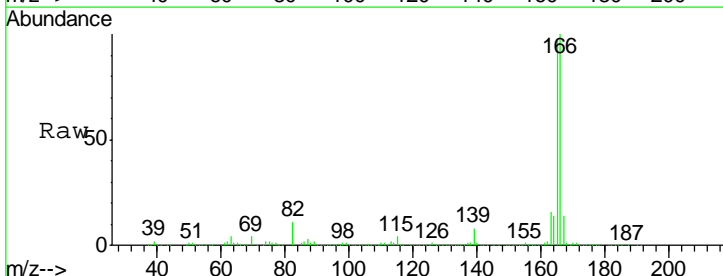
Tgt Ion	Resp	Lower	Upper
168	100		
139	37.2	31.6	47.4
169	15.9	11.4	17.2

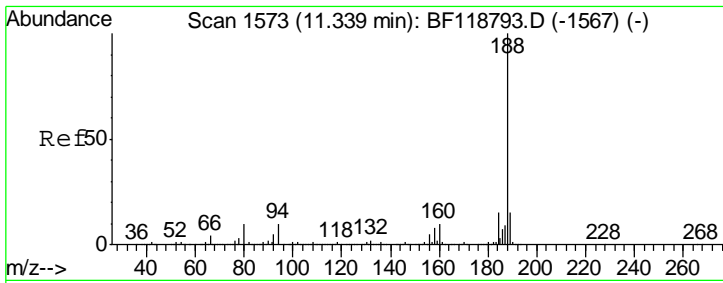
Manual Integrations
 APPROVED
 mohammad
 2/12/2020 3:51:28 PM



#58
 Fluorene
 Concen: 24.570 ng
 RT: 10.39 min Scan# 1412
 Delta R.T. -0.01 min
 Lab File: BF118904.D
 Acq: 12 Feb 2020 00:52

Tgt Ion	Resp	Lower	Upper
166	100		
165	96.9	77.0	115.6
167	14.0	11.1	16.7





#64
 Phenanthrene-d10
 Concen: 20.000 ng
 RT: 11.33 min Scan# 1571
 Delta R.T. -0.01 min
 Lab File: BF118904.D
 Acq: 12 Feb 2020 00:52

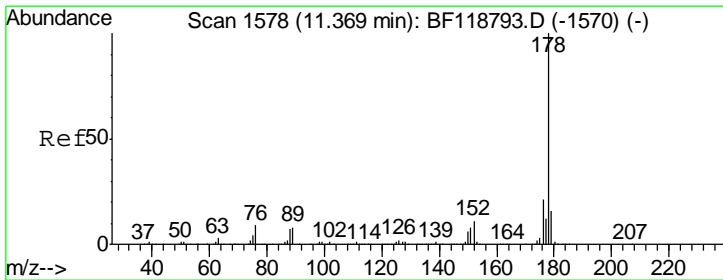
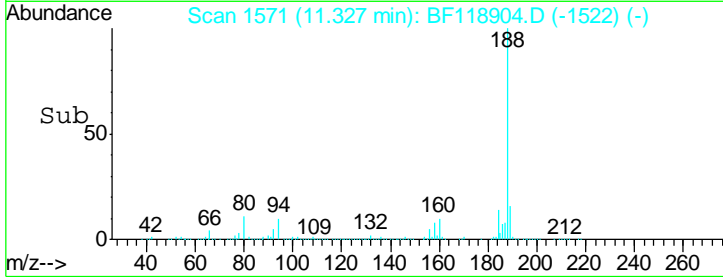
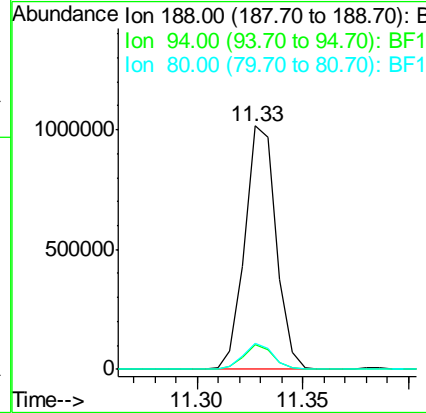
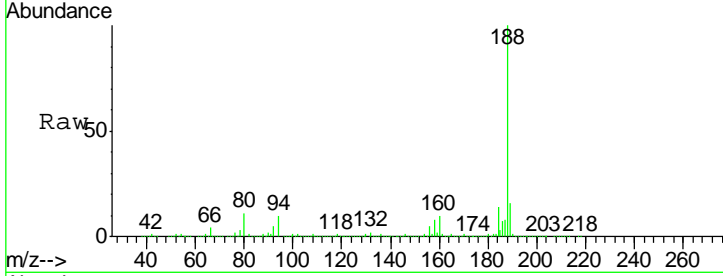
Instrument :
 BNA_F
ClientSampled :
 TP10-EP2-3DL

Tgt Ion: 188 Resp: 1041478

Ion	Ratio	Lower	Upper
188	100		
94	9.9	7.9	11.9
80	10.6	8.4	12.6

Manual Integrations
APPROVED

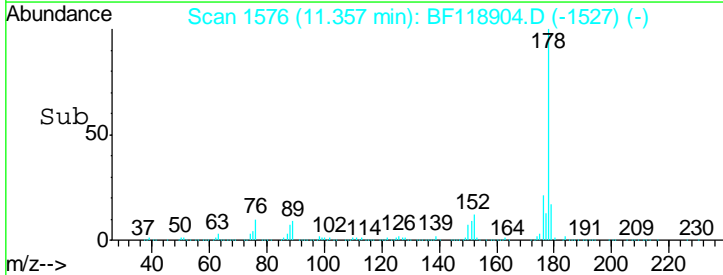
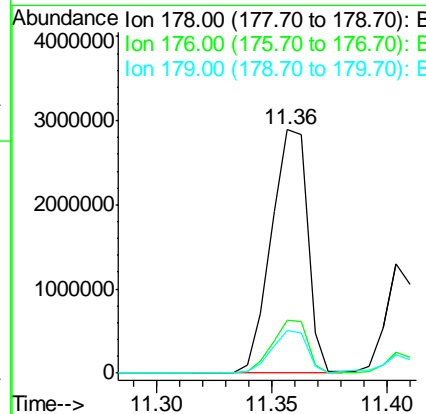
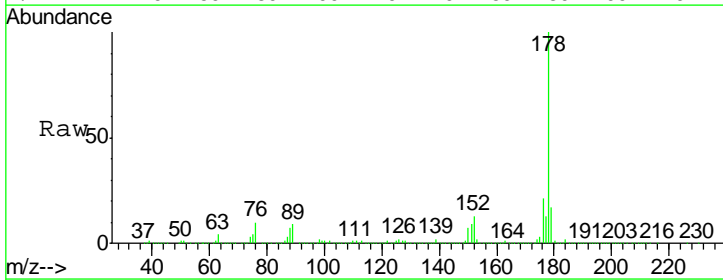
mohammad
 2/12/2020 3:51:28 PM

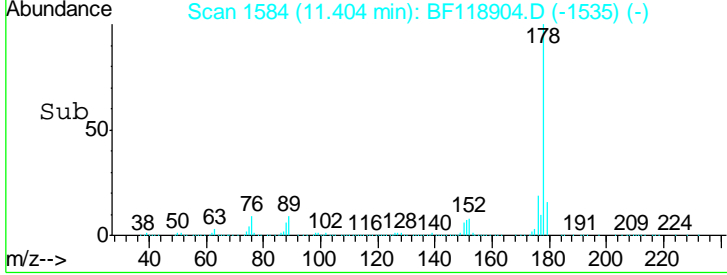
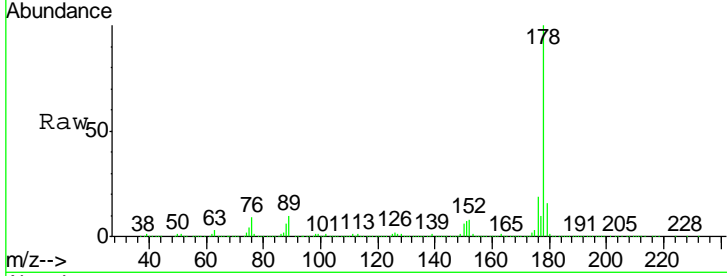
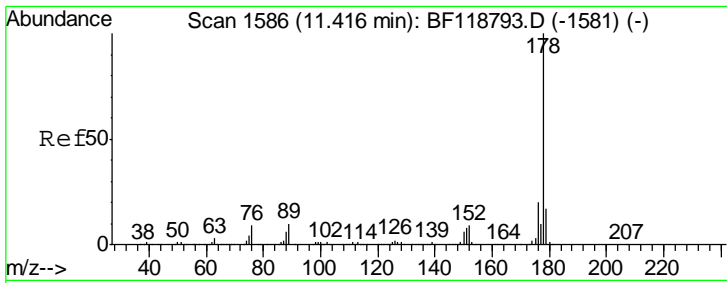


#71
 Phenanthrene
 Concen: 61.777 ng
 RT: 11.36 min Scan# 1576
 Delta R.T. -0.01 min
 Lab File: BF118904.D
 Acq: 12 Feb 2020 00:52

Tgt Ion: 178 Resp: 3165598

Ion	Ratio	Lower	Upper
178	100		
176	21.5	16.6	24.8
179	17.5	13.2	19.8





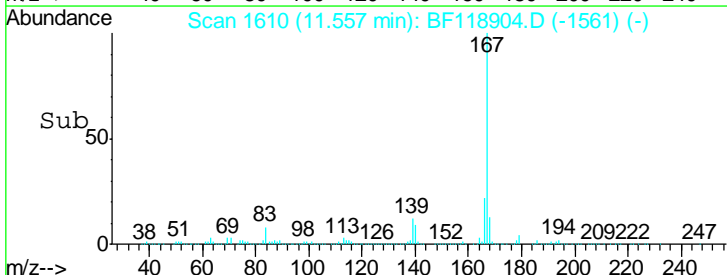
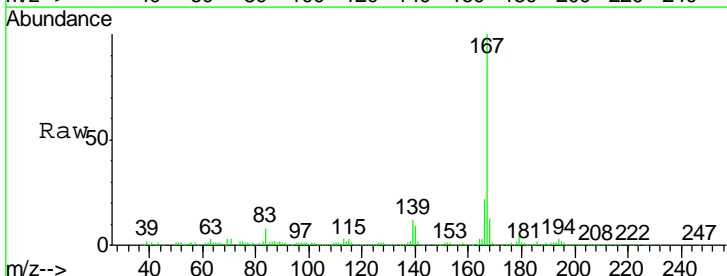
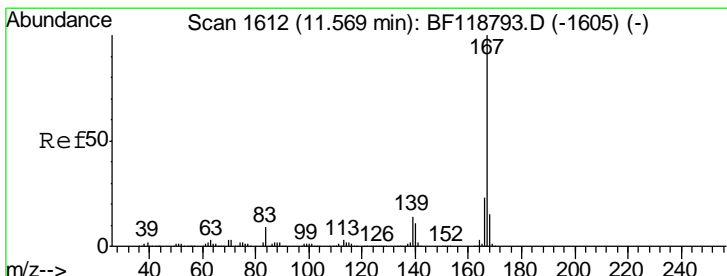
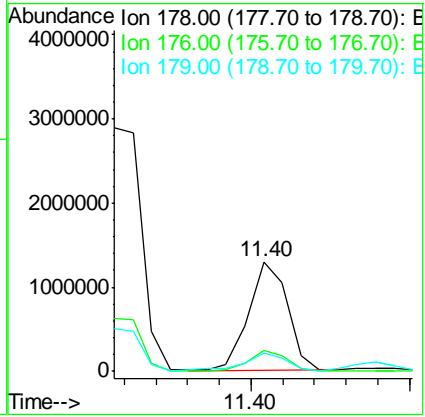
#72
 Anthracene
 Concen: 21.499 ng
 RT: 11.40 min Scan# 1584
 Delta R.T. -0.01 min
 Lab File: BF118904.D
 Acq: 12 Feb 2020 00:52

Tgt Ion: 178 Resp: 1095939

Ion	Ratio	Lower	Upper
178	100		
176	18.7	16.2	24.2
179	16.2	13.4	20.2

Instrument :
 BNA_F
 Client Sampled :
 TP10-EP2-3DL

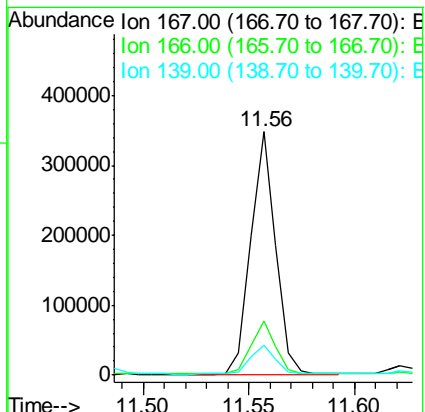
Manual Integrations
APPROVED
 mohammad
 2/12/2020 3:51:28 PM

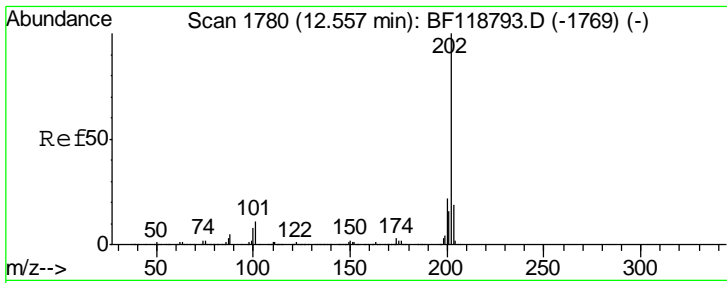


#73
 Carbazole
 Concen: 6.336 ng
 RT: 11.56 min Scan# 1610
 Delta R.T. -0.01 min
 Lab File: BF118904.D
 Acq: 12 Feb 2020 00:52

Tgt Ion: 167 Resp: 283460

Ion	Ratio	Lower	Upper
167	100		
166	22.0	18.4	27.6
139	12.3	11.1	16.7





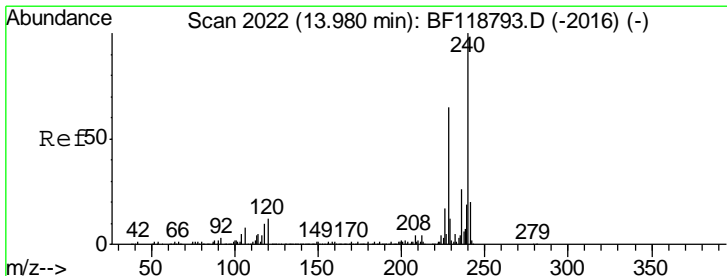
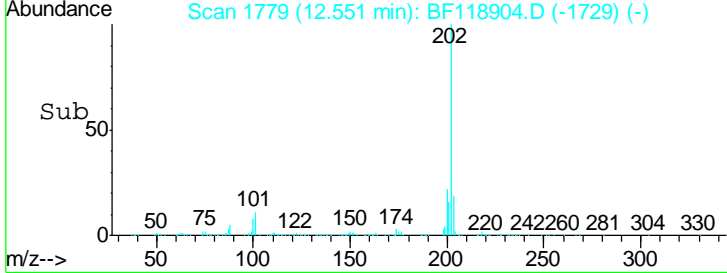
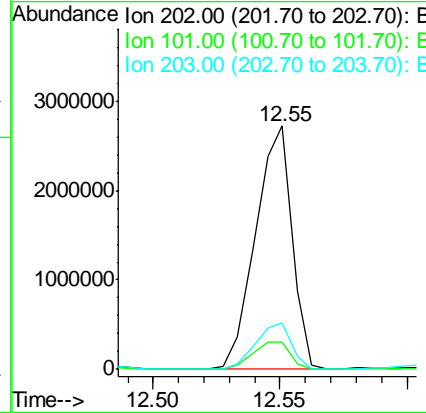
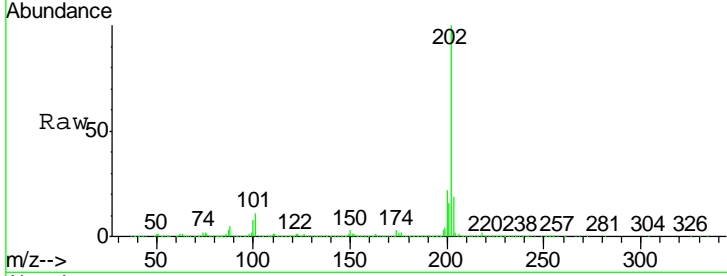
#75
 Fluoranthene
 Concen: 48.825 ng
 RT: 12.55 min Scan# 1779
 Delta R.T. -0.01 min
 Lab File: BF118904.D
 Acq: 12 Feb 2020 00:52

Instrument :
 BNA_F
Client Sampled :
 TP10-EP2-3DL

Tgt Ion	Ratio	Lower	Upper
202	100		
101	11.3	0.0	31.0
203	19.3	0.0	38.7

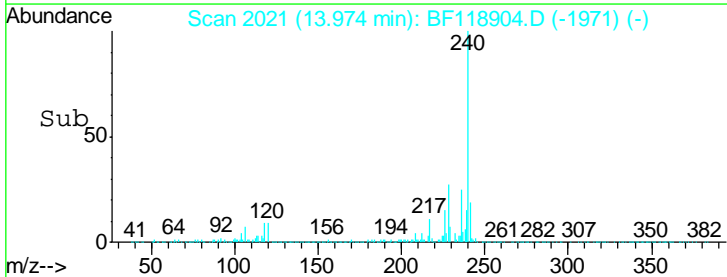
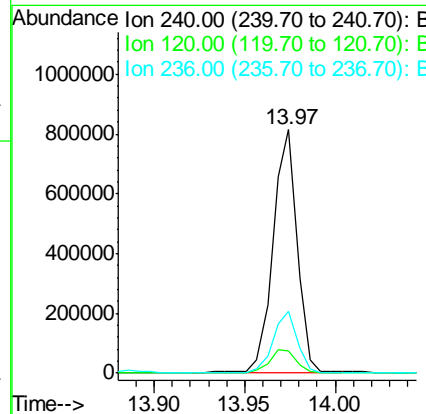
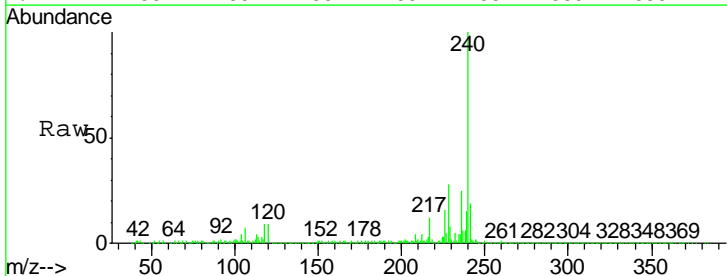
Manual Integrations
APPROVED

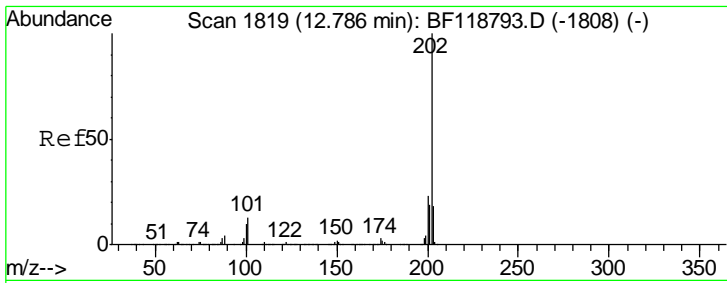
mohammad
 2/12/2020 3:51:28 PM



#76
 Chrysene-d12
 Concen: 20.000 ng
 RT: 13.97 min Scan# 2021
 Delta R.T. -0.01 min
 Lab File: BF118904.D
 Acq: 12 Feb 2020 00:52

Tgt Ion	Ratio	Lower	Upper
240	100		
120	9.4	9.4	14.0#
236	25.4	21.0	31.6





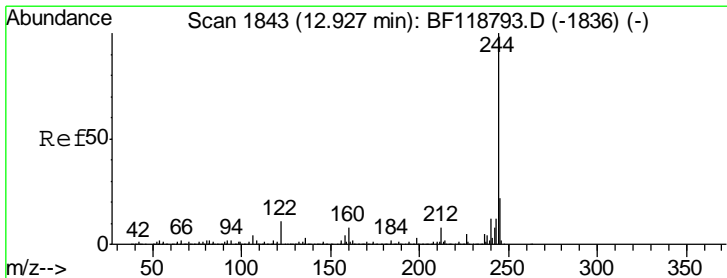
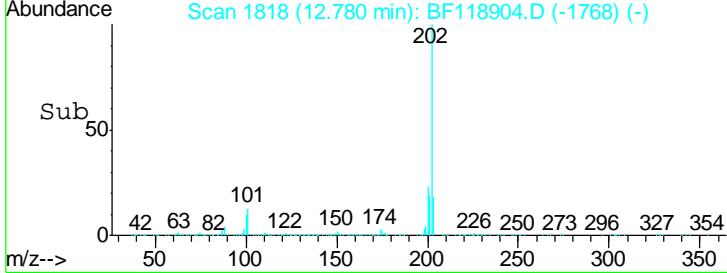
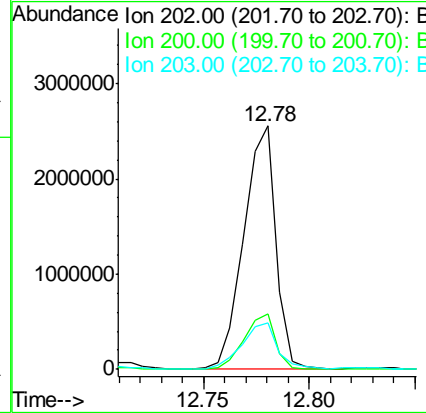
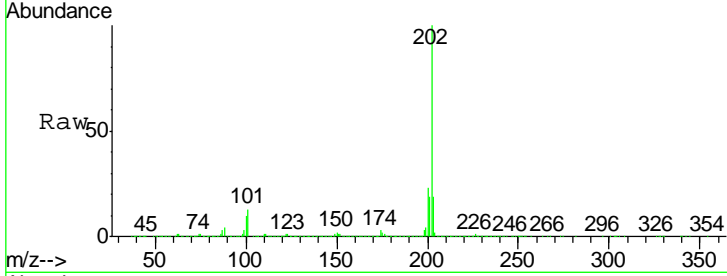
#78
 Pyrene
 Concen: 52.041 ng
 RT: 12.78 min Scan# 1818
 Delta R.T. -0.01 min
 Lab File: BF118904.D
 Acq: 12 Feb 2020 00:52

Instrument :
 BNA_F
Client Sampled :
 TP10-EP2-3DL

Tgt Ion	Ratio	Lower	Upper
202	100		
200	22.8	18.2	27.2
203	19.1	14.8	22.2

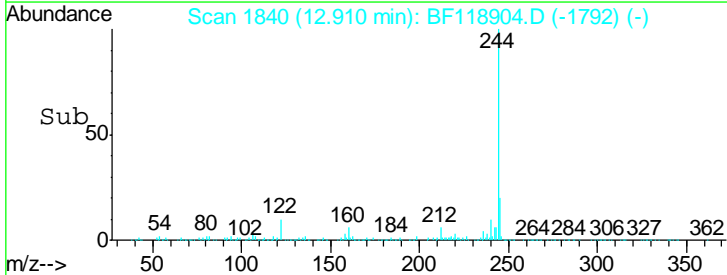
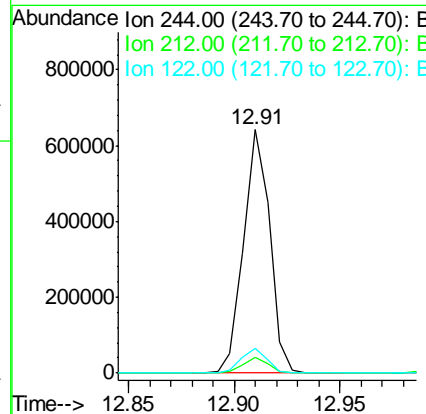
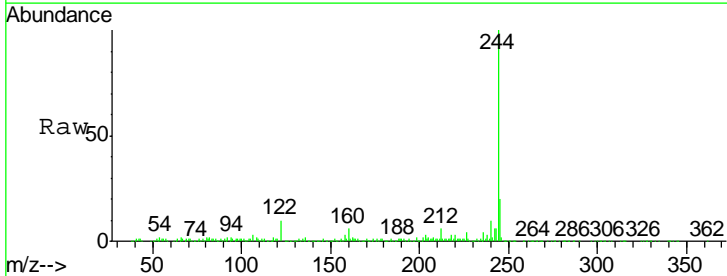
Manual Integrations
APPROVED

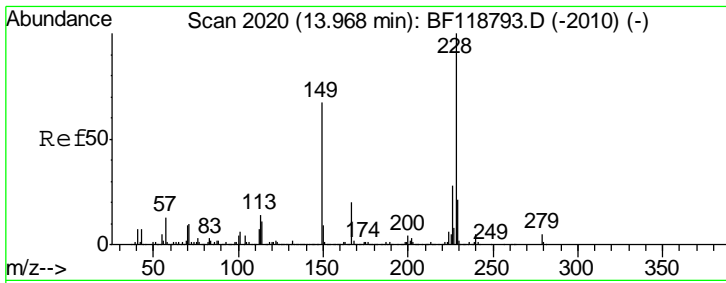
mohammad
 2/12/2020 3:51:28 PM



#79
 Terphenyl-d14
 Concen: 15.083 ng
 RT: 12.91 min Scan# 1840
 Delta R.T. -0.02 min
 Lab File: BF118904.D
 Acq: 12 Feb 2020 00:52

Tgt Ion	Ratio	Lower	Upper
244	100		
212	6.5	6.5	9.7#
122	9.9	8.9	13.3





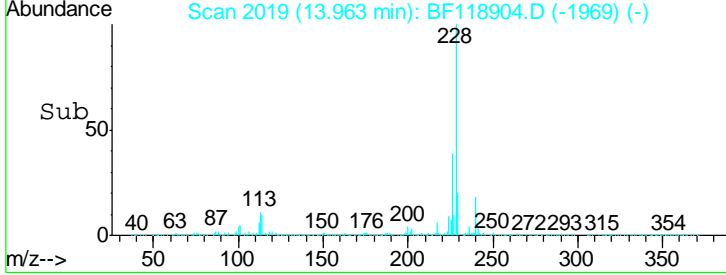
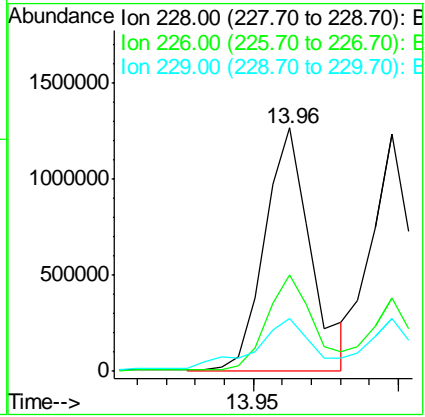
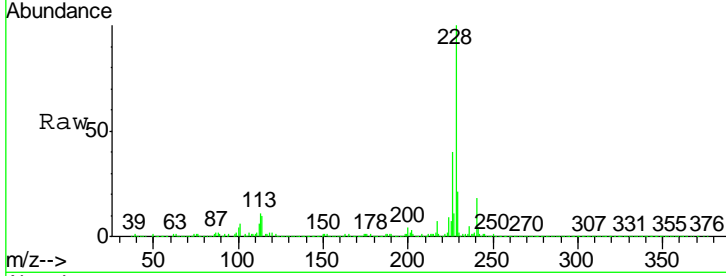
#81
 Benzo(a)anthracene
 Concen: 31.571 ng m
 RT: 13.96 min Scan# 2019
 Delta R.T. -0.01 min
 Lab File: BF118904.D
 Acq: 12 Feb 2020 00:52

Instrument :
 BNA_F
 ClientSampled :
 TP10-EP2-3DL

Tgt Ion: 228 Resp: 1402876

Ion	Ratio	Lower	Upper
228	100		
226	39.5	22.7	34.1#
229	21.5	16.6	25.0

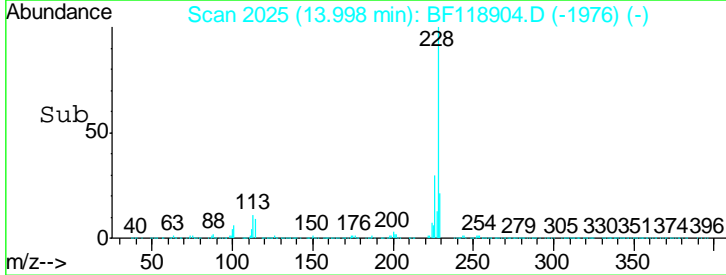
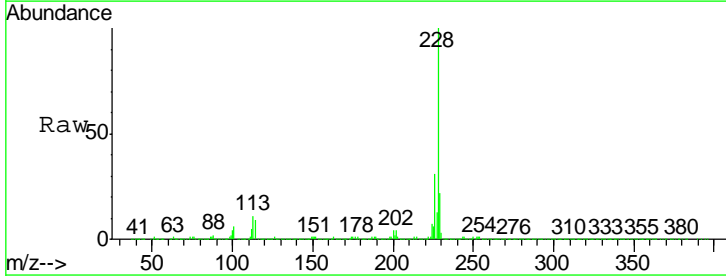
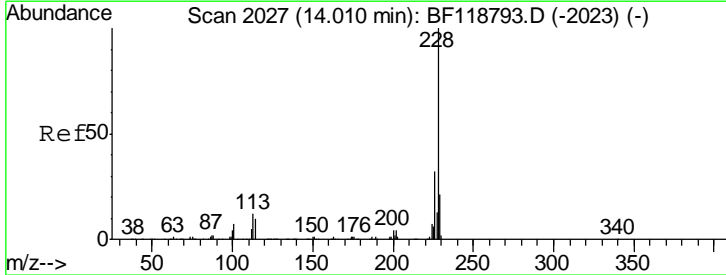
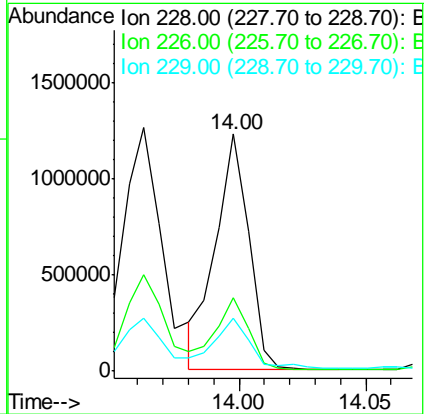
Manual Integrations
APPROVED
 mohammad
 2/12/2020 3:51:28 PM

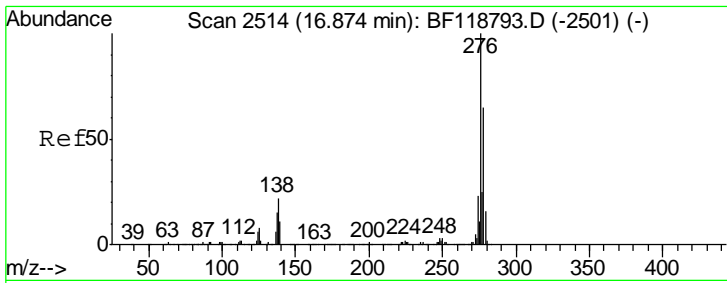


#83
 Chrysene
 Concen: 25.212 ng
 RT: 14.00 min Scan# 2025
 Delta R.T. -0.01 min
 Lab File: BF118904.D
 Acq: 12 Feb 2020 00:52

Tgt Ion: 228 Resp: 1124405

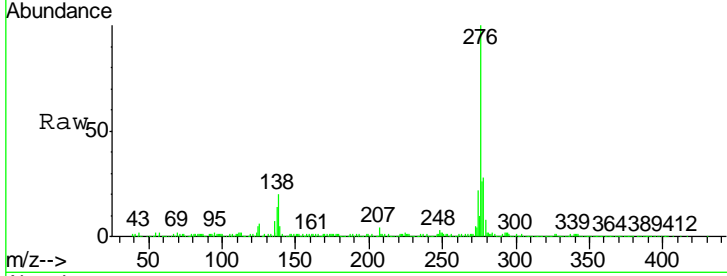
Ion	Ratio	Lower	Upper
228	100		
226	30.8	25.4	38.0
229	22.4	16.9	25.3





#86
 Indeno(1,2,3-cd)pyrene
 Concen: 11.839 ng
 RT: 16.86 min Scan# 2512
 Delta R.T. -0.01 min
 Lab File: BF118904.D
 Acq: 12 Feb 2020 00:52

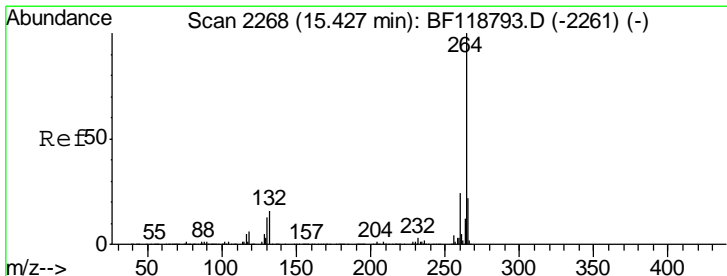
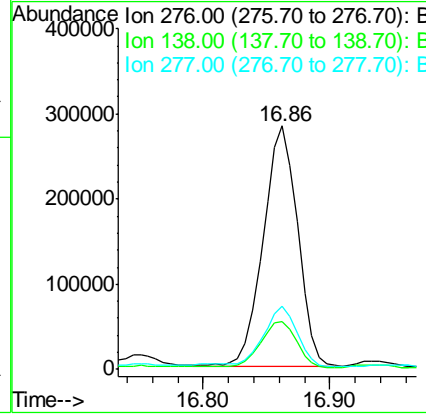
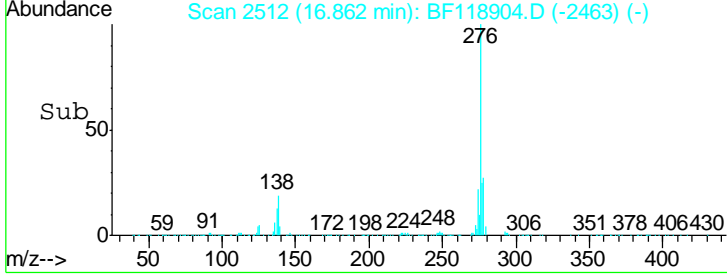
Instrument :
 BNA_F
ClientSampled :
 TP10-EP2-3DL



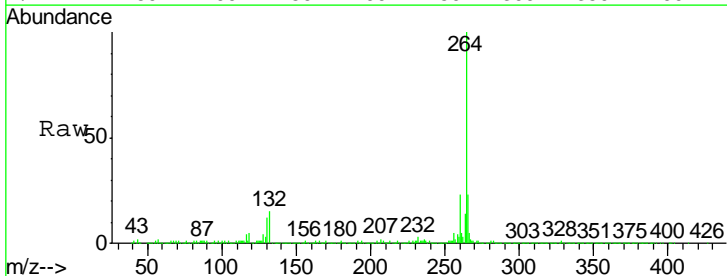
Tgt Ion: 276 Resp: 530486

Ion	Ratio	Lower	Upper
276	100		
138	20.6	18.3	27.5
277	24.5	20.2	30.4

Manual Integrations
APPROVED
 mohammad
 2/12/2020 3:51:28 PM

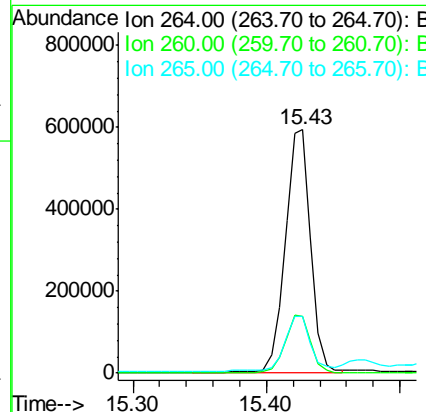
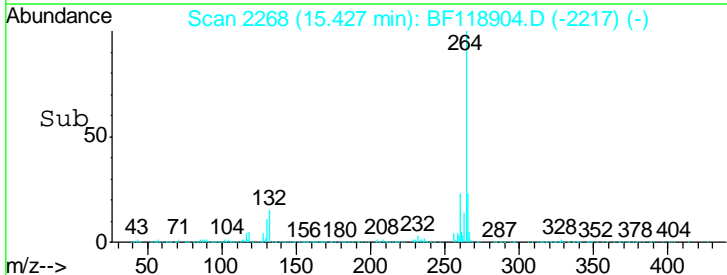


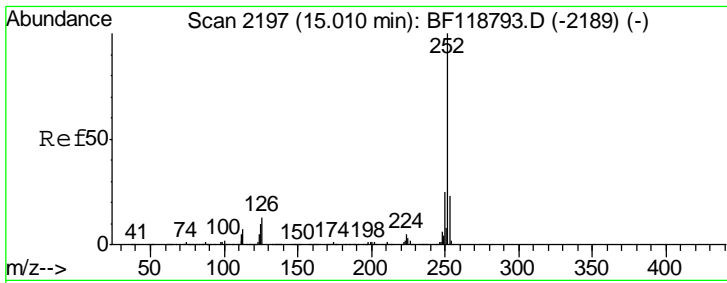
#87
 Perylene-d12
 Concen: 20.000 ng
 RT: 15.43 min Scan# 2268
 Delta R.T. -0.00 min
 Lab File: BF118904.D
 Acq: 12 Feb 2020 00:52



Tgt Ion: 264 Resp: 786555

Ion	Ratio	Lower	Upper
264	100		
260	23.4	19.1	28.7
265	23.3	17.2	25.8





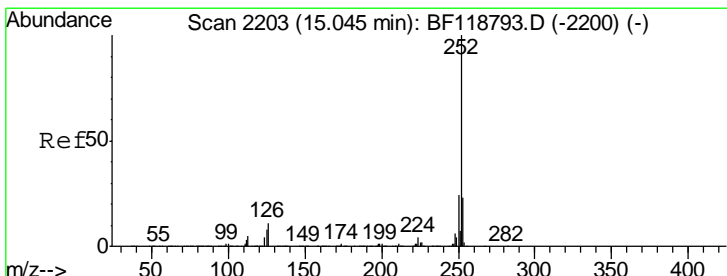
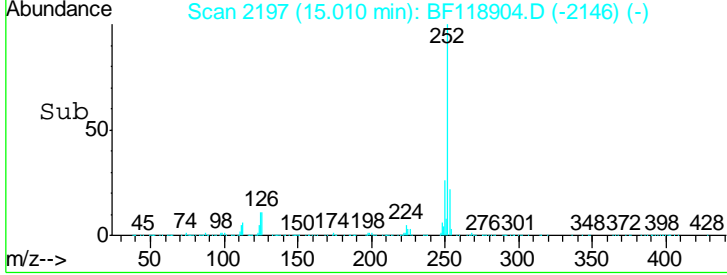
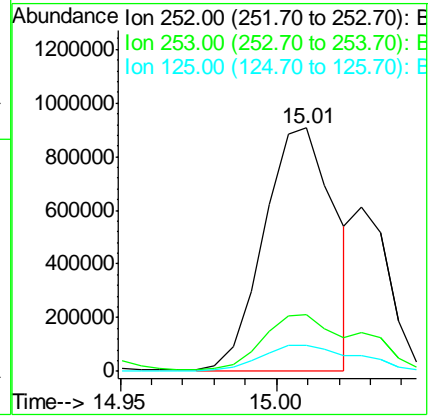
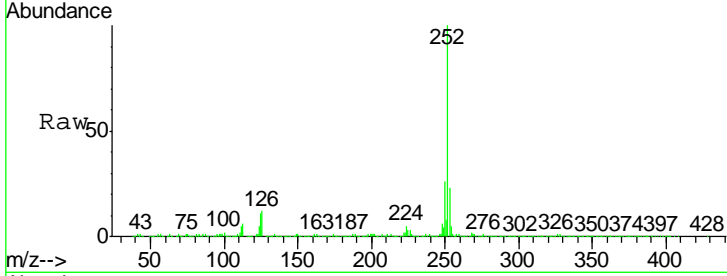
#88
 Benzo(b)fluoranthene
 Concen: 29.330 ng m
 RT: 15.01 min Scan# 2197
 Delta R.T. -0.00 min
 Lab File: BF118904.D
 Acq: 12 Feb 2020 00:52

Instrument :
 BNA_F
 ClientSampled :
 TP10-EP2-3DL

Tgt Ion	Resp	Lower	Upper
252	1431512		
253	23.2	18.4	27.6
125	10.8	8.1	12.1

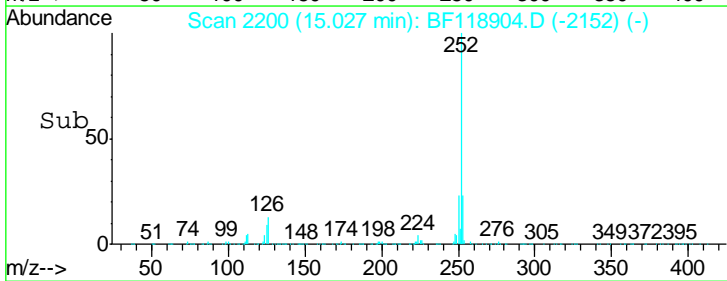
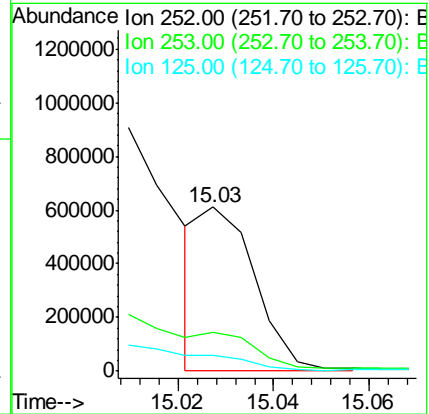
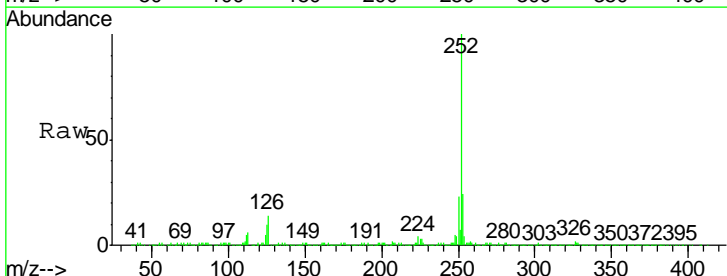
Manual Integrations
 APPROVED

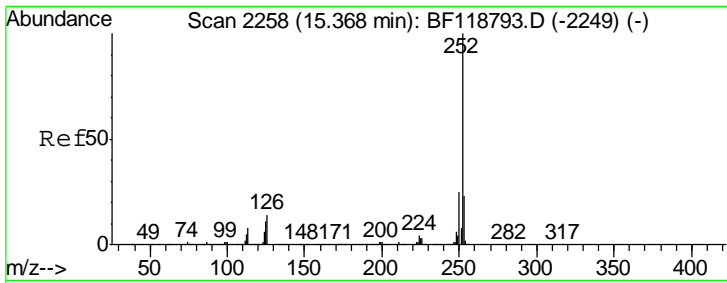
mohammad
 2/12/2020 3:51:28 PM



#89
 Benzo(k)fluoranthene
 Concen: 11.365 ng m
 RT: 15.03 min Scan# 2200
 Delta R.T. -0.02 min
 Lab File: BF118904.D
 Acq: 12 Feb 2020 00:52

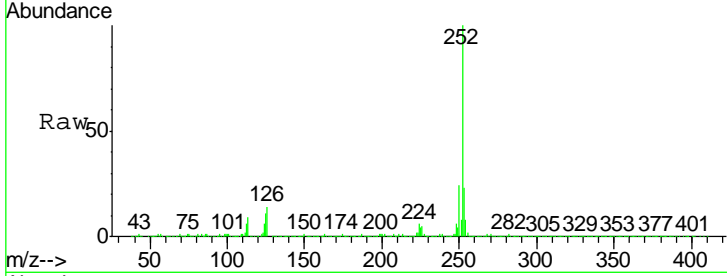
Tgt Ion	Resp	Lower	Upper
252	483036		
253	23.7	18.2	27.4
125	9.8	7.0	10.6





#90
 Benzo(a)pyrene
 Concen: 28.508 ng
 RT: 15.36 min Scan# 2257
 Delta R.T. -0.01 min
 Lab File: BF118904.D
 Acq: 12 Feb 2020 00:52

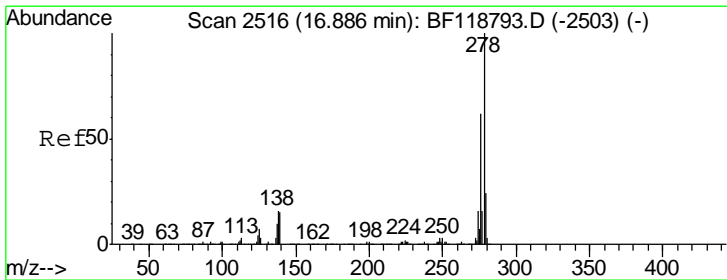
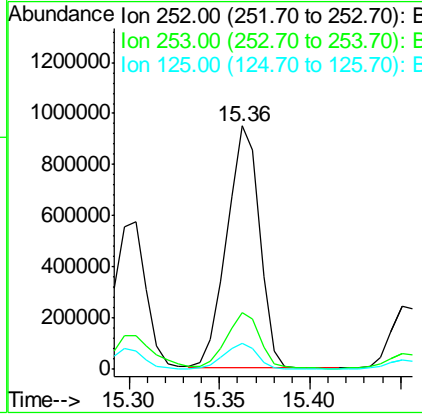
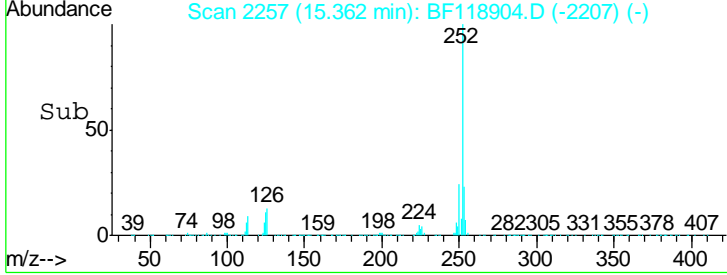
Instrument :
 BNA_F
Client Sampled :
 TP10-EP2-3DL



Tgt Ion: 252 Resp: 1190778

Ion	Ratio	Lower	Upper
252	100		
253	23.4	18.1	27.1
125	10.9	8.7	13.1

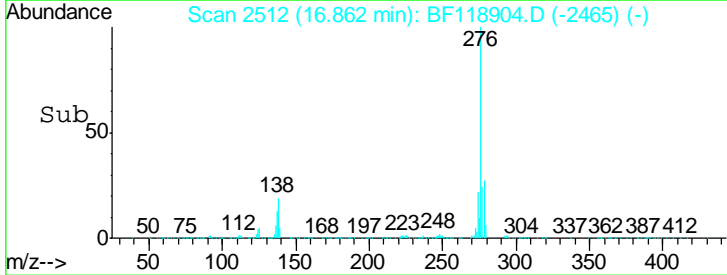
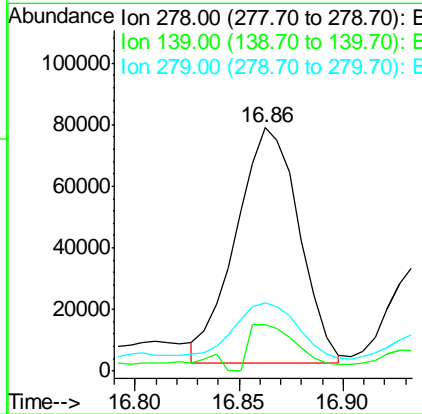
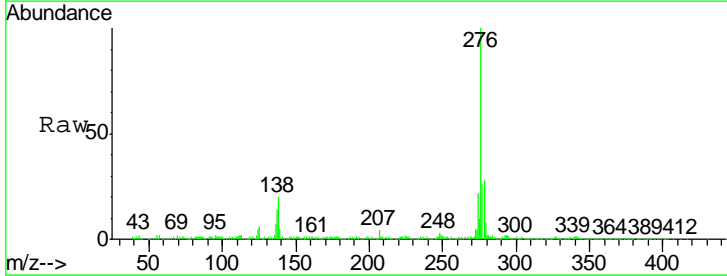
Manual Integrations
APPROVED
 mohammad
 2/12/2020 3:51:28 PM

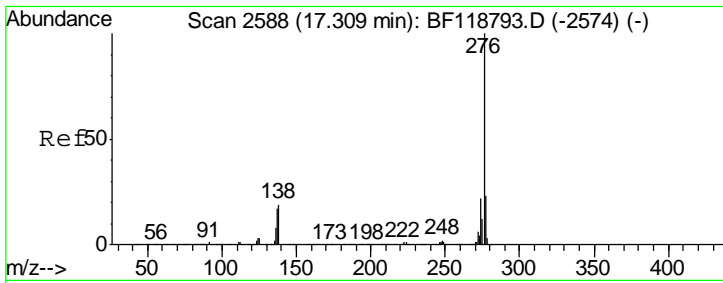


#91
 Dibenzo(a,h)anthracene
 Concen: 4.336 ng m
 RT: 16.86 min Scan# 2512
 Delta R.T. -0.02 min
 Lab File: BF118904.D
 Acq: 12 Feb 2020 00:52

Tgt Ion: 278 Resp: 160783

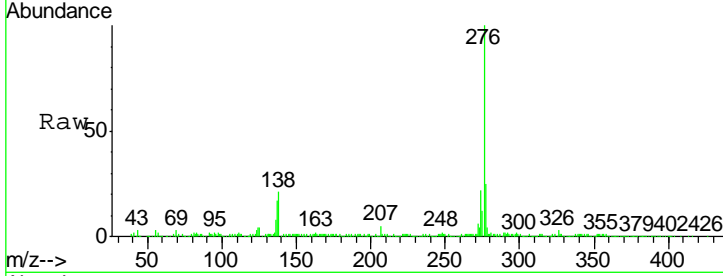
Ion	Ratio	Lower	Upper
278	100		
139	18.9	12.3	18.5#
279	27.9	19.1	28.7





#92
 Benzo(a,h,i)perylene
 Concen: 13.444 ng
 RT: 17.30 min Scan# 2586
 Delta R.T. -0.01 min
 Lab File: BF118904.D
 Acq: 12 Feb 2020 00:52

Instrument :
 BNA_F
ClientSampled :
 TP10-EP2-3DL



Tot Ion: 276 Resp: 479412

Ion	Ratio	Lower	Upper
276	100		
277	24.7	18.7	28.1
138	20.7	15.4	23.2

Manual Integrations
APPROVED
 mohammad
 2/12/2020 3:51:28 PM

