

Data Path : \\74.0.250.170\SVOASRV\HPCHEM1\BNA_F\DATA\BF021218\
 Data File : BF102928.D
 Acq On : 12 Feb 2018 18:44
 Operator : SJ/JU
 Sample : J1517-07
 Misc :
 ALS Vial : 23 Sample Multiplier: 1

Instrument :
 BNA_F
 ClientSampleId :
 TP-1

Integration Parameters: rteint.p
 Integrator: RTE
 Smoothing : ON Filtering: 5
 Sampling : 1 Min Area: 3 % of largest Peak
 Start Thrs: 0.2 Max Peaks: 100
 Stop Thrs : 0 Peak Location: TOP

If leading or trailing edge < 100 prefer < Baseline drop else tangent >
 Peak separation: 5

Method : Z:\HPCHEM1\BNA_F\METHODS\8270-BF020318.M
 Title : ASP BNA STANDARDS FOR 5 POINT CALIBRATION

Signal : TIC

peak #	R.T. min	first scan	max scan	last scan	PK TY	peak height	corr. area	corr. % max.	% of total
1	2.175	9	15	23	rVB	684314	910381	21.10%	2.453%
2	5.116	512	515	523	rVB	214965	279888	6.49%	0.754%
3	5.510	577	582	585	rBV	4367586	4314327	100.00%	11.623%
4	6.516	747	753	756	rBV	3935075	4202563	97.41%	11.322%
5	6.657	772	777	780	rBV	4423175	4176308	96.80%	11.251%
6	6.886	812	816	819	rBV	1455907	1212054	28.09%	3.265%
7	7.039	838	842	846	rBV	3257427	3226555	74.79%	8.693%
8	7.451	906	912	915	rBV	2735643	2810316	65.14%	7.571%
9	8.169	1030	1034	1037	rBV	1845673	1532347	35.52%	4.128%
10	9.245	1211	1217	1220	rBV	4212596	3981527	92.29%	10.727%
11	9.633	1279	1283	1291	rBV	354069	326328	7.56%	0.879%
12	9.845	1314	1319	1322	rBV	138629	106226	2.46%	0.286%
13	9.922	1328	1332	1341	rBV2	1592920	1493501	34.62%	4.024%
14	10.321	1397	1400	1401	rBV	49754	44969	1.04%	0.121%
15	10.345	1401	1404	1407	rVB	222313	165775	3.84%	0.447%
16	10.563	1436	1441	1444	rBV	56547	71902	1.67%	0.194%
17	10.633	1448	1453	1459	rBV2	44483	68153	1.58%	0.184%
18	10.716	1463	1467	1476	rVB	1780424	1846146	42.79%	4.974%
19	10.816	1482	1484	1491	rVB	171850	170150	3.94%	0.458%
20	10.969	1506	1510	1514	rVB	43460	43560	1.01%	0.117%
21	11.268	1557	1561	1563	rBV	78733	73794	1.71%	0.199%
22	11.410	1581	1585	1589	rBV	1261328	1152641	26.72%	3.105%
23	11.692	1630	1633	1636	rVB	60650	43282	1.00%	0.117%
24	12.998	1850	1855	1858	rBV	2746521	2499558	57.94%	6.734%
25	13.880	2001	2005	2015	rBV	363437	409081	9.48%	1.102%
26	14.051	2030	2034	2043	rVB	1078697	1040813	24.12%	2.804%
27	15.539	2282	2287	2296	rBV	663244	915923	21.23%	2.468%

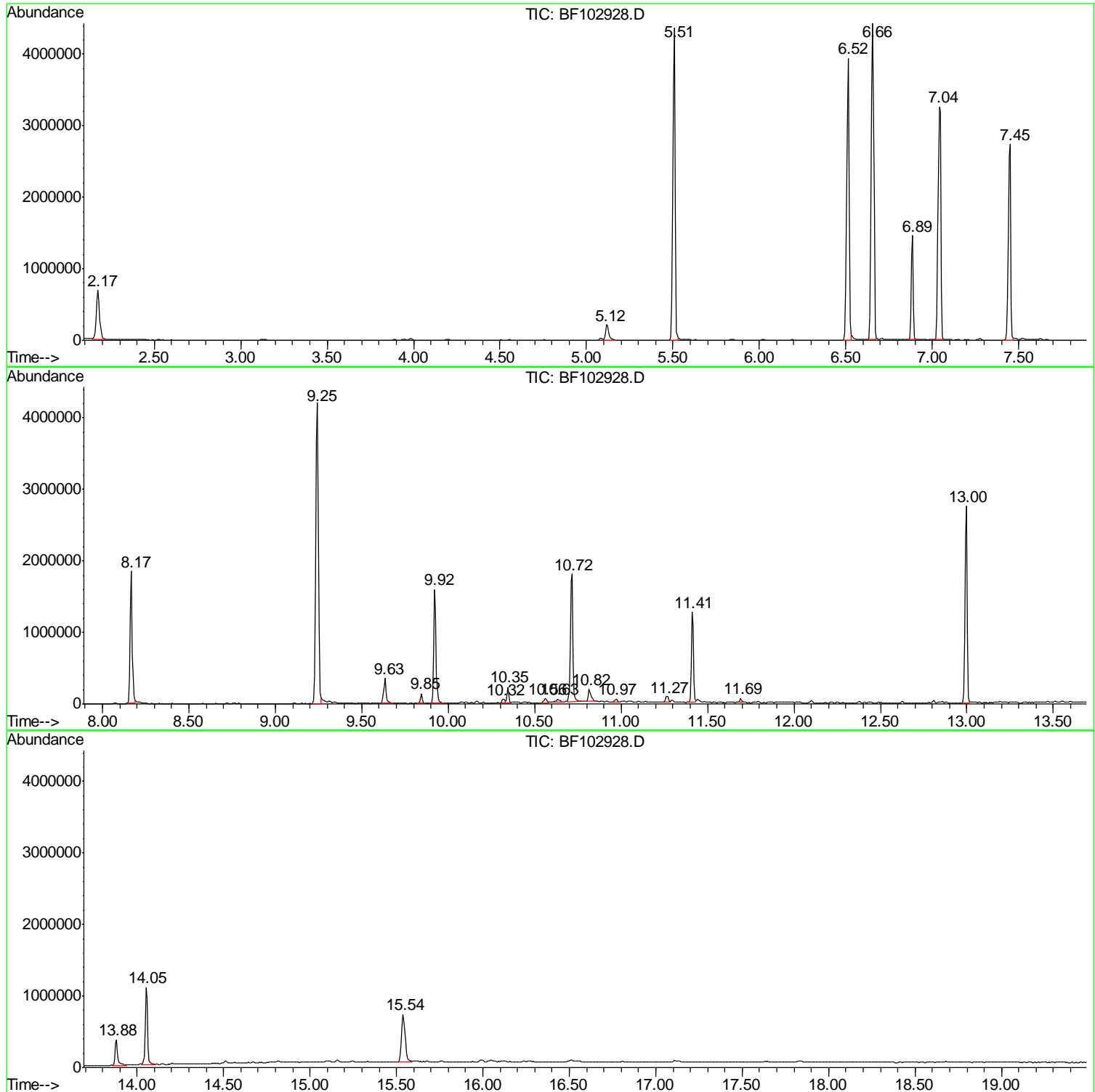
Sum of corrected areas: 37118068

Data Path : \\74.0.250.170\SVOASRV\HPCHEM1\BNA F\DATA\BF021218\
Data File : BF102928.D
Acq On : 12 Feb 2018 18:44
Operator : SJ/JU
Sample : J1517-07
Misc :
ALS Vial : 23 Sample Multiplier: 1

Instrument :
BNA_F
ClientSampled :
TP-1

Quant Method : Z:\HPCHEM1\BNA F\METHODS\8270-BF020318.M
Quant Title : ASP BNA STANDARDS FOR 5 POINT CALIBRATION

TIC Library : C:\DATABASE\NIST11.L
TIC Integration Parameters: LSCINT.P



Data Path : \\74.0.250.170\SVOASRV\HPCHEM1\BNA F\DATA\BF021218\
 Data File : BF102928.D
 Acq On : 12 Feb 2018 18:44
 Operator : SJ/JU
 Sample : J1517-07
 Misc :
 ALS Vial : 23 Sample Multiplier: 1

Instrument :
 BNA_F
 ClientSampled :
 TP-1

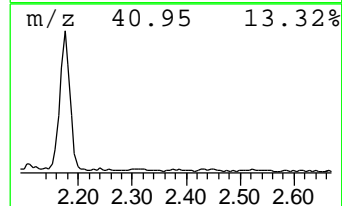
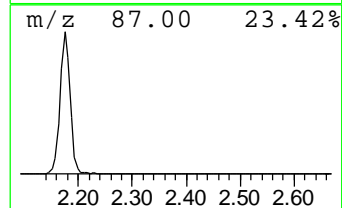
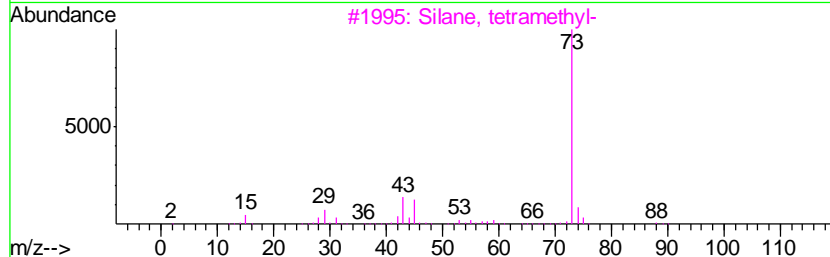
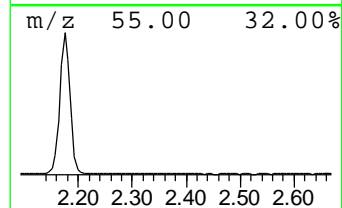
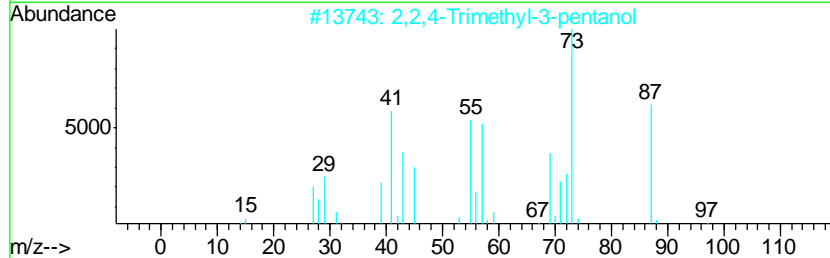
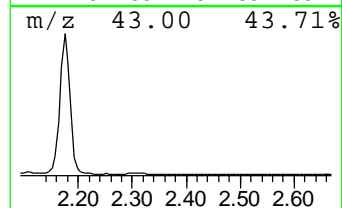
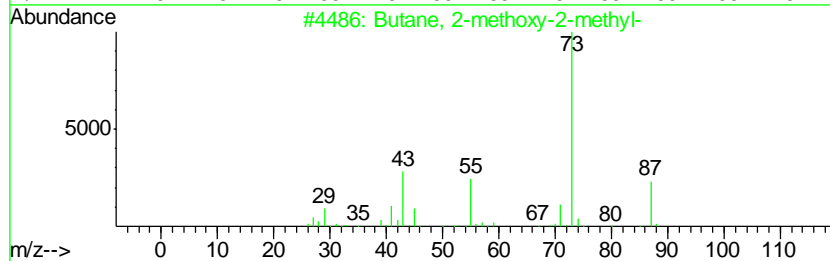
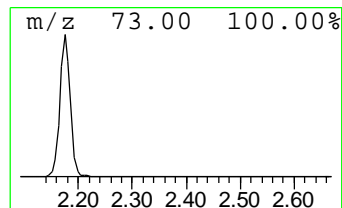
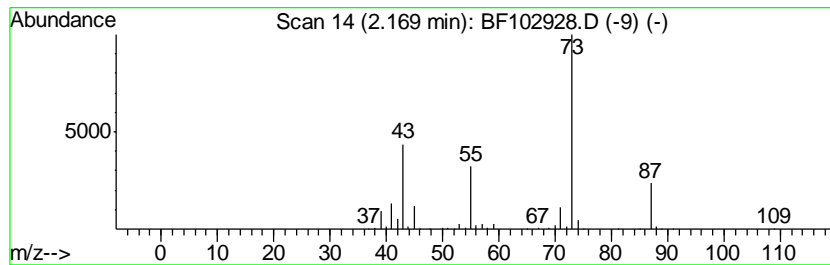
Quant Method : Z:\HPCHEM1\BNA F\METHODS\8270-BF020318.M
 Quant Title : ASP BNA STANDARDS FOR 5 POINT CALIBRATION

TIC Library : C:\DATABASE\NIST11.L
 TIC Integration Parameters: LSCINT.P

 Peak Number 1 Butane, 2-methoxy-2-methyl- Concentration Rank 3

R.T.	EstConc	Area	Relative to ISTD	R.T.
2.17	15.02 ng	910381	1,4-Dichlorobenzene-d4	6.89

Hit#	of	Tentative ID	MW	MolForm	CAS#	Qual
1	5	Butane, 2-methoxy-2-methyl-	102	C6H14O	000994-05-8	83
2		2,2,4-Trimethyl-3-pentanol	130	C8H18O	005162-48-1	39
3		Silane, tetramethyl-	88	C4H12Si	000075-76-3	35
4		1,3-Dioxolane, 2-methyl-	88	C4H8O2	000497-26-7	25
5		Pentane, 3-methoxy-	102	C6H14O	036839-67-5	12



Data Path : \\74.0.250.170\SVOASRV\HPCHEM1\BNA F\DATA\BF021218\
 Data File : BF102928.D
 Acq On : 12 Feb 2018 18:44
 Operator : SJ/JU
 Sample : J1517-07
 Misc :
 ALS Vial : 23 Sample Multiplier: 1

Instrument :
 BNA_F
 ClientSampled :
 TP-1

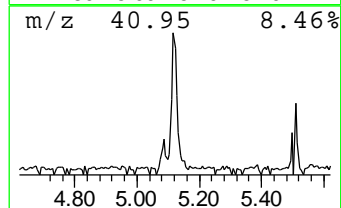
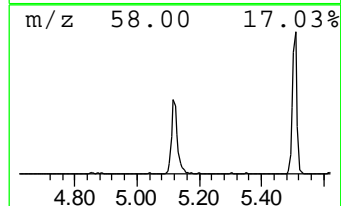
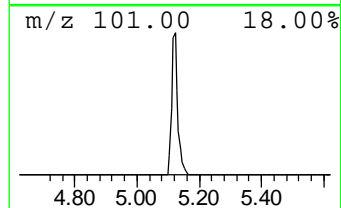
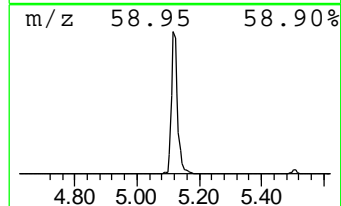
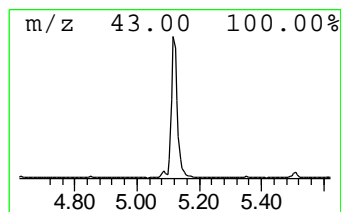
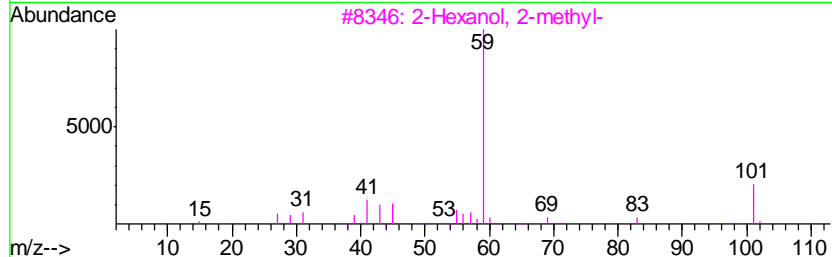
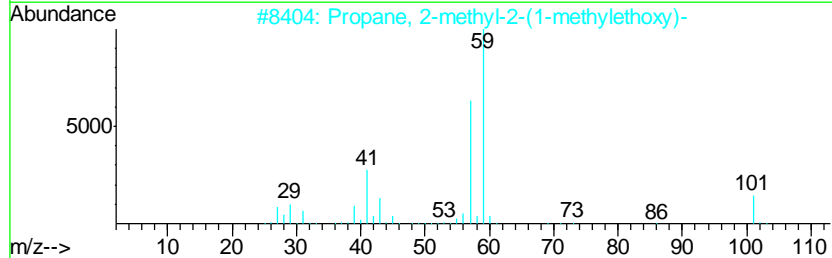
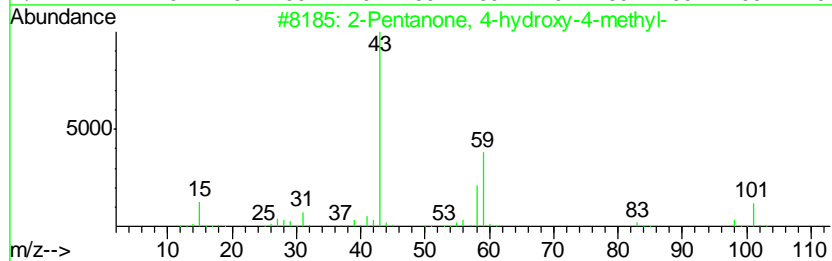
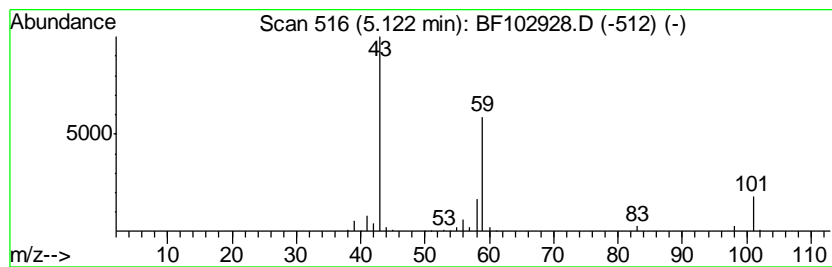
Quant Method : Z:\HPCHEM1\BNA F\METHODS\8270-BF020318.M
 Quant Title : ASP BNA STANDARDS FOR 5 POINT CALIBRATION

TIC Library : C:\DATABASE\NIST11.L
 TIC Integration Parameters: LSCINT.P

 Peak Number 2 2-Pentanone, 4-hydroxy-4-me... Concentration Rank 5

R.T.	EstConc	Area	Relative to ISTD	R.T.
5.12	4.62 ng	279888	1,4-Dichlorobenzene-d4	6.89

Hit#	of	Tentative ID	MW	MolForm	CAS#	Qual
1	5	2-Pentanone, 4-hydroxy-4-methyl-	116	C6H12O2	000123-42-2	56
2		Propane, 2-methyl-2-(1-methyleth...	116	C7H16O	017348-59-3	53
3		2-Hexanol, 2-methyl-	116	C7H16O	000625-23-0	33
4		3-Octanol	130	C8H18O	000589-98-0	33
5		3-Hexanol, 4-methyl-	116	C7H16O	000615-29-2	33



Data Path : \\74.0.250.170\SVOASRV\HPCHEM1\BNA F\DATA\BF021218\
 Data File : BF102928.D
 Acq On : 12 Feb 2018 18:44
 Operator : SJ/JU
 Sample : J1517-07
 Misc :
 ALS Vial : 23 Sample Multiplier: 1

Instrument :
 BNA_F
 ClientSampled :
 TP-1

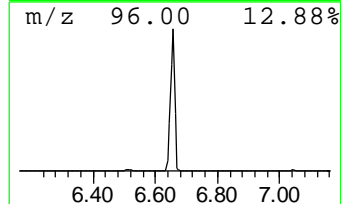
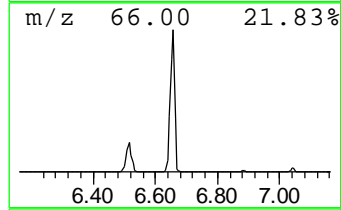
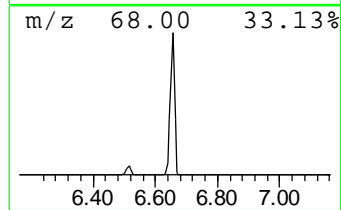
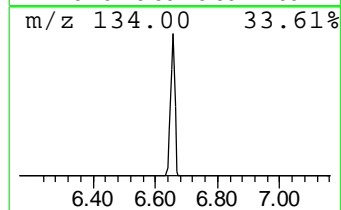
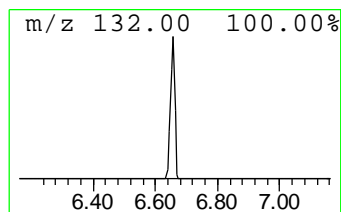
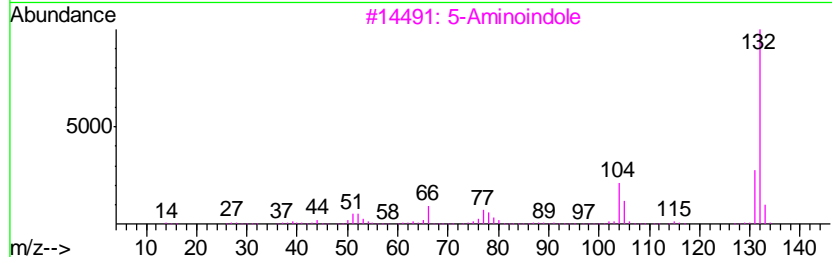
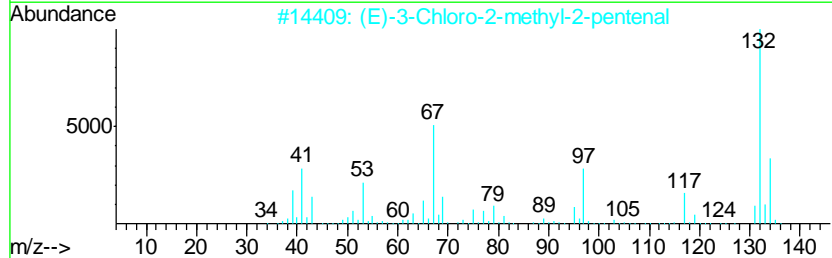
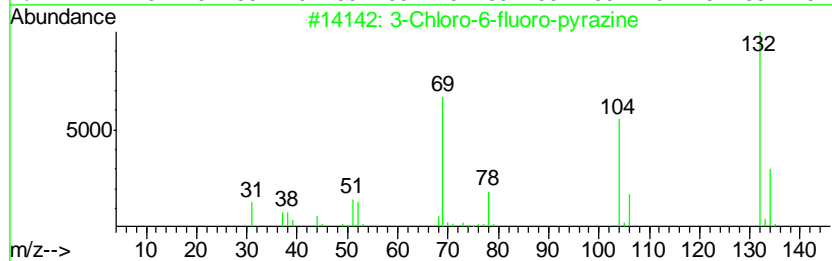
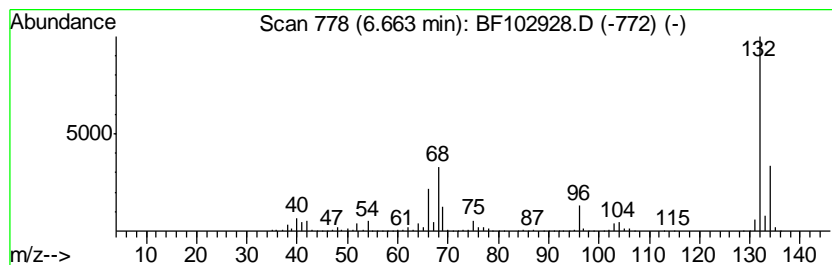
Quant Method : Z:\HPCHEM1\BNA F\METHODS\8270-BF020318.M
 Quant Title : ASP BNA STANDARDS FOR 5 POINT CALIBRATION

TIC Library : C:\DATABASE\NIST11.L
 TIC Integration Parameters: LSCINT.P

 Peak Number 3 unknown6.66 Concentration Rank 1

R.T.	EstConc	Area	Relative to ISTD	R.T.
6.66	68.91 ng	4176310	1,4-Dichlorobenzene-d4	6.89

Hit#	of	Tentative ID	MW	MolForm	CAS#	Qual
1	5	3-Chloro-6-fluoro-pyrazine	132	C4H2ClFN2	1000146-10-7	27
2		(E)-3-Chloro-2-methyl-2-pentenal	132	C6H9ClO	031357-76-3	16
3		5-Aminoindole	132	C8H8N2	005192-03-0	12
4		Tranylcypromine-propionyl	189	C12H15NO	1000123-86-3	10
5		Bicyclo[4.2.0]octa-1,3,5-triene,...	132	C10H12	028749-81-7	9



Data Path : \\74.0.250.170\SVOASRV\HPCHEM1\BNA F\DATA\BF021218\
 Data File : BF102928.D
 Acq On : 12 Feb 2018 18:44
 Operator : SJ/JU
 Sample : J1517-07
 Misc :
 ALS Vial : 23 Sample Multiplier: 1

Instrument :
 BNA_F
 ClientSampleID :
 TP-1

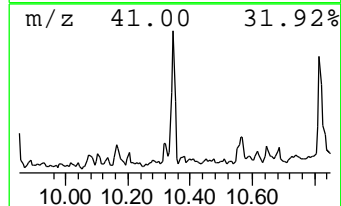
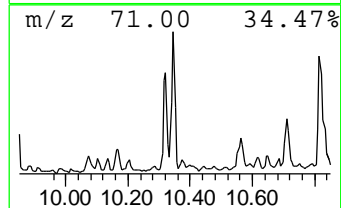
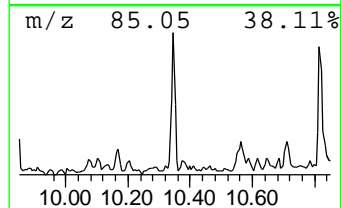
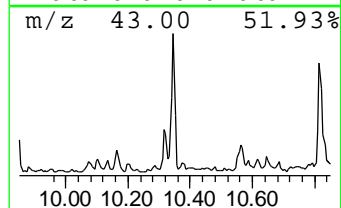
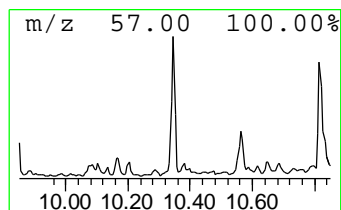
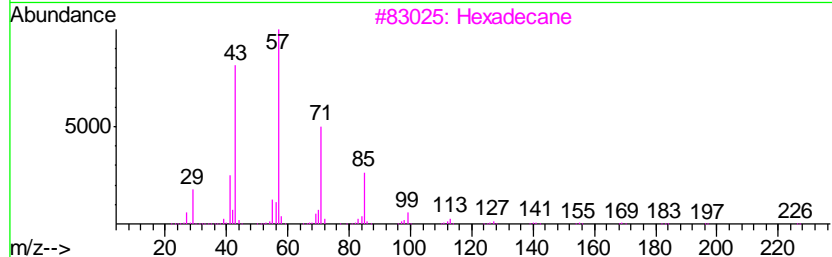
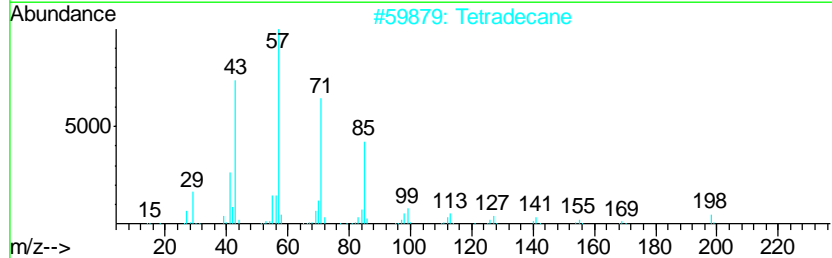
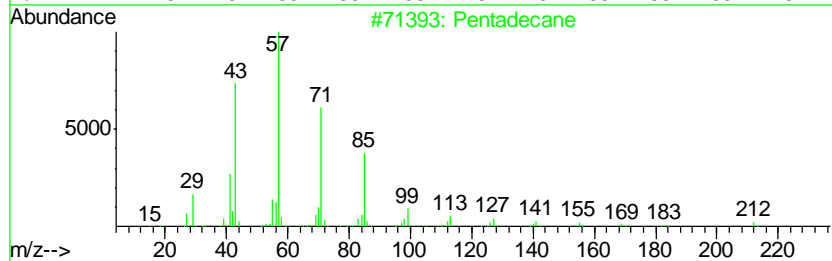
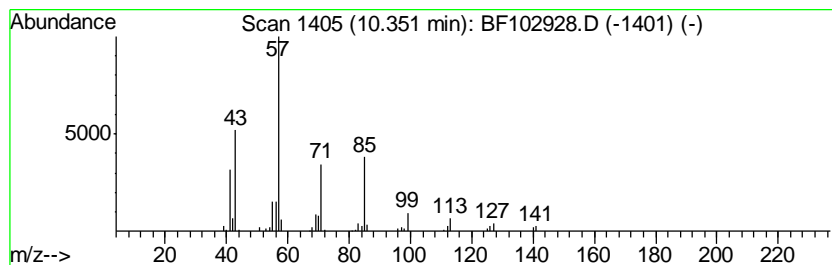
Quant Method : Z:\HPCHEM1\BNA F\METHODS\8270-BF020318.M
 Quant Title : ASP BNA STANDARDS FOR 5 POINT CALIBRATION

TIC Library : C:\DATABASE\NIST11.L
 TIC Integration Parameters: LSCINT.P

 Peak Number 5 Pentadecane Concentration Rank 7

R.T.	EstConc	Area	Relative to ISTD	R.T.
10.35	2.22 ng	165775	Acenaphthene-d10	9.92

Hit#	of	Tentative ID	MW	MolForm	CAS#	Qual
1	5	Pentadecane	212	C15H32	000629-62-9	90
2		Tetradecane	198	C14H30	000629-59-4	90
3		Hexadecane	226	C16H34	000544-76-3	90
4		Sulfurous acid, 2-propyl tetrade...	320	C17H36O3S	1000309-12-5	86
5		Nonadecane	268	C19H40	000629-92-5	86



Data Path : \\74.0.250.170\SVOASRV\HPCHEM1\BNA F\DATA\BF021218\
 Data File : BF102928.D
 Acq On : 12 Feb 2018 18:44
 Operator : SJ/JU
 Sample : J1517-07
 Misc :
 ALS Vial : 23 Sample Multiplier: 1

Instrument :
 BNA_F
 ClientSampled :
 TP-1

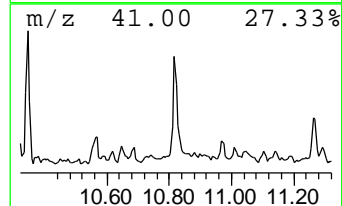
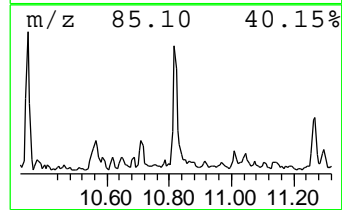
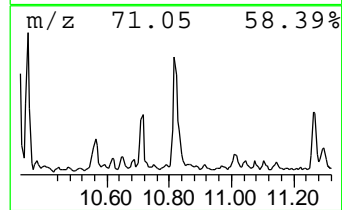
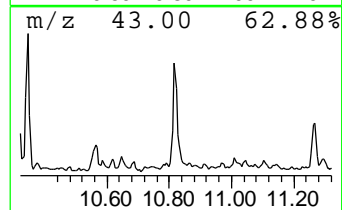
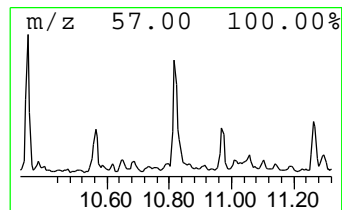
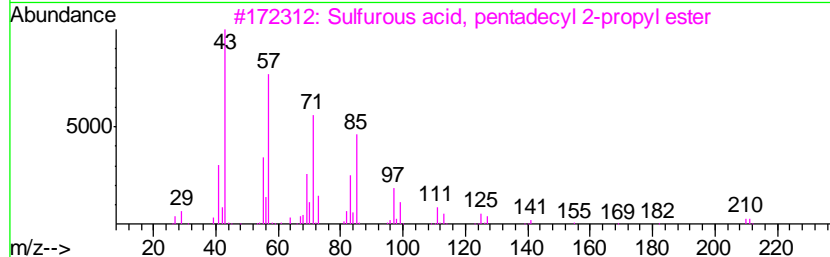
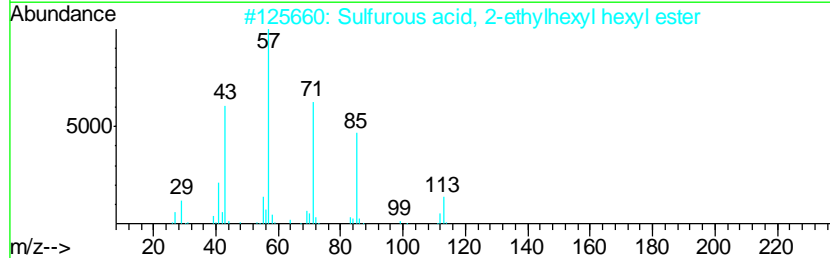
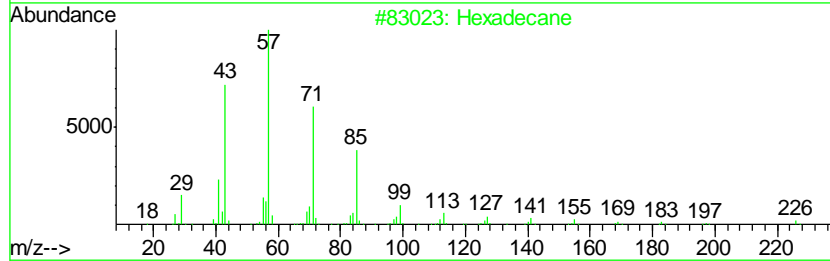
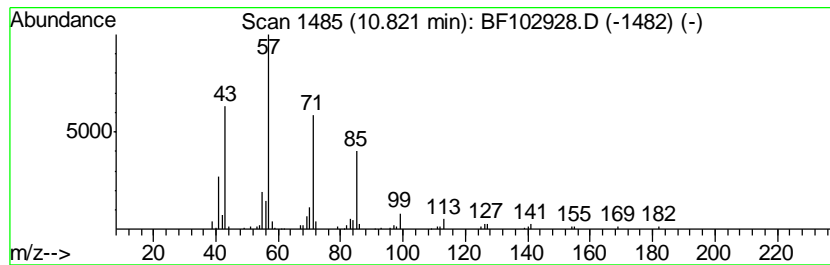
Quant Method : Z:\HPCHEM1\BNA F\METHODS\8270-BF020318.M
 Quant Title : ASP BNA STANDARDS FOR 5 POINT CALIBRATION

TIC Library : C:\DATABASE\NIST11.L
 TIC Integration Parameters: LSCINT.P

 Peak Number 6 Hexadecane Concentration Rank 6

R.T.	EstConc	Area	Relative to ISTD	R.T.
10.82	2.95 ng	170150	Phenanthrene-d10	11.41

Hit#	of	Tentative ID	MW	MolForm	CAS#	Qual
1	5	Hexadecane	226	C16H34	000544-76-3	90
2		Sulfurous acid, 2-ethylhexyl hex...	278	C14H30O3S	1000309-20-2	86
3		Sulfurous acid, pentadecyl 2-pro...	334	C18H38O3S	1000309-12-6	72
4		Pentadecane	212	C15H32	000629-62-9	72
5		Tridecane	184	C13H28	000629-50-5	72



Data Path : \\74.0.250.170\SVOASRV\HPCHEM1\BNA F\DATA\BF021218\
 Data File : BF102928.D
 Acq On : 12 Feb 2018 18:44
 Operator : SJ/JU
 Sample : J1517-07
 Misc :
 ALS Vial : 23 Sample Multiplier: 1

Instrument :
 BNA_F
 ClientSampled :
 TP-1

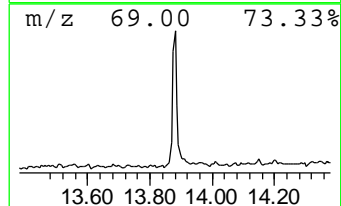
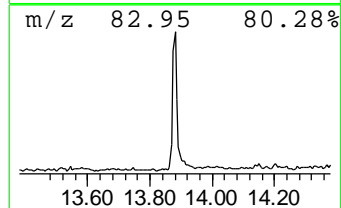
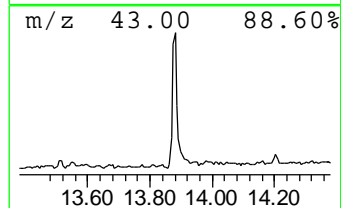
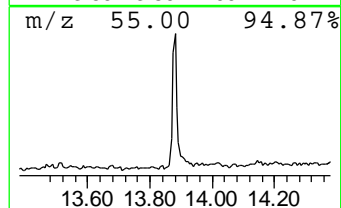
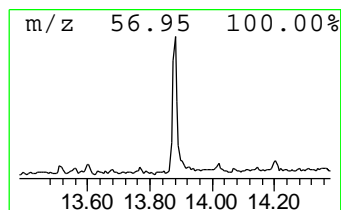
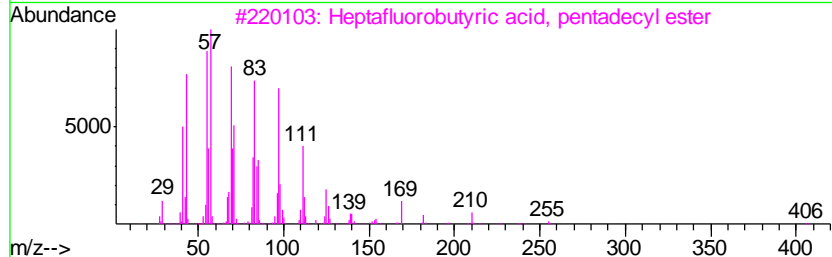
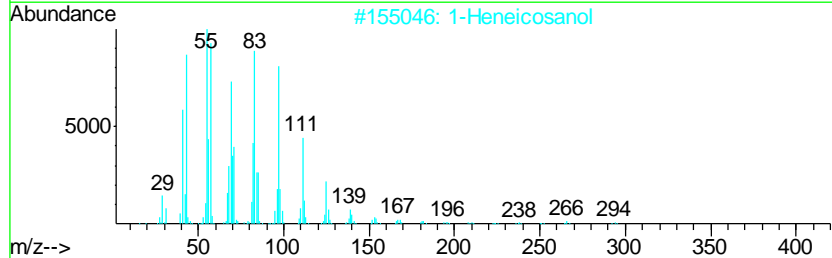
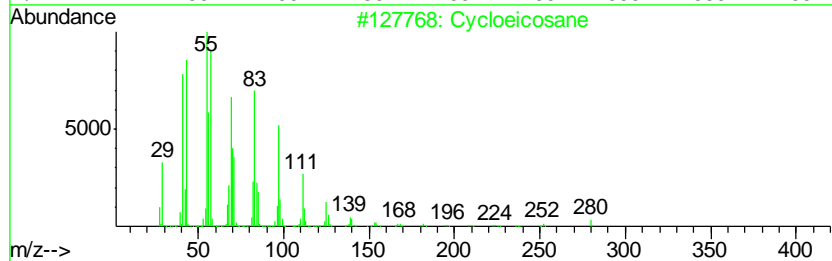
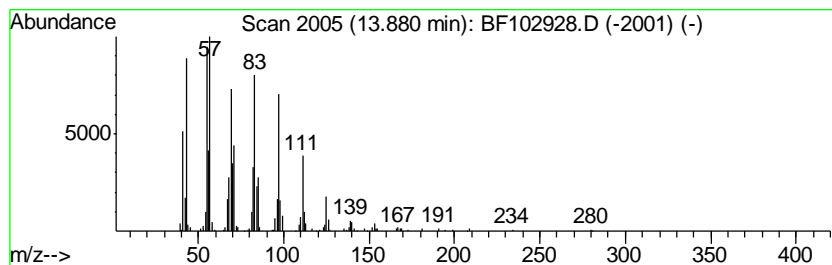
Quant Method : Z:\HPCHEM1\BNA F\METHODS\8270-BF020318.M
 Quant Title : ASP BNA STANDARDS FOR 5 POINT CALIBRATION

TIC Library : C:\DATABASE\NIST11.L
 TIC Integration Parameters: LSCINT.P

 Peak Number 7 Cycloeicosane Concentration Rank 4

R.T.	EstConc	Area	Relative to ISTD	R.T.
13.88	7.86 ng	409081	Chrysene-d12	14.05

Hit#	of	Tentative ID	MW	MolForm	CAS#	Qual
1	5	Cycloeicosane	280	C20H40	000296-56-0	95
2		1-Heneicosanol	312	C21H44O	015594-90-8	95
3		Heptafluorobutyric acid, pentade...	424	C19H31F7O2	959261-23-5	94
4		Trichloroacetic acid, hexadecyl ...	386	C18H33Cl3O2	074339-54-1	91
5		1-Heptacosanol	396	C27H56O	002004-39-9	91



Data Path : \\74.0.250.170\SVOASRV\HPCHEM1\BNA_F\DATA\BF021218\
 Data File : BF102928.D
 Acq On : 12 Feb 2018 18:44
 Operator : SJ/JU
 Sample : J1517-07
 Misc :
 ALS Vial : 23 Sample Multiplier: 1

Instrument :
 BNA_F
 ClientSampled :
 TP-1

Quant Method : Z:\HPCHEM1\BNA_F\METHODS\8270-BF020318.M
 Quant Title : ASP BNA STANDARDS FOR 5 POINT CALIBRATION

TIC Library : C:\DATABASE\NIST11.L
 TIC Integration Parameters: LSCINT.P

TIC Top Hit name	RT	EstConc	Units	Response	--Internal Standard--			
					#	RT	Resp	Conc
Butane, 2-methoxy...	2.17	15.0	ng	910381	1	6.89	1212050	20.0
2-Pentanone, 4-hy...	5.12	4.6	ng	279888	1	6.89	1212050	20.0
unknown6.66	6.66	68.9	ng	4176310	1	6.89	1212050	20.0
Pentadecane	10.35	2.2	ng	165775	3	9.92	1493500	20.0
Hexadecane	10.82	3.0	ng	170150	4	11.41	1152640	20.0
Cycloeicosane	13.88	7.9	ng	409081	5	14.05	1040810	20.0